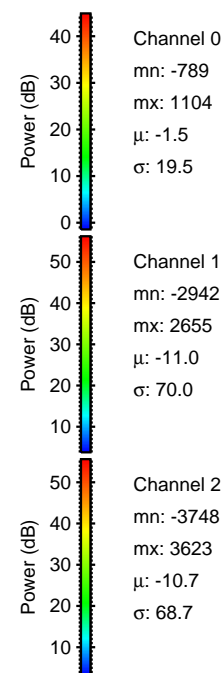
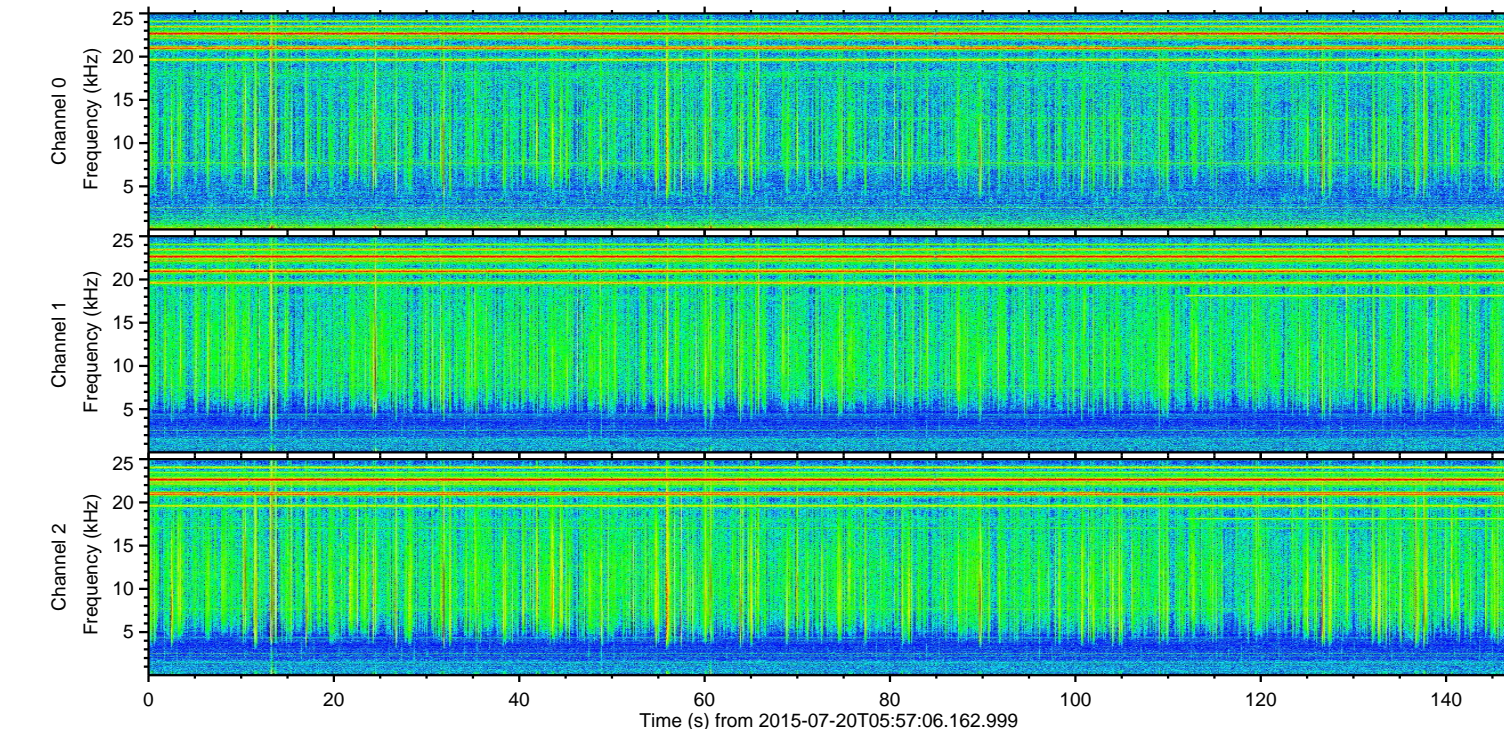
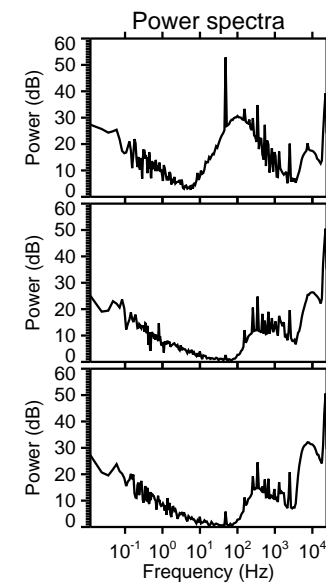
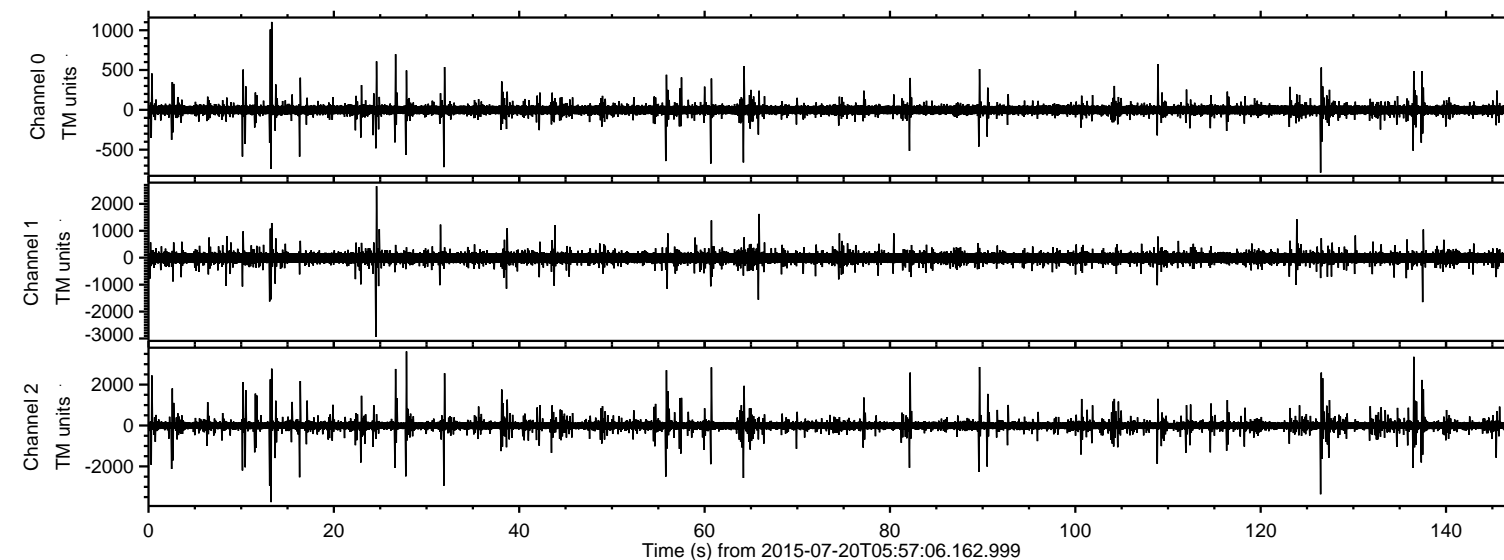
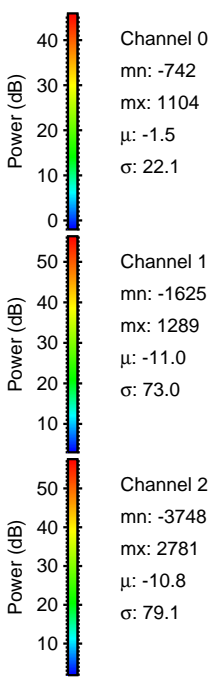
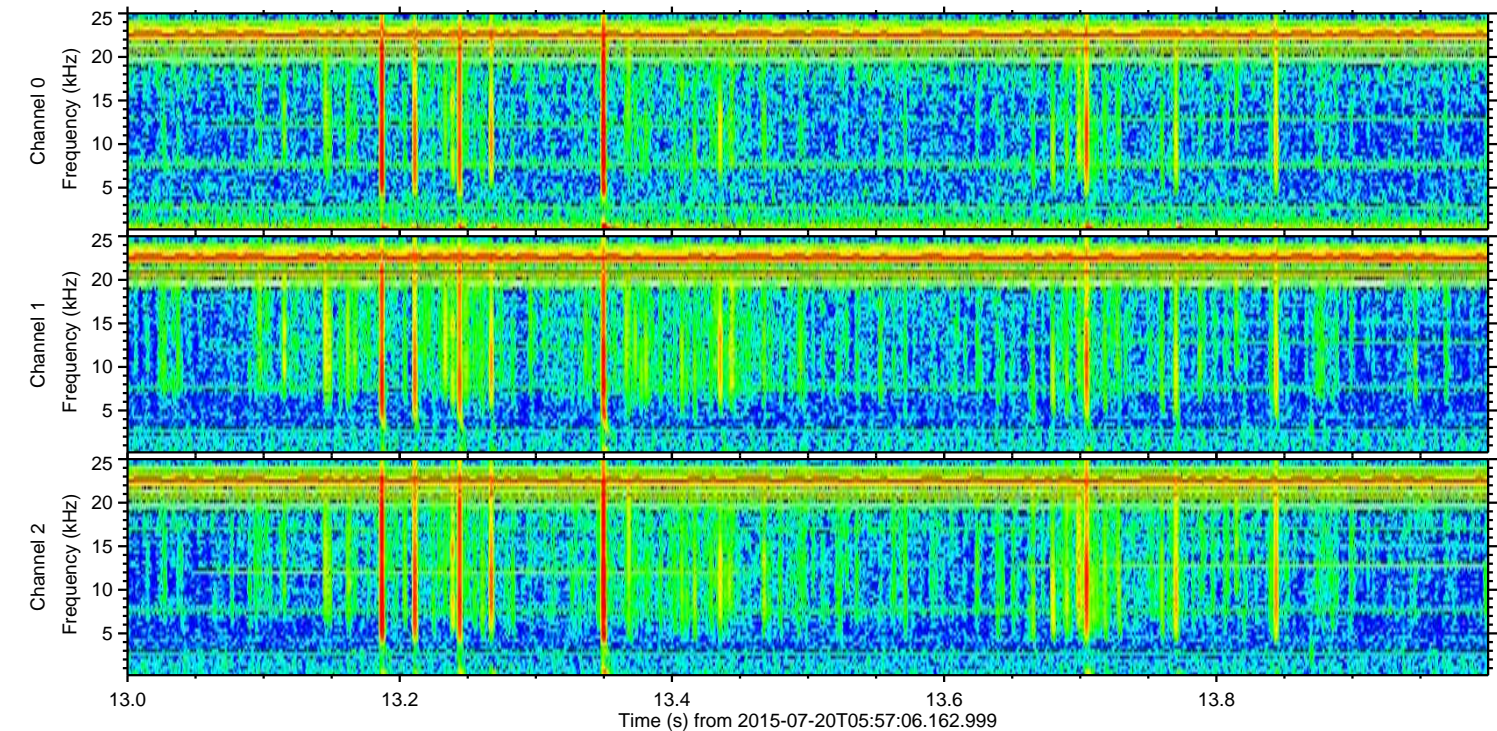
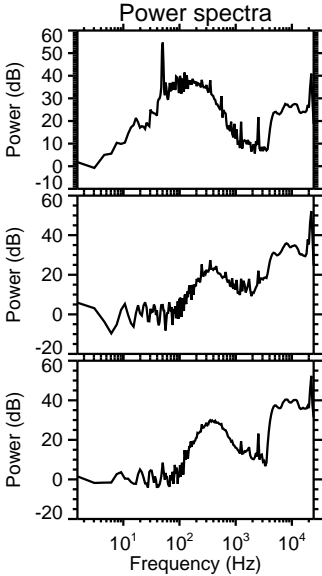
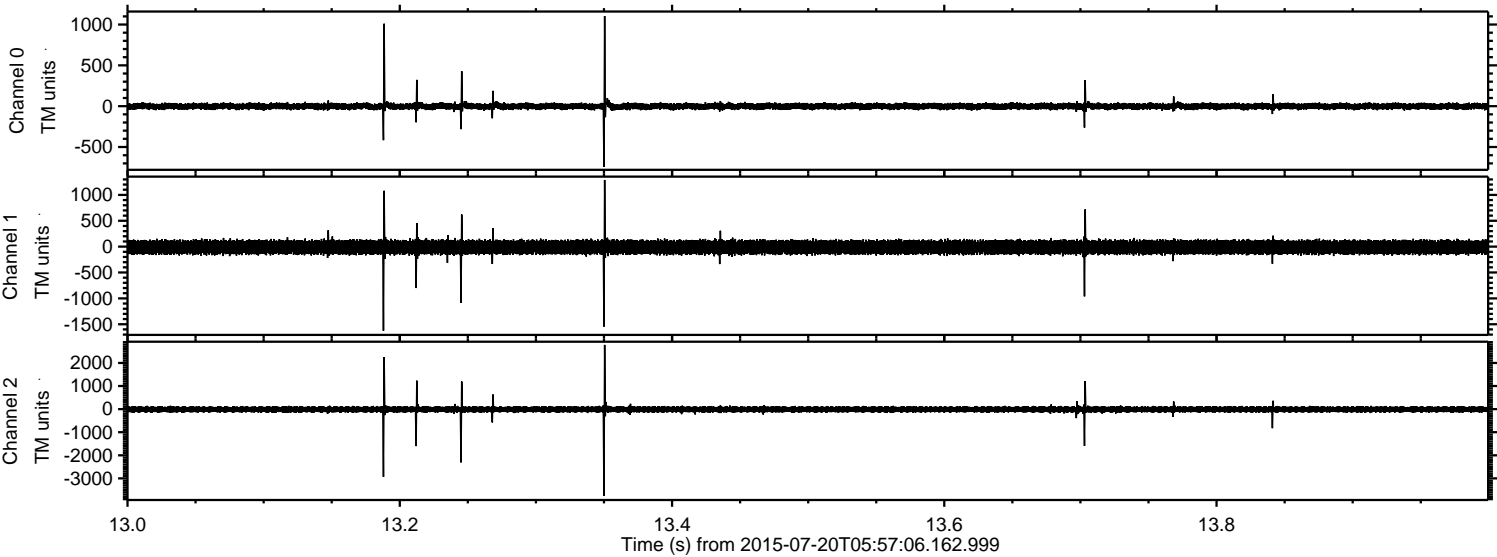


ELMAVAN 3D WAVEFORMS (Measured data sampled at 50 kHz) 51000 packets of 144 samples from 2015-07-20T05:57:06.162.999.

Processed Mon Jul 20 08:03:03 2015 by ELM ver.2012-10-06 from 001__elm20150720_055705__dat00.bin



Processed Mon Jul 20 08:03:15 2015 by ELM ver.2012-10-06 from 001__elm20150720_055705__dat00.bin

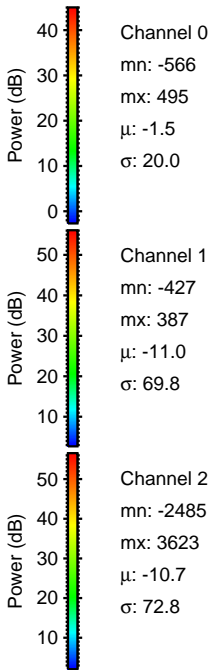
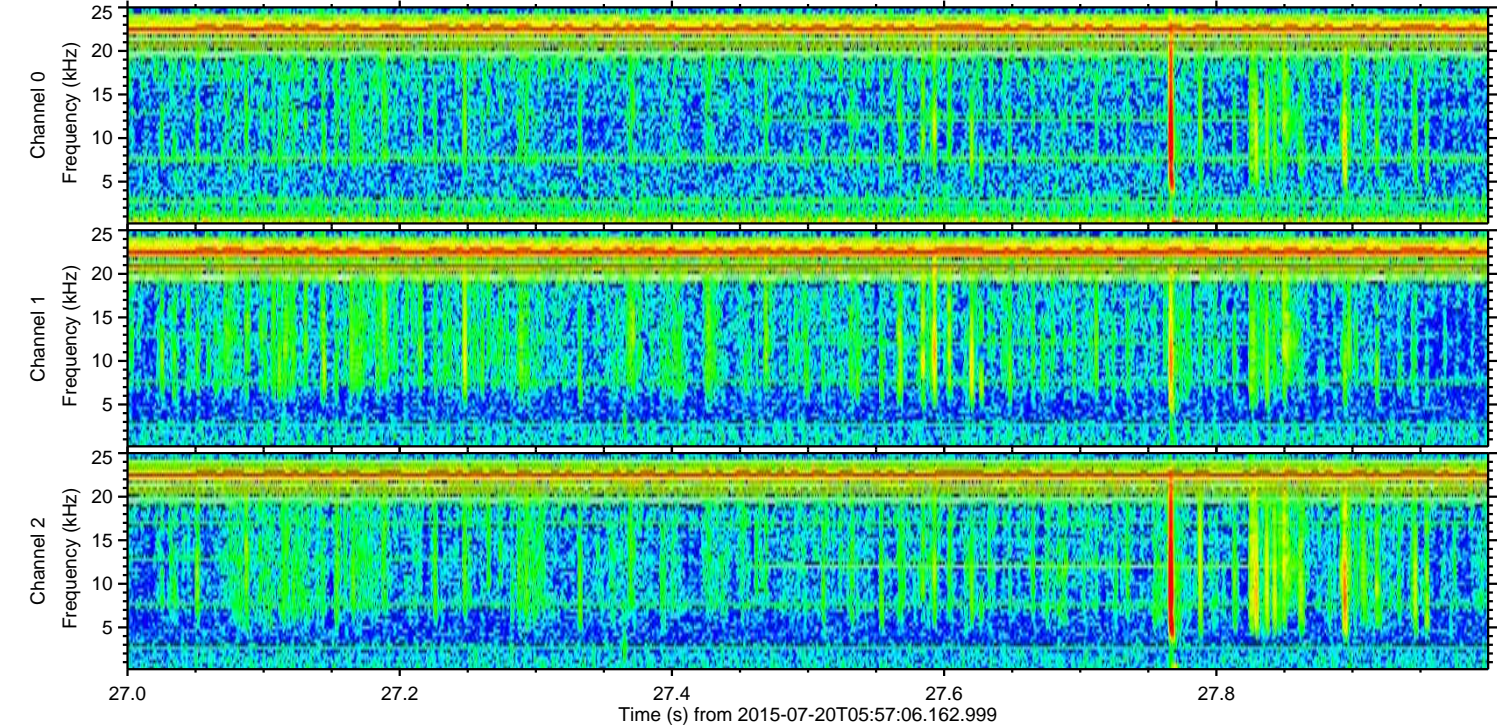
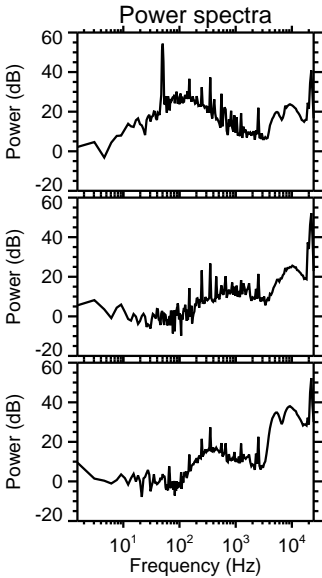
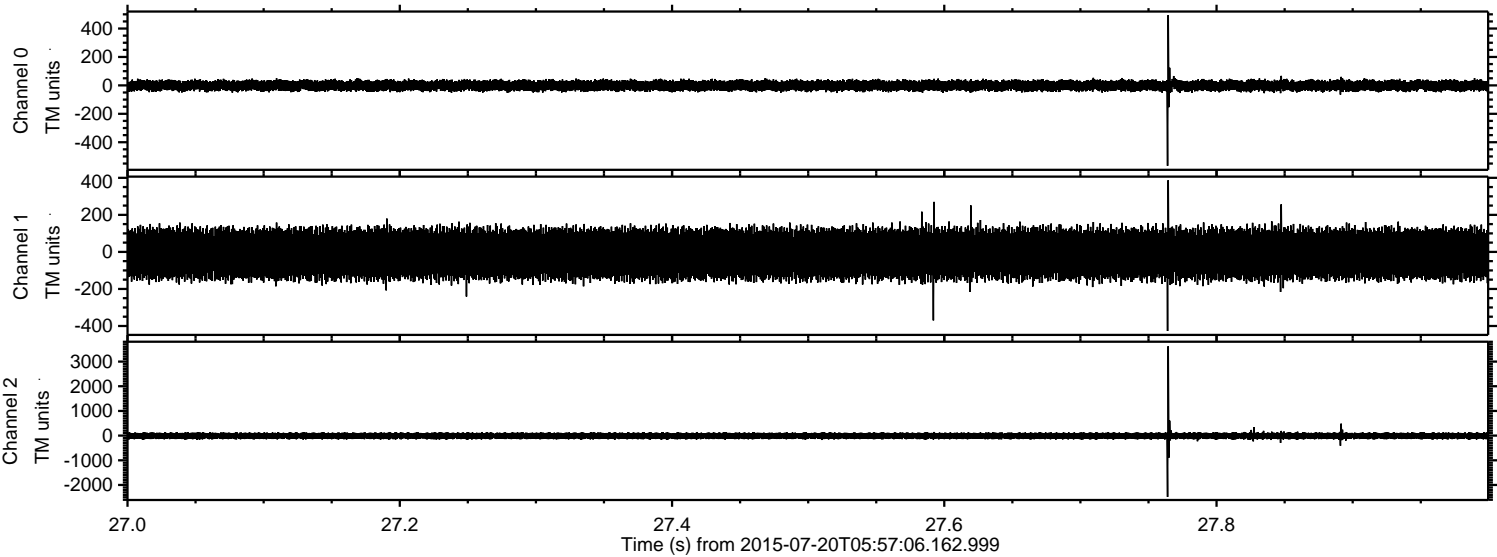


Channel 0
mn: -742
mx: 1104
 μ : -1.5
 σ : 22.1

Channel 1
mn: -1625
mx: 1289
 μ : -11.0
 σ : 73.0

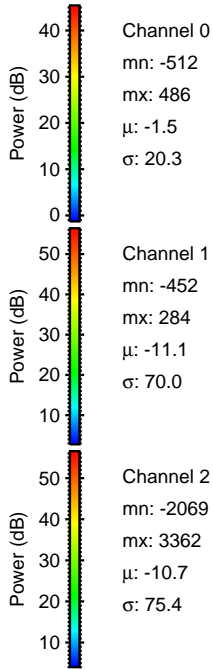
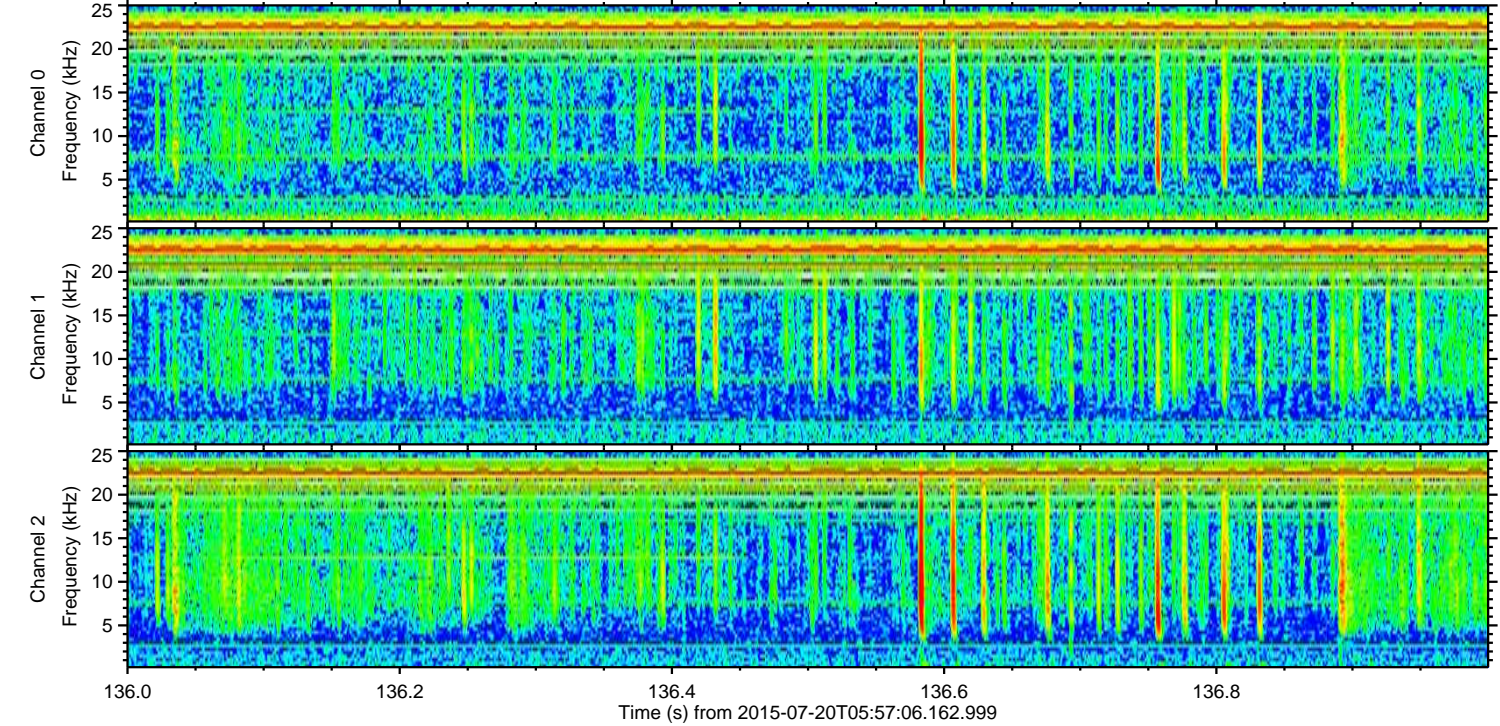
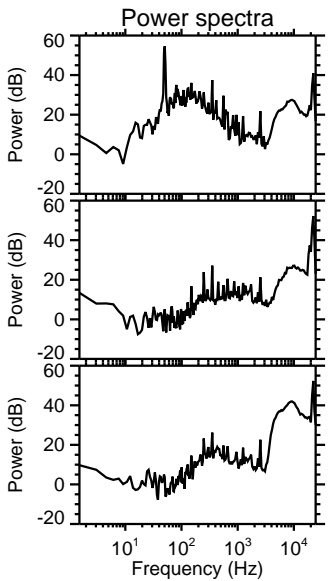
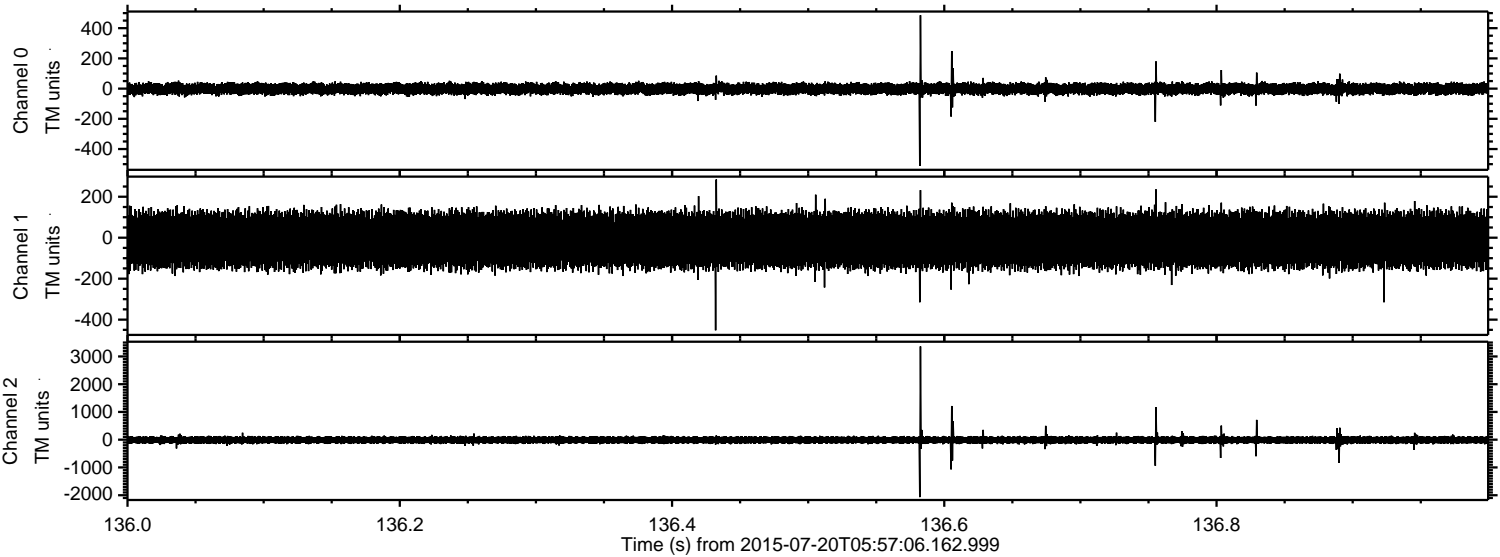
Channel 2
mn: -3748
mx: 2781
 μ : -10.8
 σ : 79.1

Processed Mon Jul 20 08:03:16 2015 by ELM ver.2012-10-06 from 001__elm20150720_055705__dat00.bin



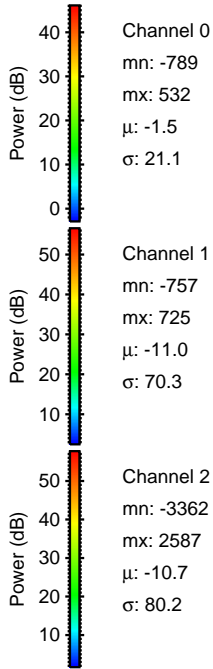
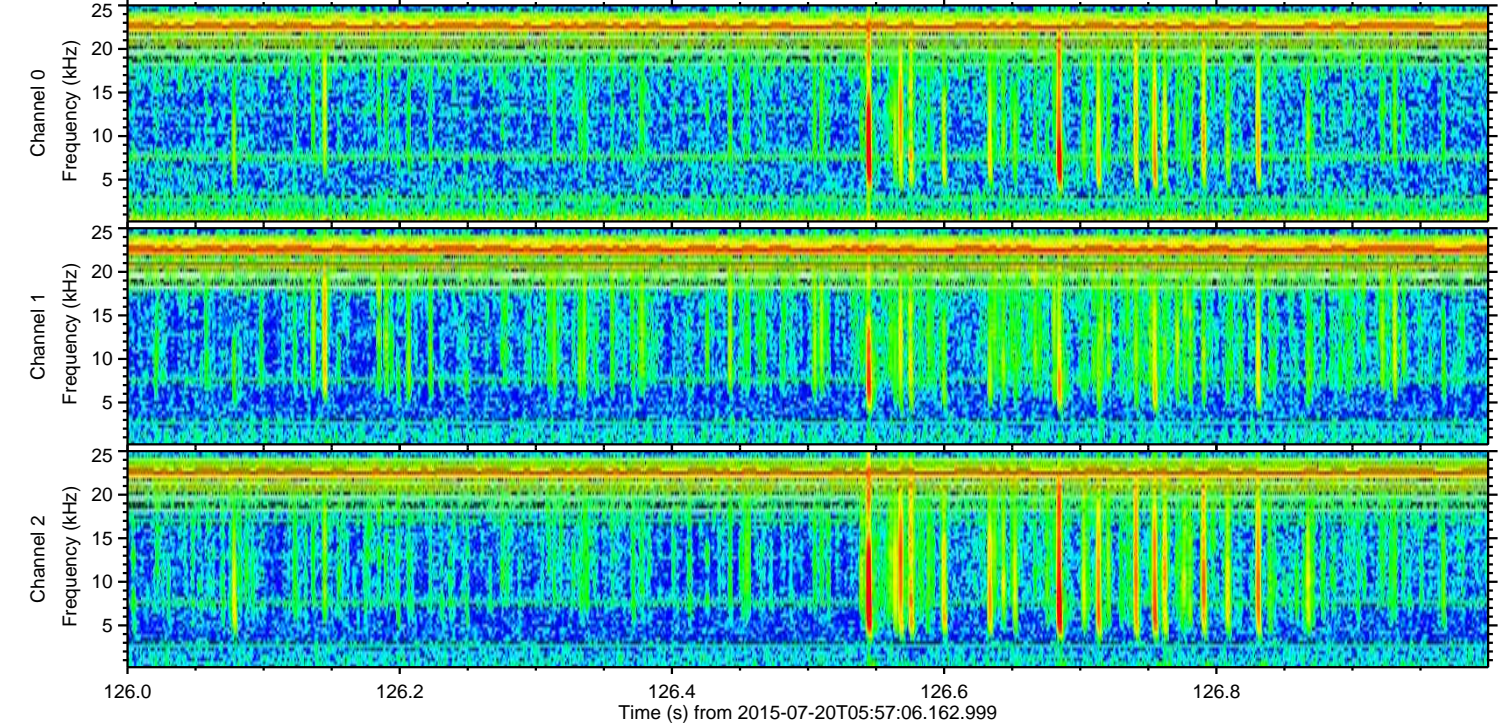
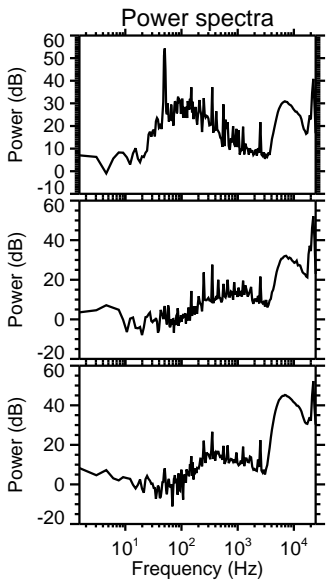
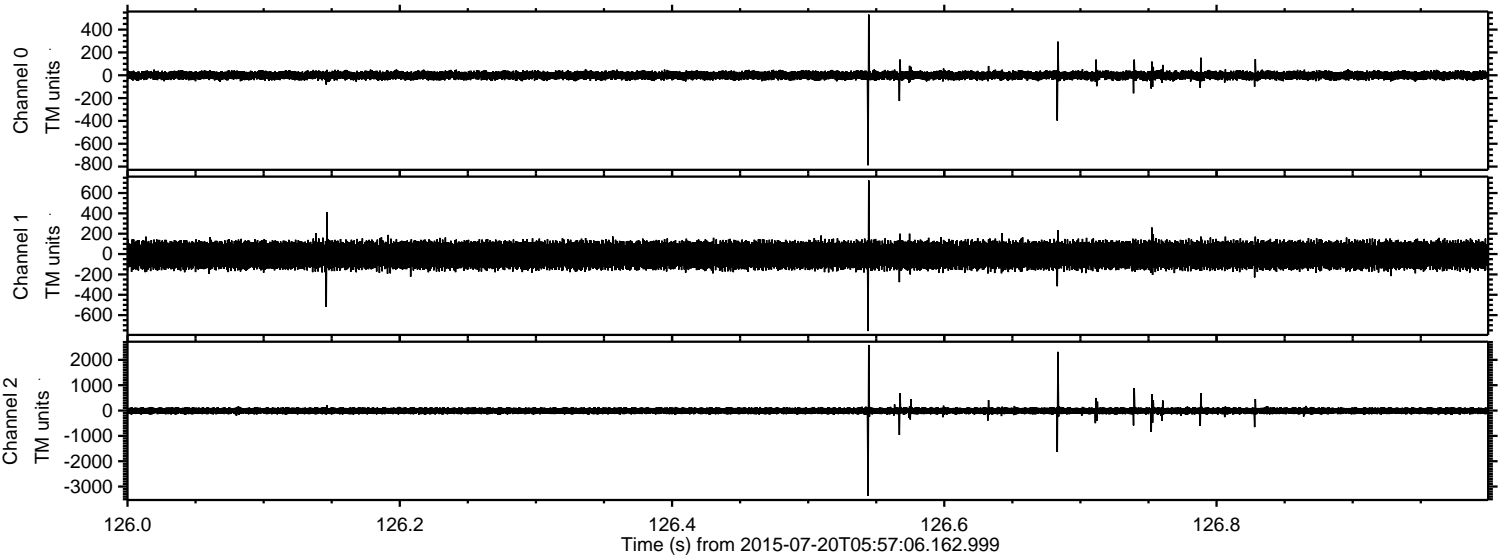
ELMAVAN 3D WAVEFORMS (Measured data sampled at 50 kHz) 51000 packets of 144 samples from 2015-07-20T05:57:06.162.999. Part 137/147

Processed Mon Jul 20 08:03:17 2015 by ELM ver.2012-10-06 from 001__elm20150720_055705__dat00.bin



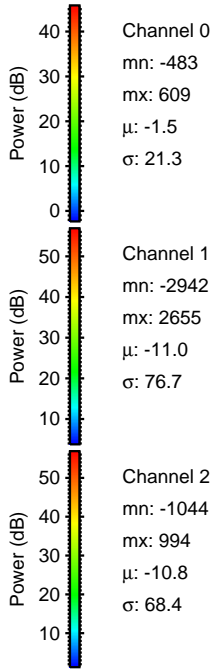
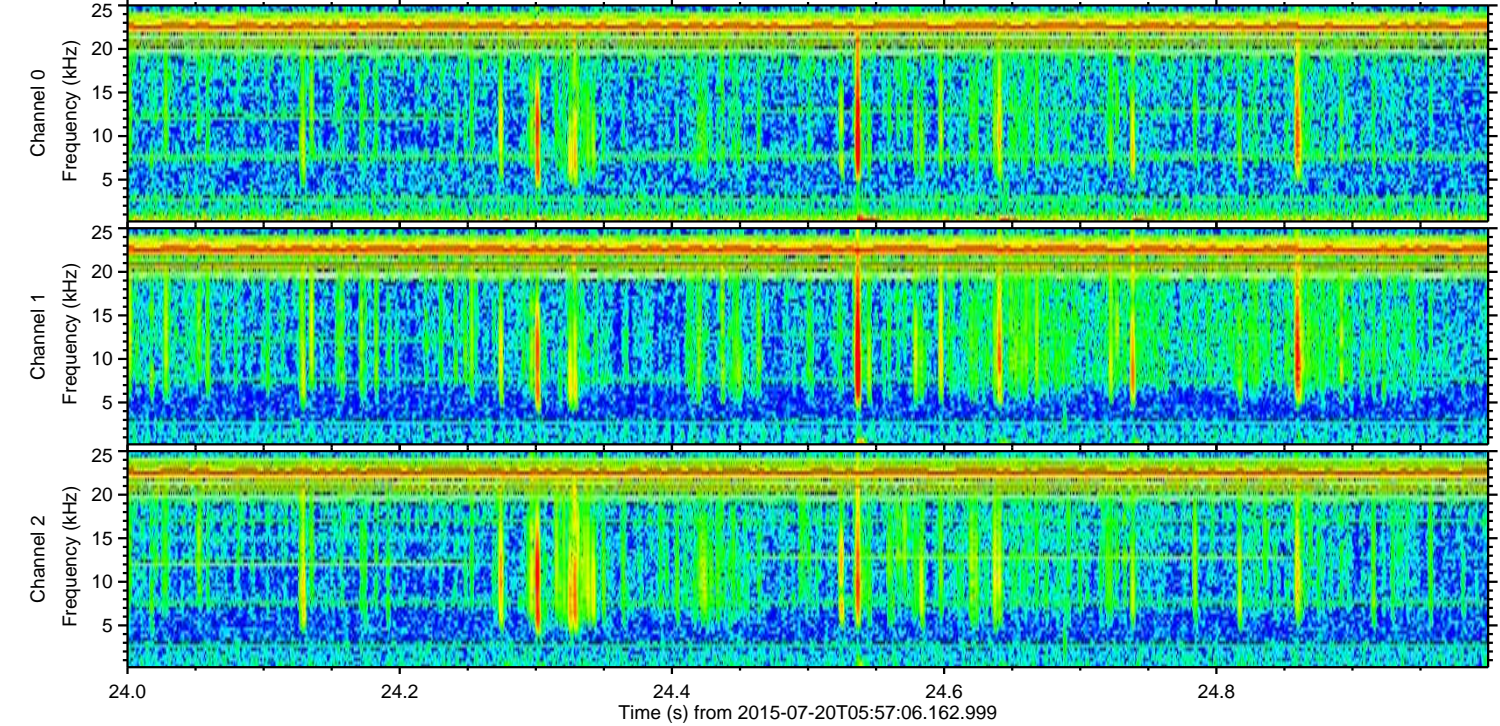
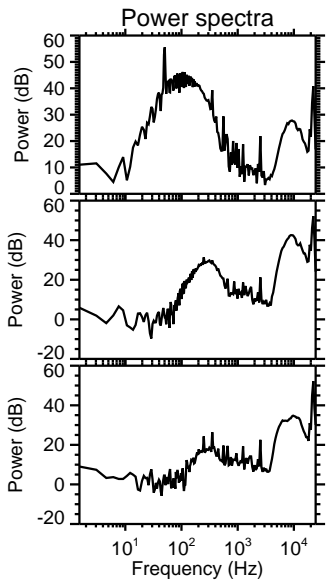
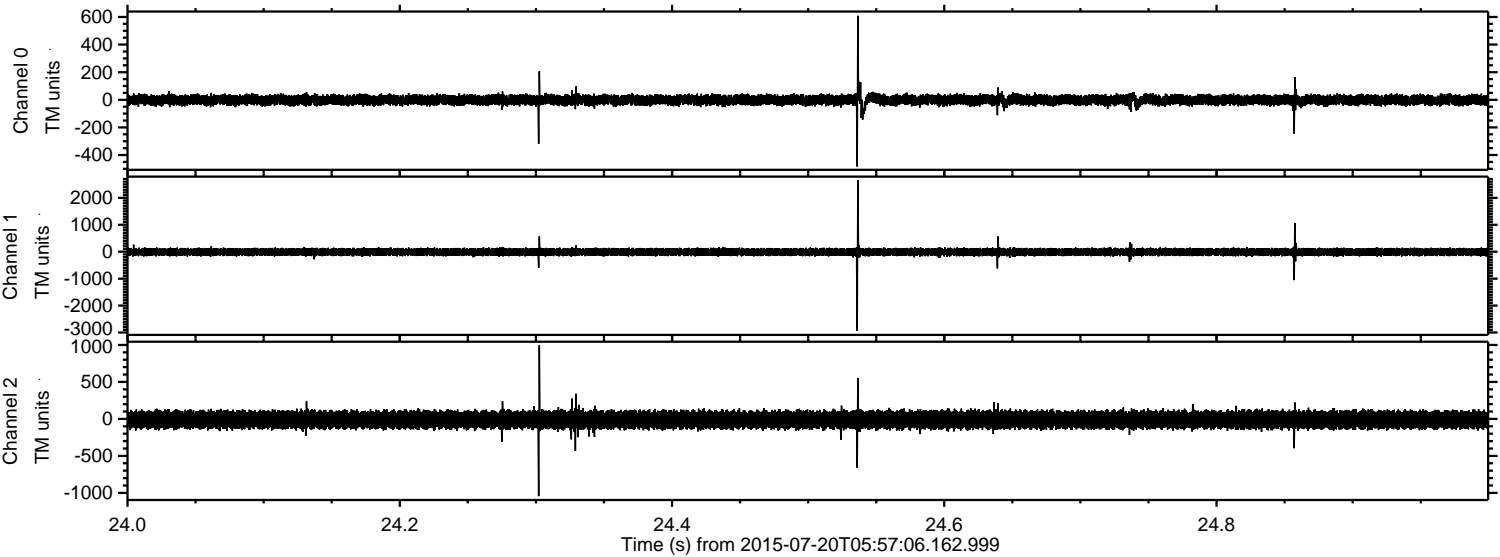
ELMAVAN 3D WAVEFORMS (Measured data sampled at 50 kHz) 51000 packets of 144 samples from 2015-07-20T05:57:06.162.999. Part 127/147

Processed Mon Jul 20 08:03:18 2015 by ELM ver.2012-10-06 from 001__elm20150720_055705__dat00.bin



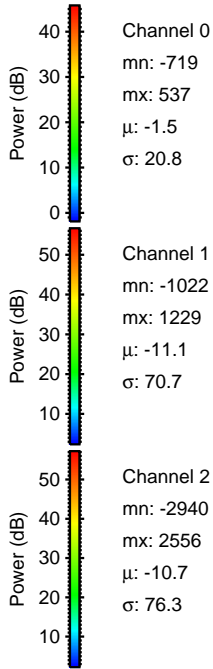
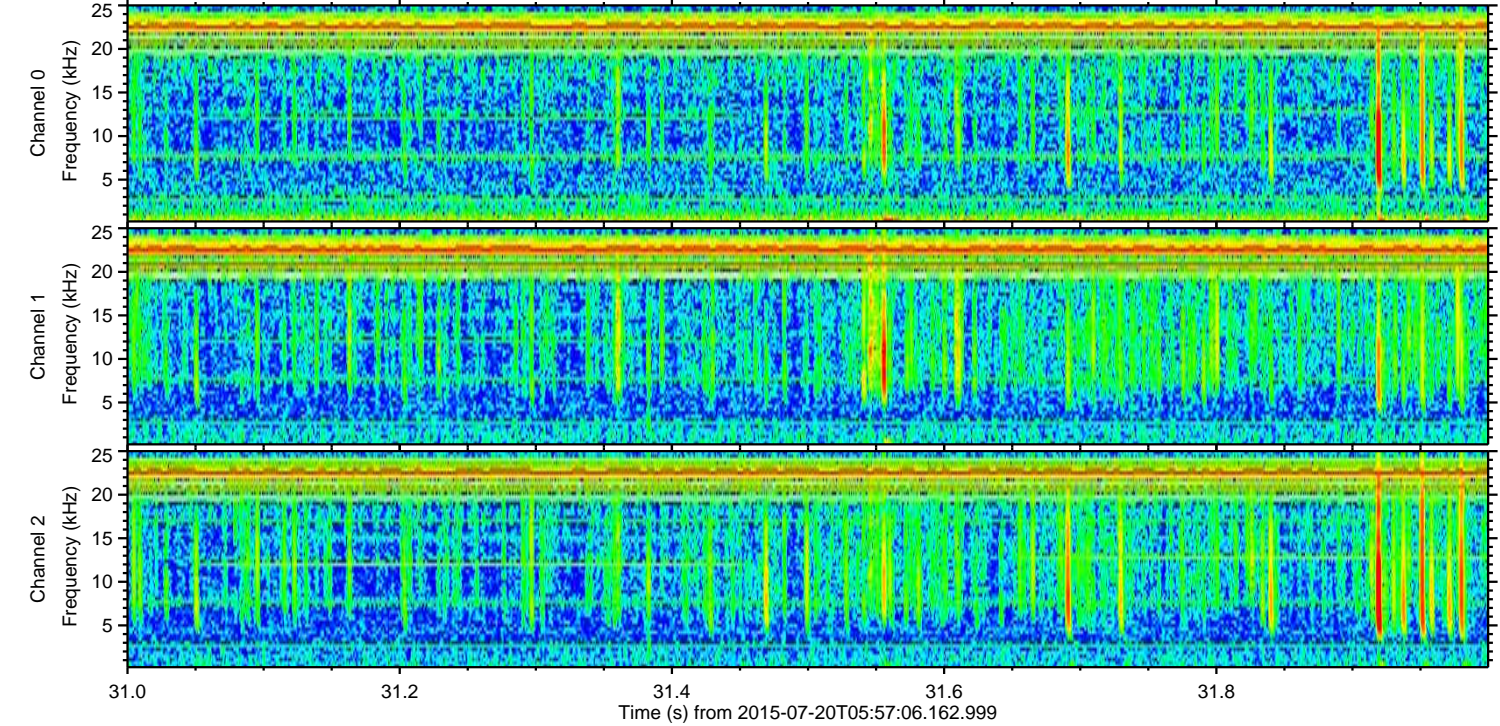
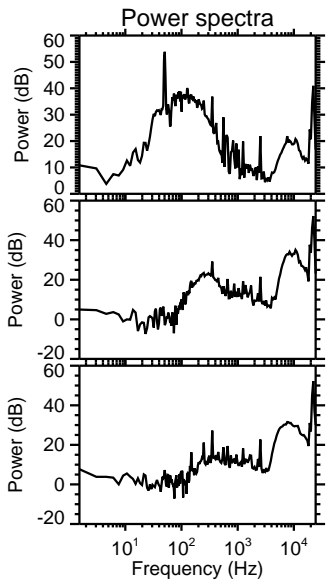
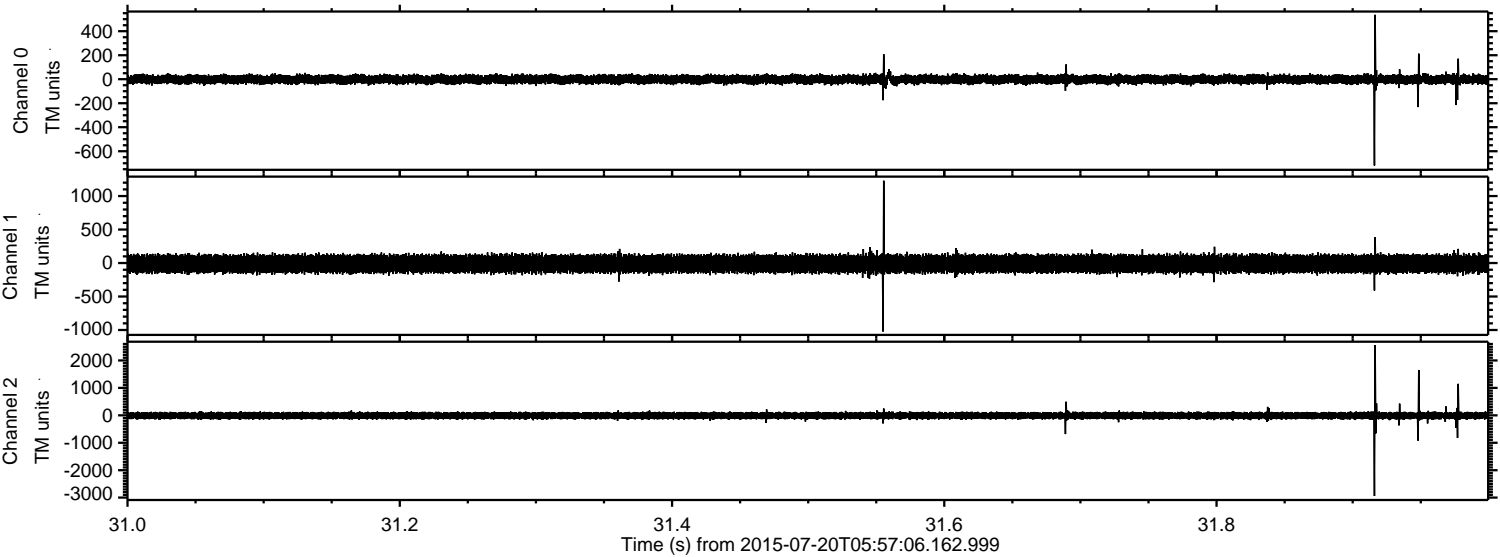
ELMAVAN 3D WAVEFORMS (Measured data sampled at 50 kHz) 51000 packets of 144 samples from 2015-07-20T05:57:06.162.999. Part 25/147

Processed Mon Jul 20 08:03:18 2015 by ELM ver.2012-10-06 from 001__elm20150720_055705__dat00.bin

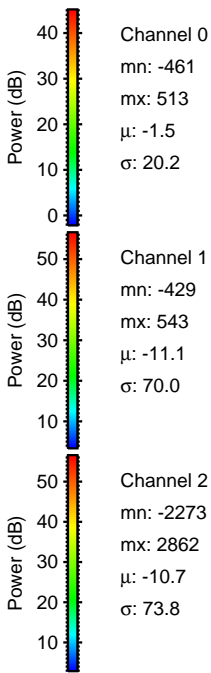
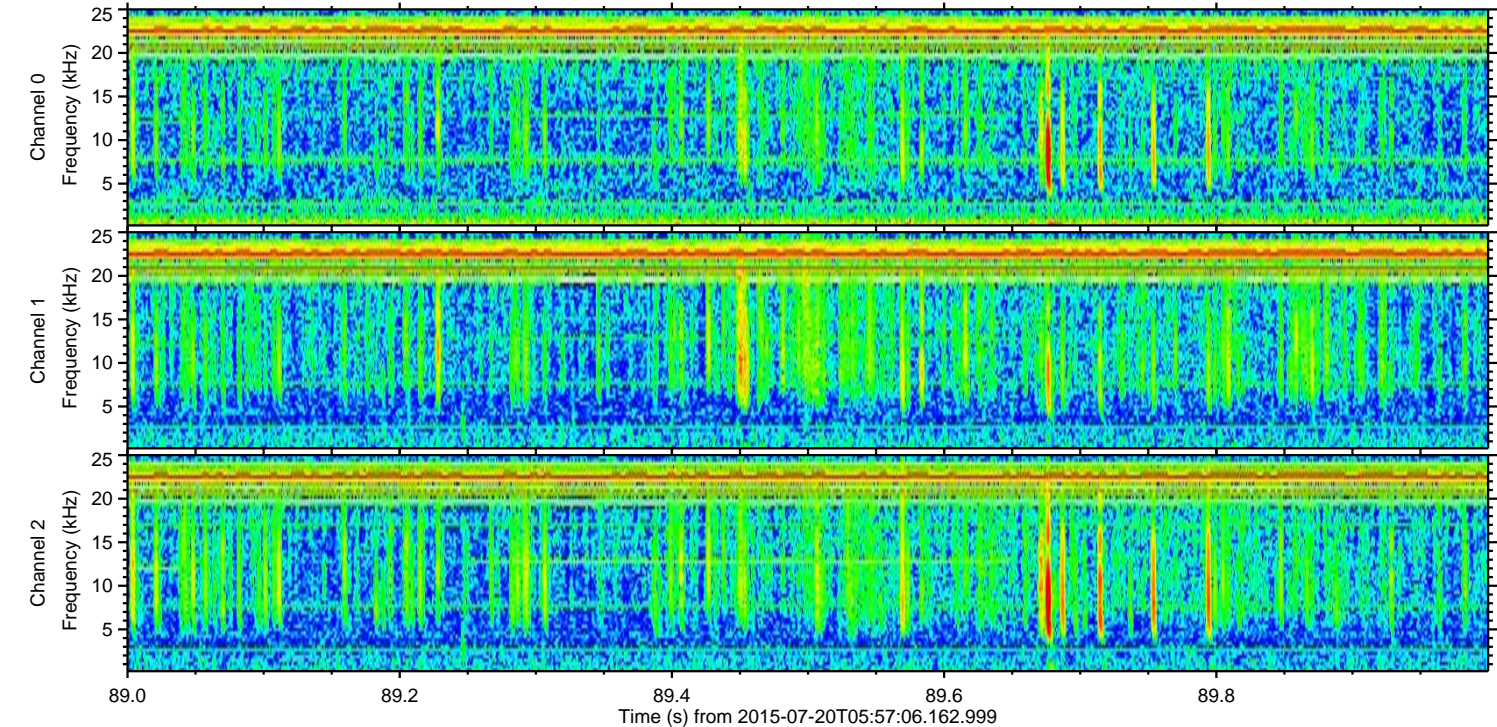
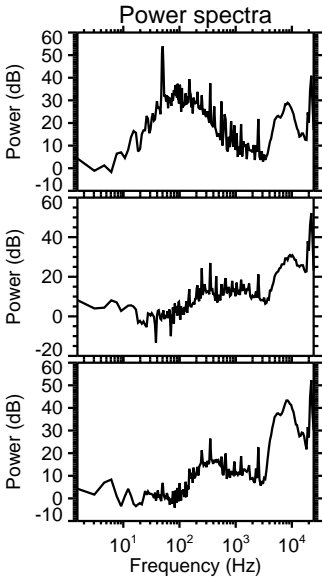
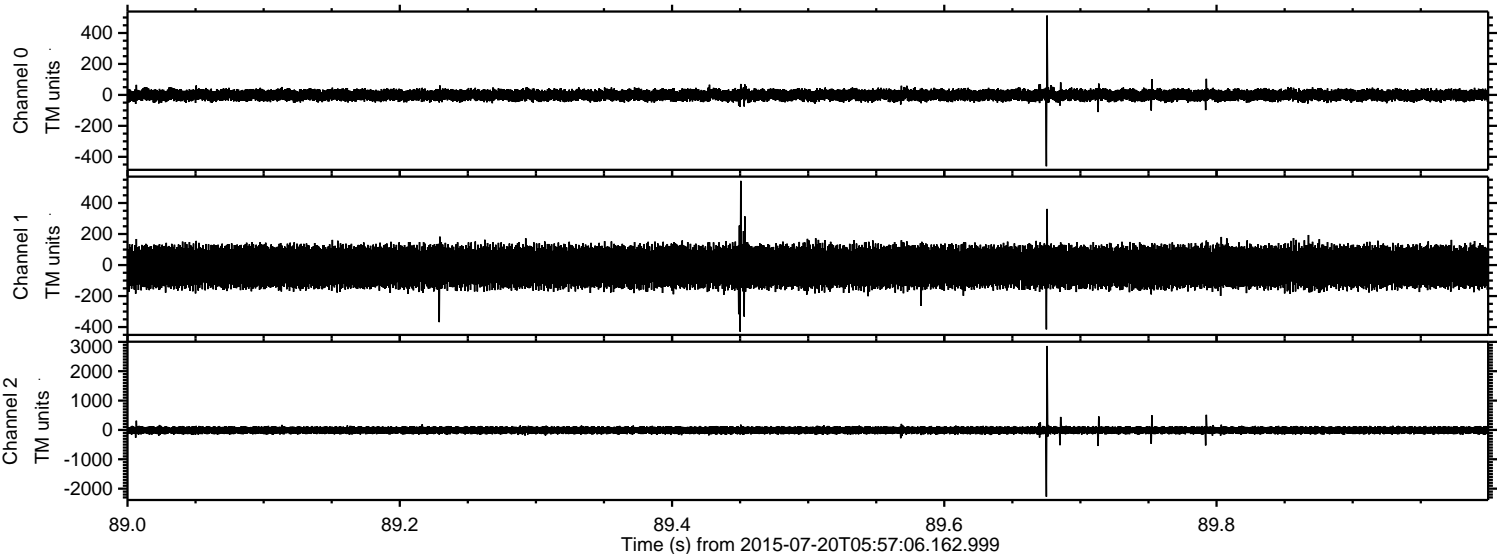


ELMAVAN 3D WAVEFORMS (Measured data sampled at 50 kHz) 51000 packets of 144 samples from 2015-07-20T05:57:06.162.999. Part 32/147

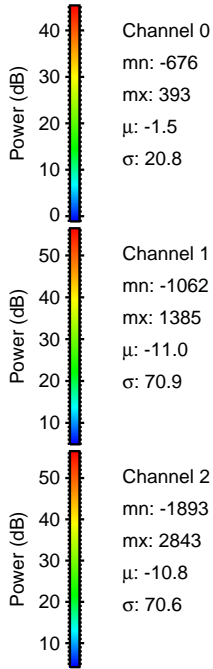
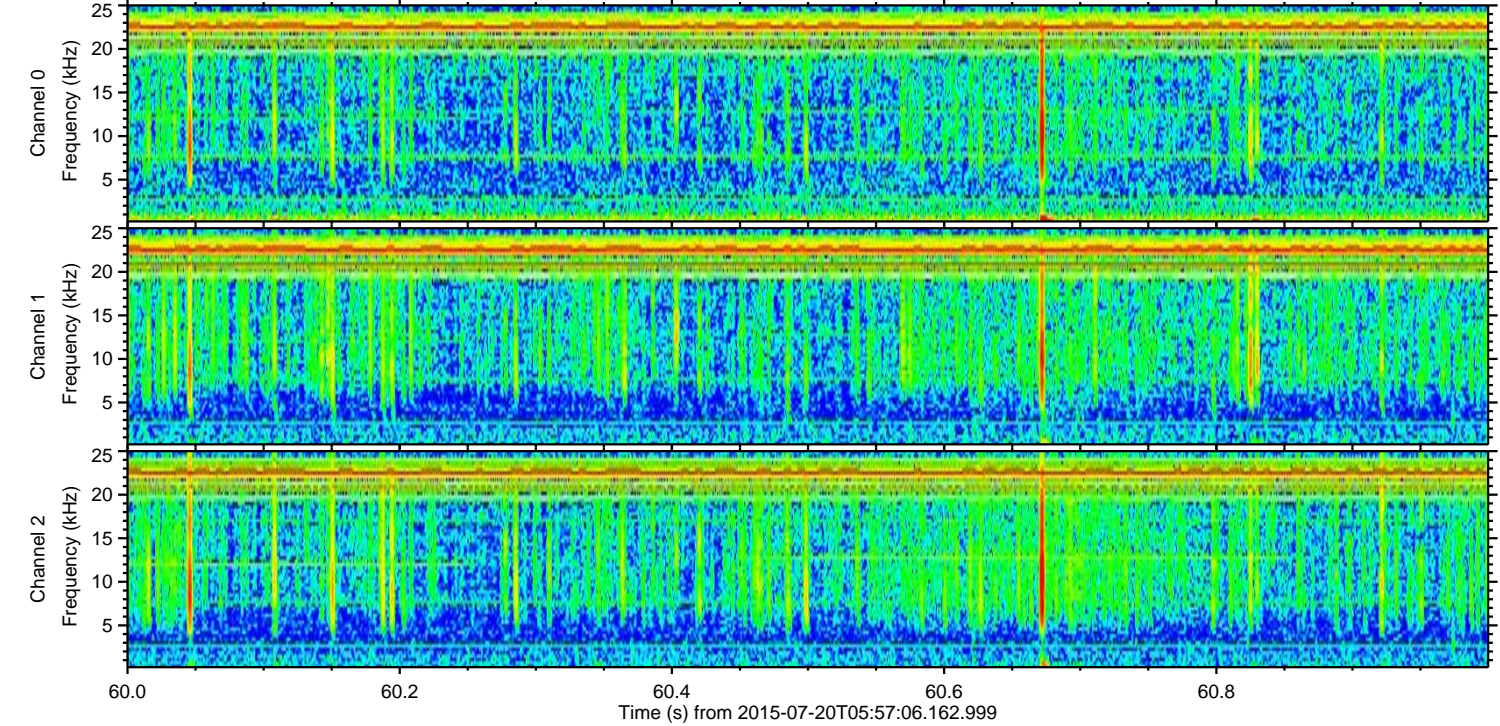
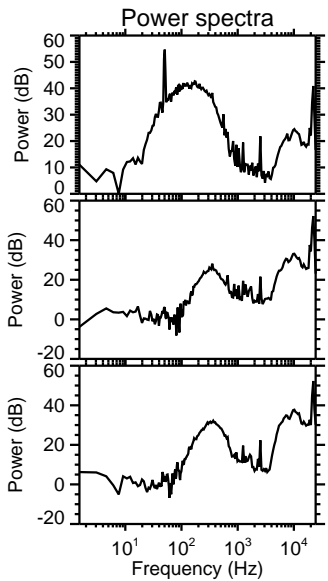
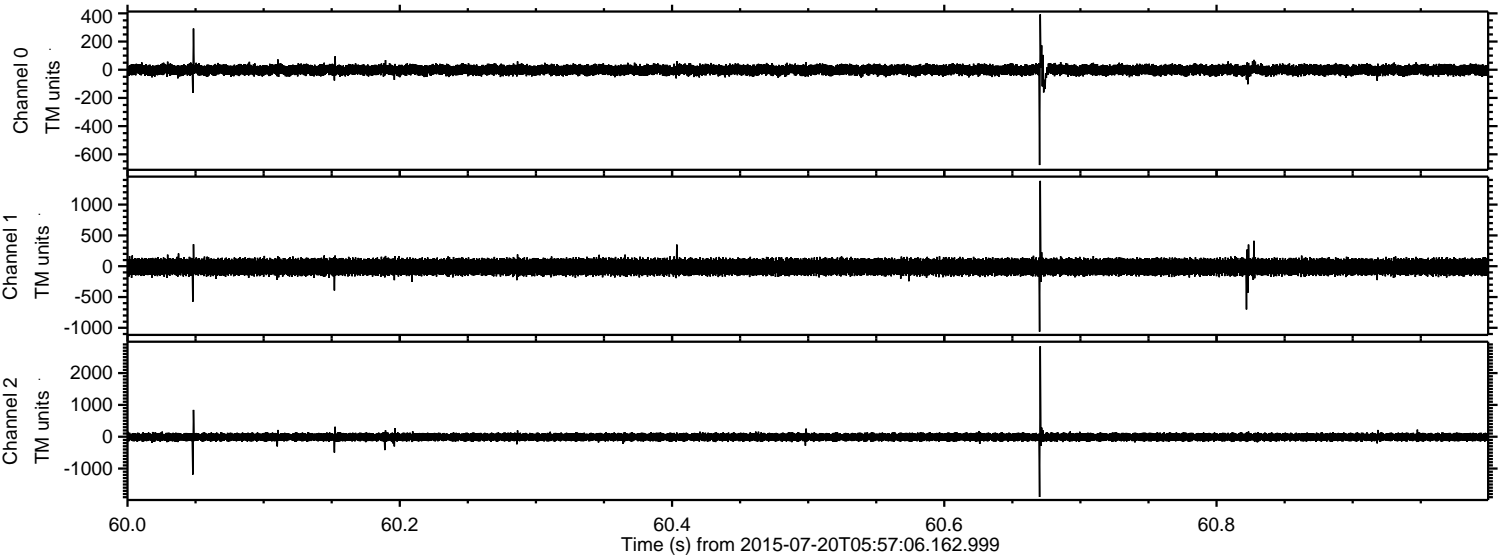
Processed Mon Jul 20 08:03:19 2015 by ELM ver.2012-10-06 from 001__elm20150720_055705__dat00.bin



Processed Mon Jul 20 08:03:21 2015 by ELM ver.2012-10-06 from 001__elm20150720_055705__dat00.bin



Processed Mon Jul 20 08:03:22 2015 by ELM ver.2012-10-06 from 001__elm20150720_055705__dat00.bin



Channel 0
mn: -676
mx: 393
 μ : -1.5
 σ : 20.8

Channel 1
mn: -1062
mx: 1385
 μ : -11.0
 σ : 70.9

Channel 2
mn: -1893
mx: 2843
 μ : -10.8
 σ : 70.6

Processed Mon Jul 20 08:03:23 2015 by ELM ver.2012-10-06 from 001__elm20150720_055705__dat00.bin

