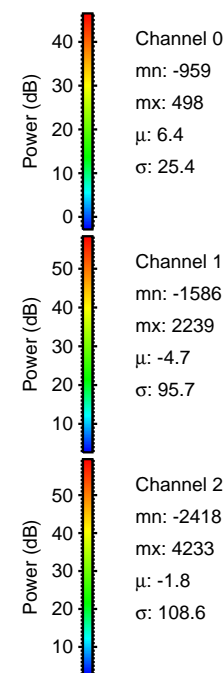
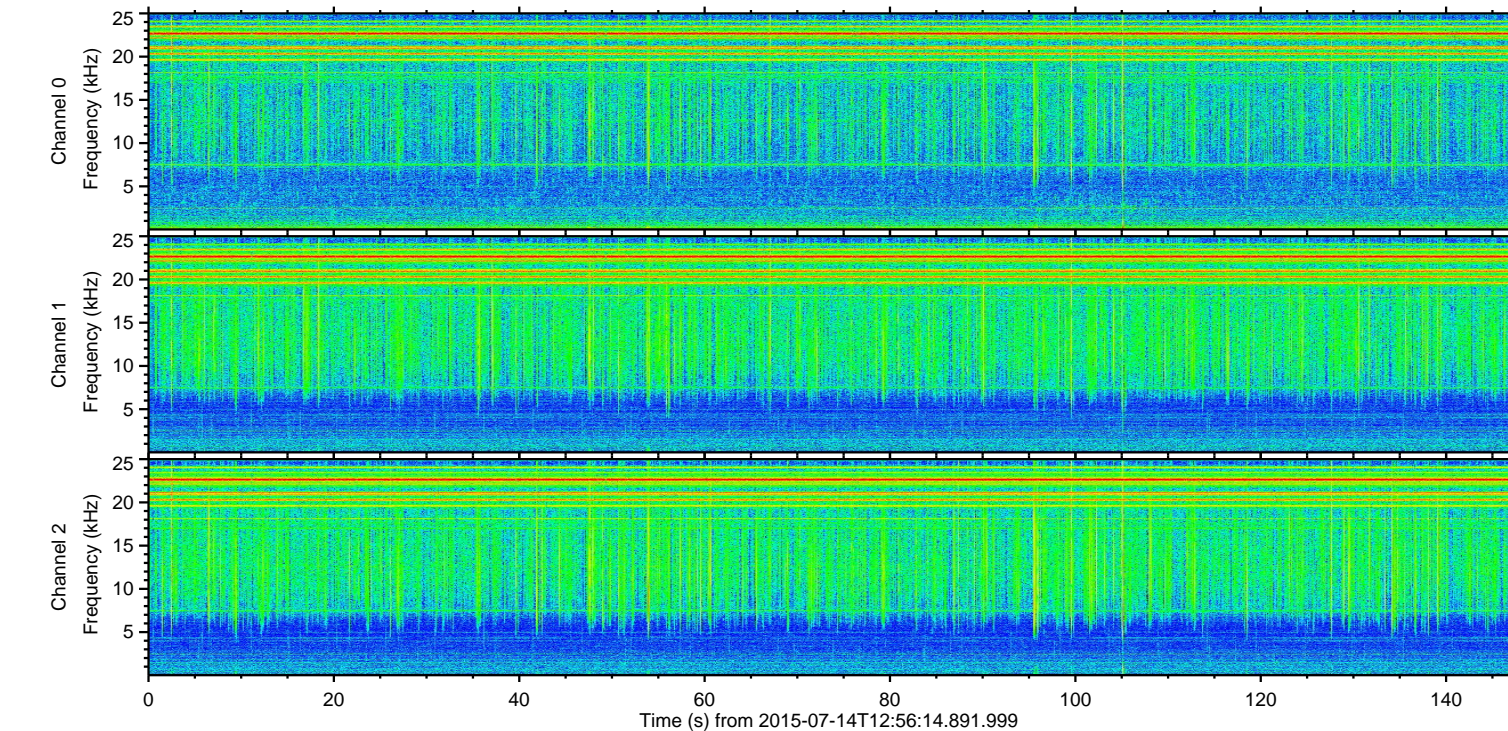
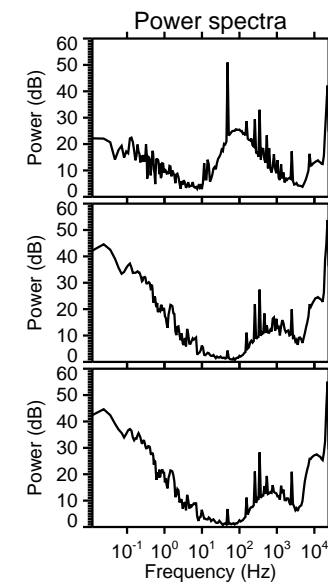
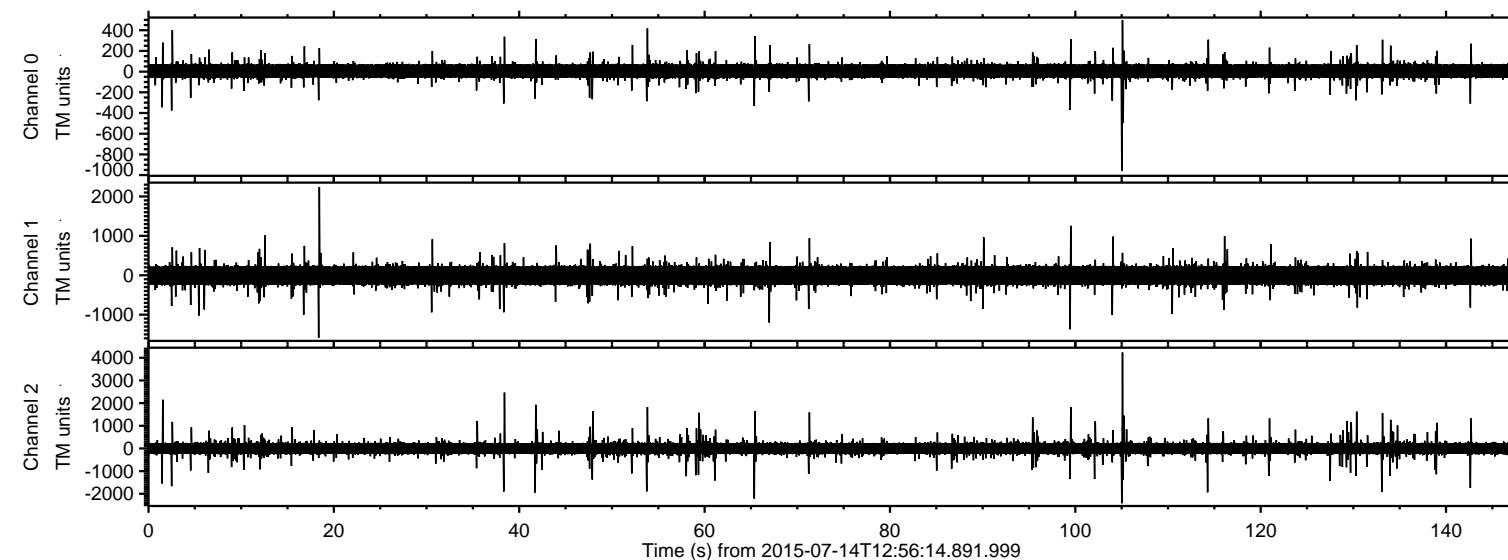


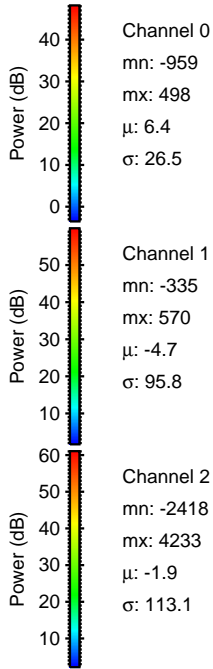
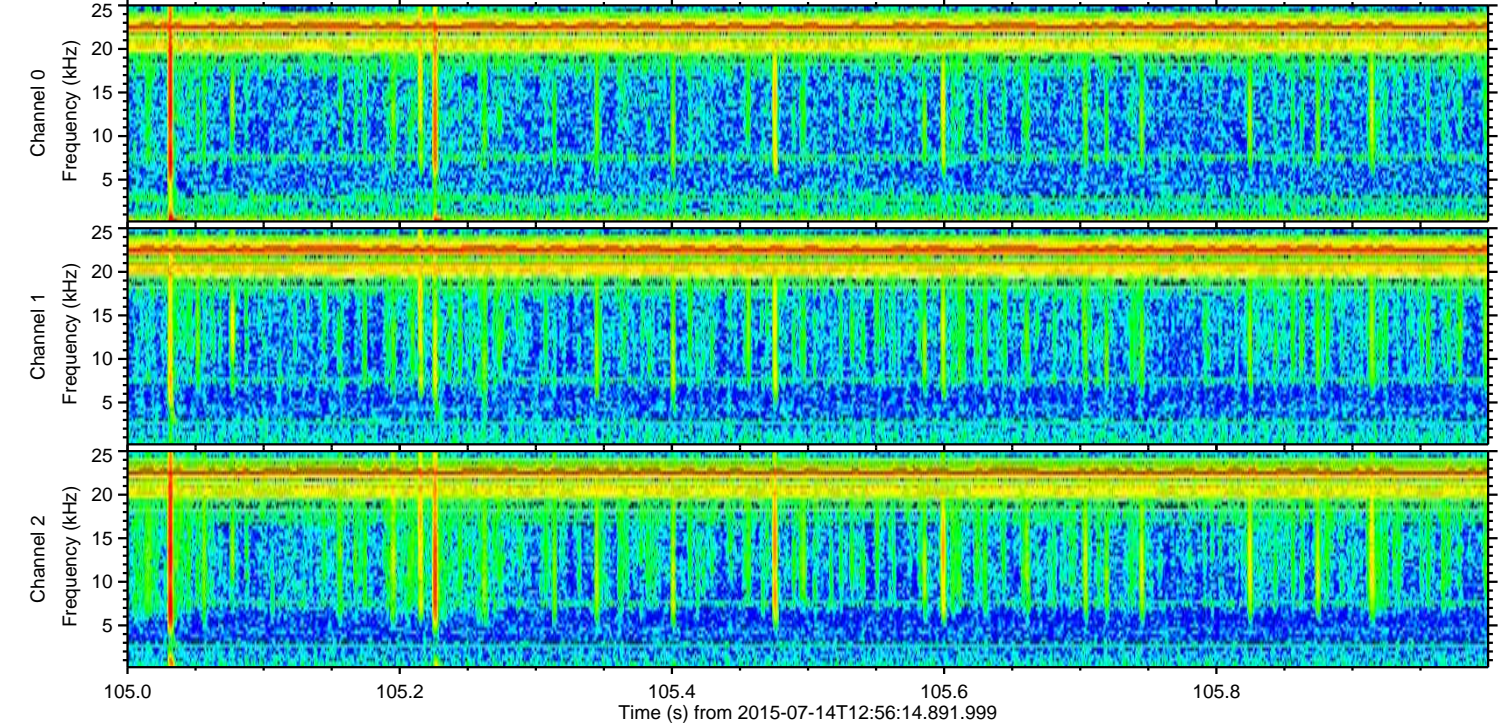
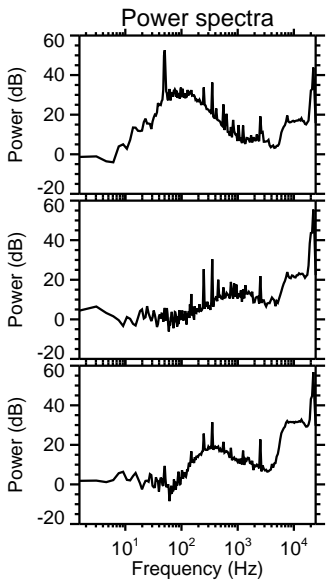
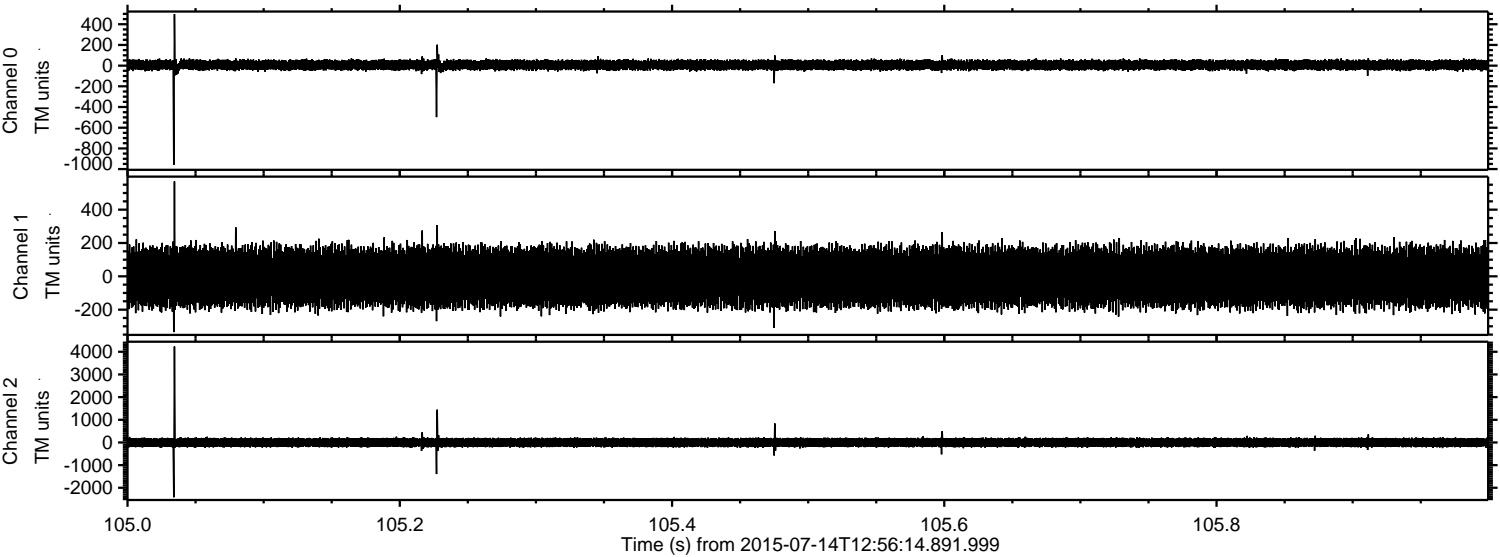
ELMAVAN 3D WAVEFORMS (Measured data sampled at 50 kHz) 51000 packets of 144 samples from 2015-07-14T12:56:14.891.999.

Processed Tue Jul 14 15:02:59 2015 by ELM ver.2012-10-06 from 001__elm20150714_125613__dat00.bin

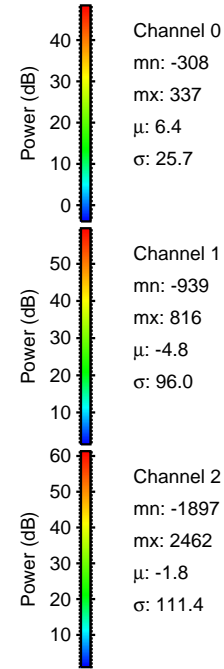
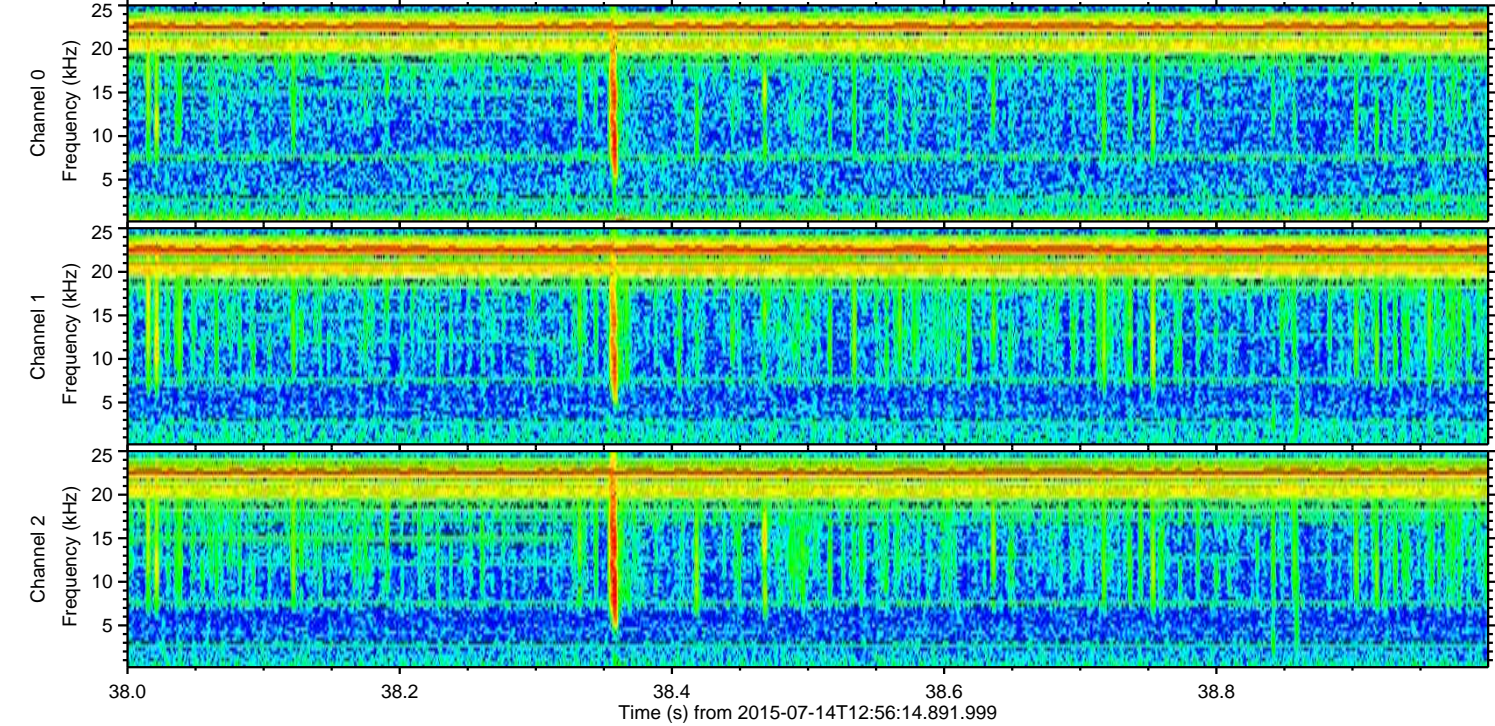
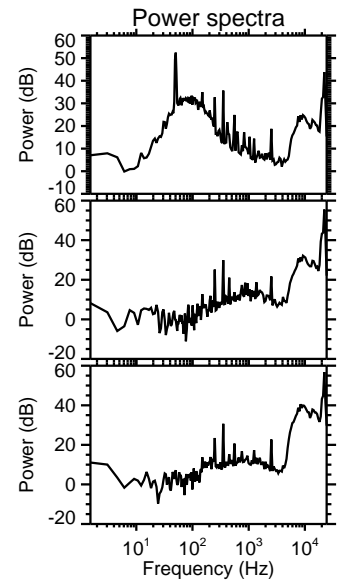
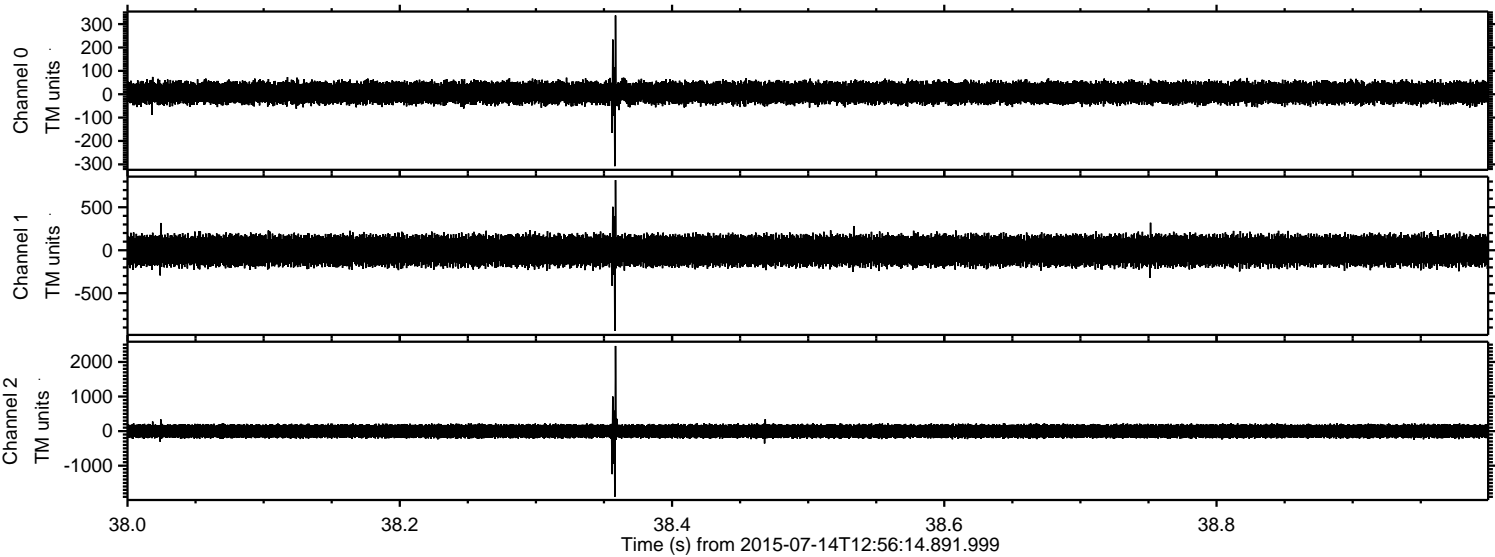


ELMAVAN 3D WAVEFORMS (Measured data sampled at 50 kHz) 51000 packets of 144 samples from 2015-07-14T12:56:14.891.999. Part 106/147

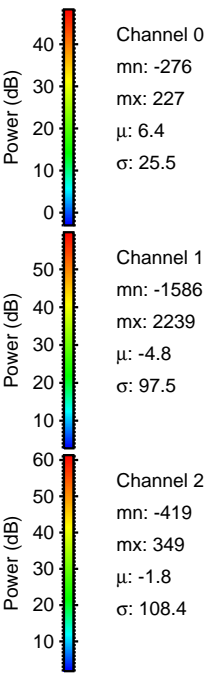
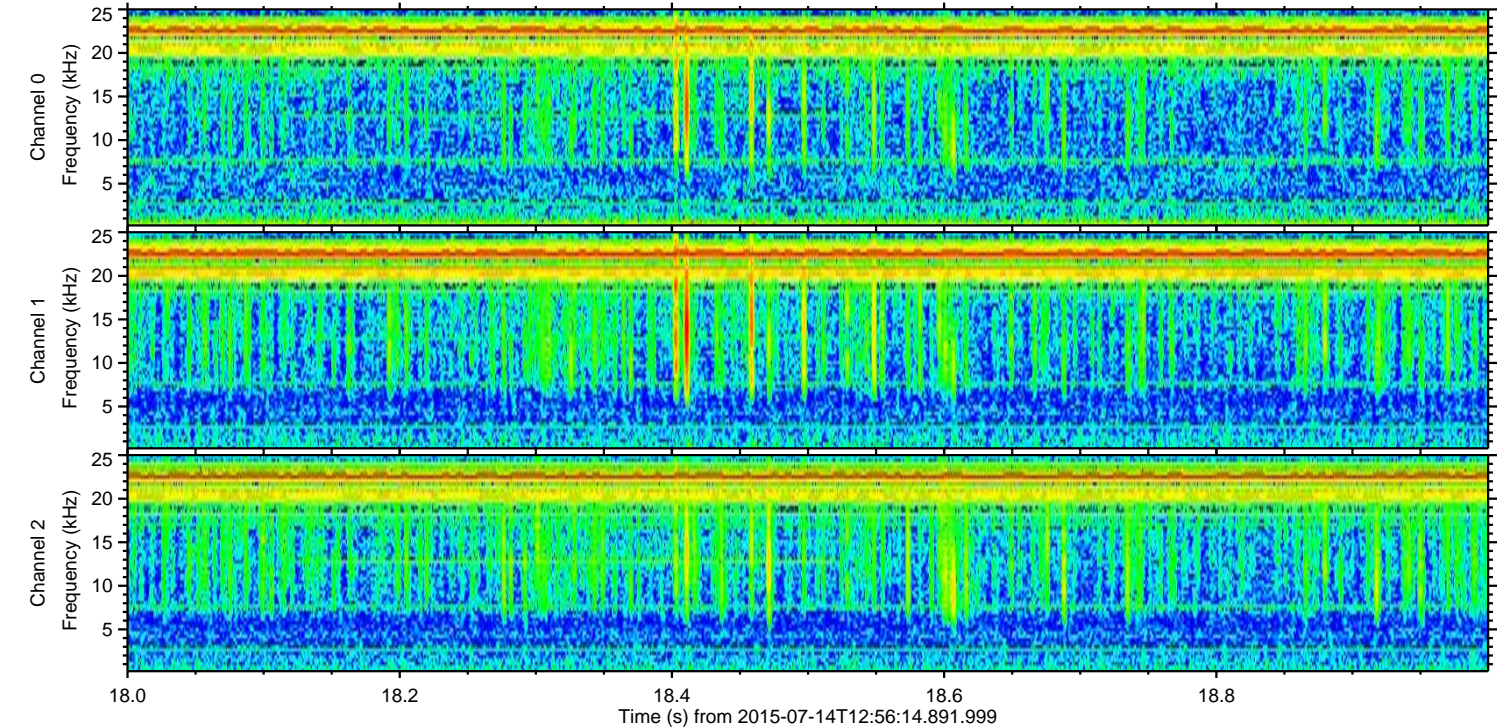
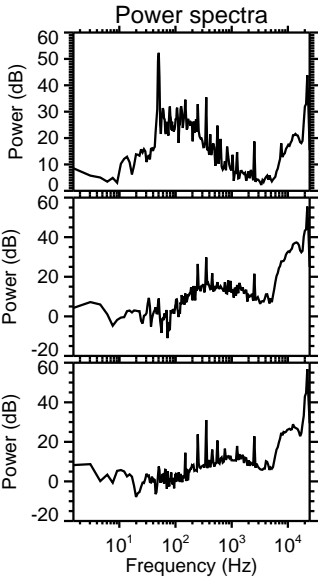
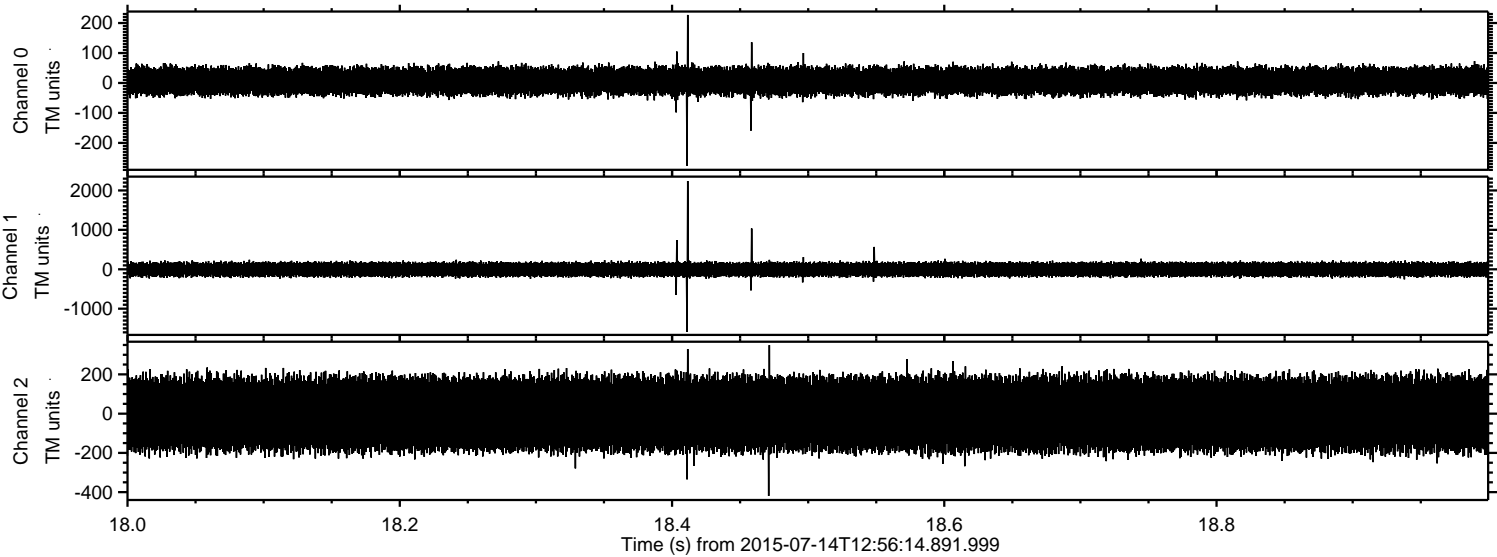
Processed Tue Jul 14 15:03:14 2015 by ELM ver.2012-10-06 from 001__elm20150714_125613__dat00.bin



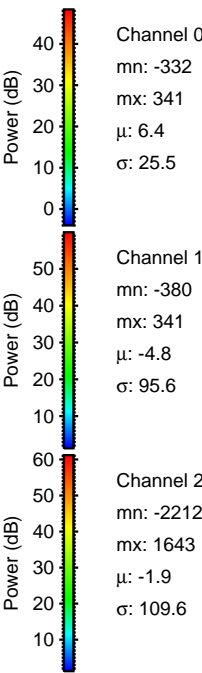
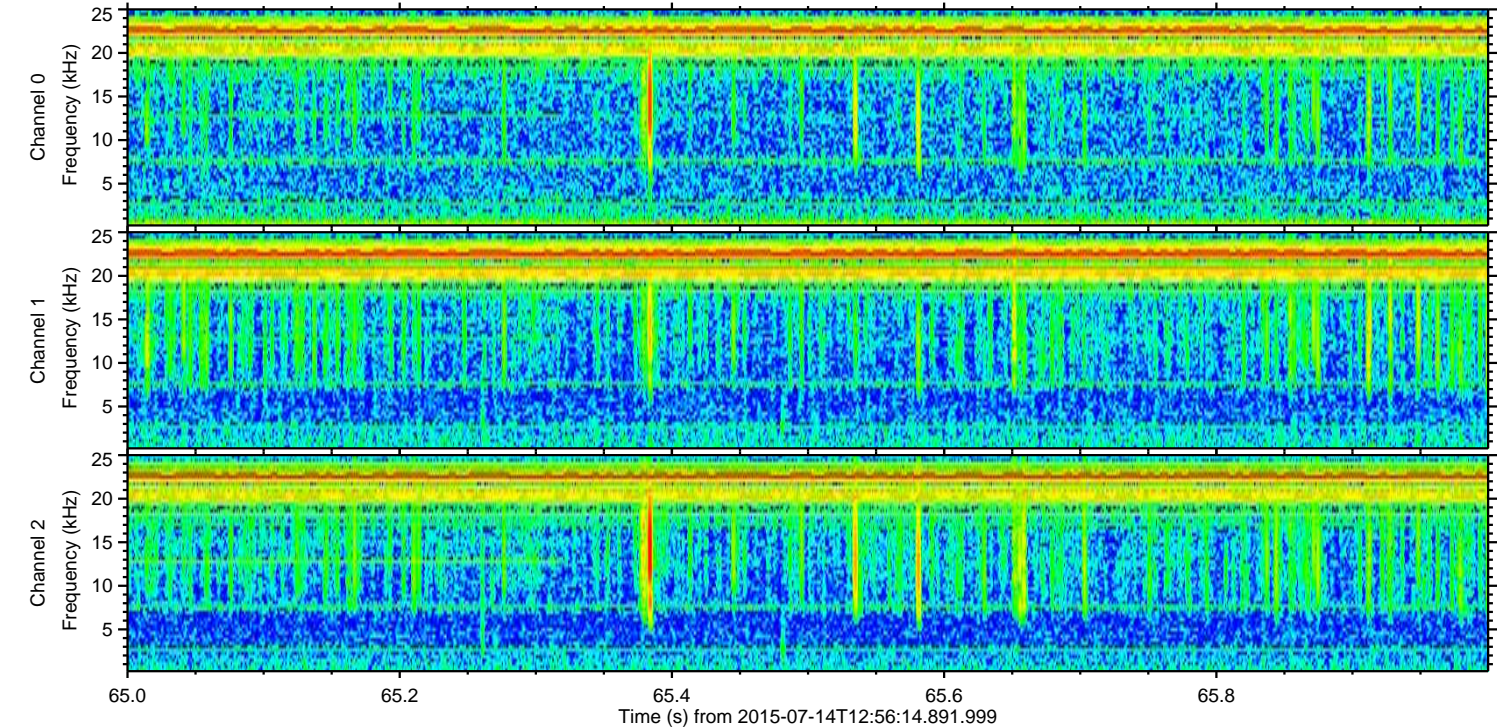
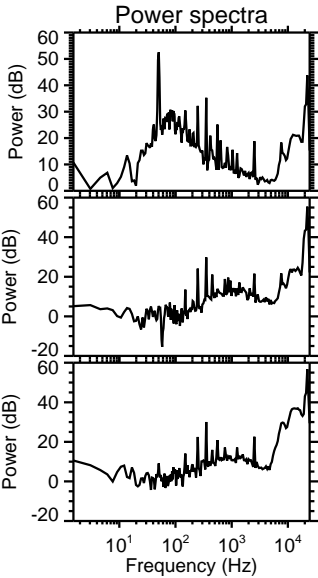
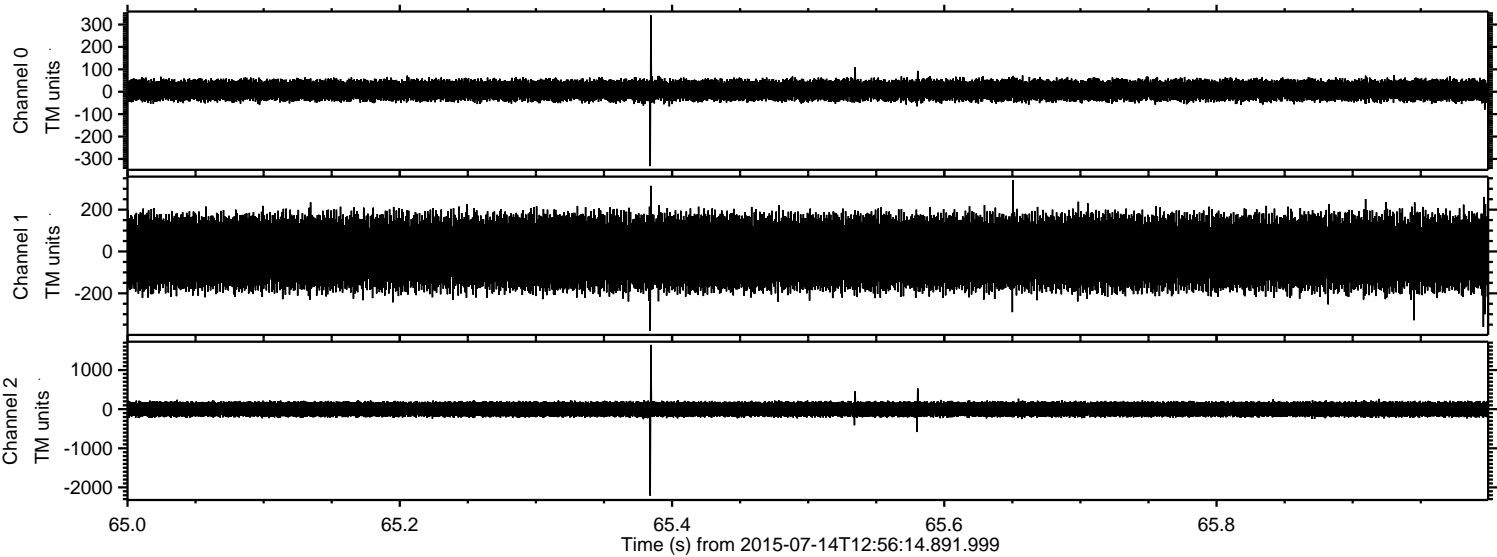
Processed Tue Jul 14 15:03:16 2015 by ELM ver.2012-10-06 from 001__elm20150714_125613__dat00.bin



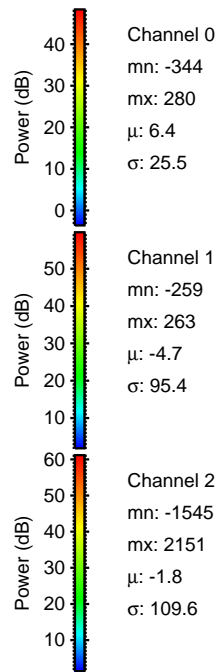
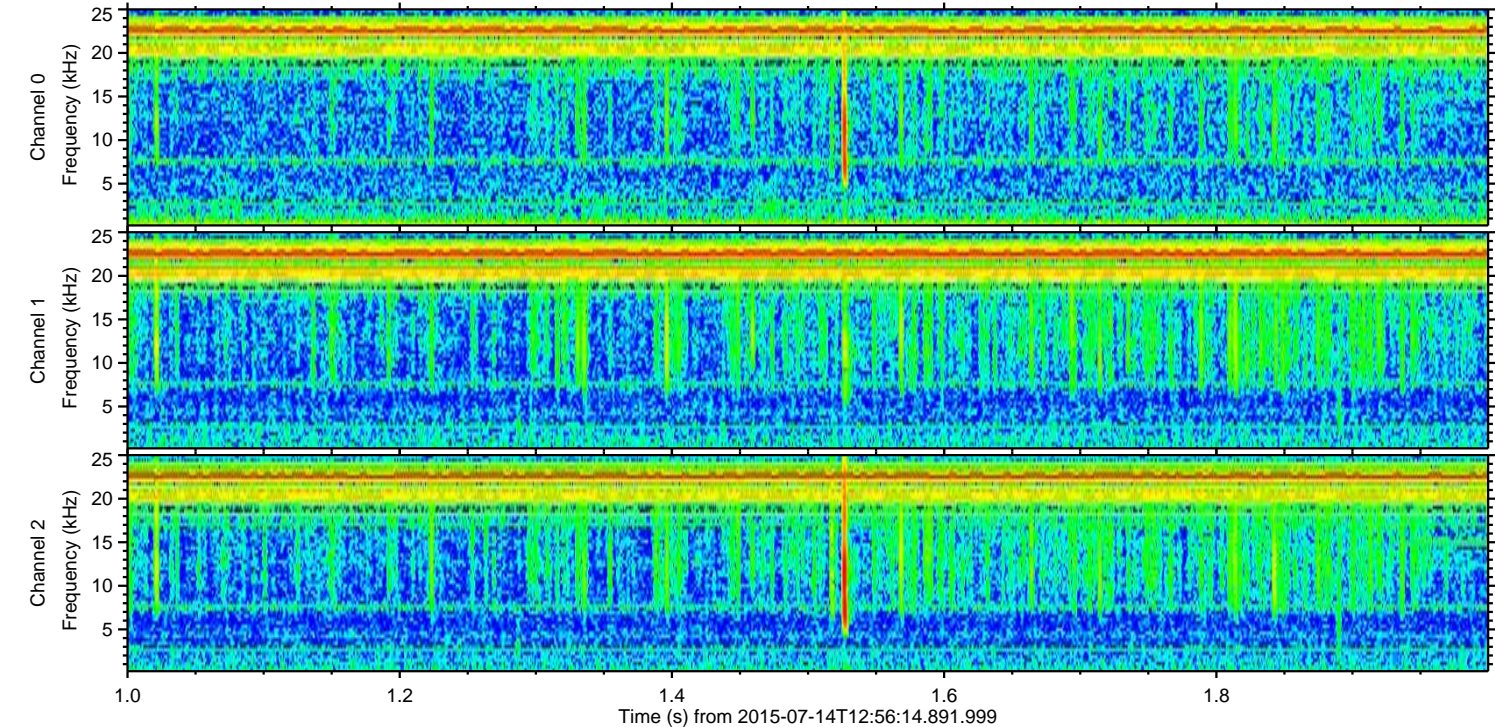
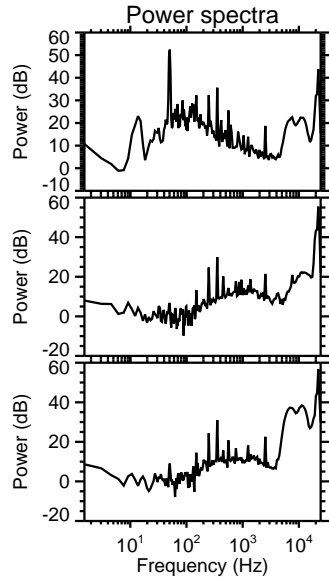
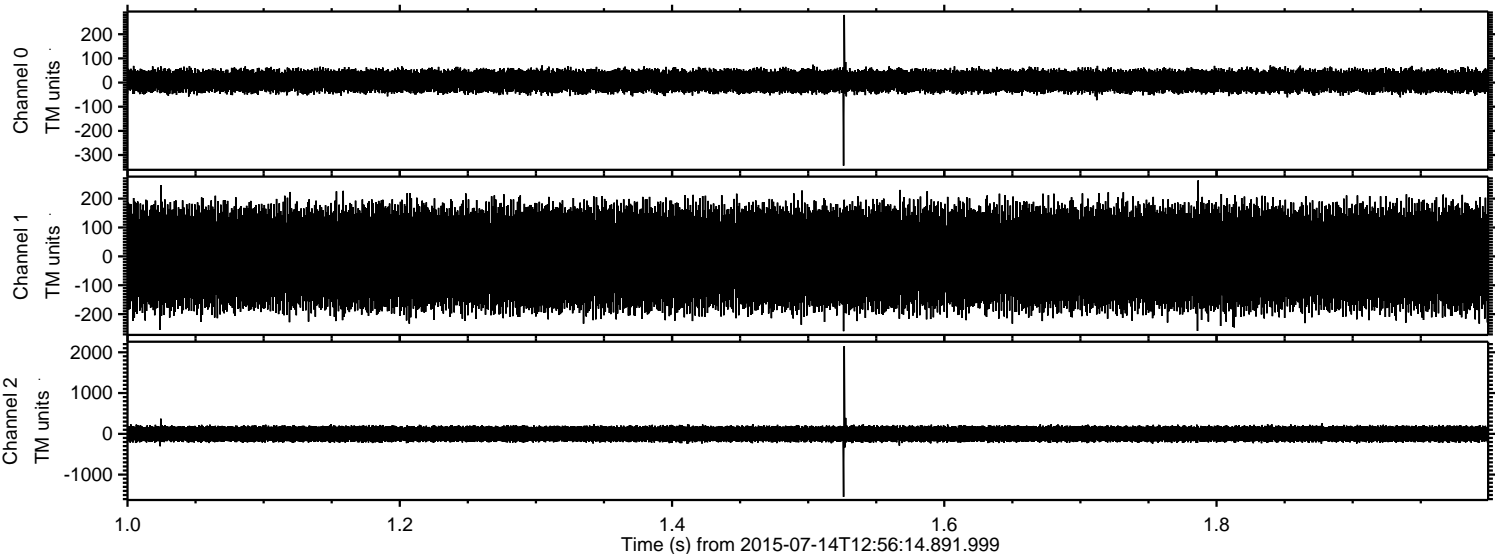
Processed Tue Jul 14 15:03:17 2015 by ELM ver.2012-10-06 from 001__elm20150714_125613__dat00.bin



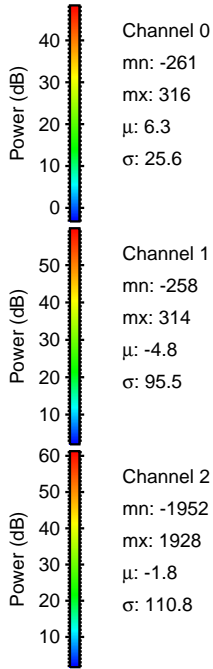
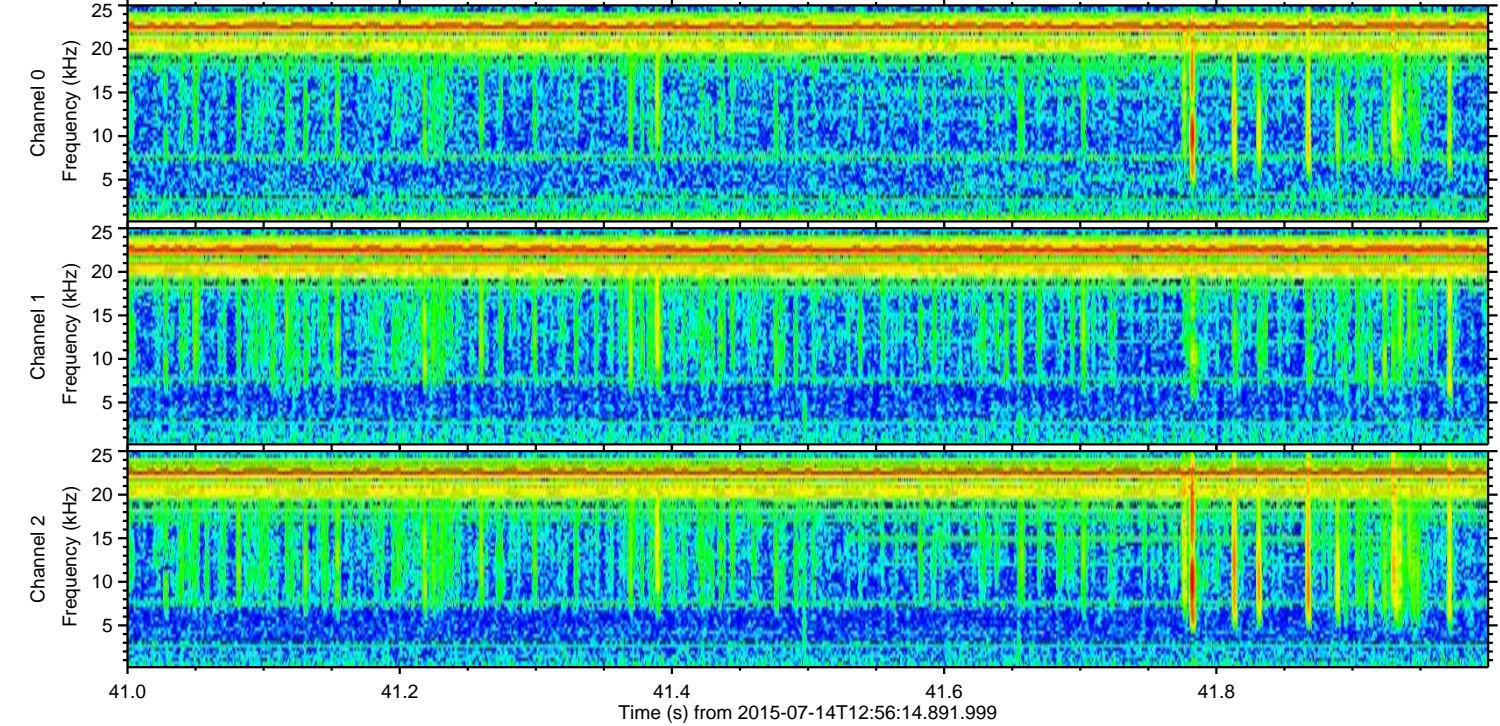
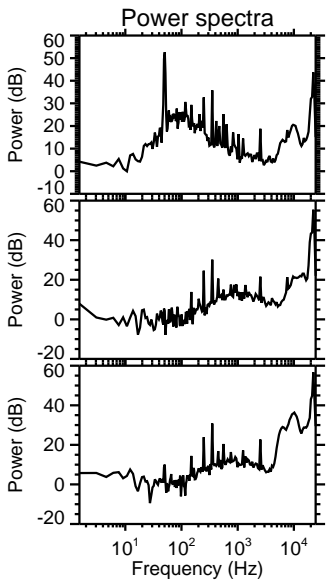
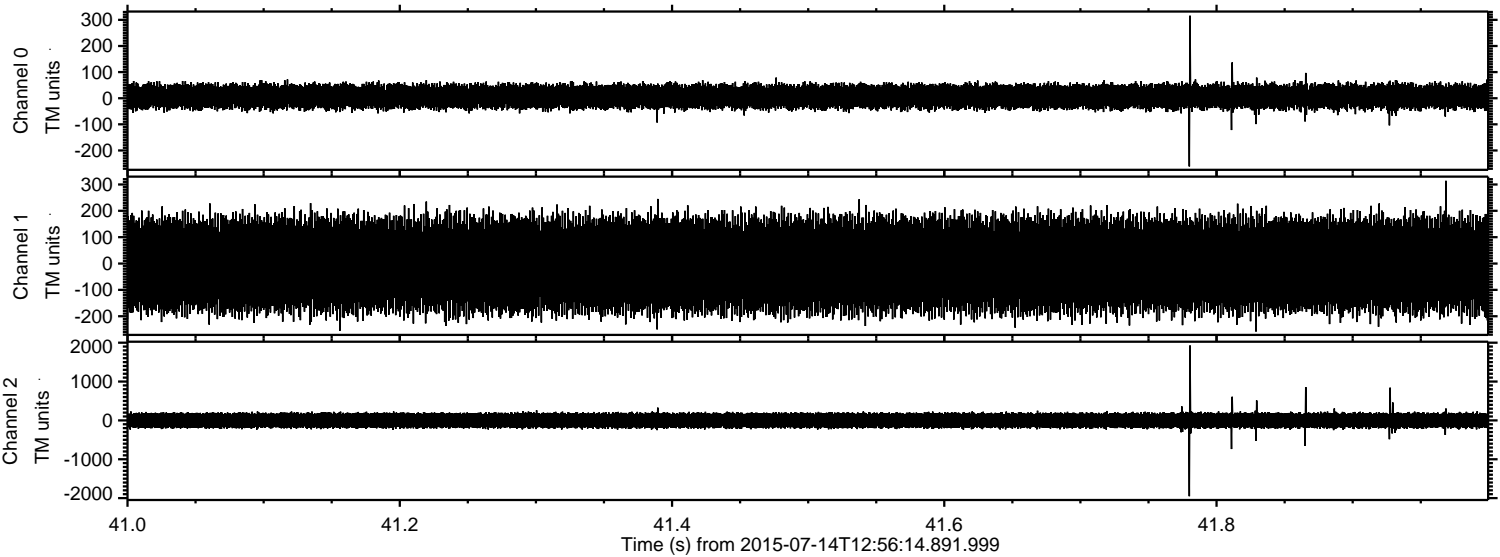
Processed Tue Jul 14 15:03:18 2015 by ELM ver.2012-10-06 from 001__elm20150714_125613__dat00.bin



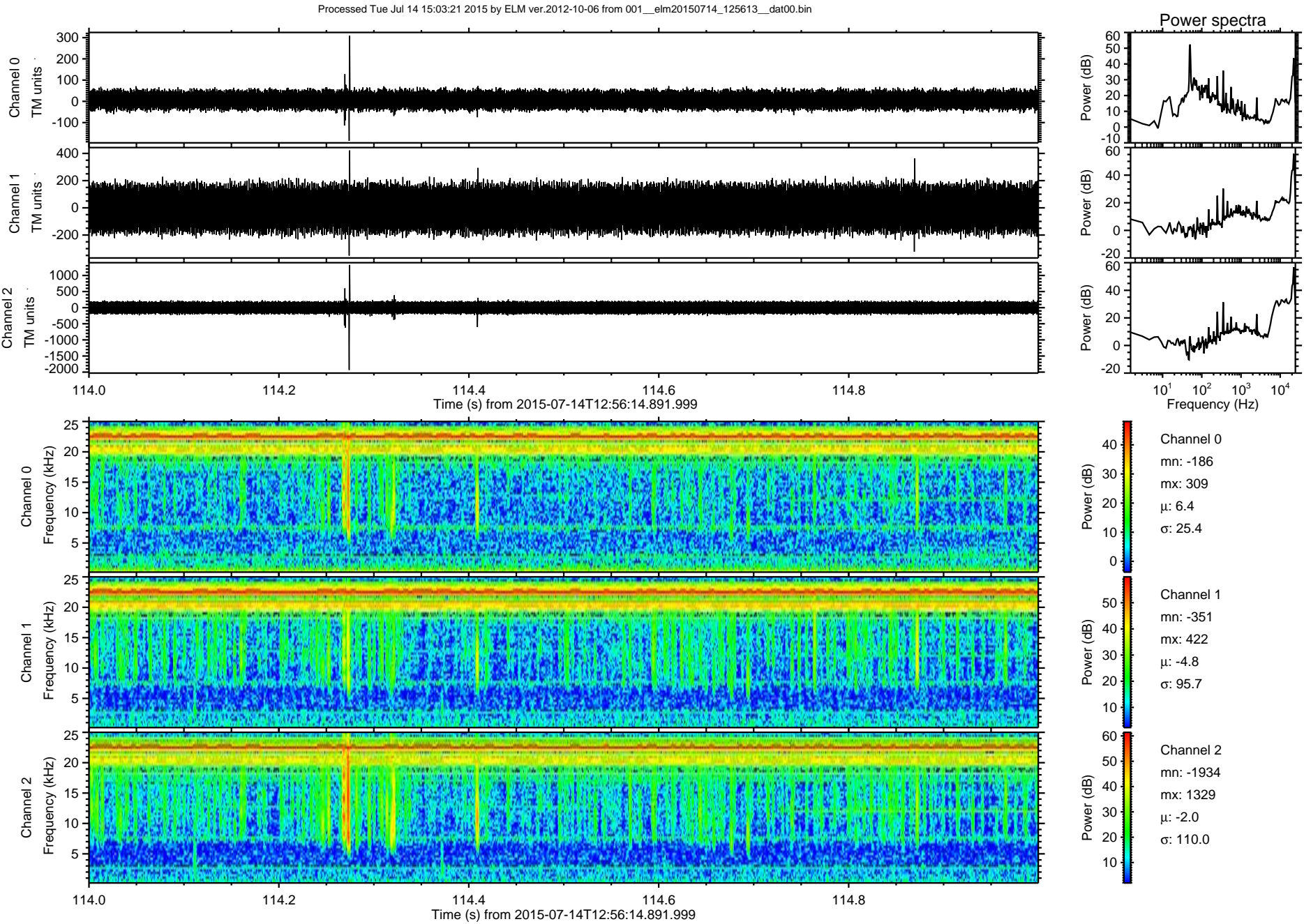
Processed Tue Jul 14 15:03:19 2015 by ELM ver.2012-10-06 from 001__elm20150714_125613__dat00.bin



Processed Tue Jul 14 15:03:20 2015 by ELM ver.2012-10-06 from 001__elm20150714_125613__dat00.bin

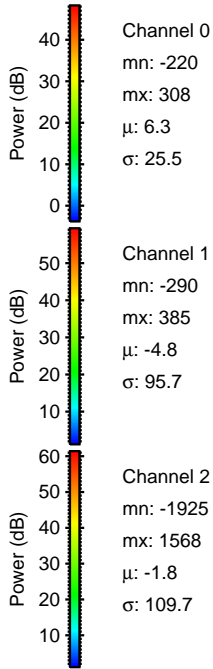
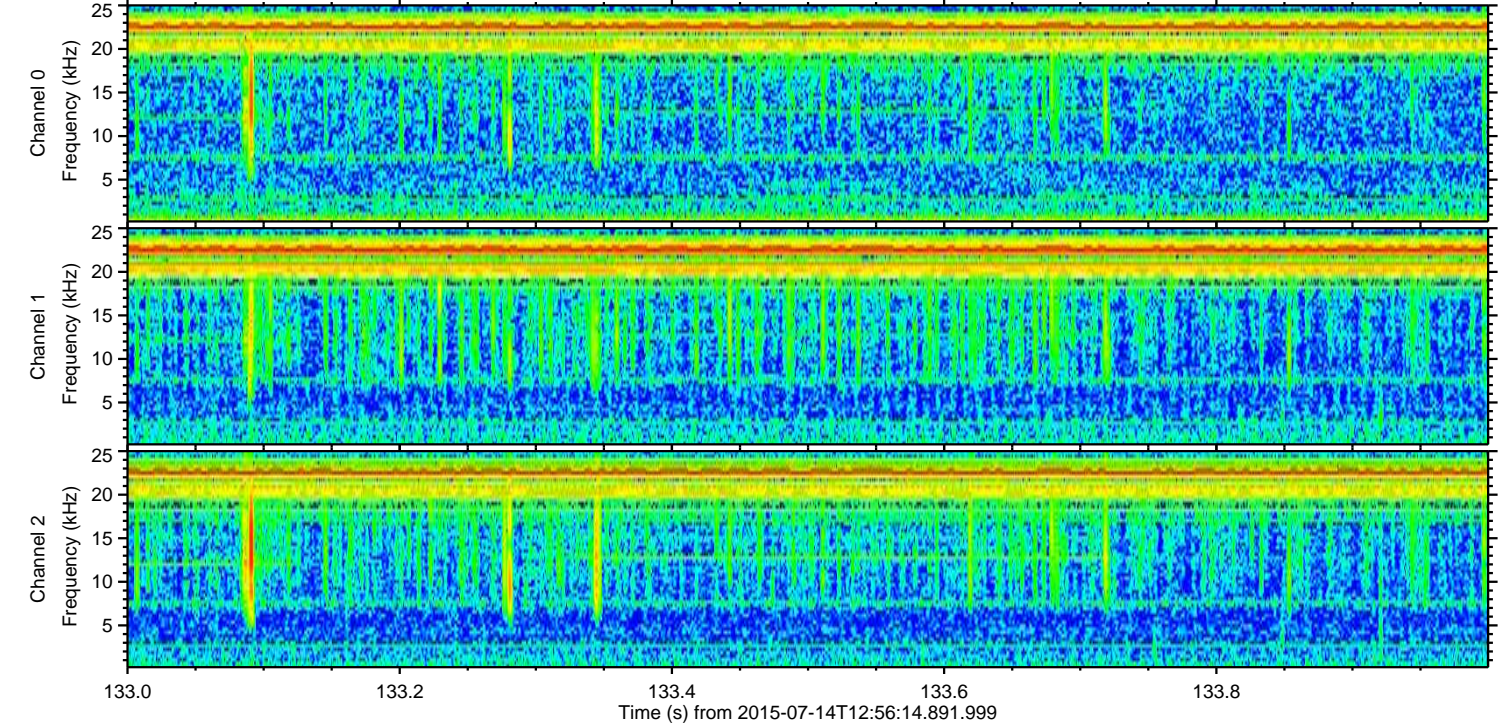
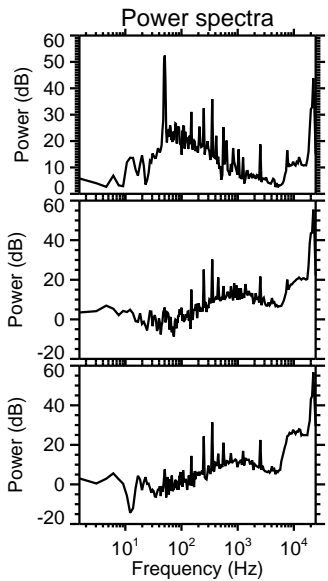
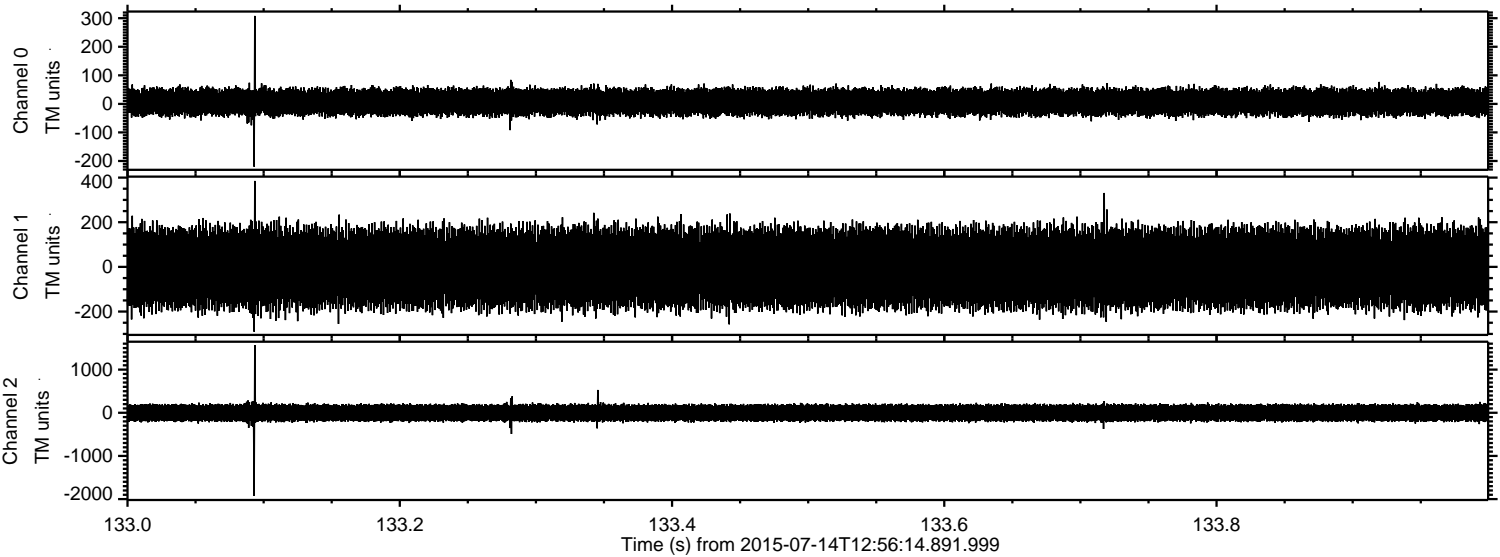


ELMAVAN 3D WAVEFORMS (Measured data sampled at 50 kHz) 51000 packets of 144 samples from 2015-07-14T12:56:14.891.999. Part 115/147

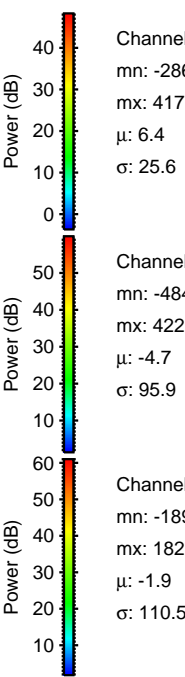
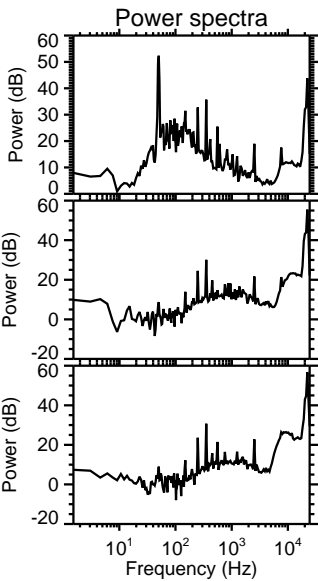
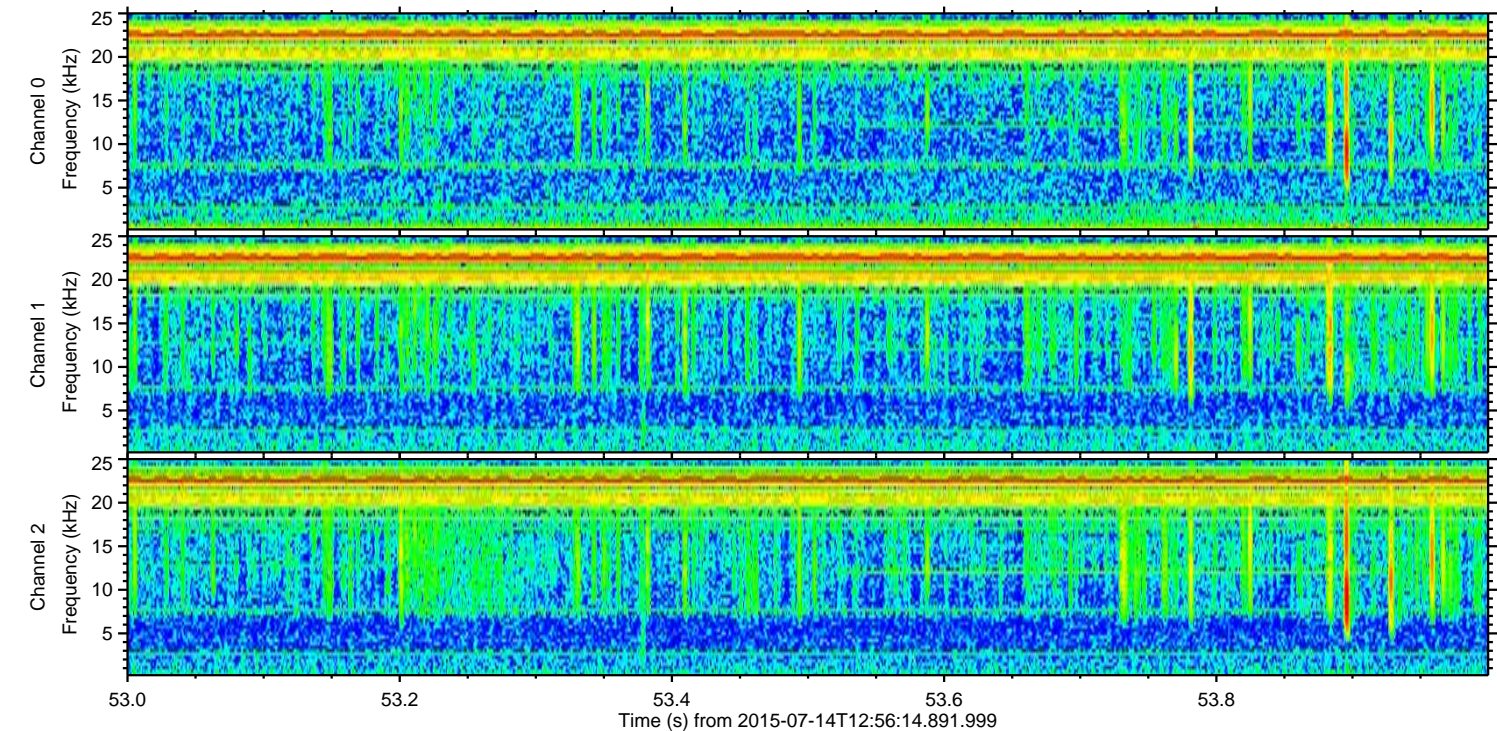
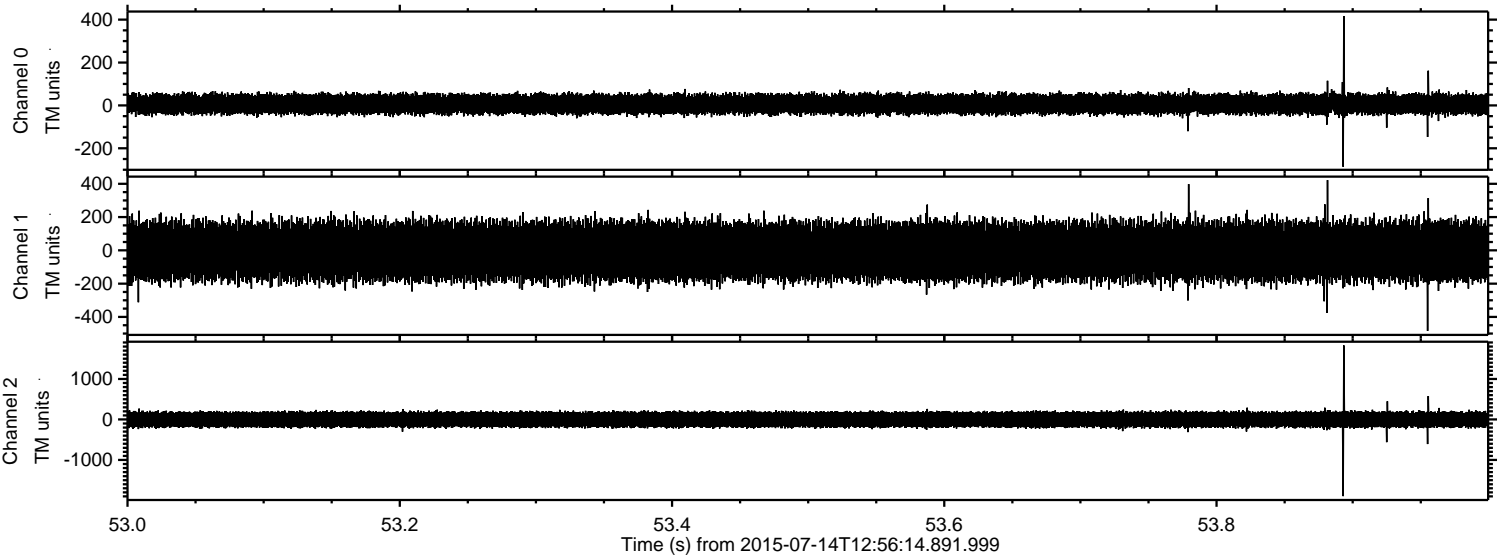


ELMAVAN 3D WAVEFORMS (Measured data sampled at 50 kHz) 51000 packets of 144 samples from 2015-07-14T12:56:14.891.999. Part 134/147

Processed Tue Jul 14 15:03:22 2015 by ELM ver.2012-10-06 from 001__elm20150714_125613__dat00.bin



Processed Tue Jul 14 15:03:23 2015 by ELM ver.2012-10-06 from 001__elm20150714_125613__dat00.bin



Channel 0
mn: -286
mx: 417
 μ : 6.4
 σ : 25.6

Channel 1
mn: -484
mx: 422
 μ : -4.7
 σ : 95.9

Channel 2
mn: -1894
mx: 1828
 μ : -1.9
 σ : 110.5

Processed Tue Jul 14 15:03:24 2015 by ELM ver.2012-10-06 from 001__elm20150714_125613__dat00.bin

