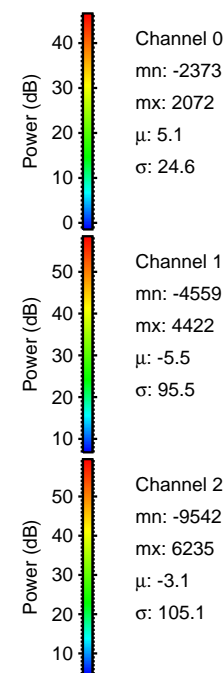
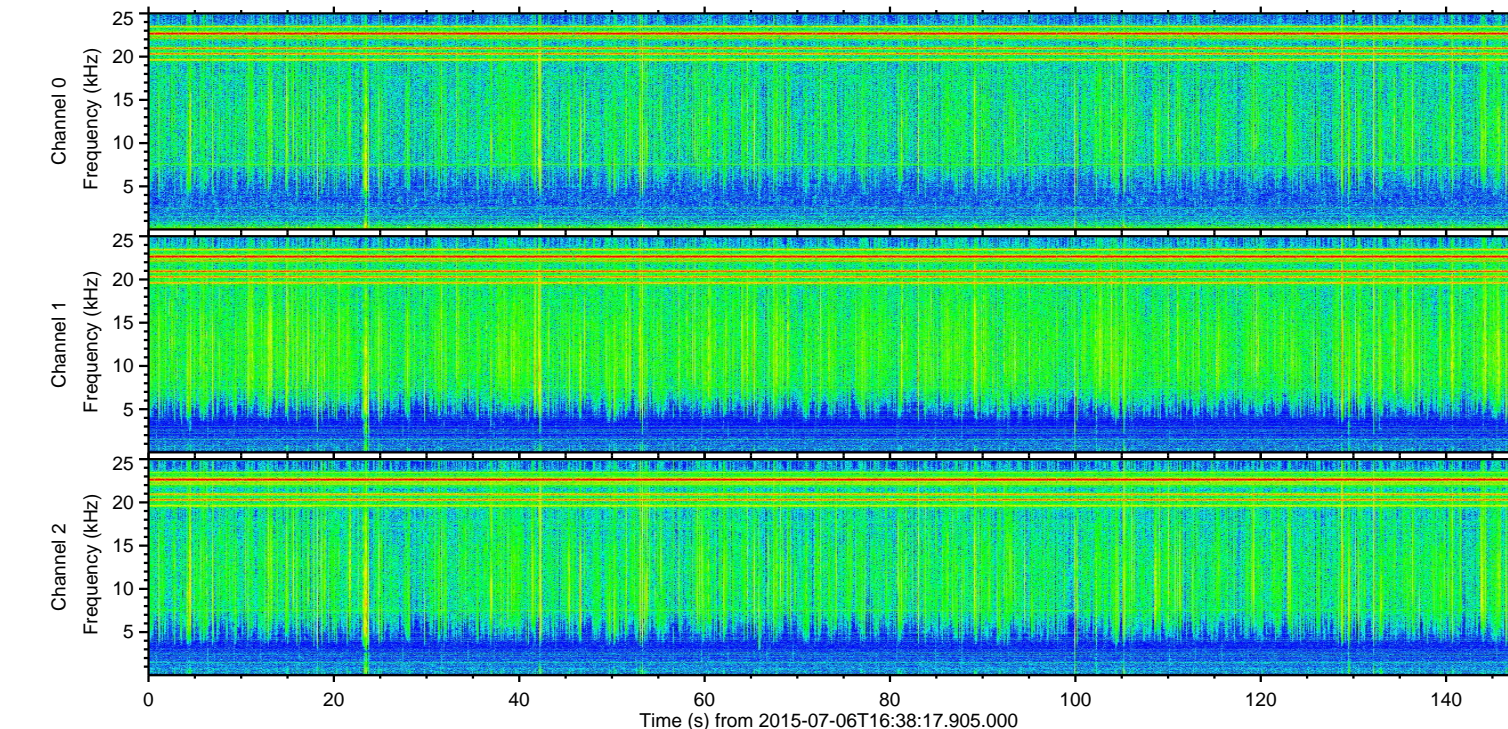
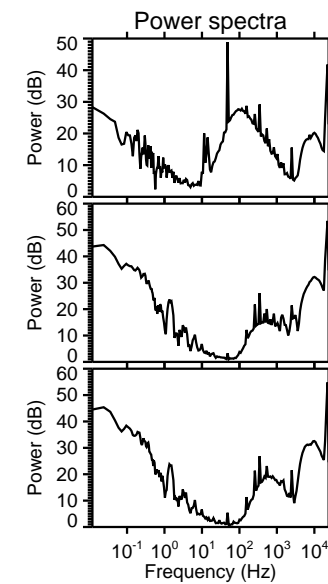
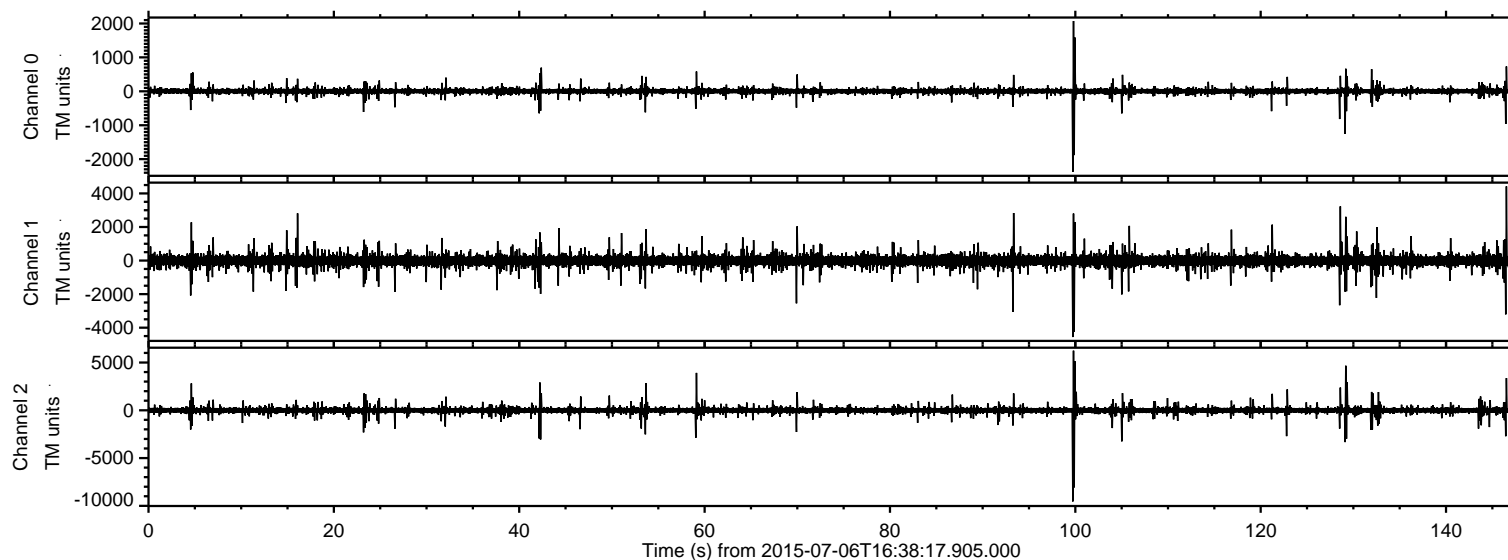


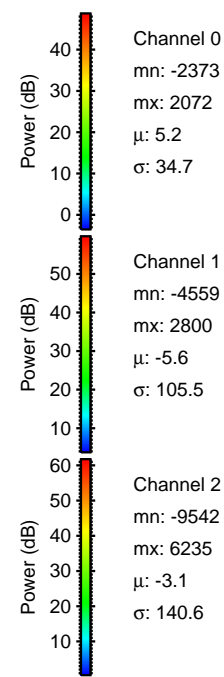
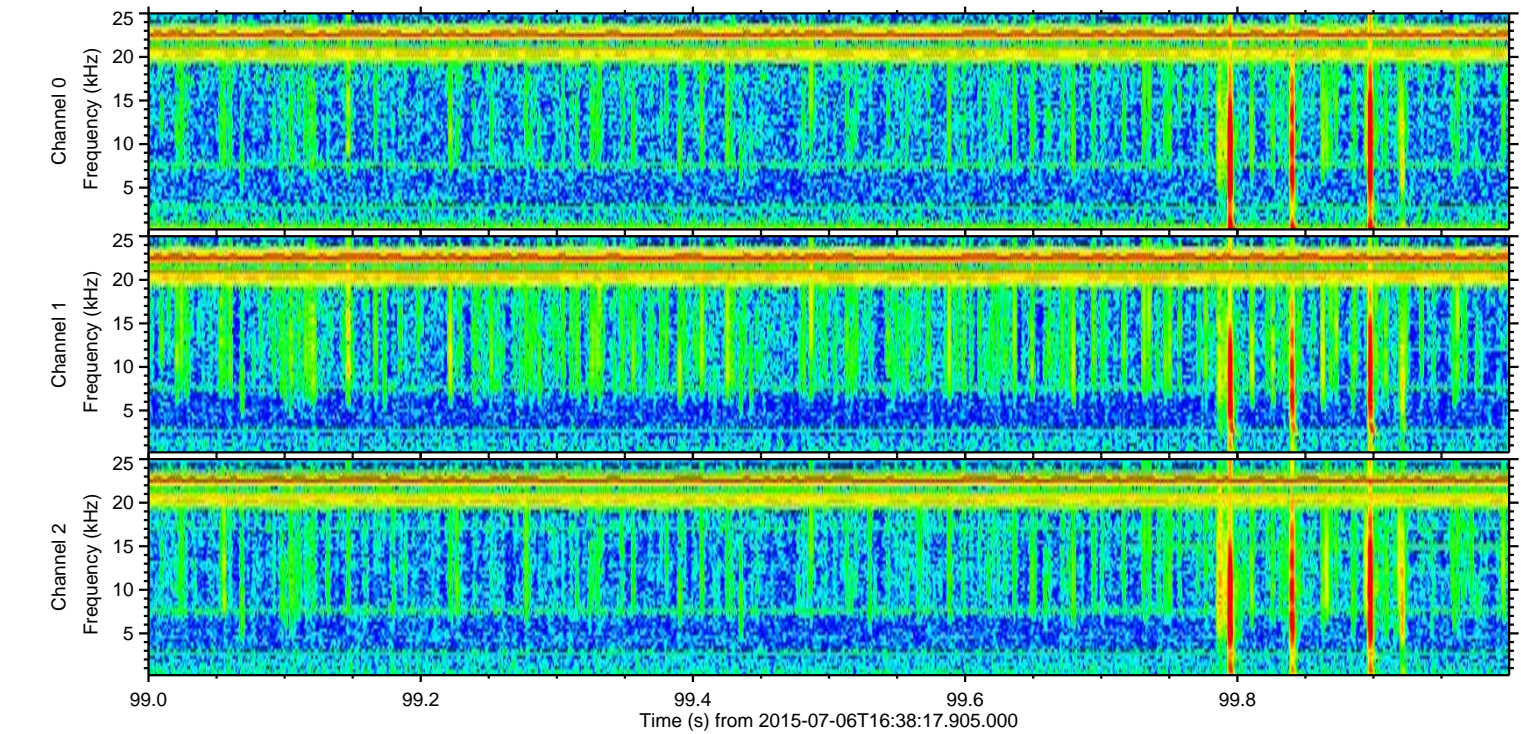
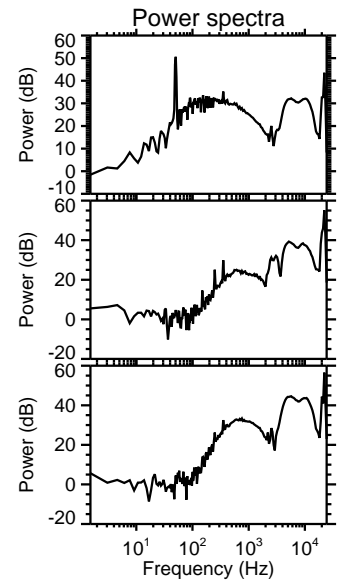
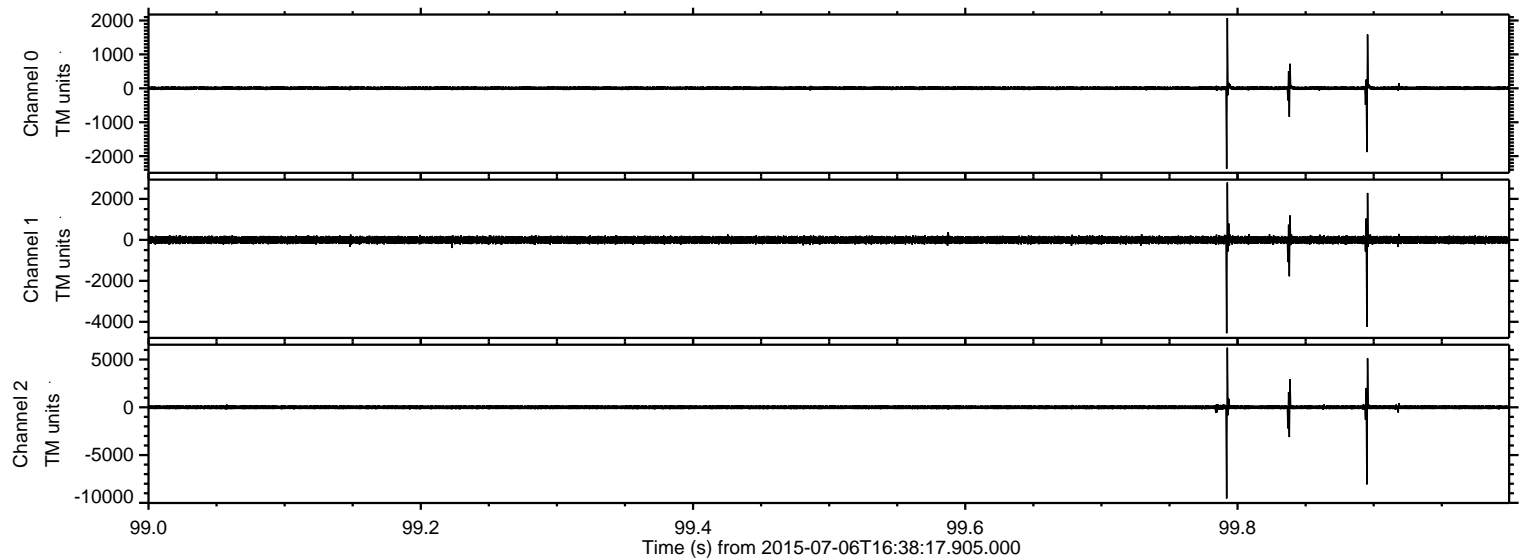
ELMAVAN 3D WAVEFORMS (Measured data sampled at 50 kHz) 51000 packets of 144 samples from 2015-07-06T16:38:17.905.000.

Processed Mon Jul 6 18:44:30 2015 by ELM ver.2012-10-06 from 001__elm20150706_163816__dat00.bin



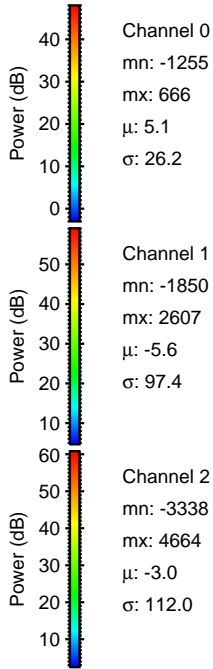
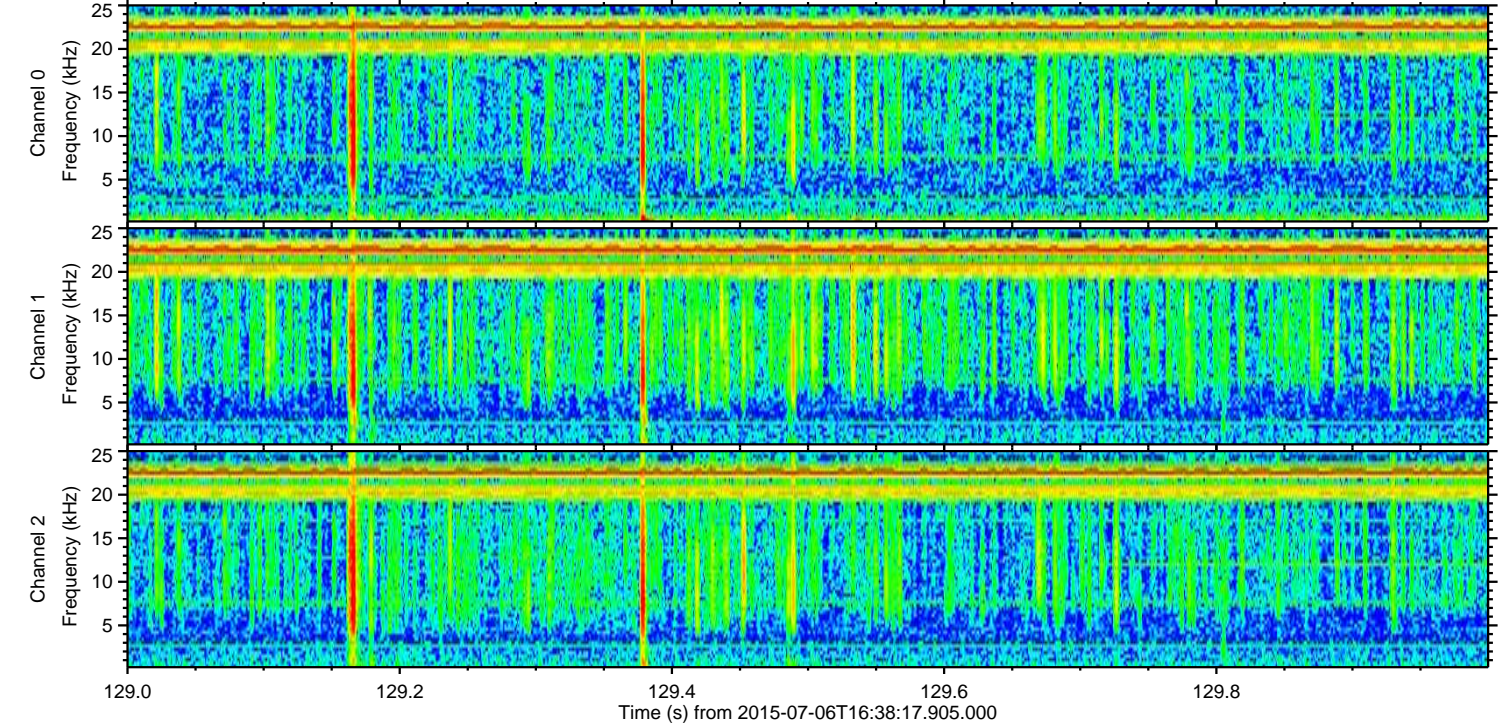
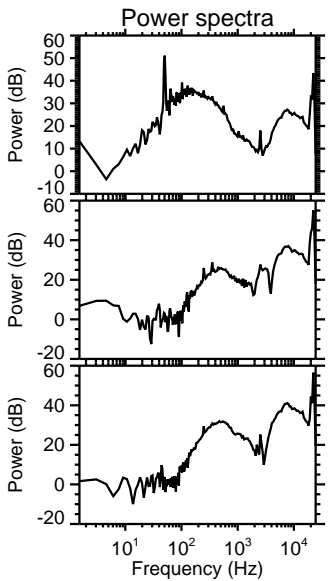
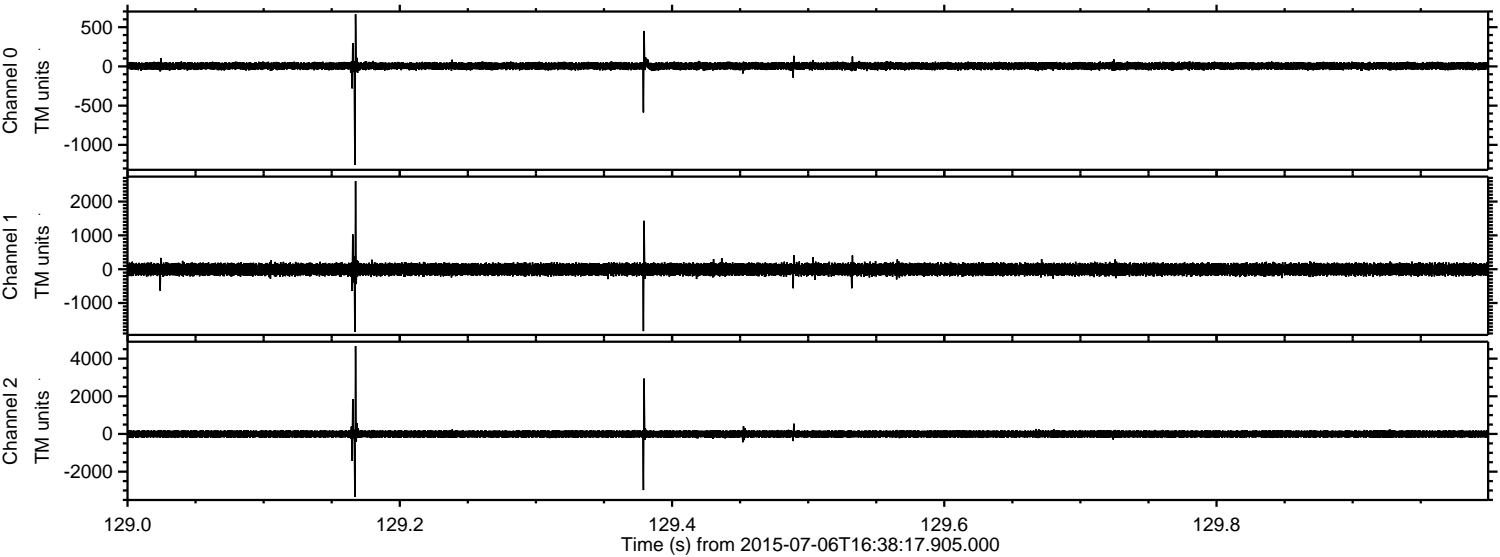
ELMAVAN 3D WAVEFORMS (Measured data sampled at 50 kHz) 51000 packets of 144 samples from 2015-07-06T16:38:17.905.000. Part 100/147

Processed Mon Jul 6 18:44:45 2015 by ELM ver.2012-10-06 from 001__elm20150706_163816__dat00.bin

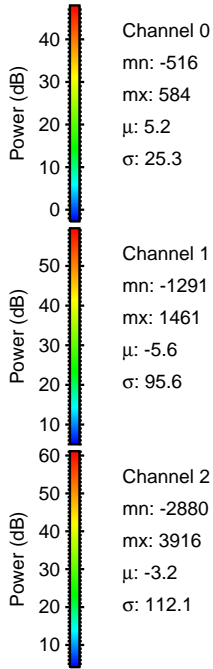
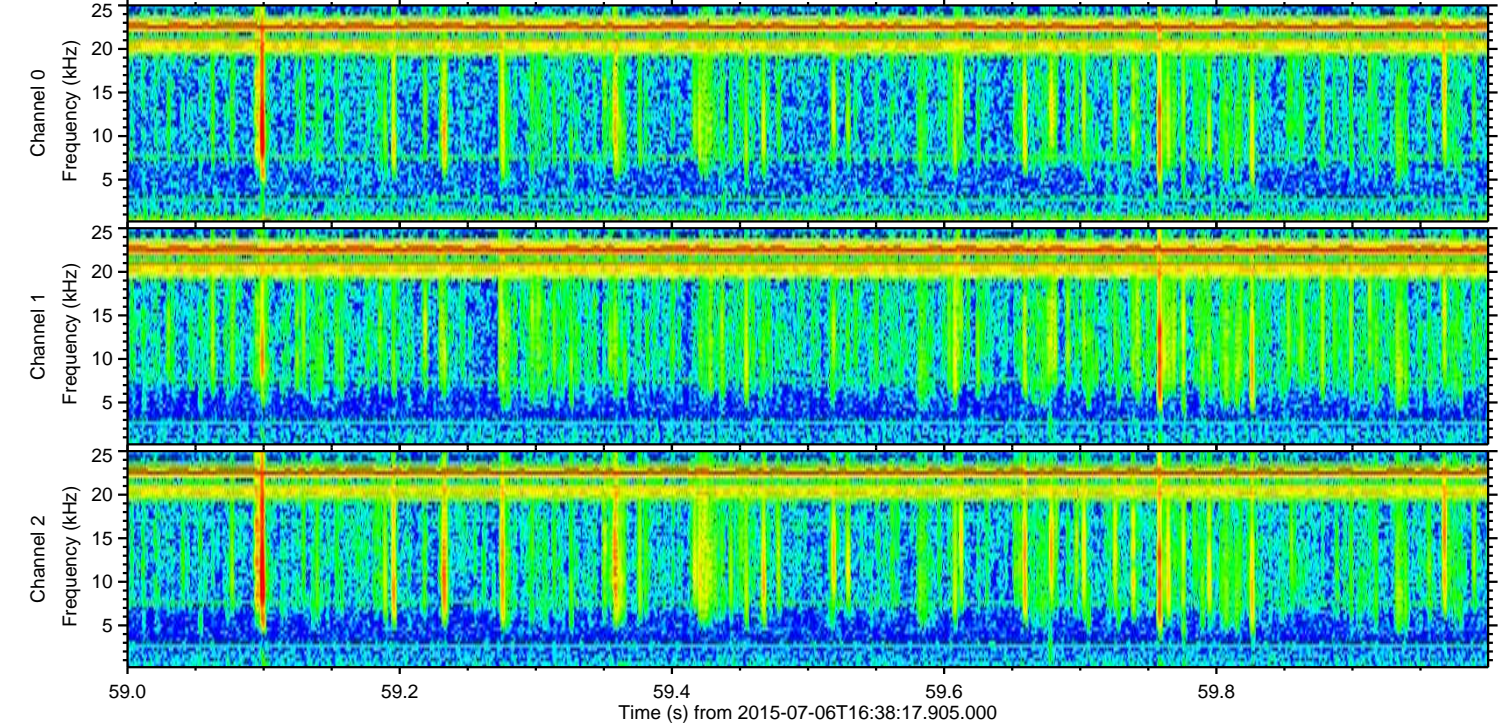
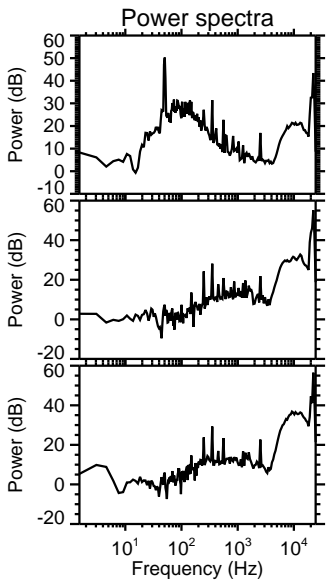
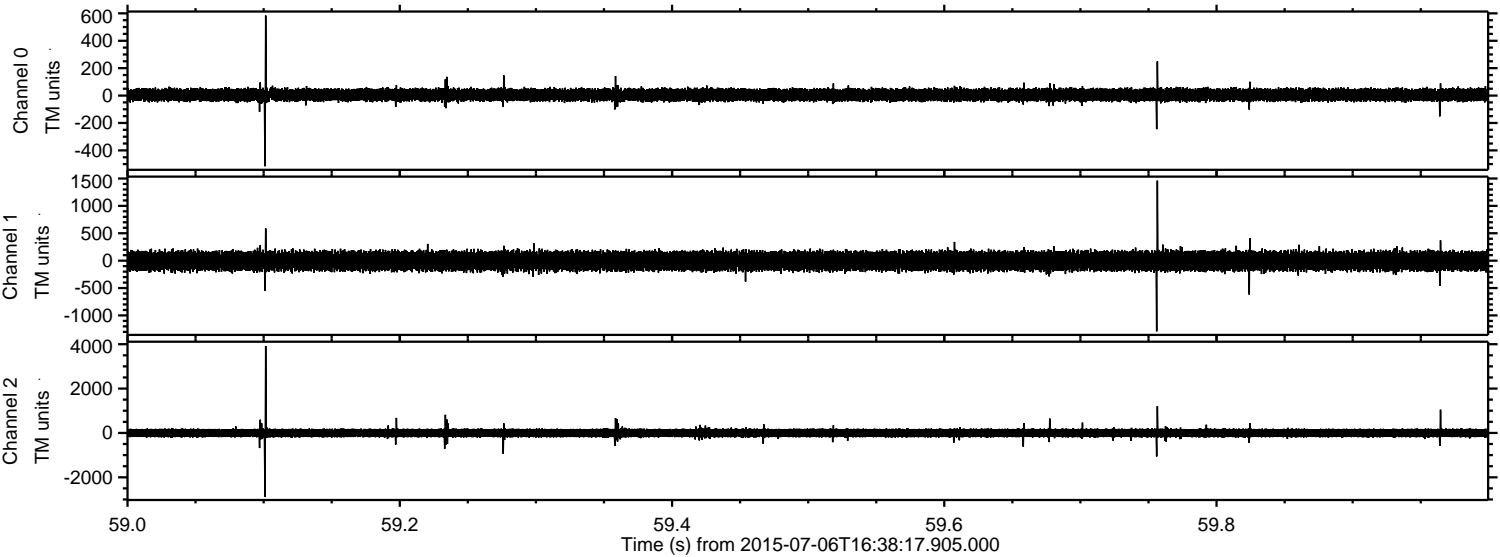


ELMAVAN 3D WAVEFORMS (Measured data sampled at 50 kHz) 51000 packets of 144 samples from 2015-07-06T16:38:17.905.000. Part 130/147

Processed Mon Jul 6 18:44:46 2015 by ELM ver.2012-10-06 from 001__elm20150706_163816__dat00.bin

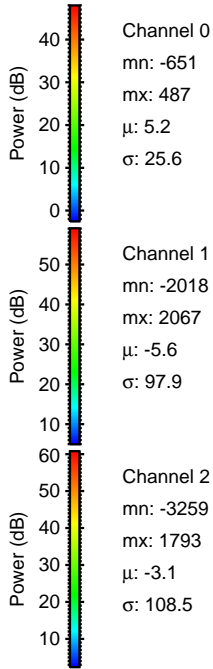
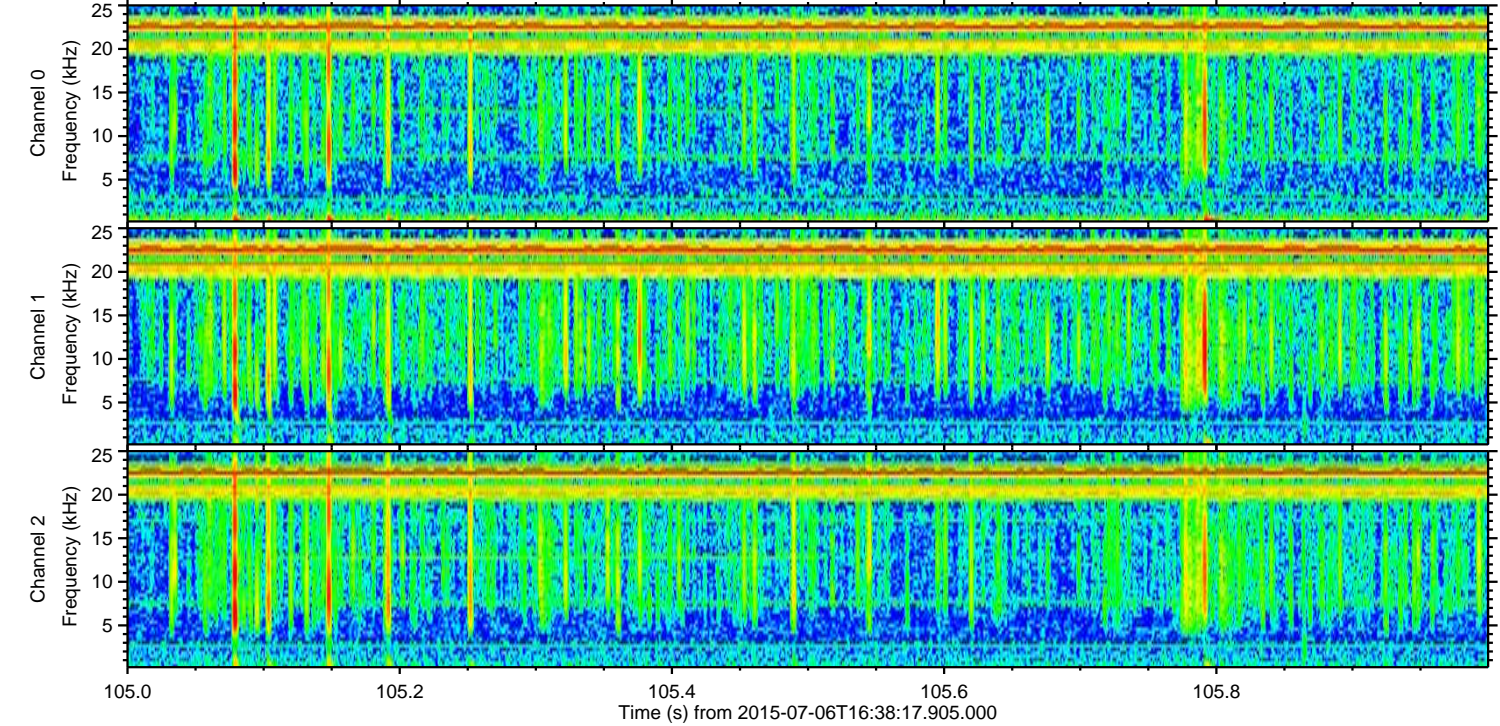
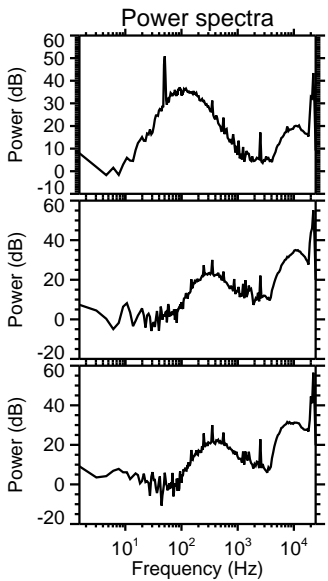
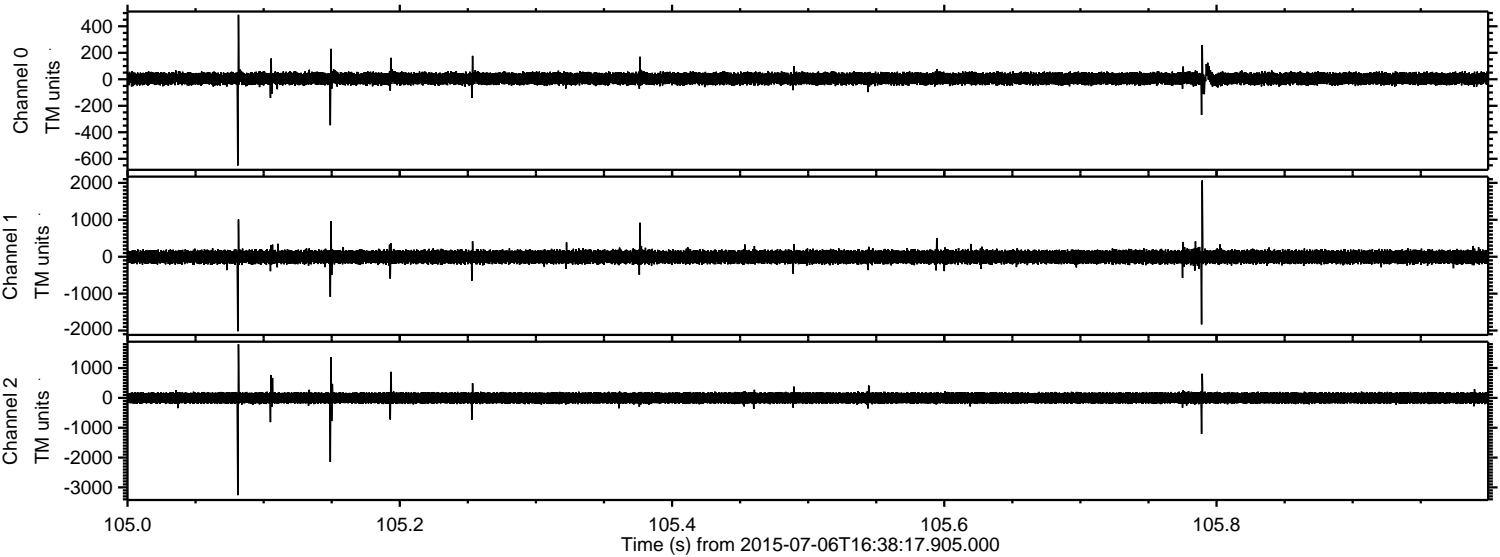


Processed Mon Jul 6 18:44:47 2015 by ELM ver.2012-10-06 from 001__elm20150706_163816__dat00.bin



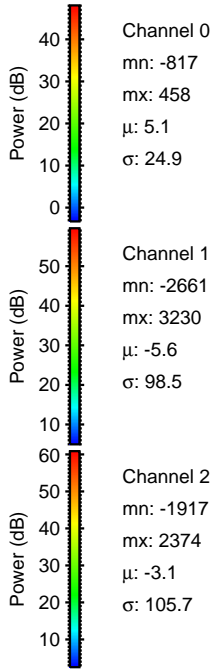
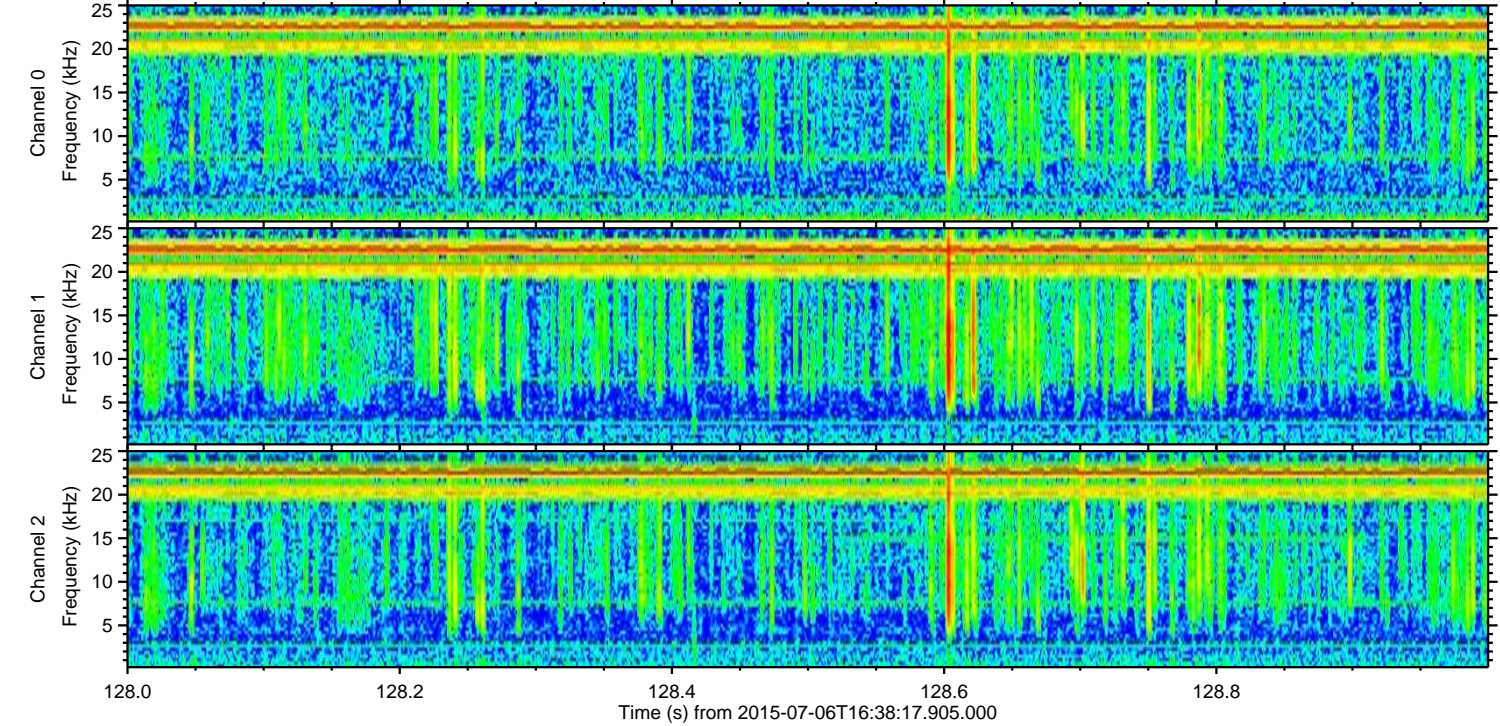
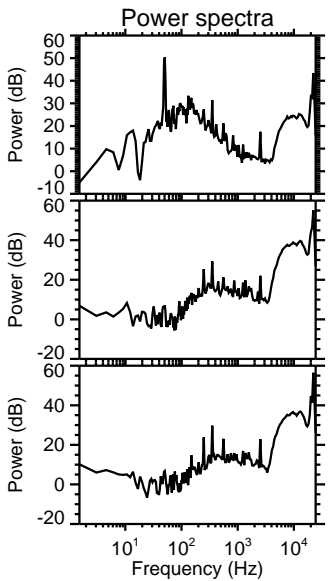
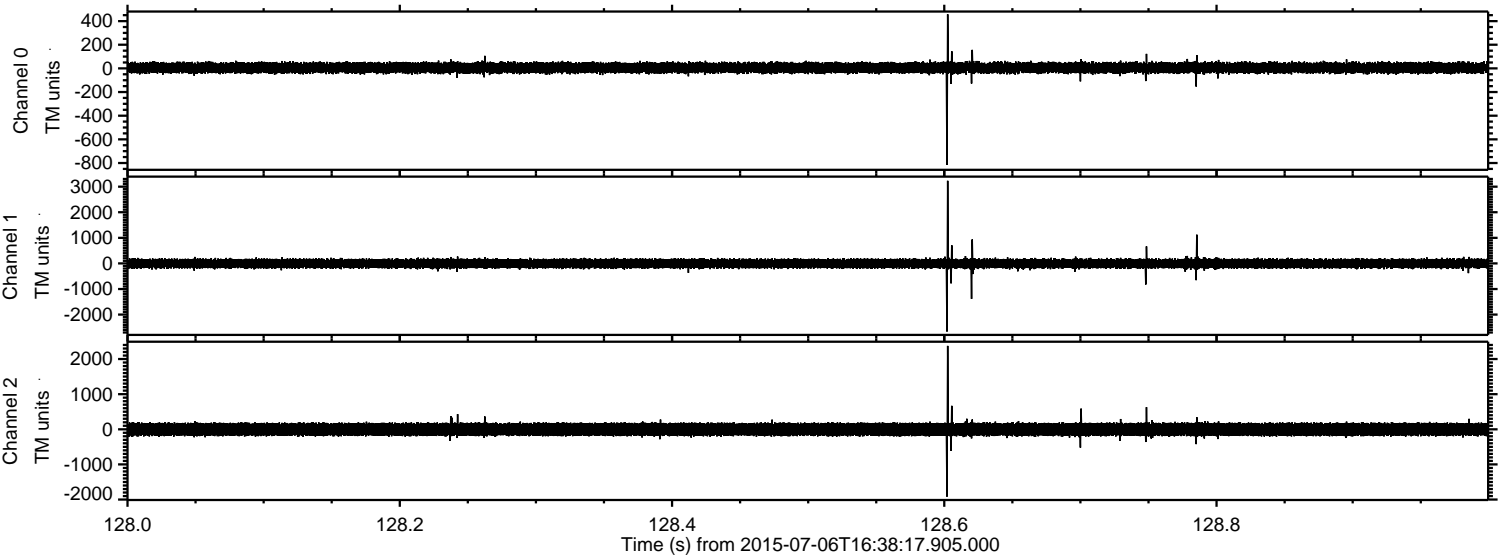
ELMAVAN 3D WAVEFORMS (Measured data sampled at 50 kHz) 51000 packets of 144 samples from 2015-07-06T16:38:17.905.000. Part 106/147

Processed Mon Jul 6 18:44:48 2015 by ELM ver.2012-10-06 from 001__elm20150706_163816__dat00.bin

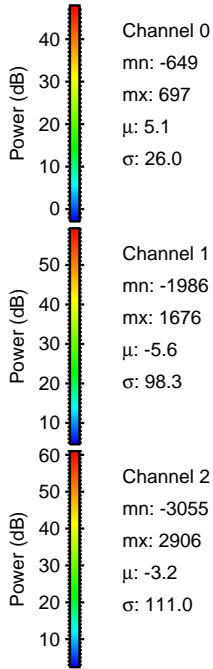
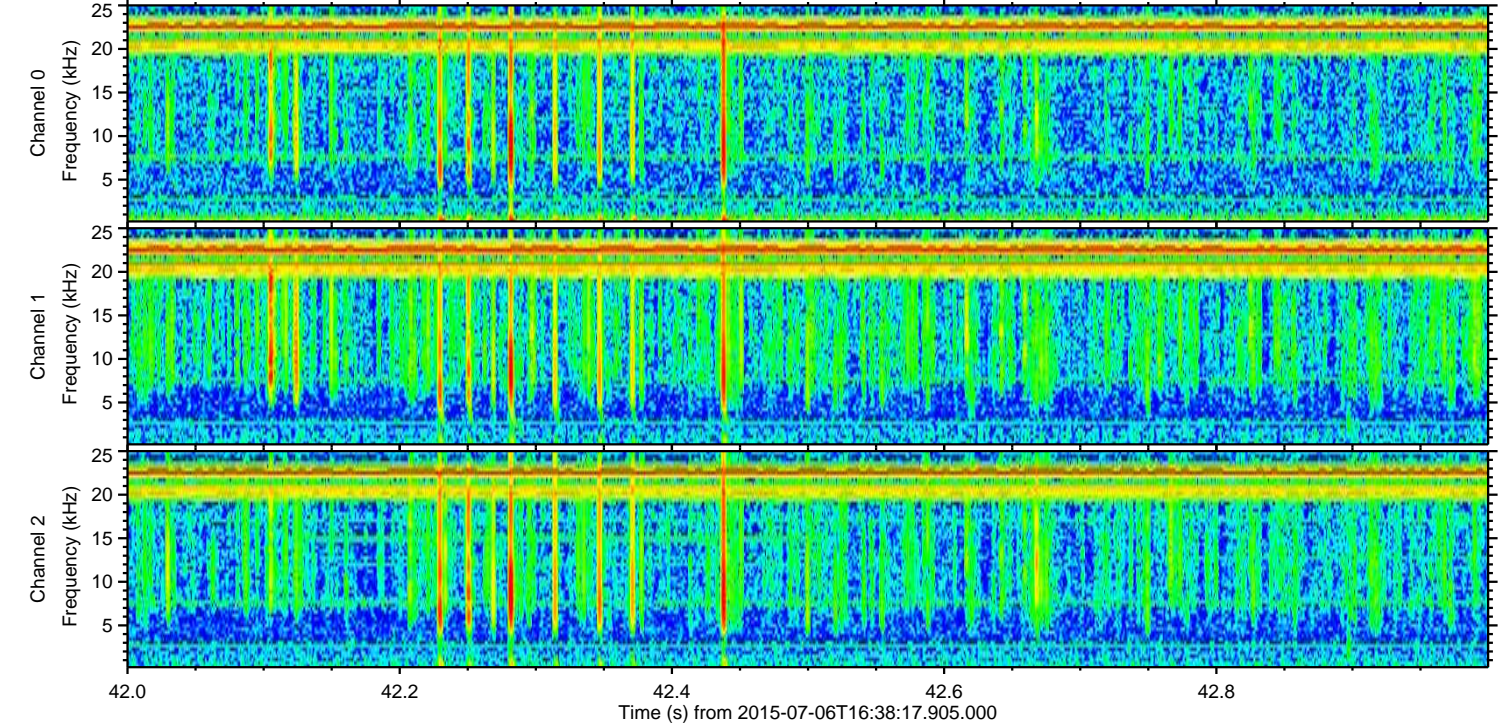
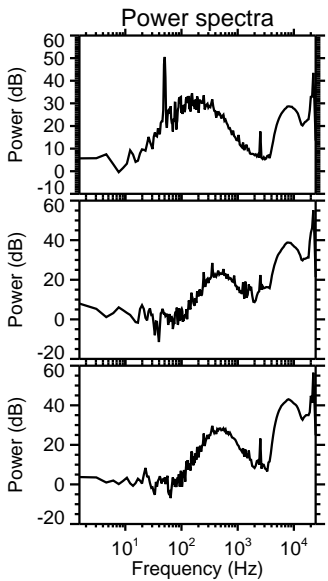
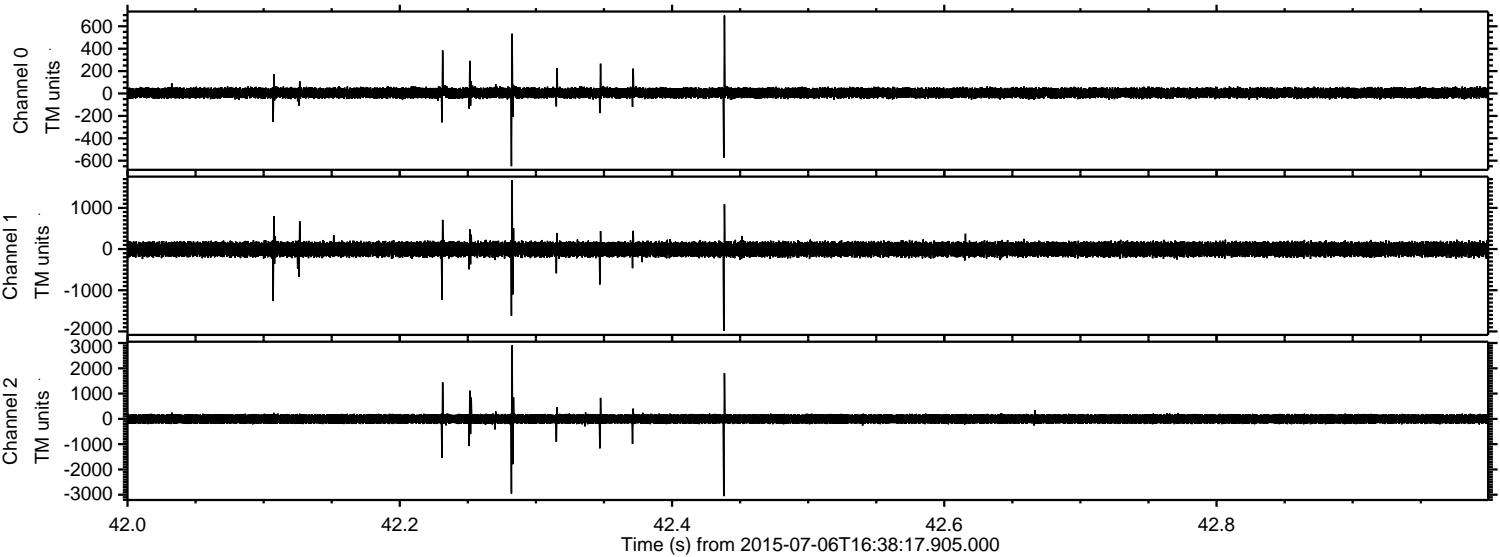


ELMAVAN 3D WAVEFORMS (Measured data sampled at 50 kHz) 51000 packets of 144 samples from 2015-07-06T16:38:17.905.000. Part 129/147

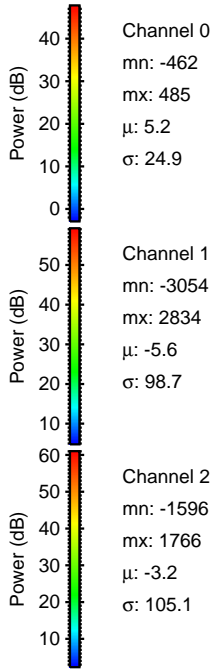
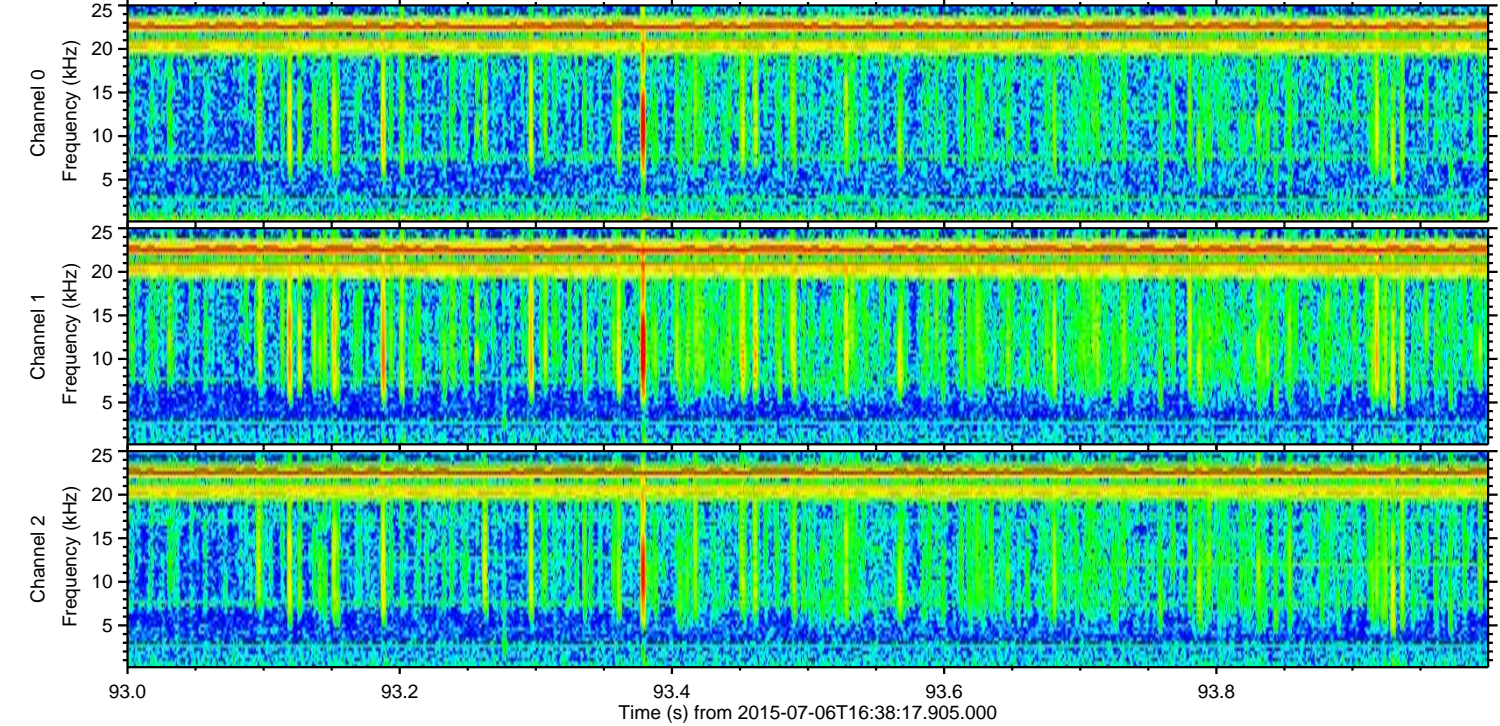
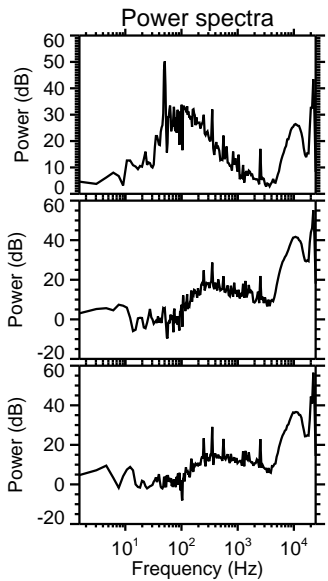
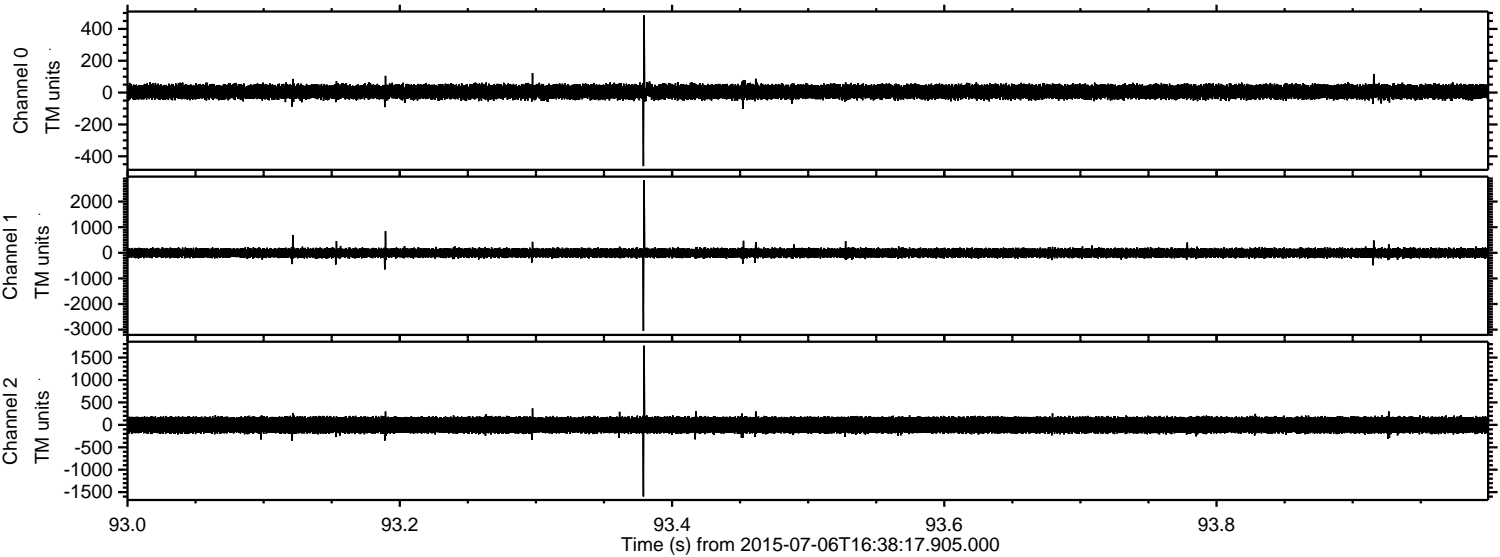
Processed Mon Jul 6 18:44:49 2015 by ELM ver.2012-10-06 from 001__elm20150706_163816__dat00.bin



Processed Mon Jul 6 18:44:50 2015 by ELM ver.2012-10-06 from 001__elm20150706_163816__dat00.bin



Processed Mon Jul 6 18:44:51 2015 by ELM ver.2012-10-06 from 001__elm20150706_163816__dat00.bin

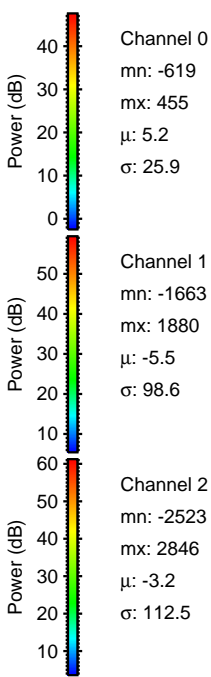
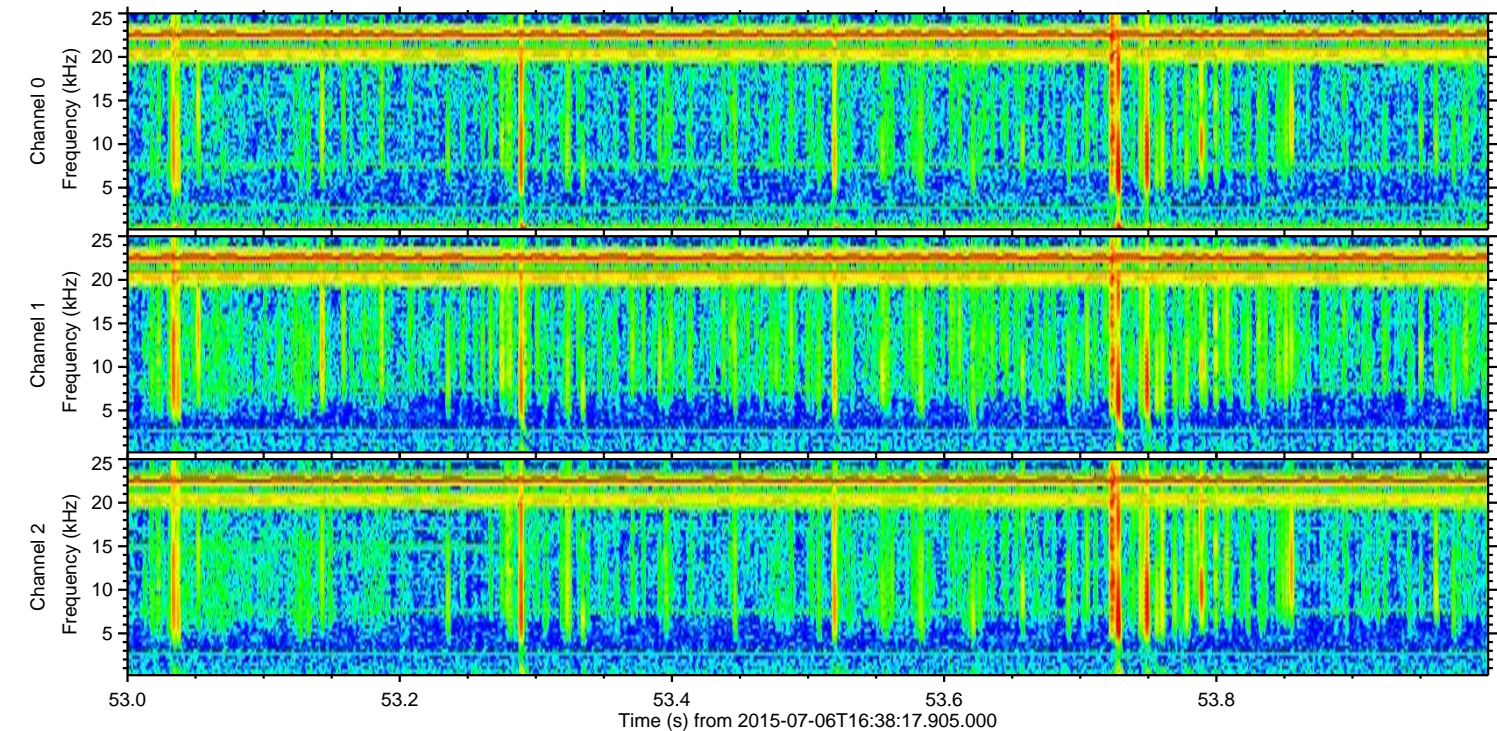
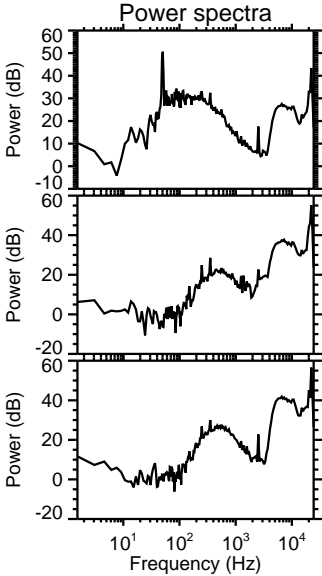
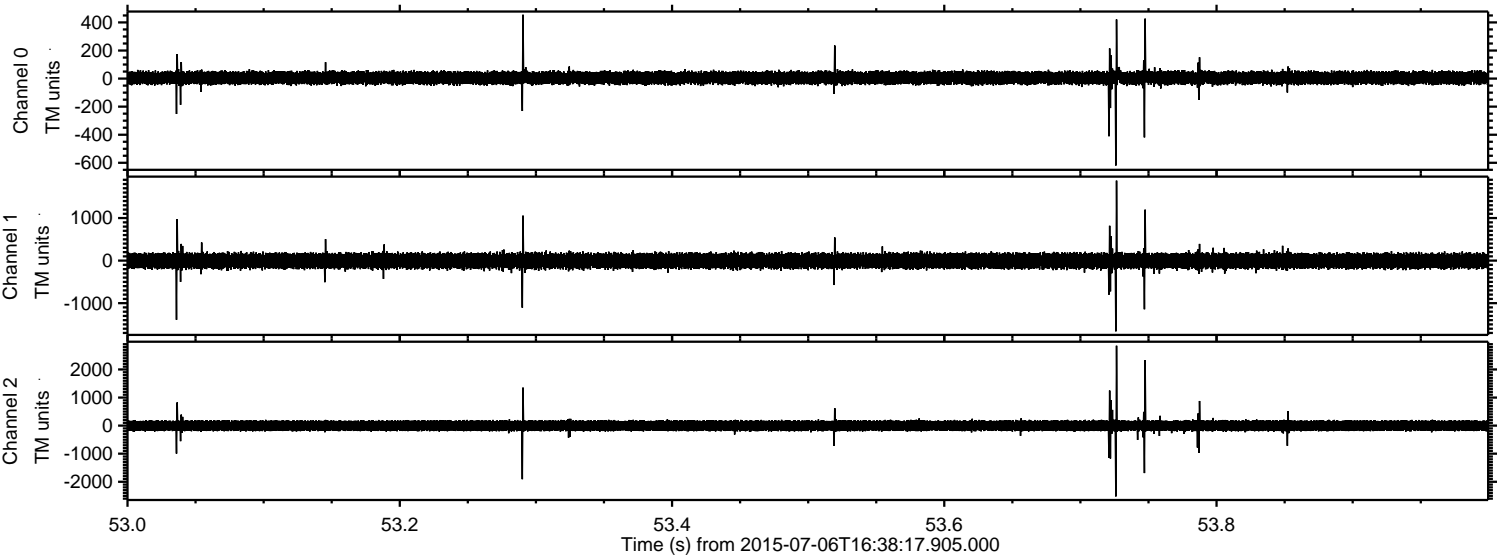


Channel 0
mn: -462
mx: 485
 μ : 5.2
 σ : 24.9

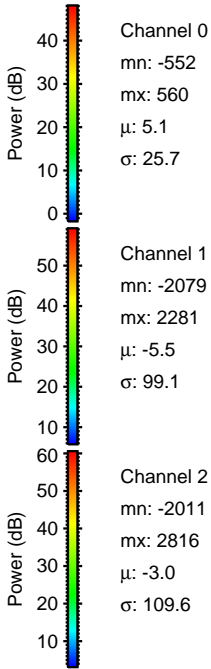
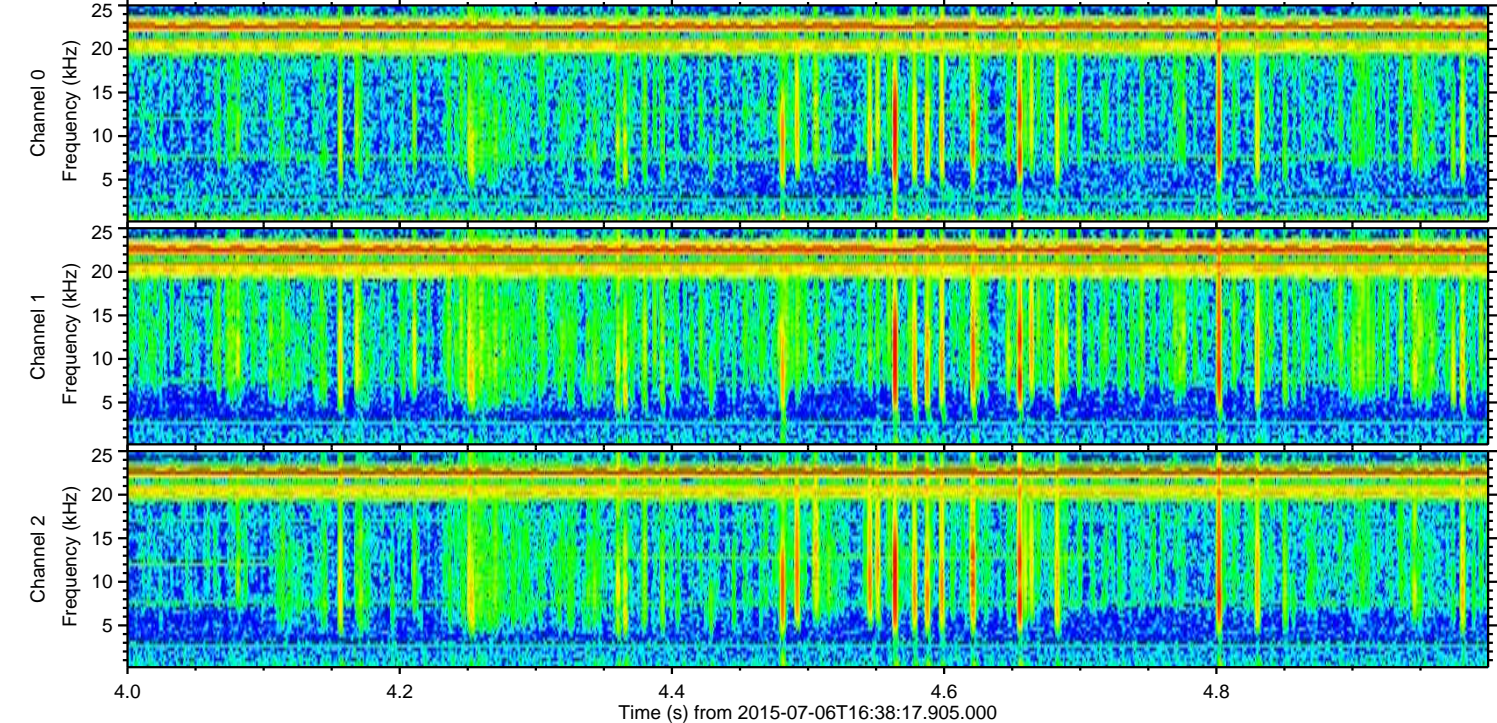
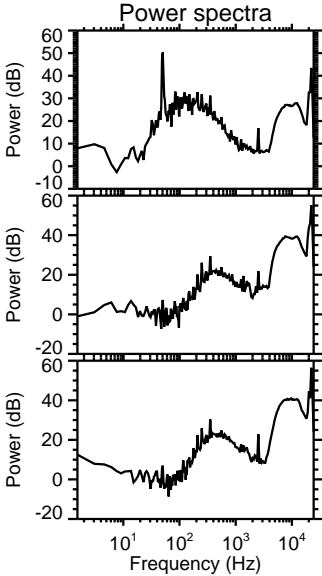
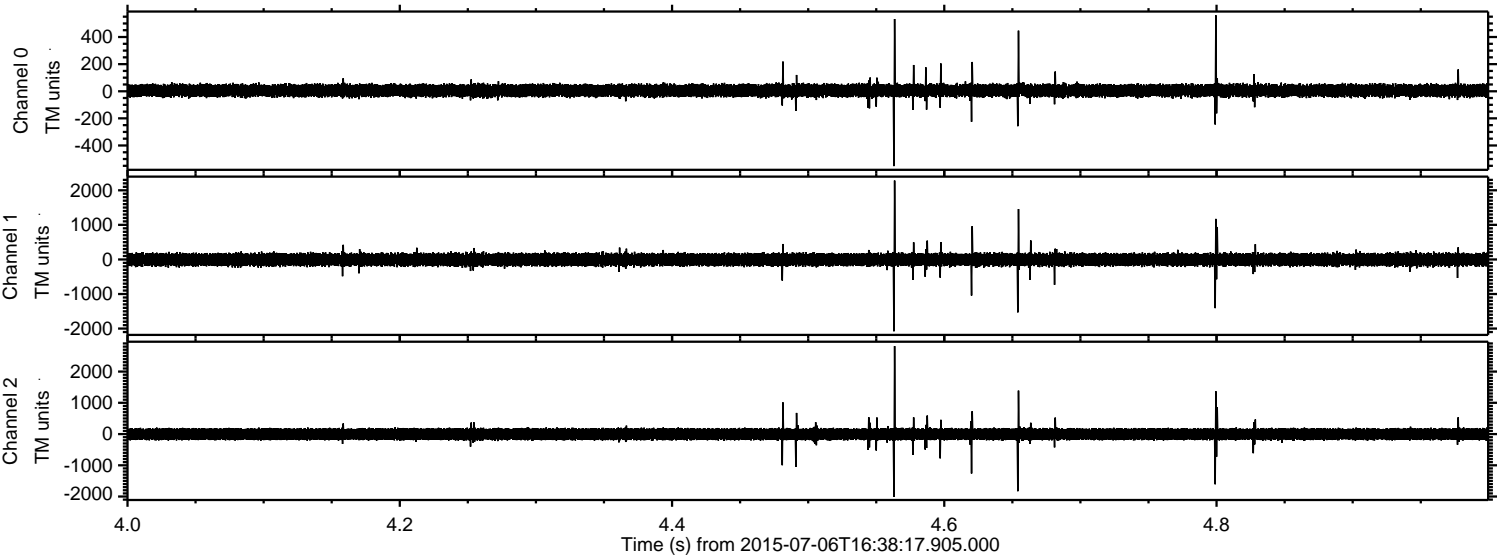
Channel 1
mn: -3054
mx: 2834
 μ : -5.6
 σ : 98.7

Channel 2
mn: -1596
mx: 1766
 μ : -3.2
 σ : 105.1

Processed Mon Jul 6 18:44:52 2015 by ELM ver.2012-10-06 from 001__elm20150706_163816__dat00.bin



Processed Mon Jul 6 18:44:53 2015 by ELM ver.2012-10-06 from 001__elm20150706_163816__dat00.bin



Processed Mon Jul 6 18:44:54 2015 by ELM ver.2012-10-06 from 001__elm20150706_163816__dat00.bin

