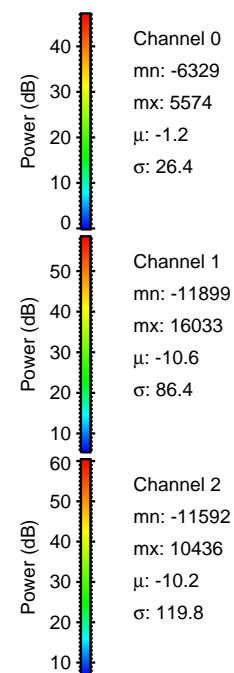
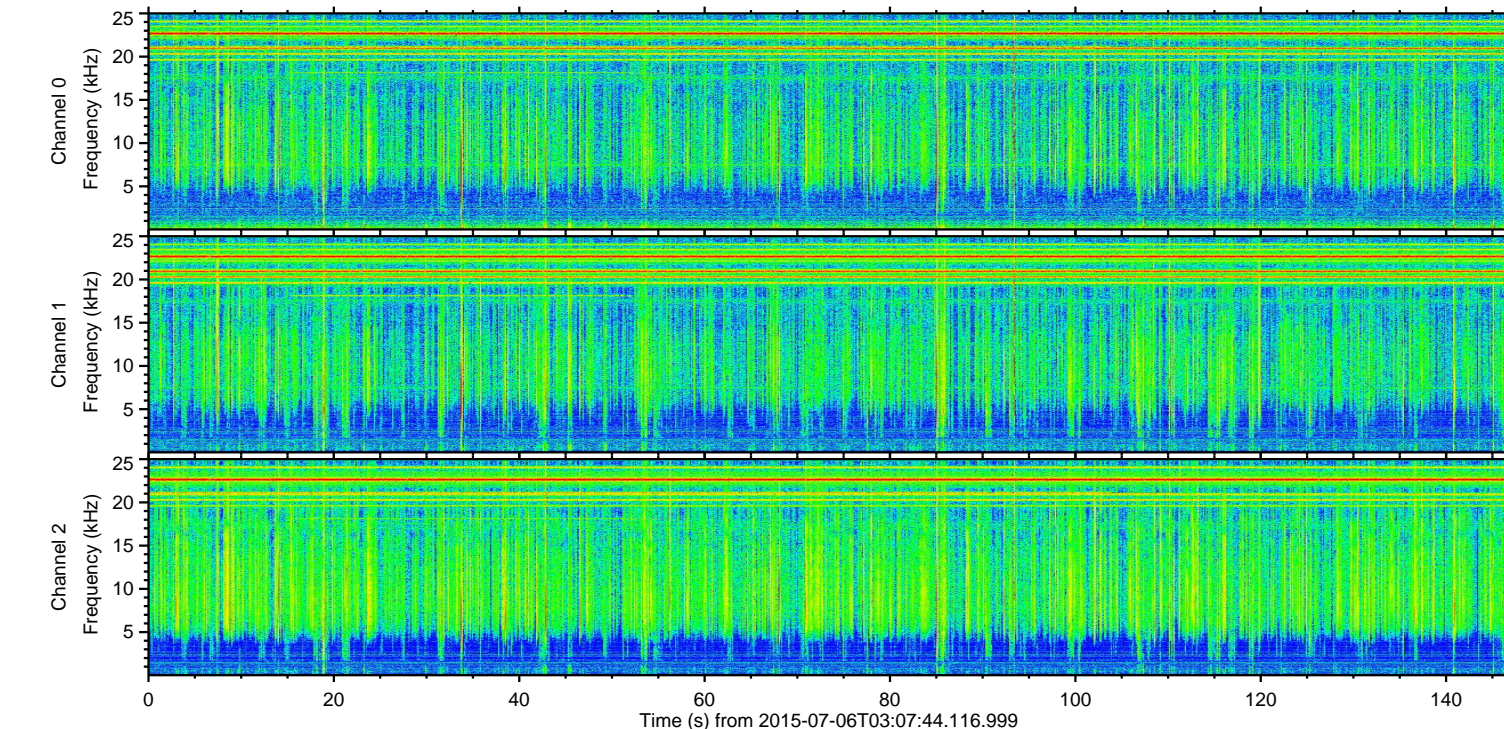
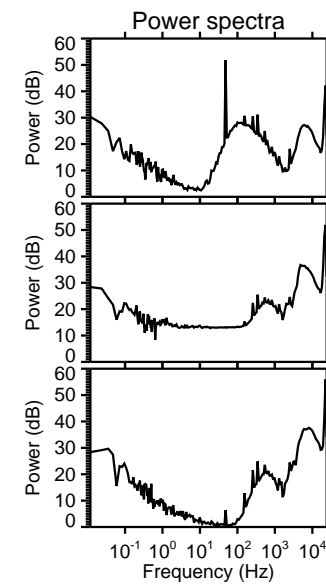
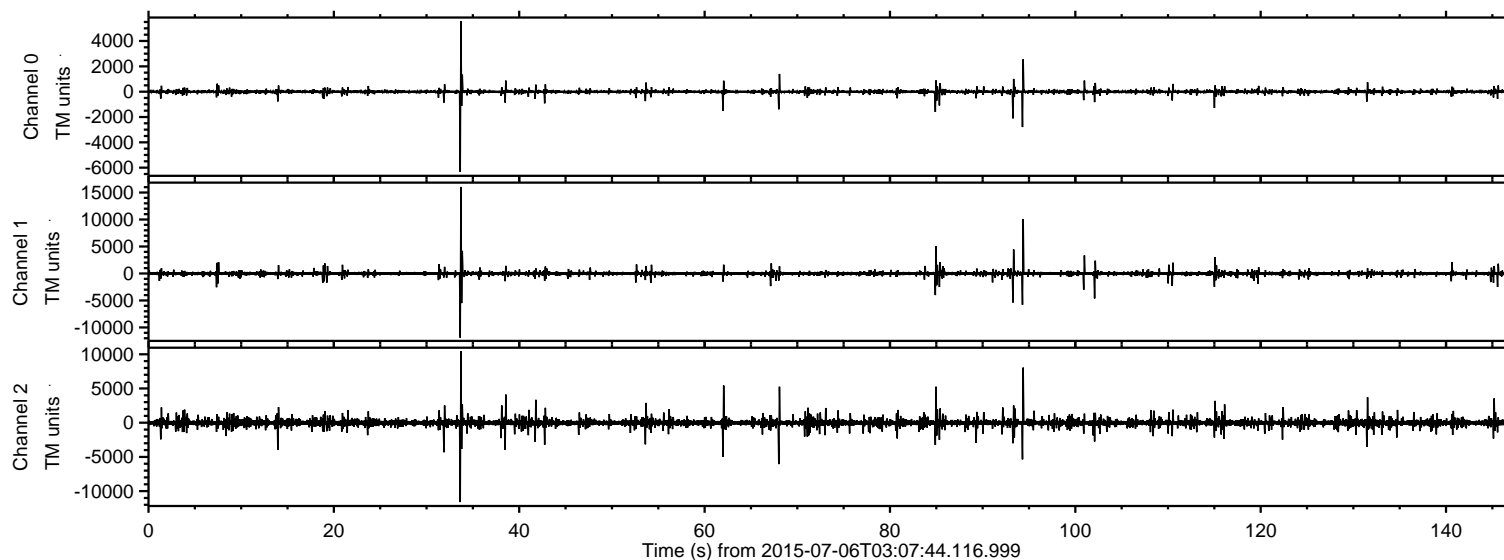
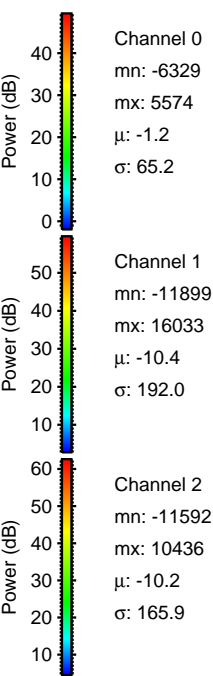
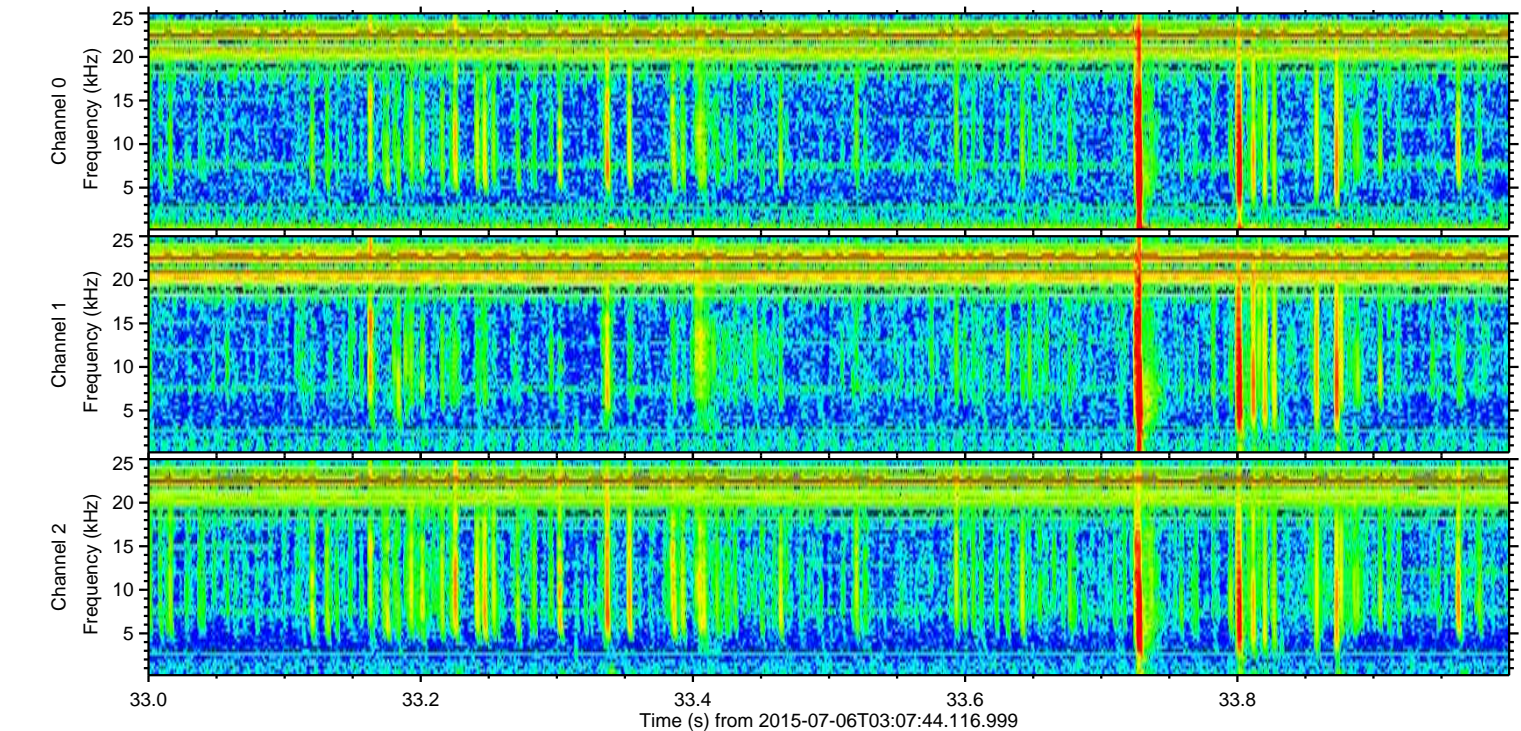
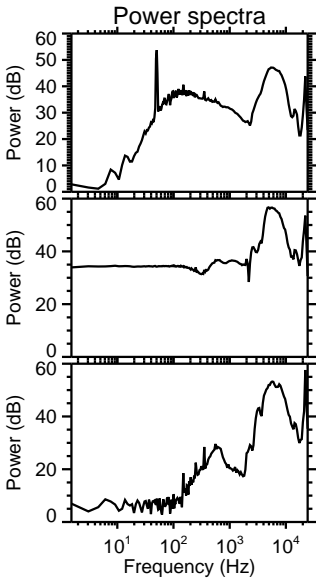
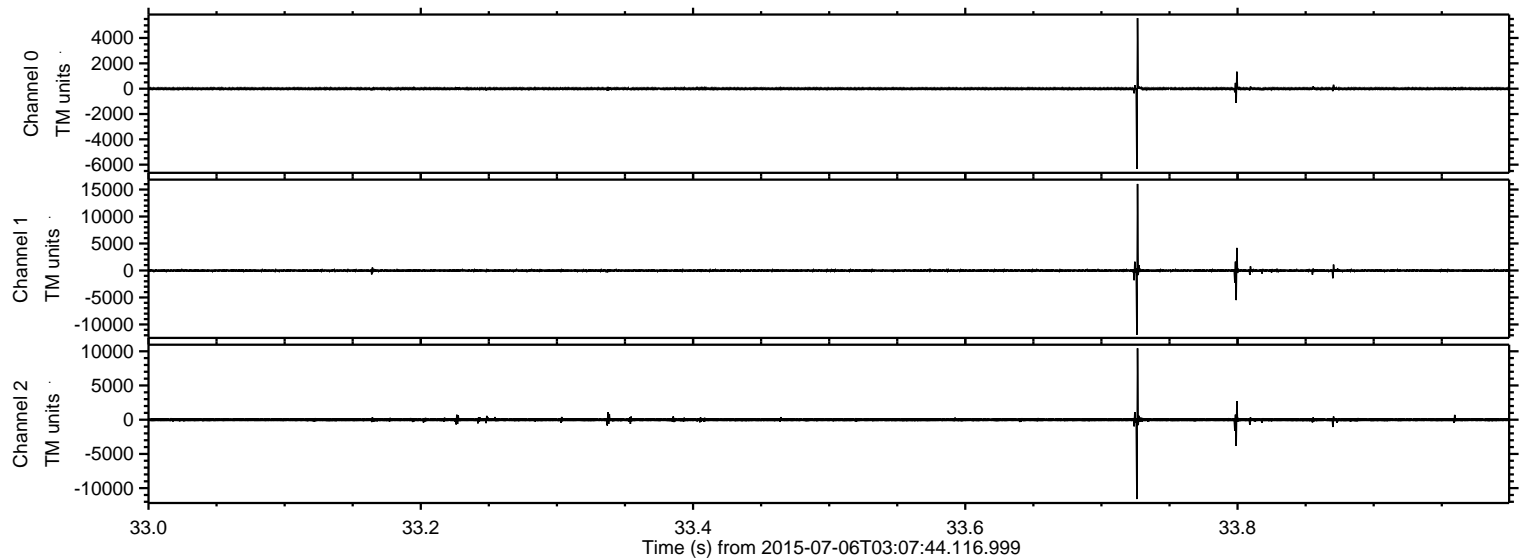


ELMAVAN 3D WAVEFORMS (Measured data sampled at 50 kHz) 51000 packets of 144 samples from 2015-07-06T03:07:44.116.999.

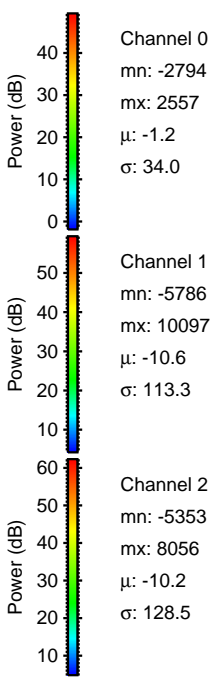
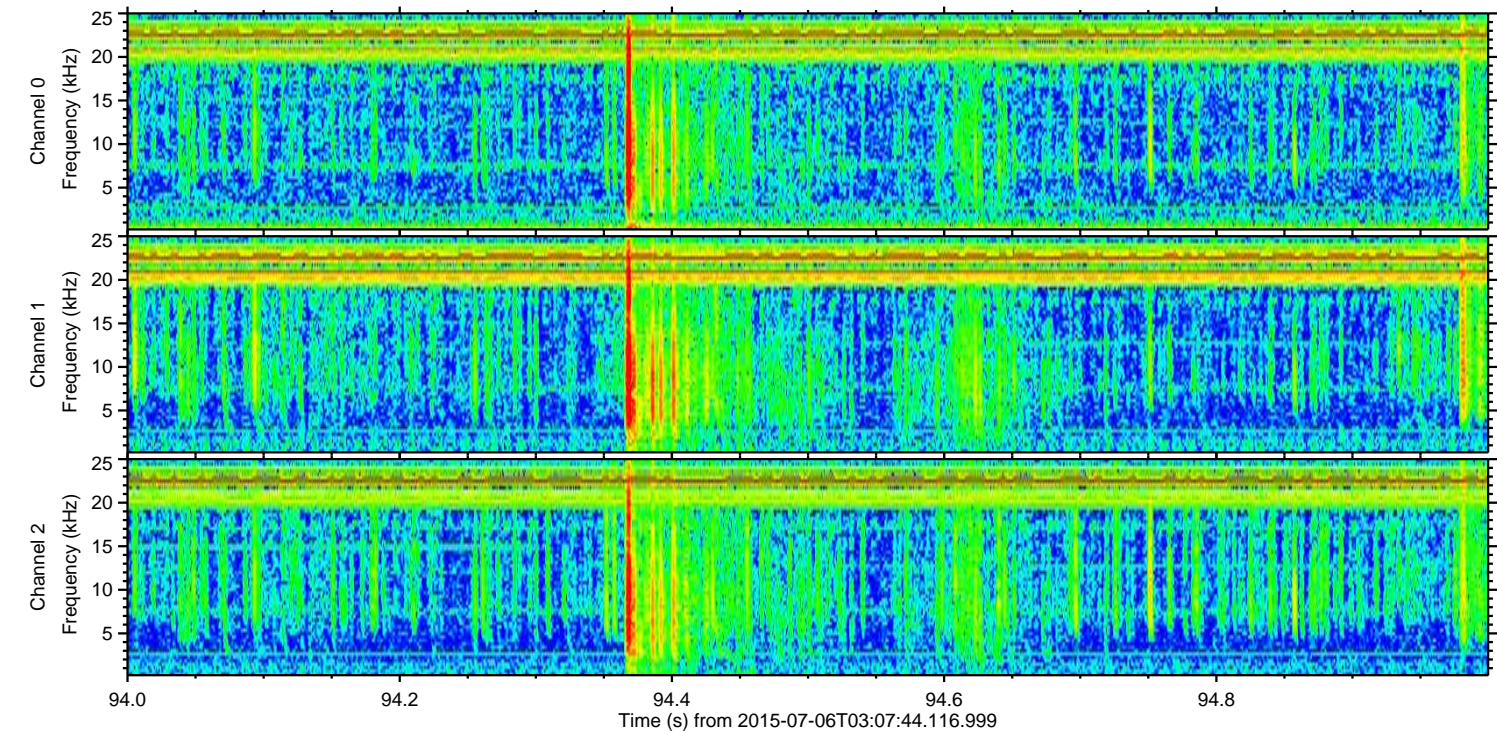
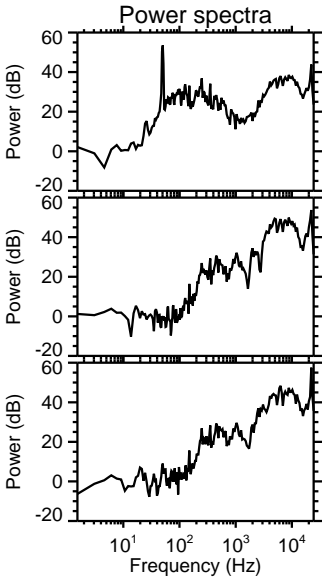
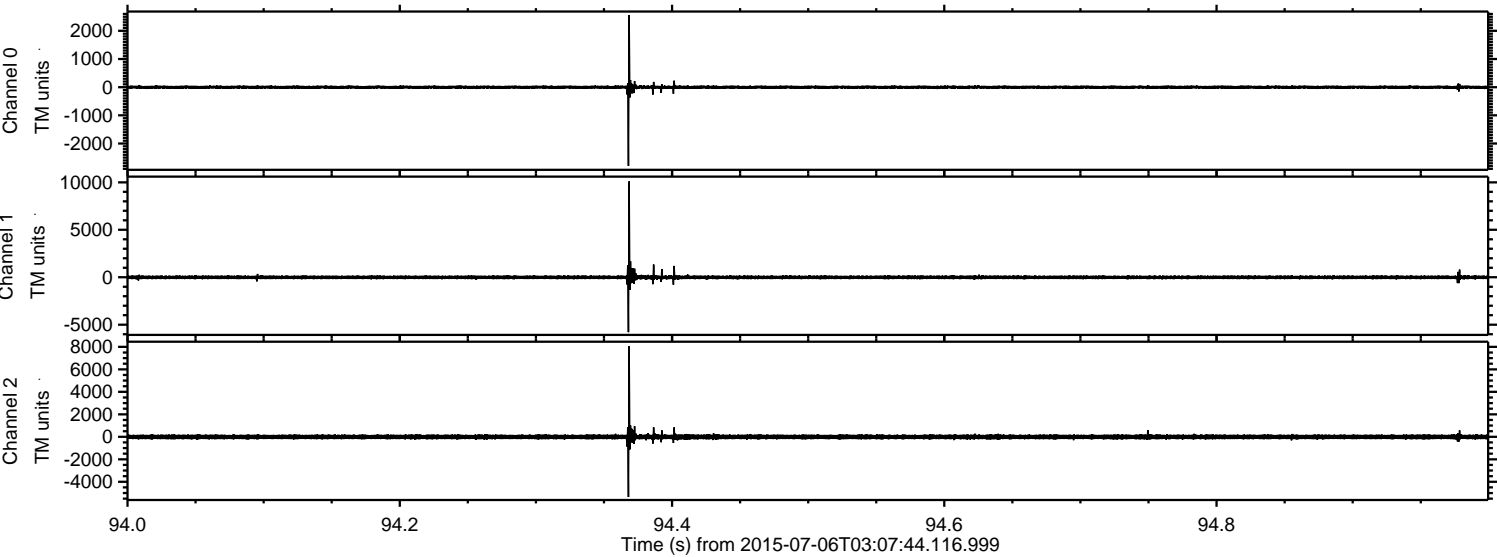
Processed Mon Jul 6 05:14:15 2015 by ELM ver.2012-10-06 from 001__elm20150706_030743__dat00.bin



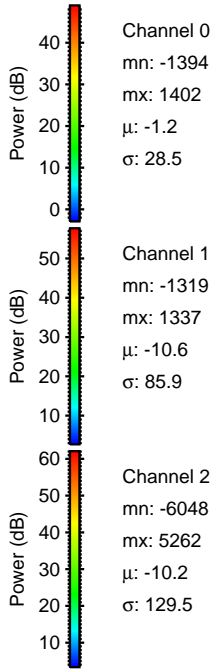
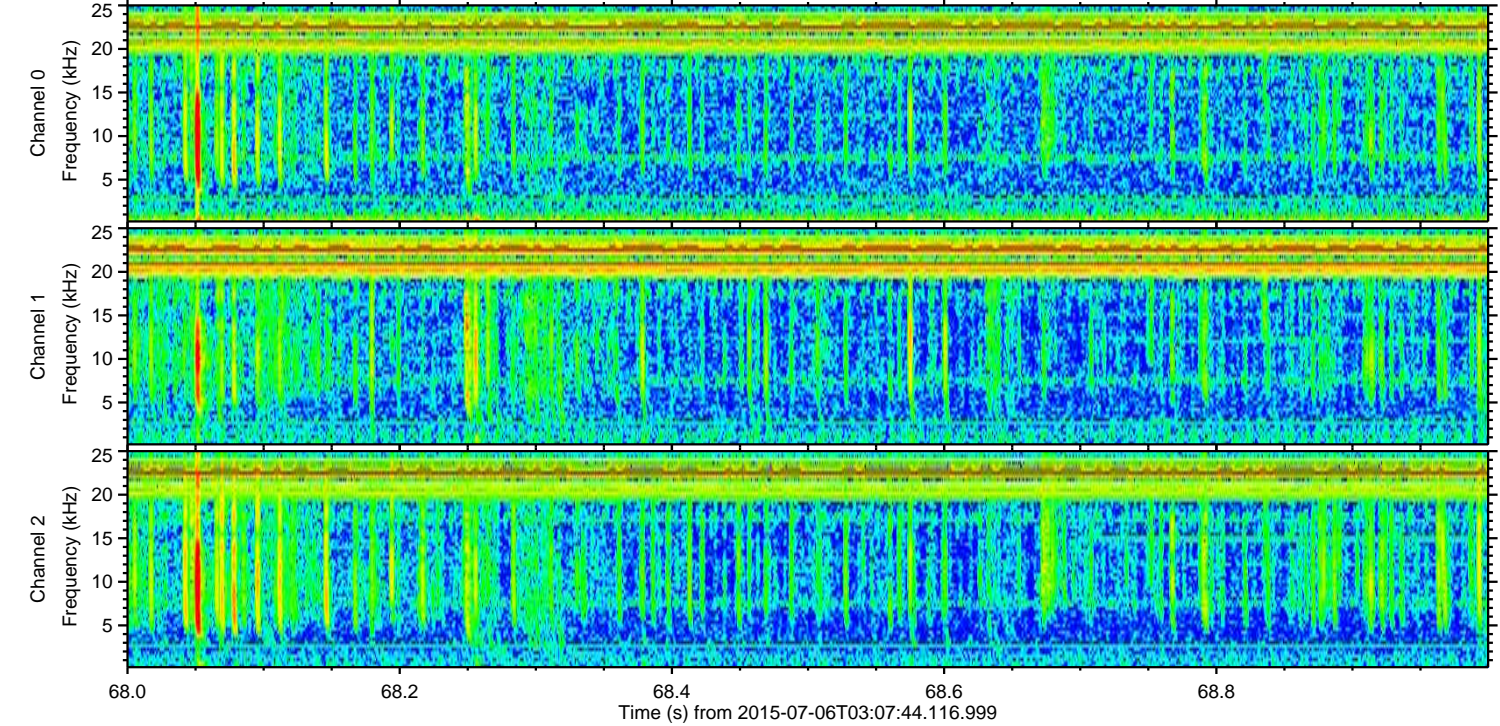
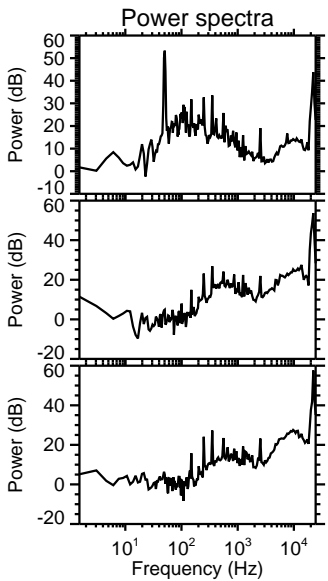
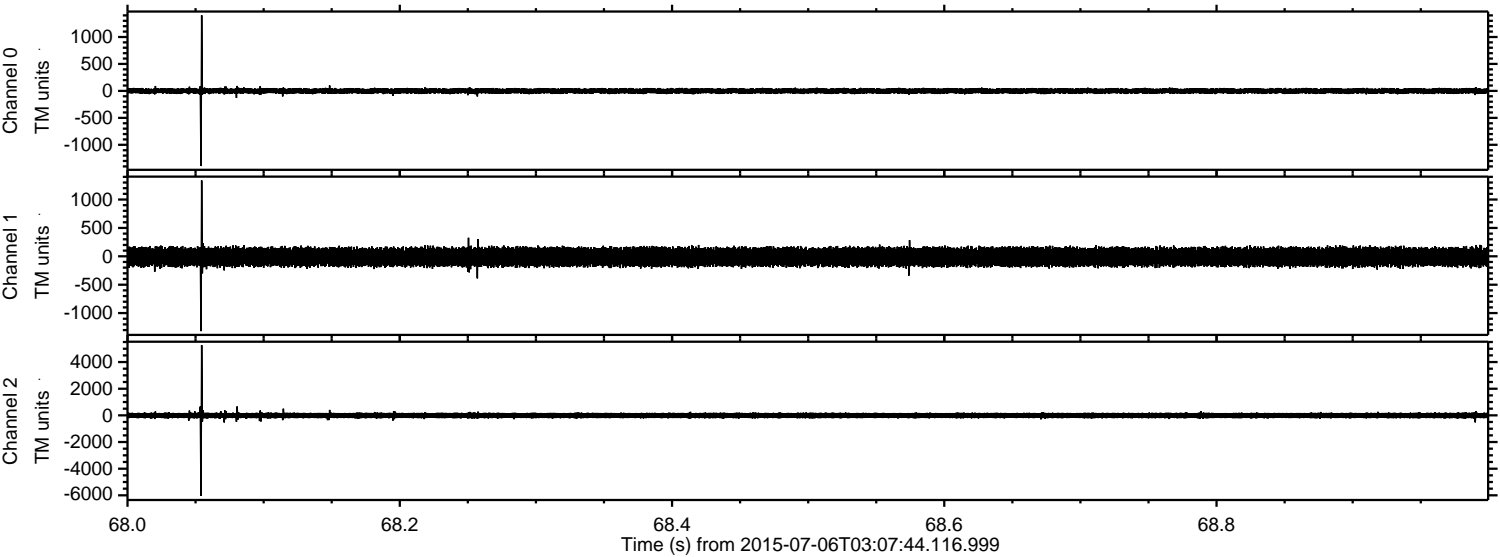
Processed Mon Jul 6 05:14:30 2015 by ELM ver.2012-10-06 from 001__elm20150706_030743__dat00.bin



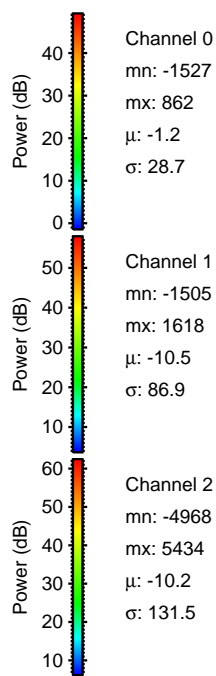
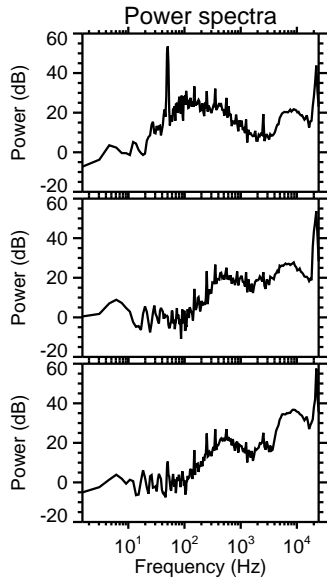
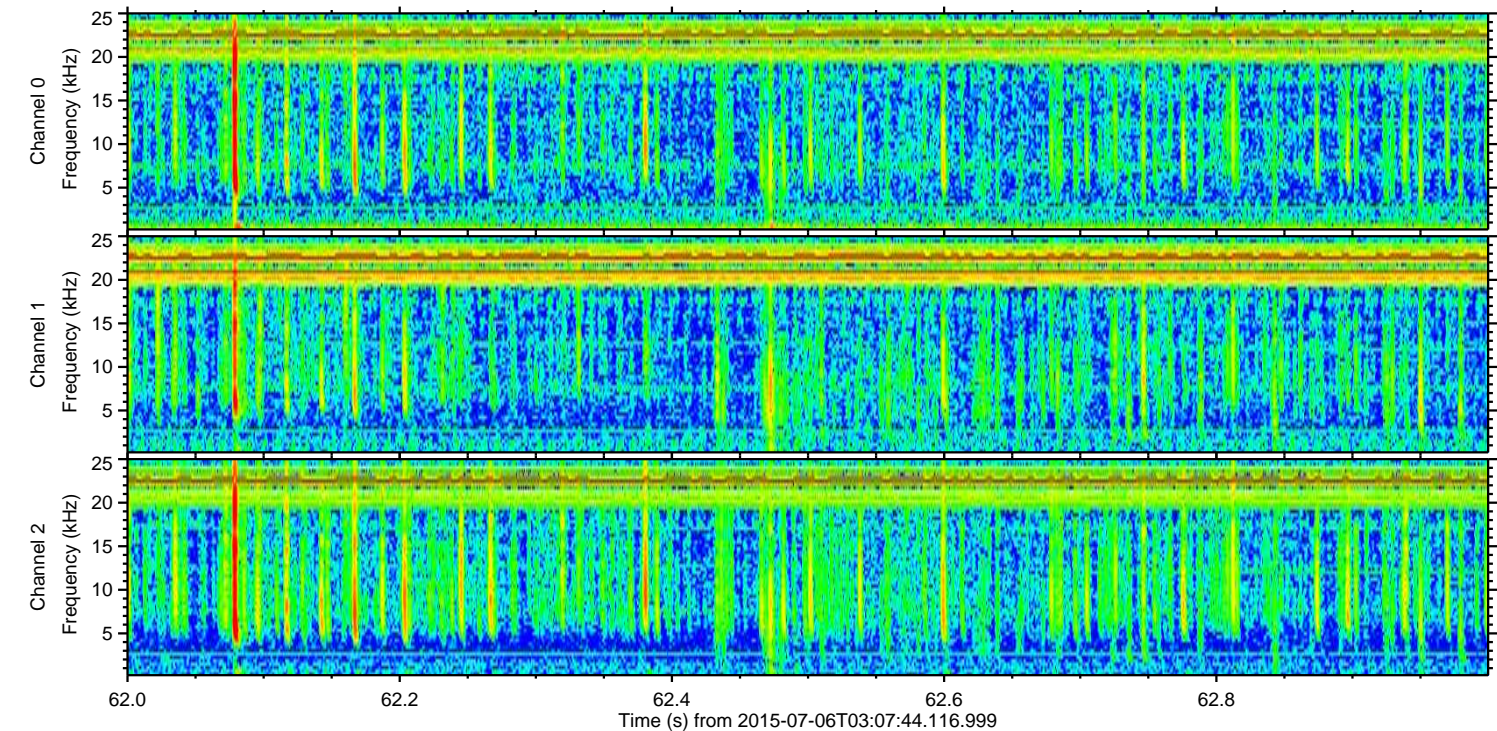
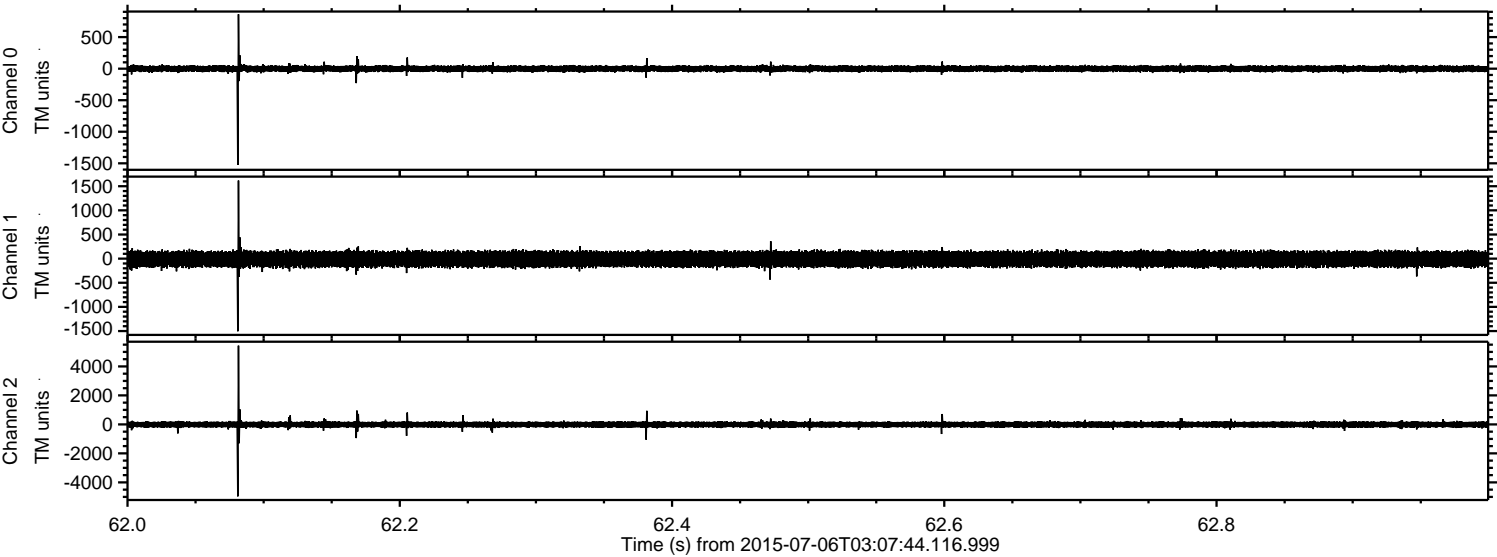
Processed Mon Jul 6 05:14:32 2015 by ELM ver.2012-10-06 from 001__elm20150706_030743__dat00.bin



Processed Mon Jul 6 05:14:33 2015 by ELM ver.2012-10-06 from 001__elm20150706_030743__dat00.bin



Processed Mon Jul 6 05:14:34 2015 by ELM ver.2012-10-06 from 001__elm20150706_030743__dat00.bin

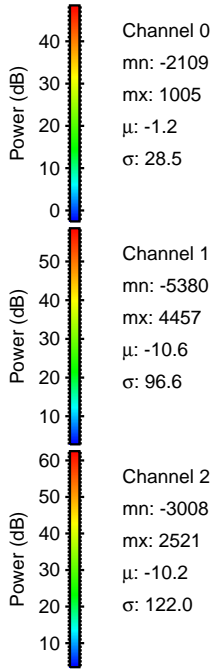
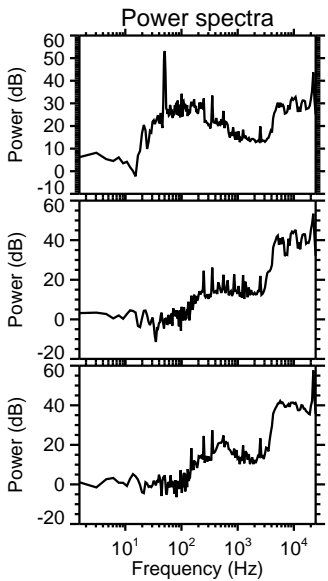
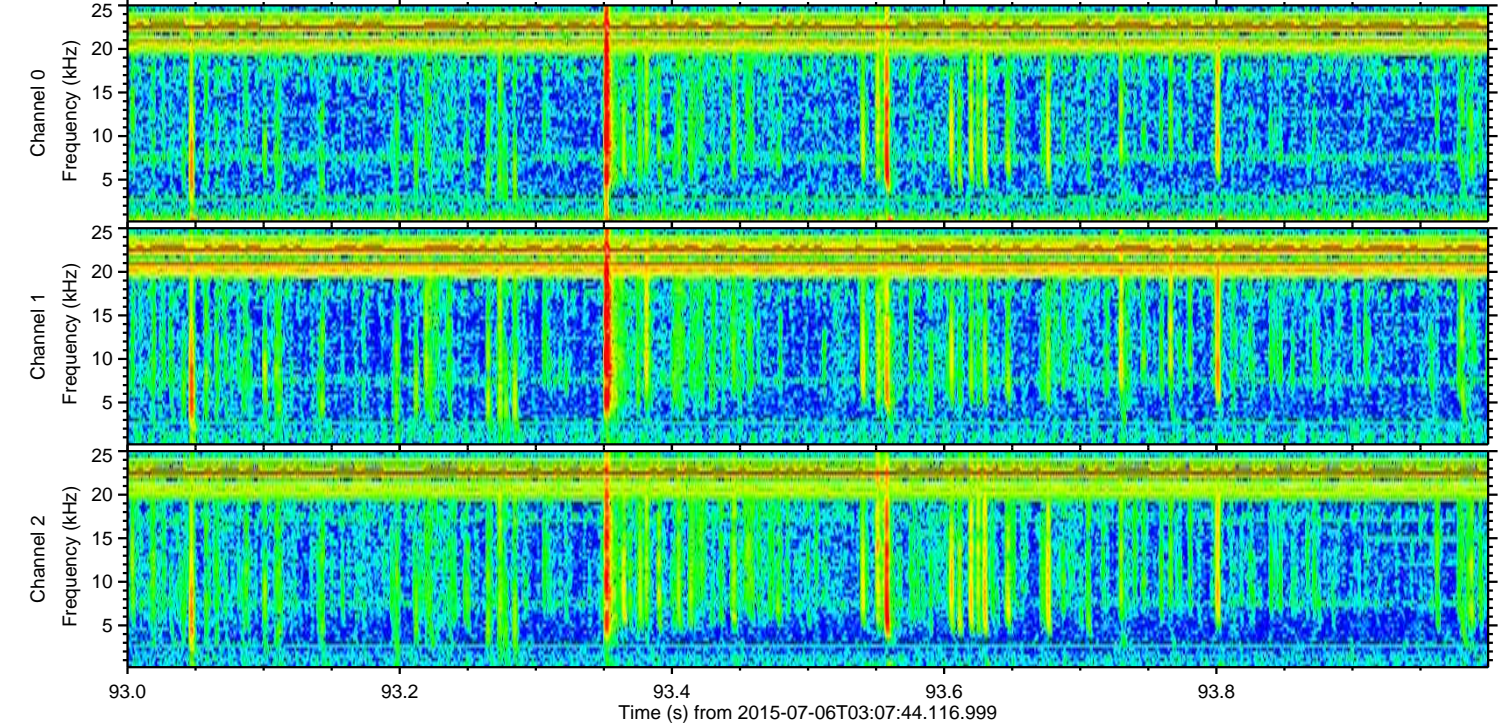
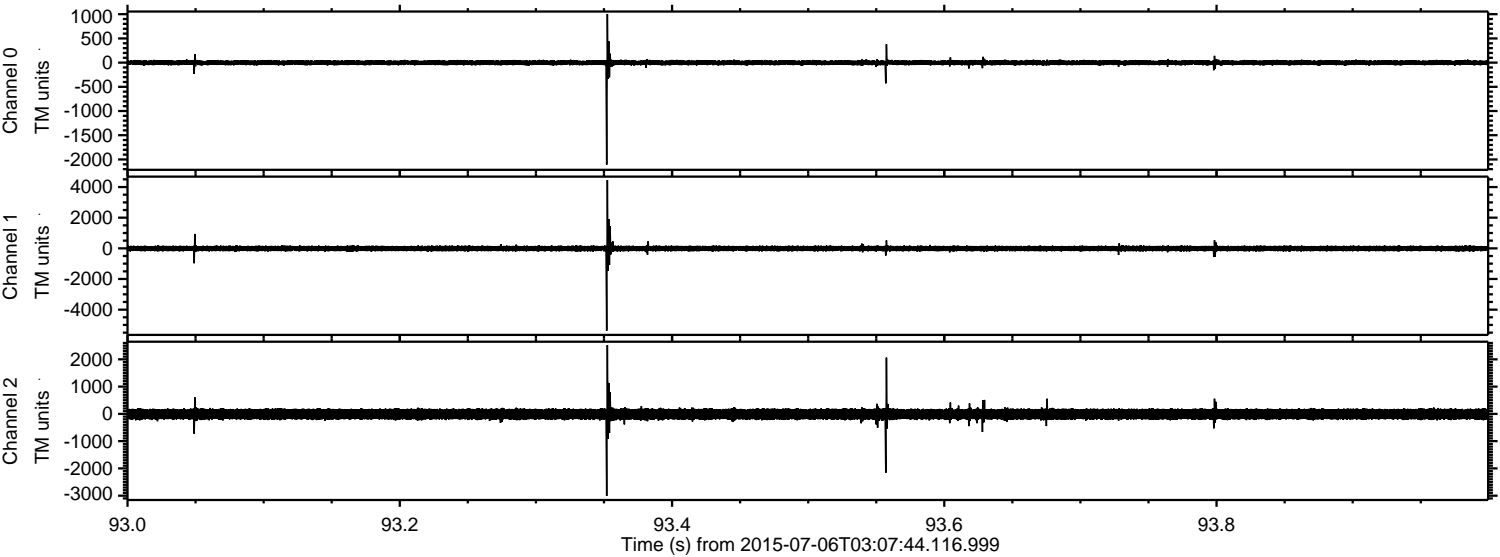


Channel 0
mn: -1527
mx: 862
 μ : -1.2
 σ : 28.7

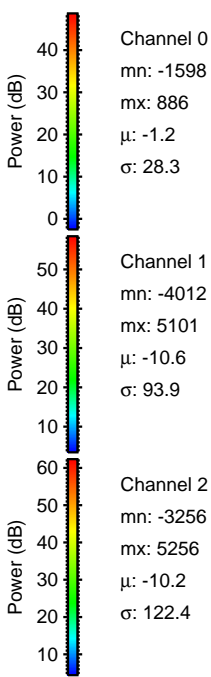
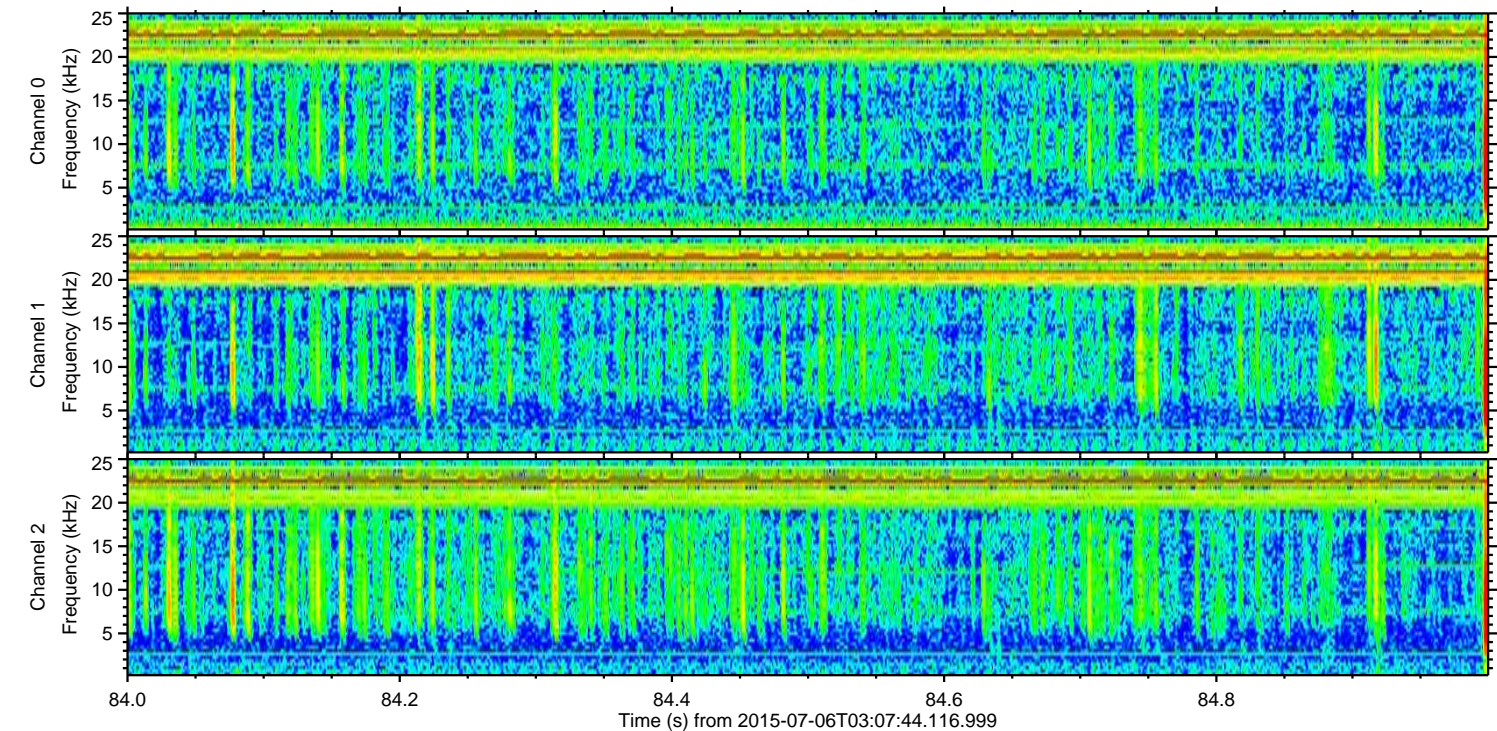
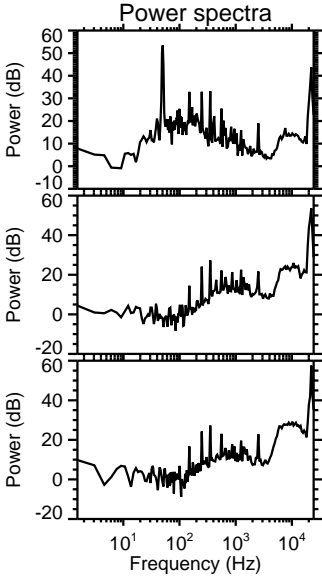
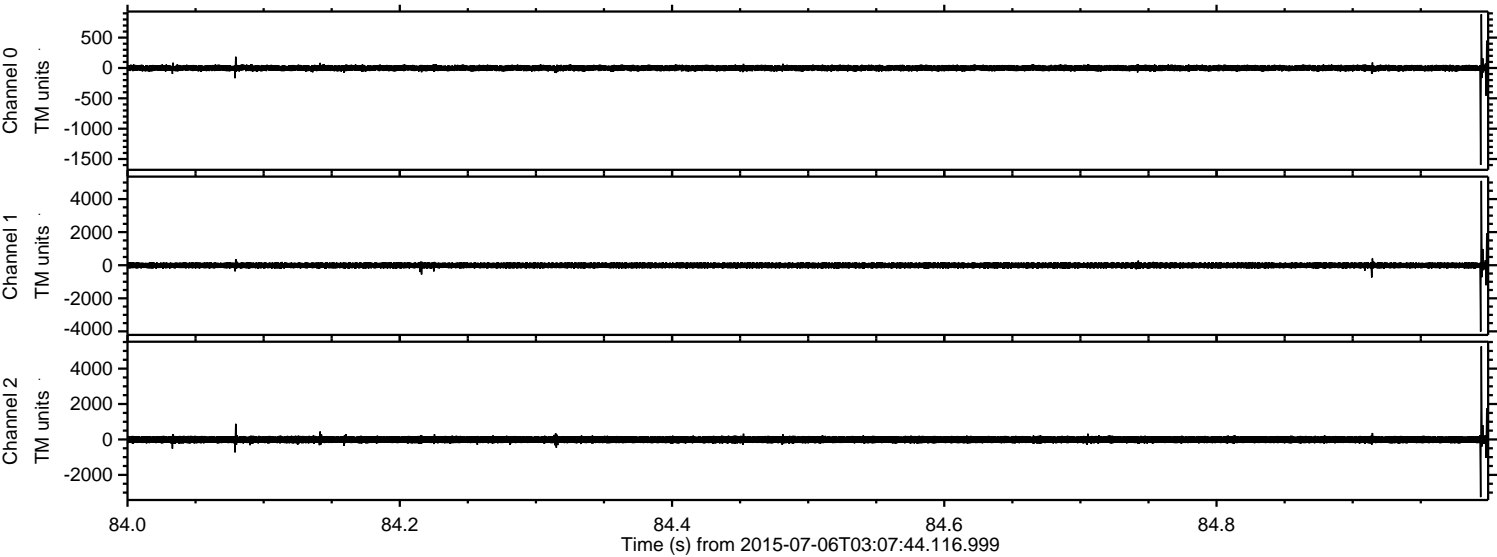
Channel 1
mn: -1505
mx: 1618
 μ : -10.5
 σ : 86.9

Channel 2
mn: -4968
mx: 5434
 μ : -10.2
 σ : 131.5

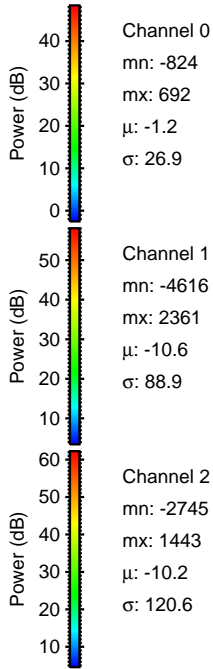
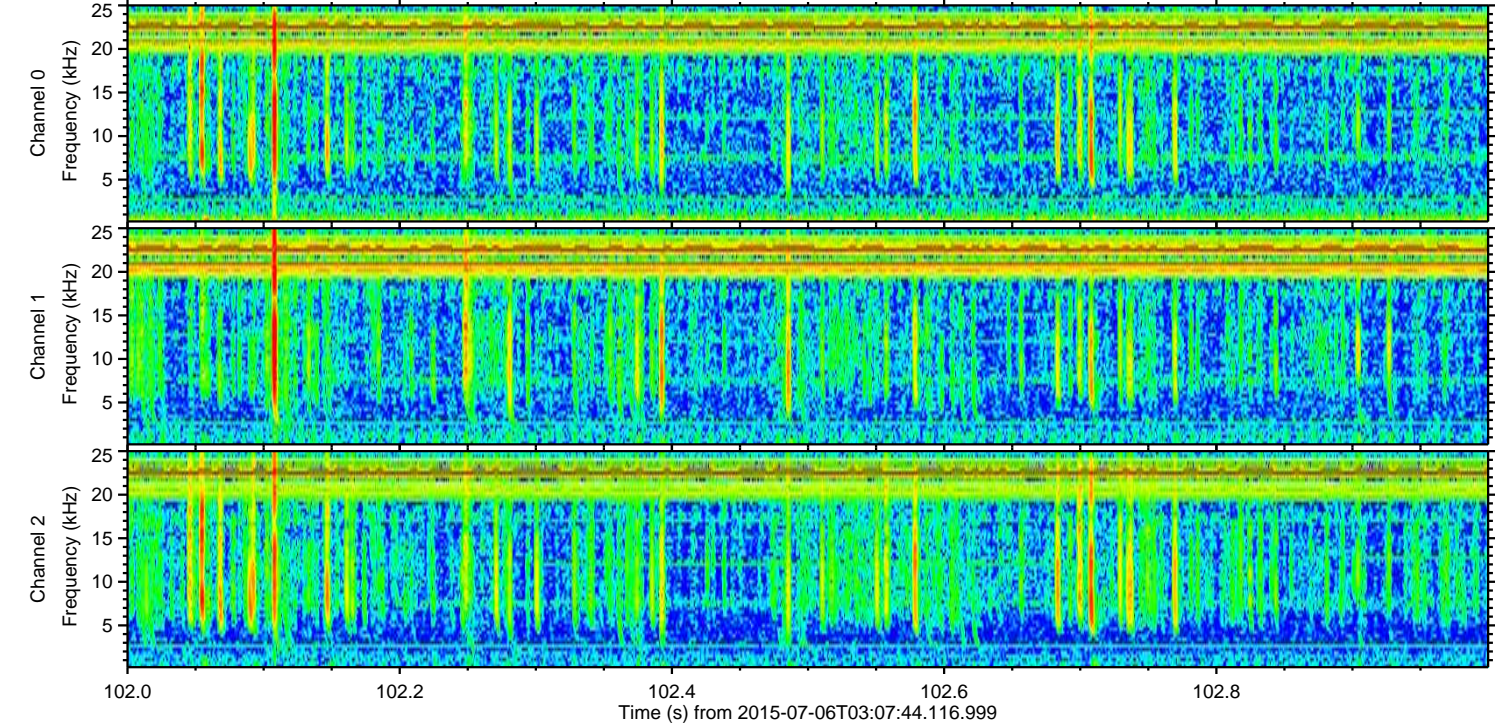
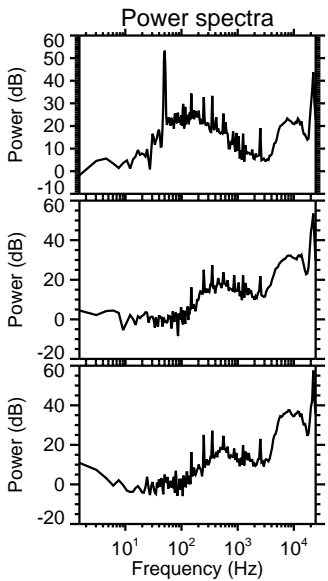
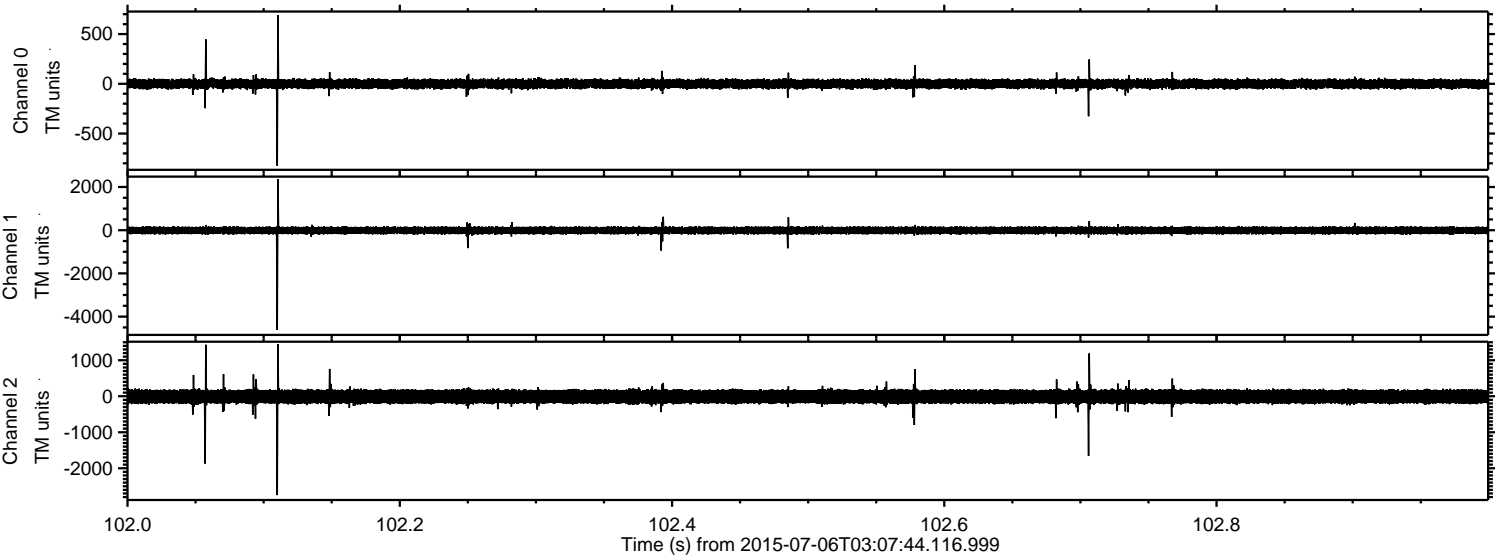
Processed Mon Jul 6 05:14:35 2015 by ELM ver.2012-10-06 from 001__elm20150706_030743__dat00.bin



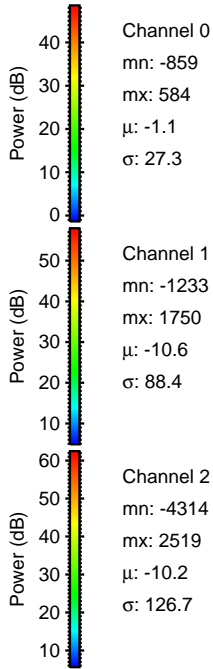
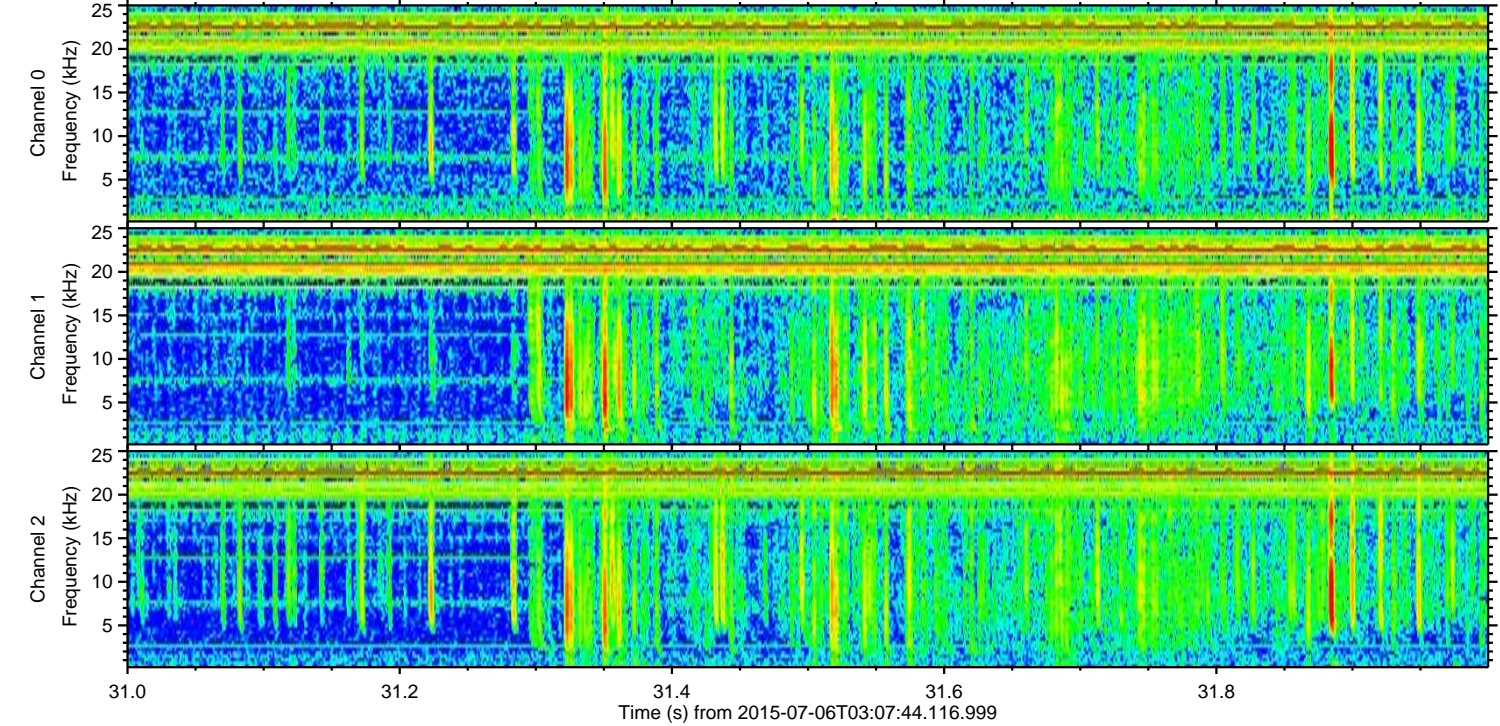
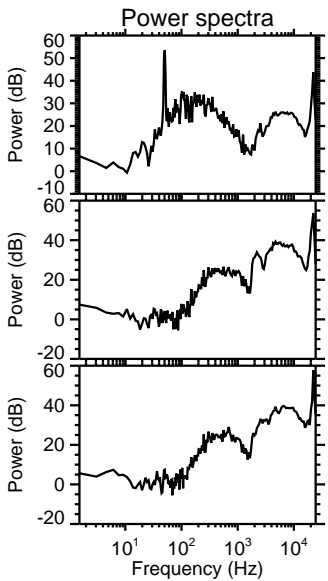
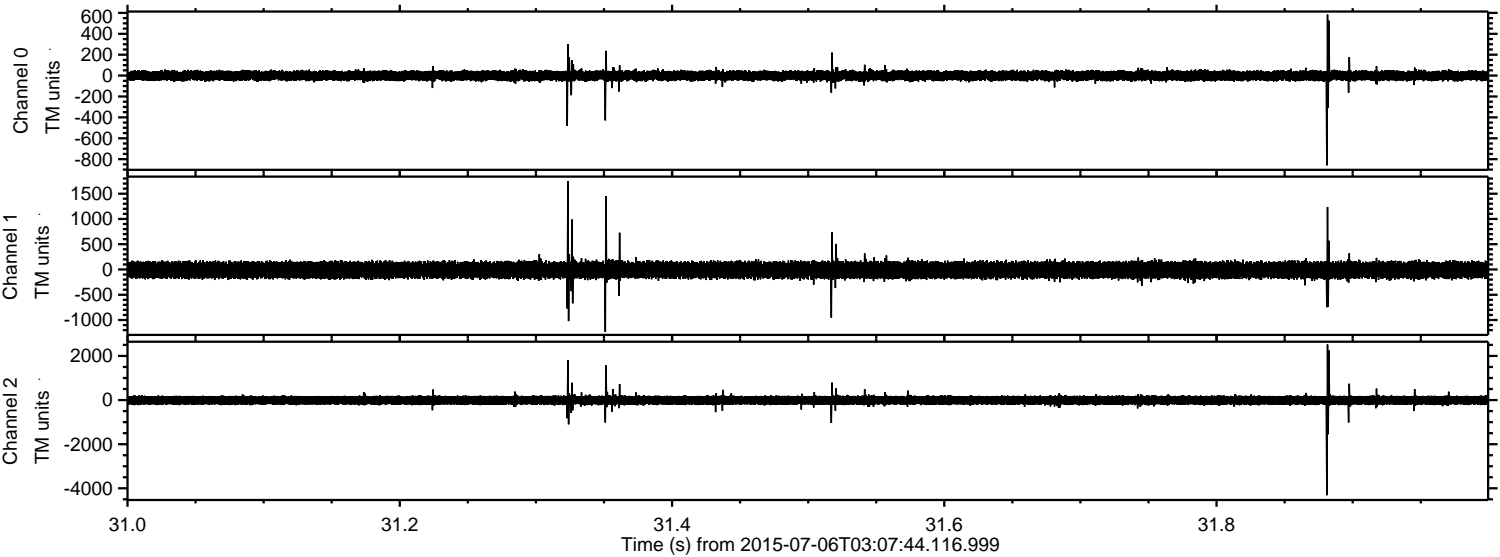
Processed Mon Jul 6 05:14:36 2015 by ELM ver.2012-10-06 from 001__elm20150706_030743__dat00.bin



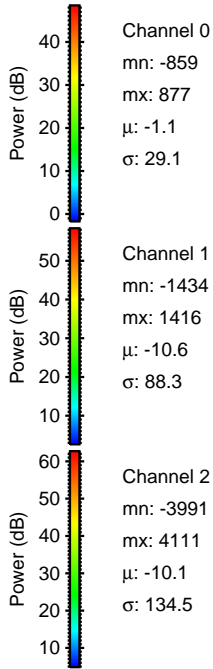
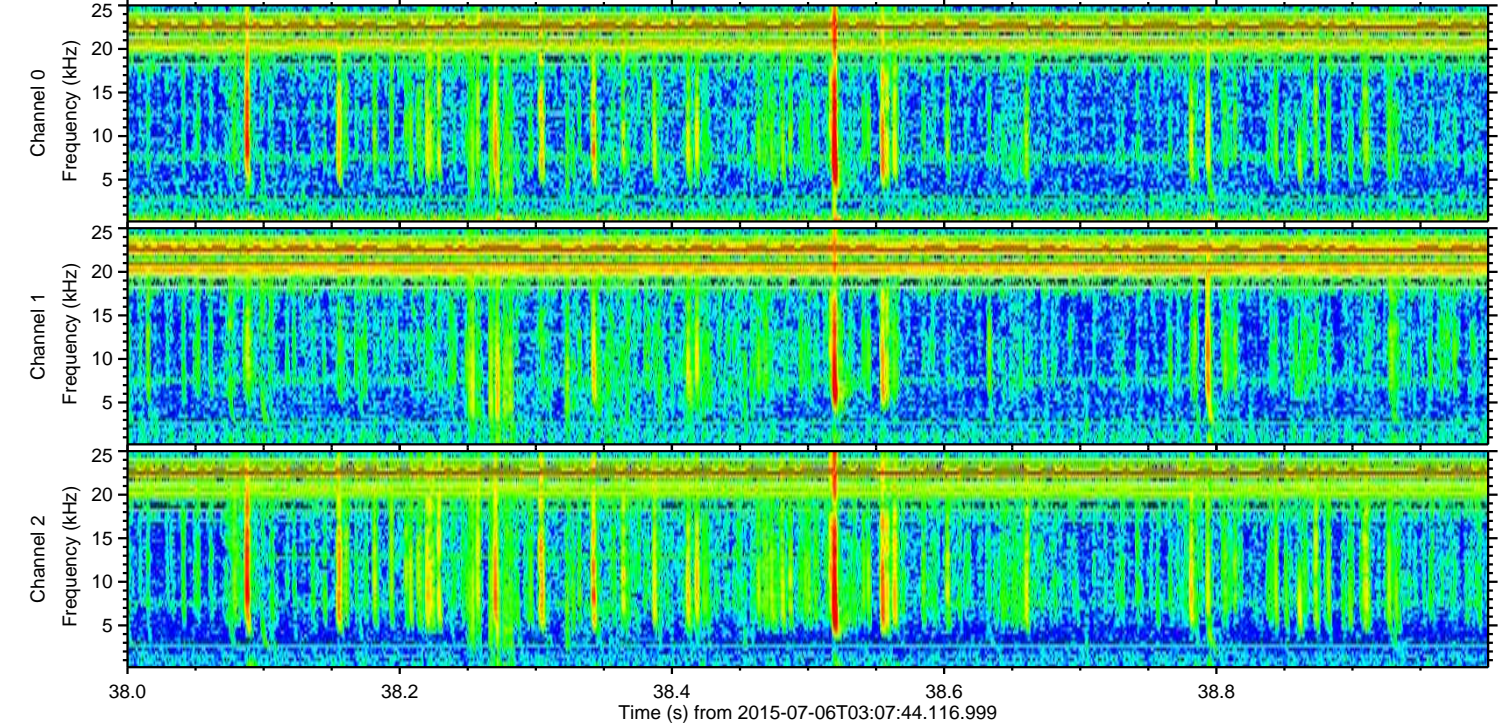
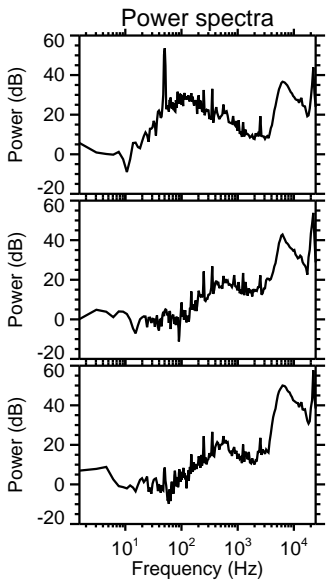
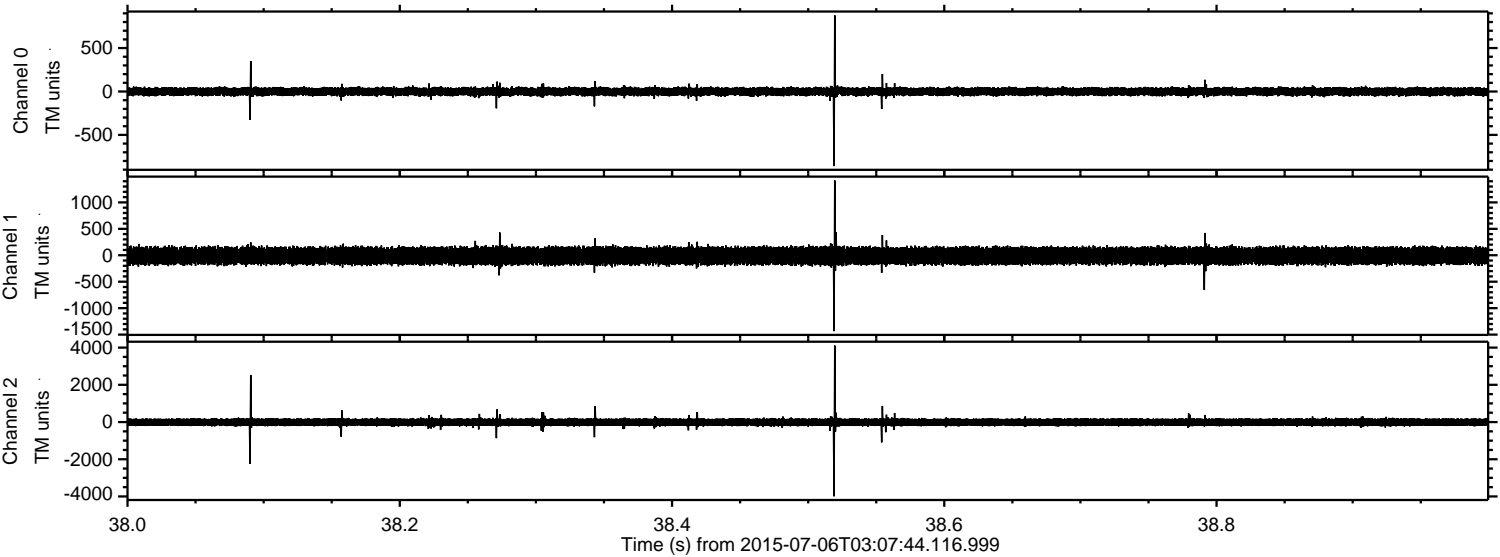
Processed Mon Jul 6 05:14:37 2015 by ELM ver.2012-10-06 from 001__elm20150706_030743__dat00.bin



Processed Mon Jul 6 05:14:38 2015 by ELM ver.2012-10-06 from 001__elm20150706_030743__dat00.bin



Processed Mon Jul 6 05:14:39 2015 by ELM ver.2012-10-06 from 001__elm20150706_030743__dat00.bin



Processed Mon Jul 6 05:14:40 2015 by ELM ver.2012-10-06 from 001__elm20150706_030743__dat00.bin

