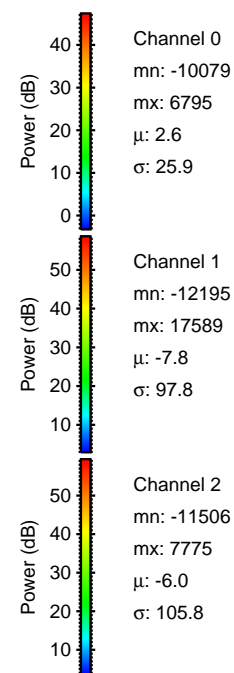
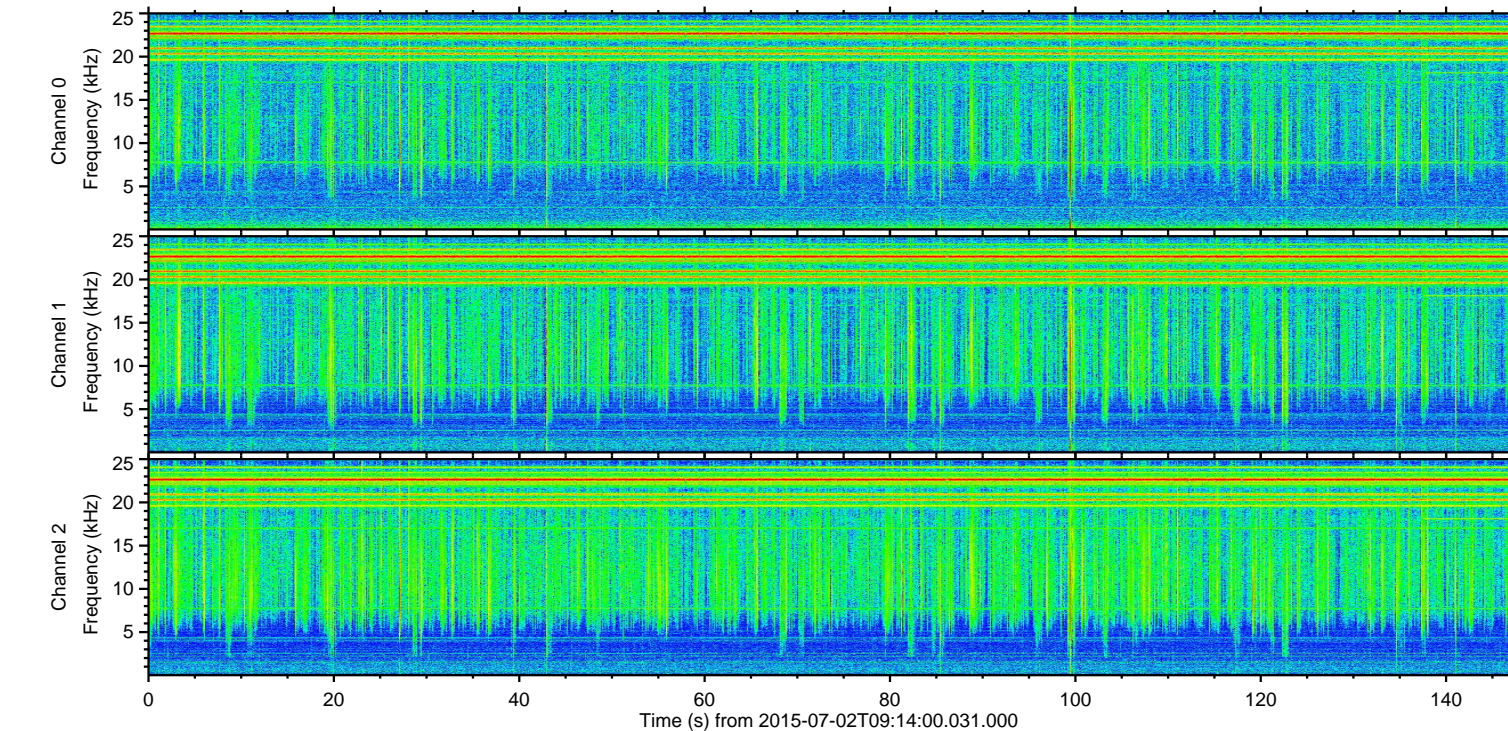
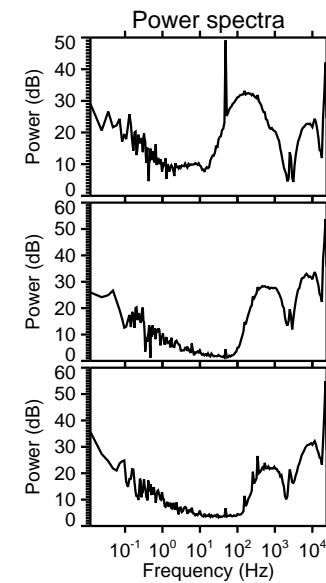
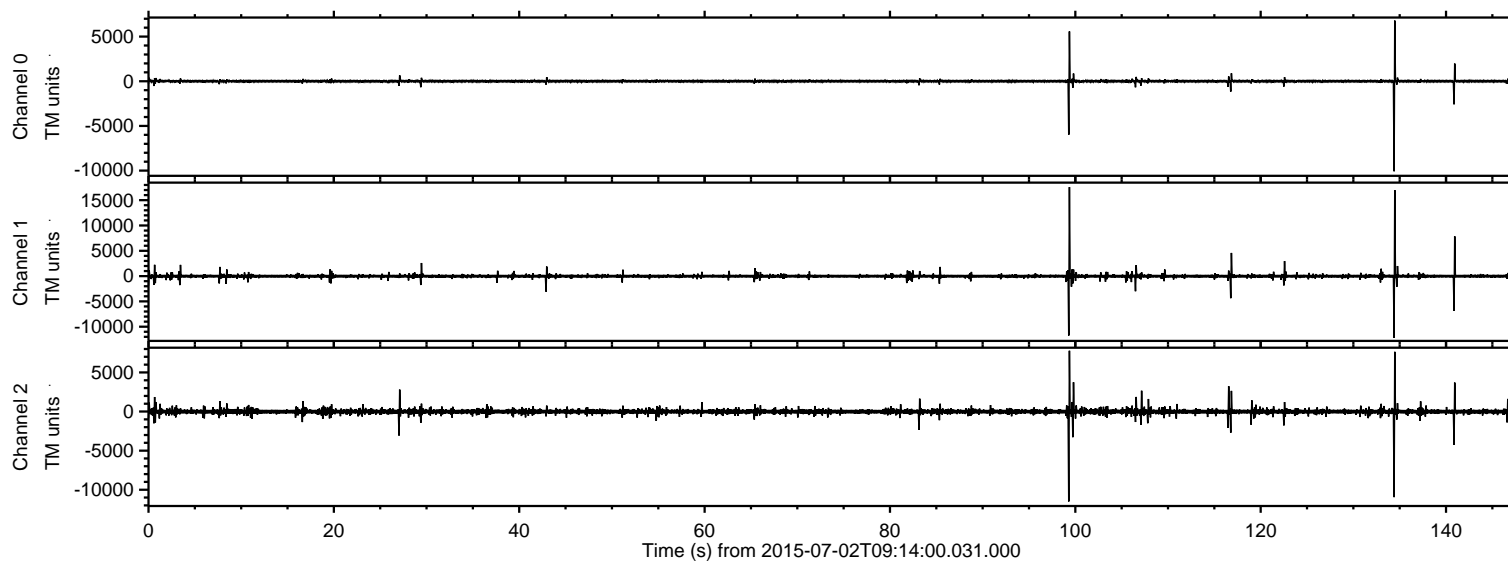


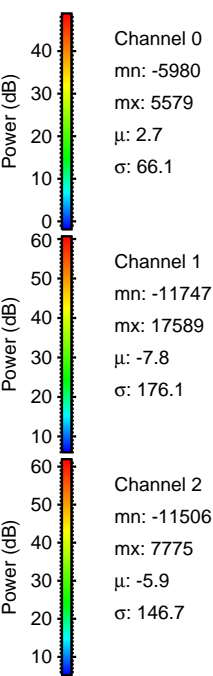
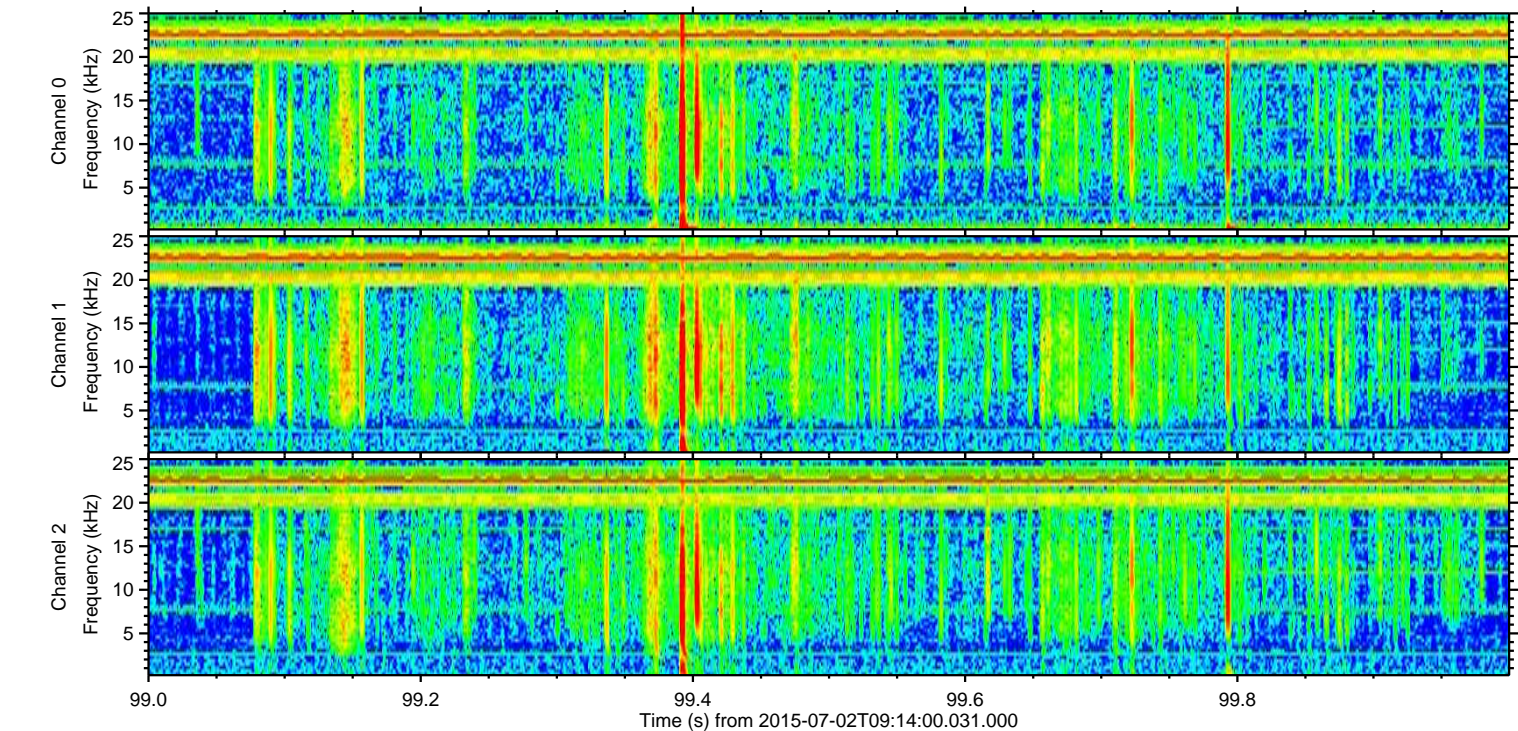
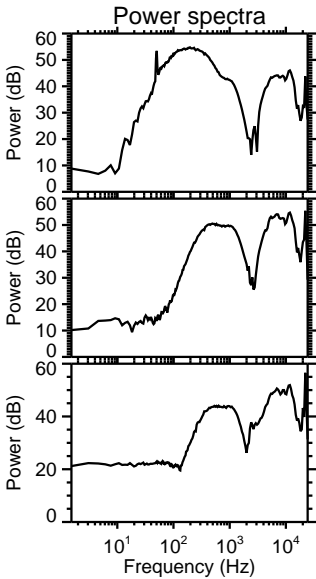
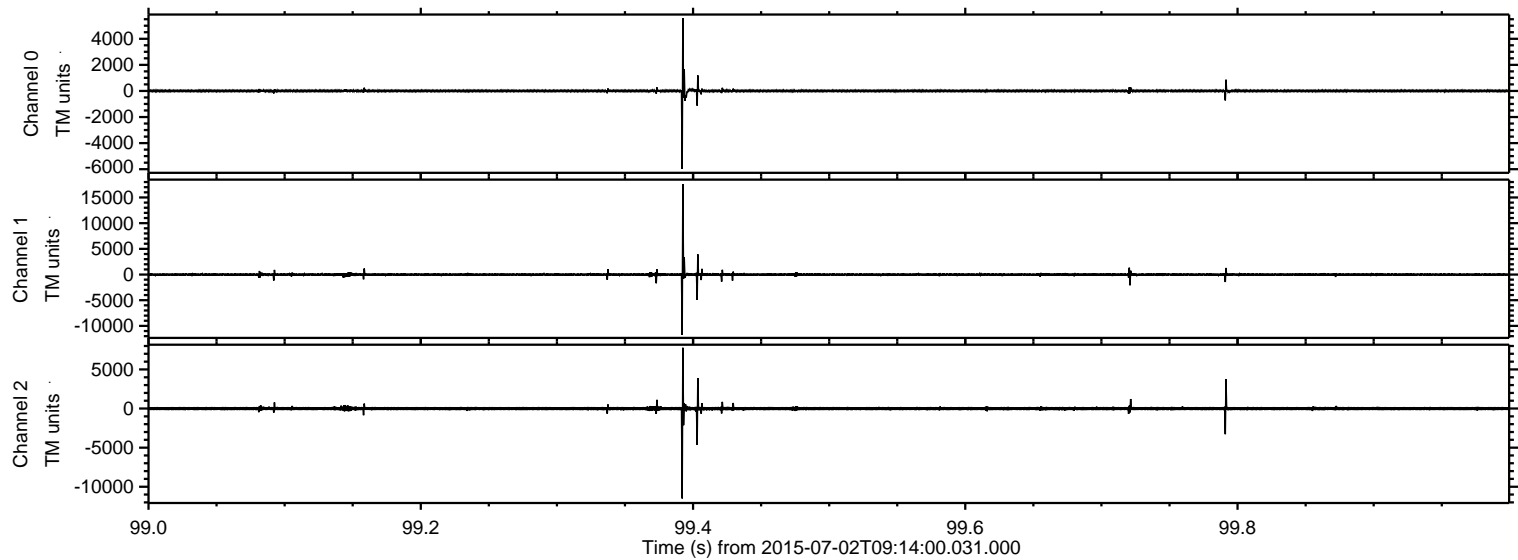
ELMAVAN 3D WAVEFORMS (Measured data sampled at 50 kHz) 51000 packets of 144 samples from 2015-07-02T09:14:00.031.000.

Processed Thu Jul 2 11:20:07 2015 by ELM ver.2012-10-06 from 001__elm20150702_091359__dat00.bin



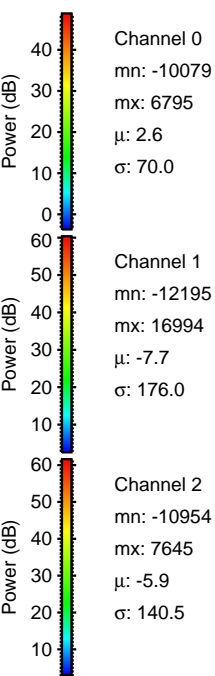
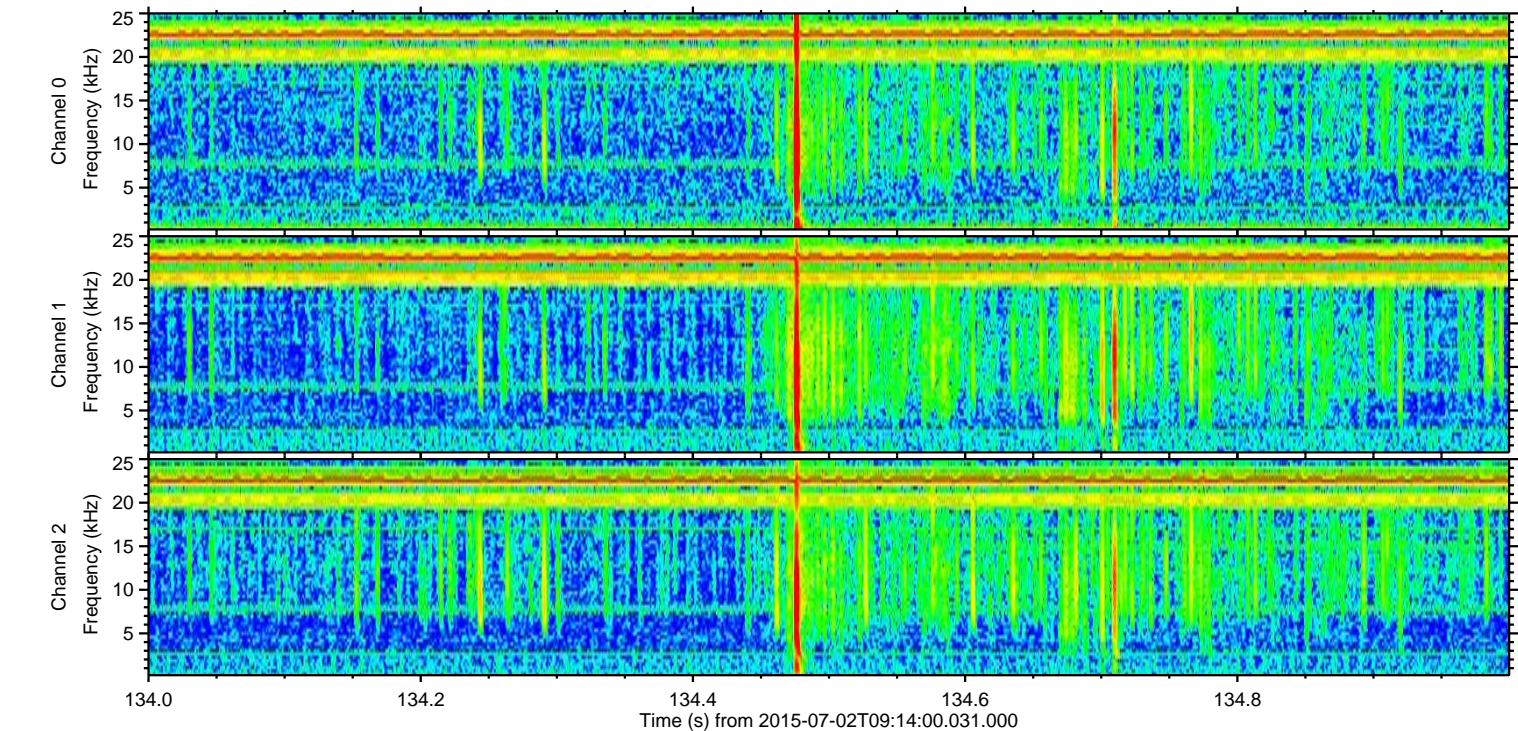
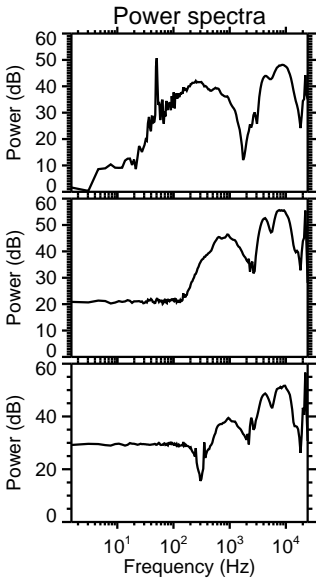
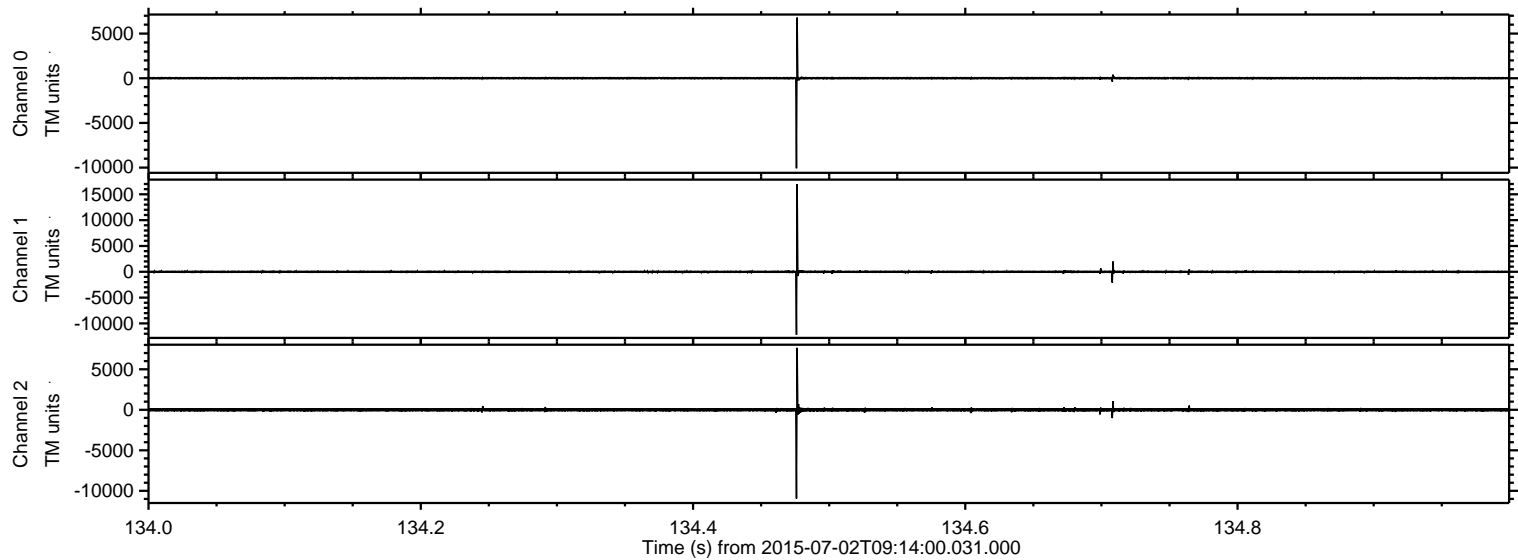
ELMAVAN 3D WAVEFORMS (Measured data sampled at 50 kHz) 51000 packets of 144 samples from 2015-07-02T09:14:00.031.000. Part 100/147

Processed Thu Jul 2 11:20:22 2015 by ELM ver.2012-10-06 from 001__elm20150702_091359__dat00.bin



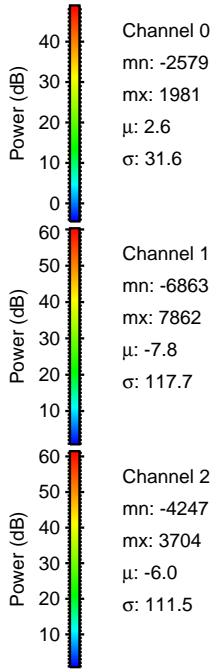
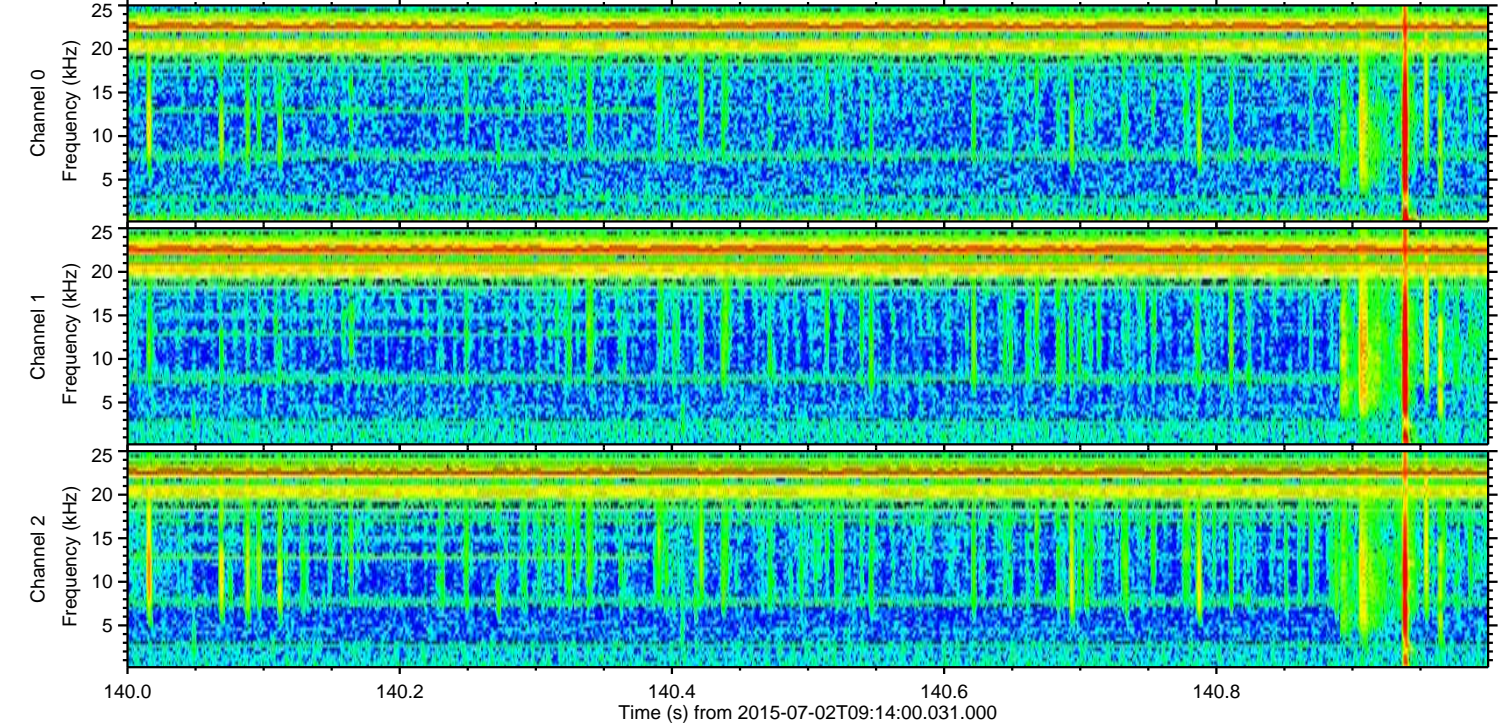
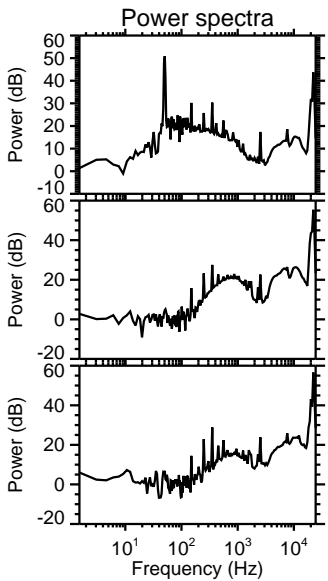
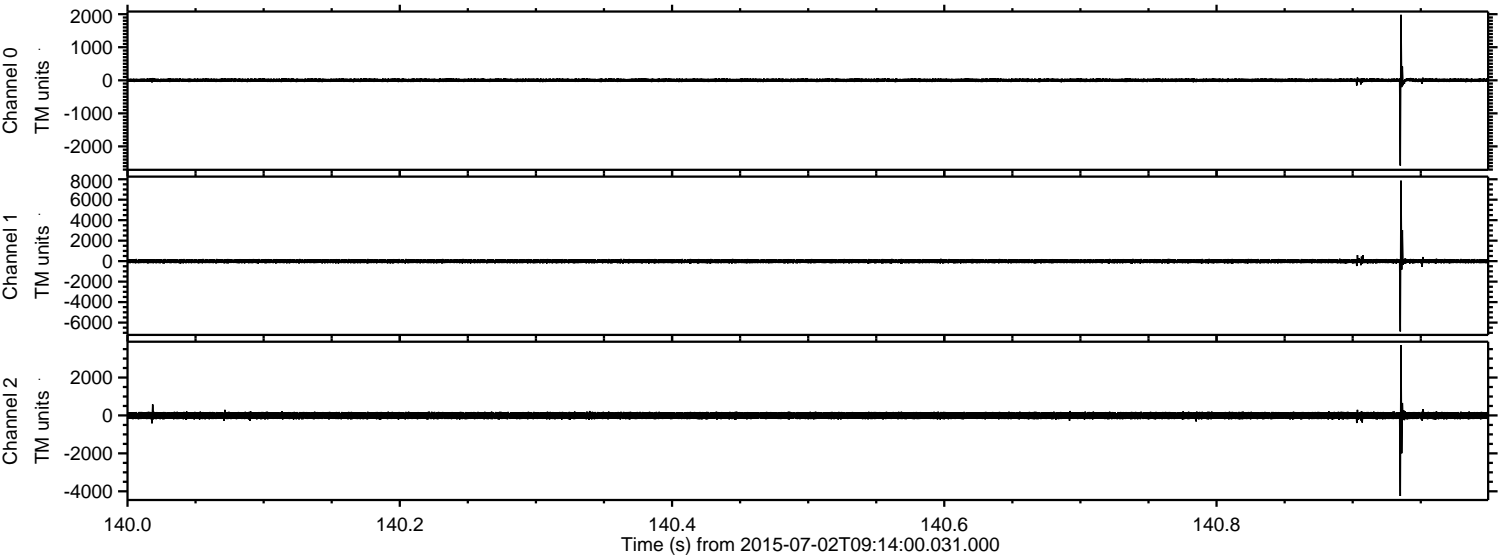
ELMAVAN 3D WAVEFORMS (Measured data sampled at 50 kHz) 51000 packets of 144 samples from 2015-07-02T09:14:00.031.000. Part 135/147

Processed Thu Jul 2 11:20:23 2015 by ELM ver.2012-10-06 from 001__elm20150702_091359__dat00.bin



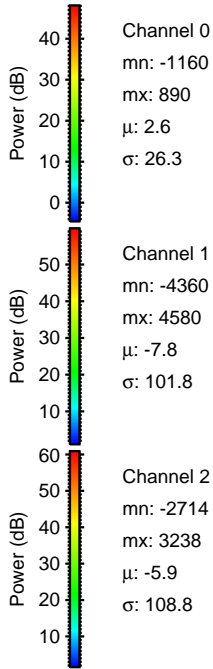
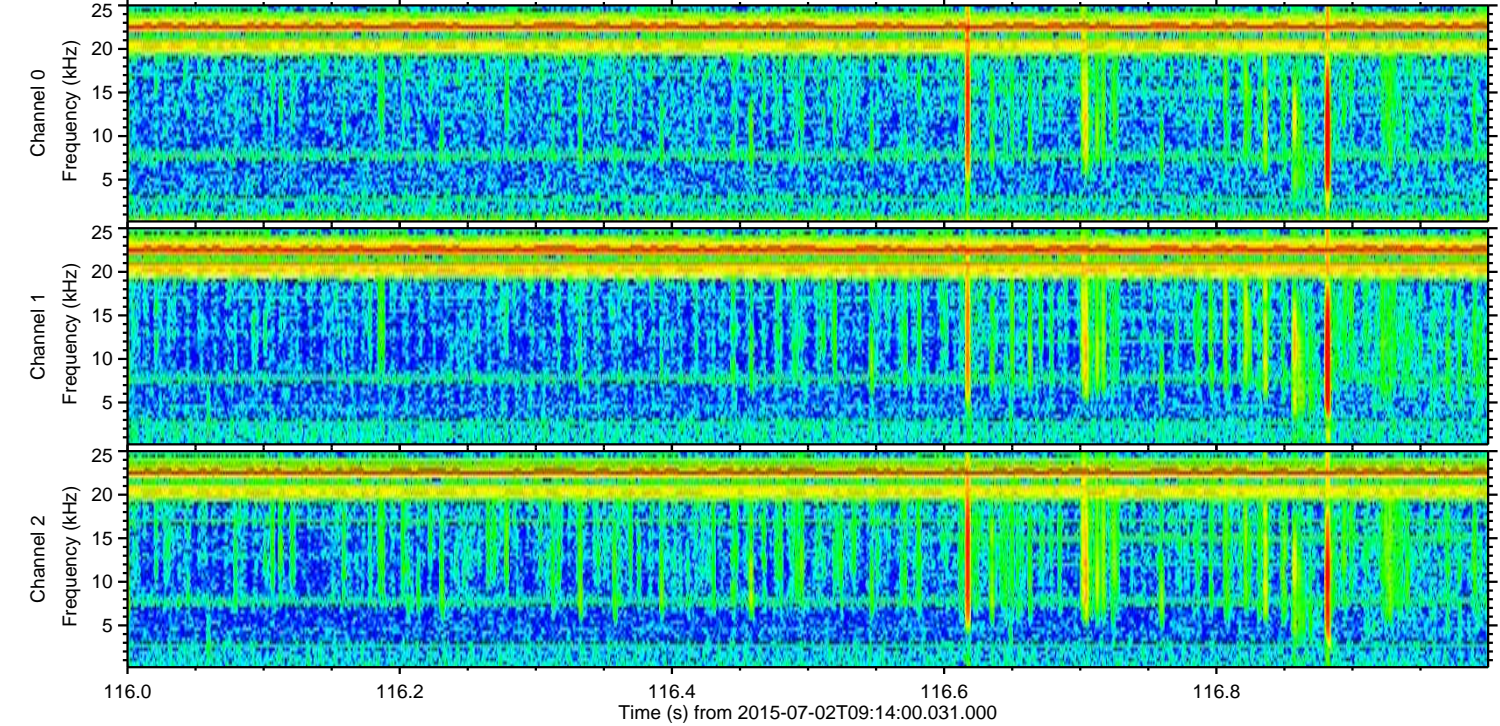
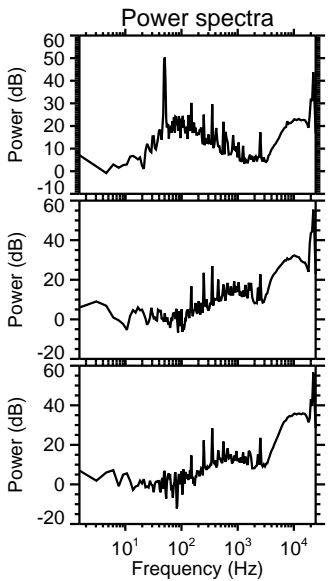
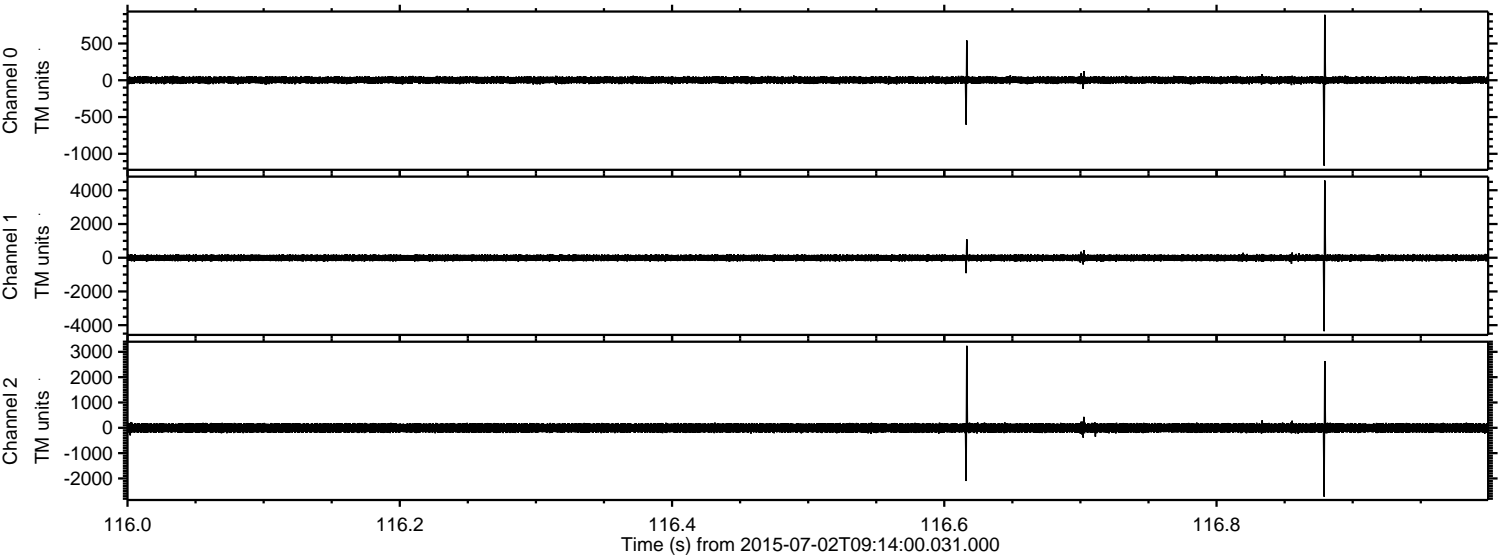
ELMAVAN 3D WAVEFORMS (Measured data sampled at 50 kHz) 51000 packets of 144 samples from 2015-07-02T09:14:00.031.000. Part 141/147

Processed Thu Jul 2 11:20:24 2015 by ELM ver.2012-10-06 from 001__elm20150702_091359__dat00.bin

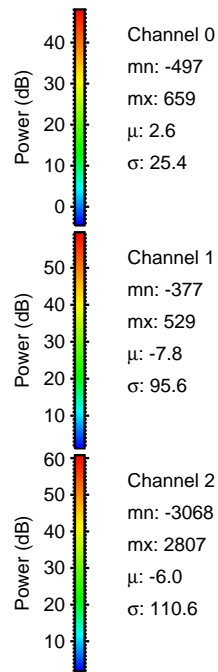
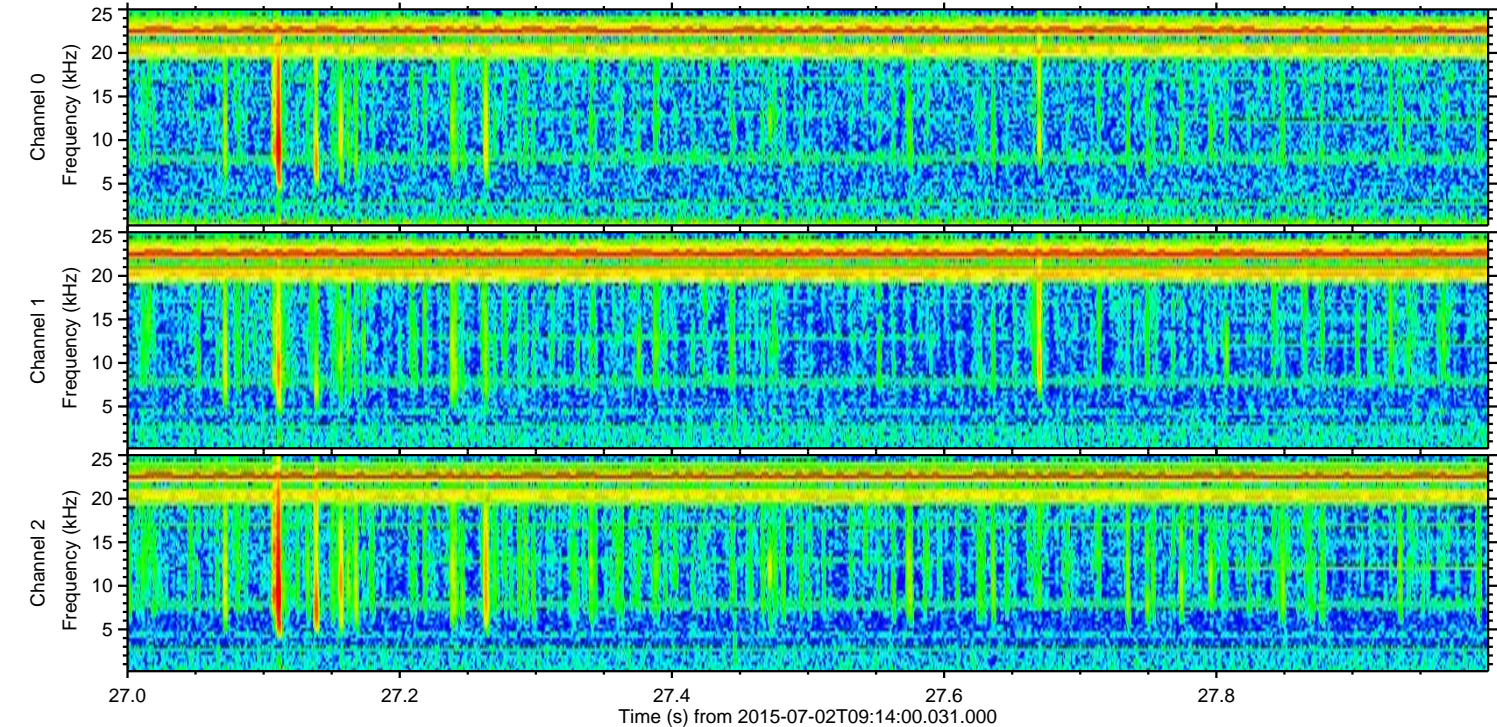
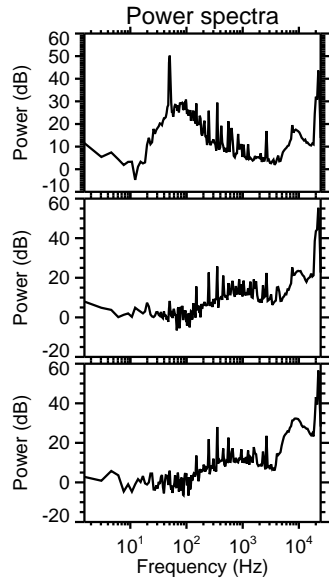
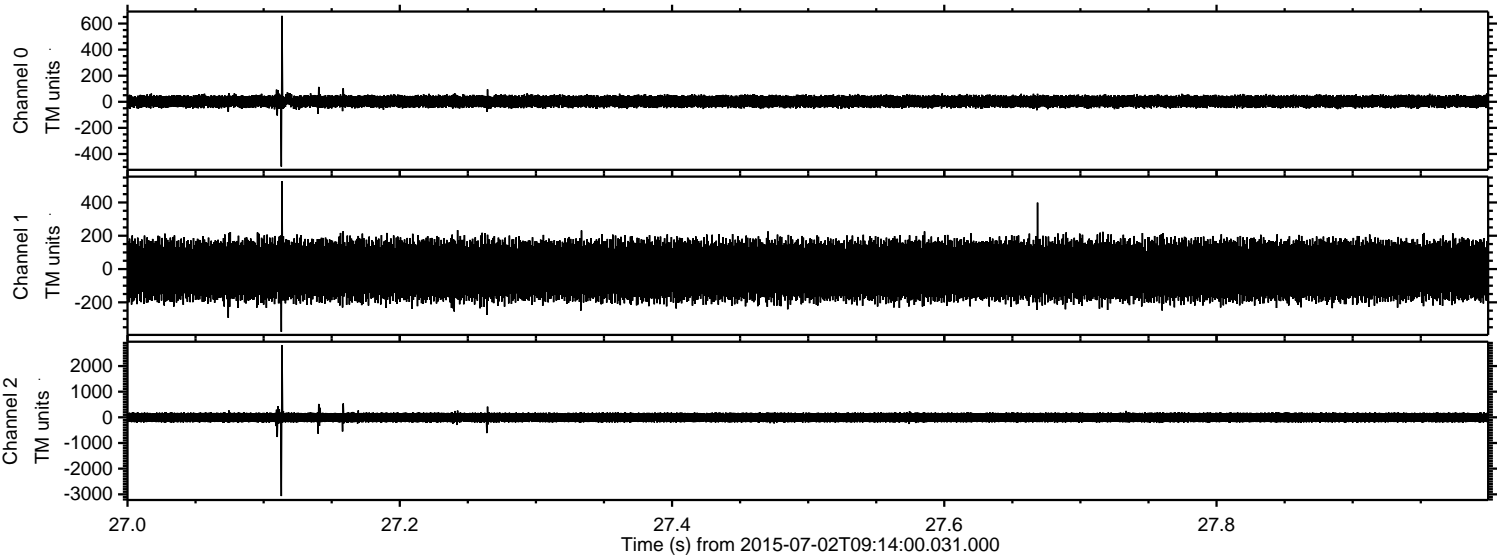


ELMAVAN 3D WAVEFORMS (Measured data sampled at 50 kHz) 51000 packets of 144 samples from 2015-07-02T09:14:00.031.000. Part 117/147

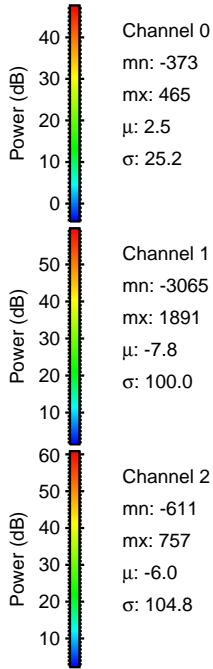
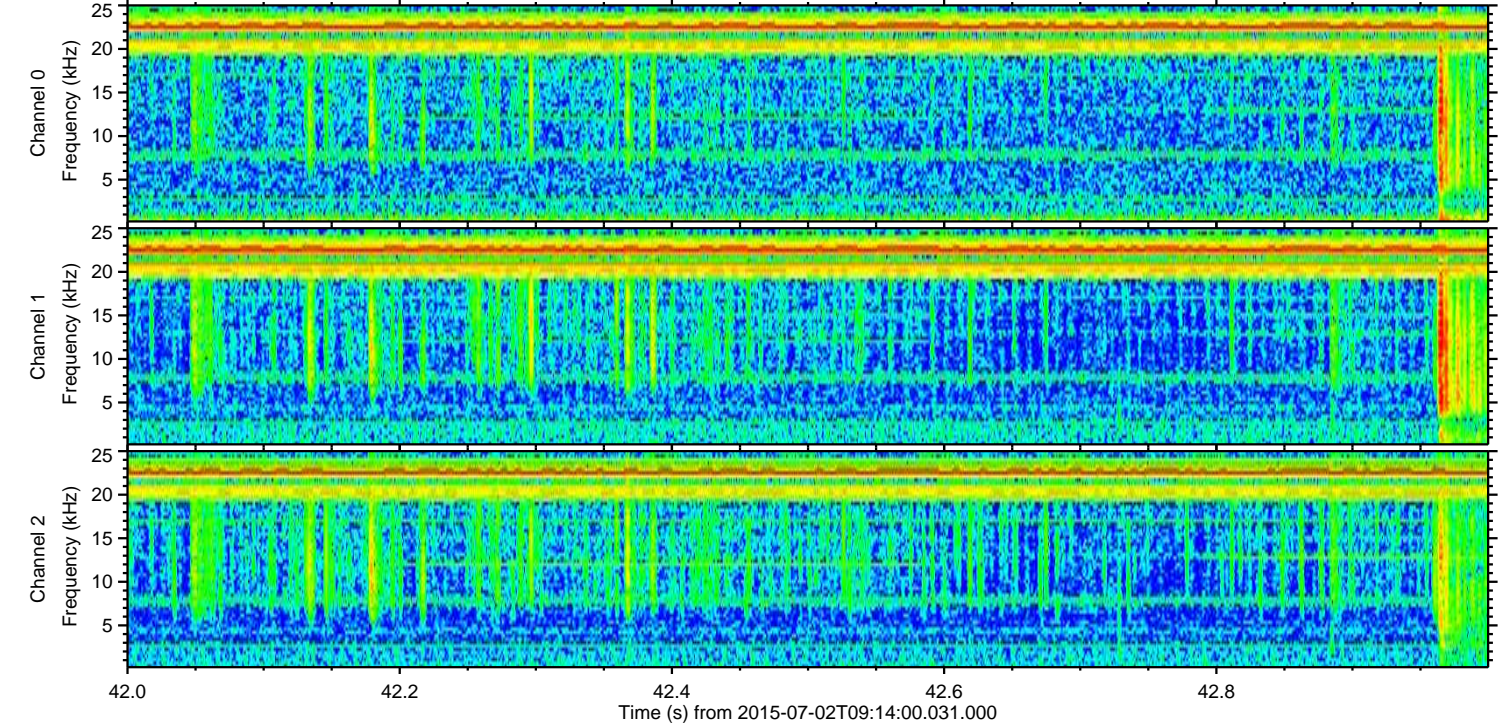
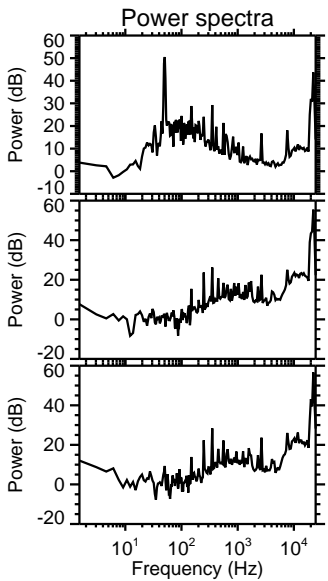
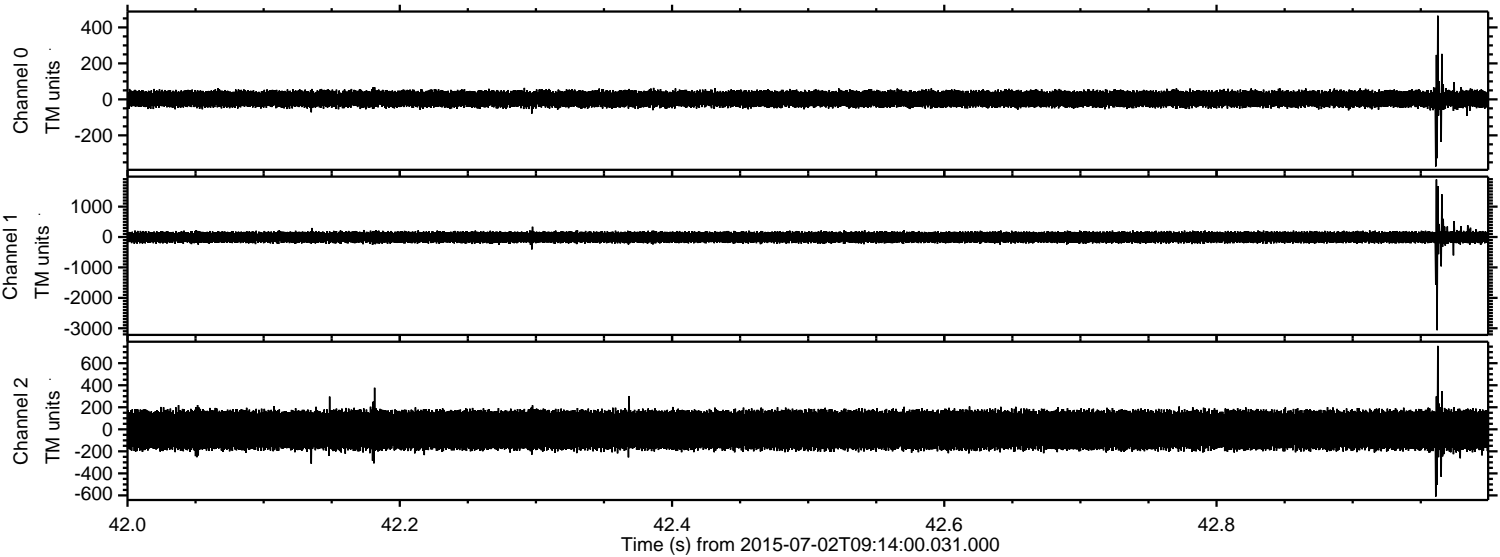
Processed Thu Jul 2 11:20:26 2015 by ELM ver.2012-10-06 from 001__elm20150702_091359__dat00.bin



Processed Thu Jul 2 11:20:27 2015 by ELM ver.2012-10-06 from 001__elm20150702_091359__dat00.bin

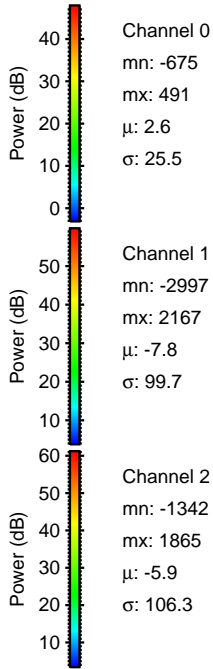
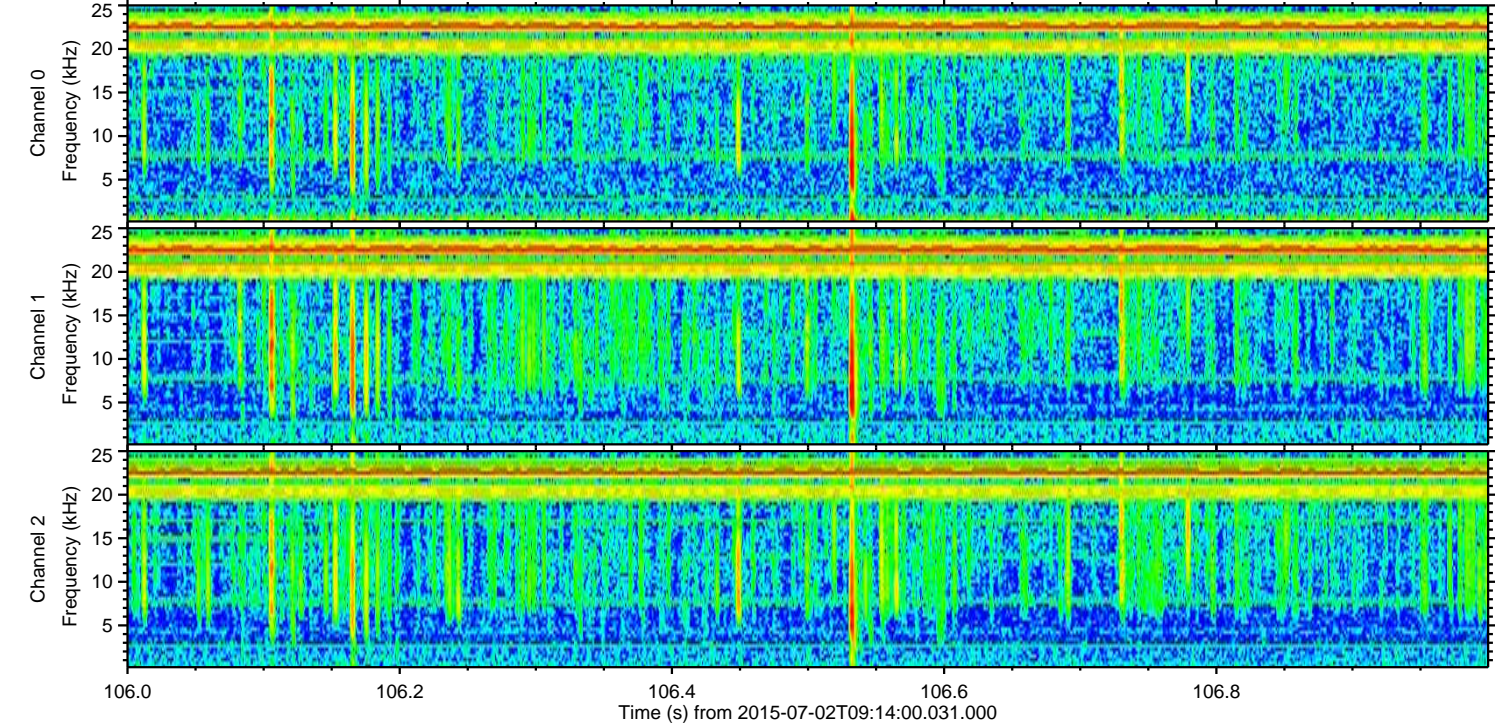
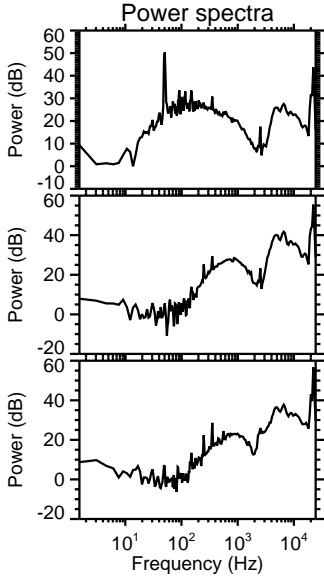
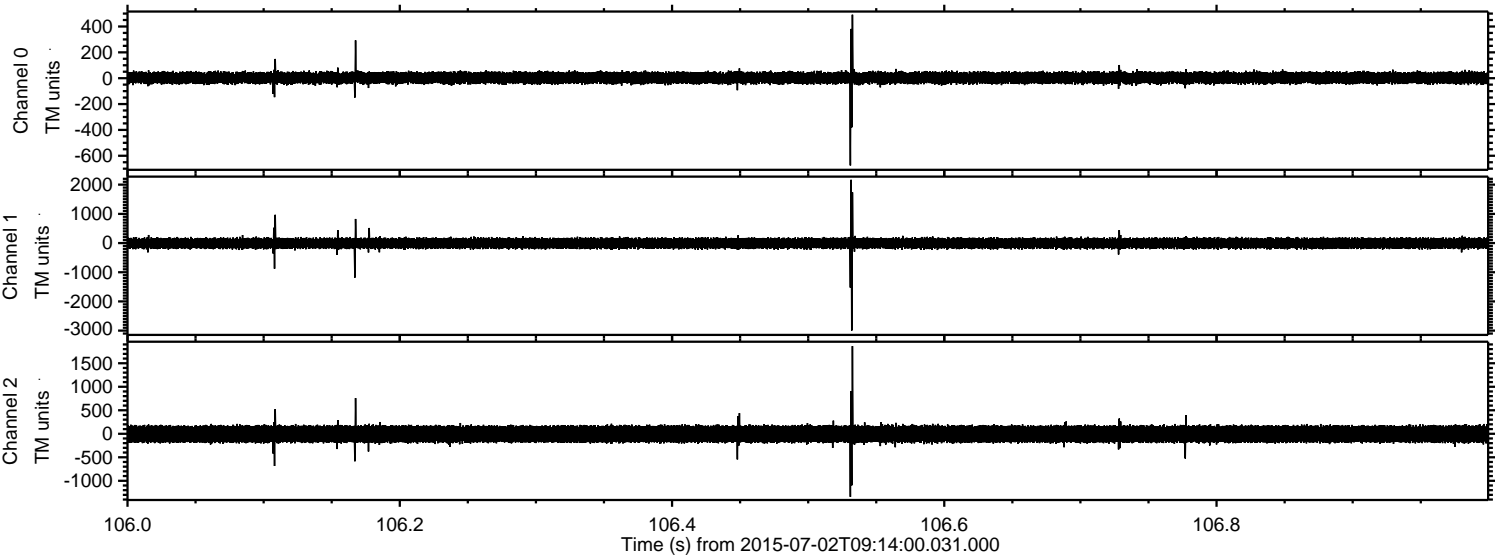


Processed Thu Jul 2 11:20:28 2015 by ELM ver.2012-10-06 from 001__elm20150702_091359__dat00.bin



ELMAVAN 3D WAVEFORMS (Measured data sampled at 50 kHz) 51000 packets of 144 samples from 2015-07-02T09:14:00.031.000. Part 107/147

Processed Thu Jul 2 11:20:29 2015 by ELM ver.2012-10-06 from 001__elm20150702_091359__dat00.bin

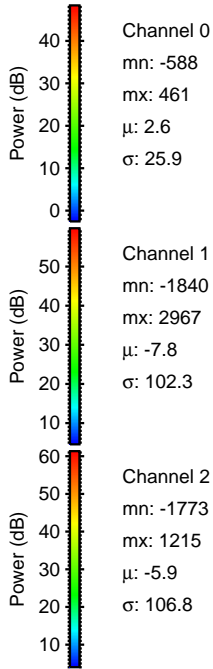
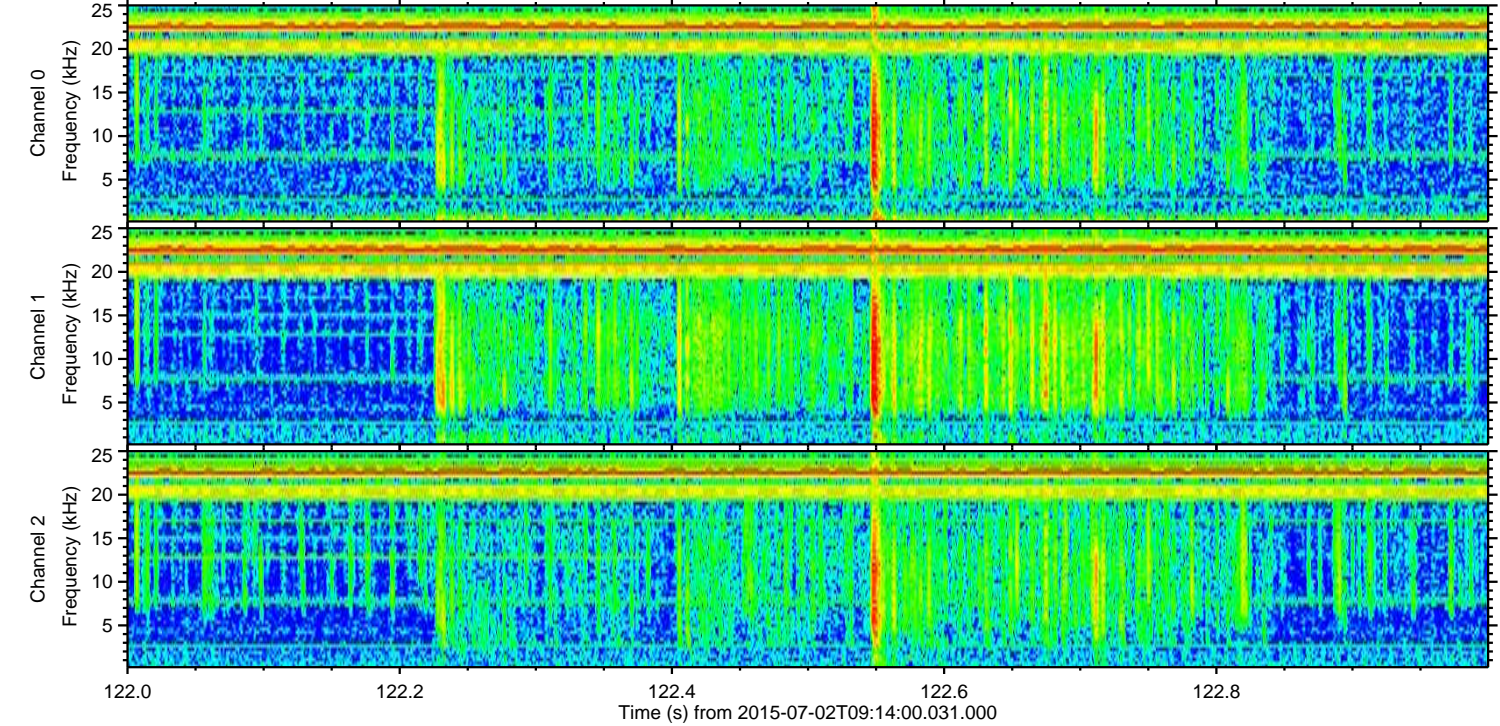
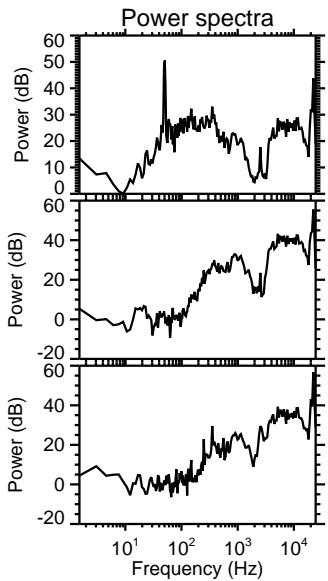
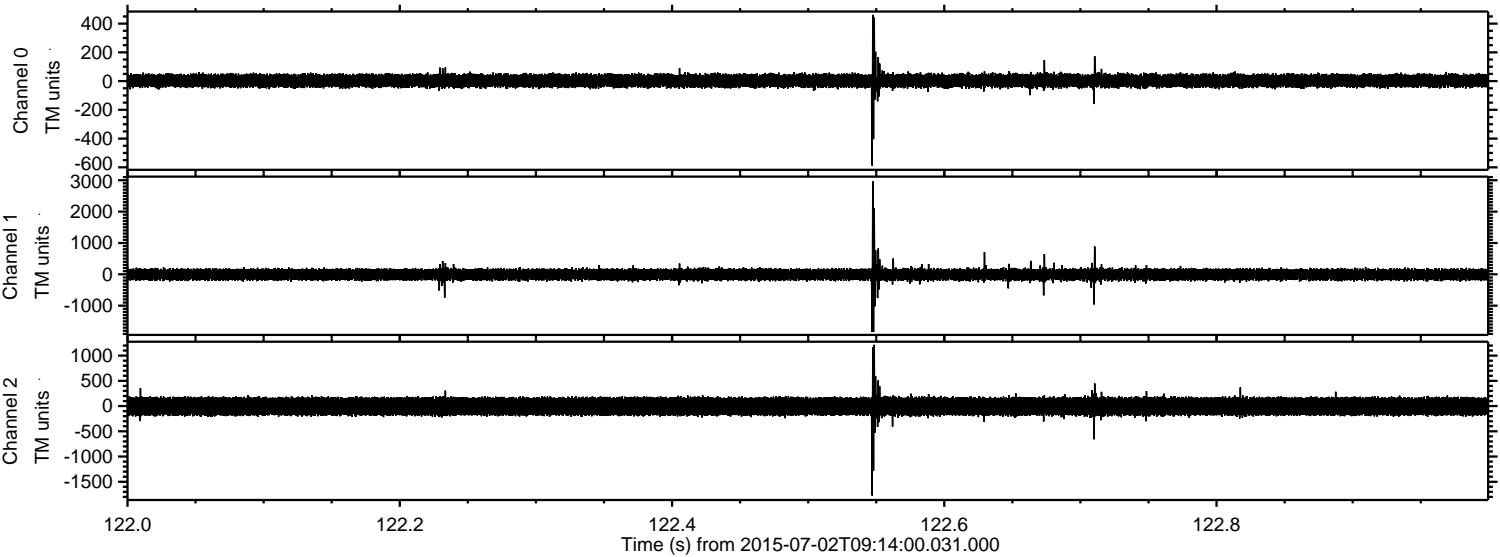


Channel 0
mn: -675
mx: 491
 μ : 2.6
 σ : 25.5

Channel 1
mn: -2997
mx: 2167
 μ : -7.8
 σ : 99.7

Channel 2
mn: -1342
mx: 1865
 μ : -5.9
 σ : 106.3

Processed Thu Jul 2 11:20:30 2015 by ELM ver.2012-10-06 from 001__elm20150702_091359__dat00.bin



Processed Thu Jul 2 11:20:31 2015 by ELM ver.2012-10-06 from 001__elm20150702_091359__dat00.bin

