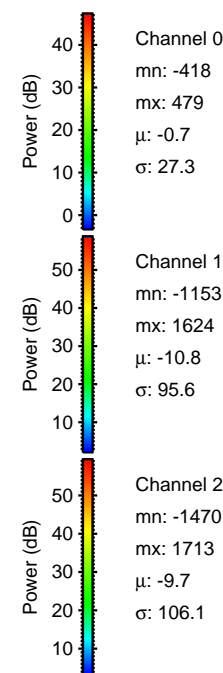
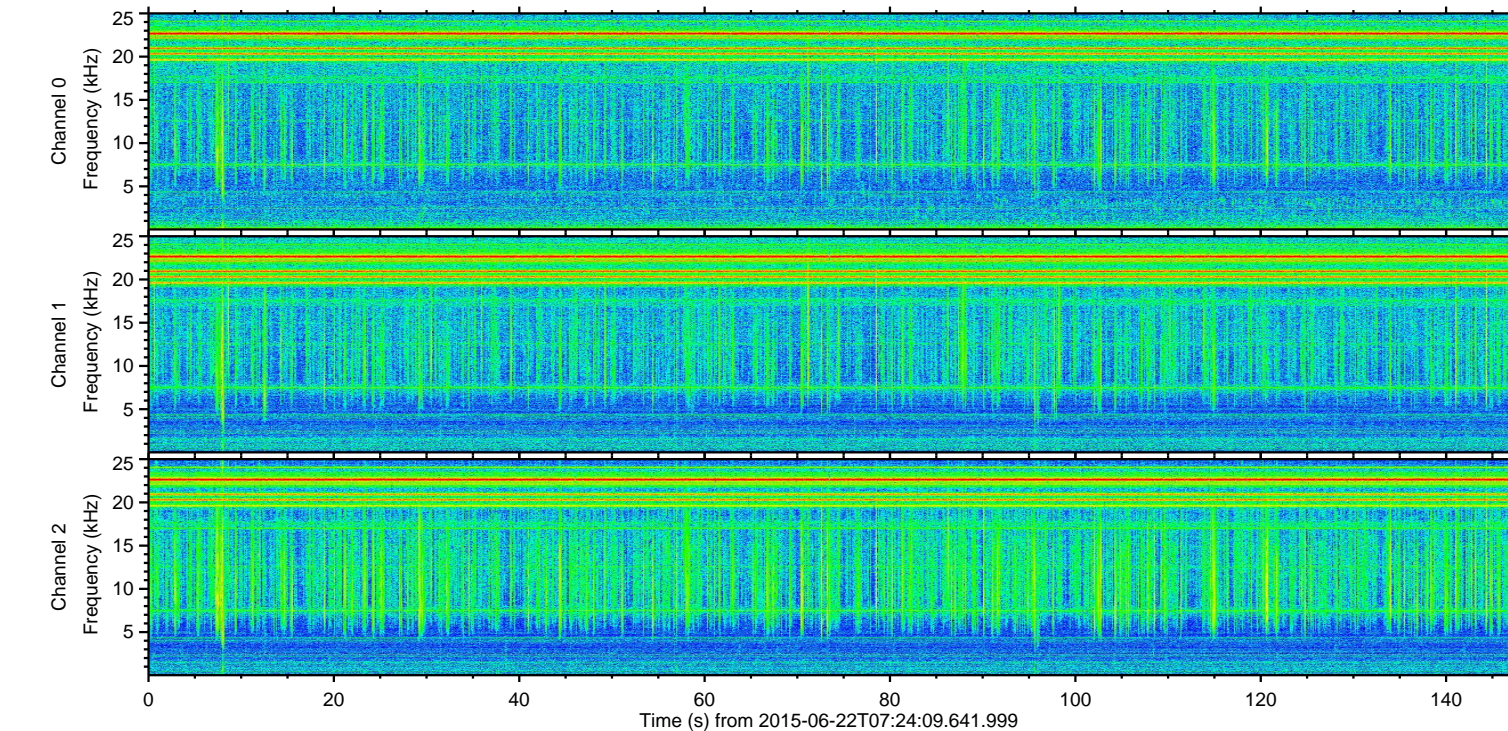
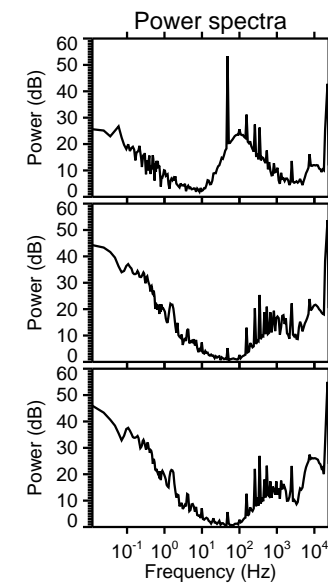
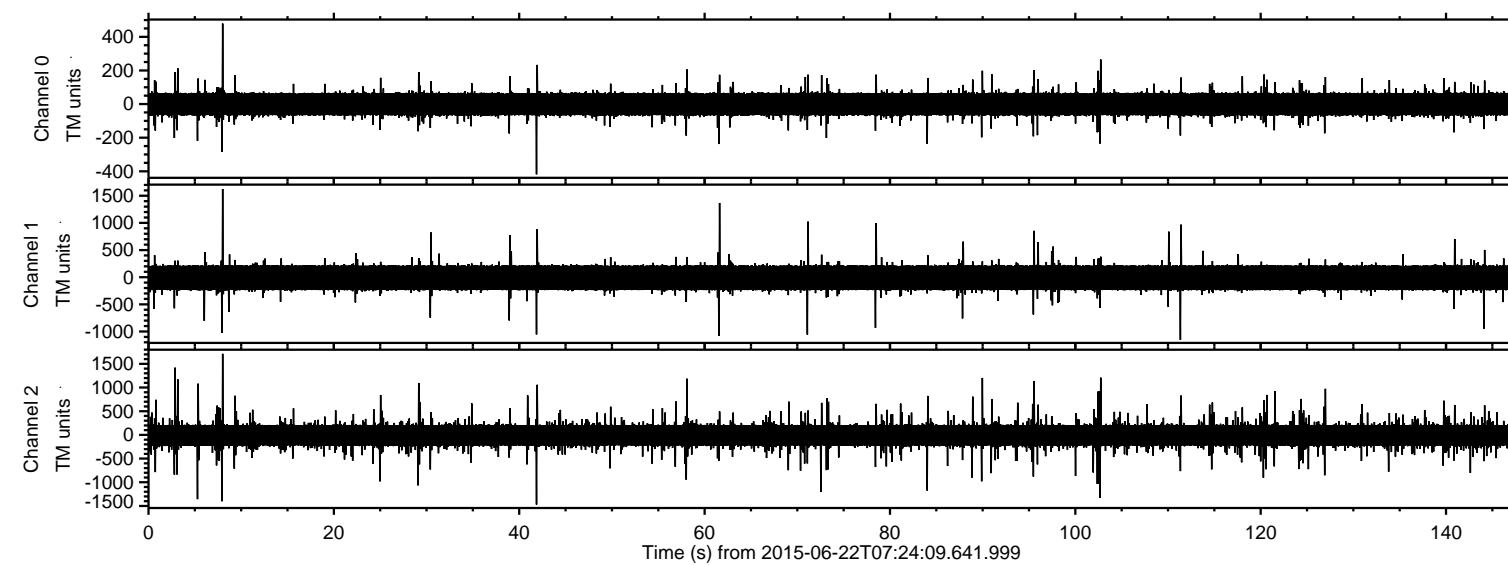


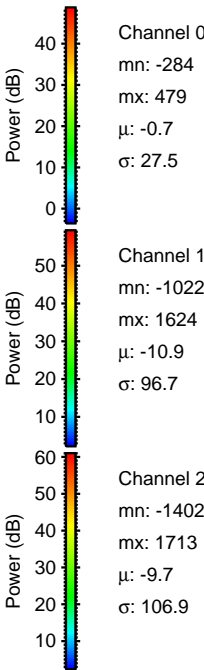
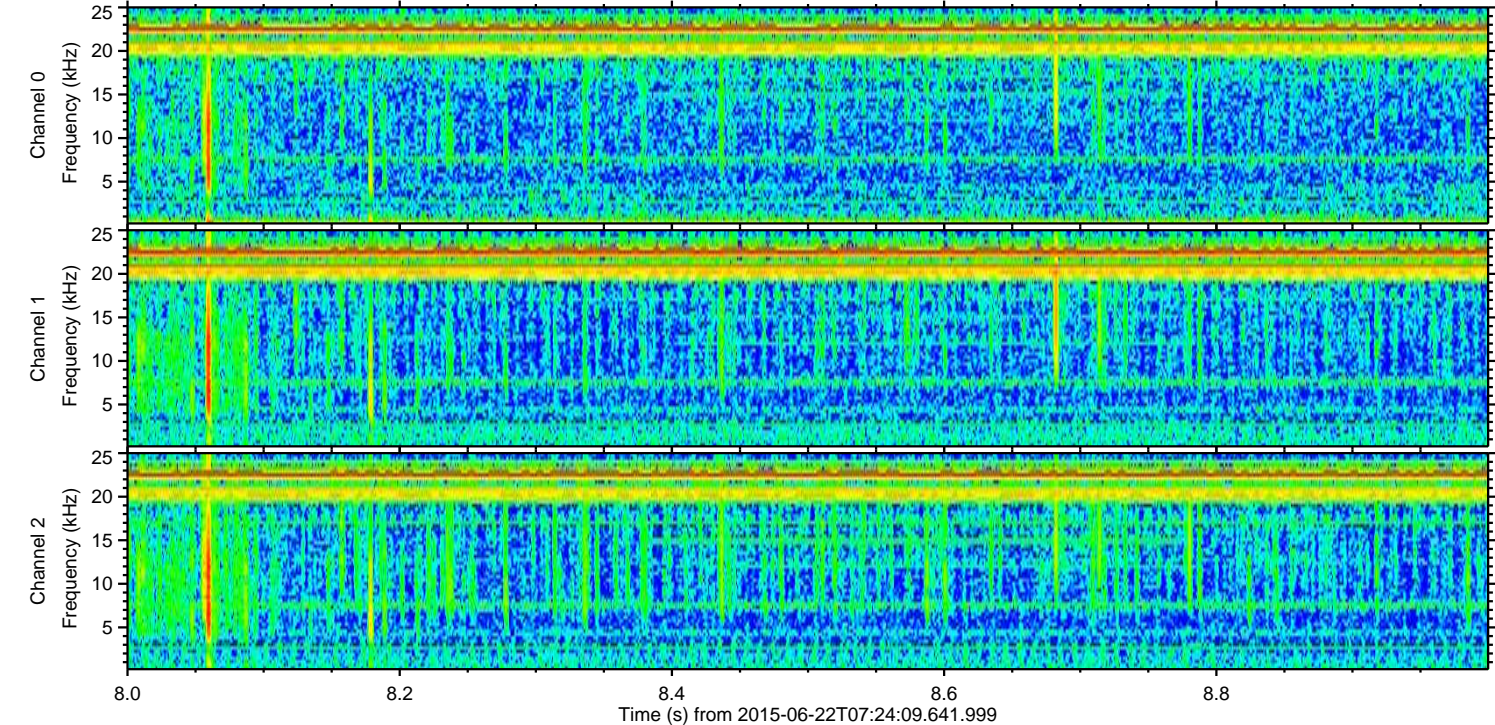
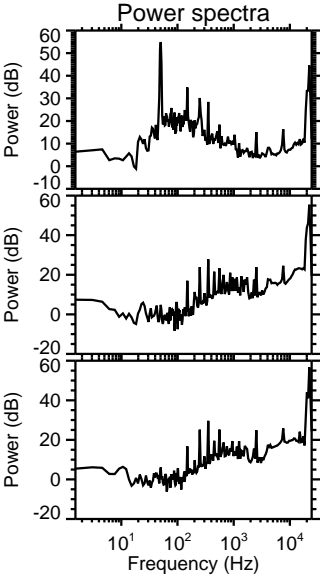
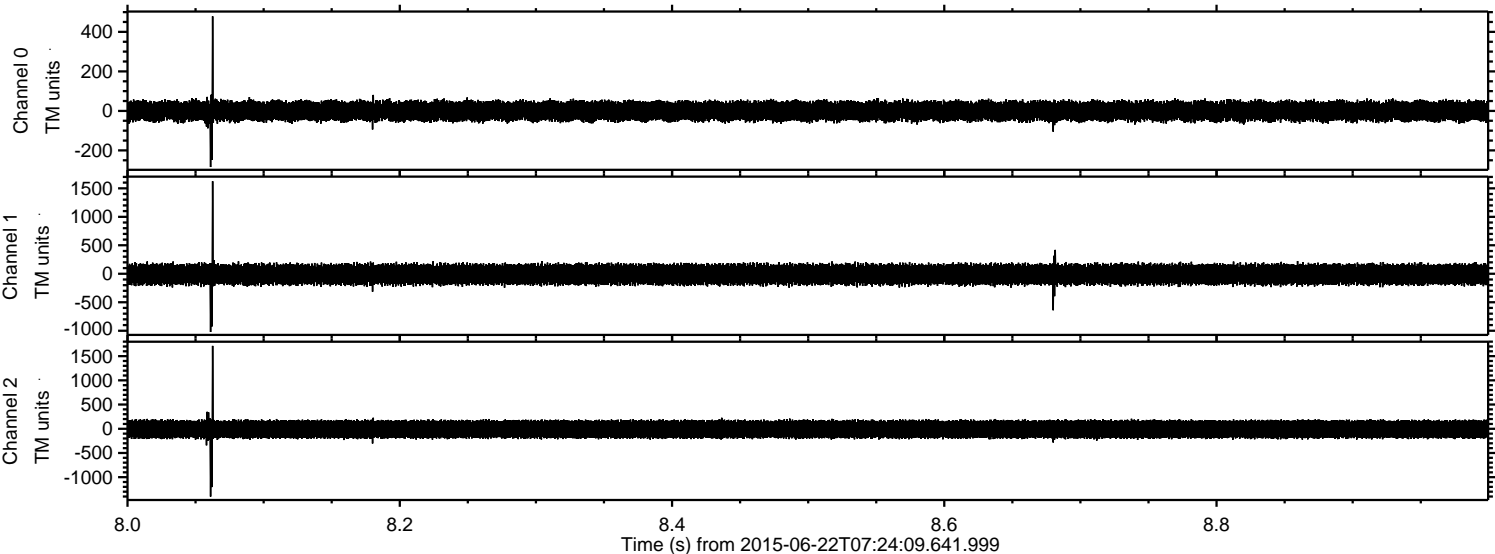
ELMAVAN 3D WAVEFORMS (Measured data sampled at 50 kHz) 51000 packets of 144 samples from 2015-06-22T07:24:09.641.999.

Processed Mon Jun 22 09:30:42 2015 by ELM ver.2012-10-06 from 001\_\_elm20150622\_072408\_\_dat00.bin





Processed Mon Jun 22 09:30:58 2015 by ELM ver.2012-10-06 from 001\_\_elm20150622\_072408\_\_dat00.bin



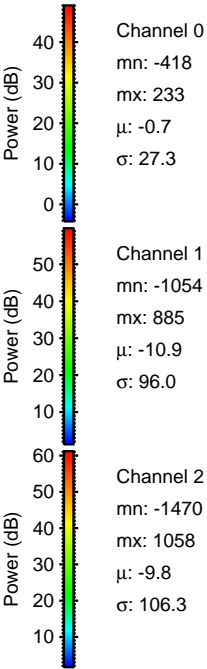
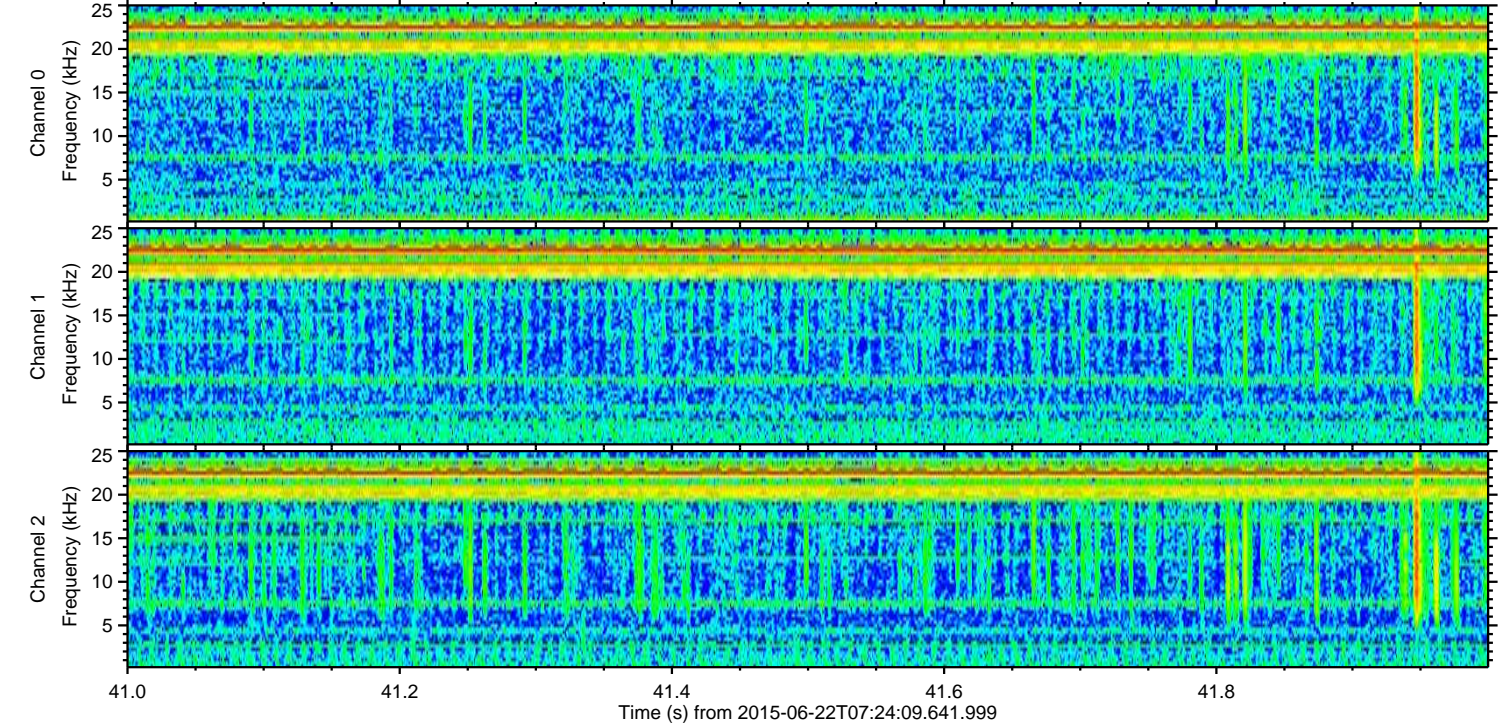
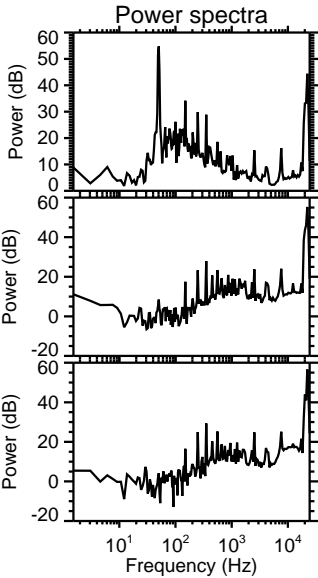
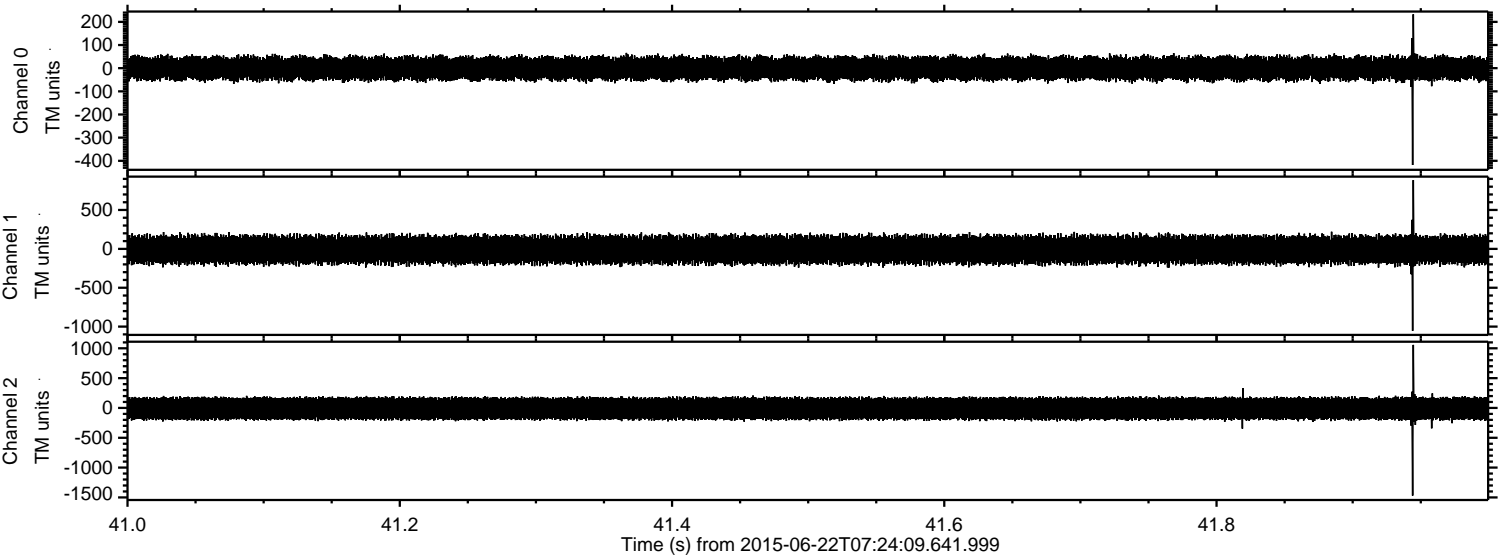
Channel 0  
mn: -284  
mx: 479  
 $\mu$ : -0.7  
 $\sigma$ : 27.5

Channel 1  
mn: -1022  
mx: 1624  
 $\mu$ : -10.9  
 $\sigma$ : 96.7

Channel 2  
mn: -1402  
mx: 1713  
 $\mu$ : -9.7  
 $\sigma$ : 106.9



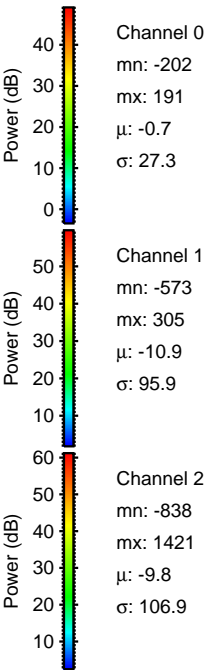
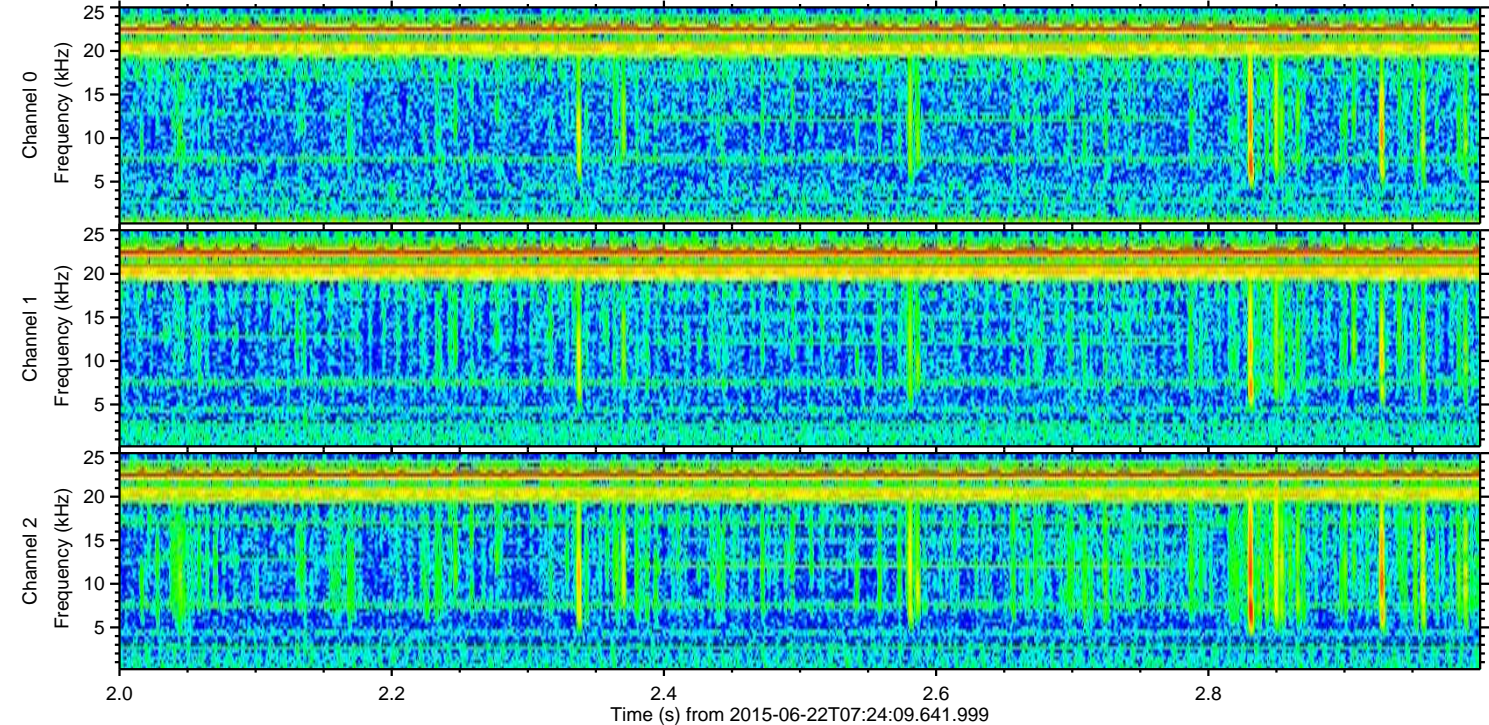
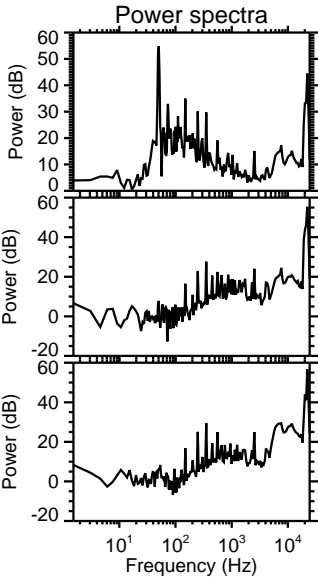
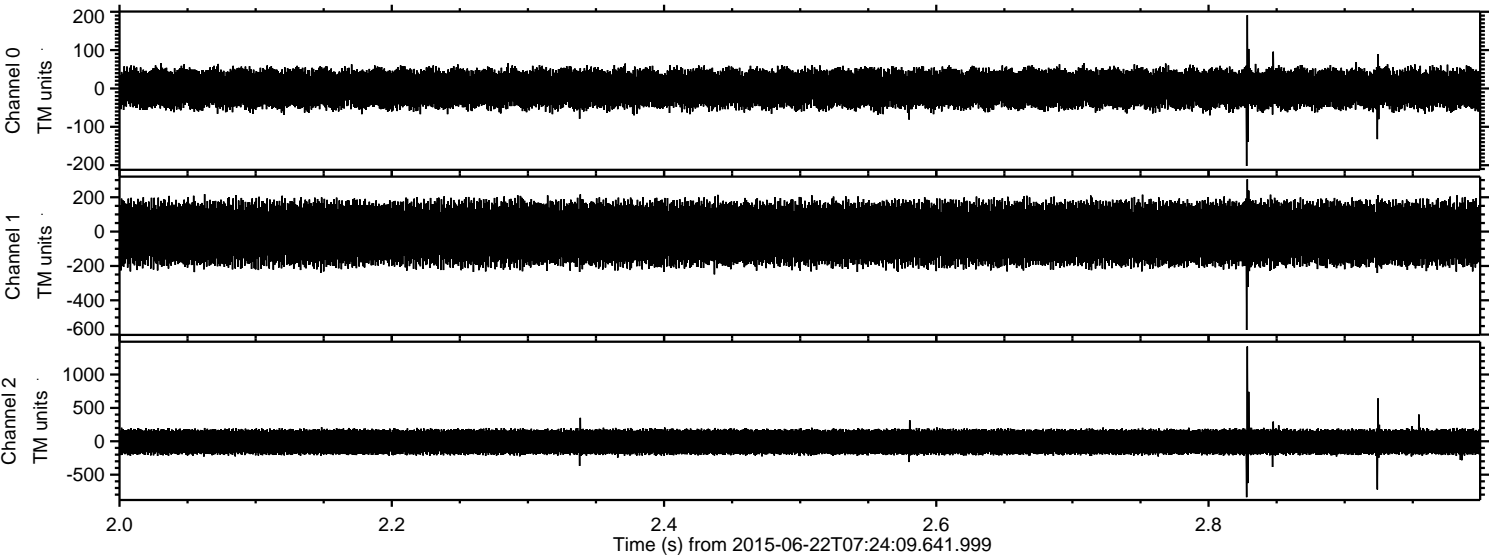
Processed Mon Jun 22 09:30:59 2015 by ELM ver.2012-10-06 from 001\_\_elm20150622\_072408\_\_dat00.bin





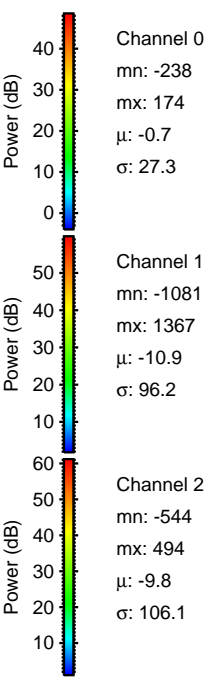
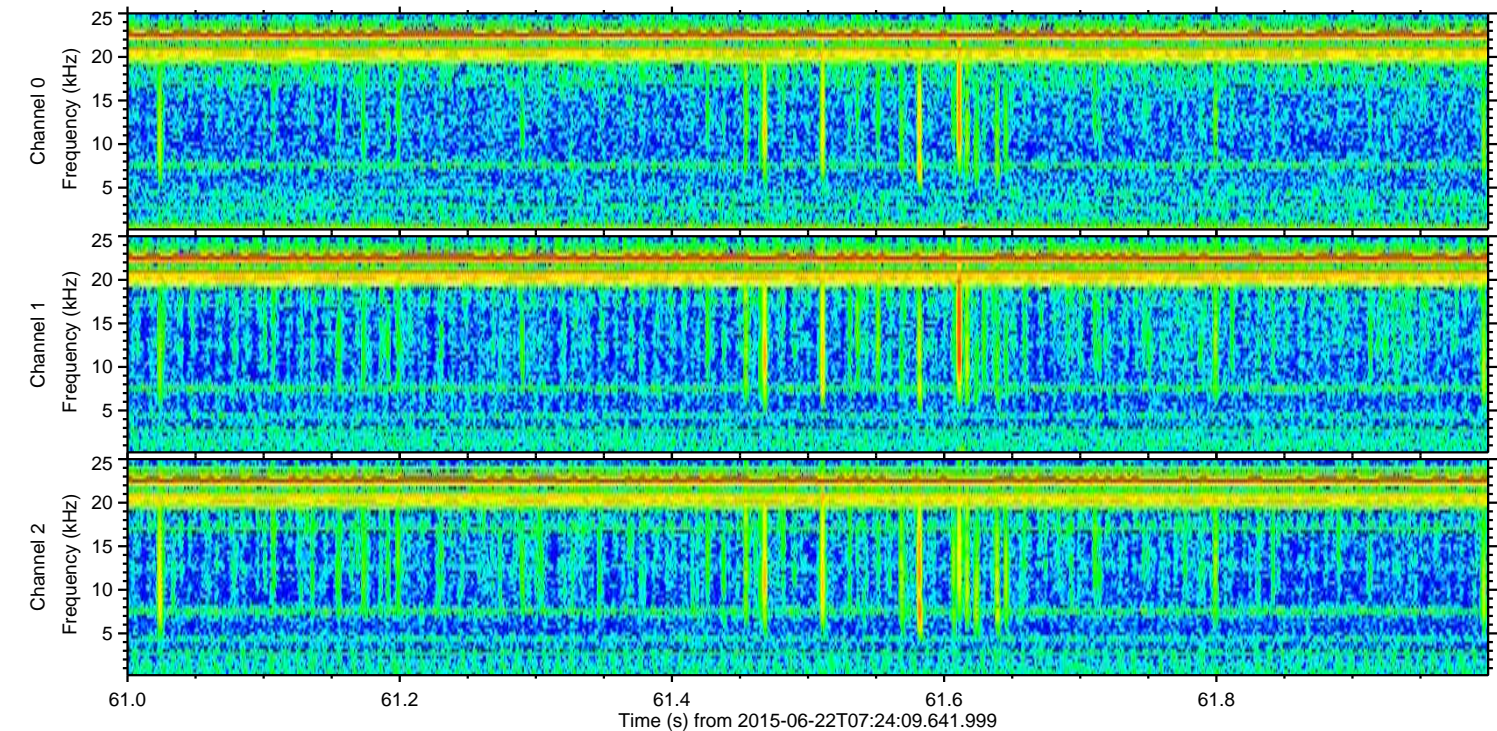
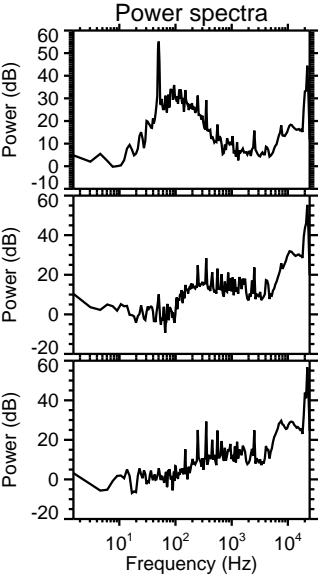
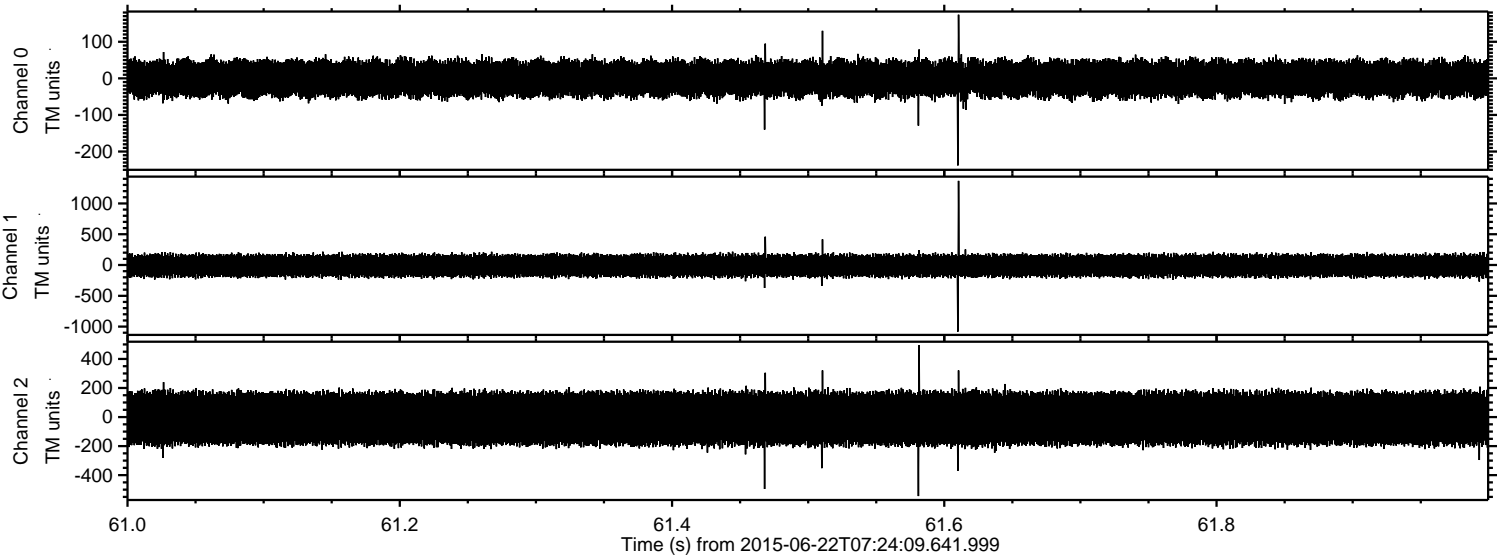
ELMAVAN 3D WAVEFORMS (Measured data sampled at 50 kHz) 51000 packets of 144 samples from 2015-06-22T07:24:09.641.999. Part 3/147

Processed Mon Jun 22 09:31:00 2015 by ELM ver.2012-10-06 from 001\_\_elm20150622\_072408\_\_dat00.bin



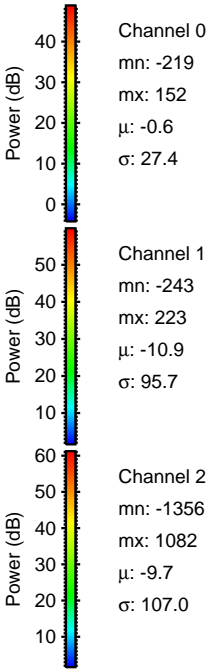
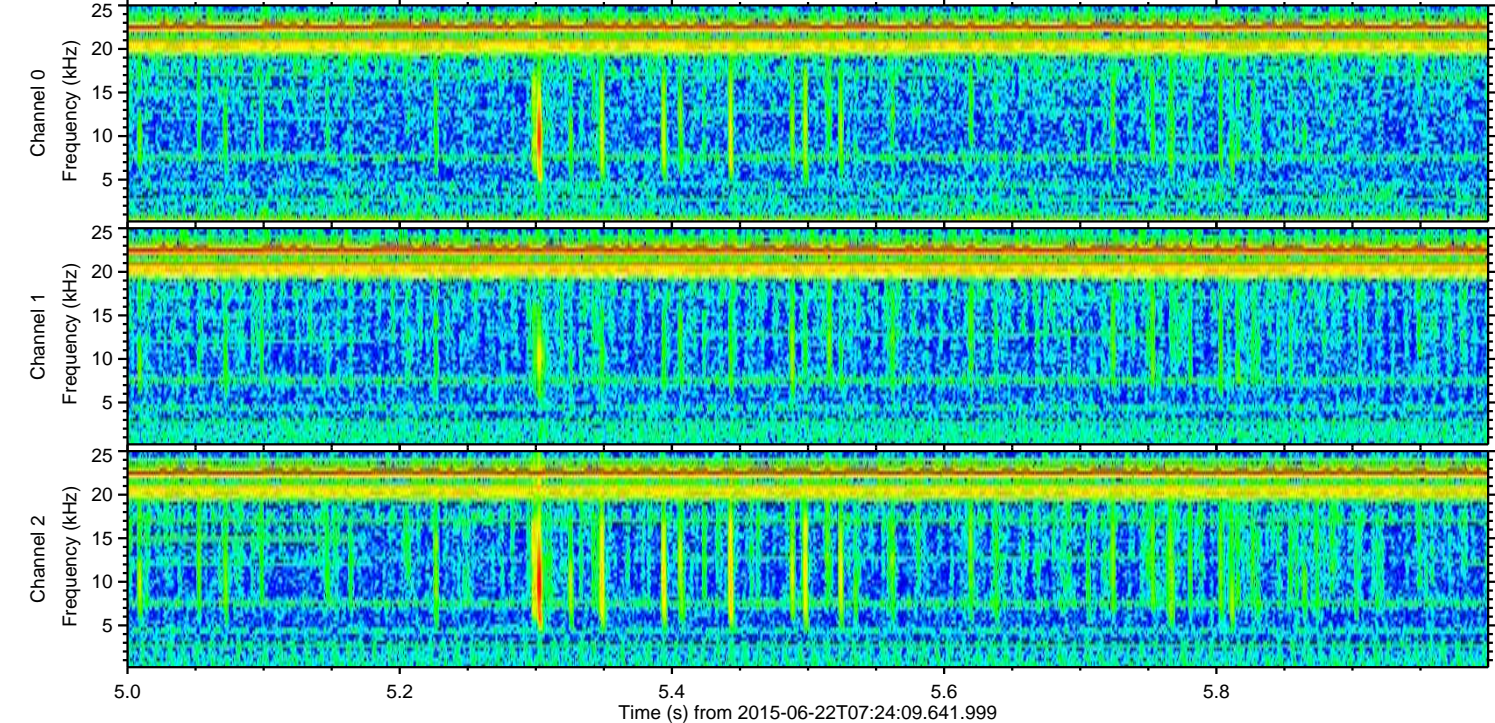
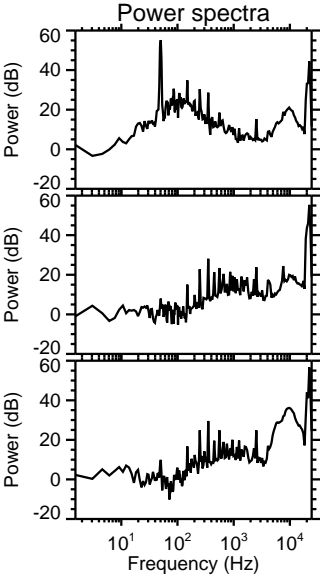
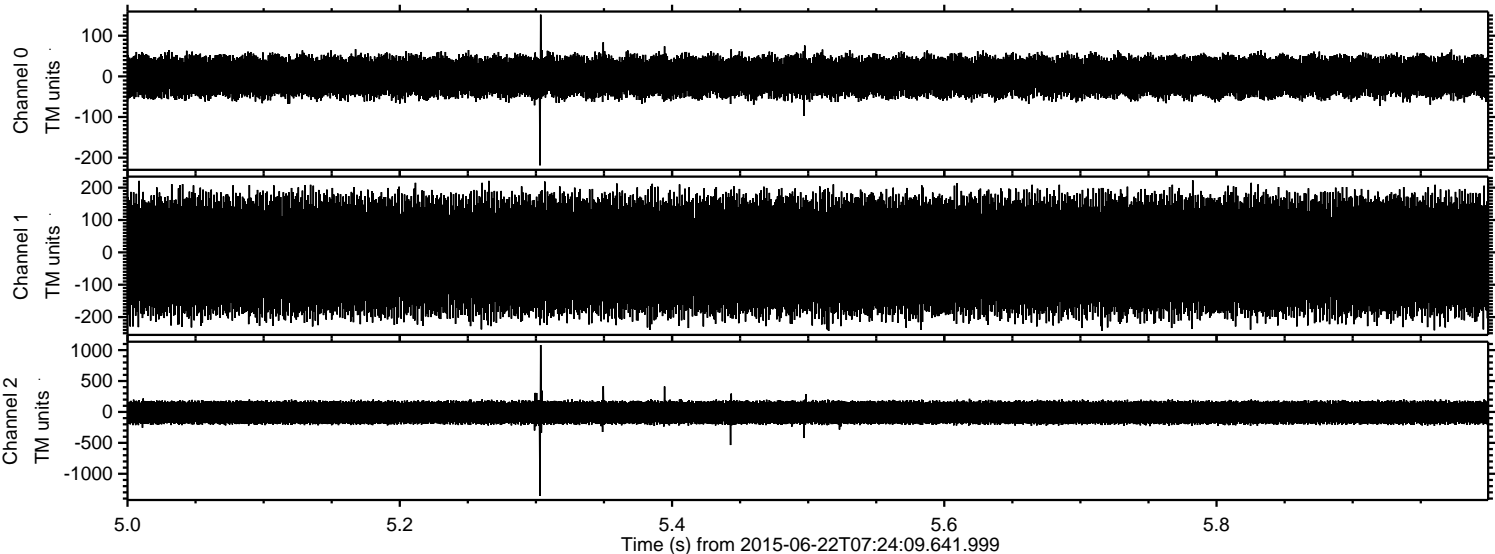


Processed Mon Jun 22 09:31:01 2015 by ELM ver.2012-10-06 from 001\_\_elm20150622\_072408\_\_dat00.bin





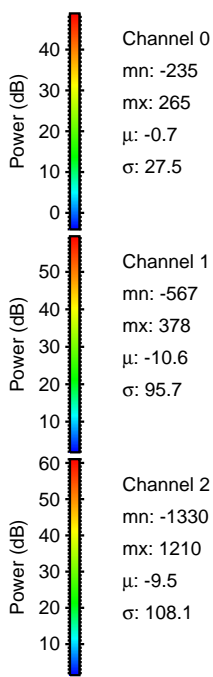
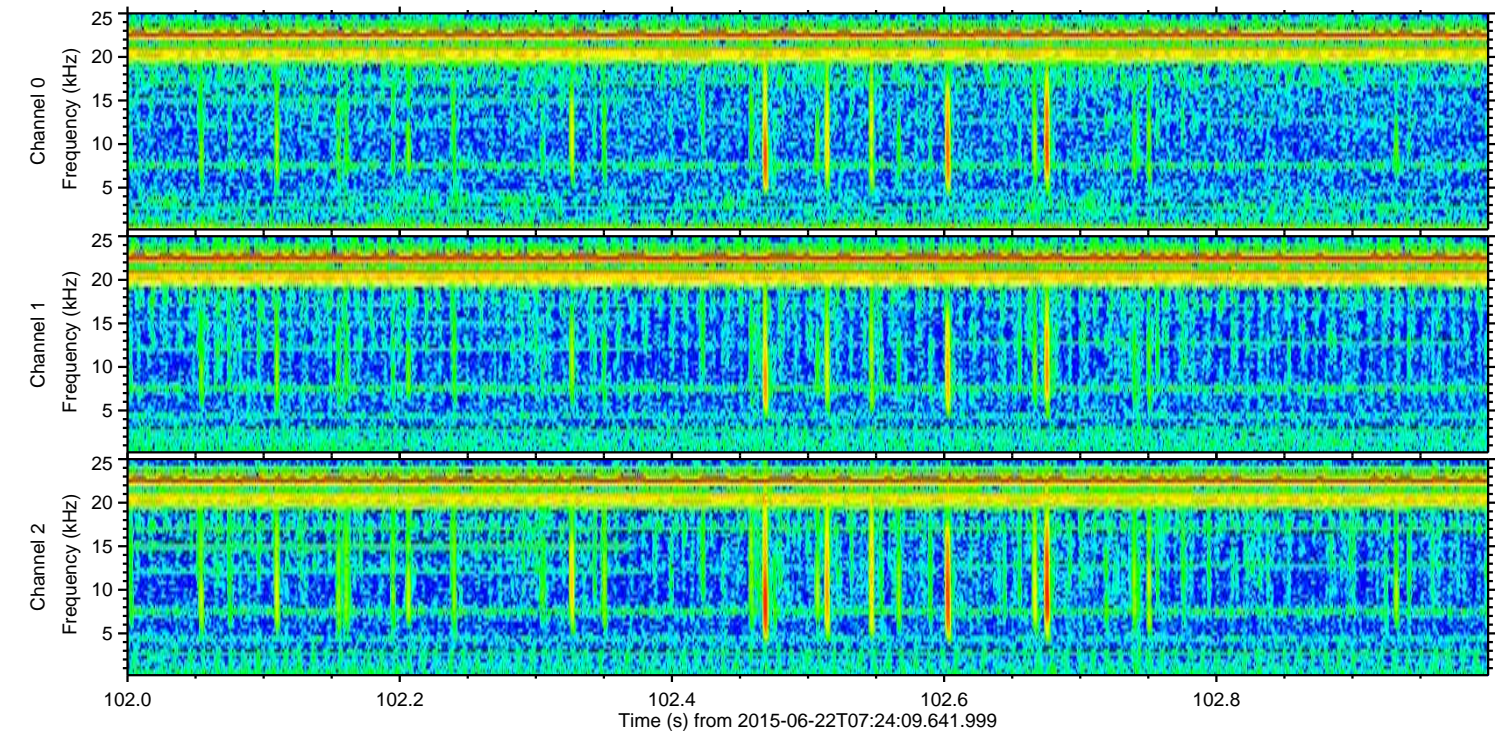
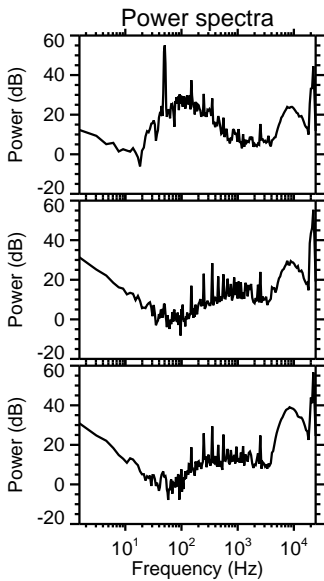
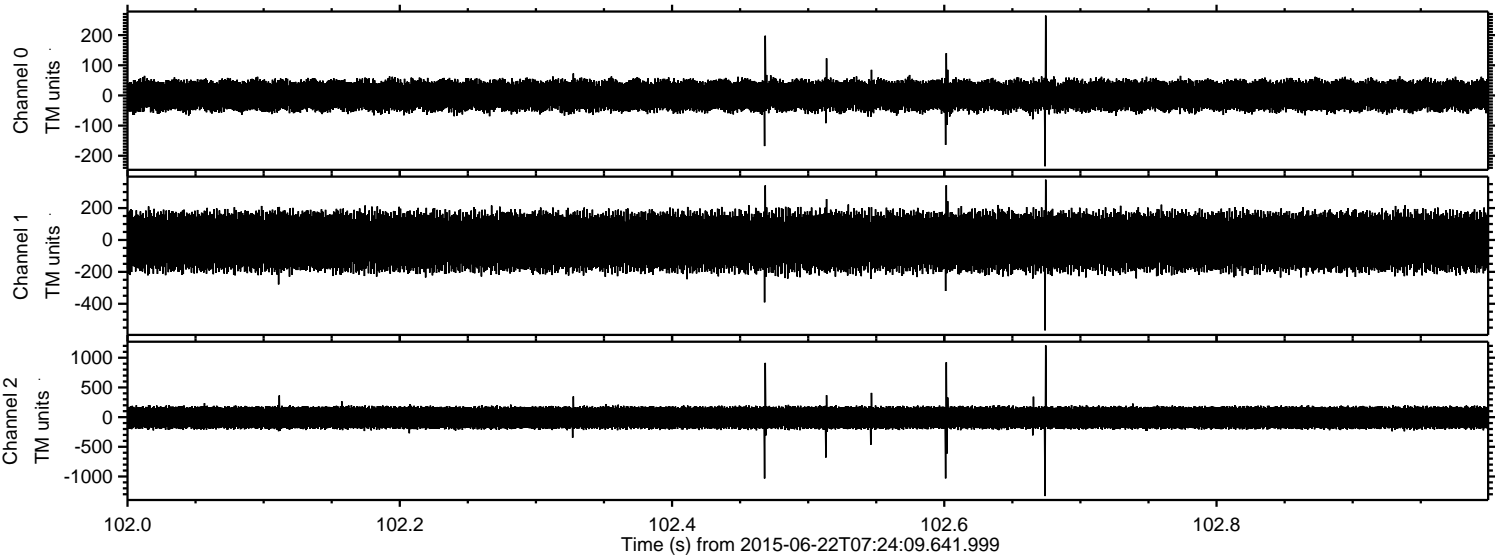
Processed Mon Jun 22 09:31:02 2015 by ELM ver.2012-10-06 from 001\_\_elm20150622\_072408\_\_dat00.bin





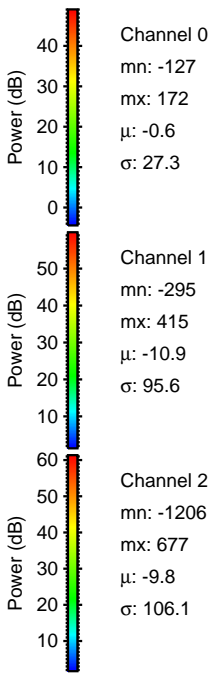
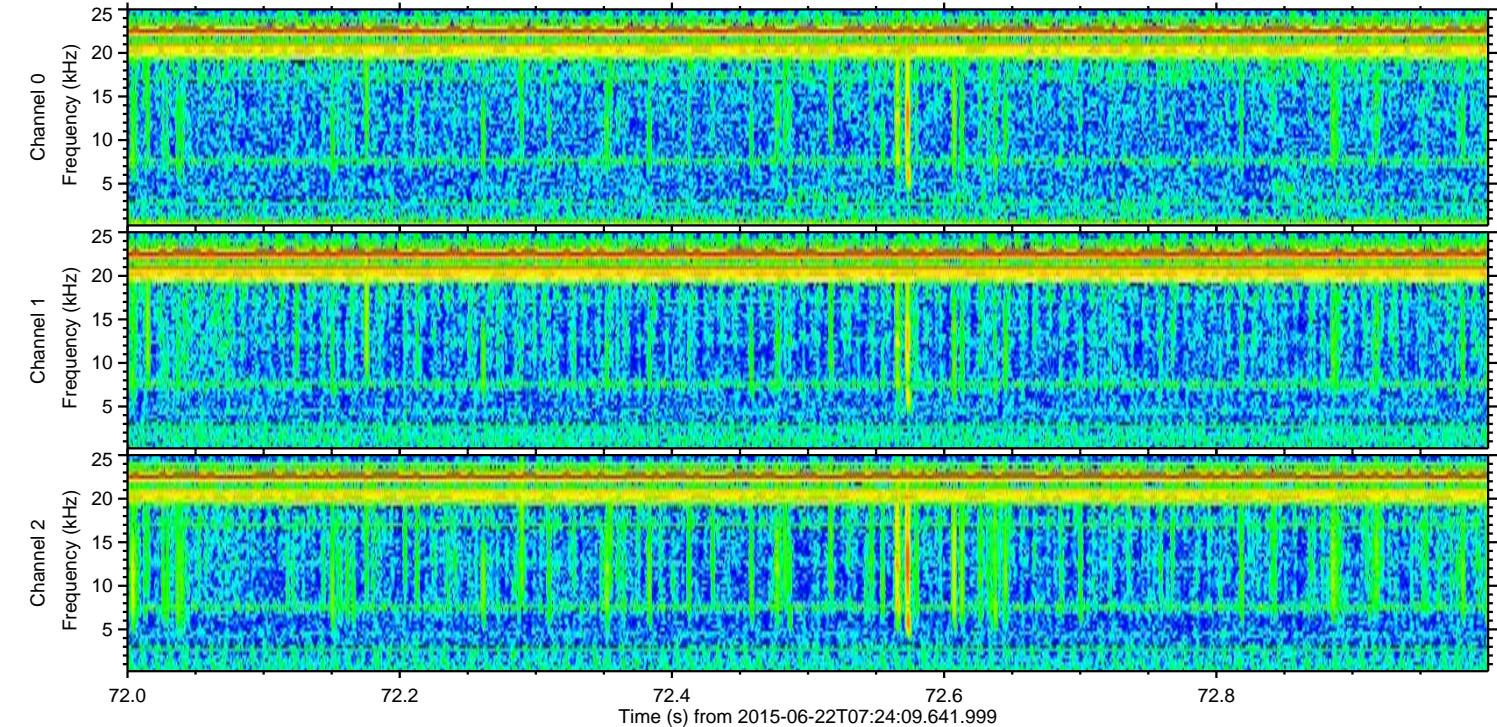
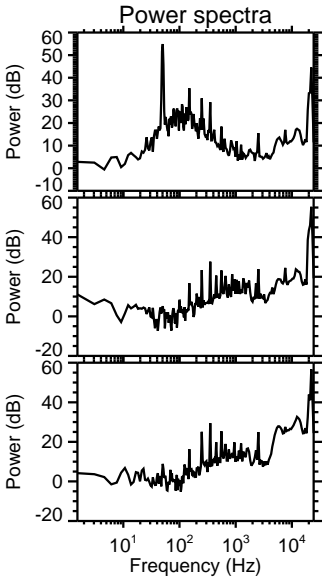
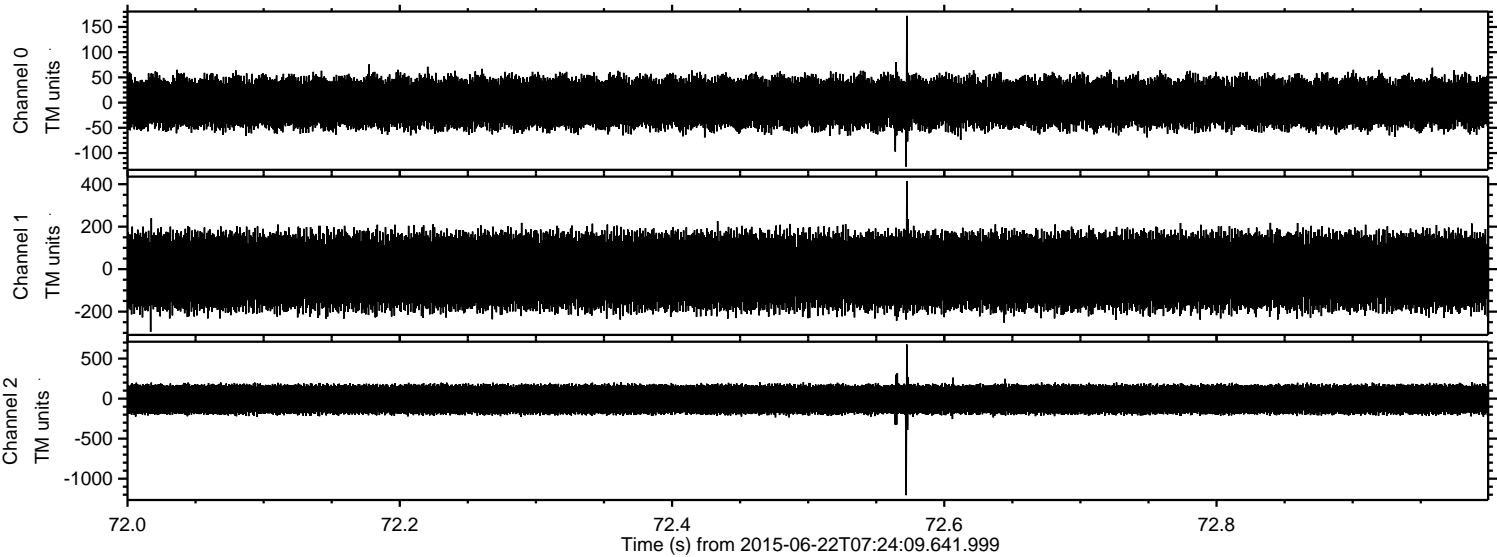
ELMAVAN 3D WAVEFORMS (Measured data sampled at 50 kHz) 51000 packets of 144 samples from 2015-06-22T07:24:09.641.999. Part 103/147

Processed Mon Jun 22 09:31:03 2015 by ELM ver.2012-10-06 from 001\_\_elm20150622\_072408\_\_dat00.bin



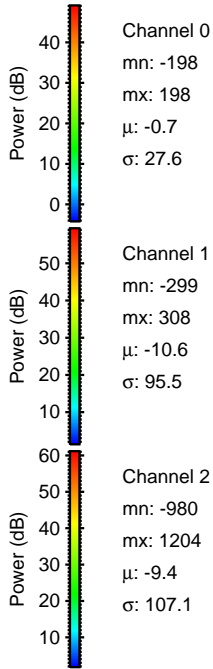
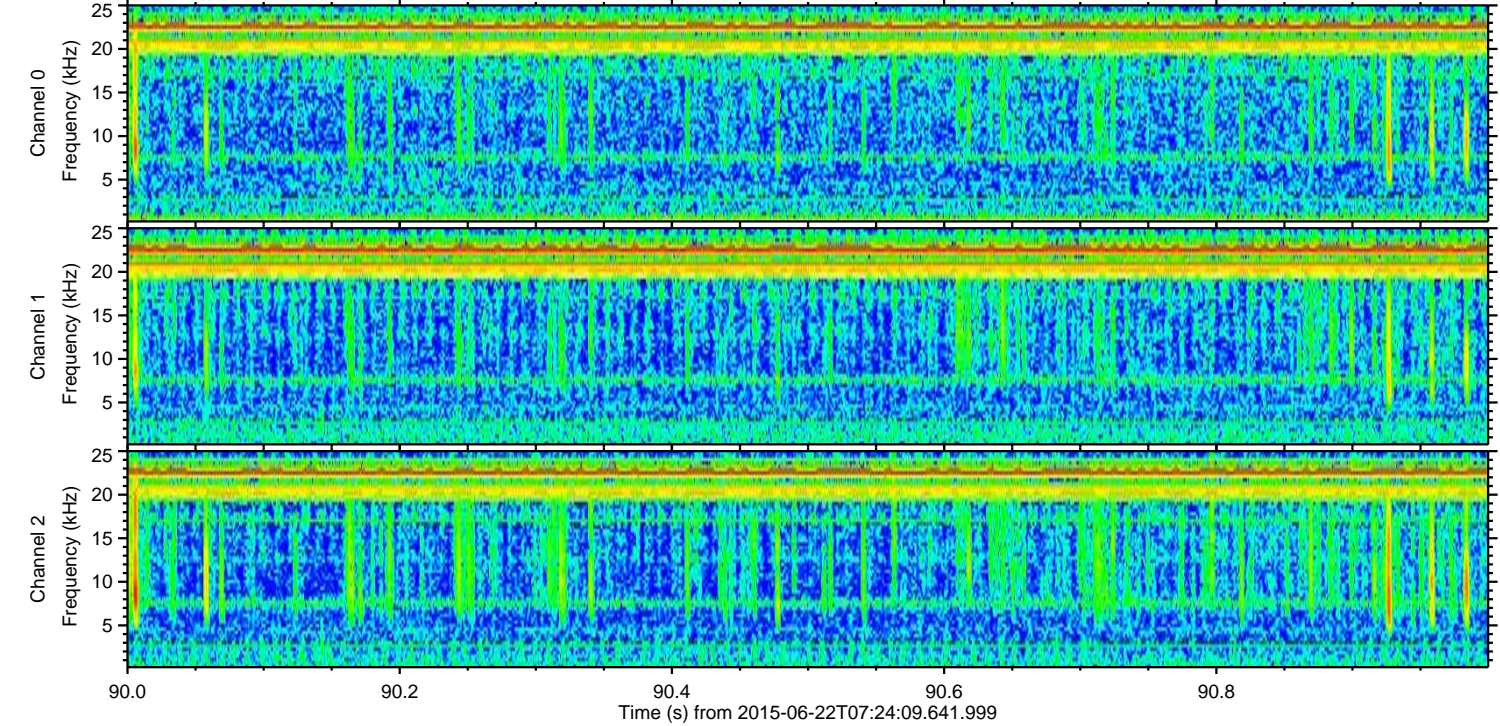
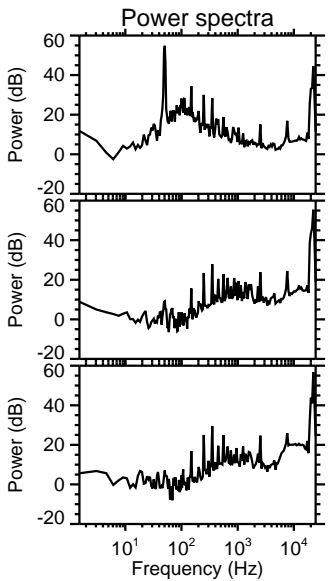
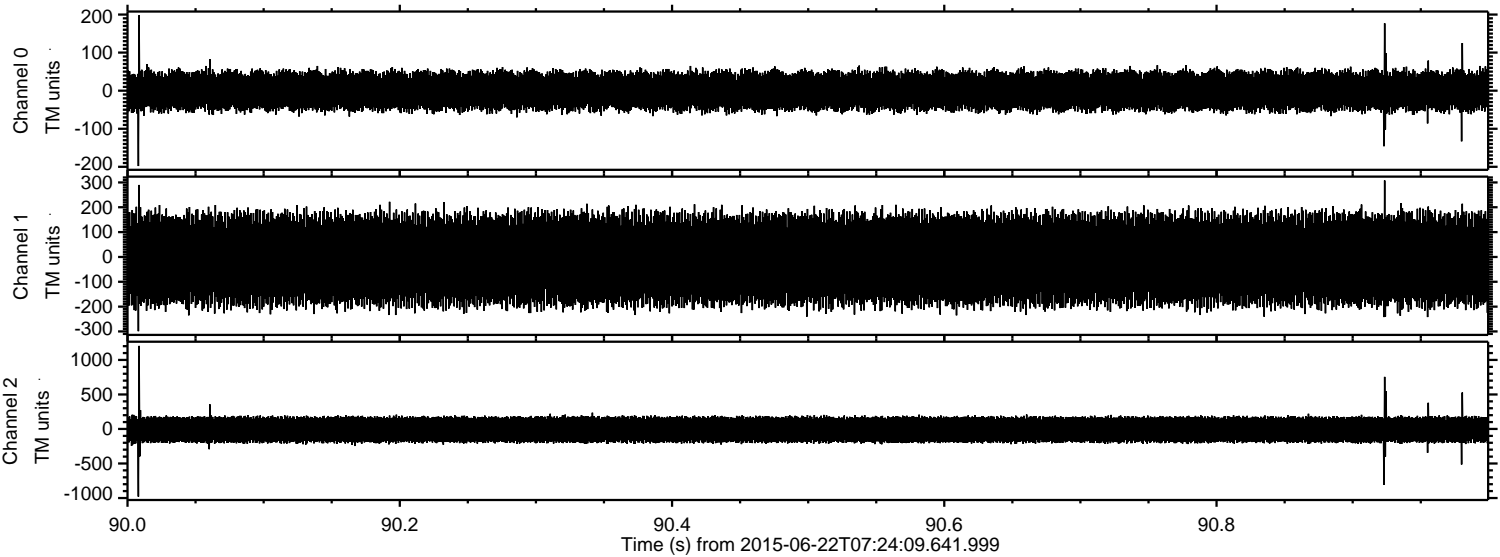


Processed Mon Jun 22 09:31:04 2015 by ELM ver.2012-10-06 from 001\_\_elm20150622\_072408\_\_dat00.bin



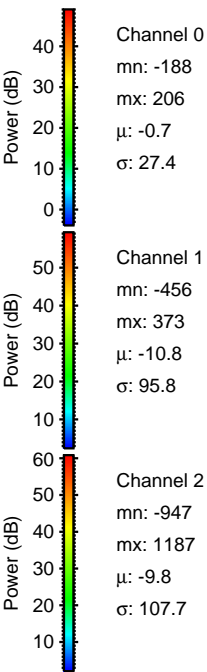
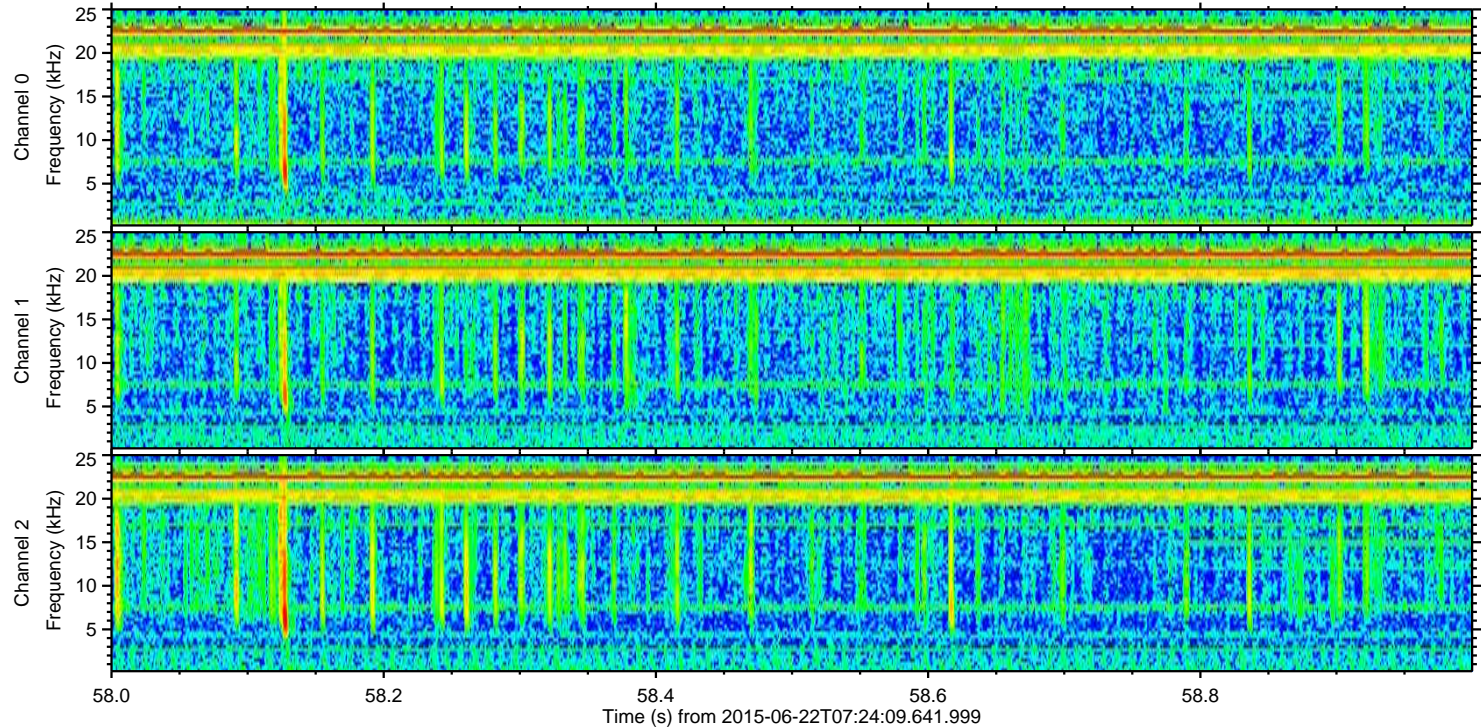
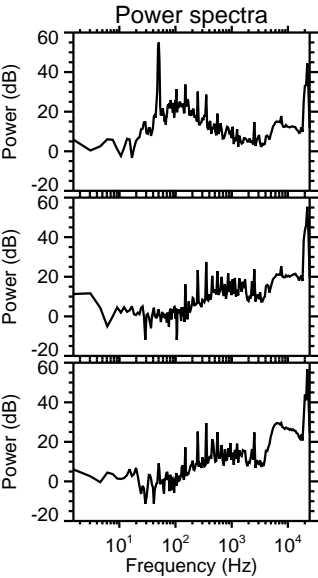
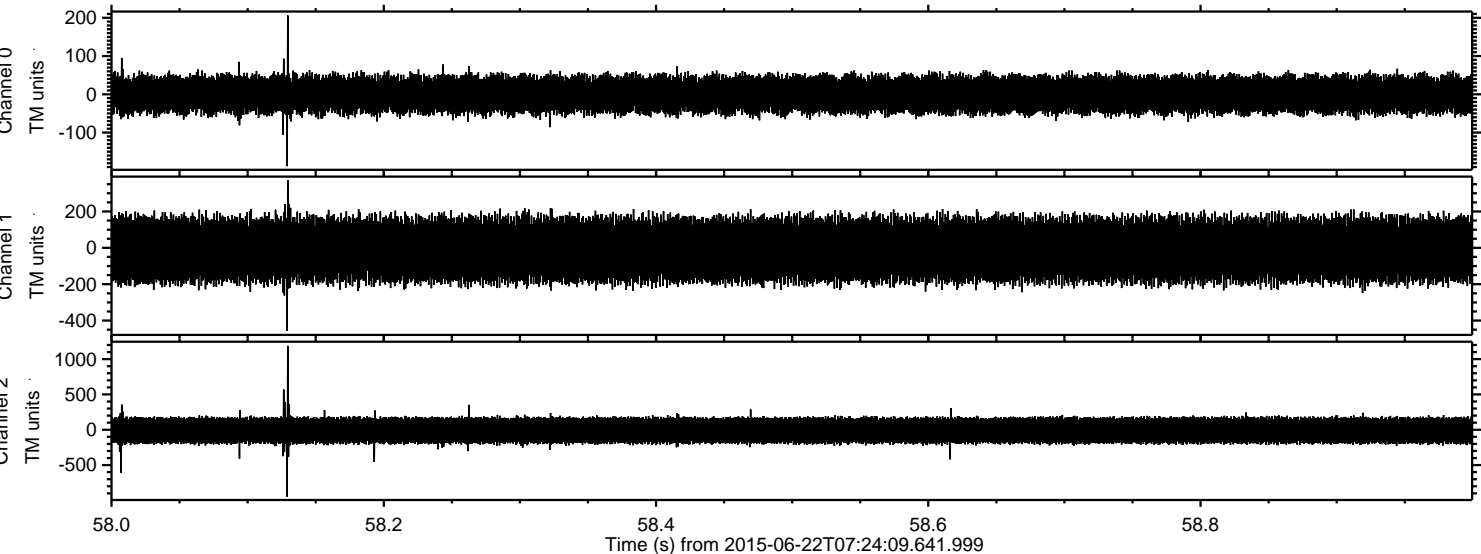


Processed Mon Jun 22 09:31:05 2015 by ELM ver.2012-10-06 from 001\_\_elm20150622\_072408\_\_dat00.bin





Processed Mon Jun 22 09:31:06 2015 by ELM ver.2012-10-06 from 001\_\_elm20150622\_072408\_\_dat00.bin





Processed Mon Jun 22 09:31:08 2015 by ELM ver.2012-10-06 from 001\_\_elm20150622\_072408\_\_dat00.bin

