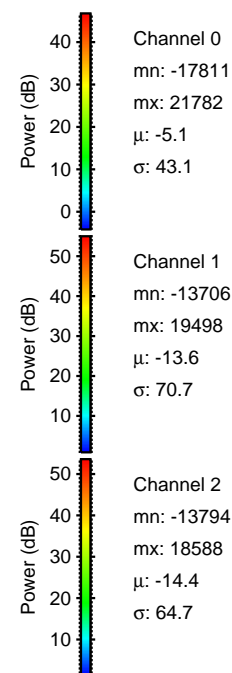
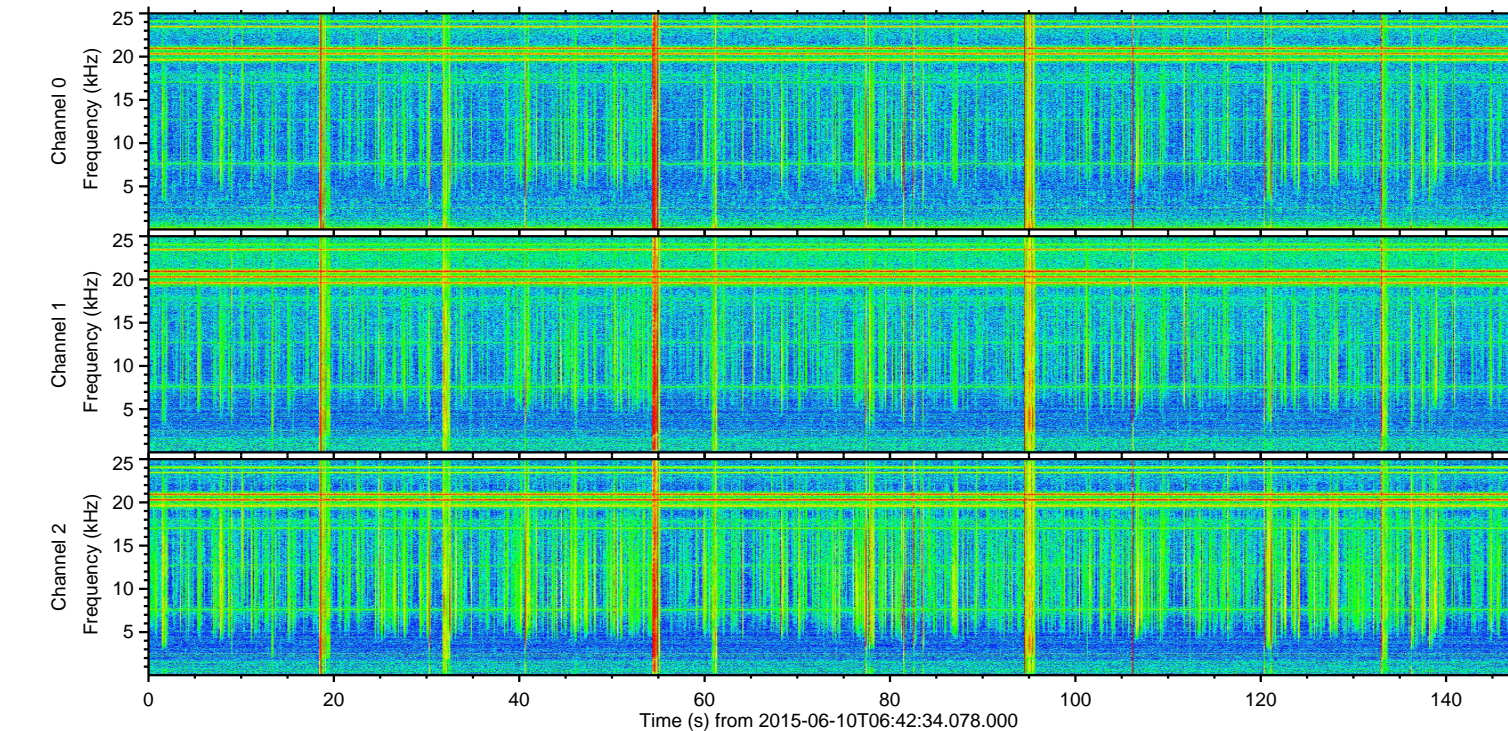
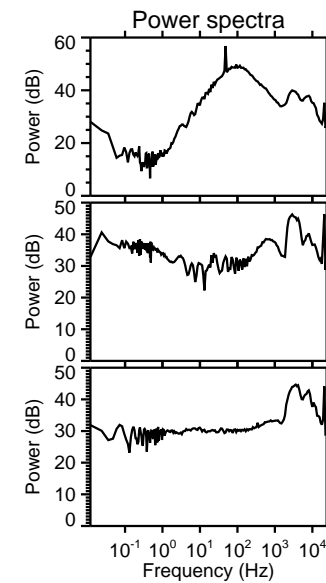
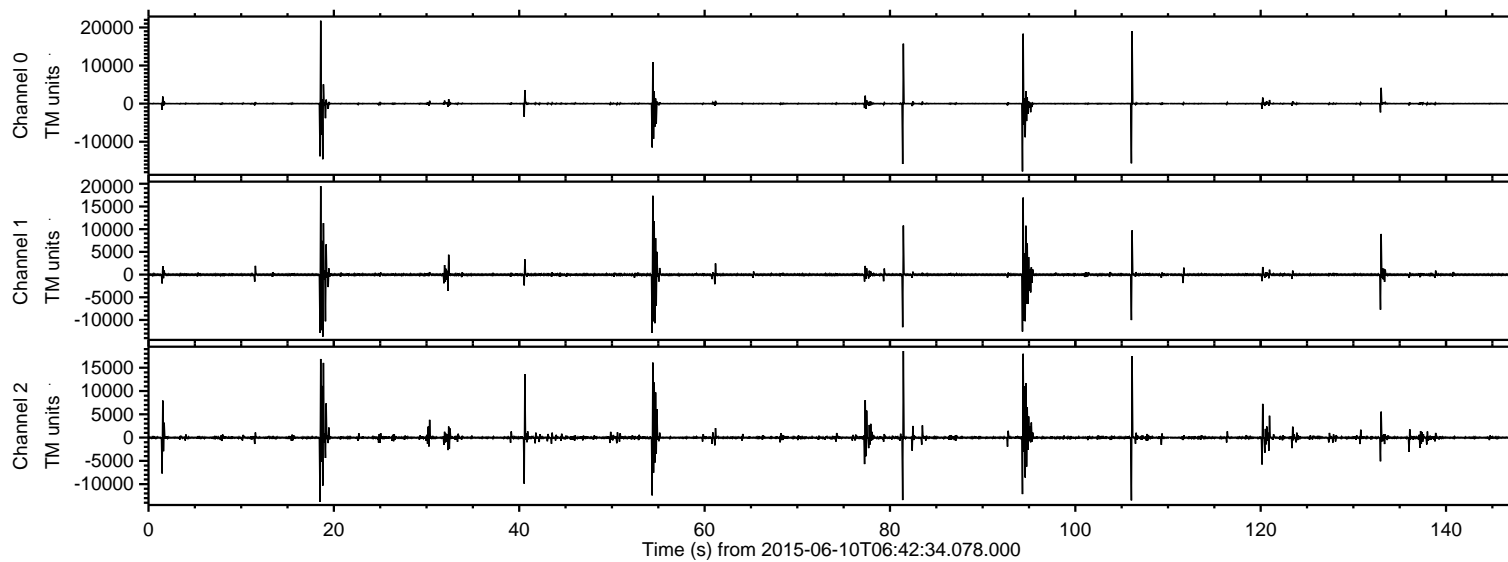
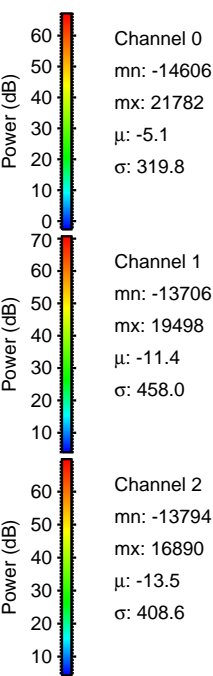
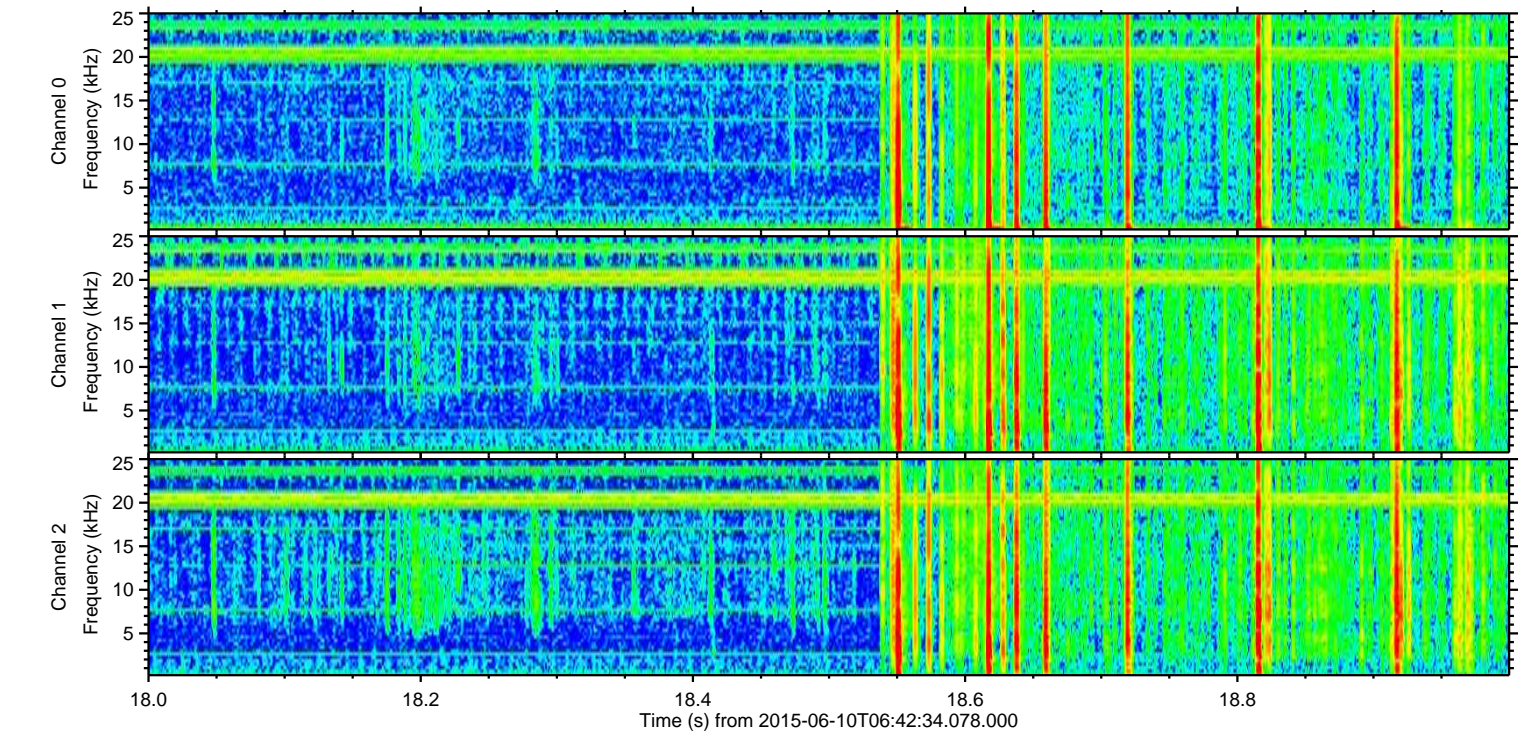
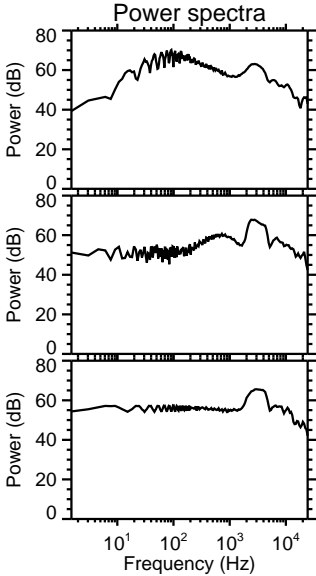
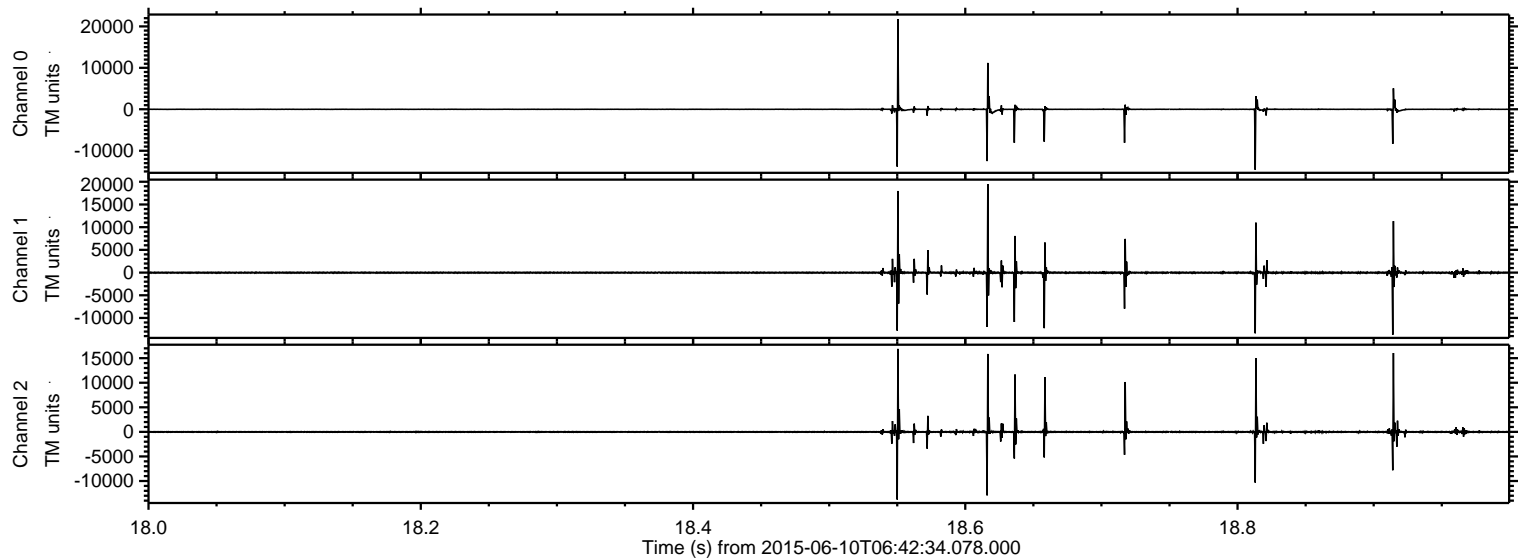


ELMAVAN 3D WAVEFORMS (Measured data sampled at 50 kHz) 51000 packets of 144 samples from 2015-06-10T06:42:34.078.000.

Processed Wed Jun 10 08:48:24 2015 by ELM ver.2012-10-06 from 001__elm20150610_064233__dat00.bin

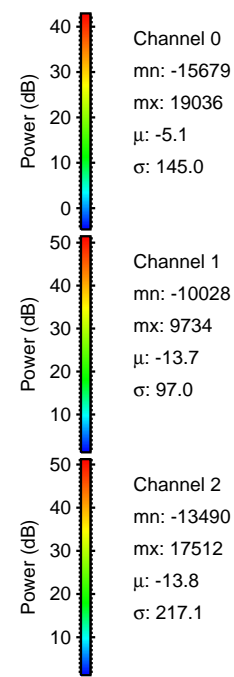
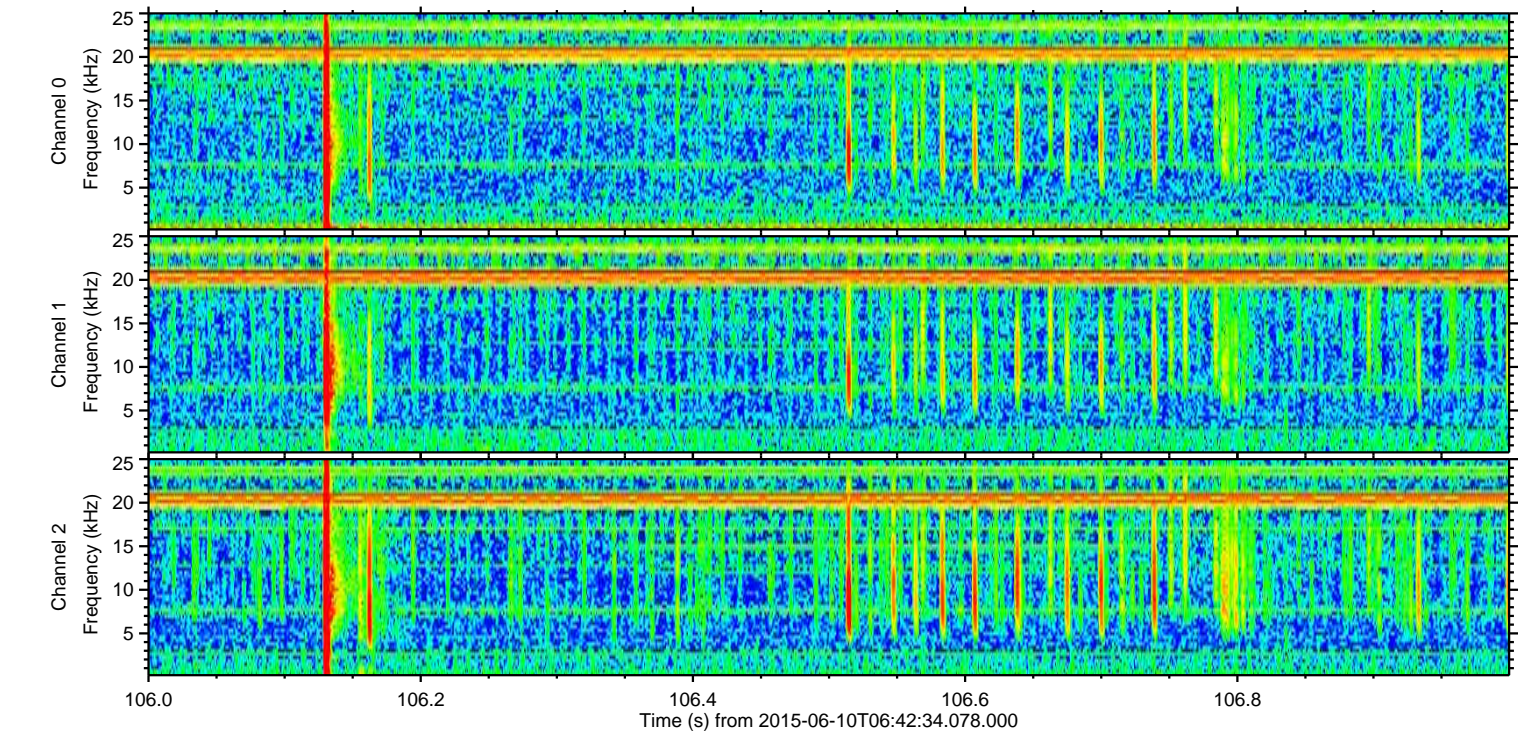
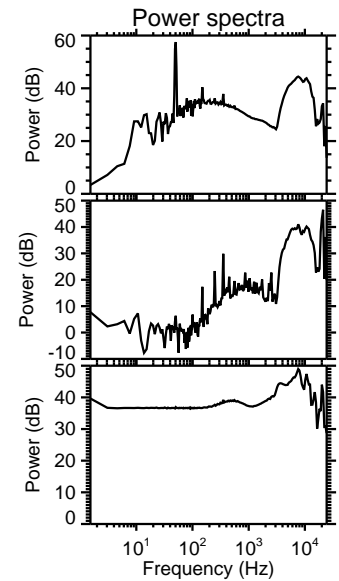
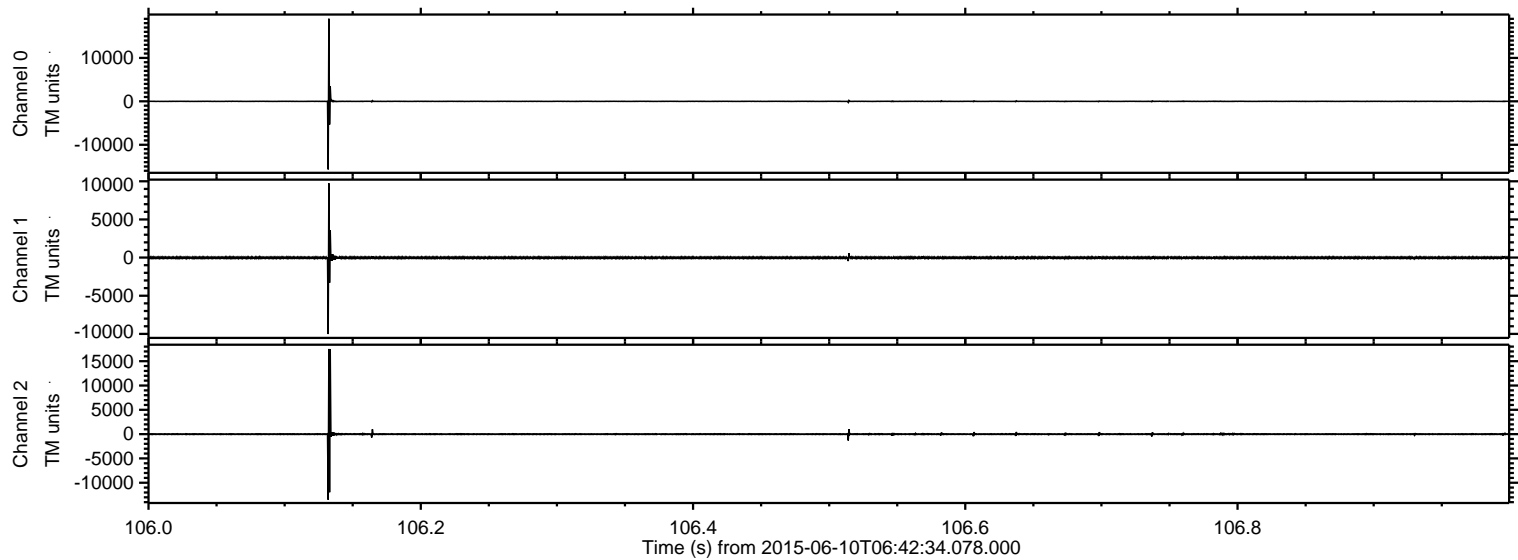


Processed Wed Jun 10 08:48:39 2015 by ELM ver.2012-10-06 from 001__elm20150610_064233__dat00.bin

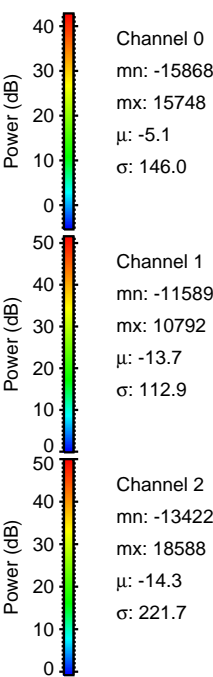
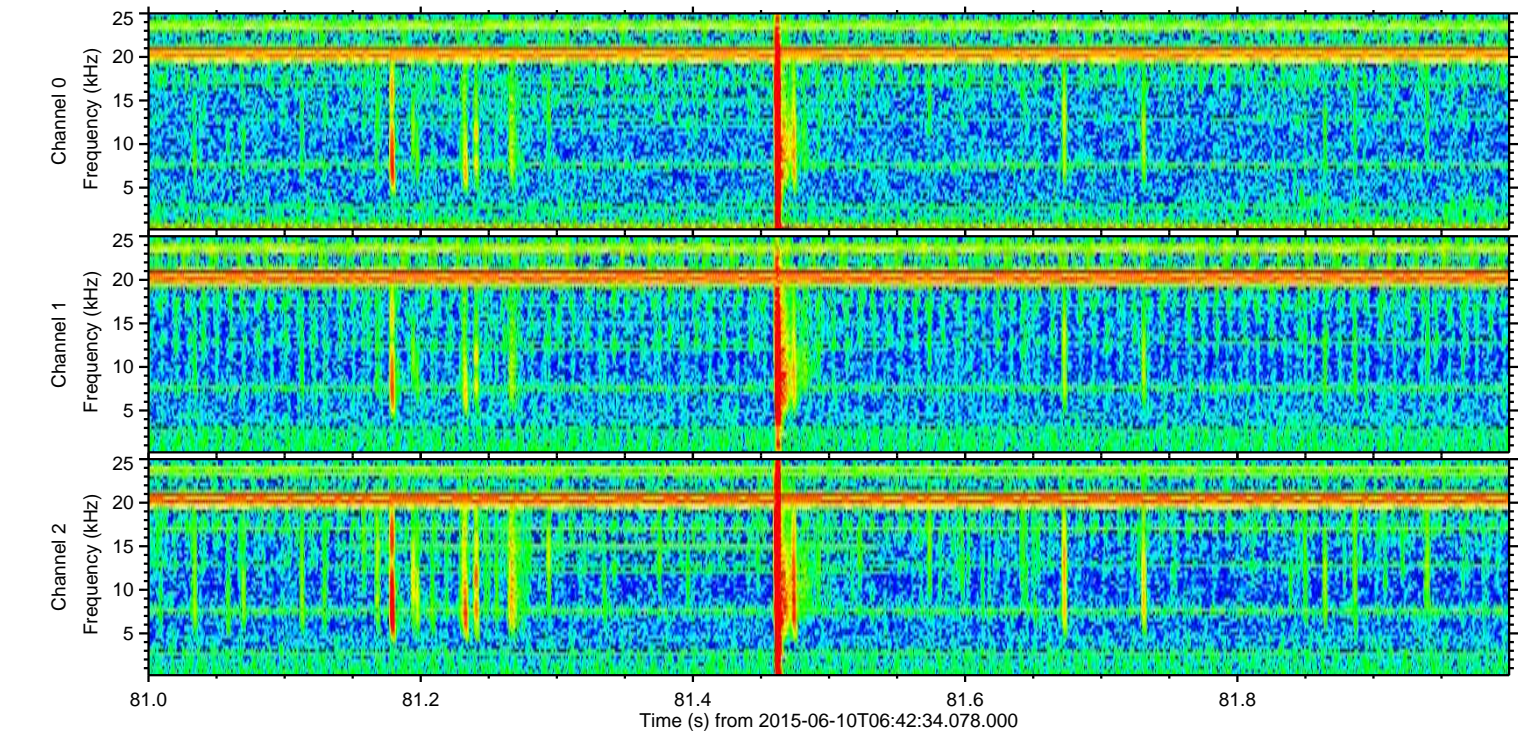
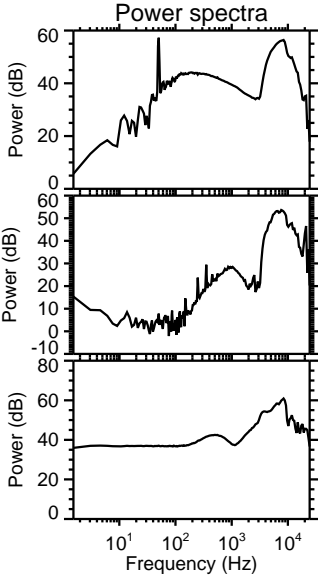
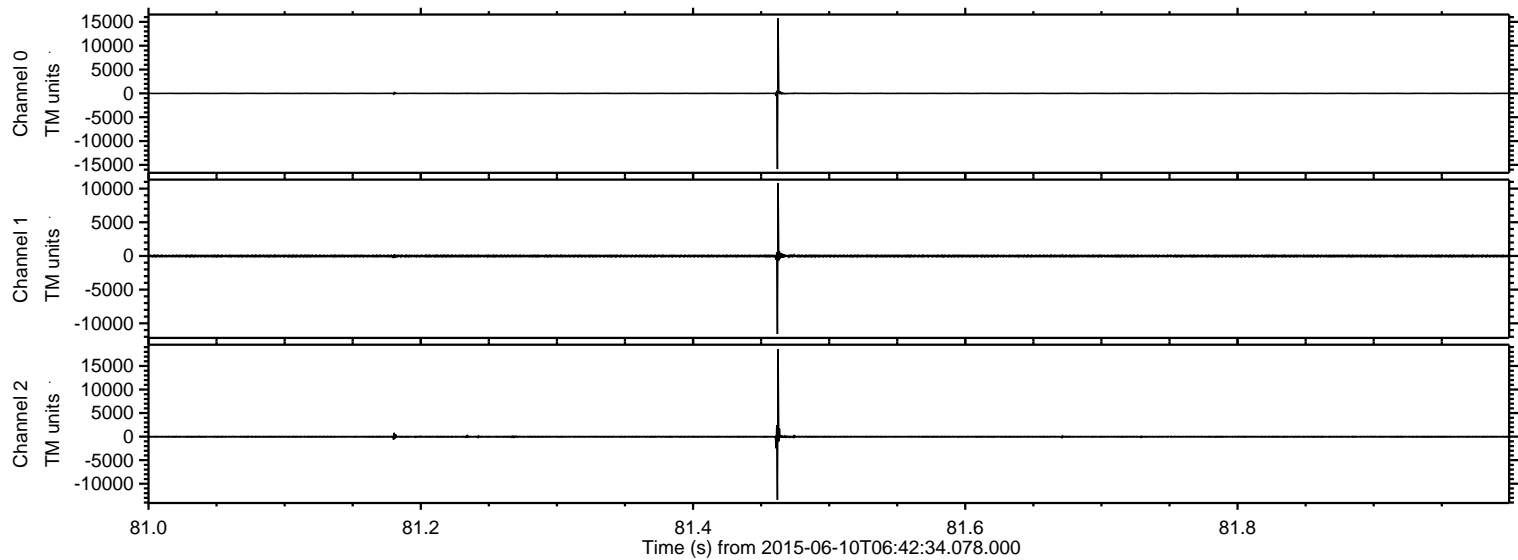


ELMAVAN 3D WAVEFORMS (Measured data sampled at 50 kHz) 51000 packets of 144 samples from 2015-06-10T06:42:34.078.000. Part 107/147

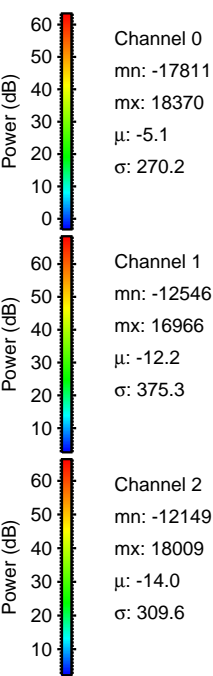
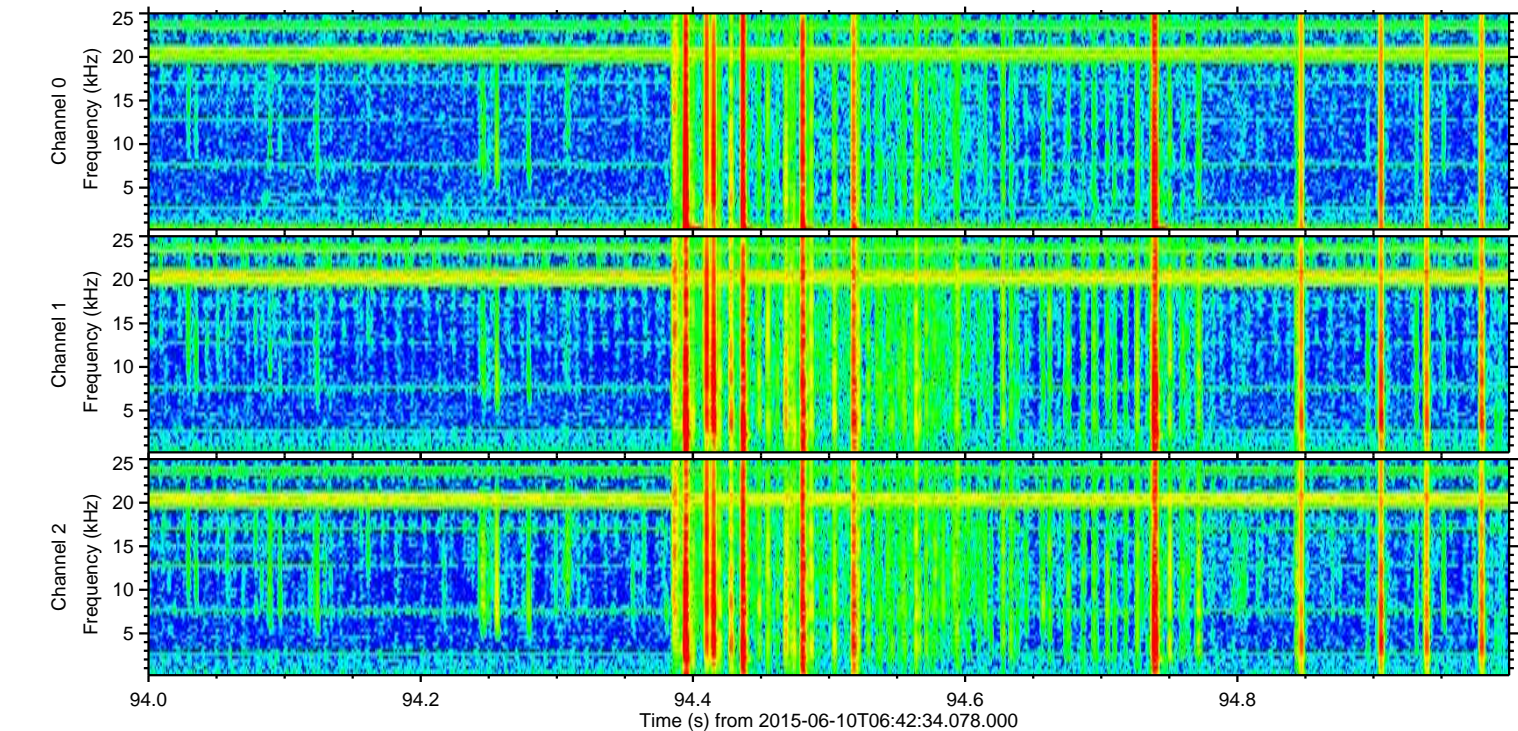
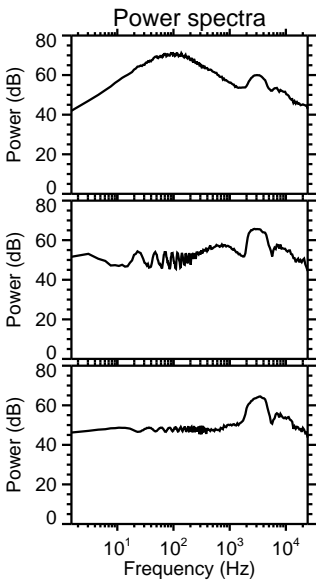
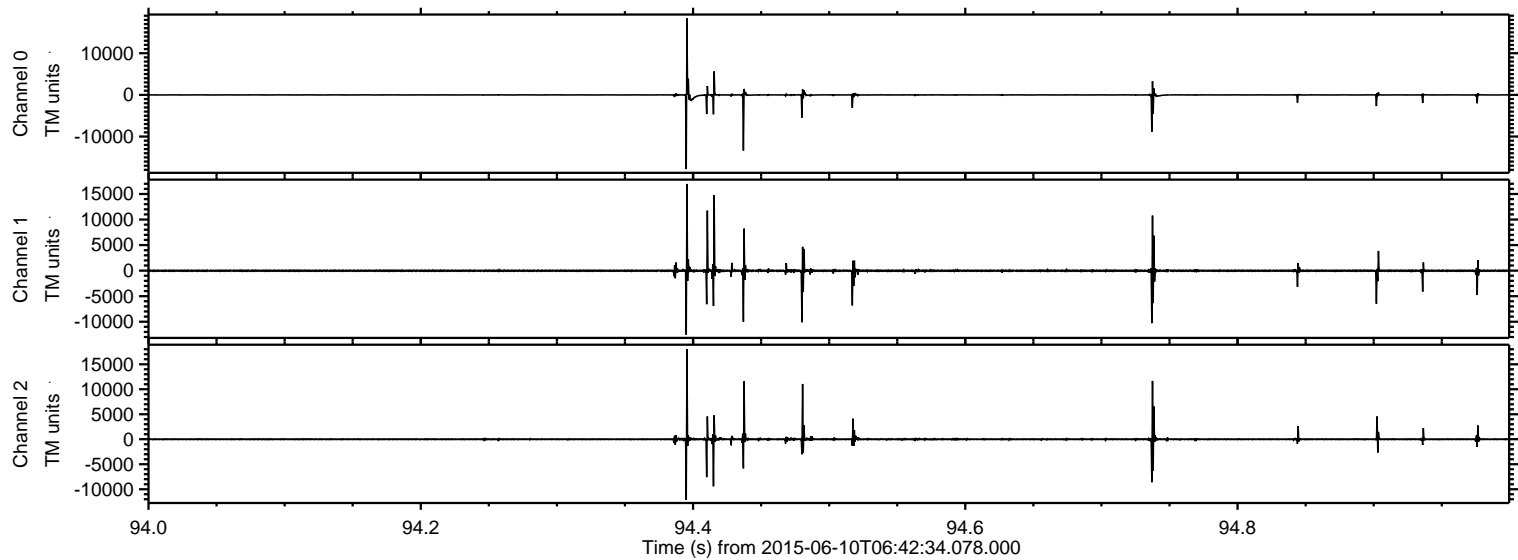
Processed Wed Jun 10 08:48:40 2015 by ELM ver.2012-10-06 from 001__elm20150610_064233__dat00.bin



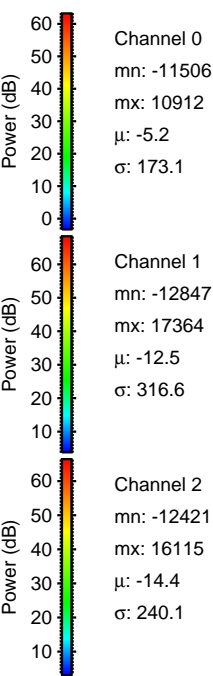
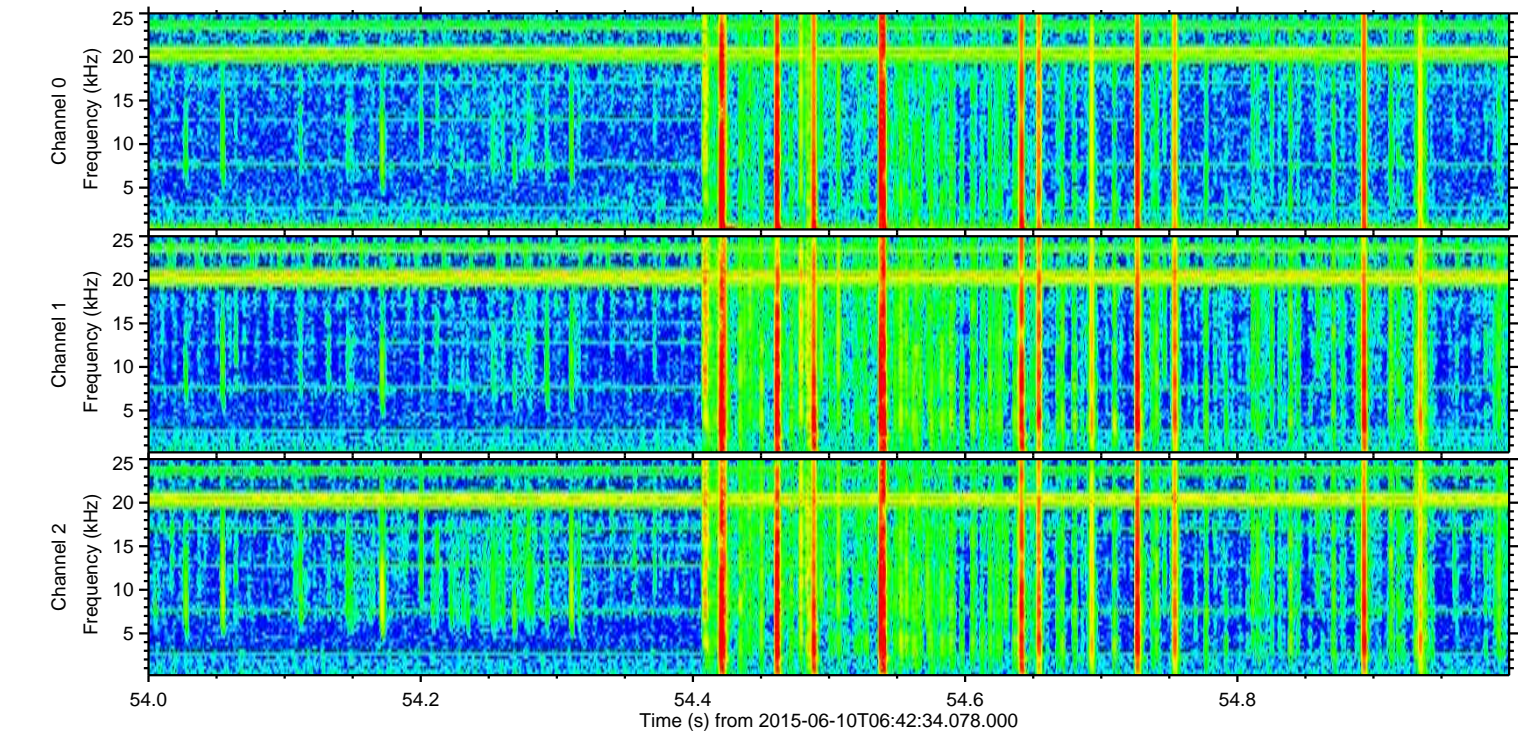
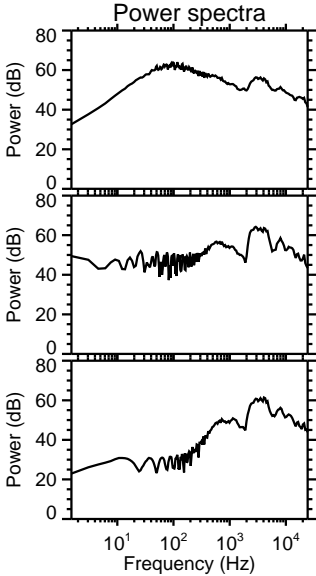
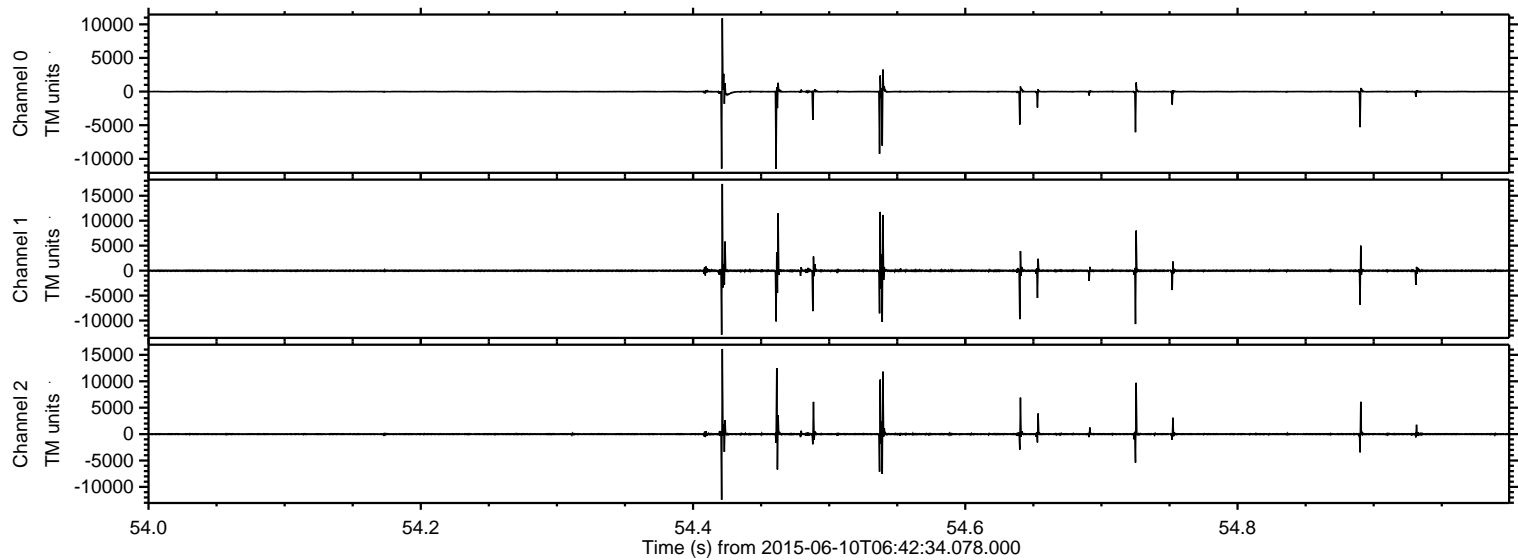
Processed Wed Jun 10 08:48:41 2015 by ELM ver.2012-10-06 from 001__elm20150610_064233__dat00.bin



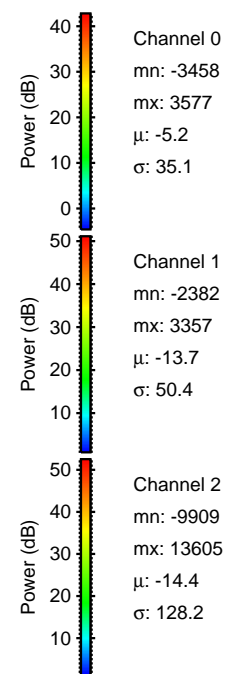
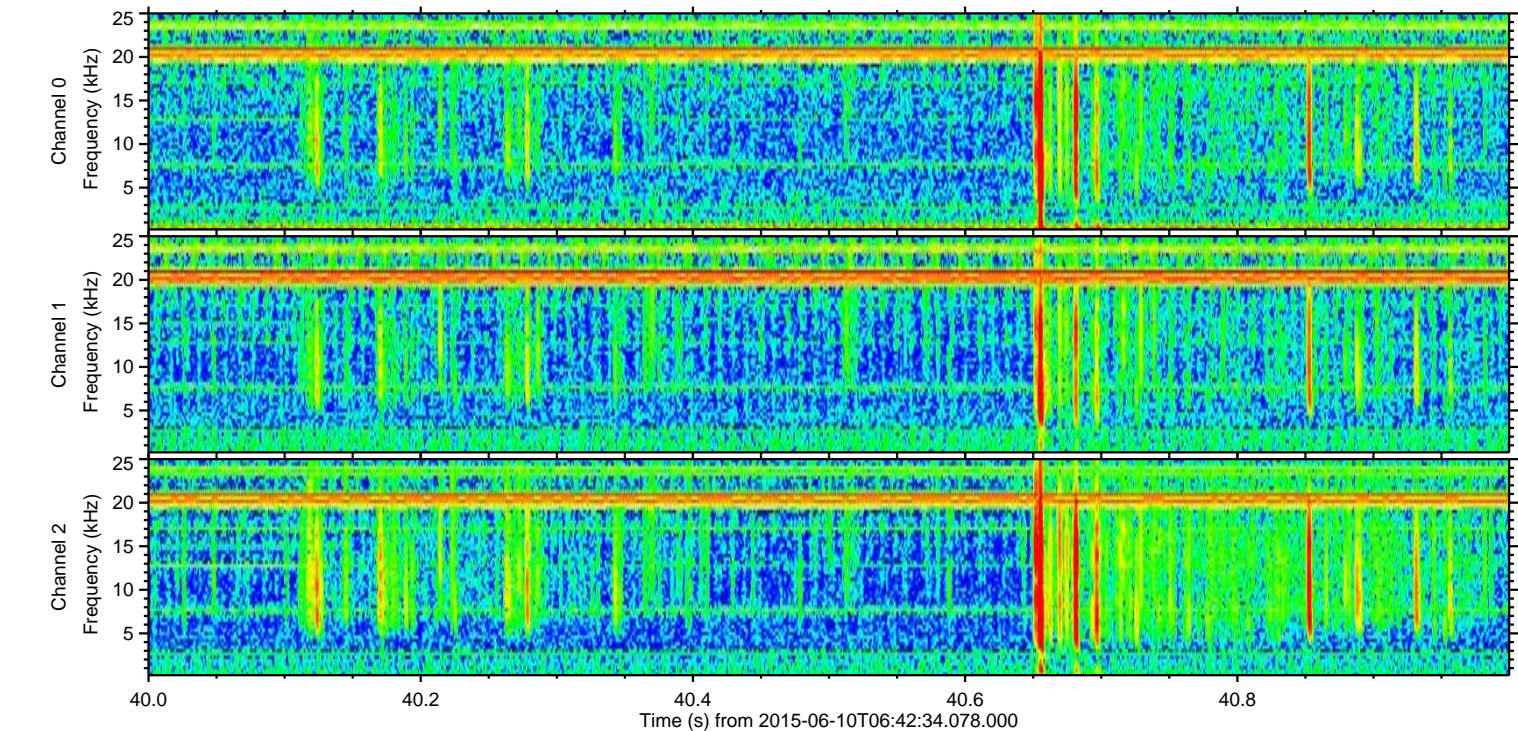
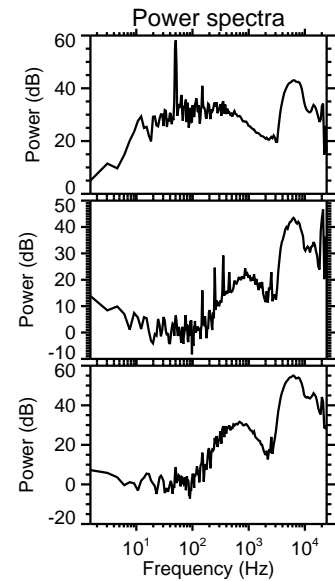
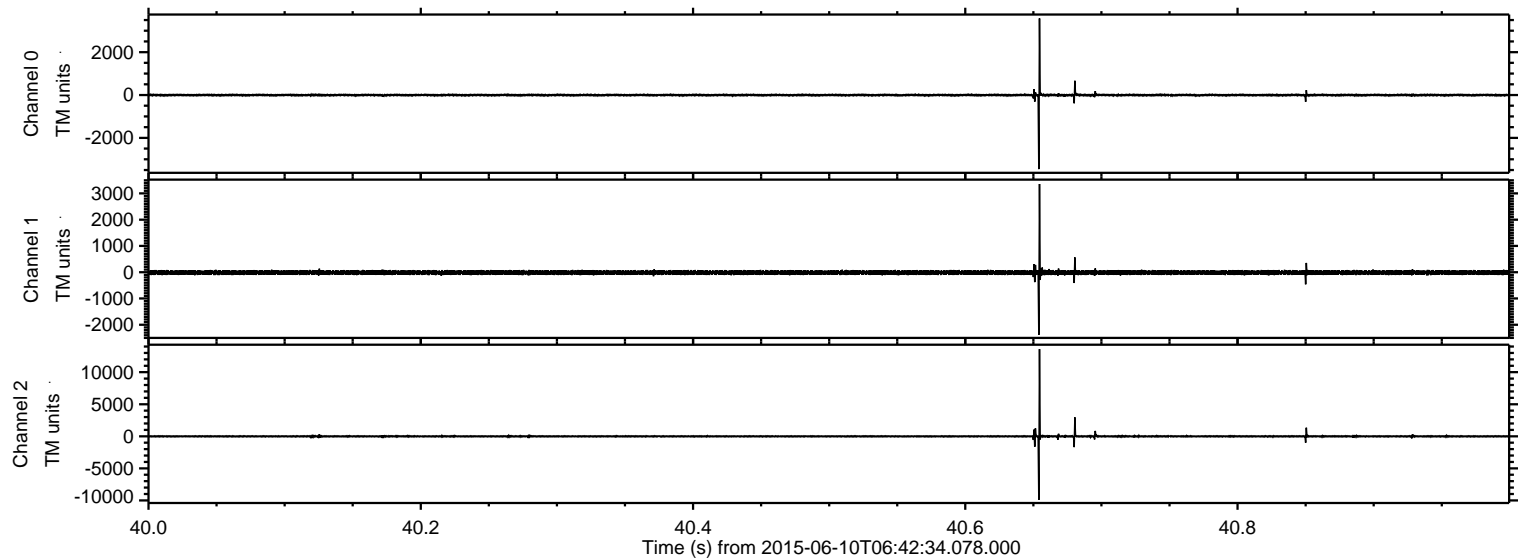
Processed Wed Jun 10 08:48:42 2015 by ELM ver.2012-10-06 from 001__elm20150610_064233__dat00.bin



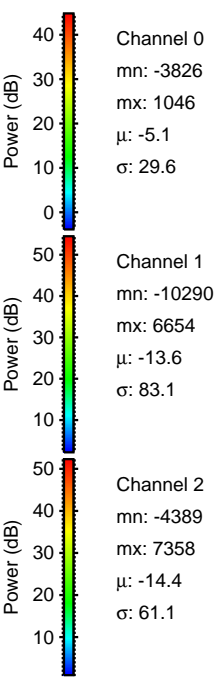
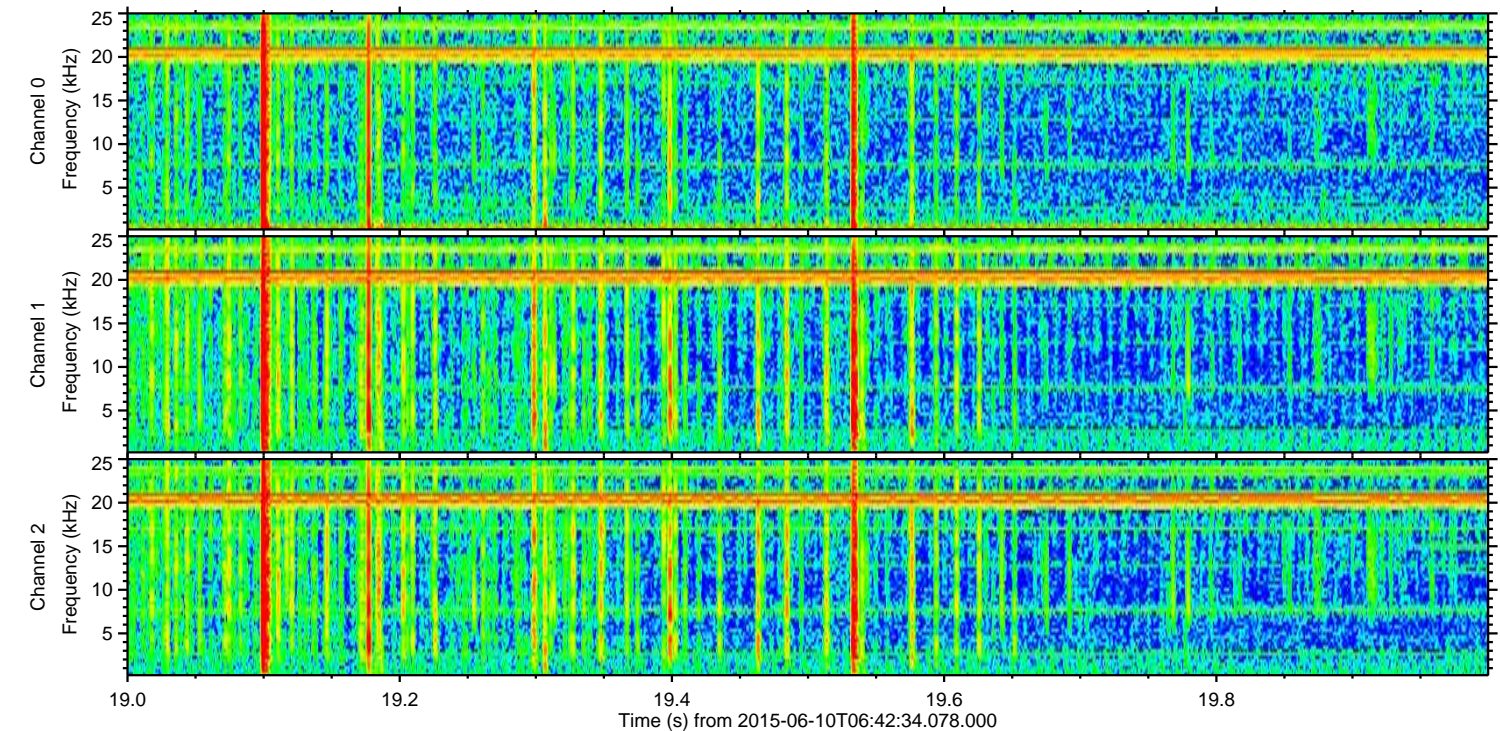
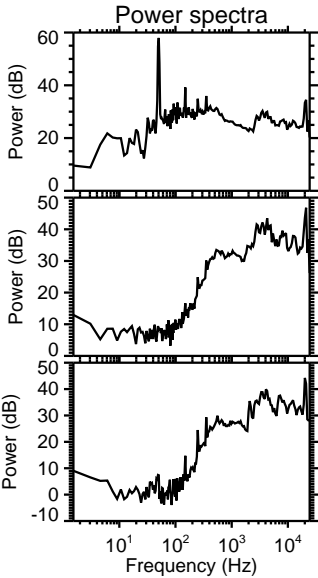
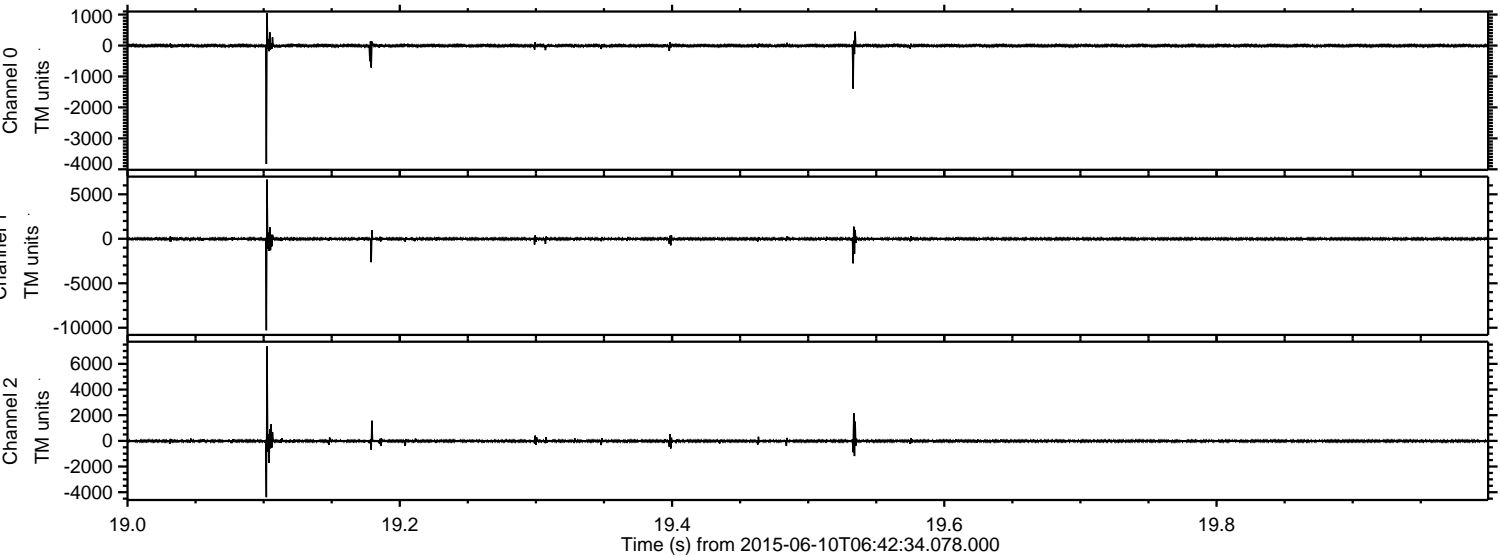
Processed Wed Jun 10 08:48:43 2015 by ELM ver.2012-10-06 from 001__elm20150610_064233__dat00.bin



Processed Wed Jun 10 08:48:44 2015 by ELM ver.2012-10-06 from 001__elm20150610_064233__dat00.bin

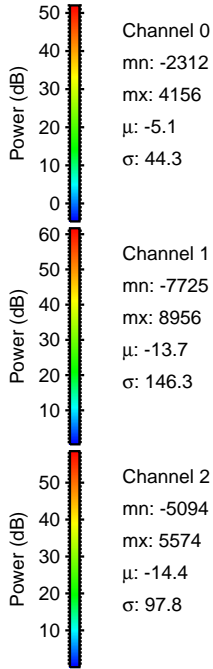
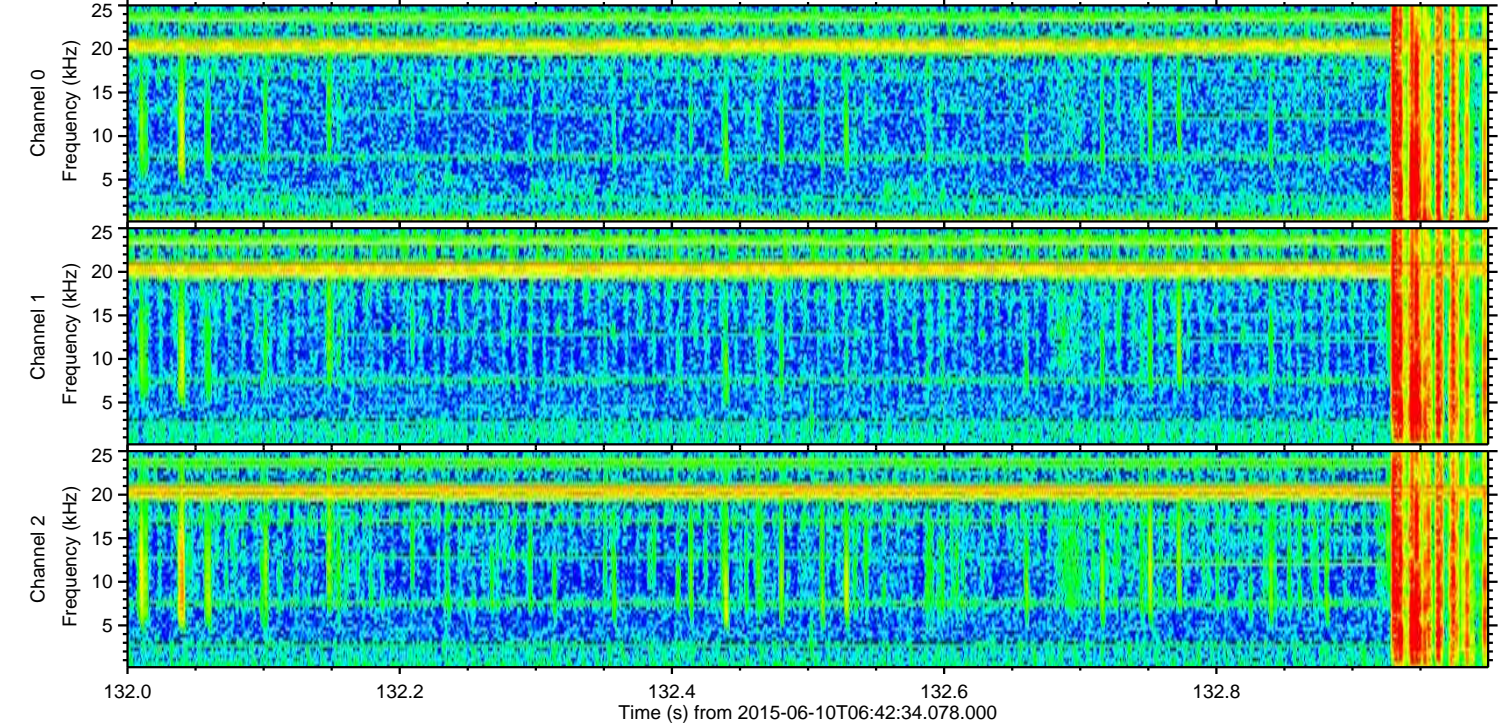
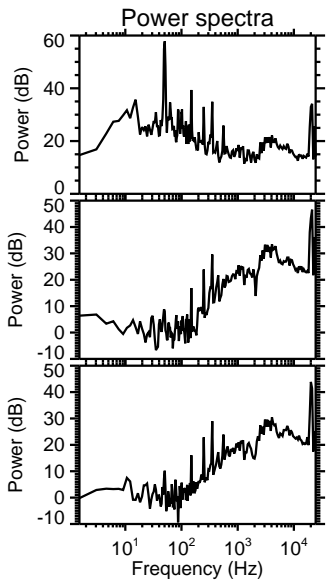
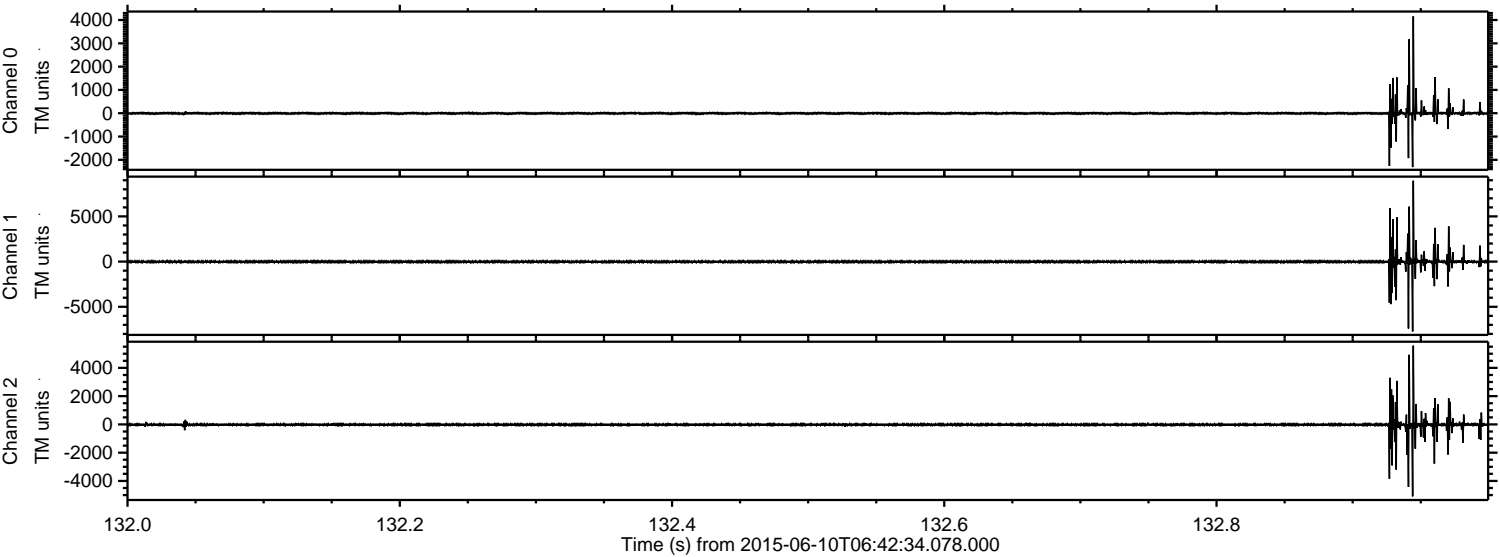


Processed Wed Jun 10 08:48:45 2015 by ELM ver.2012-10-06 from 001__elm20150610_064233__dat00.bin

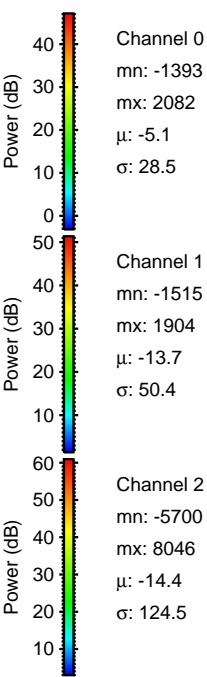
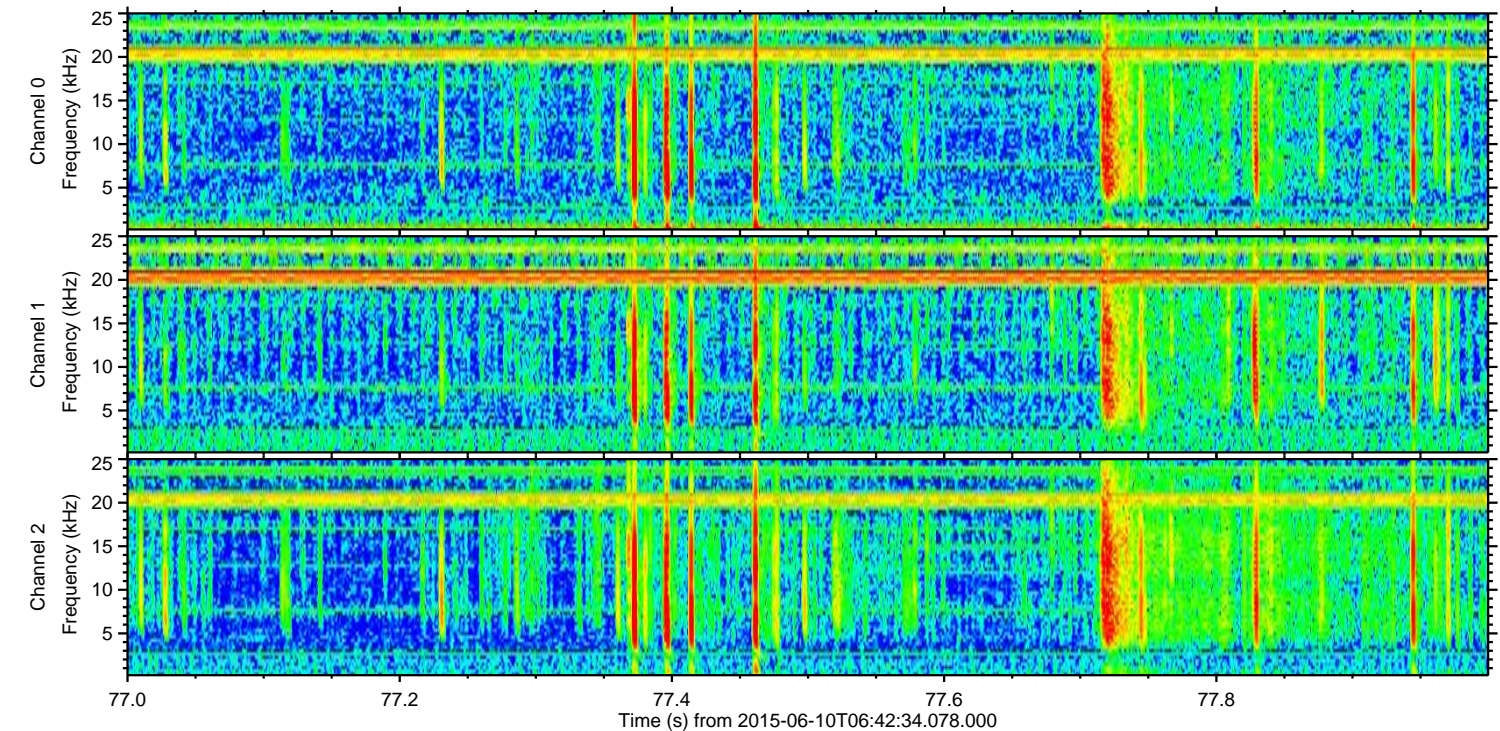
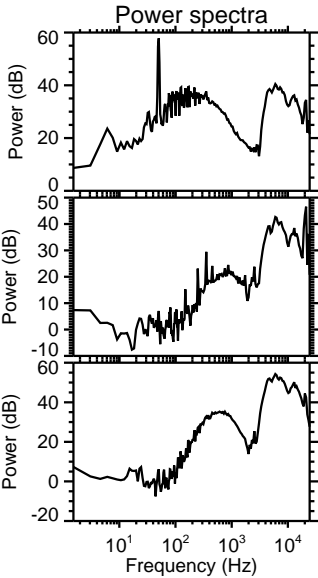
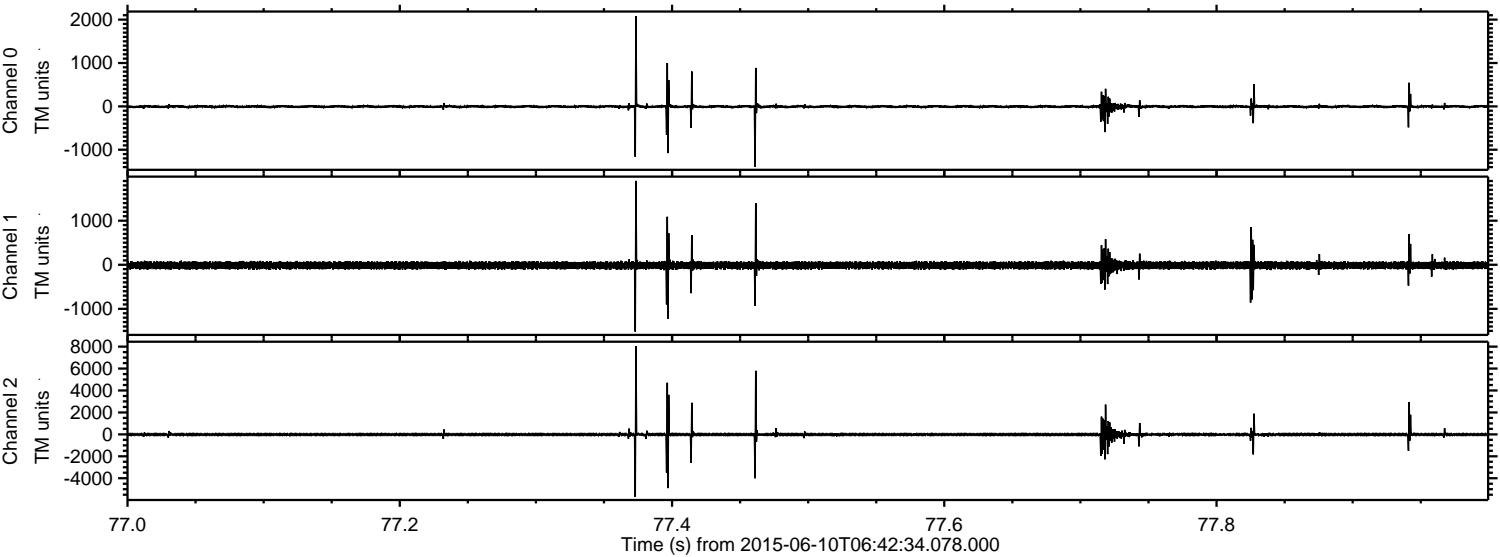


ELMAVAN 3D WAVEFORMS (Measured data sampled at 50 kHz) 51000 packets of 144 samples from 2015-06-10T06:42:34.078.000. Part 133/147

Processed Wed Jun 10 08:48:47 2015 by ELM ver.2012-10-06 from 001__elm20150610_064233__dat00.bin



Processed Wed Jun 10 08:48:48 2015 by ELM ver.2012-10-06 from 001__elm20150610_064233__dat00.bin



Channel 0
mn: -1393
mx: 2082
 μ : -5.1
 σ : 28.5

Channel 1
mn: -1515
mx: 1904
 μ : -13.7
 σ : 50.4

Channel 2
mn: -5700
mx: 8046
 μ : -14.4
 σ : 124.5

Processed Wed Jun 10 08:48:49 2015 by ELM ver.2012-10-06 from 001__elm20150610_064233__dat00.bin

