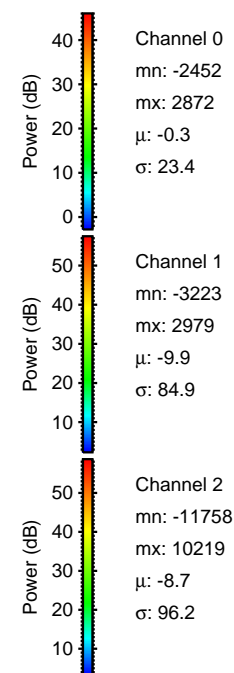
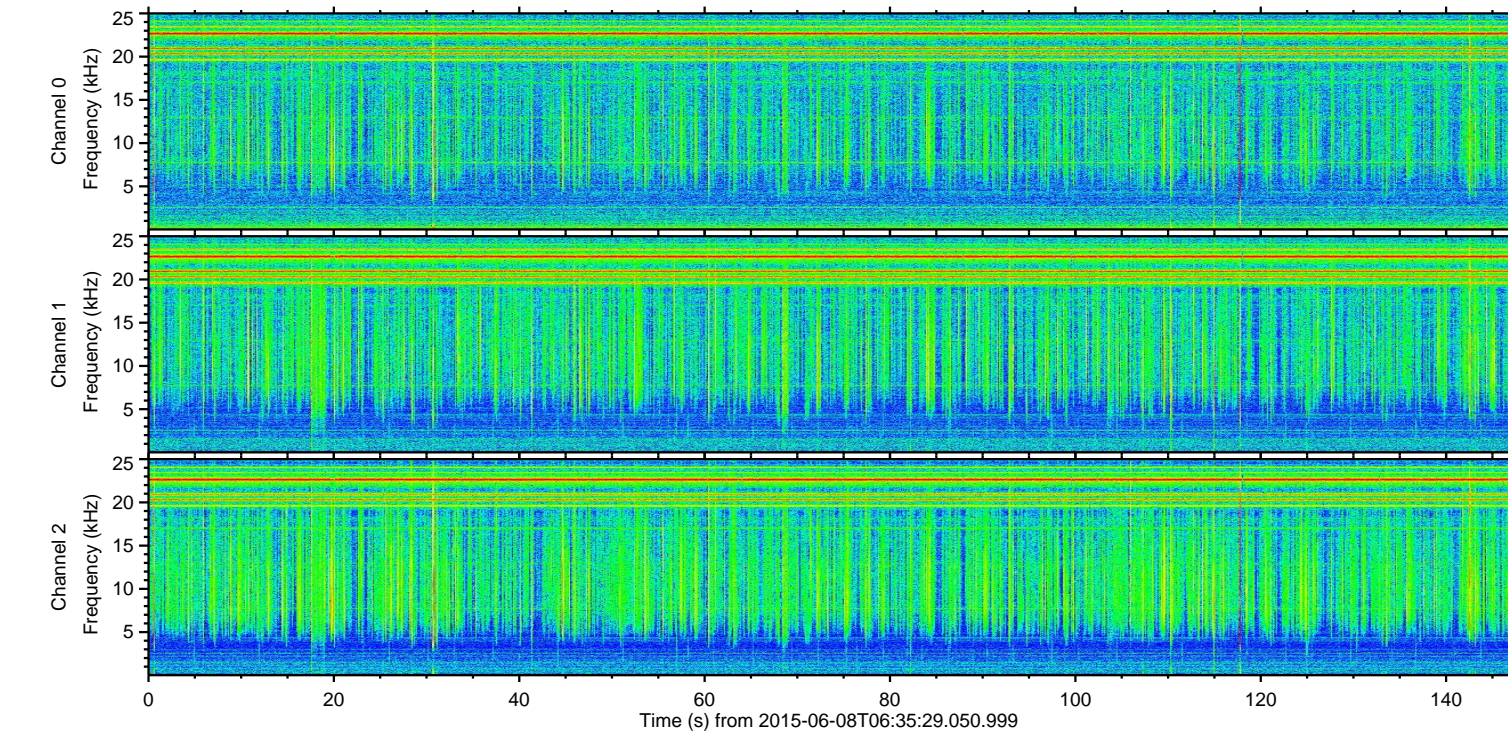
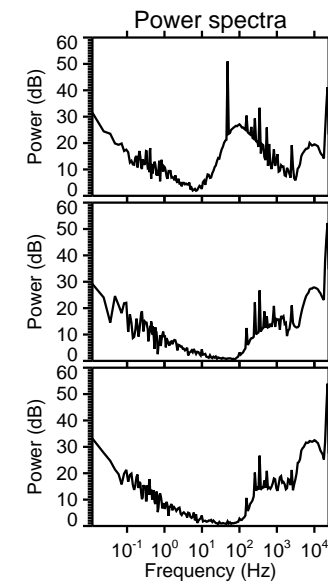
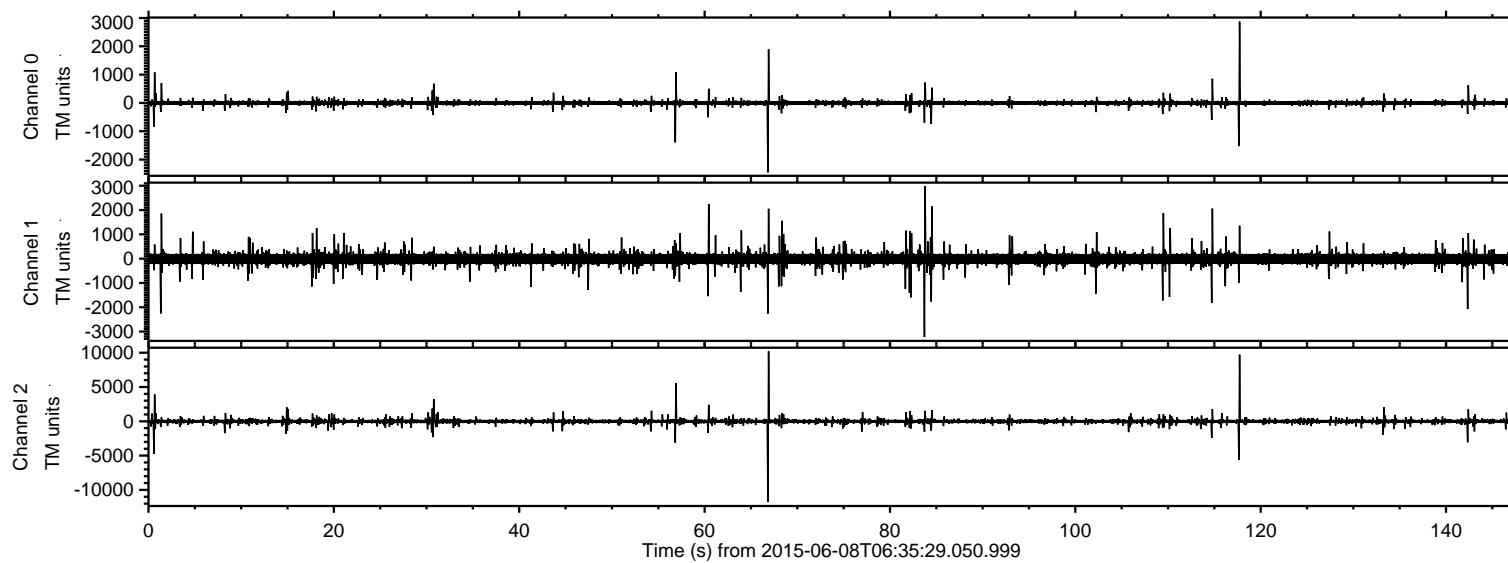


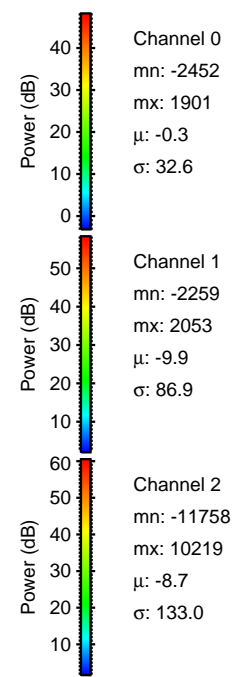
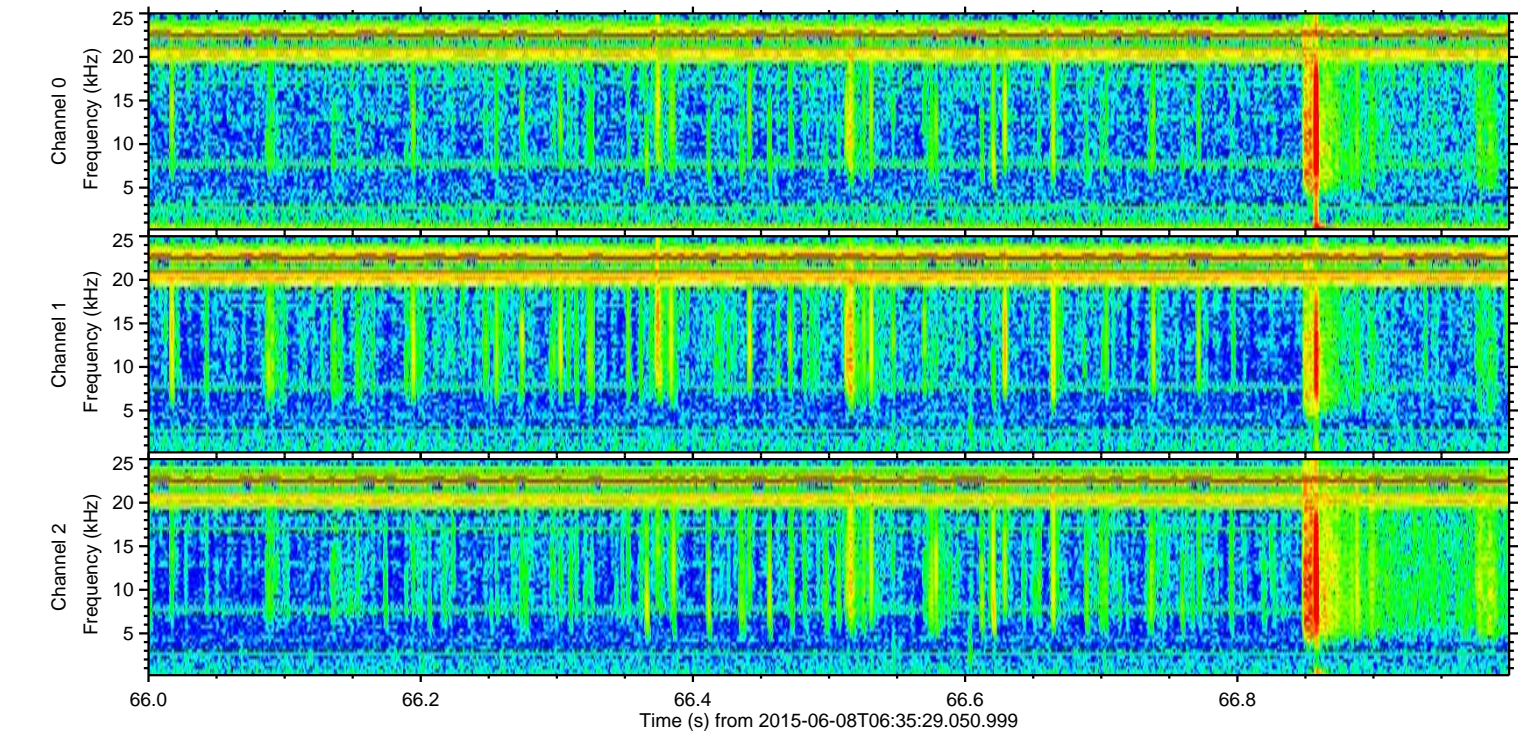
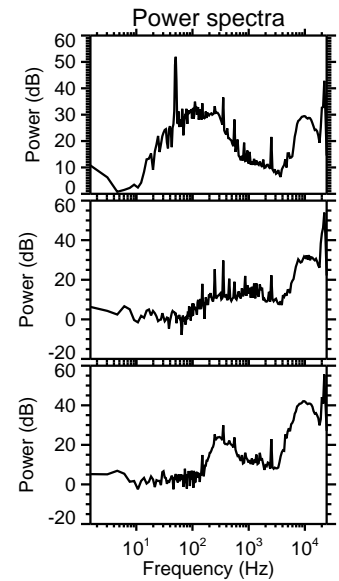
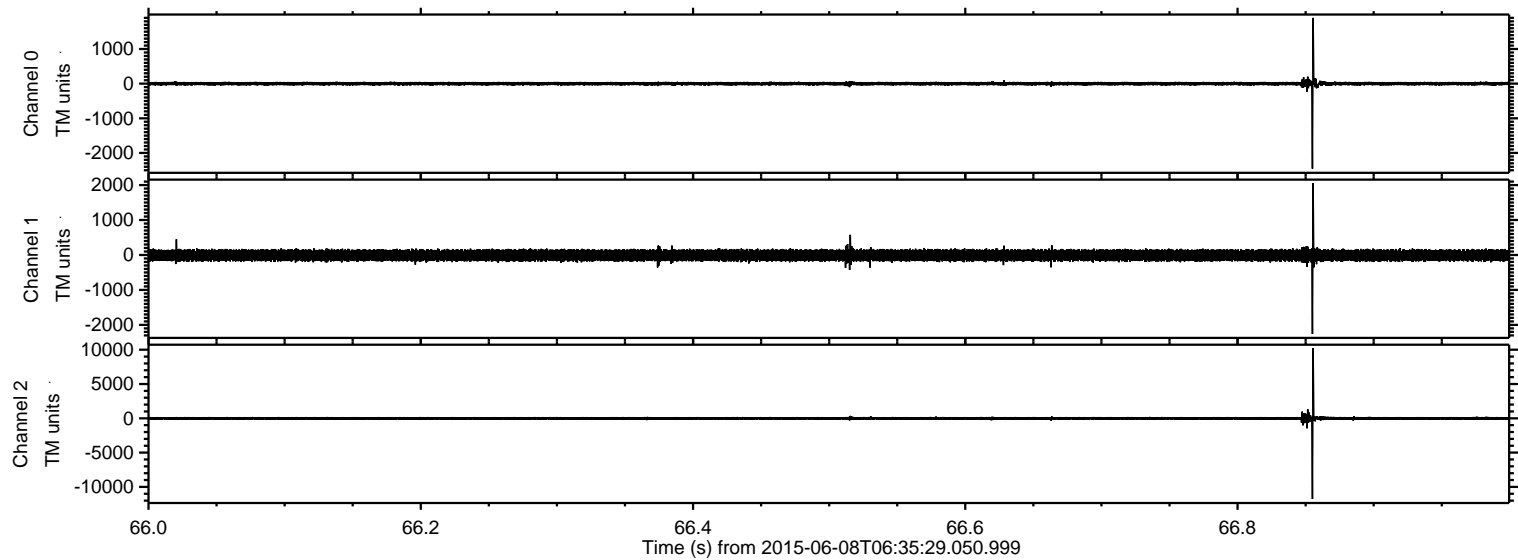
# ELMAVAN 3D WAVEFORMS (Measured data sampled at 50 kHz) 51000 packets of 144 samples from 2015-06-08T06:35:29.050.999.

Processed Mon Jun 8 08:41:55 2015 by ELM ver.2012-10-06 from 001\_\_elm20150608\_063528\_\_dat00.bin





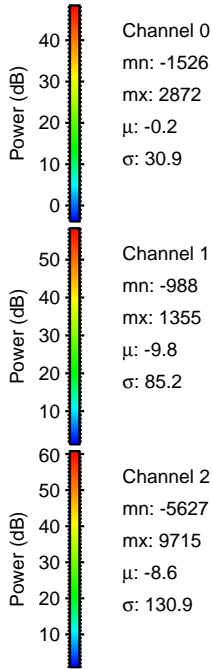
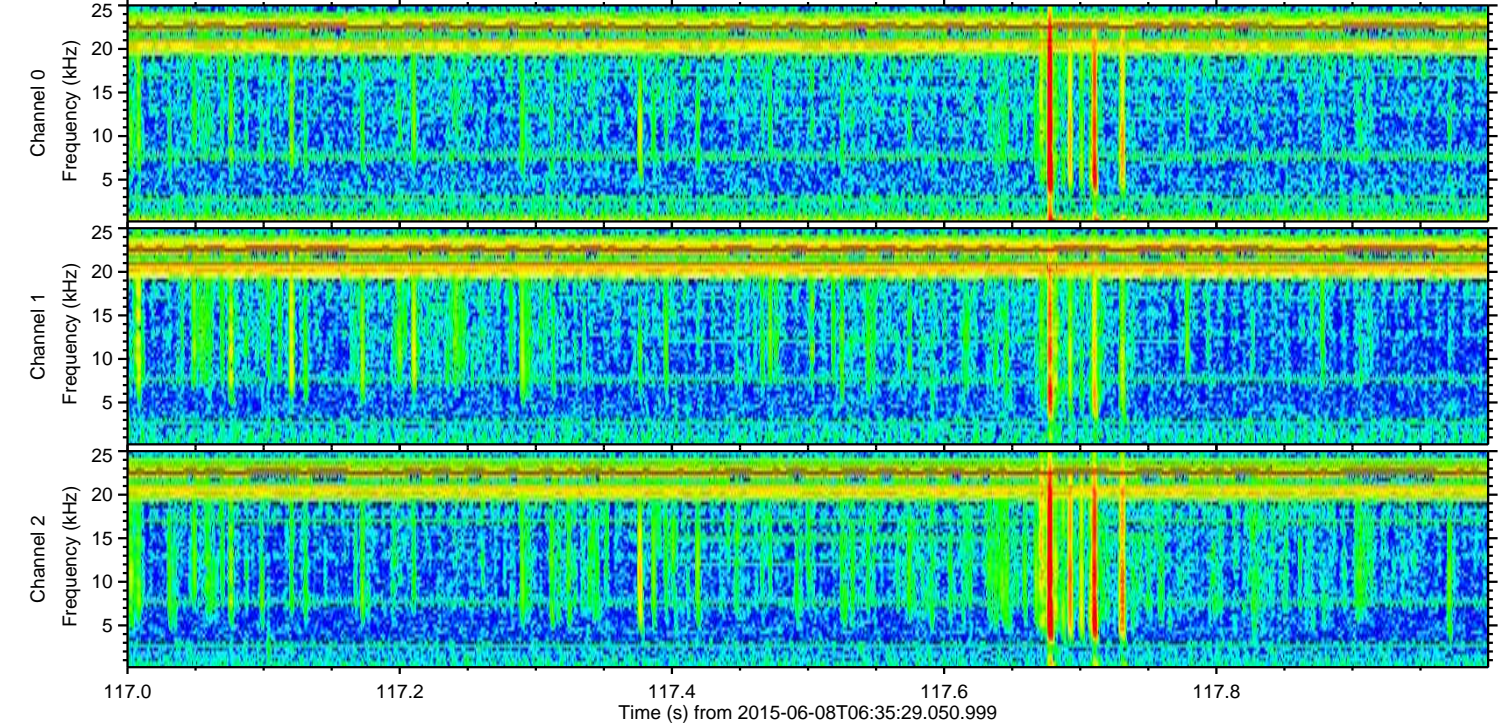
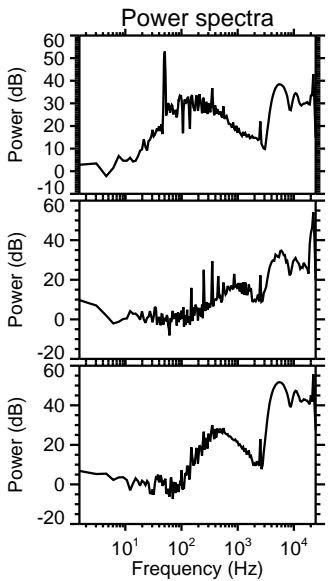
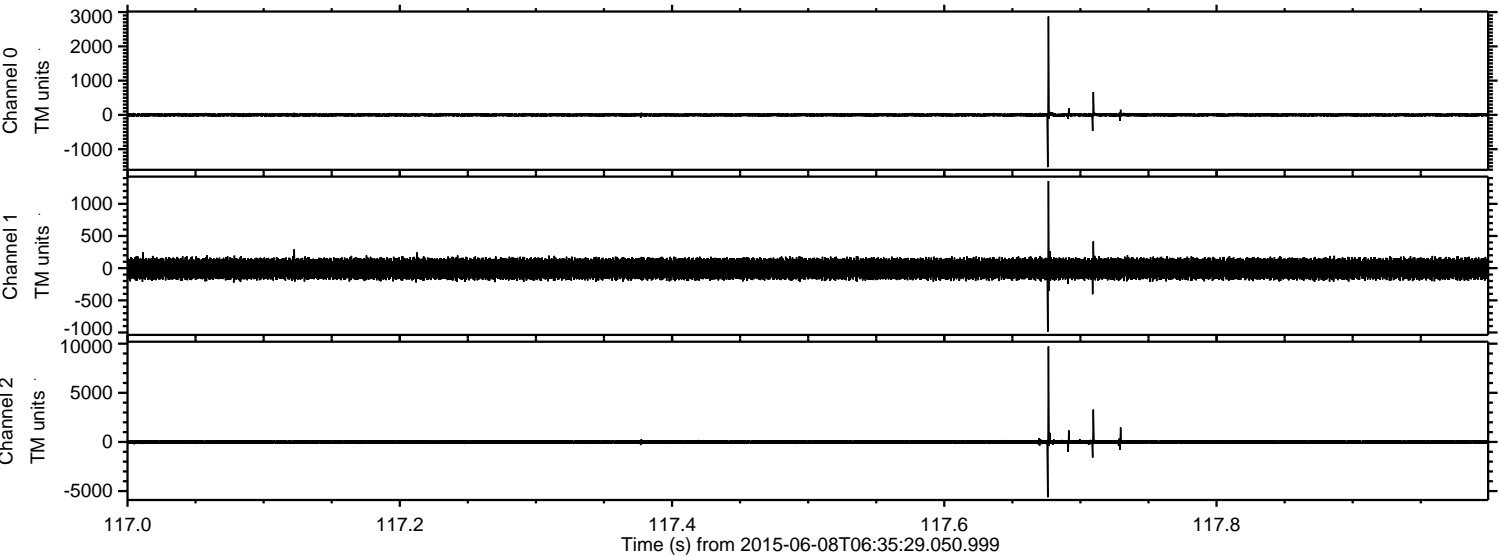
Processed Mon Jun 8 08:42:06 2015 by ELM ver.2012-10-06 from 001\_\_elm20150608\_063528\_\_dat00.bin





ELMAVAN 3D WAVEFORMS (Measured data sampled at 50 kHz) 51000 packets of 144 samples from 2015-06-08T06:35:29.050.999. Part 118/147

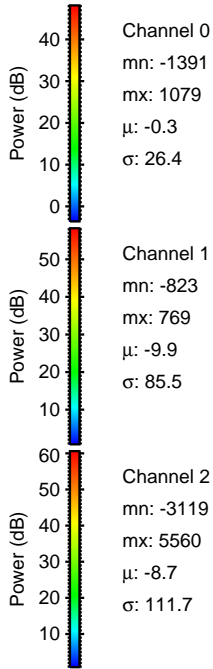
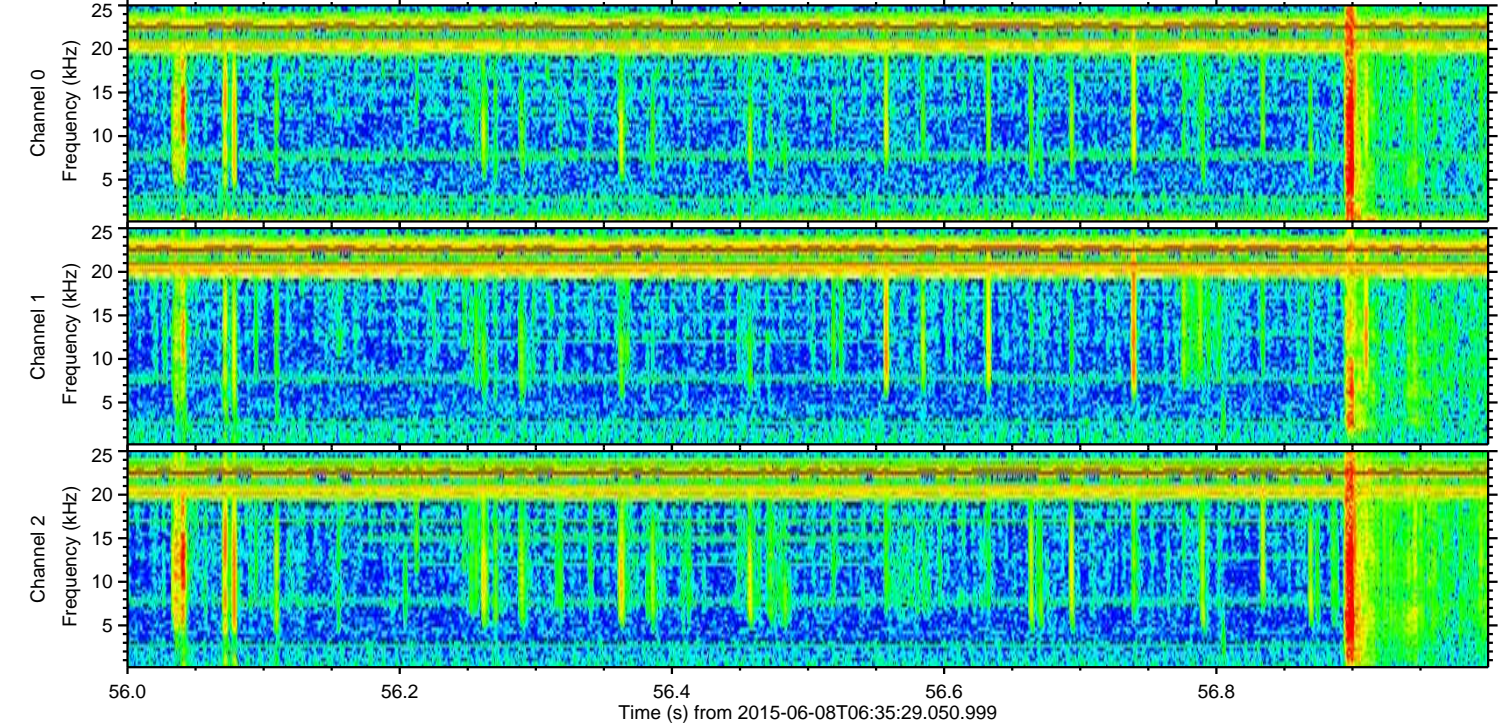
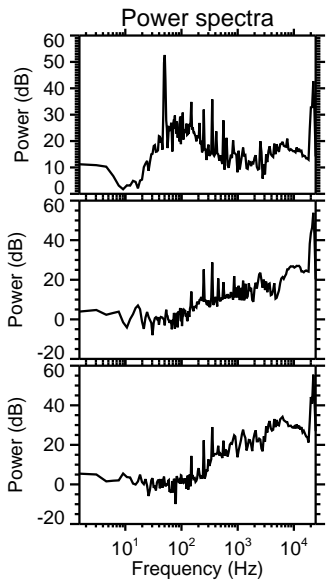
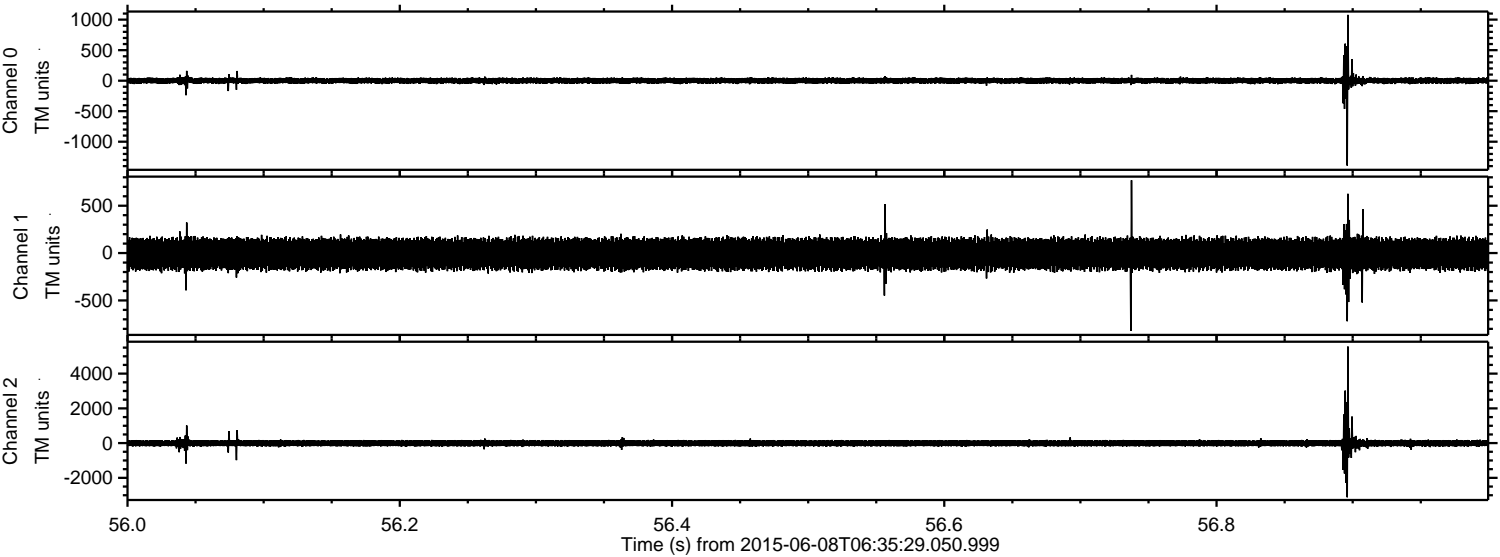
Processed Mon Jun 8 08:42:07 2015 by ELM ver.2012-10-06 from 001\_\_elm20150608\_063528\_\_dat00.bin





ELMAVAN 3D WAVEFORMS (Measured data sampled at 50 kHz) 51000 packets of 144 samples from 2015-06-08T06:35:29.050.999. Part 57/147

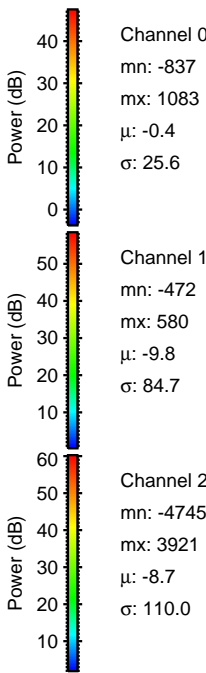
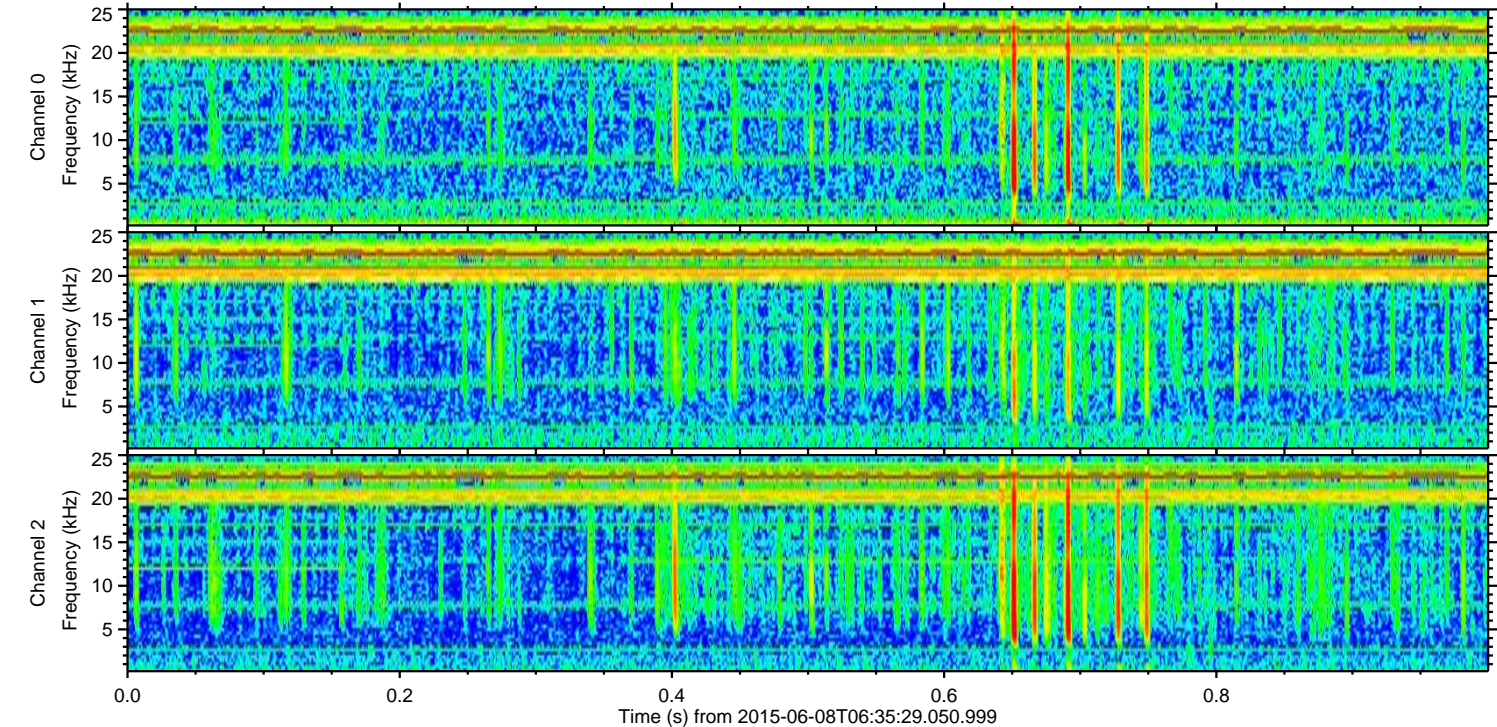
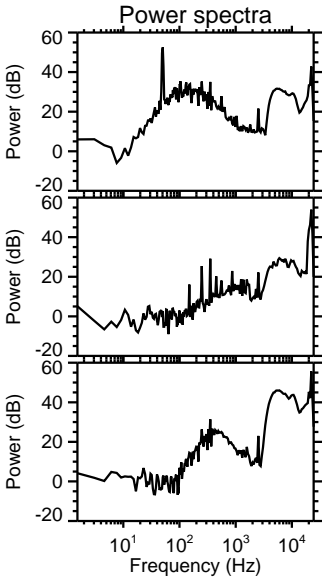
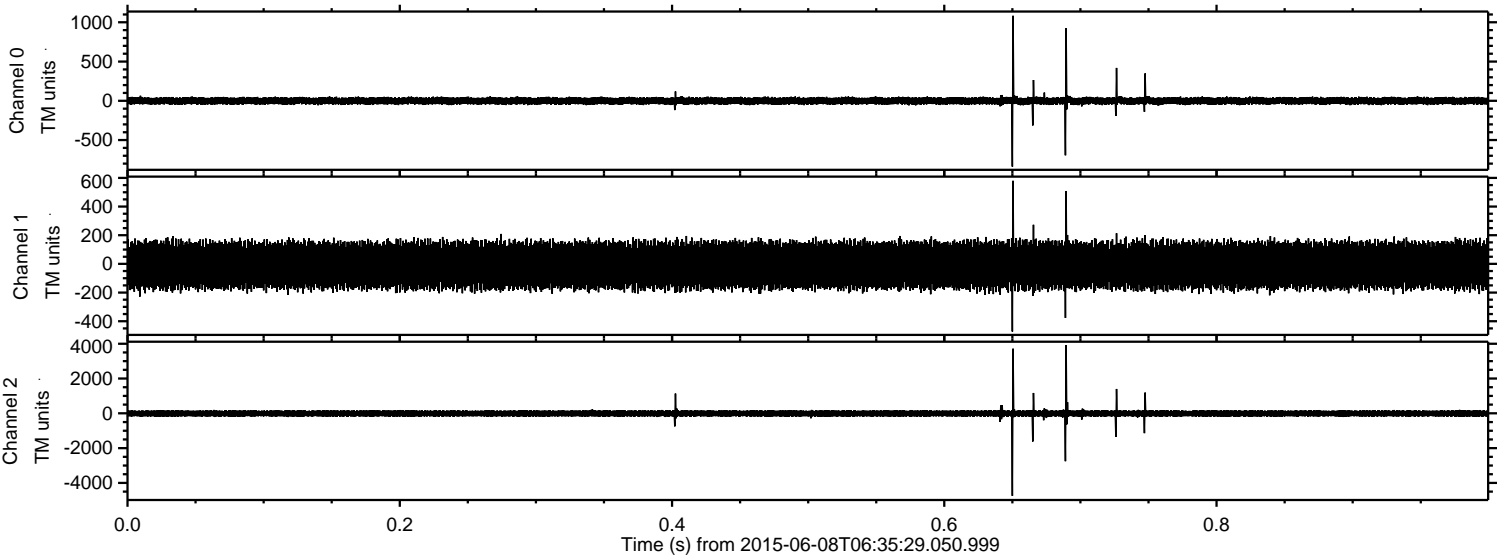
Processed Mon Jun 8 08:42:08 2015 by ELM ver.2012-10-06 from 001\_\_elm20150608\_063528\_\_dat00.bin





ELMAVAN 3D WAVEFORMS (Measured data sampled at 50 kHz) 51000 packets of 144 samples from 2015-06-08T06:35:29.050.999. Part 1/147

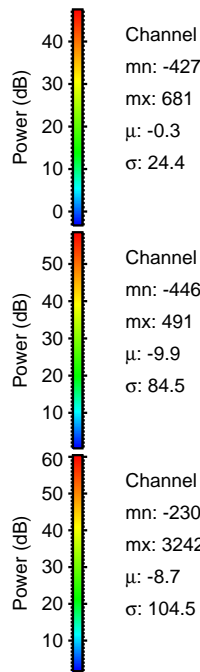
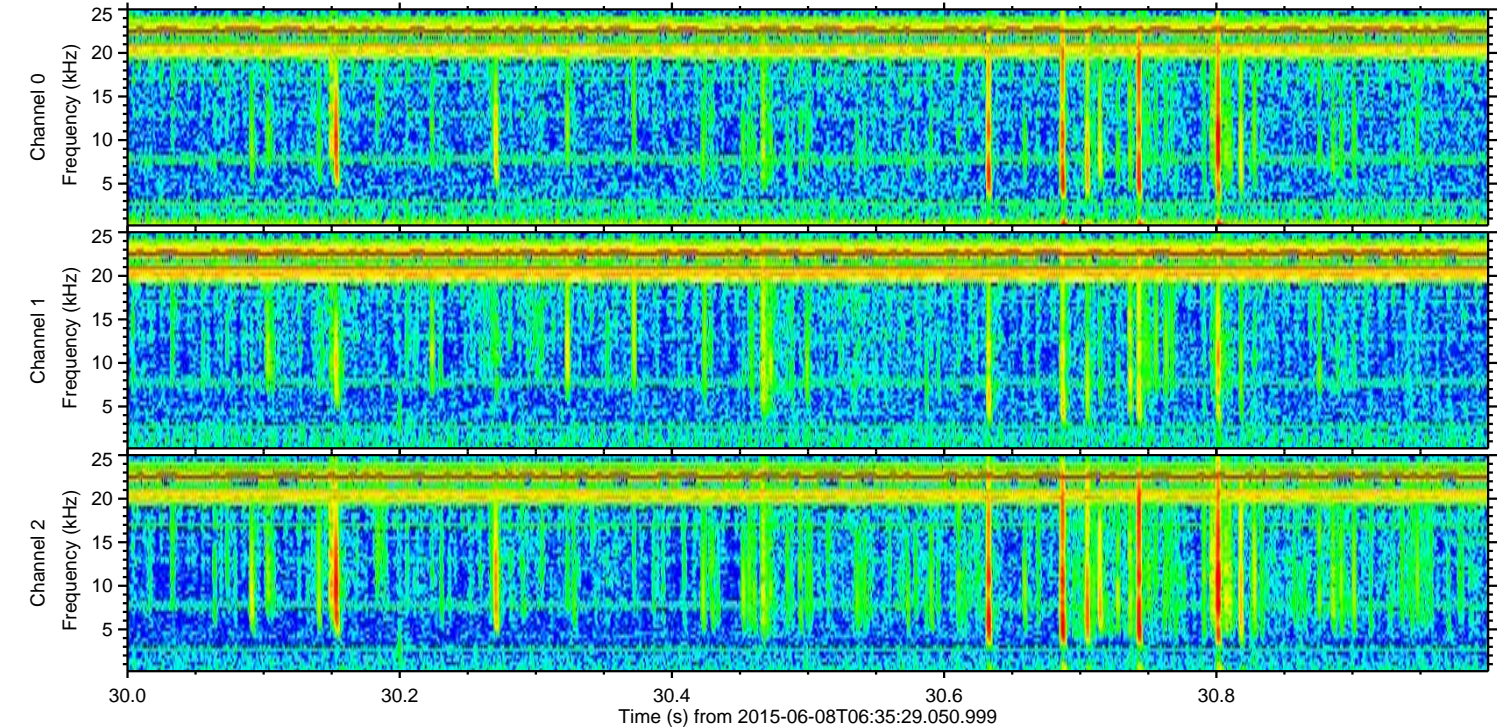
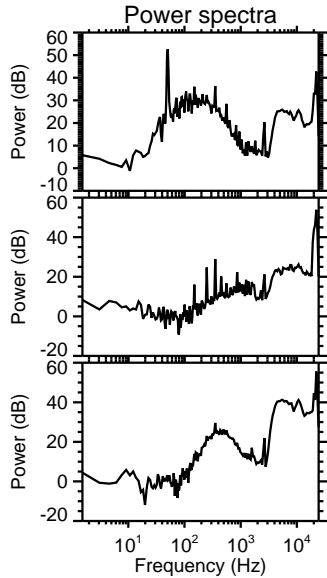
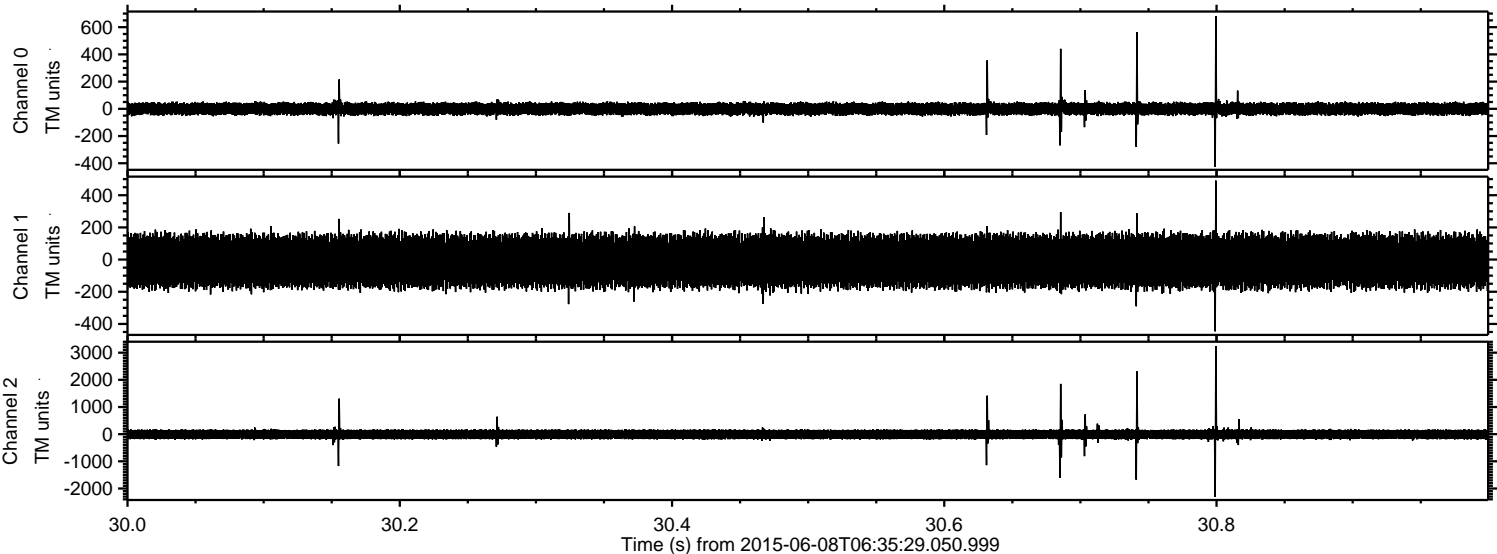
Processed Mon Jun 8 08:42:09 2015 by ELM ver.2012-10-06 from 001\_\_elm20150608\_063528\_\_dat00.bin





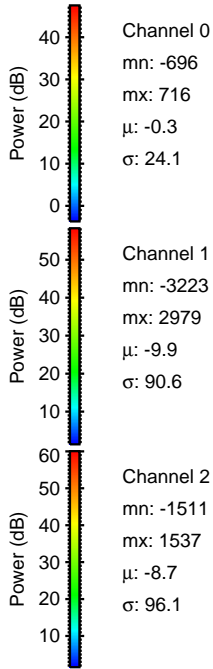
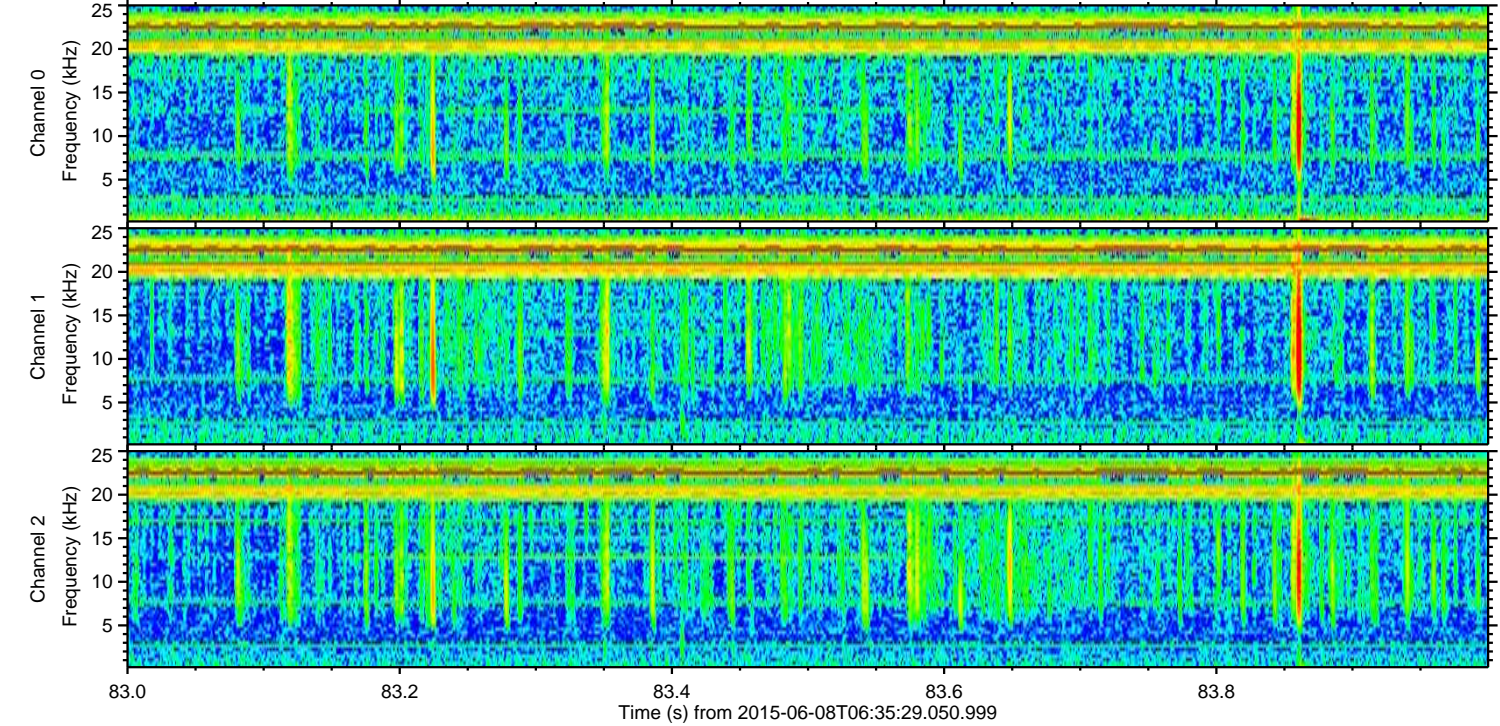
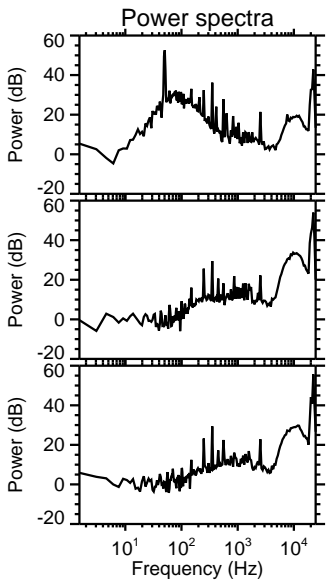
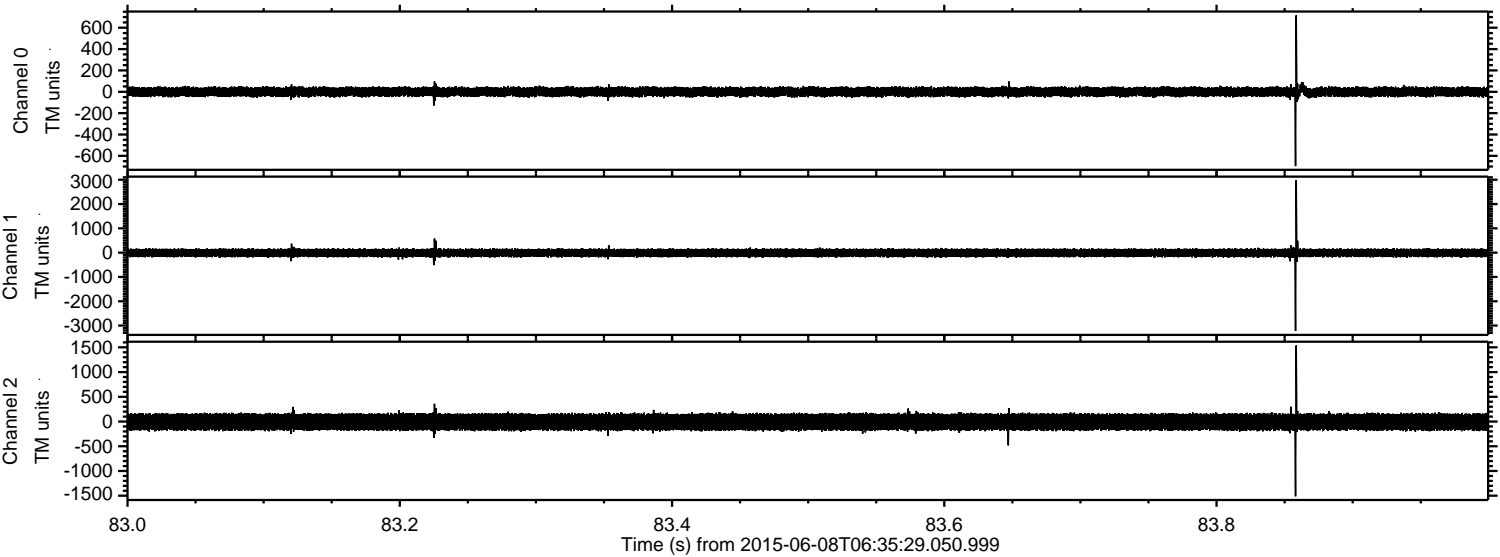
ELMAVAN 3D WAVEFORMS (Measured data sampled at 50 kHz) 51000 packets of 144 samples from 2015-06-08T06:35:29.050.999. Part 31/147

Processed Mon Jun 8 08:42:10 2015 by ELM ver.2012-10-06 from 001\_\_elm20150608\_063528\_\_dat00.bin





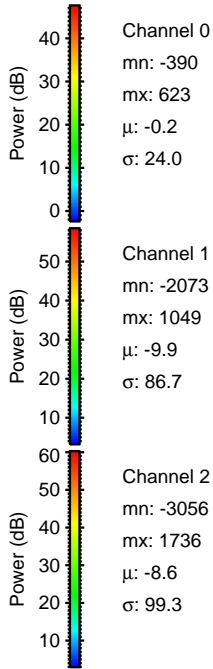
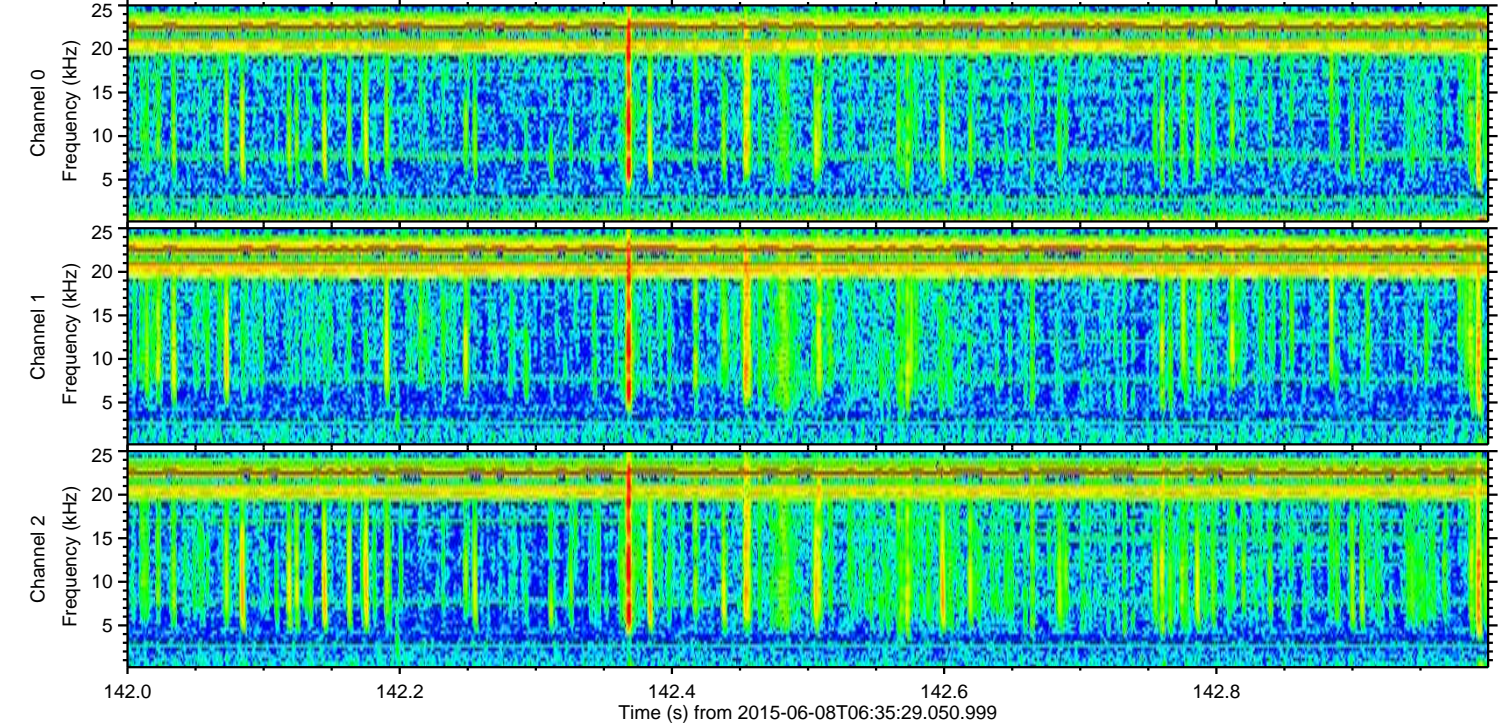
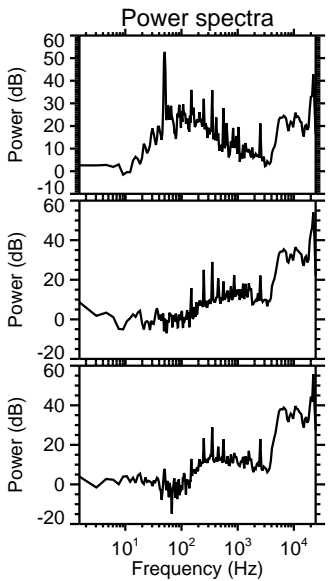
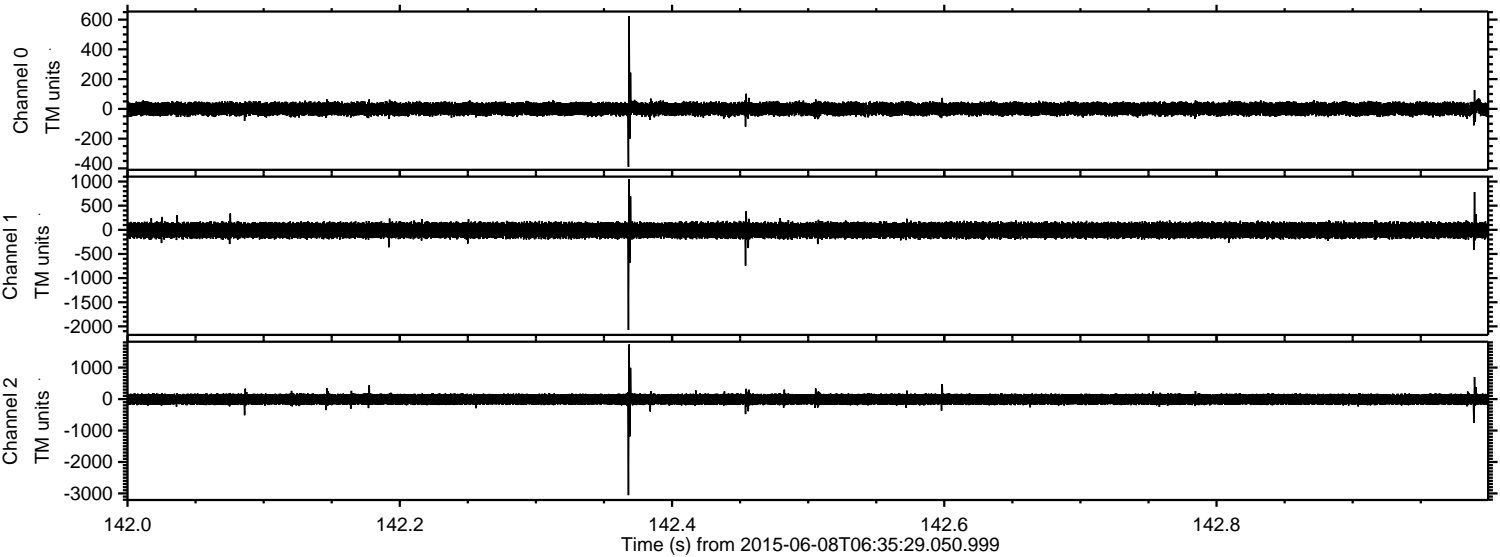
Processed Mon Jun 8 08:42:11 2015 by ELM ver.2012-10-06 from 001\_\_elm20150608\_063528\_\_dat00.bin





ELMAVAN 3D WAVEFORMS (Measured data sampled at 50 kHz) 51000 packets of 144 samples from 2015-06-08T06:35:29.050.999. Part 143/147

Processed Mon Jun 8 08:42:12 2015 by ELM ver.2012-10-06 from 001\_\_elm20150608\_063528\_\_dat00.bin



Channel 0  
mn: -390  
mx: 623  
 $\mu$ : -0.2  
 $\sigma$ : 24.0

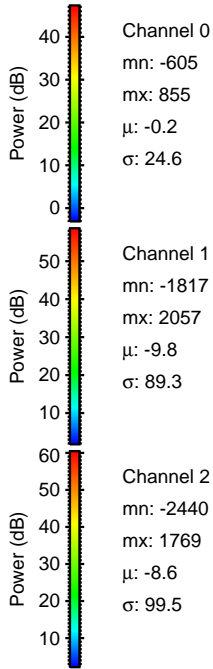
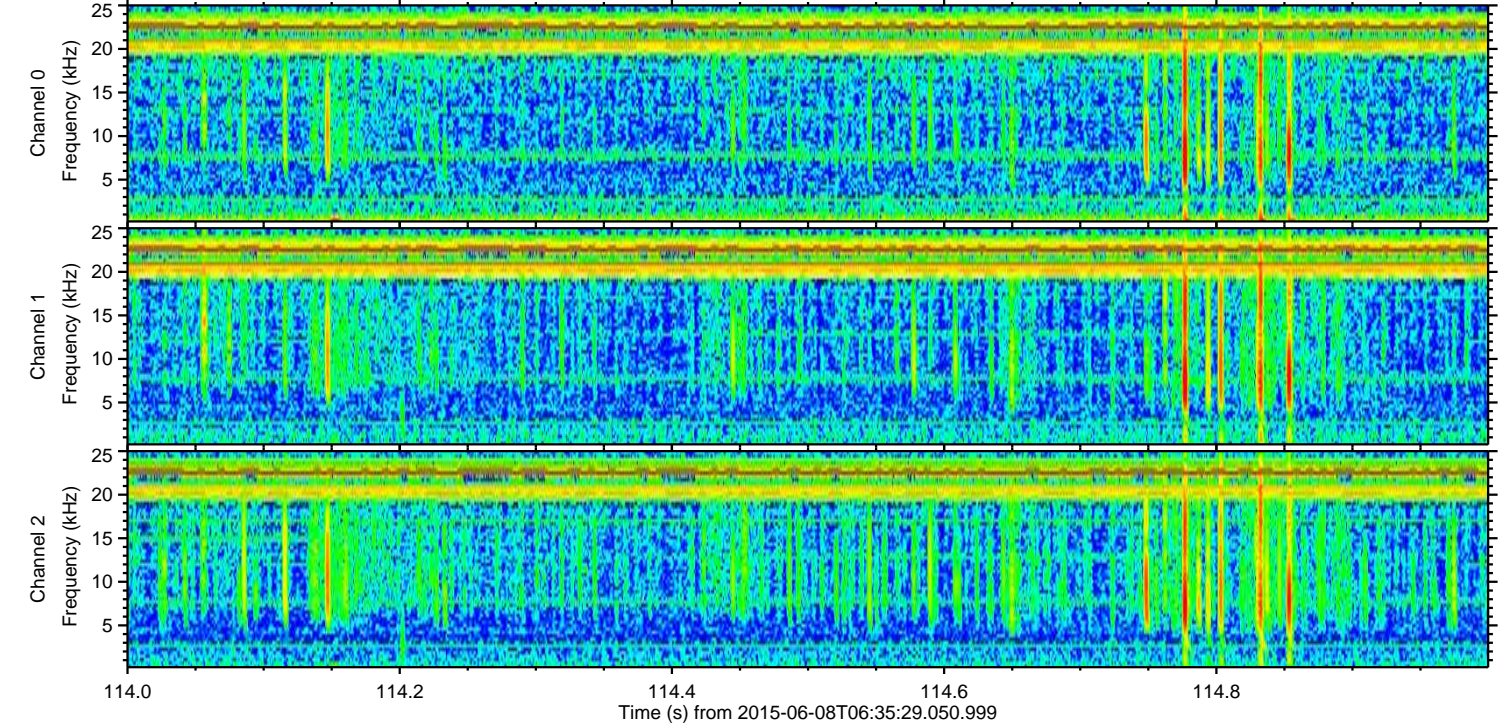
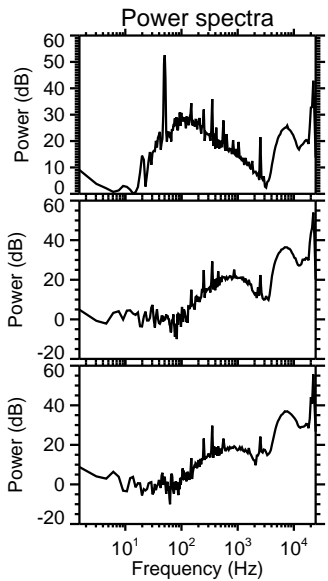
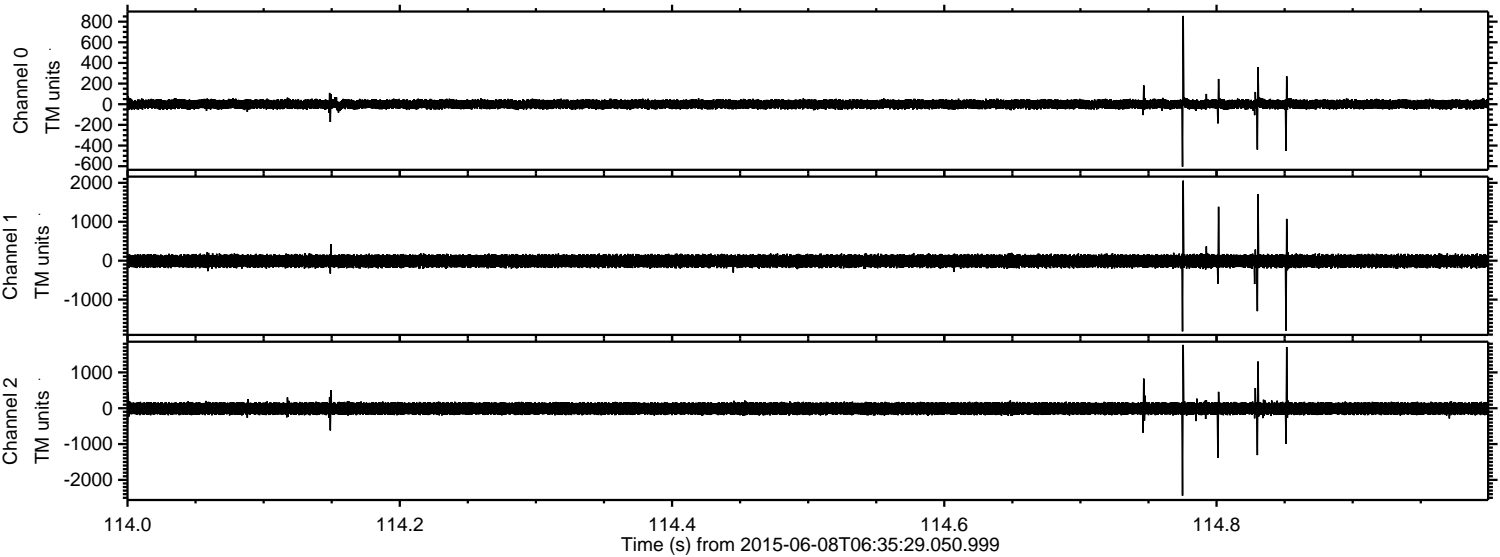
Channel 1  
mn: -2073  
mx: 1049  
 $\mu$ : -9.9  
 $\sigma$ : 86.7

Channel 2  
mn: -3056  
mx: 1736  
 $\mu$ : -8.6  
 $\sigma$ : 99.3



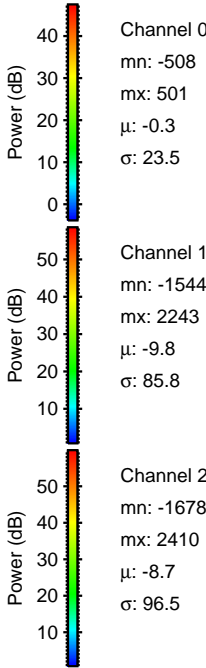
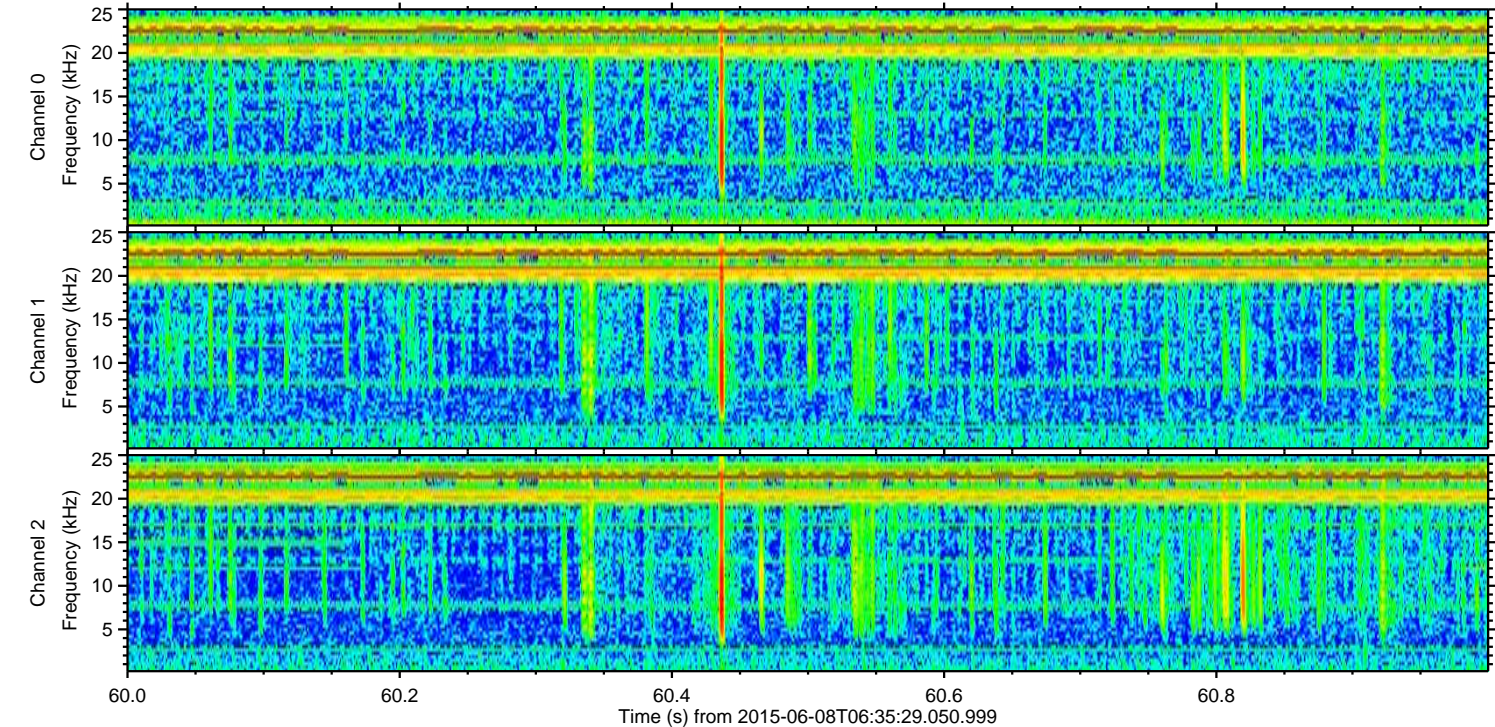
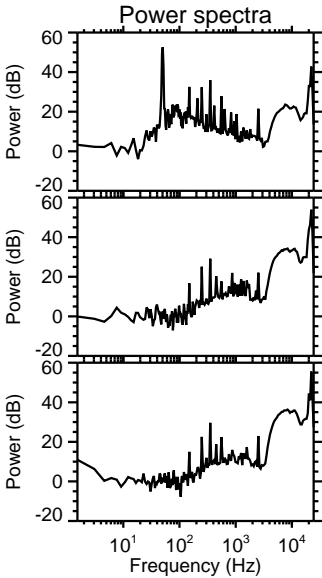
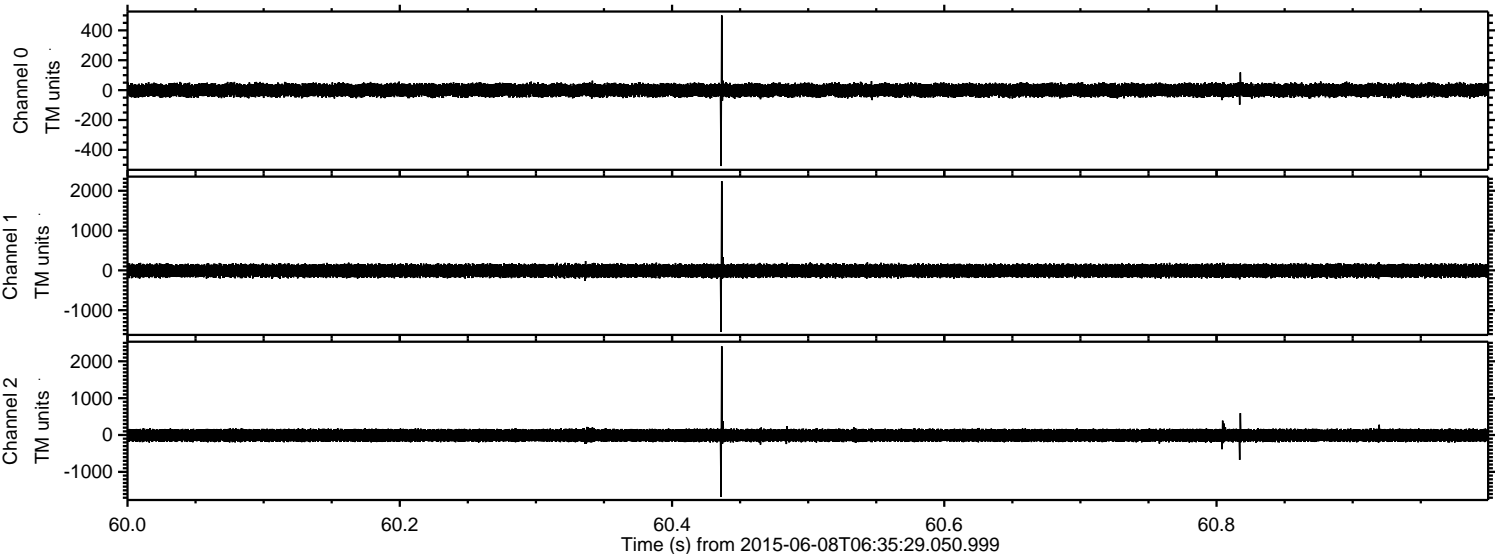
ELMAVAN 3D WAVEFORMS (Measured data sampled at 50 kHz) 51000 packets of 144 samples from 2015-06-08T06:35:29.050.999. Part 115/147

Processed Mon Jun 8 08:42:13 2015 by ELM ver.2012-10-06 from 001\_\_elm20150608\_063528\_\_dat00.bin





Processed Mon Jun 8 08:42:14 2015 by ELM ver.2012-10-06 from 001\_\_elm20150608\_063528\_\_dat00.bin





ELMAVAN 3D WAVEFORMS (Measured data sampled at 50 kHz) 51000 packets of 144 samples from 2015-06-08T06:35:29.050.999. Part 101/147

