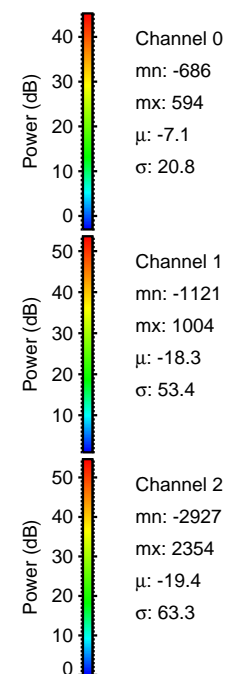
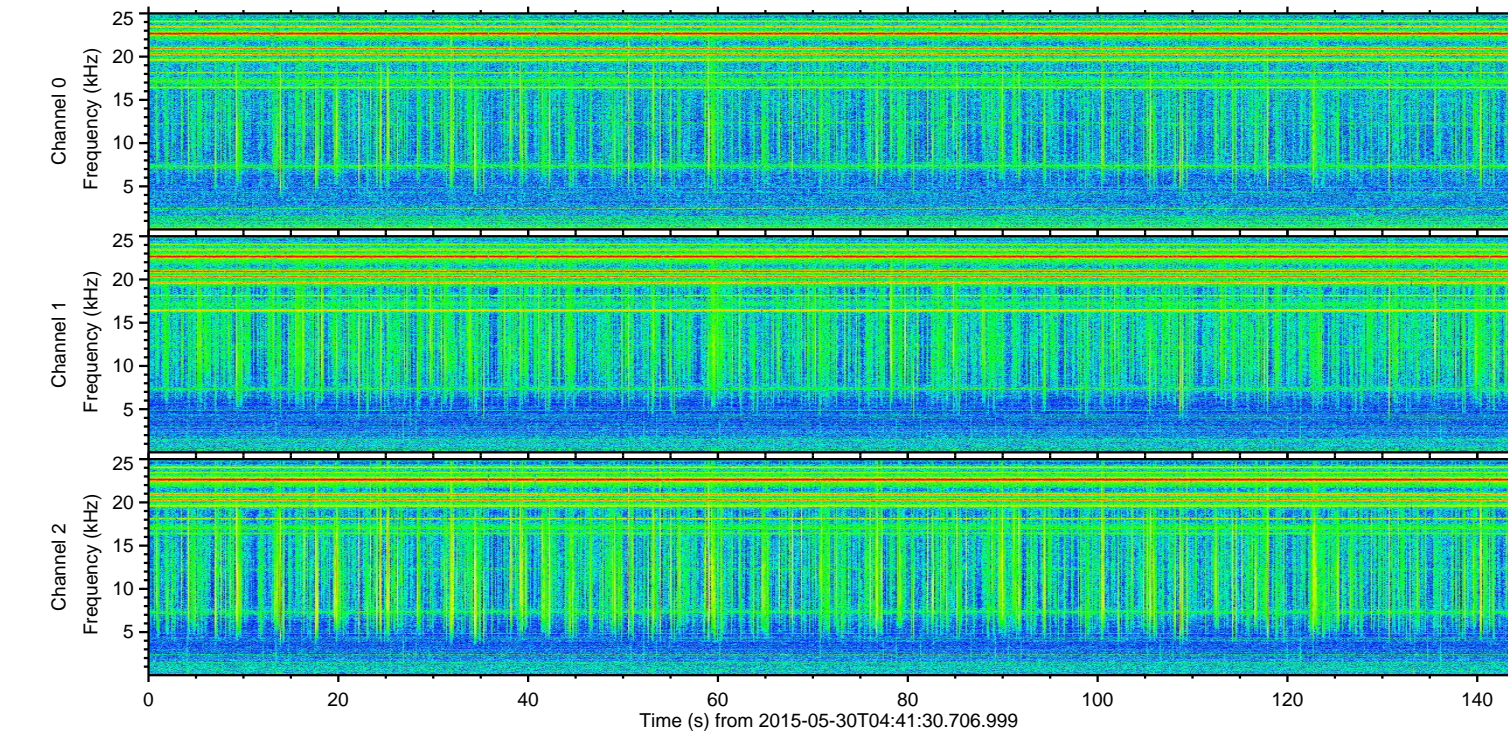
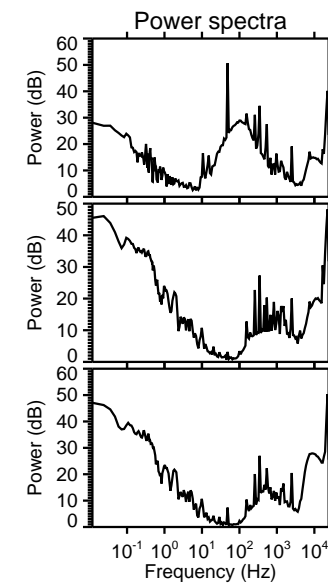
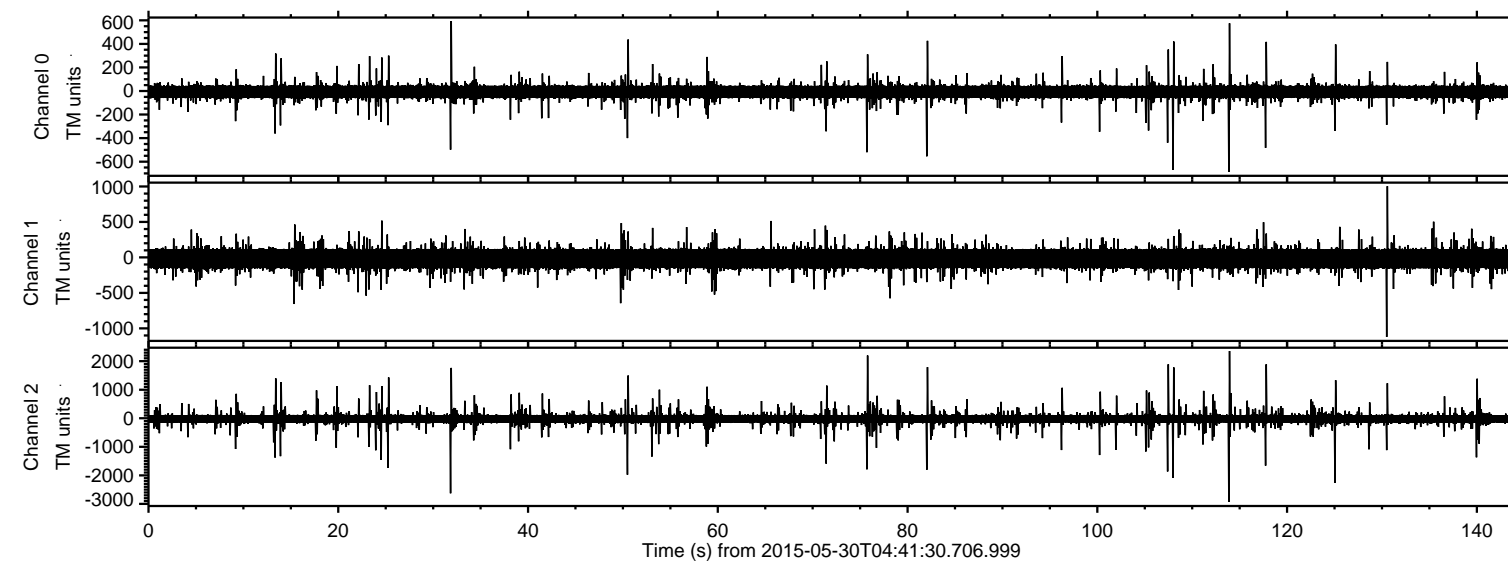


ELMAVAN 3D WAVEFORMS (Measured data sampled at 50 kHz) 49793 packets of 144 samples from 2015-05-30T04:41:30.706.999.

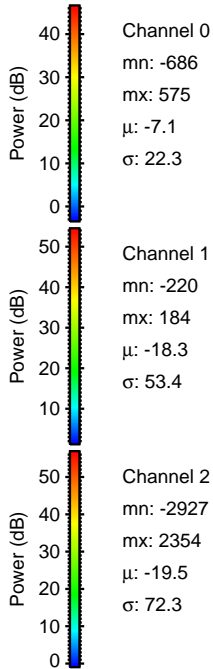
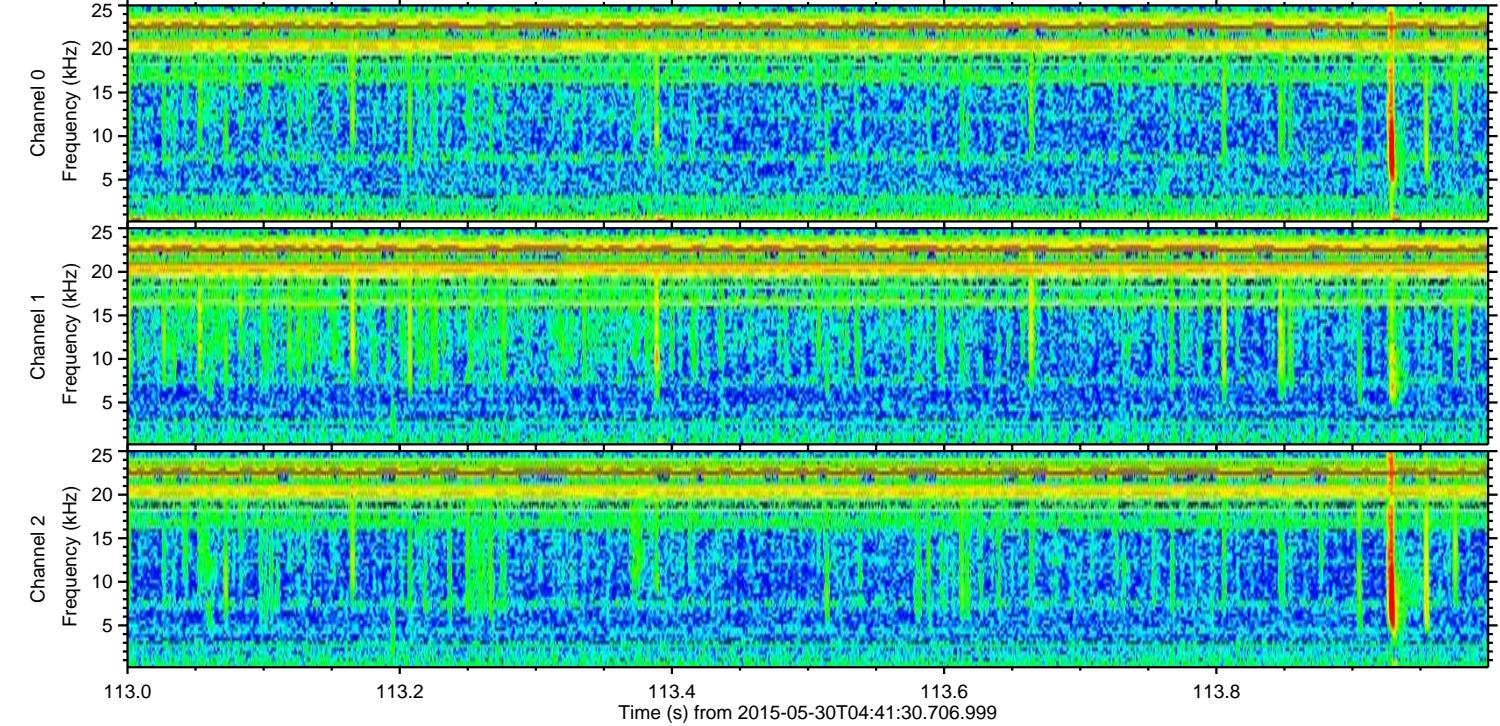
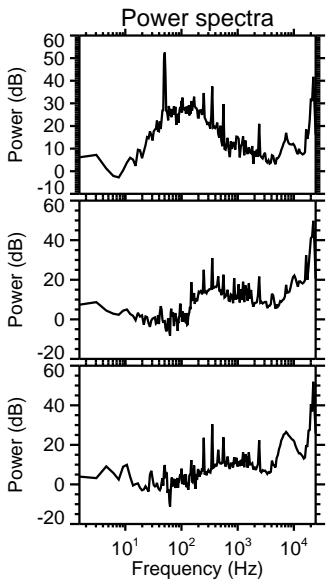
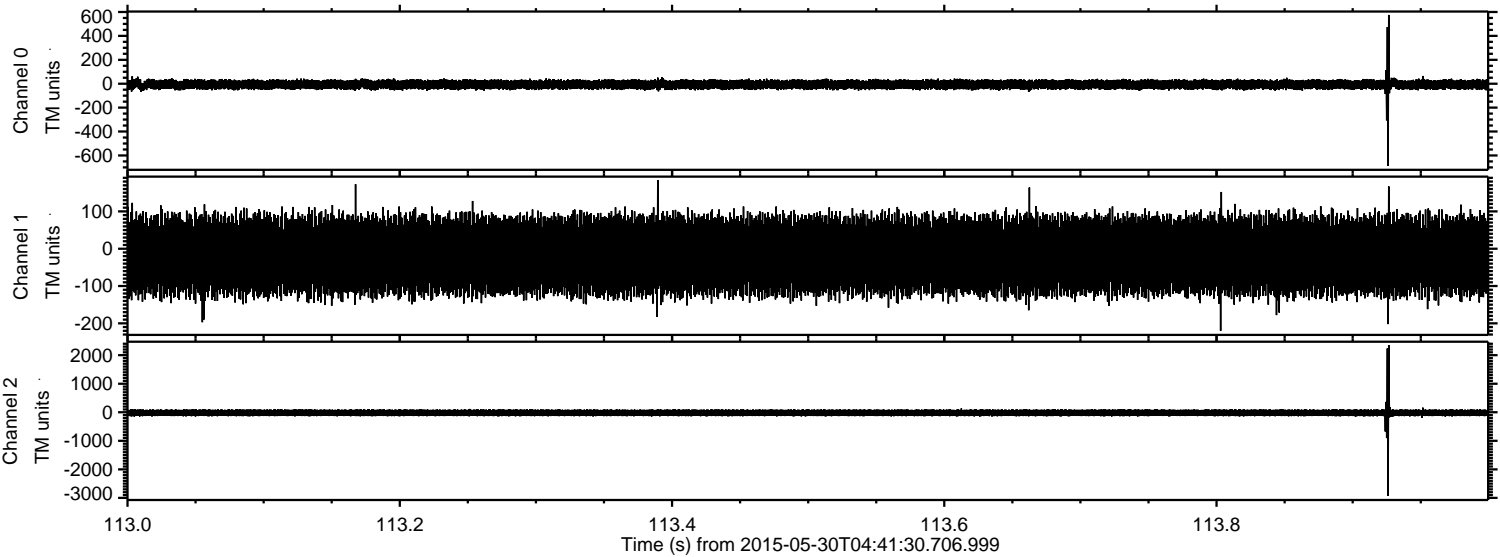
Processed Sat May 30 06:48:41 2015 by ELM ver.2012-10-06 from 001\_\_elm20150530\_044129\_\_dat00.bin





ELMAVAN 3D WAVEFORMS (Measured data sampled at 50 kHz) 49793 packets of 144 samples from 2015-05-30T04:41:30.706.999. Part 114/144

Processed Sat May 30 06:48:53 2015 by ELM ver.2012-10-06 from 001\_\_elm20150530\_044129\_\_dat00.bin



Channel 0  
mn: -686  
mx: 575  
 $\mu$ : -7.1  
 $\sigma$ : 22.3

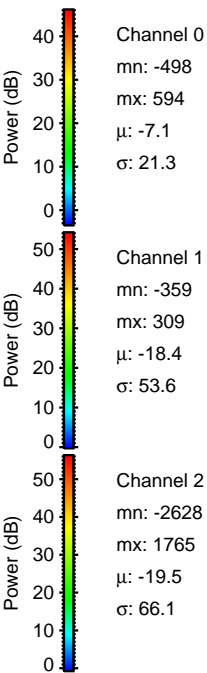
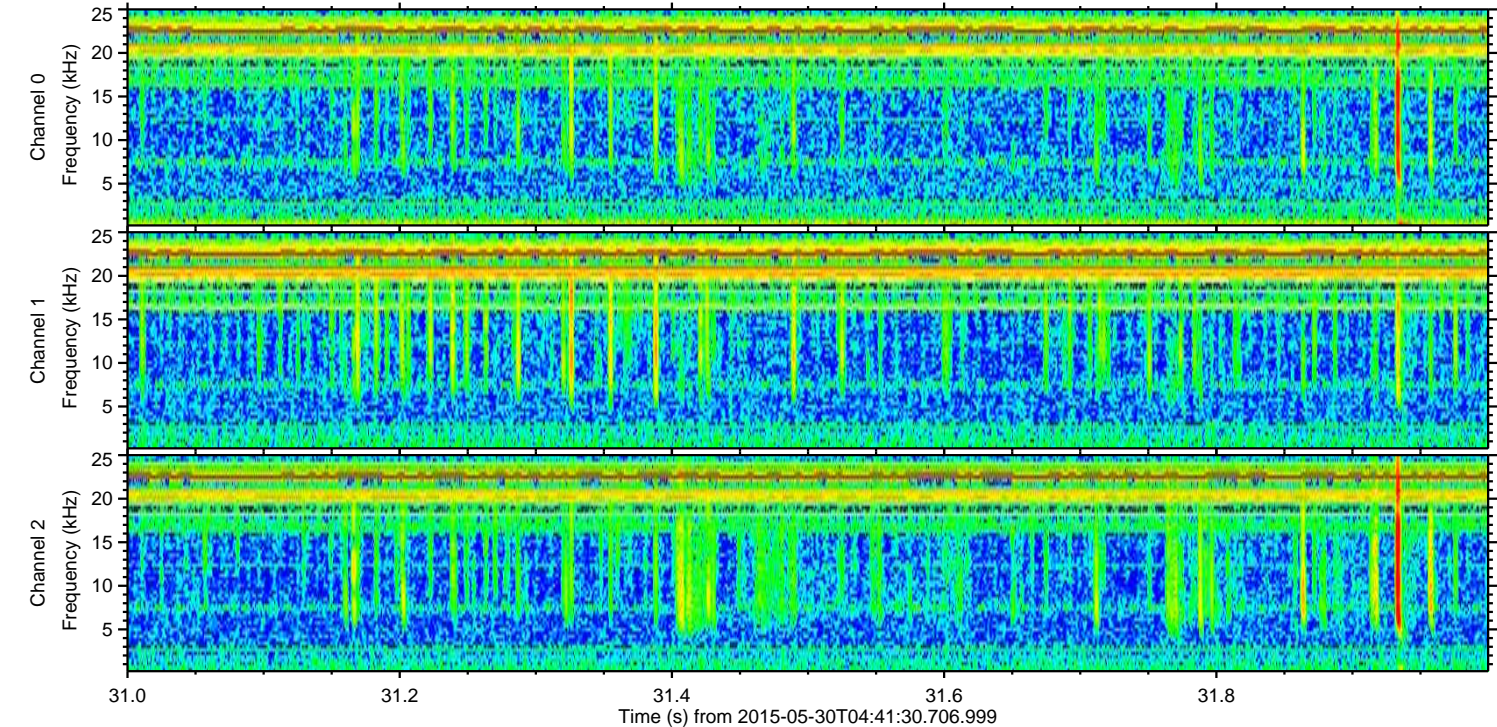
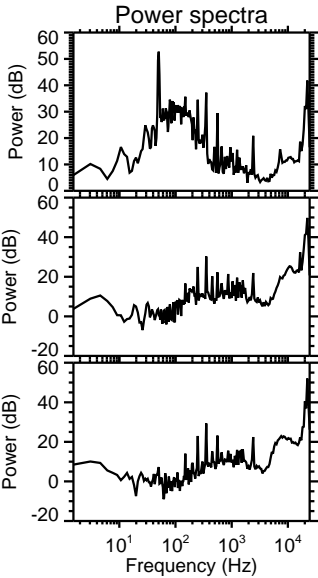
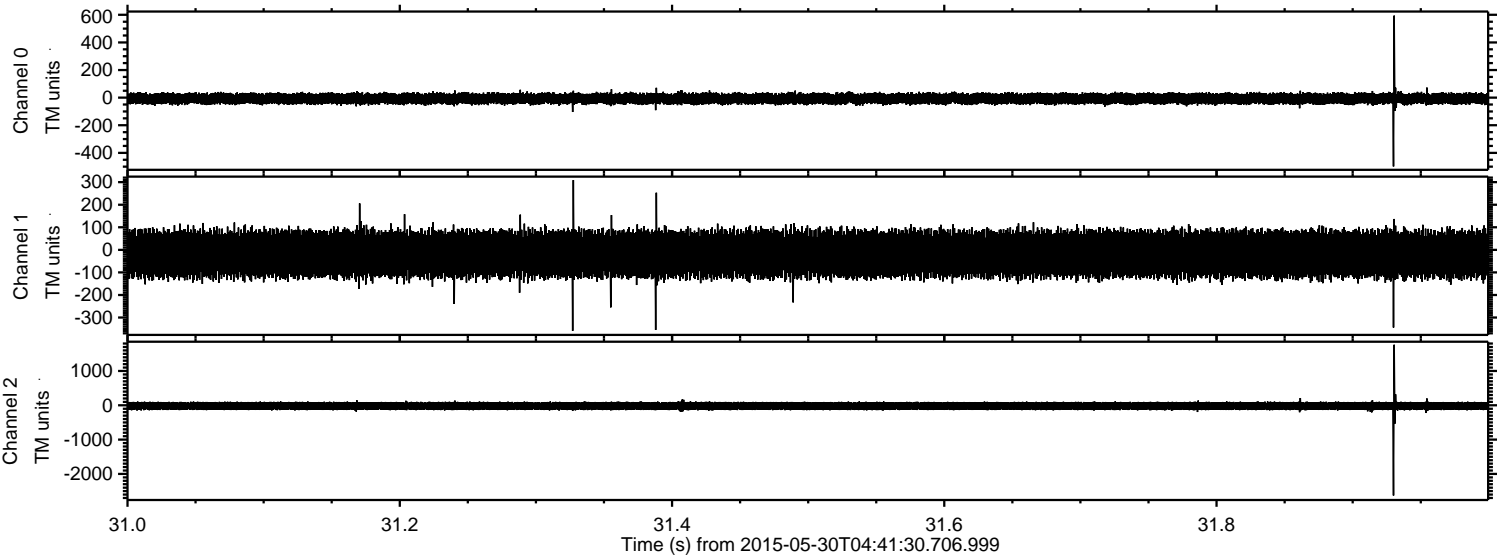
Channel 1  
mn: -220  
mx: 184  
 $\mu$ : -18.3  
 $\sigma$ : 53.4

Channel 2  
mn: -2927  
mx: 2354  
 $\mu$ : -19.5  
 $\sigma$ : 72.3



ELMAVAN 3D WAVEFORMS (Measured data sampled at 50 kHz) 49793 packets of 144 samples from 2015-05-30T04:41:30.706.999. Part 32/144

Processed Sat May 30 06:48:54 2015 by ELM ver.2012-10-06 from 001\_\_elm20150530\_044129\_\_dat00.bin



Channel 0  
mn: -498  
mx: 594  
 $\mu$ : -7.1  
 $\sigma$ : 21.3

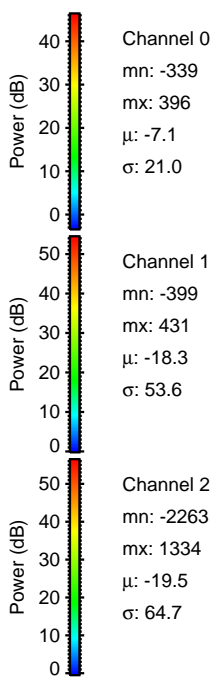
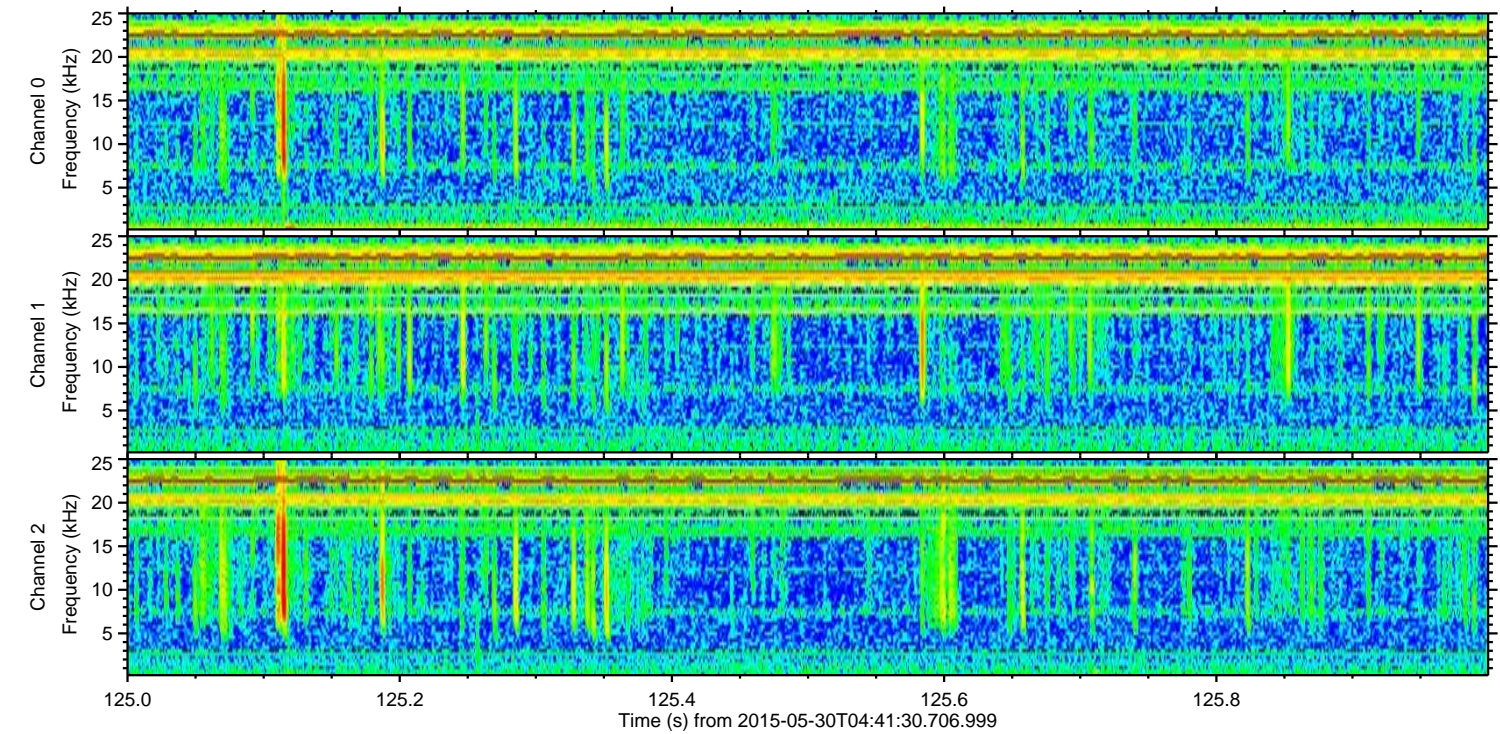
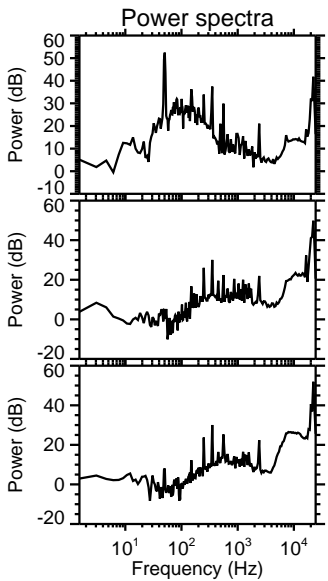
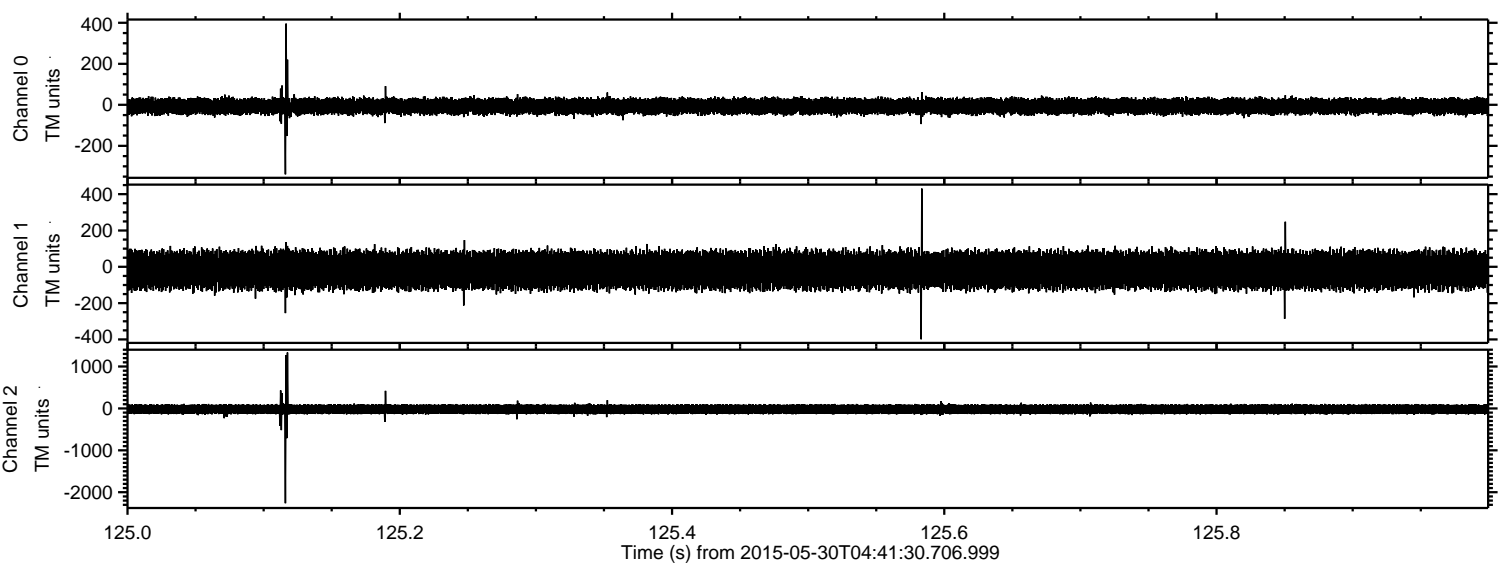
Channel 1  
mn: -359  
mx: 309  
 $\mu$ : -18.4  
 $\sigma$ : 53.6

Channel 2  
mn: -2628  
mx: 1765  
 $\mu$ : -19.5  
 $\sigma$ : 66.1



ELMAVAN 3D WAVEFORMS (Measured data sampled at 50 kHz) 49793 packets of 144 samples from 2015-05-30T04:41:30.706.999. Part 126/144

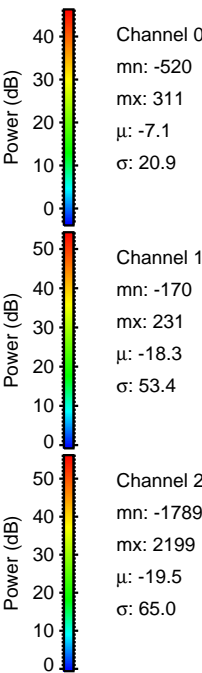
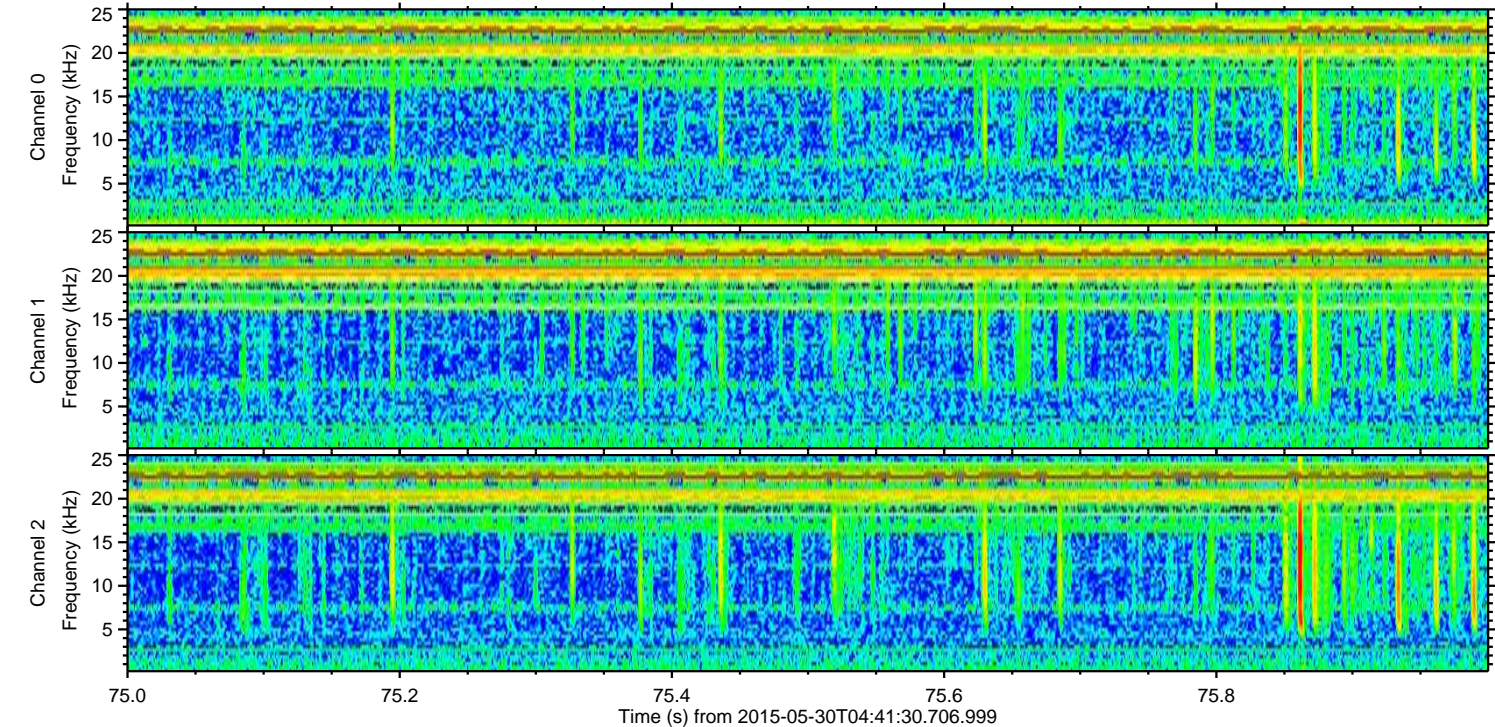
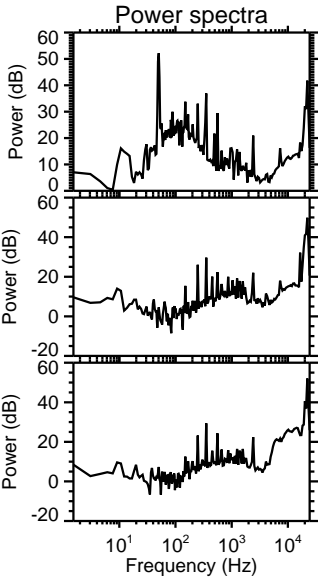
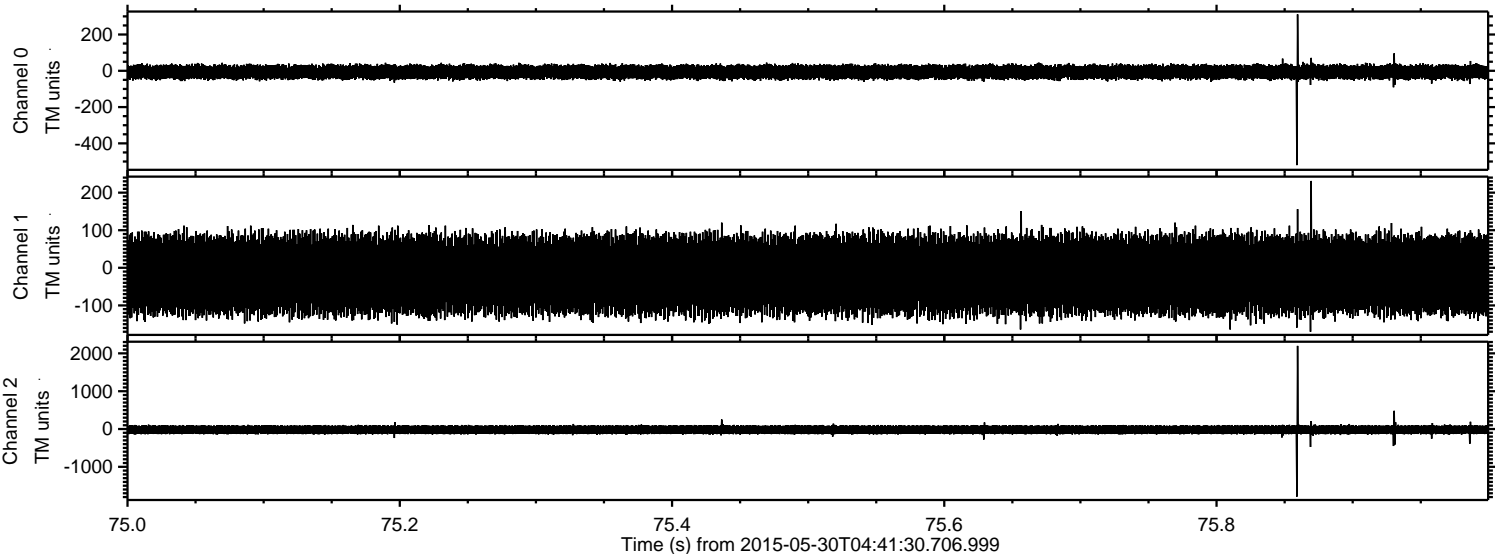
Processed Sat May 30 06:48:55 2015 by ELM ver.2012-10-06 from 001\_\_elm20150530\_044129\_\_dat00.bin





ELMAVAN 3D WAVEFORMS (Measured data sampled at 50 kHz) 49793 packets of 144 samples from 2015-05-30T04:41:30.706.999. Part 76/144

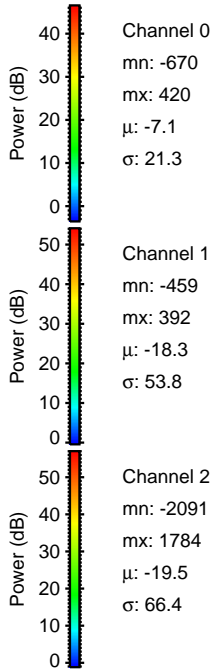
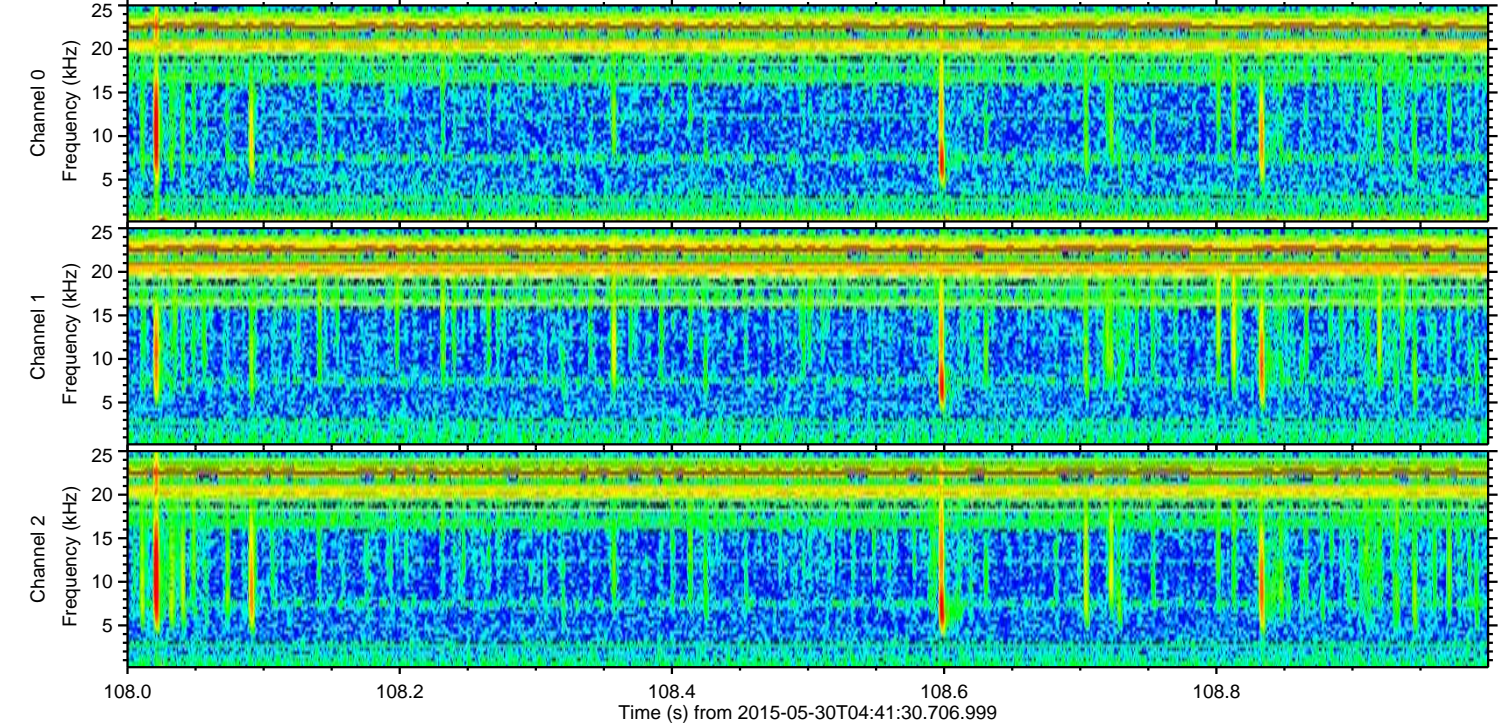
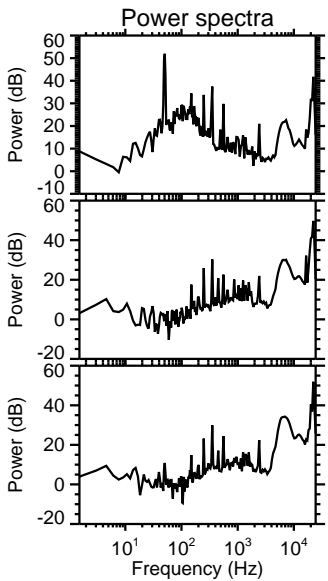
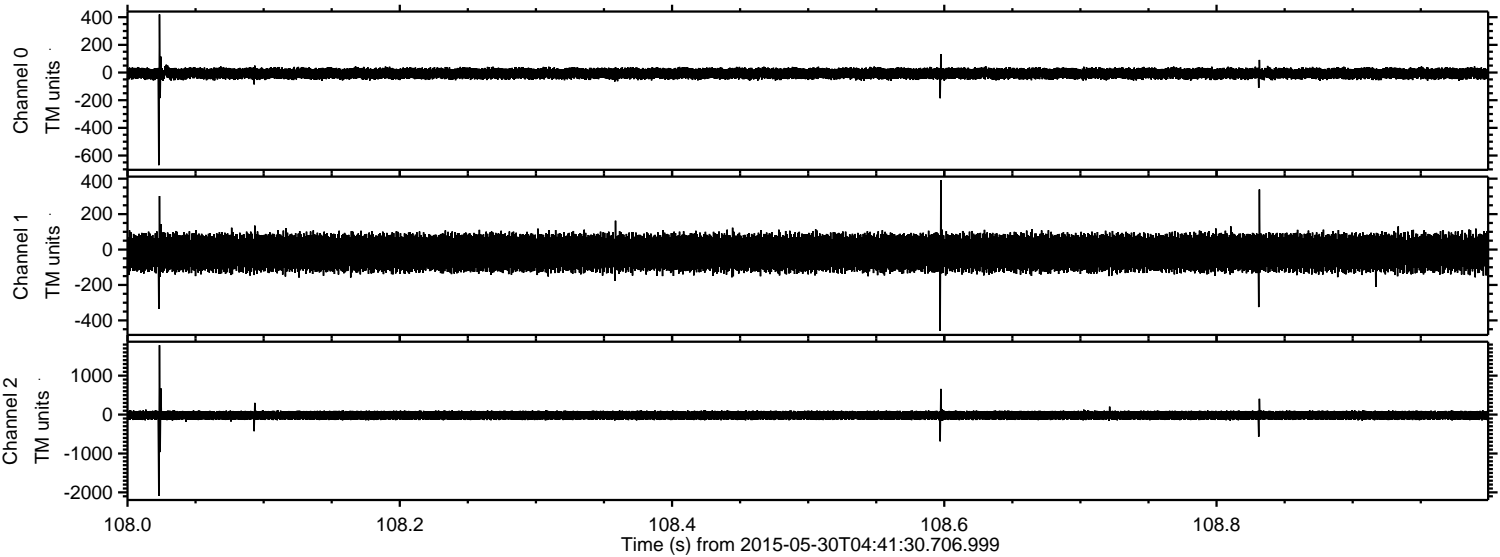
Processed Sat May 30 06:48:55 2015 by ELM ver.2012-10-06 from 001\_\_elm20150530\_044129\_\_dat00.bin





ELMAVAN 3D WAVEFORMS (Measured data sampled at 50 kHz) 49793 packets of 144 samples from 2015-05-30T04:41:30.706.999. Part 109/144

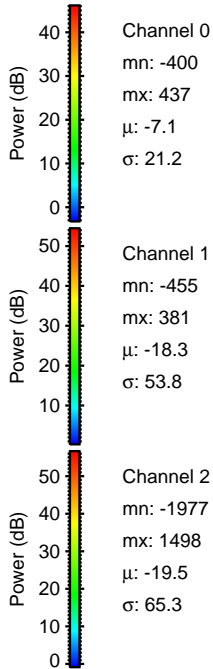
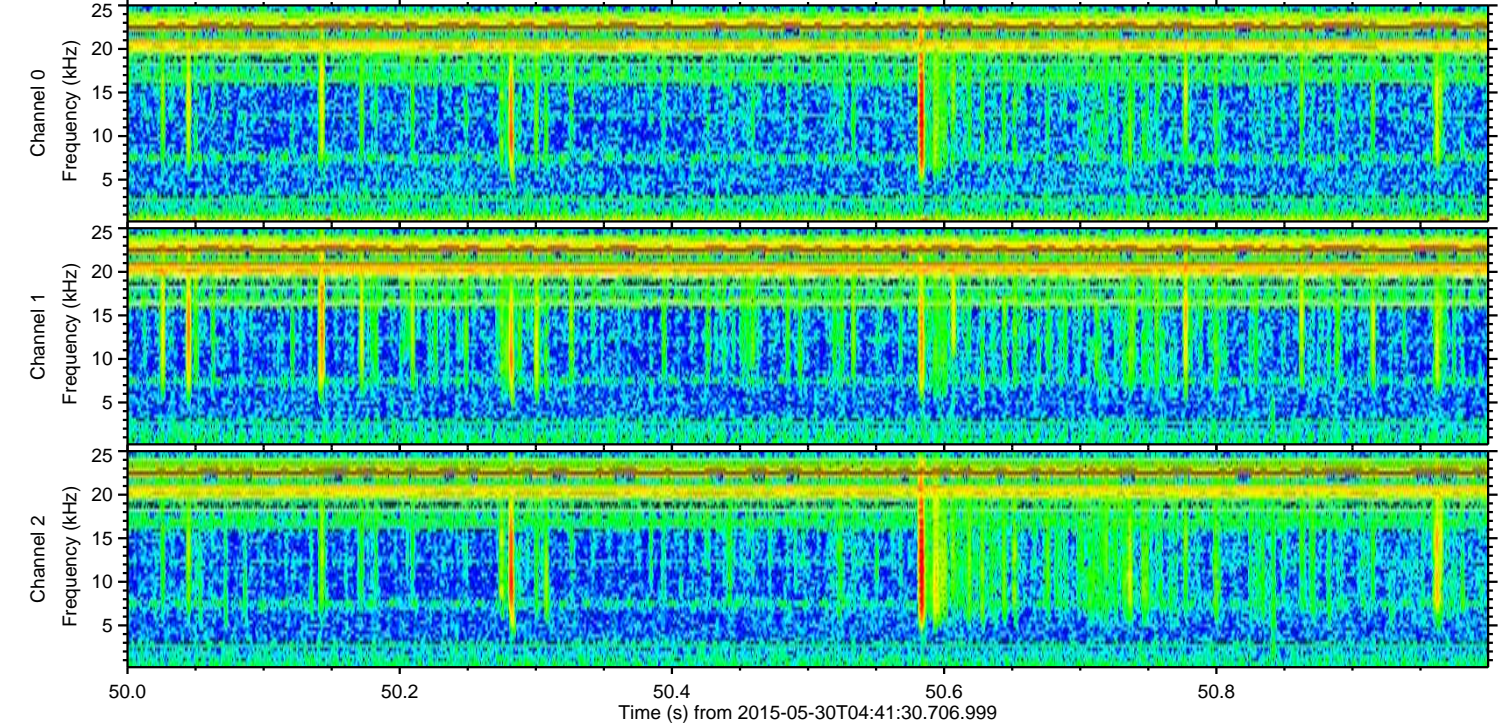
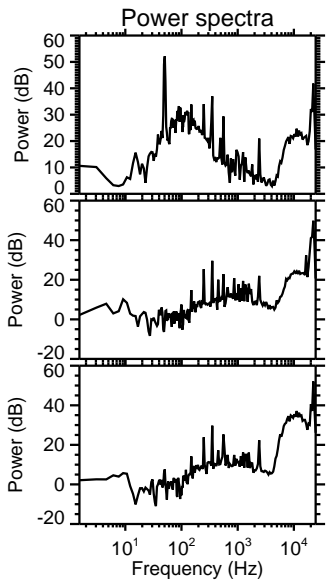
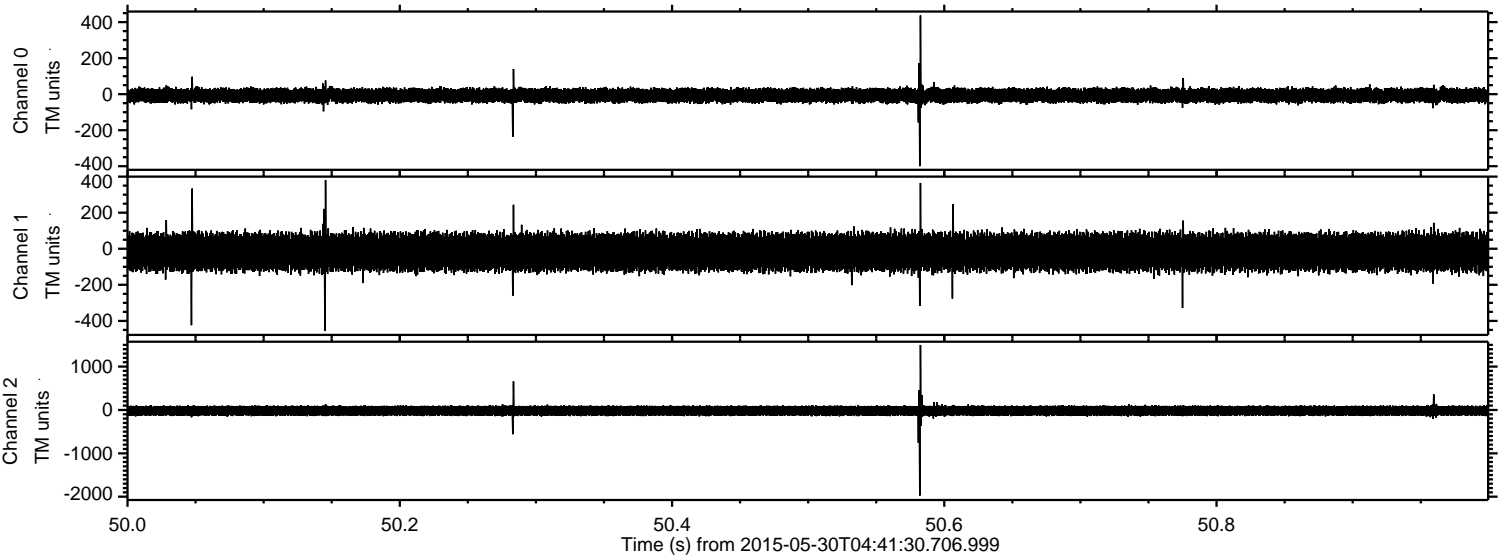
Processed Sat May 30 06:48:56 2015 by ELM ver.2012-10-06 from 001\_\_elm20150530\_044129\_\_dat00.bin





ELMAVAN 3D WAVEFORMS (Measured data sampled at 50 kHz) 49793 packets of 144 samples from 2015-05-30T04:41:30.706.999. Part 51/144

Processed Sat May 30 06:48:57 2015 by ELM ver.2012-10-06 from 001\_\_elm20150530\_044129\_\_dat00.bin



Channel 0  
mn: -400  
mx: 437  
 $\mu$ : -7.1  
 $\sigma$ : 21.2

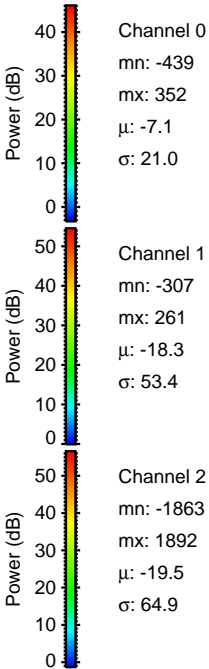
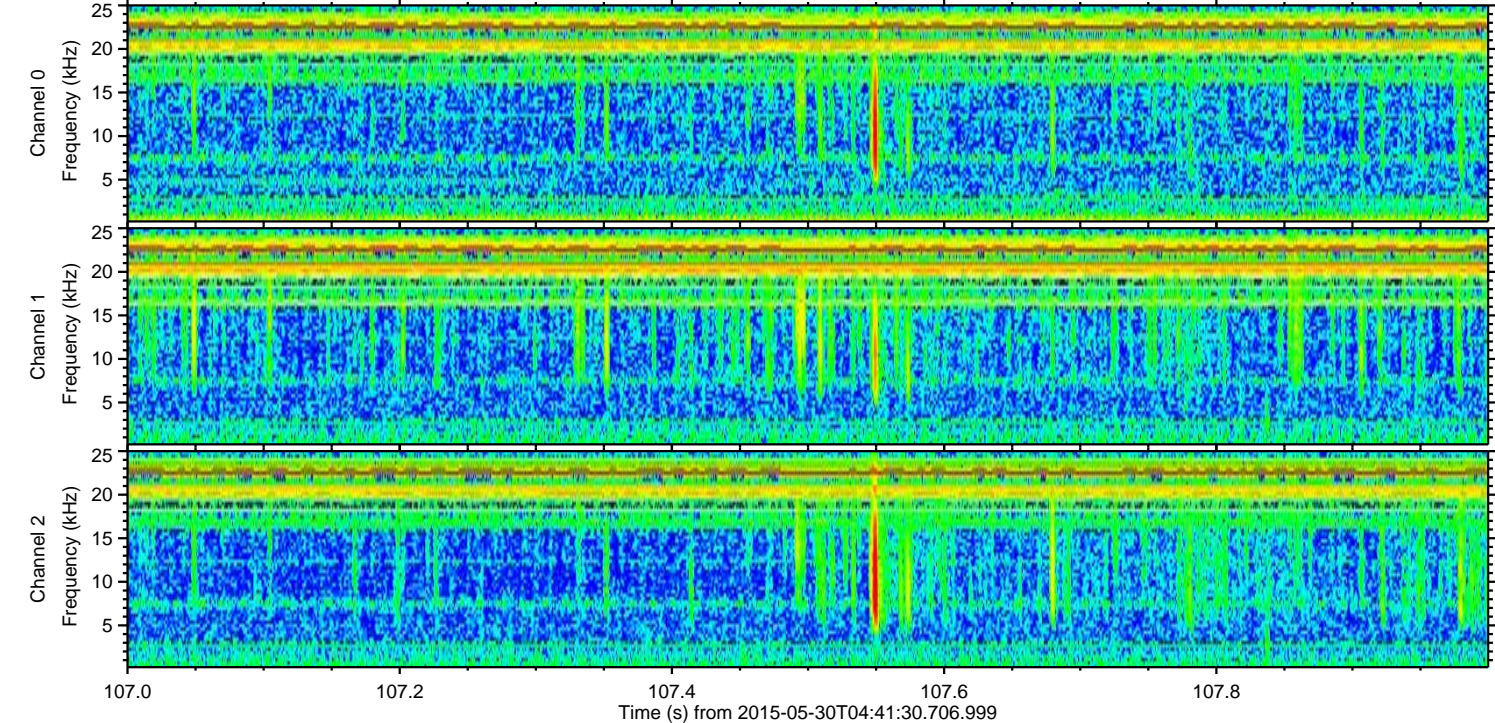
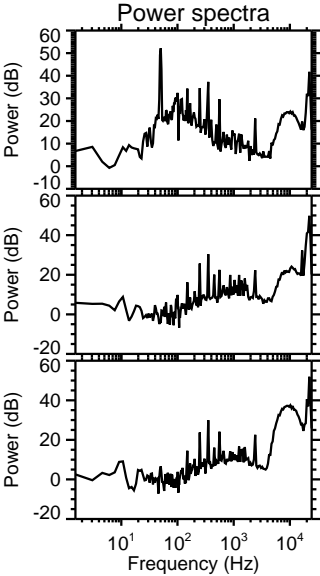
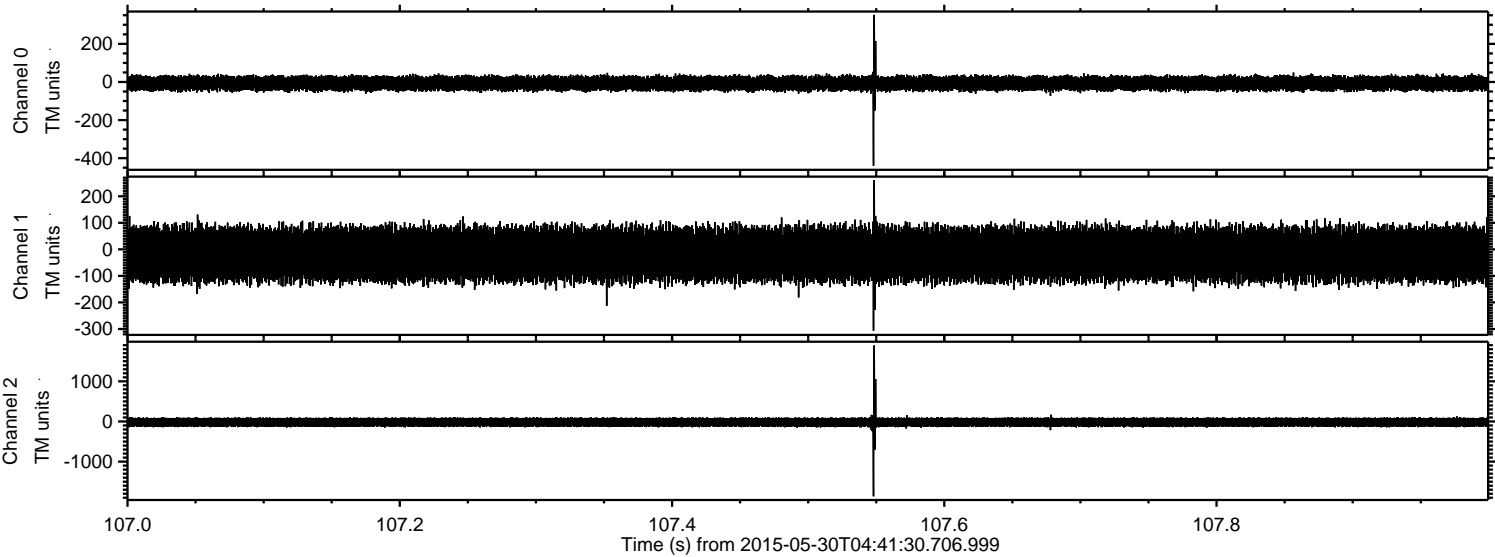
Channel 1  
mn: -455  
mx: 381  
 $\mu$ : -18.3  
 $\sigma$ : 53.8

Channel 2  
mn: -1977  
mx: 1498  
 $\mu$ : -19.5  
 $\sigma$ : 65.3



ELMAVAN 3D WAVEFORMS (Measured data sampled at 50 kHz) 49793 packets of 144 samples from 2015-05-30T04:41:30.706.999. Part 108/144

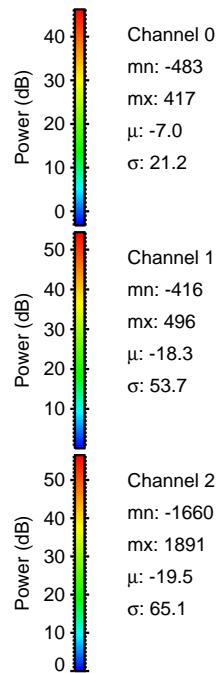
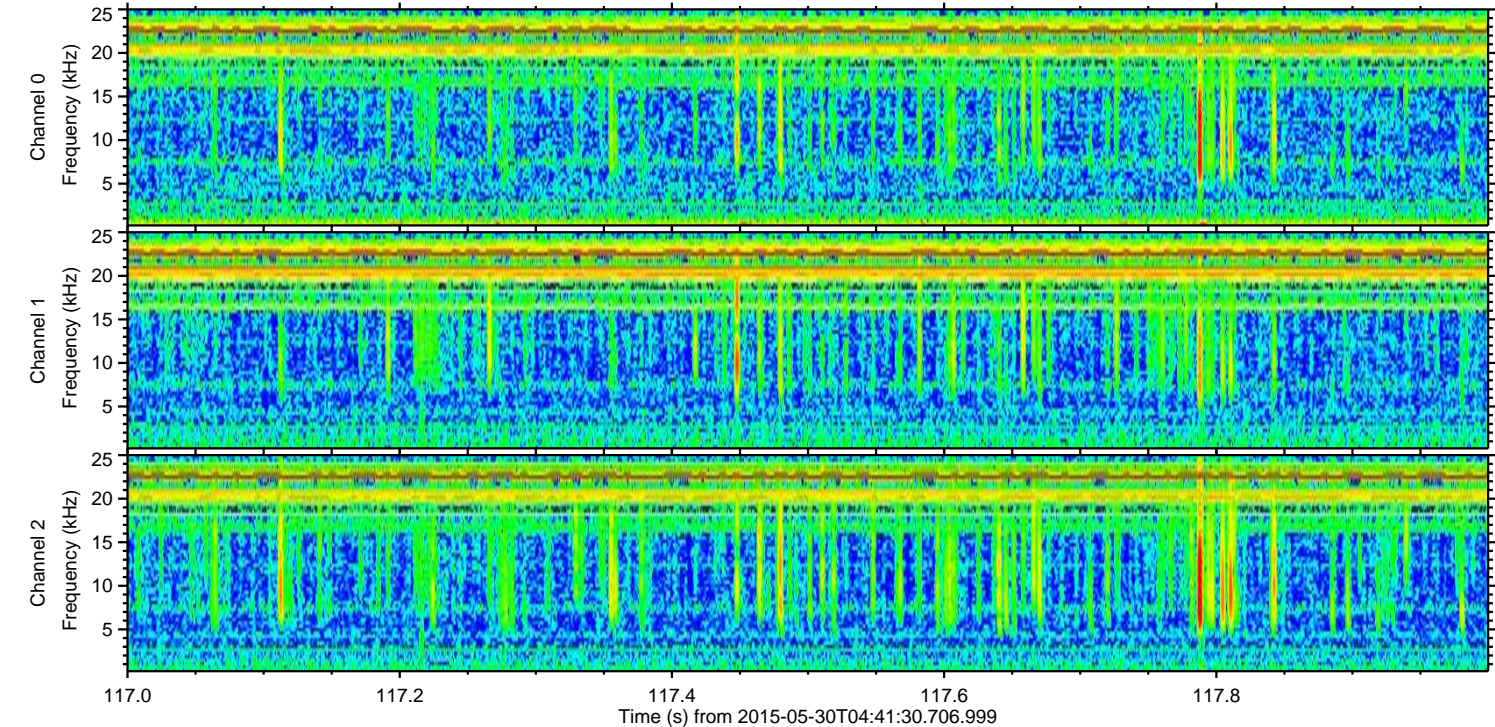
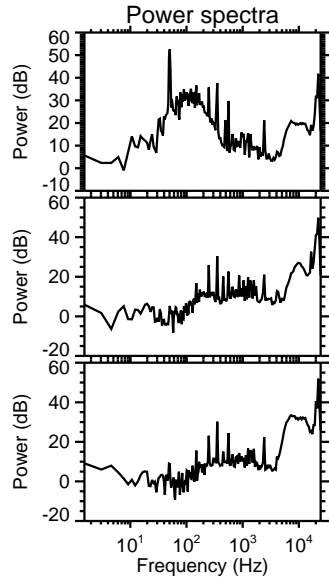
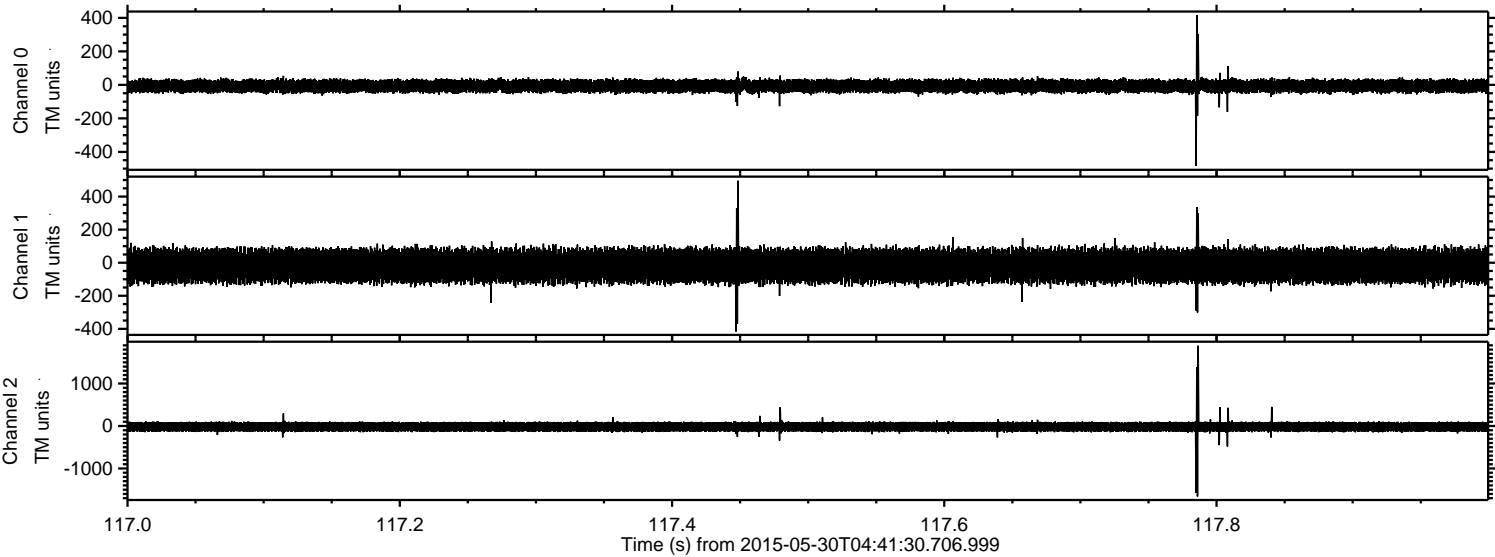
Processed Sat May 30 06:48:58 2015 by ELM ver.2012-10-06 from 001\_\_elm20150530\_044129\_\_dat00.bin





ELMAVAN 3D WAVEFORMS (Measured data sampled at 50 kHz) 49793 packets of 144 samples from 2015-05-30T04:41:30.706.999. Part 118/144

Processed Sat May 30 06:48:59 2015 by ELM ver.2012-10-06 from 001\_\_elm20150530\_044129\_\_dat00.bin



Channel 0  
mn: -483  
mx: 417  
 $\mu$ : -7.0  
 $\sigma$ : 21.2

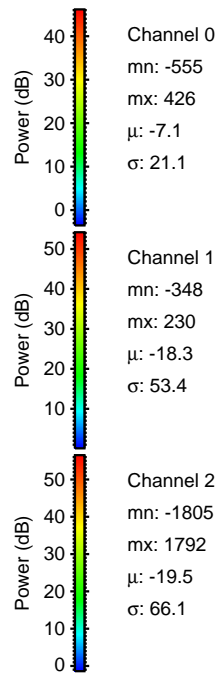
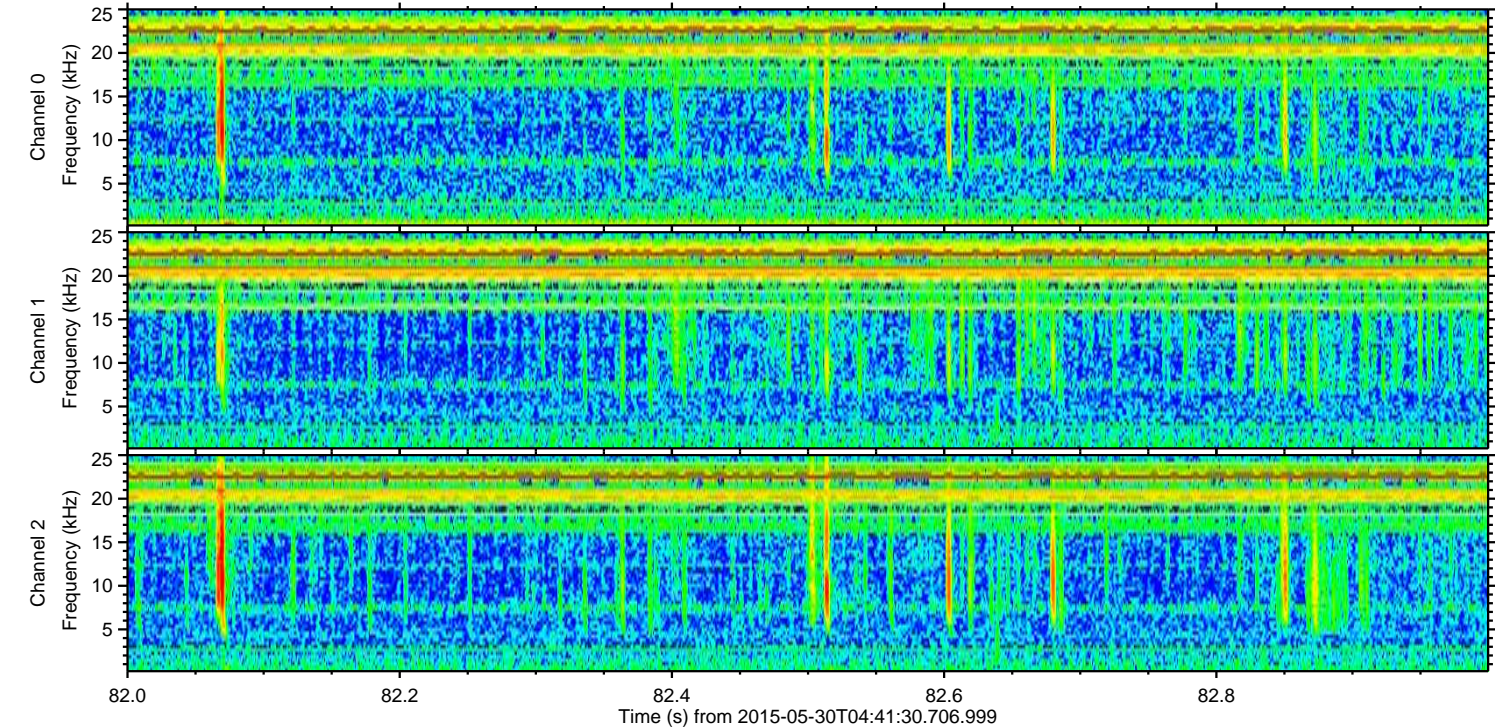
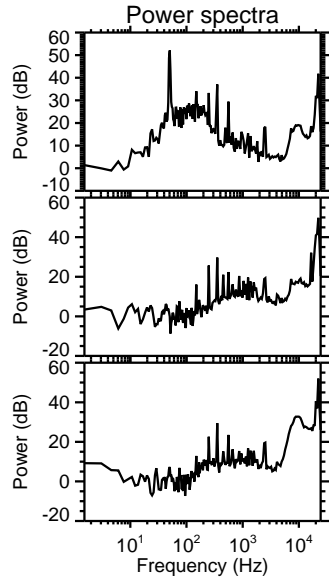
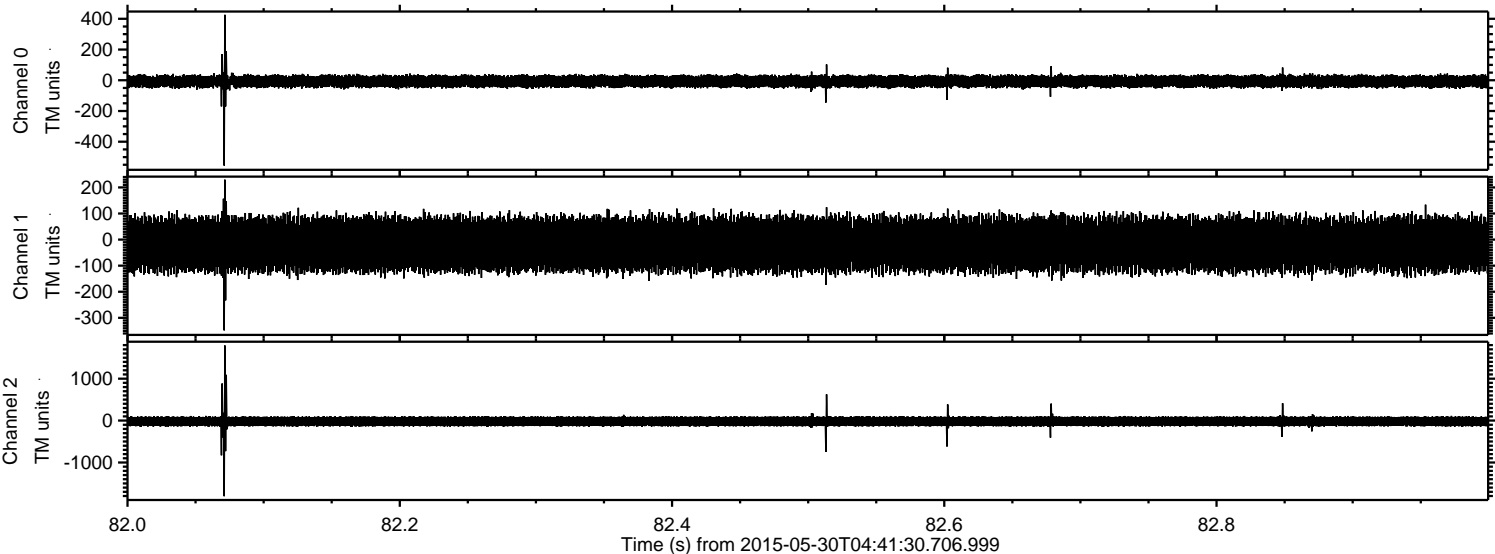
Channel 1  
mn: -416  
mx: 496  
 $\mu$ : -18.3  
 $\sigma$ : 53.7

Channel 2  
mn: -1660  
mx: 1891  
 $\mu$ : -19.5  
 $\sigma$ : 65.1



ELMAVAN 3D WAVEFORMS (Measured data sampled at 50 kHz) 49793 packets of 144 samples from 2015-05-30T04:41:30.706.999. Part 83/144

Processed Sat May 30 06:49:00 2015 by ELM ver.2012-10-06 from 001\_\_elm20150530\_044129\_\_dat00.bin





ELMAVAN 3D WAVEFORMS (Measured data sampled at 50 kHz) 49793 packets of 144 samples from 2015-05-30T04:41:30.706.999. Part 37/144

Processed Sat May 30 06:49:01 2015 by ELM ver.2012-10-06 from 001\_\_elm20150530\_044129\_\_dat00.bin

