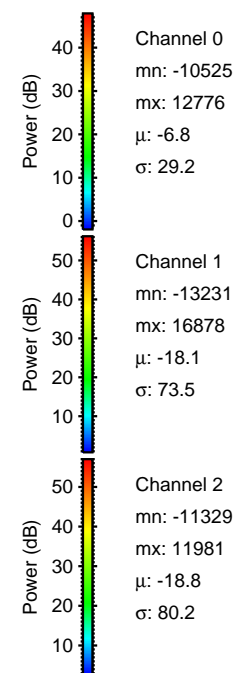
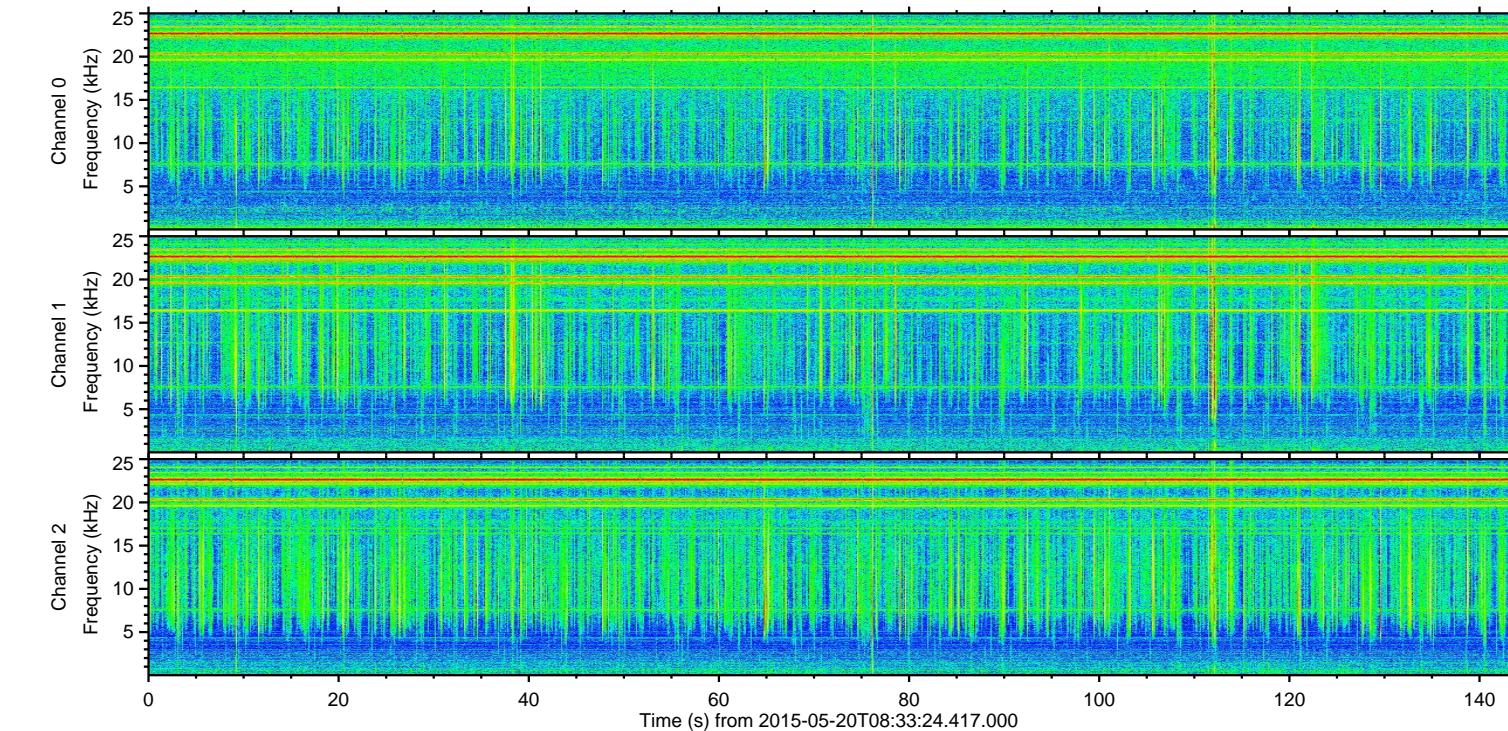
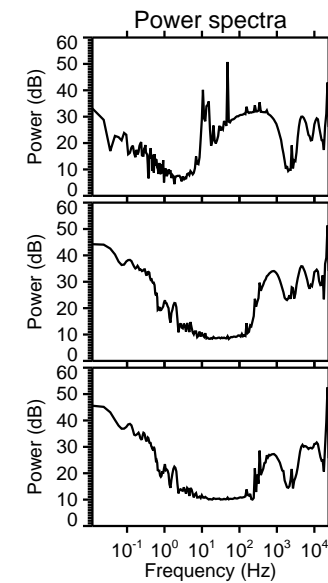
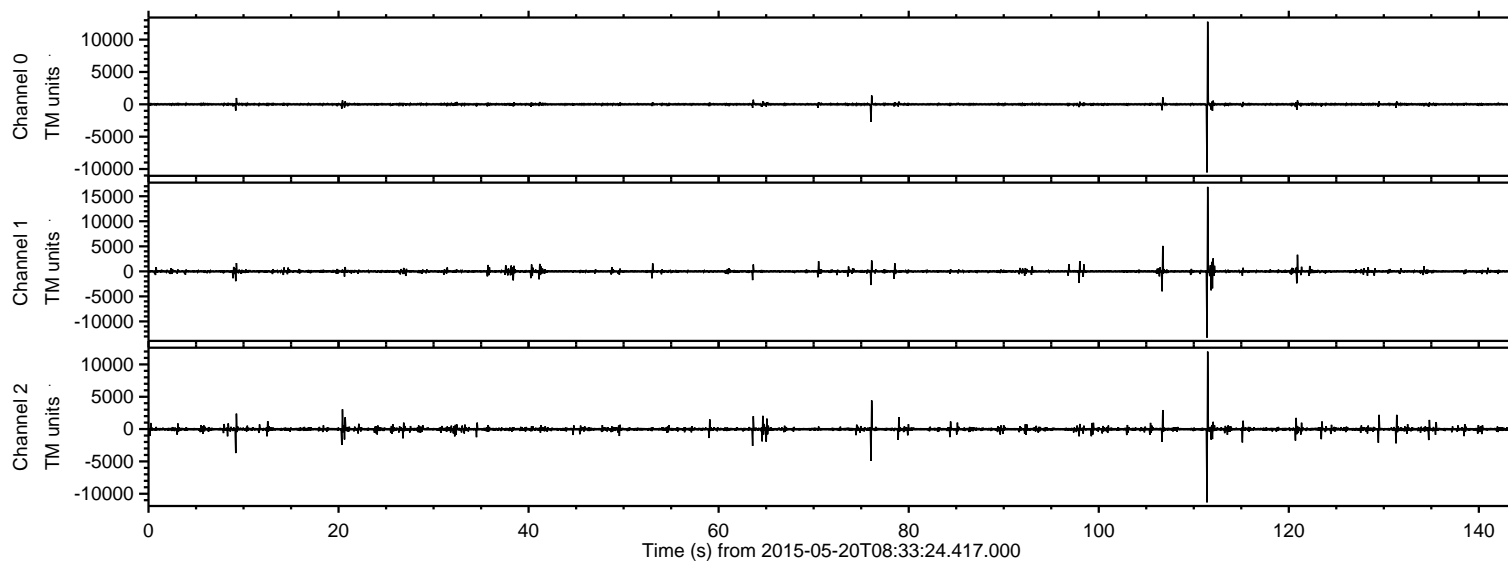


# ELMAVAN 3D WAVEFORMS (Measured data sampled at 50 kHz) 49719 packets of 144 samples from 2015-05-20T08:33:24.417.000.

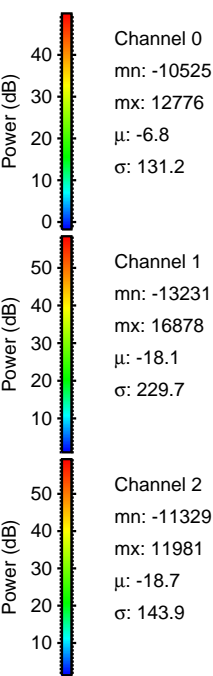
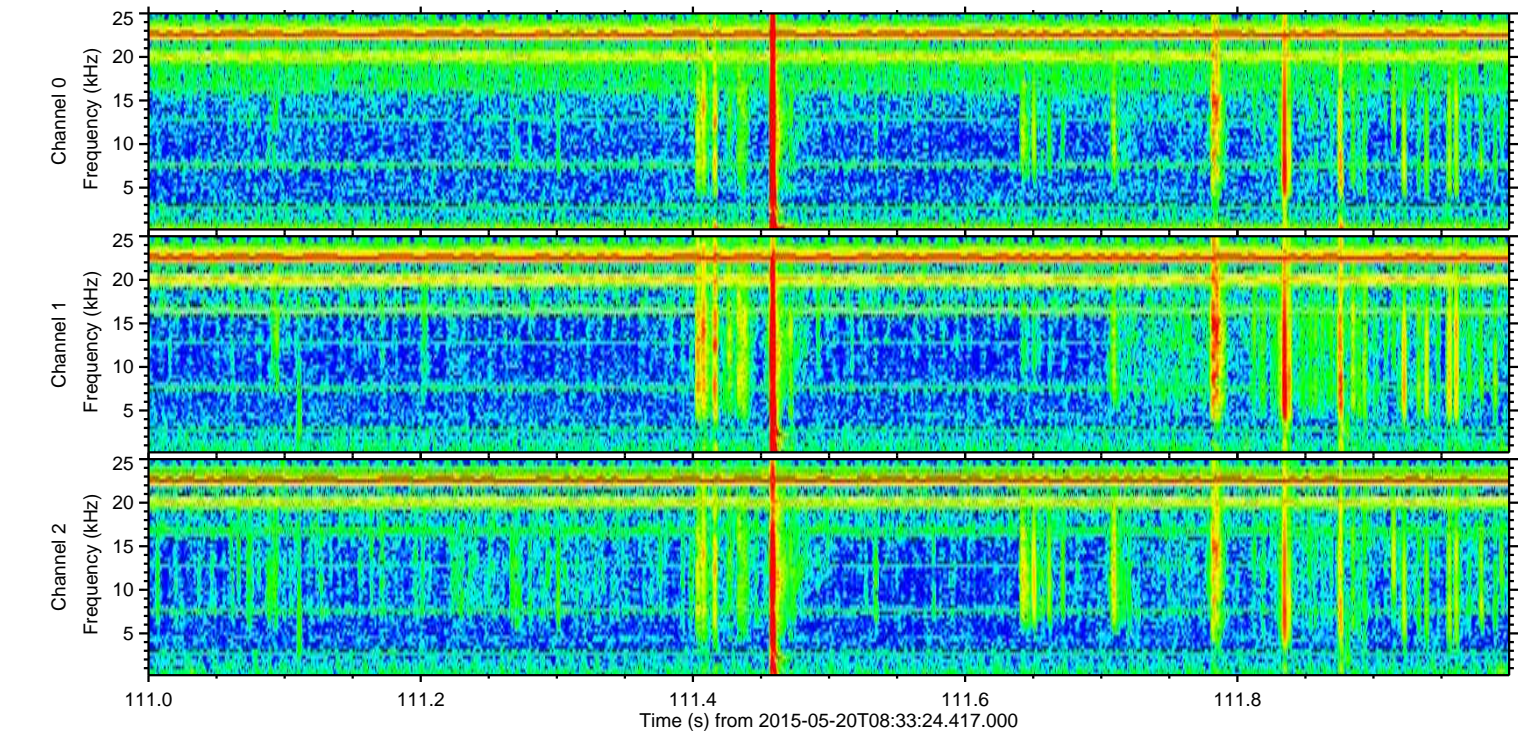
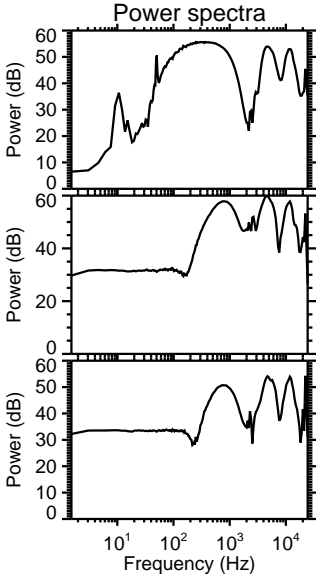
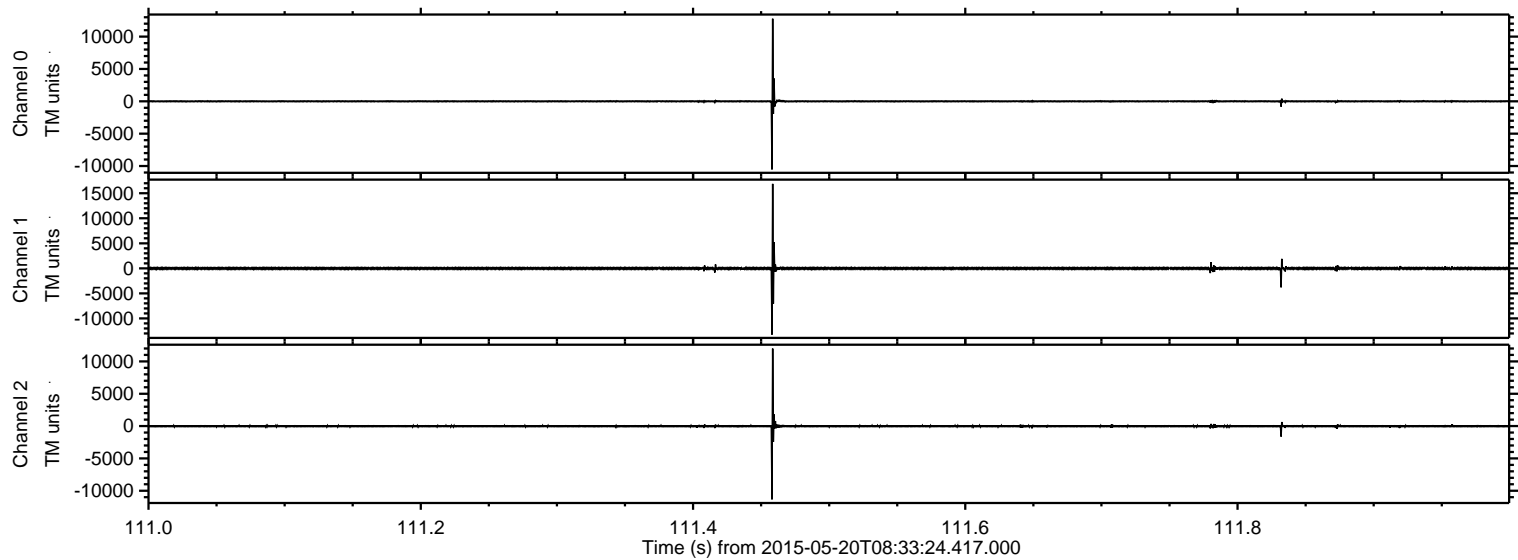
Processed Wed May 20 10:39:50 2015 by ELM ver.2012-10-06 from 001\_\_elm20150520\_083323\_\_dat00.bin





ELMAVAN 3D WAVEFORMS (Measured data sampled at 50 kHz) 49719 packets of 144 samples from 2015-05-20T08:33:24.417.000. Part 112/144

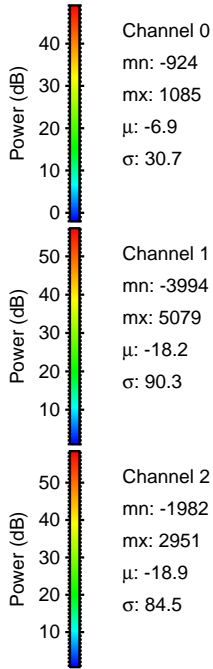
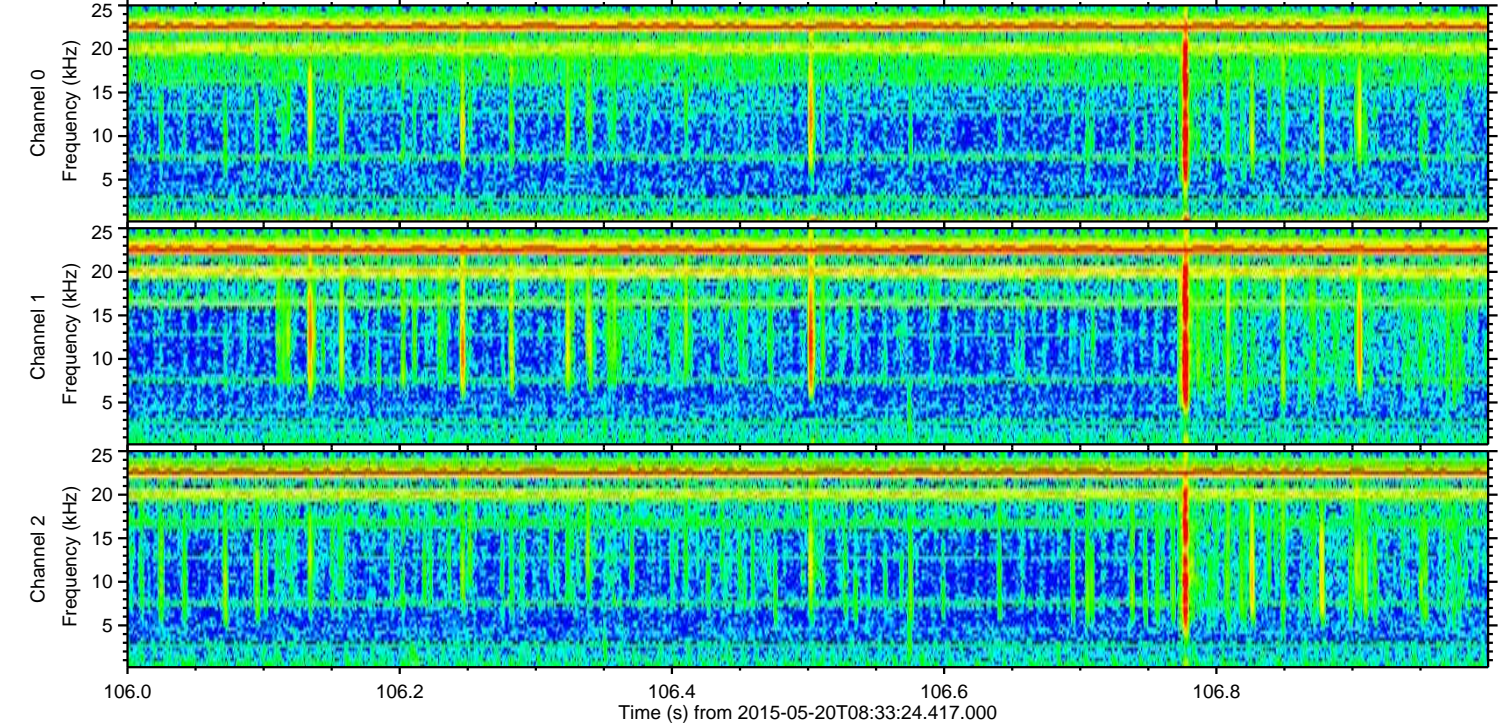
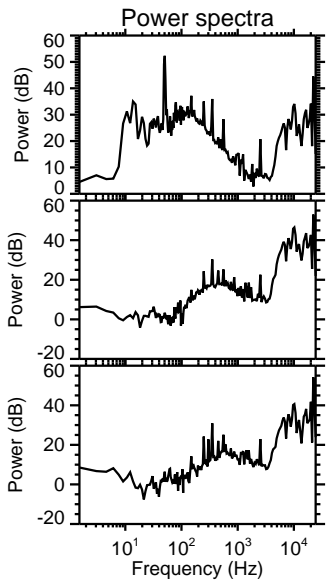
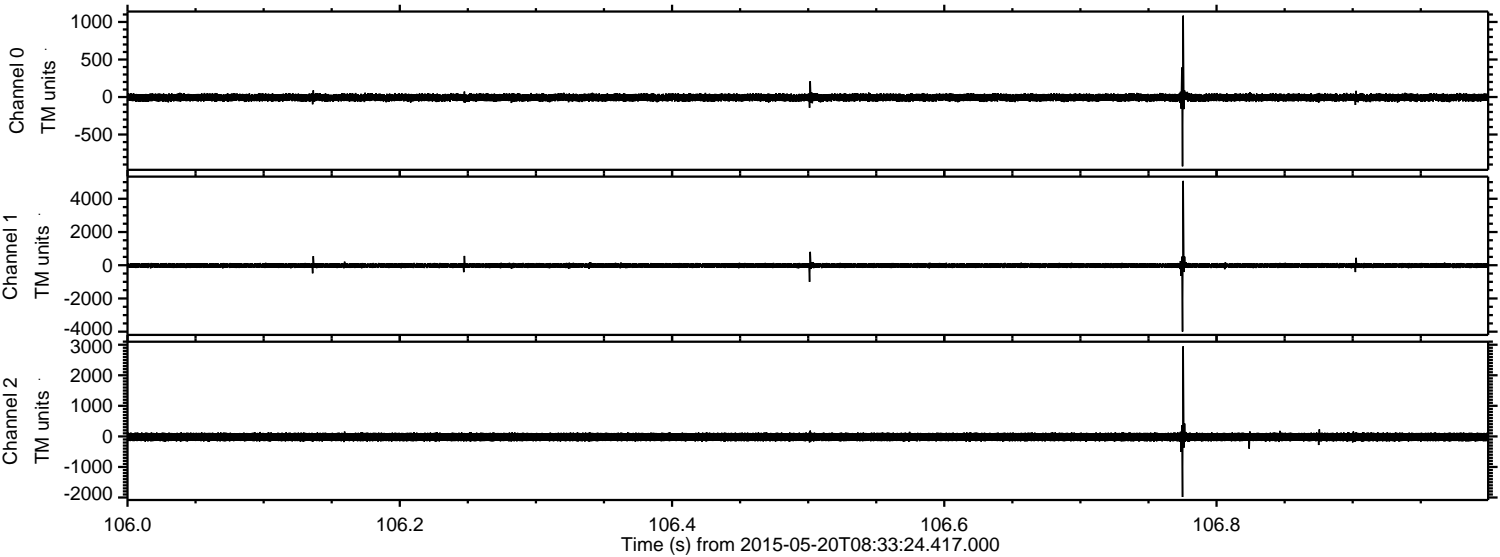
Processed Wed May 20 10:40:02 2015 by ELM ver.2012-10-06 from 001\_\_elm20150520\_083323\_\_dat00.bin





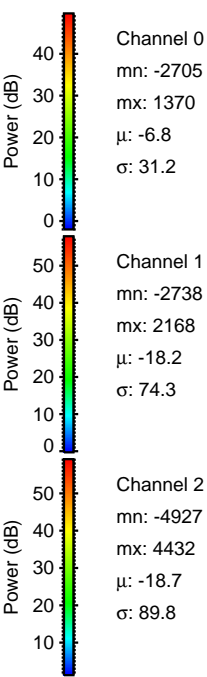
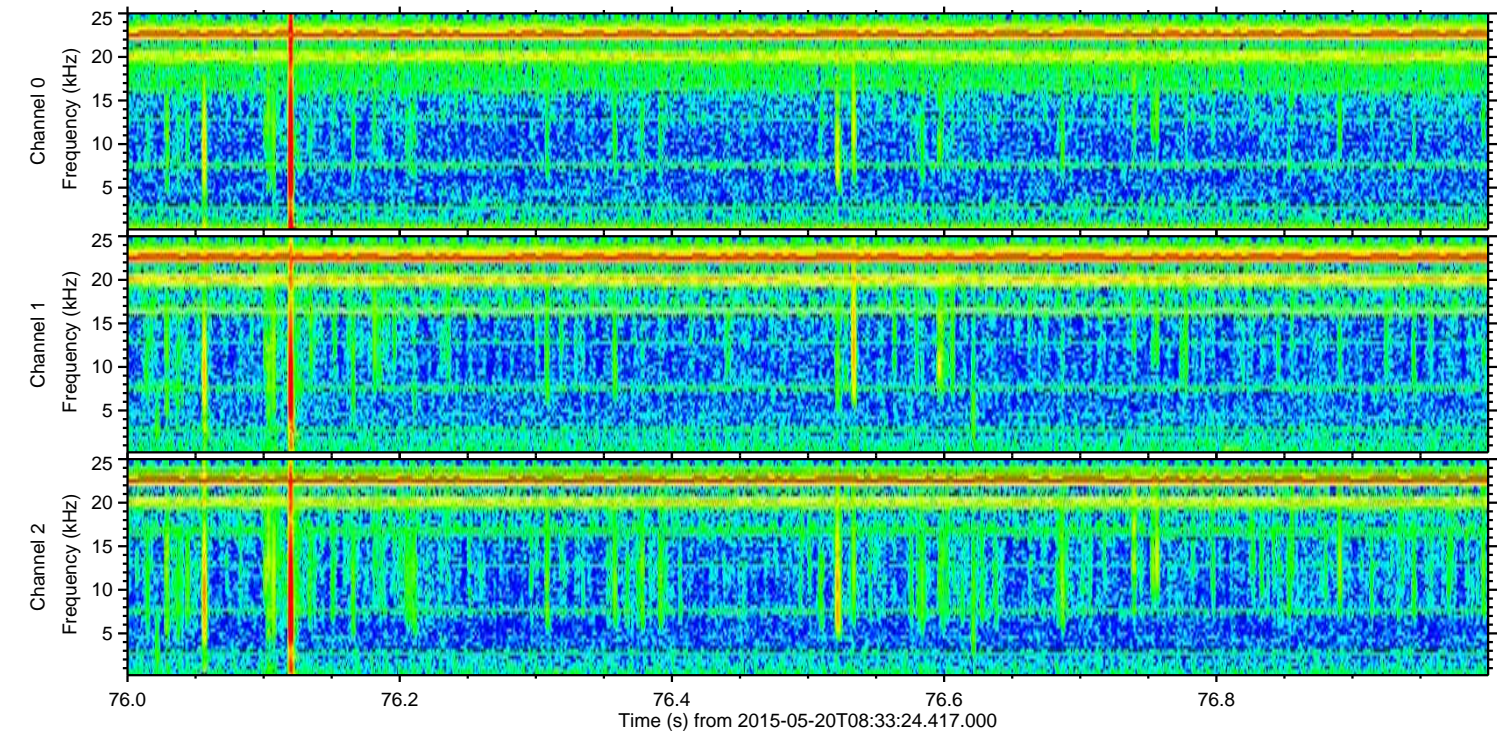
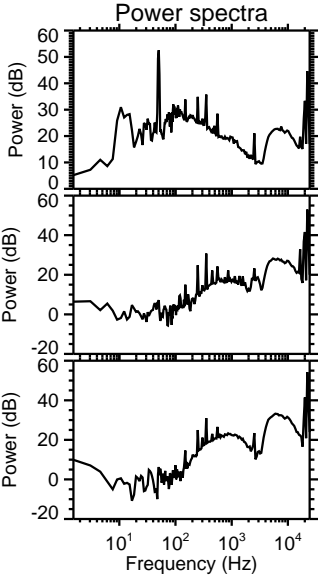
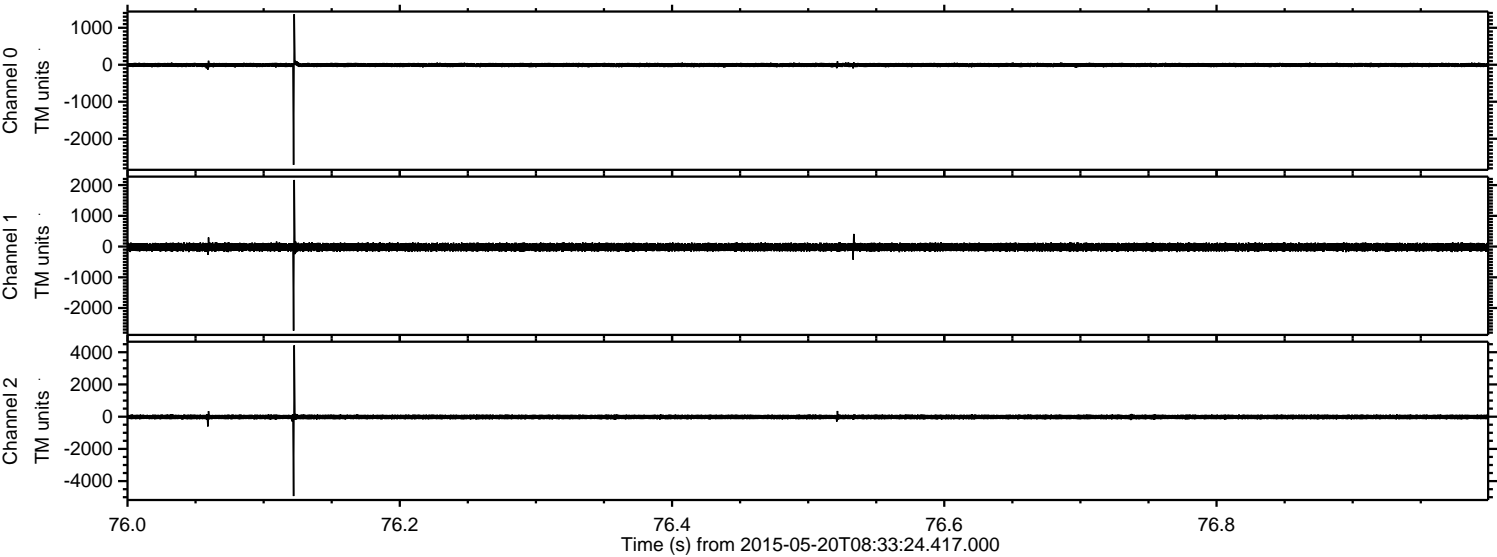
ELMAVAN 3D WAVEFORMS (Measured data sampled at 50 kHz) 49719 packets of 144 samples from 2015-05-20T08:33:24.417.000. Part 107/144

Processed Wed May 20 10:40:03 2015 by ELM ver.2012-10-06 from 001\_\_elm20150520\_083323\_\_dat00.bin



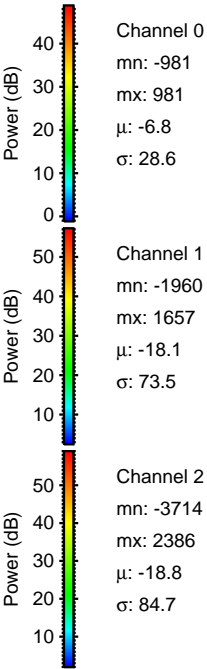
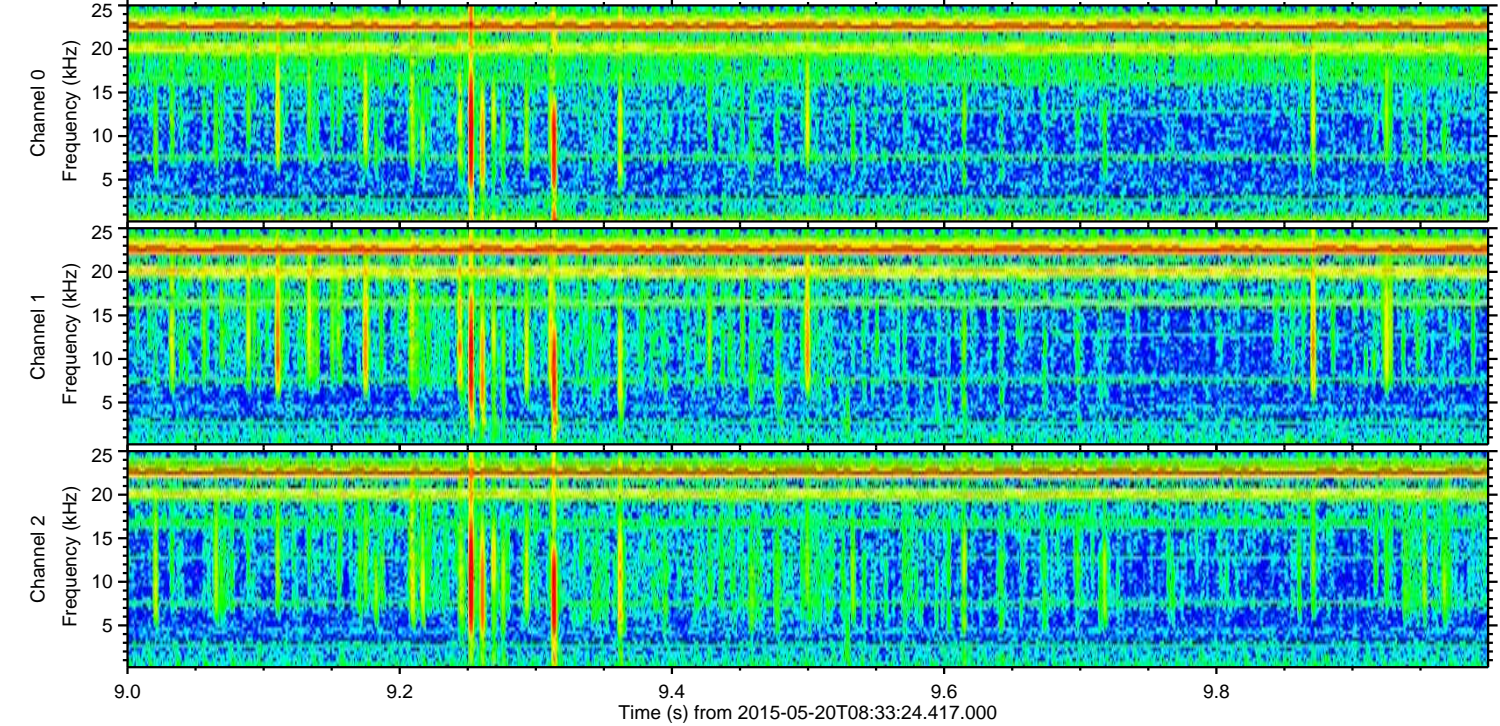
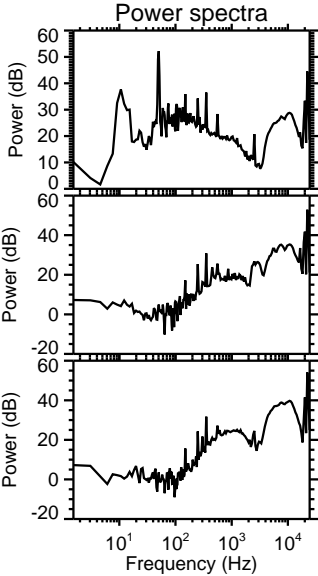
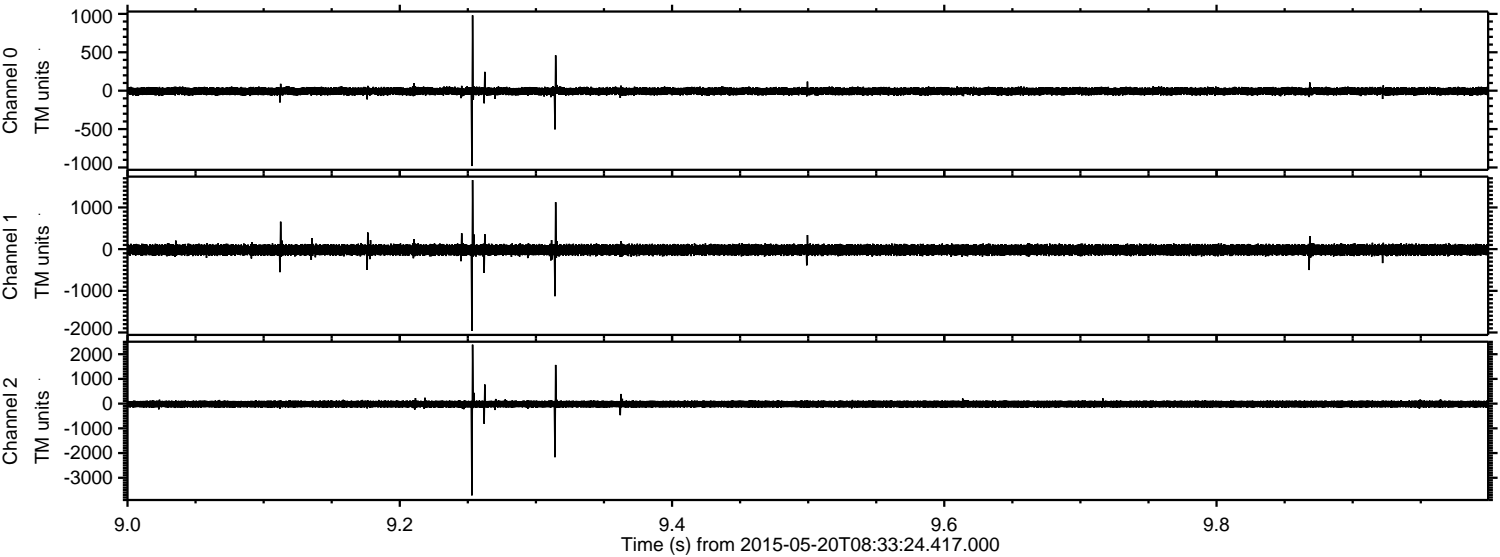


Processed Wed May 20 10:40:04 2015 by ELM ver.2012-10-06 from 001\_\_elm20150520\_083323\_\_dat00.bin





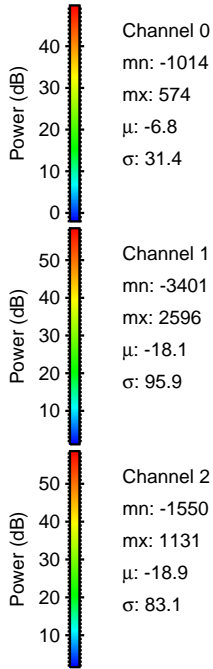
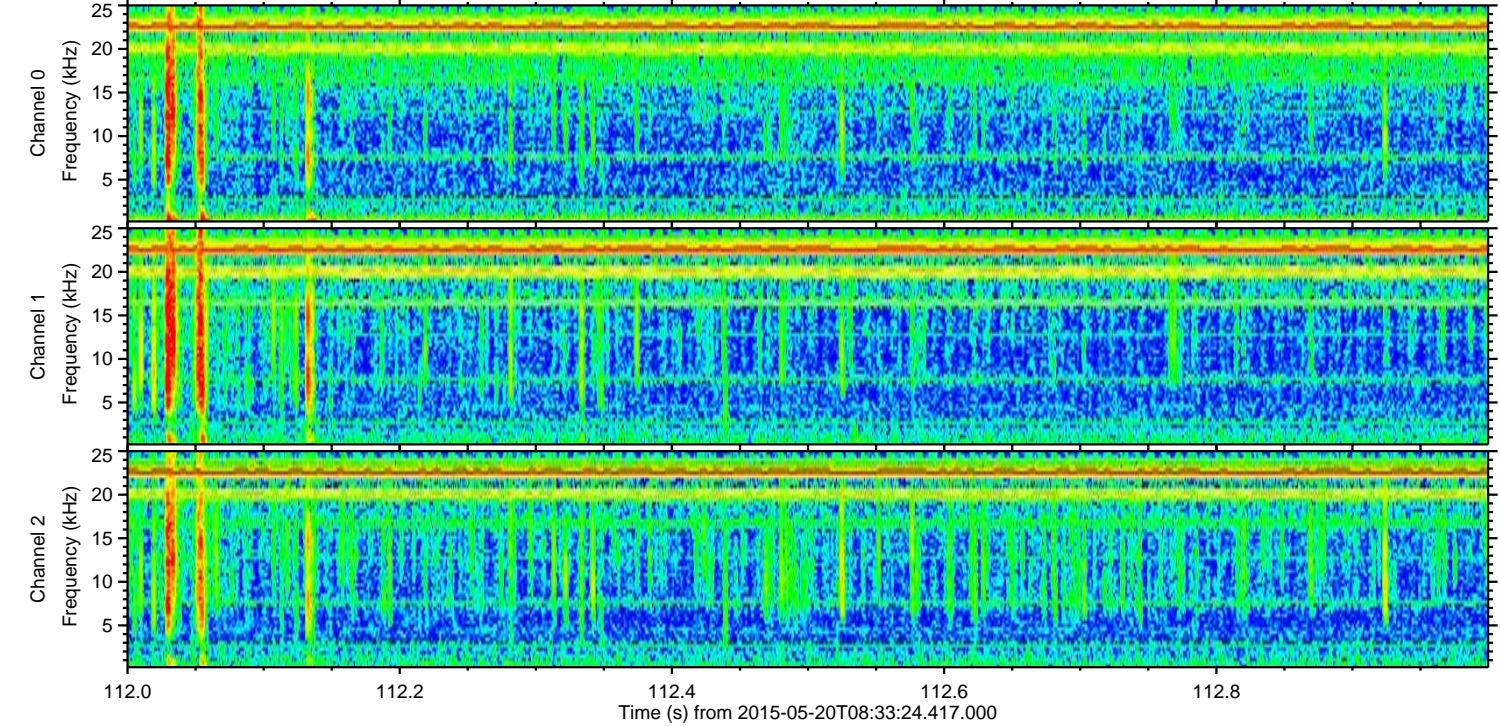
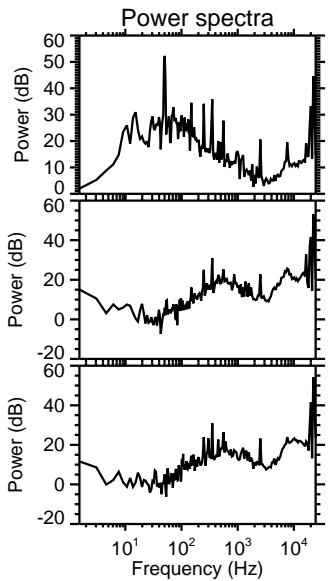
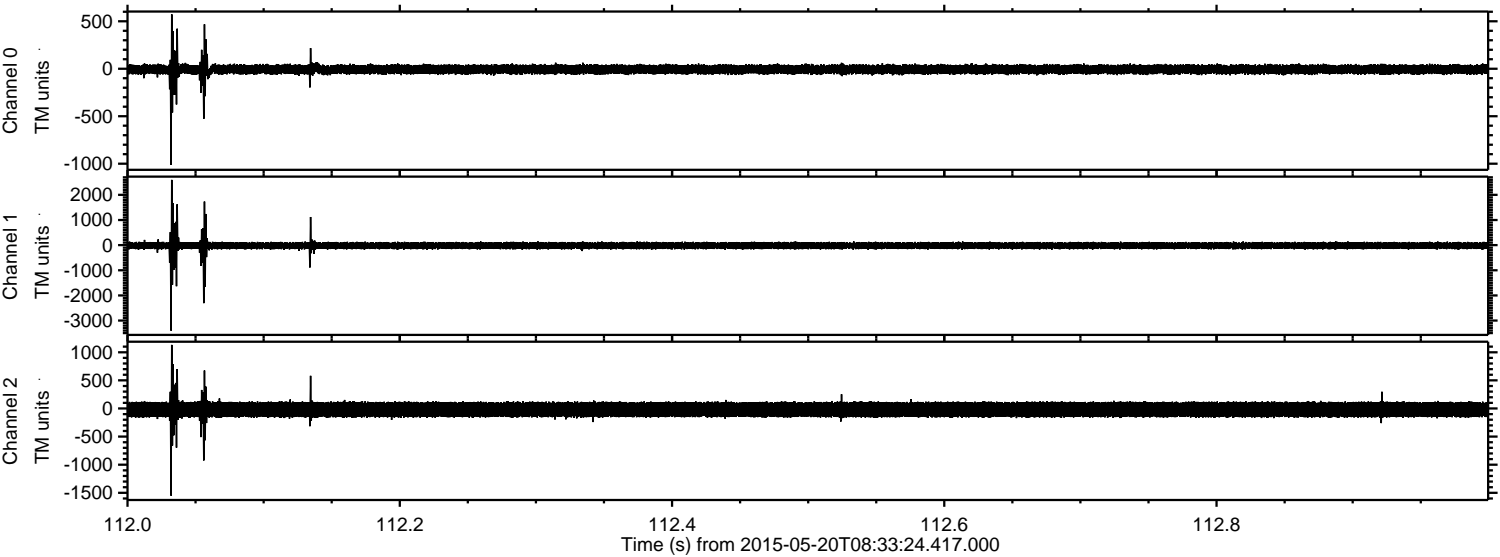
Processed Wed May 20 10:40:05 2015 by ELM ver.2012-10-06 from 001\_\_elm20150520\_083323\_\_dat00.bin





ELMAVAN 3D WAVEFORMS (Measured data sampled at 50 kHz) 49719 packets of 144 samples from 2015-05-20T08:33:24.417.000. Part 113/144

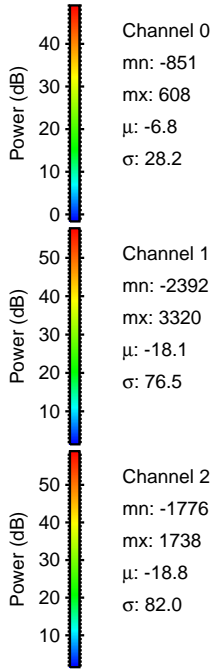
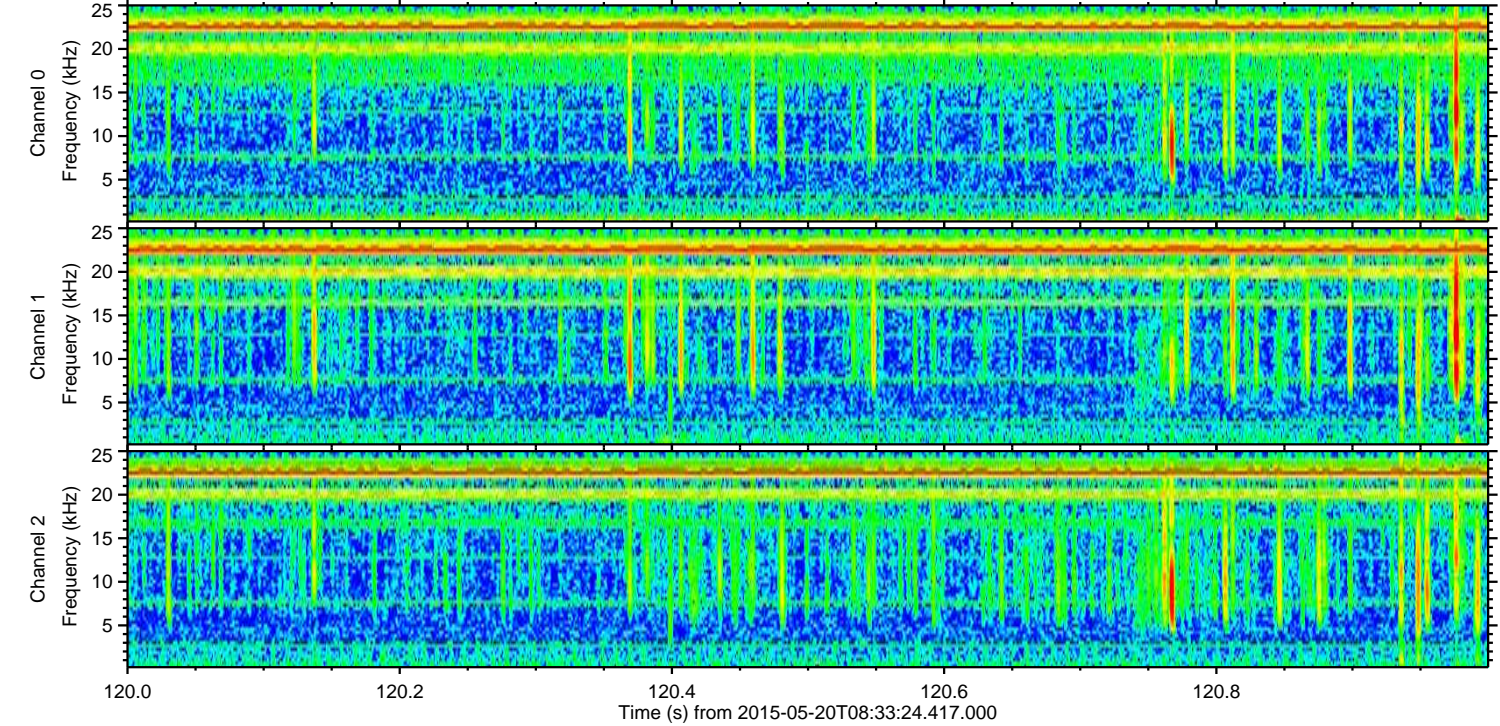
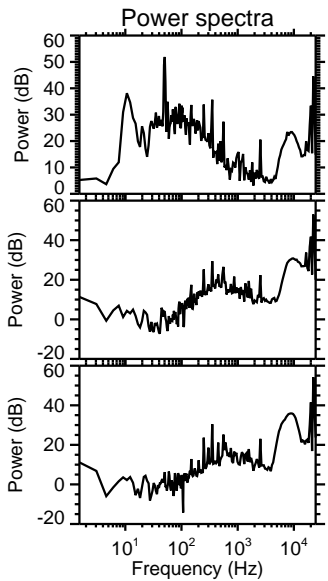
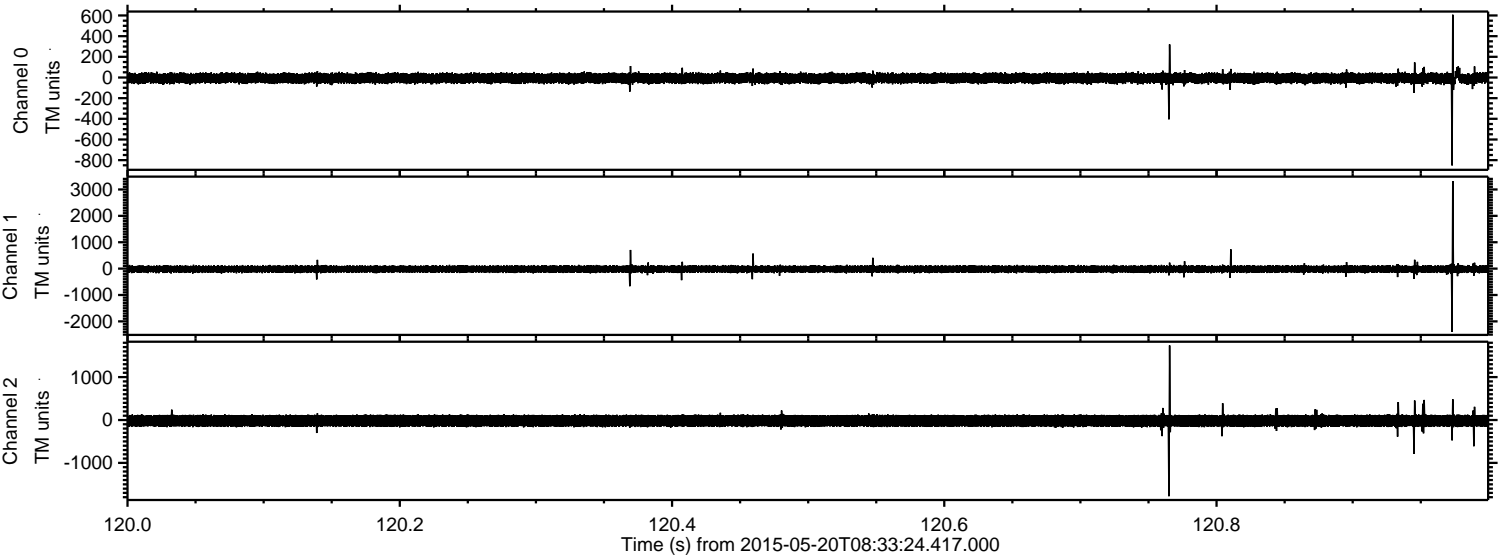
Processed Wed May 20 10:40:05 2015 by ELM ver.2012-10-06 from 001\_\_elm20150520\_083323\_\_dat00.bin





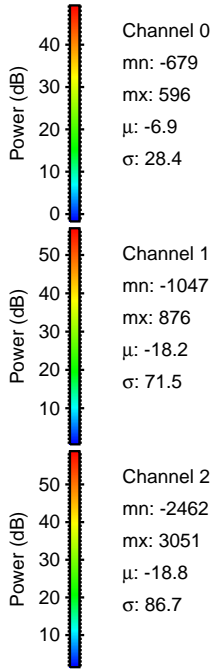
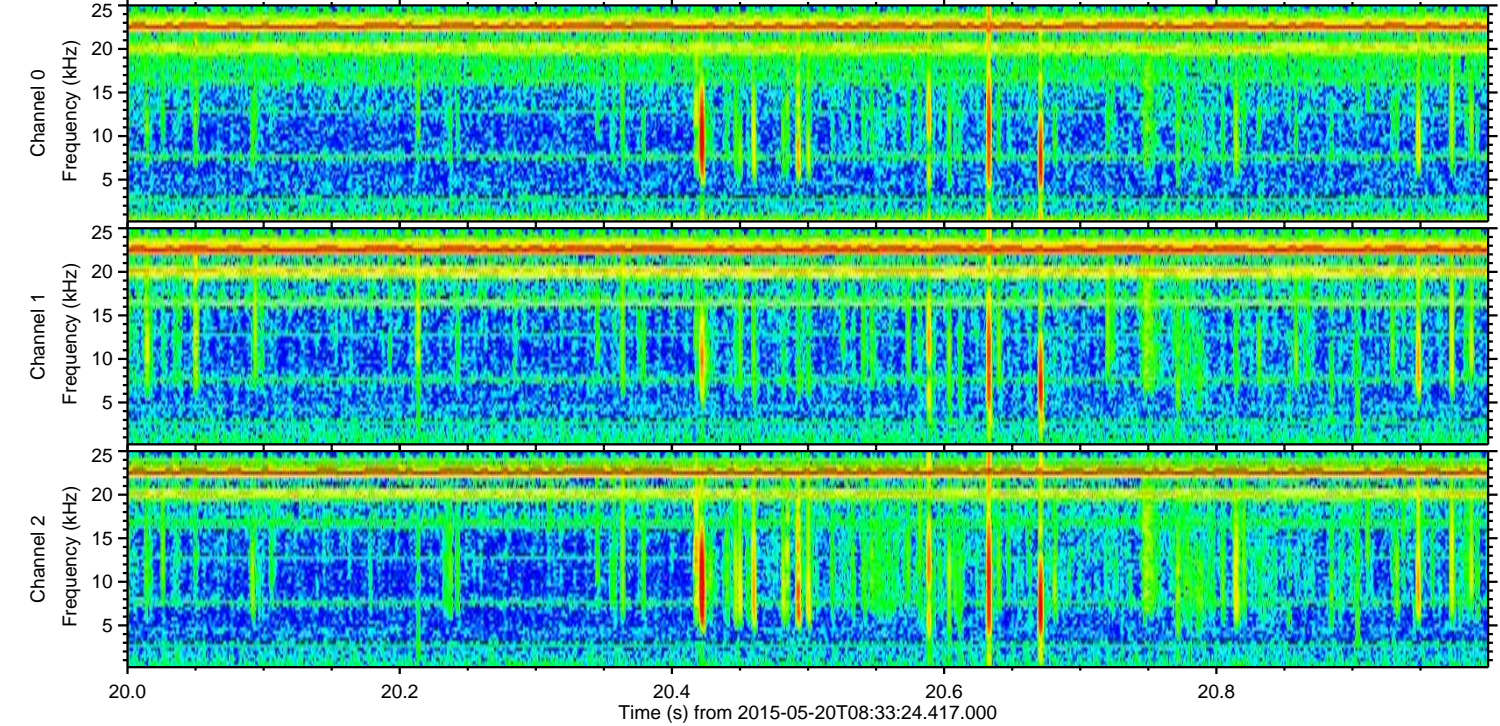
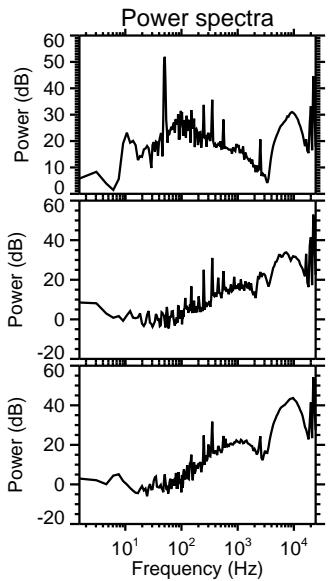
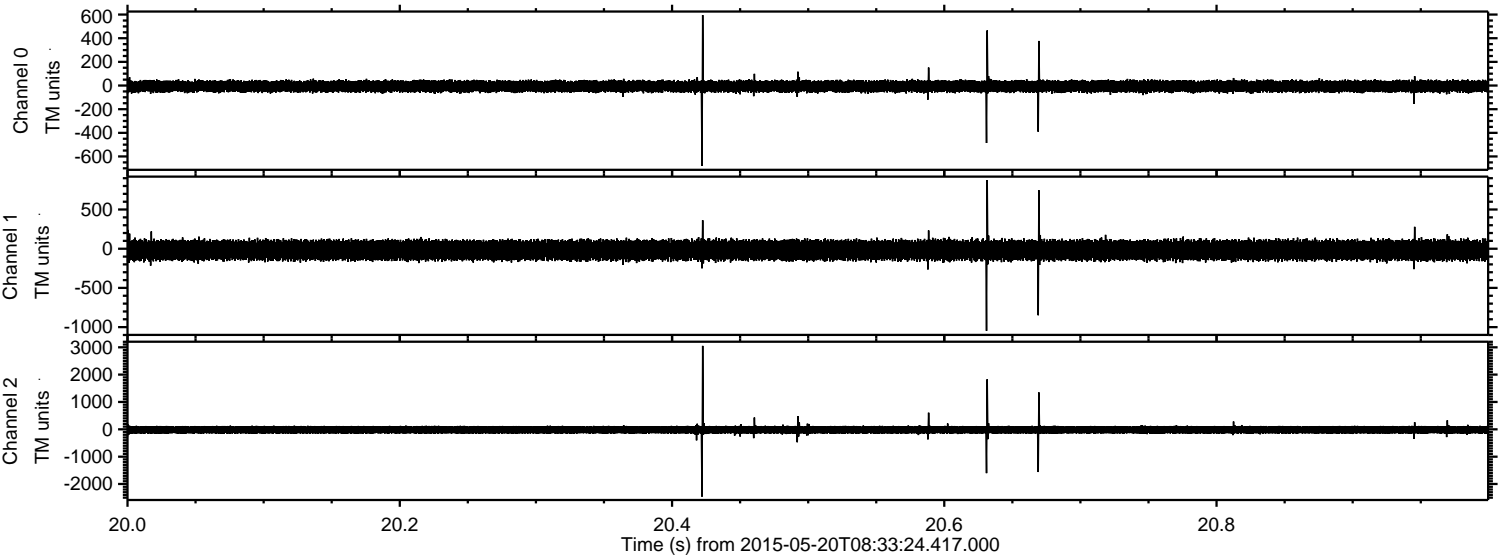
ELMAVAN 3D WAVEFORMS (Measured data sampled at 50 kHz) 49719 packets of 144 samples from 2015-05-20T08:33:24.417.000. Part 121/144

Processed Wed May 20 10:40:06 2015 by ELM ver.2012-10-06 from 001\_\_elm20150520\_083323\_\_dat00.bin



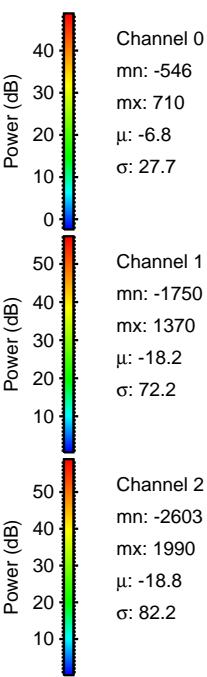
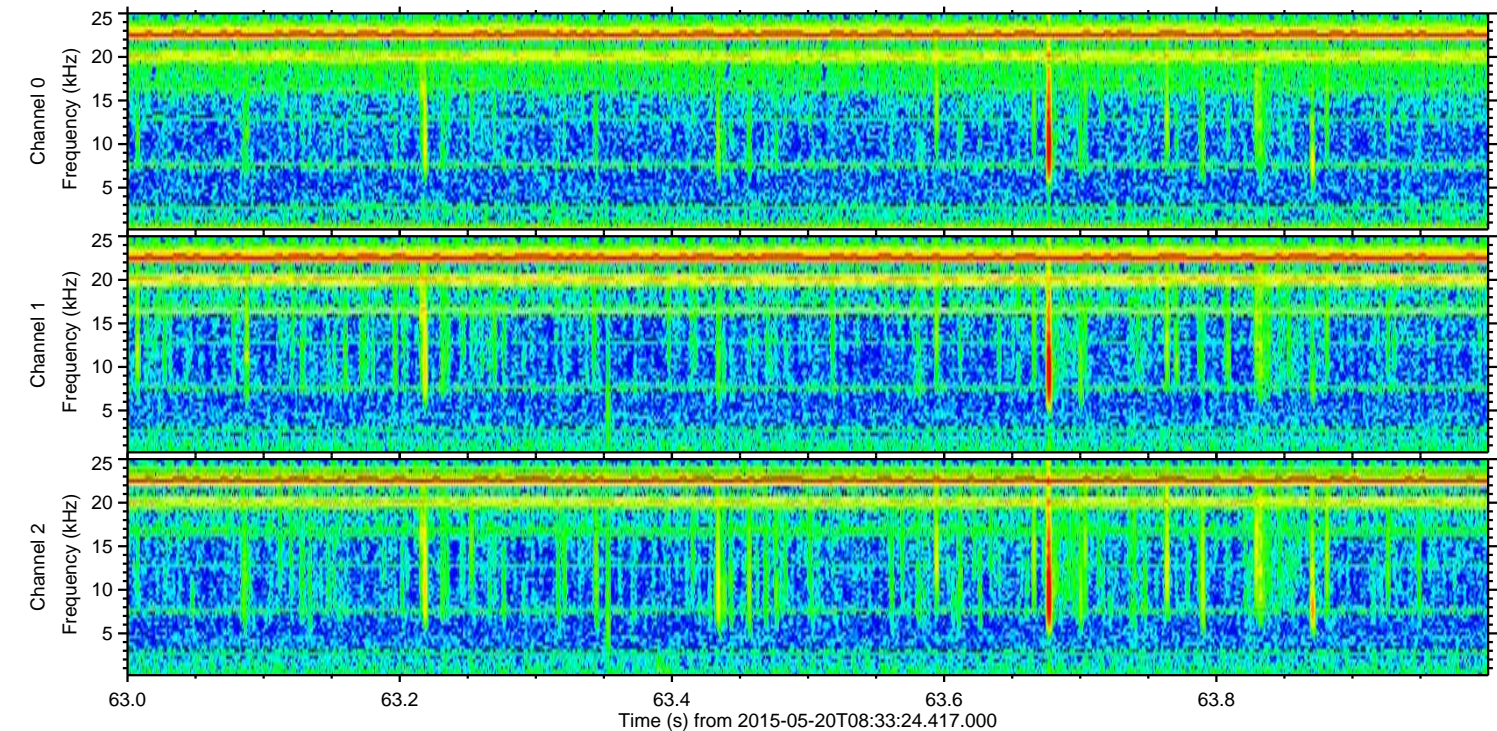
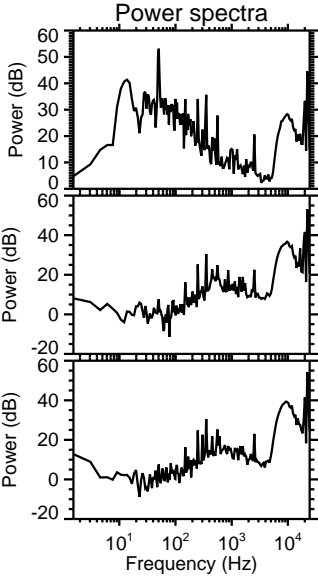
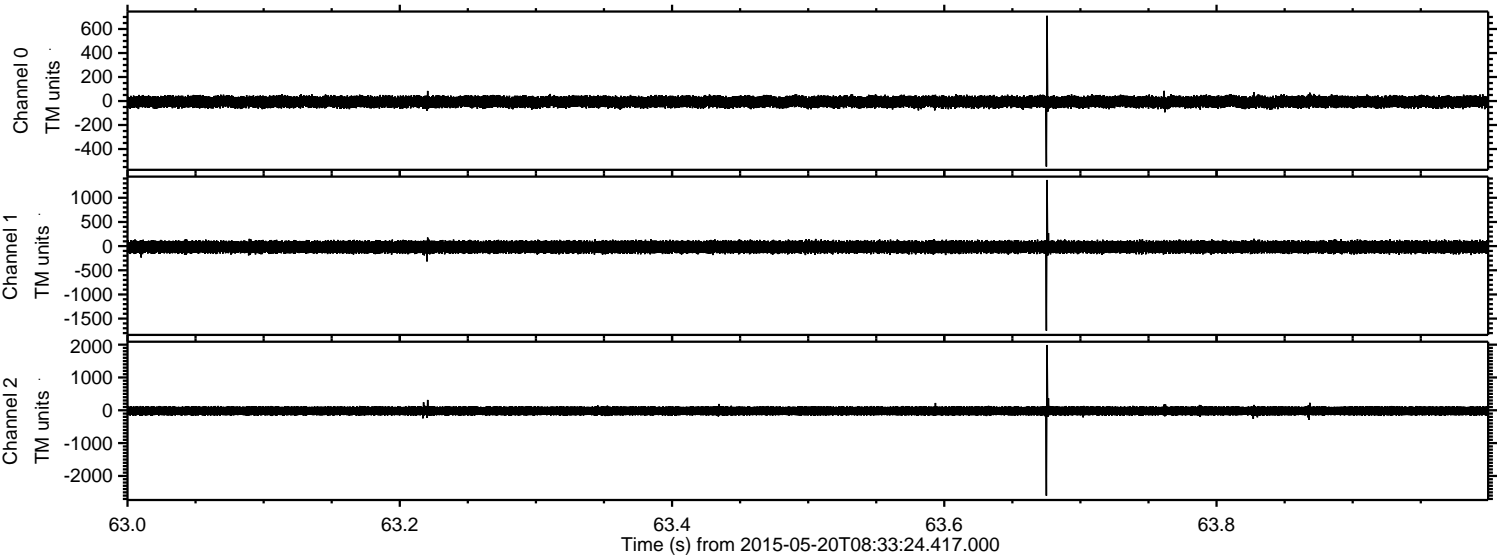


Processed Wed May 20 10:40:07 2015 by ELM ver.2012-10-06 from 001\_\_elm20150520\_083323\_\_dat00.bin



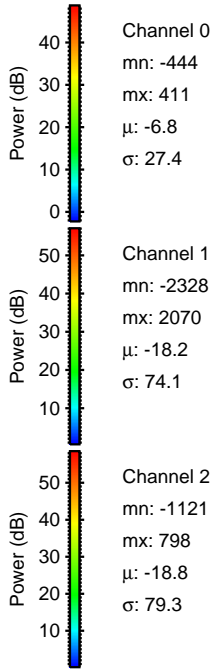
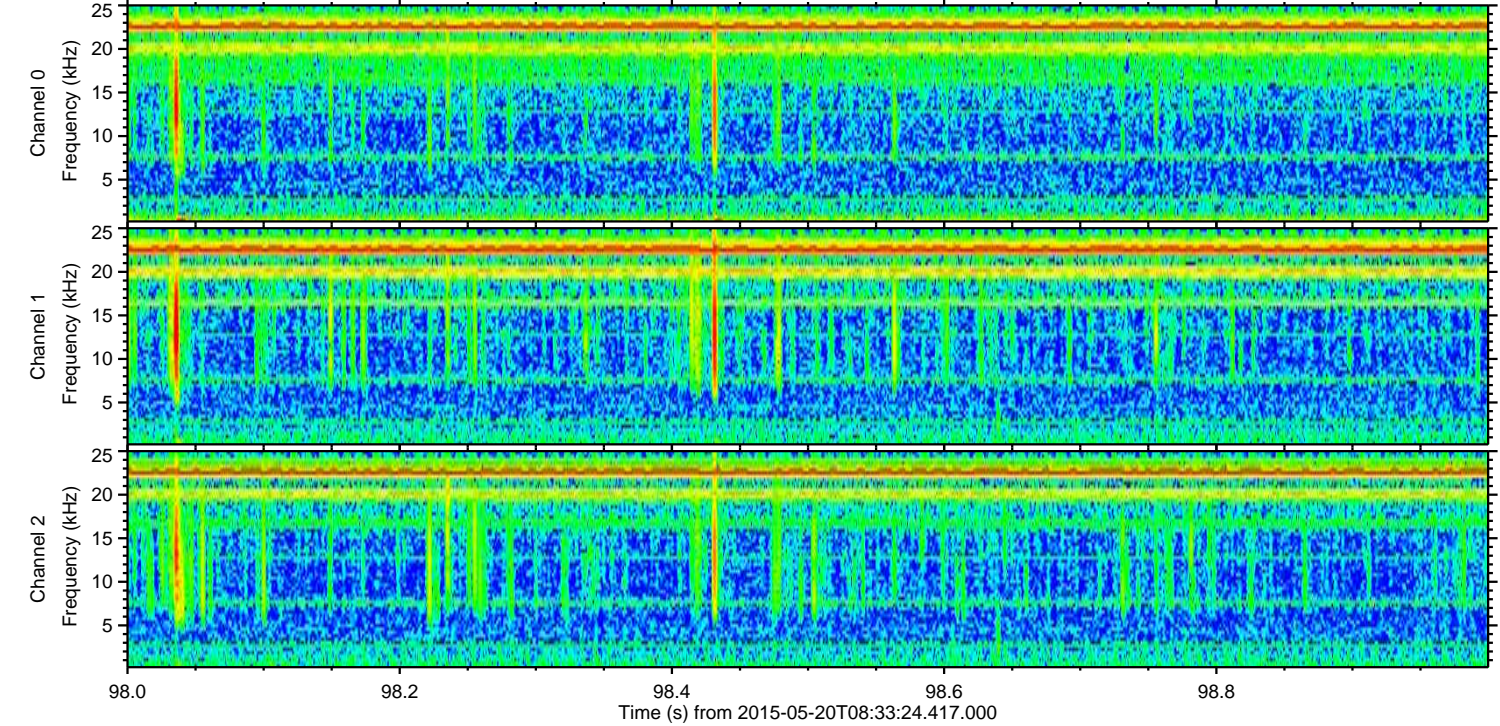
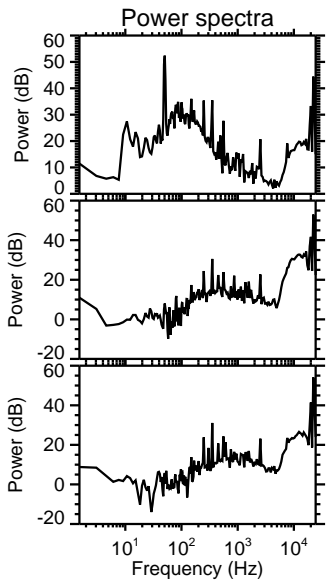
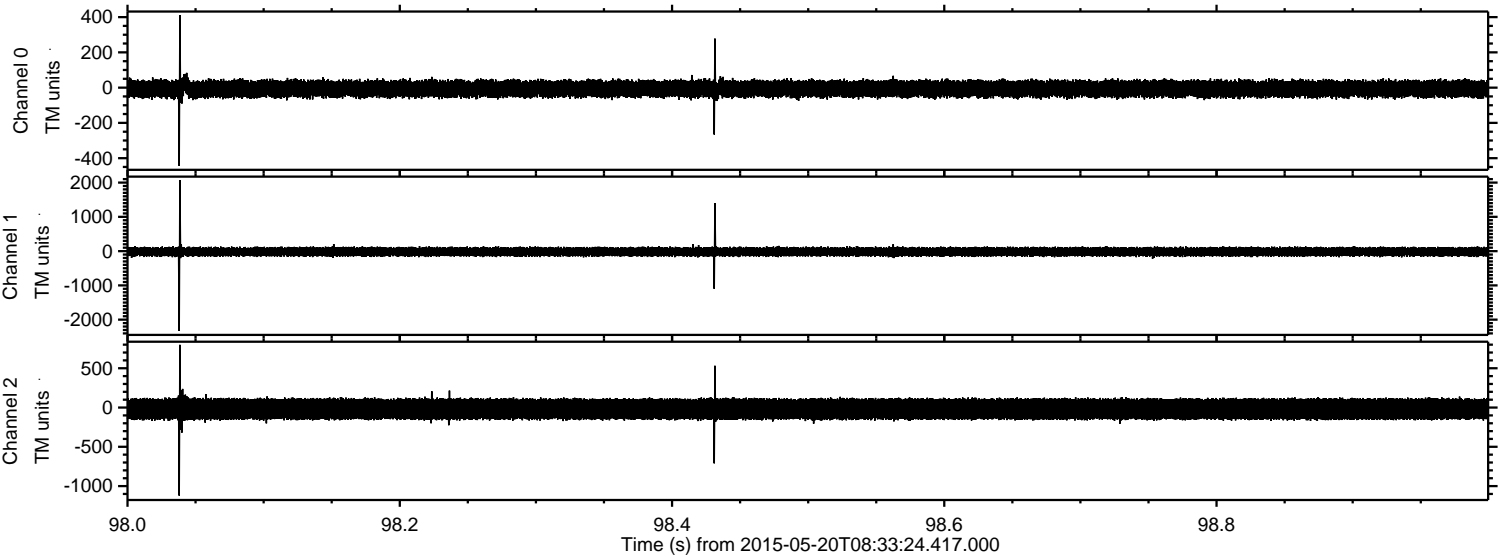


Processed Wed May 20 10:40:08 2015 by ELM ver.2012-10-06 from 001\_\_elm20150520\_083323\_\_dat00.bin





Processed Wed May 20 10:40:09 2015 by ELM ver.2012-10-06 from 001\_\_elm20150520\_083323\_\_dat00.bin



Channel 0  
mn: -444  
mx: 411  
 $\mu$ : -6.8  
 $\sigma$ : 27.4

Channel 1  
mn: -2328  
mx: 2070  
 $\mu$ : -18.2  
 $\sigma$ : 74.1

Channel 2  
mn: -1121  
mx: 798  
 $\mu$ : -18.8  
 $\sigma$ : 79.3



Processed Wed May 20 10:40:11 2015 by ELM ver.2012-10-06 from 001\_\_elm20150520\_083323\_\_dat00.bin

