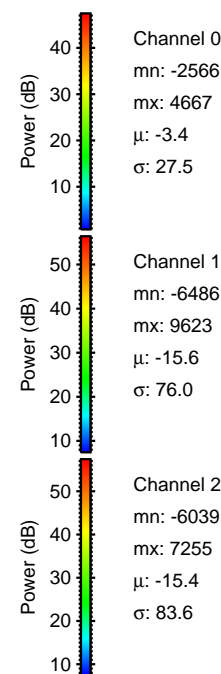
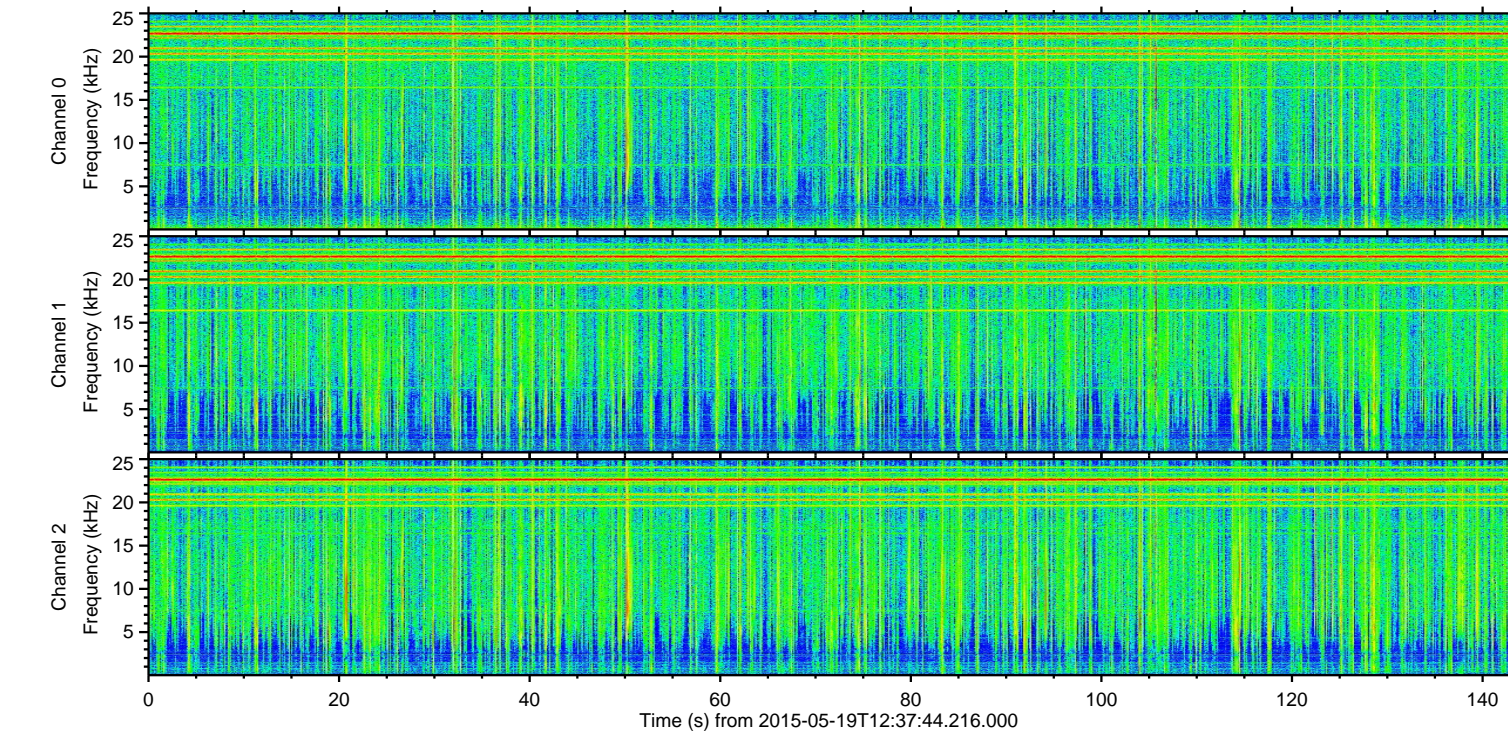
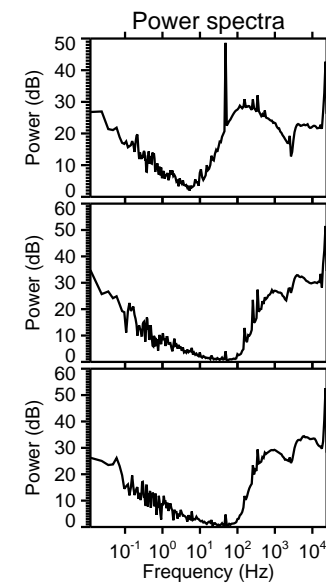
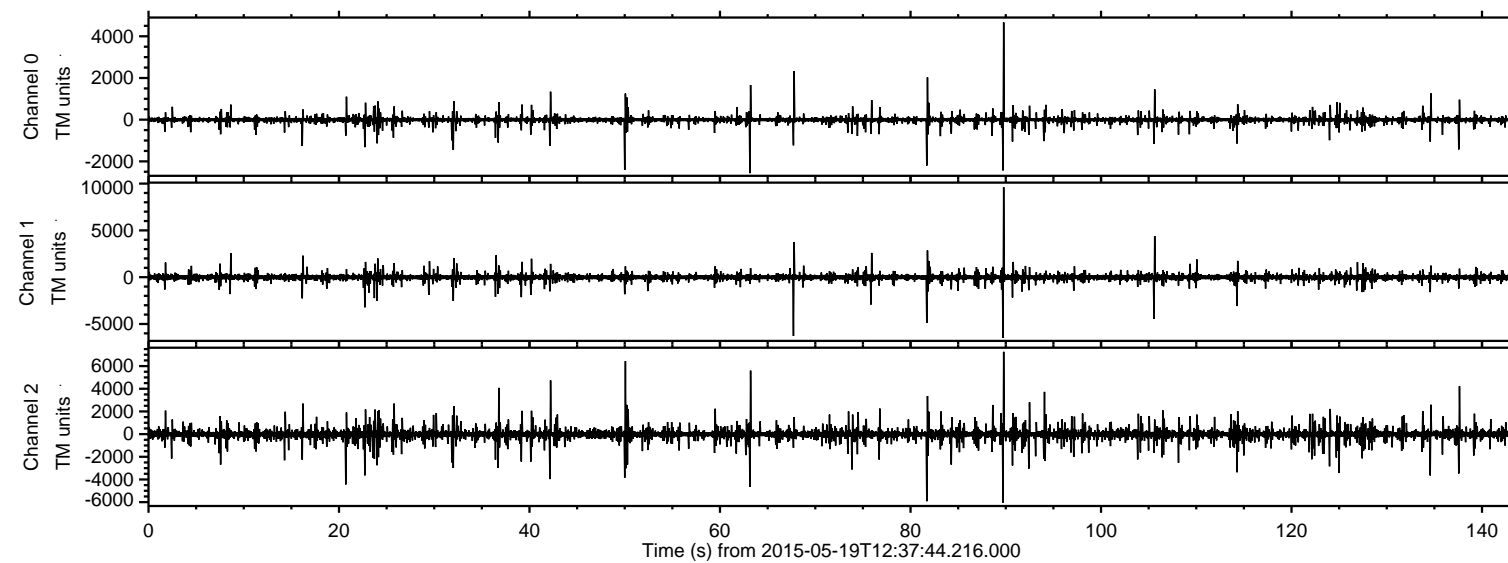
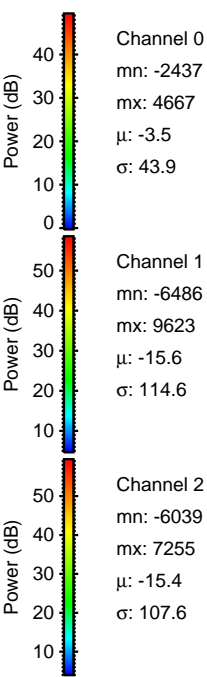
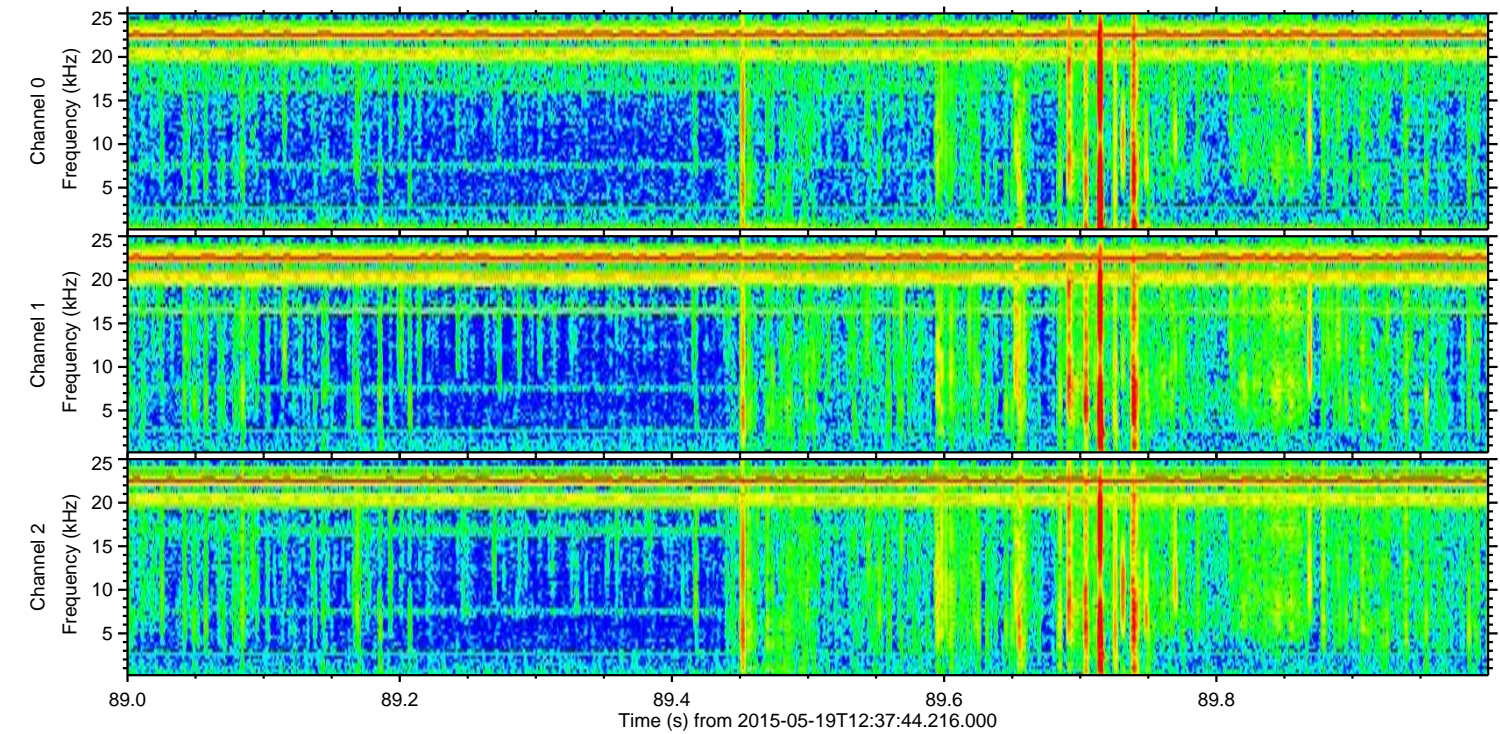
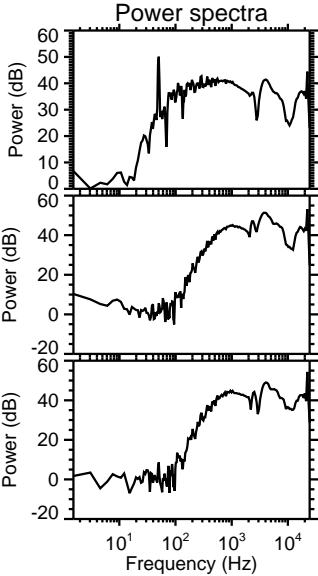
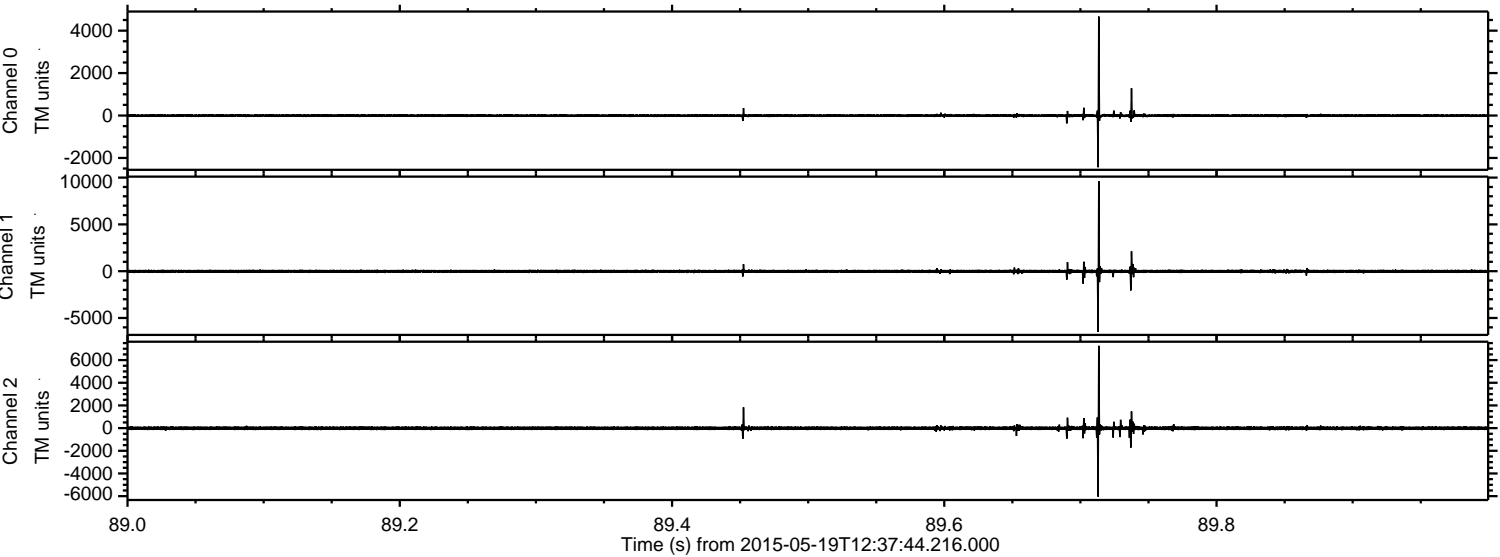


ELMAVAN 3D WAVEFORMS (Measured data sampled at 50 kHz) 49600 packets of 144 samples from 2015-05-19T12:37:44.216.000.

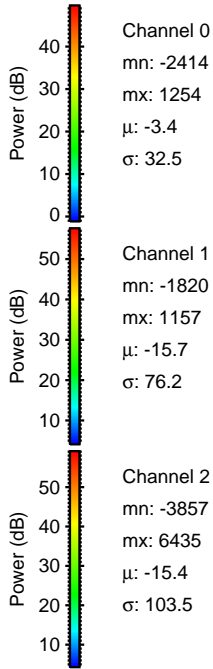
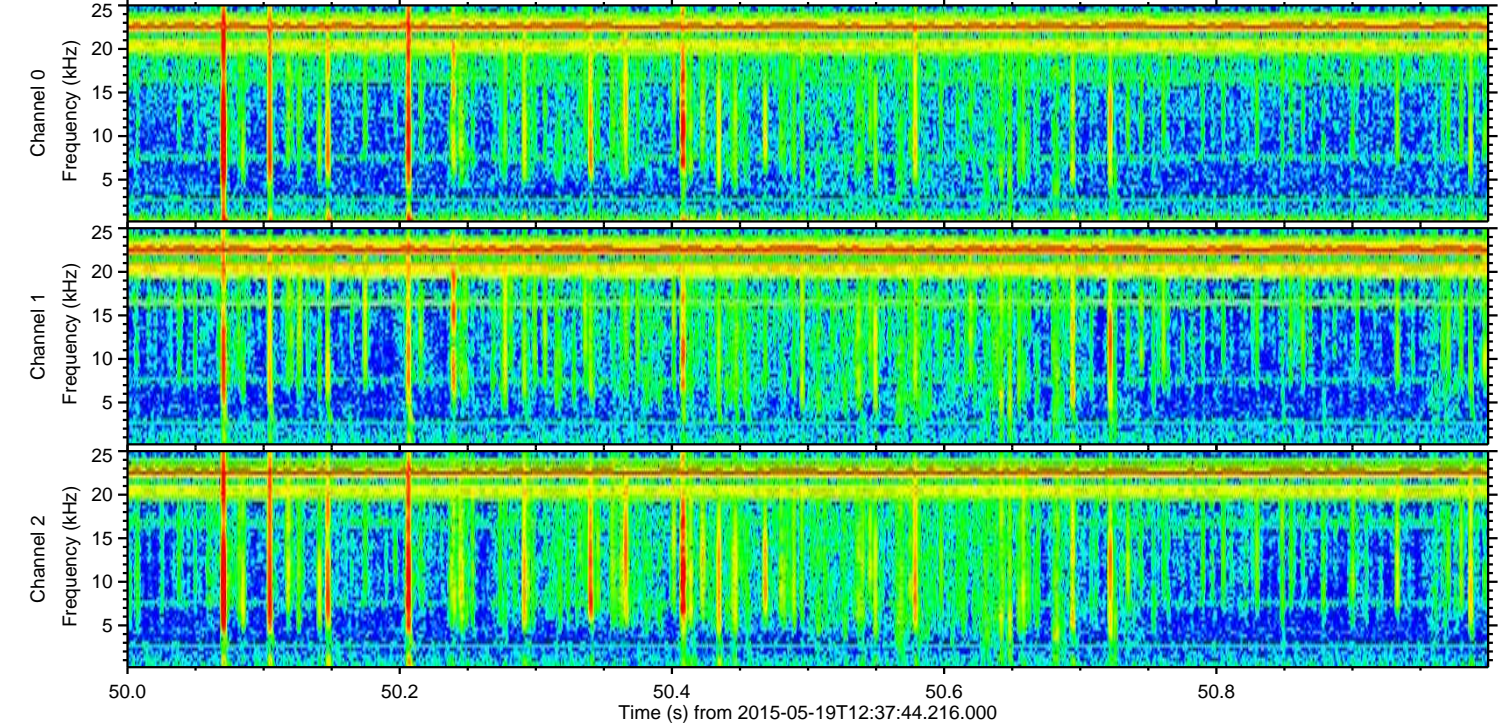
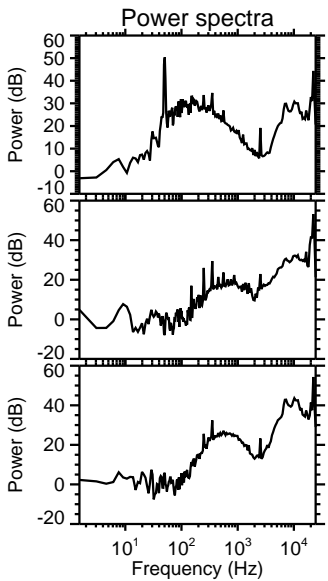
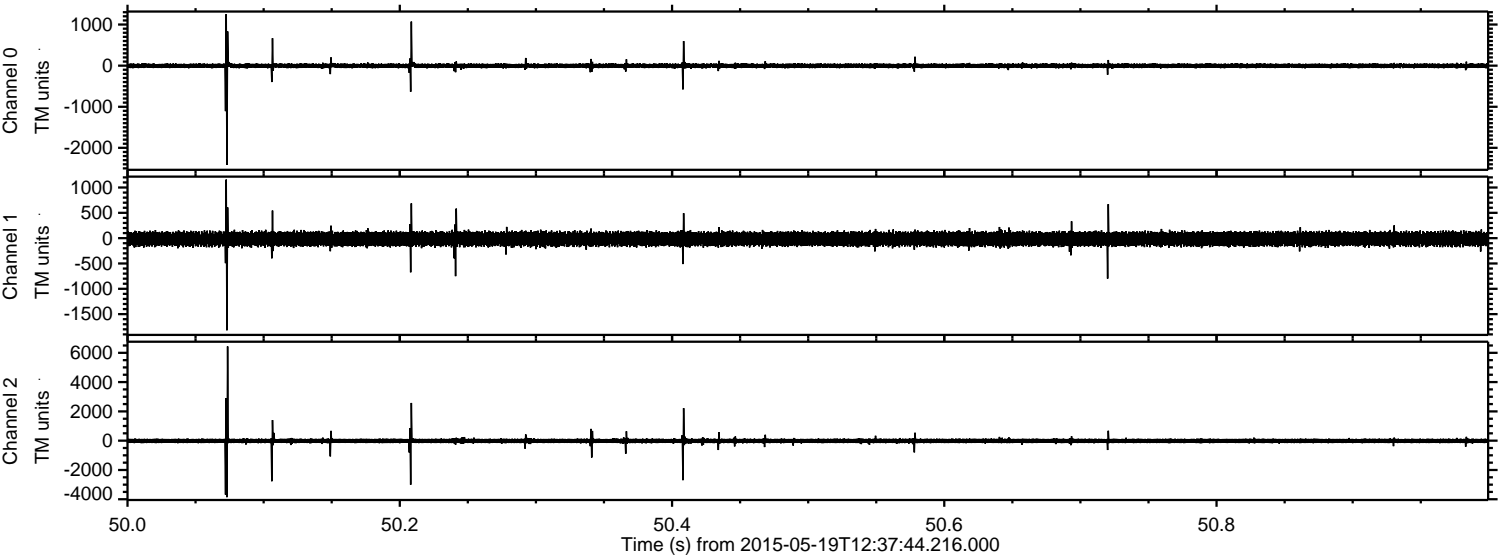
Processed Tue May 19 14:44:49 2015 by ELM ver.2012-10-06 from 001__elm20150519_123743__dat00.bin



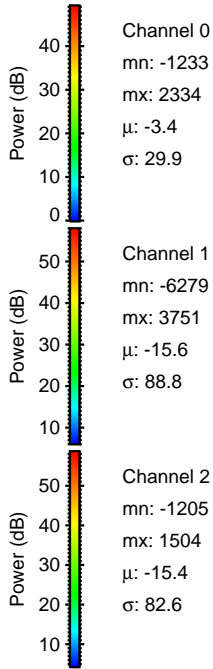
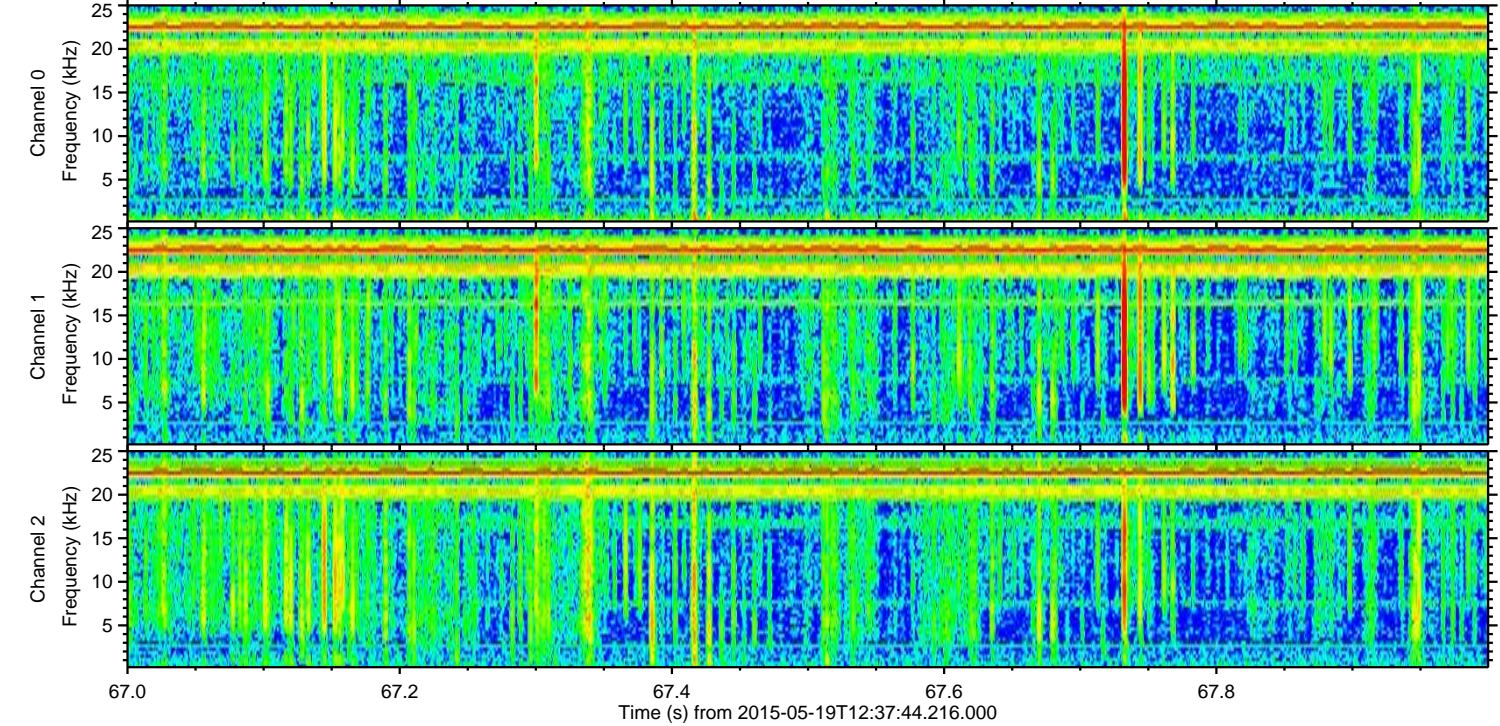
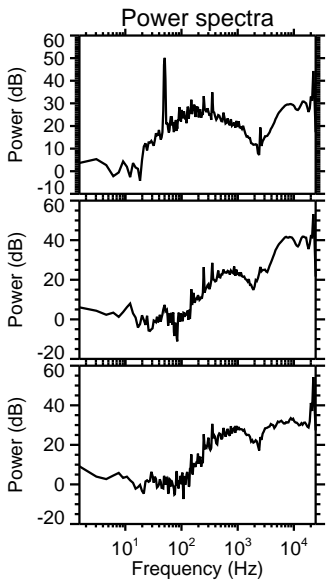
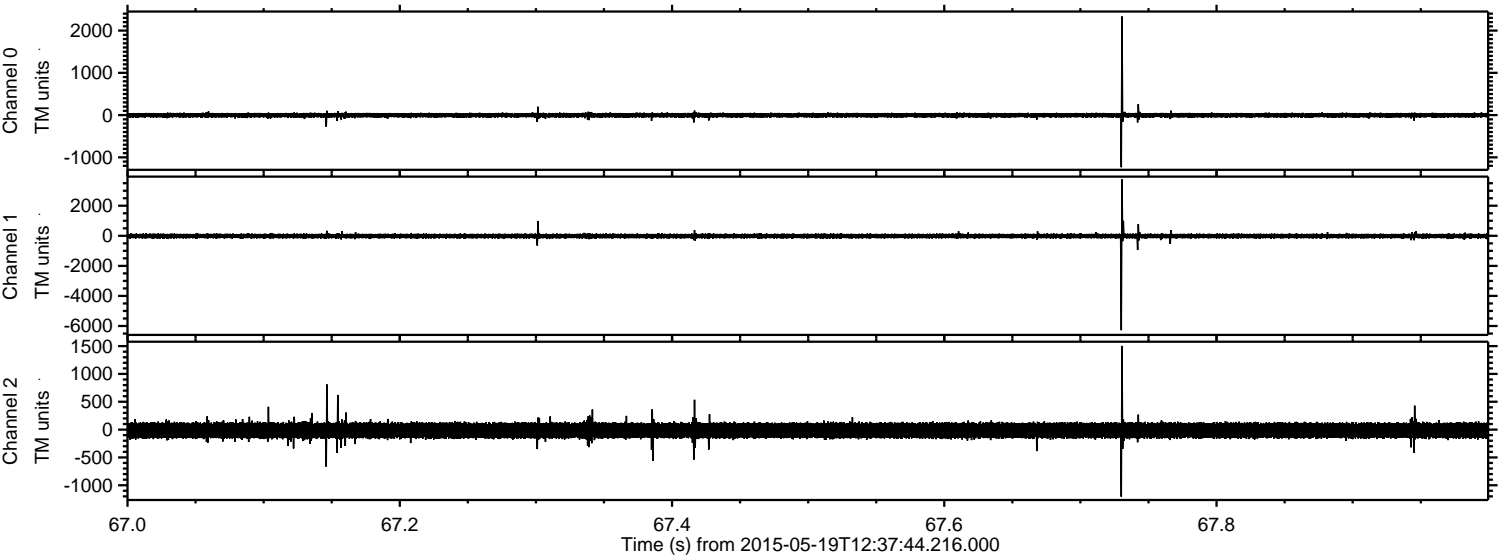
Processed Tue May 19 14:45:00 2015 by ELM ver.2012-10-06 from 001__elm20150519_123743__dat00.bin



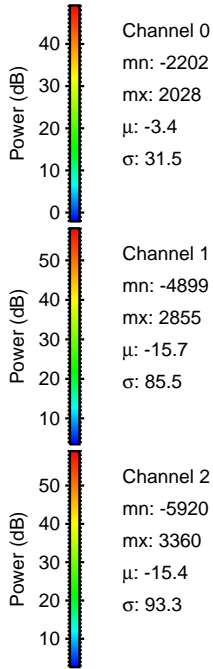
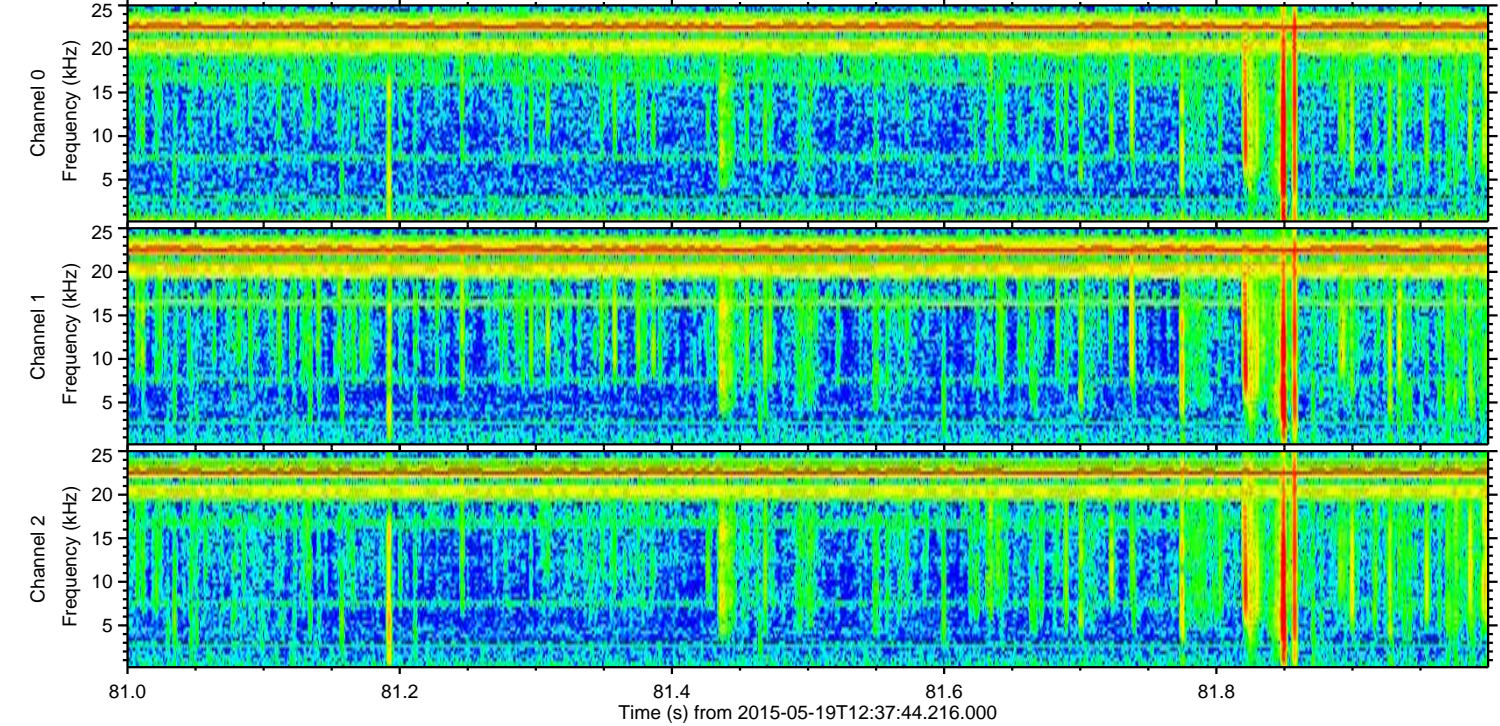
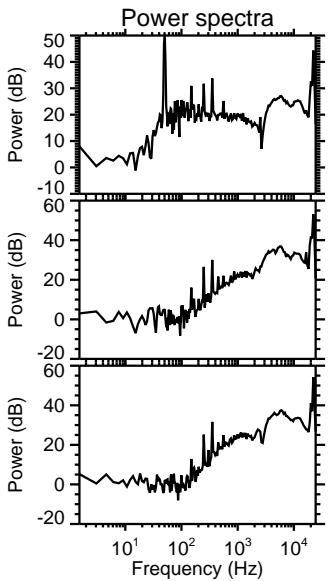
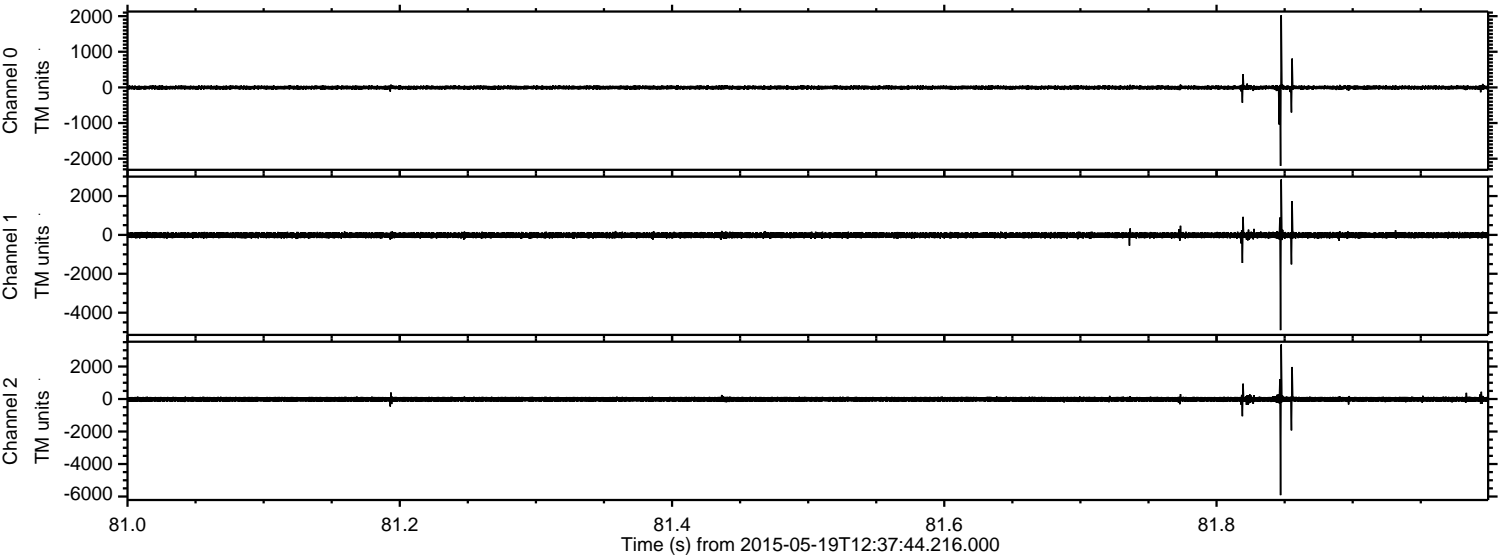
Processed Tue May 19 14:45:01 2015 by ELM ver.2012-10-06 from 001__elm20150519_123743__dat00.bin



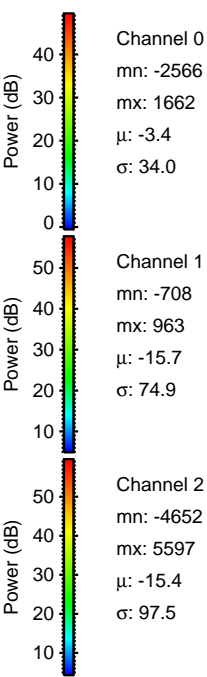
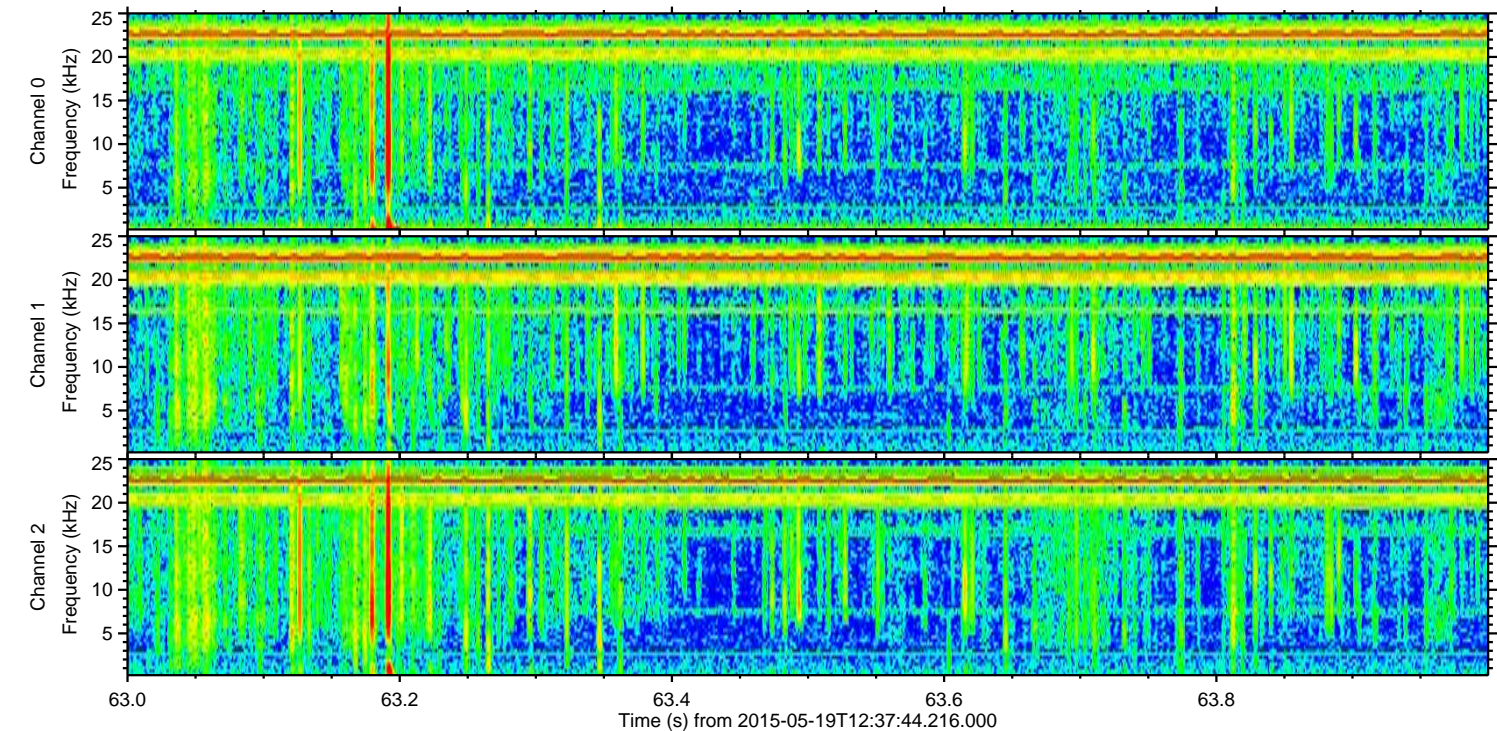
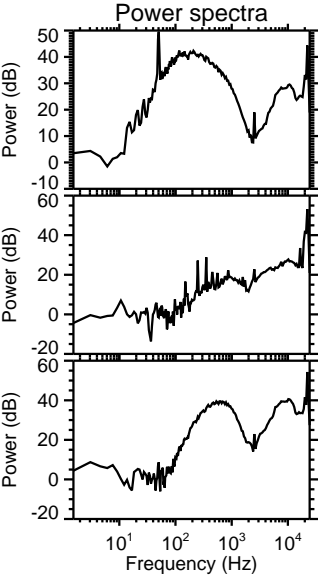
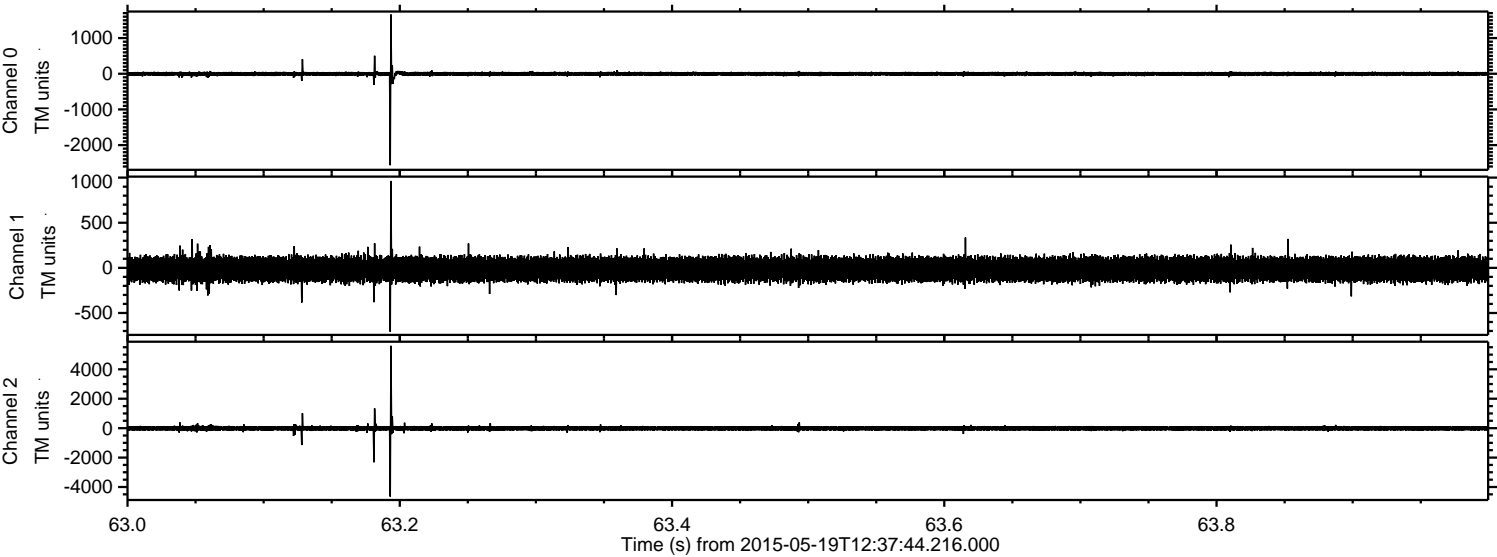
Processed Tue May 19 14:45:02 2015 by ELM ver.2012-10-06 from 001__elm20150519_123743__dat00.bin



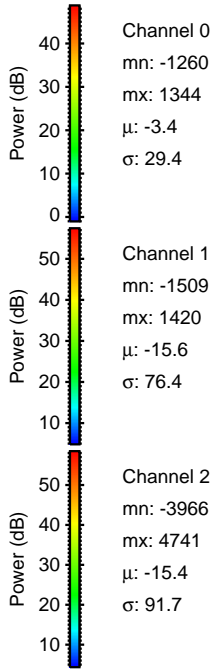
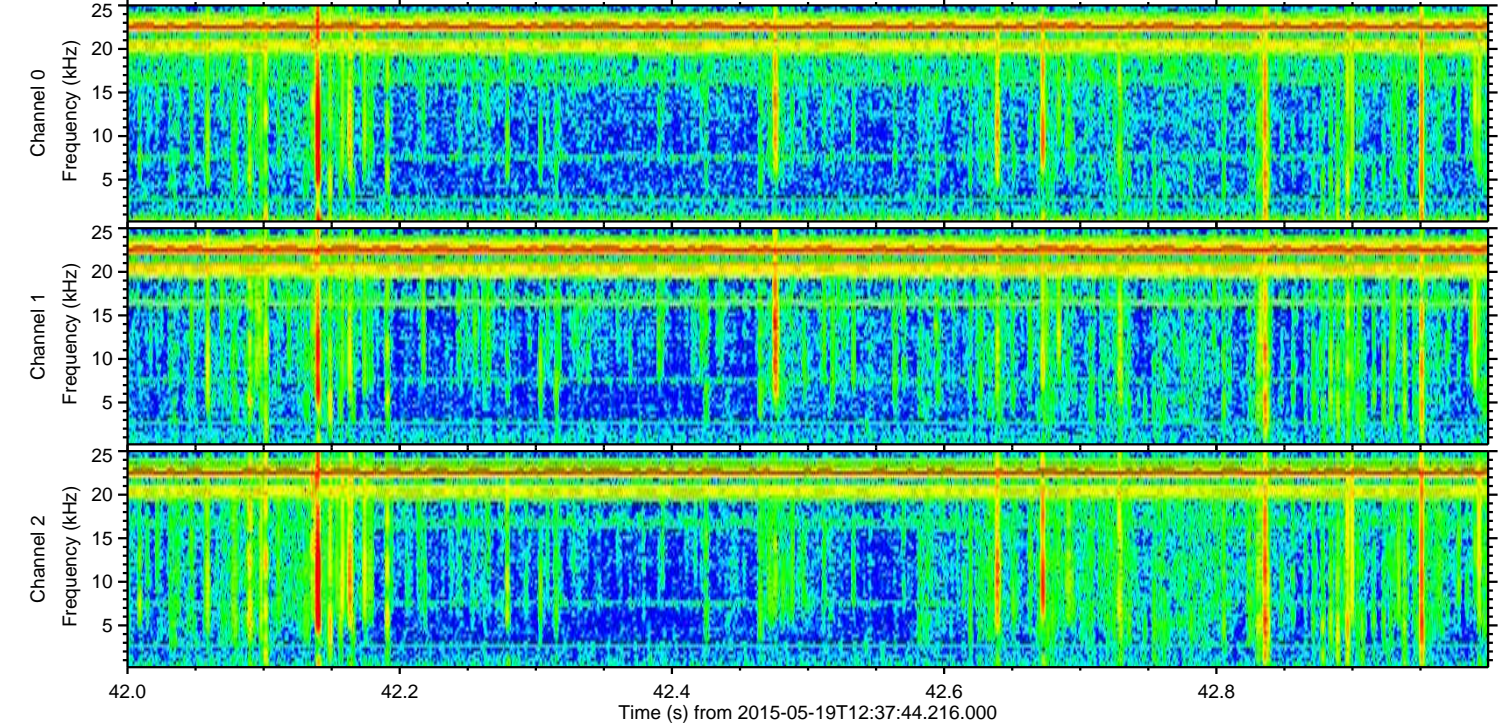
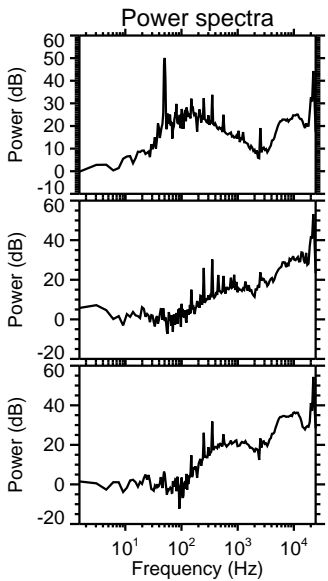
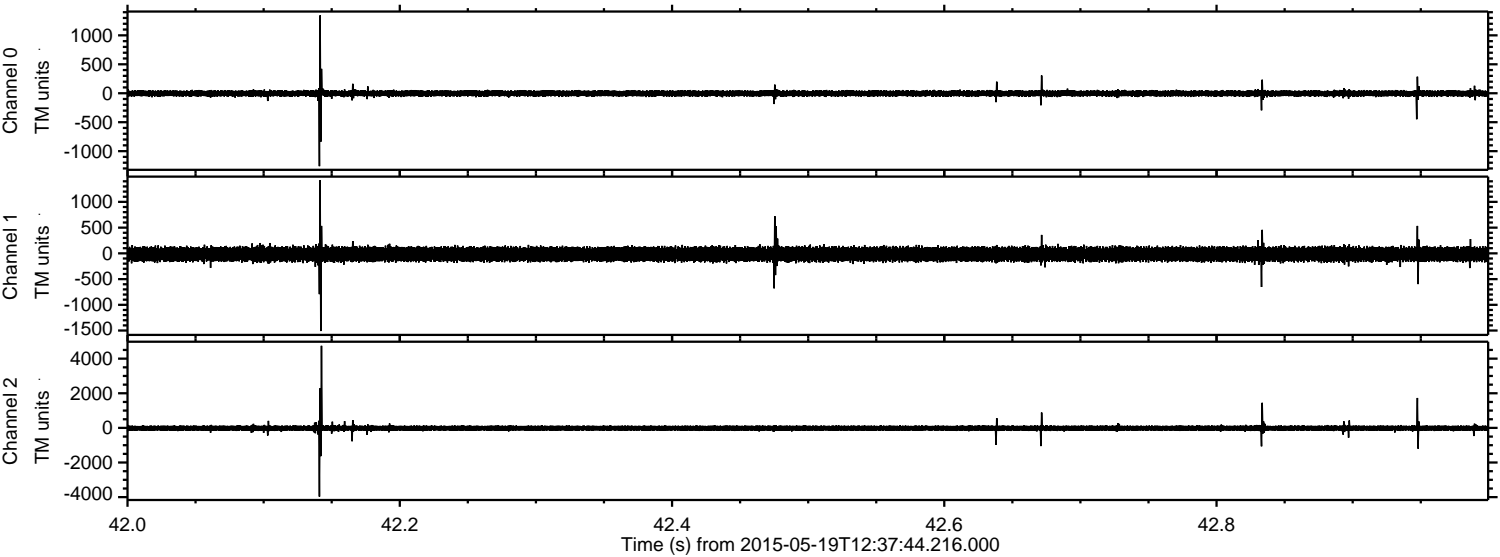
Processed Tue May 19 14:45:03 2015 by ELM ver.2012-10-06 from 001__elm20150519_123743__dat00.bin



Processed Tue May 19 14:45:04 2015 by ELM ver.2012-10-06 from 001__elm20150519_123743__dat00.bin

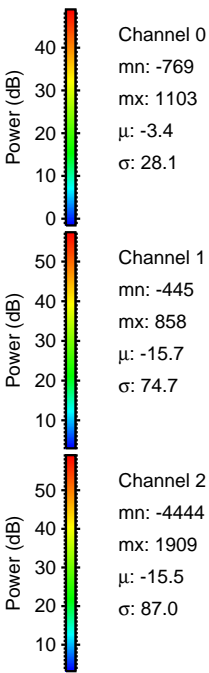
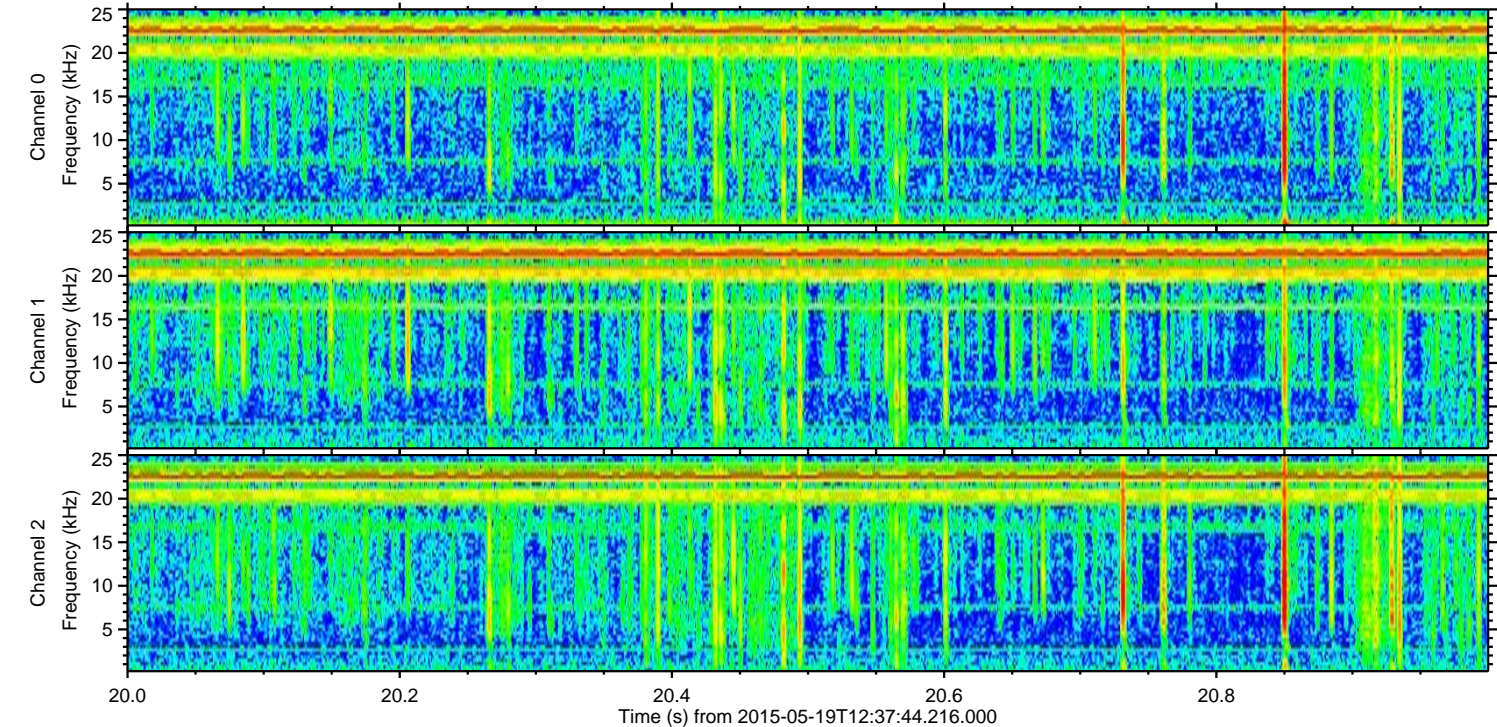
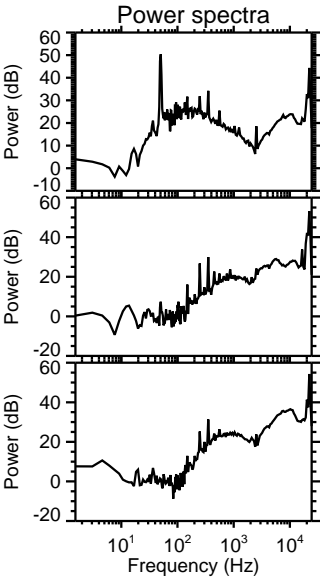
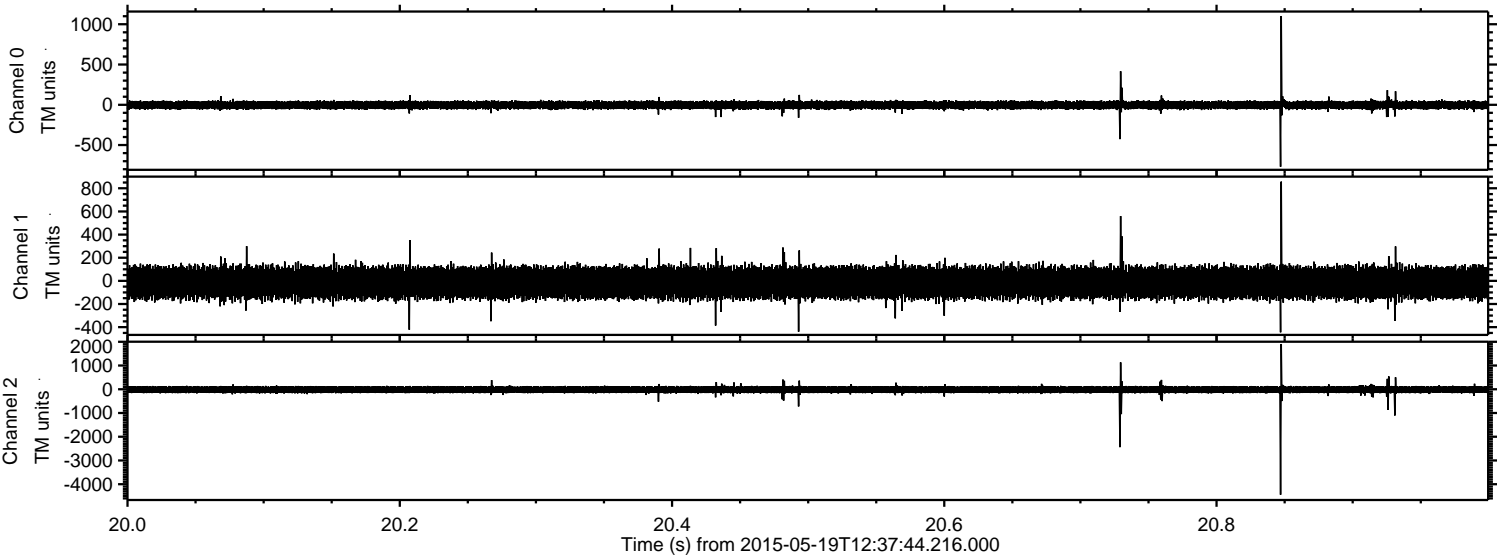


Processed Tue May 19 14:45:05 2015 by ELM ver.2012-10-06 from 001__elm20150519_123743__dat00.bin



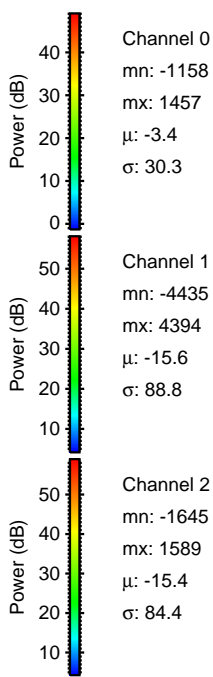
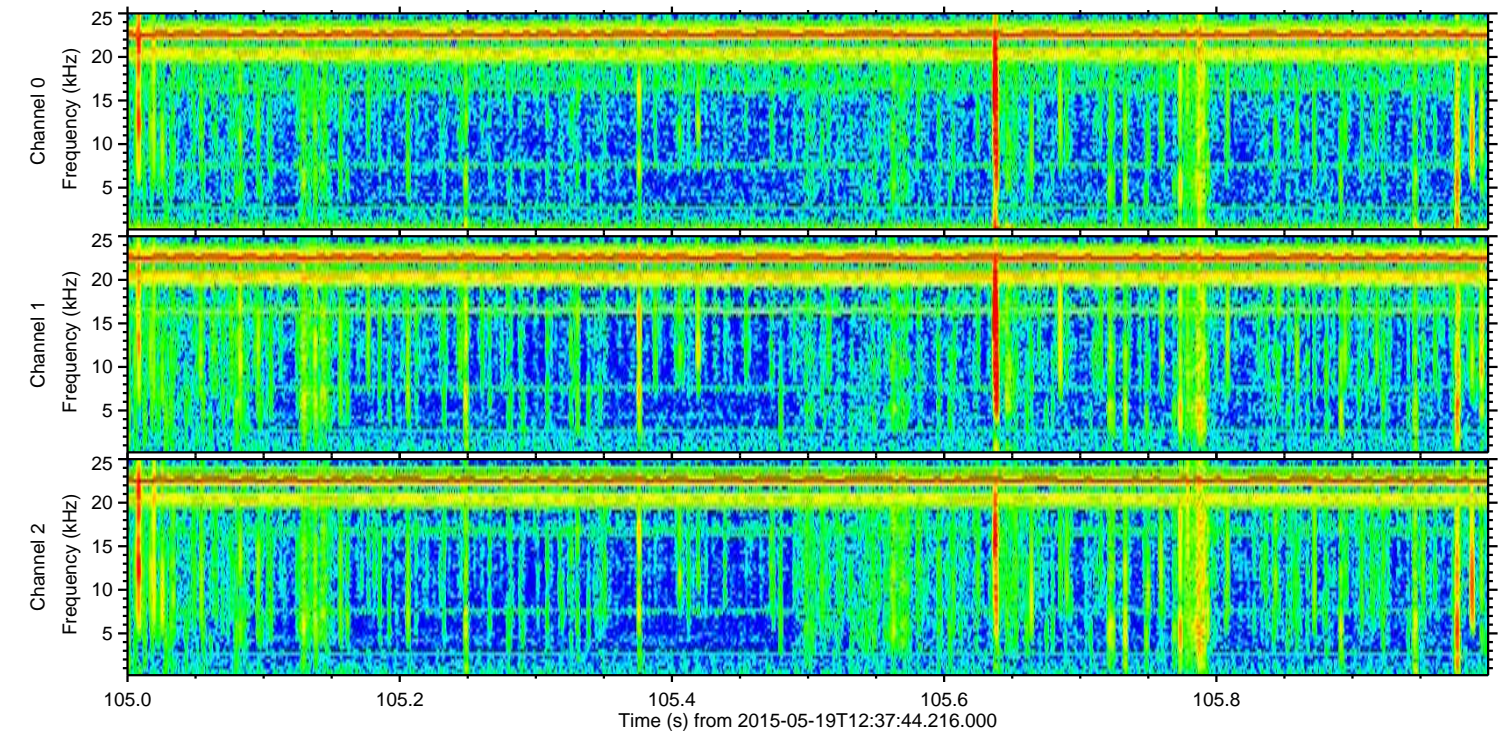
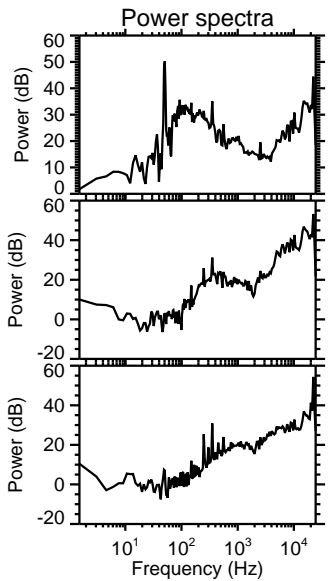
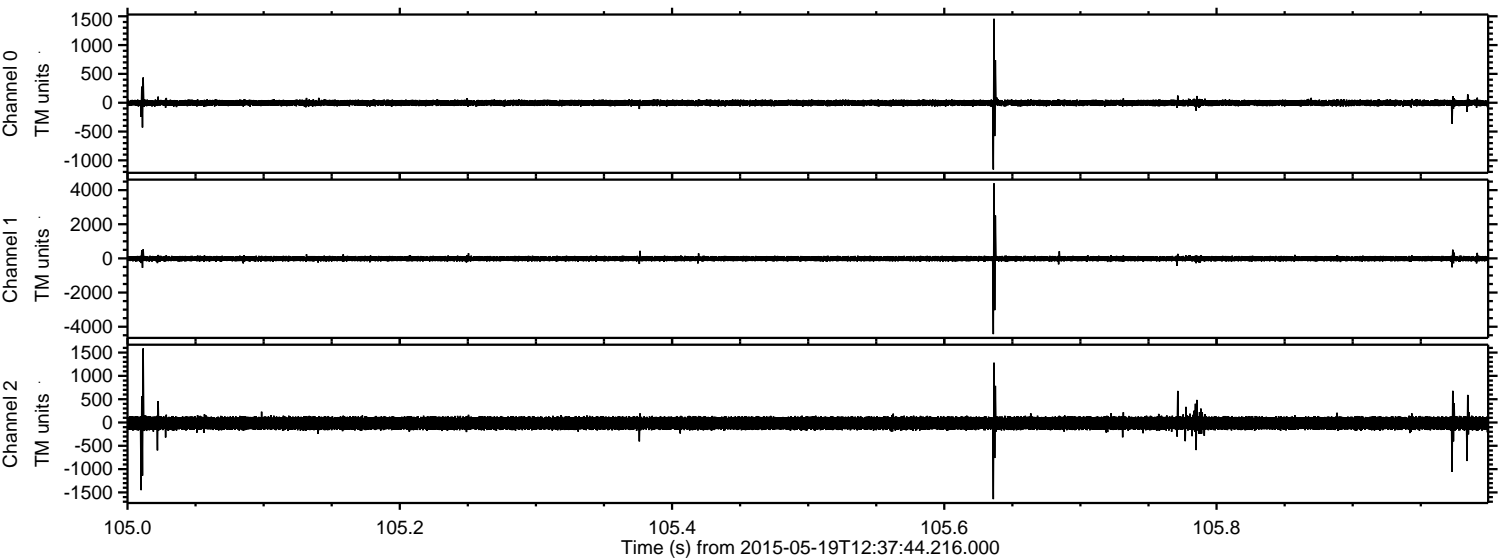
ELMAVAN 3D WAVEFORMS (Measured data sampled at 50 kHz) 49600 packets of 144 samples from 2015-05-19T12:37:44.216.000. Part 21/143

Processed Tue May 19 14:45:06 2015 by ELM ver.2012-10-06 from 001__elm20150519_123743__dat00.bin



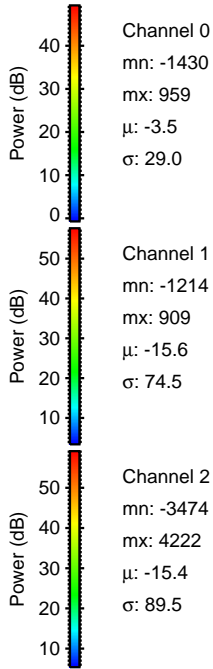
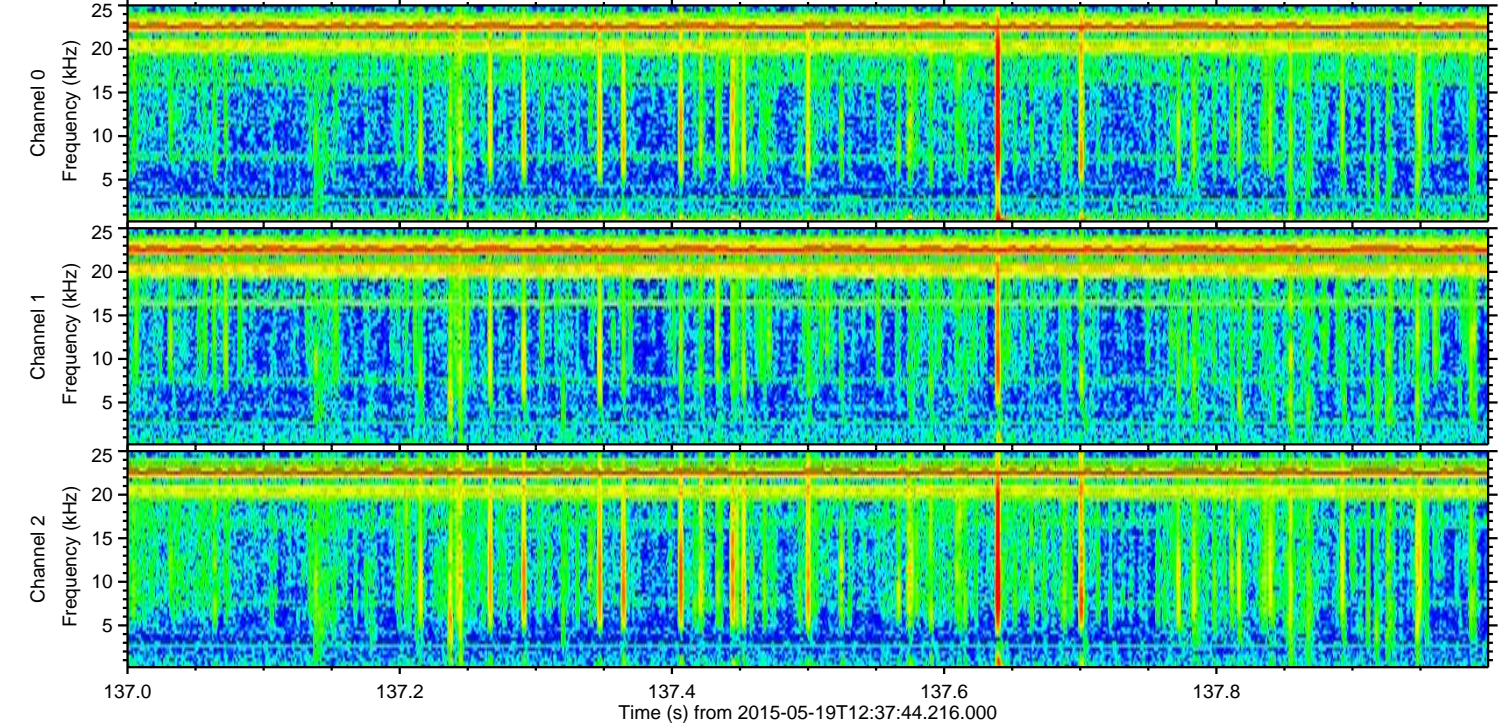
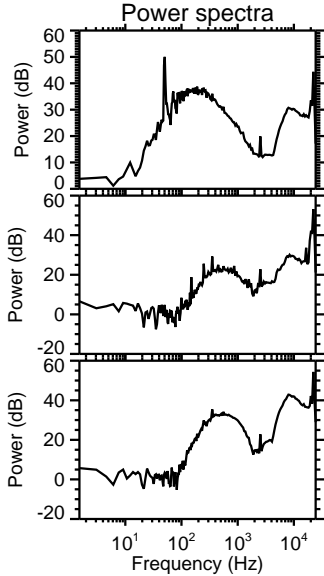
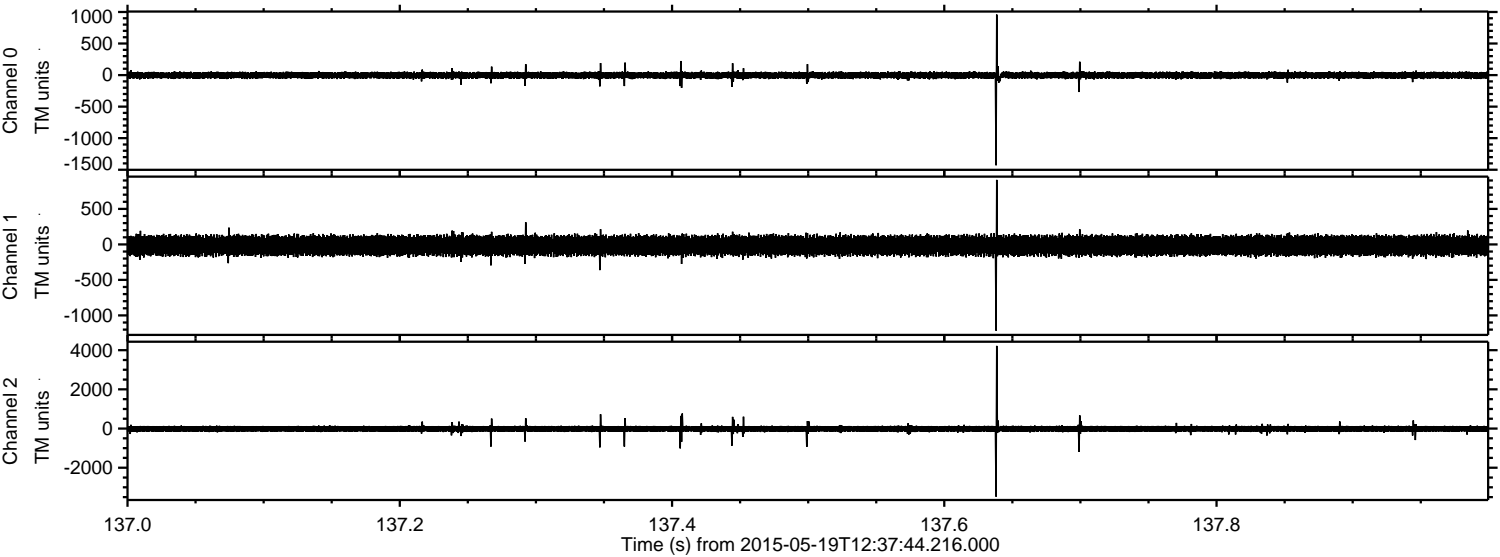
ELMAVAN 3D WAVEFORMS (Measured data sampled at 50 kHz) 49600 packets of 144 samples from 2015-05-19T12:37:44.216.000. Part 106/143

Processed Tue May 19 14:45:07 2015 by ELM ver.2012-10-06 from 001__elm20150519_123743__dat00.bin



ELMAVAN 3D WAVEFORMS (Measured data sampled at 50 kHz) 49600 packets of 144 samples from 2015-05-19T12:37:44.216.000. Part 138/143

Processed Tue May 19 14:45:08 2015 by ELM ver.2012-10-06 from 001__elm20150519_123743__dat00.bin



Channel 0
mn: -1430
mx: 959
 μ : -3.5
 σ : 29.0

Channel 1
mn: -1214
mx: 909
 μ : -15.6
 σ : 74.5

Channel 2
mn: -3474
mx: 4222
 μ : -15.4
 σ : 89.5

Processed Tue May 19 14:45:09 2015 by ELM ver.2012-10-06 from 001__elm20150519_123743__dat00.bin

