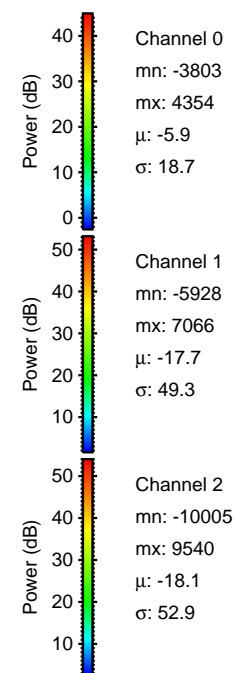
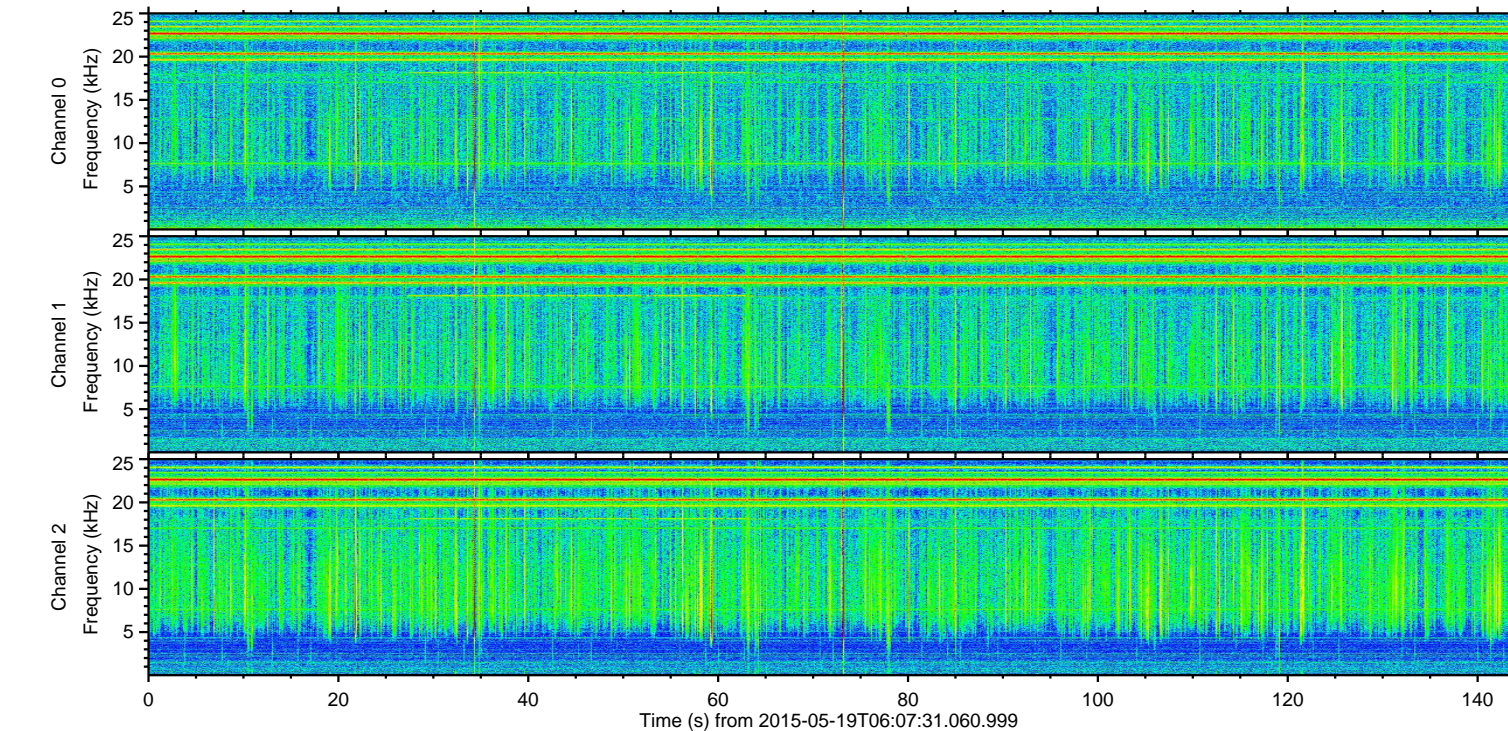
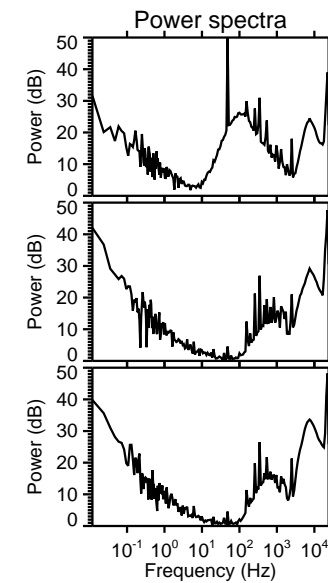
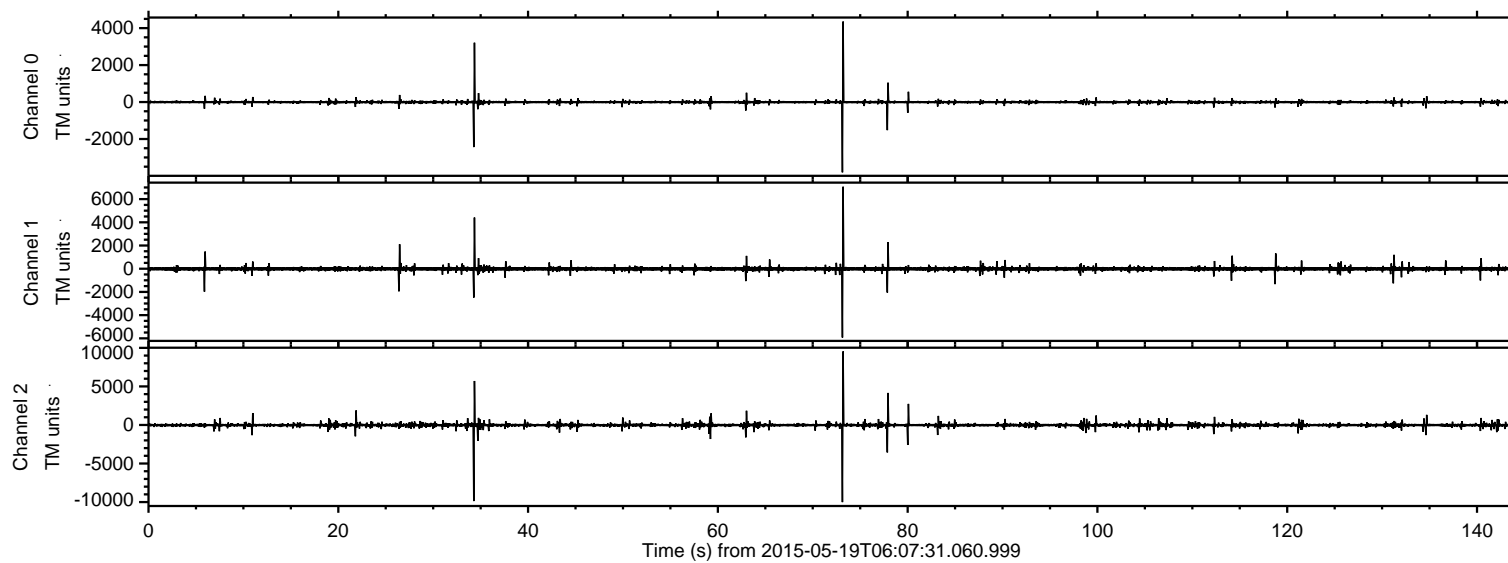


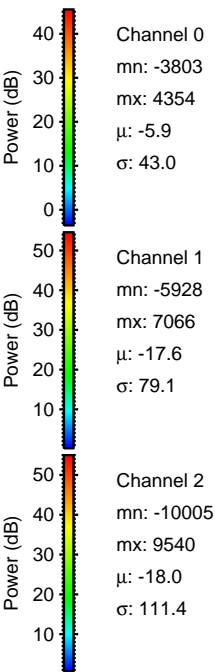
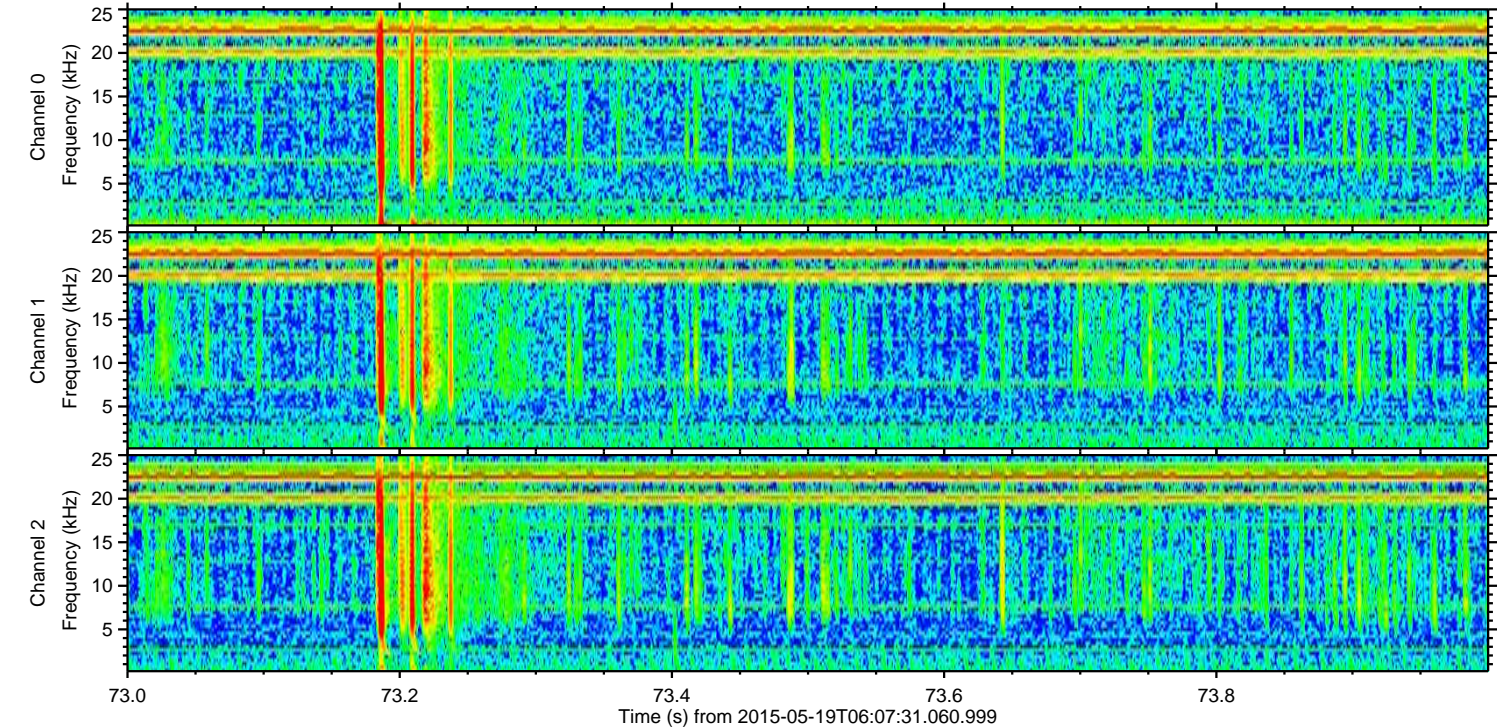
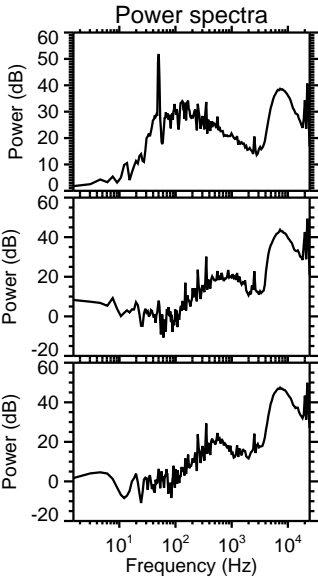
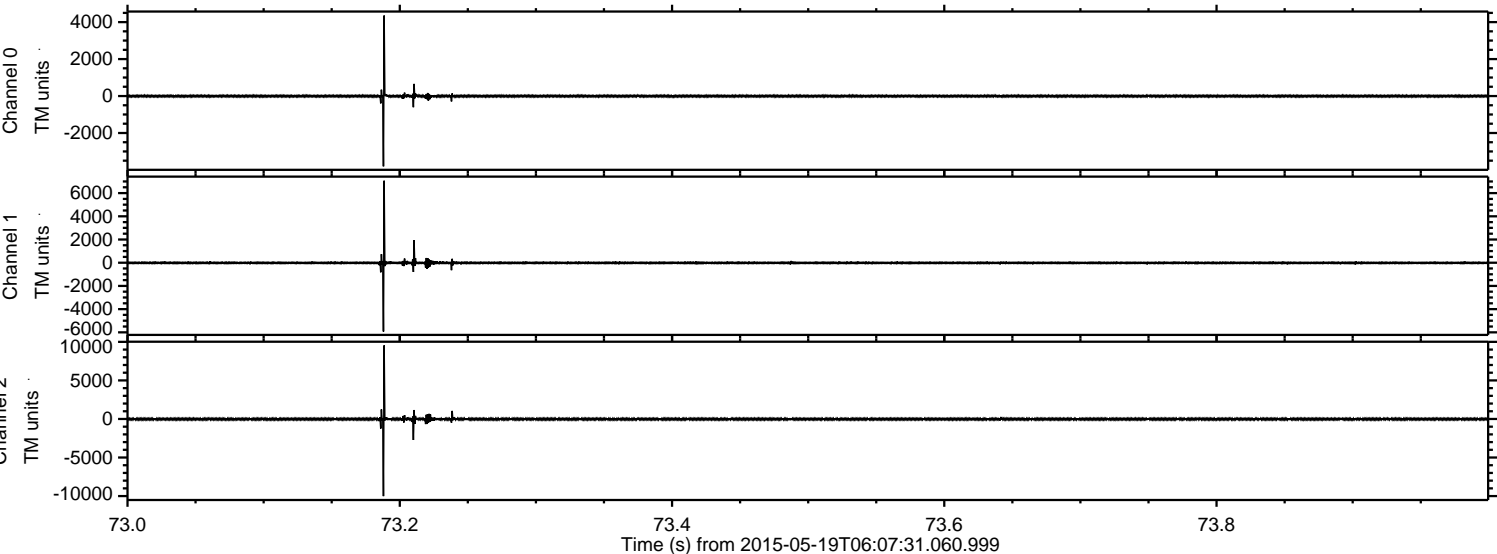
# ELMAVAN 3D WAVEFORMS (Measured data sampled at 50 kHz) 49788 packets of 144 samples from 2015-05-19T06:07:31.060.999.

Processed Tue May 19 08:13:55 2015 by ELM ver.2012-10-06 from 001\_\_elm20150519\_060730\_\_dat00.bin



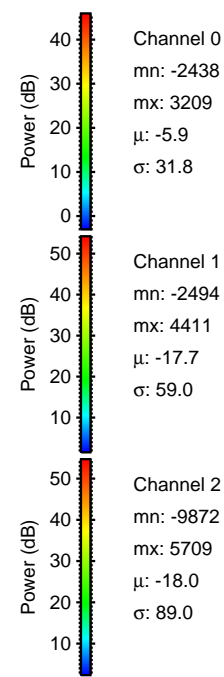
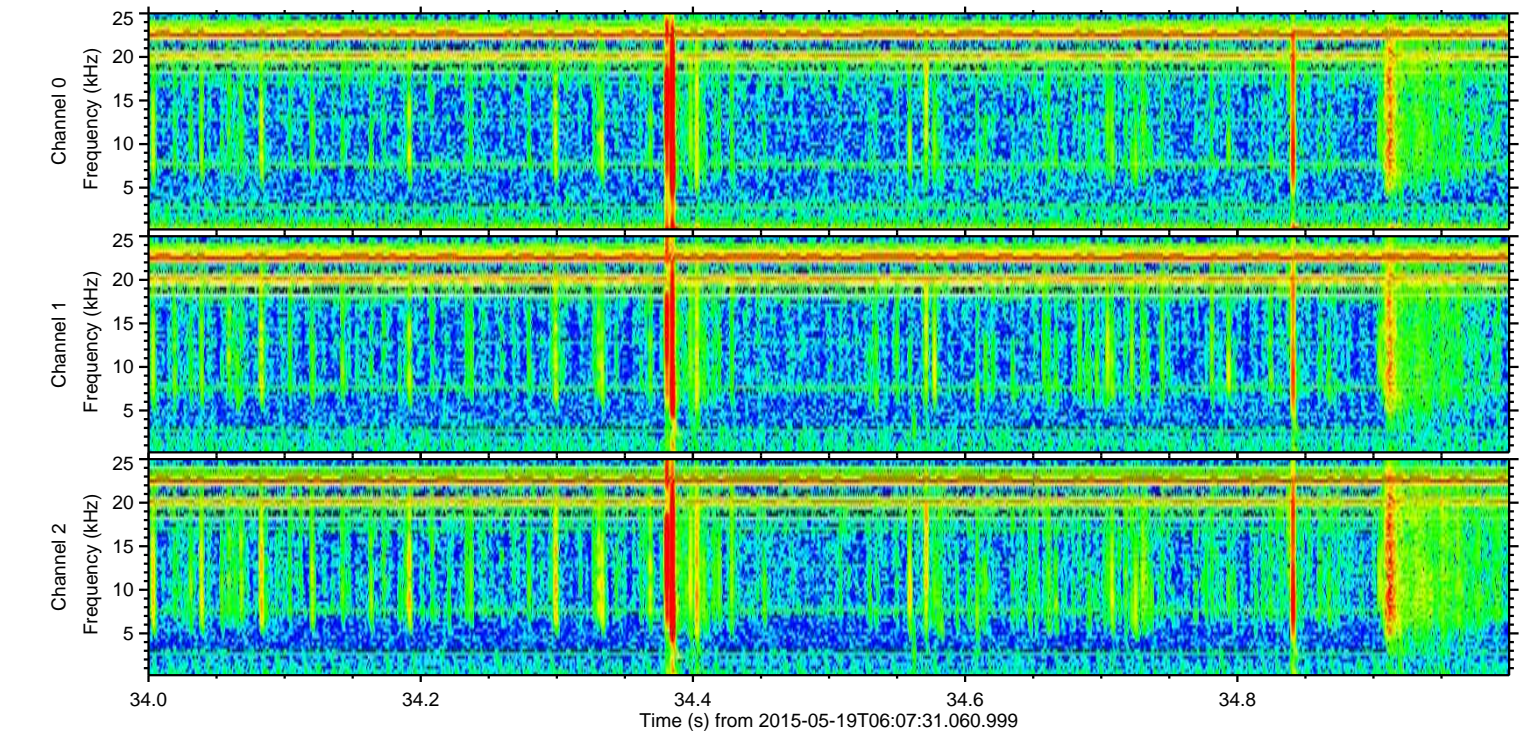
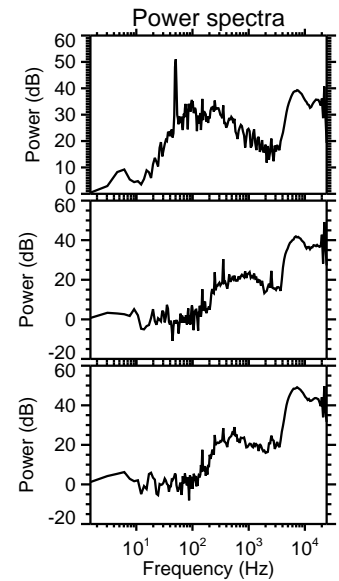
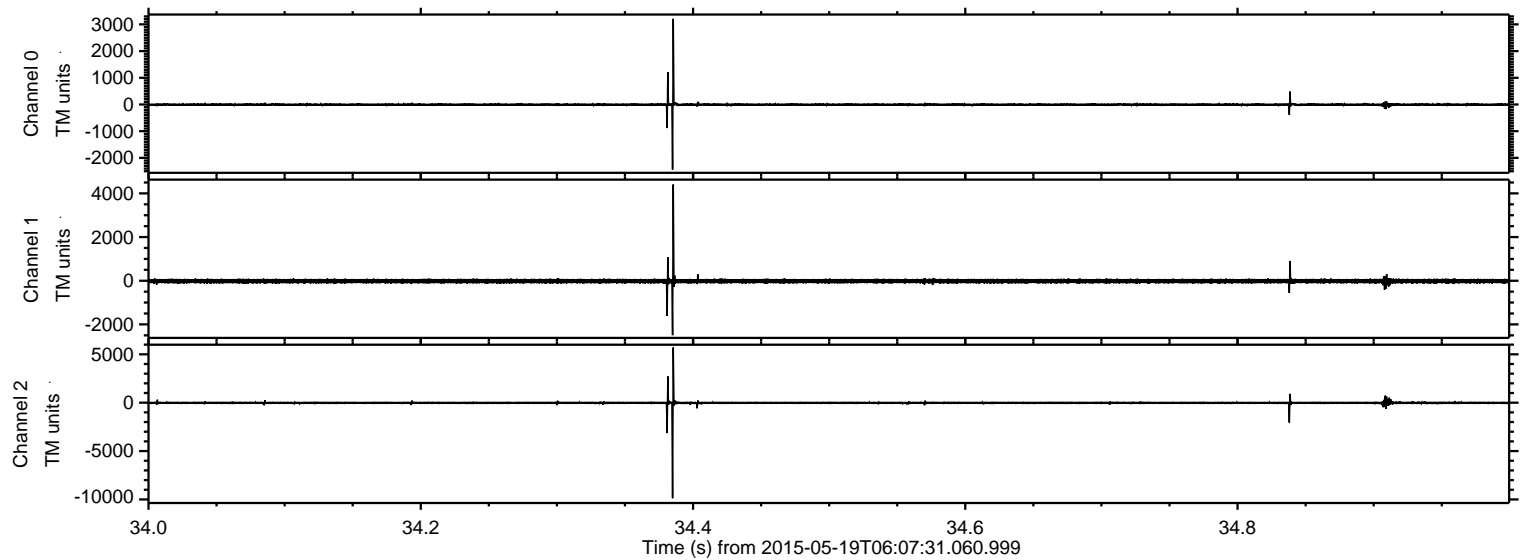


Processed Tue May 19 08:14:07 2015 by ELM ver.2012-10-06 from 001\_\_elm20150519\_060730\_\_dat00.bin



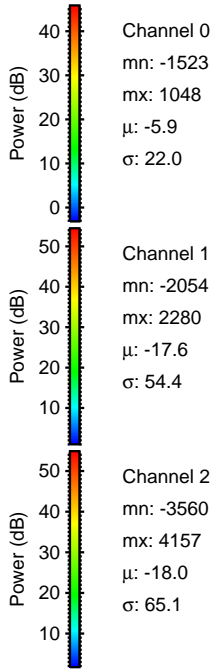
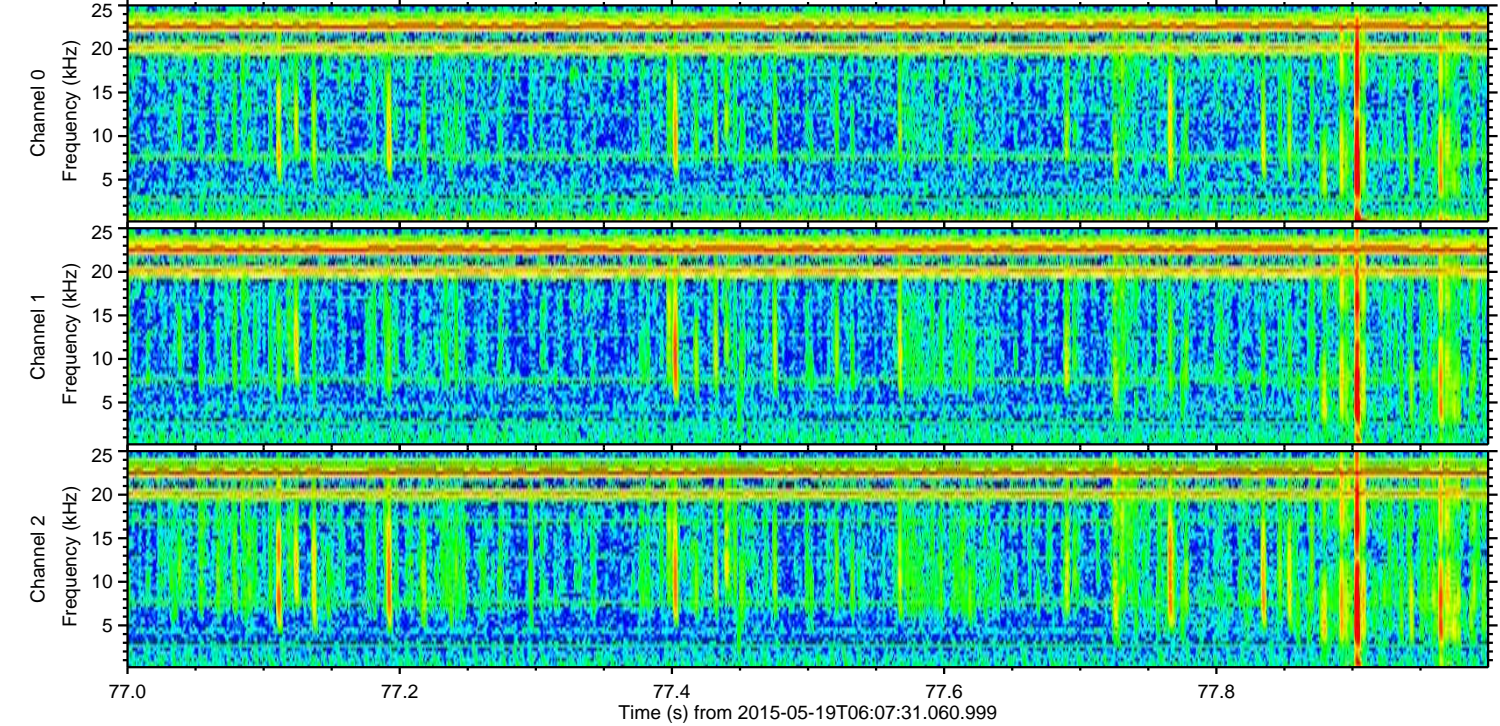
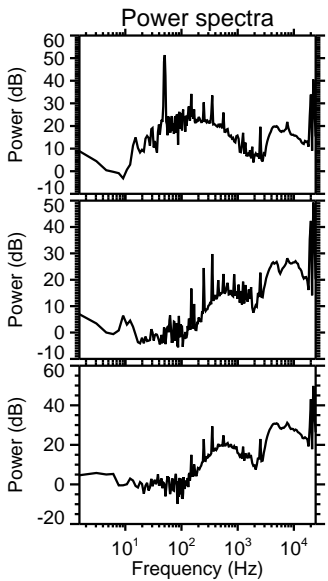
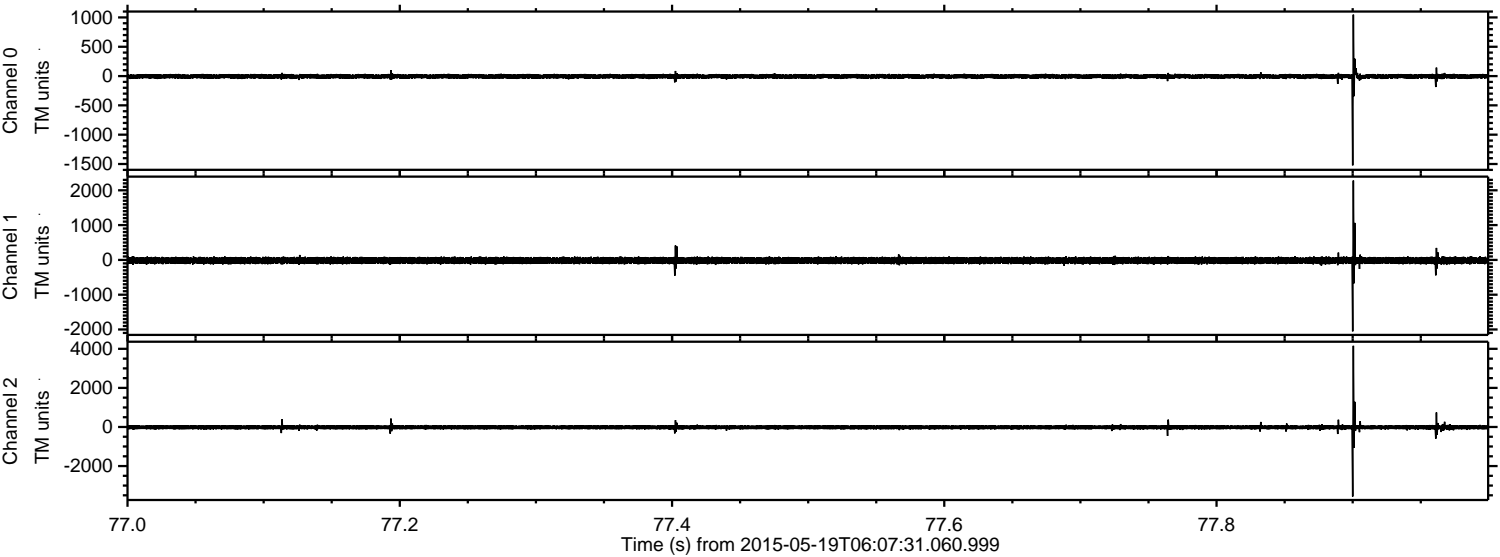


Processed Tue May 19 08:14:08 2015 by ELM ver.2012-10-06 from 001\_\_elm20150519\_060730\_\_dat00.bin



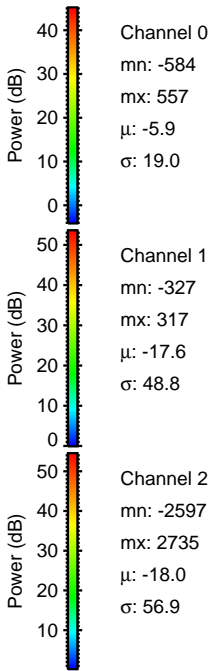
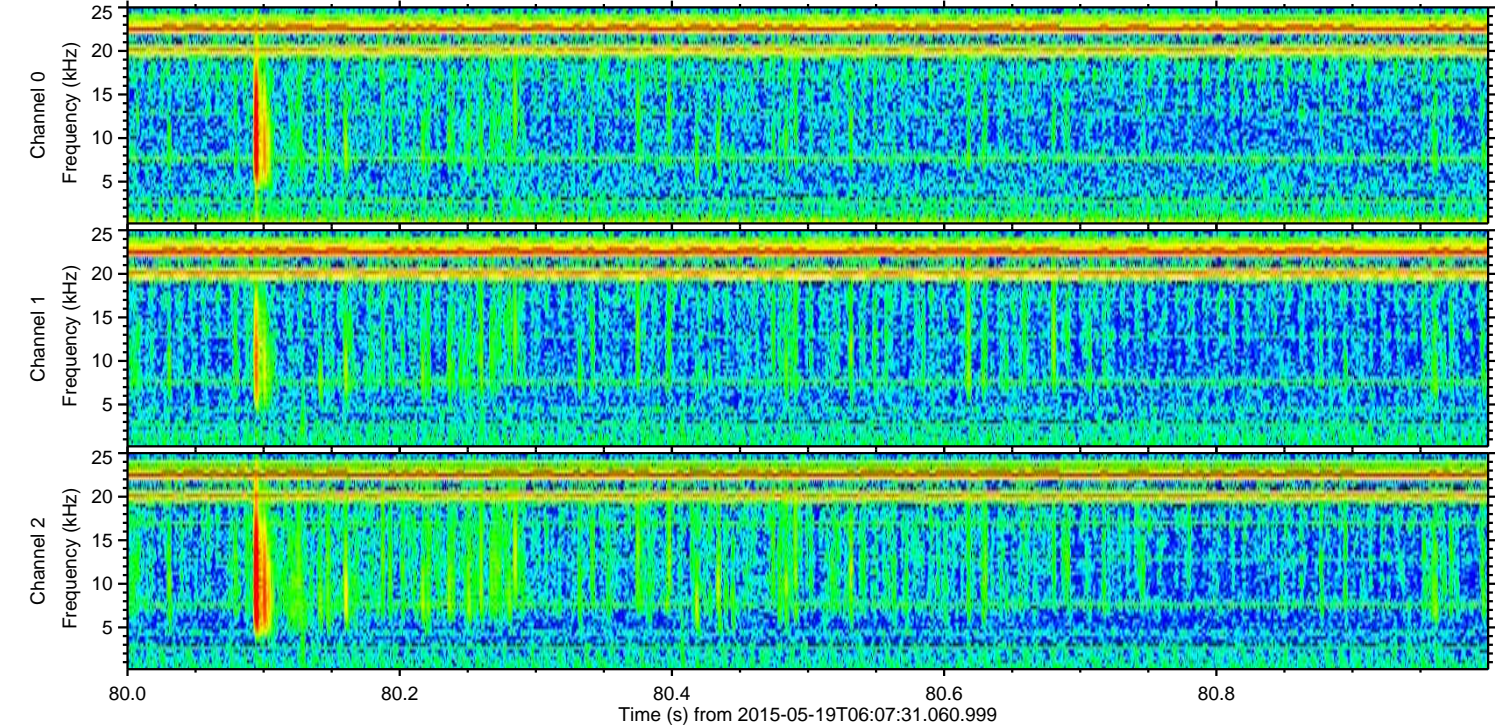
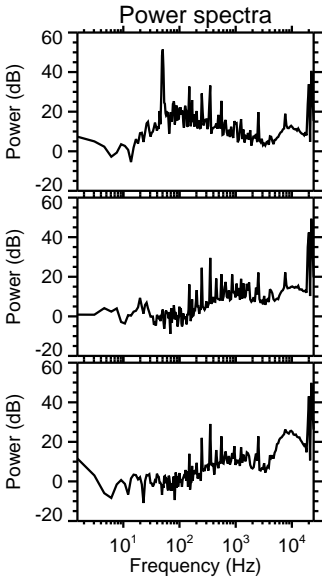
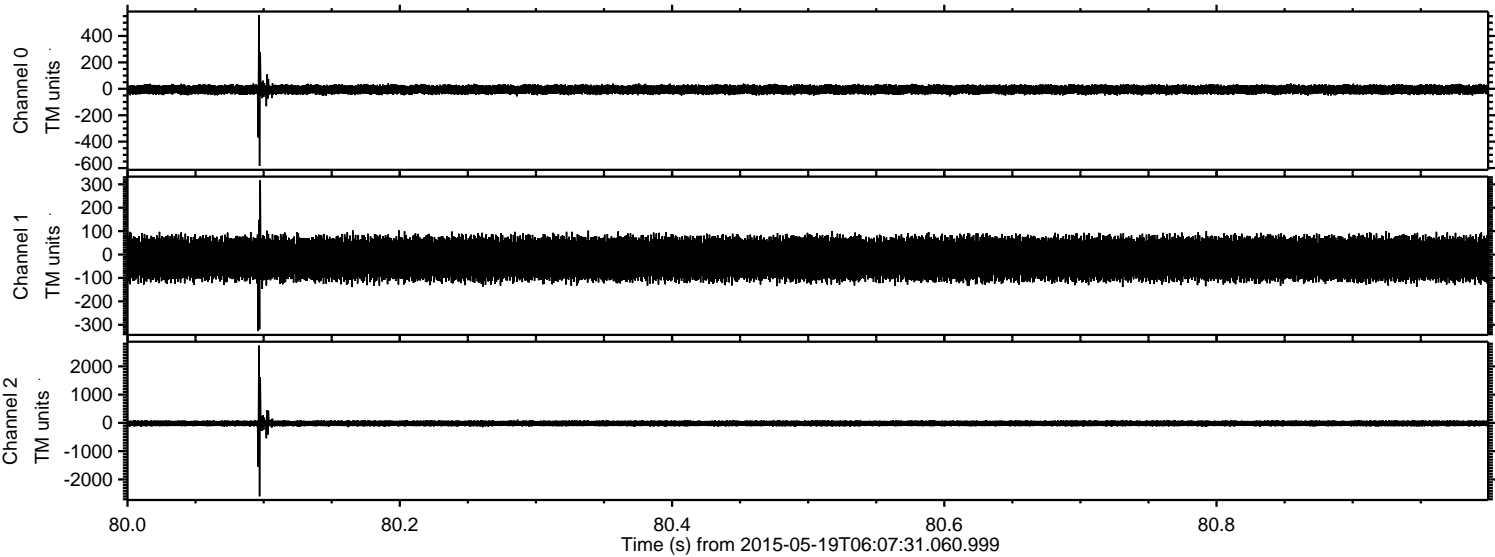


Processed Tue May 19 08:14:09 2015 by ELM ver.2012-10-06 from 001\_\_elm20150519\_060730\_\_dat00.bin



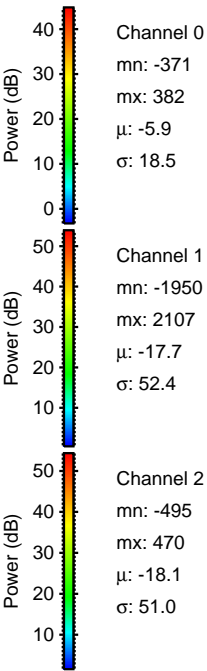
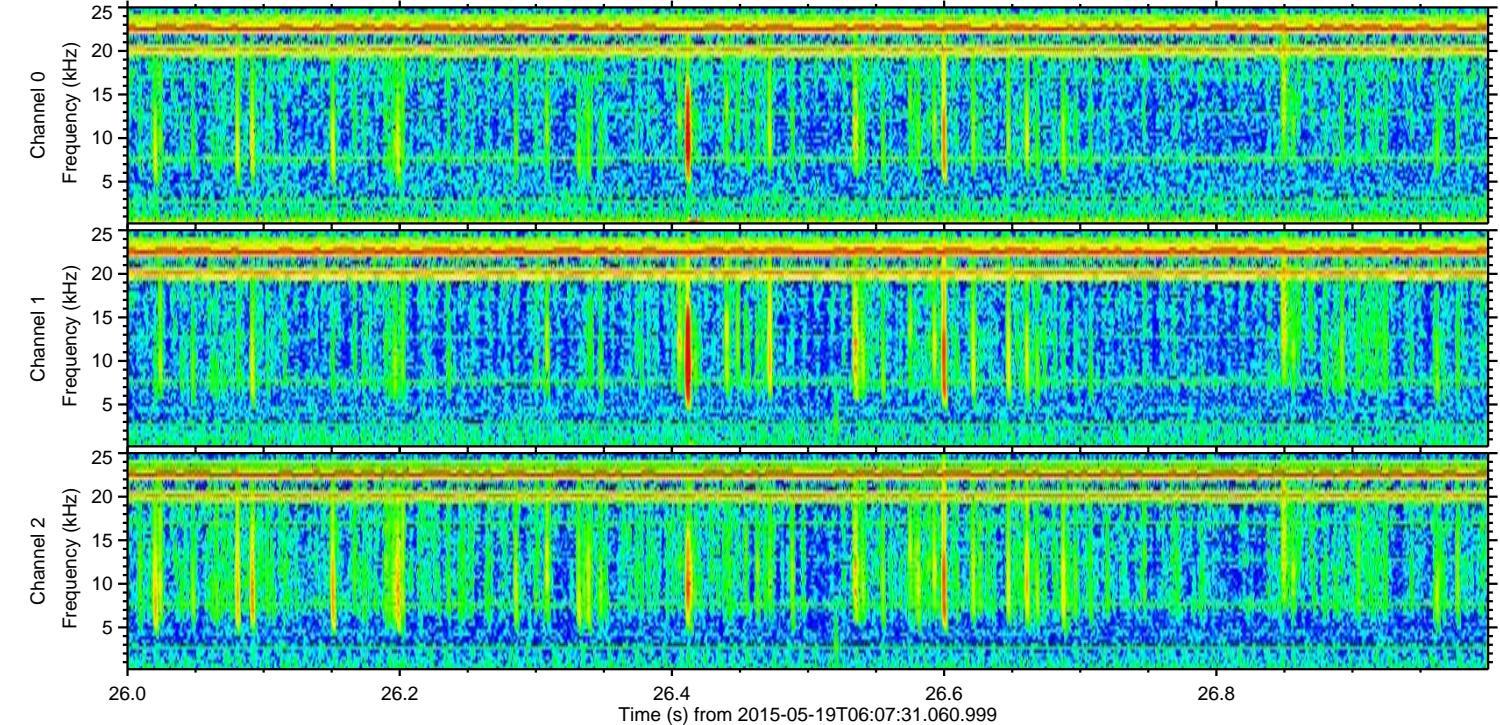
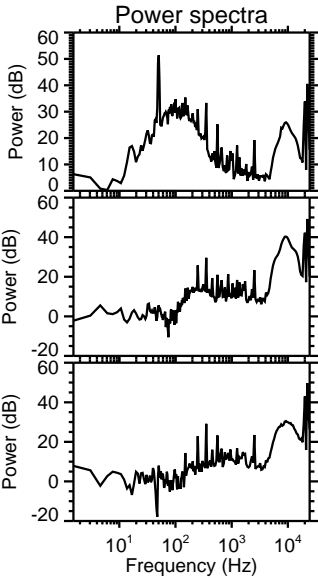
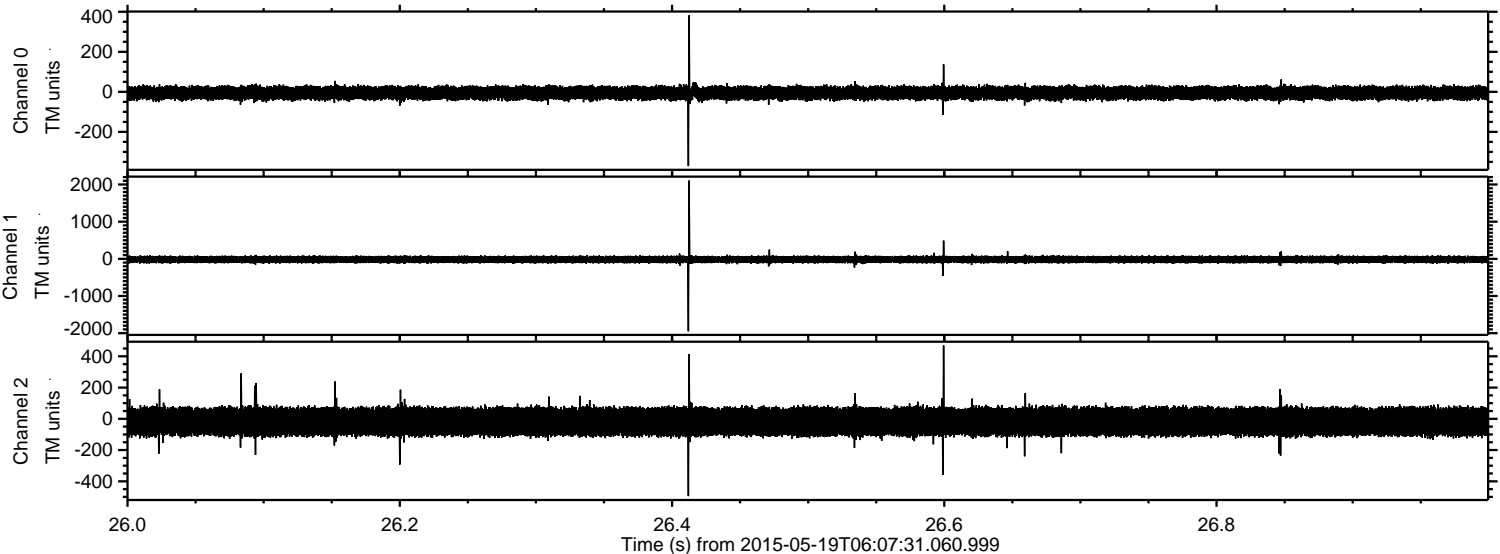


Processed Tue May 19 08:14:10 2015 by ELM ver.2012-10-06 from 001\_\_elm20150519\_060730\_\_dat00.bin



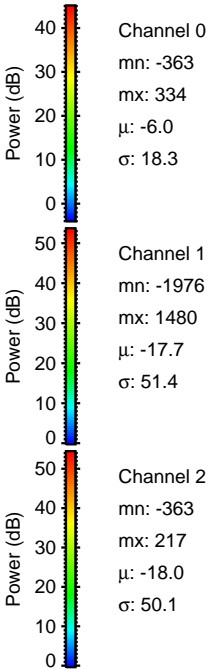
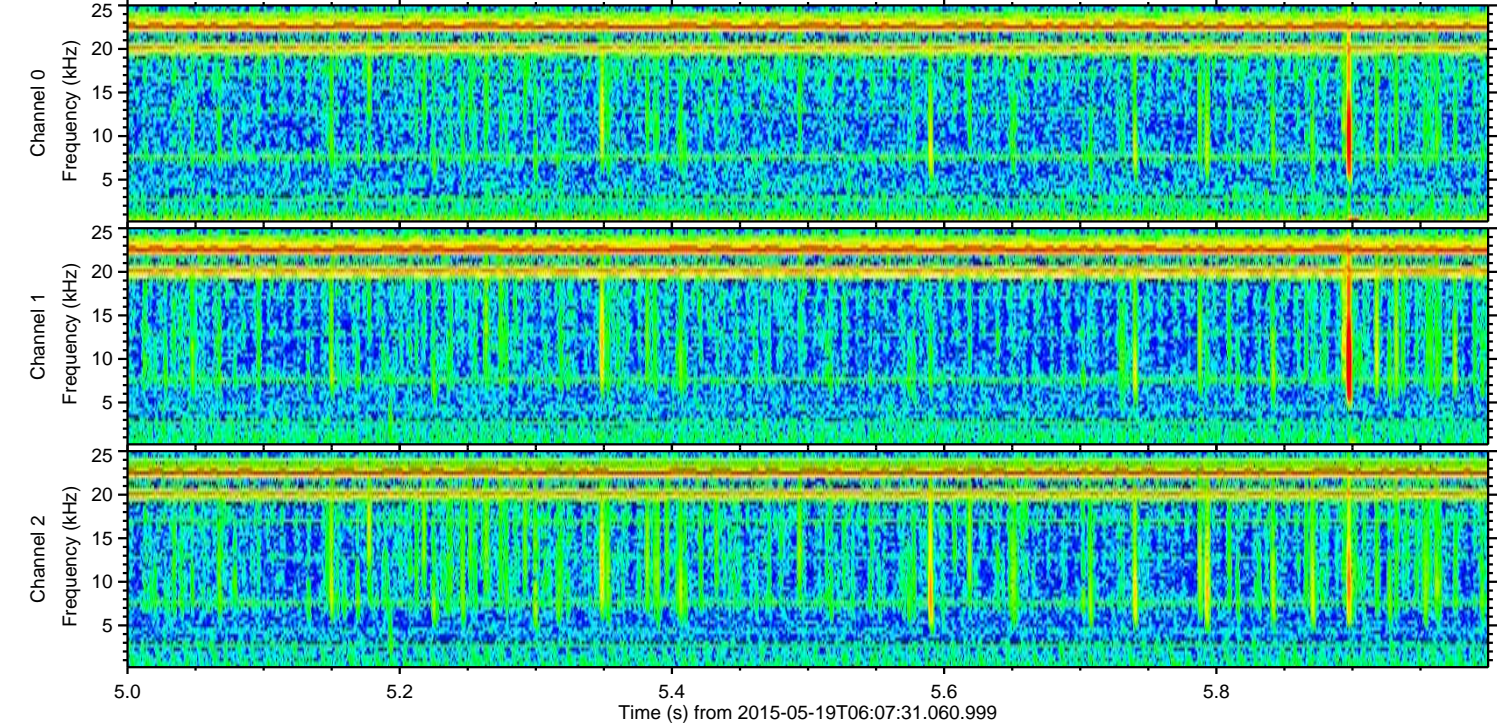
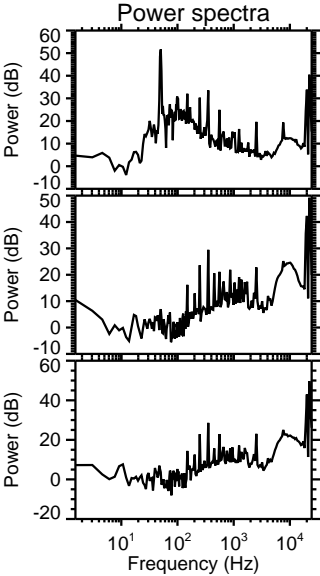
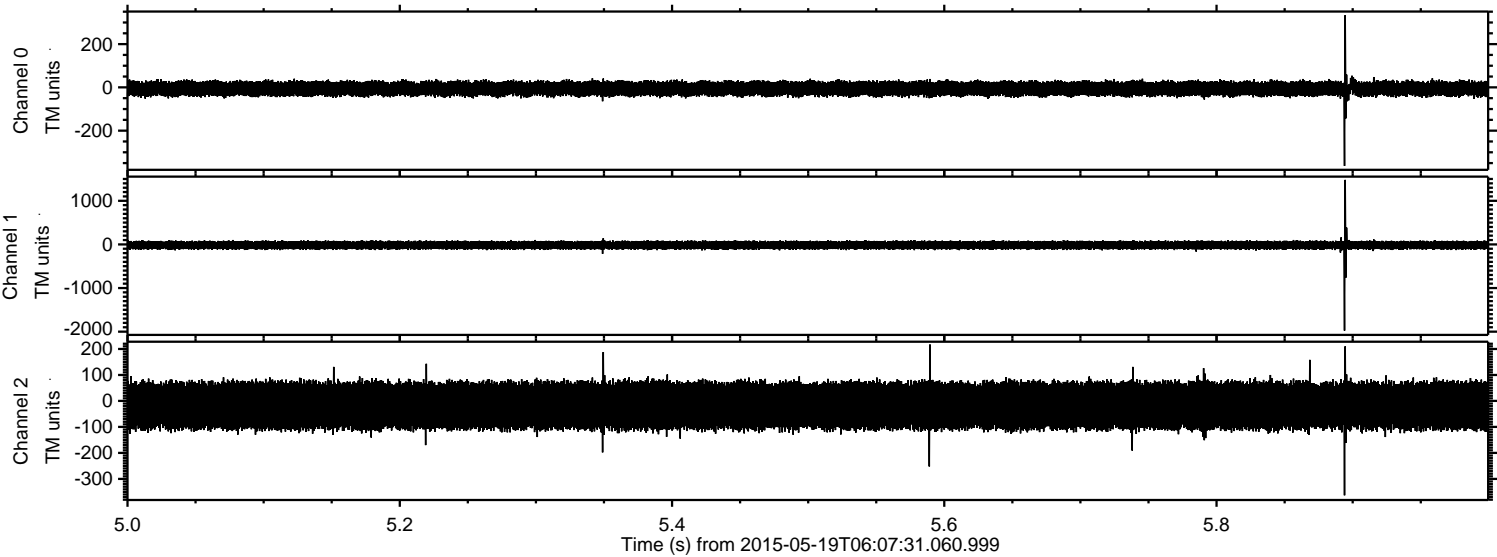


Processed Tue May 19 08:14:11 2015 by ELM ver.2012-10-06 from 001\_\_elm20150519\_060730\_\_dat00.bin



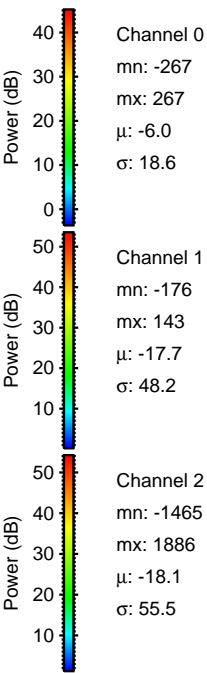
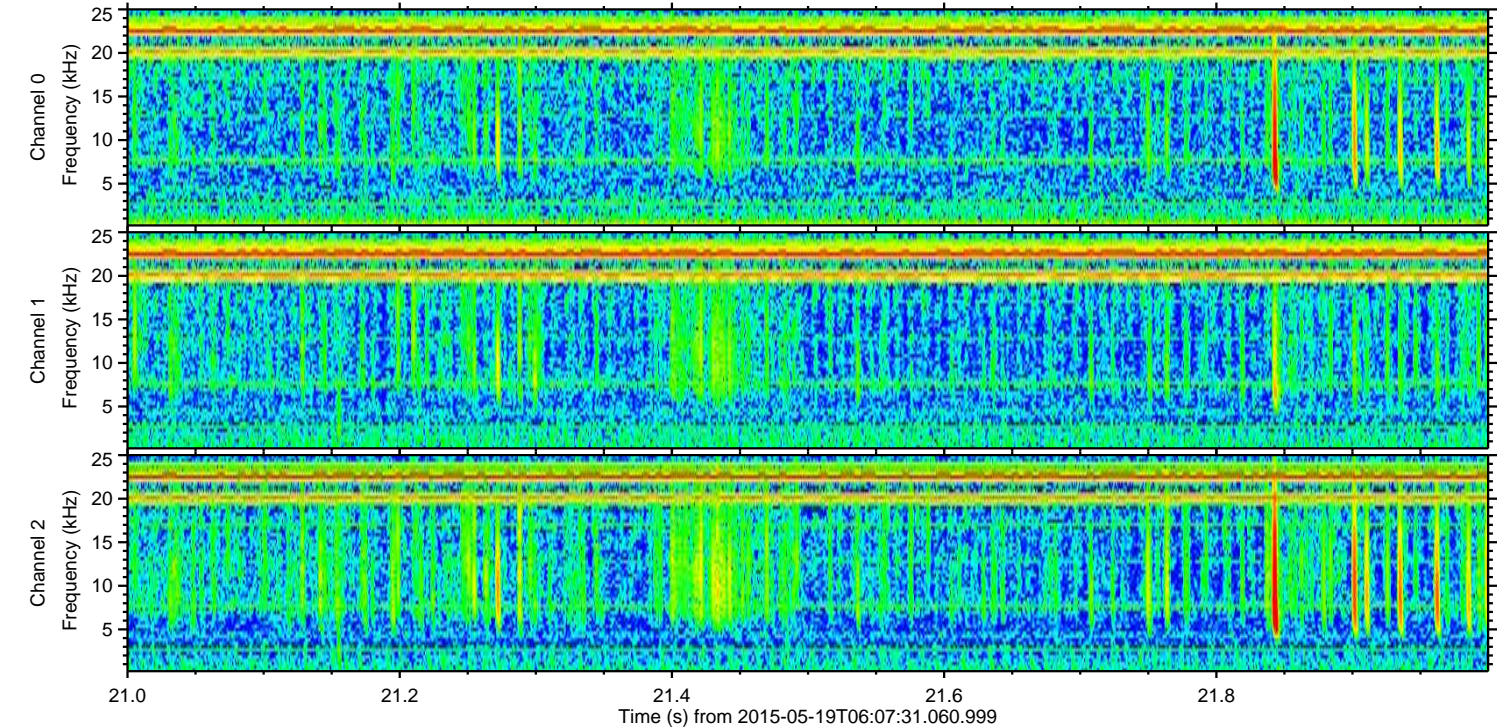
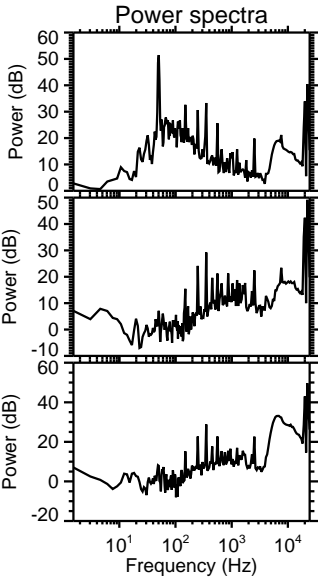
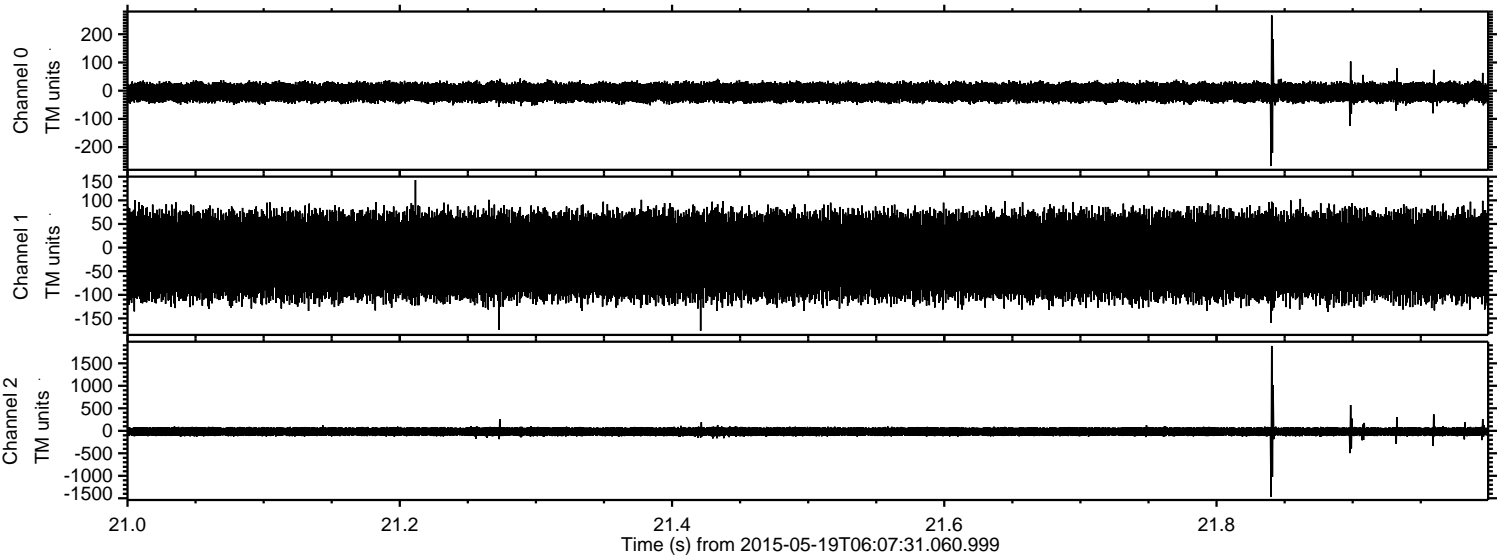


Processed Tue May 19 08:14:11 2015 by ELM ver.2012-10-06 from 001\_\_elm20150519\_060730\_\_dat00.bin



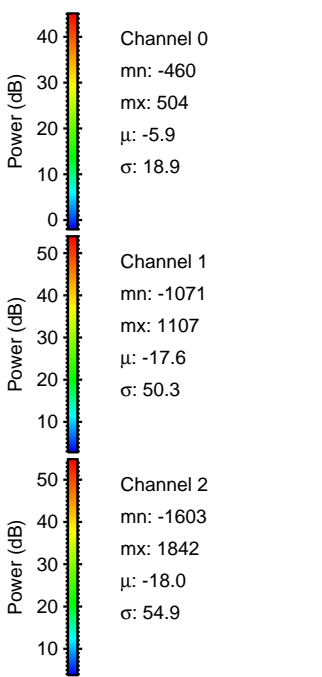
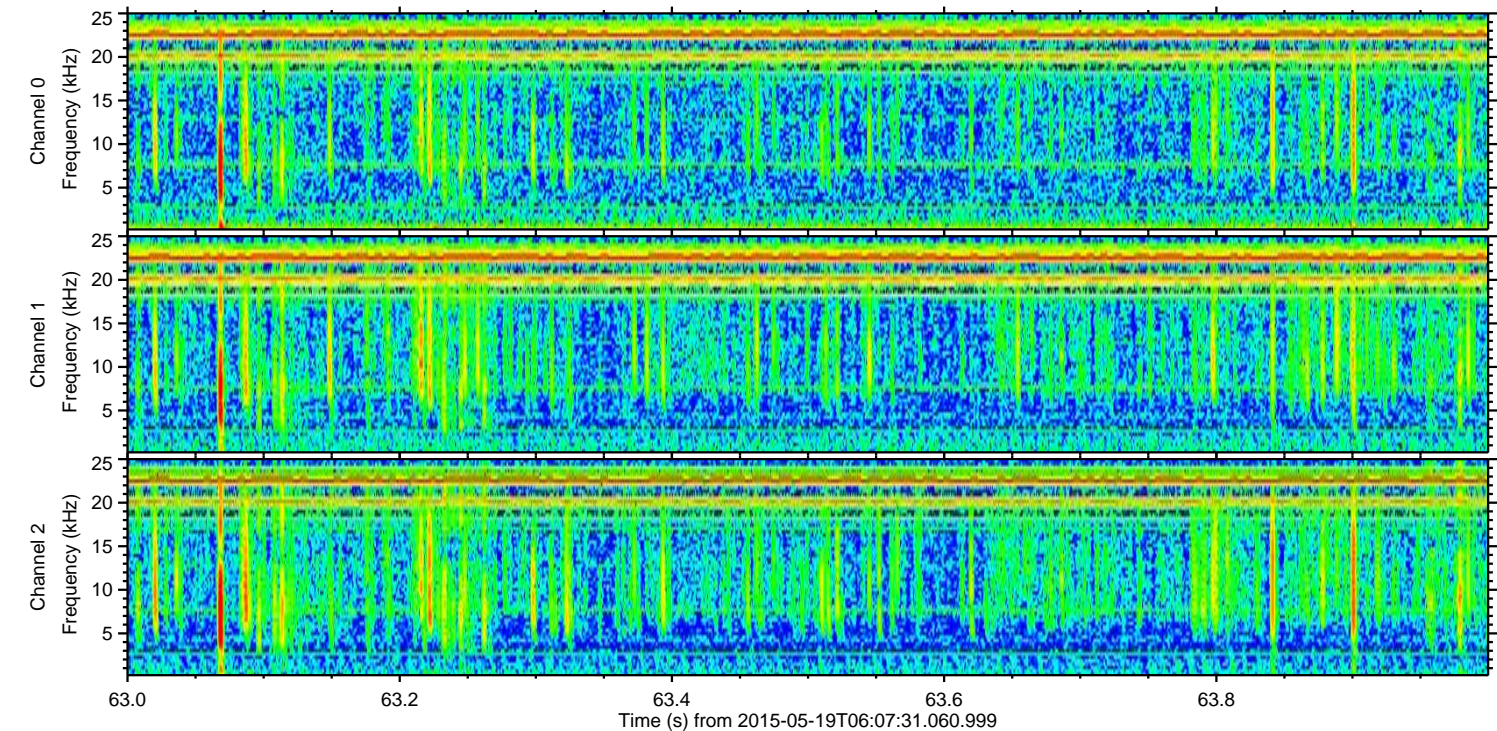
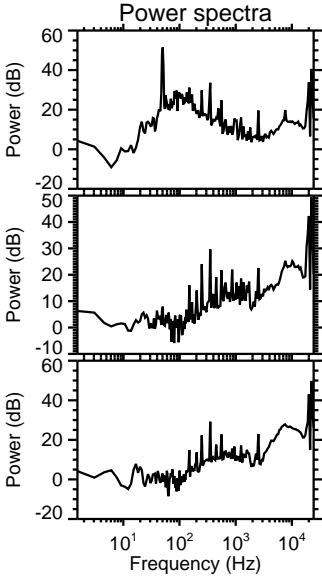
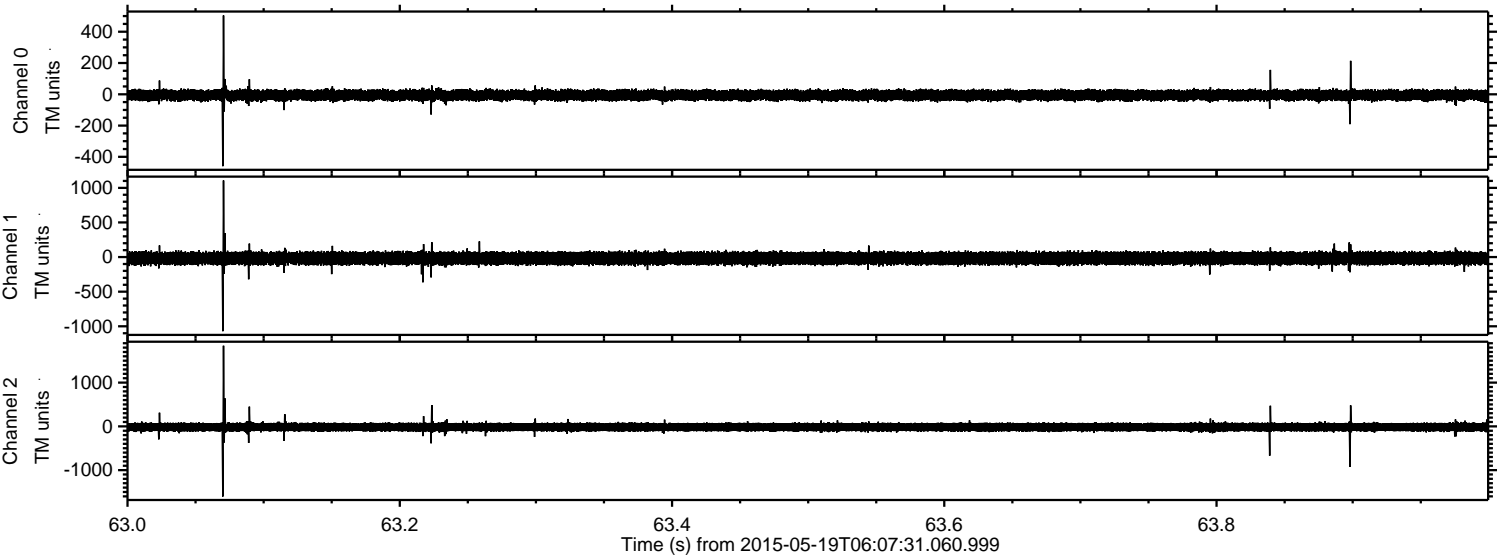


Processed Tue May 19 08:14:12 2015 by ELM ver.2012-10-06 from 001\_\_elm20150519\_060730\_\_dat00.bin



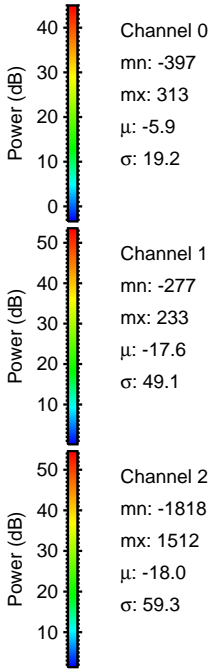
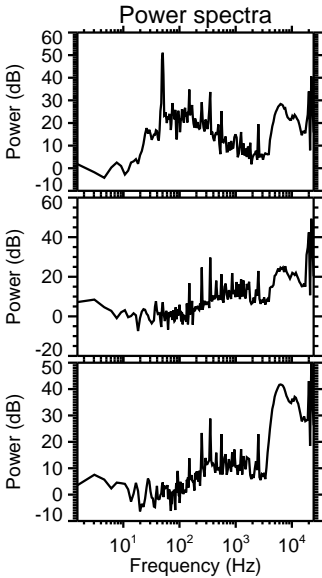
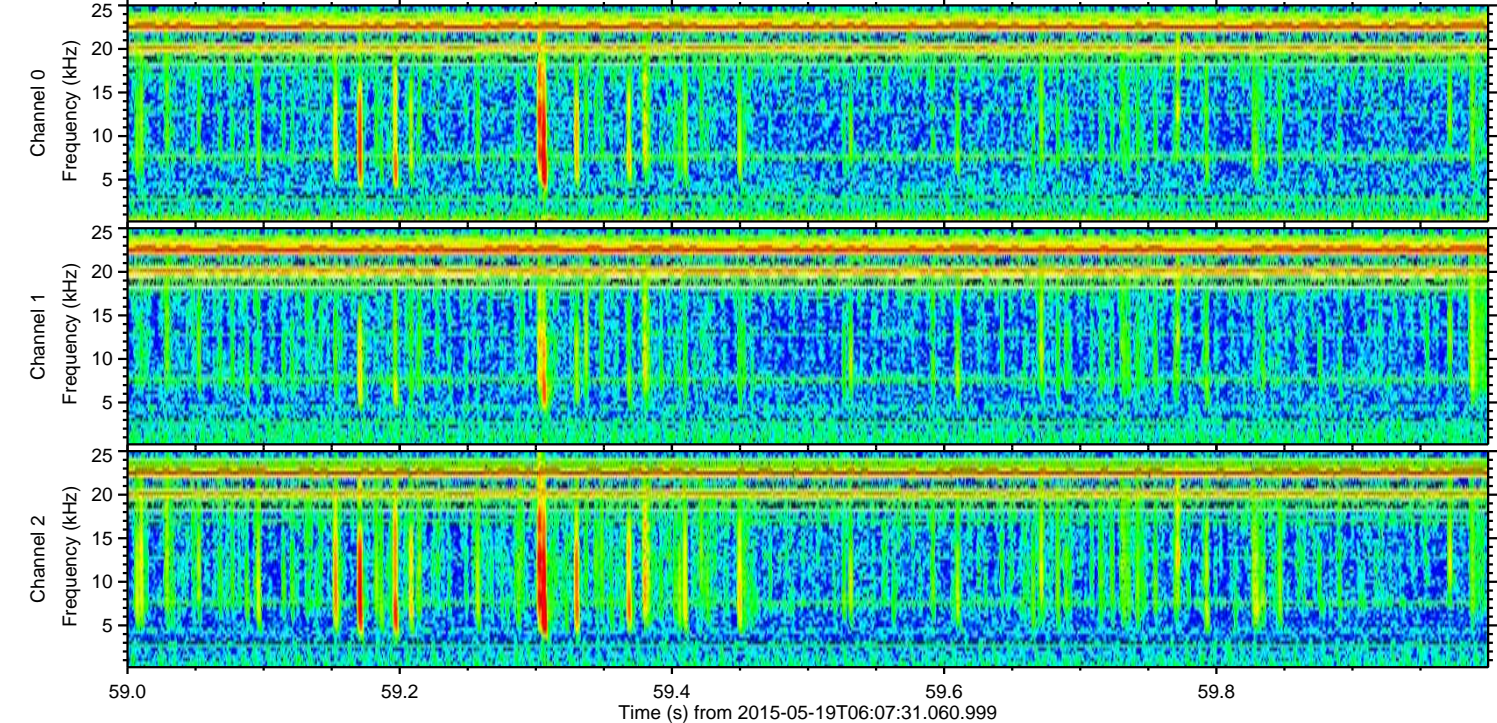
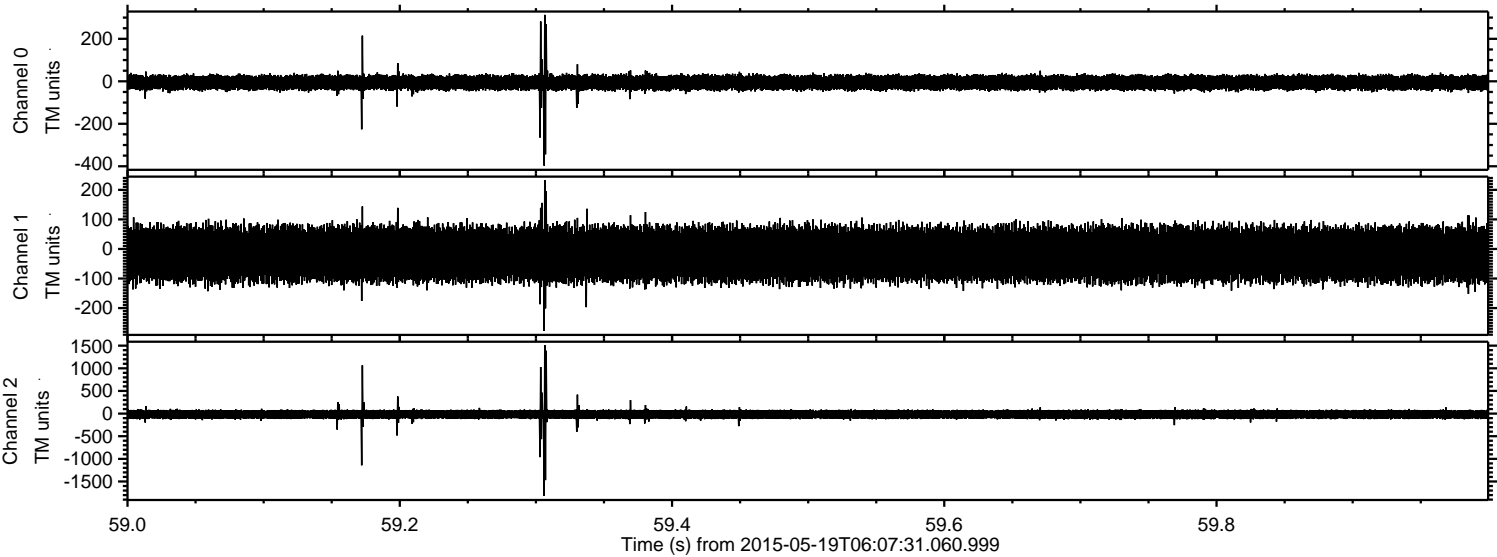


Processed Tue May 19 08:14:13 2015 by ELM ver.2012-10-06 from 001\_\_elm20150519\_060730\_\_dat00.bin





Processed Tue May 19 08:14:14 2015 by ELM ver.2012-10-06 from 001\_\_elm20150519\_060730\_\_dat00.bin



Channel 0  
mn: -397  
mx: 313  
 $\mu$ : -5.9  
 $\sigma$ : 19.2

Channel 1  
mn: -277  
mx: 233  
 $\mu$ : -17.6  
 $\sigma$ : 49.1

Channel 2  
mn: -1818  
mx: 1512  
 $\mu$ : -18.0  
 $\sigma$ : 59.3



