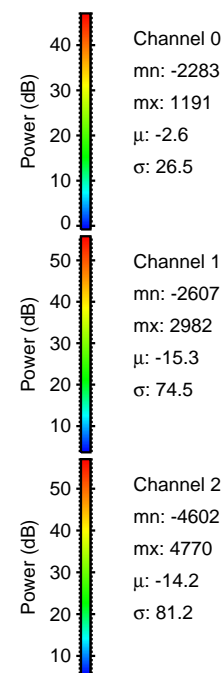
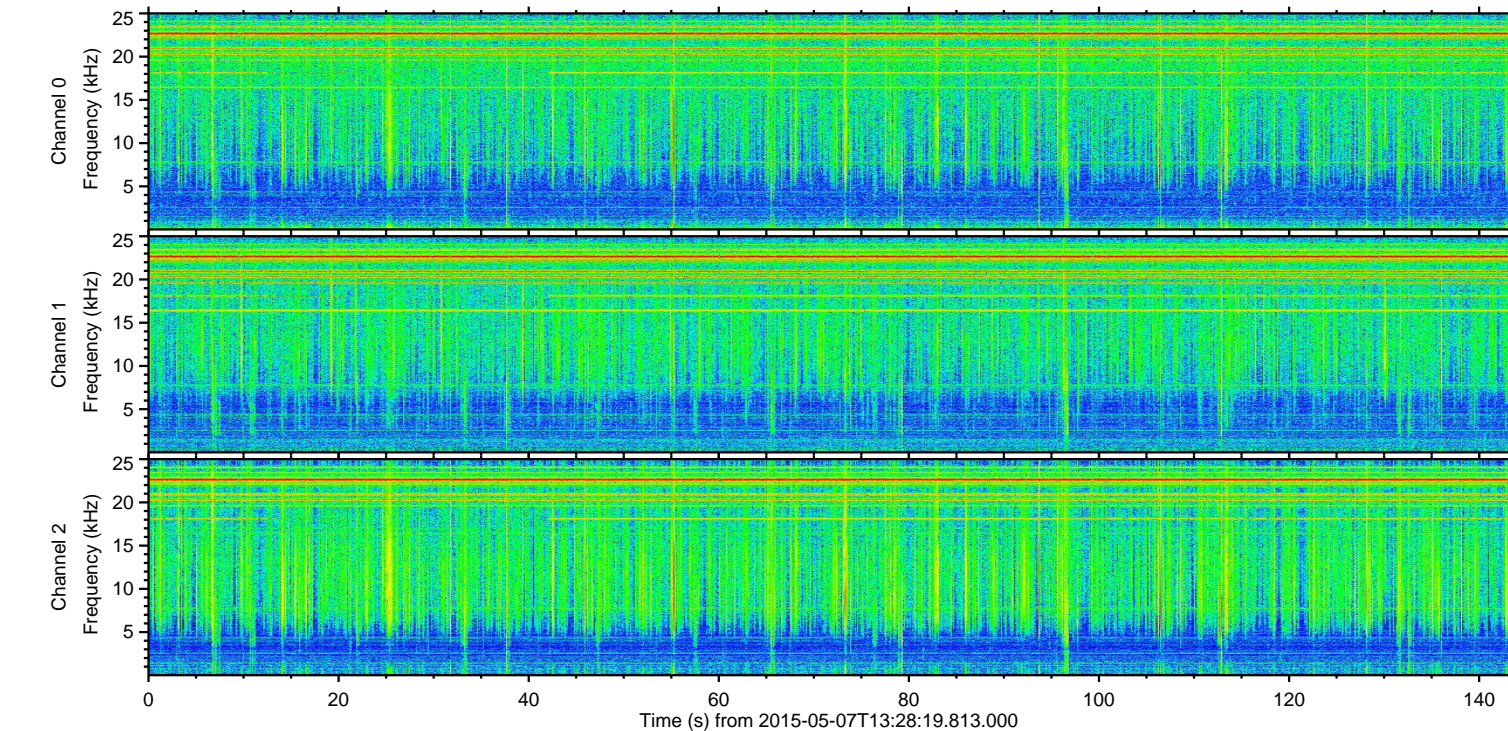
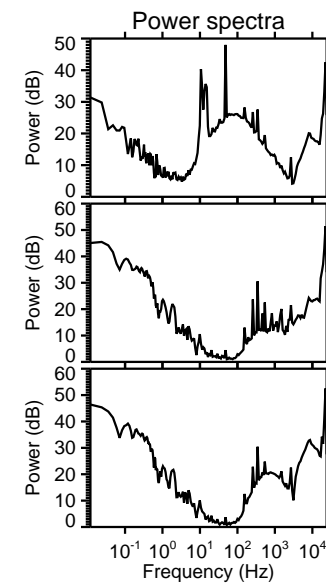
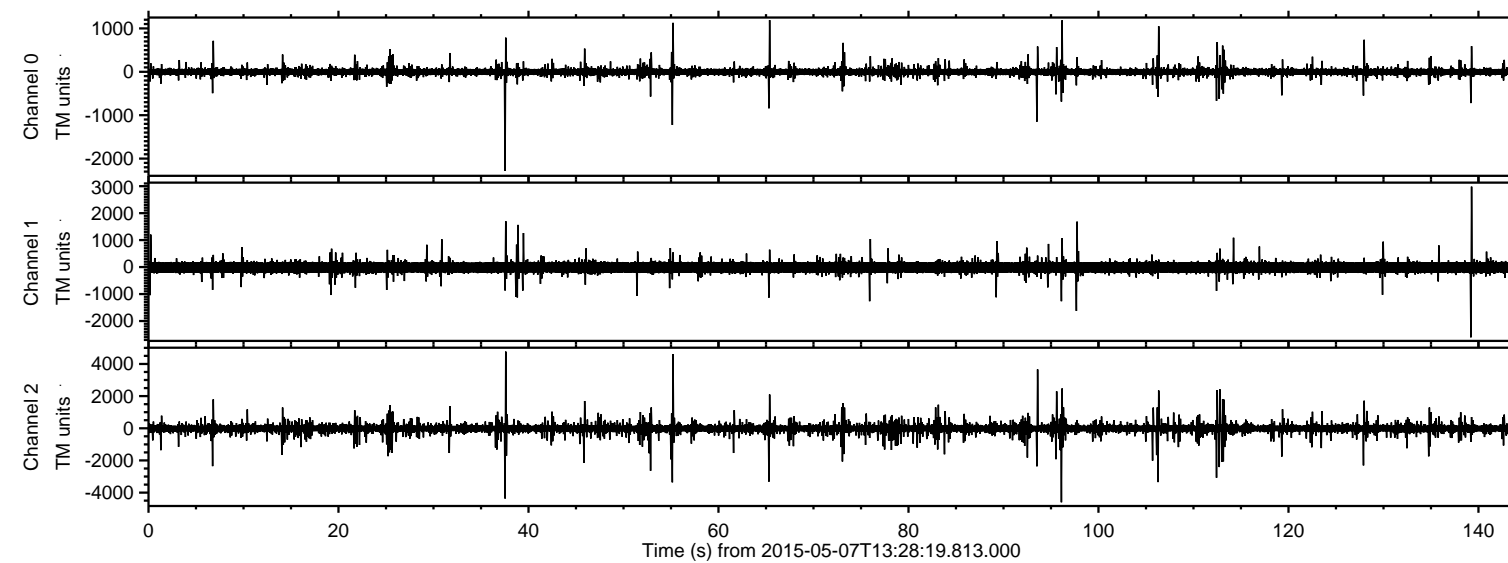


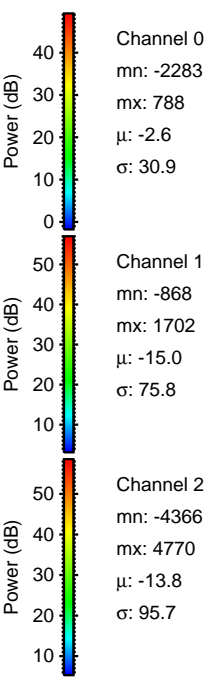
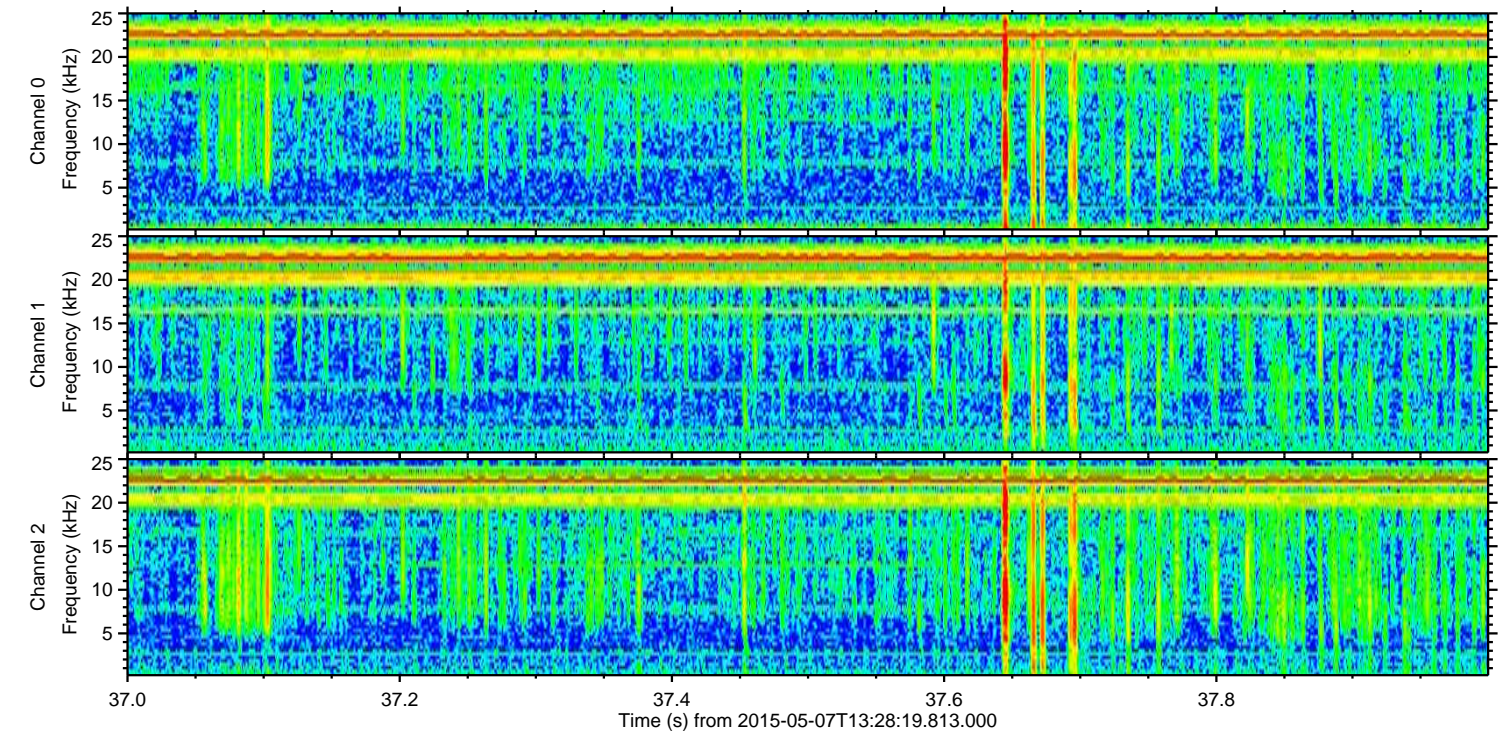
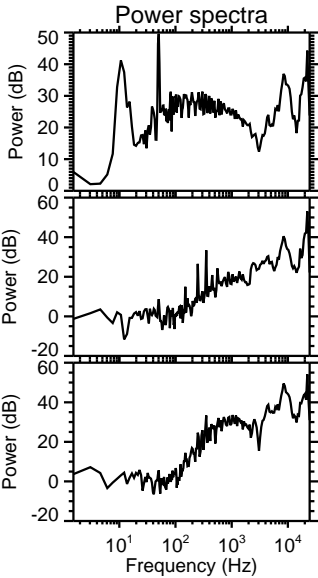
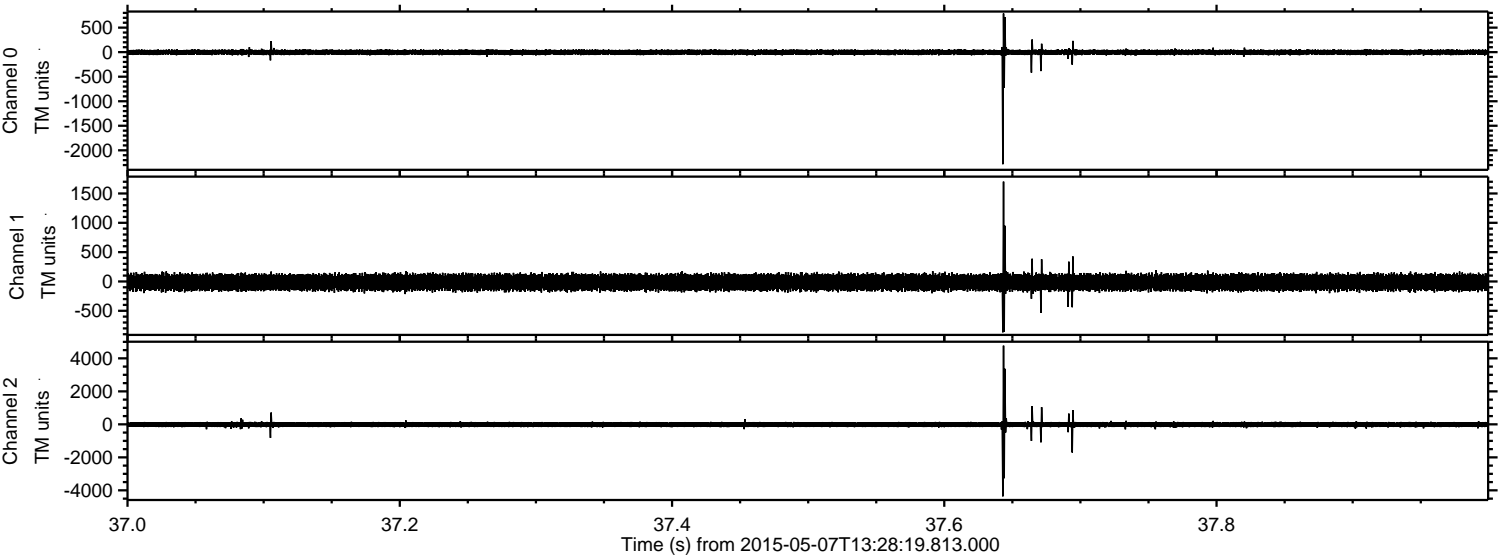
ELMAVAN 3D WAVEFORMS (Measured data sampled at 50 kHz) 49732 packets of 144 samples from 2015-05-07T13:28:19.813.000.

Processed Thu May 7 15:35:26 2015 by ELM ver.2012-10-06 from 001\_\_elm20150507\_132818\_\_dat00.bin



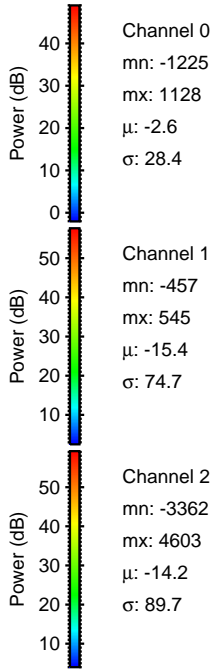
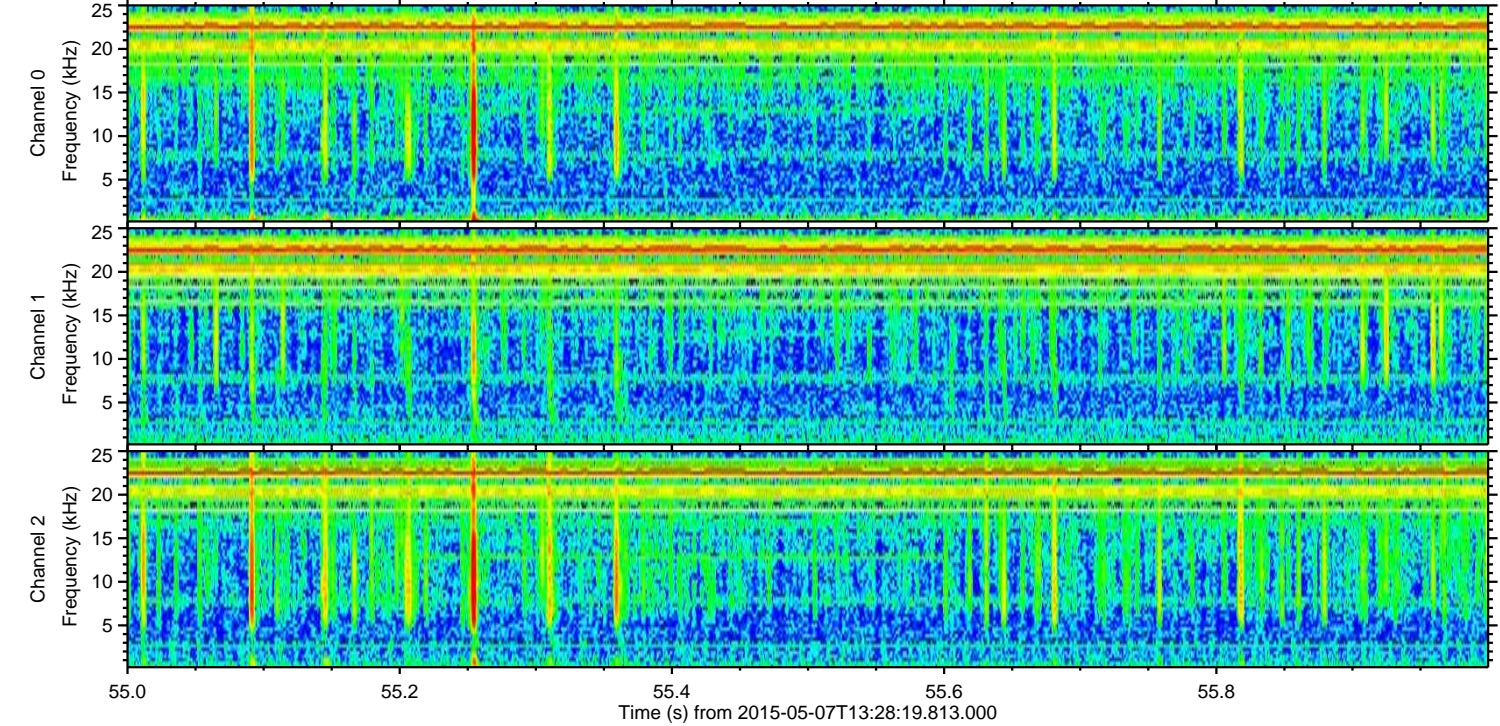
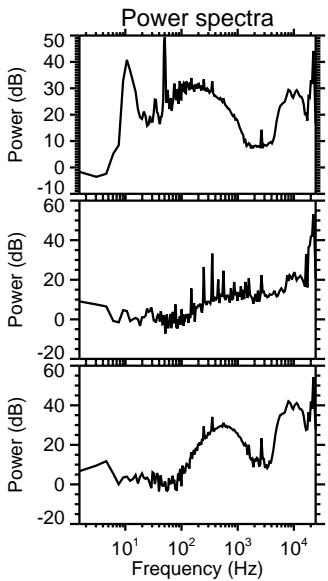
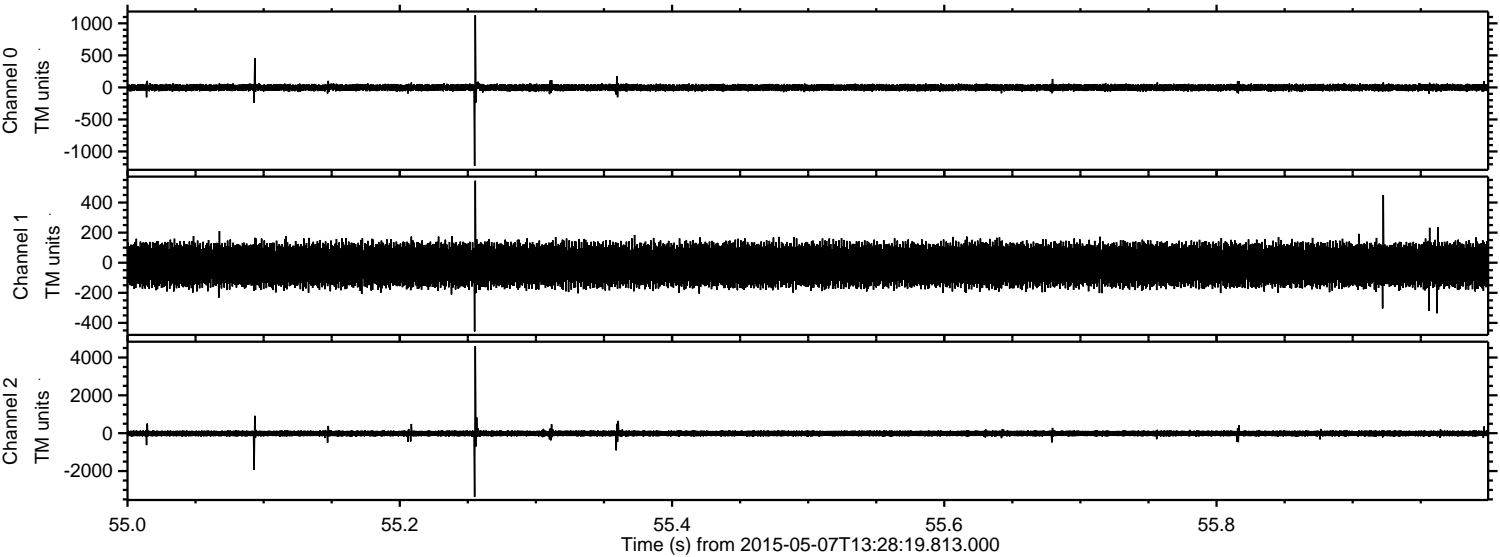


Processed Thu May 7 15:35:37 2015 by ELM ver.2012-10-06 from 001\_\_elm20150507\_132818\_\_dat00.bin





Processed Thu May 7 15:35:38 2015 by ELM ver.2012-10-06 from 001\_\_elm20150507\_132818\_\_dat00.bin



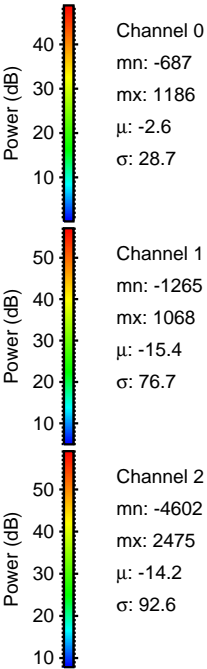
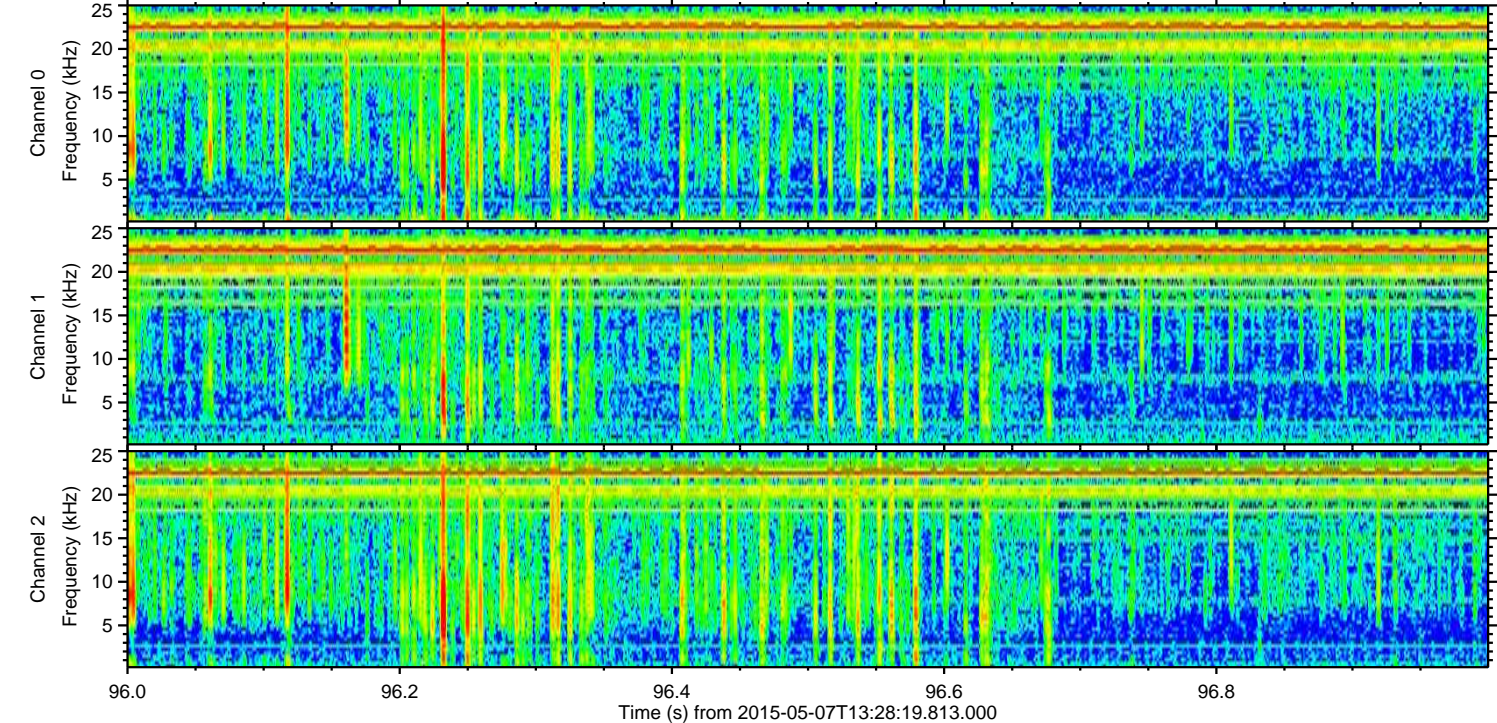
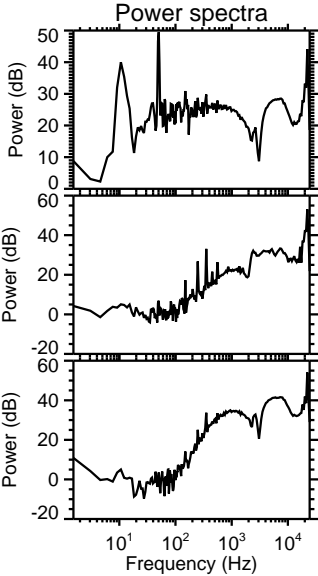
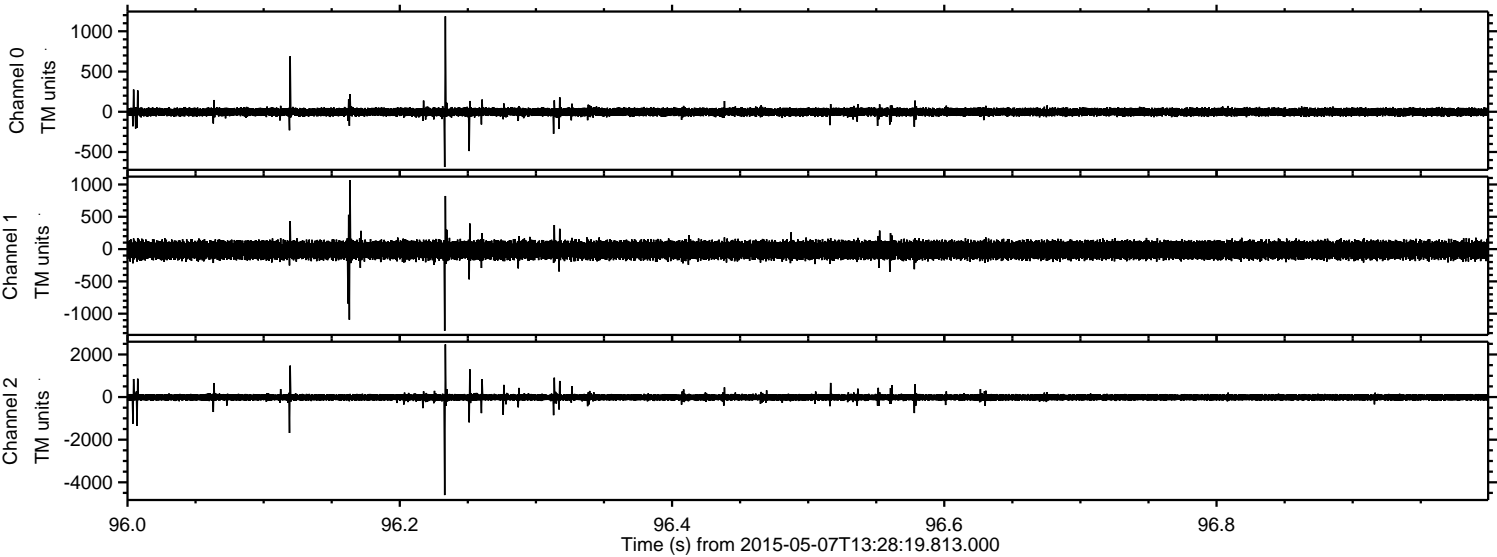
Channel 0  
mn: -1225  
mx: 1128  
 $\mu$ : -2.6  
 $\sigma$ : 28.4

Channel 1  
mn: -457  
mx: 545  
 $\mu$ : -15.4  
 $\sigma$ : 74.7

Channel 2  
mn: -3362  
mx: 4603  
 $\mu$ : -14.2  
 $\sigma$ : 89.7

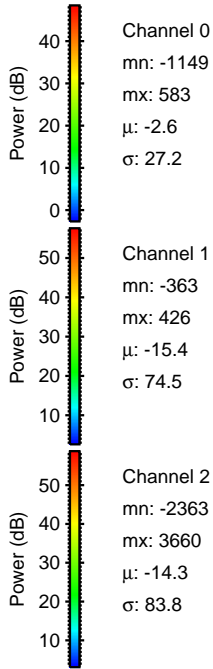
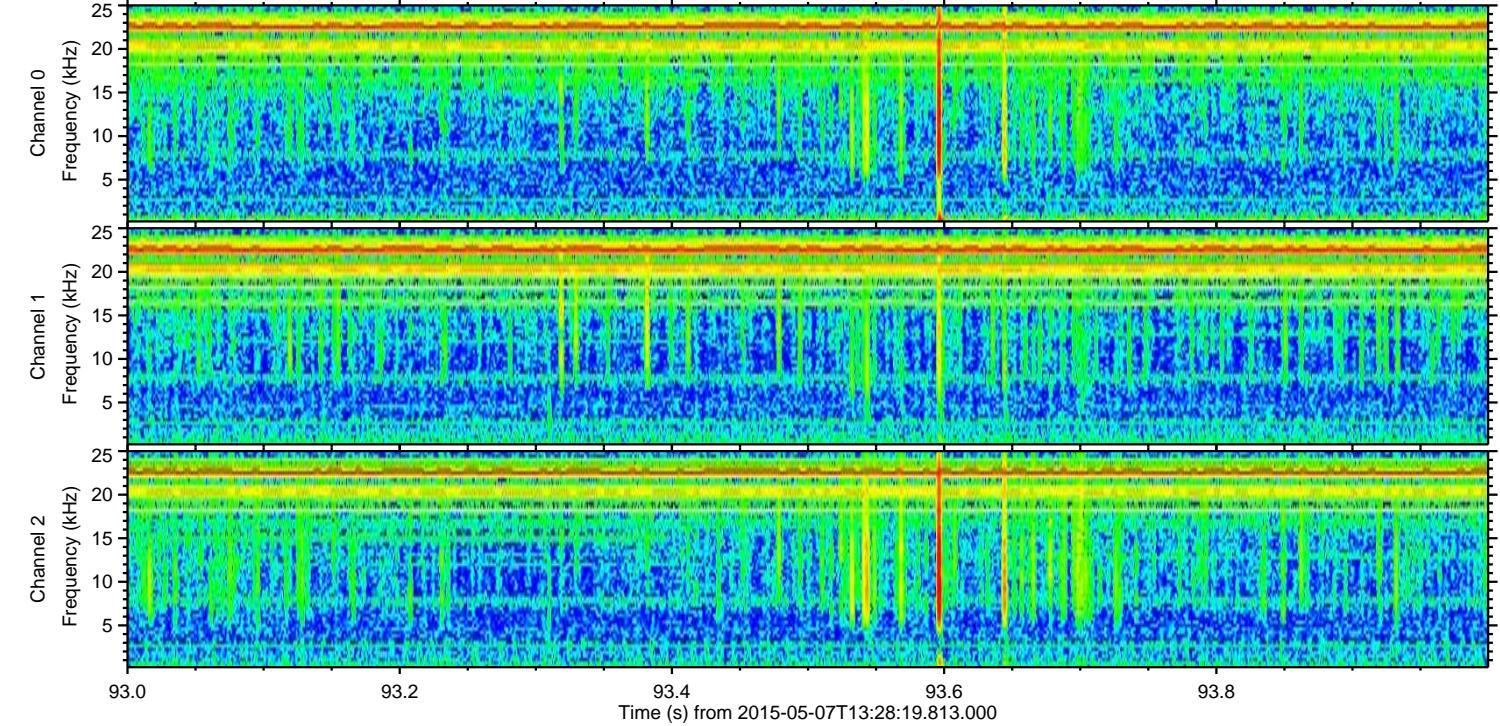
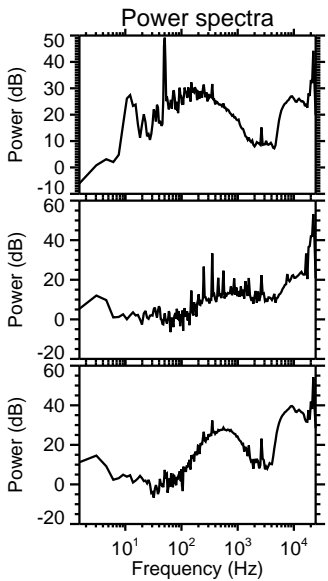
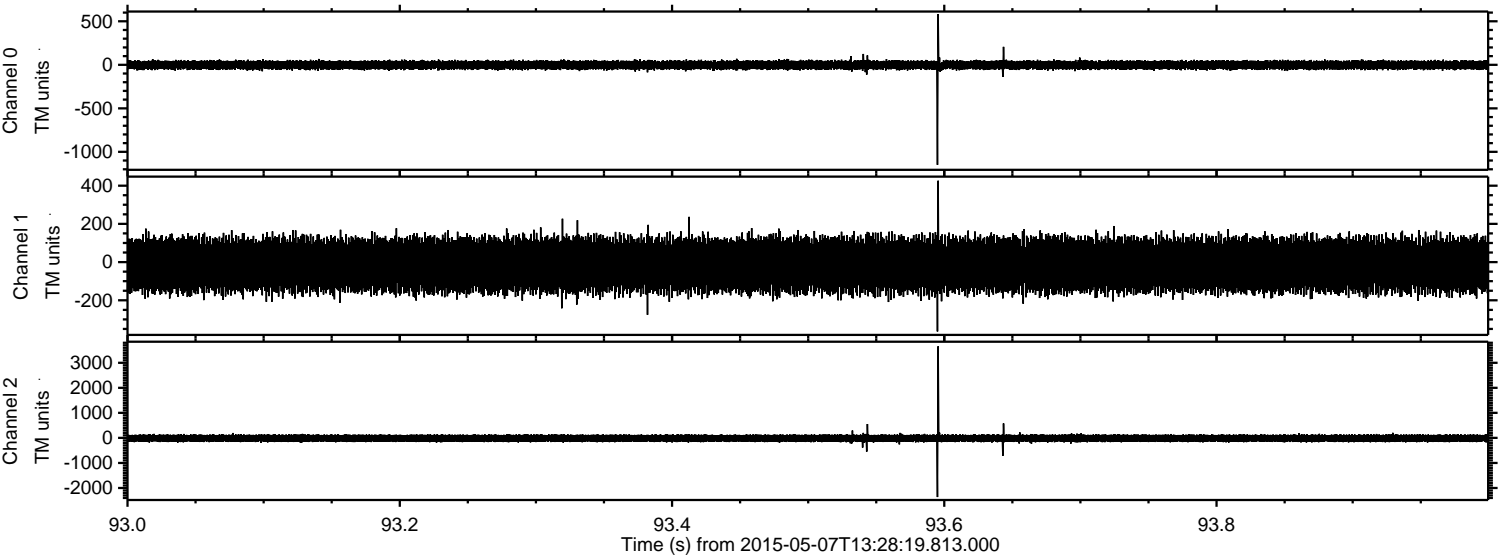


Processed Thu May 7 15:35:39 2015 by ELM ver.2012-10-06 from 001\_\_elm20150507\_132818\_\_dat00.bin





Processed Thu May 7 15:35:40 2015 by ELM ver.2012-10-06 from 001\_\_elm20150507\_132818\_\_dat00.bin



Channel 0  
mn: -1149  
mx: 583  
 $\mu$ : -2.6  
 $\sigma$ : 27.2

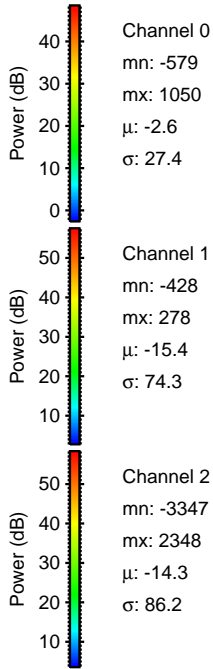
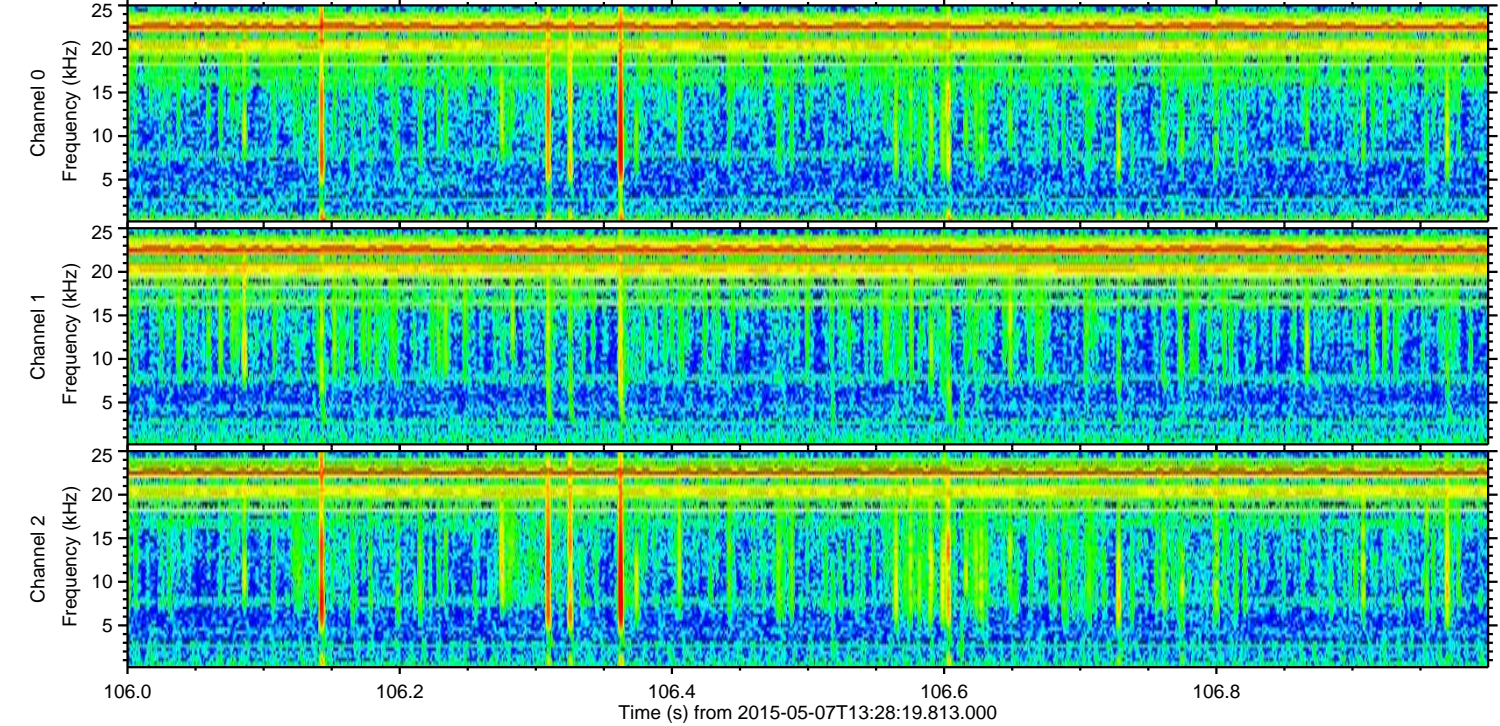
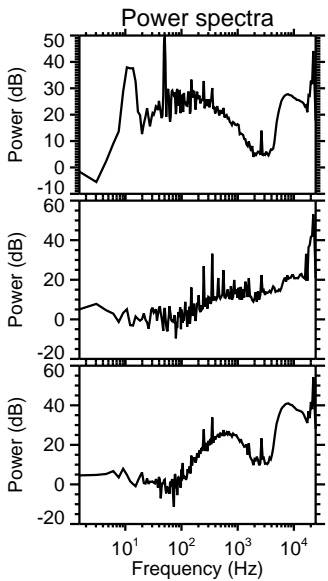
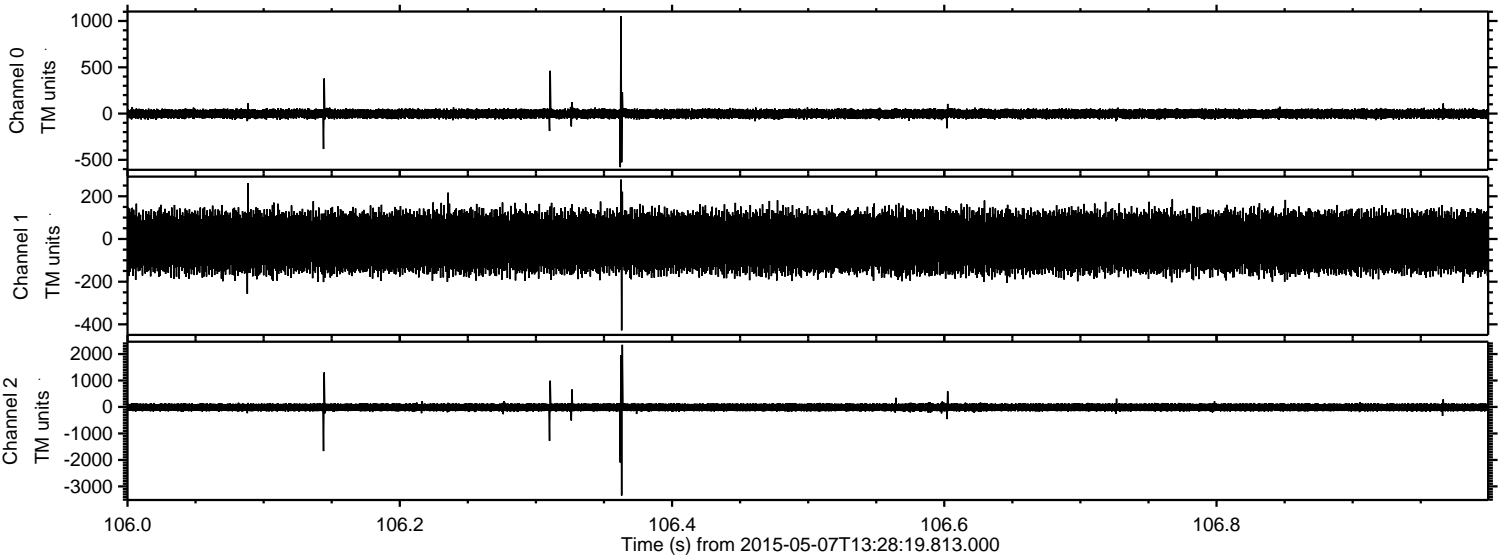
Channel 1  
mn: -363  
mx: 426  
 $\mu$ : -15.4  
 $\sigma$ : 74.5

Channel 2  
mn: -2363  
mx: 3660  
 $\mu$ : -14.3  
 $\sigma$ : 83.8



ELMAVAN 3D WAVEFORMS (Measured data sampled at 50 kHz) 49732 packets of 144 samples from 2015-05-07T13:28:19.813.000. Part 107/144

Processed Thu May 7 15:35:41 2015 by ELM ver.2012-10-06 from 001\_\_elm20150507\_132818\_\_dat00.bin



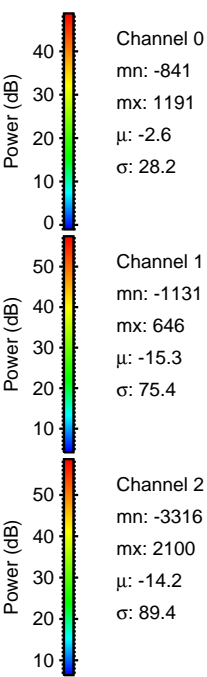
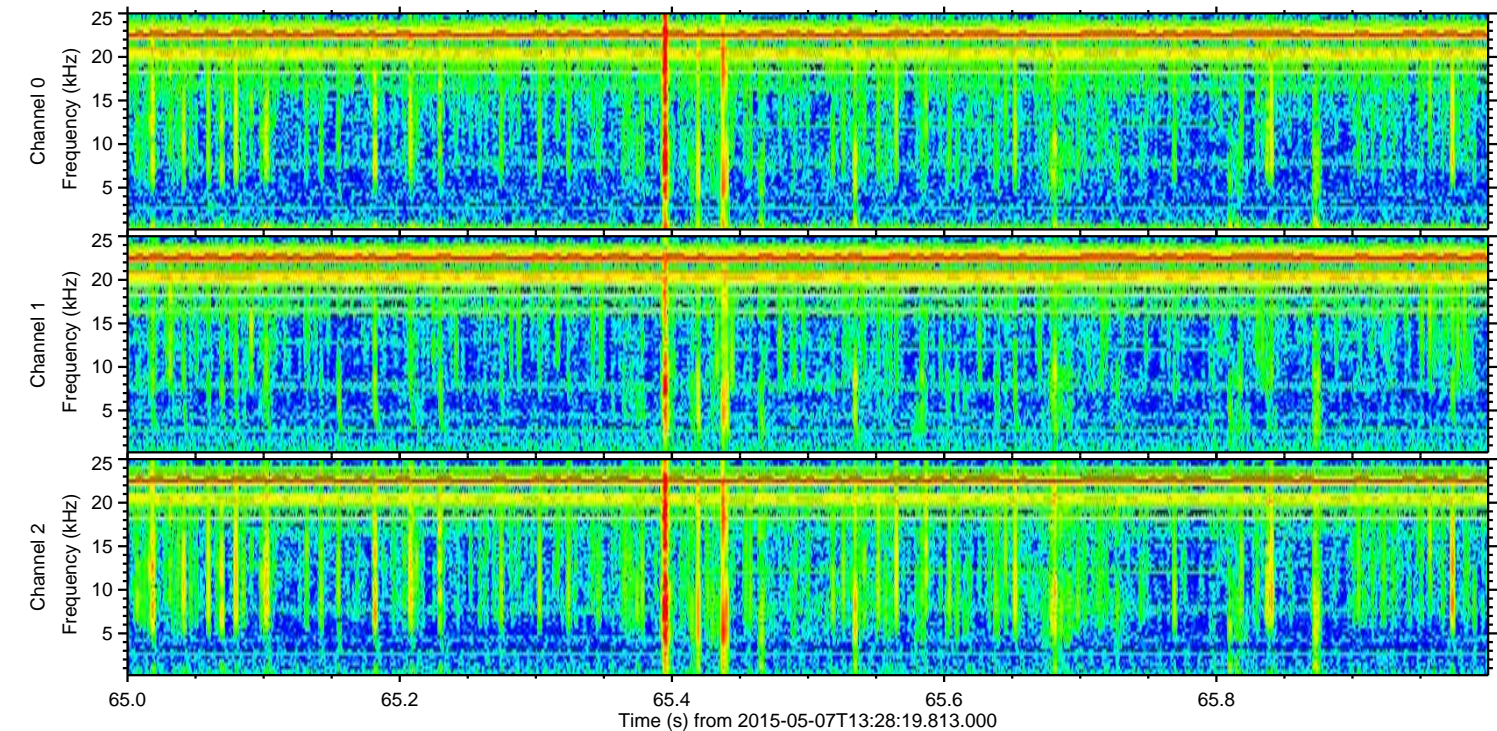
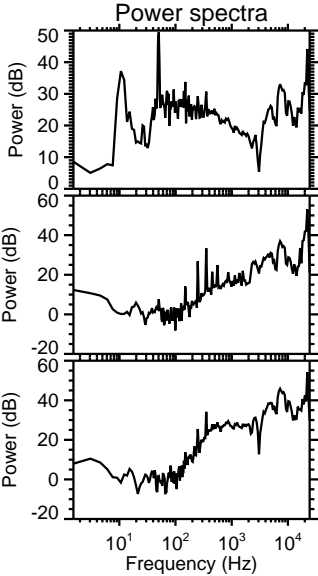
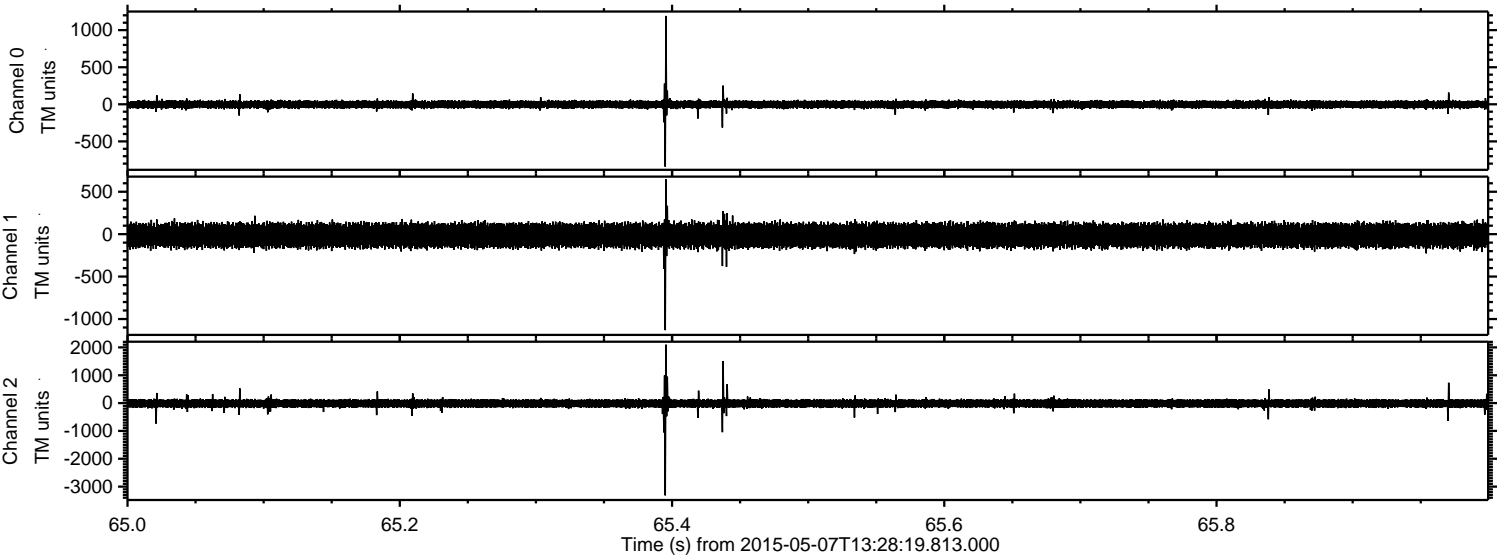
Channel 0  
mn: -579  
mx: 1050  
 $\mu$ : -2.6  
 $\sigma$ : 27.4

Channel 1  
mn: -428  
mx: 278  
 $\mu$ : -15.4  
 $\sigma$ : 74.3

Channel 2  
mn: -3347  
mx: 2348  
 $\mu$ : -14.3  
 $\sigma$ : 86.2



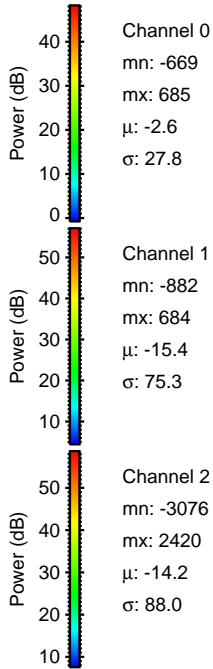
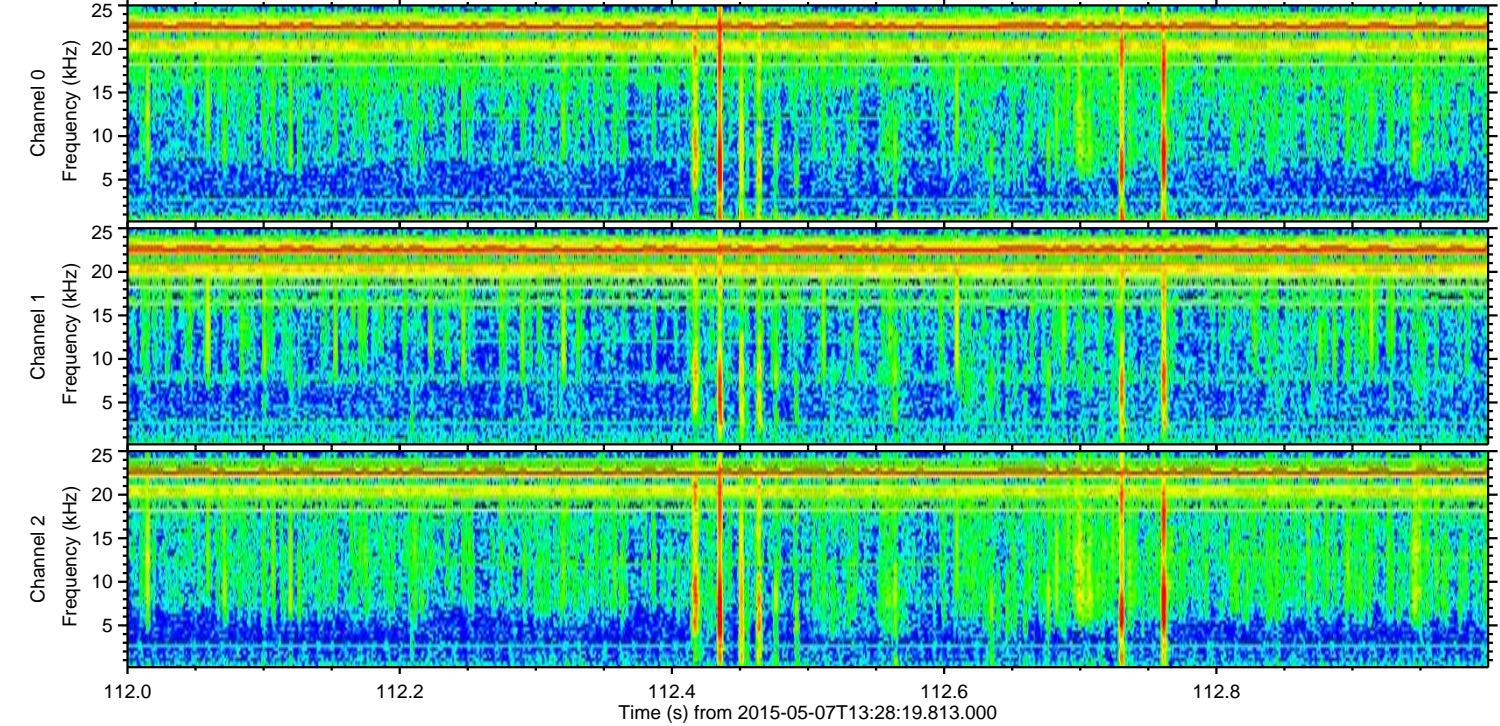
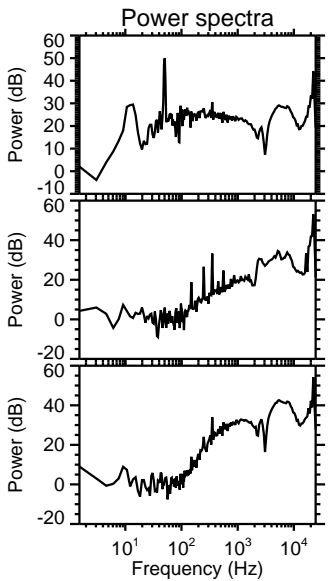
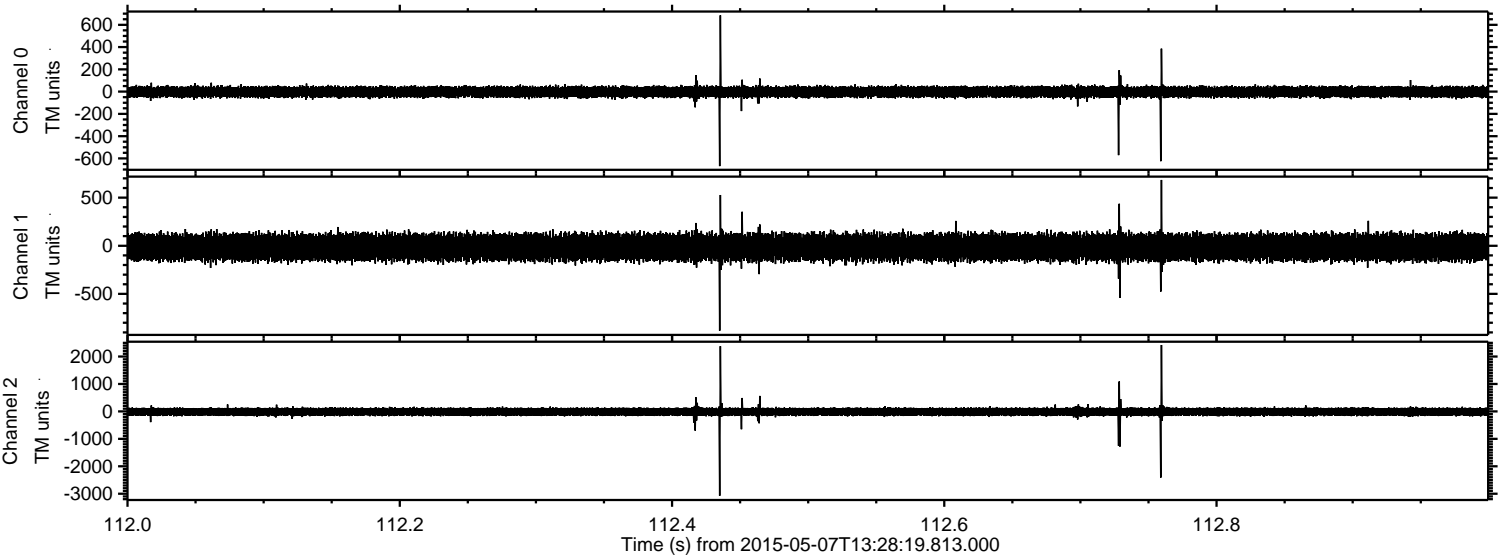
Processed Thu May 7 15:35:42 2015 by ELM ver.2012-10-06 from 001\_\_elm20150507\_132818\_\_dat00.bin





ELMAVAN 3D WAVEFORMS (Measured data sampled at 50 kHz) 49732 packets of 144 samples from 2015-05-07T13:28:19.813.000. Part 113/144

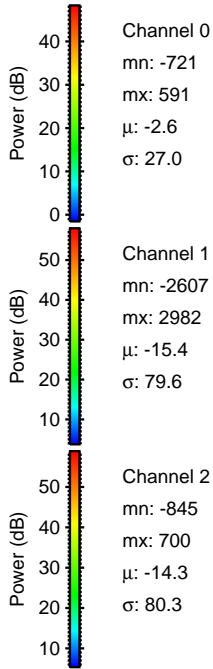
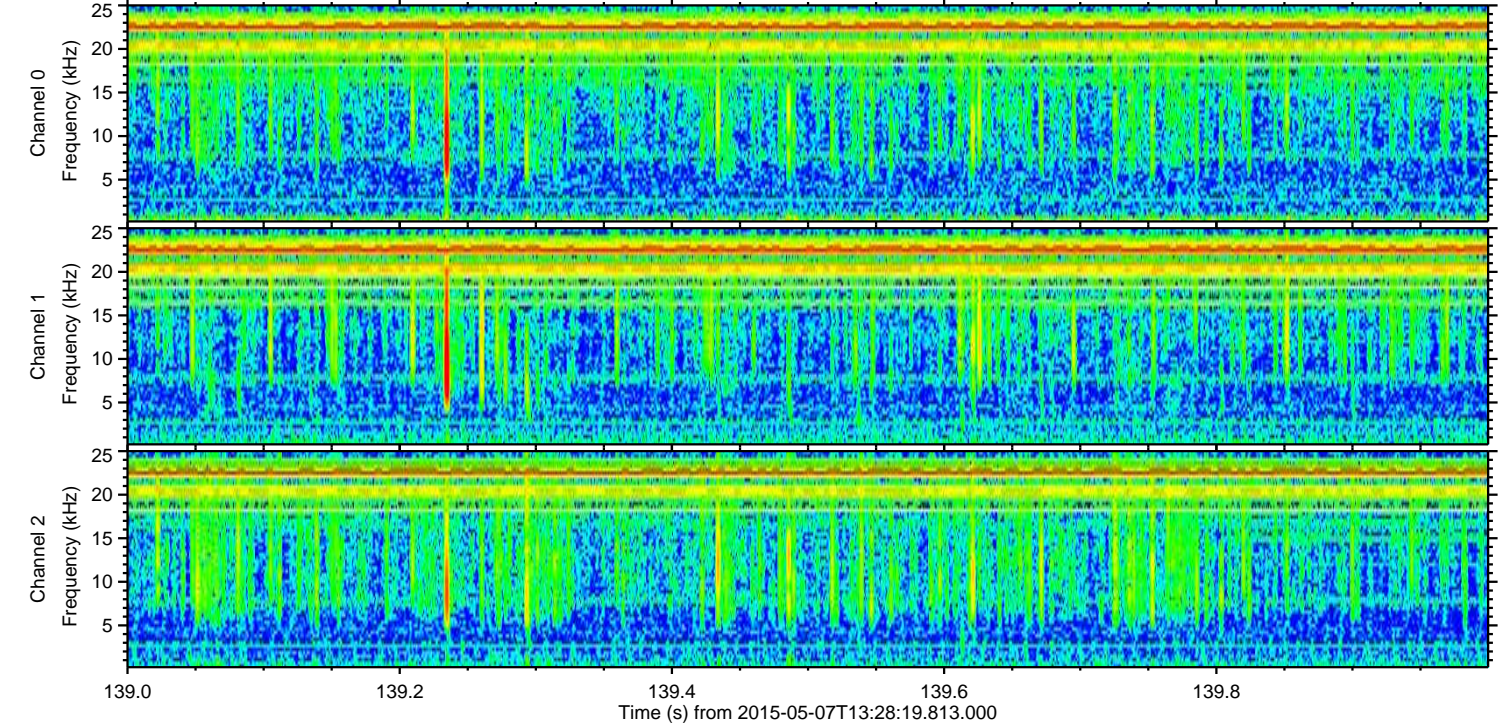
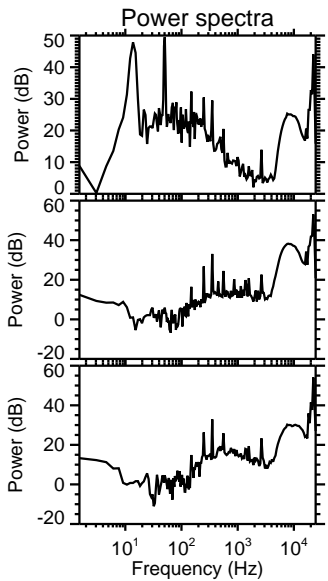
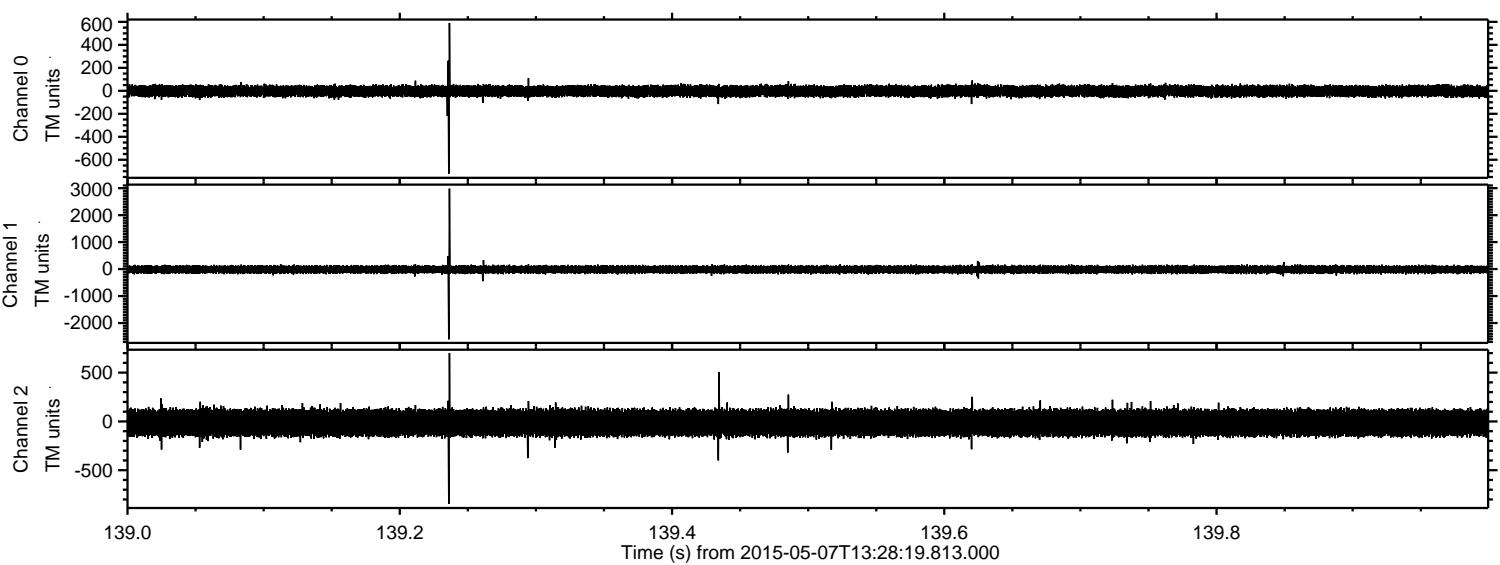
Processed Thu May 7 15:35:43 2015 by ELM ver.2012-10-06 from 001\_\_elm20150507\_132818\_\_dat00.bin





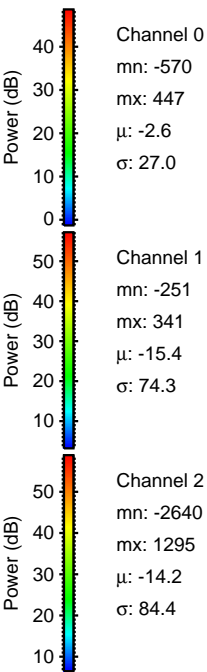
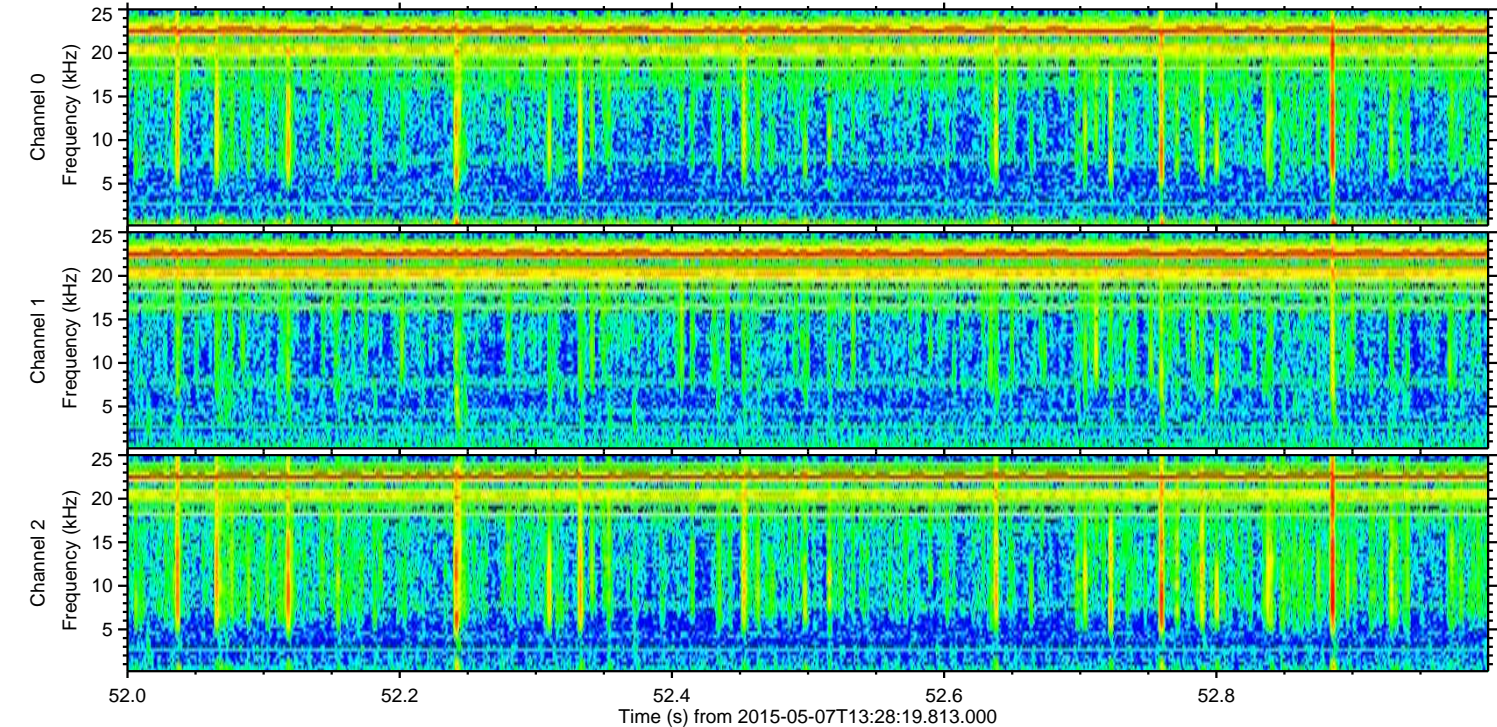
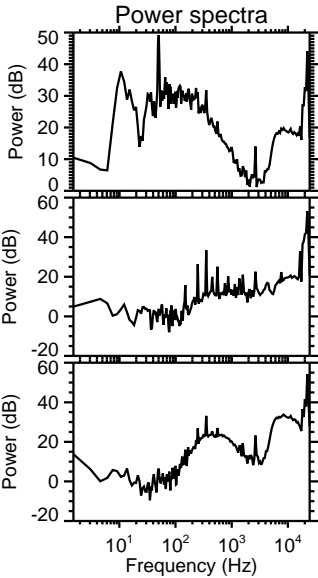
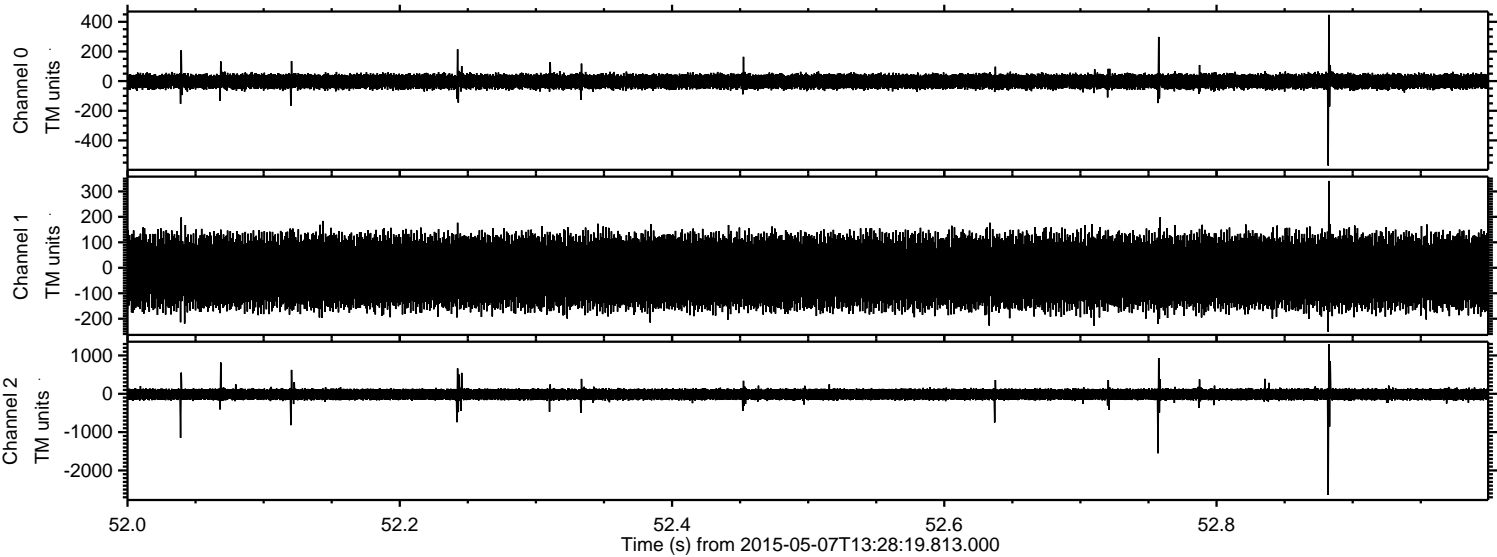
ELMAVAN 3D WAVEFORMS (Measured data sampled at 50 kHz) 49732 packets of 144 samples from 2015-05-07T13:28:19.813.000. Part 140/144

Processed Thu May 7 15:35:44 2015 by ELM ver.2012-10-06 from 001\_\_elm20150507\_132818\_\_dat00.bin



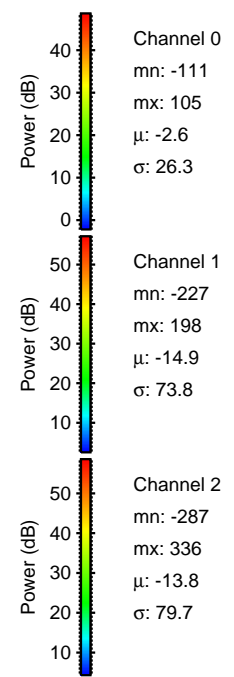
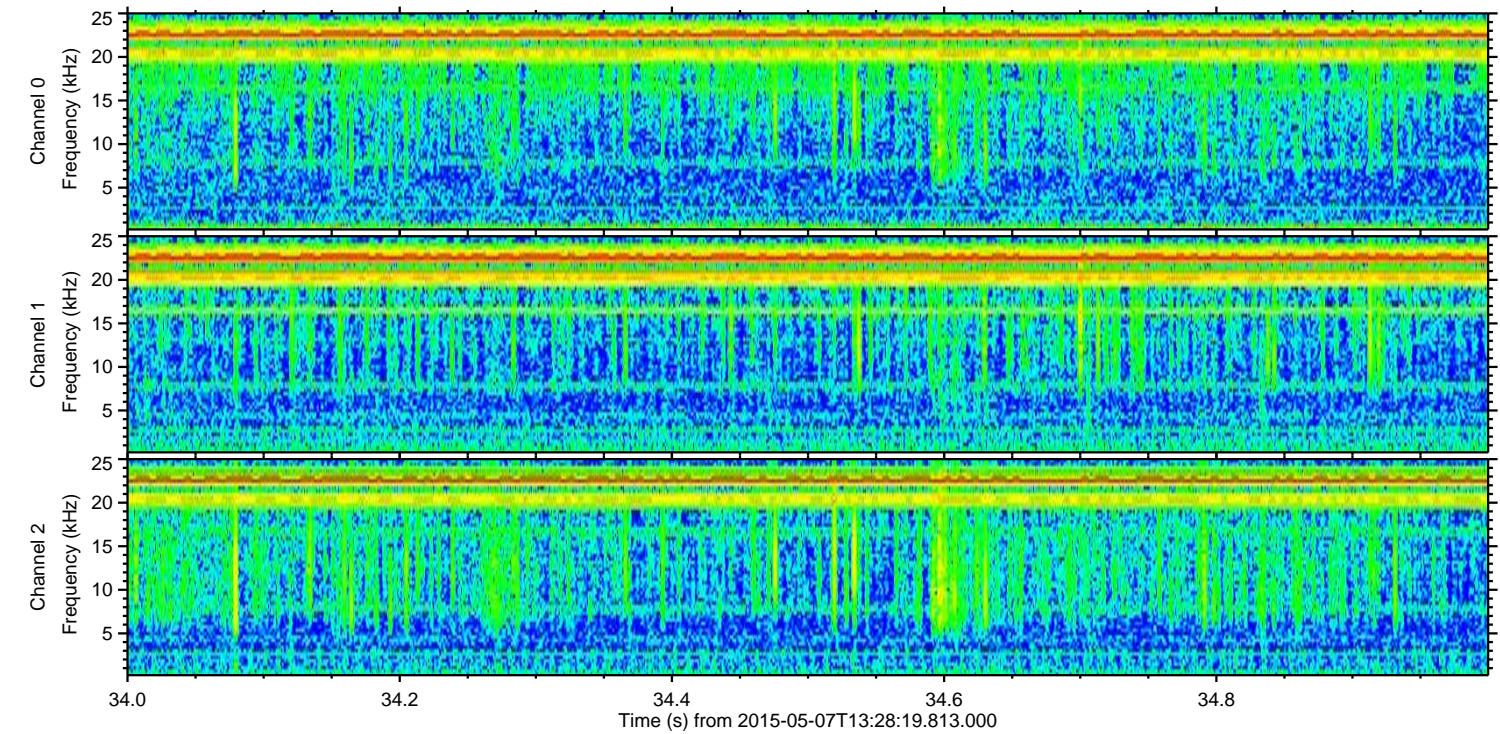
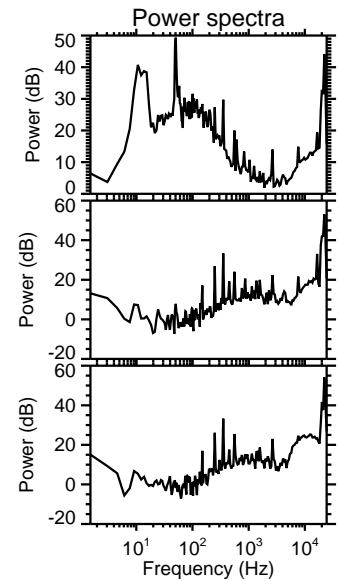
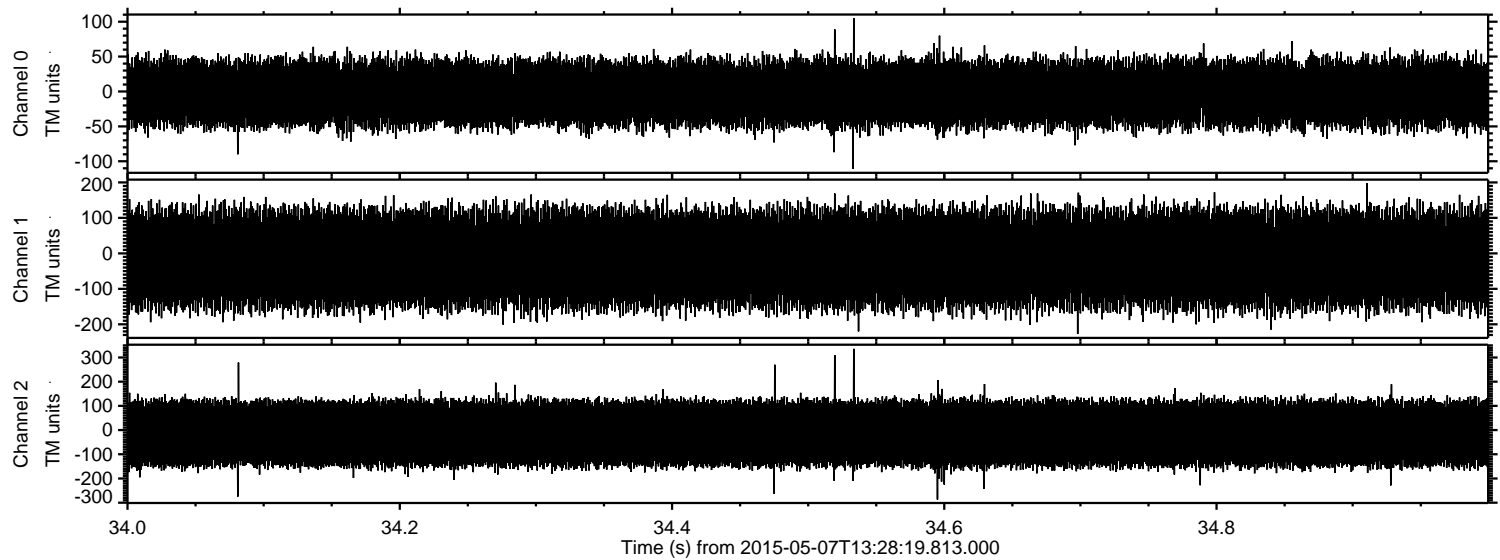


Processed Thu May 7 15:35:45 2015 by ELM ver.2012-10-06 from 001\_\_elm20150507\_132818\_\_dat00.bin





Processed Thu May 7 15:35:46 2015 by ELM ver.2012-10-06 from 001\_\_elm20150507\_132818\_\_dat00.bin



Channel 0  
mn: -111  
mx: 105  
 $\mu$ : -2.6  
 $\sigma$ : 26.3

Channel 1  
mn: -227  
mx: 198  
 $\mu$ : -14.9  
 $\sigma$ : 73.8

Channel 2  
mn: -287  
mx: 336  
 $\mu$ : -13.8  
 $\sigma$ : 79.7