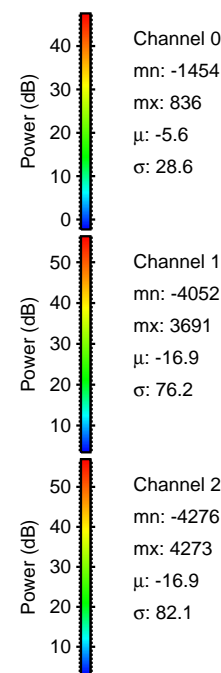
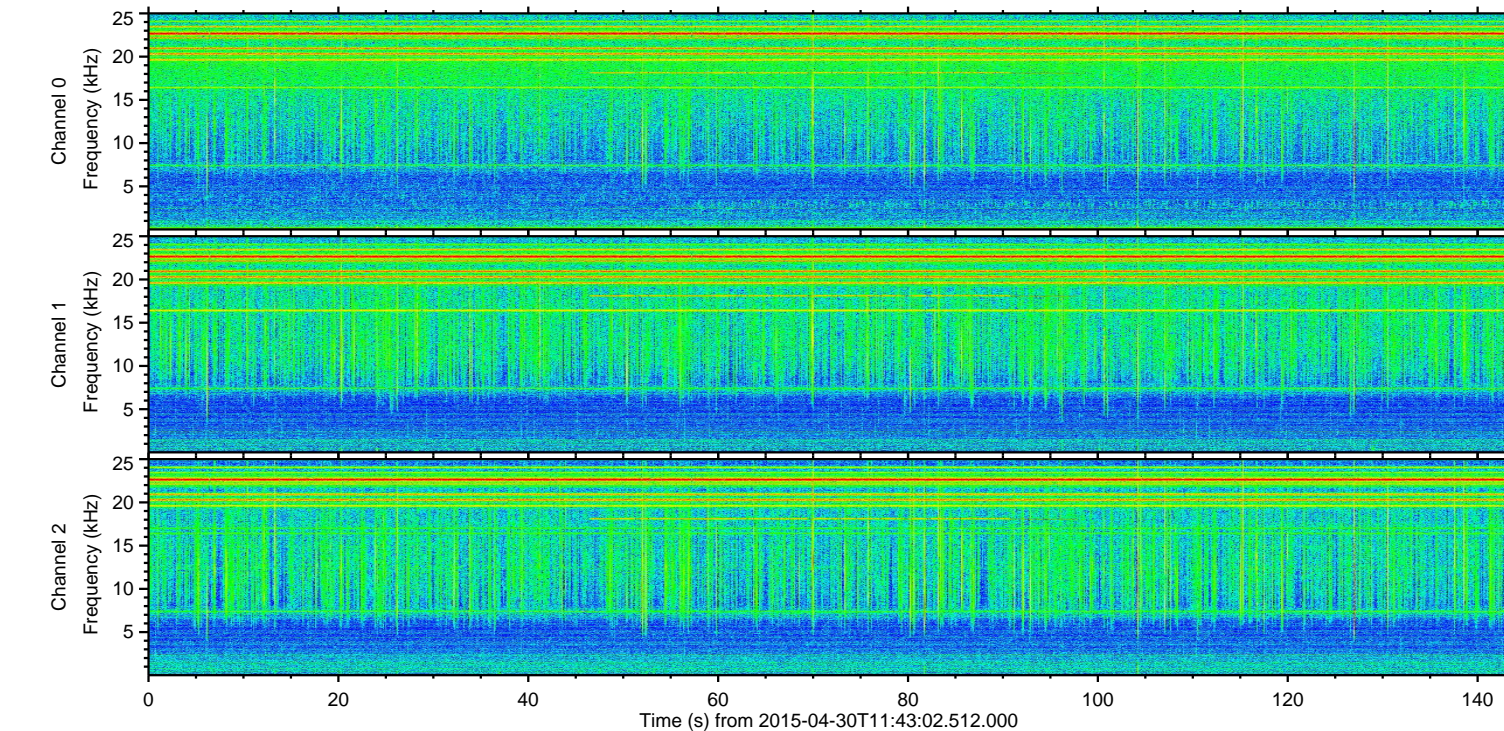
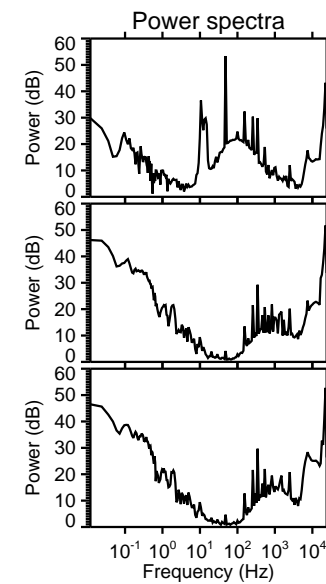
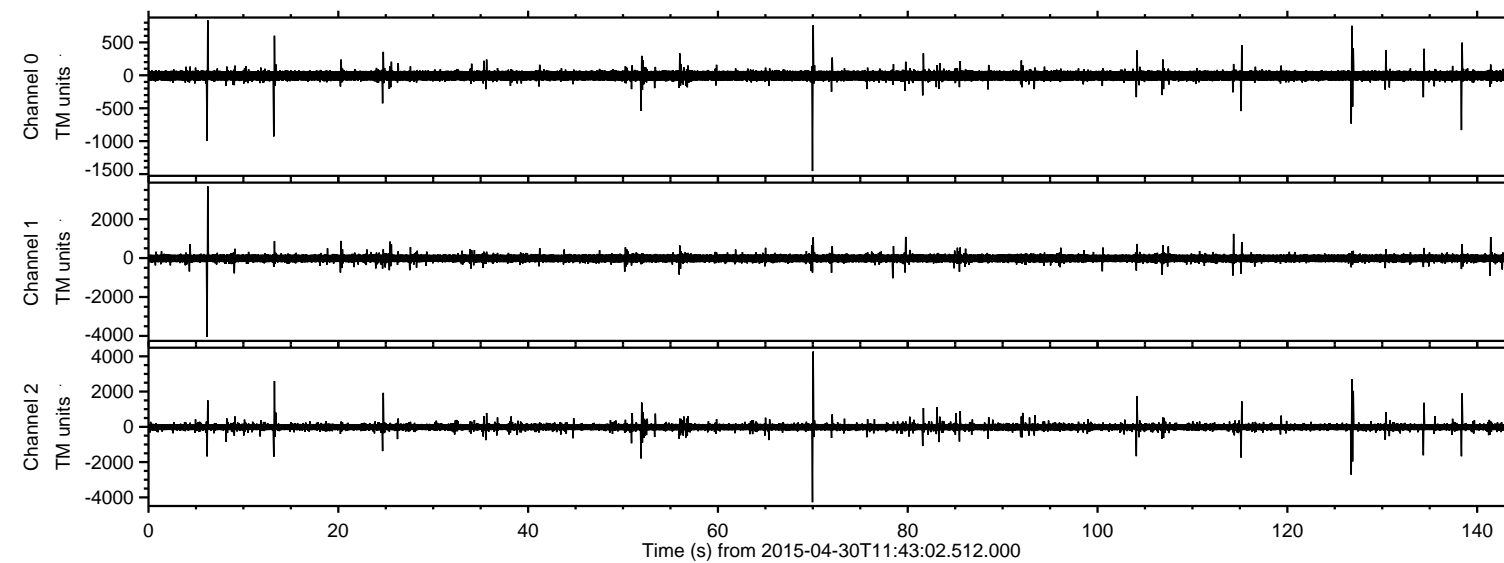
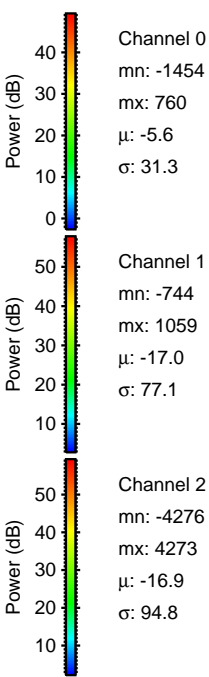
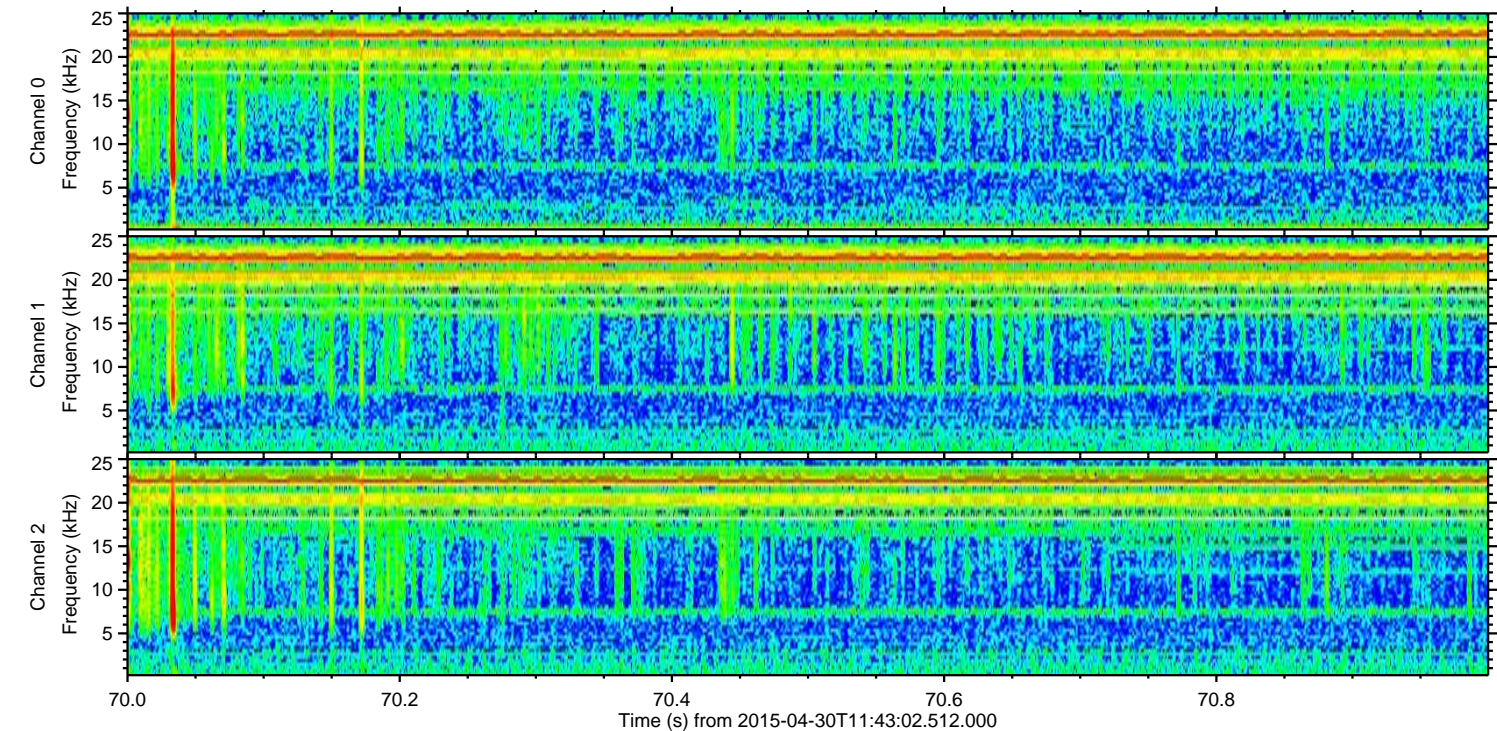
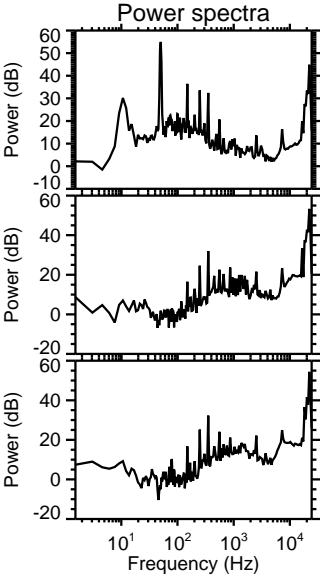
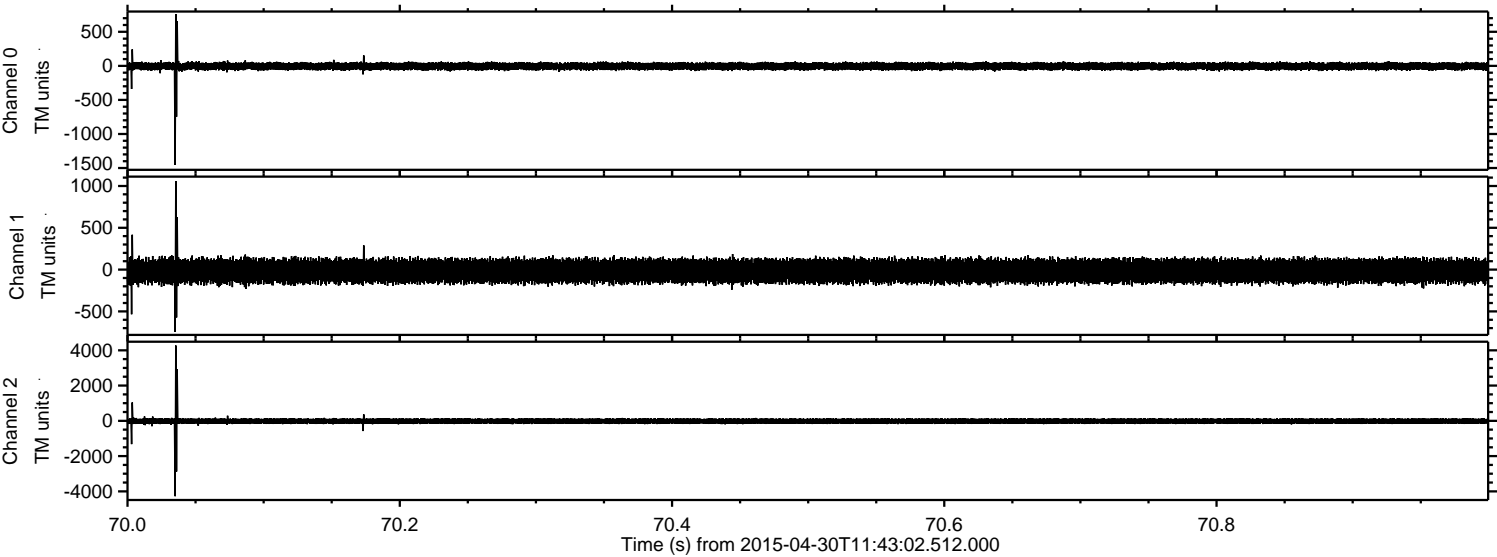


ELMAVAN 3D WAVEFORMS (Measured data sampled at 50 kHz) 49782 packets of 144 samples from 2015-04-30T11:43:02.512.000.

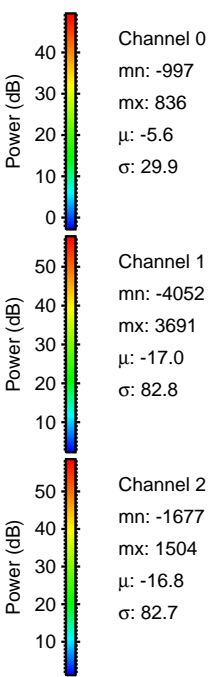
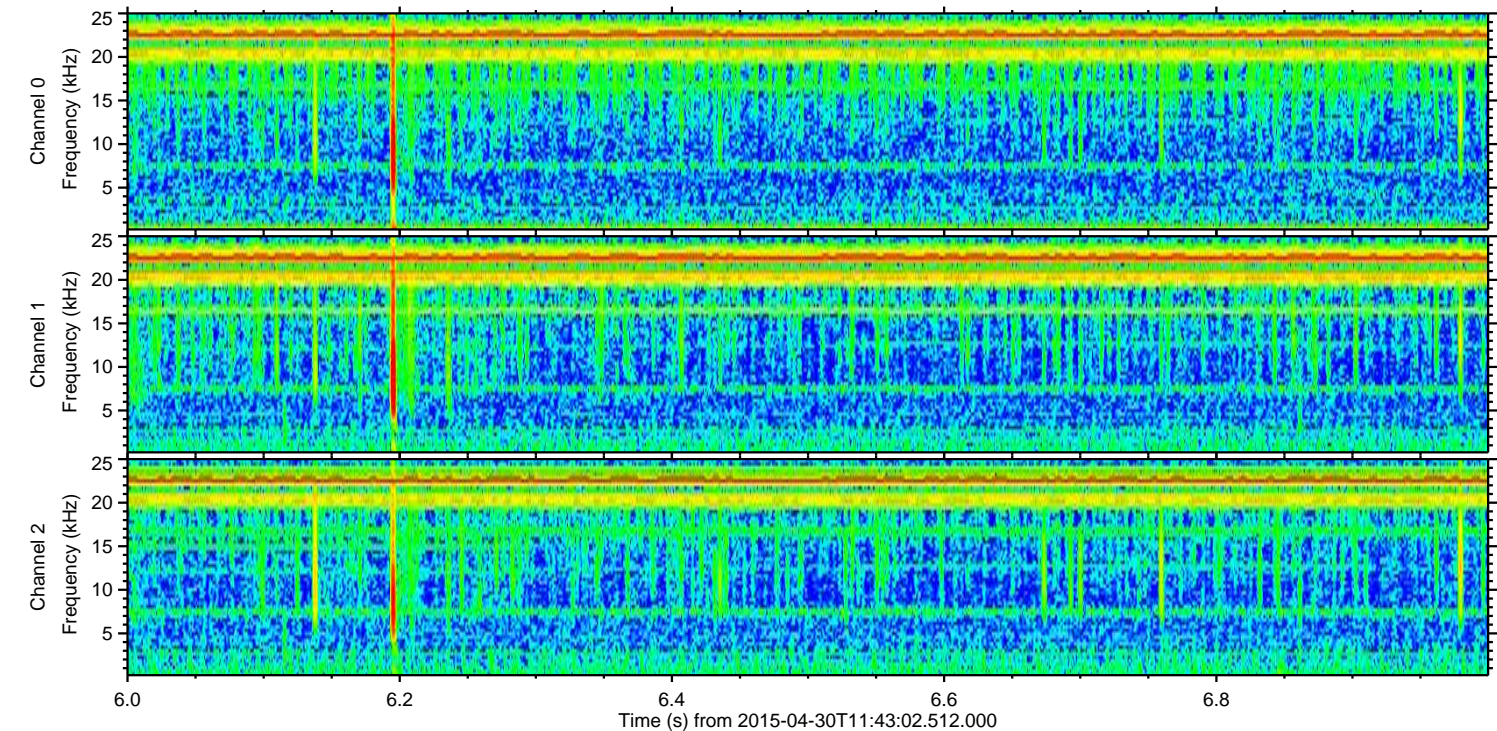
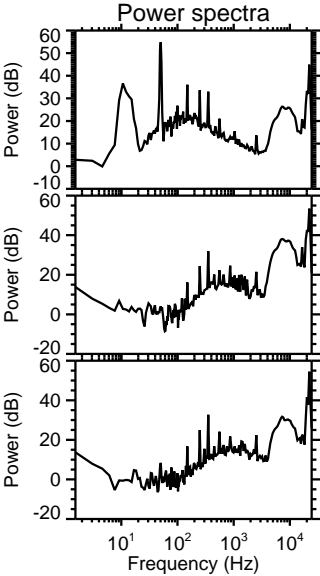
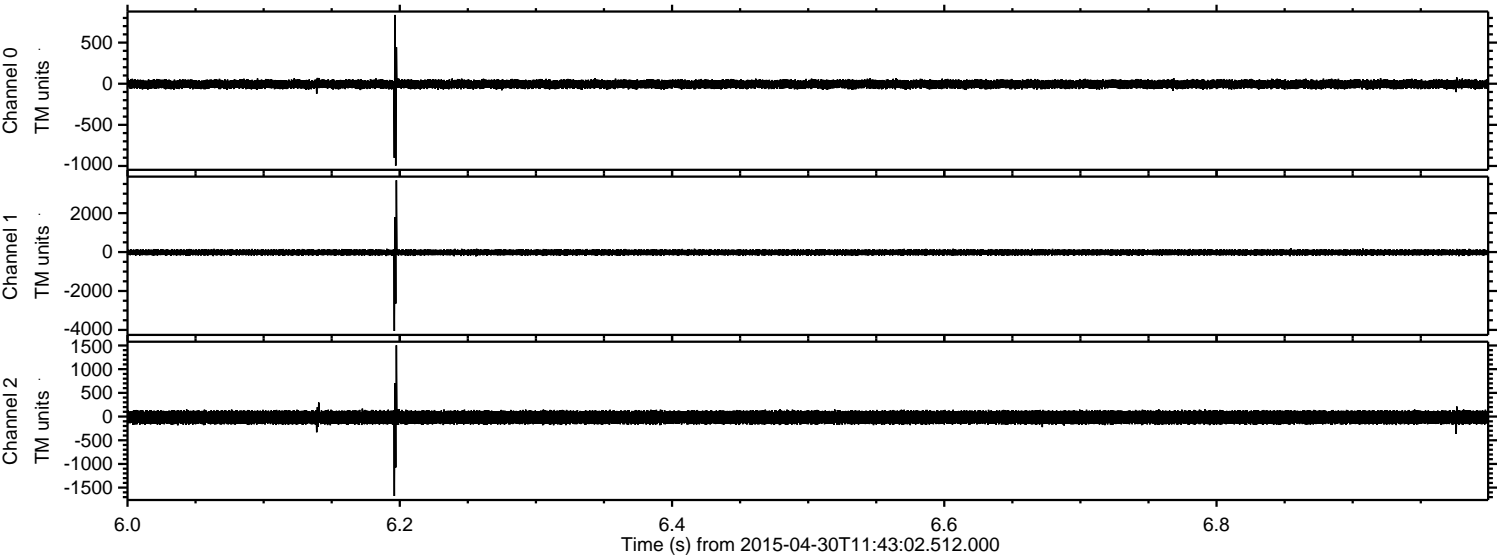
Processed Thu Apr 30 13:49:59 2015 by ELM ver.2012-10-06 from 001__elm20150430_114301__dat00.bin



Processed Thu Apr 30 13:50:10 2015 by ELM ver.2012-10-06 from 001__elm20150430_114301__dat00.bin

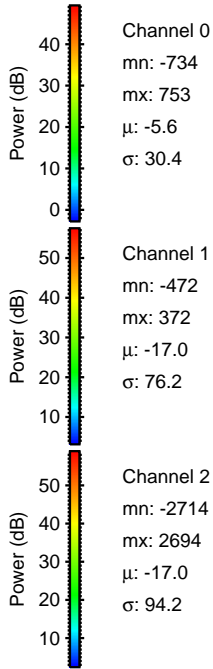
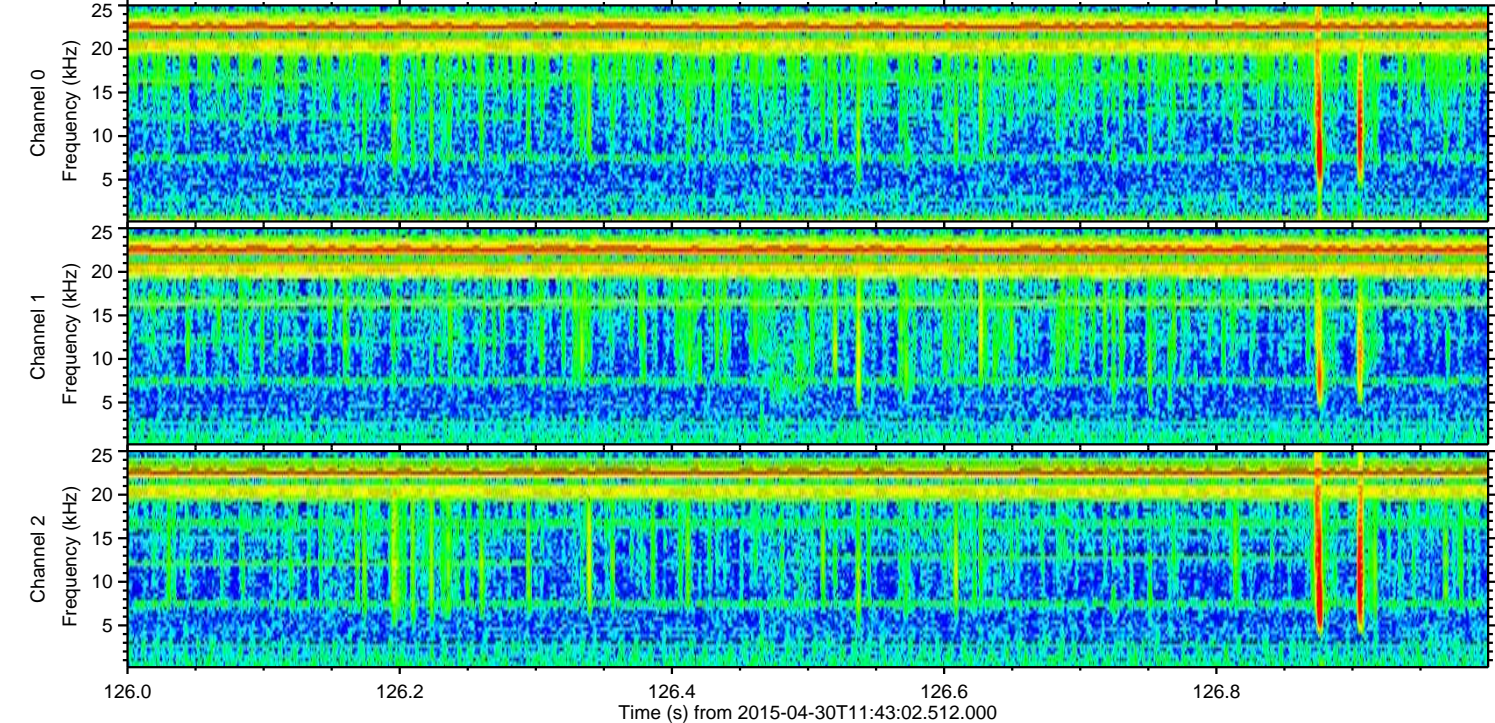
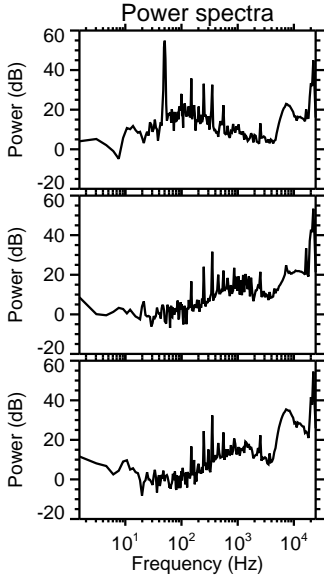
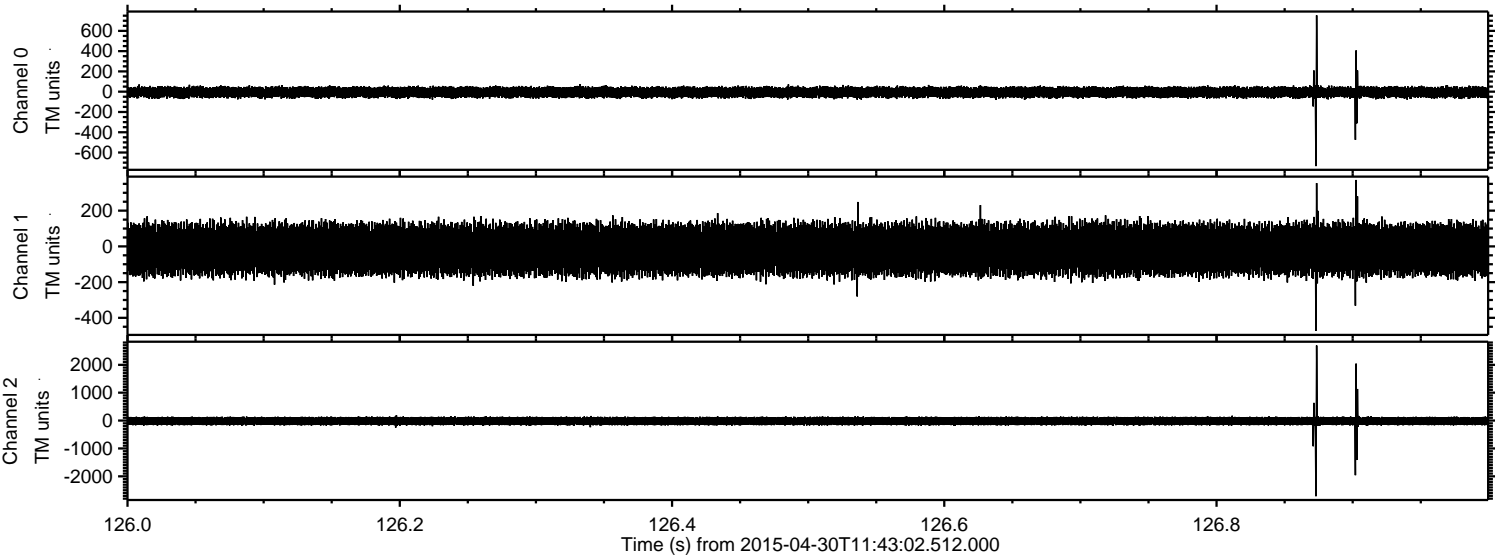


Processed Thu Apr 30 13:50:11 2015 by ELM ver.2012-10-06 from 001__elm20150430_114301__dat00.bin

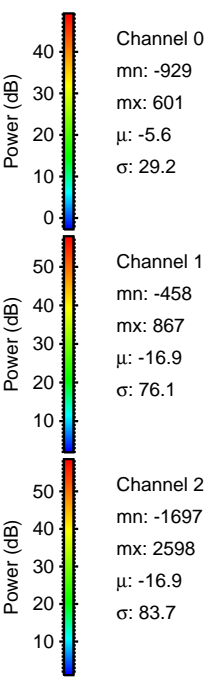
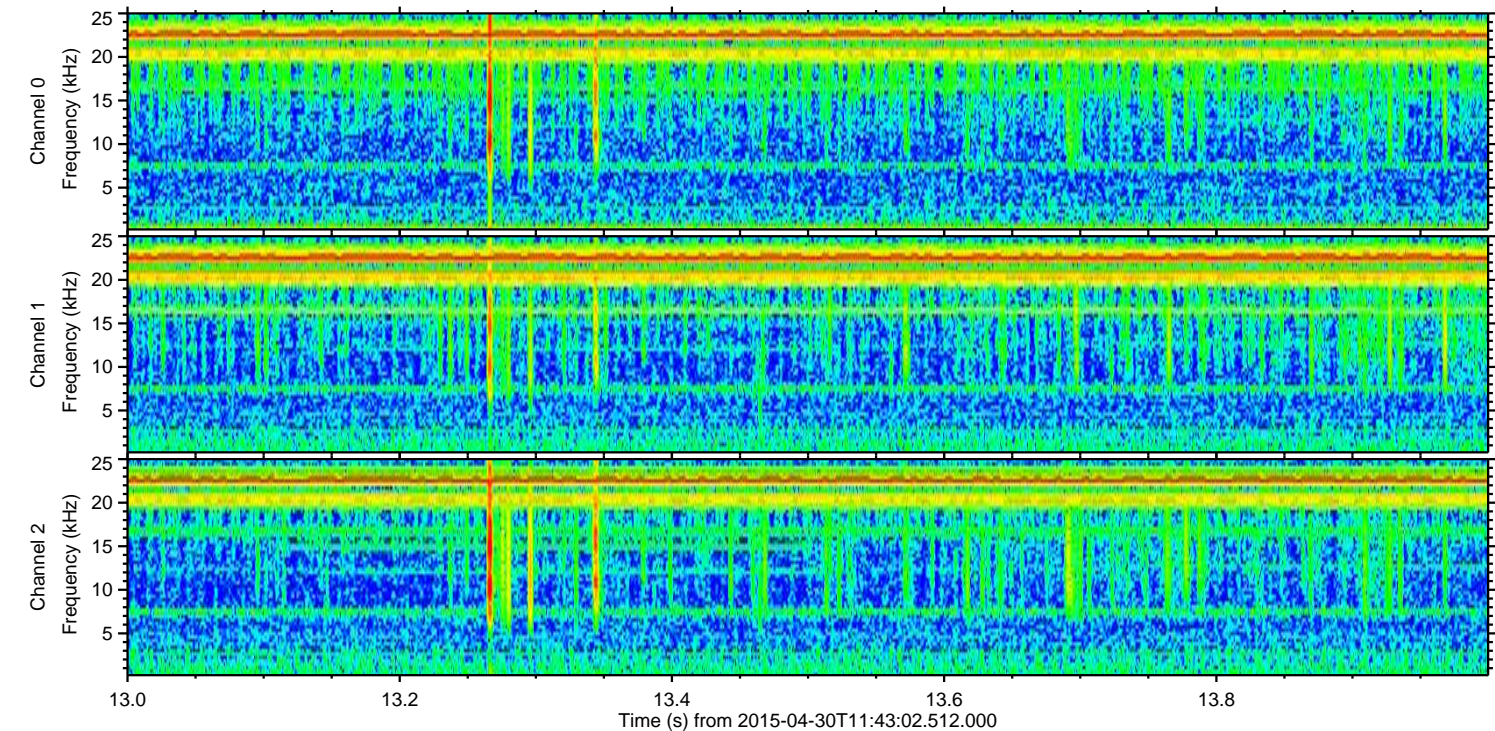
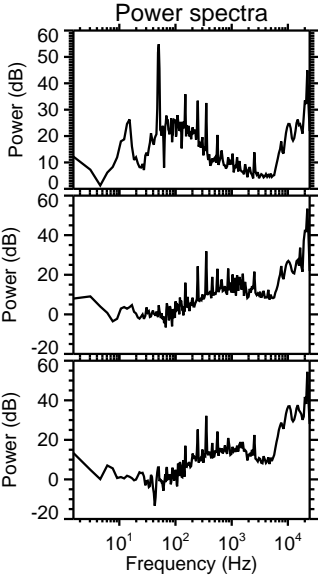
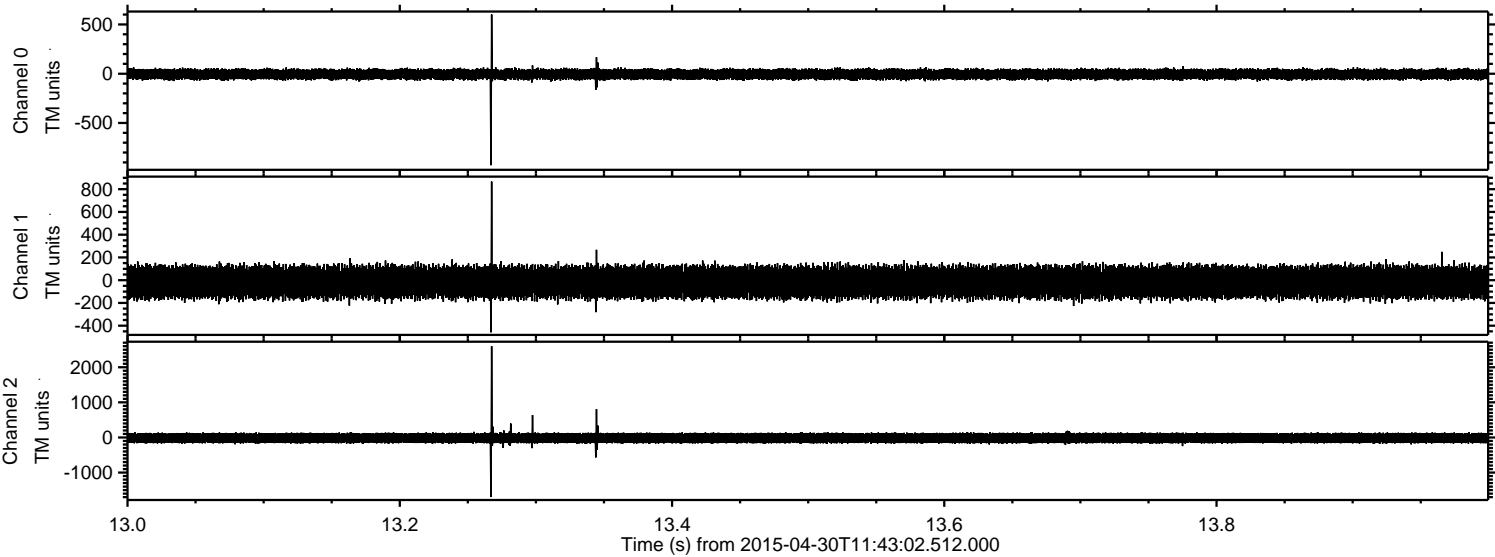


ELMAVAN 3D WAVEFORMS (Measured data sampled at 50 kHz) 49782 packets of 144 samples from 2015-04-30T11:43:02.512.000. Part 127/144

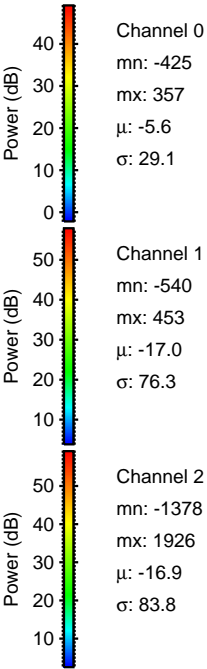
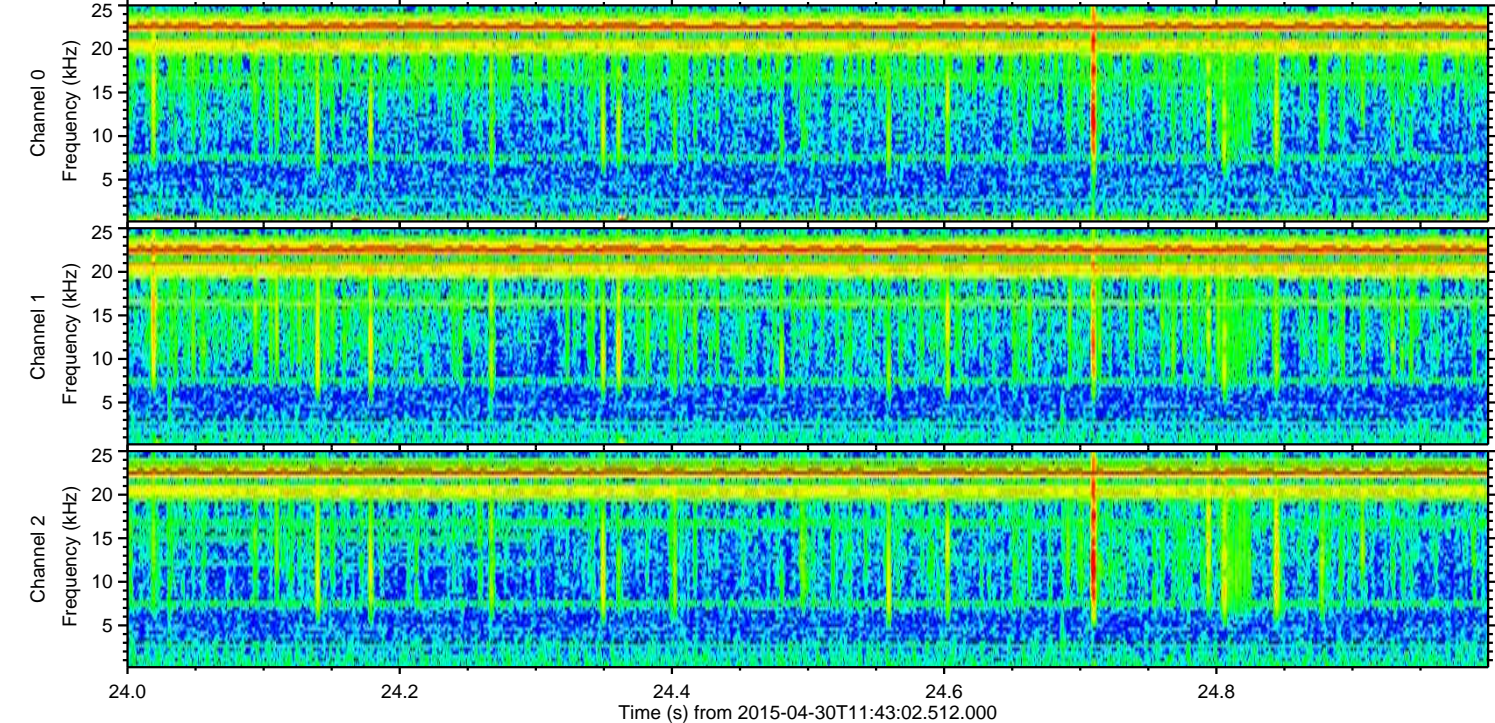
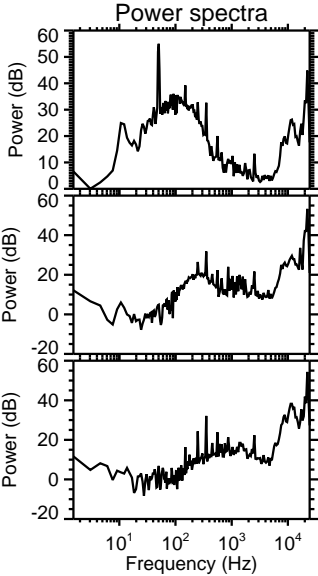
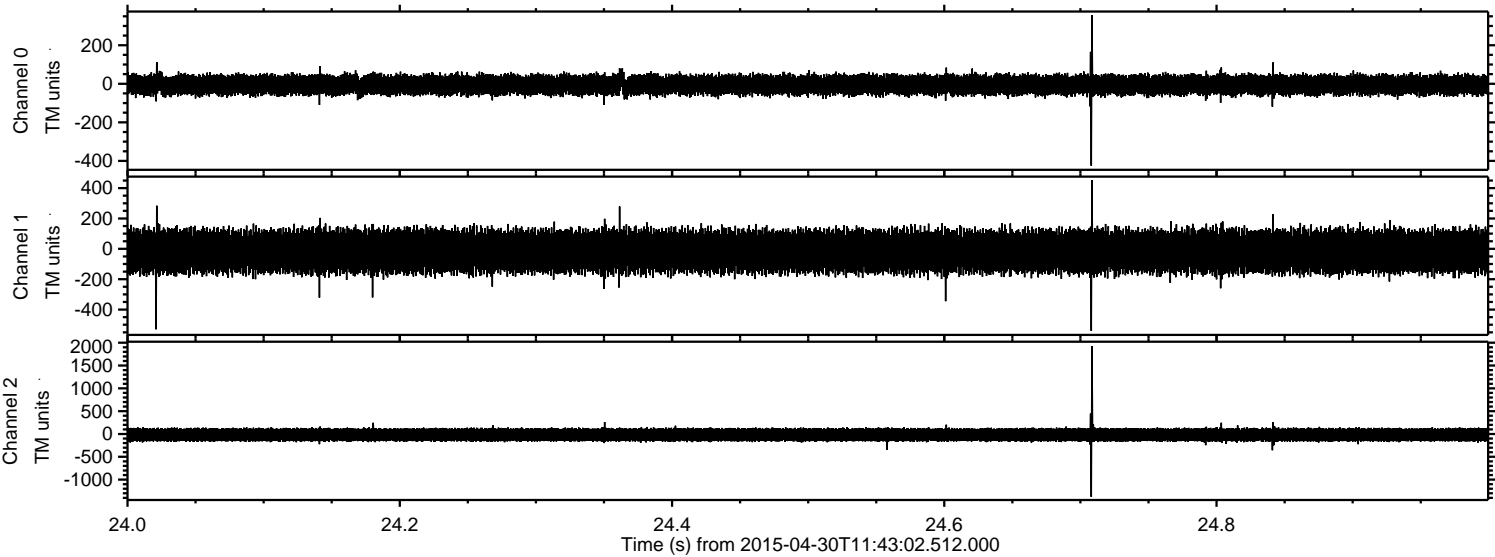
Processed Thu Apr 30 13:50:12 2015 by ELM ver.2012-10-06 from 001__elm20150430_114301__dat00.bin



Processed Thu Apr 30 13:50:13 2015 by ELM ver.2012-10-06 from 001__elm20150430_114301__dat00.bin

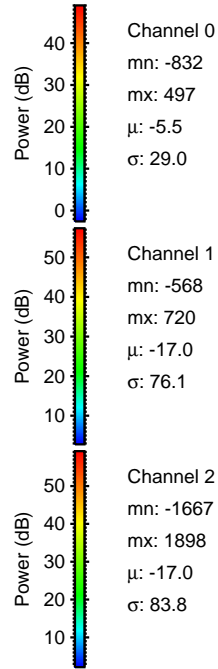
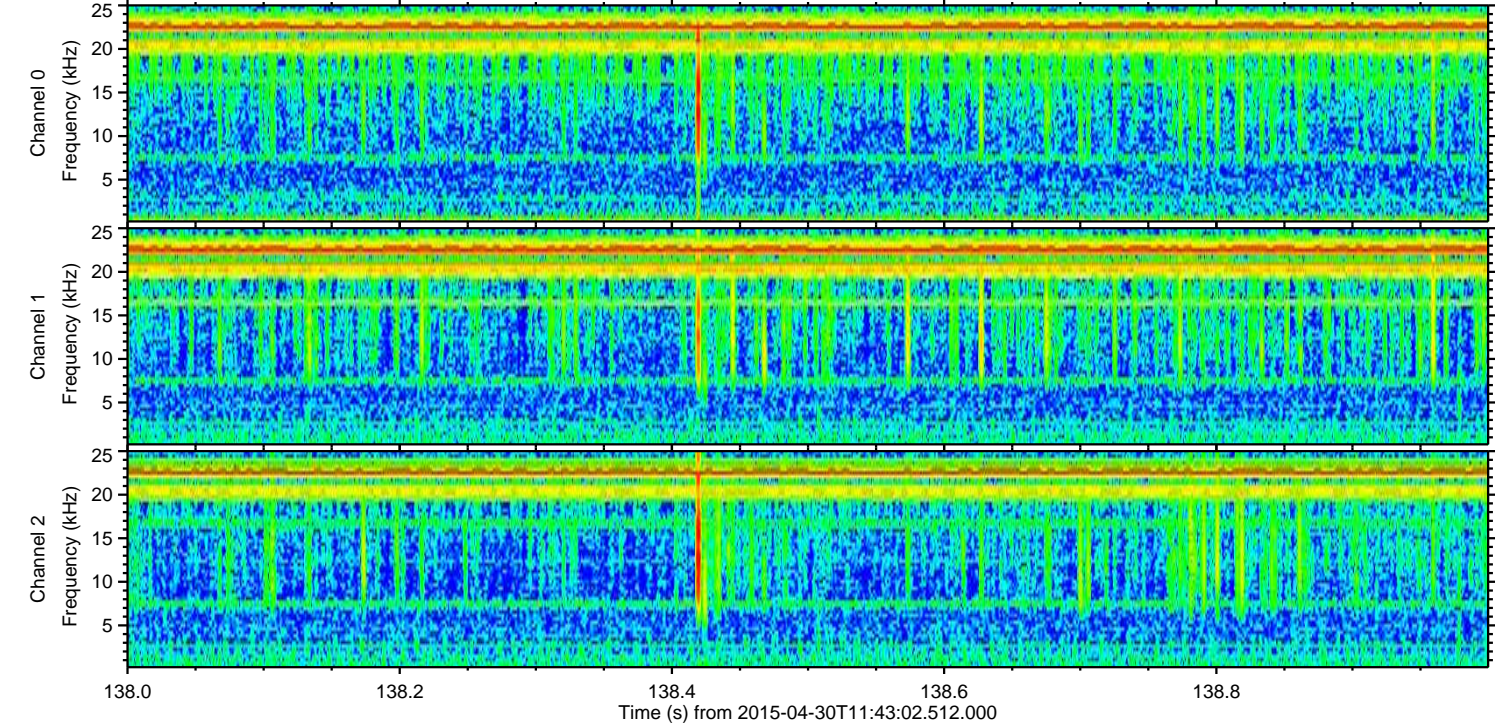
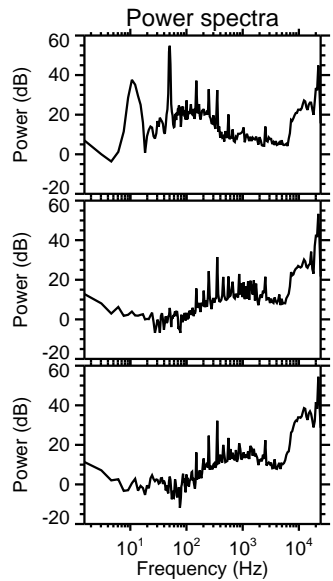
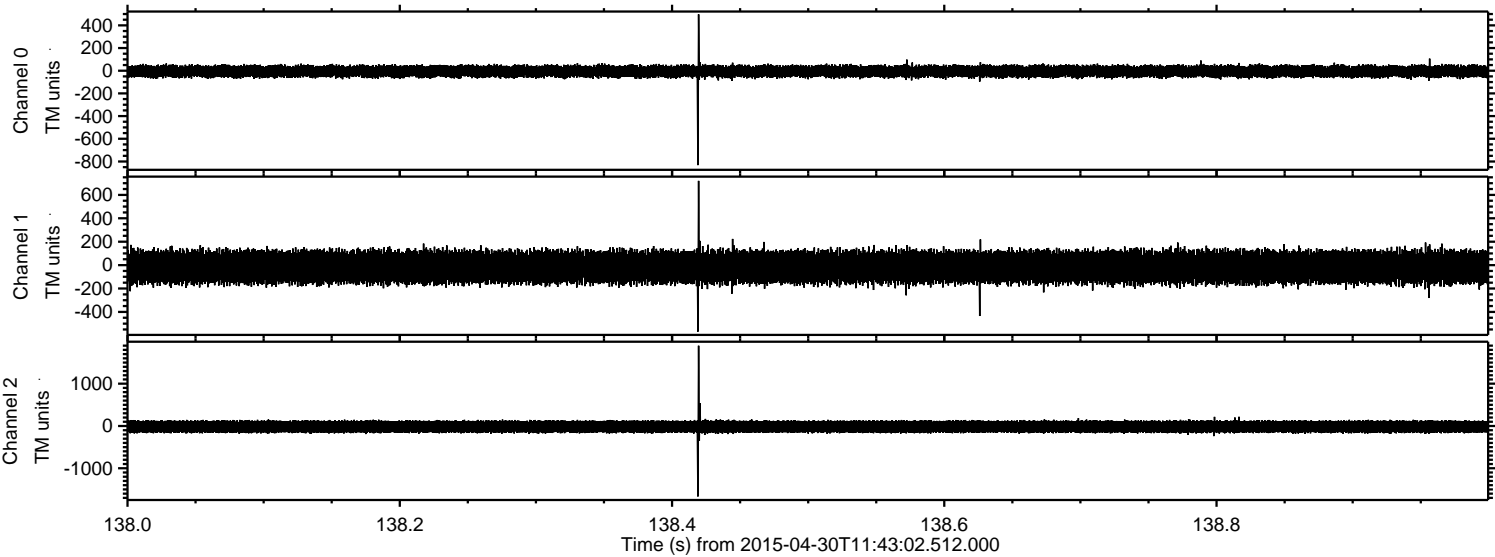


Processed Thu Apr 30 13:50:14 2015 by ELM ver.2012-10-06 from 001__elm20150430_114301__dat00.bin

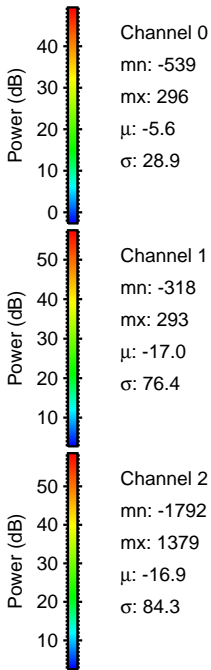
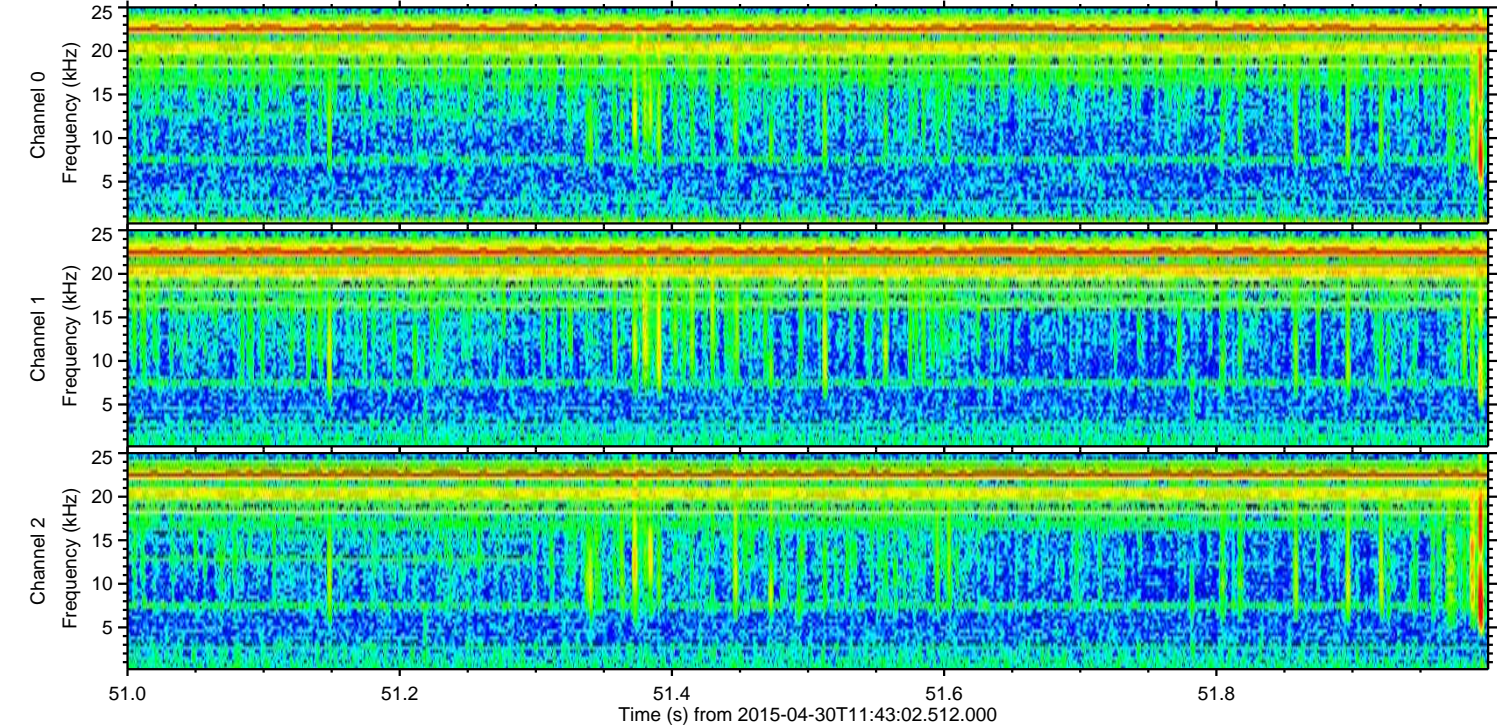
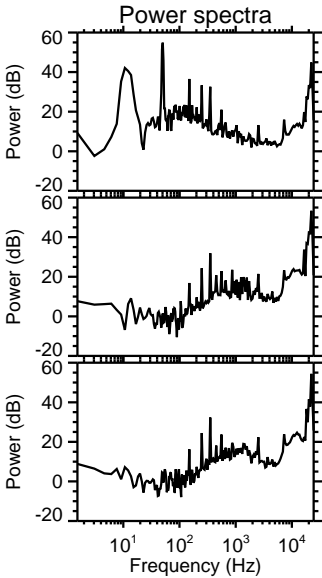
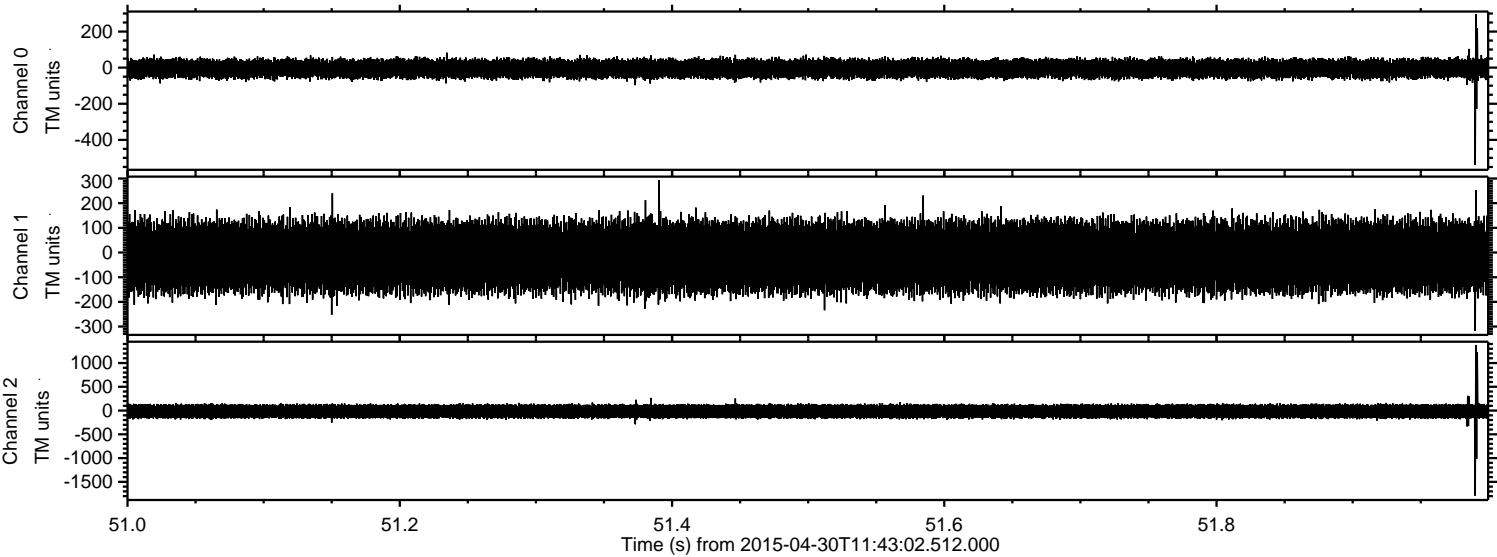


ELMAVAN 3D WAVEFORMS (Measured data sampled at 50 kHz) 49782 packets of 144 samples from 2015-04-30T11:43:02.512.000. Part 139/144

Processed Thu Apr 30 13:50:15 2015 by ELM ver.2012-10-06 from 001__elm20150430_114301__dat00.bin

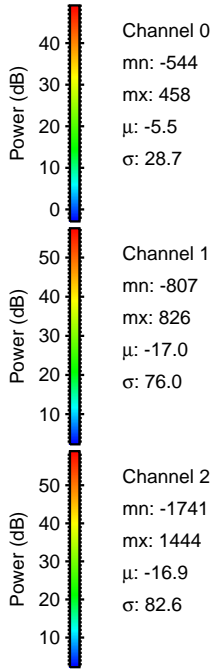
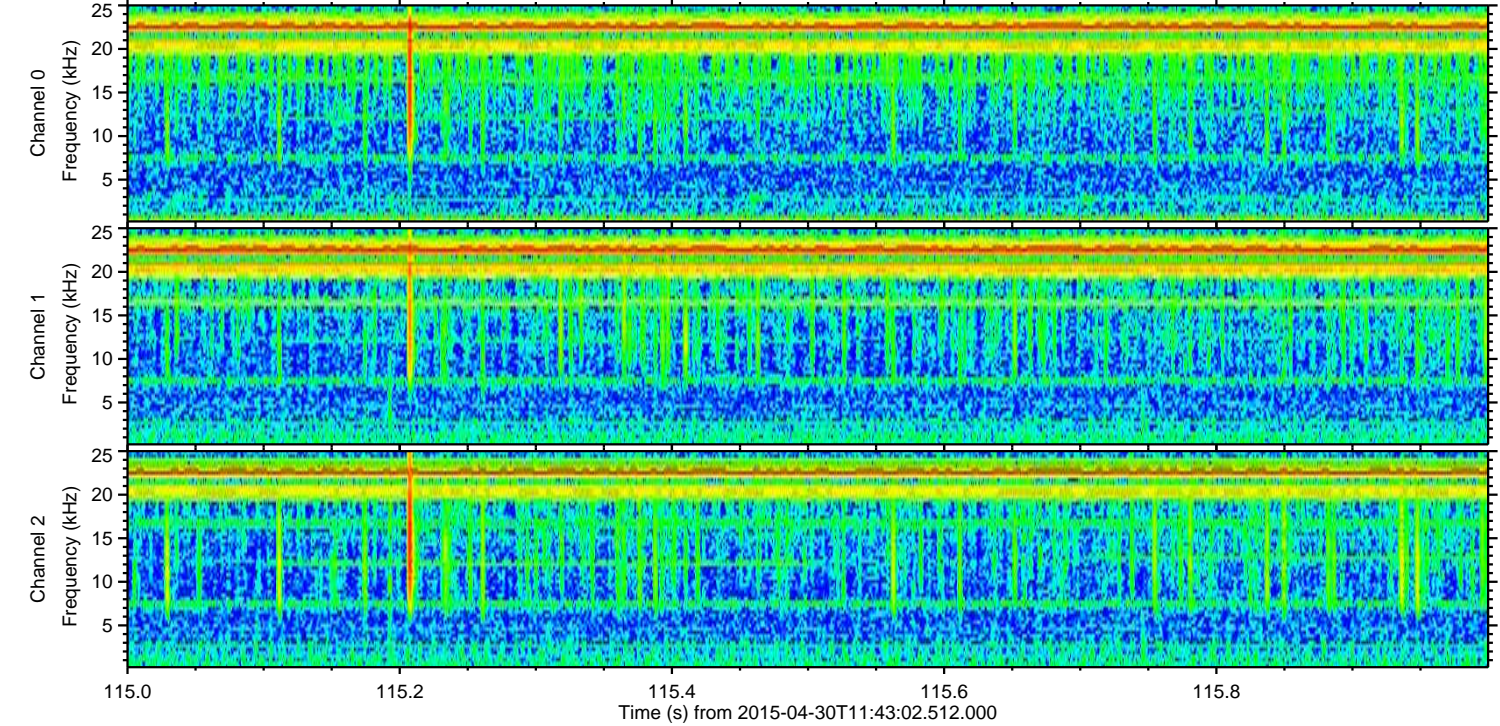
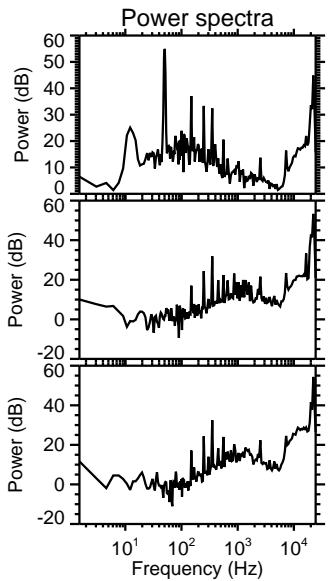
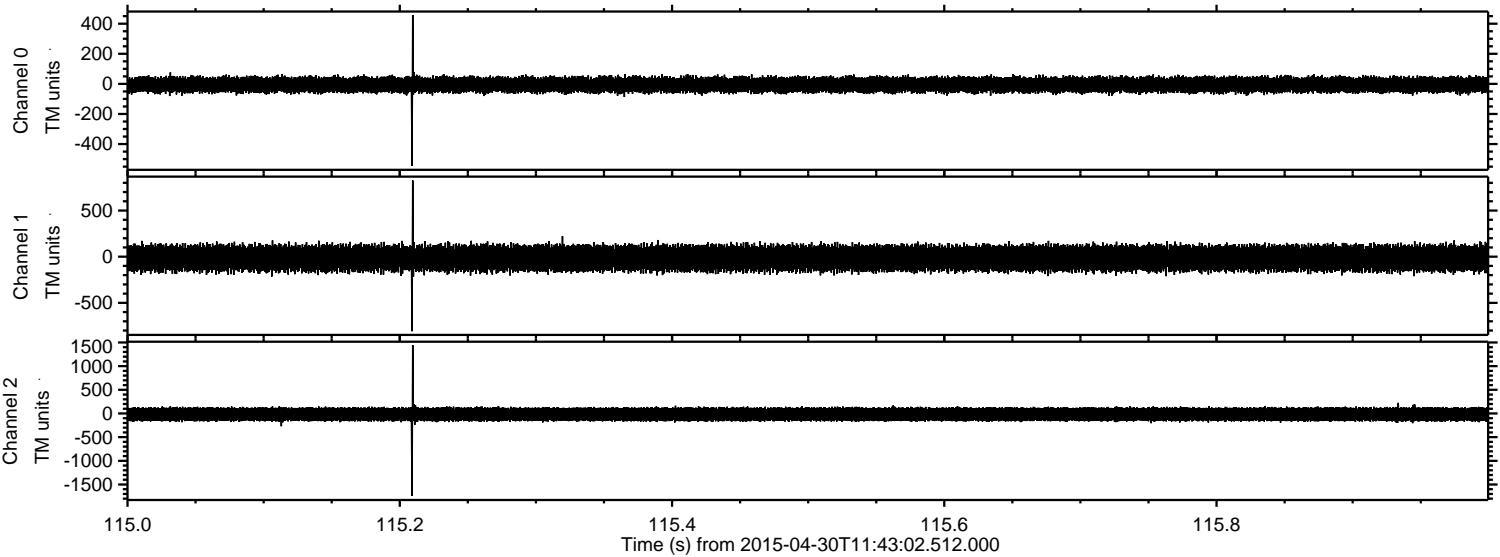


Processed Thu Apr 30 13:50:16 2015 by ELM ver.2012-10-06 from 001__elm20150430_114301__dat00.bin



ELMAVAN 3D WAVEFORMS (Measured data sampled at 50 kHz) 49782 packets of 144 samples from 2015-04-30T11:43:02.512.000. Part 116/144

Processed Thu Apr 30 13:50:17 2015 by ELM ver.2012-10-06 from 001__elm20150430_114301__dat00.bin

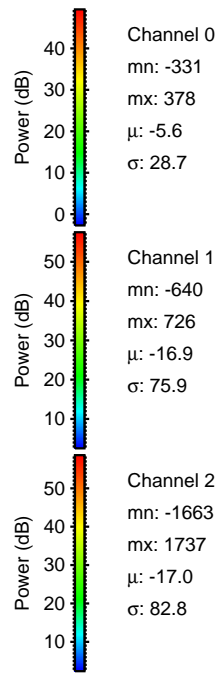
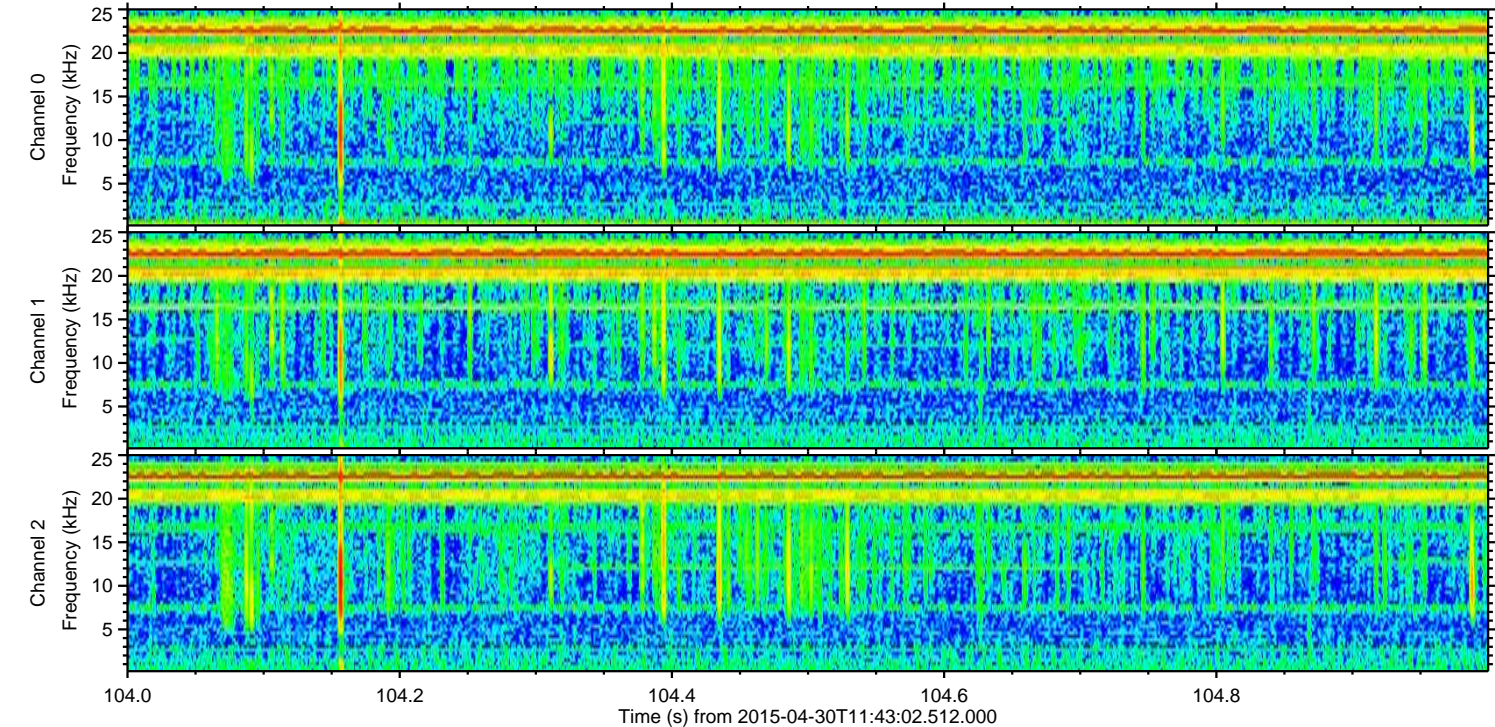
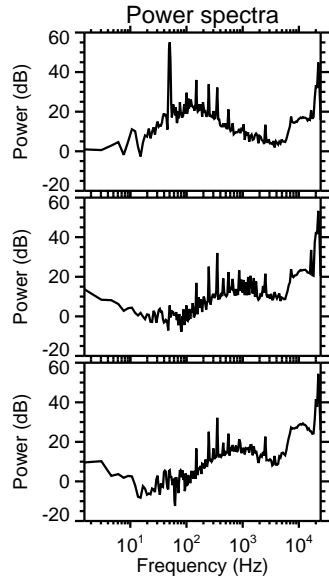
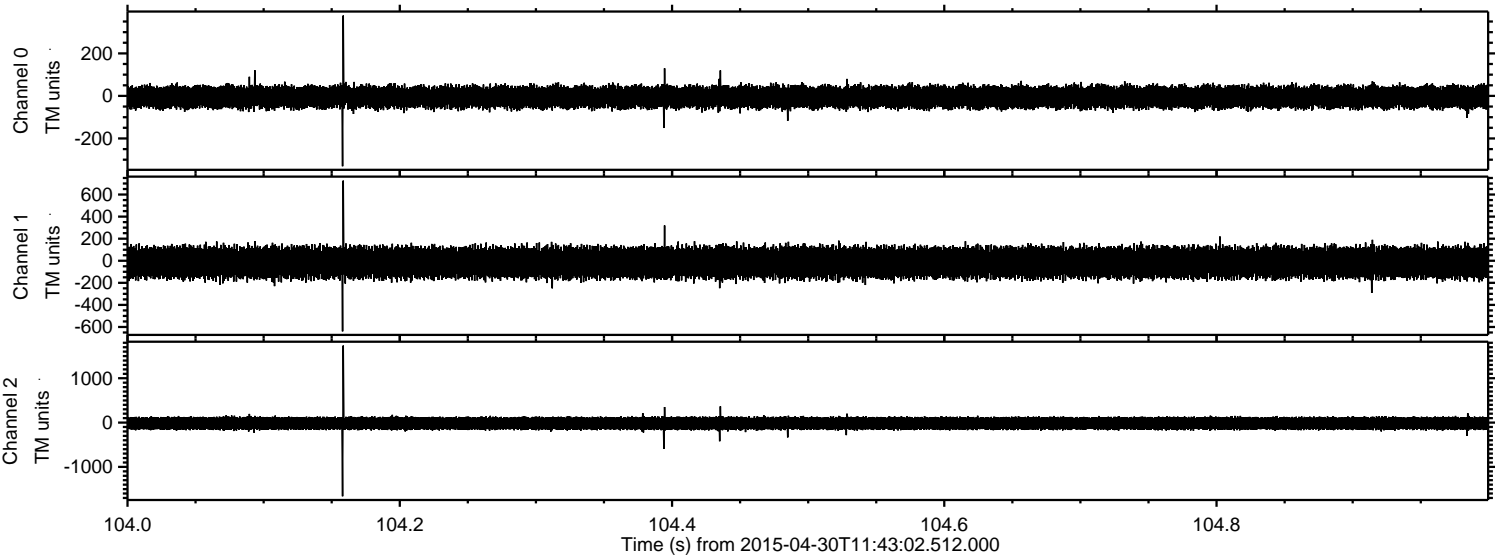


Channel 0
mn: -544
mx: 458
 μ : -5.5
 σ : 28.7

Channel 1
mn: -807
mx: 826
 μ : -17.0
 σ : 76.0

Channel 2
mn: -1741
mx: 1444
 μ : -16.9
 σ : 82.6

Processed Thu Apr 30 13:50:17 2015 by ELM ver.2012-10-06 from 001__elm20150430_114301__dat00.bin



Channel 0
mn: -331
mx: 378
 μ : -5.6
 σ : 28.7

Channel 1
mn: -640
mx: 726
 μ : -16.9
 σ : 75.9

Channel 2
mn: -1663
mx: 1737
 μ : -17.0
 σ : 82.8

Processed Thu Apr 30 13:50:18 2015 by ELM ver.2012-10-06 from 001__elm20150430_114301__dat00.bin

