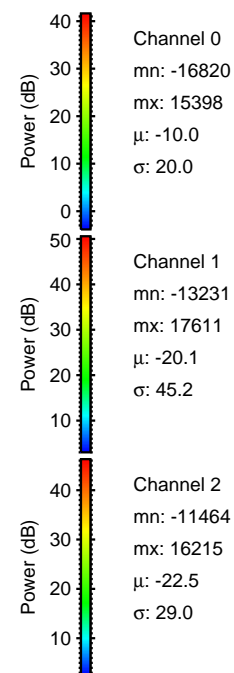
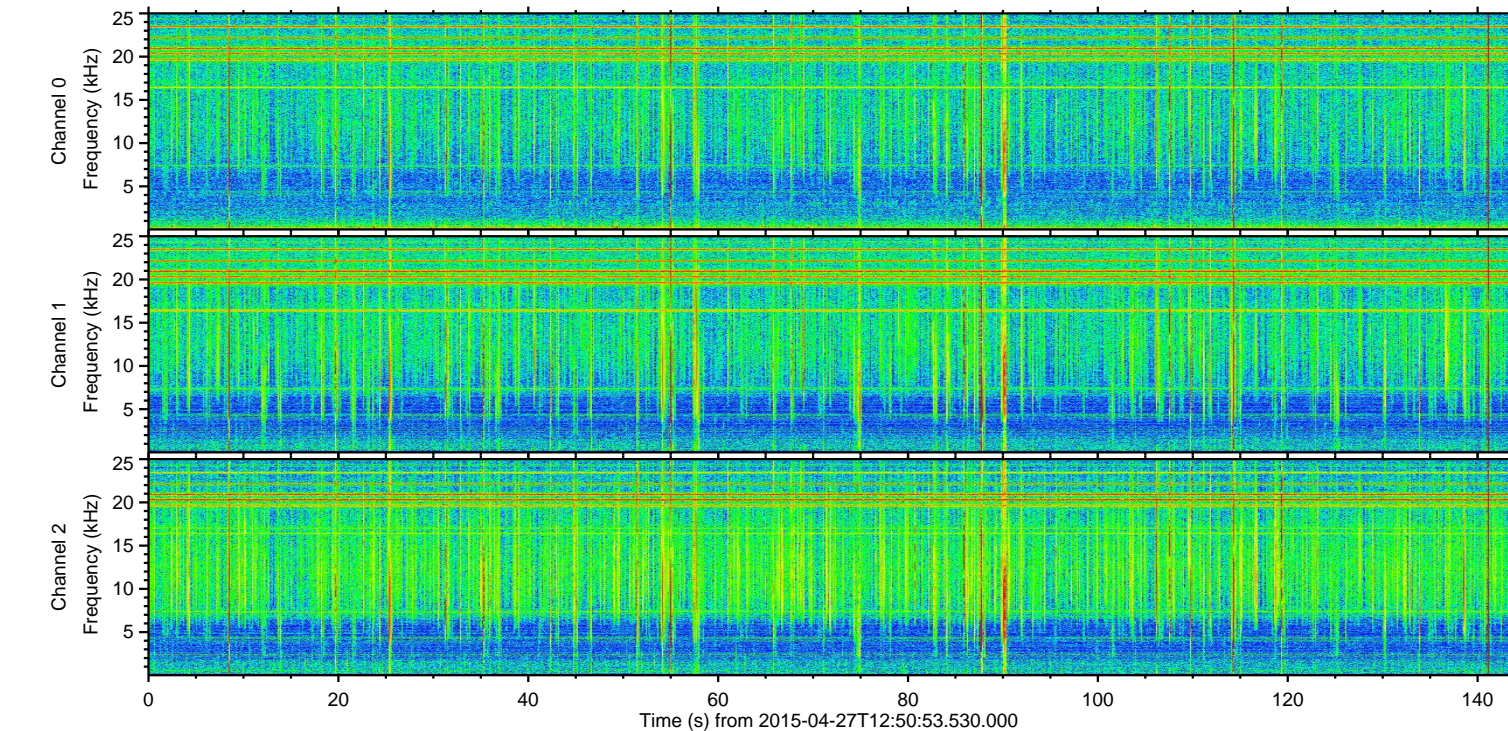
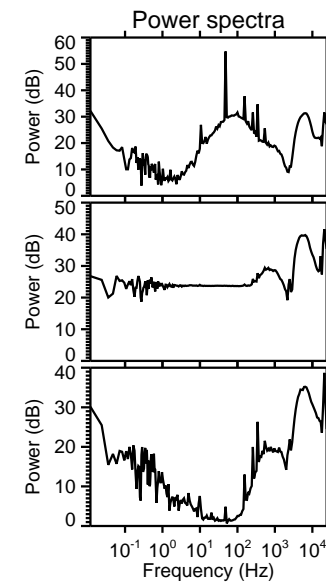
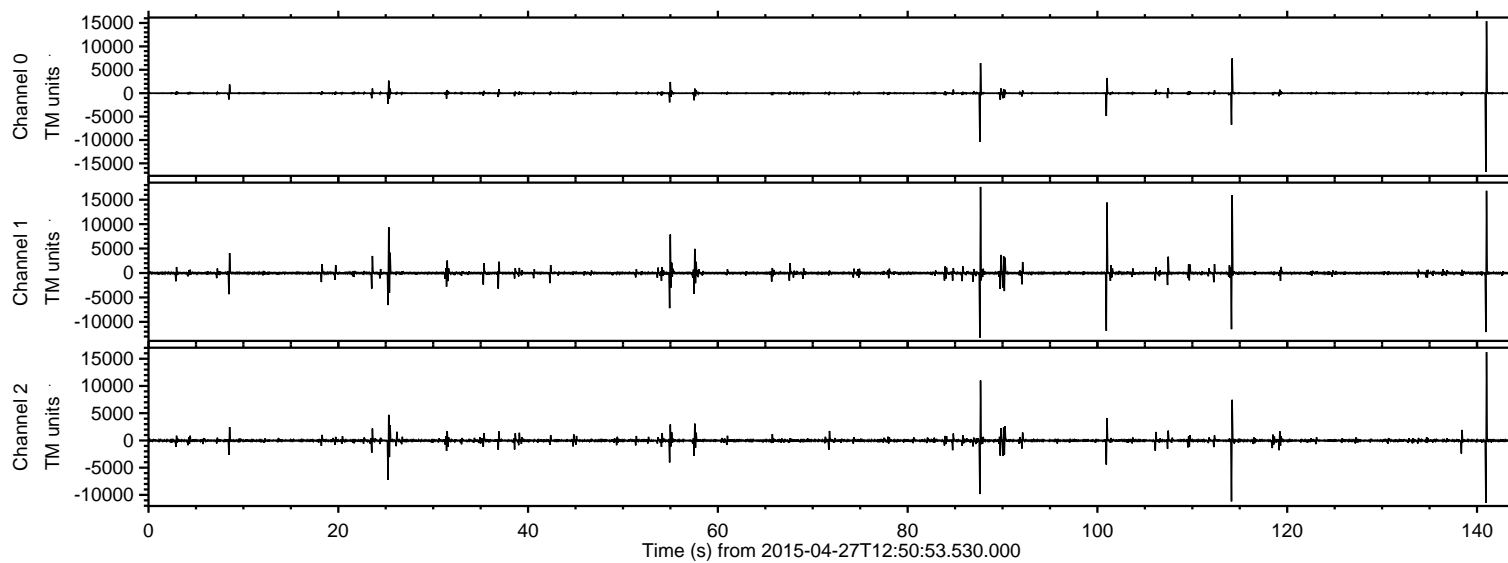


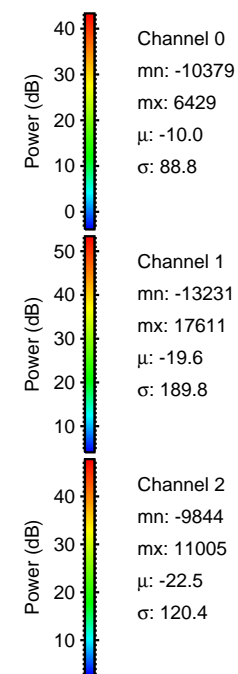
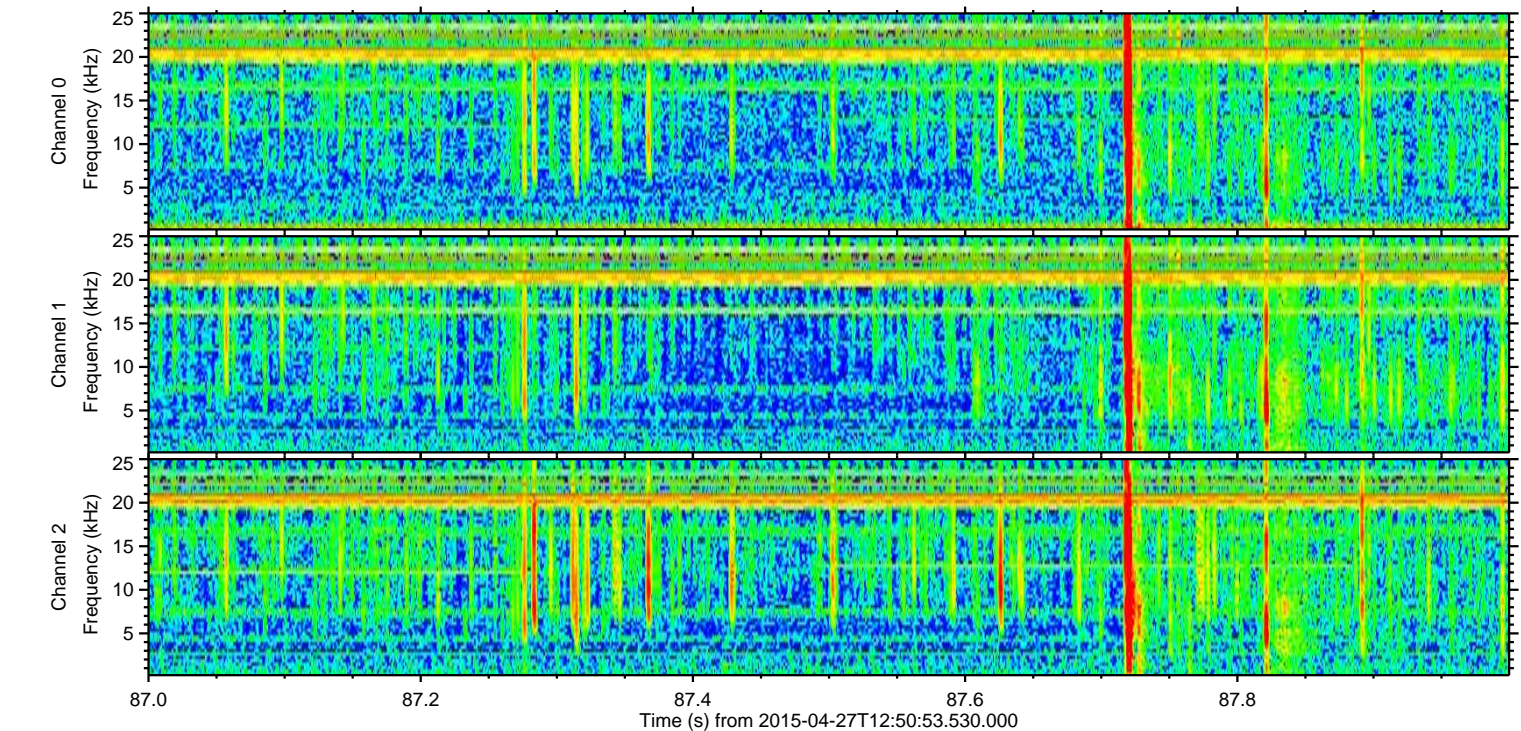
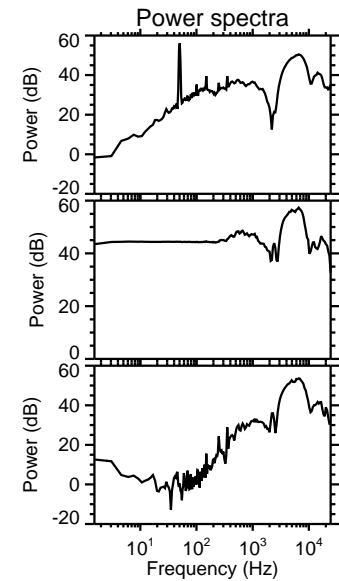
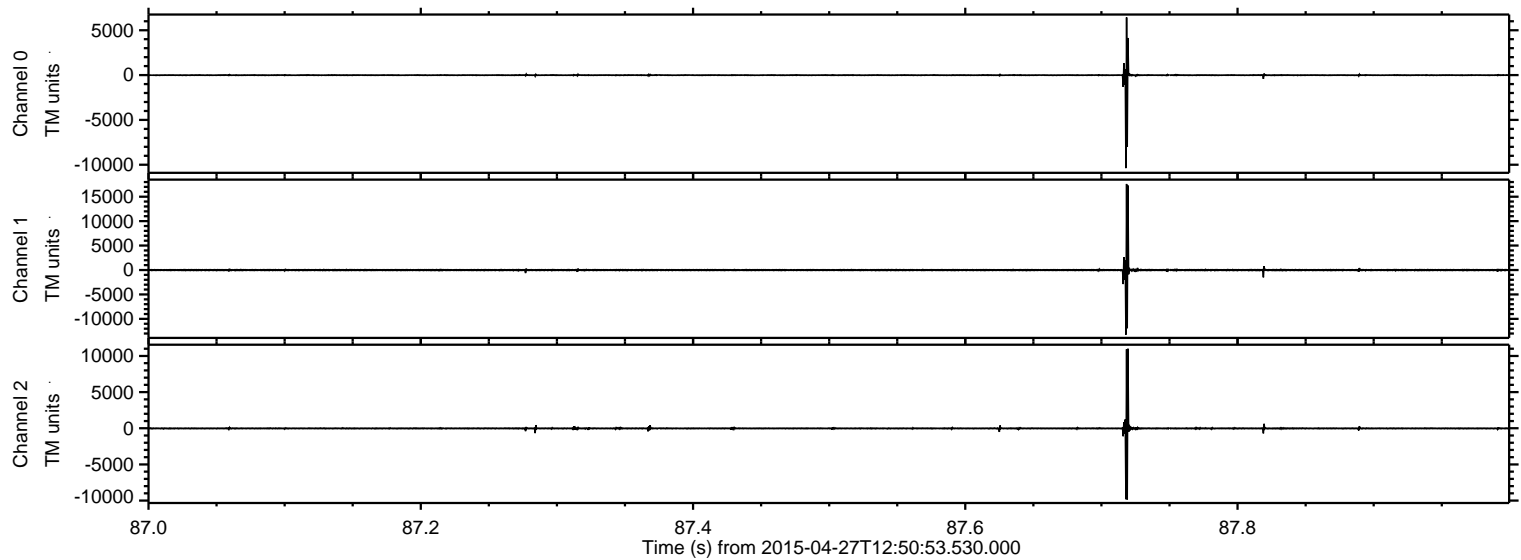
# ELMAVAN 3D WAVEFORMS (Measured data sampled at 50 kHz) 49788 packets of 144 samples from 2015-04-27T12:50:53.530.000.

Processed Mon Apr 27 14:58:13 2015 by ELM ver.2012-10-06 from 001\_\_elm20150427\_125052\_\_dat00.bin





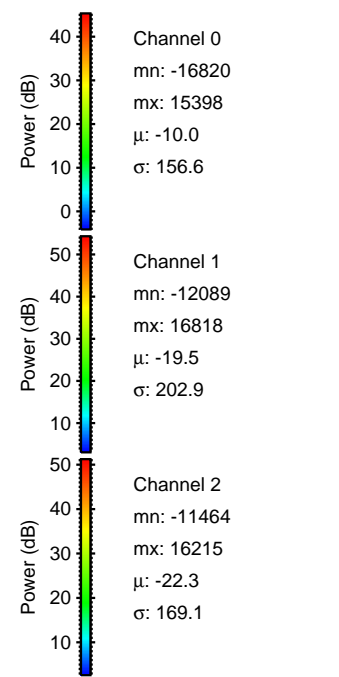
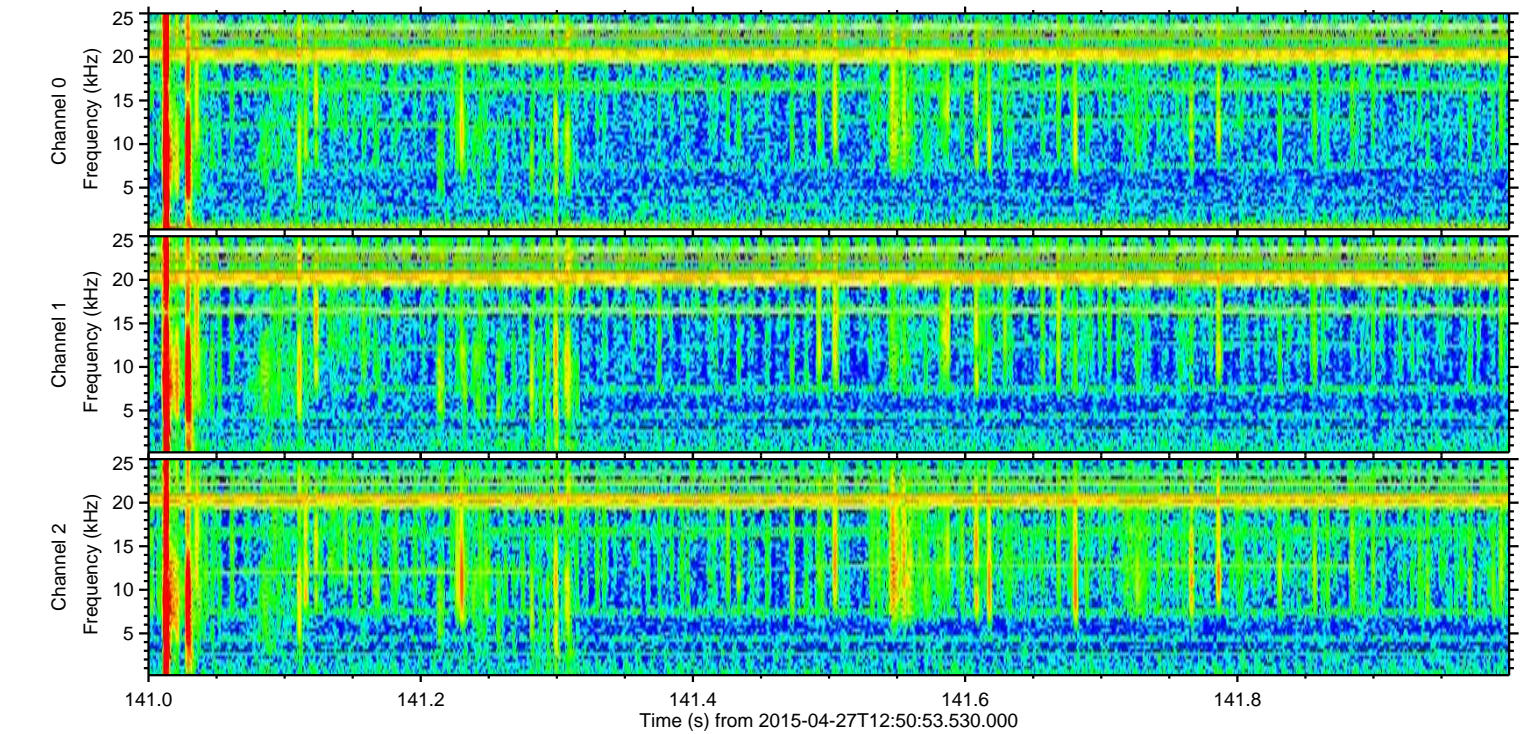
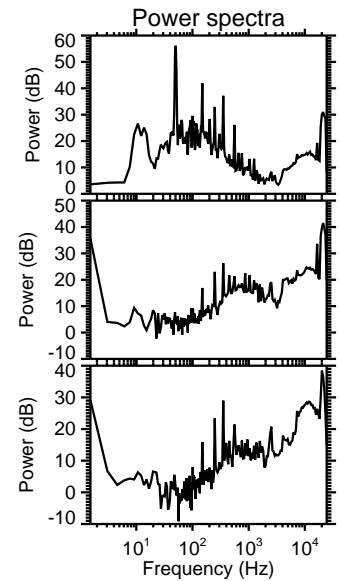
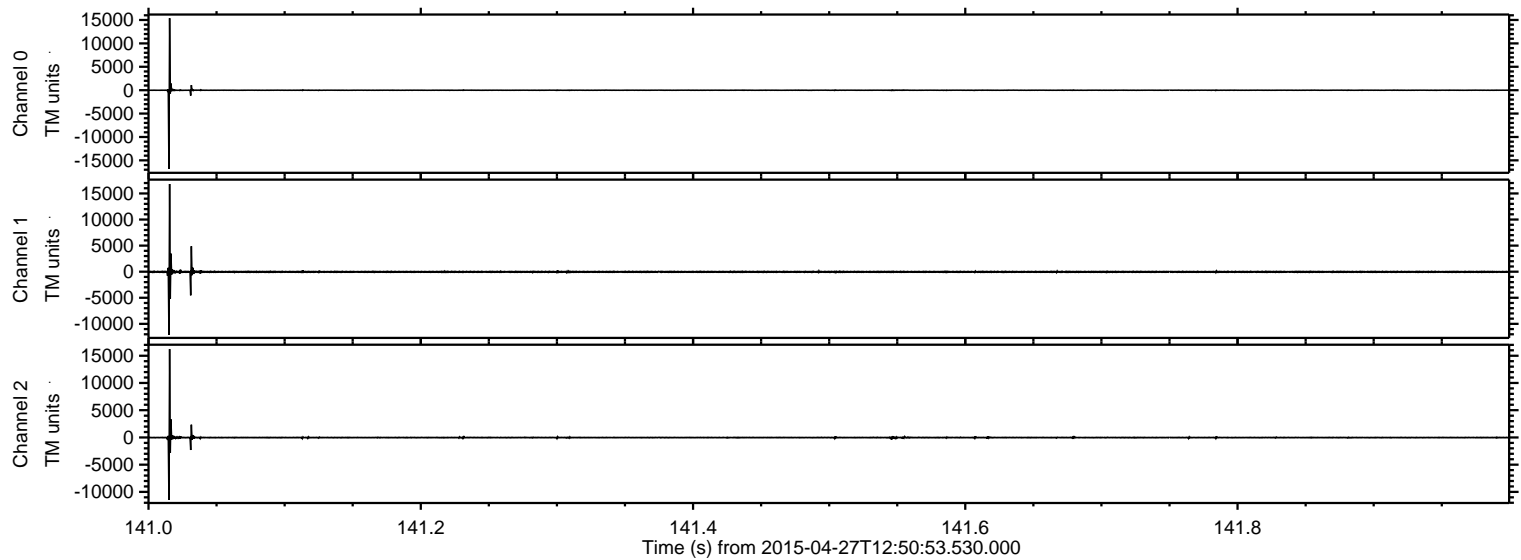
Processed Mon Apr 27 14:58:25 2015 by ELM ver.2012-10-06 from 001\_\_elm20150427\_125052\_\_dat00.bin





ELMAVAN 3D WAVEFORMS (Measured data sampled at 50 kHz) 49788 packets of 144 samples from 2015-04-27T12:50:53.530.000. Part 142/144

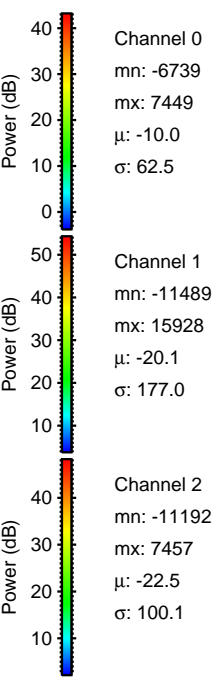
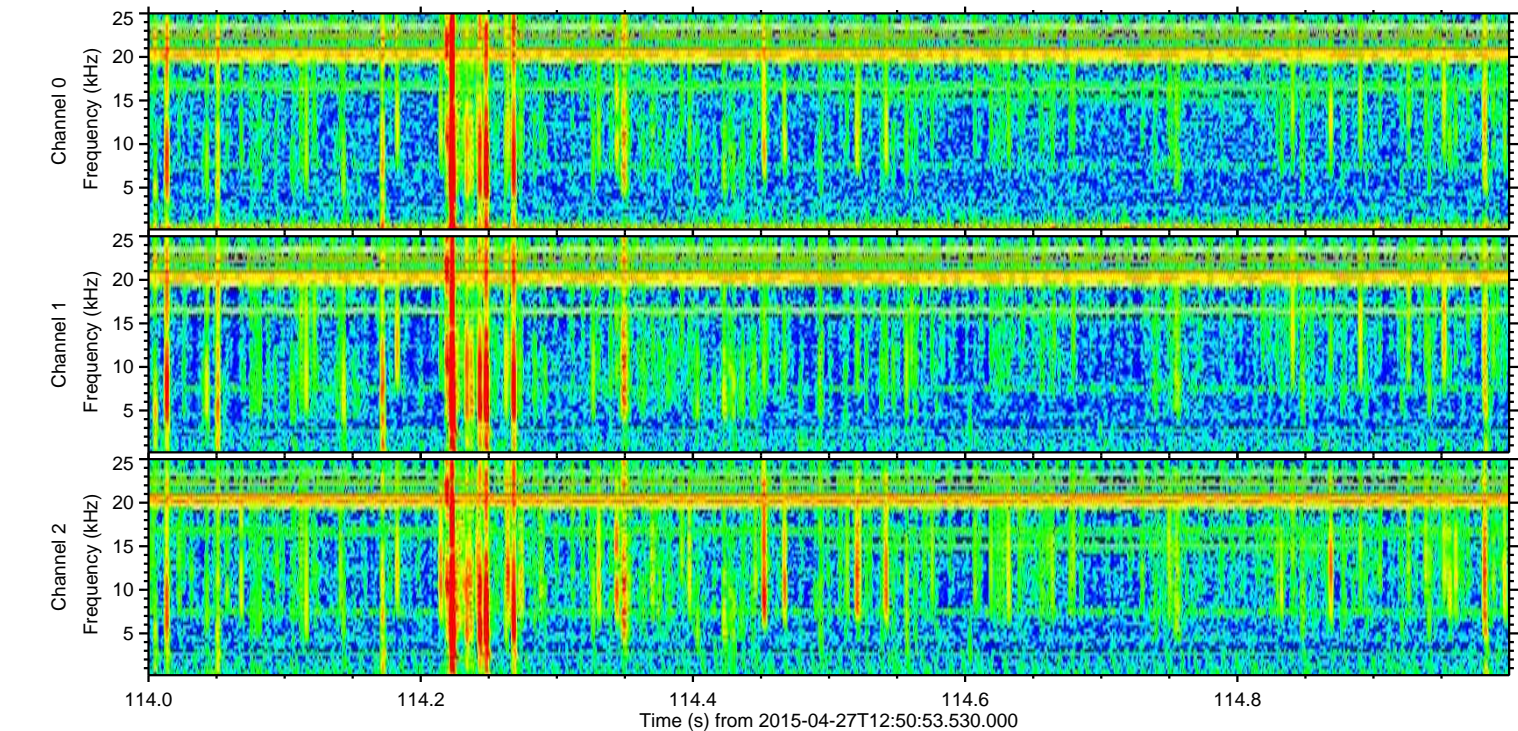
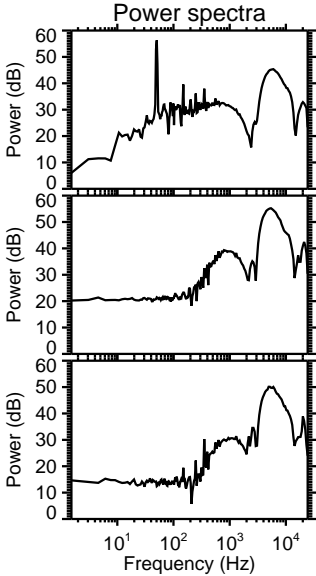
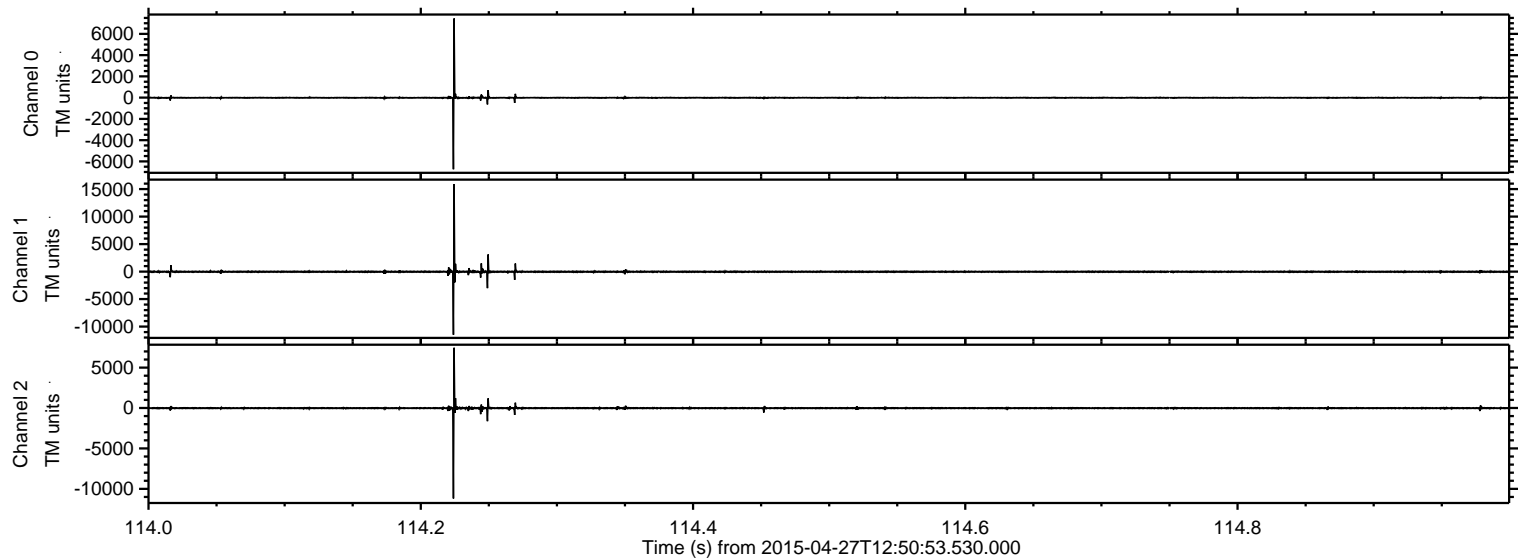
Processed Mon Apr 27 14:58:26 2015 by ELM ver.2012-10-06 from 001\_\_elm20150427\_125052\_\_dat00.bin





ELMAVAN 3D WAVEFORMS (Measured data sampled at 50 kHz) 49788 packets of 144 samples from 2015-04-27T12:50:53.530.000. Part 115/144

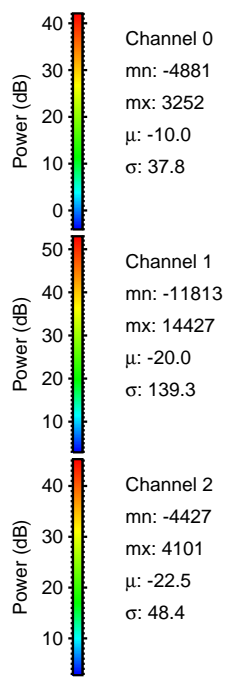
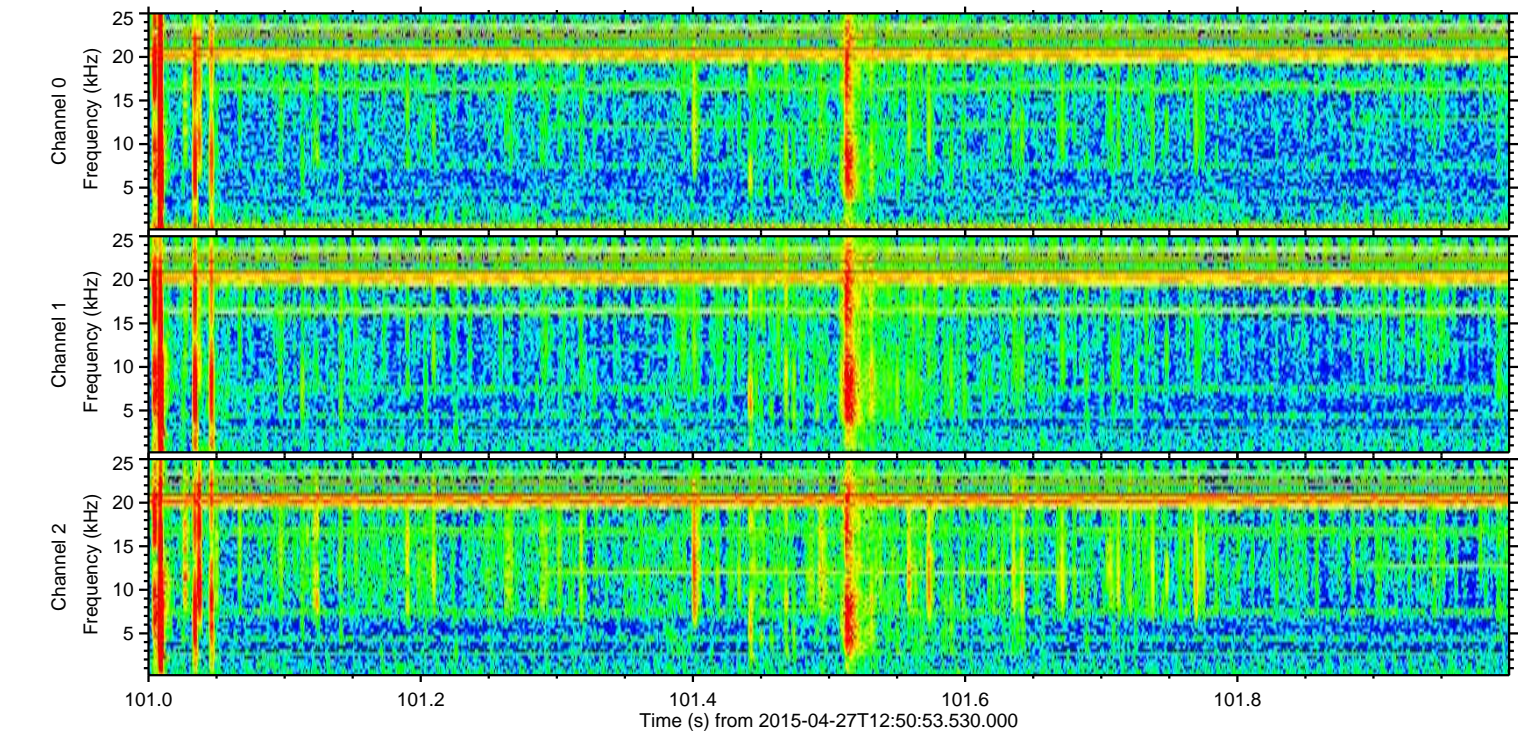
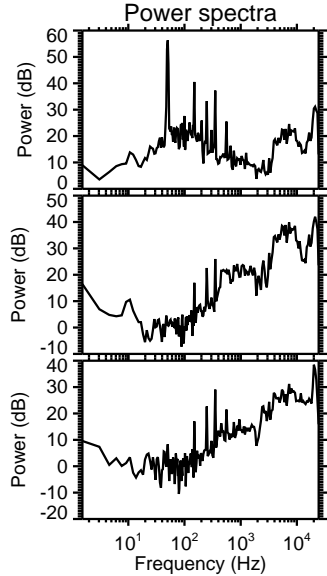
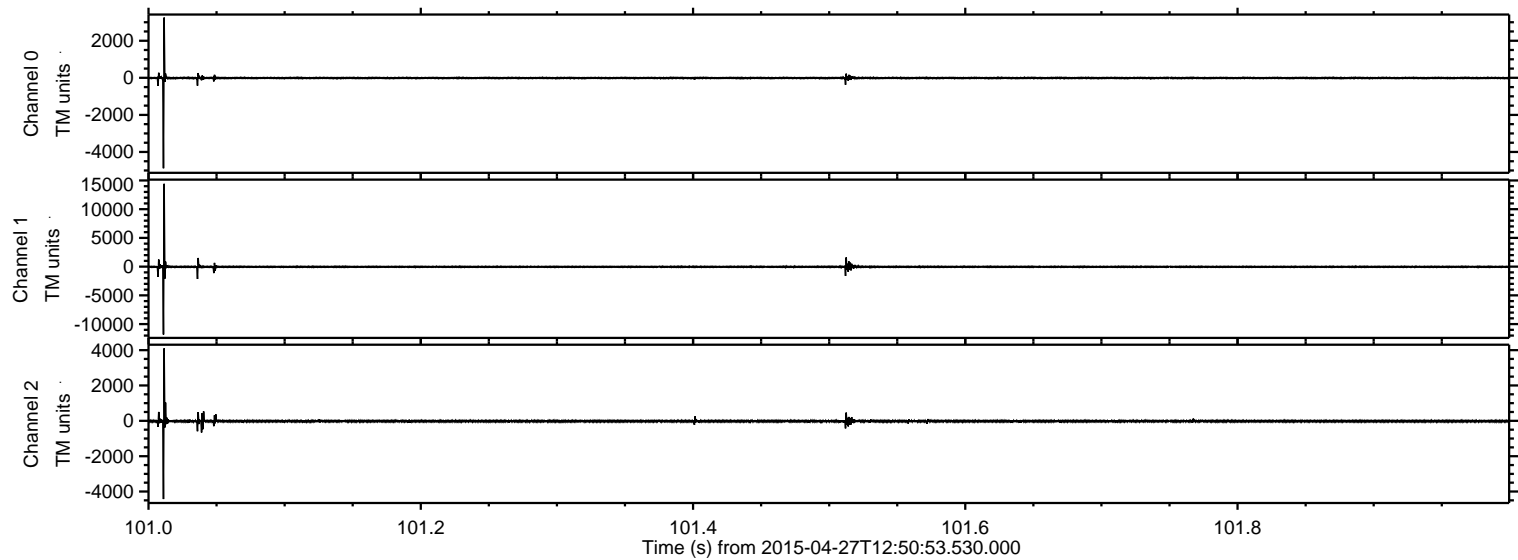
Processed Mon Apr 27 14:58:27 2015 by ELM ver.2012-10-06 from 001\_\_elm20150427\_125052\_\_dat00.bin





ELMAVAN 3D WAVEFORMS (Measured data sampled at 50 kHz) 49788 packets of 144 samples from 2015-04-27T12:50:53.530.000. Part 102/144

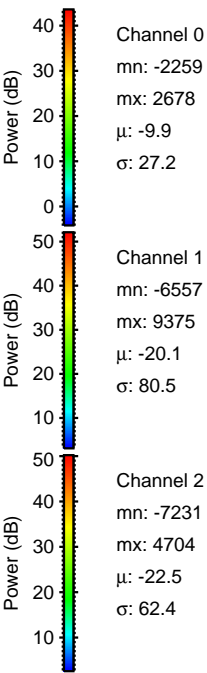
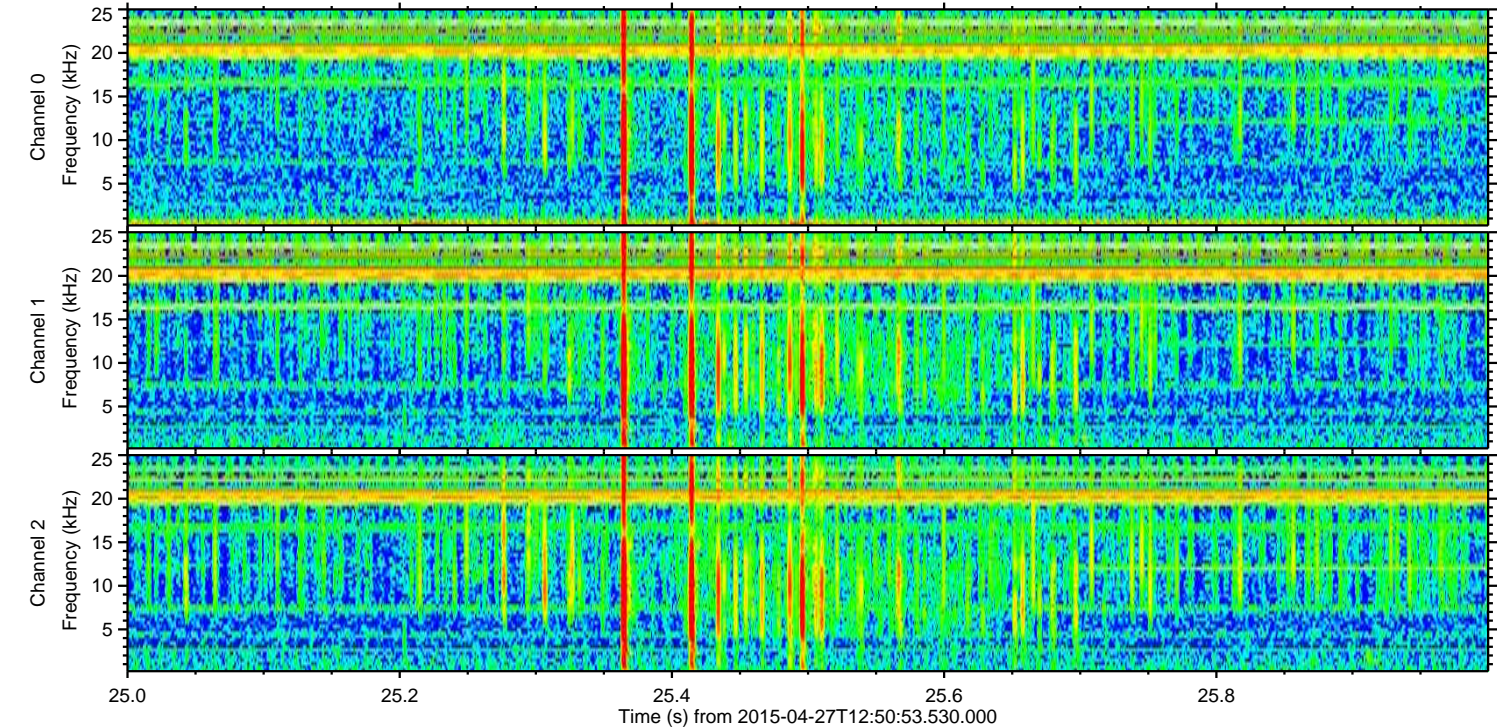
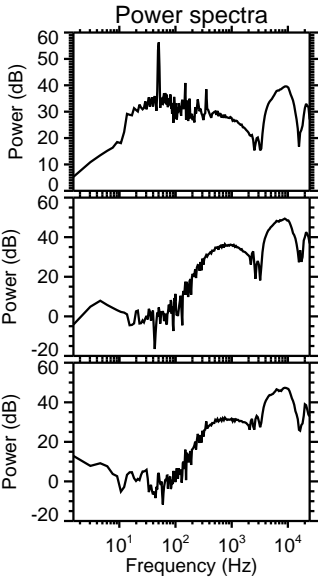
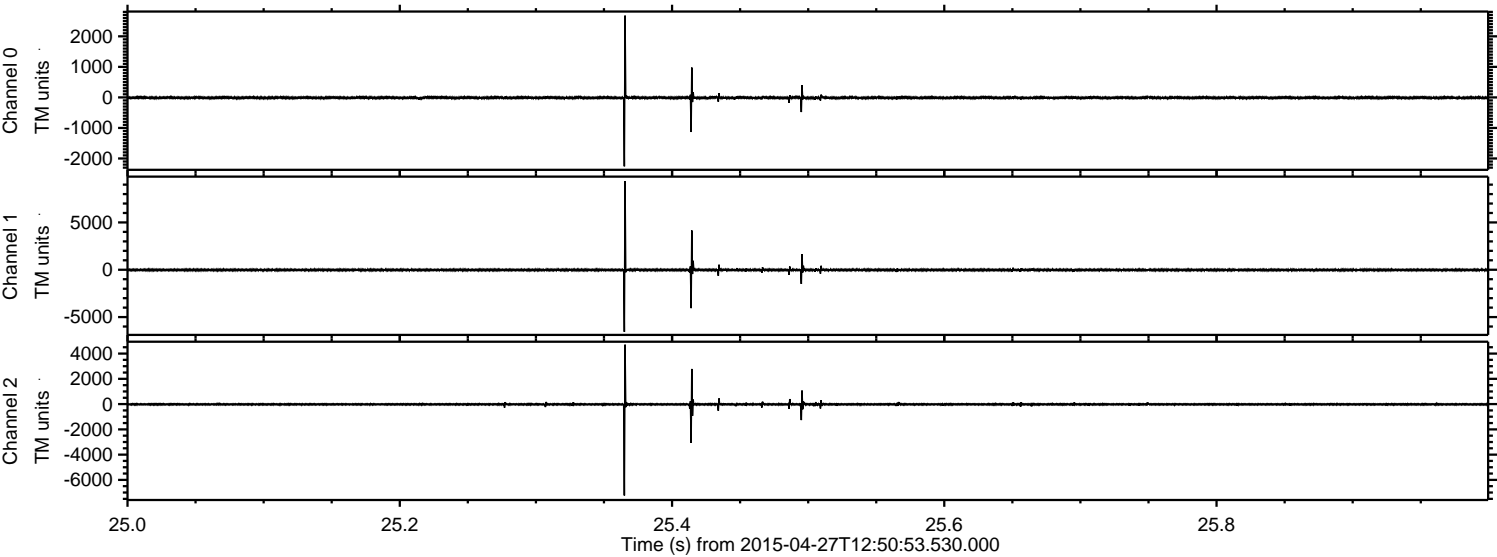
Processed Mon Apr 27 14:58:28 2015 by ELM ver.2012-10-06 from 001\_\_elm20150427\_125052\_\_dat00.bin





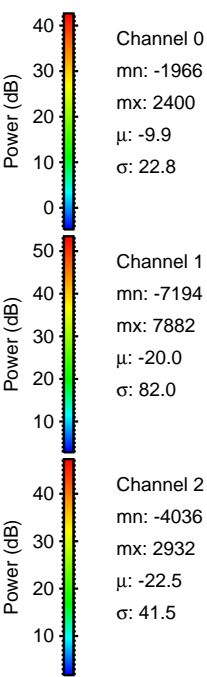
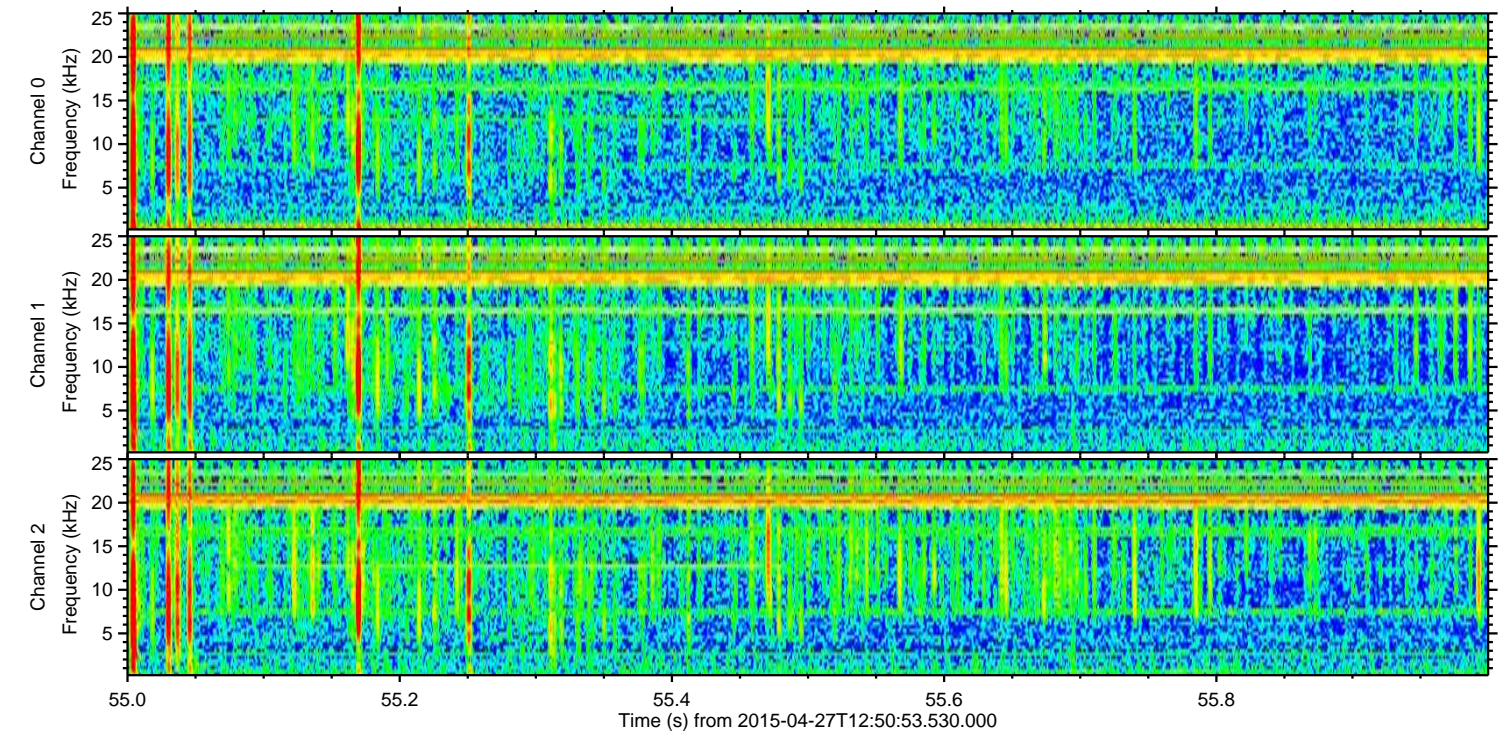
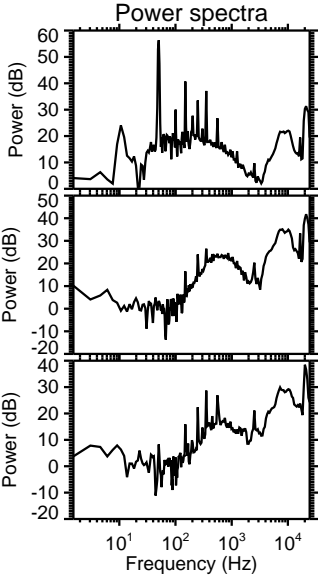
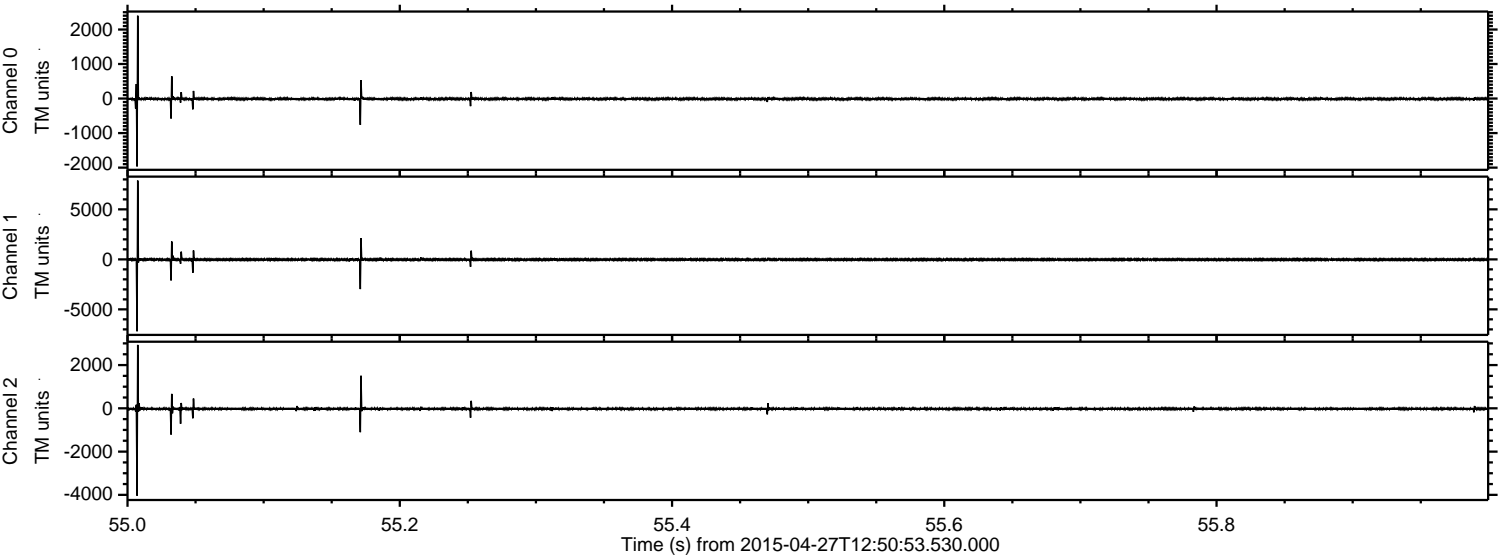
ELMAVAN 3D WAVEFORMS (Measured data sampled at 50 kHz) 49788 packets of 144 samples from 2015-04-27T12:50:53.530.000. Part 26/144

Processed Mon Apr 27 14:58:29 2015 by ELM ver.2012-10-06 from 001\_\_elm20150427\_125052\_\_dat00.bin



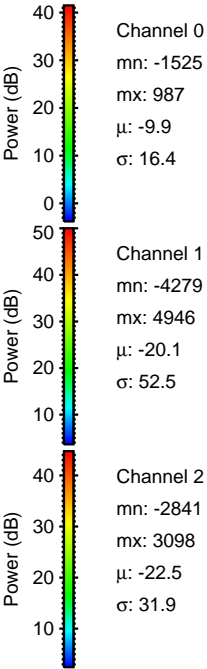
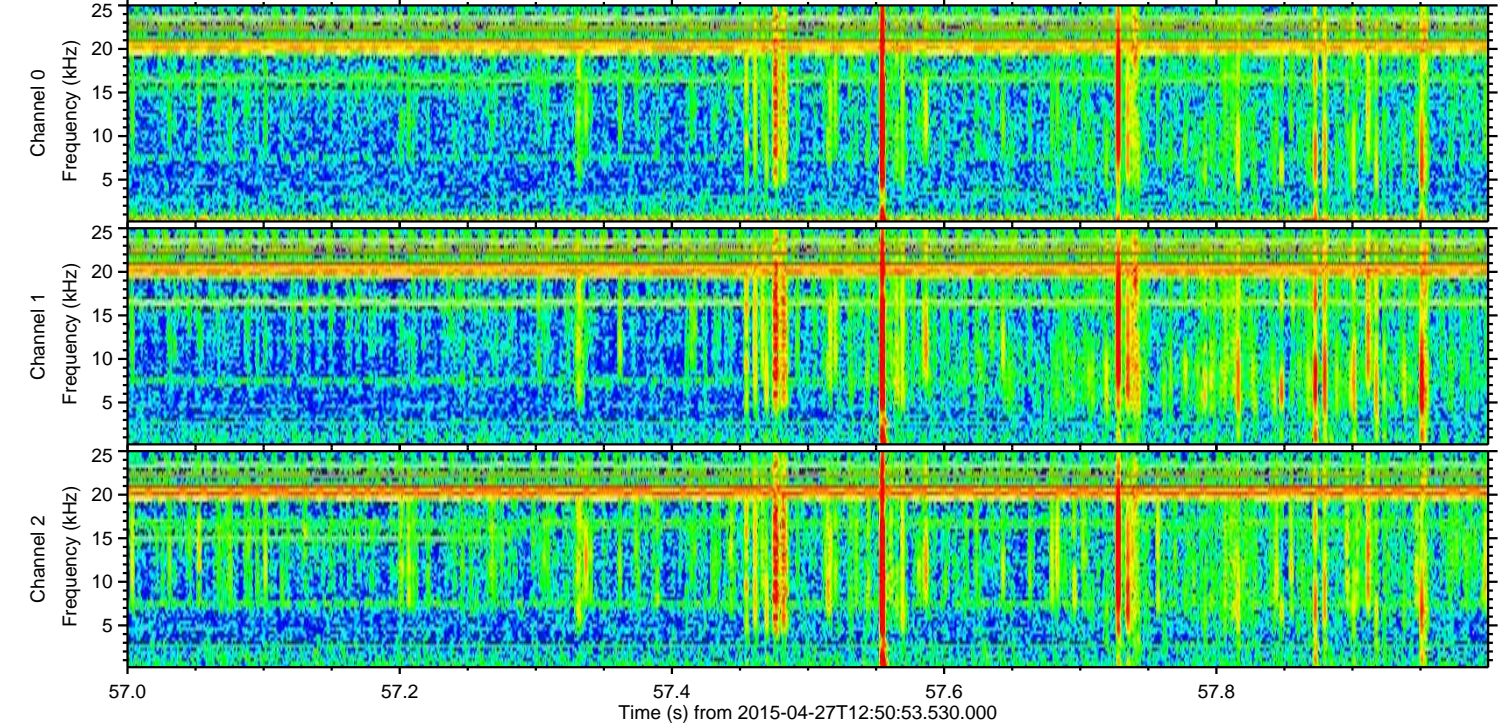
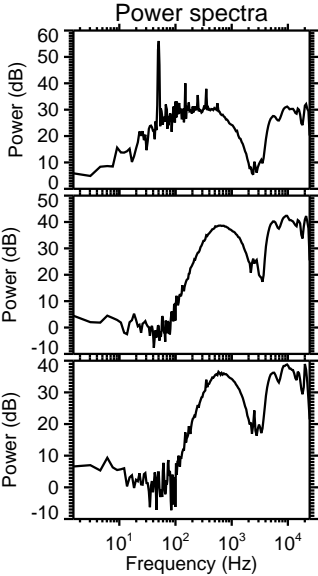
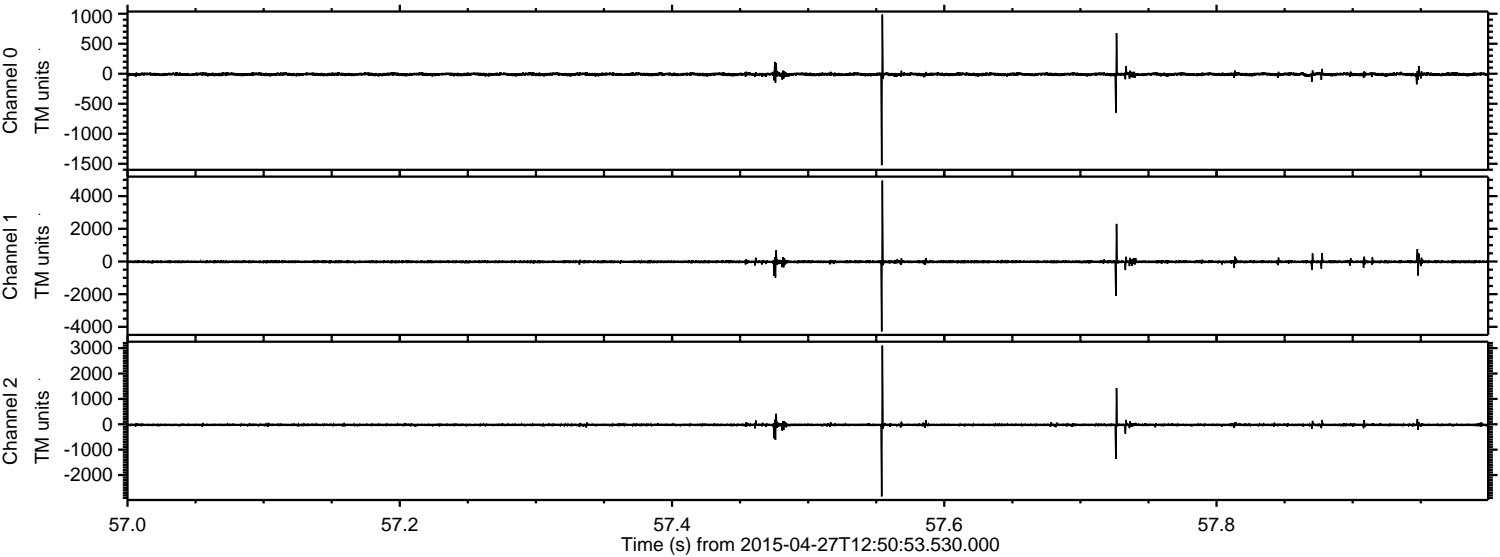


Processed Mon Apr 27 14:58:30 2015 by ELM ver.2012-10-06 from 001\_\_elm20150427\_125052\_\_dat00.bin



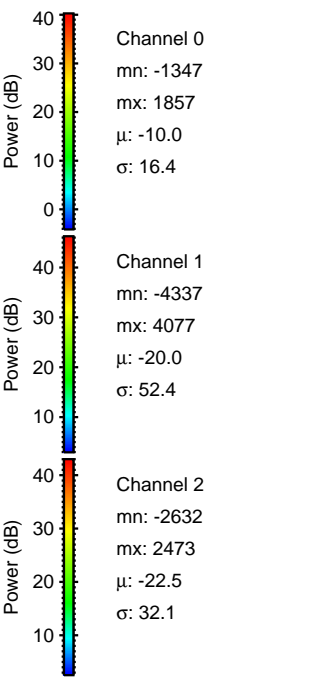
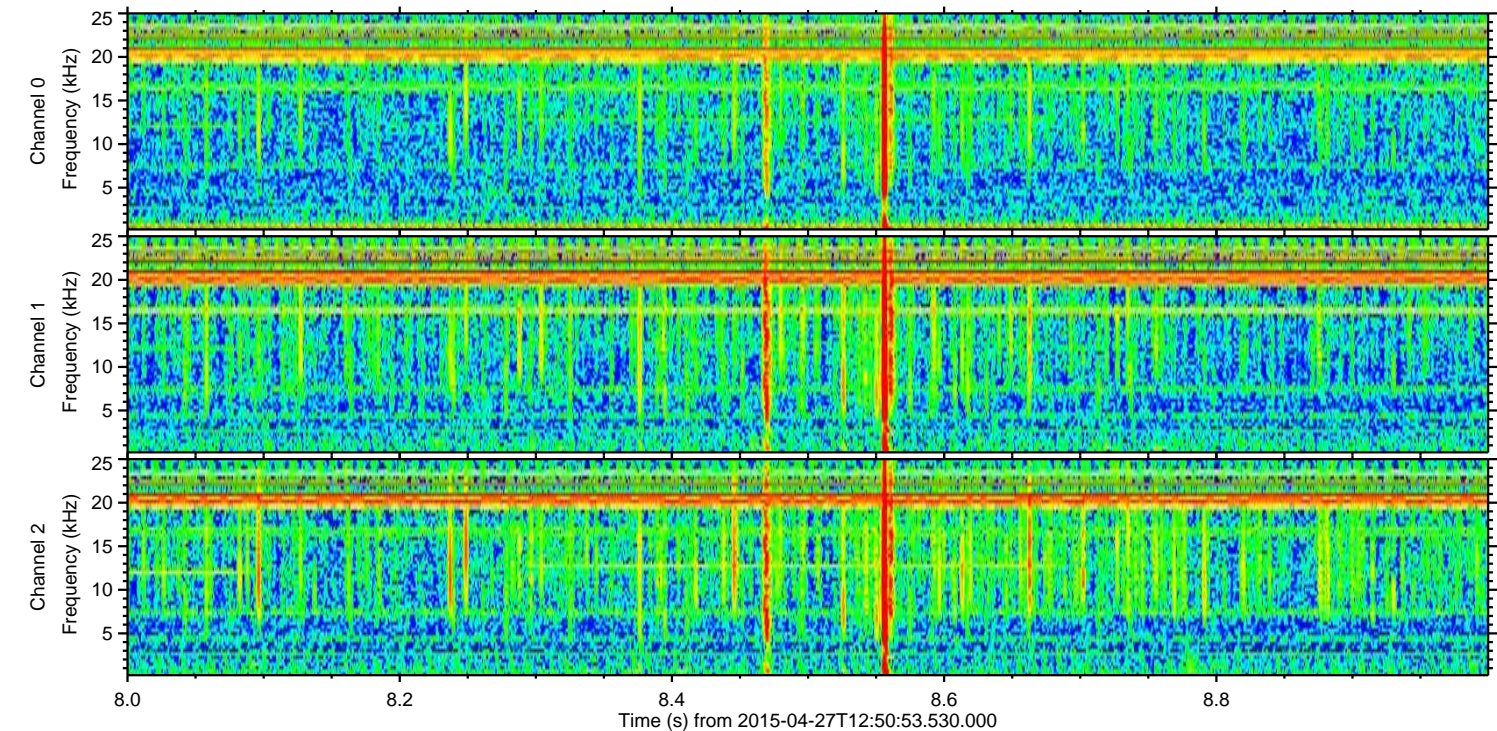
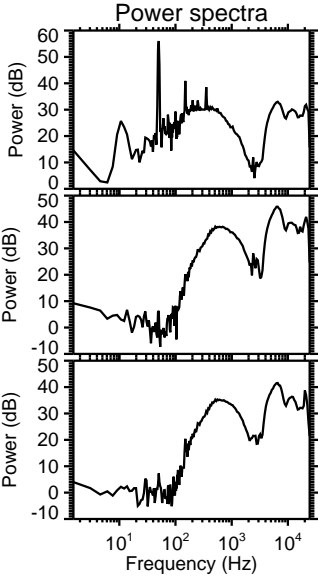
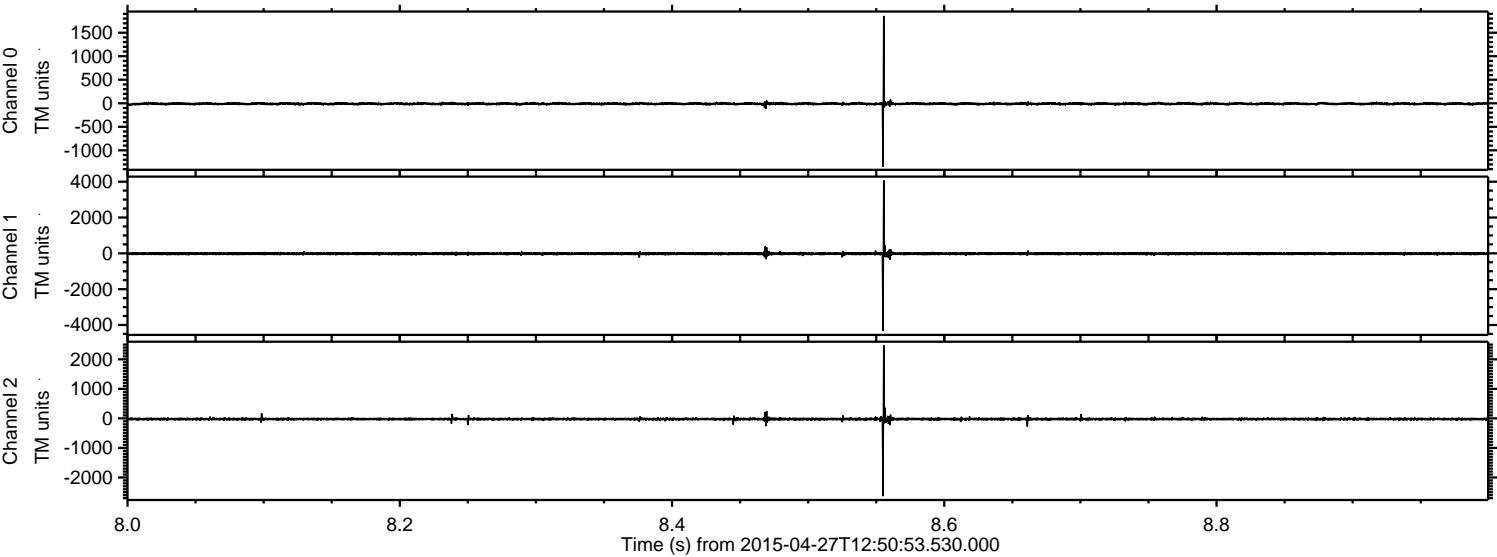


Processed Mon Apr 27 14:58:31 2015 by ELM ver.2012-10-06 from 001\_\_elm20150427\_125052\_\_dat00.bin





Processed Mon Apr 27 14:58:32 2015 by ELM ver.2012-10-06 from 001\_\_elm20150427\_125052\_\_dat00.bin





Processed Mon Apr 27 14:58:33 2015 by ELM ver.2012-10-06 from 001\_\_elm20150427\_125052\_\_dat00.bin

