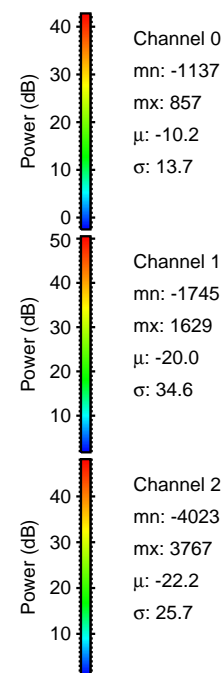
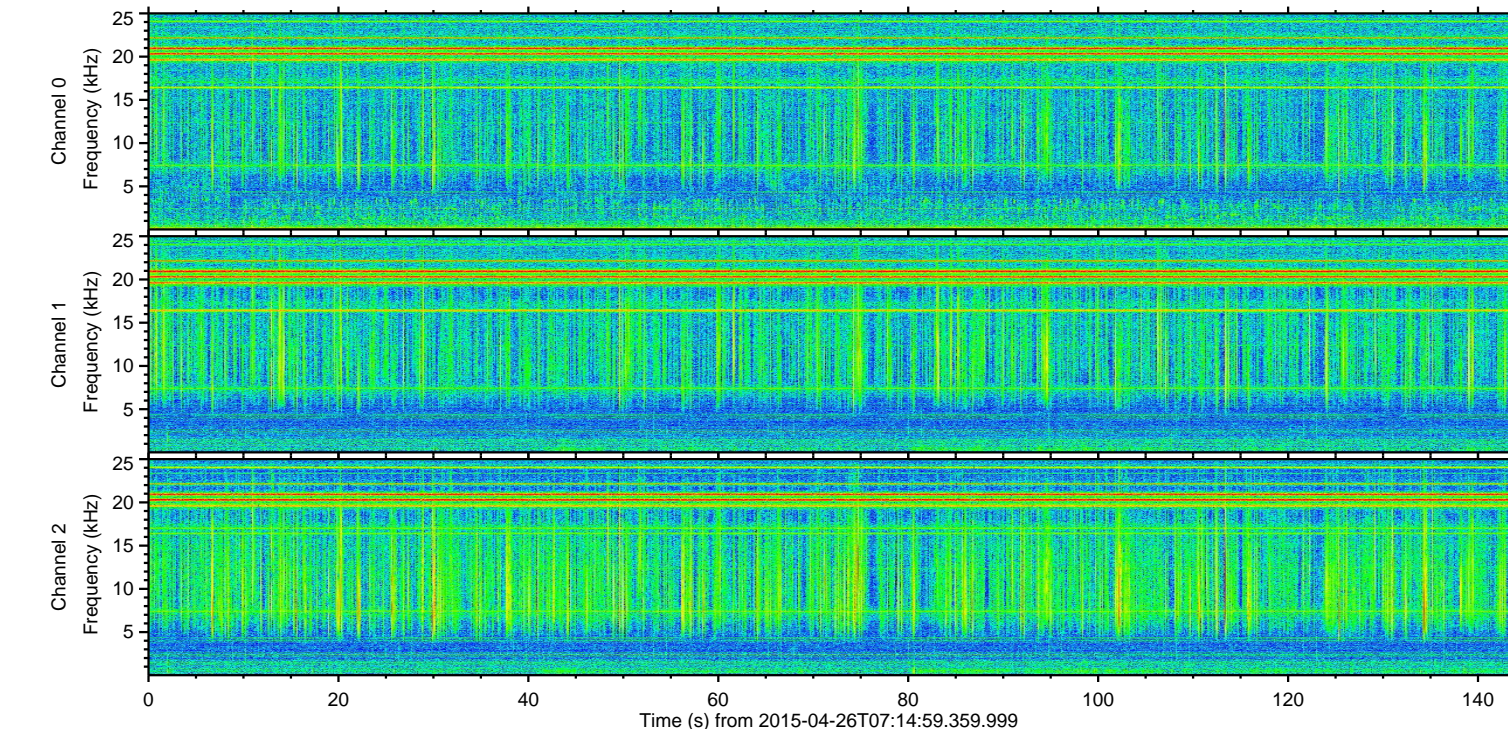
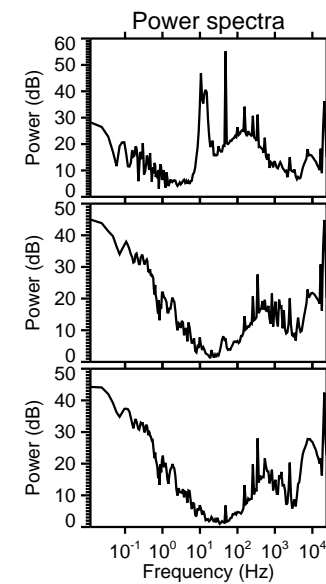
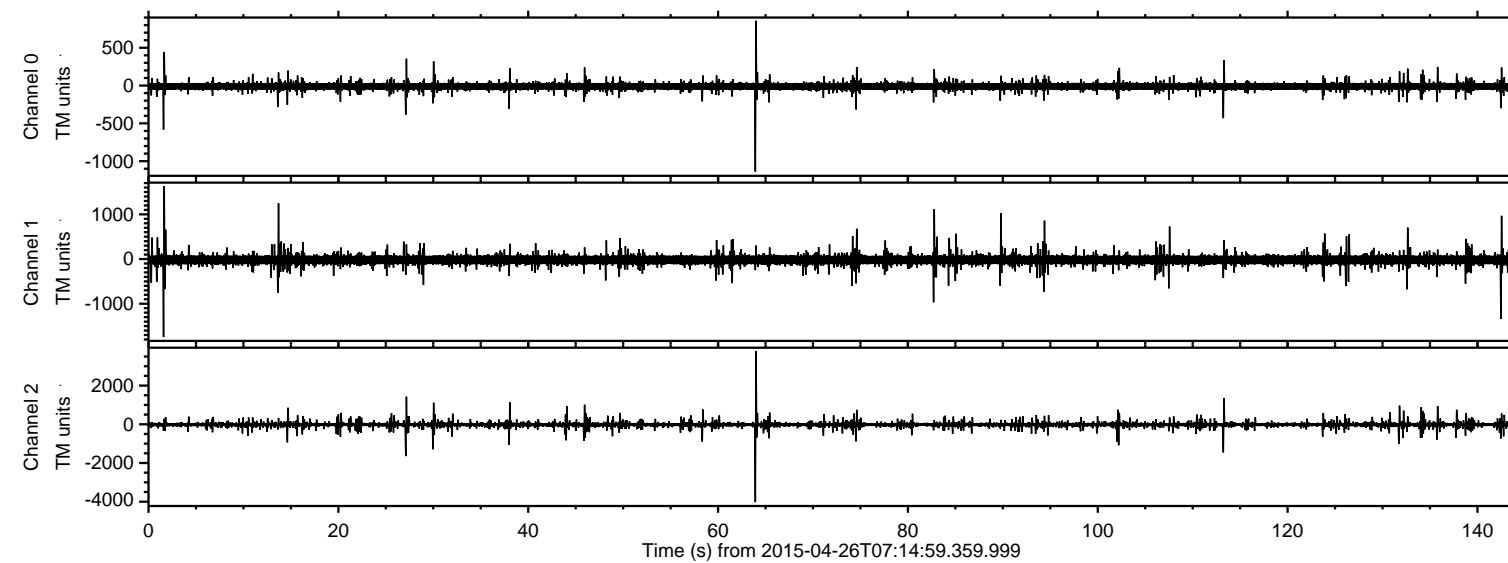


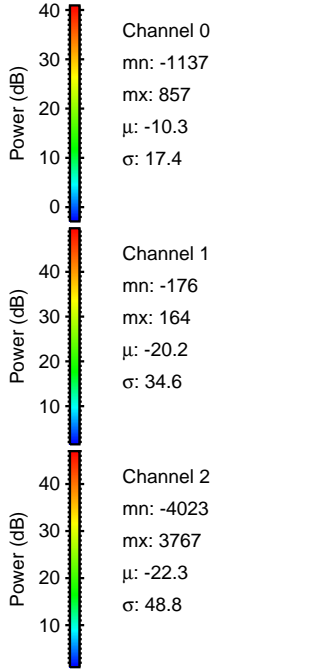
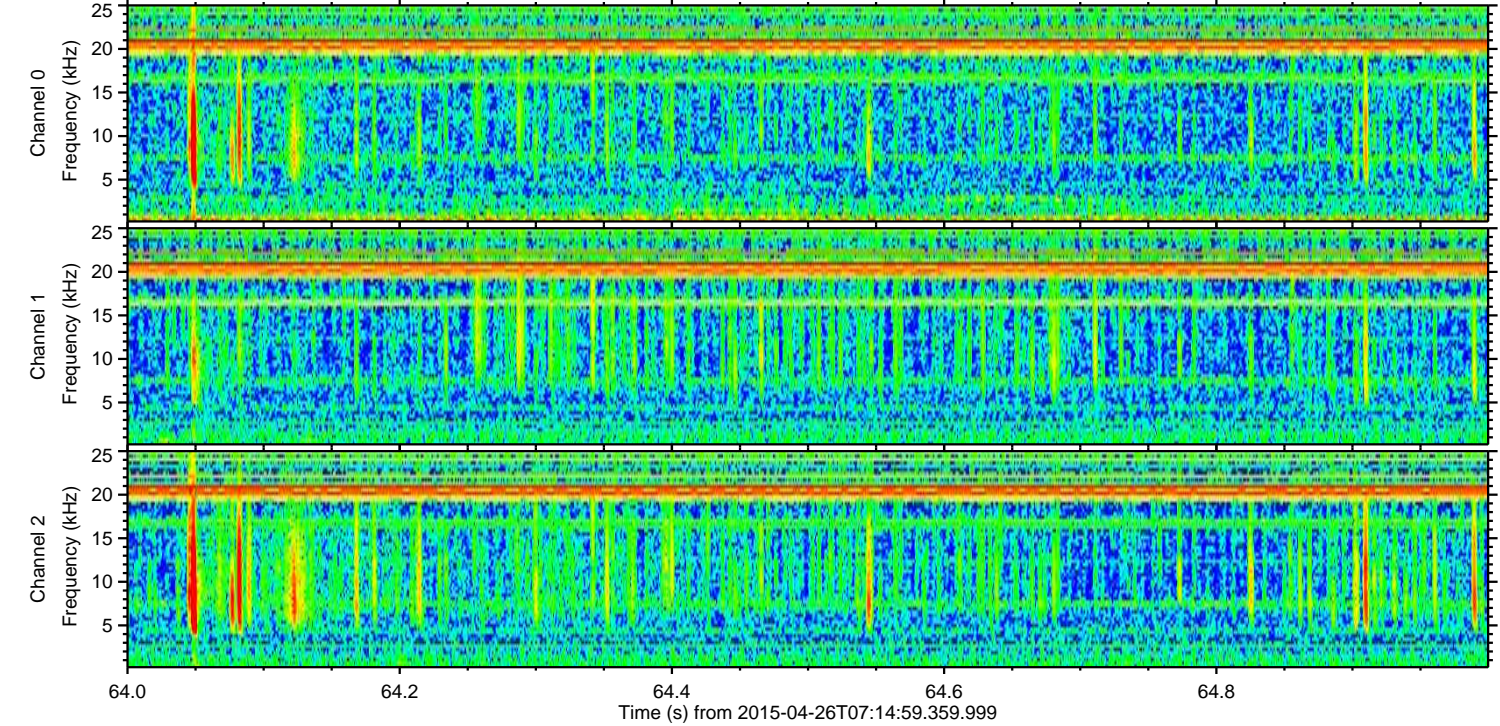
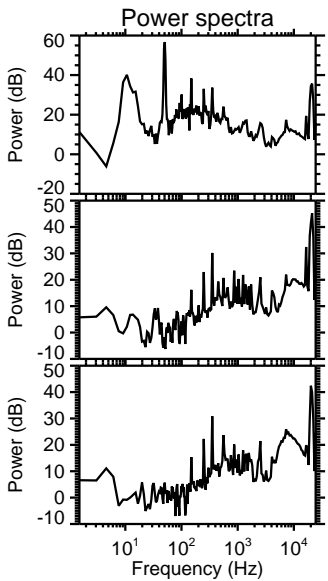
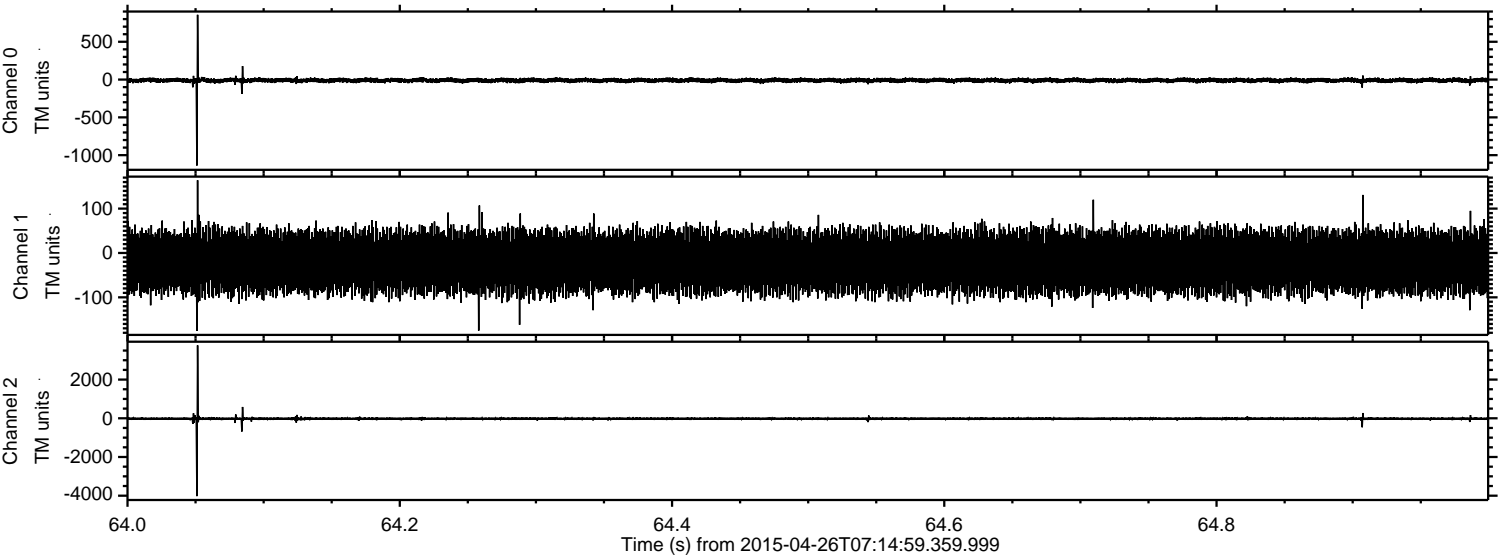
# ELMAVAN 3D WAVEFORMS (Measured data sampled at 50 kHz) 49770 packets of 144 samples from 2015-04-26T07:14:59.359.999.

Processed Sun Apr 26 12:50:40 2015 by ELM ver.2012-10-06 from 001\_\_elm20150426\_071458\_\_dat00.bin





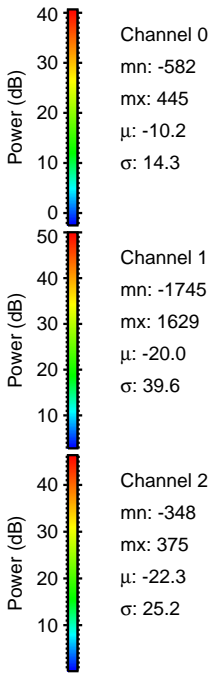
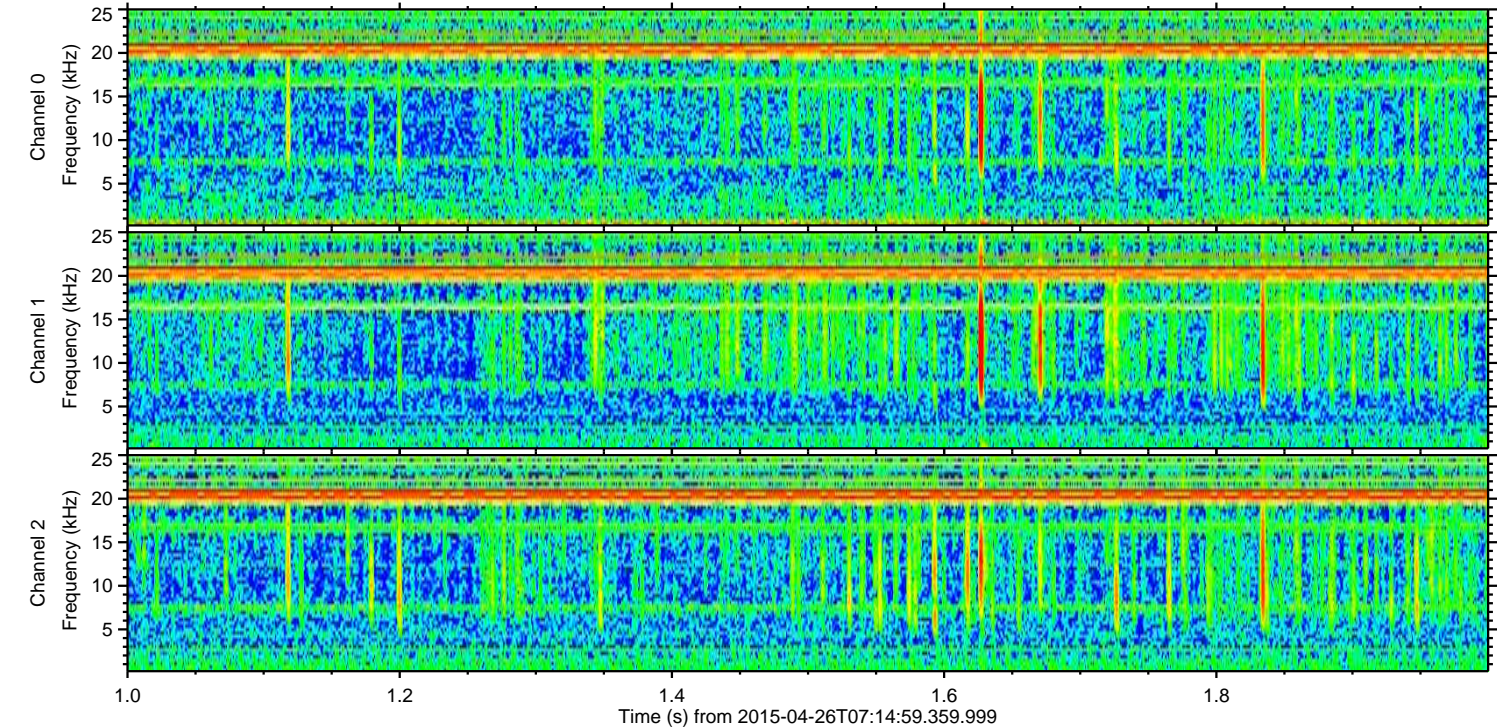
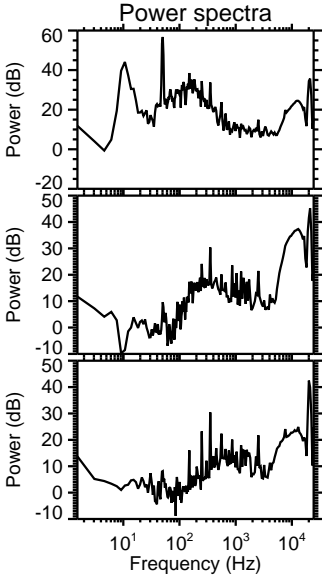
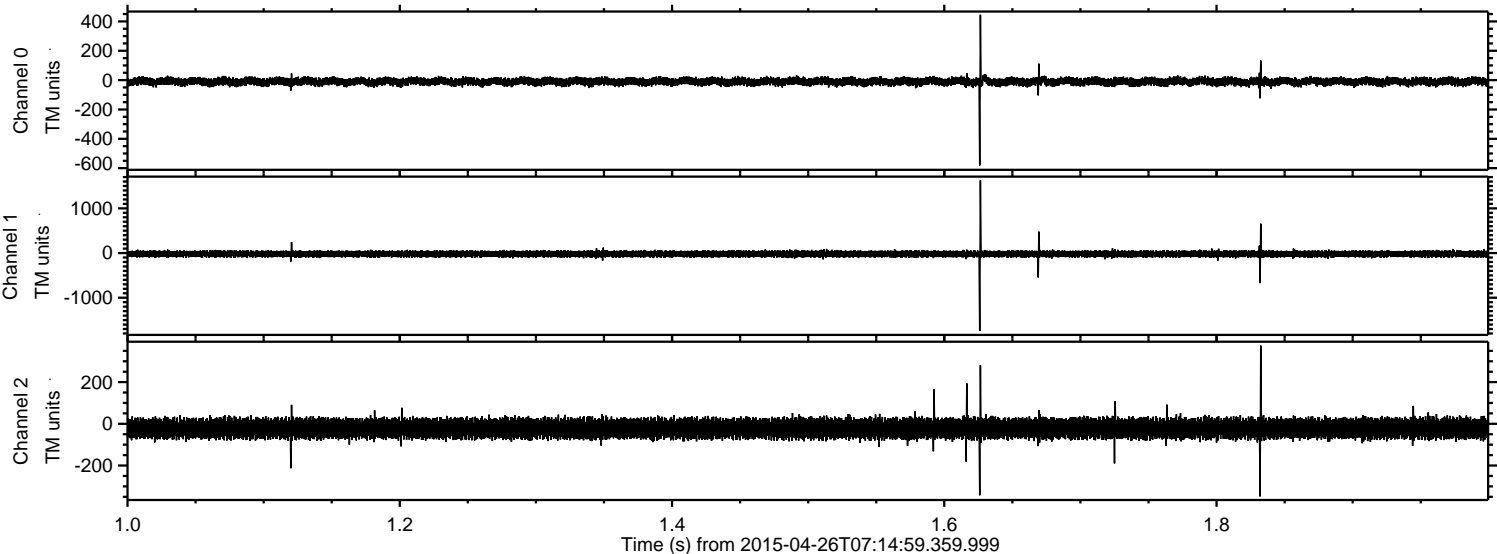
Processed Sun Apr 26 12:50:51 2015 by ELM ver.2012-10-06 from 001\_\_elm20150426\_071458\_\_dat00.bin





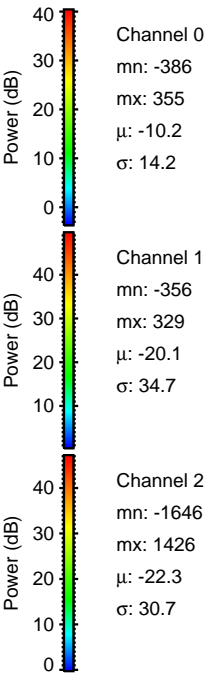
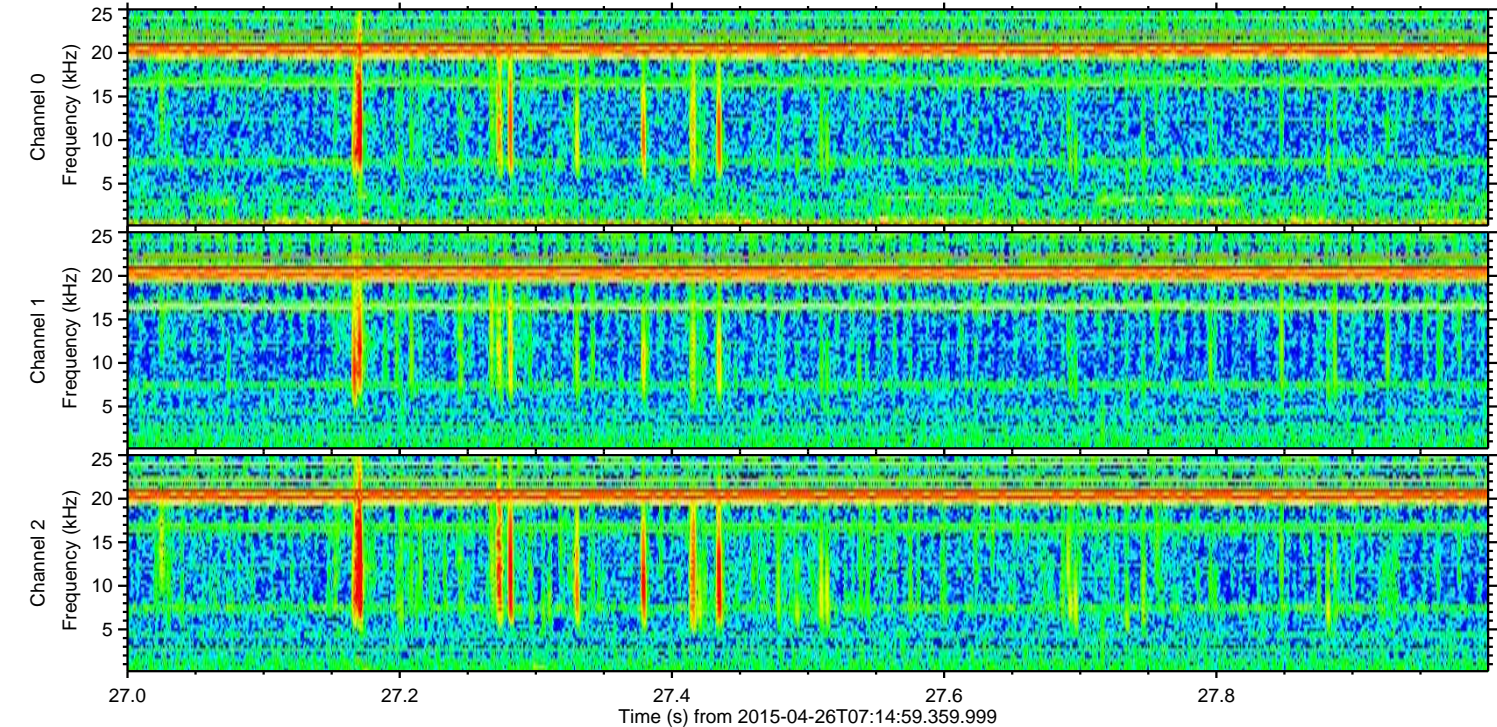
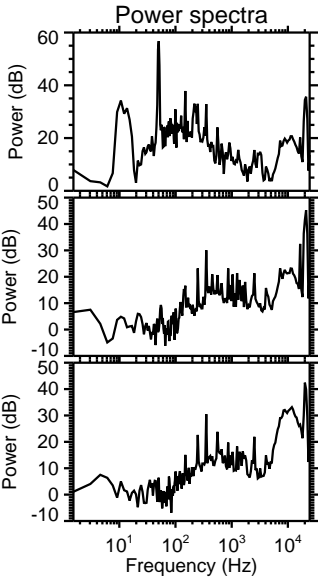
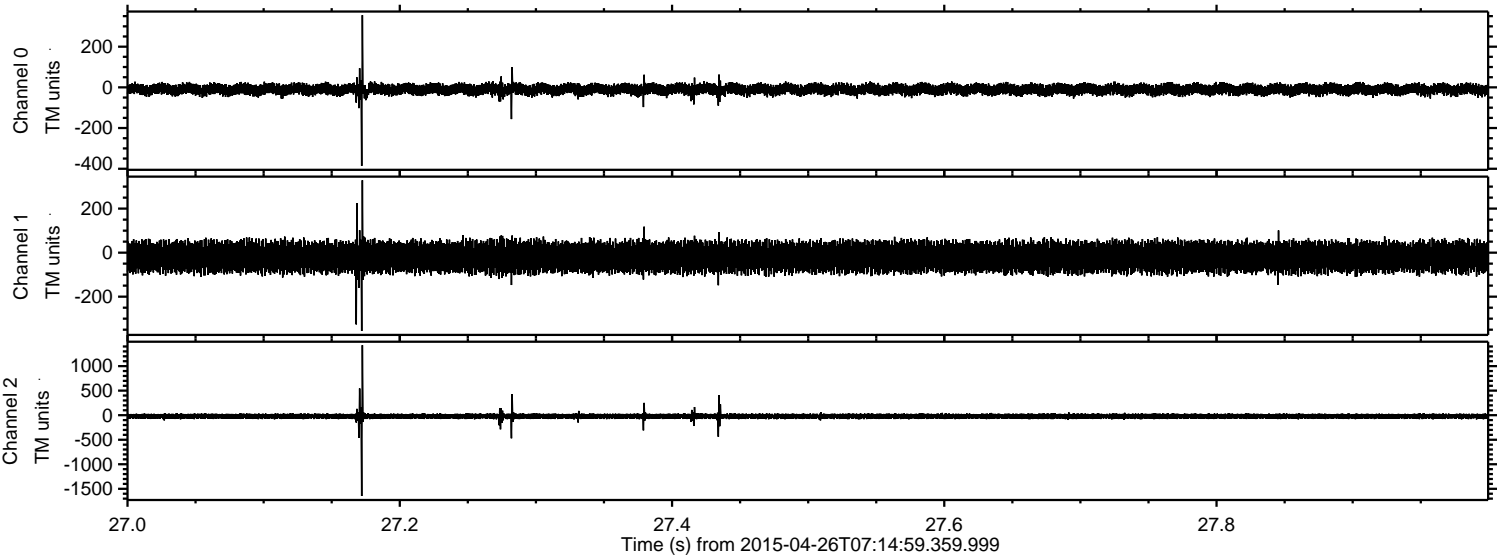
ELMAVAN 3D WAVEFORMS (Measured data sampled at 50 kHz) 49770 packets of 144 samples from 2015-04-26T07:14:59.359.999. Part 2/144

Processed Sun Apr 26 12:50:52 2015 by ELM ver.2012-10-06 from 001\_\_elm20150426\_071458\_\_dat00.bin





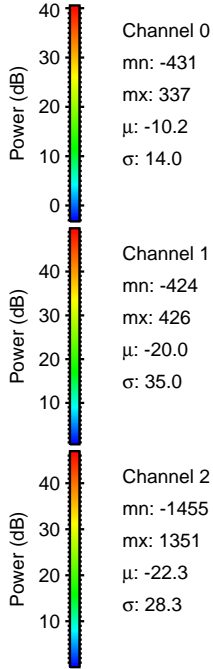
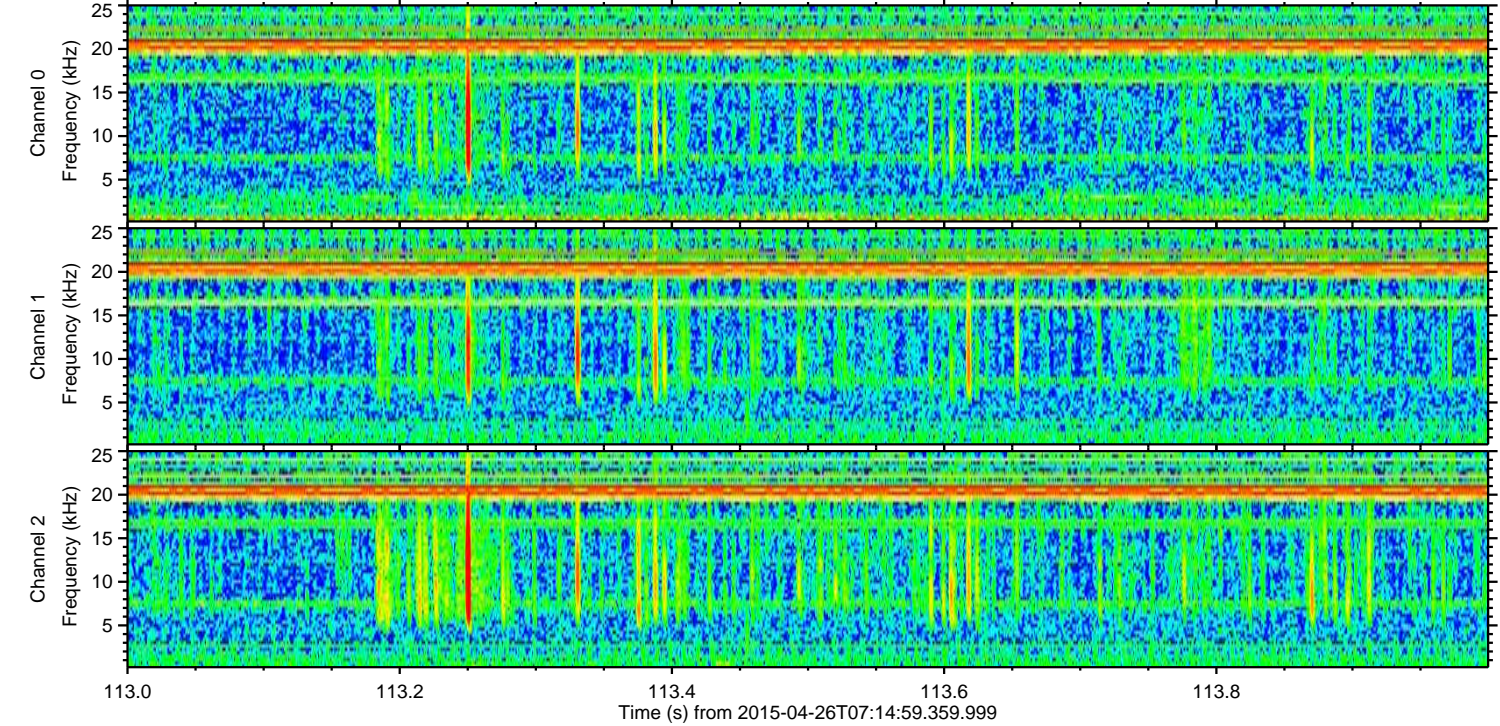
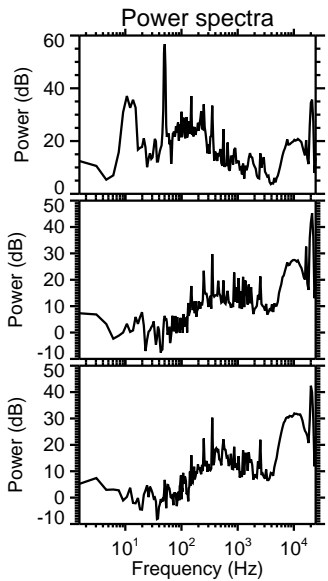
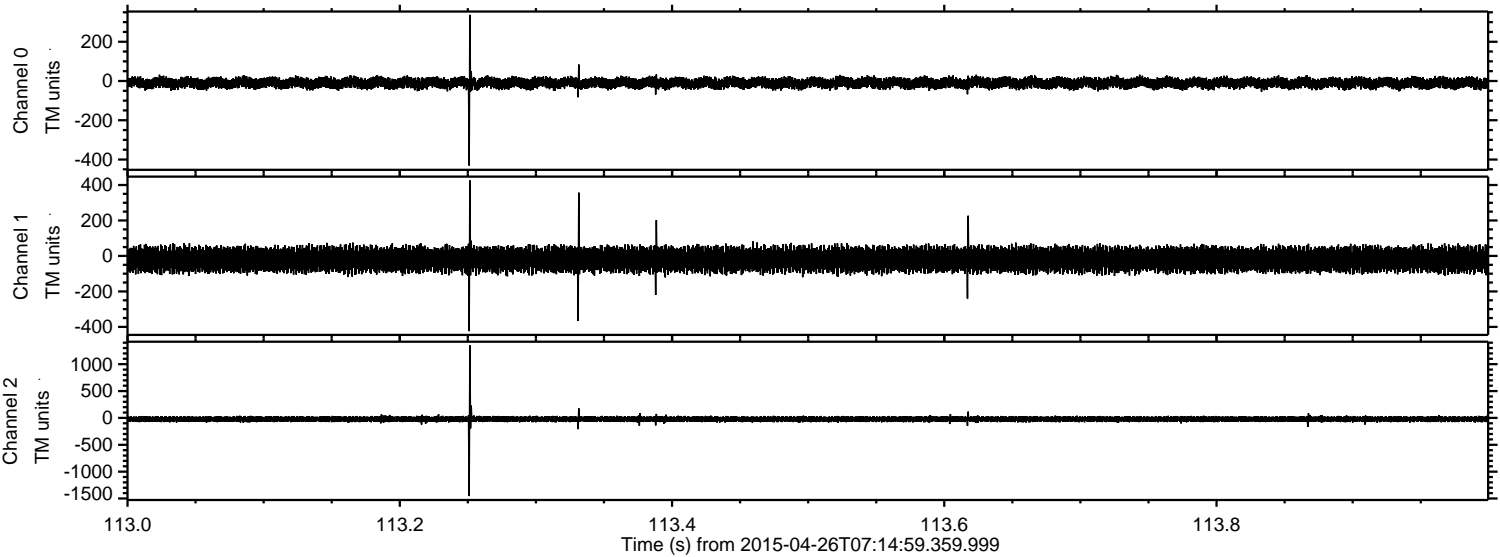
Processed Sun Apr 26 12:50:53 2015 by ELM ver.2012-10-06 from 001\_\_elm20150426\_071458\_\_dat00.bin





ELMAVAN 3D WAVEFORMS (Measured data sampled at 50 kHz) 49770 packets of 144 samples from 2015-04-26T07:14:59.359.999. Part 114/144

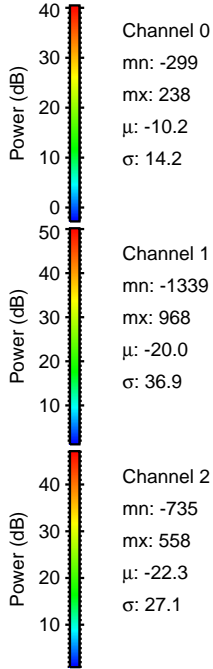
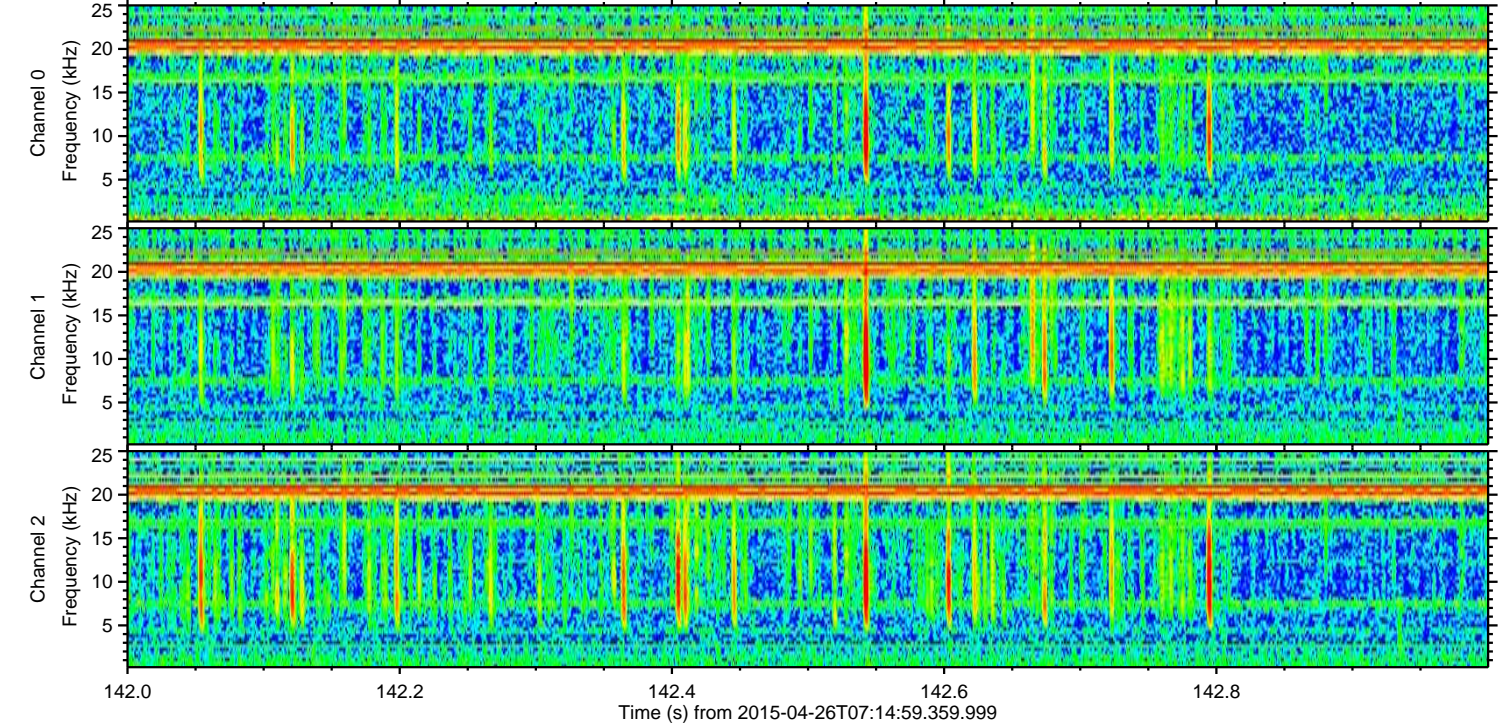
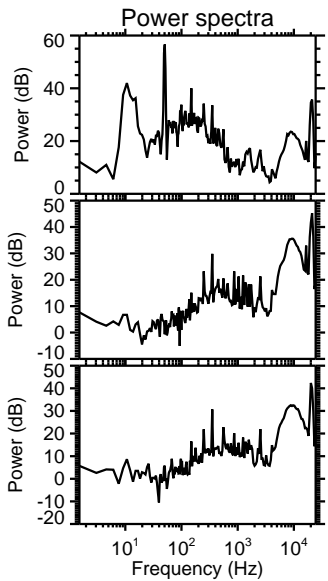
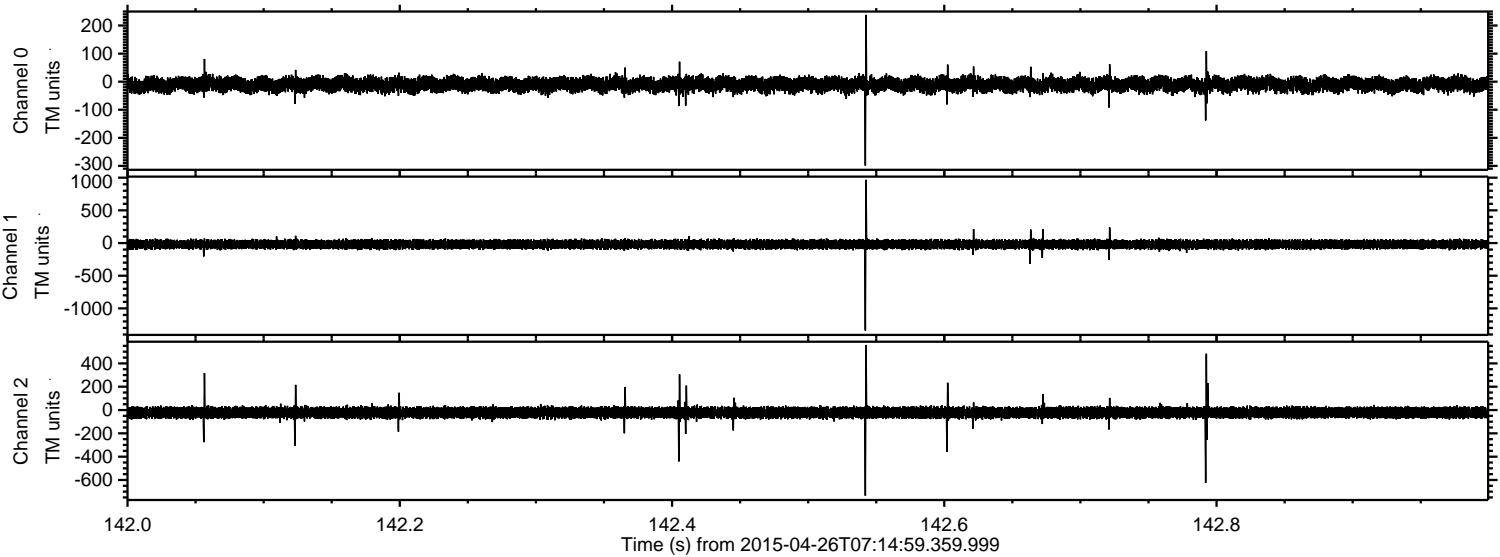
Processed Sun Apr 26 12:50:54 2015 by ELM ver.2012-10-06 from 001\_\_elm20150426\_071458\_\_dat00.bin





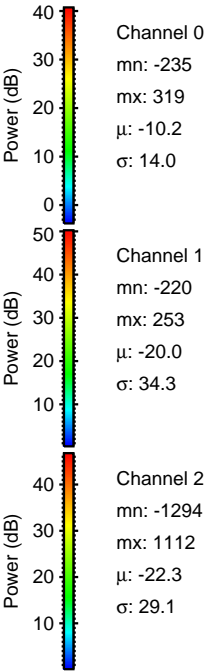
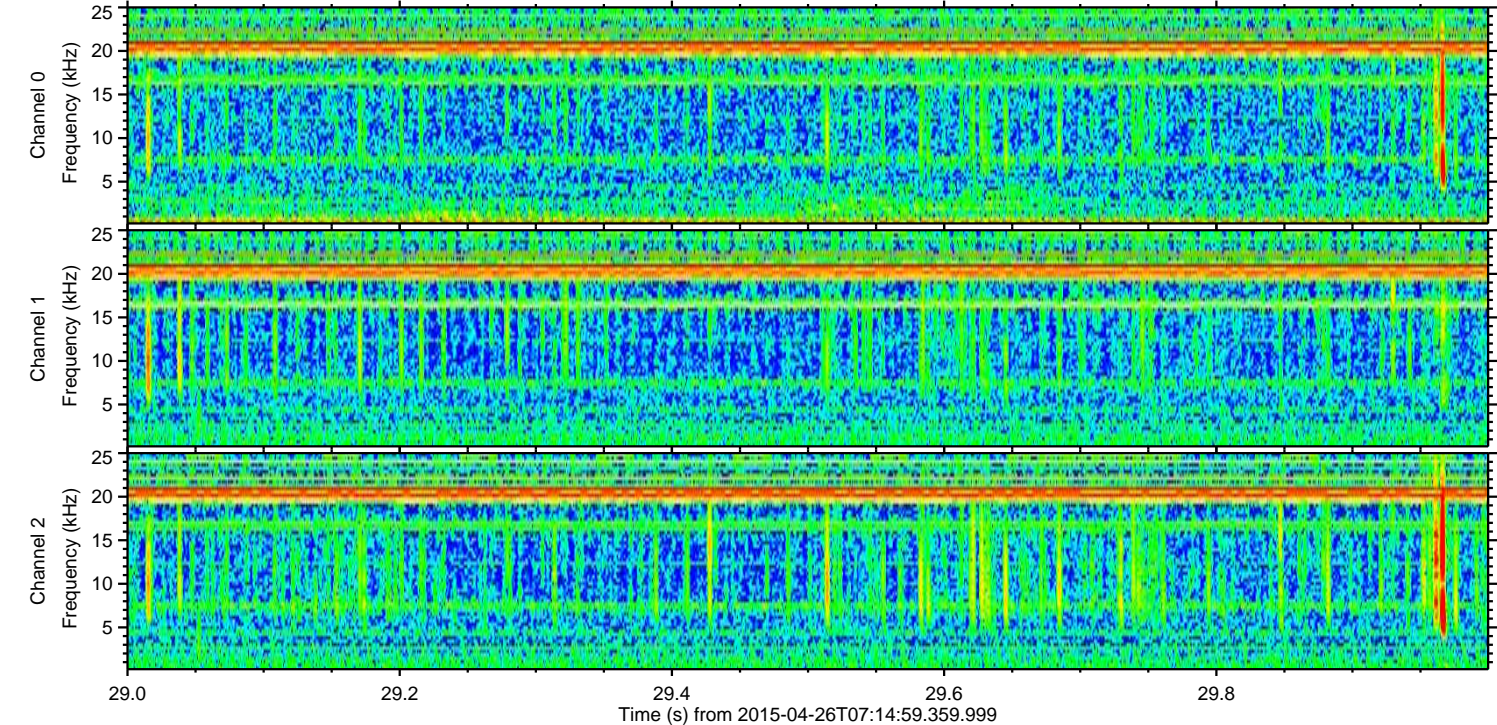
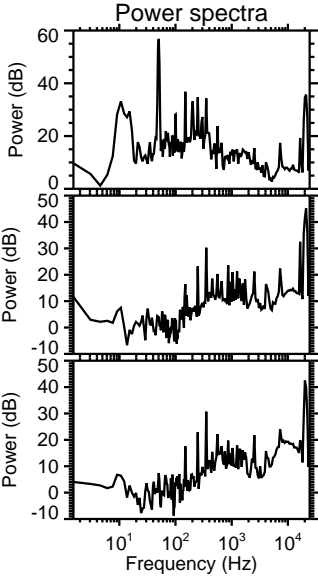
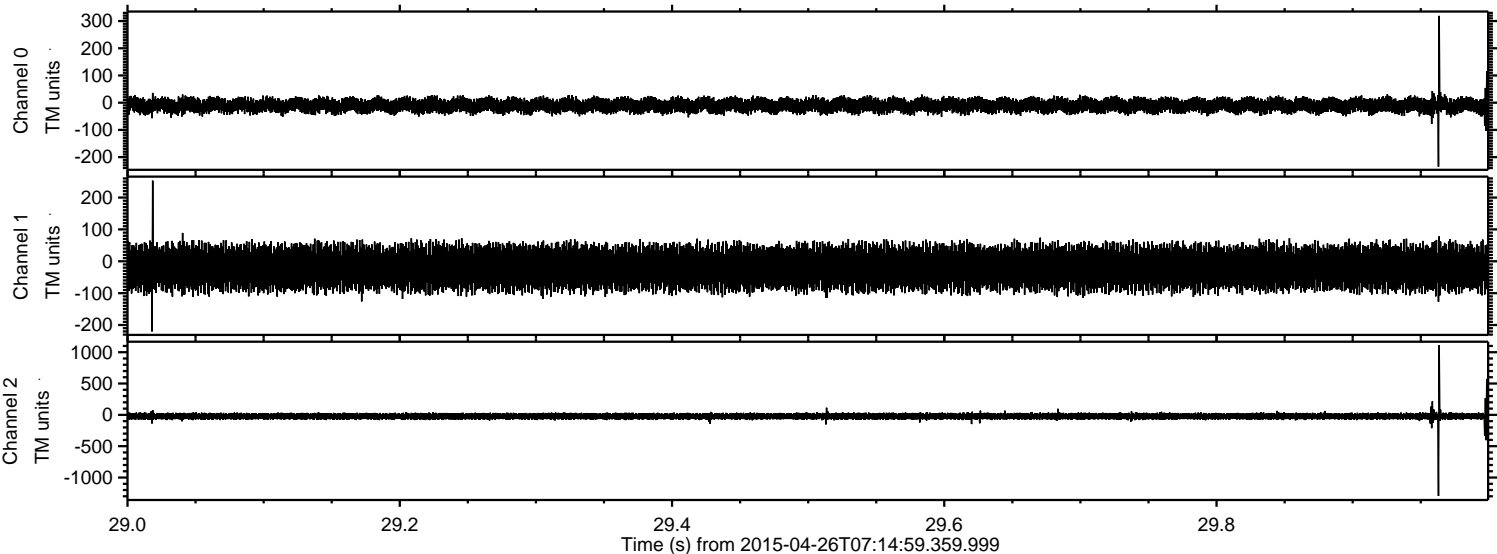
ELMAVAN 3D WAVEFORMS (Measured data sampled at 50 kHz) 49770 packets of 144 samples from 2015-04-26T07:14:59.359.999. Part 143/144

Processed Sun Apr 26 12:50:55 2015 by ELM ver.2012-10-06 from 001\_\_elm20150426\_071458\_\_dat00.bin



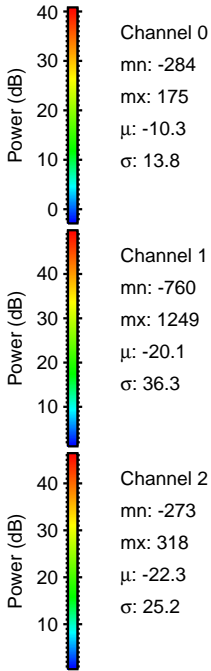
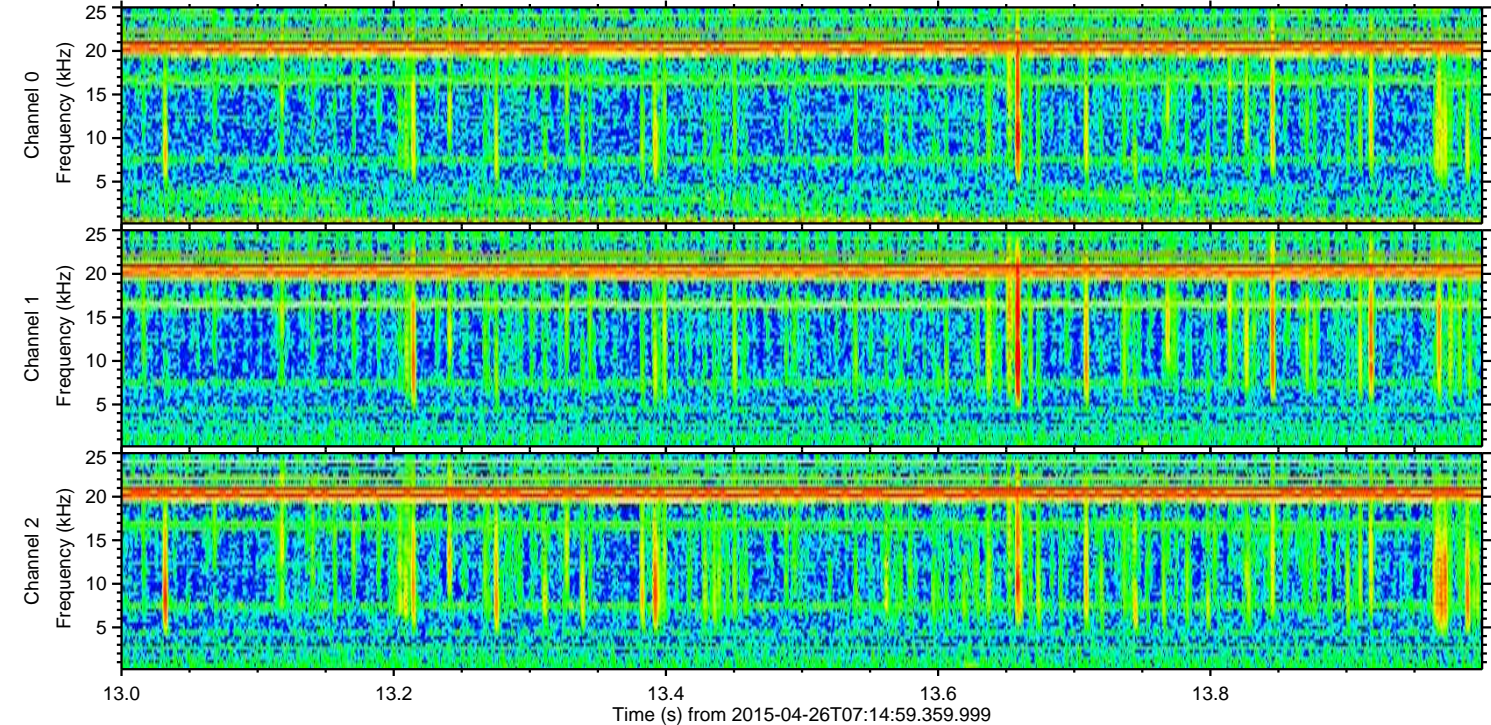
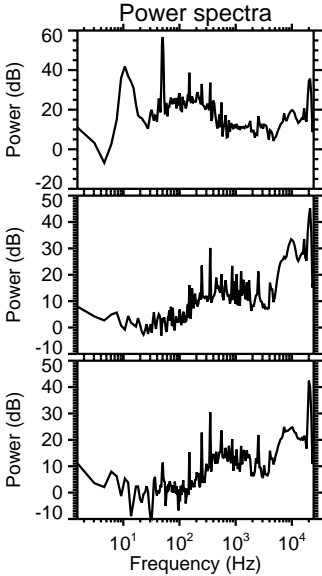
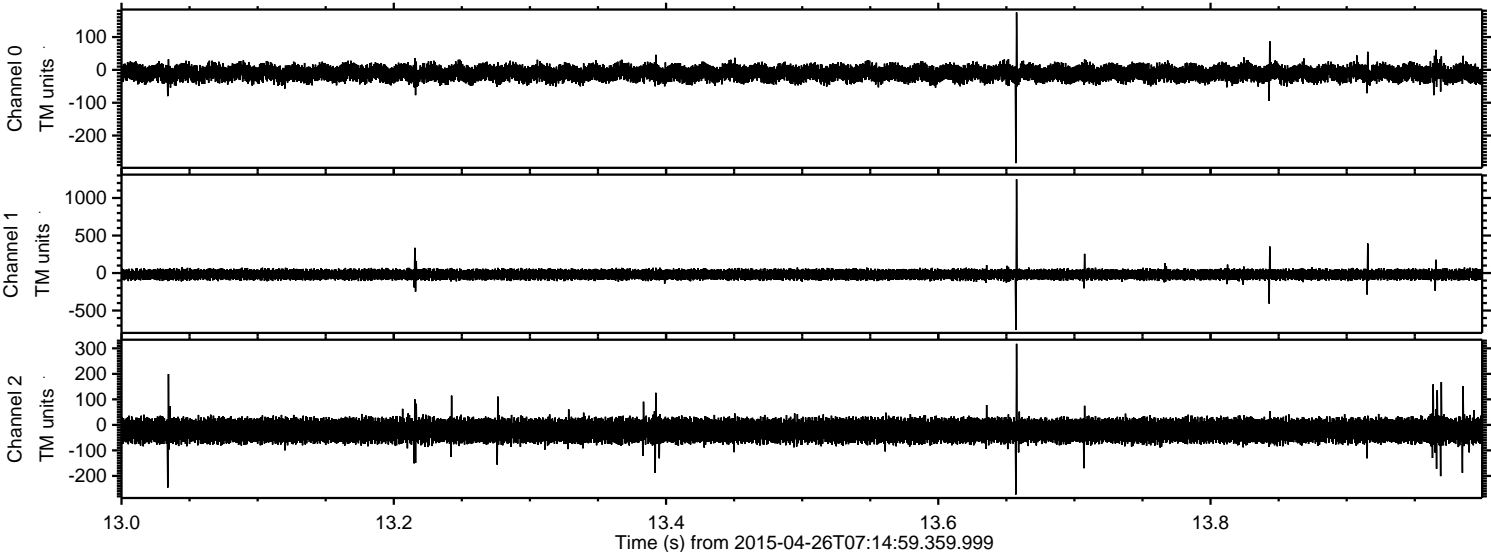


Processed Sun Apr 26 12:50:56 2015 by ELM ver.2012-10-06 from 001\_\_elm20150426\_071458\_\_dat00.bin



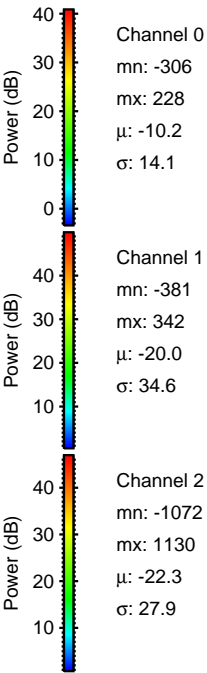
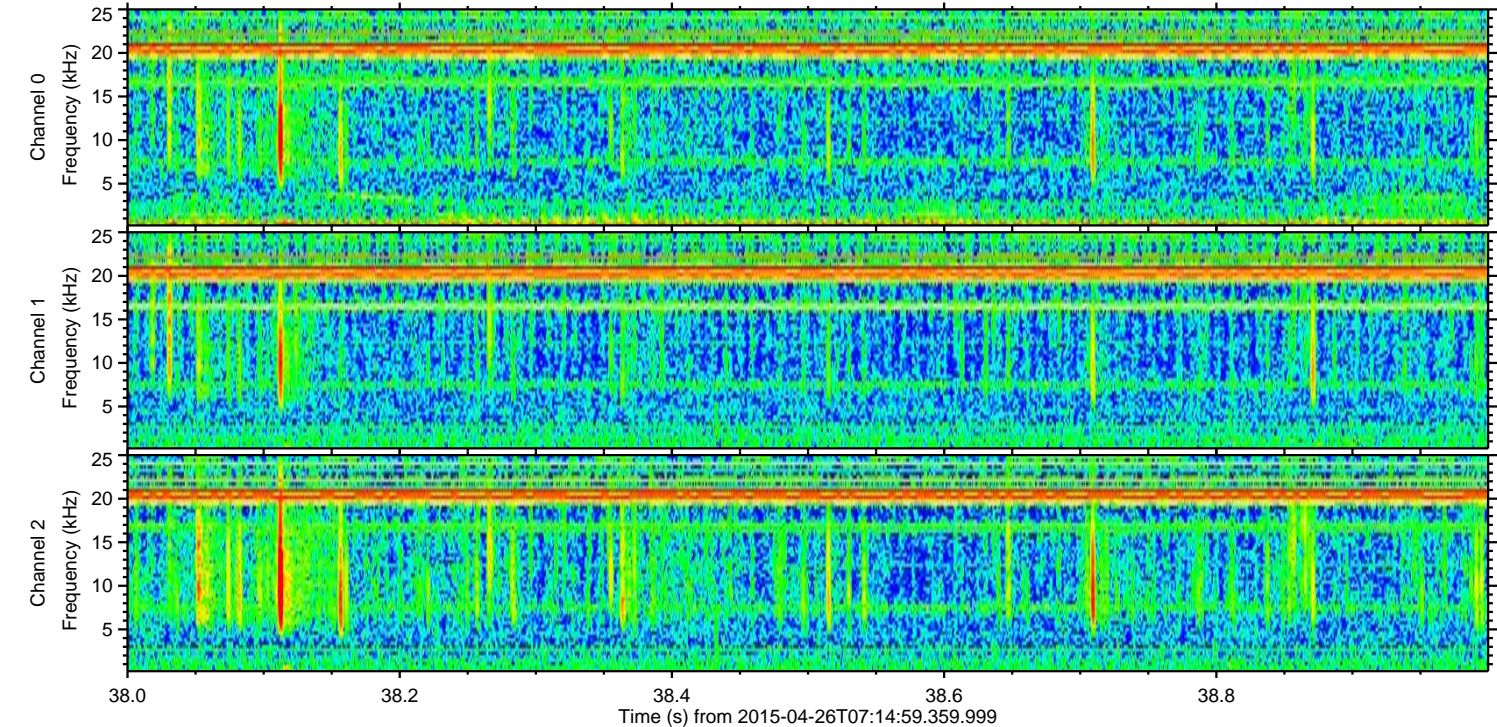
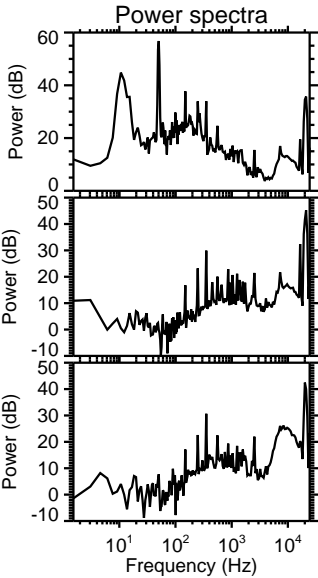
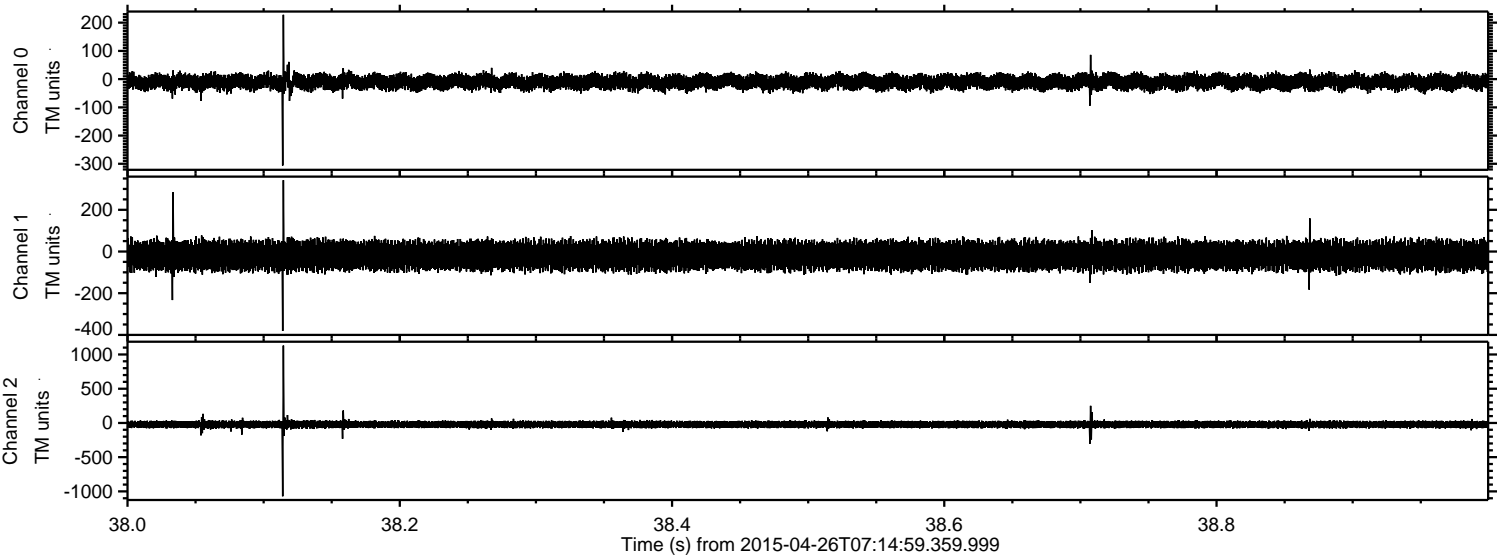


Processed Sun Apr 26 12:50:57 2015 by ELM ver.2012-10-06 from 001\_\_elm20150426\_071458\_\_dat00.bin



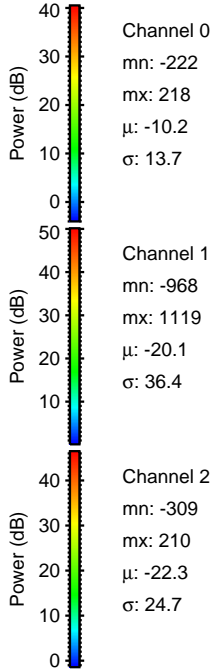
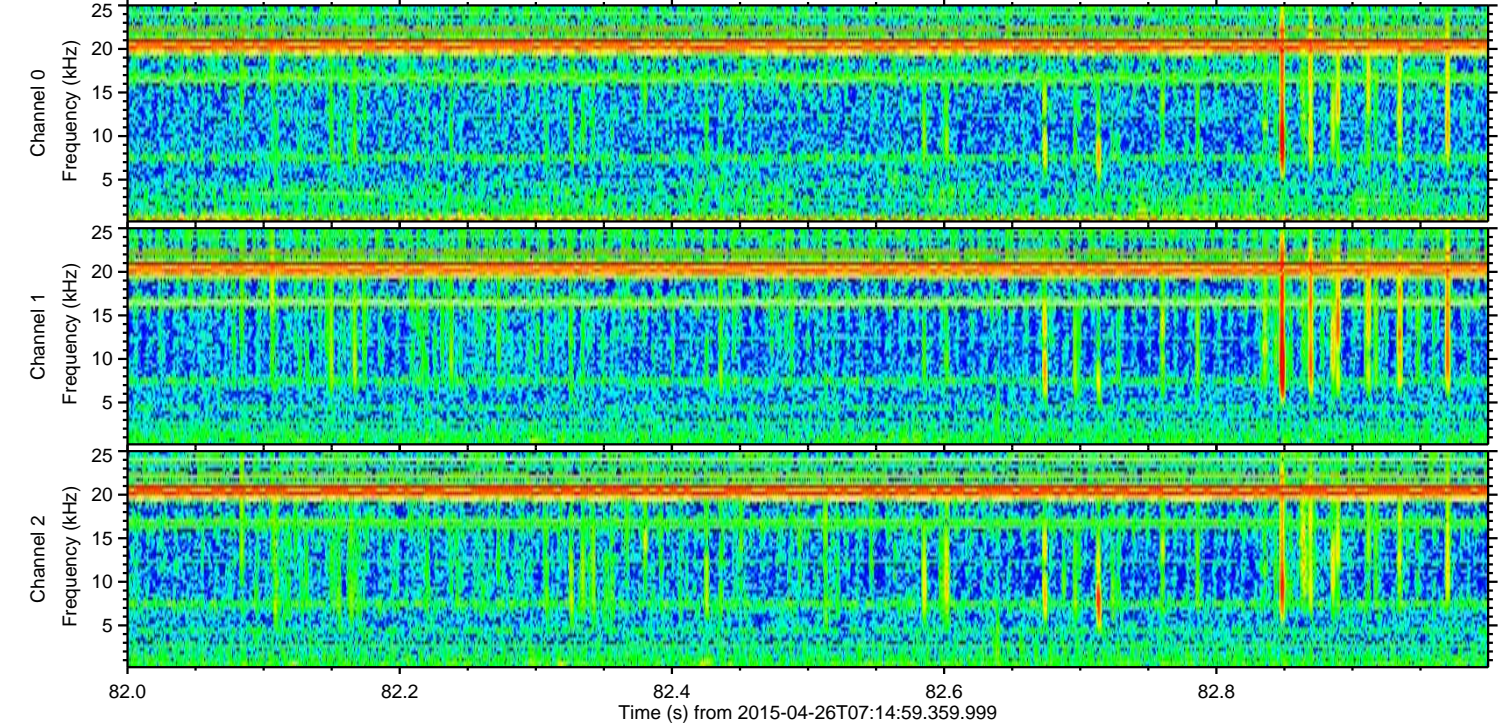
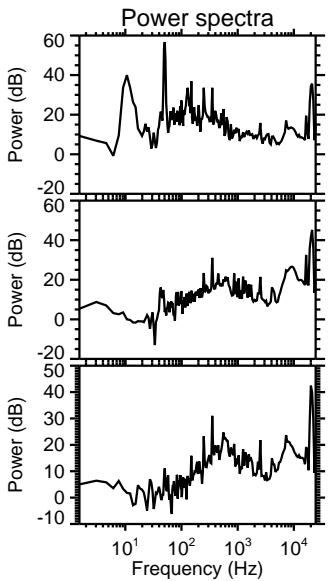
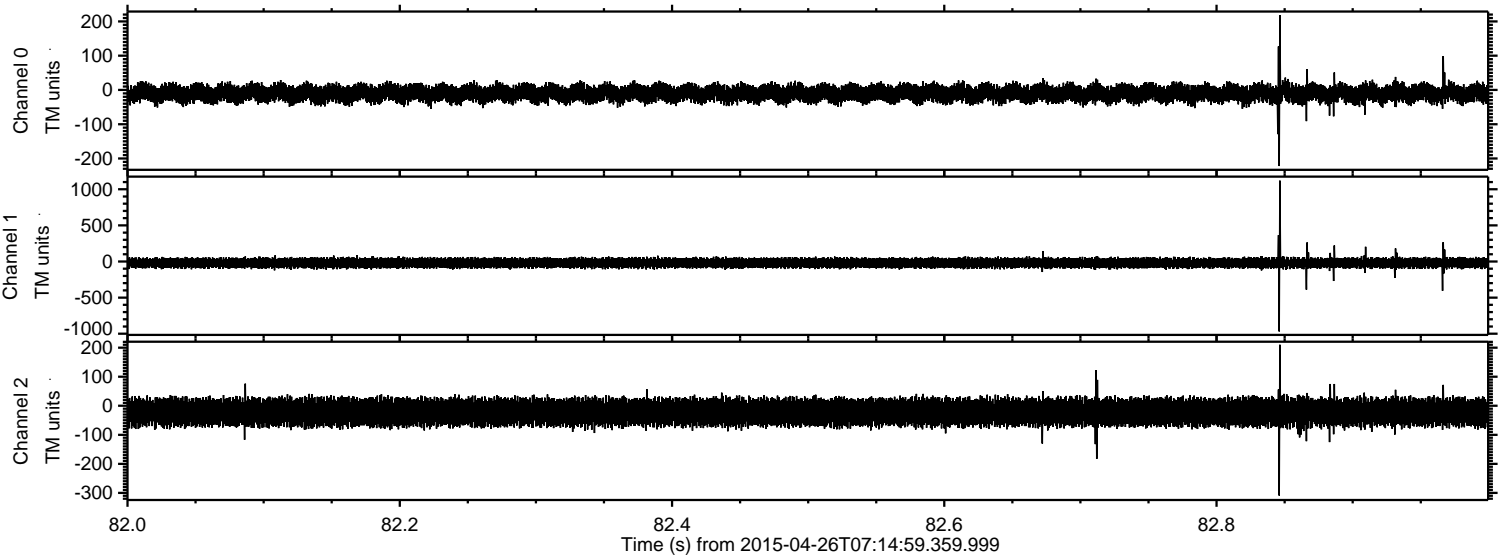


Processed Sun Apr 26 12:50:58 2015 by ELM ver.2012-10-06 from 001\_\_elm20150426\_071458\_\_dat00.bin





Processed Sun Apr 26 12:50:59 2015 by ELM ver.2012-10-06 from 001\_\_elm20150426\_071458\_\_dat00.bin



Channel 0  
mn: -222  
mx: 218  
 $\mu$ : -10.2  
 $\sigma$ : 13.7

Channel 1  
mn: -968  
mx: 1119  
 $\mu$ : -20.1  
 $\sigma$ : 36.4

Channel 2  
mn: -309  
mx: 210  
 $\mu$ : -22.3  
 $\sigma$ : 24.7



Processed Sun Apr 26 12:51:00 2015 by ELM ver.2012-10-06 from 001\_\_elm20150426\_071458\_\_dat00.bin

