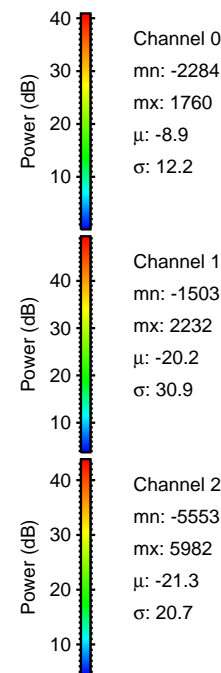
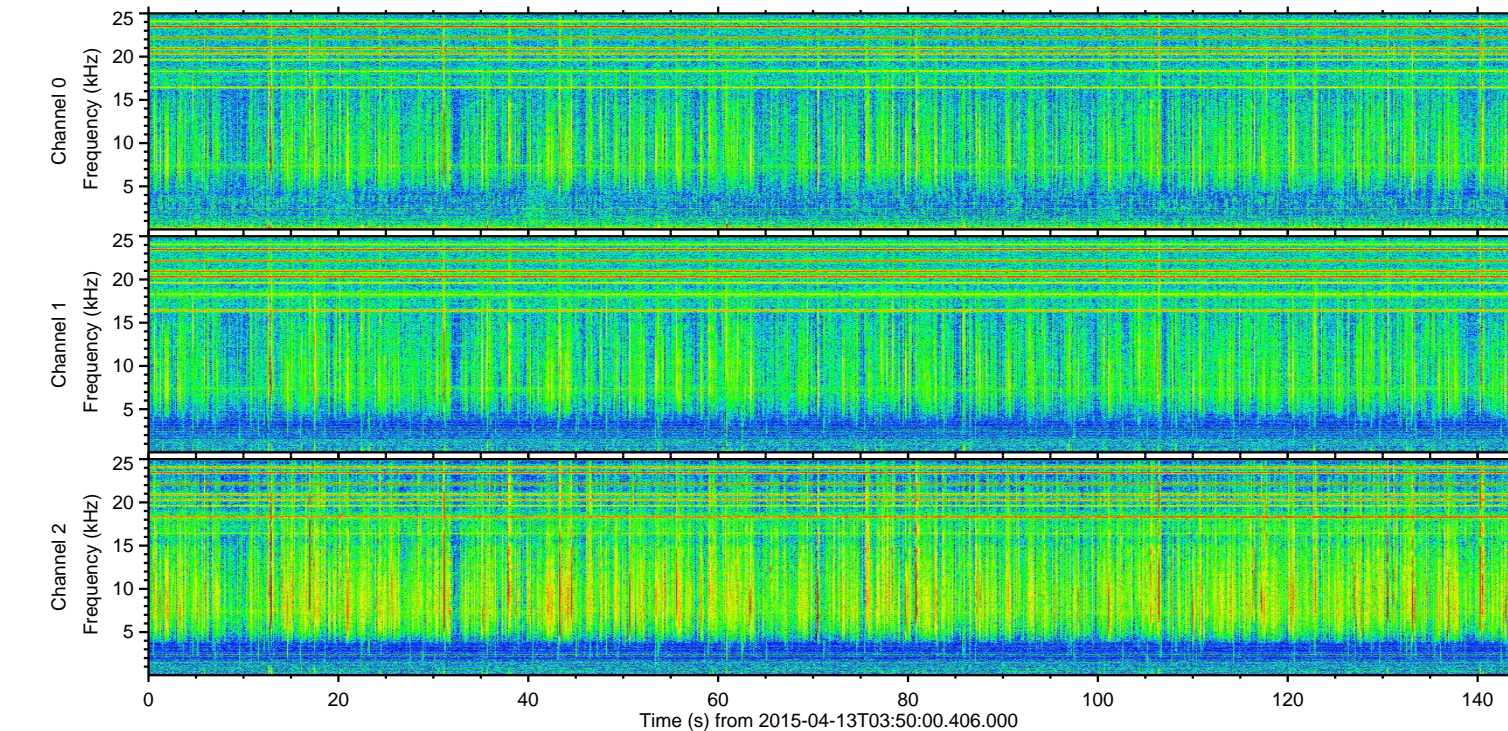
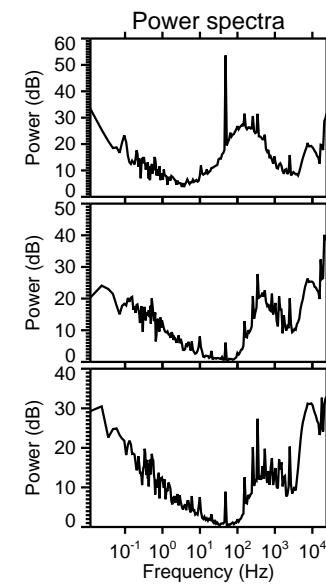
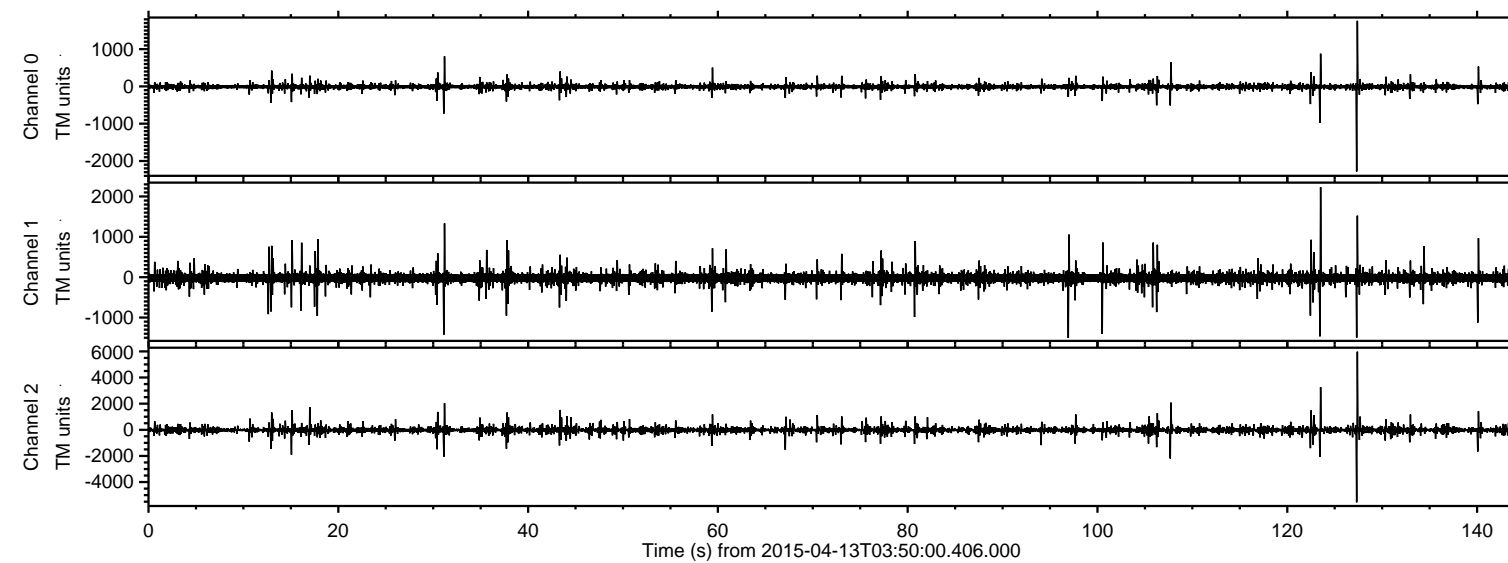


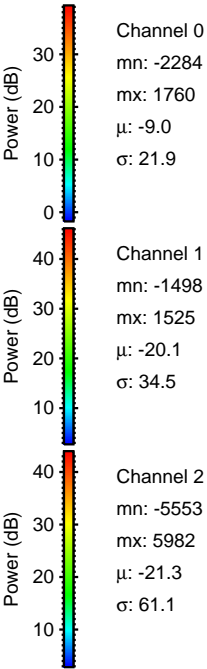
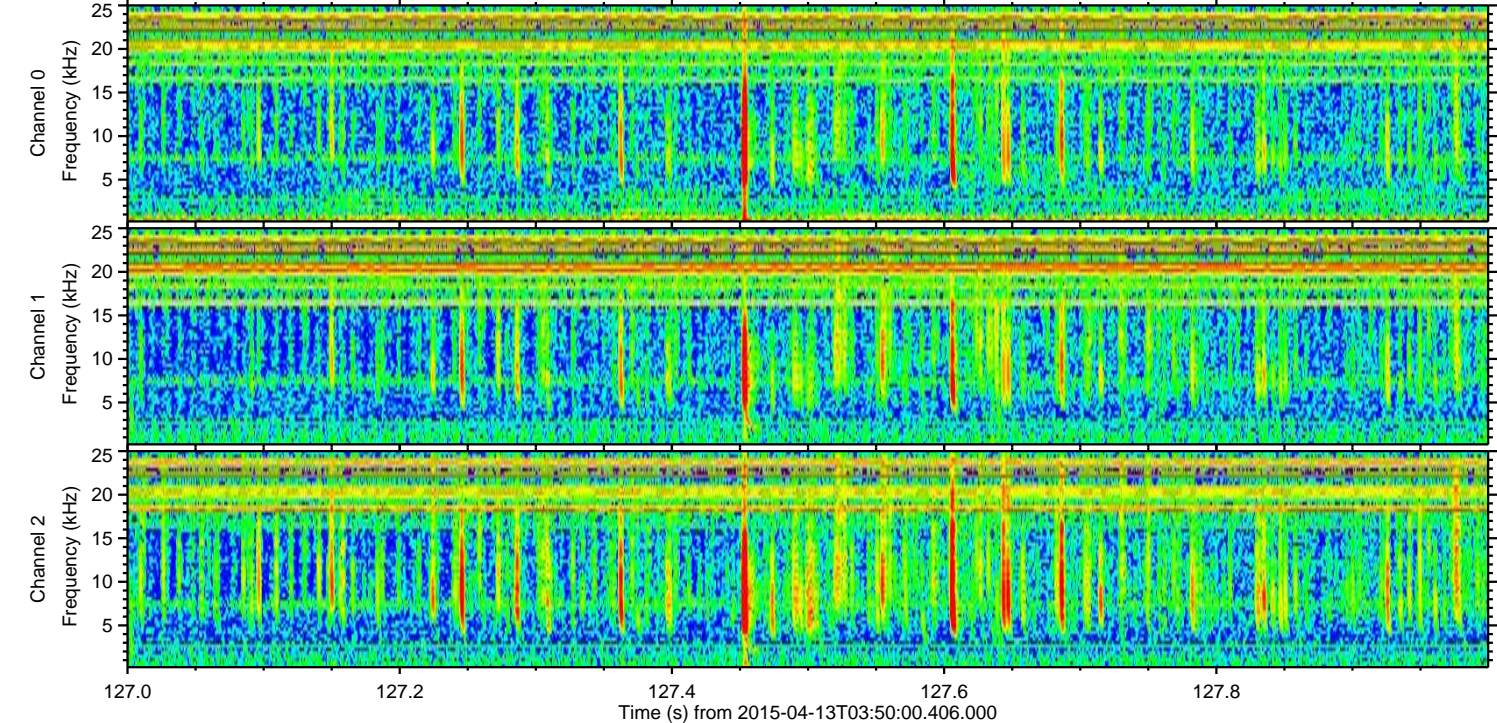
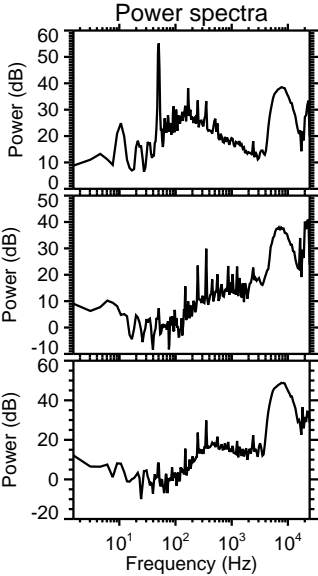
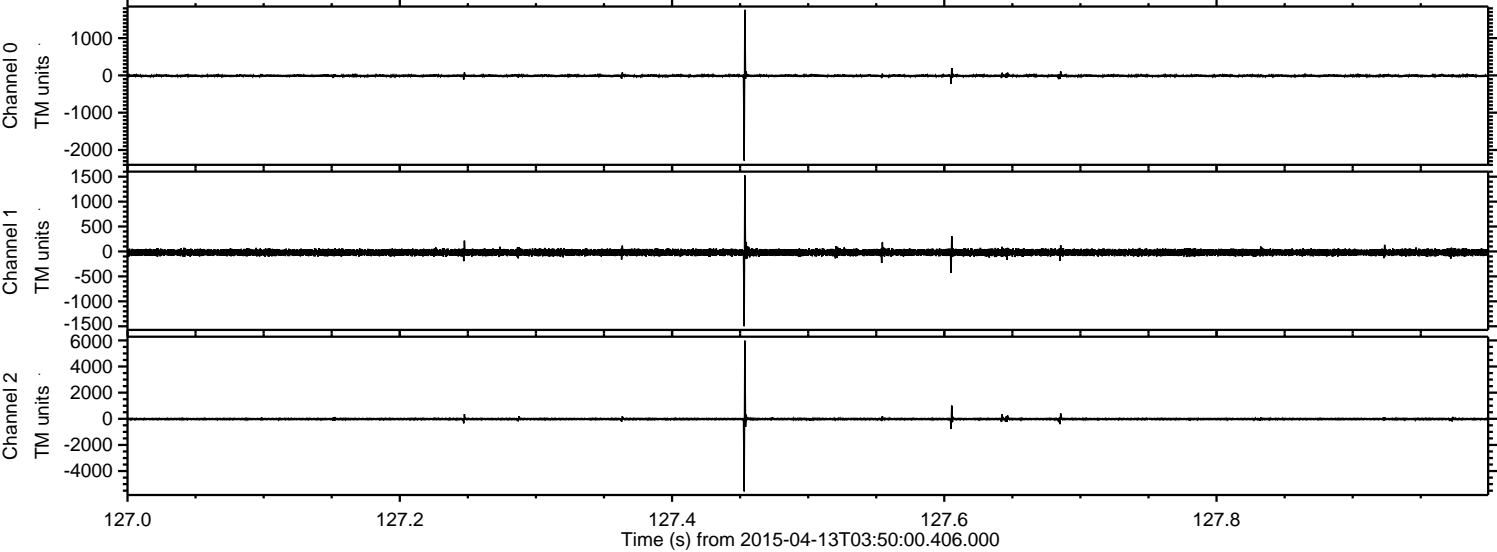
# ELMAVAN 3D WAVEFORMS (Measured data sampled at 50 kHz) 49785 packets of 144 samples from 2015-04-13T03:50:00.406.000.

Processed Mon Apr 13 05:56:54 2015 by ELM ver.2012-10-06 from 001\_\_elm20150413\_034959\_\_dat00.bin



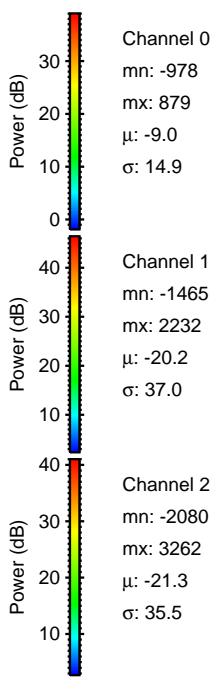
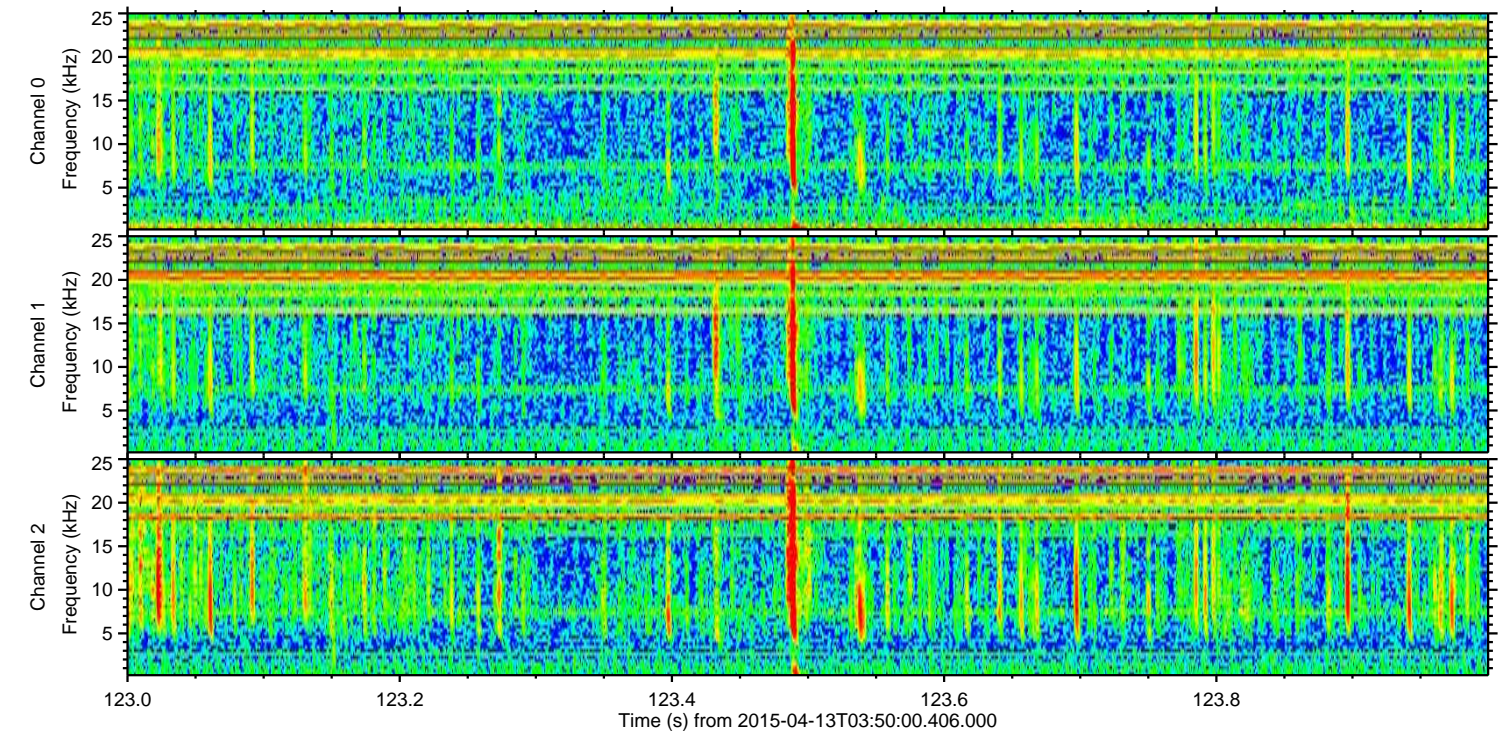
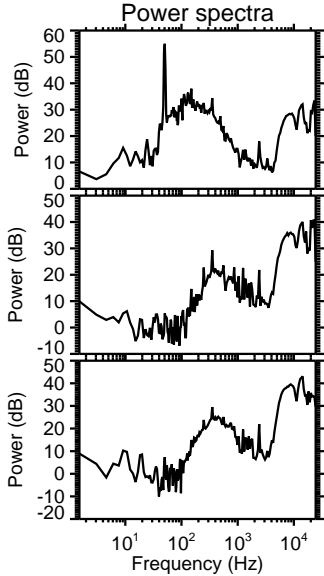
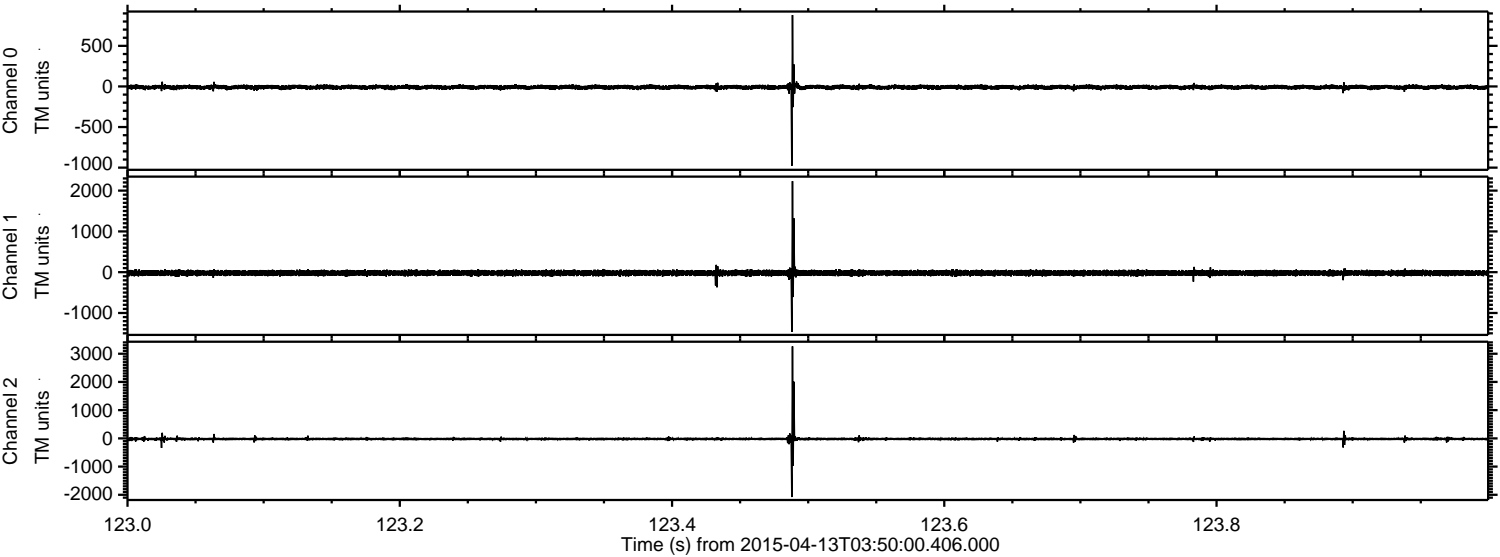


Processed Mon Apr 13 05:57:05 2015 by ELM ver.2012-10-06 from 001\_\_elm20150413\_034959\_\_dat00.bin





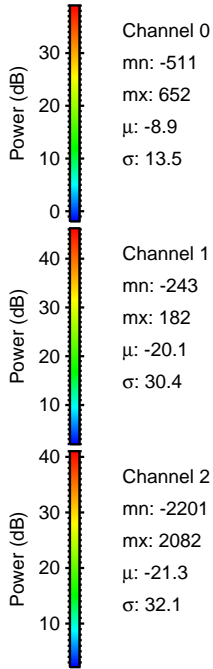
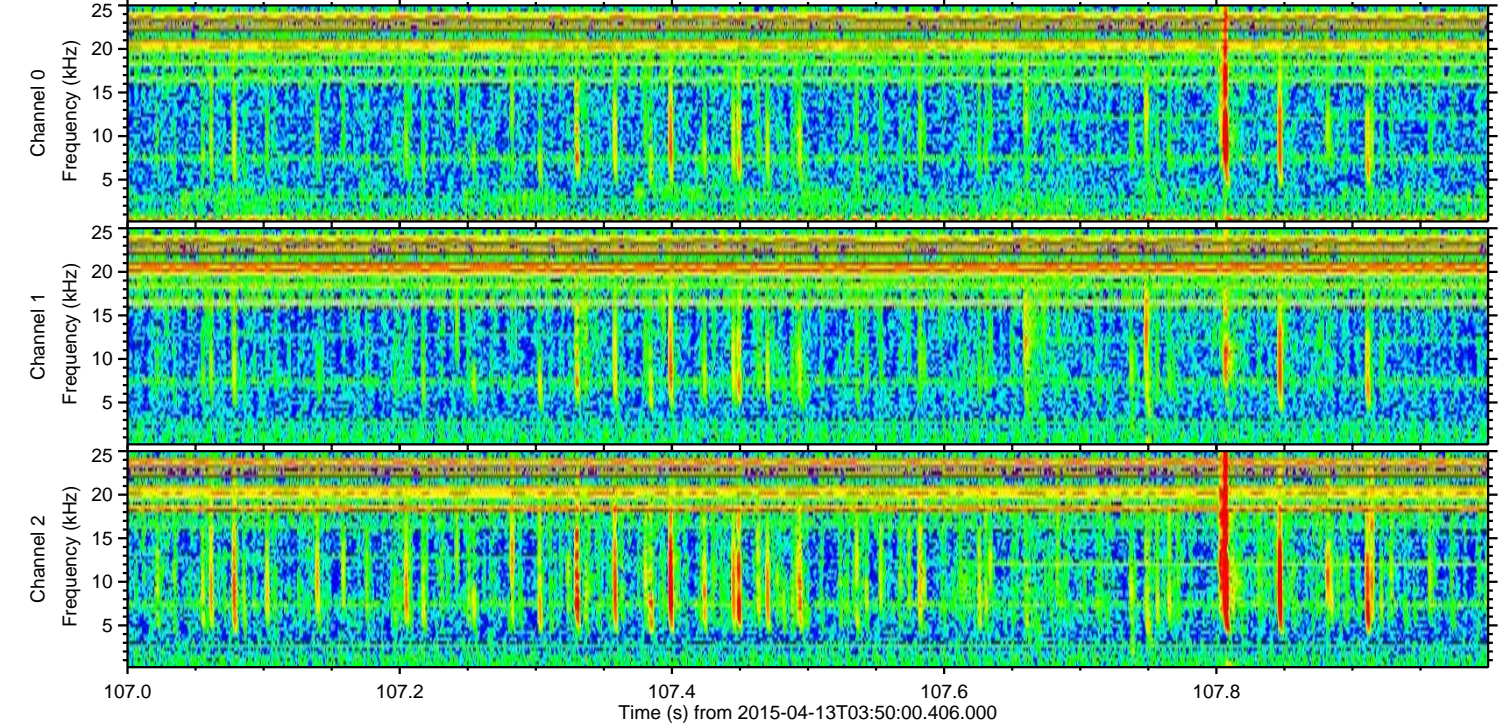
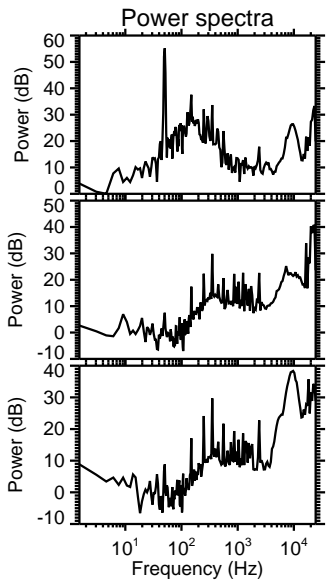
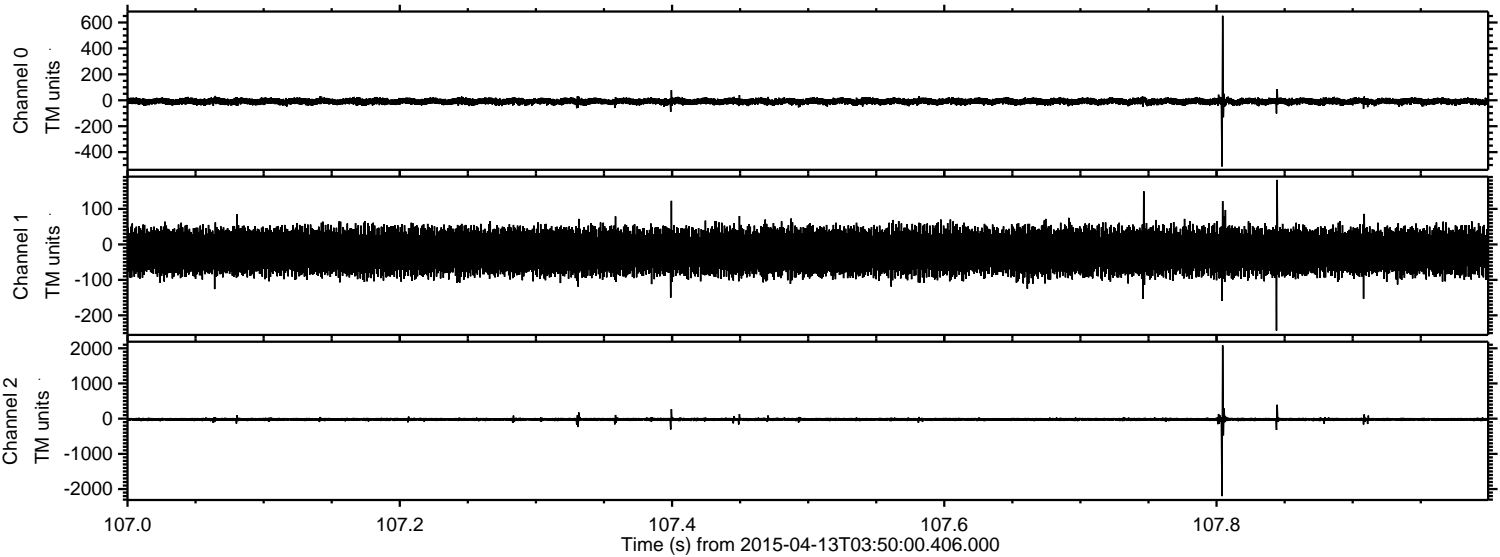
Processed Mon Apr 13 05:57:06 2015 by ELM ver.2012-10-06 from 001\_\_elm20150413\_034959\_\_dat00.bin





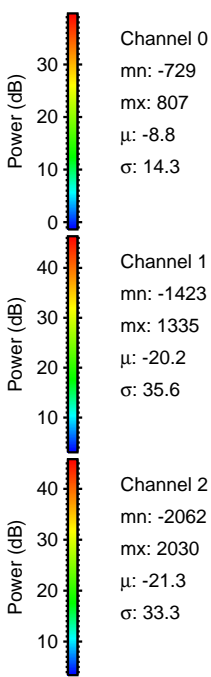
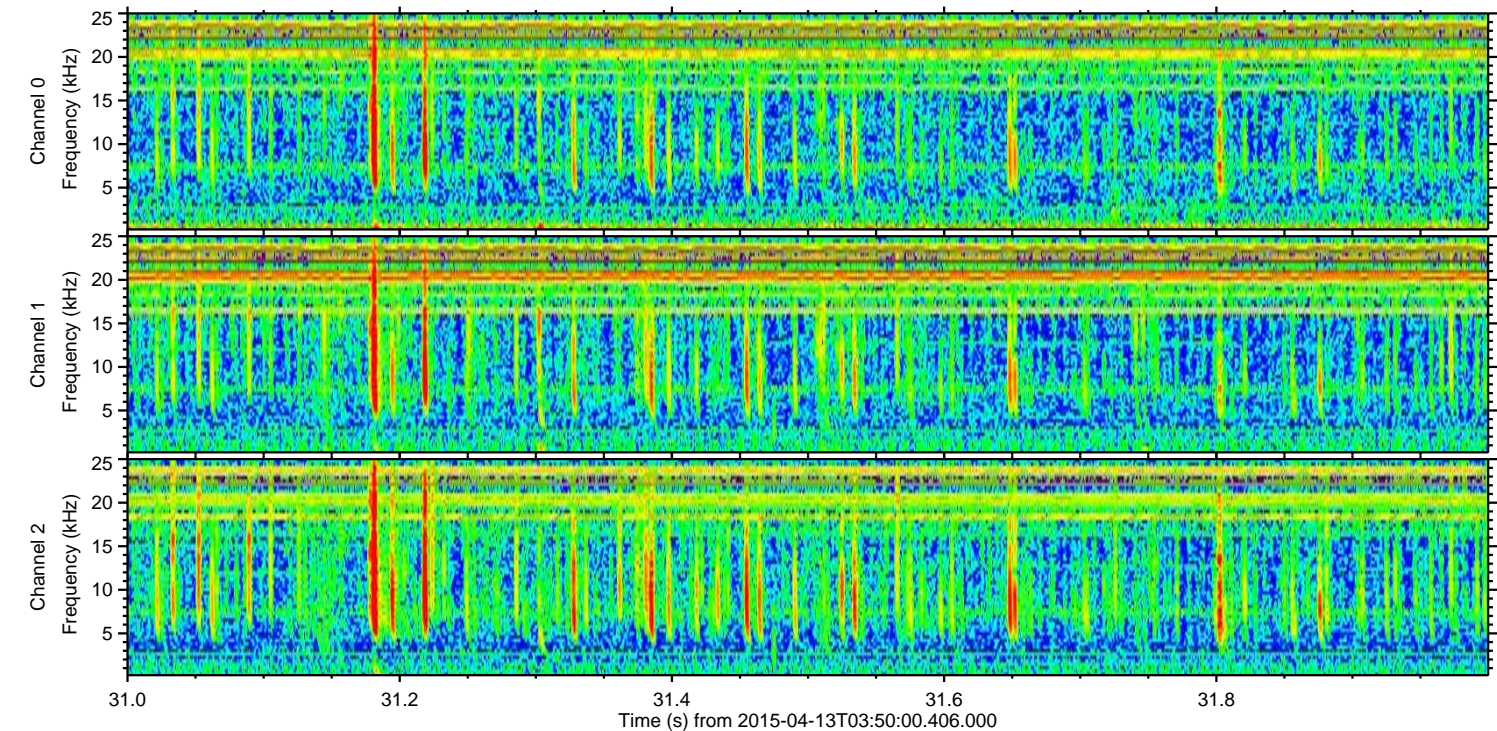
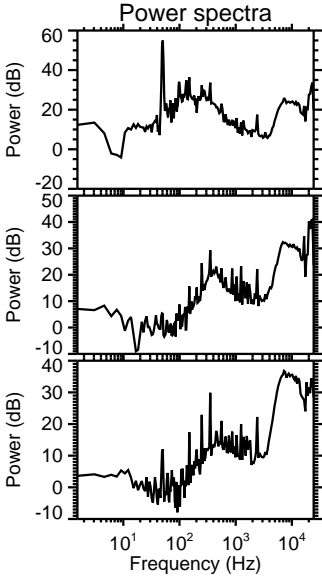
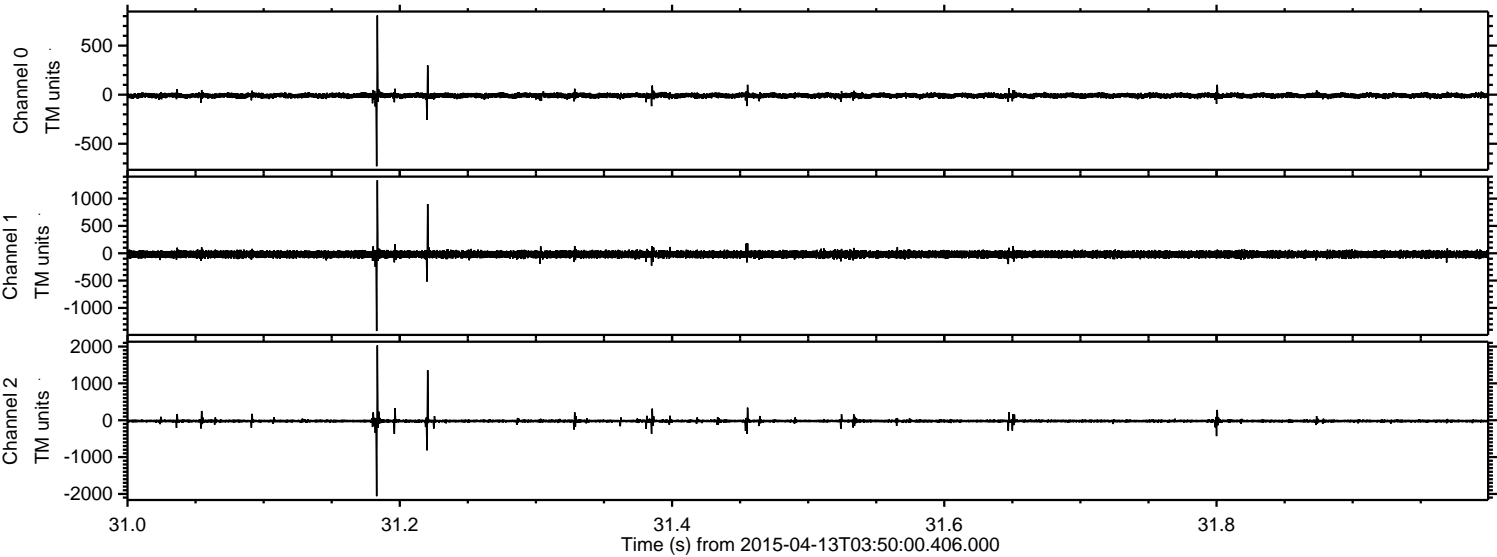
ELMAVAN 3D WAVEFORMS (Measured data sampled at 50 kHz) 49785 packets of 144 samples from 2015-04-13T03:50:00.406.000. Part 108/144

Processed Mon Apr 13 05:57:07 2015 by ELM ver.2012-10-06 from 001\_\_elm20150413\_034959\_\_dat00.bin





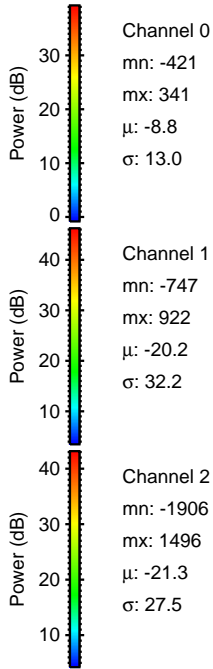
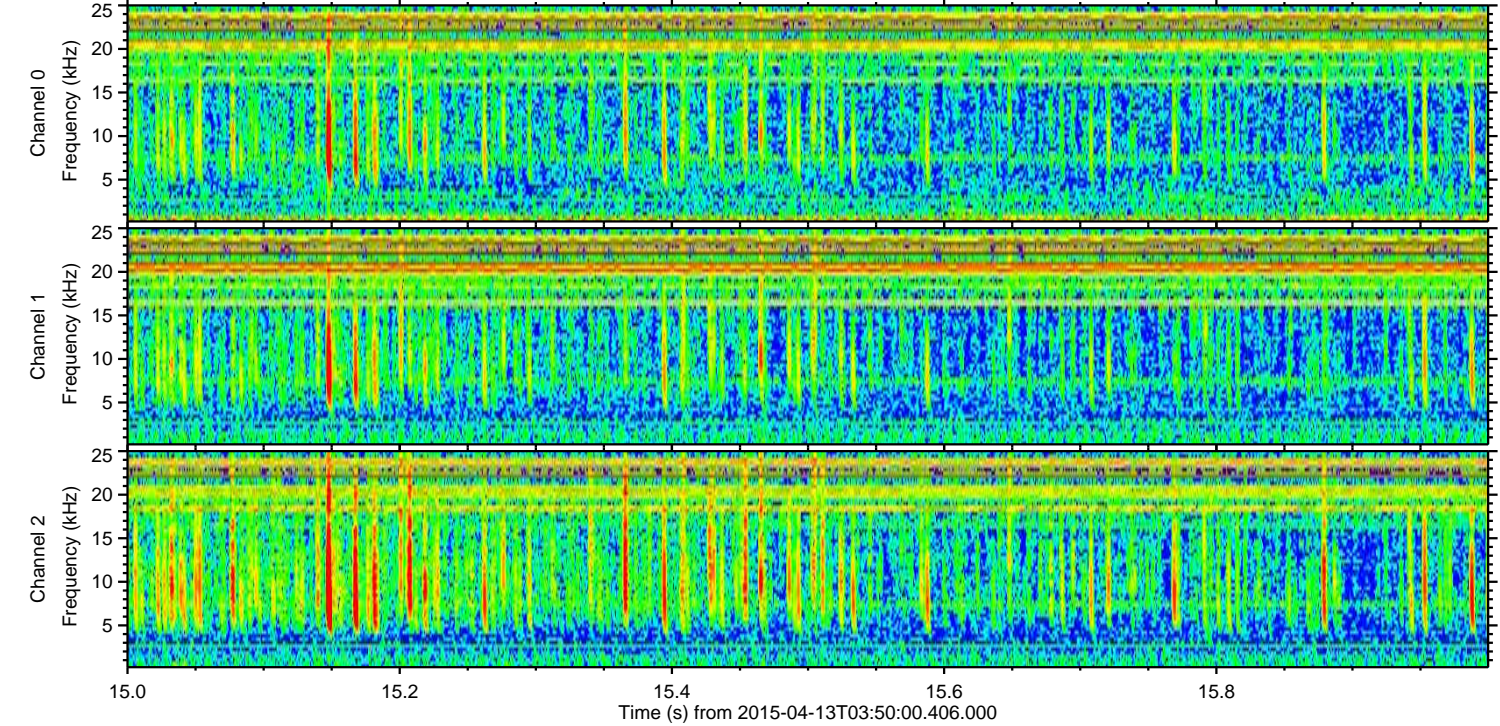
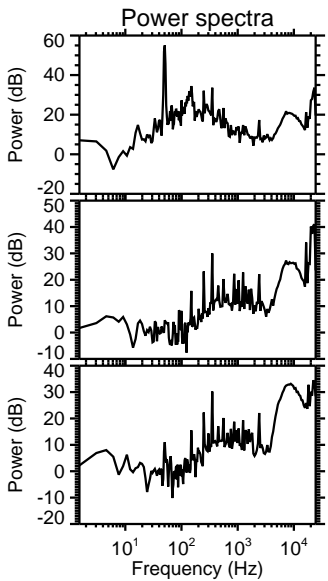
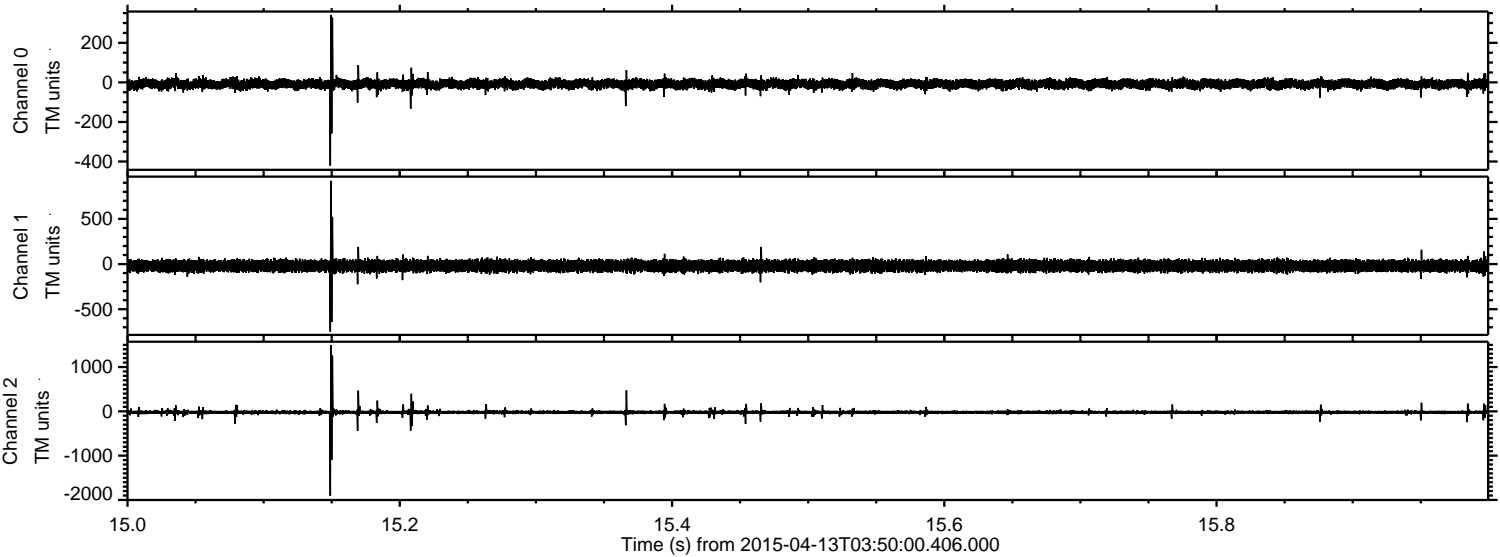
Processed Mon Apr 13 05:57:08 2015 by ELM ver.2012-10-06 from 001\_\_elm20150413\_034959\_\_dat00.bin





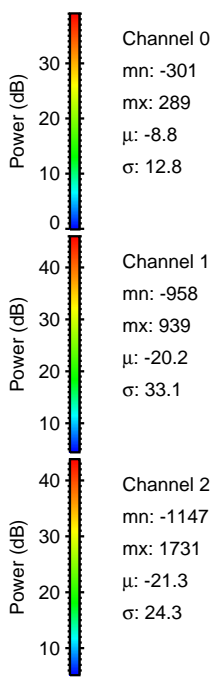
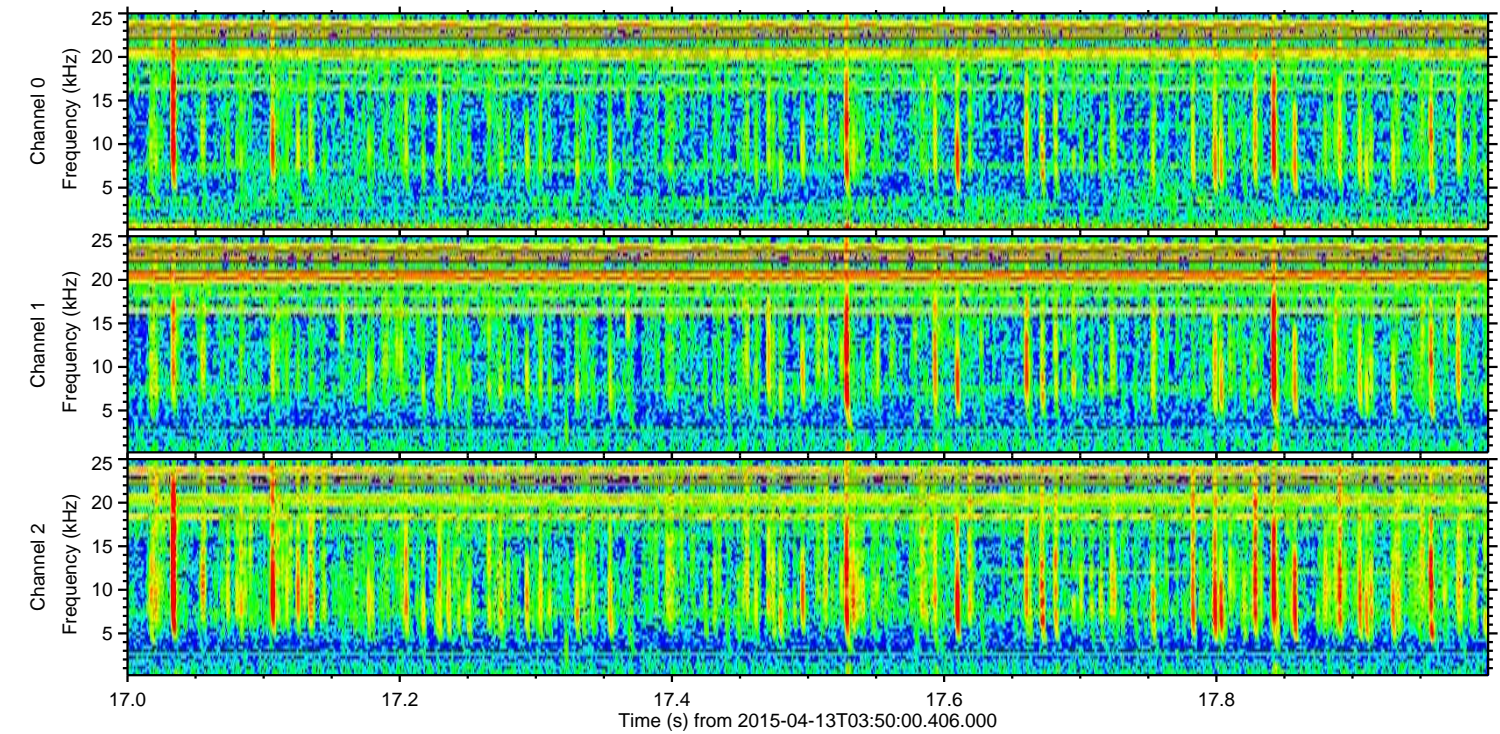
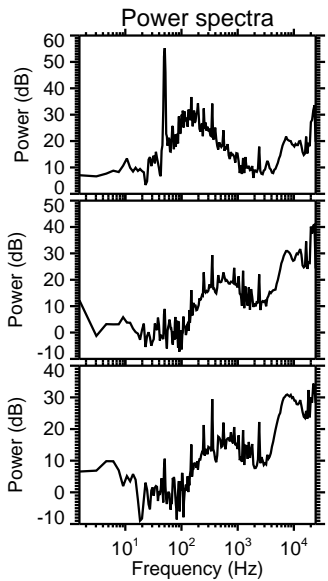
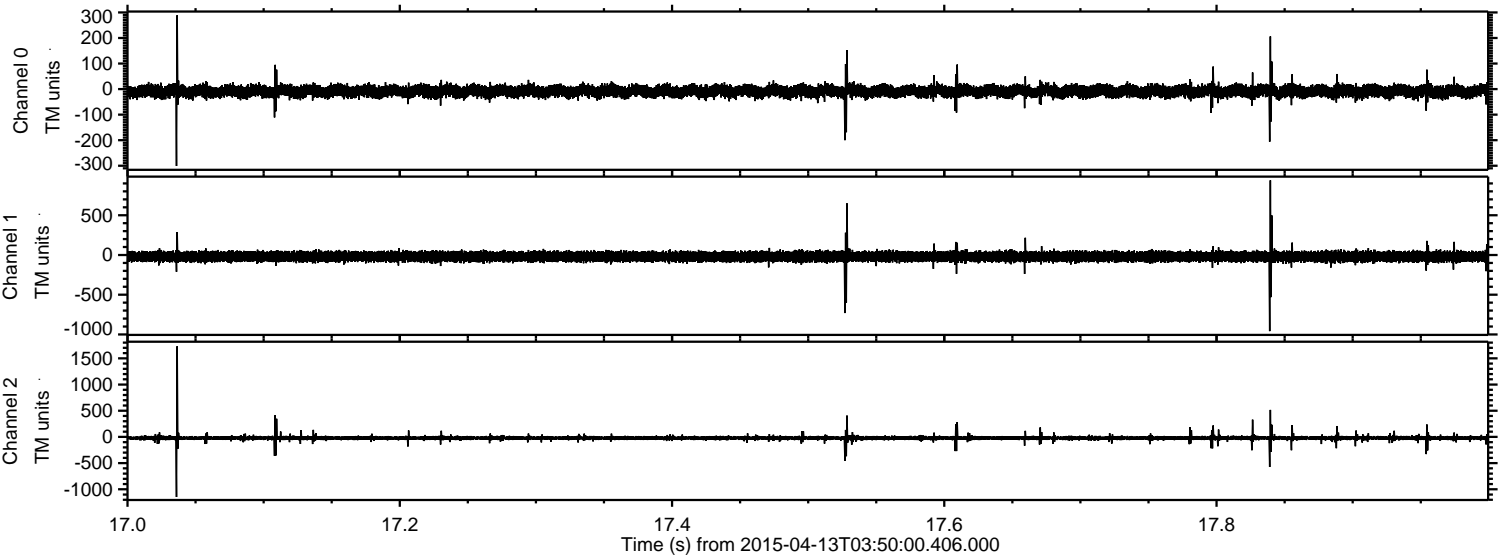
ELMAVAN 3D WAVEFORMS (Measured data sampled at 50 kHz) 49785 packets of 144 samples from 2015-04-13T03:50:00.406.000. Part 16/144

Processed Mon Apr 13 05:57:09 2015 by ELM ver.2012-10-06 from 001\_\_elm20150413\_034959\_\_dat00.bin





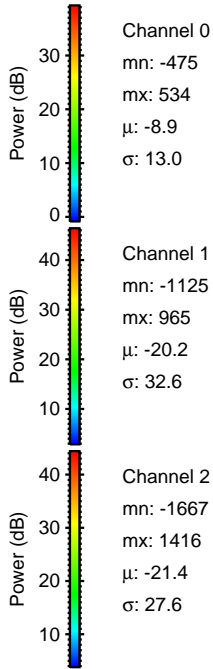
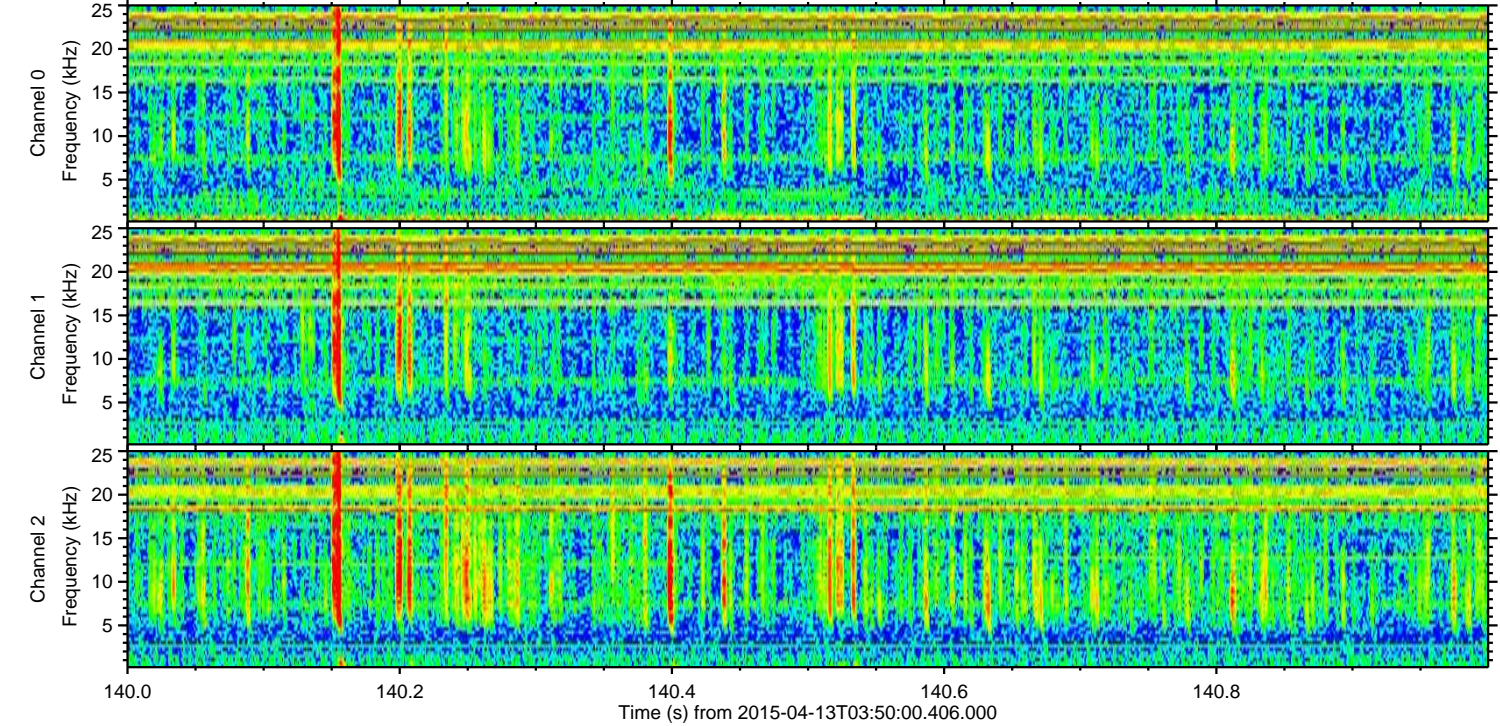
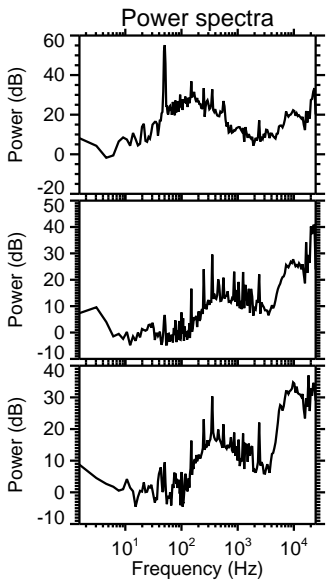
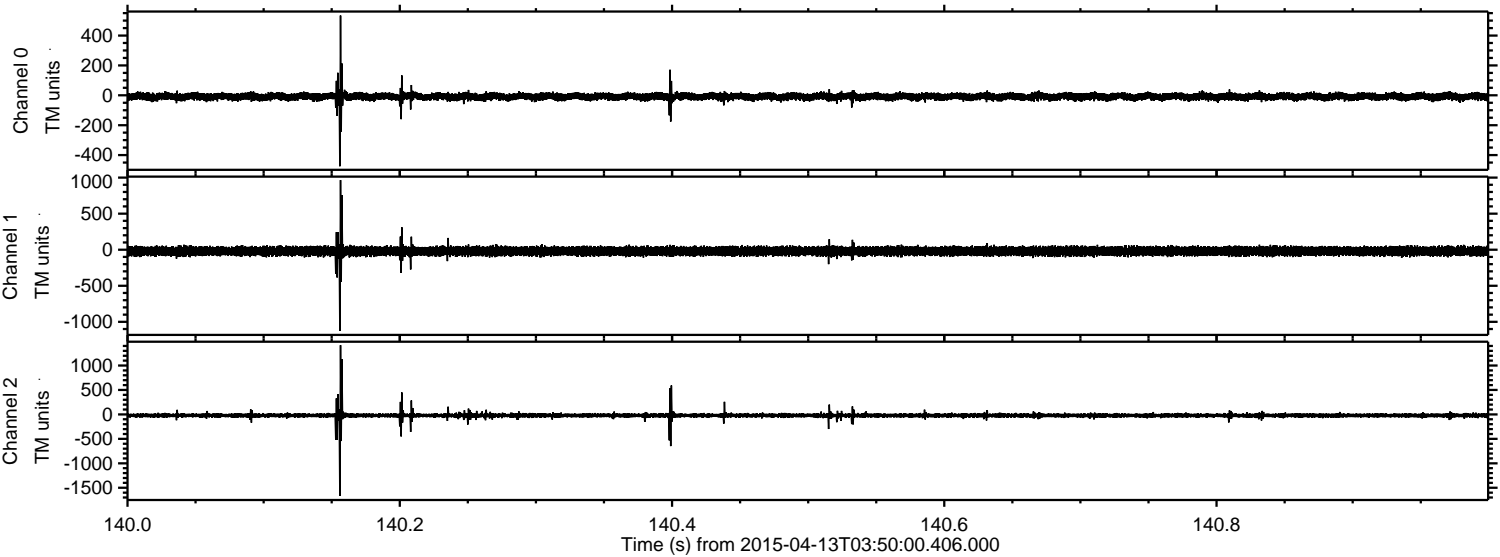
Processed Mon Apr 13 05:57:10 2015 by ELM ver.2012-10-06 from 001\_\_elm20150413\_034959\_\_dat00.bin





ELMAVAN 3D WAVEFORMS (Measured data sampled at 50 kHz) 49785 packets of 144 samples from 2015-04-13T03:50:00.406.000. Part 141/144

Processed Mon Apr 13 05:57:11 2015 by ELM ver.2012-10-06 from 001\_\_elm20150413\_034959\_\_dat00.bin



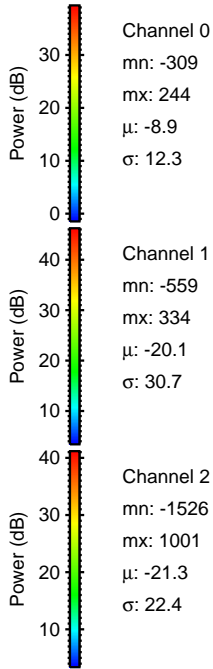
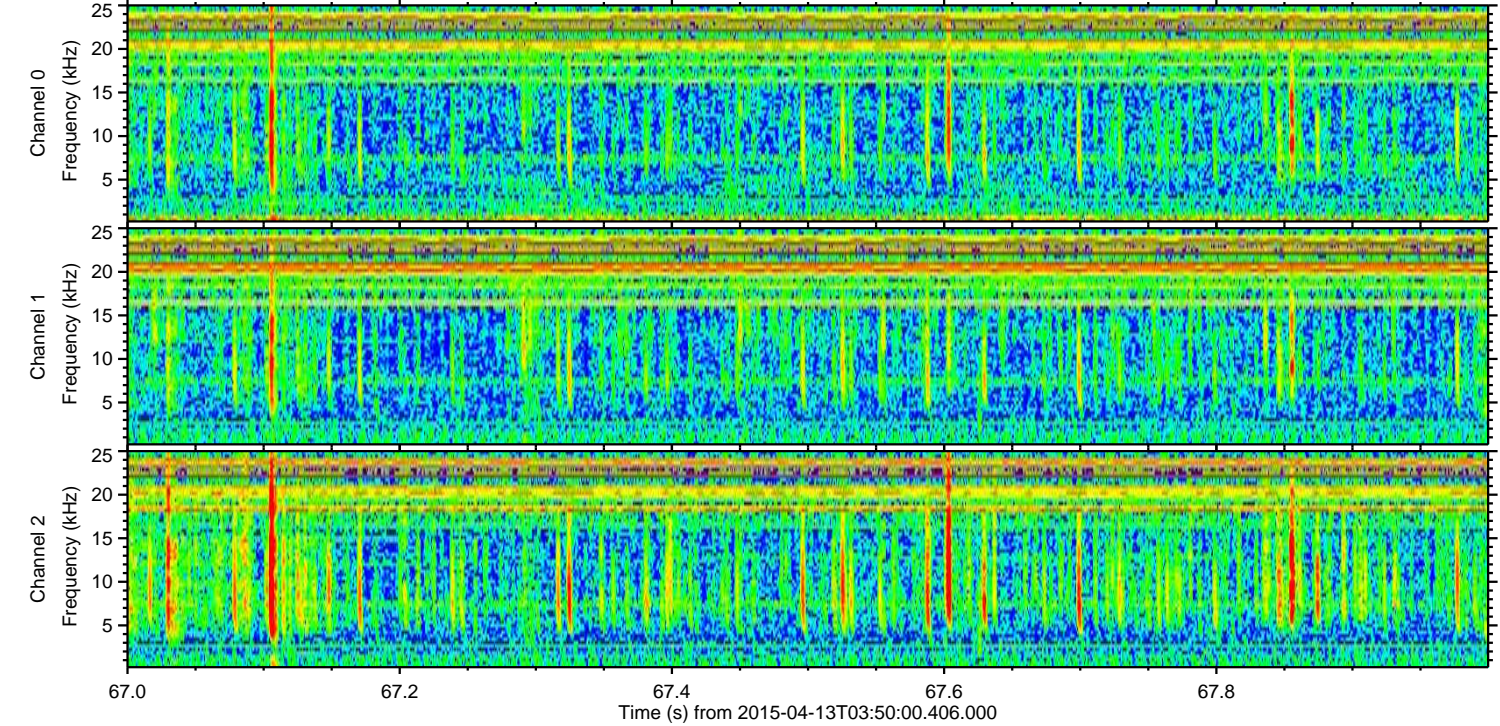
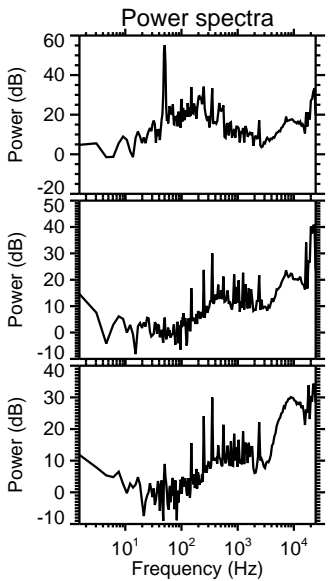
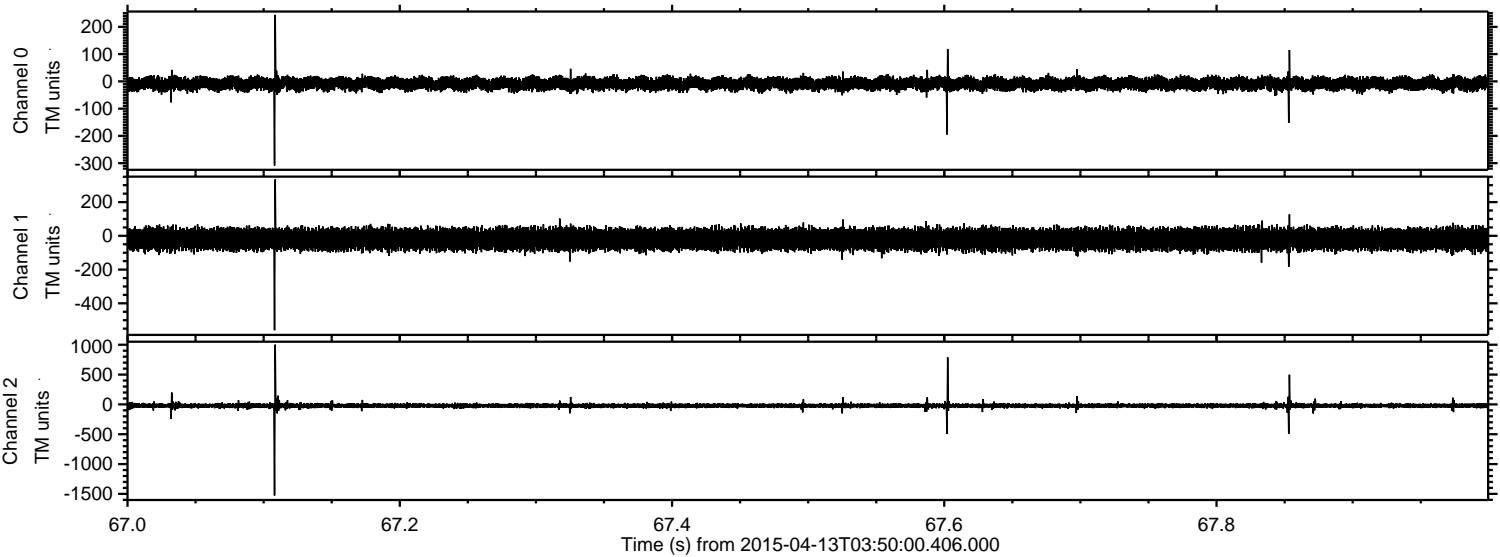
Channel 0  
mn: -475  
mx: 534  
 $\mu$ : -8.9  
 $\sigma$ : 13.0

Channel 1  
mn: -1125  
mx: 965  
 $\mu$ : -20.2  
 $\sigma$ : 32.6

Channel 2  
mn: -1667  
mx: 1416  
 $\mu$ : -21.4  
 $\sigma$ : 27.6

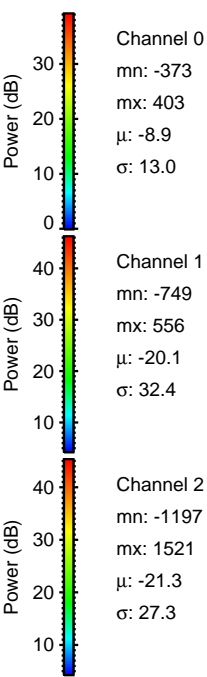
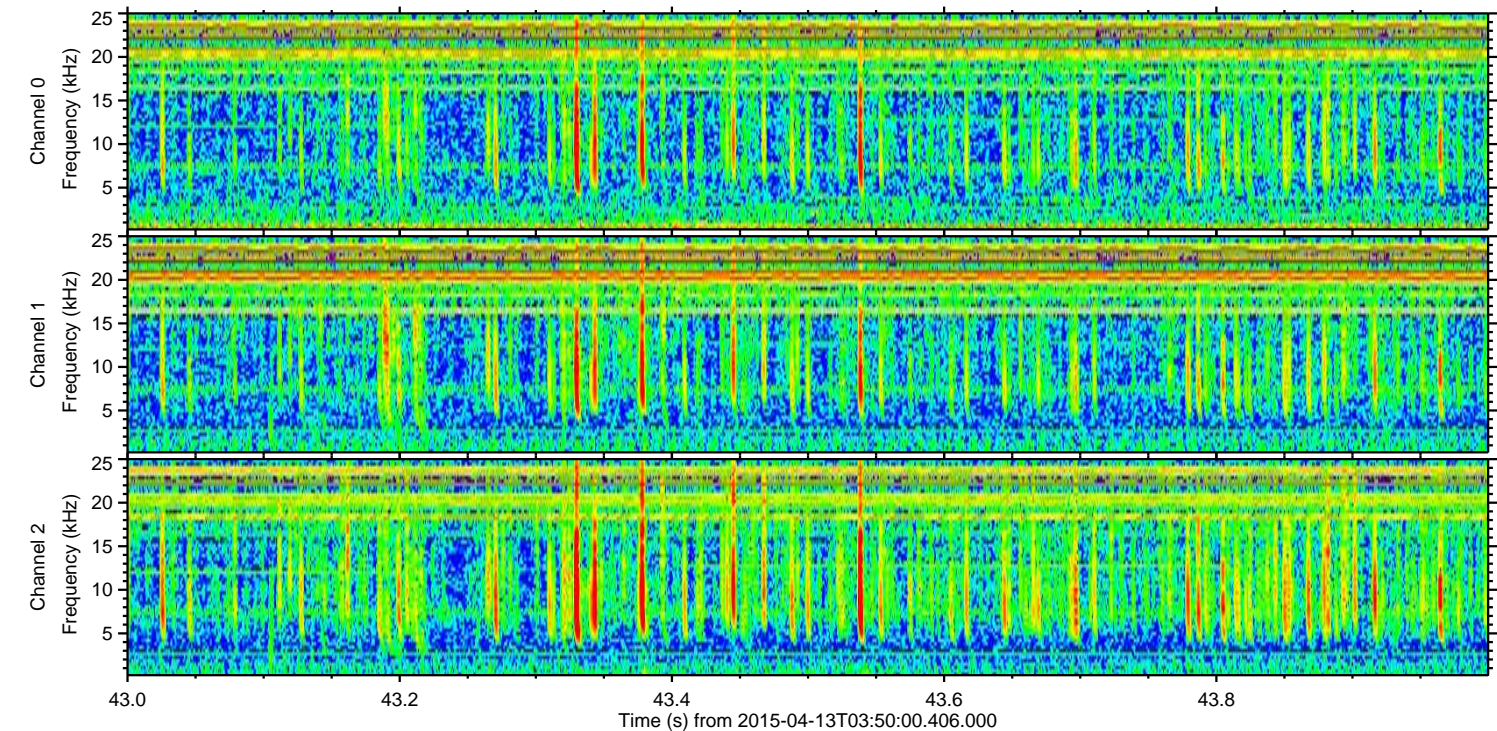
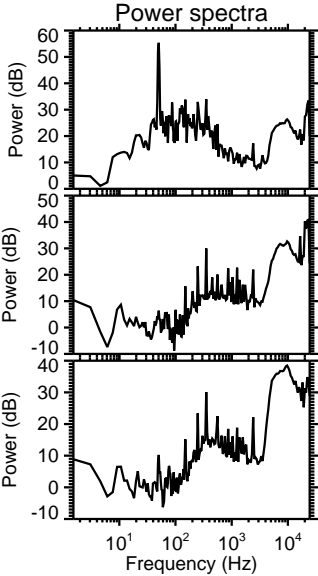
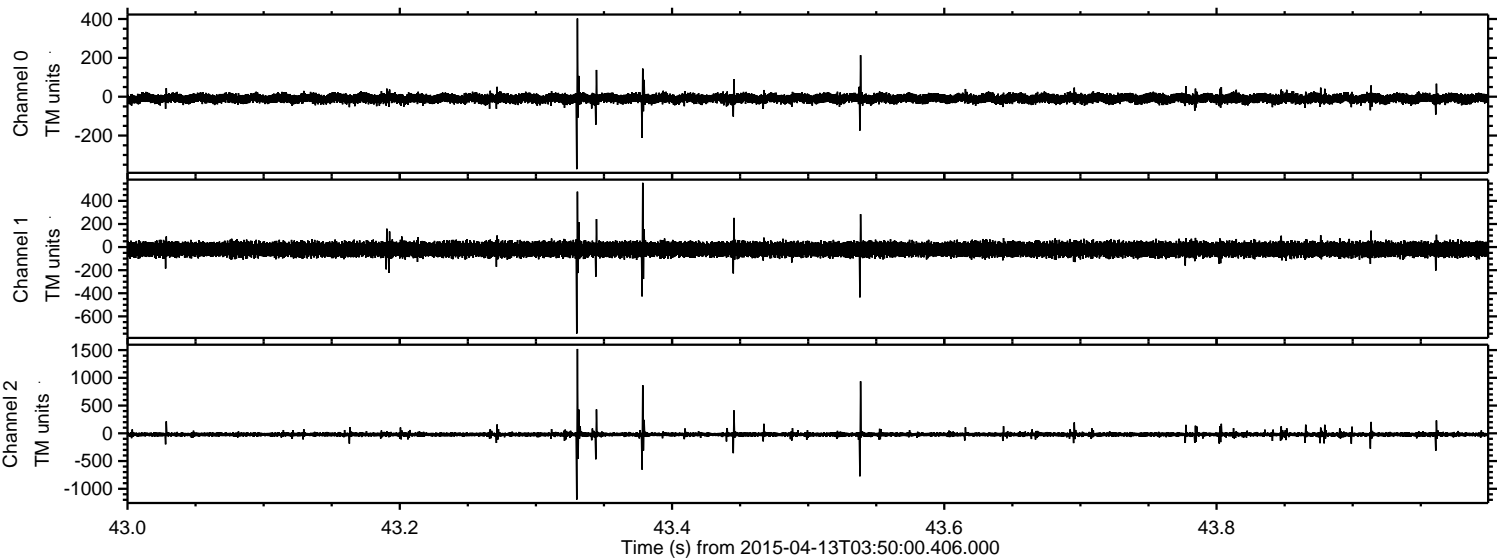


Processed Mon Apr 13 05:57:12 2015 by ELM ver.2012-10-06 from 001\_\_elm20150413\_034959\_\_dat00.bin





Processed Mon Apr 13 05:57:13 2015 by ELM ver.2012-10-06 from 001\_\_elm20150413\_034959\_\_dat00.bin





Processed Mon Apr 13 05:57:14 2015 by ELM ver.2012-10-06 from 001\_\_elm20150413\_034959\_\_dat00.bin

