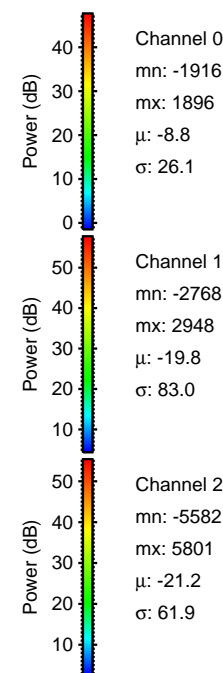
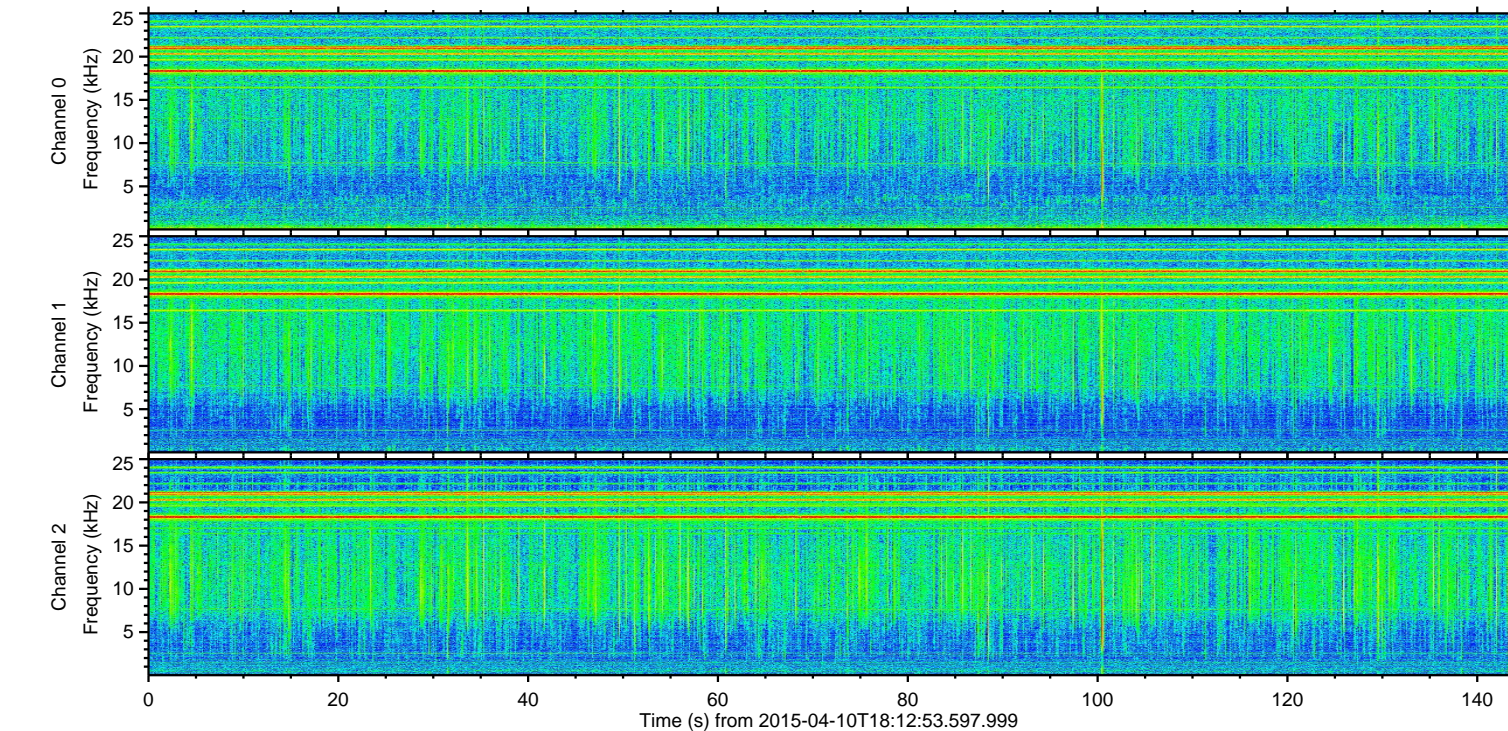
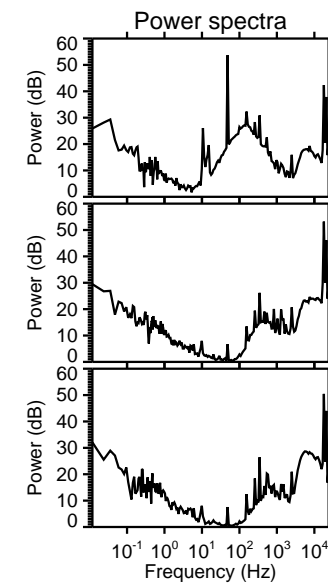
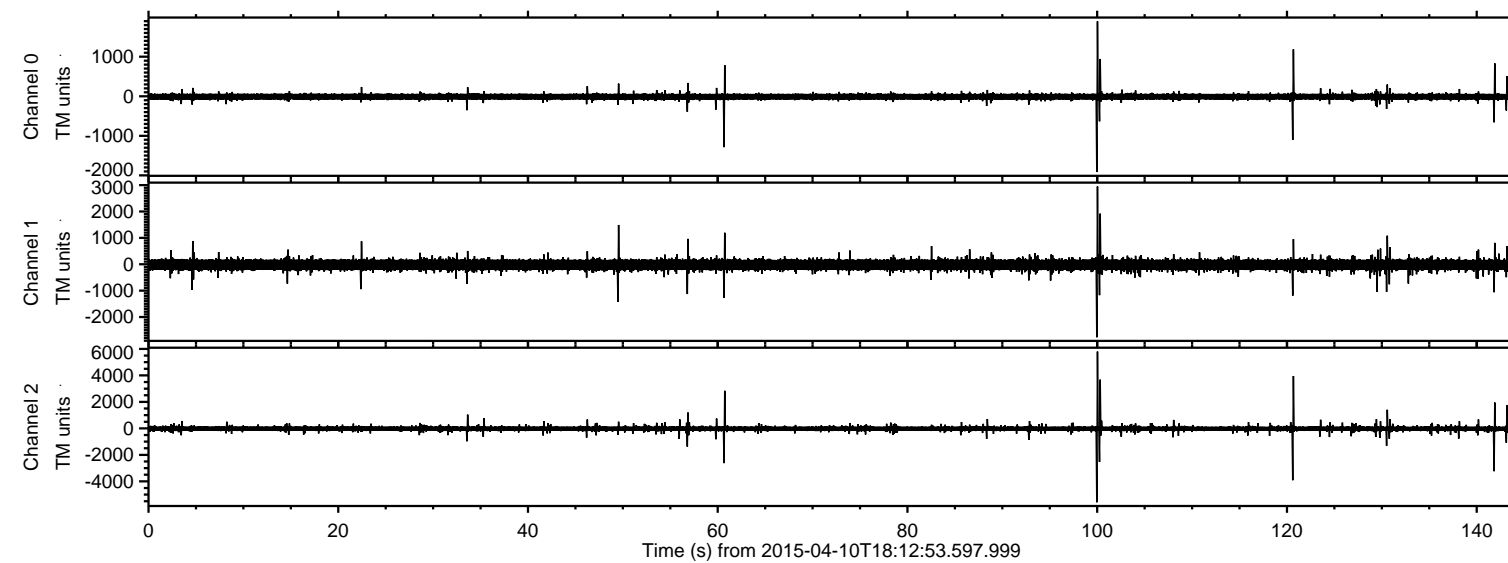


# ELMAVAN 3D WAVEFORMS (Measured data sampled at 50 kHz) 49799 packets of 144 samples from 2015-04-10T18:12:53.597.999.

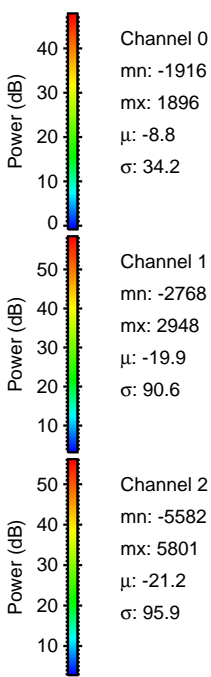
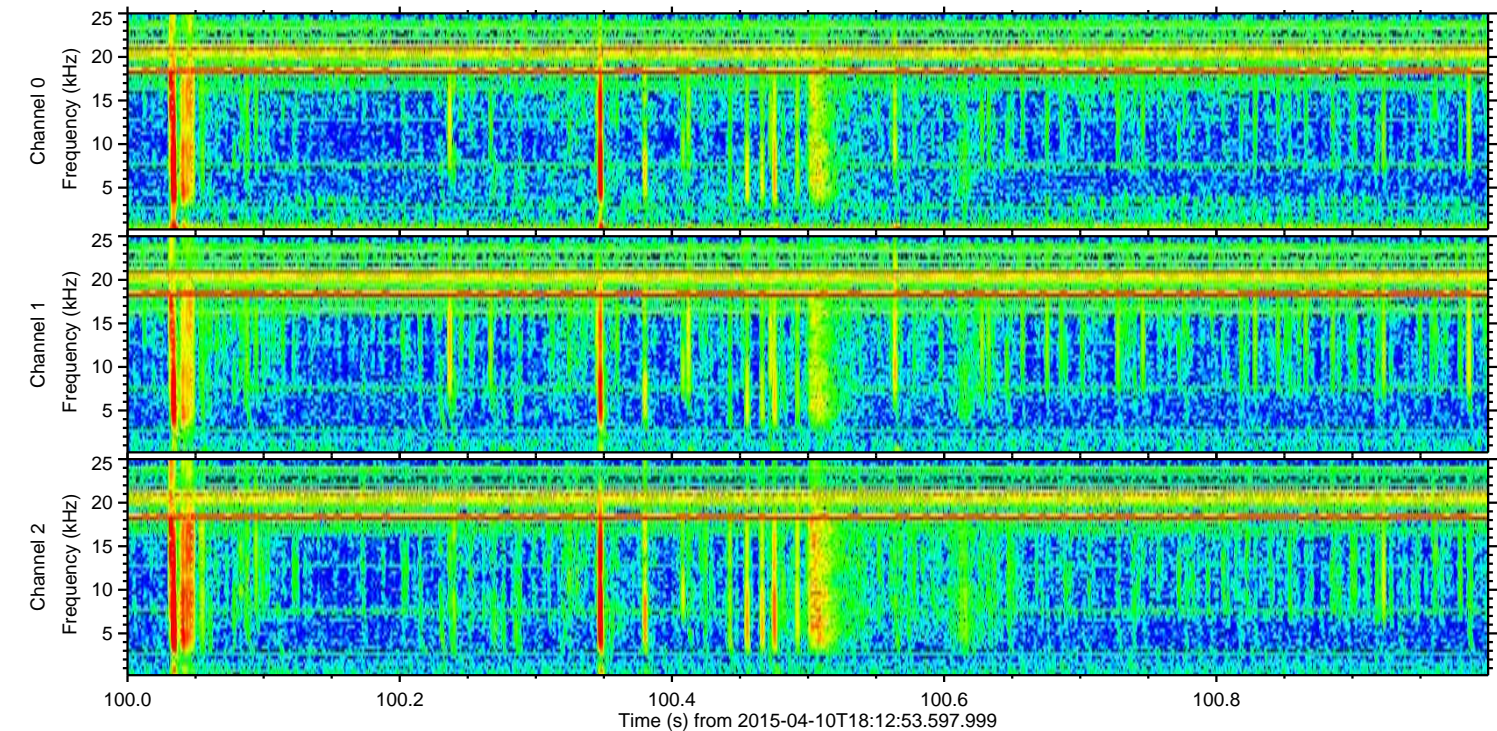
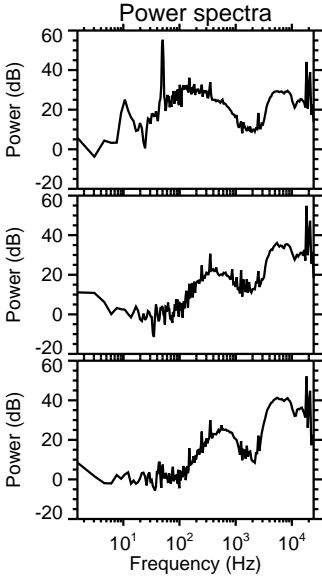
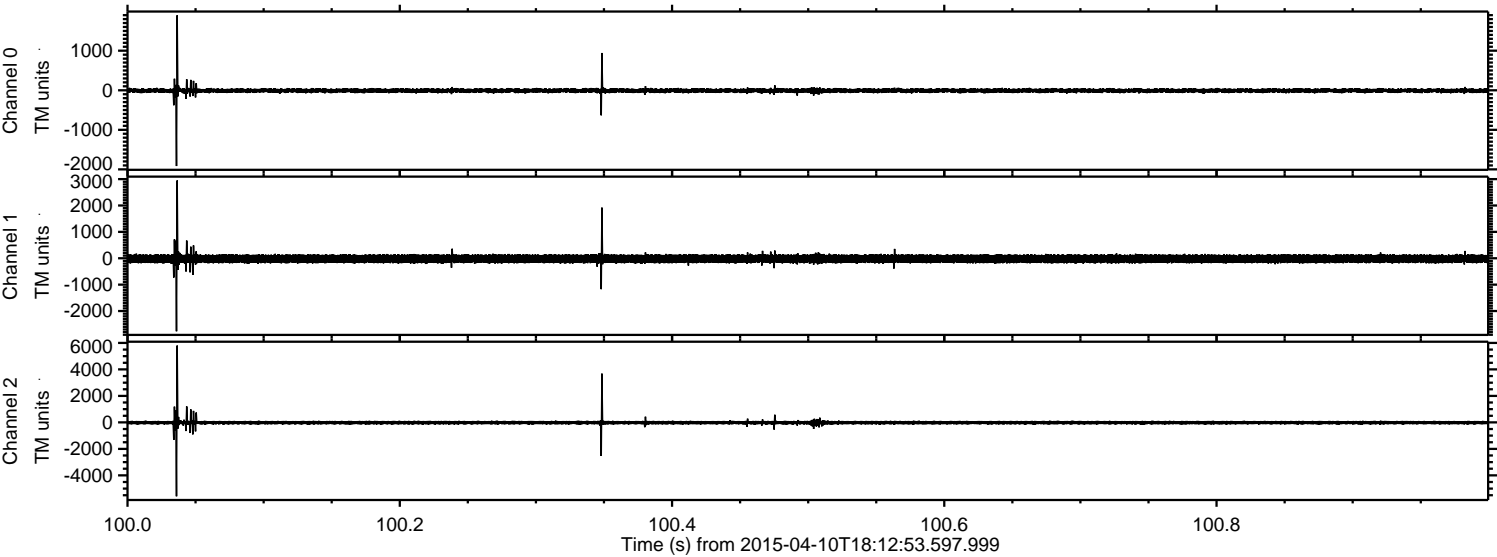
Processed Fri Apr 10 20:19:51 2015 by ELM ver.2012-10-06 from 001\_\_elm20150410\_181252\_\_dat00.bin





ELMAVAN 3D WAVEFORMS (Measured data sampled at 50 kHz) 49799 packets of 144 samples from 2015-04-10T18:12:53.597.999. Part 101/144

Processed Fri Apr 10 20:20:02 2015 by ELM ver.2012-10-06 from 001\_\_elm20150410\_181252\_\_dat00.bin



Channel 0  
mn: -1916  
mx: 1896  
 $\mu$ : -8.8  
 $\sigma$ : 34.2

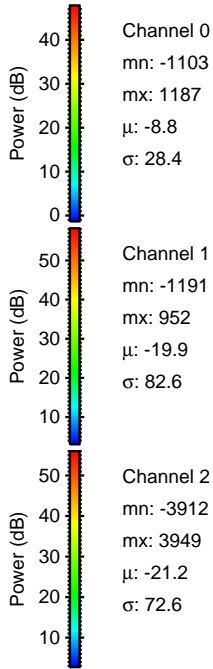
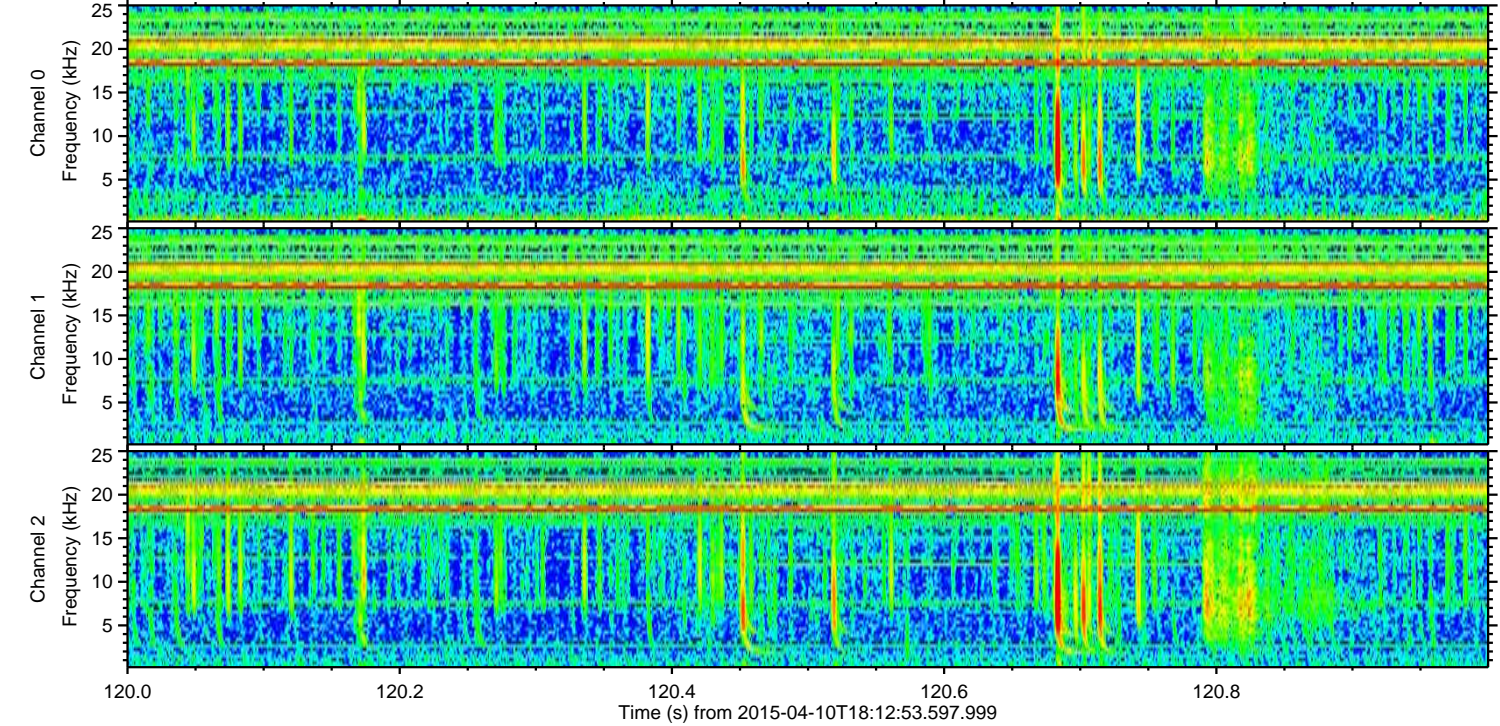
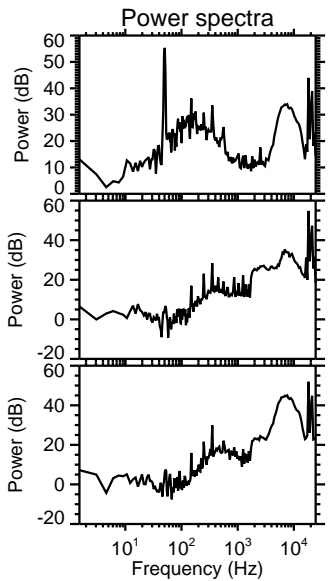
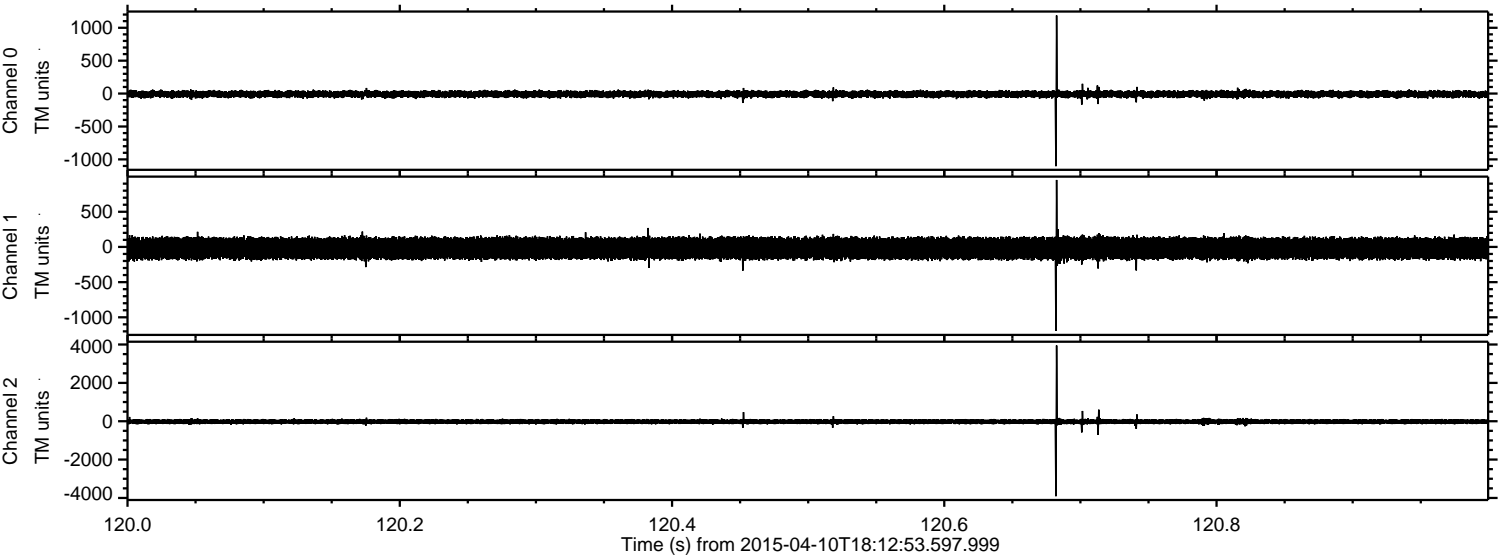
Channel 1  
mn: -2768  
mx: 2948  
 $\mu$ : -19.9  
 $\sigma$ : 90.6

Channel 2  
mn: -5582  
mx: 5801  
 $\mu$ : -21.2  
 $\sigma$ : 95.9



ELMAVAN 3D WAVEFORMS (Measured data sampled at 50 kHz) 49799 packets of 144 samples from 2015-04-10T18:12:53.597.999. Part 121/144

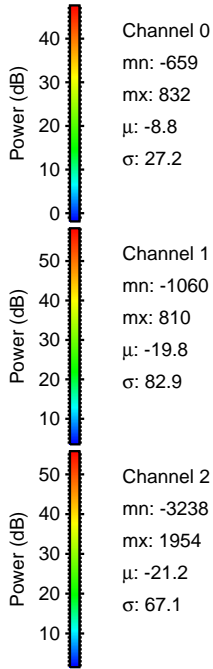
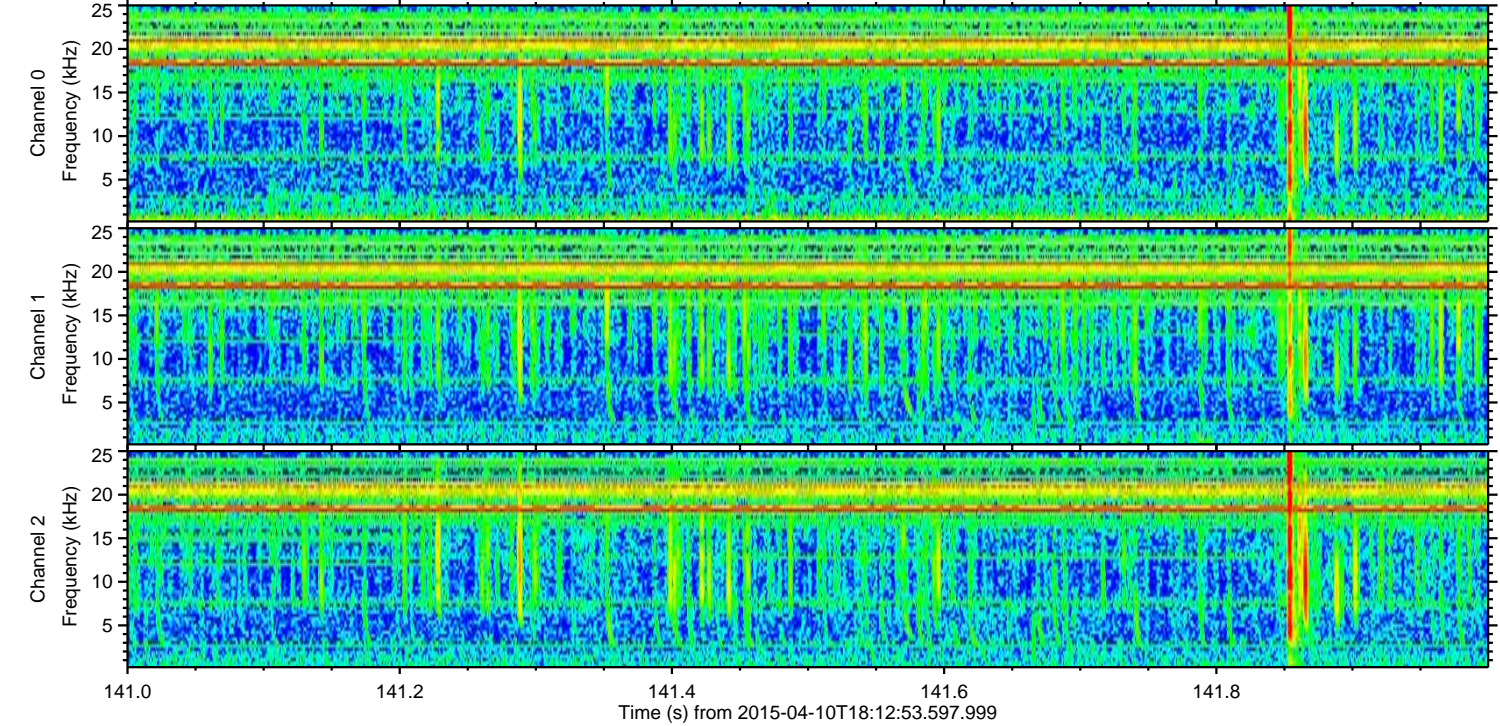
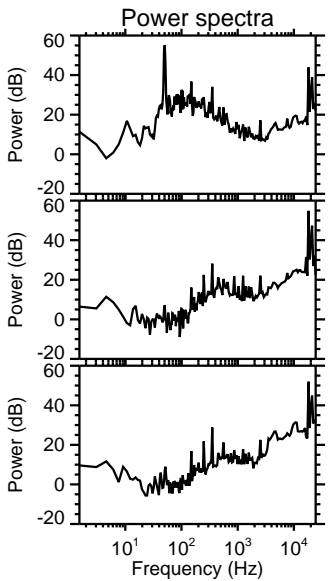
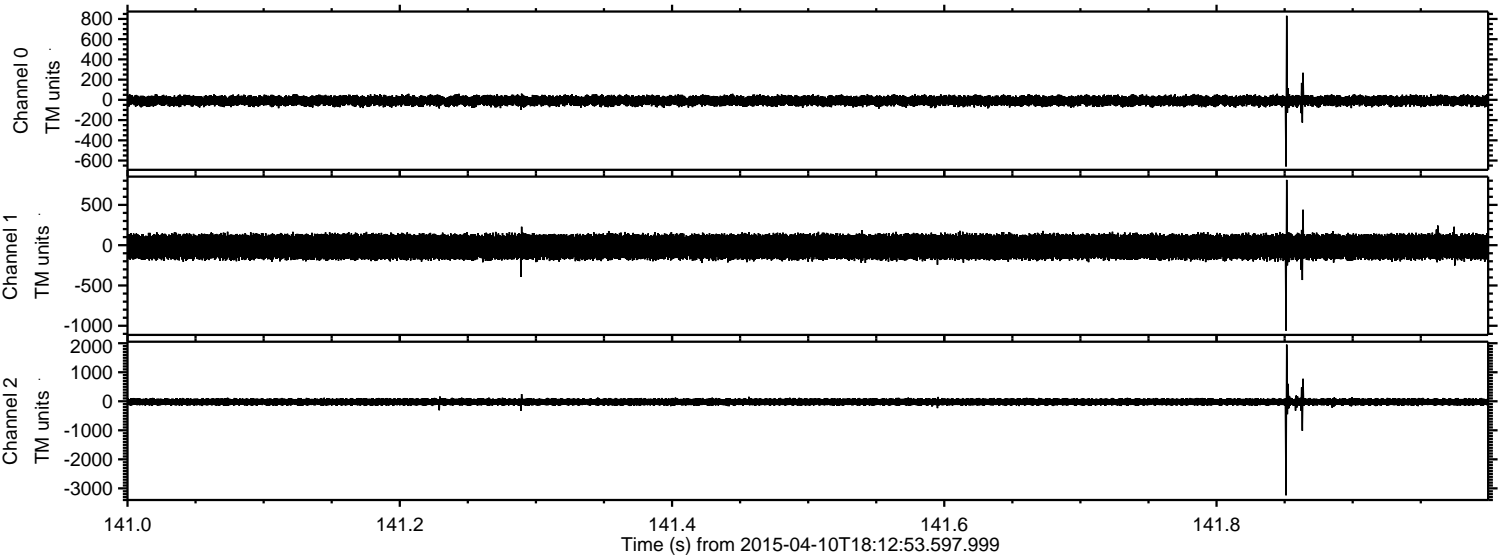
Processed Fri Apr 10 20:20:03 2015 by ELM ver.2012-10-06 from 001\_\_elm20150410\_181252\_\_dat00.bin





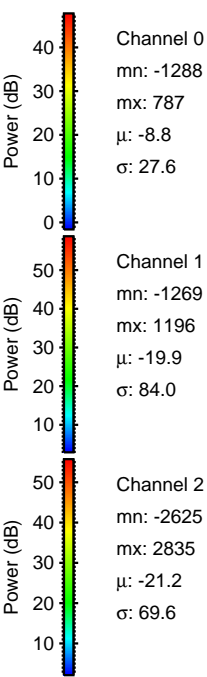
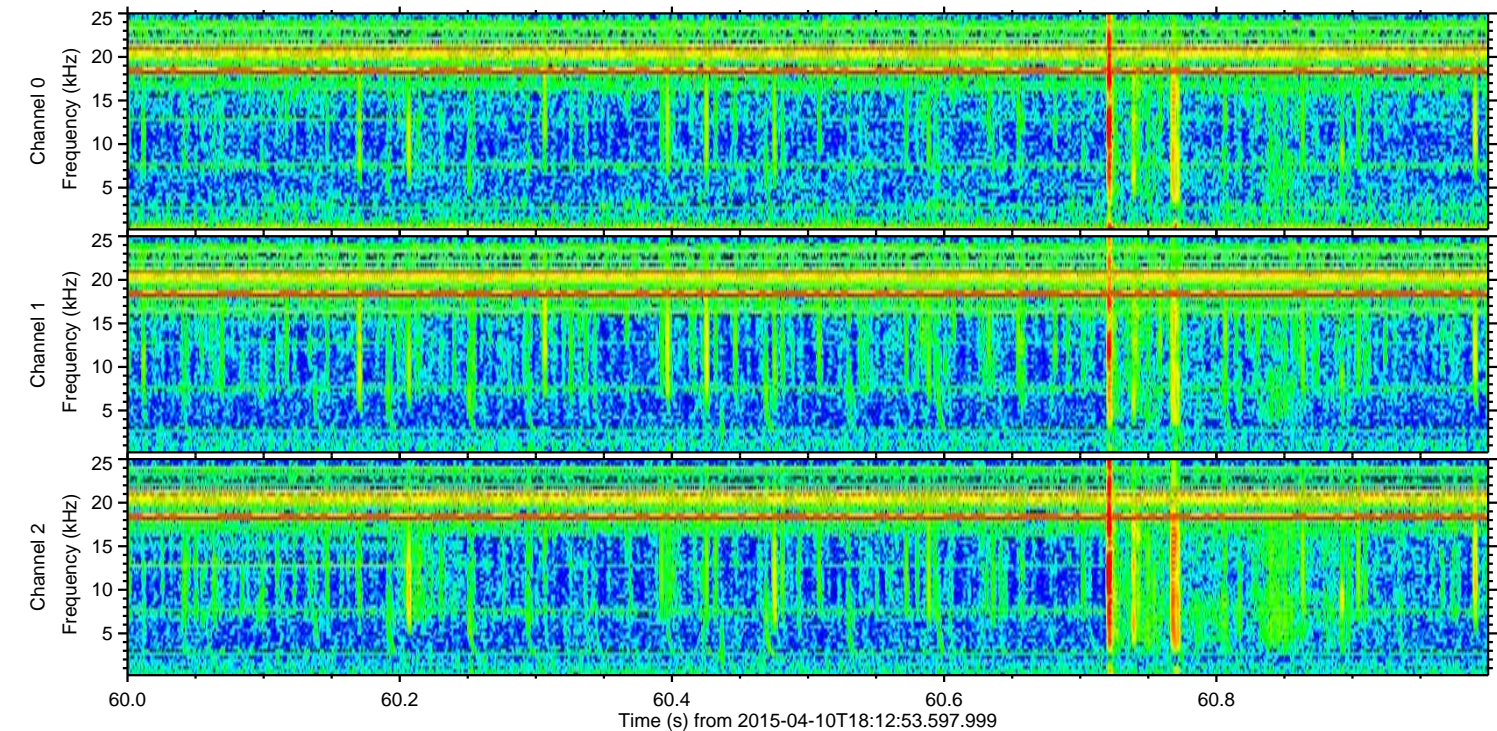
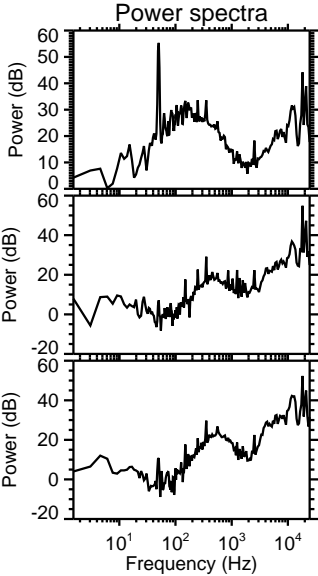
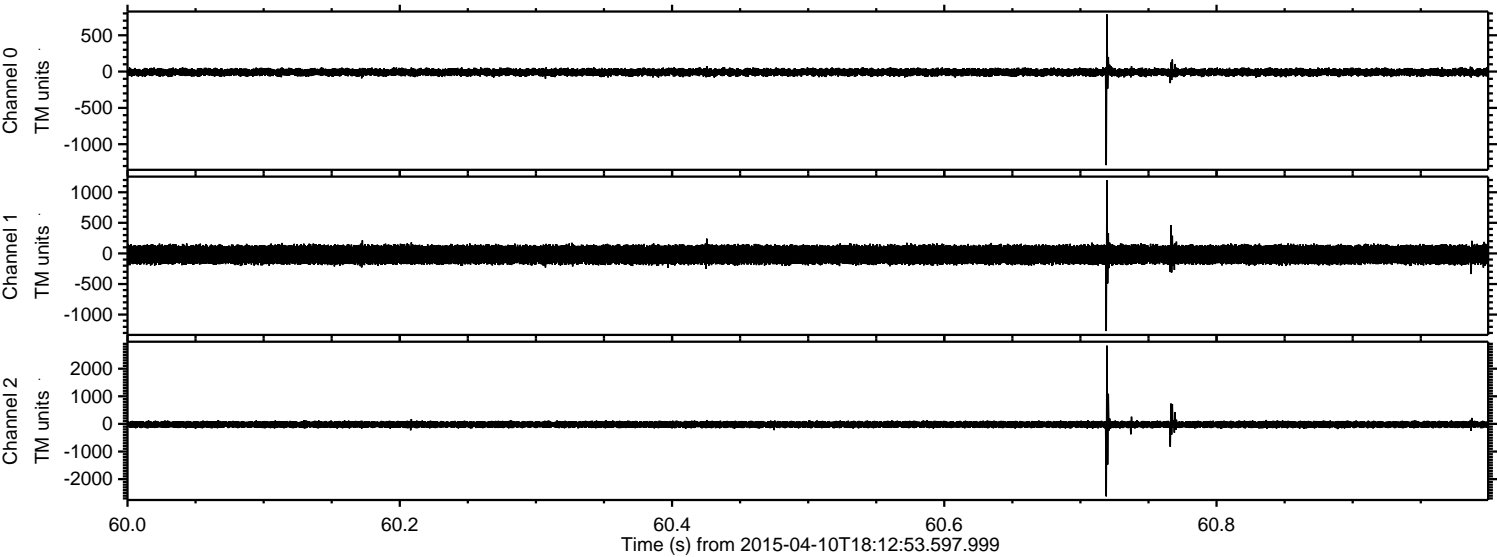
ELMAVAN 3D WAVEFORMS (Measured data sampled at 50 kHz) 49799 packets of 144 samples from 2015-04-10T18:12:53.597.999. Part 142/144

Processed Fri Apr 10 20:20:04 2015 by ELM ver.2012-10-06 from 001\_\_elm20150410\_181252\_\_dat00.bin



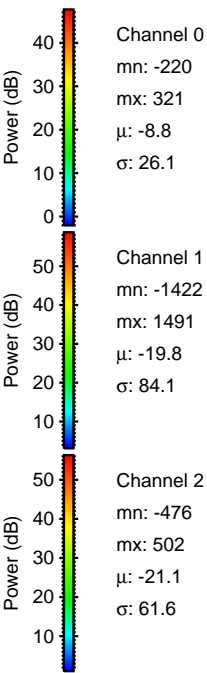
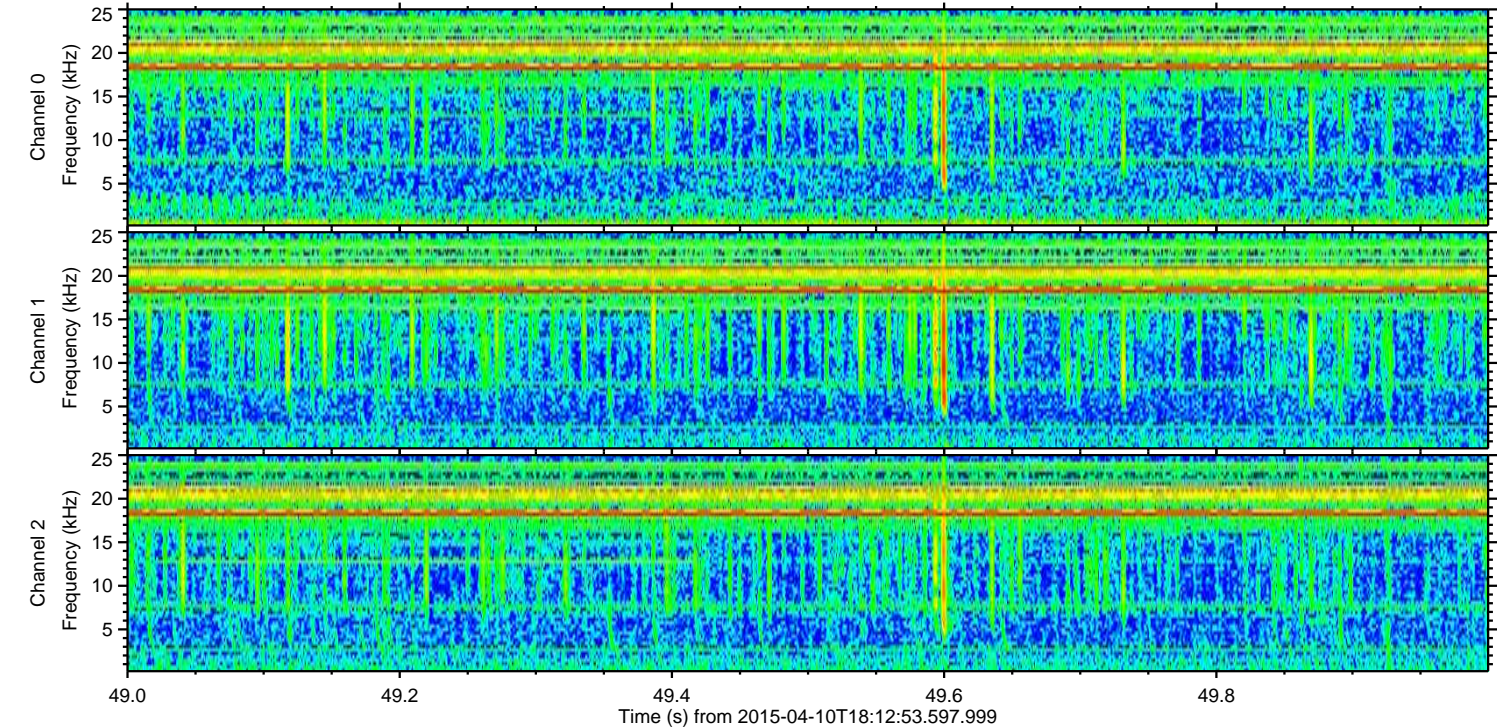
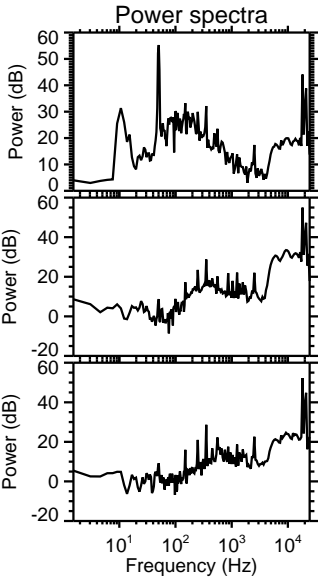
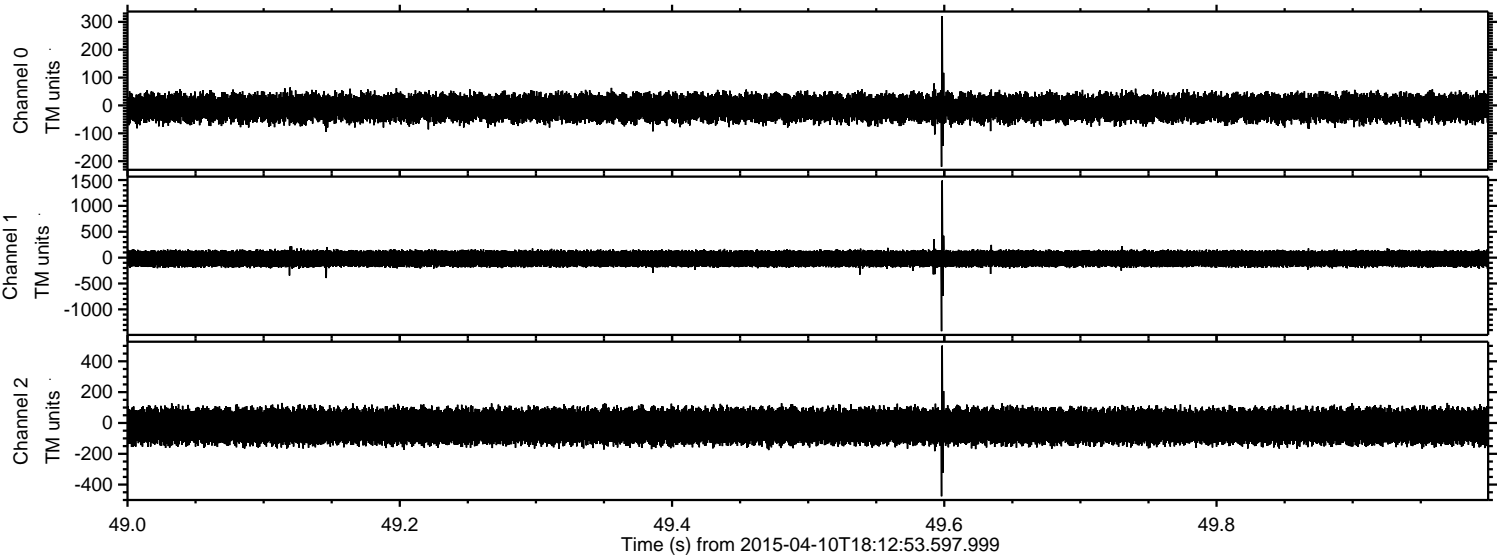


Processed Fri Apr 10 20:20:05 2015 by ELM ver.2012-10-06 from 001\_\_elm20150410\_181252\_\_dat00.bin





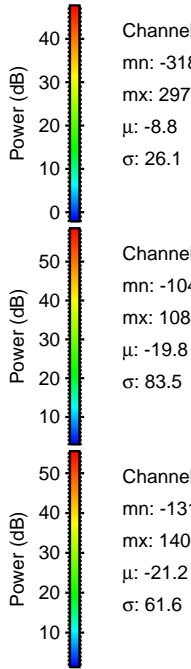
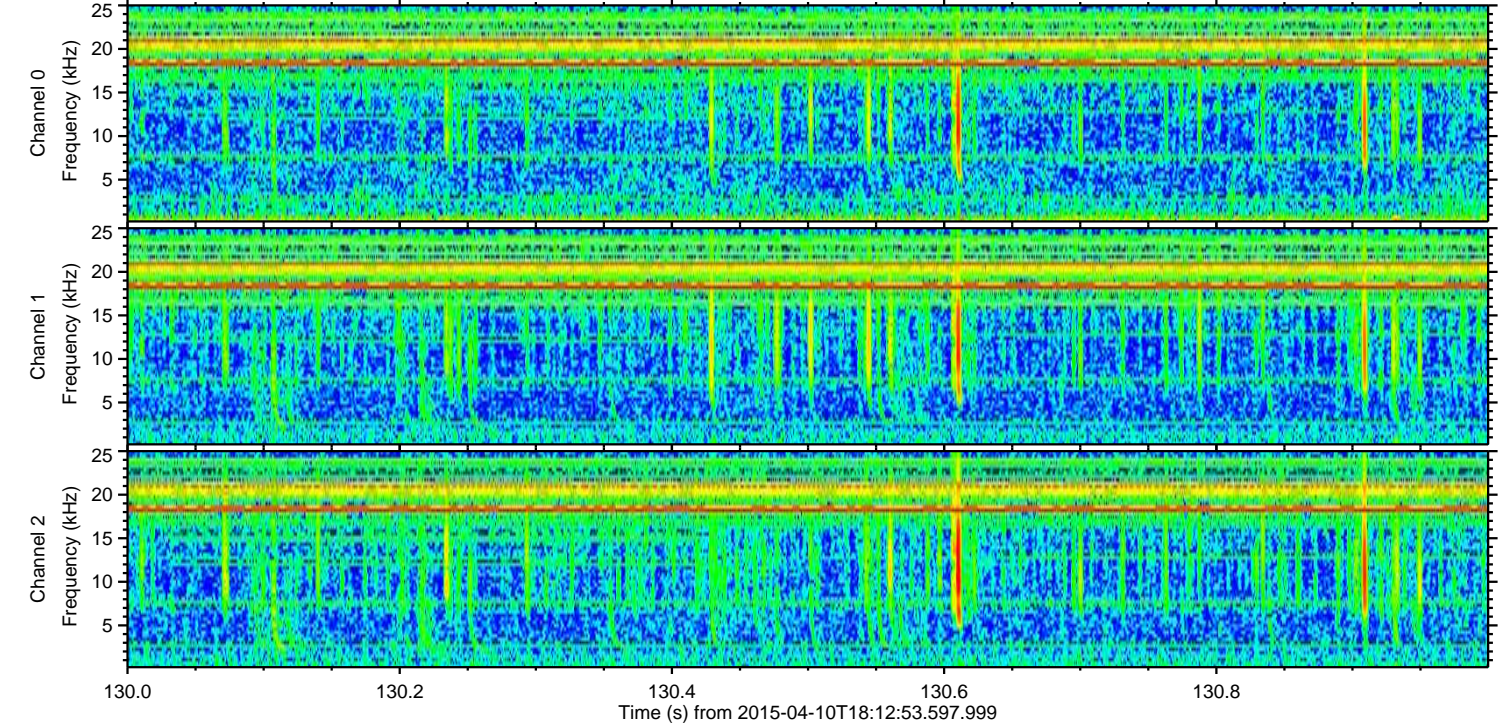
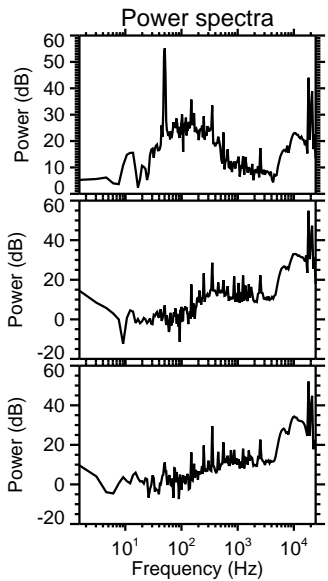
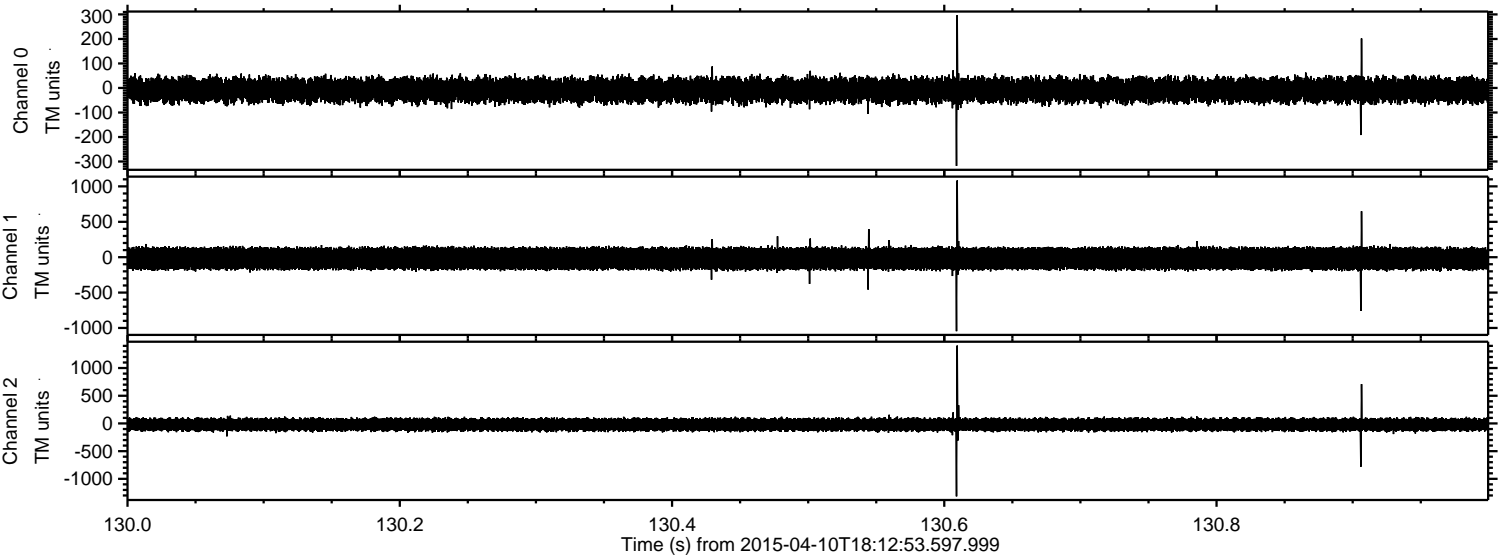
Processed Fri Apr 10 20:20:06 2015 by ELM ver.2012-10-06 from 001\_\_elm20150410\_181252\_\_dat00.bin





ELMAVAN 3D WAVEFORMS (Measured data sampled at 50 kHz) 49799 packets of 144 samples from 2015-04-10T18:12:53.597.999. Part 131/144

Processed Fri Apr 10 20:20:07 2015 by ELM ver.2012-10-06 from 001\_\_elm20150410\_181252\_\_dat00.bin



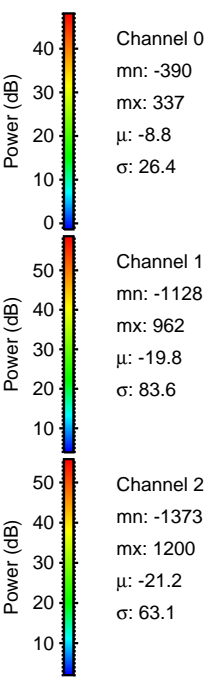
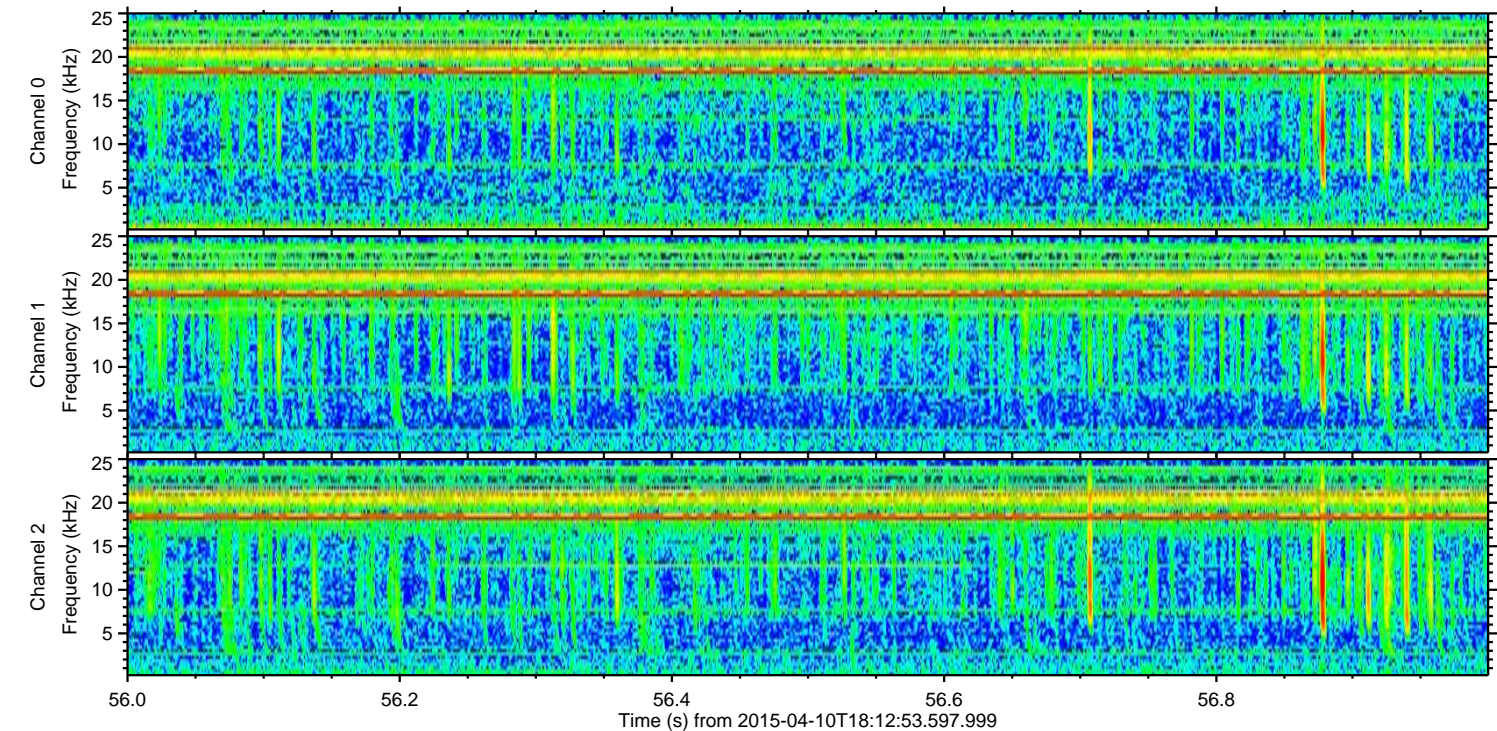
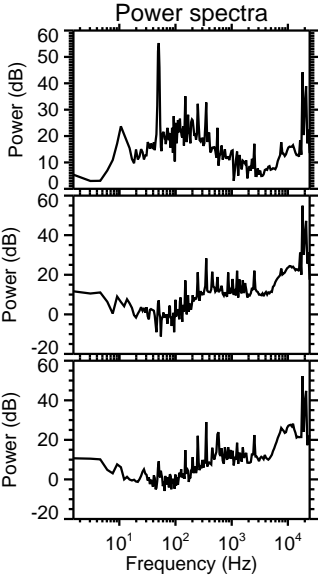
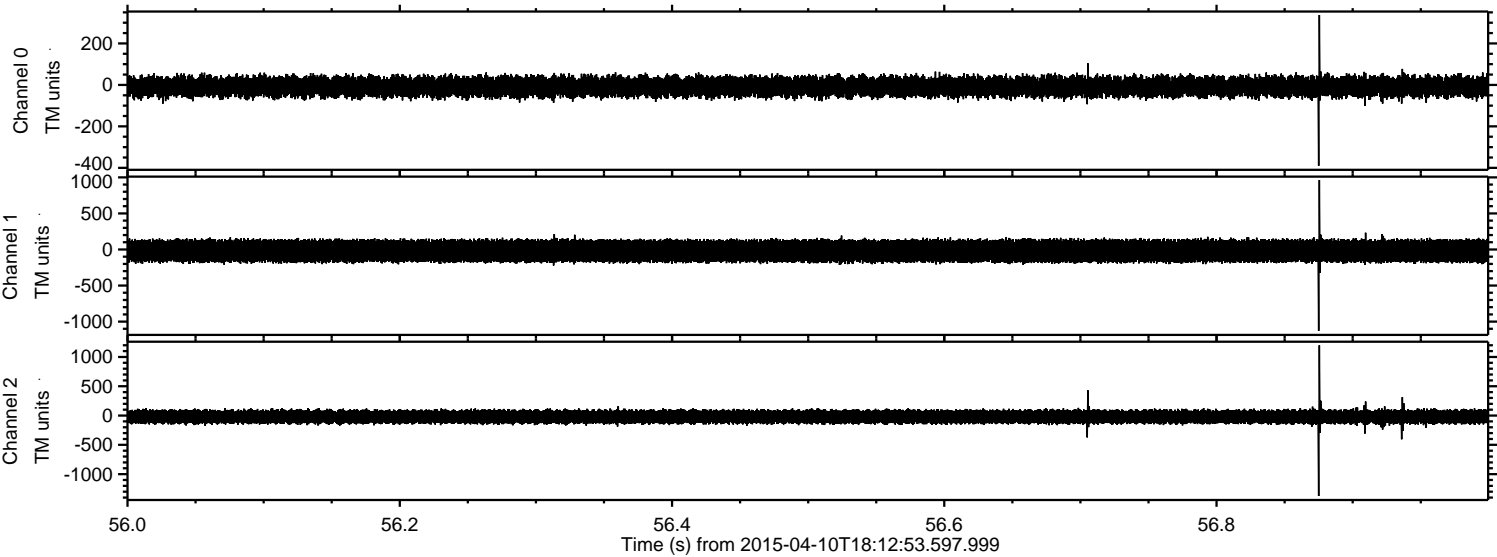
Channel 0  
mn: -318  
mx: 297  
 $\mu$ : -8.8  
 $\sigma$ : 26.1

Channel 1  
mn: -1046  
mx: 1084  
 $\mu$ : -19.8  
 $\sigma$ : 83.5

Channel 2  
mn: -1316  
mx: 1405  
 $\mu$ : -21.2  
 $\sigma$ : 61.6

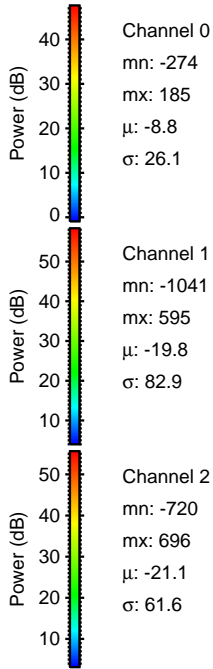
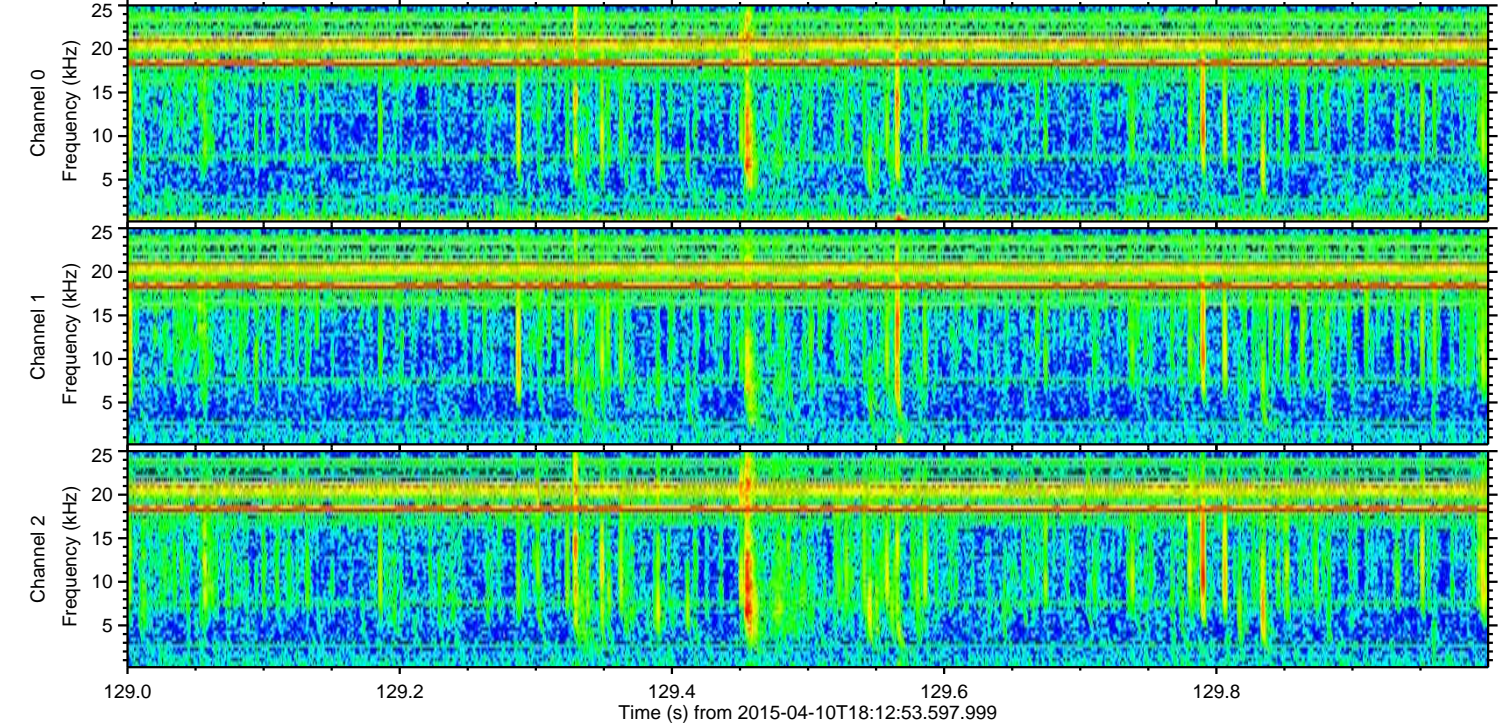
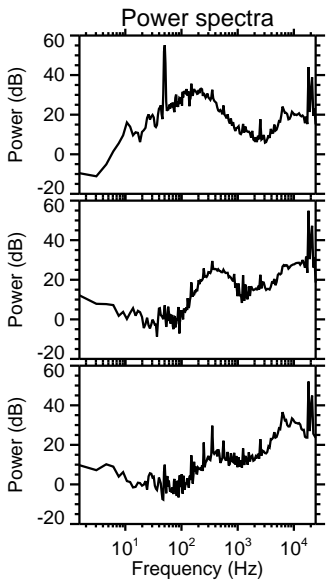
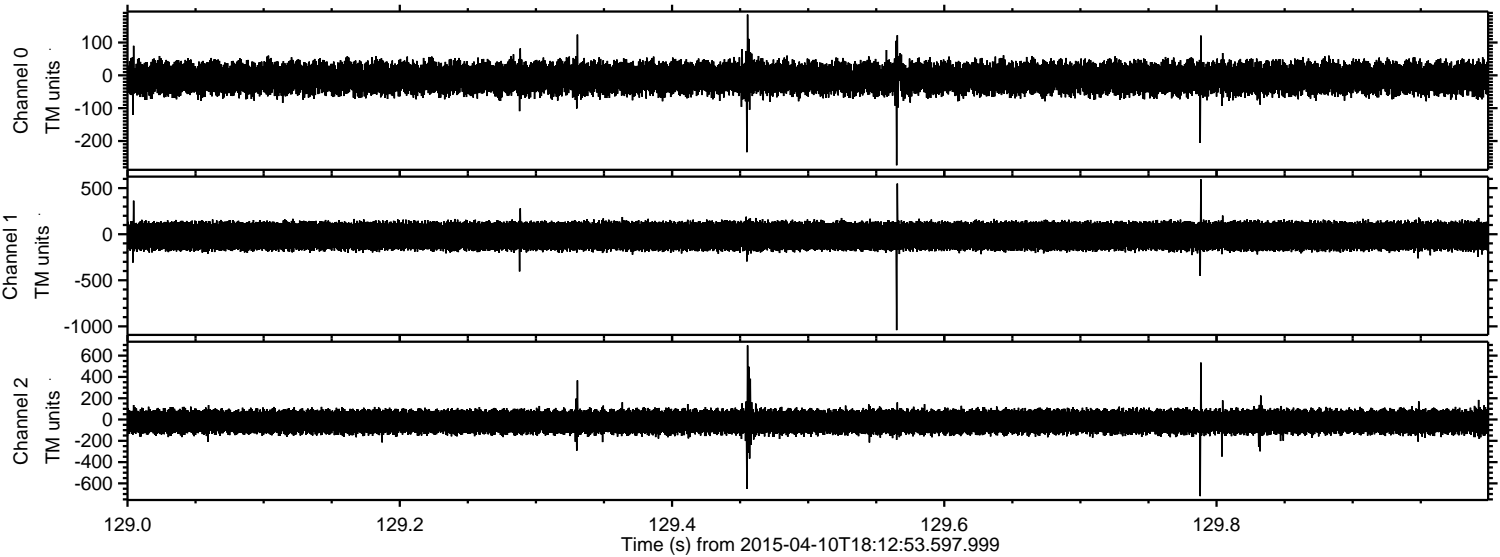


Processed Fri Apr 10 20:20:08 2015 by ELM ver.2012-10-06 from 001\_\_elm20150410\_181252\_\_dat00.bin





Processed Fri Apr 10 20:20:09 2015 by ELM ver.2012-10-06 from 001\_\_elm20150410\_181252\_\_dat00.bin





Processed Fri Apr 10 20:20:10 2015 by ELM ver.2012-10-06 from 001\_\_elm20150410\_181252\_\_dat00.bin

