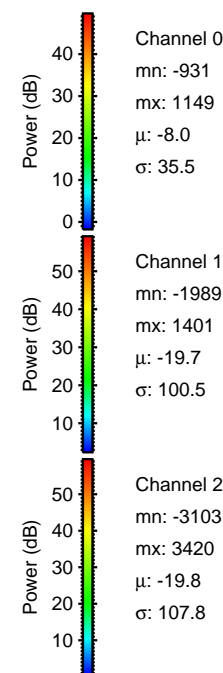
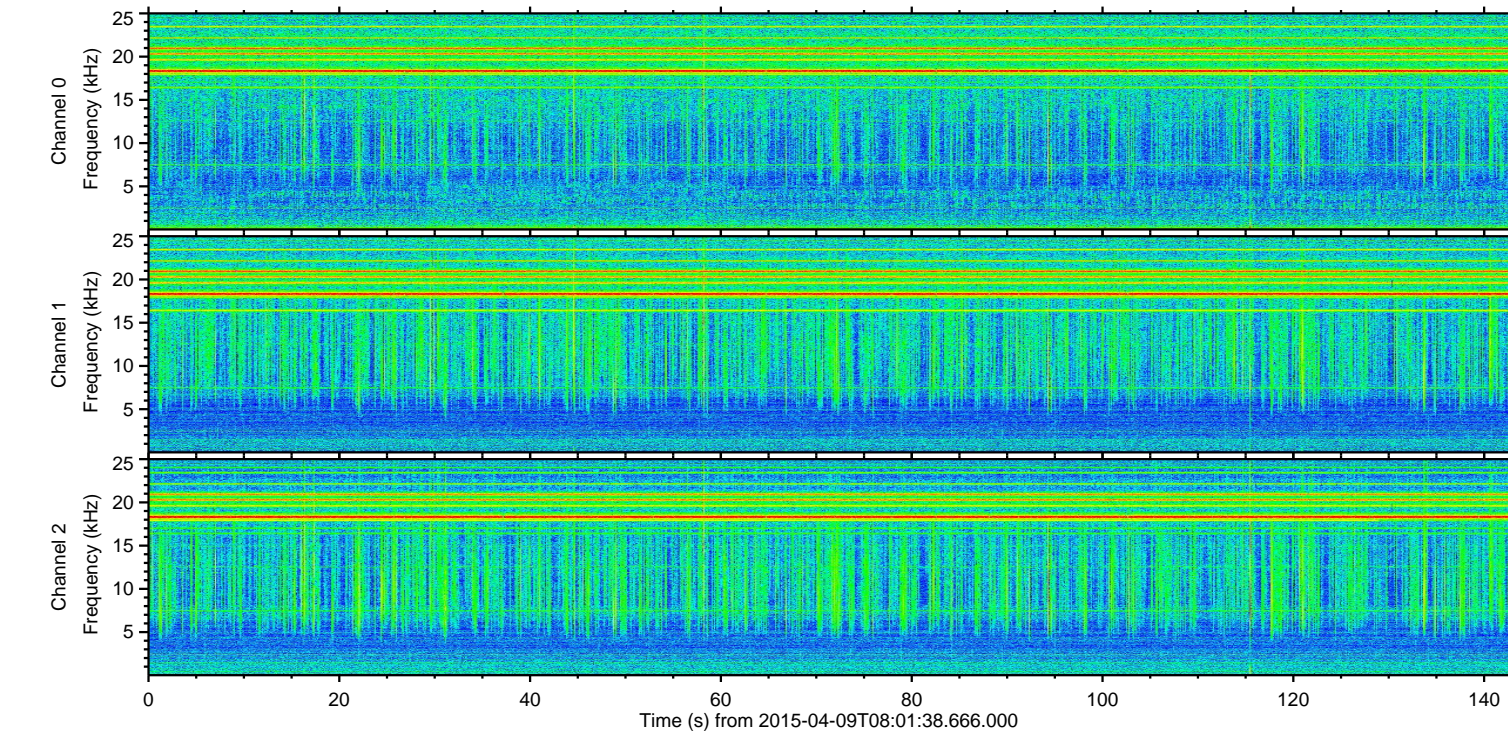
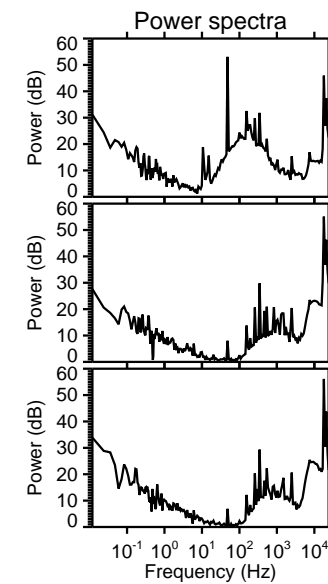
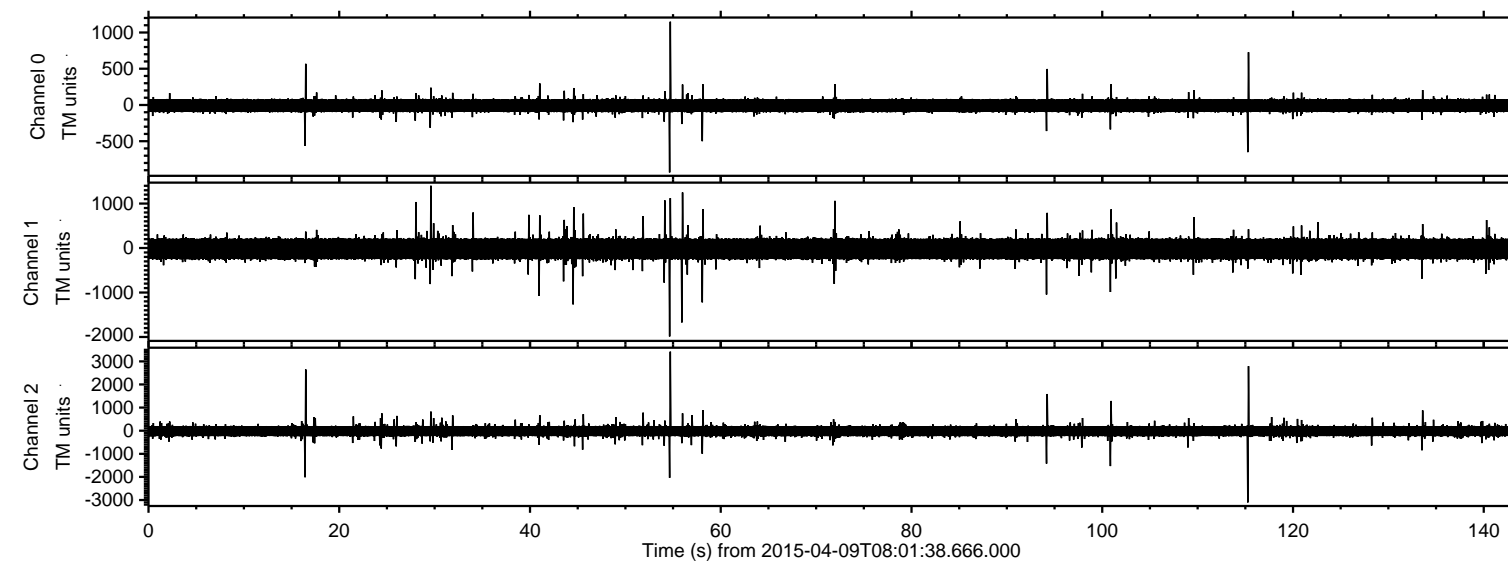


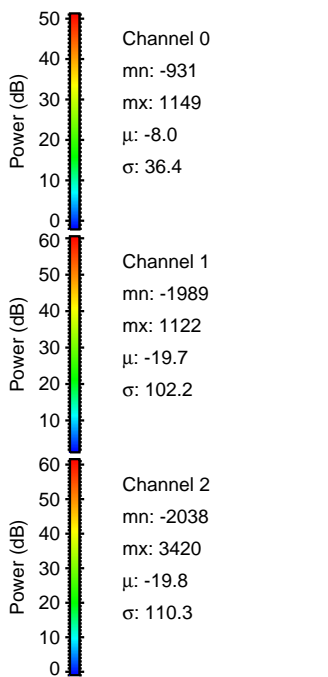
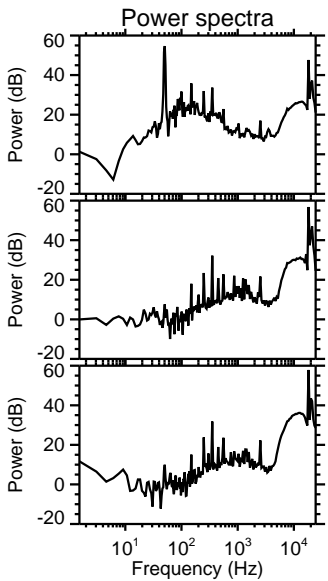
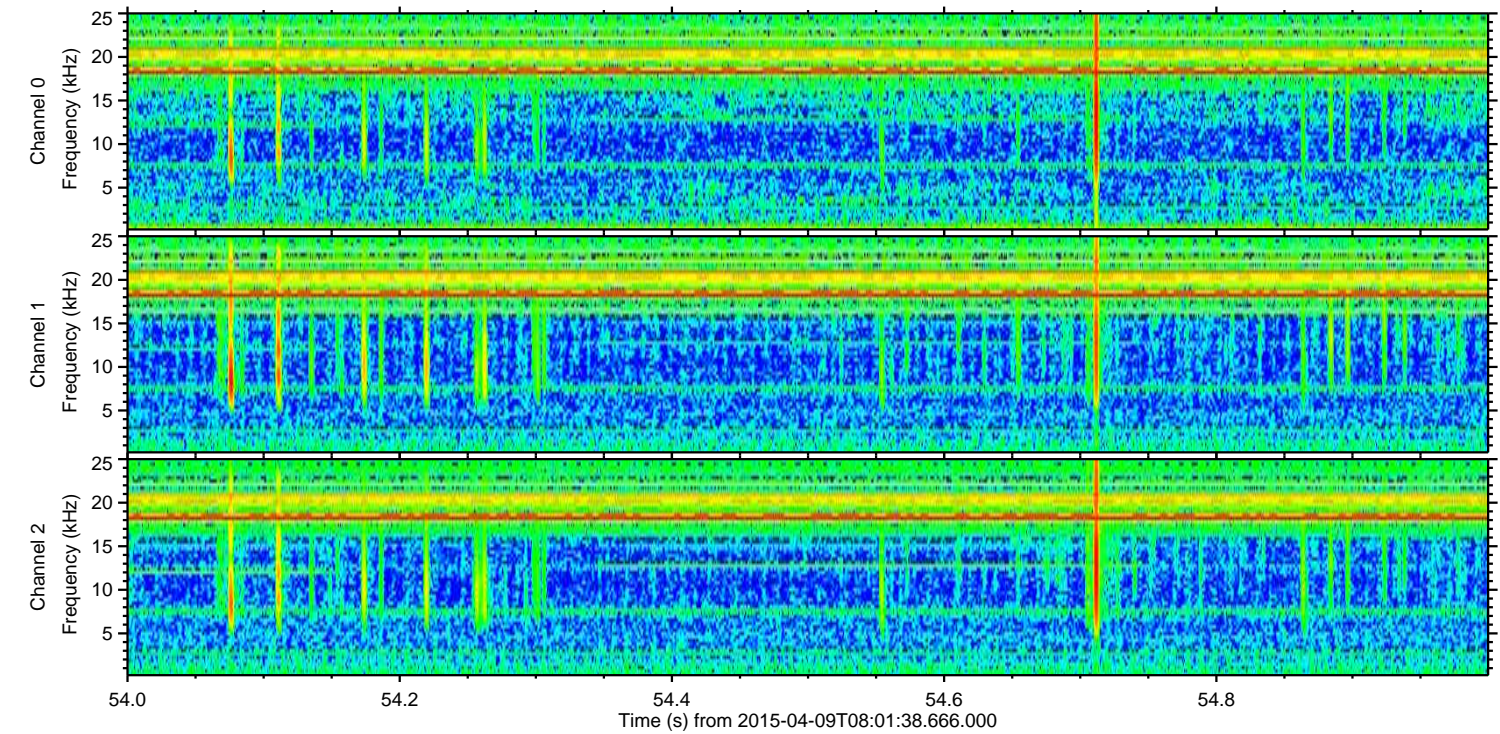
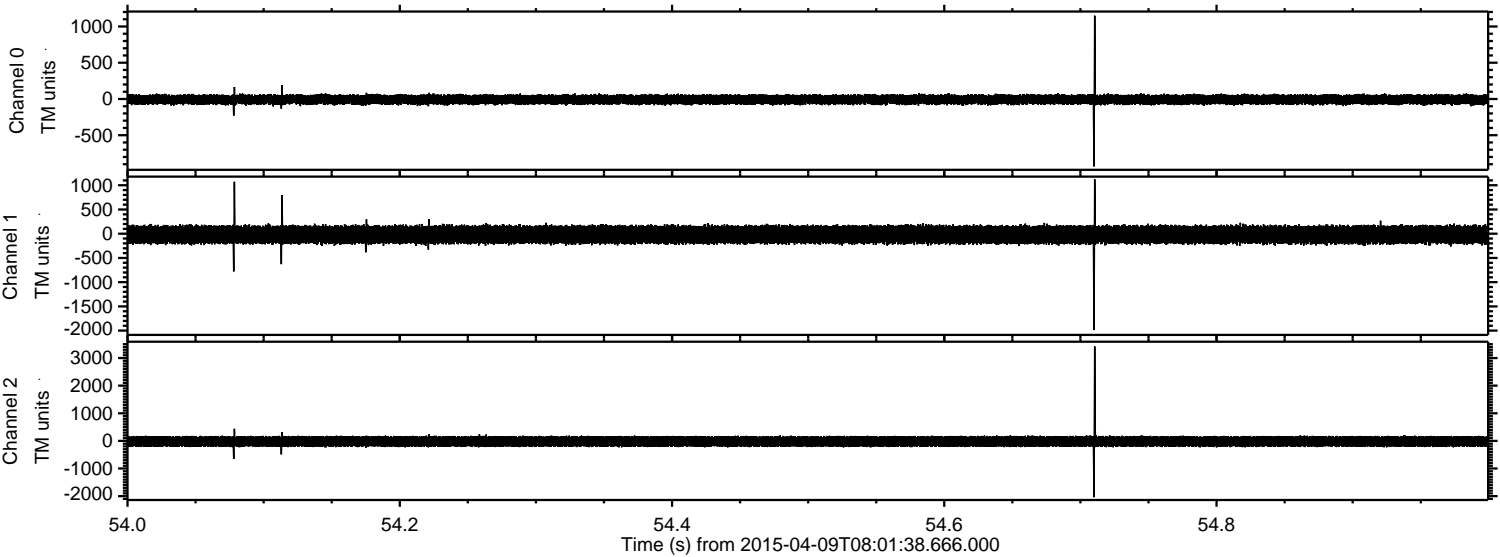
# ELMAVAN 3D WAVEFORMS (Measured data sampled at 50 kHz) 49536 packets of 144 samples from 2015-04-09T08:01:38.666.000.

Processed Thu Apr 9 10:09:15 2015 by ELM ver.2012-10-06 from 001\_\_elm20150409\_080137\_\_dat00.bin





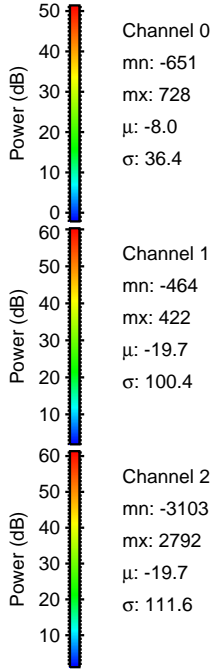
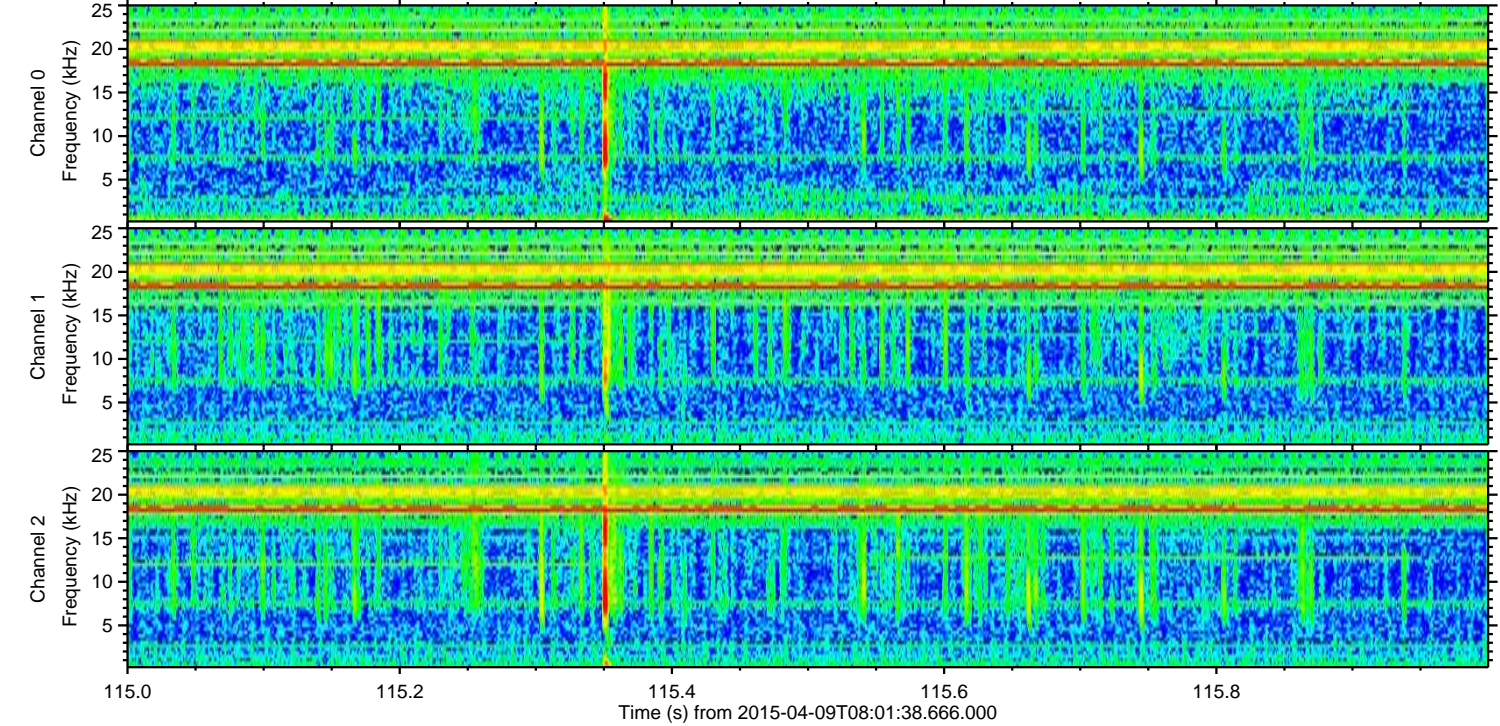
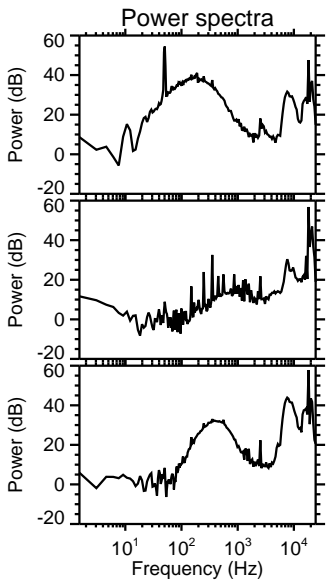
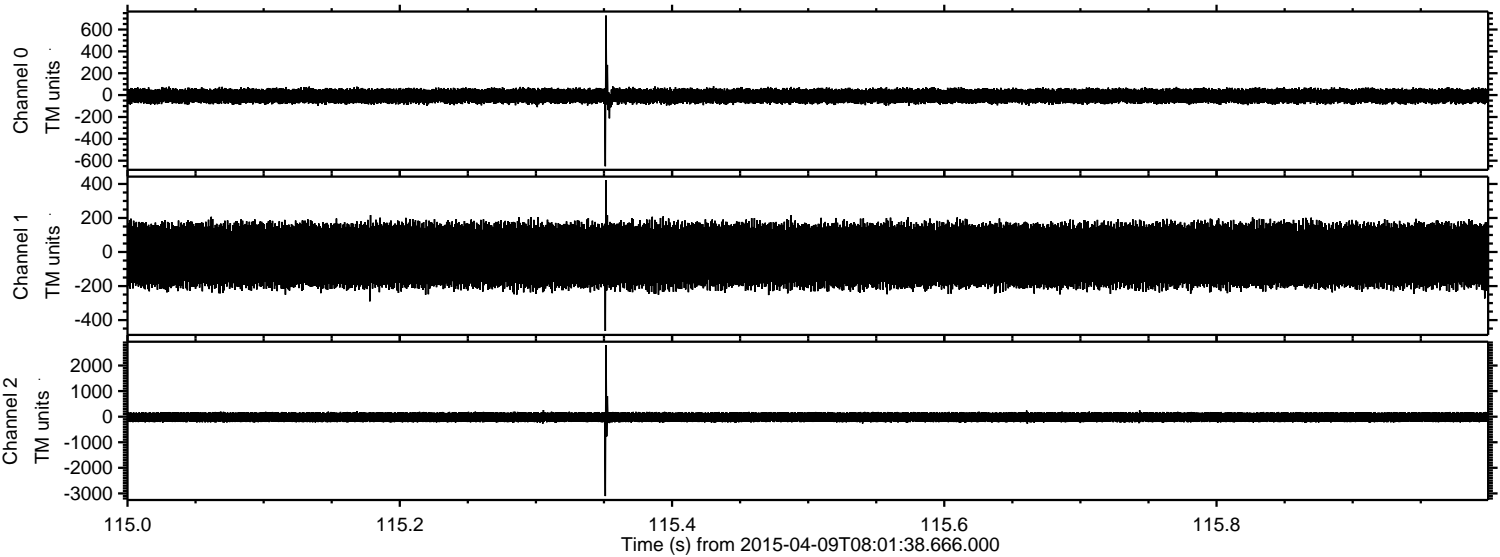
Processed Thu Apr 9 10:09:30 2015 by ELM ver.2012-10-06 from 001\_\_elm20150409\_080137\_\_dat00.bin





ELMAVAN 3D WAVEFORMS (Measured data sampled at 50 kHz) 49536 packets of 144 samples from 2015-04-09T08:01:38.666.000. Part 116/143

Processed Thu Apr 9 10:09:31 2015 by ELM ver.2012-10-06 from 001\_\_elm20150409\_080137\_\_dat00.bin



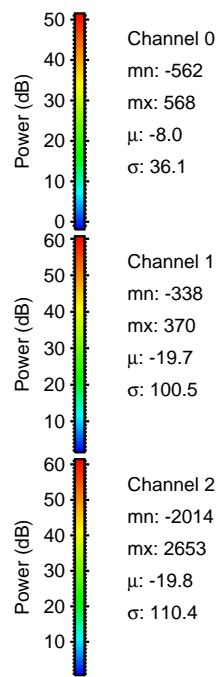
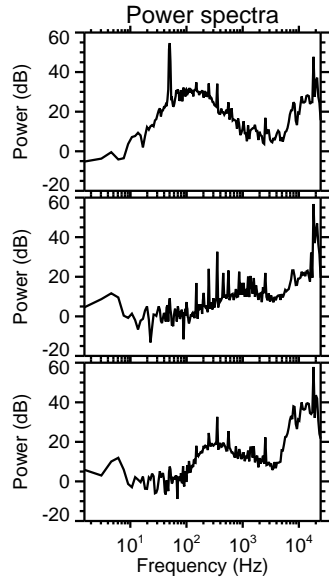
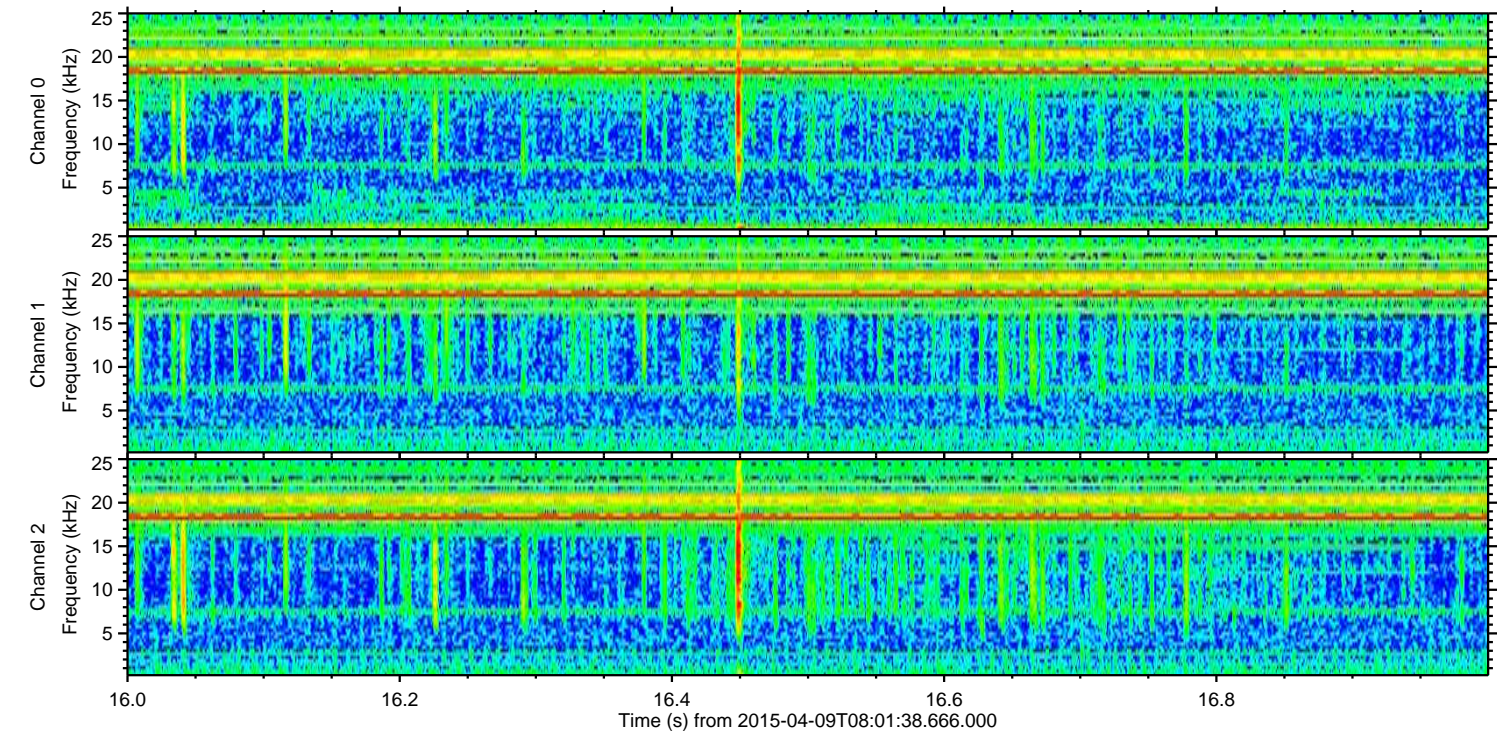
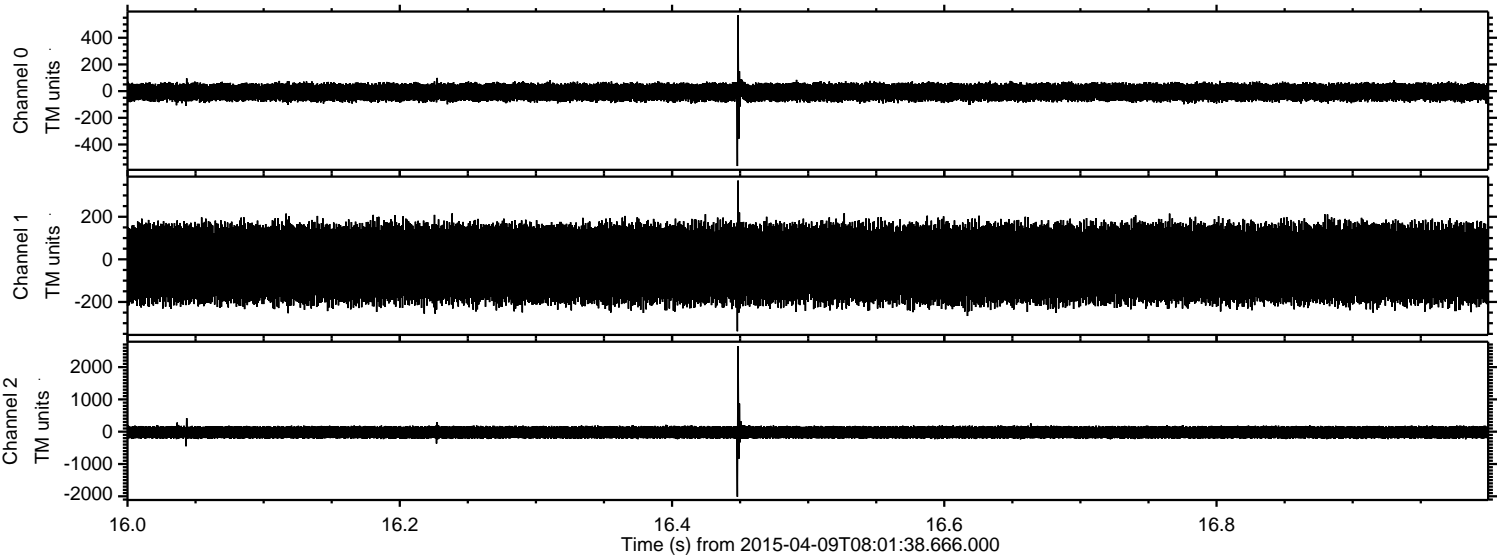
Channel 0  
mn: -651  
mx: 728  
 $\mu$ : -8.0  
 $\sigma$ : 36.4

Channel 1  
mn: -464  
mx: 422  
 $\mu$ : -19.7  
 $\sigma$ : 100.4

Channel 2  
mn: -3103  
mx: 2792  
 $\mu$ : -19.7  
 $\sigma$ : 111.6

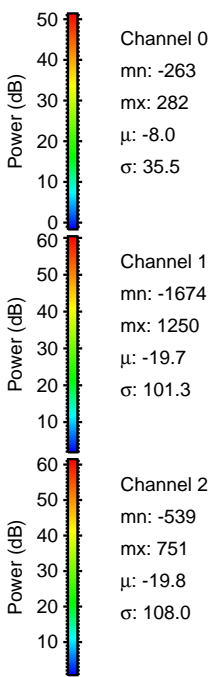
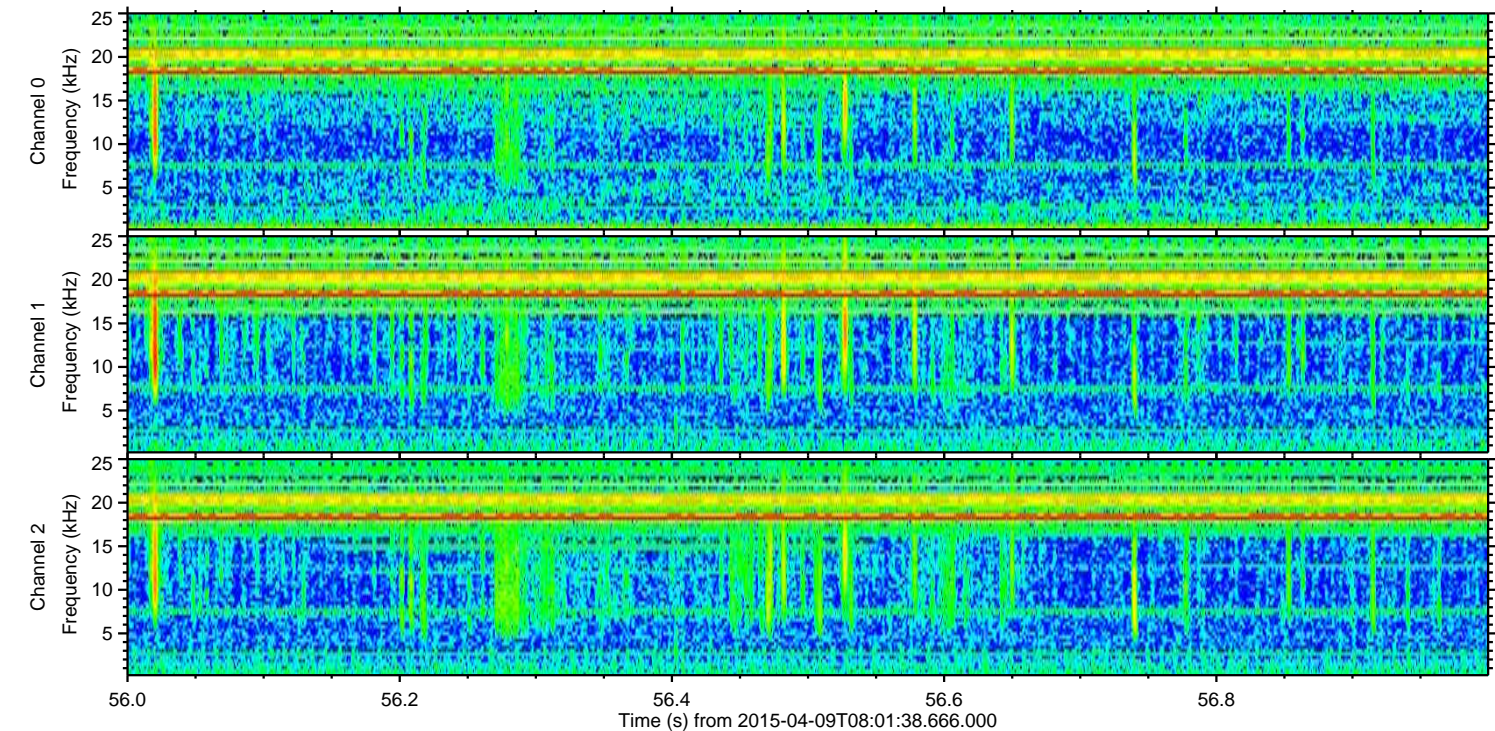
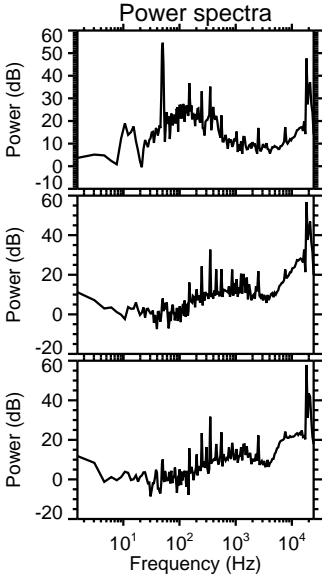
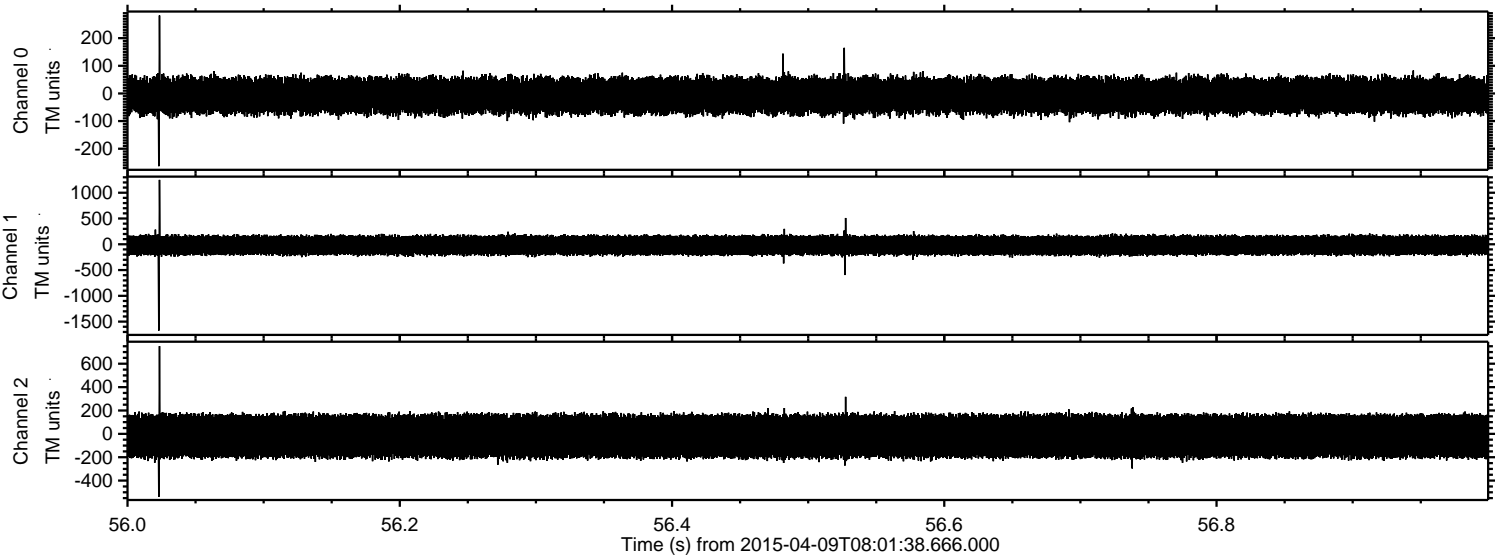


Processed Thu Apr 9 10:09:32 2015 by ELM ver.2012-10-06 from 001\_\_elm20150409\_080137\_\_dat00.bin



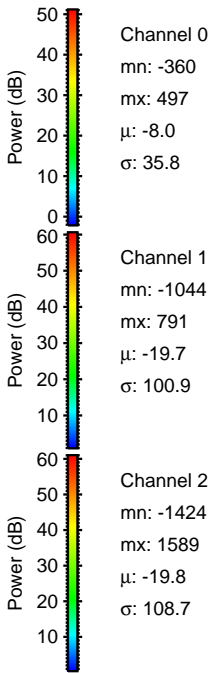
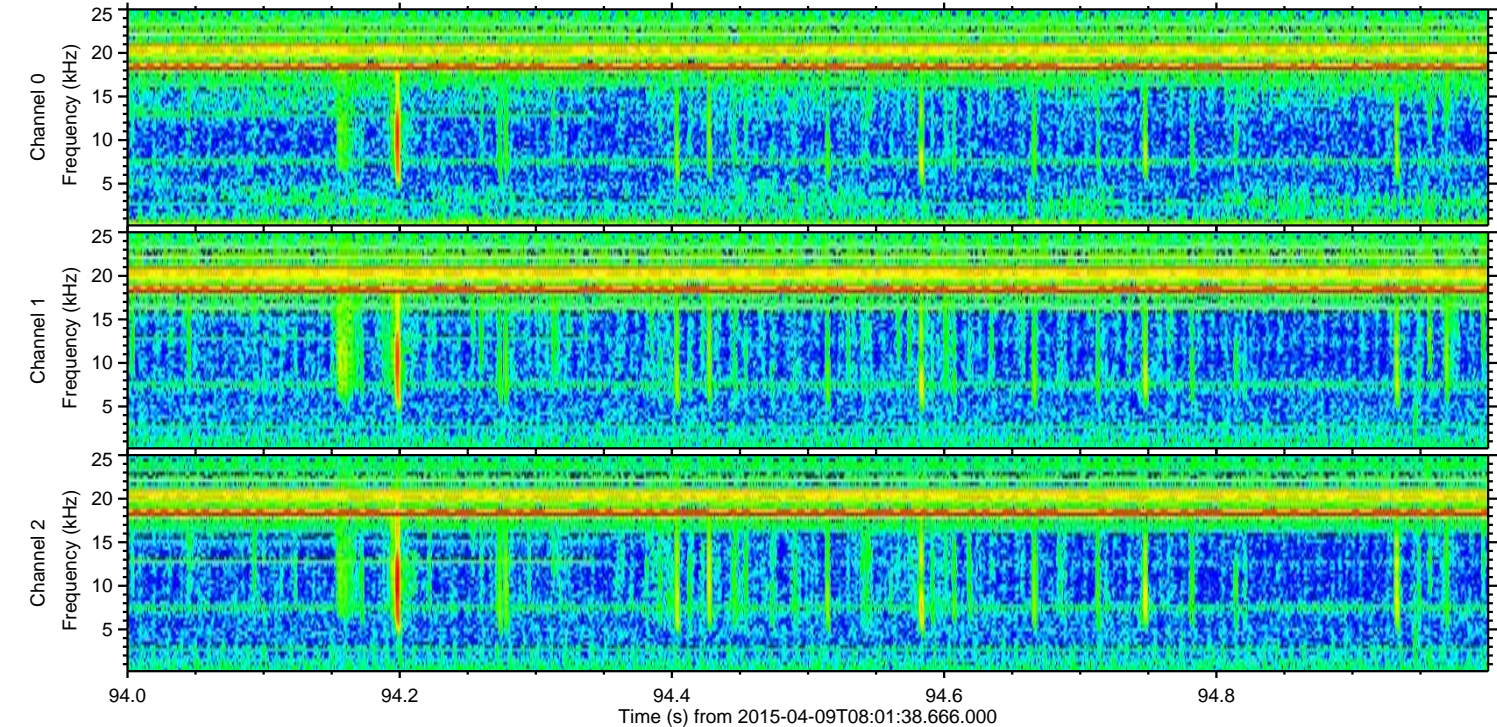
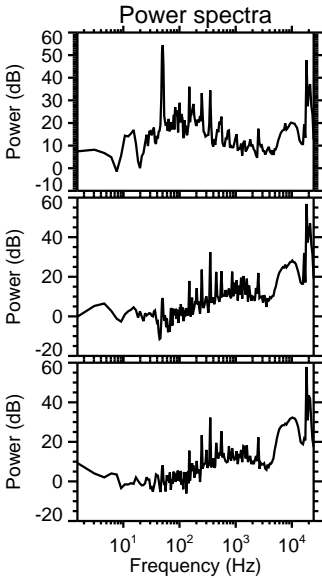
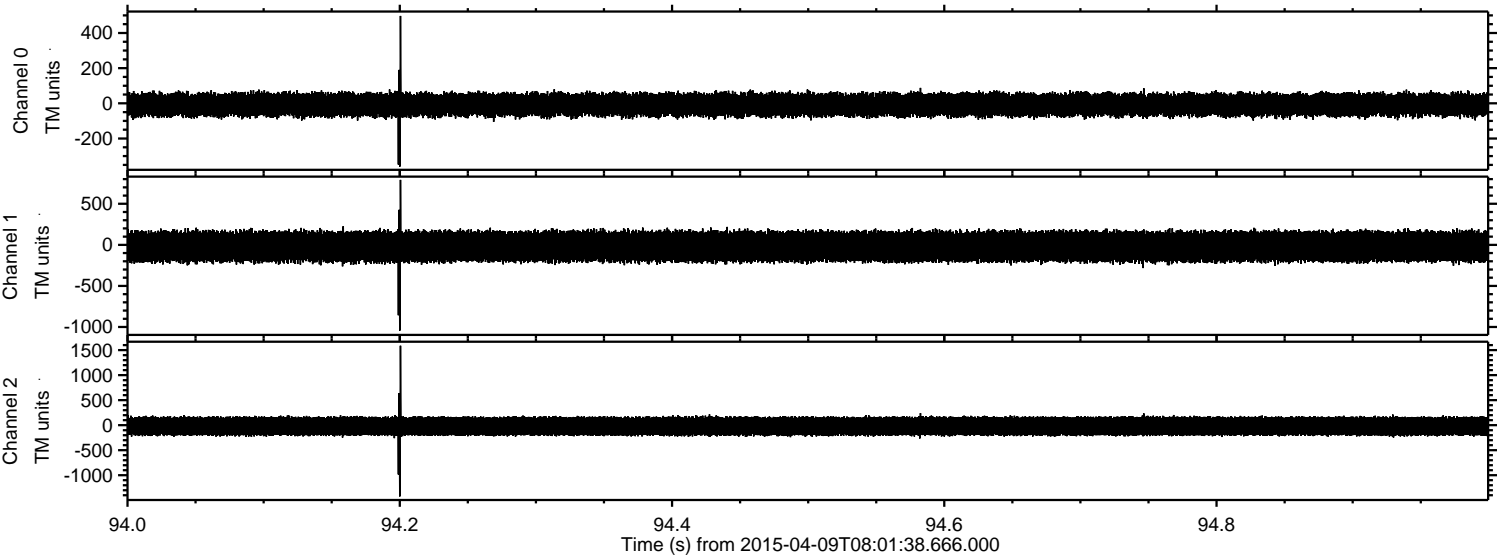


Processed Thu Apr 9 10:09:33 2015 by ELM ver.2012-10-06 from 001\_\_elm20150409\_080137\_\_dat00.bin





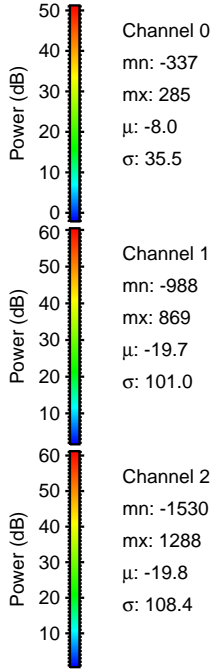
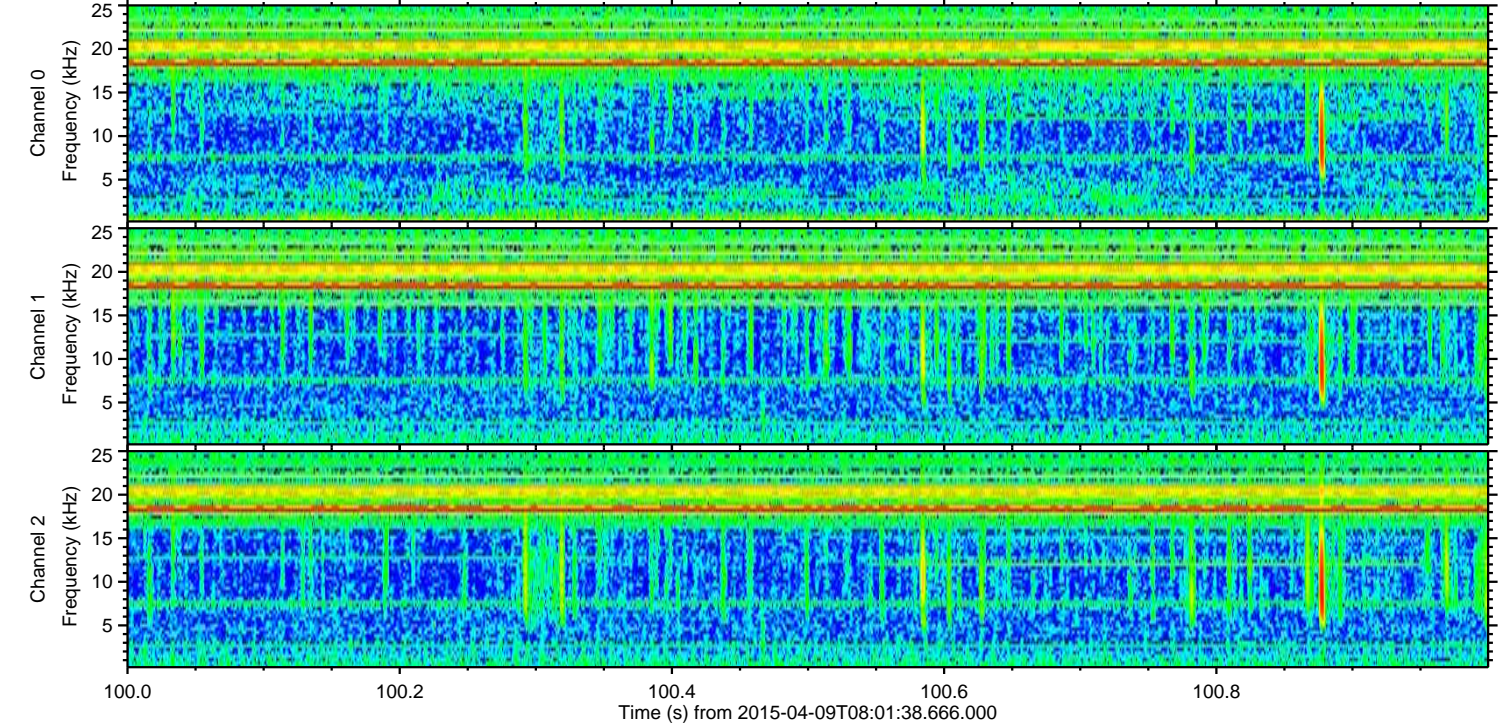
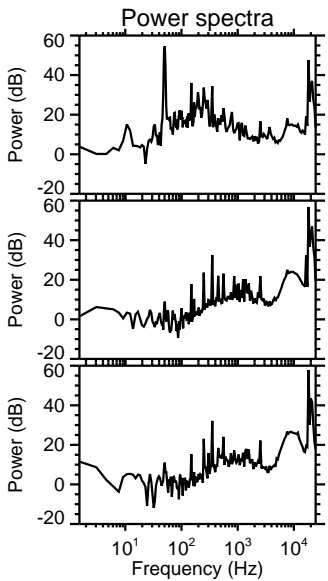
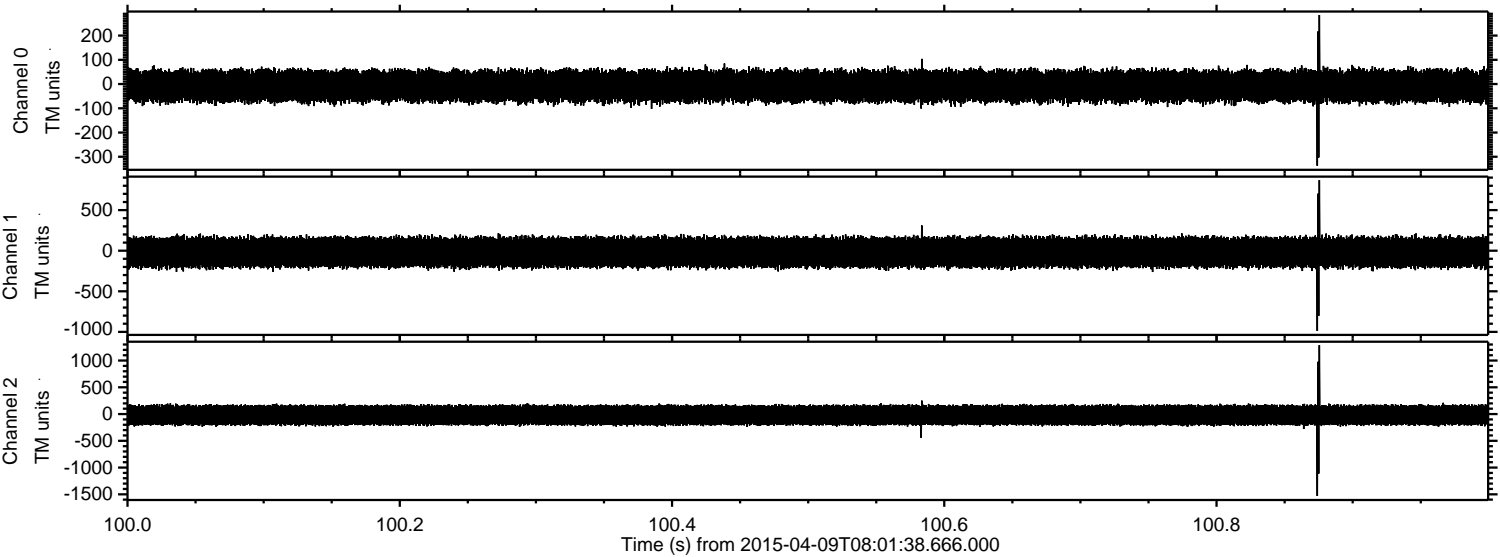
Processed Thu Apr 9 10:09:34 2015 by ELM ver.2012-10-06 from 001\_\_elm20150409\_080137\_\_dat00.bin





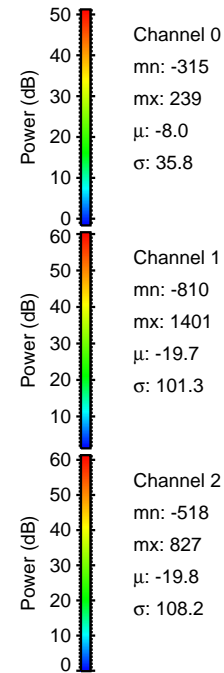
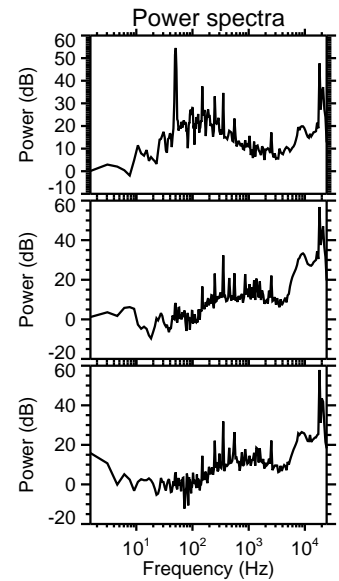
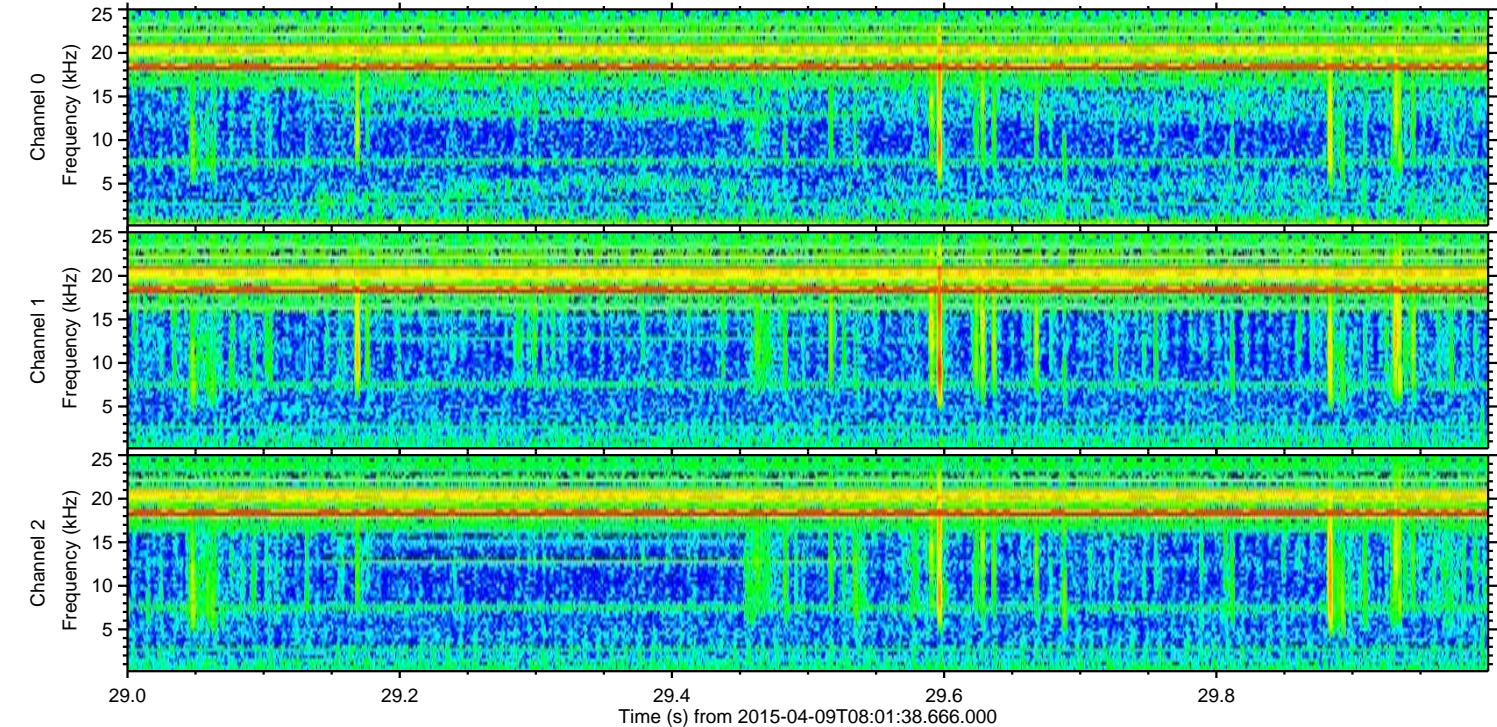
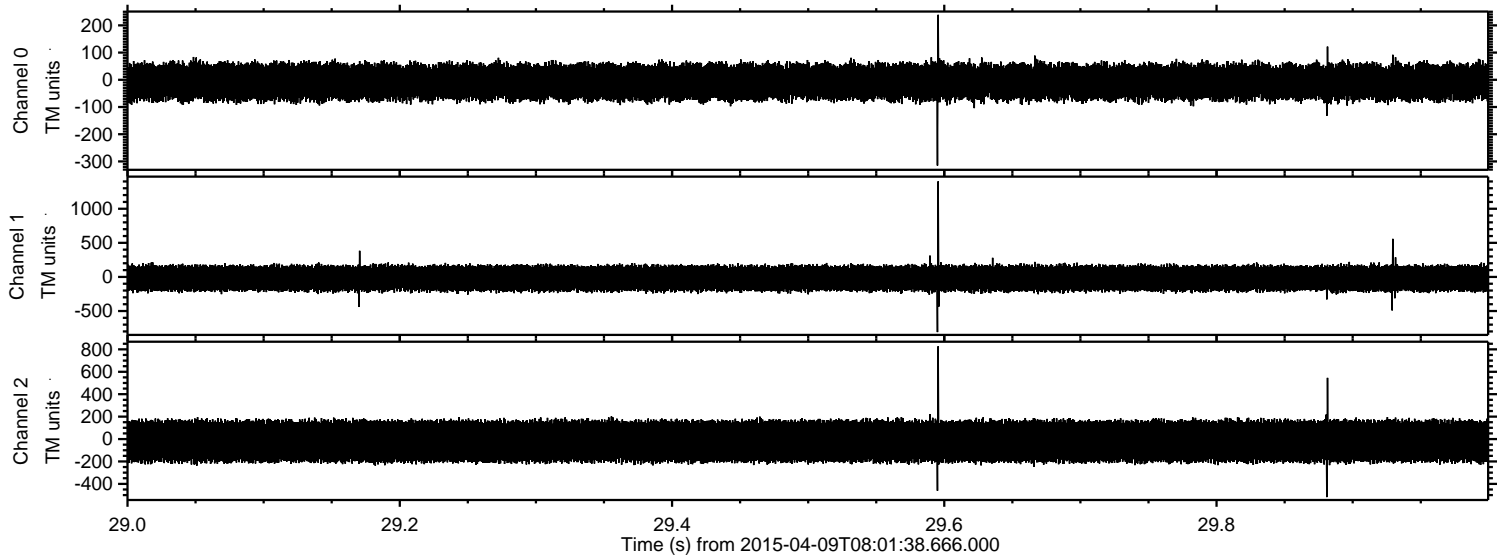
ELMAVAN 3D WAVEFORMS (Measured data sampled at 50 kHz) 49536 packets of 144 samples from 2015-04-09T08:01:38.666.000. Part 101/143

Processed Thu Apr 9 10:09:35 2015 by ELM ver.2012-10-06 from 001\_\_elm20150409\_080137\_\_dat00.bin





Processed Thu Apr 9 10:09:36 2015 by ELM ver.2012-10-06 from 001\_\_elm20150409\_080137\_\_dat00.bin



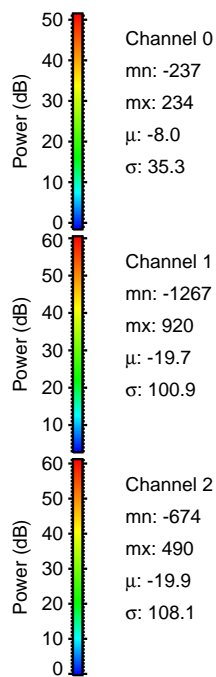
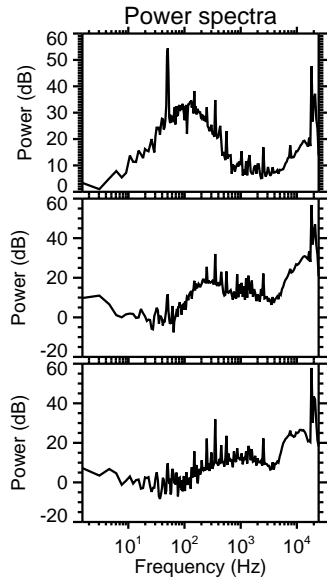
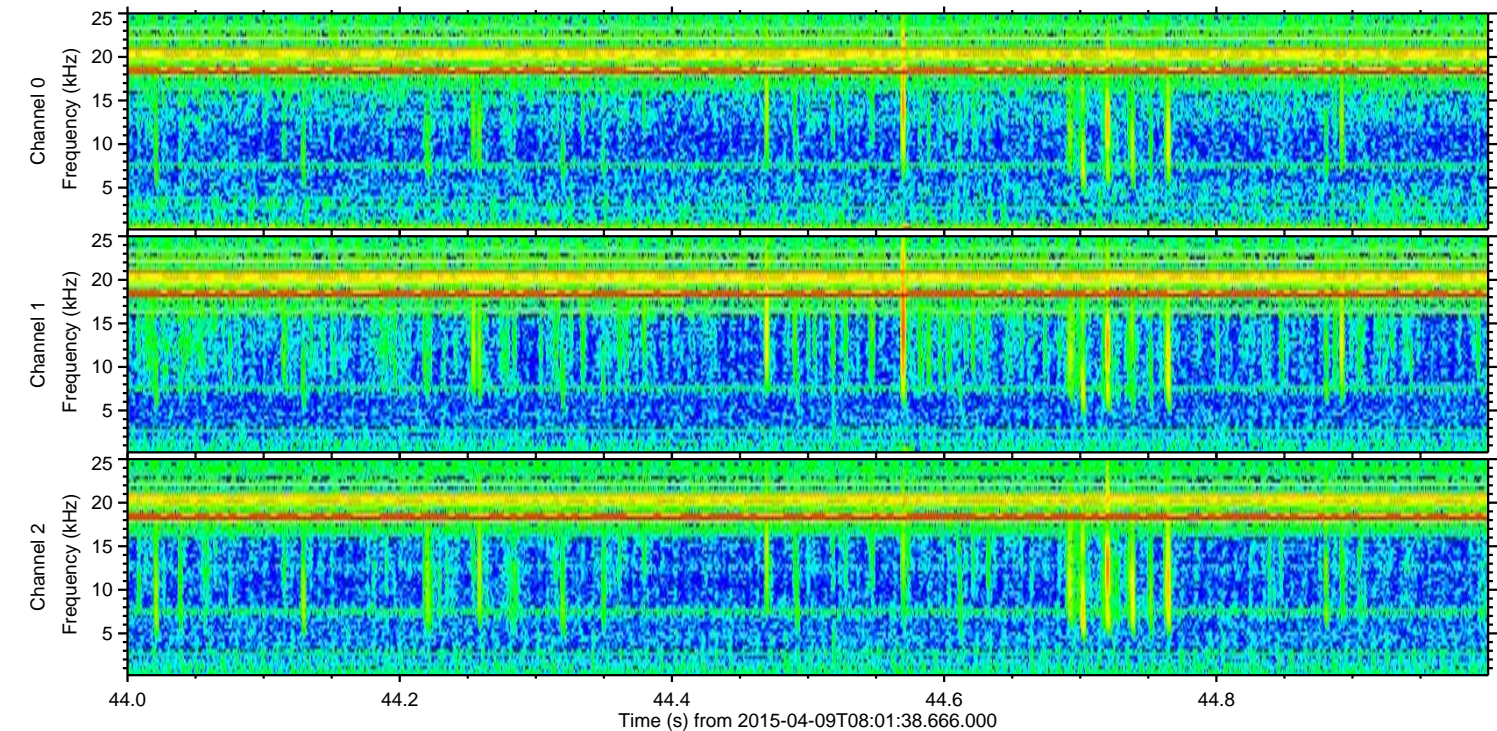
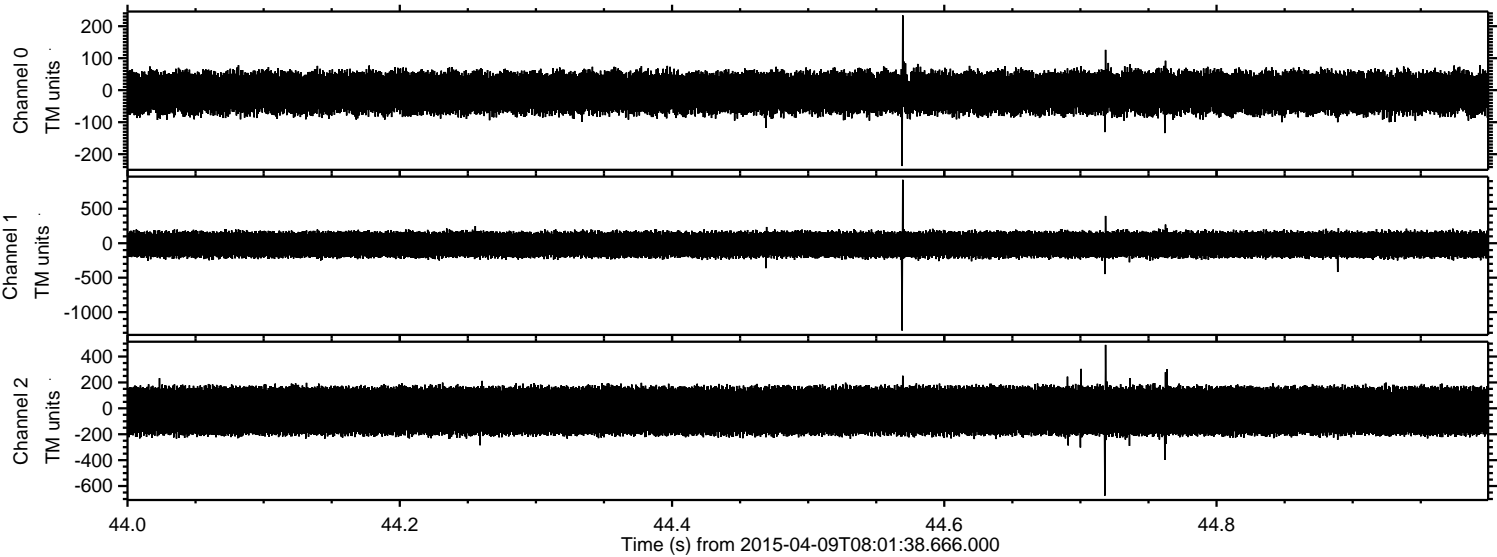
Channel 0  
mn: -315  
mx: 239  
 $\mu$ : -8.0  
 $\sigma$ : 35.8

Channel 1  
mn: -810  
mx: 1401  
 $\mu$ : -19.7  
 $\sigma$ : 101.3

Channel 2  
mn: -518  
mx: 827  
 $\mu$ : -19.8  
 $\sigma$ : 108.2

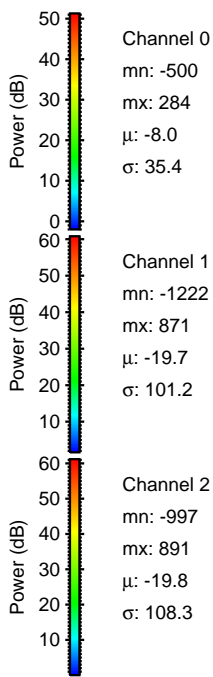
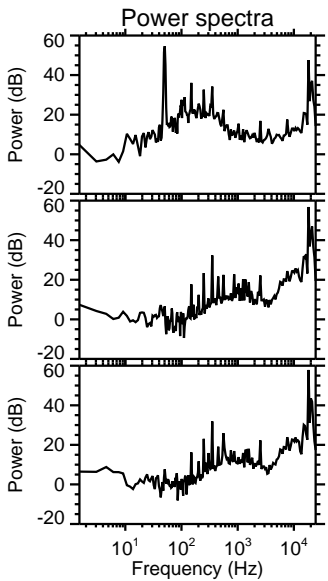
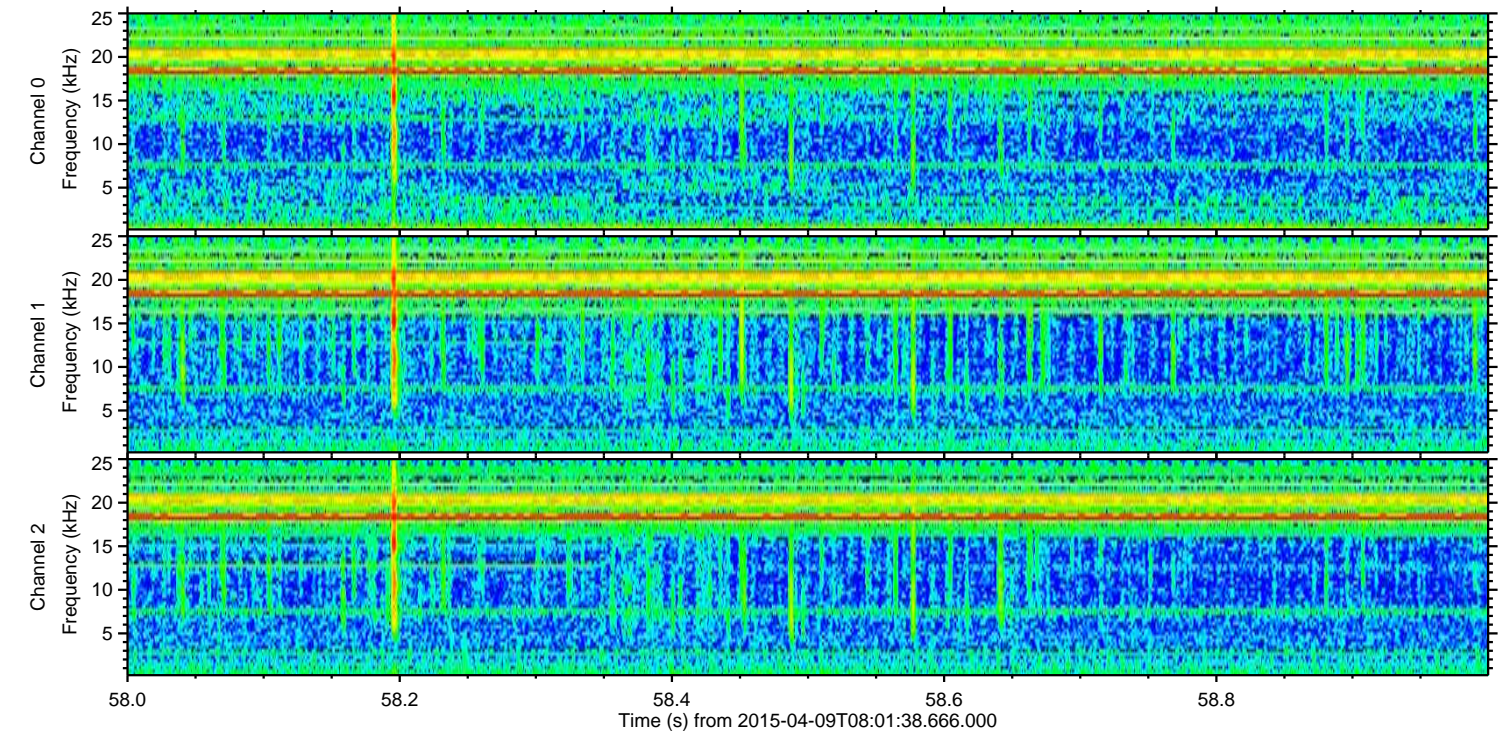
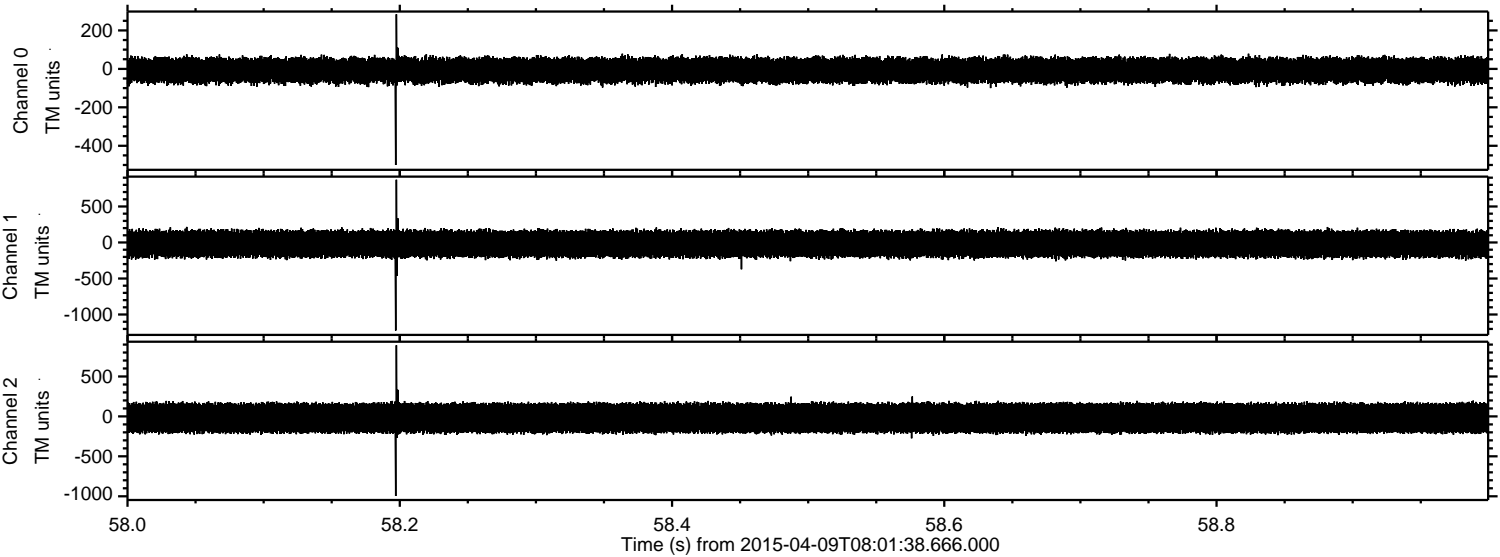


Processed Thu Apr 9 10:09:37 2015 by ELM ver.2012-10-06 from 001\_\_elm20150409\_080137\_\_dat00.bin





Processed Thu Apr 9 10:09:38 2015 by ELM ver.2012-10-06 from 001\_\_elm20150409\_080137\_\_dat00.bin





ELMAVAN 3D WAVEFORMS (Measured data sampled at 50 kHz) 49536 packets of 144 samples from 2015-04-09T08:01:38.666.000. Part 117/143

