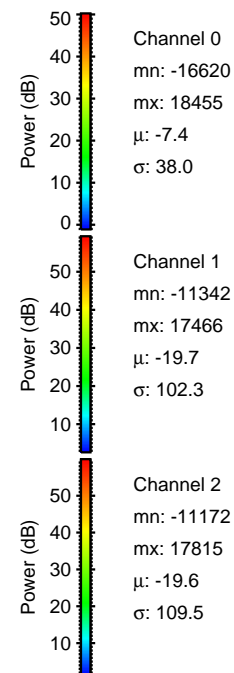
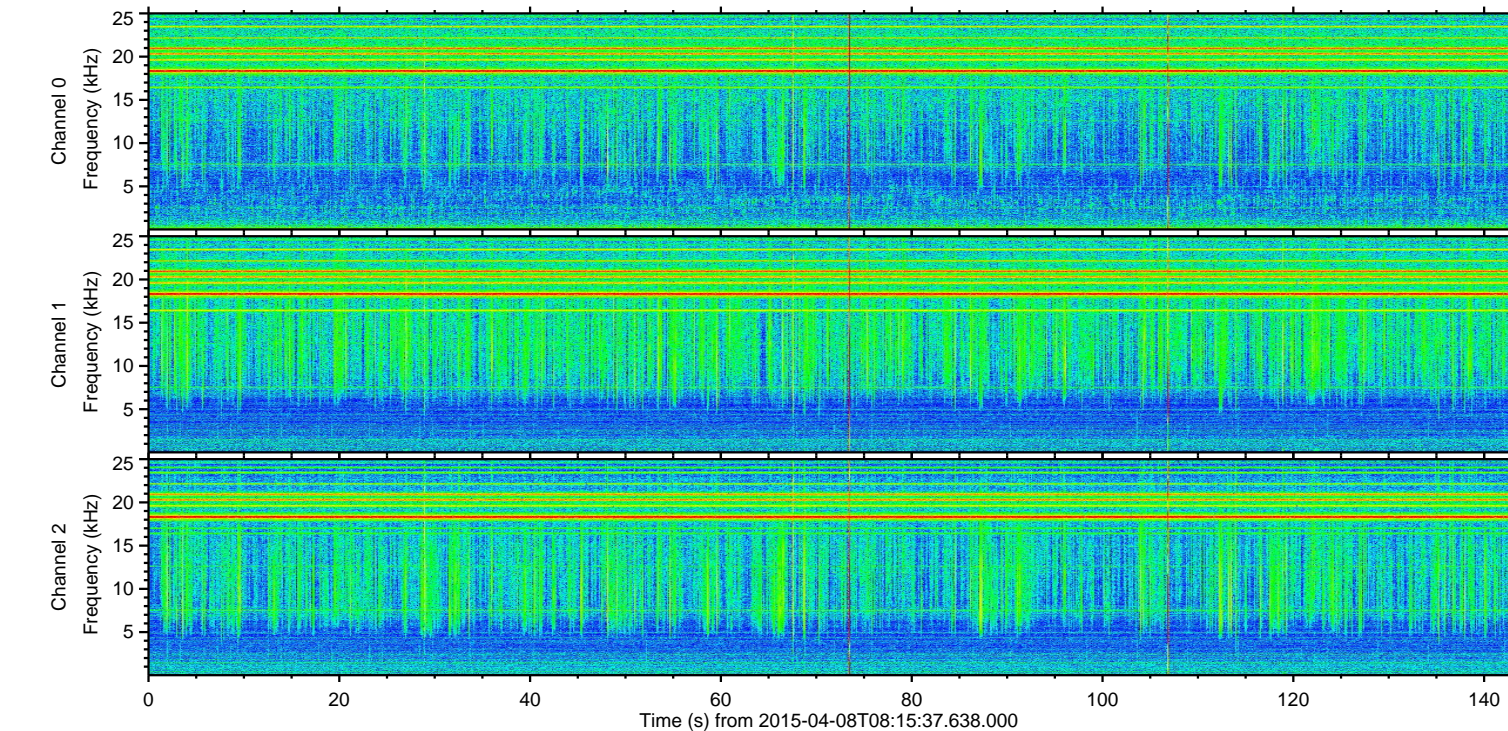
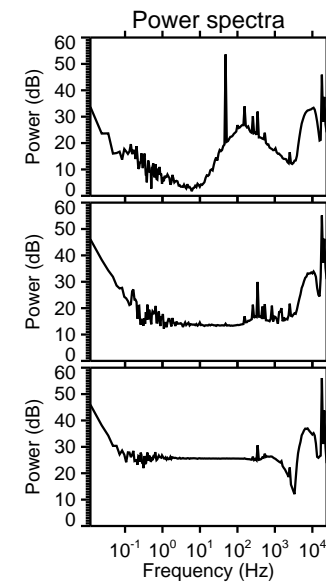
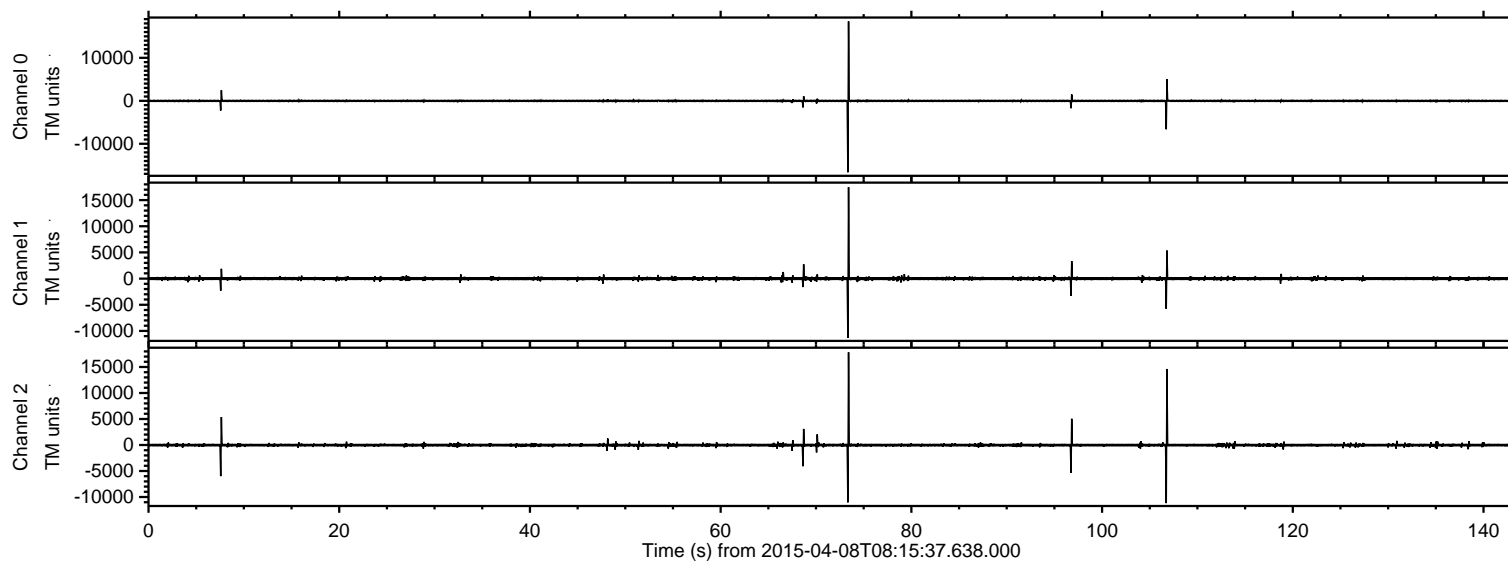
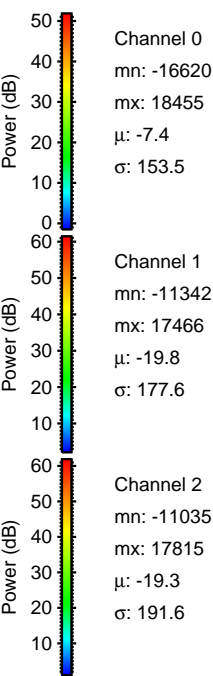
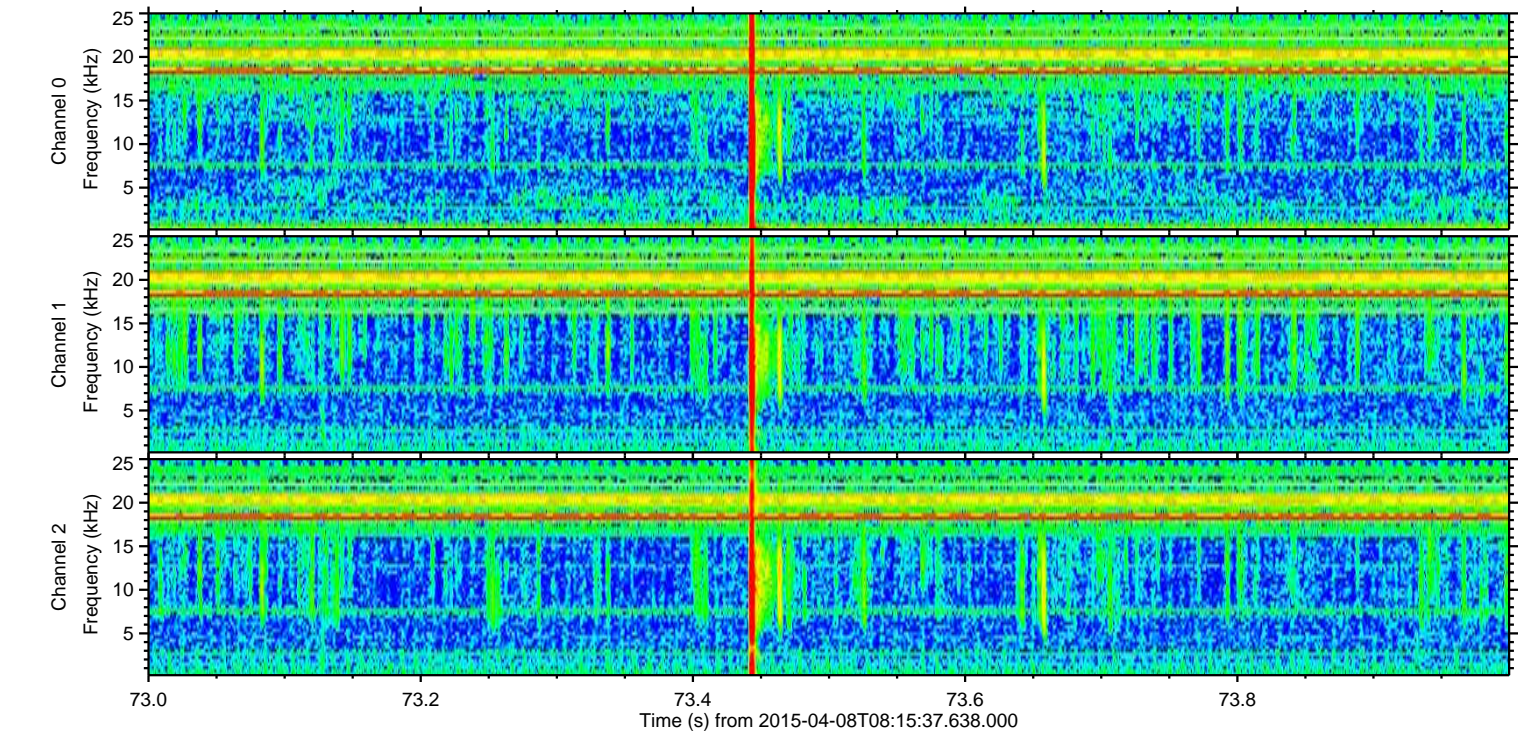
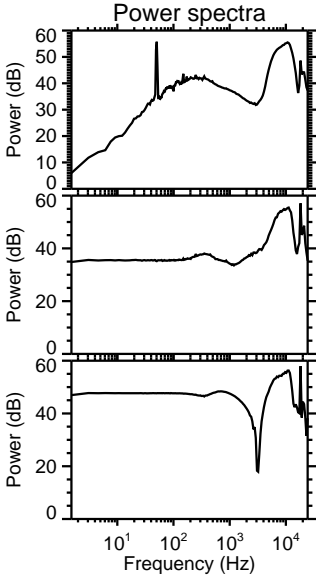
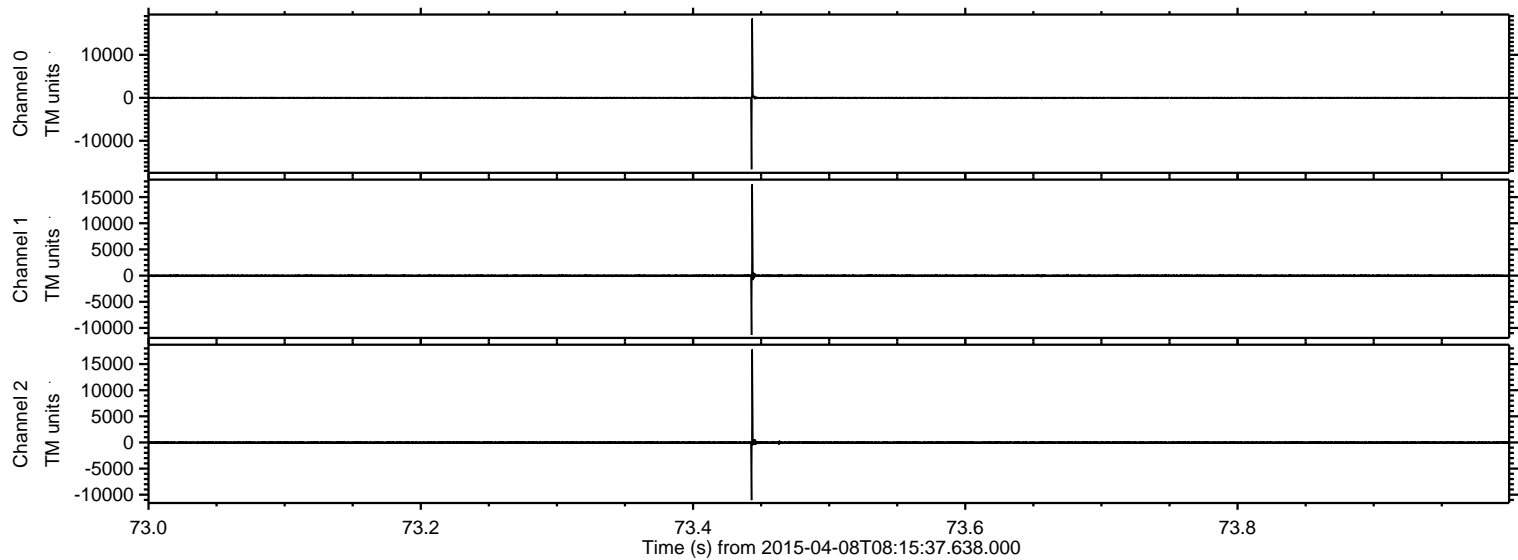


ELMAVAN 3D WAVEFORMS (Measured data sampled at 50 kHz) 49545 packets of 144 samples from 2015-04-08T08:15:37.638.000.

Processed Wed Apr 8 11:19:20 2015 by ELM ver.2012-10-06 from 001__elm20150408_081536__dat00.bin

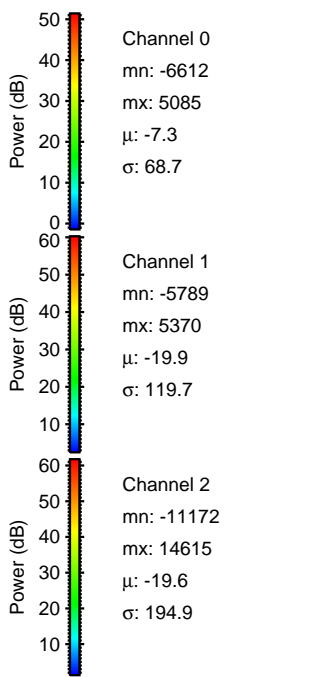
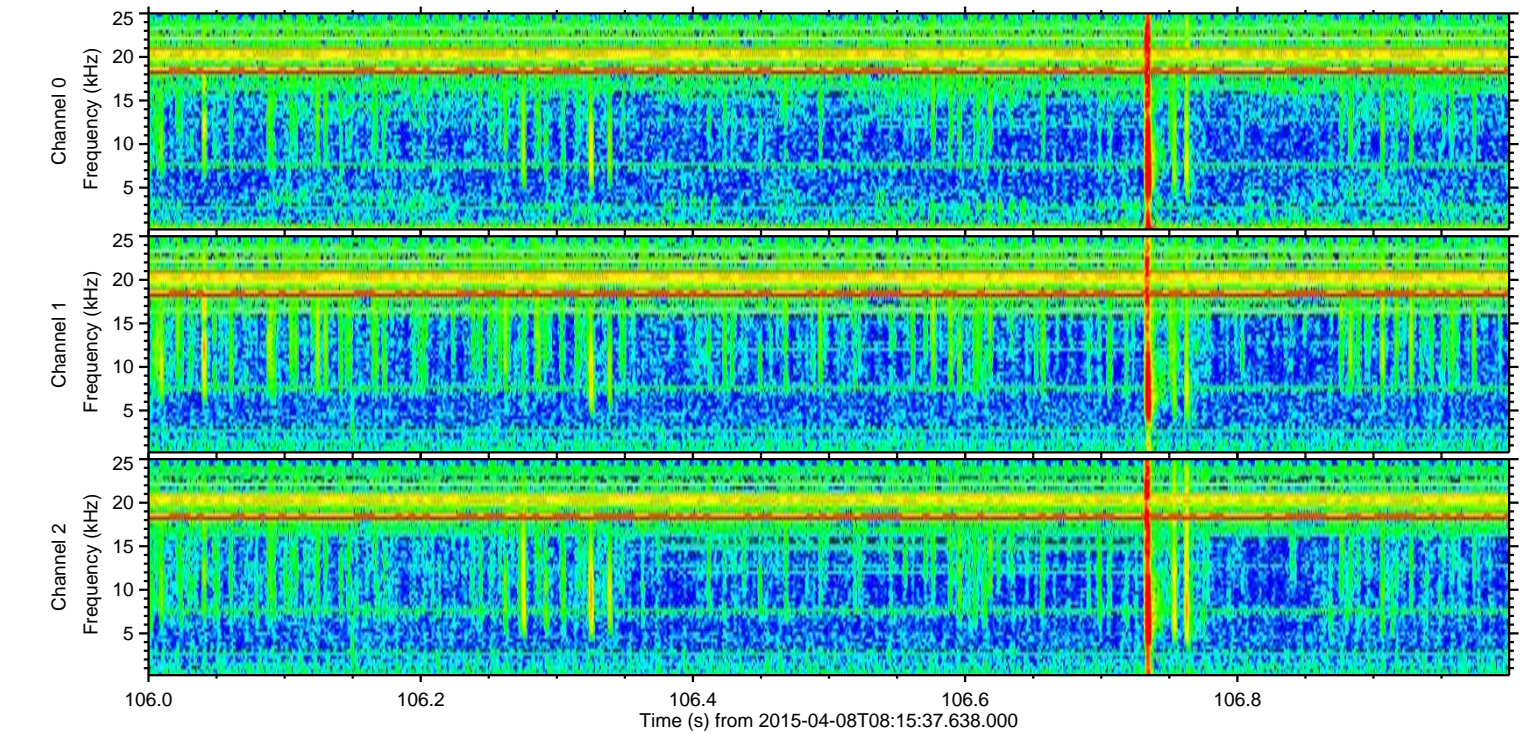
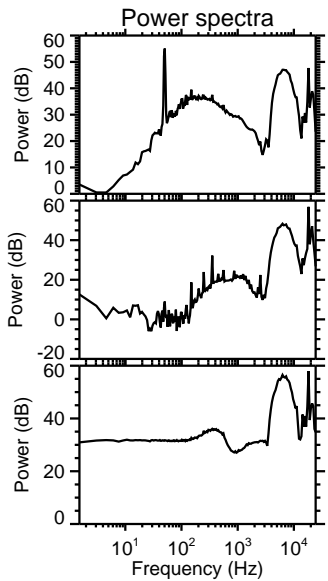
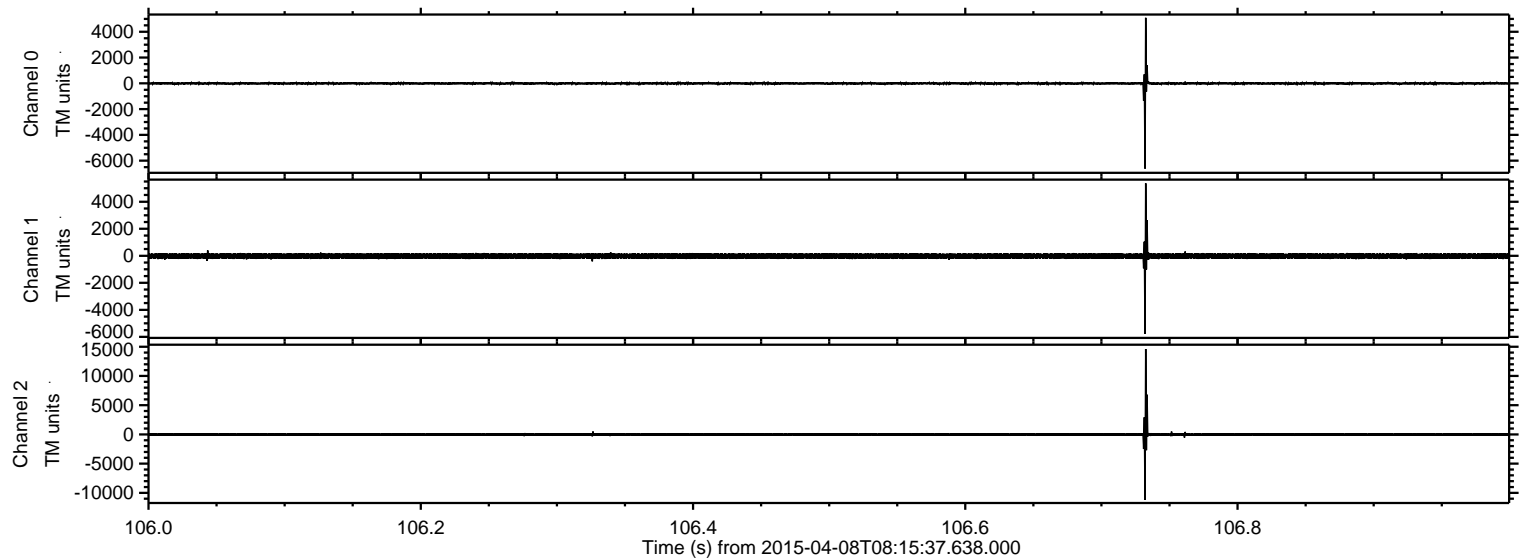


Processed Wed Apr 8 11:19:35 2015 by ELM ver.2012-10-06 from 001__elm20150408_081536__dat00.bin



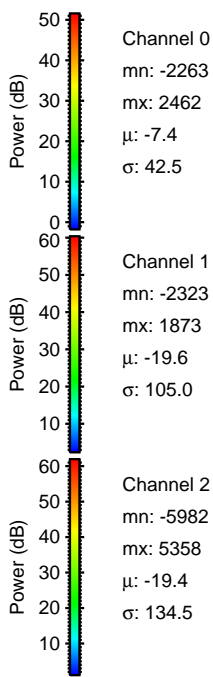
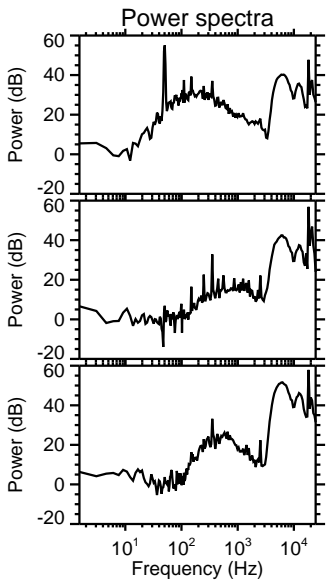
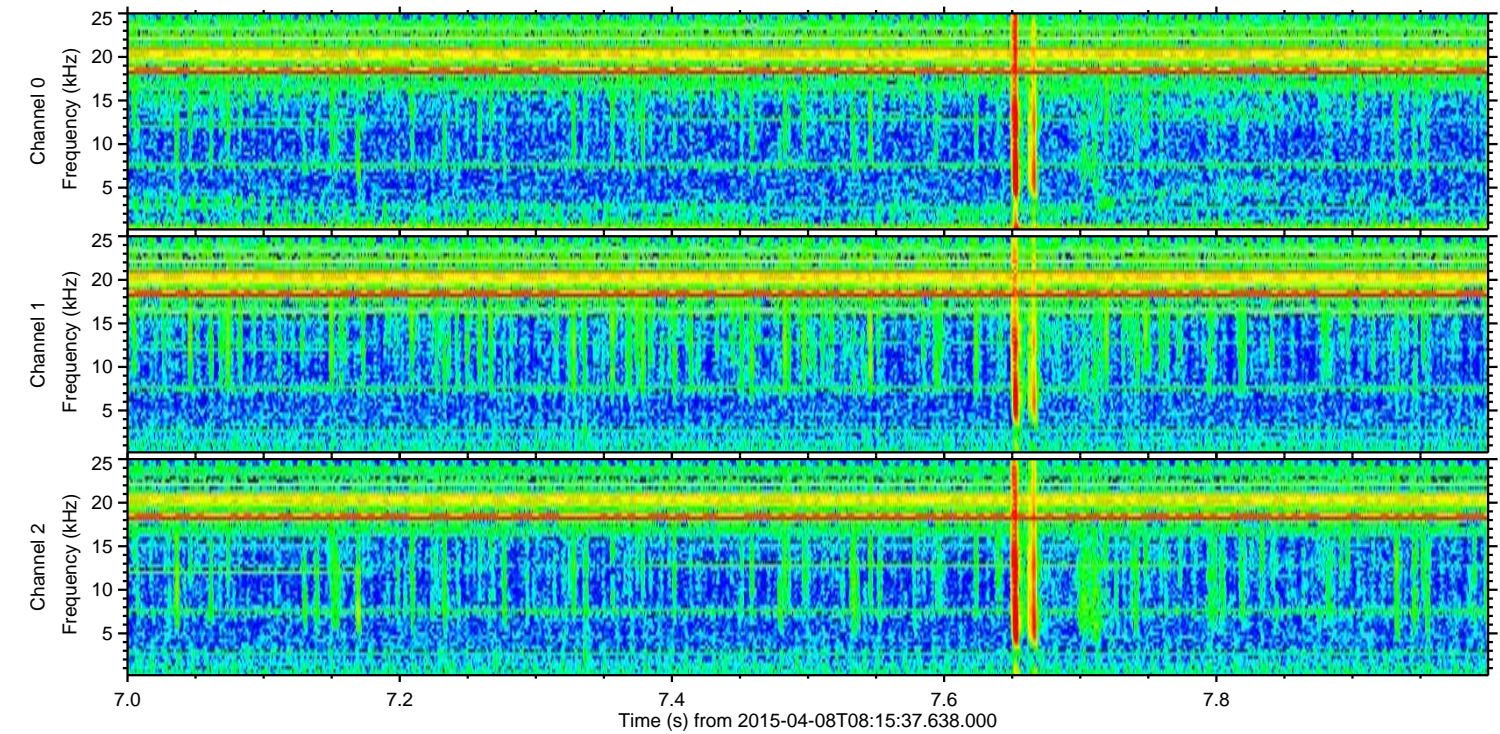
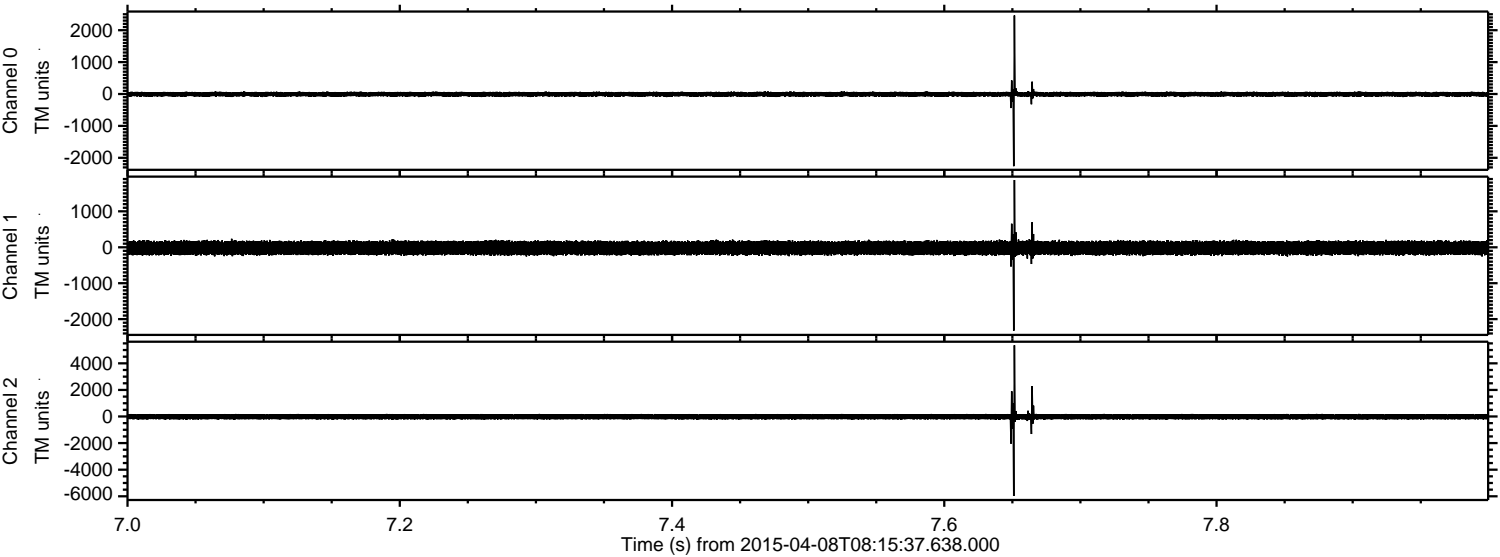
ELMAVAN 3D WAVEFORMS (Measured data sampled at 50 kHz) 49545 packets of 144 samples from 2015-04-08T08:15:37.638.000. Part 107/143

Processed Wed Apr 8 11:19:36 2015 by ELM ver.2012-10-06 from 001__elm20150408_081536__dat00.bin



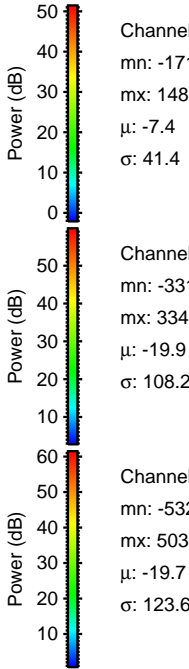
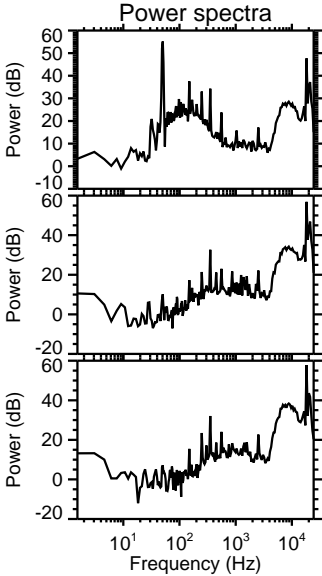
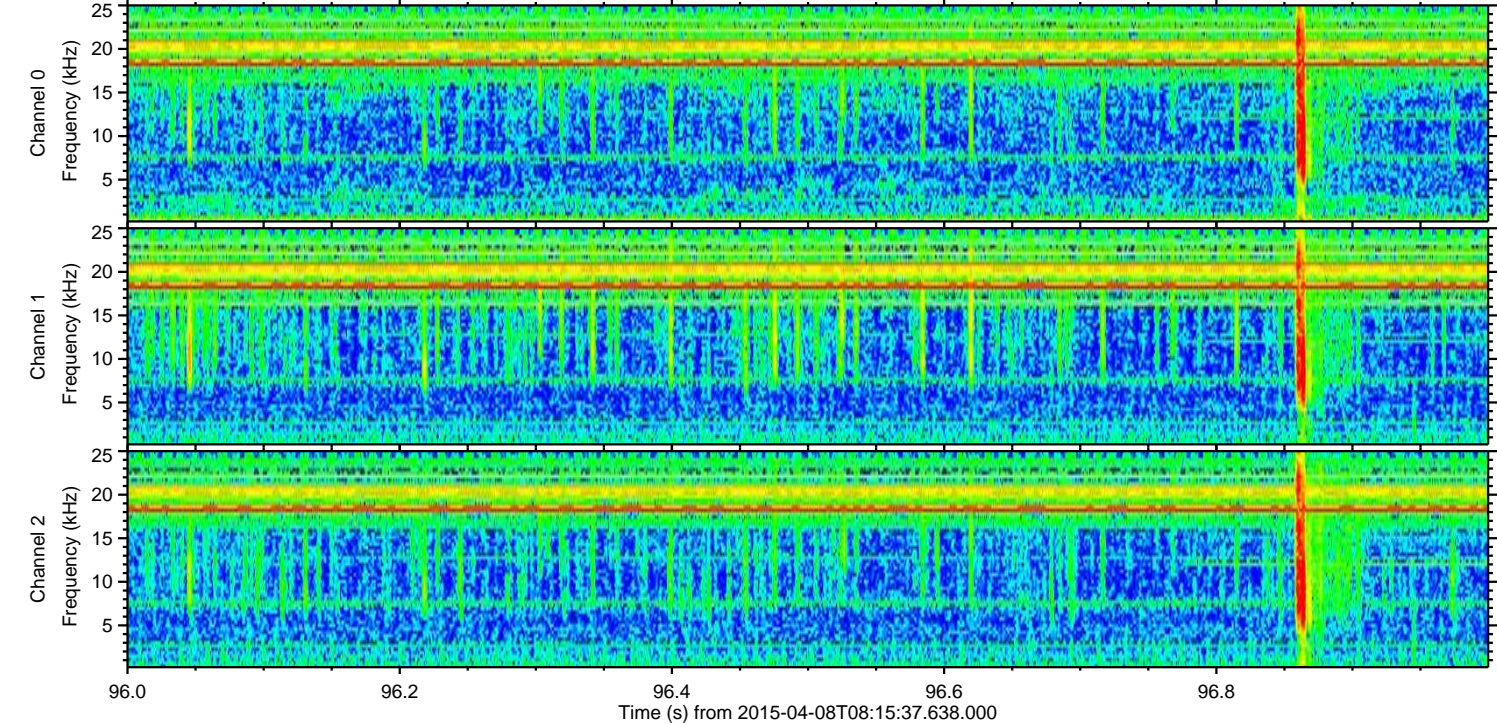
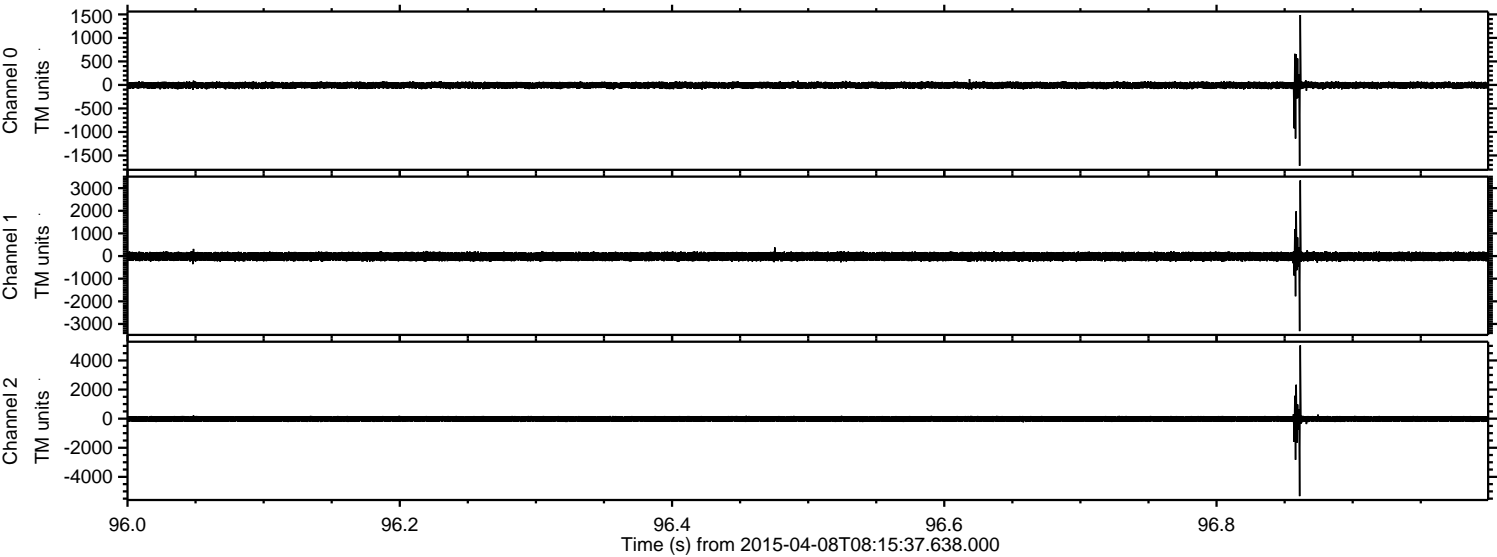
ELMAVAN 3D WAVEFORMS (Measured data sampled at 50 kHz) 49545 packets of 144 samples from 2015-04-08T08:15:37.638.000. Part 8/143

Processed Wed Apr 8 11:19:37 2015 by ELM ver.2012-10-06 from 001__elm20150408_081536__dat00.bin

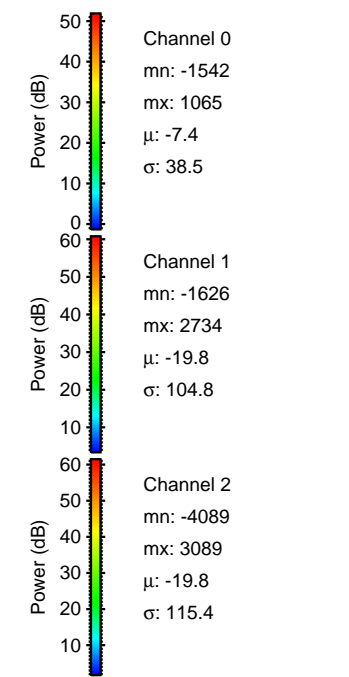
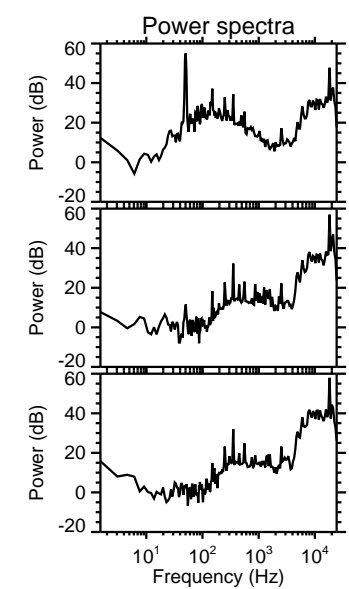
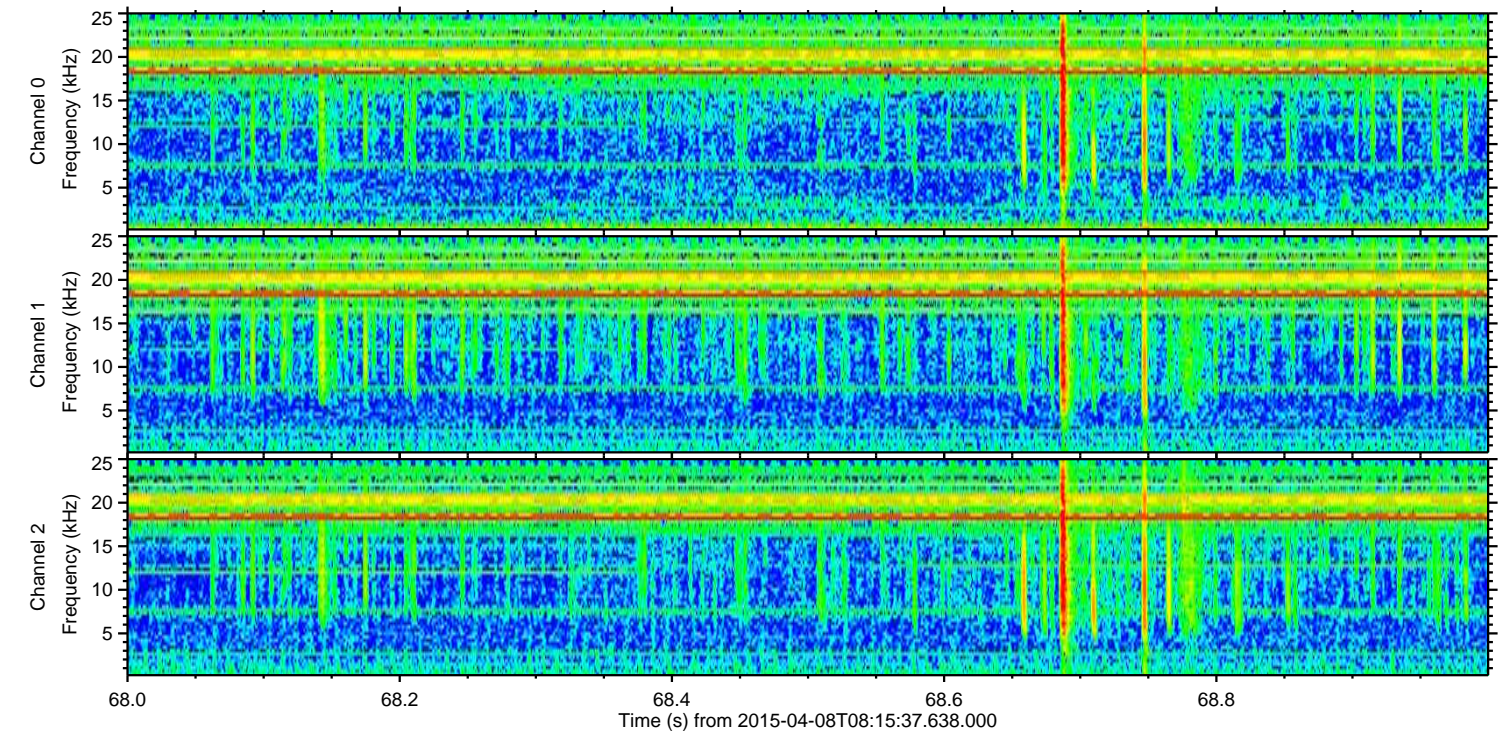
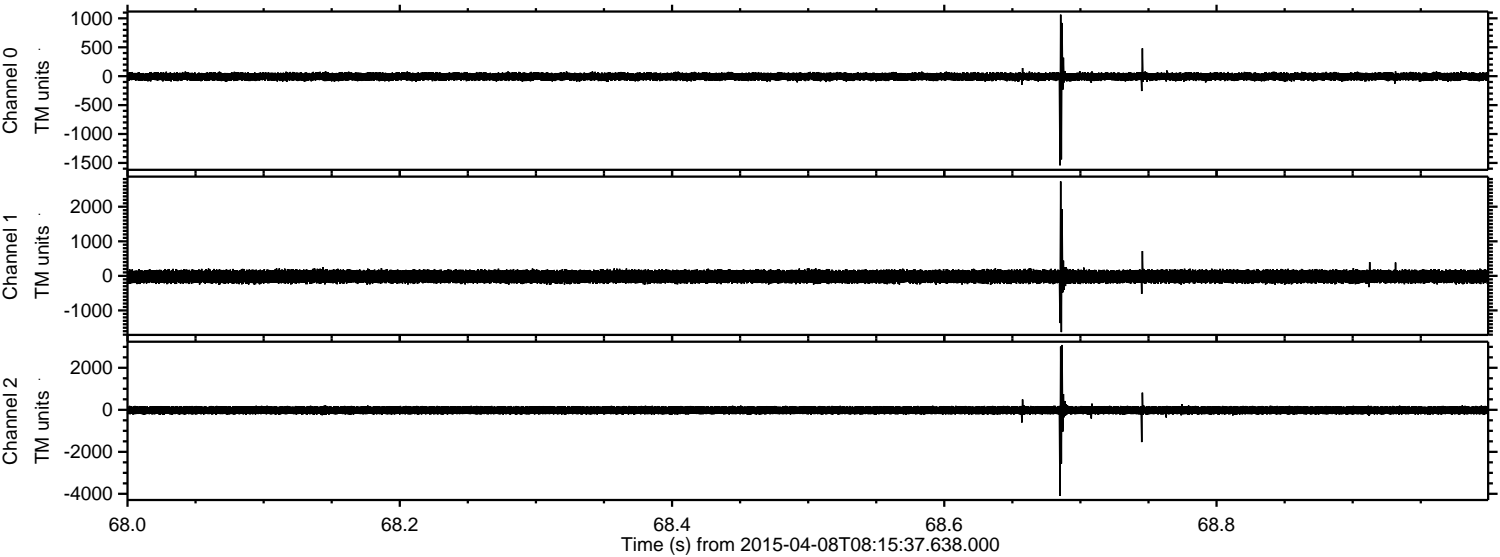


ELMAVAN 3D WAVEFORMS (Measured data sampled at 50 kHz) 49545 packets of 144 samples from 2015-04-08T08:15:37.638.000. Part 97/143

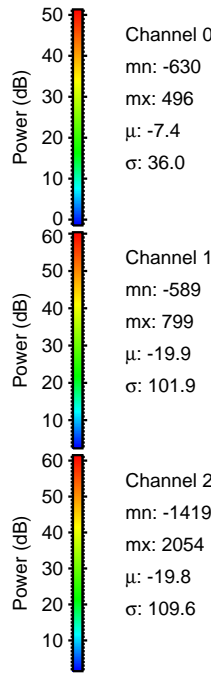
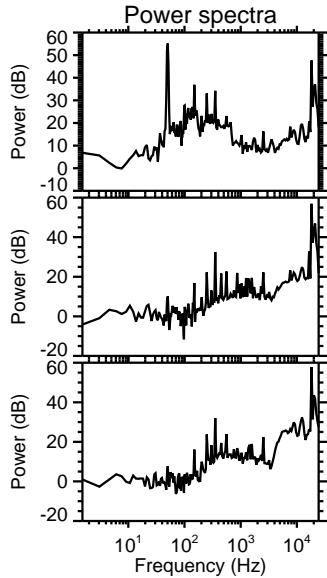
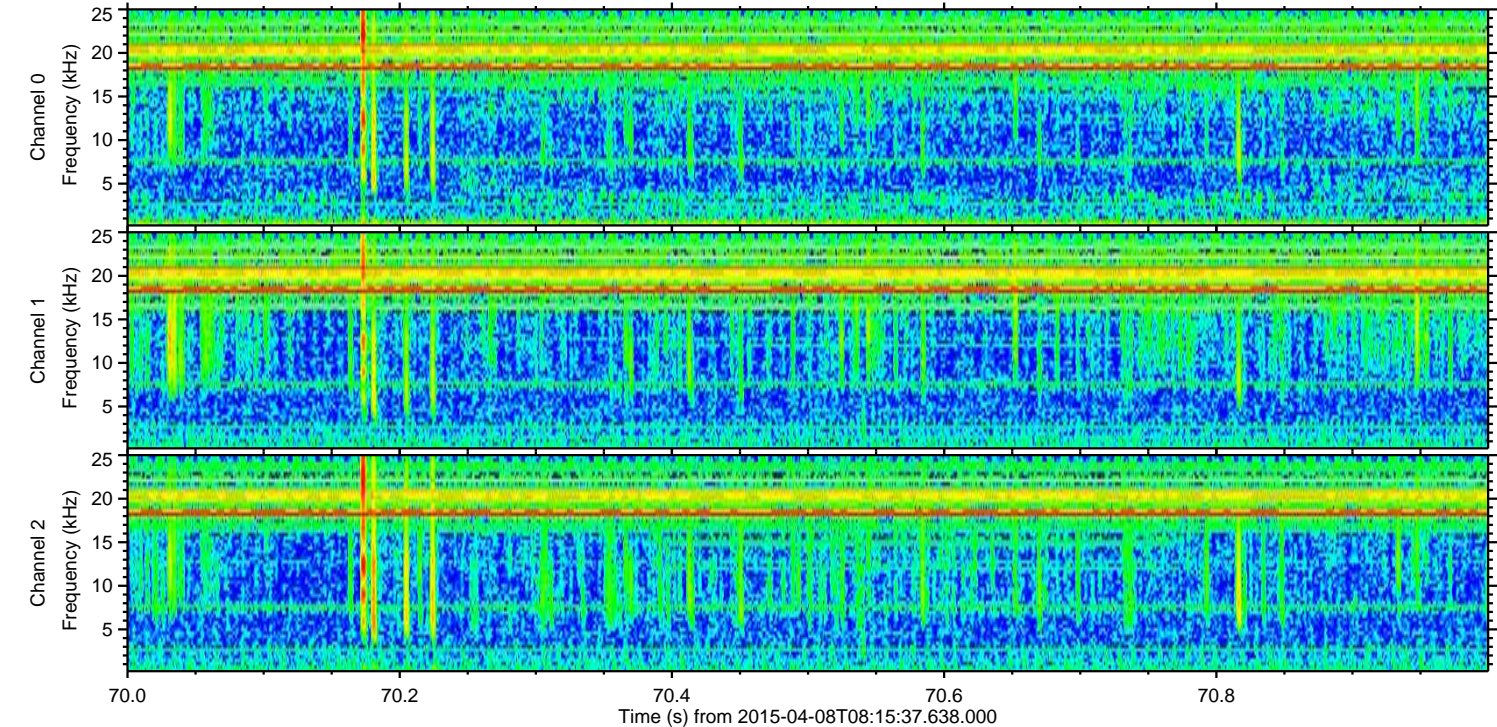
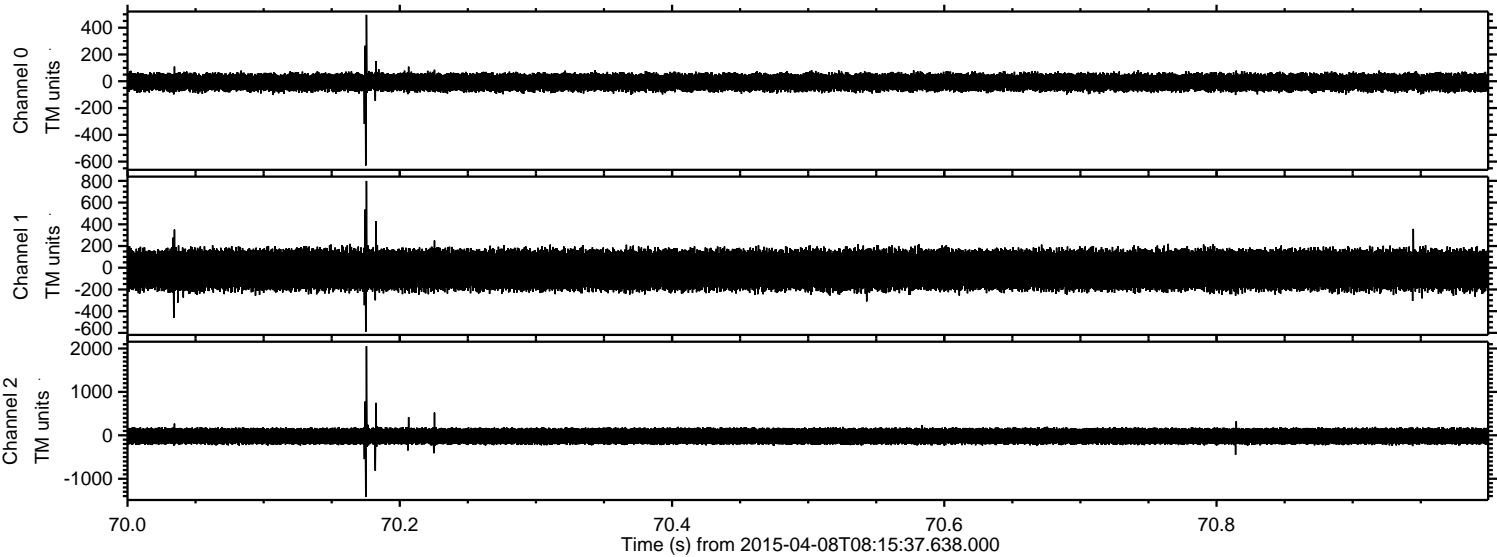
Processed Wed Apr 8 11:19:38 2015 by ELM ver.2012-10-06 from 001__elm20150408_081536__dat00.bin



Processed Wed Apr 8 11:19:39 2015 by ELM ver.2012-10-06 from 001__elm20150408_081536__dat00.bin



Processed Wed Apr 8 11:19:40 2015 by ELM ver.2012-10-06 from 001__elm20150408_081536__dat00.bin

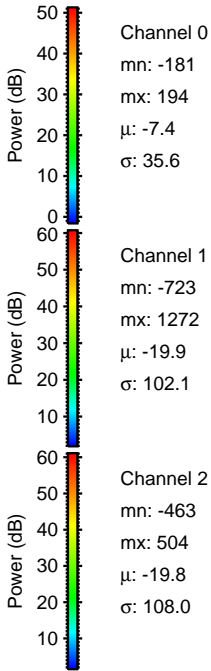
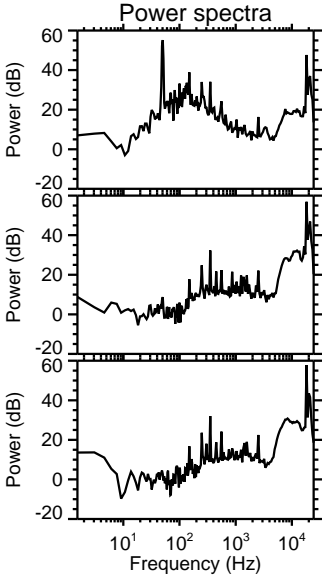
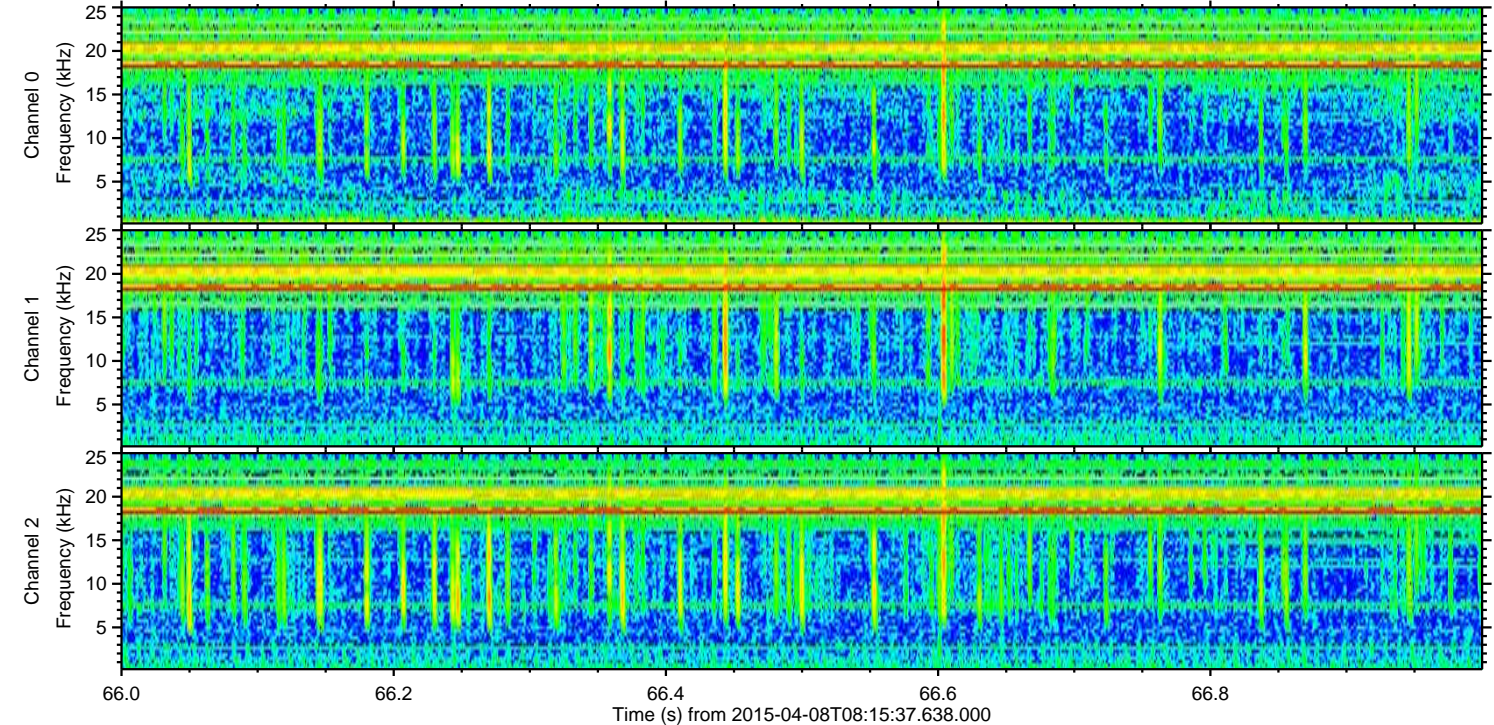
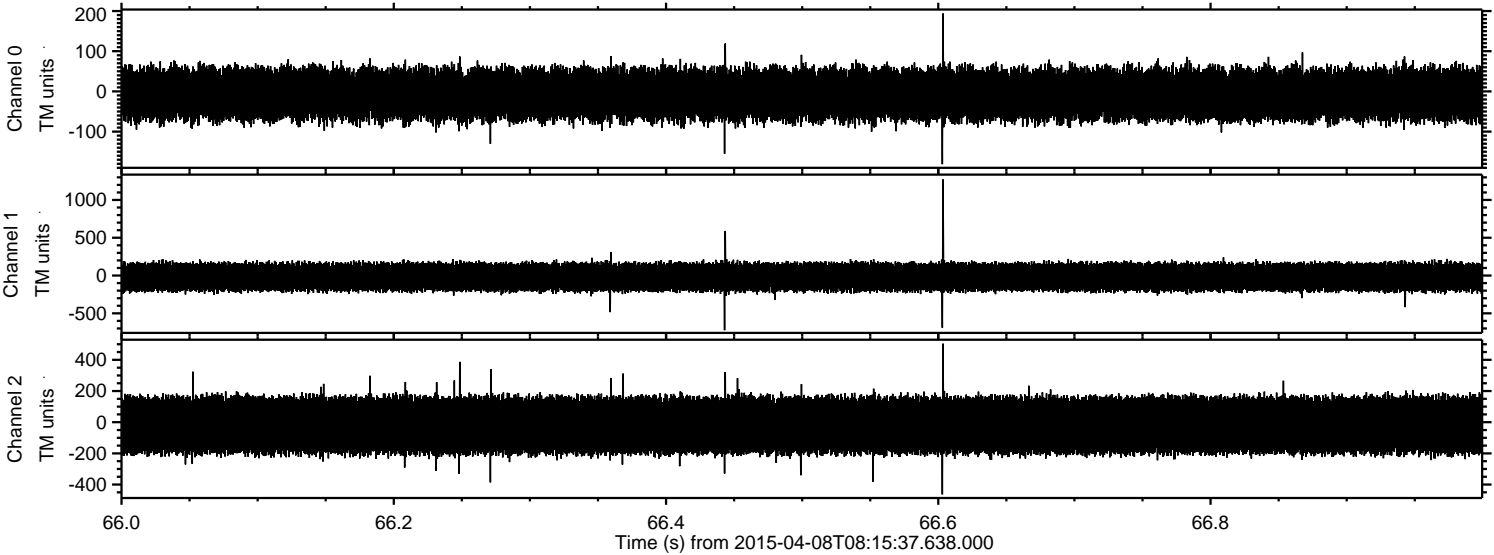


Channel 0
mn: -630
mx: 496
 μ : -7.4
 σ : 36.0

Channel 1
mn: -589
mx: 799
 μ : -19.9
 σ : 101.9

Channel 2
mn: -1419
mx: 2054
 μ : -19.8
 σ : 109.6

Processed Wed Apr 8 11:19:41 2015 by ELM ver.2012-10-06 from 001__elm20150408_081536__dat00.bin

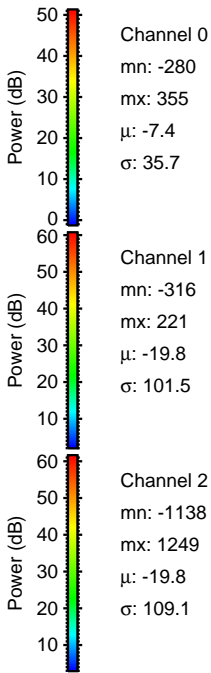
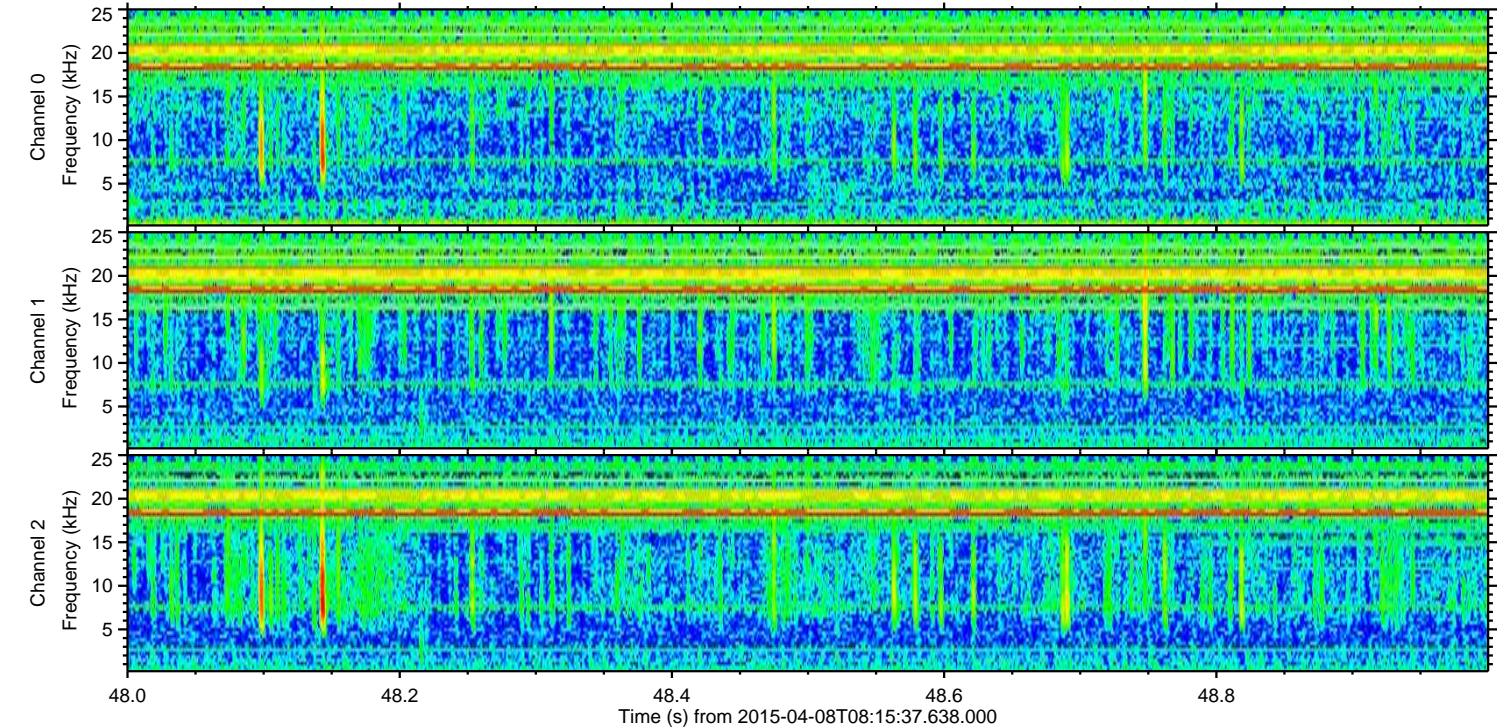
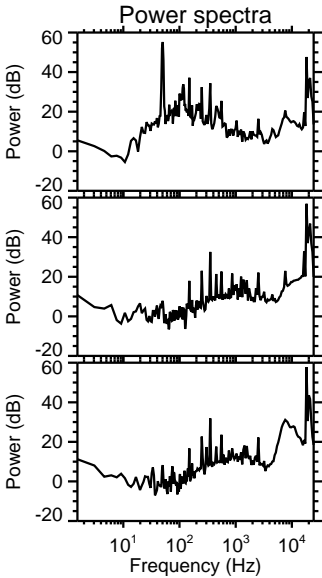
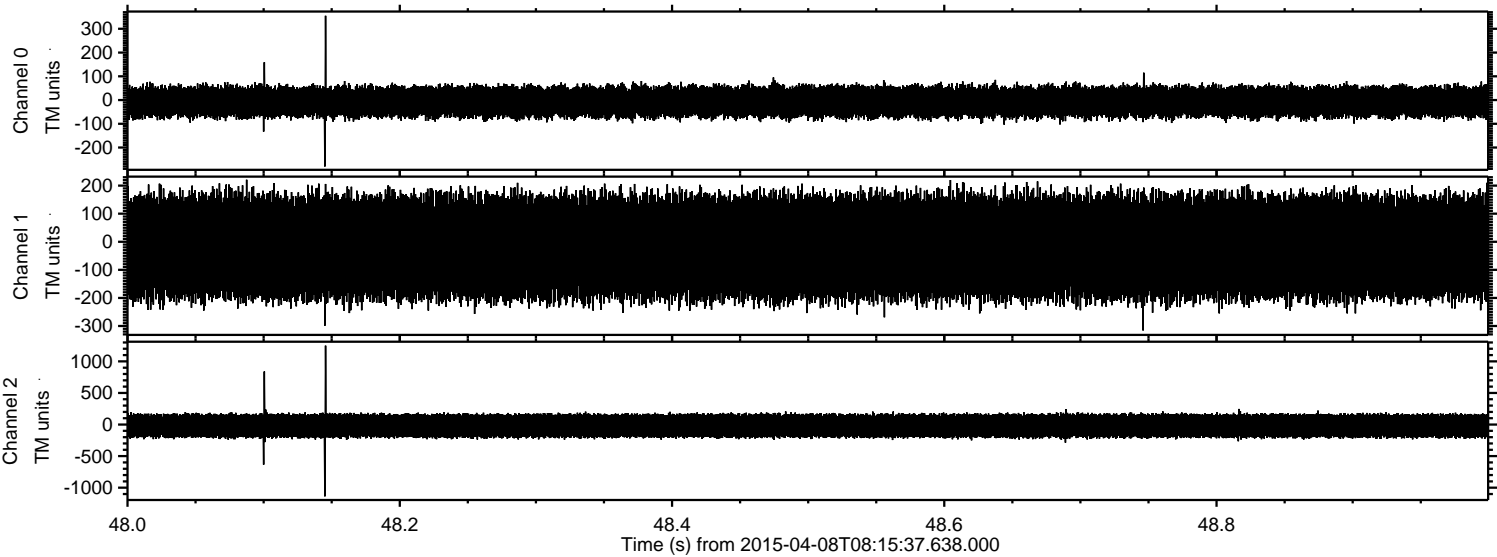


Channel 0
mn: -181
mx: 194
 μ : -7.4
 σ : 35.6

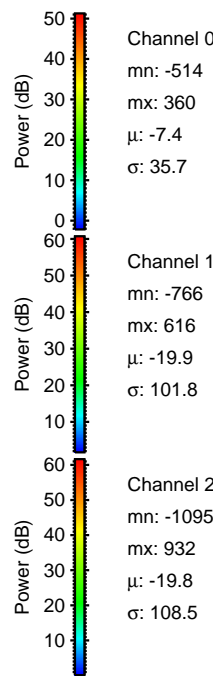
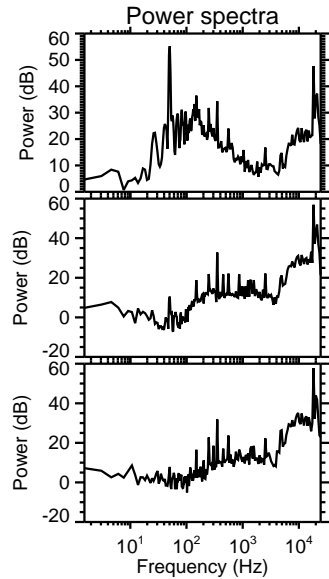
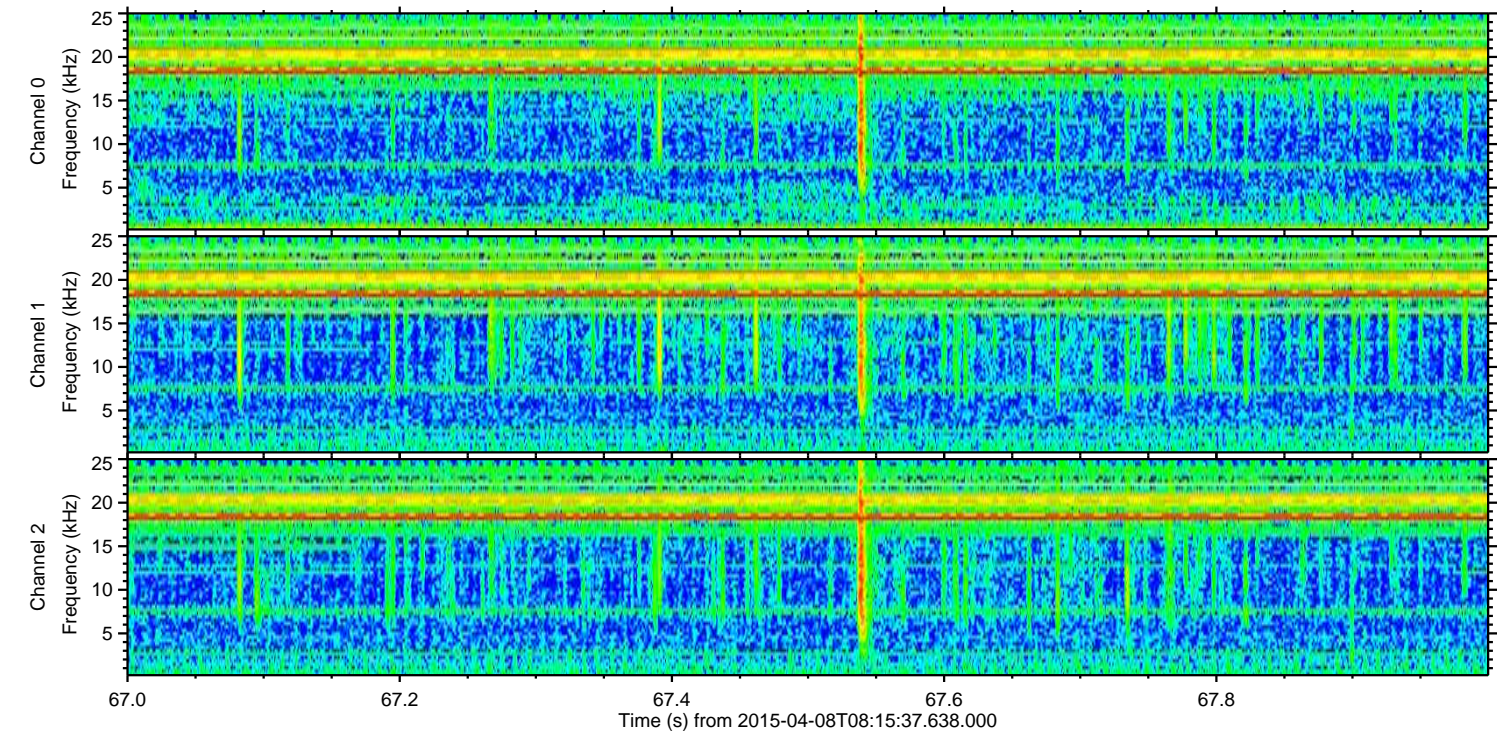
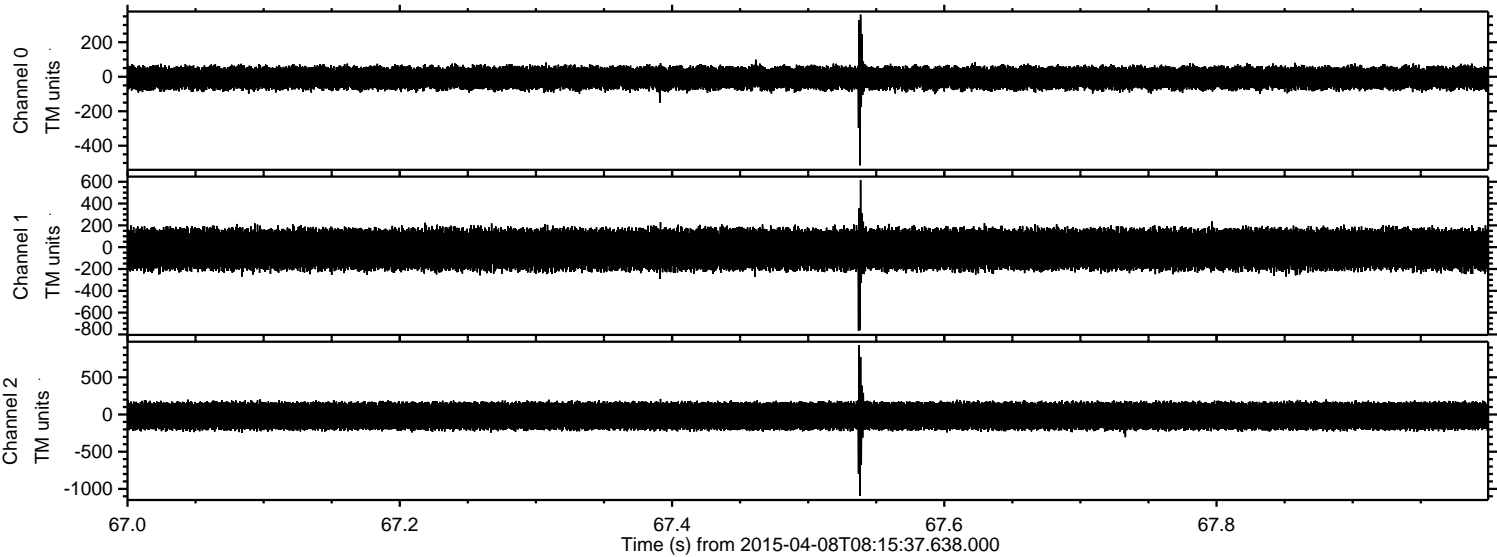
Channel 1
mn: -723
mx: 1272
 μ : -19.9
 σ : 102.1

Channel 2
mn: -463
mx: 504
 μ : -19.8
 σ : 108.0

Processed Wed Apr 8 11:19:42 2015 by ELM ver.2012-10-06 from 001__elm20150408_081536__dat00.bin



Processed Wed Apr 8 11:19:43 2015 by ELM ver.2012-10-06 from 001__elm20150408_081536__dat00.bin



Processed Wed Apr 8 11:19:44 2015 by ELM ver.2012-10-06 from 001__elm20150408_081536__dat00.bin

