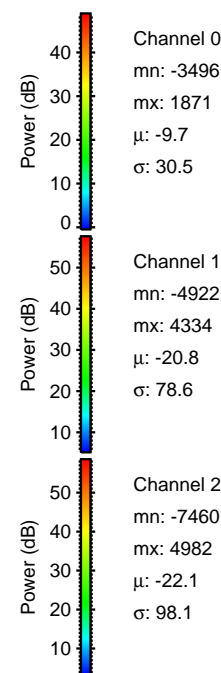
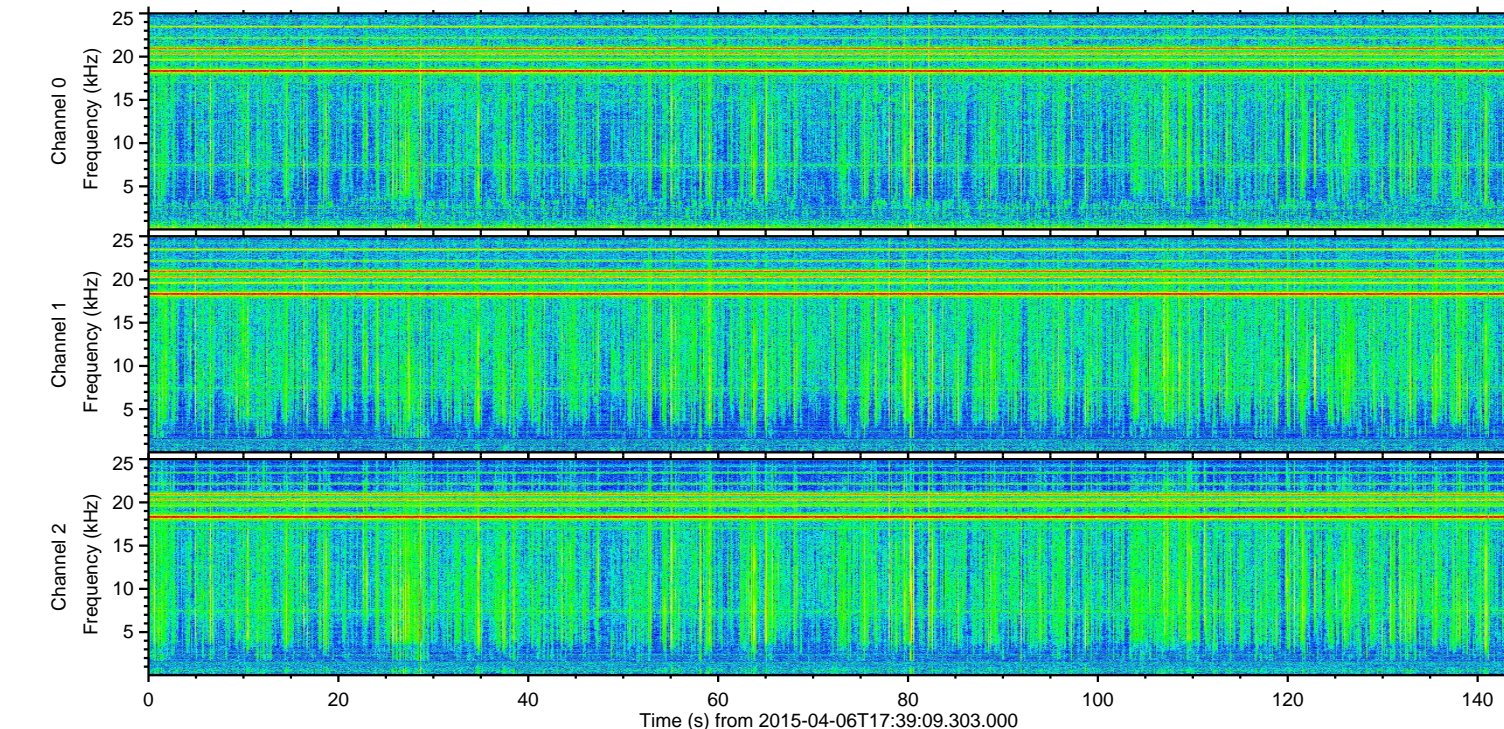
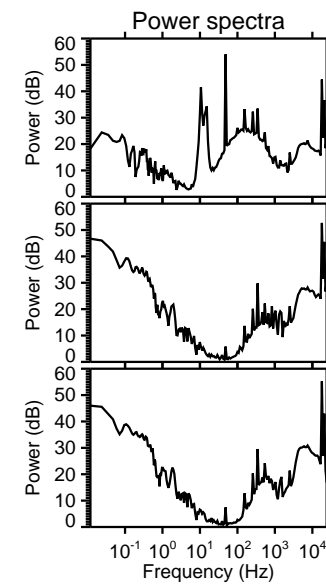
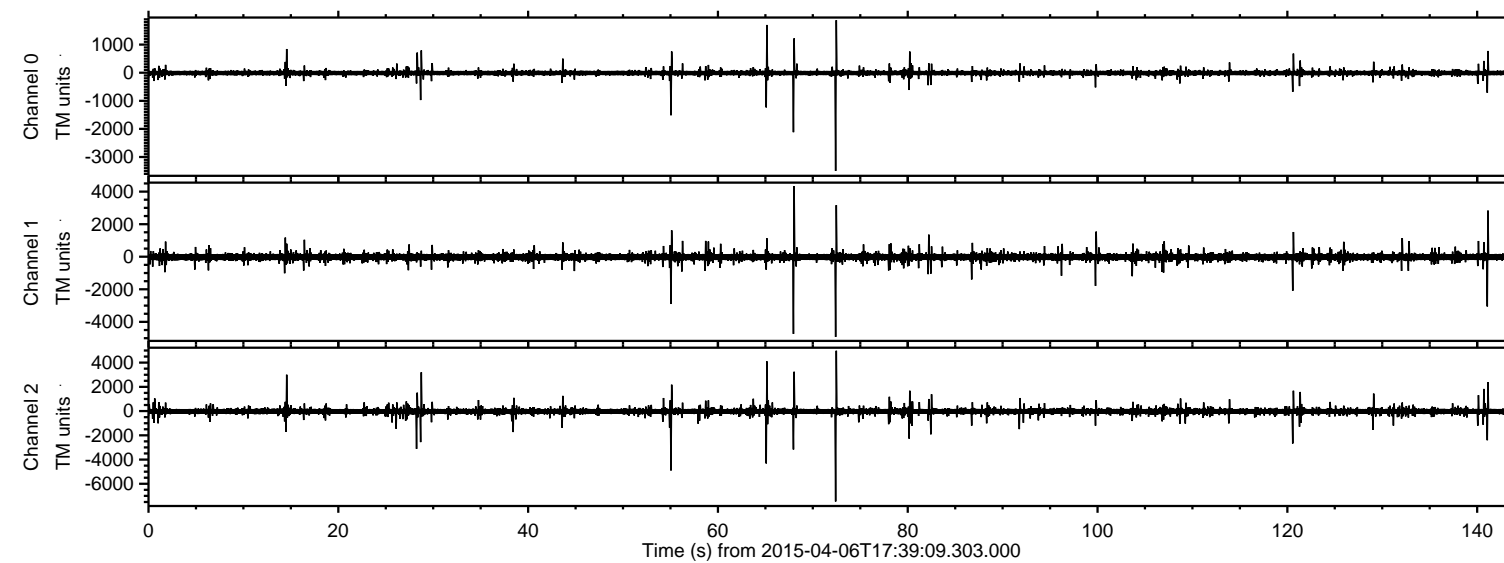
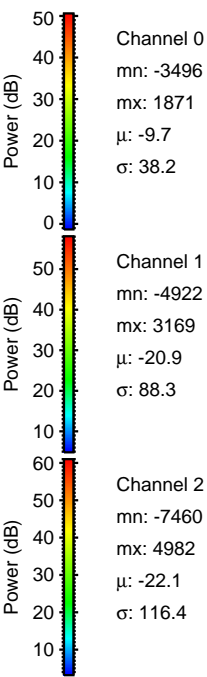
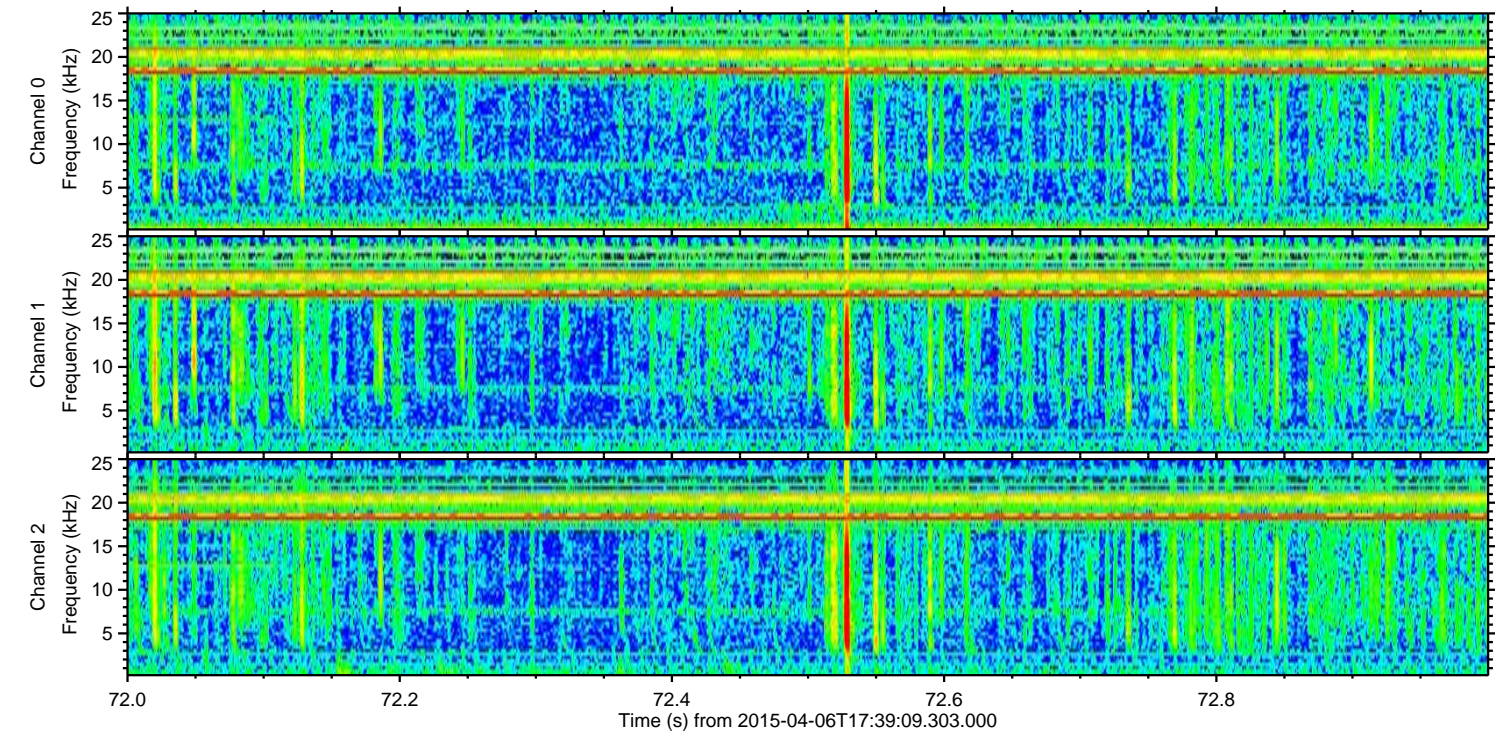
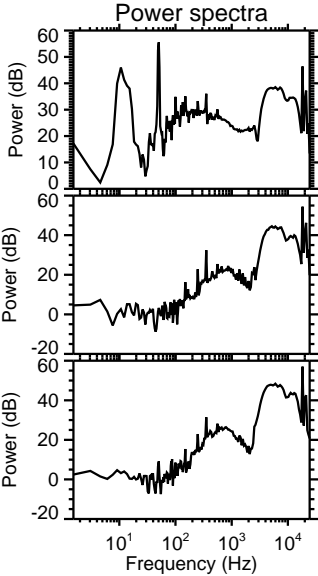
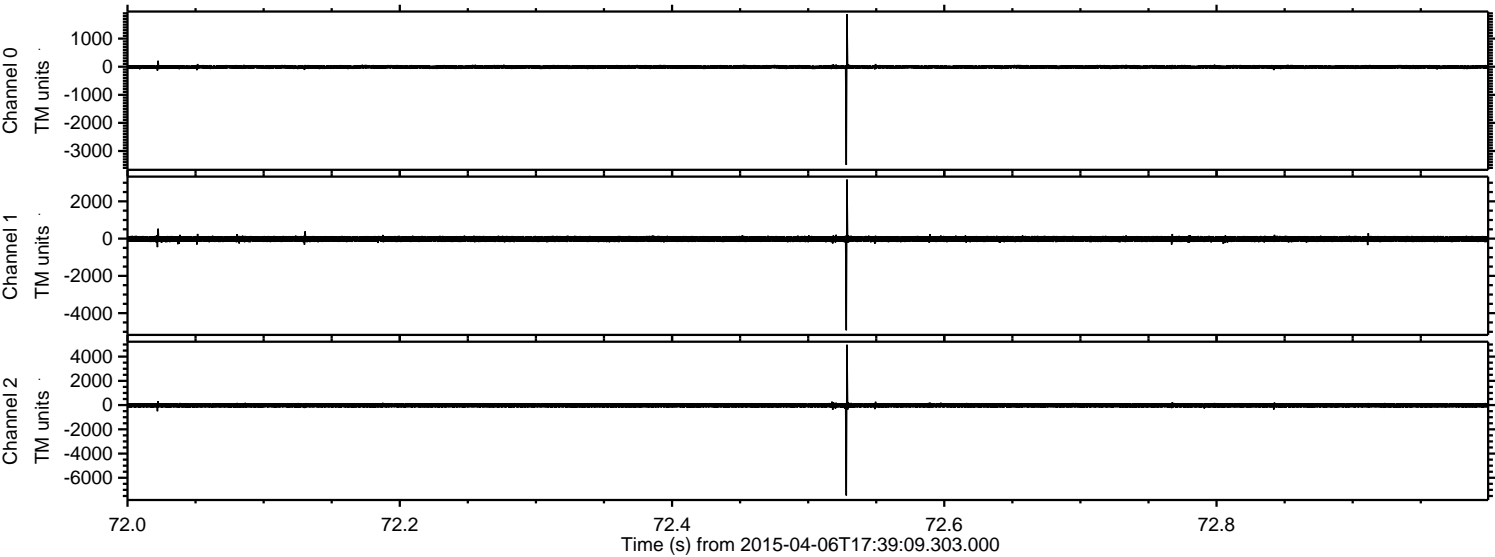


ELMAVAN 3D WAVEFORMS (Measured data sampled at 50 kHz) 49782 packets of 144 samples from 2015-04-06T17:39:09.303.000.

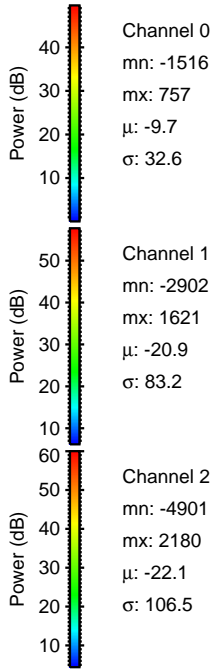
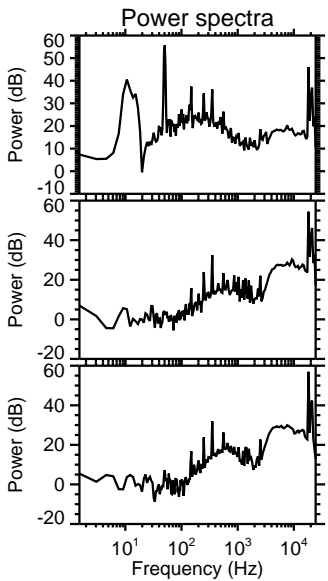
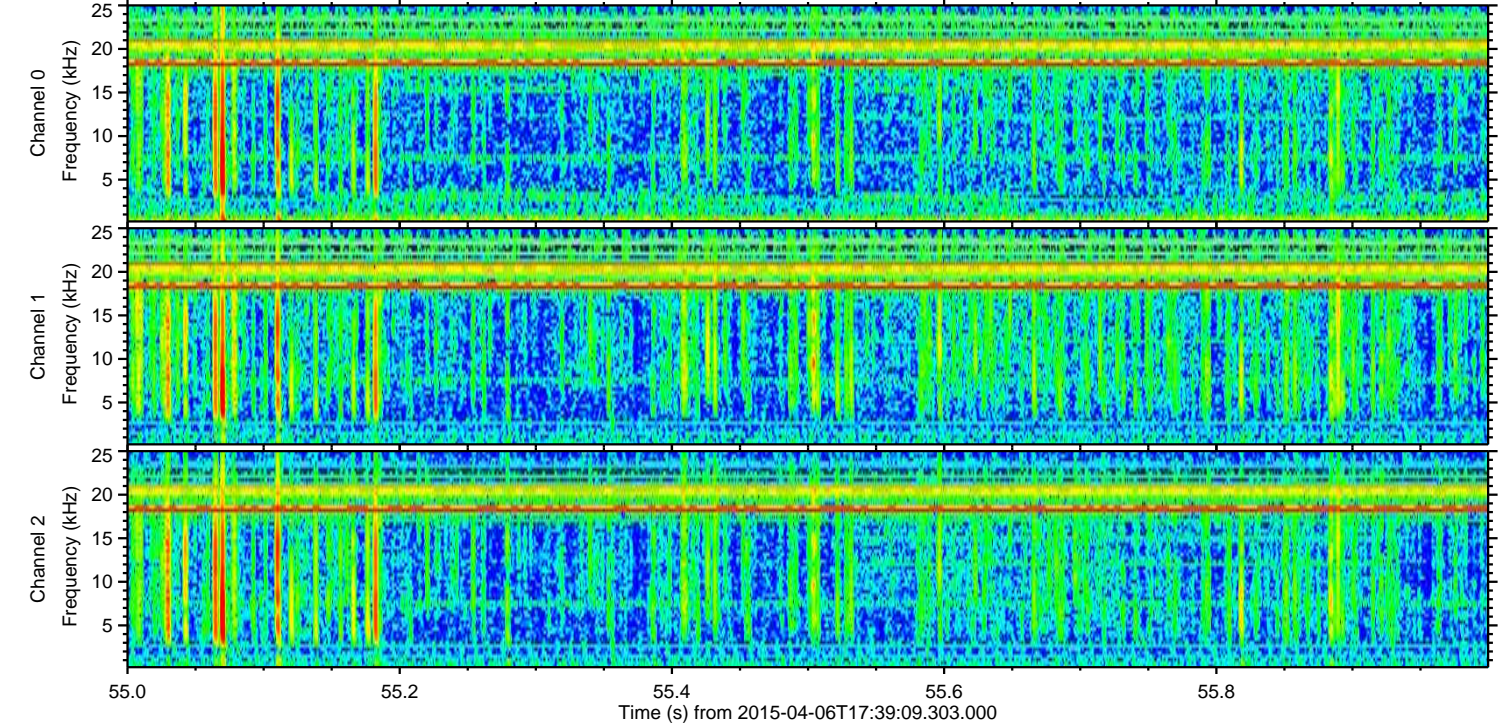
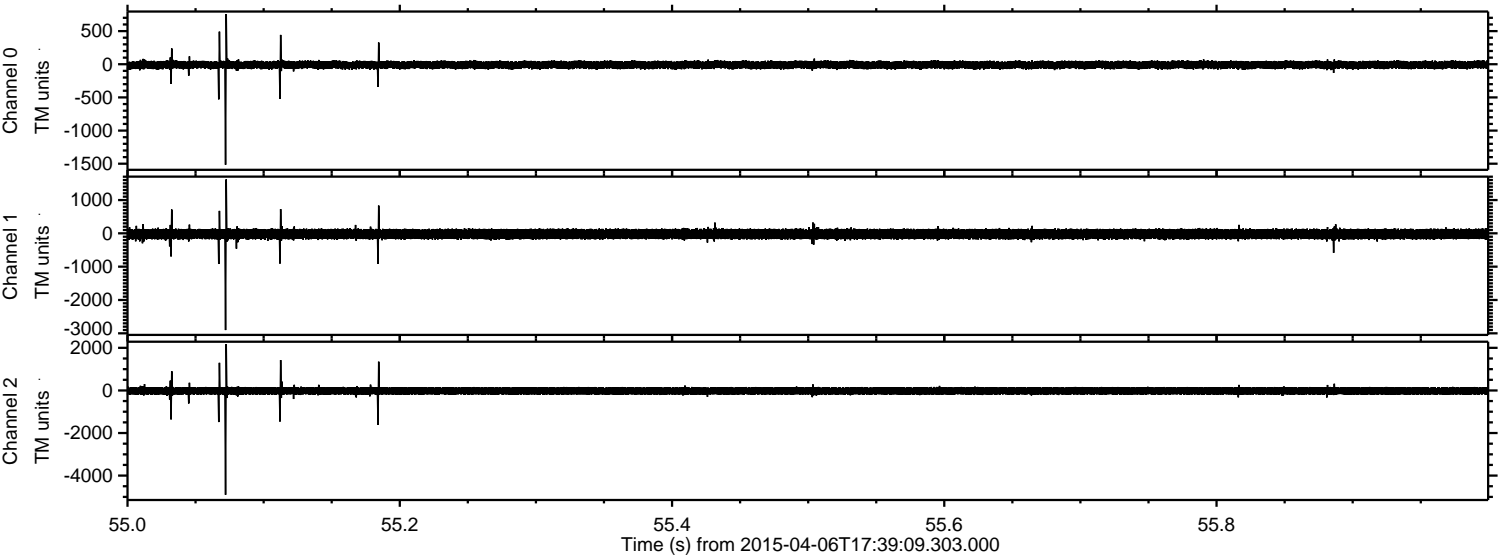
Processed Mon Apr 6 19:46:11 2015 by ELM ver.2012-10-06 from 001__elm20150406_173908__dat00.bin



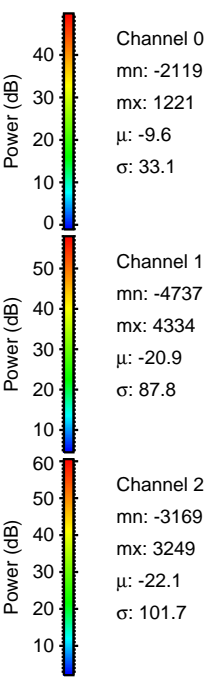
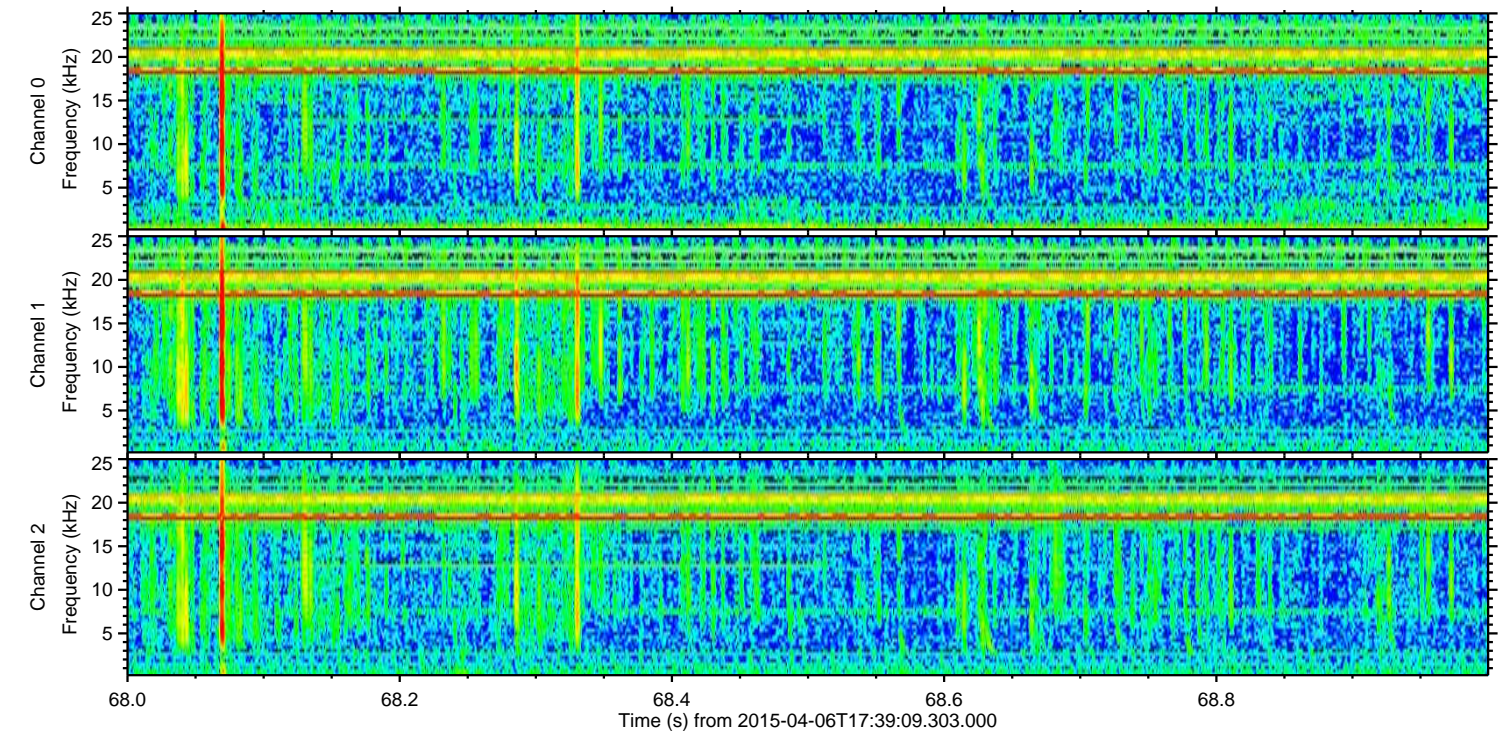
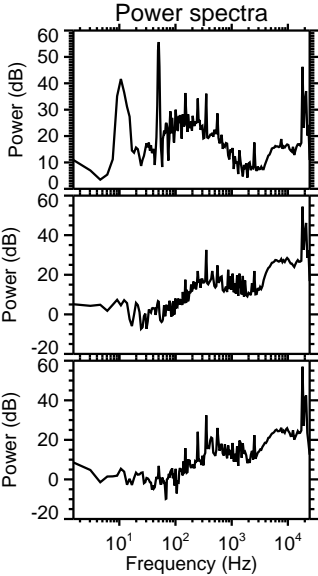
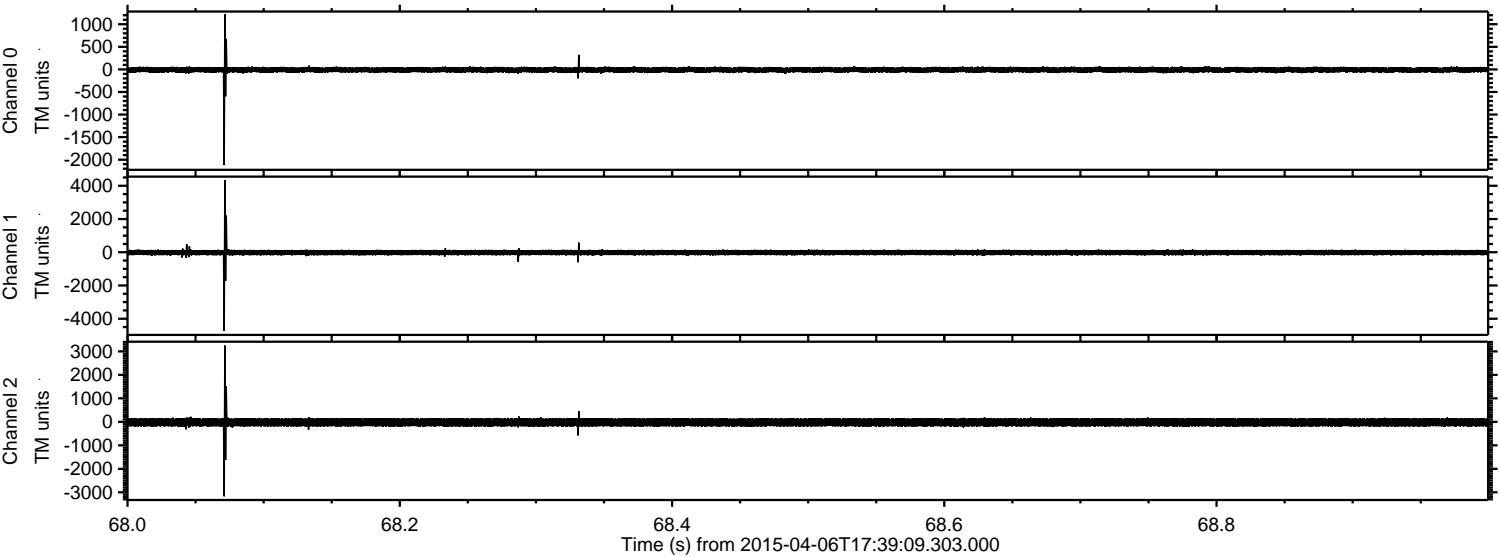
Processed Mon Apr 6 19:46:23 2015 by ELM ver.2012-10-06 from 001__elm20150406_173908__dat00.bin



Processed Mon Apr 6 19:46:24 2015 by ELM ver.2012-10-06 from 001__elm20150406_173908__dat00.bin



Processed Mon Apr 6 19:46:25 2015 by ELM ver.2012-10-06 from 001__elm20150406_173908__dat00.bin

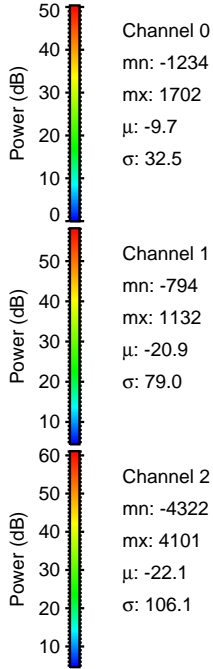
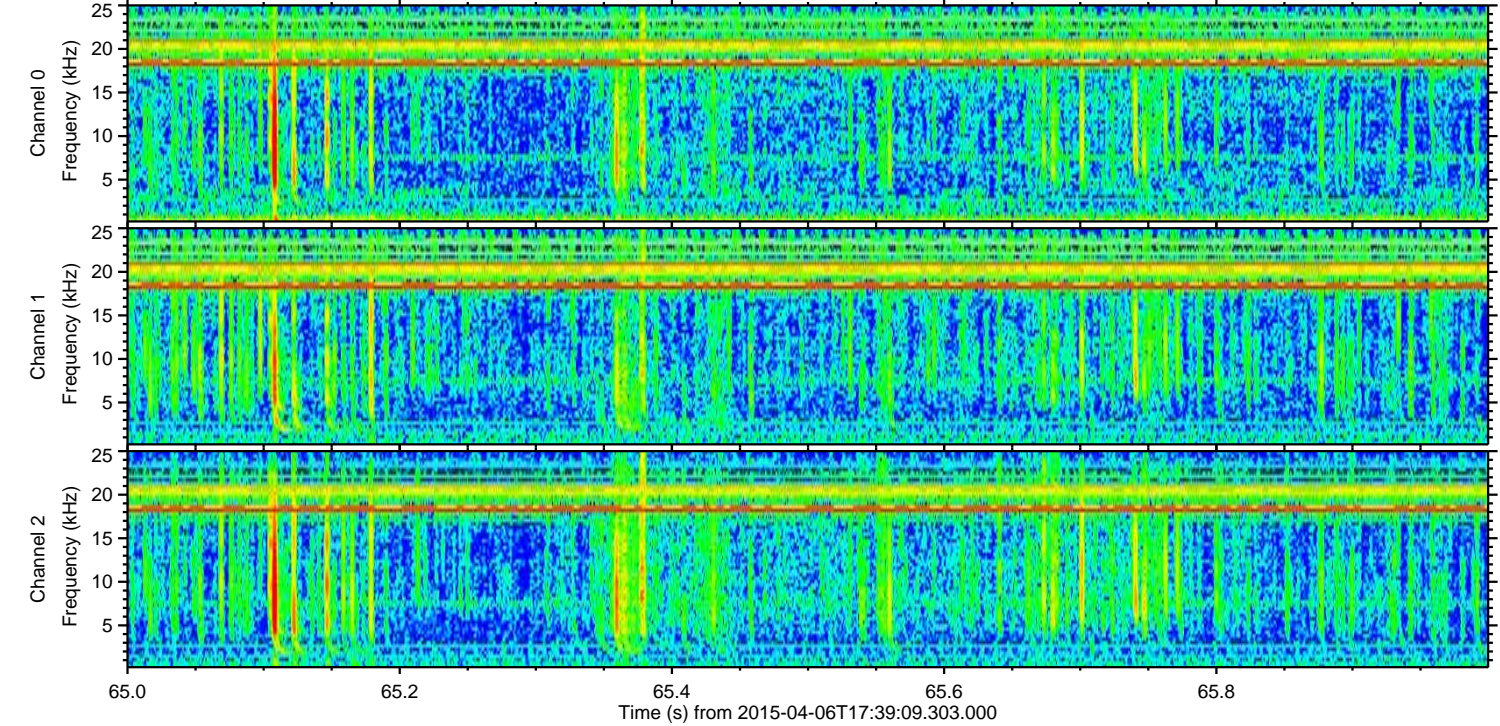
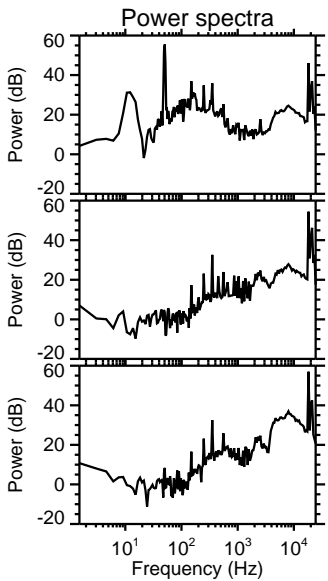
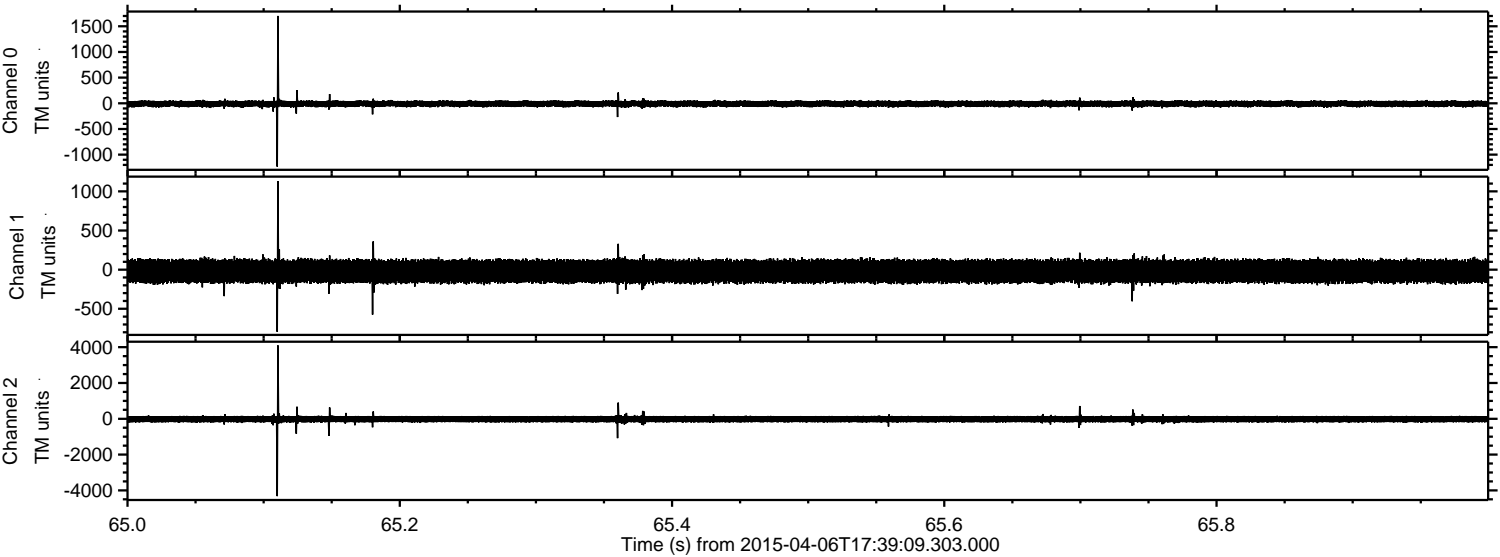


Channel 0
mn: -2119
mx: 1221
 μ : -9.6
 σ : 33.1

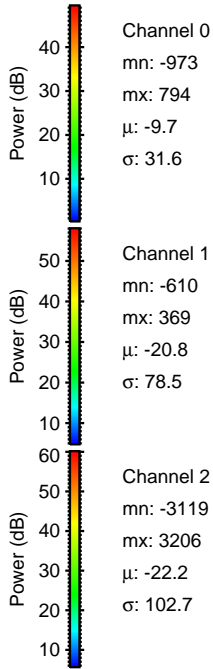
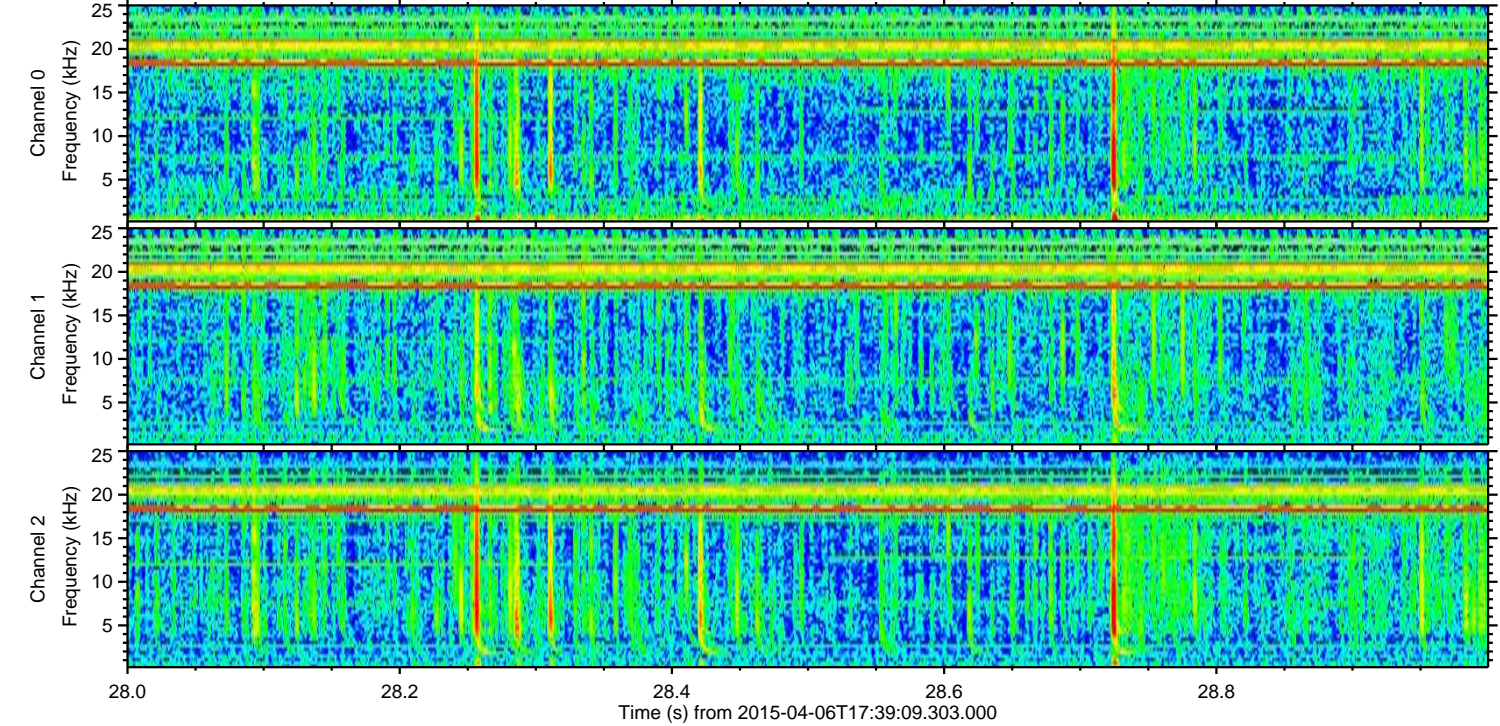
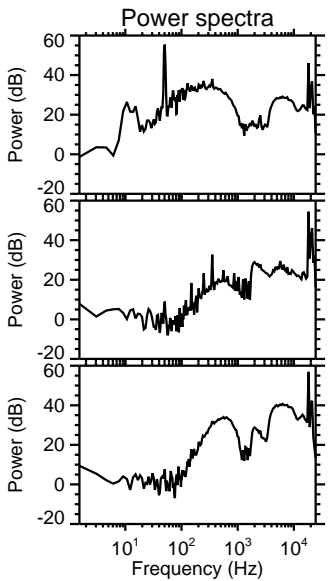
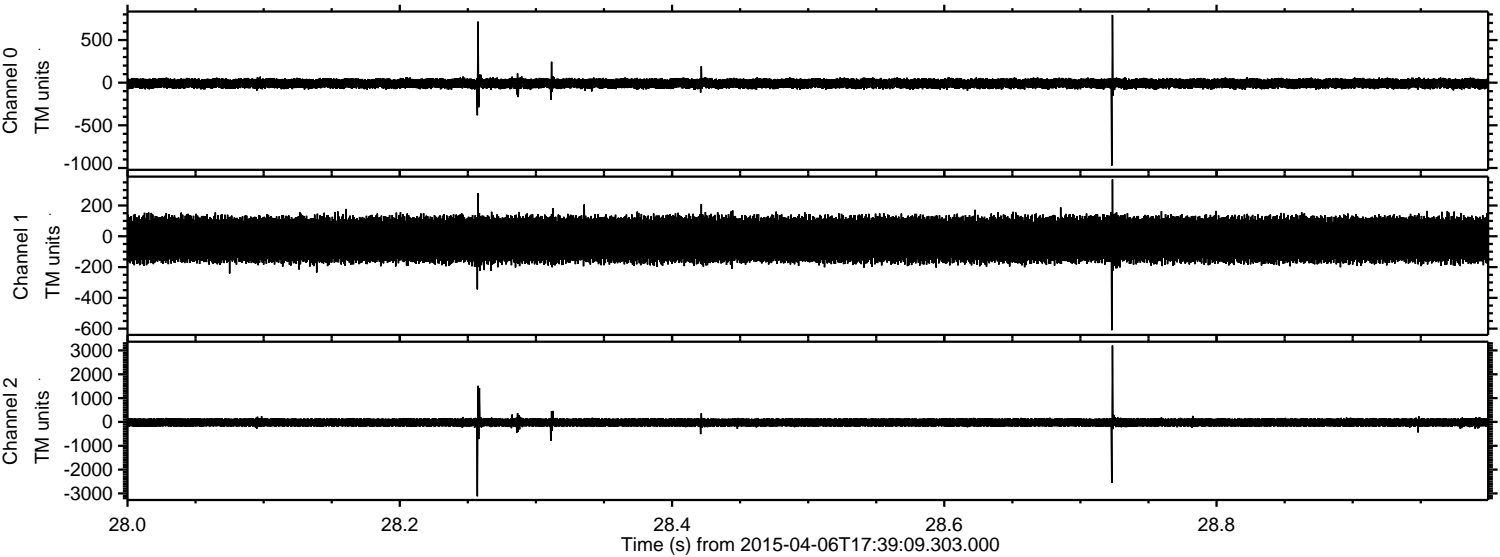
Channel 1
mn: -4737
mx: 4334
 μ : -20.9
 σ : 87.8

Channel 2
mn: -3169
mx: 3249
 μ : -22.1
 σ : 101.7

Processed Mon Apr 6 19:46:26 2015 by ELM ver.2012-10-06 from 001__elm20150406_173908__dat00.bin

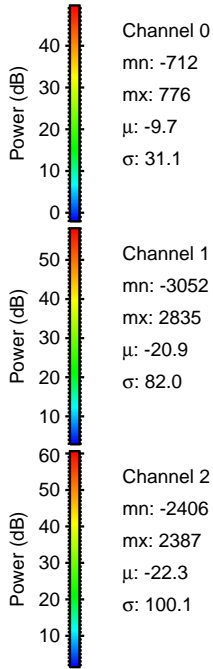
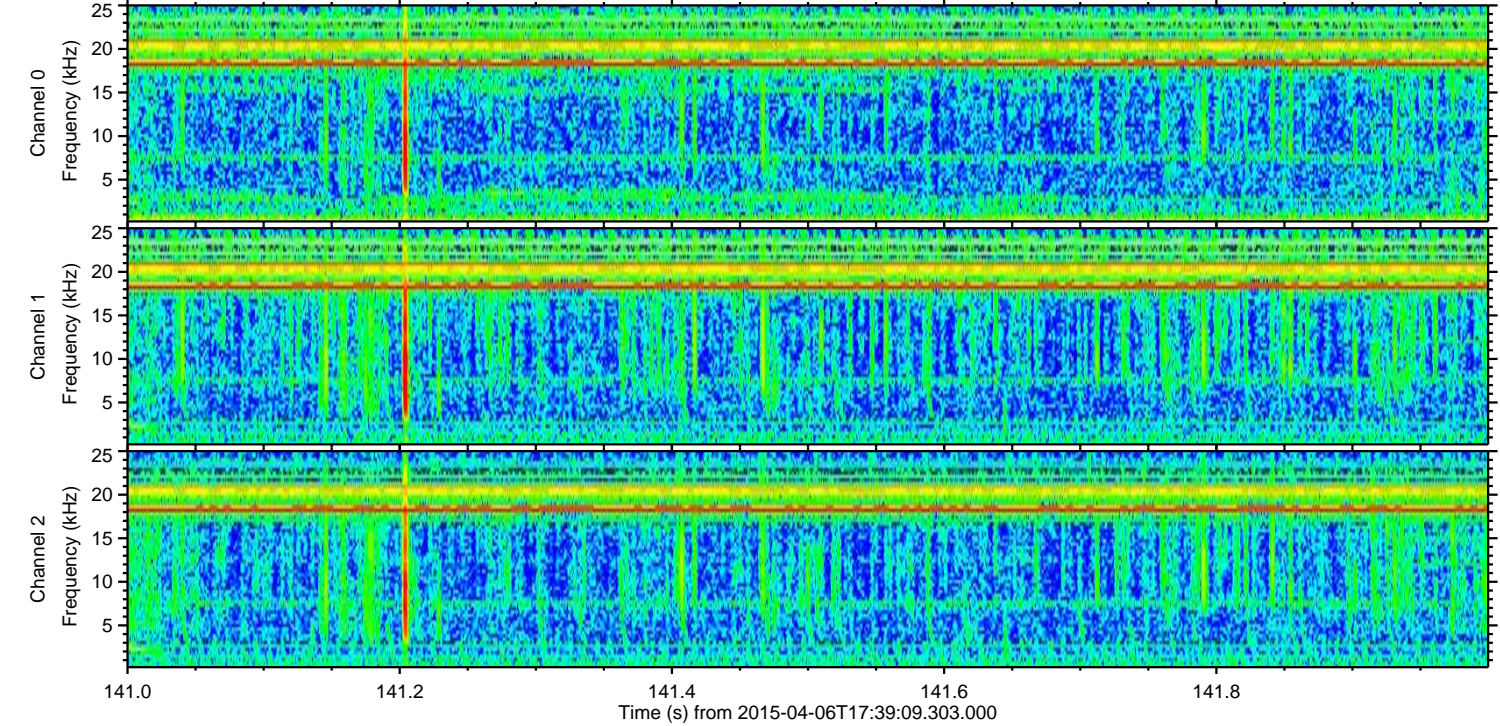
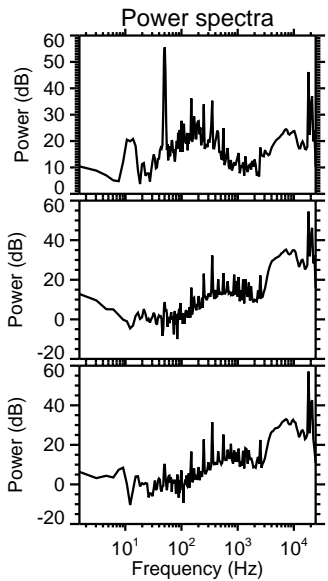
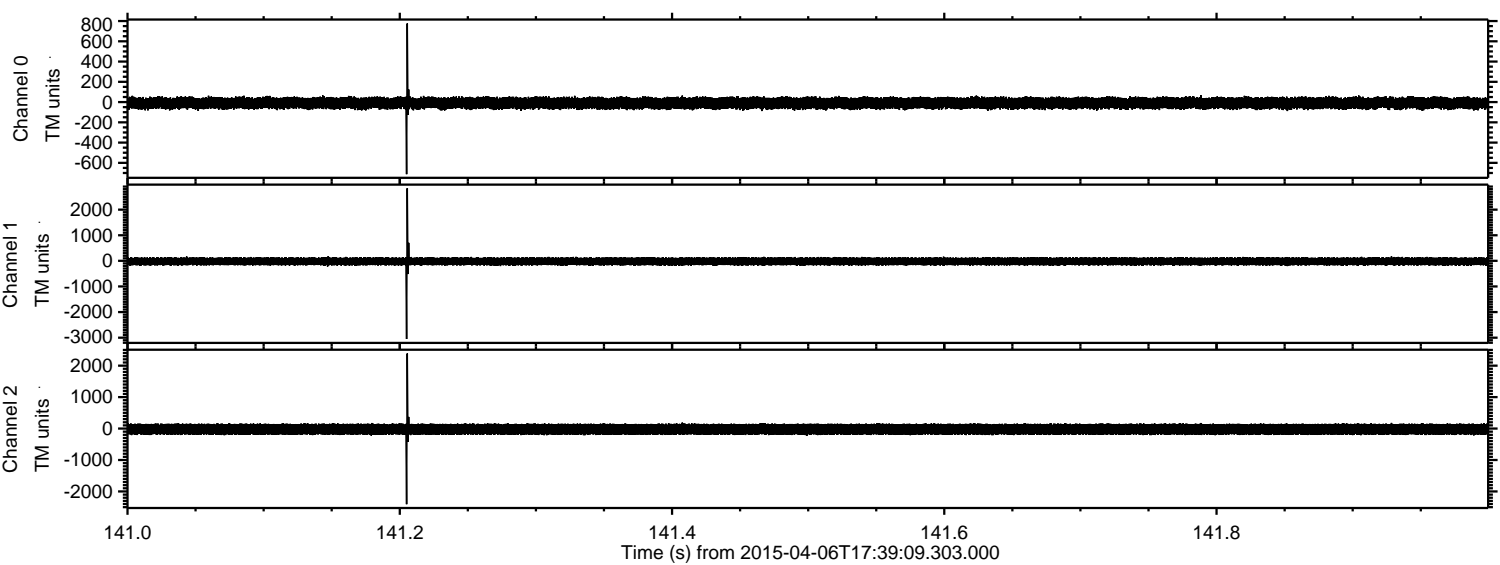


Processed Mon Apr 6 19:46:26 2015 by ELM ver.2012-10-06 from 001__elm20150406_173908__dat00.bin

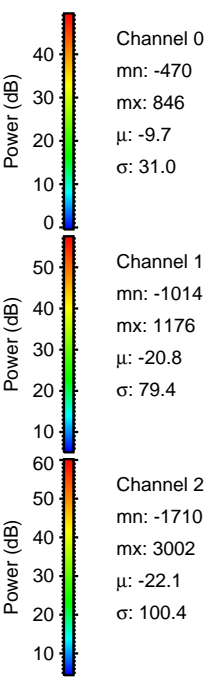
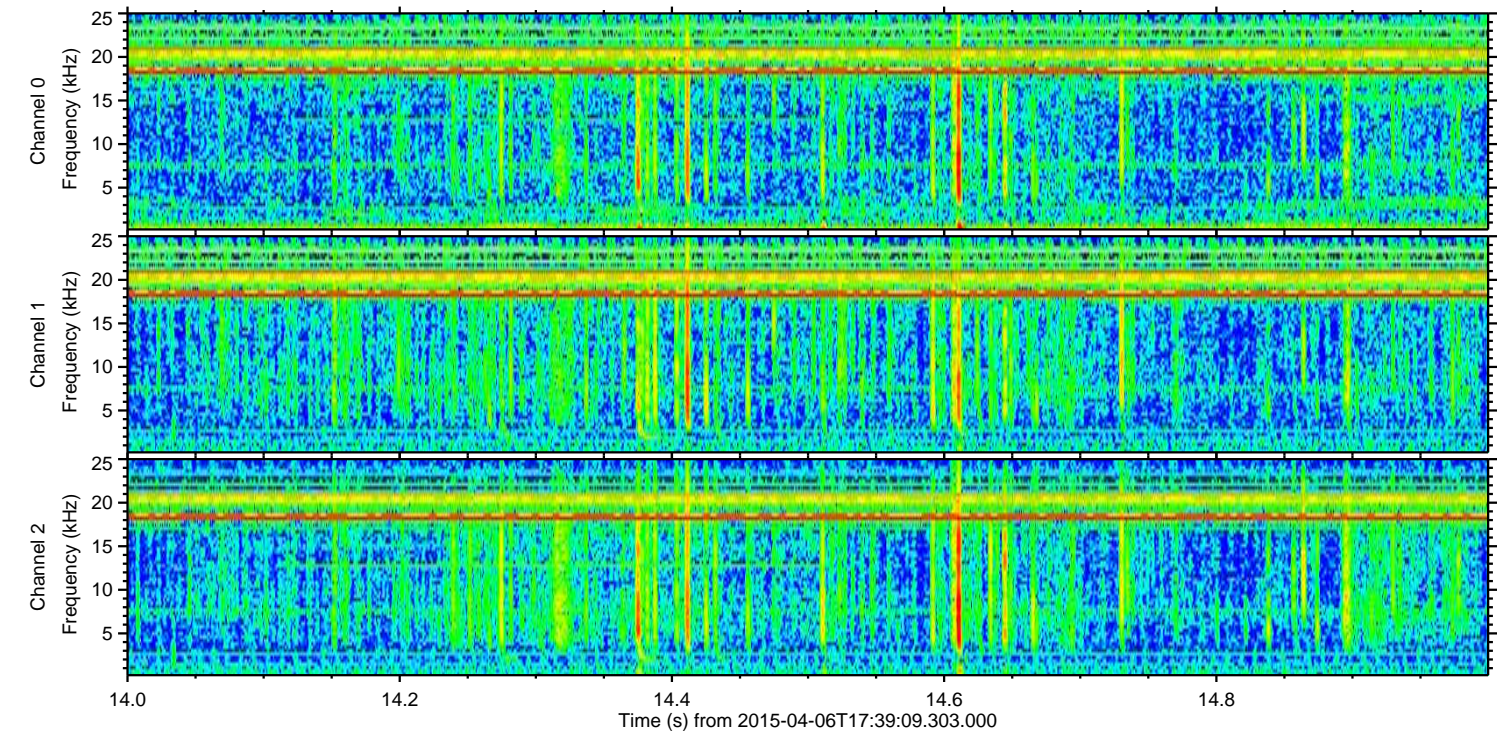
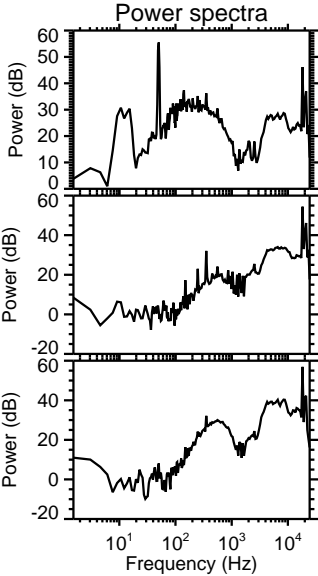
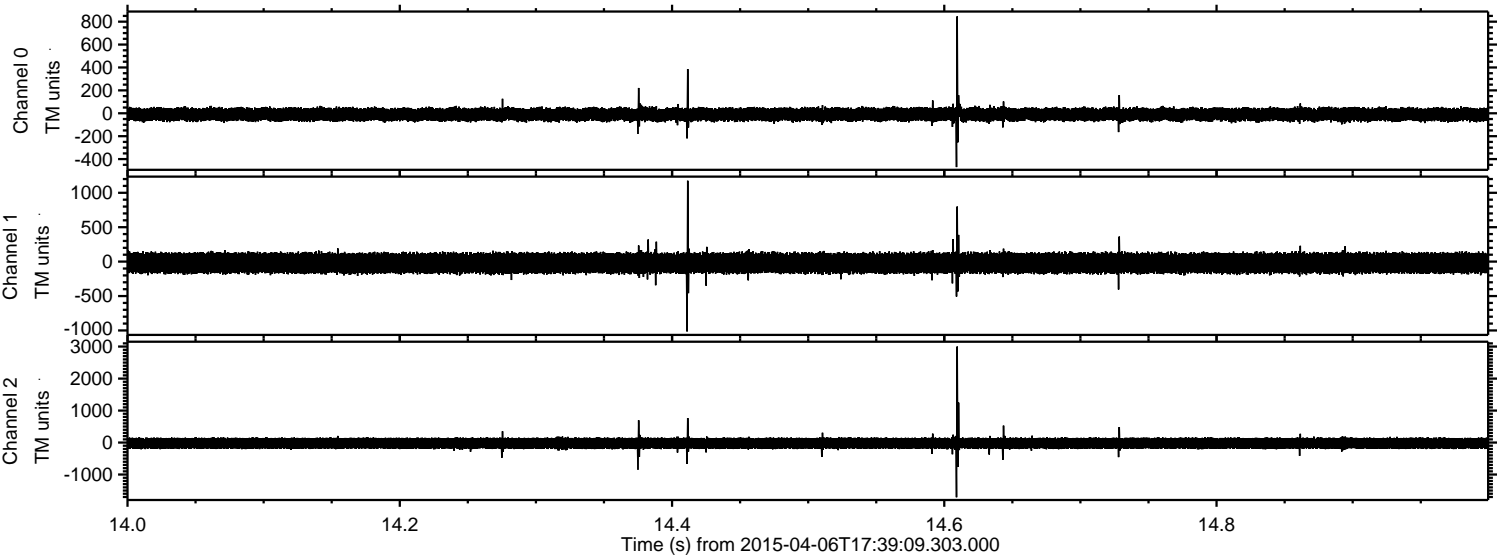


ELMAVAN 3D WAVEFORMS (Measured data sampled at 50 kHz) 49782 packets of 144 samples from 2015-04-06T17:39:09.303.000. Part 142/144

Processed Mon Apr 6 19:46:27 2015 by ELM ver.2012-10-06 from 001__elm20150406_173908__dat00.bin

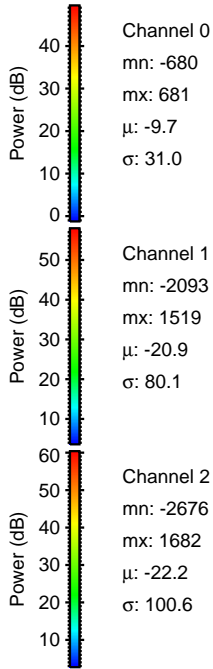
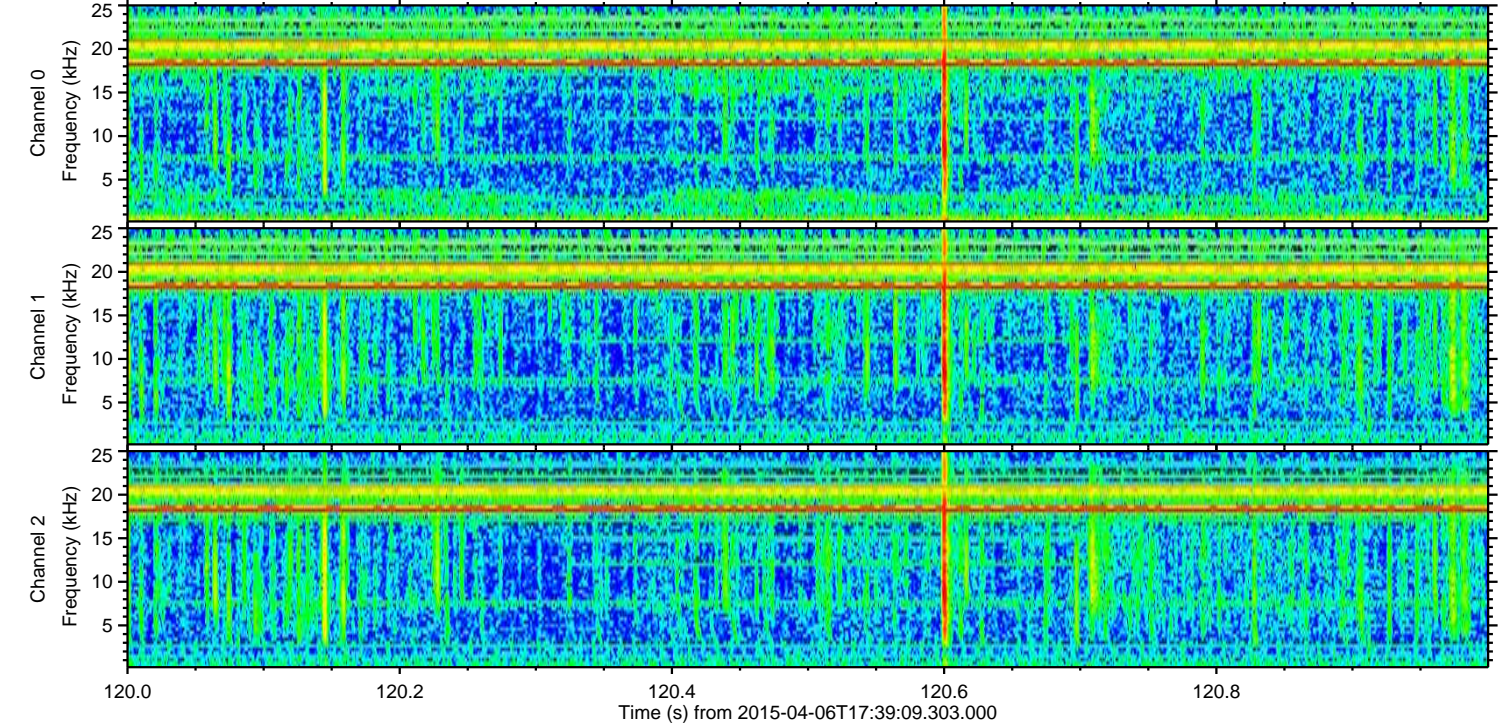
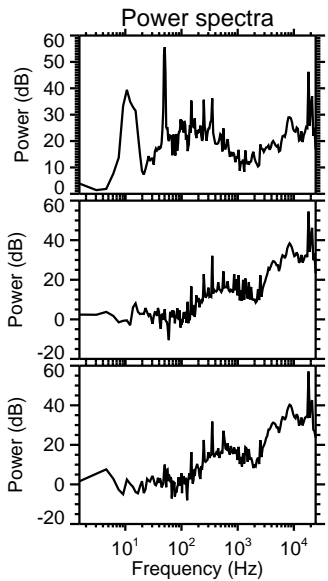
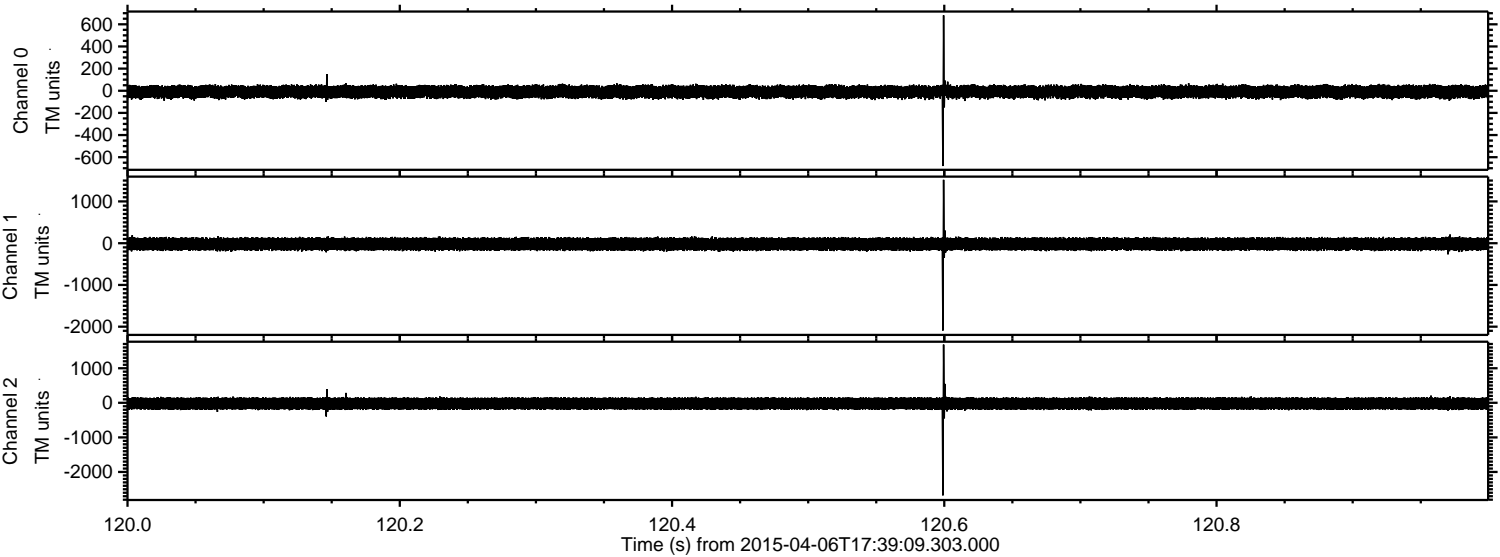


Processed Mon Apr 6 19:46:28 2015 by ELM ver.2012-10-06 from 001__elm20150406_173908__dat00.bin

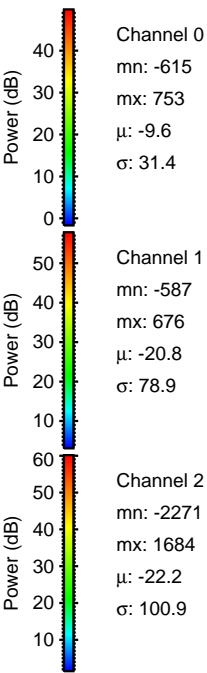
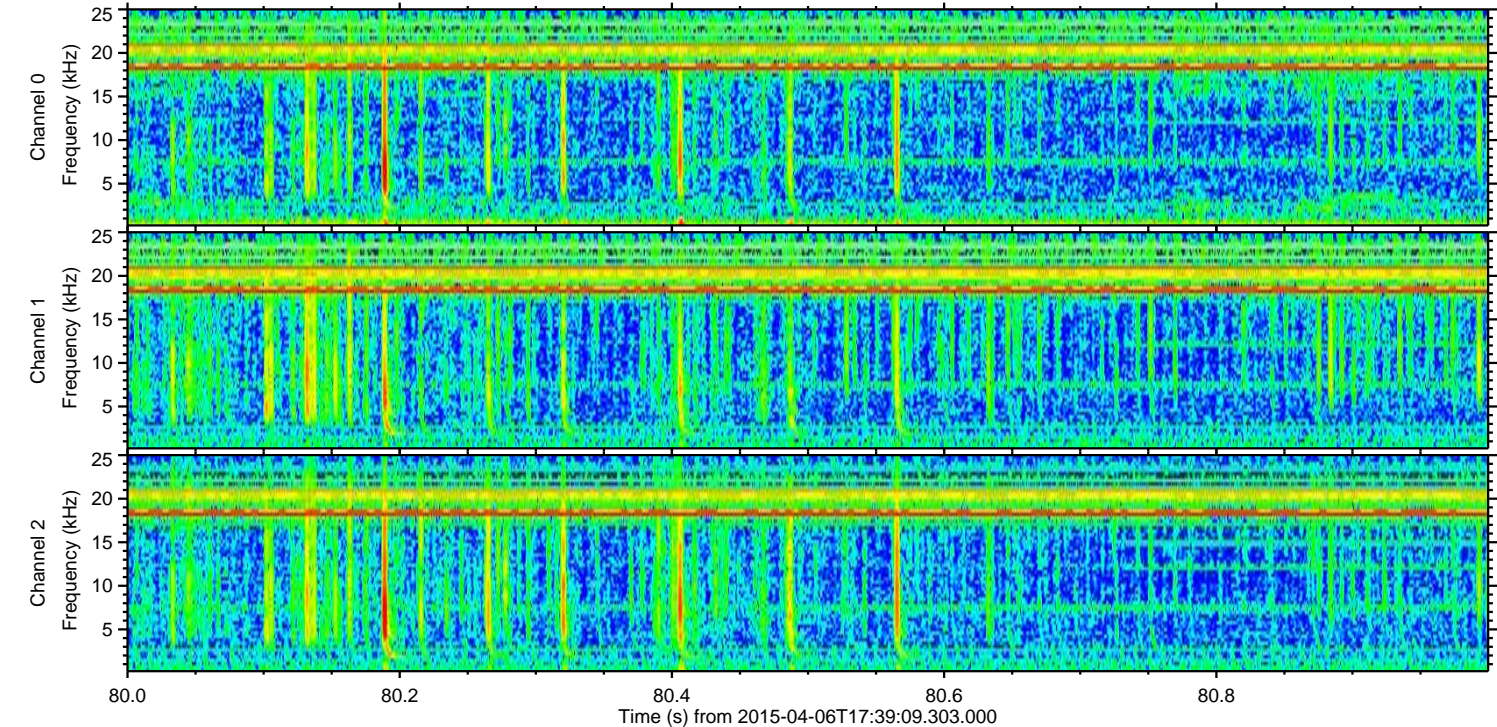
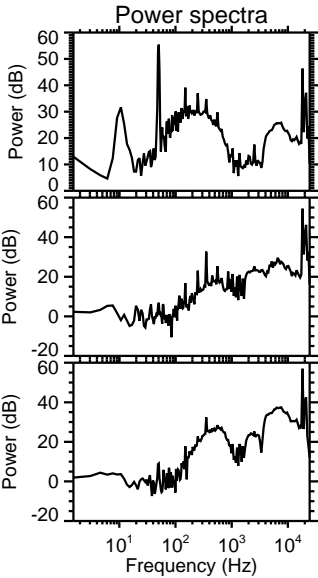
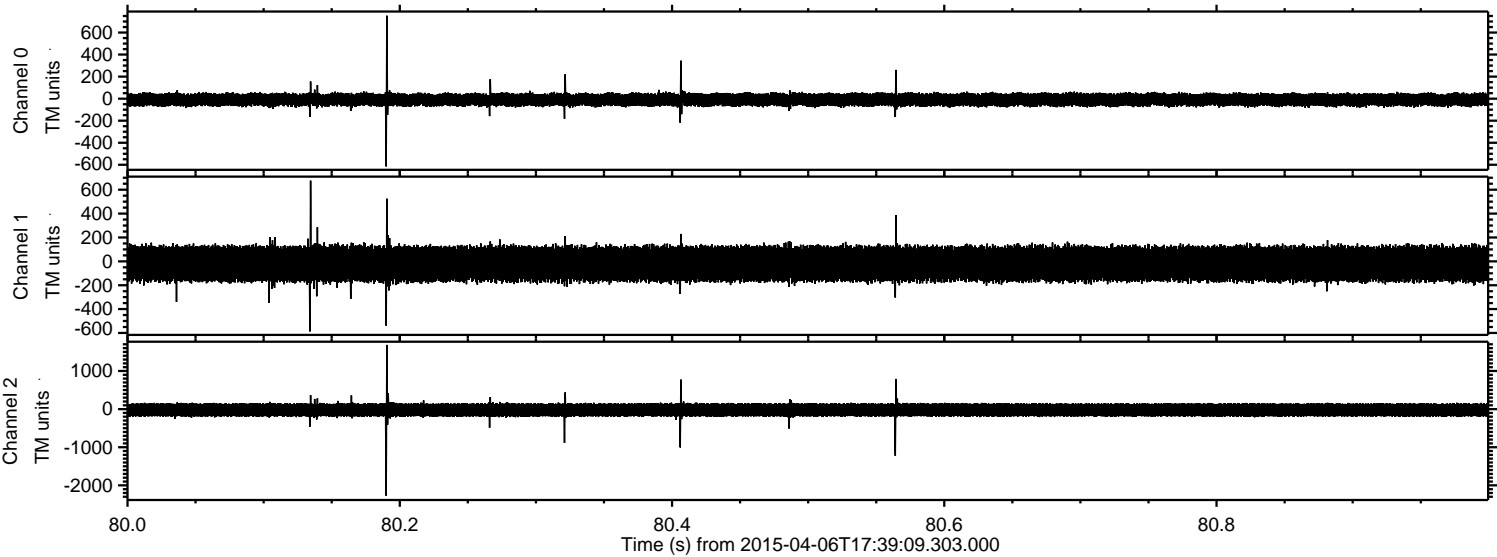


ELMAVAN 3D WAVEFORMS (Measured data sampled at 50 kHz) 49782 packets of 144 samples from 2015-04-06T17:39:09.303.000. Part 121/144

Processed Mon Apr 6 19:46:29 2015 by ELM ver.2012-10-06 from 001__elm20150406_173908__dat00.bin



Processed Mon Apr 6 19:46:30 2015 by ELM ver.2012-10-06 from 001__elm20150406_173908__dat00.bin



Processed Mon Apr 6 19:46:31 2015 by ELM ver.2012-10-06 from 001__elm20150406_173908__dat00.bin

