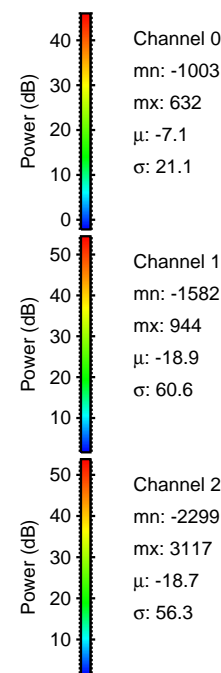
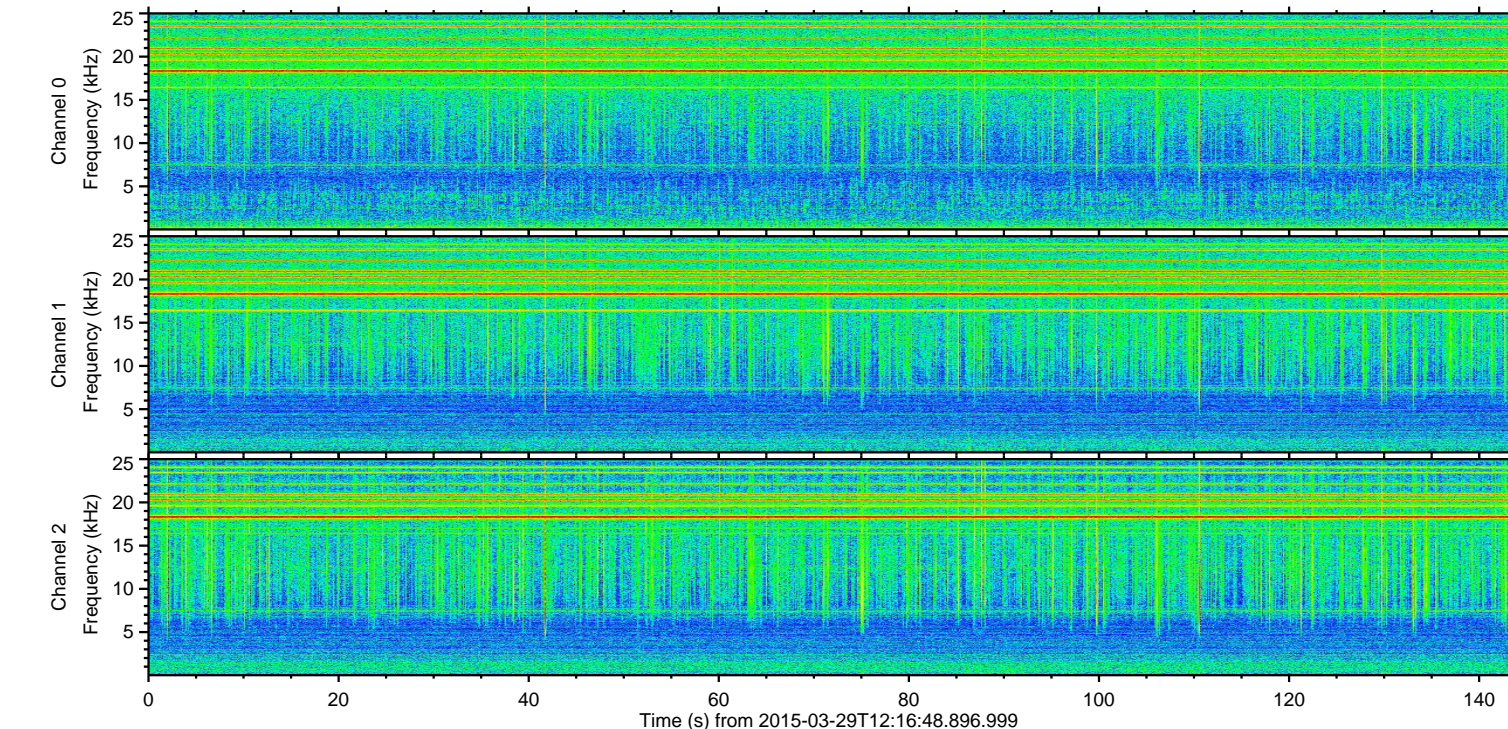
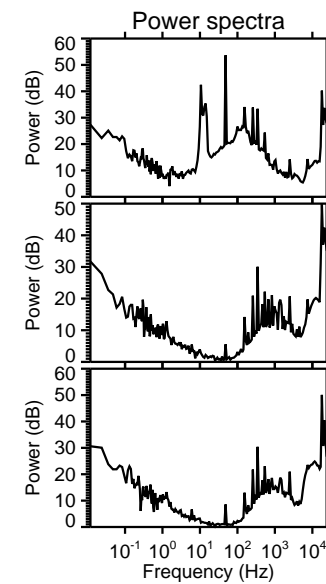
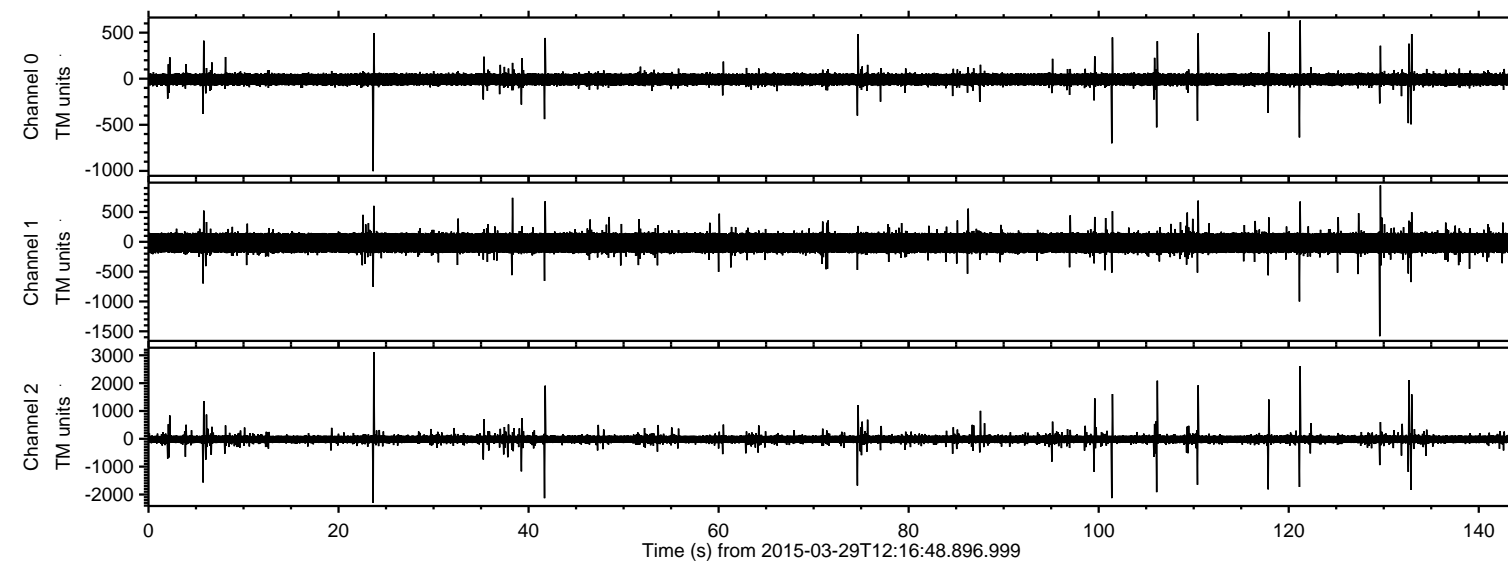


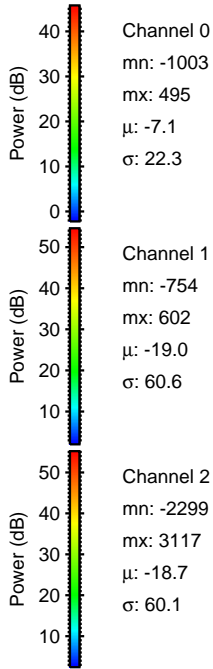
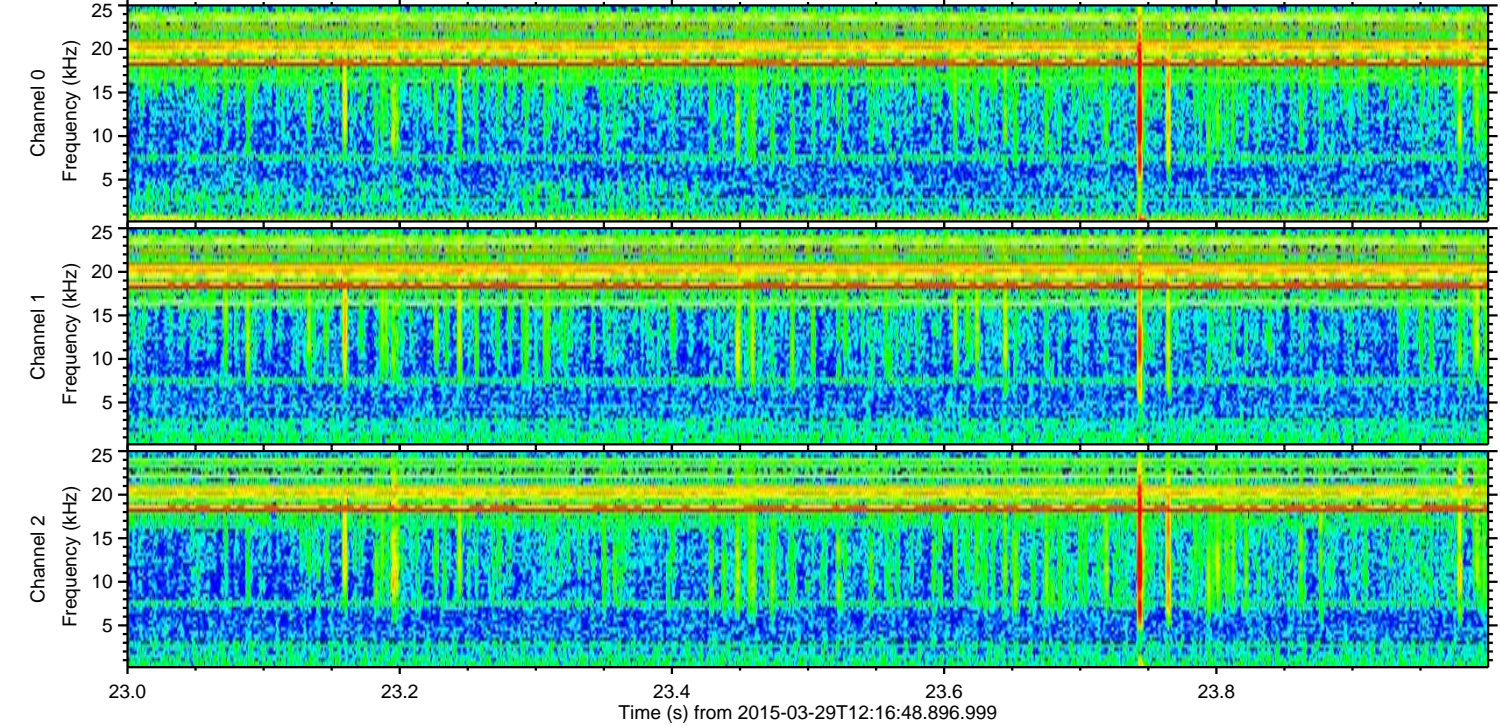
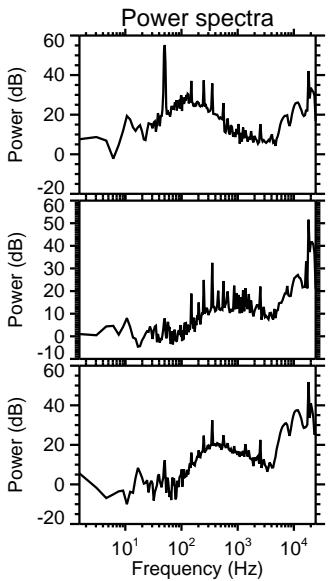
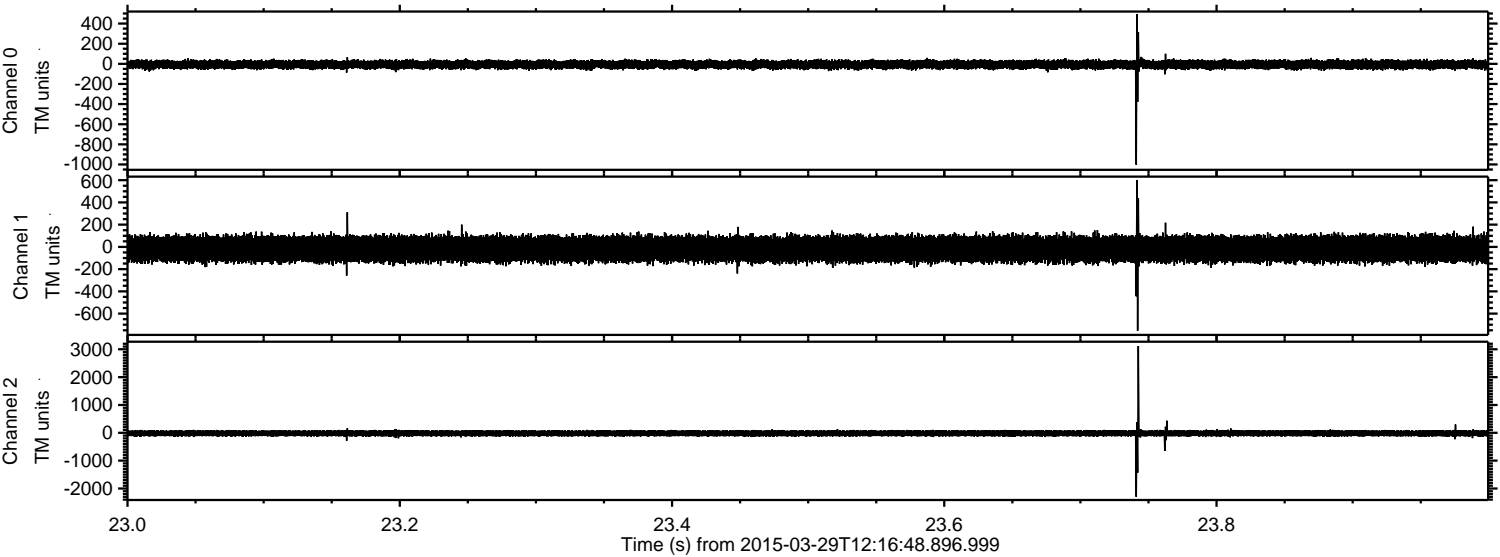
ELMAVAN 3D WAVEFORMS (Measured data sampled at 50 kHz) 49722 packets of 144 samples from 2015-03-29T12:16:48.896.999.

Processed Sun Mar 29 14:24:01 2015 by ELM ver.2012-10-06 from 001__elm20150329_121647__dat00.bin



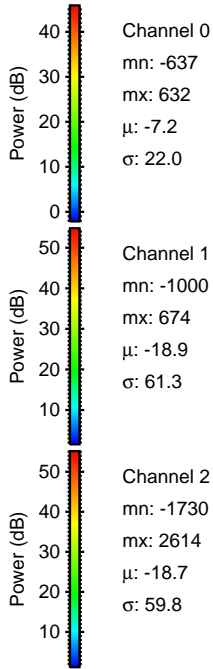
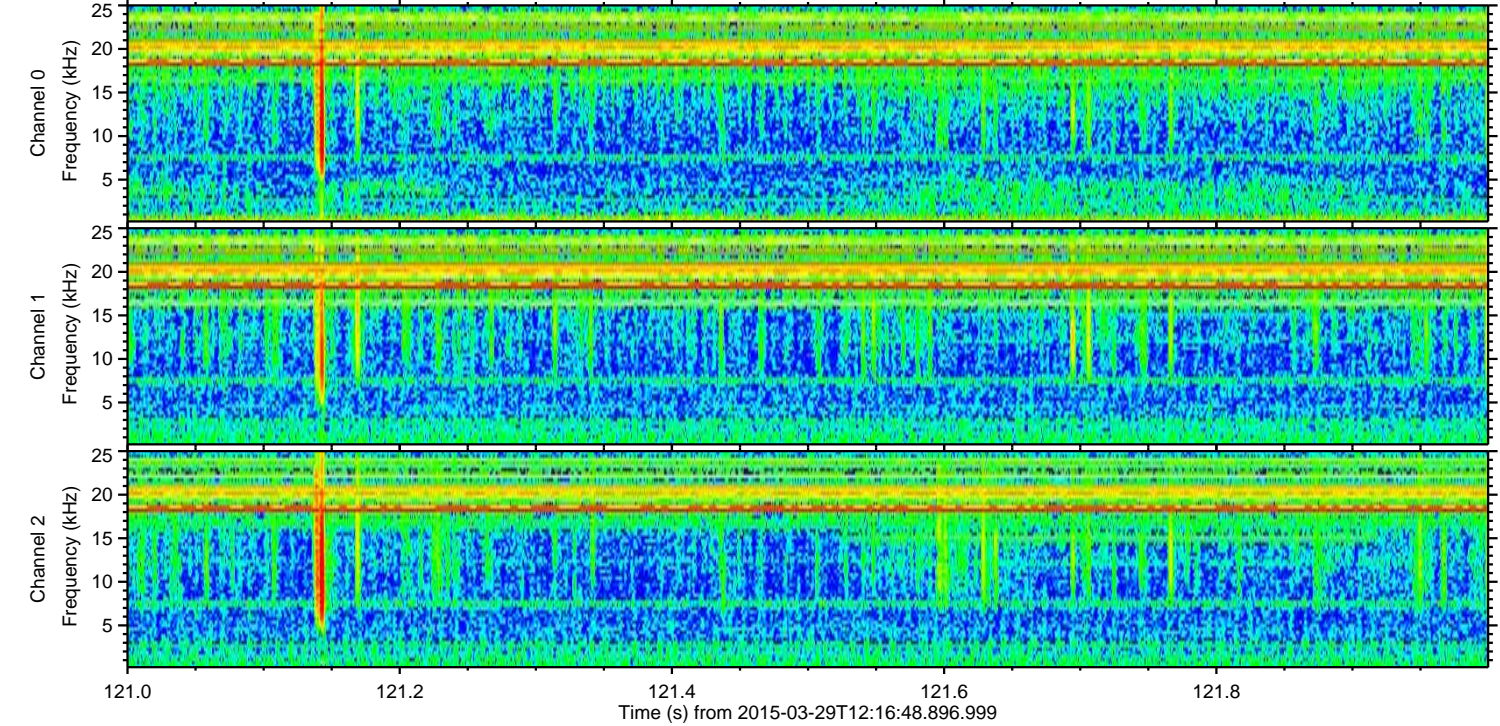
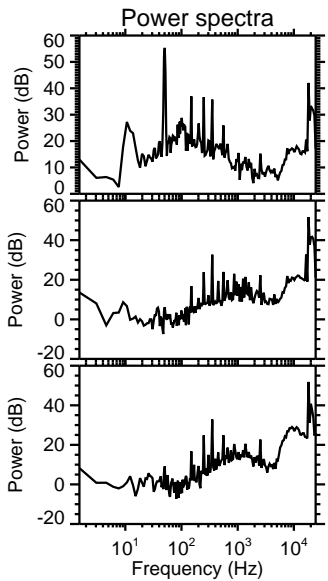
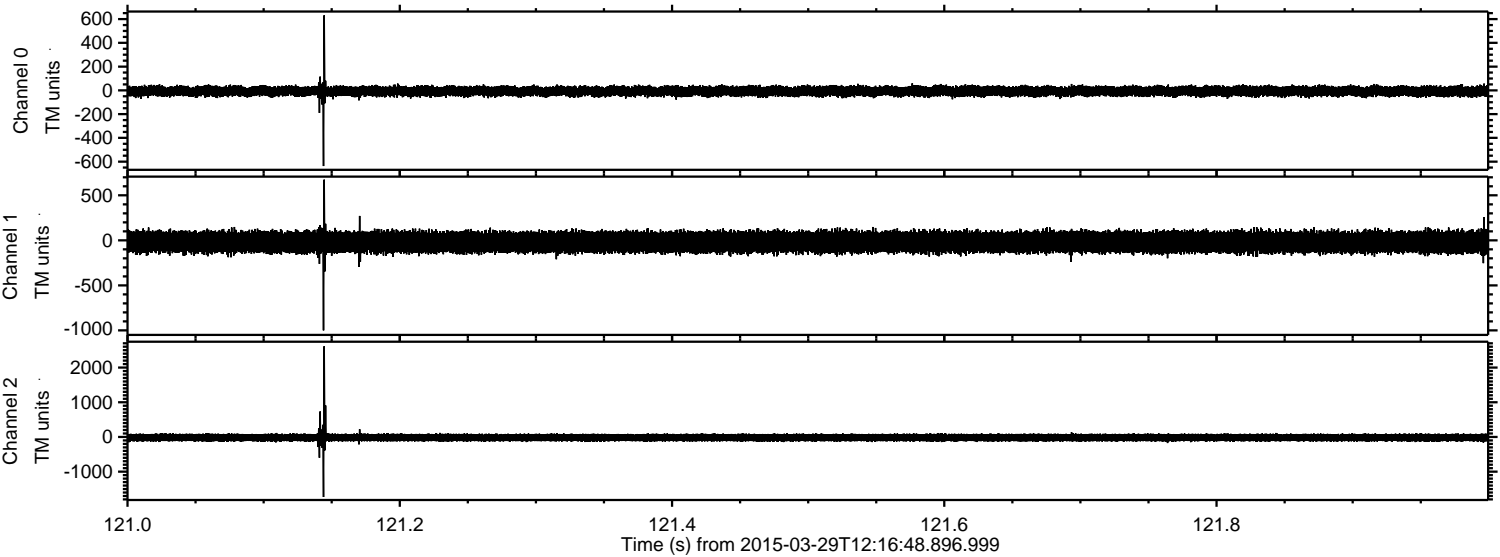
ELMAVAN 3D WAVEFORMS (Measured data sampled at 50 kHz) 49722 packets of 144 samples from 2015-03-29T12:16:48.896.999. Part 24/144

Processed Sun Mar 29 14:24:12 2015 by ELM ver.2012-10-06 from 001__elm20150329_121647__dat00.bin



ELMAVAN 3D WAVEFORMS (Measured data sampled at 50 kHz) 49722 packets of 144 samples from 2015-03-29T12:16:48.896.999. Part 122/144

Processed Sun Mar 29 14:24:13 2015 by ELM ver.2012-10-06 from 001__elm20150329_121647__dat00.bin



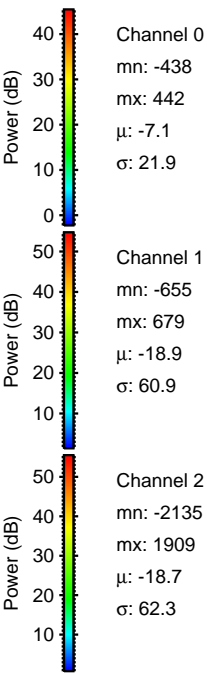
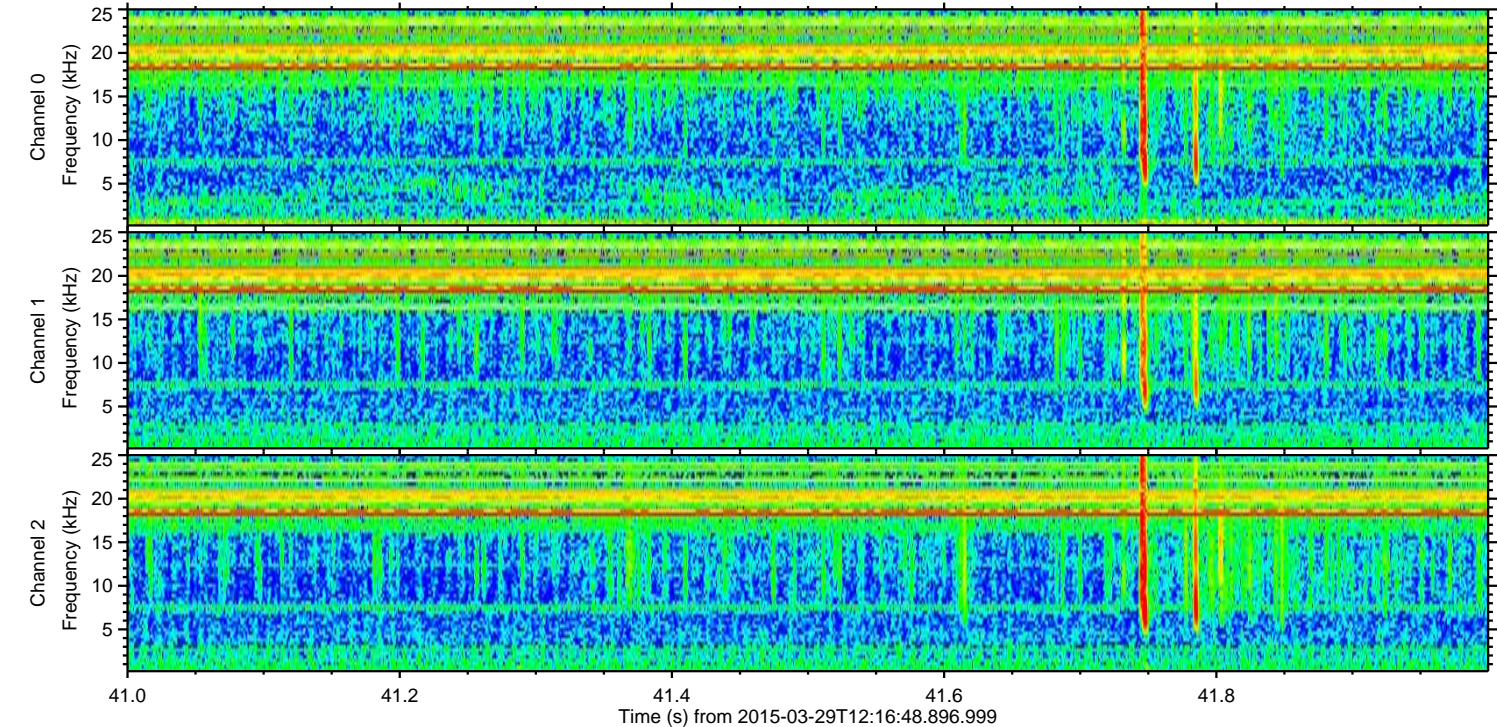
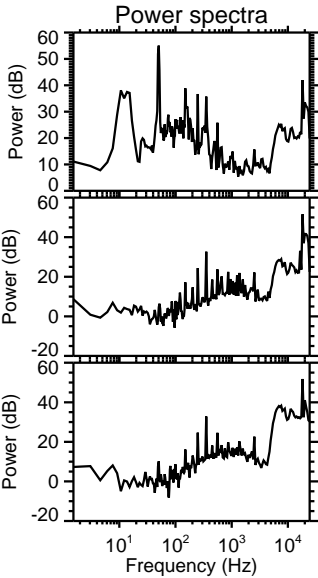
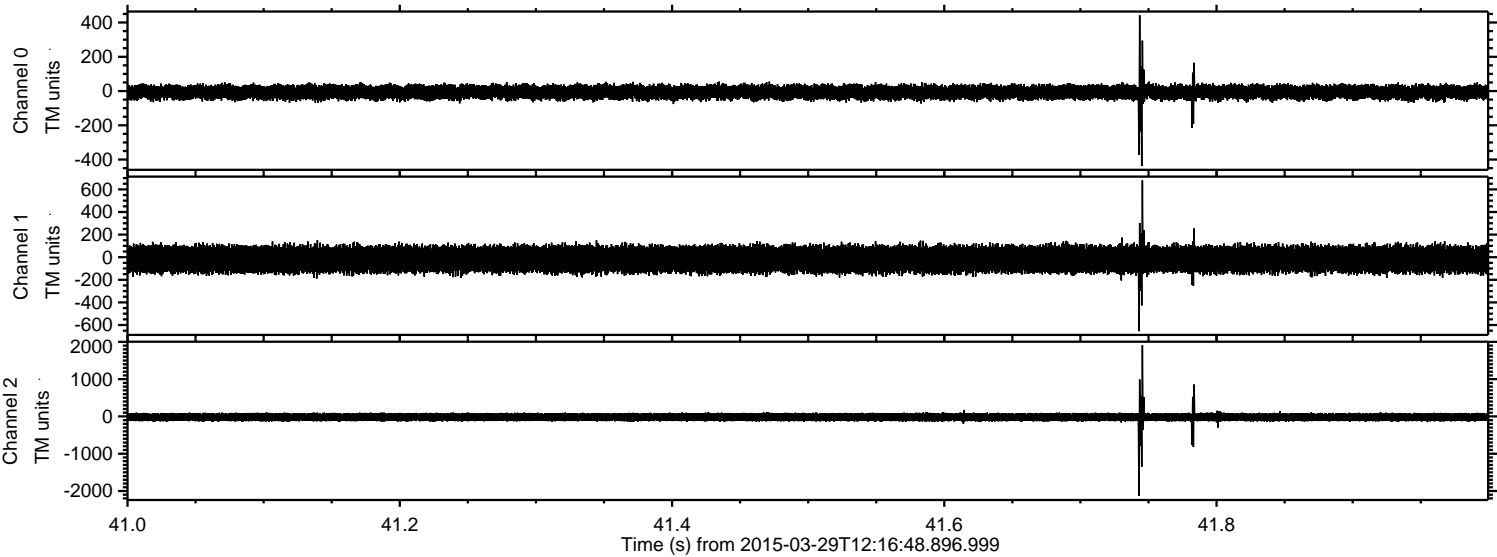
Channel 0
mn: -637
mx: 632
 μ : -7.2
 σ : 22.0

Channel 1
mn: -1000
mx: 674
 μ : -18.9
 σ : 61.3

Channel 2
mn: -1730
mx: 2614
 μ : -18.7
 σ : 59.8

ELMAVAN 3D WAVEFORMS (Measured data sampled at 50 kHz) 49722 packets of 144 samples from 2015-03-29T12:16:48.896.999. Part 42/144

Processed Sun Mar 29 14:24:14 2015 by ELM ver.2012-10-06 from 001__elm20150329_121647__dat00.bin

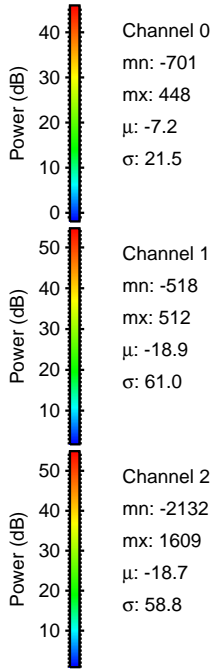
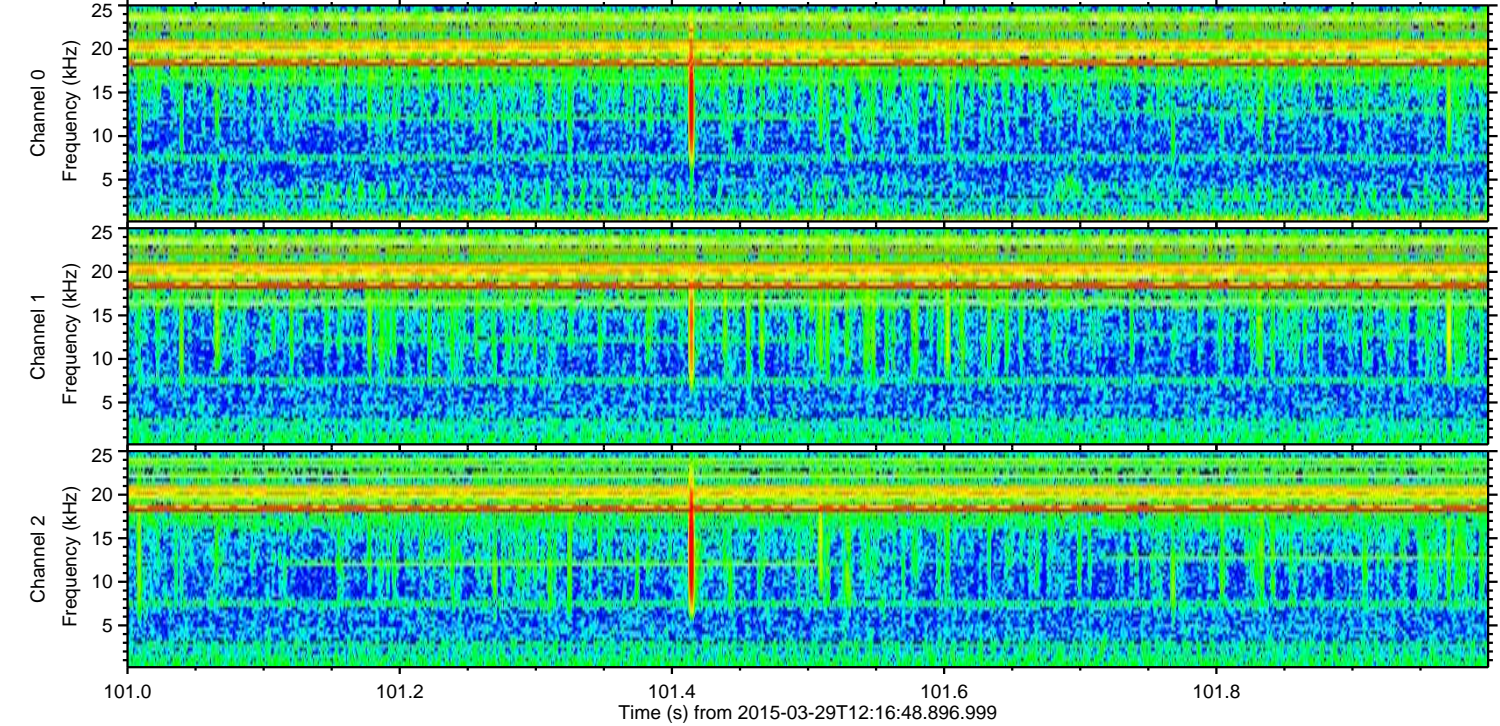
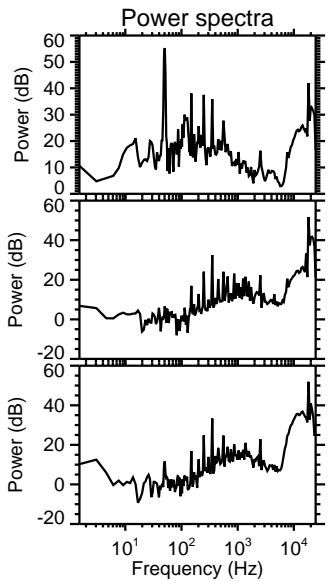
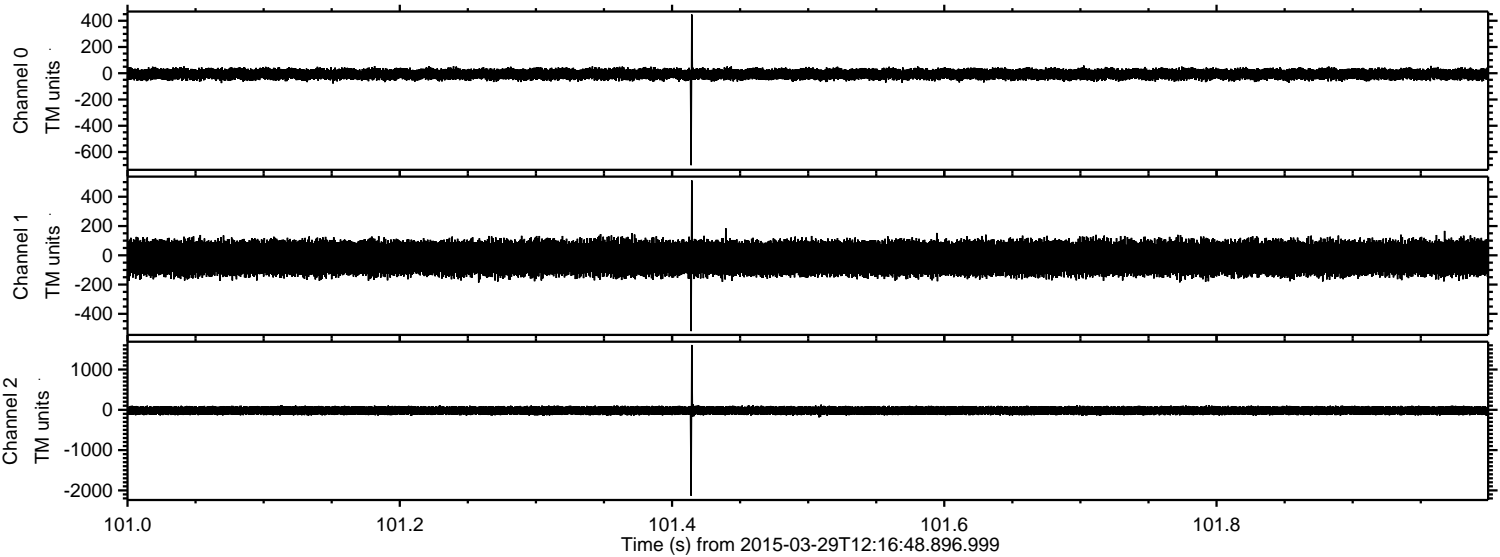


Channel 0
mn: -438
mx: 442
 μ : -7.1
 σ : 21.9

Channel 1
mn: -655
mx: 679
 μ : -18.9
 σ : 60.9

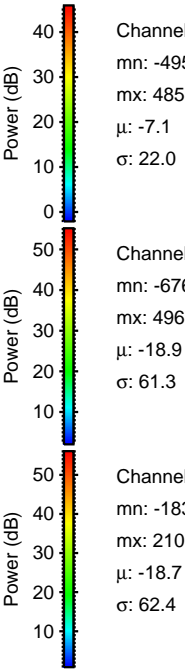
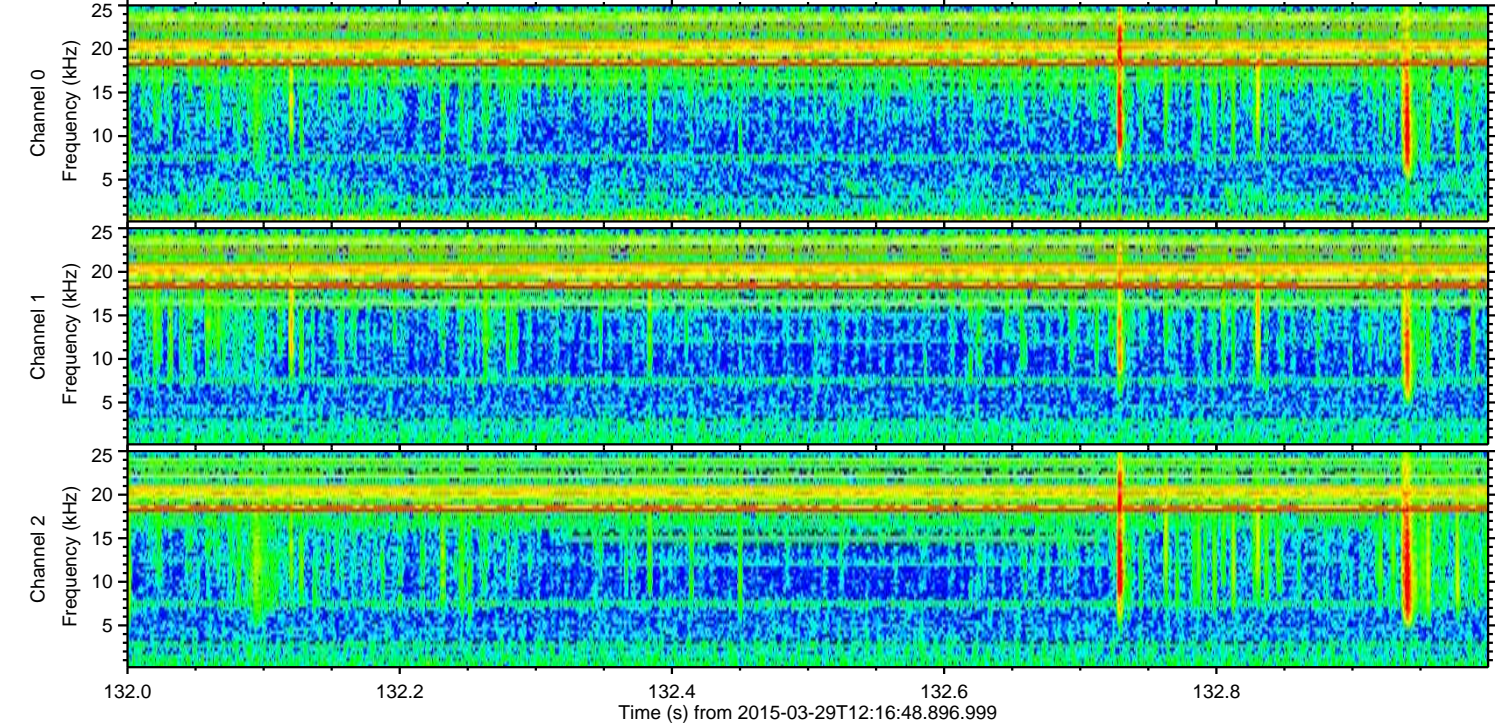
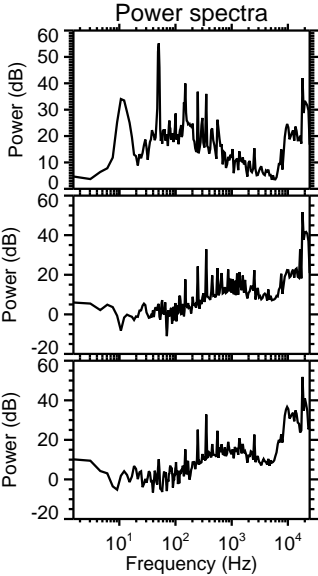
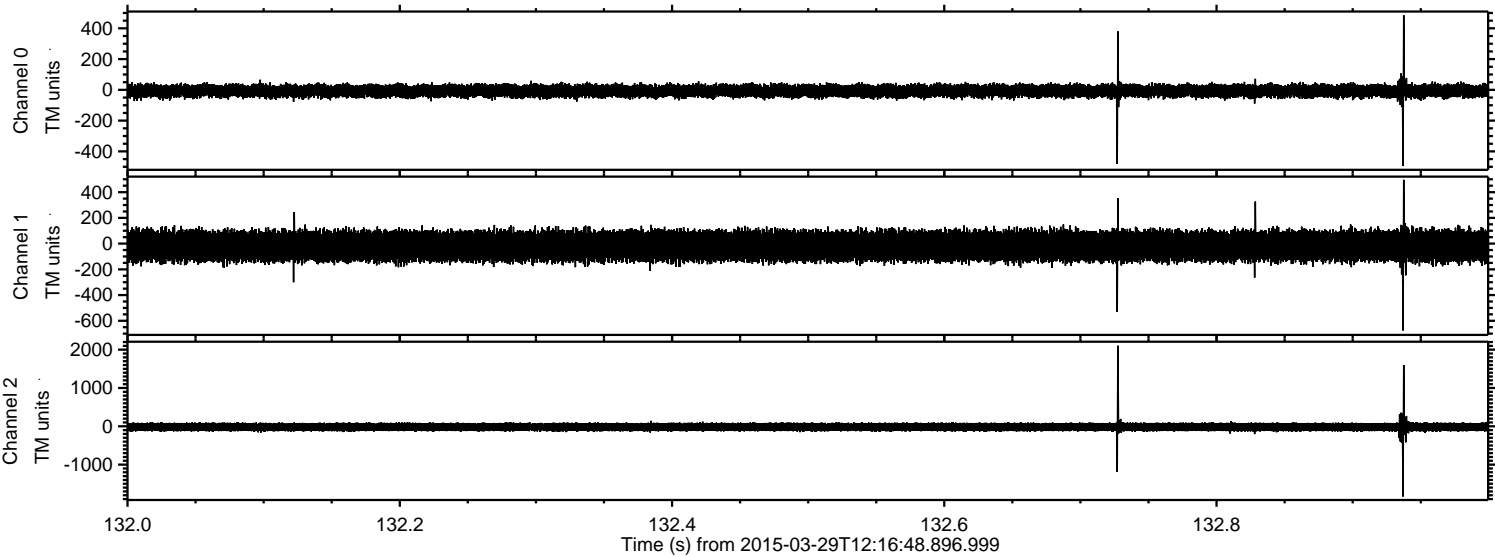
Channel 2
mn: -2135
mx: 1909
 μ : -18.7
 σ : 62.3

Processed Sun Mar 29 14:24:15 2015 by ELM ver.2012-10-06 from 001__elm20150329_121647__dat00.bin

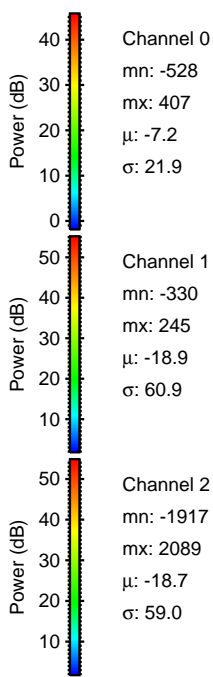
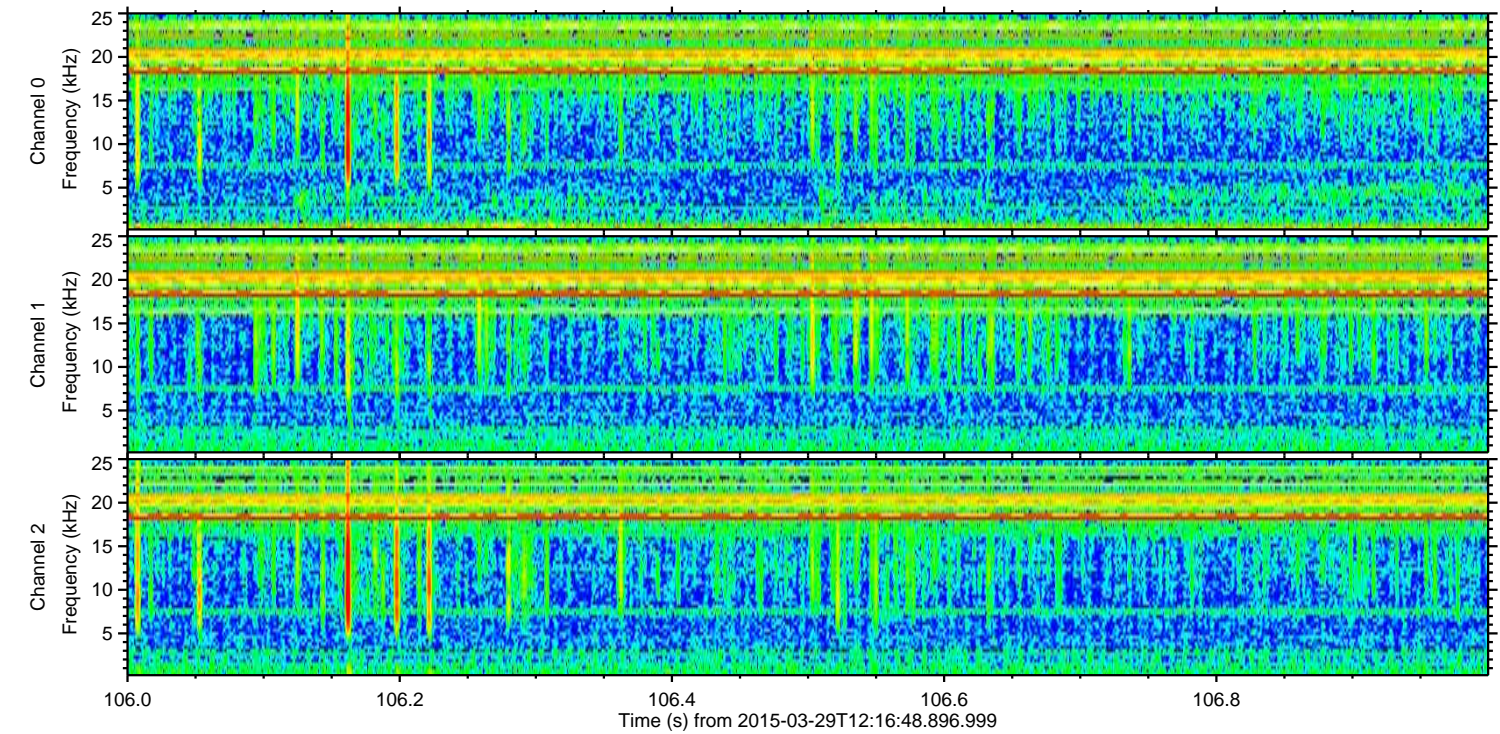
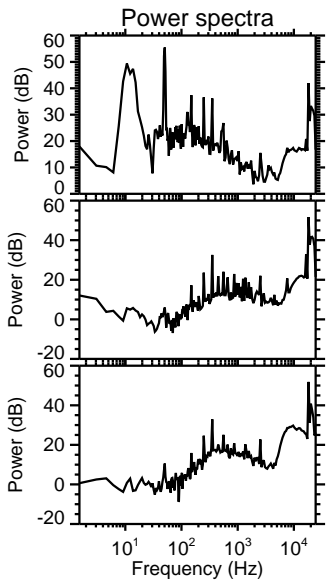
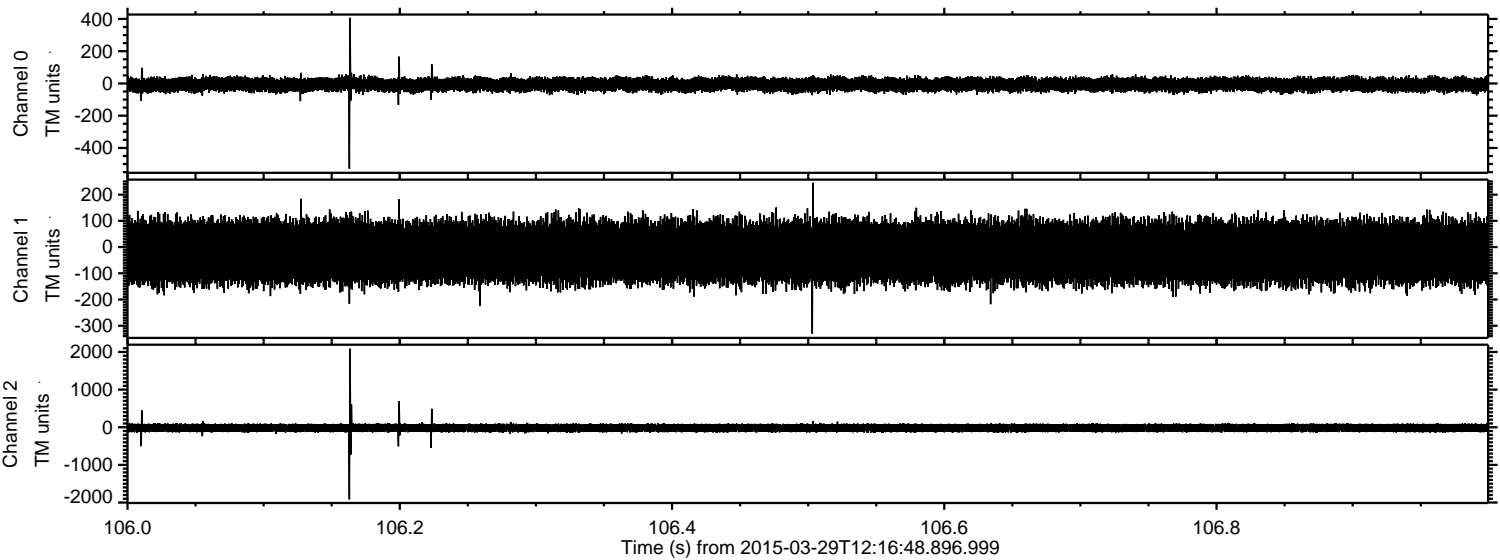


ELMAVAN 3D WAVEFORMS (Measured data sampled at 50 kHz) 49722 packets of 144 samples from 2015-03-29T12:16:48.896.999. Part 133/144

Processed Sun Mar 29 14:24:16 2015 by ELM ver.2012-10-06 from 001__elm20150329_121647__dat00.bin



Processed Sun Mar 29 14:24:17 2015 by ELM ver.2012-10-06 from 001__elm20150329_121647__dat00.bin



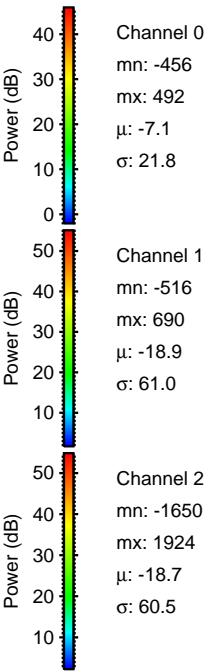
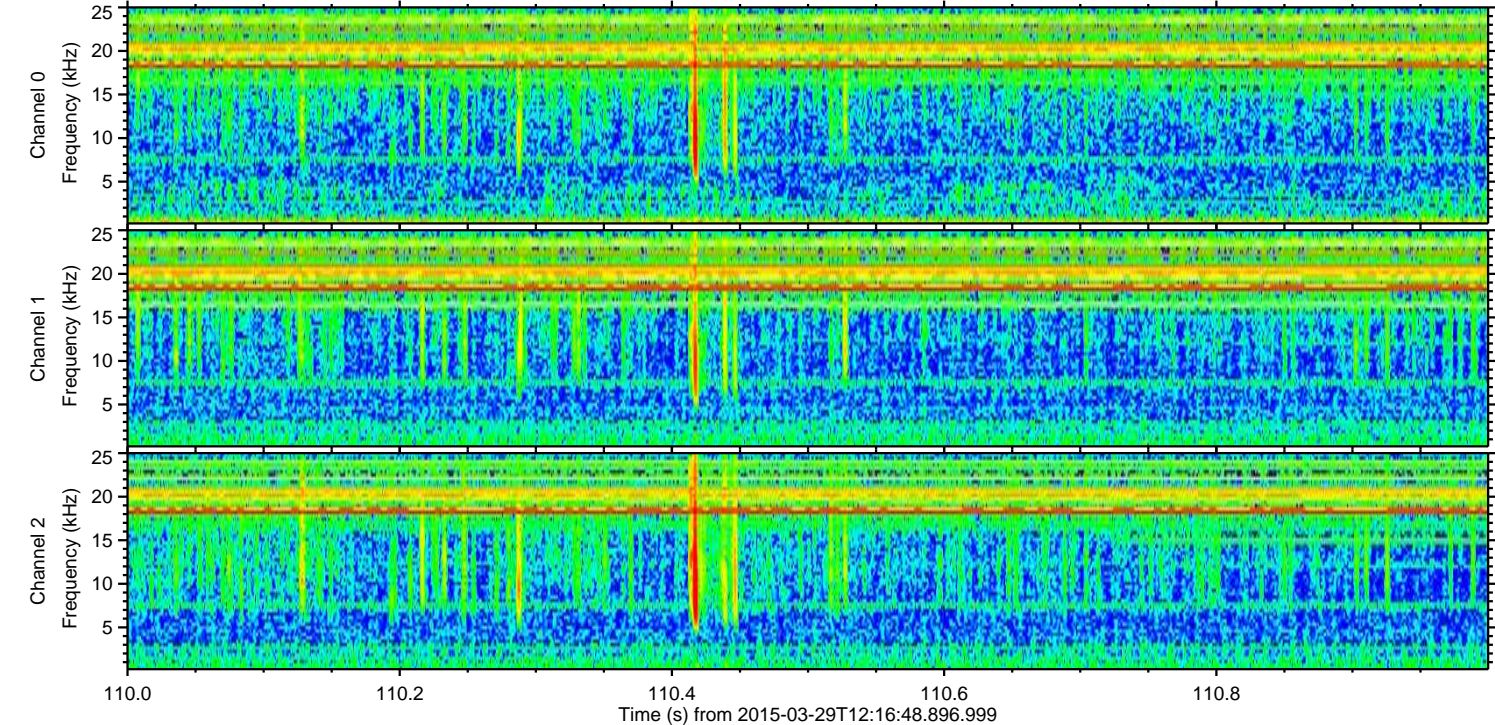
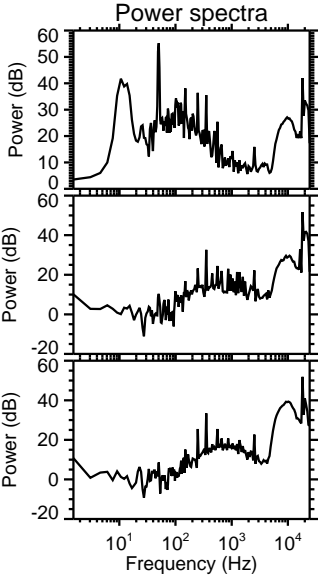
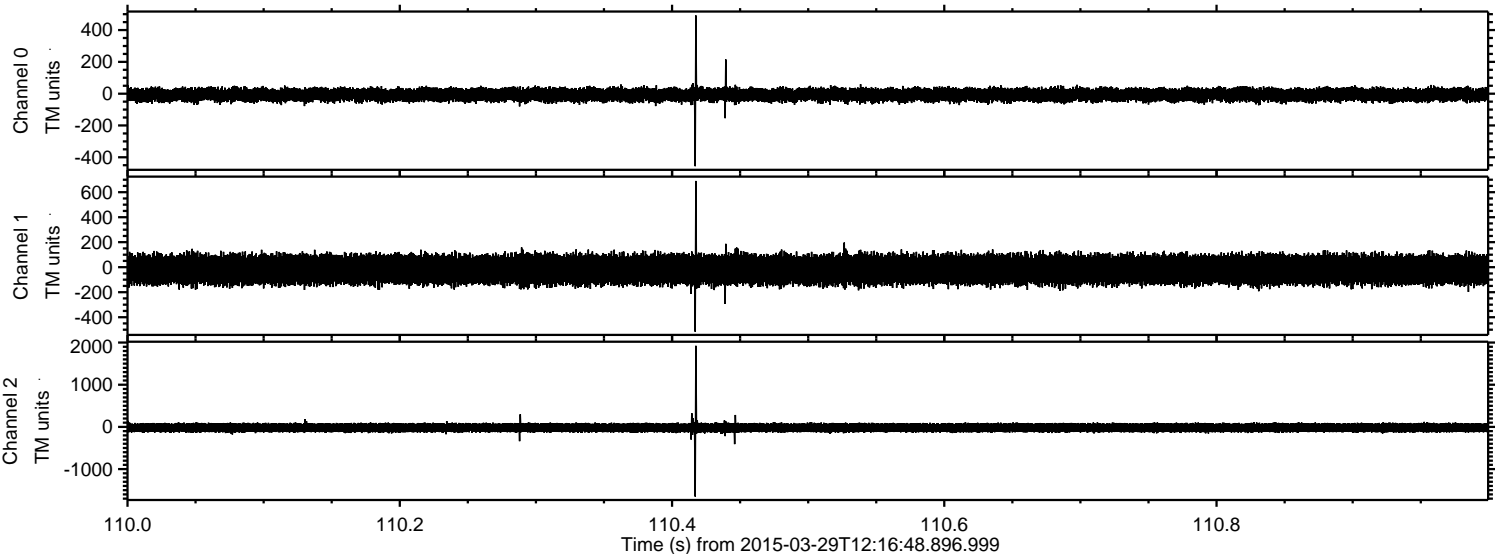
Channel 0
mn: -528
mx: 407
 μ : -7.2
 σ : 21.9

Channel 1
mn: -330
mx: 245
 μ : -18.9
 σ : 60.9

Channel 2
mn: -1917
mx: 2089
 μ : -18.7
 σ : 59.0

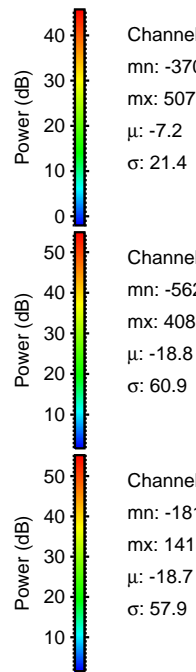
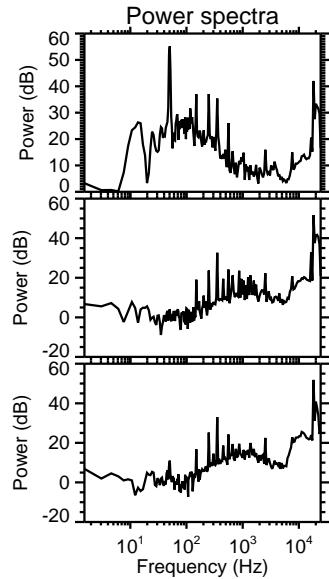
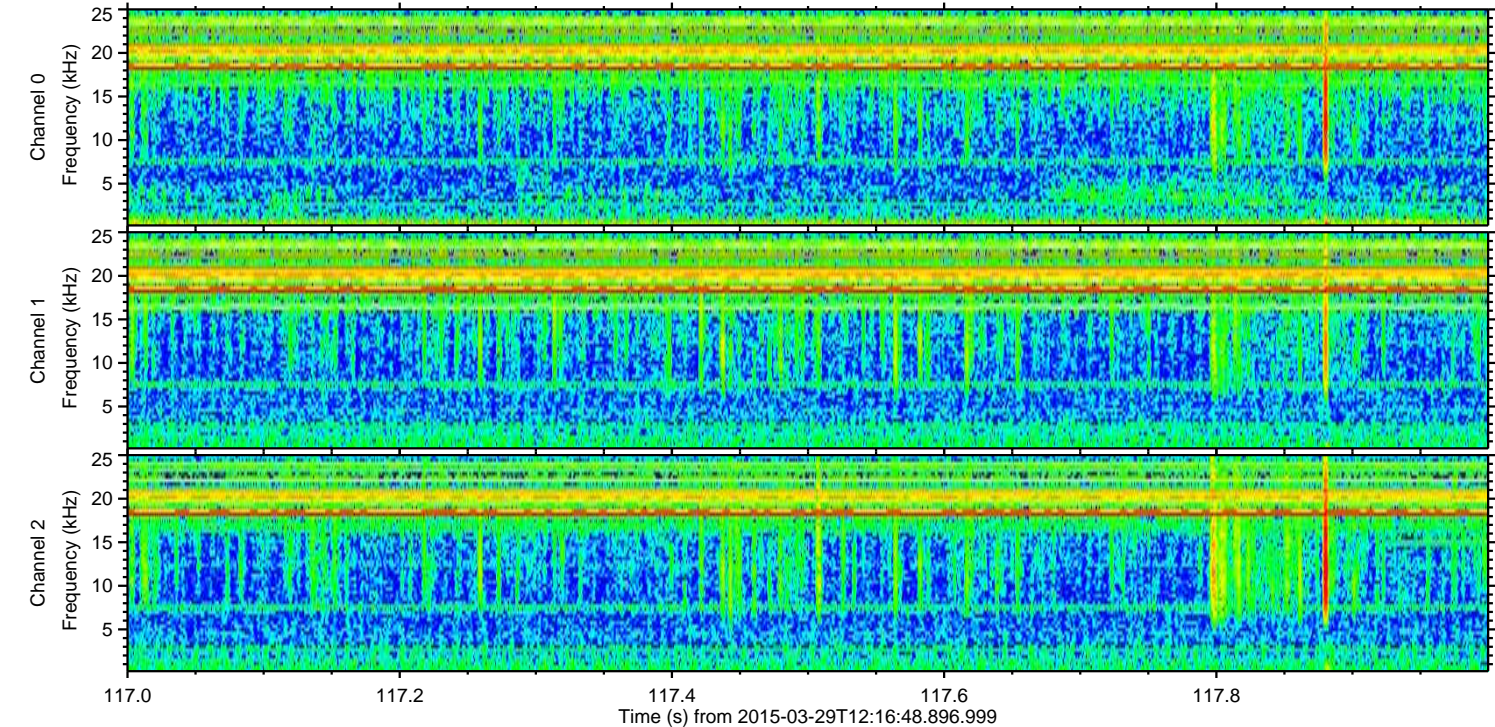
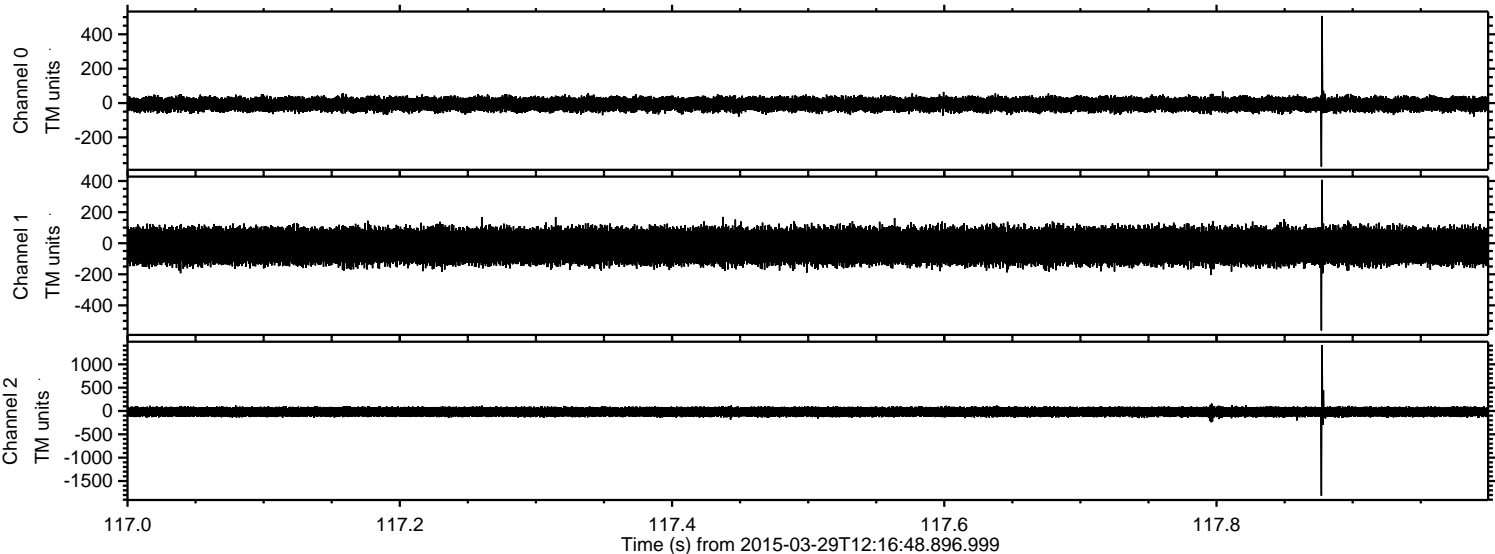
ELMAVAN 3D WAVEFORMS (Measured data sampled at 50 kHz) 49722 packets of 144 samples from 2015-03-29T12:16:48.896.999. Part 111/144

Processed Sun Mar 29 14:24:18 2015 by ELM ver.2012-10-06 from 001__elm20150329_121647__dat00.bin



ELMAVAN 3D WAVEFORMS (Measured data sampled at 50 kHz) 49722 packets of 144 samples from 2015-03-29T12:16:48.896.999. Part 118/144

Processed Sun Mar 29 14:24:19 2015 by ELM ver.2012-10-06 from 001__elm20150329_121647__dat00.bin

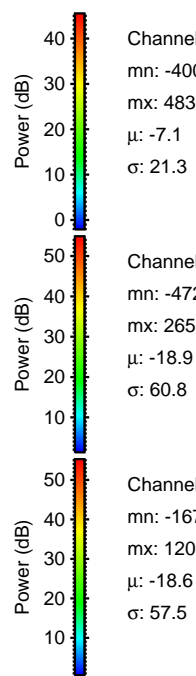
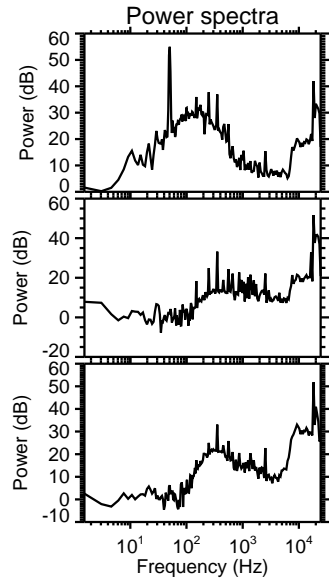
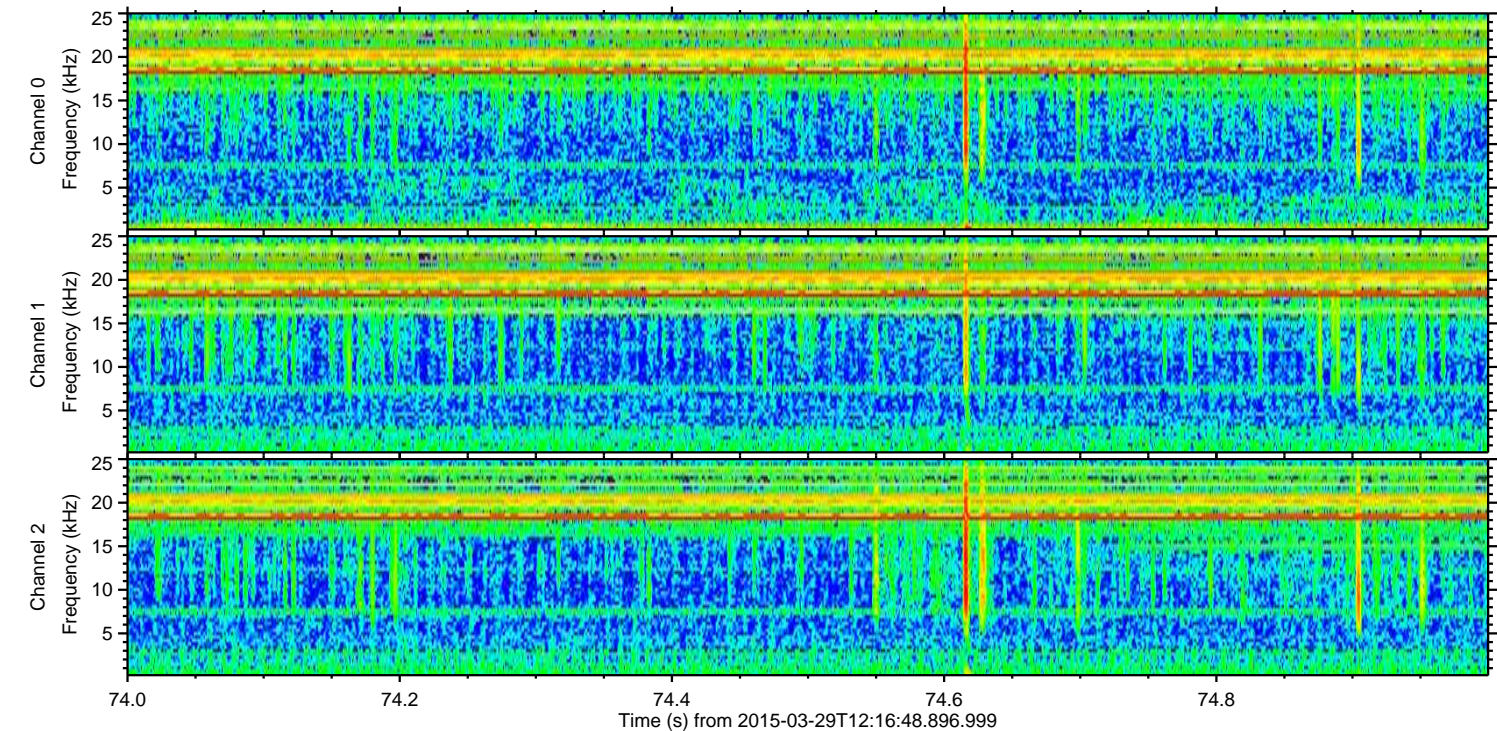
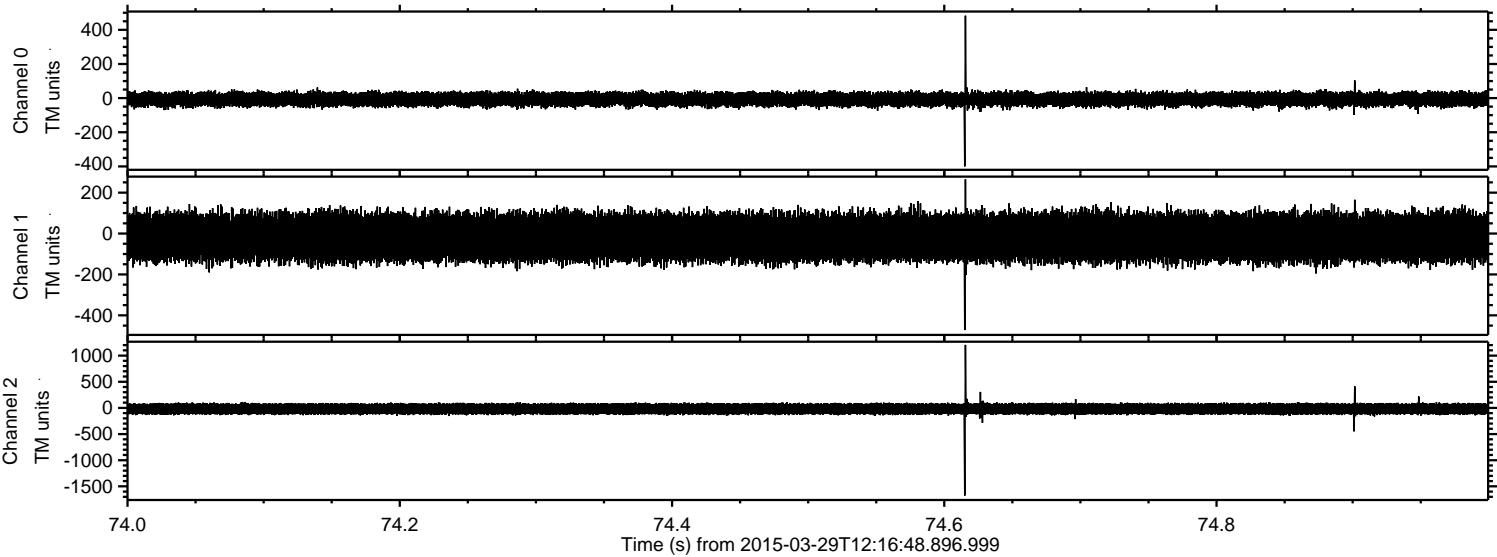


Channel 0
mn: -370
mx: 507
 μ : -7.2
 σ : 21.4

Channel 1
mn: -562
mx: 408
 μ : -18.8
 σ : 60.9

Channel 2
mn: -1816
mx: 1413
 μ : -18.7
 σ : 57.9

Processed Sun Mar 29 14:24:20 2015 by ELM ver.2012-10-06 from 001__elm20150329_121647__dat00.bin



Channel 0
mn: -400
mx: 483
 μ : -7.1
 σ : 21.3

Channel 1
mn: -472
mx: 265
 μ : -18.9
 σ : 60.8

Channel 2
mn: -1677
mx: 1205
 μ : -18.6
 σ : 57.5

Processed Sun Mar 29 14:24:21 2015 by ELM ver.2012-10-06 from 001__elm20150329_121647__dat00.bin

