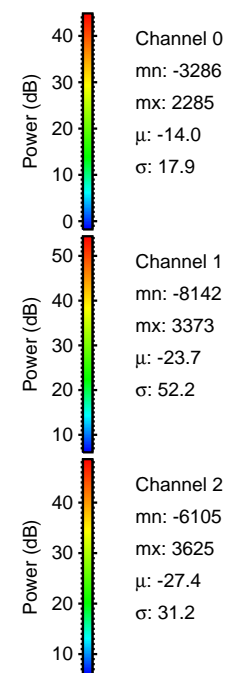
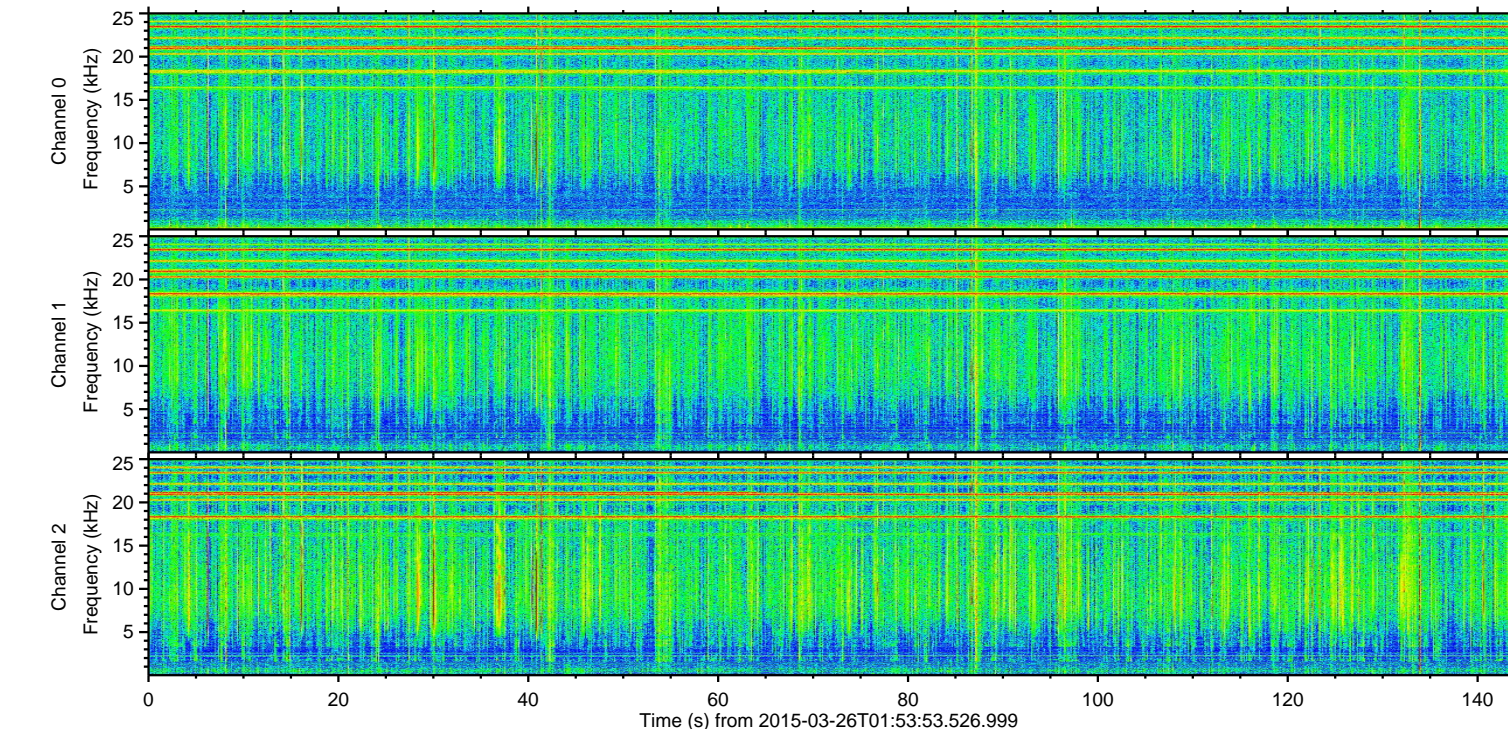
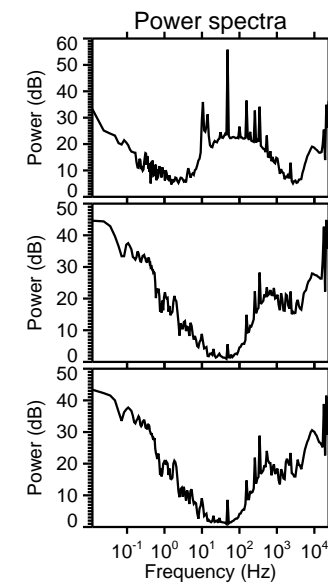
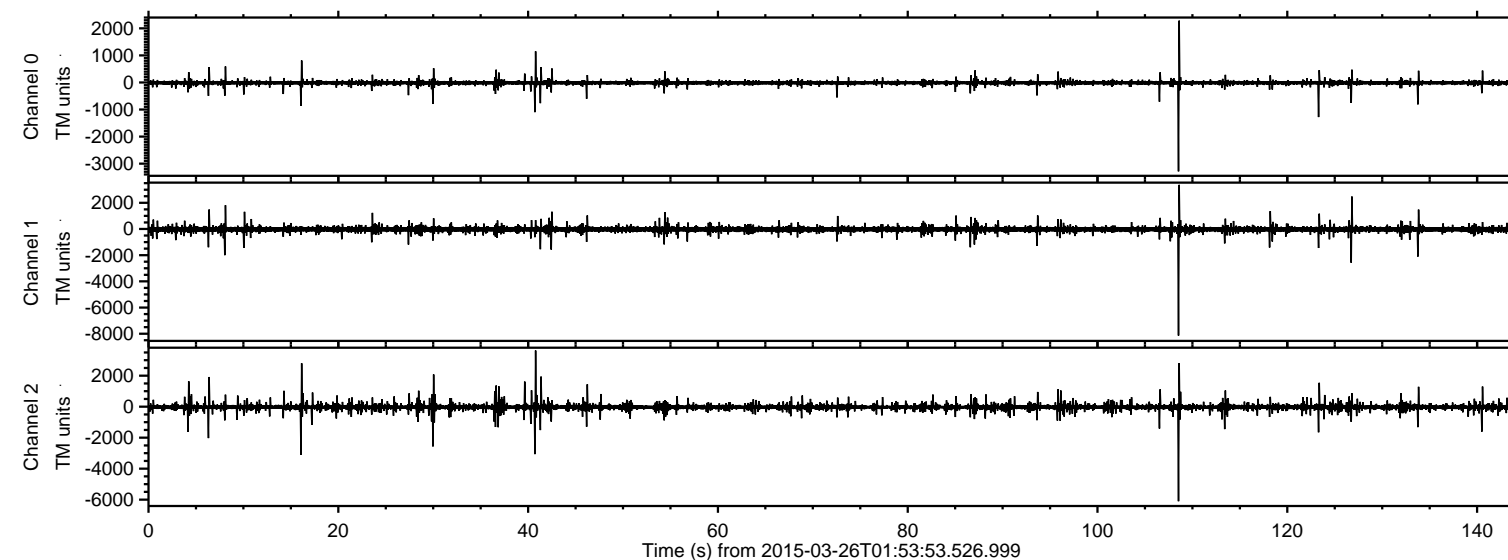


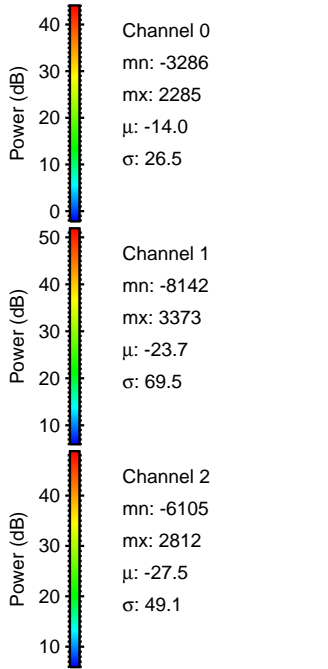
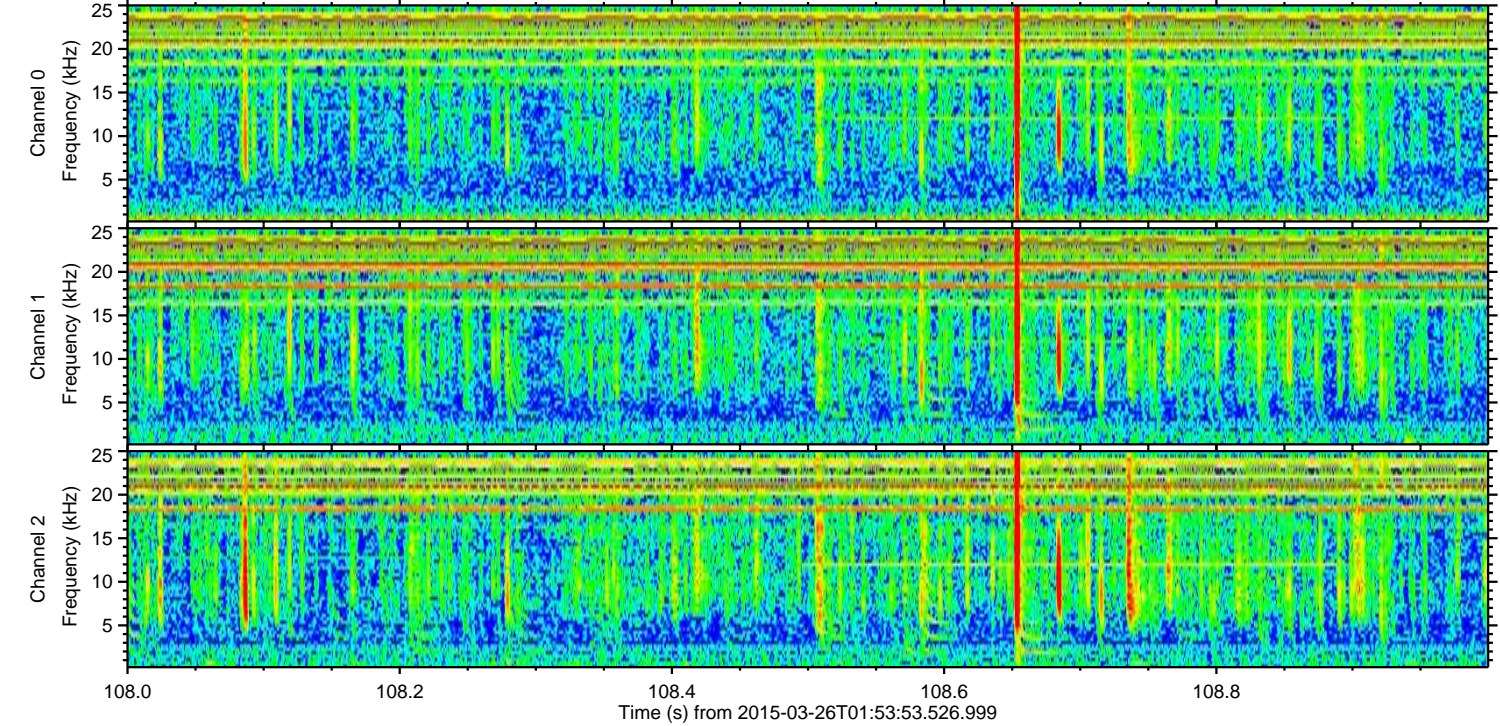
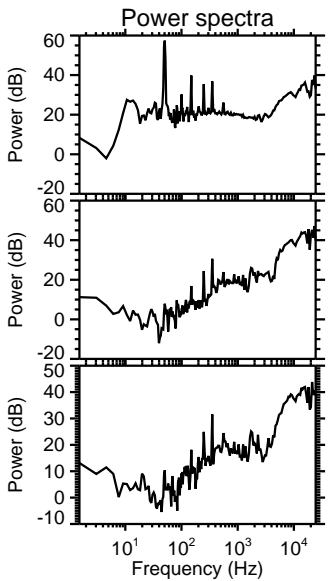
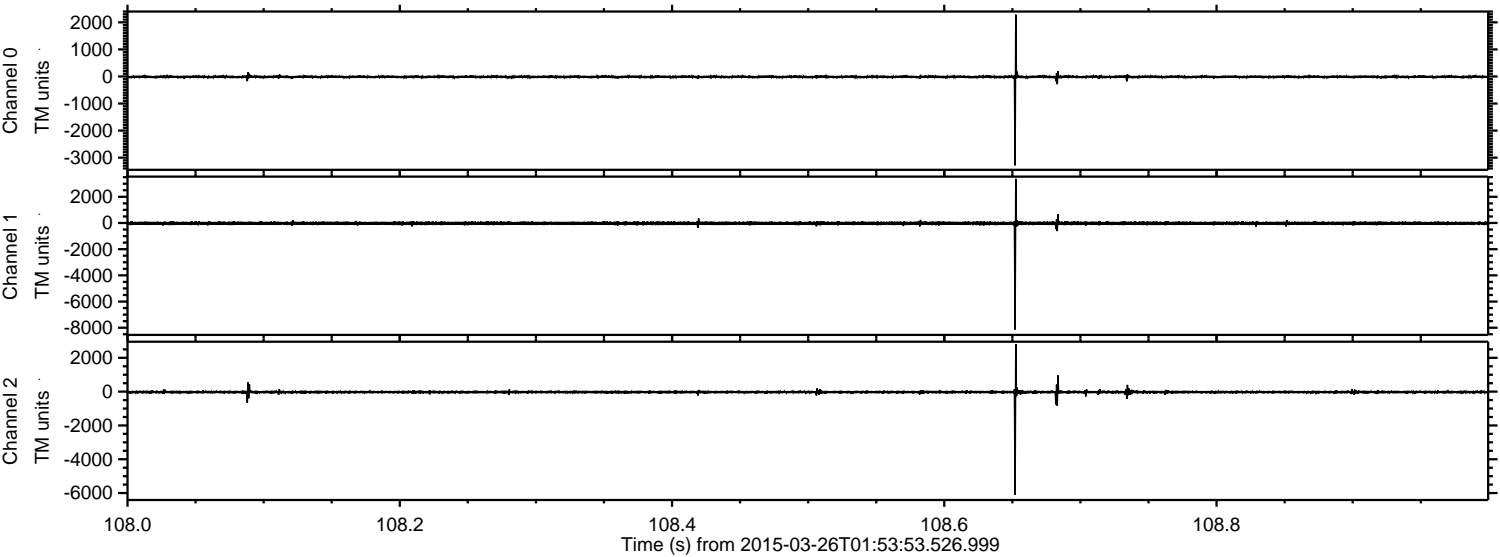
ELMAVAN 3D WAVEFORMS (Measured data sampled at 50 kHz) 49783 packets of 144 samples from 2015-03-26T01:53:53.526.999.

Processed Thu Mar 26 03:02:00 2015 by ELM ver.2012-10-06 from 001__elm20150326_015352__dat00.bin



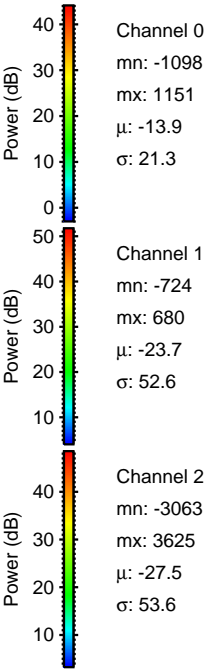
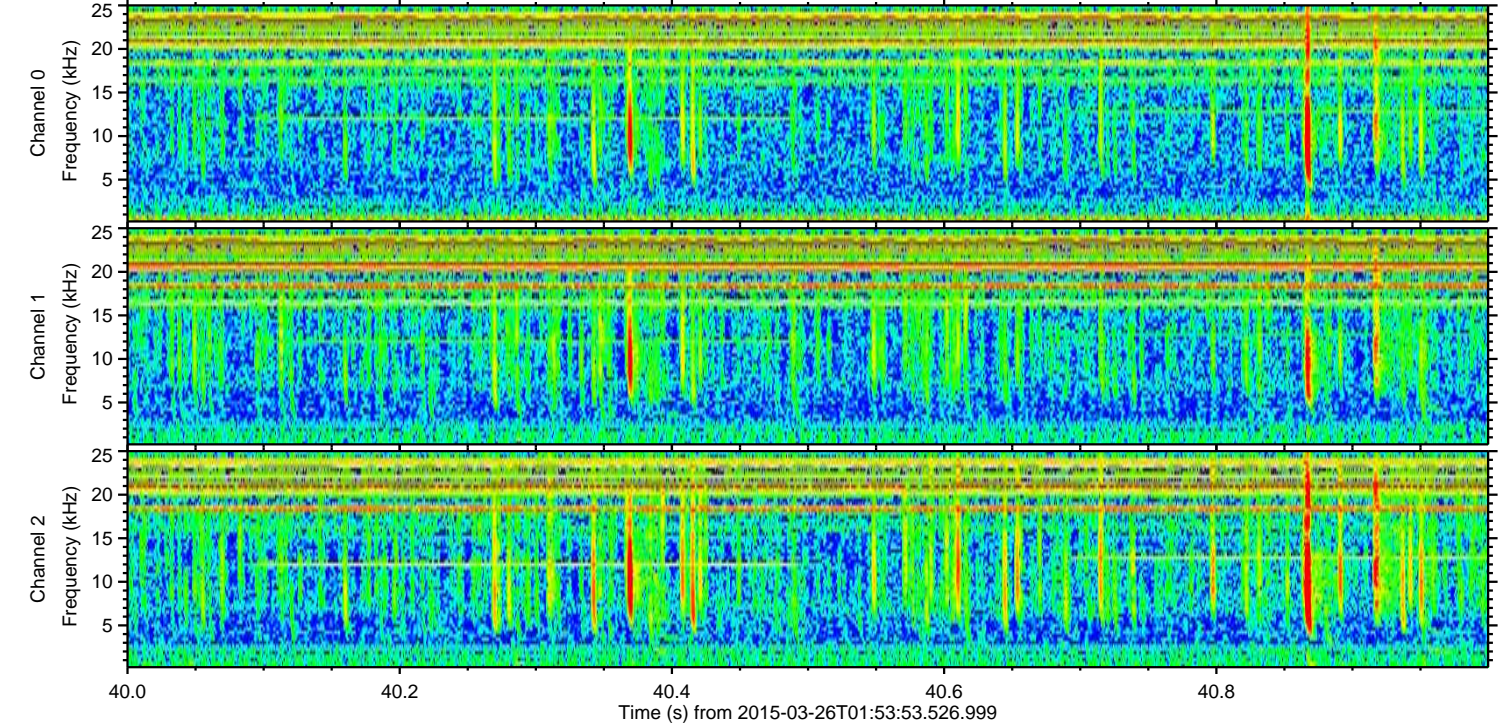
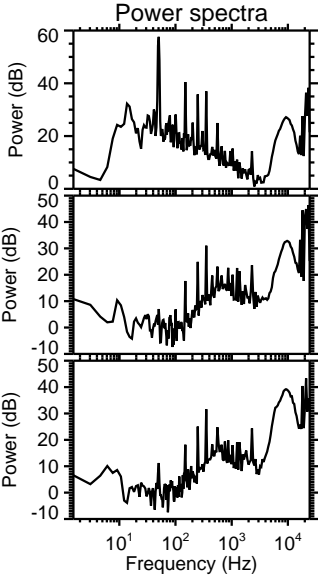
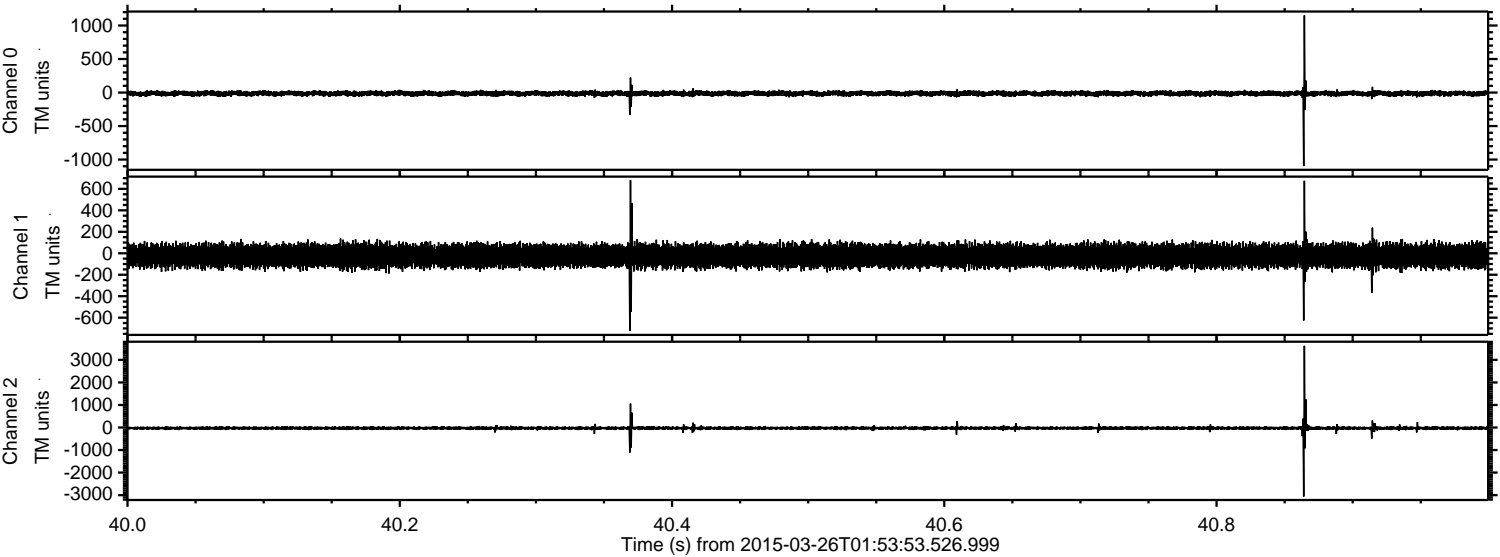
ELMAVAN 3D WAVEFORMS (Measured data sampled at 50 kHz) 49783 packets of 144 samples from 2015-03-26T01:53:53.526.999. Part 109/144

Processed Thu Mar 26 03:02:11 2015 by ELM ver.2012-10-06 from 001__elm20150326_015352__dat00.bin



ELMAVAN 3D WAVEFORMS (Measured data sampled at 50 kHz) 49783 packets of 144 samples from 2015-03-26T01:53:53.526.999. Part 41/144

Processed Thu Mar 26 03:02:12 2015 by ELM ver.2012-10-06 from 001__elm20150326_015352__dat00.bin



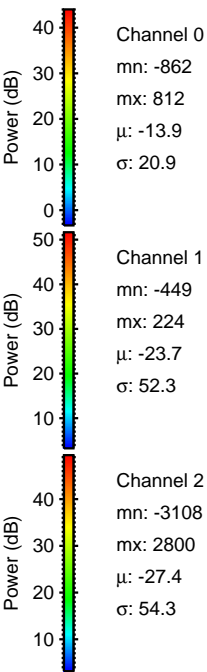
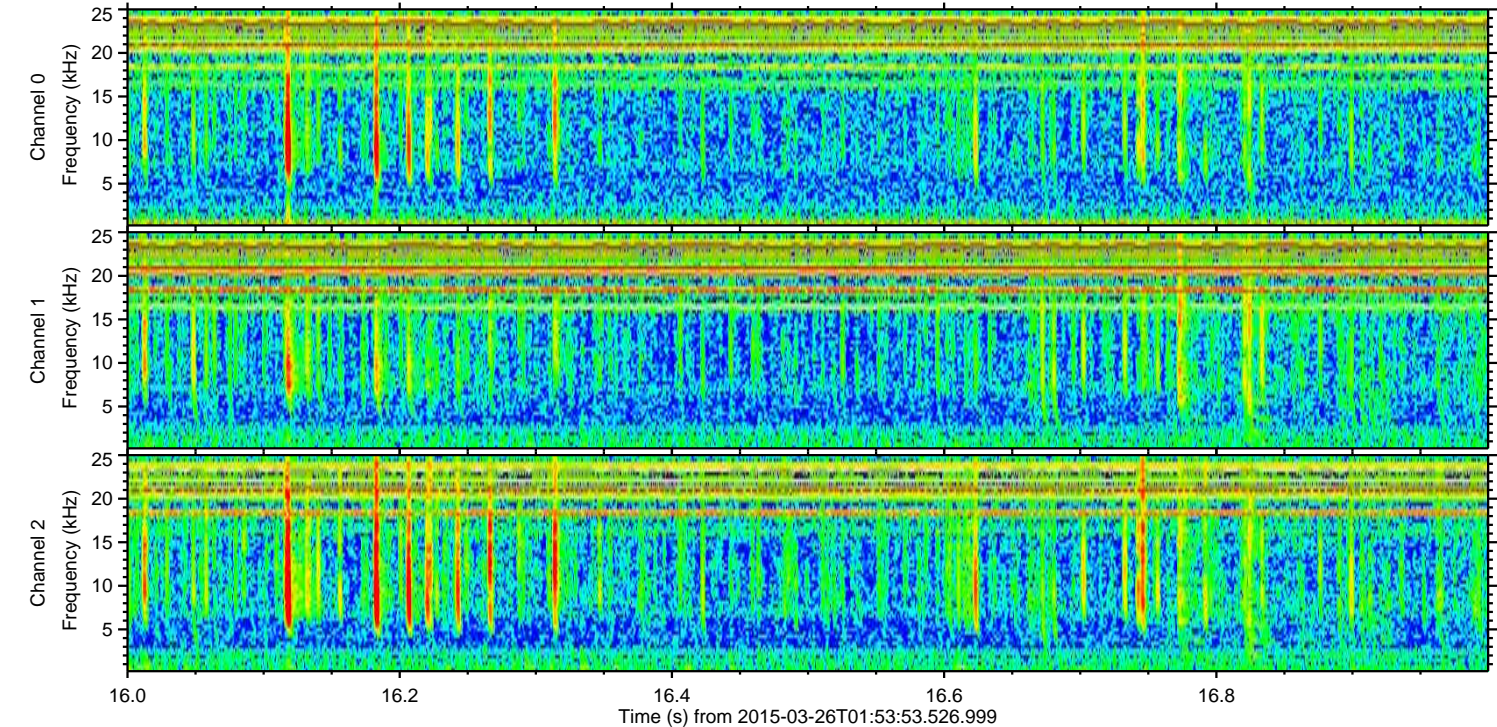
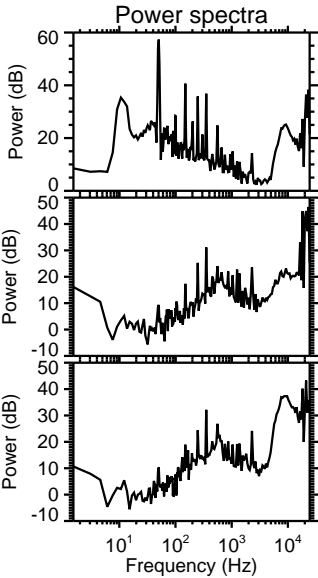
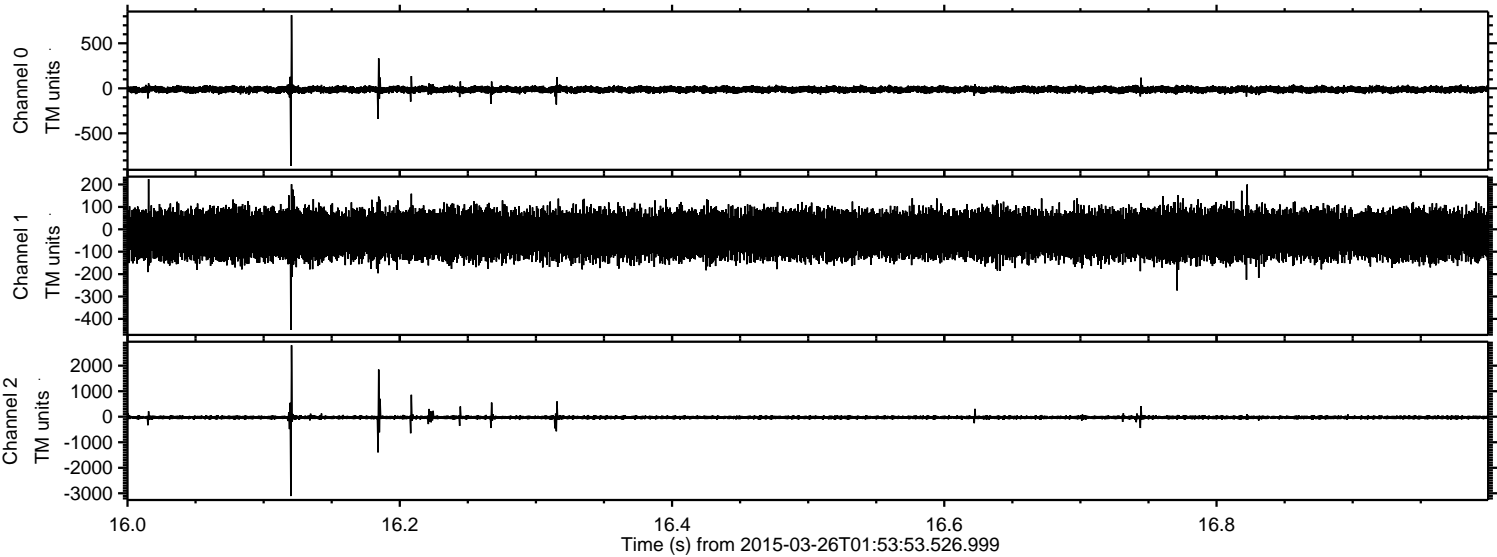
Channel 0
mn: -1098
mx: 1151
 μ : -13.9
 σ : 21.3

Channel 1
mn: -724
mx: 680
 μ : -23.7
 σ : 52.6

Channel 2
mn: -3063
mx: 3625
 μ : -27.5
 σ : 53.6

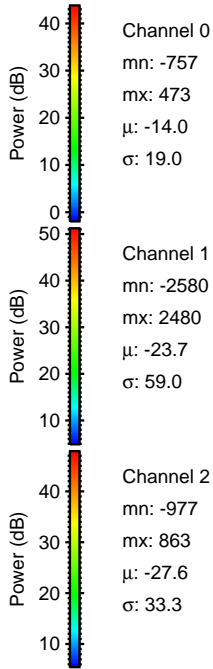
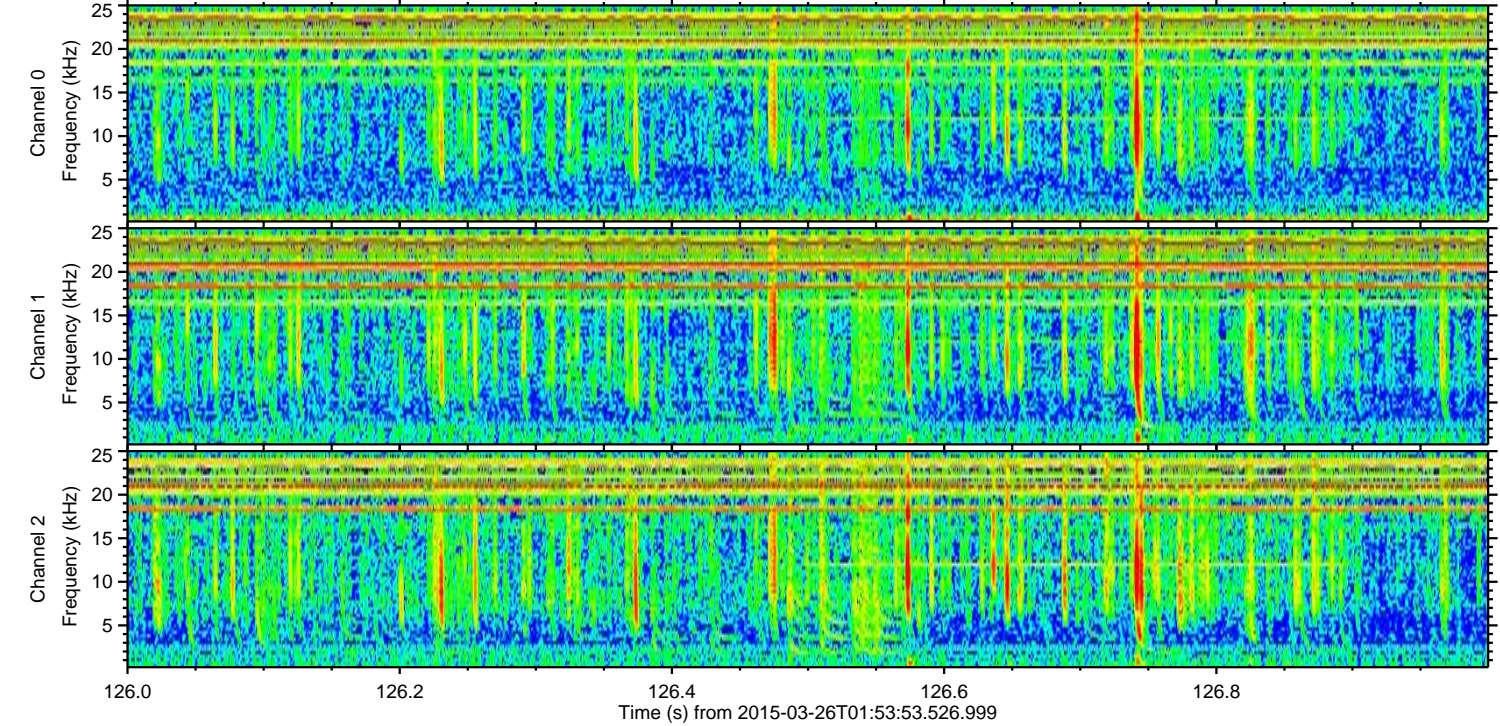
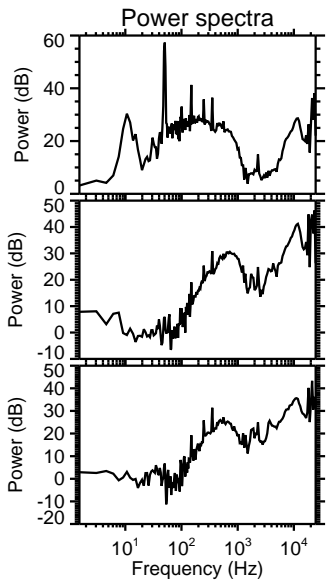
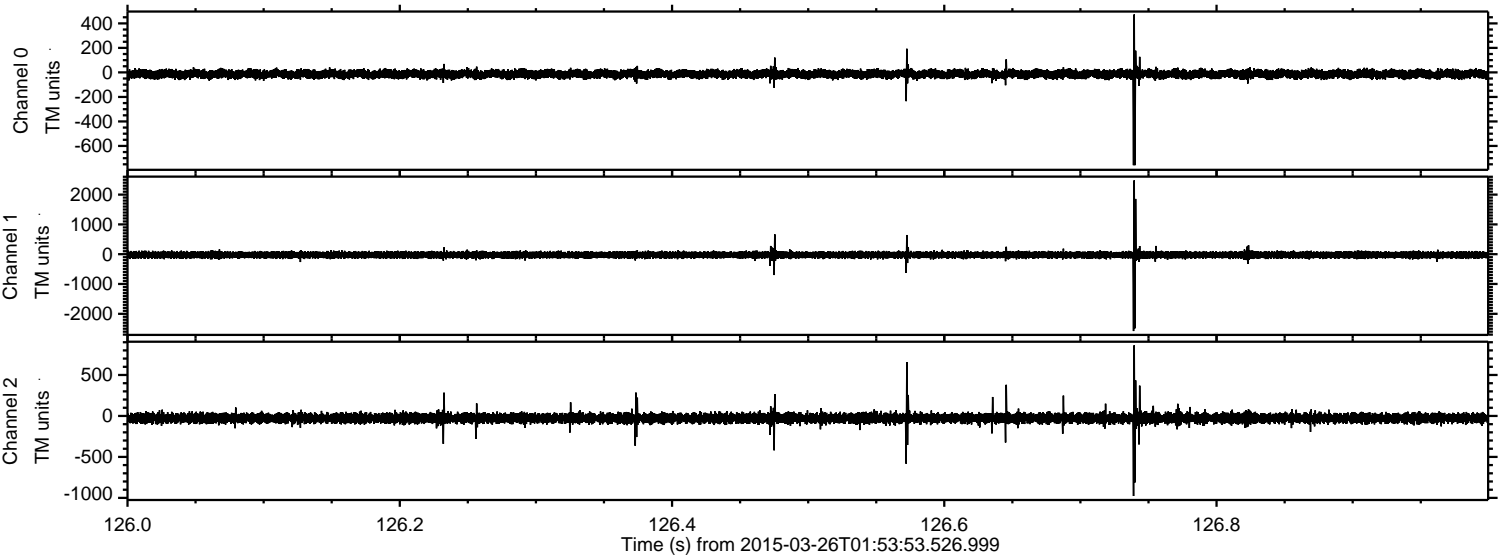
ELMAVAN 3D WAVEFORMS (Measured data sampled at 50 kHz) 49783 packets of 144 samples from 2015-03-26T01:53:53.526.999. Part 17/144

Processed Thu Mar 26 03:02:13 2015 by ELM ver.2012-10-06 from 001__elm20150326_015352__dat00.bin



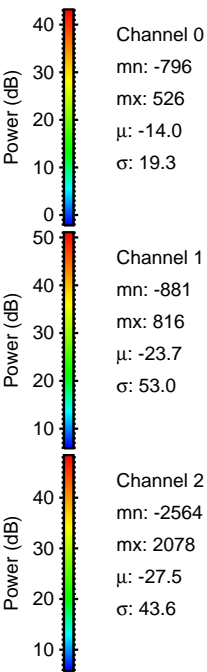
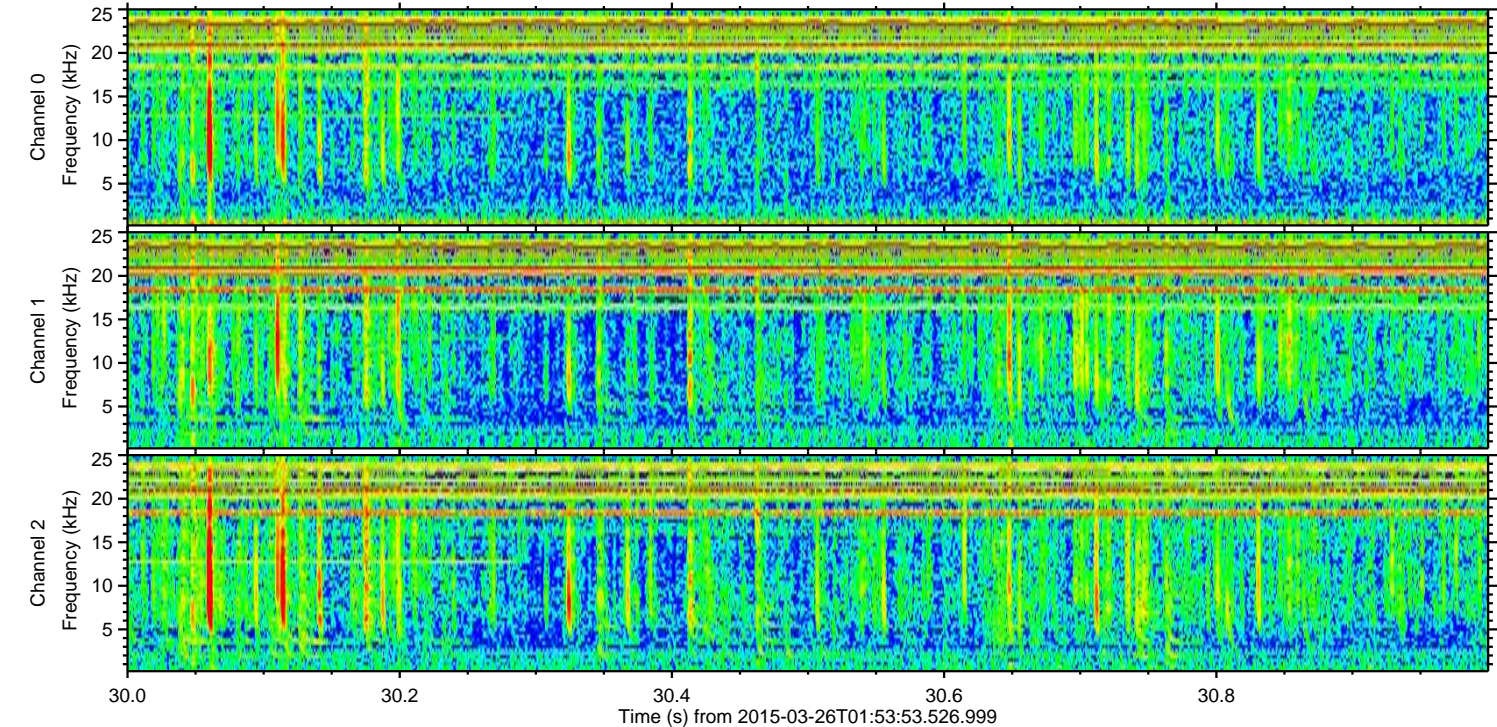
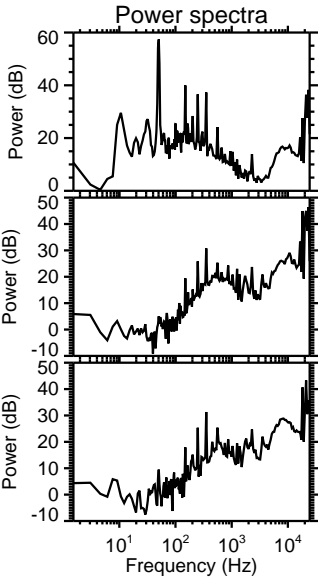
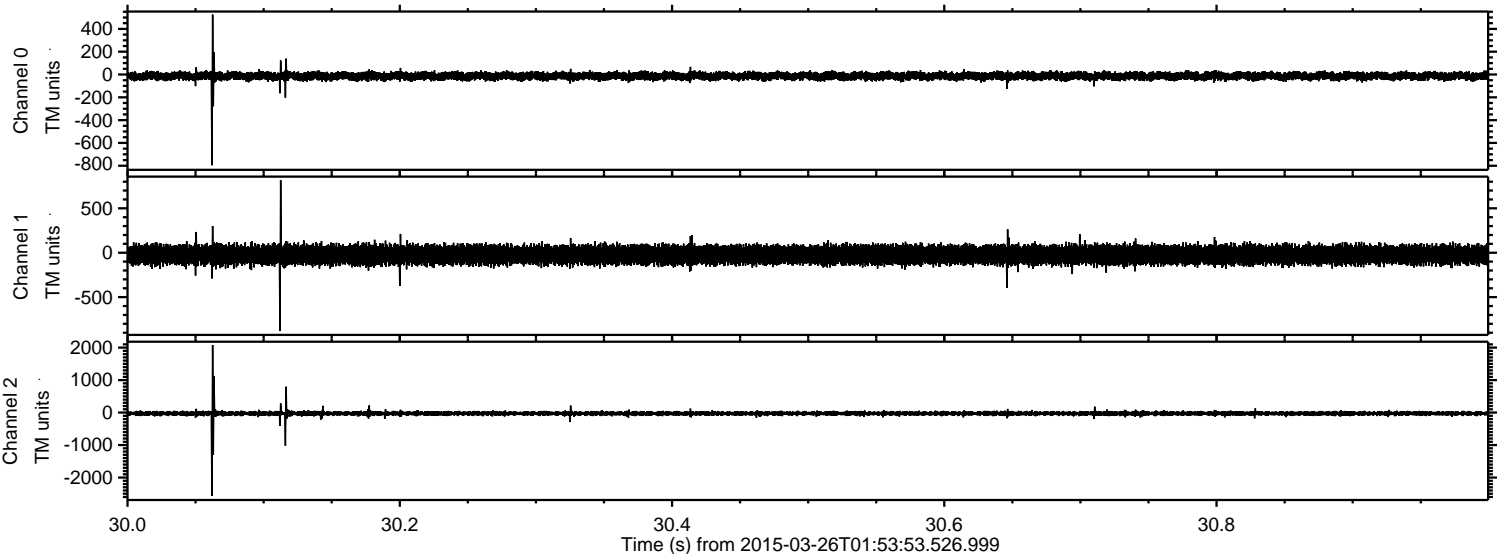
ELMAVAN 3D WAVEFORMS (Measured data sampled at 50 kHz) 49783 packets of 144 samples from 2015-03-26T01:53:53.526.999. Part 127/144

Processed Thu Mar 26 03:02:14 2015 by ELM ver.2012-10-06 from 001__elm20150326_015352__dat00.bin



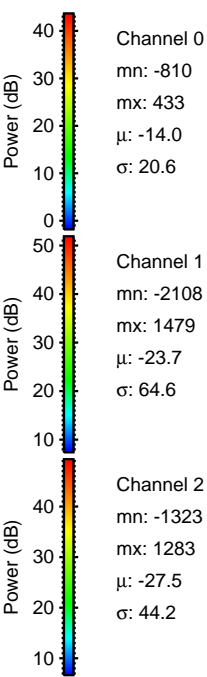
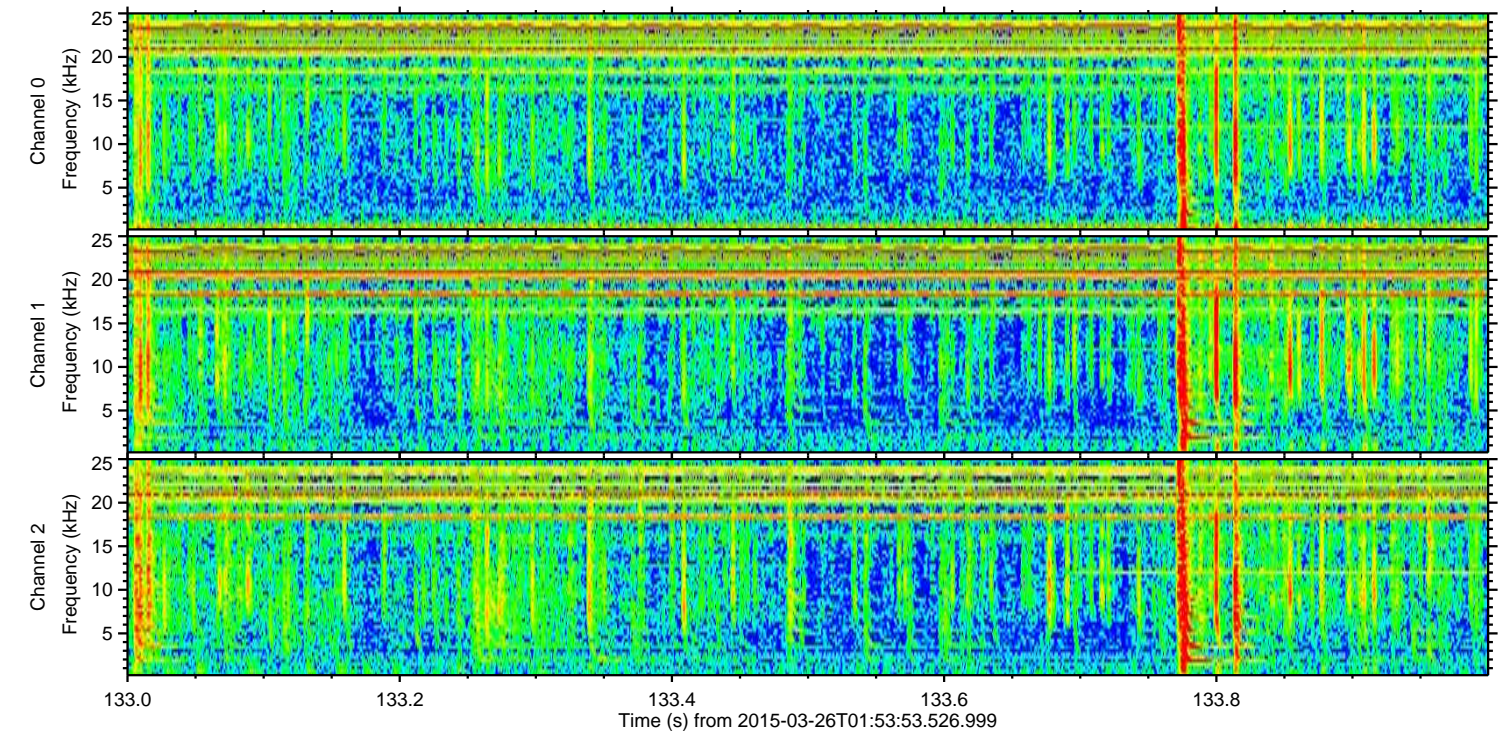
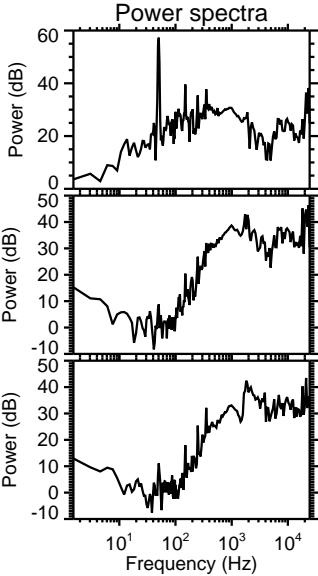
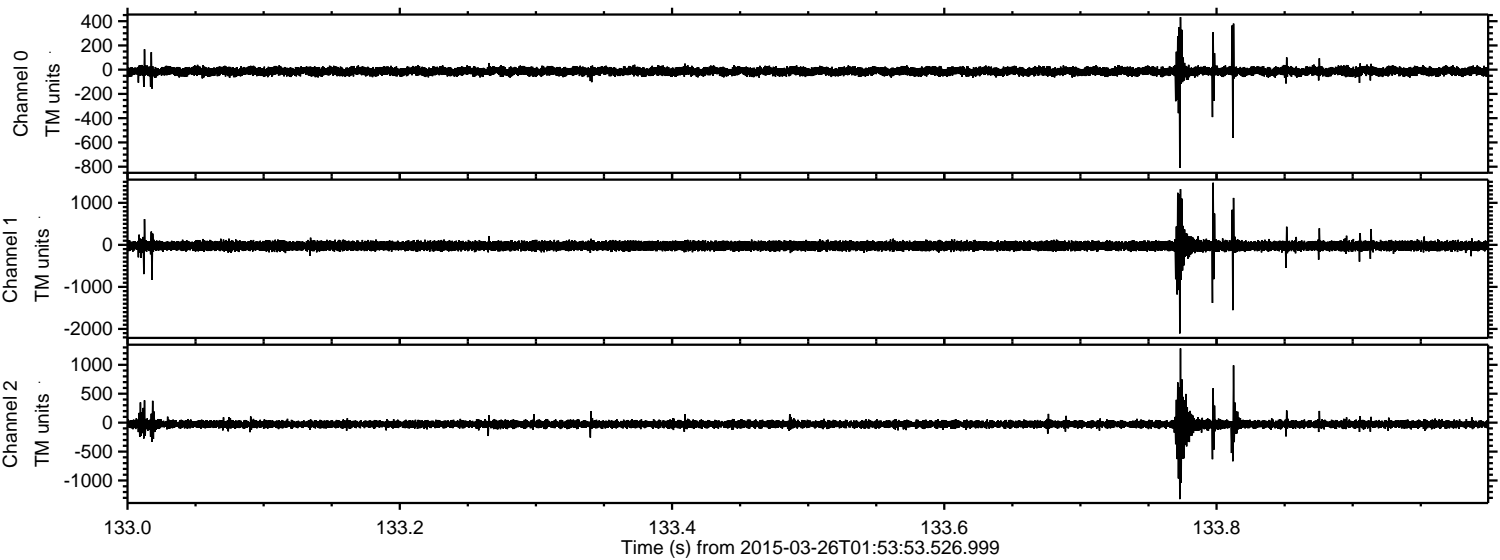
ELMAVAN 3D WAVEFORMS (Measured data sampled at 50 kHz) 49783 packets of 144 samples from 2015-03-26T01:53:53.526.999. Part 31/144

Processed Thu Mar 26 03:02:15 2015 by ELM ver.2012-10-06 from 001__elm20150326_015352__dat00.bin



ELMAVAN 3D WAVEFORMS (Measured data sampled at 50 kHz) 49783 packets of 144 samples from 2015-03-26T01:53:53.526.999. Part 134/144

Processed Thu Mar 26 03:02:16 2015 by ELM ver.2012-10-06 from 001__elm20150326_015352__dat00.bin

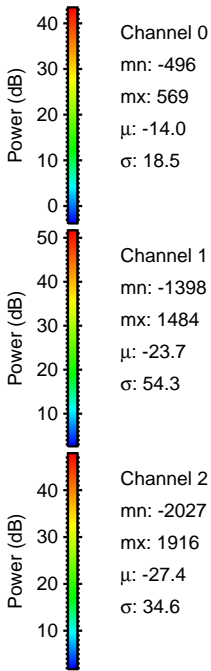
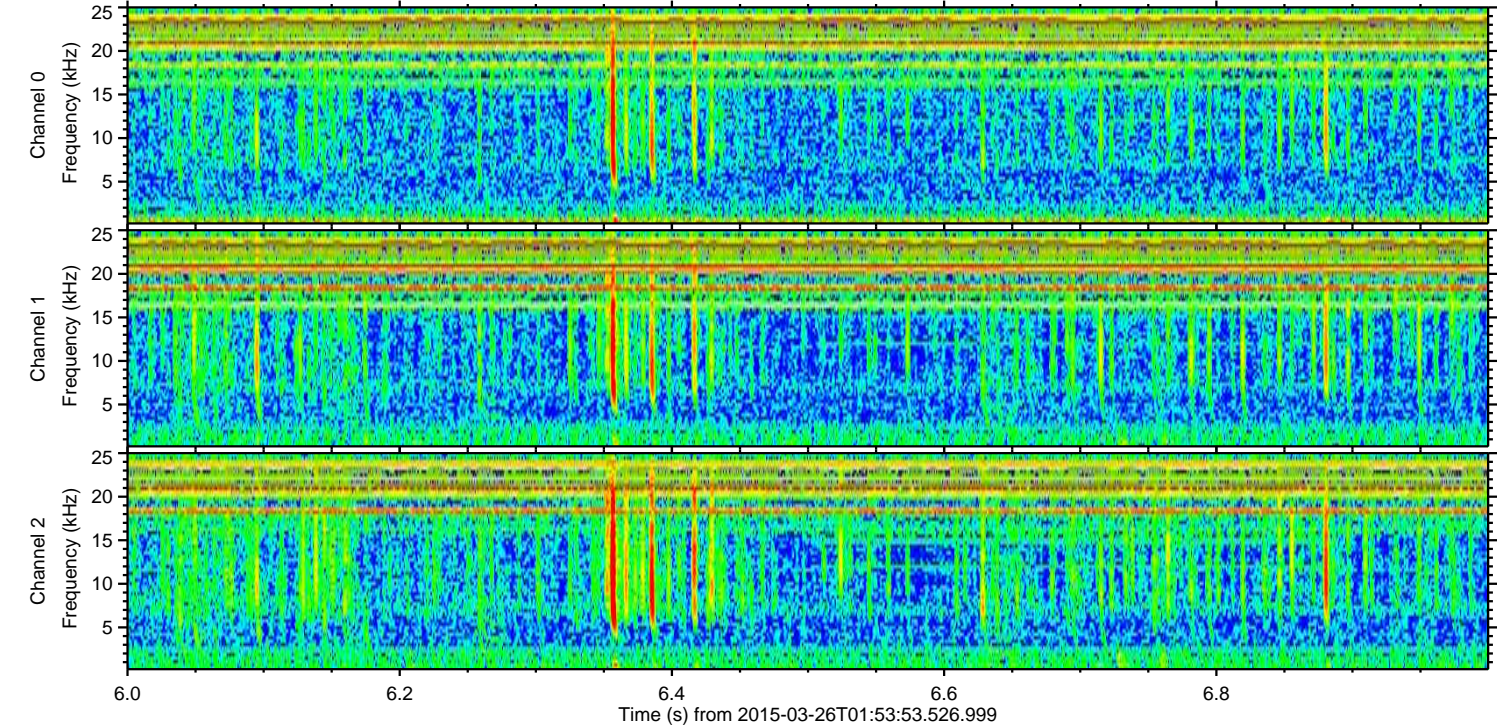
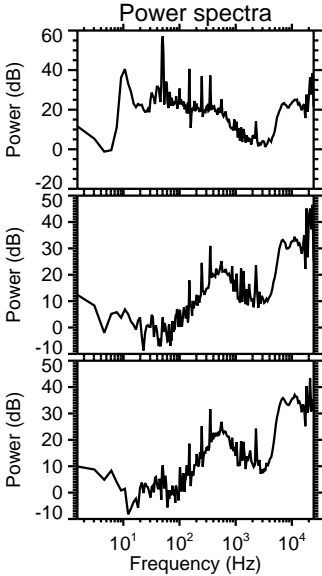
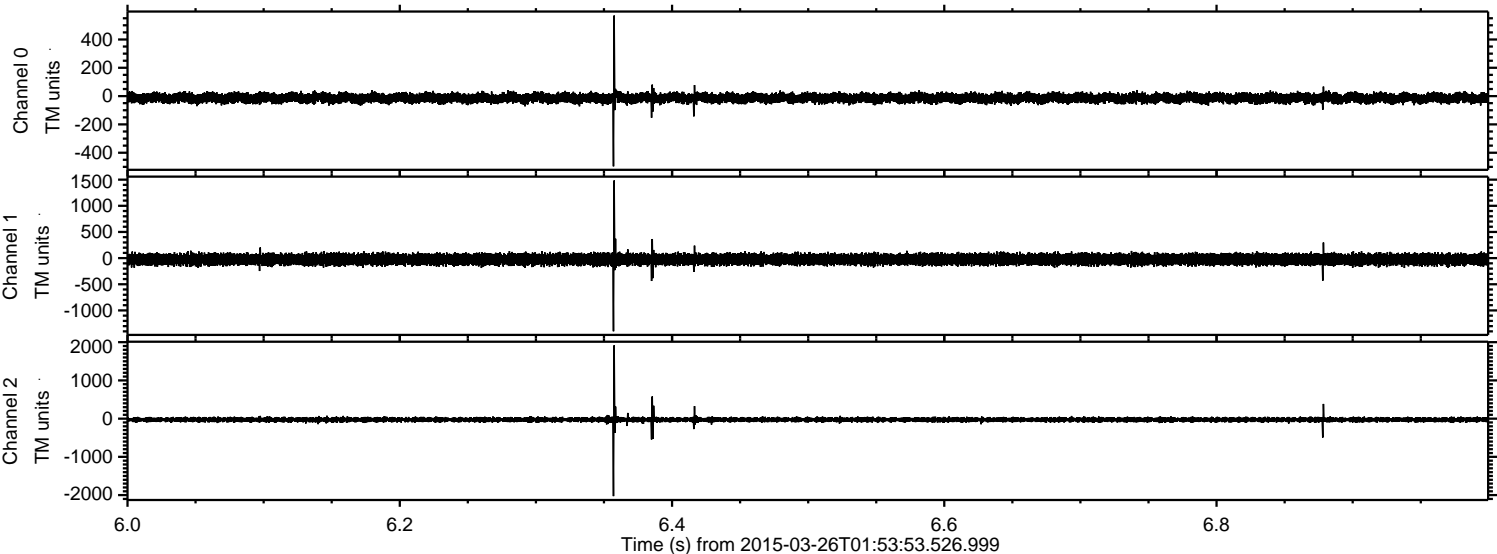


Channel 0
mn: -810
mx: 433
 μ : -14.0
 σ : 20.6

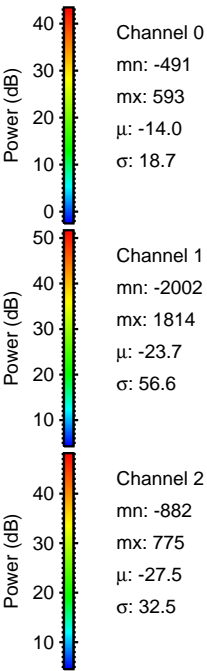
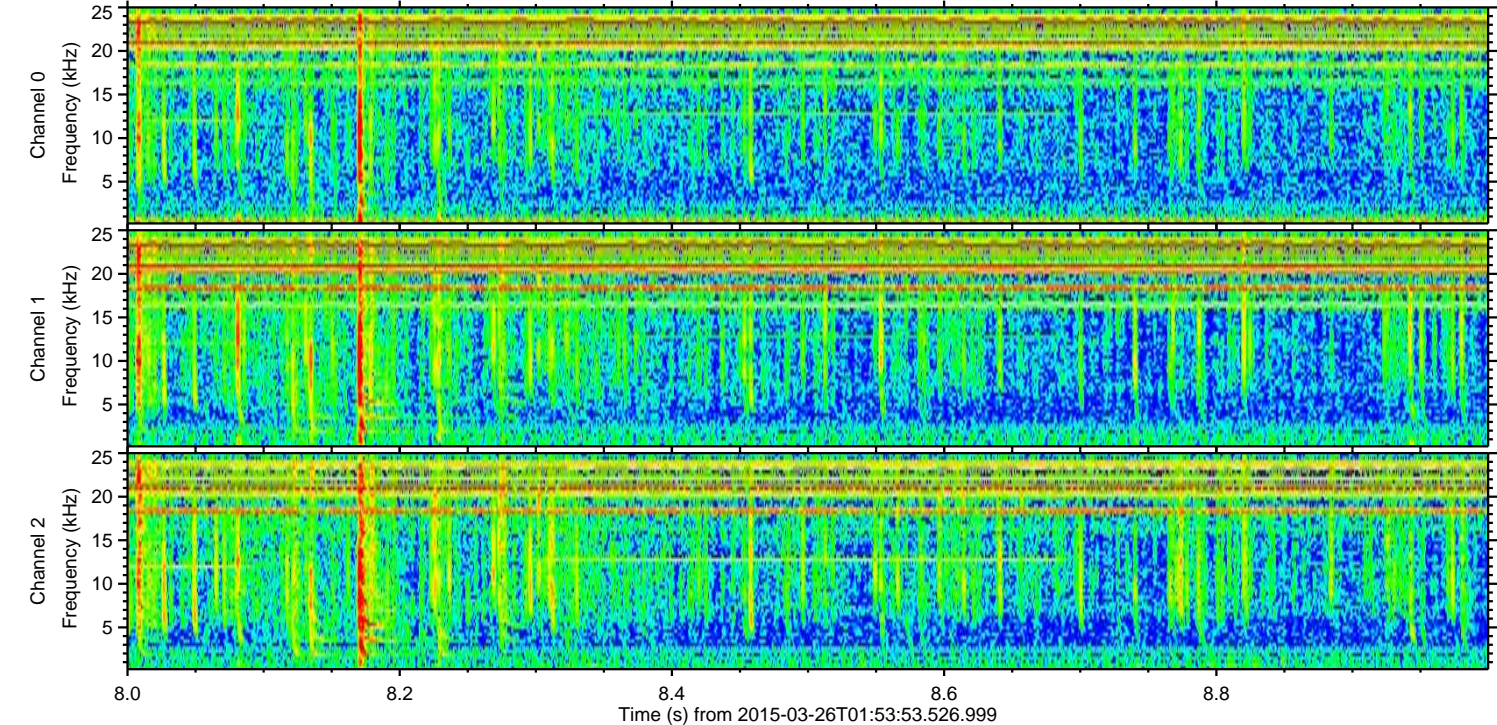
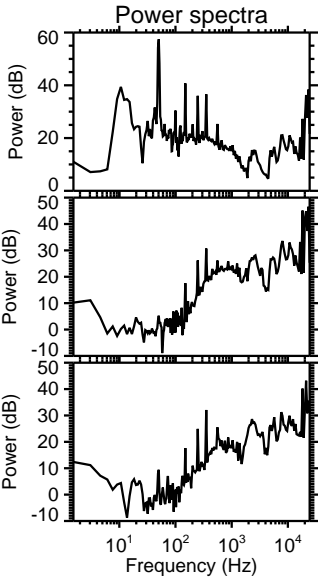
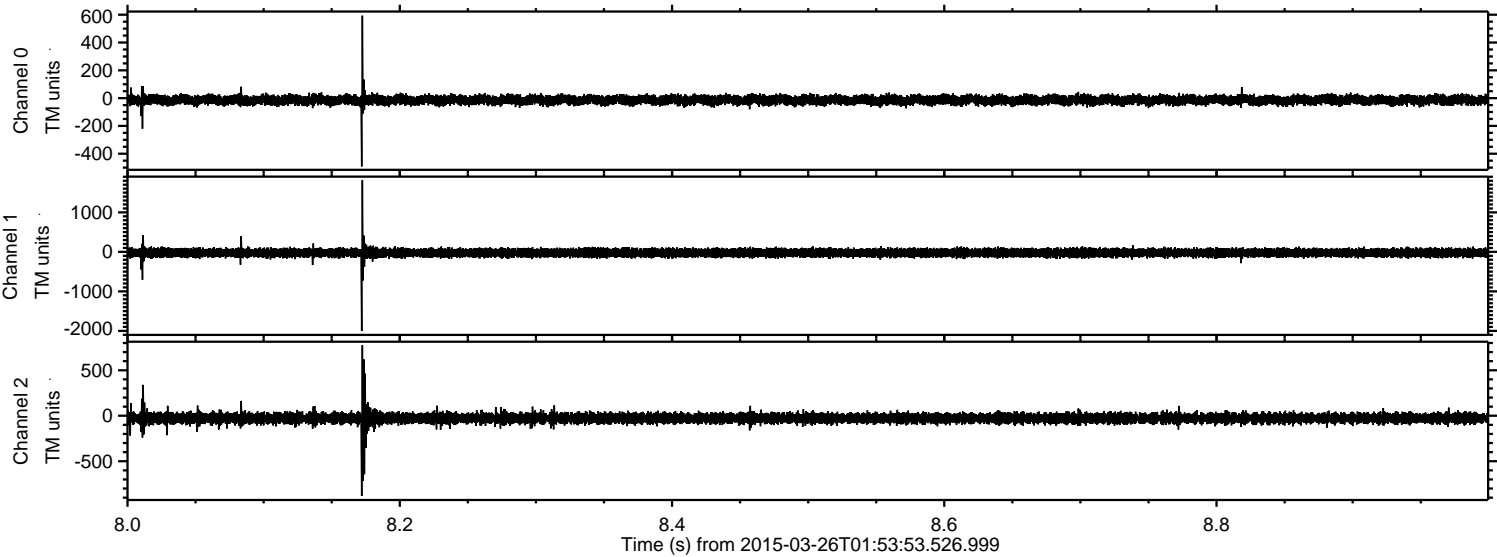
Channel 1
mn: -2108
mx: 1479
 μ : -23.7
 σ : 64.6

Channel 2
mn: -1323
mx: 1283
 μ : -27.5
 σ : 44.2

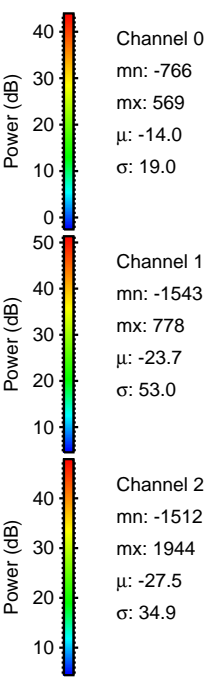
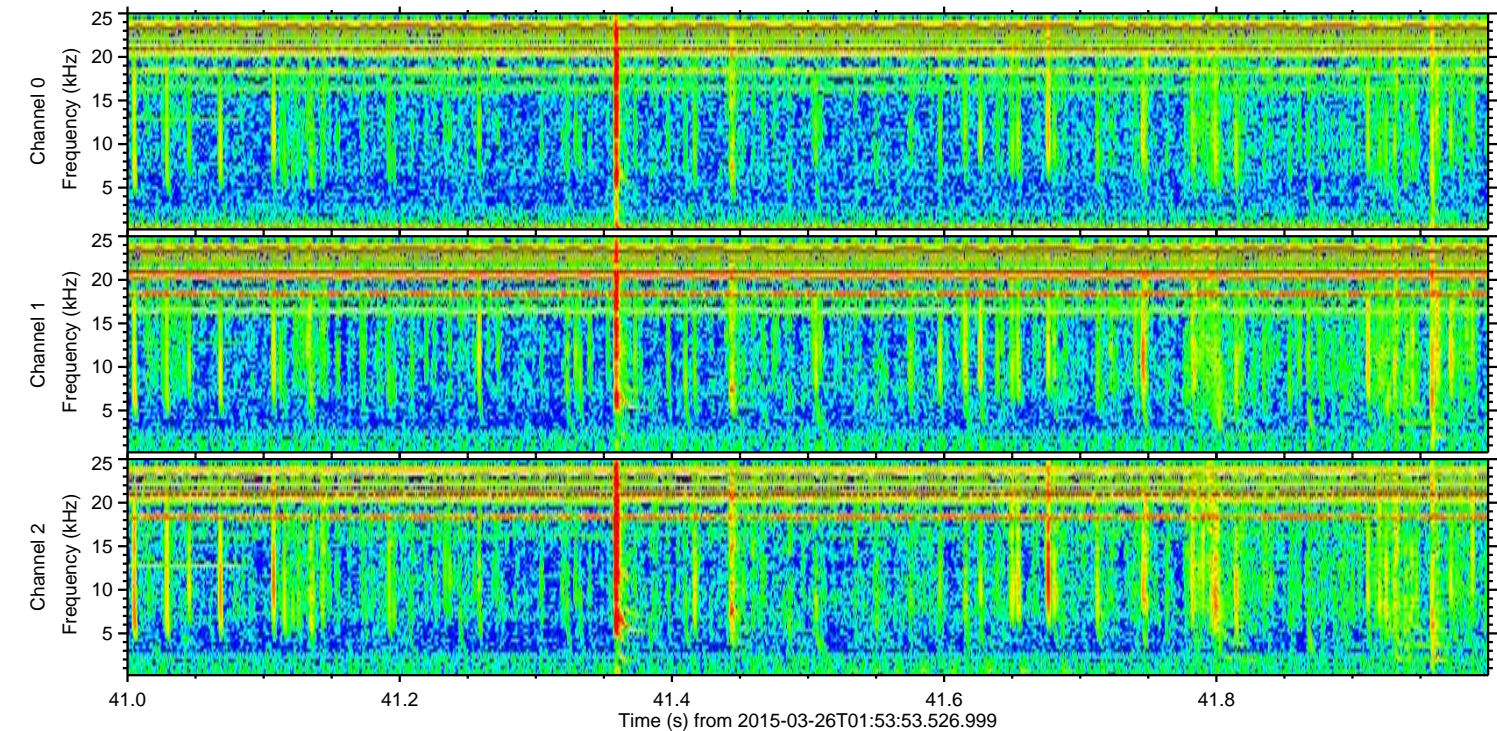
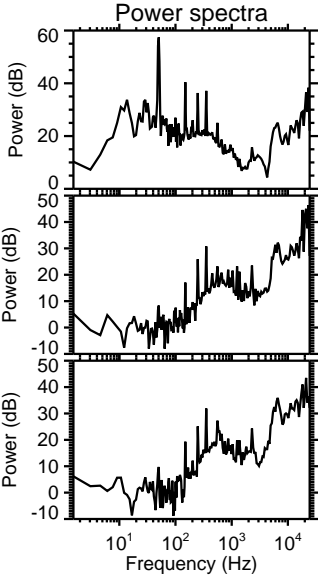
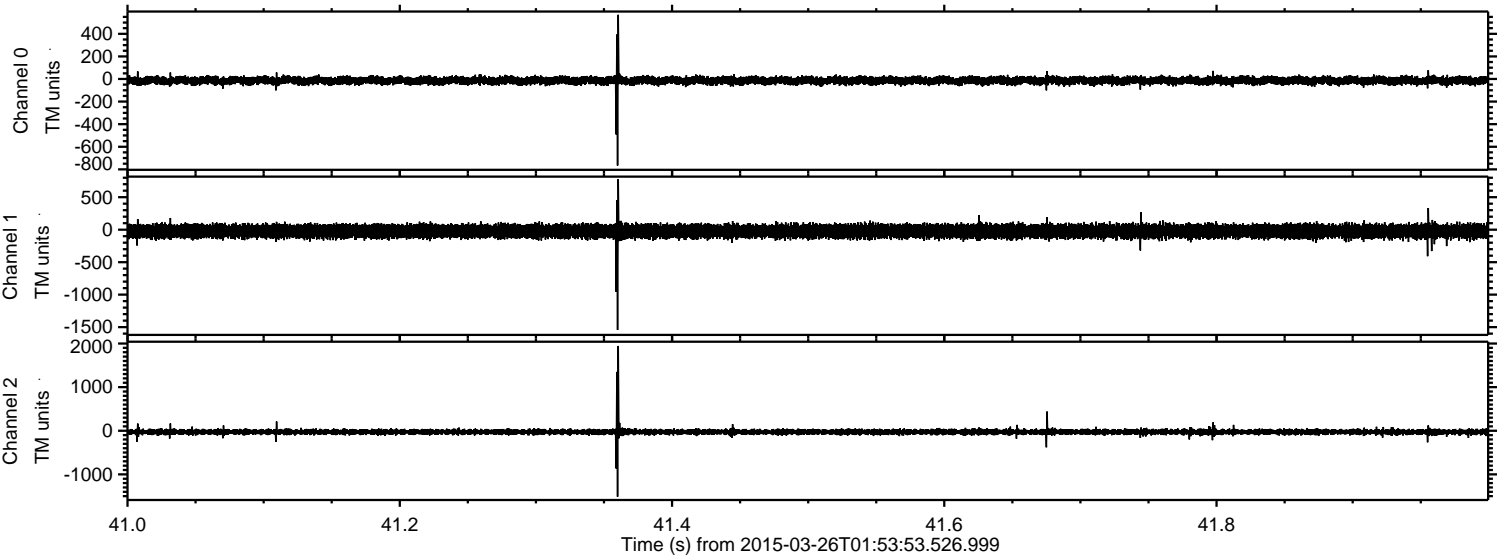
Processed Thu Mar 26 03:02:17 2015 by ELM ver.2012-10-06 from 001__elm20150326_015352__dat00.bin



Processed Thu Mar 26 03:02:18 2015 by ELM ver.2012-10-06 from 001__elm20150326_015352__dat00.bin



Processed Thu Mar 26 03:02:19 2015 by ELM ver.2012-10-06 from 001__elm20150326_015352__dat00.bin



Processed Thu Mar 26 03:02:20 2015 by ELM ver.2012-10-06 from 001__elm20150326_015352__dat00.bin

