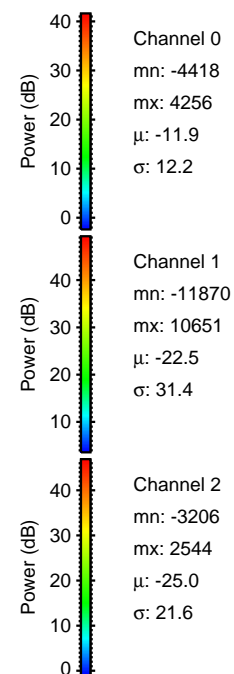
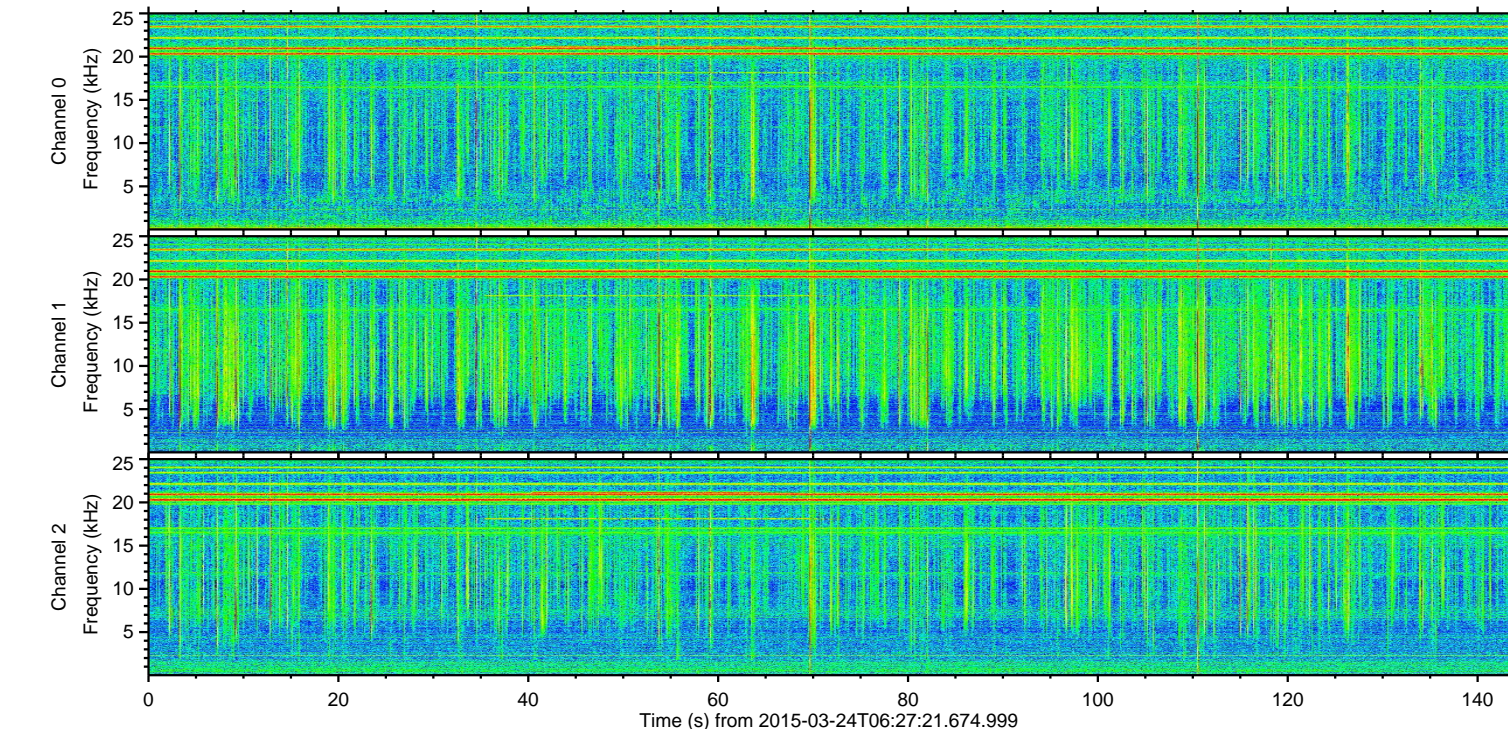
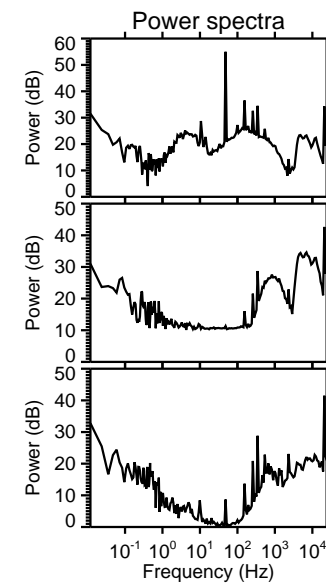
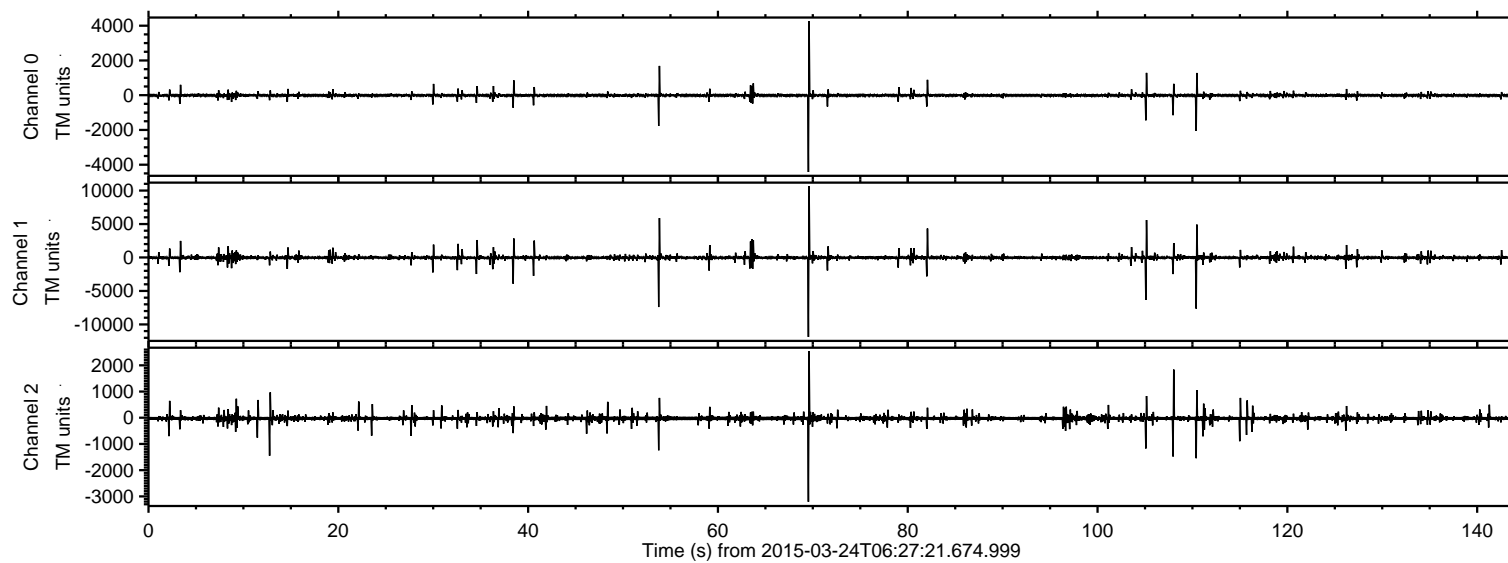


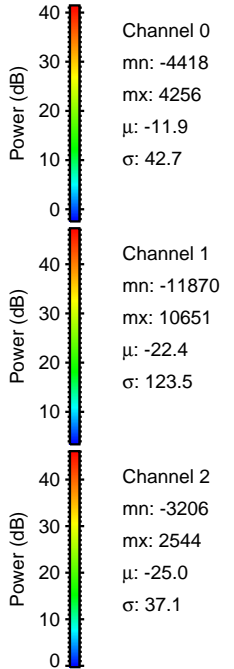
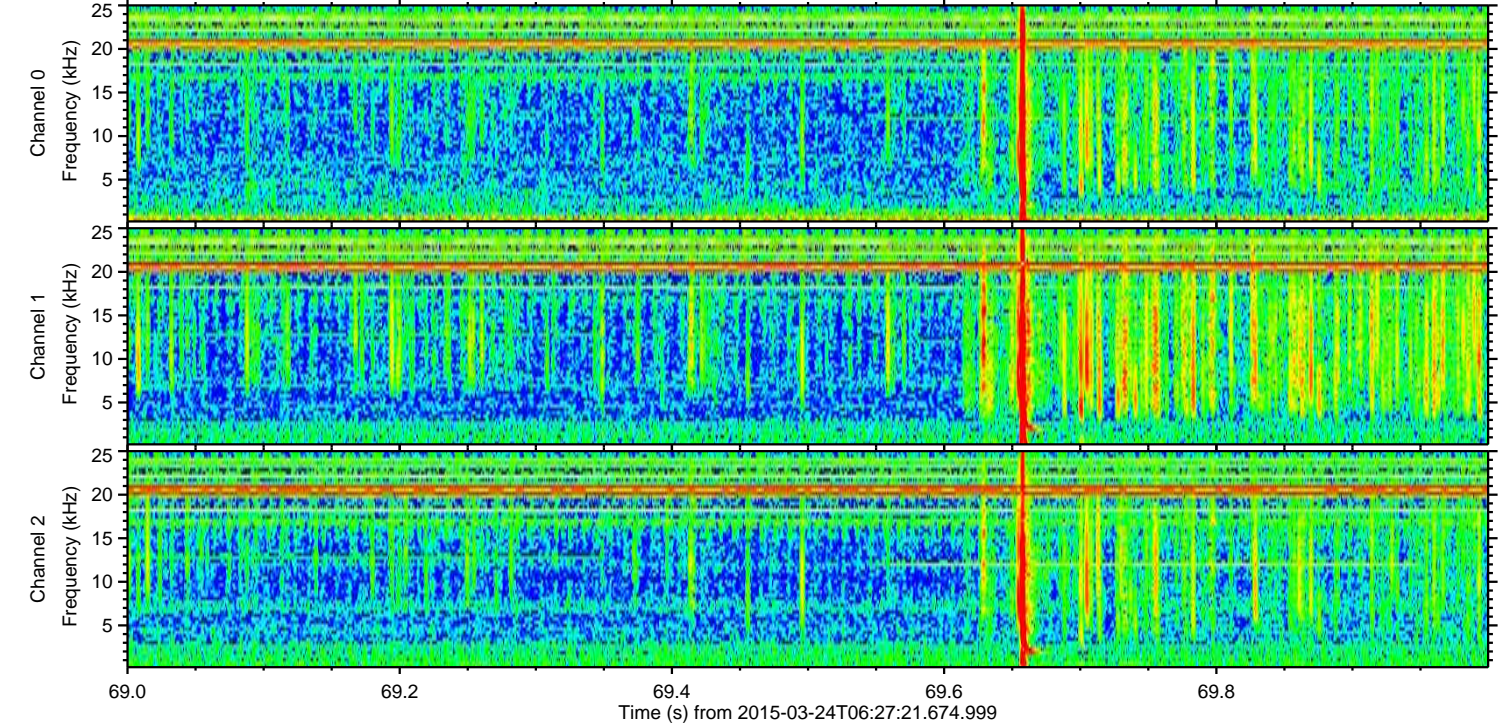
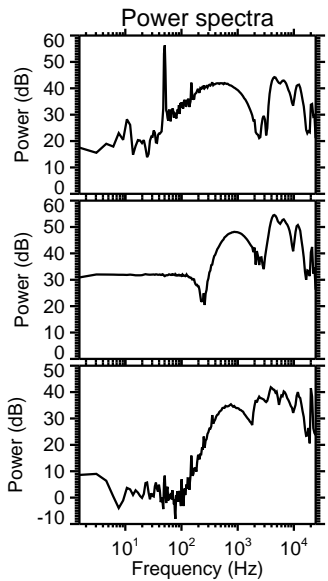
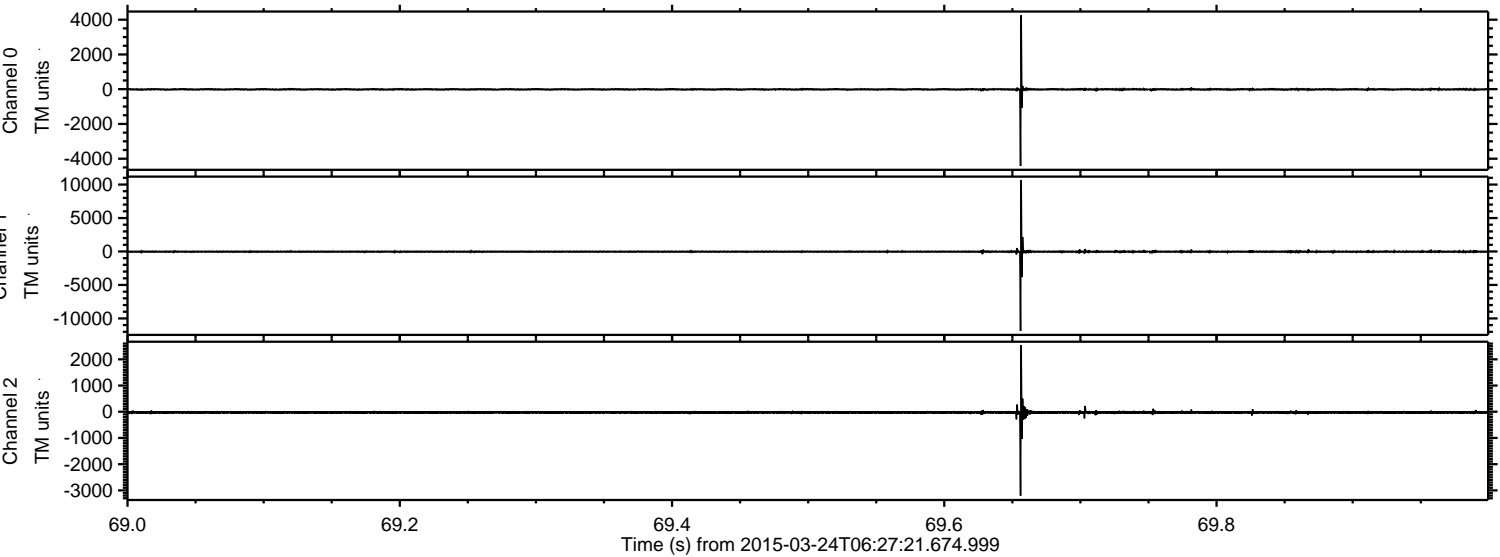
# ELMAVAN 3D WAVEFORMS (Measured data sampled at 50 kHz) 49781 packets of 144 samples from 2015-03-24T06:27:21.674.999.

Processed Tue Mar 24 07:34:42 2015 by ELM ver.2012-10-06 from 001\_\_elm20150324\_062720\_\_dat00.bin





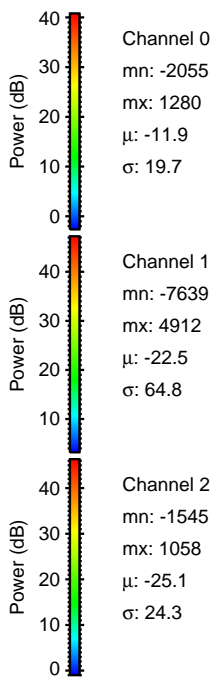
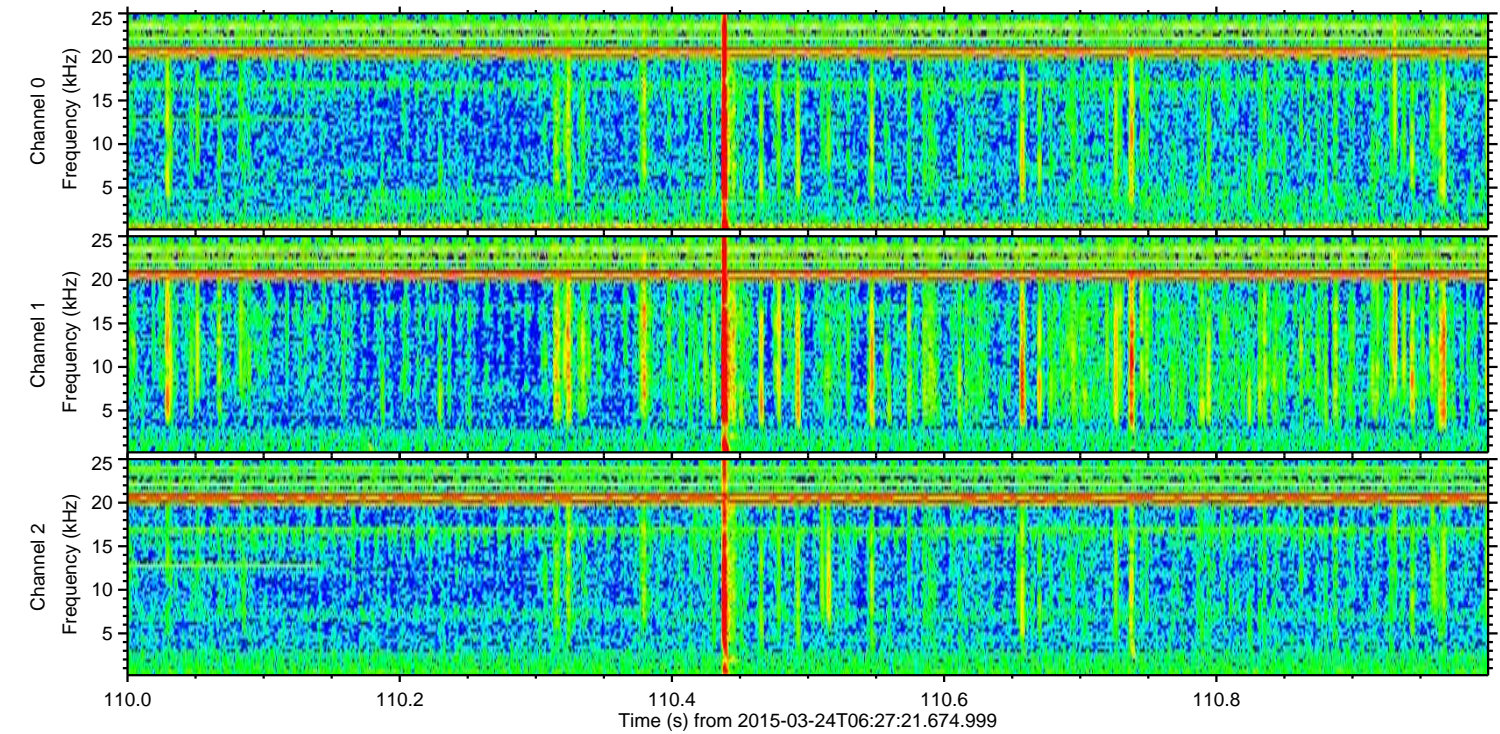
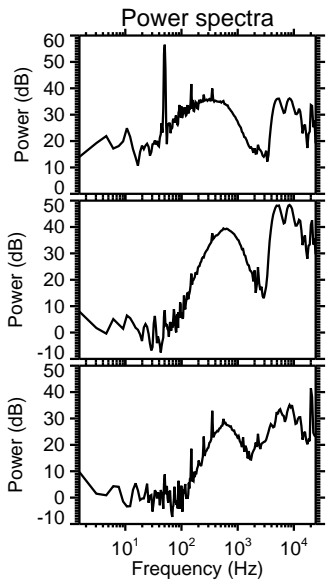
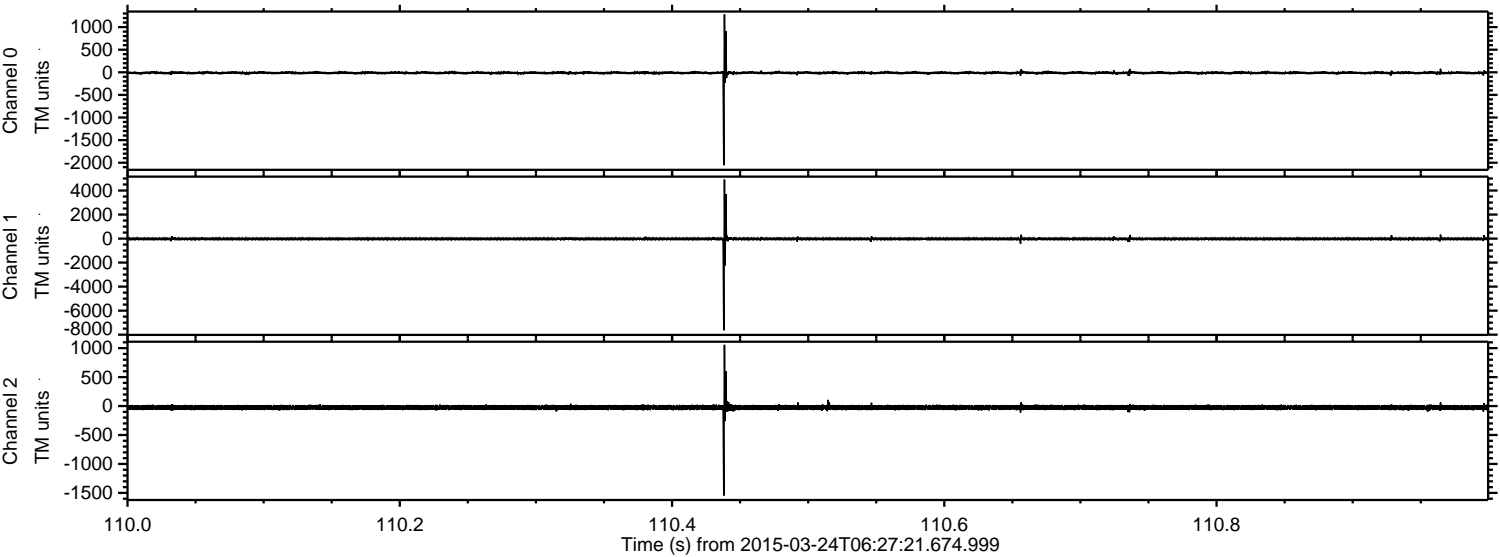
Processed Tue Mar 24 07:34:54 2015 by ELM ver.2012-10-06 from 001\_\_elm20150324\_062720\_\_dat00.bin





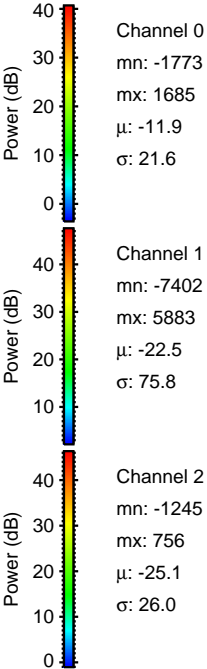
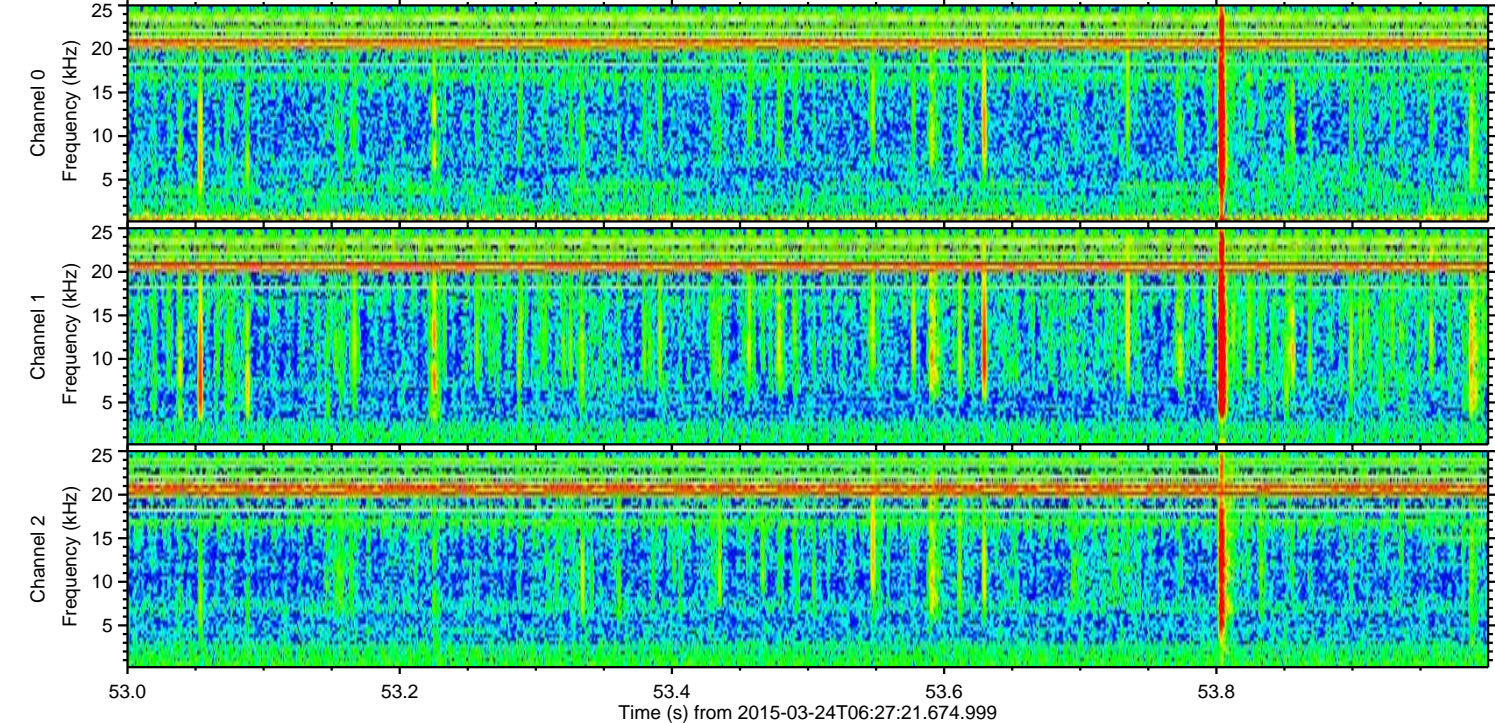
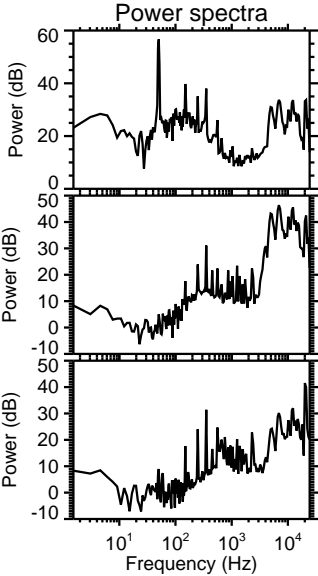
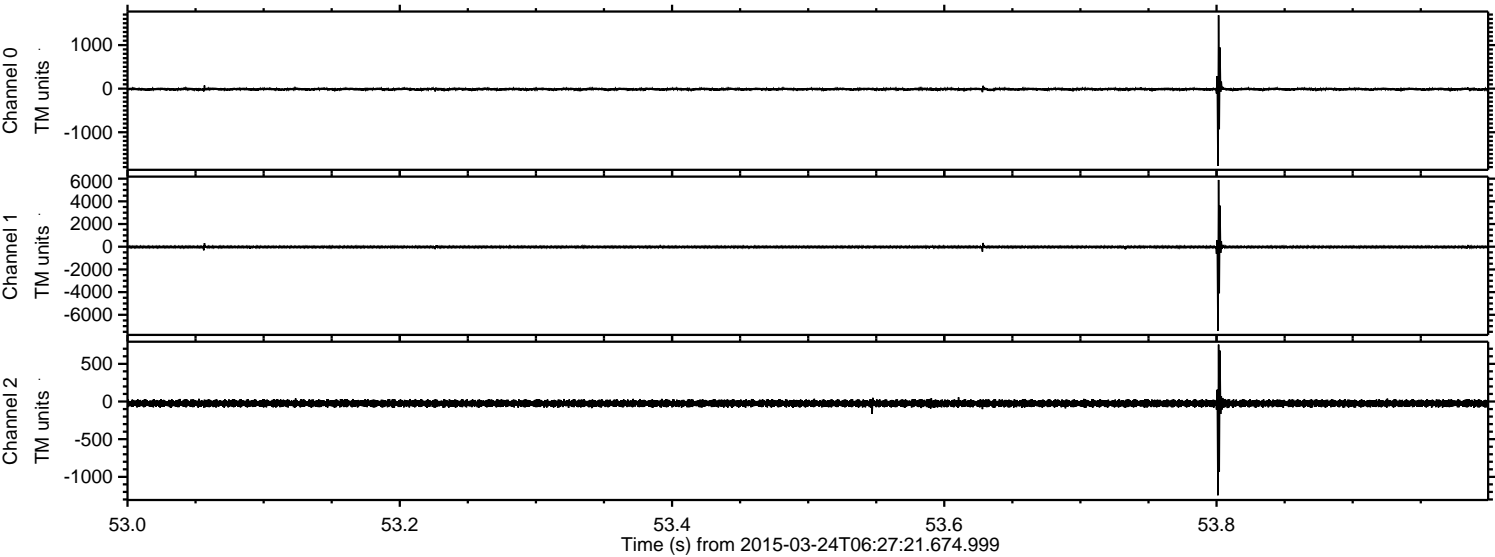
ELMAVAN 3D WAVEFORMS (Measured data sampled at 50 kHz) 49781 packets of 144 samples from 2015-03-24T06:27:21.674.999. Part 111/144

Processed Tue Mar 24 07:34:55 2015 by ELM ver.2012-10-06 from 001\_\_elm20150324\_062720\_\_dat00.bin





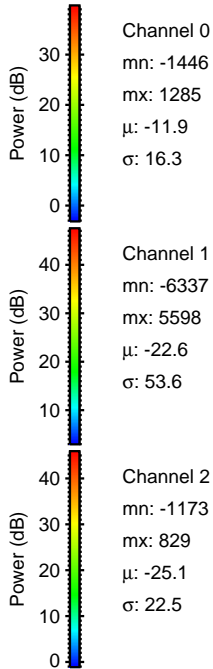
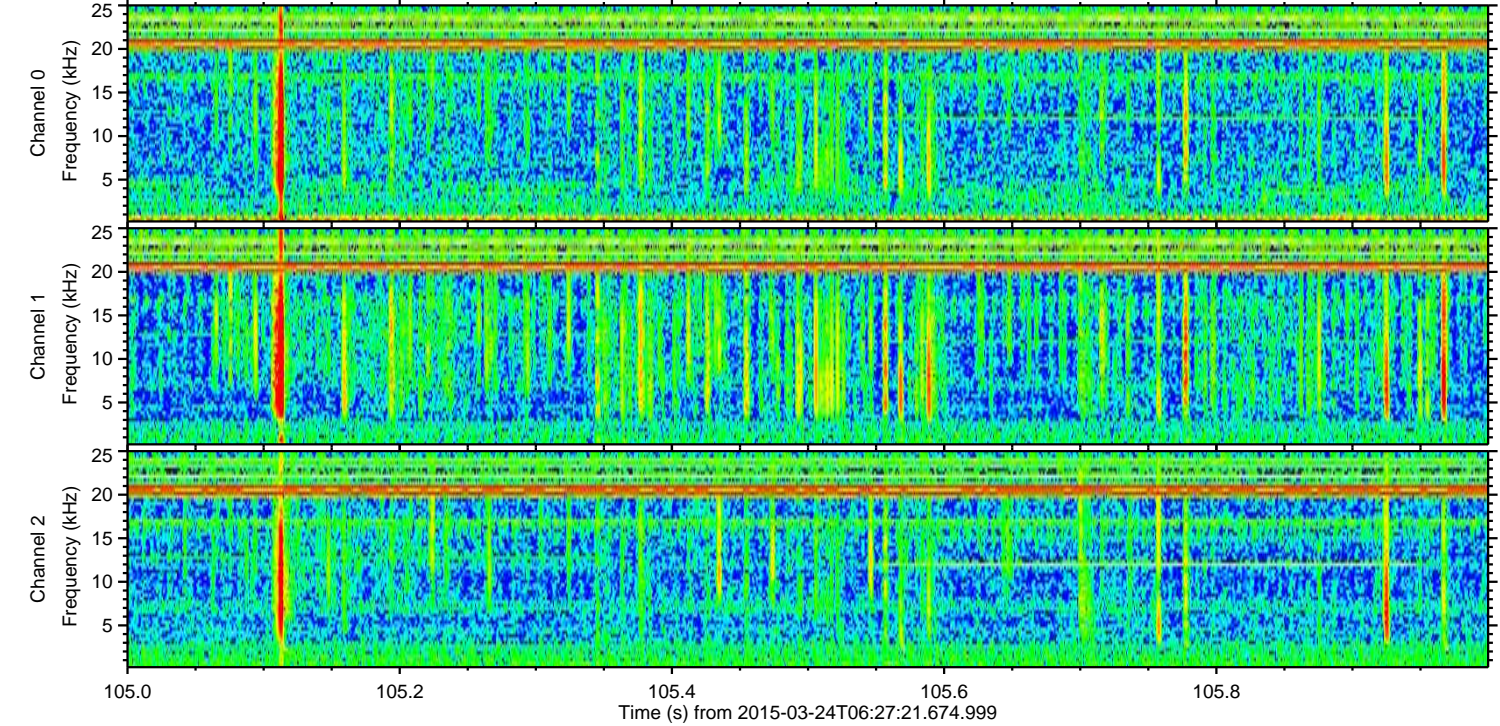
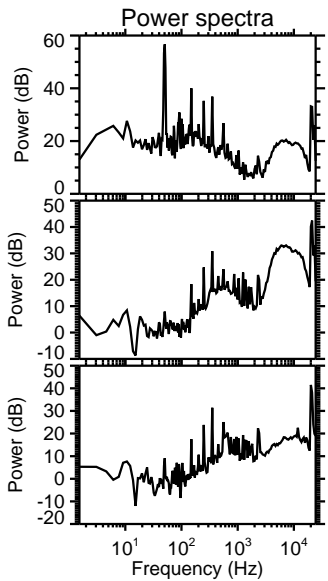
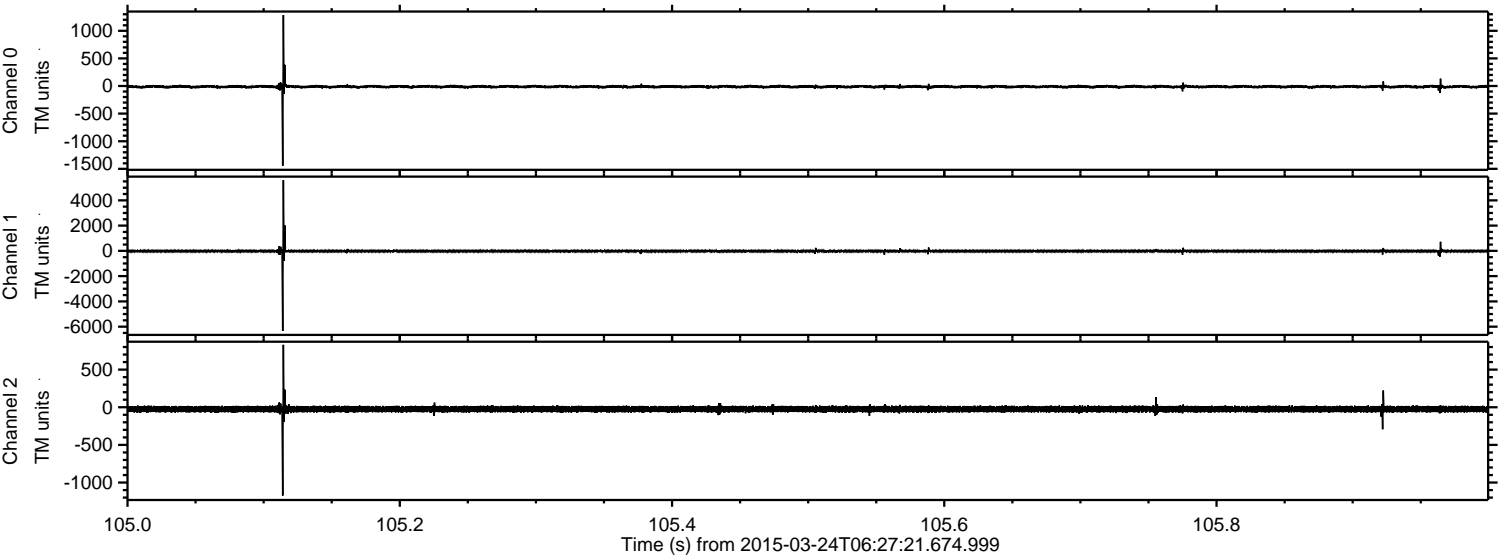
Processed Tue Mar 24 07:34:56 2015 by ELM ver.2012-10-06 from 001\_\_elm20150324\_062720\_\_dat00.bin





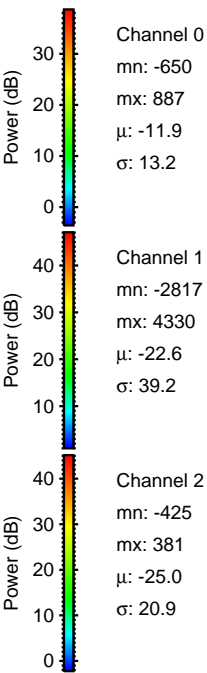
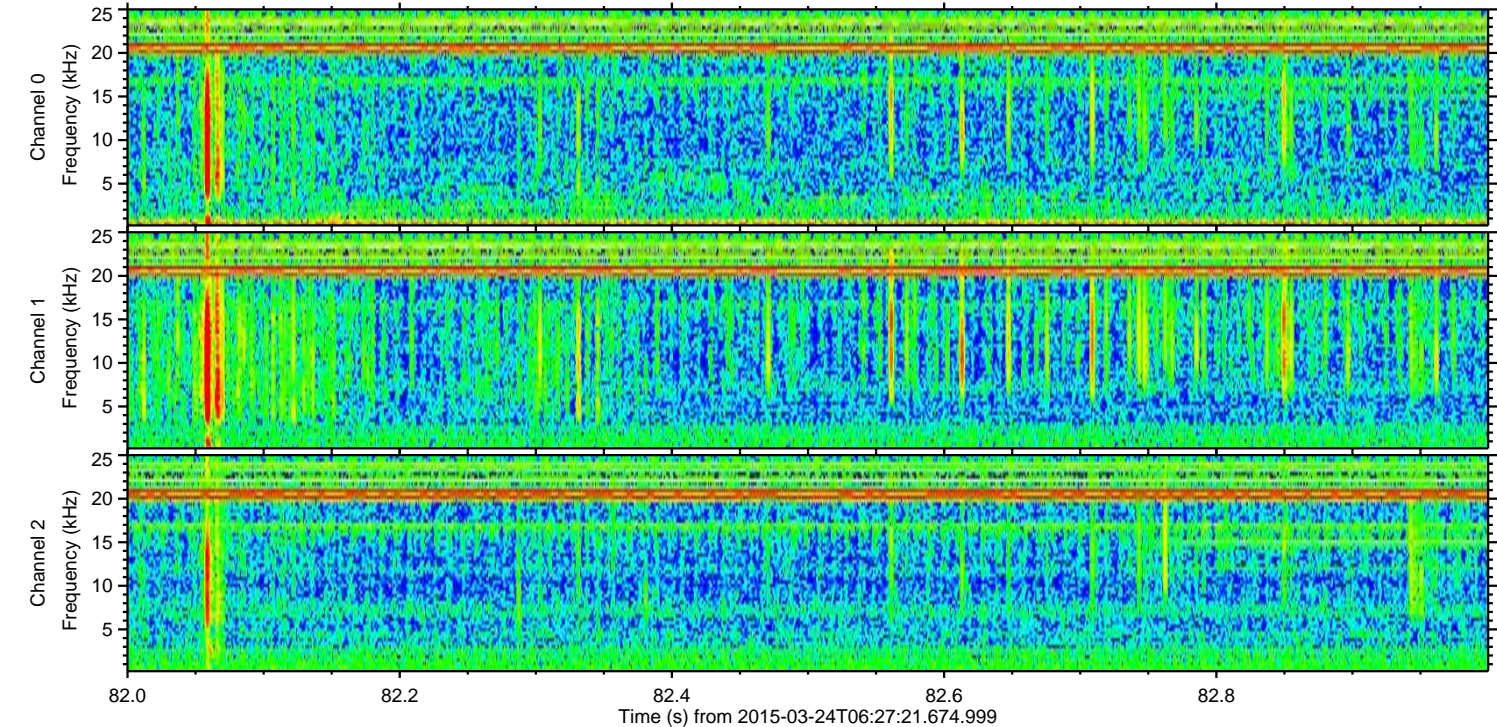
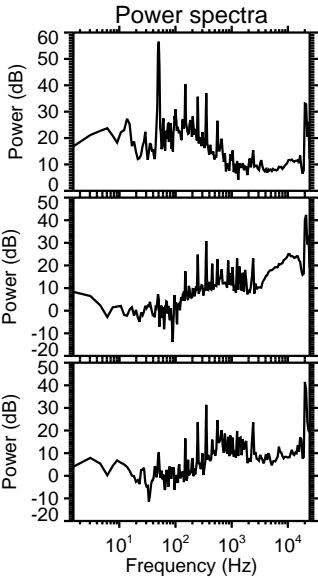
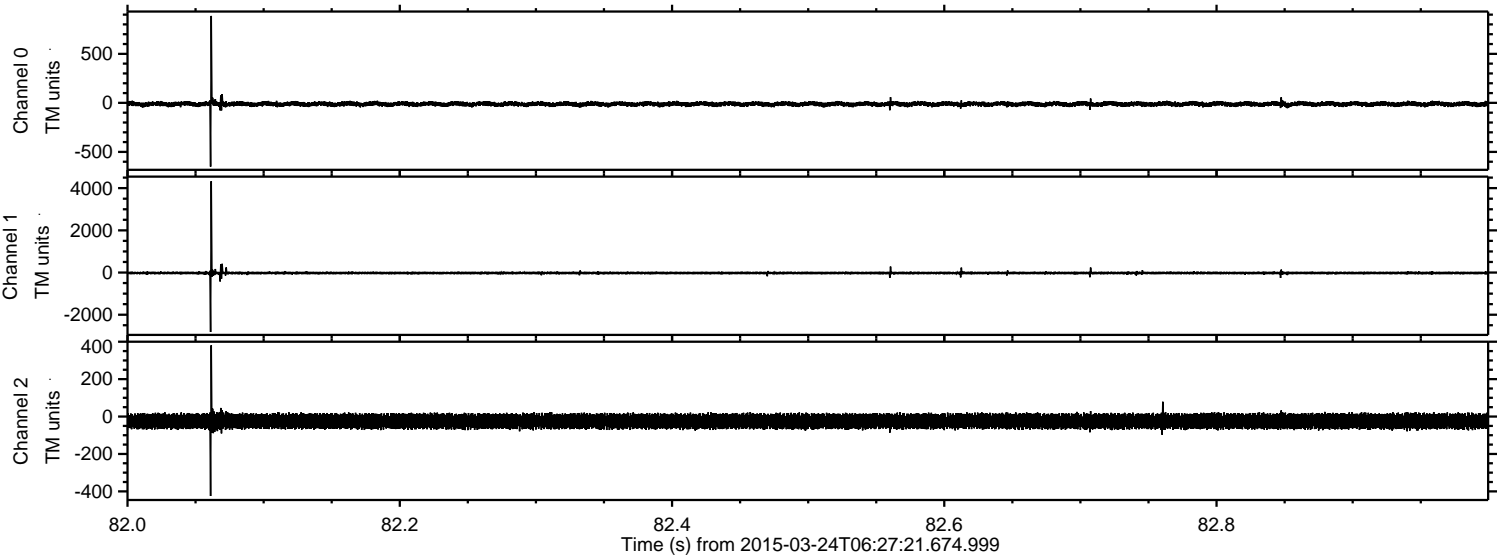
ELMAVAN 3D WAVEFORMS (Measured data sampled at 50 kHz) 49781 packets of 144 samples from 2015-03-24T06:27:21.674.999. Part 106/144

Processed Tue Mar 24 07:34:57 2015 by ELM ver.2012-10-06 from 001\_\_elm20150324\_062720\_\_dat00.bin



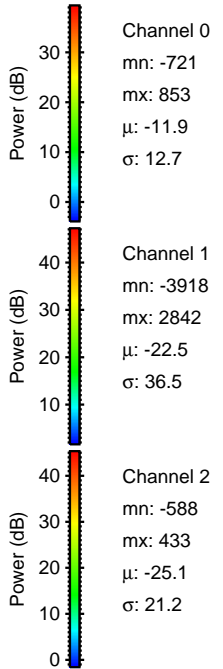
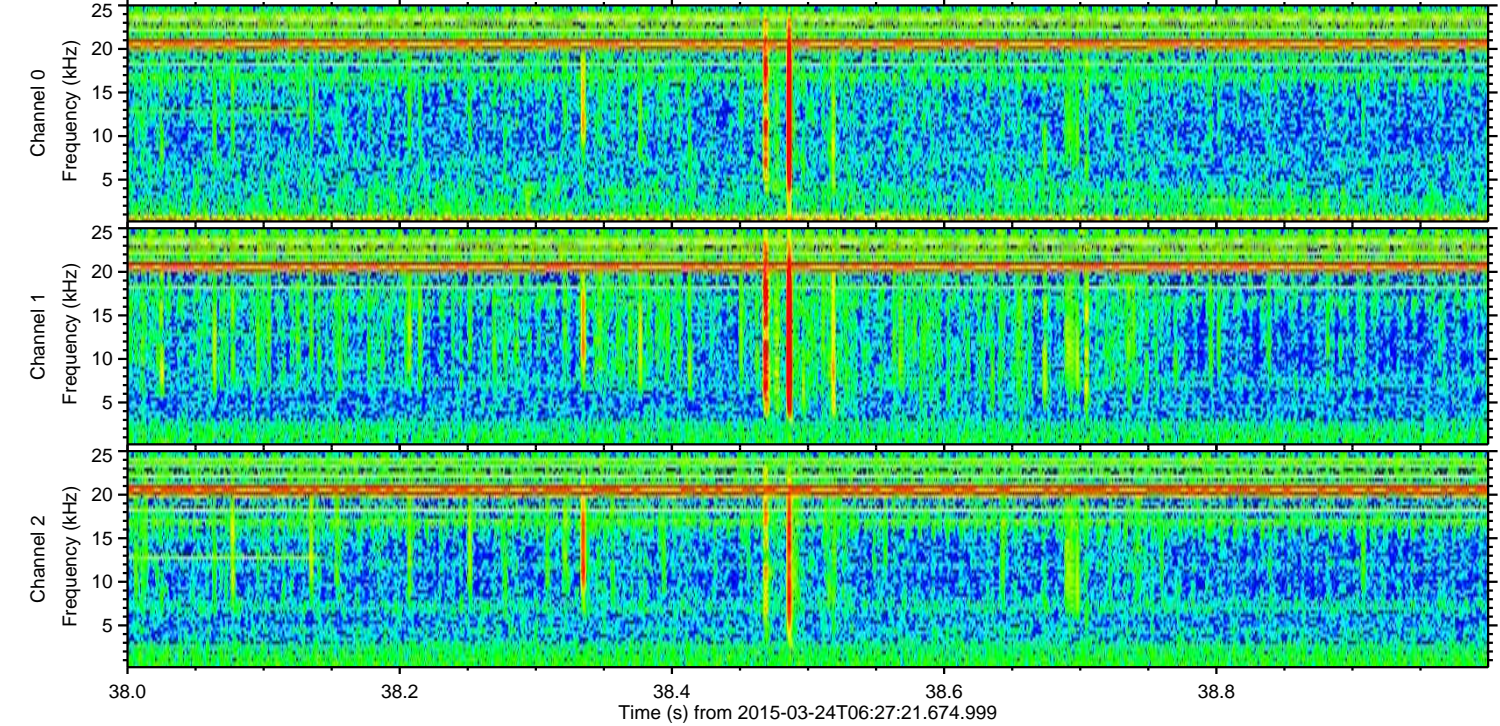
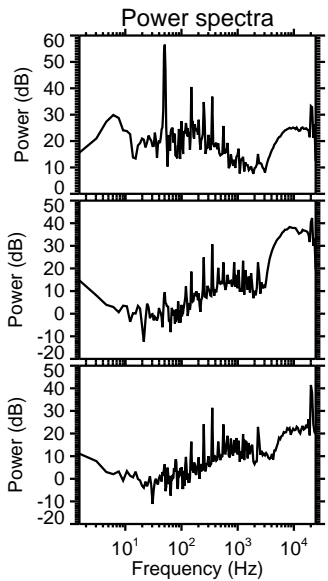
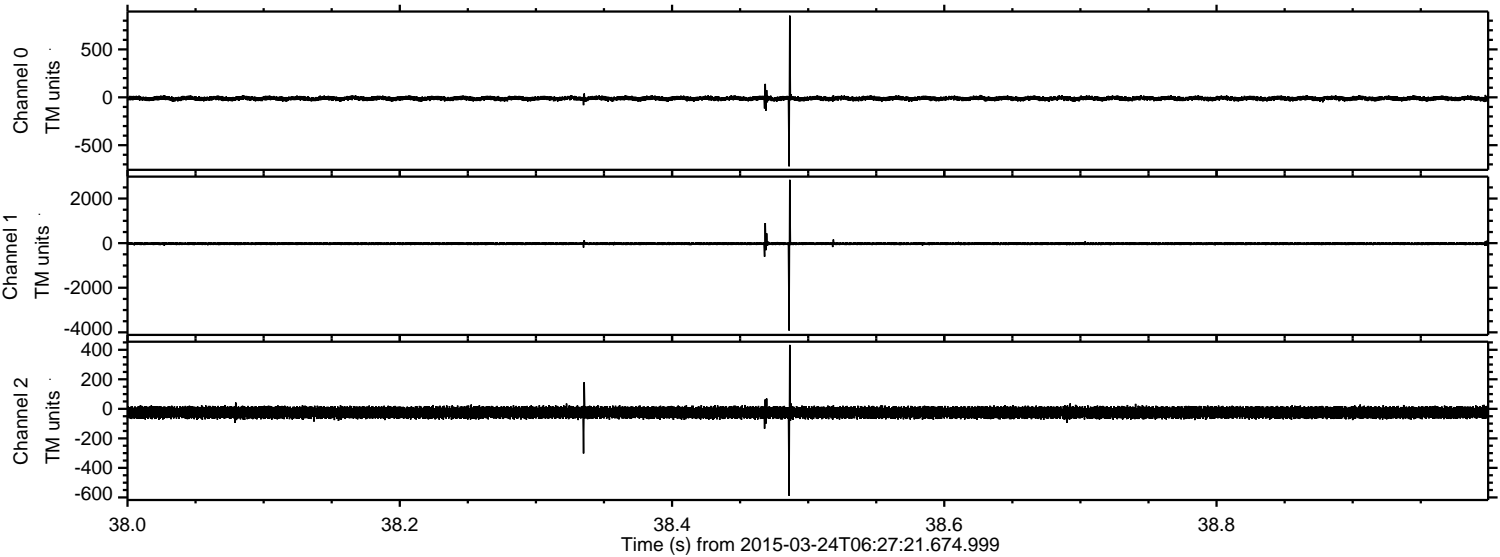


Processed Tue Mar 24 07:34:57 2015 by ELM ver.2012-10-06 from 001\_\_elm20150324\_062720\_\_dat00.bin





Processed Tue Mar 24 07:34:58 2015 by ELM ver.2012-10-06 from 001\_\_elm20150324\_062720\_\_dat00.bin



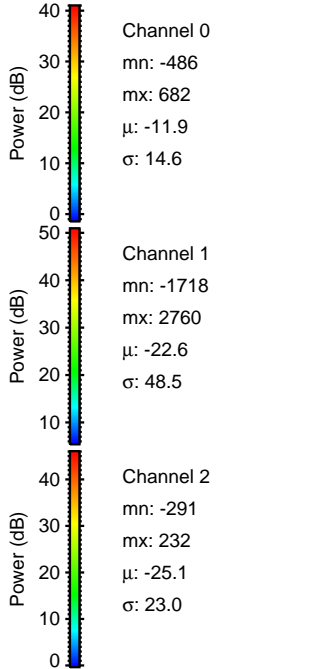
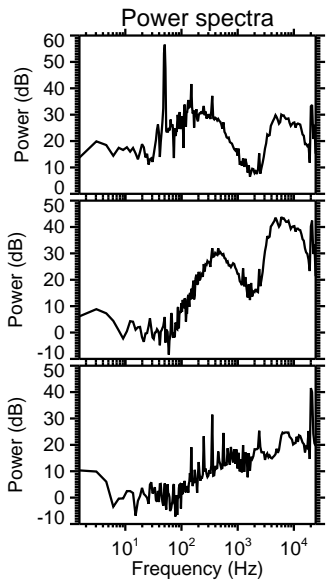
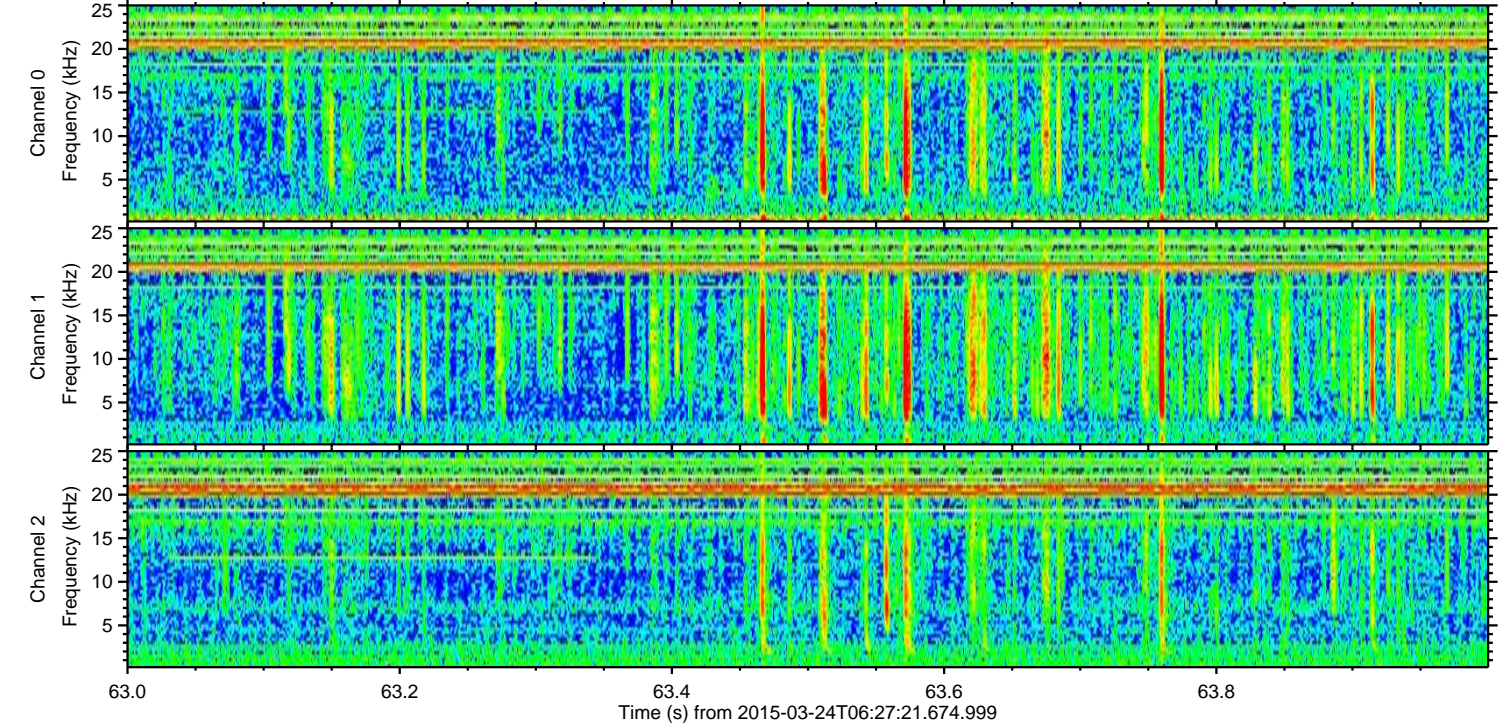
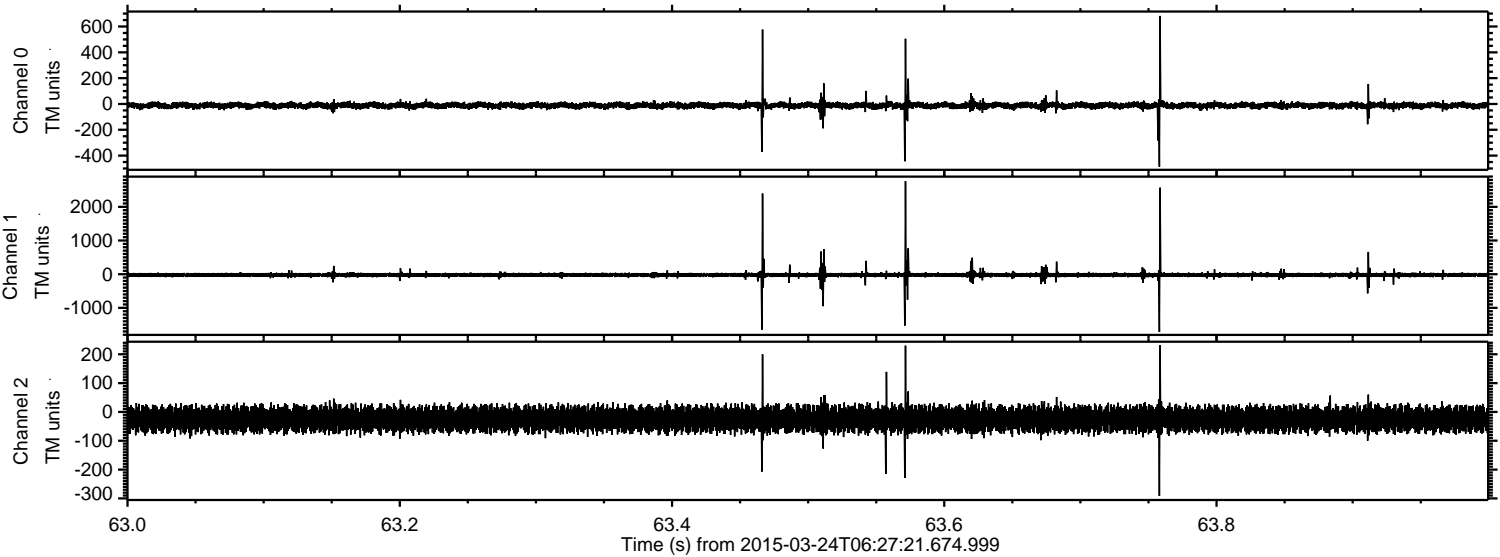
Channel 0  
mn: -721  
mx: 853  
 $\mu$ : -11.9  
 $\sigma$ : 12.7

Channel 1  
mn: -3918  
mx: 2842  
 $\mu$ : -22.5  
 $\sigma$ : 36.5

Channel 2  
mn: -588  
mx: 433  
 $\mu$ : -25.1  
 $\sigma$ : 21.2

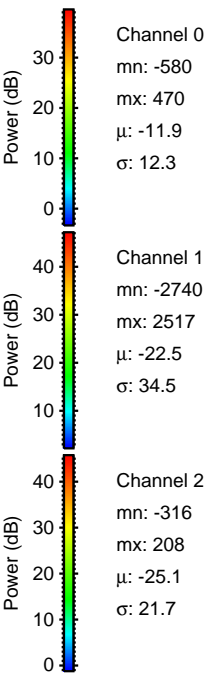
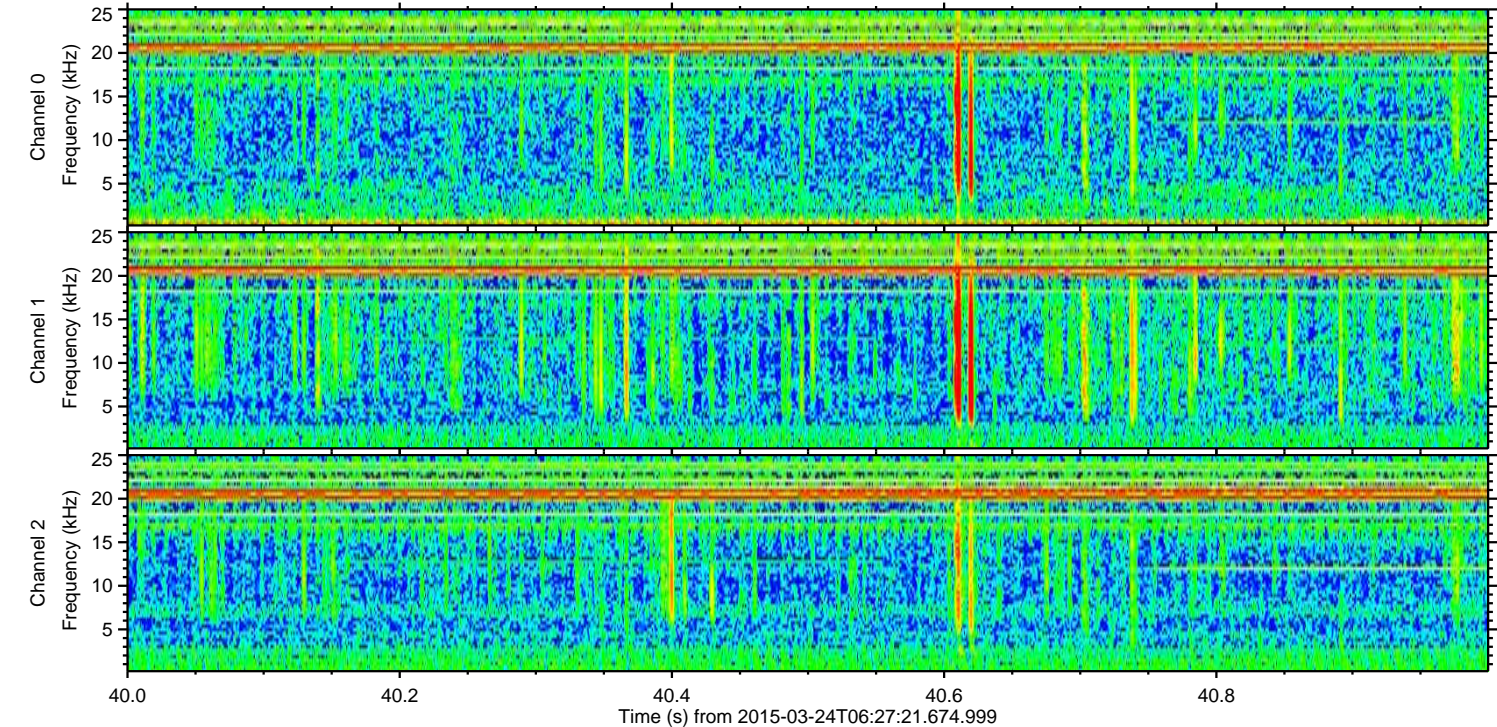
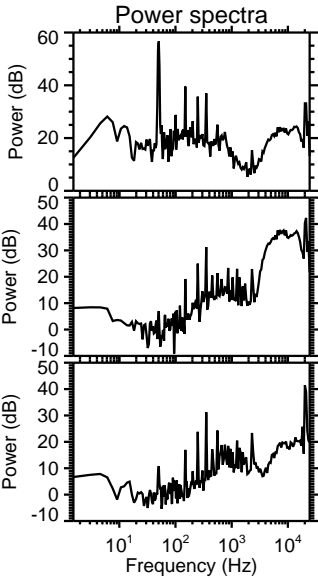
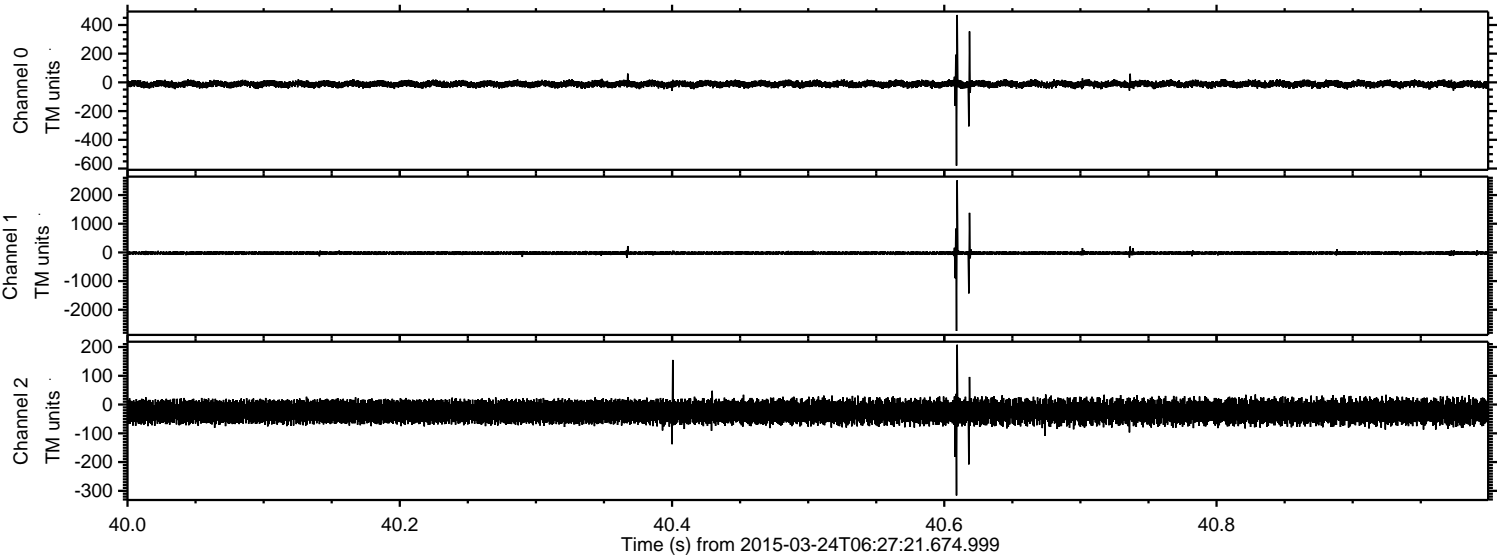


Processed Tue Mar 24 07:34:59 2015 by ELM ver.2012-10-06 from 001\_\_elm20150324\_062720\_\_dat00.bin



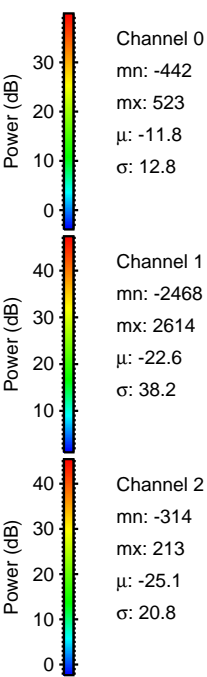
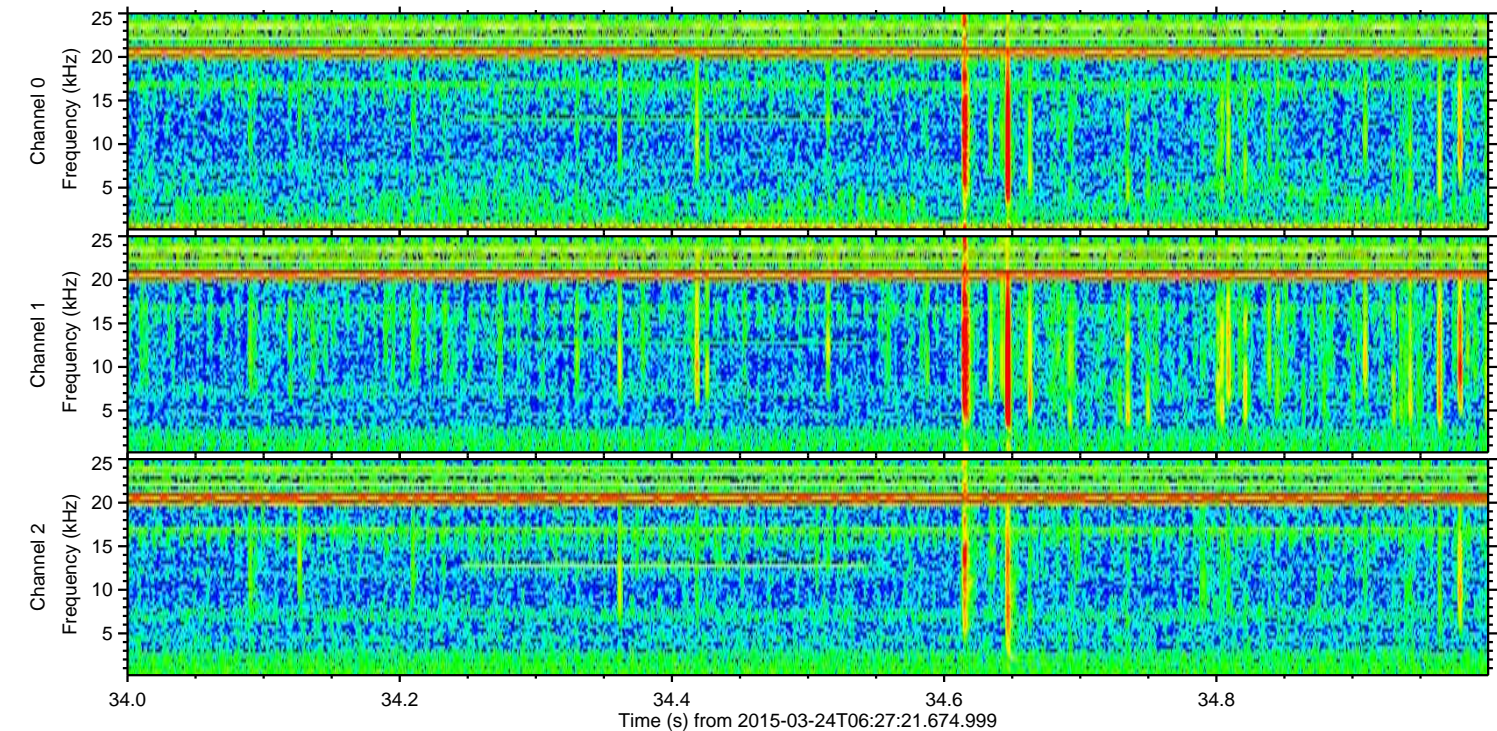
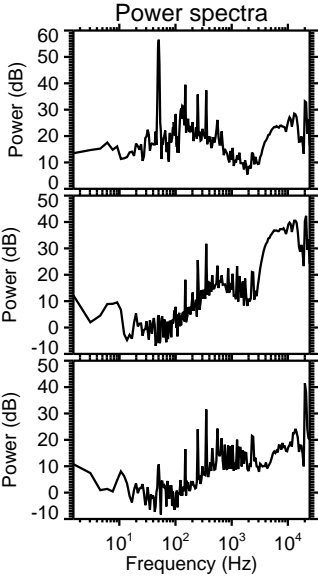
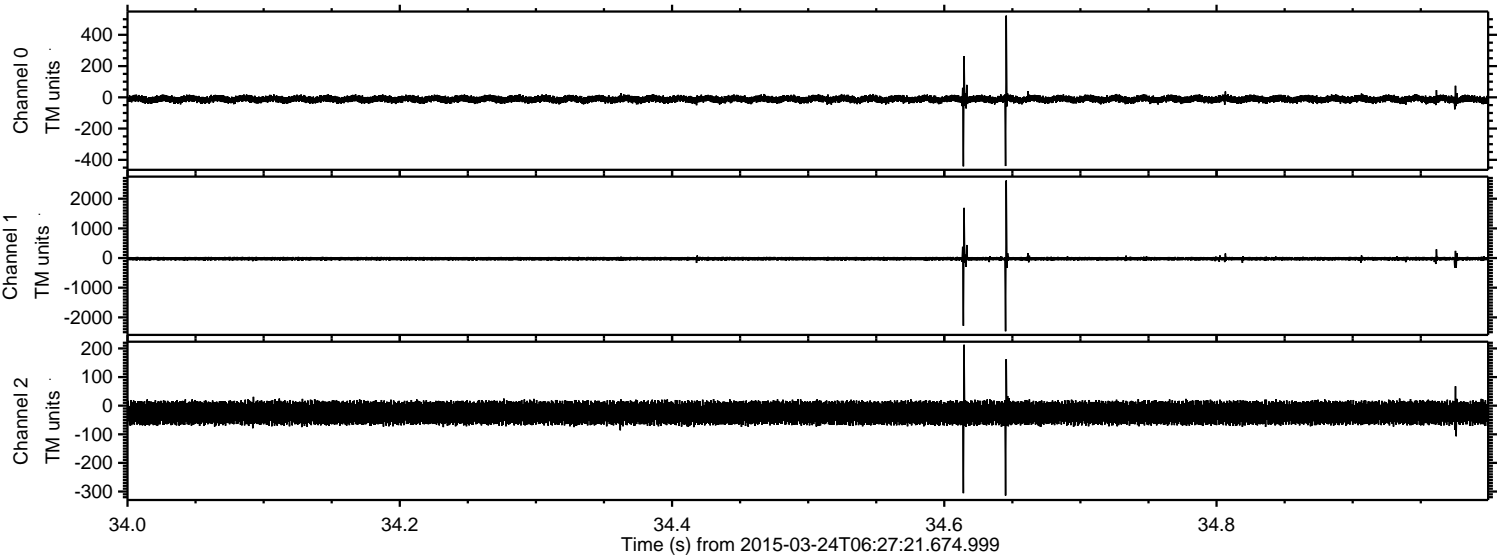


Processed Tue Mar 24 07:35:00 2015 by ELM ver.2012-10-06 from 001\_\_elm20150324\_062720\_\_dat00.bin





Processed Tue Mar 24 07:35:01 2015 by ELM ver.2012-10-06 from 001\_\_elm20150324\_062720\_\_dat00.bin





Processed Tue Mar 24 07:35:02 2015 by ELM ver.2012-10-06 from 001\_\_elm20150324\_062720\_\_dat00.bin

