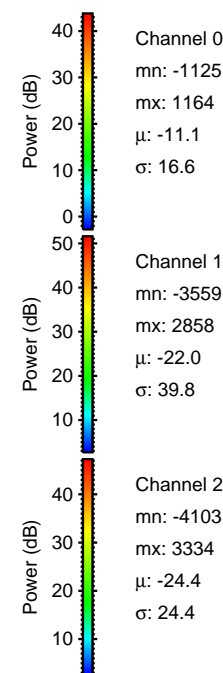
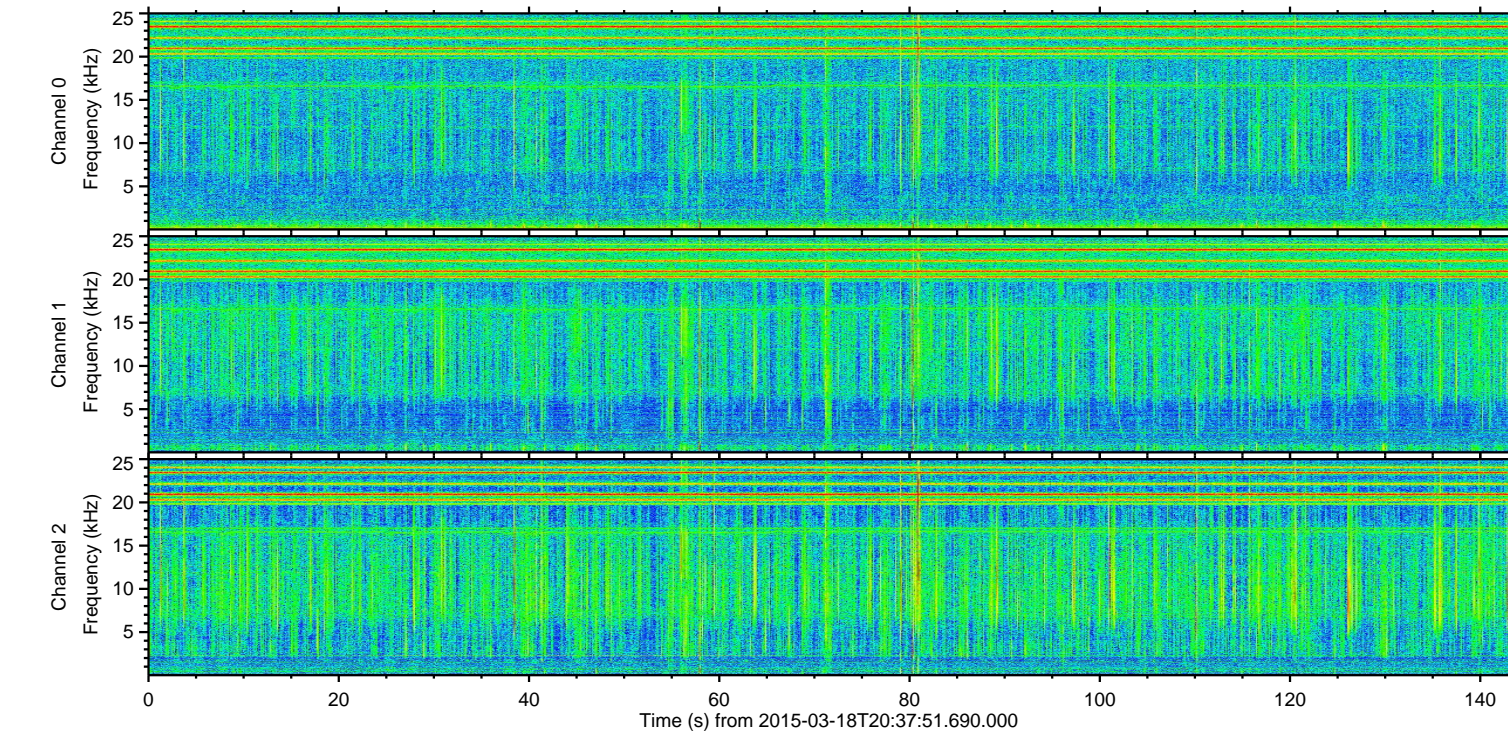
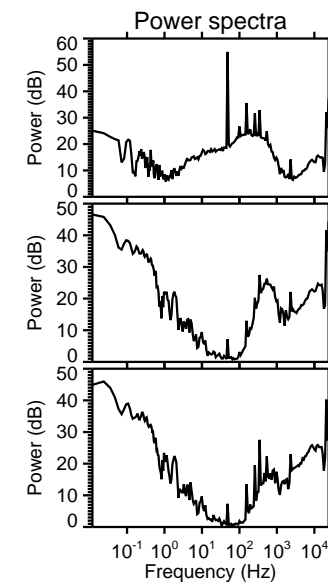
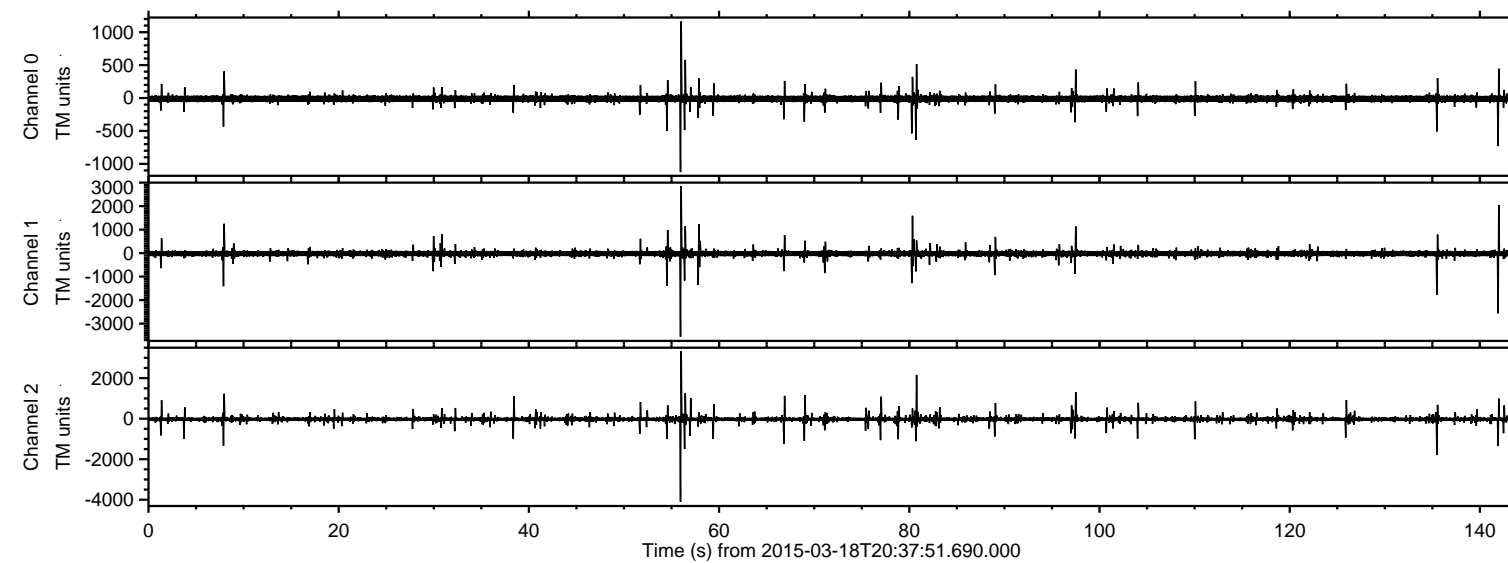
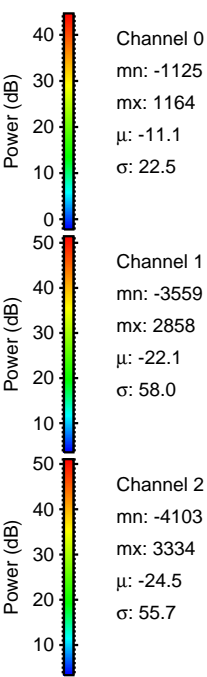
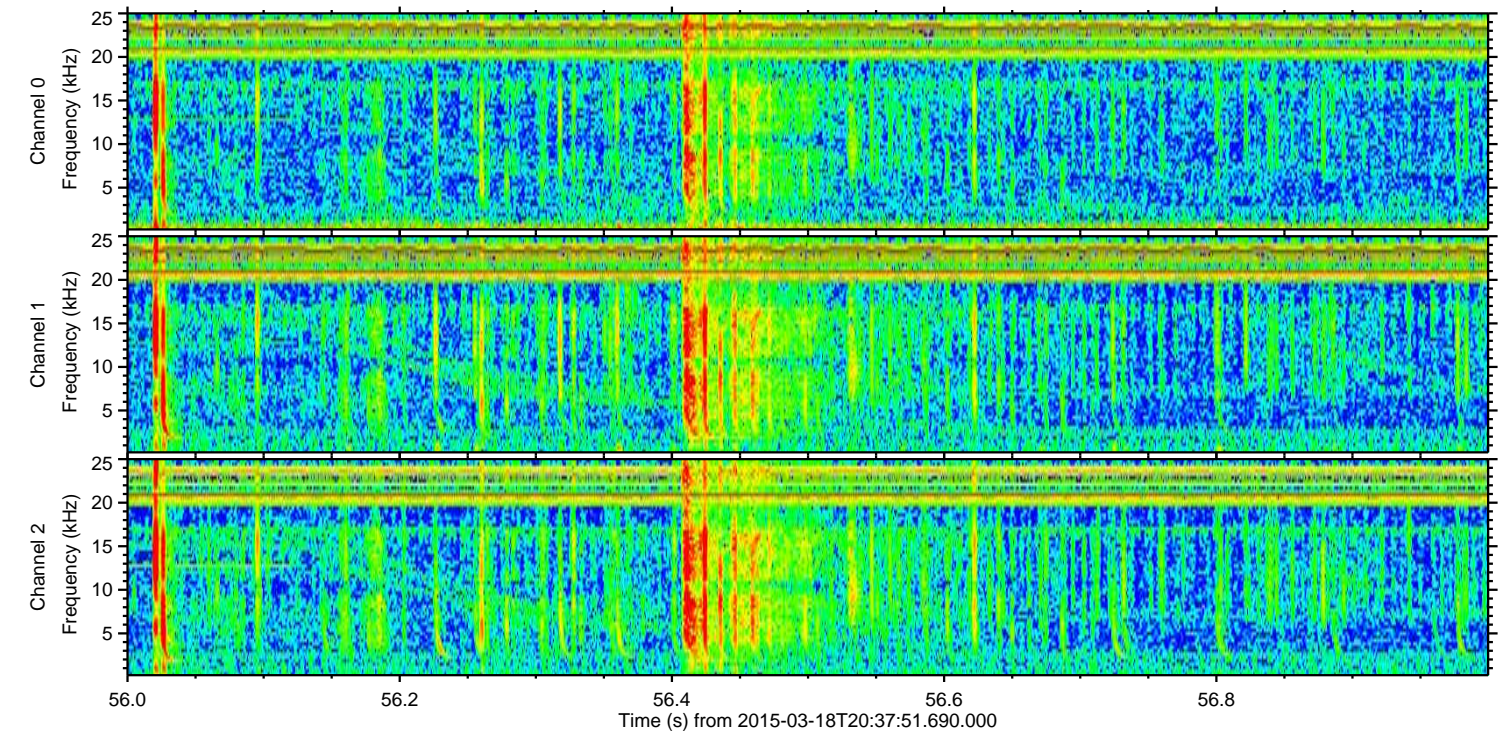
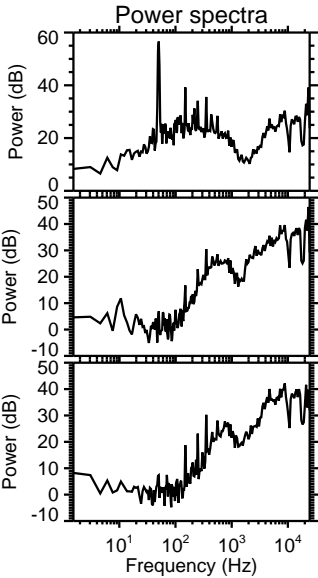
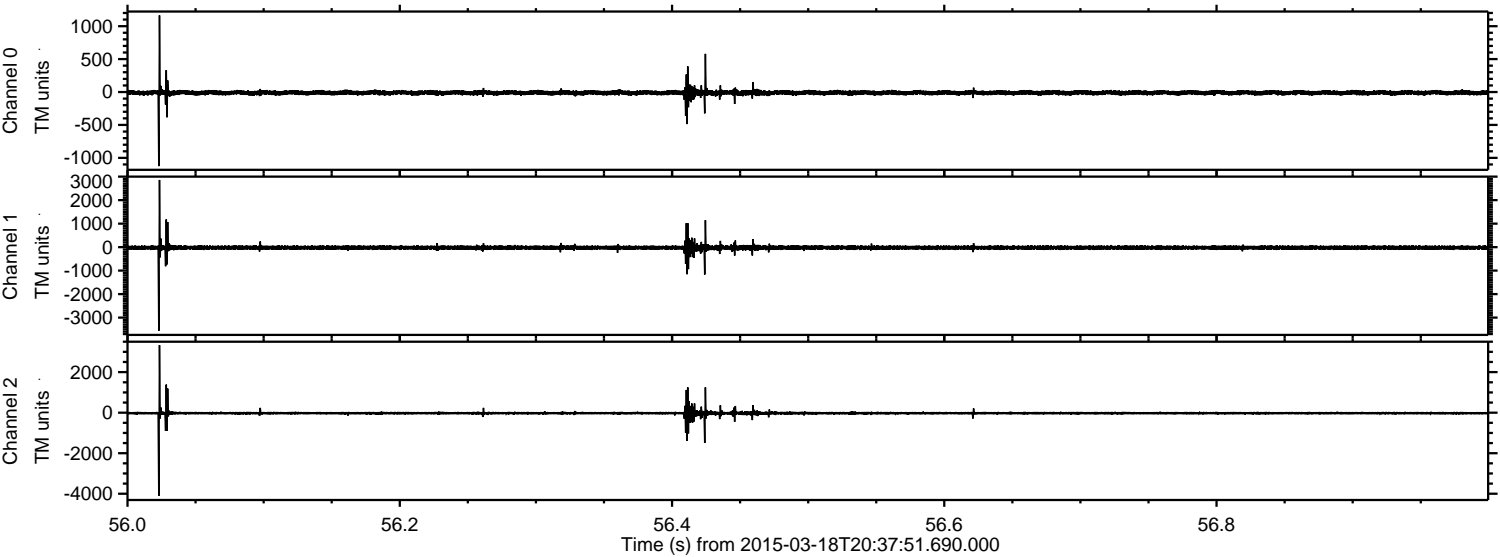


ELMAVAN 3D WAVEFORMS (Measured data sampled at 50 kHz) 49679 packets of 144 samples from 2015-03-18T20:37:51.690.000.

Processed Wed Mar 18 21:45:55 2015 by ELM ver.2012-10-06 from 001__elm20150318_203750__dat00.bin

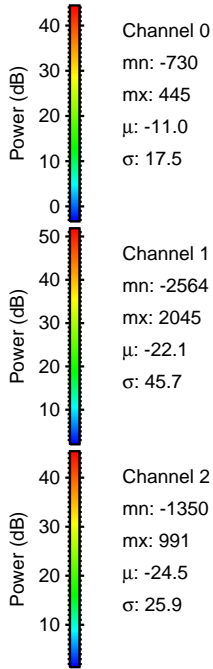
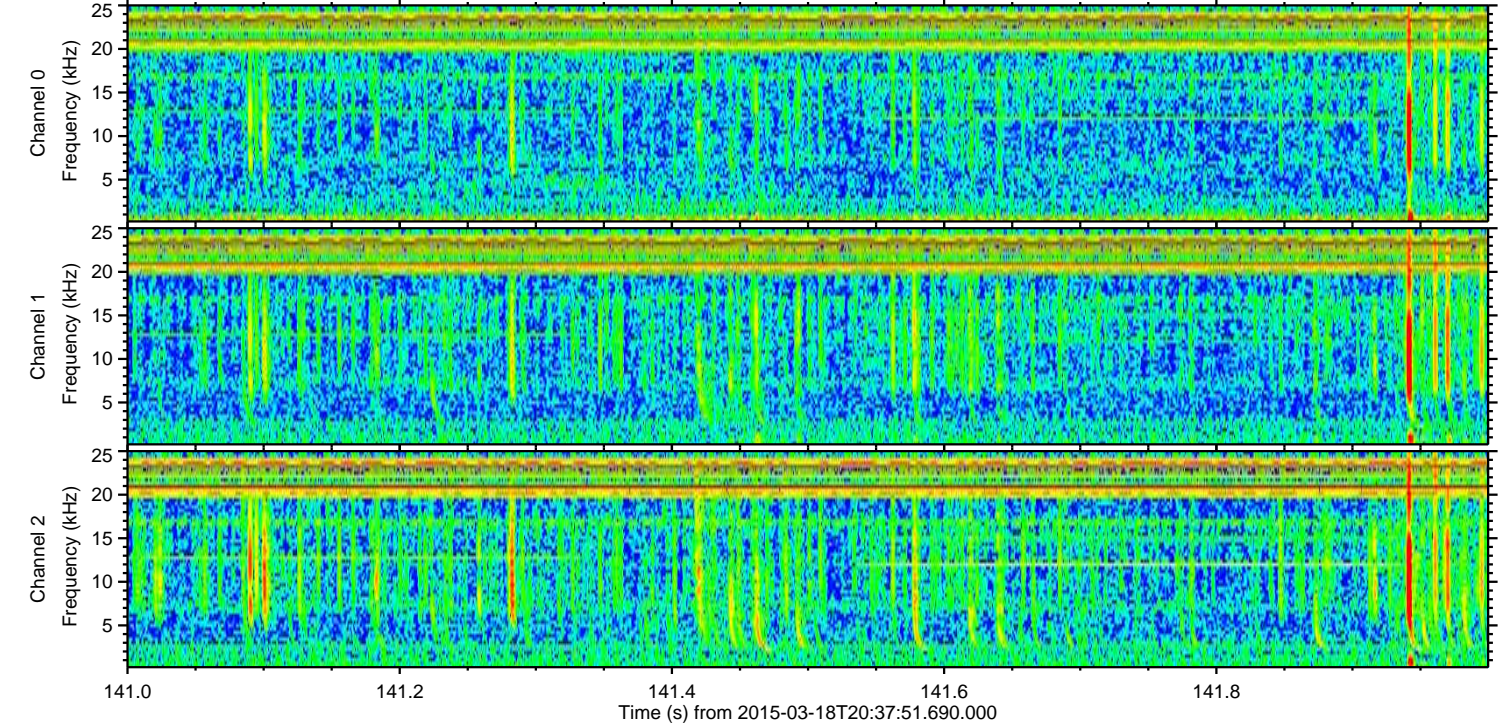
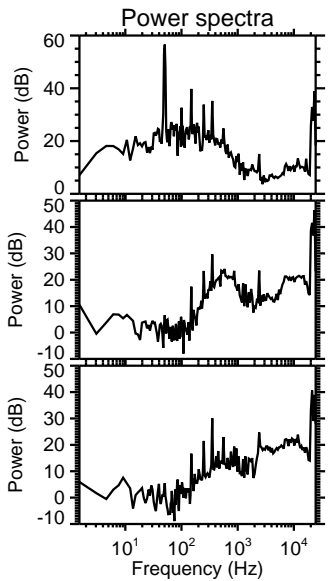
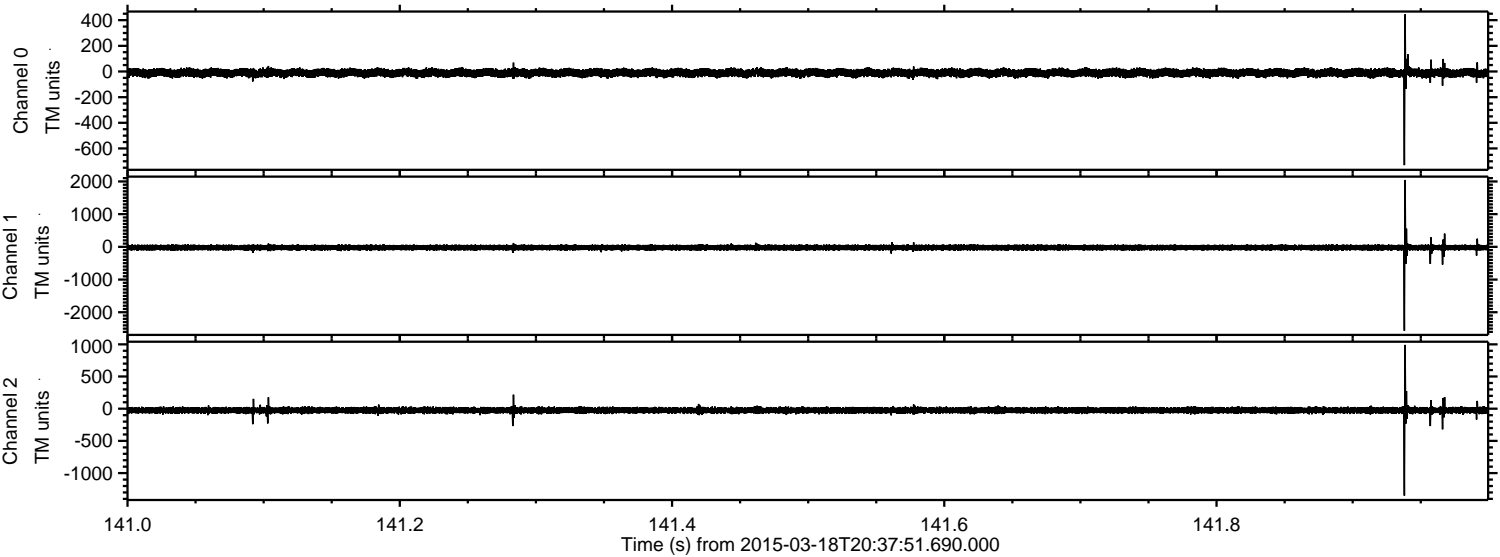


Processed Wed Mar 18 21:46:09 2015 by ELM ver.2012-10-06 from 001__elm20150318_203750__dat00.bin



ELMAVAN 3D WAVEFORMS (Measured data sampled at 50 kHz) 49679 packets of 144 samples from 2015-03-18T20:37:51.690.000. Part 142/144

Processed Wed Mar 18 21:46:10 2015 by ELM ver.2012-10-06 from 001__elm20150318_203750__dat00.bin

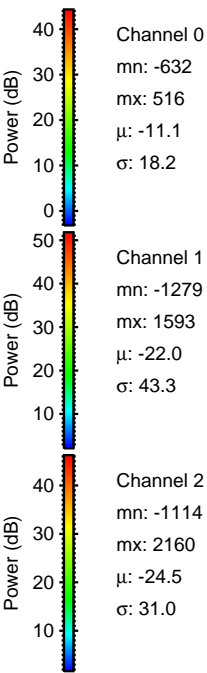
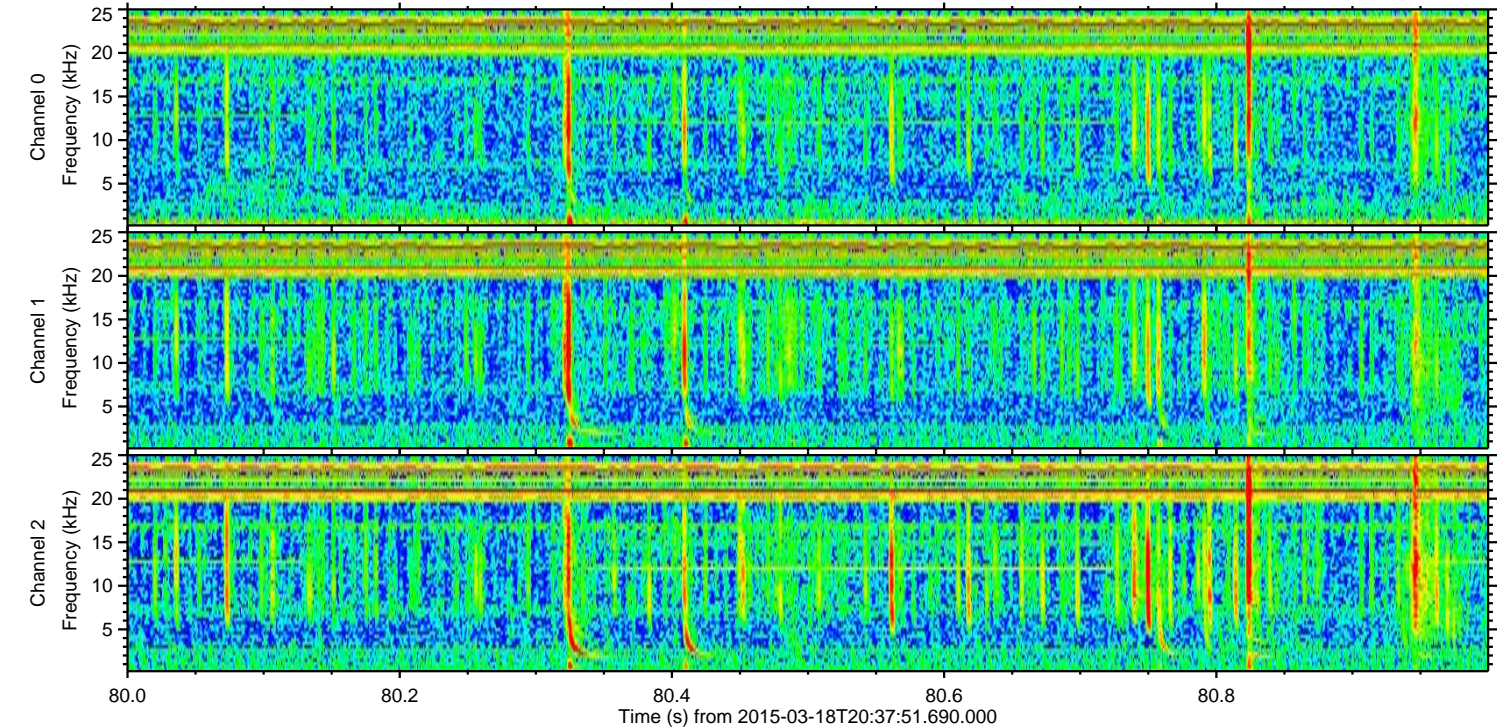
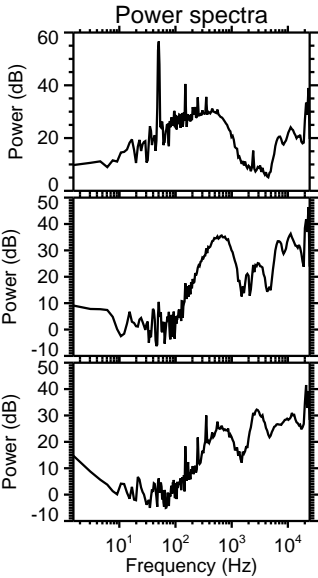
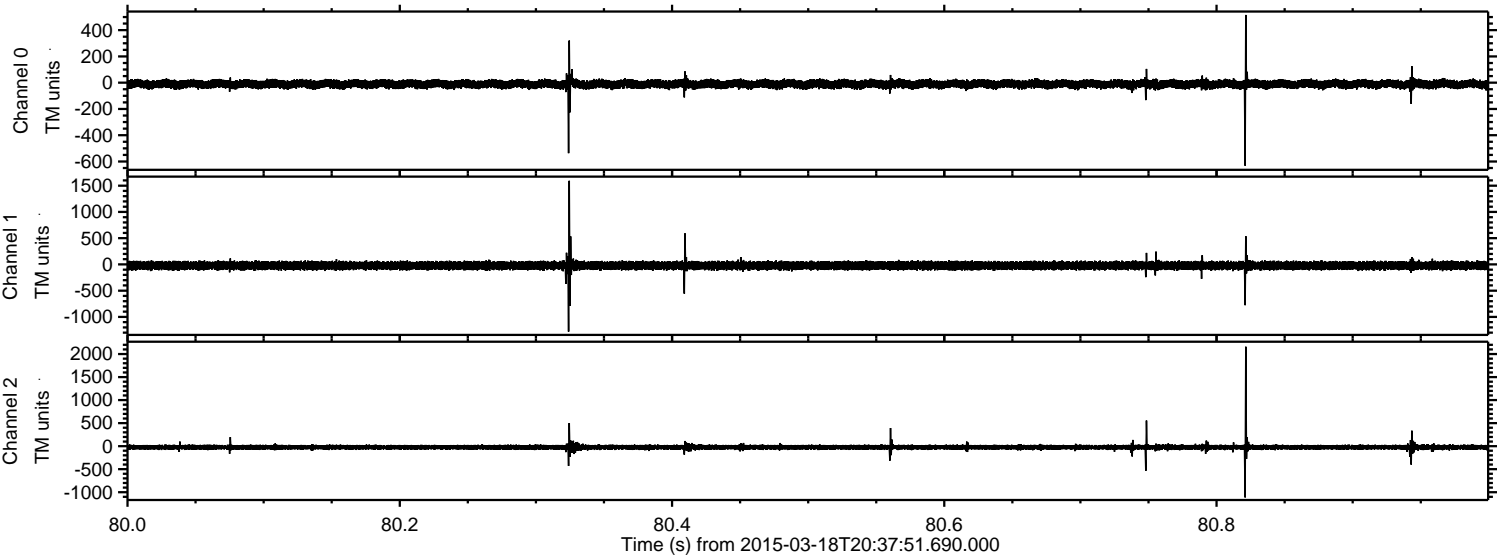


Channel 0
mn: -730
mx: 445
 μ : -11.0
 σ : 17.5

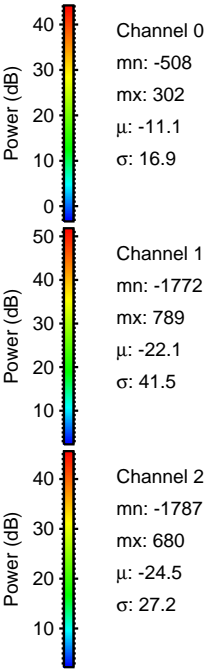
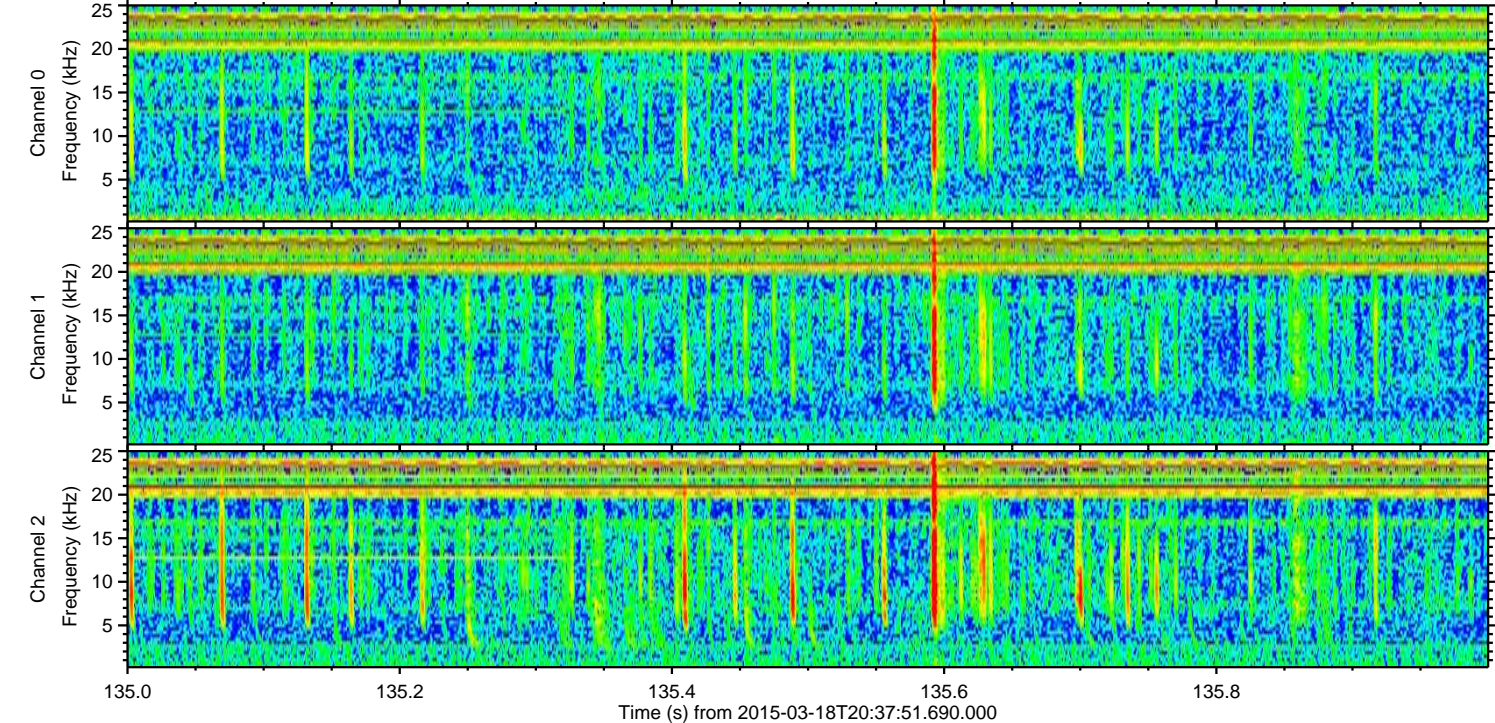
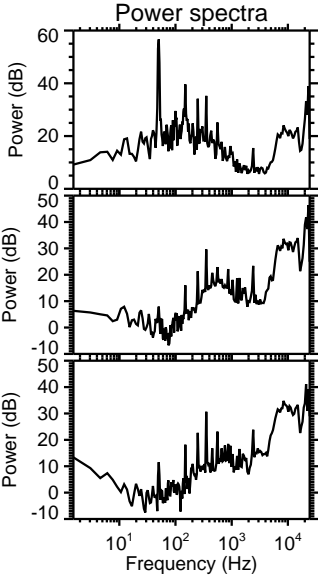
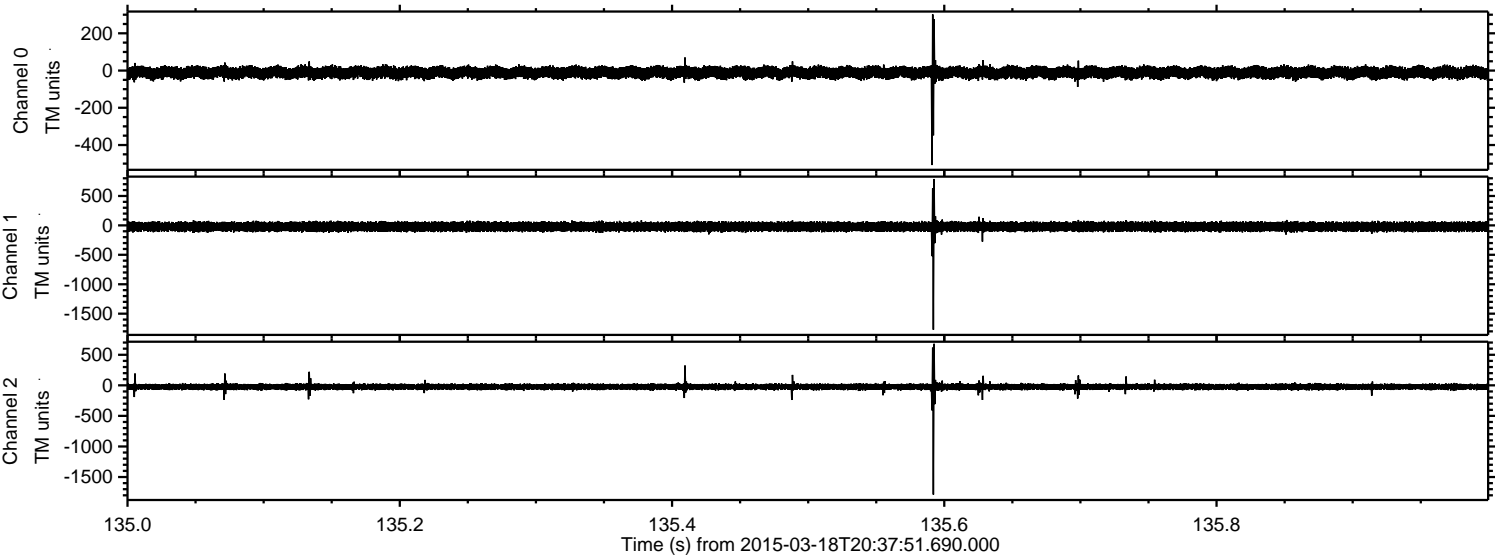
Channel 1
mn: -2564
mx: 2045
 μ : -22.1
 σ : 45.7

Channel 2
mn: -1350
mx: 991
 μ : -24.5
 σ : 25.9

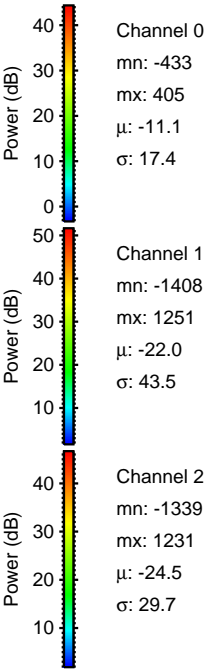
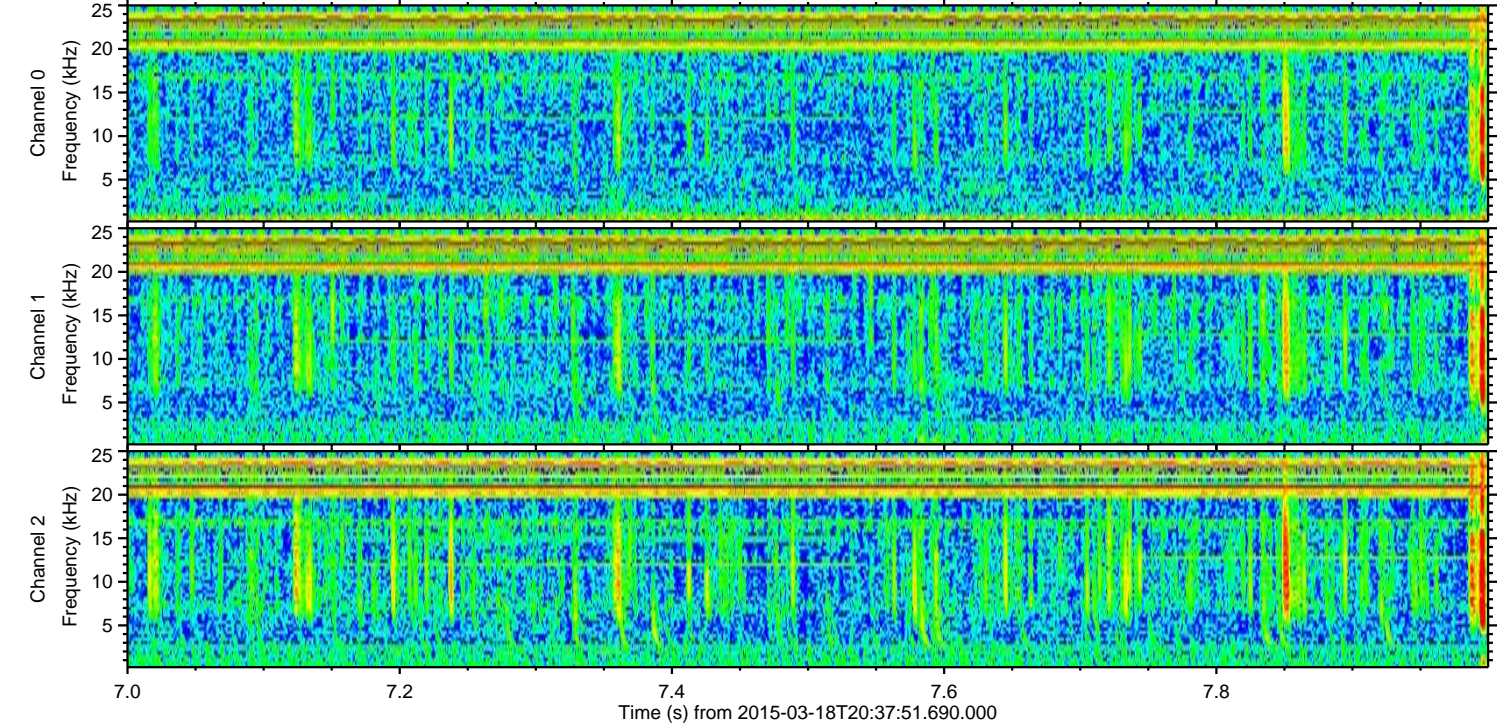
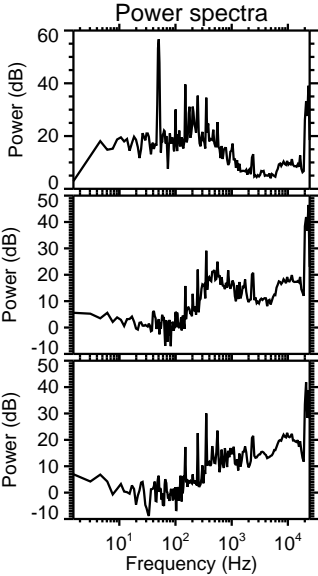
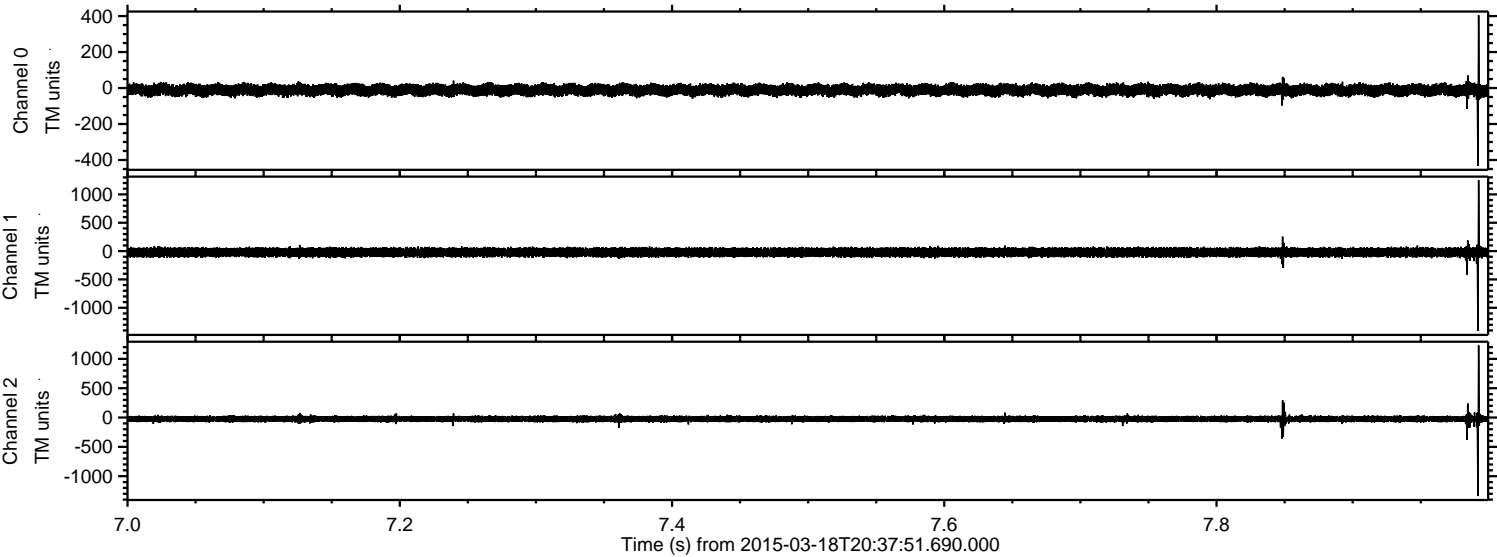
Processed Wed Mar 18 21:46:11 2015 by ELM ver.2012-10-06 from 001__elm20150318_203750__dat00.bin



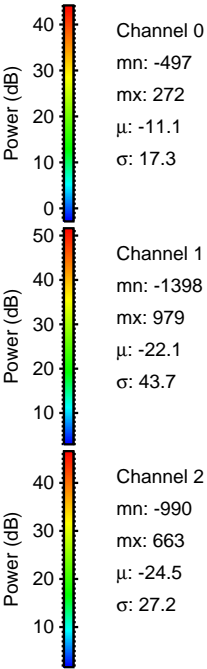
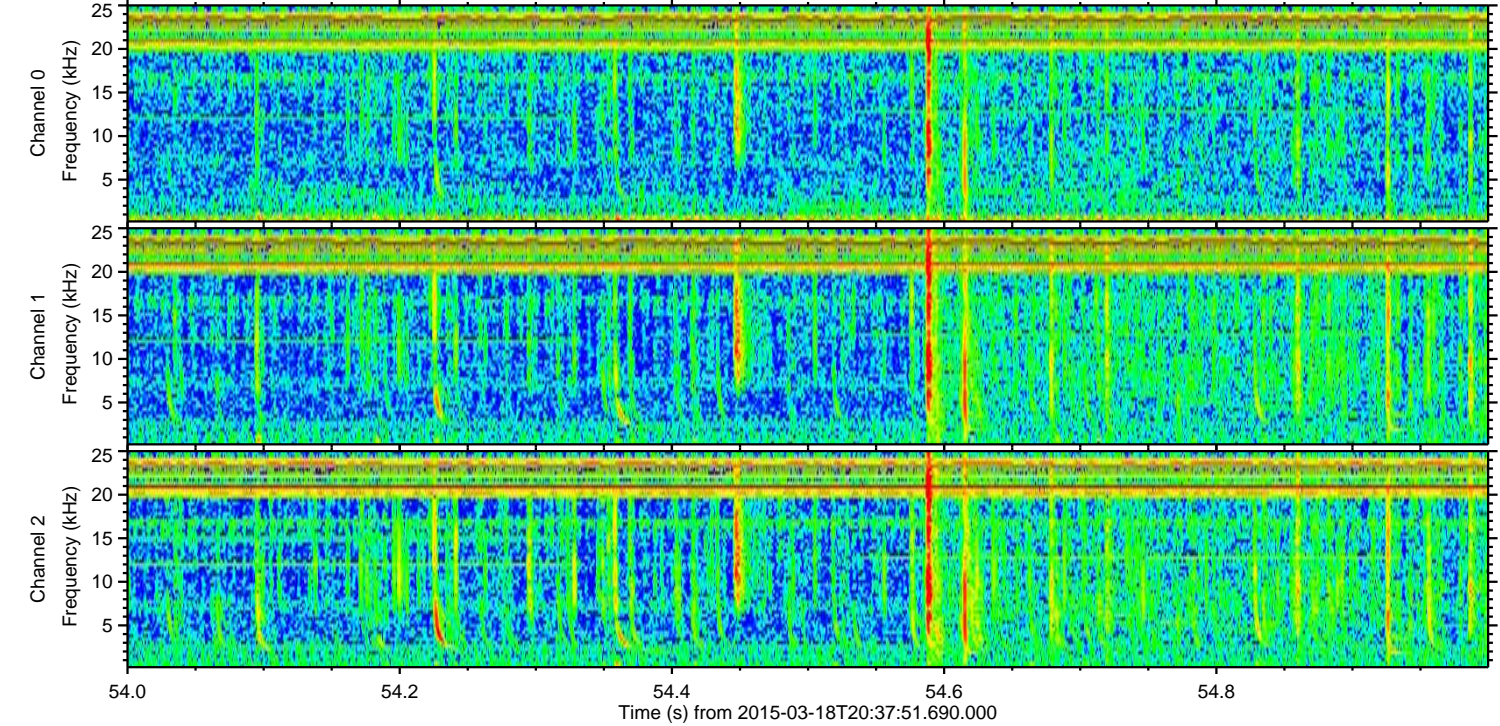
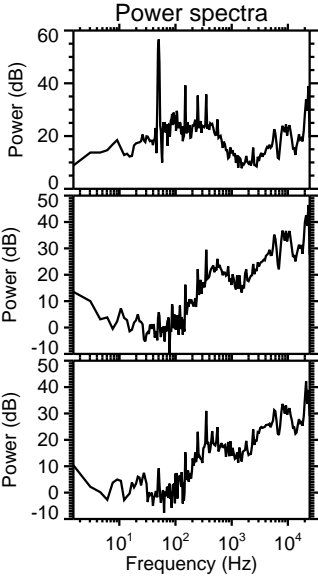
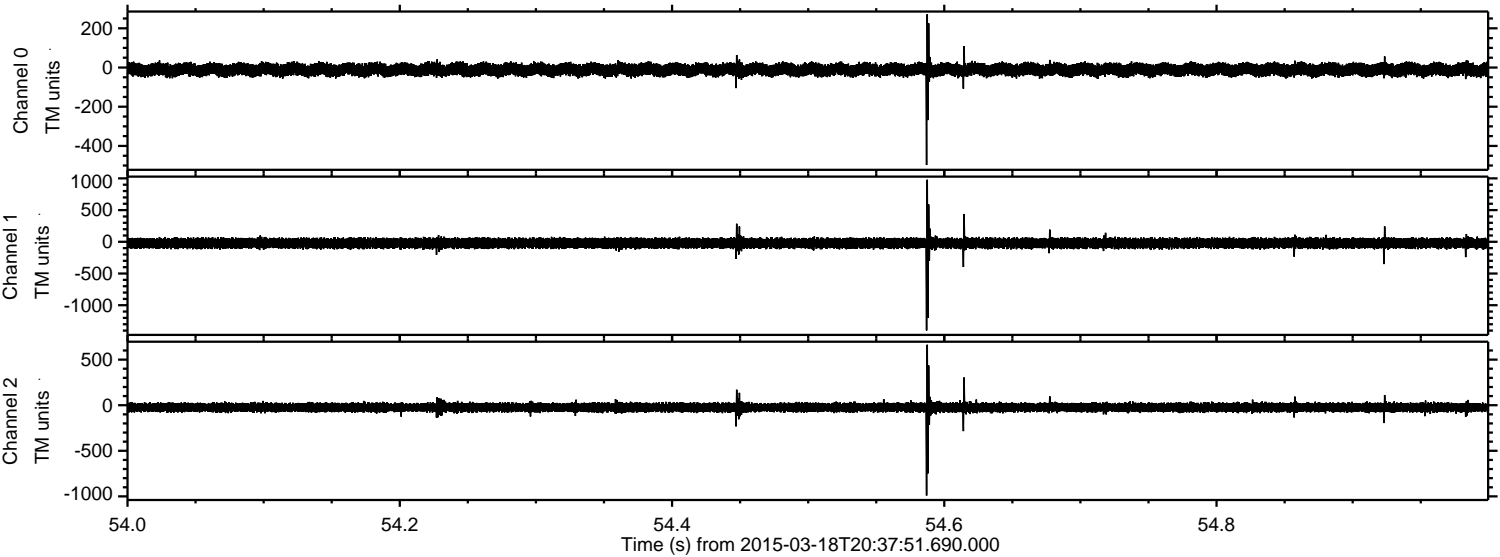
Processed Wed Mar 18 21:46:13 2015 by ELM ver.2012-10-06 from 001__elm20150318_203750__dat00.bin



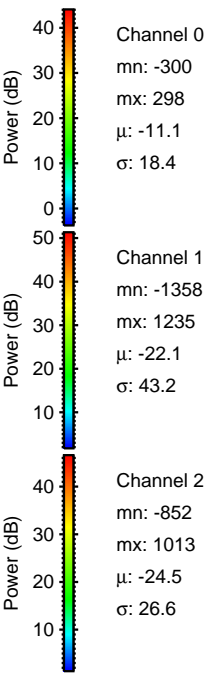
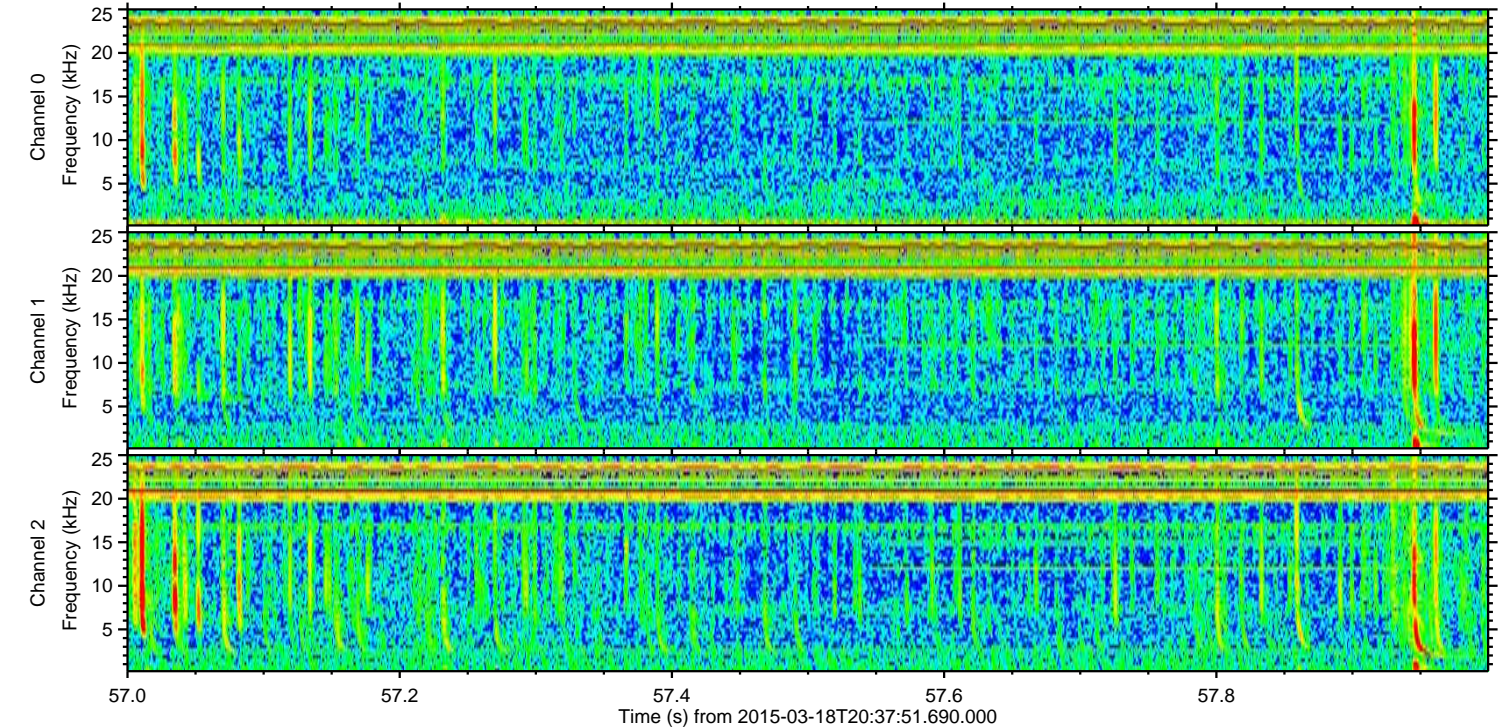
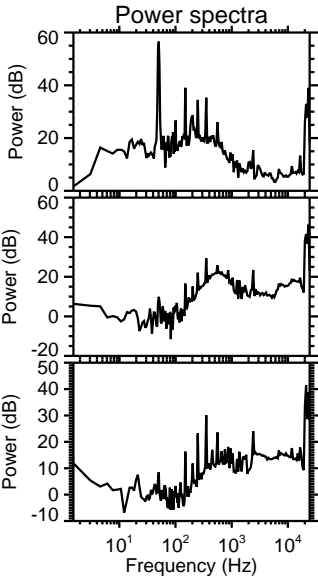
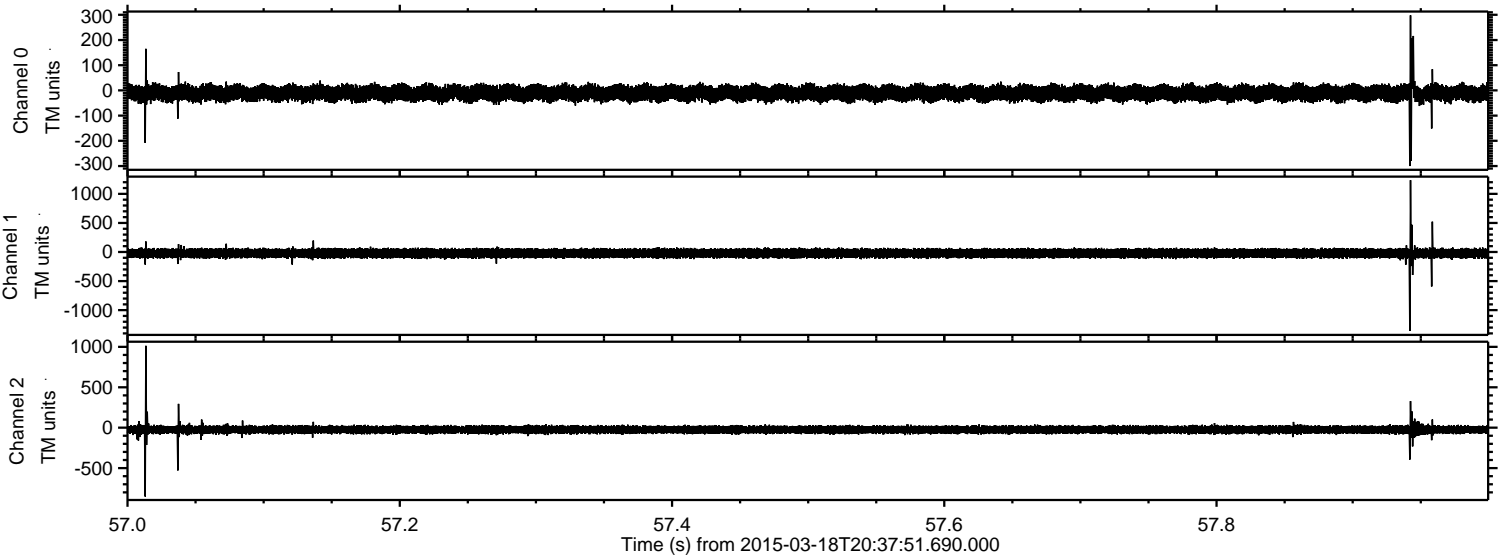
Processed Wed Mar 18 21:46:14 2015 by ELM ver.2012-10-06 from 001__elm20150318_203750__dat00.bin



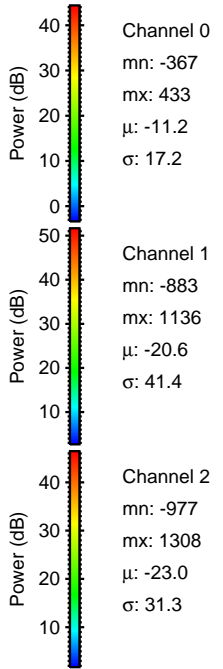
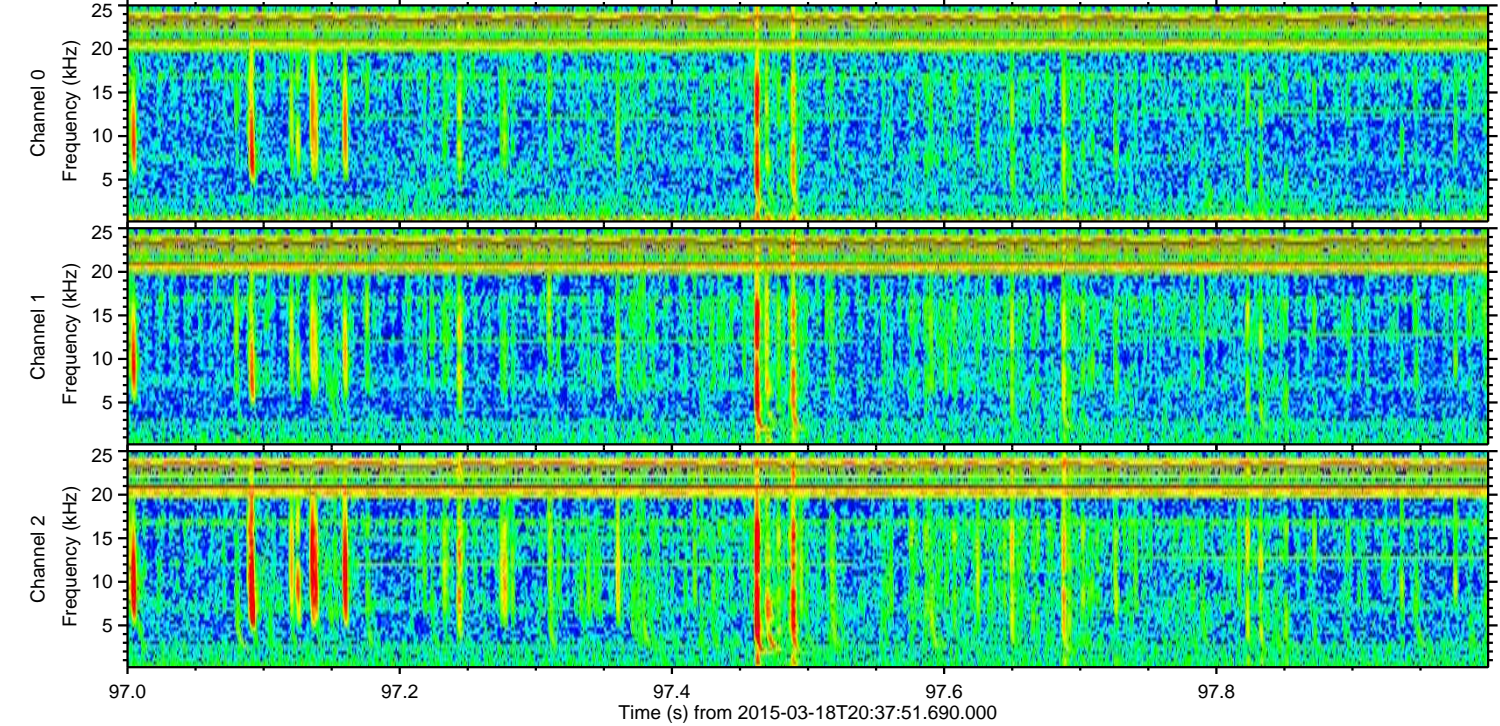
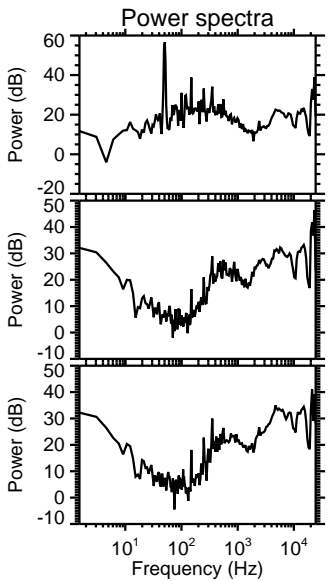
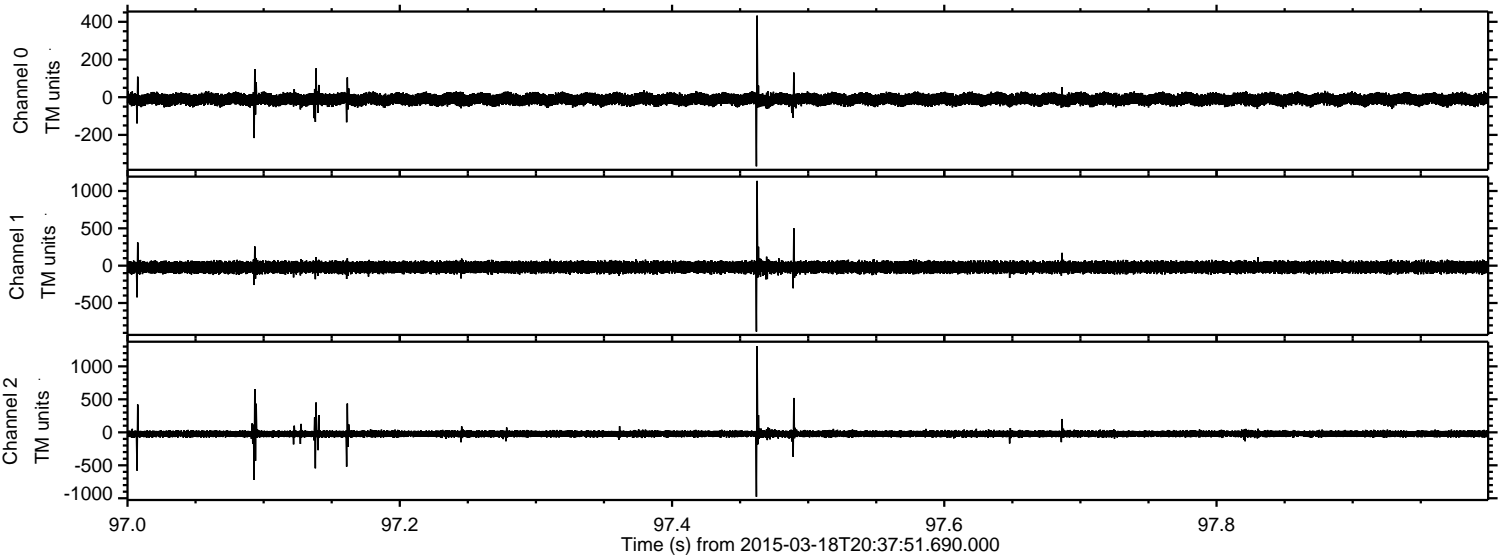
Processed Wed Mar 18 21:46:15 2015 by ELM ver.2012-10-06 from 001__elm20150318_203750__dat00.bin



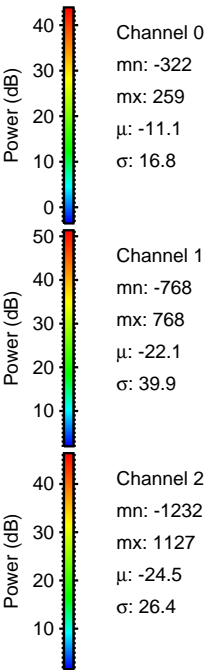
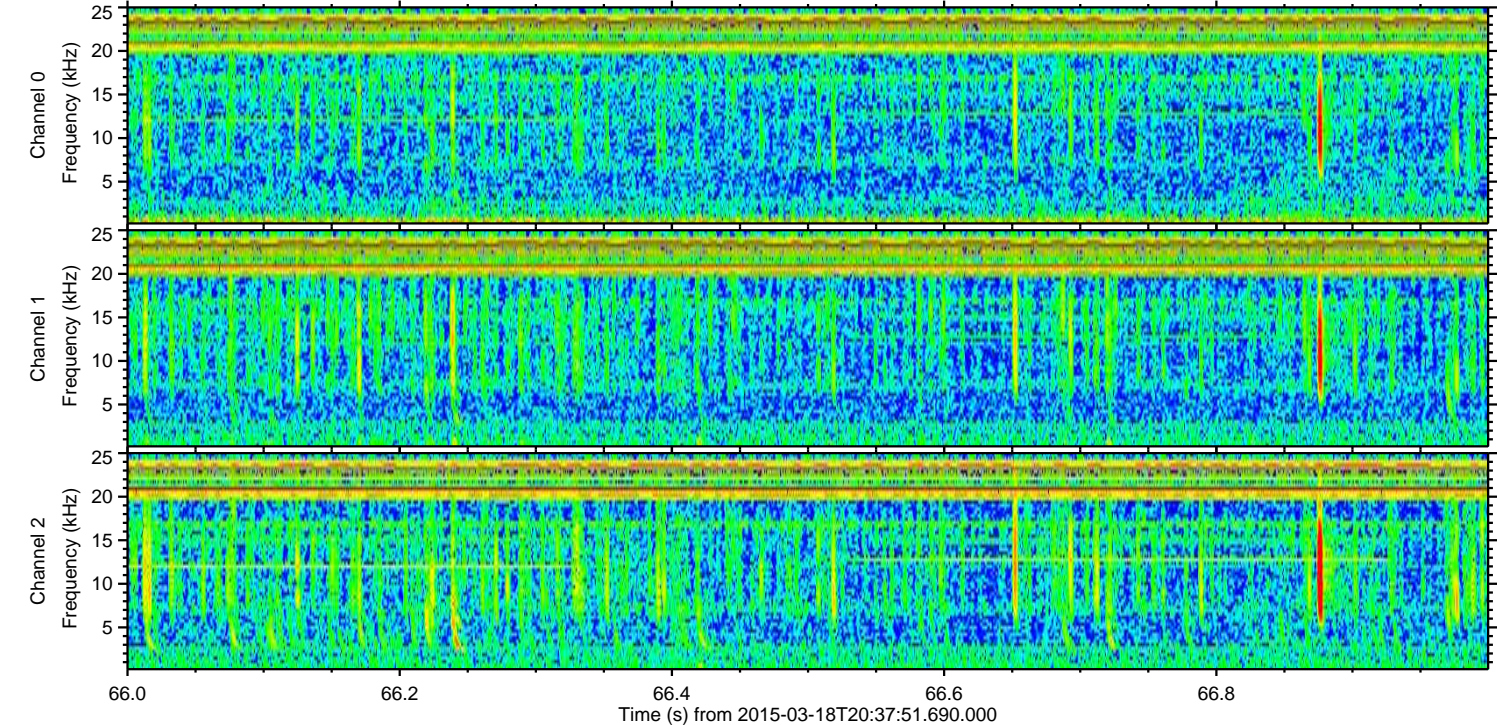
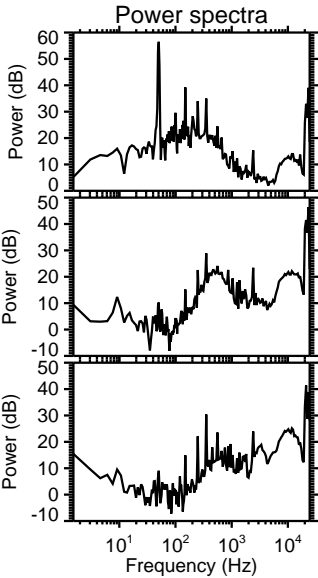
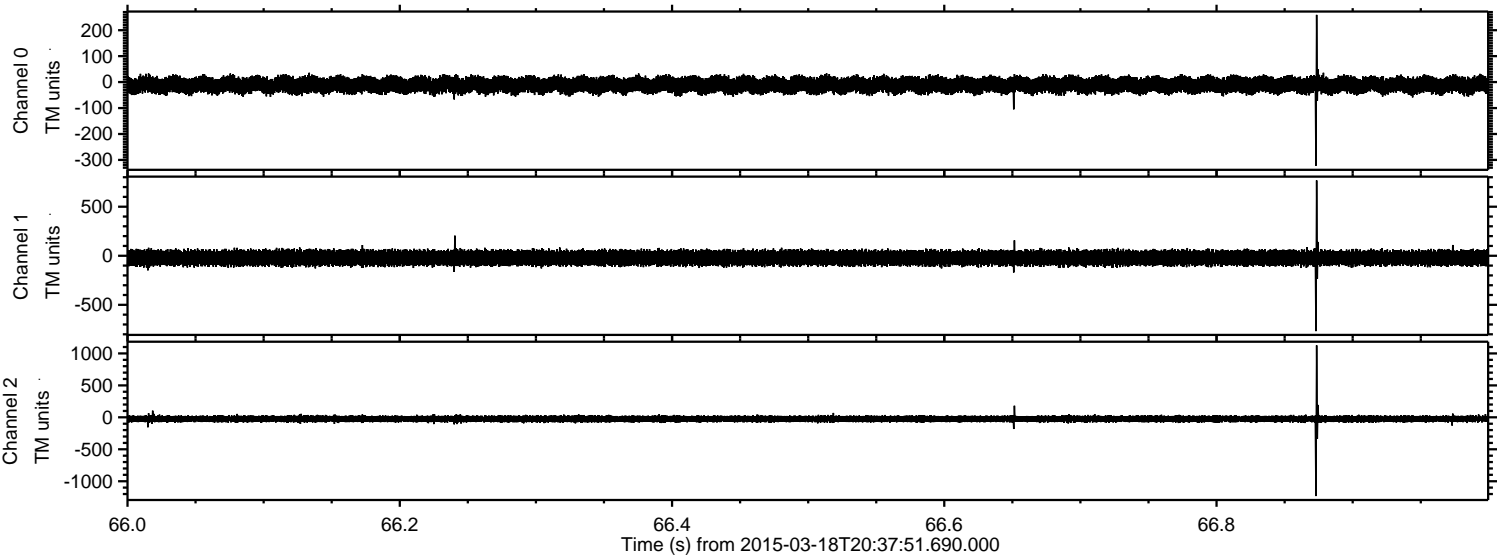
Processed Wed Mar 18 21:46:16 2015 by ELM ver.2012-10-06 from 001__elm20150318_203750__dat00.bin



Processed Wed Mar 18 21:46:17 2015 by ELM ver.2012-10-06 from 001__elm20150318_203750__dat00.bin



Processed Wed Mar 18 21:46:18 2015 by ELM ver.2012-10-06 from 001__elm20150318_203750__dat00.bin



Channel 0
mn: -322
mx: 259
 μ : -11.1
 σ : 16.8

Channel 1
mn: -768
mx: 768
 μ : -22.1
 σ : 39.9

Channel 2
mn: -1232
mx: 1127
 μ : -24.5
 σ : 26.4

Processed Wed Mar 18 21:46:19 2015 by ELM ver.2012-10-06 from 001__elm20150318_203750__dat00.bin

