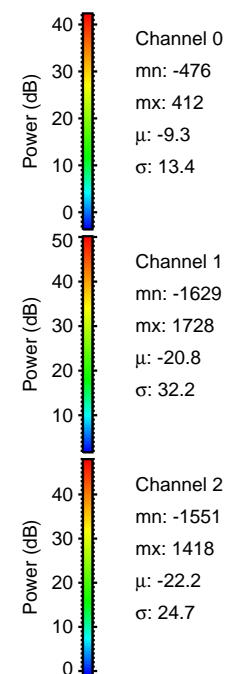
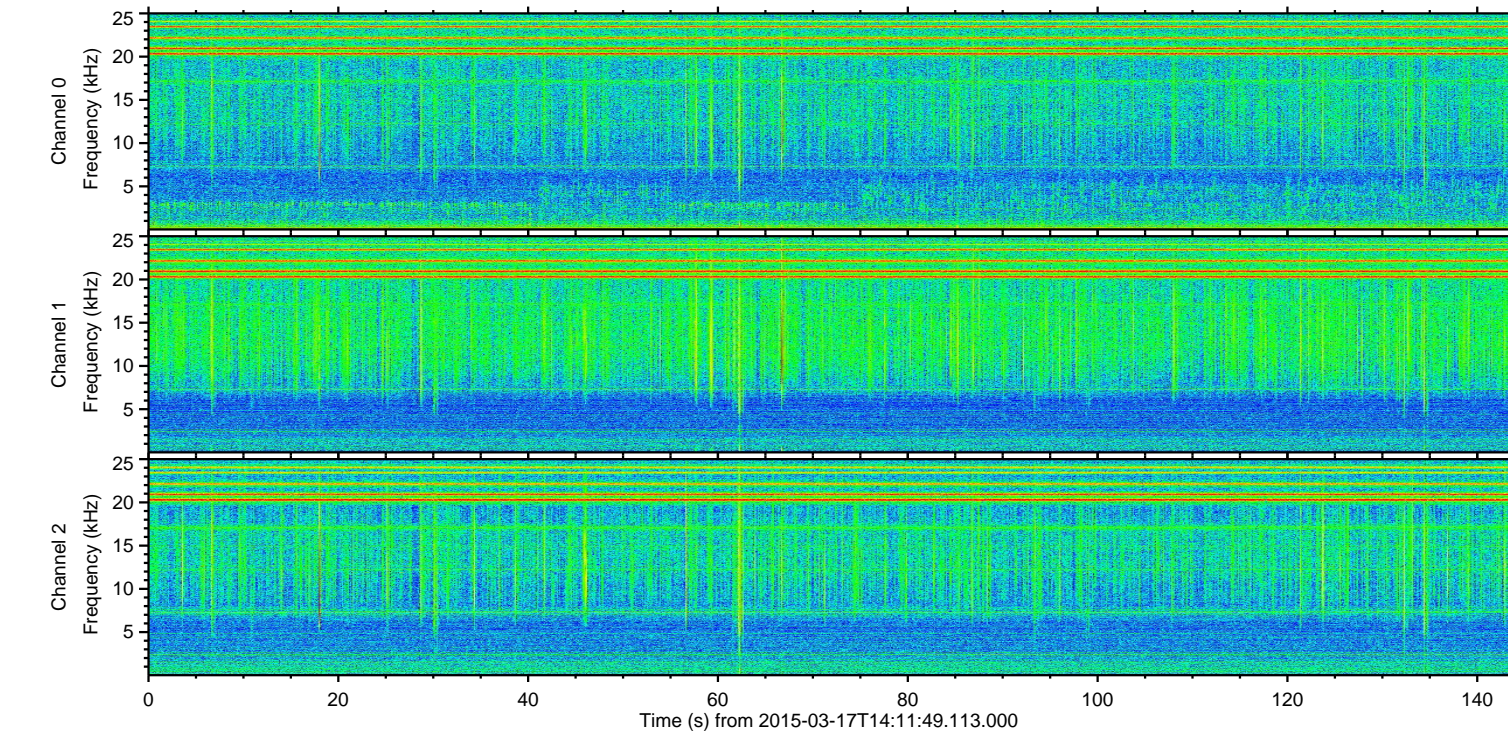
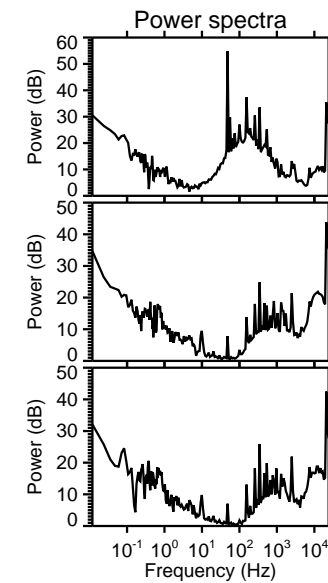
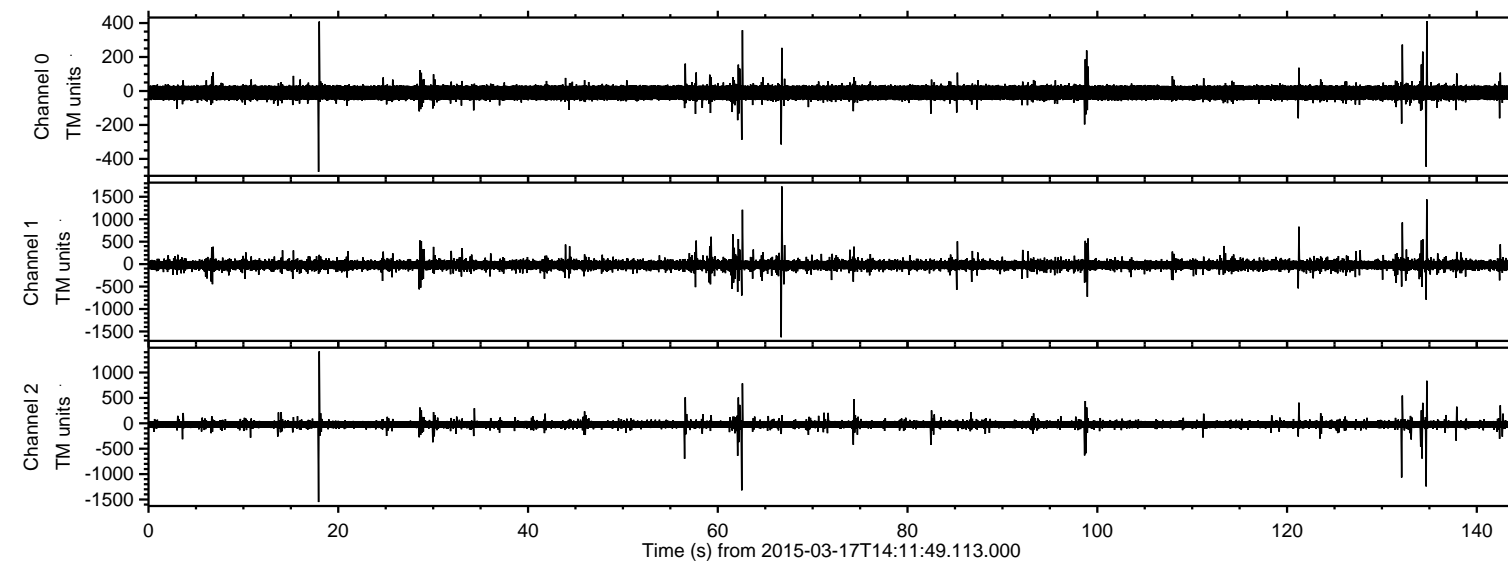
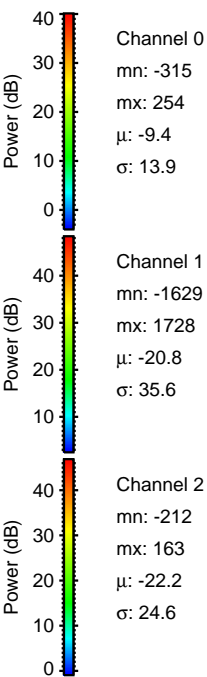
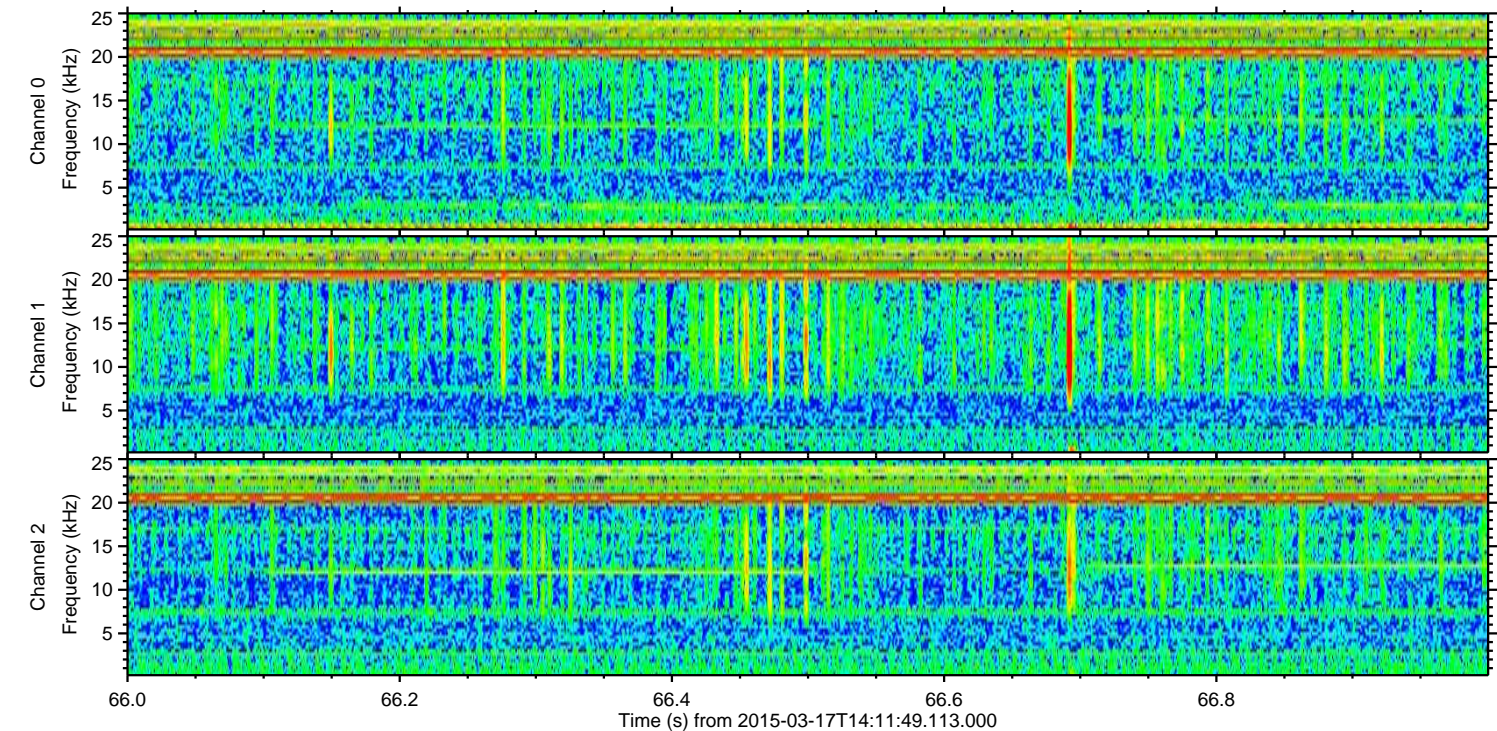
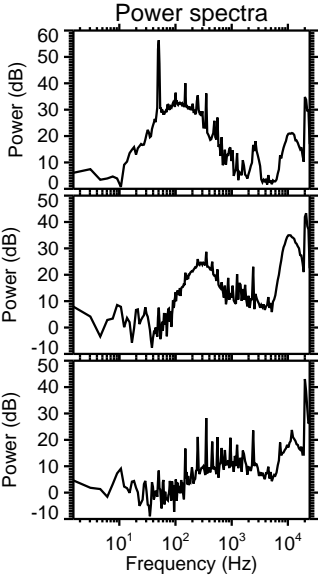
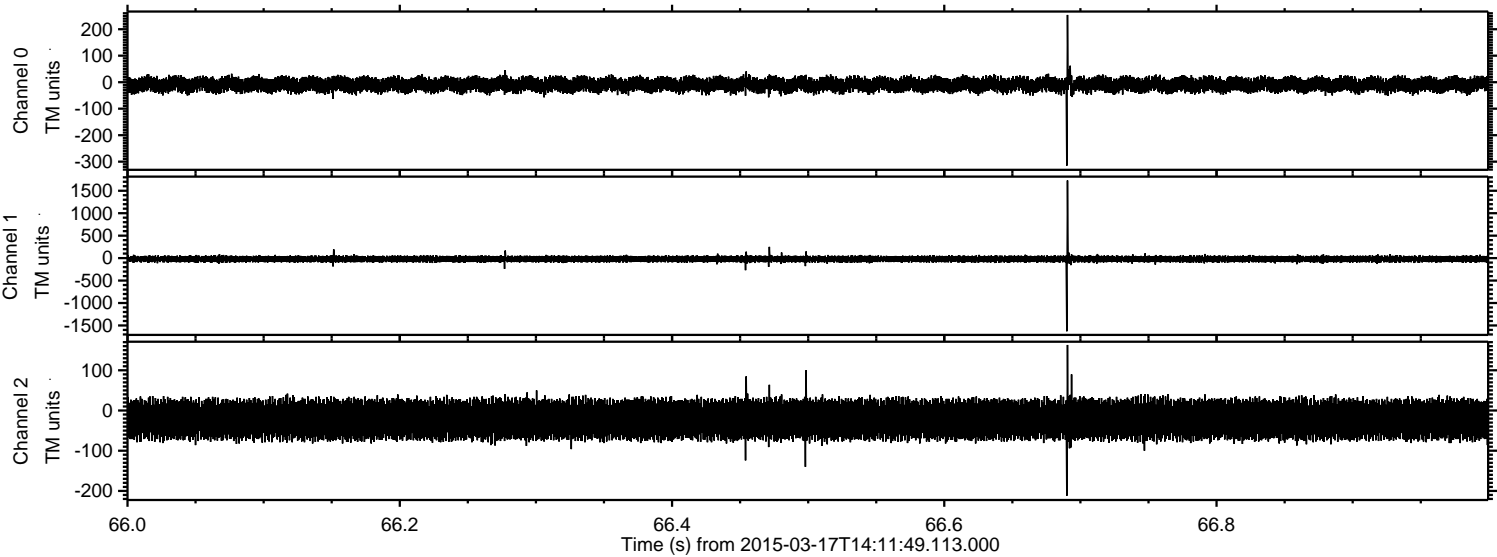


# ELMAVAN 3D WAVEFORMS (Measured data sampled at 50 kHz) 49794 packets of 144 samples from 2015-03-17T14:11:49.113.000.

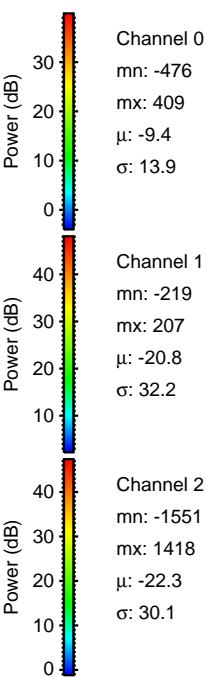
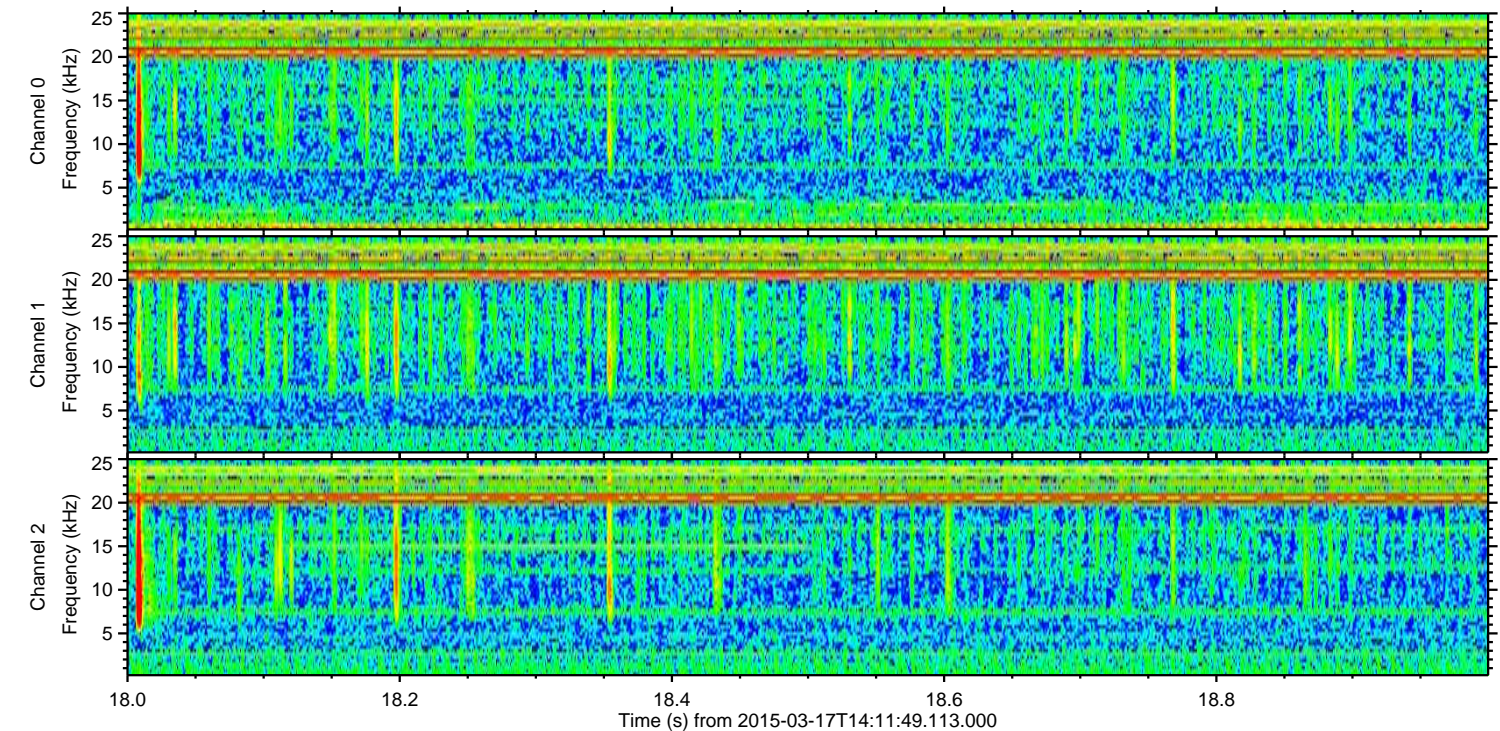
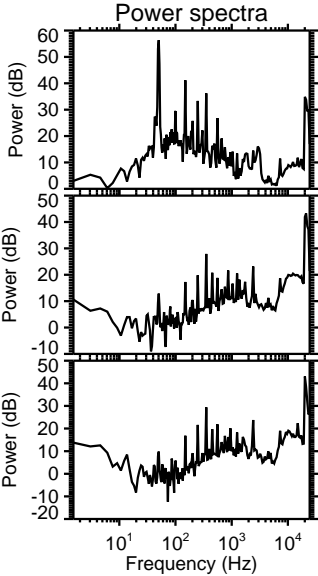
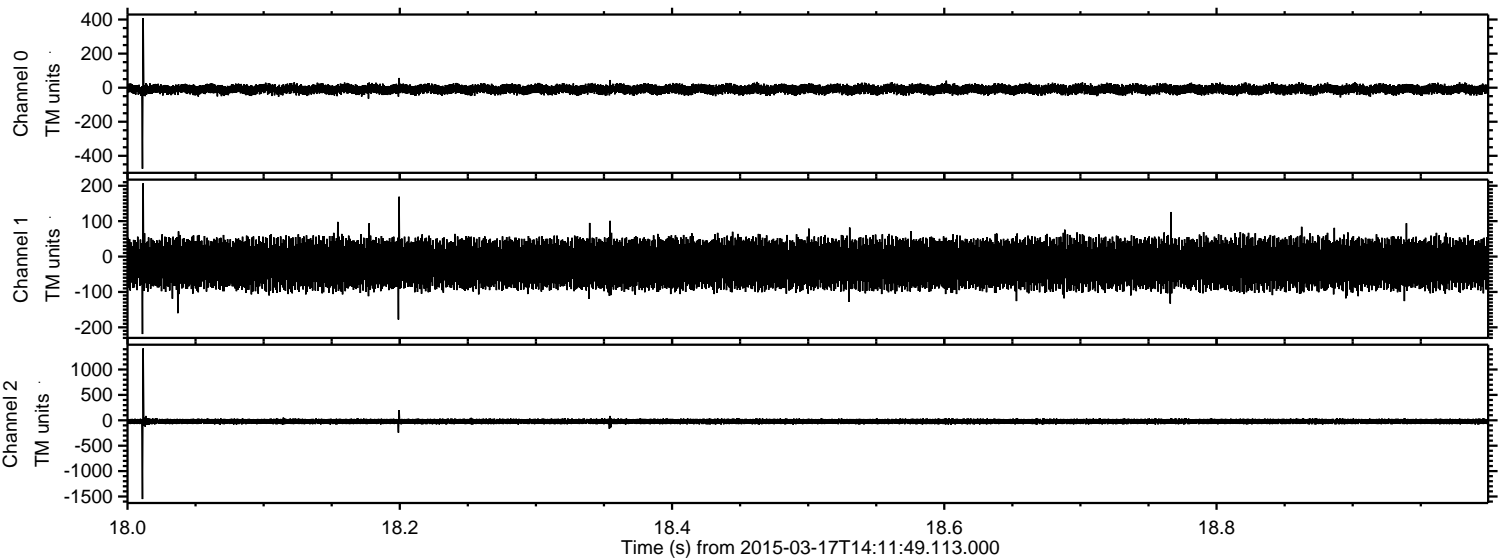
Processed Tue Mar 17 15:20:42 2015 by ELM ver.2012-10-06 from 001\_\_elm20150317\_141148\_\_dat00.bin



Processed Tue Mar 17 15:20:53 2015 by ELM ver.2012-10-06 from 001\_\_elm20150317\_141148\_\_dat00.bin



Processed Tue Mar 17 15:20:54 2015 by ELM ver.2012-10-06 from 001\_\_elm20150317\_141148\_\_dat00.bin



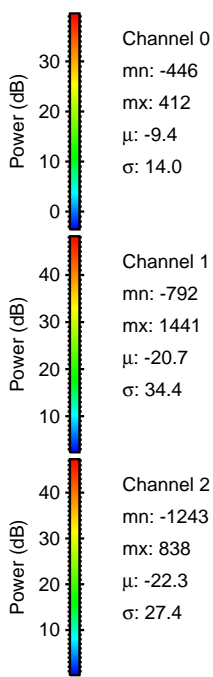
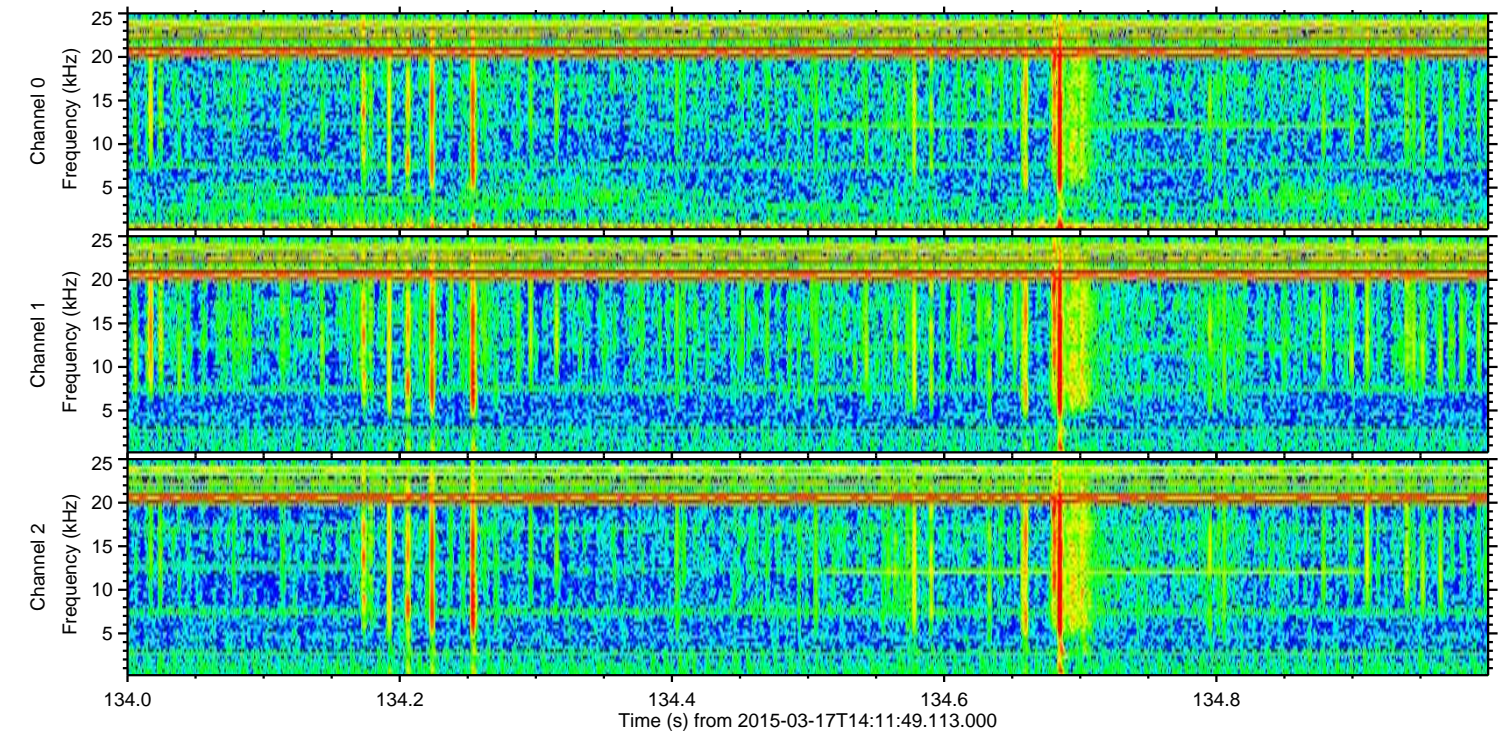
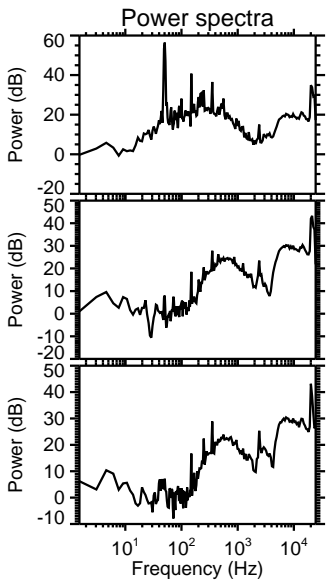
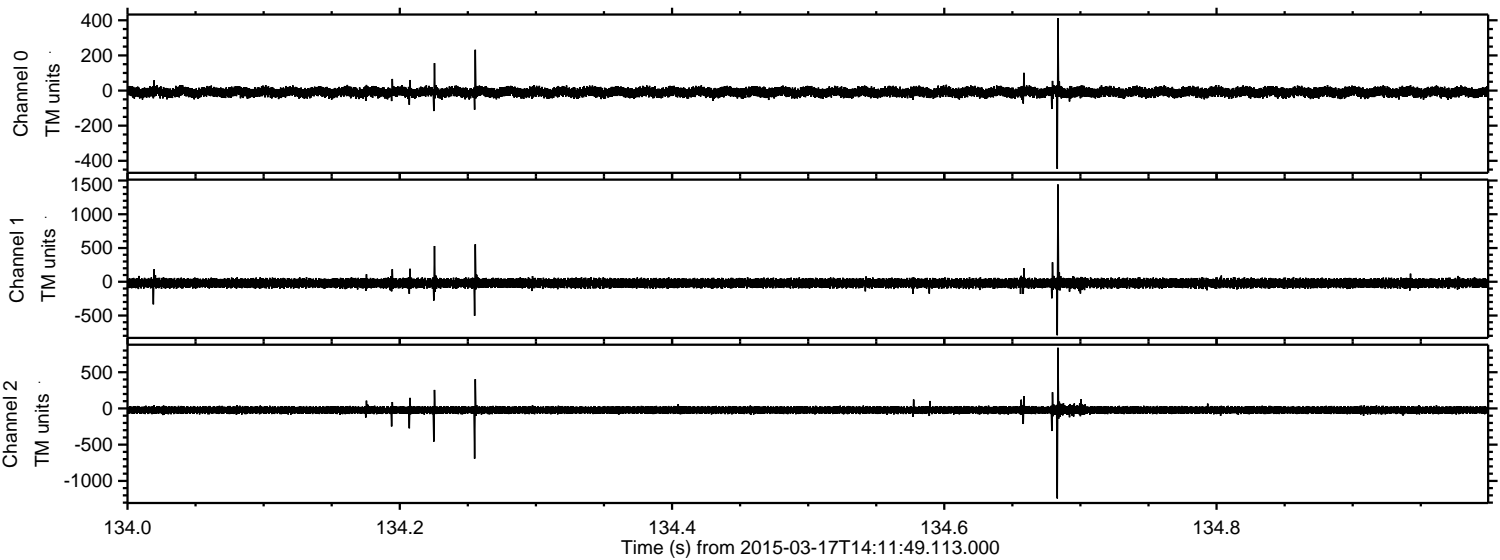
Channel 0  
mn: -476  
mx: 409  
 $\mu$ : -9.4  
 $\sigma$ : 13.9

Channel 1  
mn: -219  
mx: 207  
 $\mu$ : -20.8  
 $\sigma$ : 32.2

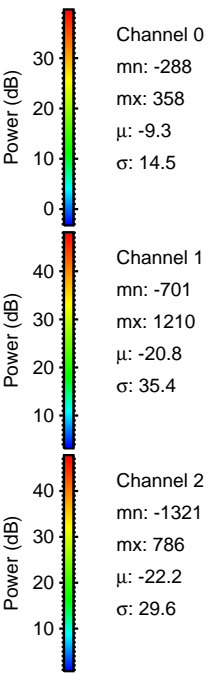
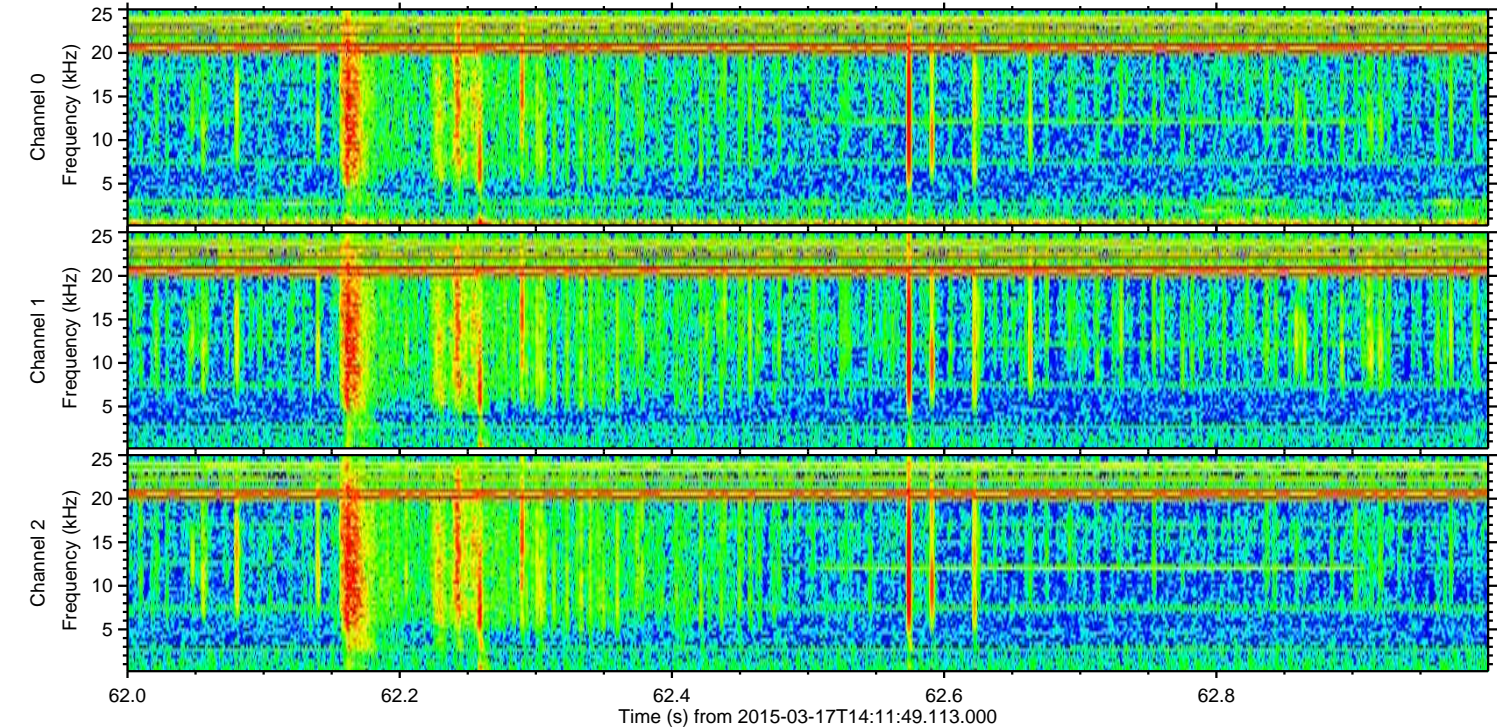
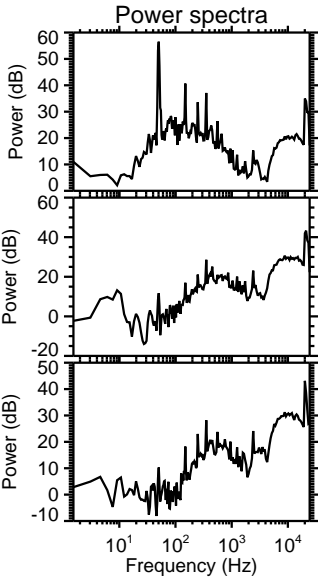
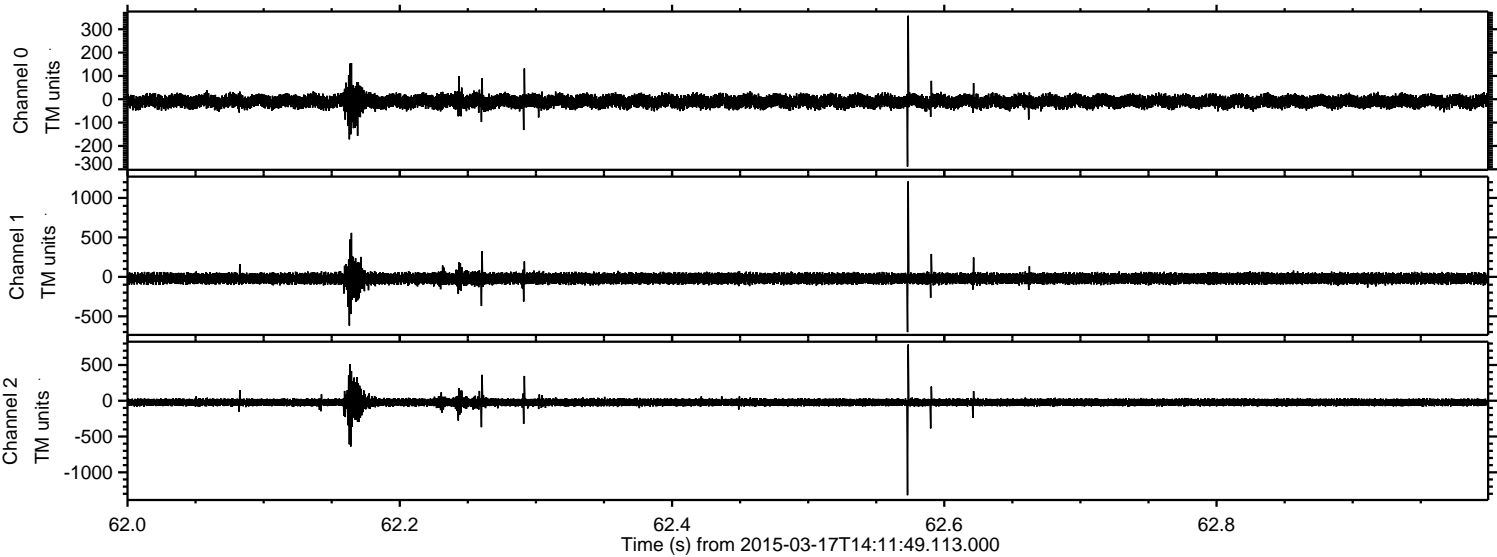
Channel 2  
mn: -1551  
mx: 1418  
 $\mu$ : -22.3  
 $\sigma$ : 30.1

ELMAVAN 3D WAVEFORMS (Measured data sampled at 50 kHz) 49794 packets of 144 samples from 2015-03-17T14:11:49.113.000. Part 135/144

Processed Tue Mar 17 15:20:55 2015 by ELM ver.2012-10-06 from 001\_\_elm20150317\_141148\_\_dat00.bin



Processed Tue Mar 17 15:20:56 2015 by ELM ver.2012-10-06 from 001\_\_elm20150317\_141148\_\_dat00.bin



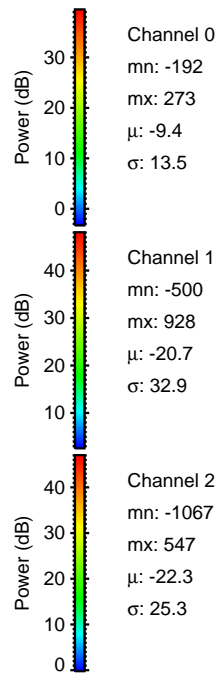
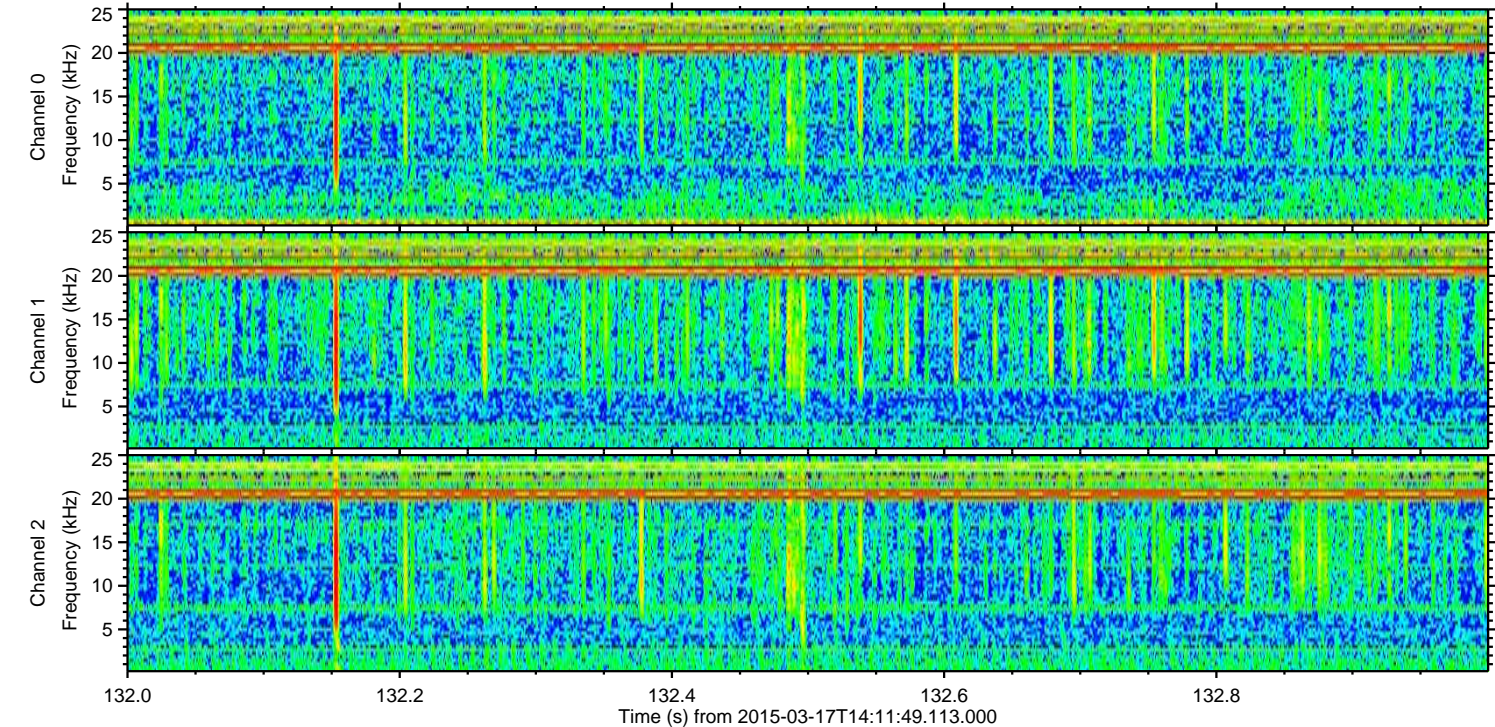
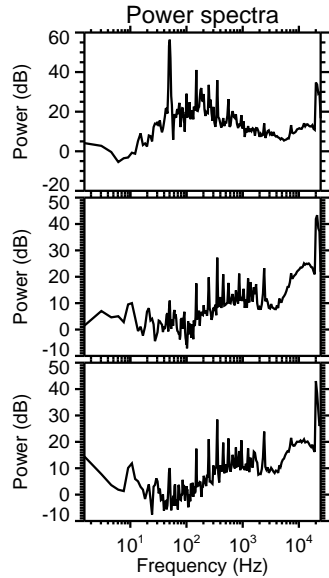
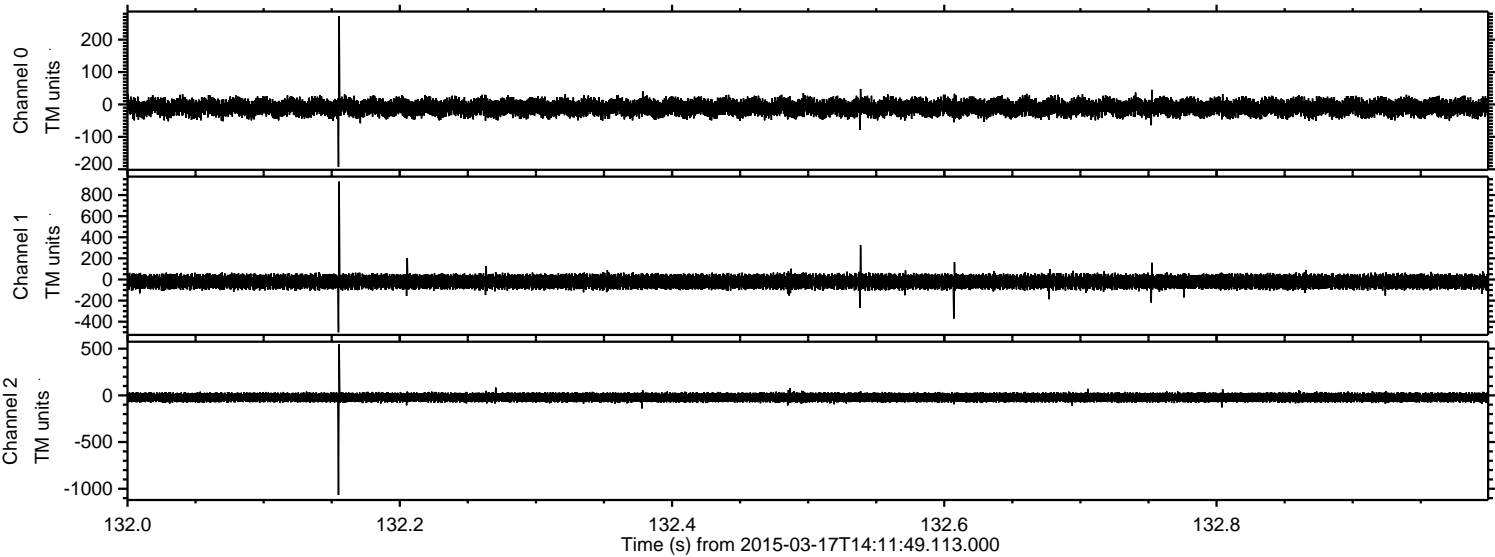
Channel 0  
mn: -288  
mx: 358  
 $\mu$ : -9.3  
 $\sigma$ : 14.5

Channel 1  
mn: -701  
mx: 1210  
 $\mu$ : -20.8  
 $\sigma$ : 35.4

Channel 2  
mn: -1321  
mx: 786  
 $\mu$ : -22.2  
 $\sigma$ : 29.6

ELMAVAN 3D WAVEFORMS (Measured data sampled at 50 kHz) 49794 packets of 144 samples from 2015-03-17T14:11:49.113.000. Part 133/144

Processed Tue Mar 17 15:20:57 2015 by ELM ver.2012-10-06 from 001\_\_elm20150317\_141148\_\_dat00.bin

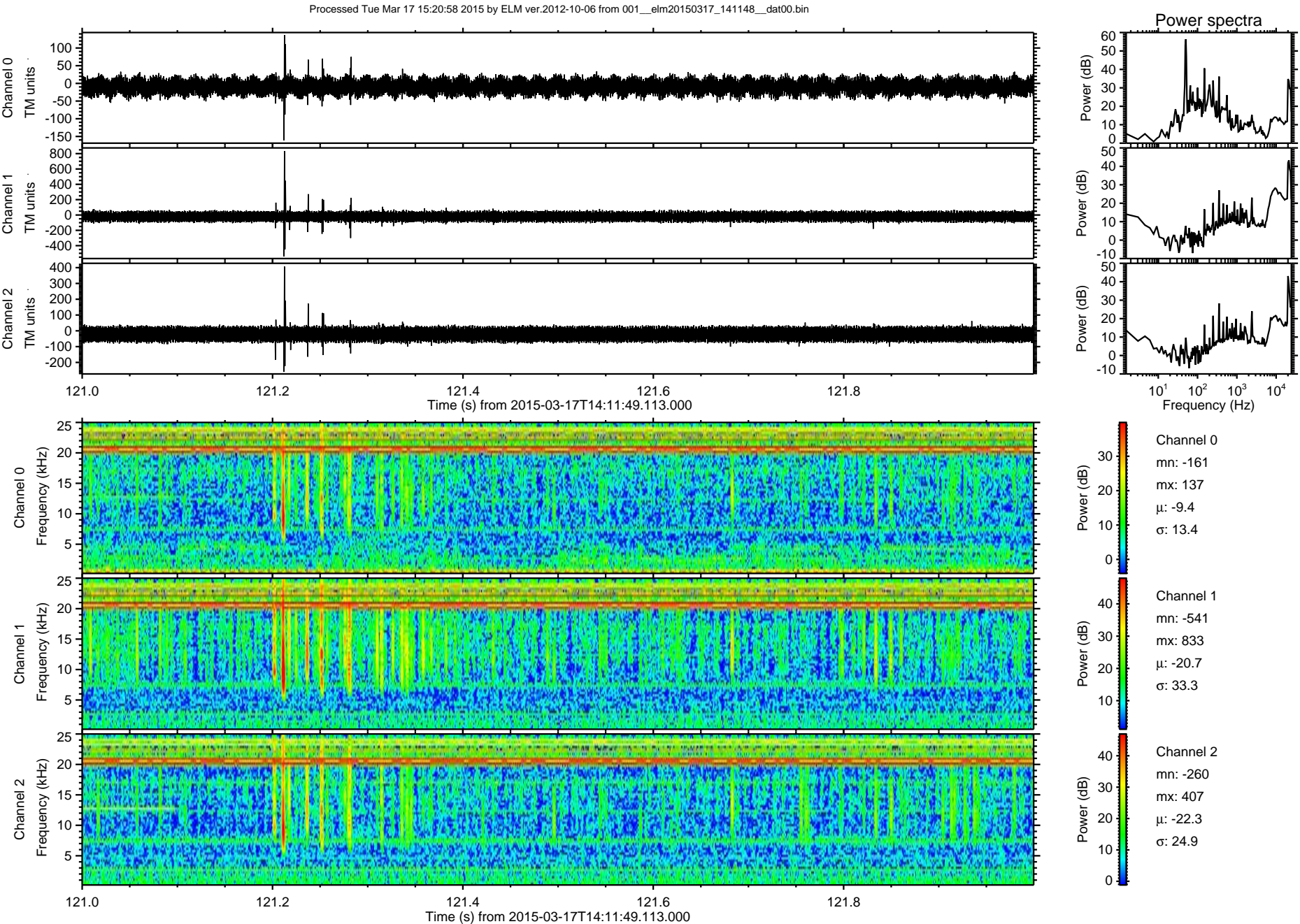


Channel 0  
mn: -192  
mx: 273  
 $\mu$ : -9.4  
 $\sigma$ : 13.5

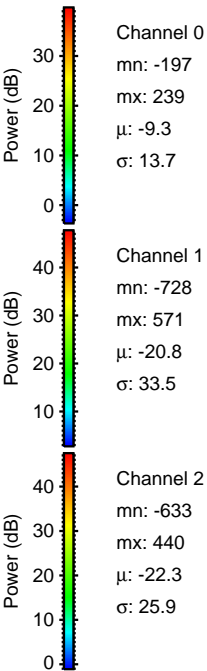
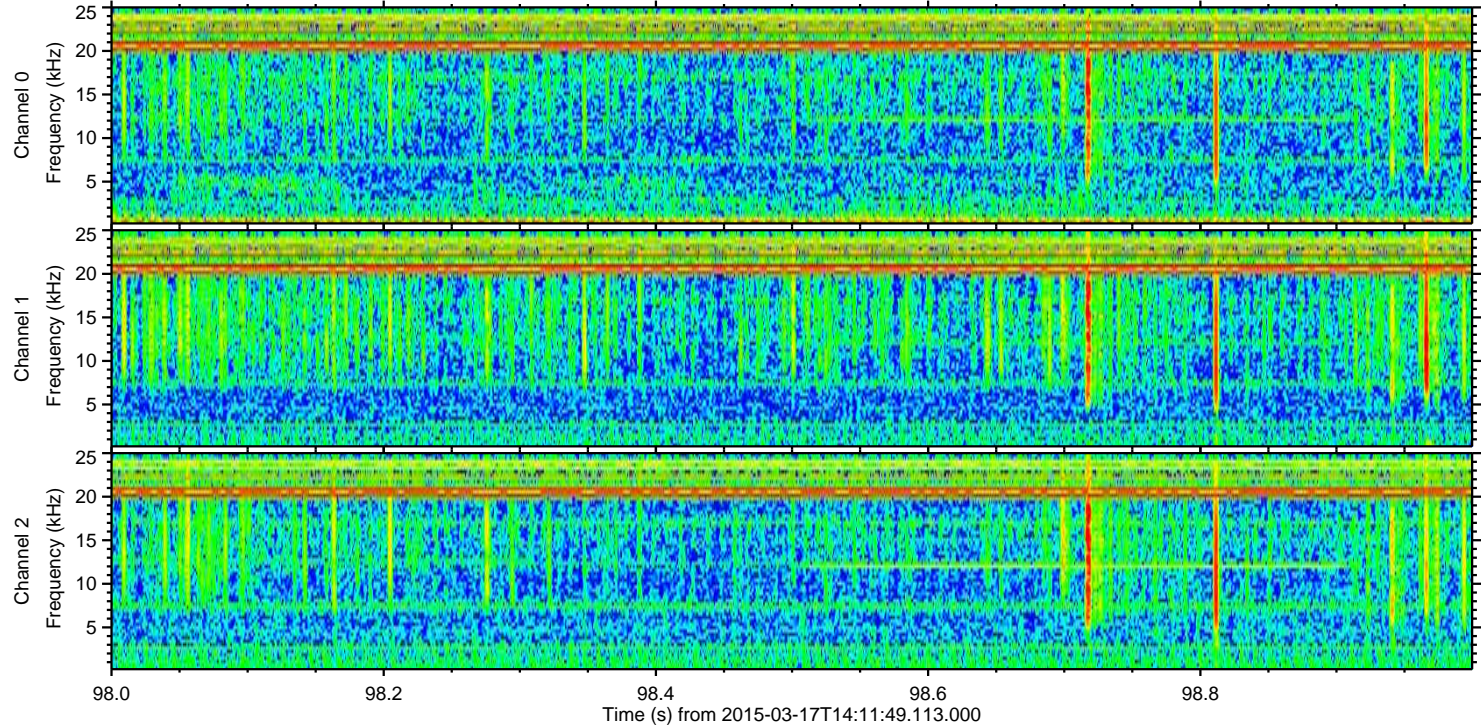
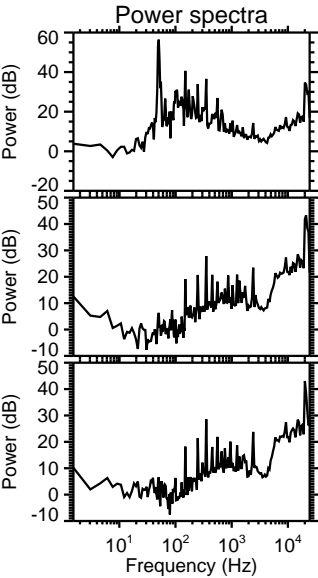
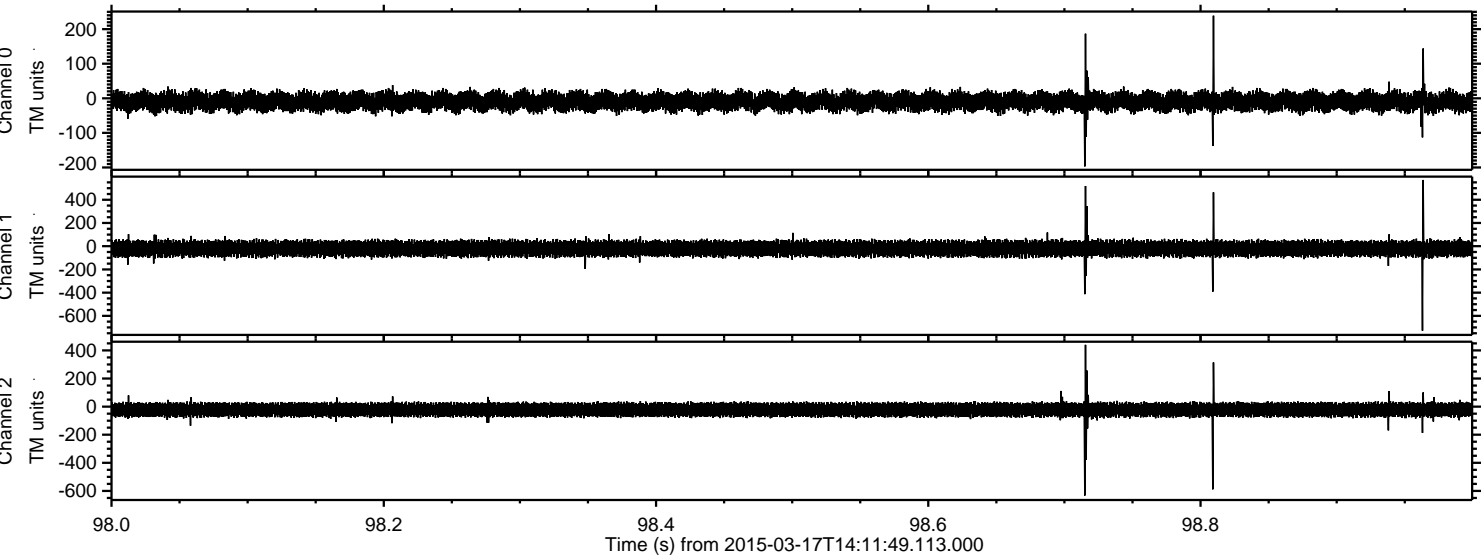
Channel 1  
mn: -500  
mx: 928  
 $\mu$ : -20.7  
 $\sigma$ : 32.9

Channel 2  
mn: -1067  
mx: 547  
 $\mu$ : -22.3  
 $\sigma$ : 25.3

ELMAVAN 3D WAVEFORMS (Measured data sampled at 50 kHz) 49794 packets of 144 samples from 2015-03-17T14:11:49.113.000. Part 122/144



Processed Tue Mar 17 15:20:59 2015 by ELM ver.2012-10-06 from 001\_\_elm20150317\_141148\_\_dat00.bin

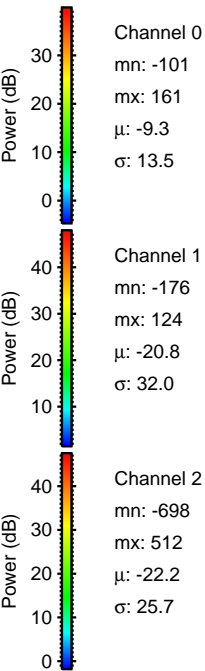
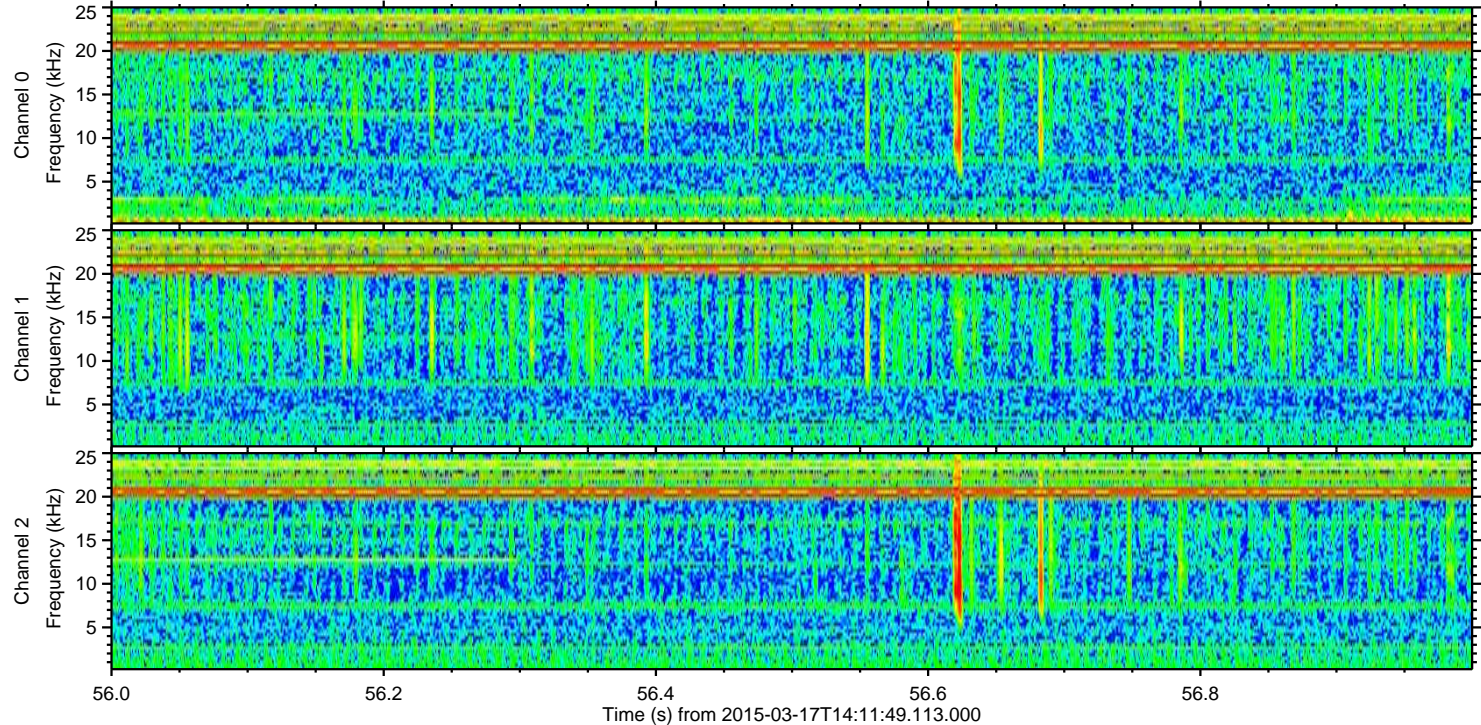
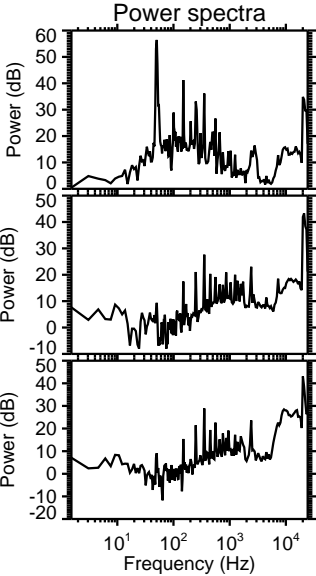
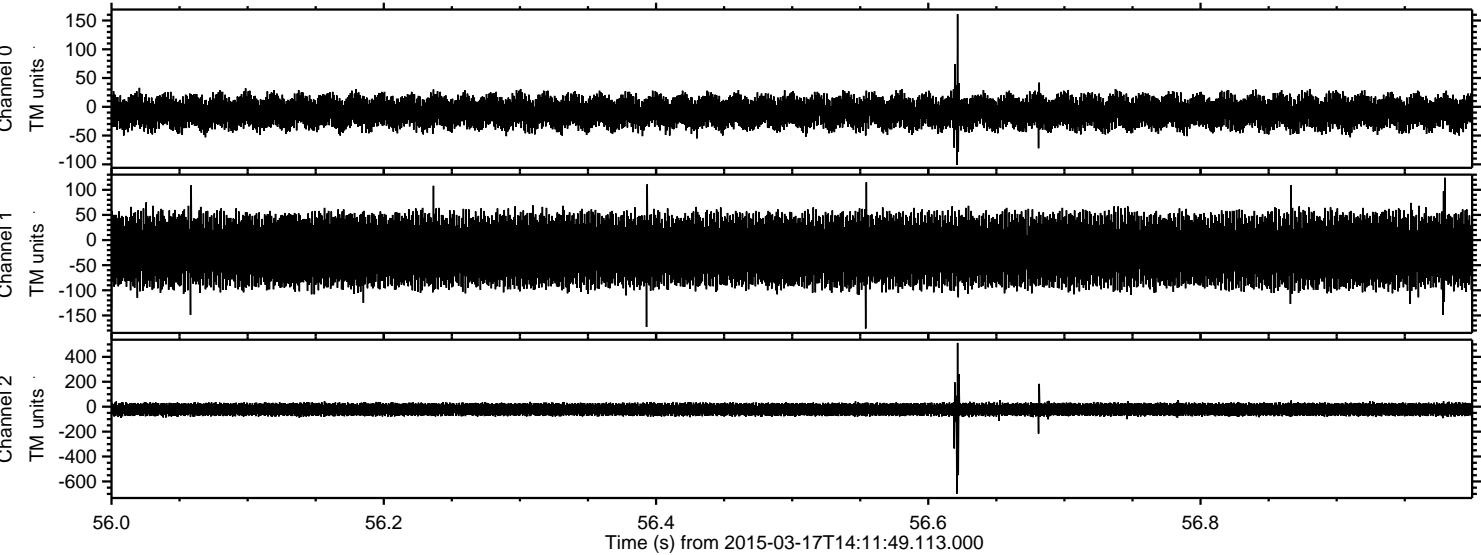


Channel 0  
mn: -197  
mx: 239  
 $\mu$ : -9.3  
 $\sigma$ : 13.7

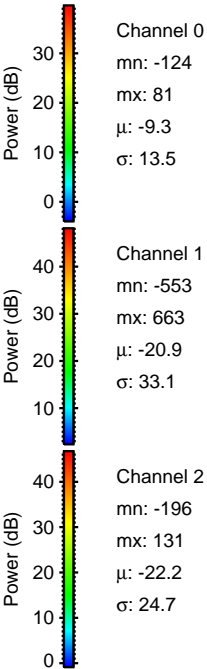
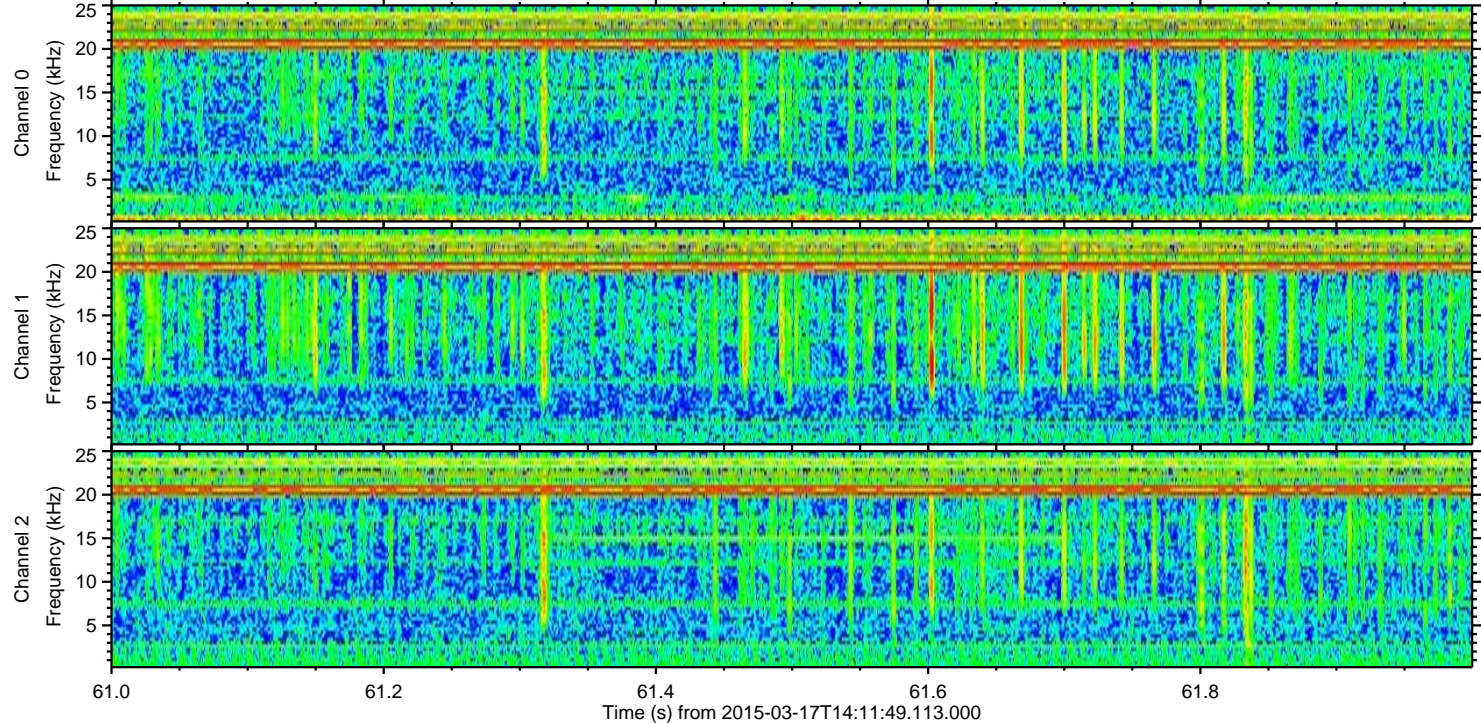
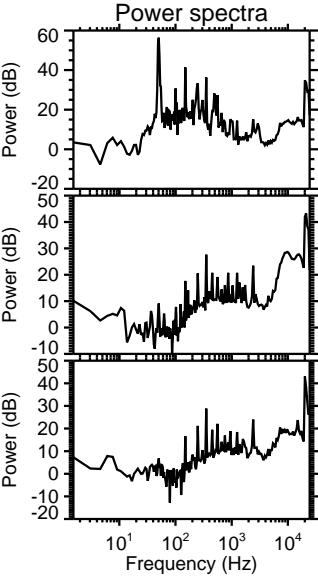
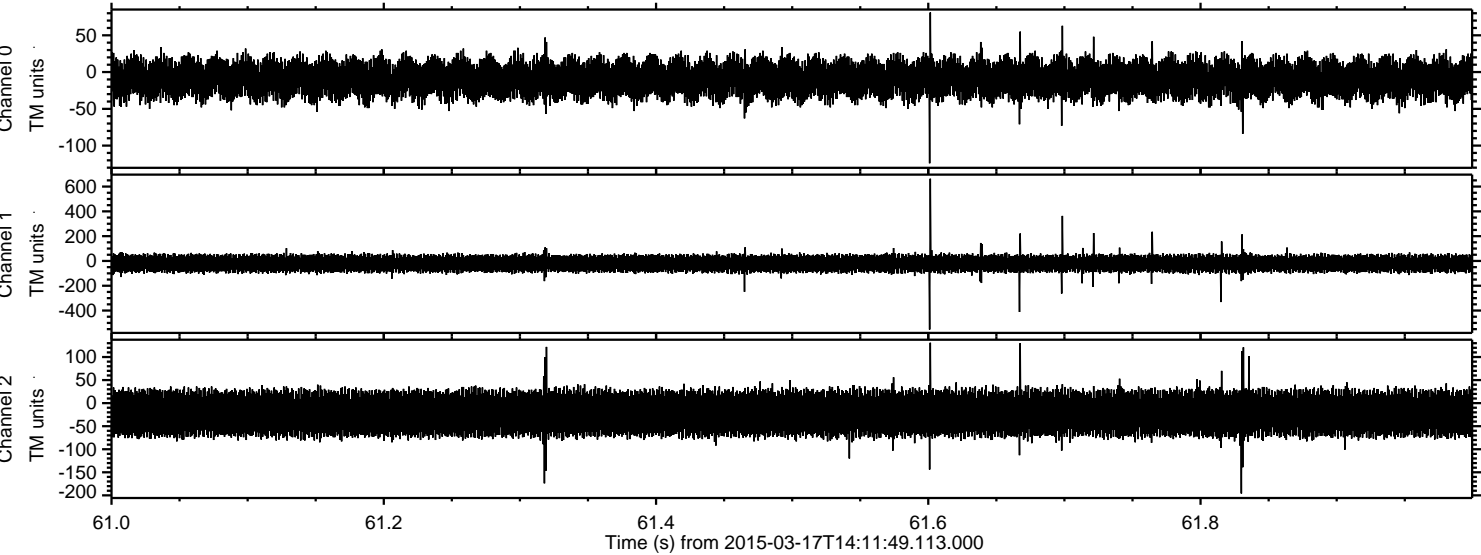
Channel 1  
mn: -728  
mx: 571  
 $\mu$ : -20.8  
 $\sigma$ : 33.5

Channel 2  
mn: -633  
mx: 440  
 $\mu$ : -22.3  
 $\sigma$ : 25.9

Processed Tue Mar 17 15:21:00 2015 by ELM ver.2012-10-06 from 001\_\_elm20150317\_141148\_\_dat00.bin



Processed Tue Mar 17 15:21:01 2015 by ELM ver.2012-10-06 from 001\_\_elm20150317\_141148\_\_dat00.bin



ELMAVAN 3D WAVEFORMS (Measured data sampled at 50 kHz) 49794 packets of 144 samples from 2015-03-17T14:11:49.113.000. Part 129/144

