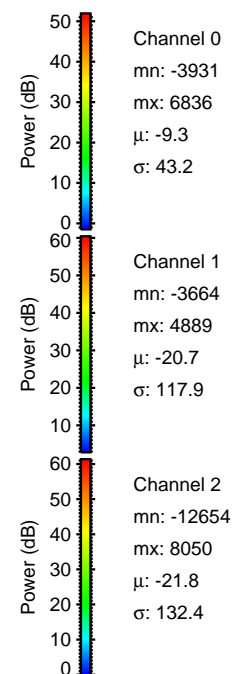
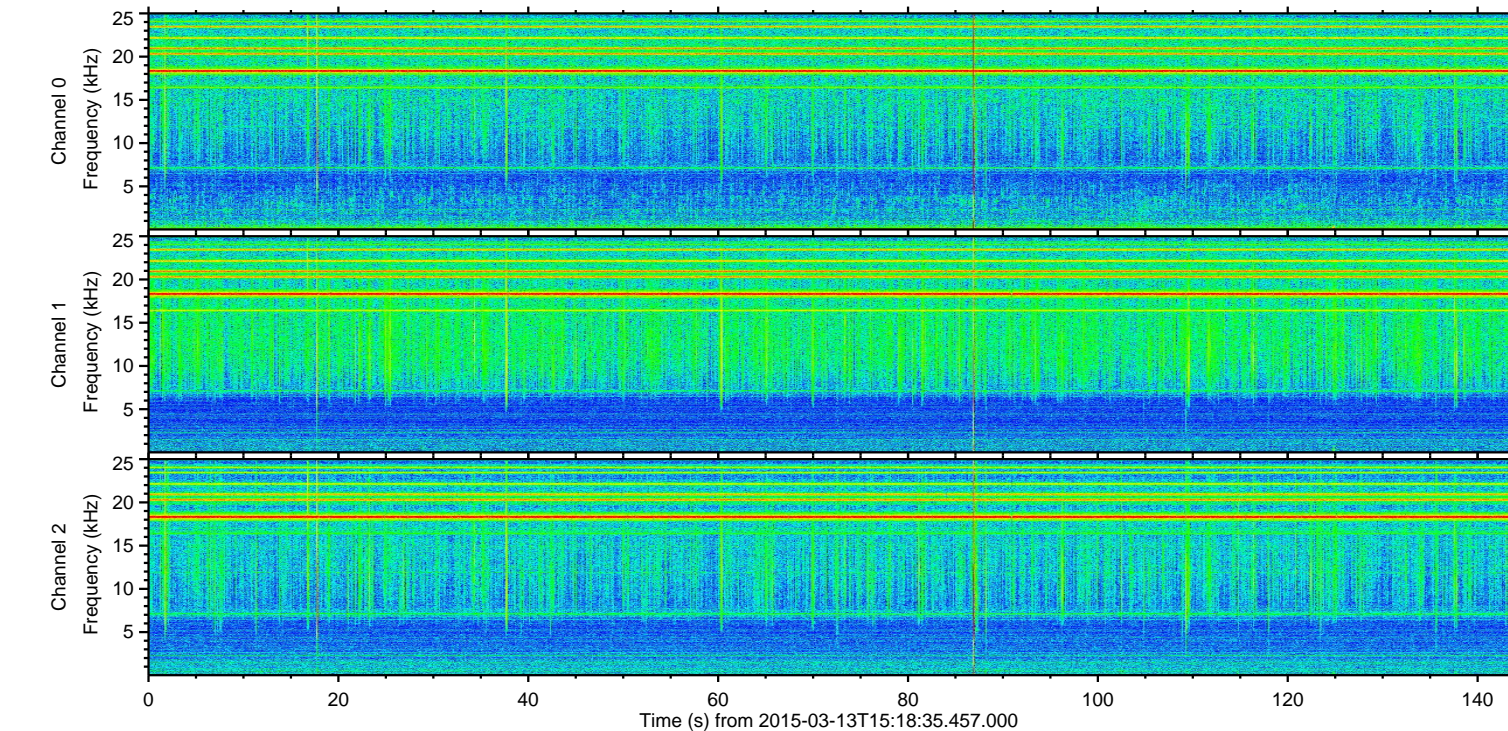
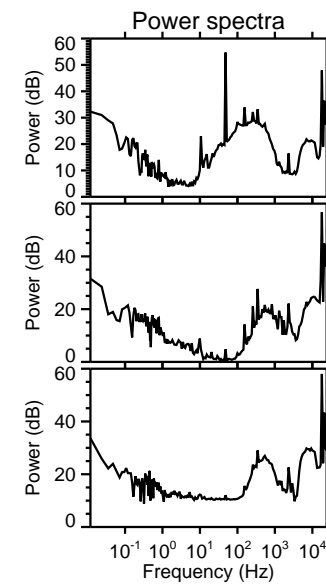
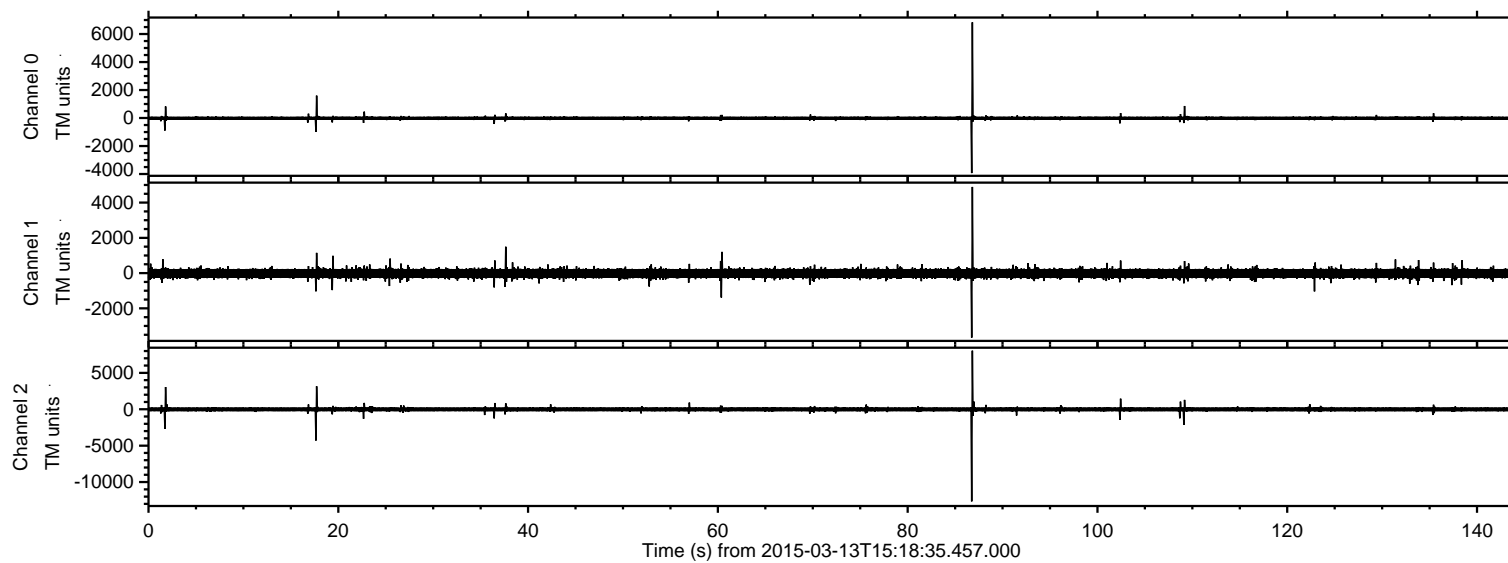


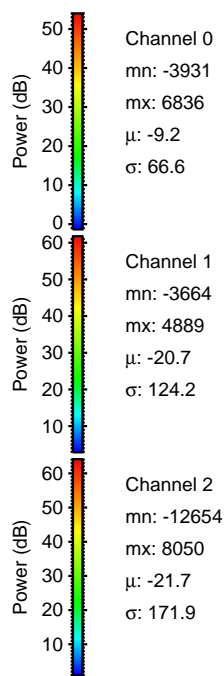
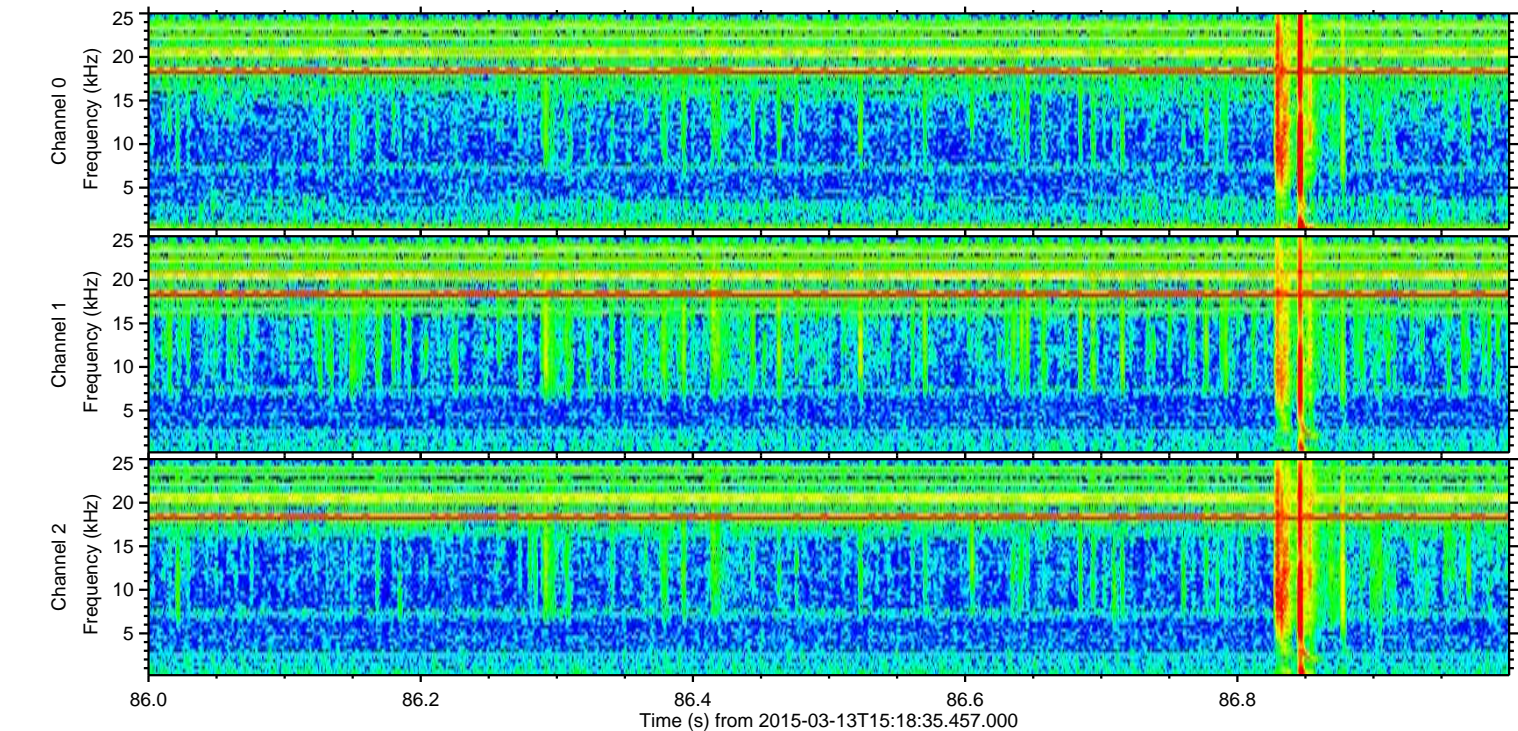
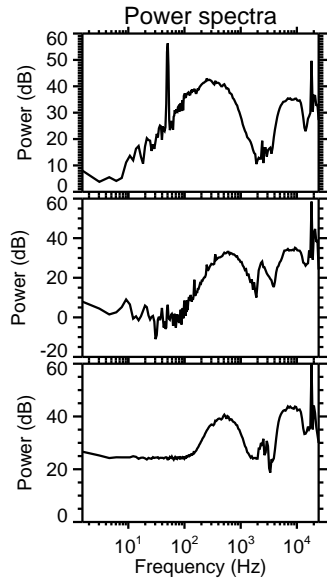
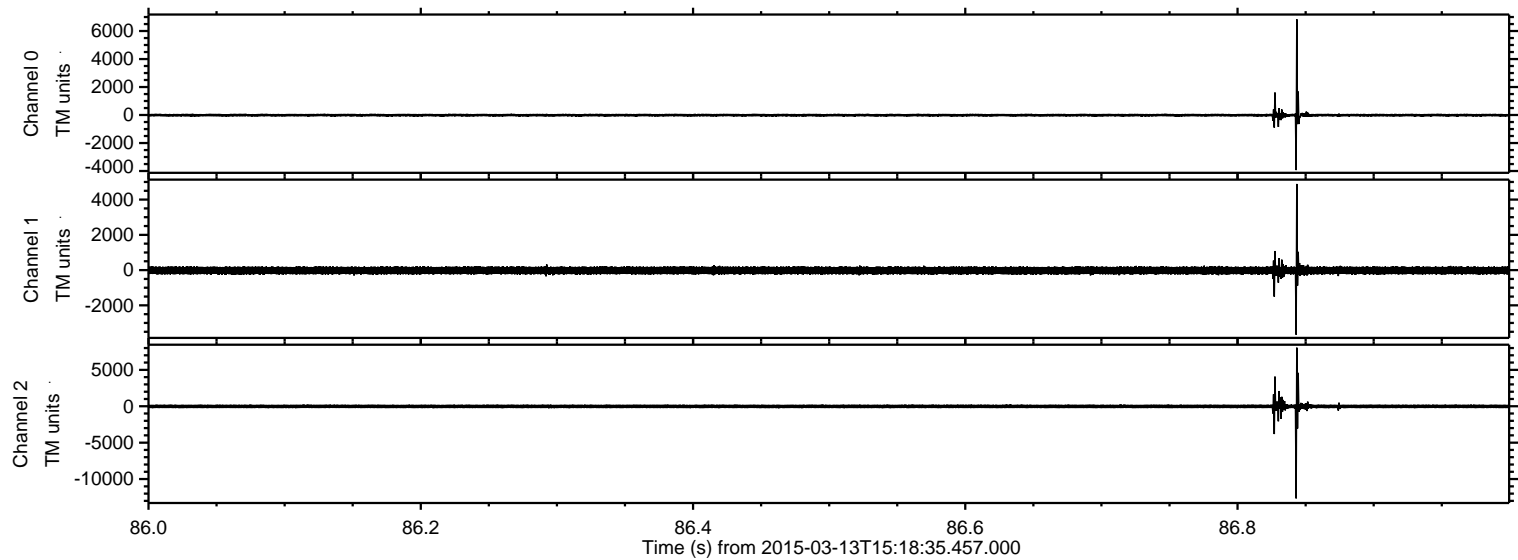
# ELMAVAN 3D WAVEFORMS (Measured data sampled at 50 kHz) 49786 packets of 144 samples from 2015-03-13T15:18:35.457.000.

Processed Fri Mar 13 16:27:22 2015 by ELM ver.2012-10-06 from 001\_\_elm20150313\_151834\_\_dat00.bin



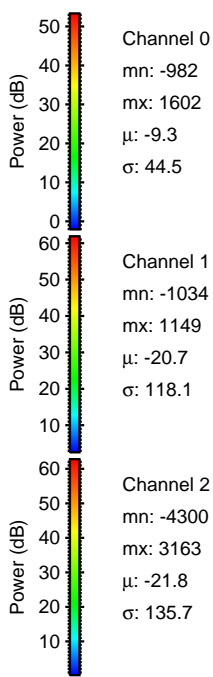
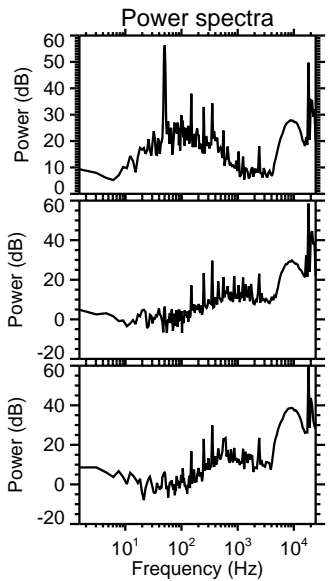
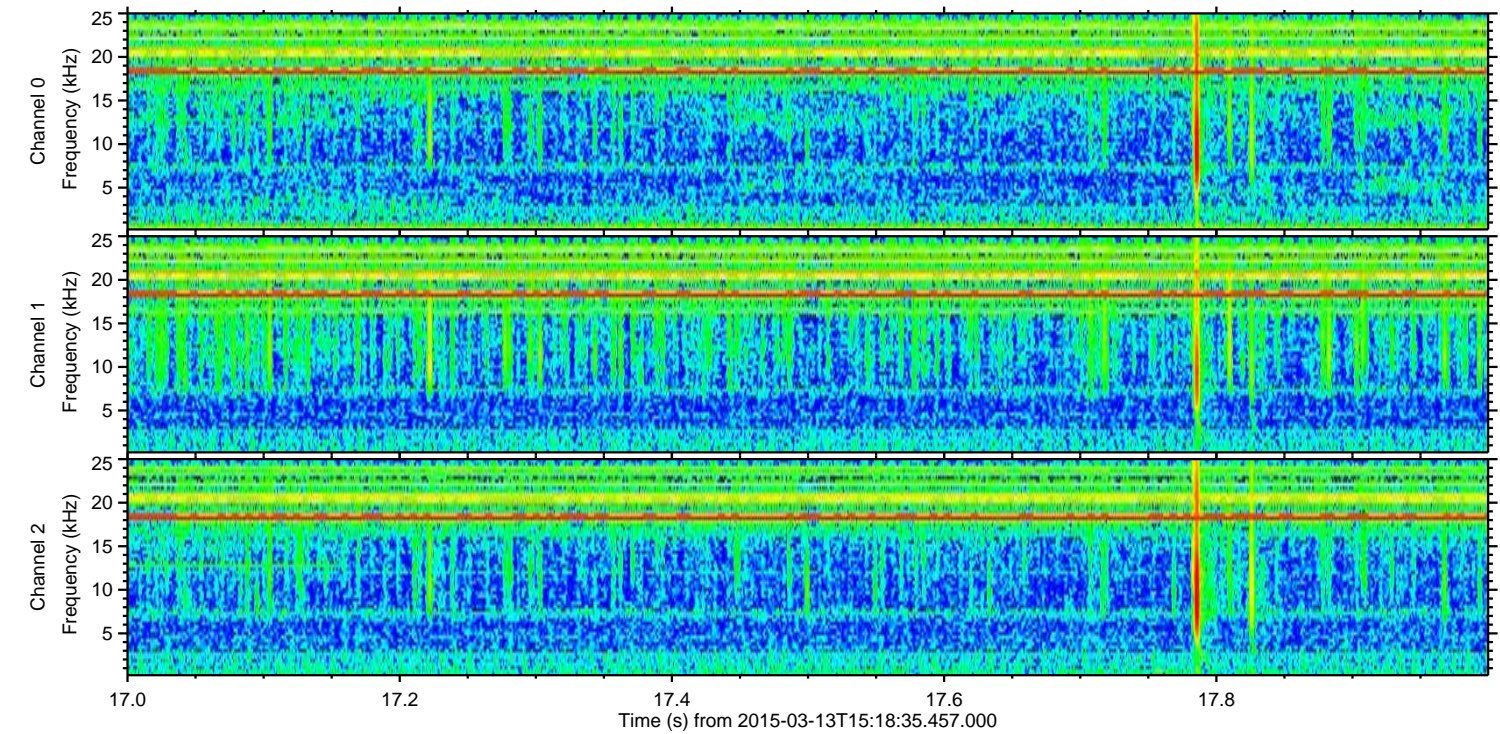
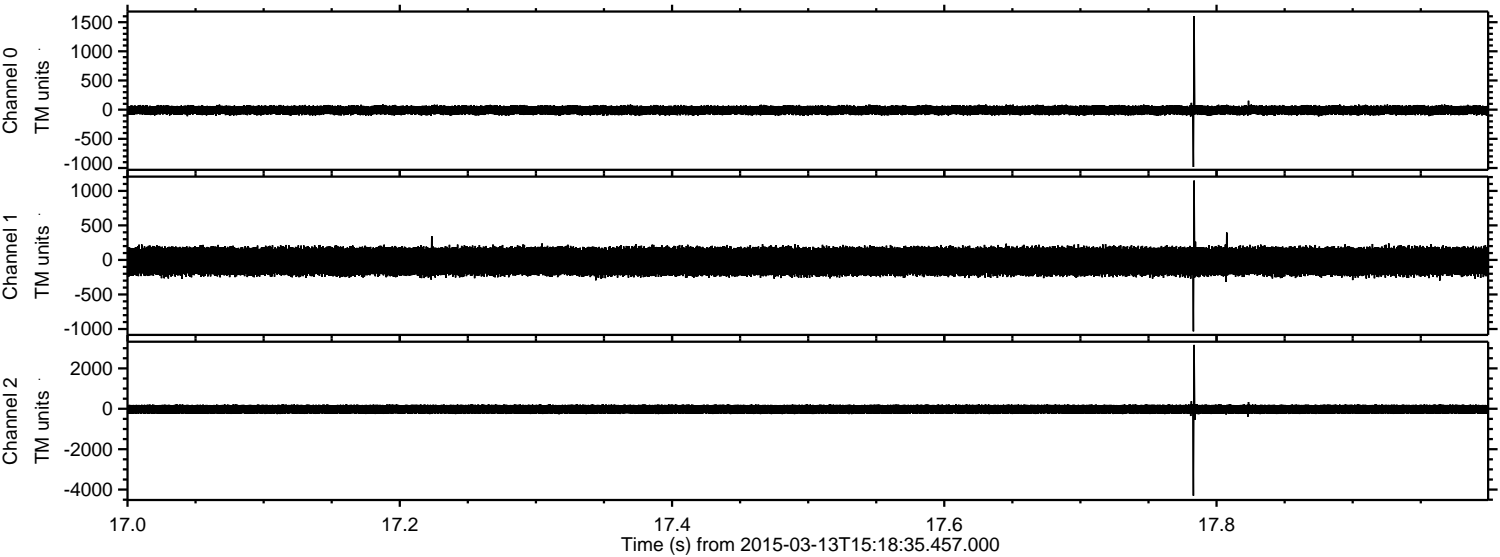


Processed Fri Mar 13 16:27:34 2015 by ELM ver.2012-10-06 from 001\_\_elm20150313\_151834\_\_dat00.bin





Processed Fri Mar 13 16:27:35 2015 by ELM ver.2012-10-06 from 001\_\_elm20150313\_151834\_\_dat00.bin



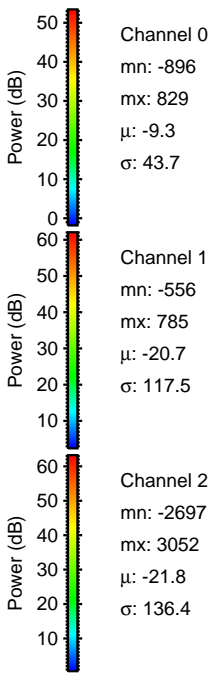
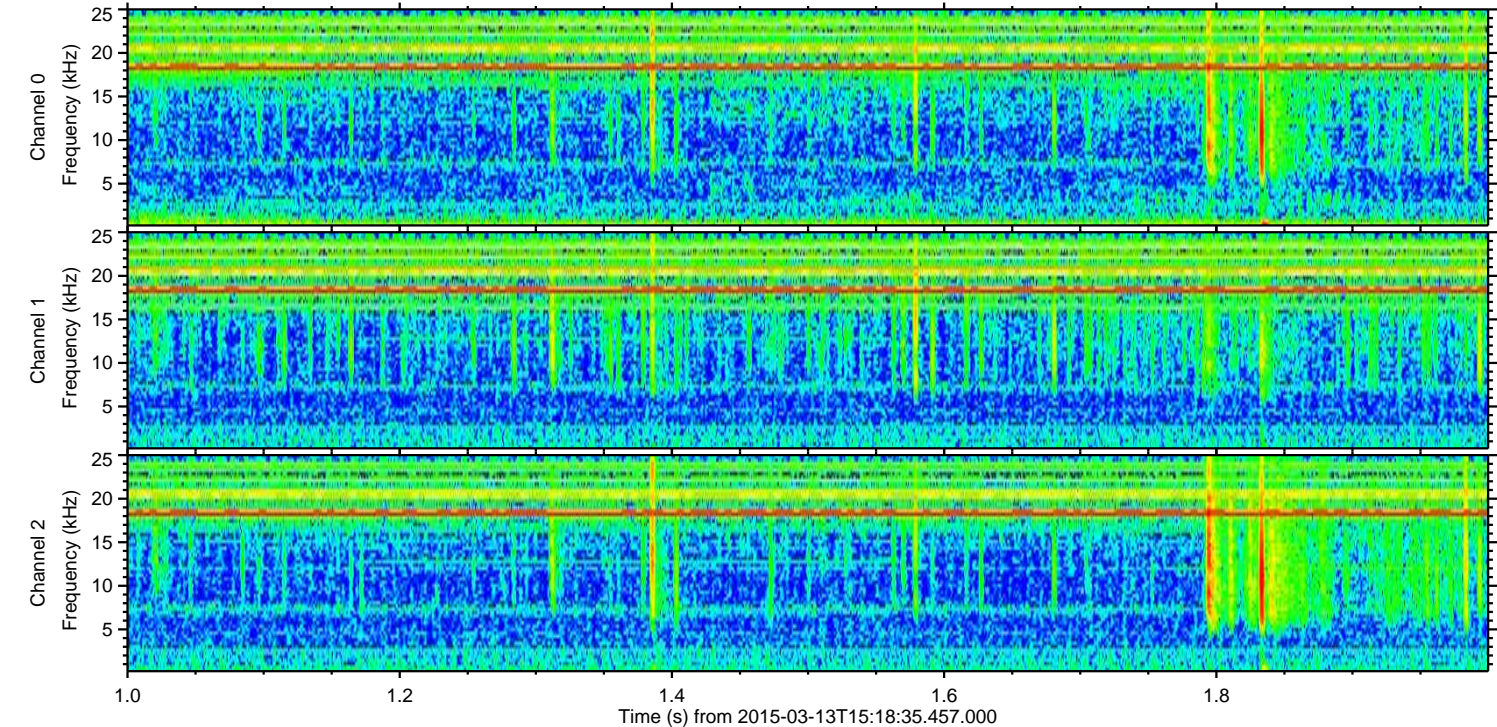
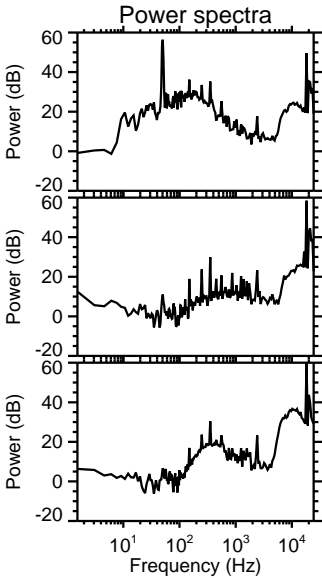
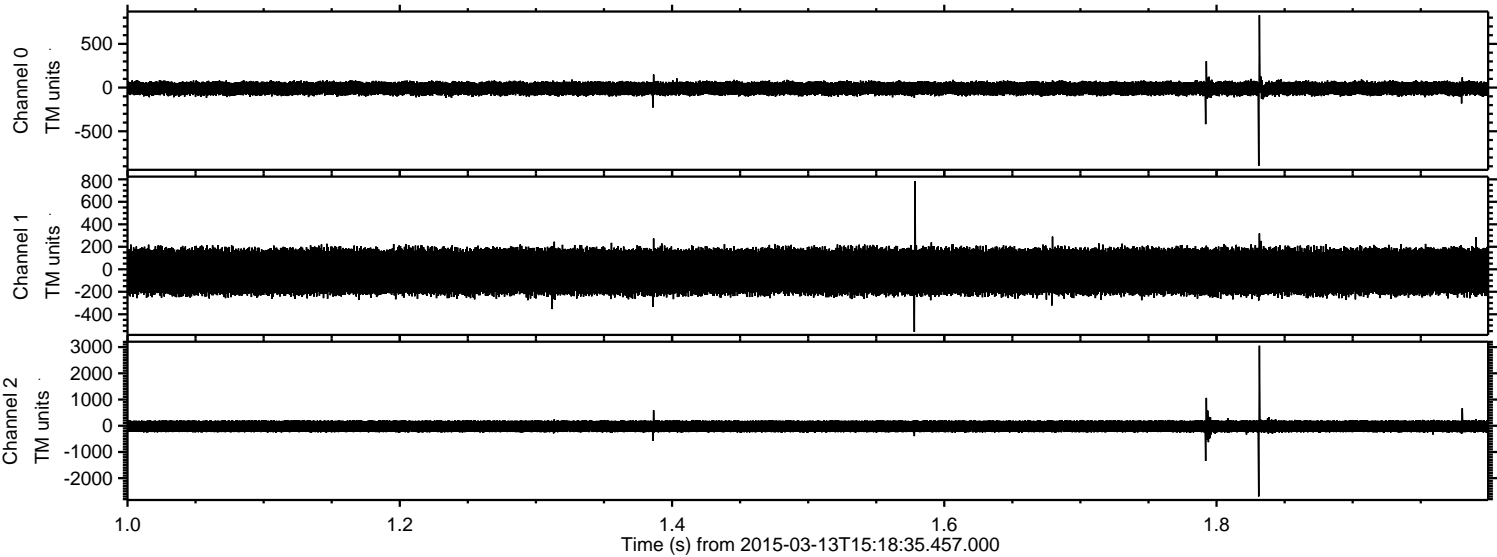
Channel 0  
mn: -982  
mx: 1602  
 $\mu$ : -9.3  
 $\sigma$ : 44.5

Channel 1  
mn: -1034  
mx: 1149  
 $\mu$ : -20.7  
 $\sigma$ : 118.1

Channel 2  
mn: -4300  
mx: 3163  
 $\mu$ : -21.8  
 $\sigma$ : 135.7

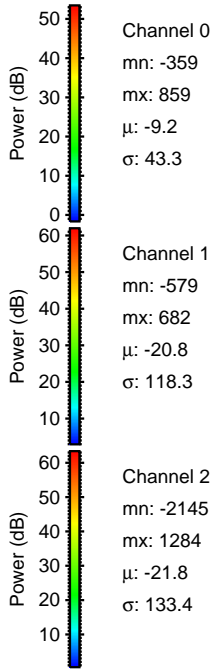
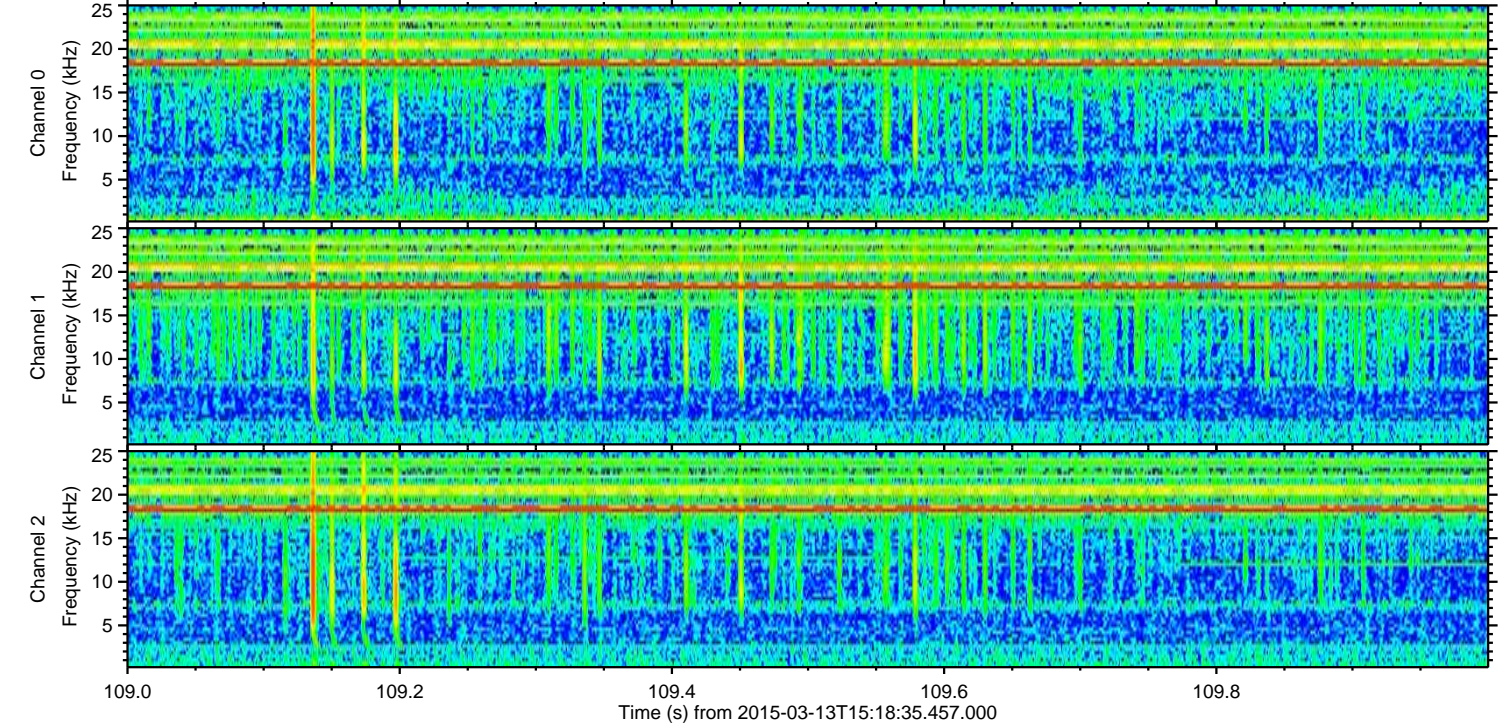
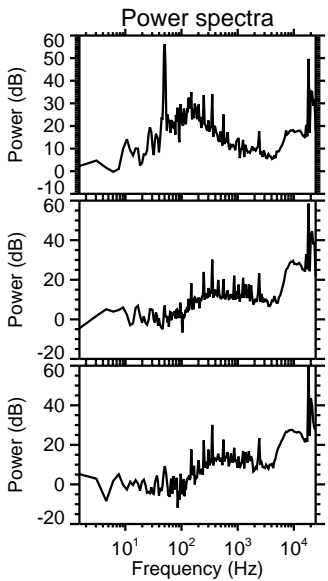
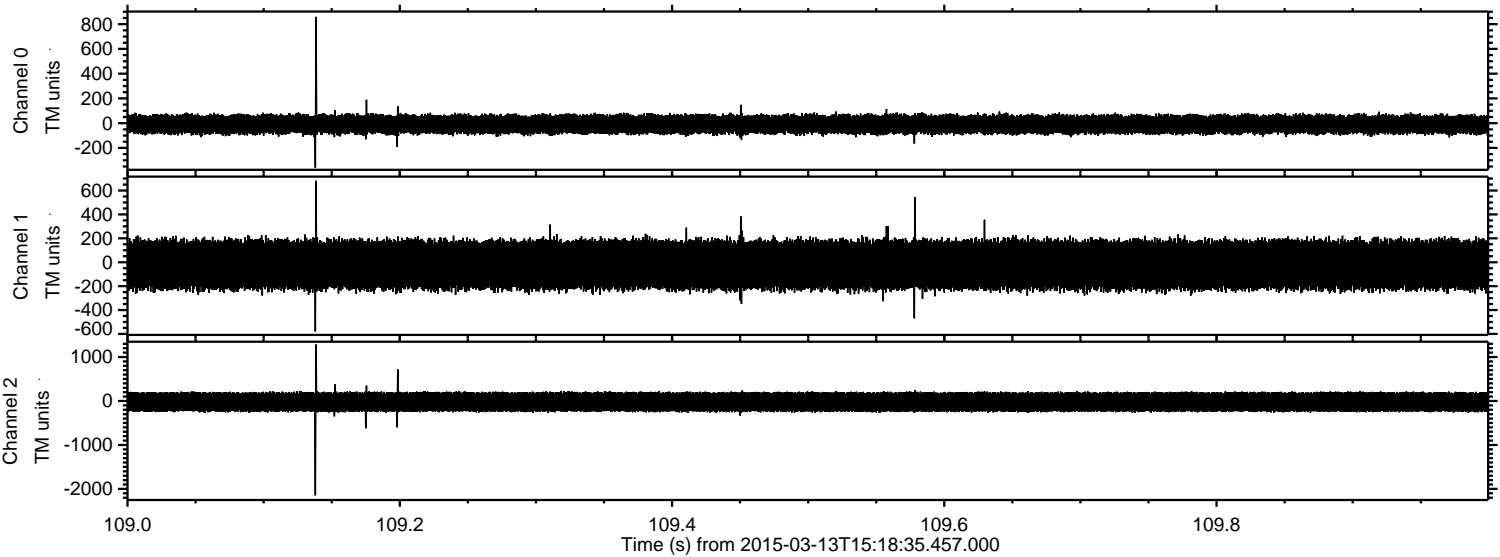


Processed Fri Mar 13 16:27:36 2015 by ELM ver.2012-10-06 from 001\_\_elm20150313\_151834\_\_dat00.bin



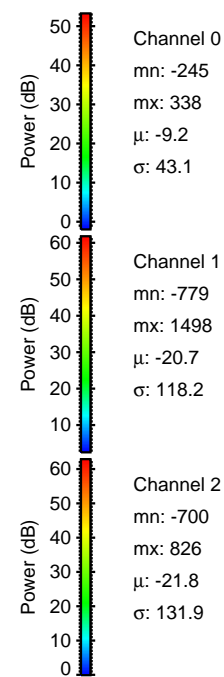
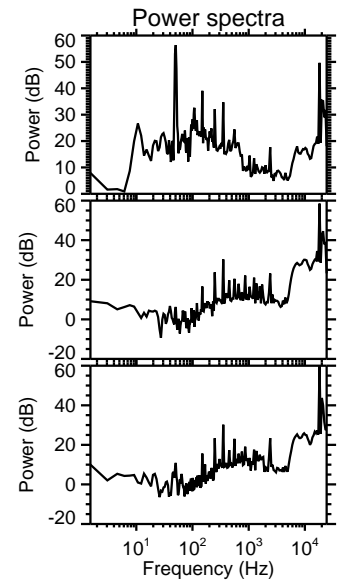
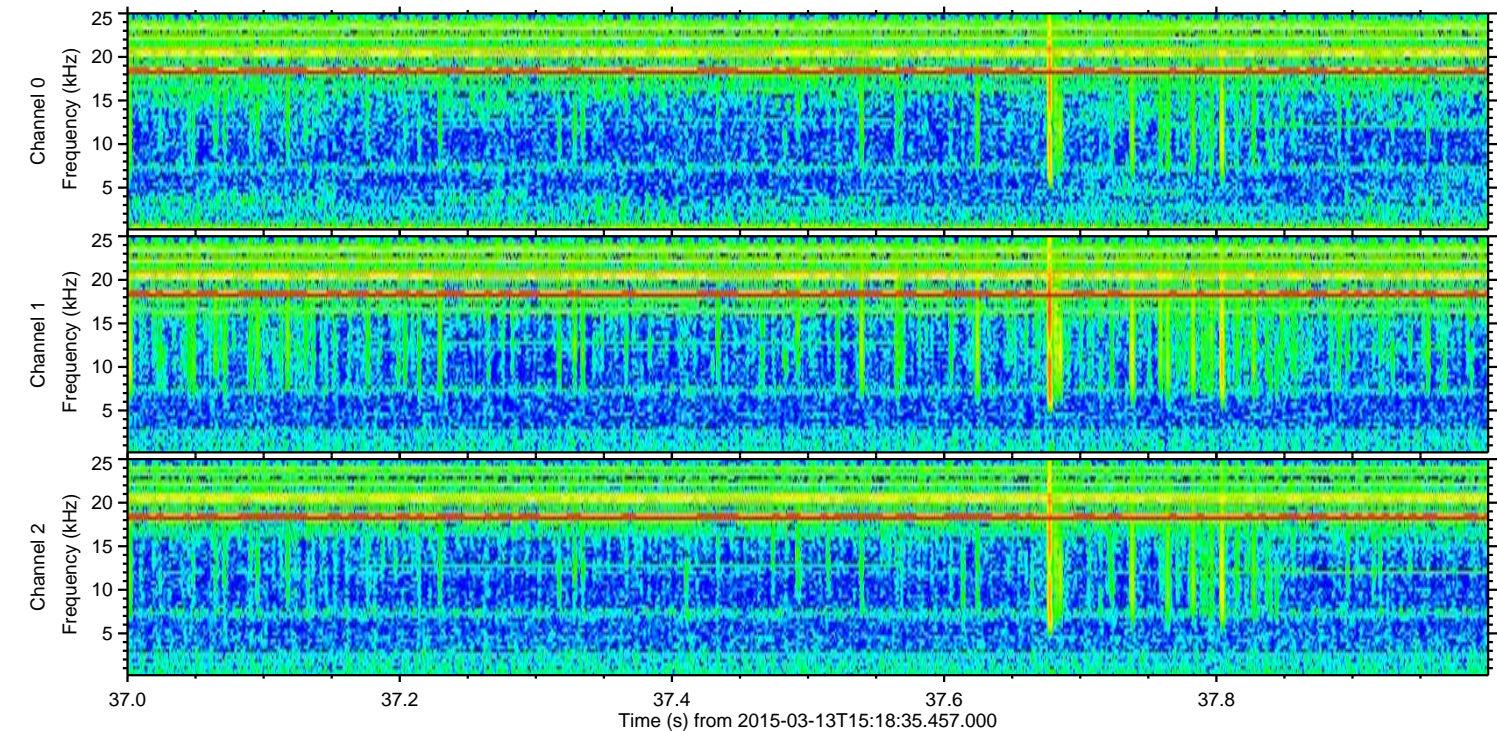
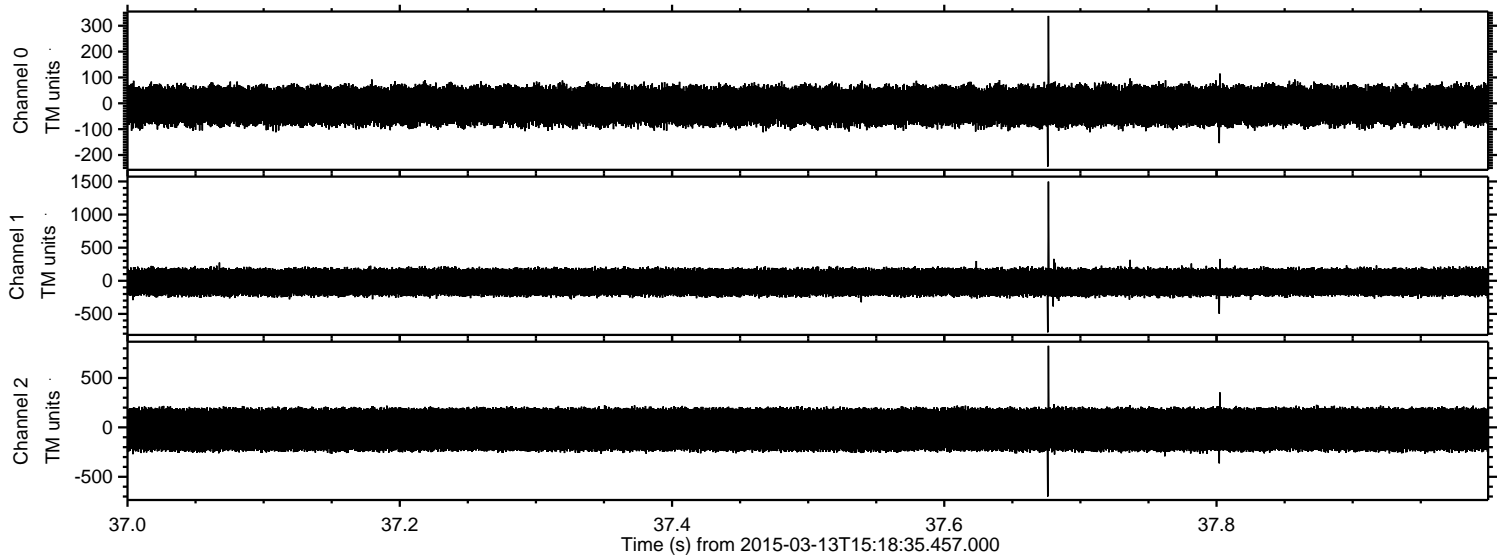


Processed Fri Mar 13 16:27:37 2015 by ELM ver.2012-10-06 from 001\_\_elm20150313\_151834\_\_dat00.bin





Processed Fri Mar 13 16:27:38 2015 by ELM ver.2012-10-06 from 001\_\_elm20150313\_151834\_\_dat00.bin



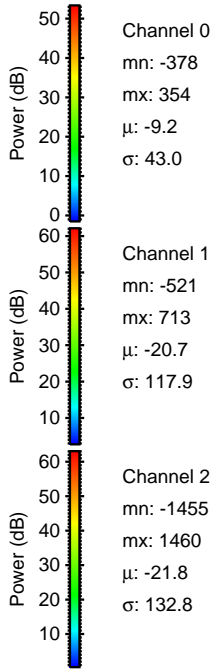
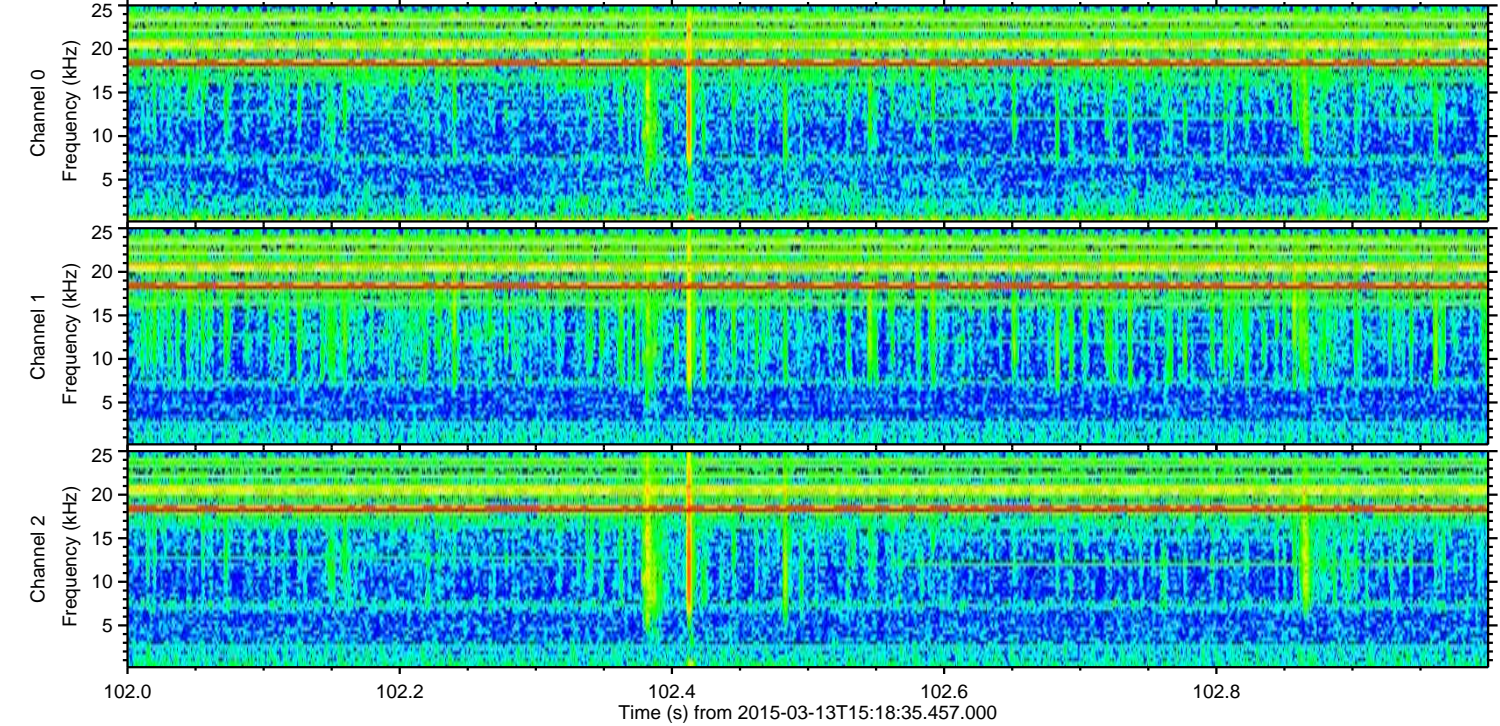
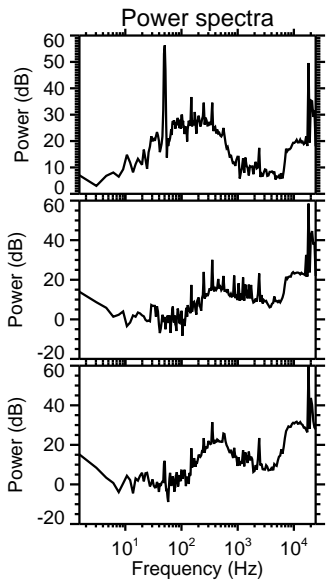
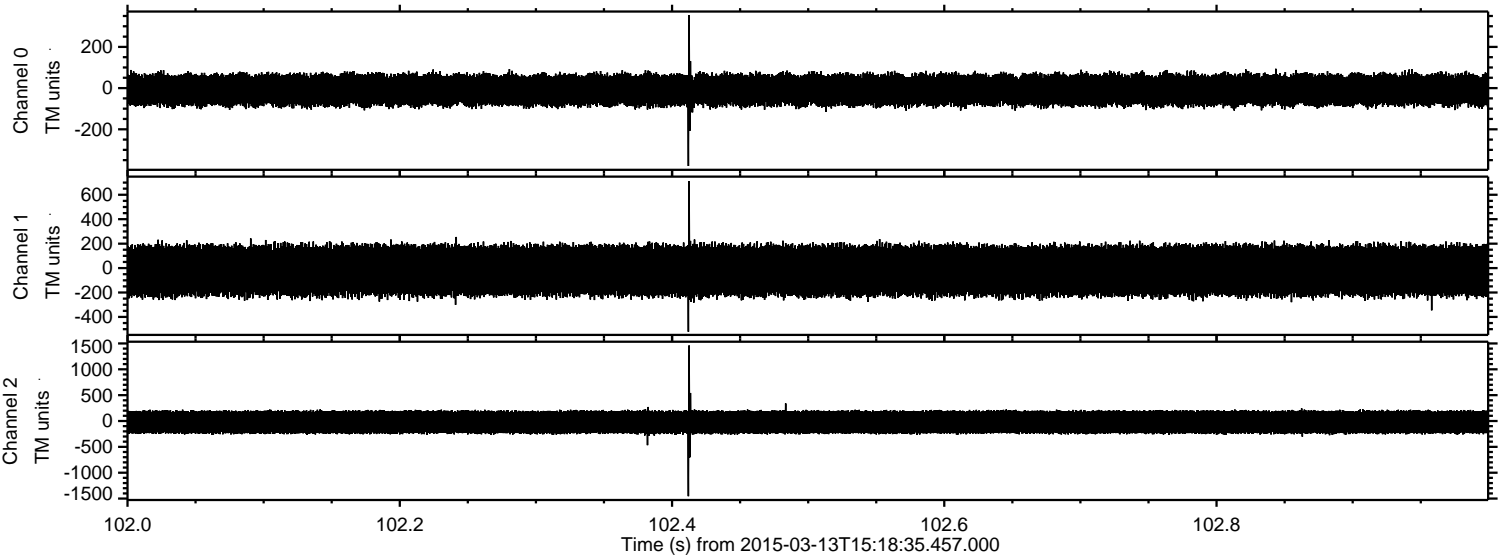
Channel 0  
mn: -245  
mx: 338  
 $\mu$ : -9.2  
 $\sigma$ : 43.1

Channel 1  
mn: -779  
mx: 1498  
 $\mu$ : -20.7  
 $\sigma$ : 118.2

Channel 2  
mn: -700  
mx: 826  
 $\mu$ : -21.8  
 $\sigma$ : 131.9

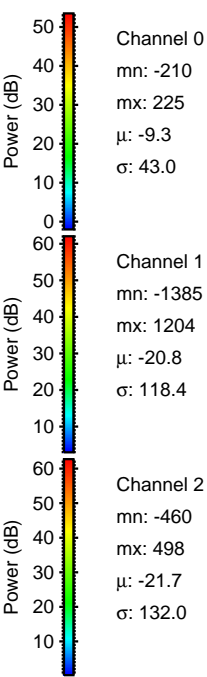
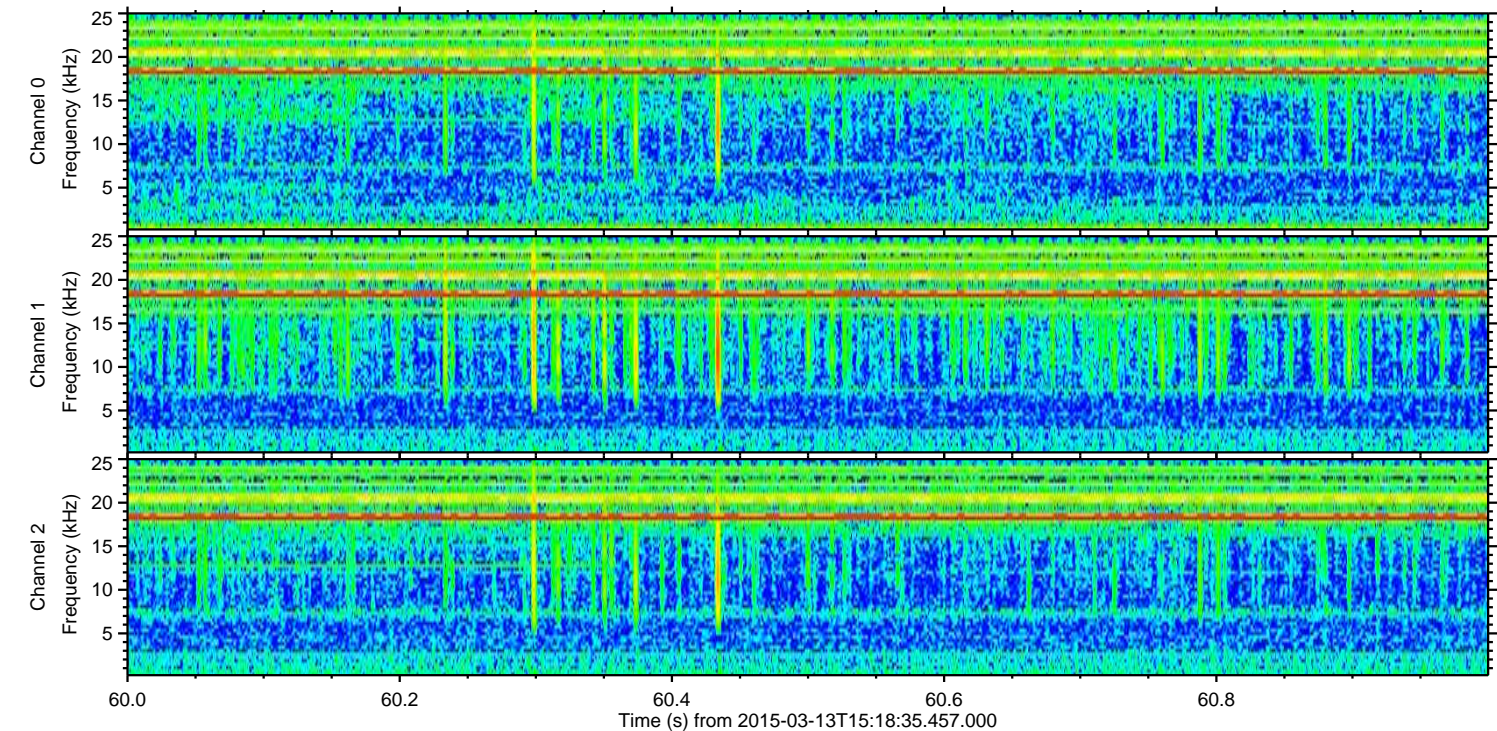
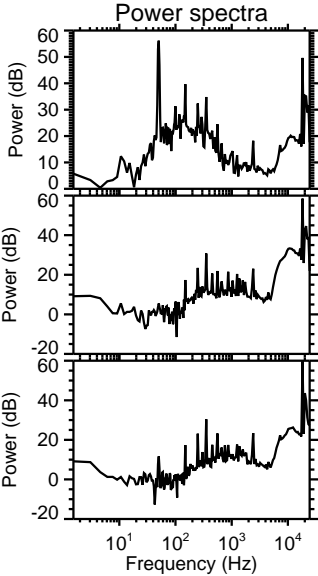
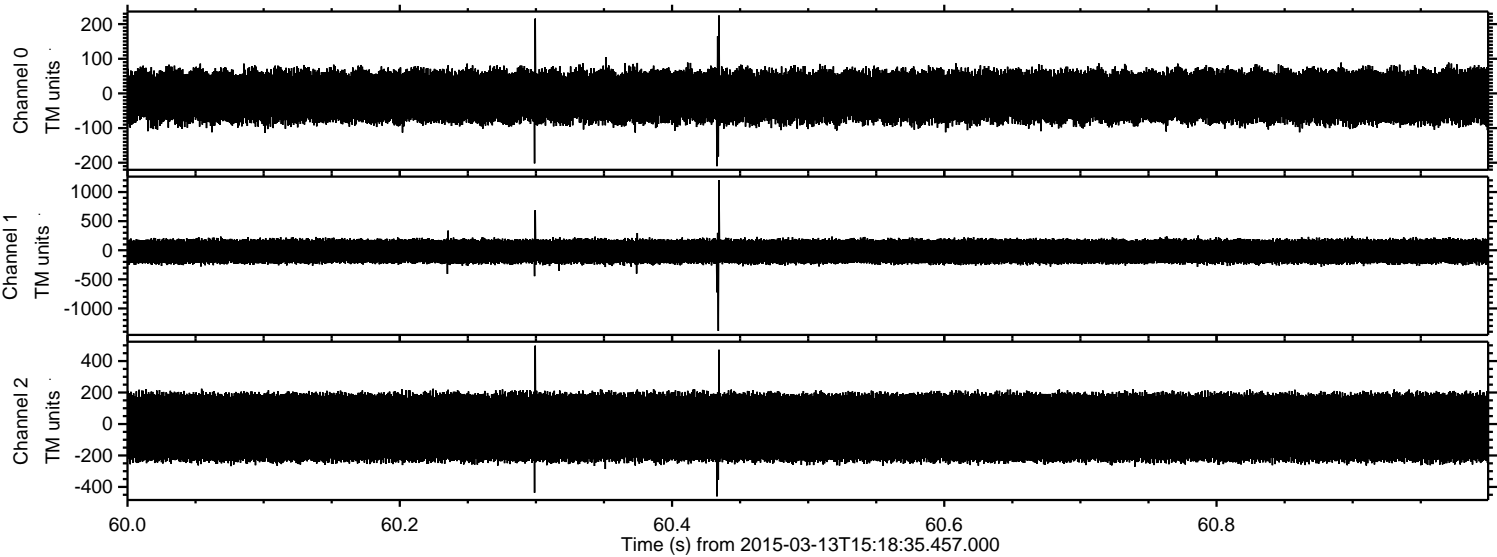


Processed Fri Mar 13 16:27:38 2015 by ELM ver.2012-10-06 from 001\_\_elm20150313\_151834\_\_dat00.bin



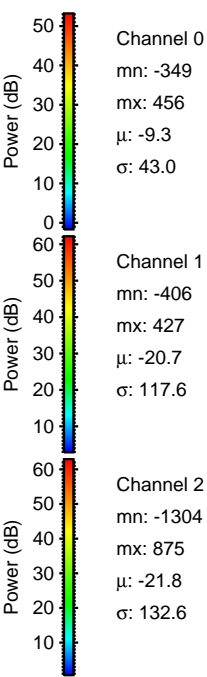
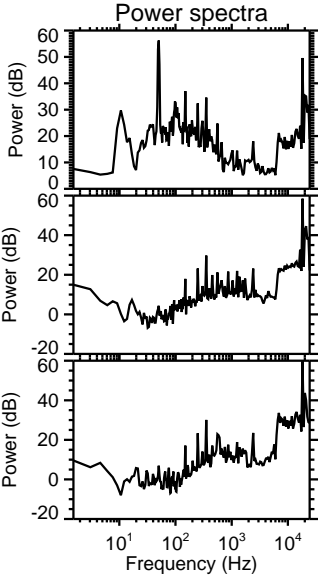
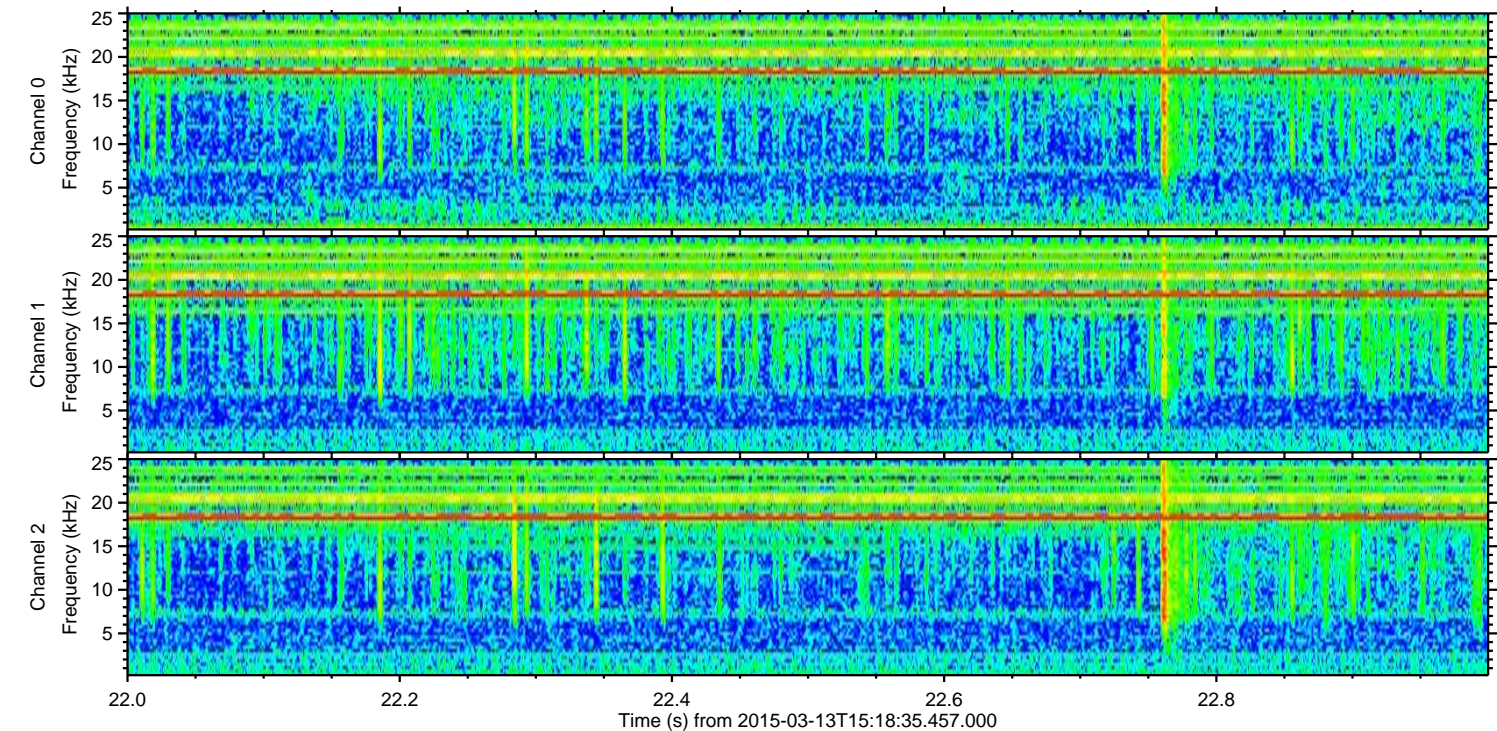
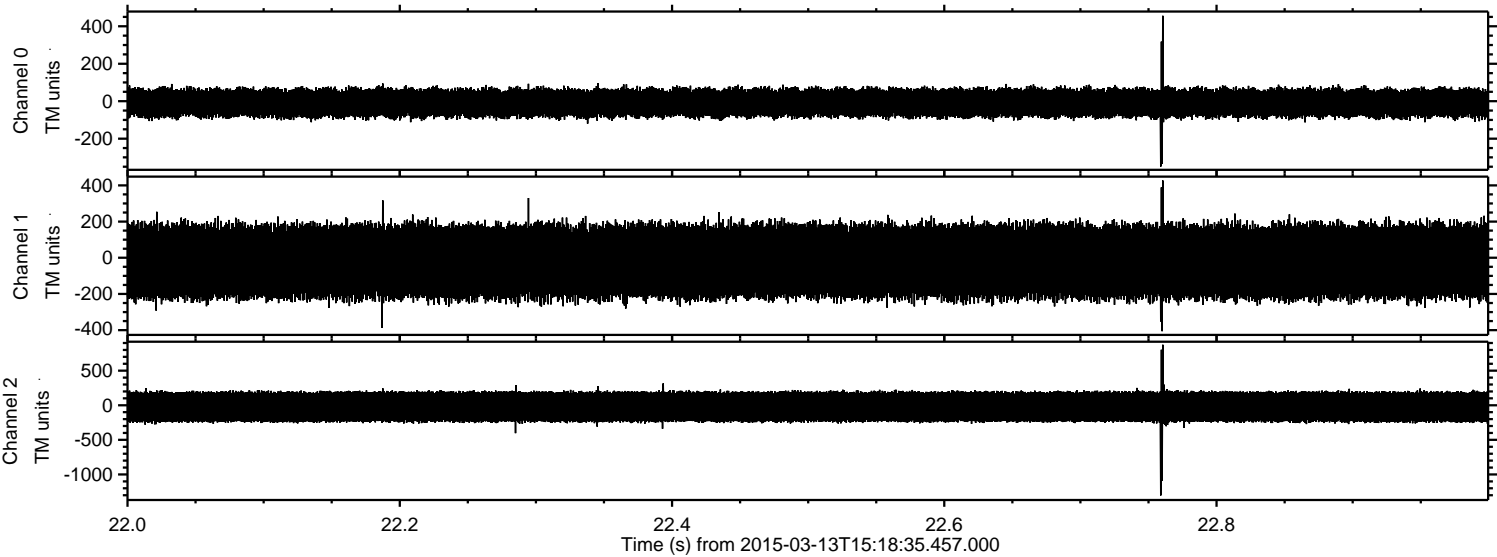


Processed Fri Mar 13 16:27:39 2015 by ELM ver.2012-10-06 from 001\_\_elm20150313\_151834\_\_dat00.bin





Processed Fri Mar 13 16:27:40 2015 by ELM ver.2012-10-06 from 001\_\_elm20150313\_151834\_\_dat00.bin



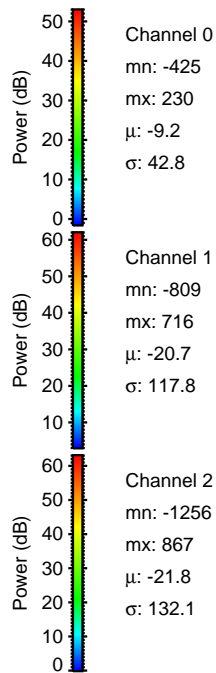
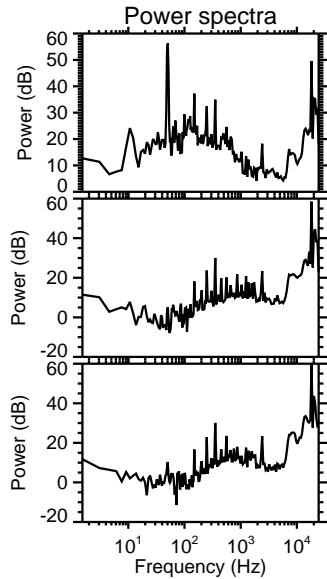
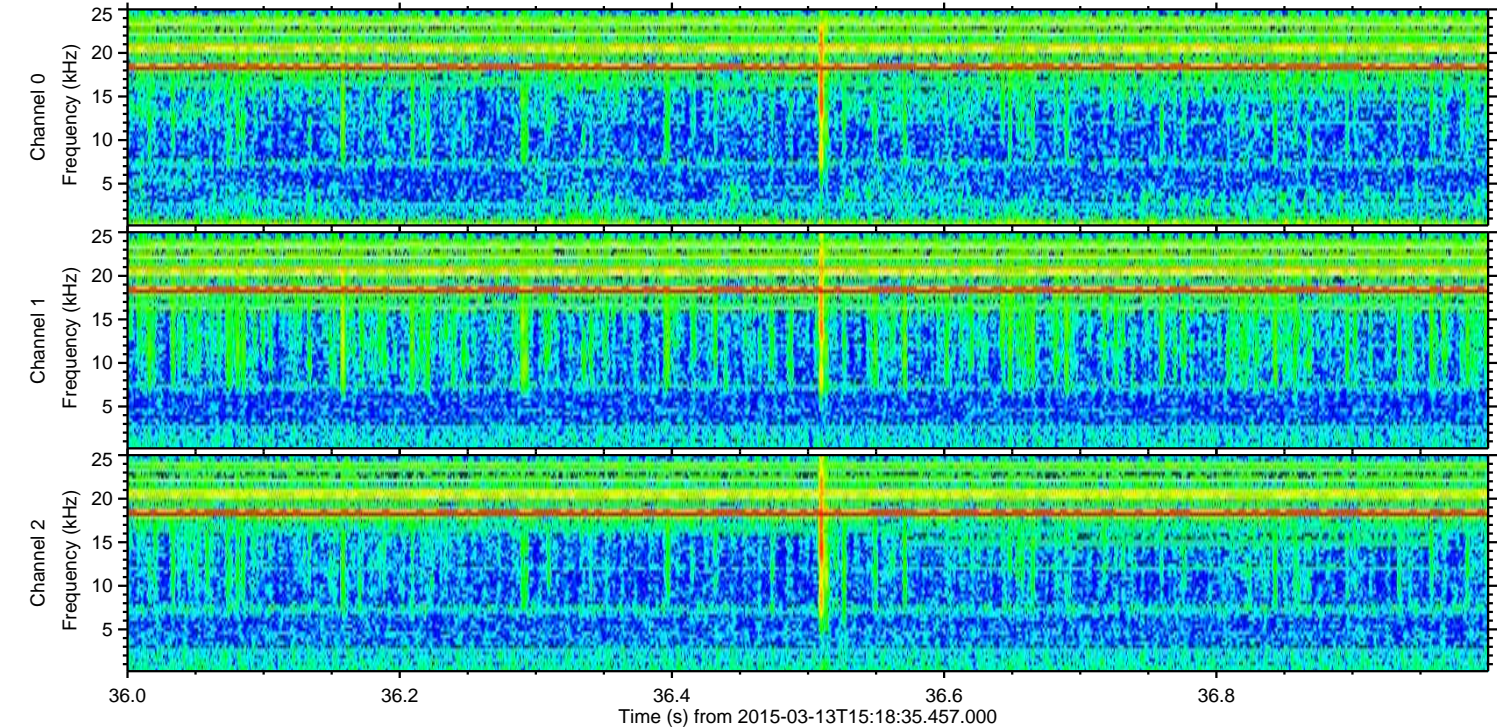
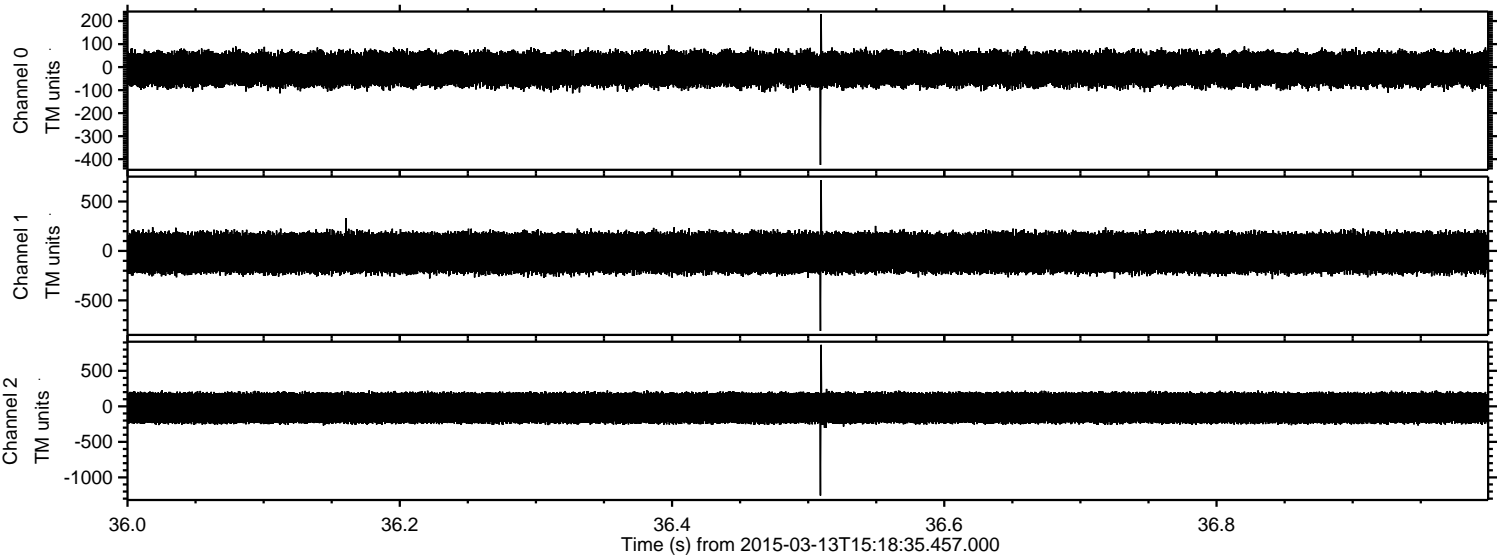
Channel 0  
mn: -349  
mx: 456  
 $\mu$ : -9.3  
 $\sigma$ : 43.0

Channel 1  
mn: -406  
mx: 427  
 $\mu$ : -20.7  
 $\sigma$ : 117.6

Channel 2  
mn: -1304  
mx: 875  
 $\mu$ : -21.8  
 $\sigma$ : 132.6



Processed Fri Mar 13 16:27:41 2015 by ELM ver.2012-10-06 from 001\_\_elm20150313\_151834\_\_dat00.bin



Channel 0  
mn: -425  
mx: 230  
 $\mu$ : -9.2  
 $\sigma$ : 42.8

Channel 1  
mn: -809  
mx: 716  
 $\mu$ : -20.7  
 $\sigma$ : 117.8

Channel 2  
mn: -1256  
mx: 867  
 $\mu$ : -21.8  
 $\sigma$ : 132.1



Processed Fri Mar 13 16:27:42 2015 by ELM ver.2012-10-06 from 001\_\_elm20150313\_151834\_\_dat00.bin

