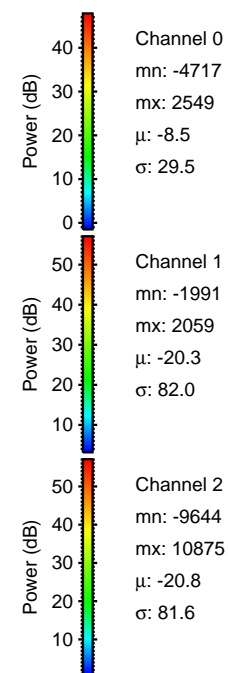
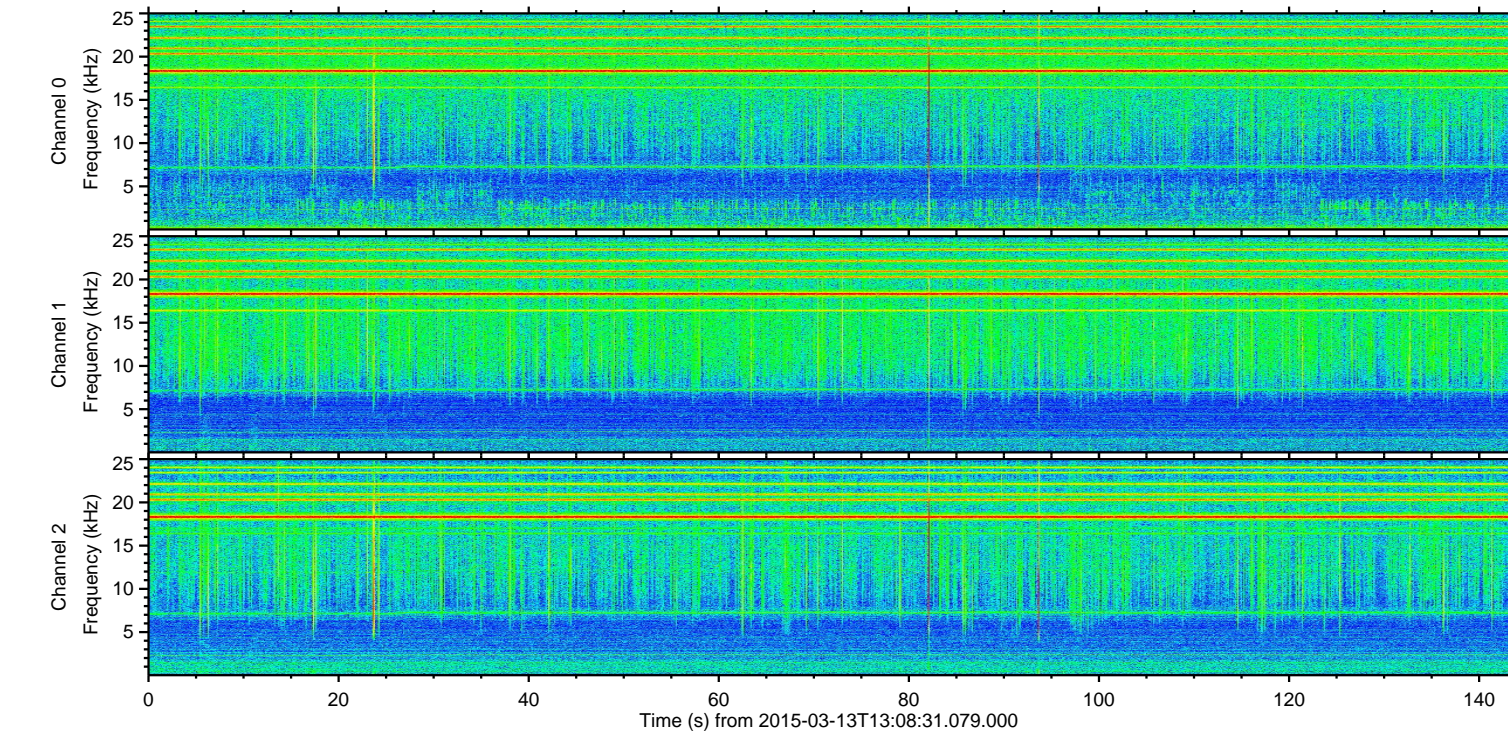
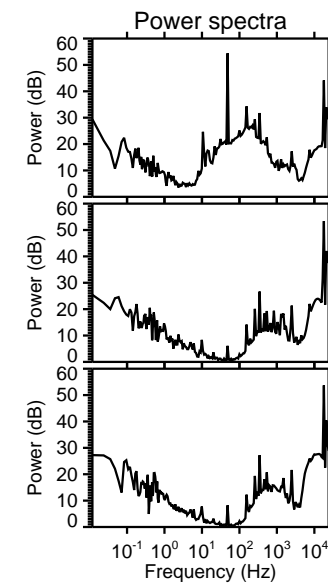
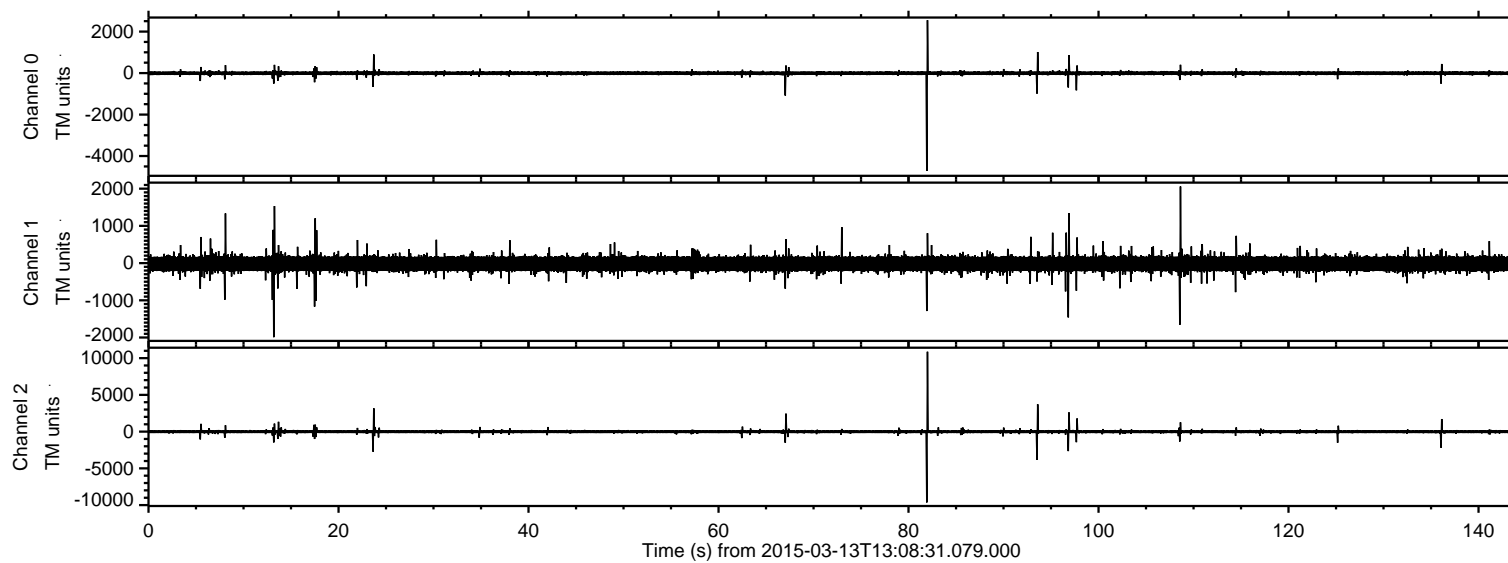
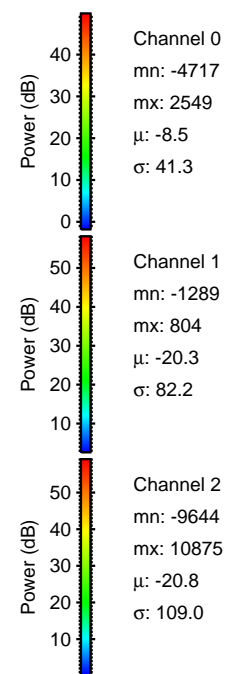
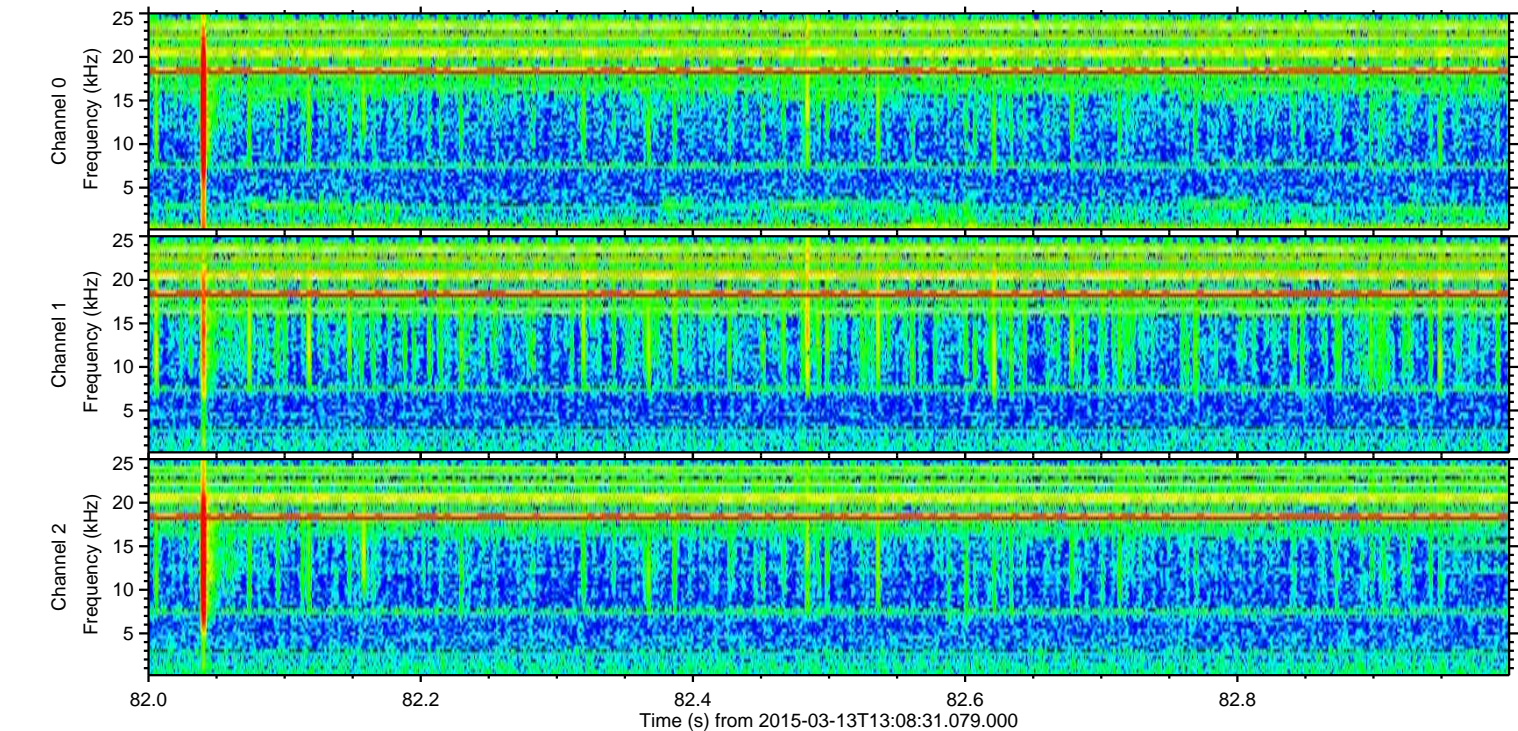
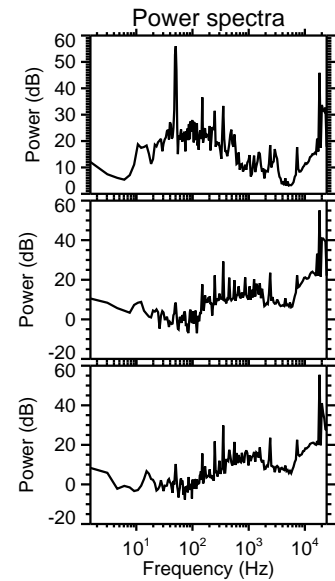
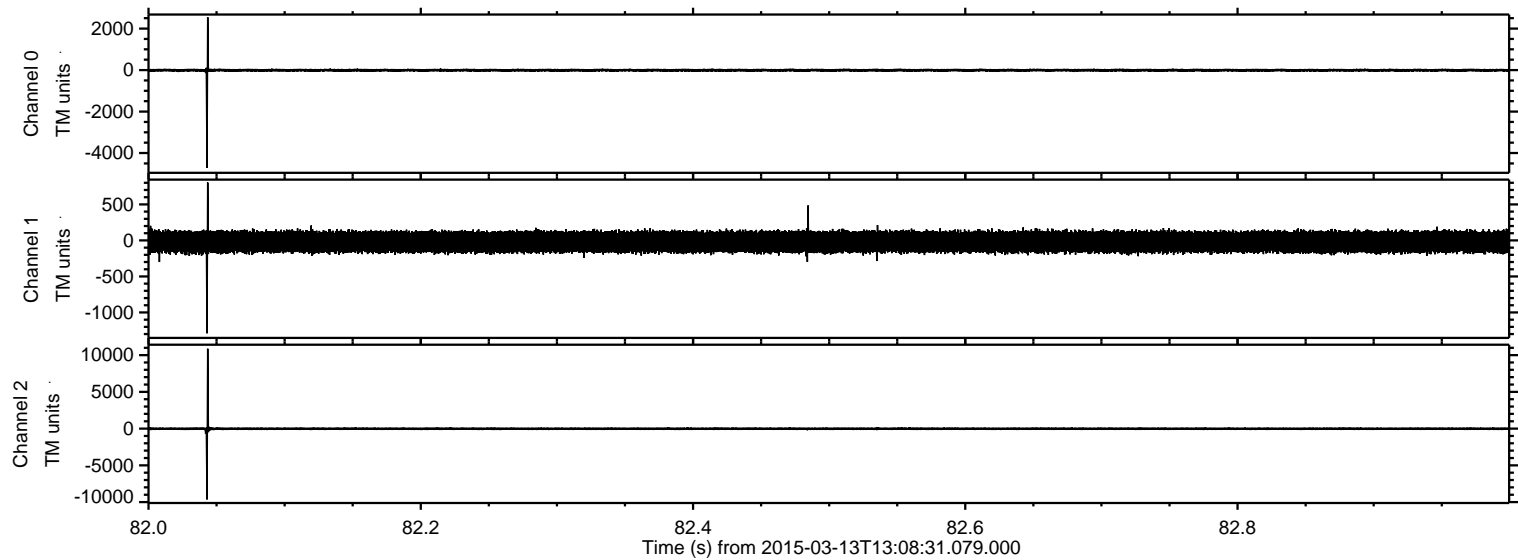


ELMAVAN 3D WAVEFORMS (Measured data sampled at 50 kHz) 49730 packets of 144 samples from 2015-03-13T13:08:31.079.000.

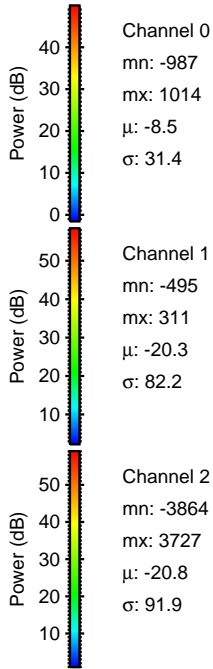
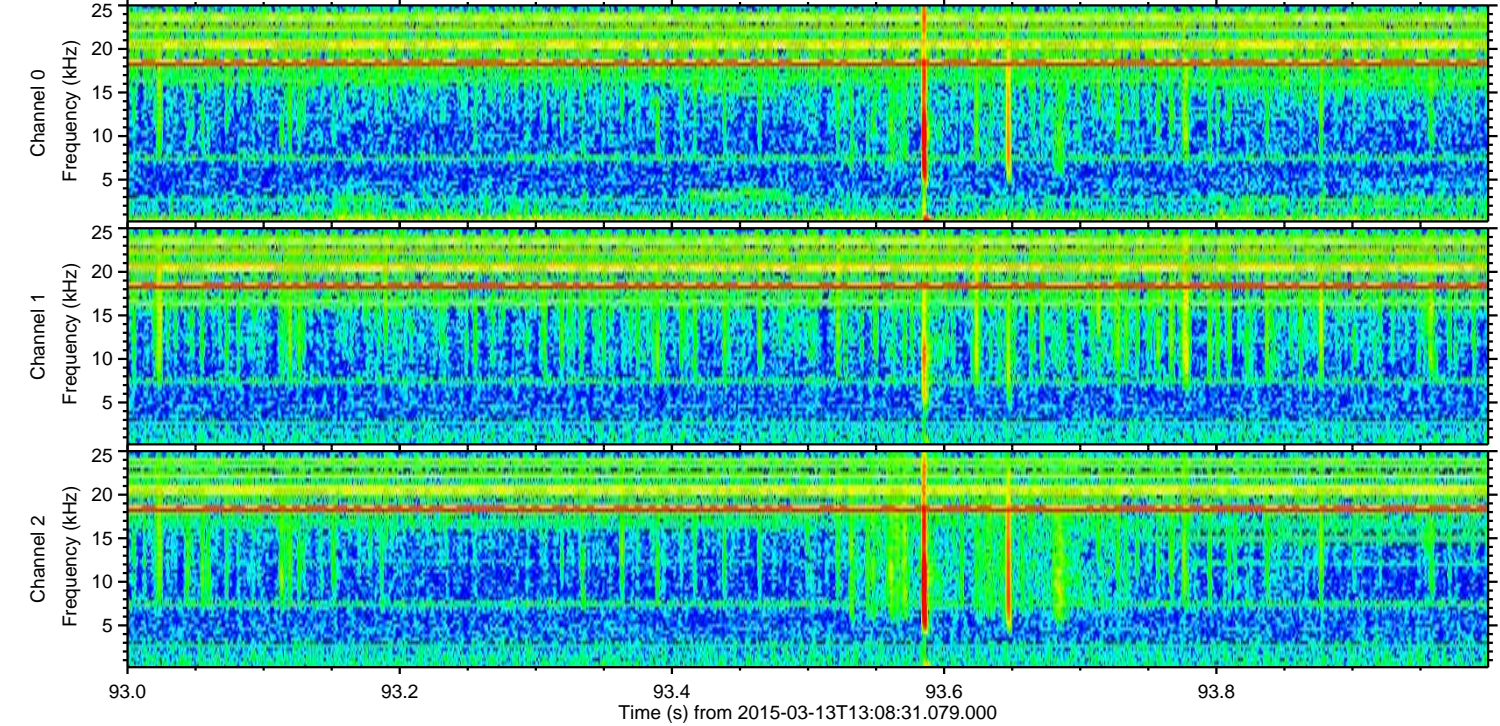
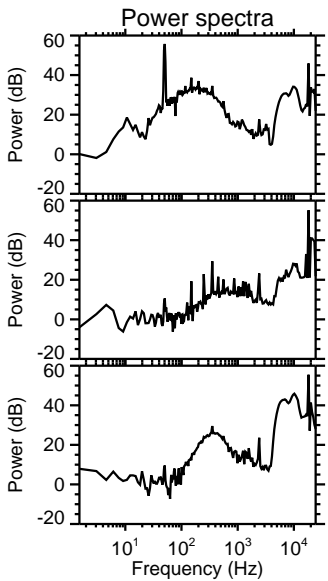
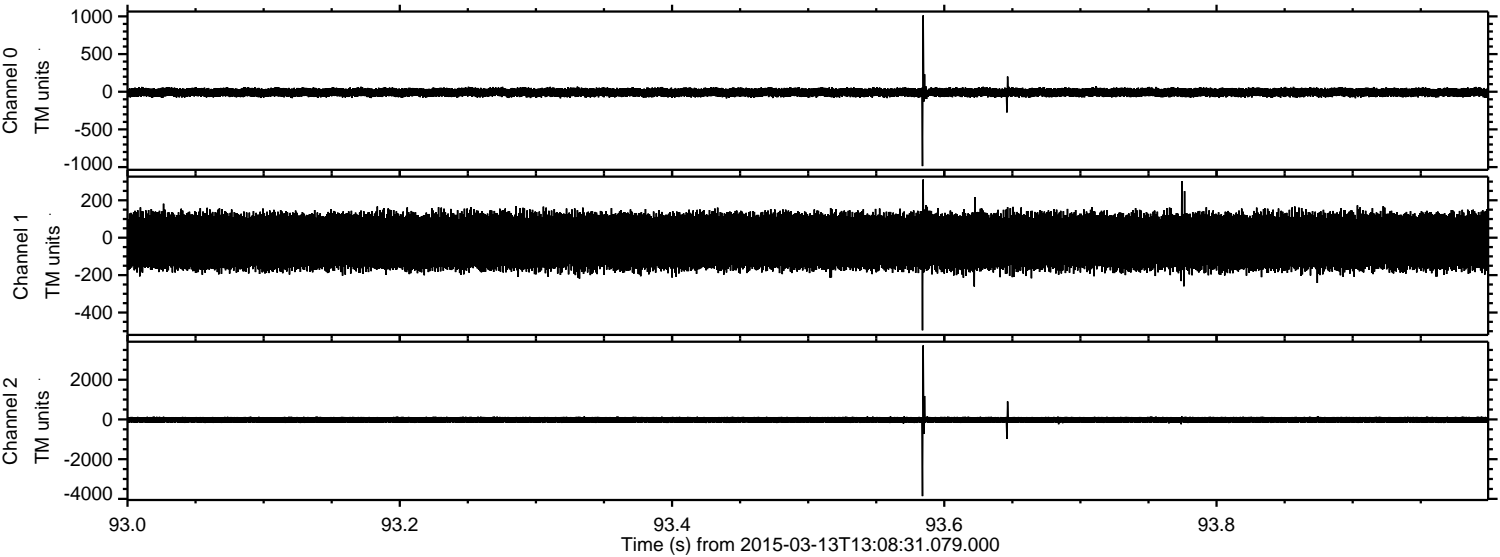
Processed Fri Mar 13 14:16:08 2015 by ELM ver.2012-10-06 from 001__elm20150313_130830__dat00.bin



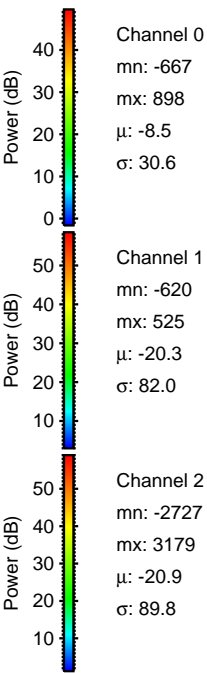
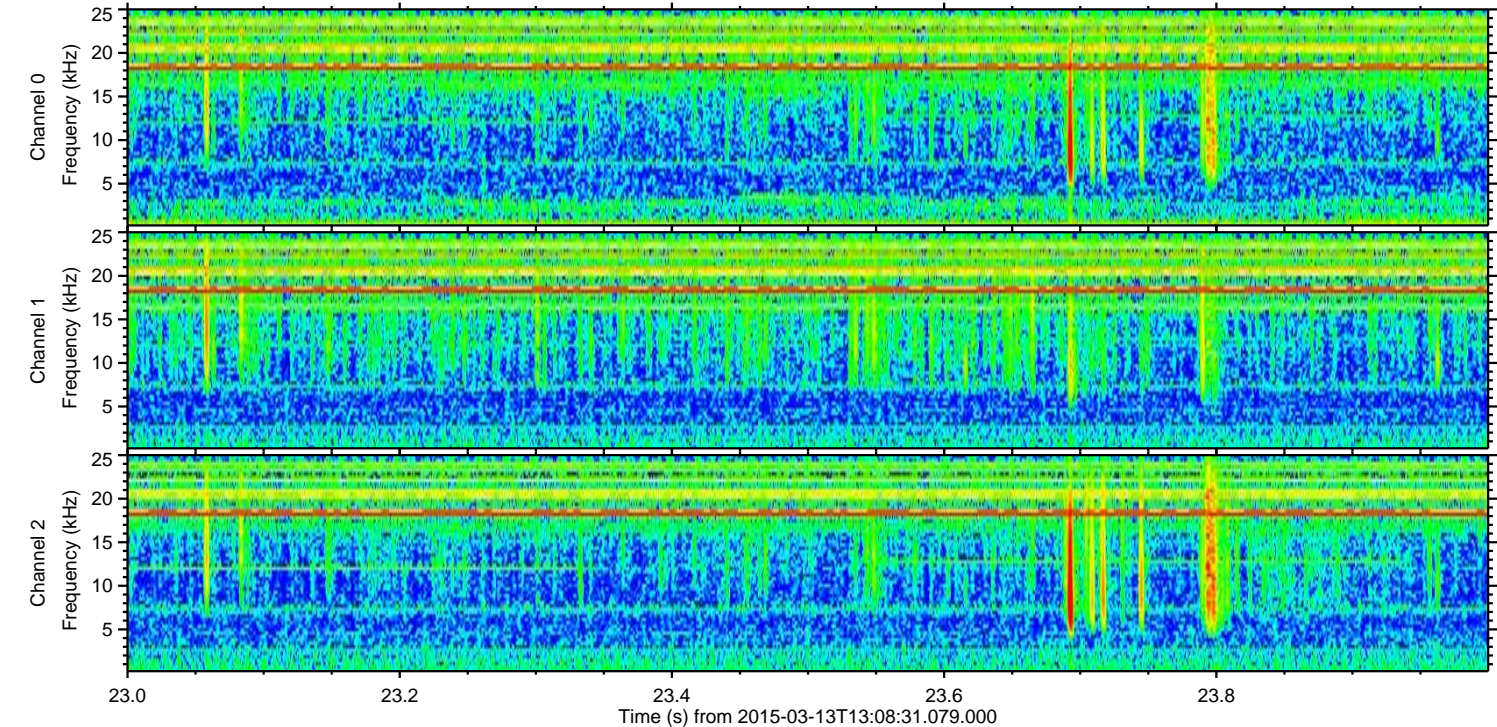
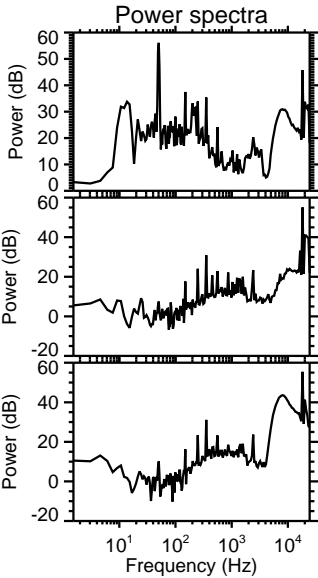
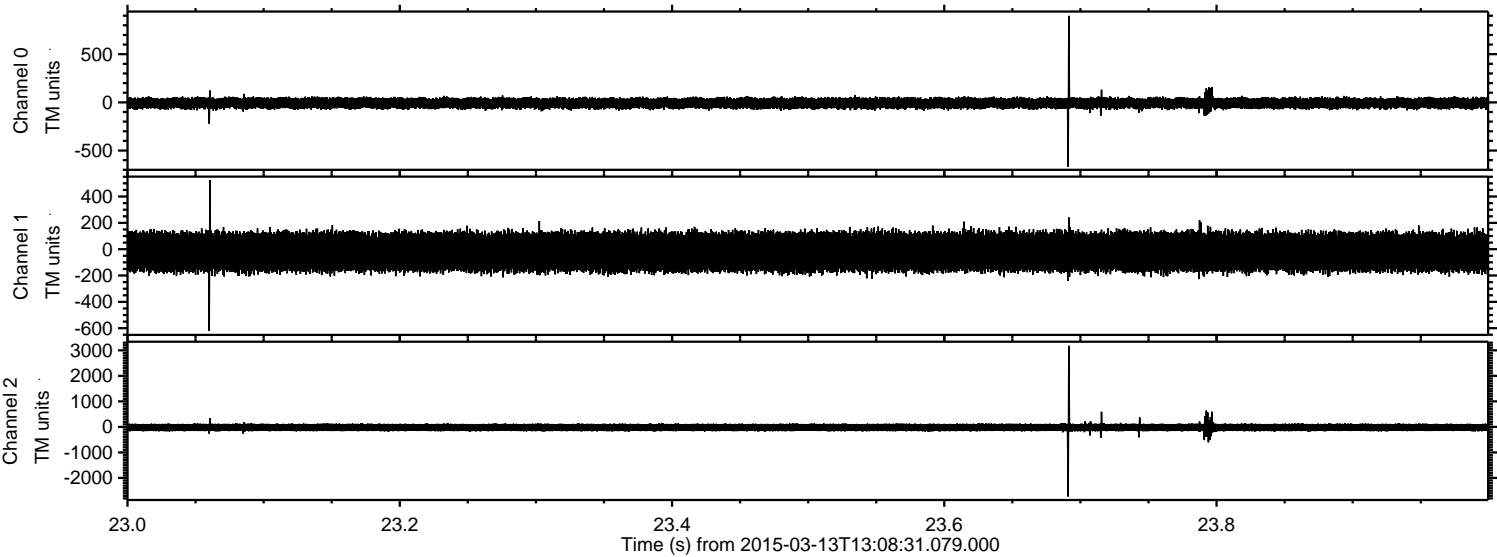
Processed Fri Mar 13 14:16:20 2015 by ELM ver.2012-10-06 from 001__elm20150313_130830__dat00.bin



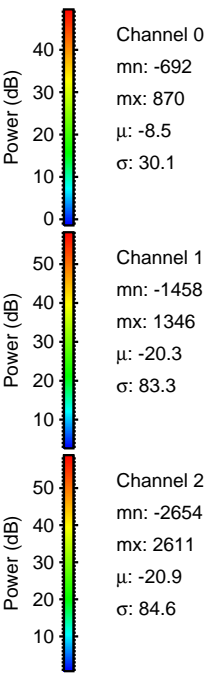
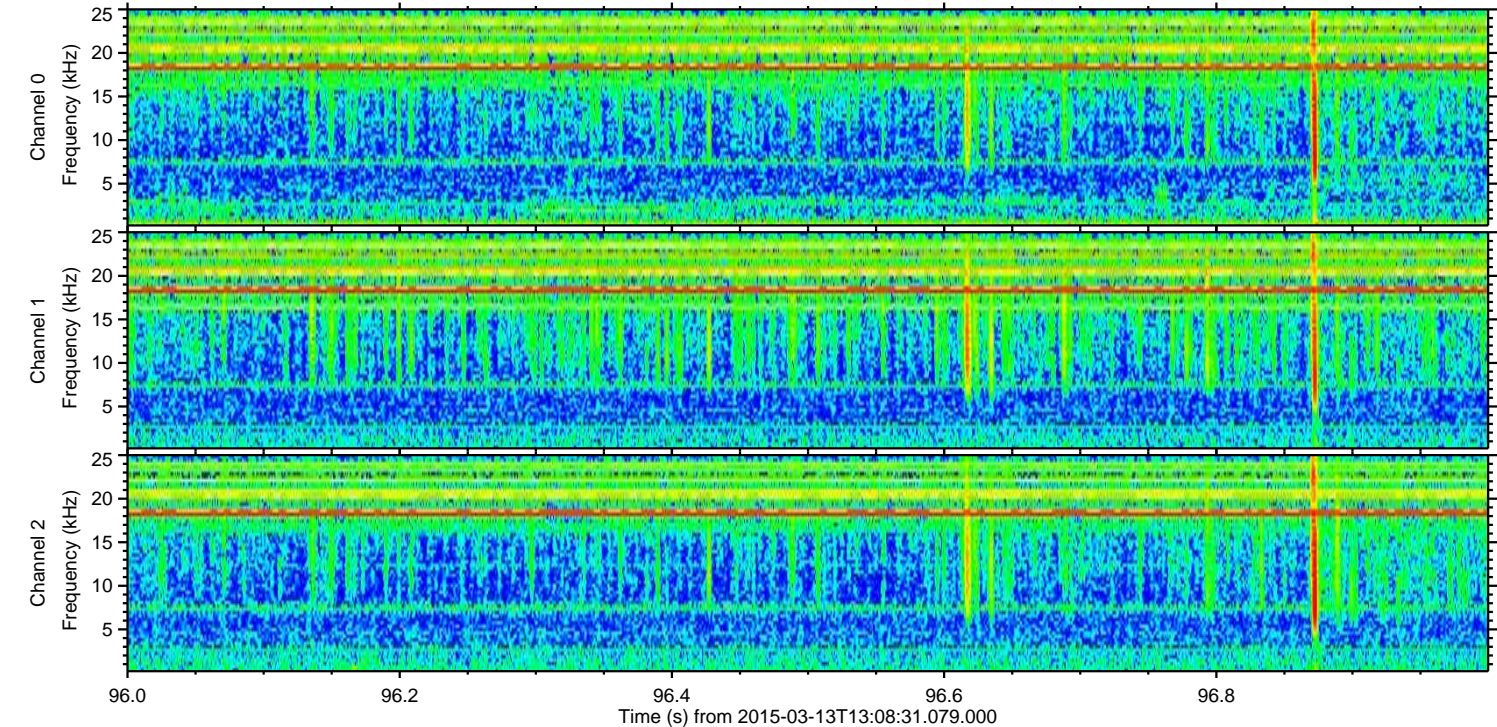
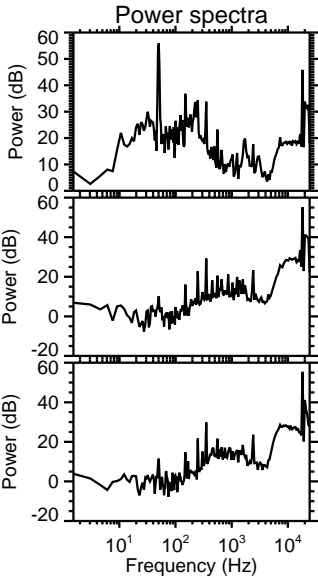
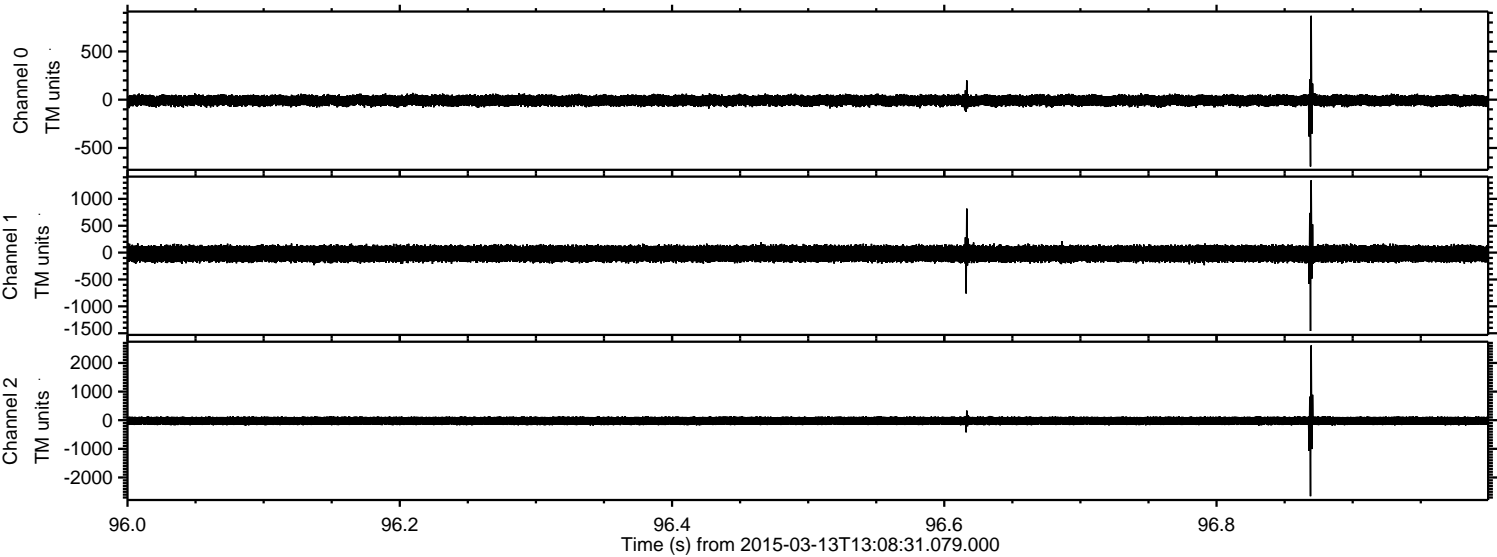
Processed Fri Mar 13 14:16:21 2015 by ELM ver.2012-10-06 from 001__elm20150313_130830__dat00.bin



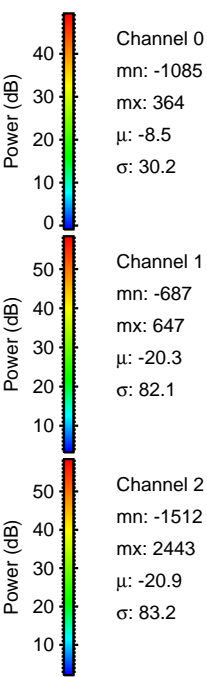
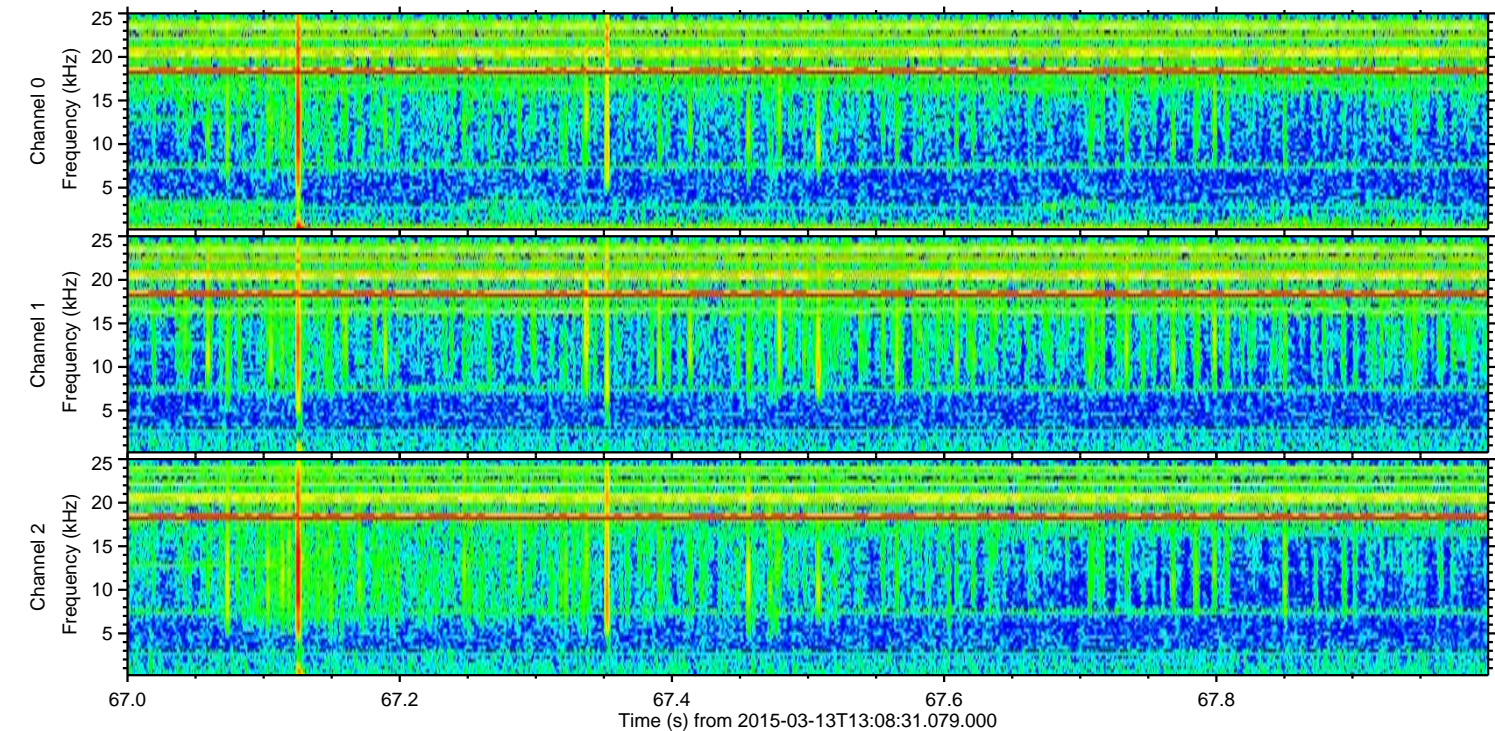
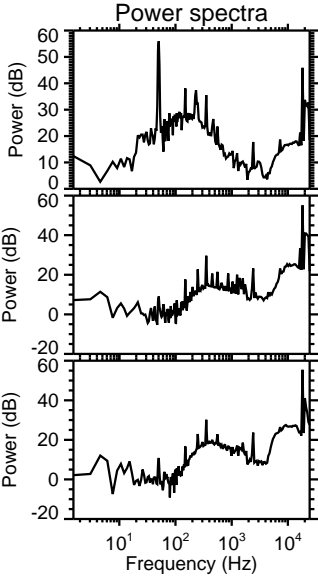
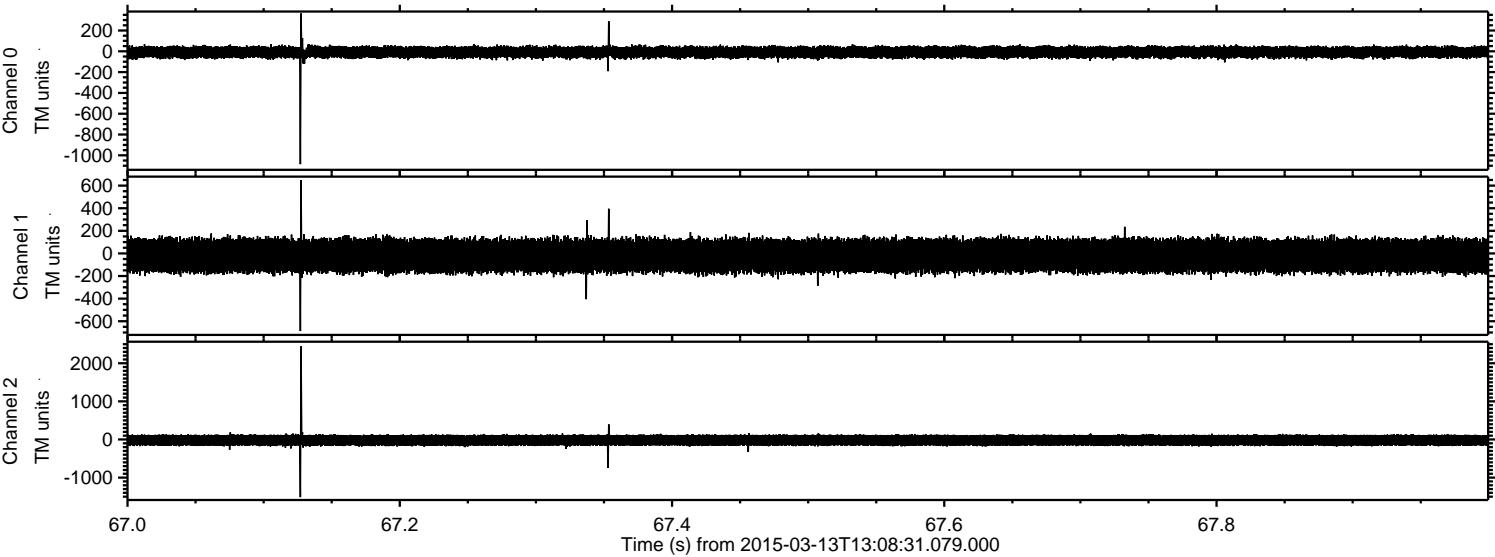
Processed Fri Mar 13 14:16:22 2015 by ELM ver.2012-10-06 from 001__elm20150313_130830__dat00.bin



Processed Fri Mar 13 14:16:23 2015 by ELM ver.2012-10-06 from 001__elm20150313_130830__dat00.bin

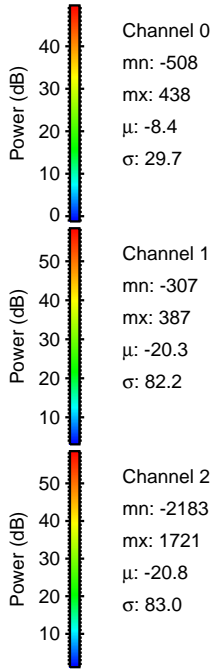
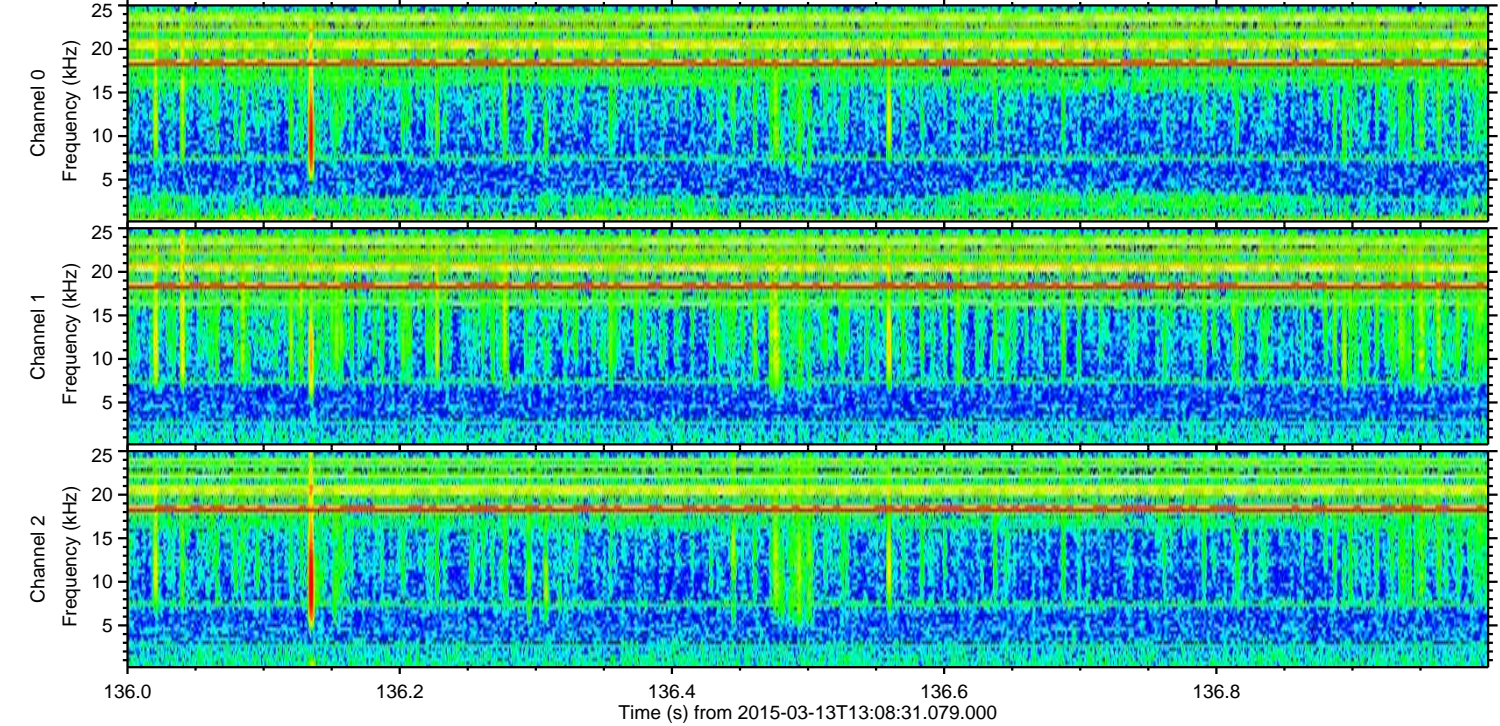
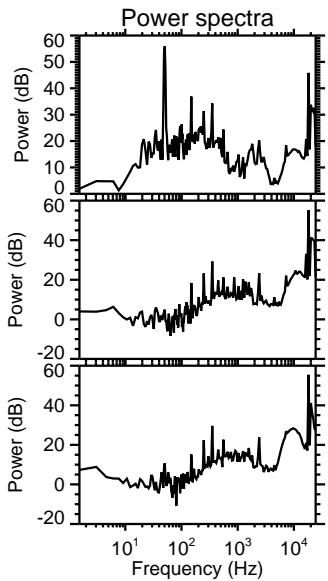
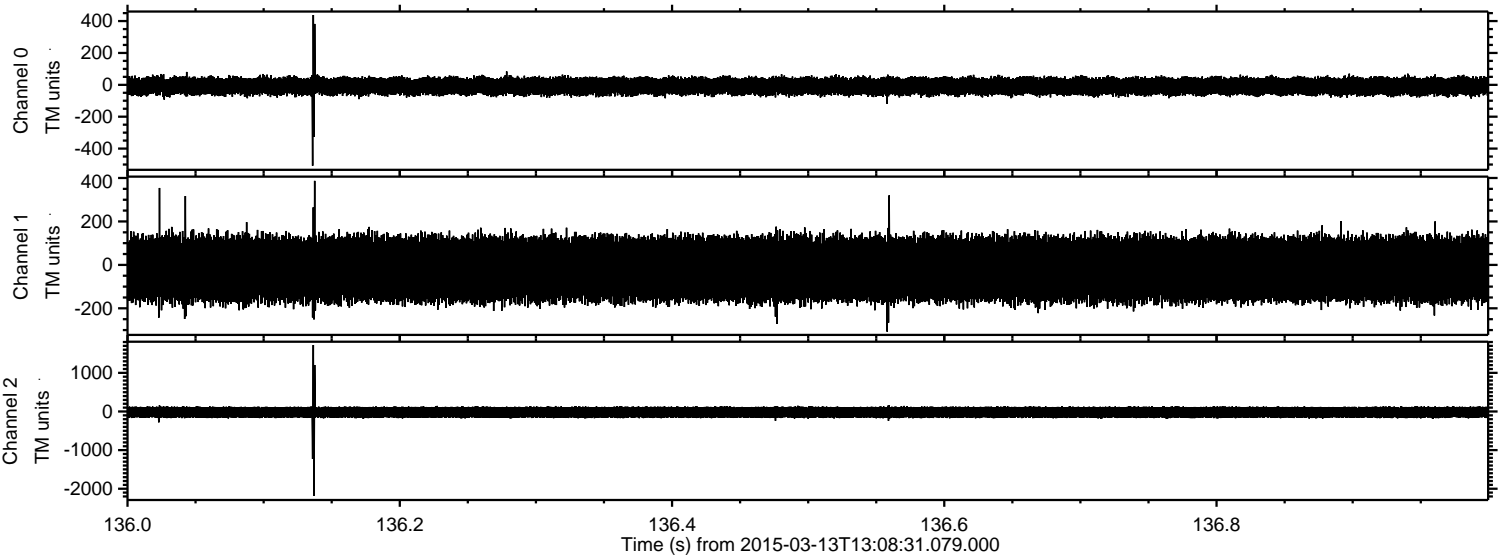


Processed Fri Mar 13 14:16:24 2015 by ELM ver.2012-10-06 from 001__elm20150313_130830__dat00.bin



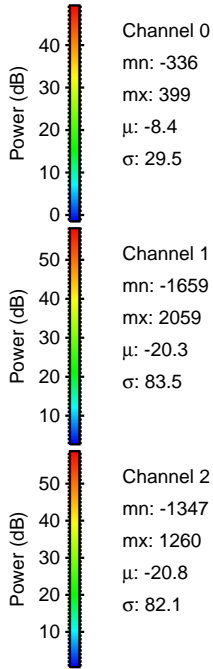
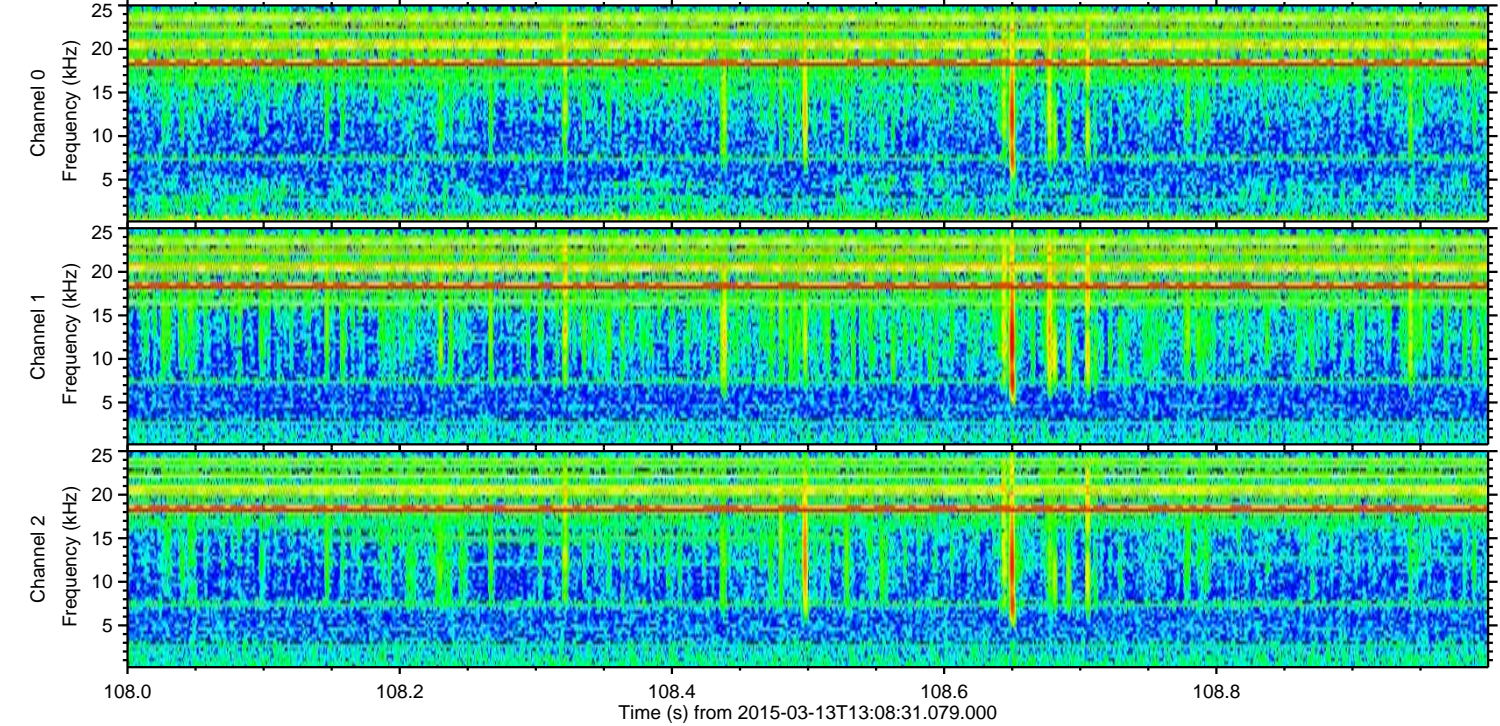
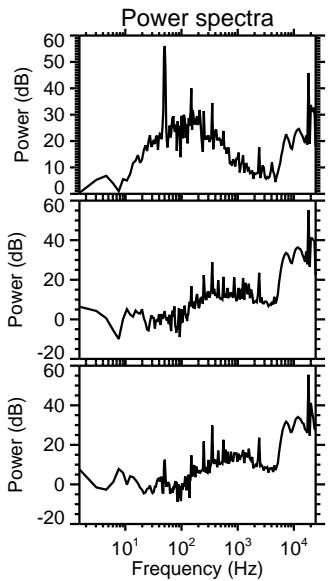
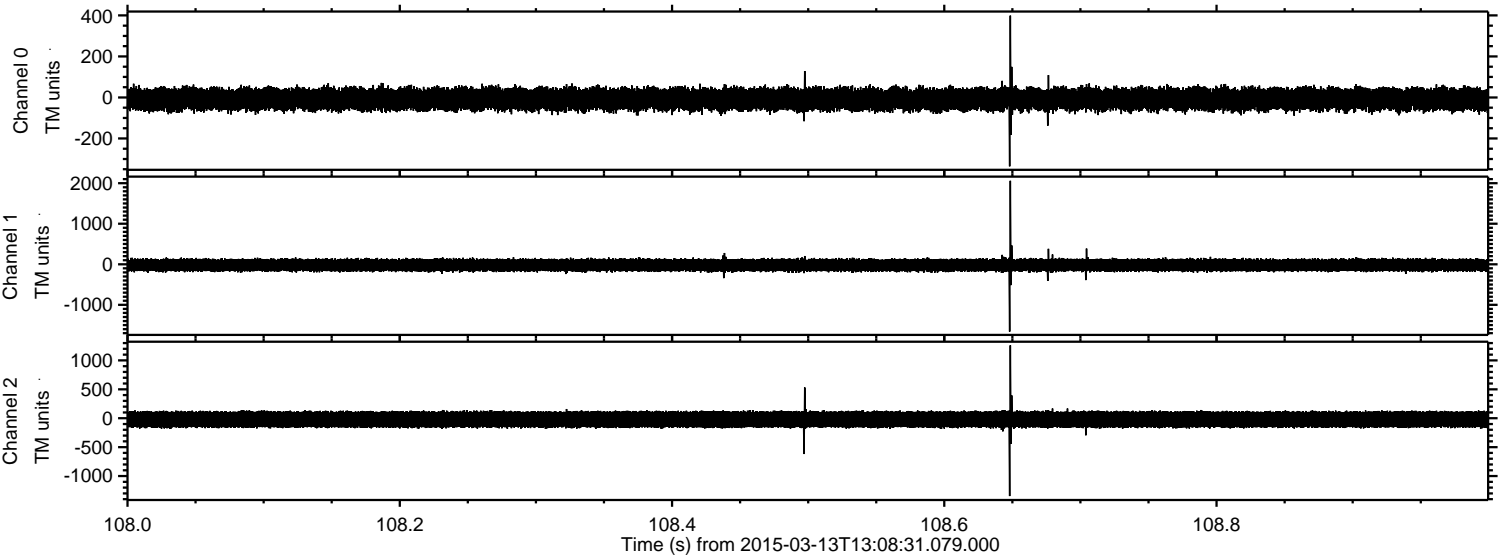
ELMAVAN 3D WAVEFORMS (Measured data sampled at 50 kHz) 49730 packets of 144 samples from 2015-03-13T13:08:31.079.000. Part 137/144

Processed Fri Mar 13 14:16:24 2015 by ELM ver.2012-10-06 from 001__elm20150313_130830__dat00.bin

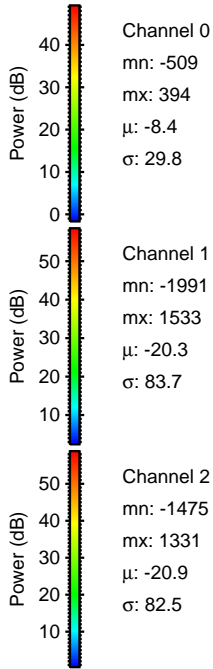
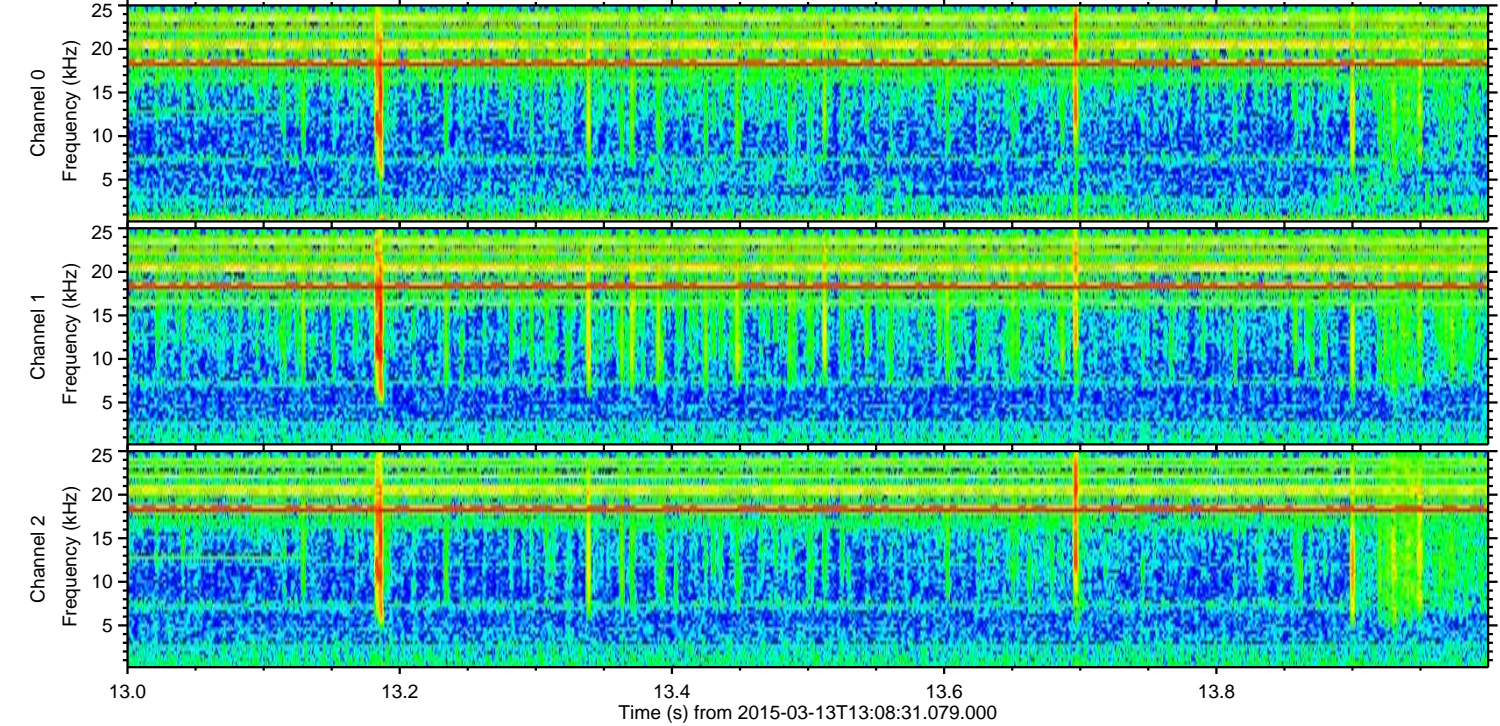
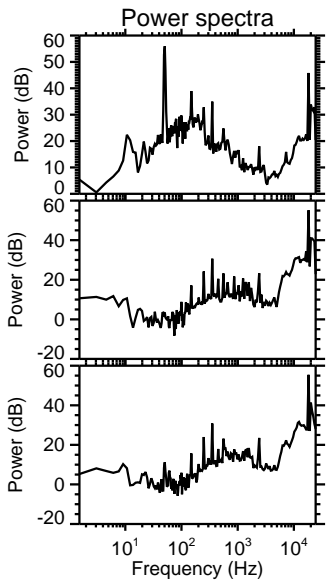
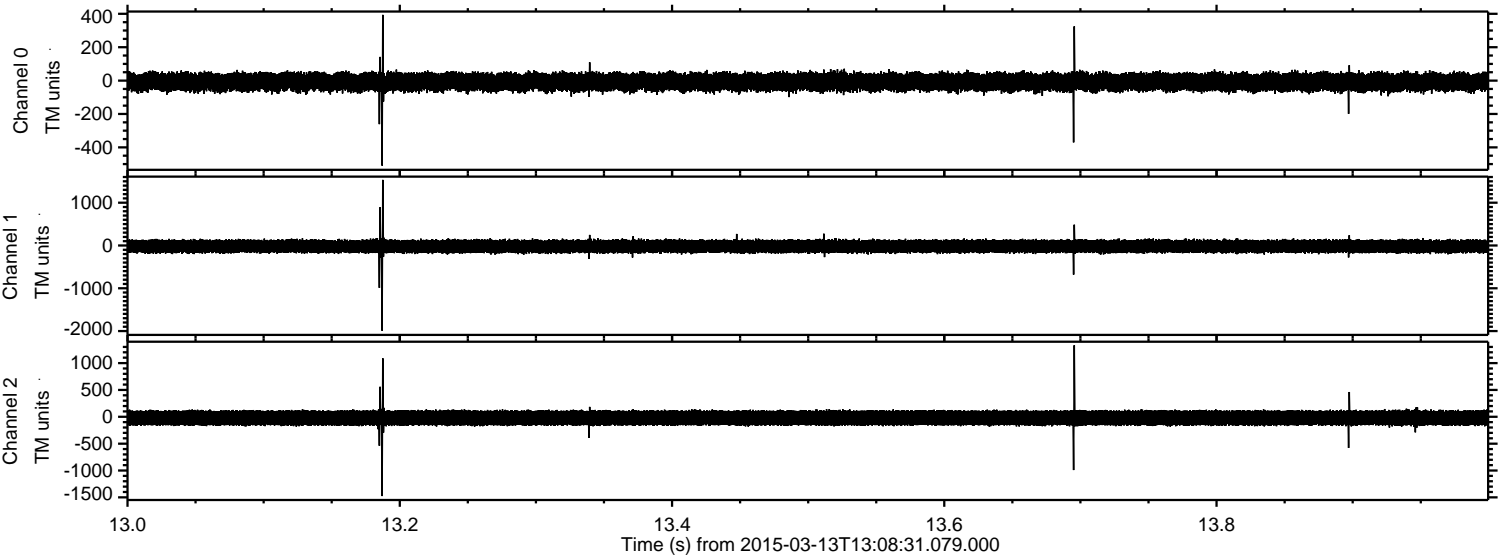


ELMAVAN 3D WAVEFORMS (Measured data sampled at 50 kHz) 49730 packets of 144 samples from 2015-03-13T13:08:31.079.000. Part 109/144

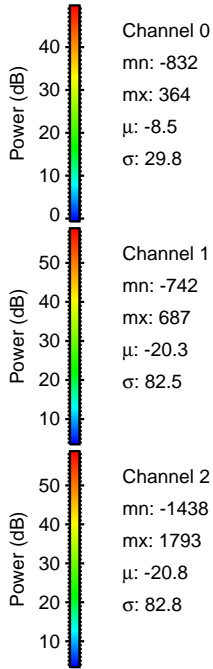
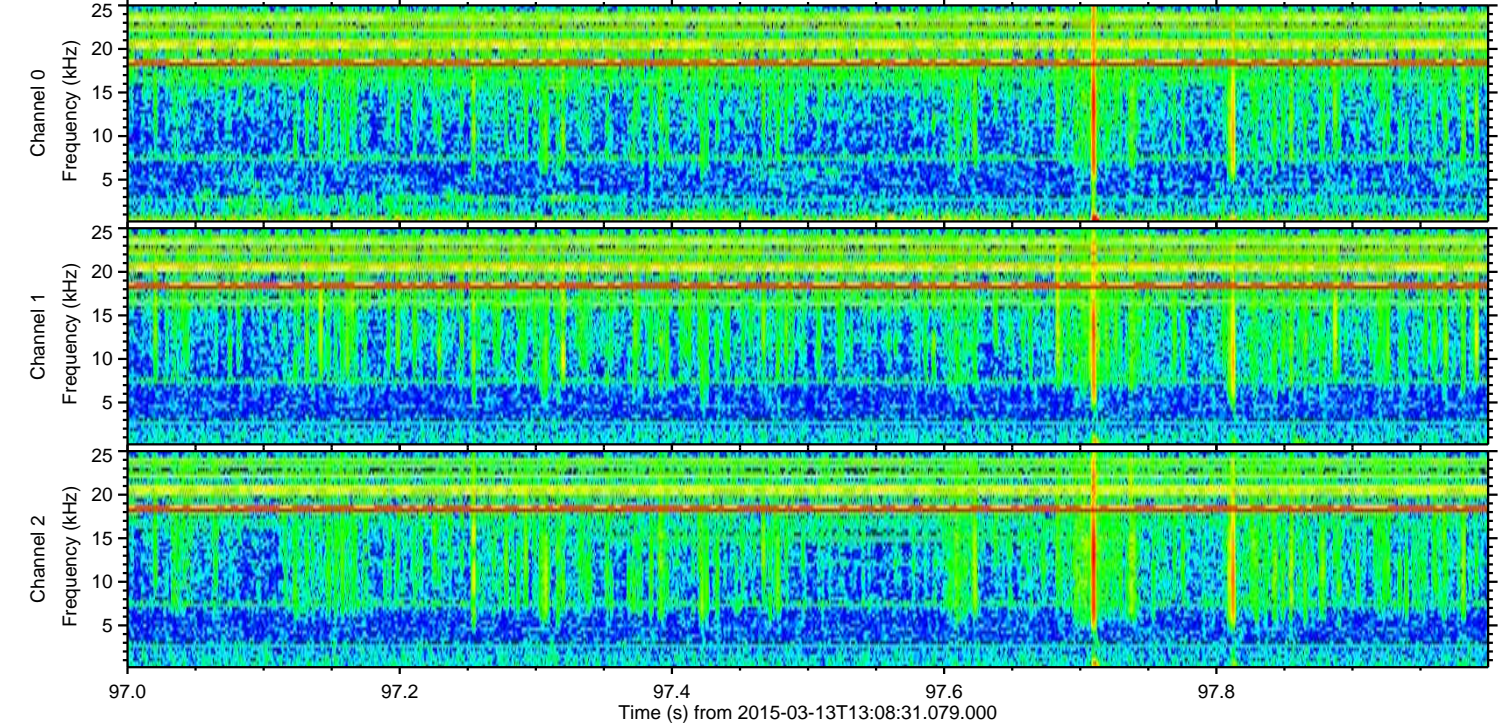
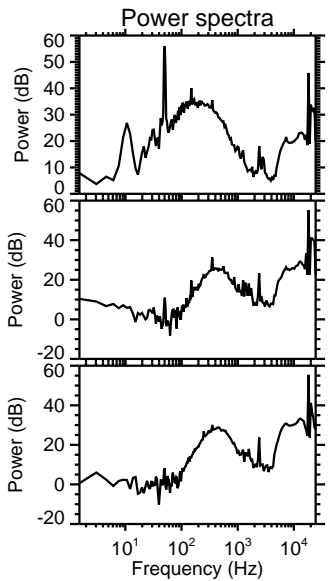
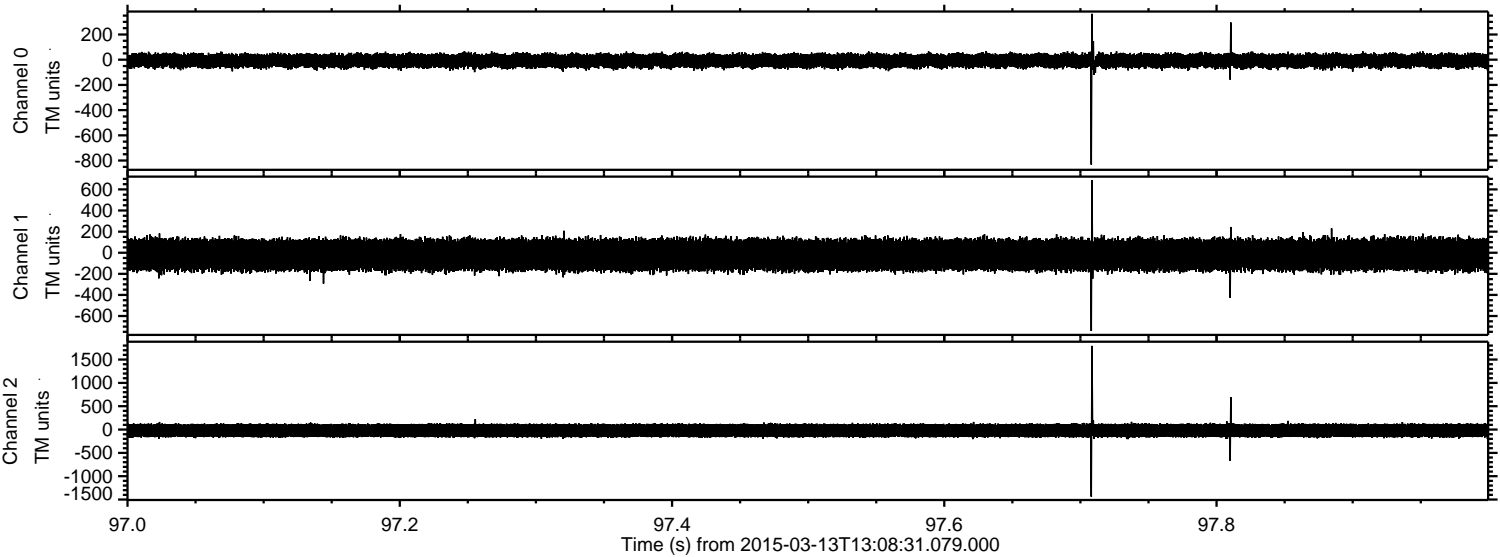
Processed Fri Mar 13 14:16:25 2015 by ELM ver.2012-10-06 from 001__elm20150313_130830__dat00.bin



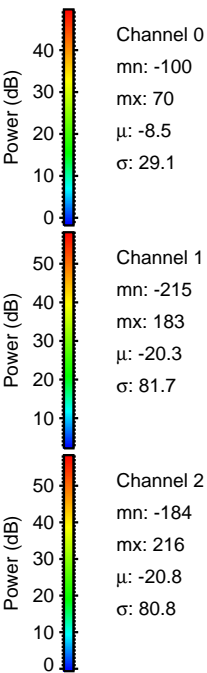
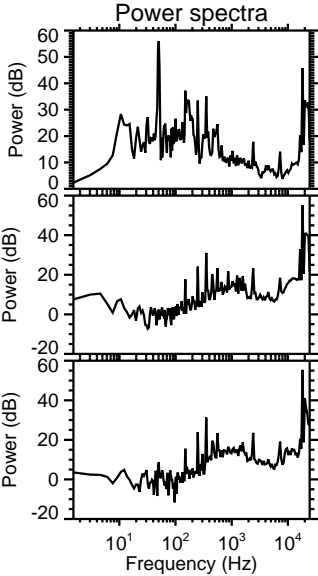
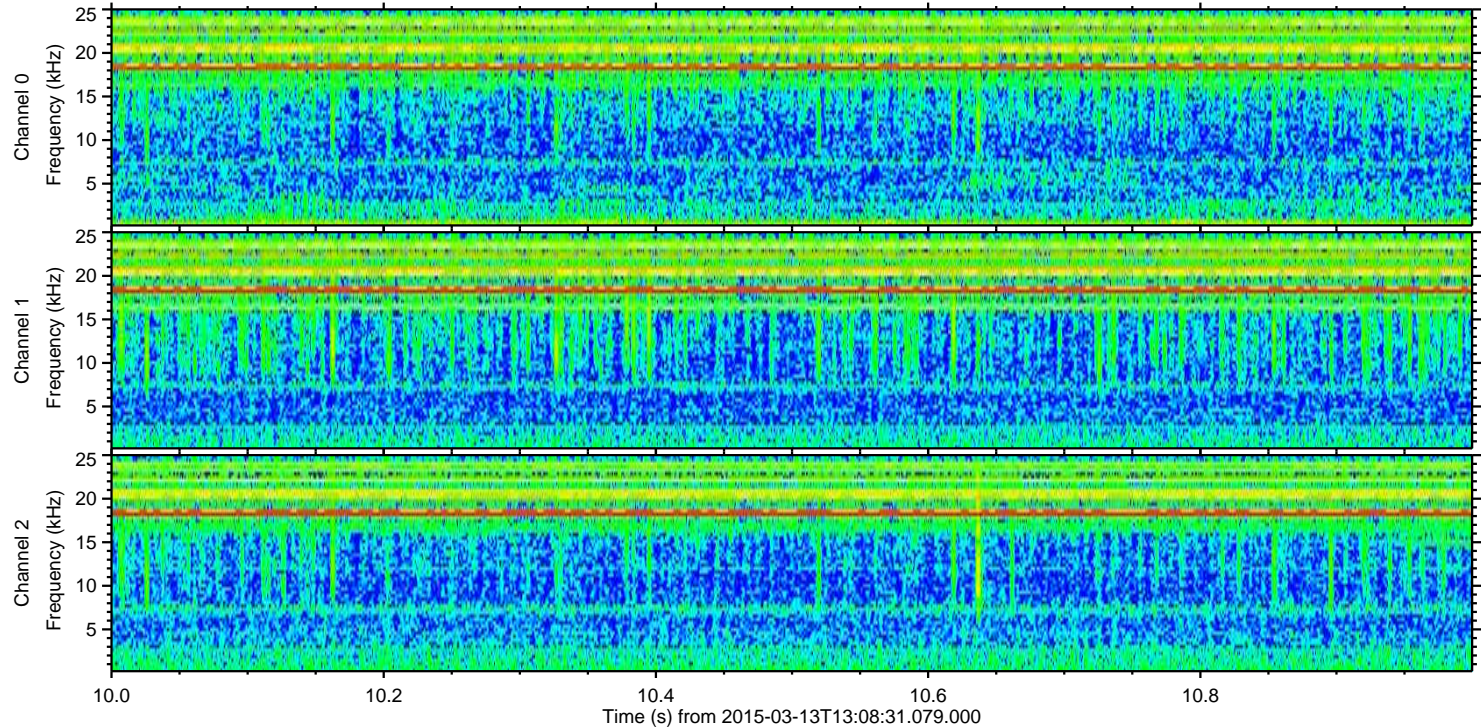
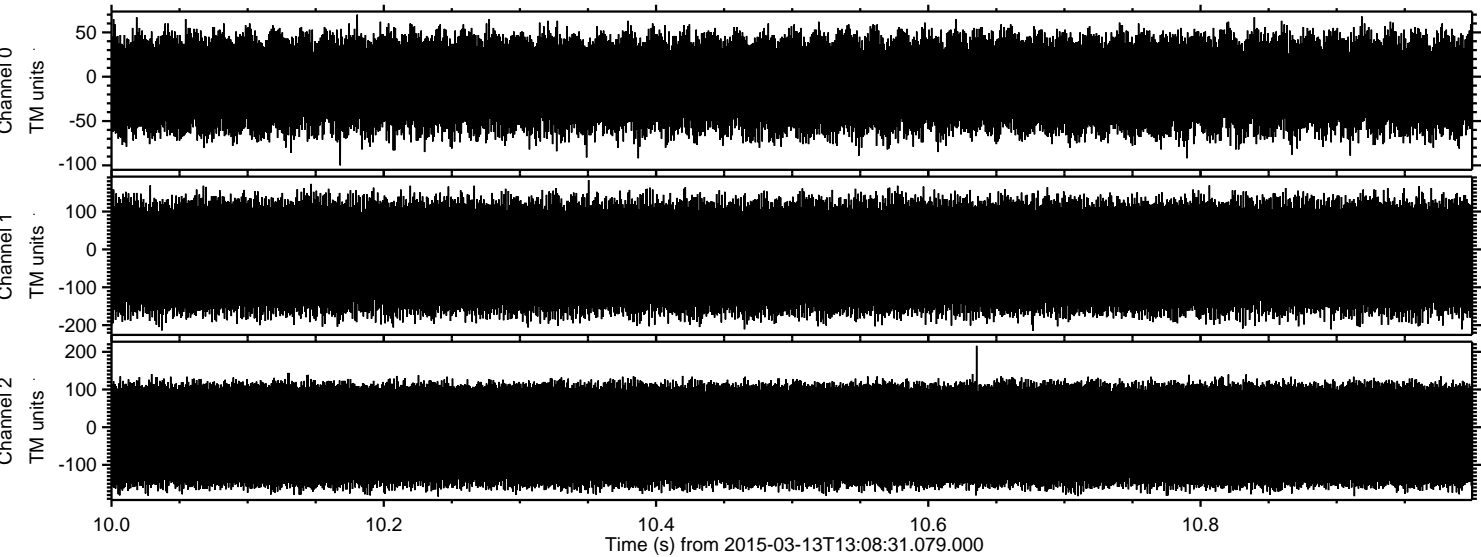
Processed Fri Mar 13 14:16:26 2015 by ELM ver.2012-10-06 from 001__elm20150313_130830__dat00.bin



Processed Fri Mar 13 14:16:27 2015 by ELM ver.2012-10-06 from 001__elm20150313_130830__dat00.bin



Processed Fri Mar 13 14:16:28 2015 by ELM ver.2012-10-06 from 001__elm20150313_130830__dat00.bin



Channel 0
mn: -100
mx: 70
 μ : -8.5
 σ : 29.1

Channel 1
mn: -215
mx: 183
 μ : -20.3
 σ : 81.7

Channel 2
mn: -184
mx: 216
 μ : -20.8
 σ : 80.8