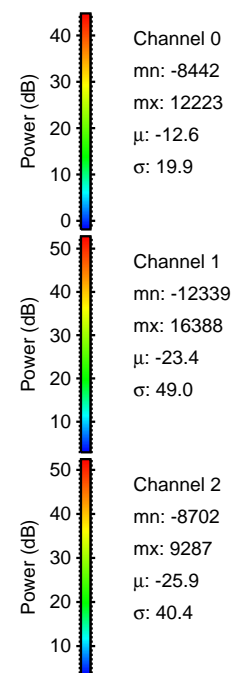
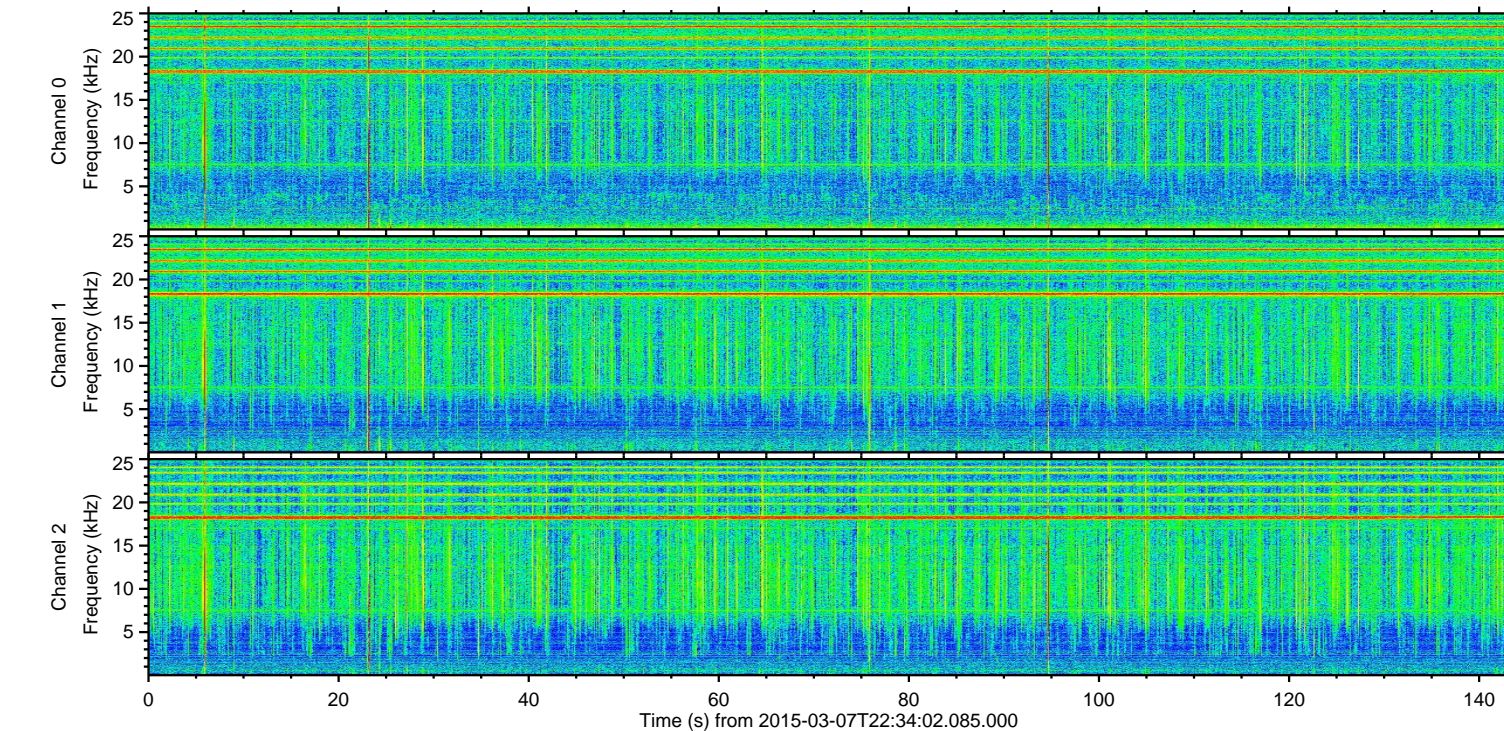
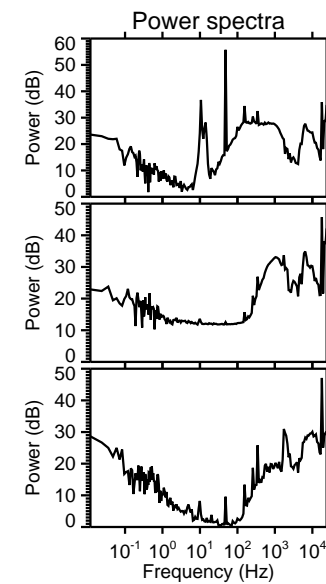
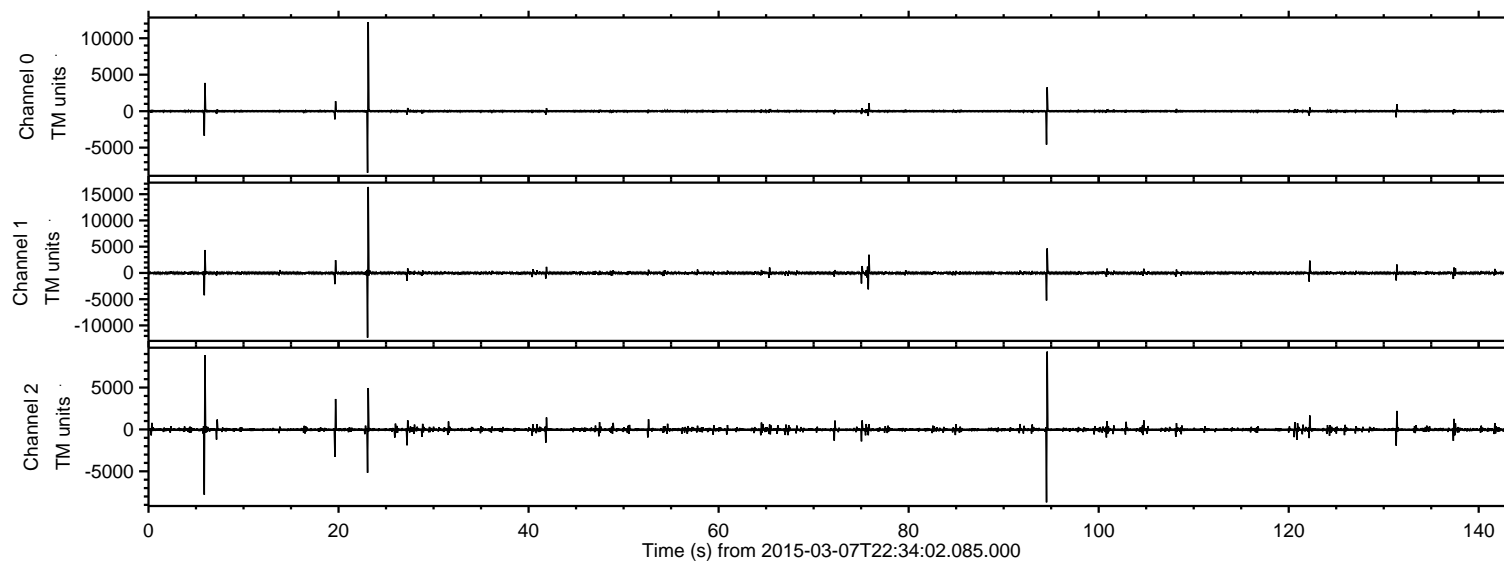


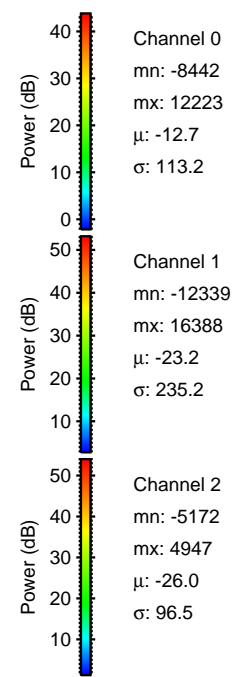
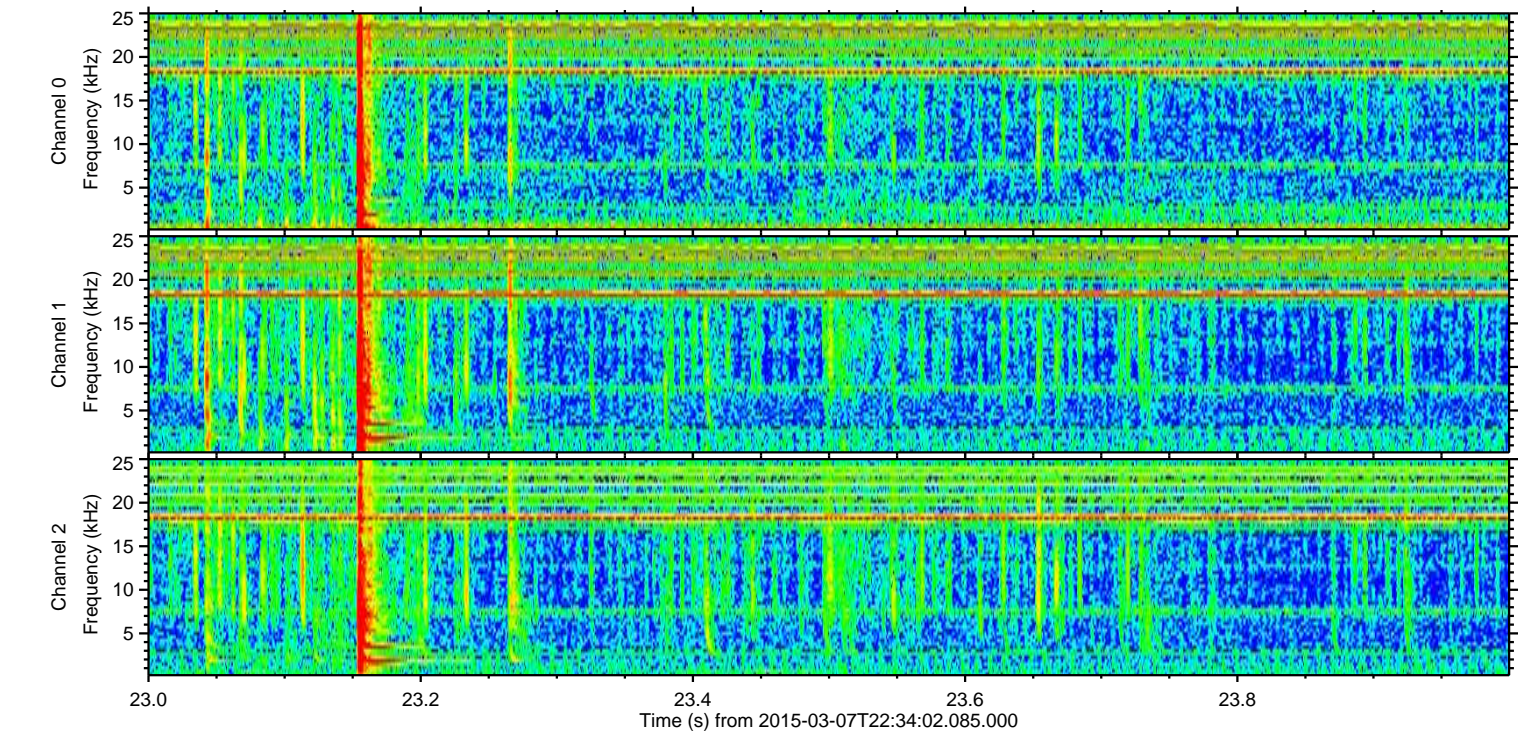
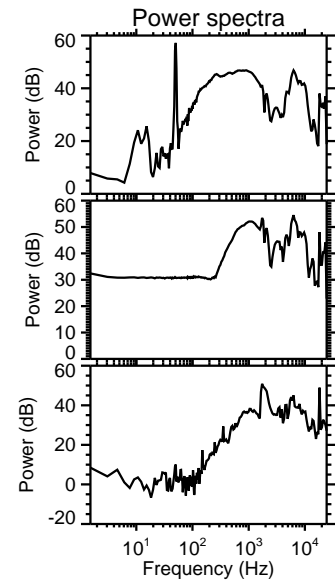
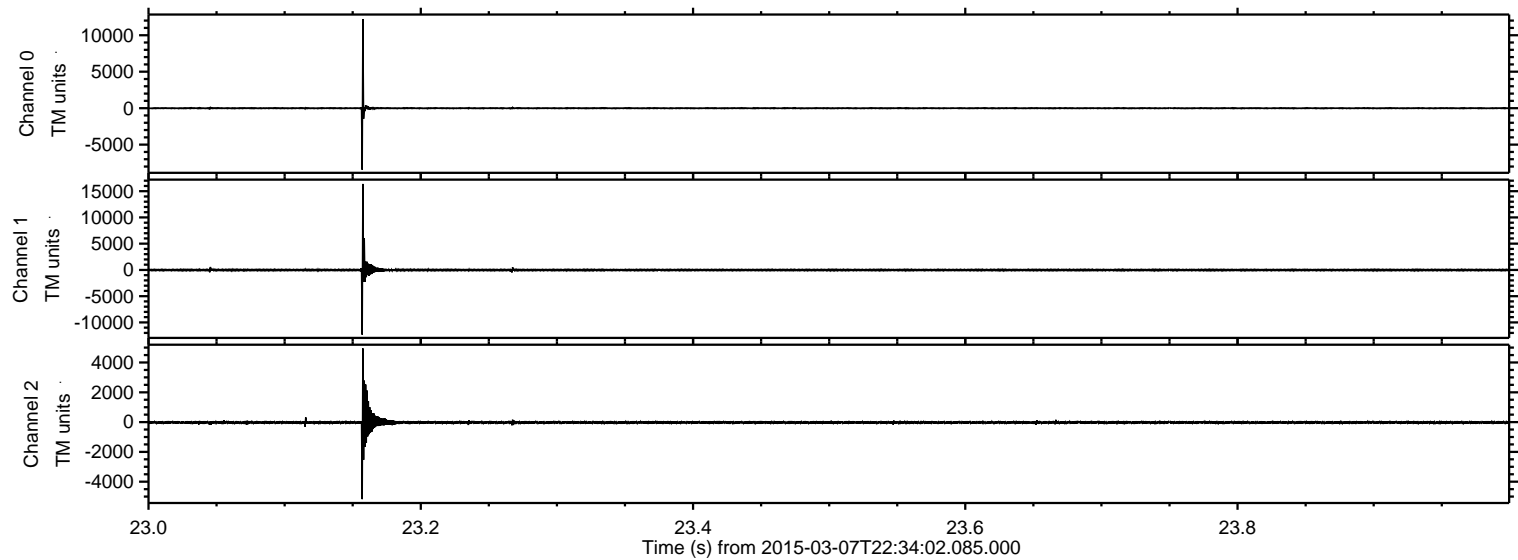
ELMAVAN 3D WAVEFORMS (Measured data sampled at 50 kHz) 49723 packets of 144 samples from 2015-03-07T22:34:02.085.000.

Processed Sun Mar 8 12:51:22 2015 by ELM ver.2012-10-06 from 001__elm20150307_223401__dat00.bin

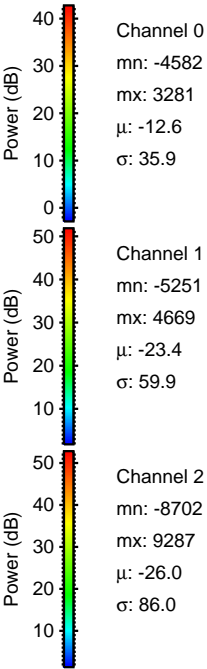
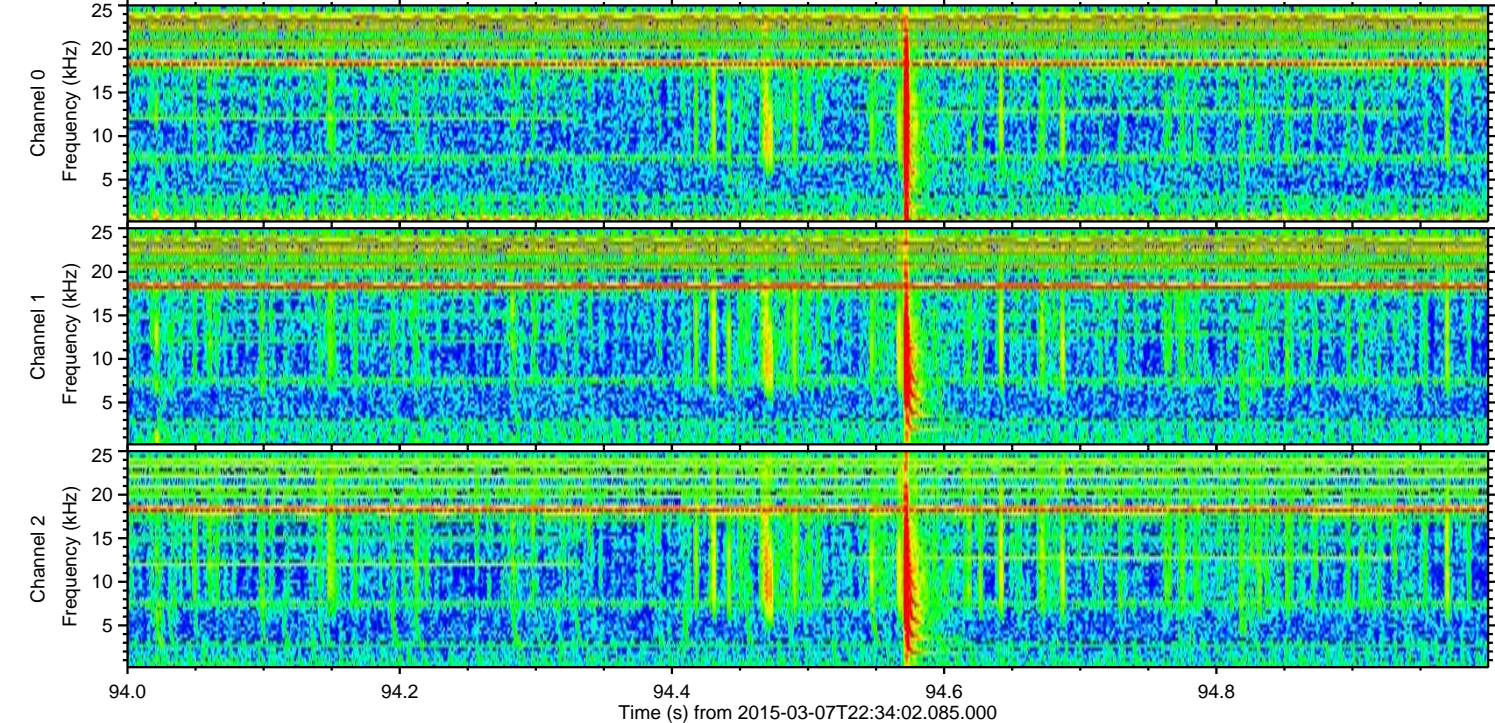
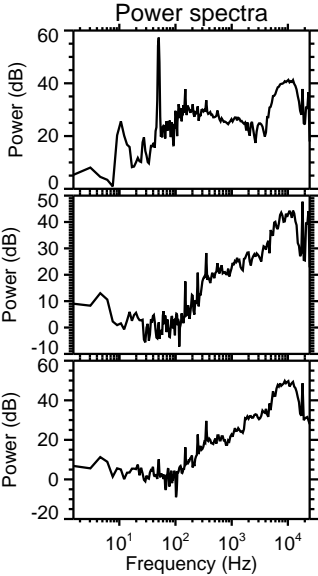
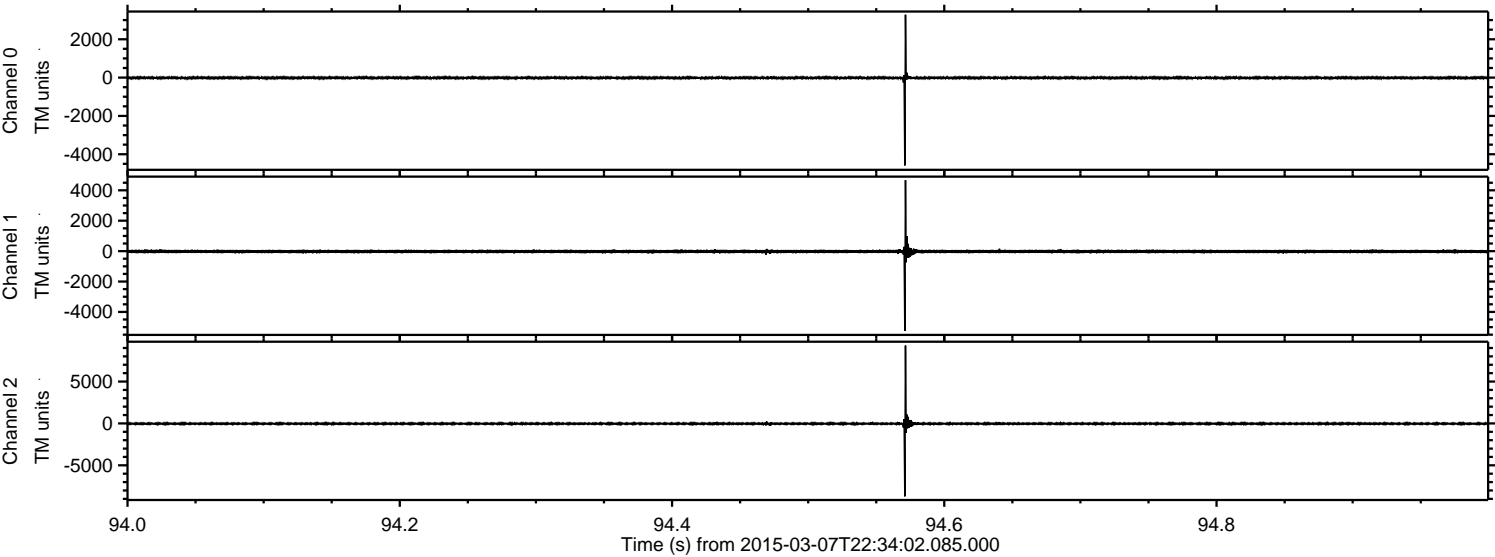


ELMAVAN 3D WAVEFORMS (Measured data sampled at 50 kHz) 49723 packets of 144 samples from 2015-03-07T22:34:02.085.000. Part 24/144

Processed Sun Mar 8 12:51:37 2015 by ELM ver.2012-10-06 from 001__elm20150307_223401__dat00.bin

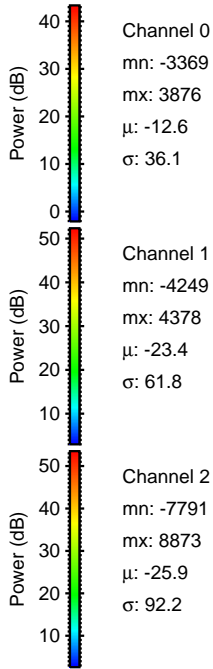
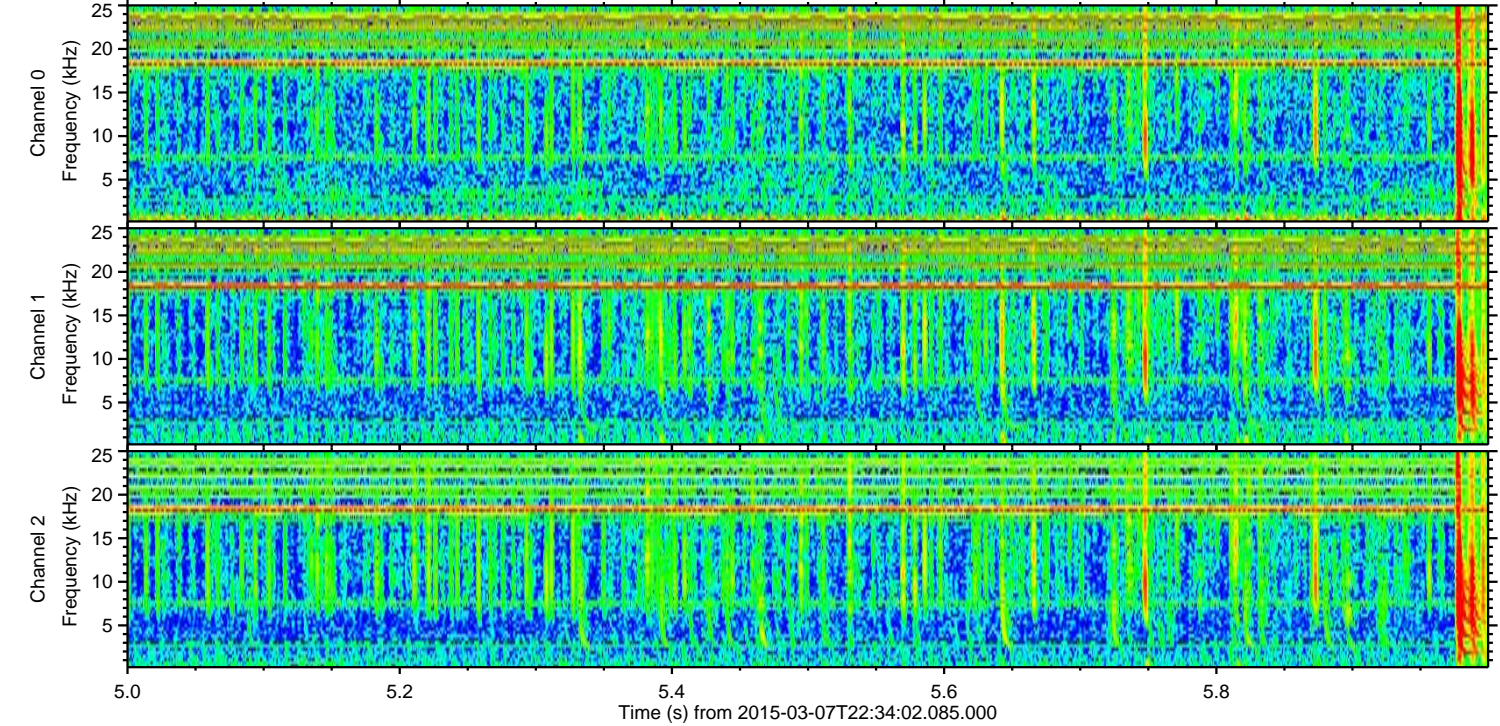
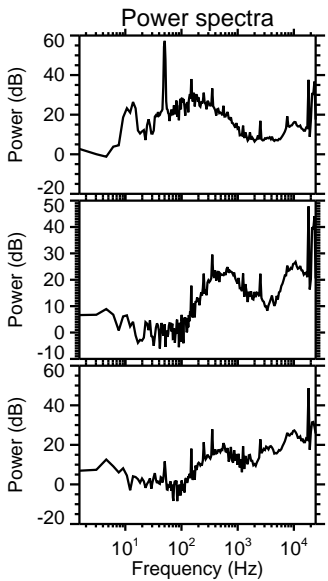
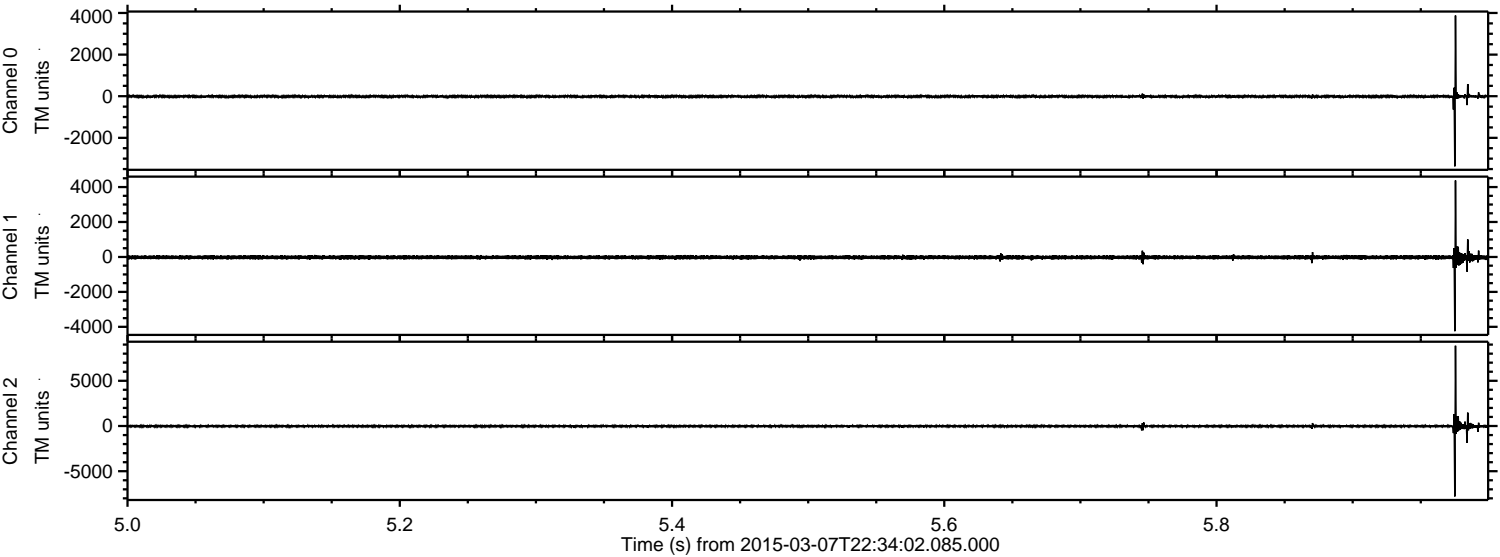


Processed Sun Mar 8 12:51:38 2015 by ELM ver.2012-10-06 from 001__elm20150307_223401__dat00.bin

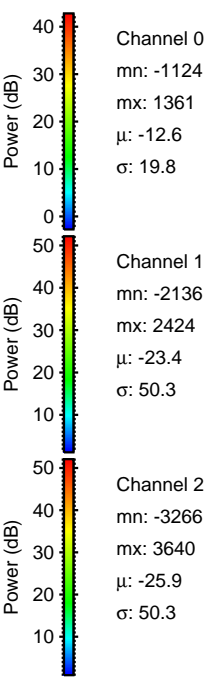
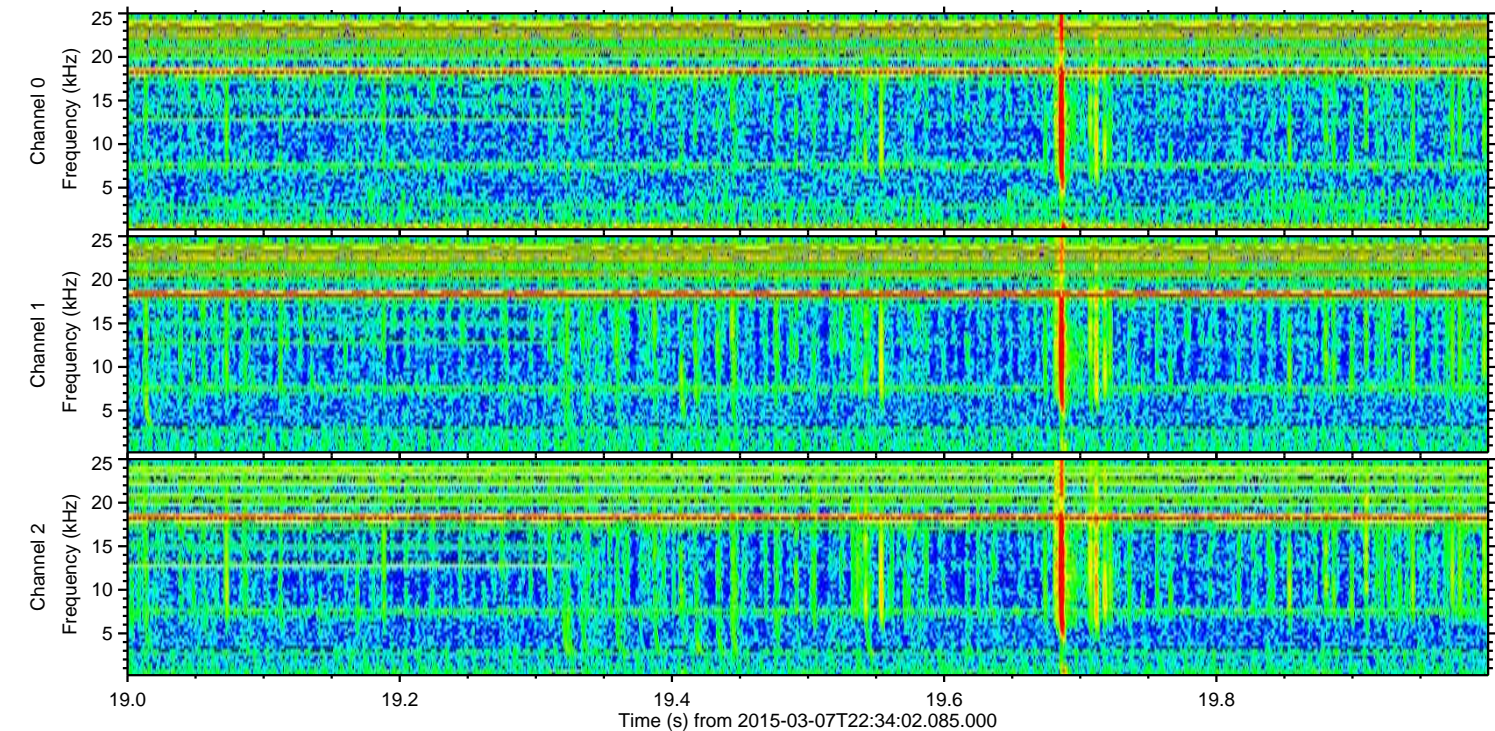
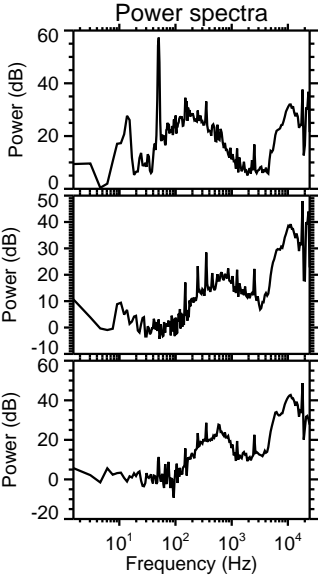
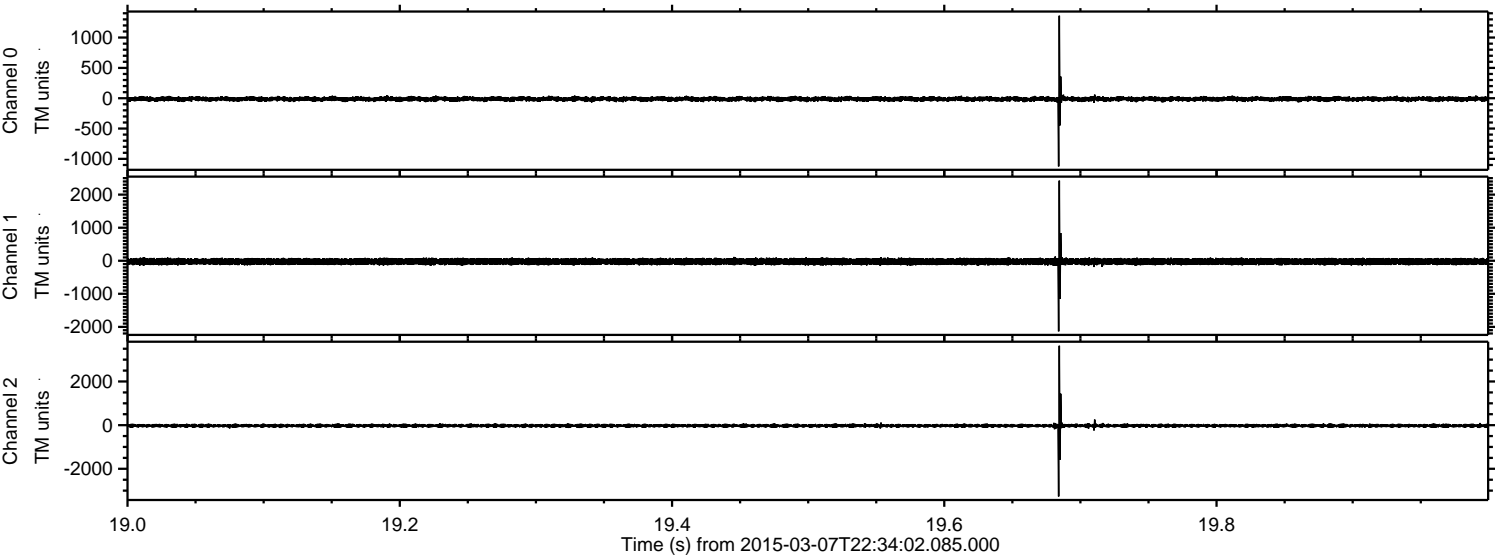


ELMAVAN 3D WAVEFORMS (Measured data sampled at 50 kHz) 49723 packets of 144 samples from 2015-03-07T22:34:02.085.000. Part 6/144

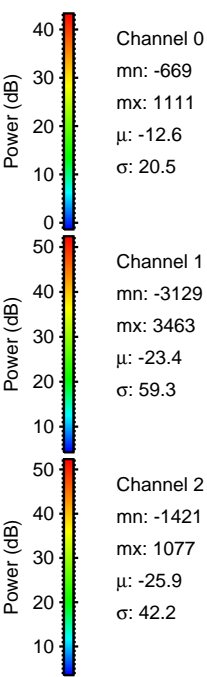
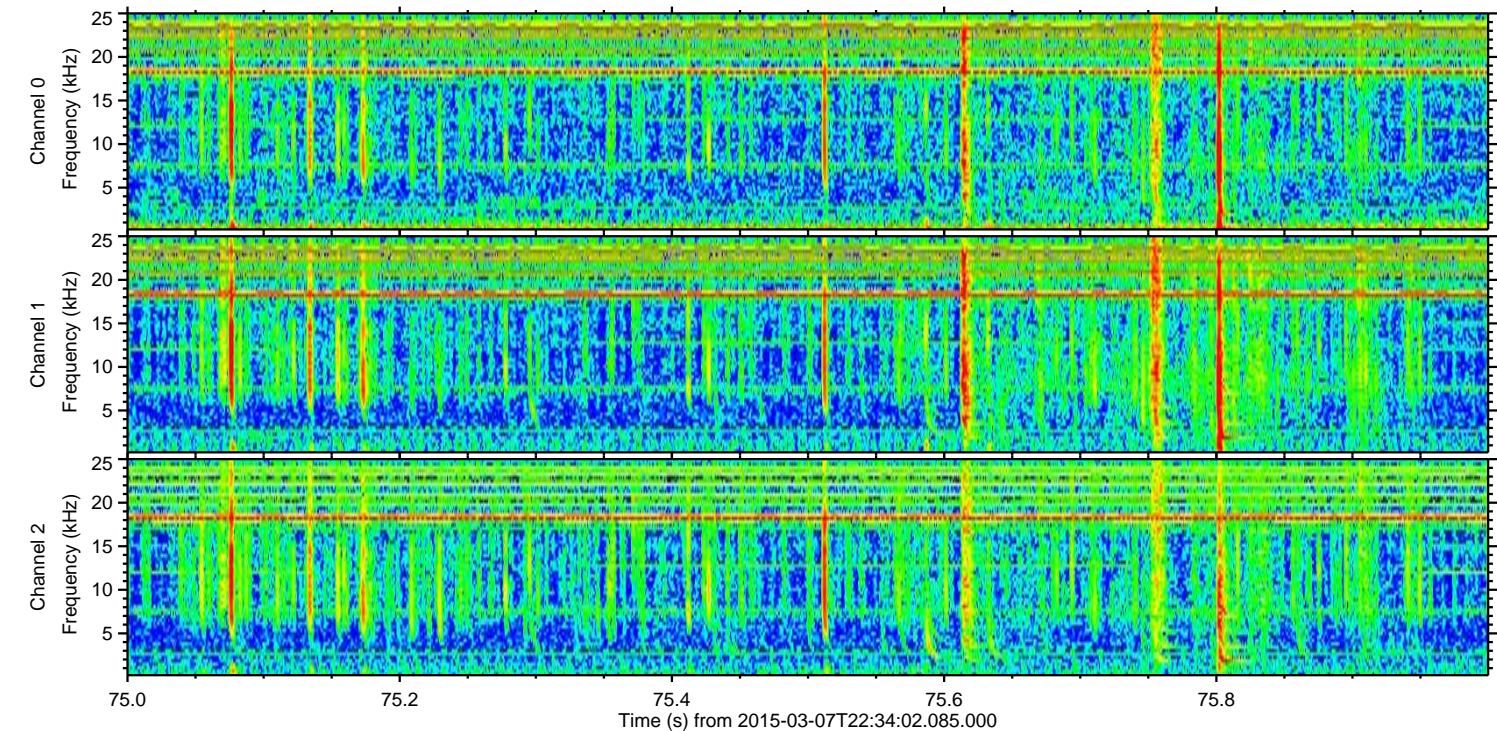
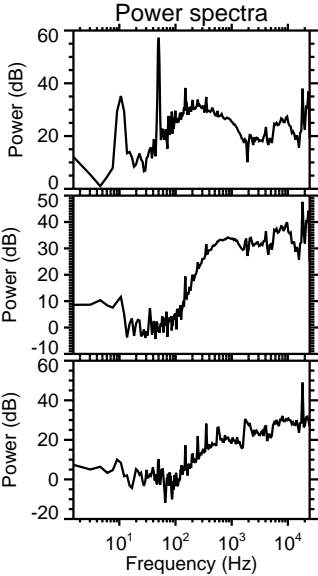
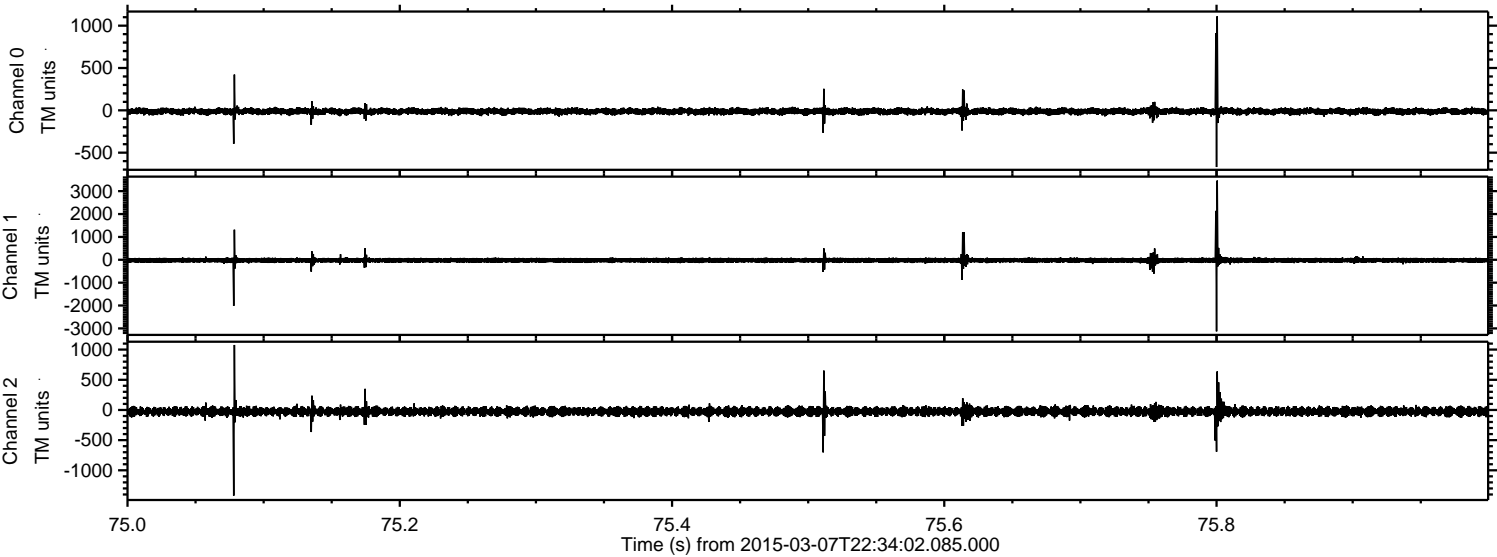
Processed Sun Mar 8 12:51:39 2015 by ELM ver.2012-10-06 from 001__elm20150307_223401__dat00.bin



Processed Sun Mar 8 12:51:40 2015 by ELM ver.2012-10-06 from 001__elm20150307_223401__dat00.bin

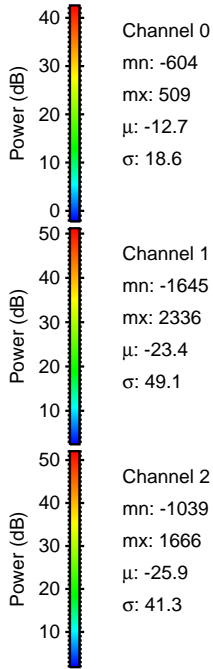
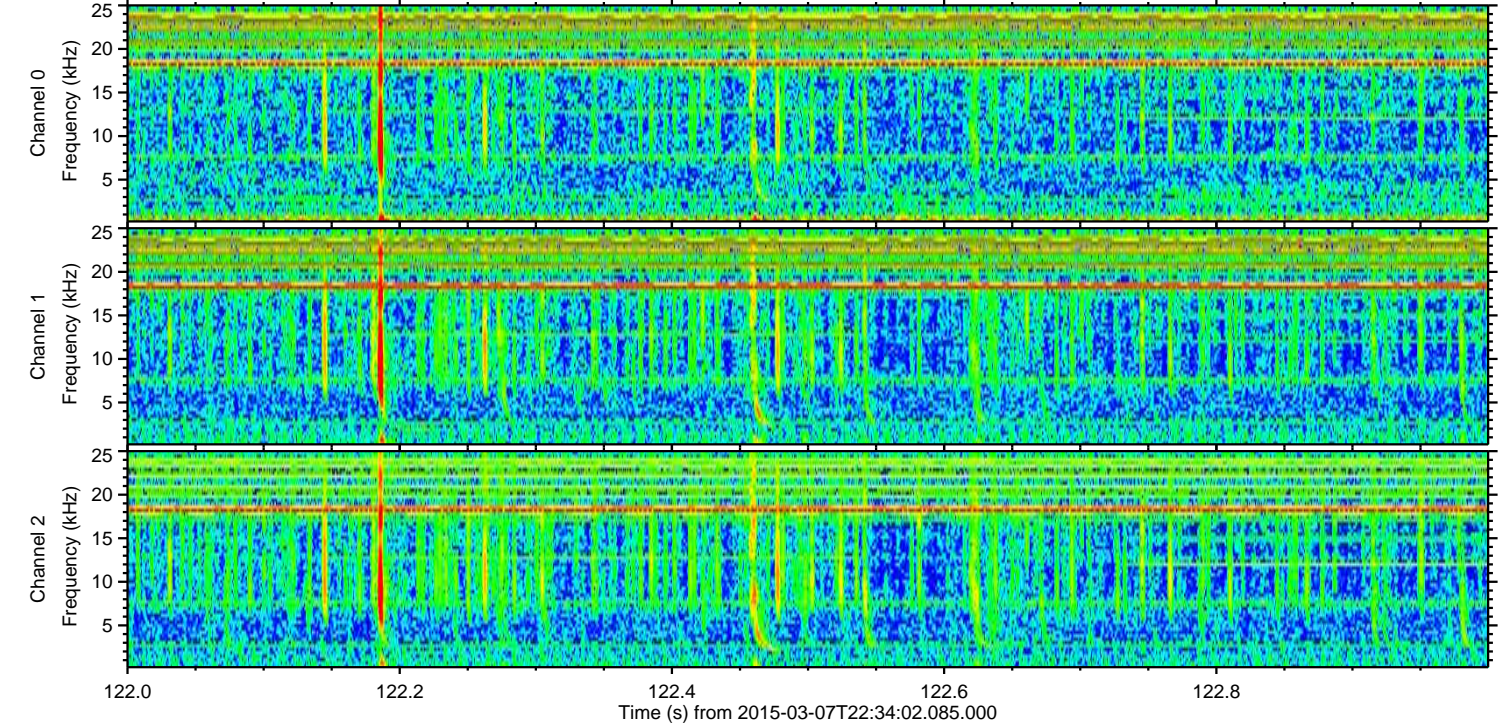
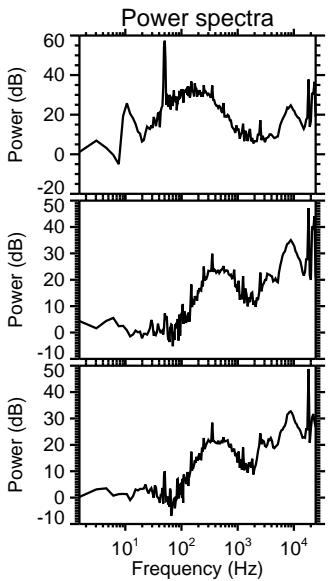
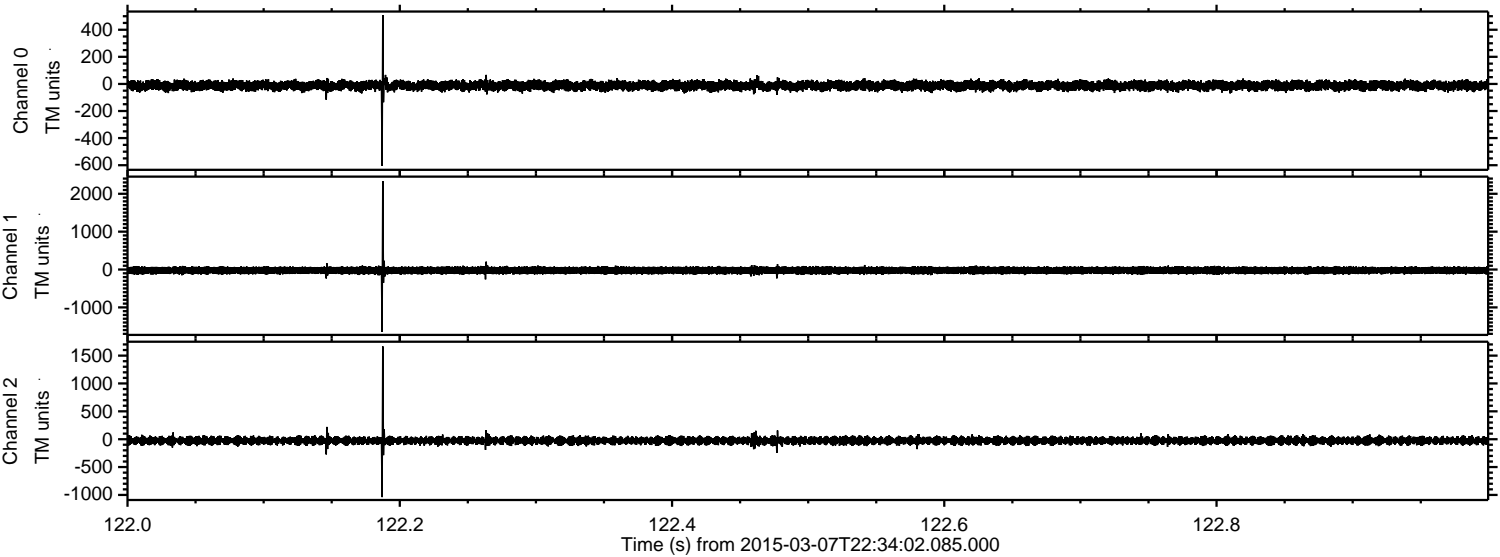


Processed Sun Mar 8 12:51:41 2015 by ELM ver.2012-10-06 from 001__elm20150307_223401__dat00.bin



ELMAVAN 3D WAVEFORMS (Measured data sampled at 50 kHz) 49723 packets of 144 samples from 2015-03-07T22:34:02.085.000. Part 123/144

Processed Sun Mar 8 12:51:42 2015 by ELM ver.2012-10-06 from 001__elm20150307_223401__dat00.bin



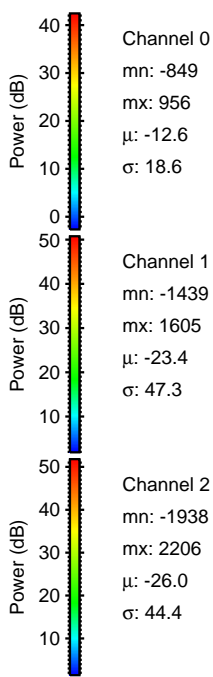
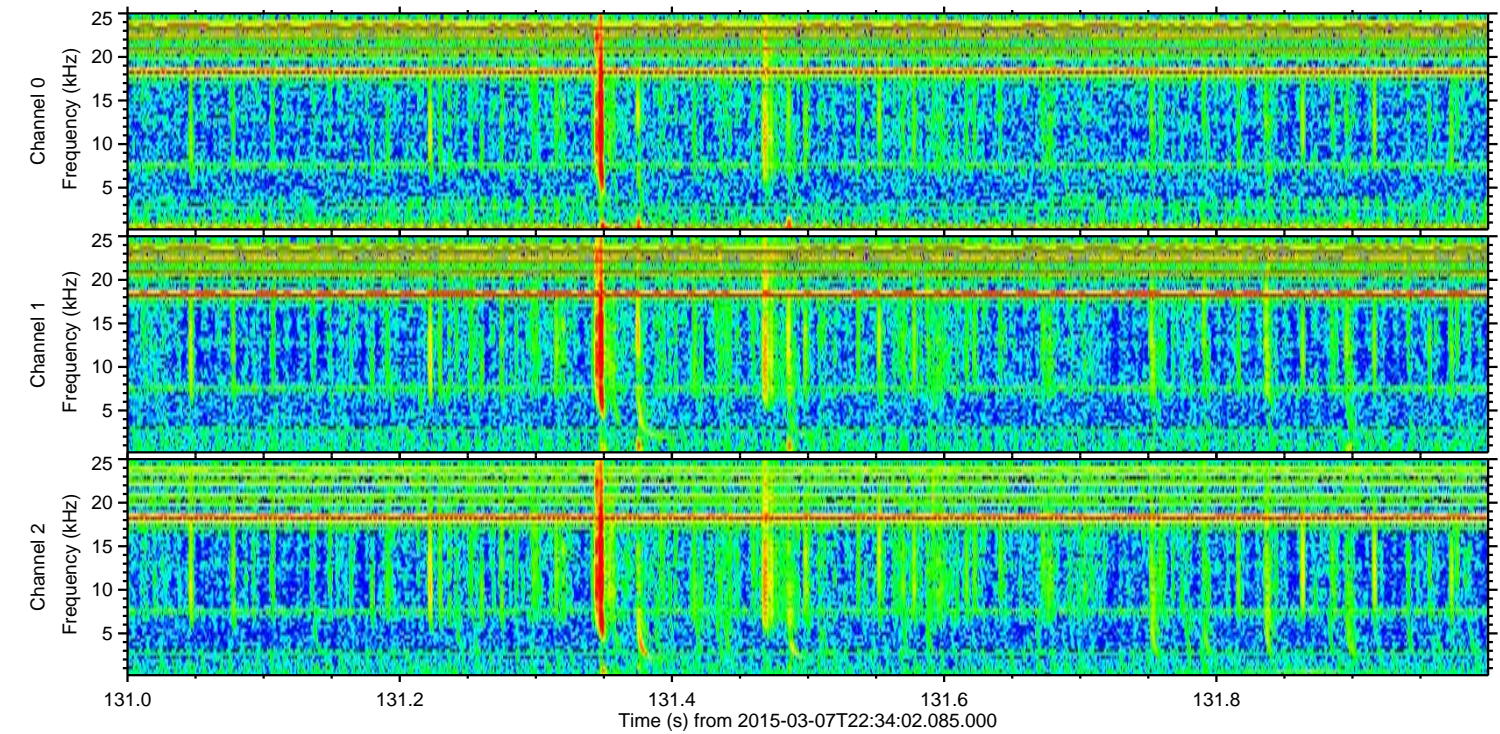
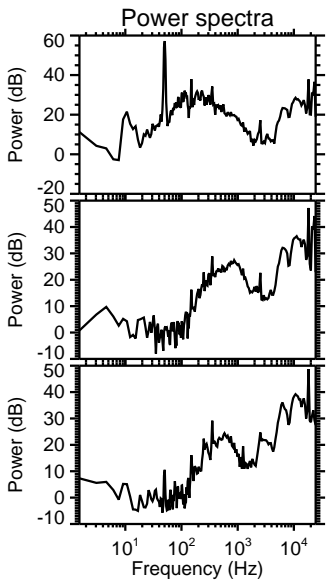
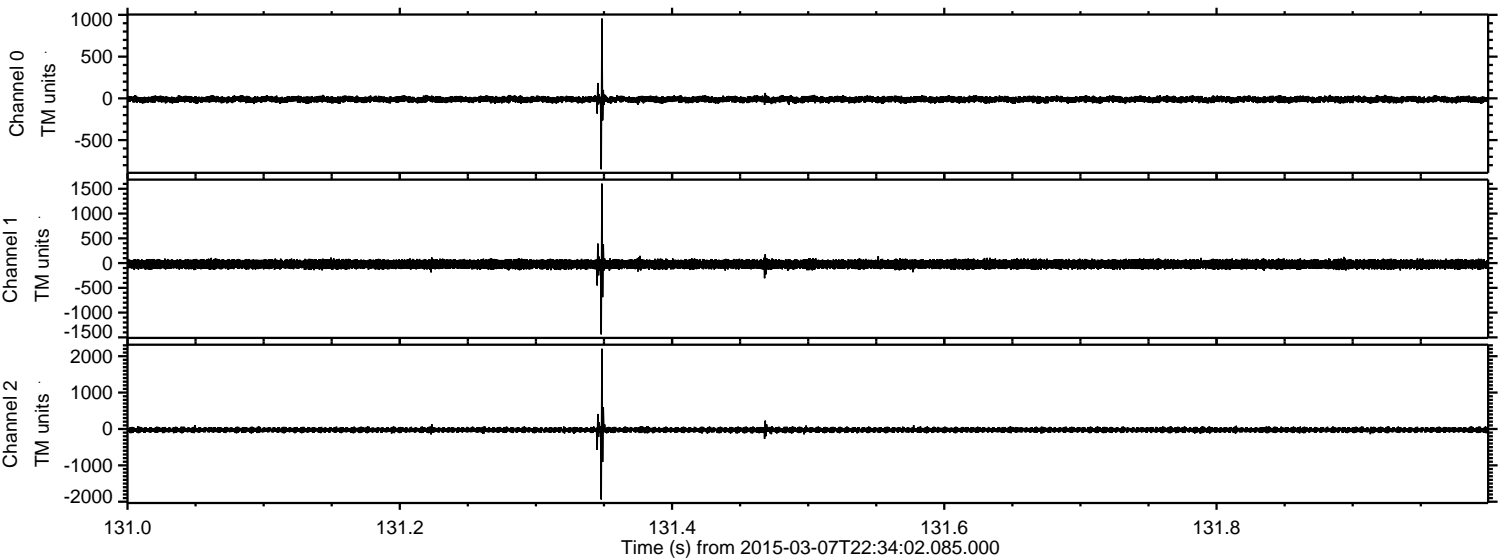
Channel 0
mn: -604
mx: 509
 μ : -12.7
 σ : 18.6

Channel 1
mn: -1645
mx: 2336
 μ : -23.4
 σ : 49.1

Channel 2
mn: -1039
mx: 1666
 μ : -25.9
 σ : 41.3

ELMAVAN 3D WAVEFORMS (Measured data sampled at 50 kHz) 49723 packets of 144 samples from 2015-03-07T22:34:02.085.000. Part 132/144

Processed Sun Mar 8 12:51:43 2015 by ELM ver.2012-10-06 from 001__elm20150307_223401__dat00.bin

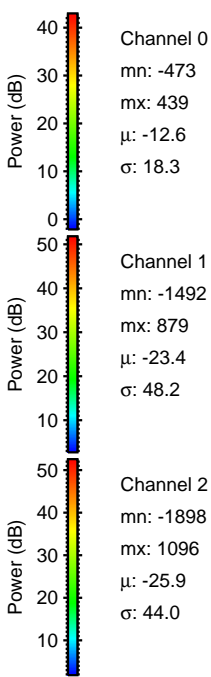
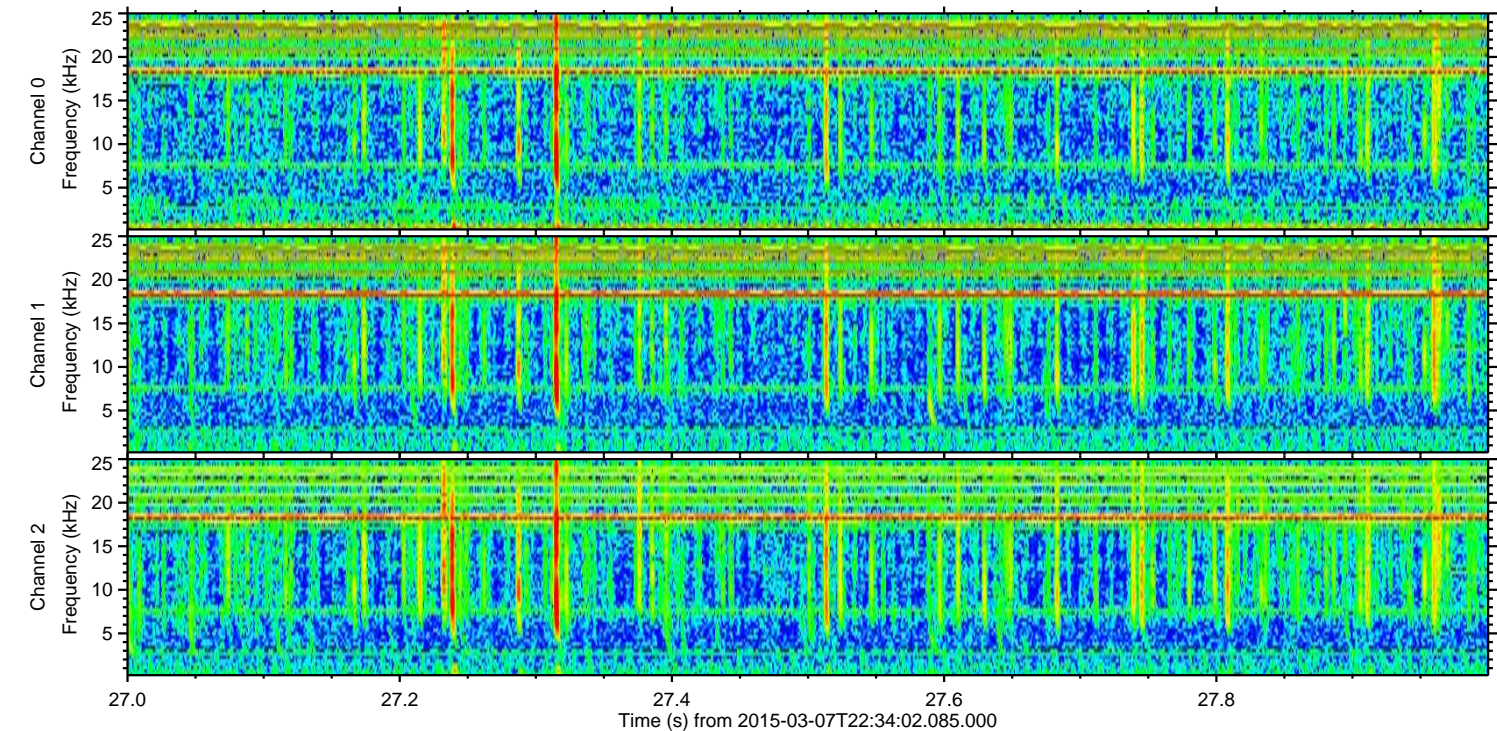
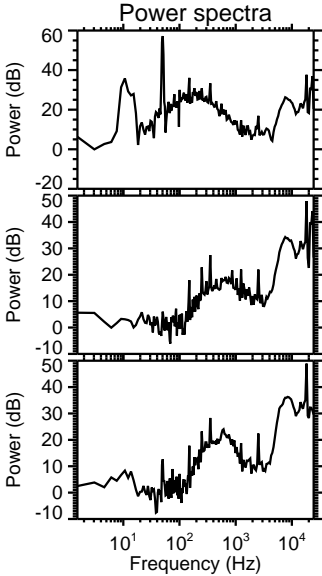
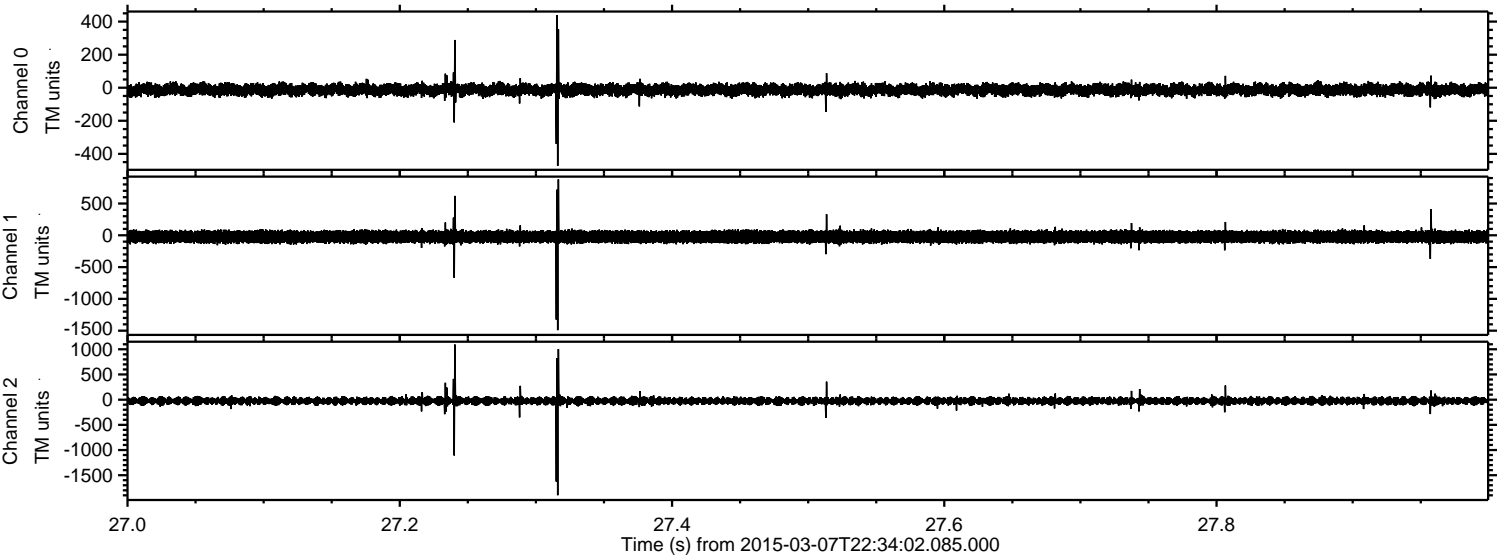


Channel 0
mn: -849
mx: 956
 μ : -12.6
 σ : 18.6

Channel 1
mn: -1439
mx: 1605
 μ : -23.4
 σ : 47.3

Channel 2
mn: -1938
mx: 2206
 μ : -26.0
 σ : 44.4

Processed Sun Mar 8 12:51:44 2015 by ELM ver.2012-10-06 from 001__elm20150307_223401__dat00.bin

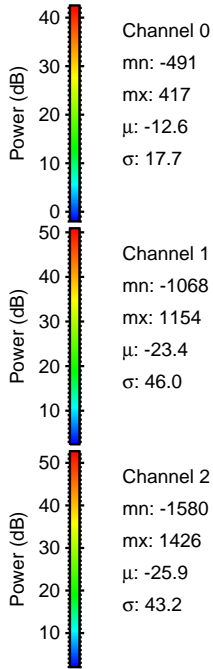
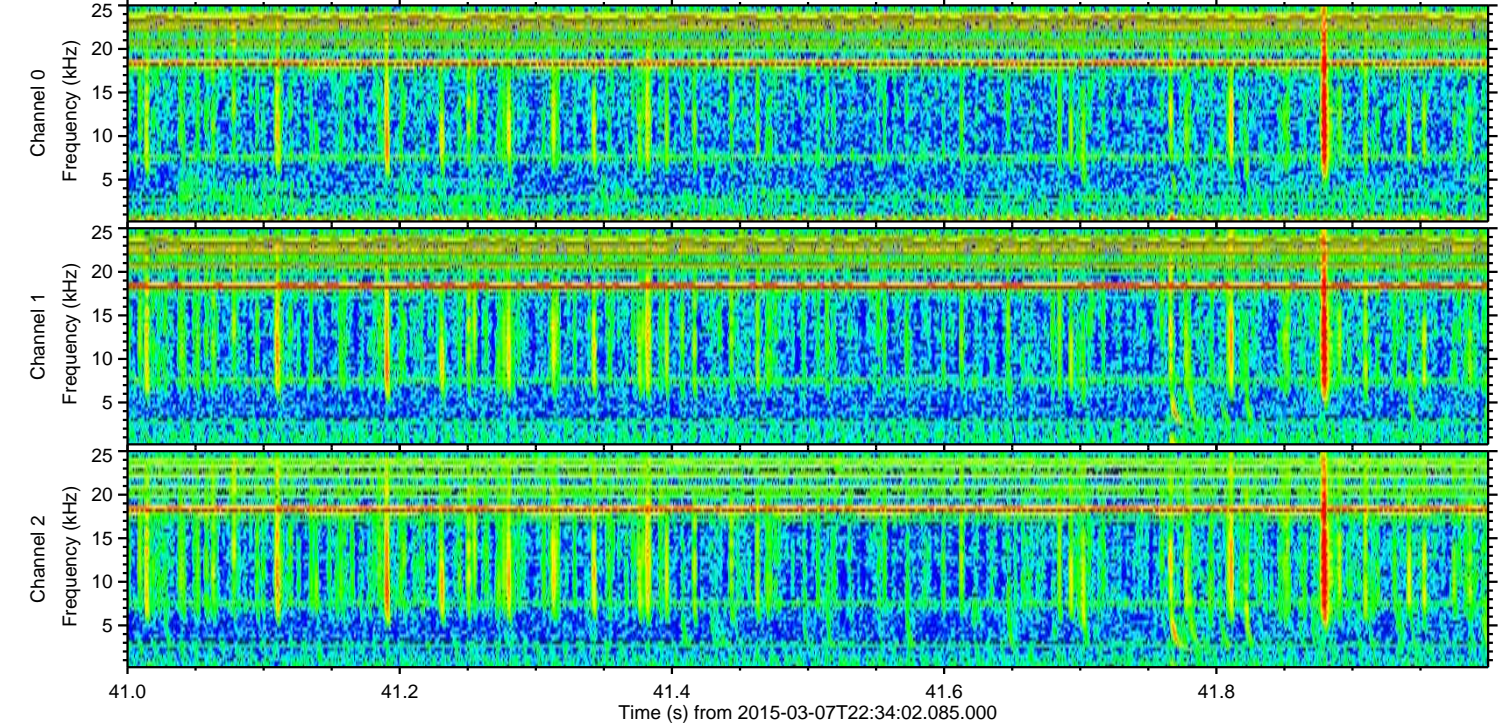
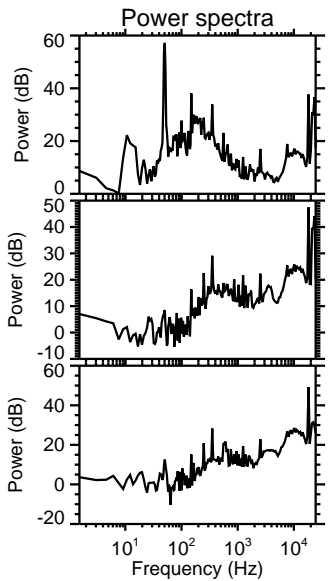
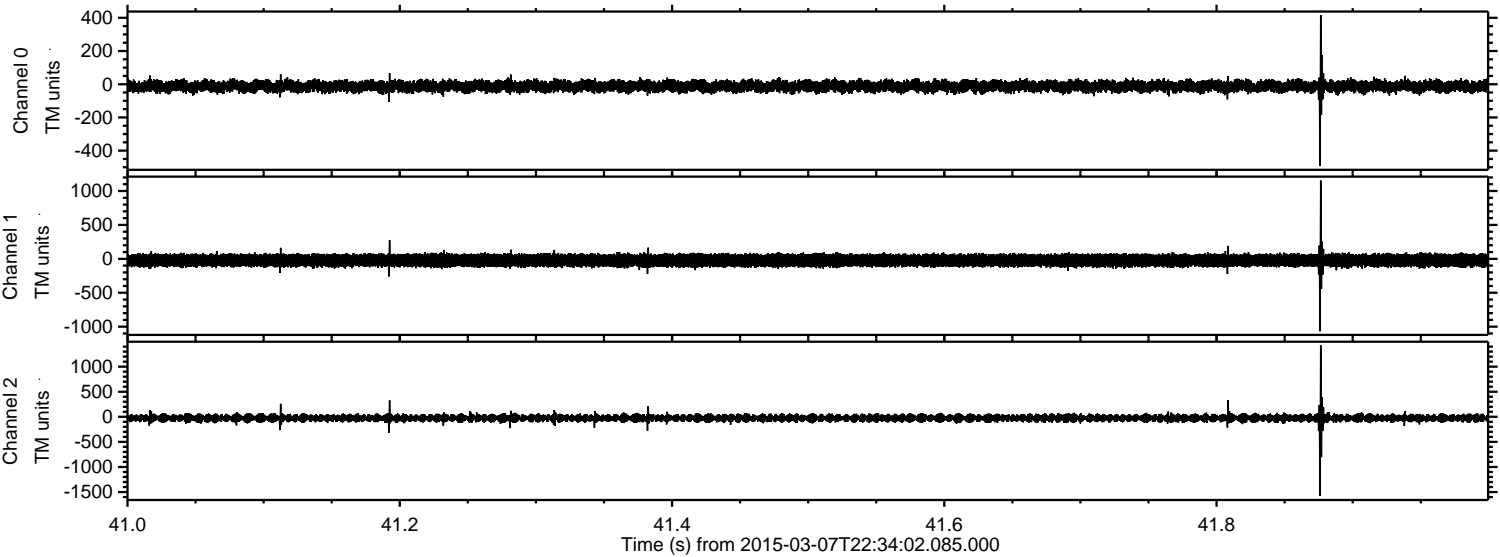


Channel 0
mn: -473
mx: 439
 μ : -12.6
 σ : 18.3

Channel 1
mn: -1492
mx: 879
 μ : -23.4
 σ : 48.2

Channel 2
mn: -1898
mx: 1096
 μ : -25.9
 σ : 44.0

Processed Sun Mar 8 12:51:45 2015 by ELM ver.2012-10-06 from 001__elm20150307_223401__dat00.bin



Channel 0
mn: -491
mx: 417
 μ : -12.6
 σ : 17.7

Channel 1
mn: -1068
mx: 1154
 μ : -23.4
 σ : 46.0

Channel 2
mn: -1580
mx: 1426
 μ : -25.9
 σ : 43.2

