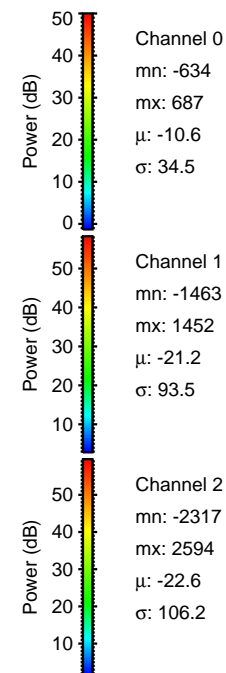
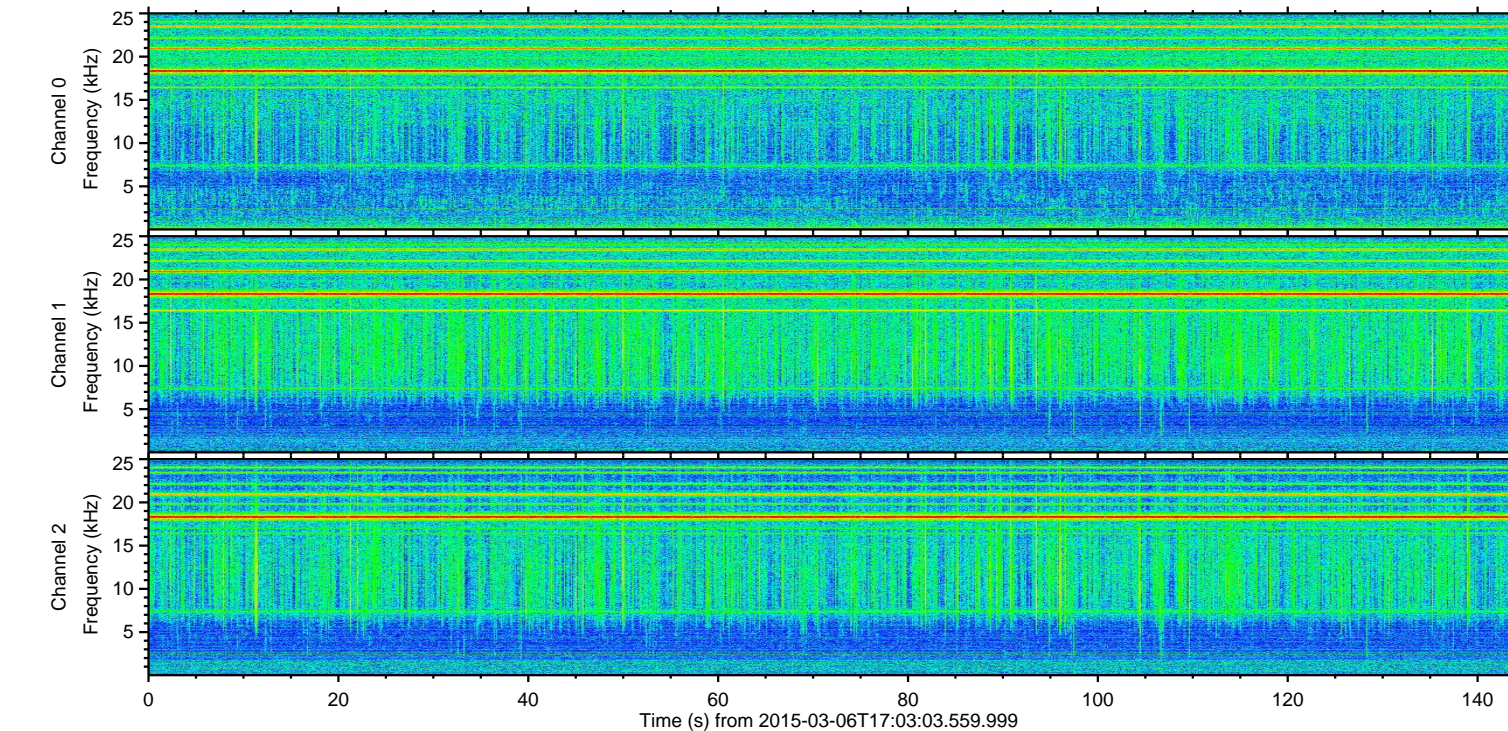
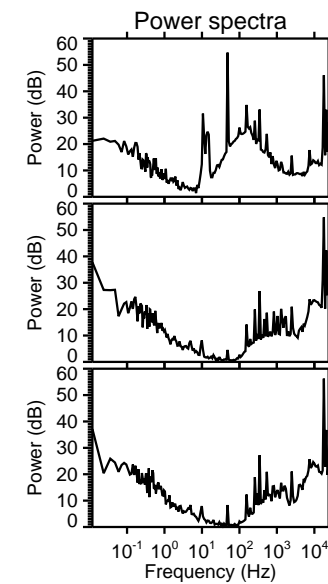
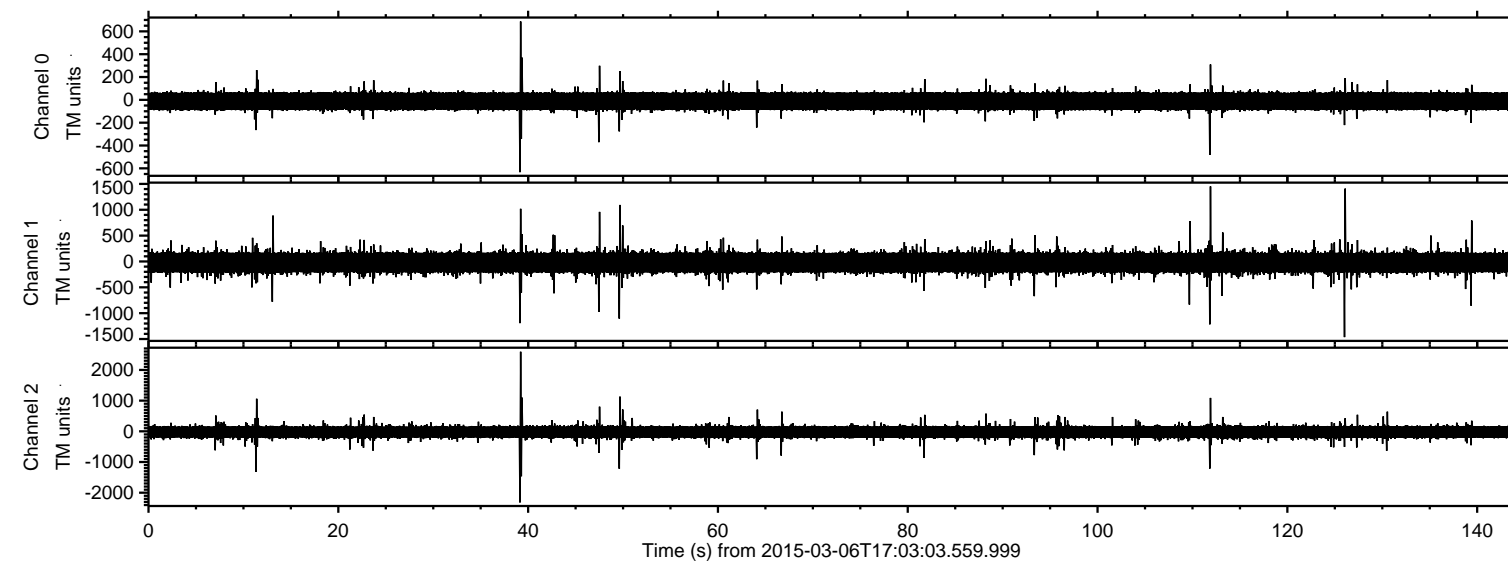
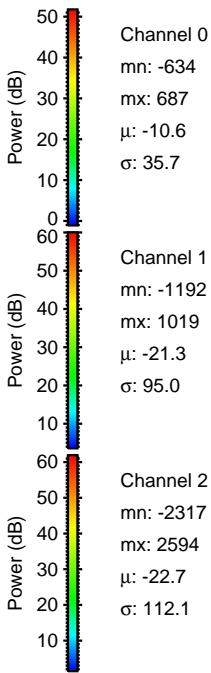
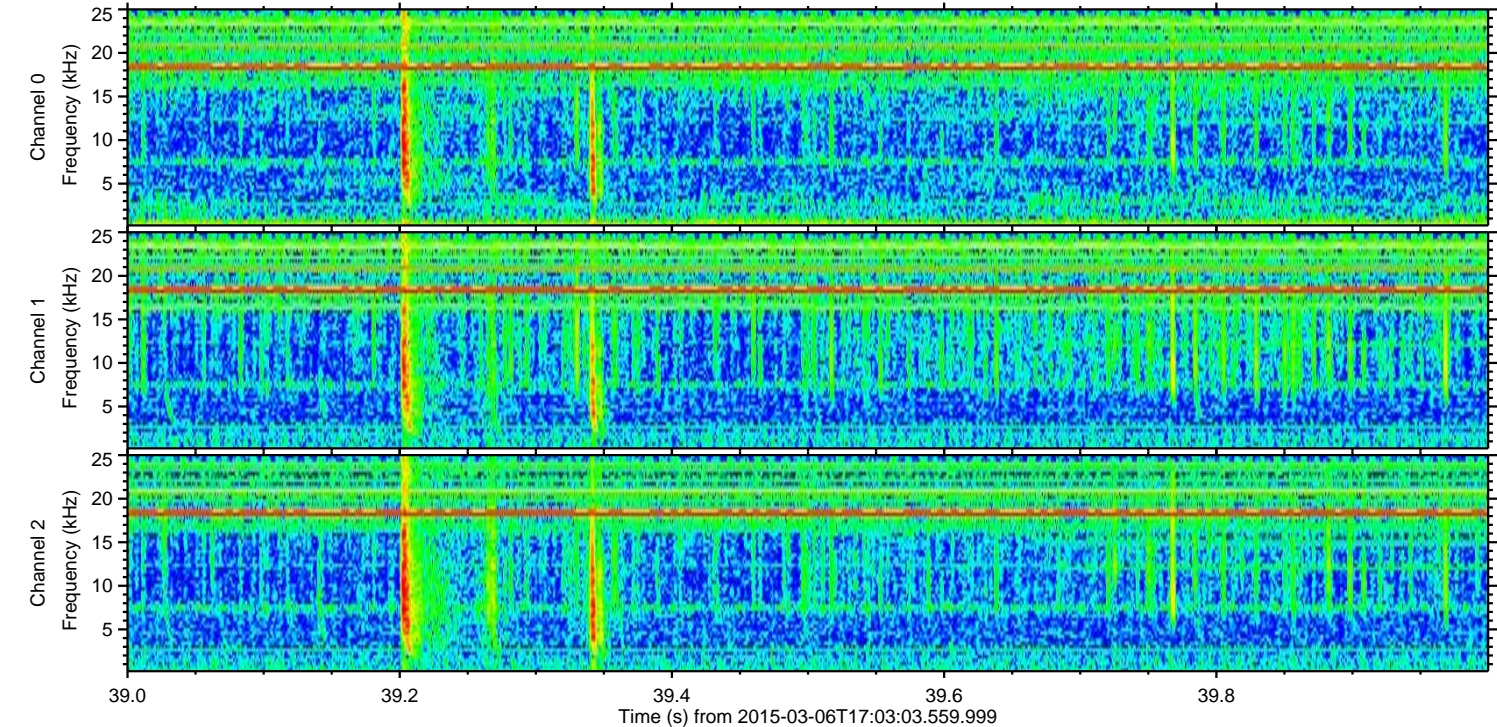
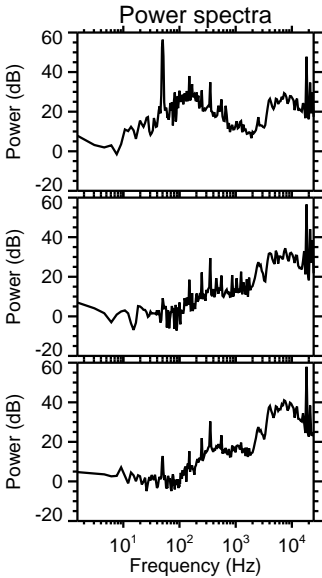
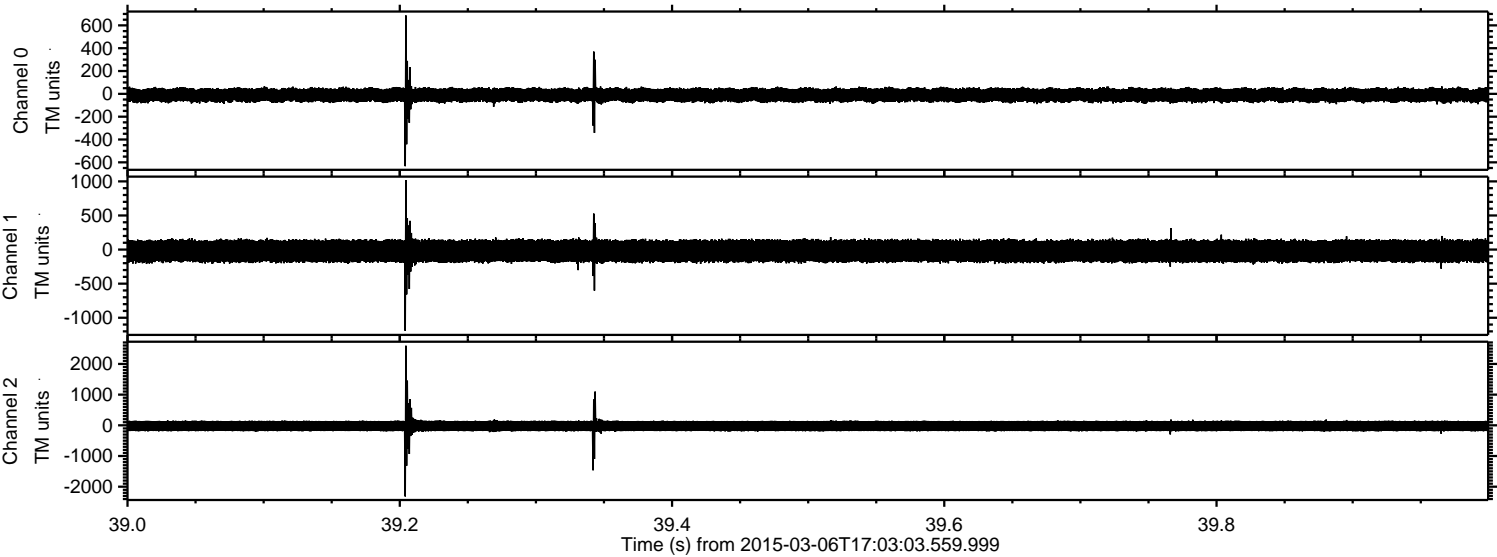


ELMAVAN 3D WAVEFORMS (Measured data sampled at 50 kHz) 49780 packets of 144 samples from 2015-03-06T17:03:03.559.999.

Processed Sun Mar 8 02:33:36 2015 by ELM ver.2012-10-06 from 001__elm20150306_170302__dat00.bin

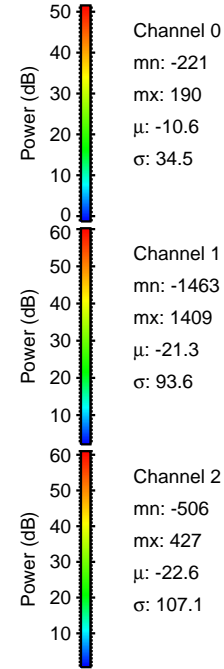
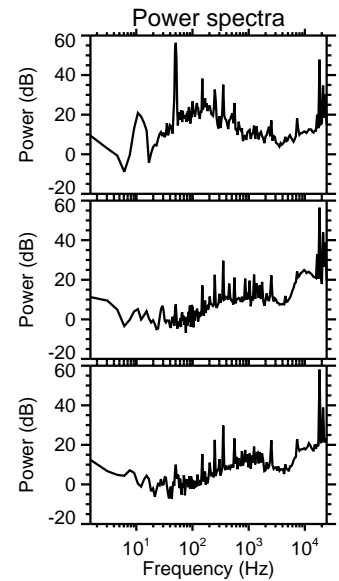
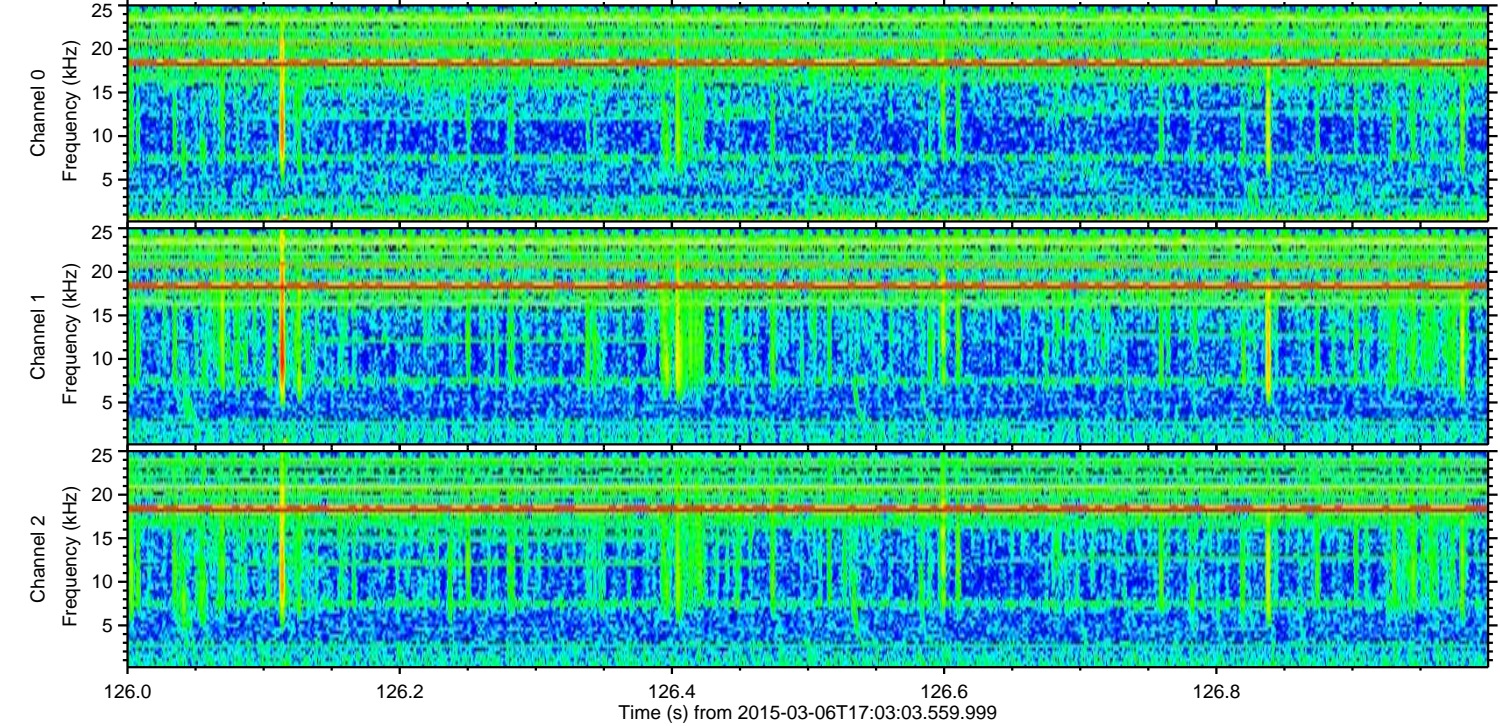
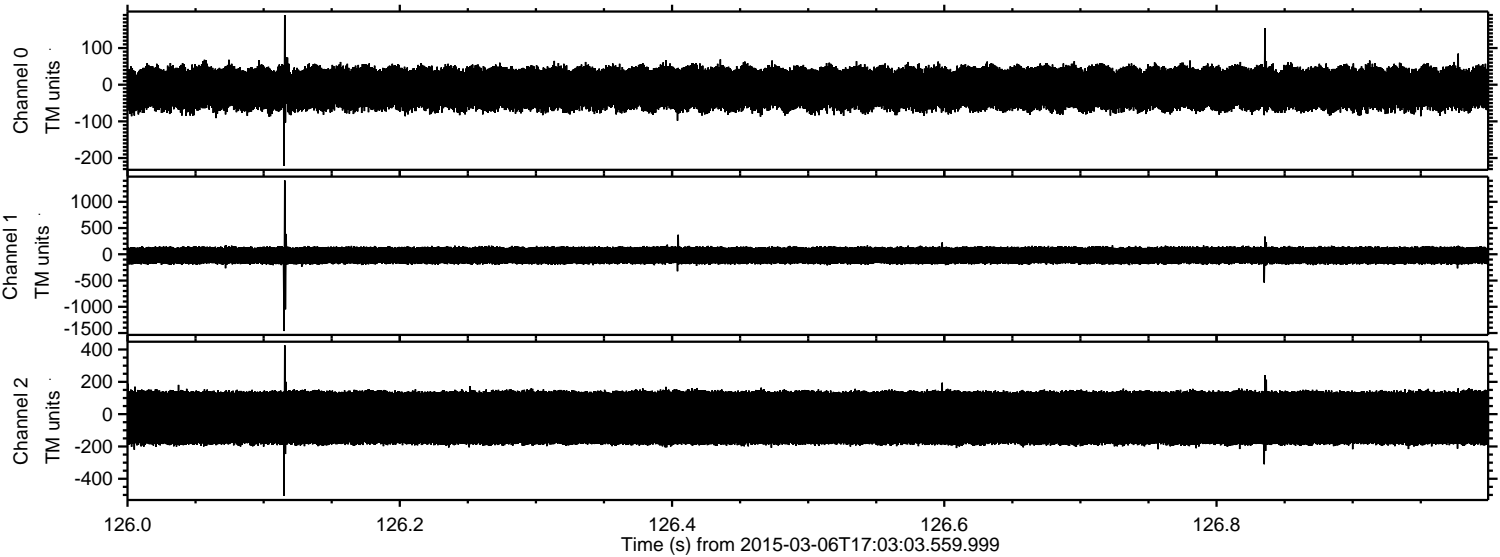


Processed Sun Mar 8 02:33:47 2015 by ELM ver.2012-10-06 from 001__elm20150306_170302__dat00.bin



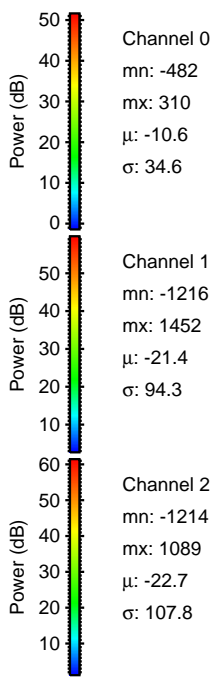
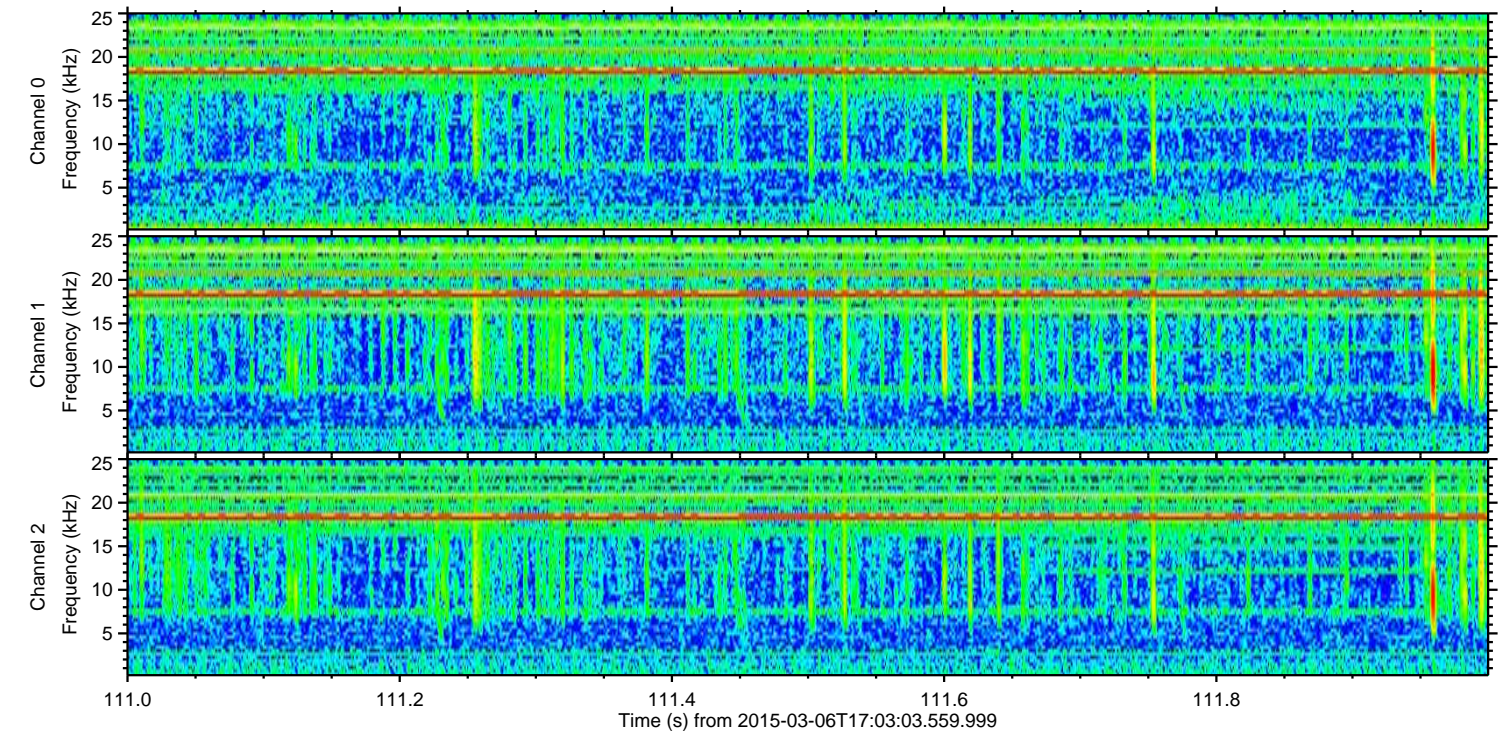
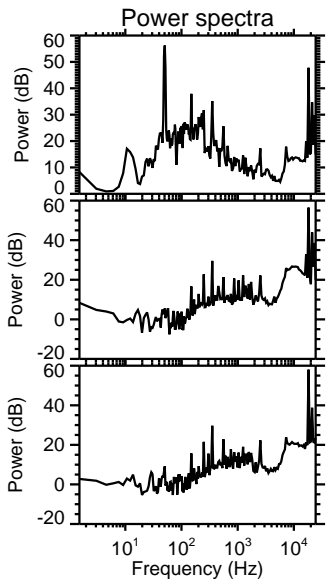
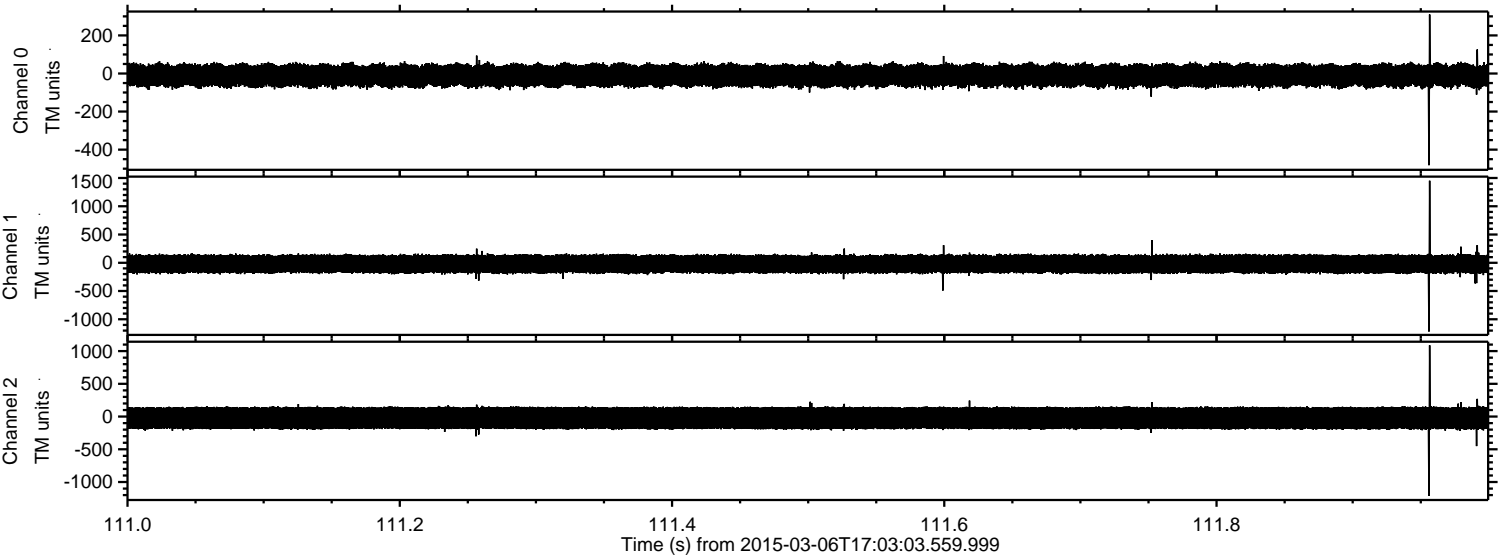
ELMAVAN 3D WAVEFORMS (Measured data sampled at 50 kHz) 49780 packets of 144 samples from 2015-03-06T17:03:03.559.999. Part 127/144

Processed Sun Mar 8 02:33:48 2015 by ELM ver.2012-10-06 from 001__elm20150306_170302__dat00.bin

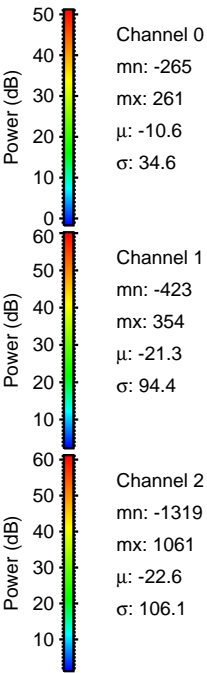
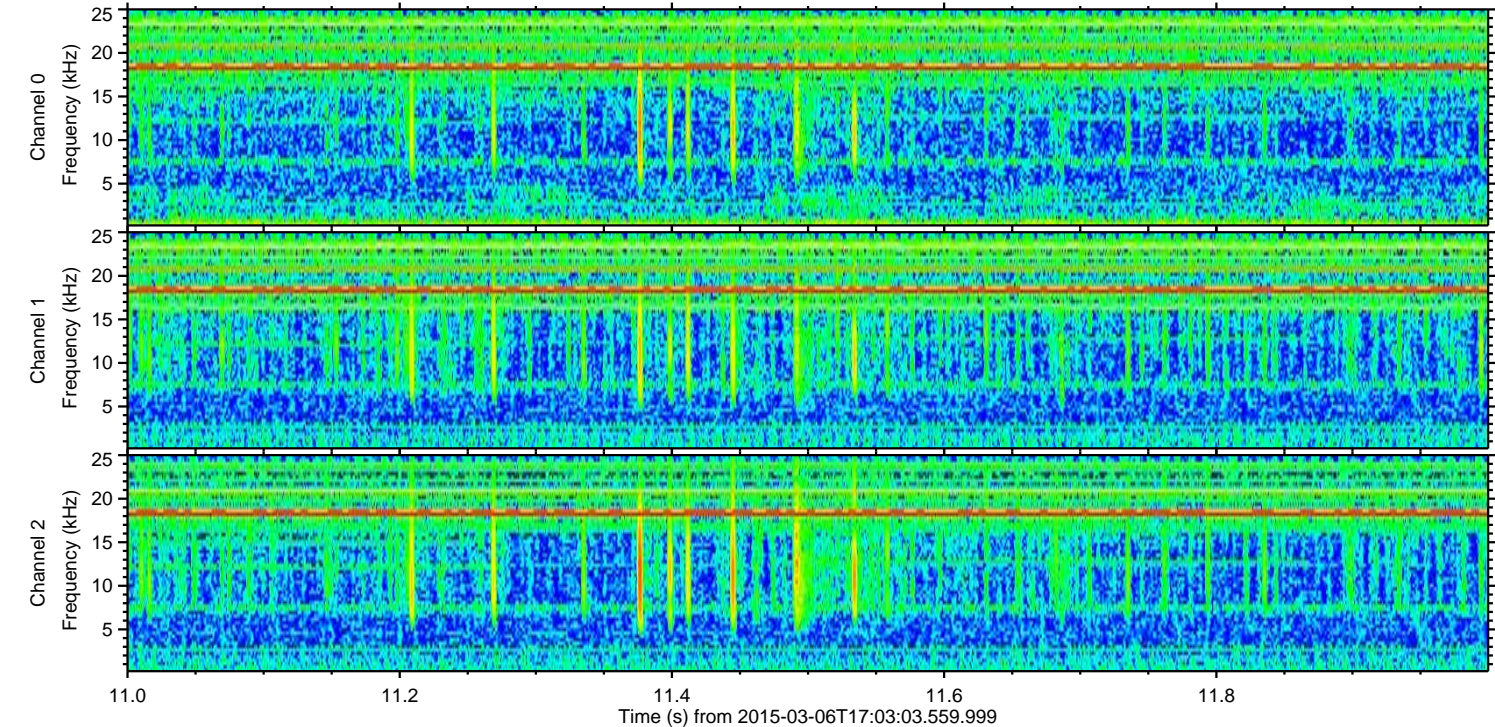
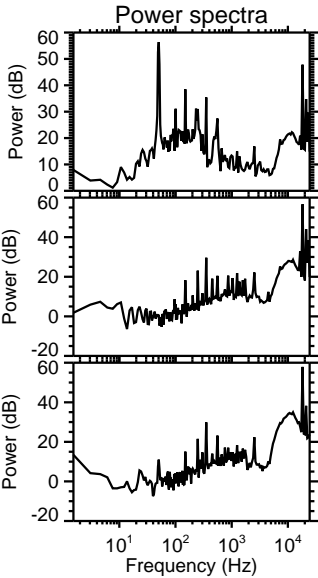
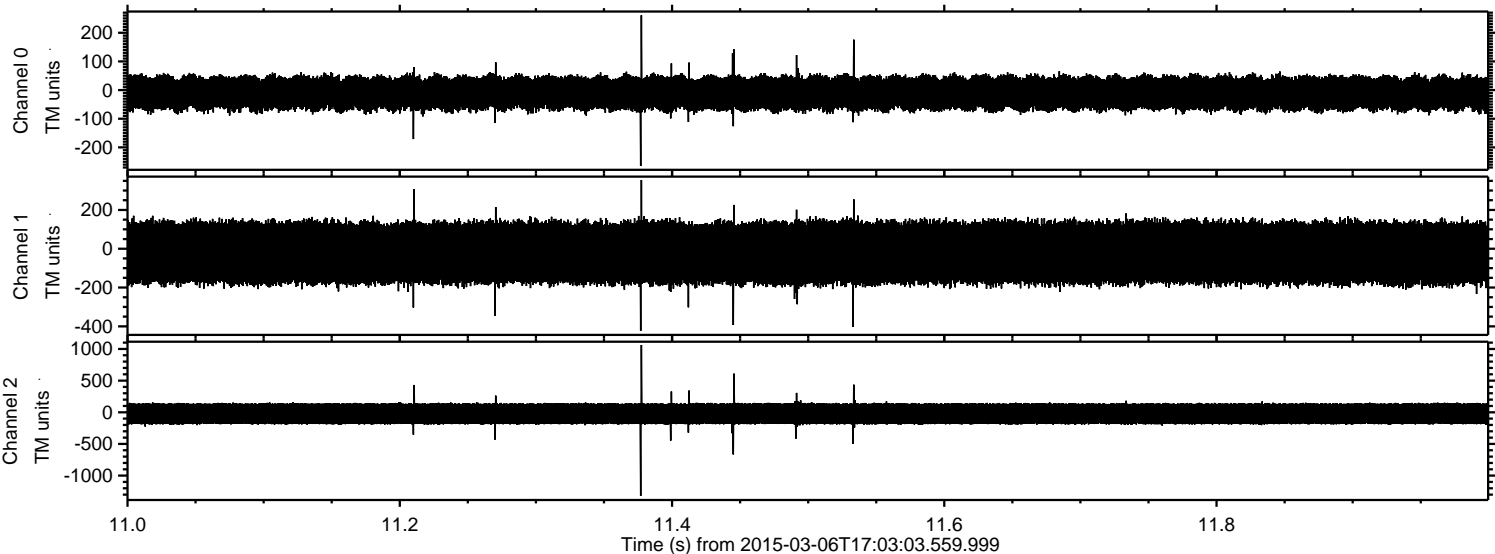


ELMAVAN 3D WAVEFORMS (Measured data sampled at 50 kHz) 49780 packets of 144 samples from 2015-03-06T17:03:03.559.999. Part 112/144

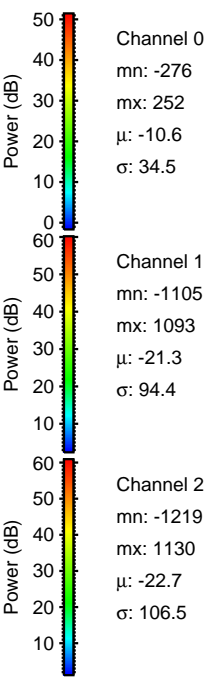
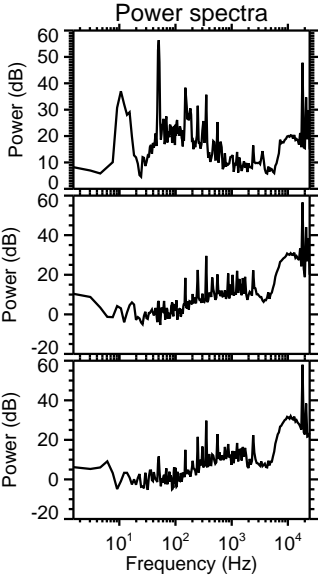
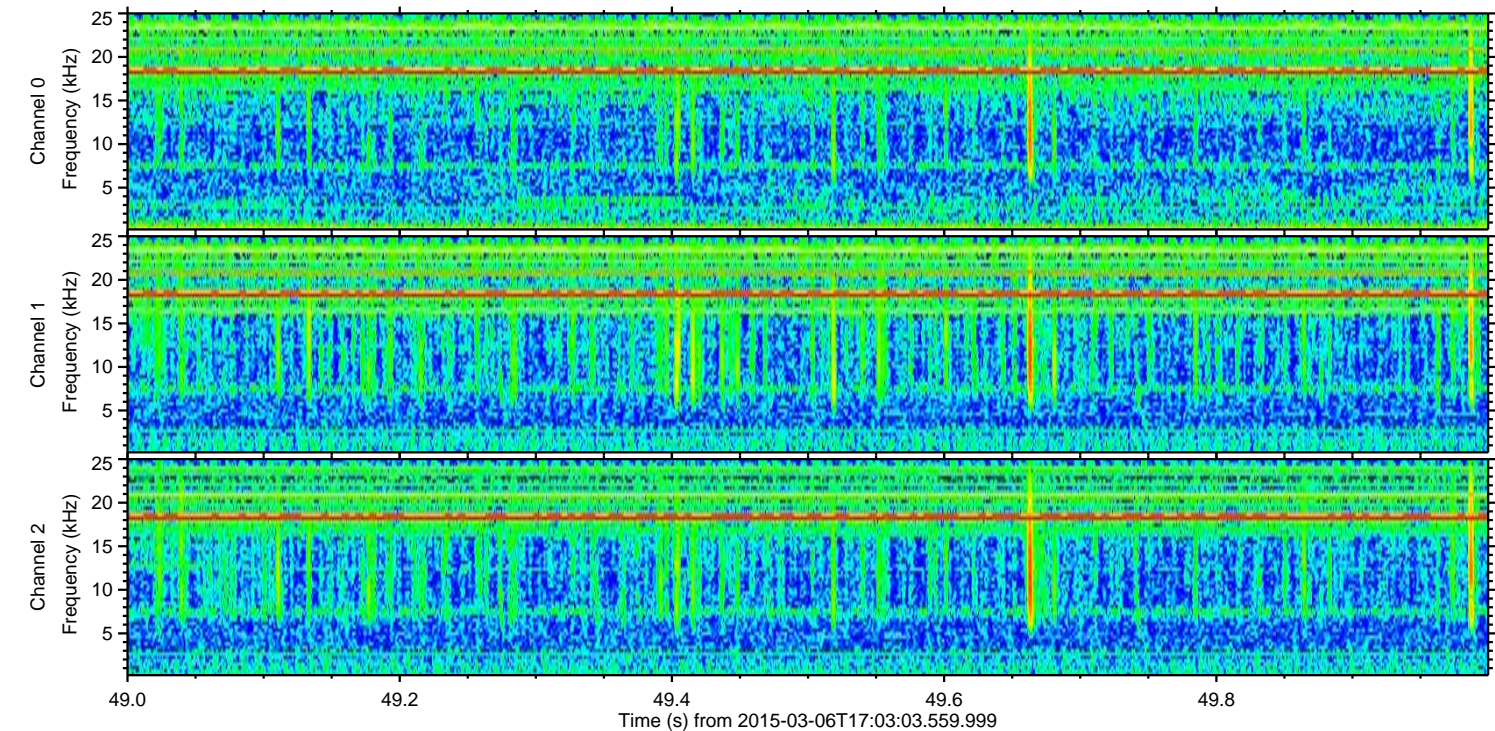
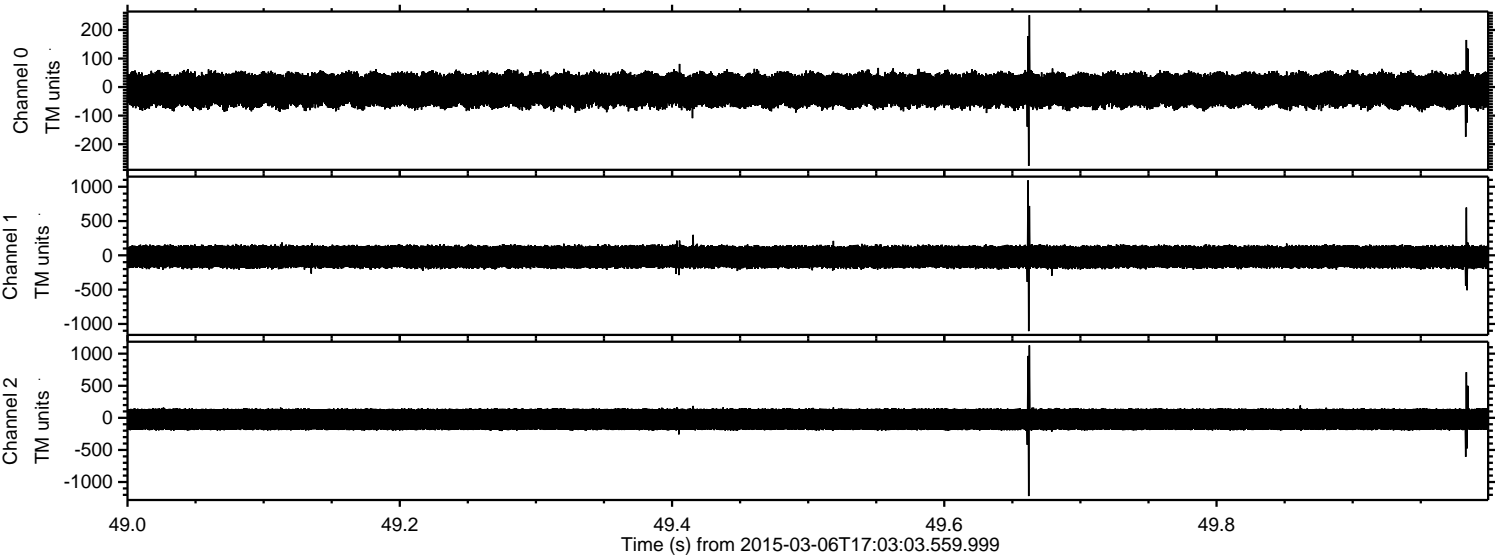
Processed Sun Mar 8 02:33:49 2015 by ELM ver.2012-10-06 from 001__elm20150306_170302__dat00.bin



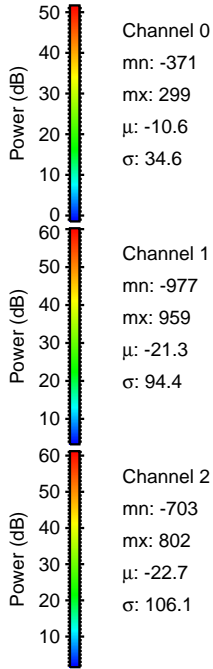
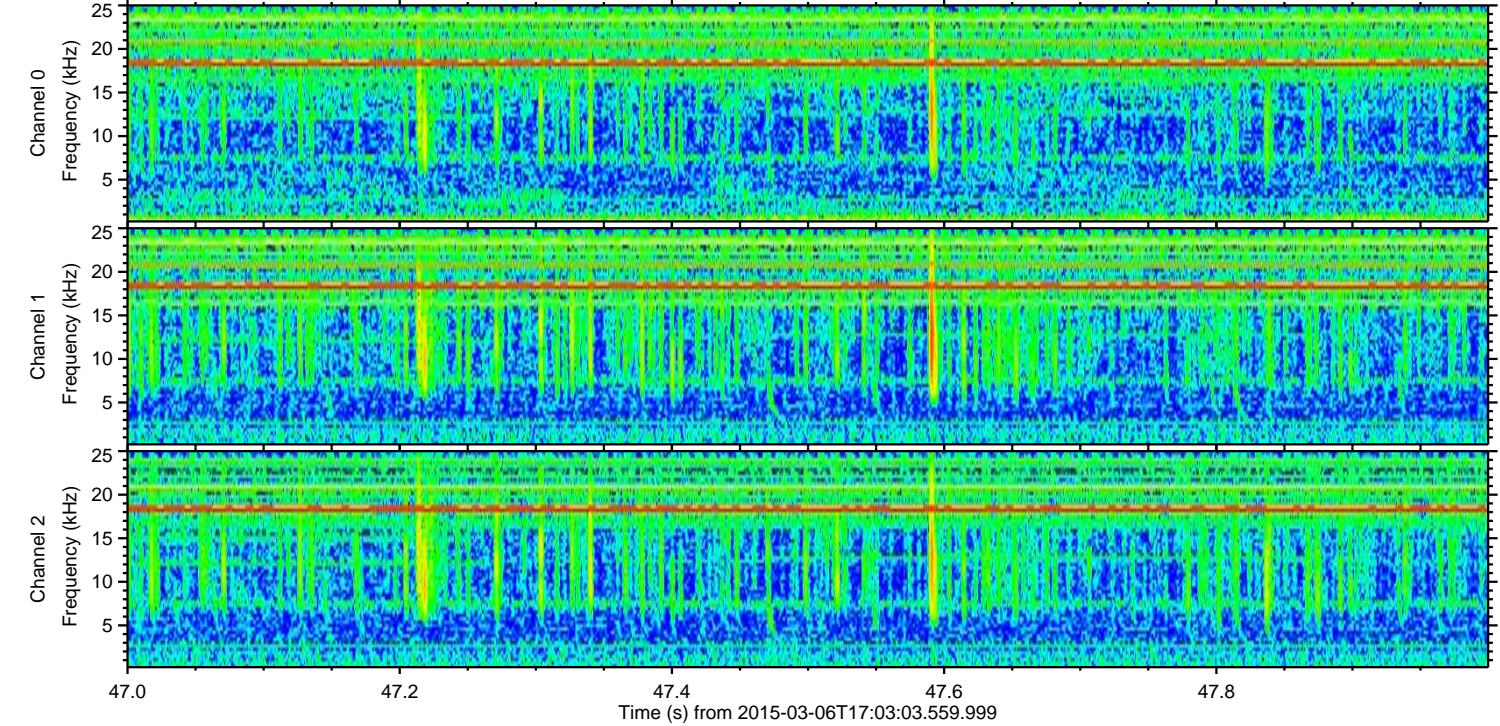
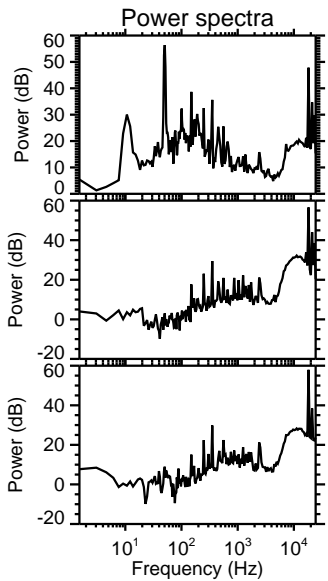
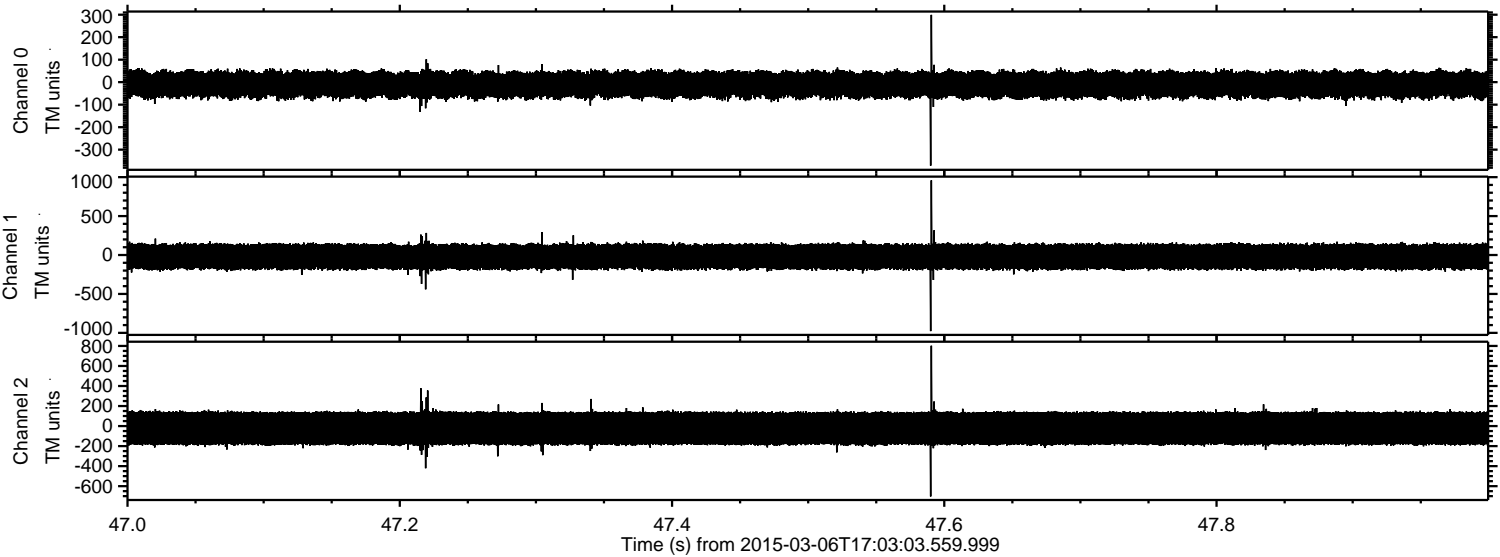
Processed Sun Mar 8 02:33:50 2015 by ELM ver.2012-10-06 from 001__elm20150306_170302__dat00.bin



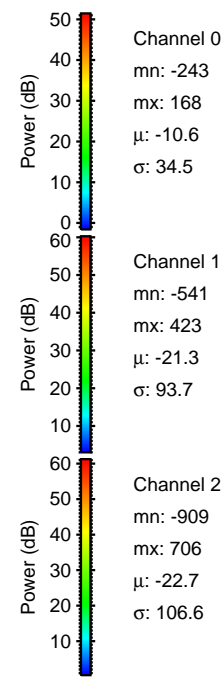
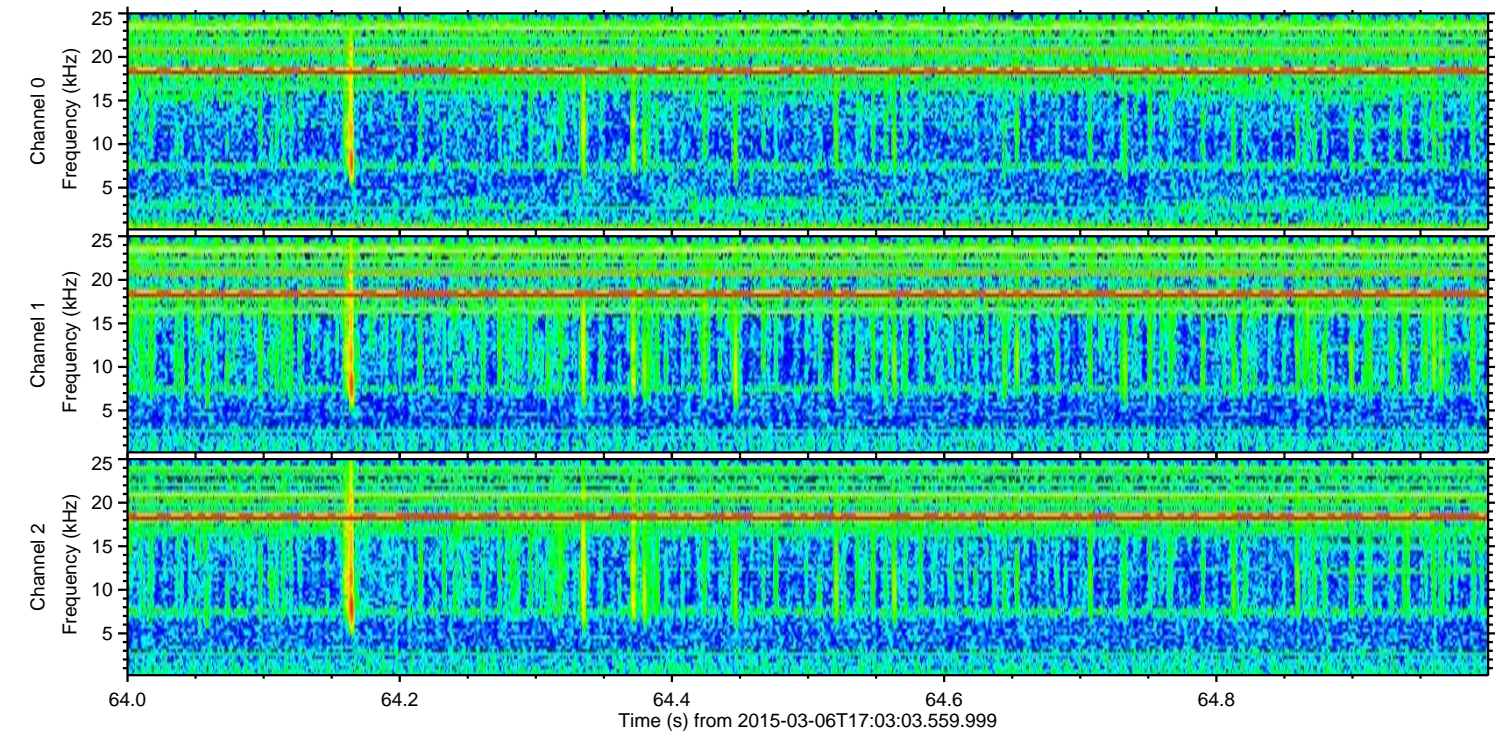
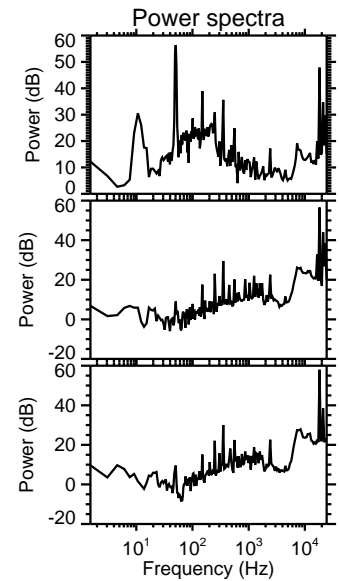
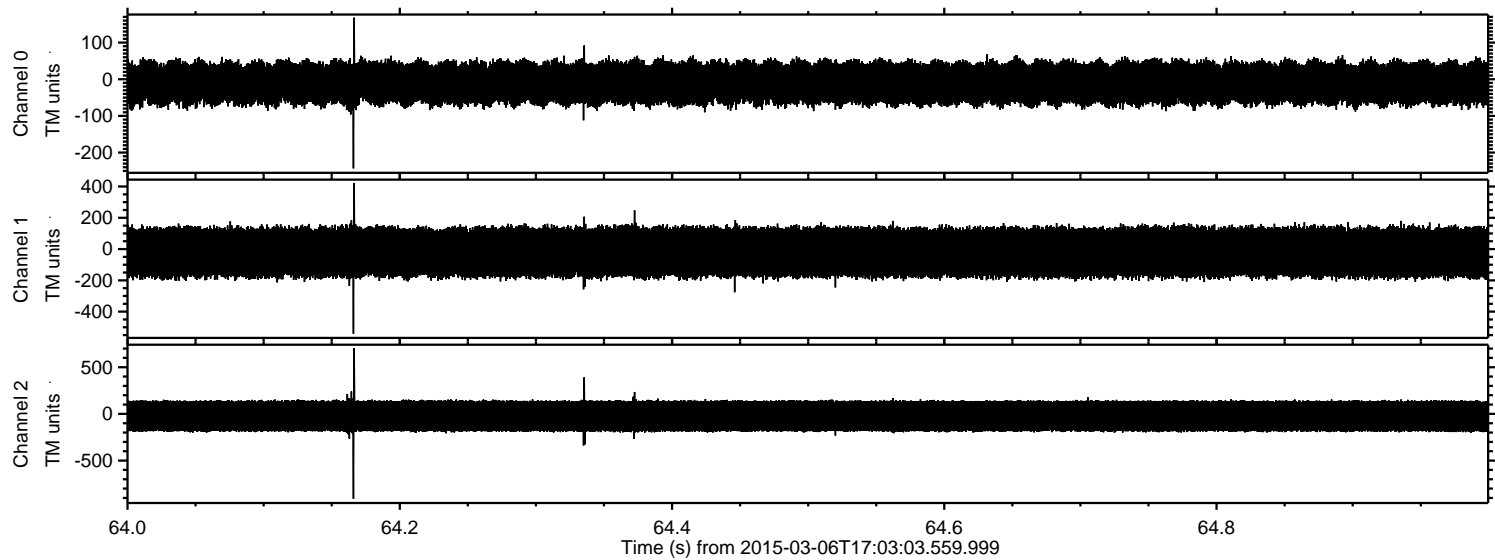
Processed Sun Mar 8 02:33:51 2015 by ELM ver.2012-10-06 from 001__elm20150306_170302__dat00.bin



Processed Sun Mar 8 02:33:52 2015 by ELM ver.2012-10-06 from 001__elm20150306_170302__dat00.bin

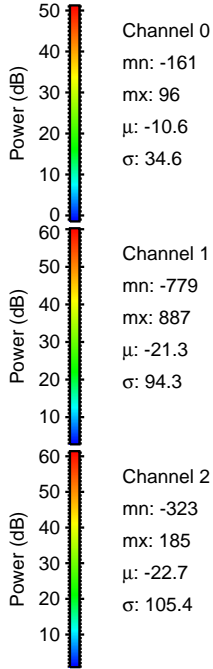
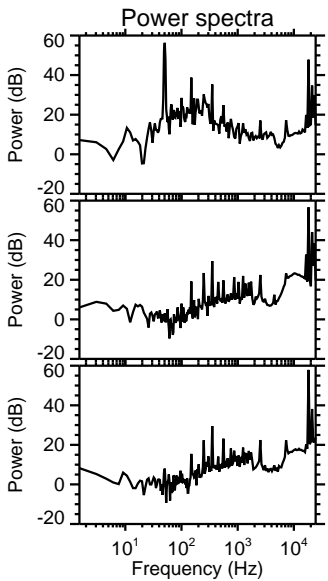
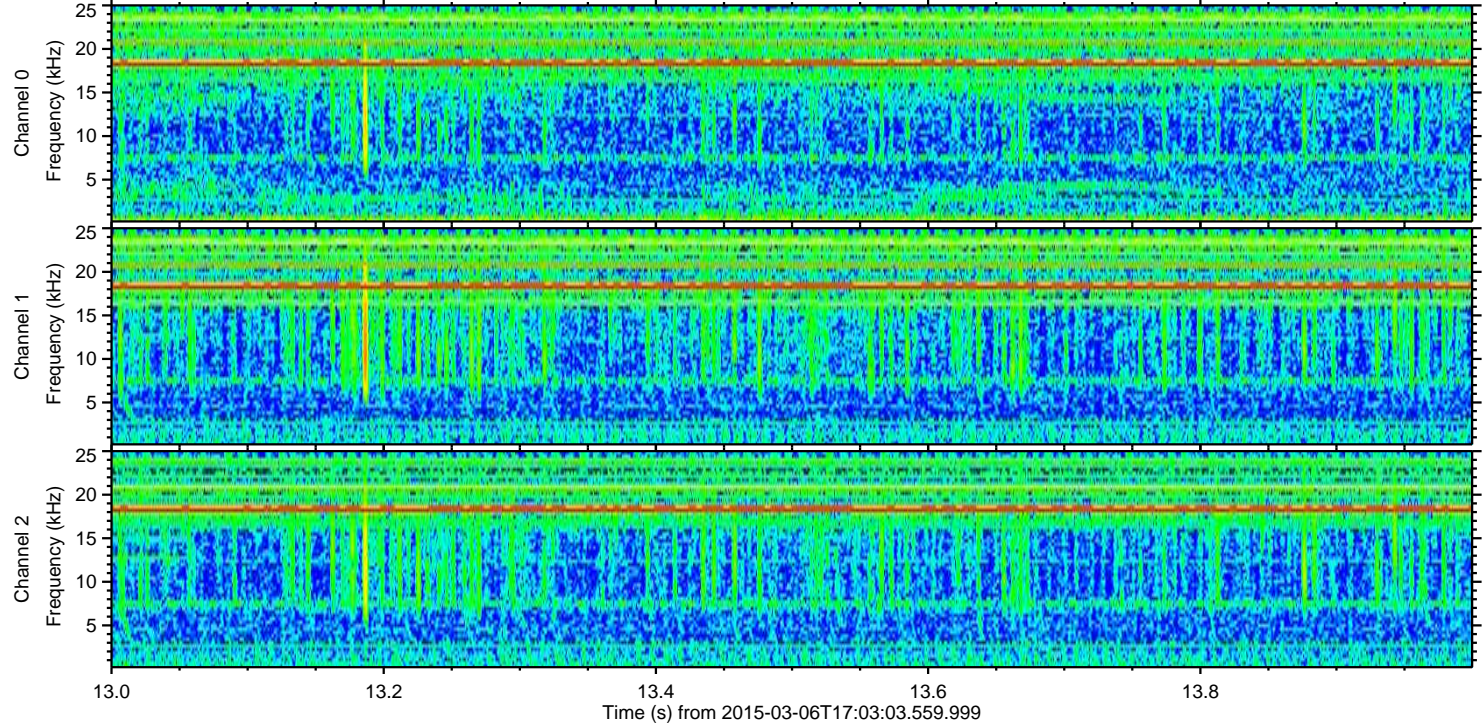
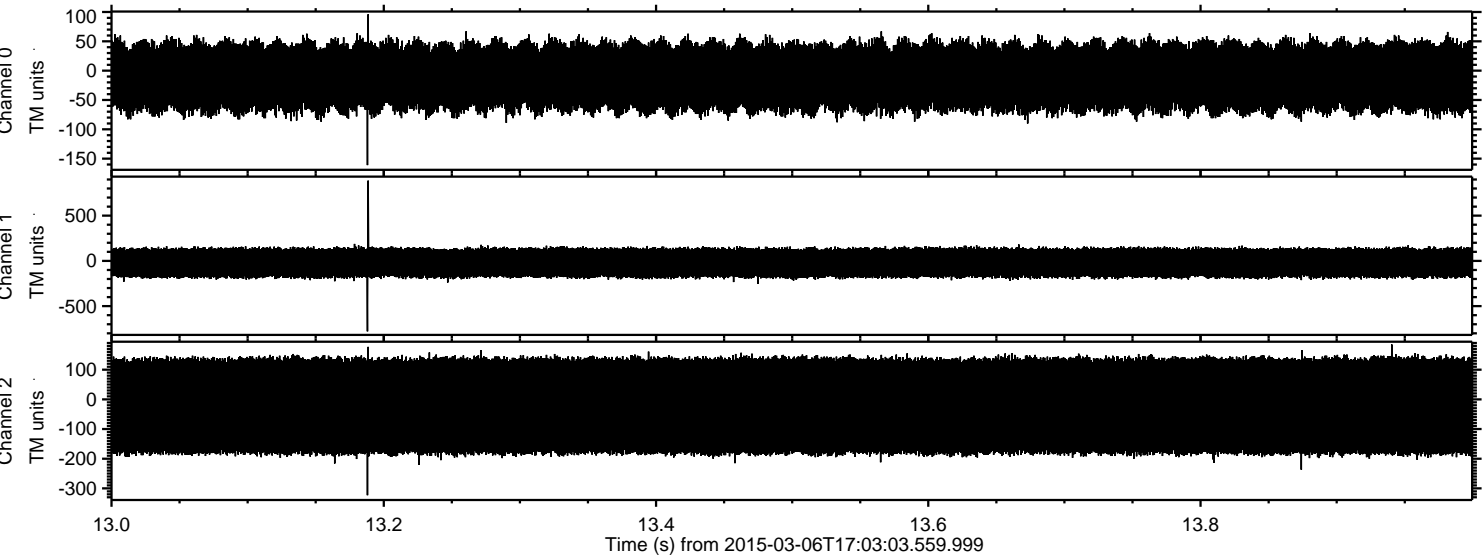


Processed Sun Mar 8 02:33:53 2015 by ELM ver.2012-10-06 from 001__elm20150306_170302__dat00.bin

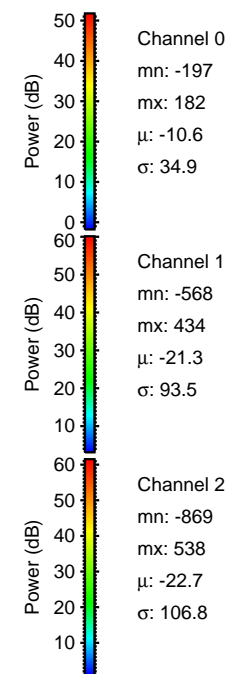
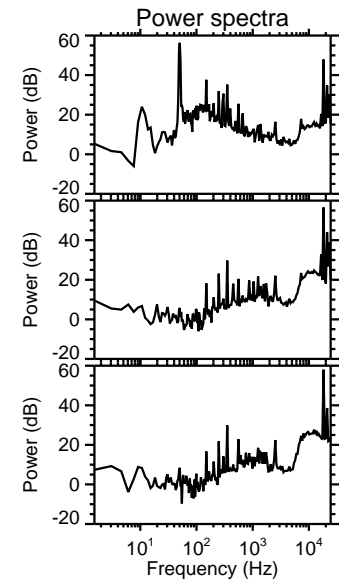
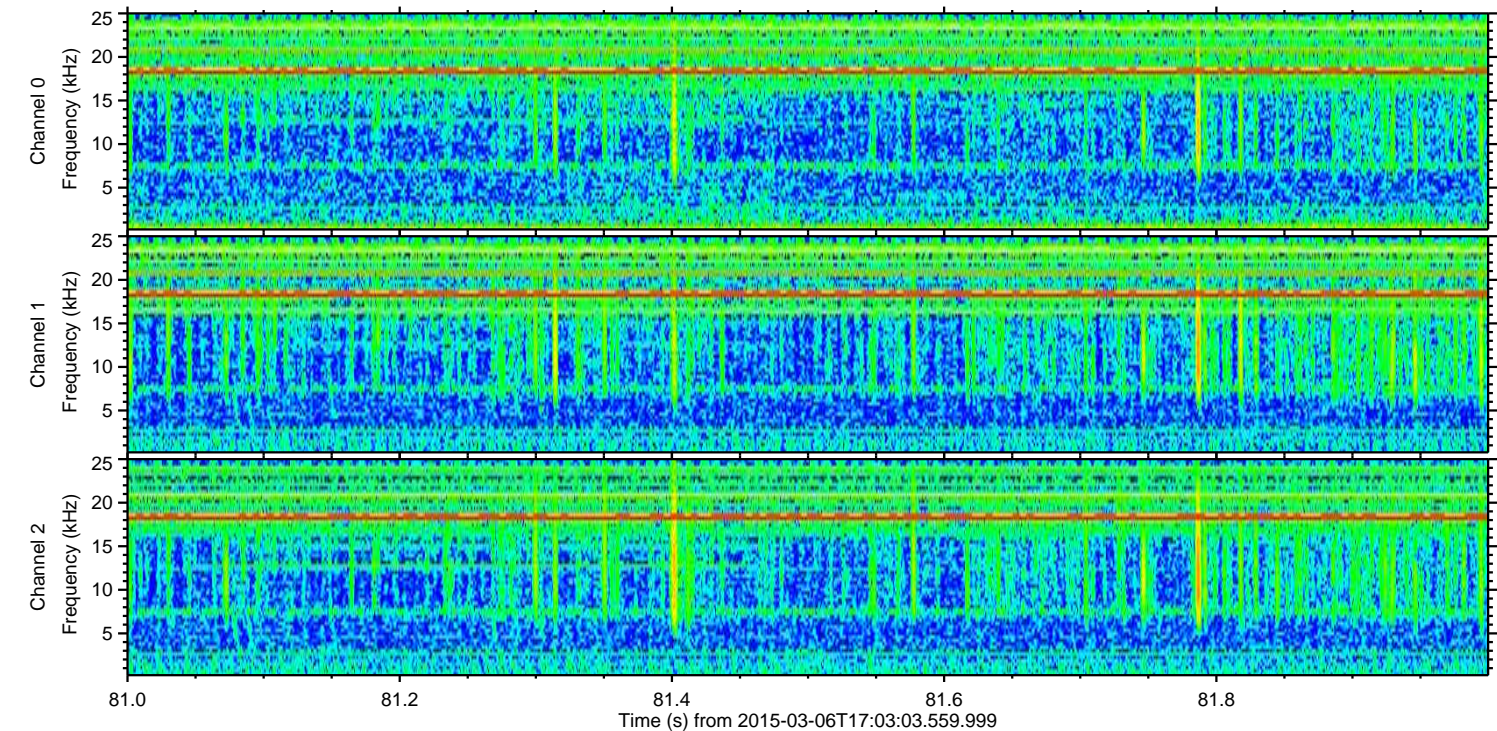
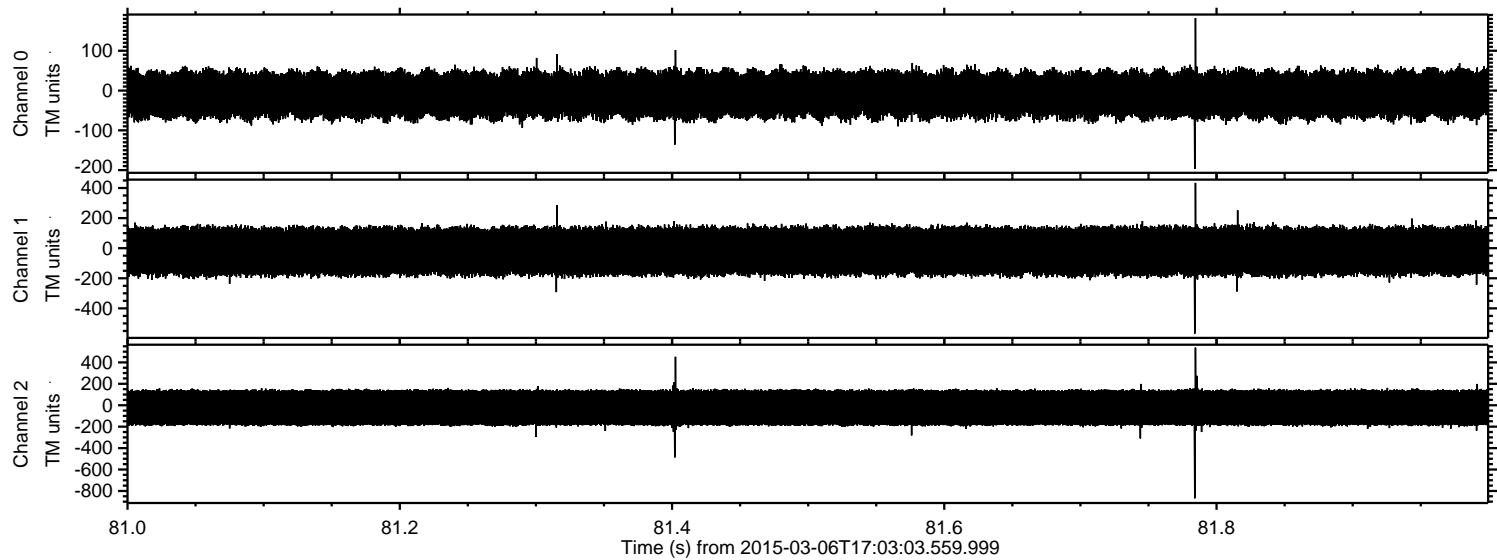


ELMAVAN 3D WAVEFORMS (Measured data sampled at 50 kHz) 49780 packets of 144 samples from 2015-03-06T17:03:03.559.999. Part 14/144

Processed Sun Mar 8 02:33:54 2015 by ELM ver.2012-10-06 from 001__elm20150306_170302__dat00.bin



Processed Sun Mar 8 02:33:55 2015 by ELM ver.2012-10-06 from 001__elm20150306_170302__dat00.bin



Channel 0
mn: -197
mx: 182
 μ : -10.6
 σ : 34.9

Channel 1
mn: -568
mx: 434
 μ : -21.3
 σ : 93.5

Channel 2
mn: -869
mx: 538
 μ : -22.7
 σ : 106.8

Processed Sun Mar 8 02:33:56 2015 by ELM ver.2012-10-06 from 001__elm20150306_170302__dat00.bin

