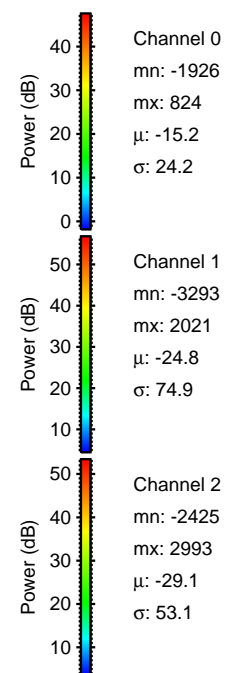
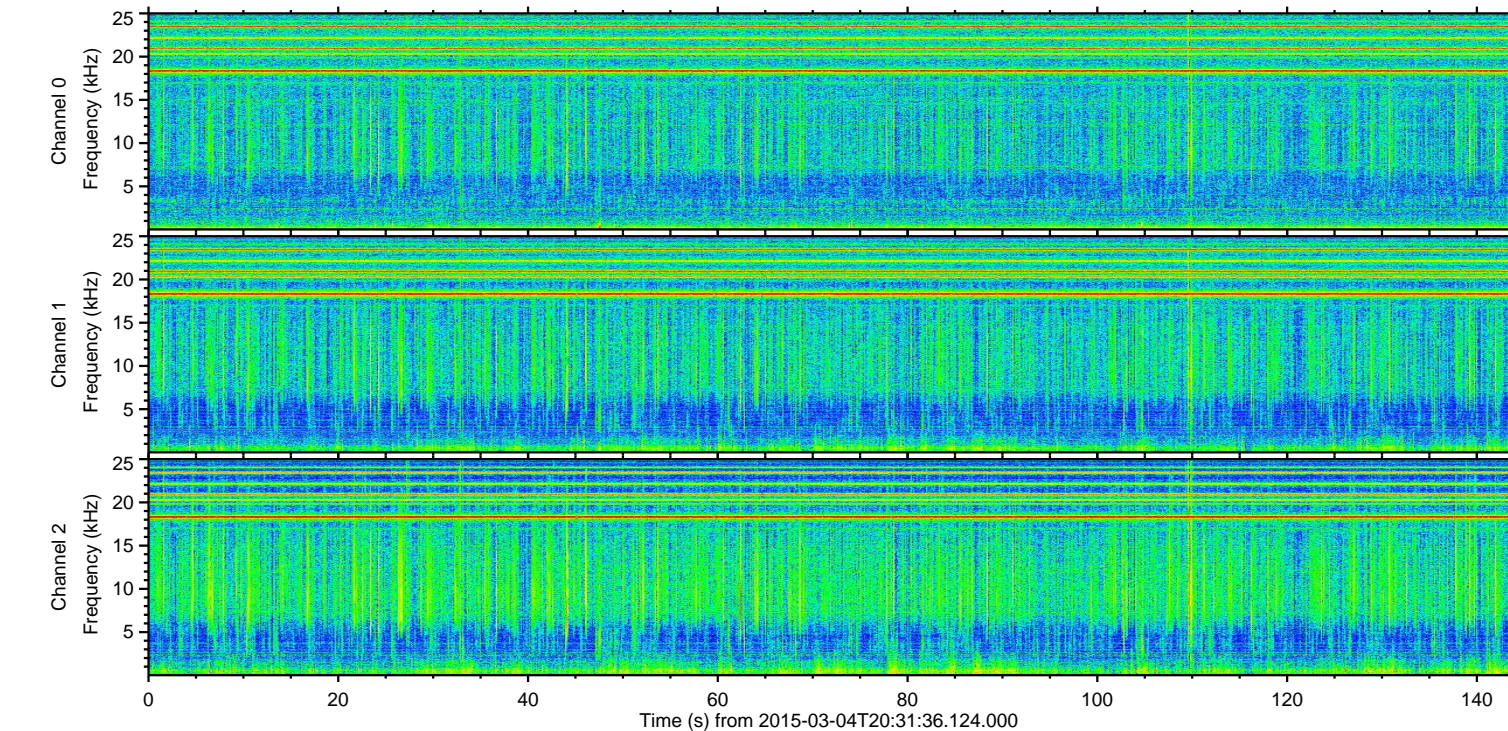
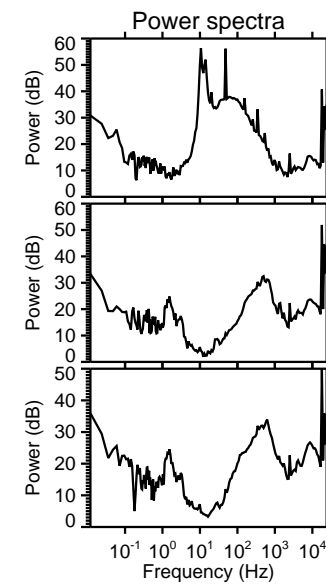
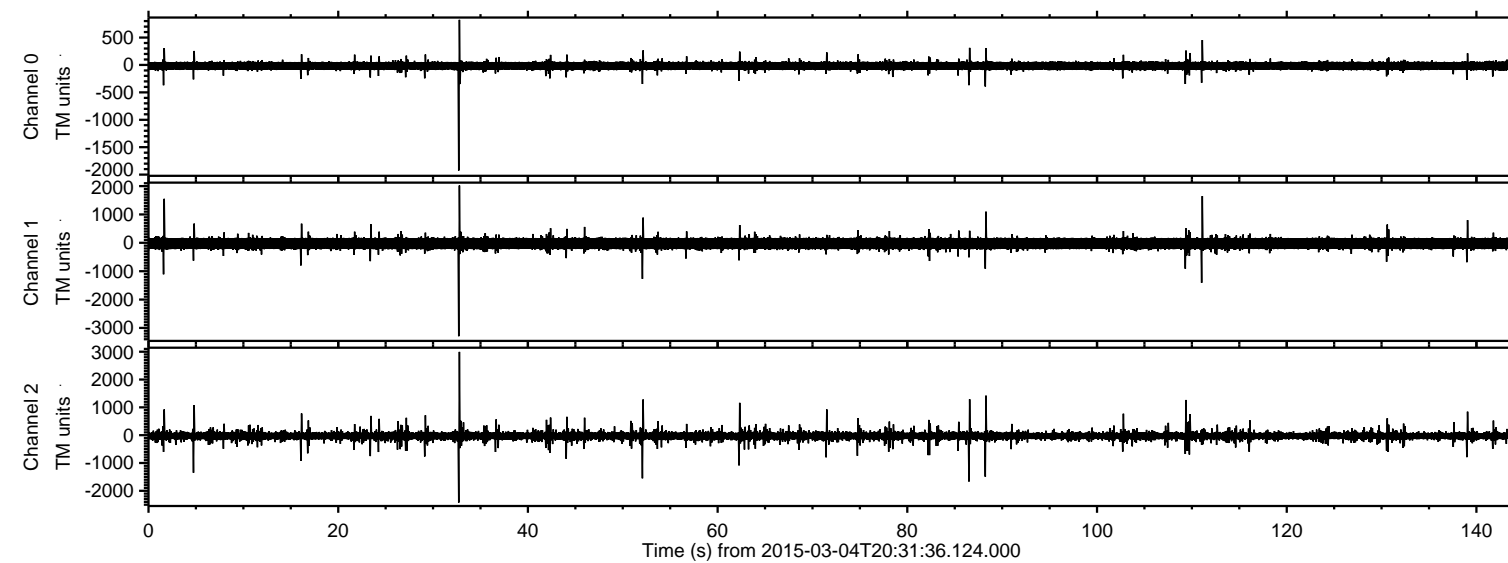


# ELMAVAN 3D WAVEFORMS (Measured data sampled at 50 kHz) 49809 packets of 144 samples from 2015-03-04T20:31:36.124.000.

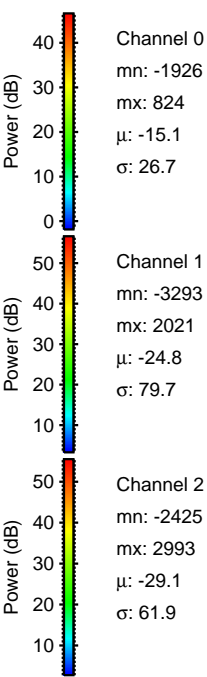
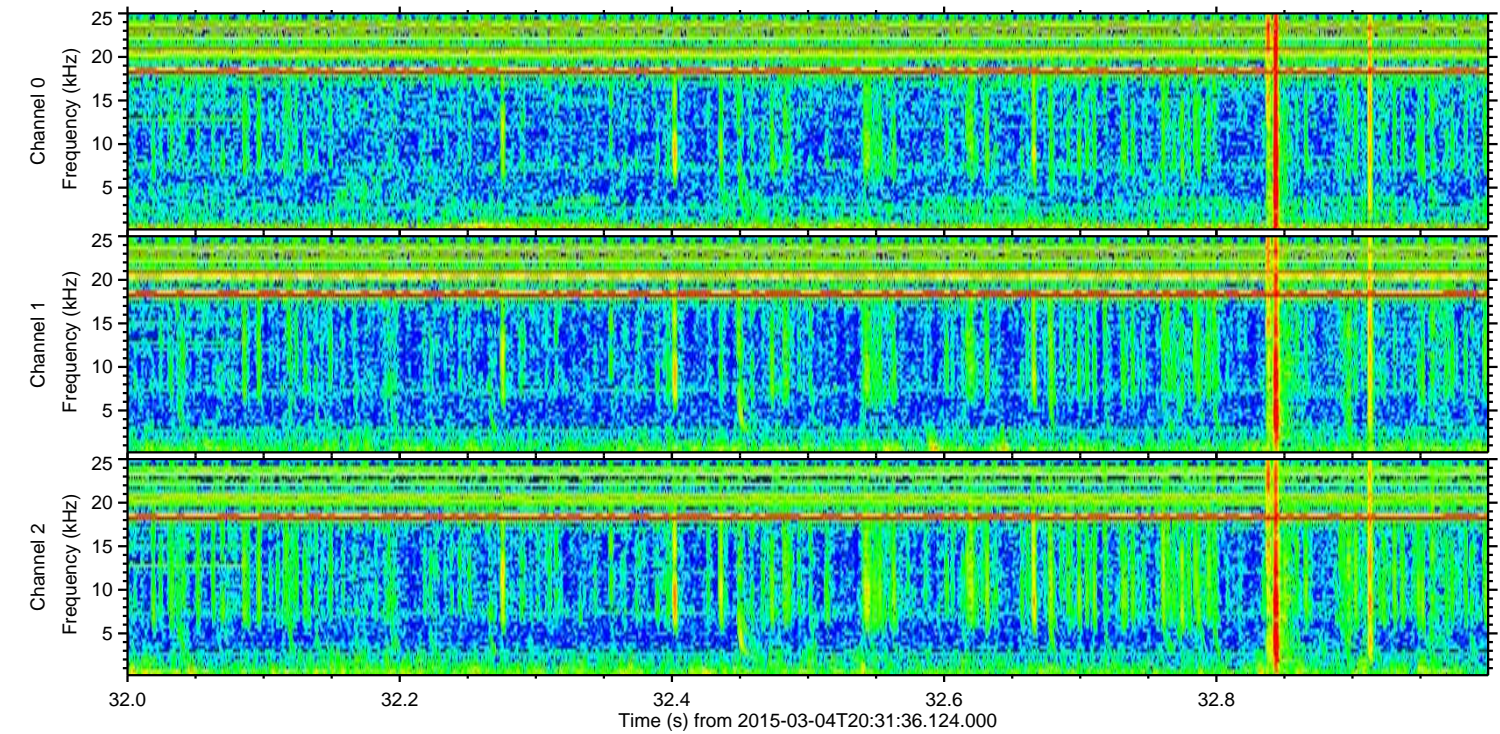
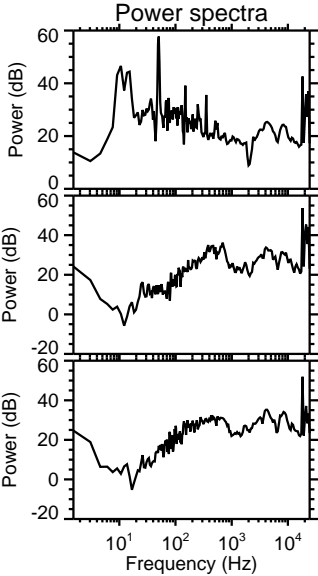
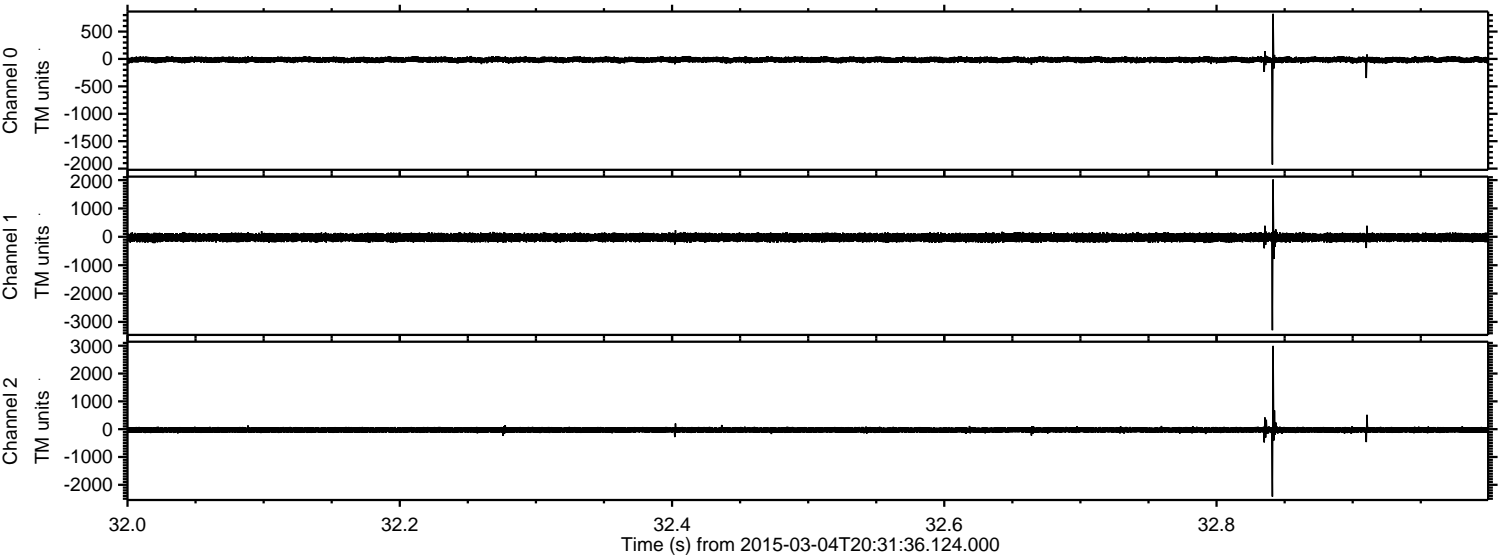
Processed Sat Mar 7 16:14:06 2015 by ELM ver.2012-10-06 from 001\_\_elm20150304\_203135\_\_dat00.bin





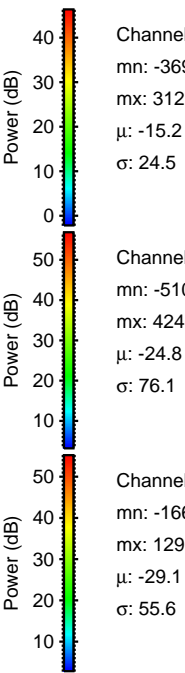
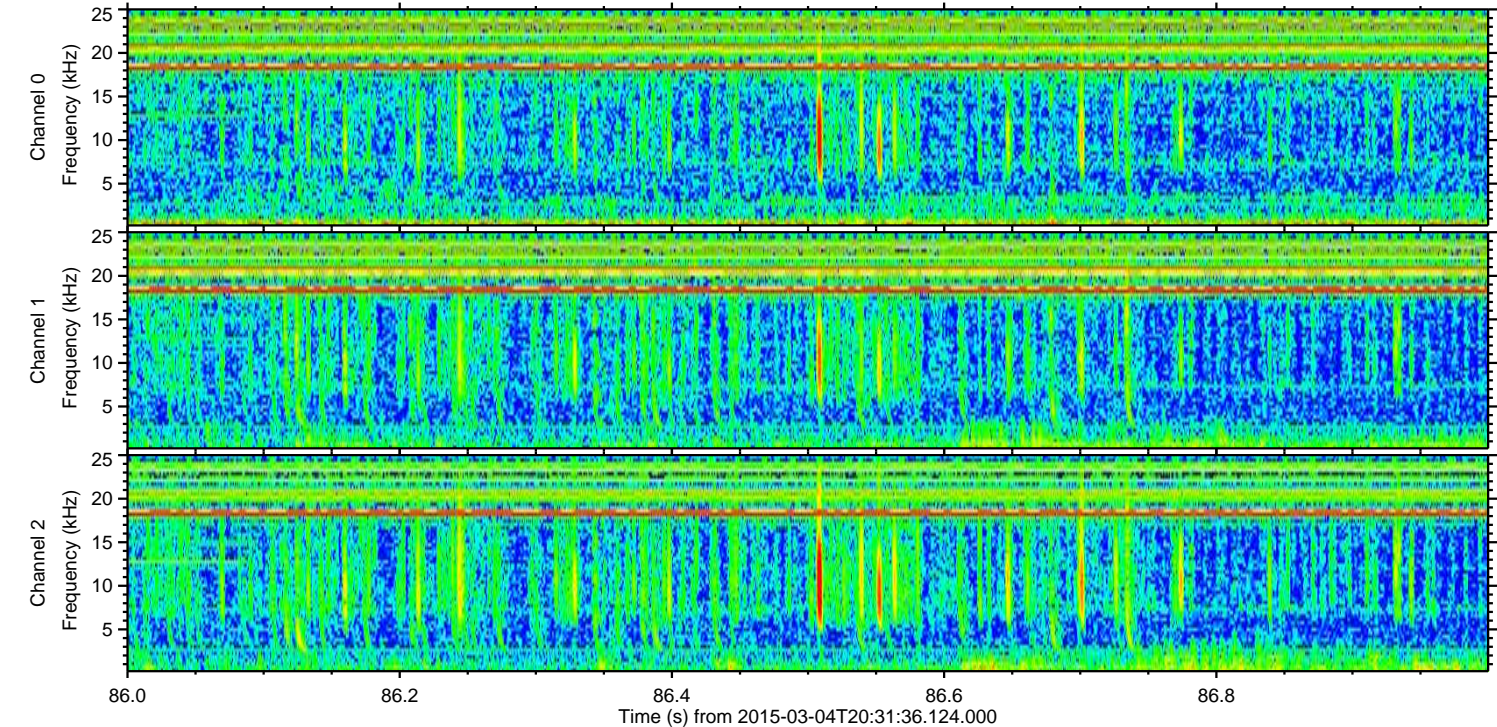
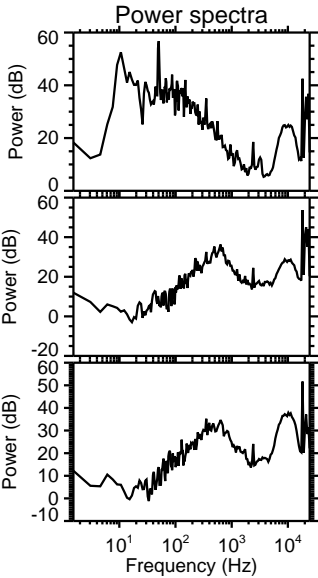
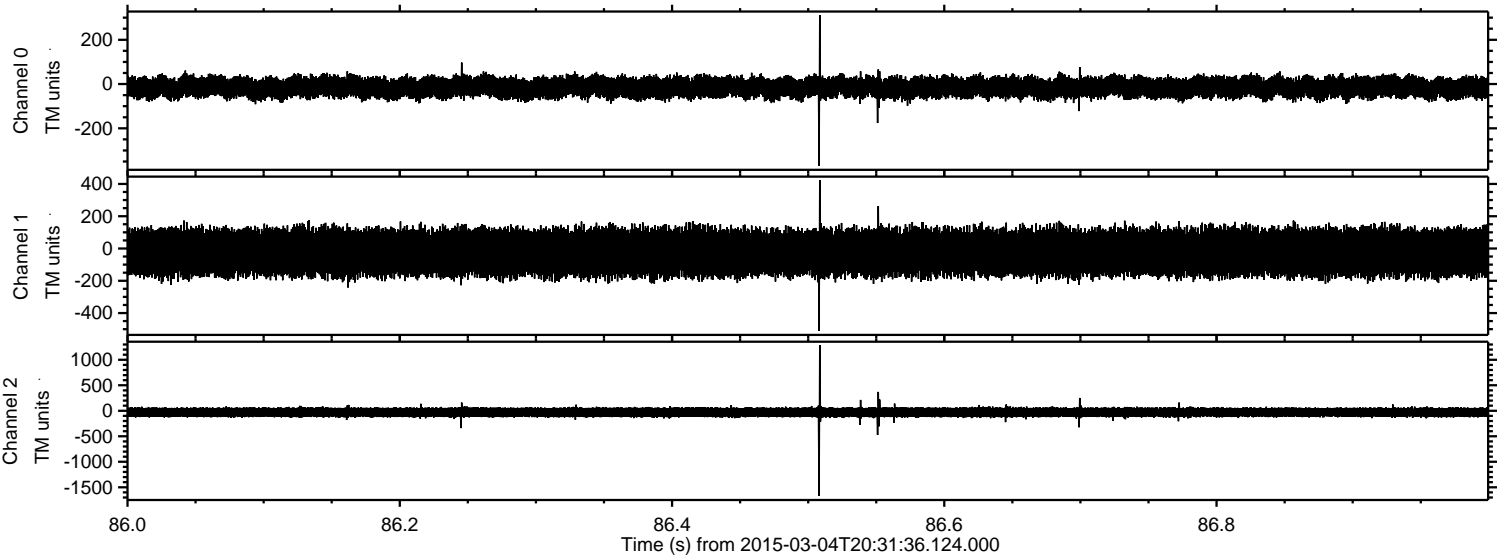
ELMAVAN 3D WAVEFORMS (Measured data sampled at 50 kHz) 49809 packets of 144 samples from 2015-03-04T20:31:36.124.000. Part 33/144

Processed Sat Mar 7 16:14:17 2015 by ELM ver.2012-10-06 from 001\_\_elm20150304\_203135\_\_dat00.bin





Processed Sat Mar 7 16:14:18 2015 by ELM ver.2012-10-06 from 001\_\_elm20150304\_203135\_\_dat00.bin



Channel 0  
mn: -369  
mx: 312  
 $\mu$ : -15.2  
 $\sigma$ : 24.5

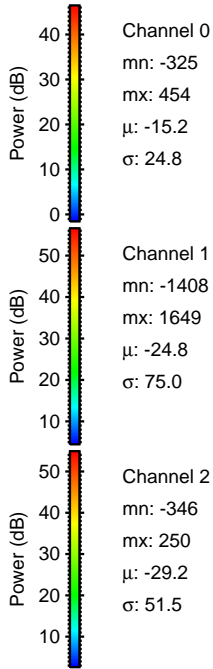
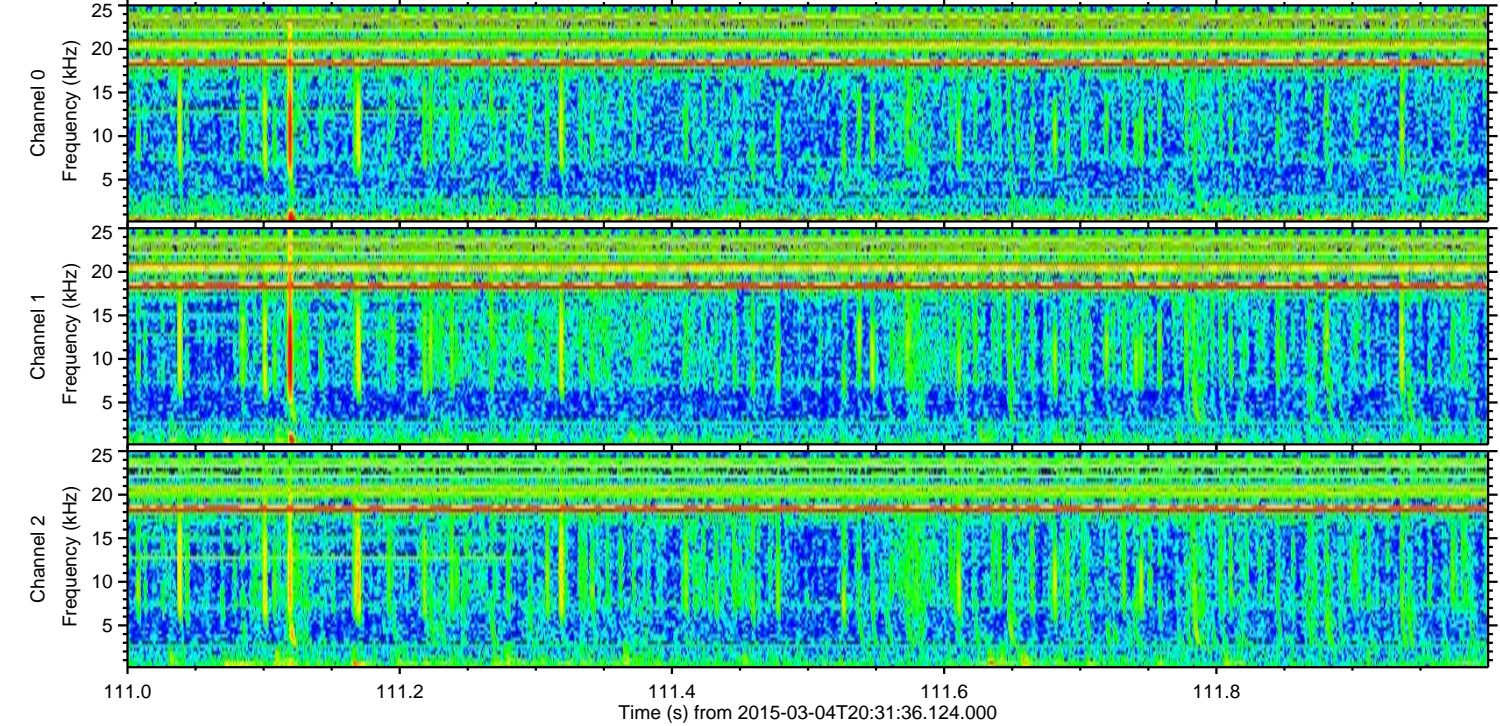
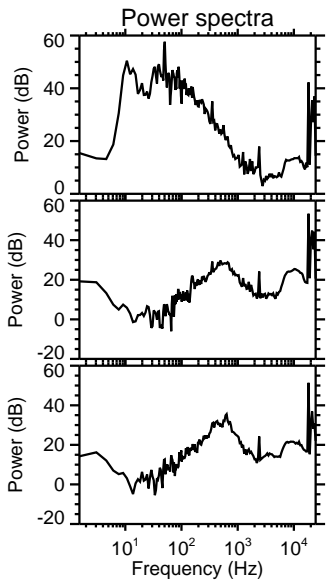
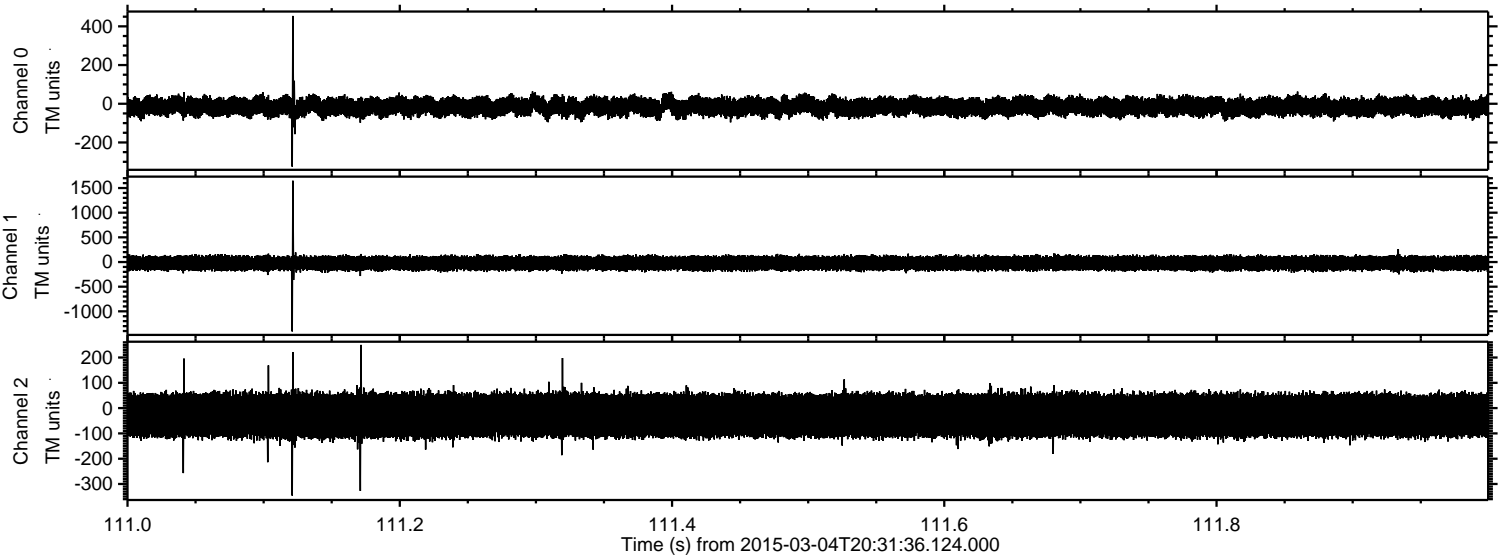
Channel 1  
mn: -510  
mx: 424  
 $\mu$ : -24.8  
 $\sigma$ : 76.1

Channel 2  
mn: -1666  
mx: 1290  
 $\mu$ : -29.1  
 $\sigma$ : 55.6



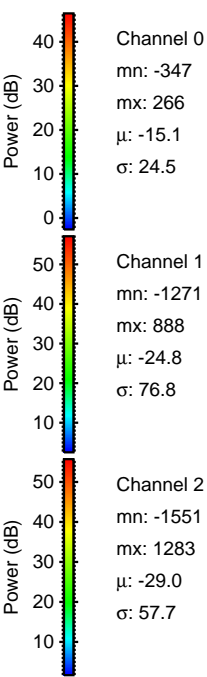
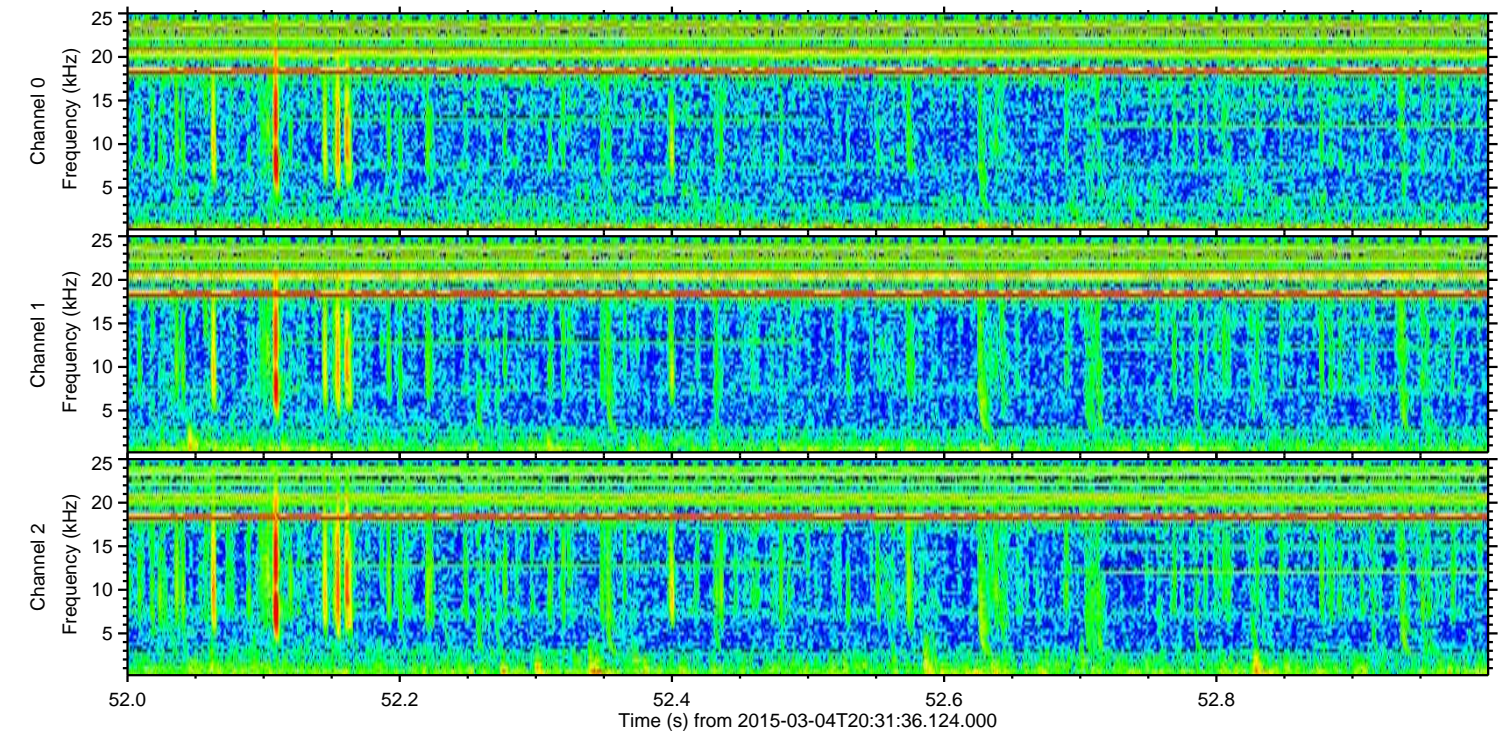
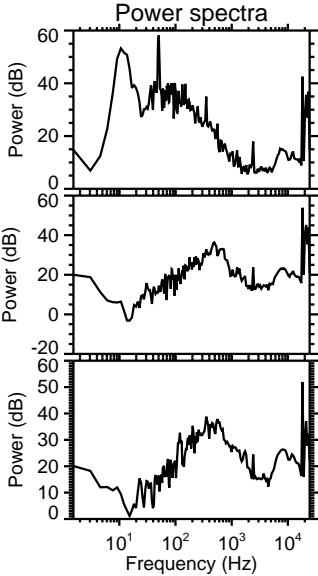
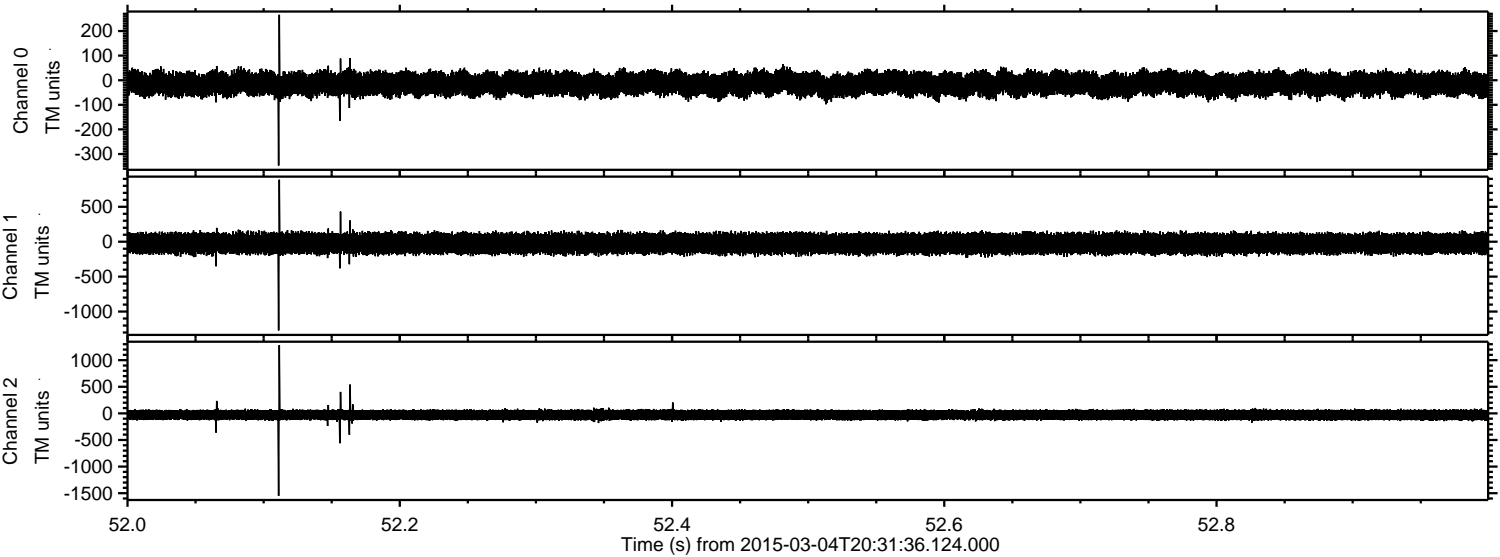
ELMAVAN 3D WAVEFORMS (Measured data sampled at 50 kHz) 49809 packets of 144 samples from 2015-03-04T20:31:36.124.000. Part 112/144

Processed Sat Mar 7 16:14:19 2015 by ELM ver.2012-10-06 from 001\_\_elm20150304\_203135\_\_dat00.bin





Processed Sat Mar 7 16:14:20 2015 by ELM ver.2012-10-06 from 001\_\_elm20150304\_203135\_\_dat00.bin



Channel 0  
mn: -347  
mx: 266  
 $\mu$ : -15.1  
 $\sigma$ : 24.5

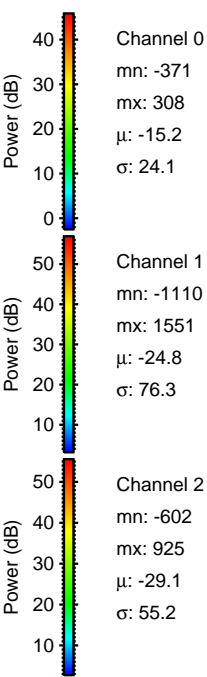
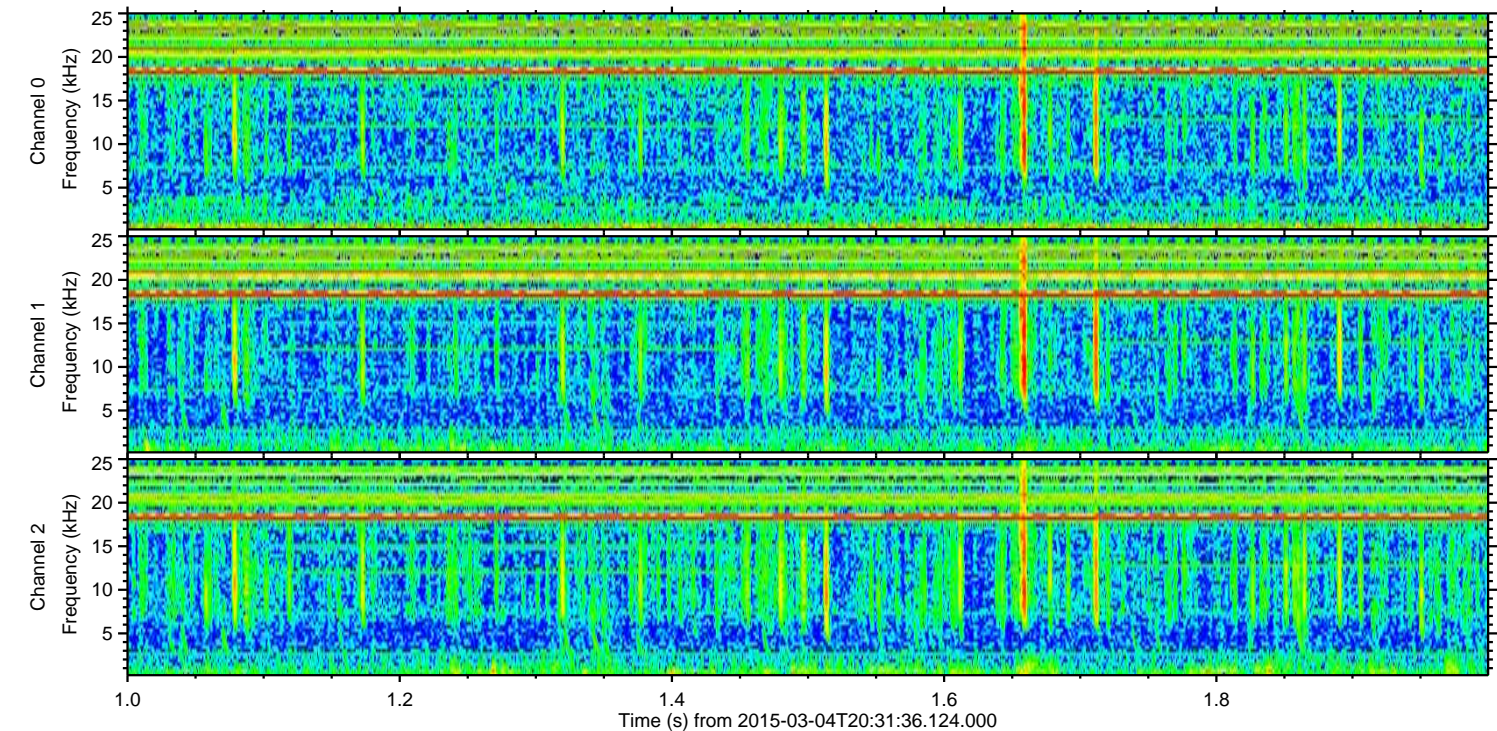
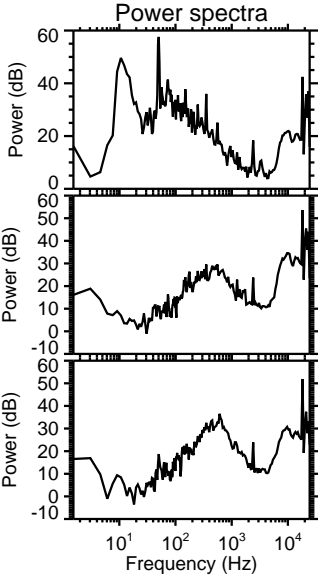
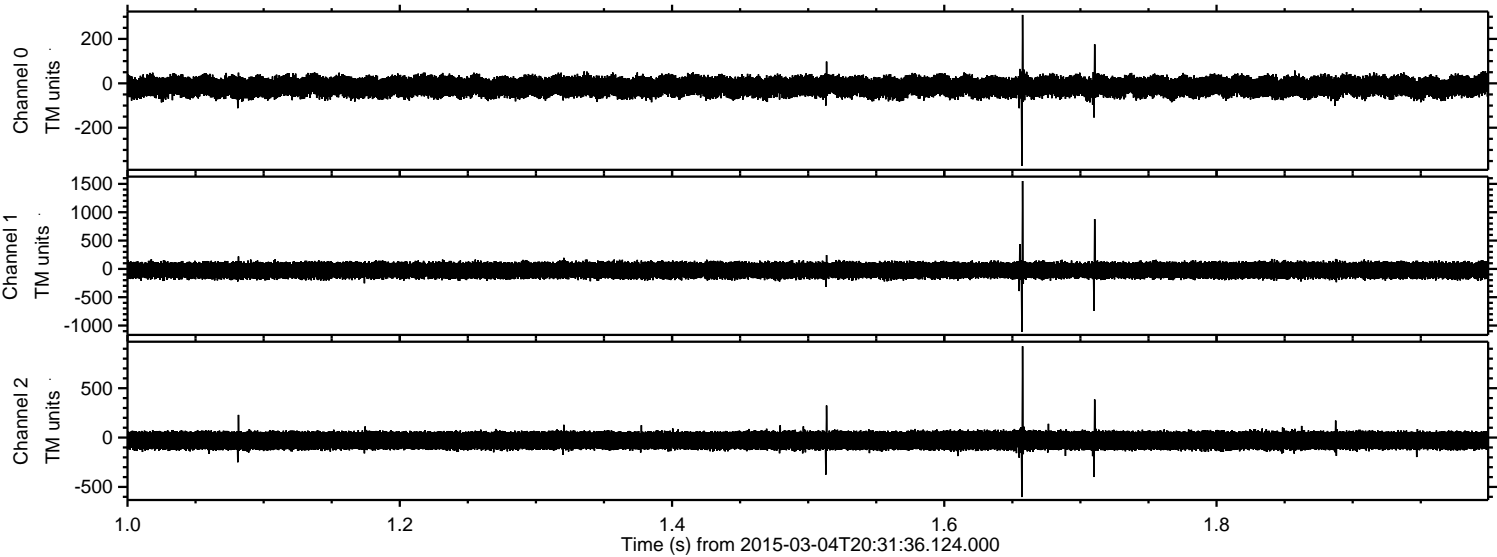
Channel 1  
mn: -1271  
mx: 888  
 $\mu$ : -24.8  
 $\sigma$ : 76.8

Channel 2  
mn: -1551  
mx: 1283  
 $\mu$ : -29.0  
 $\sigma$ : 57.7



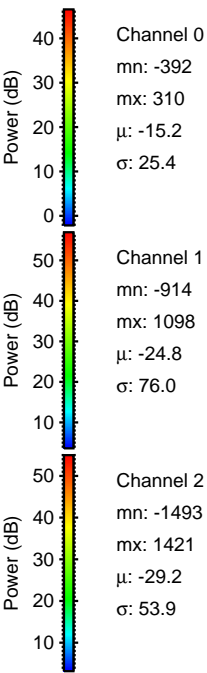
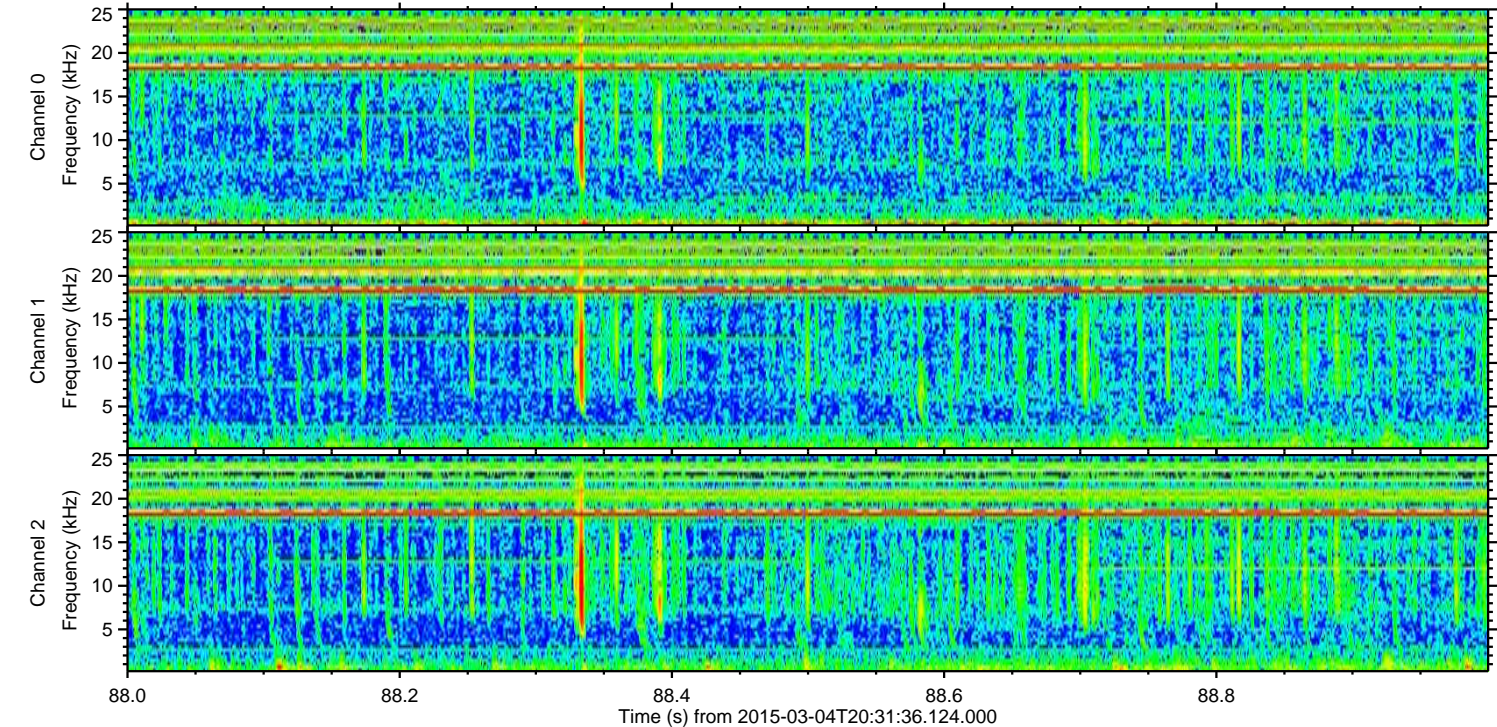
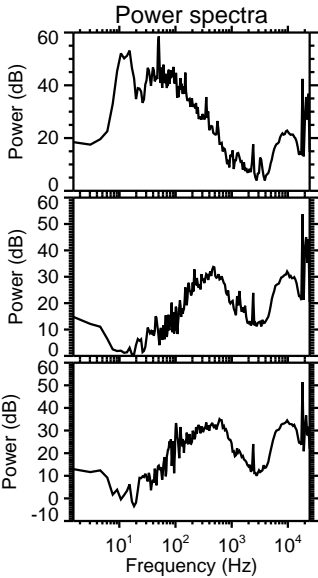
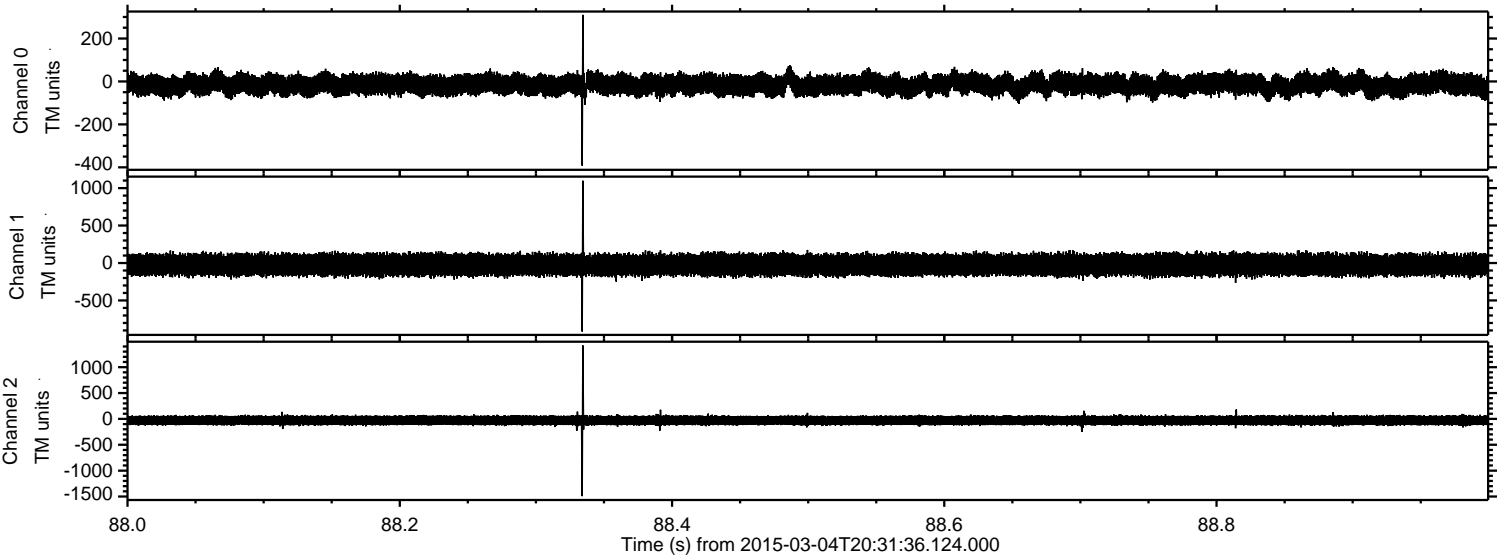
ELMAVAN 3D WAVEFORMS (Measured data sampled at 50 kHz) 49809 packets of 144 samples from 2015-03-04T20:31:36.124.000. Part 2/144

Processed Sat Mar 7 16:14:21 2015 by ELM ver.2012-10-06 from 001\_\_elm20150304\_203135\_\_dat00.bin



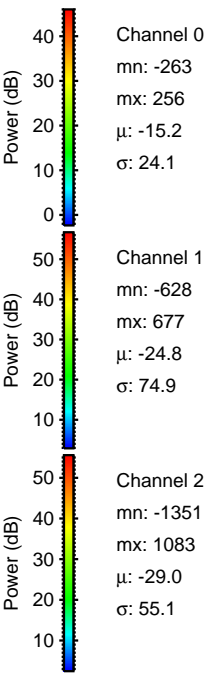
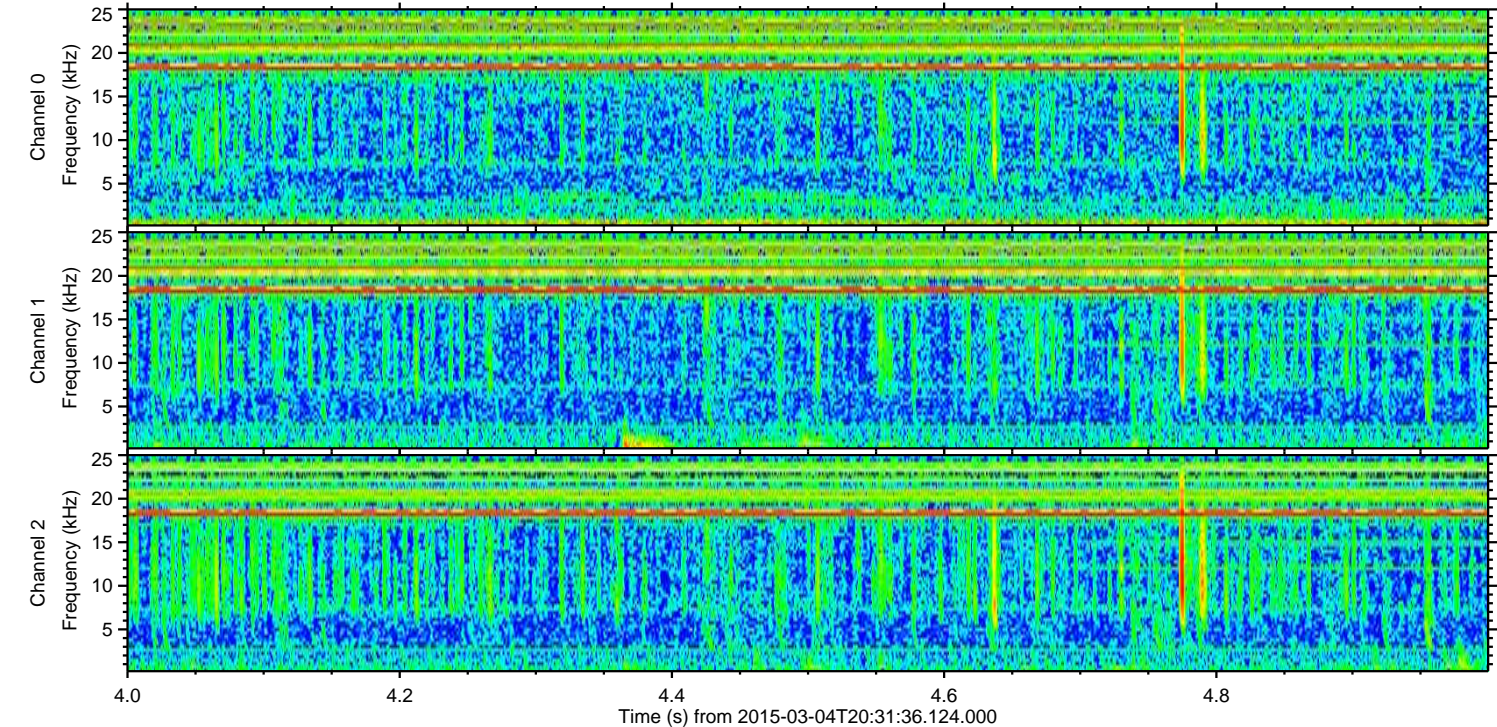
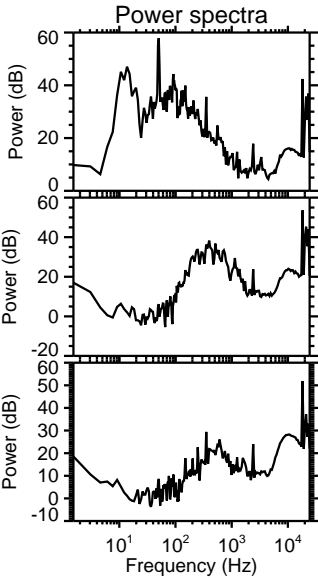
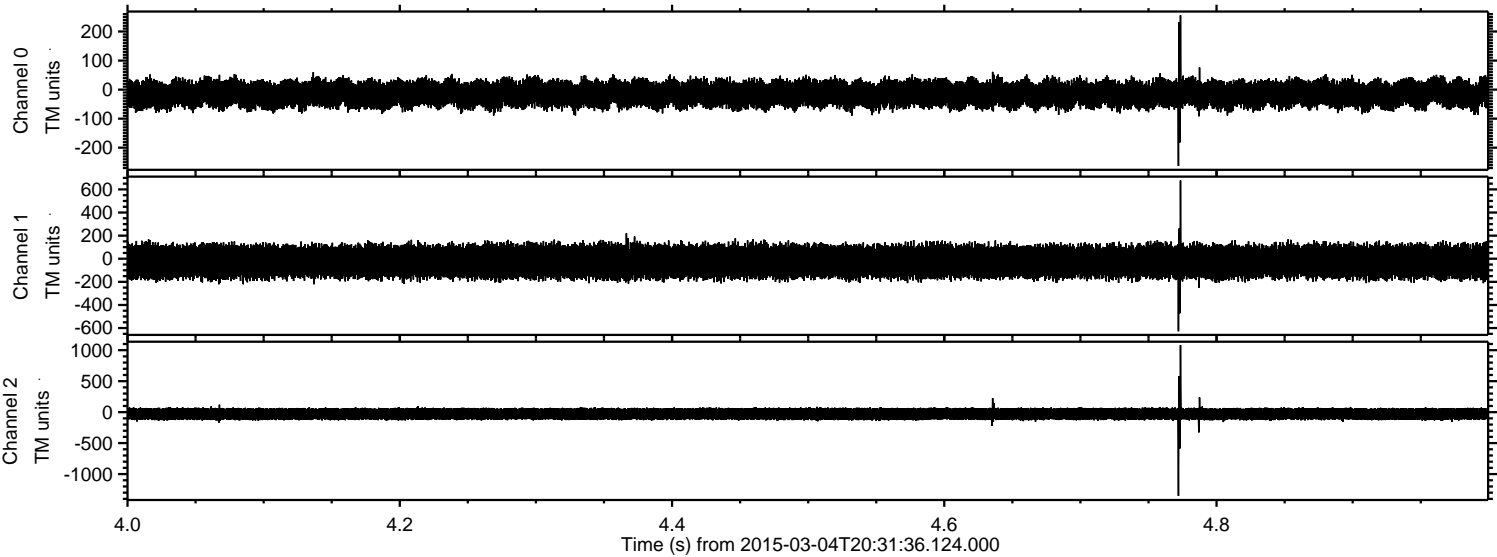


Processed Sat Mar 7 16:14:22 2015 by ELM ver.2012-10-06 from 001\_\_elm20150304\_203135\_\_dat00.bin





Processed Sat Mar 7 16:14:23 2015 by ELM ver.2012-10-06 from 001\_\_elm20150304\_203135\_\_dat00.bin



Channel 0  
mn: -263  
mx: 256  
 $\mu$ : -15.2  
 $\sigma$ : 24.1

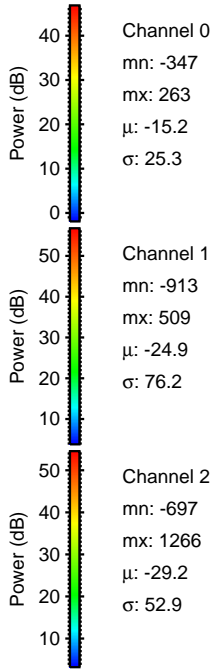
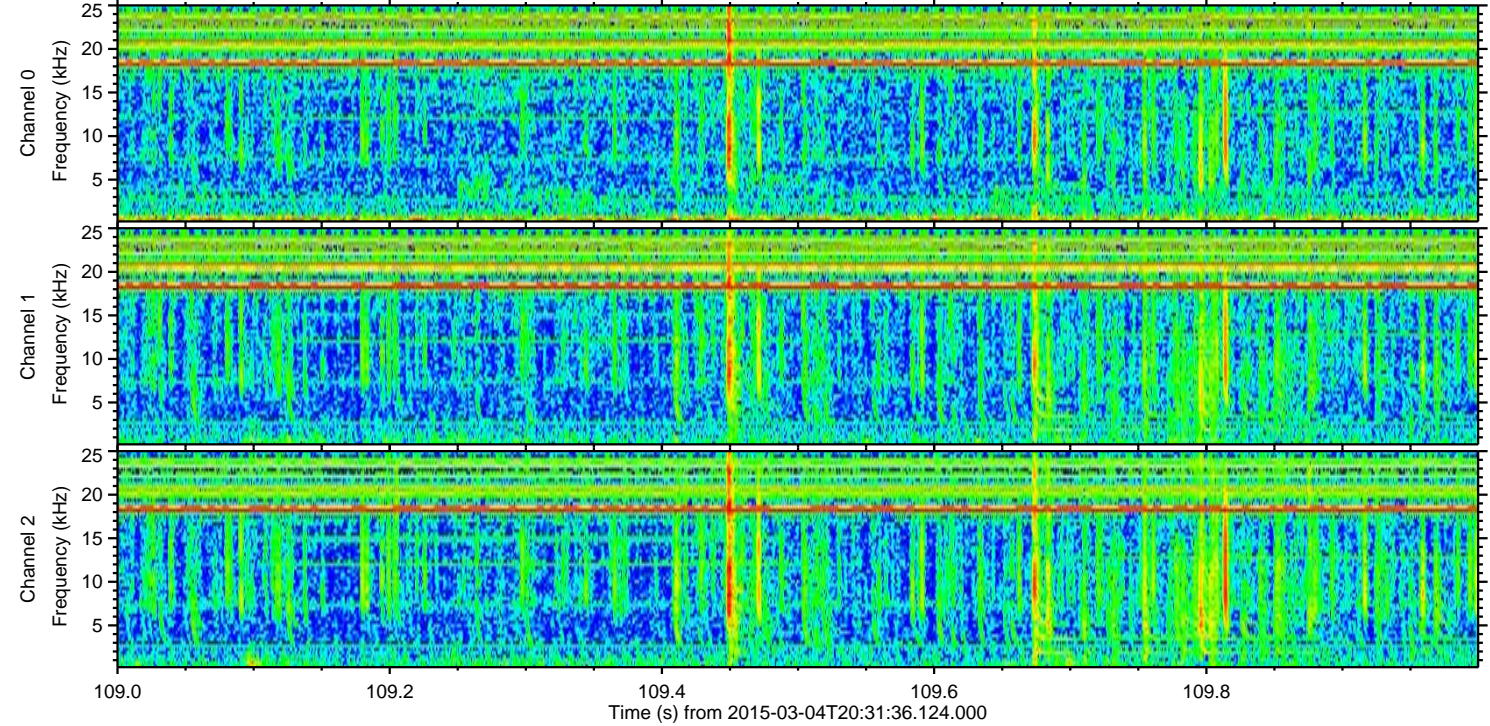
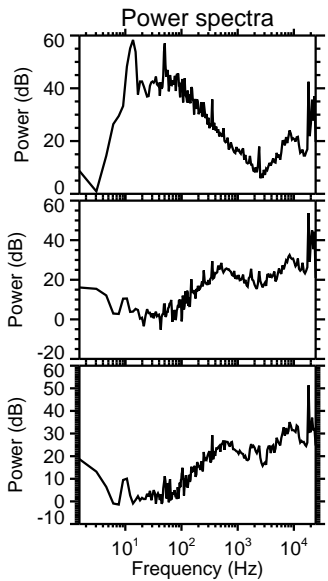
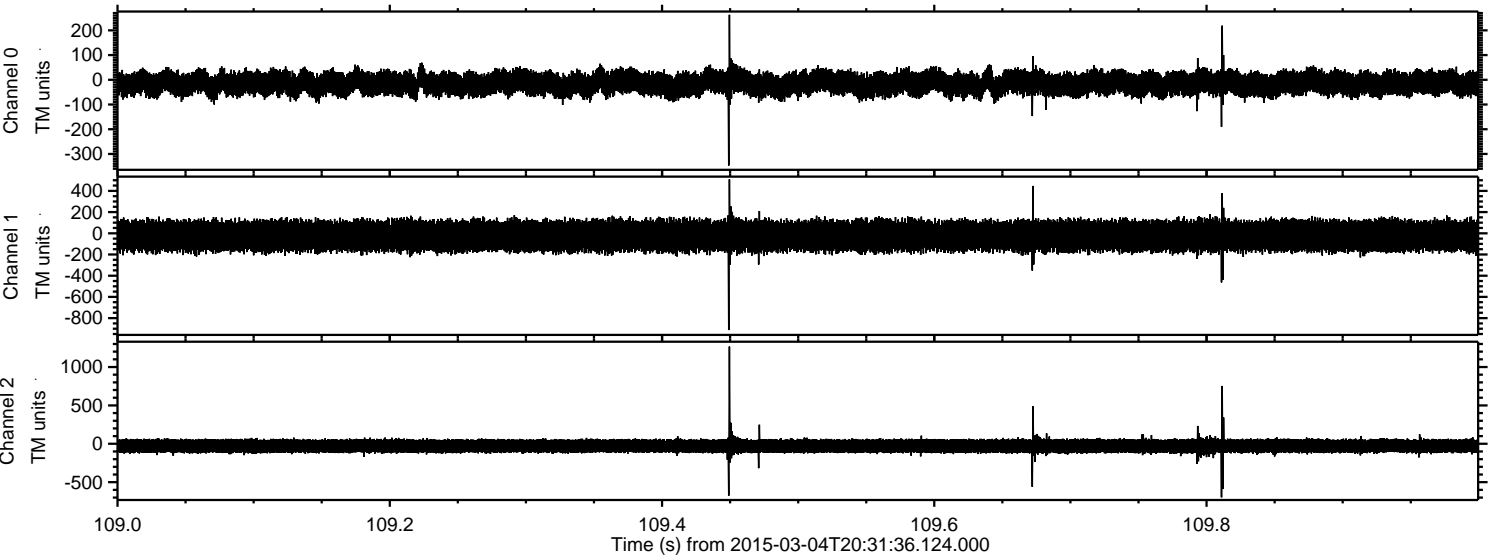
Channel 1  
mn: -628  
mx: 677  
 $\mu$ : -24.8  
 $\sigma$ : 74.9

Channel 2  
mn: -1351  
mx: 1083  
 $\mu$ : -29.0  
 $\sigma$ : 55.1



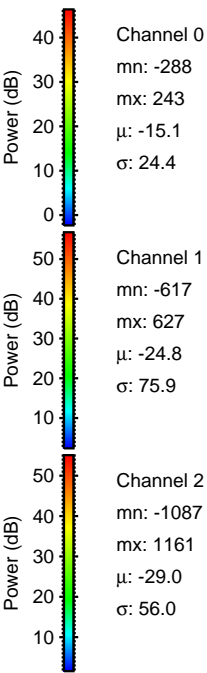
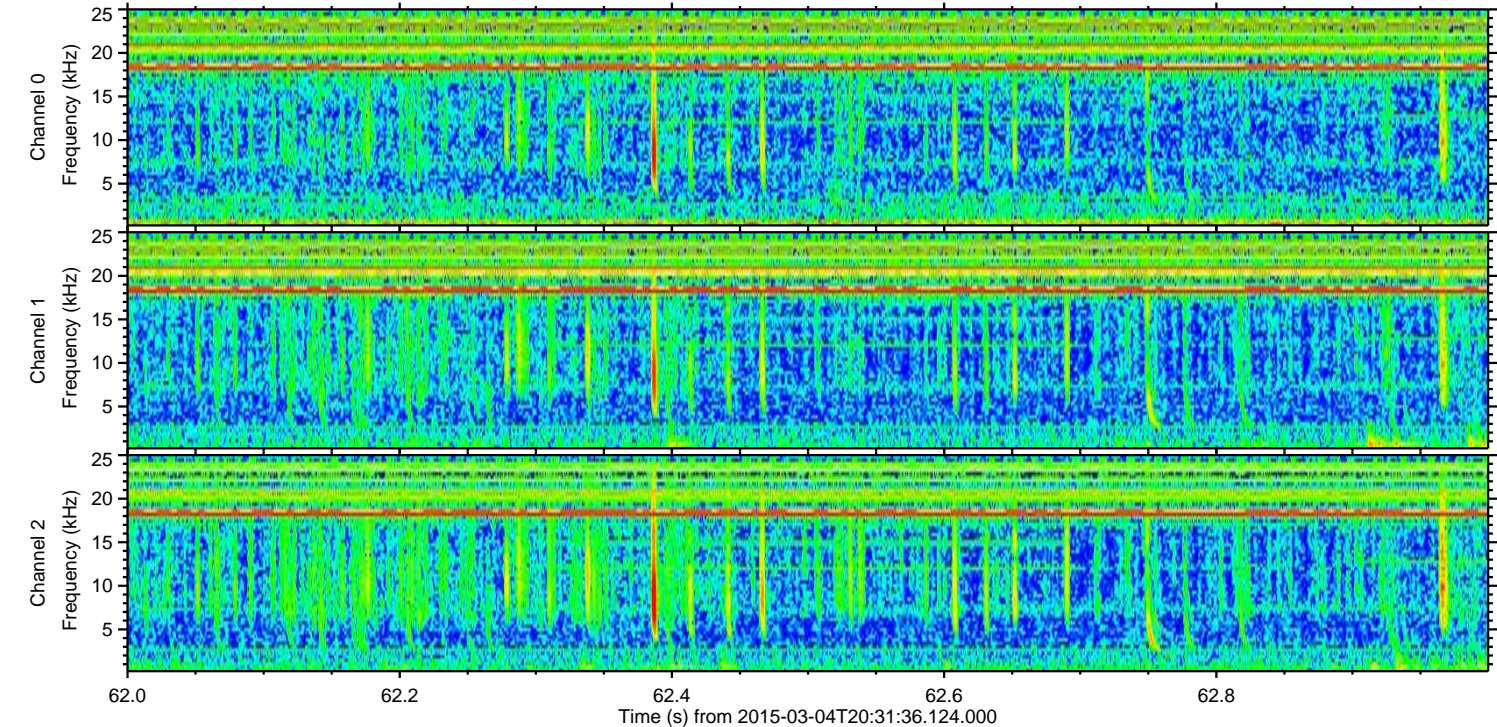
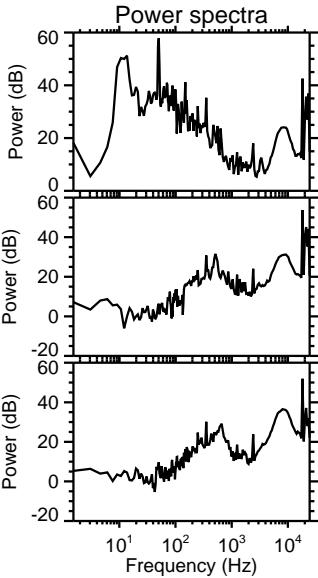
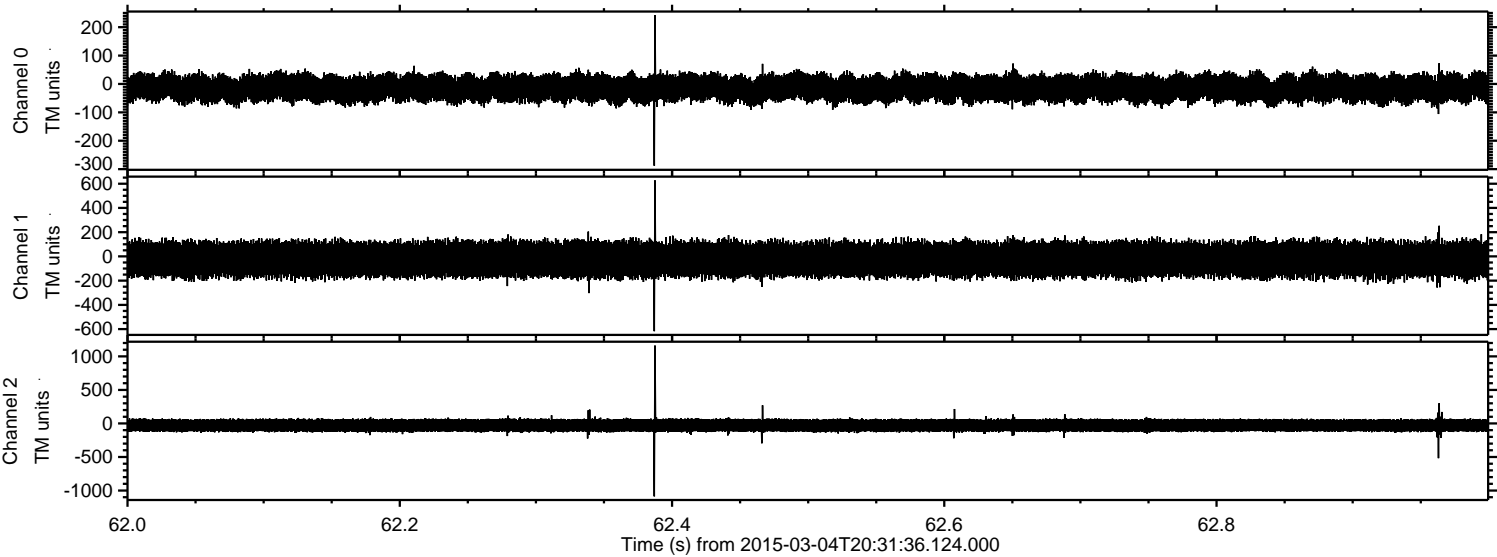
ELMAVAN 3D WAVEFORMS (Measured data sampled at 50 kHz) 49809 packets of 144 samples from 2015-03-04T20:31:36.124.000. Part 110/144

Processed Sat Mar 7 16:14:24 2015 by ELM ver.2012-10-06 from 001\_\_elm20150304\_203135\_\_dat00.bin





Processed Sat Mar 7 16:14:25 2015 by ELM ver.2012-10-06 from 001\_\_elm20150304\_203135\_\_dat00.bin





ELMAVAN 3D WAVEFORMS (Measured data sampled at 50 kHz) 49809 packets of 144 samples from 2015-03-04T20:31:36.124.000. Part 101/144

