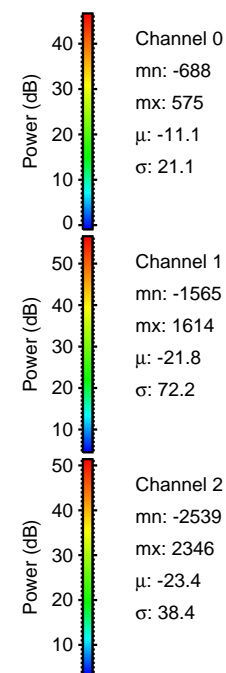
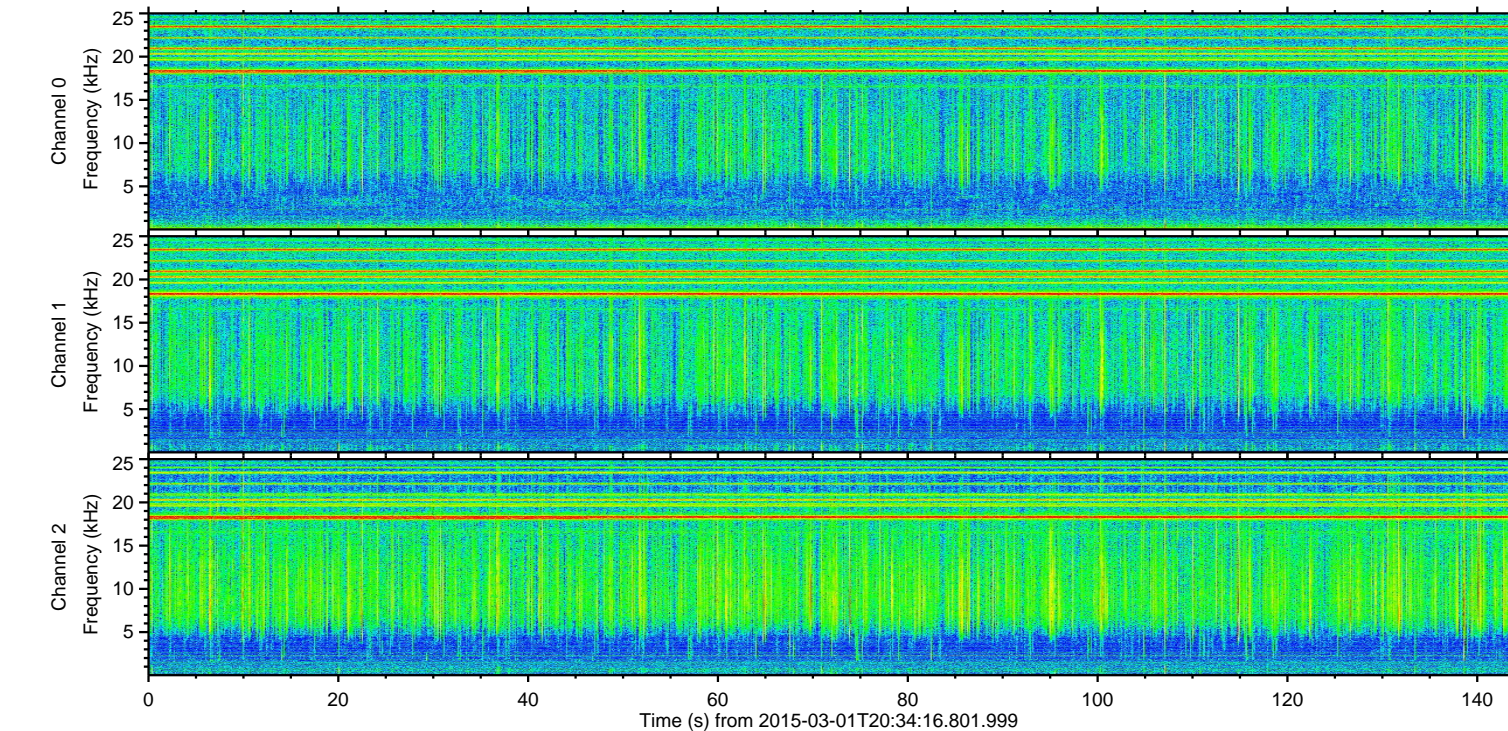
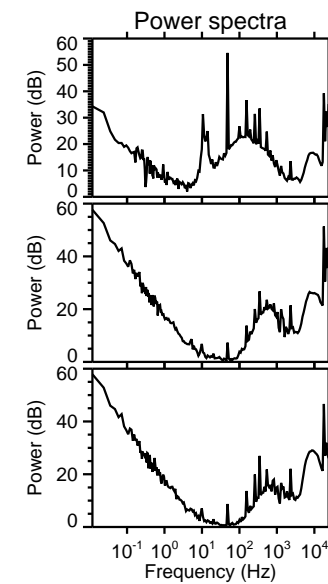
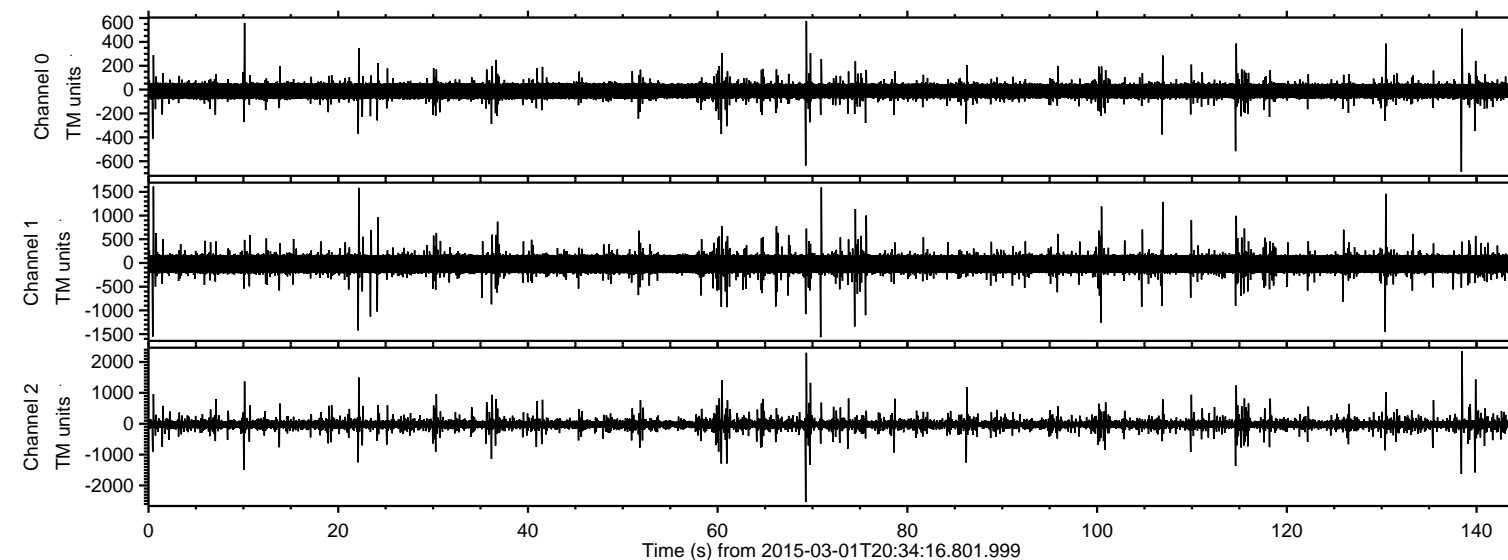
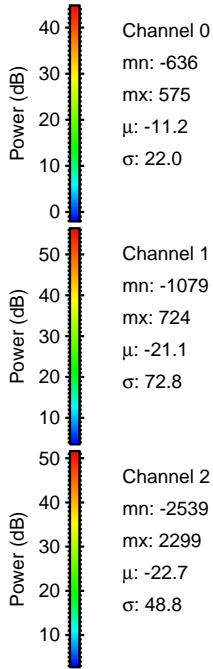
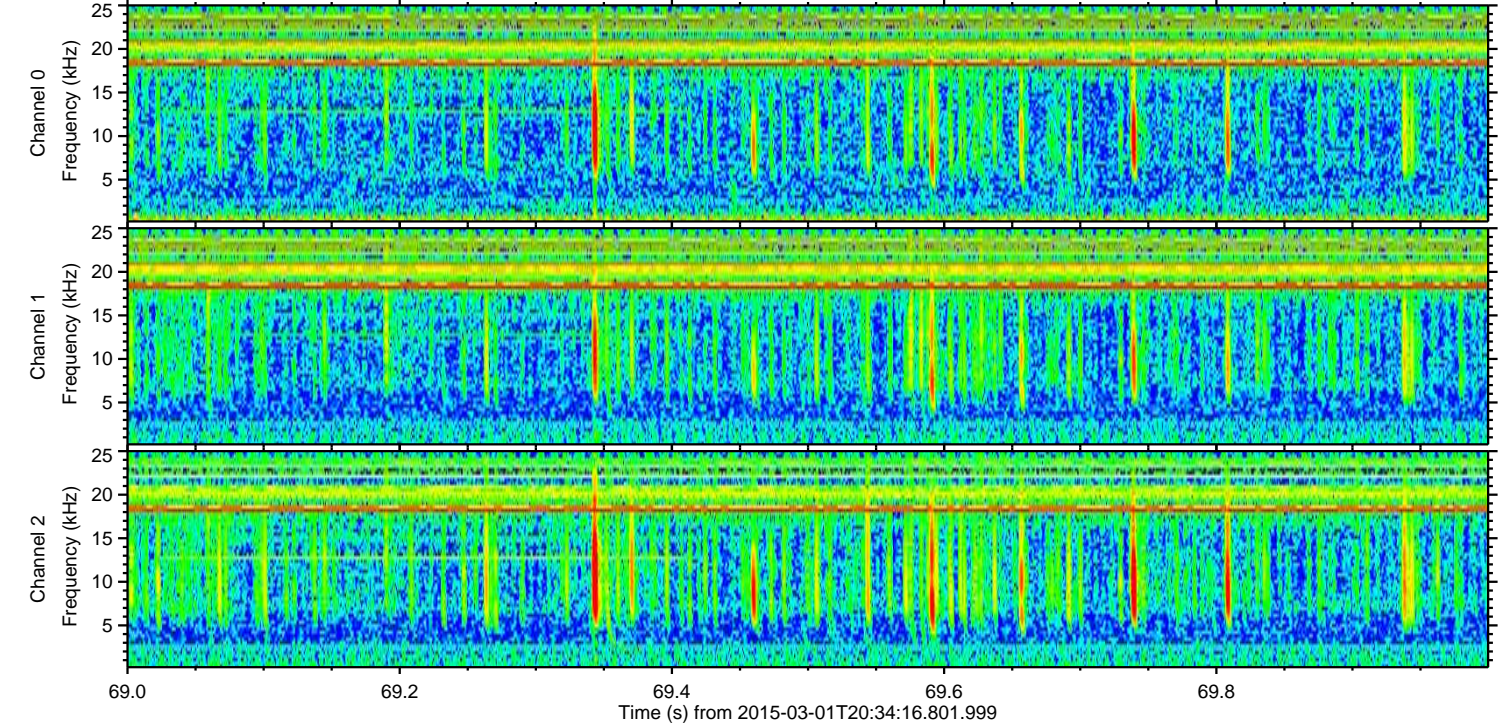
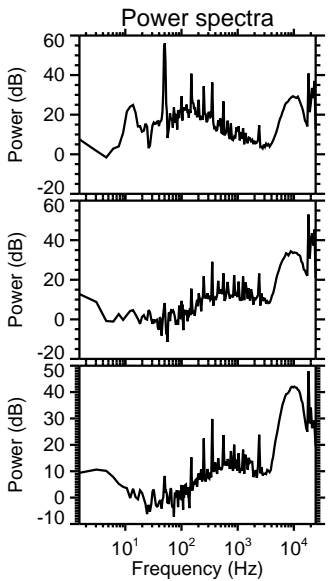
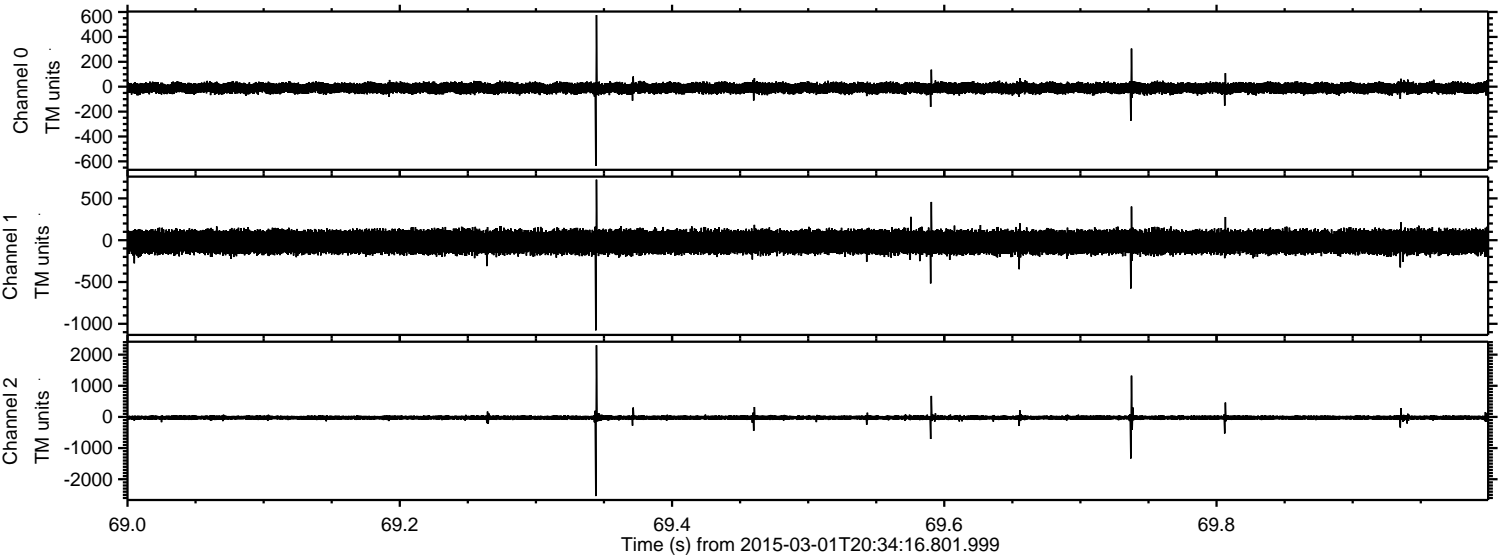


ELMAVAN 3D WAVEFORMS (Measured data sampled at 50 kHz) 49805 packets of 144 samples from 2015-03-01T20:34:16.801.999.

Processed Fri Mar 6 18:40:01 2015 by ELM ver.2012-10-06 from 001__elm20150301_203415__dat00.bin

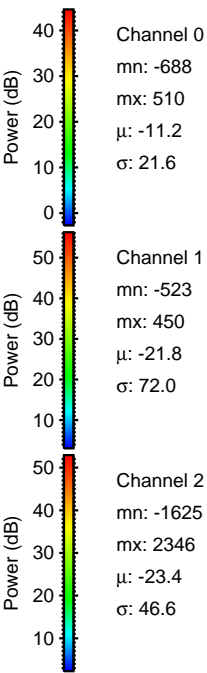
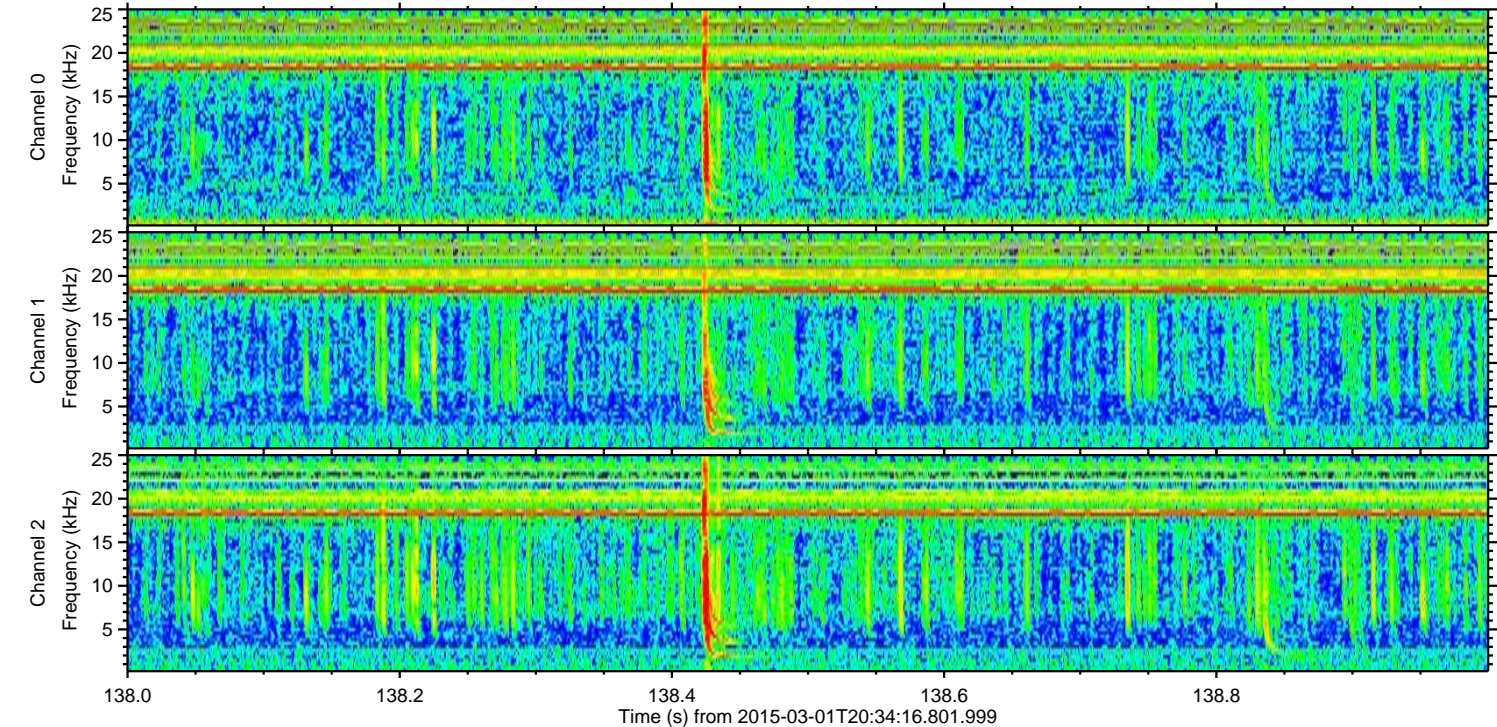
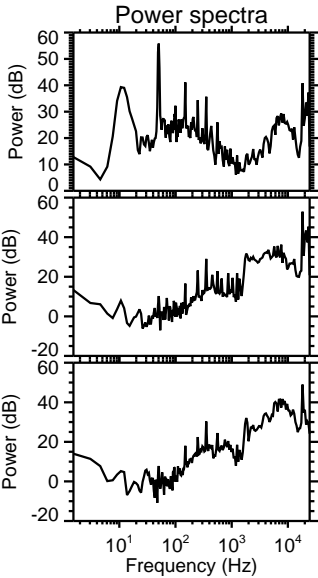
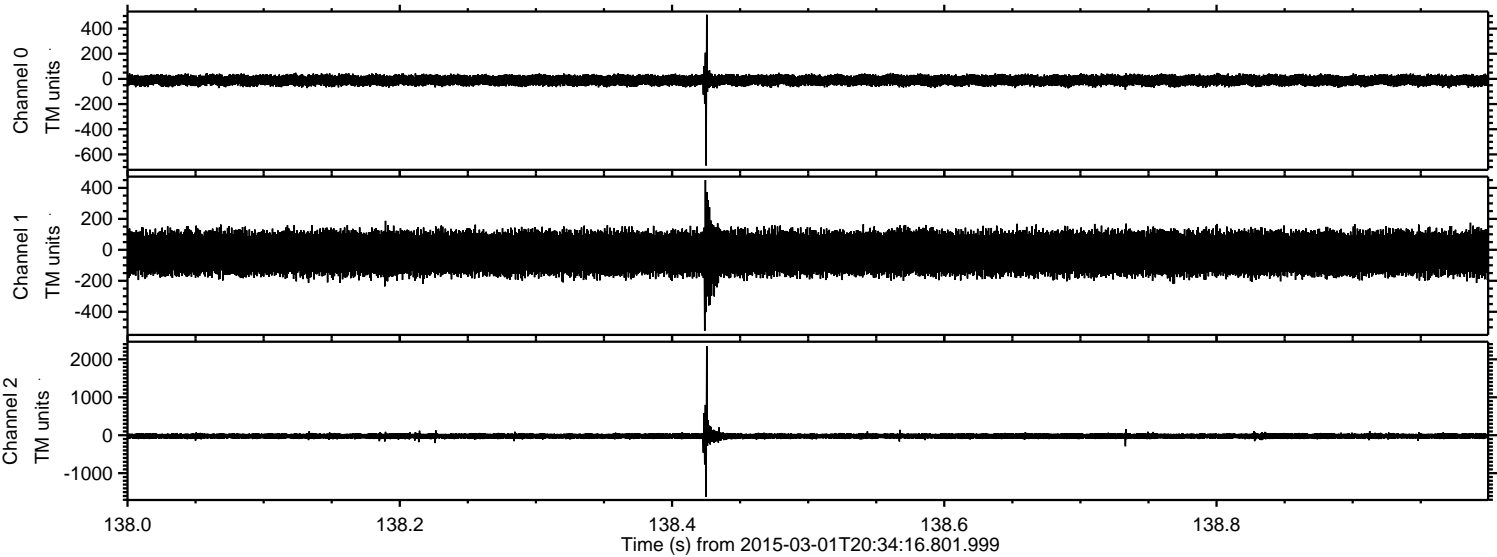


Processed Fri Mar 6 18:40:13 2015 by ELM ver.2012-10-06 from 001__elm20150301_203415__dat00.bin



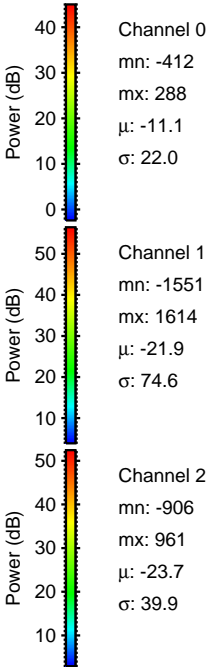
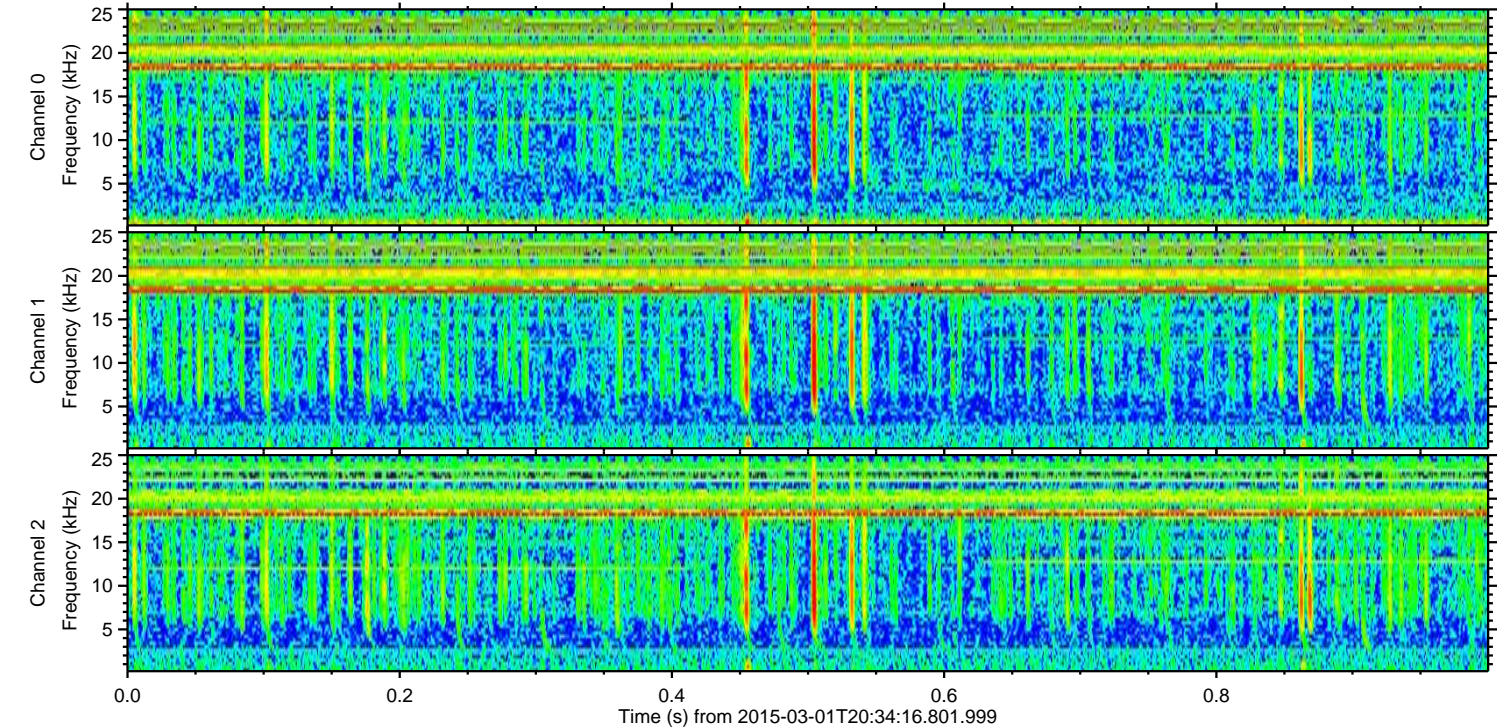
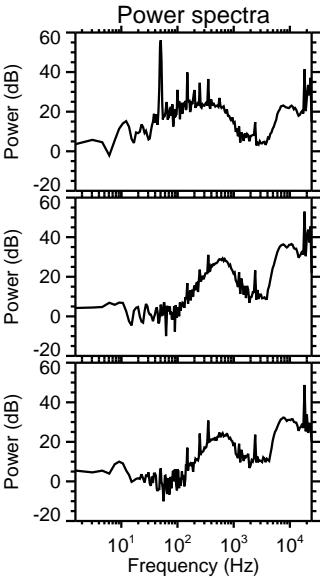
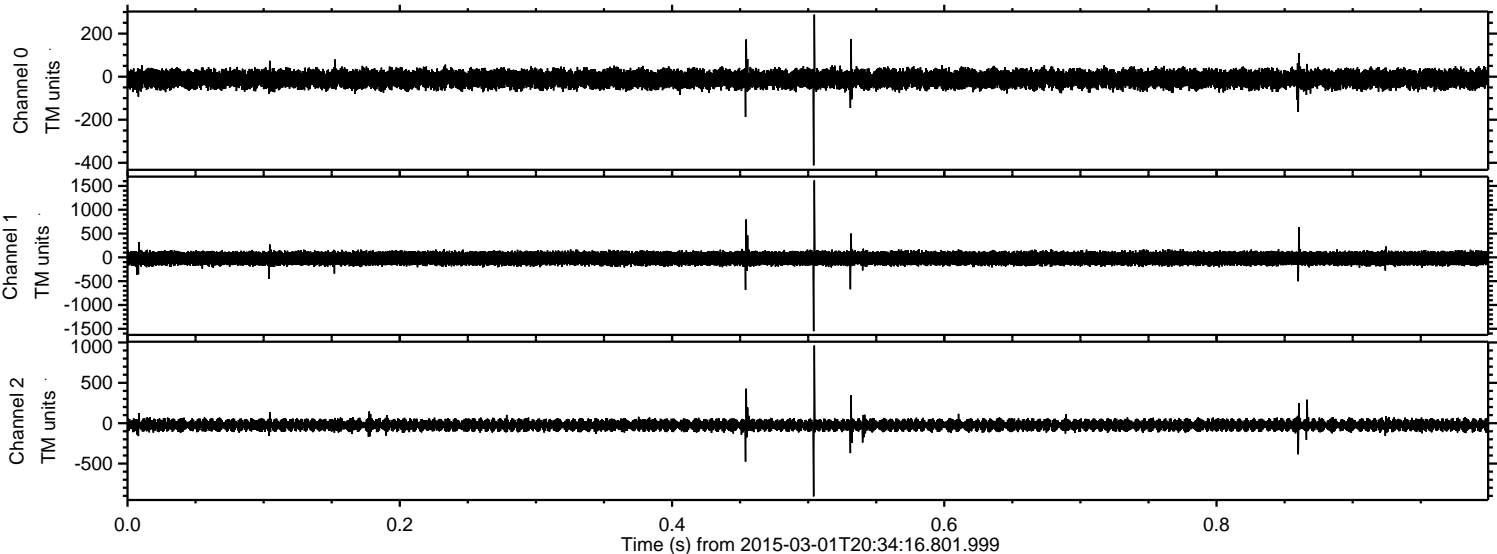
ELMAVAN 3D WAVEFORMS (Measured data sampled at 50 kHz) 49805 packets of 144 samples from 2015-03-01T20:34:16.801.999. Part 139/144

Processed Fri Mar 6 18:40:14 2015 by ELM ver.2012-10-06 from 001__elm20150301_203415__dat00.bin

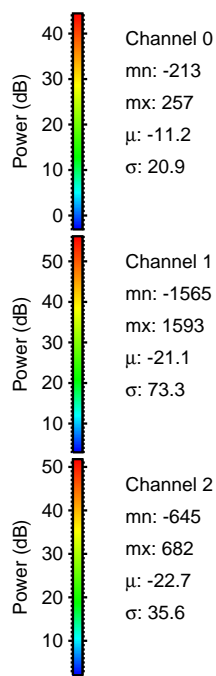
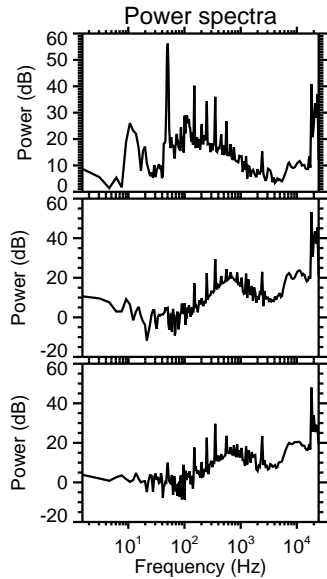
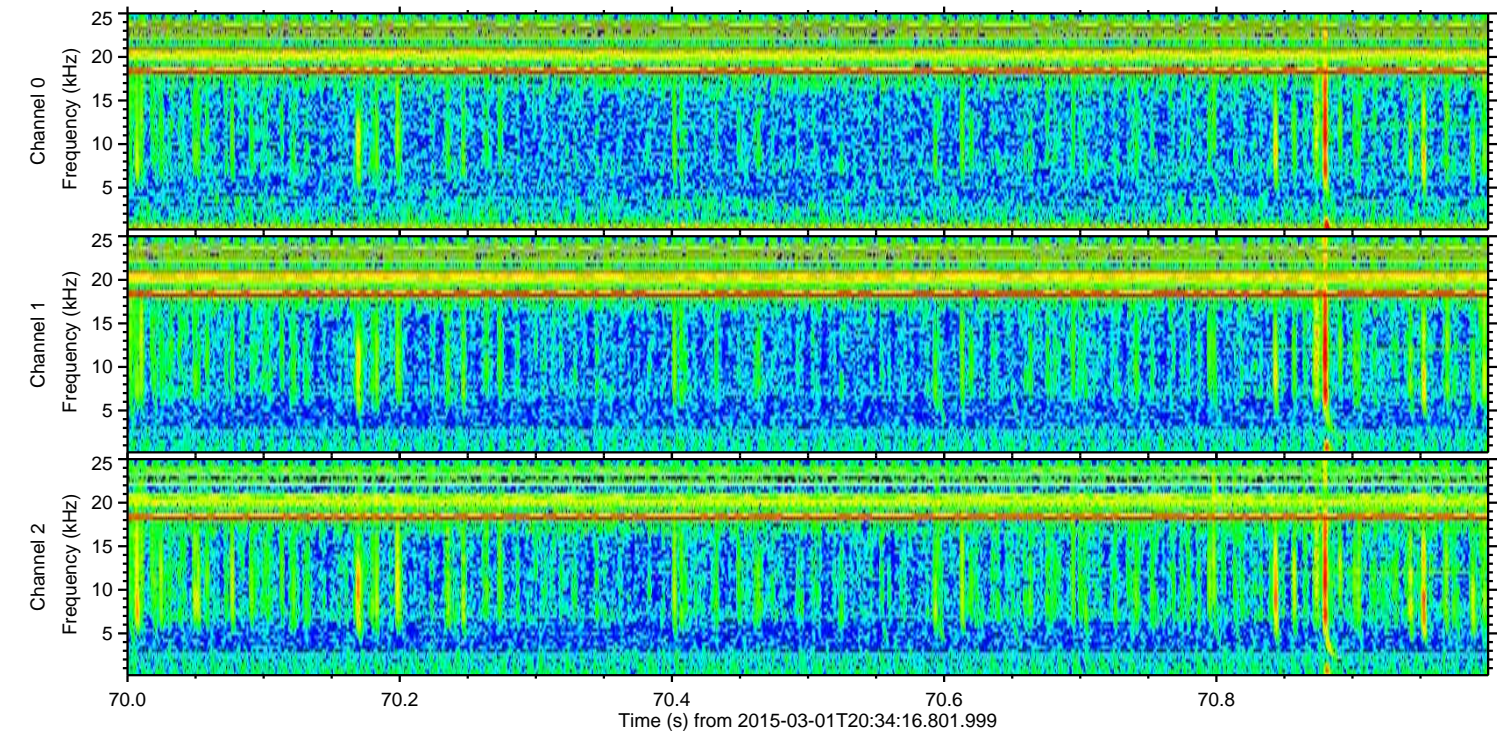
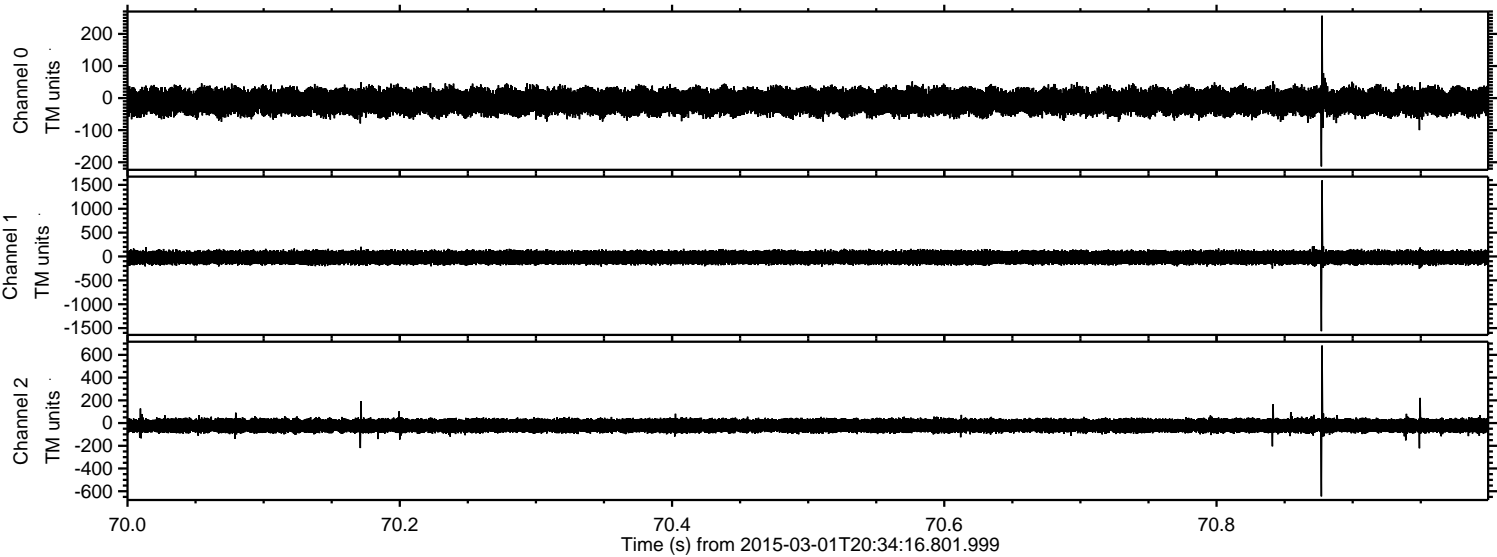


ELMAVAN 3D WAVEFORMS (Measured data sampled at 50 kHz) 49805 packets of 144 samples from 2015-03-01T20:34:16.801.999. Part 1/144

Processed Fri Mar 6 18:40:15 2015 by ELM ver.2012-10-06 from 001__elm20150301_203415__dat00.bin



Processed Fri Mar 6 18:40:16 2015 by ELM ver.2012-10-06 from 001__elm20150301_203415__dat00.bin



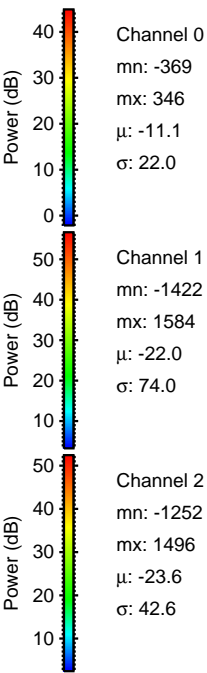
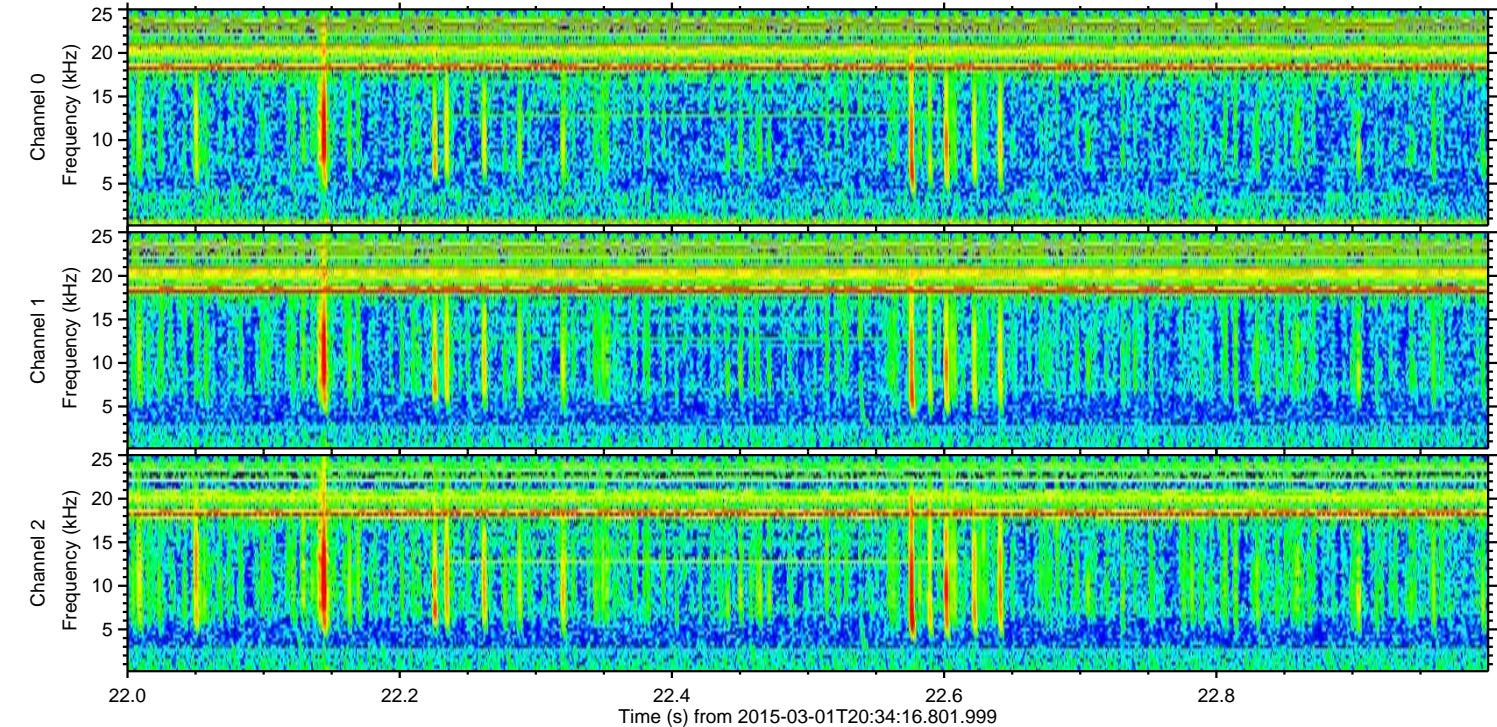
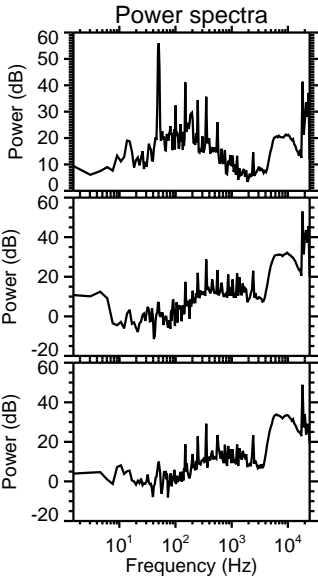
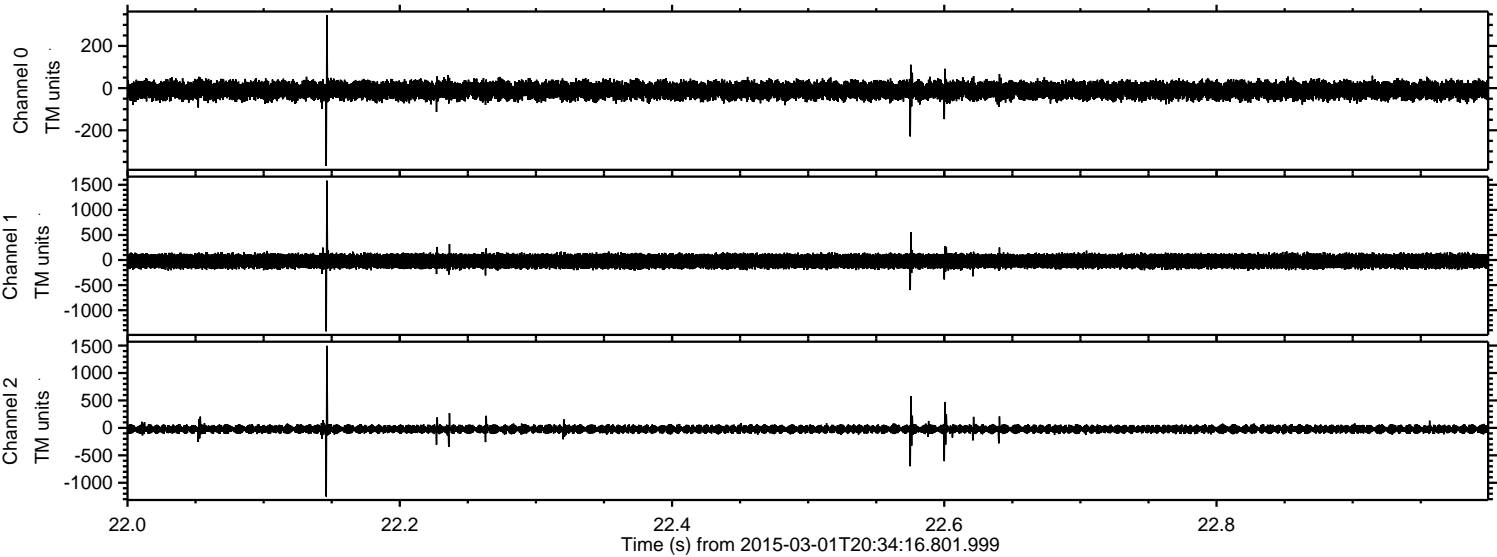
Power spectra

Channel 0
mn: -213
mx: 257
 μ : -11.2
 σ : 20.9

Channel 1
mn: -1565
mx: 1593
 μ : -21.1
 σ : 73.3

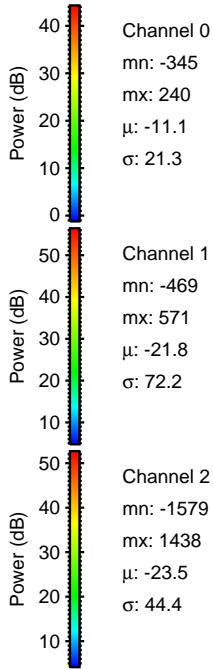
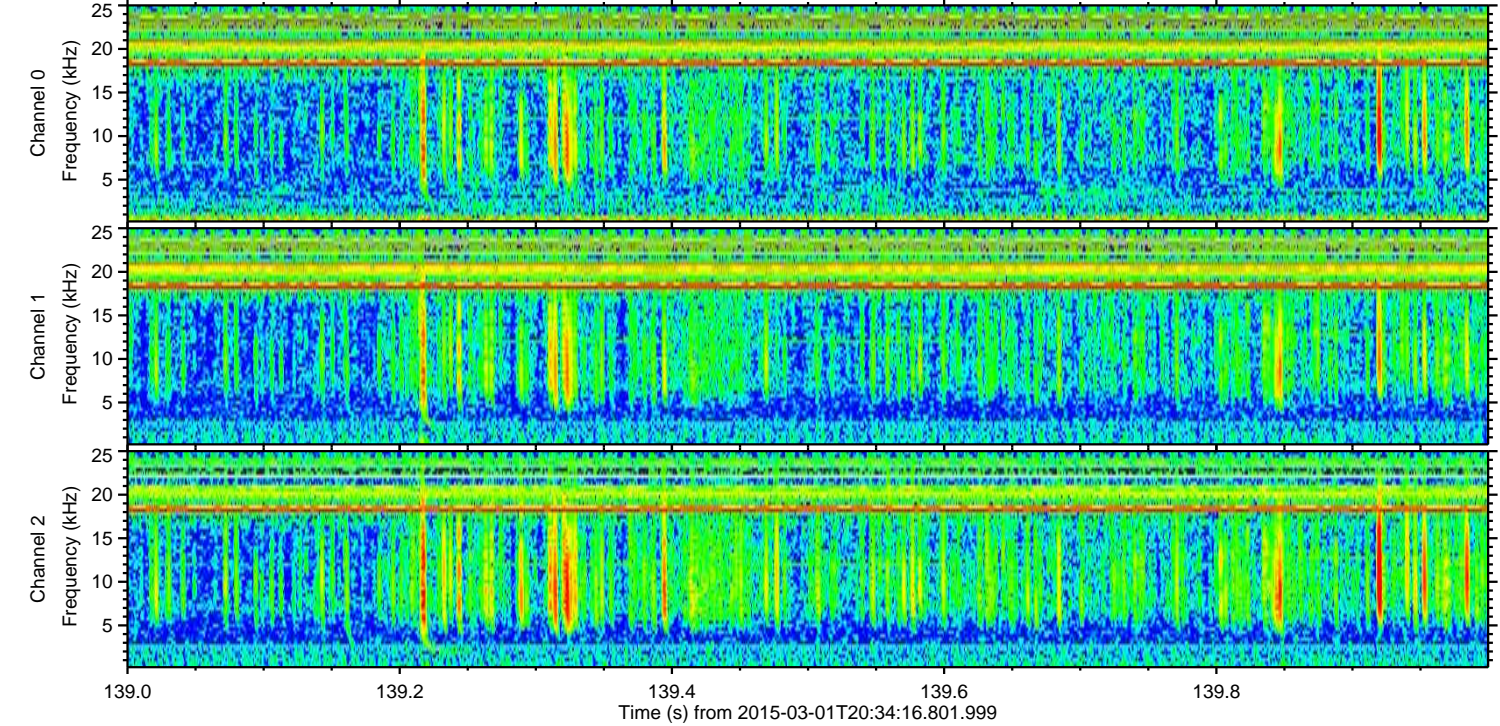
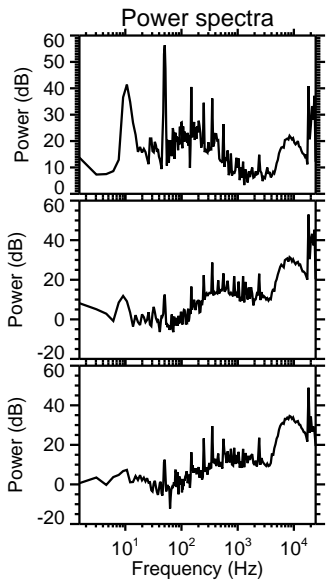
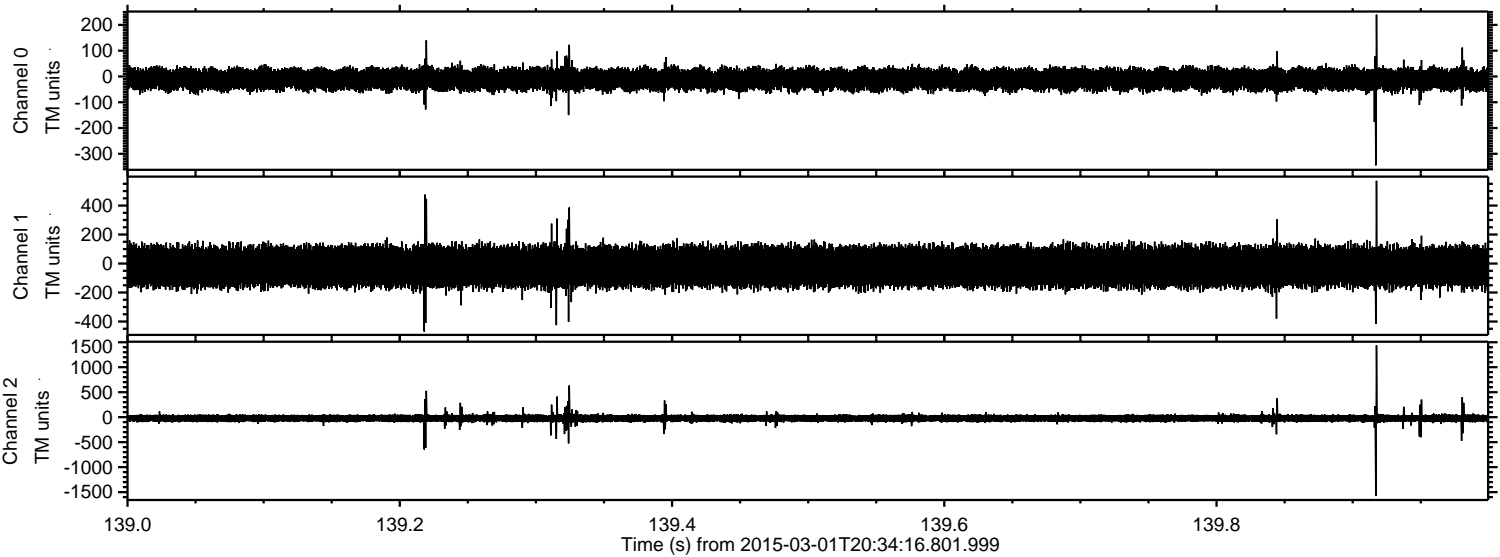
Channel 2
mn: -645
mx: 682
 μ : -22.7
 σ : 35.6

Processed Fri Mar 6 18:40:17 2015 by ELM ver.2012-10-06 from 001__elm20150301_203415__dat00.bin

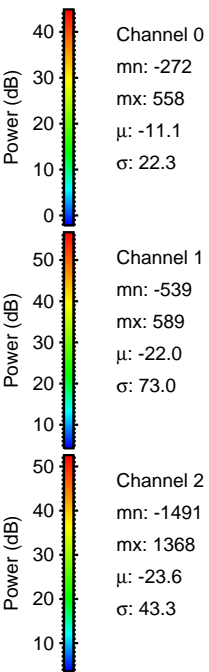
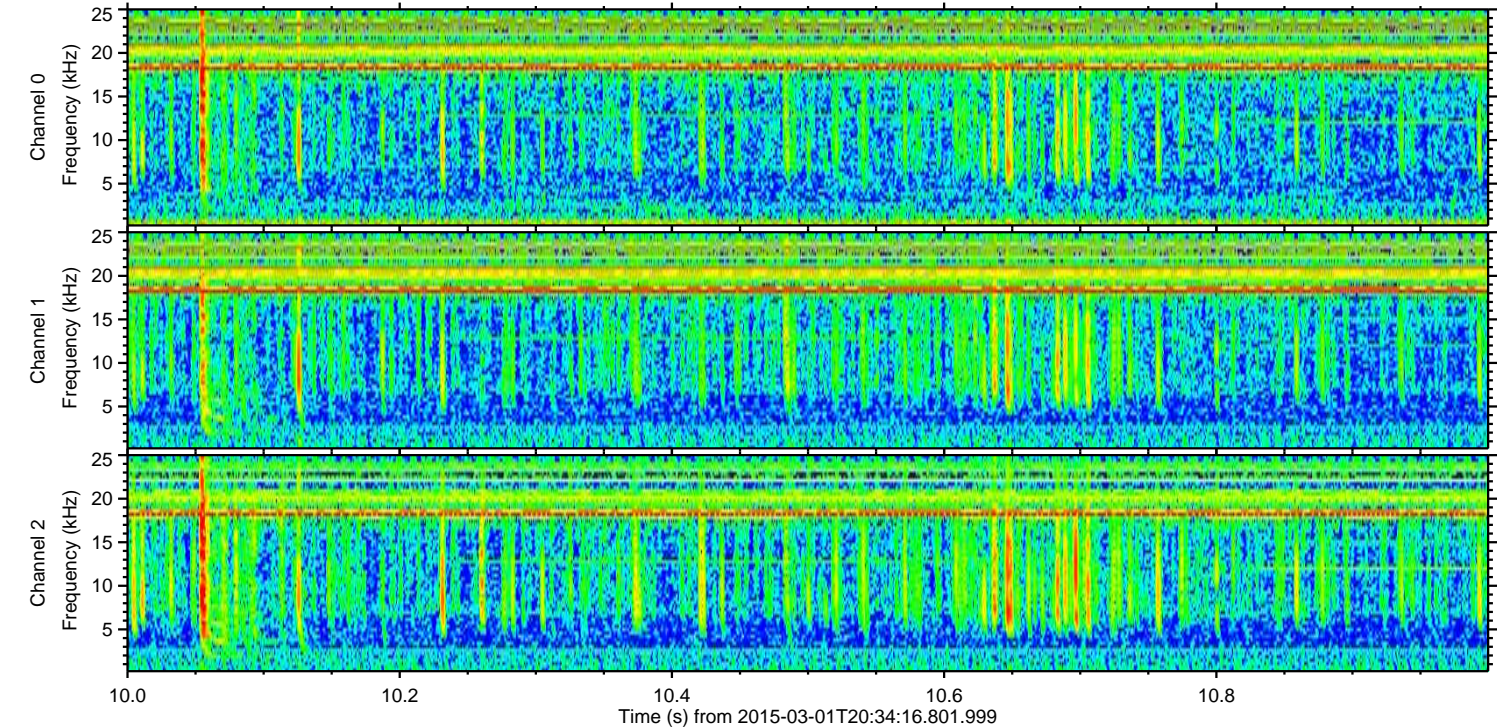
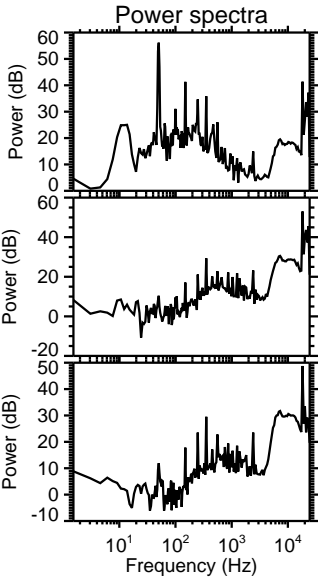
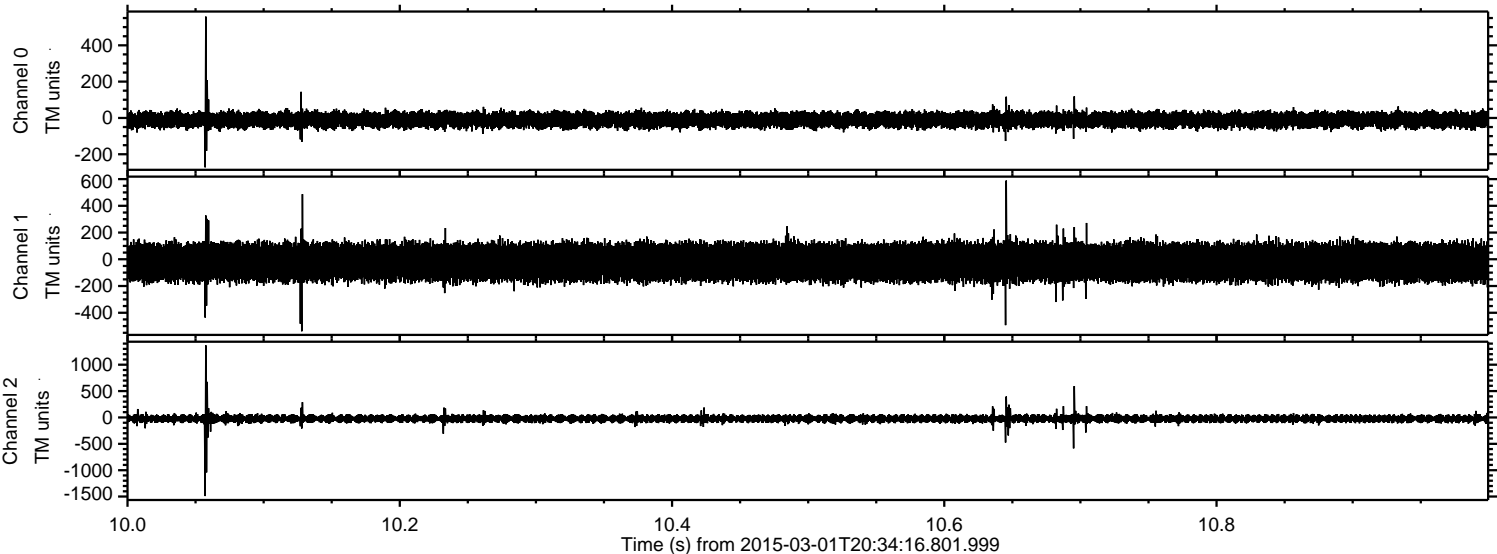


ELMAVAN 3D WAVEFORMS (Measured data sampled at 50 kHz) 49805 packets of 144 samples from 2015-03-01T20:34:16.801.999. Part 140/144

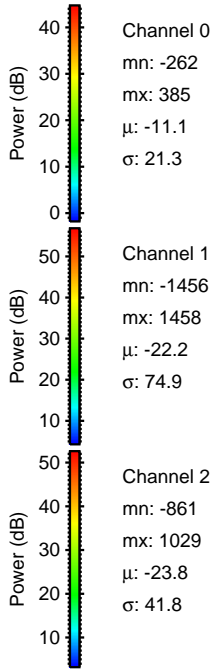
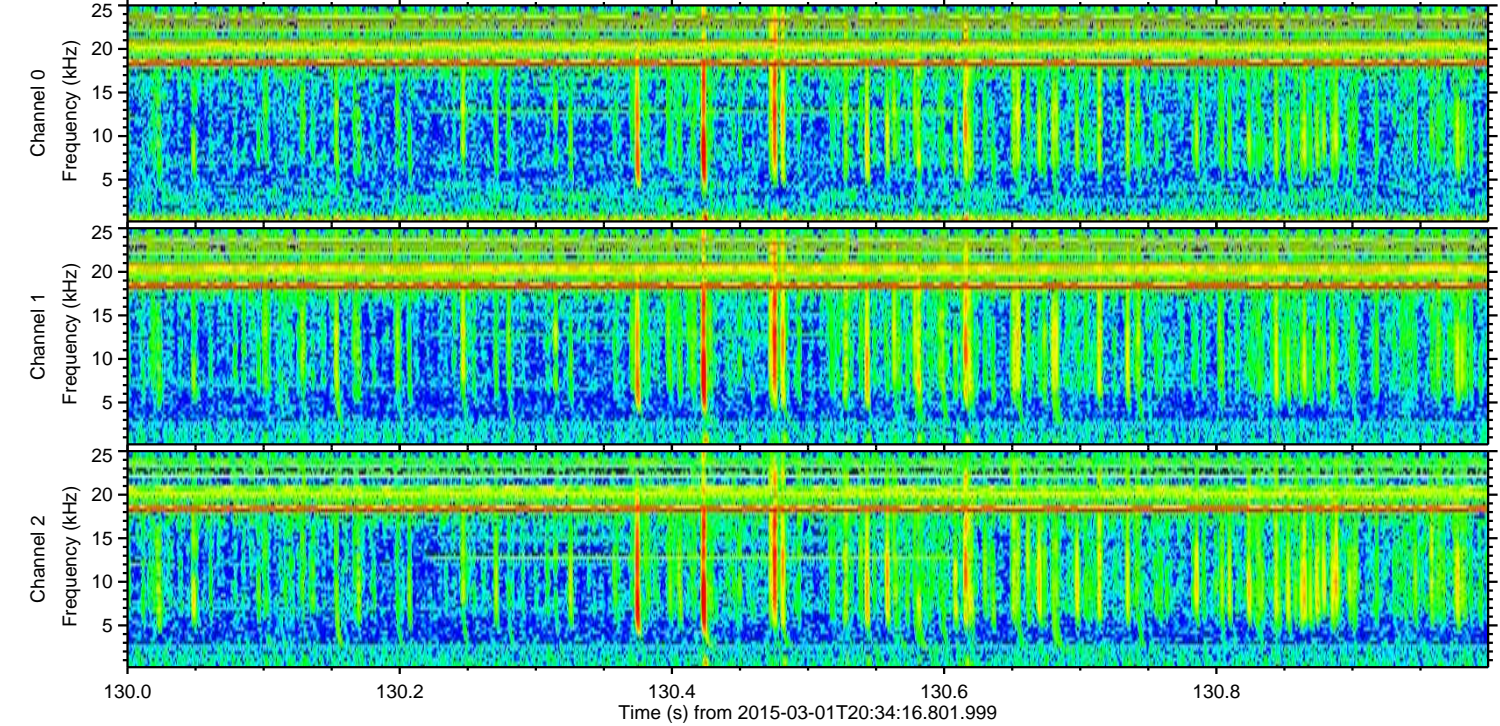
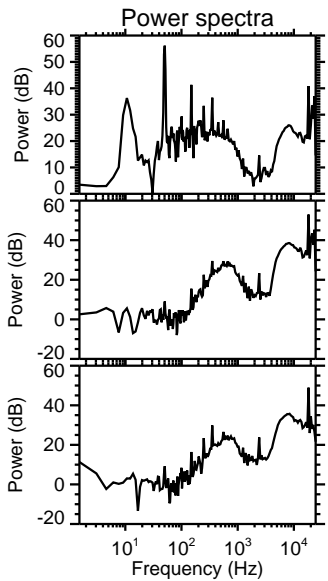
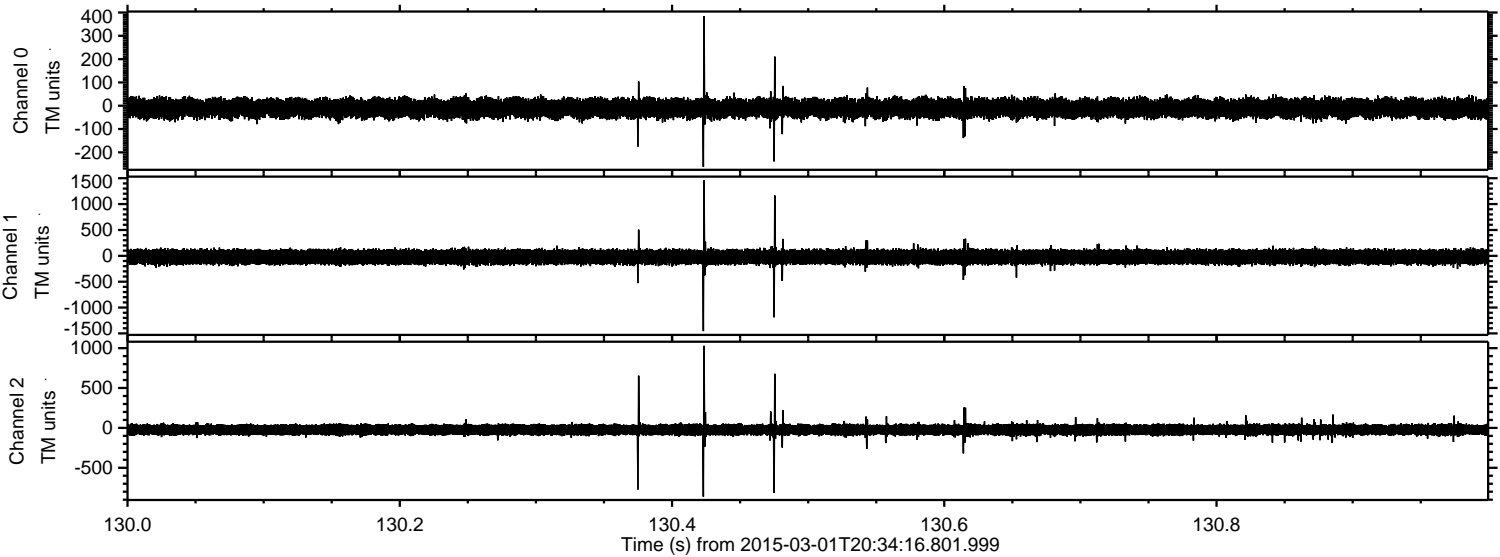
Processed Fri Mar 6 18:40:18 2015 by ELM ver.2012-10-06 from 001__elm20150301_203415__dat00.bin



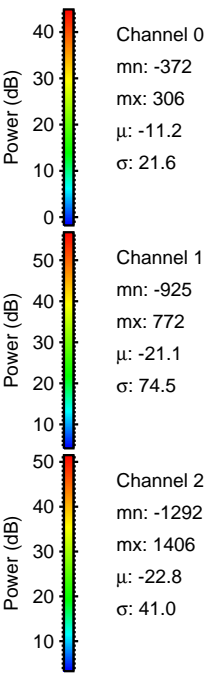
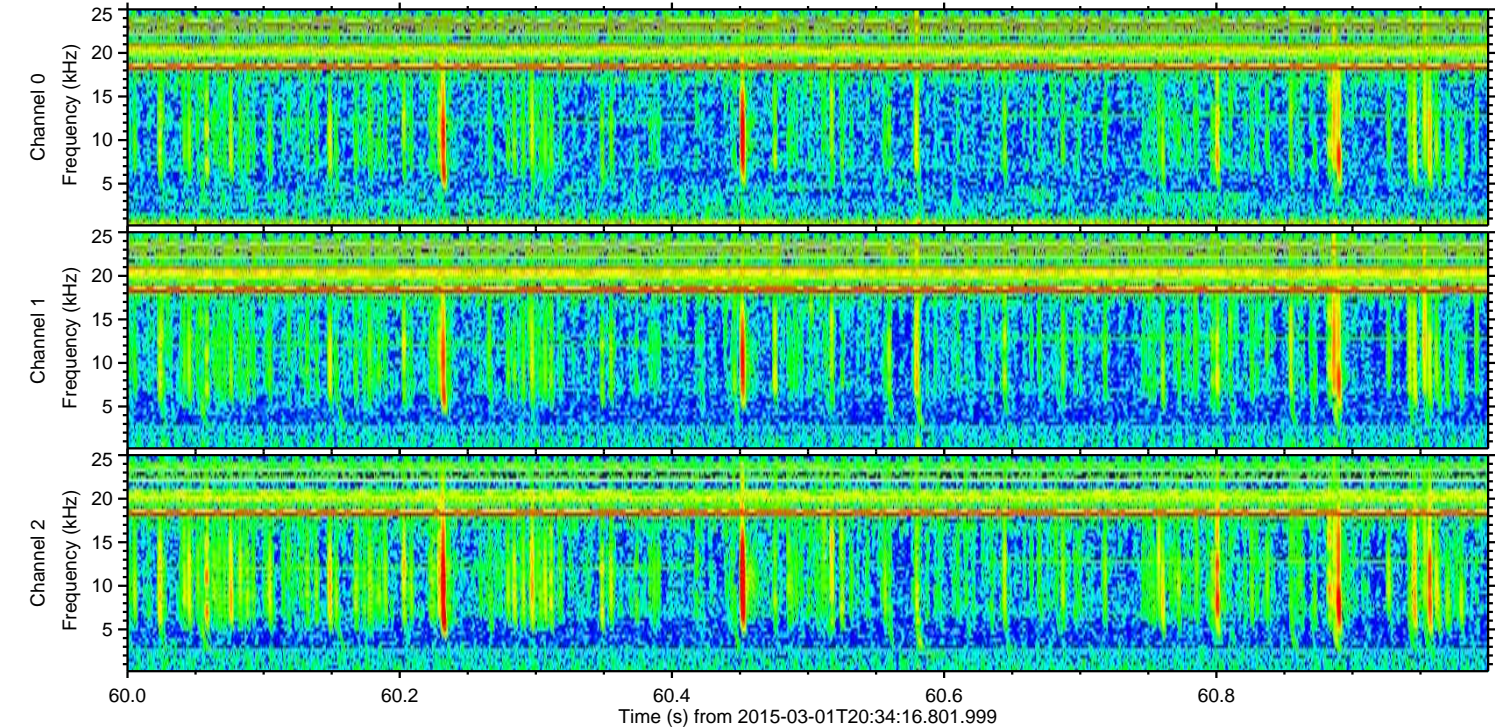
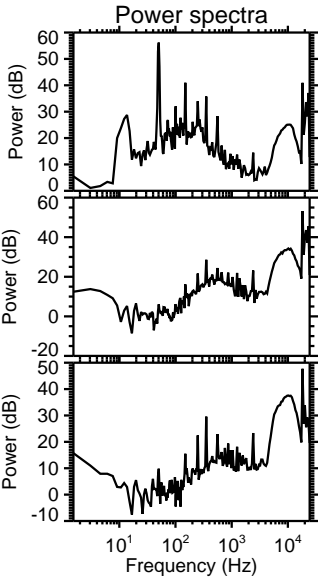
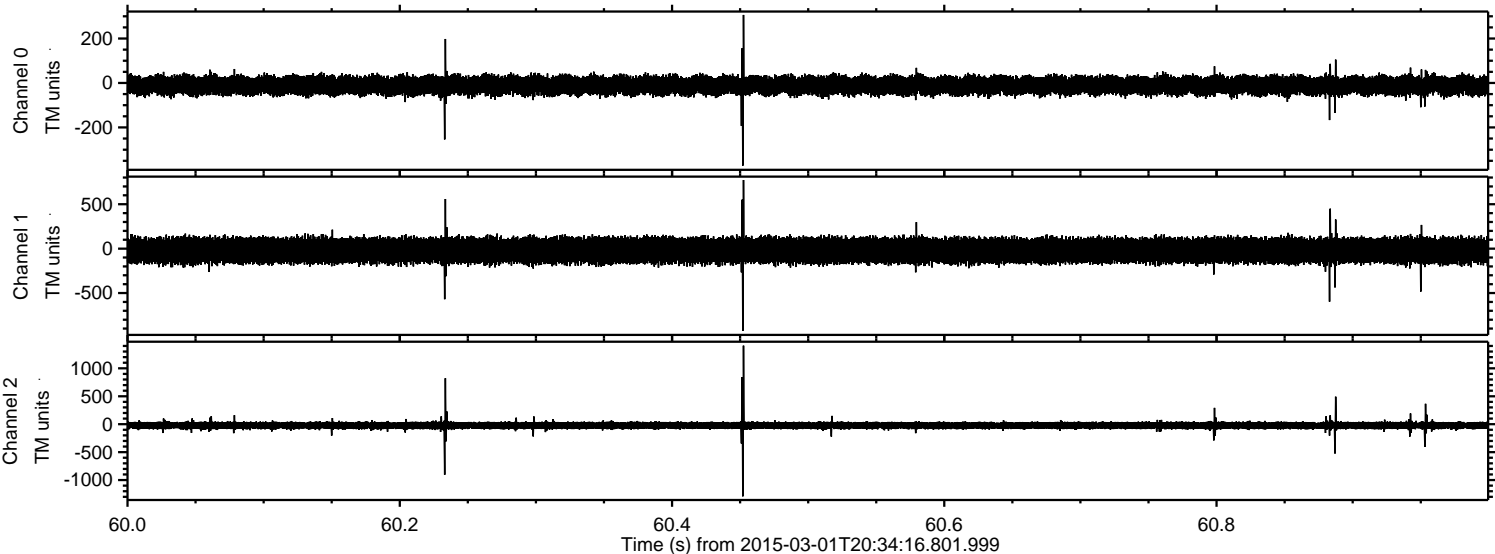
Processed Fri Mar 6 18:40:19 2015 by ELM ver.2012-10-06 from 001__elm20150301_203415__dat00.bin



Processed Fri Mar 6 18:40:20 2015 by ELM ver.2012-10-06 from 001__elm20150301_203415__dat00.bin



Processed Fri Mar 6 18:40:21 2015 by ELM ver.2012-10-06 from 001__elm20150301_203415__dat00.bin



Channel 0
mn: -372
mx: 306
 μ : -11.2
 σ : 21.6

Channel 1
mn: -925
mx: 772
 μ : -21.1
 σ : 74.5

Channel 2
mn: -1292
mx: 1406
 μ : -22.8
 σ : 41.0

