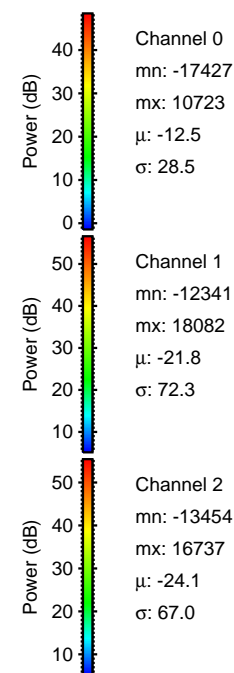
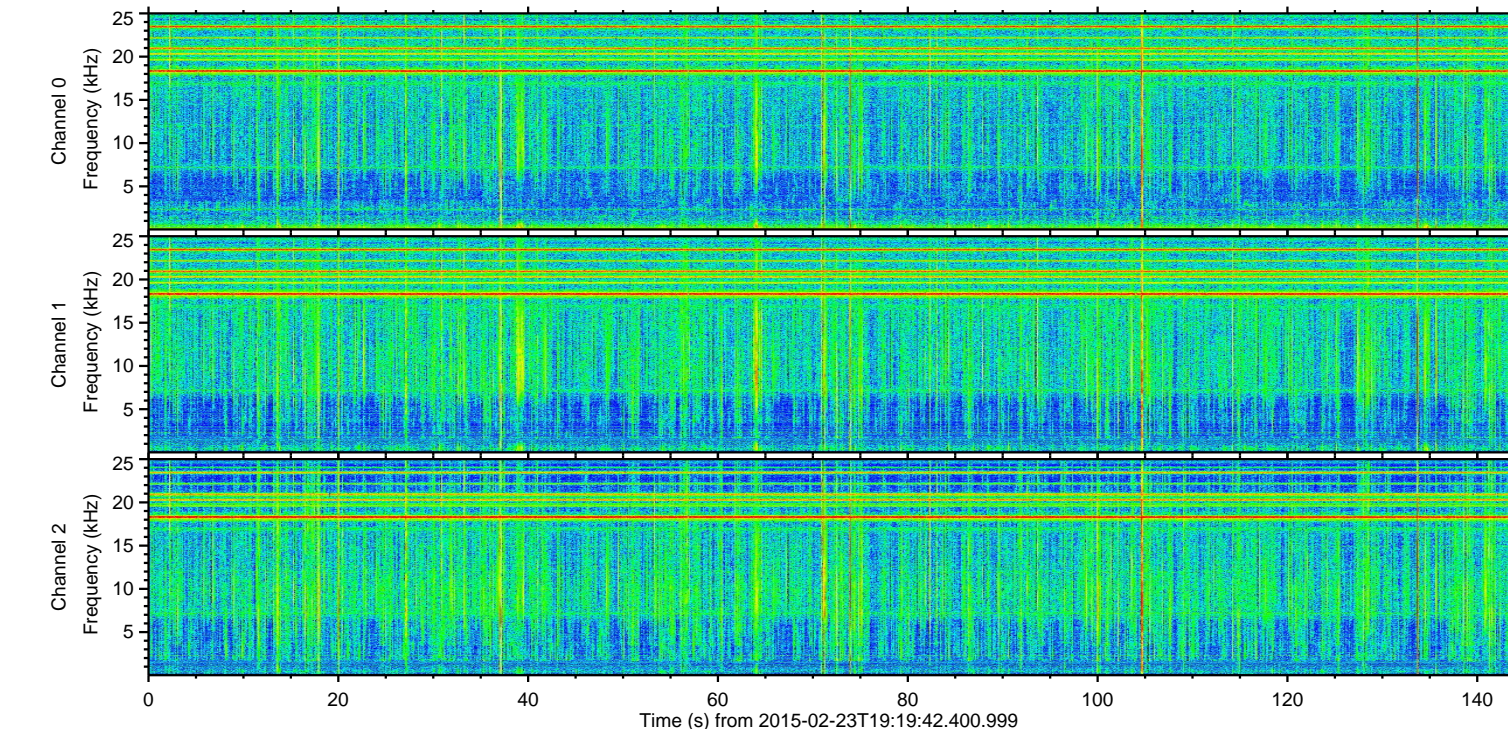
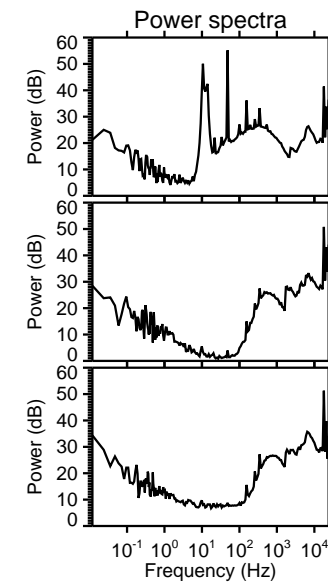
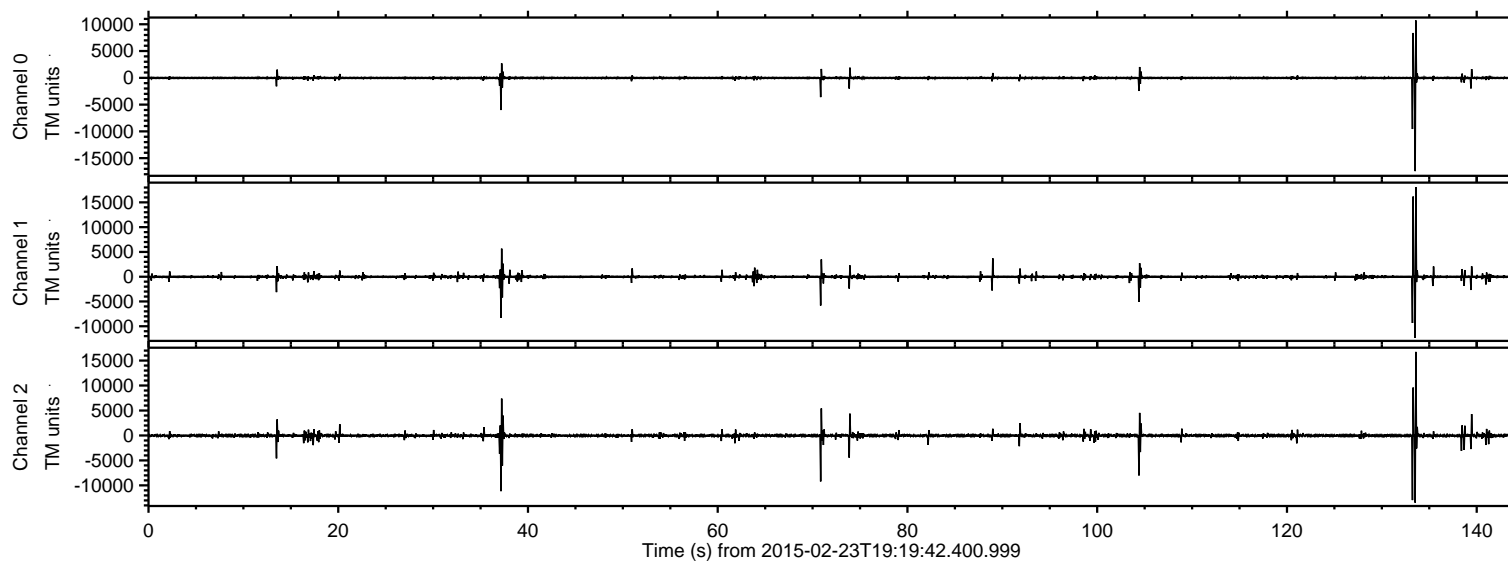


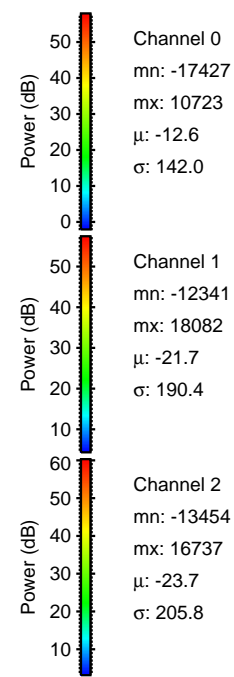
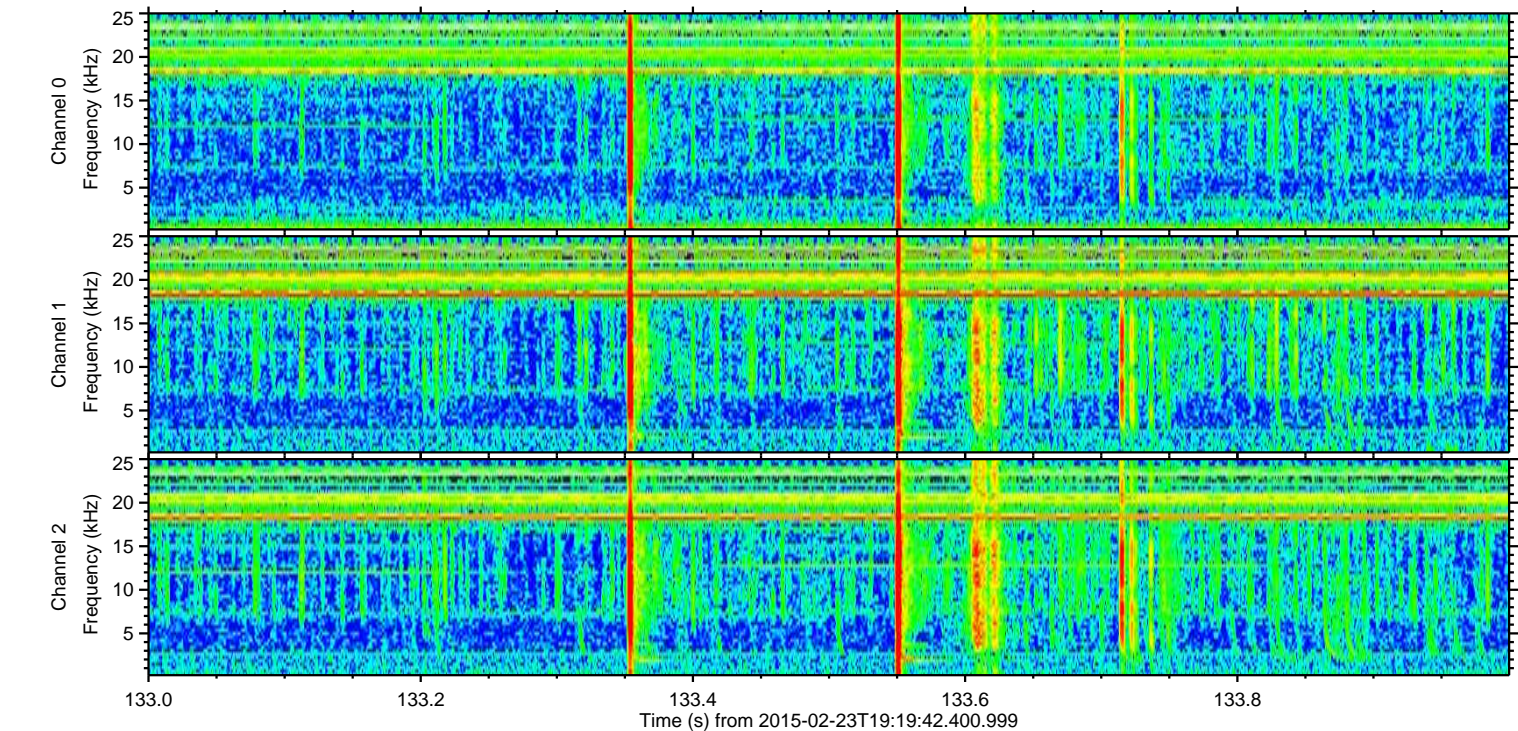
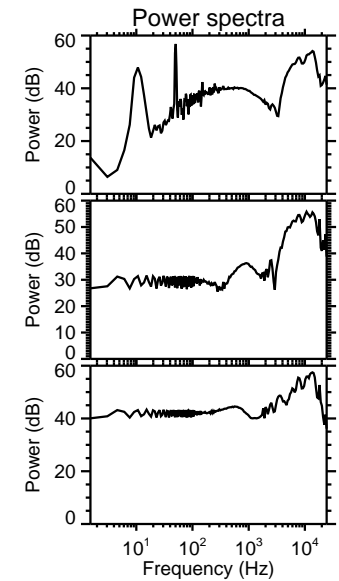
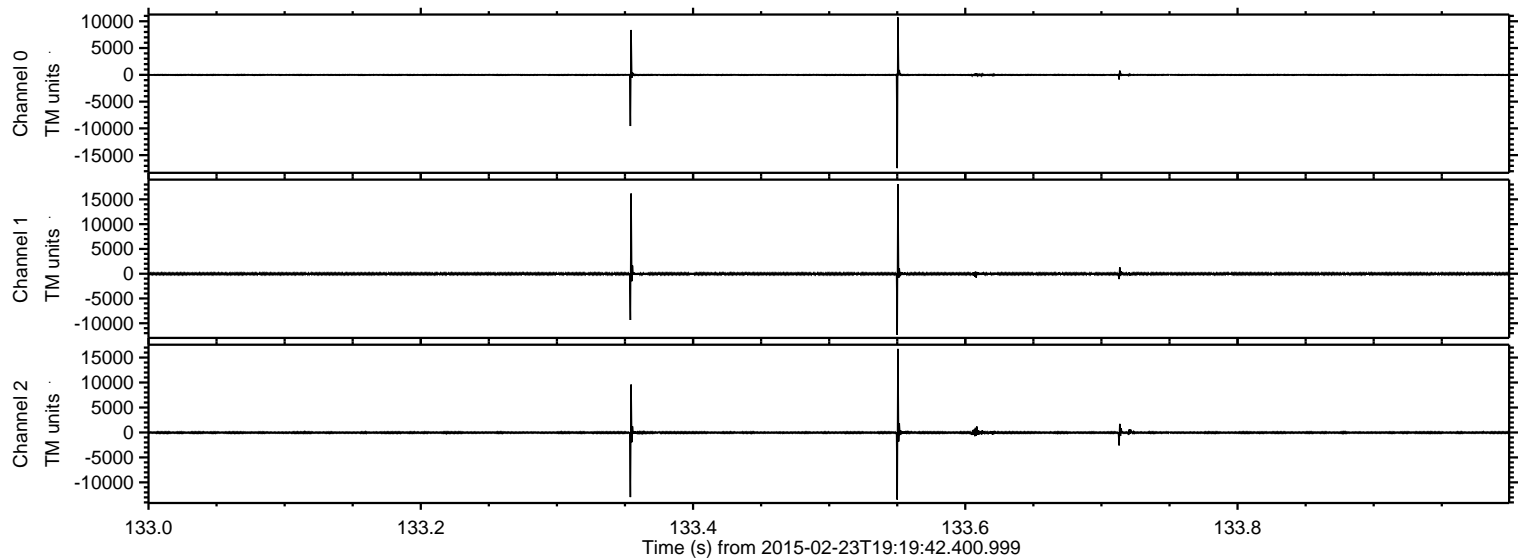
ELMAVAN 3D WAVEFORMS (Measured data sampled at 50 kHz) 49799 packets of 144 samples from 2015-02-23T19:19:42.400.999.

Processed Tue Mar 3 03:22:07 2015 by ELM ver.2012-10-06 from 001__elm20150223_191941__dat00.bin

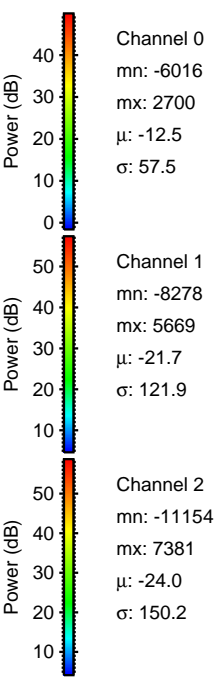
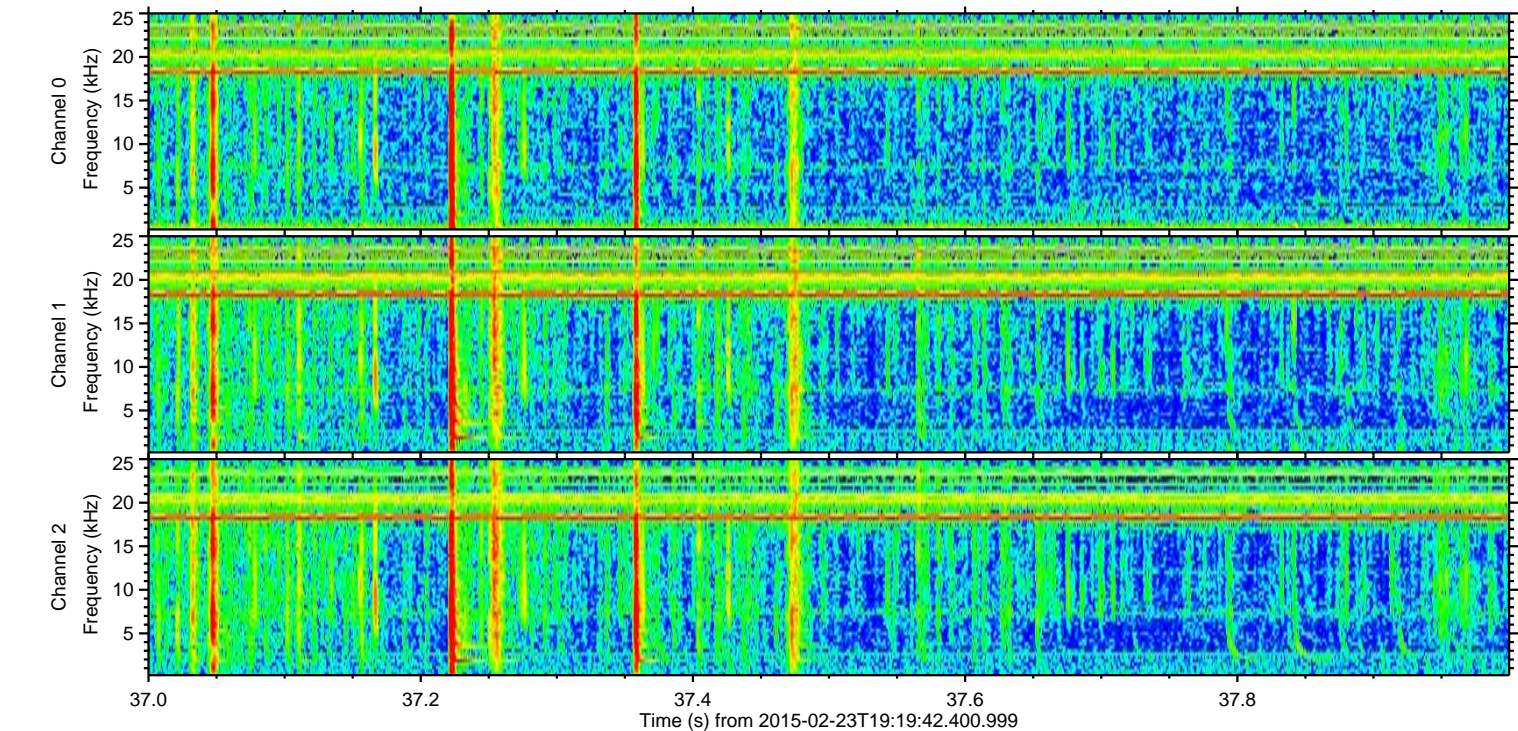
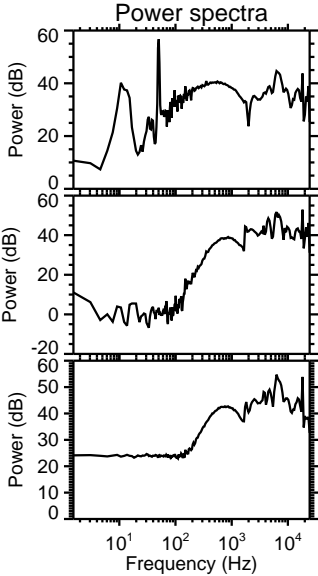
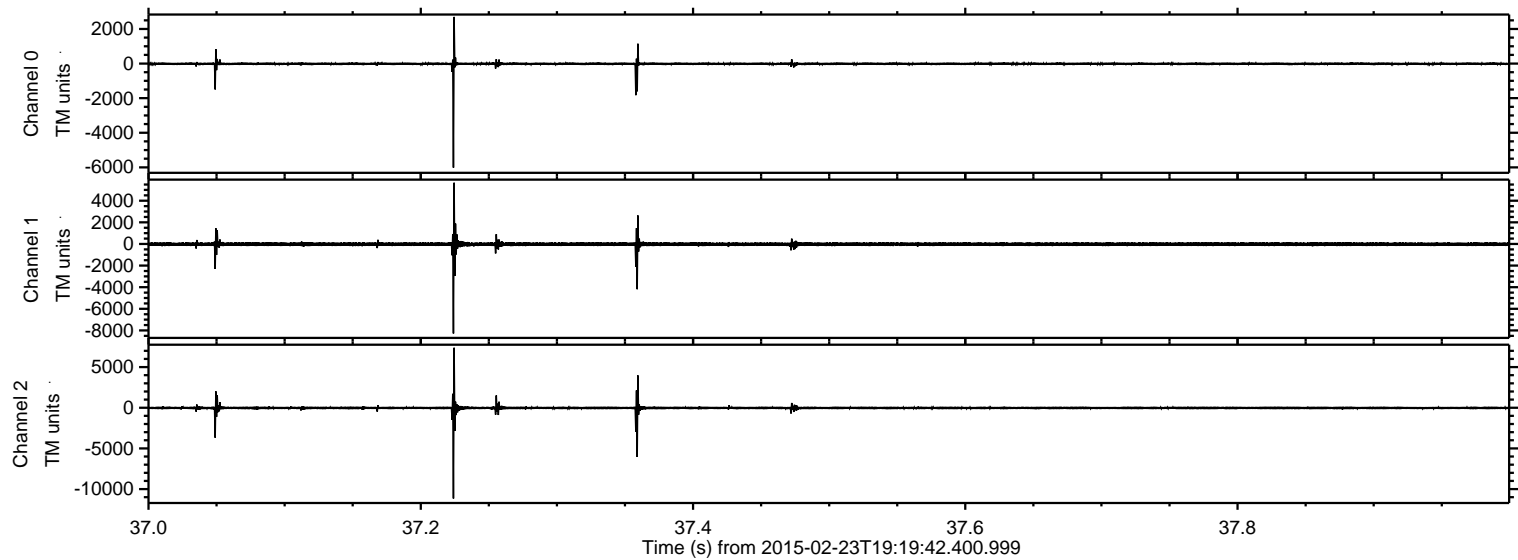


ELMAVAN 3D WAVEFORMS (Measured data sampled at 50 kHz) 49799 packets of 144 samples from 2015-02-23T19:19:42.400.999. Part 134/144

Processed Tue Mar 3 03:22:19 2015 by ELM ver.2012-10-06 from 001__elm20150223_191941__dat00.bin

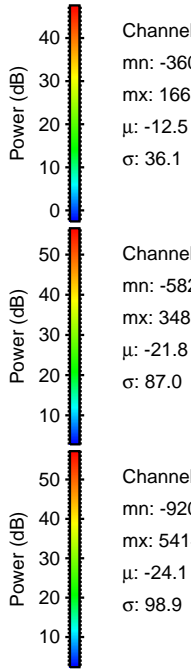
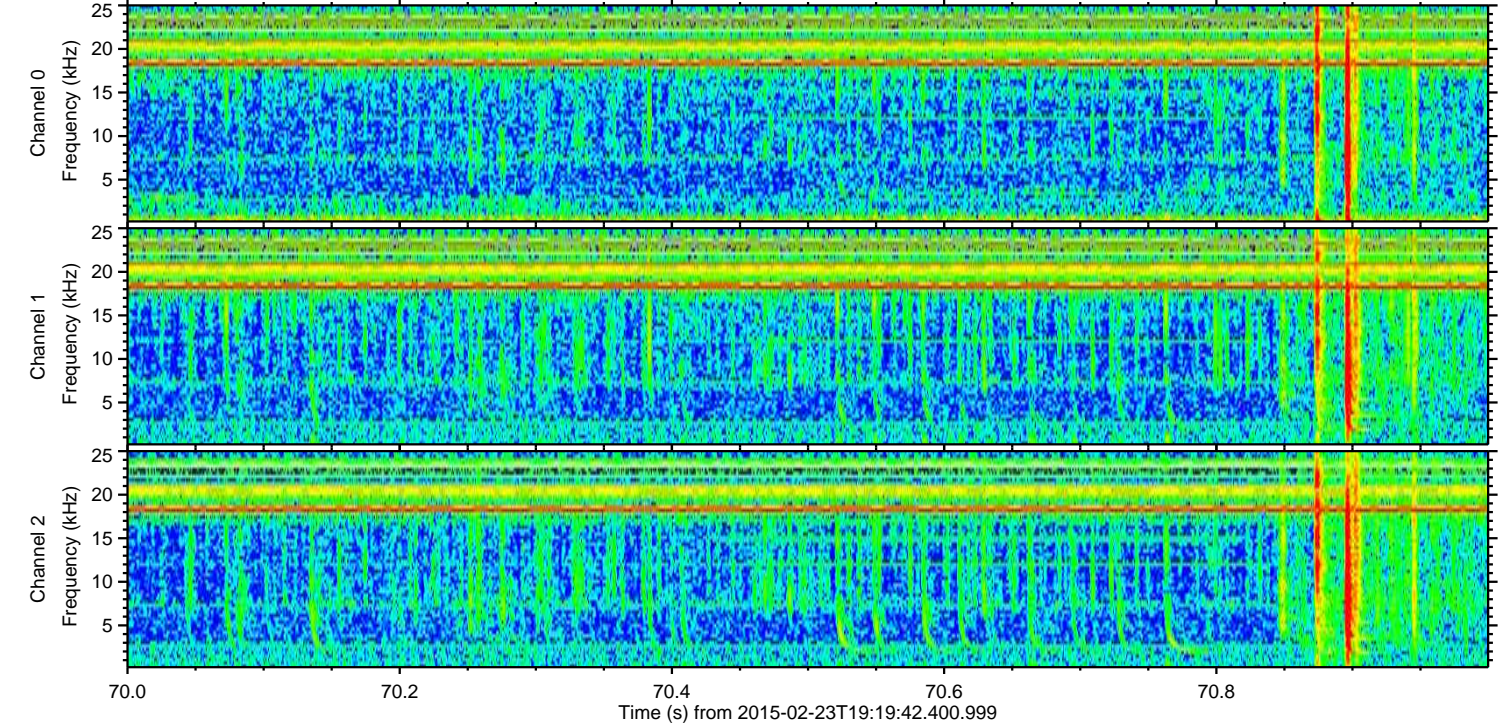
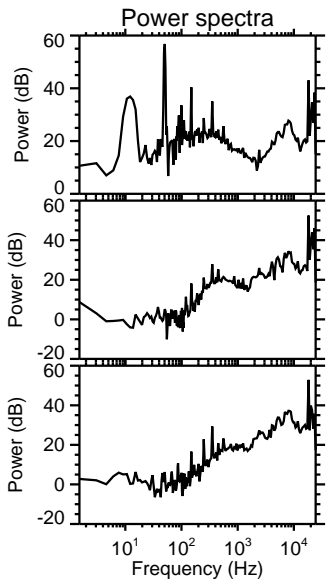
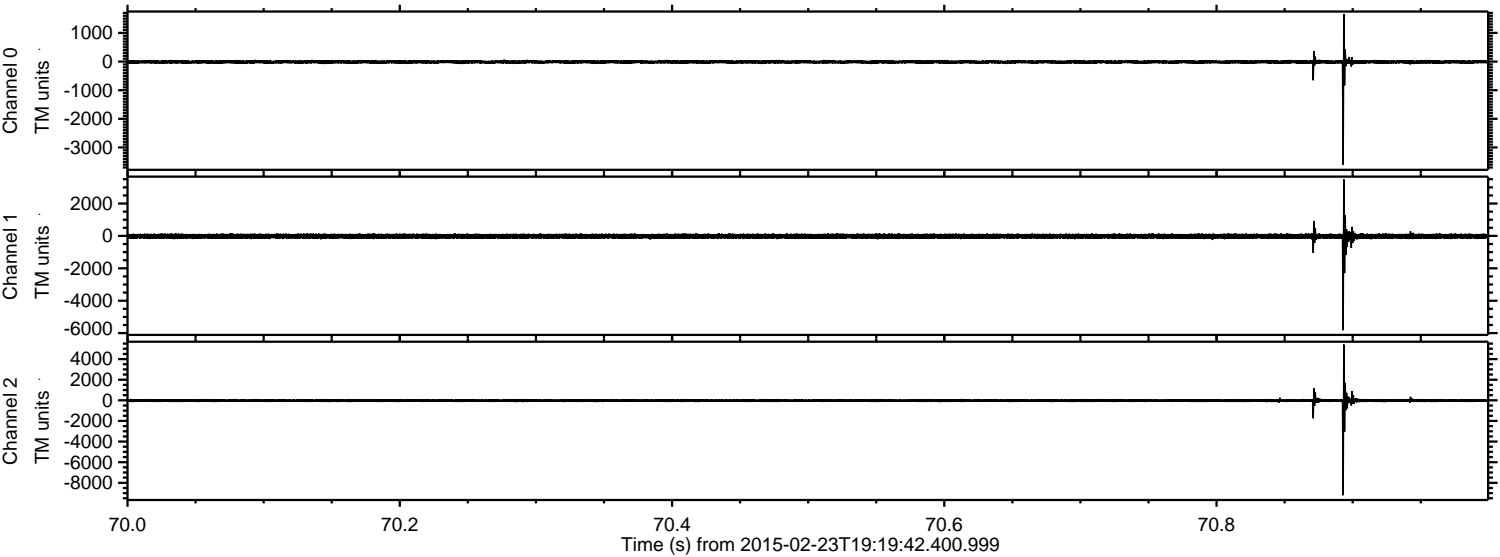


Processed Tue Mar 3 03:22:20 2015 by ELM ver.2012-10-06 from 001__elm20150223_191941__dat00.bin



ELMAVAN 3D WAVEFORMS (Measured data sampled at 50 kHz) 49799 packets of 144 samples from 2015-02-23T19:19:42.400.999. Part 71/144

Processed Tue Mar 3 03:22:21 2015 by ELM ver.2012-10-06 from 001__elm20150223_191941__dat00.bin



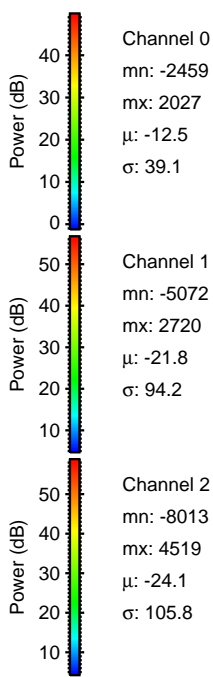
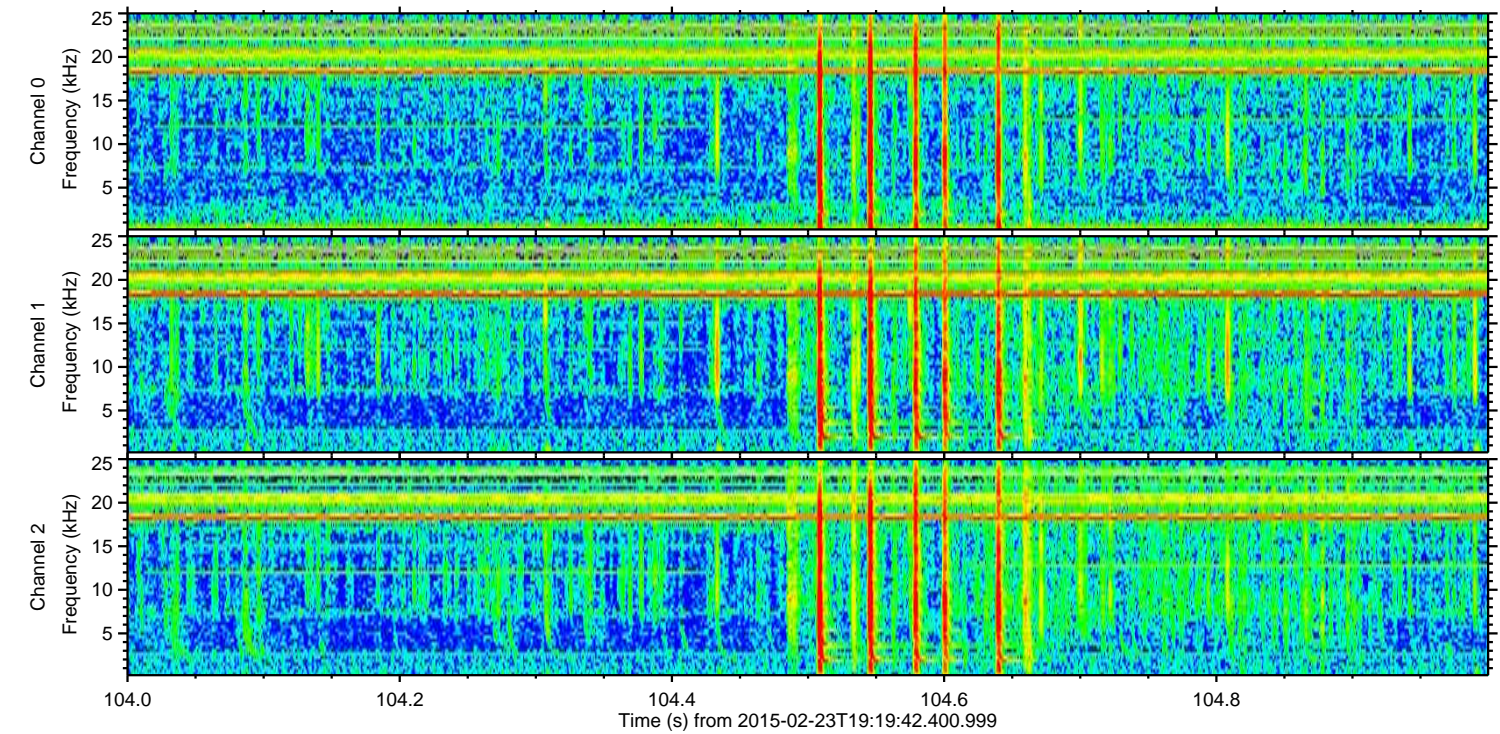
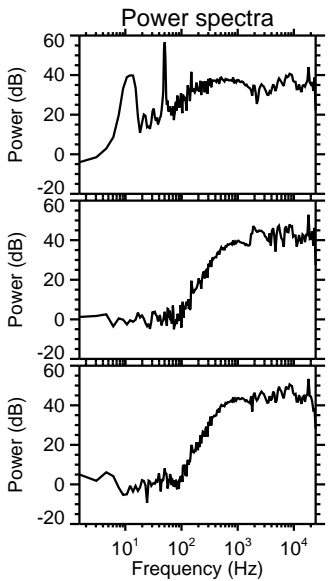
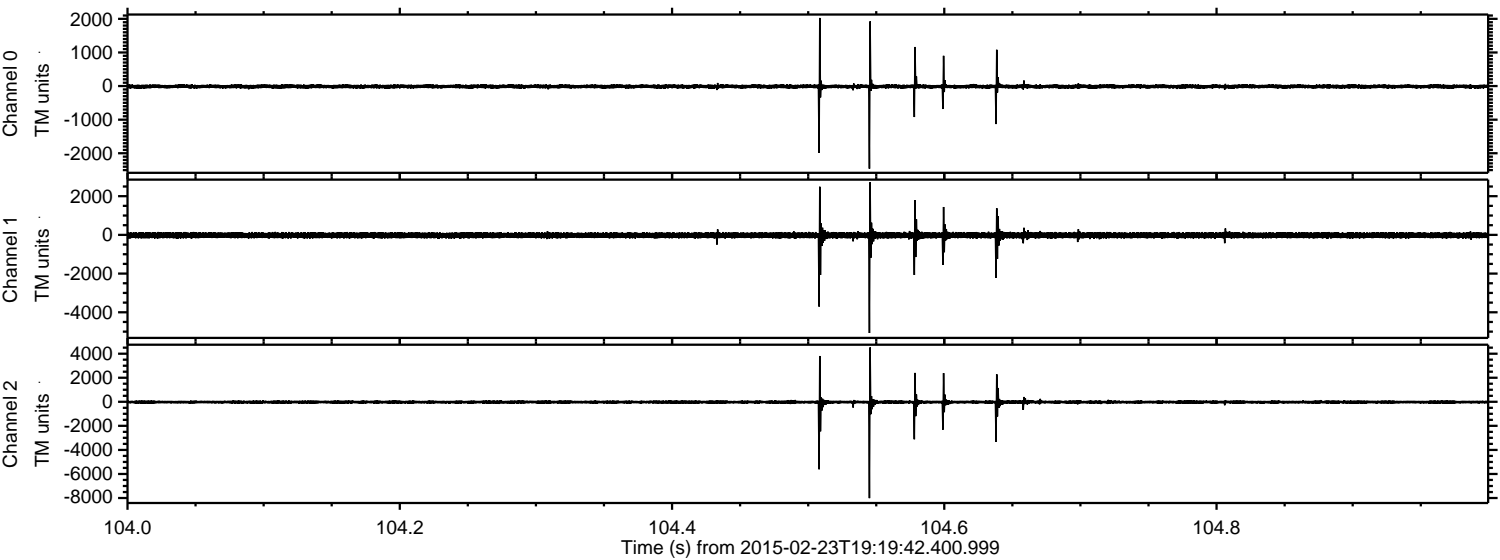
Channel 0
mn: -3601
mx: 1665
 μ : -12.5
 σ : 36.1

Channel 1
mn: -5820
mx: 3486
 μ : -21.8
 σ : 87.0

Channel 2
mn: -9206
mx: 5414
 μ : -24.1
 σ : 98.9

ELMAVAN 3D WAVEFORMS (Measured data sampled at 50 kHz) 49799 packets of 144 samples from 2015-02-23T19:19:42.400.999. Part 105/144

Processed Tue Mar 3 03:22:22 2015 by ELM ver.2012-10-06 from 001__elm20150223_191941__dat00.bin



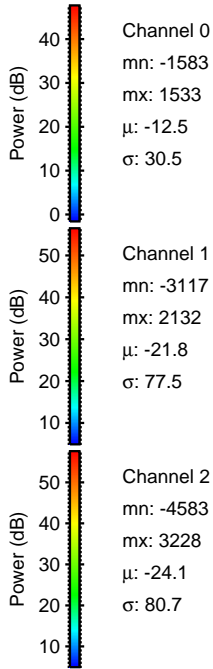
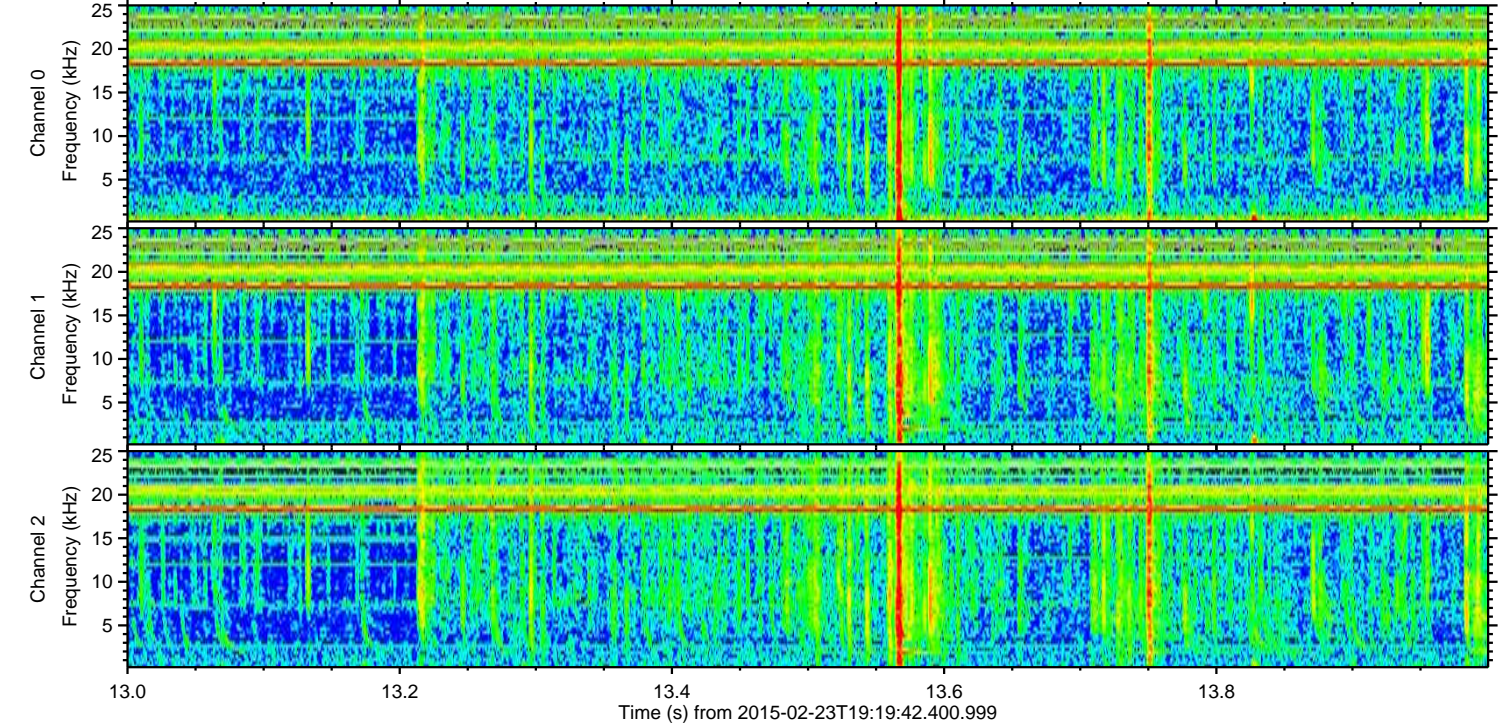
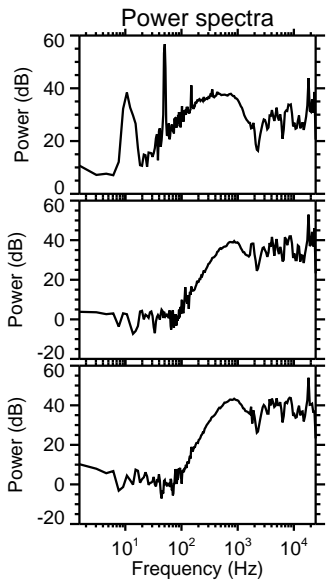
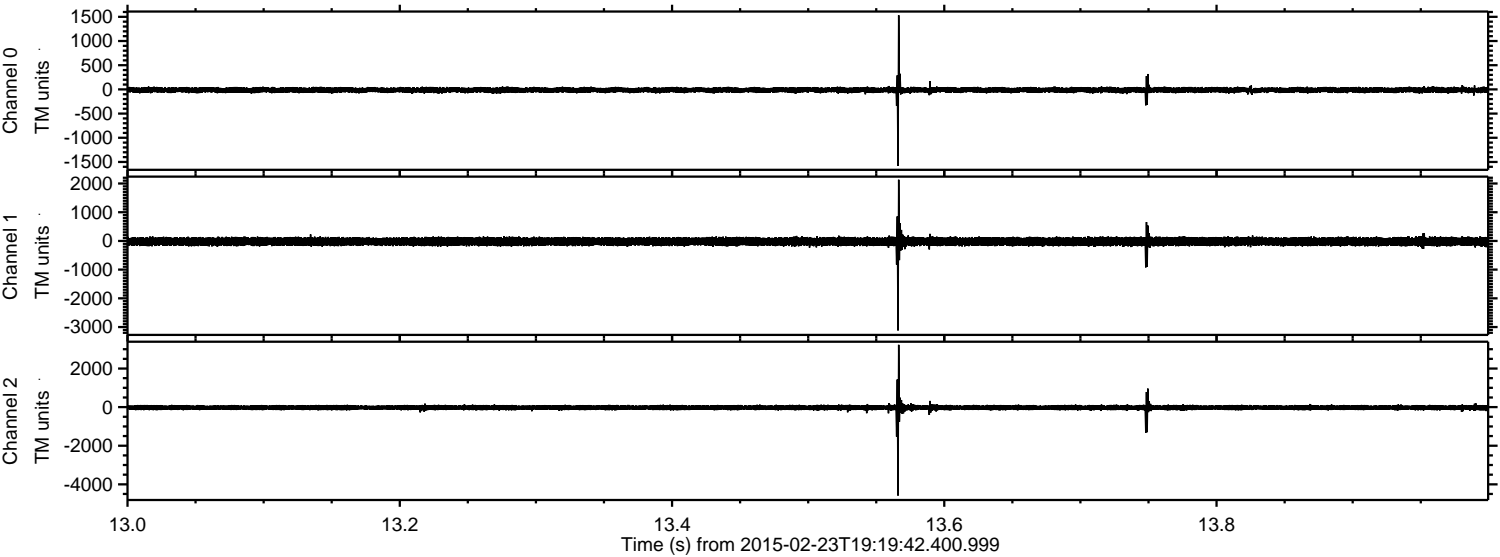
Channel 0
mn: -2459
mx: 2027
 μ : -12.5
 σ : 39.1

Channel 1
mn: -5072
mx: 2720
 μ : -21.8
 σ : 94.2

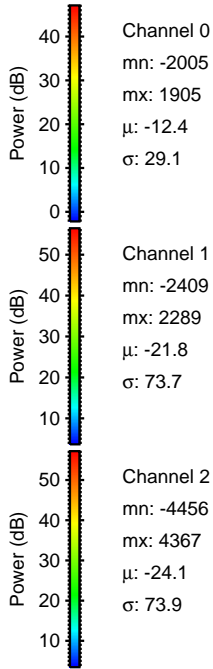
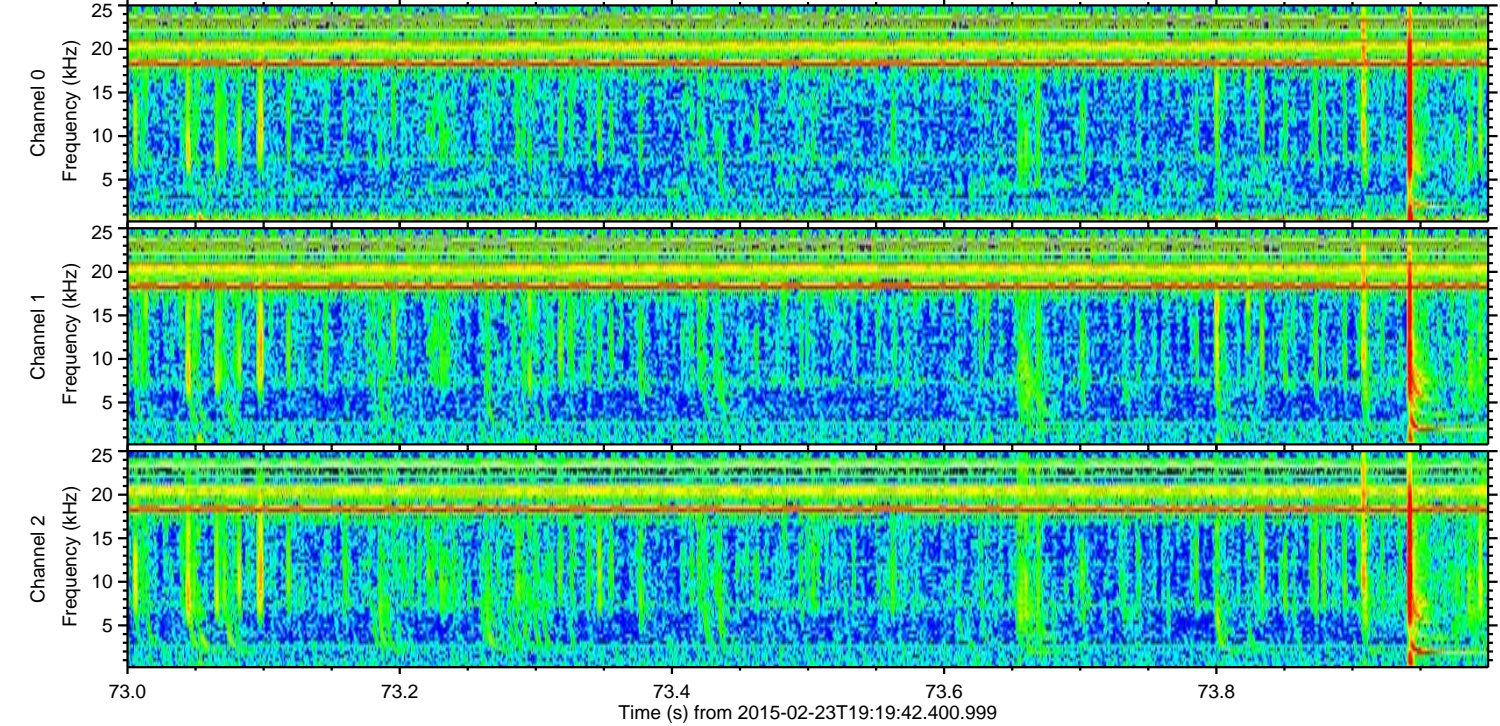
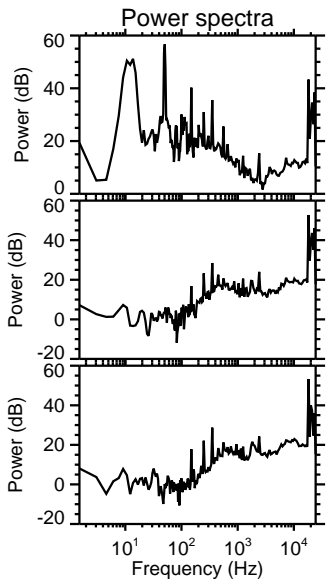
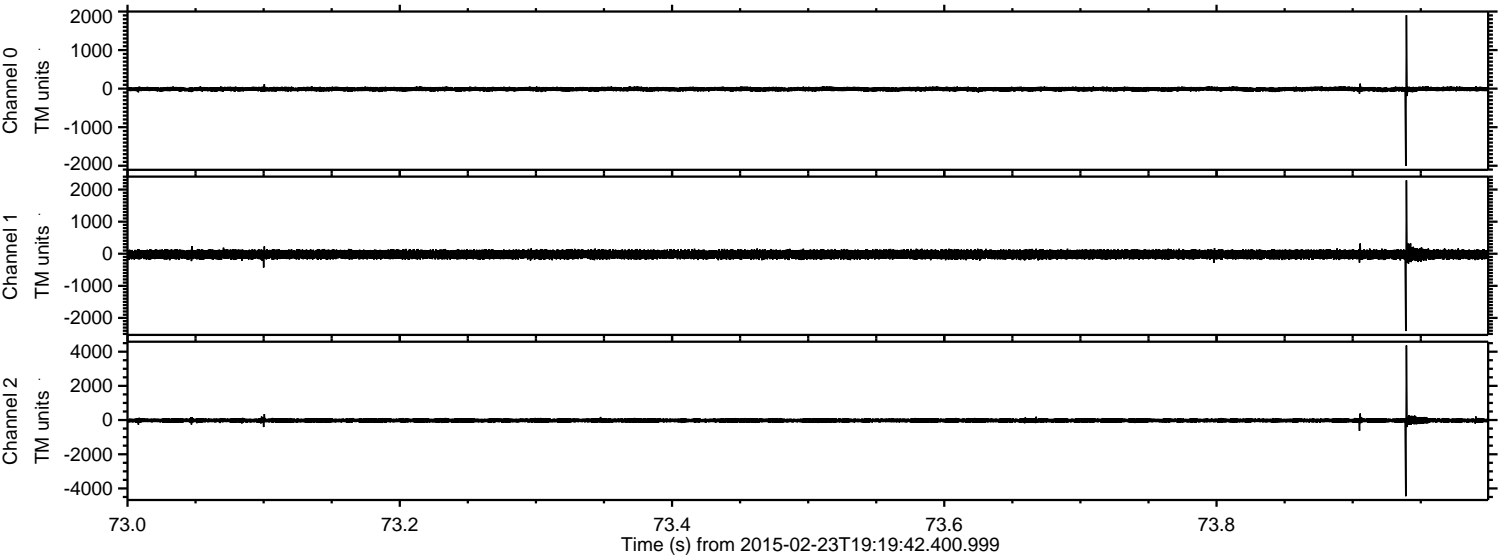
Channel 2
mn: -8013
mx: 4519
 μ : -24.1
 σ : 105.8

ELMAVAN 3D WAVEFORMS (Measured data sampled at 50 kHz) 49799 packets of 144 samples from 2015-02-23T19:19:42.400.999. Part 14/144

Processed Tue Mar 3 03:22:23 2015 by ELM ver.2012-10-06 from 001__elm20150223_191941__dat00.bin



Processed Tue Mar 3 03:22:24 2015 by ELM ver.2012-10-06 from 001__elm20150223_191941__dat00.bin



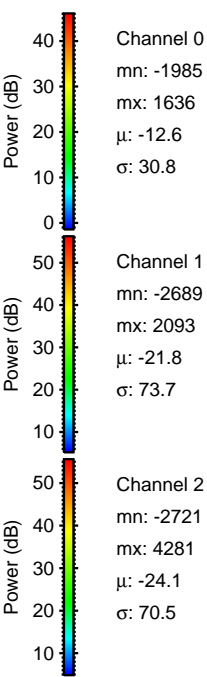
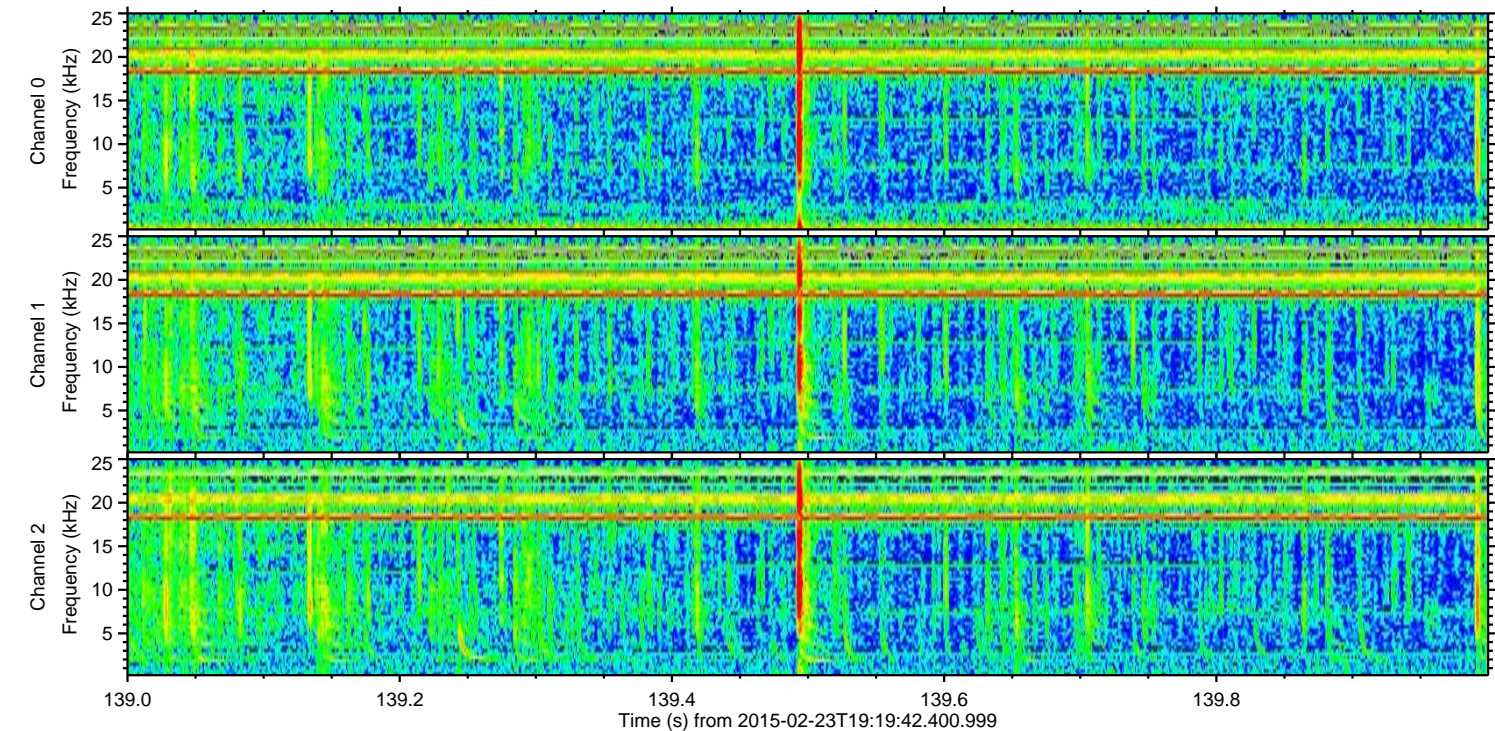
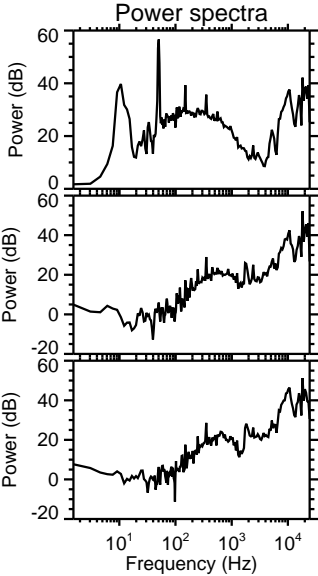
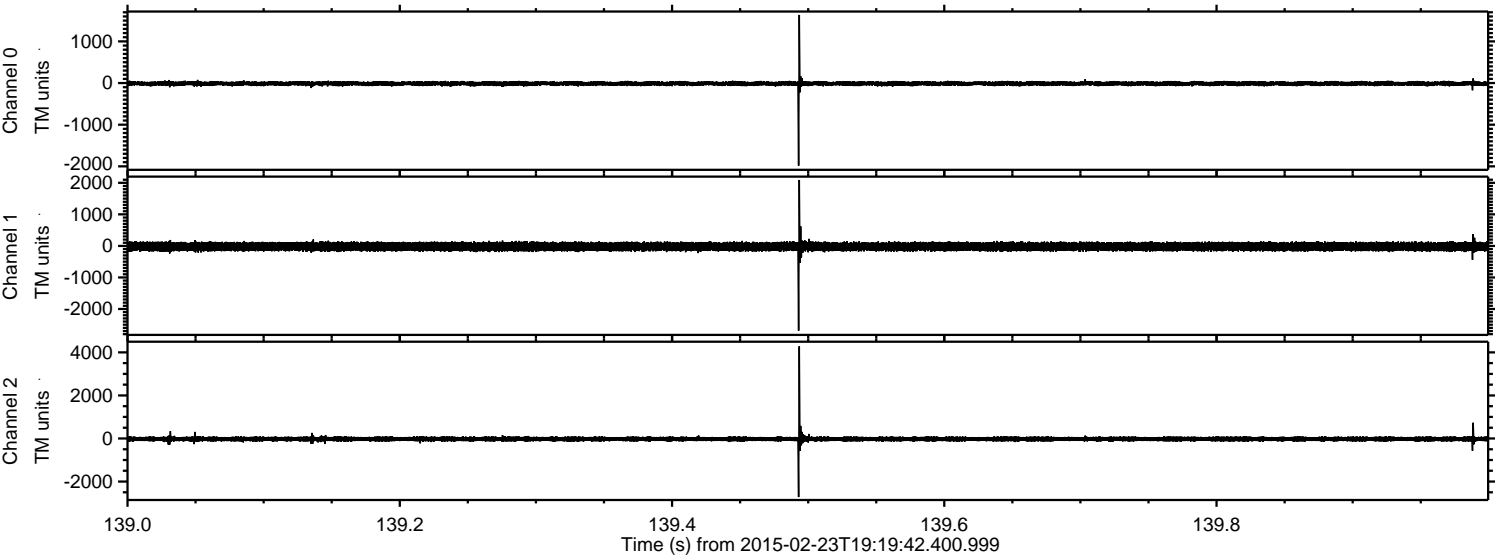
Channel 0
mn: -2005
mx: 1905
 μ : -12.4
 σ : 29.1

Channel 1
mn: -2409
mx: 2289
 μ : -21.8
 σ : 73.7

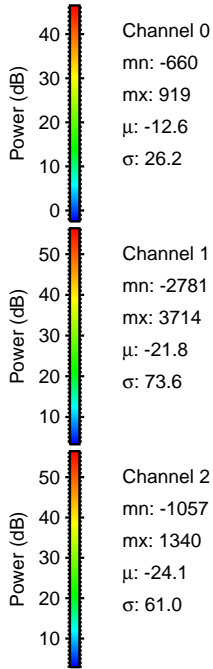
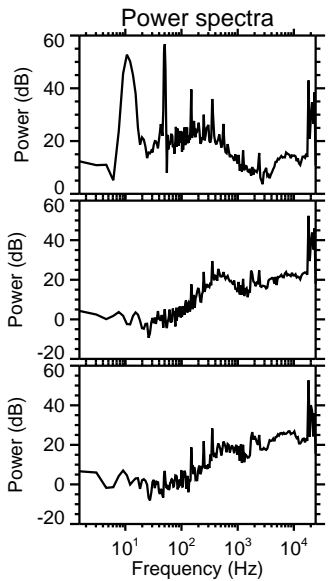
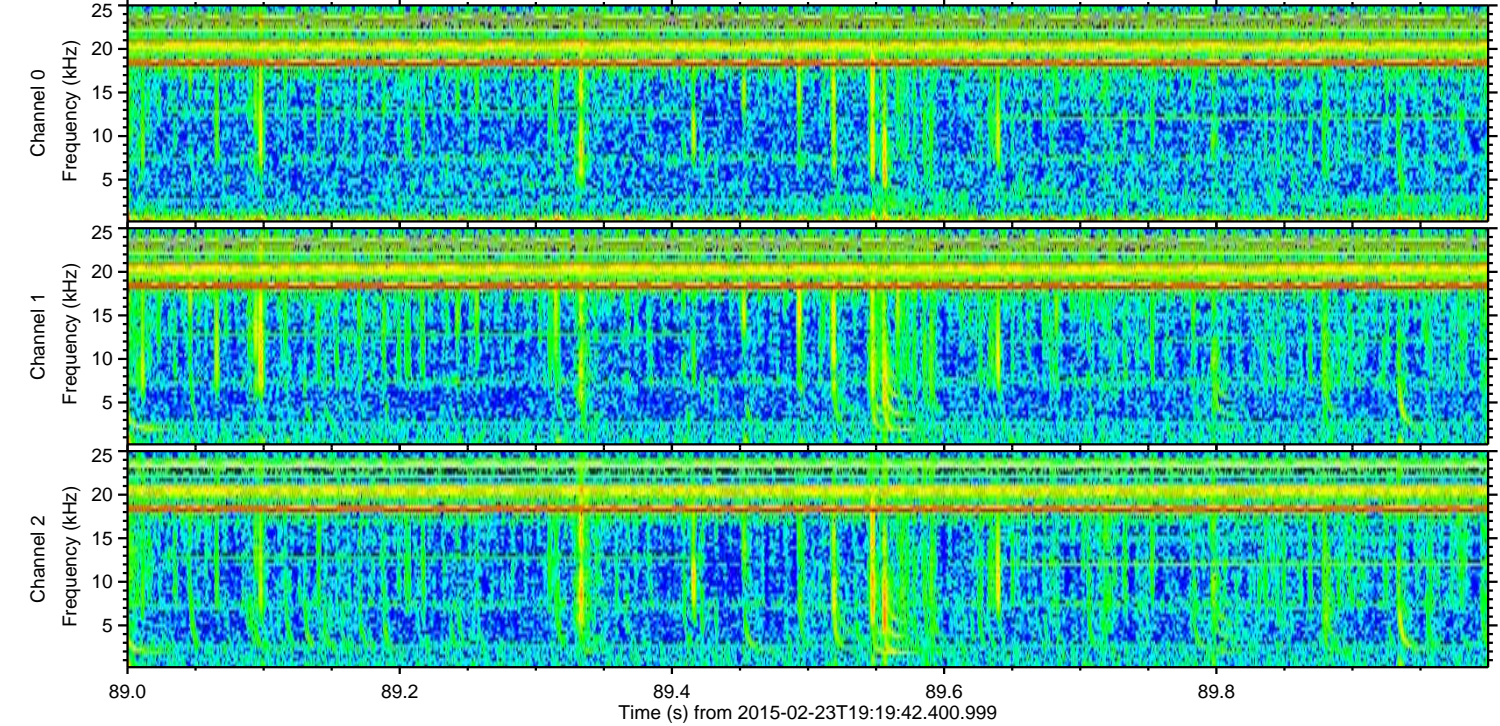
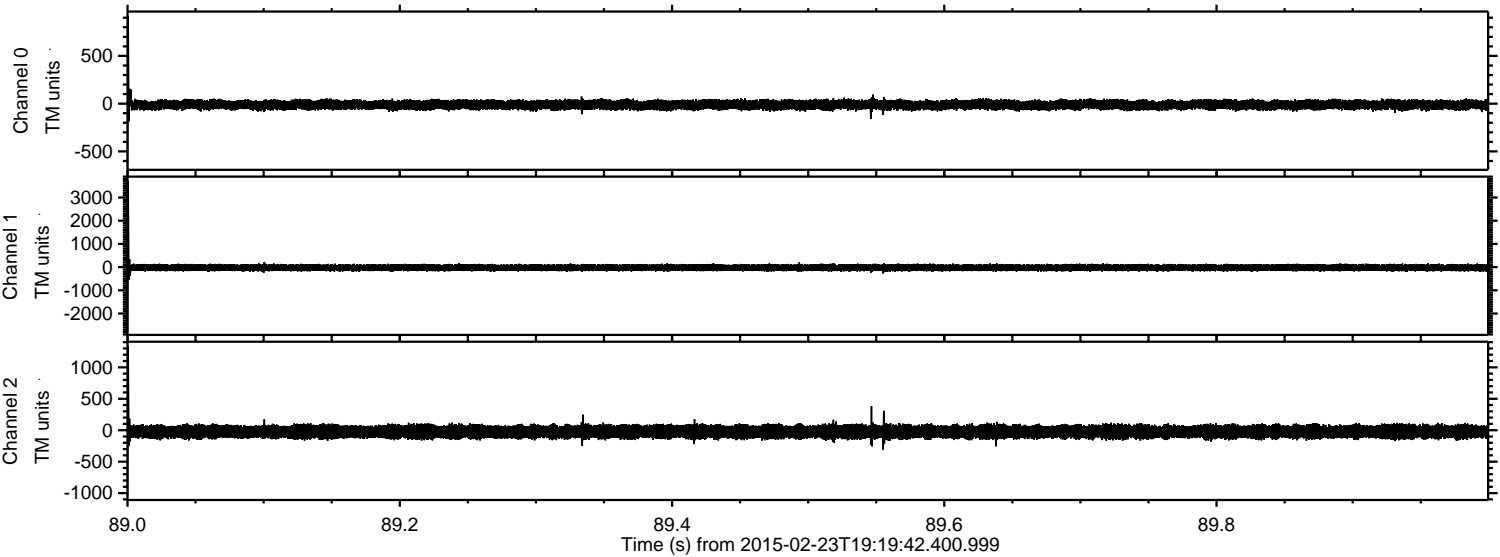
Channel 2
mn: -4456
mx: 4367
 μ : -24.1
 σ : 73.9

ELMAVAN 3D WAVEFORMS (Measured data sampled at 50 kHz) 49799 packets of 144 samples from 2015-02-23T19:19:42.400.999. Part 140/144

Processed Tue Mar 3 03:22:24 2015 by ELM ver.2012-10-06 from 001__elm20150223_191941__dat00.bin

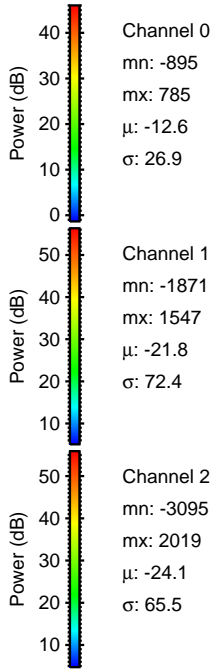
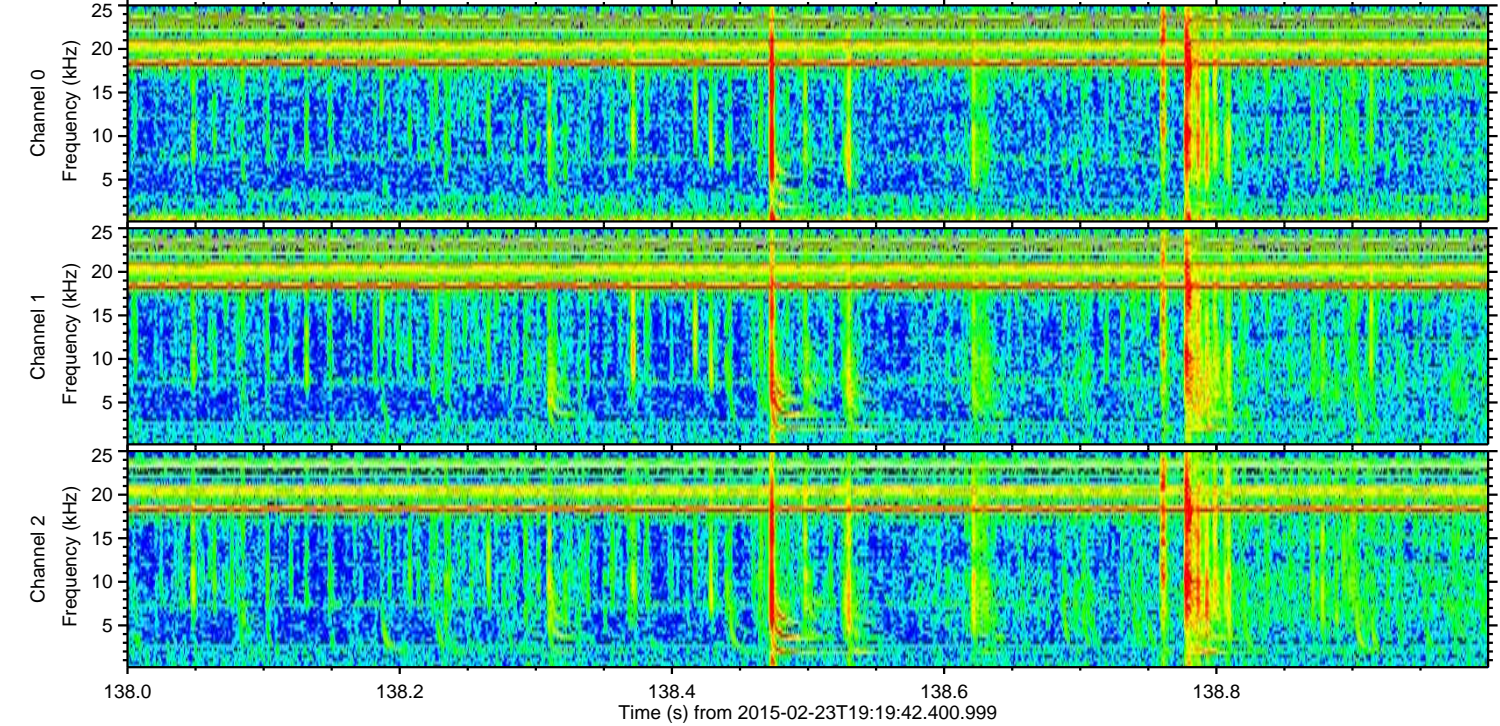
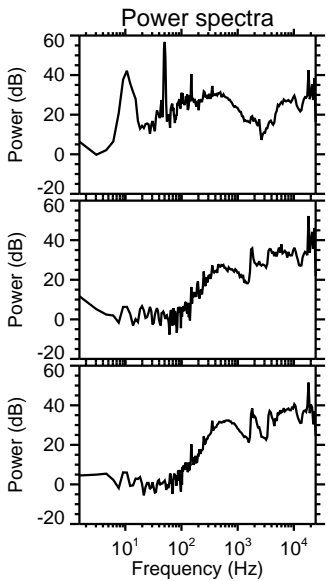
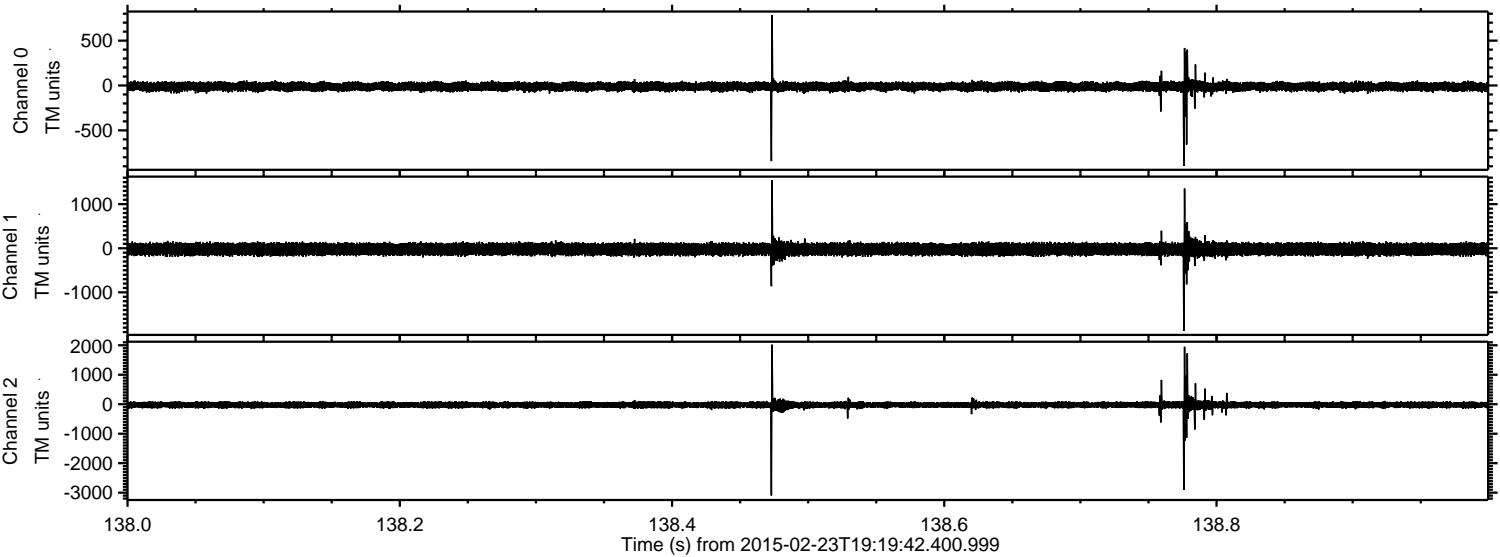


Processed Tue Mar 3 03:22:25 2015 by ELM ver.2012-10-06 from 001__elm20150223_191941__dat00.bin

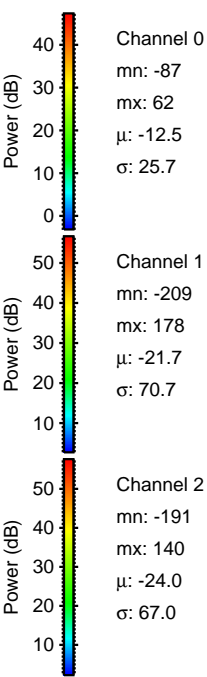
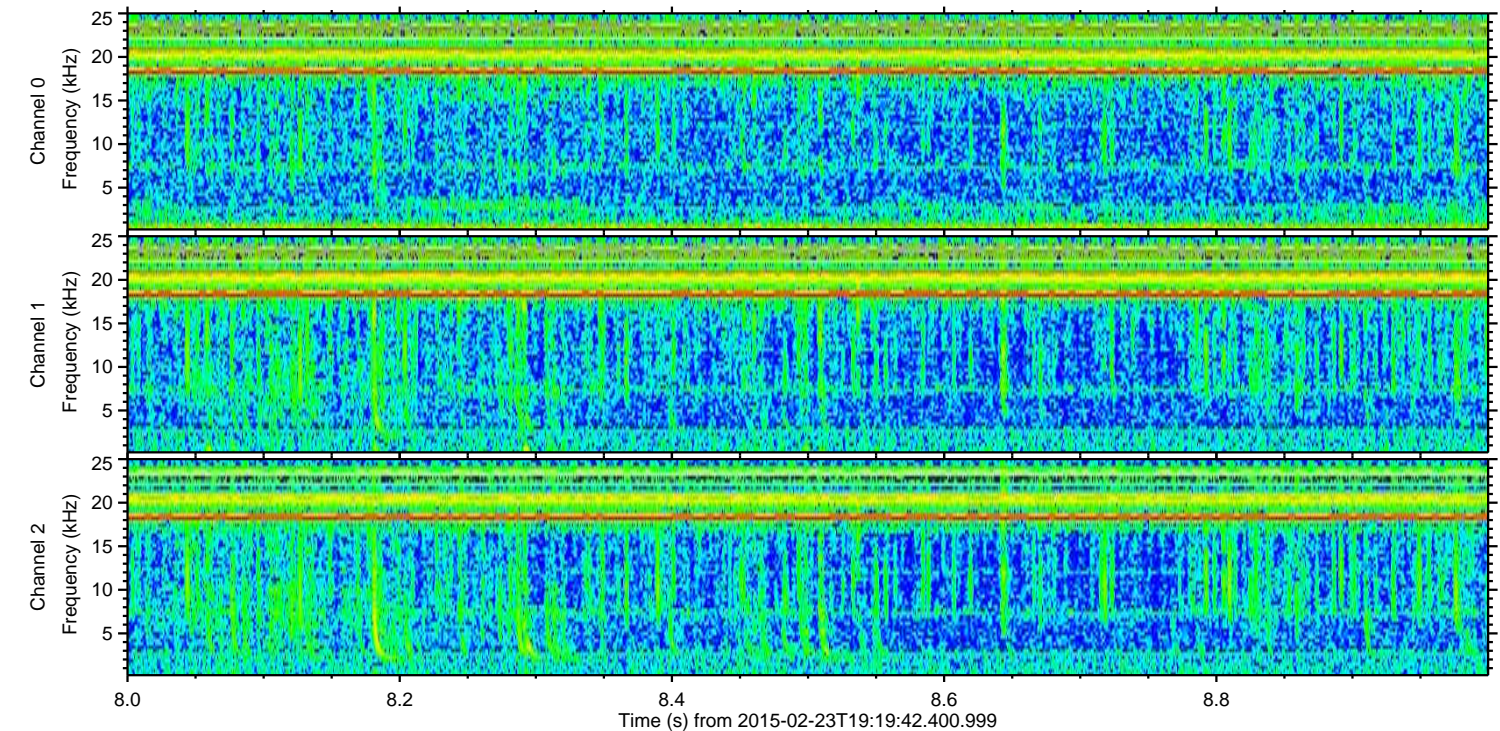
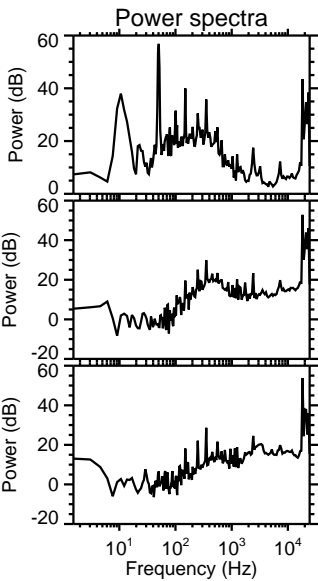
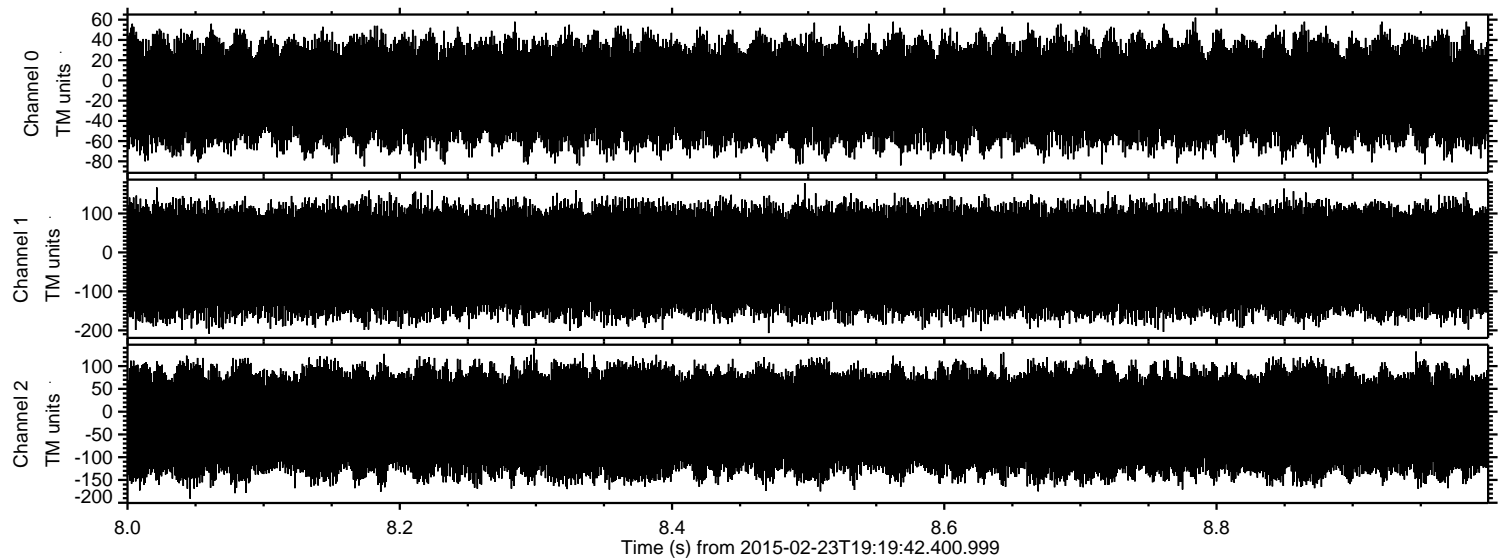


ELMAVAN 3D WAVEFORMS (Measured data sampled at 50 kHz) 49799 packets of 144 samples from 2015-02-23T19:19:42.400.999. Part 139/144

Processed Tue Mar 3 03:22:26 2015 by ELM ver.2012-10-06 from 001__elm20150223_191941__dat00.bin



Processed Tue Mar 3 03:22:27 2015 by ELM ver.2012-10-06 from 001__elm20150223_191941__dat00.bin



Channel 0
mn: -87
mx: 62
 μ : -12.5
 σ : 25.7

Channel 1
mn: -209
mx: 178
 μ : -21.7
 σ : 70.7

Channel 2
mn: -191
mx: 140
 μ : -24.0
 σ : 67.0