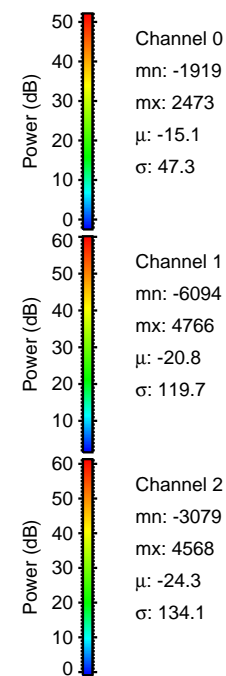
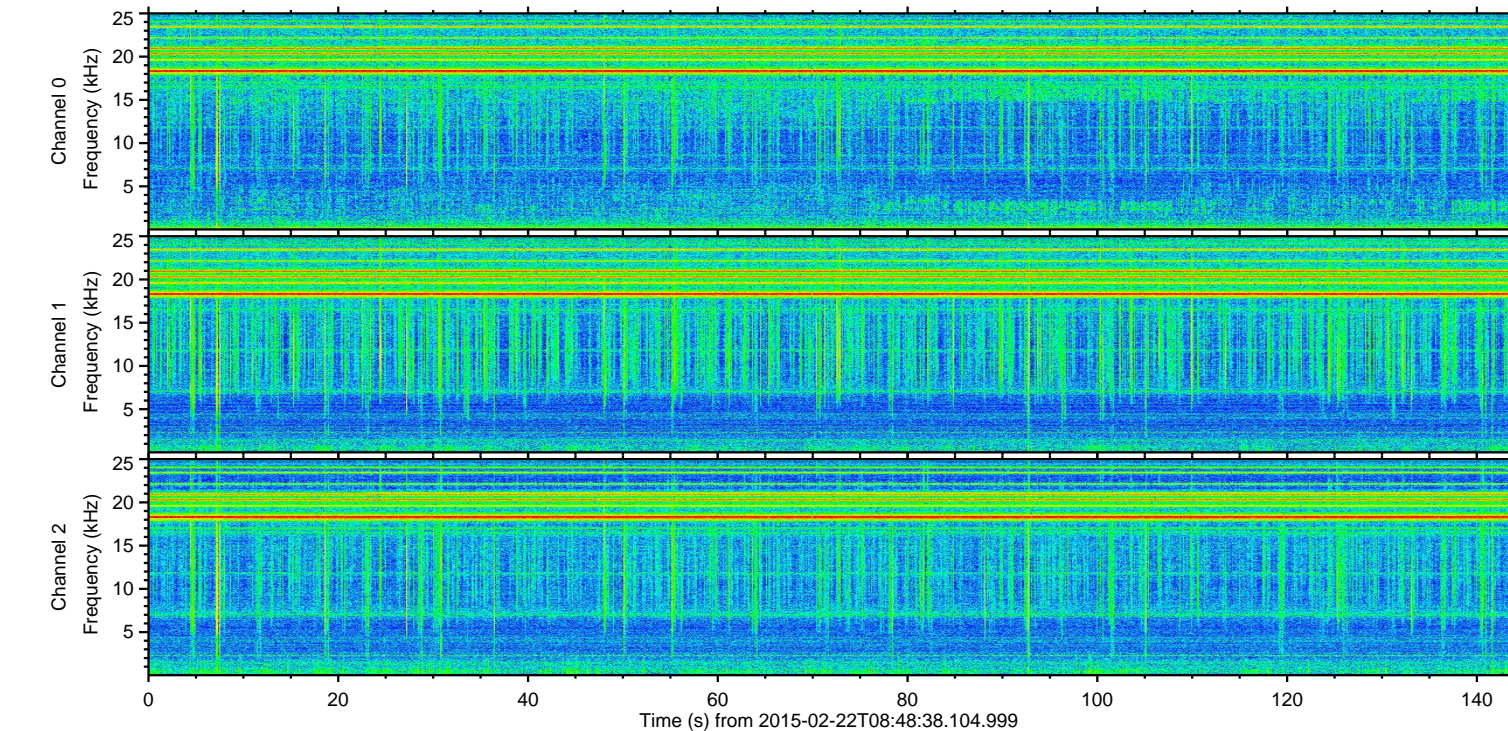
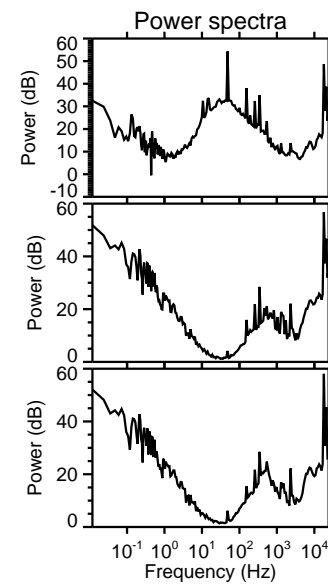
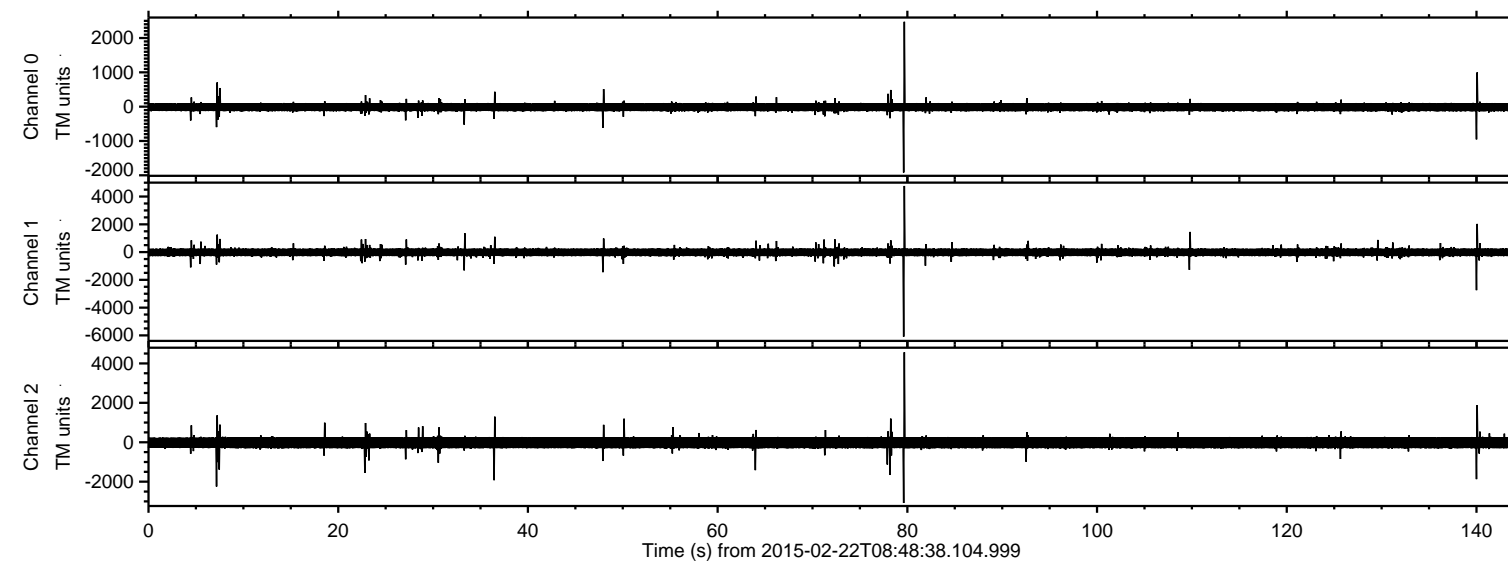
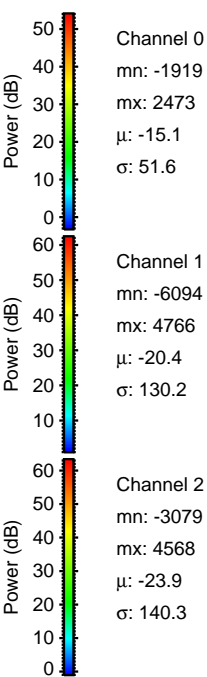
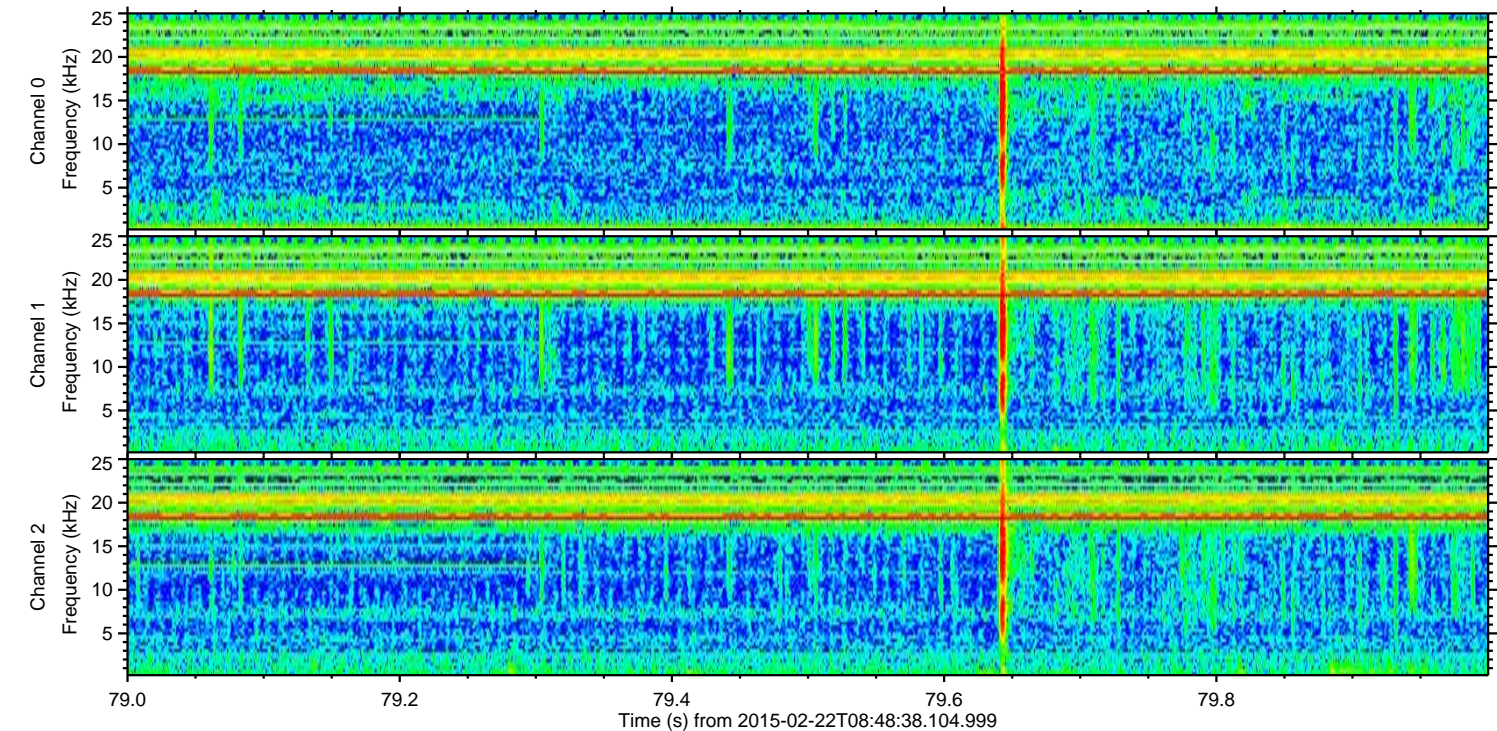
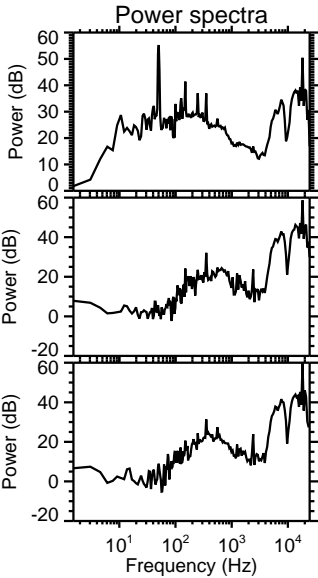
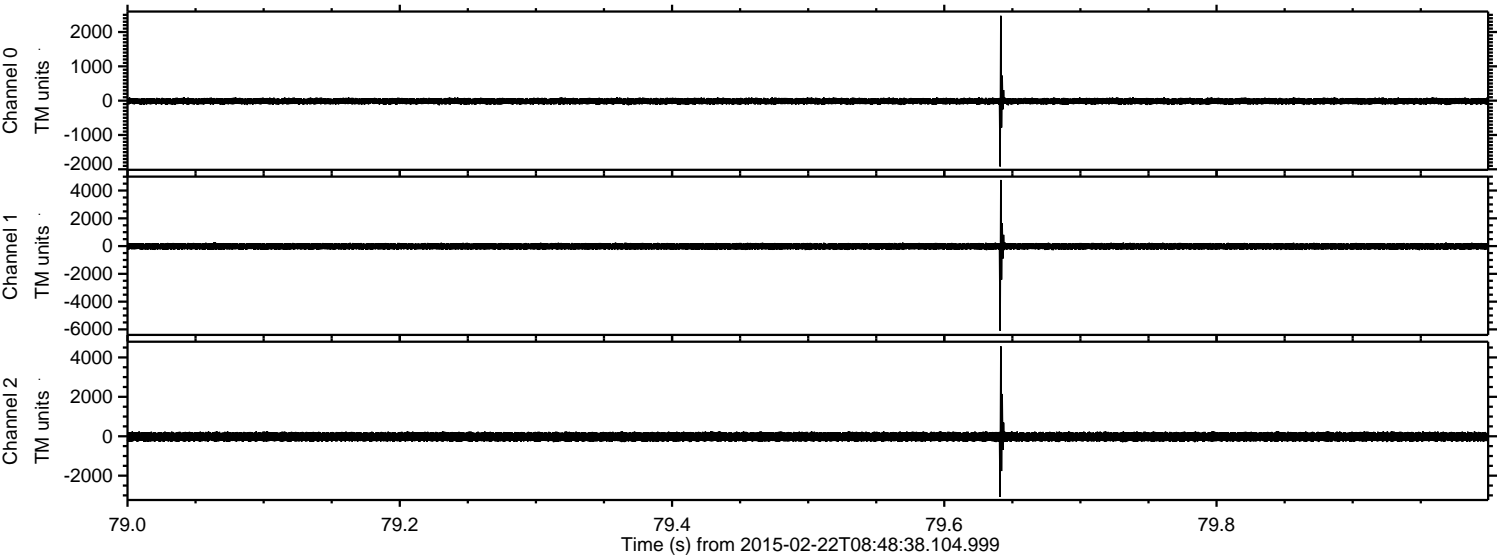


ELMAVAN 3D WAVEFORMS (Measured data sampled at 50 kHz) 49807 packets of 144 samples from 2015-02-22T08:48:38.104.999.

Processed Mon Mar 2 10:48:11 2015 by ELM ver.2012-10-06 from 001__elm20150222_084837__dat00.bin

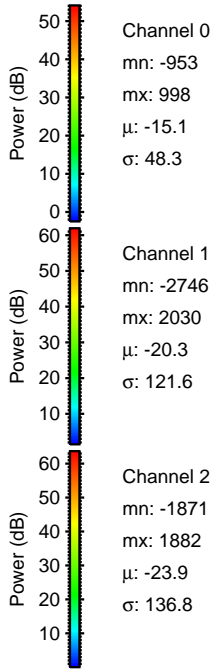
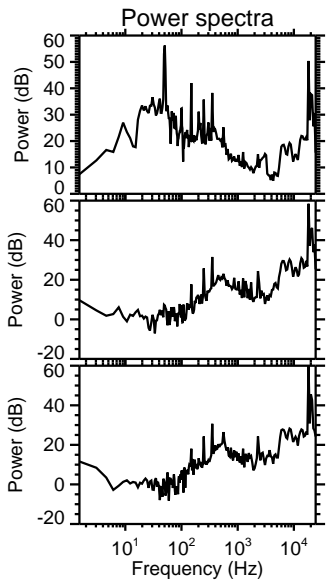
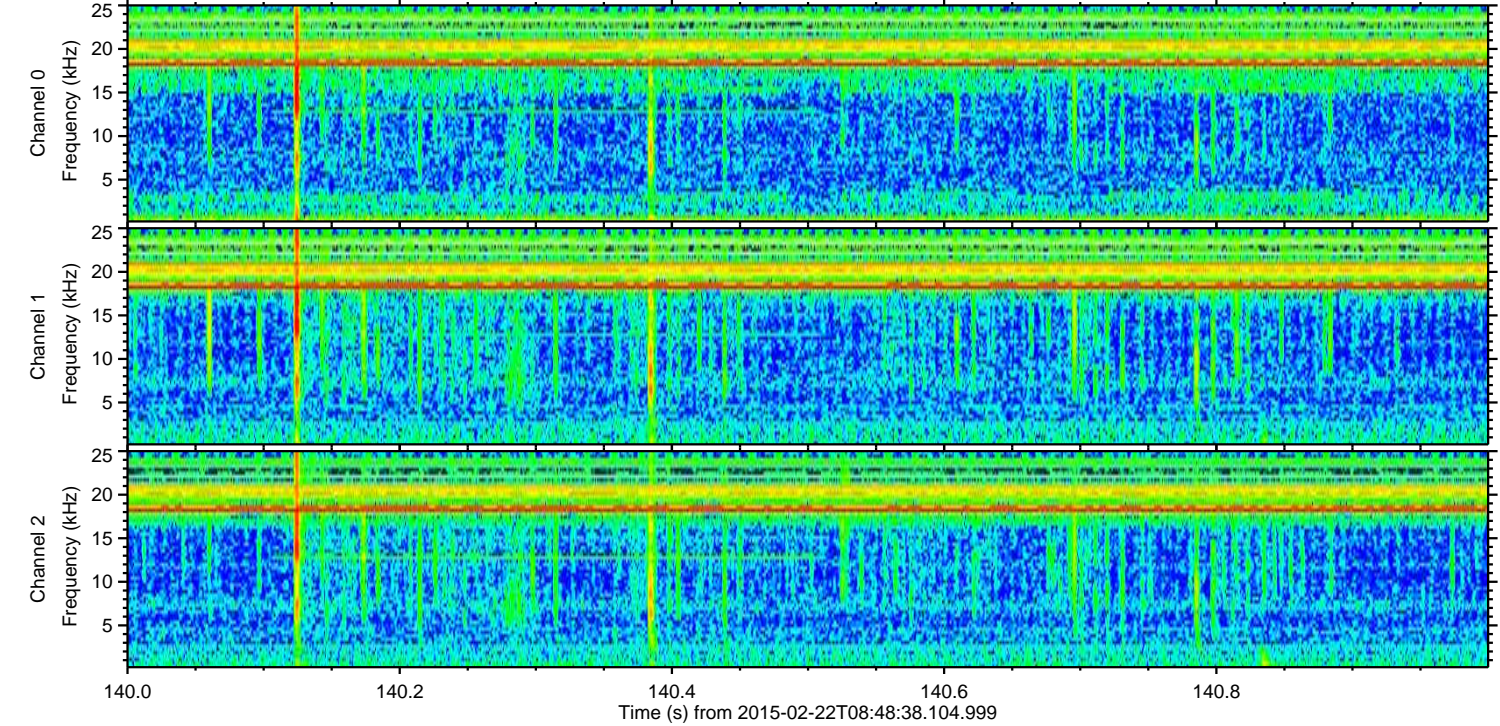
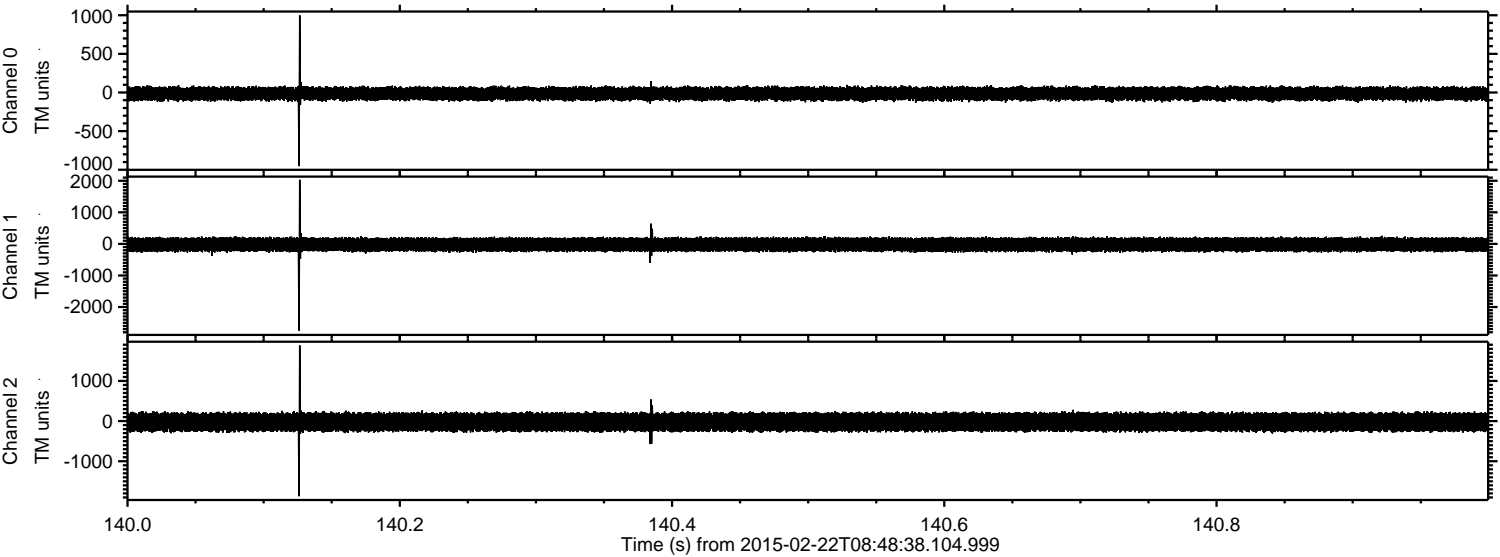


Processed Mon Mar 2 10:48:23 2015 by ELM ver.2012-10-06 from 001__elm20150222_084837__dat00.bin

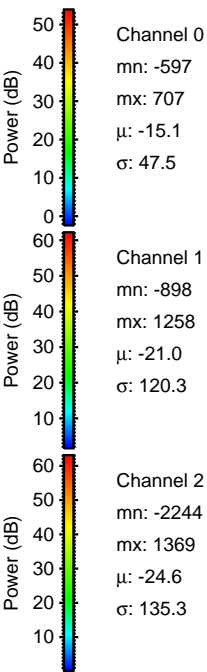
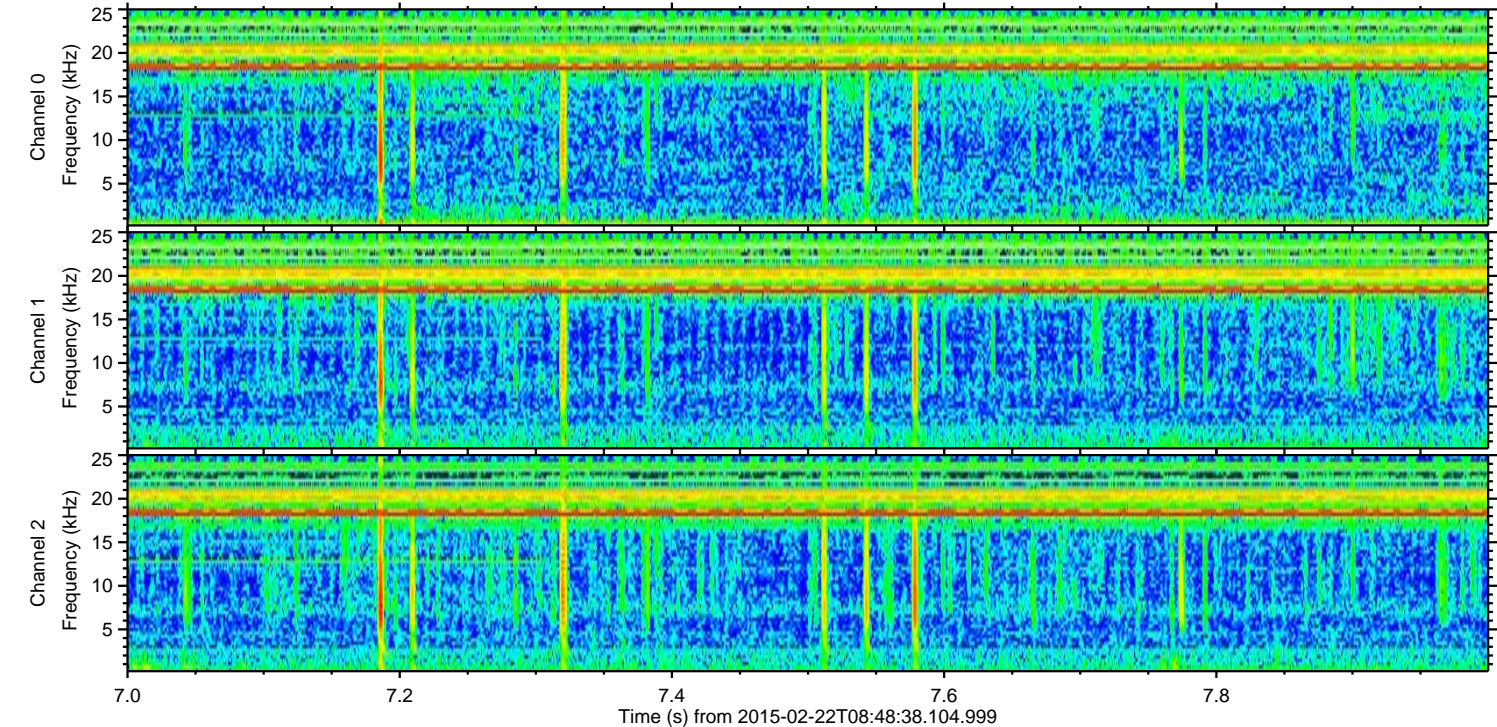
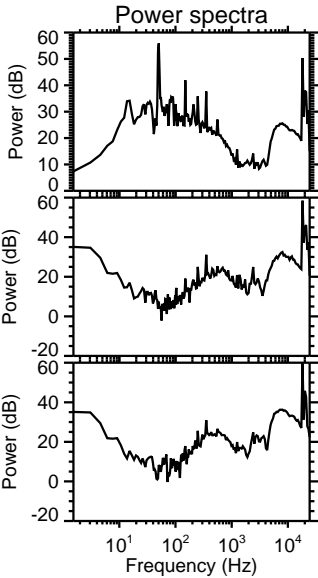
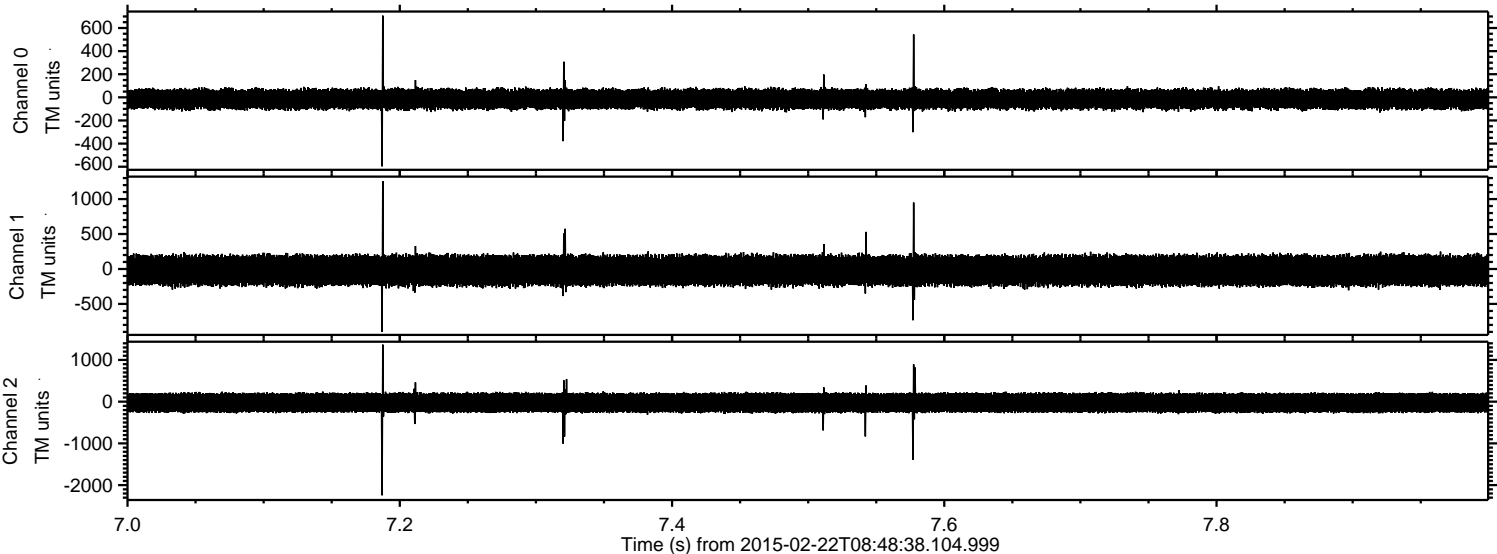


ELMAVAN 3D WAVEFORMS (Measured data sampled at 50 kHz) 49807 packets of 144 samples from 2015-02-22T08:48:38.104.999. Part 141/144

Processed Mon Mar 2 10:48:24 2015 by ELM ver.2012-10-06 from 001__elm20150222_084837__dat00.bin

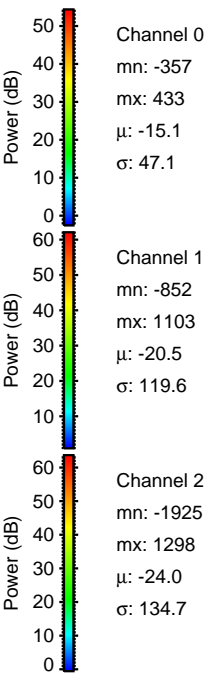
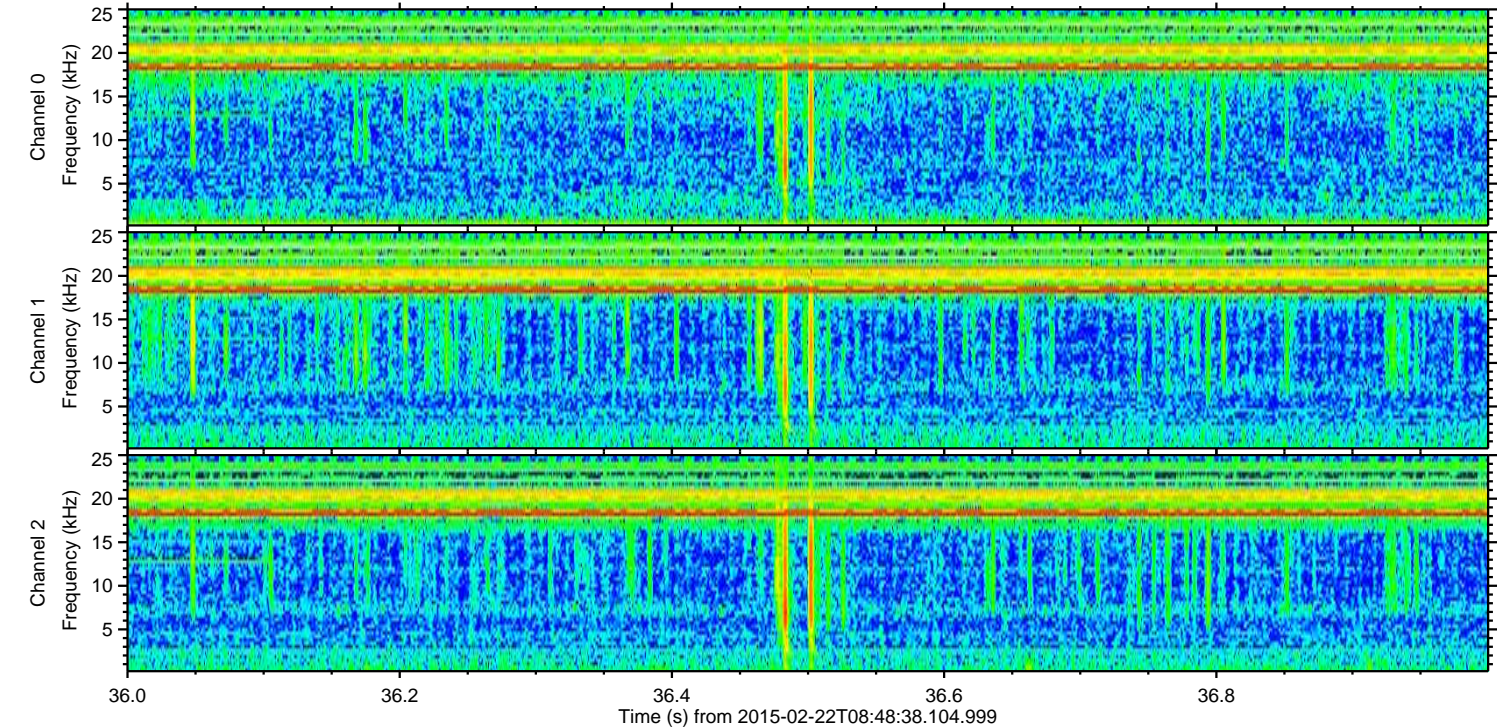
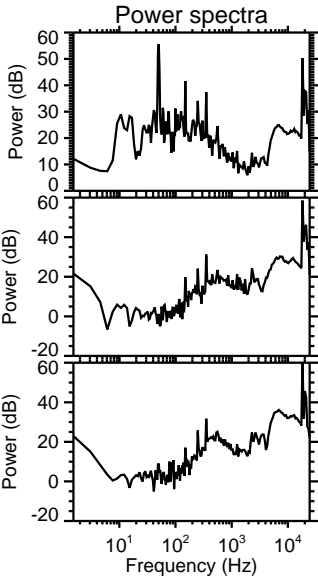
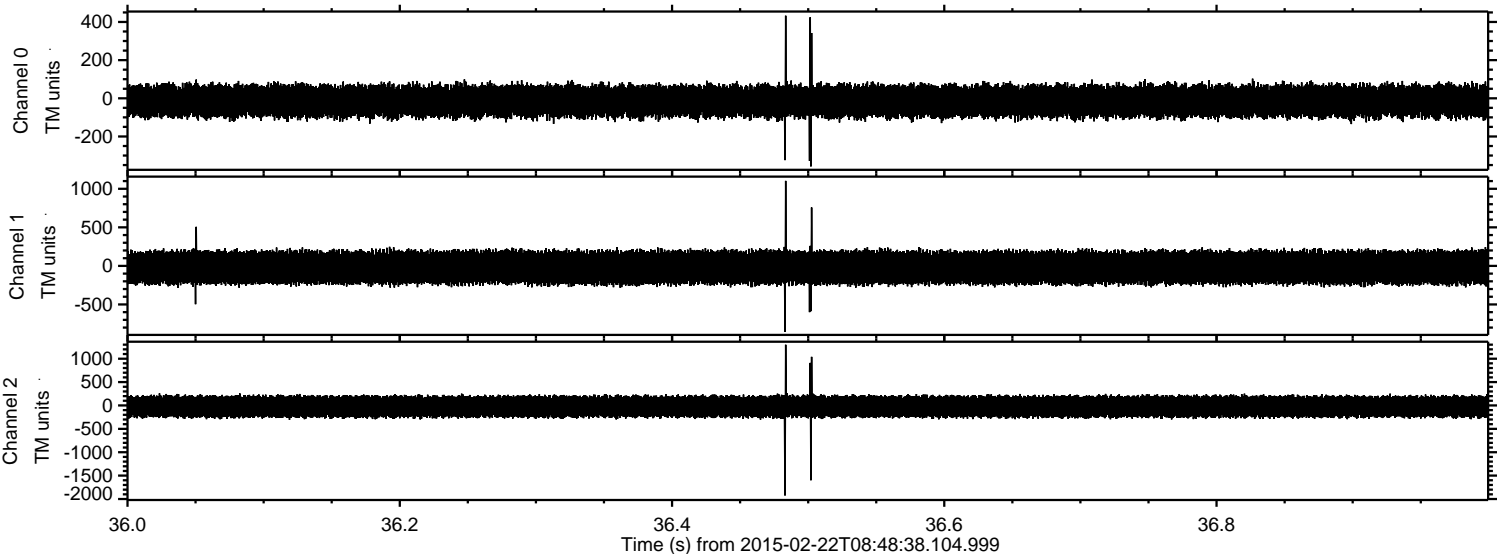


Processed Mon Mar 2 10:48:24 2015 by ELM ver.2012-10-06 from 001__elm20150222_084837__dat00.bin

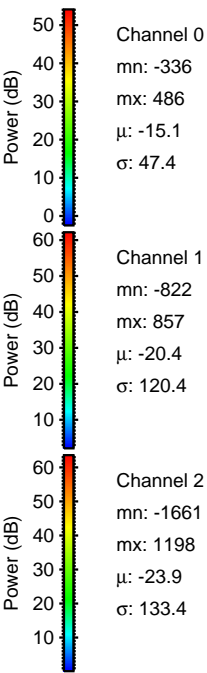
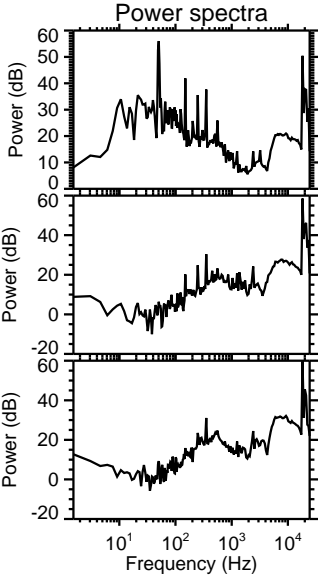
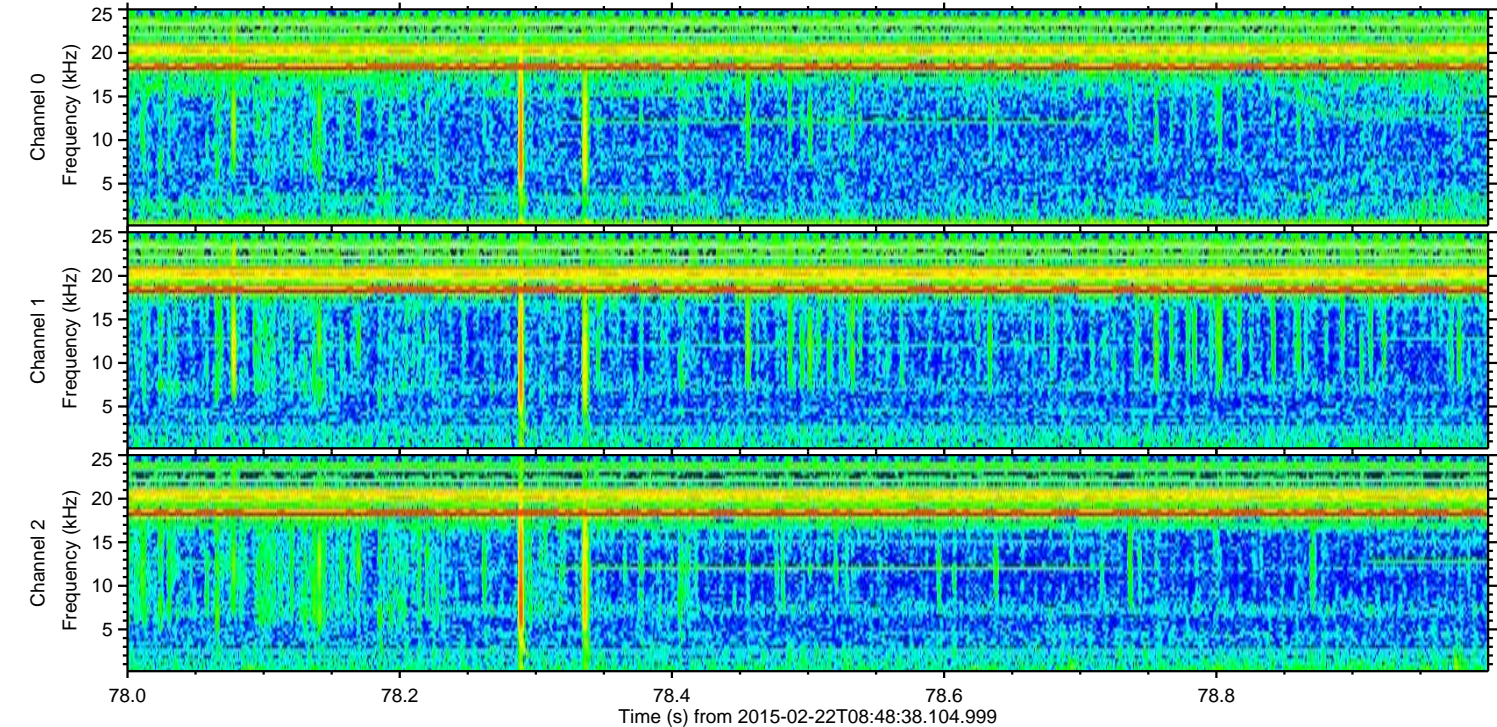
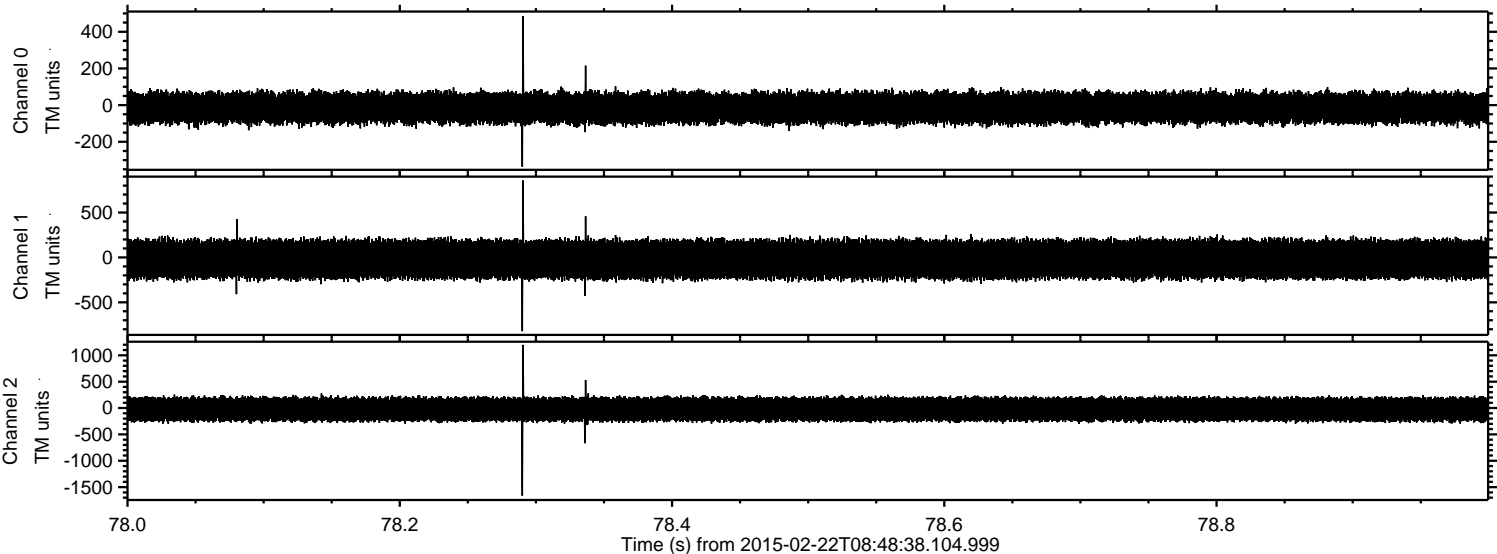


ELMAVAN 3D WAVEFORMS (Measured data sampled at 50 kHz) 49807 packets of 144 samples from 2015-02-22T08:48:38.104.999. Part 37/144

Processed Mon Mar 2 10:48:25 2015 by ELM ver.2012-10-06 from 001__elm20150222_084837__dat00.bin

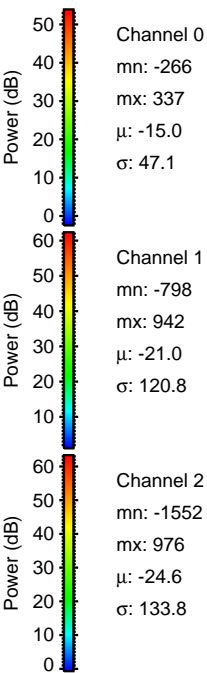
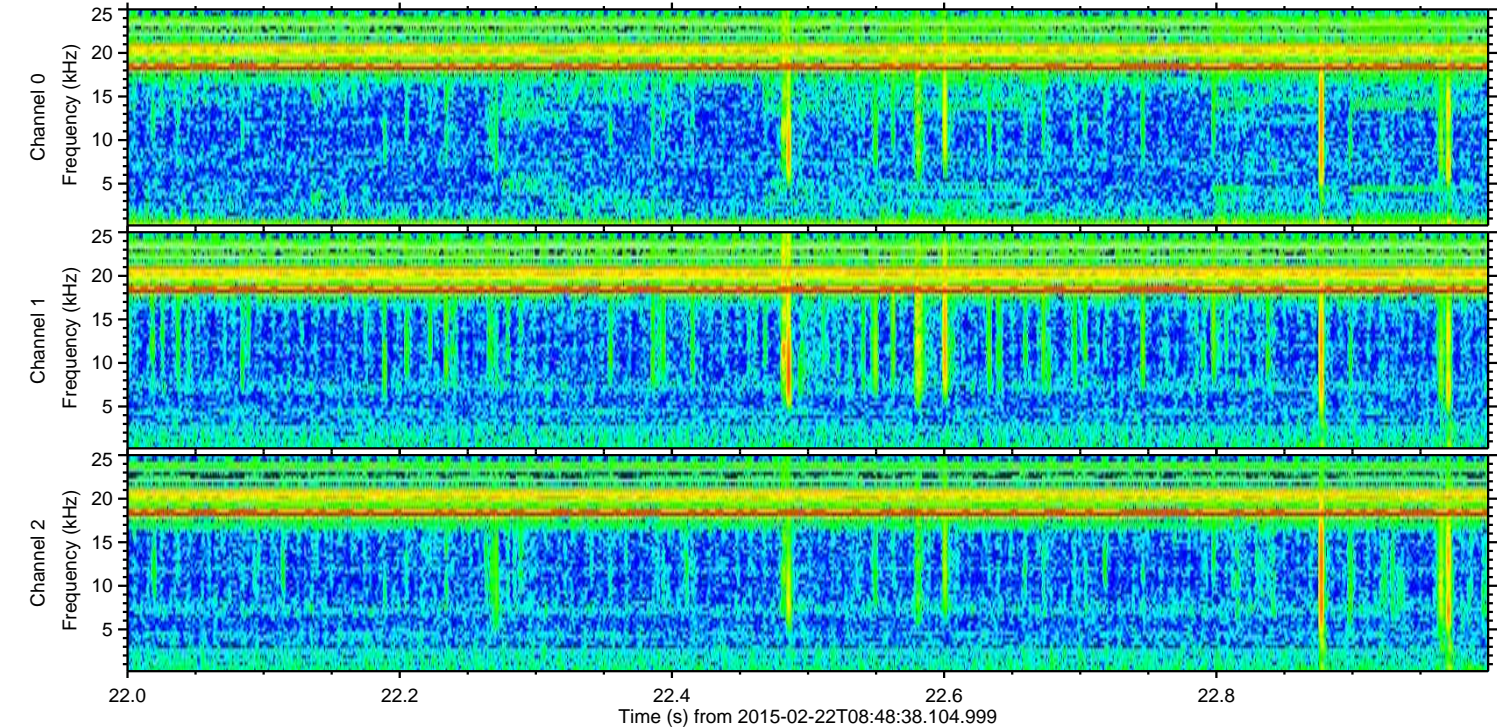
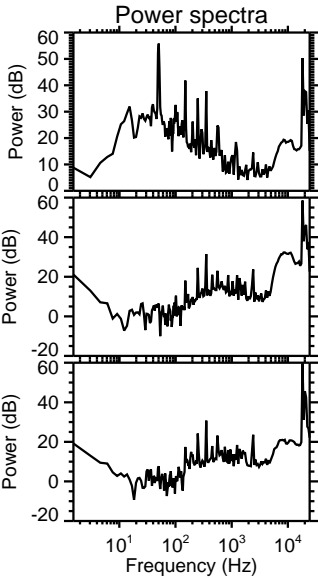
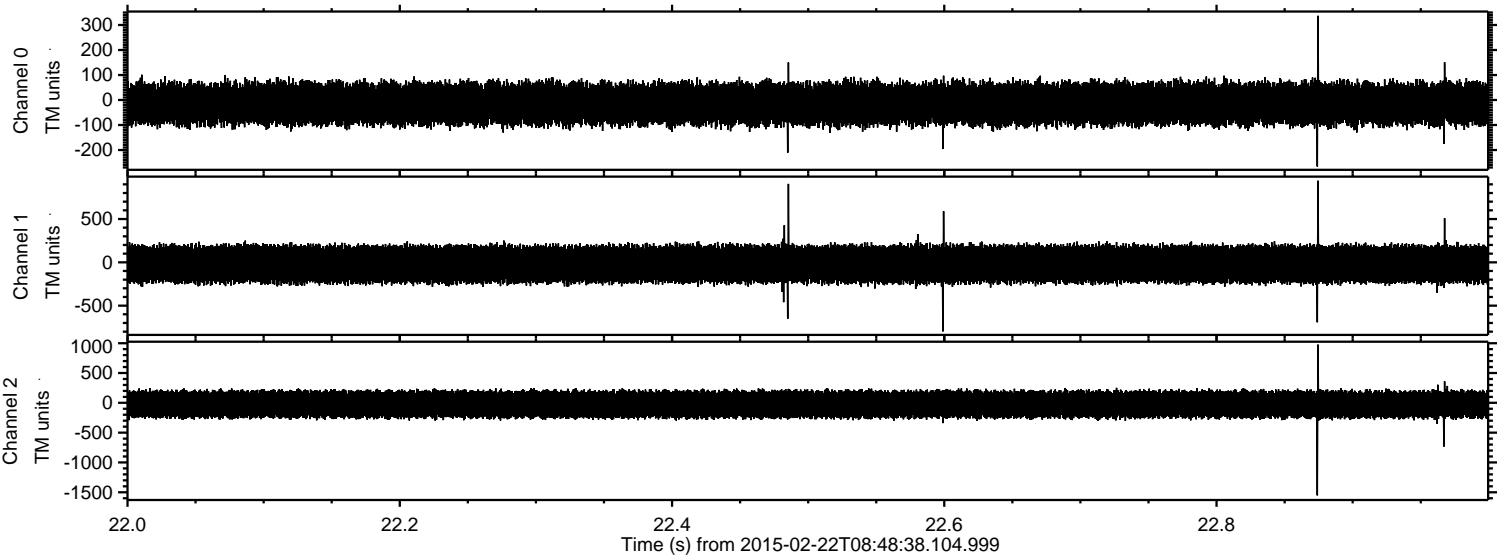


Processed Mon Mar 2 10:48:26 2015 by ELM ver.2012-10-06 from 001__elm20150222_084837__dat00.bin

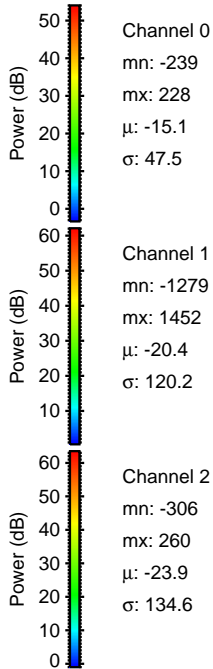
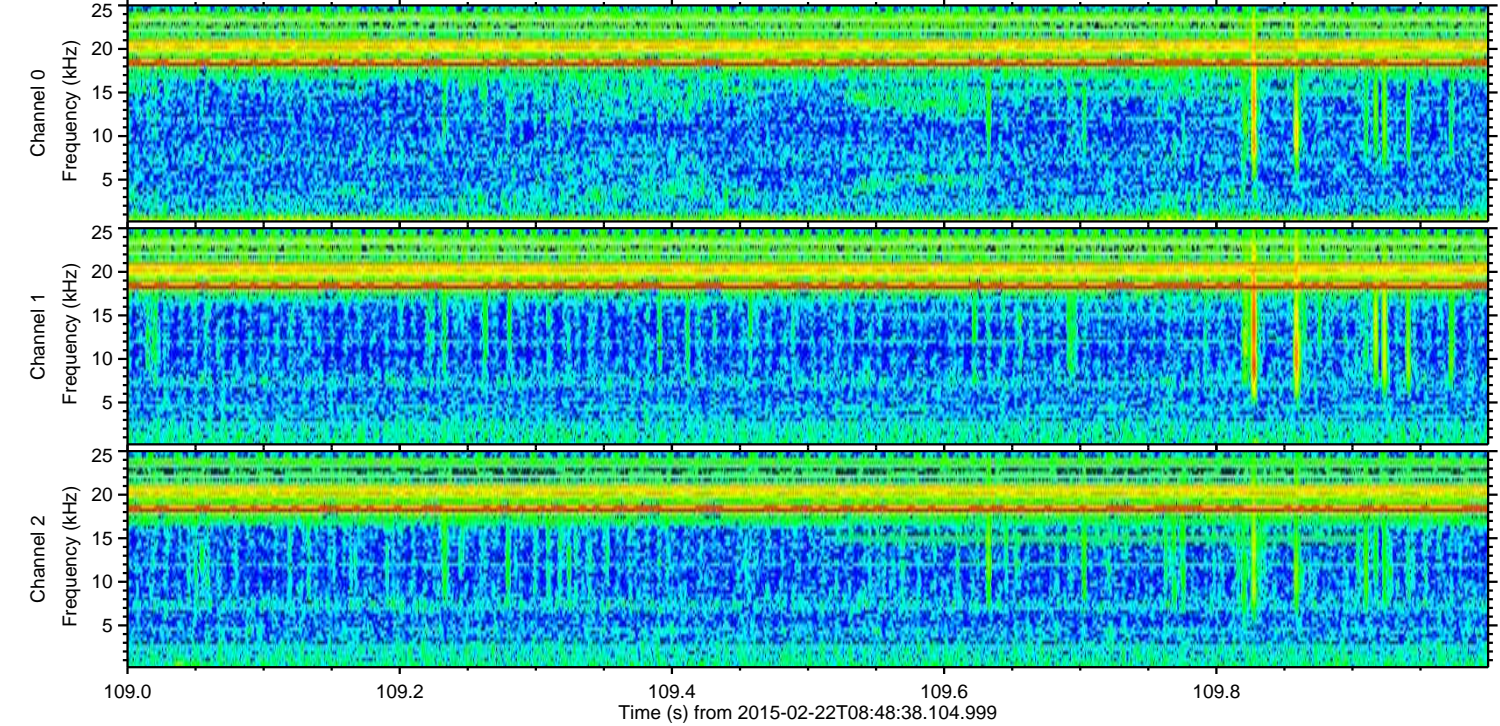
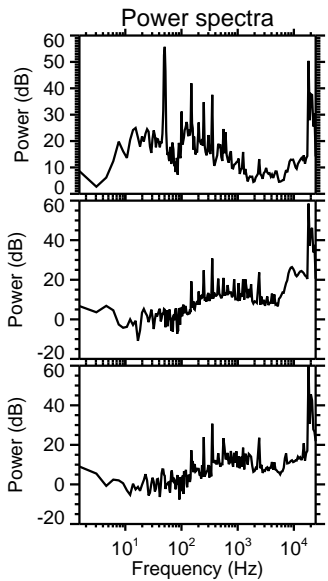
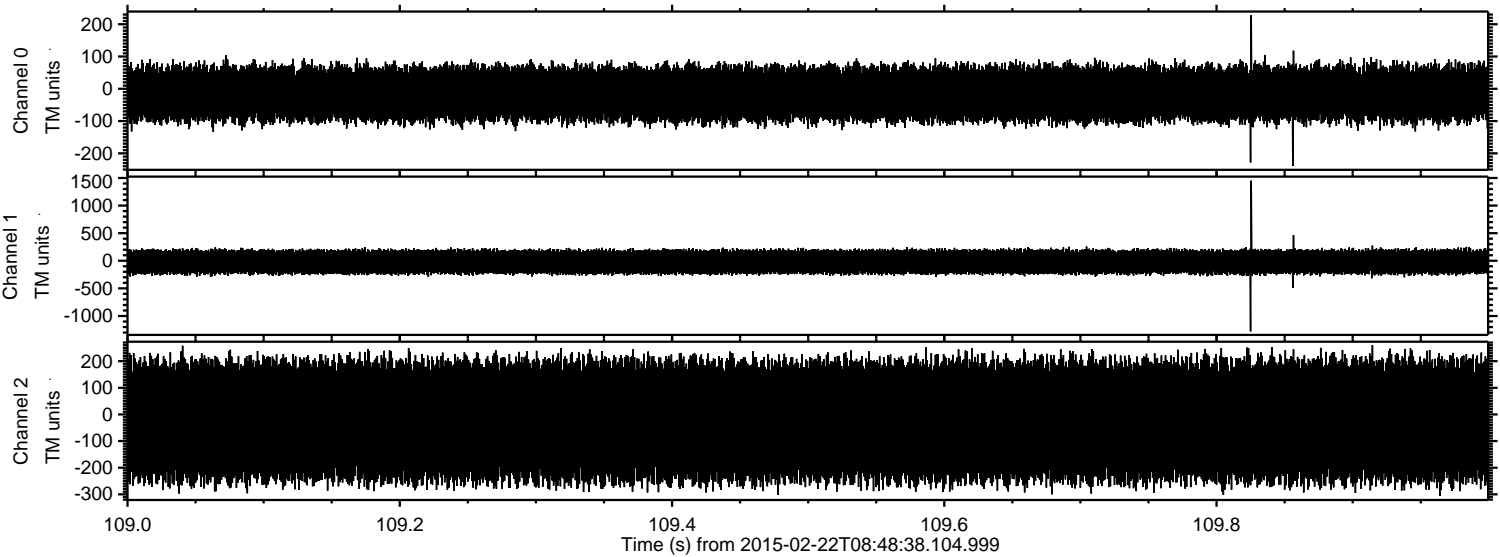


ELMAVAN 3D WAVEFORMS (Measured data sampled at 50 kHz) 49807 packets of 144 samples from 2015-02-22T08:48:38.104.999. Part 23/144

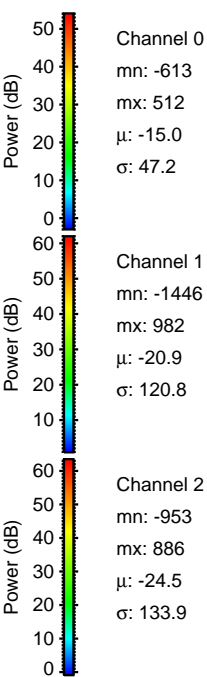
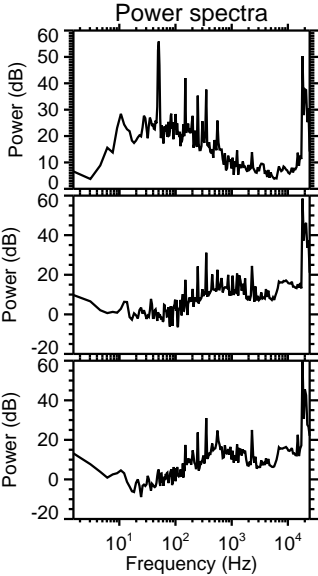
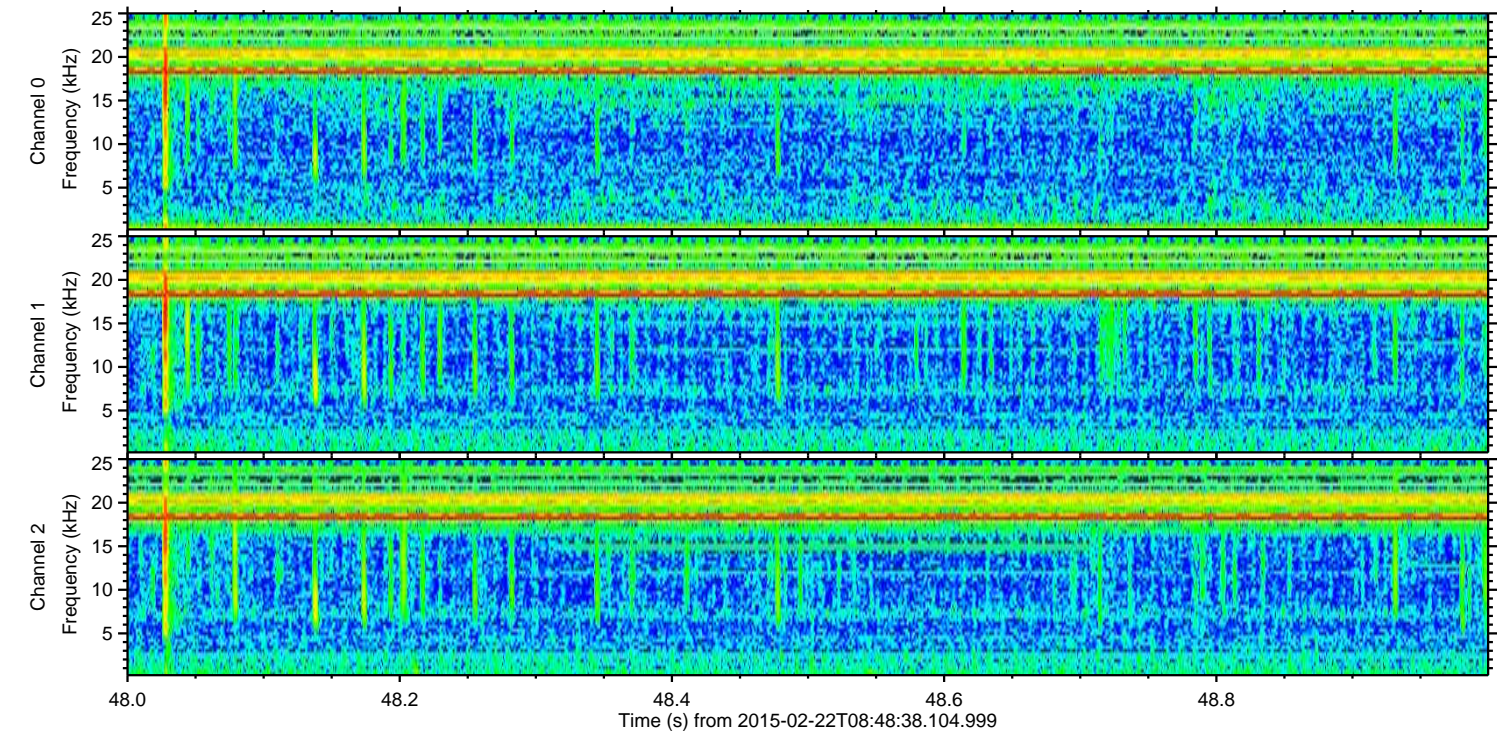
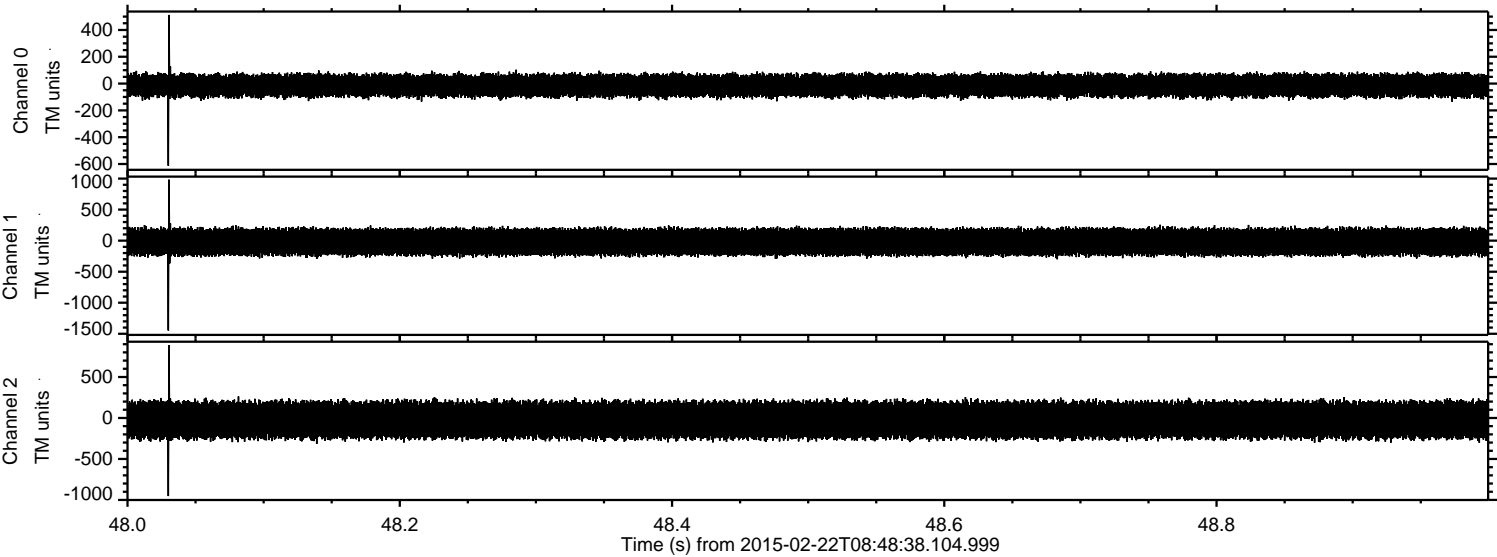
Processed Mon Mar 2 10:48:27 2015 by ELM ver.2012-10-06 from 001__elm20150222_084837__dat00.bin



Processed Mon Mar 2 10:48:28 2015 by ELM ver.2012-10-06 from 001__elm20150222_084837__dat00.bin



Processed Mon Mar 2 10:48:29 2015 by ELM ver.2012-10-06 from 001__elm20150222_084837__dat00.bin

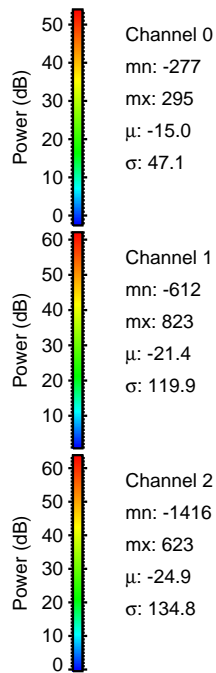
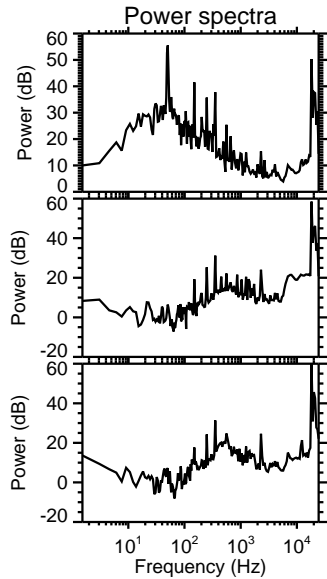
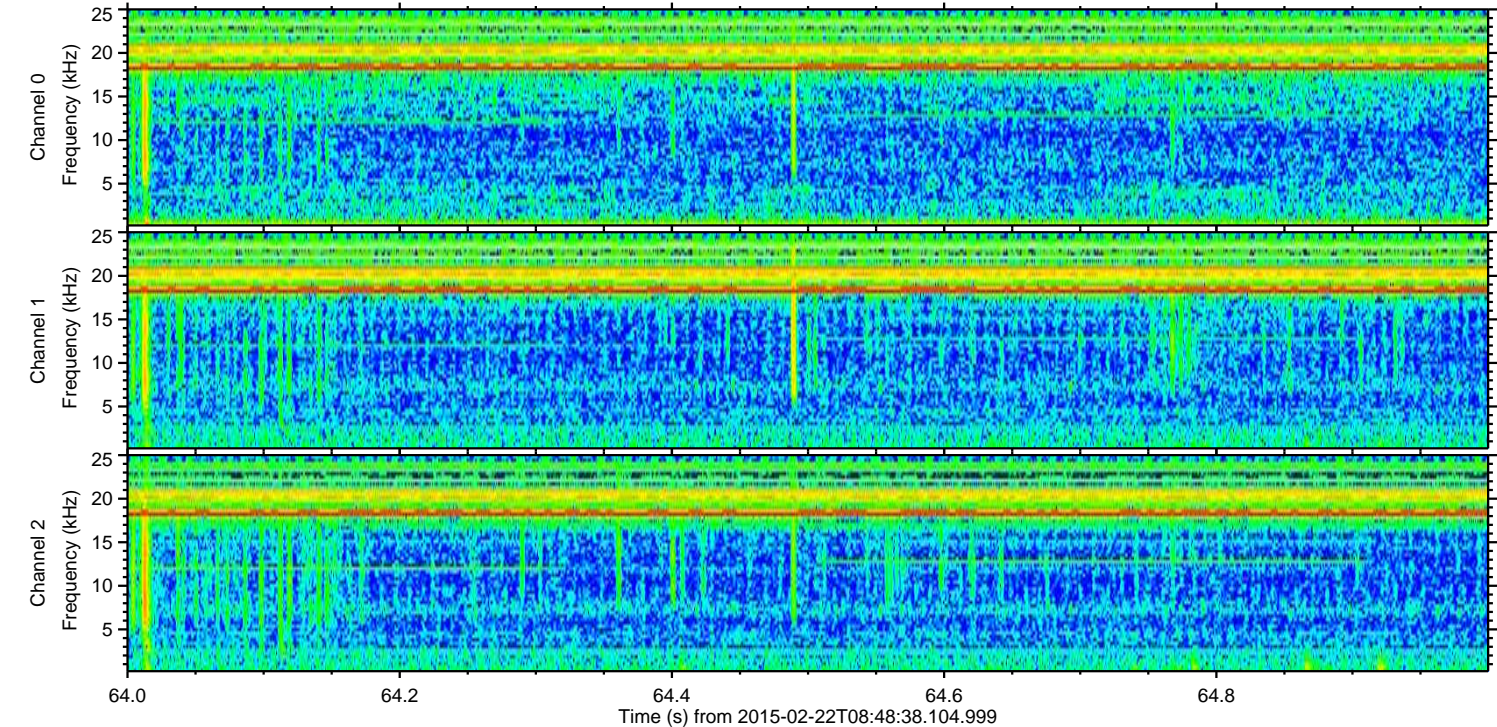
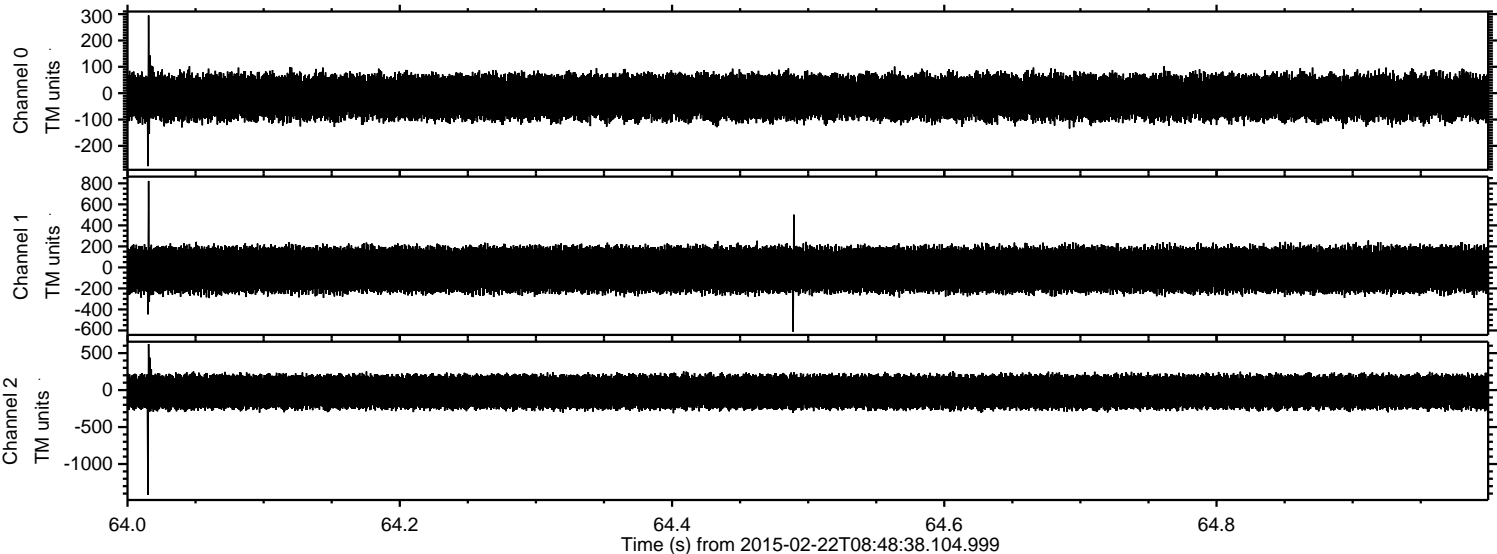


Channel 0
mn: -613
mx: 512
 μ : -15.0
 σ : 47.2

Channel 1
mn: -1446
mx: 982
 μ : -20.9
 σ : 120.8

Channel 2
mn: -953
mx: 886
 μ : -24.5
 σ : 133.9

Processed Mon Mar 2 10:48:30 2015 by ELM ver.2012-10-06 from 001__elm20150222_084837__dat00.bin



Channel 0
mn: -277
mx: 295
 μ : -15.0
 σ : 47.1

Channel 1
mn: -612
mx: 823
 μ : -21.4
 σ : 119.9

Channel 2
mn: -1416
mx: 623
 μ : -24.9
 σ : 134.8

Processed Mon Mar 2 10:48:31 2015 by ELM ver.2012-10-06 from 001__elm20150222_084837__dat00.bin

