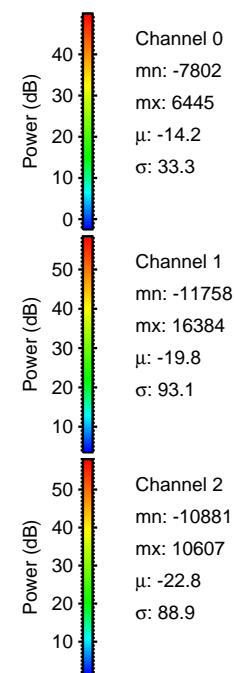
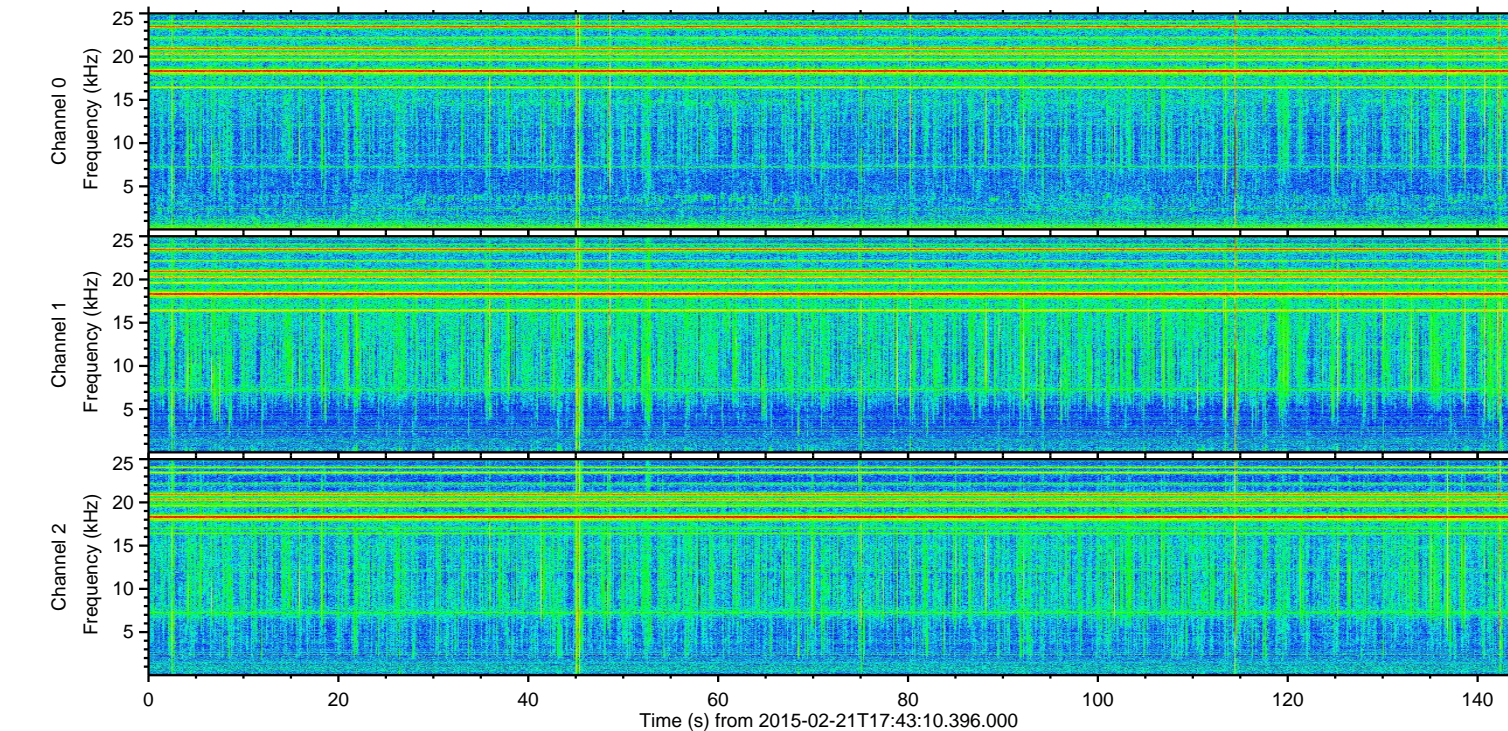
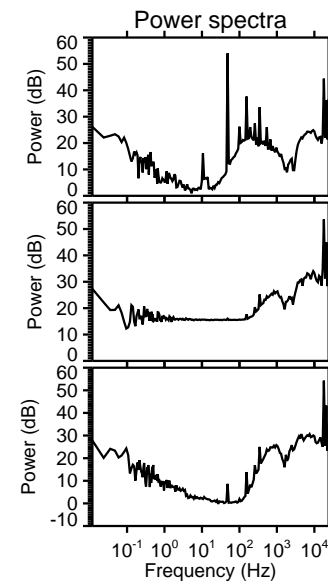
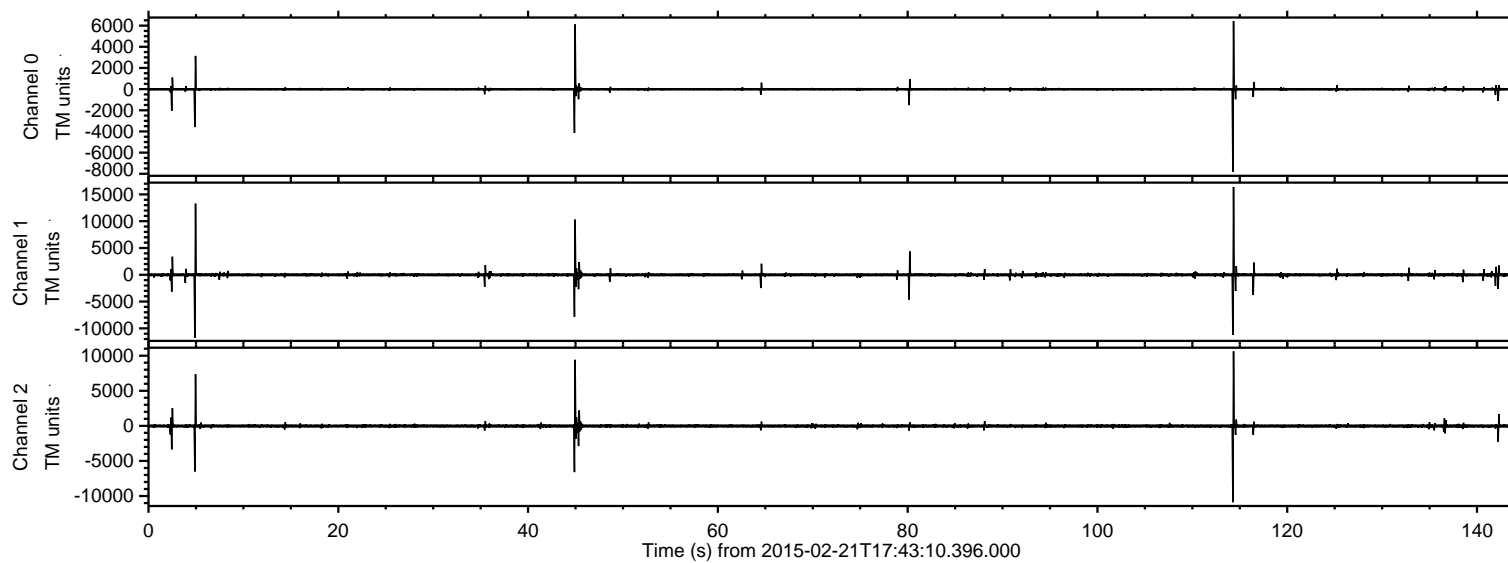


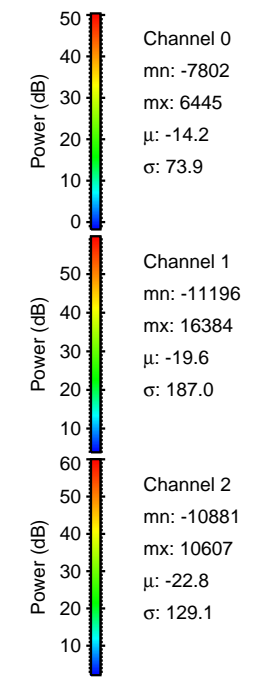
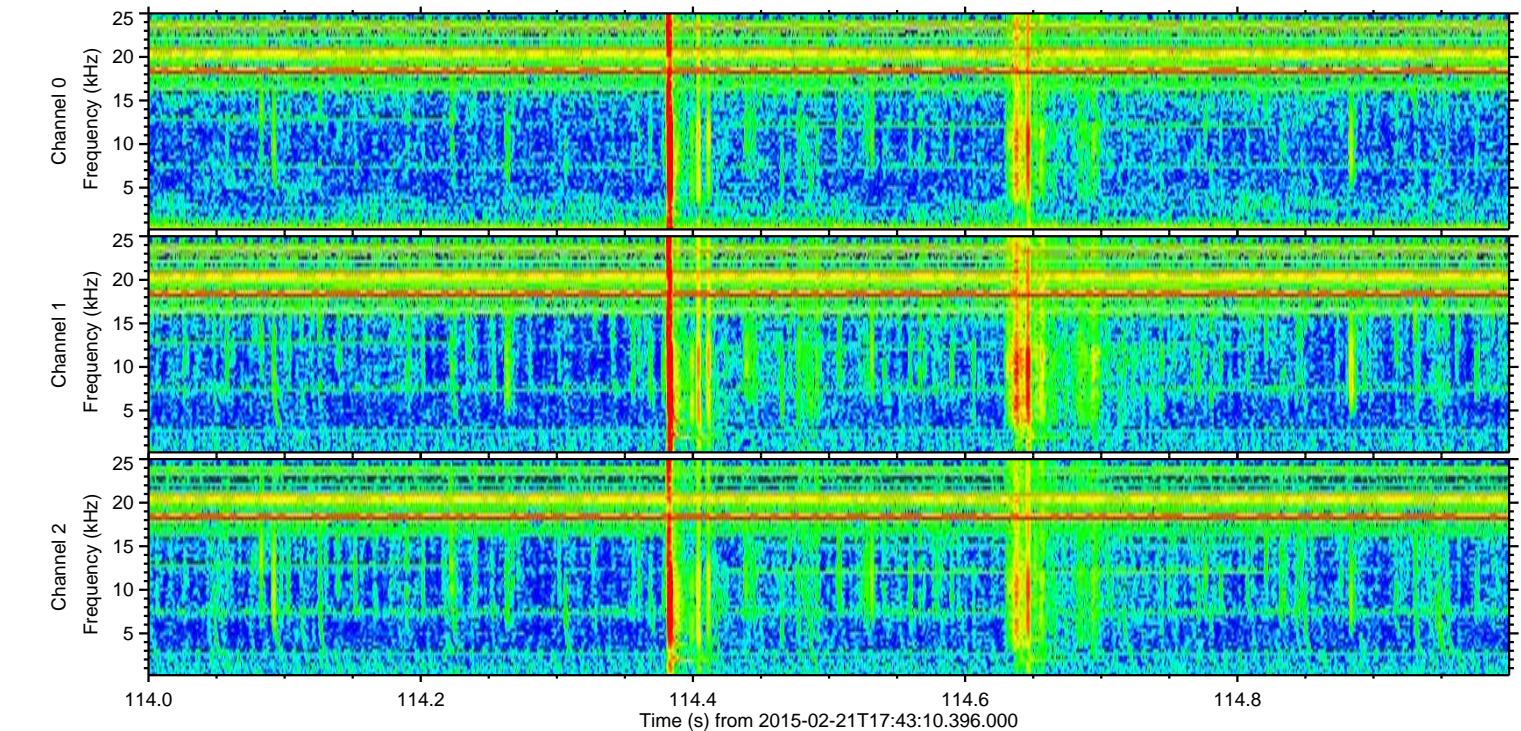
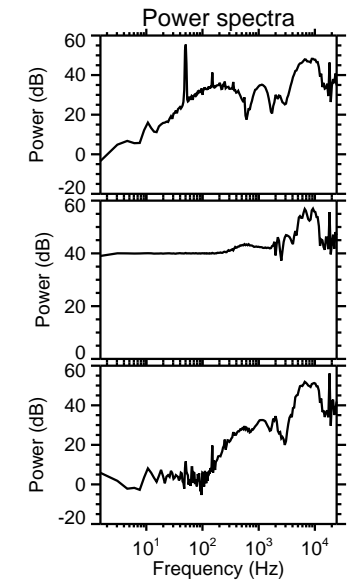
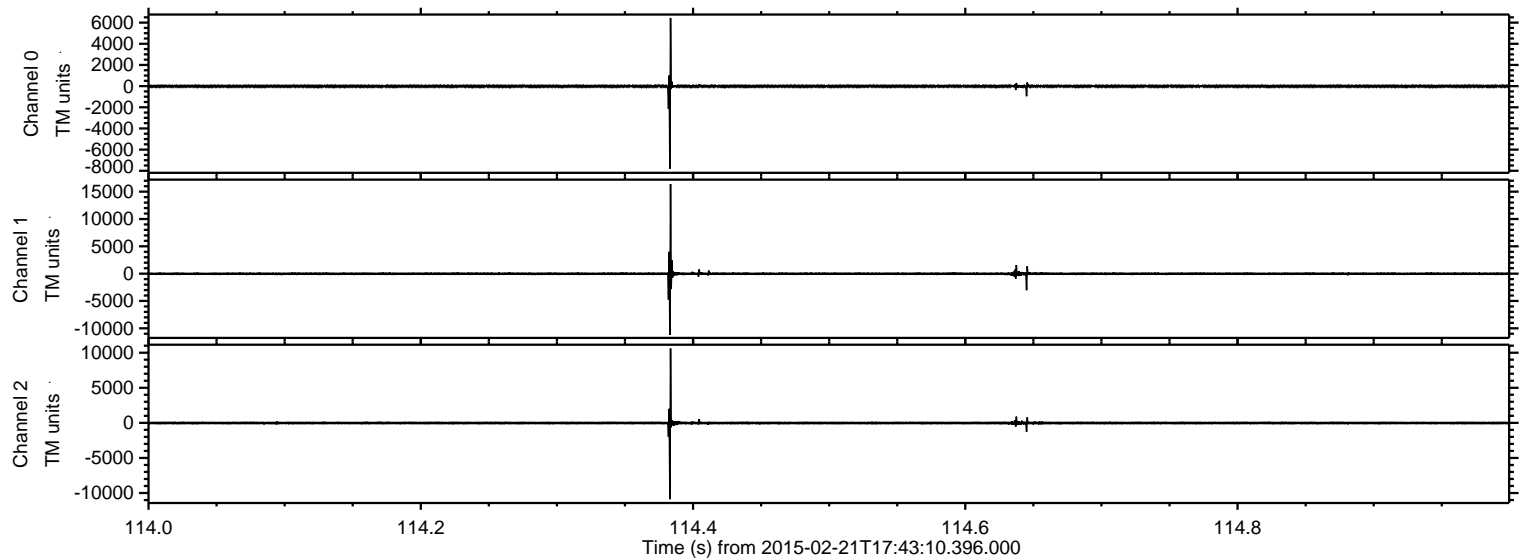
ELMAVAN 3D WAVEFORMS (Measured data sampled at 50 kHz) 49786 packets of 144 samples from 2015-02-21T17:43:10.396.000.

Processed Mon Mar 2 01:25:34 2015 by ELM ver.2012-10-06 from 001__elm20150221_174309__dat00.bin

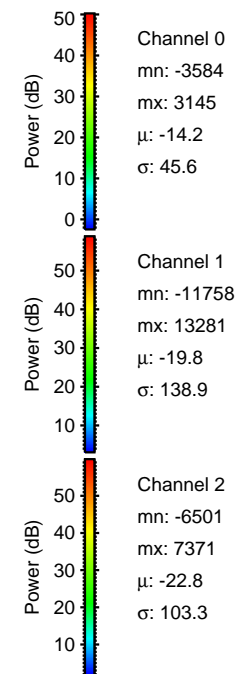
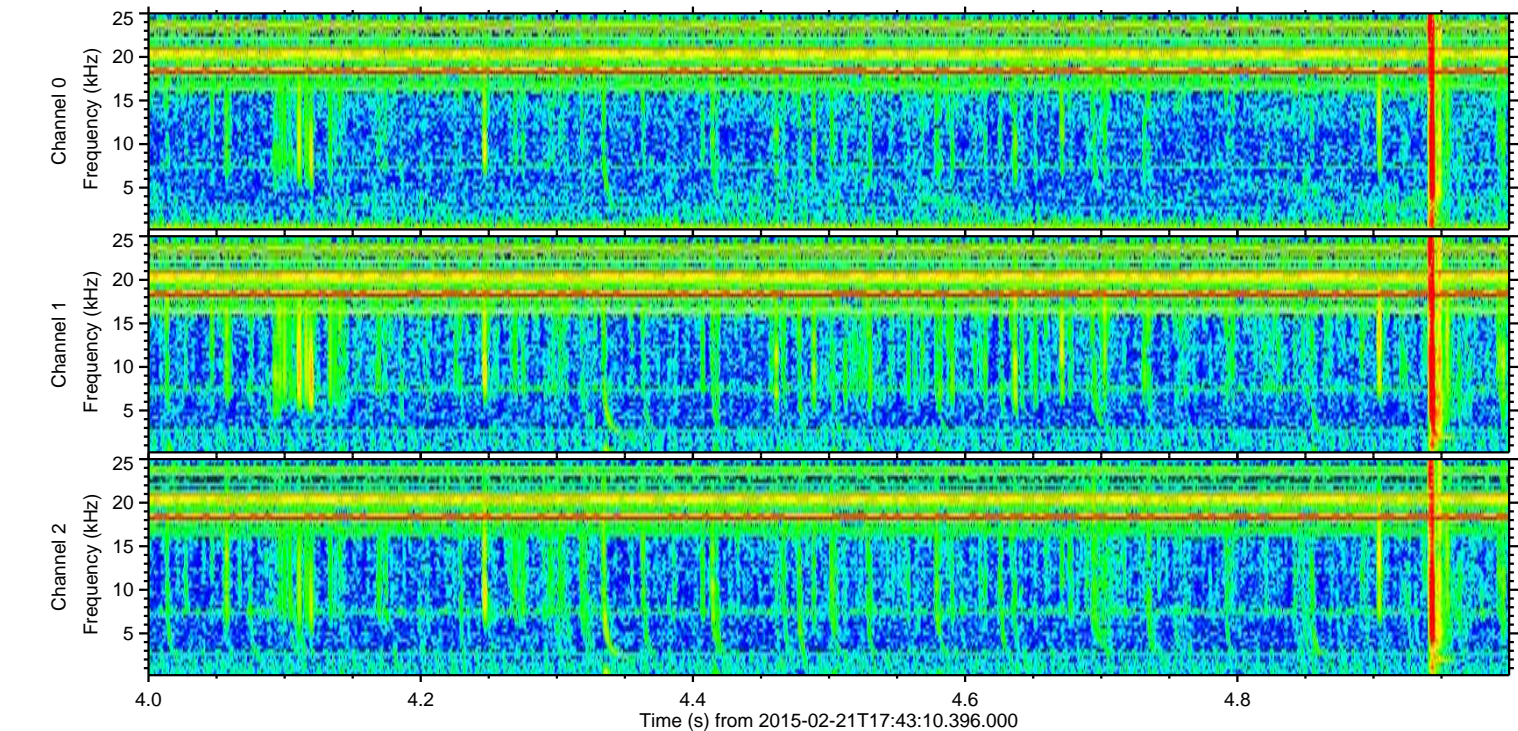
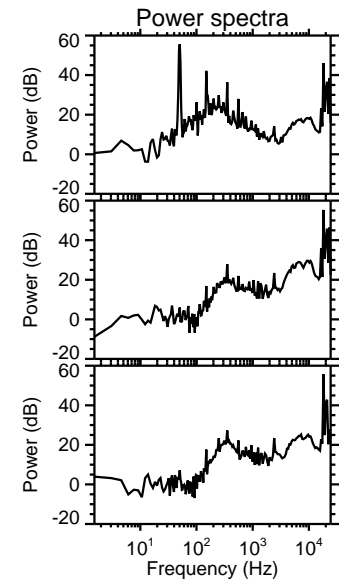
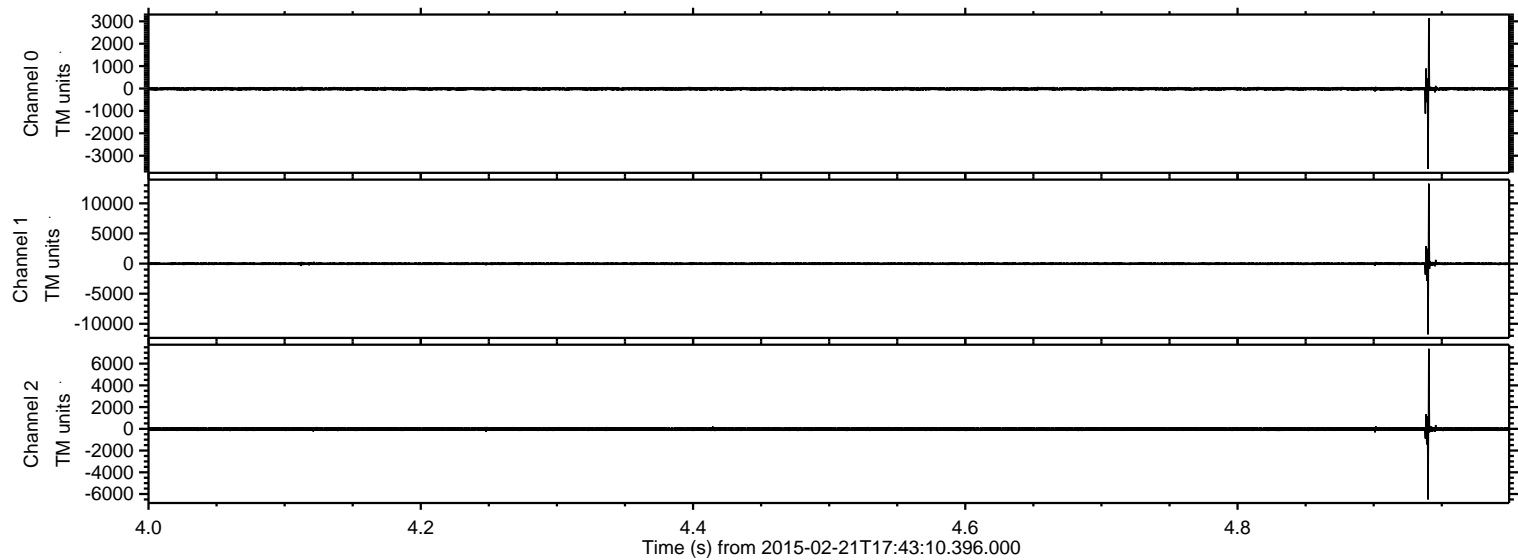


ELMAVAN 3D WAVEFORMS (Measured data sampled at 50 kHz) 49786 packets of 144 samples from 2015-02-21T17:43:10.396.000. Part 115/144

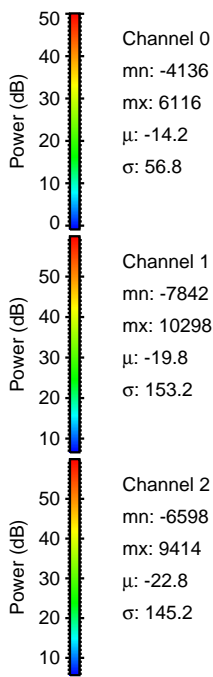
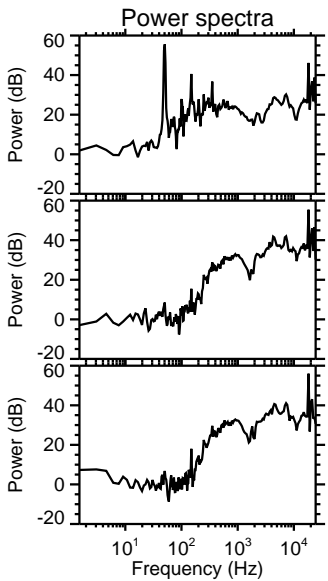
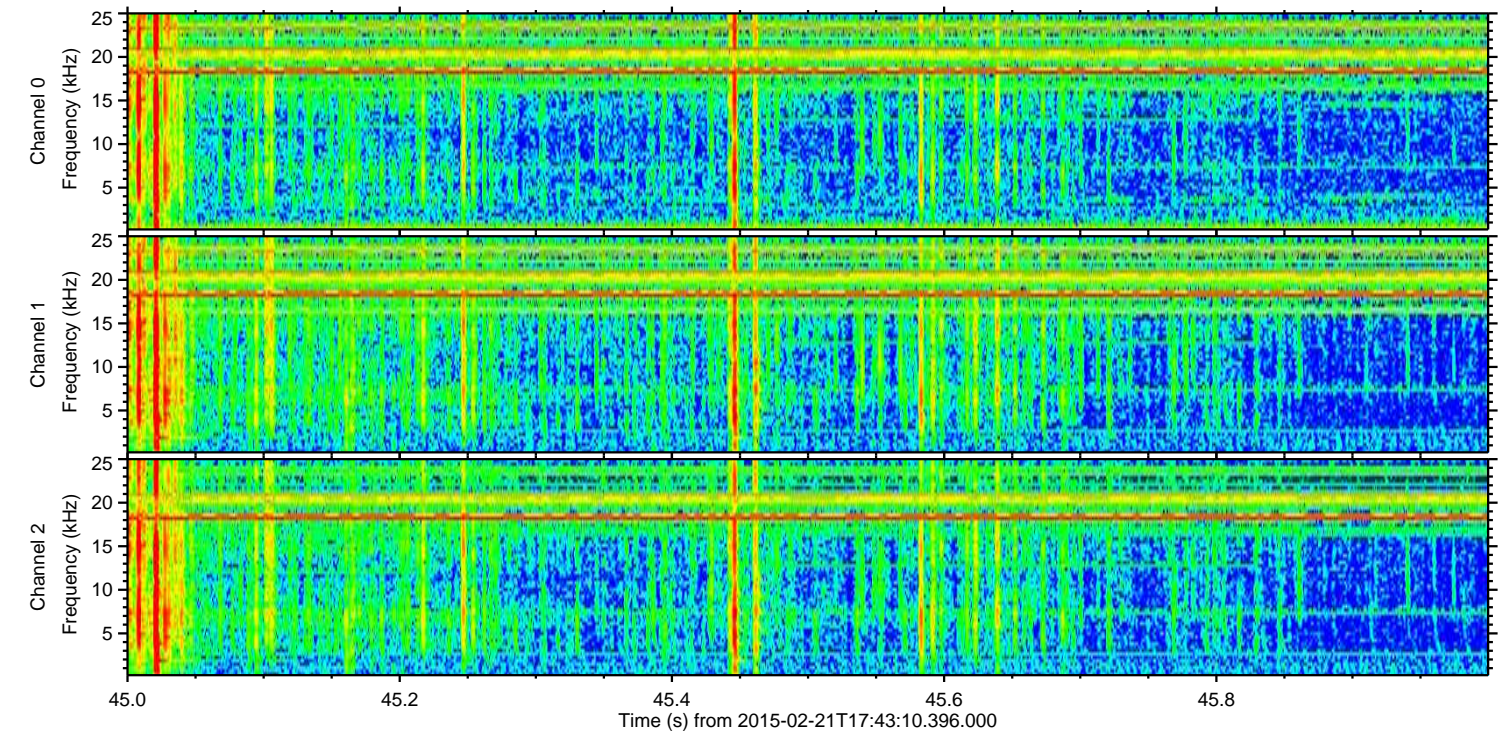
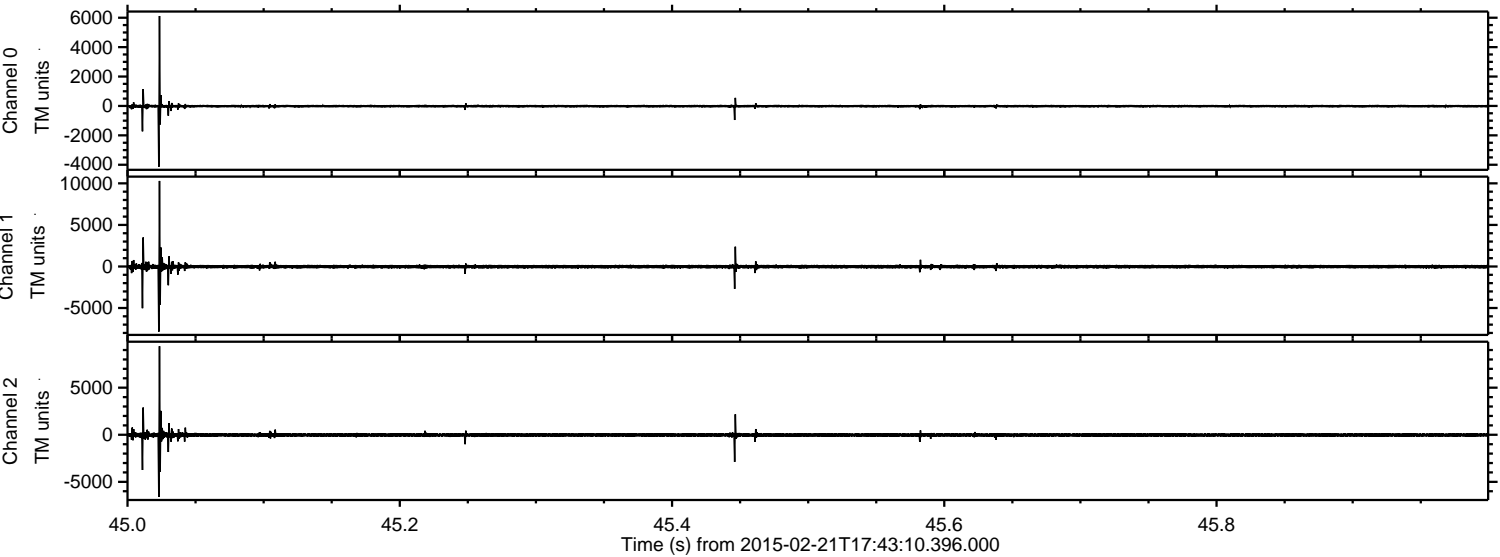
Processed Mon Mar 2 01:25:46 2015 by ELM ver.2012-10-06 from 001__elm20150221_174309__dat00.bin



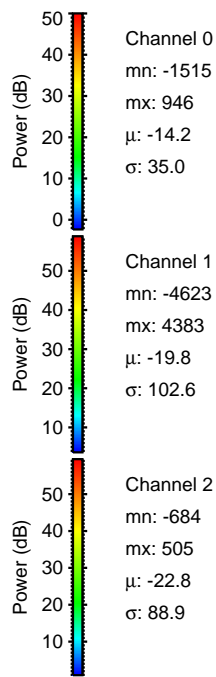
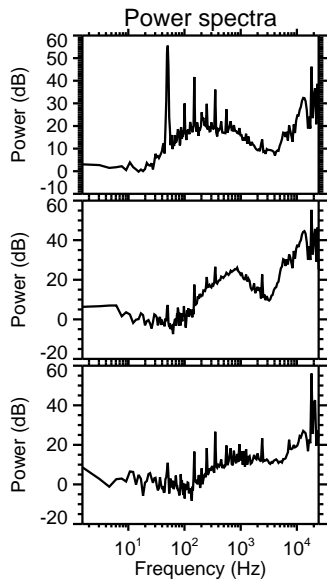
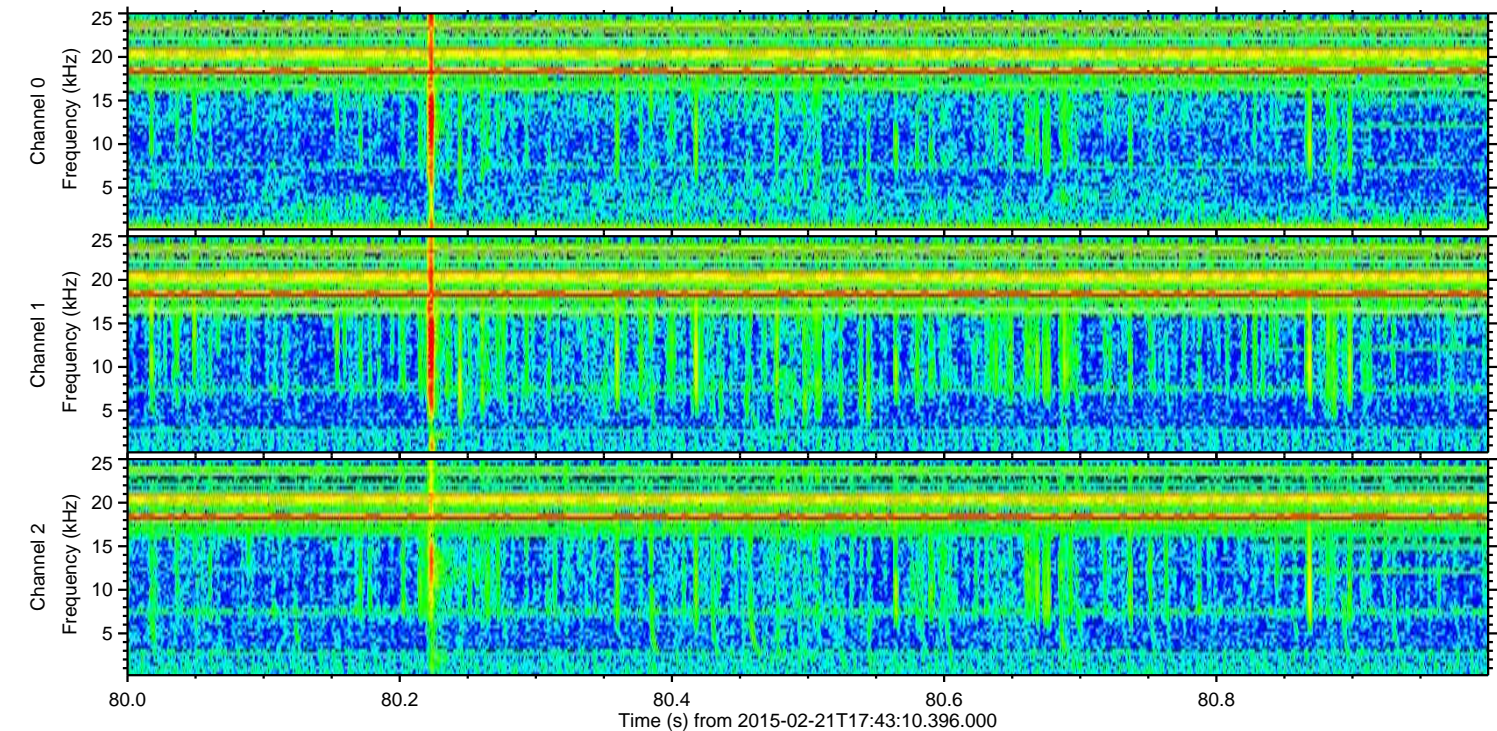
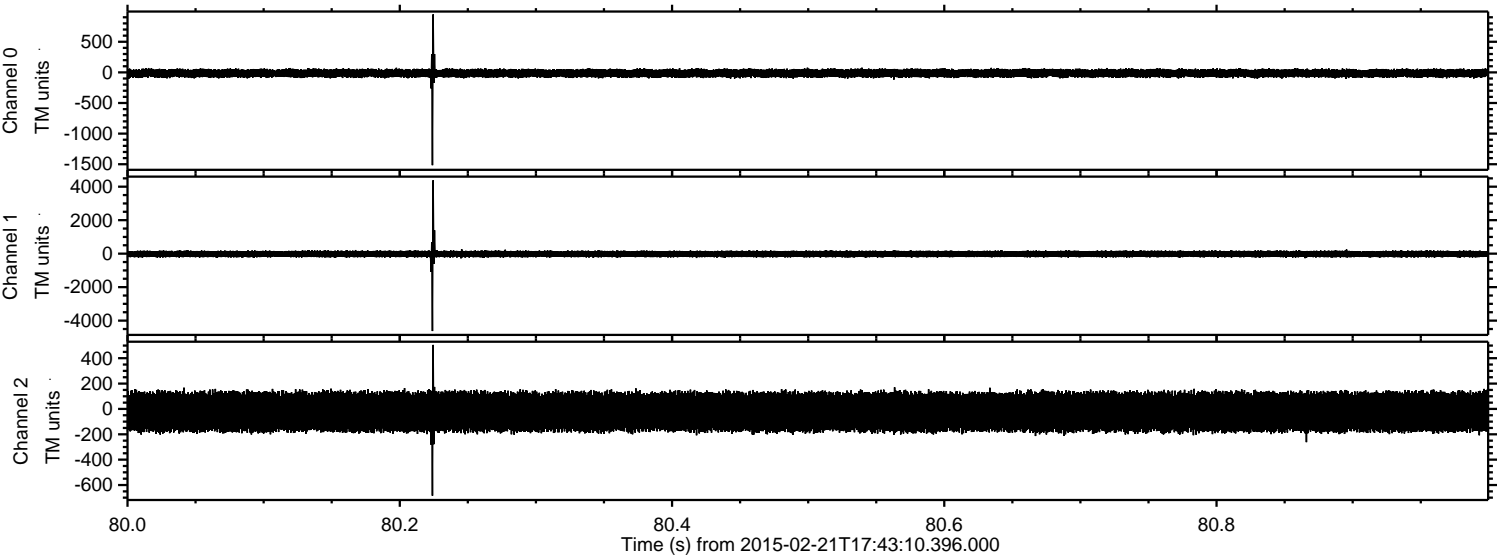
Processed Mon Mar 2 01:25:47 2015 by ELM ver.2012-10-06 from 001__elm20150221_174309__dat00.bin



Processed Mon Mar 2 01:25:48 2015 by ELM ver.2012-10-06 from 001__elm20150221_174309__dat00.bin

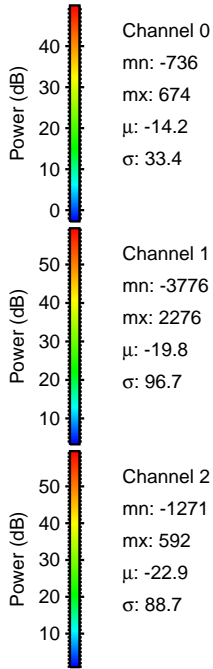
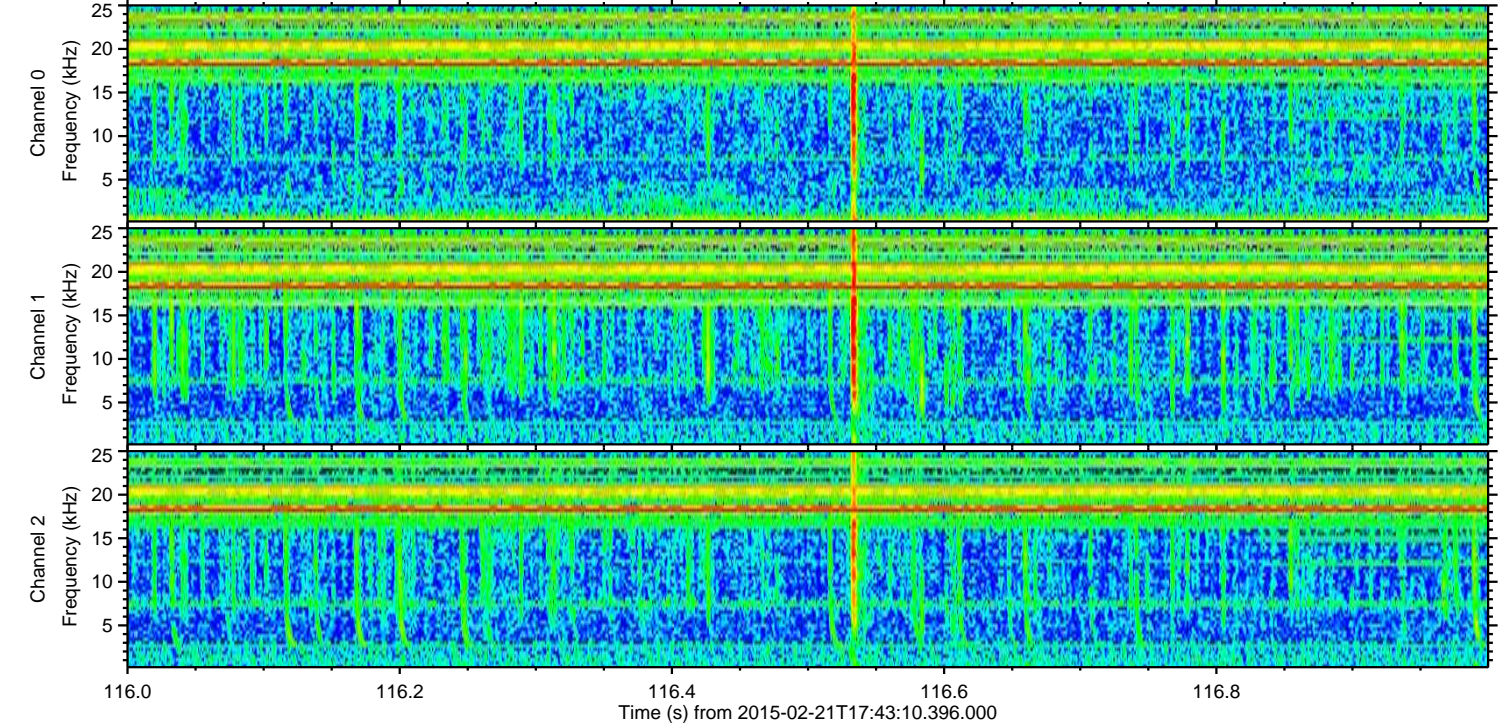
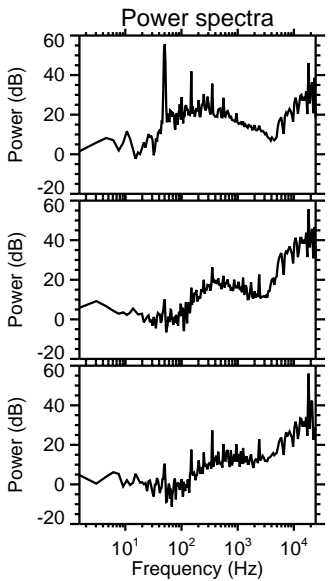
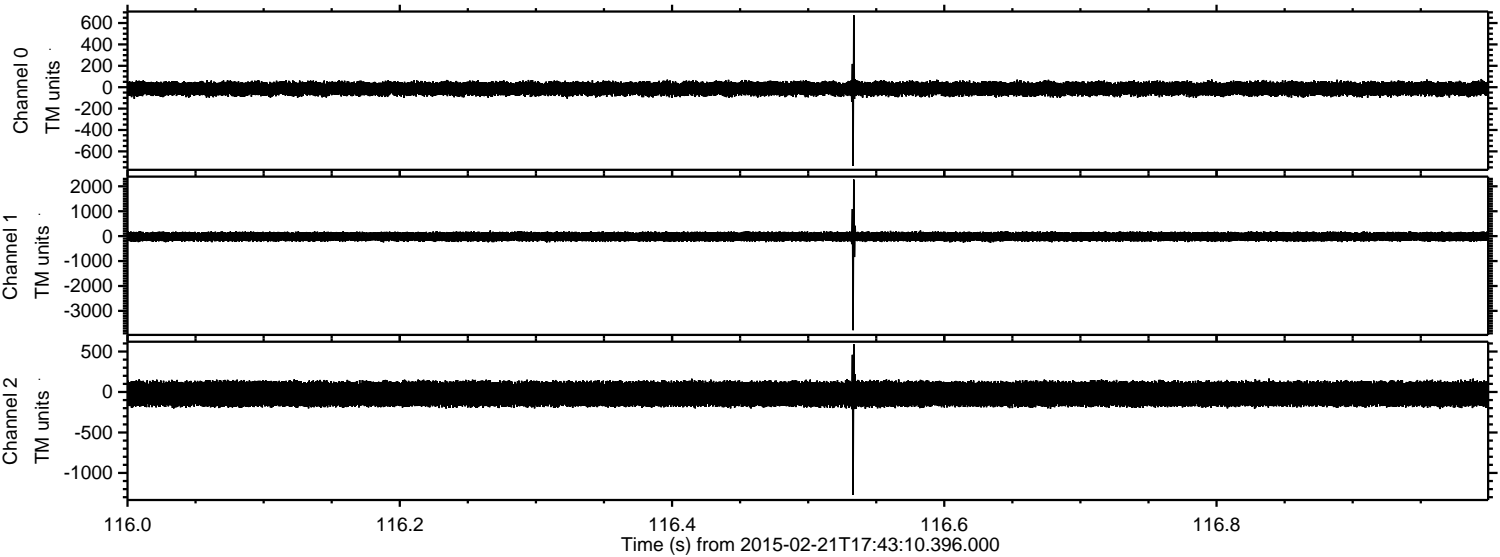


Processed Mon Mar 2 01:25:49 2015 by ELM ver.2012-10-06 from 001__elm20150221_174309__dat00.bin

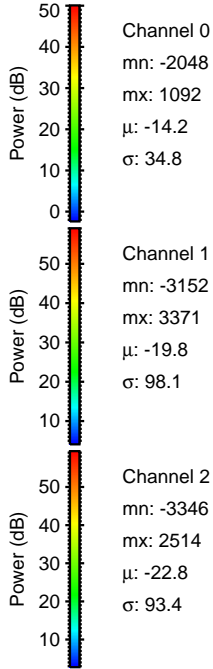
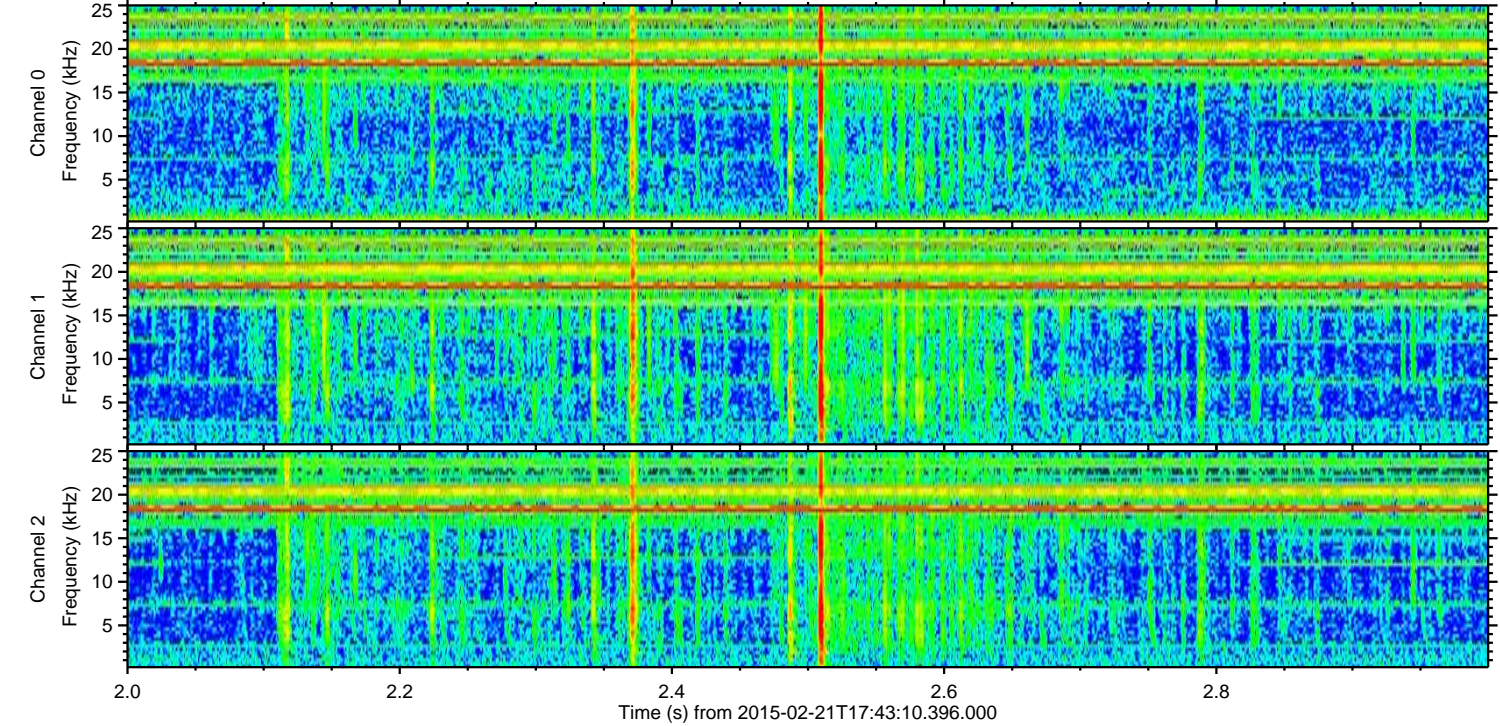
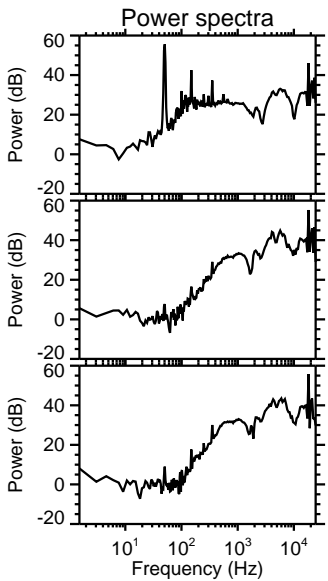
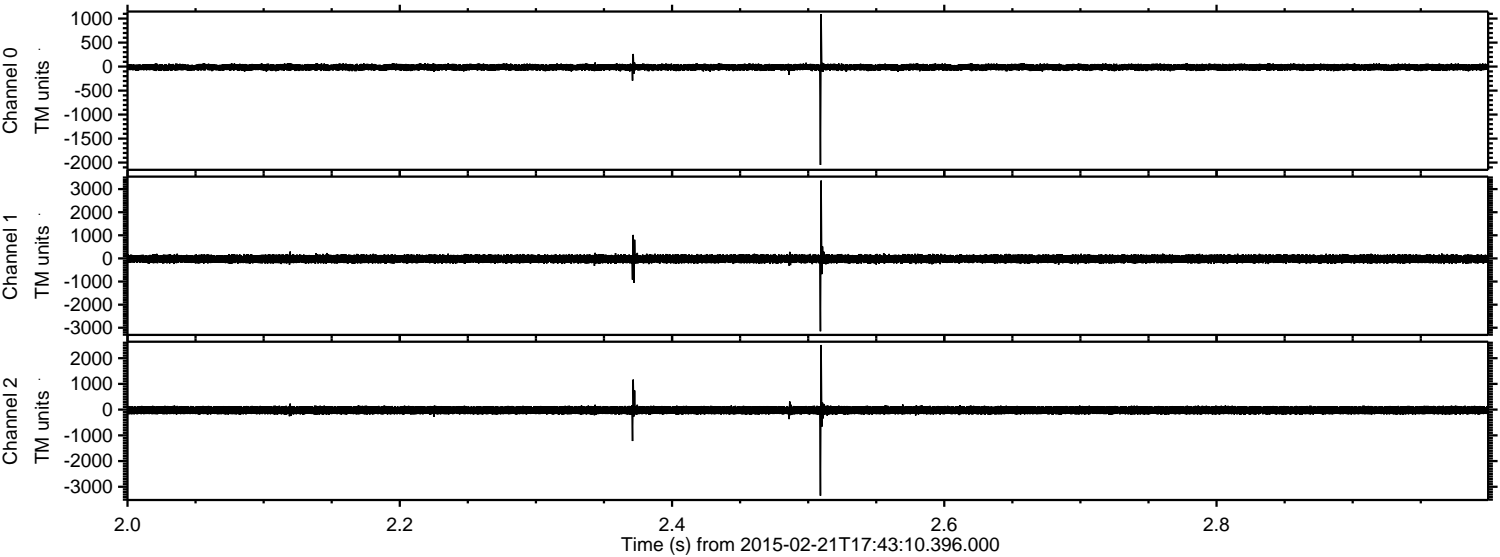


ELMAVAN 3D WAVEFORMS (Measured data sampled at 50 kHz) 49786 packets of 144 samples from 2015-02-21T17:43:10.396.000. Part 117/144

Processed Mon Mar 2 01:25:50 2015 by ELM ver.2012-10-06 from 001__elm20150221_174309__dat00.bin

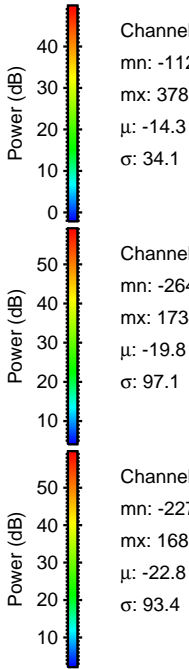
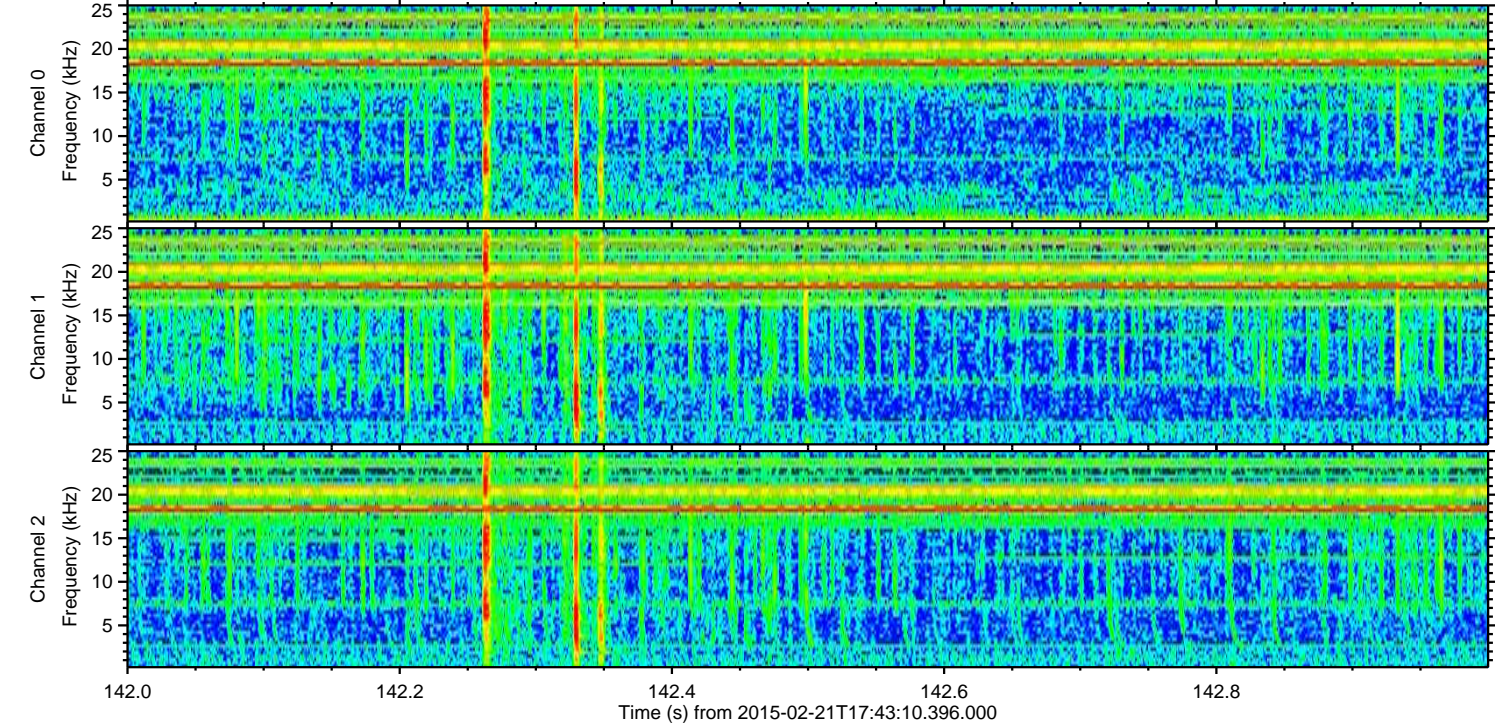
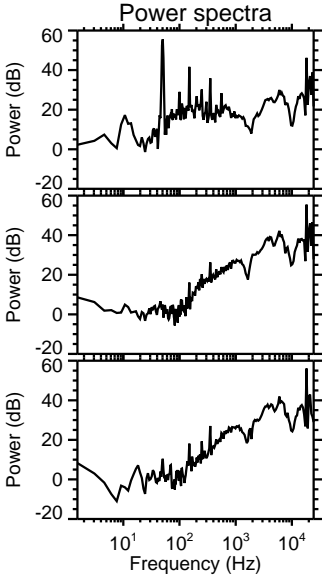
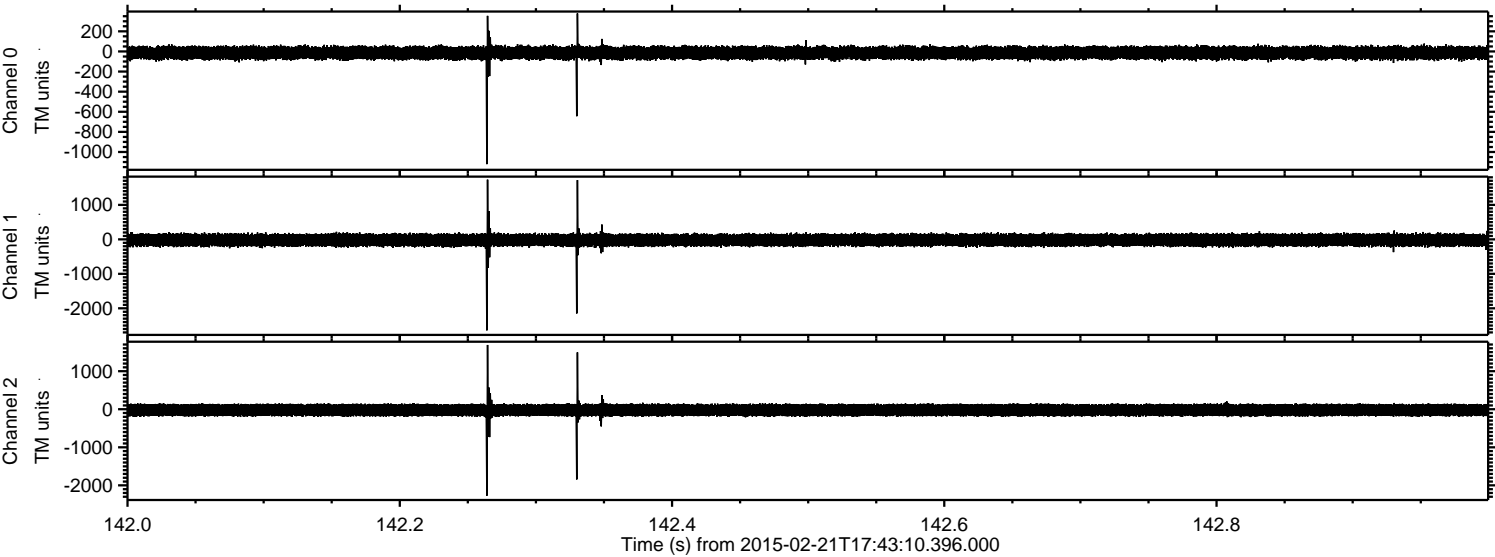


Processed Mon Mar 2 01:25:51 2015 by ELM ver.2012-10-06 from 001__elm20150221_174309__dat00.bin

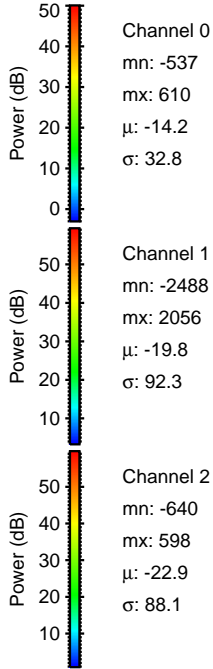
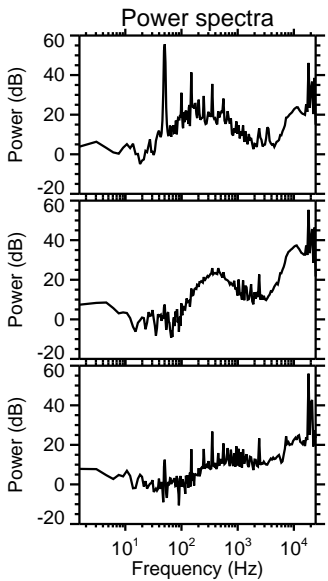
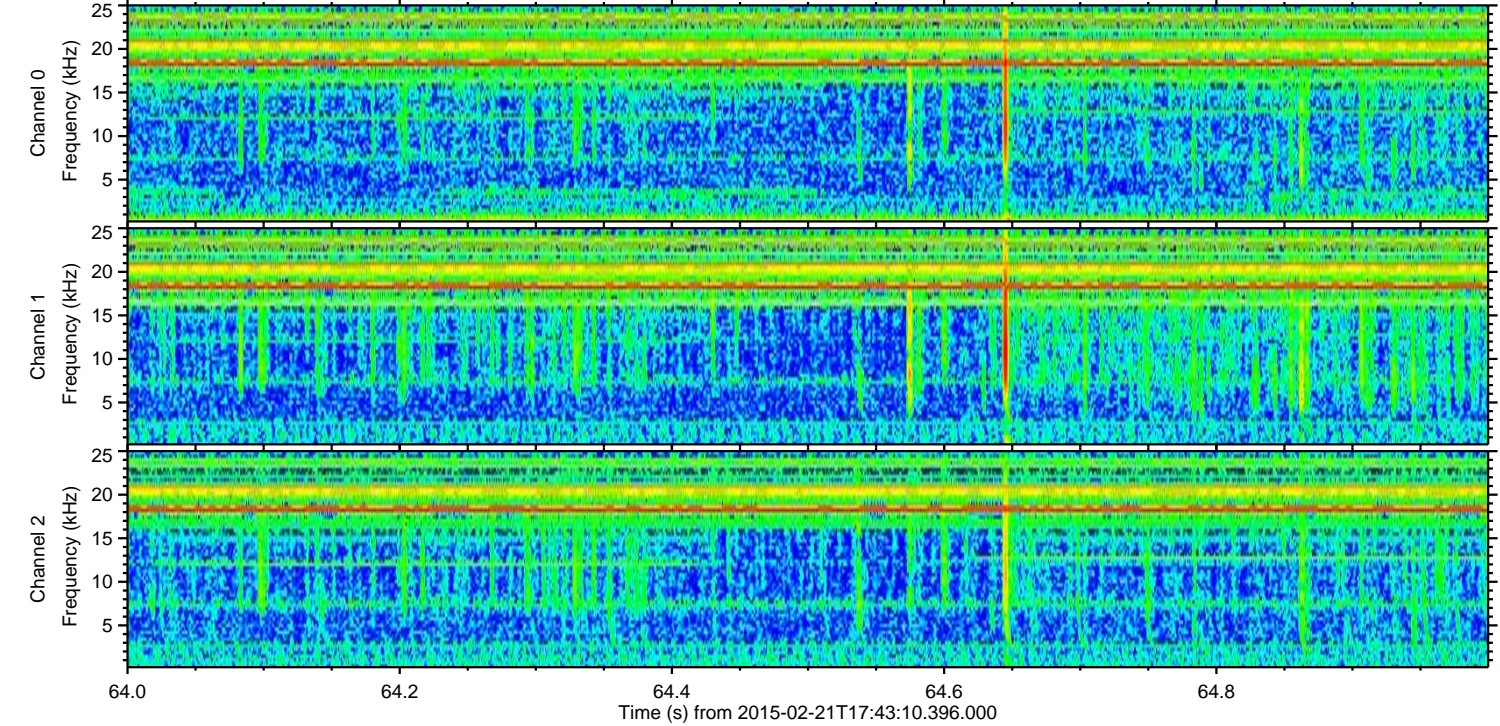
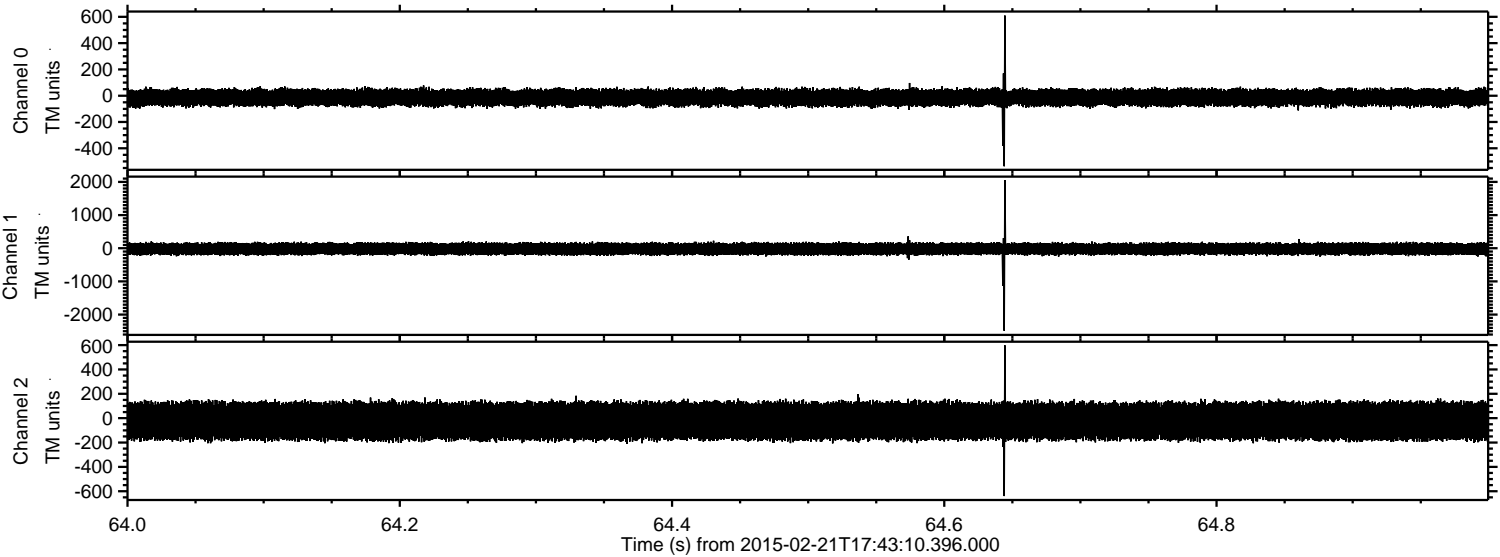


ELMAVAN 3D WAVEFORMS (Measured data sampled at 50 kHz) 49786 packets of 144 samples from 2015-02-21T17:43:10.396.000. Part 143/144

Processed Mon Mar 2 01:25:52 2015 by ELM ver.2012-10-06 from 001__elm20150221_174309__dat00.bin



Processed Mon Mar 2 01:25:53 2015 by ELM ver.2012-10-06 from 001__elm20150221_174309__dat00.bin

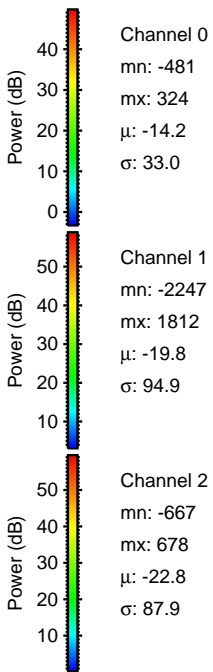
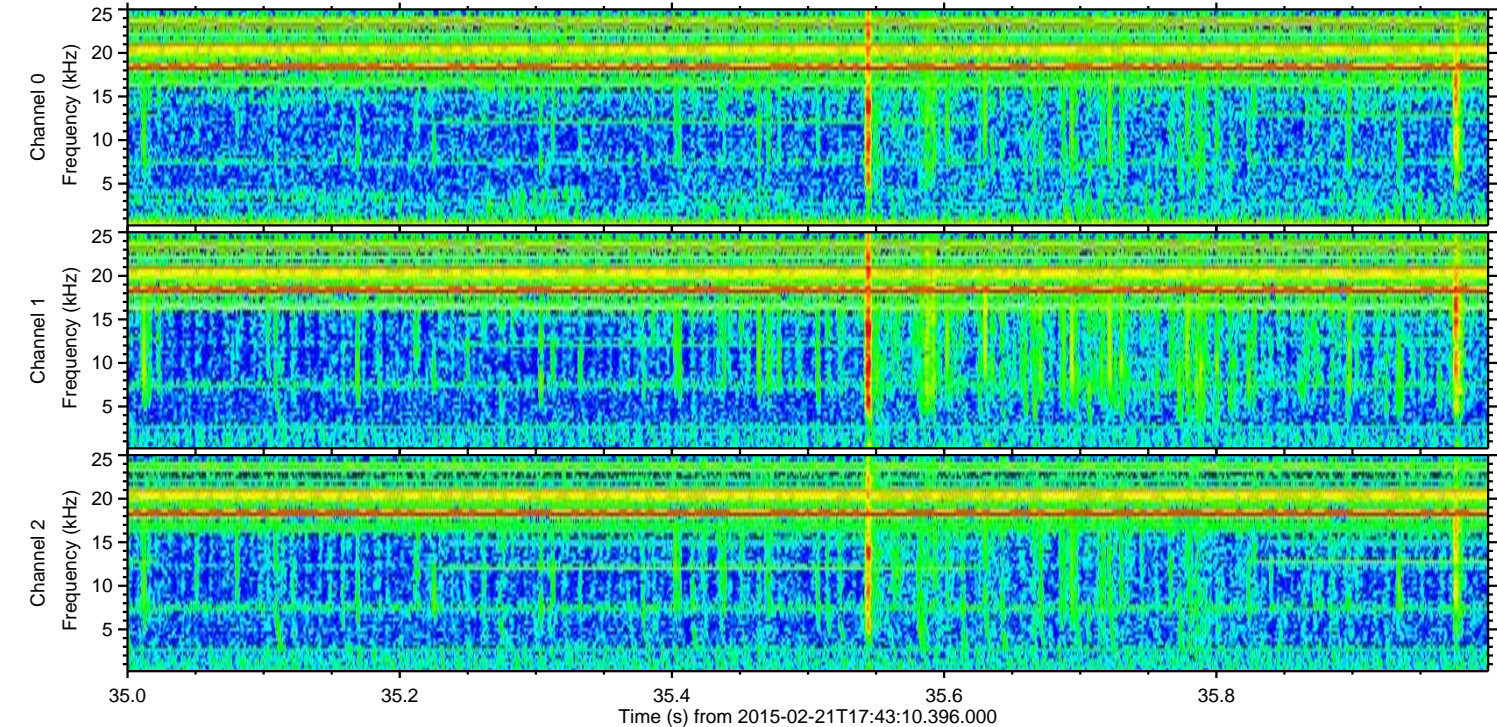
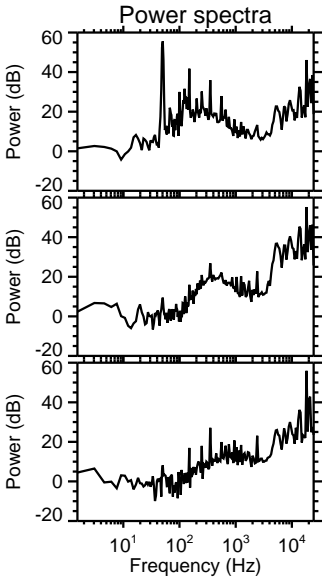
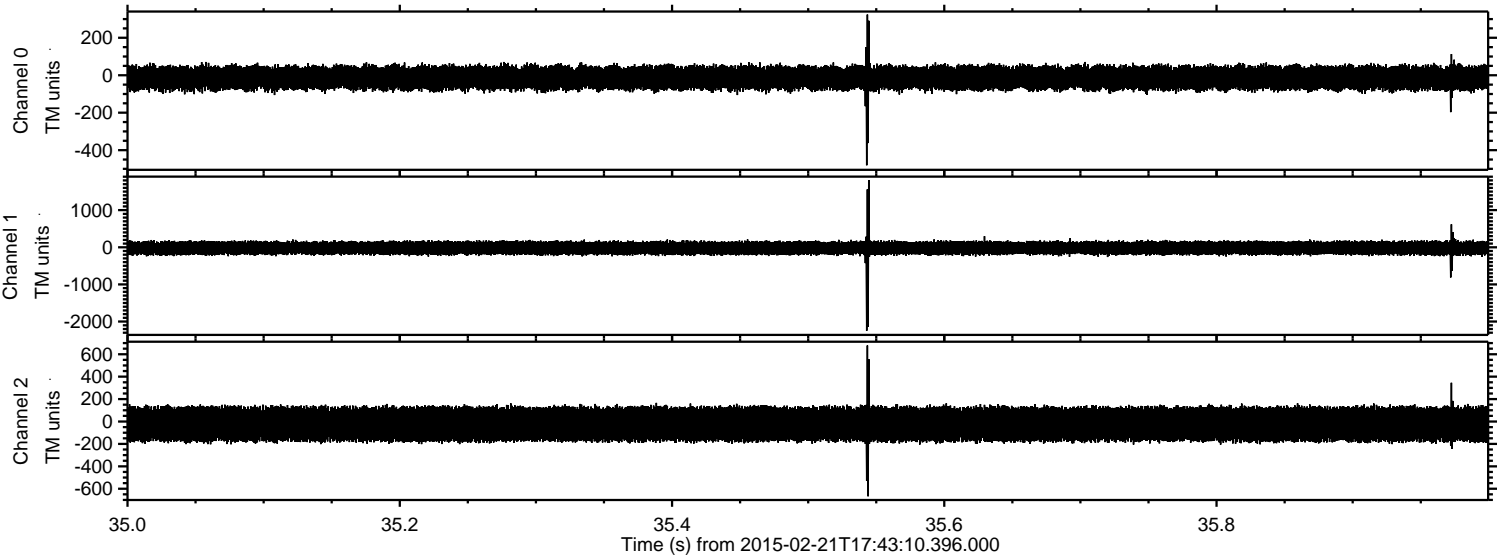


Channel 0
mn: -537
mx: 610
 μ : -14.2
 σ : 32.8

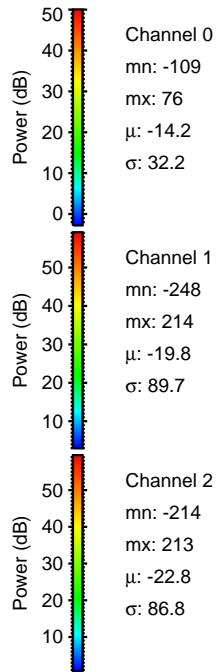
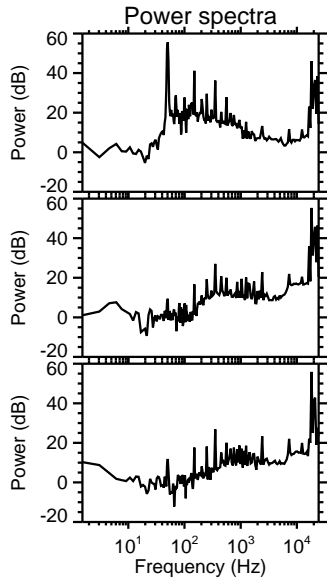
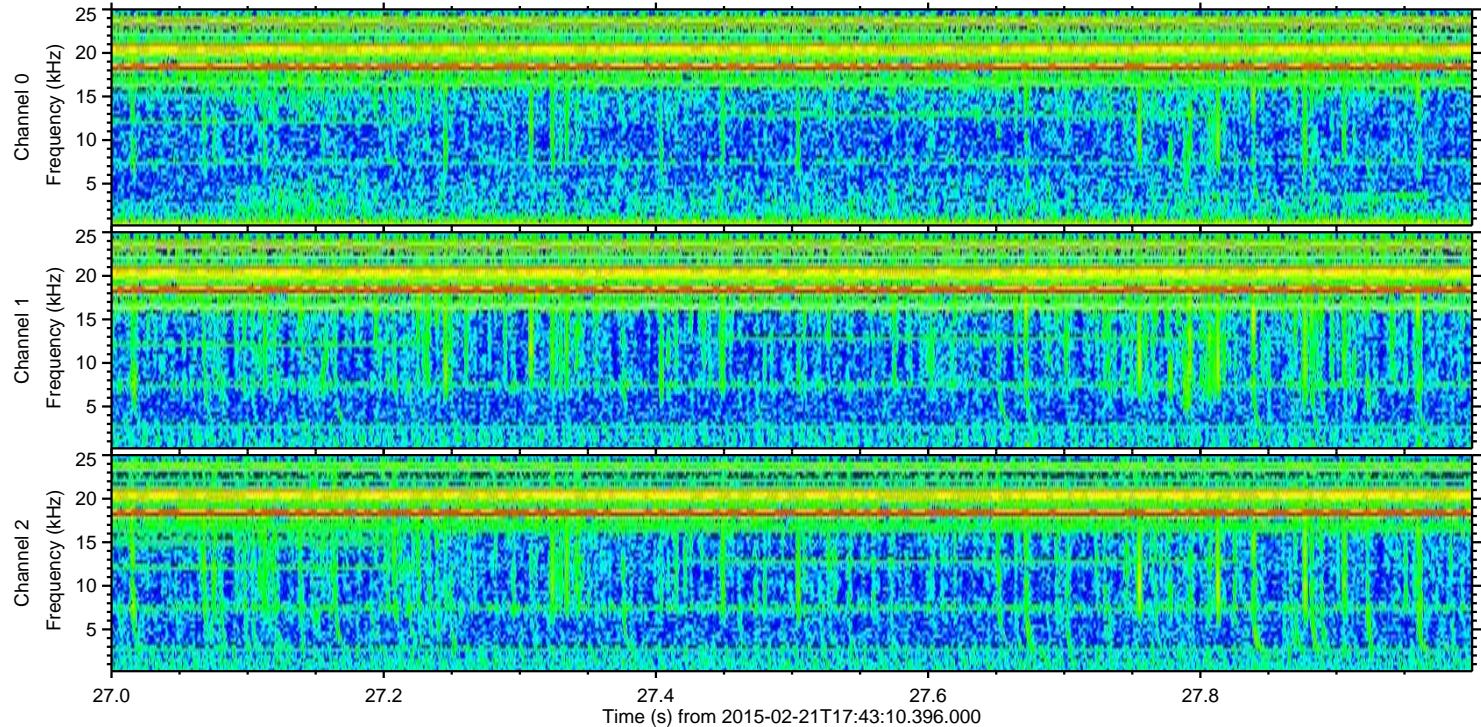
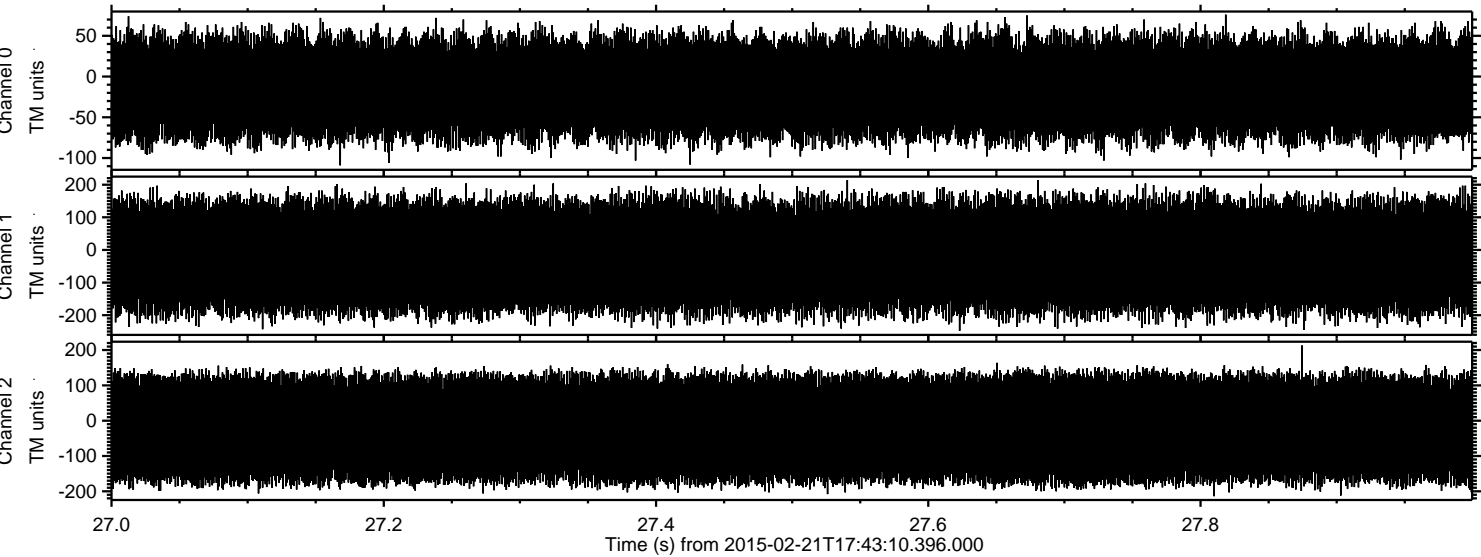
Channel 1
mn: -2488
mx: 2056
 μ : -19.8
 σ : 92.3

Channel 2
mn: -640
mx: 598
 μ : -22.9
 σ : 88.1

Processed Mon Mar 2 01:25:54 2015 by ELM ver.2012-10-06 from 001__elm20150221_174309__dat00.bin



Processed Mon Mar 2 01:25:55 2015 by ELM ver.2012-10-06 from 001__elm20150221_174309__dat00.bin



Power spectra

Channel 0
mn: -109
mx: 76
 μ : -14.2
 σ : 32.2

Channel 1
mn: -248
mx: 214
 μ : -19.8
 σ : 89.7

Channel 2
mn: -214
mx: 213
 μ : -22.8
 σ : 86.8