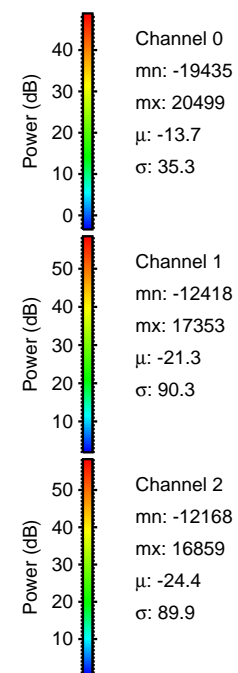
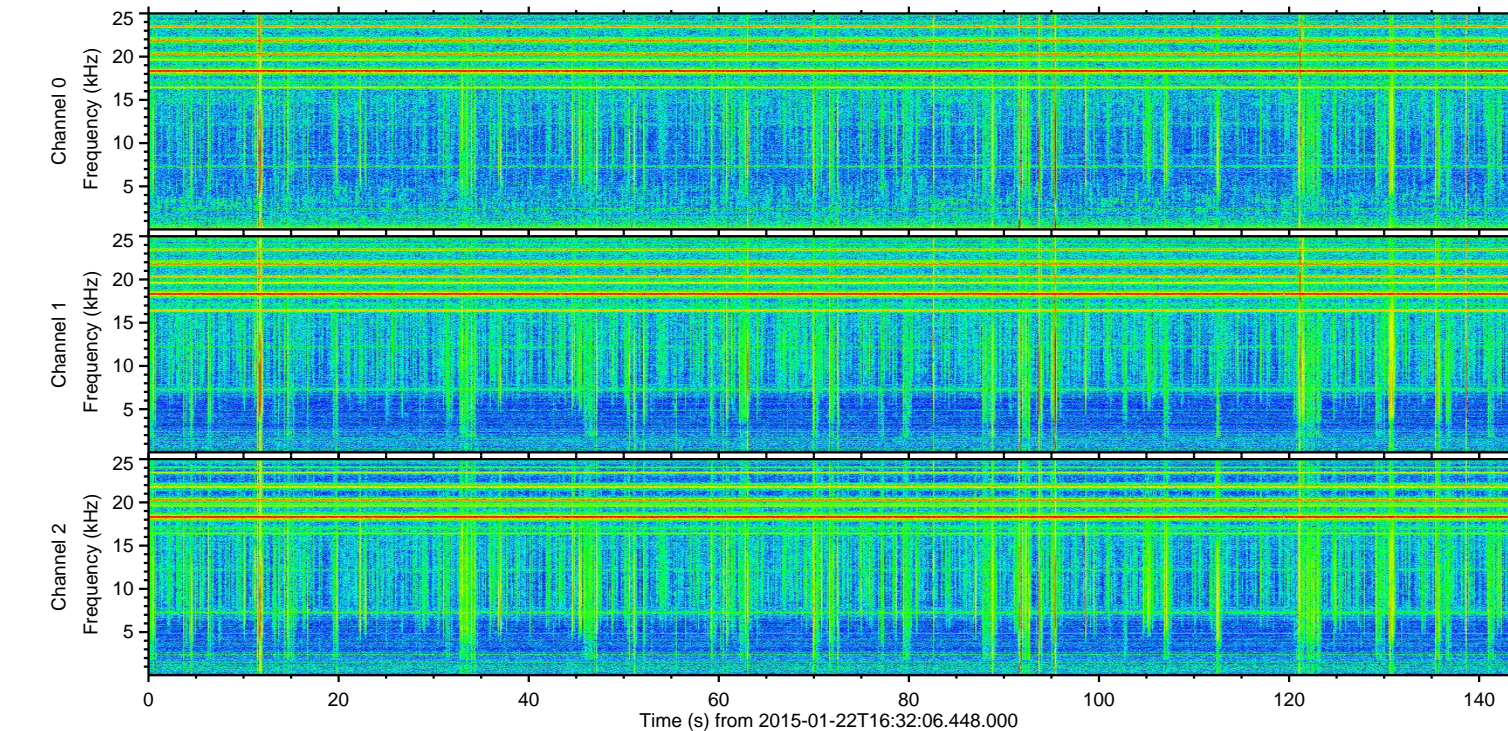
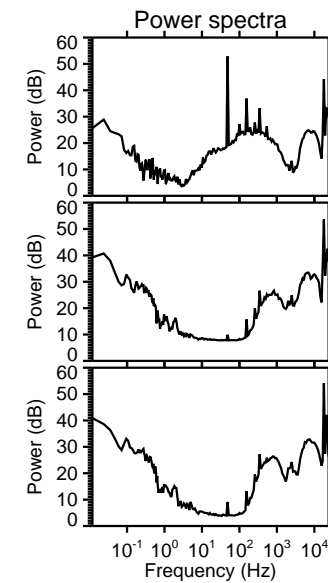
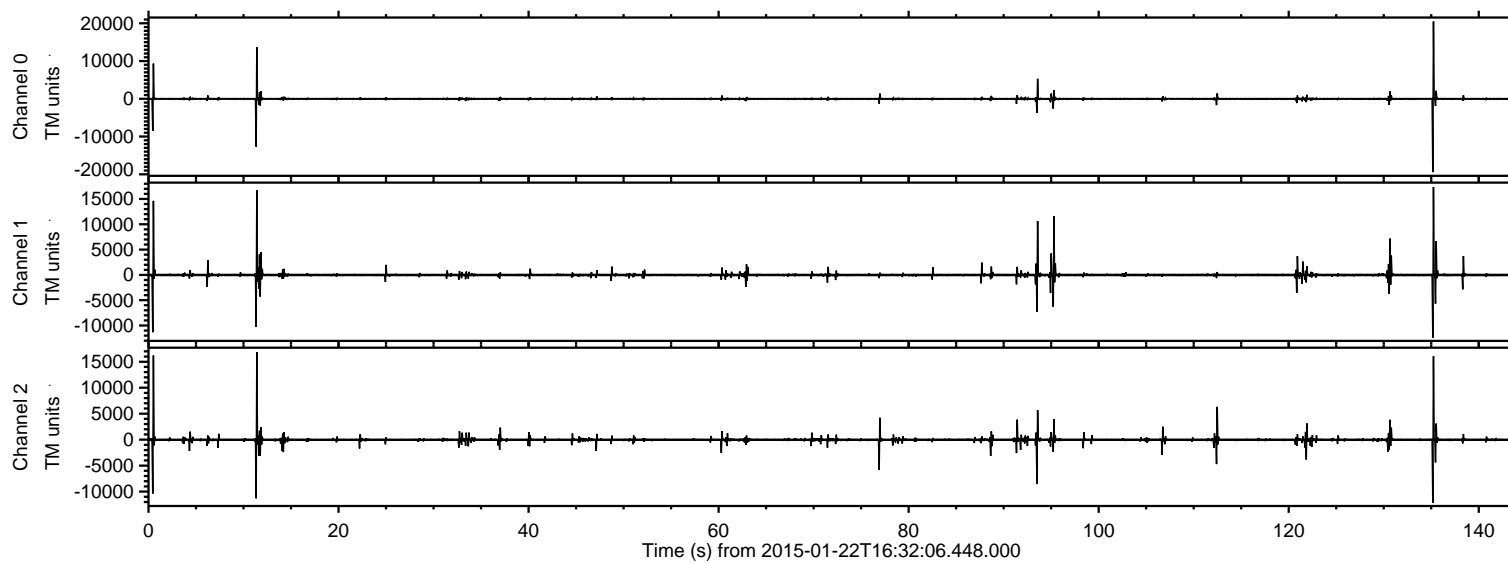


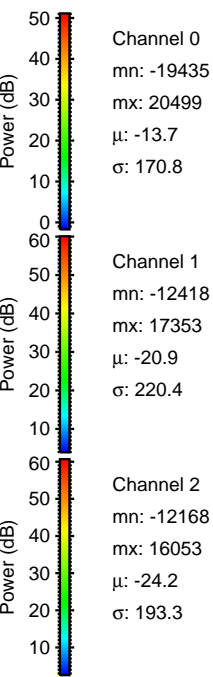
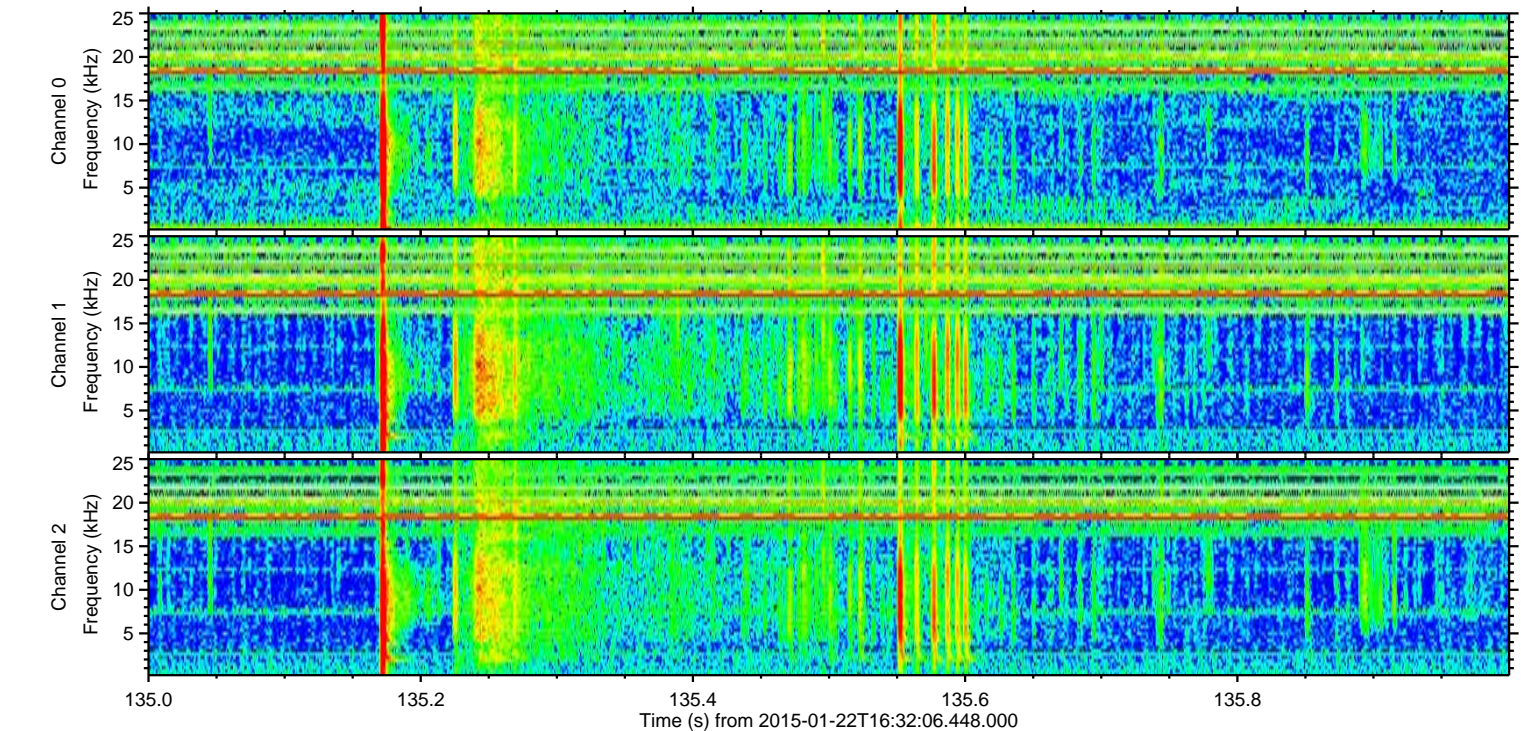
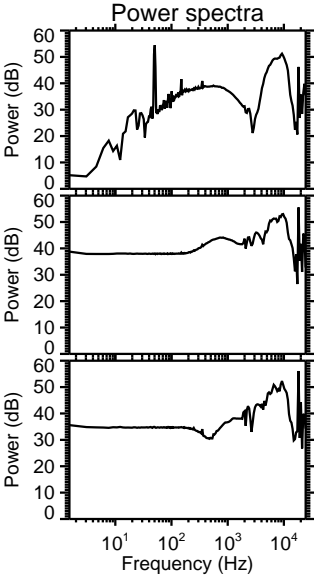
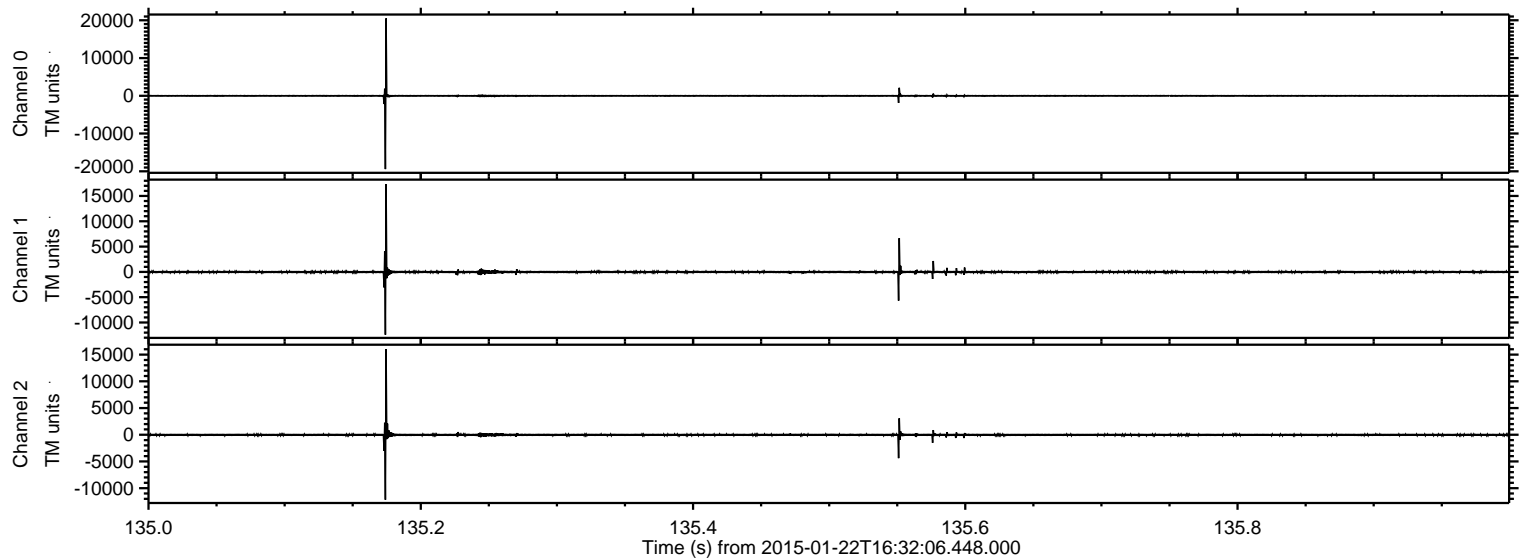
ELMAVAN 3D WAVEFORMS (Measured data sampled at 50 kHz) 49722 packets of 144 samples from 2015-01-22T16:32:06.448.000.

Processed Tue Feb 10 12:05:33 2015 by ELM ver.2012-10-06 from 001__elm20150122_163205__dat00.bin



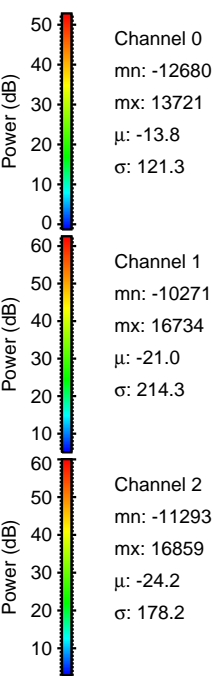
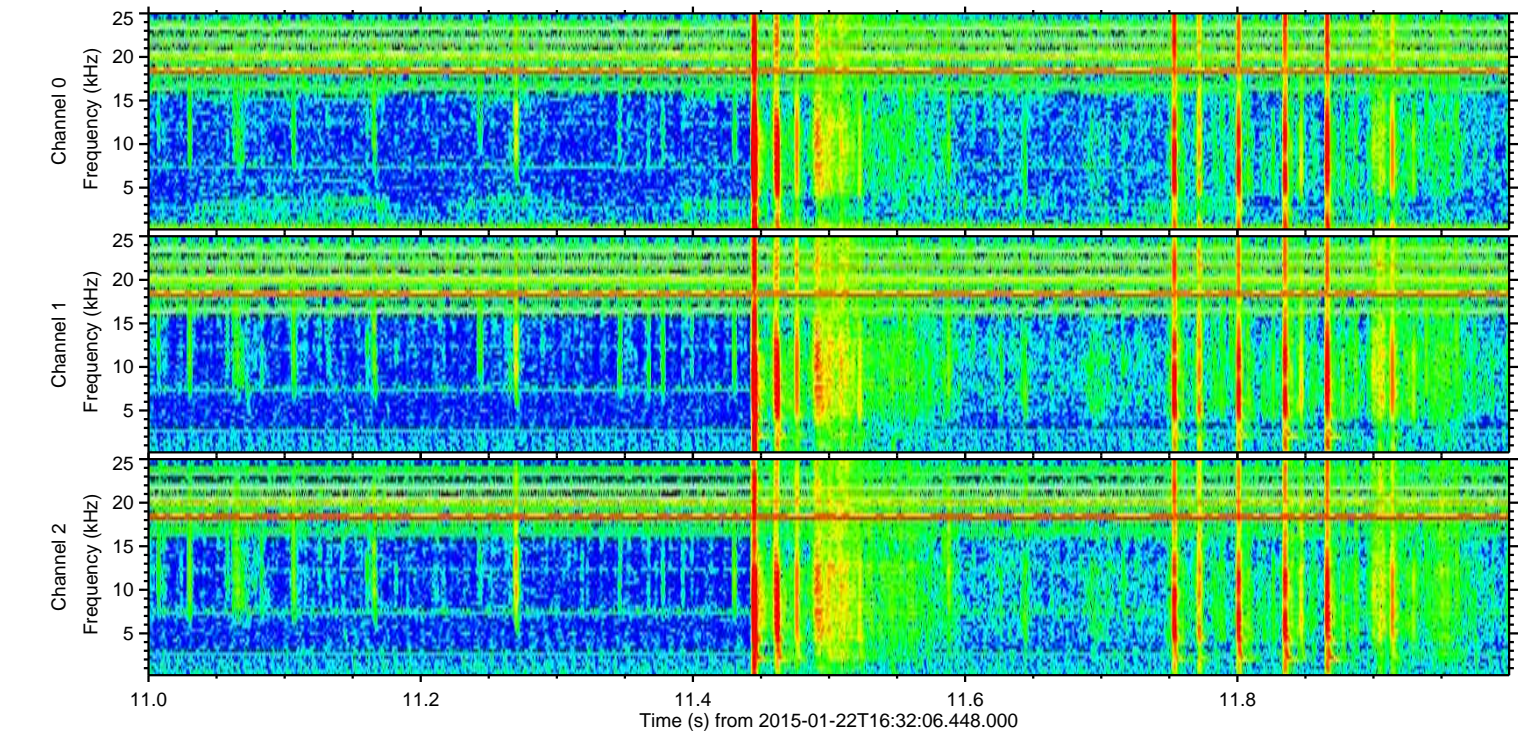
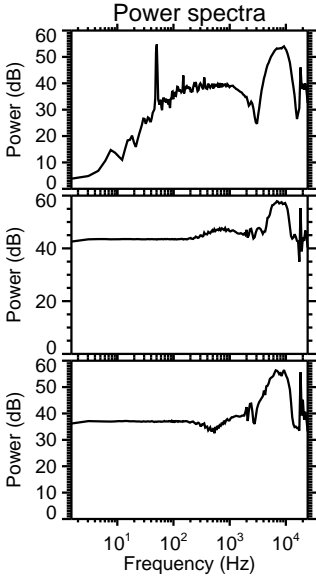
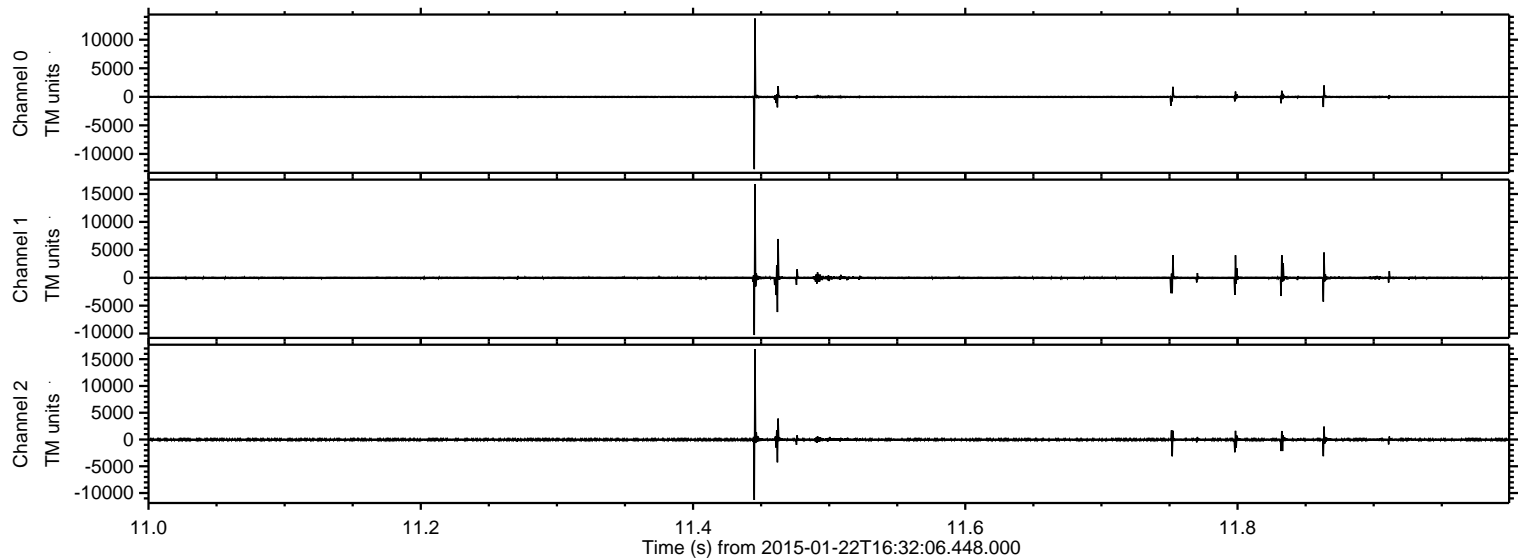
ELMAVAN 3D WAVEFORMS (Measured data sampled at 50 kHz) 49722 packets of 144 samples from 2015-01-22T16:32:06.448.000. Part 136/144

Processed Tue Feb 10 12:05:49 2015 by ELM ver.2012-10-06 from 001__elm20150122_163205__dat00.bin



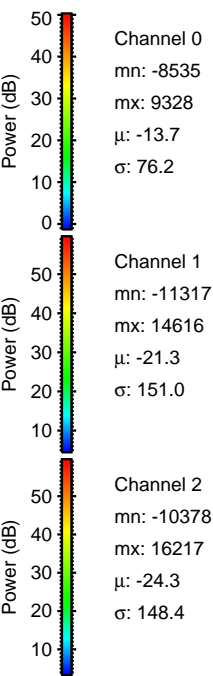
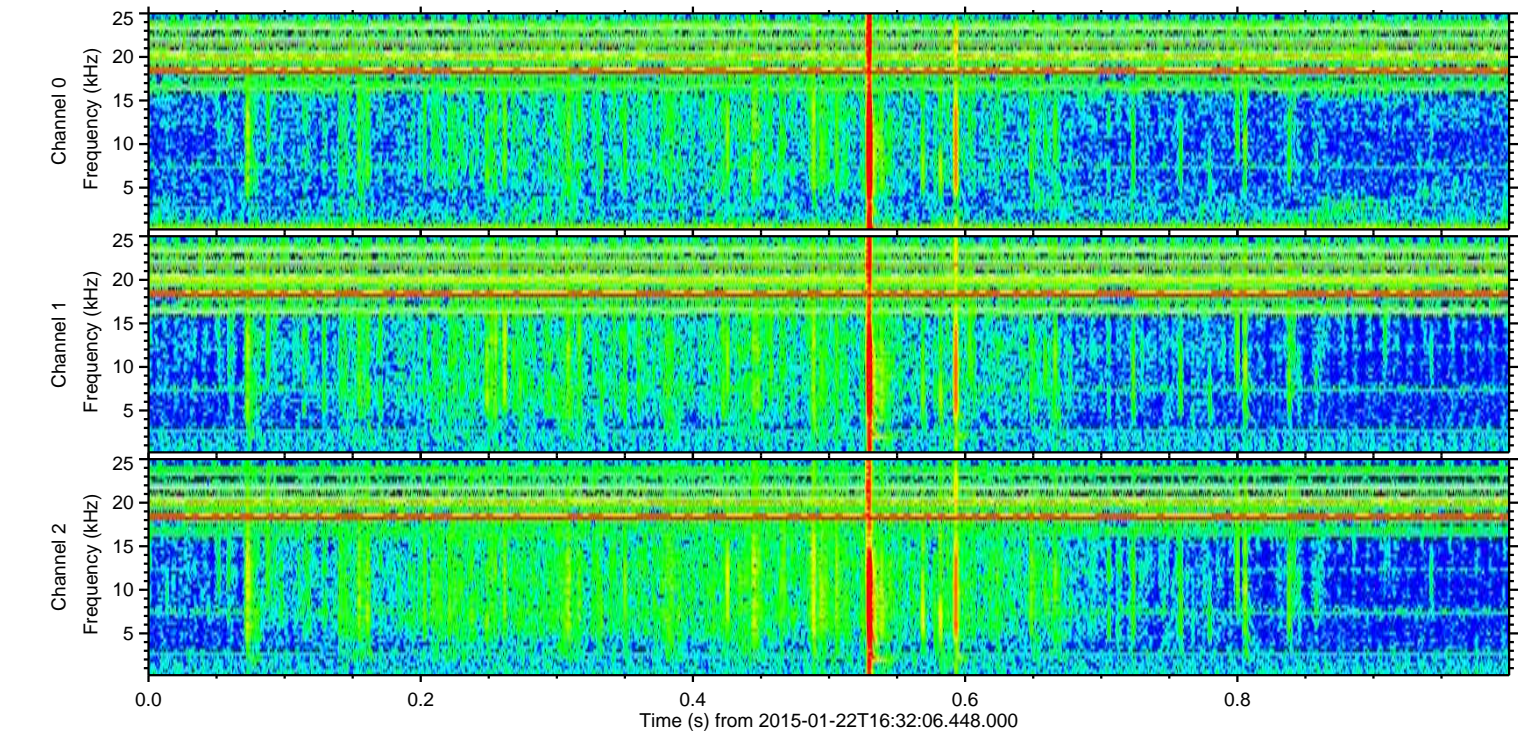
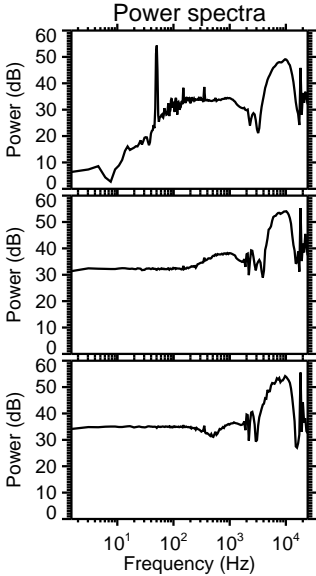
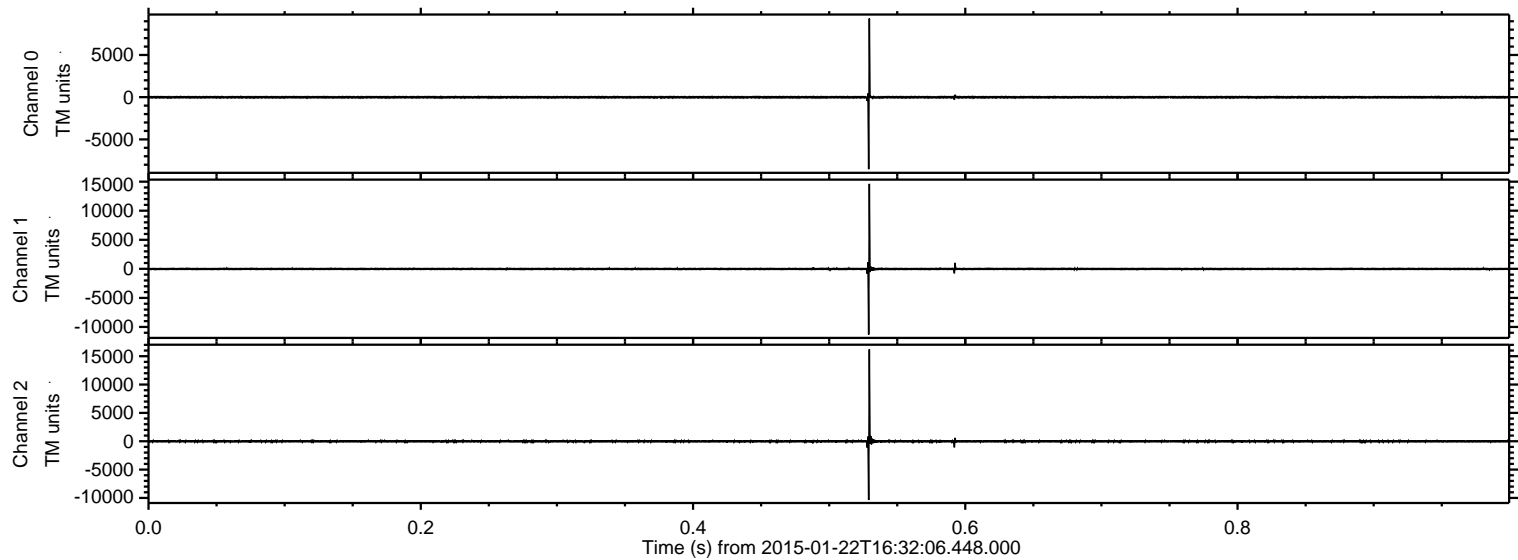
ELMAVAN 3D WAVEFORMS (Measured data sampled at 50 kHz) 49722 packets of 144 samples from 2015-01-22T16:32:06.448.000. Part 12/144

Processed Tue Feb 10 12:05:50 2015 by ELM ver.2012-10-06 from 001__elm20150122_163205__dat00.bin

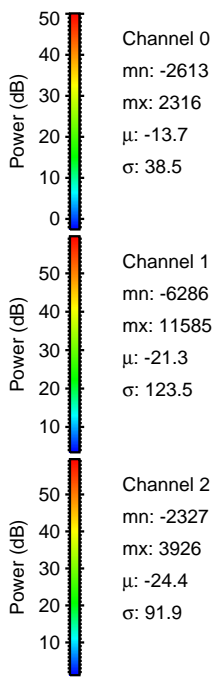
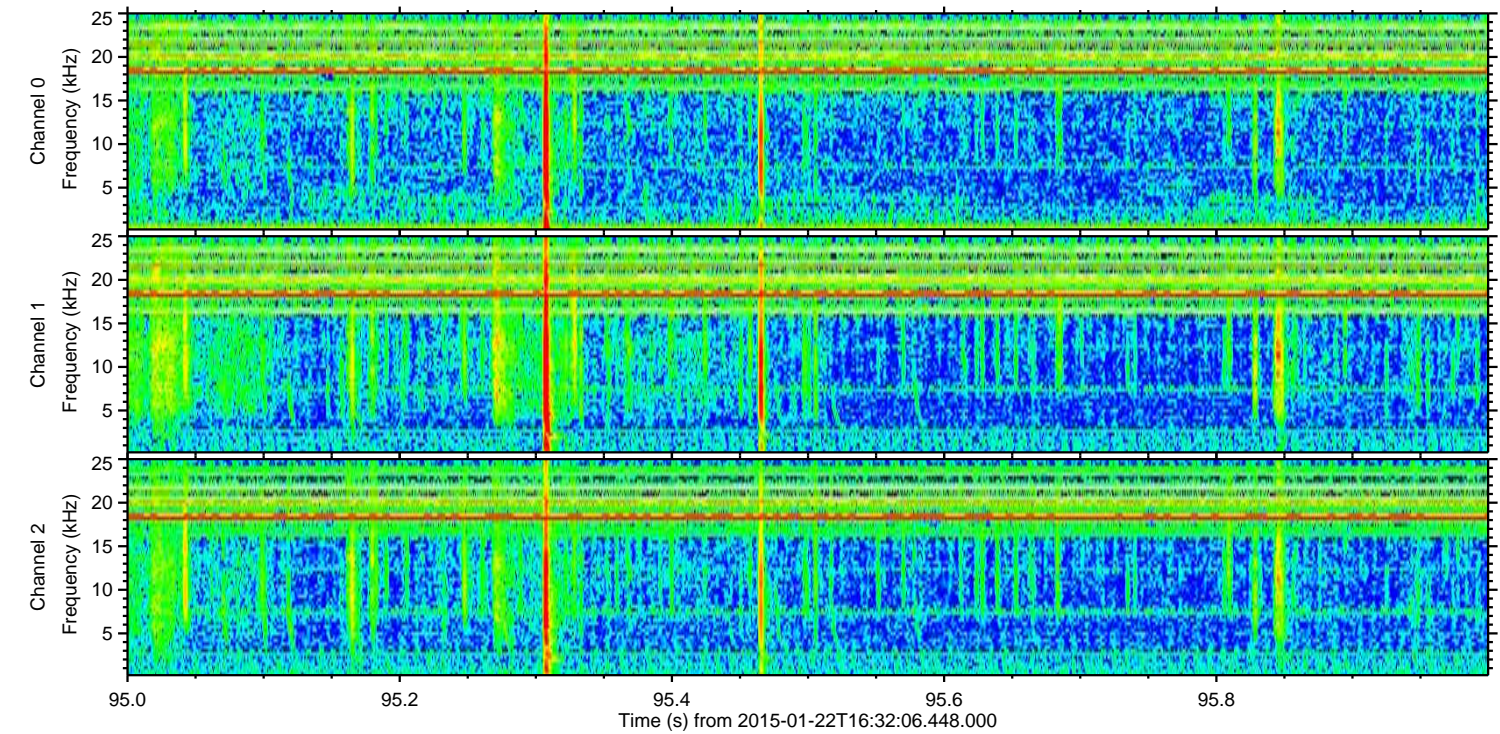
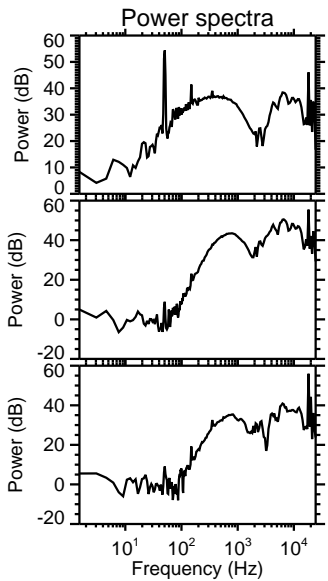
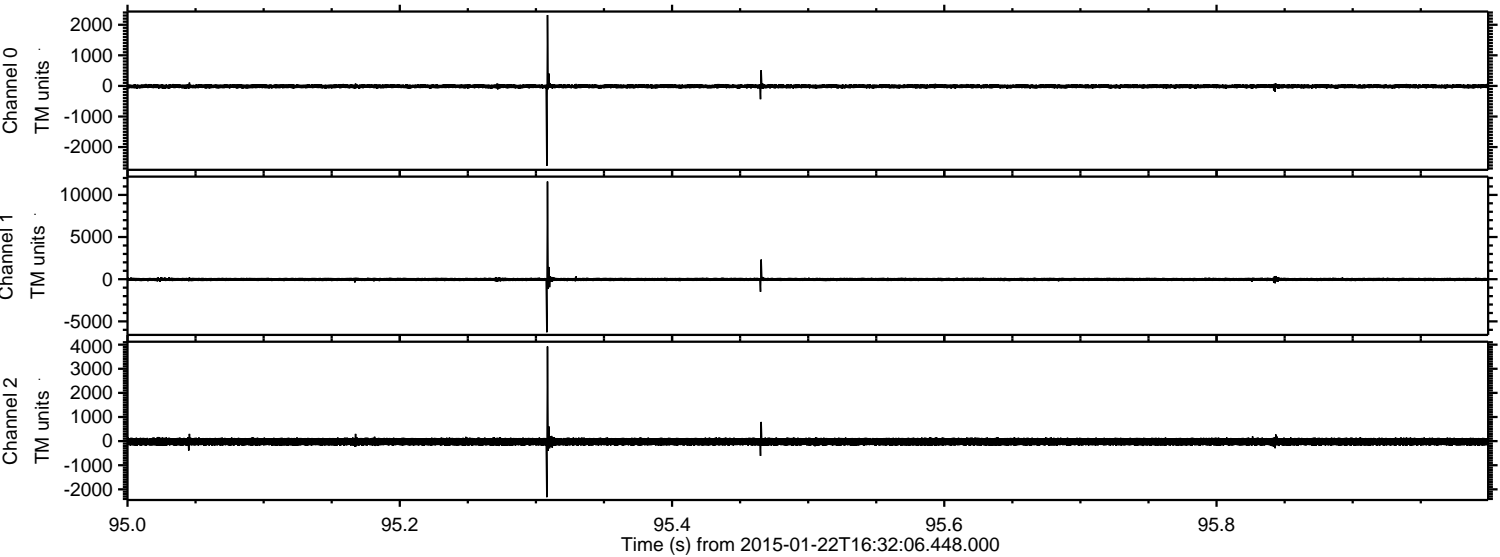


ELMAVAN 3D WAVEFORMS (Measured data sampled at 50 kHz) 49722 packets of 144 samples from 2015-01-22T16:32:06.448.000. Part 1/144

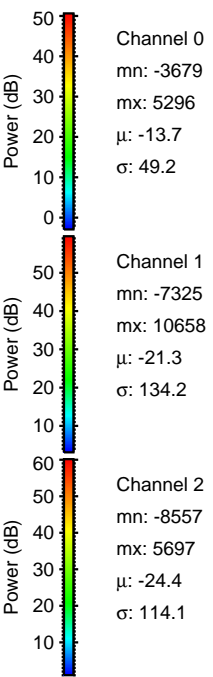
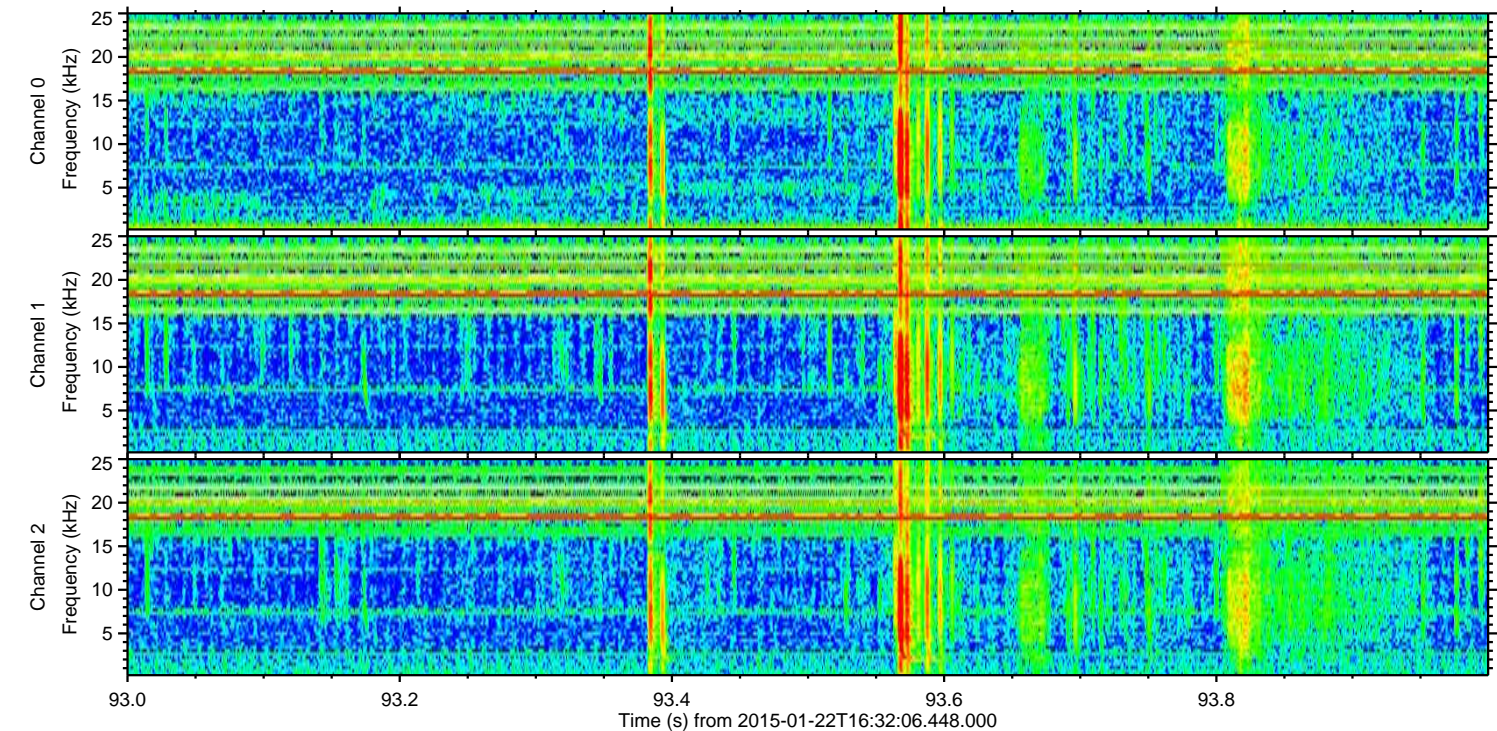
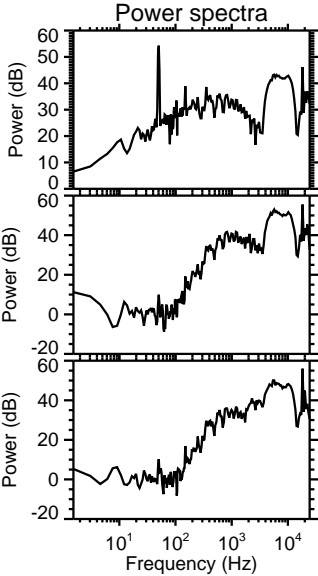
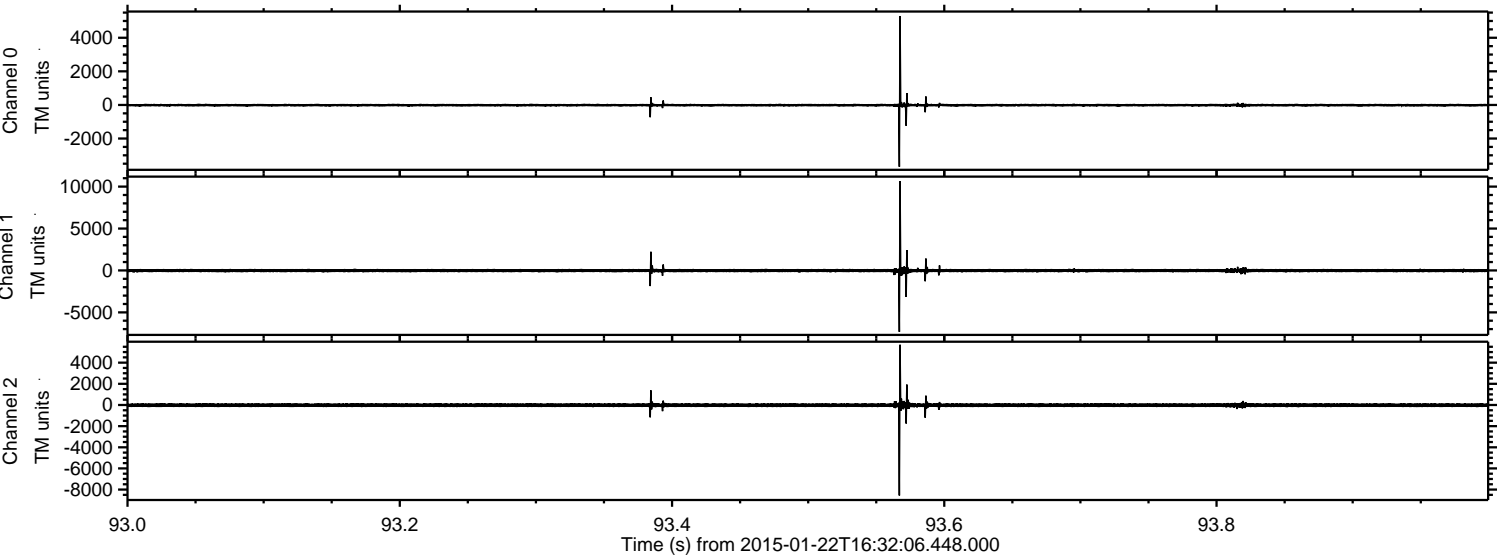
Processed Tue Feb 10 12:05:51 2015 by ELM ver.2012-10-06 from 001__elm20150122_163205__dat00.bin



Processed Tue Feb 10 12:05:52 2015 by ELM ver.2012-10-06 from 001__elm20150122_163205__dat00.bin

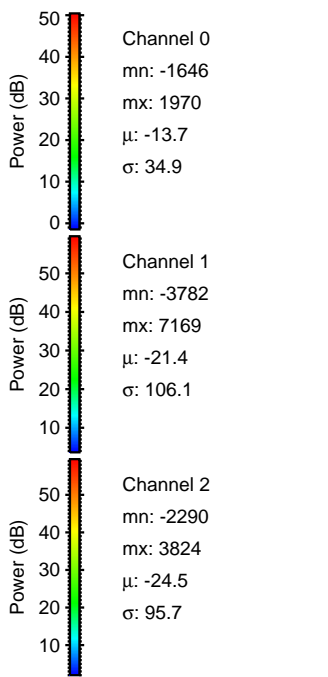
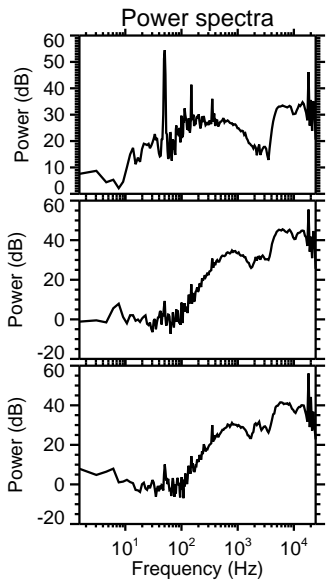
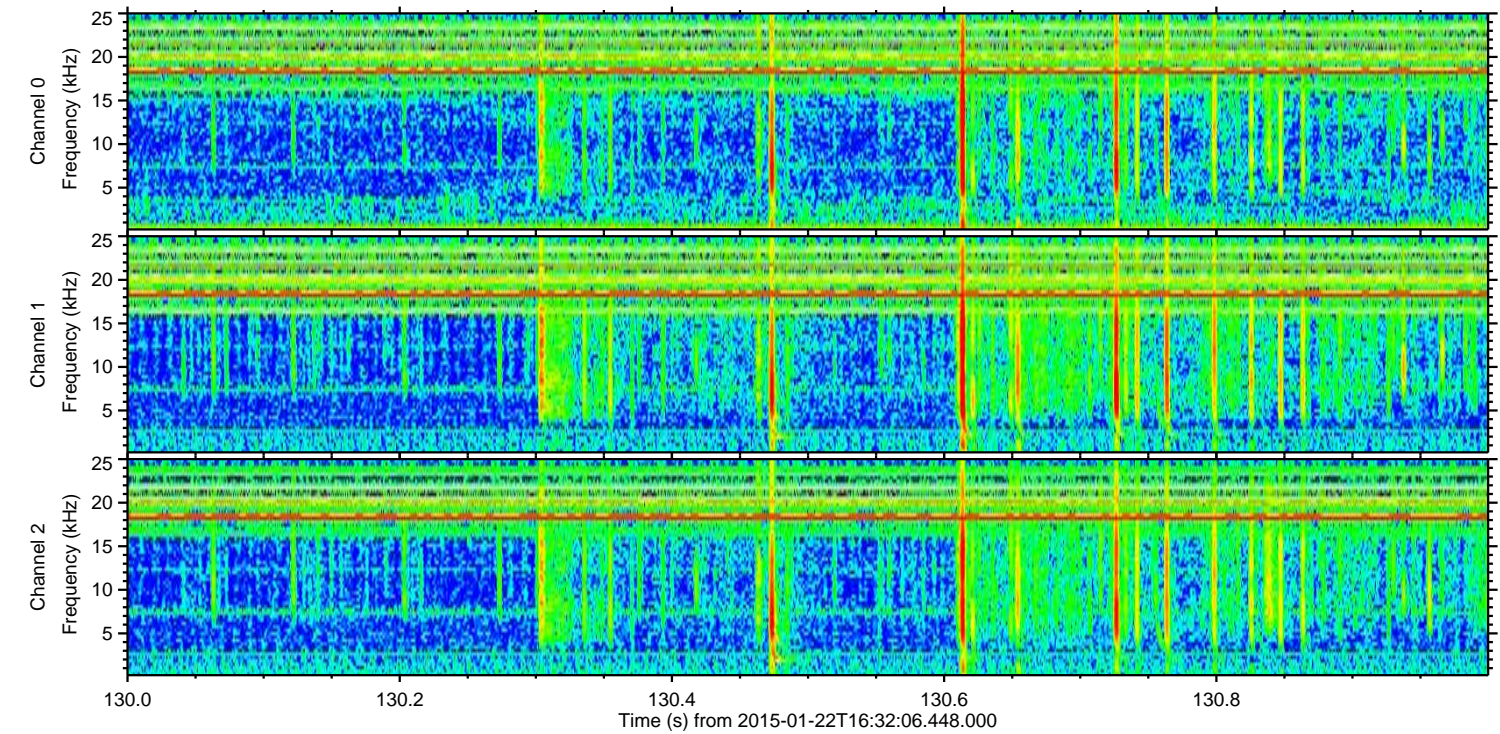
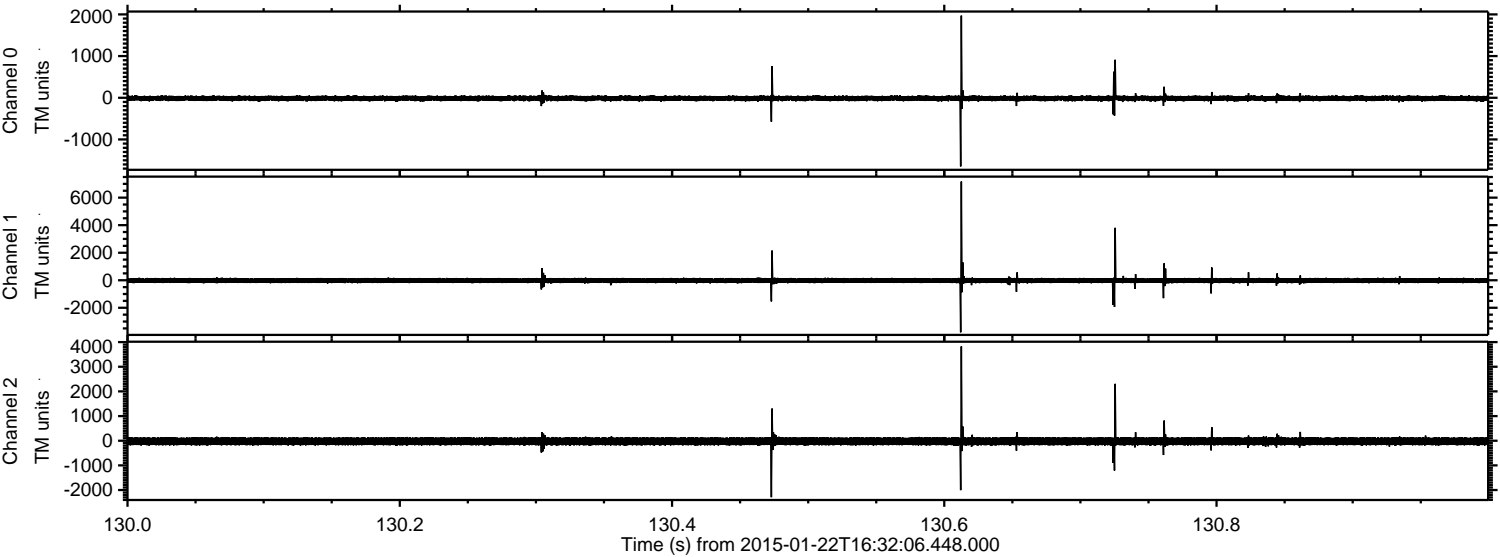


Processed Tue Feb 10 12:05:53 2015 by ELM ver.2012-10-06 from 001__elm20150122_163205__dat00.bin



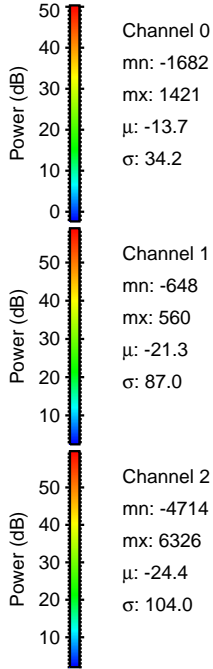
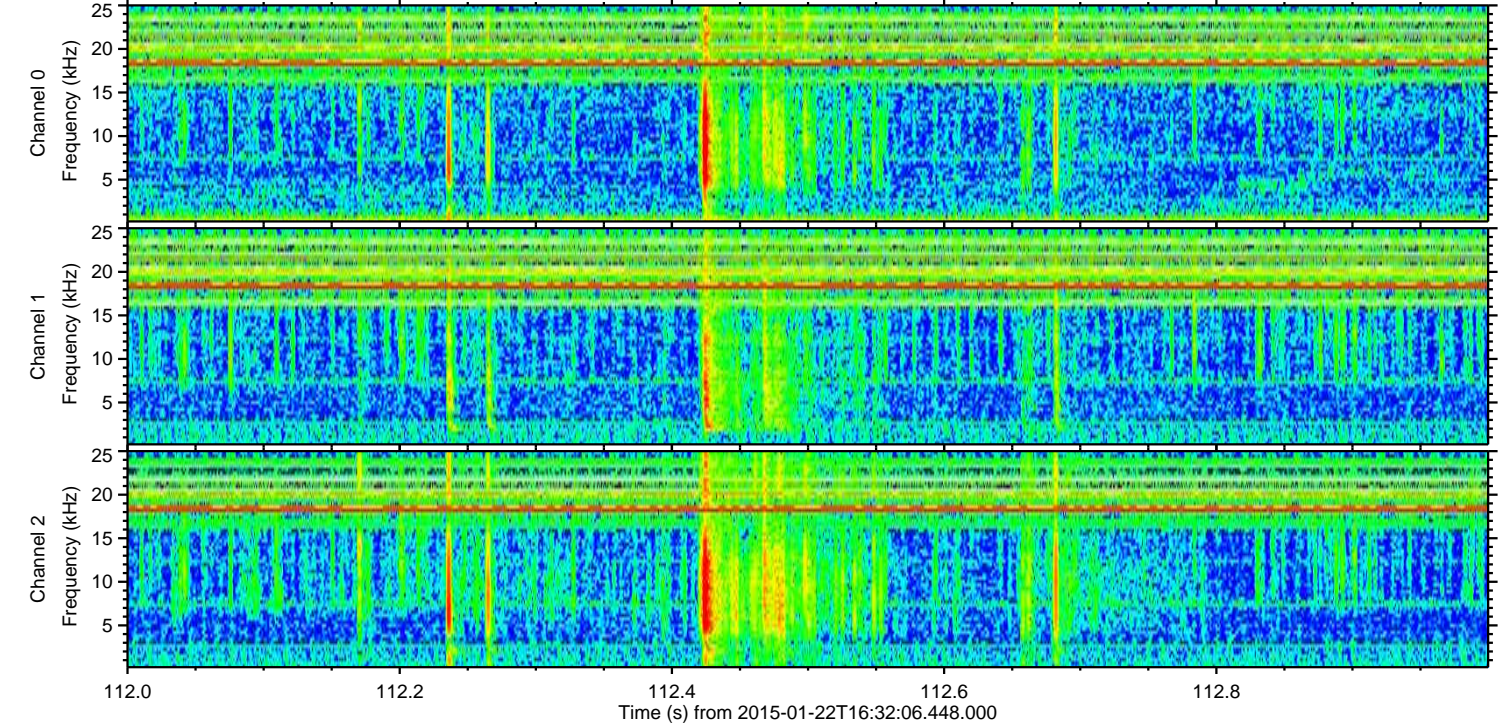
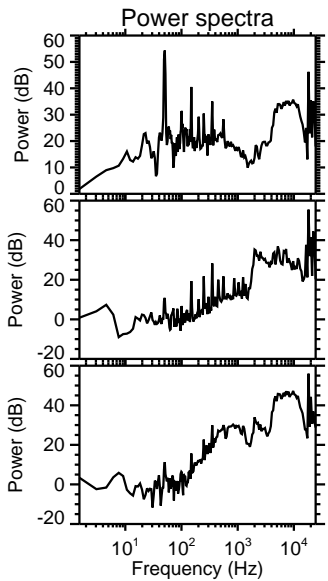
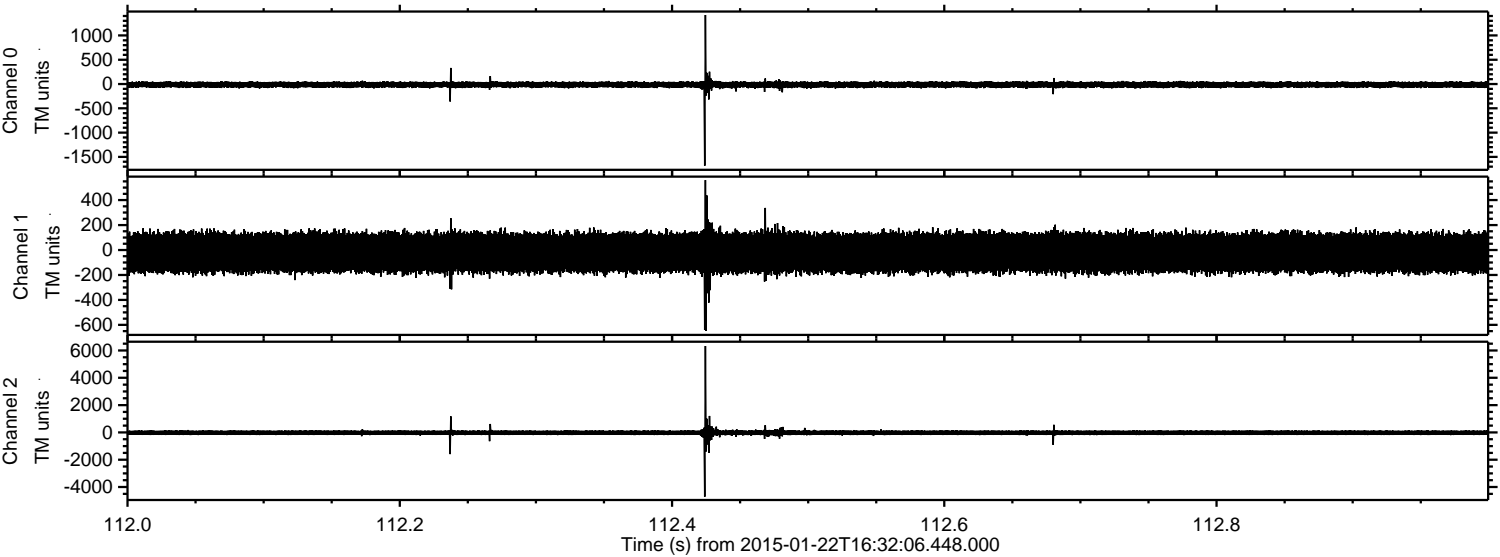
ELMAVAN 3D WAVEFORMS (Measured data sampled at 50 kHz) 49722 packets of 144 samples from 2015-01-22T16:32:06.448.000. Part 131/144

Processed Tue Feb 10 12:05:54 2015 by ELM ver.2012-10-06 from 001__elm20150122_163205__dat00.bin



ELMAVAN 3D WAVEFORMS (Measured data sampled at 50 kHz) 49722 packets of 144 samples from 2015-01-22T16:32:06.448.000. Part 113/144

Processed Tue Feb 10 12:05:55 2015 by ELM ver.2012-10-06 from 001__elm20150122_163205__dat00.bin

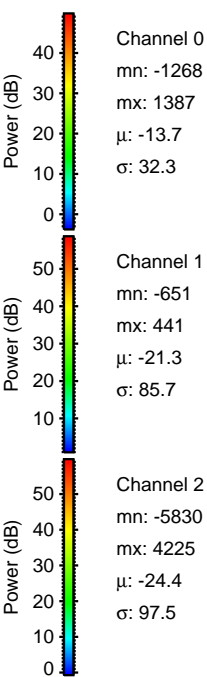
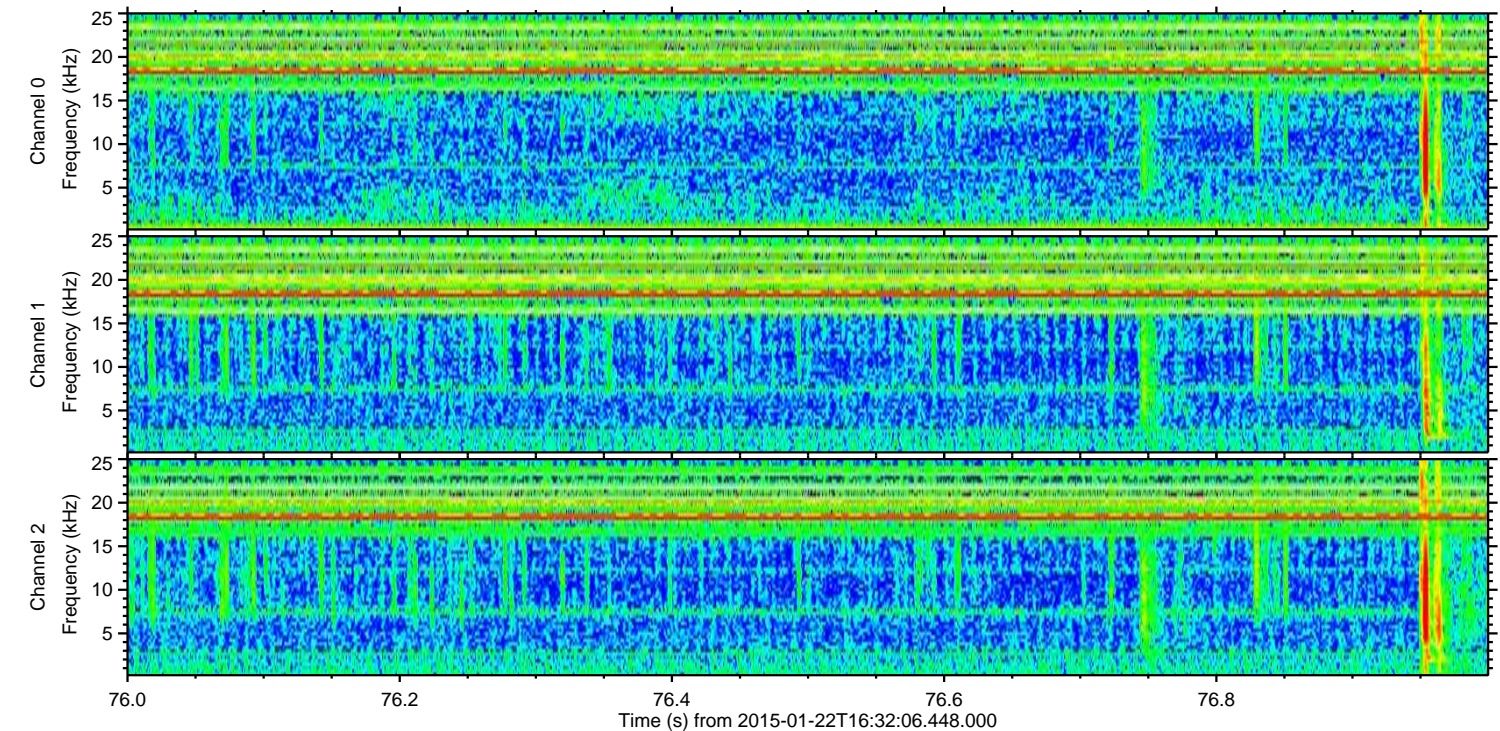
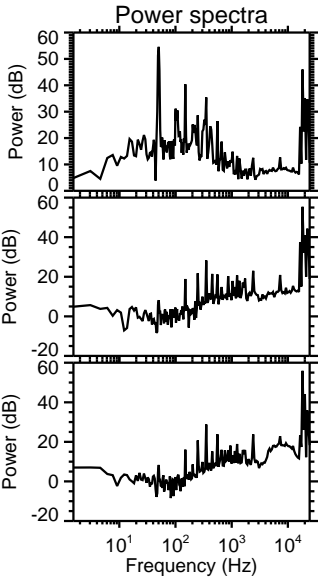
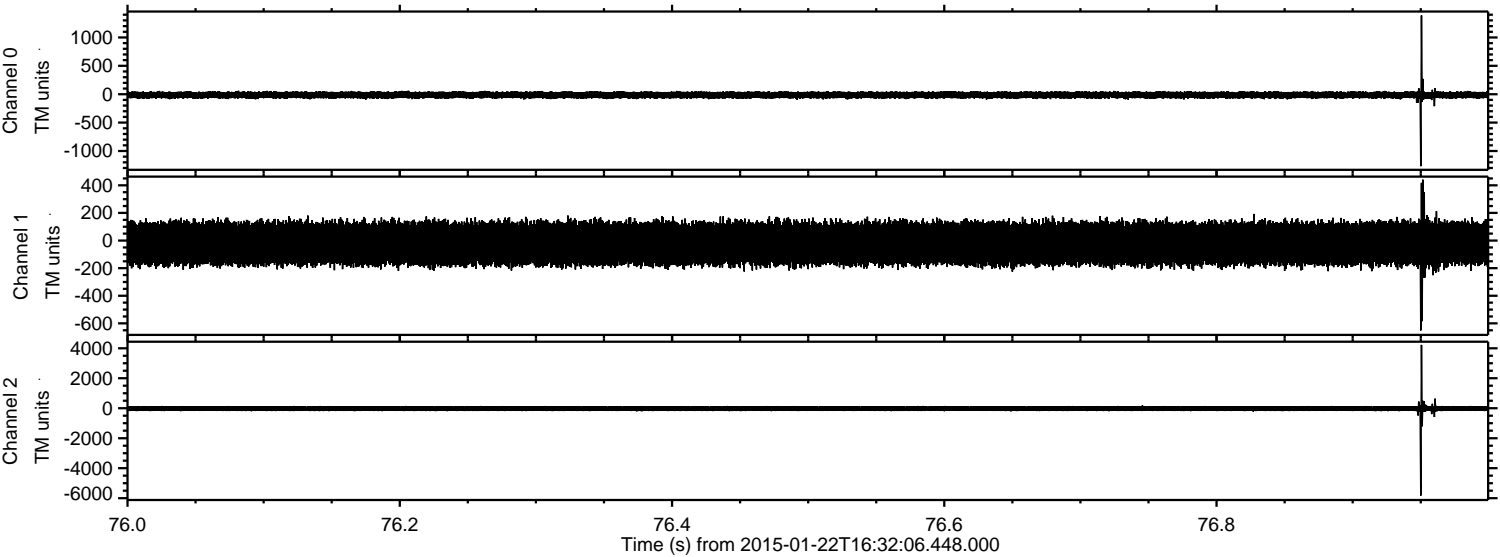


Channel 0
mn: -1682
mx: 1421
 μ : -13.7
 σ : 34.2

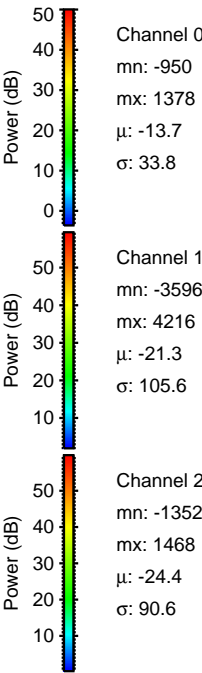
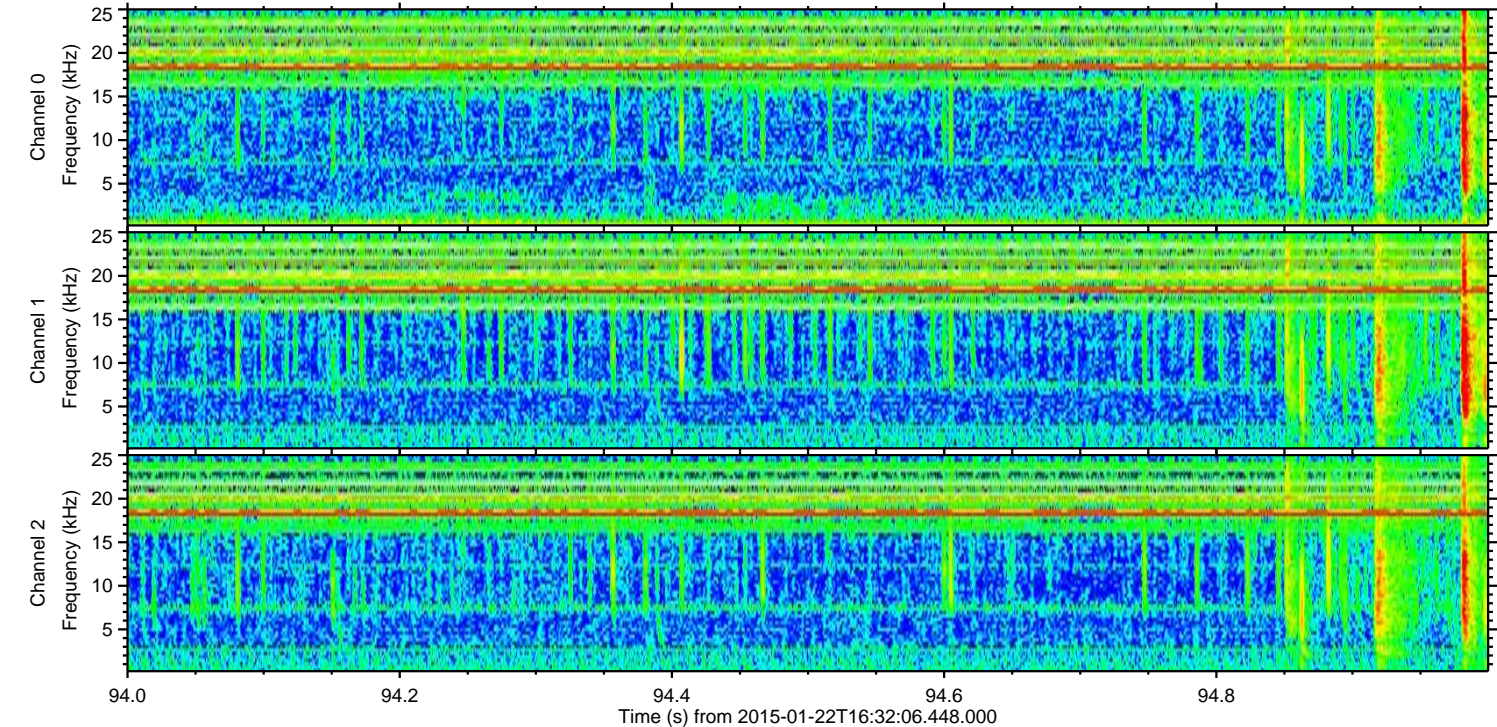
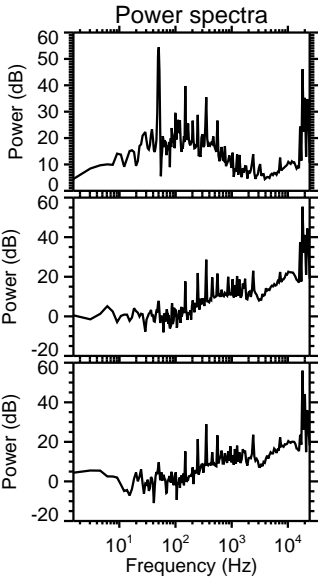
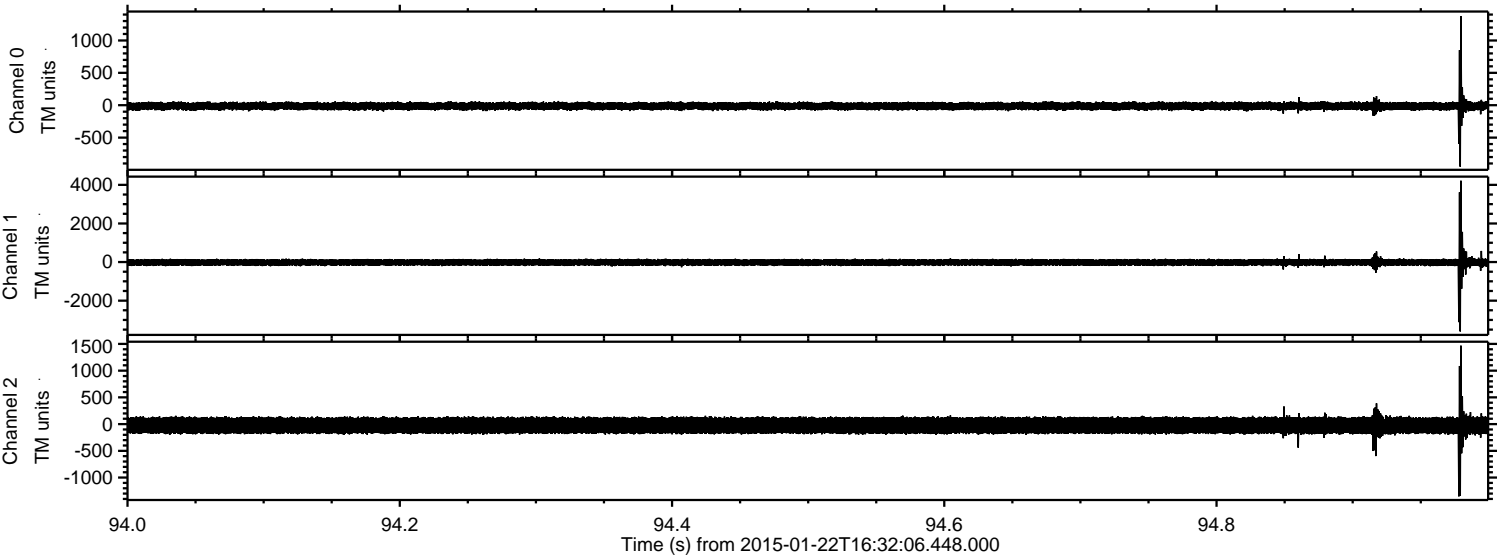
Channel 1
mn: -648
mx: 560
 μ : -21.3
 σ : 87.0

Channel 2
mn: -4714
mx: 6326
 μ : -24.4
 σ : 104.0

Processed Tue Feb 10 12:05:56 2015 by ELM ver.2012-10-06 from 001__elm20150122_163205__dat00.bin



Processed Tue Feb 10 12:05:57 2015 by ELM ver.2012-10-06 from 001__elm20150122_163205__dat00.bin



Processed Tue Feb 10 12:05:58 2015 by ELM ver.2012-10-06 from 001__elm20150122_163205__dat00.bin

