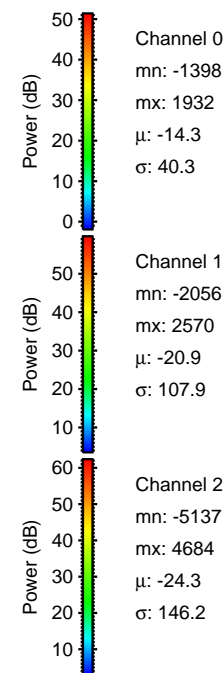
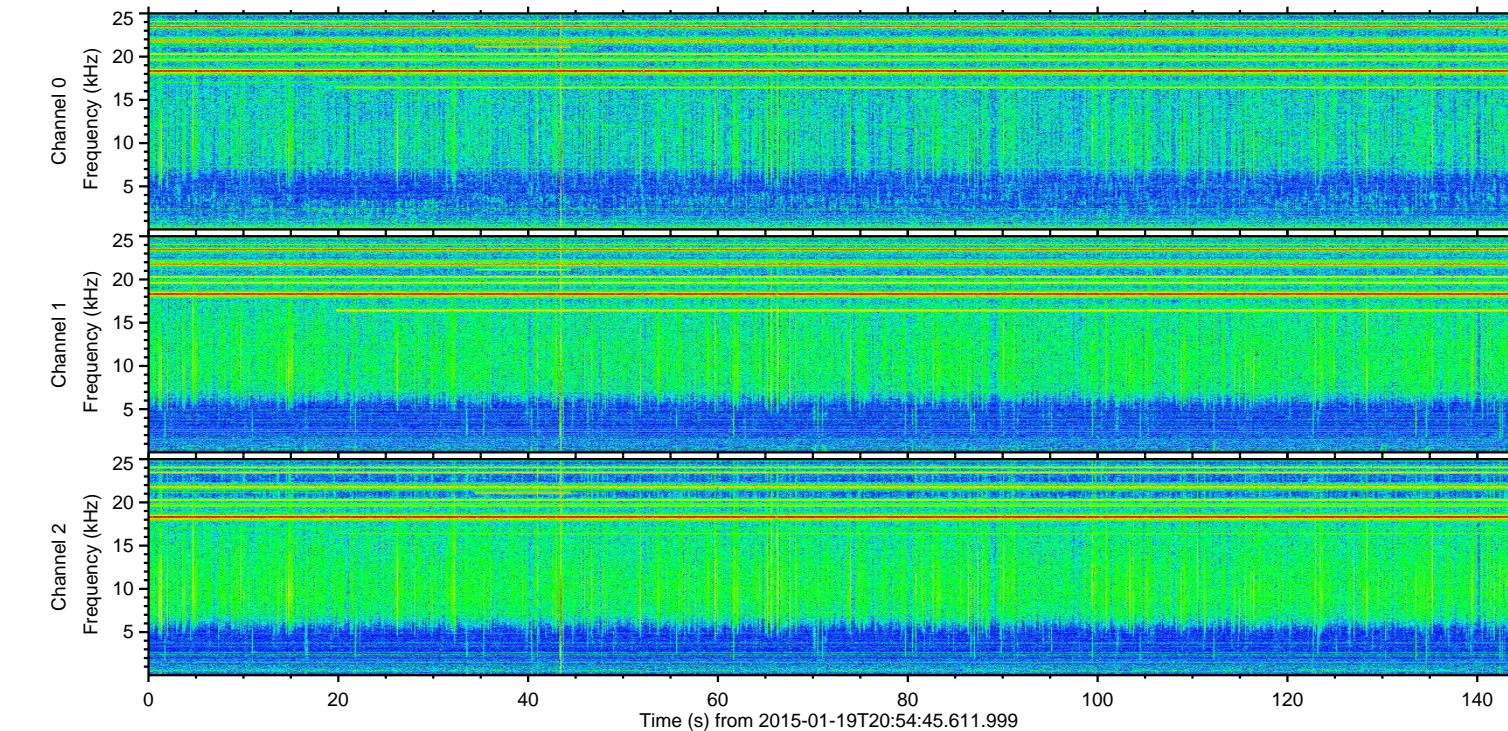
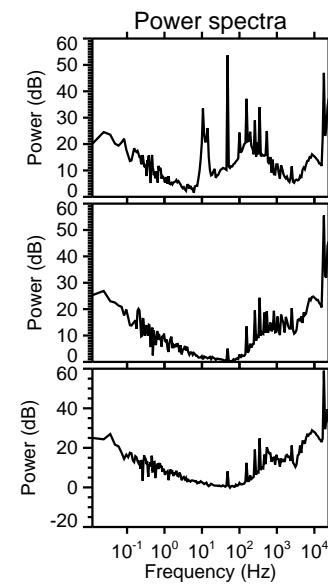
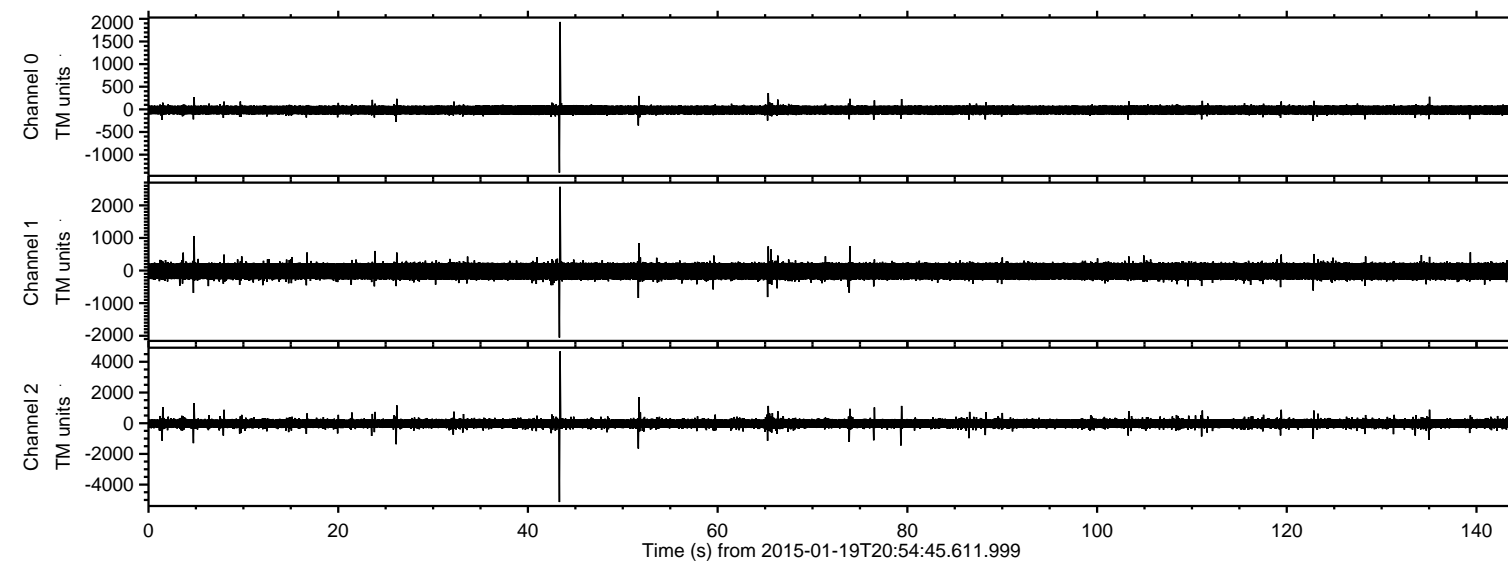
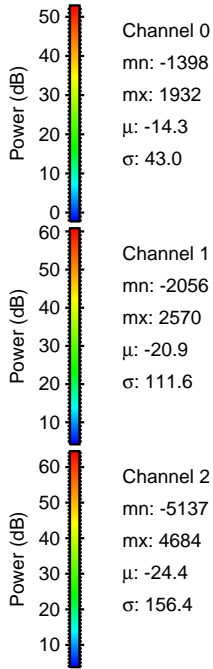
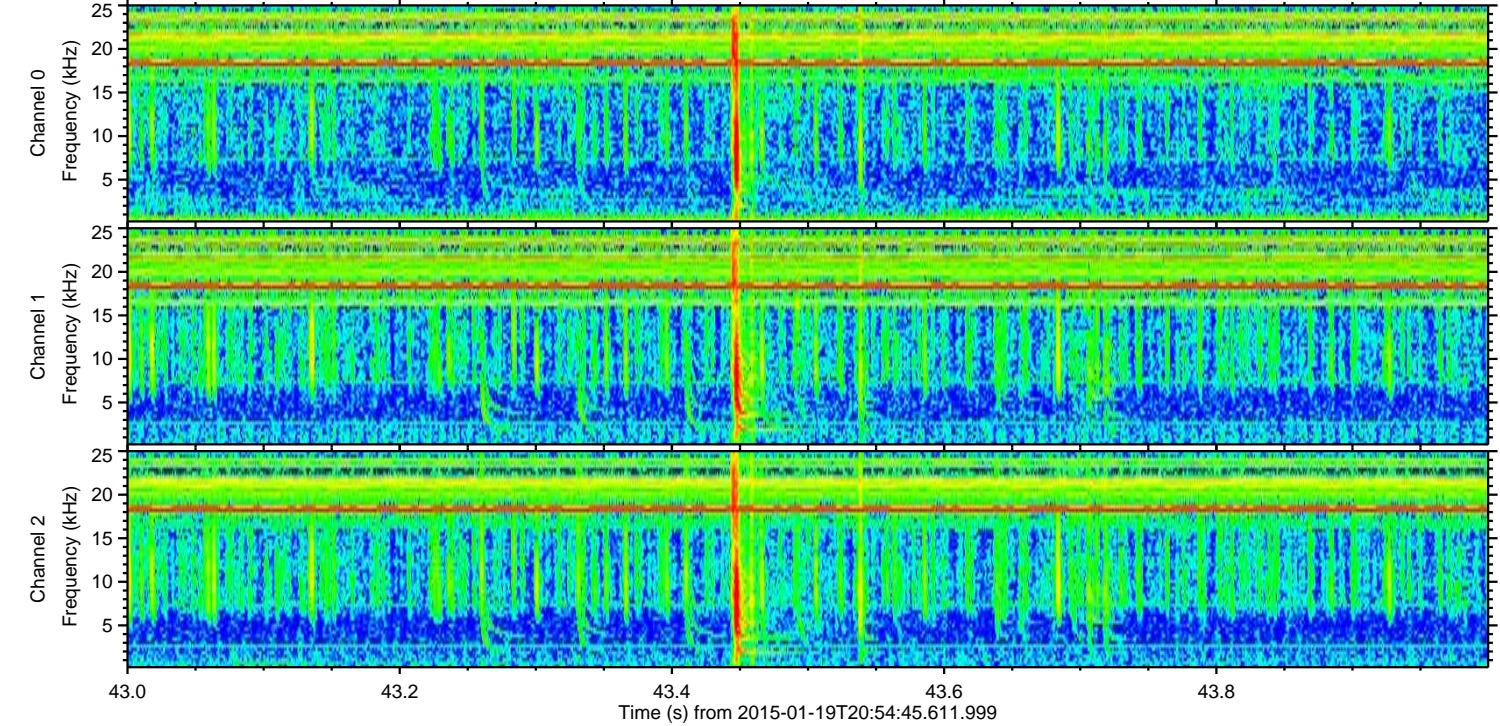
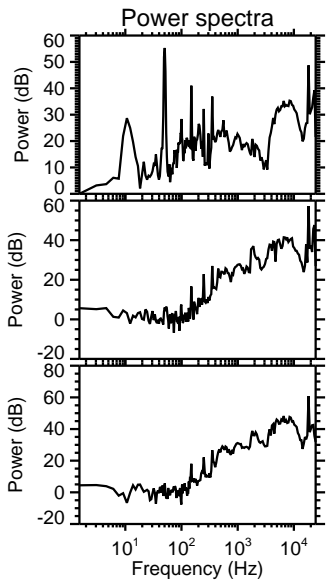
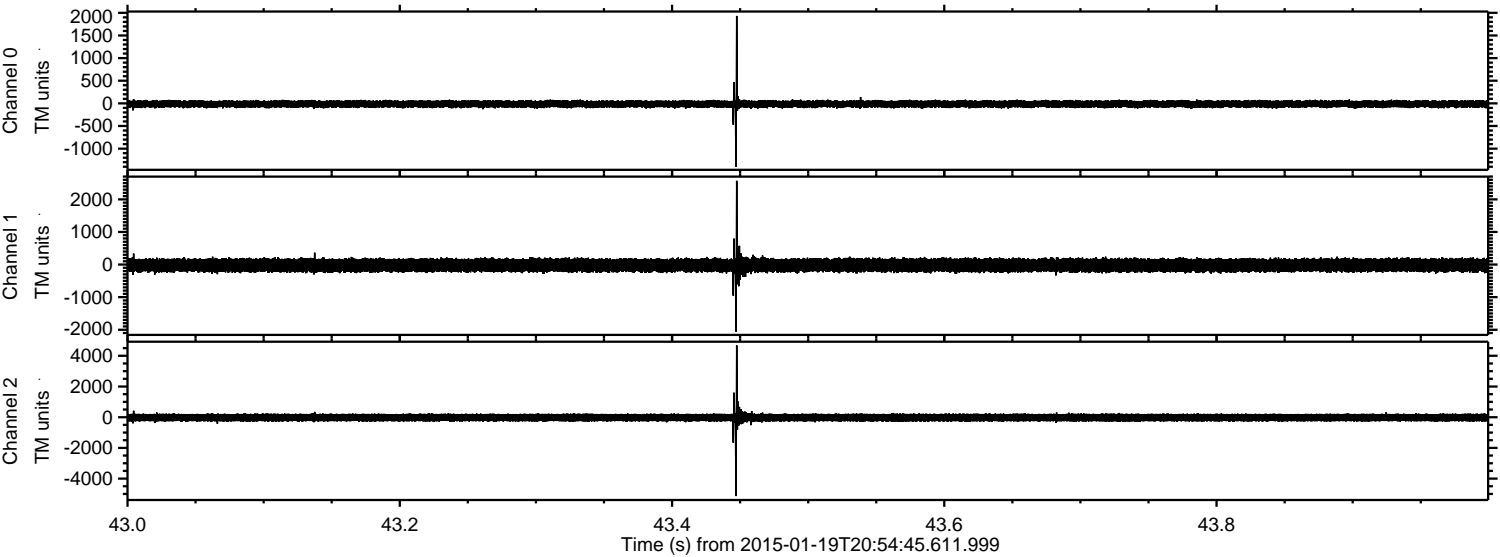


ELMAVAN 3D WAVEFORMS (Measured data sampled at 50 kHz) 49806 packets of 144 samples from 2015-01-19T20:54:45.611.999.

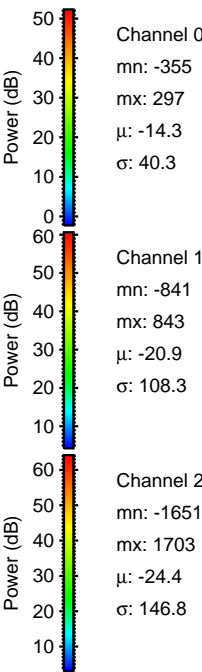
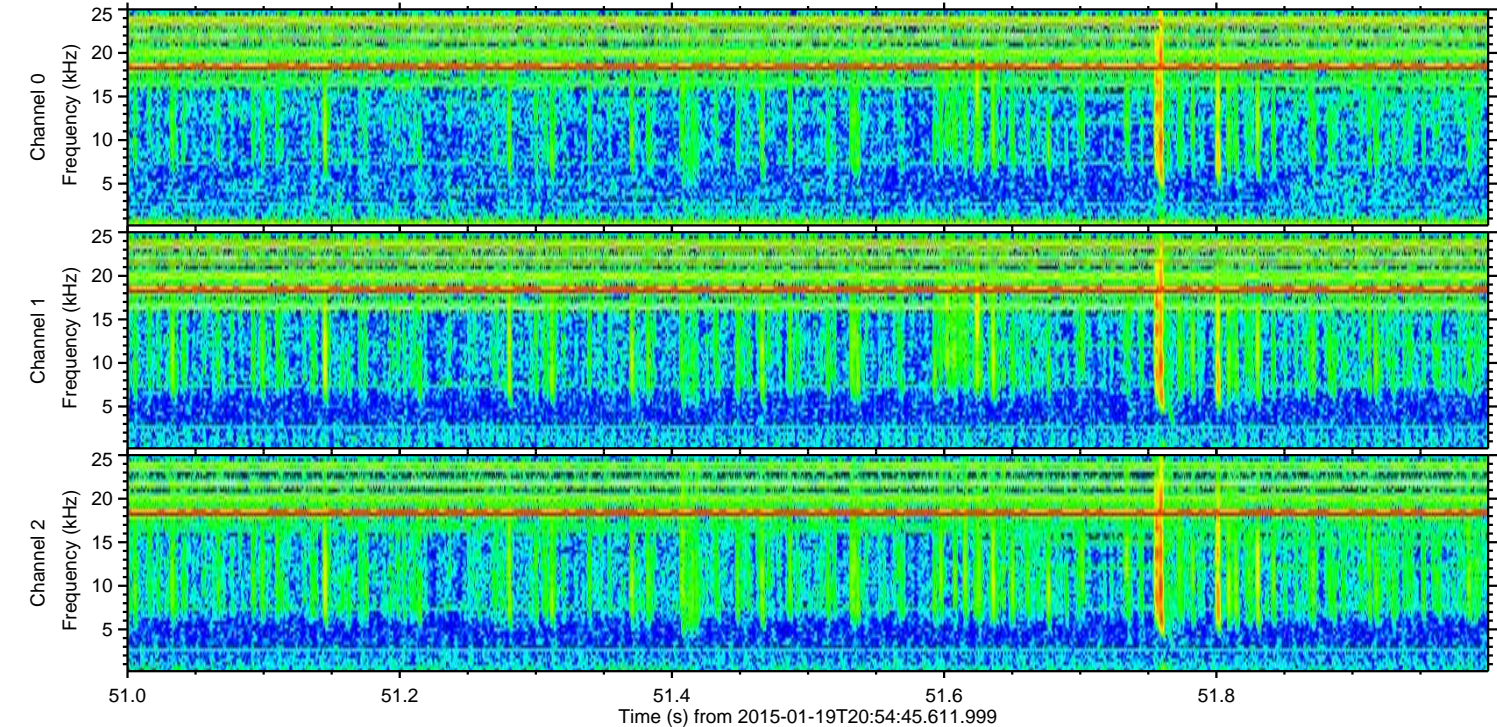
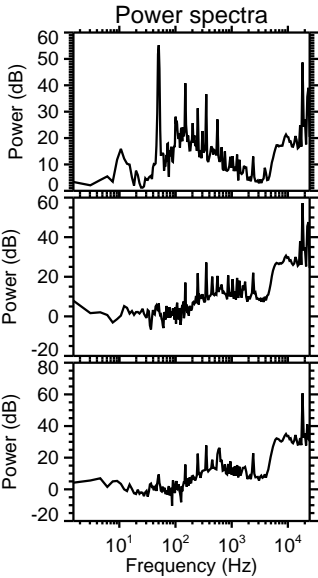
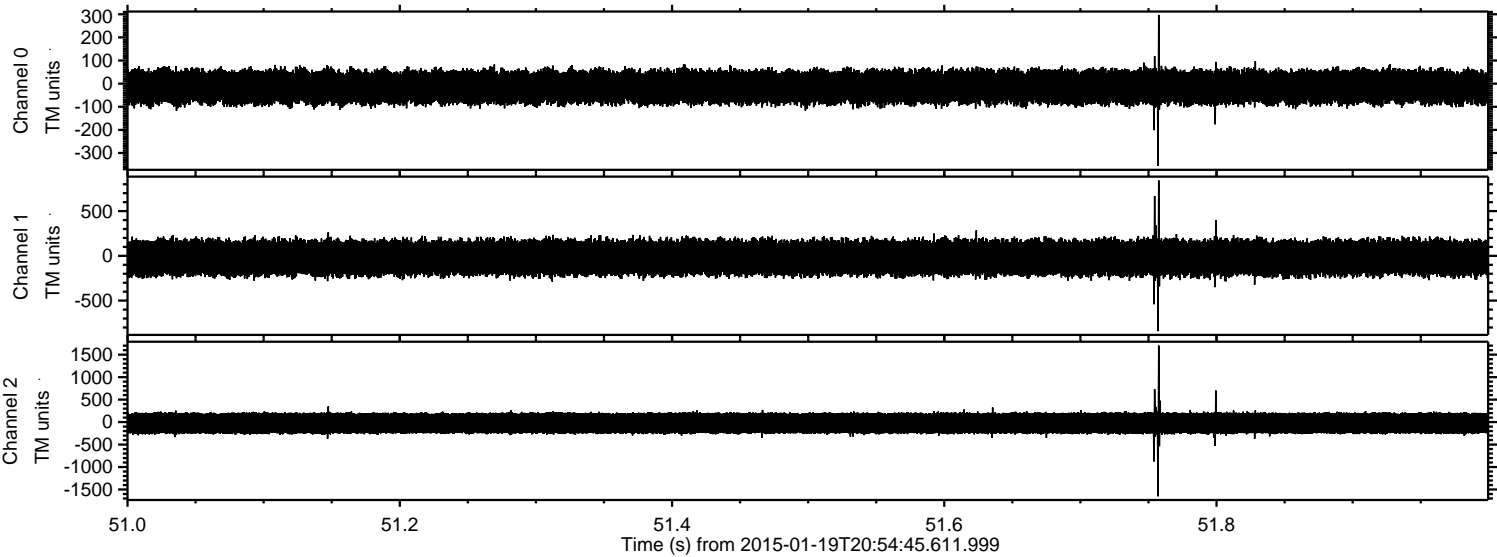
Processed Sun Feb 8 02:54:45 2015 by ELM ver.2012-10-06 from 001__elm20150119_205444__dat00.bin



Processed Sun Feb 8 02:54:57 2015 by ELM ver.2012-10-06 from 001__elm20150119_205444__dat00.bin

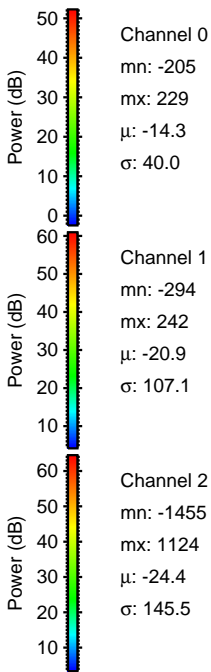
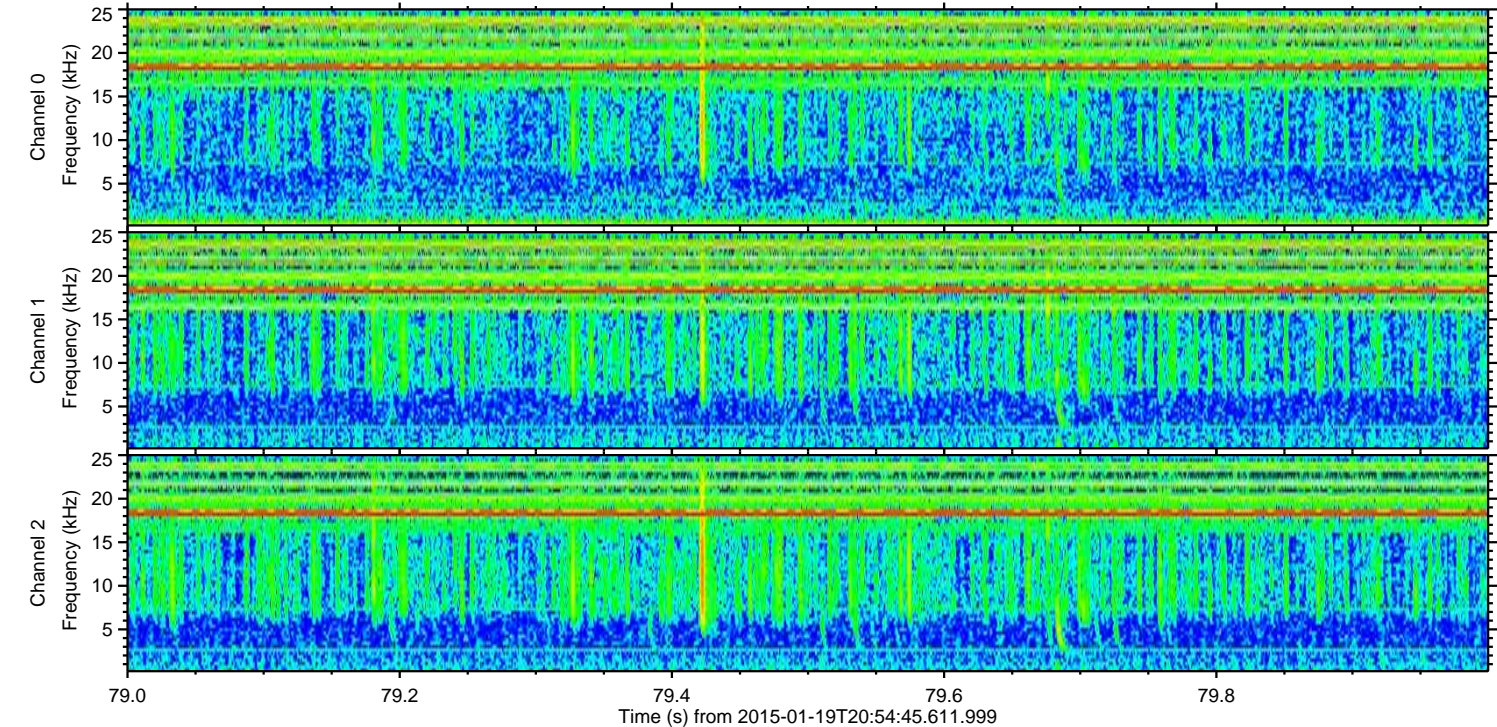
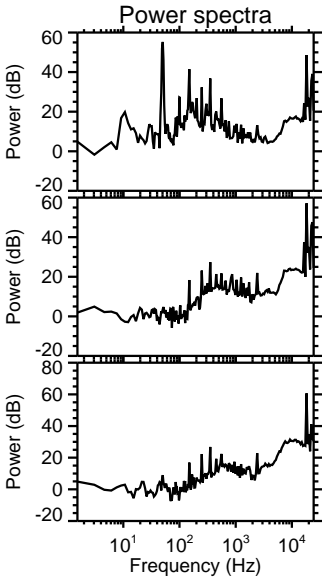
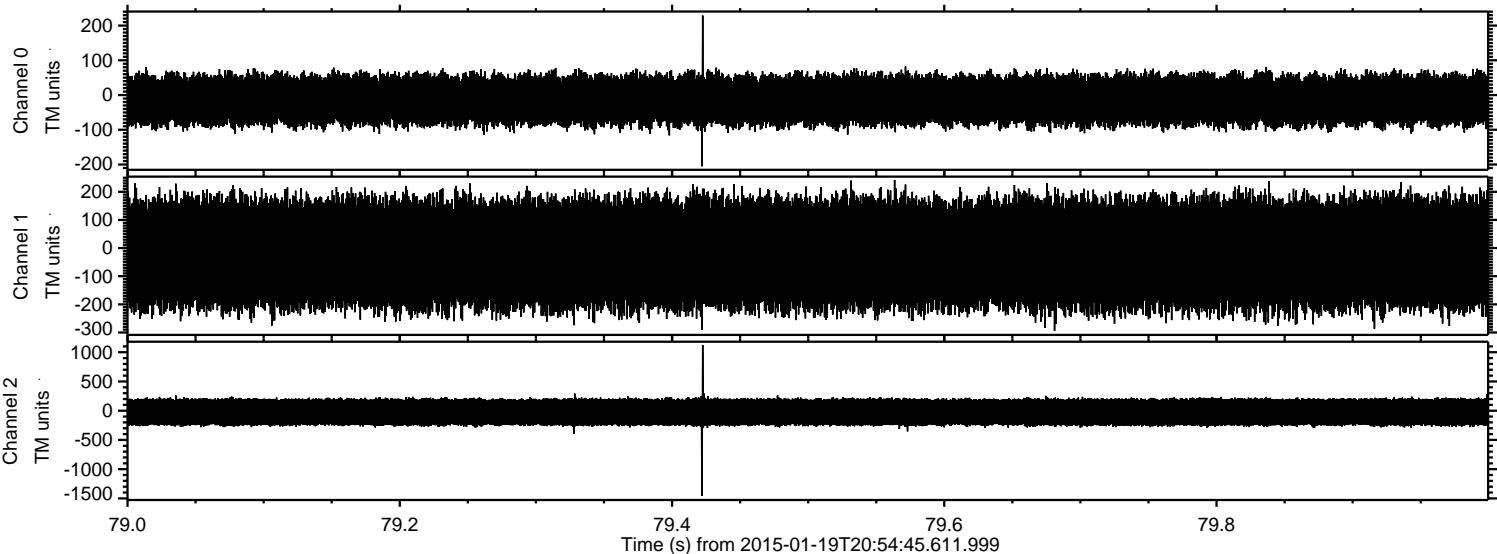


Processed Sun Feb 8 02:54:58 2015 by ELM ver.2012-10-06 from 001__elm20150119_205444__dat00.bin



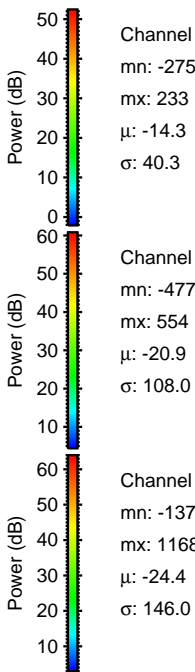
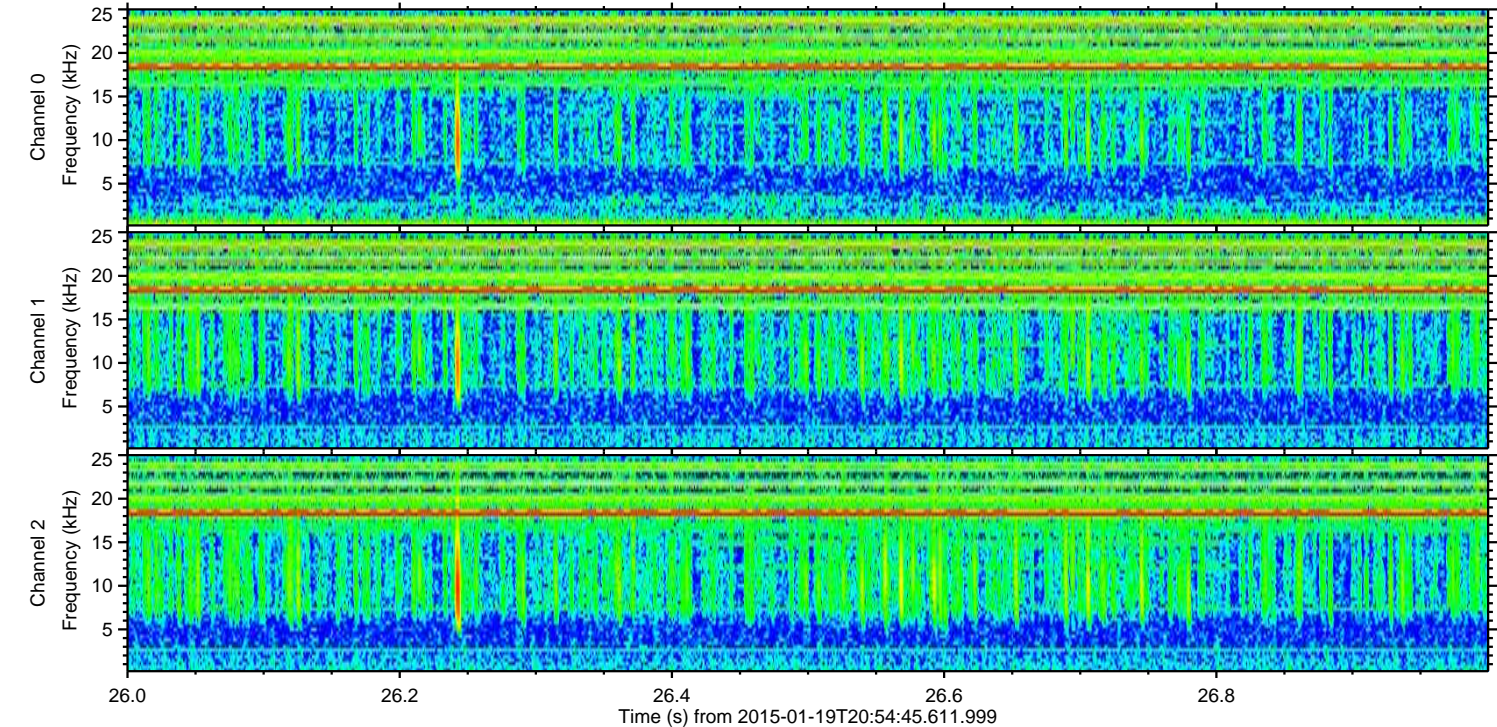
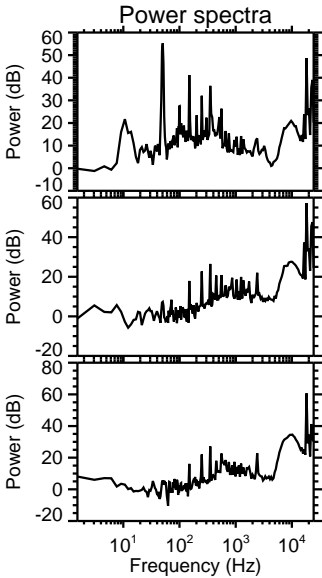
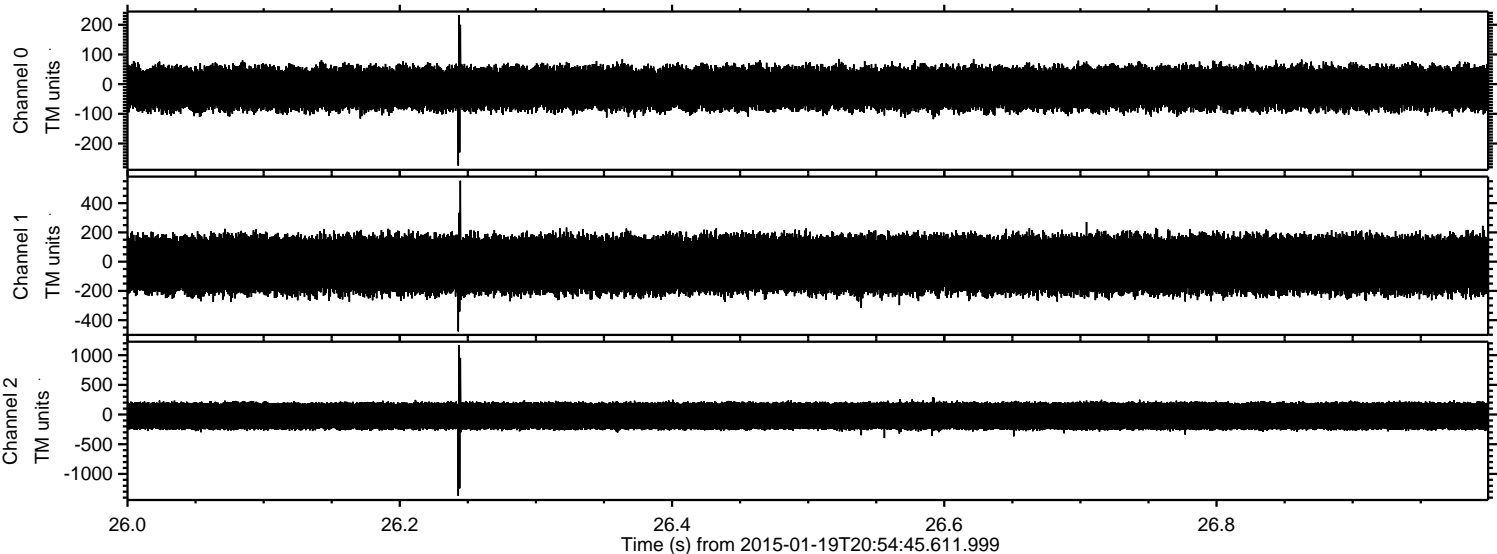
ELMAVAN 3D WAVEFORMS (Measured data sampled at 50 kHz) 49806 packets of 144 samples from 2015-01-19T20:54:45.611.999. Part 80/144

Processed Sun Feb 8 02:54:59 2015 by ELM ver.2012-10-06 from 001__elm20150119_205444__dat00.bin

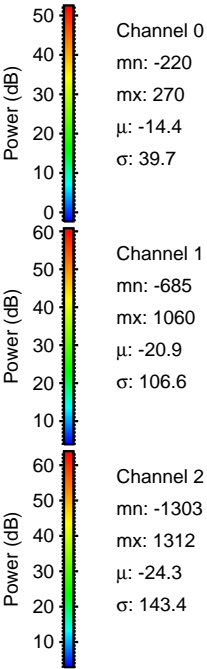
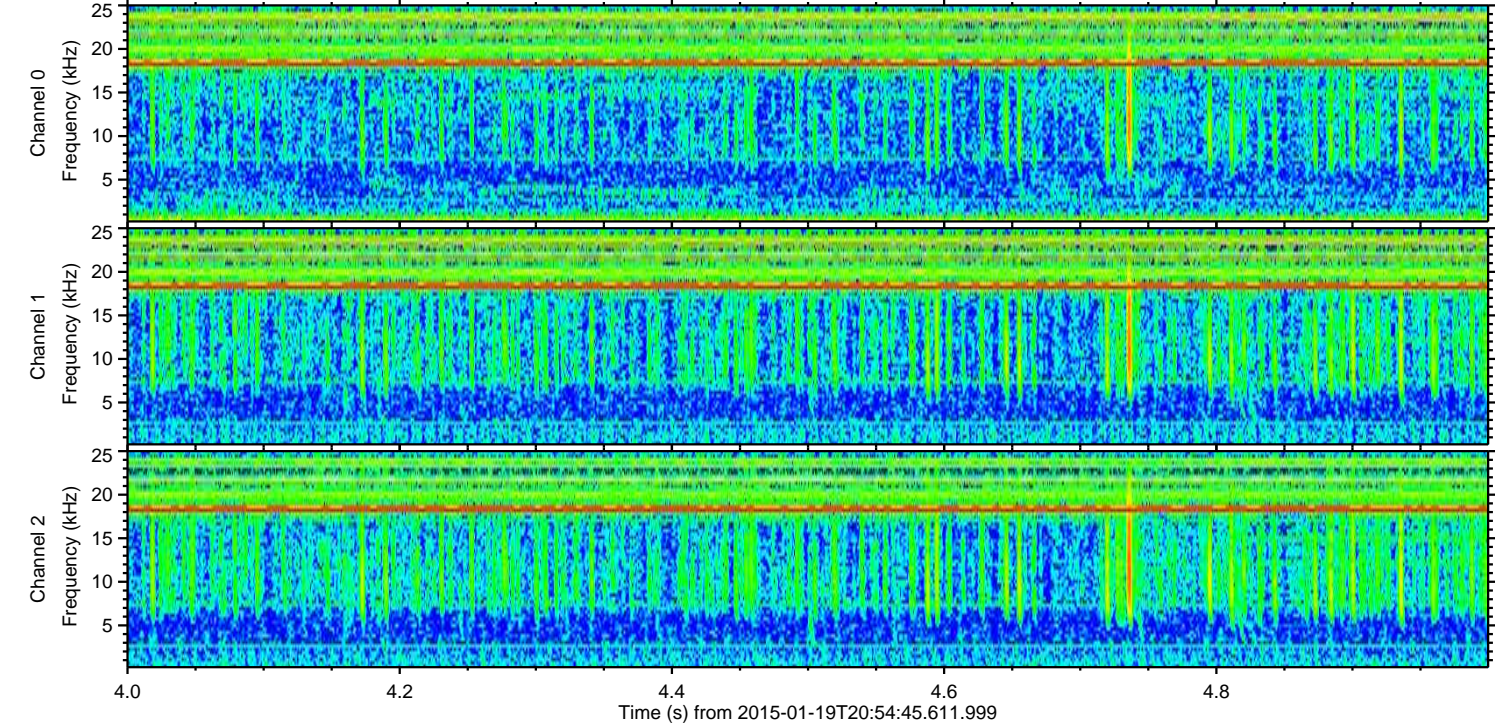
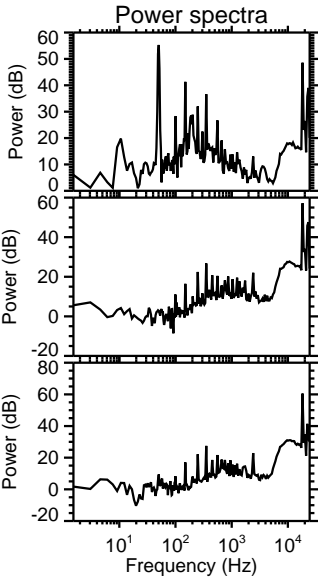
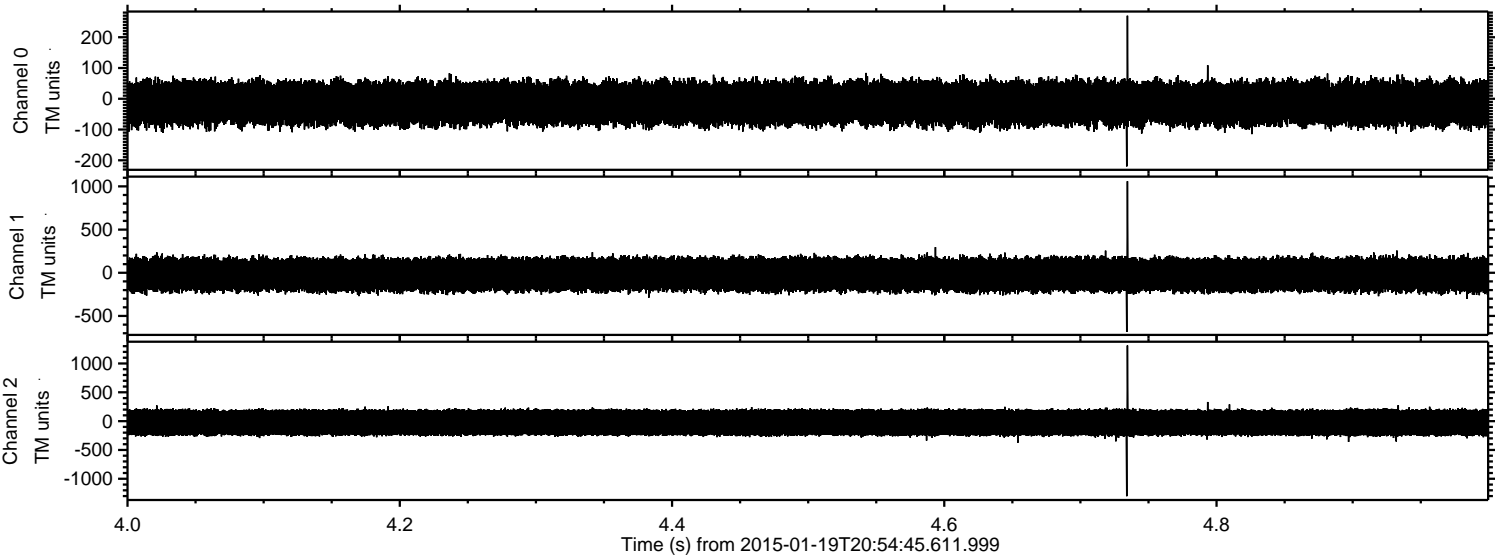


ELMAVAN 3D WAVEFORMS (Measured data sampled at 50 kHz) 49806 packets of 144 samples from 2015-01-19T20:54:45.611.999. Part 27/144

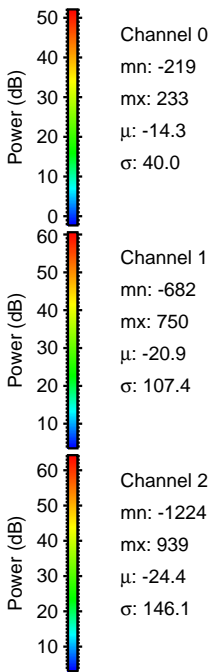
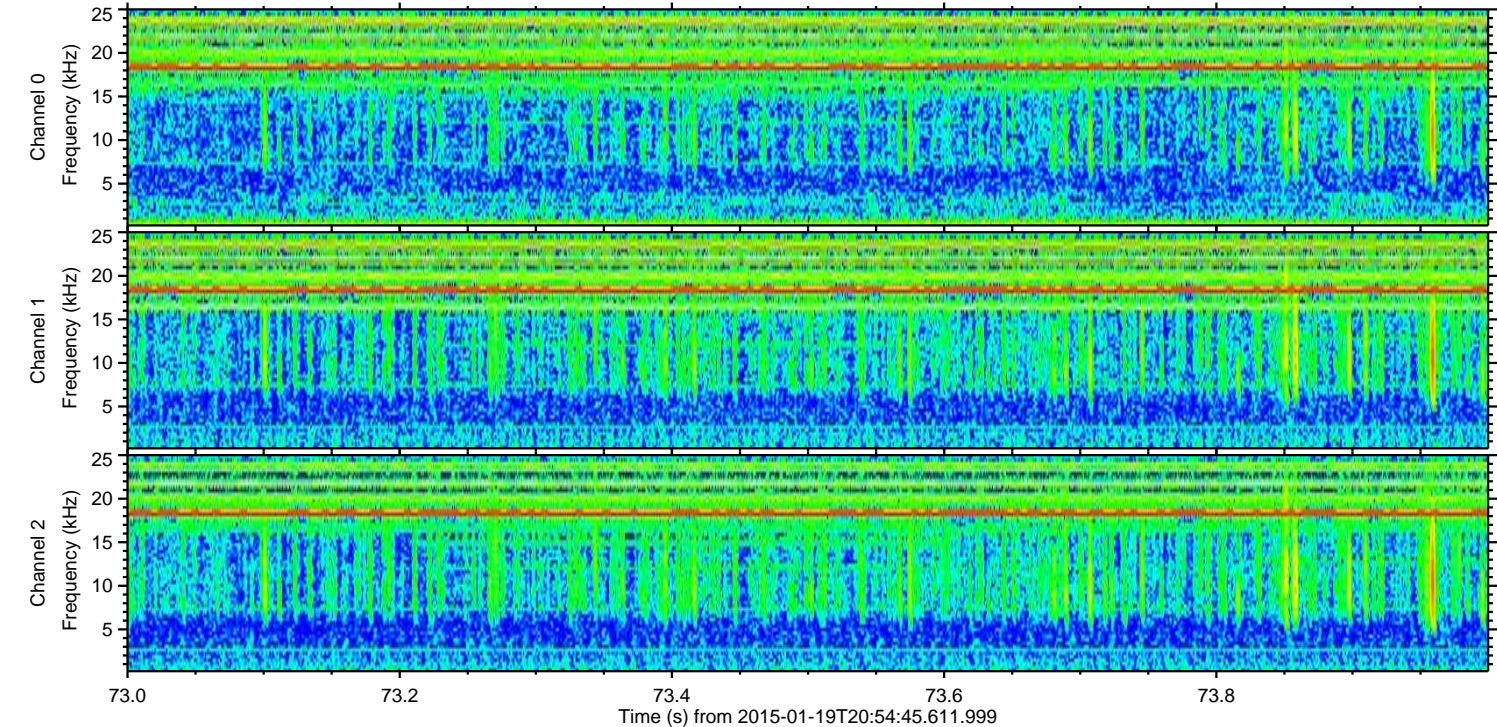
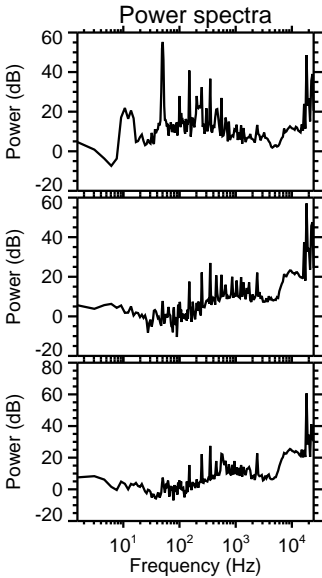
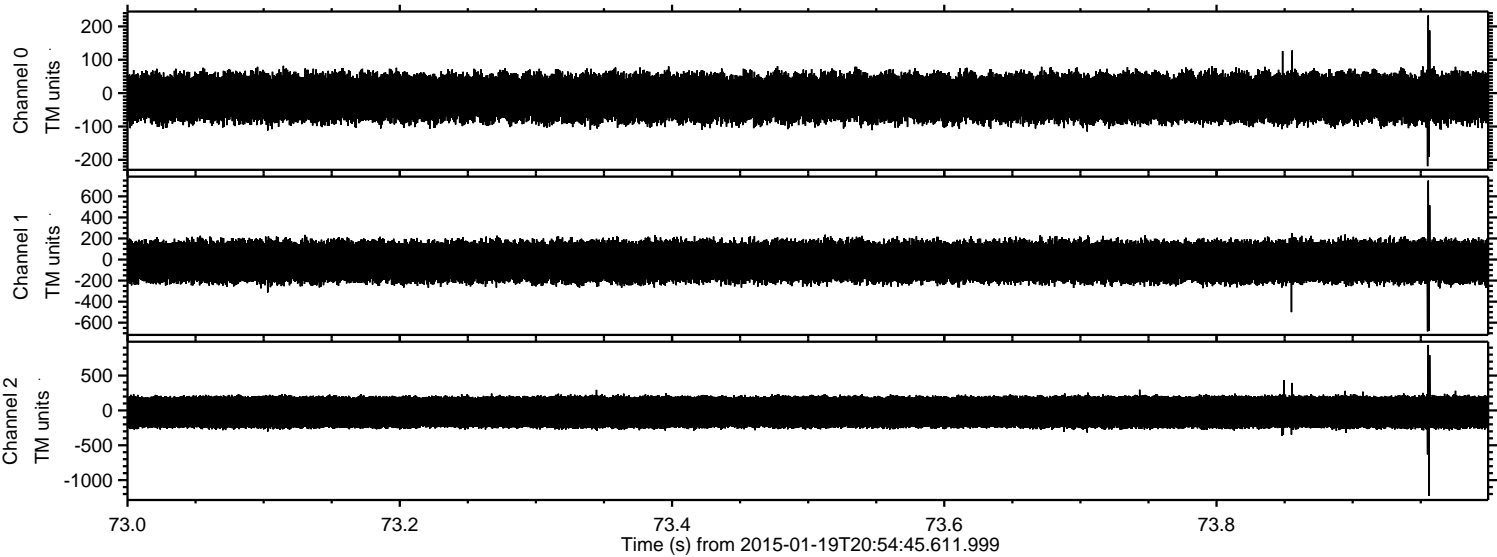
Processed Sun Feb 8 02:55:00 2015 by ELM ver.2012-10-06 from 001__elm20150119_205444__dat00.bin



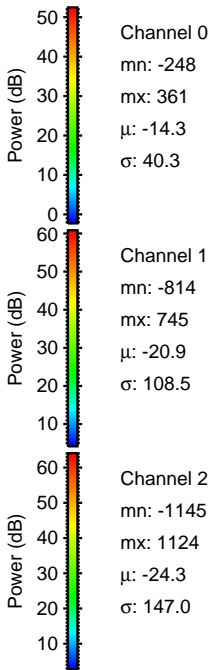
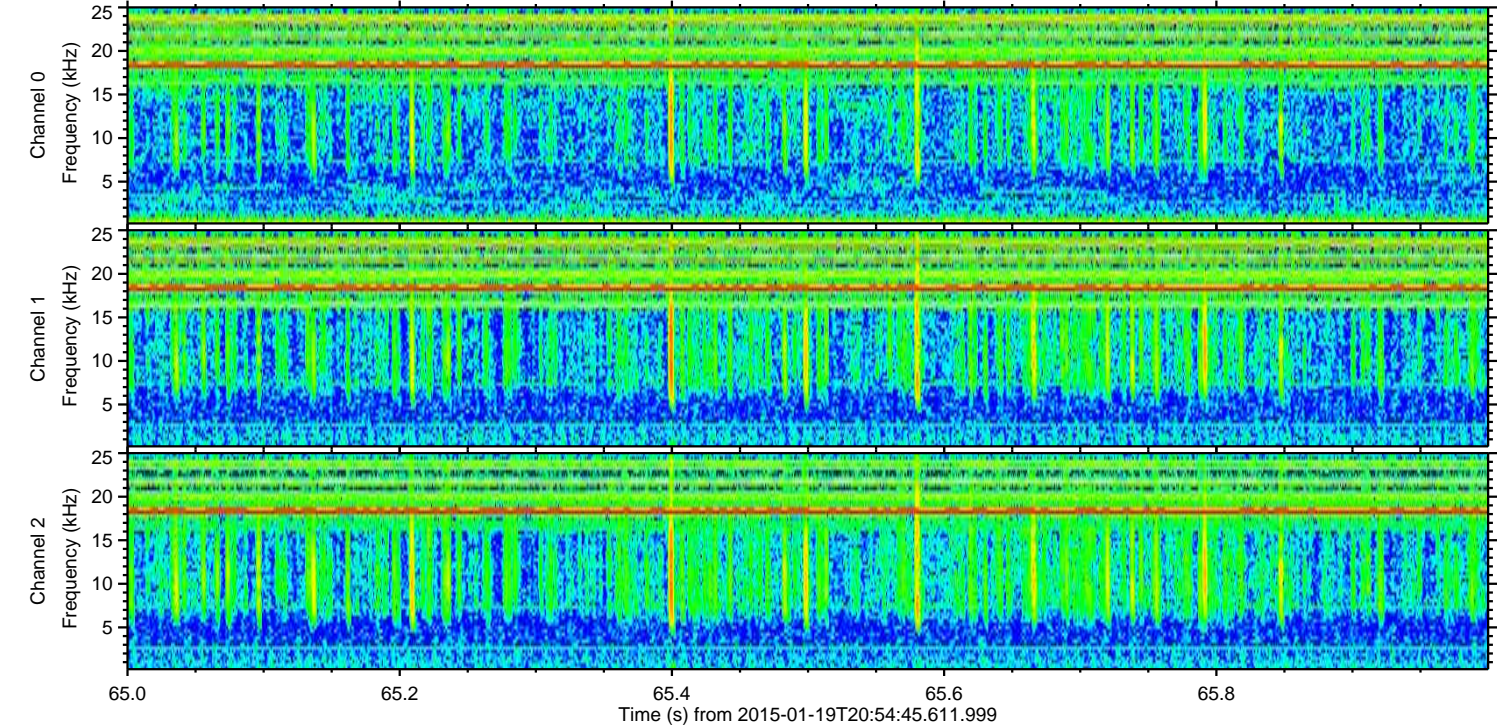
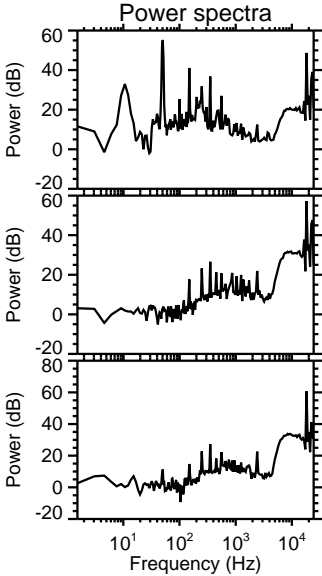
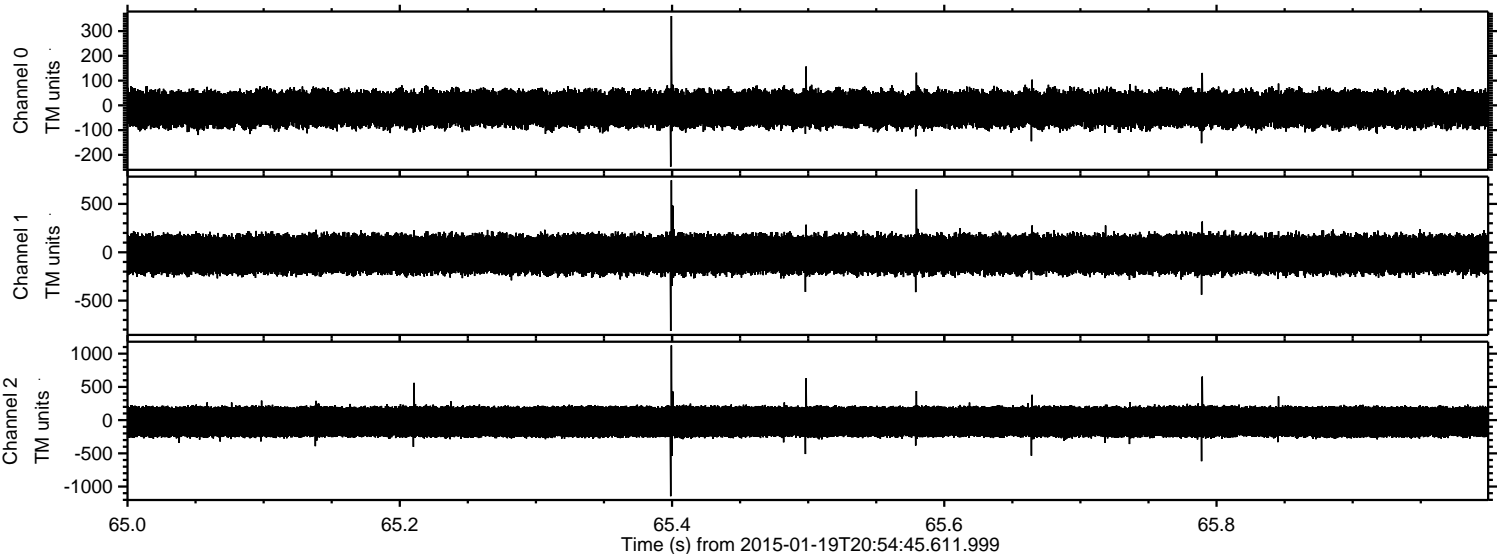
Processed Sun Feb 8 02:55:00 2015 by ELM ver.2012-10-06 from 001__elm20150119_205444__dat00.bin



Processed Sun Feb 8 02:55:01 2015 by ELM ver.2012-10-06 from 001__elm20150119_205444__dat00.bin

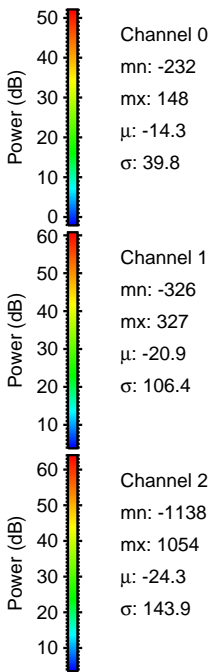
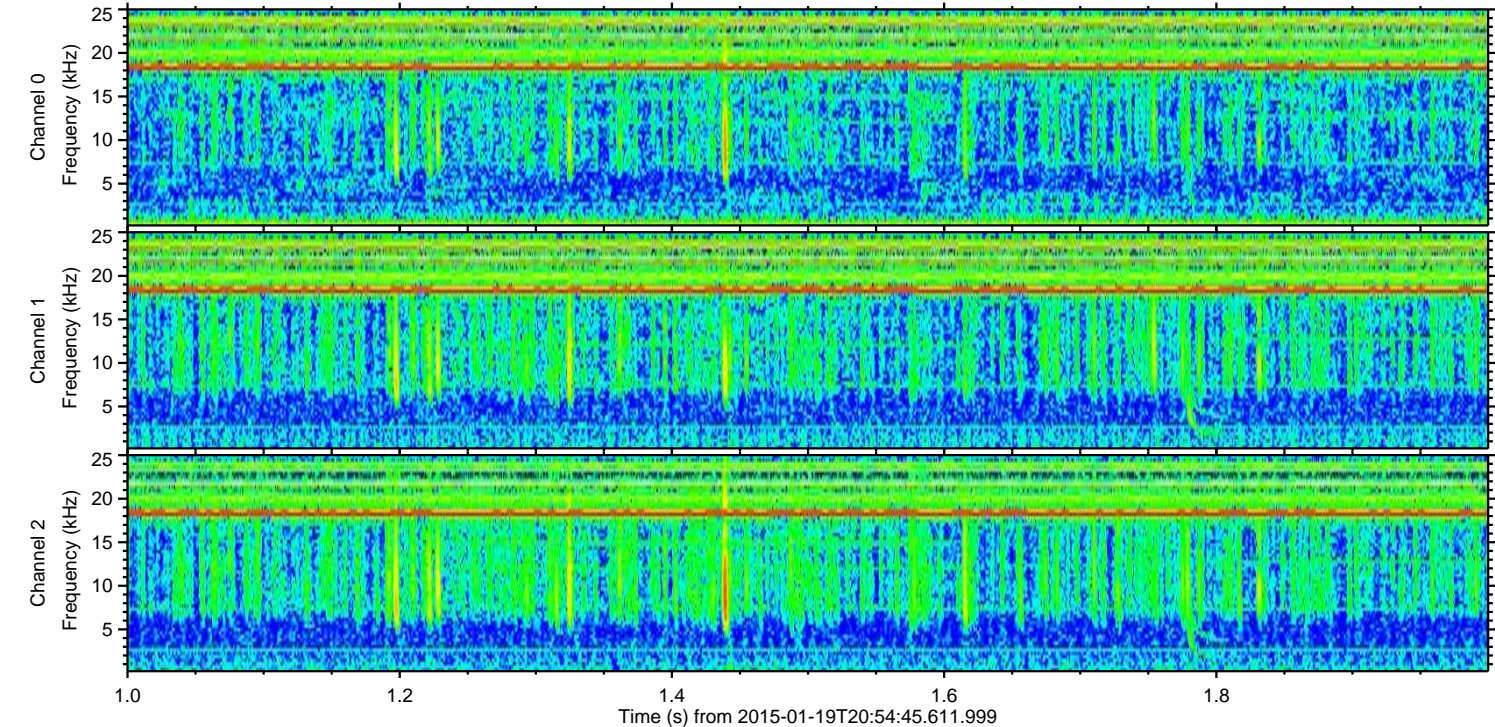
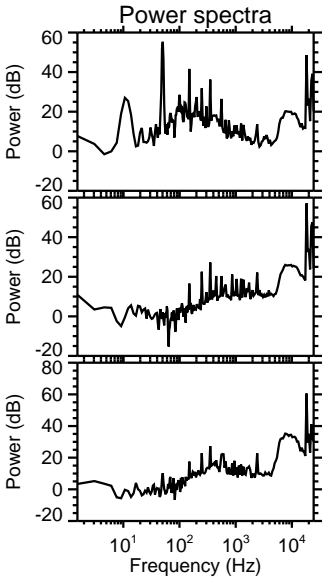
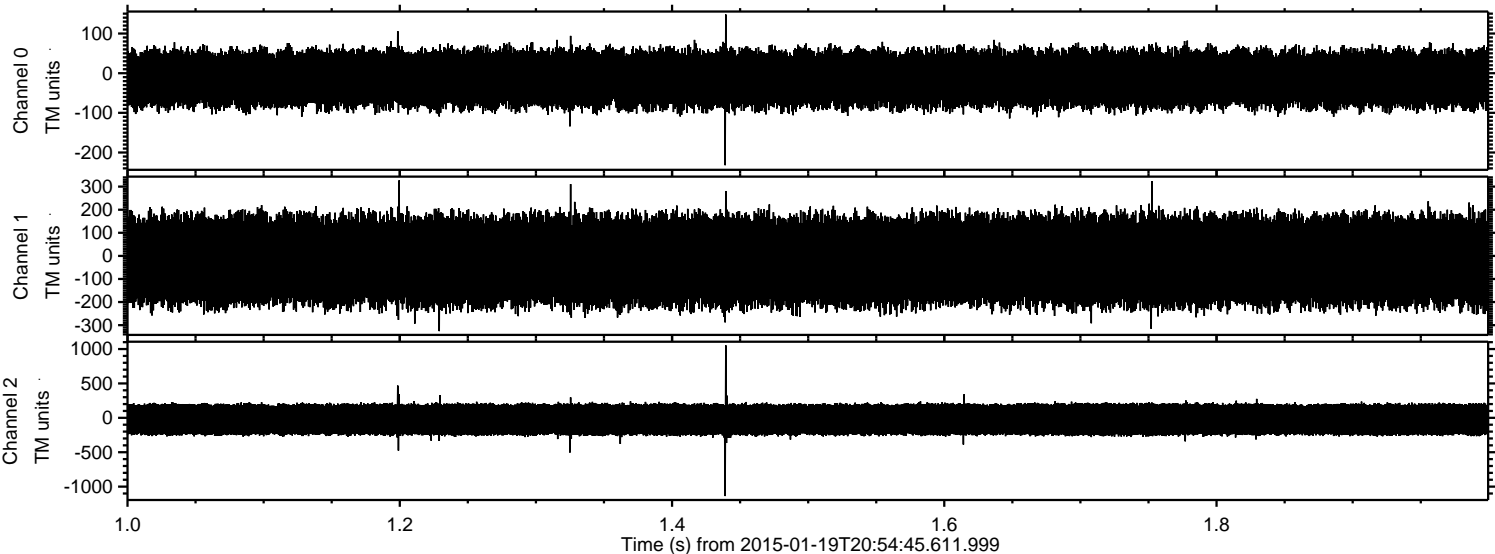


Processed Sun Feb 8 02:55:02 2015 by ELM ver.2012-10-06 from 001__elm20150119_205444__dat00.bin

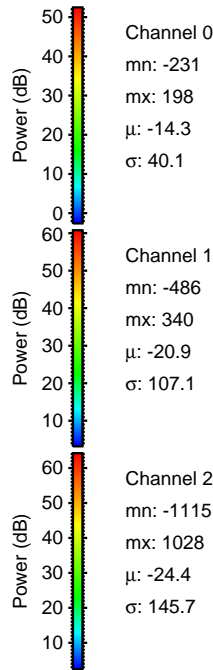
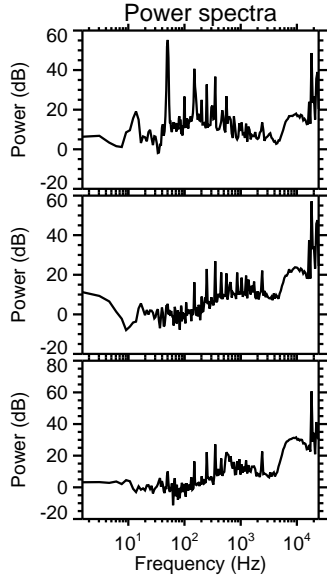
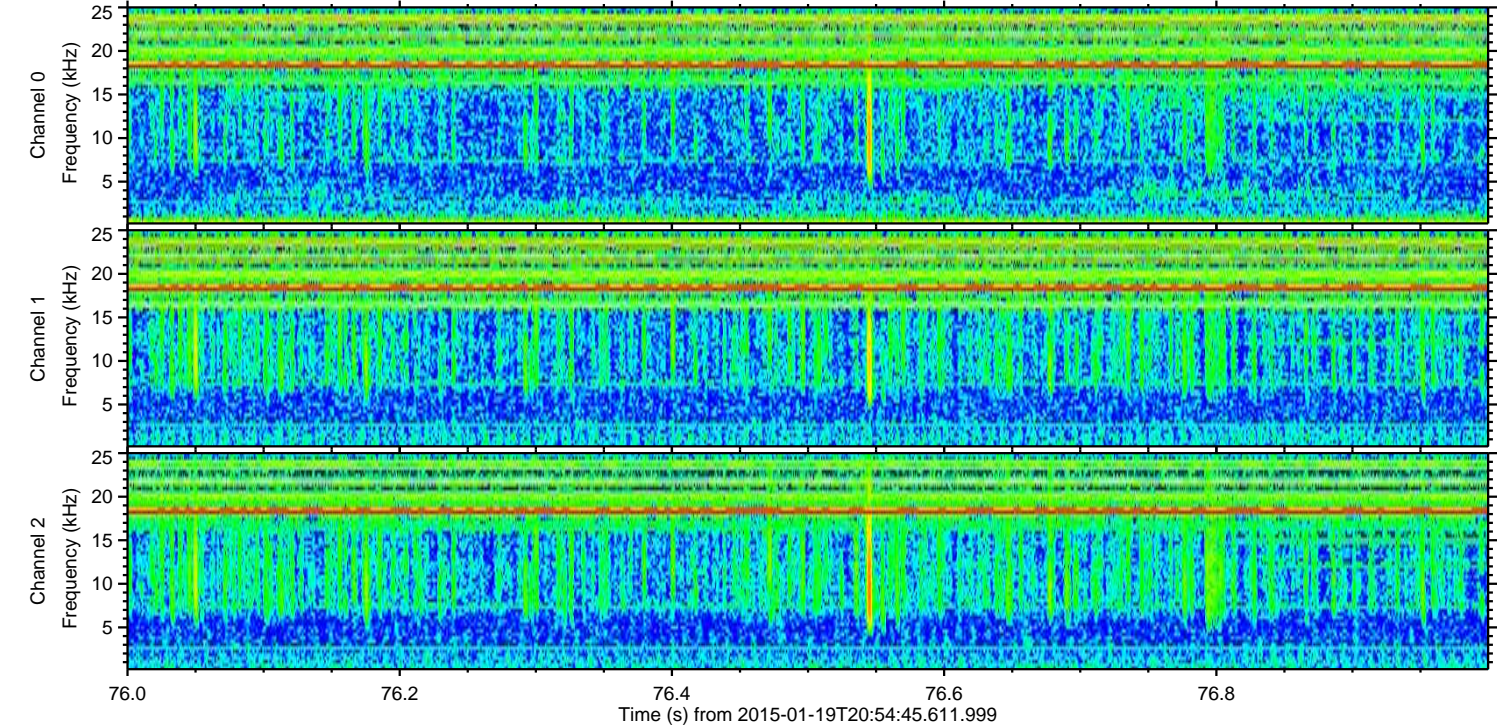
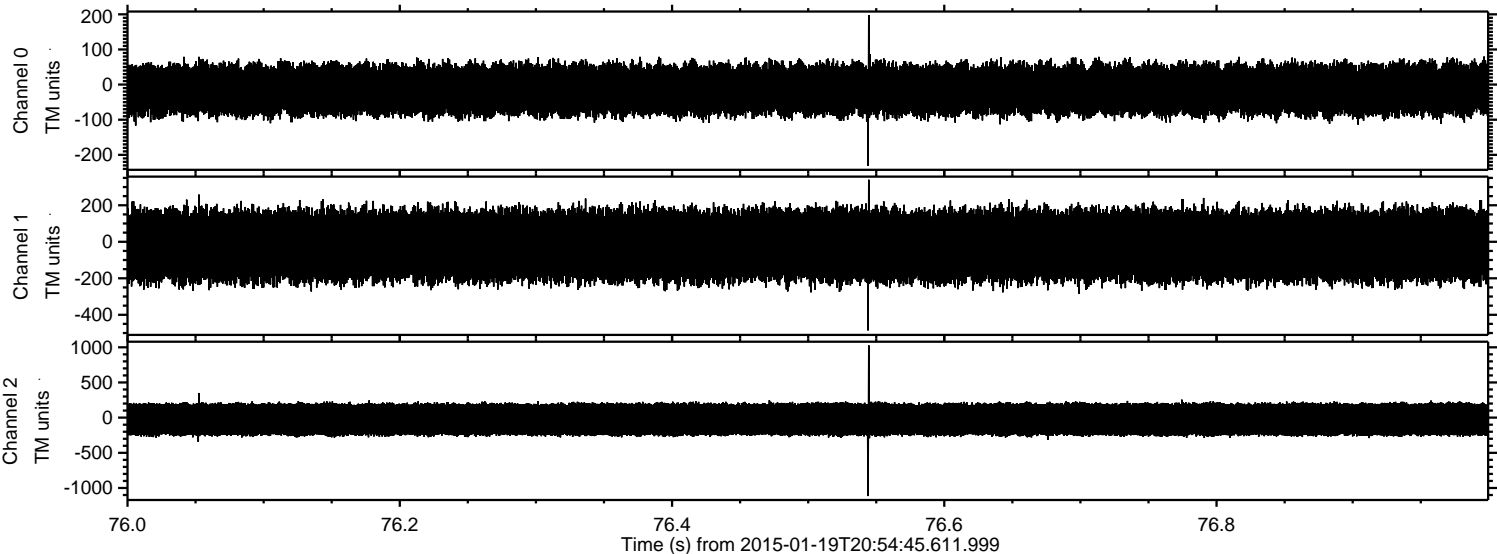


ELMAVAN 3D WAVEFORMS (Measured data sampled at 50 kHz) 49806 packets of 144 samples from 2015-01-19T20:54:45.611.999. Part 2/144

Processed Sun Feb 8 02:55:03 2015 by ELM ver.2012-10-06 from 001__elm20150119_205444__dat00.bin



Processed Sun Feb 8 02:55:05 2015 by ELM ver.2012-10-06 from 001__elm20150119_205444__dat00.bin



Channel 0
mn: -231
mx: 198
 μ : -14.3
 σ : 40.1

Channel 1
mn: -486
mx: 340
 μ : -20.9
 σ : 107.1

Channel 2
mn: -1115
mx: 1028
 μ : -24.4
 σ : 145.7

Processed Sun Feb 8 02:55:06 2015 by ELM ver.2012-10-06 from 001__elm20150119_205444__dat00.bin

