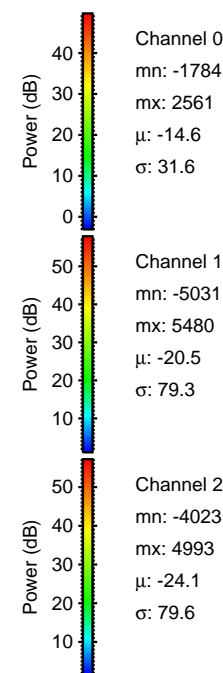
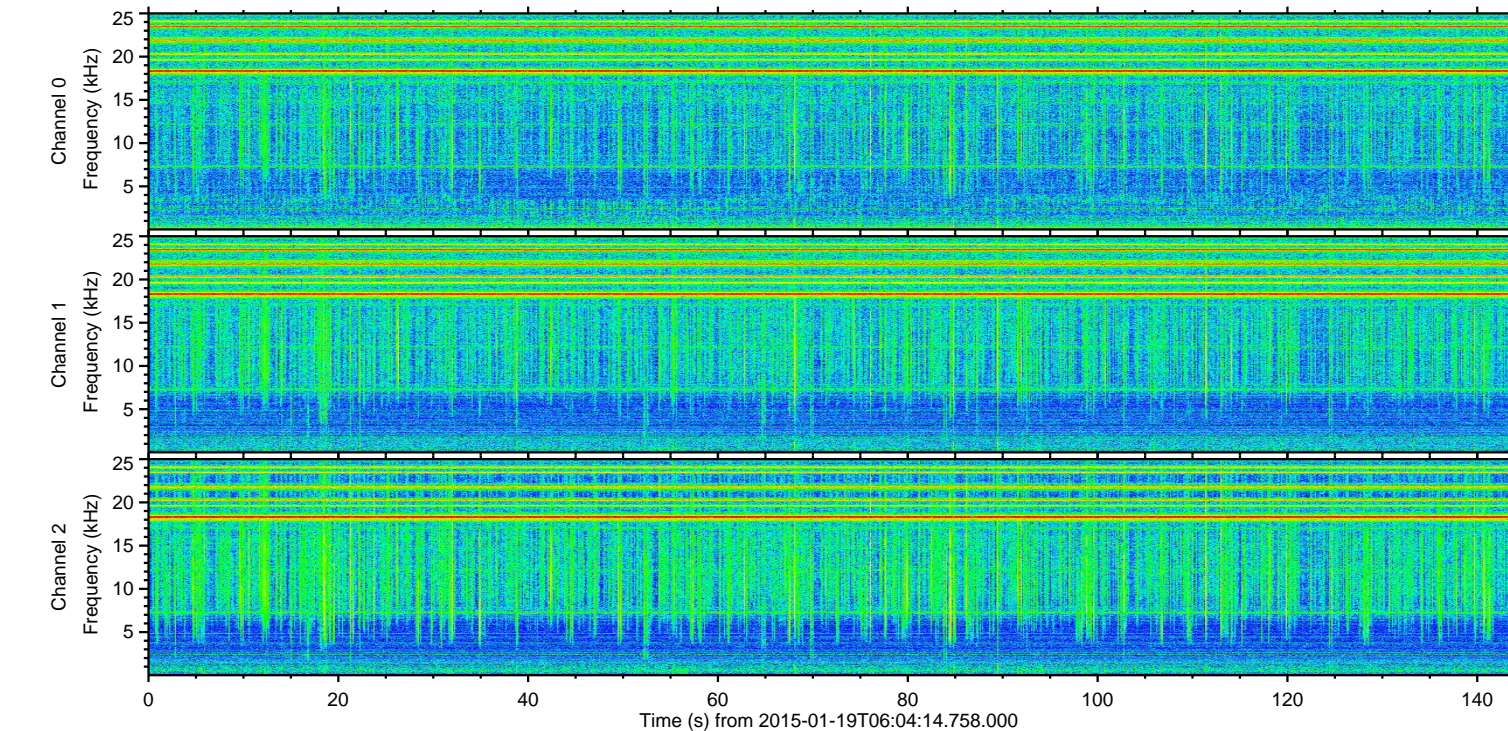
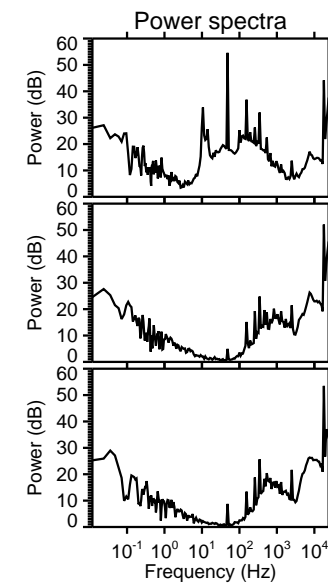
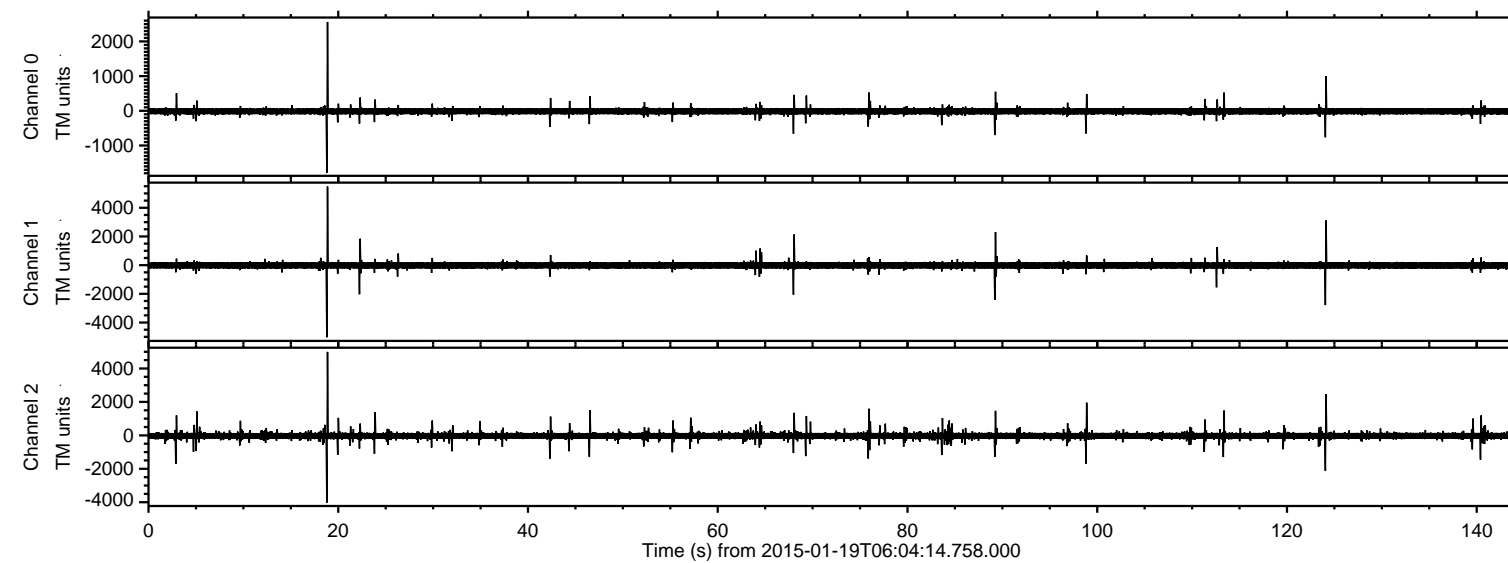


# ELMAVAN 3D WAVEFORMS (Measured data sampled at 50 kHz) 49798 packets of 144 samples from 2015-01-19T06:04:14.758.000.

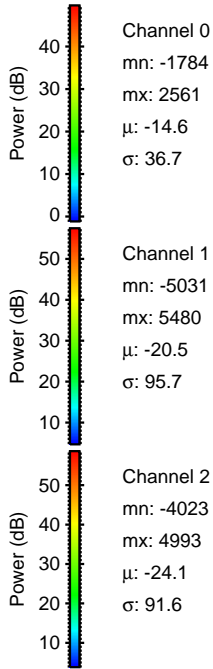
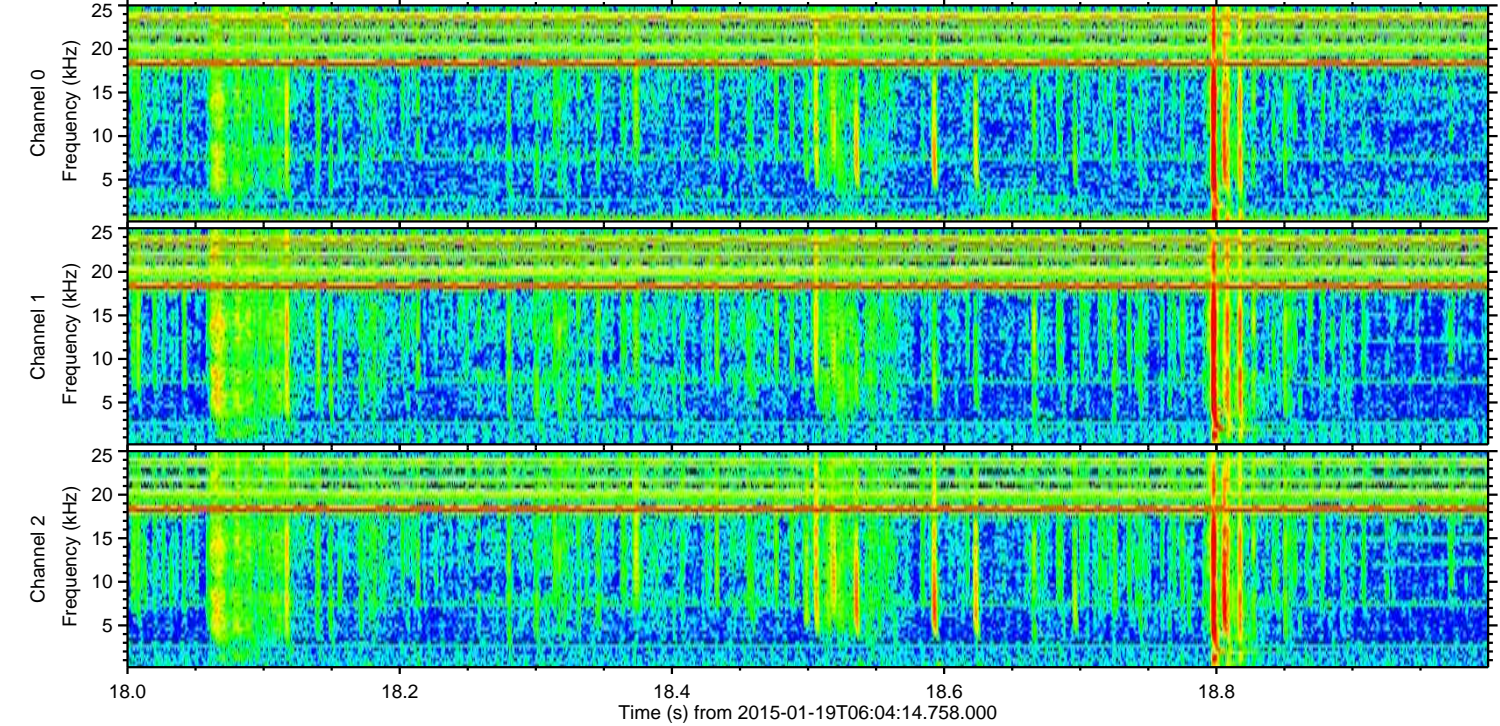
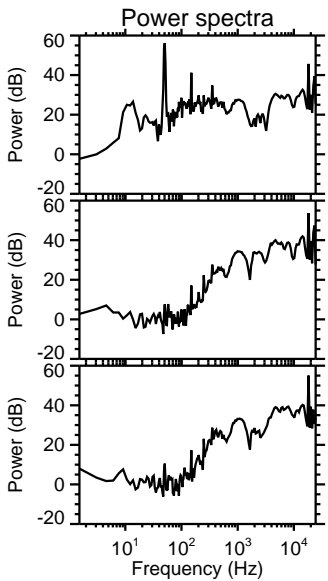
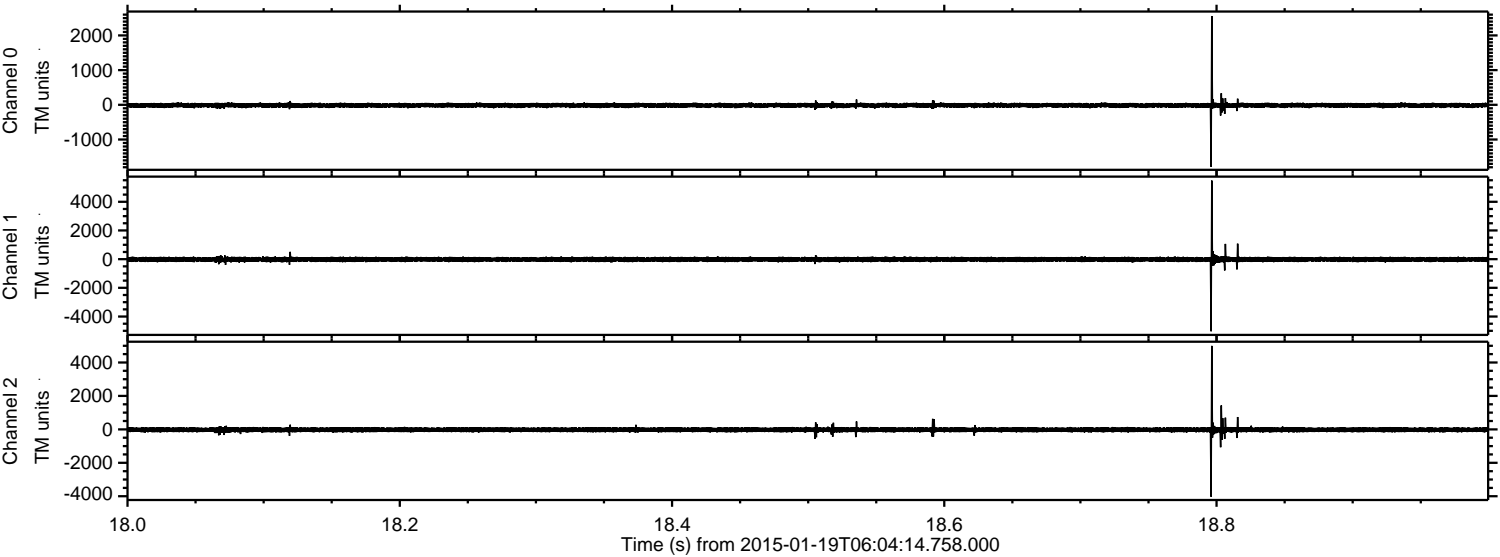
Processed Fri Jan 30 17:14:35 2015 by ELM ver.2012-10-06 from 001\_\_elm20150119\_060413\_\_dat00.bin





ELMAVAN 3D WAVEFORMS (Measured data sampled at 50 kHz) 49798 packets of 144 samples from 2015-01-19T06:04:14.758.000. Part 19/144

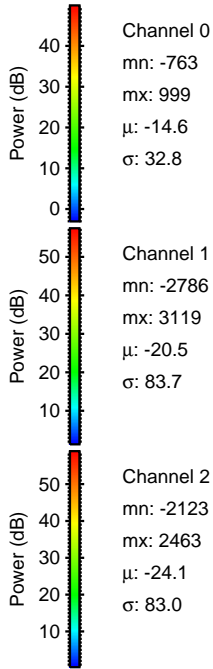
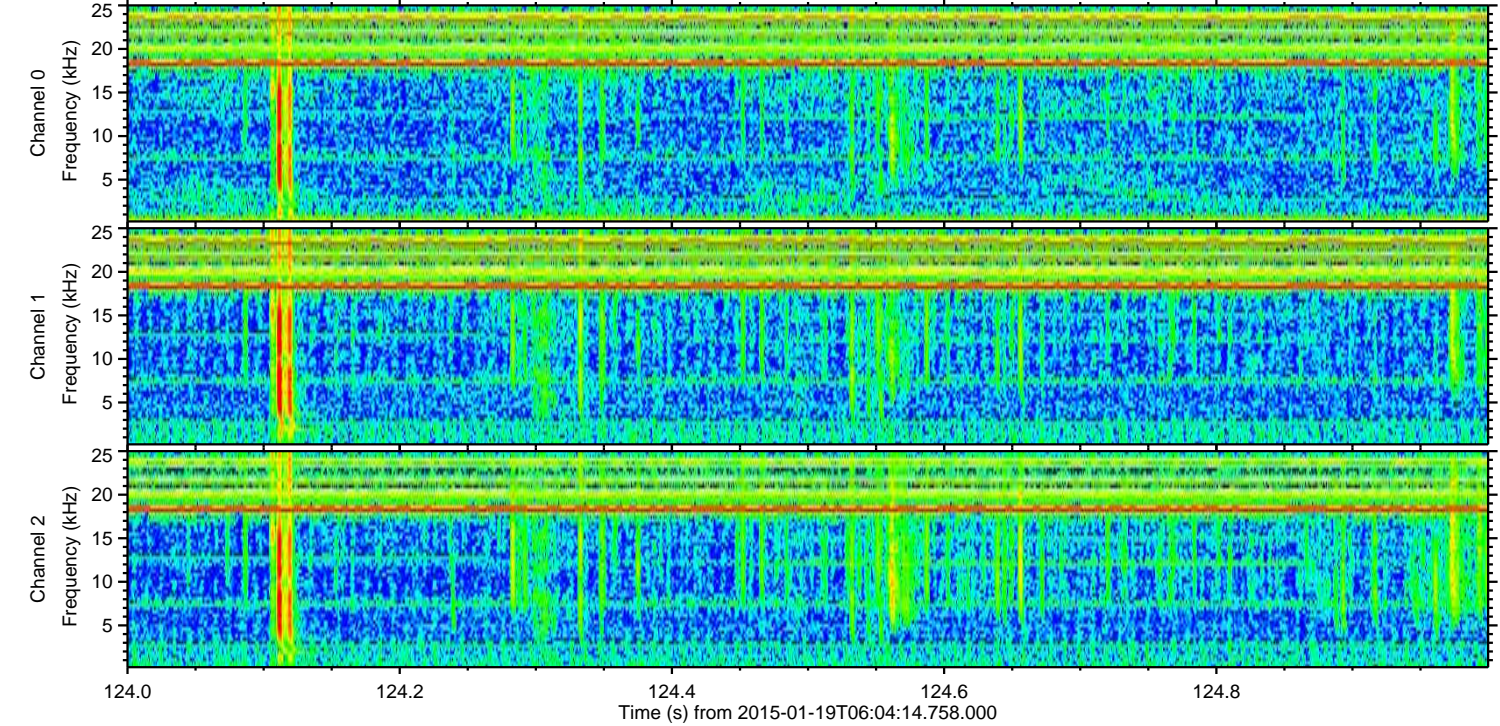
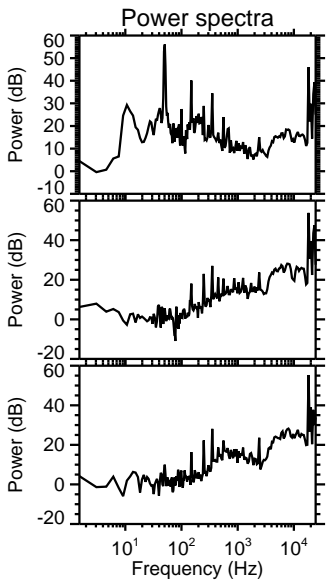
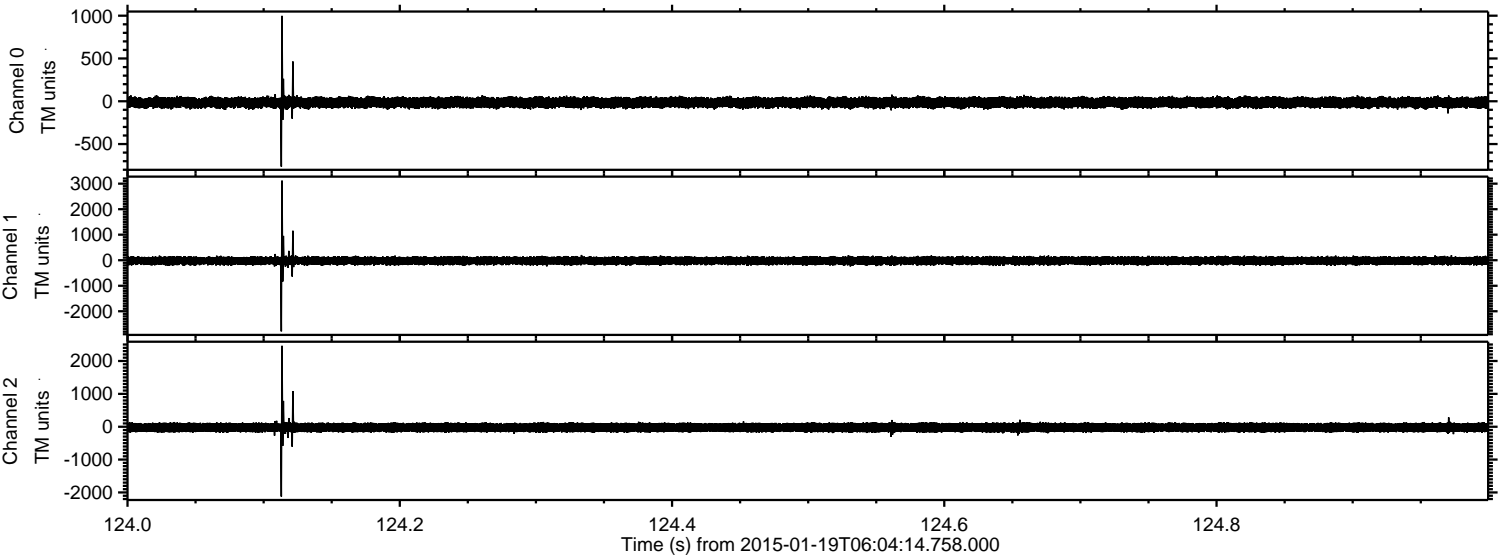
Processed Fri Jan 30 17:14:47 2015 by ELM ver.2012-10-06 from 001\_\_elm20150119\_060413\_\_dat00.bin





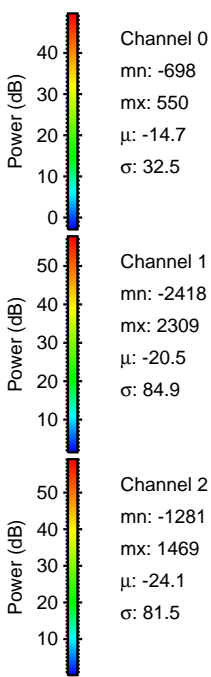
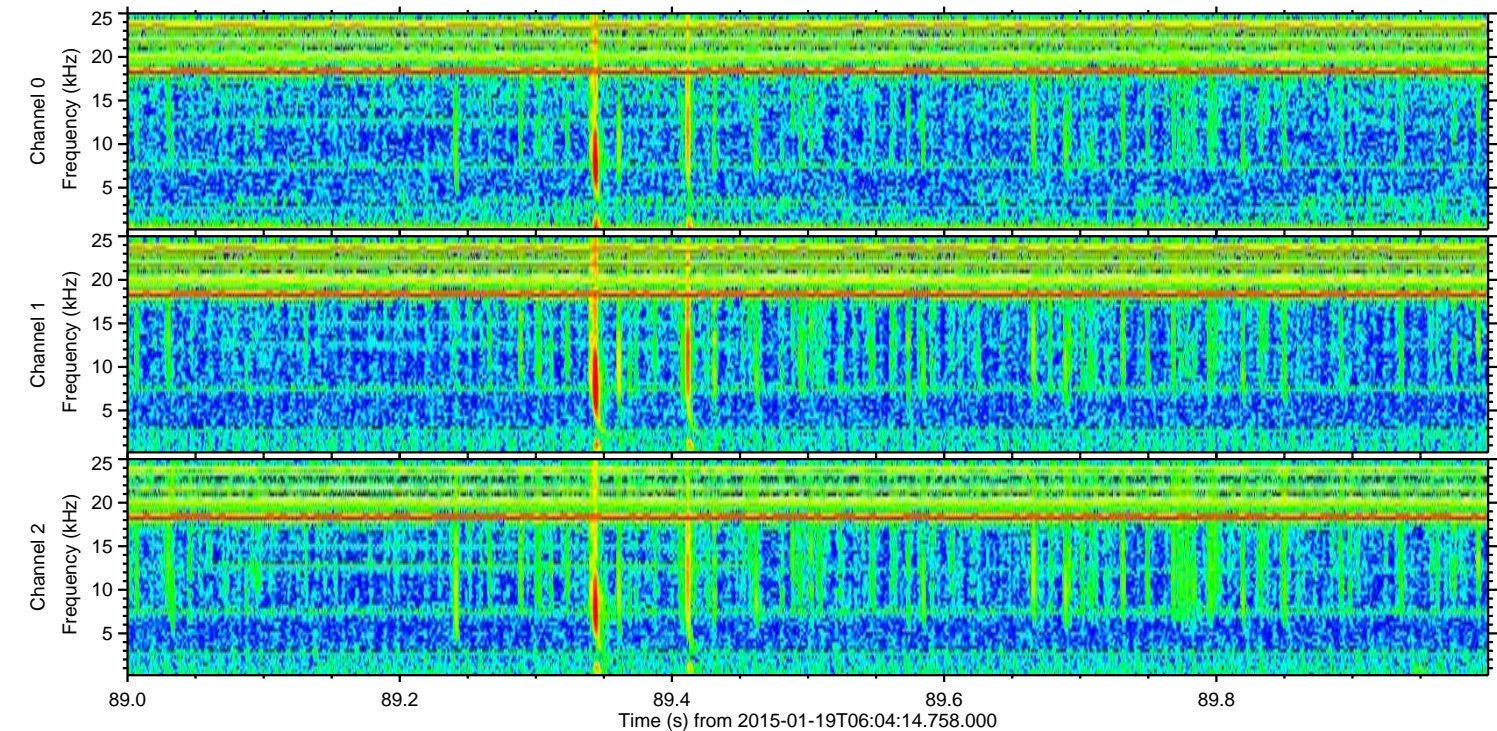
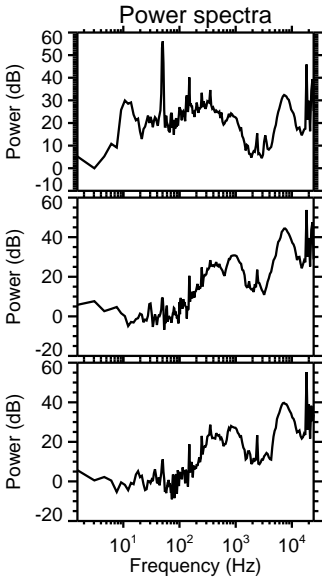
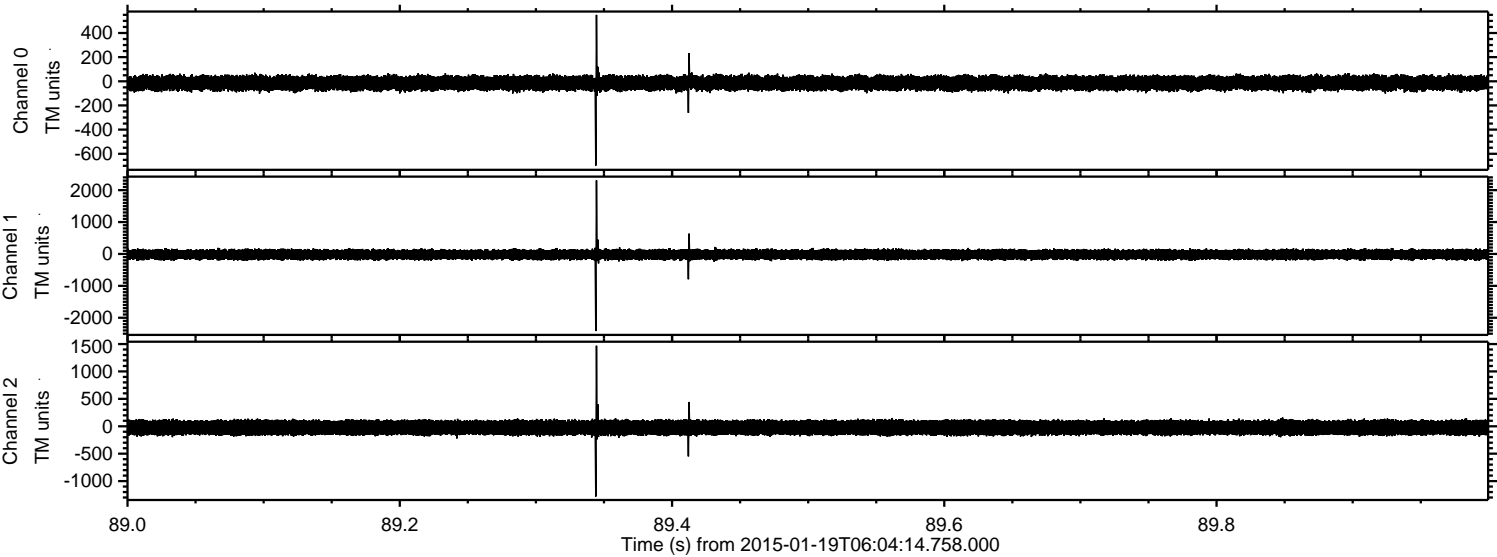
ELMAVAN 3D WAVEFORMS (Measured data sampled at 50 kHz) 49798 packets of 144 samples from 2015-01-19T06:04:14.758.000. Part 125/144

Processed Fri Jan 30 17:14:47 2015 by ELM ver.2012-10-06 from 001\_\_elm20150119\_060413\_\_dat00.bin



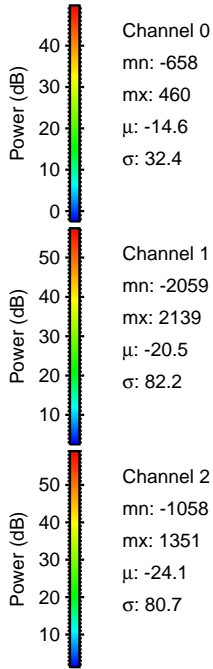
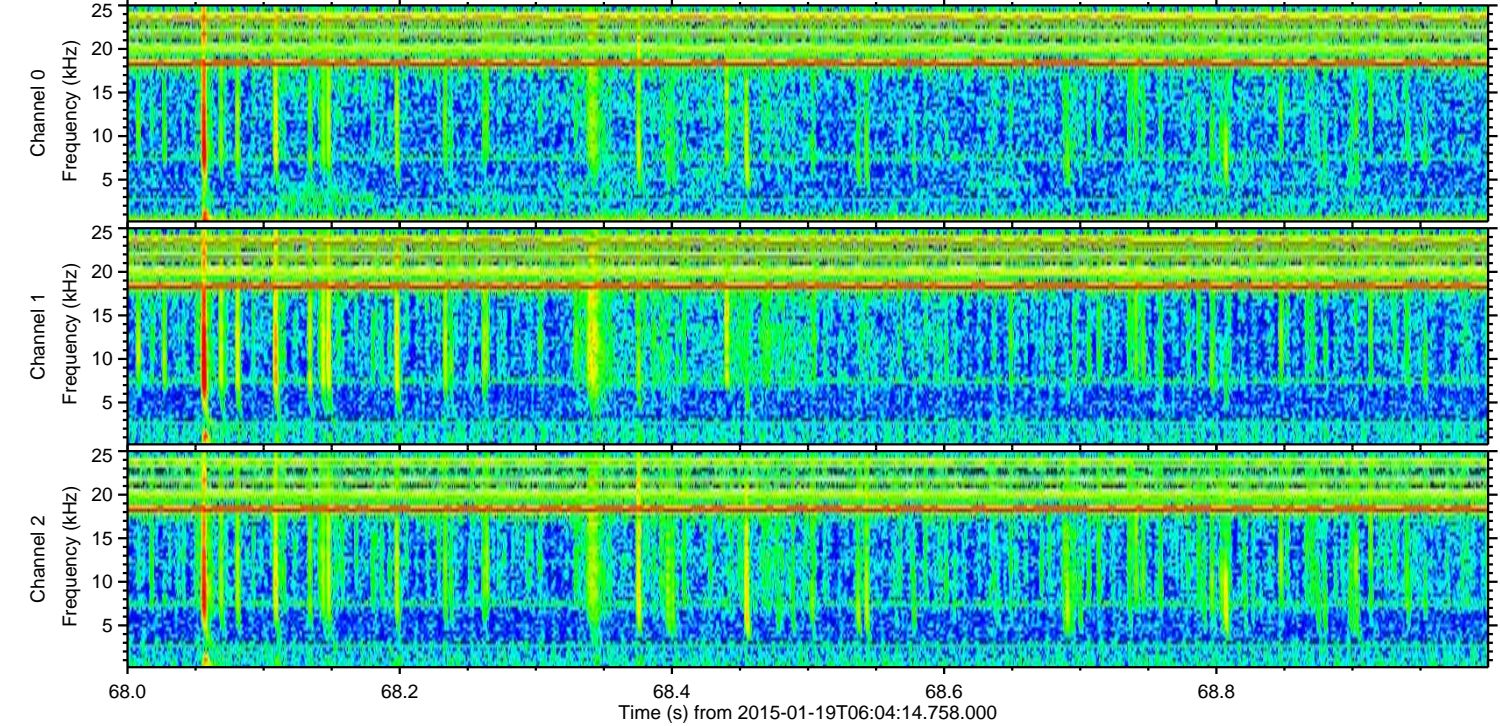
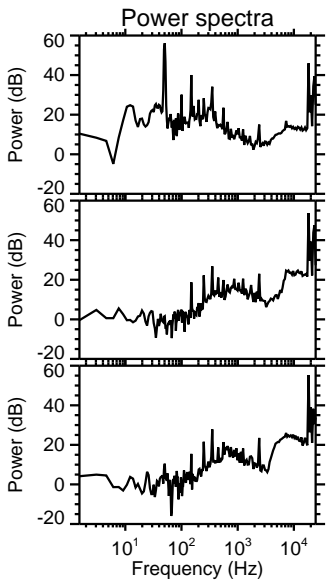
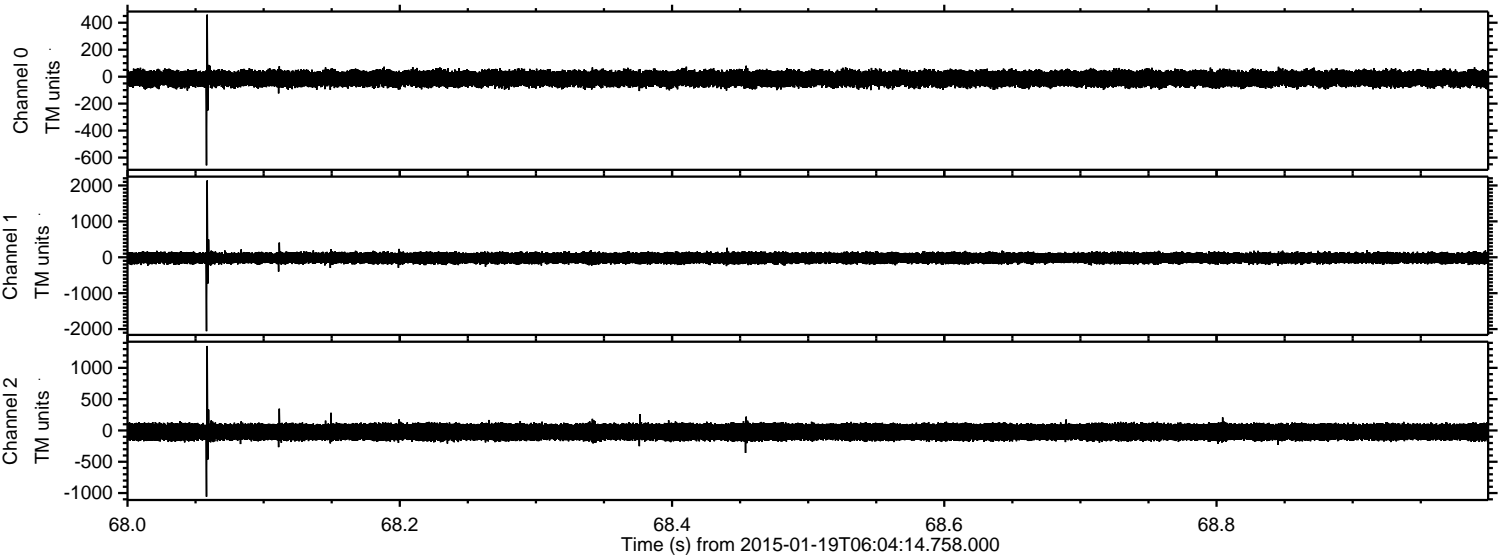


Processed Fri Jan 30 17:14:48 2015 by ELM ver.2012-10-06 from 001\_\_elm20150119\_060413\_\_dat00.bin





Processed Fri Jan 30 17:14:49 2015 by ELM ver.2012-10-06 from 001\_\_elm20150119\_060413\_\_dat00.bin



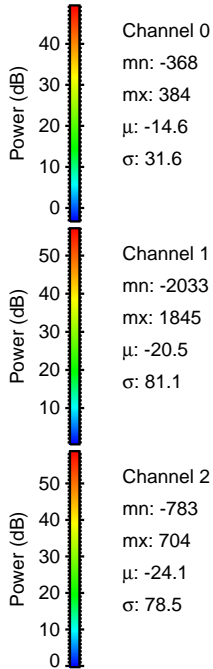
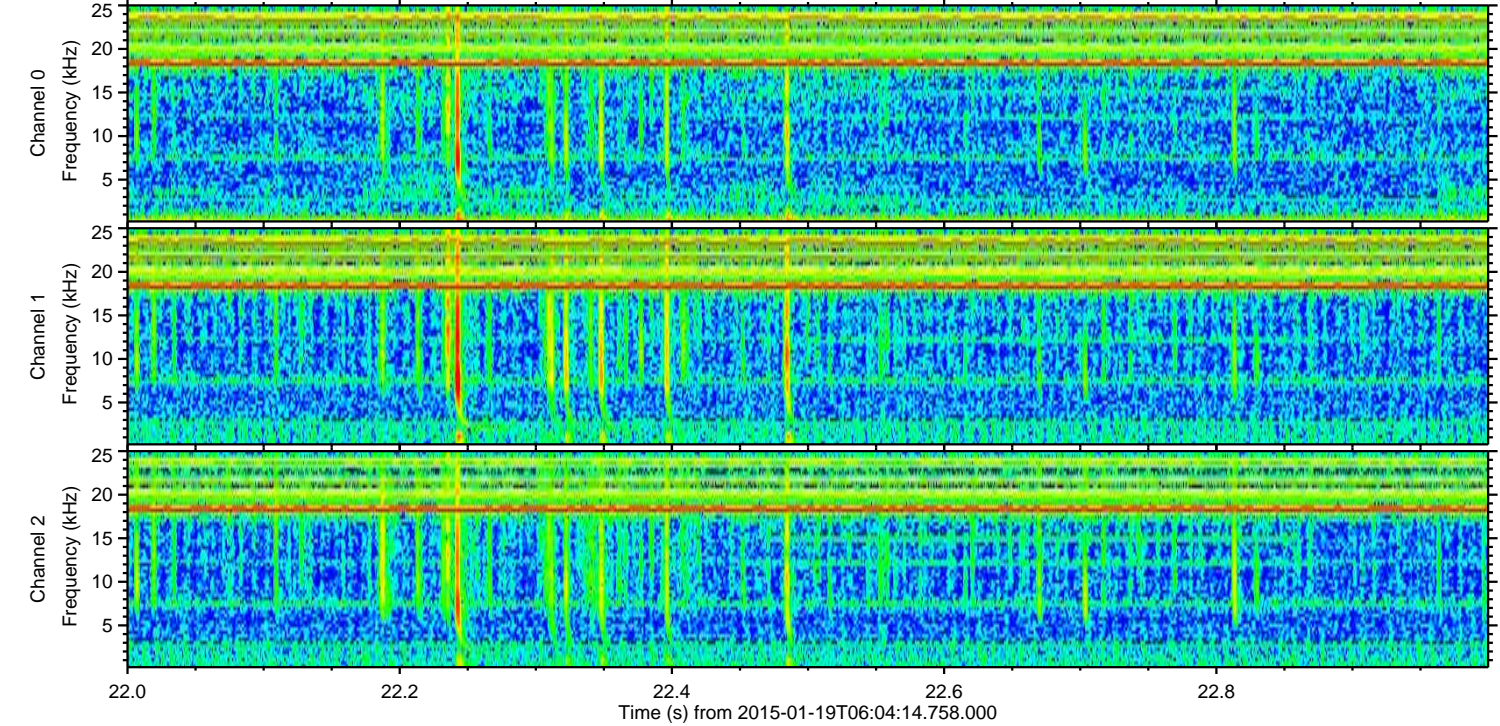
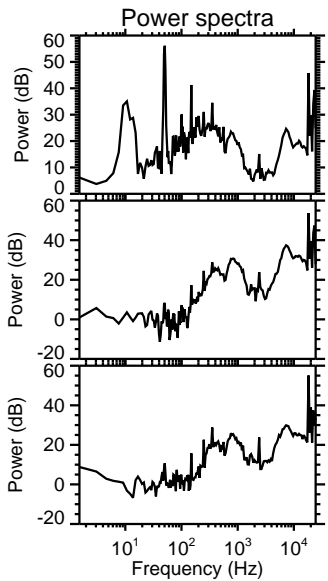
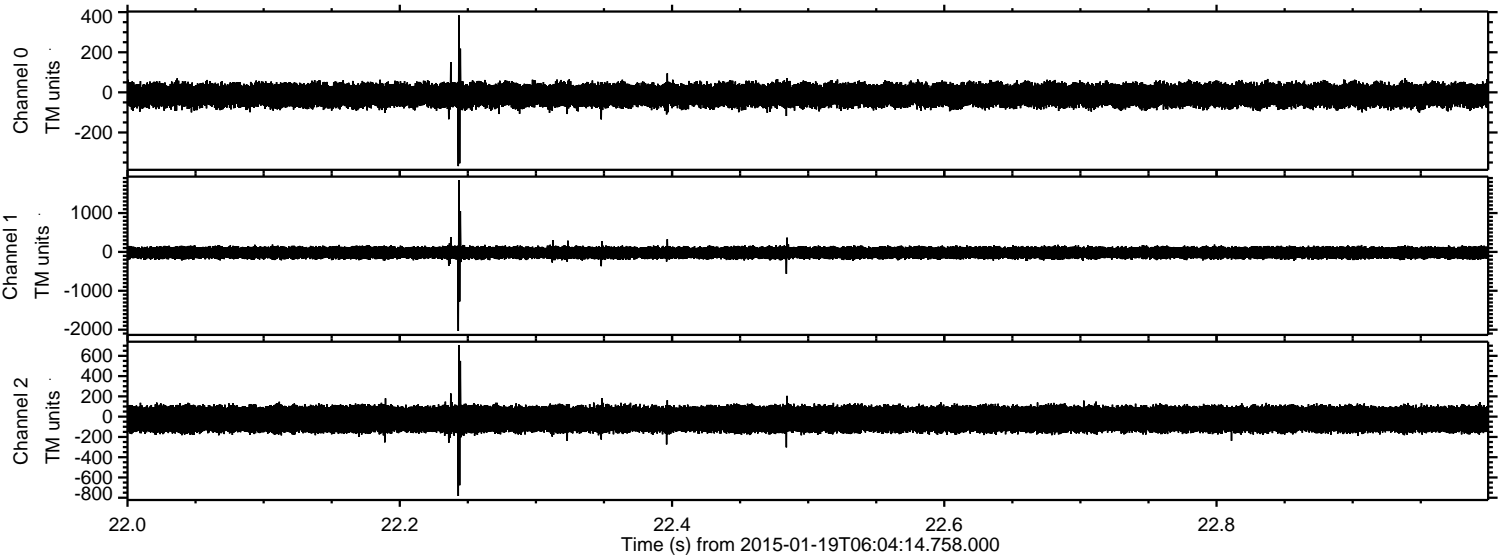
Channel 0  
mn: -658  
mx: 460  
 $\mu$ : -14.6  
 $\sigma$ : 32.4

Channel 1  
mn: -2059  
mx: 2139  
 $\mu$ : -20.5  
 $\sigma$ : 82.2

Channel 2  
mn: -1058  
mx: 1351  
 $\mu$ : -24.1  
 $\sigma$ : 80.7

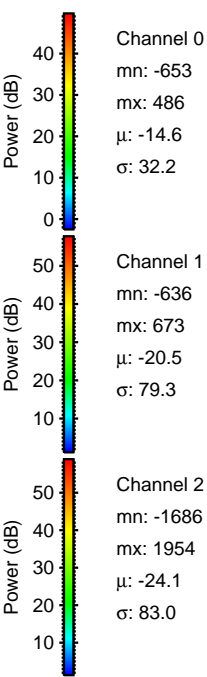
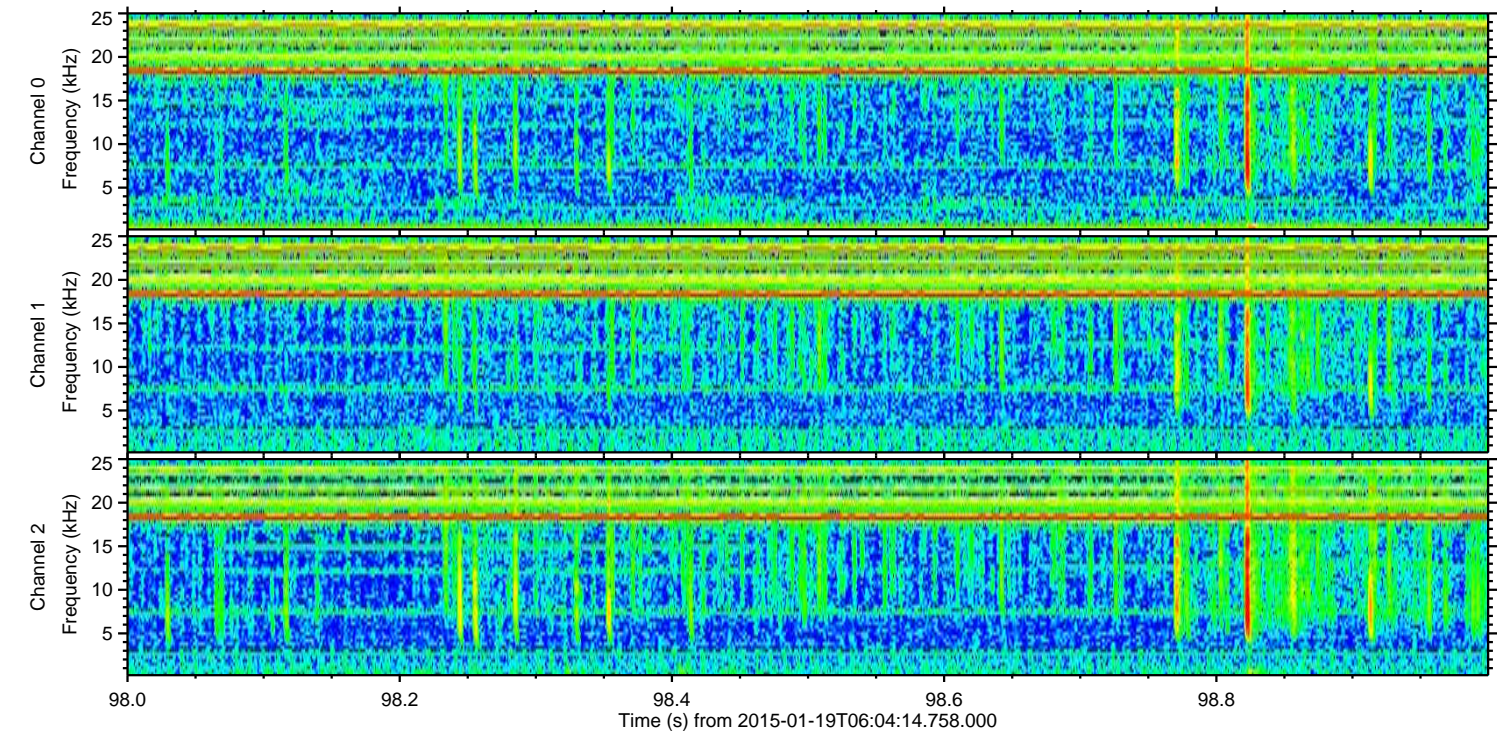
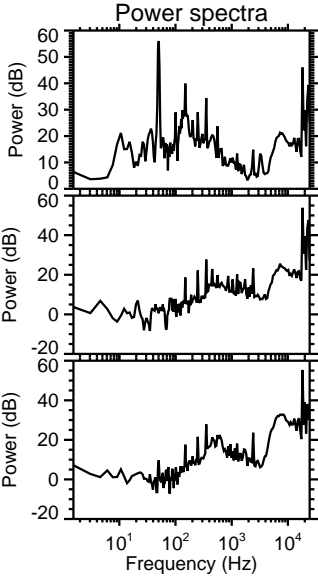
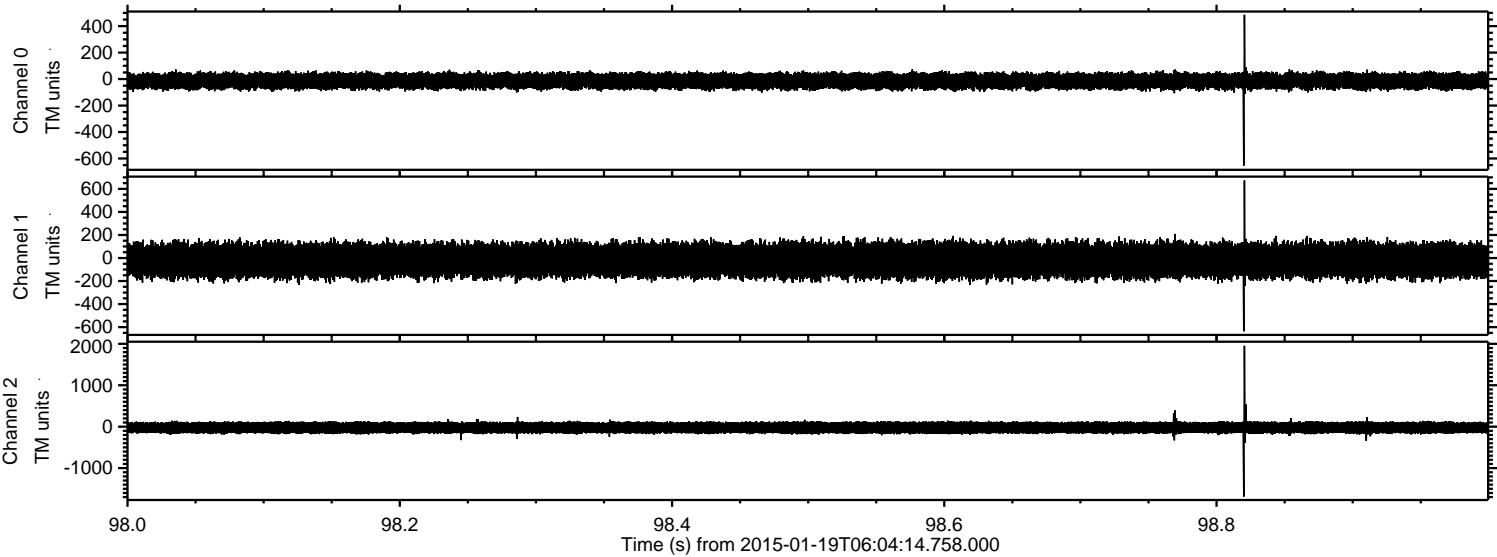


Processed Fri Jan 30 17:14:50 2015 by ELM ver.2012-10-06 from 001\_\_elm20150119\_060413\_\_dat00.bin





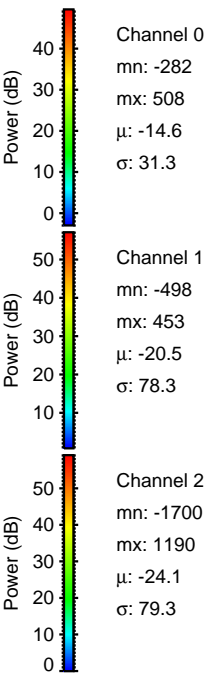
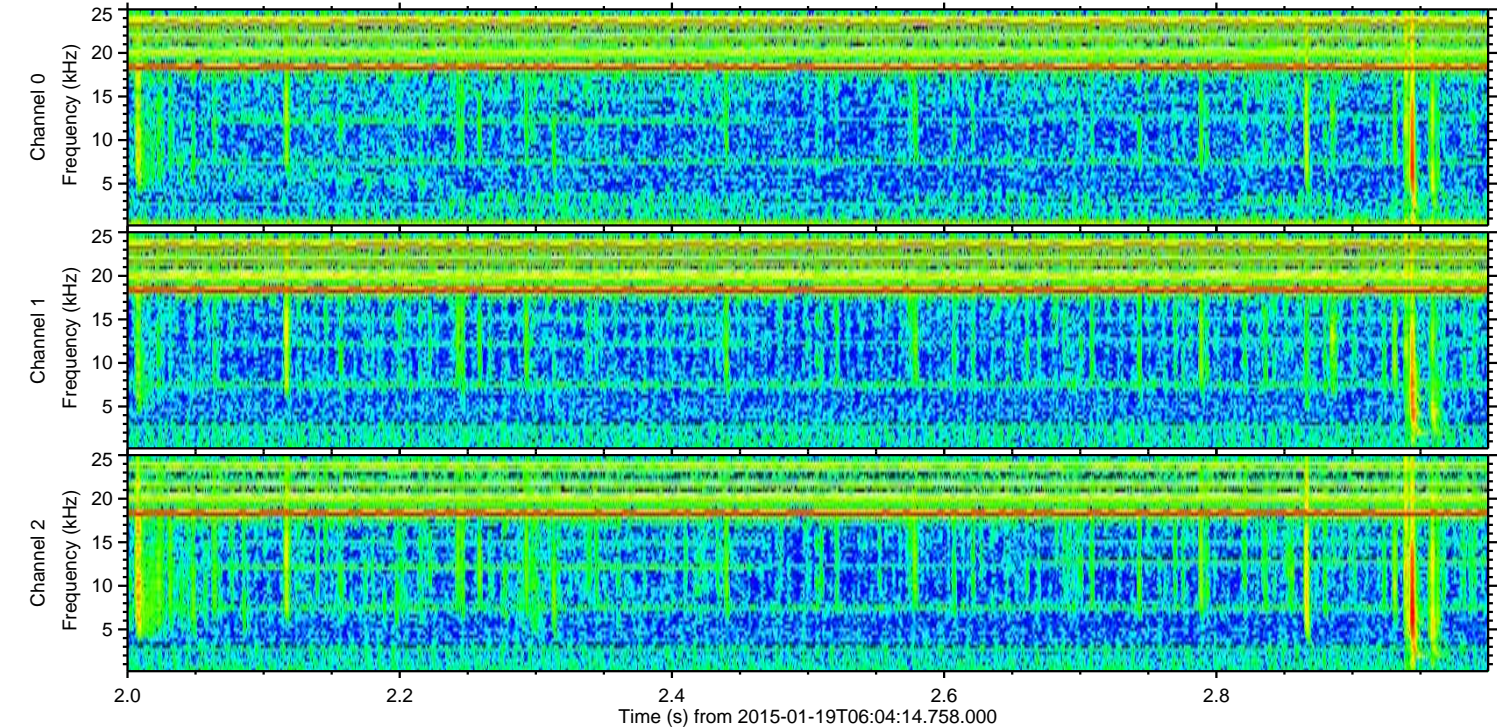
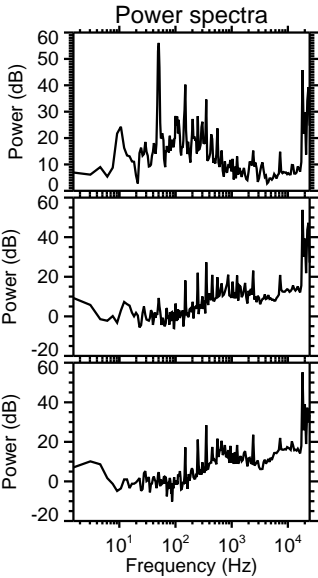
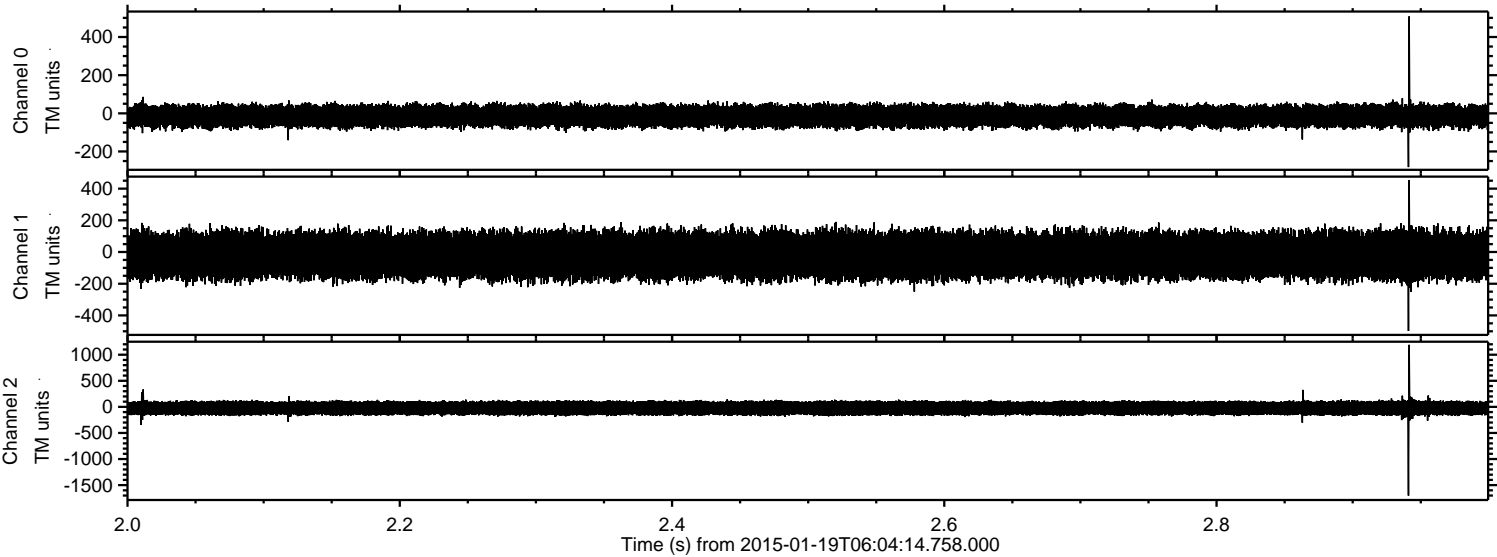
Processed Fri Jan 30 17:14:51 2015 by ELM ver.2012-10-06 from 001\_\_elm20150119\_060413\_\_dat00.bin





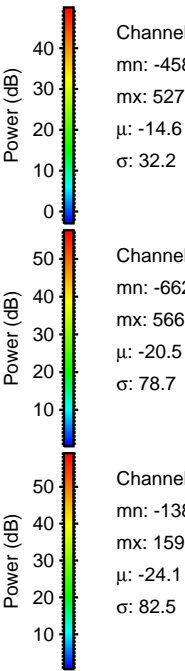
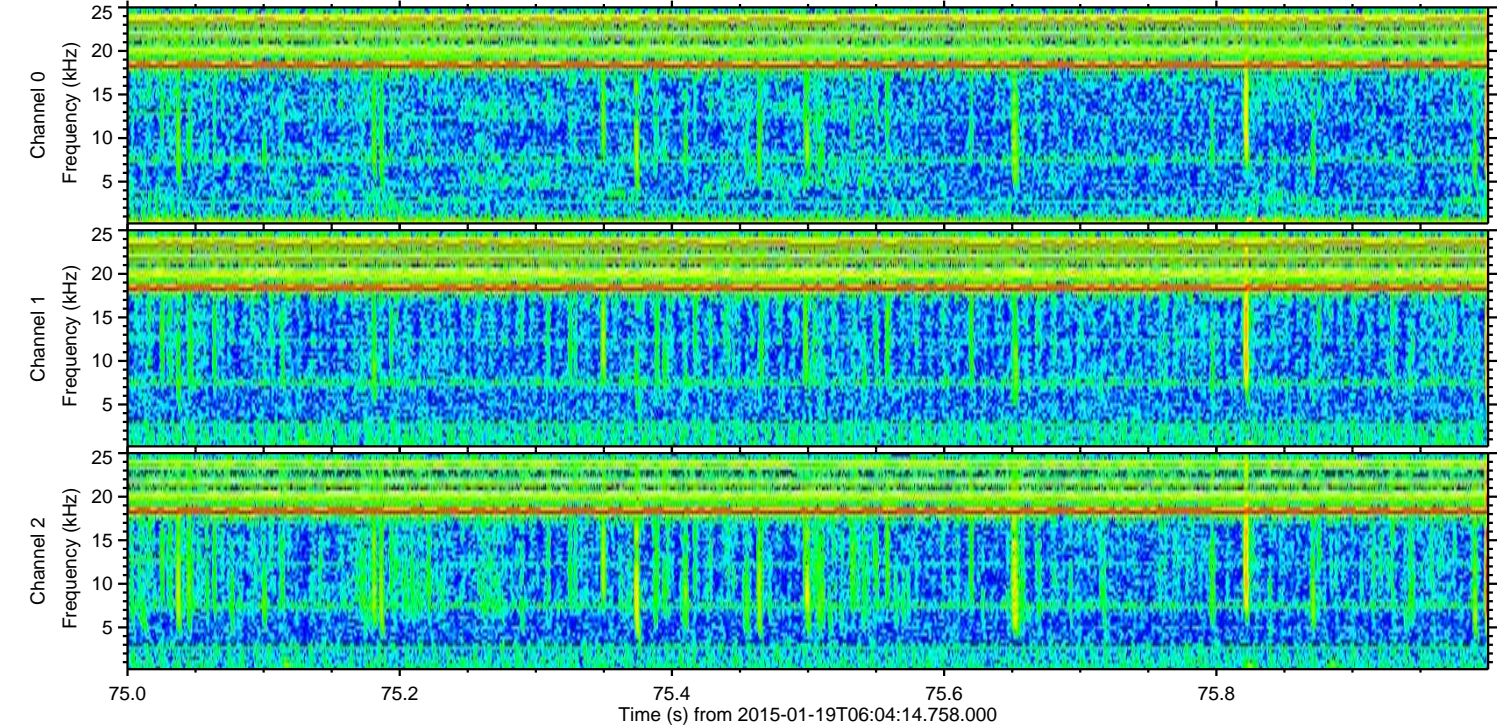
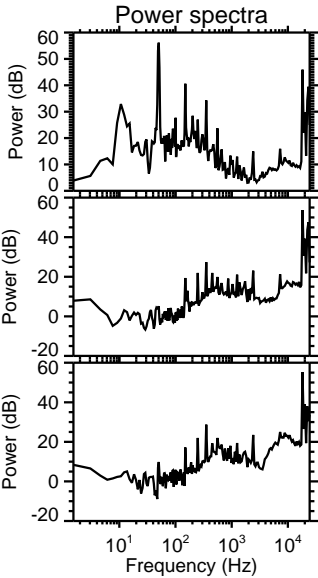
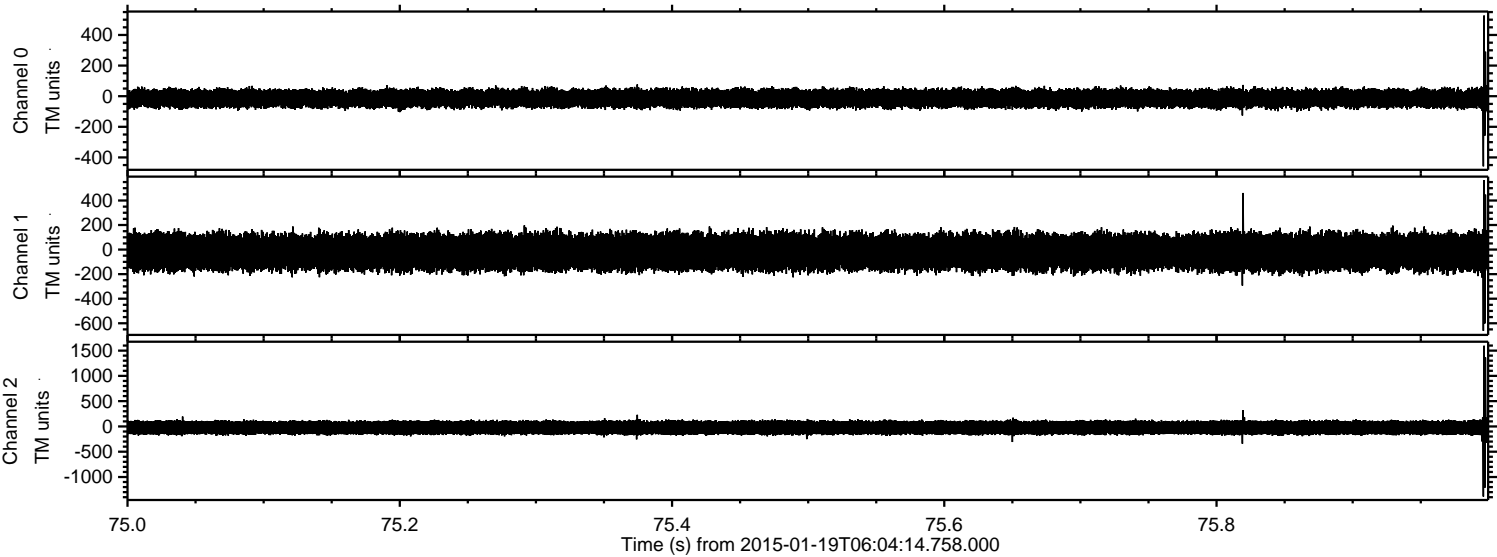
ELMAVAN 3D WAVEFORMS (Measured data sampled at 50 kHz) 49798 packets of 144 samples from 2015-01-19T06:04:14.758.000. Part 3/144

Processed Fri Jan 30 17:14:52 2015 by ELM ver.2012-10-06 from 001\_\_elm20150119\_060413\_\_dat00.bin





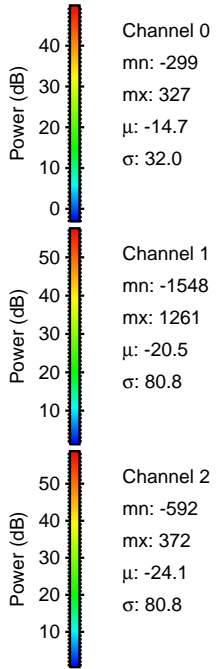
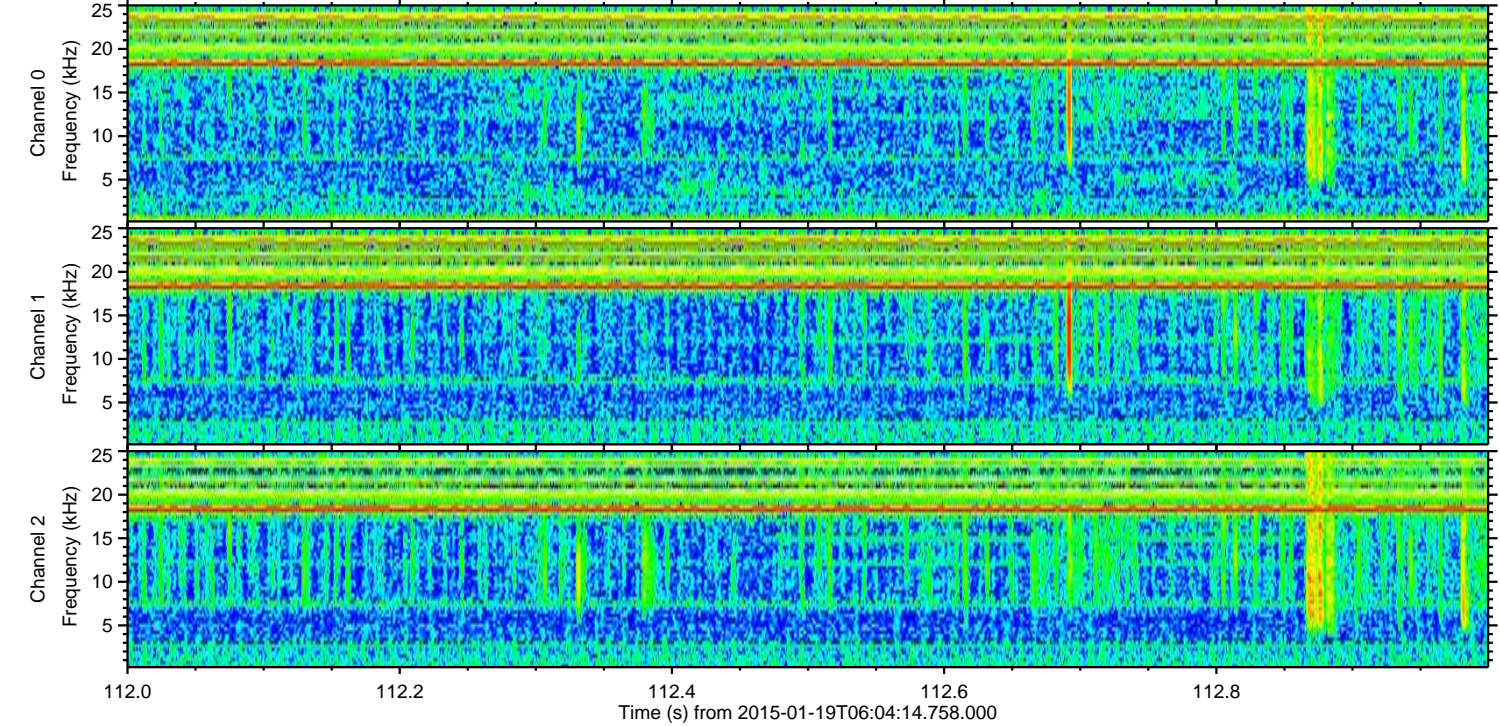
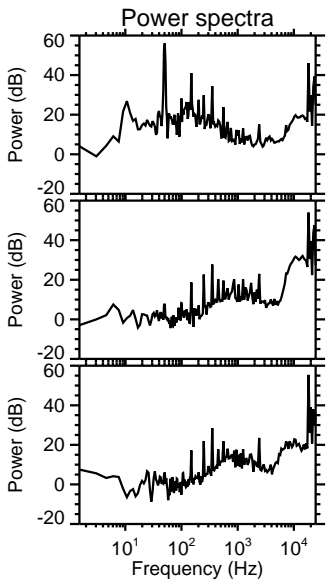
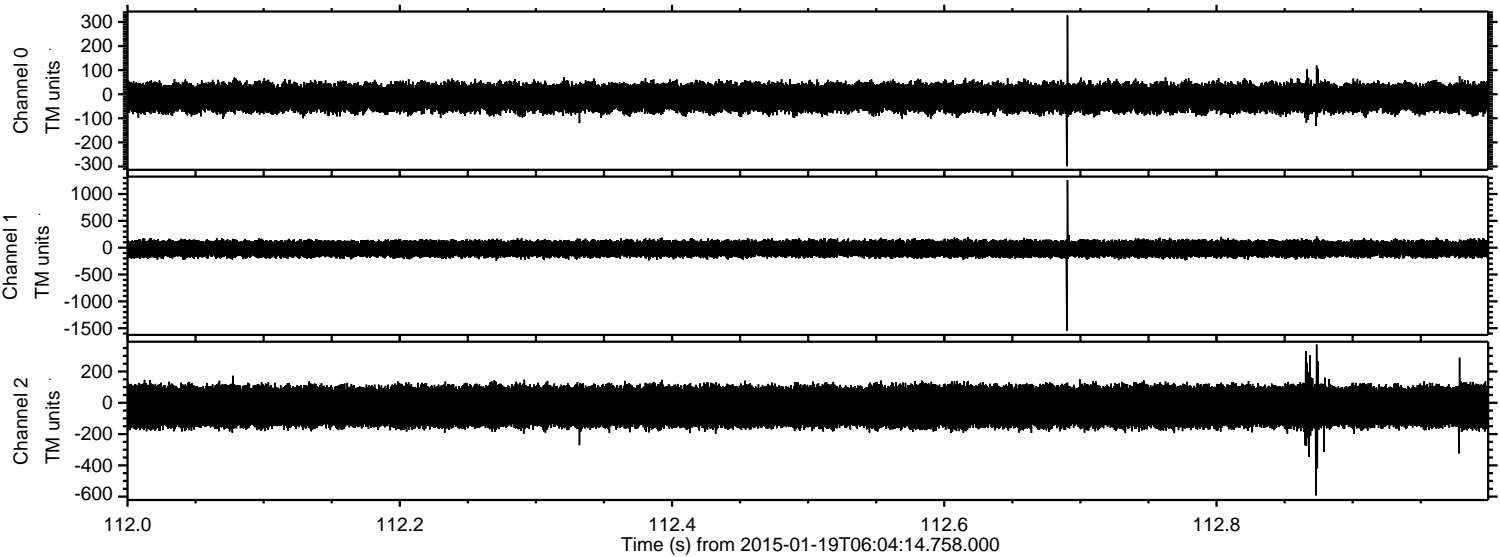
Processed Fri Jan 30 17:14:53 2015 by ELM ver.2012-10-06 from 001\_\_elm20150119\_060413\_\_dat00.bin





ELMAVAN 3D WAVEFORMS (Measured data sampled at 50 kHz) 49798 packets of 144 samples from 2015-01-19T06:04:14.758.000. Part 113/144

Processed Fri Jan 30 17:14:54 2015 by ELM ver.2012-10-06 from 001\_\_elm20150119\_060413\_\_dat00.bin



Channel 0  
mn: -299  
mx: 327  
 $\mu$ : -14.7  
 $\sigma$ : 32.0

Channel 1  
mn: -1548  
mx: 1261  
 $\mu$ : -20.5  
 $\sigma$ : 80.8

Channel 2  
mn: -592  
mx: 372  
 $\mu$ : -24.1  
 $\sigma$ : 80.8



ELMAVAN 3D WAVEFORMS (Measured data sampled at 50 kHz) 49798 packets of 144 samples from 2015-01-19T06:04:14.758.000. Part 25/144

Processed Fri Jan 30 17:14:55 2015 by ELM ver.2012-10-06 from 001\_\_elm20150119\_060413\_\_dat00.bin

