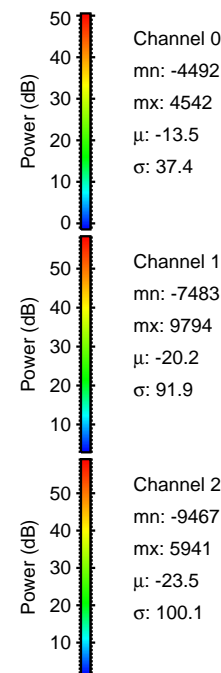
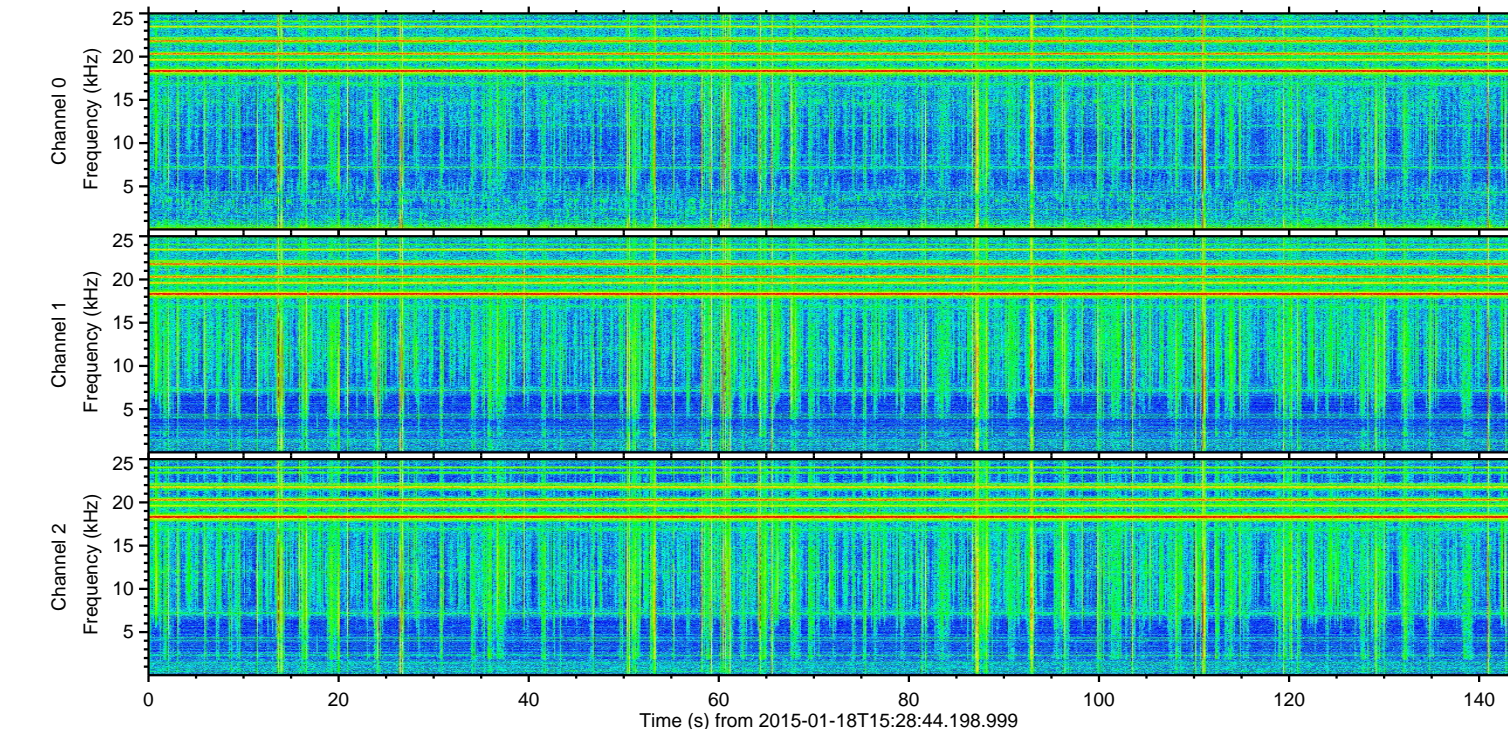
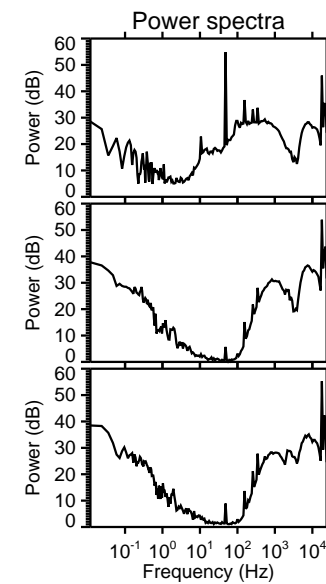
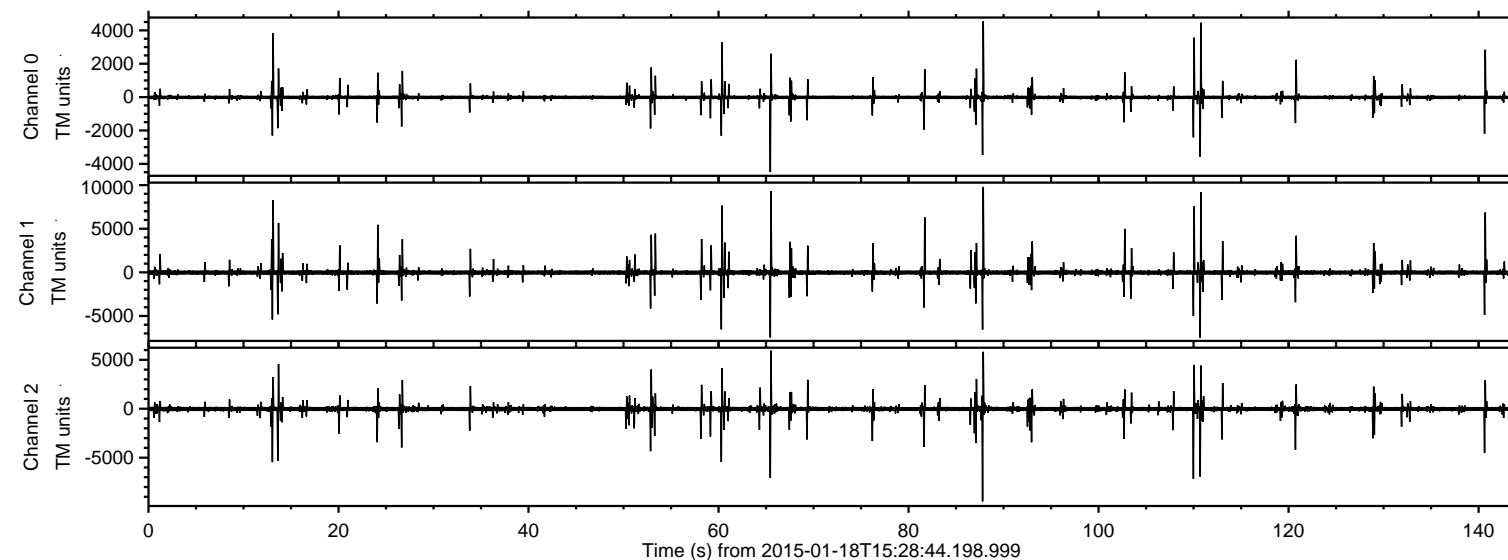


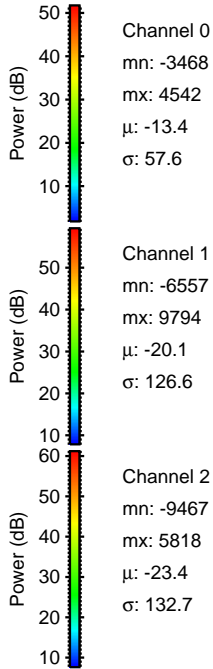
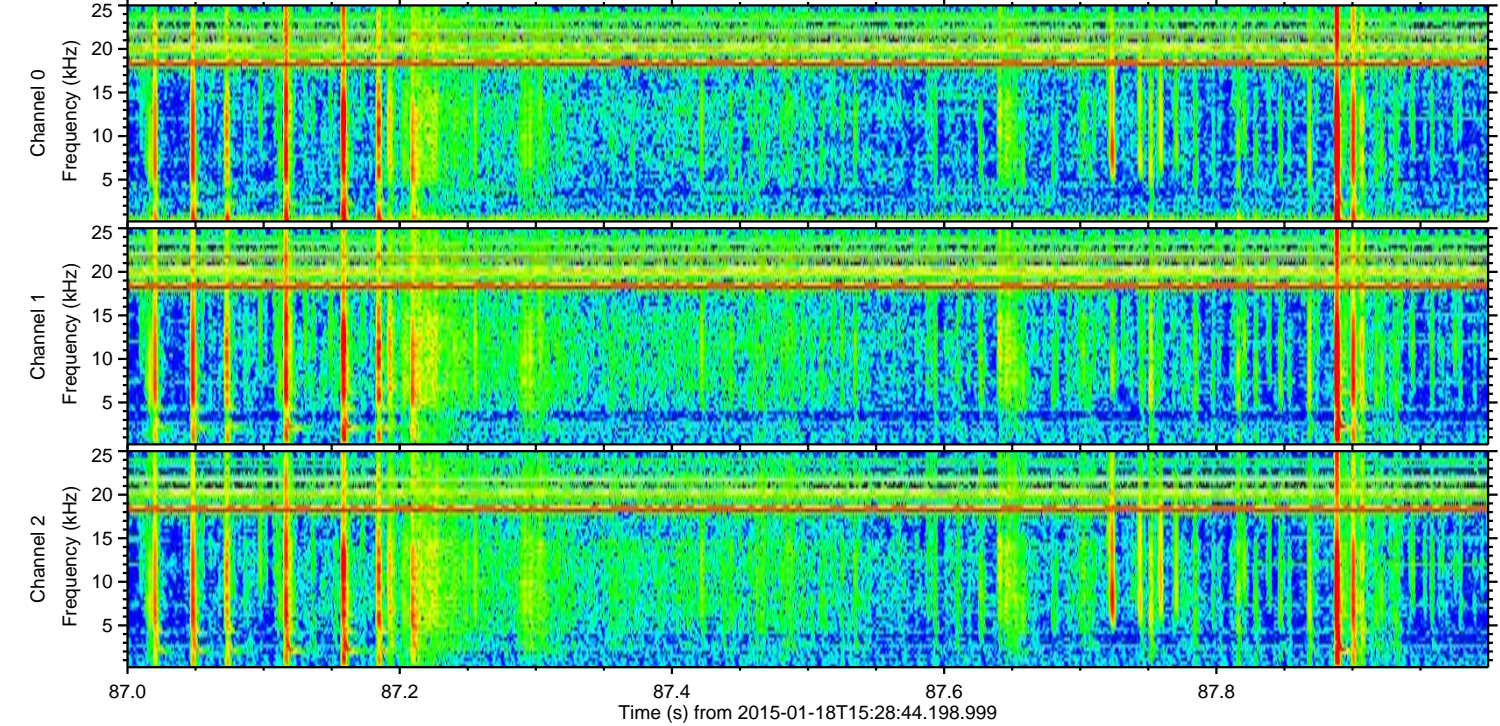
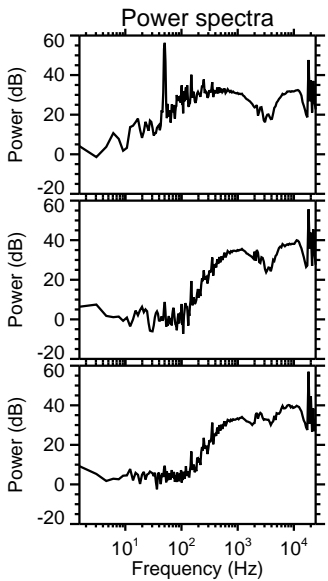
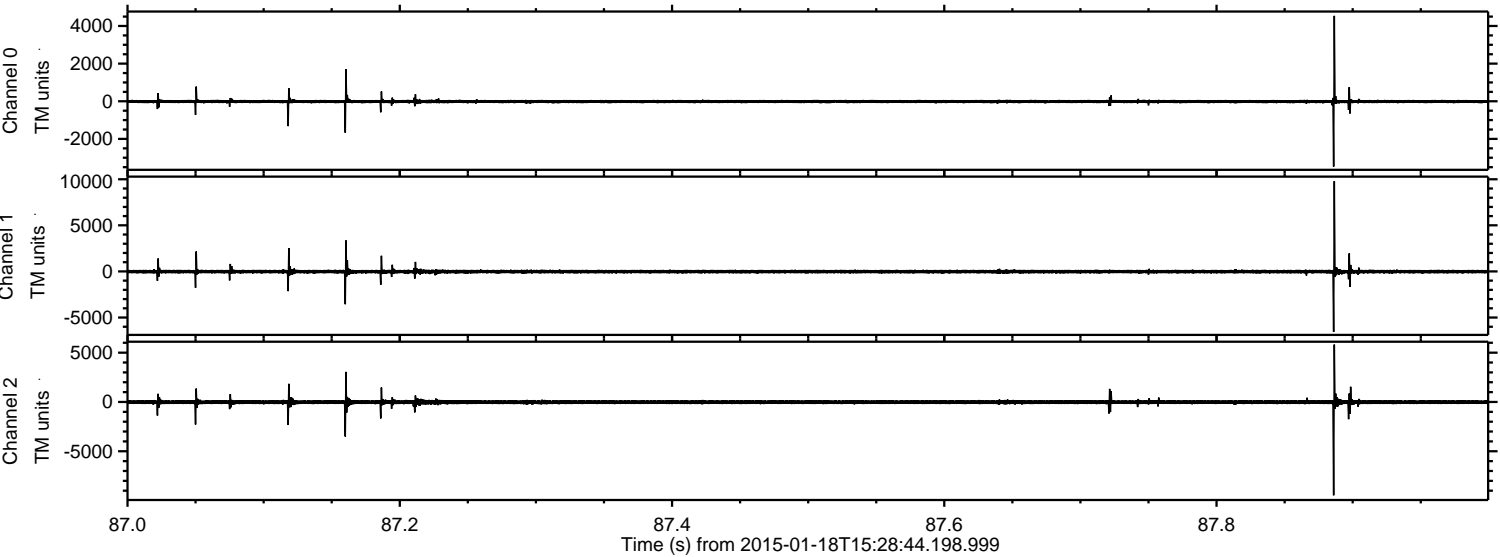
# ELMAVAN 3D WAVEFORMS (Measured data sampled at 50 kHz) 49728 packets of 144 samples from 2015-01-18T15:28:44.198.999.

Processed Mon Jan 26 15:53:27 2015 by ELM ver.2012-10-06 from 001\_\_elm20150118\_152843\_\_dat00.bin



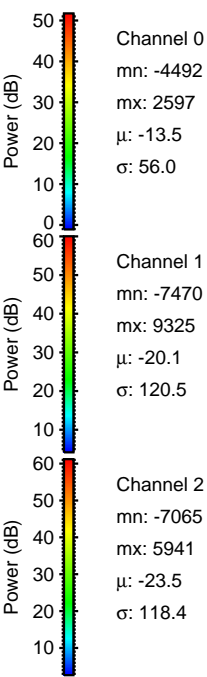
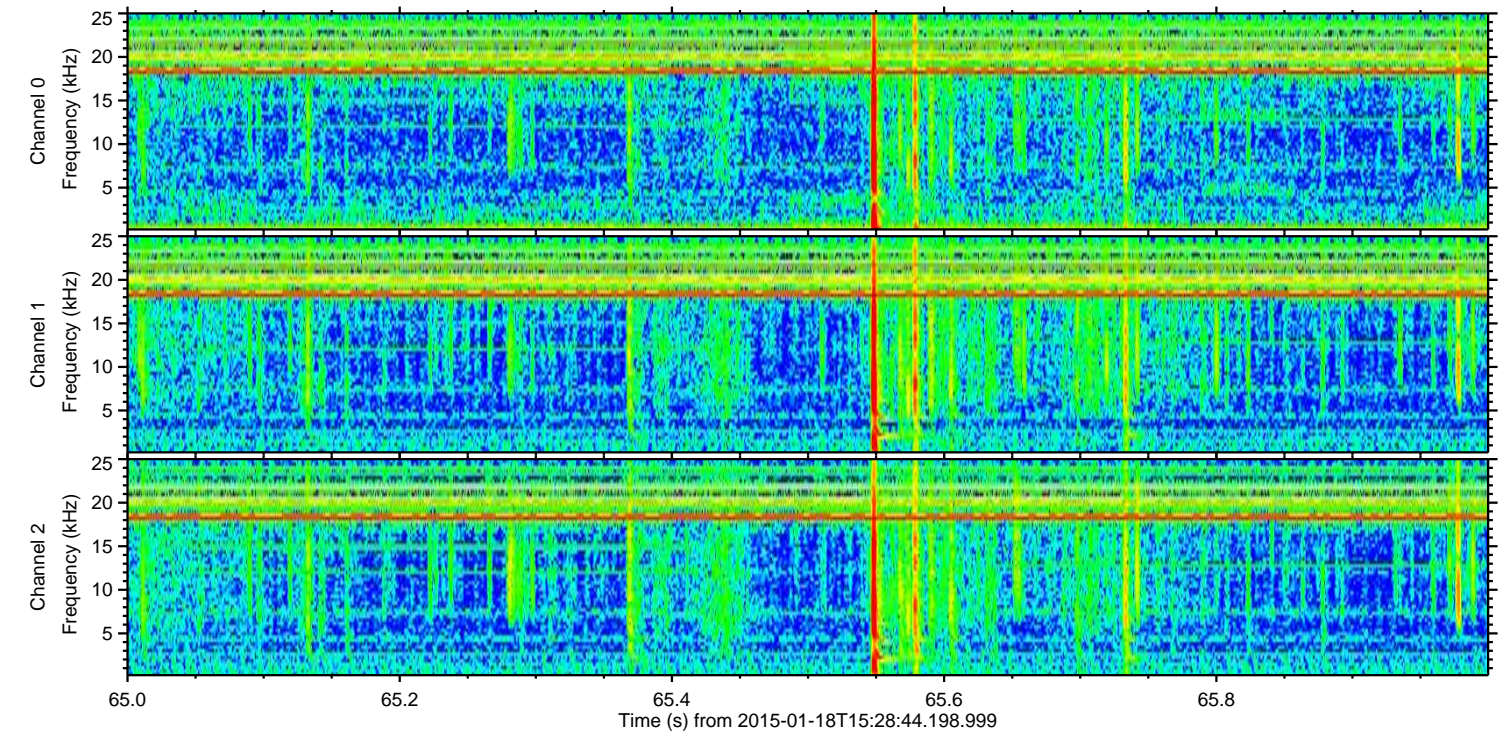
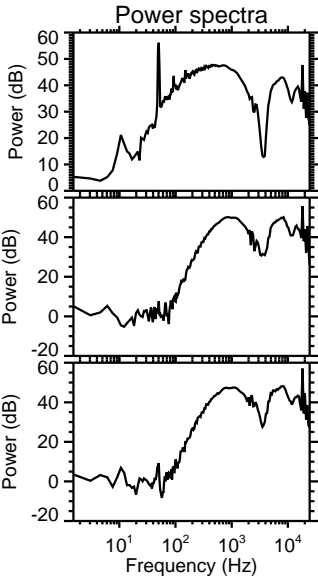
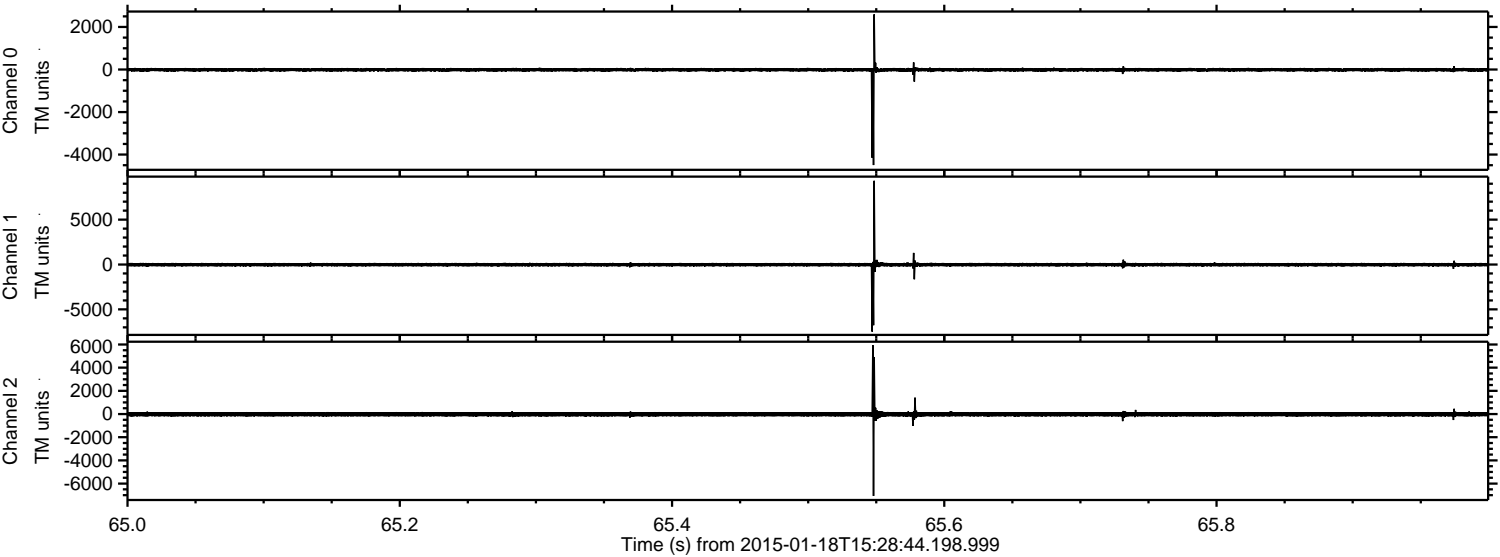


Processed Mon Jan 26 15:53:39 2015 by ELM ver.2012-10-06 from 001\_\_elm20150118\_152843\_\_dat00.bin





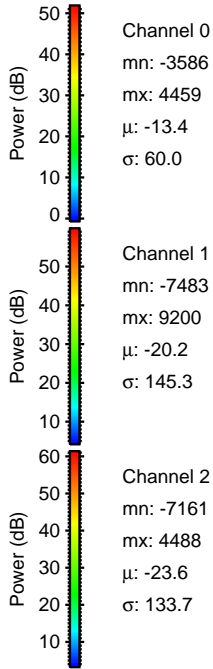
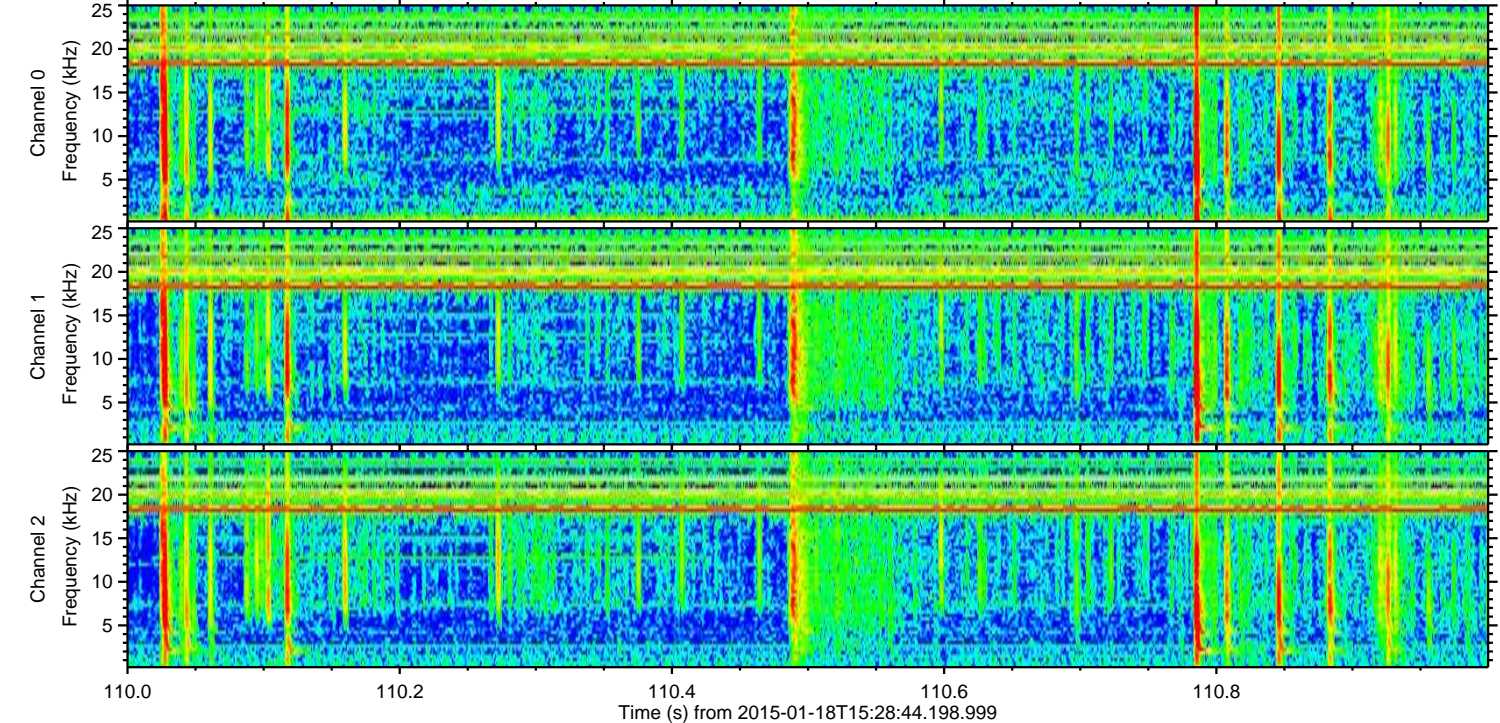
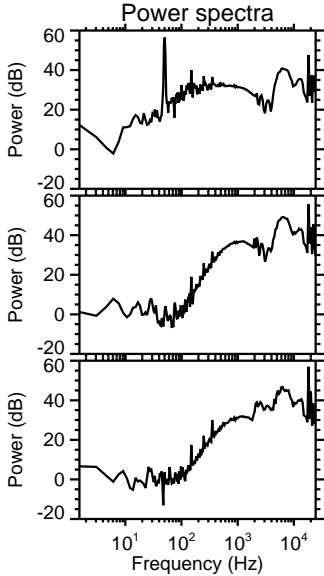
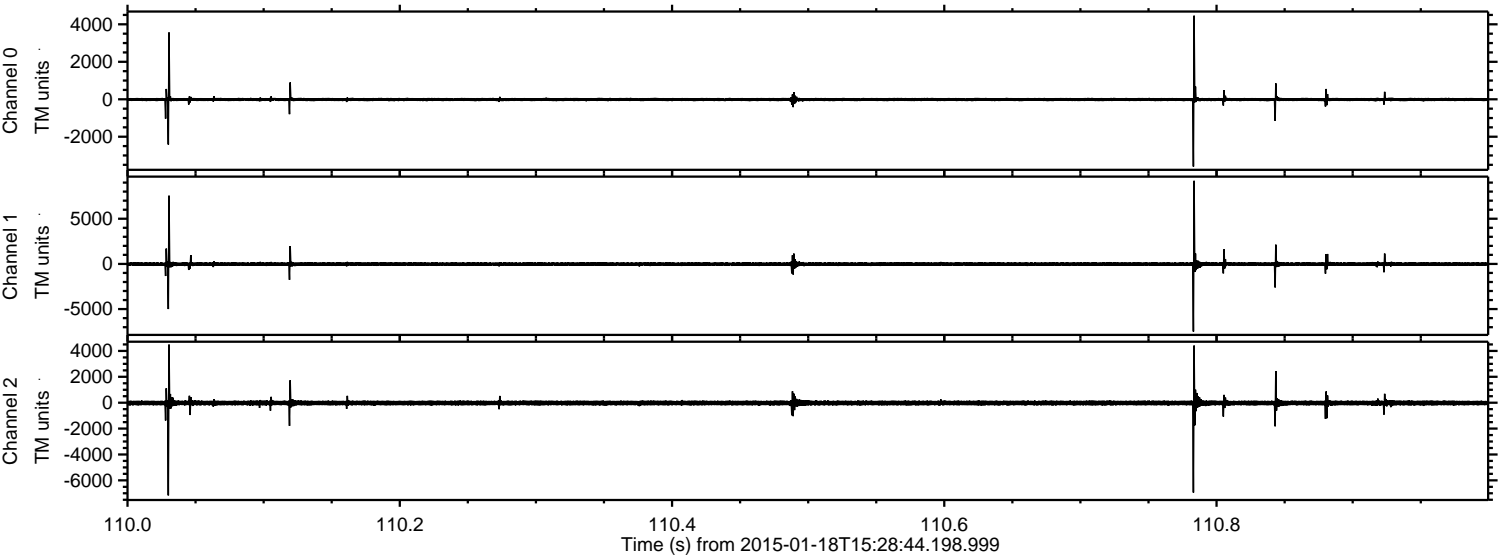
Processed Mon Jan 26 15:53:40 2015 by ELM ver.2012-10-06 from 001\_\_elm20150118\_152843\_\_dat00.bin





ELMAVAN 3D WAVEFORMS (Measured data sampled at 50 kHz) 49728 packets of 144 samples from 2015-01-18T15:28:44.198.999. Part 111/144

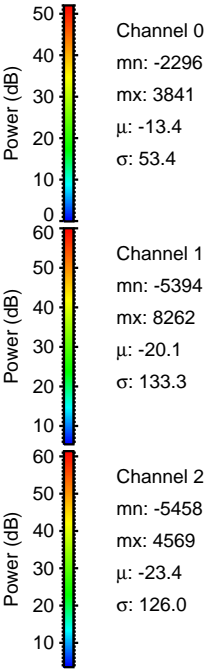
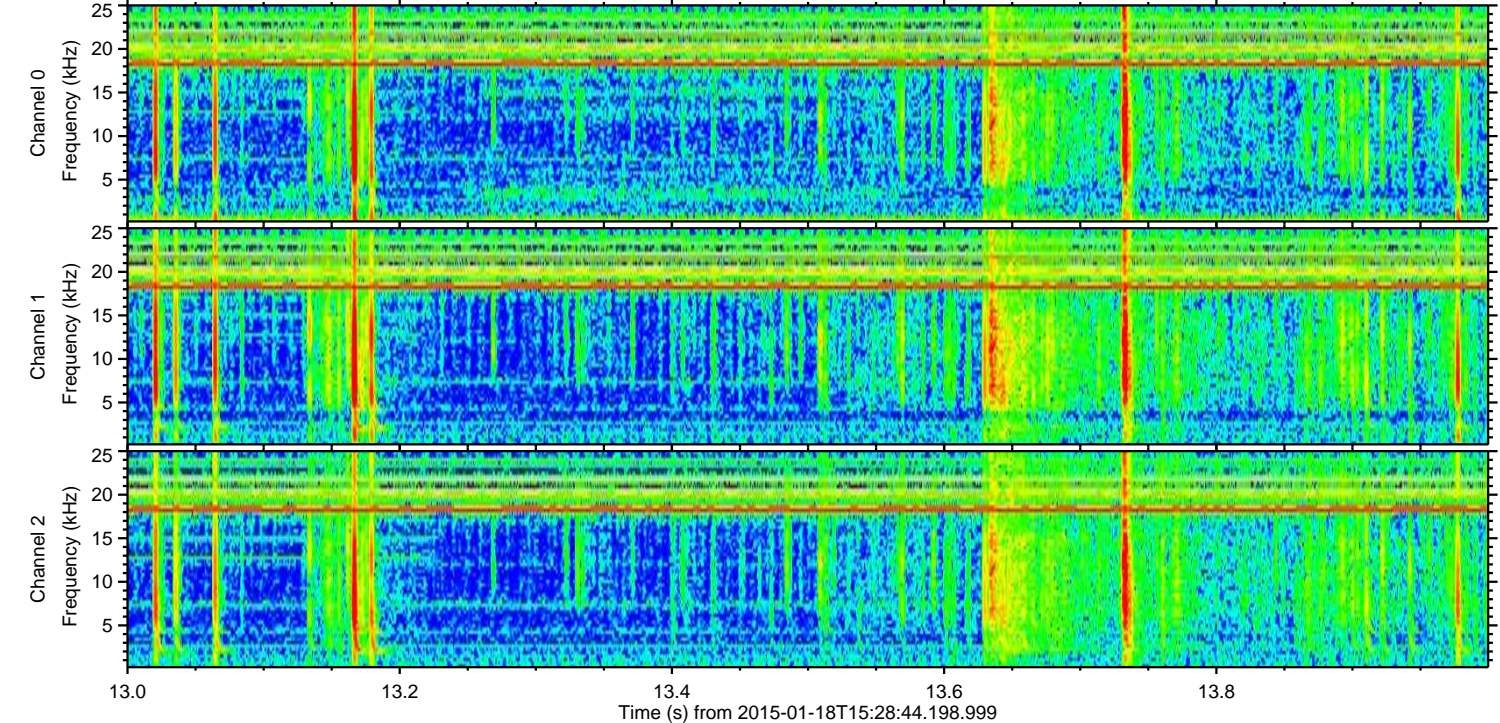
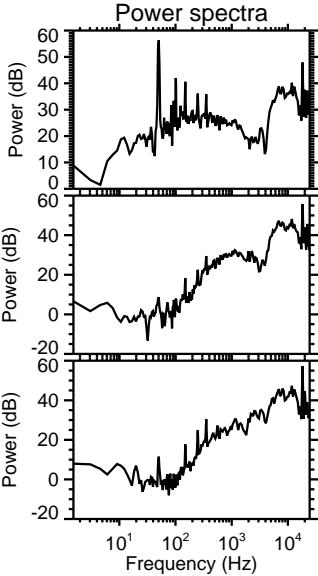
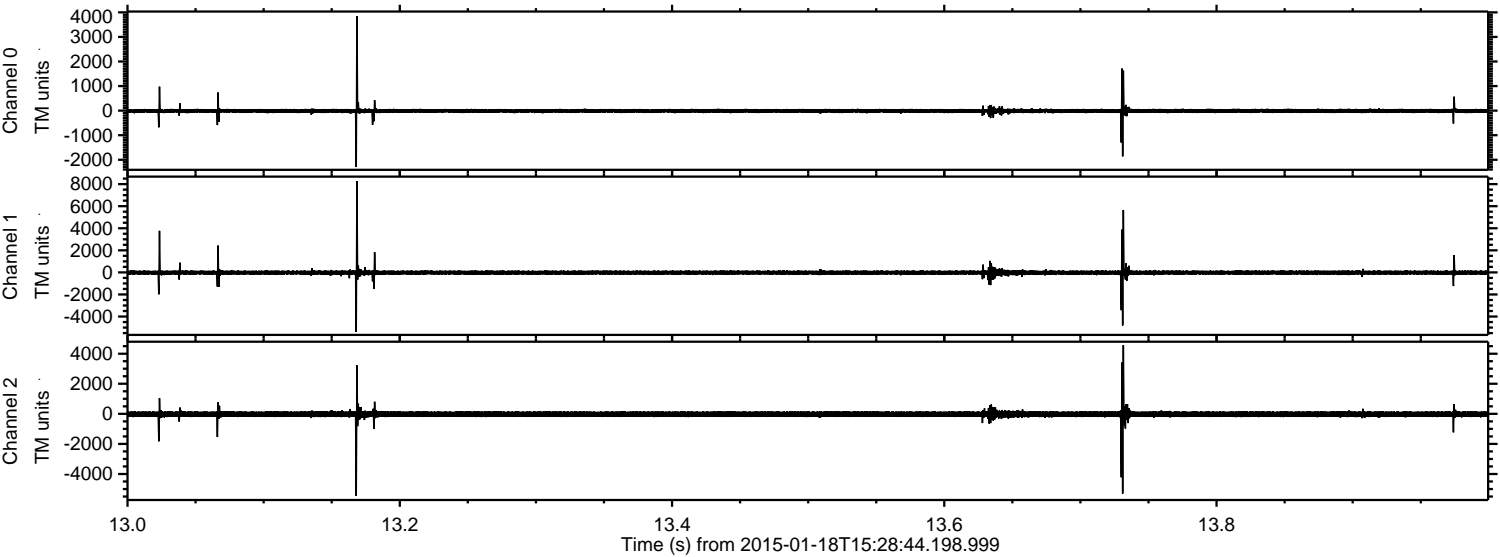
Processed Mon Jan 26 15:53:41 2015 by ELM ver.2012-10-06 from 001\_\_elm20150118\_152843\_\_dat00.bin





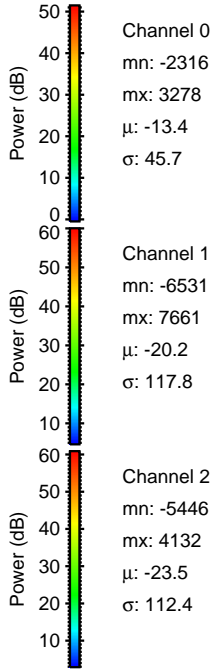
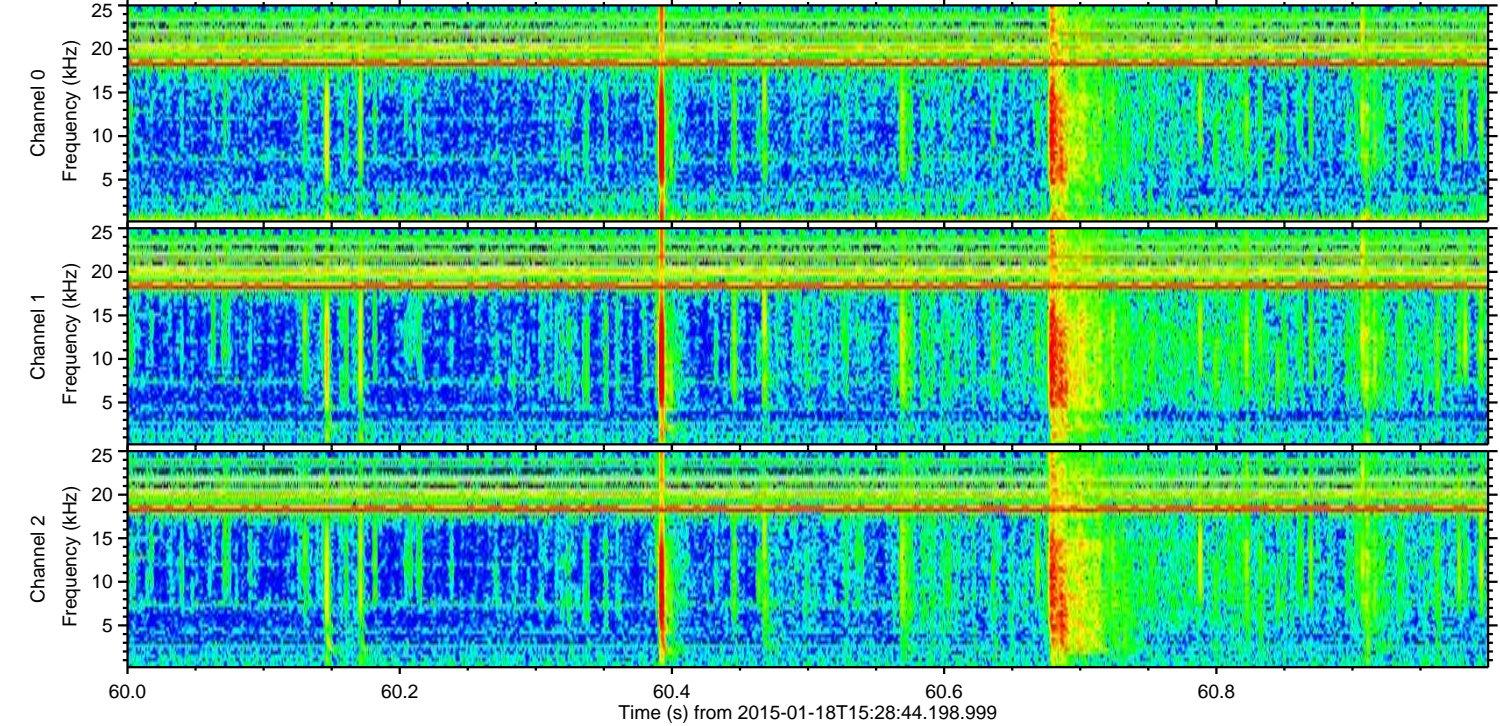
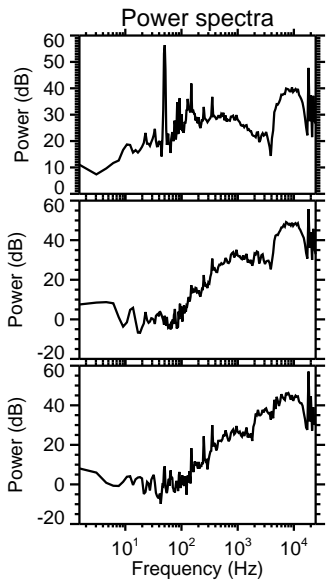
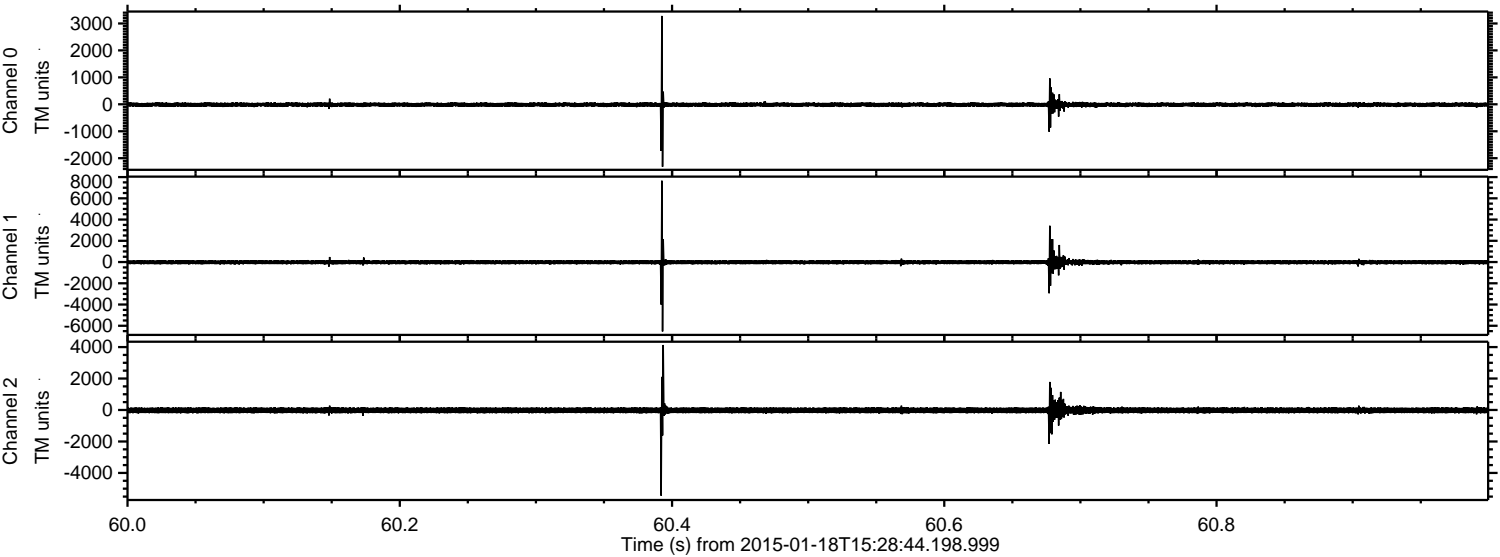
ELMAVAN 3D WAVEFORMS (Measured data sampled at 50 kHz) 49728 packets of 144 samples from 2015-01-18T15:28:44.198.999. Part 14/144

Processed Mon Jan 26 15:53:42 2015 by ELM ver.2012-10-06 from 001\_\_elm20150118\_152843\_\_dat00.bin





Processed Mon Jan 26 15:53:43 2015 by ELM ver.2012-10-06 from 001\_\_elm20150118\_152843\_\_dat00.bin



Channel 0  
mn: -2316  
mx: 3278  
 $\mu$ : -13.4  
 $\sigma$ : 45.7

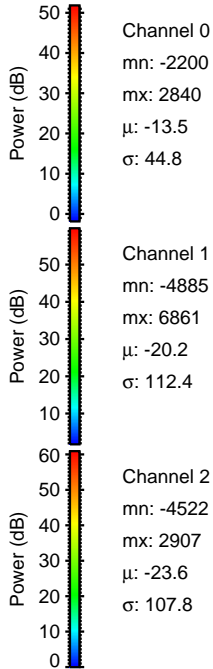
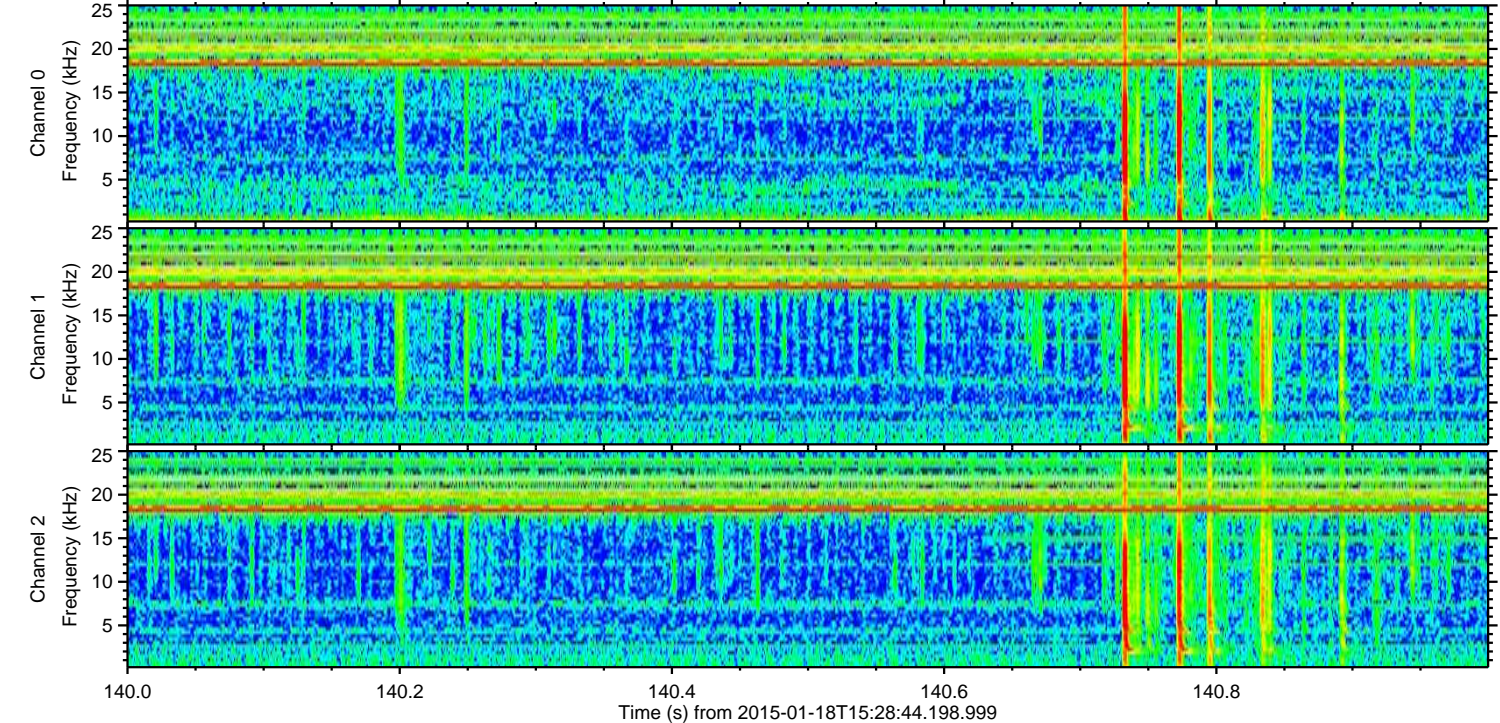
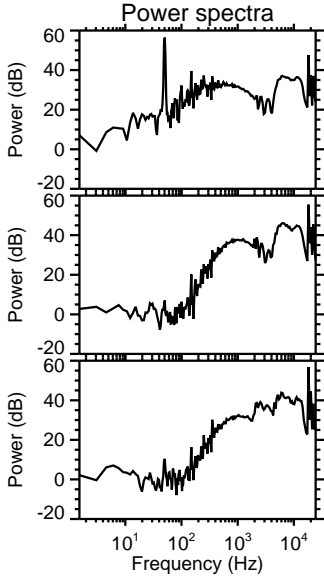
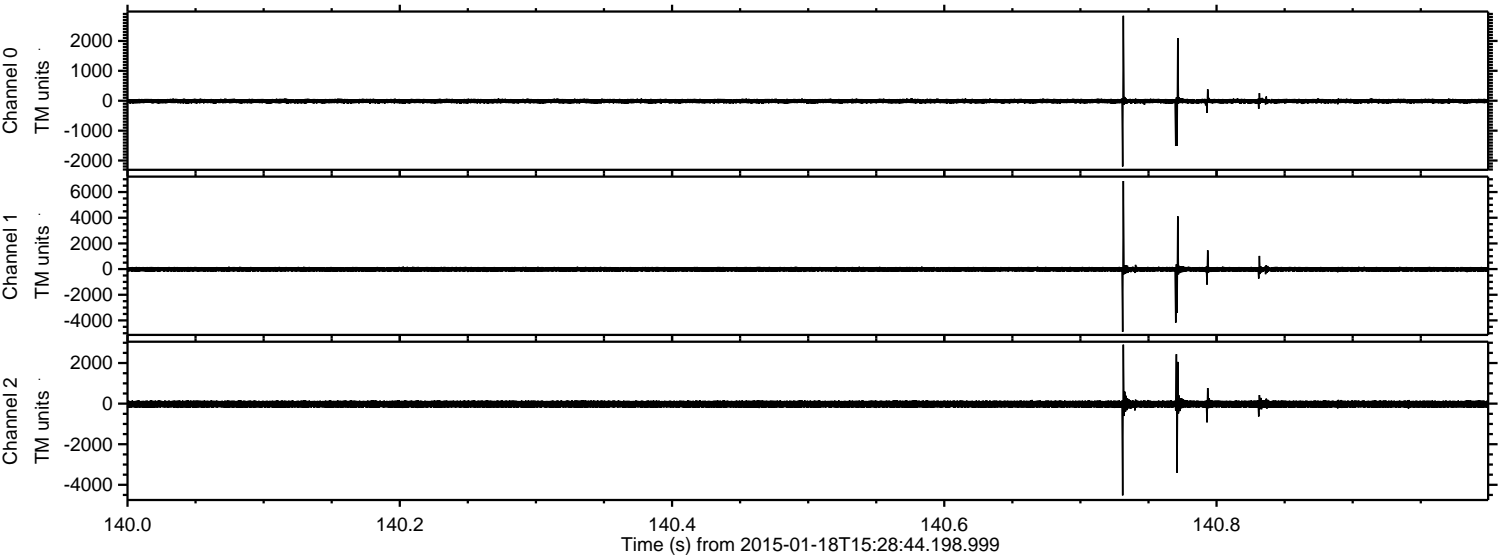
Channel 1  
mn: -6531  
mx: 7661  
 $\mu$ : -20.2  
 $\sigma$ : 117.8

Channel 2  
mn: -5446  
mx: 4132  
 $\mu$ : -23.5  
 $\sigma$ : 112.4



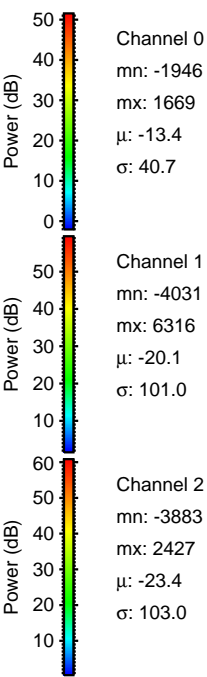
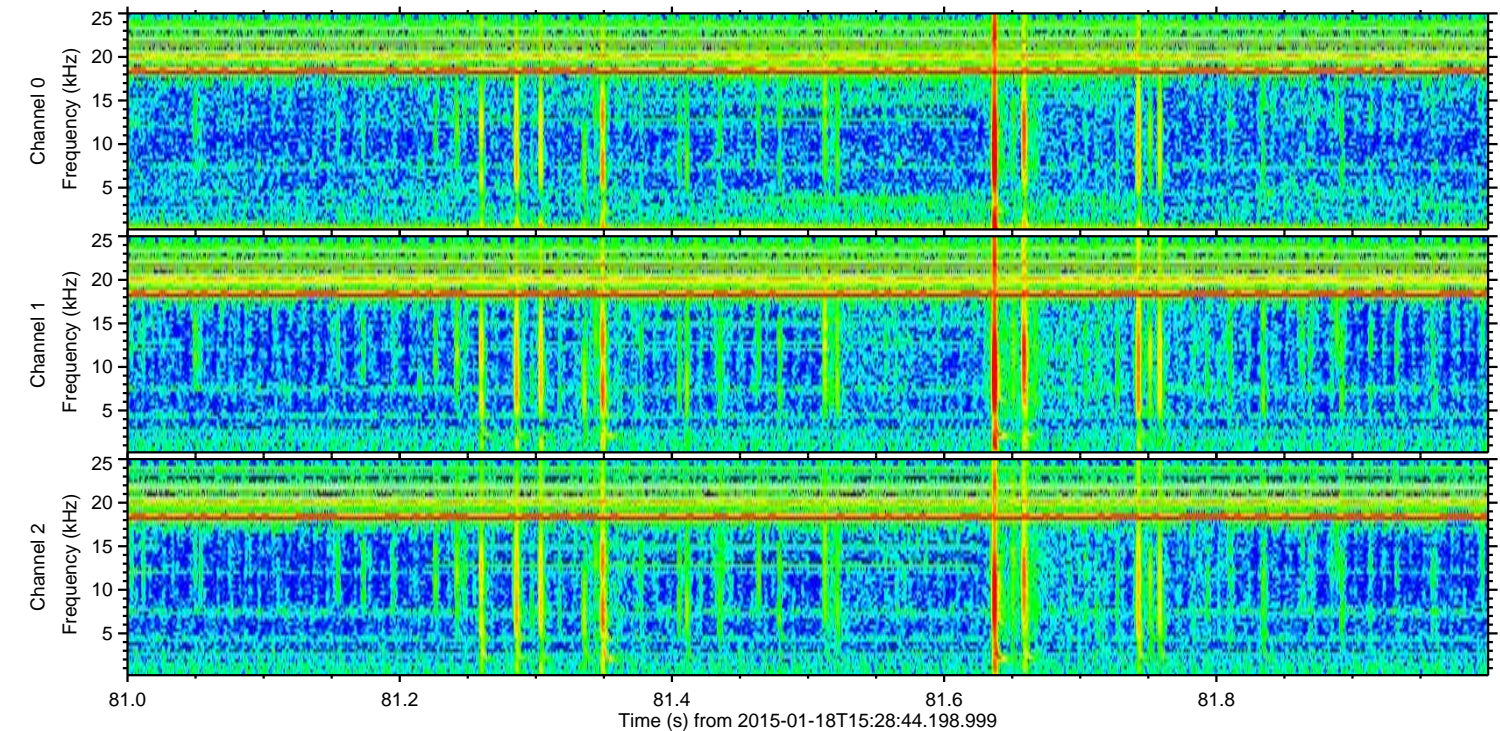
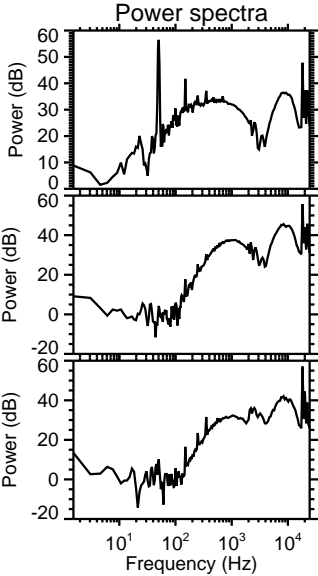
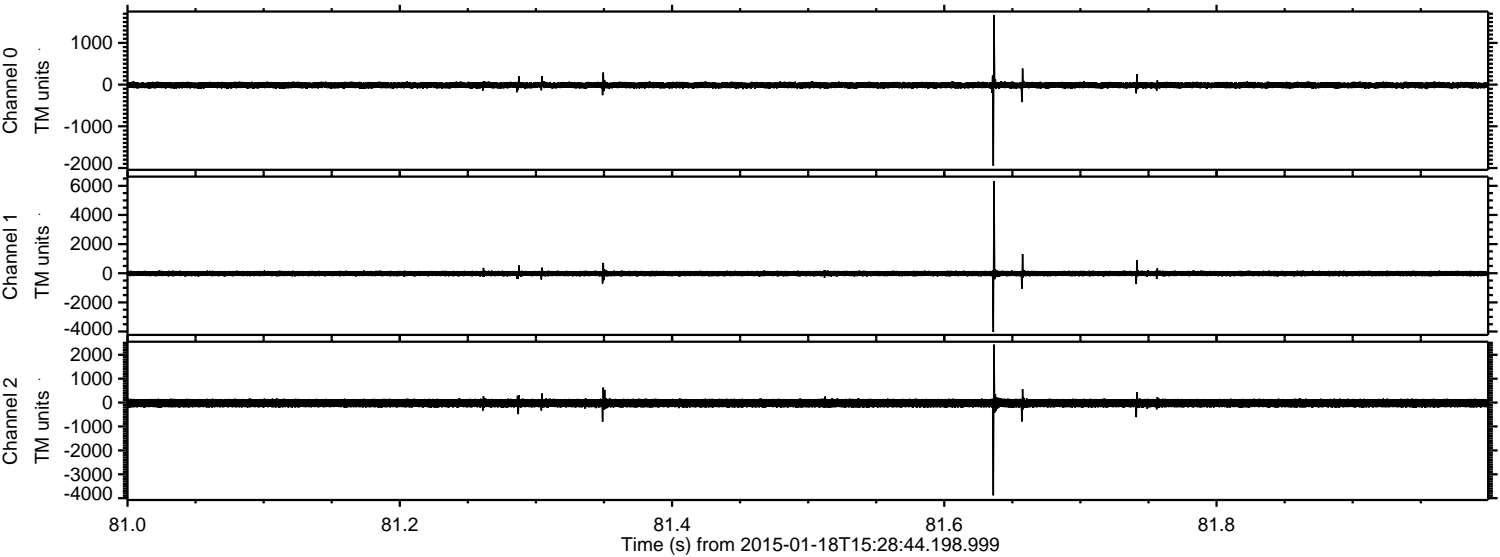
ELMAVAN 3D WAVEFORMS (Measured data sampled at 50 kHz) 49728 packets of 144 samples from 2015-01-18T15:28:44.198.999. Part 141/144

Processed Mon Jan 26 15:53:44 2015 by ELM ver.2012-10-06 from 001\_\_elm20150118\_152843\_\_dat00.bin





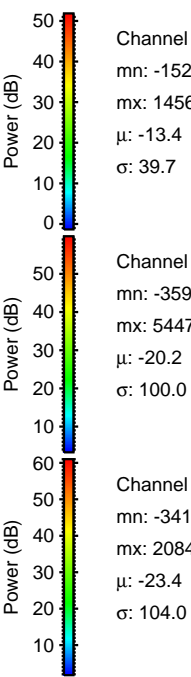
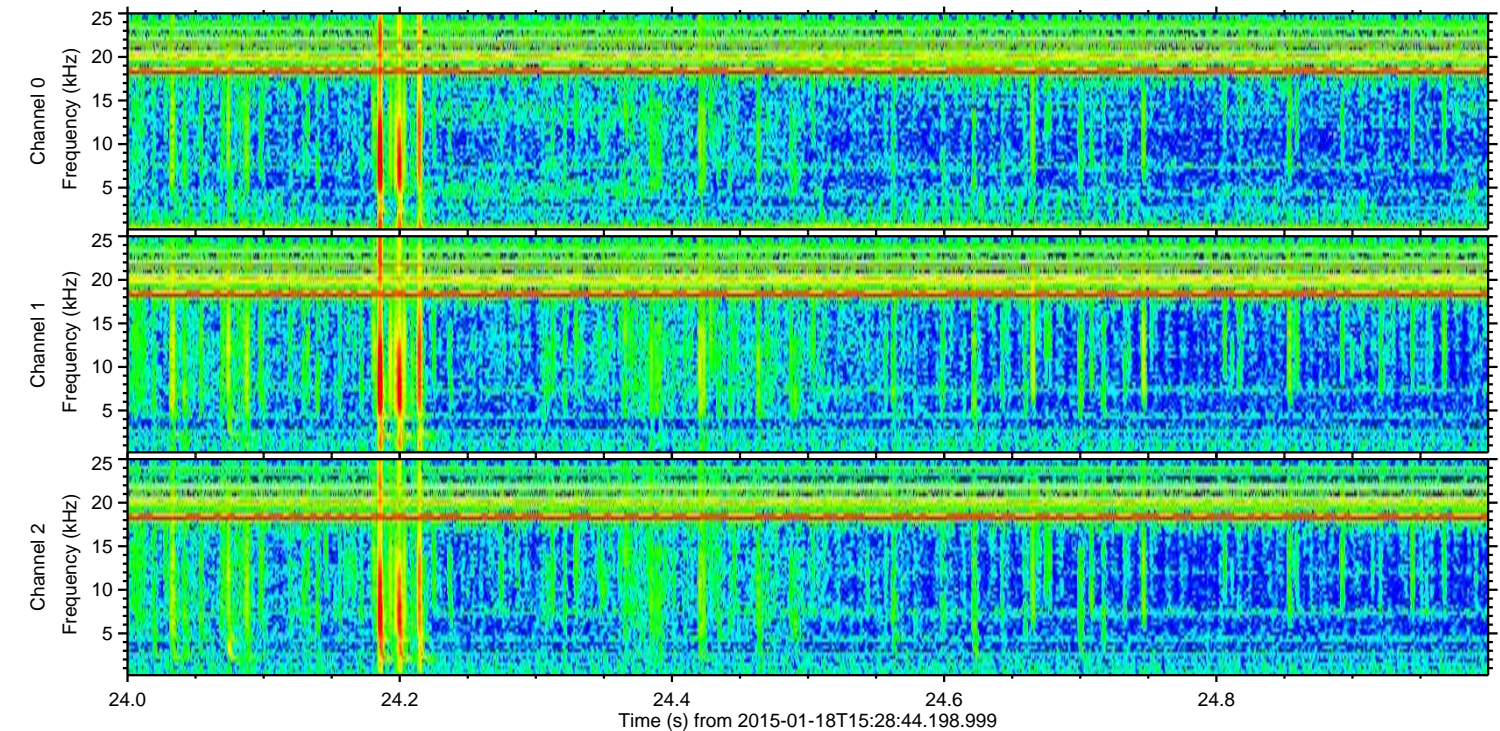
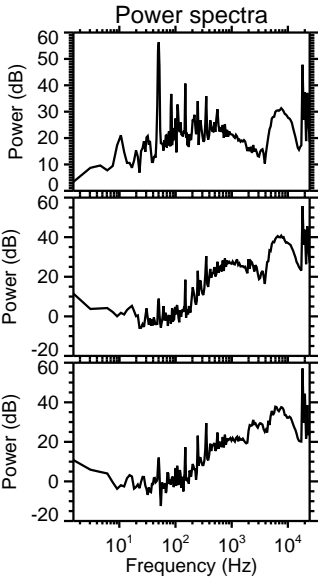
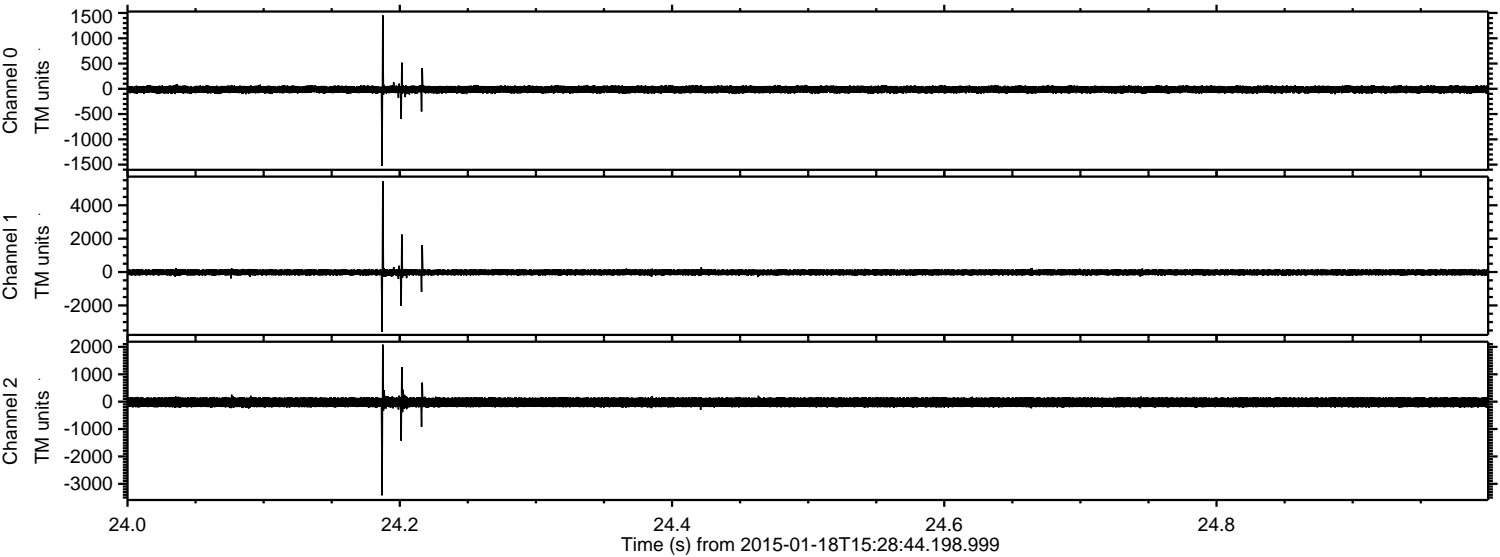
Processed Mon Jan 26 15:53:44 2015 by ELM ver.2012-10-06 from 001\_\_elm20150118\_152843\_\_dat00.bin





ELMAVAN 3D WAVEFORMS (Measured data sampled at 50 kHz) 49728 packets of 144 samples from 2015-01-18T15:28:44.198.999. Part 25/144

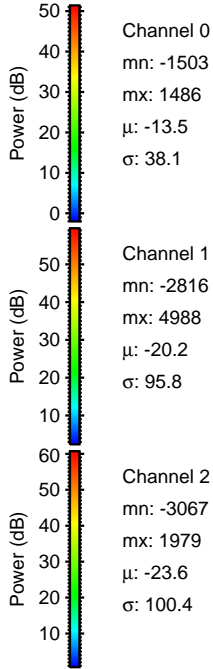
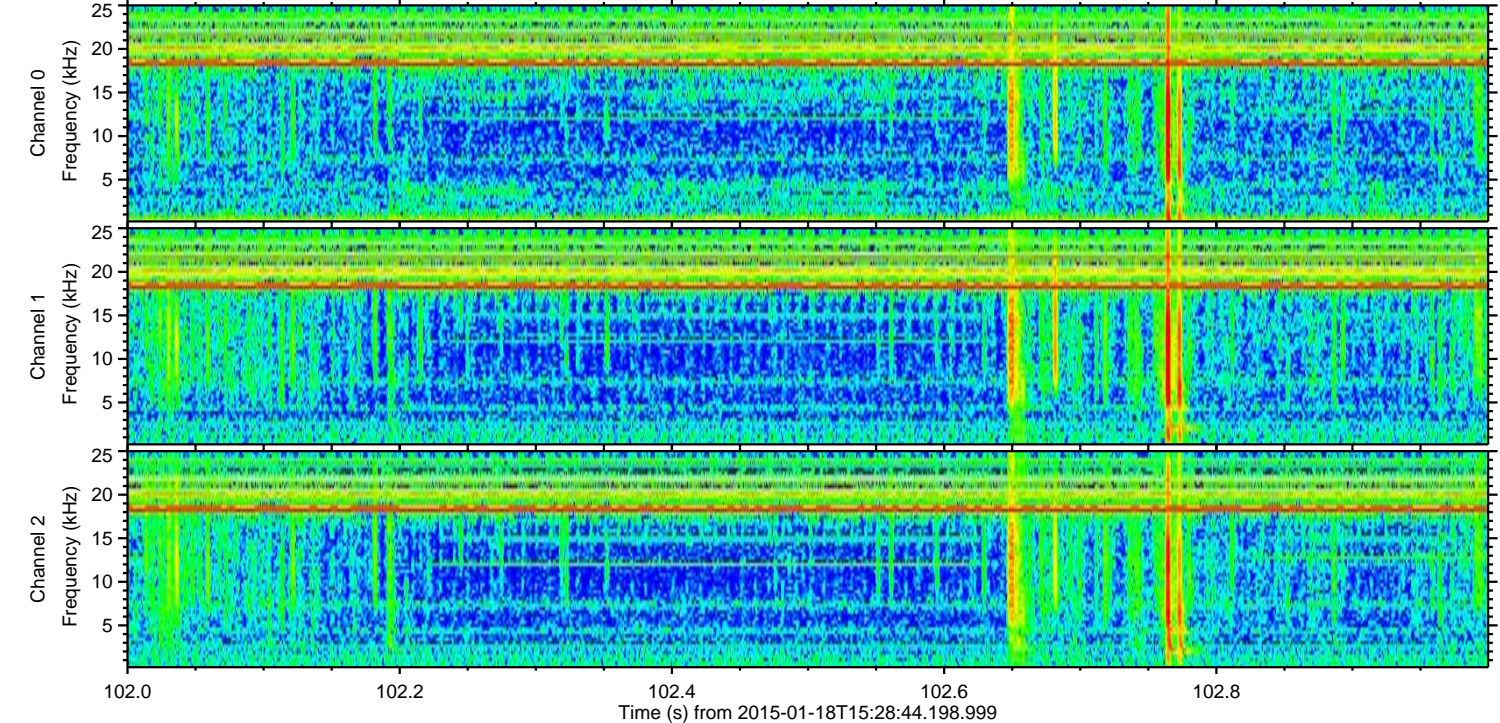
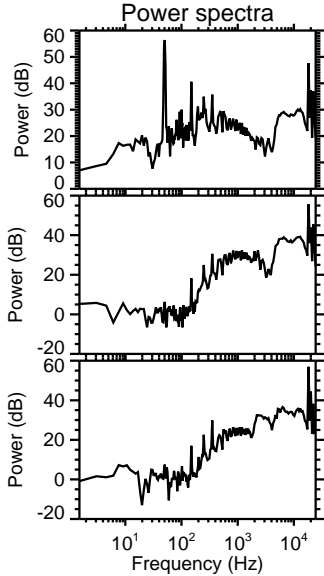
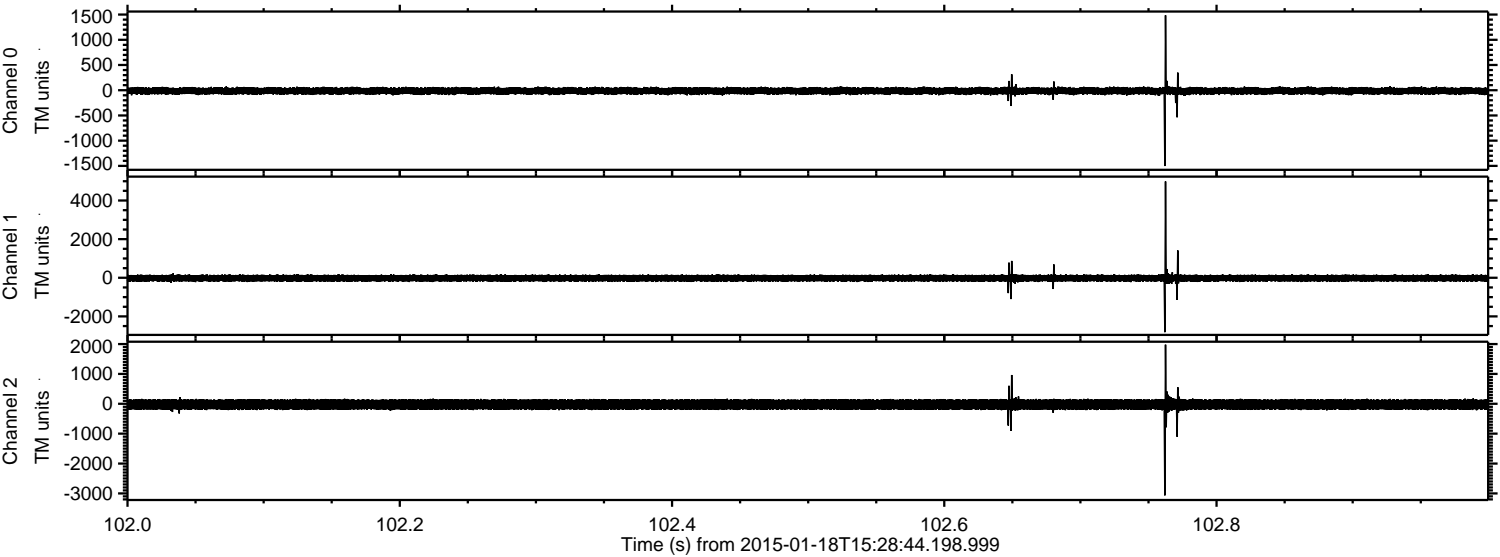
Processed Mon Jan 26 15:53:45 2015 by ELM ver.2012-10-06 from 001\_\_elm20150118\_152843\_\_dat00.bin





ELMAVAN 3D WAVEFORMS (Measured data sampled at 50 kHz) 49728 packets of 144 samples from 2015-01-18T15:28:44.198.999. Part 103/144

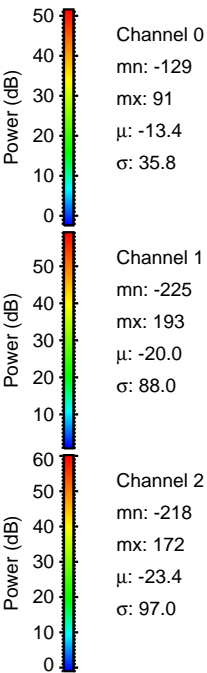
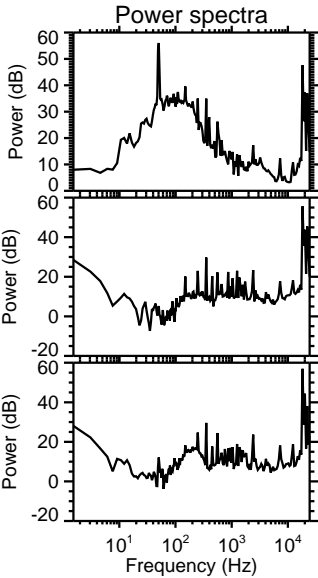
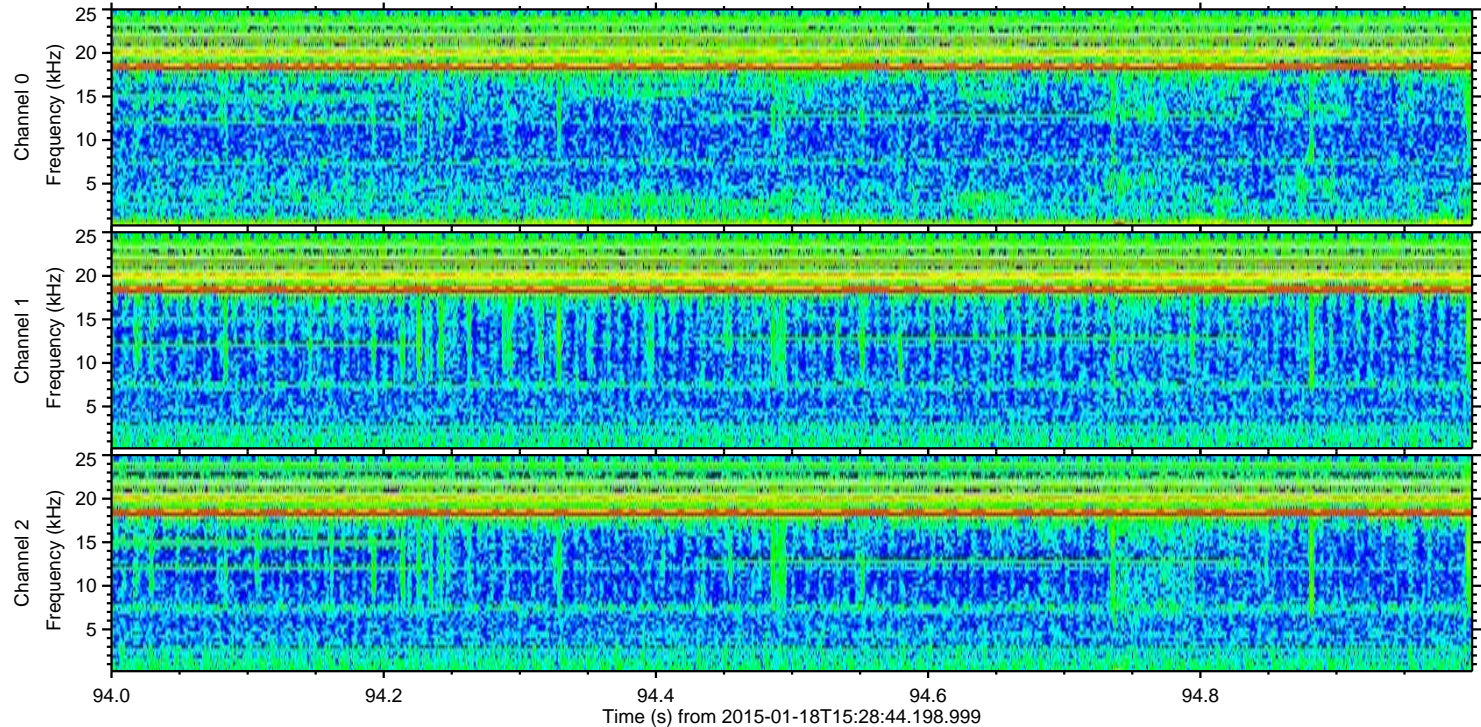
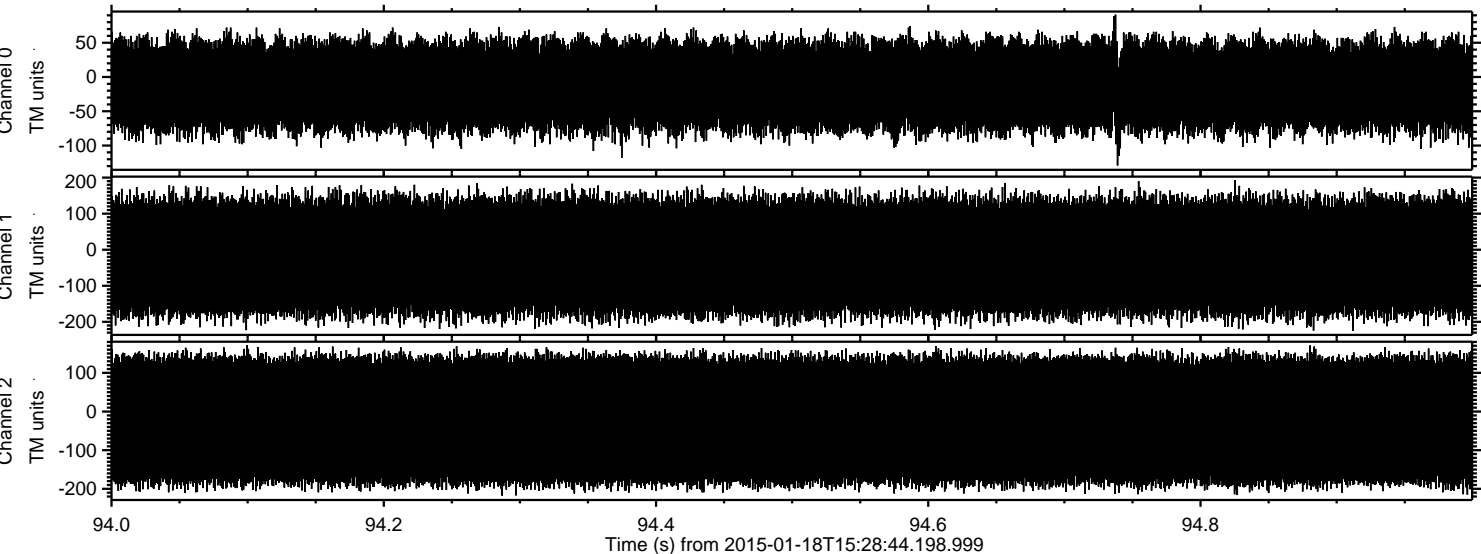
Processed Mon Jan 26 15:53:46 2015 by ELM ver.2012-10-06 from 001\_\_elm20150118\_152843\_\_dat00.bin





ELMAVAN 3D WAVEFORMS (Measured data sampled at 50 kHz) 49728 packets of 144 samples from 2015-01-18T15:28:44.198.999. Part 95/144

Processed Mon Jan 26 15:53:47 2015 by ELM ver.2012-10-06 from 001\_\_elm20150118\_152843\_\_dat00.bin



Channel 0  
mn: -129  
mx: 91  
 $\mu$ : -13.4  
 $\sigma$ : 35.8

Channel 1  
mn: -225  
mx: 193  
 $\mu$ : -20.0  
 $\sigma$ : 88.0

Channel 2  
mn: -218  
mx: 172  
 $\mu$ : -23.4  
 $\sigma$ : 97.0