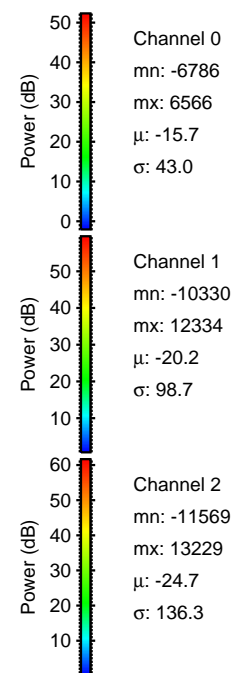
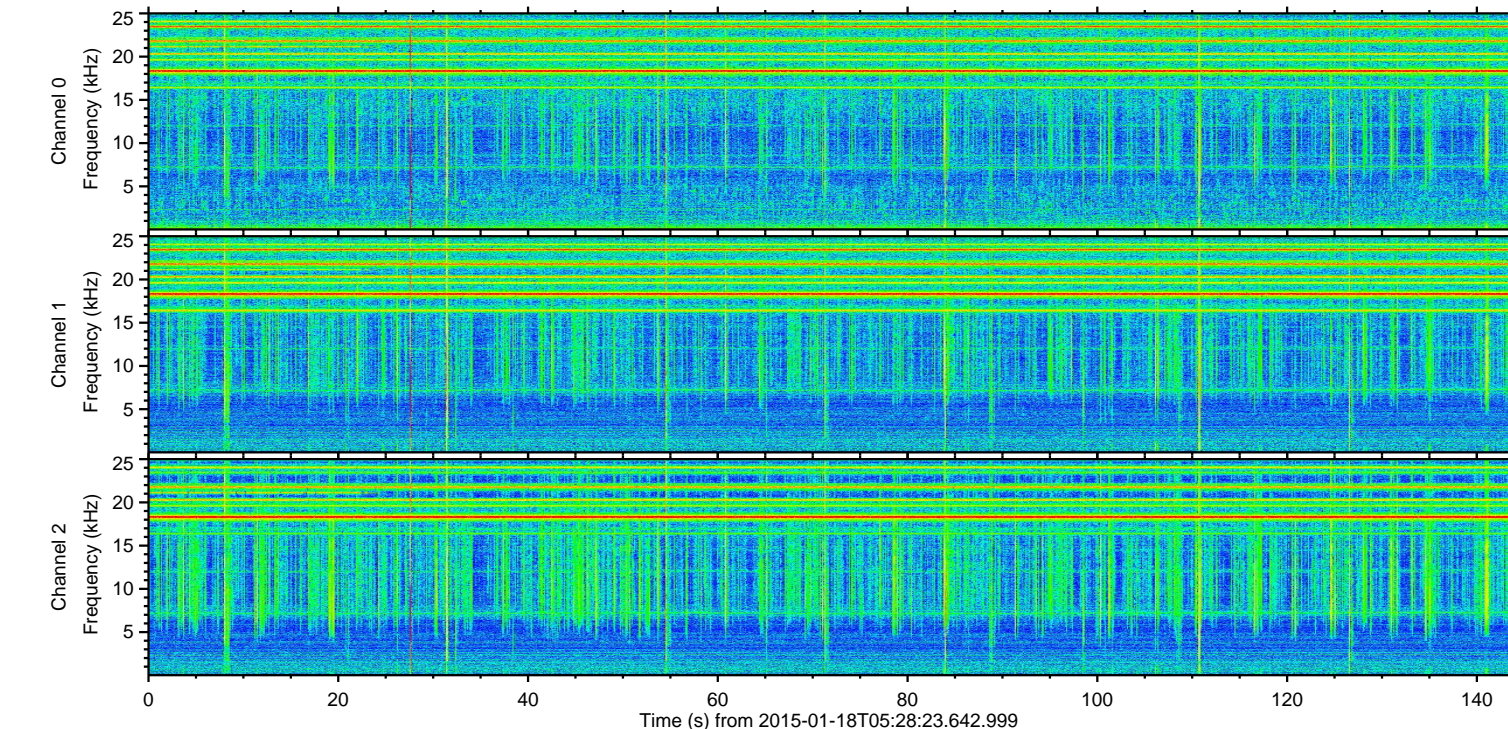
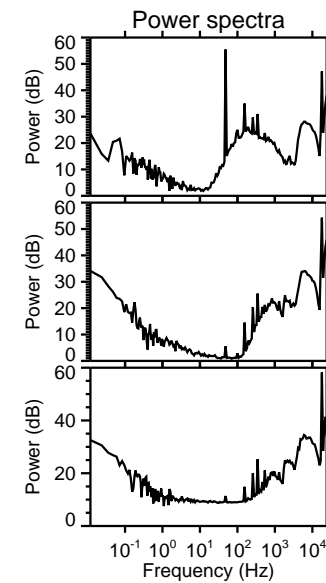
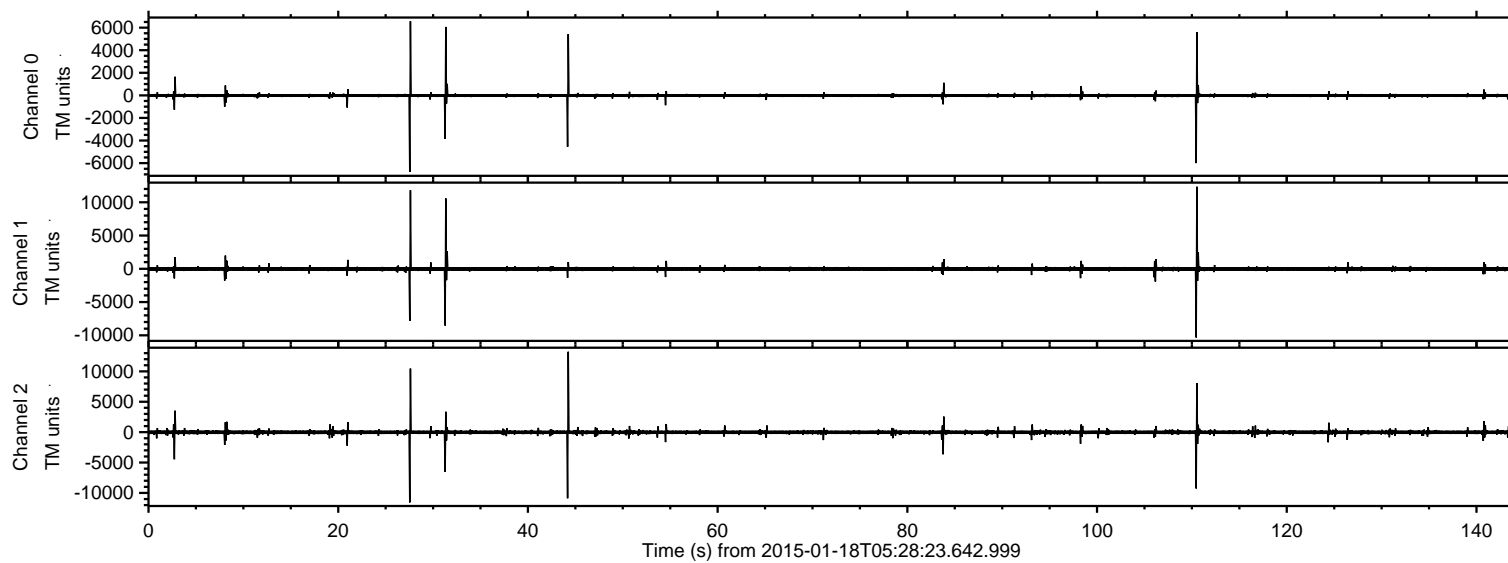


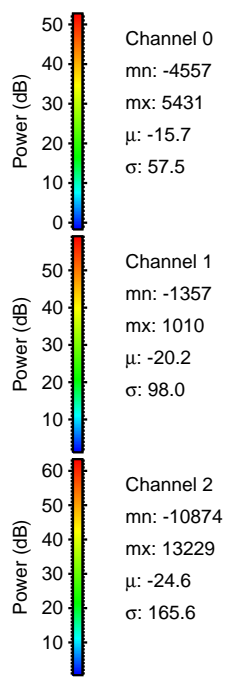
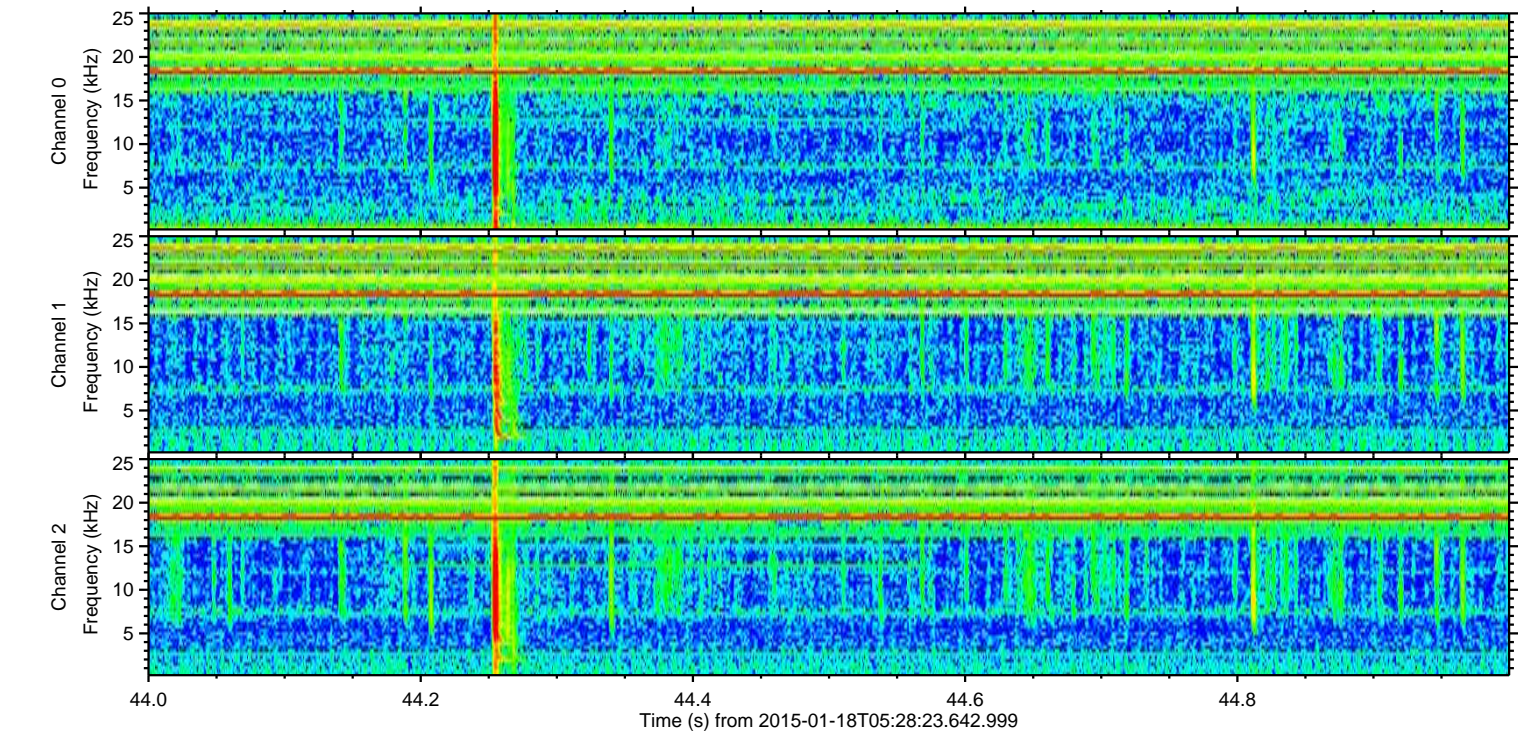
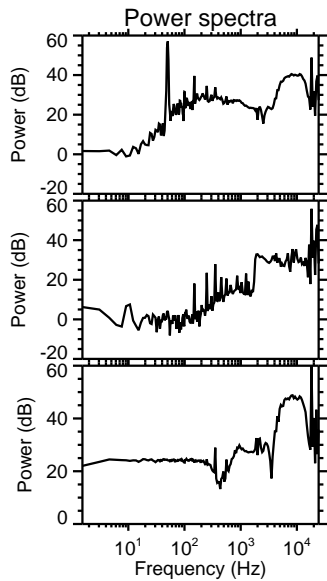
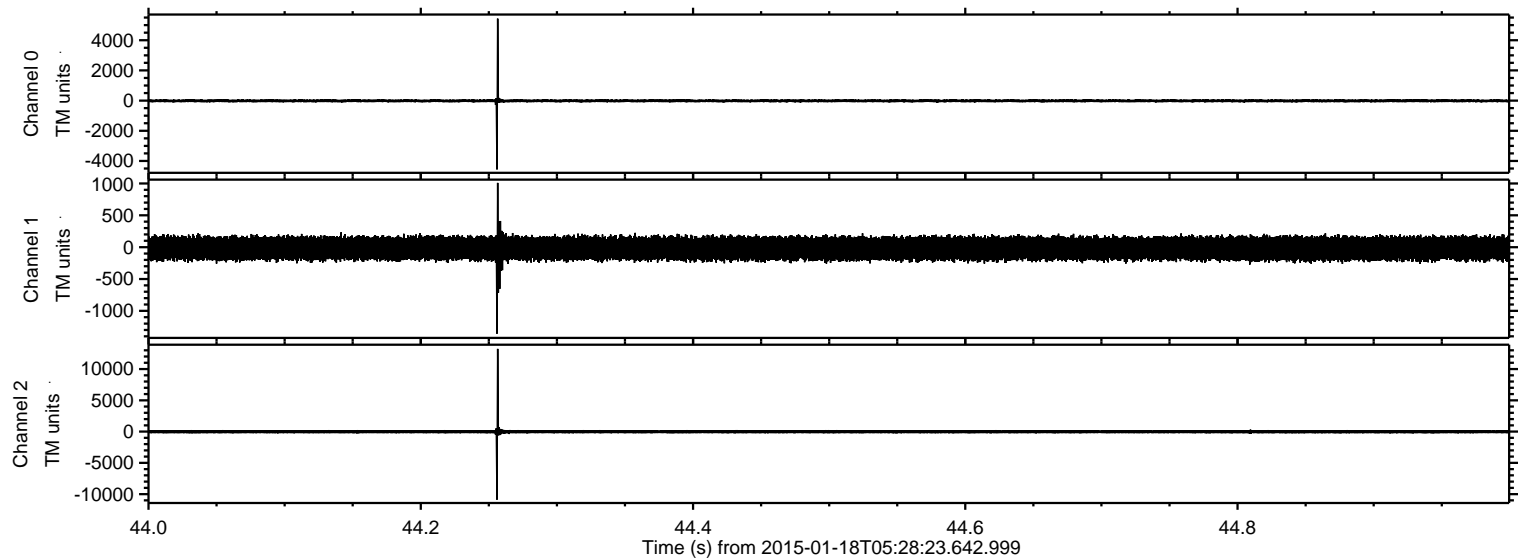
# ELMAVAN 3D WAVEFORMS (Measured data sampled at 50 kHz) 49807 packets of 144 samples from 2015-01-18T05:28:23.642.999.

Processed Fri Jan 23 22:05:17 2015 by ELM ver.2012-10-06 from 001\_\_elm20150118\_052822\_\_dat00.bin





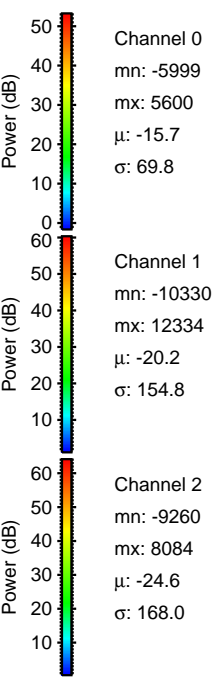
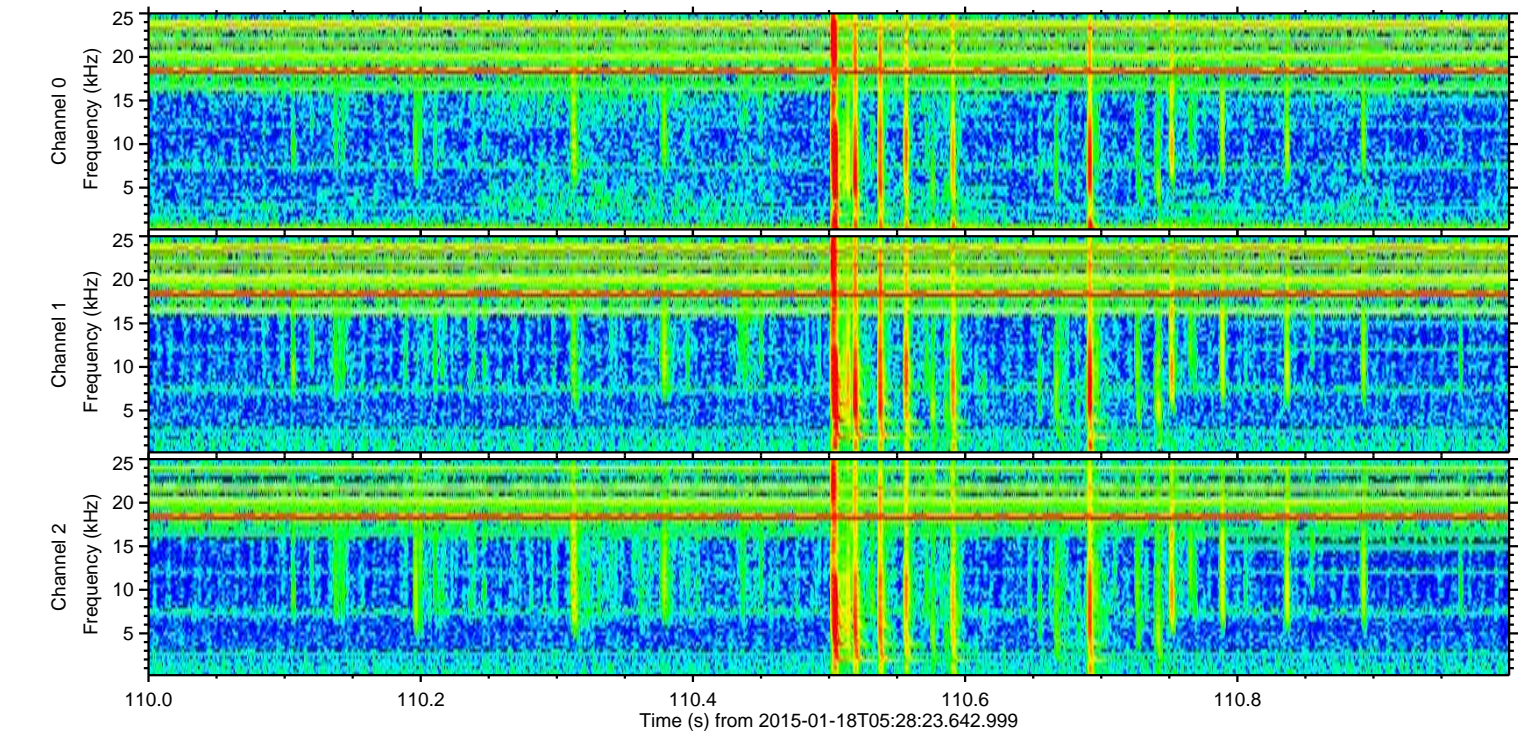
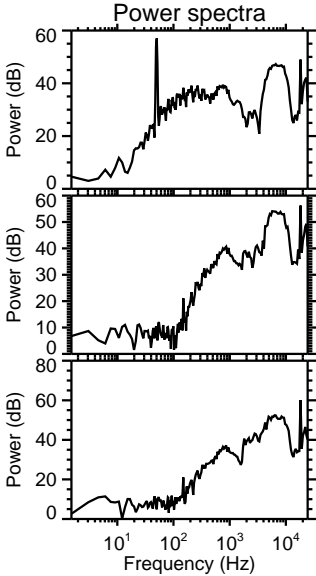
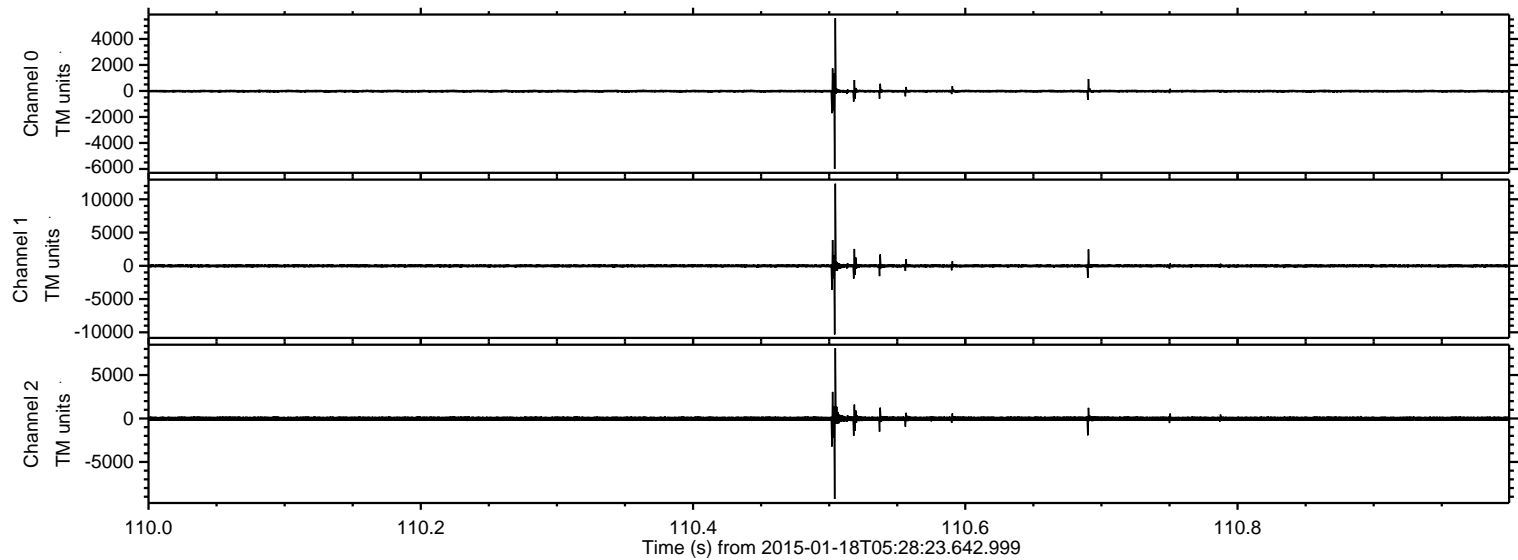
Processed Fri Jan 23 22:05:28 2015 by ELM ver.2012-10-06 from 001\_\_elm20150118\_052822\_\_dat00.bin





ELMAVAN 3D WAVEFORMS (Measured data sampled at 50 kHz) 49807 packets of 144 samples from 2015-01-18T05:28:23.642.999. Part 111/144

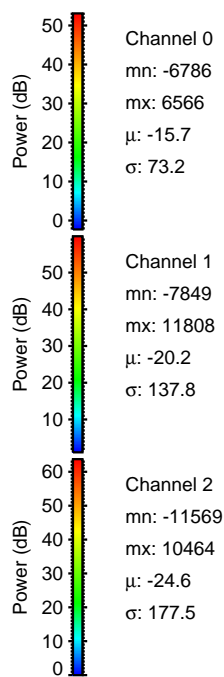
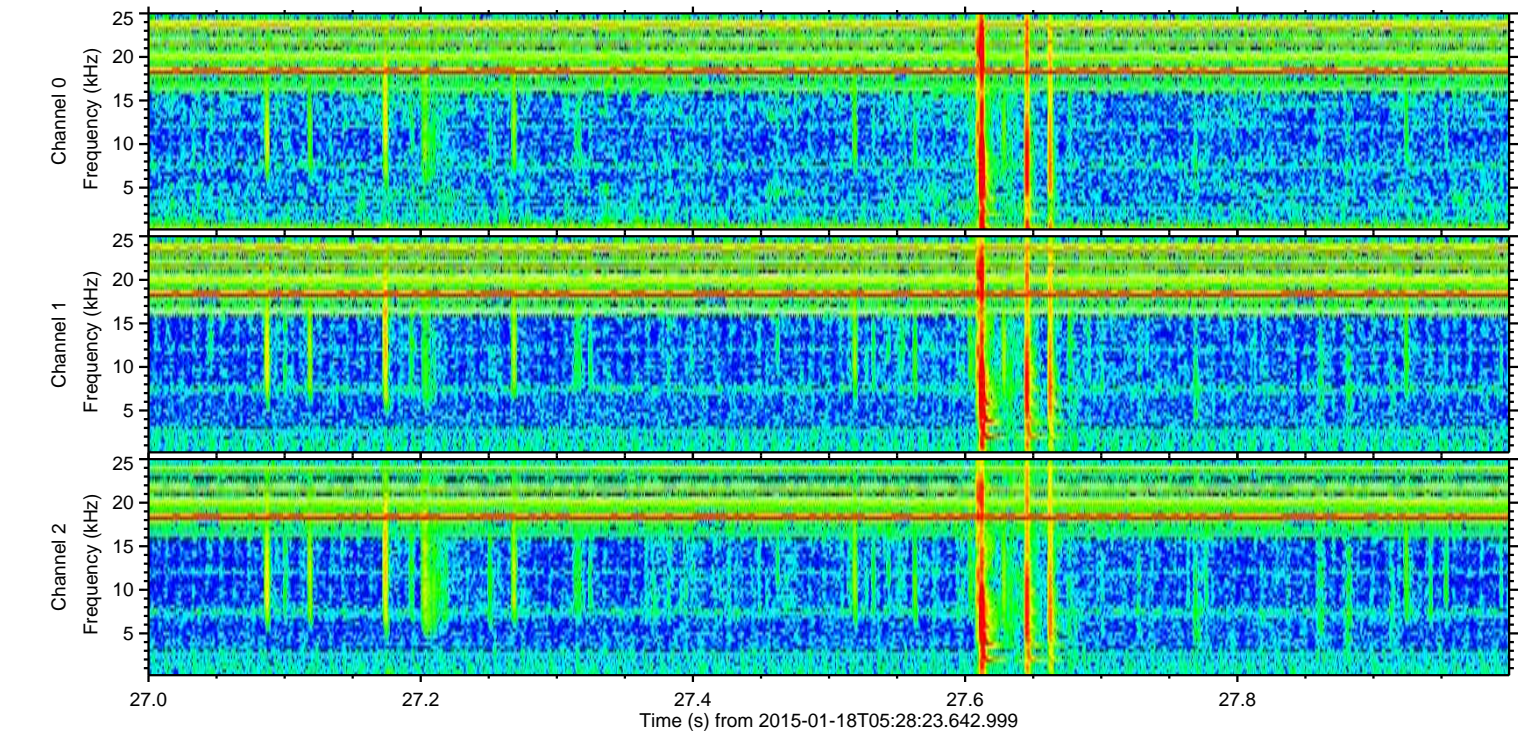
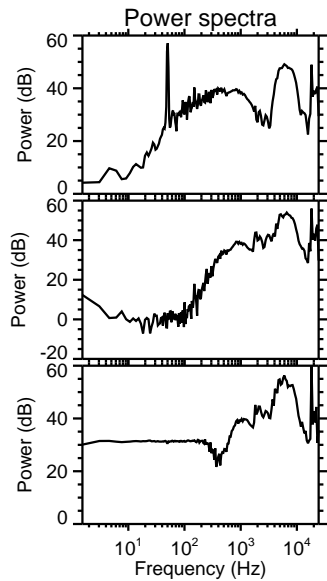
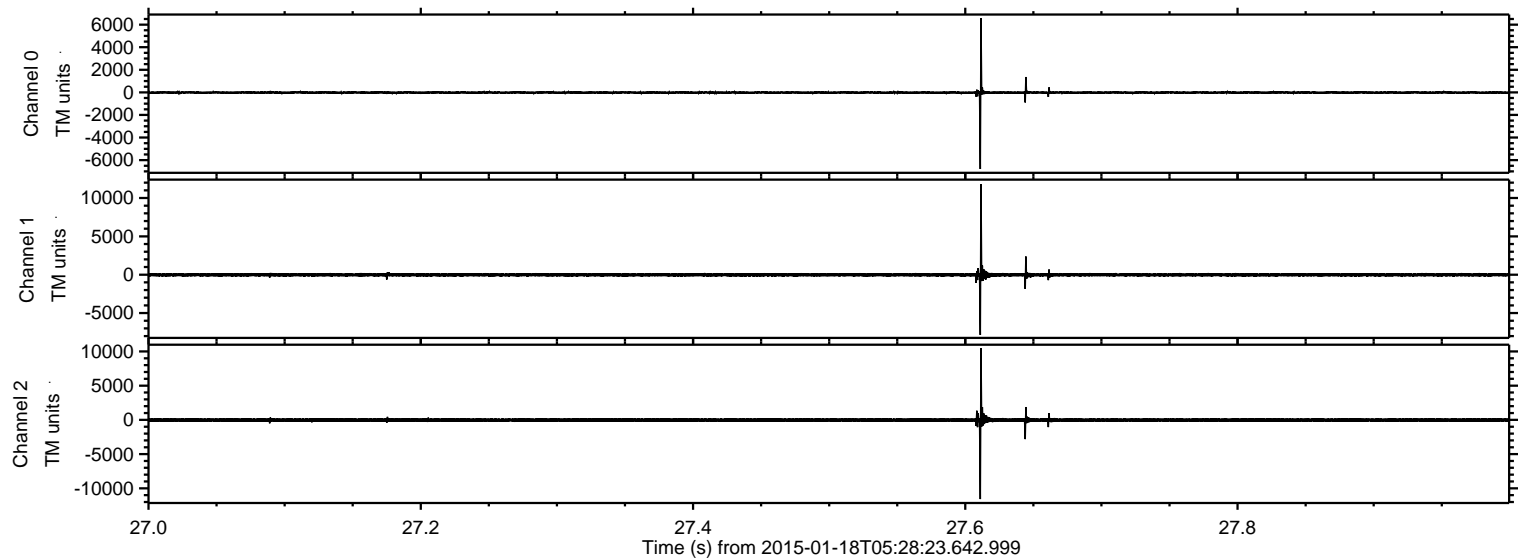
Processed Fri Jan 23 22:05:29 2015 by ELM ver.2012-10-06 from 001\_\_elm20150118\_052822\_\_dat00.bin





ELMAVAN 3D WAVEFORMS (Measured data sampled at 50 kHz) 49807 packets of 144 samples from 2015-01-18T05:28:23.642.999. Part 28/144

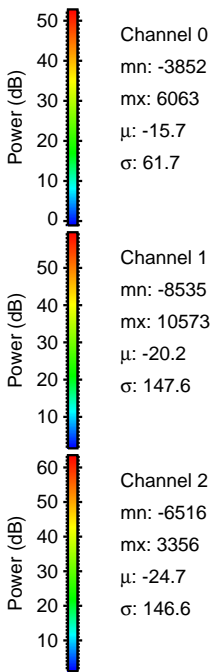
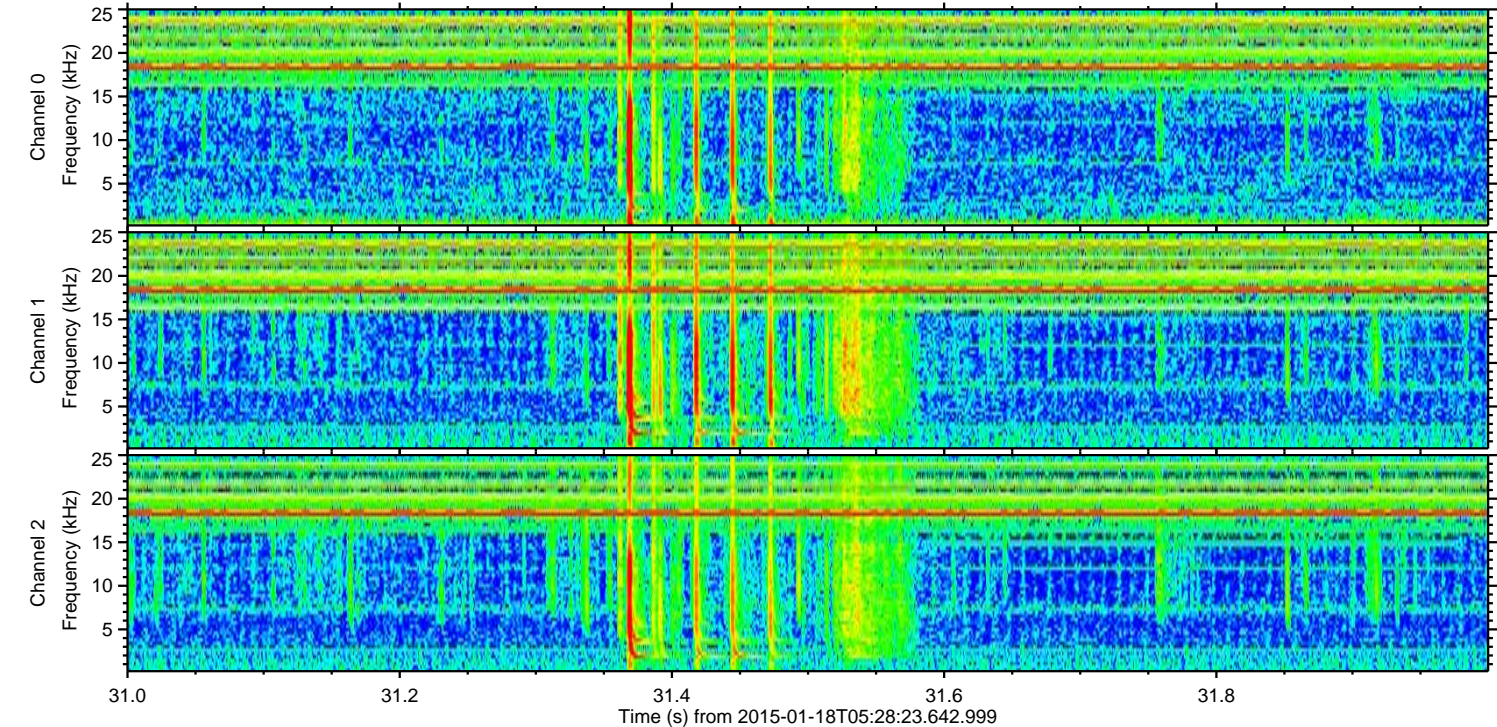
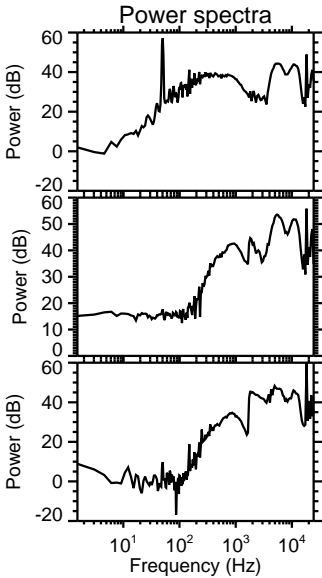
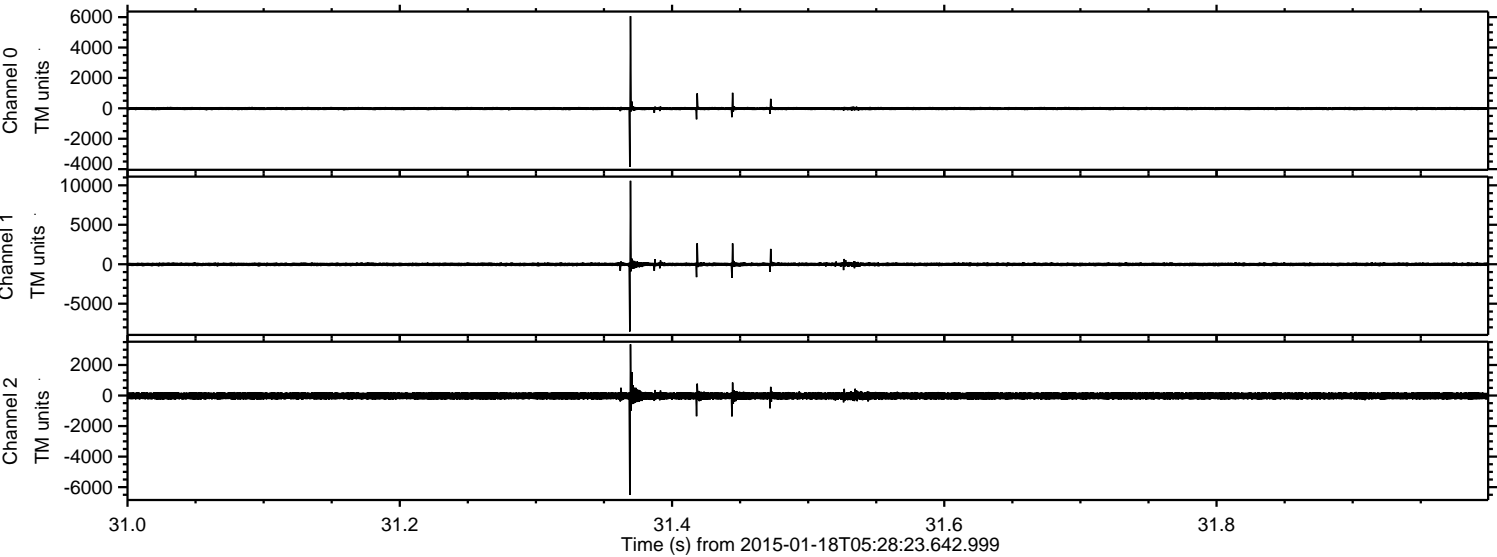
Processed Fri Jan 23 22:05:30 2015 by ELM ver.2012-10-06 from 001\_\_elm20150118\_052822\_\_dat00.bin





ELMAVAN 3D WAVEFORMS (Measured data sampled at 50 kHz) 49807 packets of 144 samples from 2015-01-18T05:28:23.642.999. Part 32/144

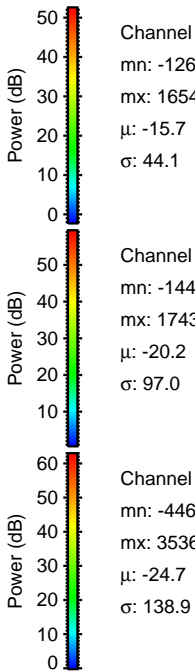
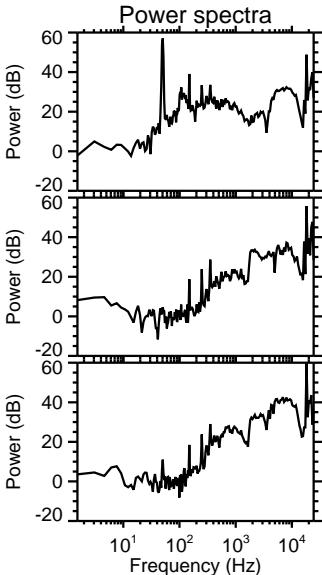
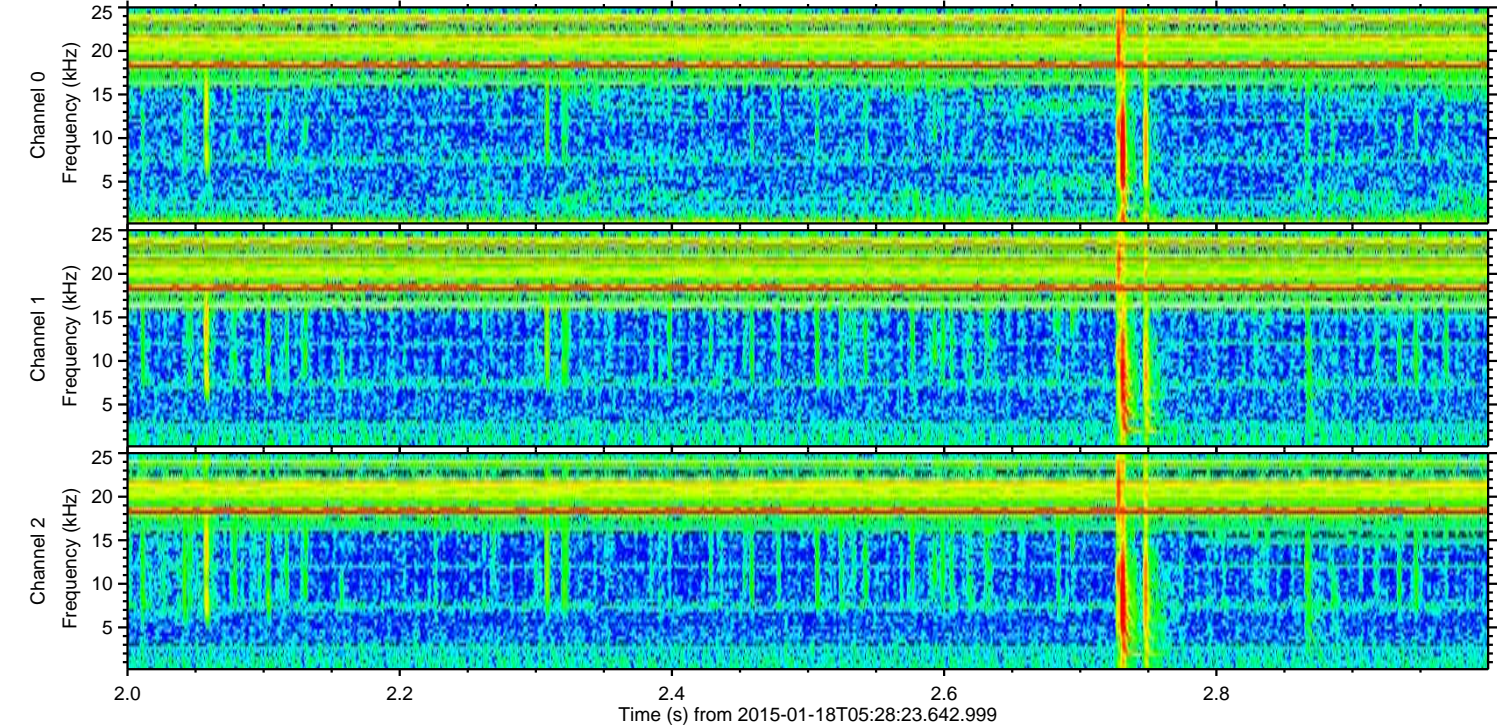
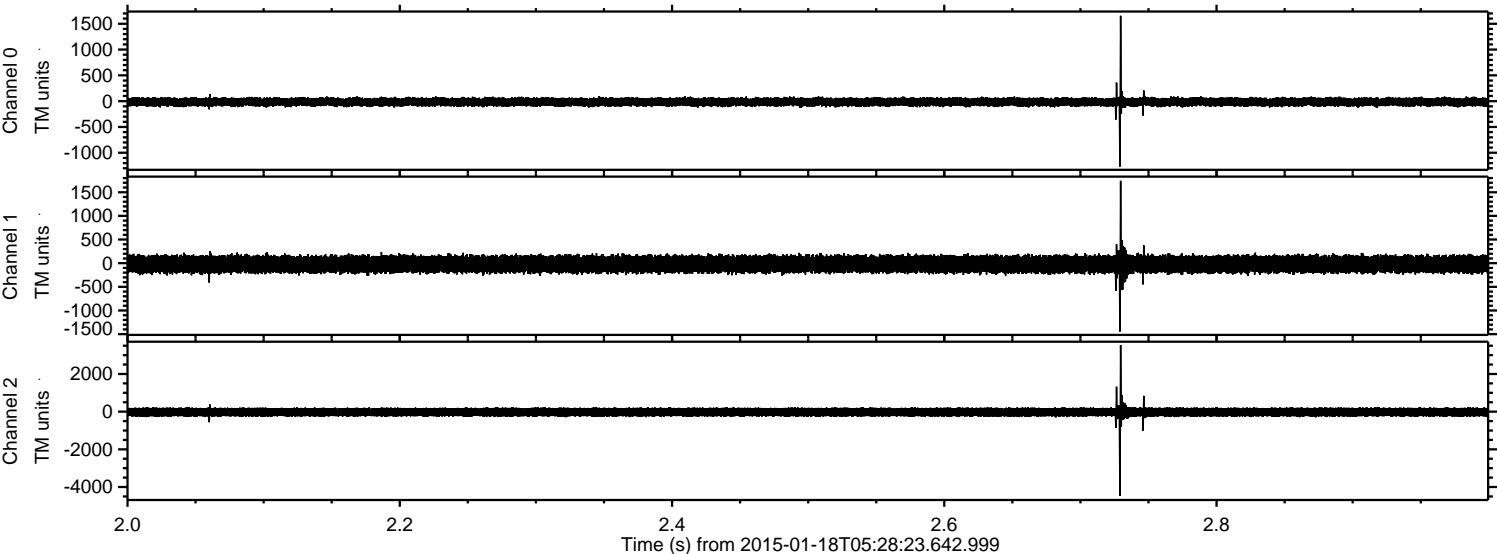
Processed Fri Jan 23 22:05:31 2015 by ELM ver.2012-10-06 from 001\_\_elm20150118\_052822\_\_dat00.bin





ELMAVAN 3D WAVEFORMS (Measured data sampled at 50 kHz) 49807 packets of 144 samples from 2015-01-18T05:28:23.642.999. Part 3/144

Processed Fri Jan 23 22:05:32 2015 by ELM ver.2012-10-06 from 001\_\_elm20150118\_052822\_\_dat00.bin



Channel 0  
mn: -1267  
mx: 1654  
 $\mu$ : -15.7  
 $\sigma$ : 44.1

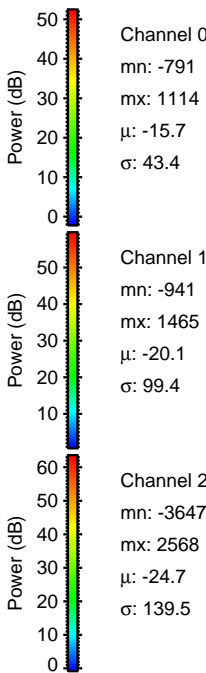
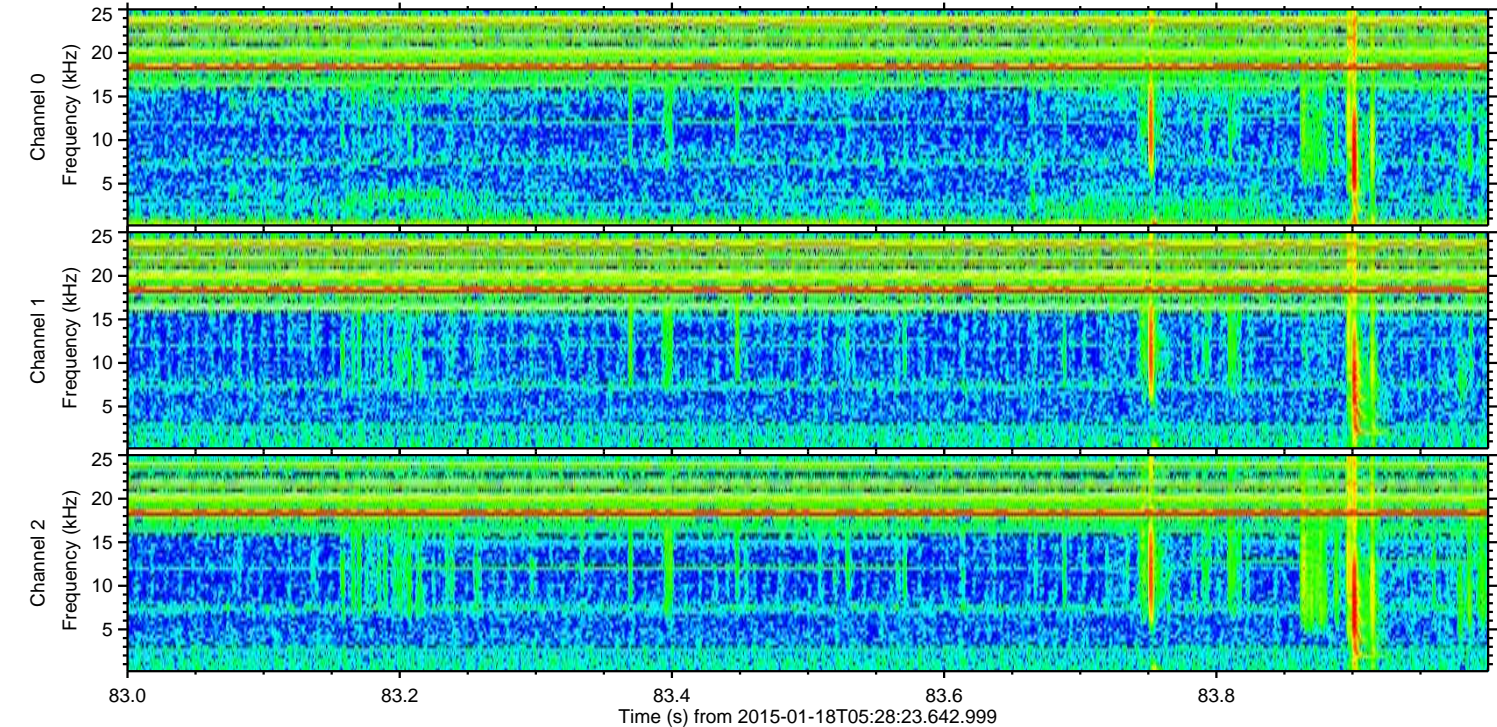
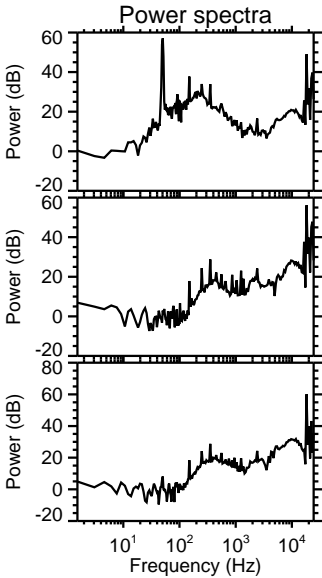
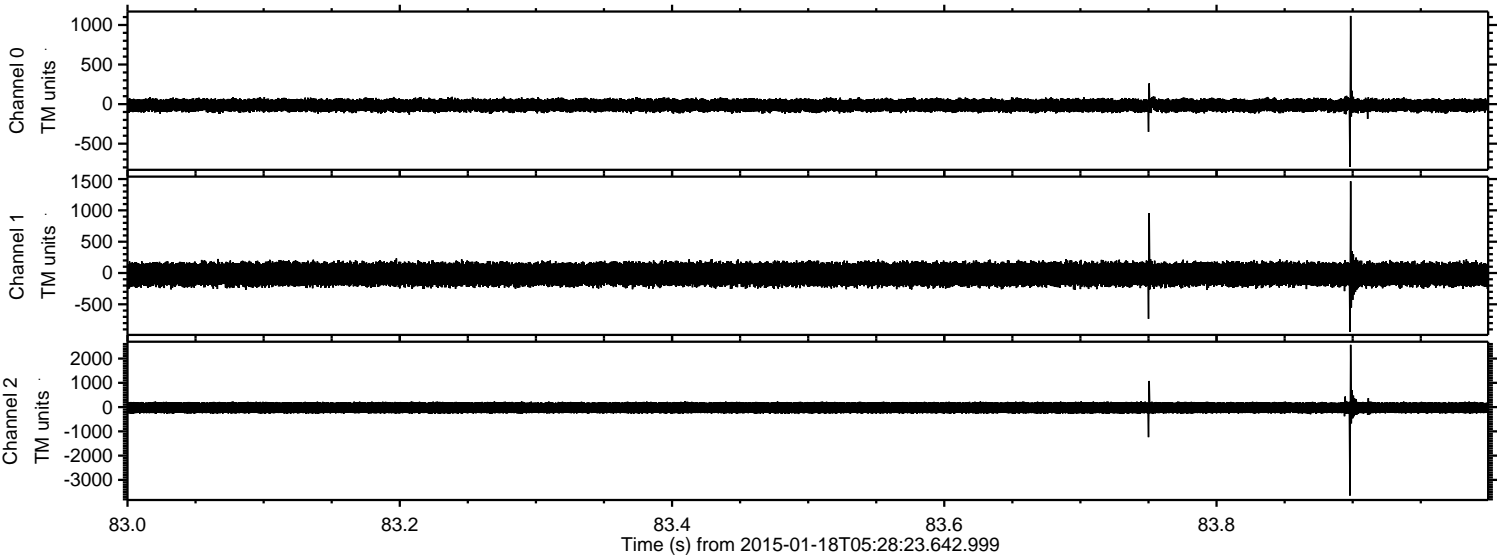
Channel 1  
mn: -1444  
mx: 1743  
 $\mu$ : -20.2  
 $\sigma$ : 97.0

Channel 2  
mn: -4466  
mx: 3536  
 $\mu$ : -24.7  
 $\sigma$ : 138.9



ELMAVAN 3D WAVEFORMS (Measured data sampled at 50 kHz) 49807 packets of 144 samples from 2015-01-18T05:28:23.642.999. Part 84/144

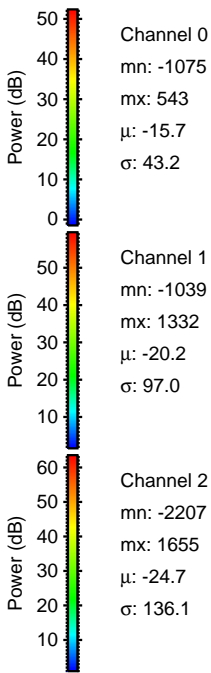
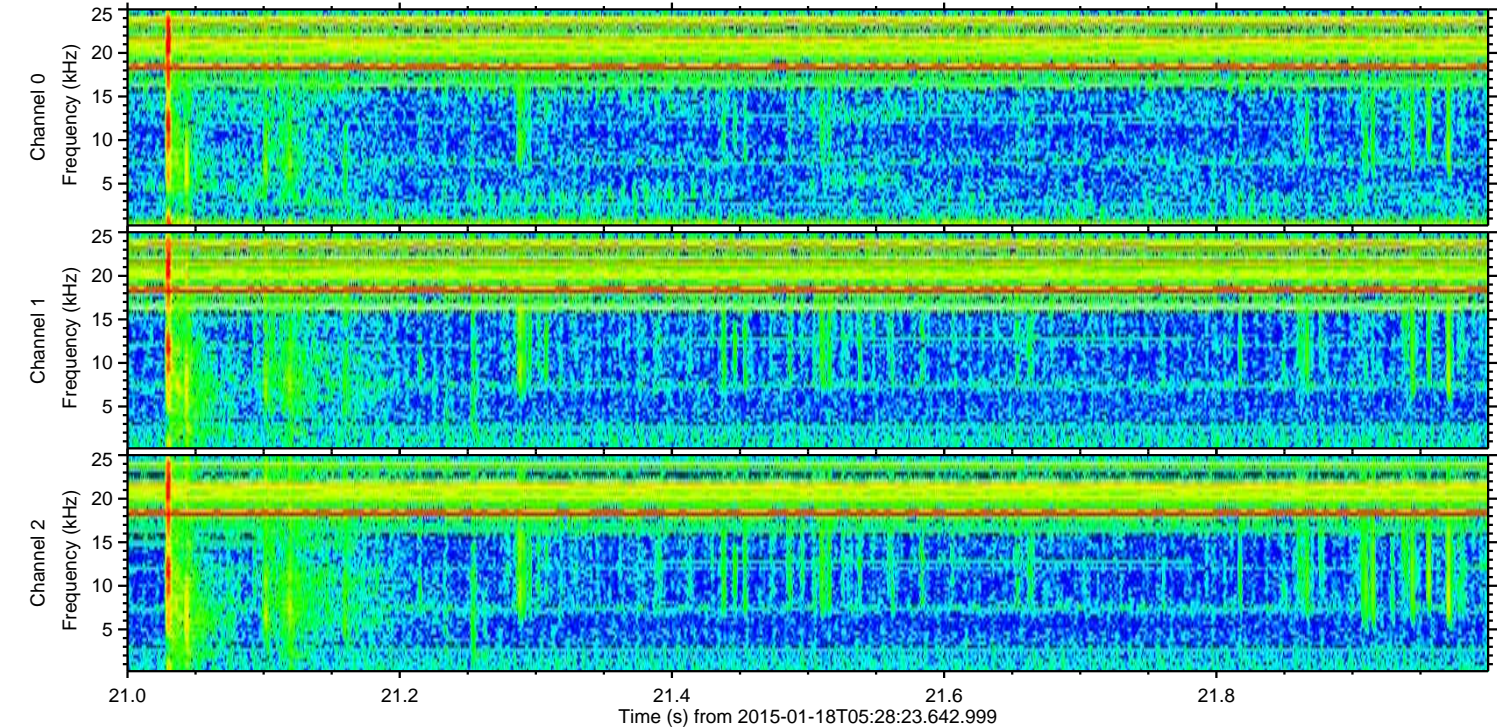
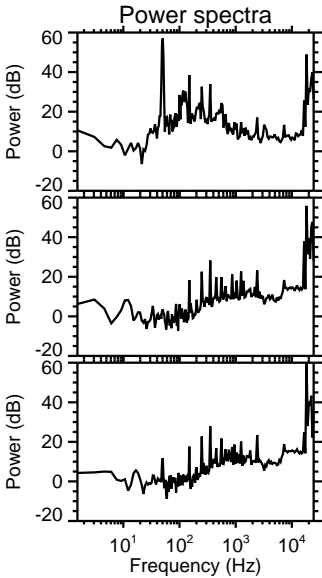
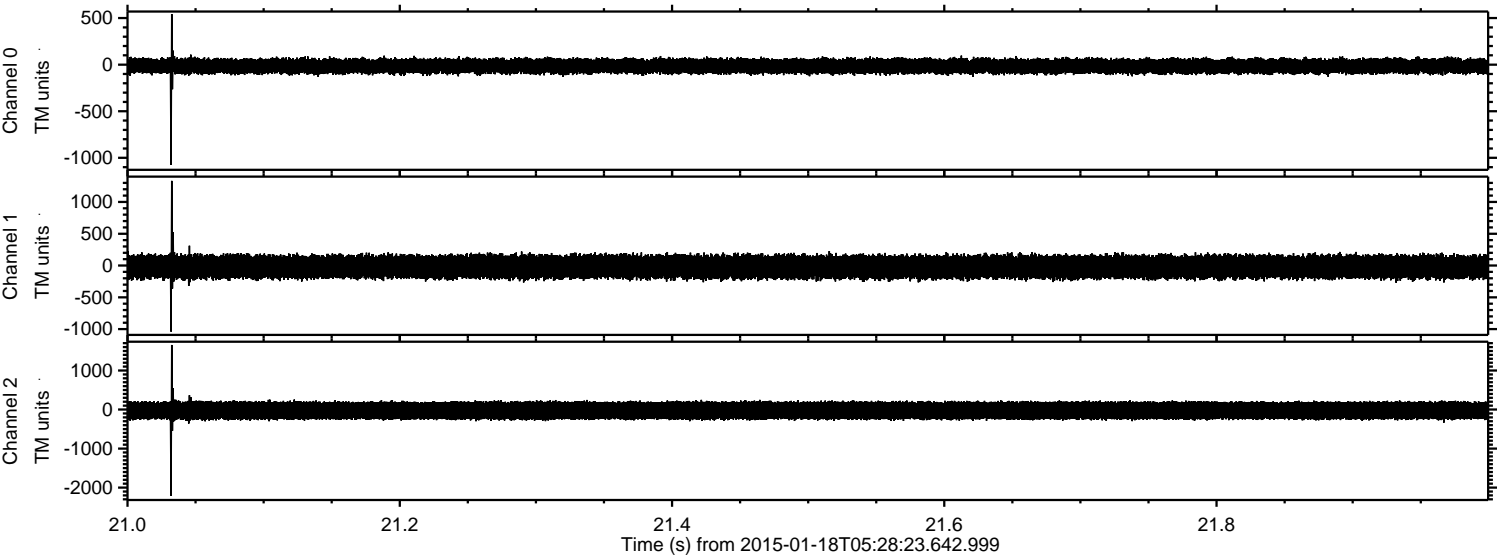
Processed Fri Jan 23 22:05:33 2015 by ELM ver.2012-10-06 from 001\_\_elm20150118\_052822\_\_dat00.bin





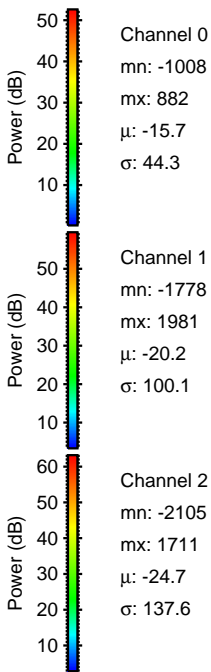
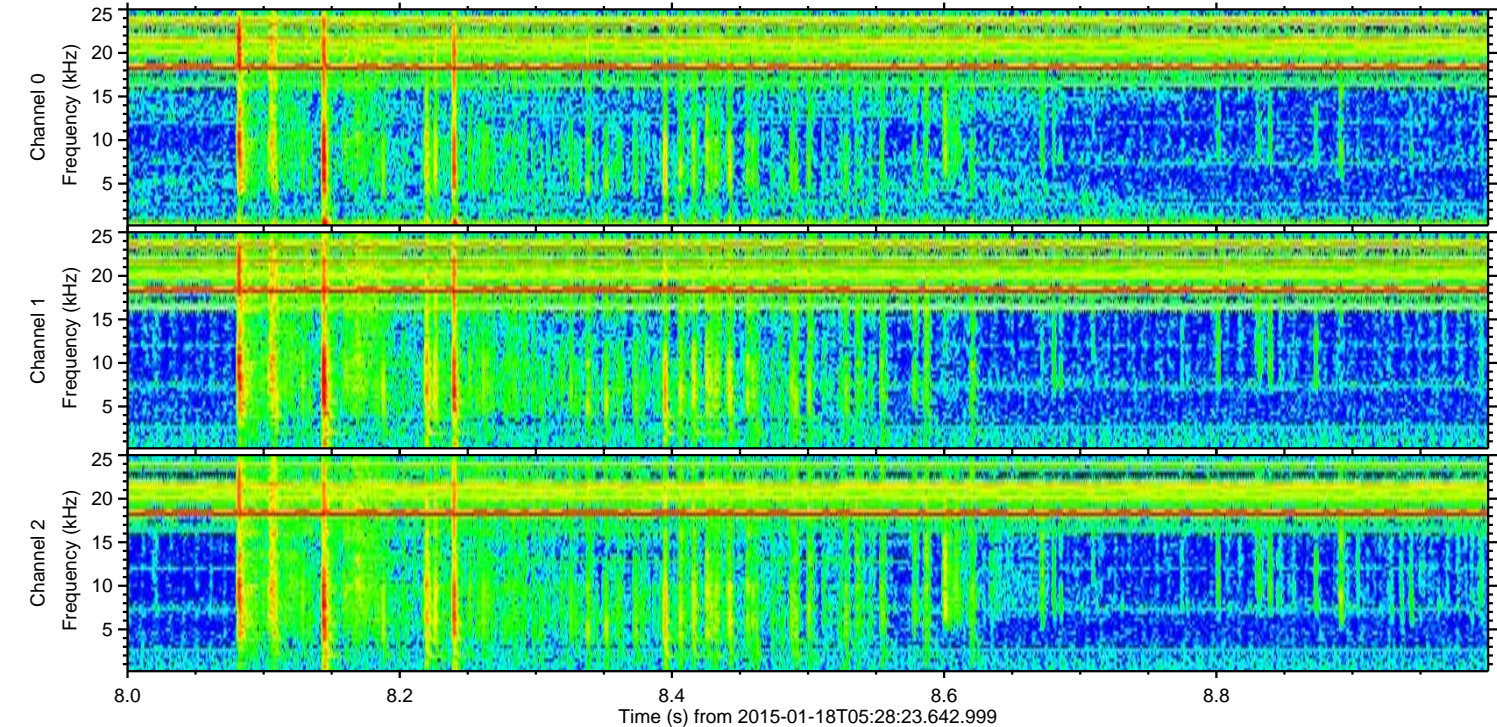
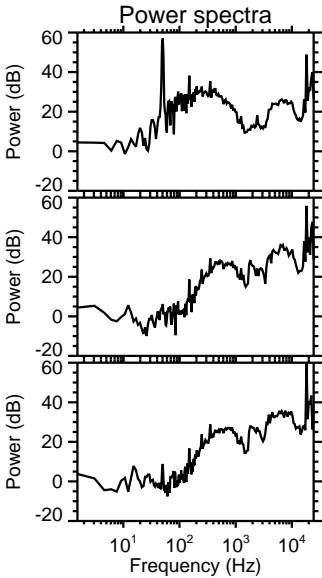
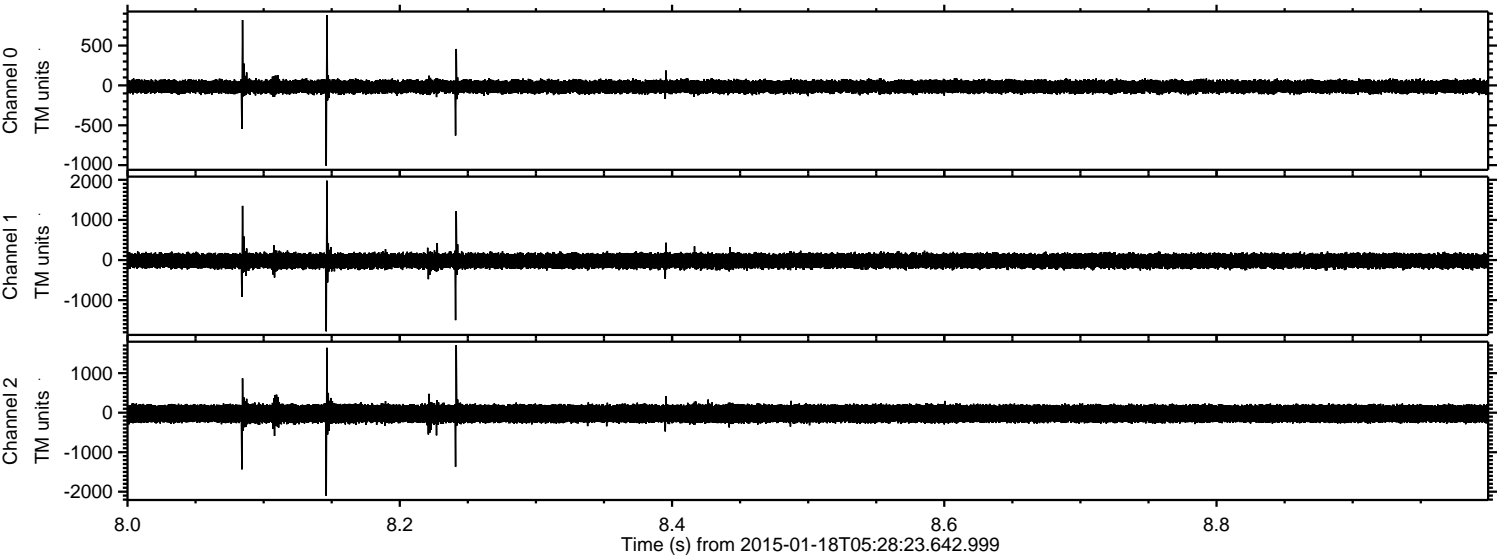
ELMAVAN 3D WAVEFORMS (Measured data sampled at 50 kHz) 49807 packets of 144 samples from 2015-01-18T05:28:23.642.999. Part 22/144

Processed Fri Jan 23 22:05:34 2015 by ELM ver.2012-10-06 from 001\_\_elm20150118\_052822\_\_dat00.bin





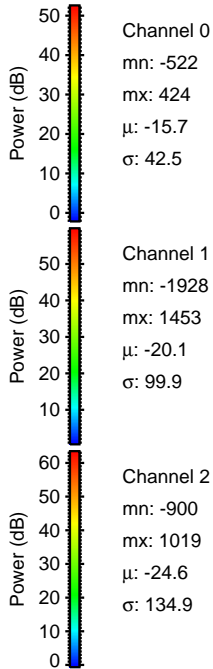
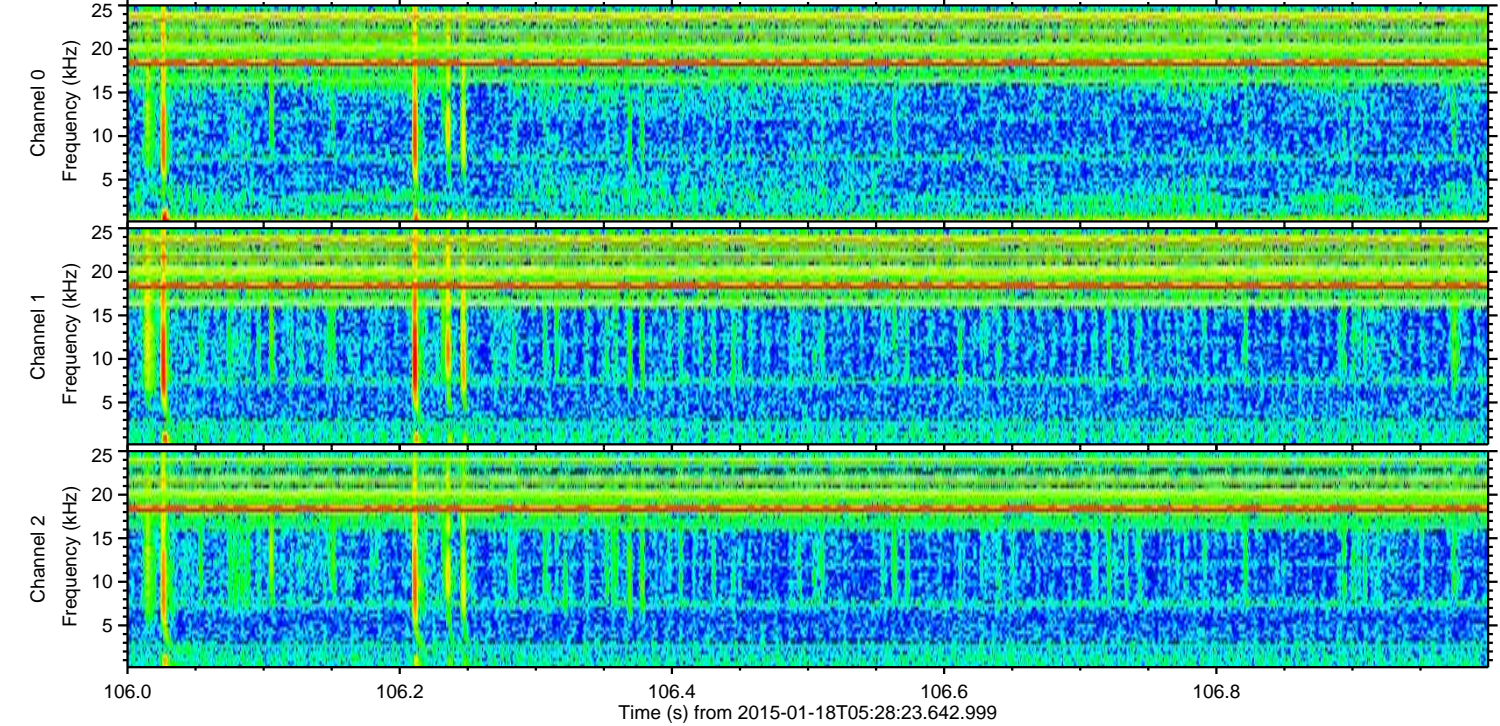
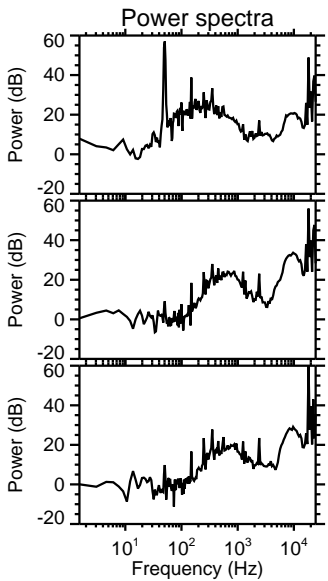
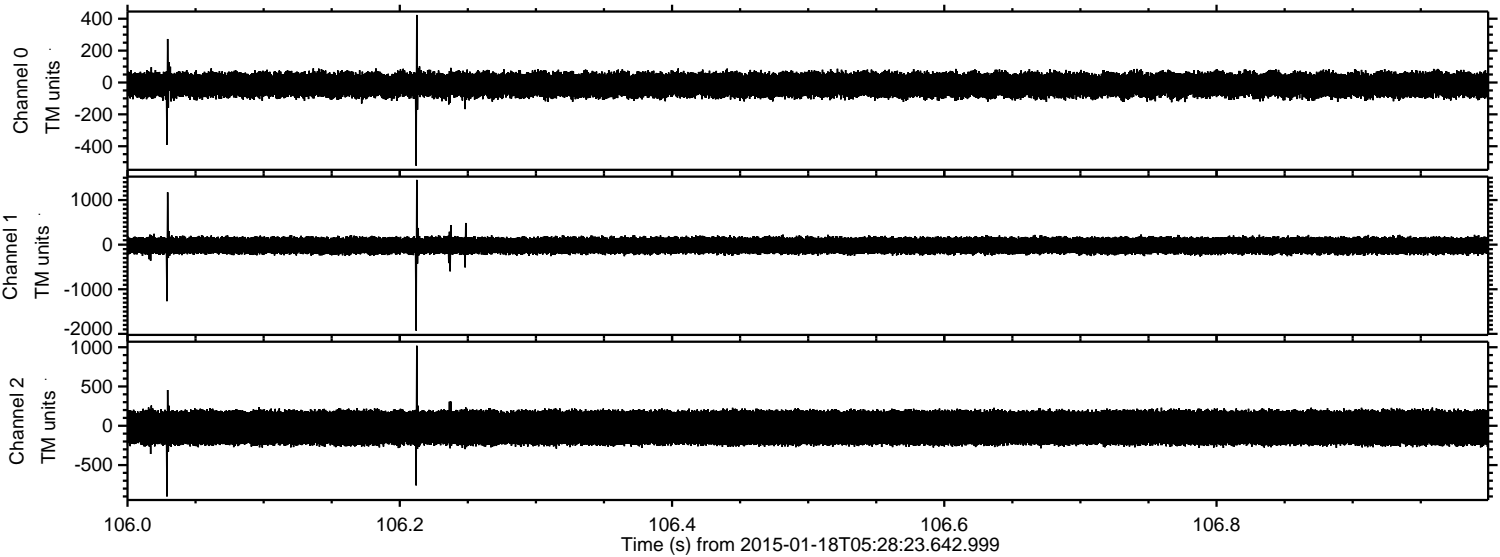
Processed Fri Jan 23 22:05:35 2015 by ELM ver.2012-10-06 from 001\_\_elm20150118\_052822\_\_dat00.bin





ELMAVAN 3D WAVEFORMS (Measured data sampled at 50 kHz) 49807 packets of 144 samples from 2015-01-18T05:28:23.642.999. Part 107/144

Processed Fri Jan 23 22:05:36 2015 by ELM ver.2012-10-06 from 001\_\_elm20150118\_052822\_\_dat00.bin





Processed Fri Jan 23 22:05:37 2015 by ELM ver.2012-10-06 from 001\_\_elm20150118\_052822\_\_dat00.bin

