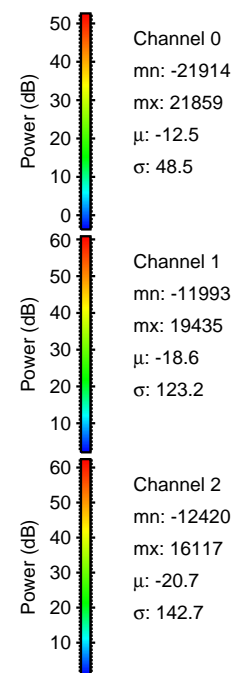
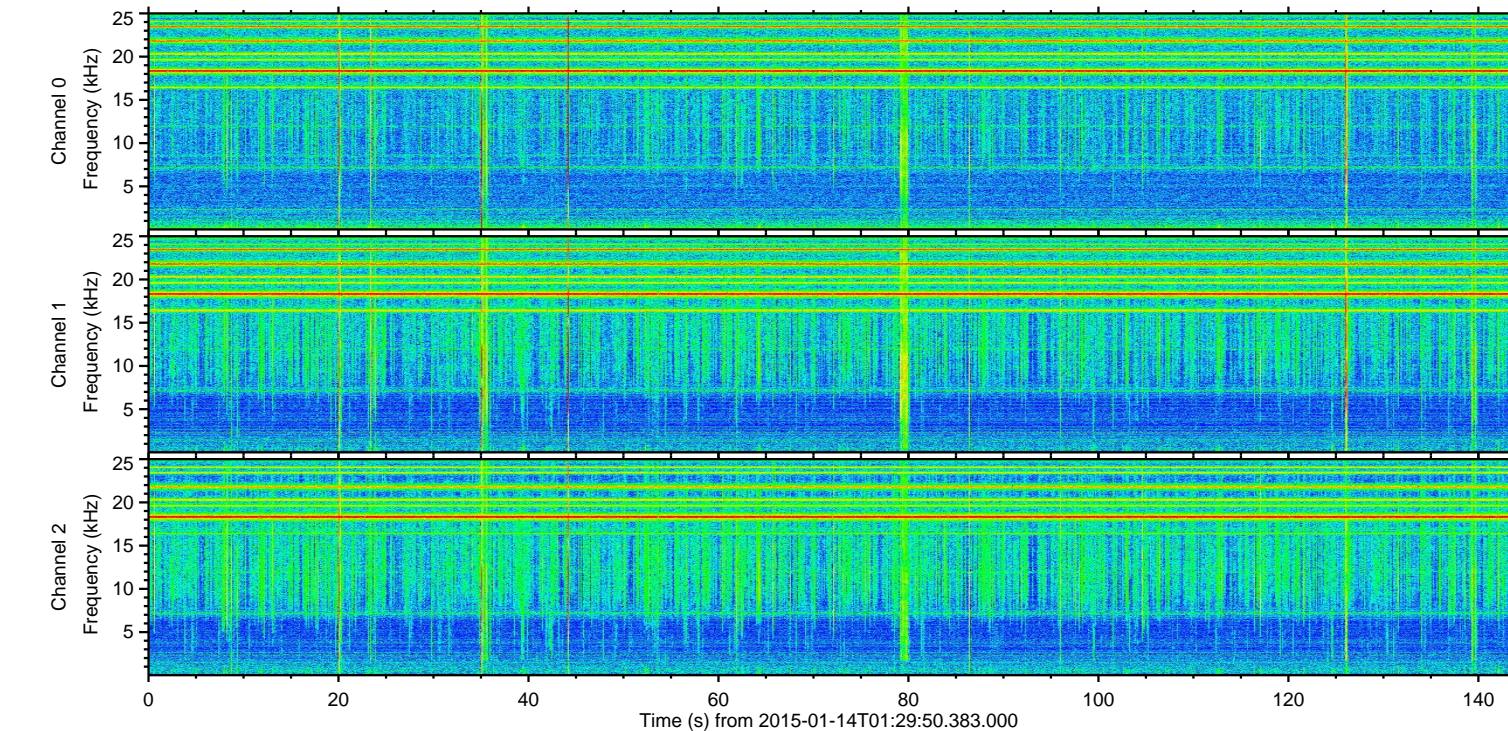
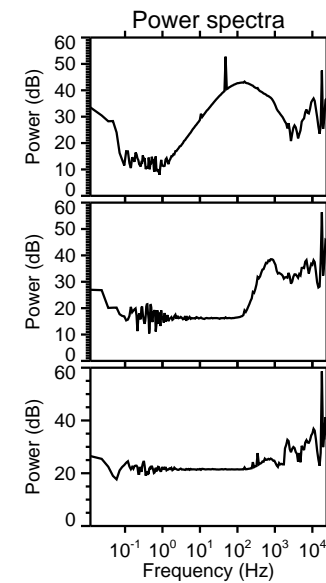
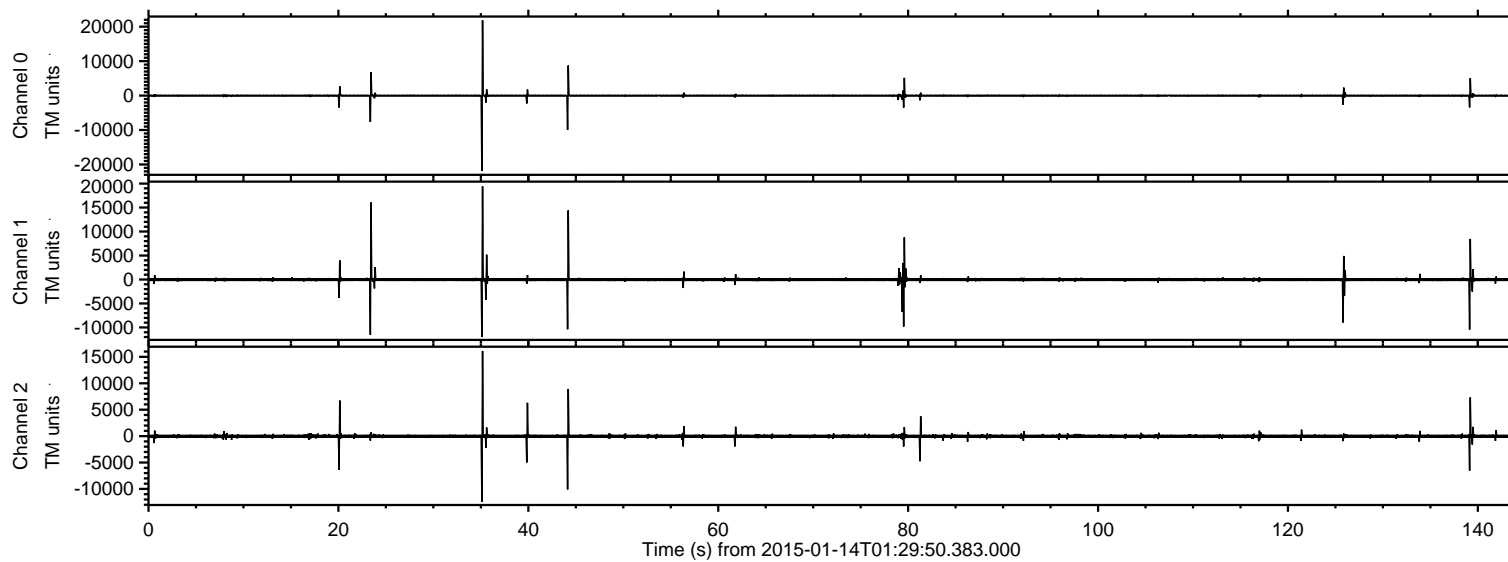


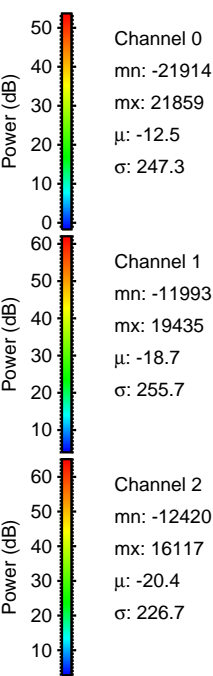
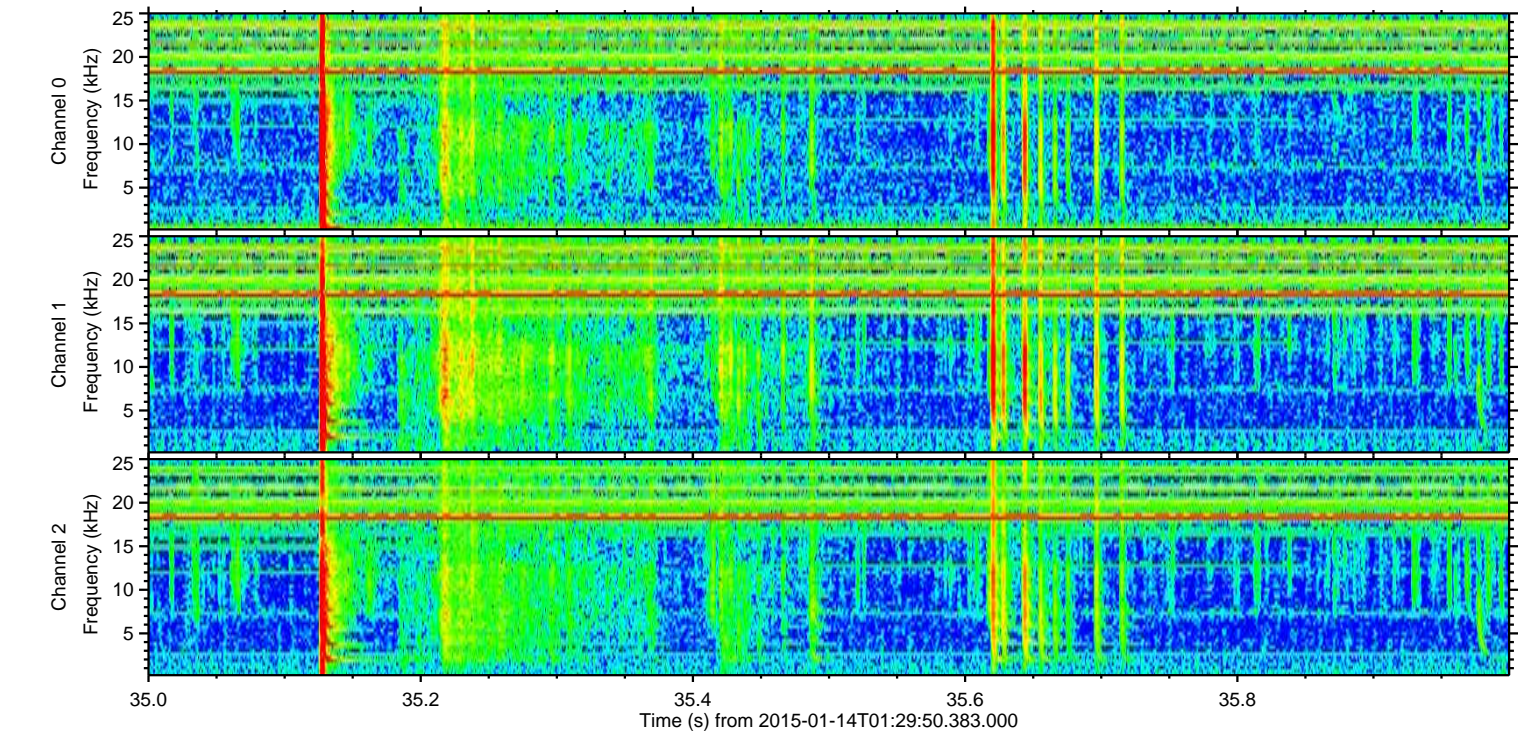
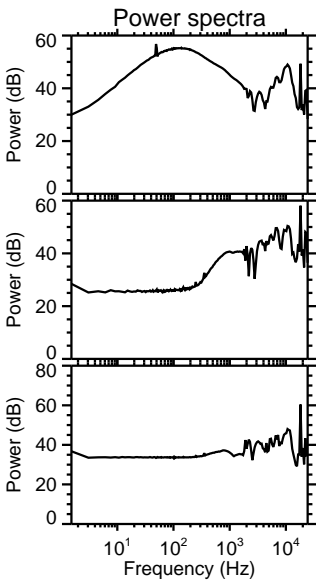
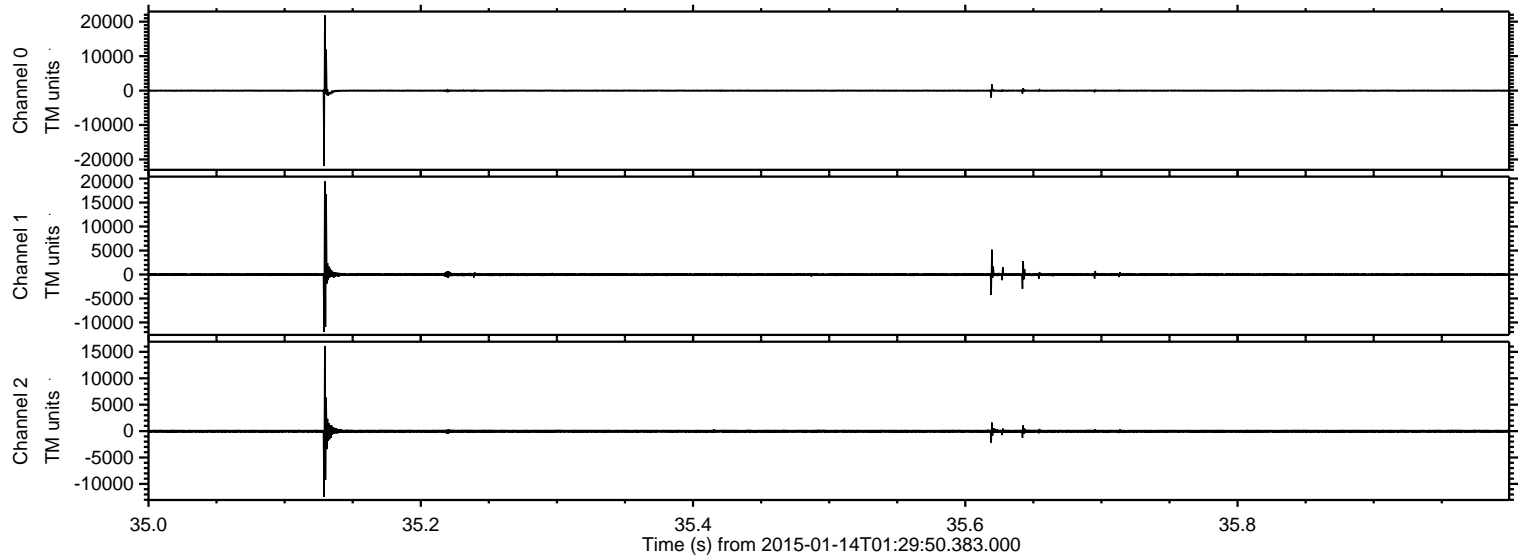
ELMAVAN 3D WAVEFORMS (Measured data sampled at 50 kHz) 49755 packets of 144 samples from 2015-01-14T01:29:50.383.000.

Processed Wed Jan 14 02:38:42 2015 by ELM ver.2012-10-06 from 001__elm20150114_012949__dat00.bin



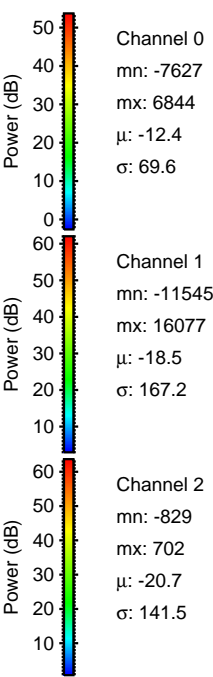
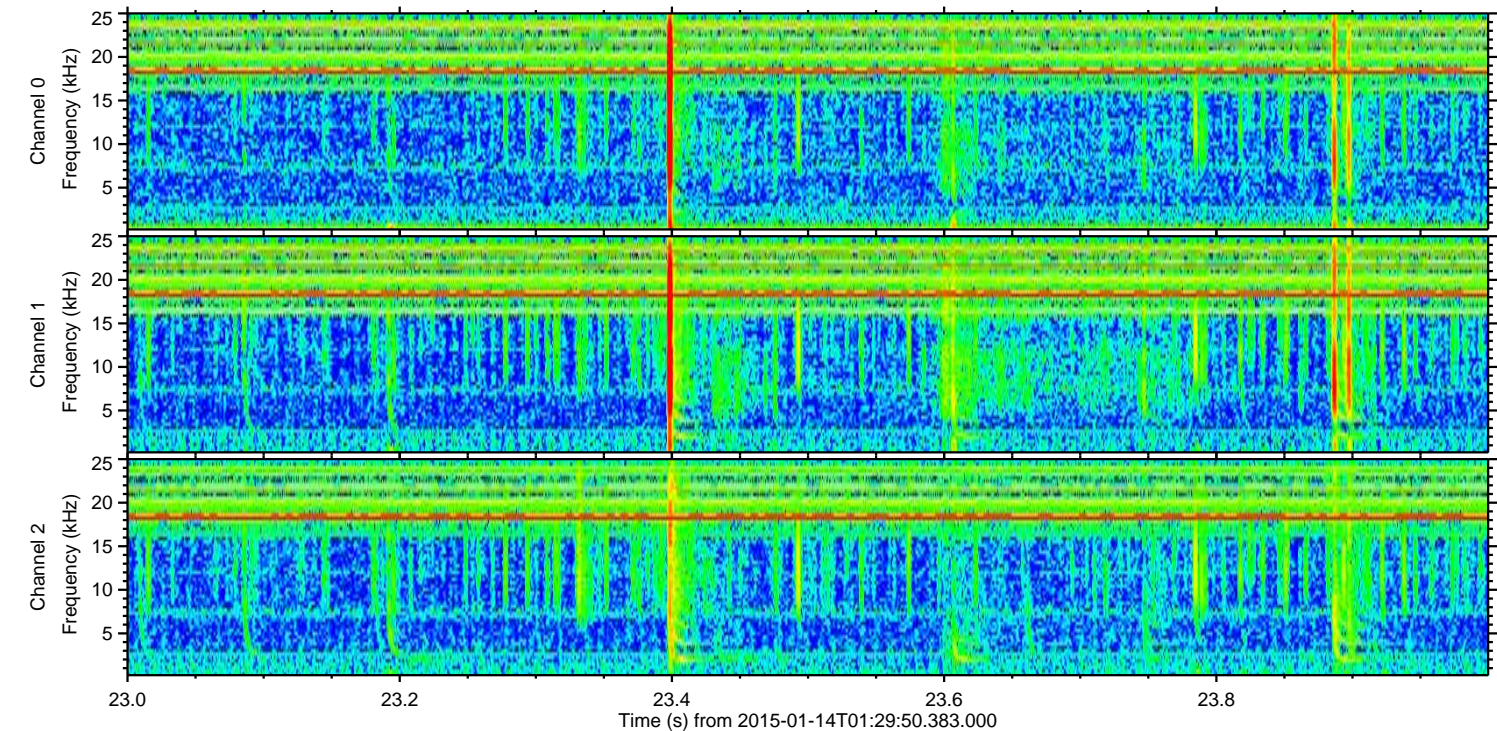
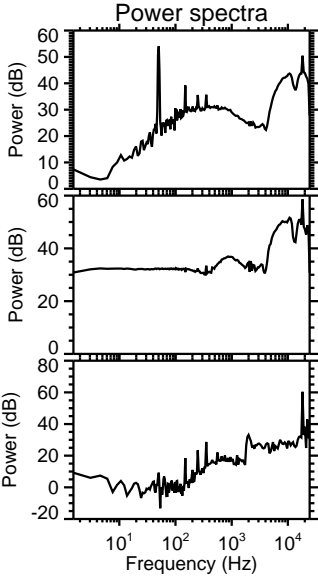
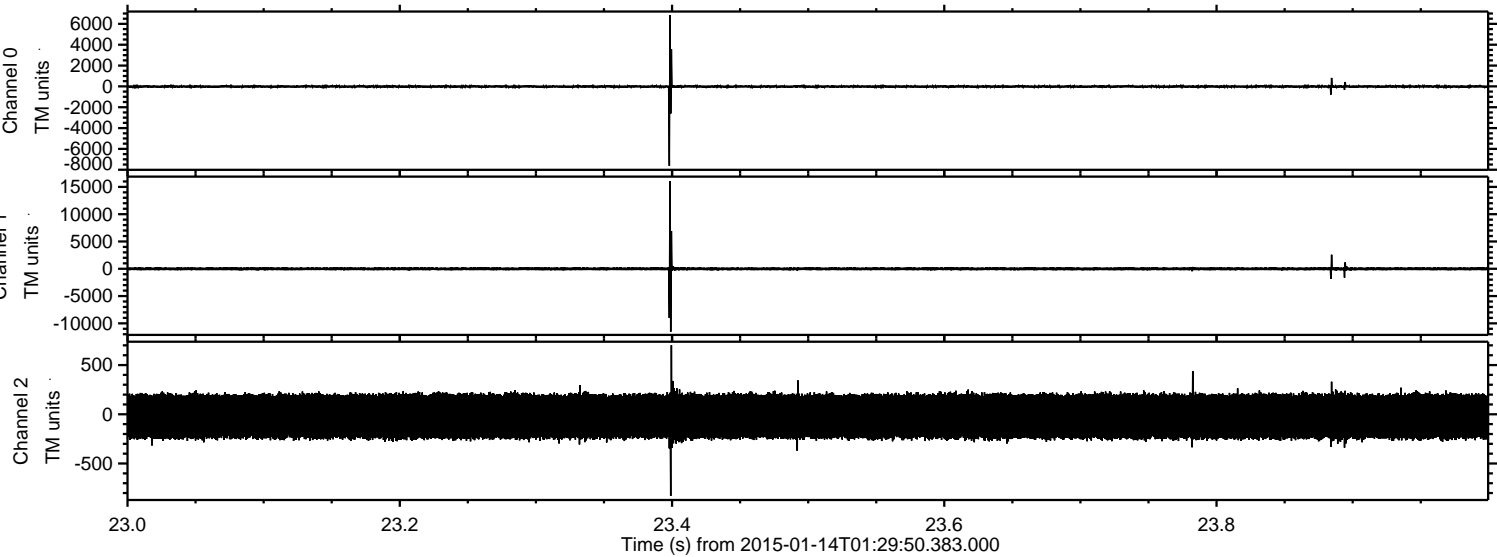
ELMAVAN 3D WAVEFORMS (Measured data sampled at 50 kHz) 49755 packets of 144 samples from 2015-01-14T01:29:50.383.000. Part 36/144

Processed Wed Jan 14 02:38:53 2015 by ELM ver.2012-10-06 from 001__elm20150114_012949__dat00.bin

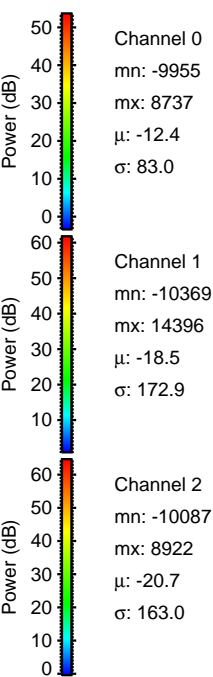
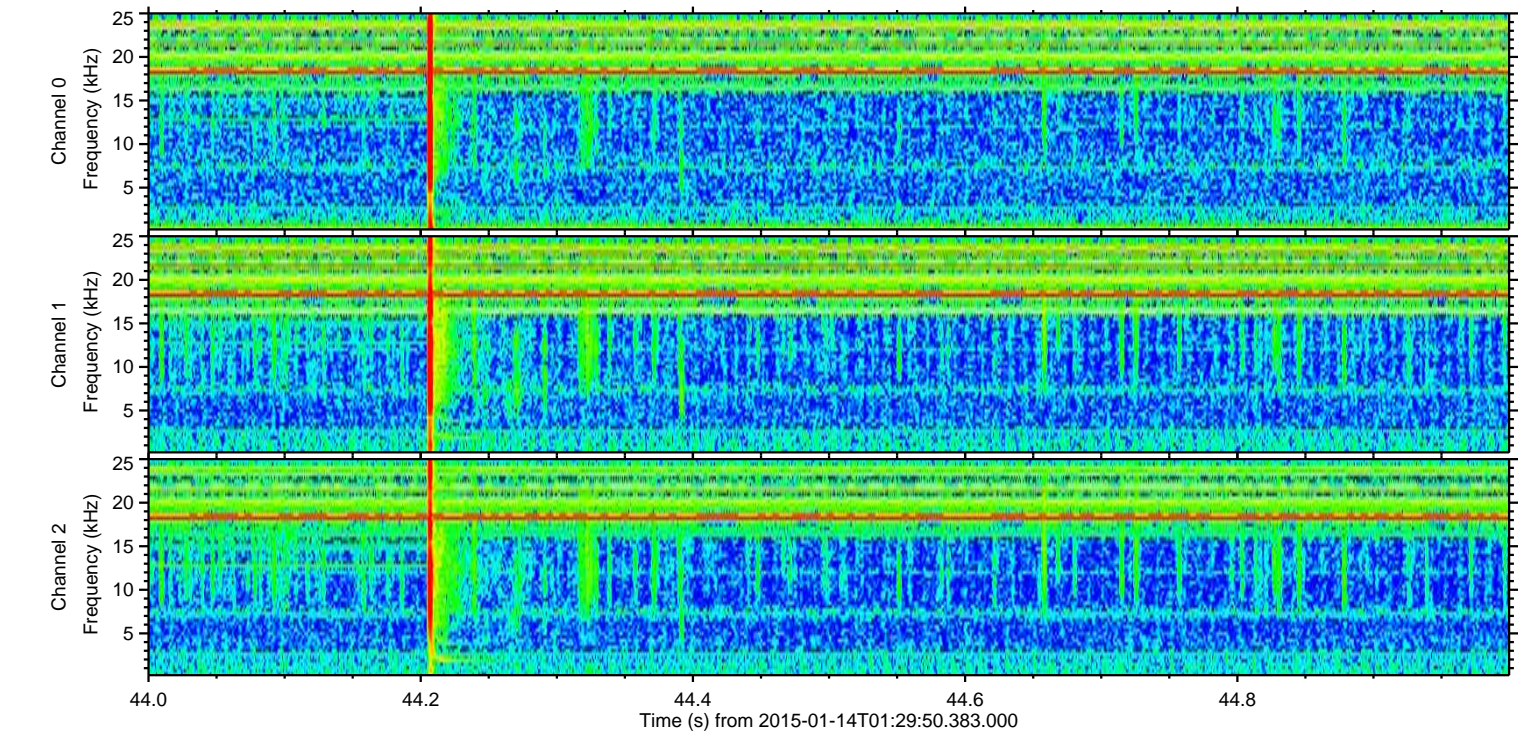
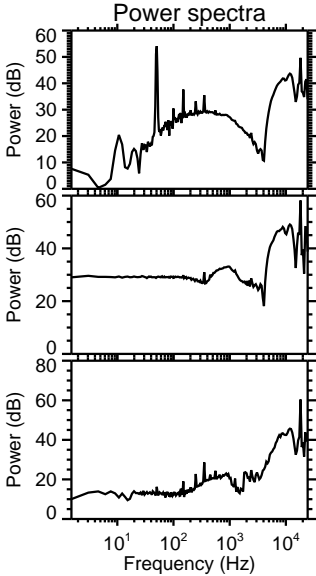
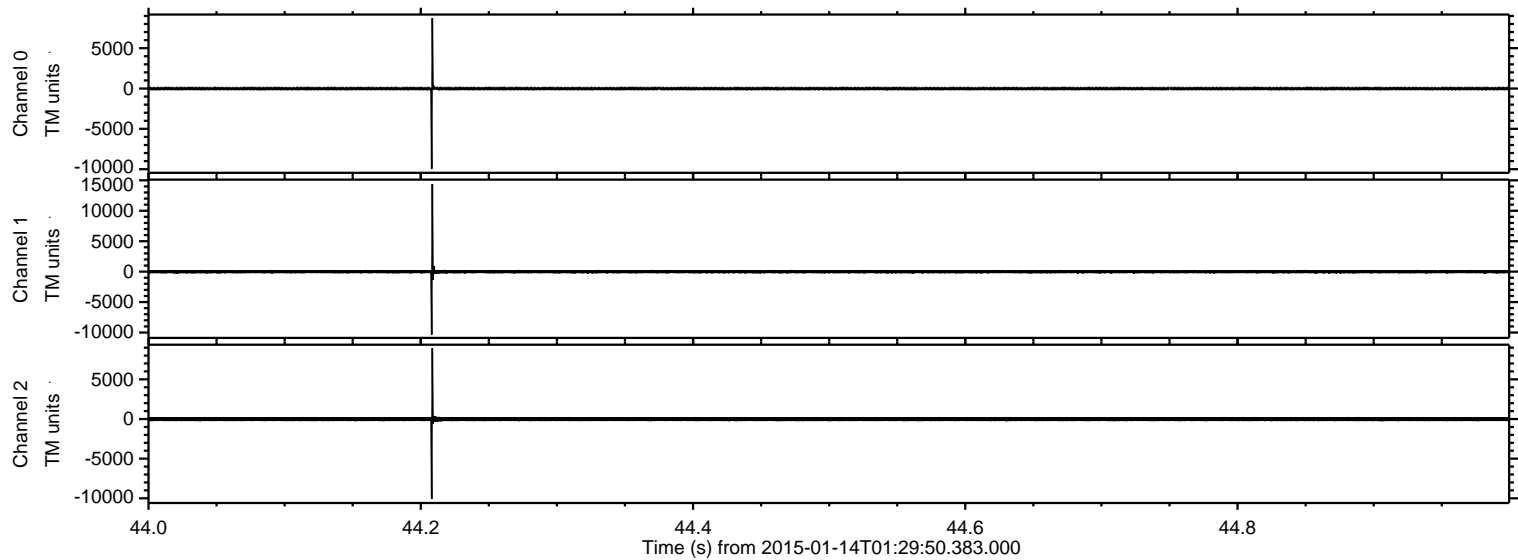


ELMAVAN 3D WAVEFORMS (Measured data sampled at 50 kHz) 49755 packets of 144 samples from 2015-01-14T01:29:50.383.000. Part 24/144

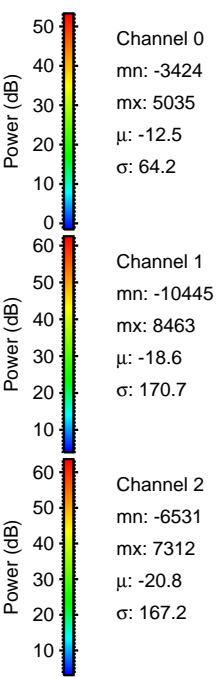
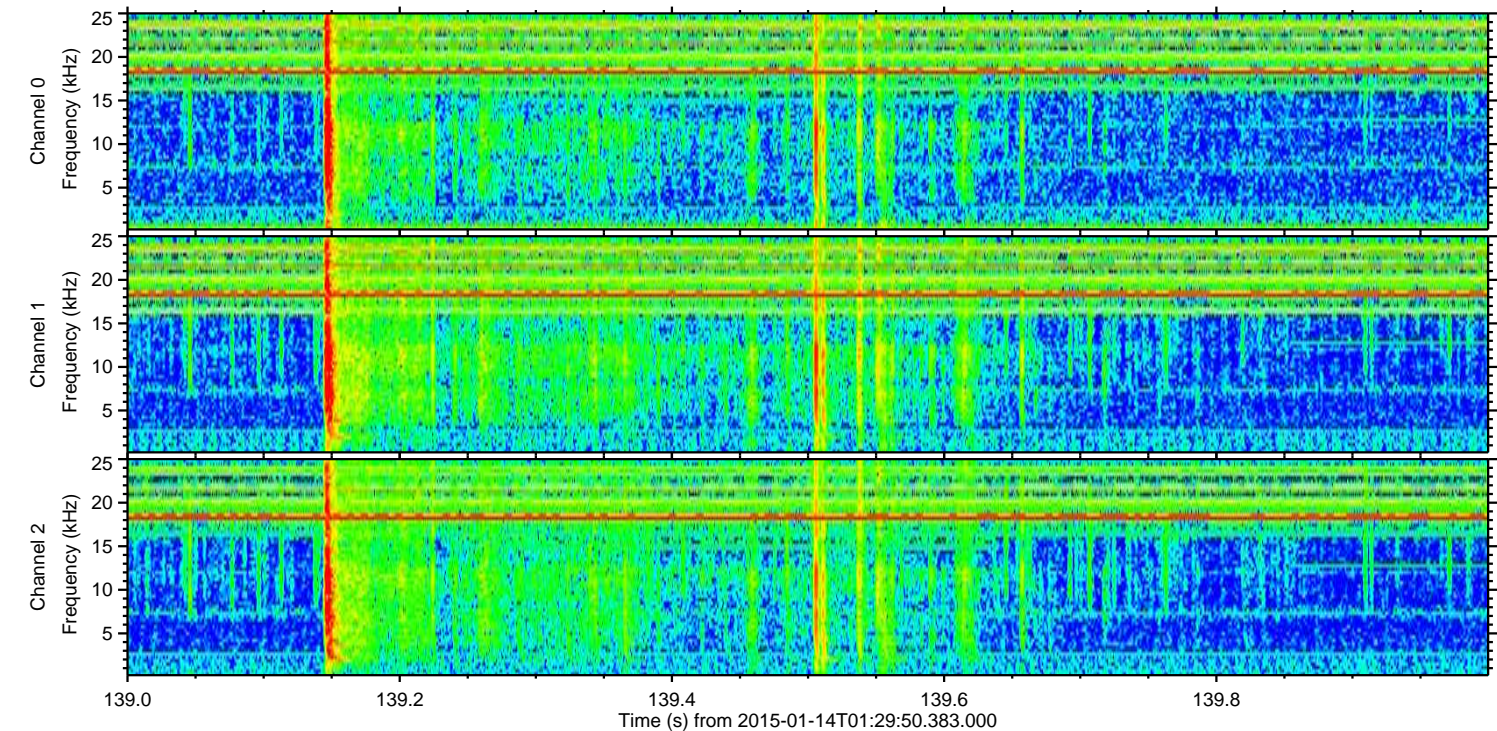
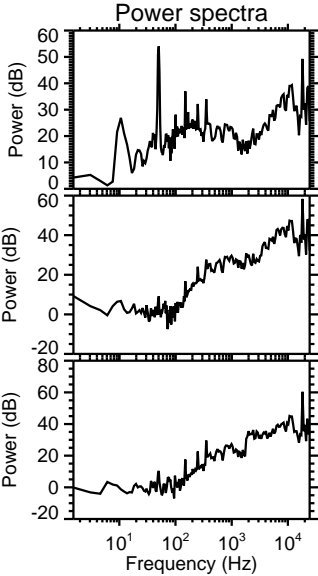
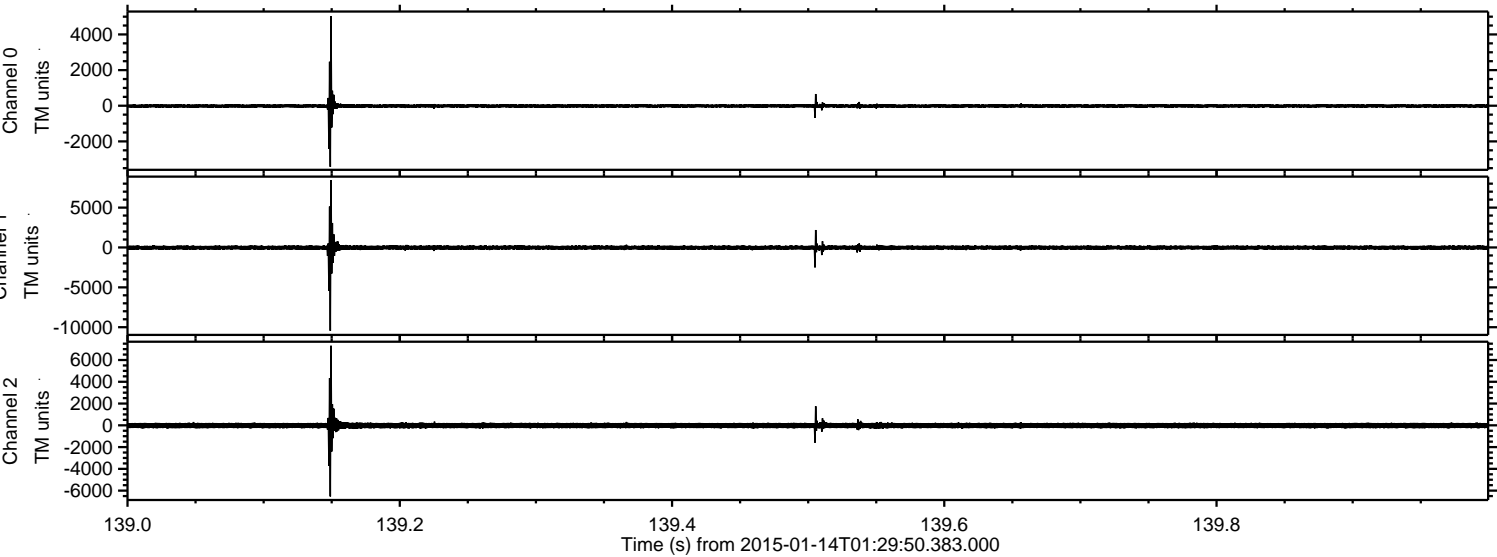
Processed Wed Jan 14 02:38:54 2015 by ELM ver.2012-10-06 from 001__elm20150114_012949__dat00.bin



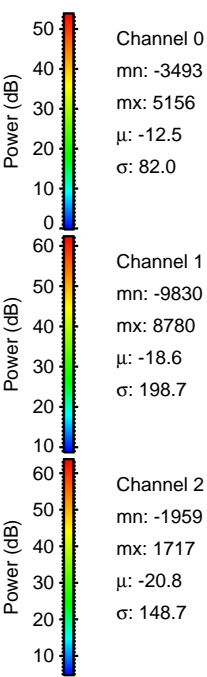
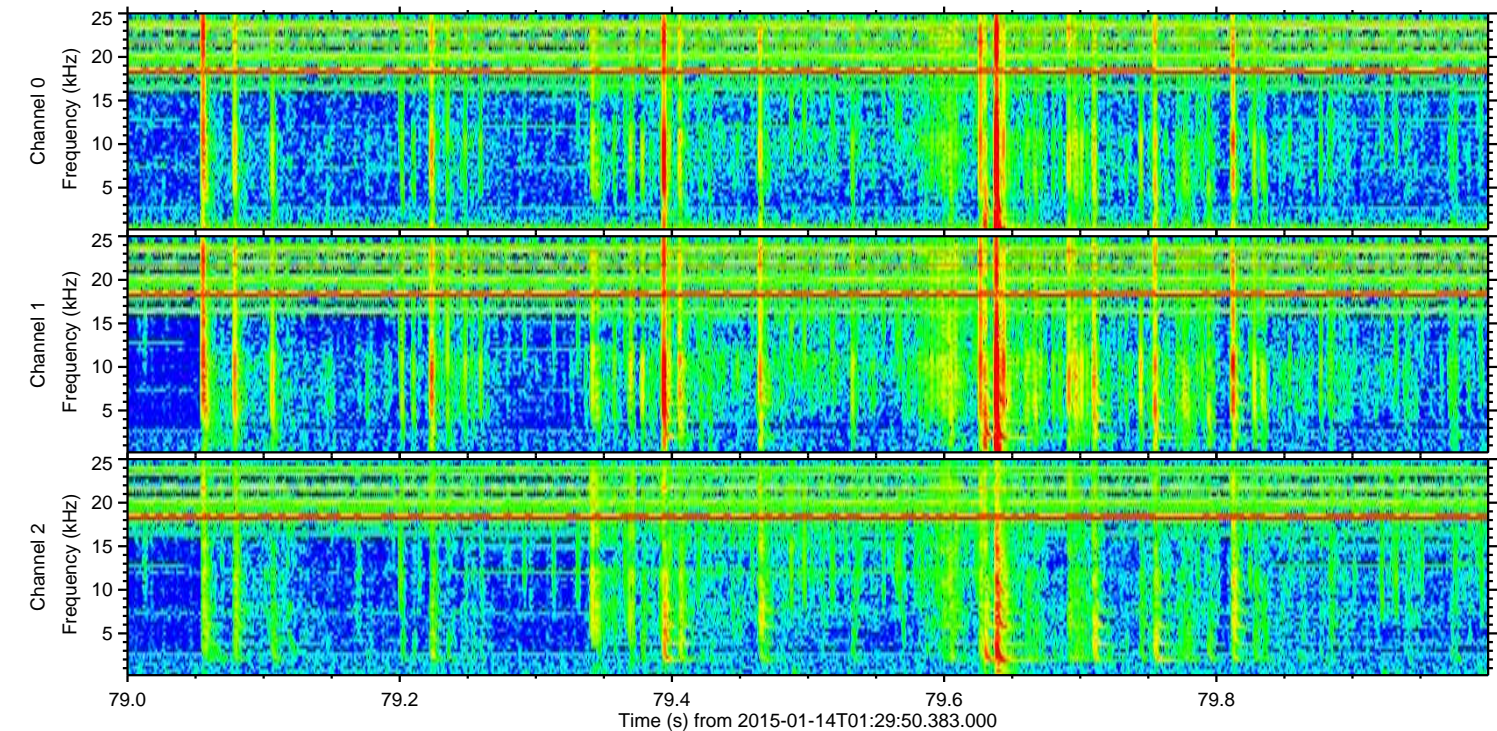
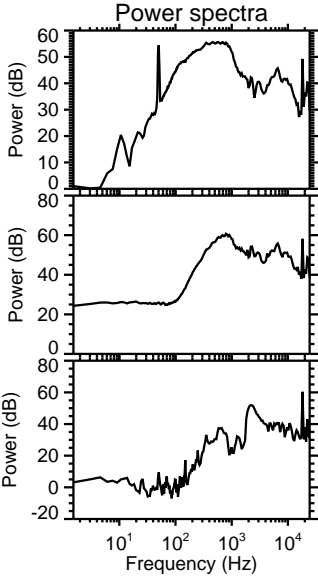
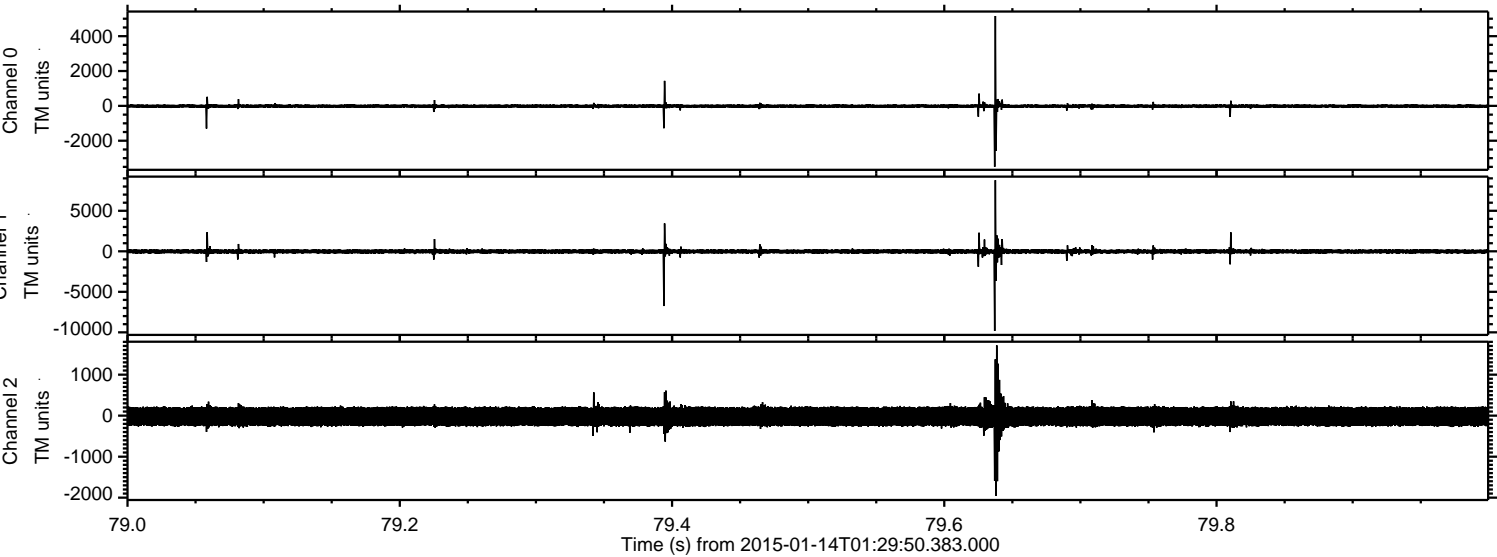
Processed Wed Jan 14 02:38:55 2015 by ELM ver.2012-10-06 from 001__elm20150114_012949__dat00.bin



Processed Wed Jan 14 02:38:56 2015 by ELM ver.2012-10-06 from 001__elm20150114_012949__dat00.bin

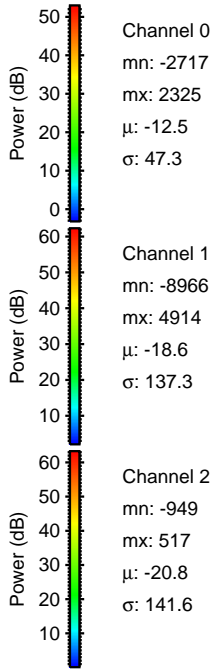
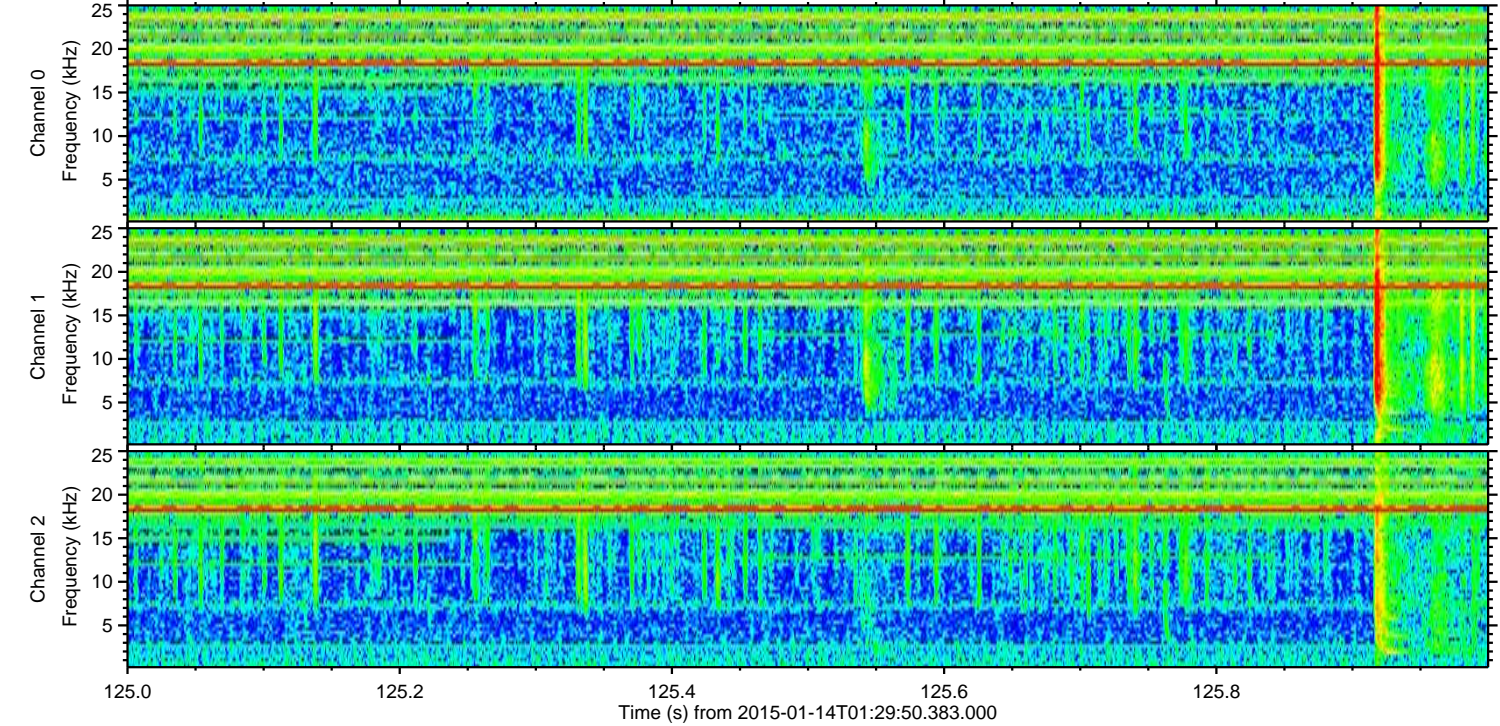
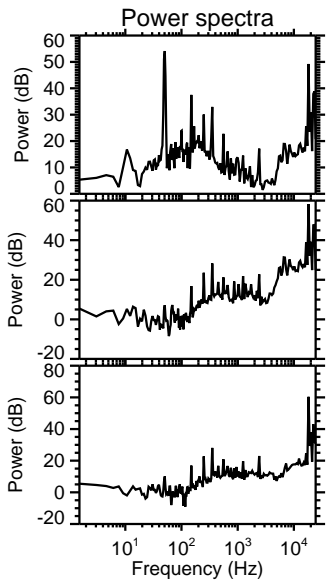
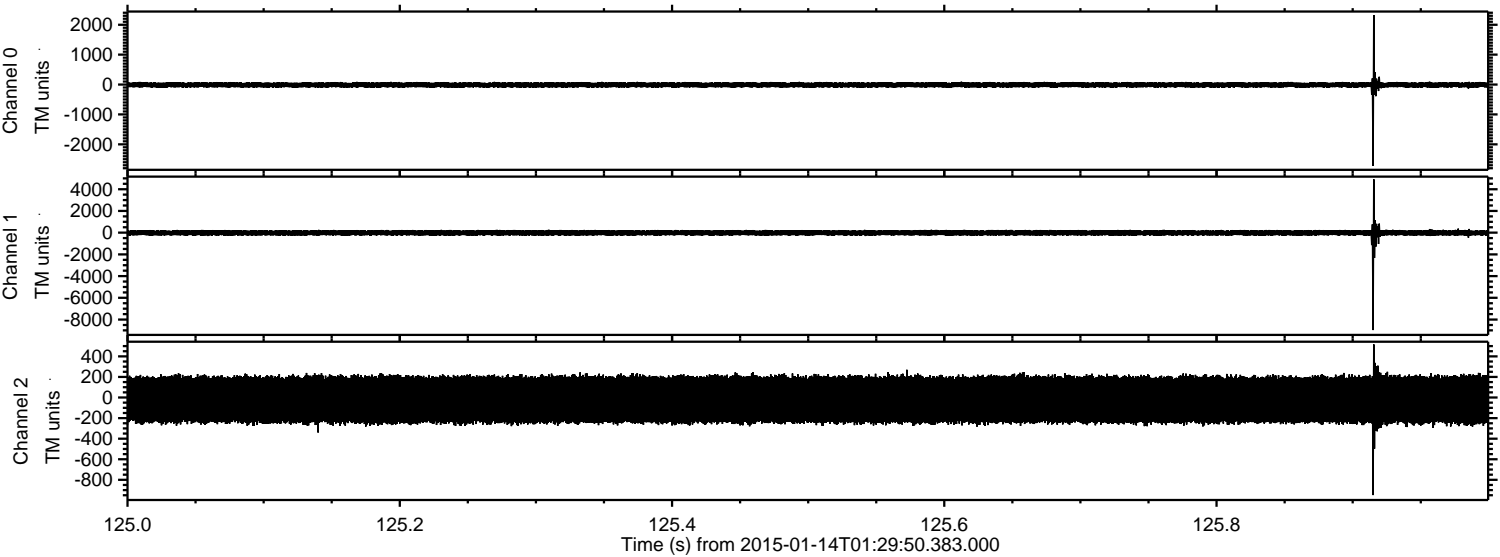


Processed Wed Jan 14 02:38:57 2015 by ELM ver.2012-10-06 from 001__elm20150114_012949__dat00.bin



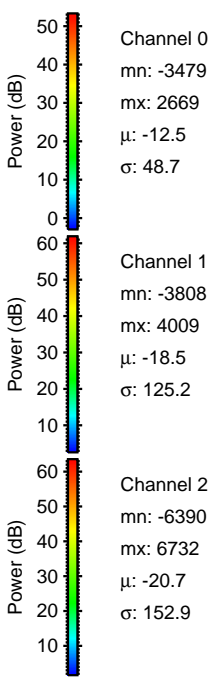
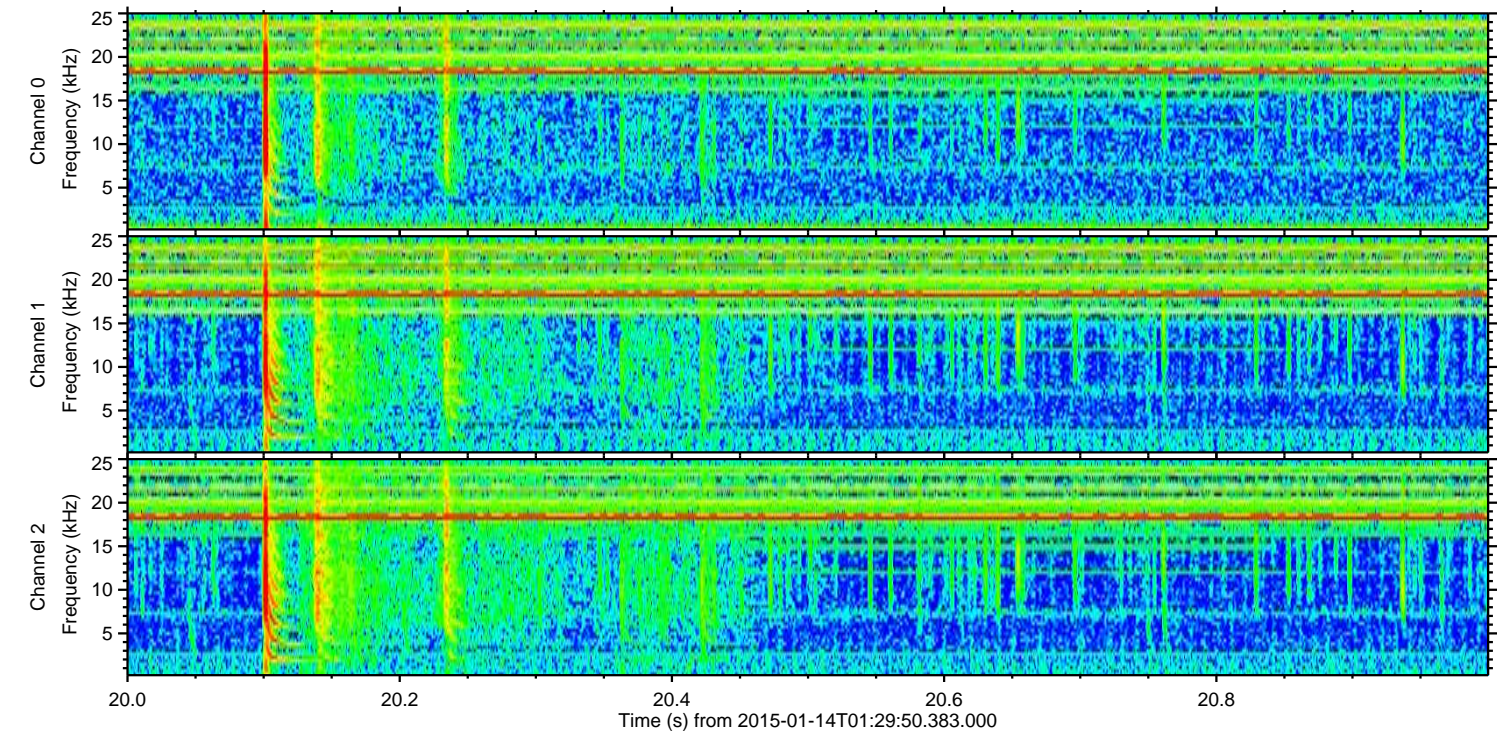
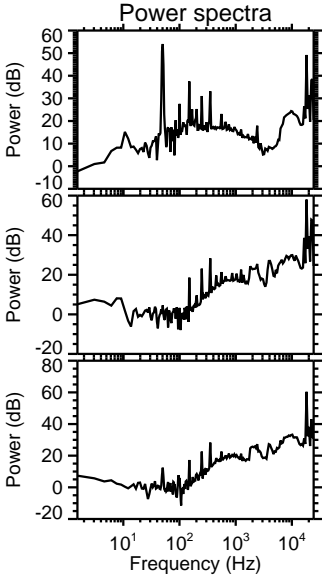
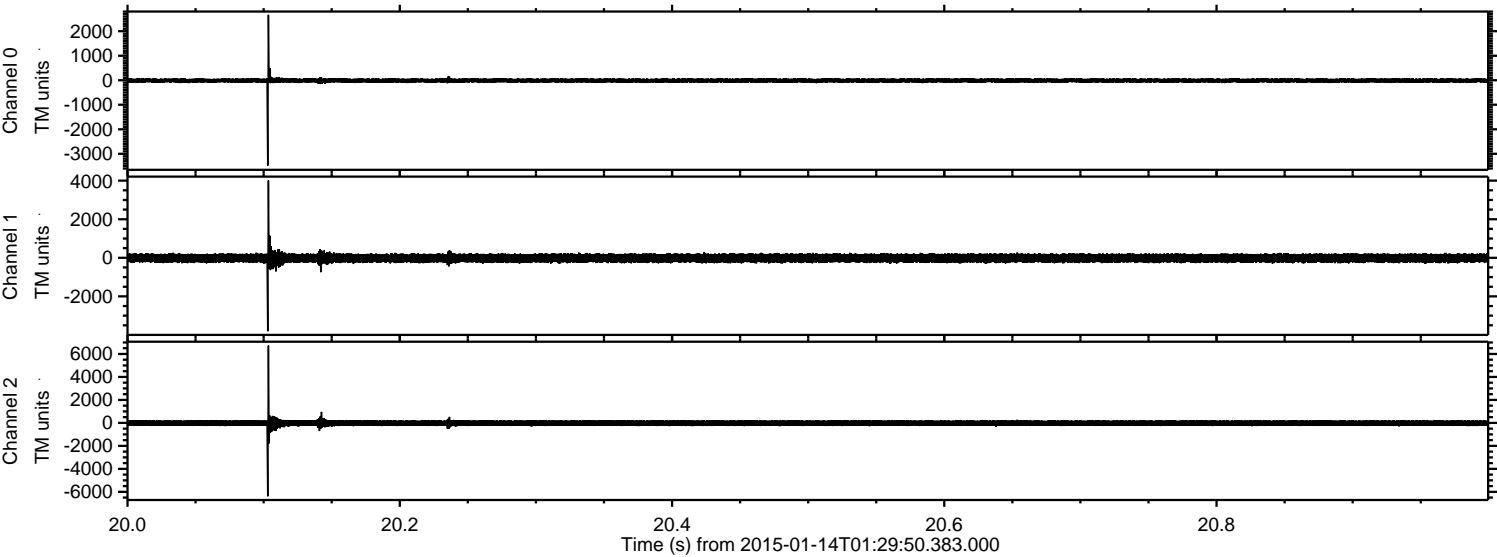
ELMAVAN 3D WAVEFORMS (Measured data sampled at 50 kHz) 49755 packets of 144 samples from 2015-01-14T01:29:50.383.000. Part 126/144

Processed Wed Jan 14 02:38:58 2015 by ELM ver.2012-10-06 from 001__elm20150114_012949__dat00.bin



ELMAVAN 3D WAVEFORMS (Measured data sampled at 50 kHz) 49755 packets of 144 samples from 2015-01-14T01:29:50.383.000. Part 21/144

Processed Wed Jan 14 02:38:59 2015 by ELM ver.2012-10-06 from 001__elm20150114_012949__dat00.bin

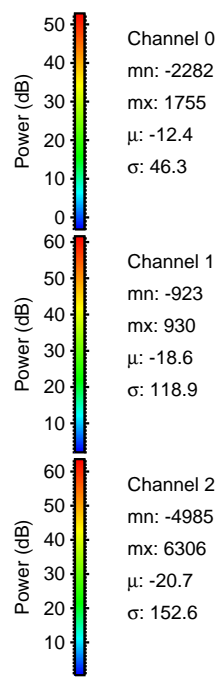
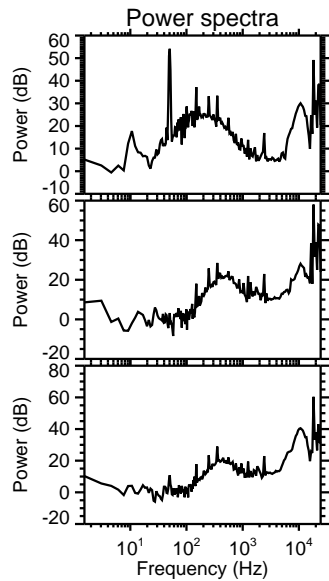
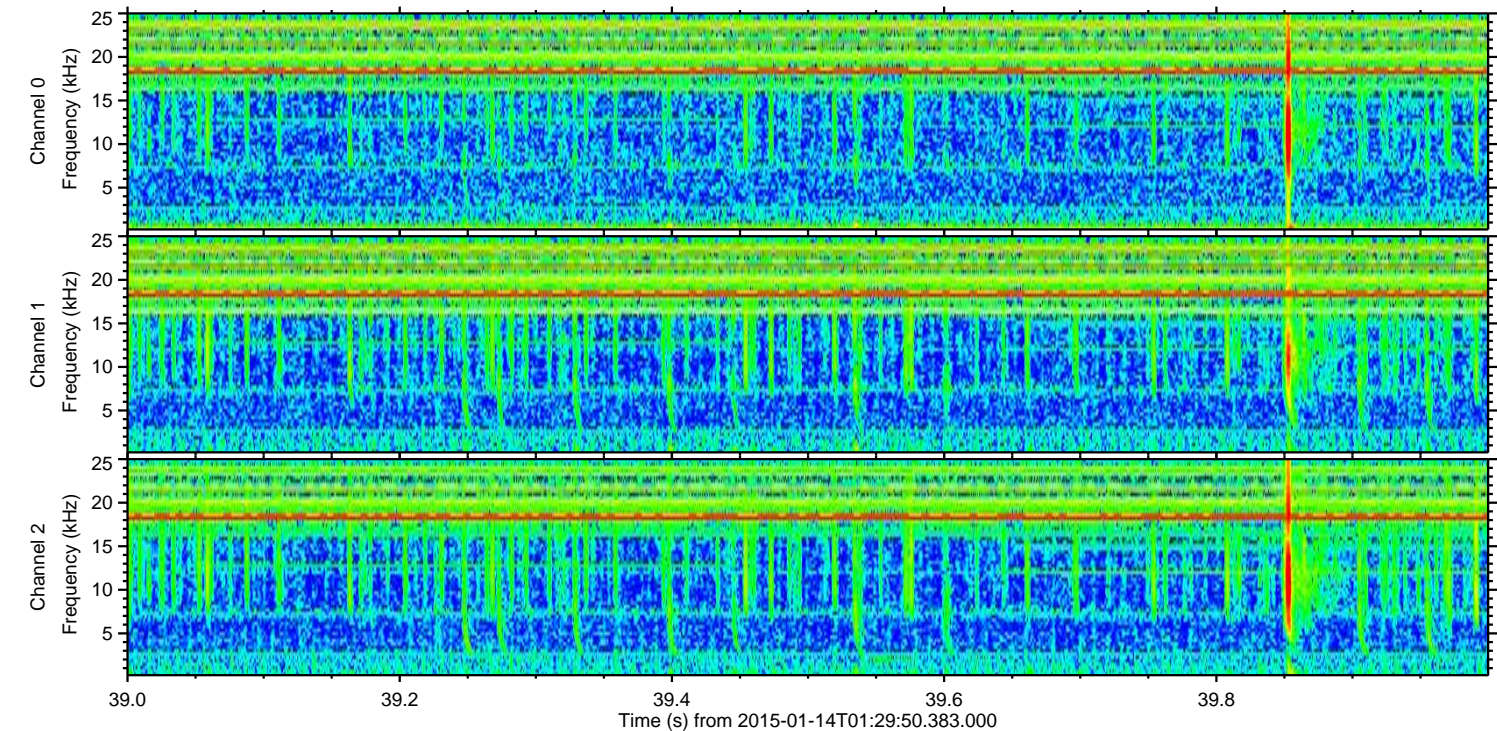
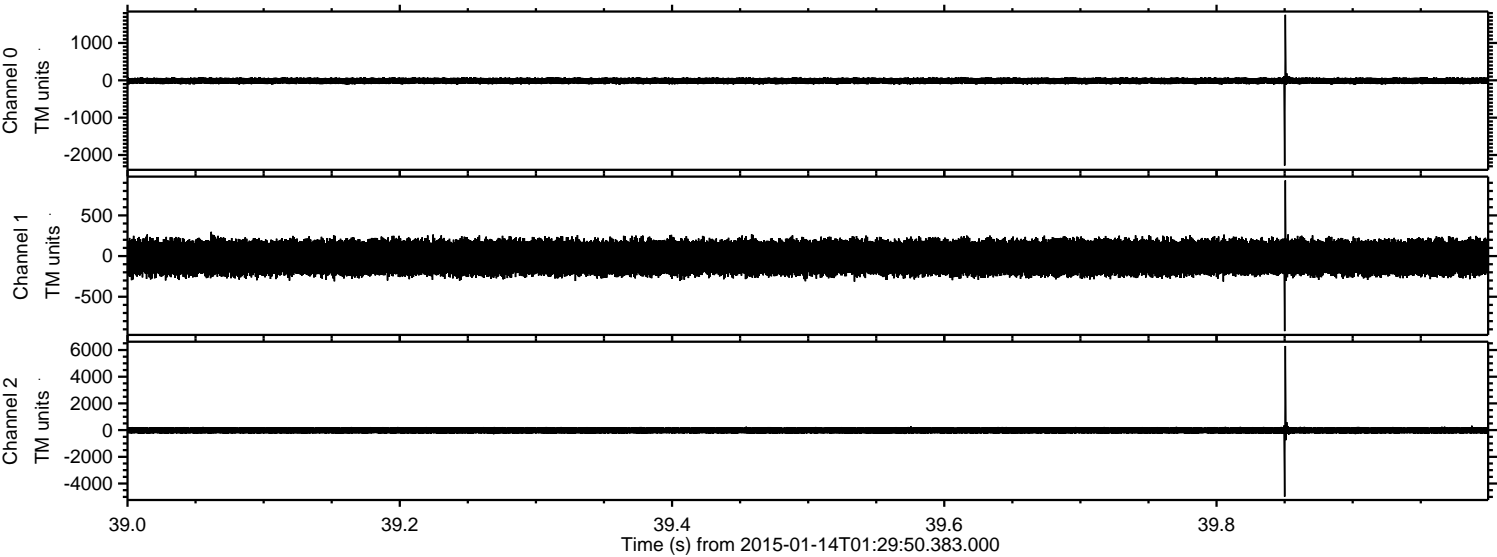


Channel 0
mn: -3479
mx: 2669
 μ : -12.5
 σ : 48.7

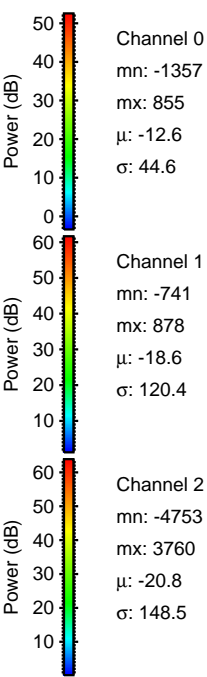
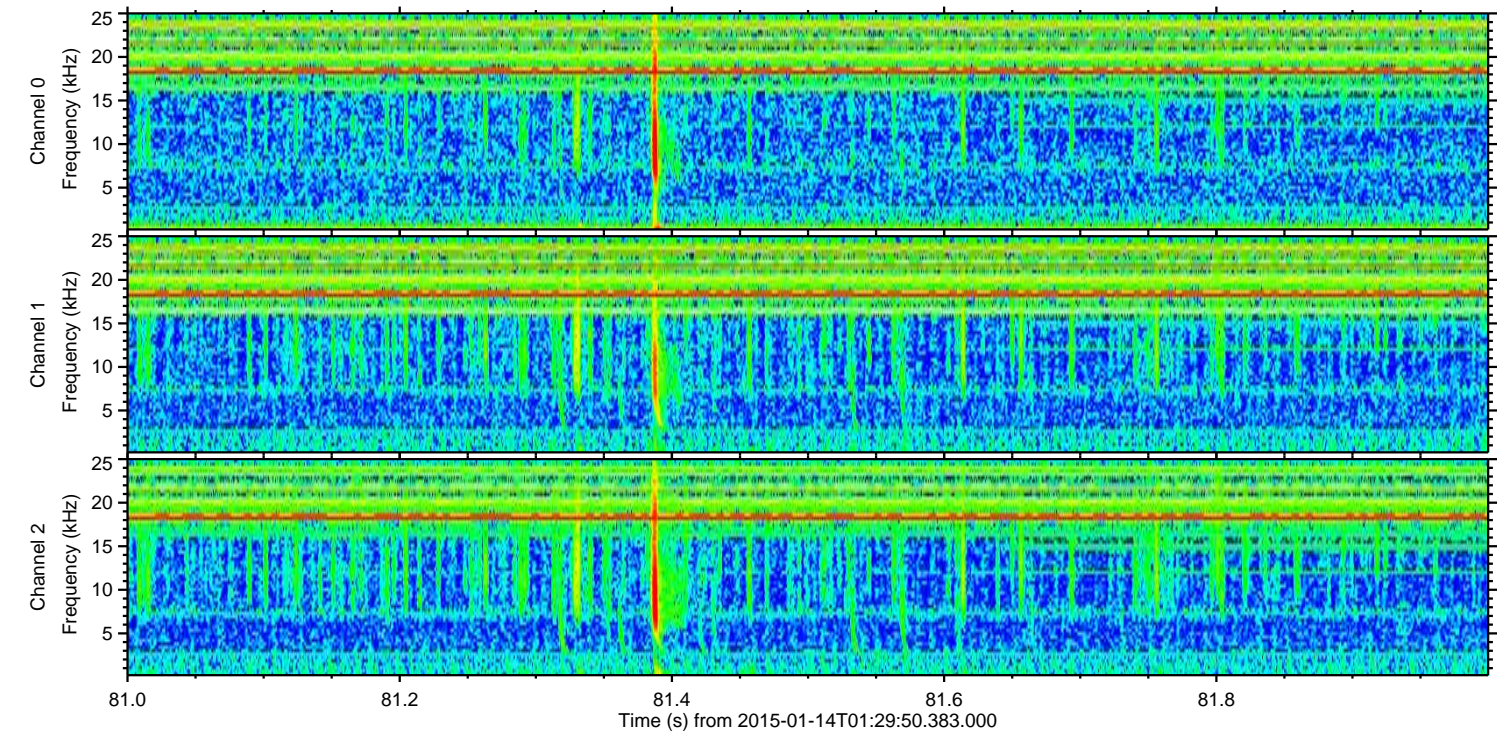
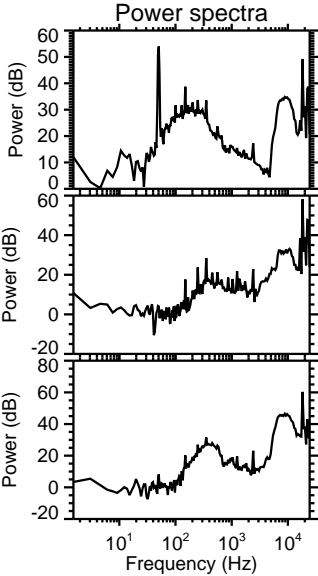
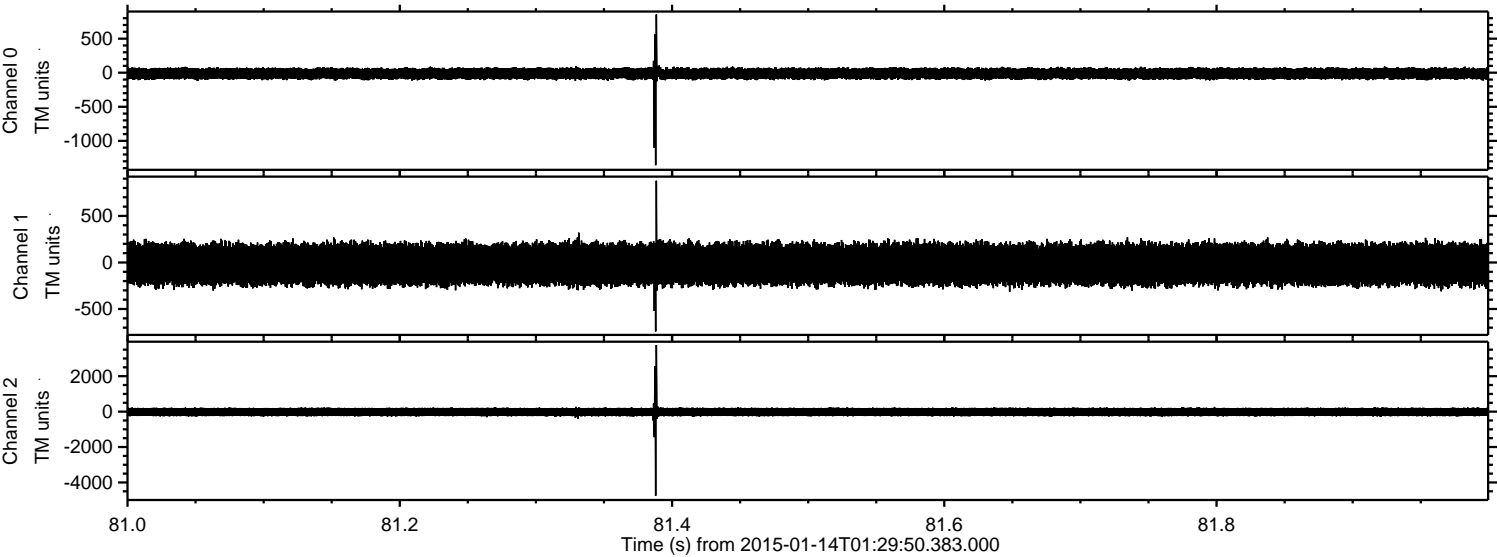
Channel 1
mn: -3808
mx: 4009
 μ : -18.5
 σ : 125.2

Channel 2
mn: -6390
mx: 6732
 μ : -20.7
 σ : 152.9

Processed Wed Jan 14 02:39:00 2015 by ELM ver.2012-10-06 from 001__elm20150114_012949__dat00.bin



Processed Wed Jan 14 02:39:01 2015 by ELM ver.2012-10-06 from 001__elm20150114_012949__dat00.bin



Processed Wed Jan 14 02:39:02 2015 by ELM ver.2012-10-06 from 001__elm20150114_012949__dat00.bin

