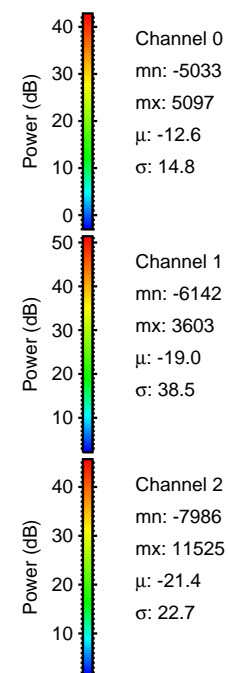
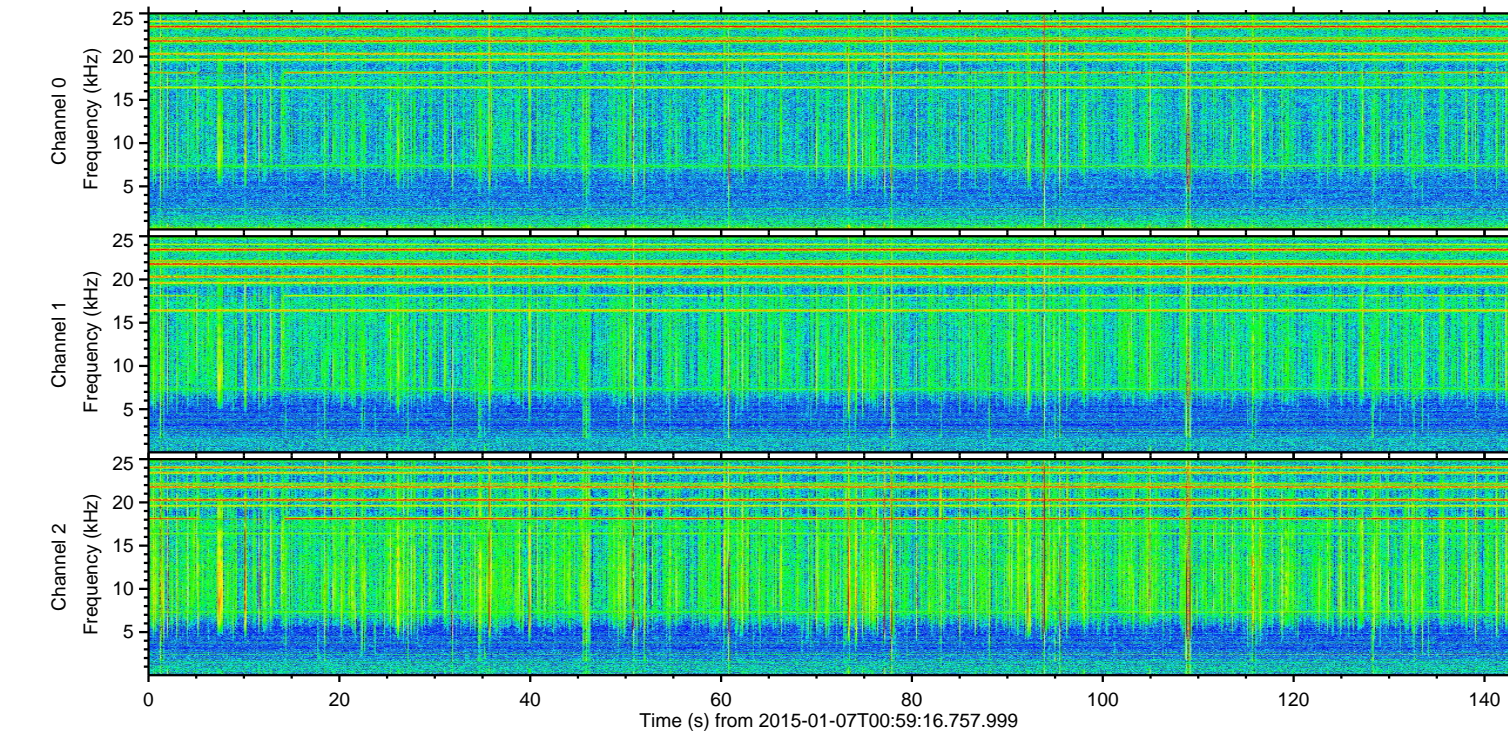
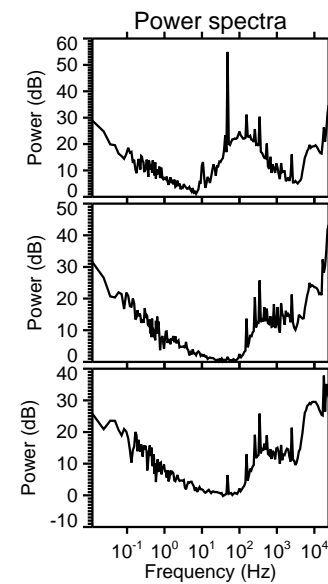
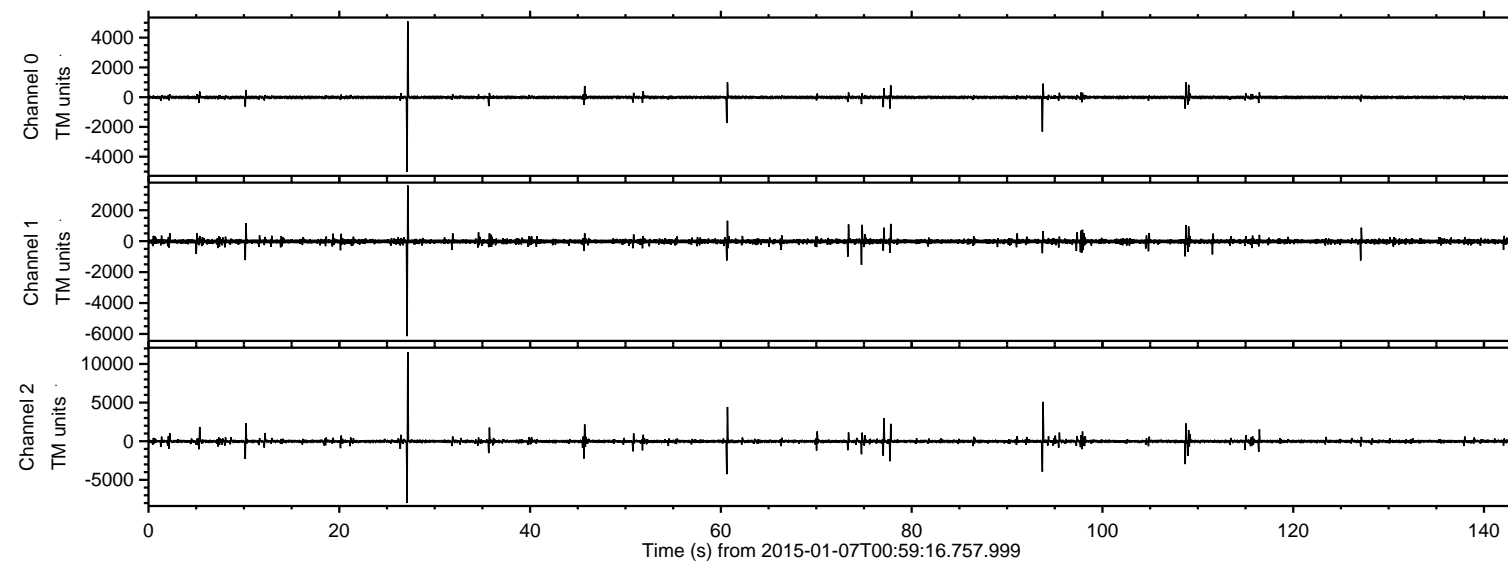


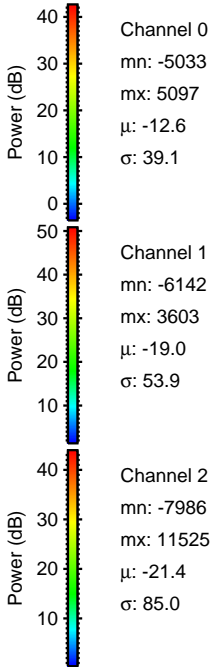
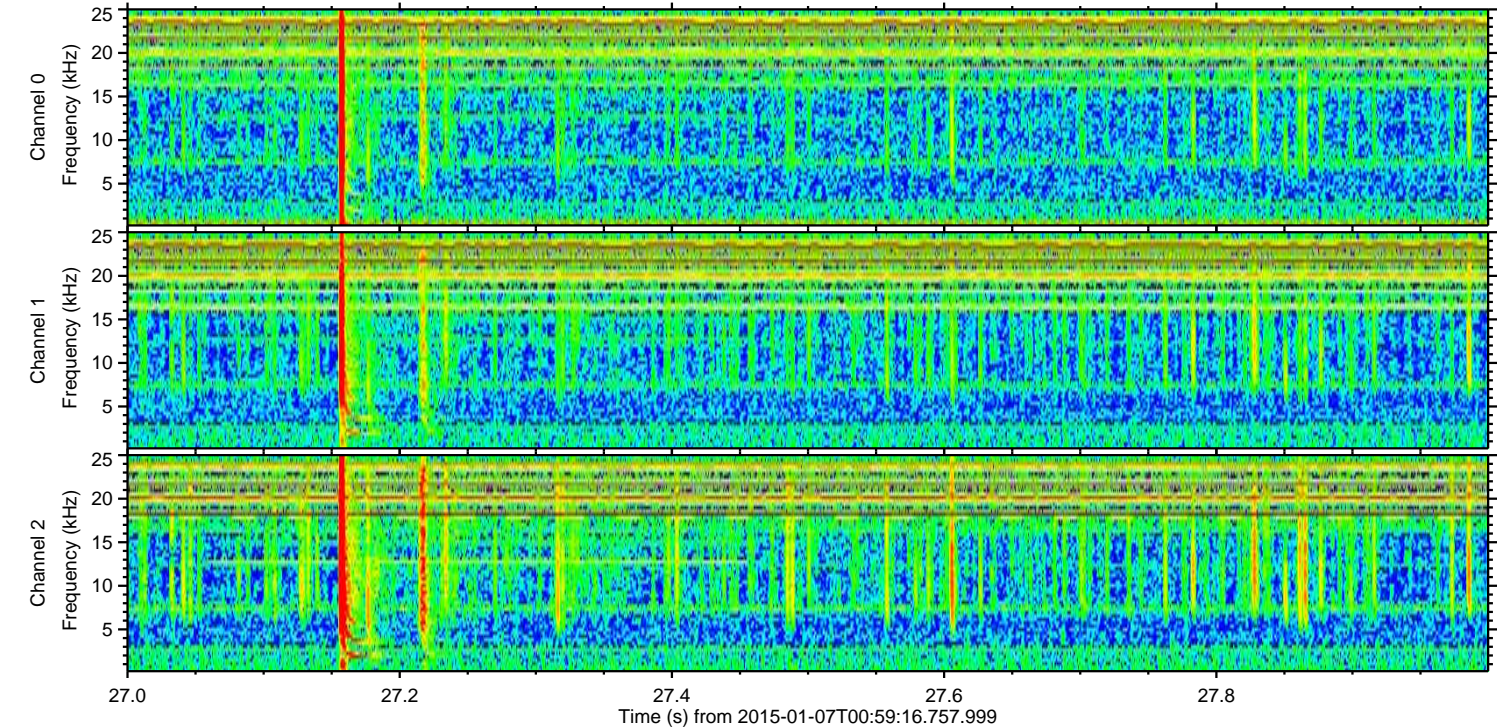
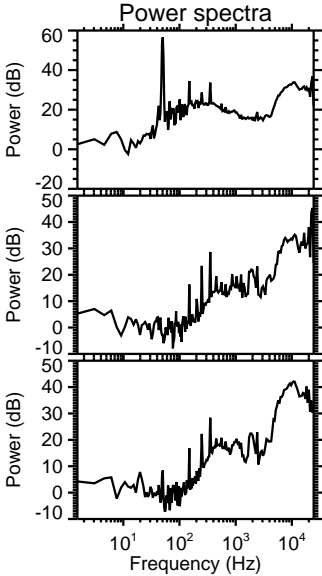
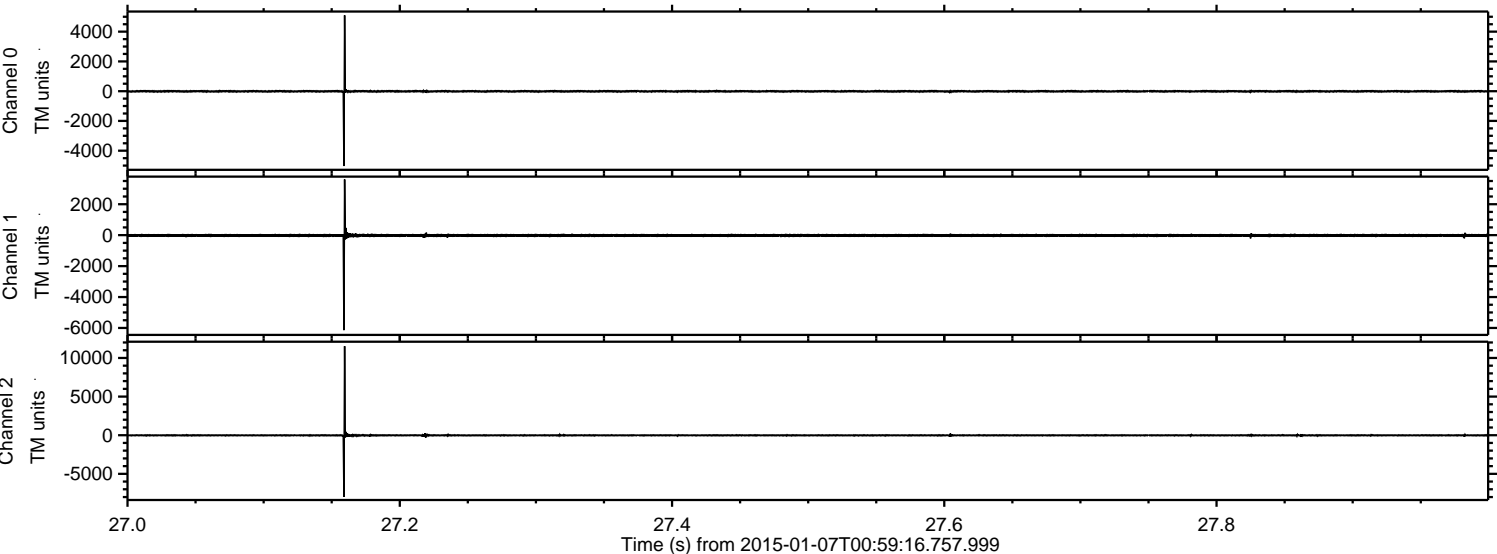
ELMAVAN 3D WAVEFORMS (Measured data sampled at 50 kHz) 49526 packets of 144 samples from 2015-01-07T00:59:16.757.999.

Processed Wed Jan 7 02:06:59 2015 by ELM ver.2012-10-06 from 001__elm20150107_005915__dat00.bin



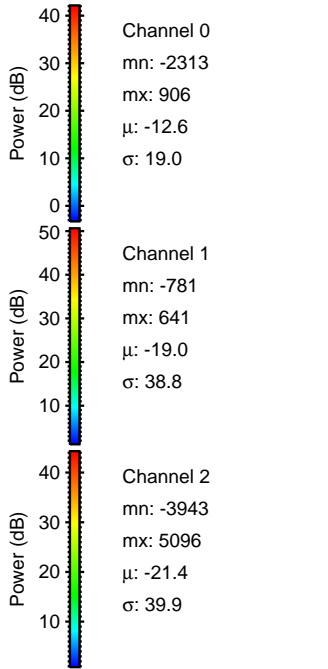
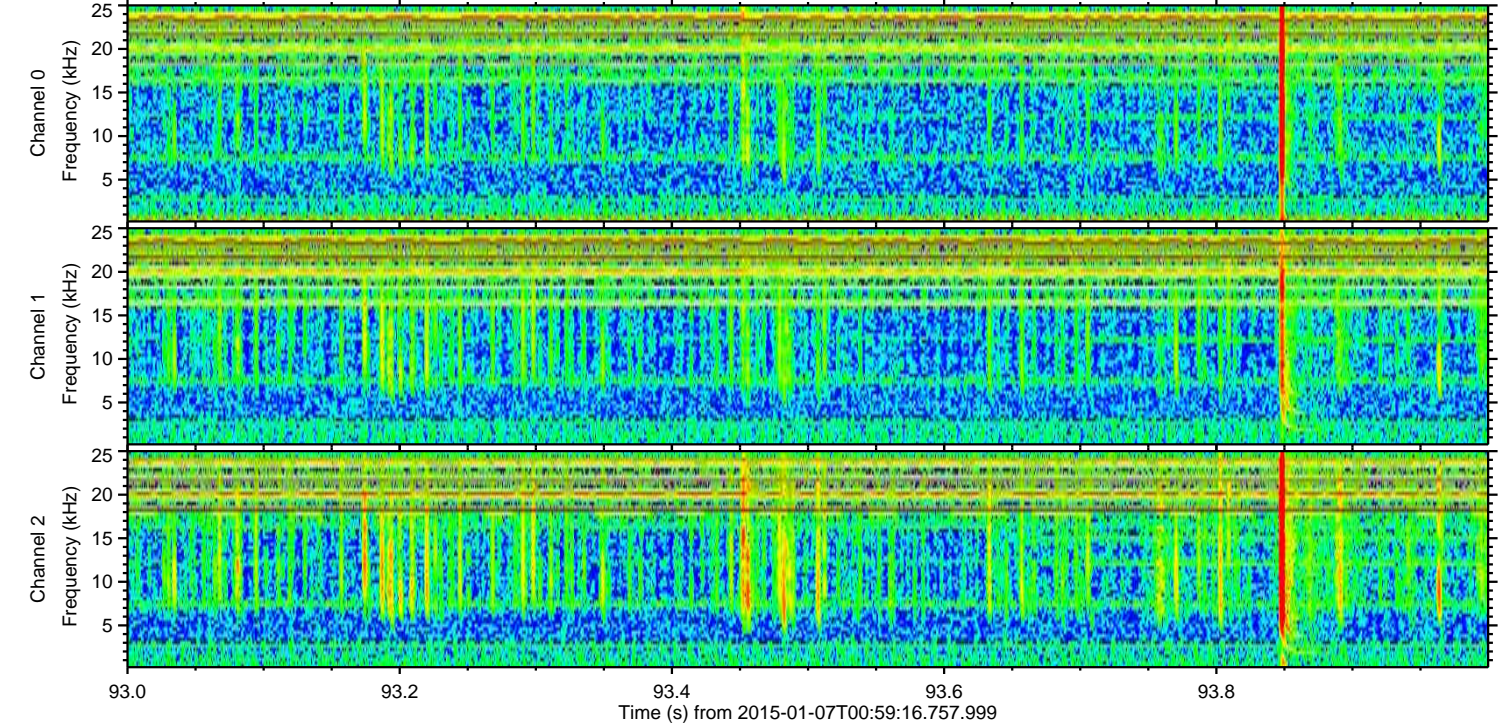
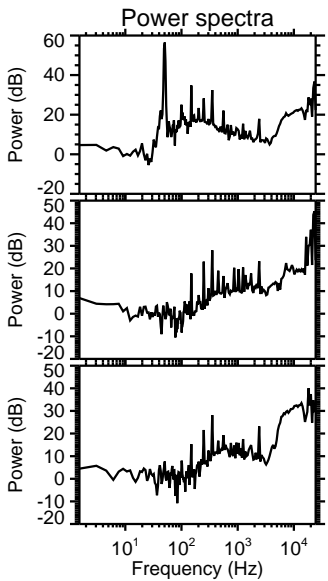
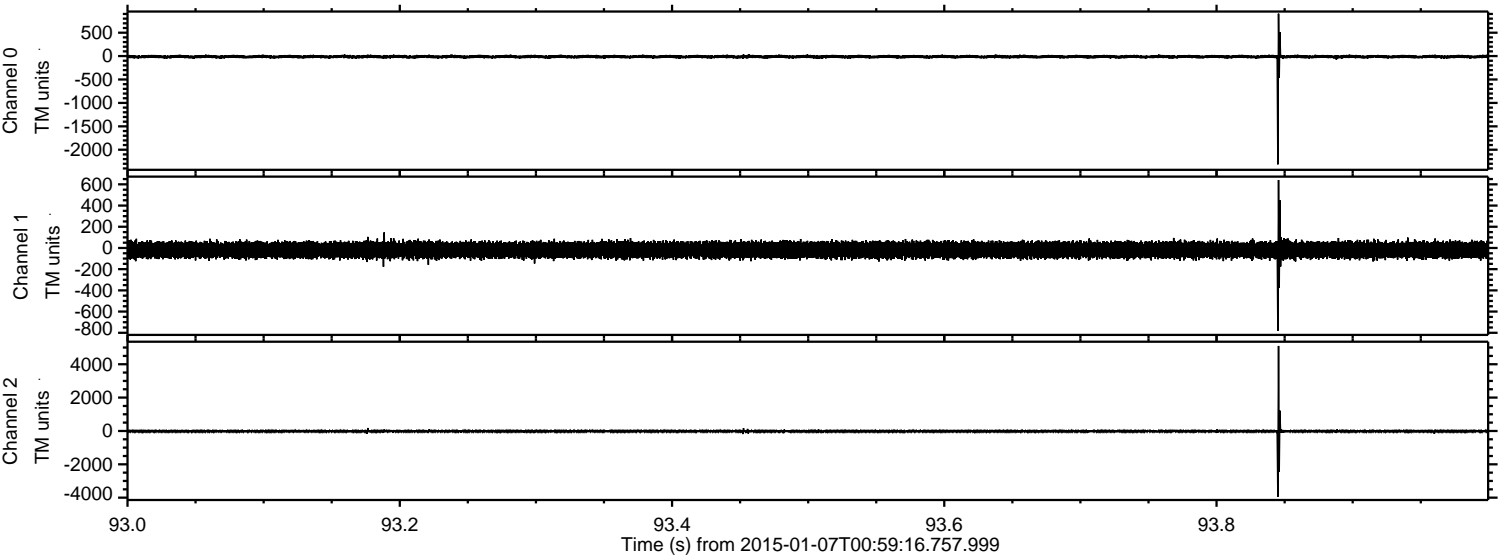
ELMAVAN 3D WAVEFORMS (Measured data sampled at 50 kHz) 49526 packets of 144 samples from 2015-01-07T00:59:16.757.999. Part 28/143

Processed Wed Jan 7 02:07:14 2015 by ELM ver.2012-10-06 from 001__elm20150107_005915__dat00.bin



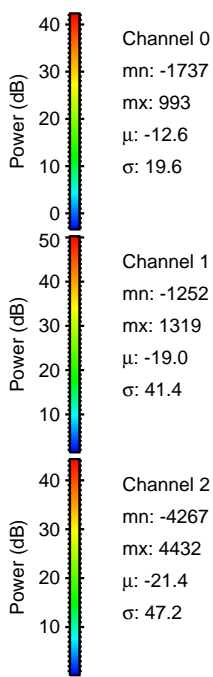
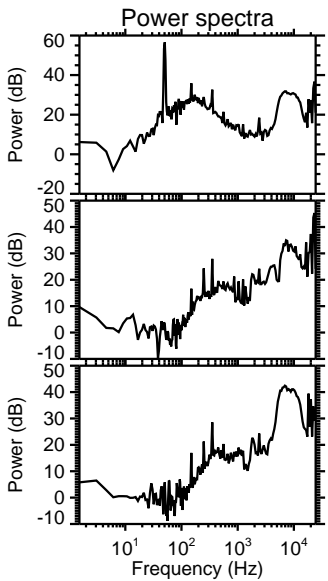
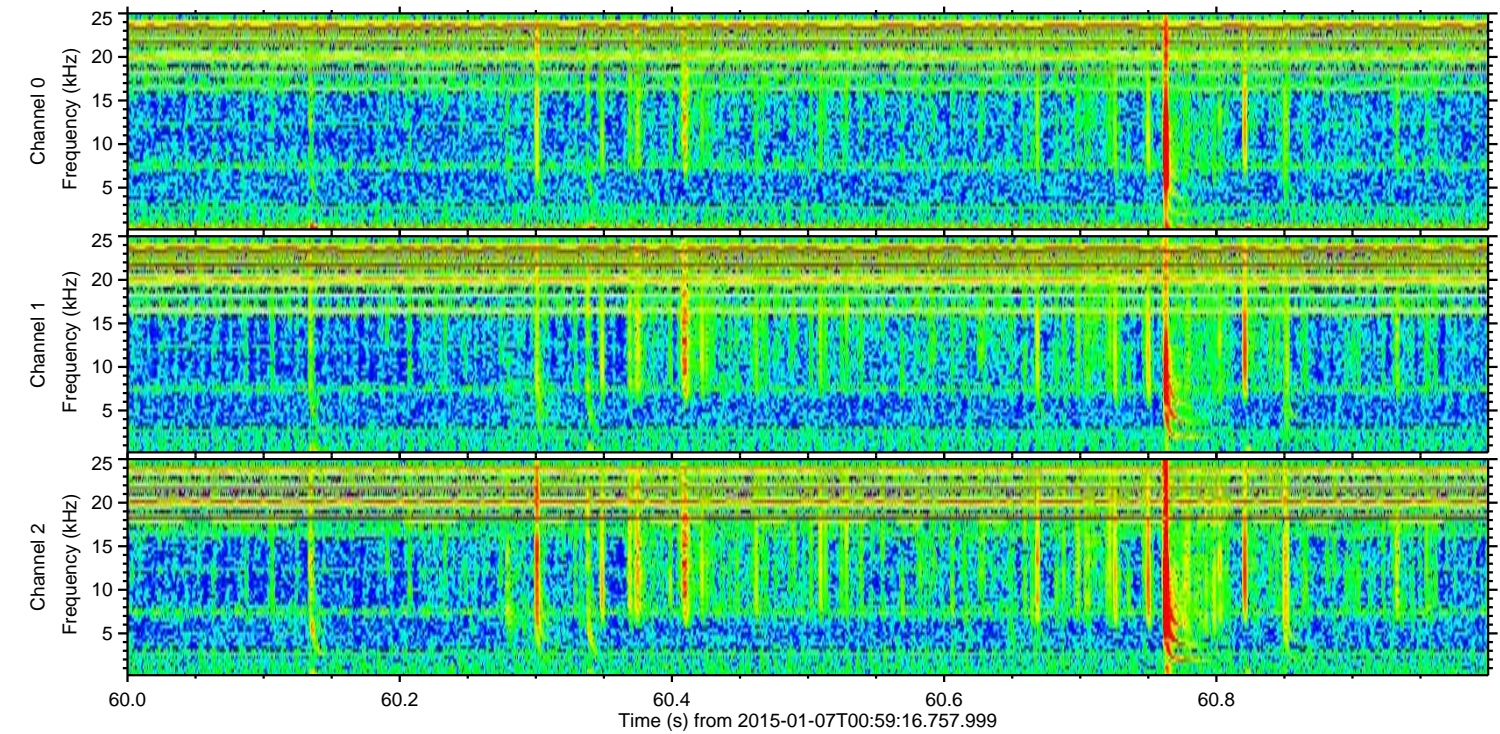
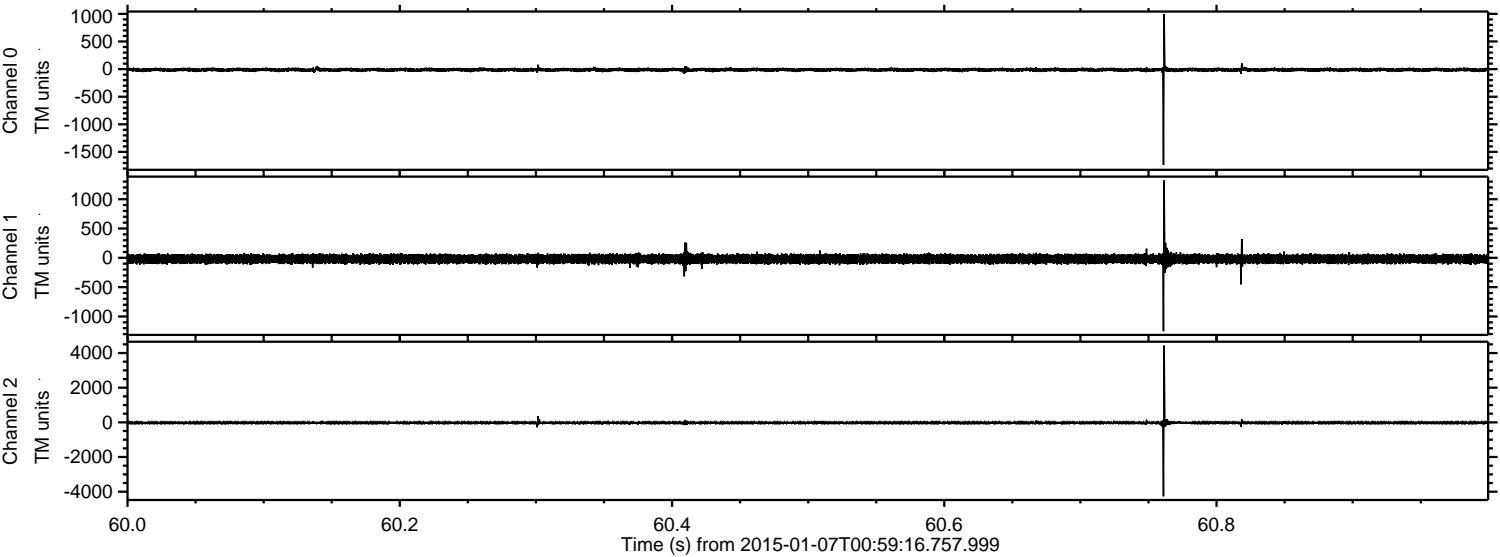
ELMAVAN 3D WAVEFORMS (Measured data sampled at 50 kHz) 49526 packets of 144 samples from 2015-01-07T00:59:16.757.999. Part 94/143

Processed Wed Jan 7 02:07:15 2015 by ELM ver.2012-10-06 from 001__elm20150107_005915__dat00.bin



ELMAVAN 3D WAVEFORMS (Measured data sampled at 50 kHz) 49526 packets of 144 samples from 2015-01-07T00:59:16.757.999. Part 61/143

Processed Wed Jan 7 02:07:17 2015 by ELM ver.2012-10-06 from 001__elm20150107_005915__dat00.bin



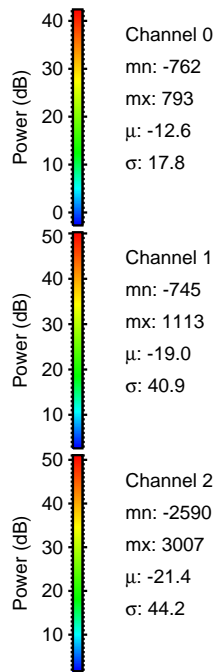
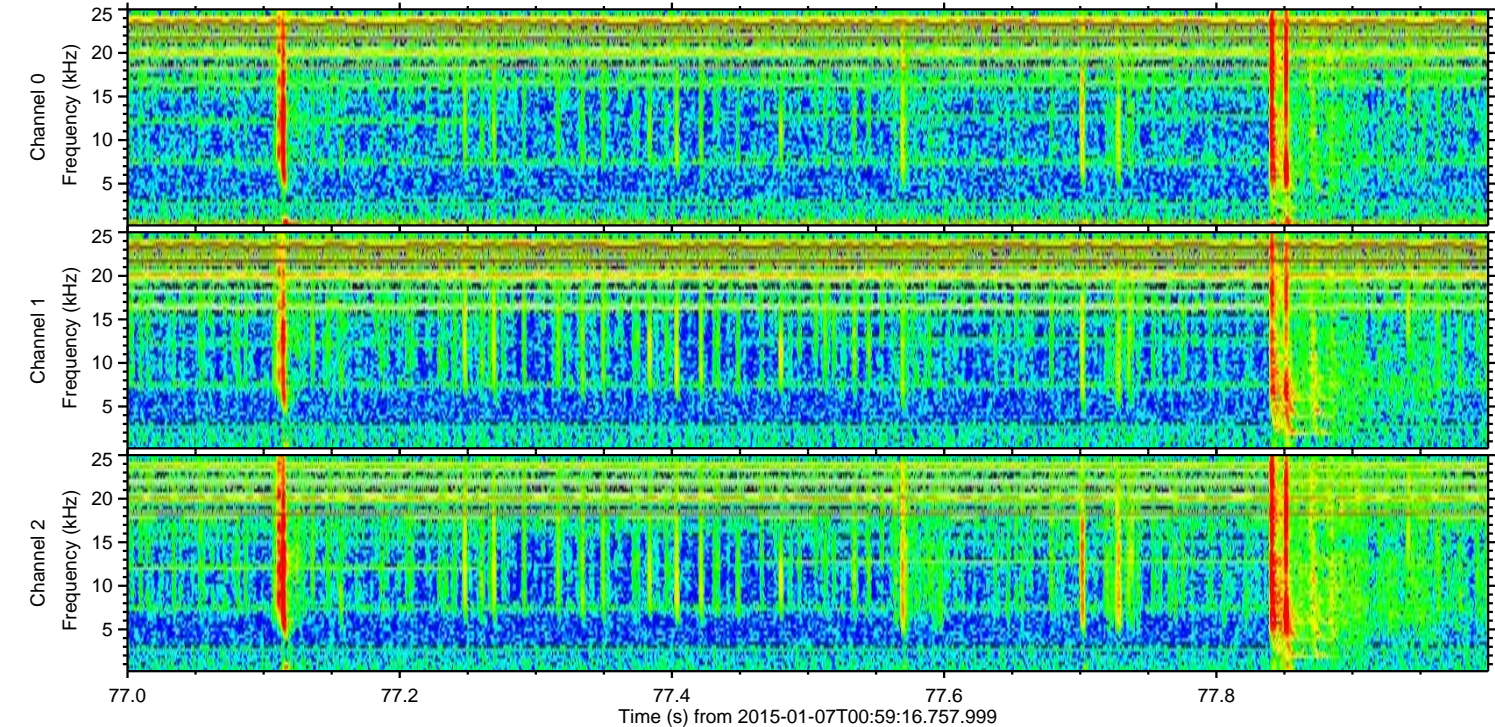
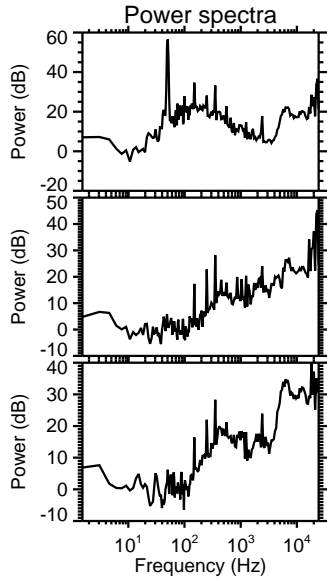
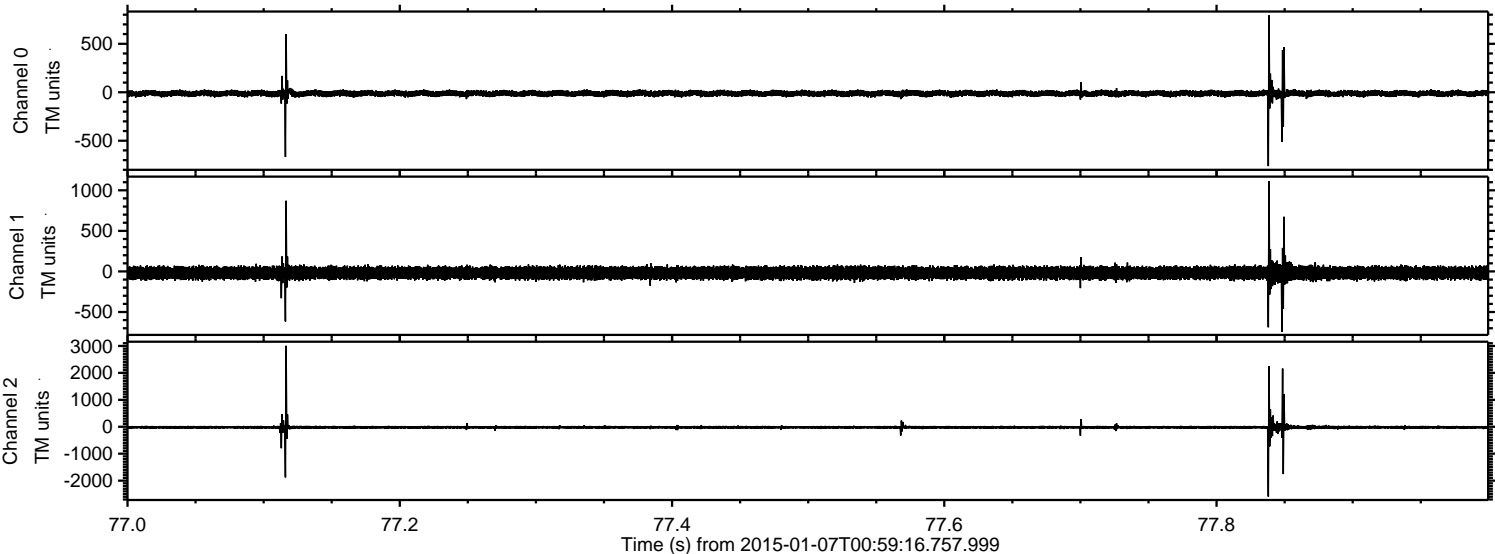
Channel 0
mn: -1737
mx: 993
 μ : -12.6
 σ : 19.6

Channel 1
mn: -1252
mx: 1319
 μ : -19.0
 σ : 41.4

Channel 2
mn: -4267
mx: 4432
 μ : -21.4
 σ : 47.2

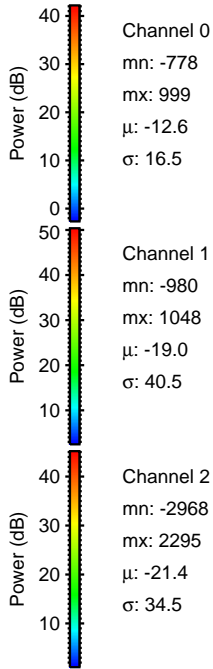
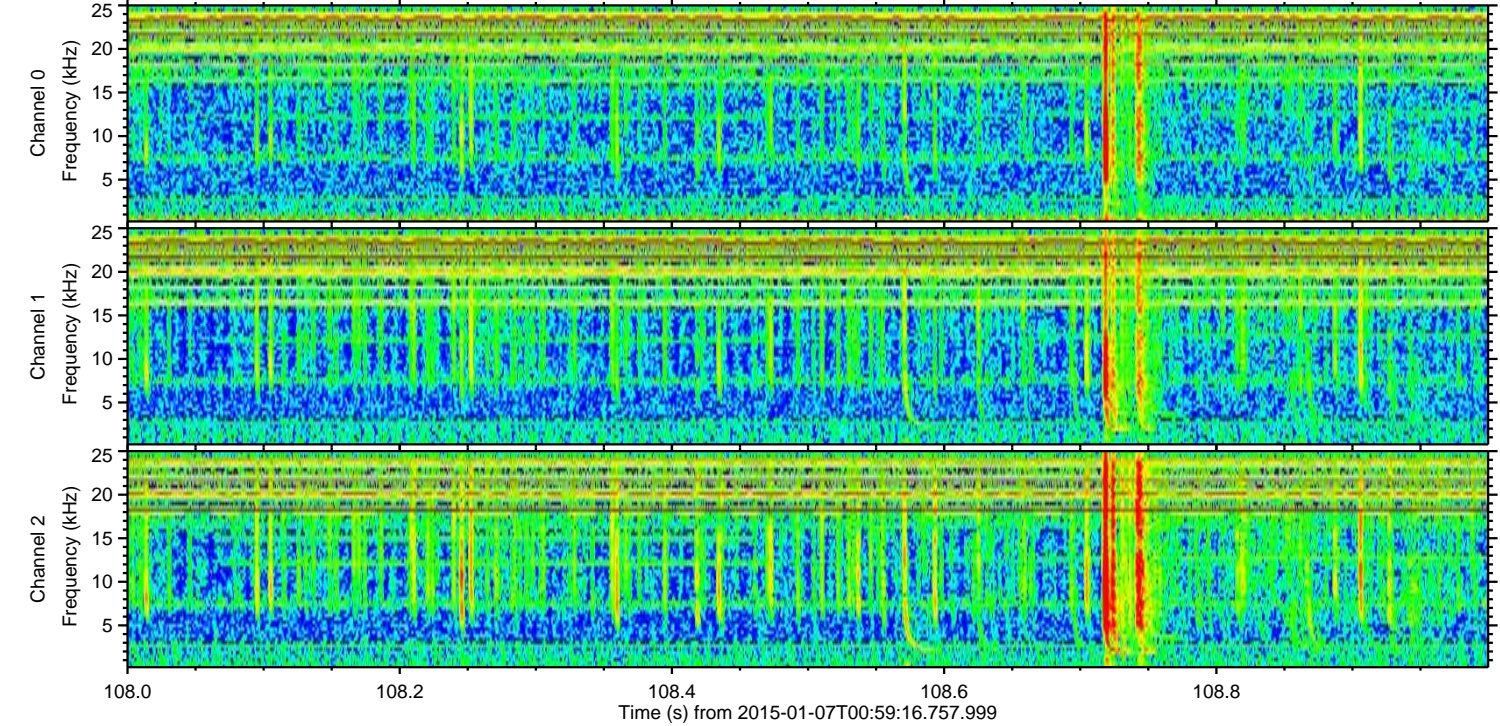
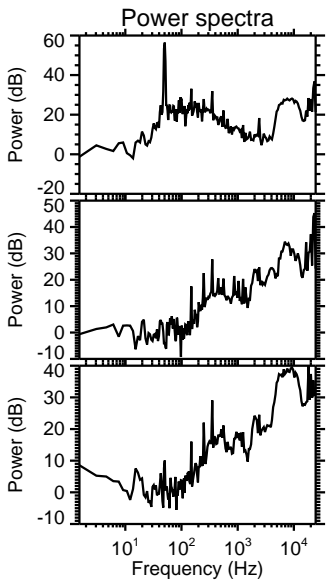
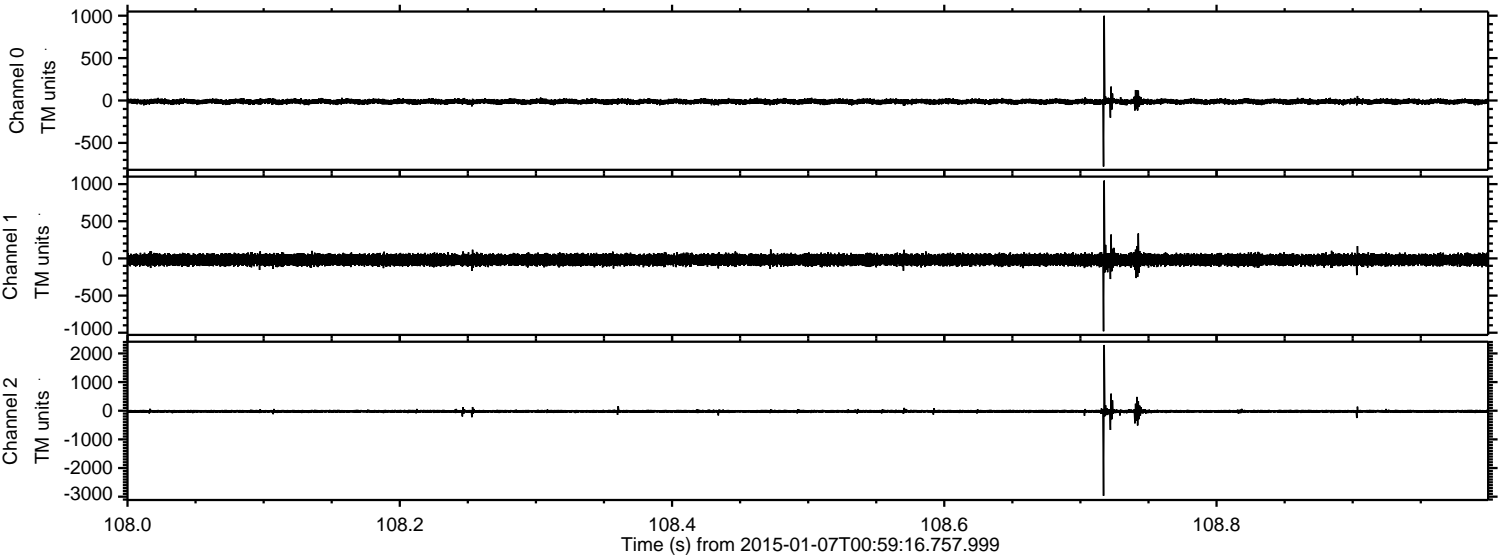
ELMAVAN 3D WAVEFORMS (Measured data sampled at 50 kHz) 49526 packets of 144 samples from 2015-01-07T00:59:16.757.999. Part 78/143

Processed Wed Jan 7 02:07:18 2015 by ELM ver.2012-10-06 from 001__elm20150107_005915__dat00.bin



ELMAVAN 3D WAVEFORMS (Measured data sampled at 50 kHz) 49526 packets of 144 samples from 2015-01-07T00:59:16.757.999. Part 109/143

Processed Wed Jan 7 02:07:19 2015 by ELM ver.2012-10-06 from 001__elm20150107_005915__dat00.bin

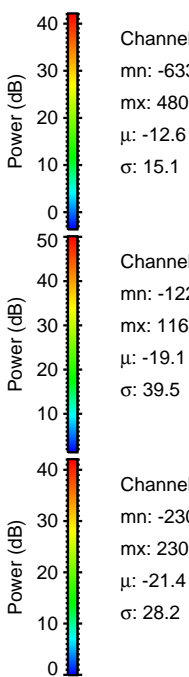
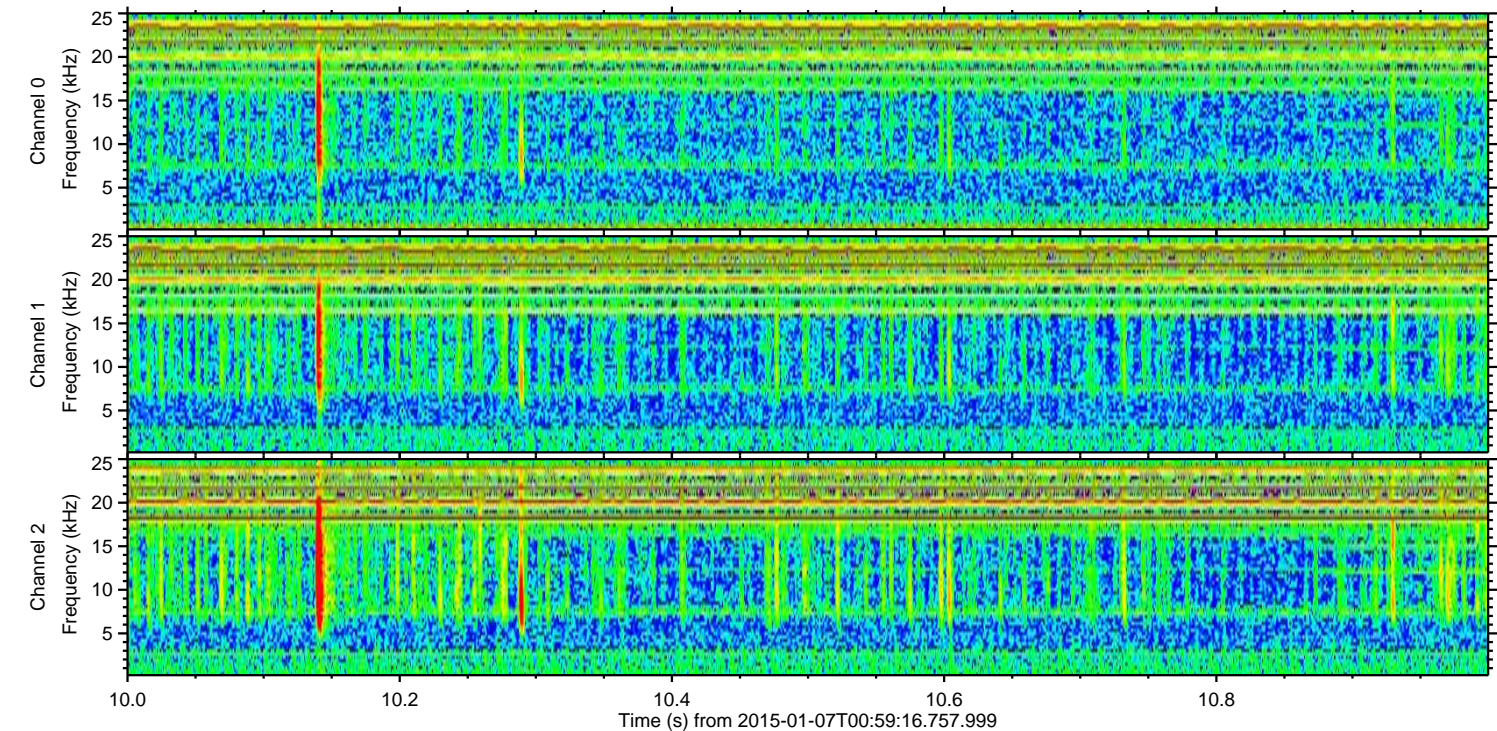
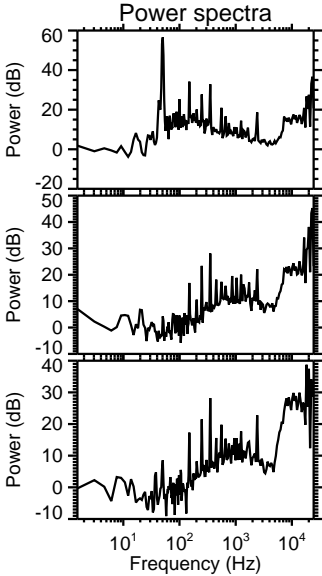
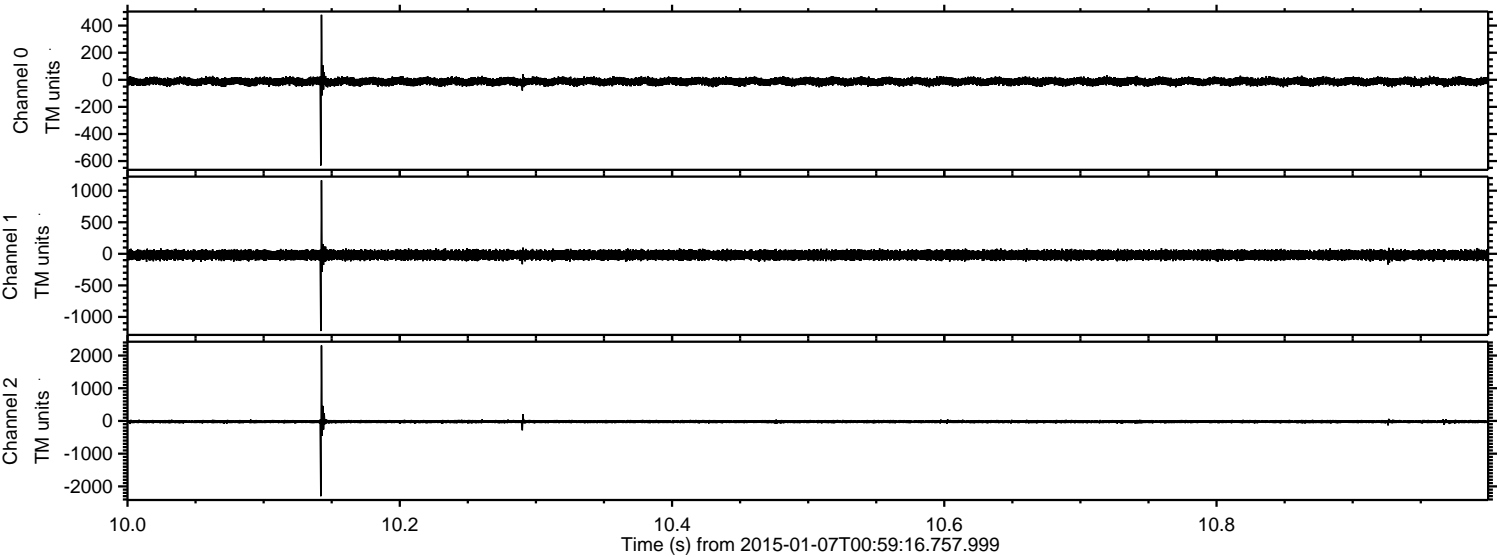


Channel 0
mn: -778
mx: 999
 μ : -12.6
 σ : 16.5

Channel 1
mn: -980
mx: 1048
 μ : -19.0
 σ : 40.5

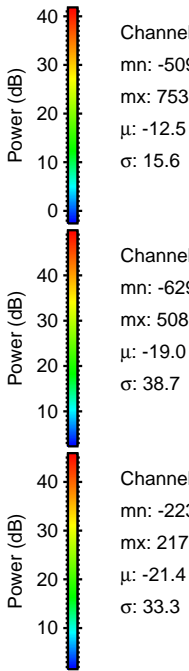
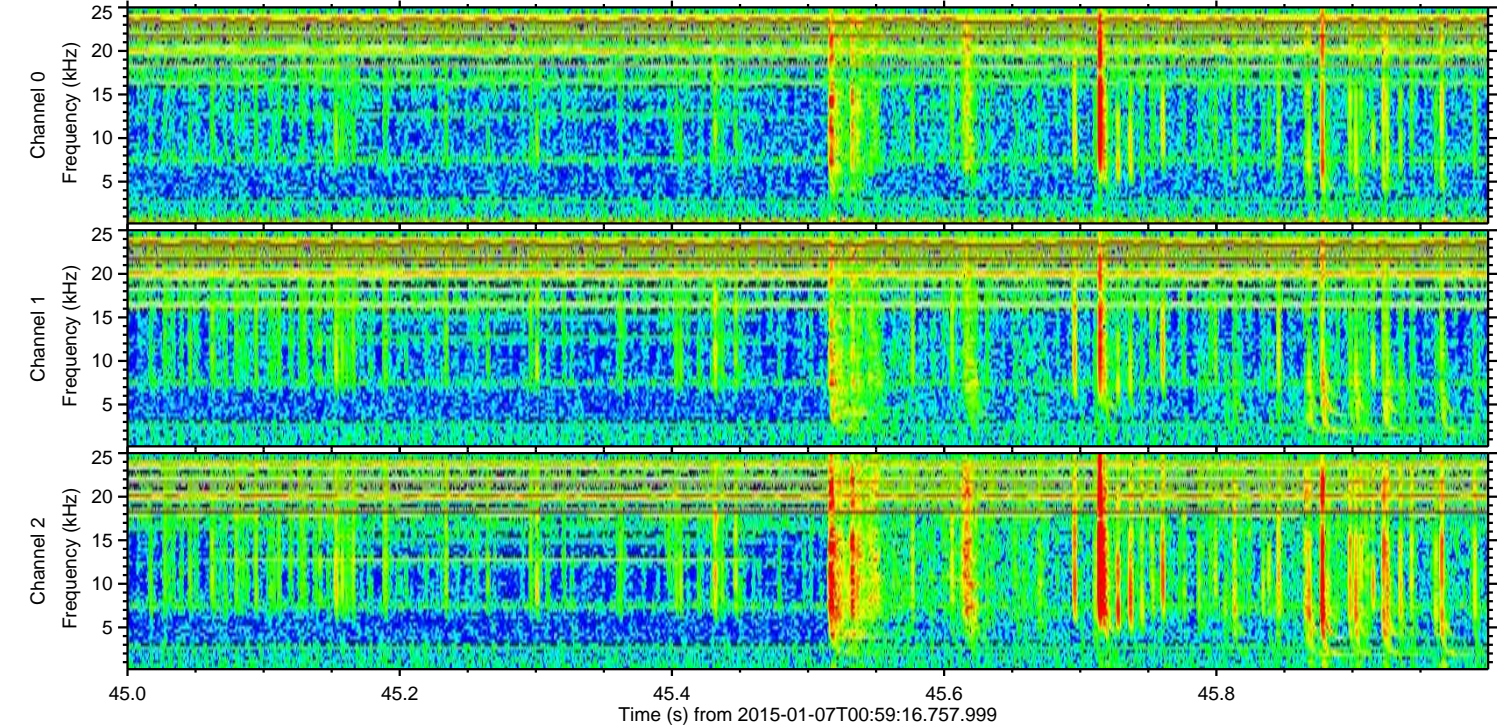
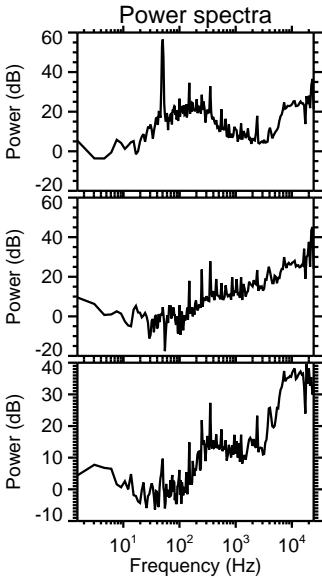
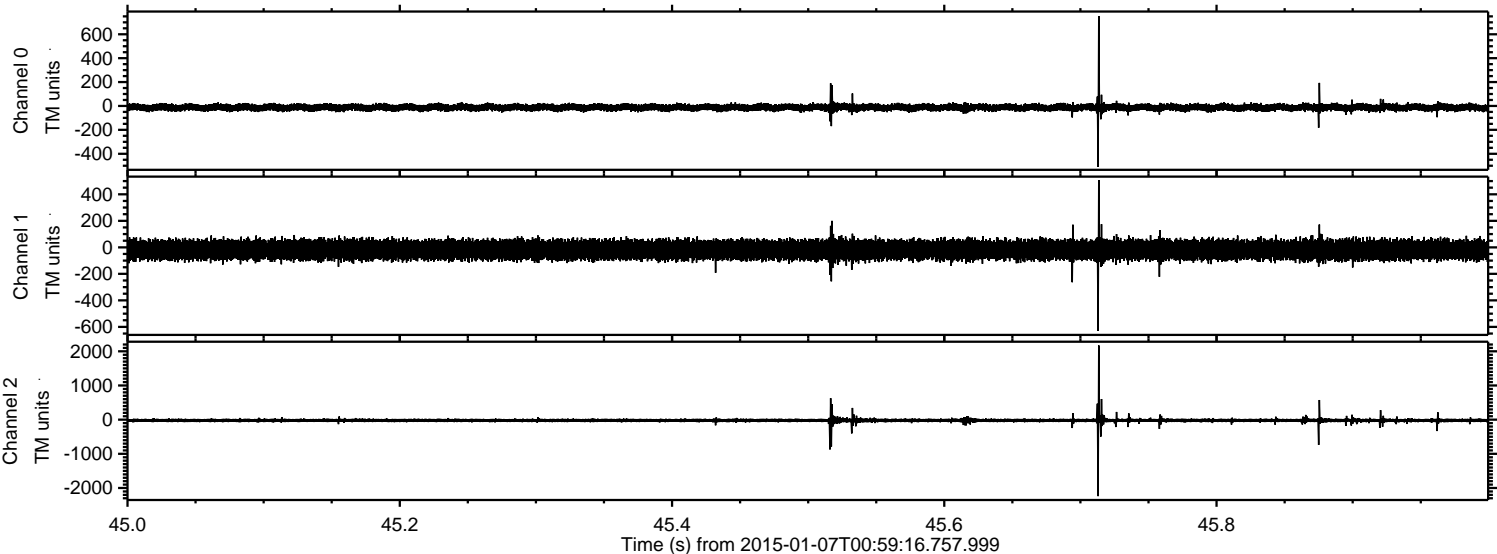
Channel 2
mn: -2968
mx: 2295
 μ : -21.4
 σ : 34.5

Processed Wed Jan 7 02:07:20 2015 by ELM ver.2012-10-06 from 001__elm20150107_005915__dat00.bin



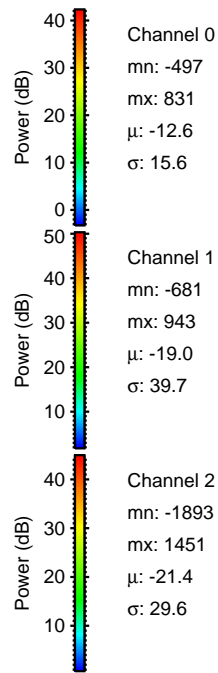
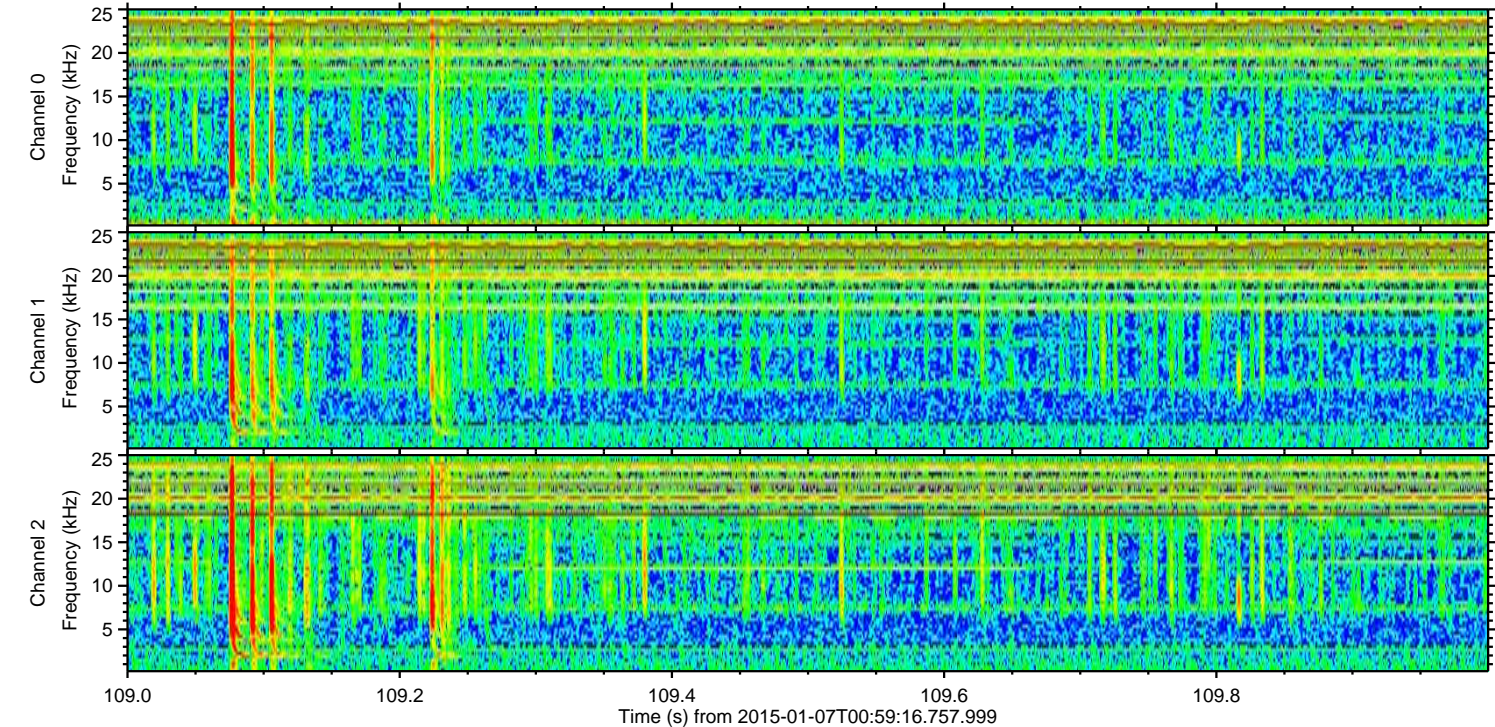
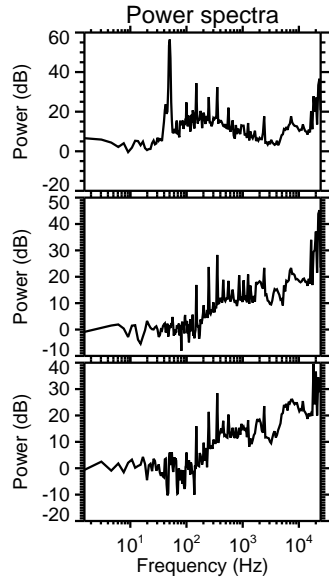
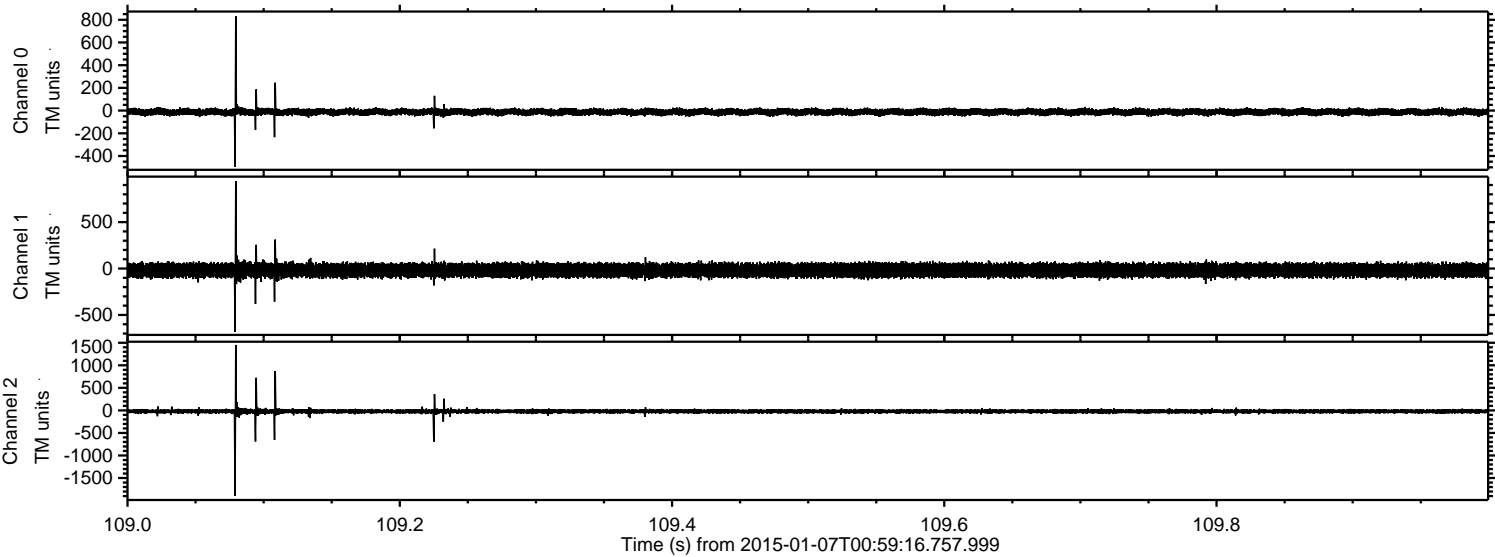
ELMAVAN 3D WAVEFORMS (Measured data sampled at 50 kHz) 49526 packets of 144 samples from 2015-01-07T00:59:16.757.999. Part 46/143

Processed Wed Jan 7 02:07:21 2015 by ELM ver.2012-10-06 from 001__elm20150107_005915__dat00.bin



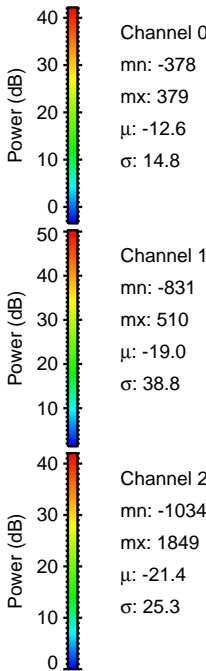
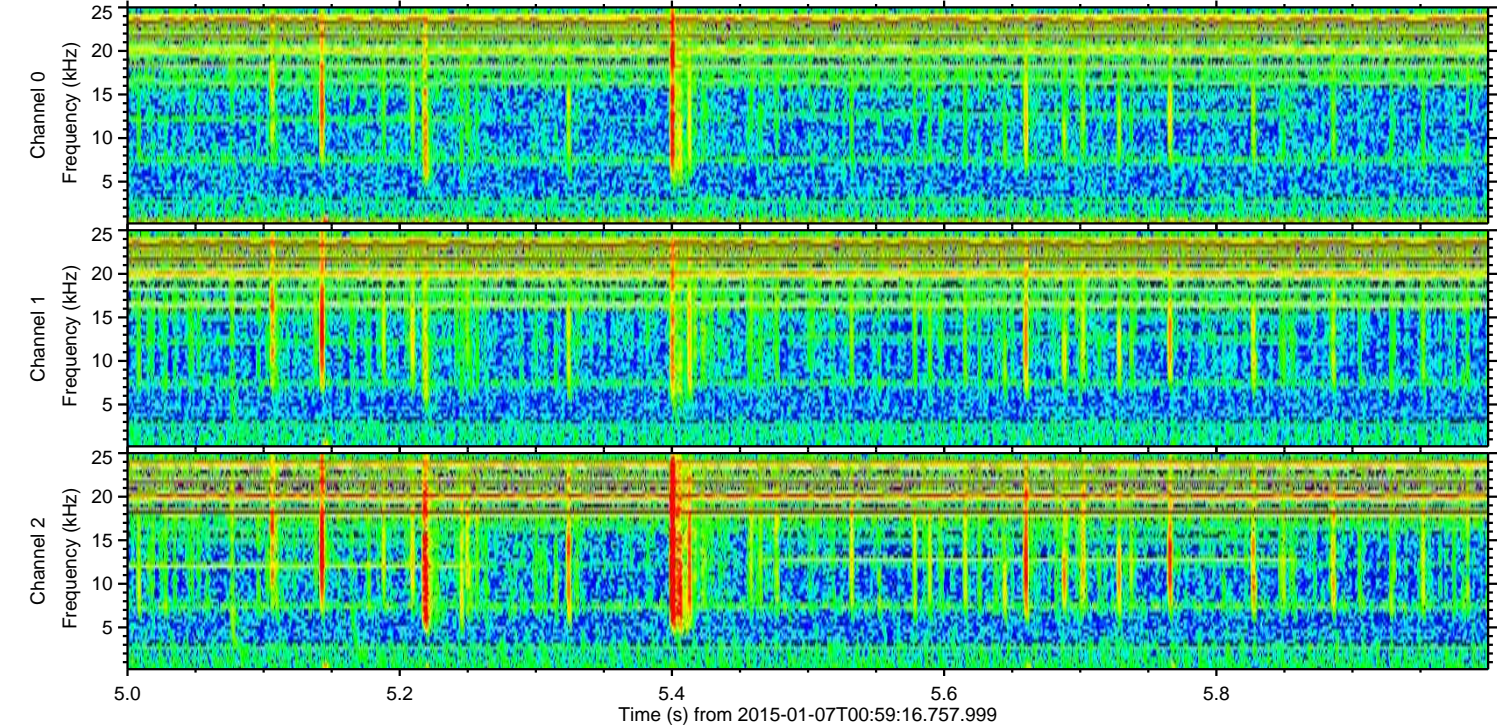
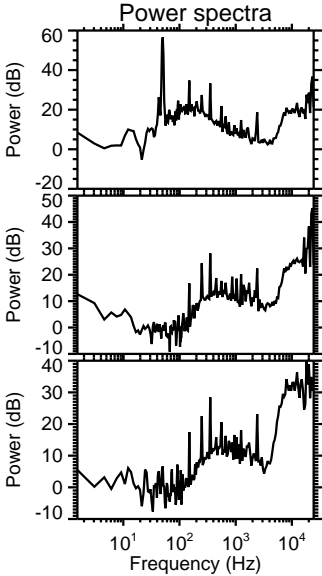
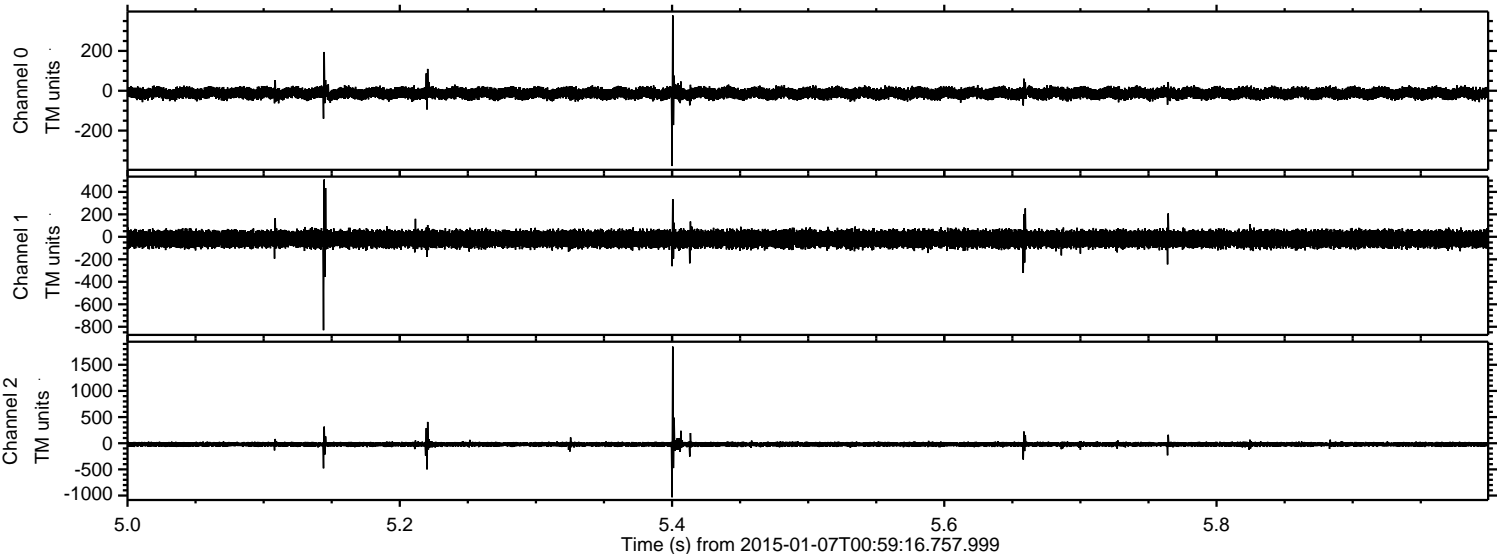
ELMAVAN 3D WAVEFORMS (Measured data sampled at 50 kHz) 49526 packets of 144 samples from 2015-01-07T00:59:16.757.999. Part 110/143

Processed Wed Jan 7 02:07:22 2015 by ELM ver.2012-10-06 from 001__elm20150107_005915__dat00.bin



ELMAVAN 3D WAVEFORMS (Measured data sampled at 50 kHz) 49526 packets of 144 samples from 2015-01-07T00:59:16.757.999. Part 6/143

Processed Wed Jan 7 02:07:23 2015 by ELM ver.2012-10-06 from 001__elm20150107_005915__dat00.bin



ELMAVAN 3D WAVEFORMS (Measured data sampled at 50 kHz) 49526 packets of 144 samples from 2015-01-07T00:59:16.757.999. Part 122/143

