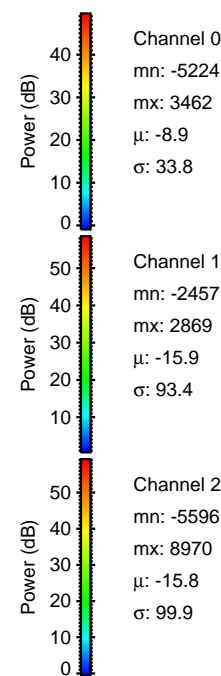
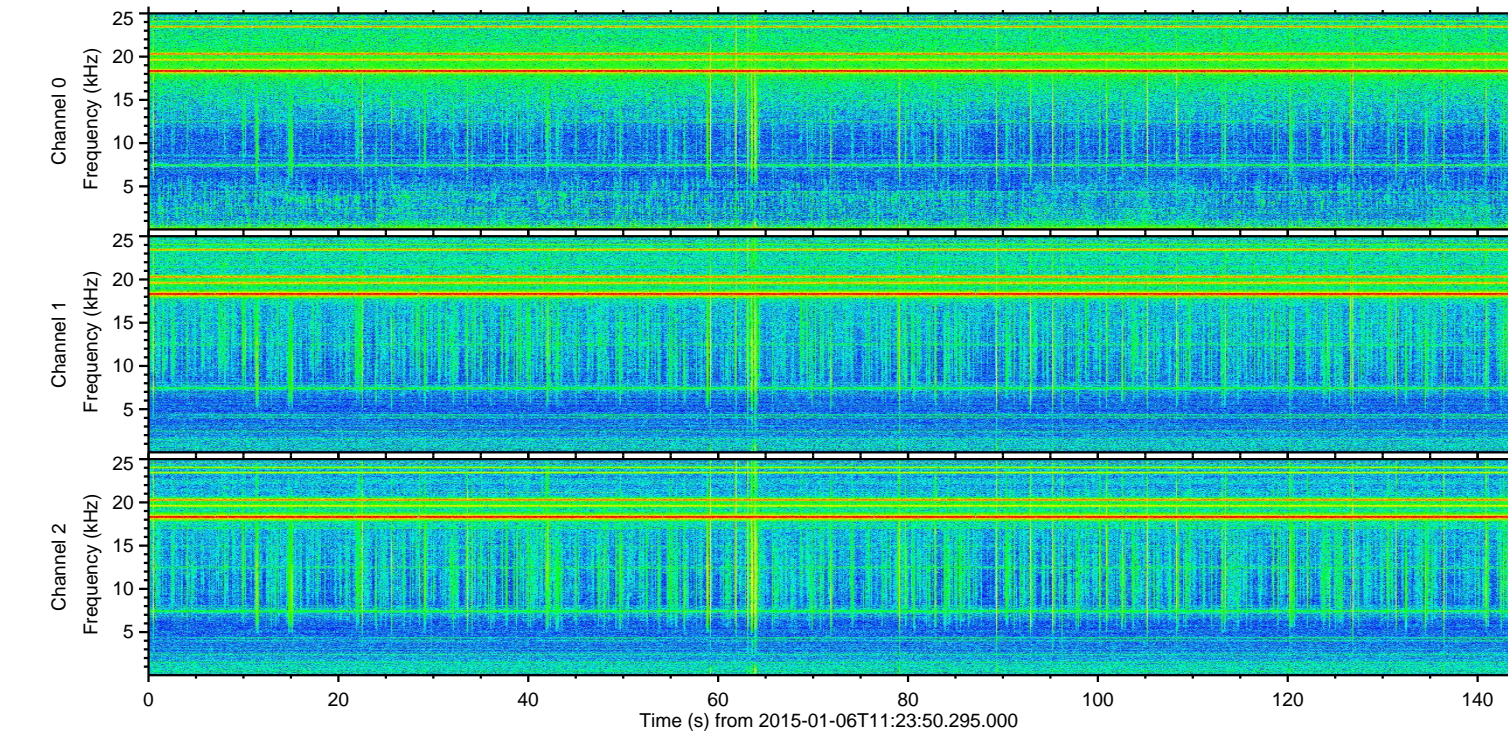
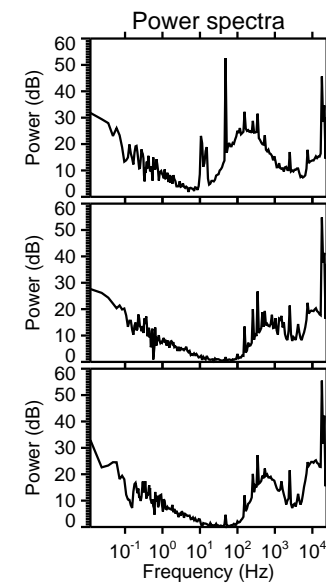
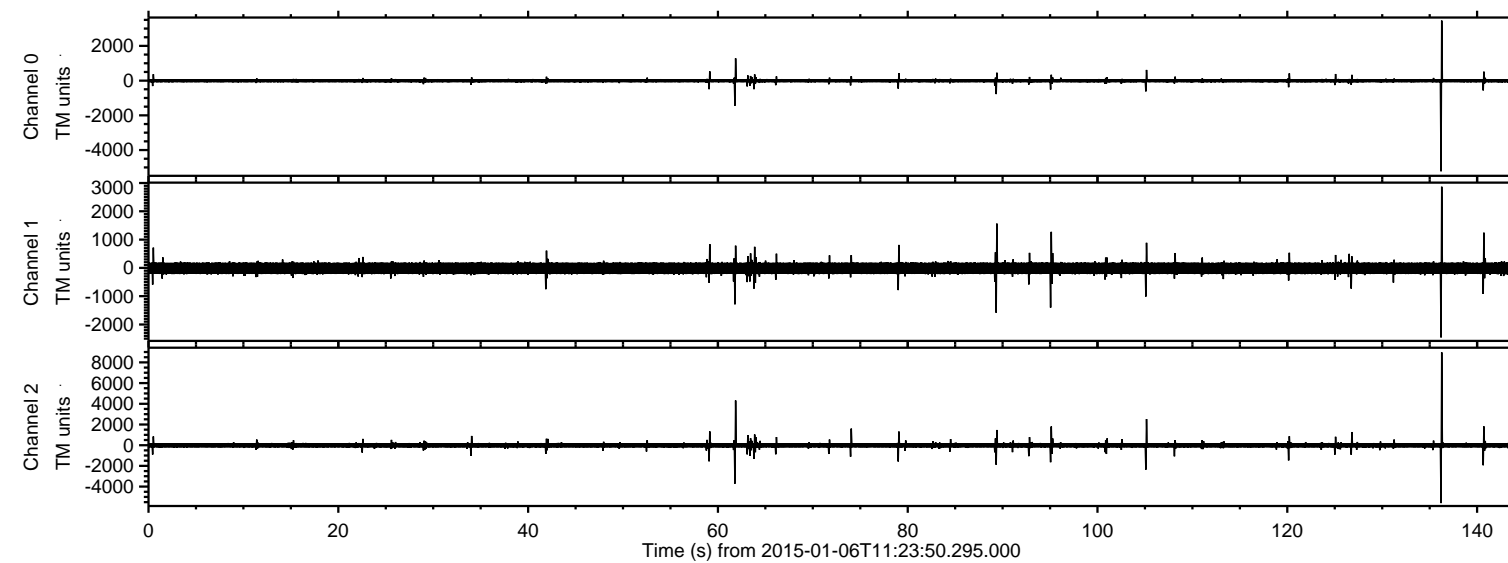


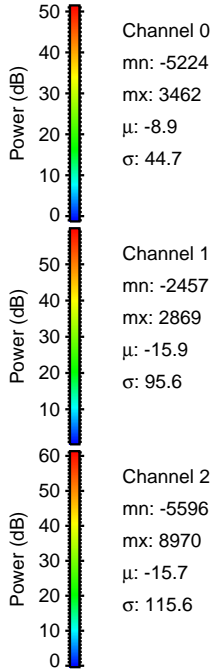
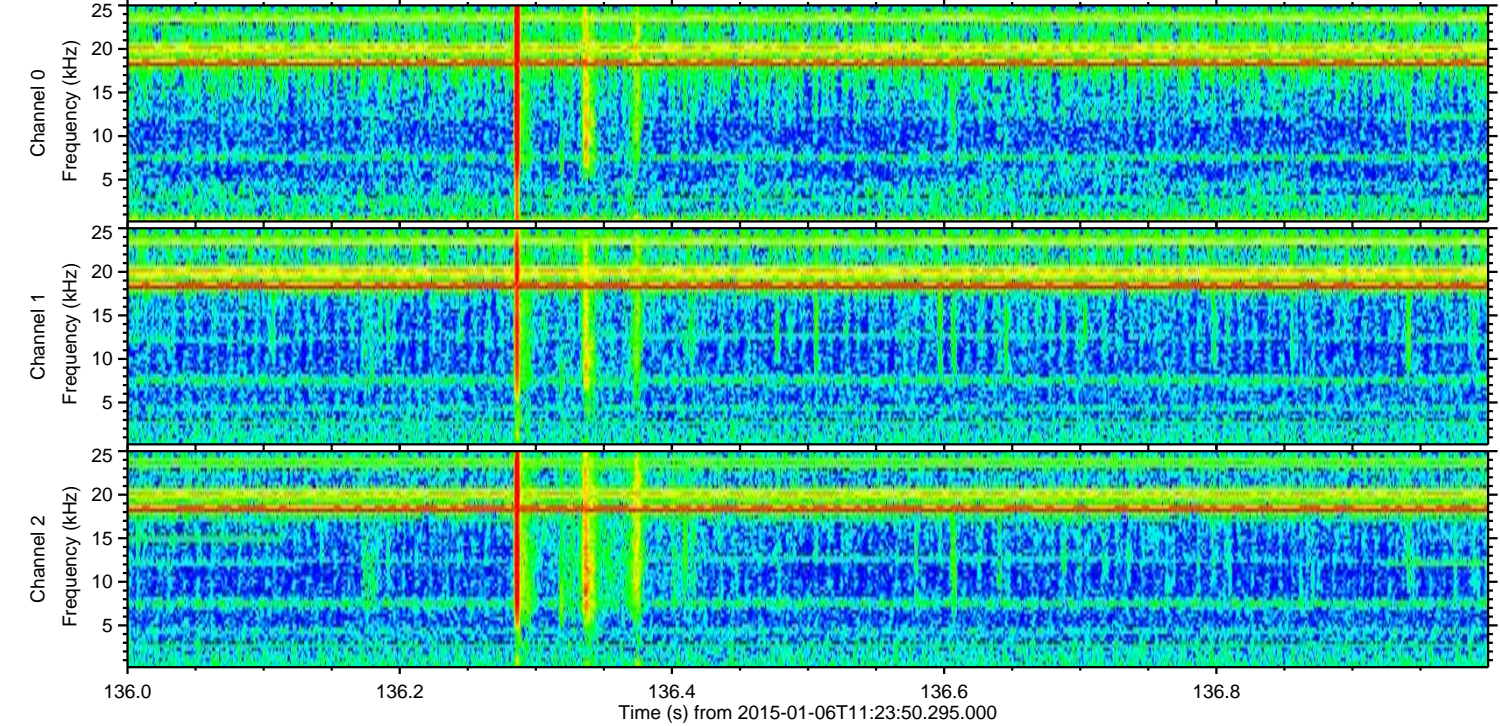
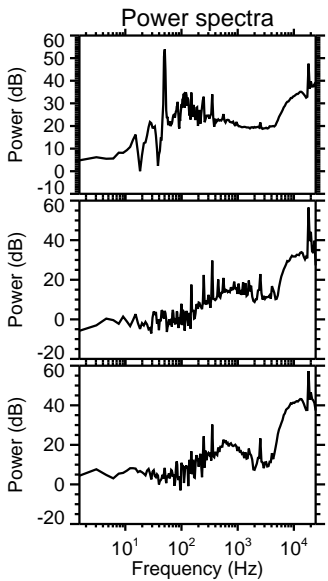
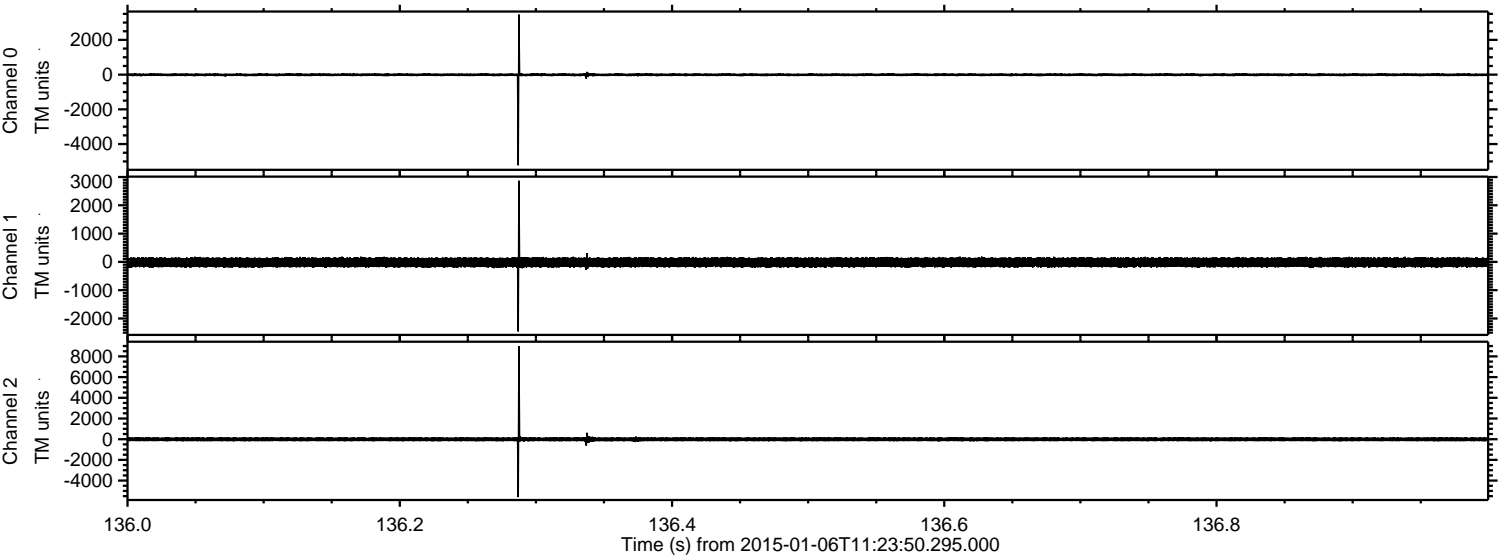
ELMAVAN 3D WAVEFORMS (Measured data sampled at 50 kHz) 49783 packets of 144 samples from 2015-01-06T11:23:50.295.000.

Processed Tue Jan 6 12:32:25 2015 by ELM ver.2012-10-06 from 001__elm20150106_112349__dat00.bin



ELMAVAN 3D WAVEFORMS (Measured data sampled at 50 kHz) 49783 packets of 144 samples from 2015-01-06T11:23:50.295.000. Part 137/144

Processed Tue Jan 6 12:32:37 2015 by ELM ver.2012-10-06 from 001__elm20150106_112349__dat00.bin



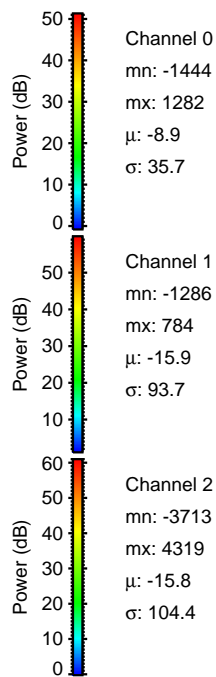
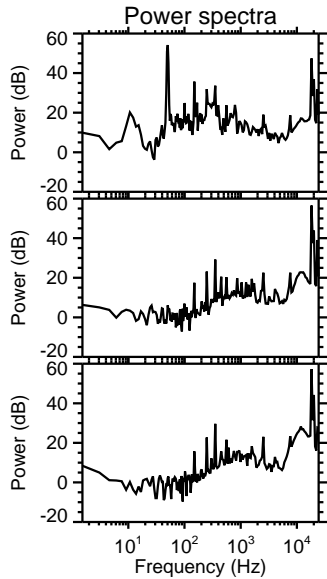
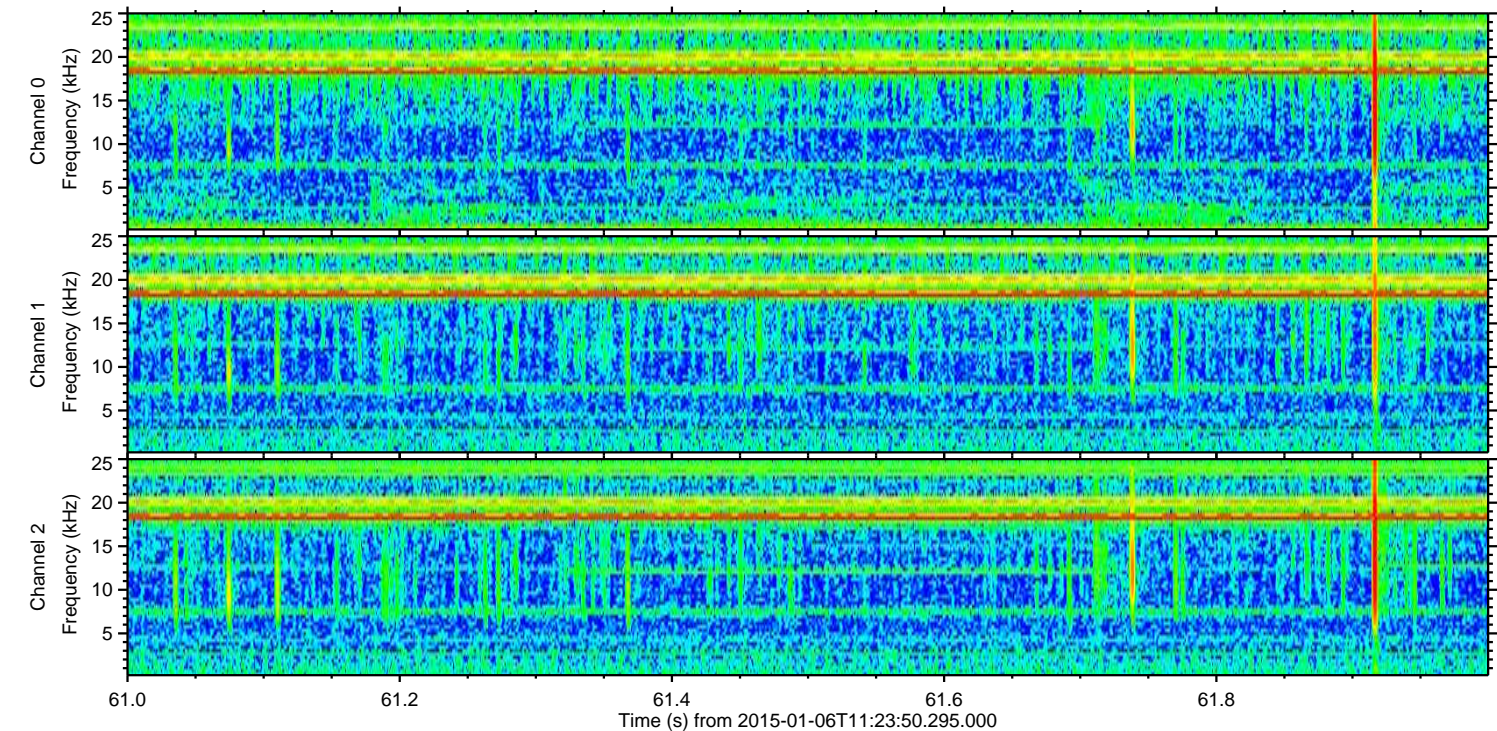
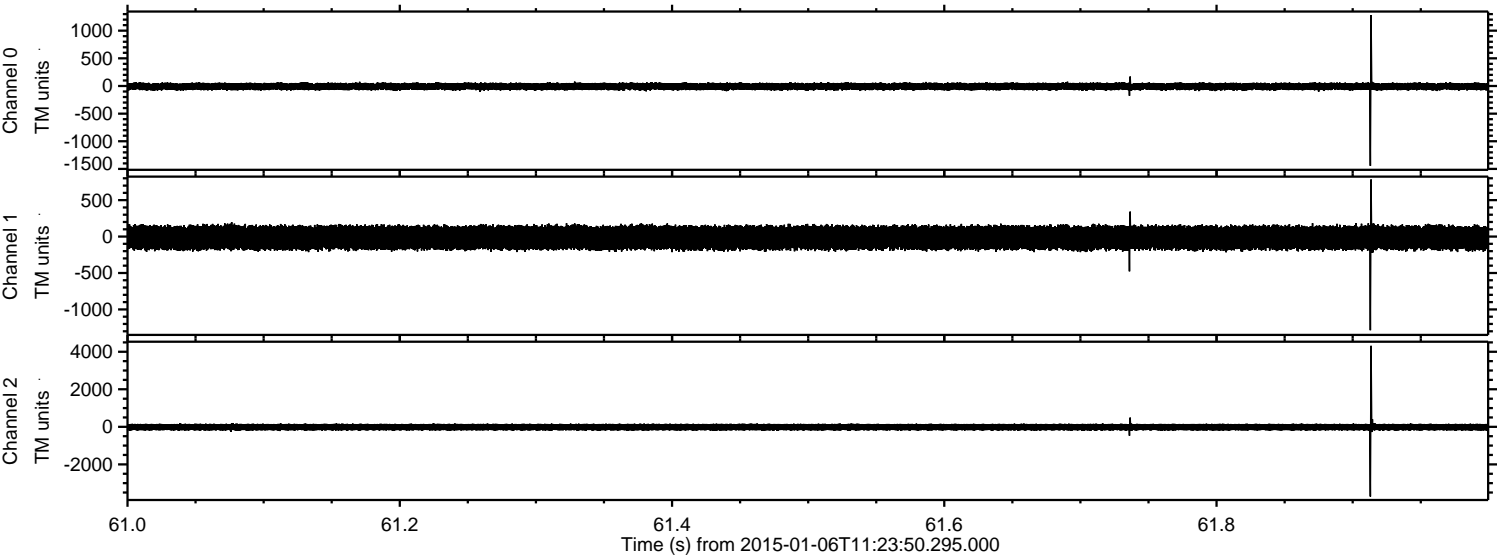
Channel 0
mn: -5224
mx: 3462
 μ : -8.9
 σ : 44.7

Channel 1
mn: -2457
mx: 2869
 μ : -15.9
 σ : 95.6

Channel 2
mn: -5596
mx: 8970
 μ : -15.7
 σ : 115.6

ELMAVAN 3D WAVEFORMS (Measured data sampled at 50 kHz) 49783 packets of 144 samples from 2015-01-06T11:23:50.295.000. Part 62/144

Processed Tue Jan 6 12:32:38 2015 by ELM ver.2012-10-06 from 001__elm20150106_112349__dat00.bin



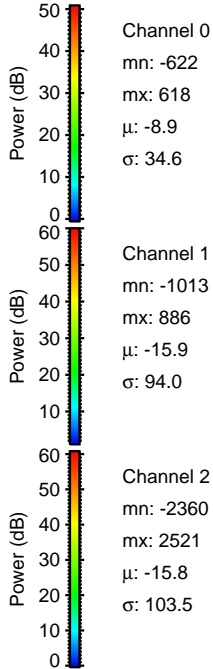
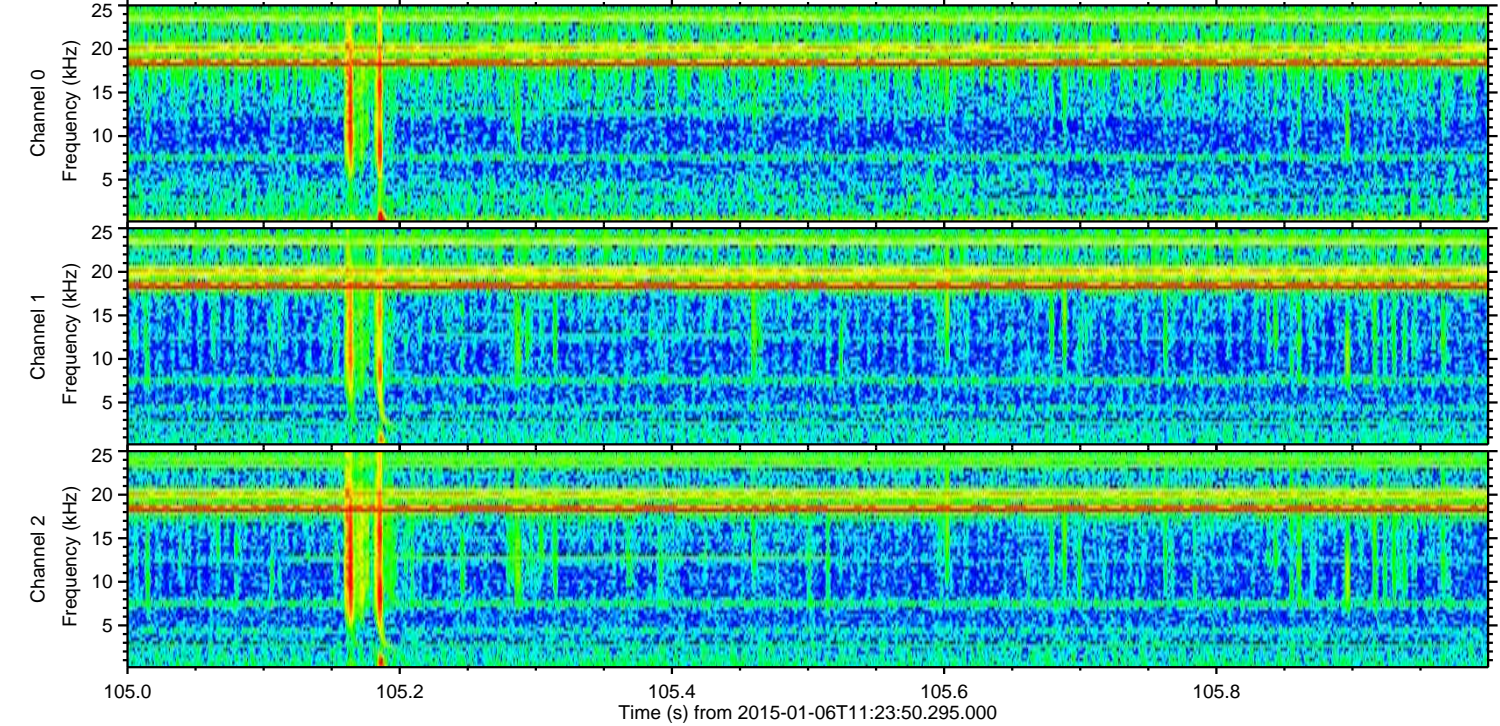
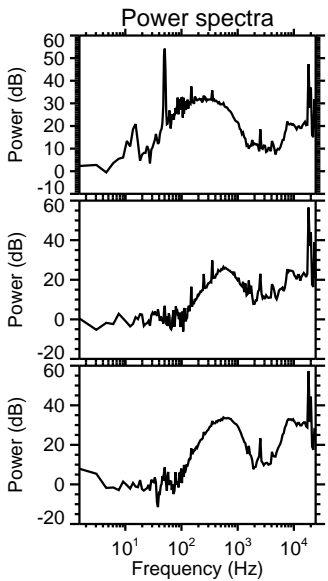
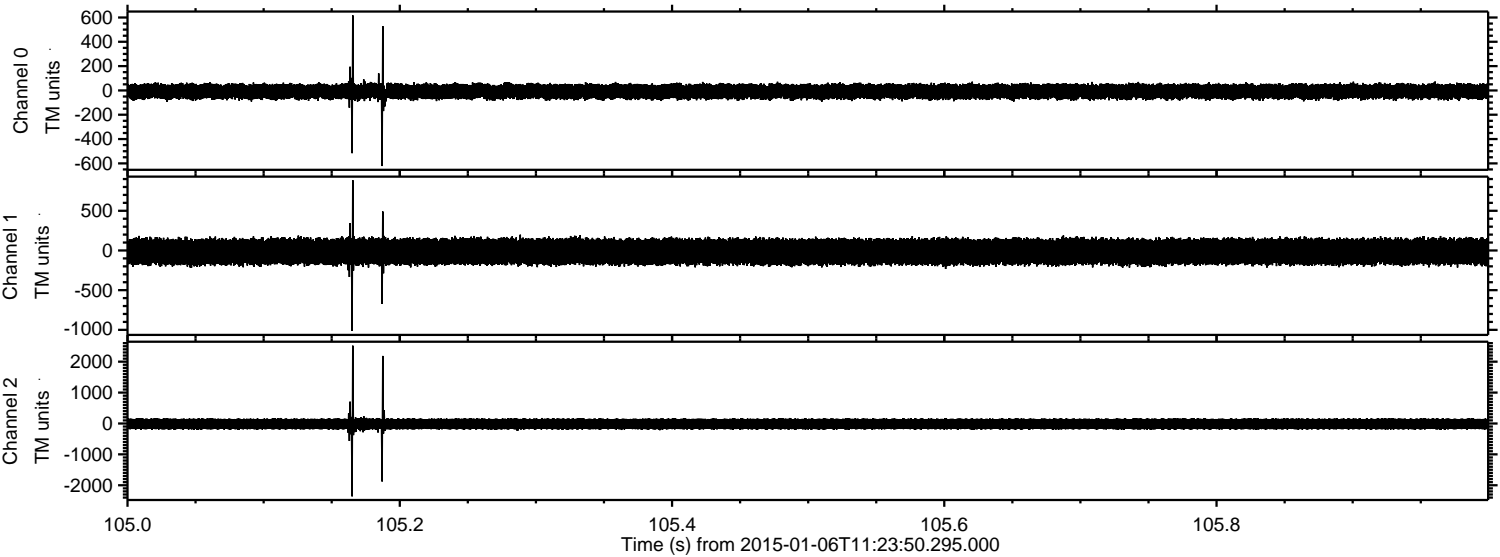
Channel 0
mn: -1444
mx: 1282
 μ : -8.9
 σ : 35.7

Channel 1
mn: -1286
mx: 784
 μ : -15.9
 σ : 93.7

Channel 2
mn: -3713
mx: 4319
 μ : -15.8
 σ : 104.4

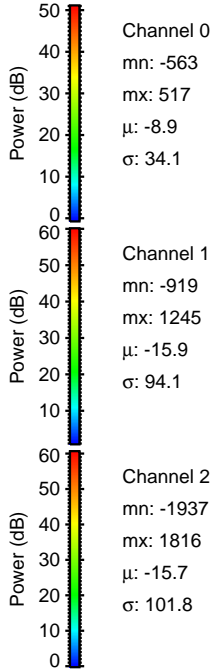
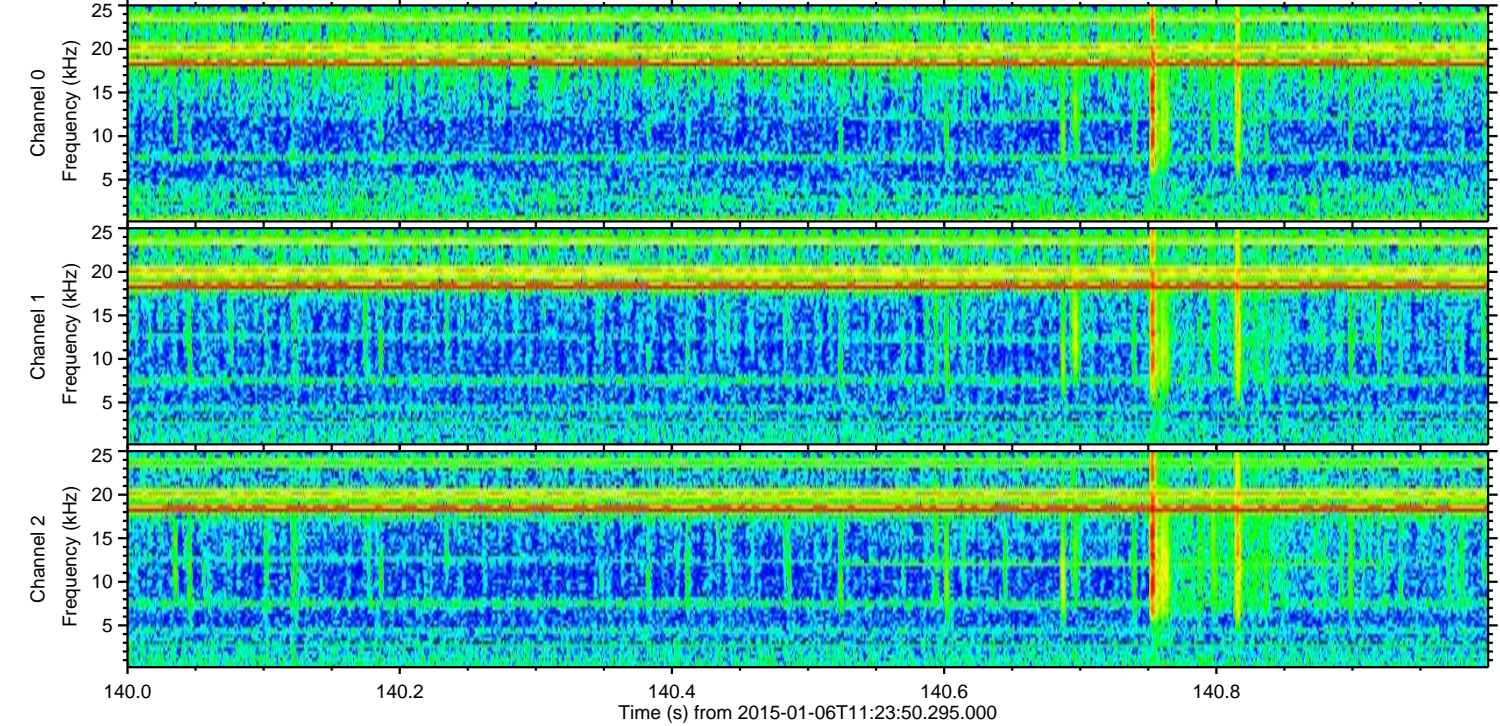
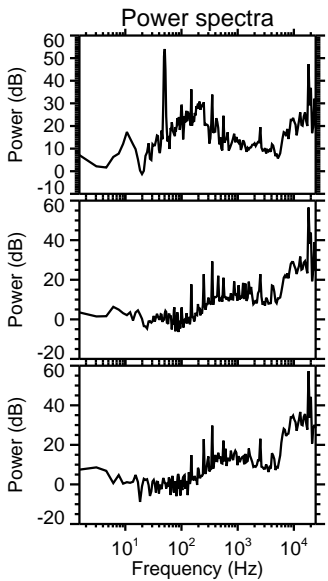
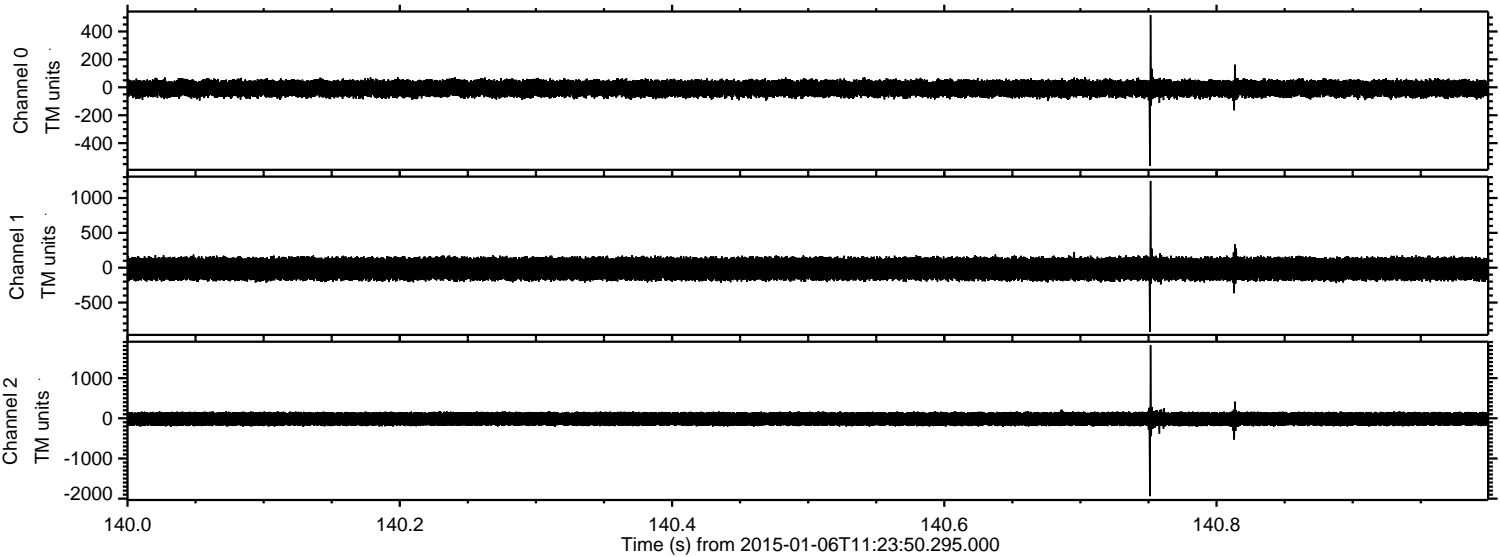
ELMAVAN 3D WAVEFORMS (Measured data sampled at 50 kHz) 49783 packets of 144 samples from 2015-01-06T11:23:50.295.000. Part 106/144

Processed Tue Jan 6 12:32:39 2015 by ELM ver.2012-10-06 from 001__elm20150106_112349__dat00.bin

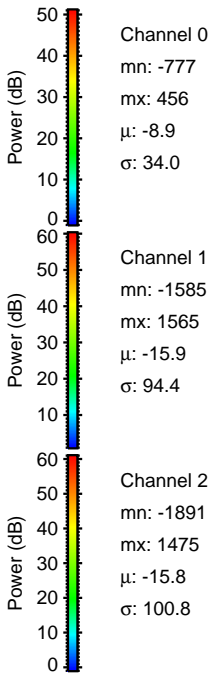
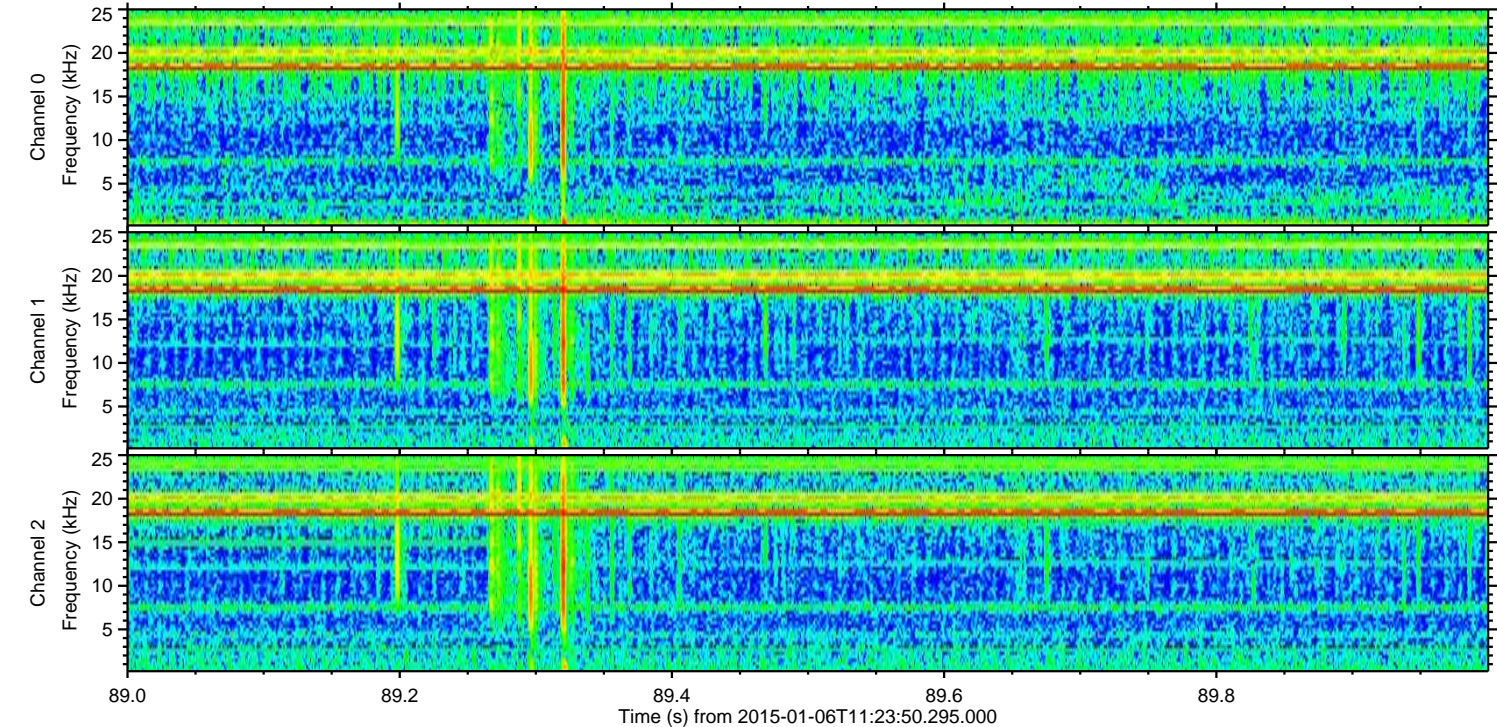
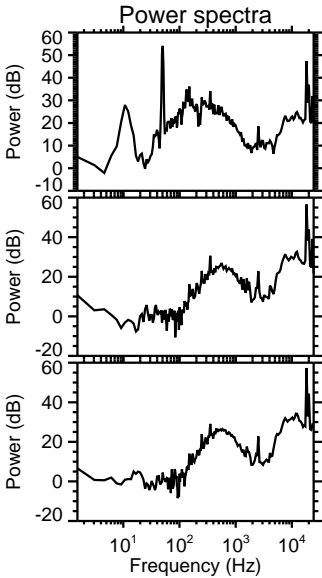
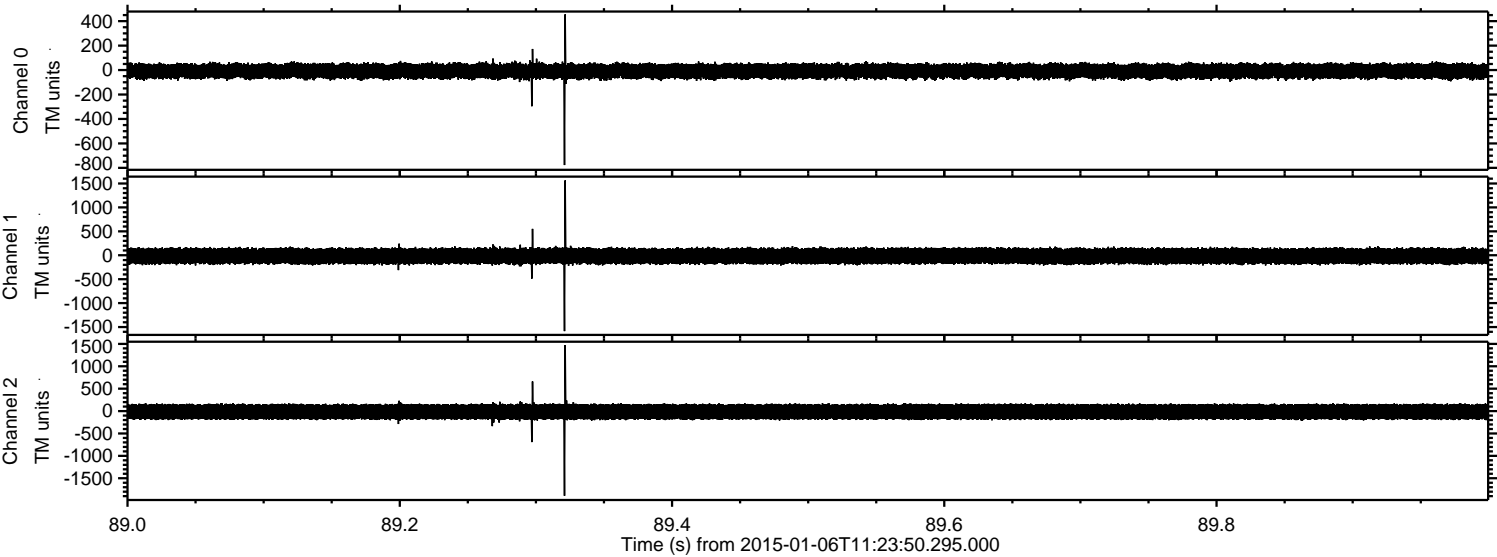


ELMAVAN 3D WAVEFORMS (Measured data sampled at 50 kHz) 49783 packets of 144 samples from 2015-01-06T11:23:50.295.000. Part 141/144

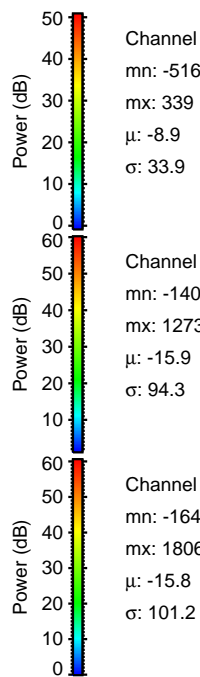
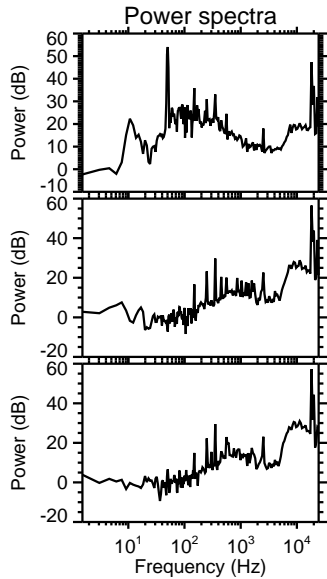
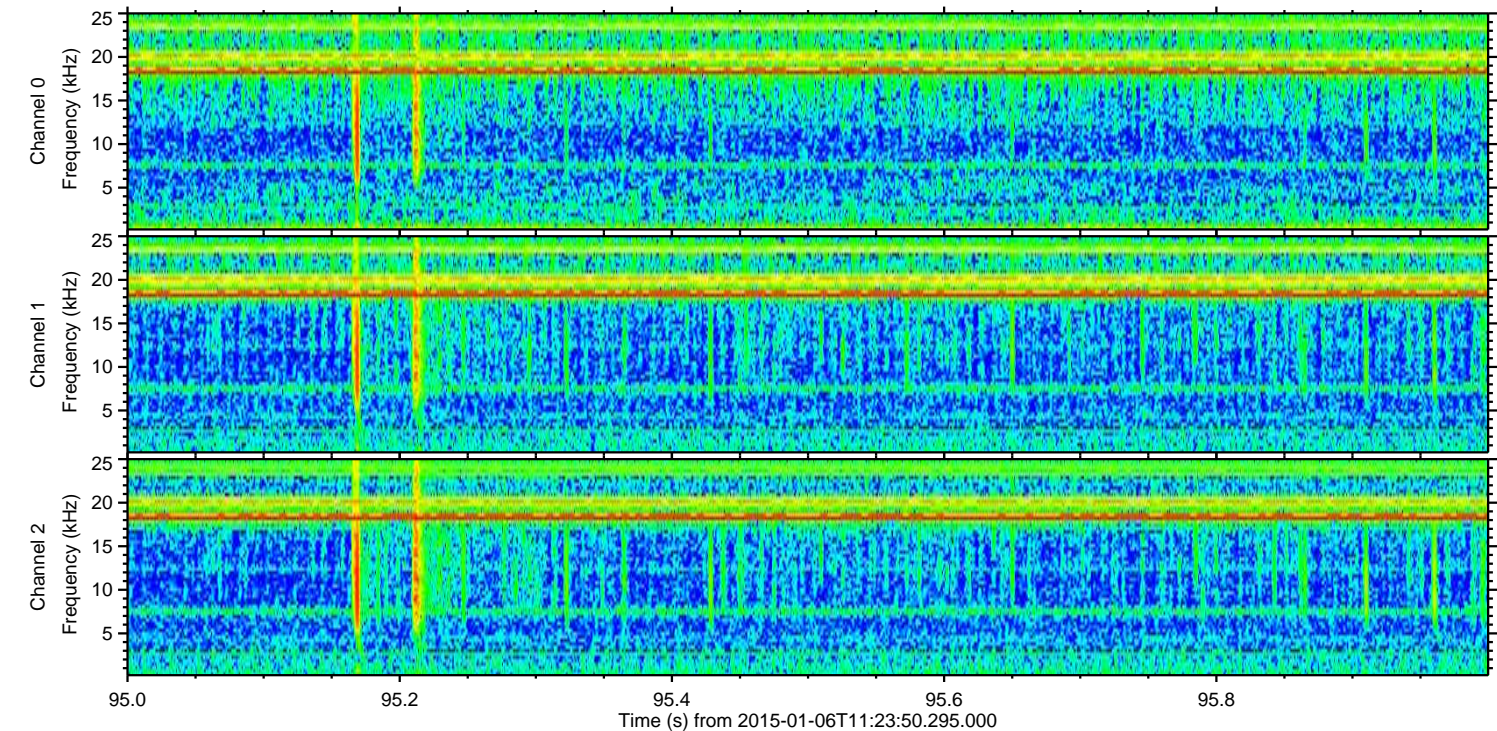
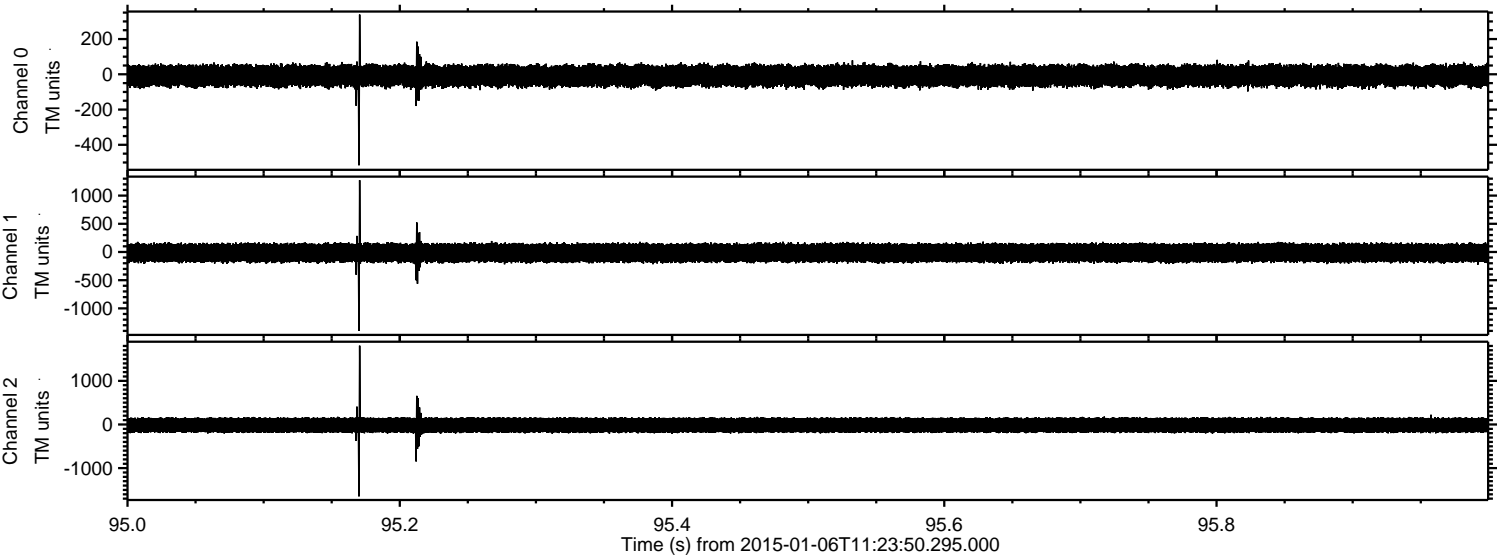
Processed Tue Jan 6 12:32:40 2015 by ELM ver.2012-10-06 from 001__elm20150106_112349__dat00.bin



Processed Tue Jan 6 12:32:41 2015 by ELM ver.2012-10-06 from 001__elm20150106_112349__dat00.bin



Processed Tue Jan 6 12:32:42 2015 by ELM ver.2012-10-06 from 001__elm20150106_112349__dat00.bin

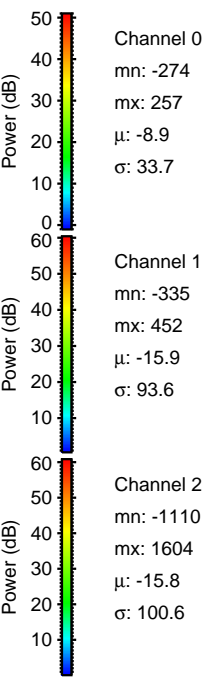
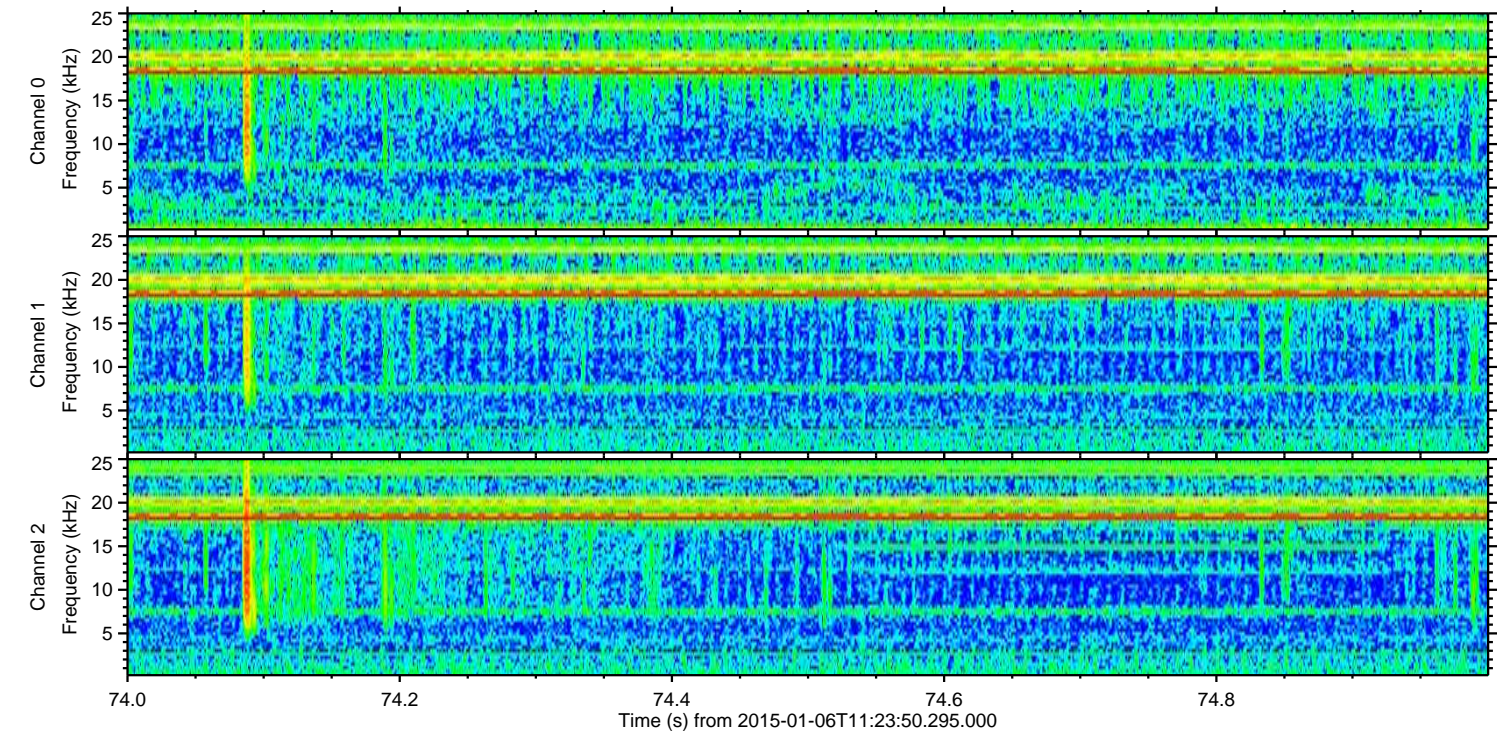
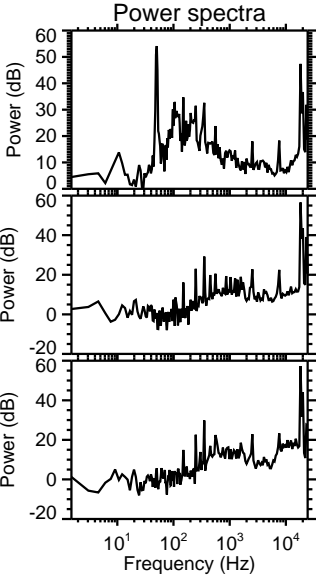
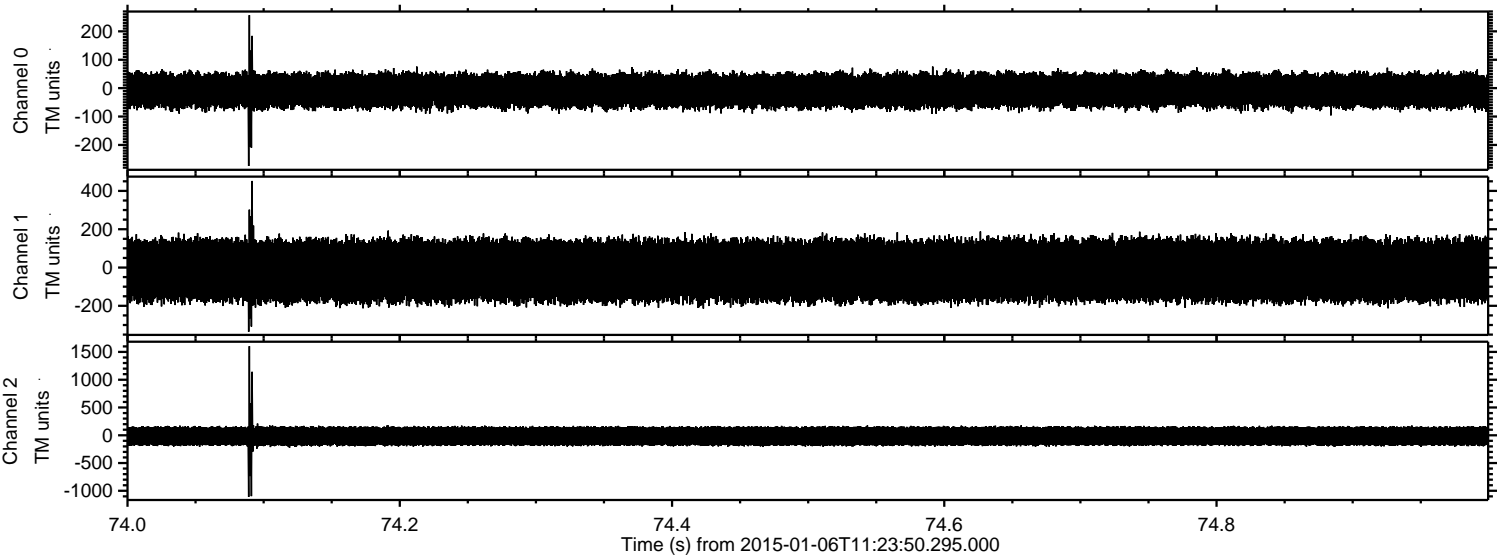


Channel 0
mn: -516
mx: 339
 μ : -8.9
 σ : 33.9

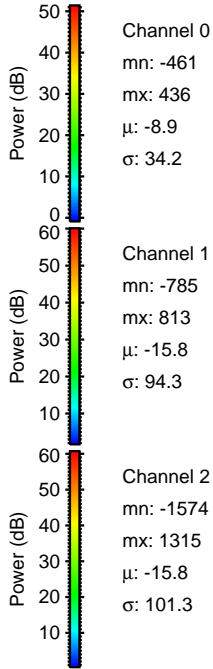
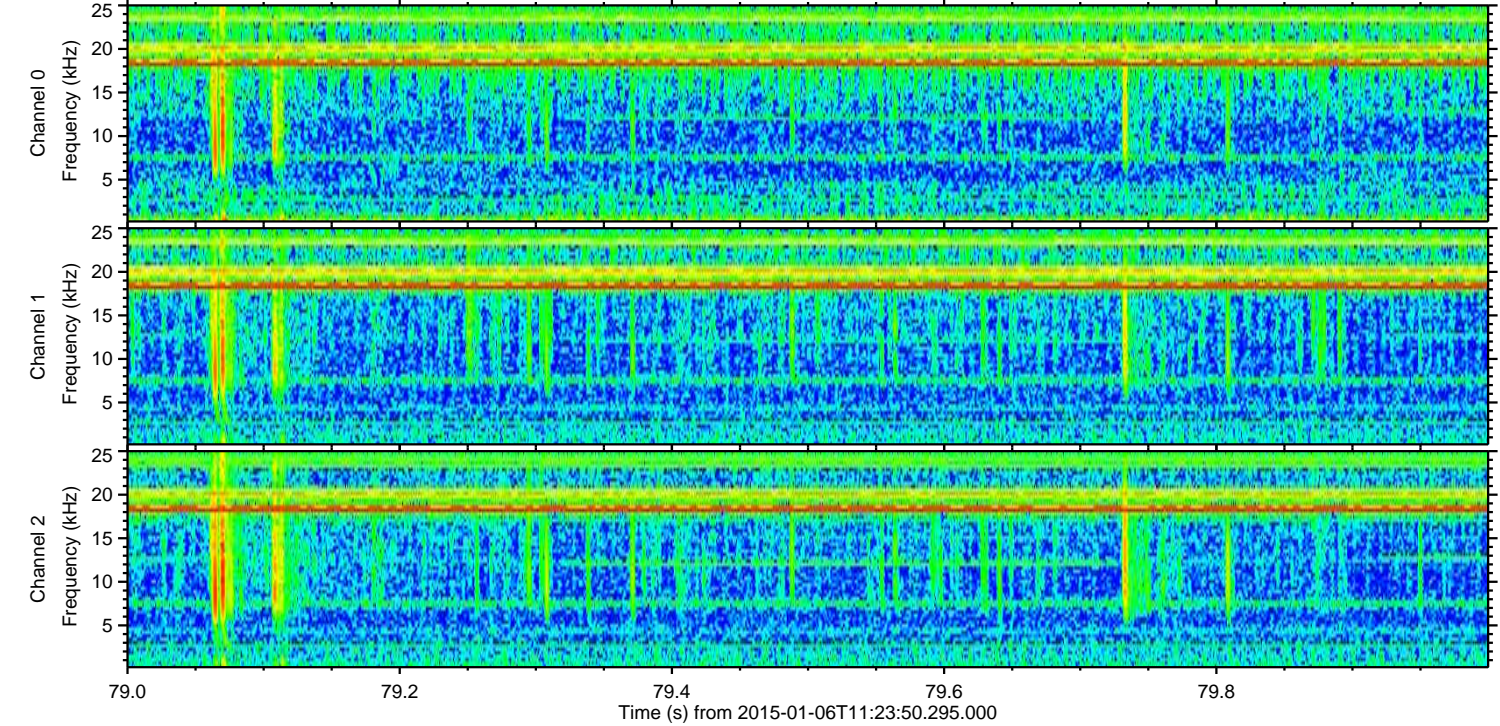
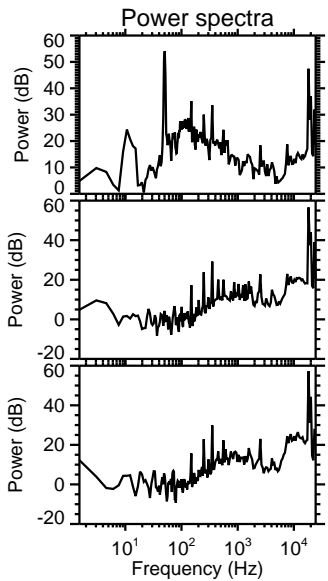
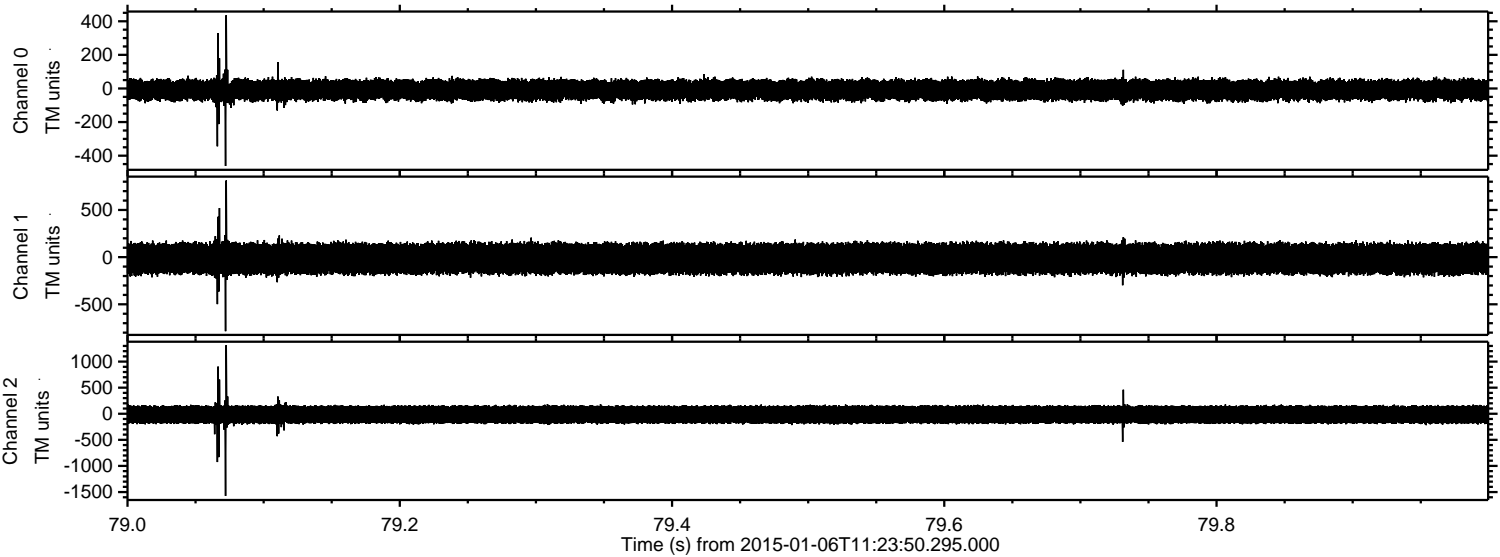
Channel 1
mn: -1401
mx: 1273
 μ : -15.9
 σ : 94.3

Channel 2
mn: -1648
mx: 1806
 μ : -15.8
 σ : 101.2

Processed Tue Jan 6 12:32:43 2015 by ELM ver.2012-10-06 from 001__elm20150106_112349__dat00.bin



Processed Tue Jan 6 12:32:43 2015 by ELM ver.2012-10-06 from 001__elm20150106_112349__dat00.bin



Channel 0
mn: -461
mx: 436
 μ : -8.9
 σ : 34.2

Channel 1
mn: -785
mx: 813
 μ : -15.8
 σ : 94.3

Channel 2
mn: -1574
mx: 1315
 μ : -15.8
 σ : 101.3

Processed Tue Jan 6 12:32:44 2015 by ELM ver.2012-10-06 from 001__elm20150106_112349__dat00.bin

