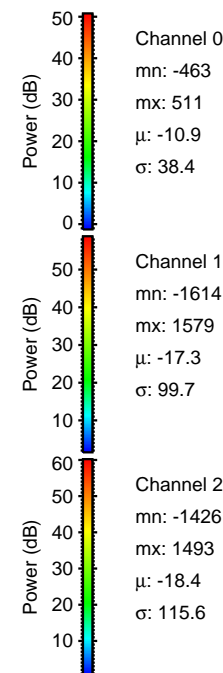
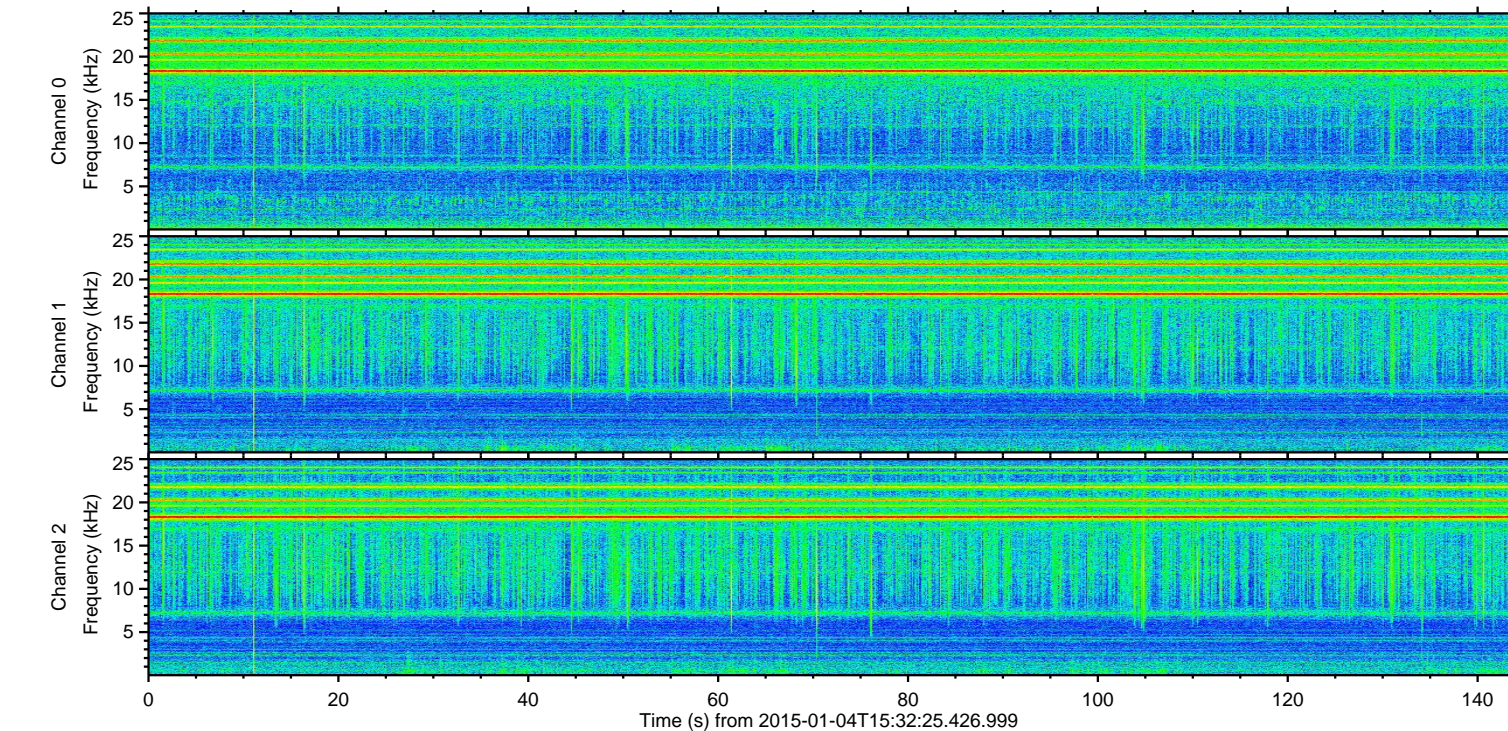
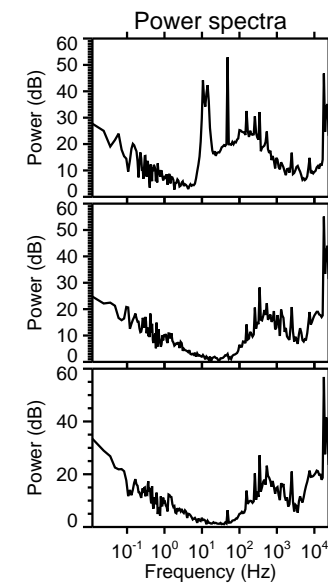
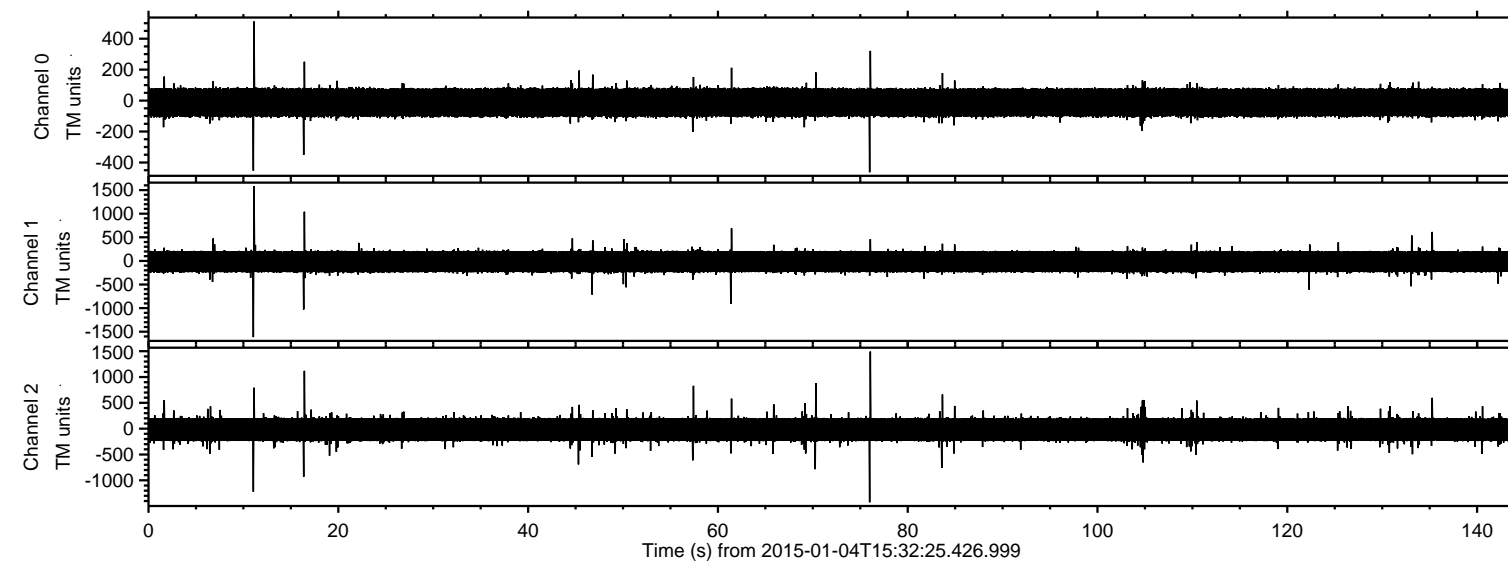


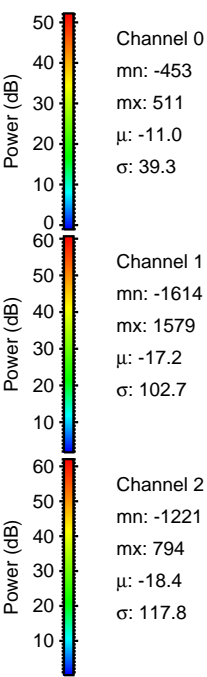
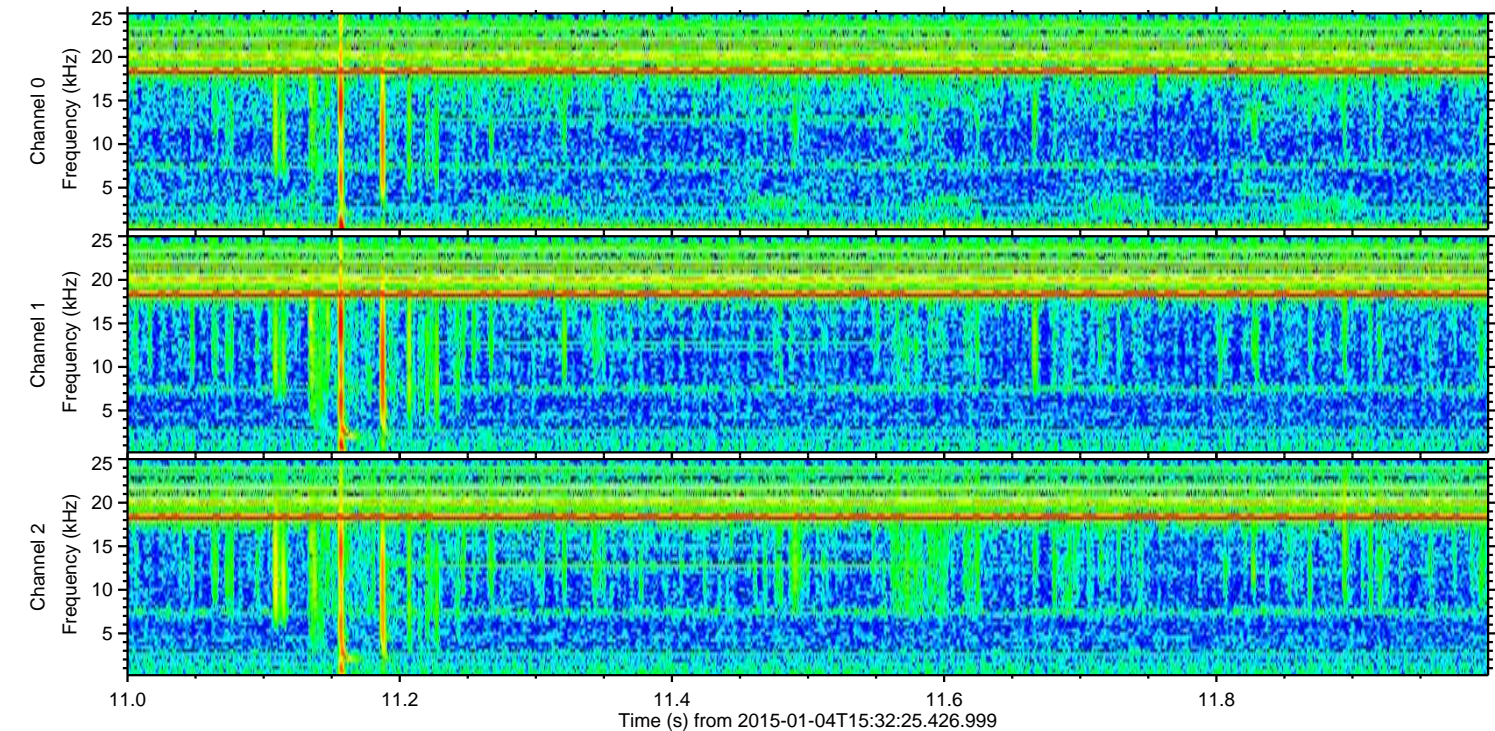
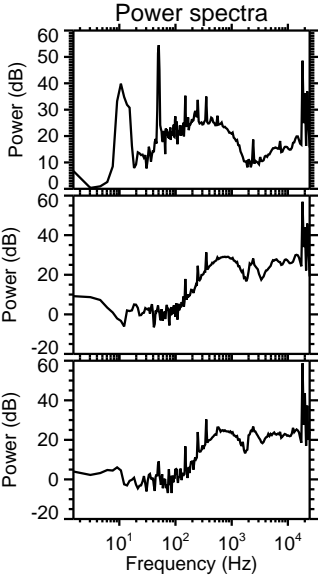
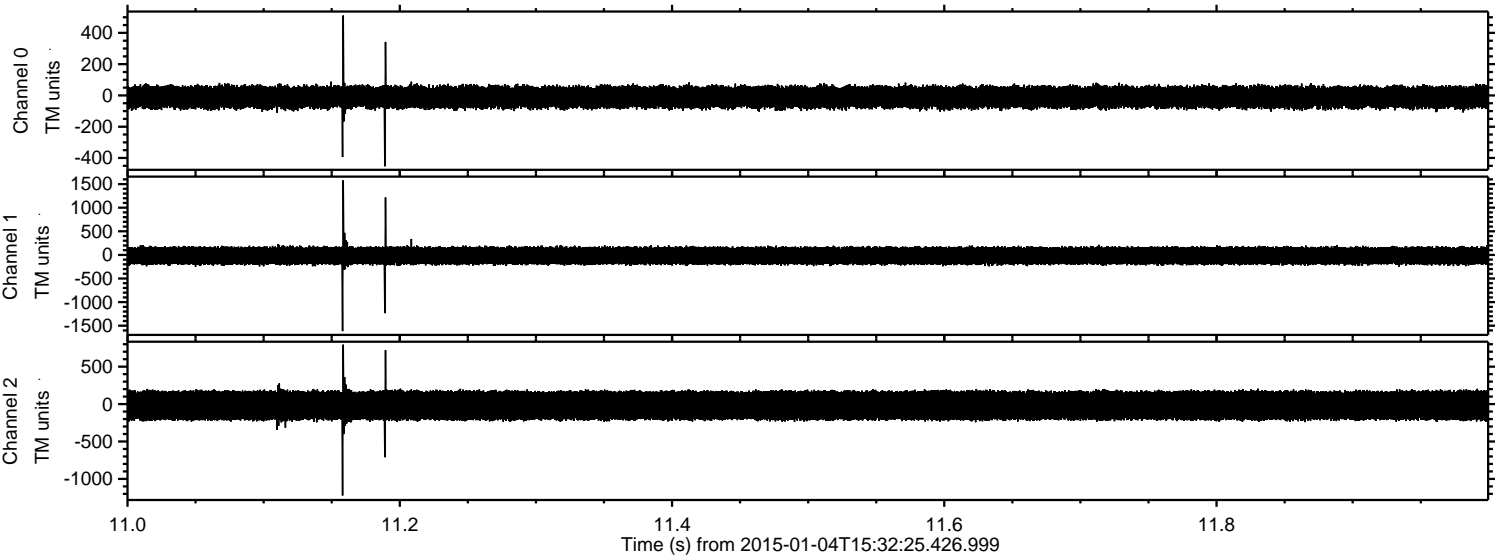
ELMAVAN 3D WAVEFORMS (Measured data sampled at 50 kHz) 49783 packets of 144 samples from 2015-01-04T15:32:25.426.999.

Processed Sun Jan 4 16:41:11 2015 by ELM ver.2012-10-06 from 001__elm20150104_153224__dat00.bin

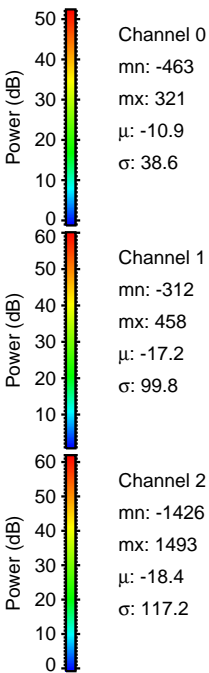
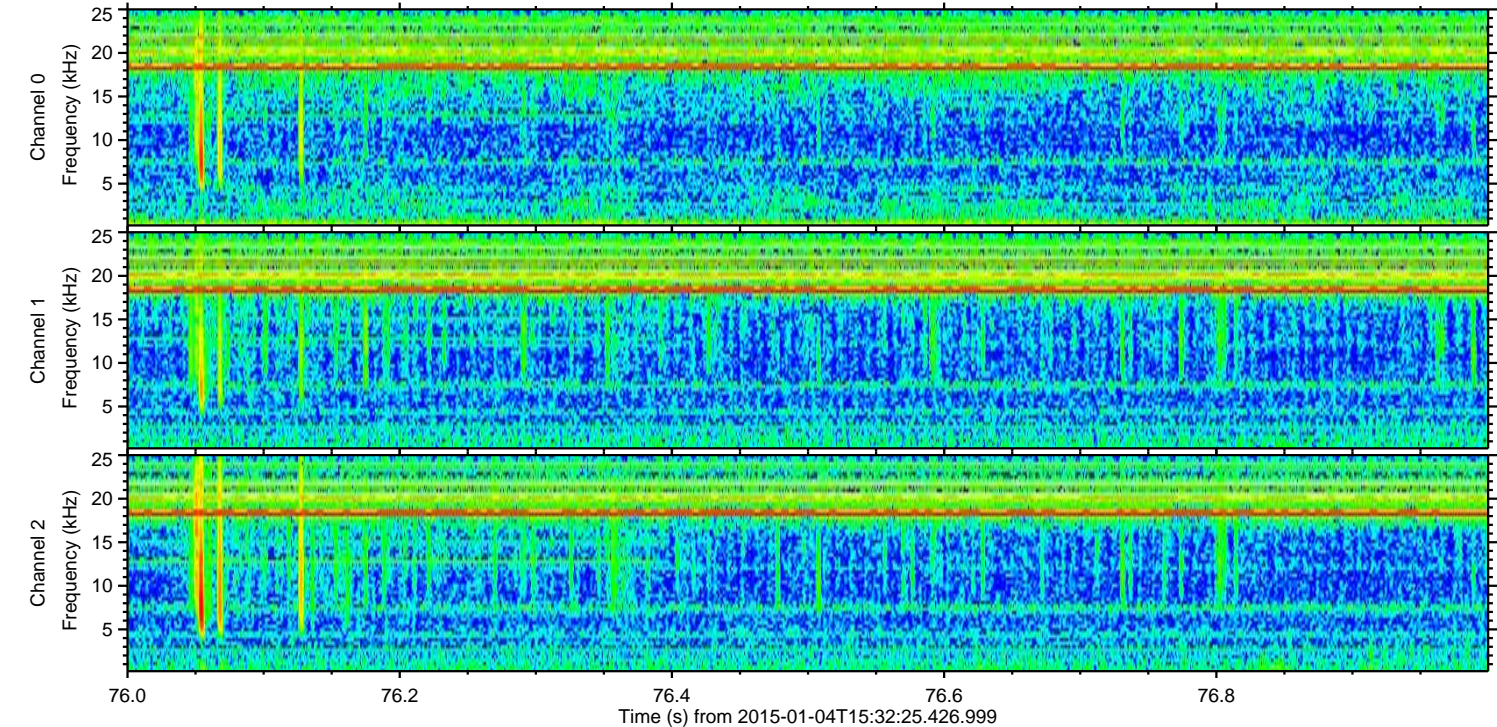
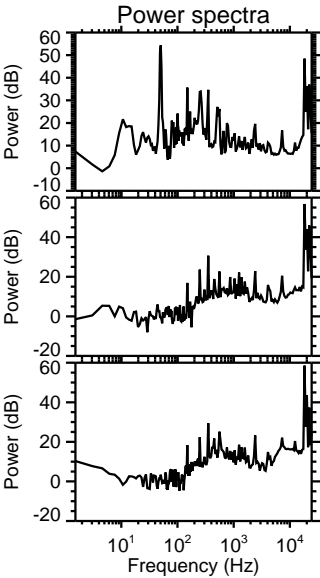
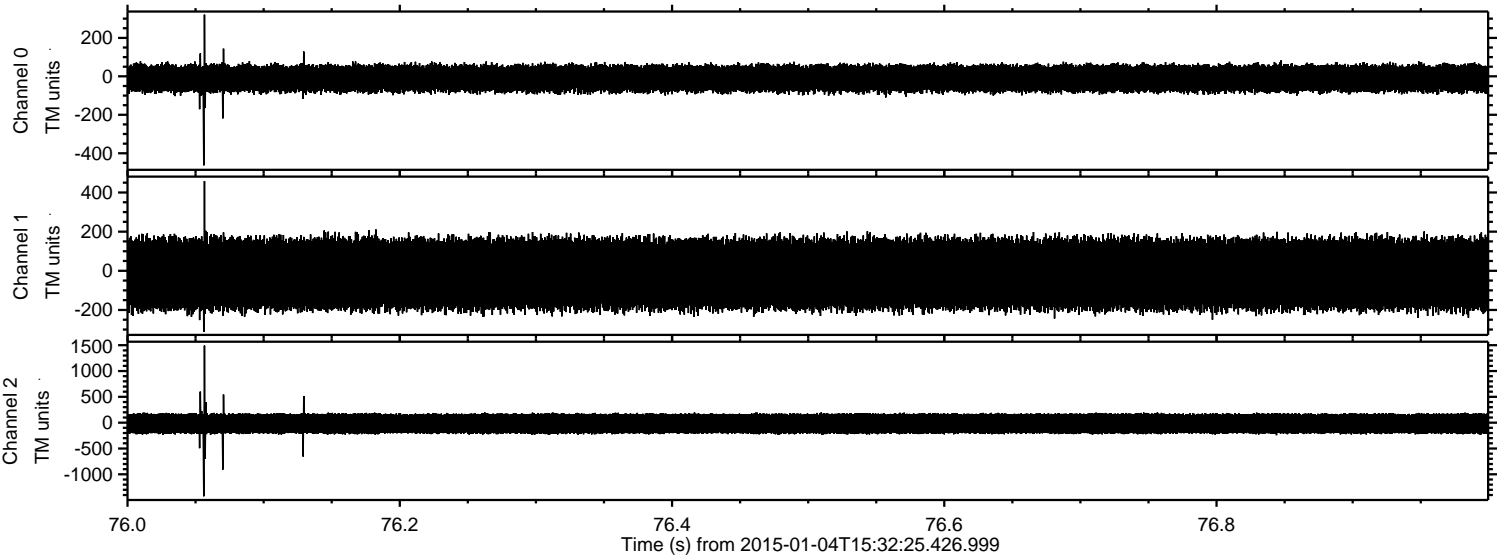


ELMAVAN 3D WAVEFORMS (Measured data sampled at 50 kHz) 49783 packets of 144 samples from 2015-01-04T15:32:25.426.999. Part 12/144

Processed Sun Jan 4 16:41:24 2015 by ELM ver.2012-10-06 from 001__elm20150104_153224__dat00.bin

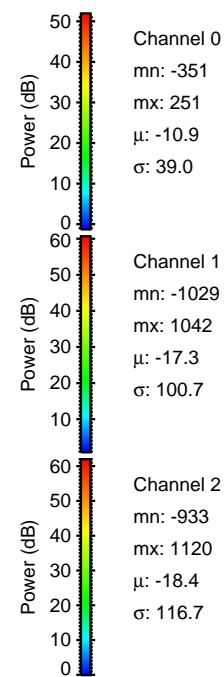
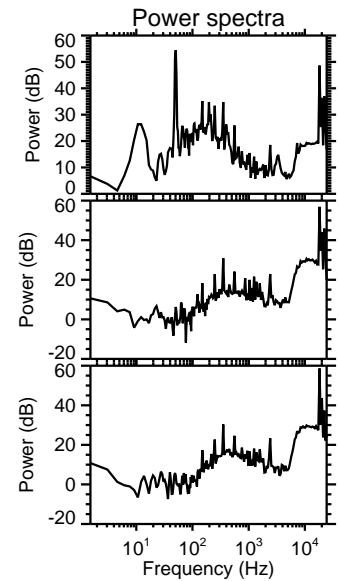
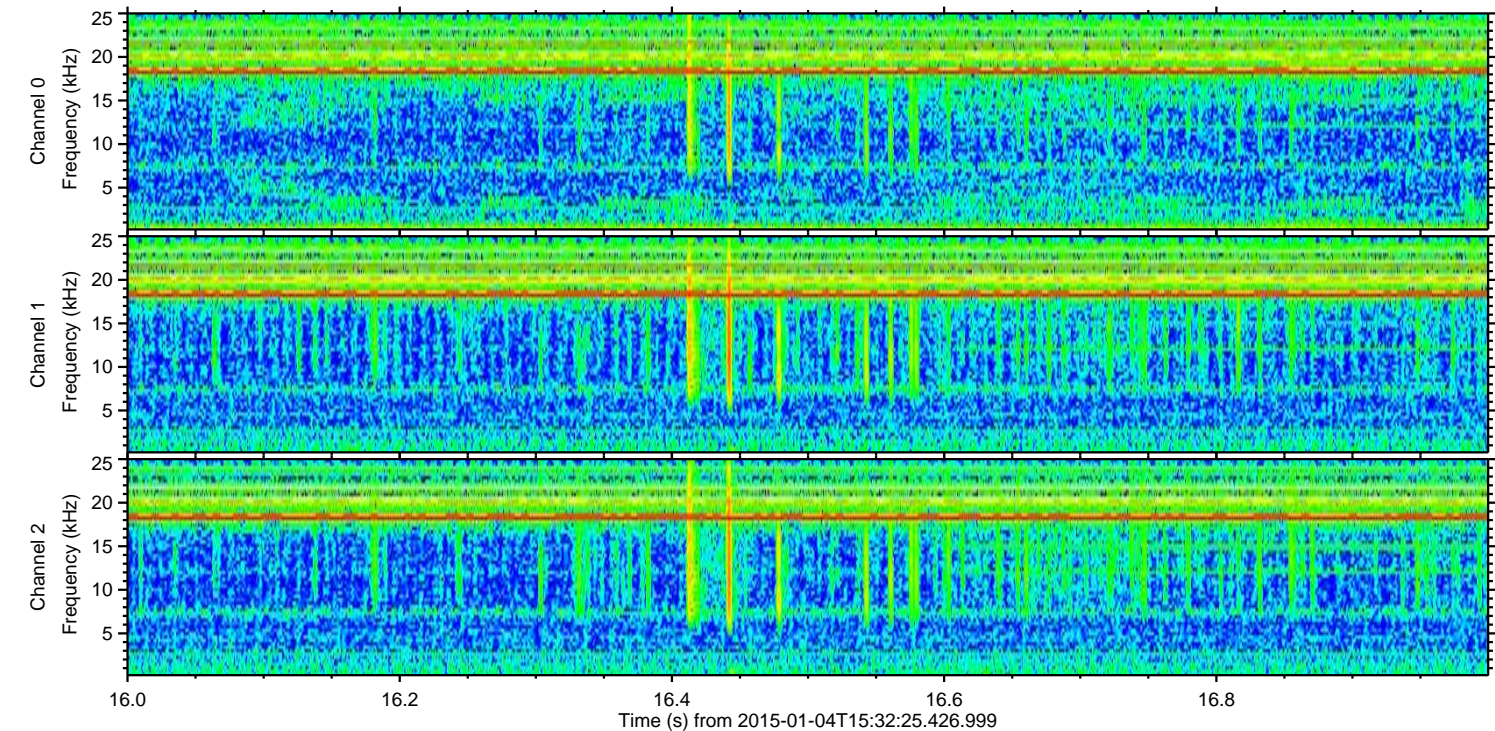
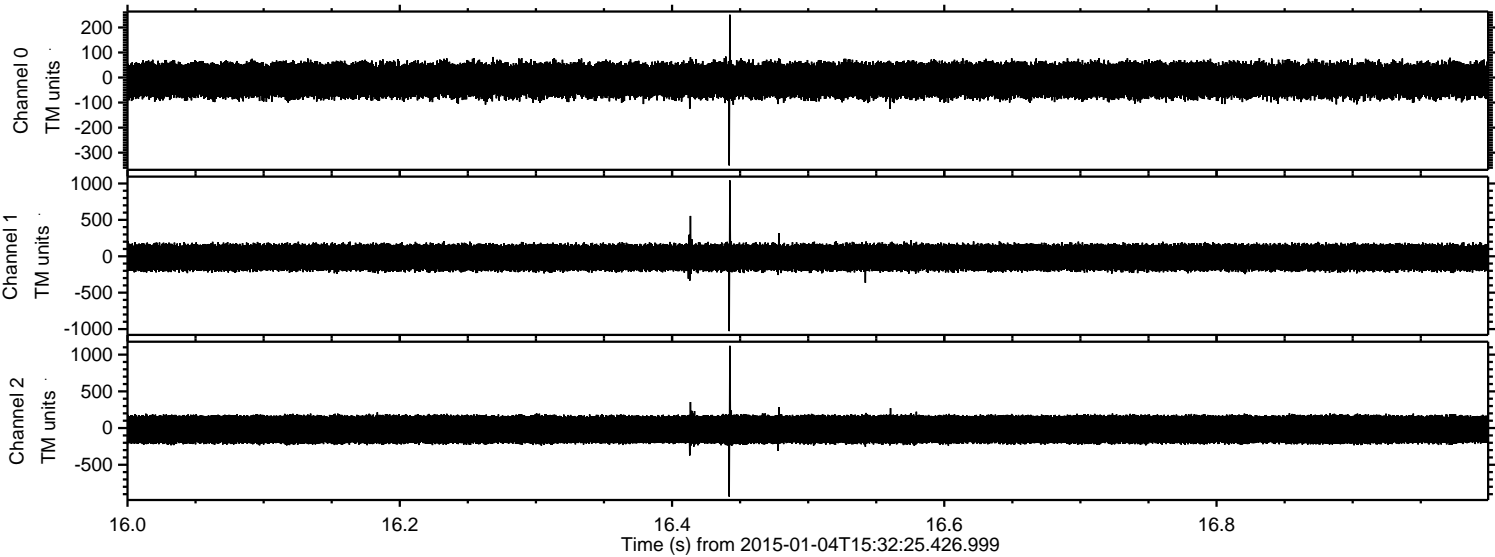


Processed Sun Jan 4 16:41:25 2015 by ELM ver.2012-10-06 from 001__elm20150104_153224__dat00.bin

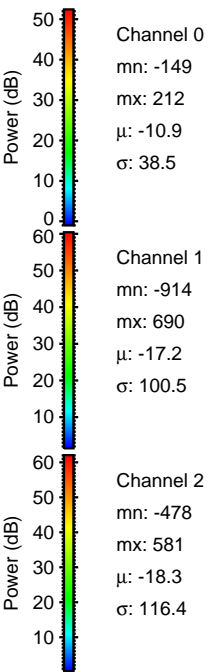
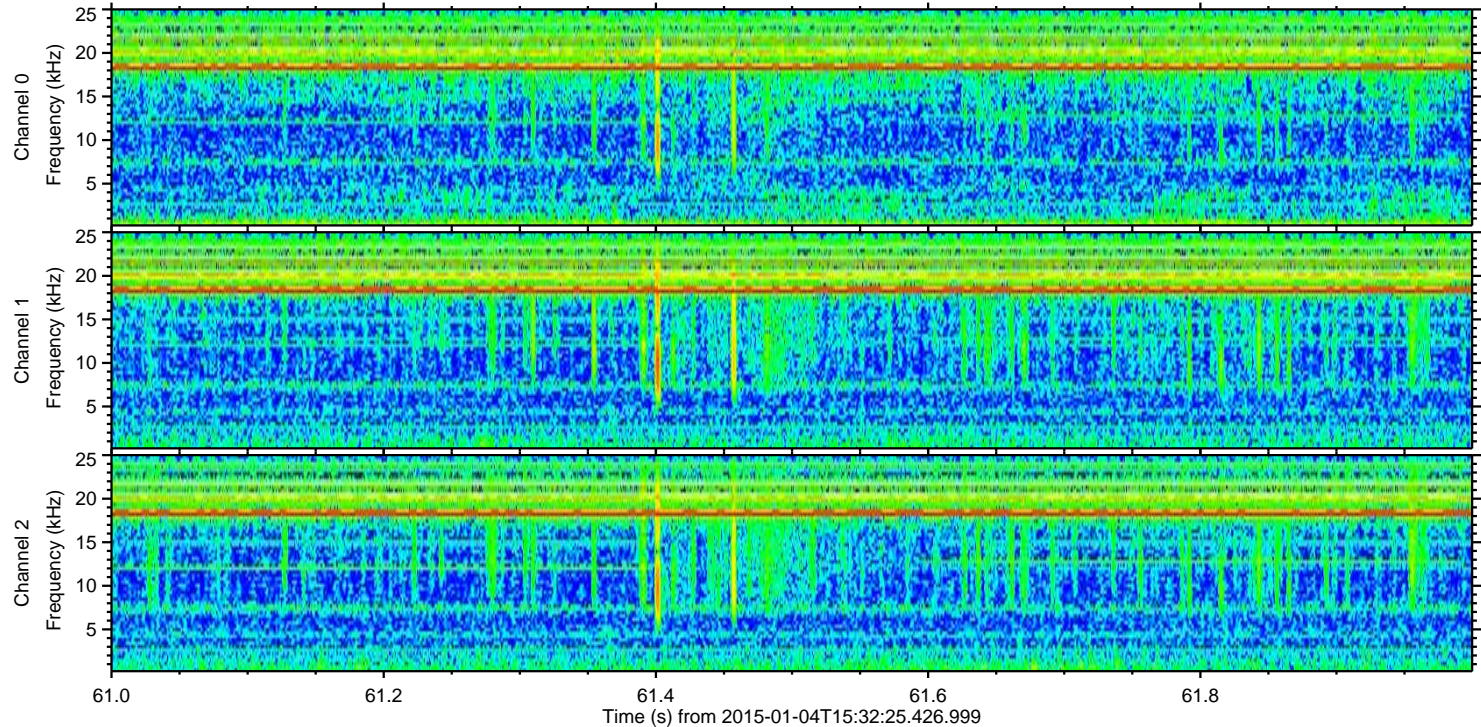
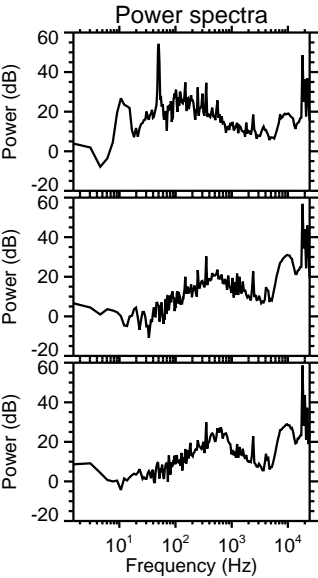
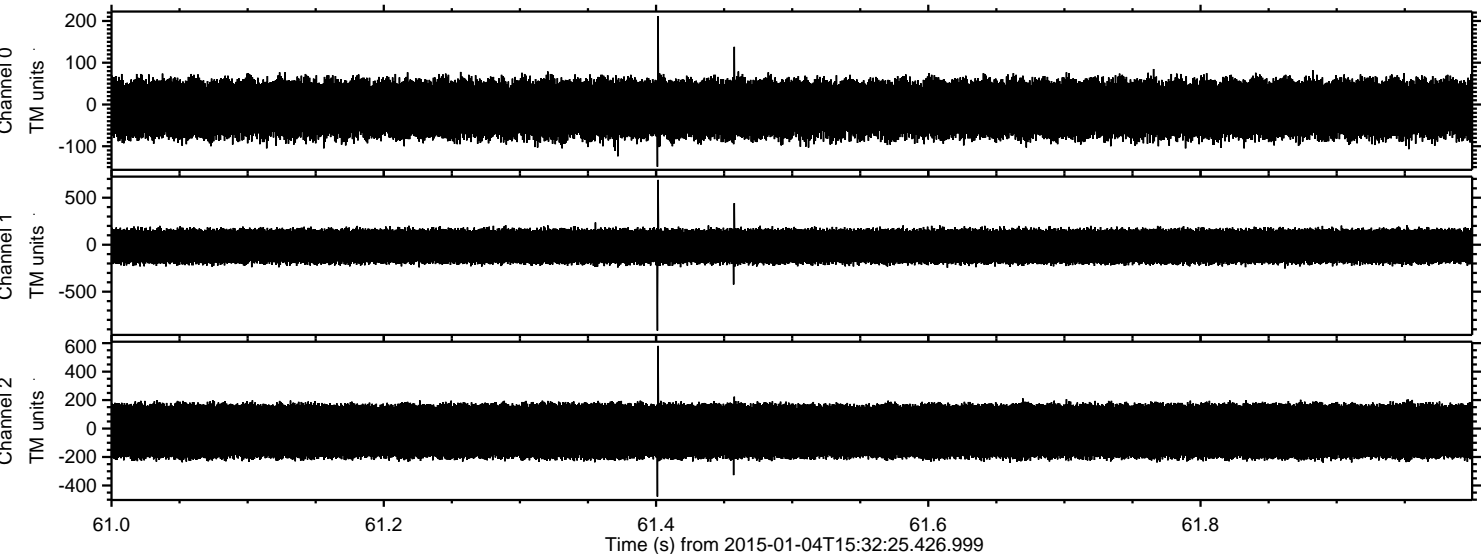


ELMAVAN 3D WAVEFORMS (Measured data sampled at 50 kHz) 49783 packets of 144 samples from 2015-01-04T15:32:25.426.999. Part 17/144

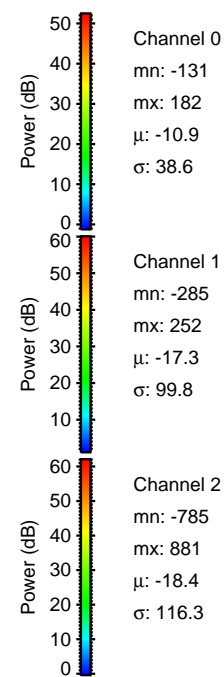
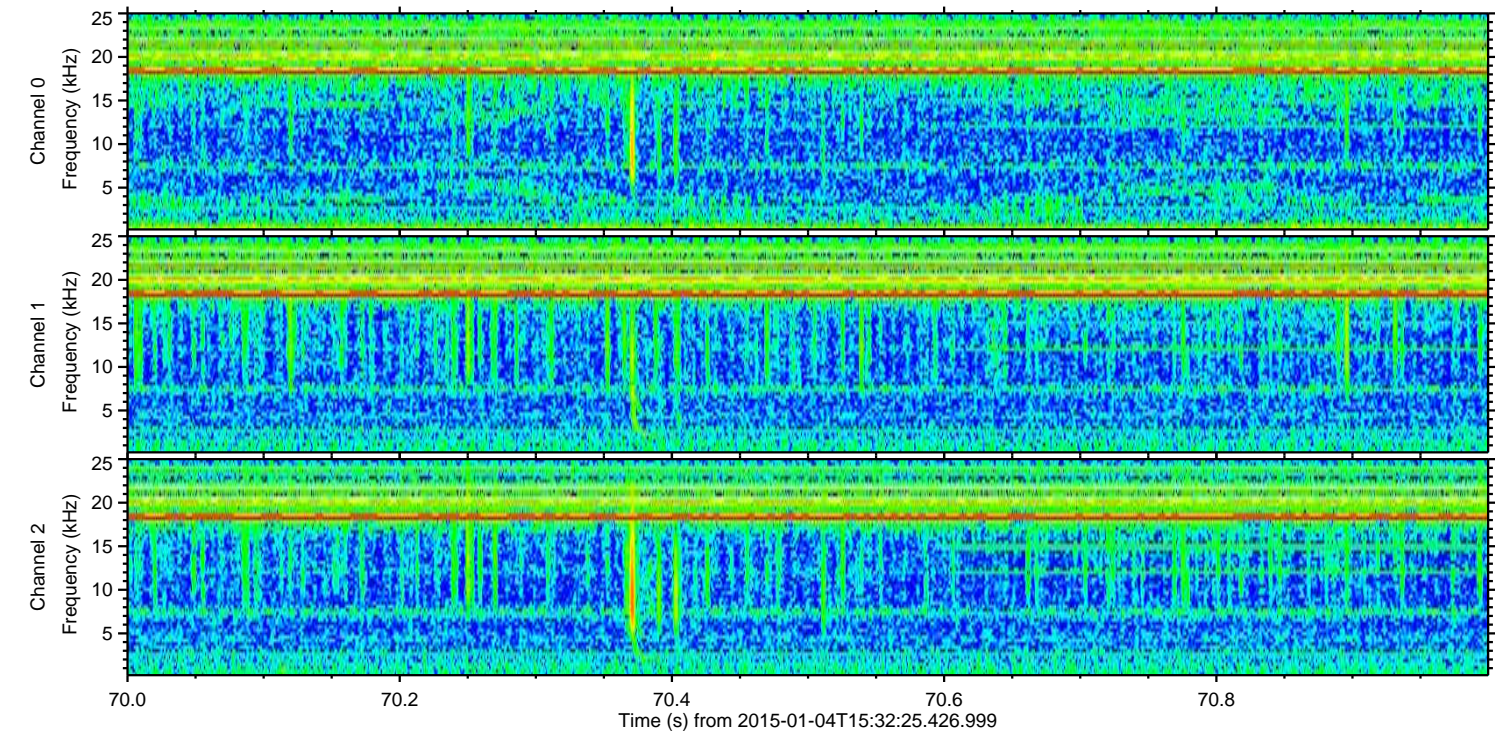
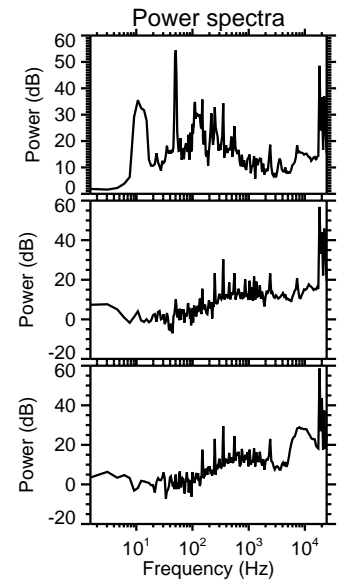
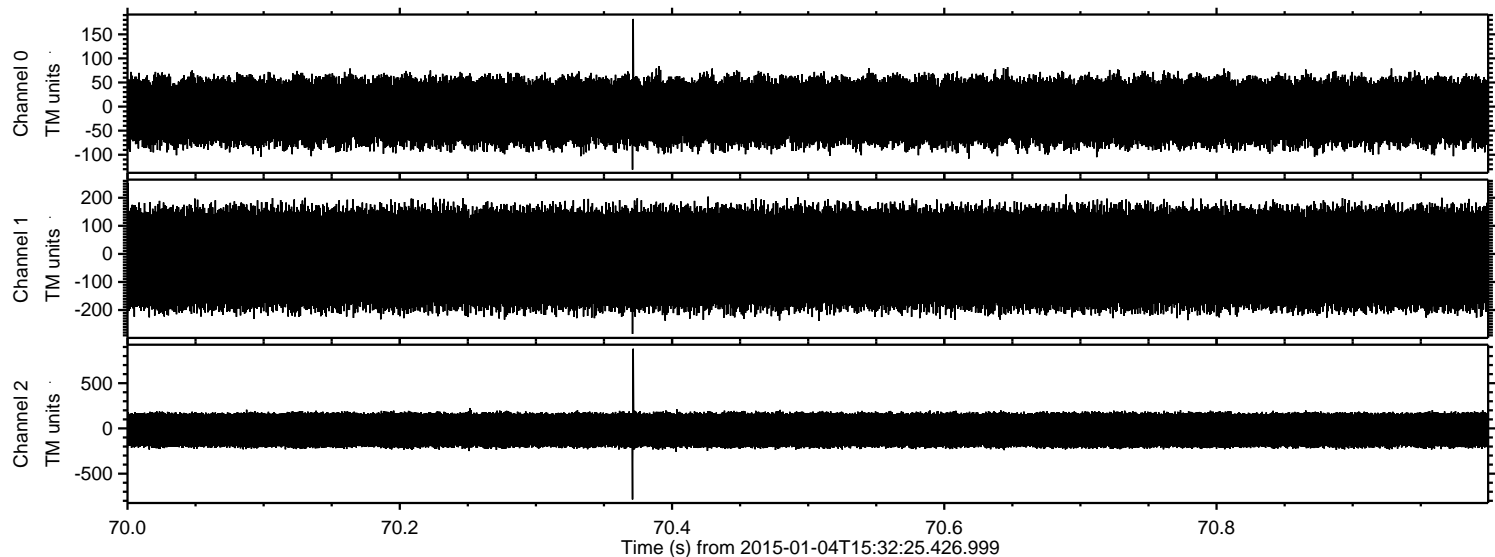
Processed Sun Jan 4 16:41:26 2015 by ELM ver.2012-10-06 from 001__elm20150104_153224__dat00.bin



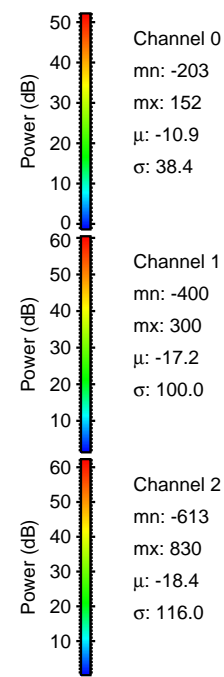
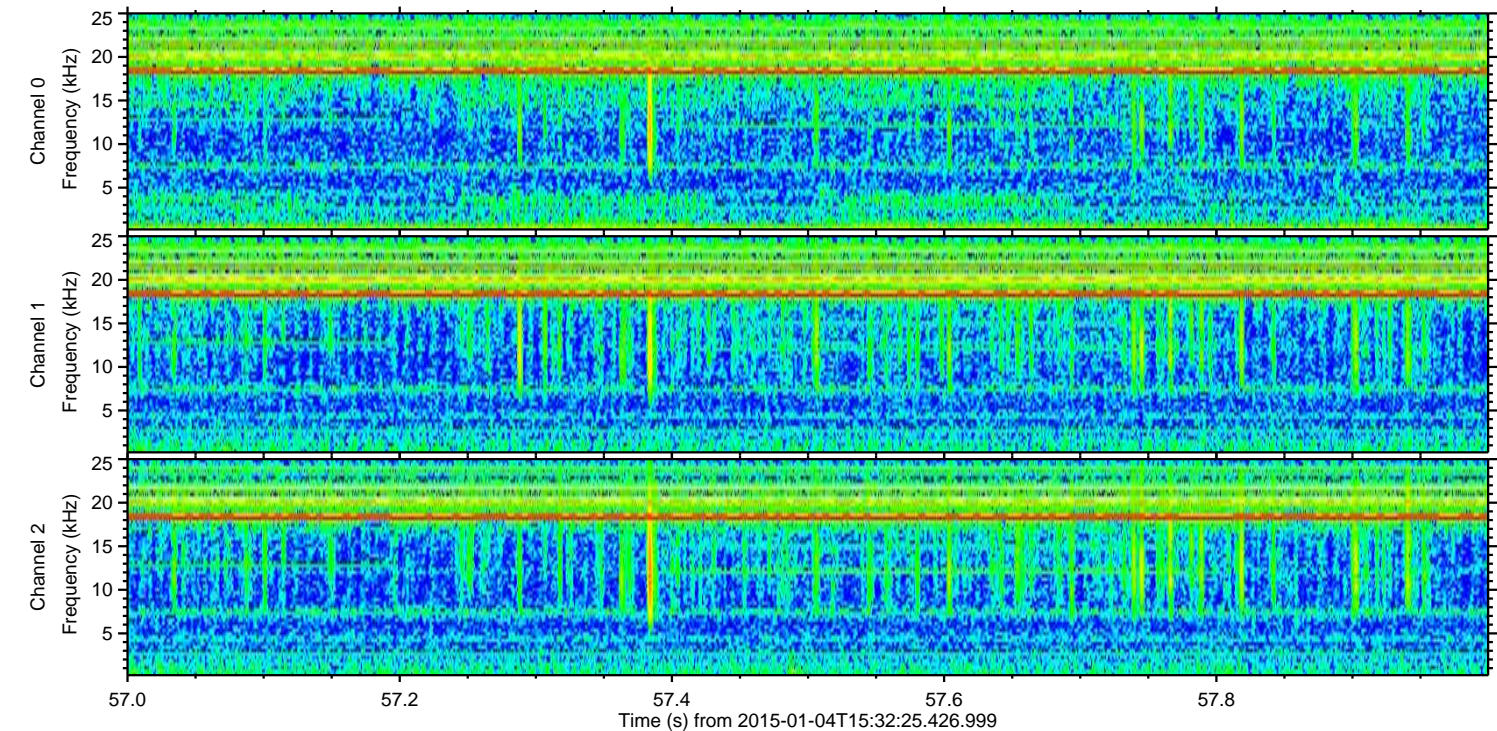
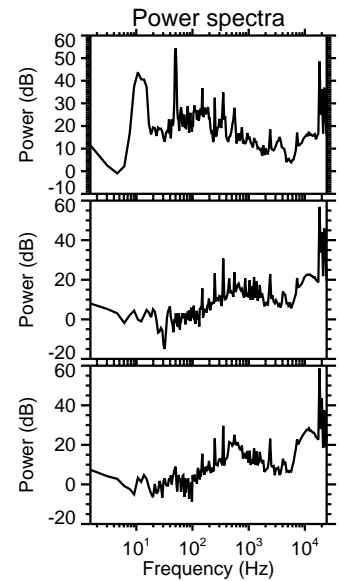
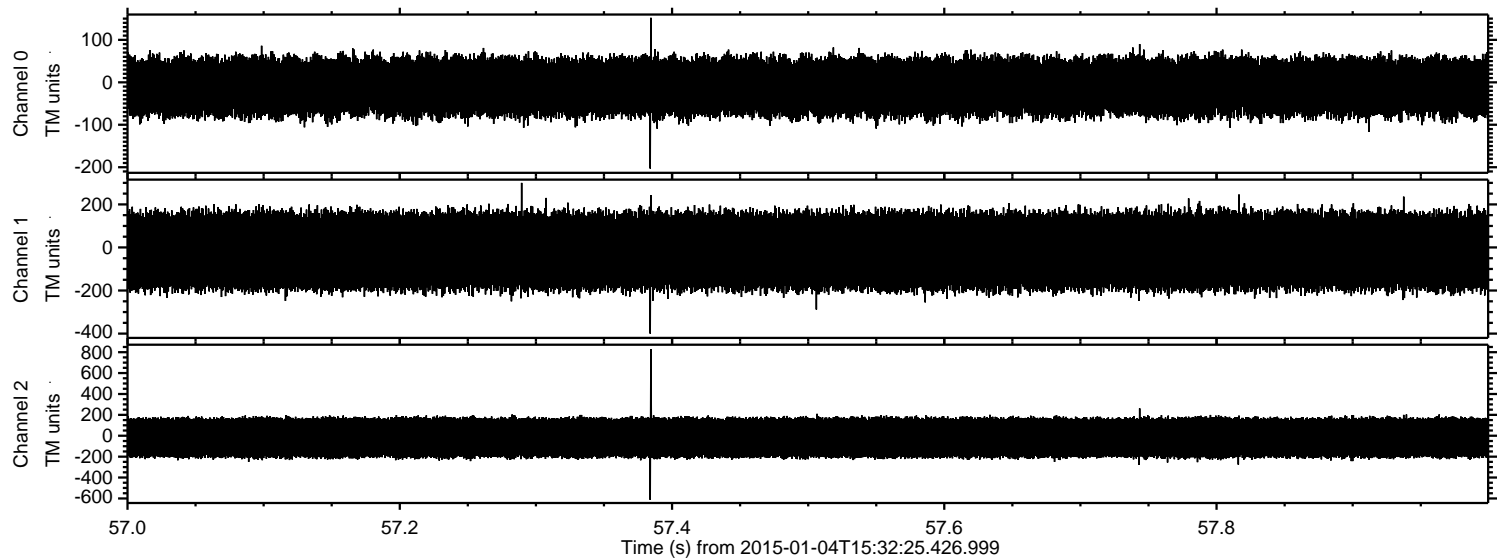
Processed Sun Jan 4 16:41:27 2015 by ELM ver.2012-10-06 from 001__elm20150104_153224__dat00.bin



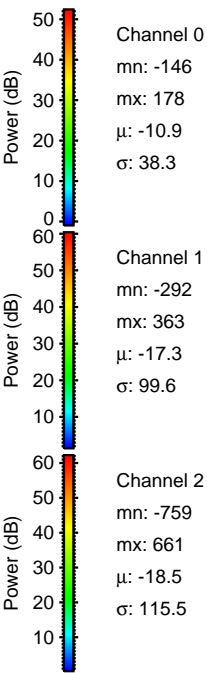
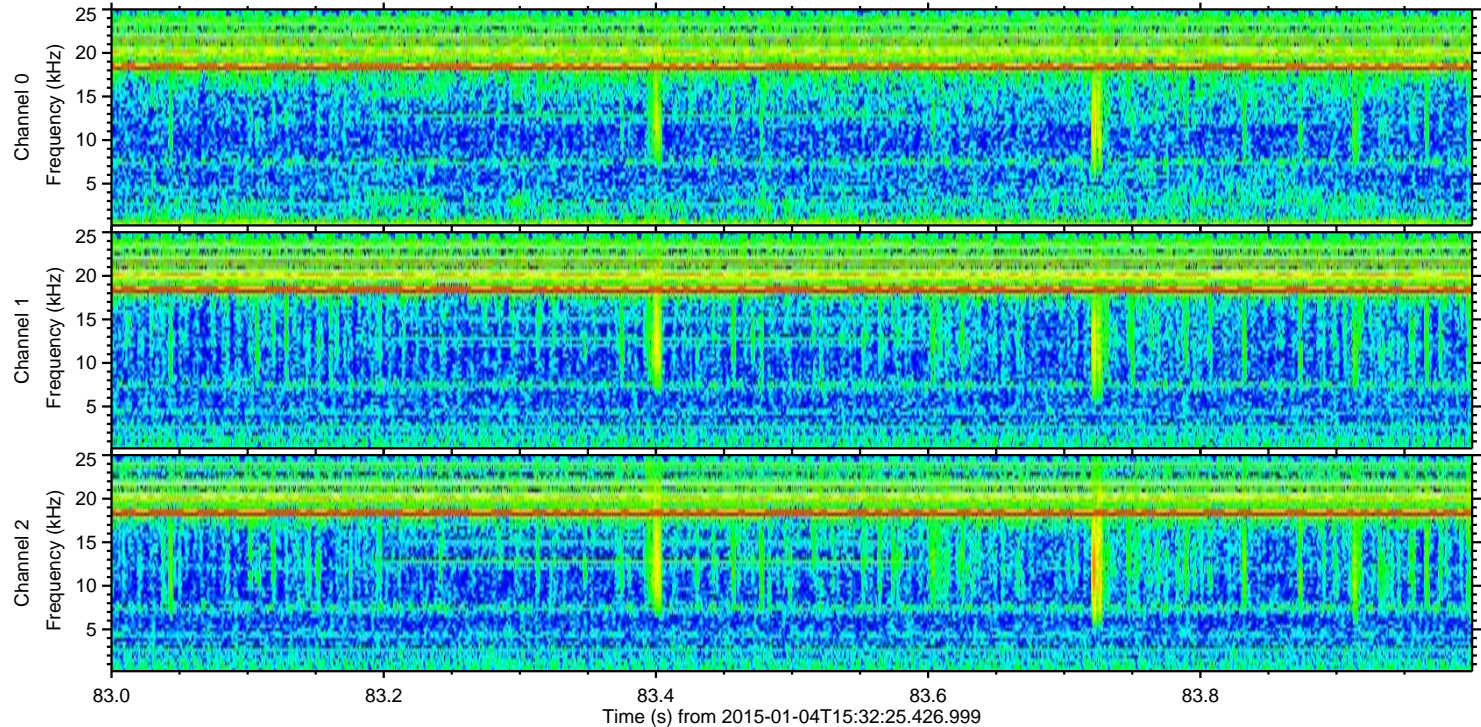
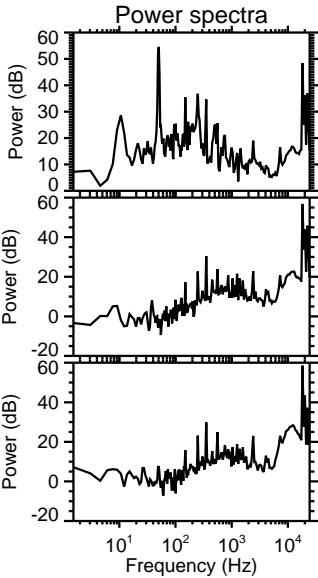
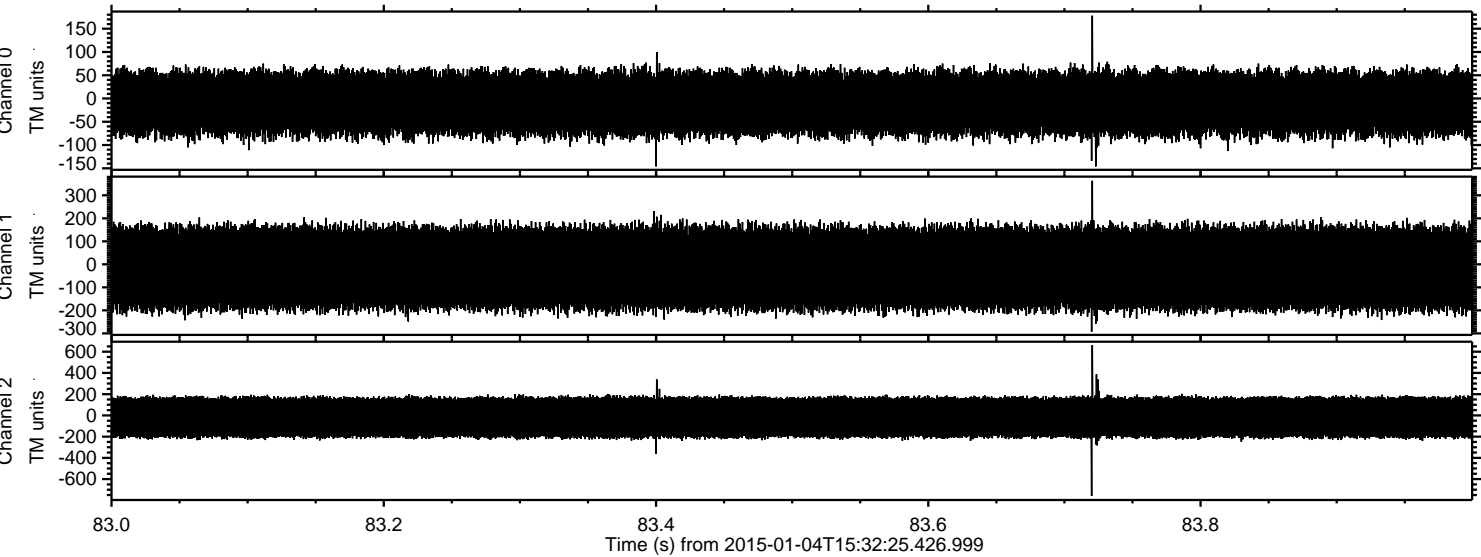
Processed Sun Jan 4 16:41:28 2015 by ELM ver.2012-10-06 from 001__elm20150104_153224__dat00.bin



Processed Sun Jan 4 16:41:29 2015 by ELM ver.2012-10-06 from 001__elm20150104_153224__dat00.bin

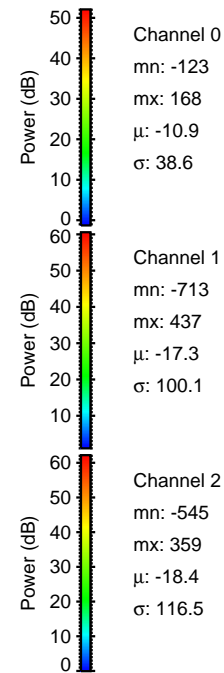
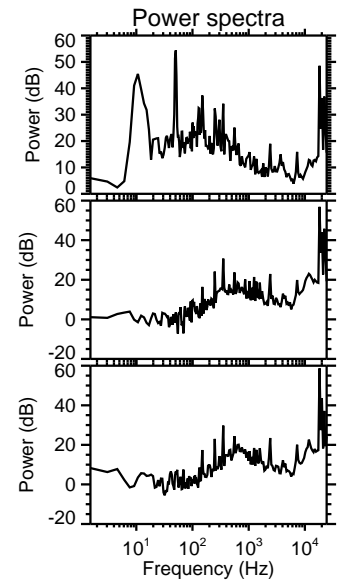
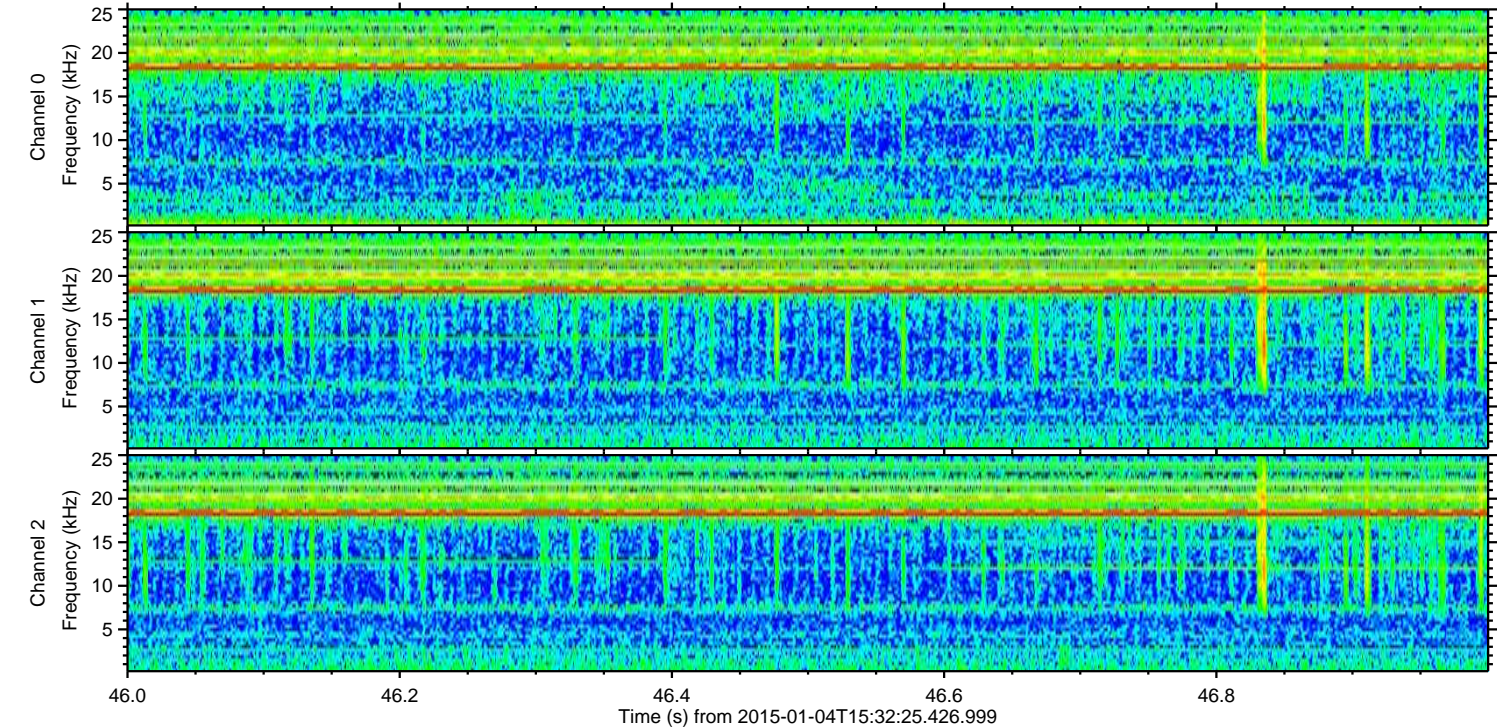
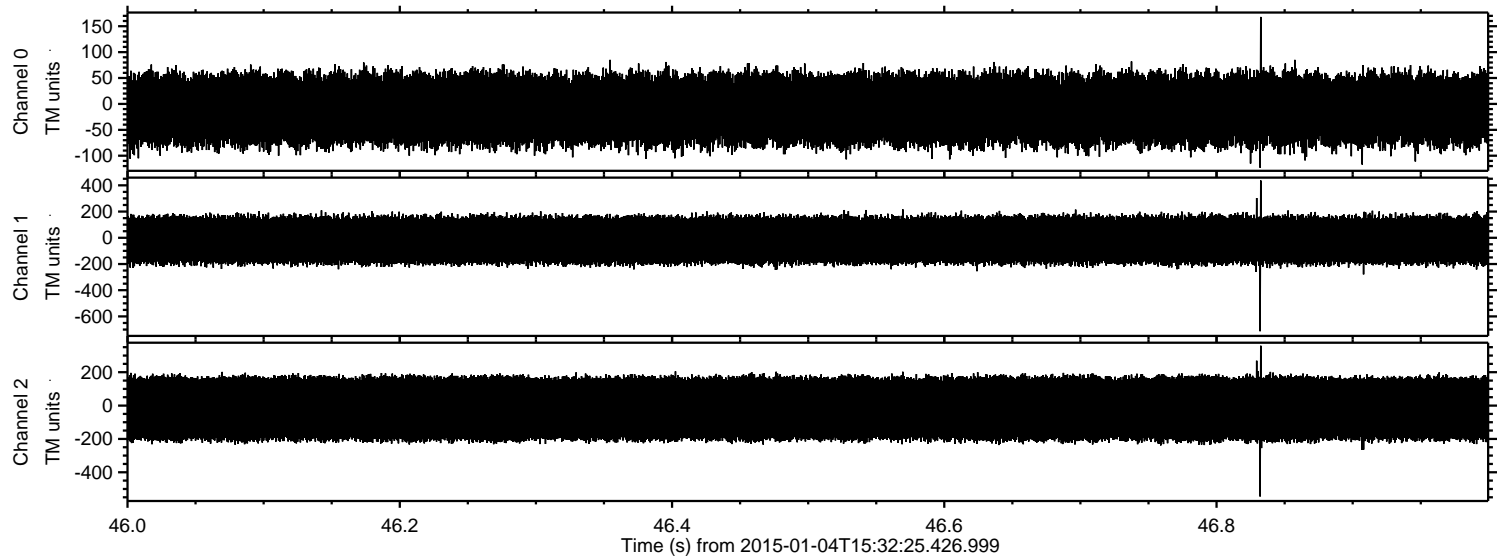


Processed Sun Jan 4 16:41:30 2015 by ELM ver.2012-10-06 from 001__elm20150104_153224__dat00.bin



ELMAVAN 3D WAVEFORMS (Measured data sampled at 50 kHz) 49783 packets of 144 samples from 2015-01-04T15:32:25.426.999. Part 47/144

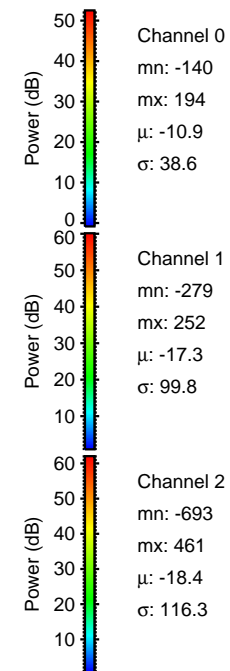
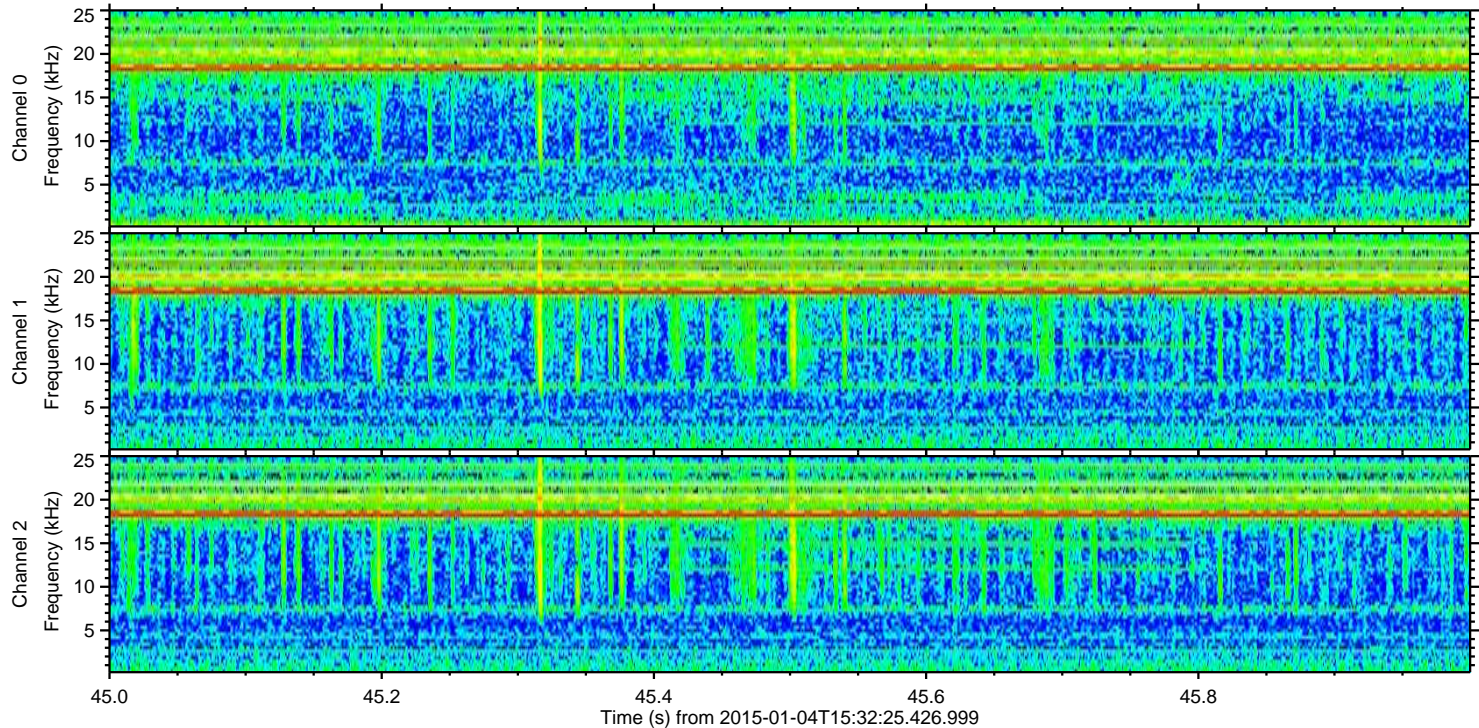
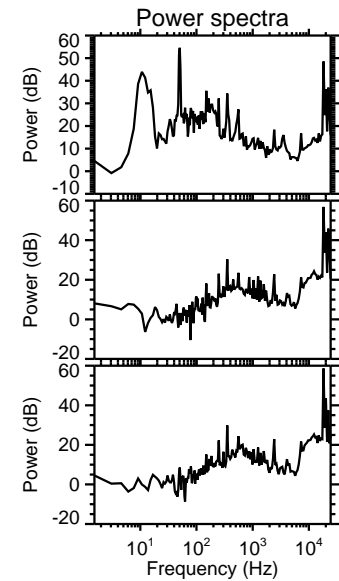
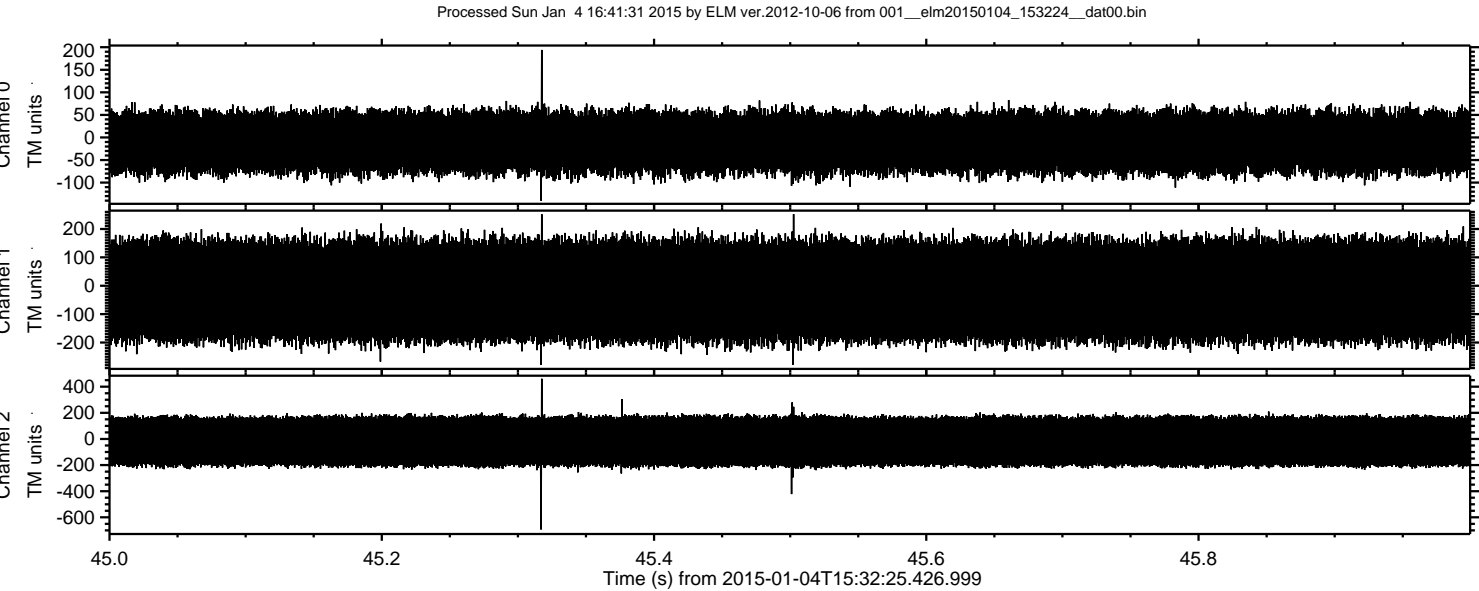
Processed Sun Jan 4 16:41:30 2015 by ELM ver.2012-10-06 from 001__elm20150104_153224__dat00.bin



Channel 0
mn: -123
mx: 168
 μ : -10.9
 σ : 38.6

Channel 1
mn: -713
mx: 437
 μ : -17.3
 σ : 100.1

Channel 2
mn: -545
mx: 359
 μ : -18.4
 σ : 116.5



Processed Sun Jan 4 16:41:32 2015 by ELM ver.2012-10-06 from 001__elm20150104_153224__dat00.bin

