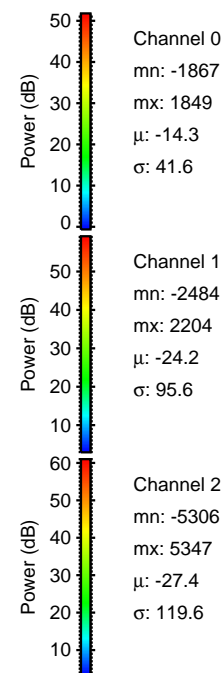
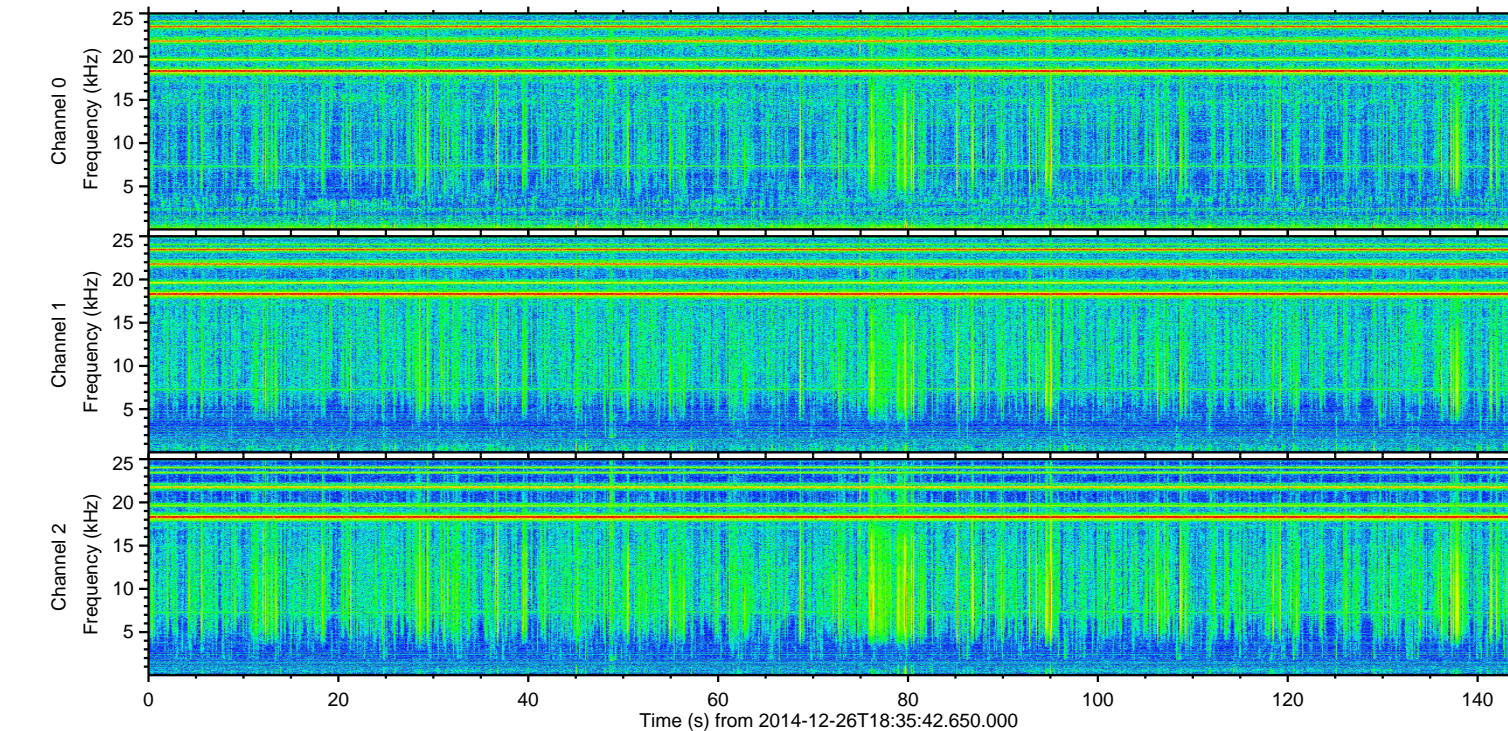
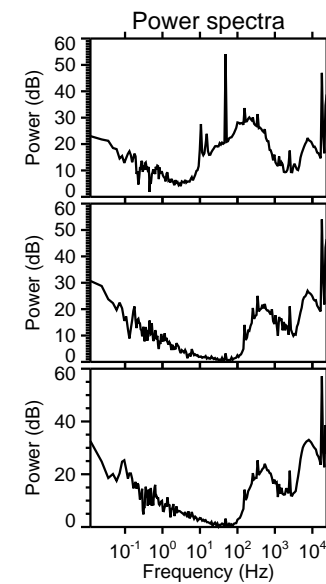
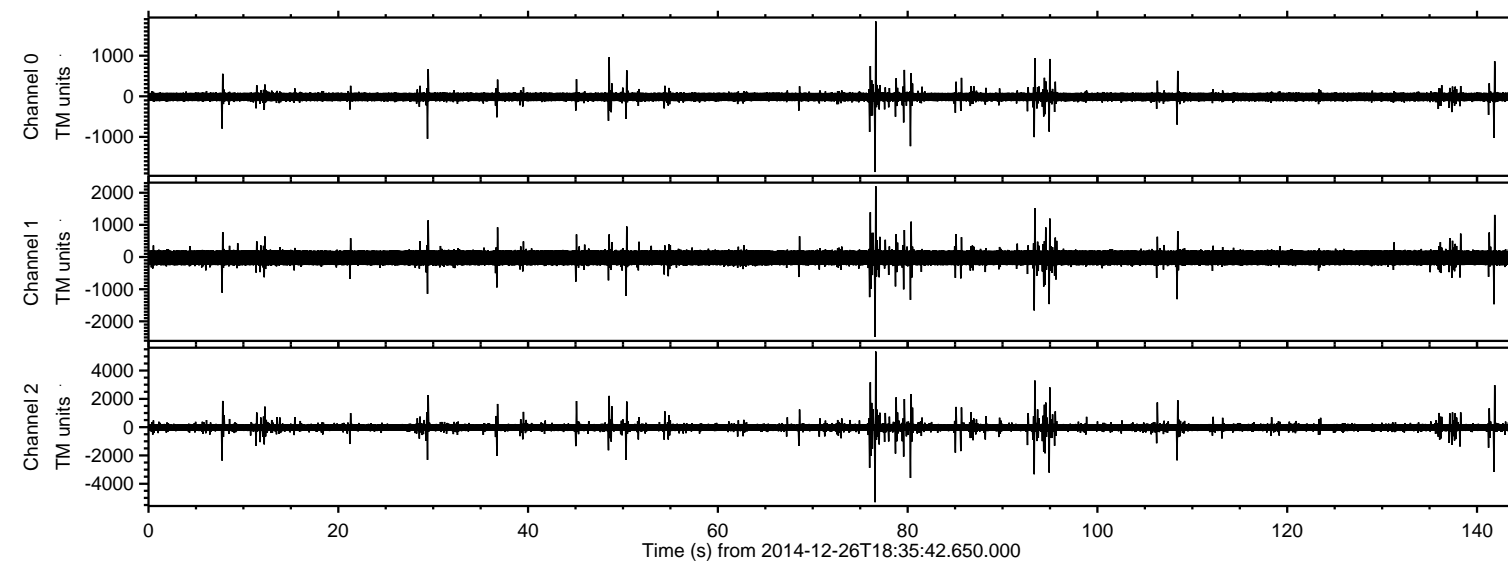


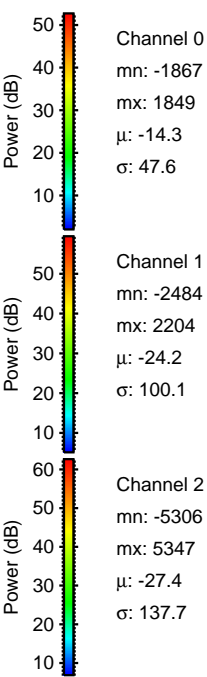
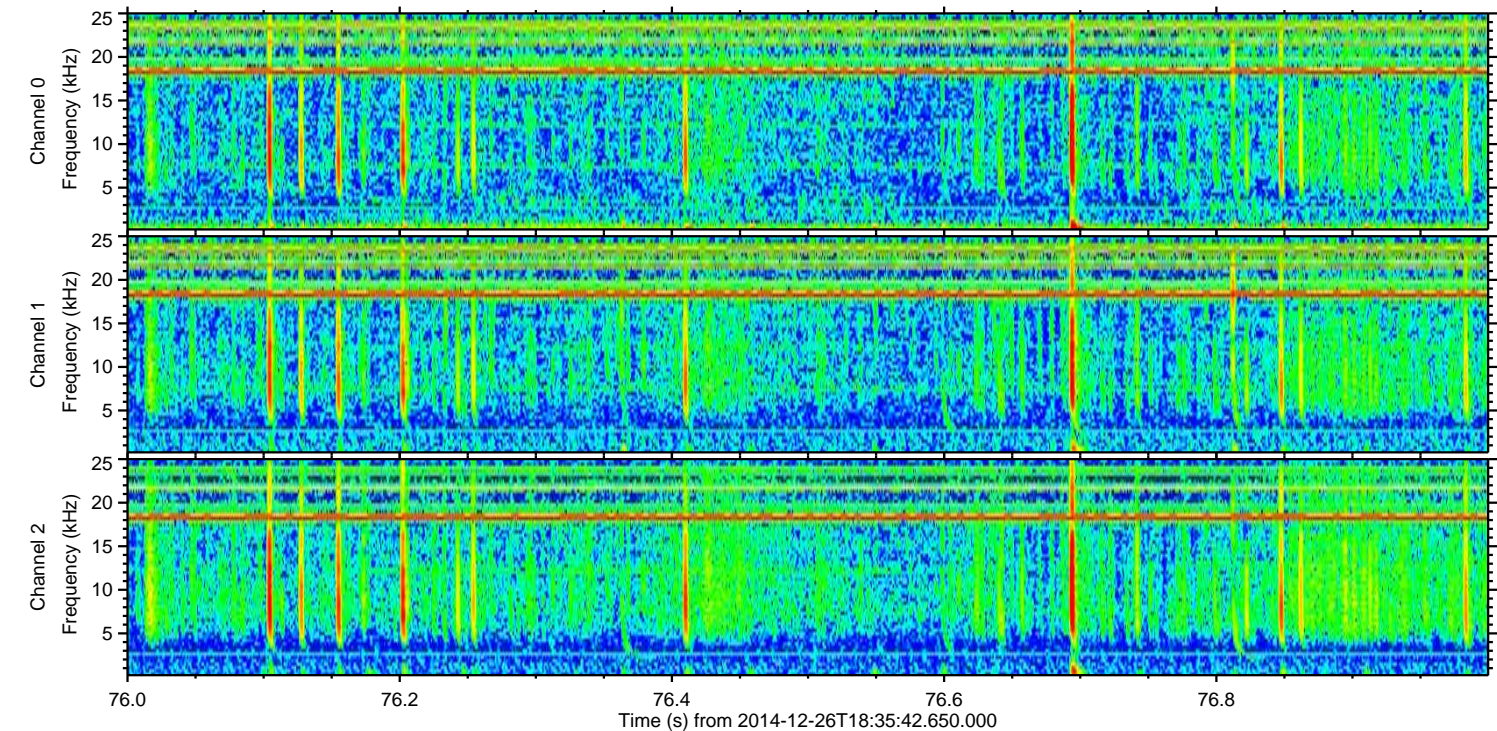
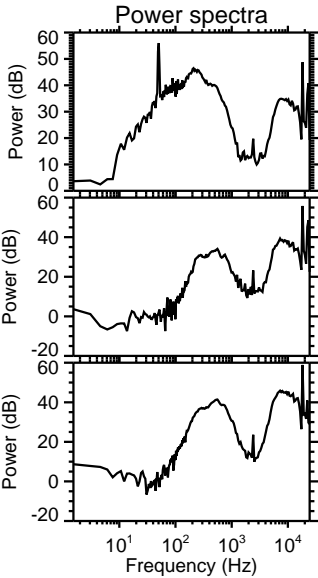
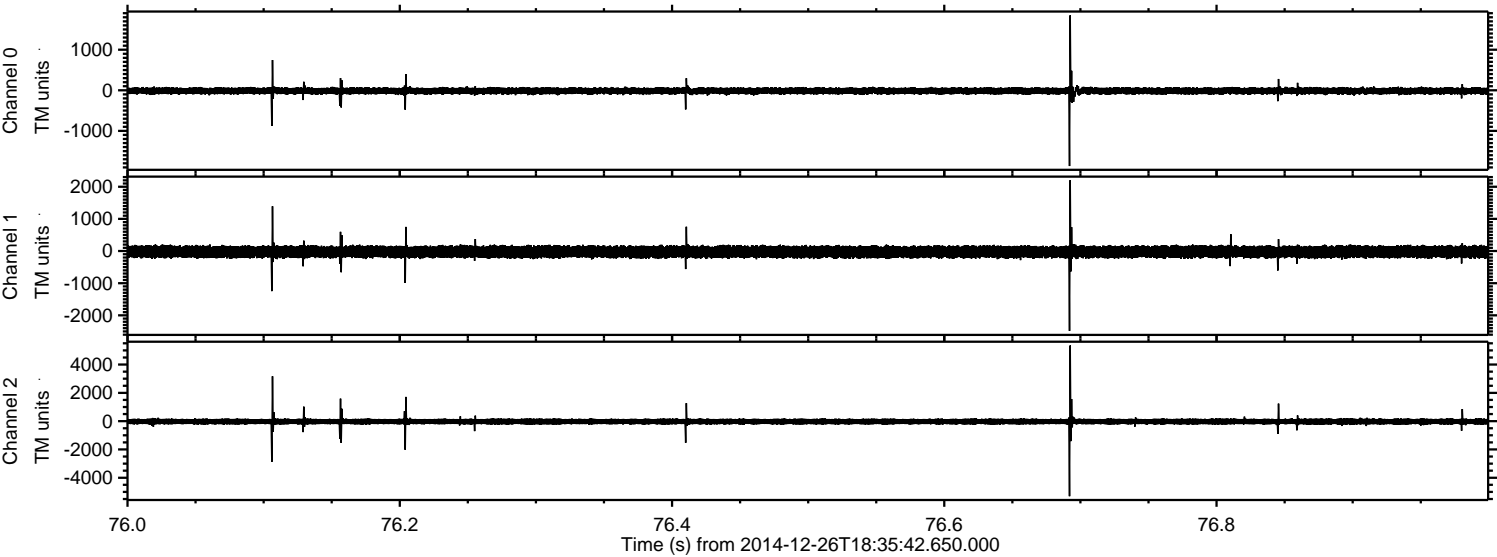
# ELMAVAN 3D WAVEFORMS (Measured data sampled at 50 kHz) 49787 packets of 144 samples from 2014-12-26T18:35:42.650.000.

Processed Fri Dec 26 19:44:06 2014 by ELM ver.2012-10-06 from 001\_\_elm20141226\_183541\_\_dat00.bin



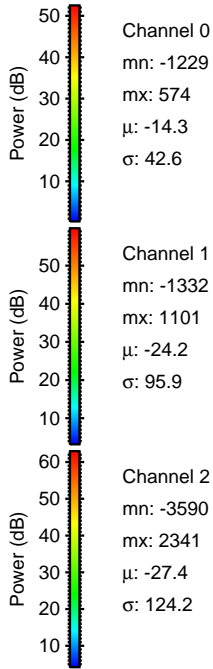
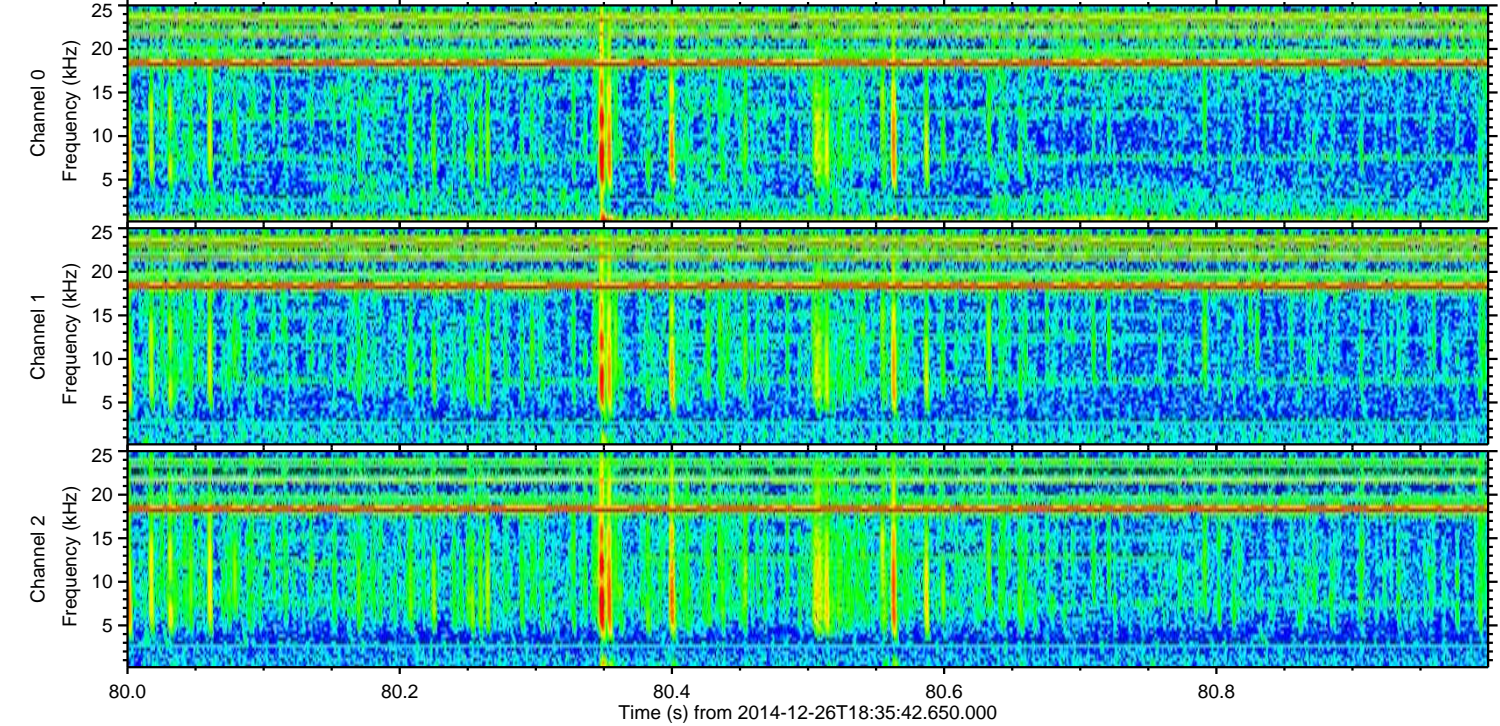
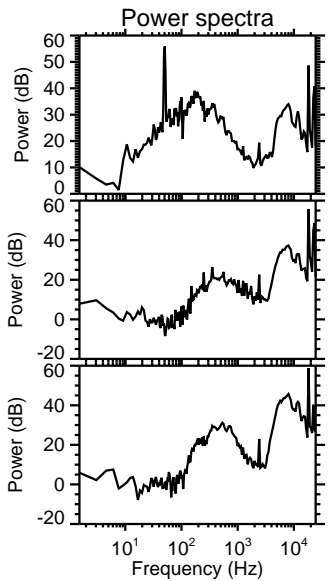
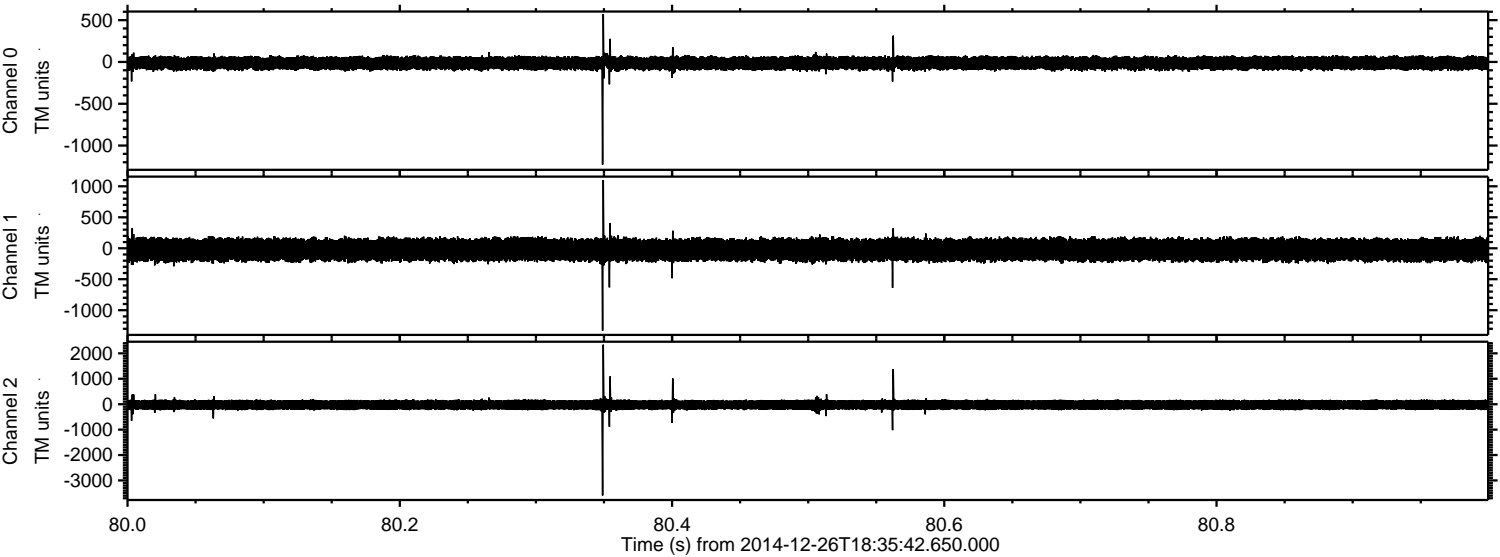


Processed Fri Dec 26 19:44:19 2014 by ELM ver.2012-10-06 from 001\_\_elm20141226\_183541\_\_dat00.bin



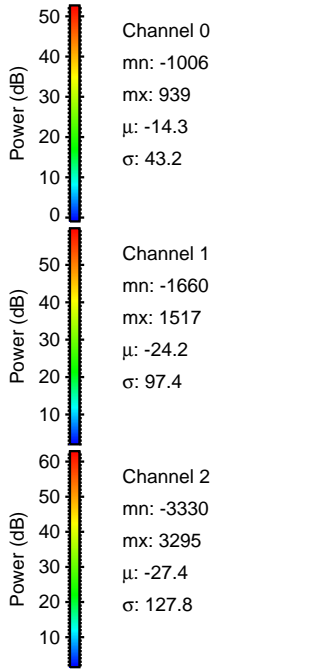
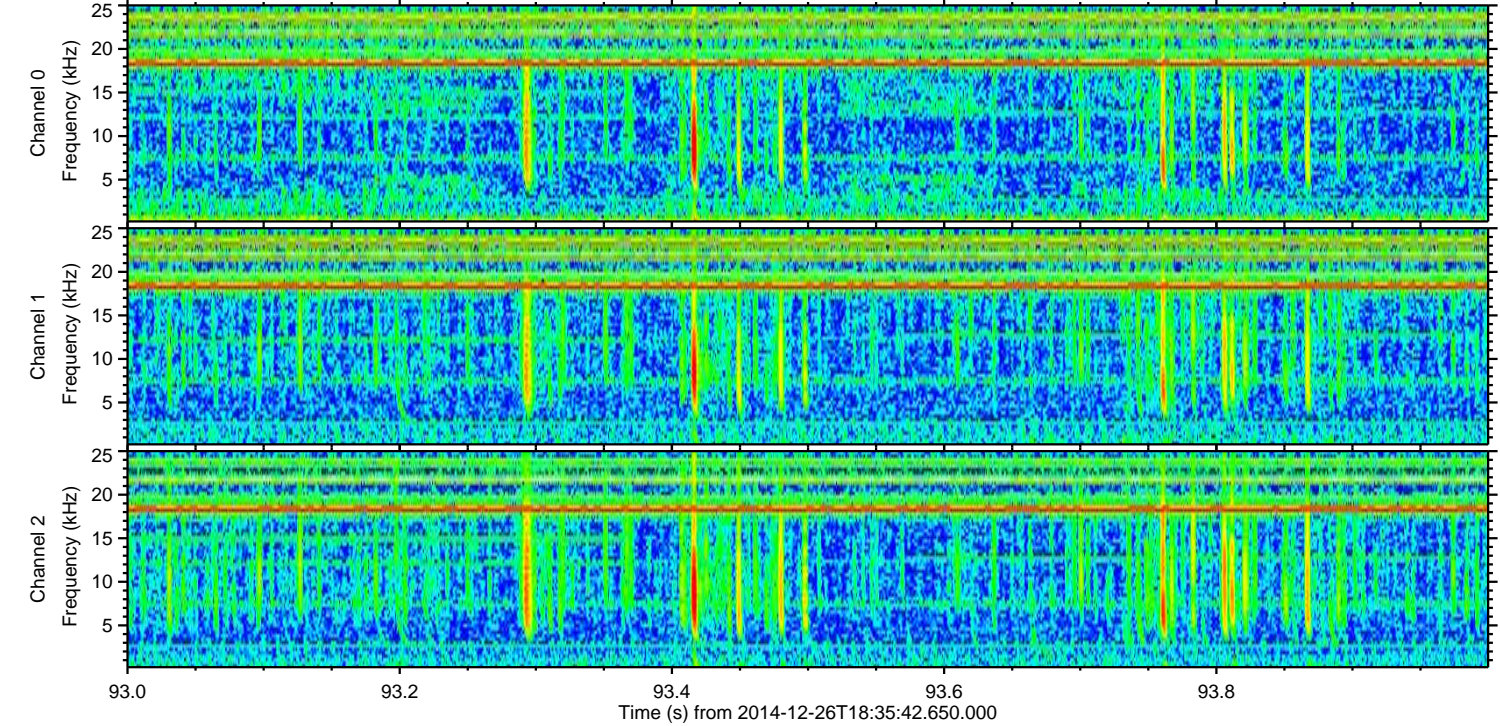
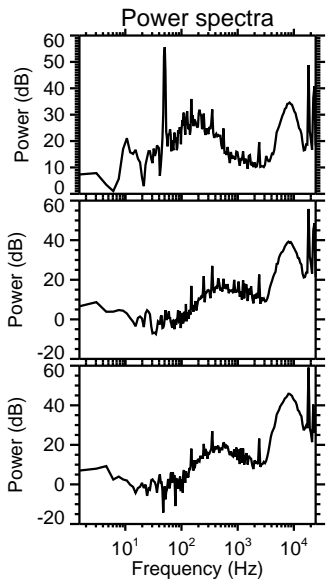
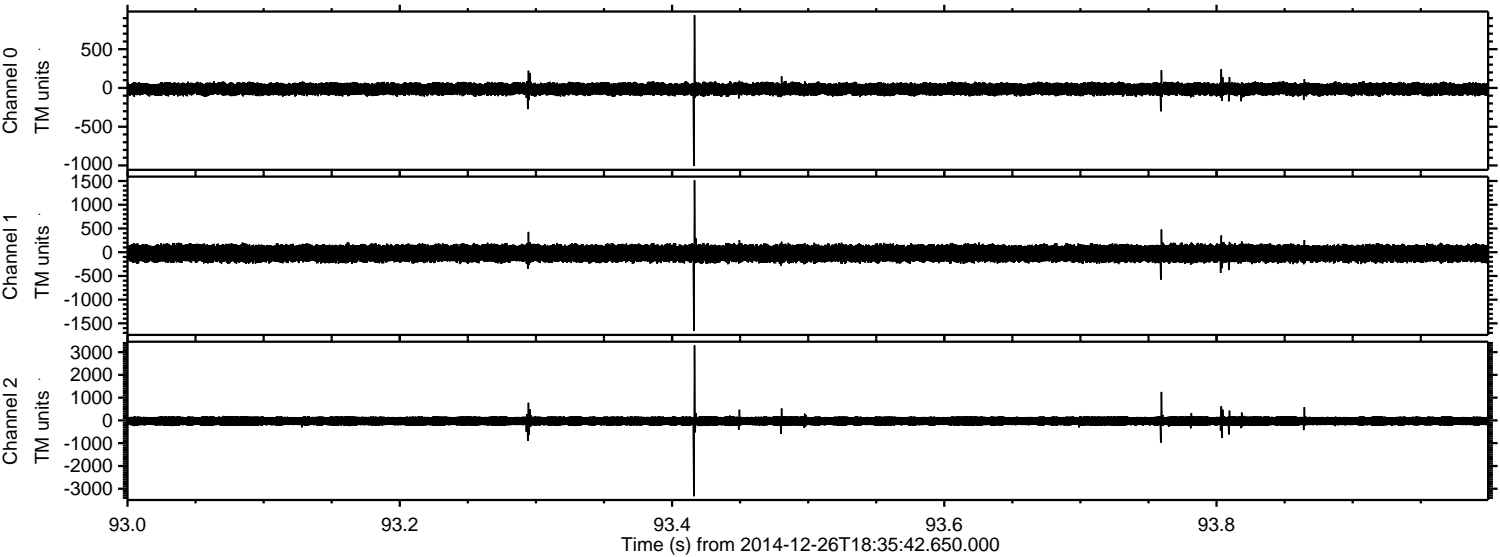


Processed Fri Dec 26 19:44:20 2014 by ELM ver.2012-10-06 from 001\_\_elm20141226\_183541\_\_dat00.bin





Processed Fri Dec 26 19:44:21 2014 by ELM ver.2012-10-06 from 001\_\_elm20141226\_183541\_\_dat00.bin



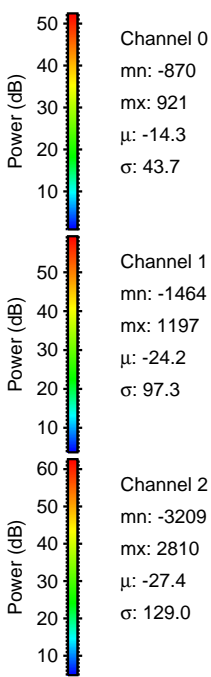
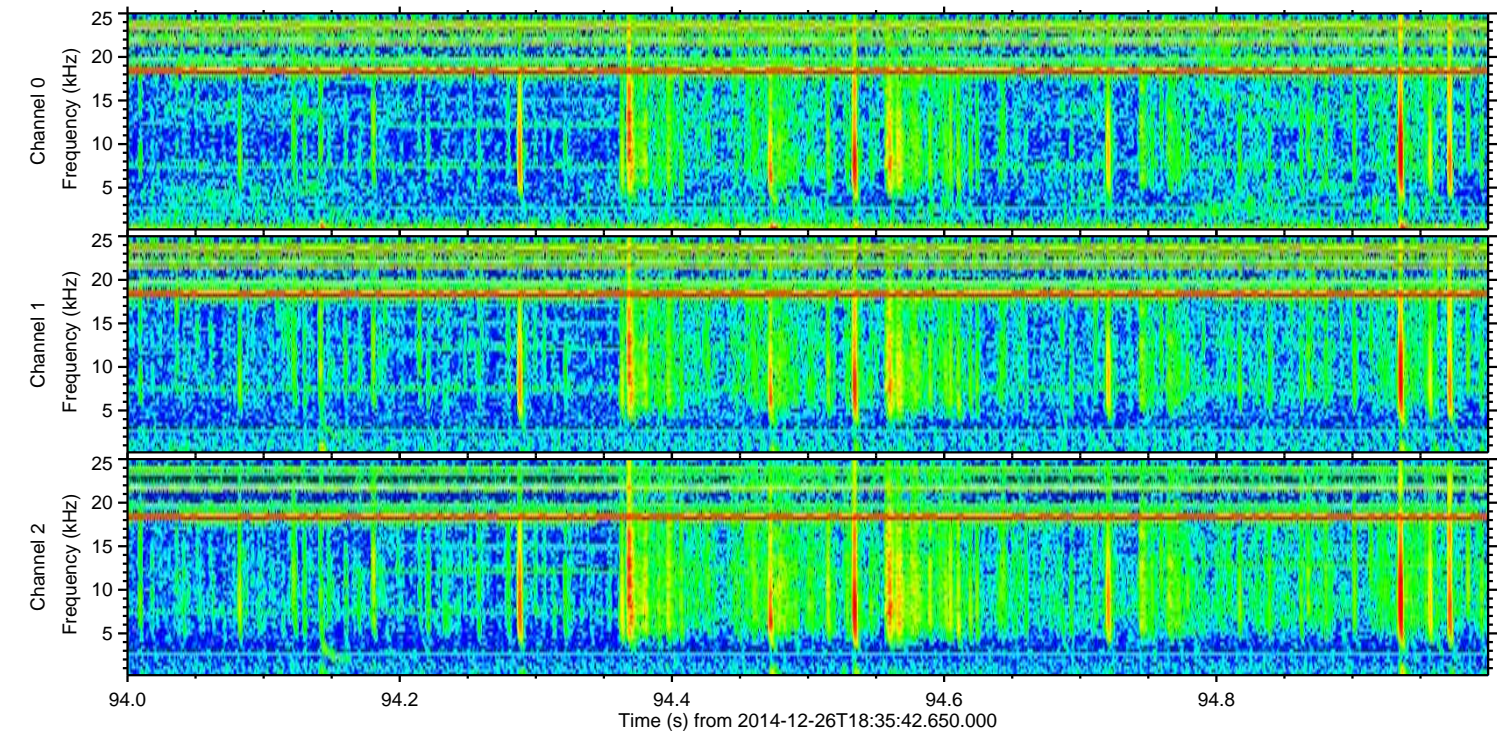
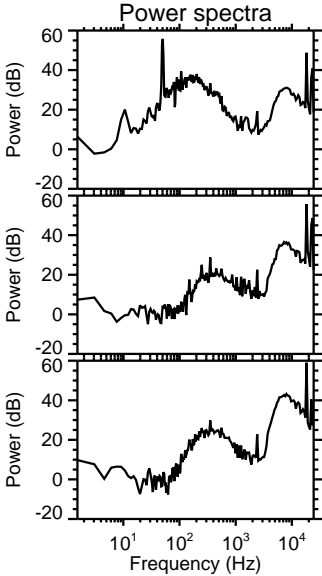
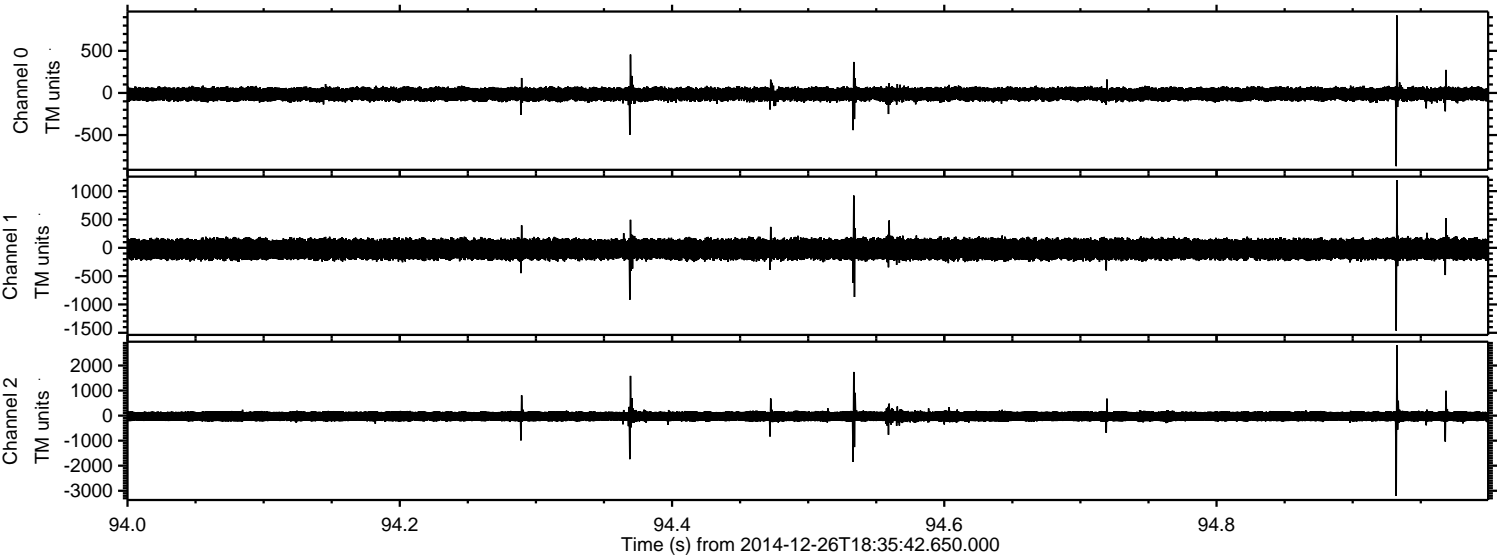
Channel 0  
mn: -1006  
mx: 939  
 $\mu$ : -14.3  
 $\sigma$ : 43.2

Channel 1  
mn: -1660  
mx: 1517  
 $\mu$ : -24.2  
 $\sigma$ : 97.4

Channel 2  
mn: -3330  
mx: 3295  
 $\mu$ : -27.4  
 $\sigma$ : 127.8



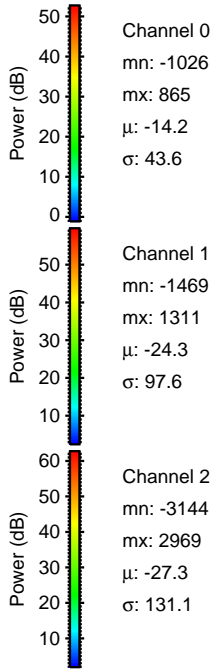
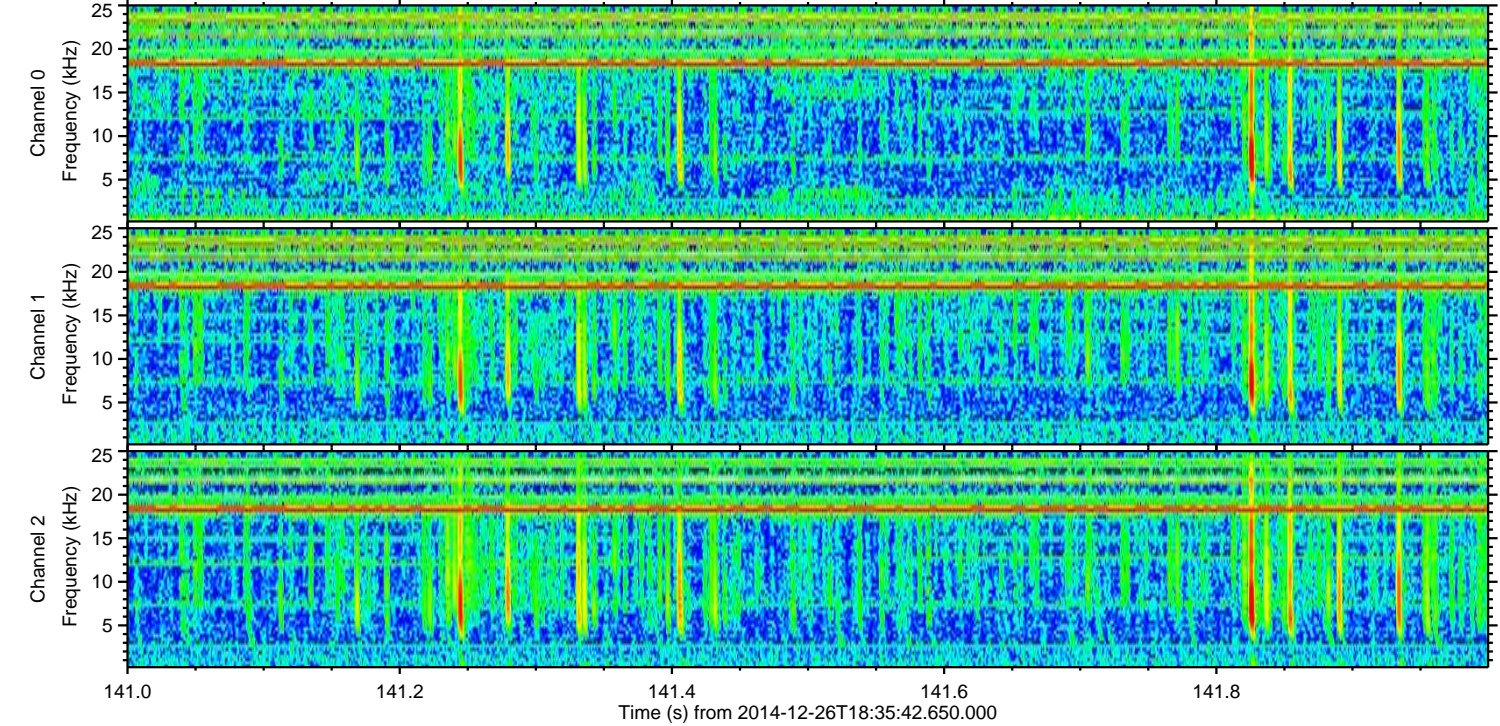
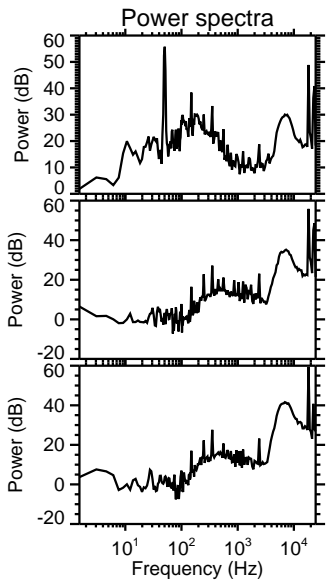
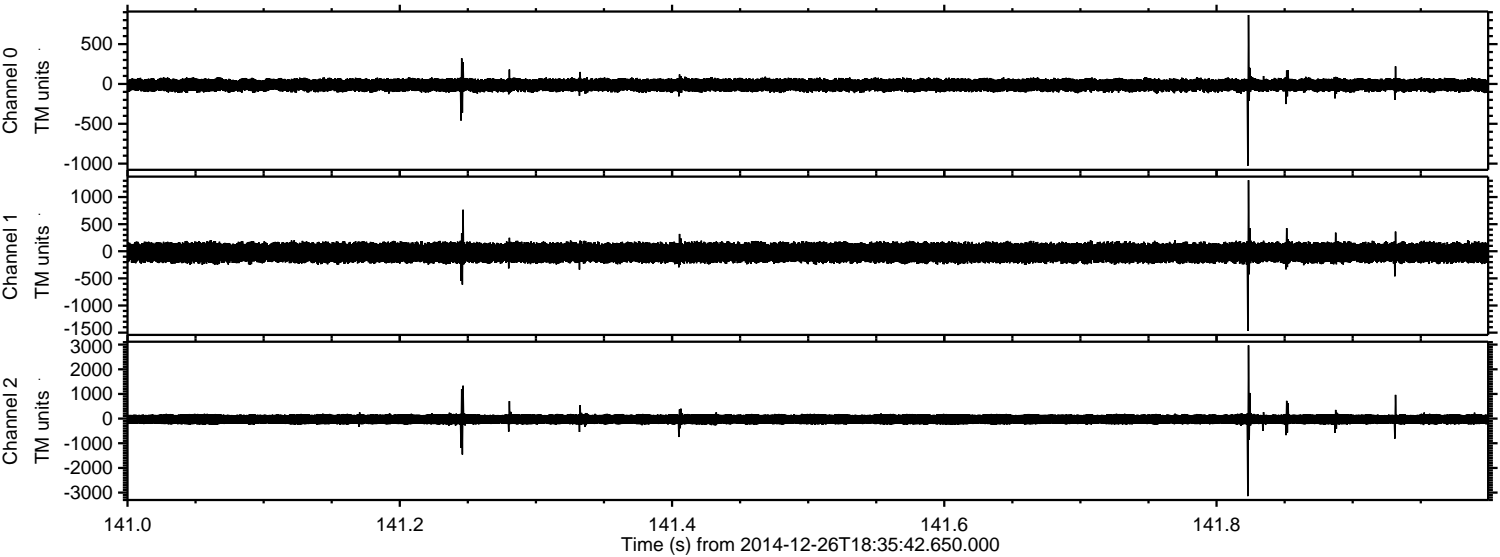
Processed Fri Dec 26 19:44:22 2014 by ELM ver.2012-10-06 from 001\_\_elm20141226\_183541\_\_dat00.bin





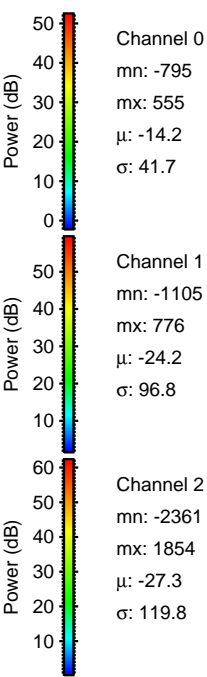
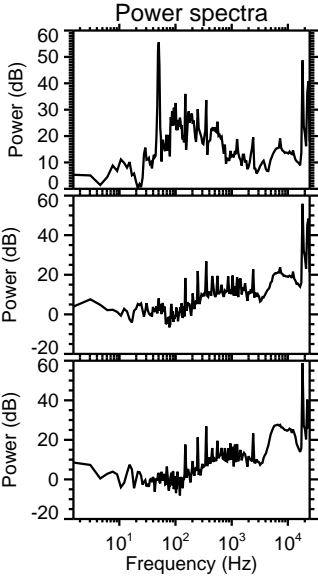
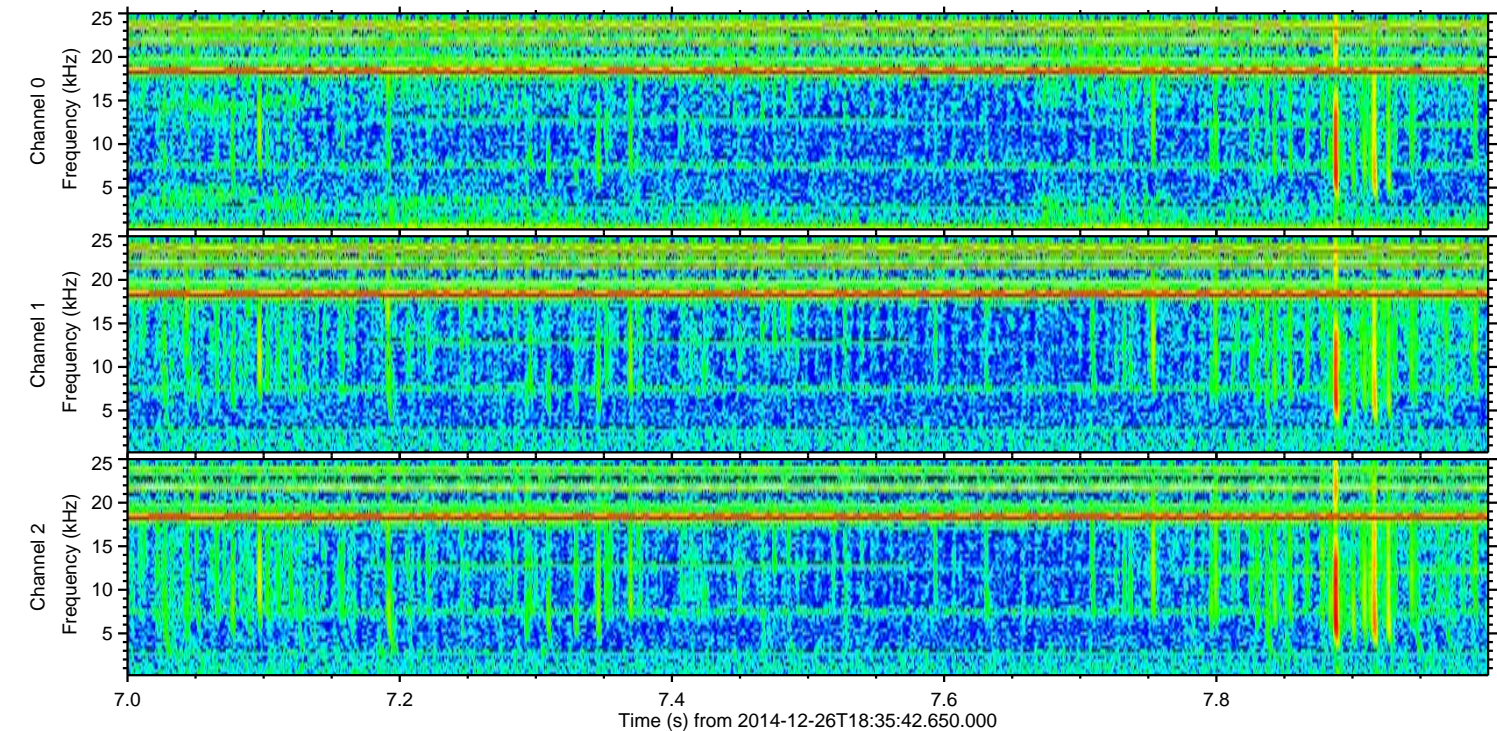
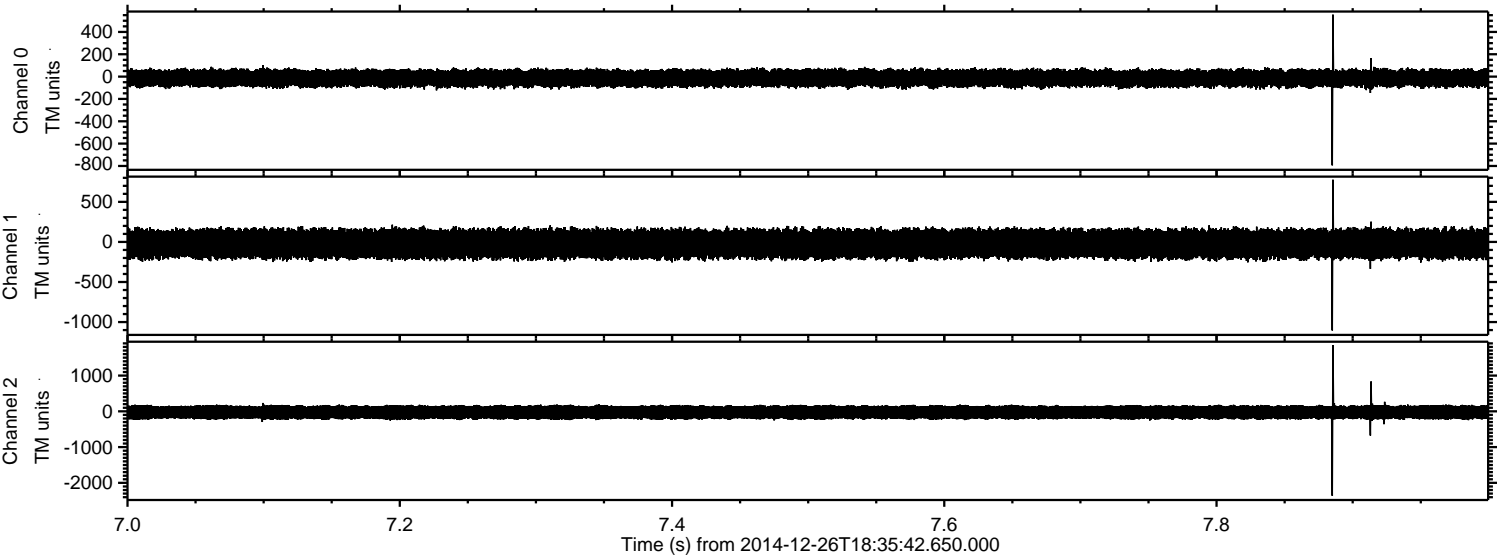
ELMAVAN 3D WAVEFORMS (Measured data sampled at 50 kHz) 49787 packets of 144 samples from 2014-12-26T18:35:42.650.000. Part 142/144

Processed Fri Dec 26 19:44:23 2014 by ELM ver.2012-10-06 from 001\_\_elm20141226\_183541\_\_dat00.bin





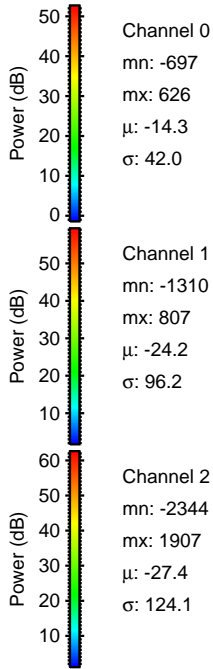
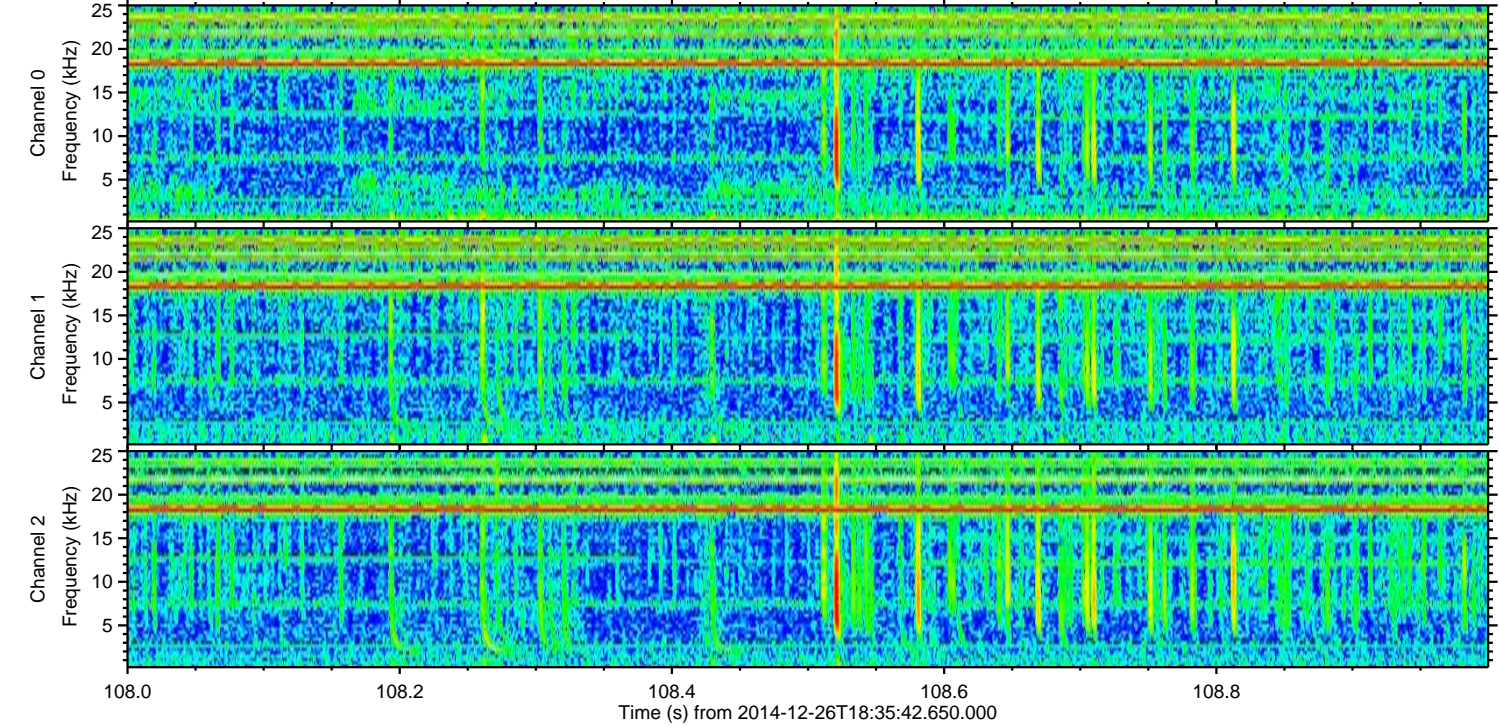
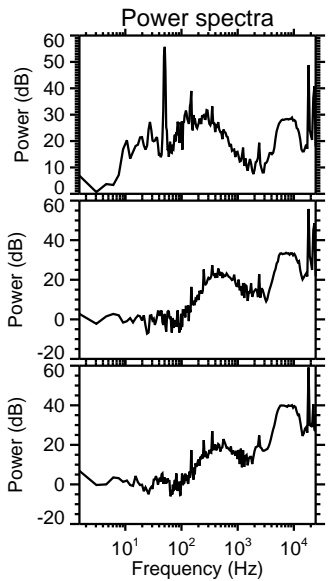
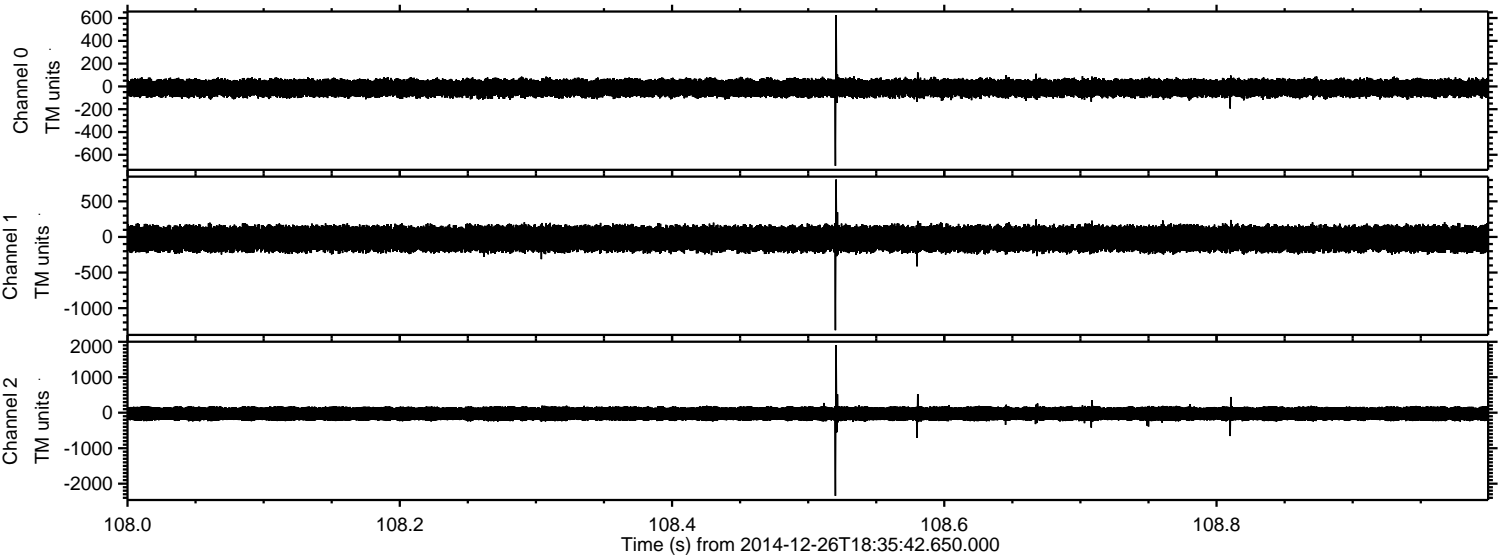
Processed Fri Dec 26 19:44:24 2014 by ELM ver.2012-10-06 from 001\_\_elm20141226\_183541\_\_dat00.bin





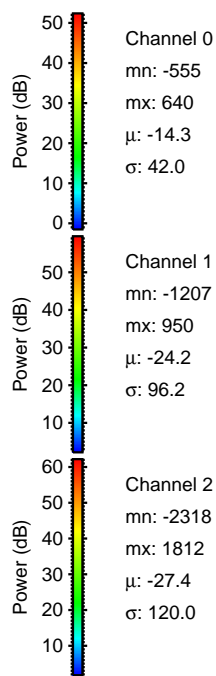
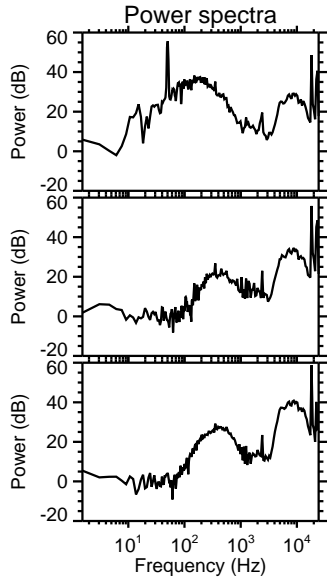
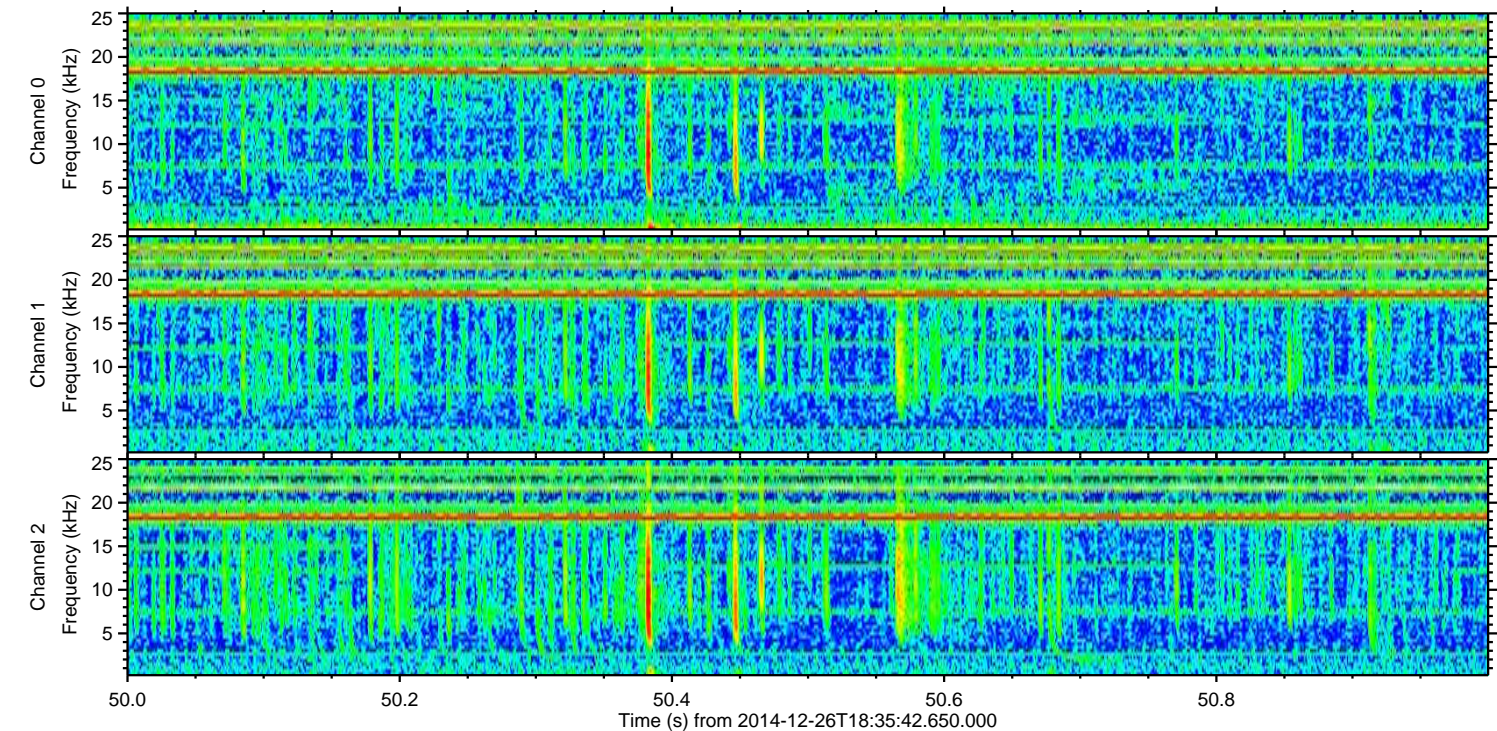
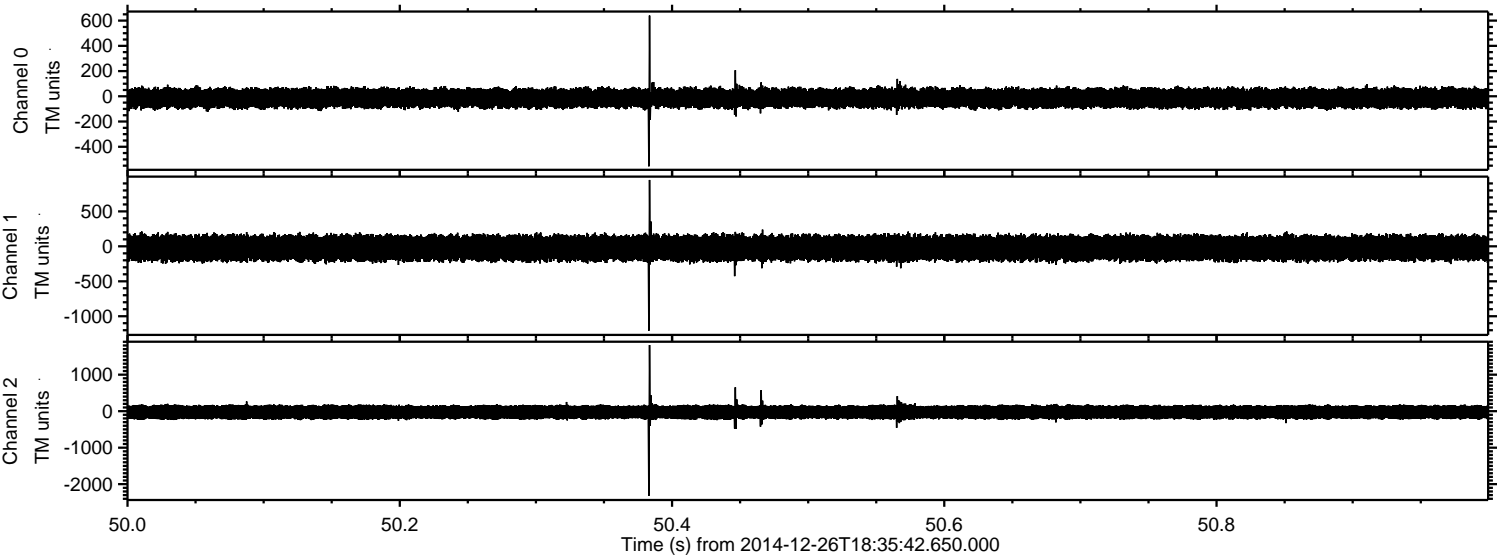
ELMAVAN 3D WAVEFORMS (Measured data sampled at 50 kHz) 49787 packets of 144 samples from 2014-12-26T18:35:42.650.000. Part 109/144

Processed Fri Dec 26 19:44:25 2014 by ELM ver.2012-10-06 from 001\_\_elm20141226\_183541\_\_dat00.bin



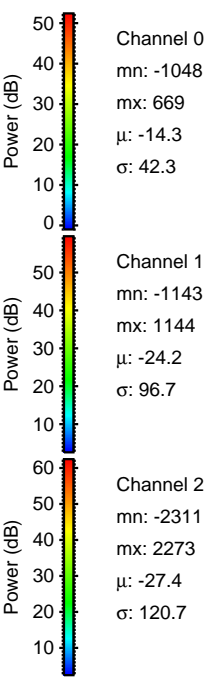
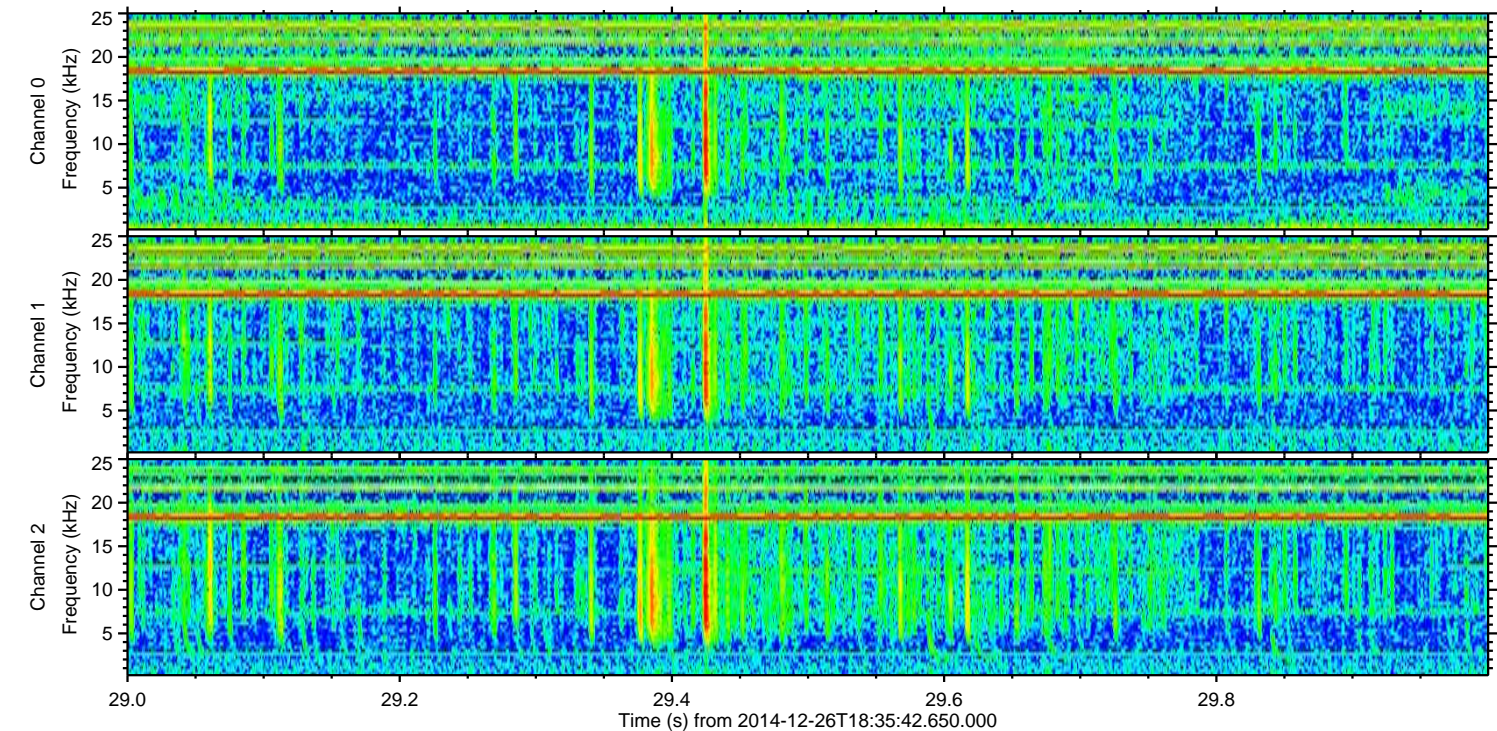
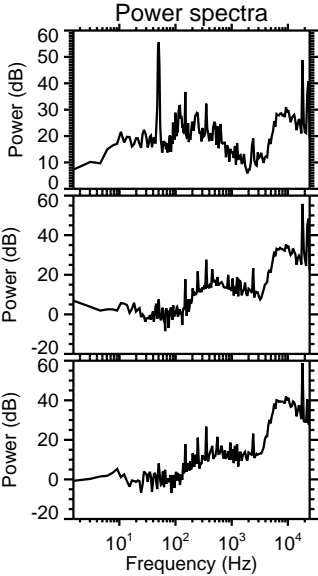
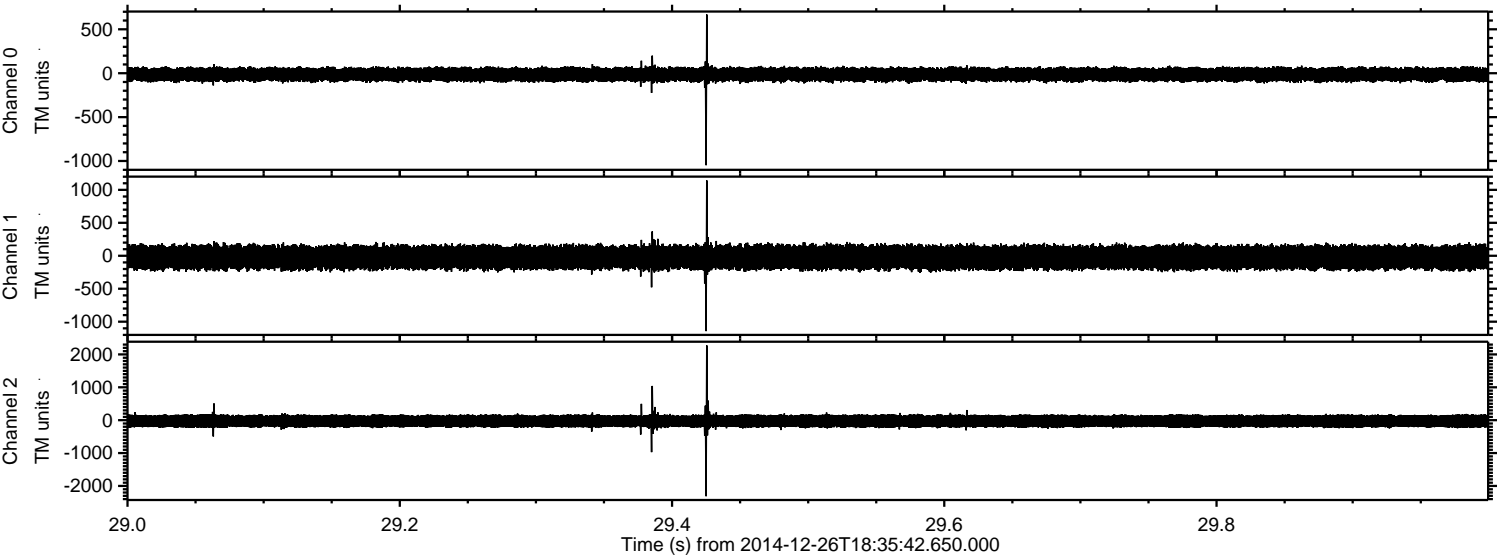


Processed Fri Dec 26 19:44:26 2014 by ELM ver.2012-10-06 from 001\_\_elm20141226\_183541\_\_dat00.bin





Processed Fri Dec 26 19:44:27 2014 by ELM ver.2012-10-06 from 001\_\_elm20141226\_183541\_\_dat00.bin





Processed Fri Dec 26 19:44:27 2014 by ELM ver.2012-10-06 from 001\_\_elm20141226\_183541\_\_dat00.bin

