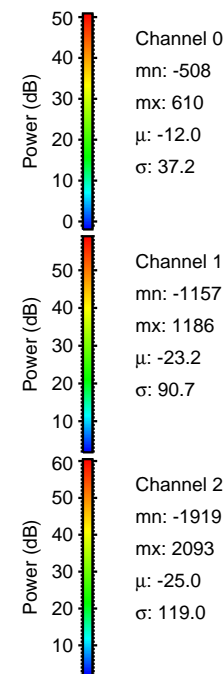
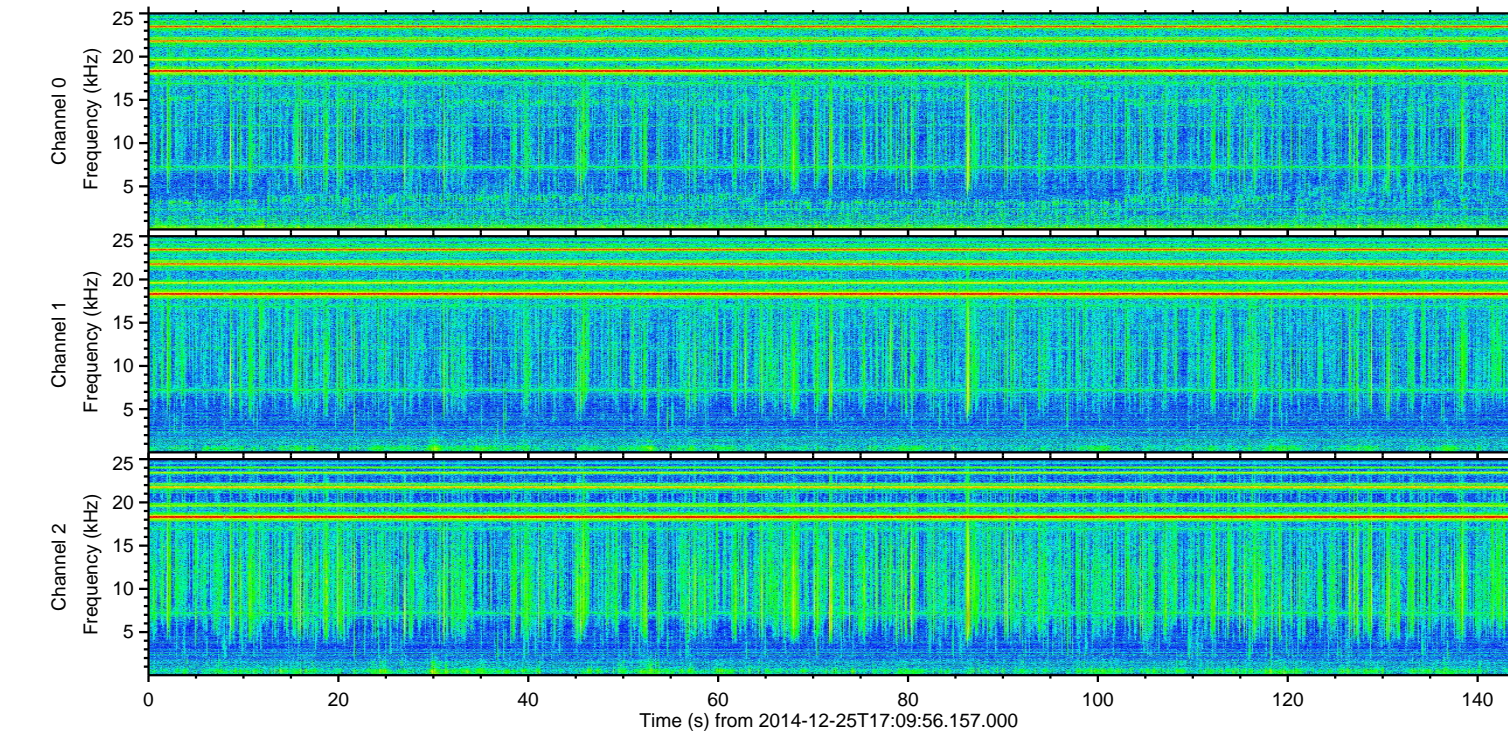
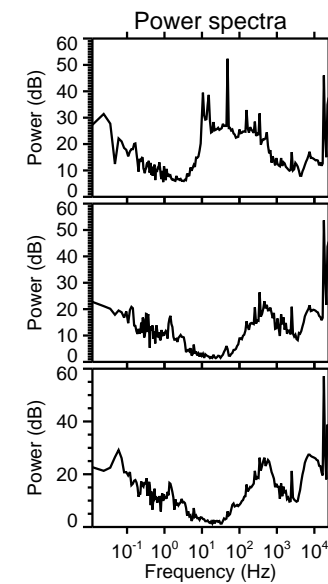
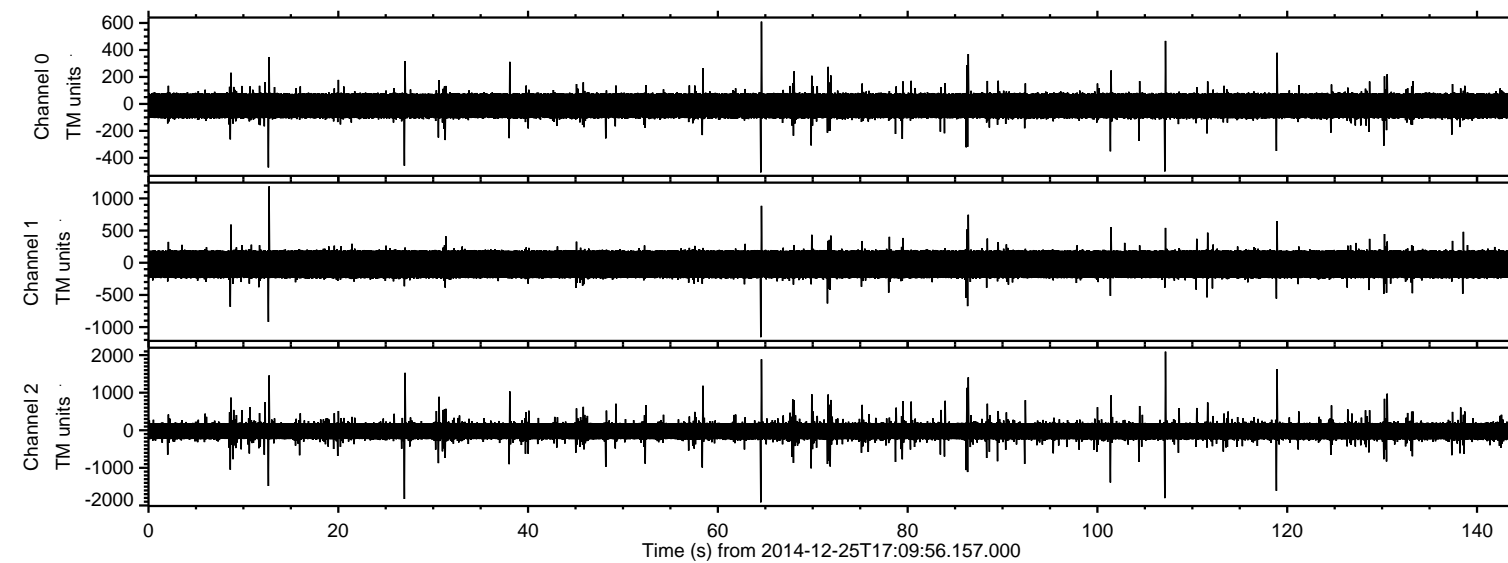


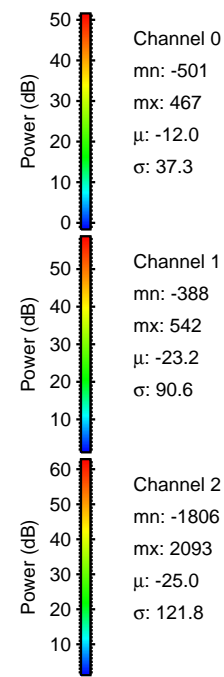
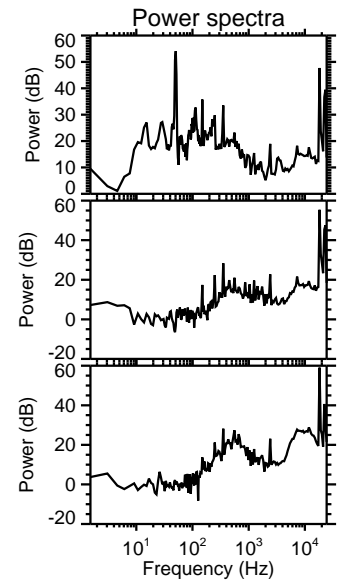
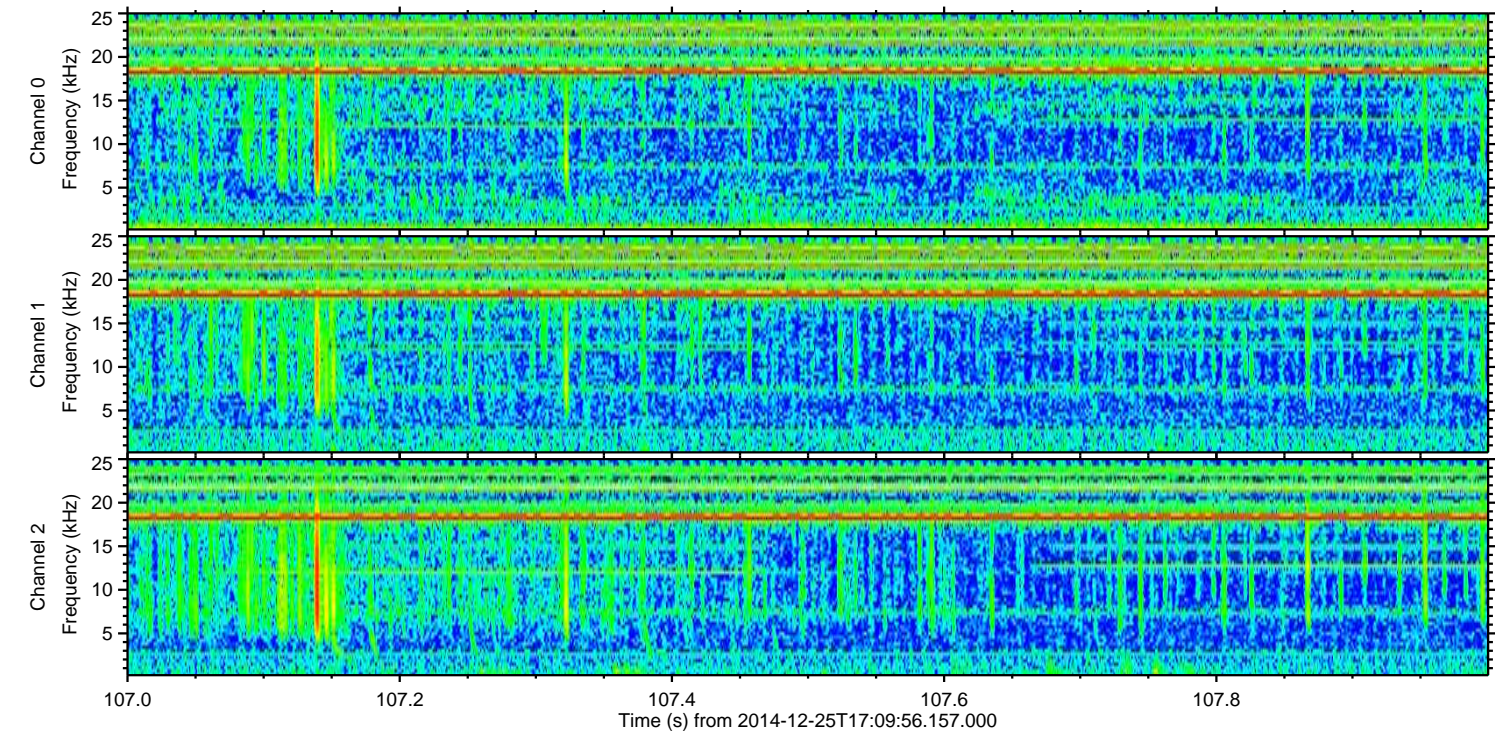
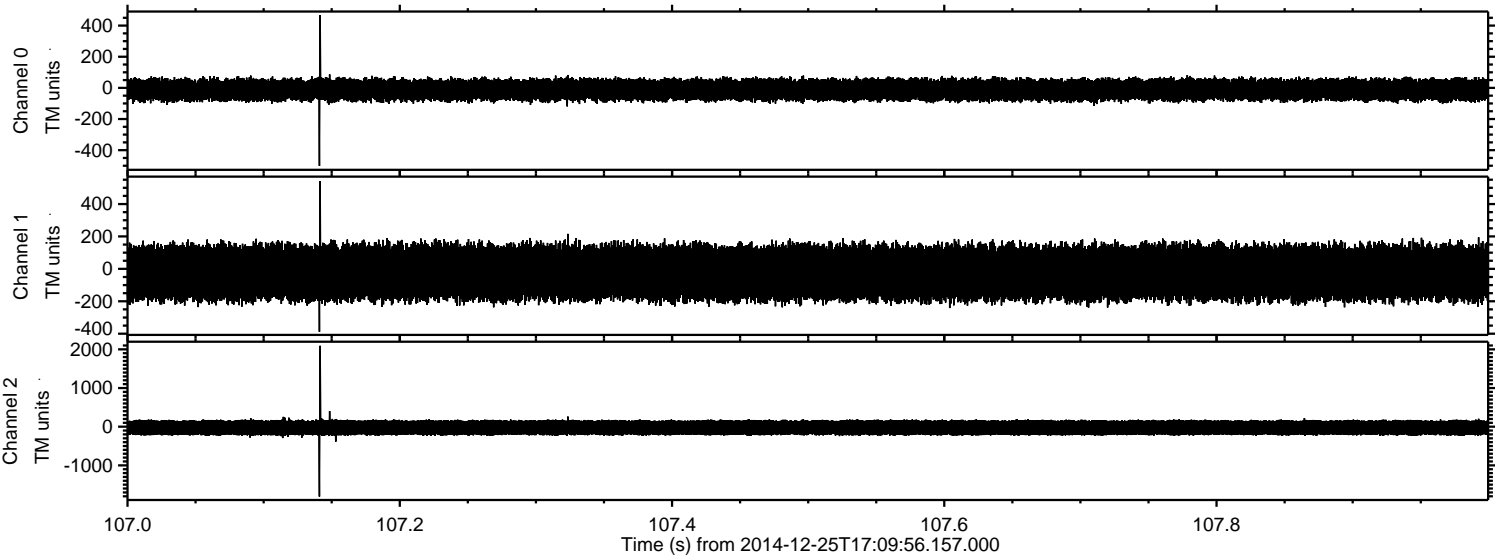
ELMAVAN 3D WAVEFORMS (Measured data sampled at 50 kHz) 49788 packets of 144 samples from 2014-12-25T17:09:56.157.000.

Processed Thu Dec 25 18:17:34 2014 by ELM ver.2012-10-06 from 001__elm20141225_170955__dat00.bin

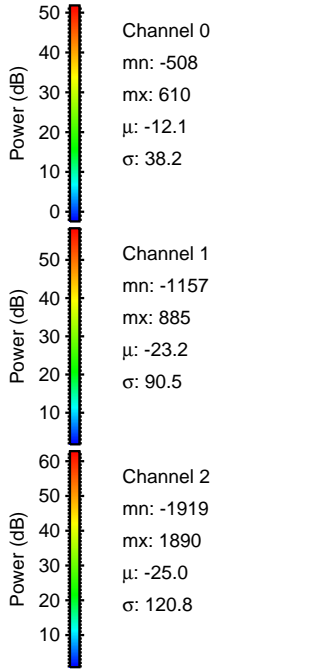
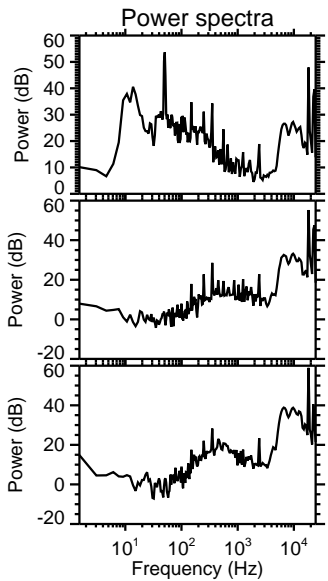
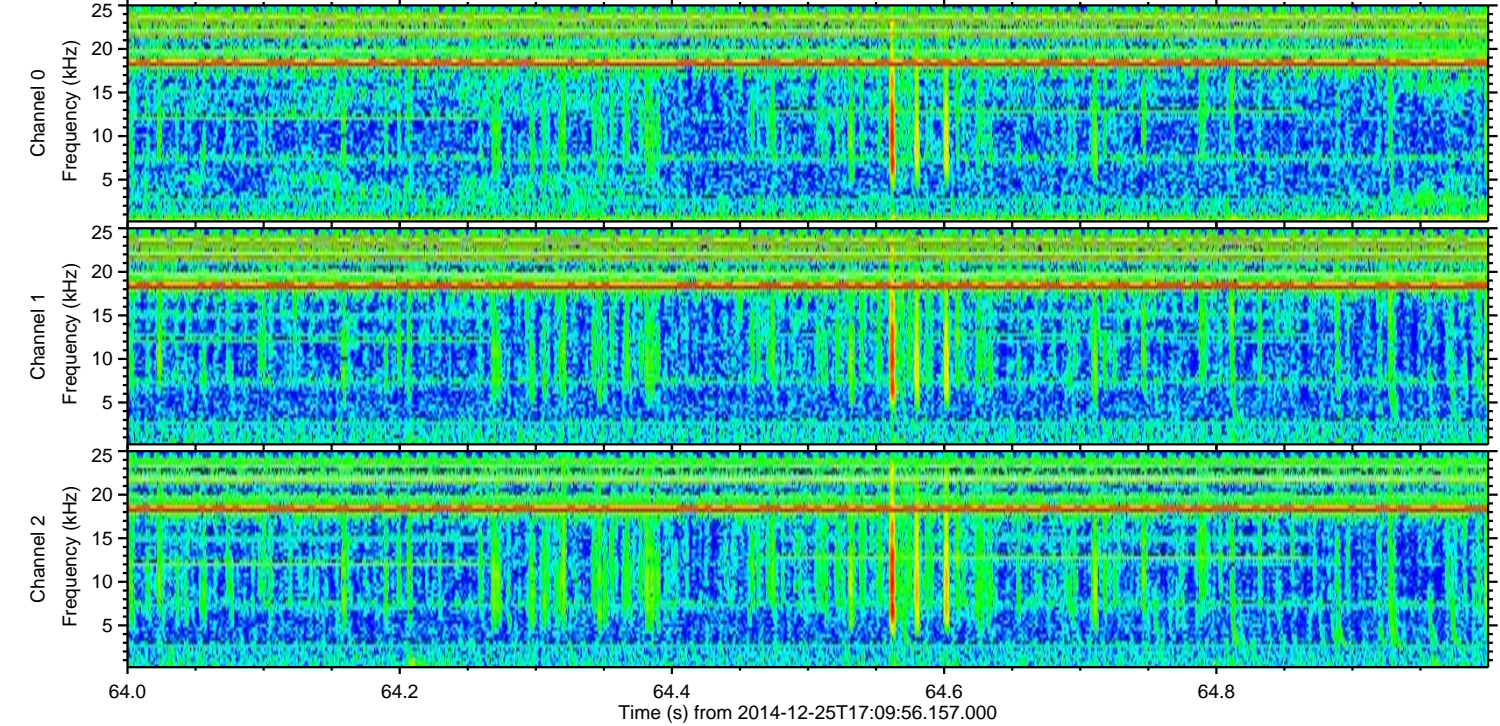
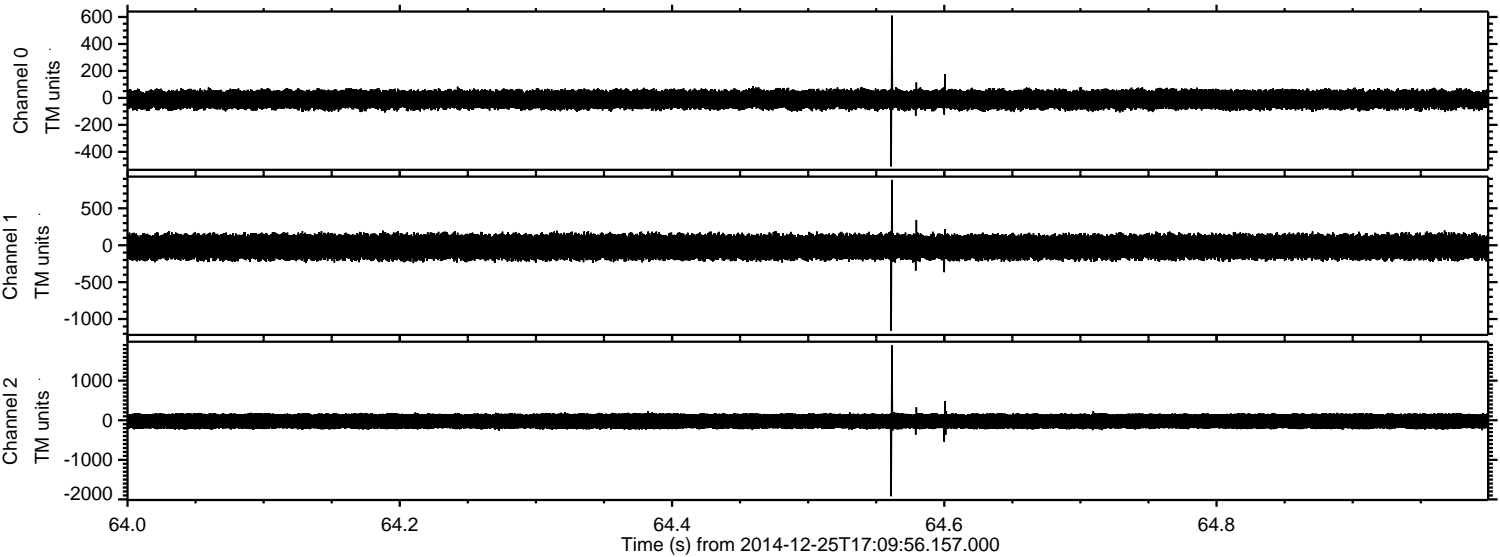


ELMAVAN 3D WAVEFORMS (Measured data sampled at 50 kHz) 49788 packets of 144 samples from 2014-12-25T17:09:56.157.000. Part 108/144

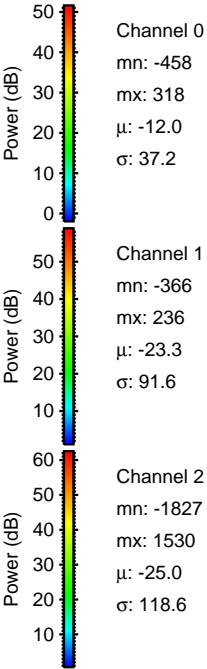
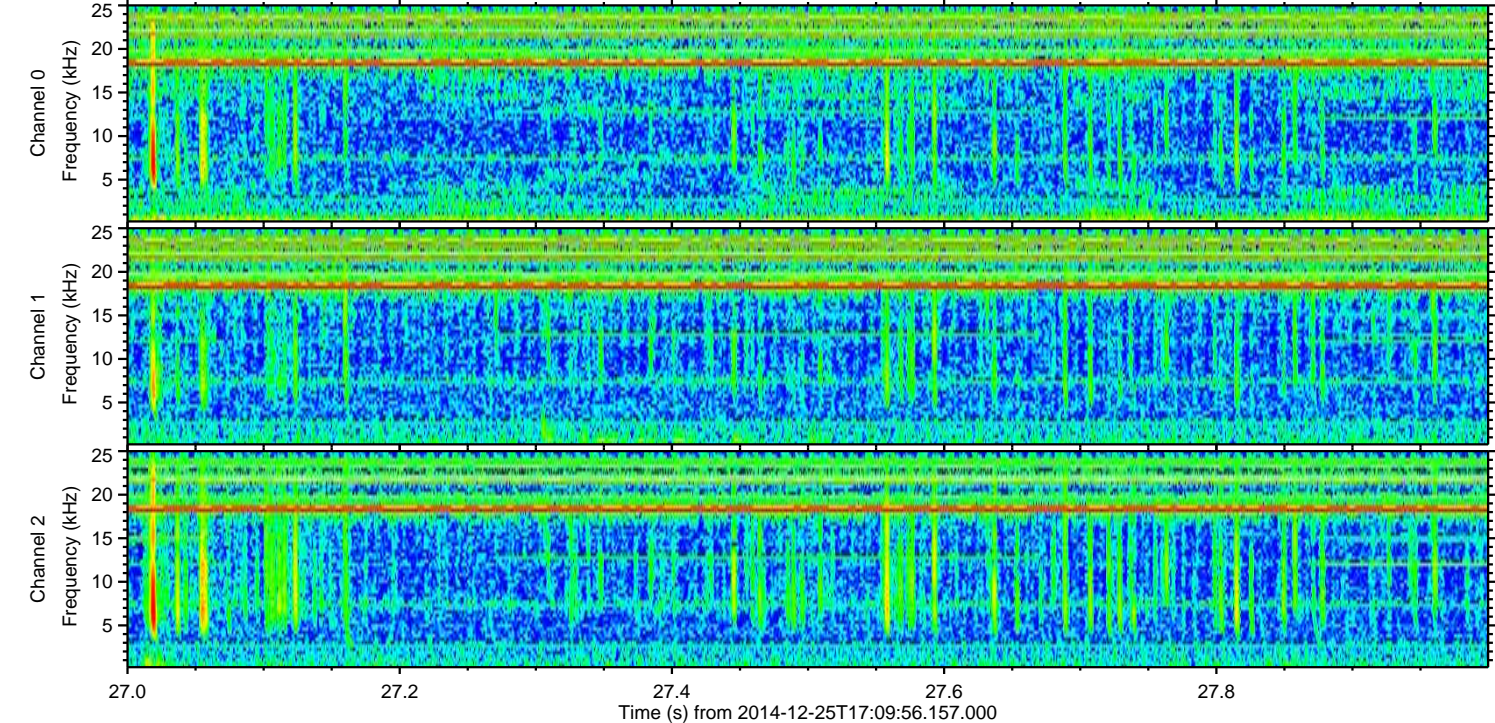
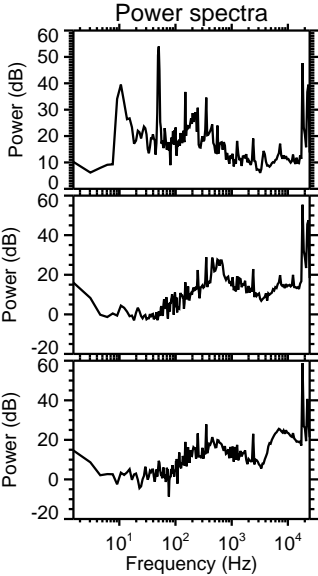
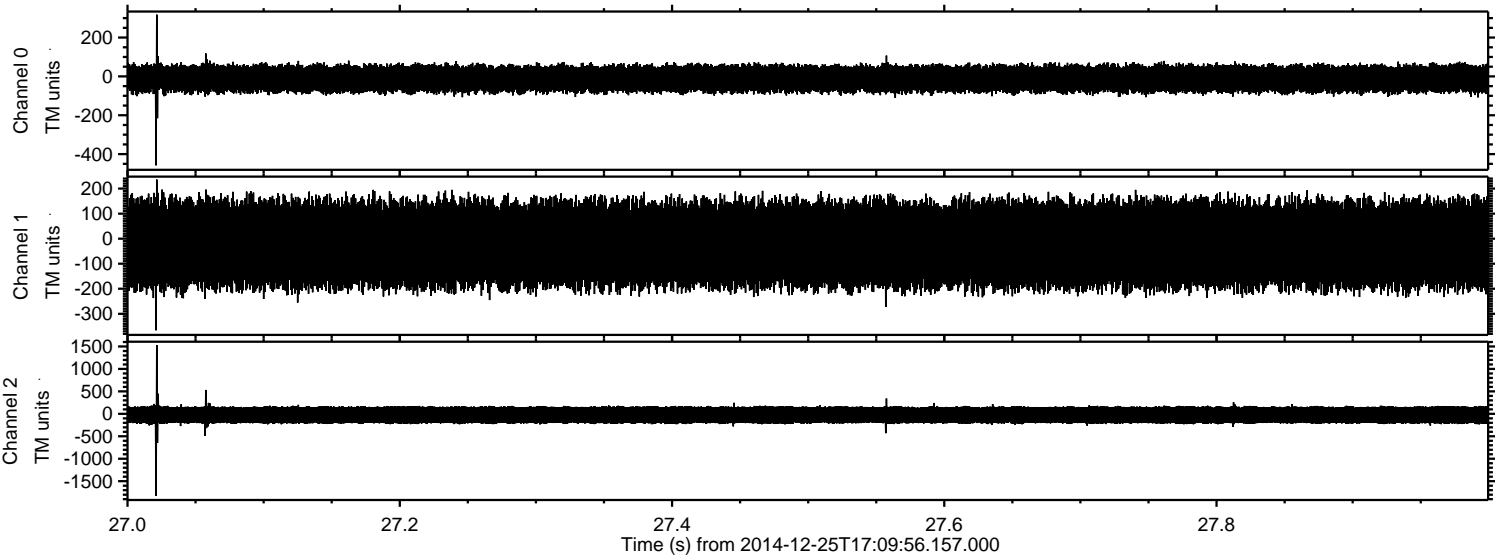
Processed Thu Dec 25 18:17:45 2014 by ELM ver.2012-10-06 from 001__elm20141225_170955__dat00.bin



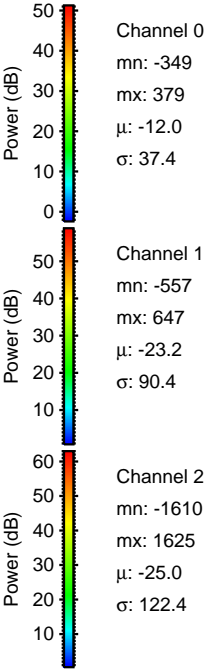
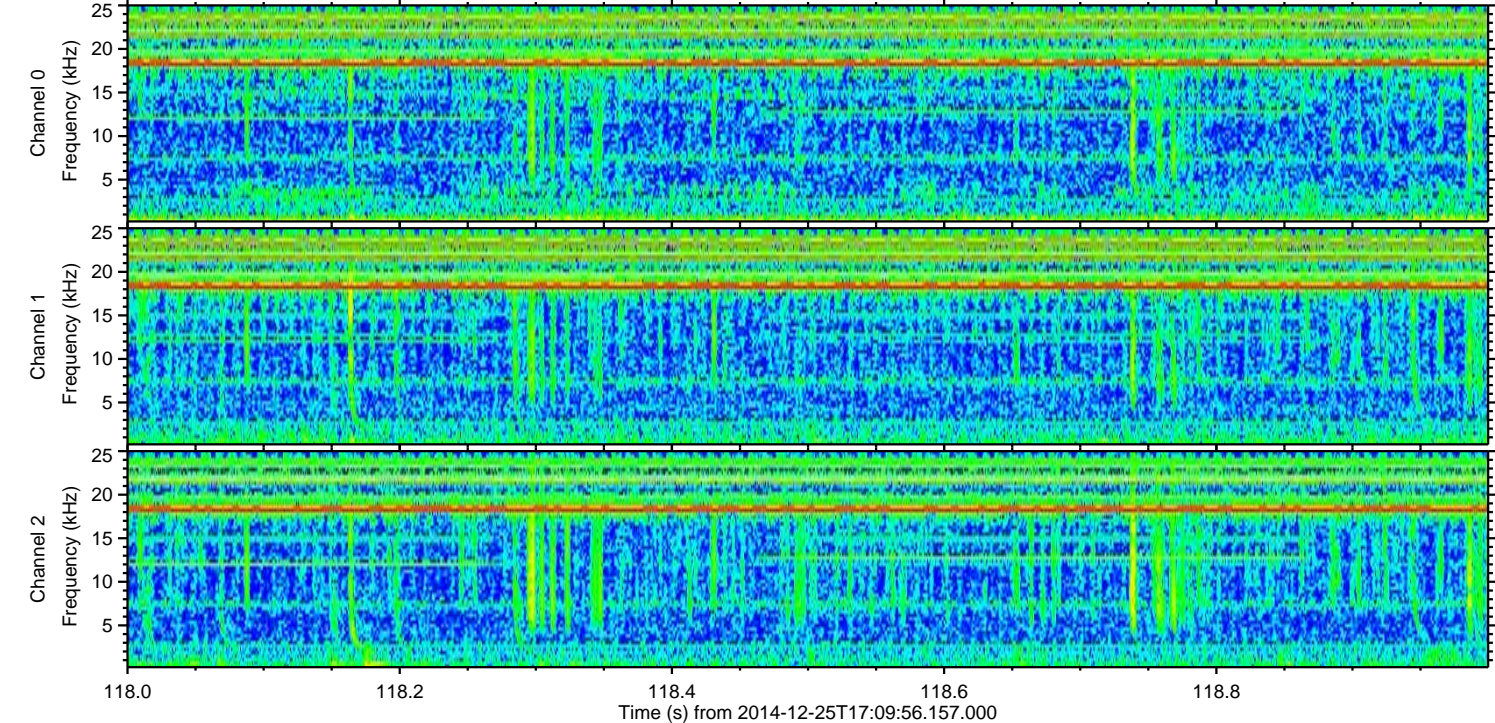
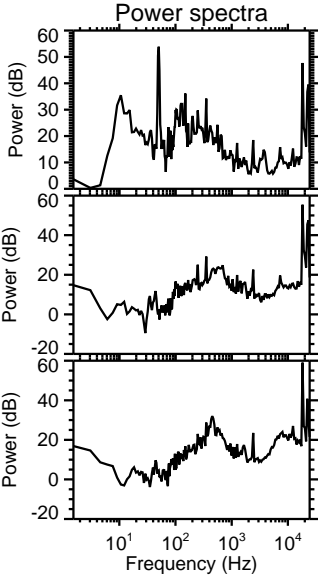
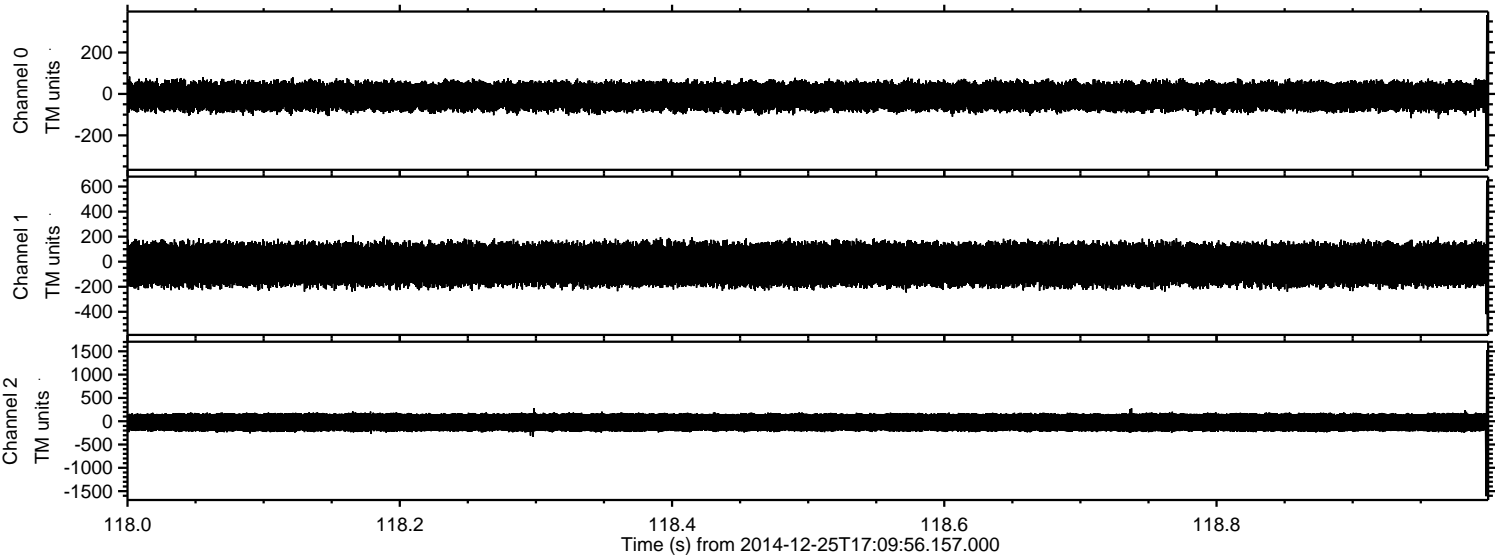
Processed Thu Dec 25 18:17:46 2014 by ELM ver.2012-10-06 from 001__elm20141225_170955__dat00.bin



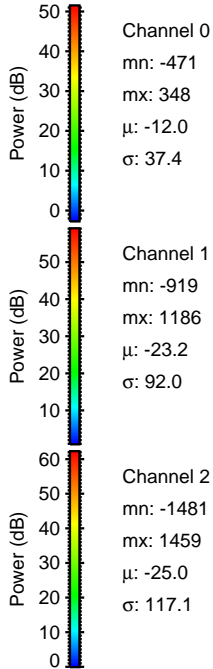
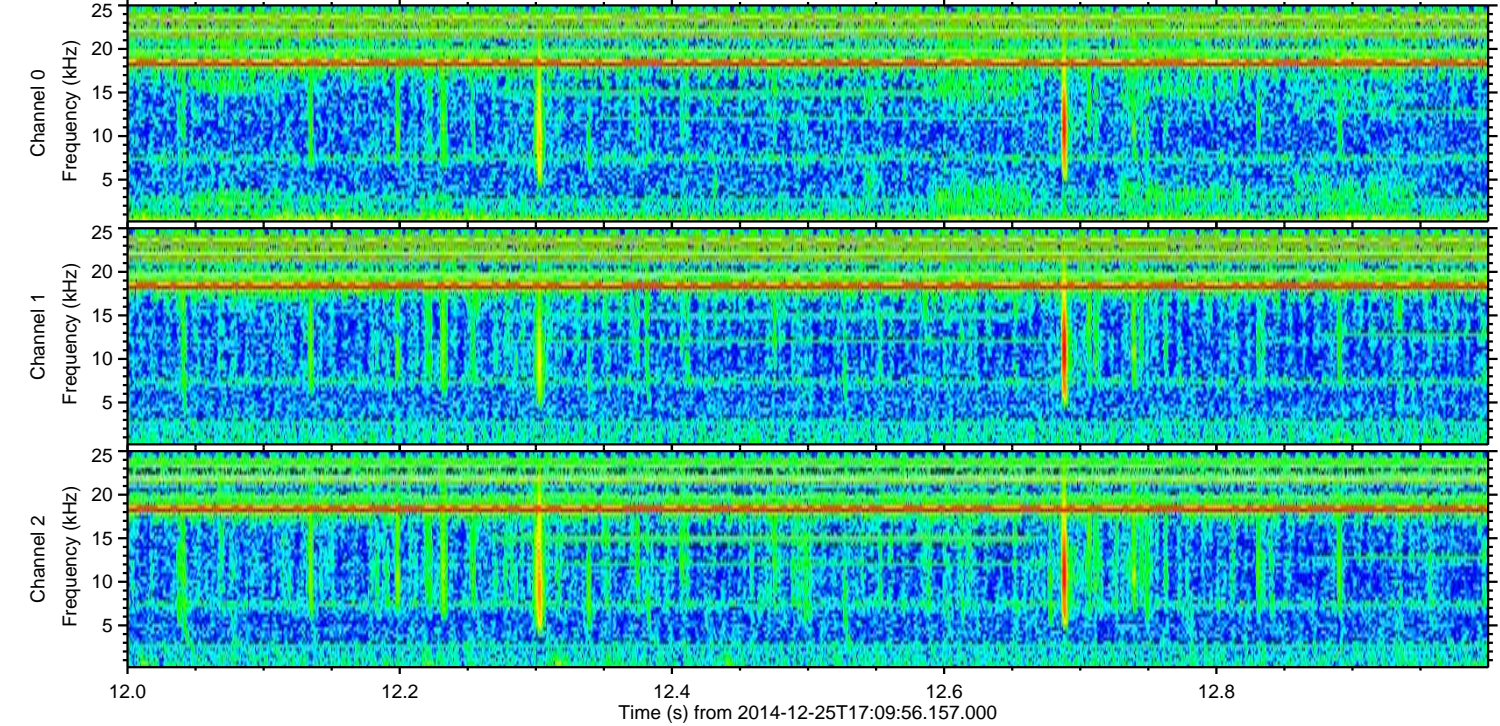
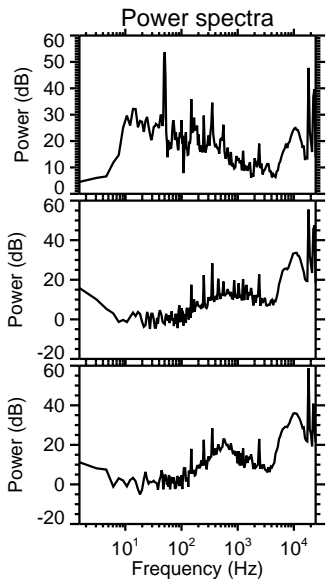
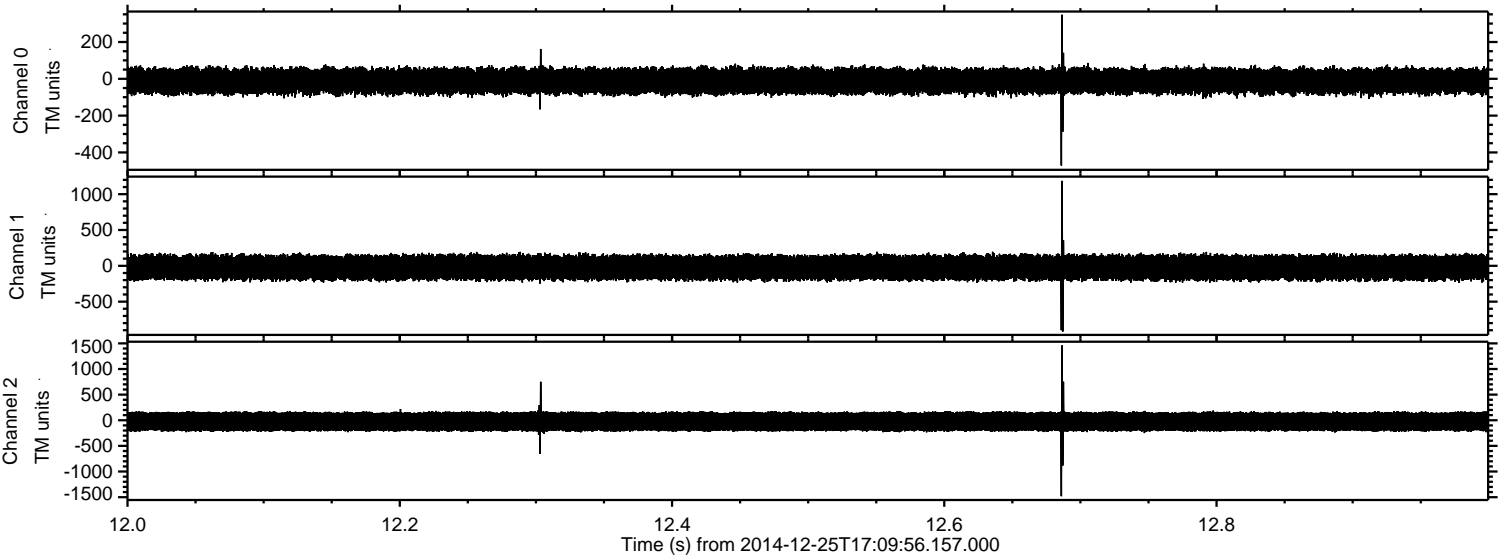
Processed Thu Dec 25 18:17:47 2014 by ELM ver.2012-10-06 from 001__elm20141225_170955__dat00.bin



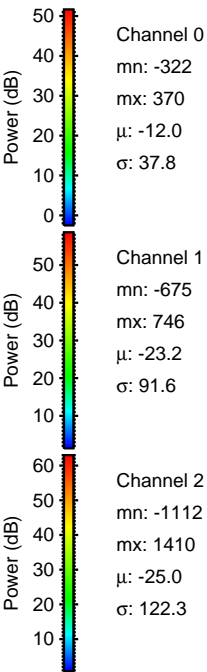
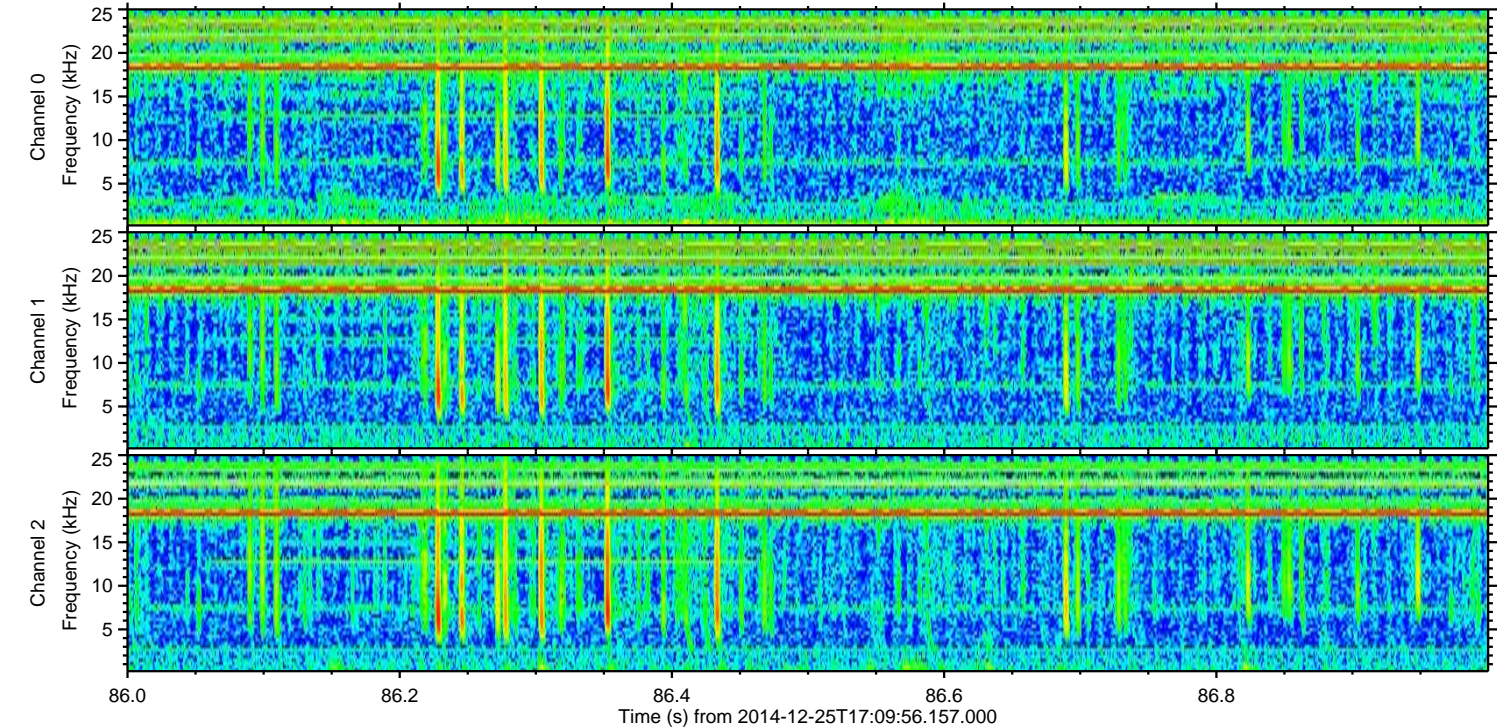
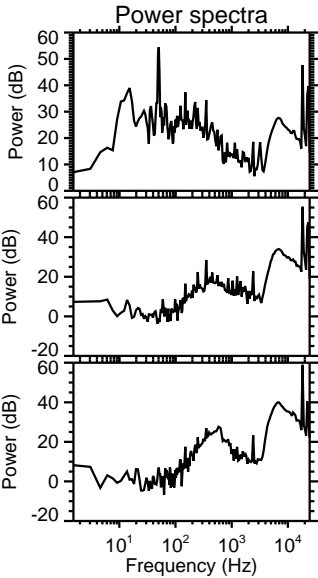
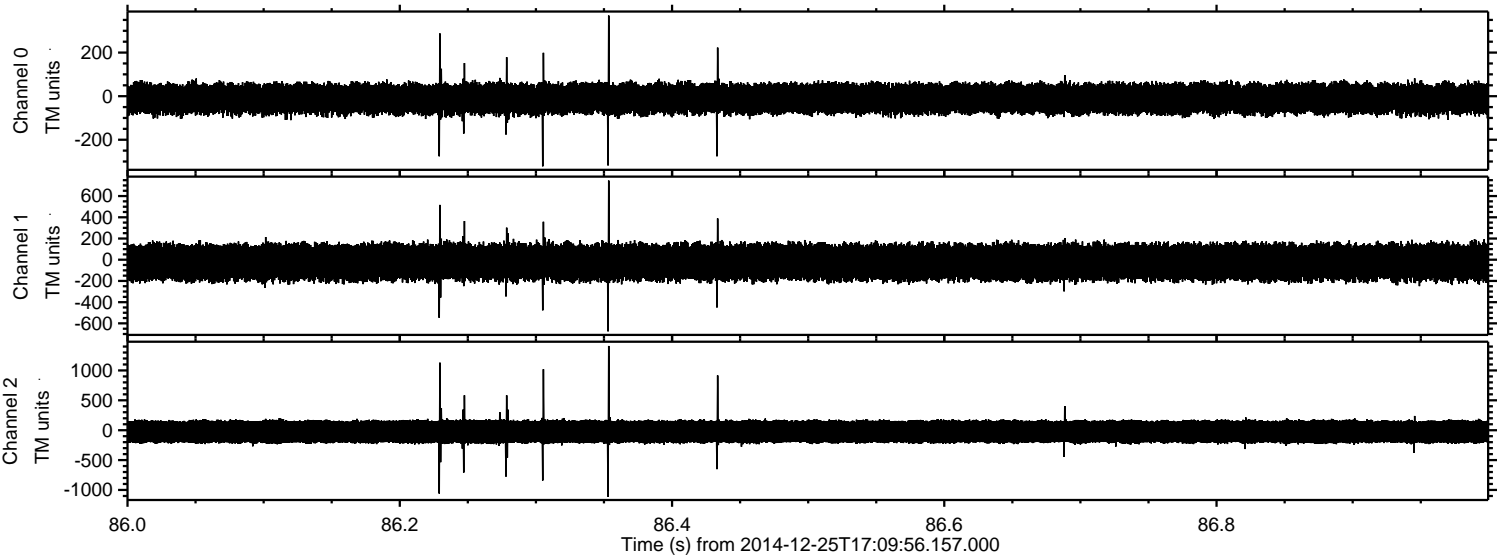
Processed Thu Dec 25 18:17:48 2014 by ELM ver.2012-10-06 from 001__elm20141225_170955__dat00.bin



Processed Thu Dec 25 18:17:49 2014 by ELM ver.2012-10-06 from 001__elm20141225_170955__dat00.bin

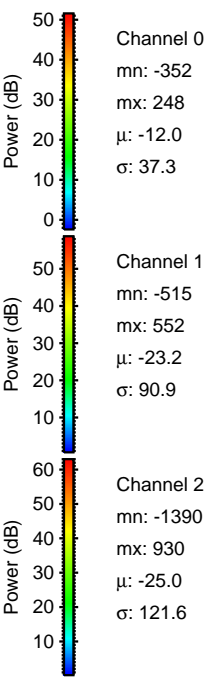
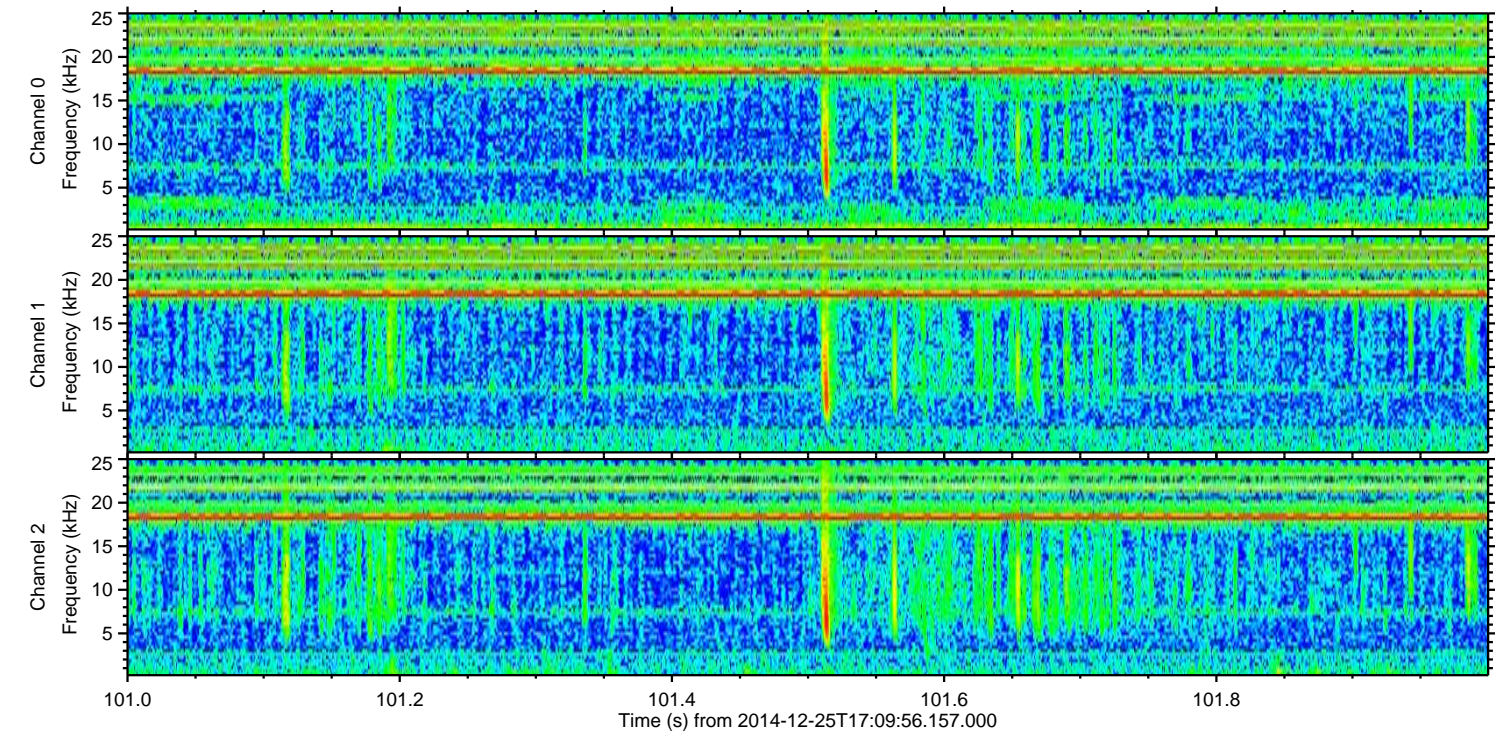
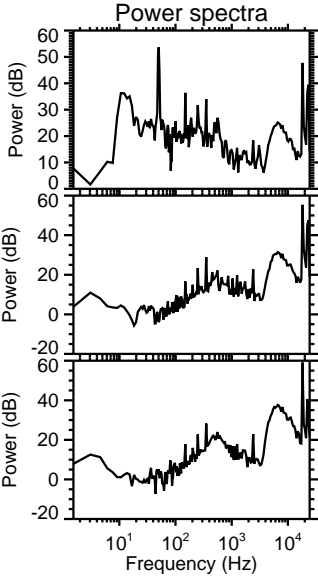
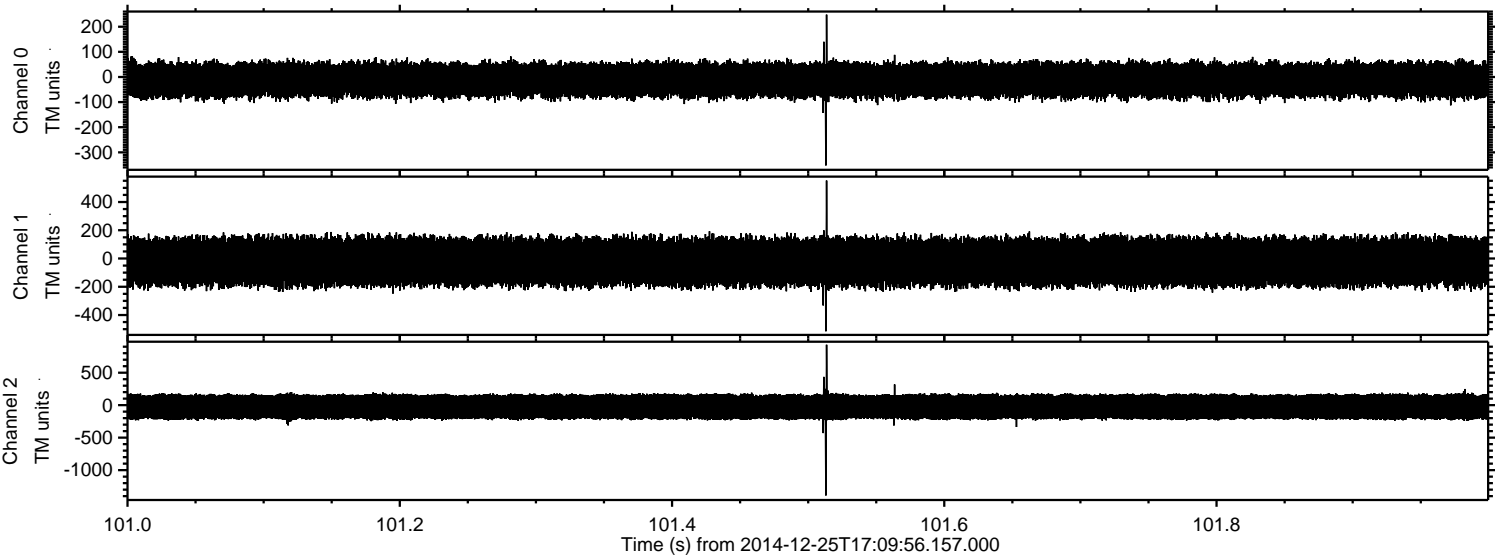


Processed Thu Dec 25 18:17:50 2014 by ELM ver.2012-10-06 from 001__elm20141225_170955__dat00.bin

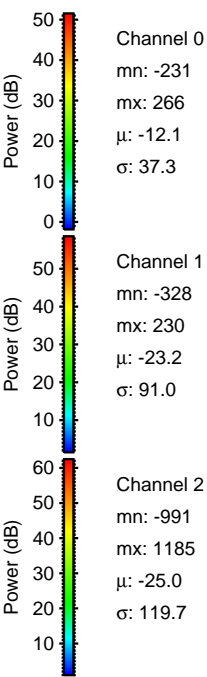
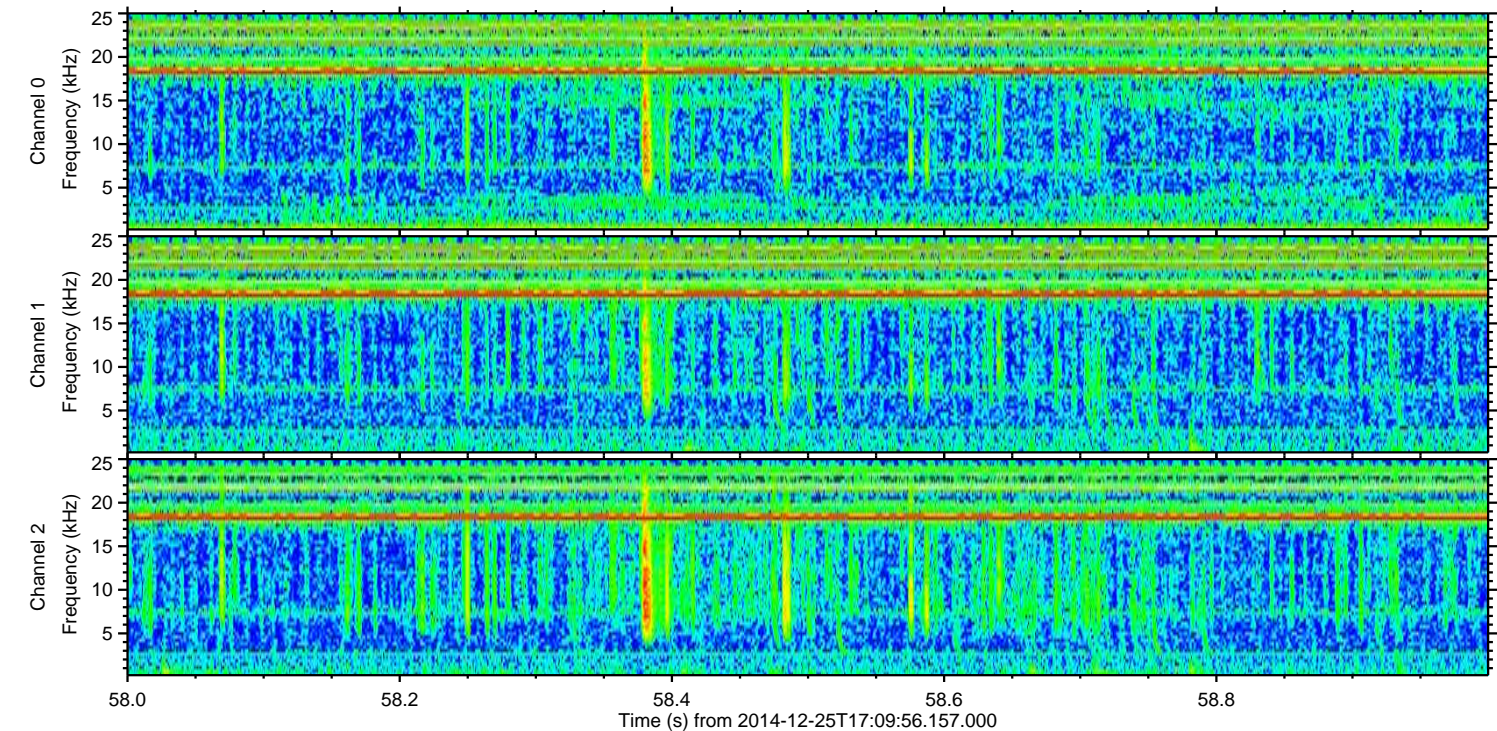
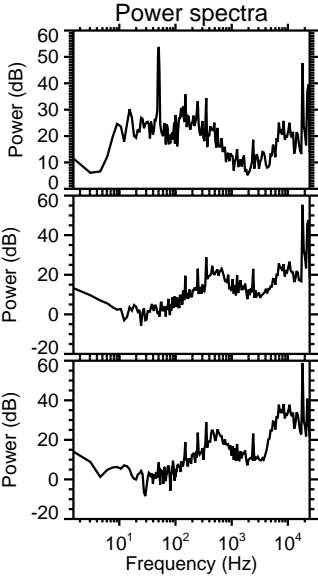
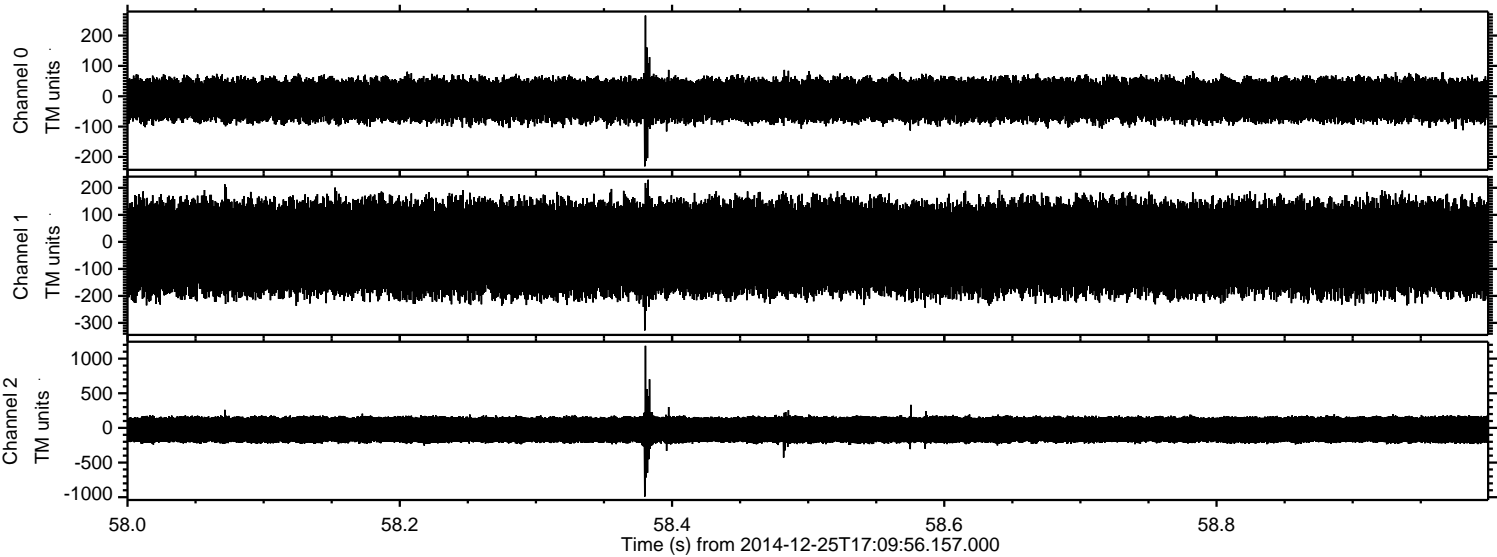


ELMAVAN 3D WAVEFORMS (Measured data sampled at 50 kHz) 49788 packets of 144 samples from 2014-12-25T17:09:56.157.000. Part 102/144

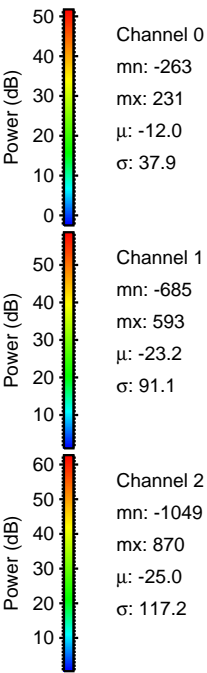
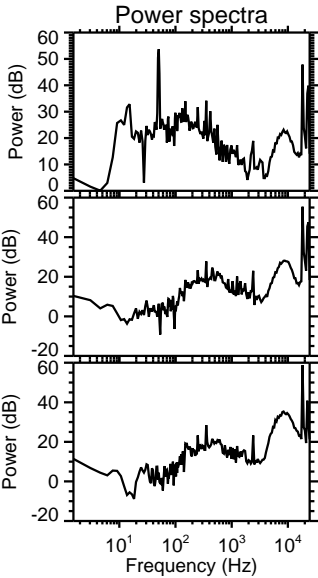
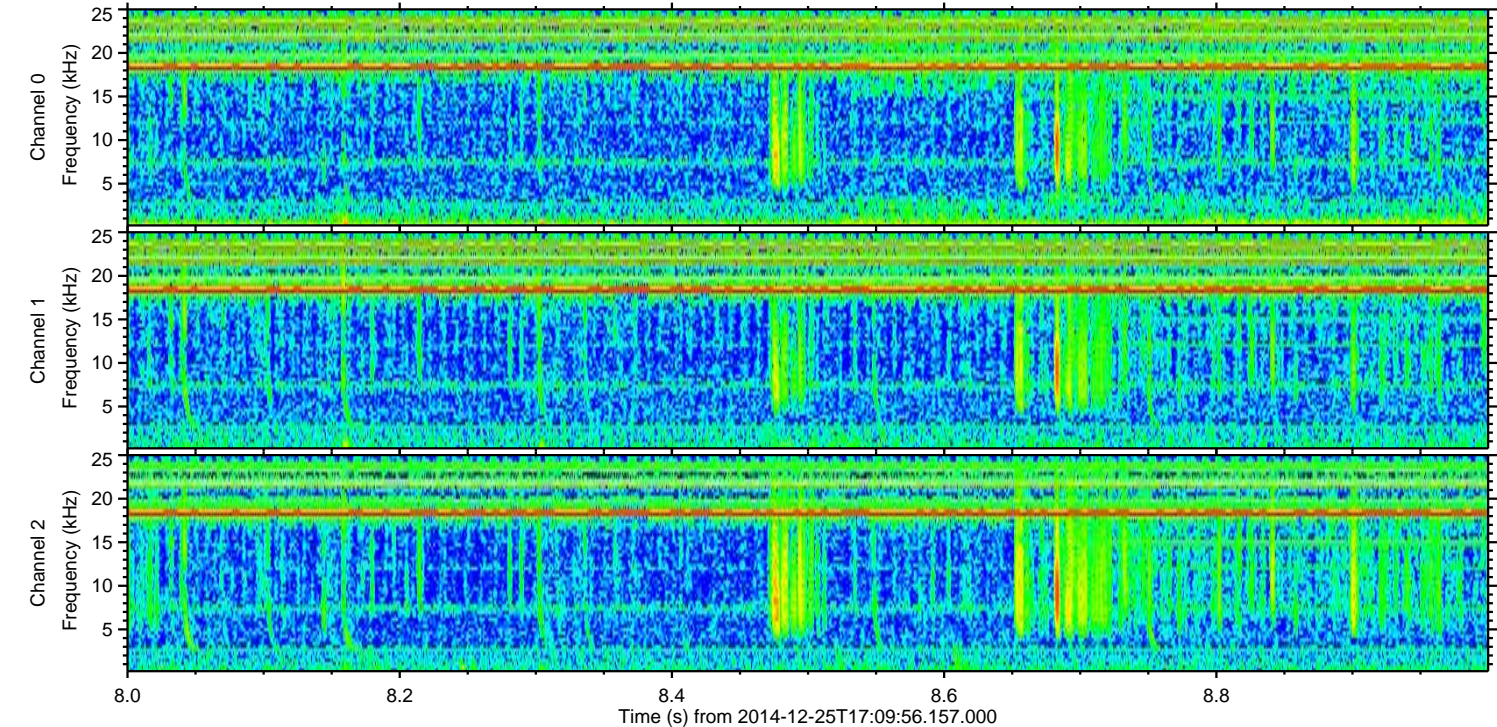
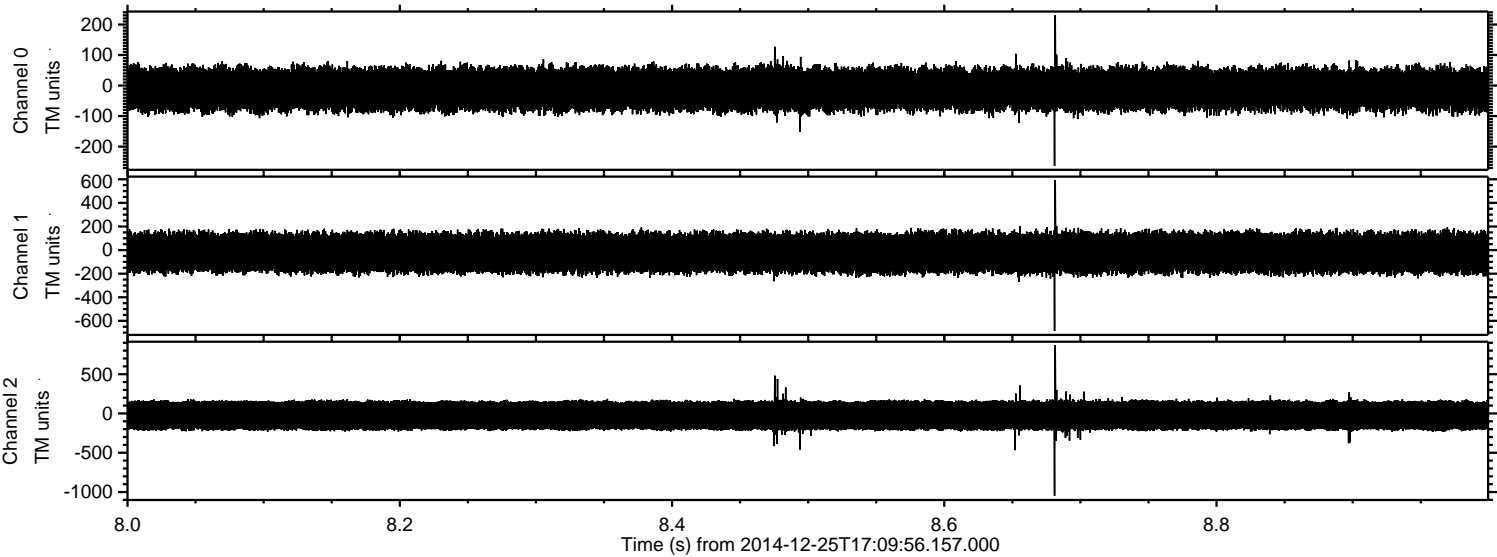
Processed Thu Dec 25 18:17:51 2014 by ELM ver.2012-10-06 from 001__elm20141225_170955__dat00.bin



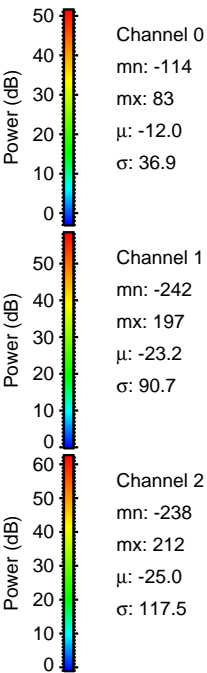
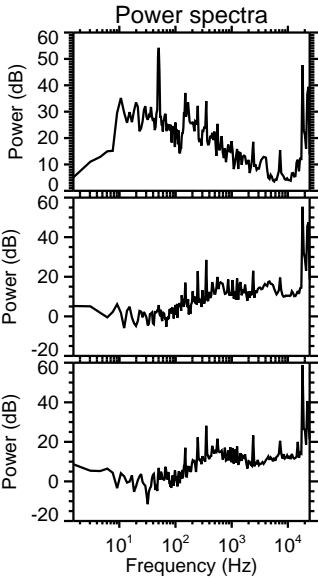
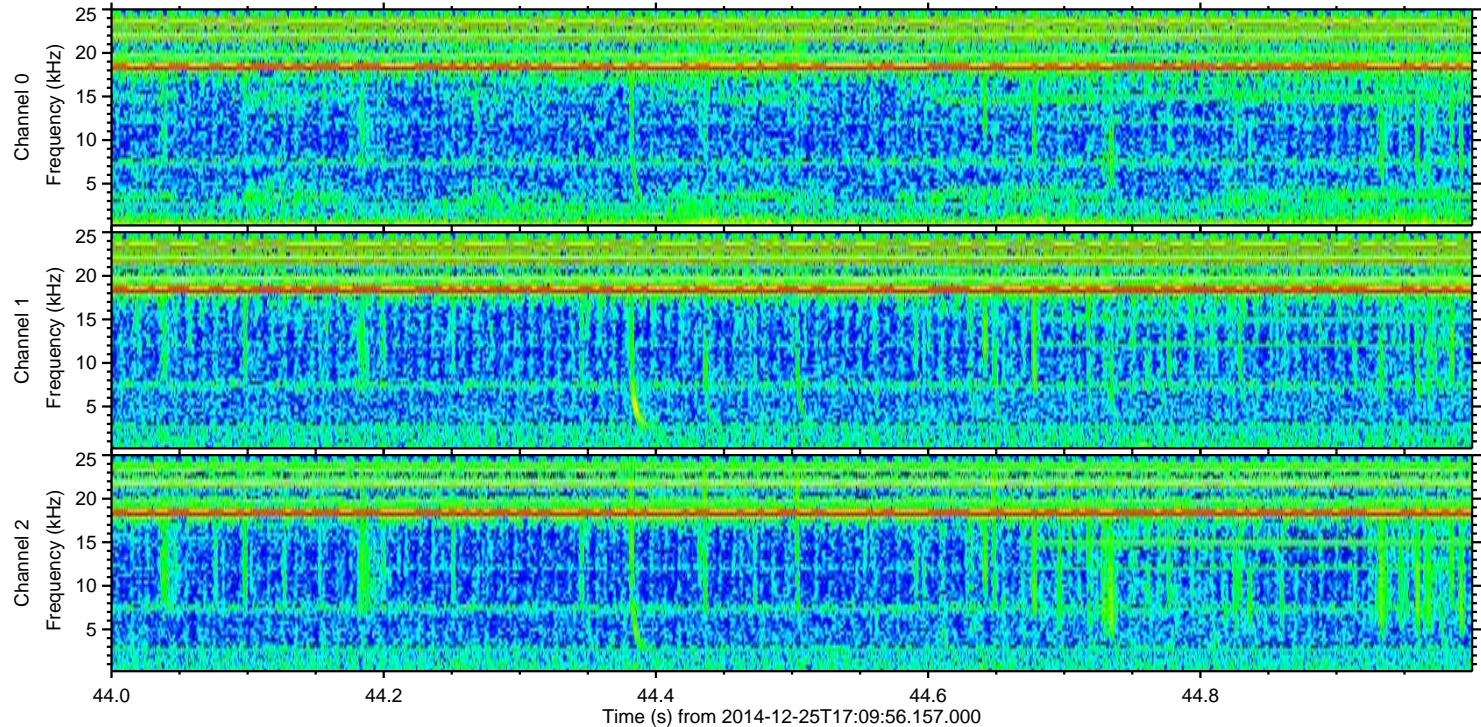
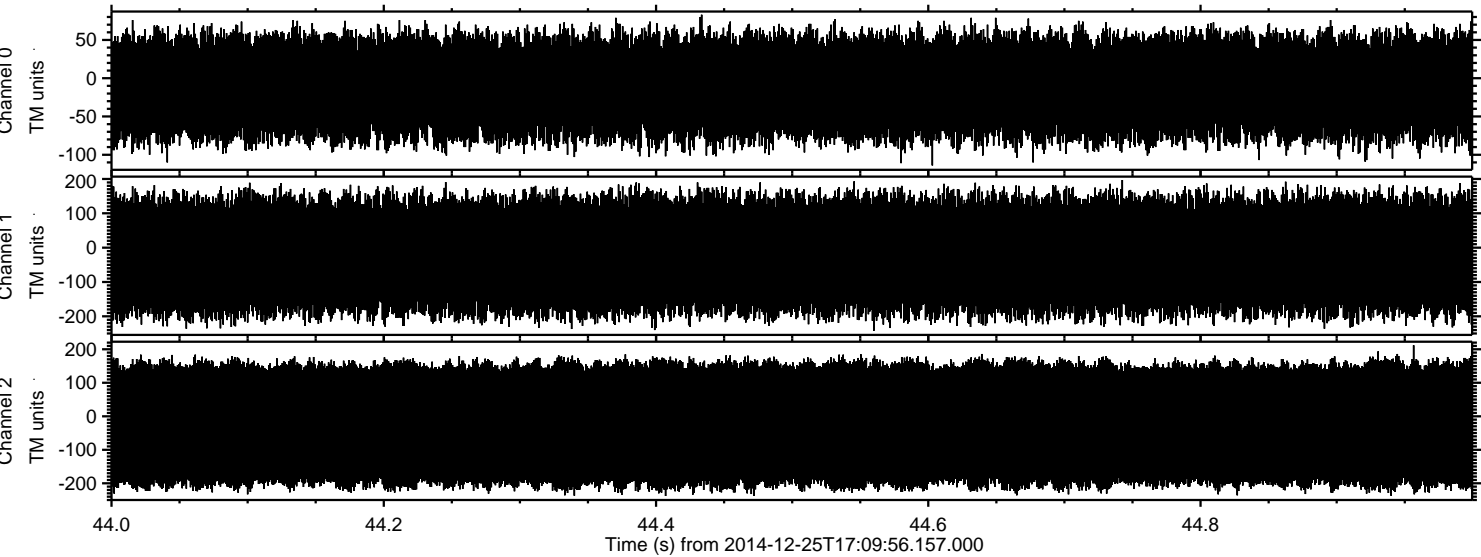
Processed Thu Dec 25 18:17:52 2014 by ELM ver.2012-10-06 from 001__elm20141225_170955__dat00.bin



Processed Thu Dec 25 18:17:53 2014 by ELM ver.2012-10-06 from 001__elm20141225_170955__dat00.bin



Processed Thu Dec 25 18:17:54 2014 by ELM ver.2012-10-06 from 001__elm20141225_170955__dat00.bin



Channel 0
mn: -114
mx: 83
 μ : -12.0
 σ : 36.9

Channel 1
mn: -242
mx: 197
 μ : -23.2
 σ : 90.7

Channel 2
mn: -238
mx: 212
 μ : -25.0
 σ : 117.5