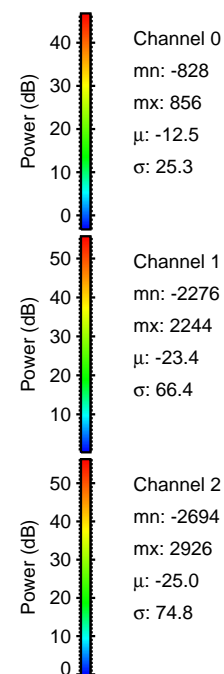
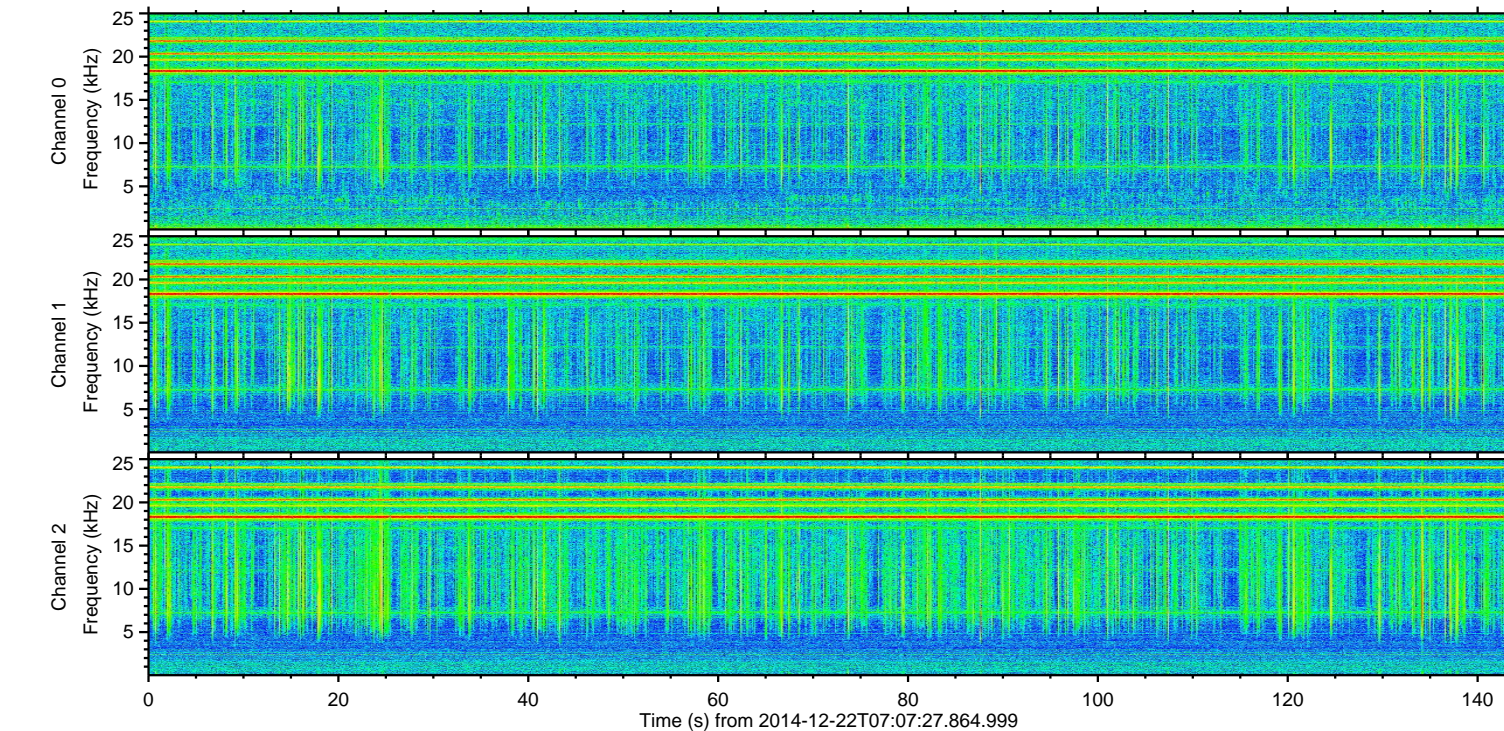
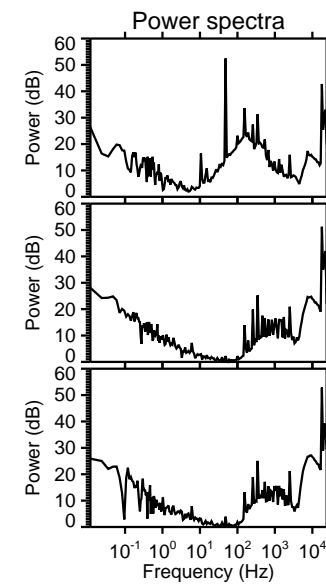
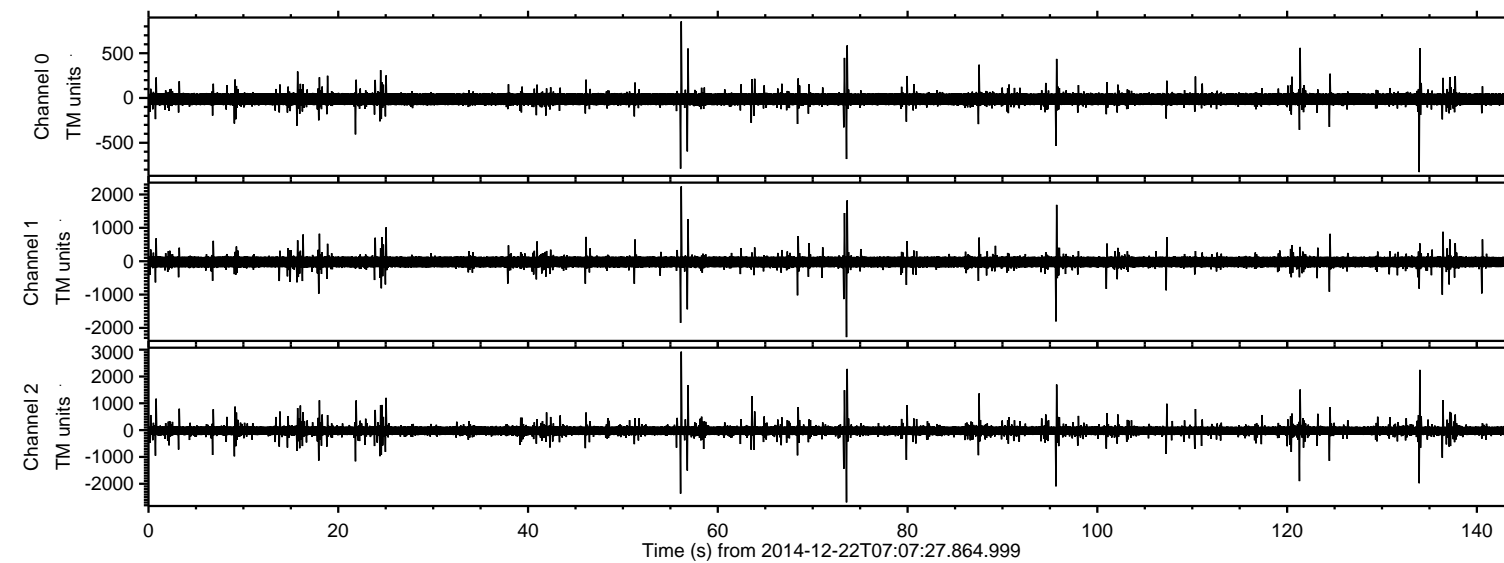
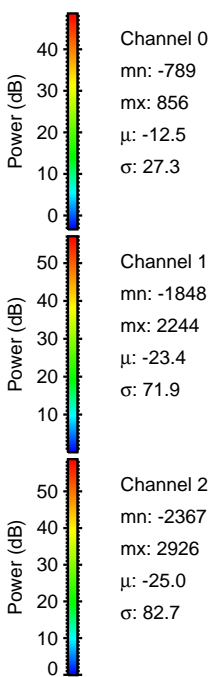
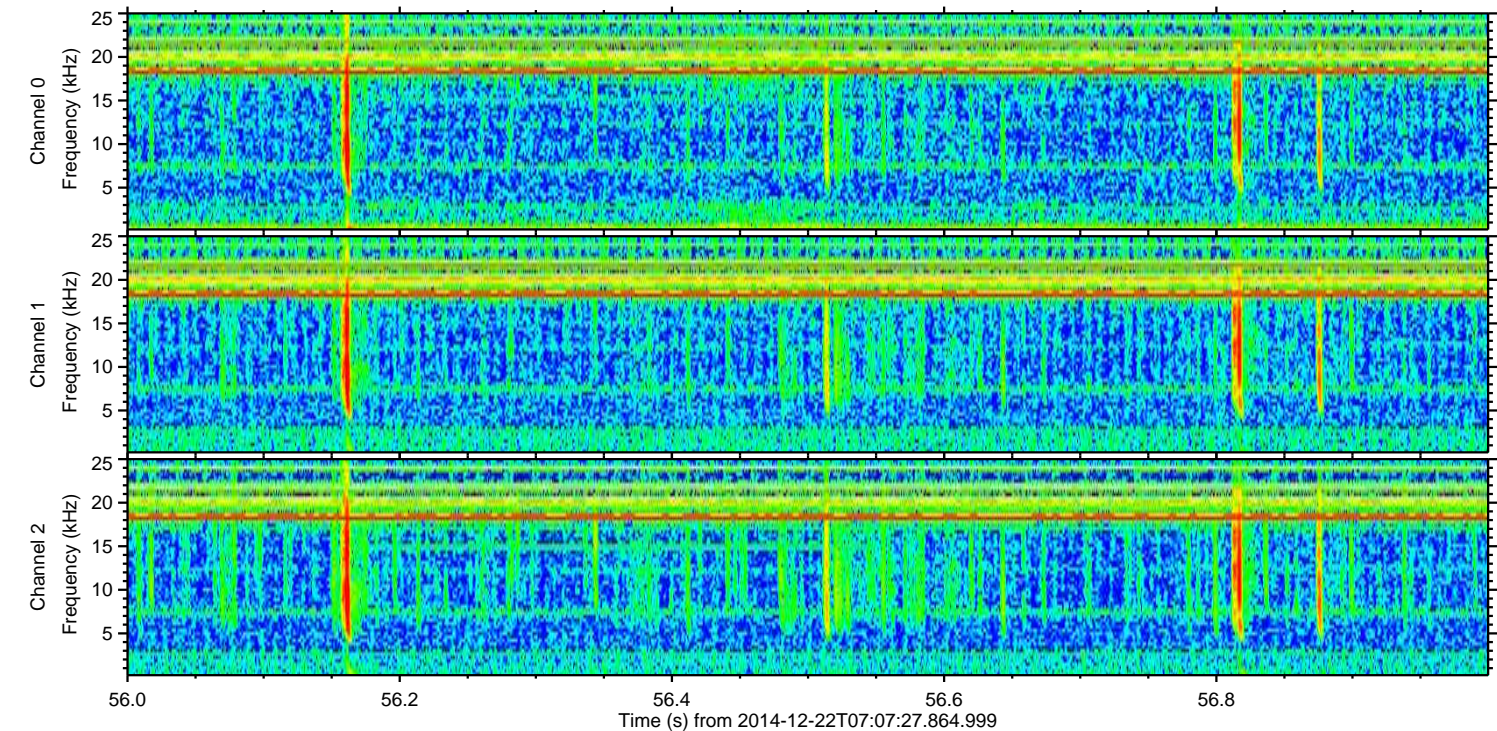
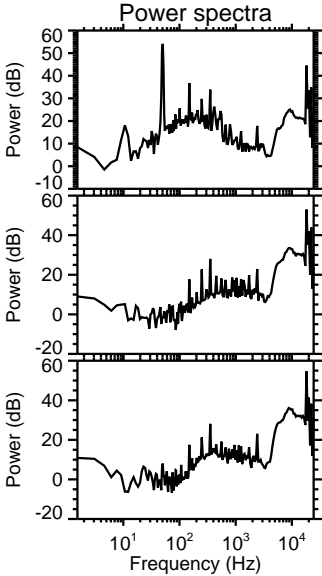
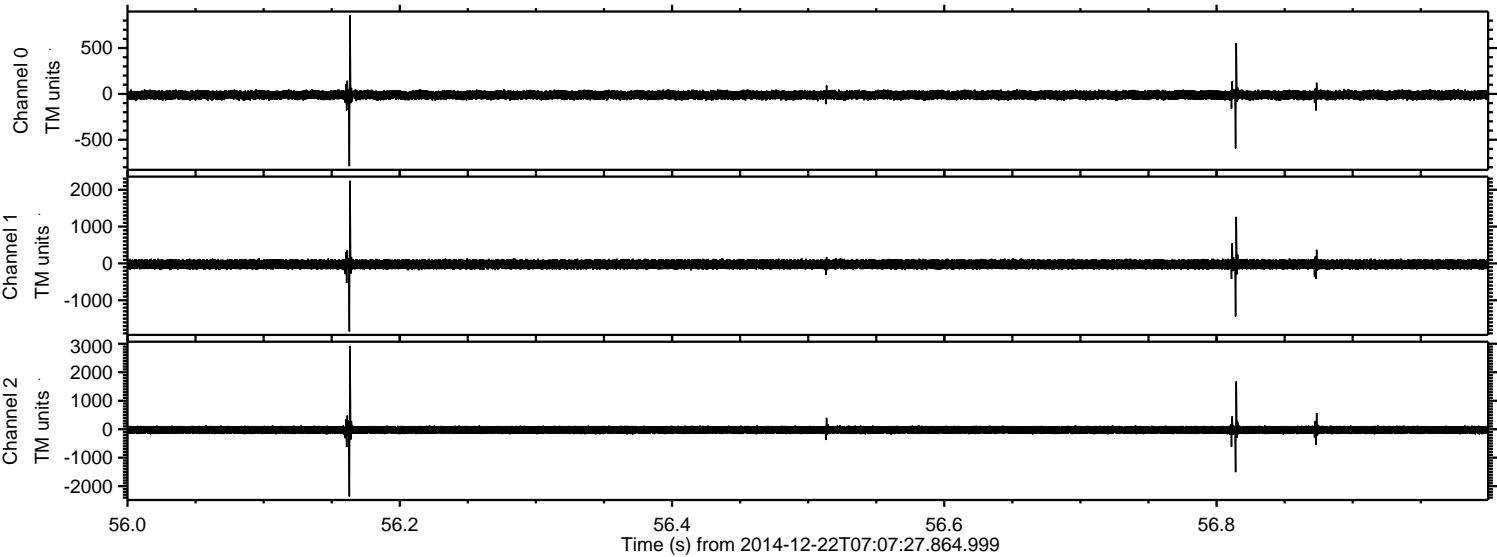


ELMAVAN 3D WAVEFORMS (Measured data sampled at 50 kHz) 49791 packets of 144 samples from 2014-12-22T07:07:27.864.999.

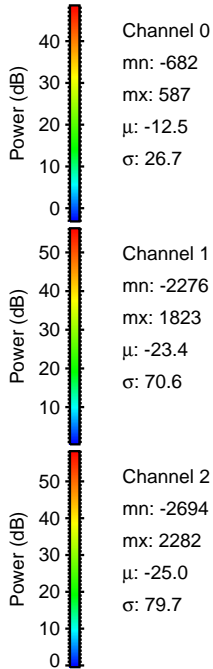
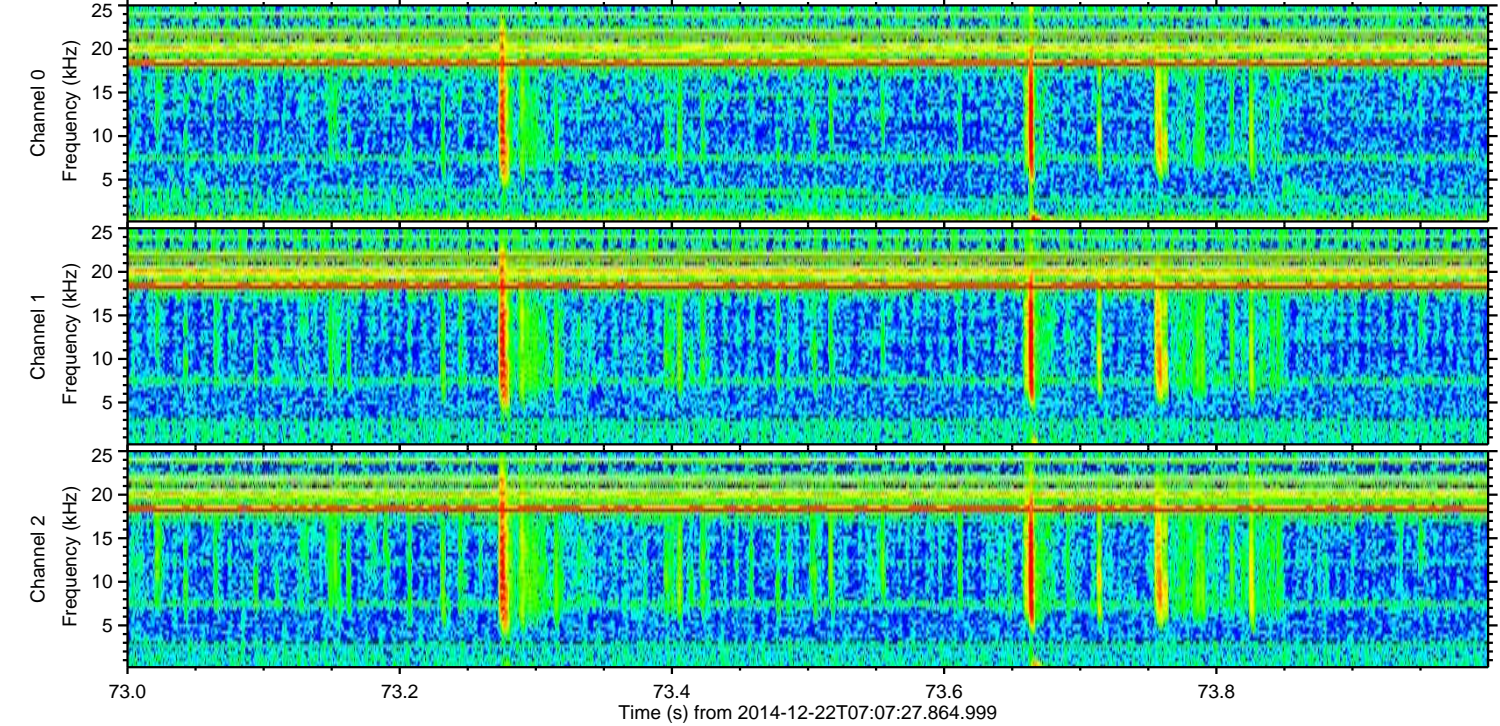
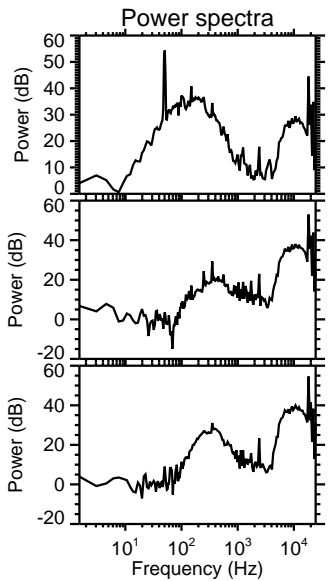
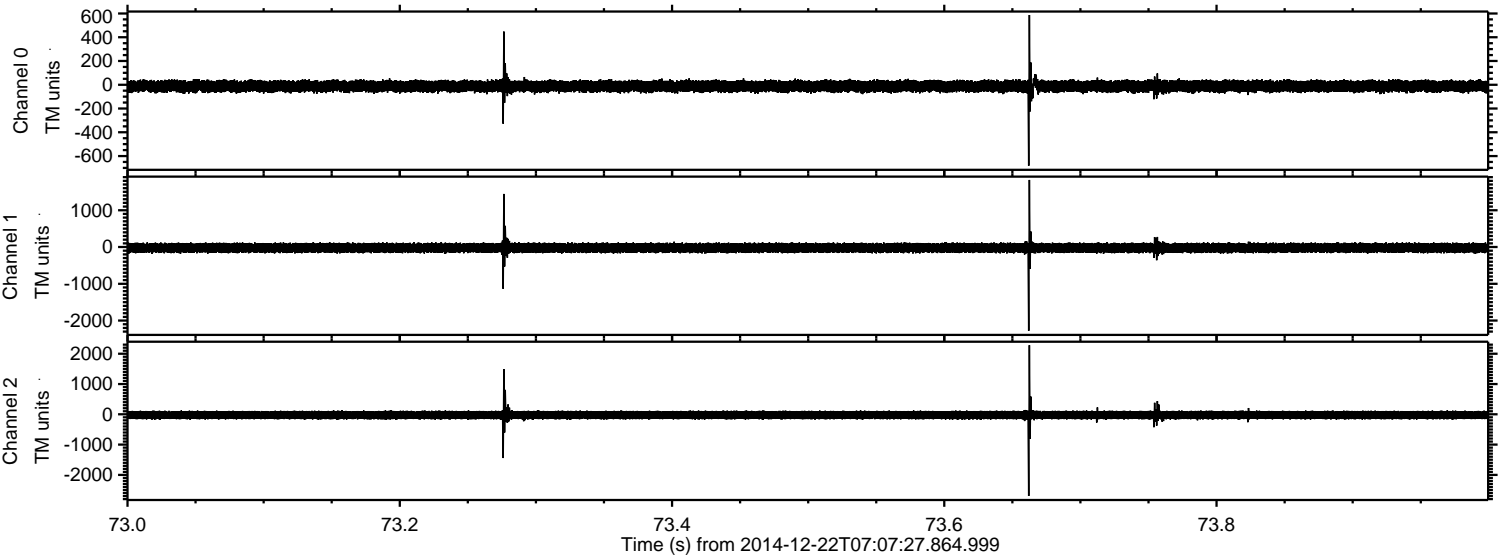
Processed Mon Dec 22 08:15:17 2014 by ELM ver.2012-10-06 from 001__elm20141222_070726__dat00.bin



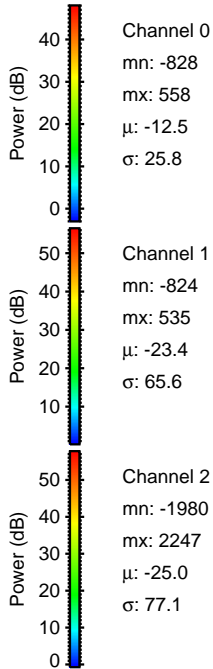
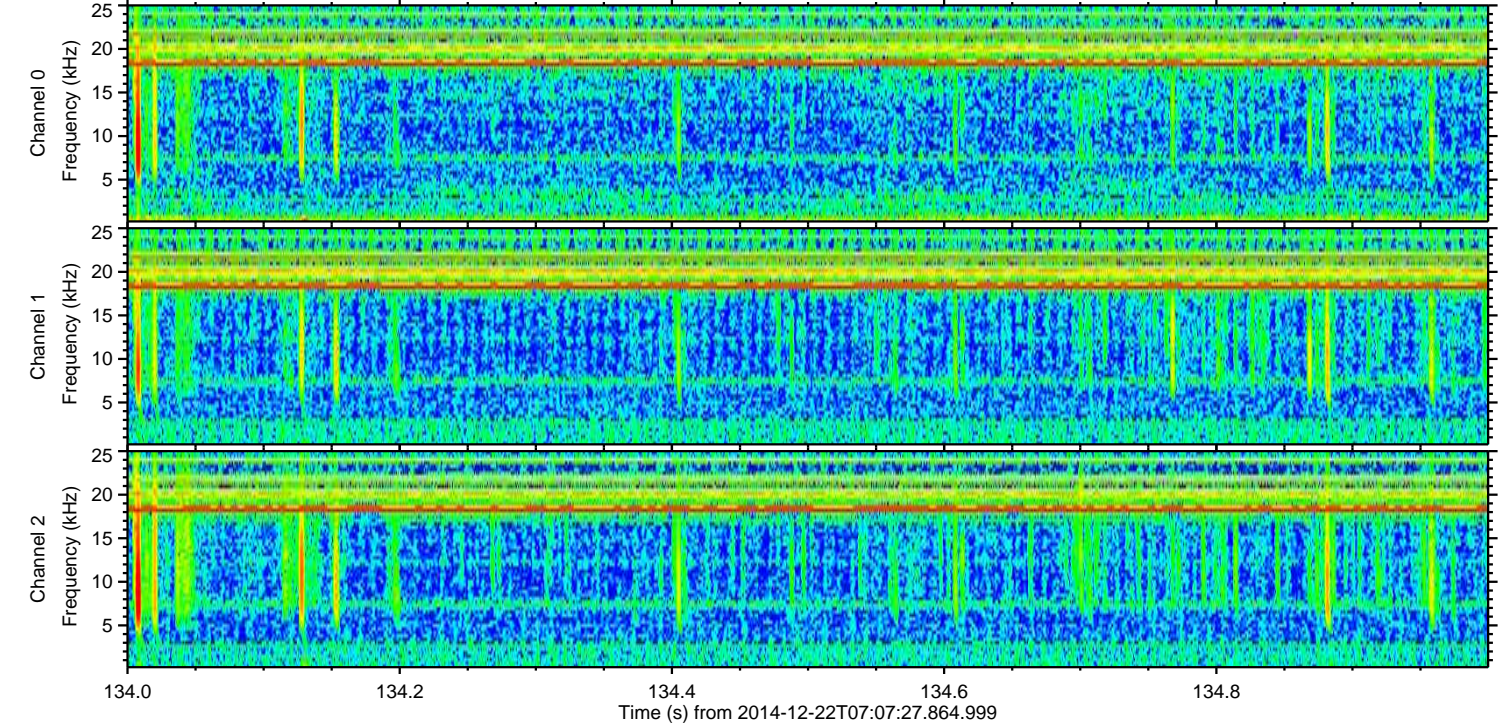
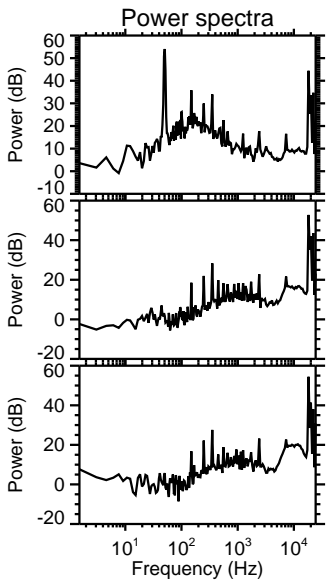
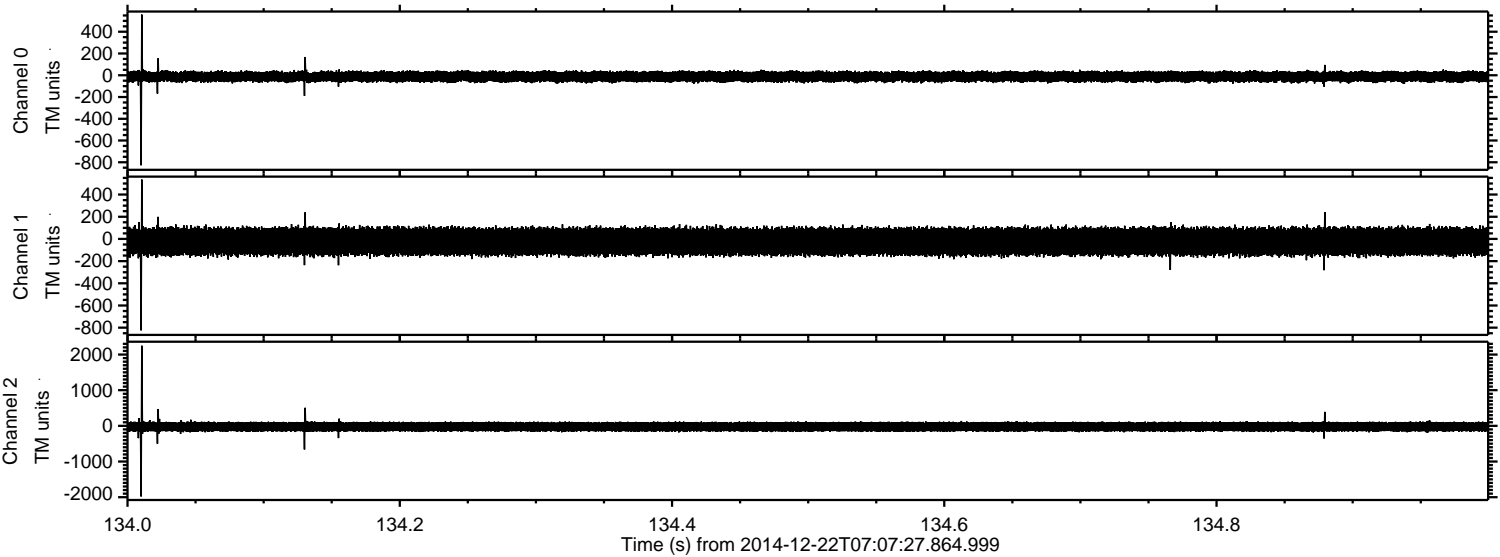
Processed Mon Dec 22 08:15:30 2014 by ELM ver.2012-10-06 from 001__elm20141222_070726__dat00.bin



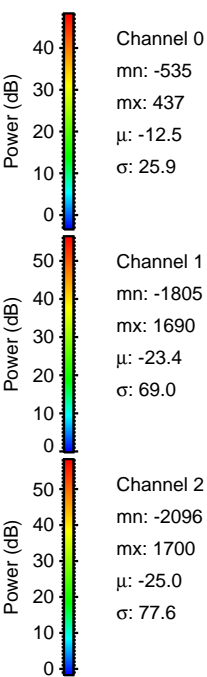
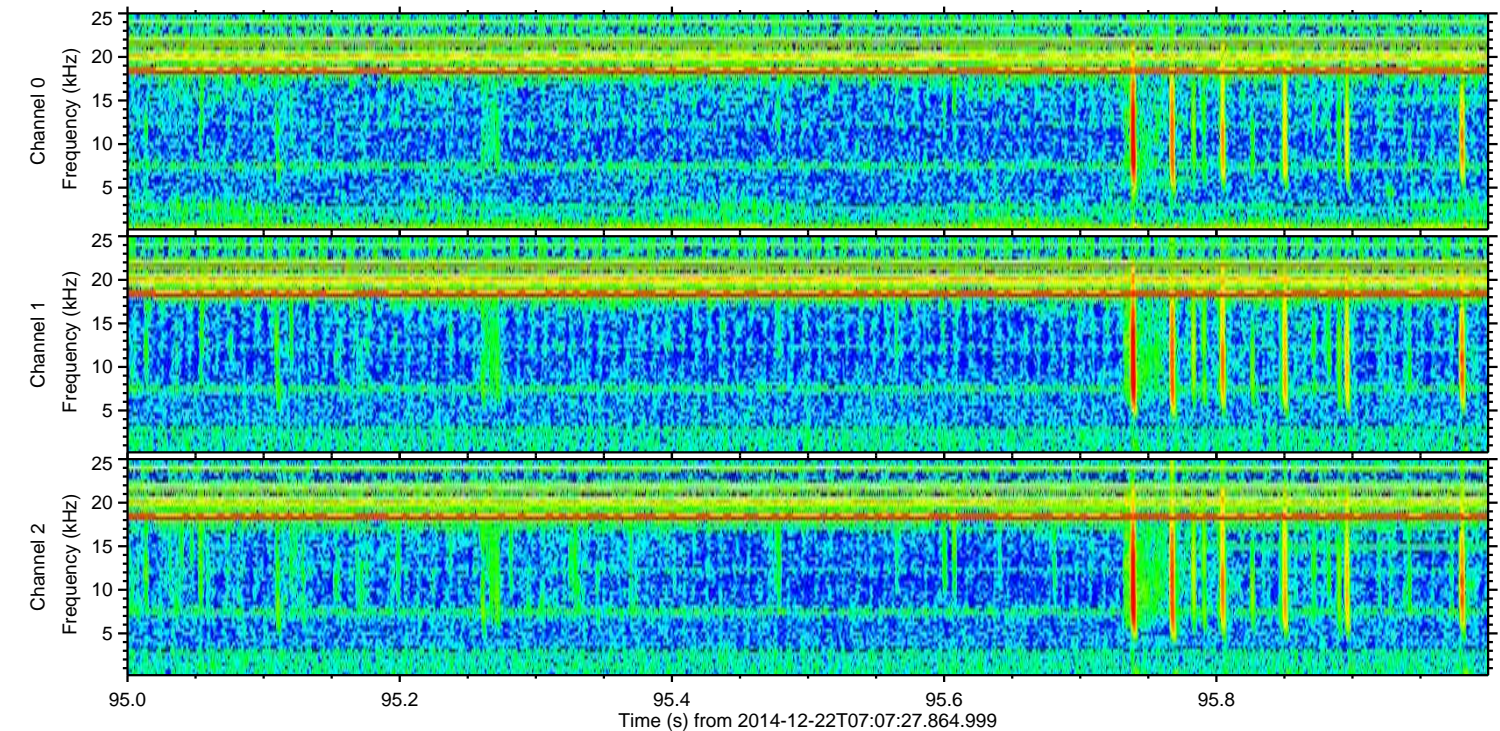
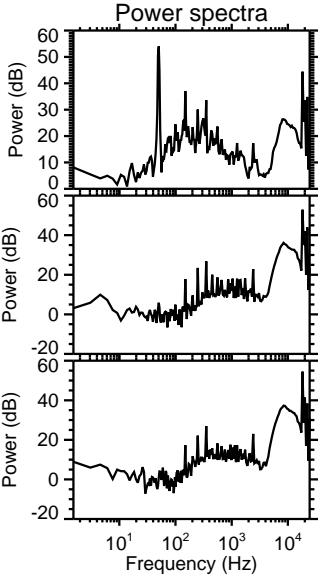
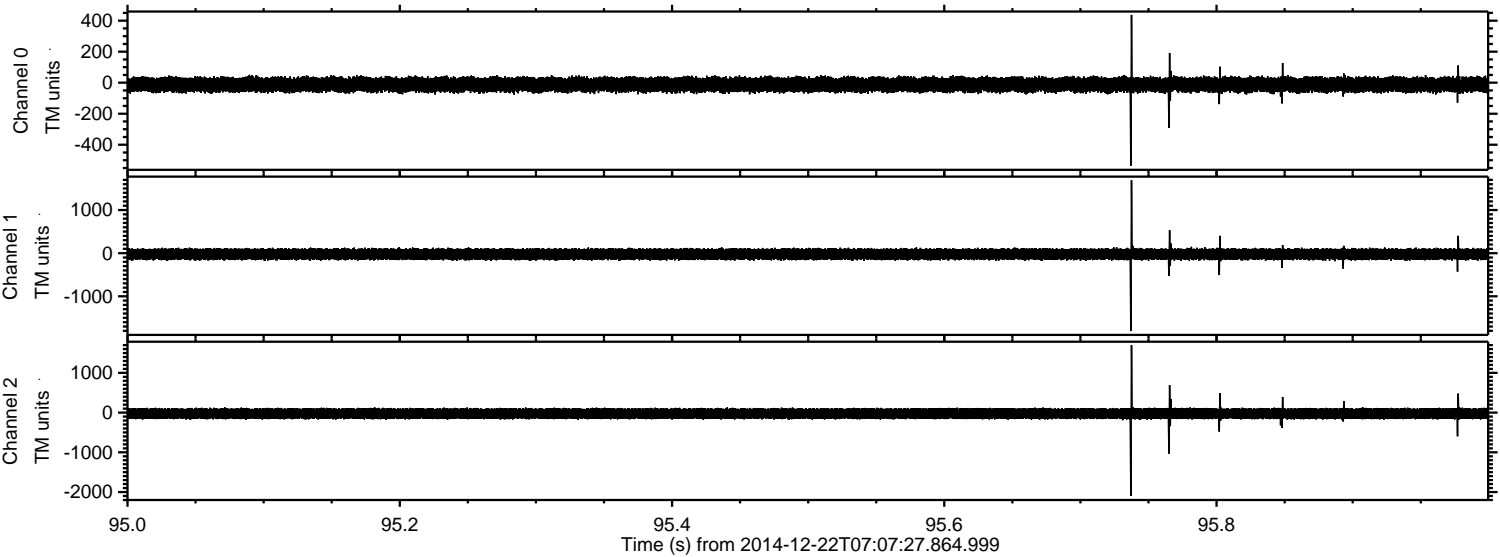
Processed Mon Dec 22 08:15:31 2014 by ELM ver.2012-10-06 from 001__elm20141222_070726__dat00.bin



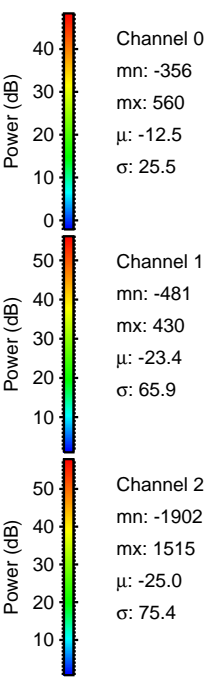
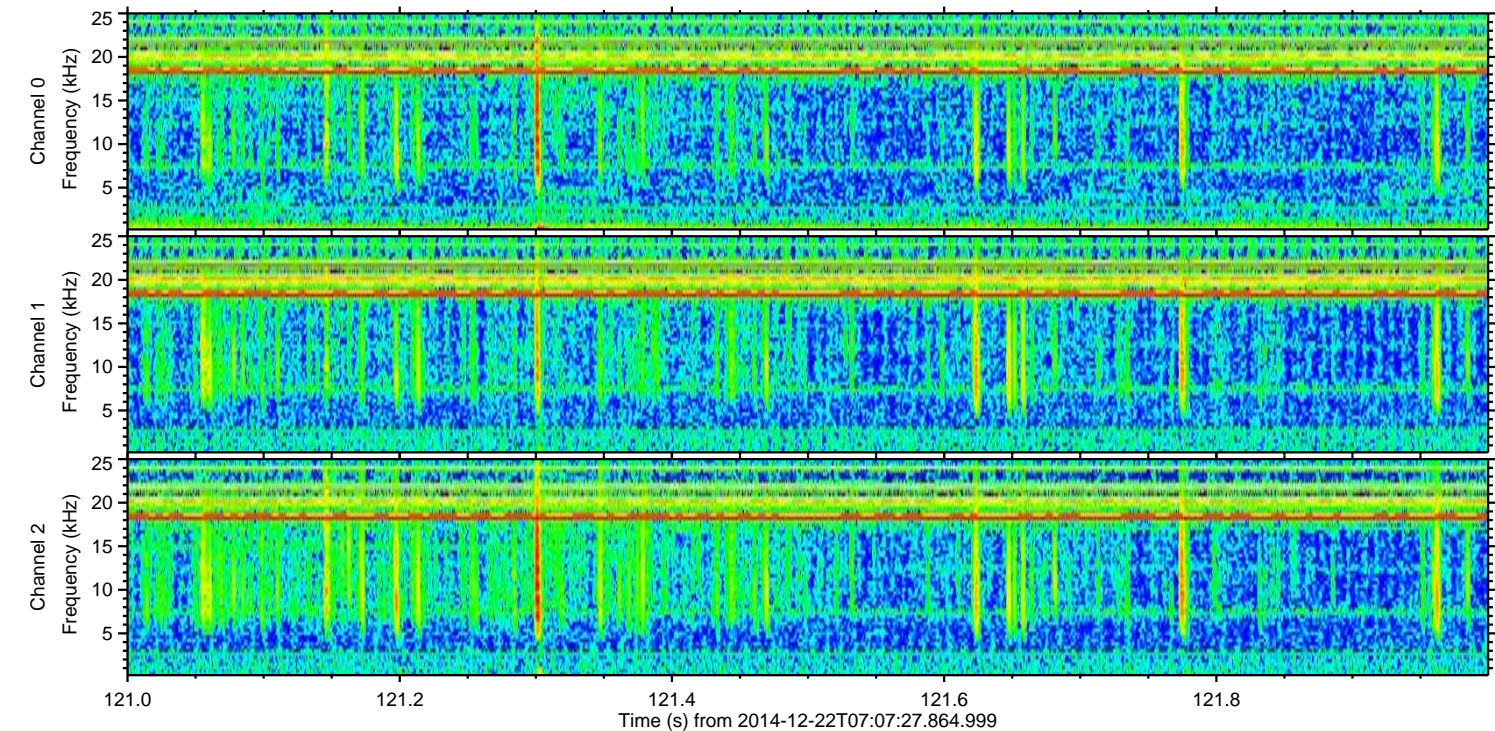
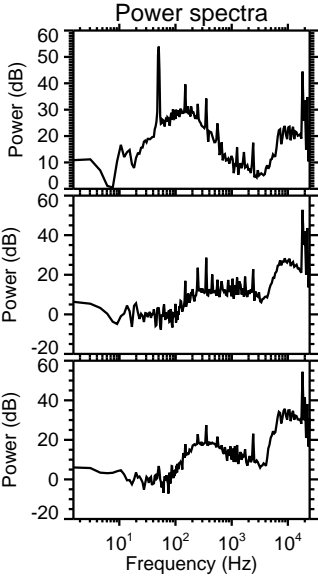
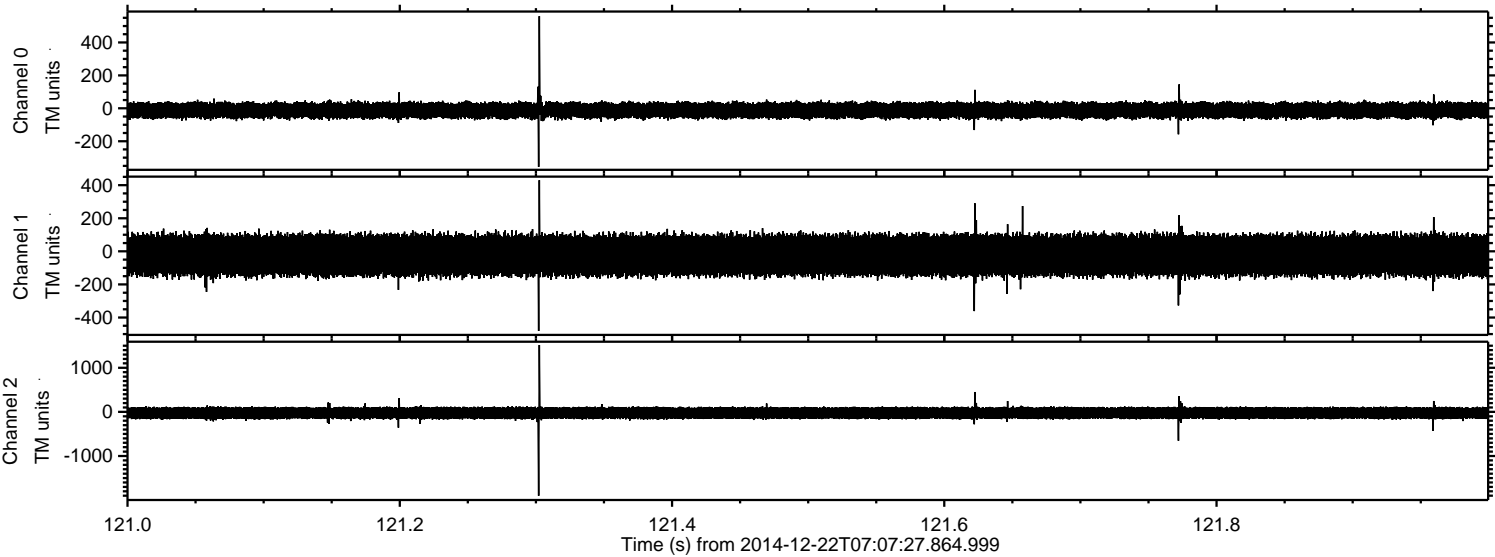
Processed Mon Dec 22 08:15:32 2014 by ELM ver.2012-10-06 from 001__elm20141222_070726__dat00.bin



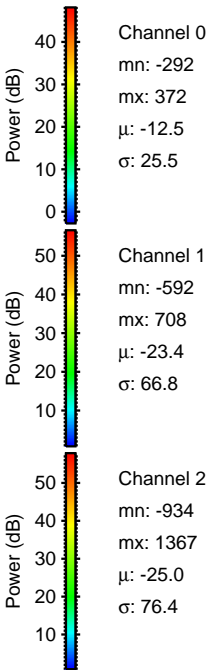
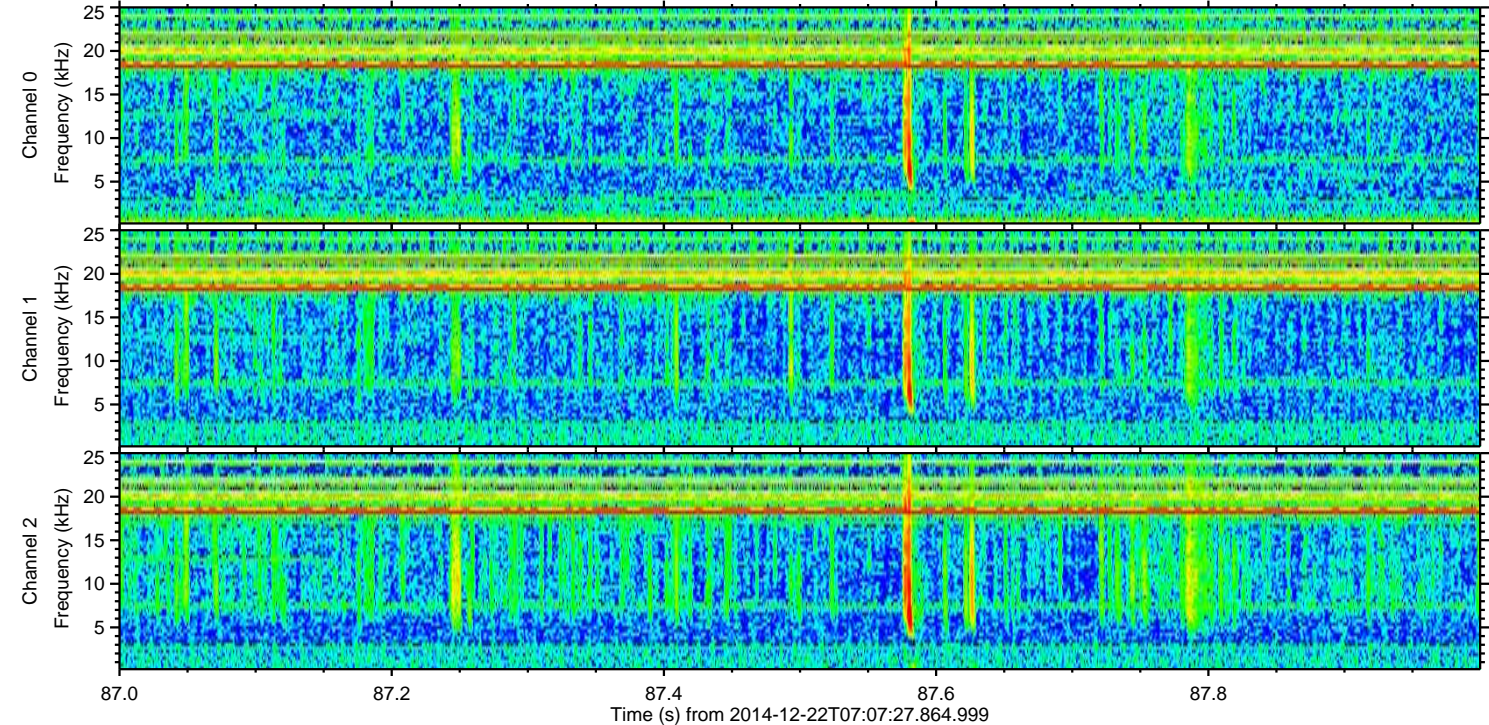
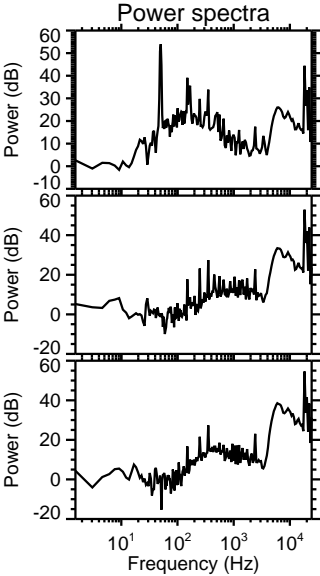
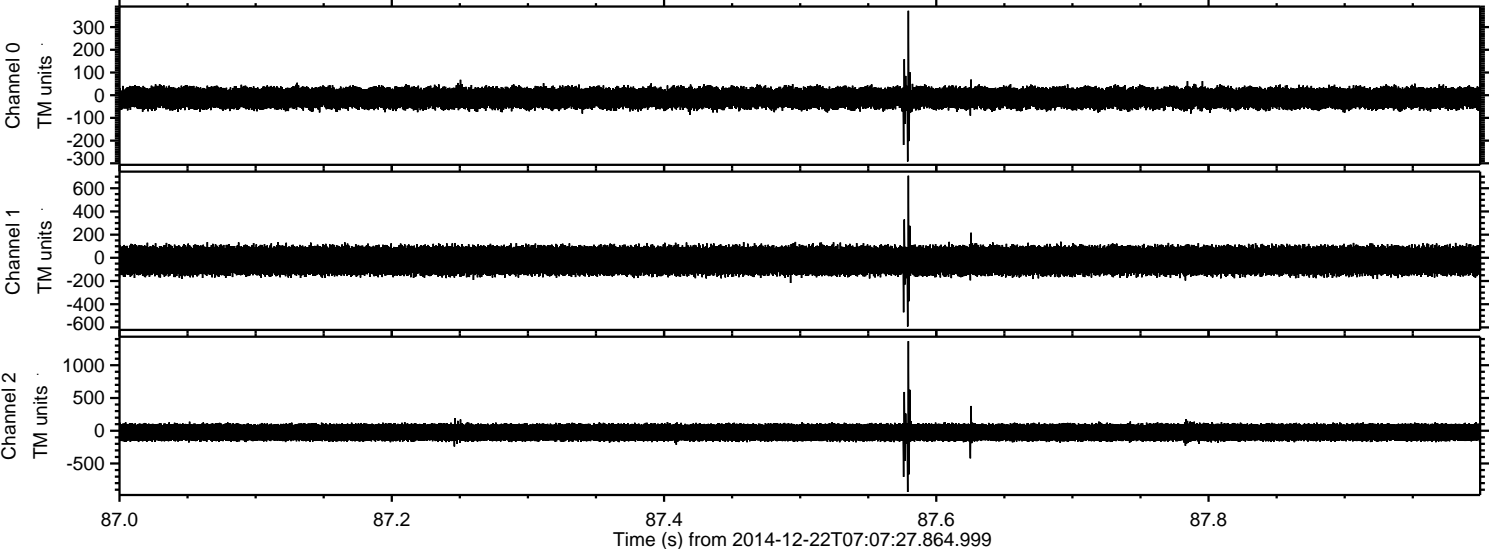
Processed Mon Dec 22 08:15:33 2014 by ELM ver.2012-10-06 from 001__elm20141222_070726__dat00.bin



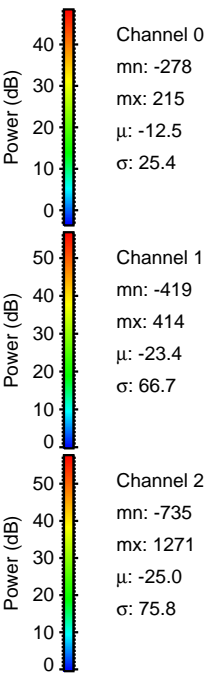
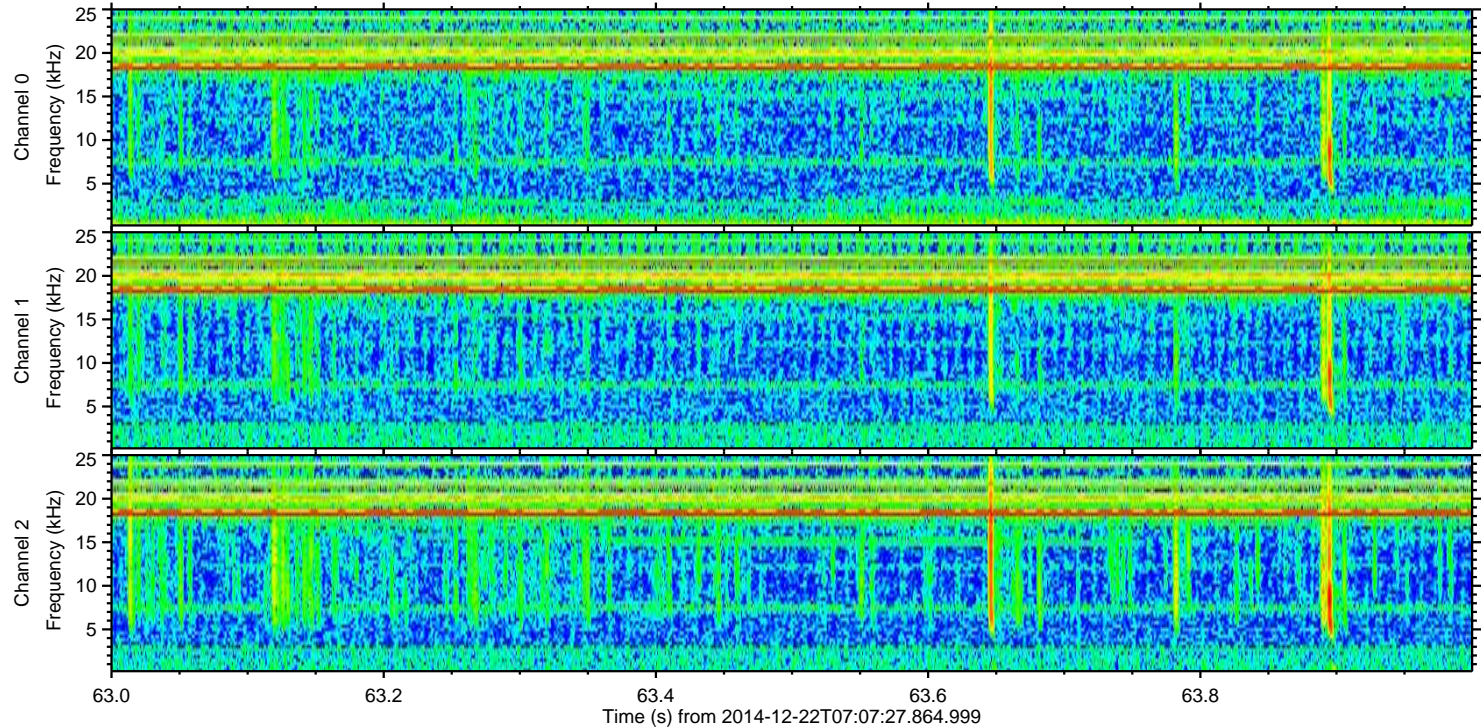
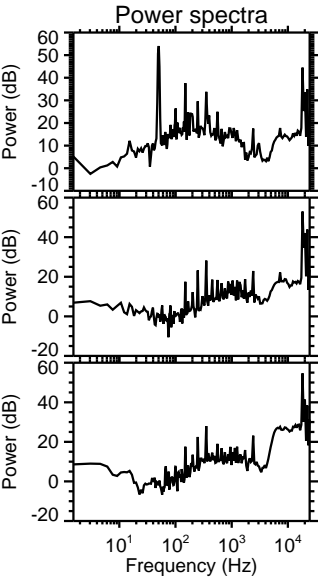
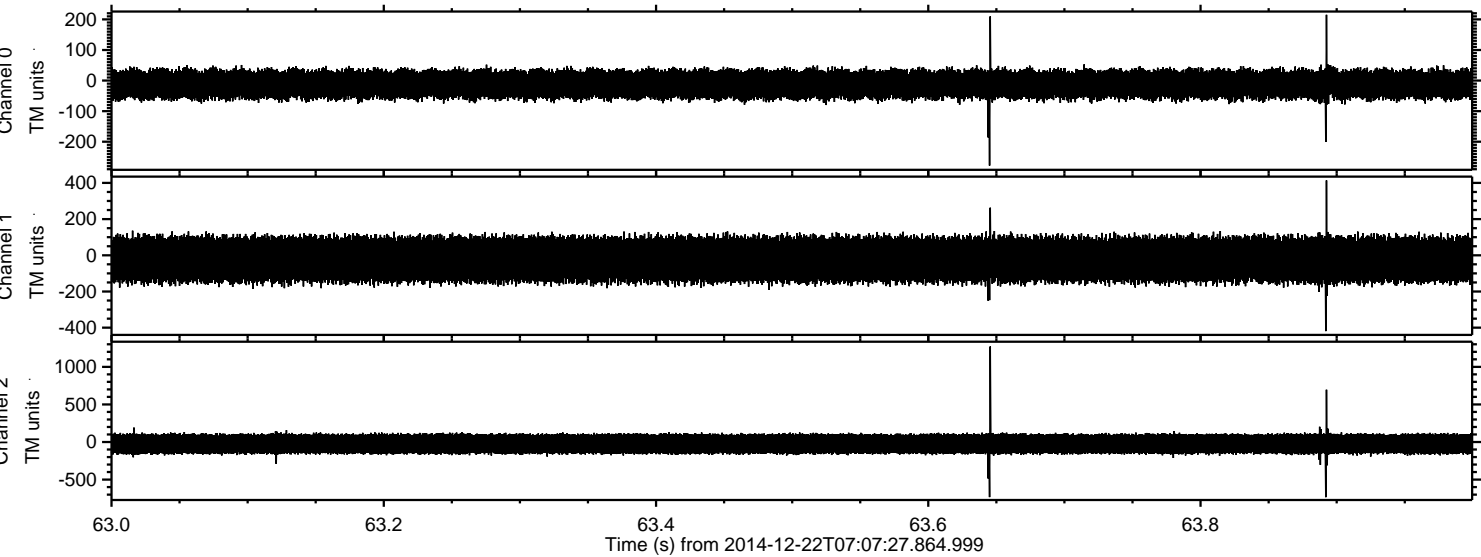
Processed Mon Dec 22 08:15:34 2014 by ELM ver.2012-10-06 from 001__elm20141222_070726__dat00.bin



Processed Mon Dec 22 08:15:35 2014 by ELM ver.2012-10-06 from 001__elm20141222_070726__dat00.bin

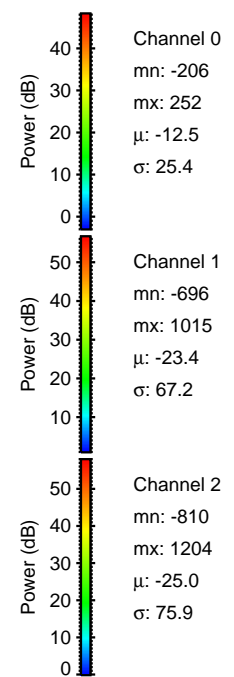
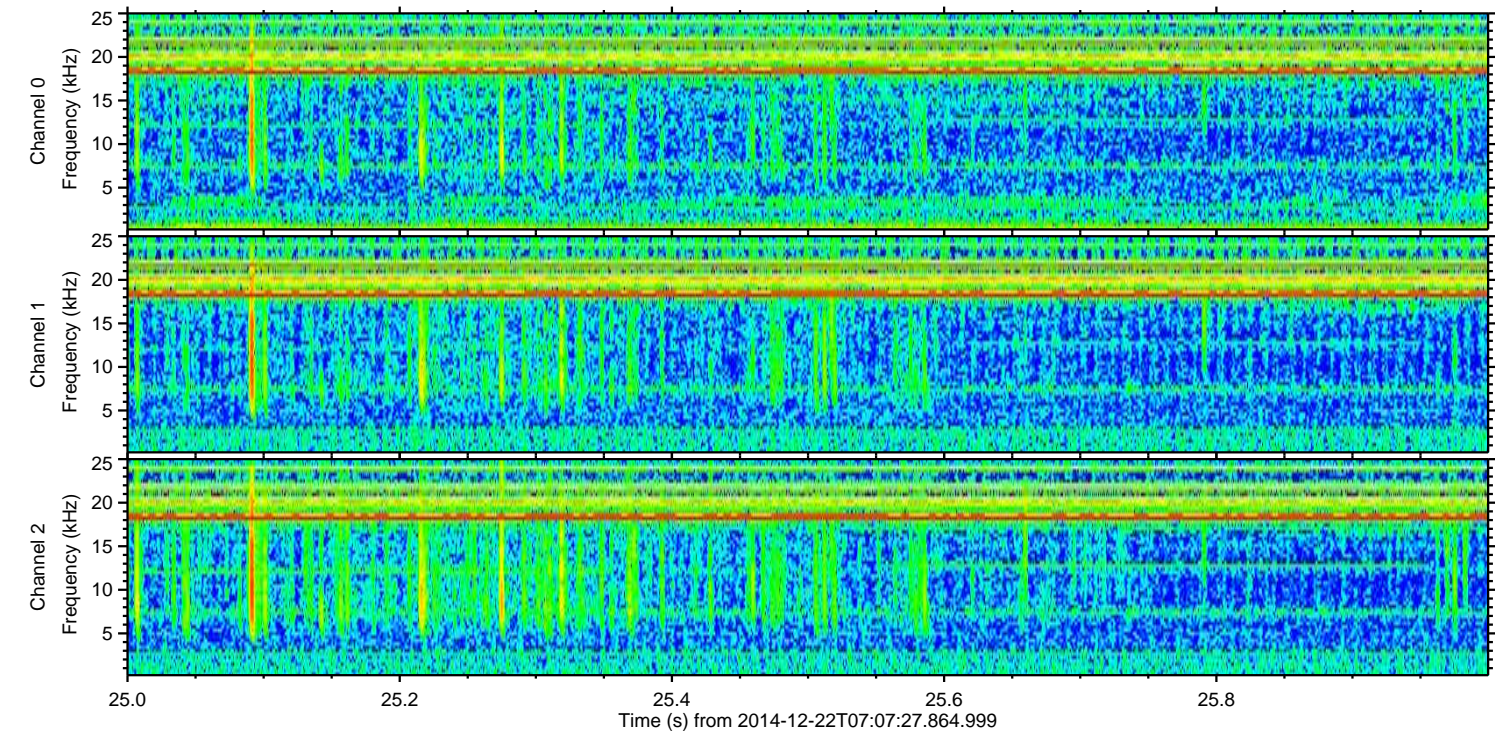
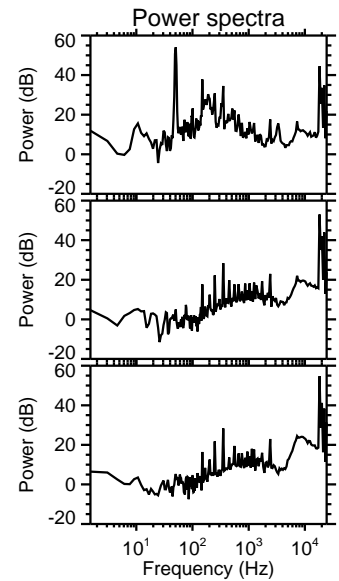
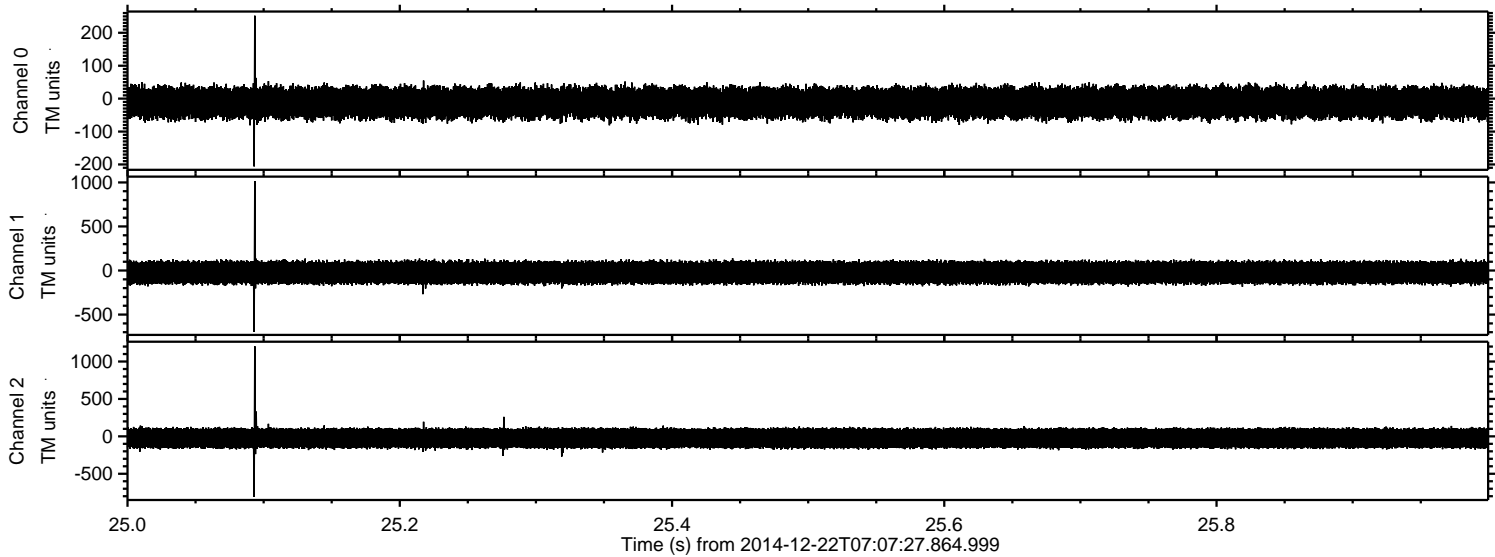


Processed Mon Dec 22 08:15:36 2014 by ELM ver.2012-10-06 from 001__elm20141222_070726__dat00.bin



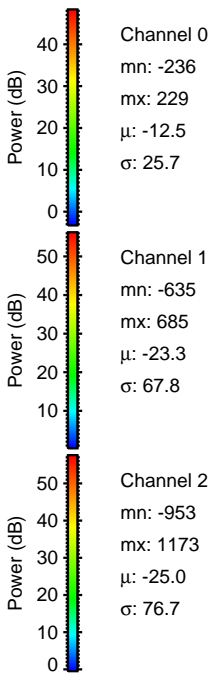
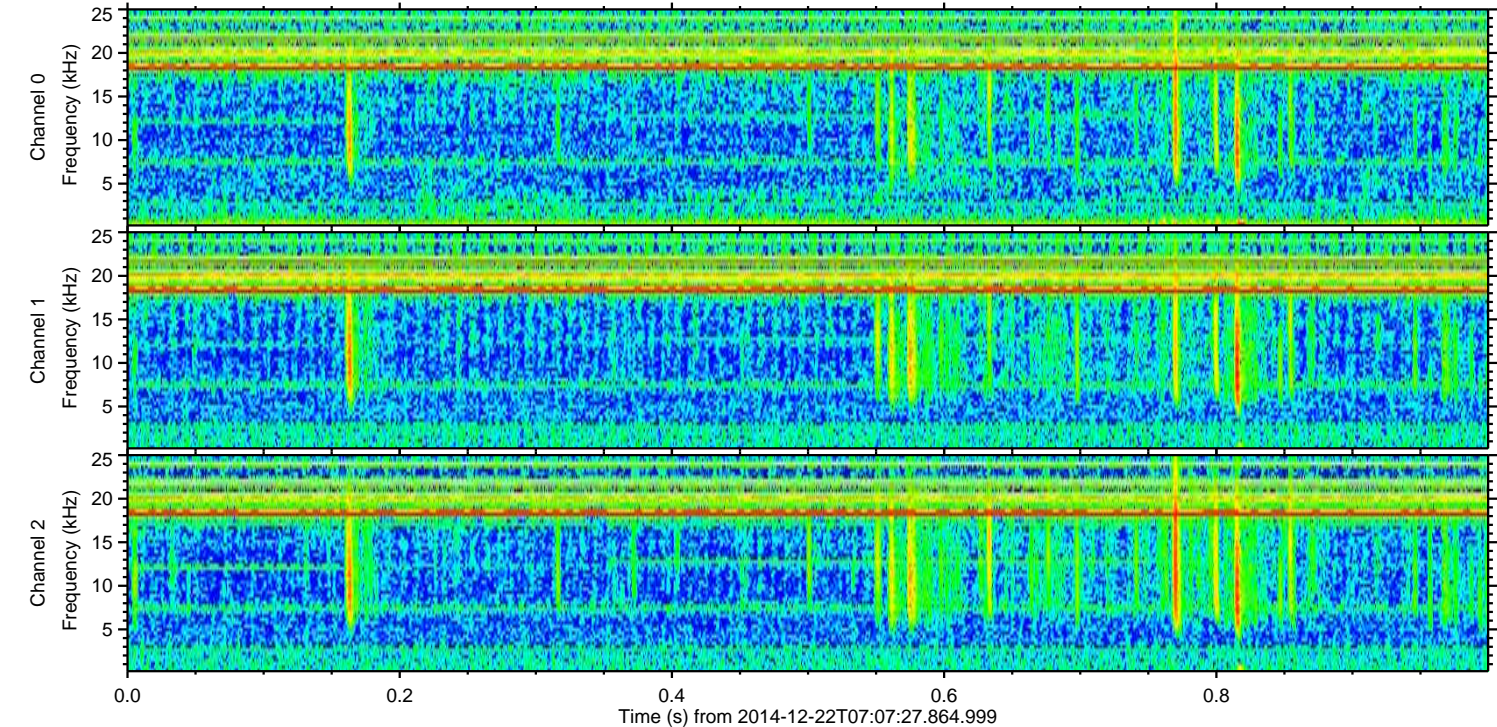
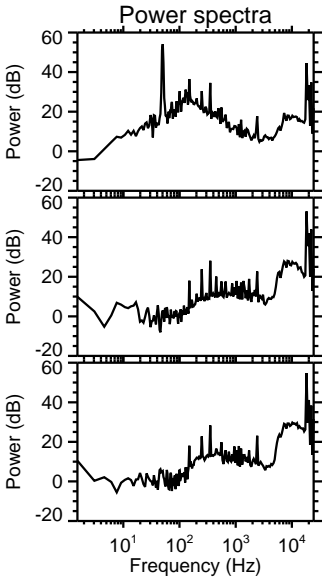
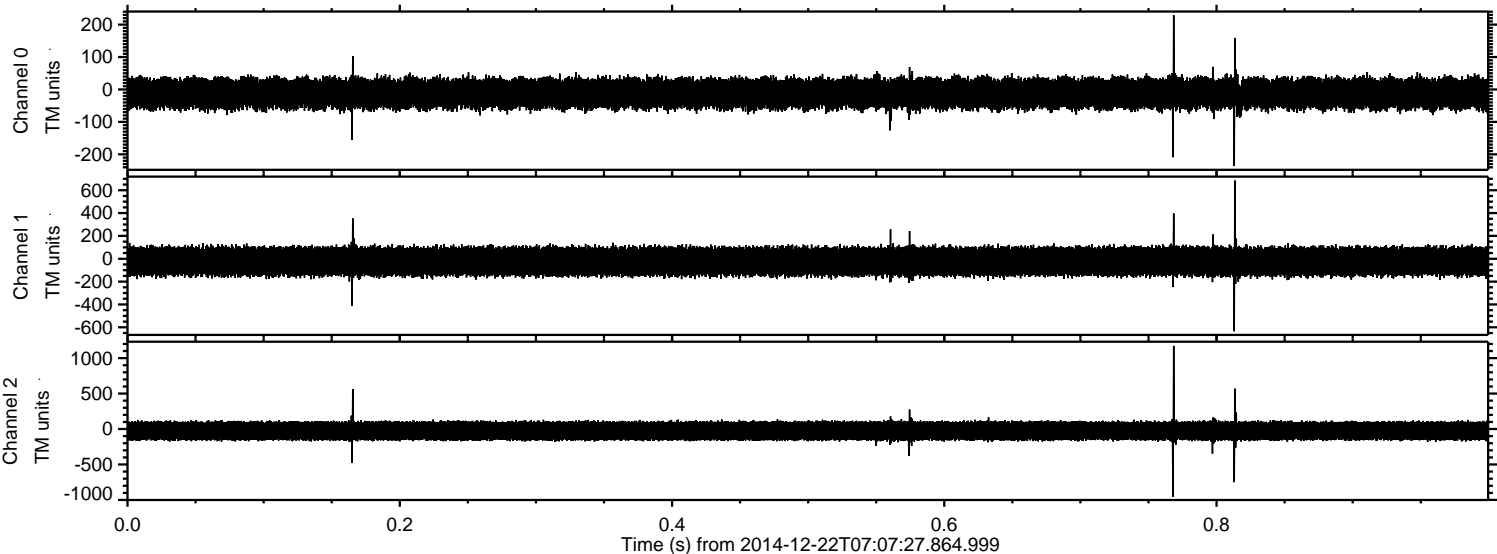
ELMAVAN 3D WAVEFORMS (Measured data sampled at 50 kHz) 49791 packets of 144 samples from 2014-12-22T07:07:27.864.999. Part 26/144

Processed Mon Dec 22 08:15:37 2014 by ELM ver.2012-10-06 from 001__elm20141222_070726__dat00.bin



ELMAVAN 3D WAVEFORMS (Measured data sampled at 50 kHz) 49791 packets of 144 samples from 2014-12-22T07:07:27.864.999. Part 1/144

Processed Mon Dec 22 08:15:38 2014 by ELM ver.2012-10-06 from 001__elm20141222_070726__dat00.bin



Channel 0
mn: -236
mx: 229
 μ : -12.5
 σ : 25.7

Channel 1
mn: -635
mx: 685
 μ : -23.3
 σ : 67.8

Channel 2
mn: -953
mx: 1173
 μ : -25.0
 σ : 76.7

Processed Mon Dec 22 08:15:39 2014 by ELM ver.2012-10-06 from 001__elm20141222_070726__dat00.bin

