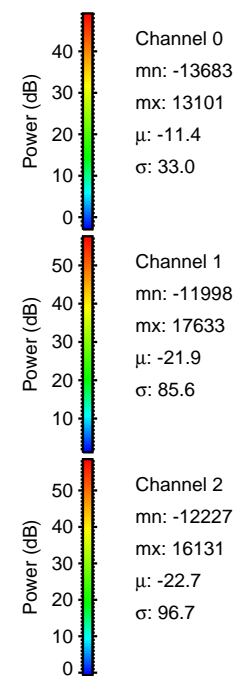
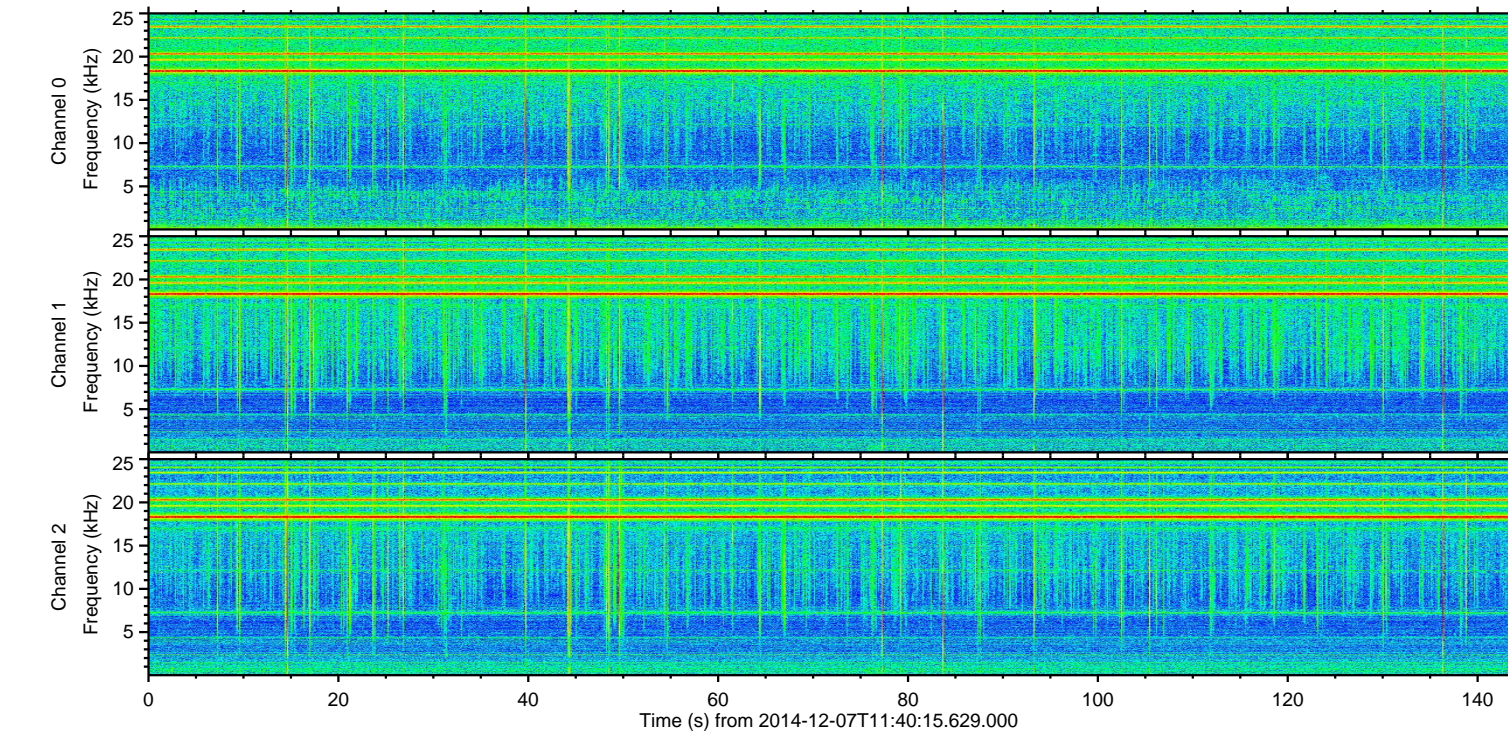
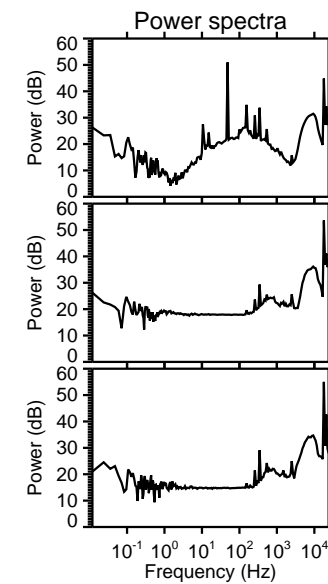
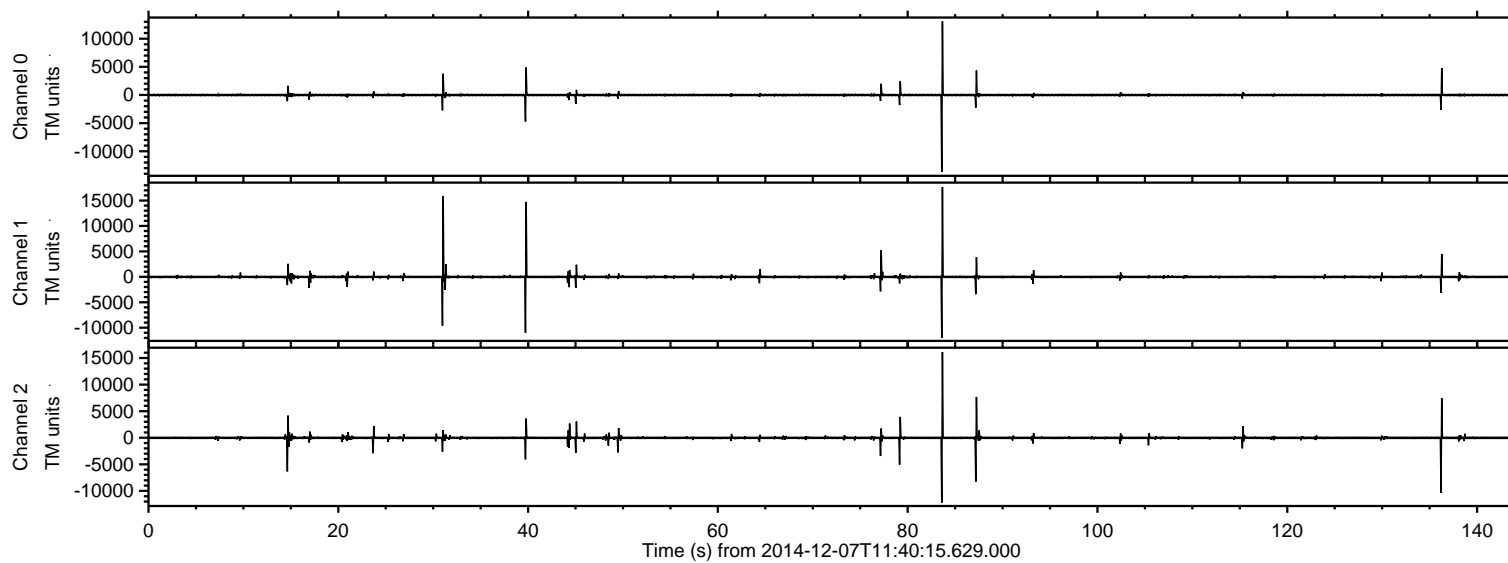
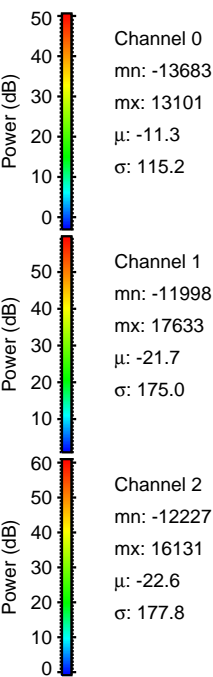
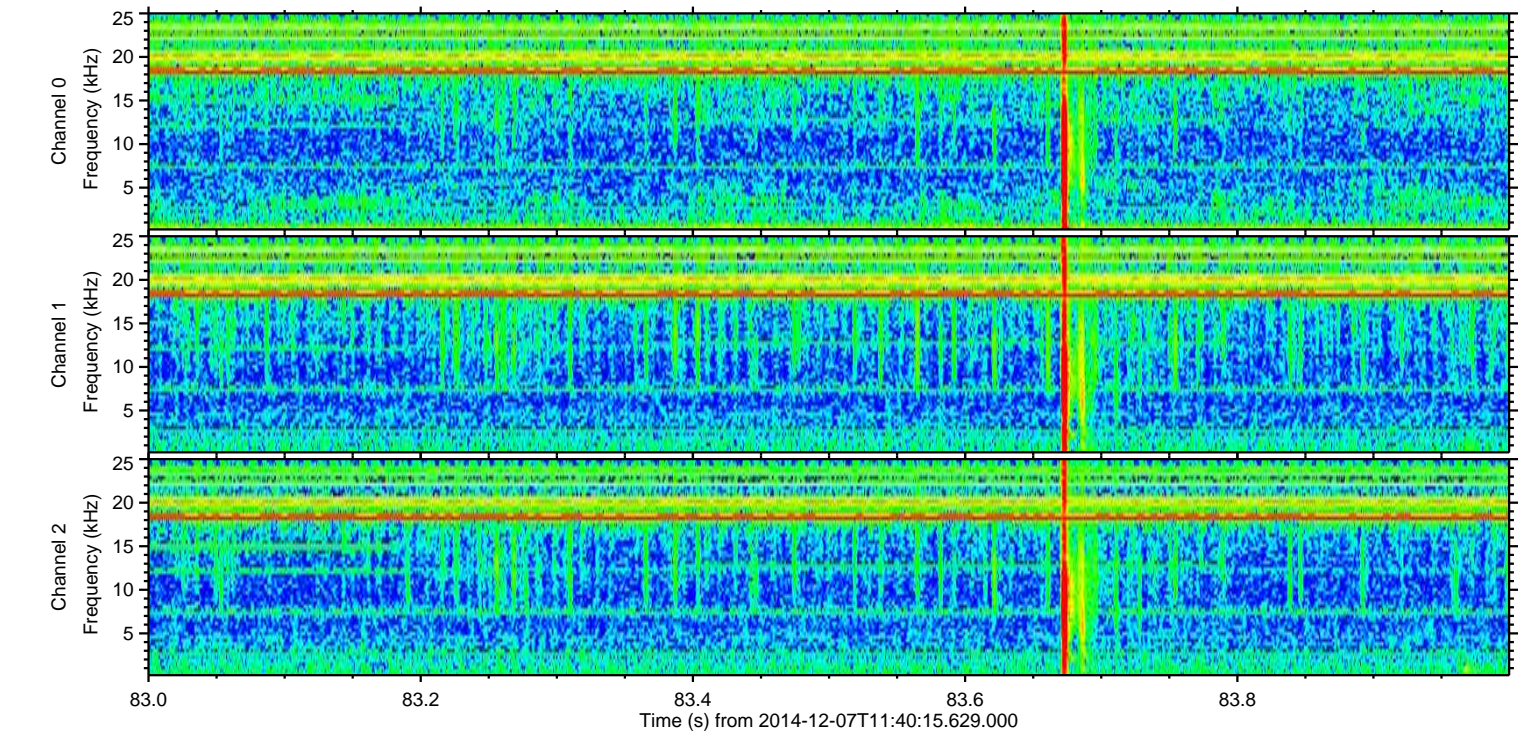
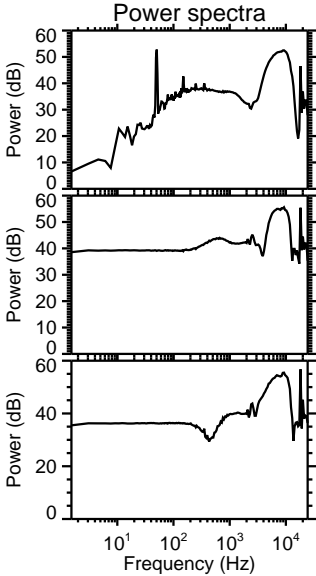
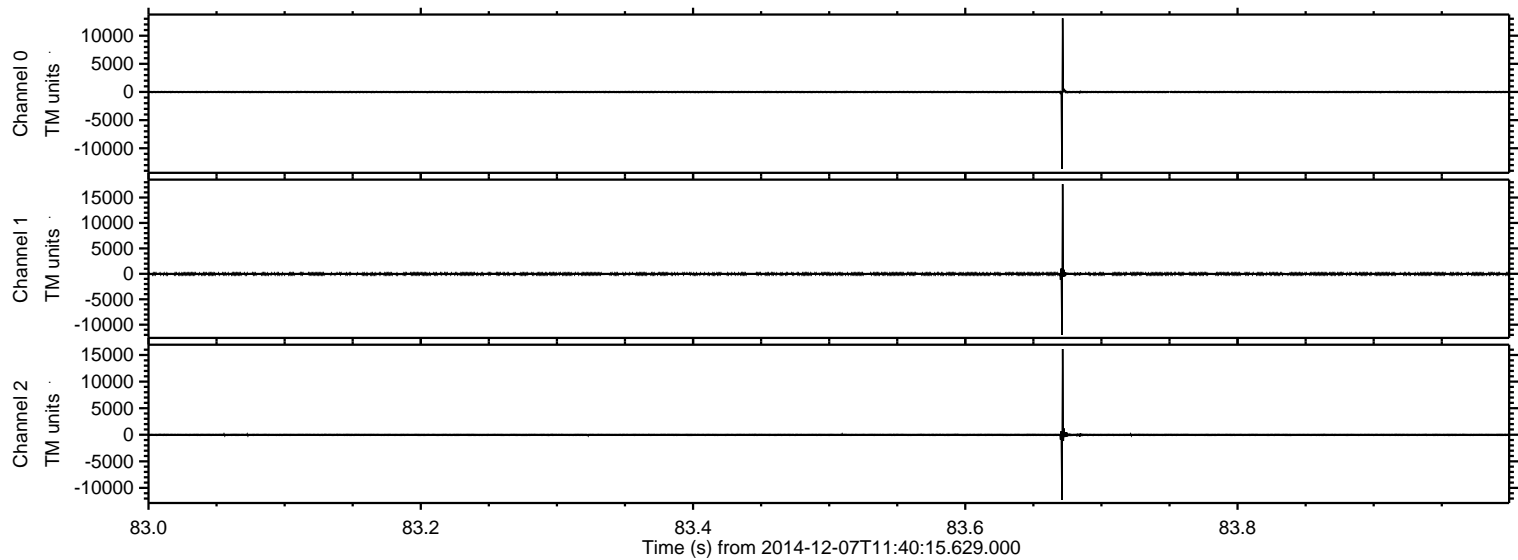


ELMAVAN 3D WAVEFORMS (Measured data sampled at 50 kHz) 49785 packets of 144 samples from 2014-12-07T11:40:15.629.000.

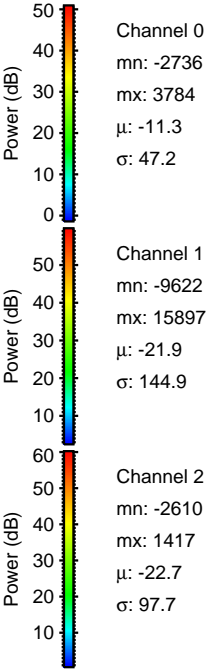
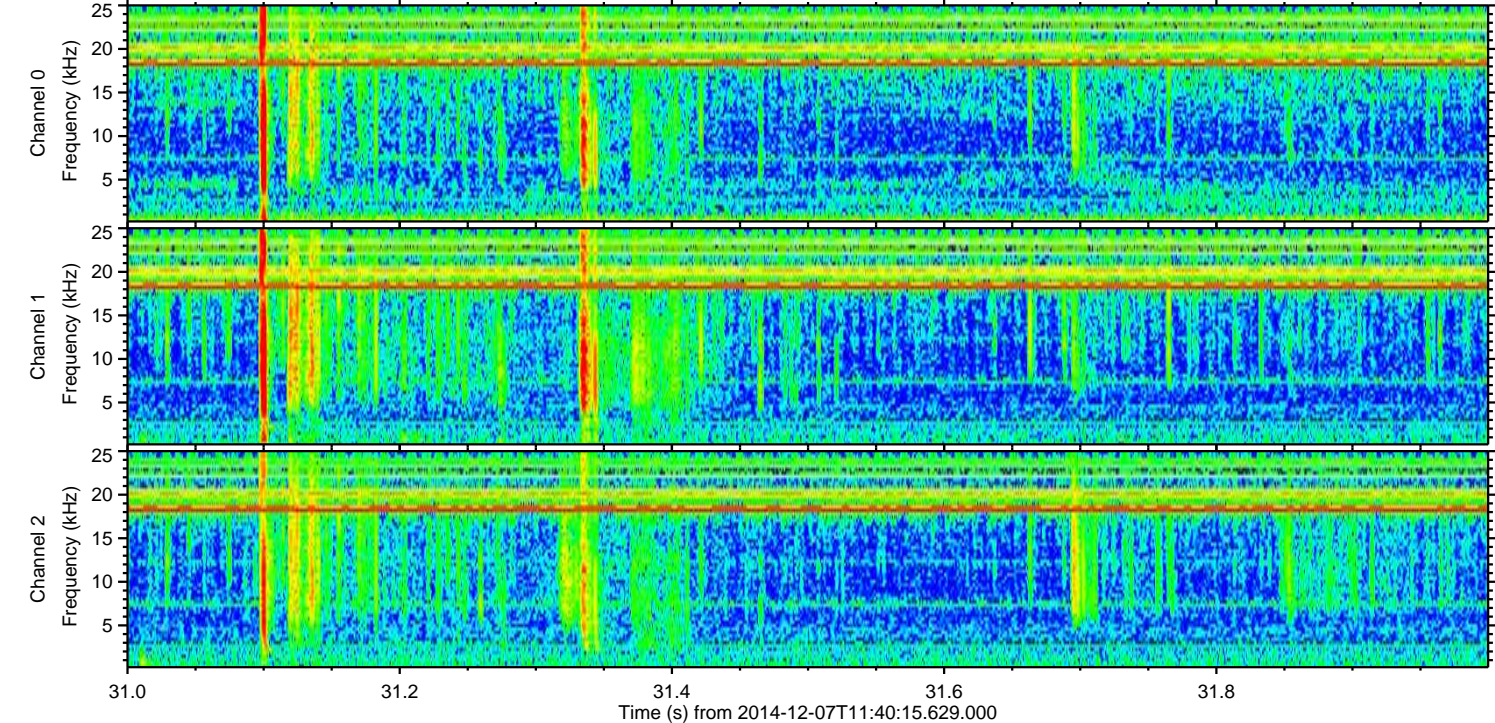
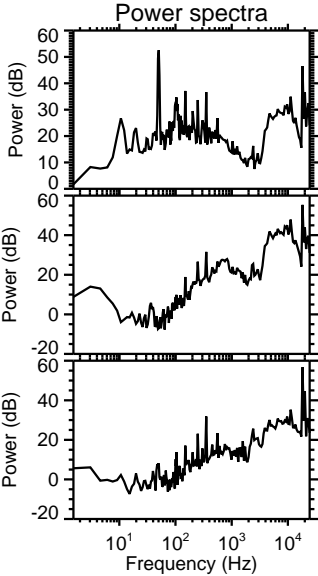
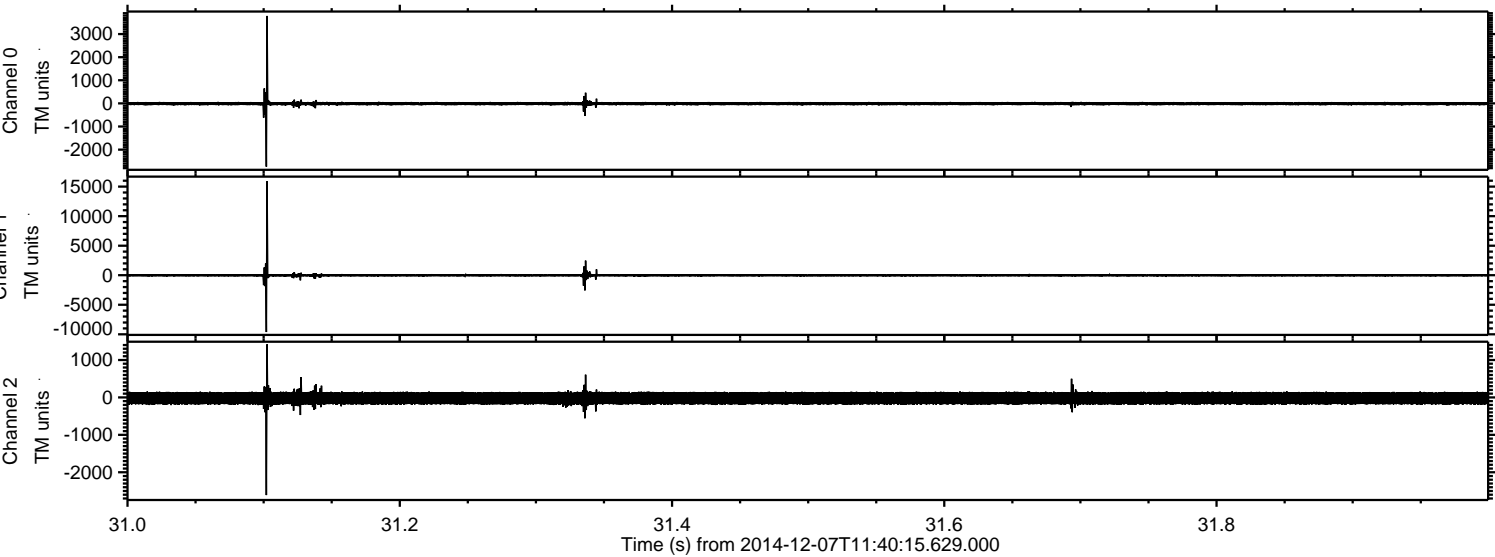
Processed Sun Dec 7 12:48:43 2014 by ELM ver.2012-10-06 from 001__elm20141207_114014__dat00.bin



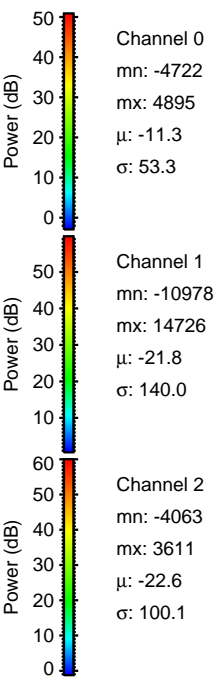
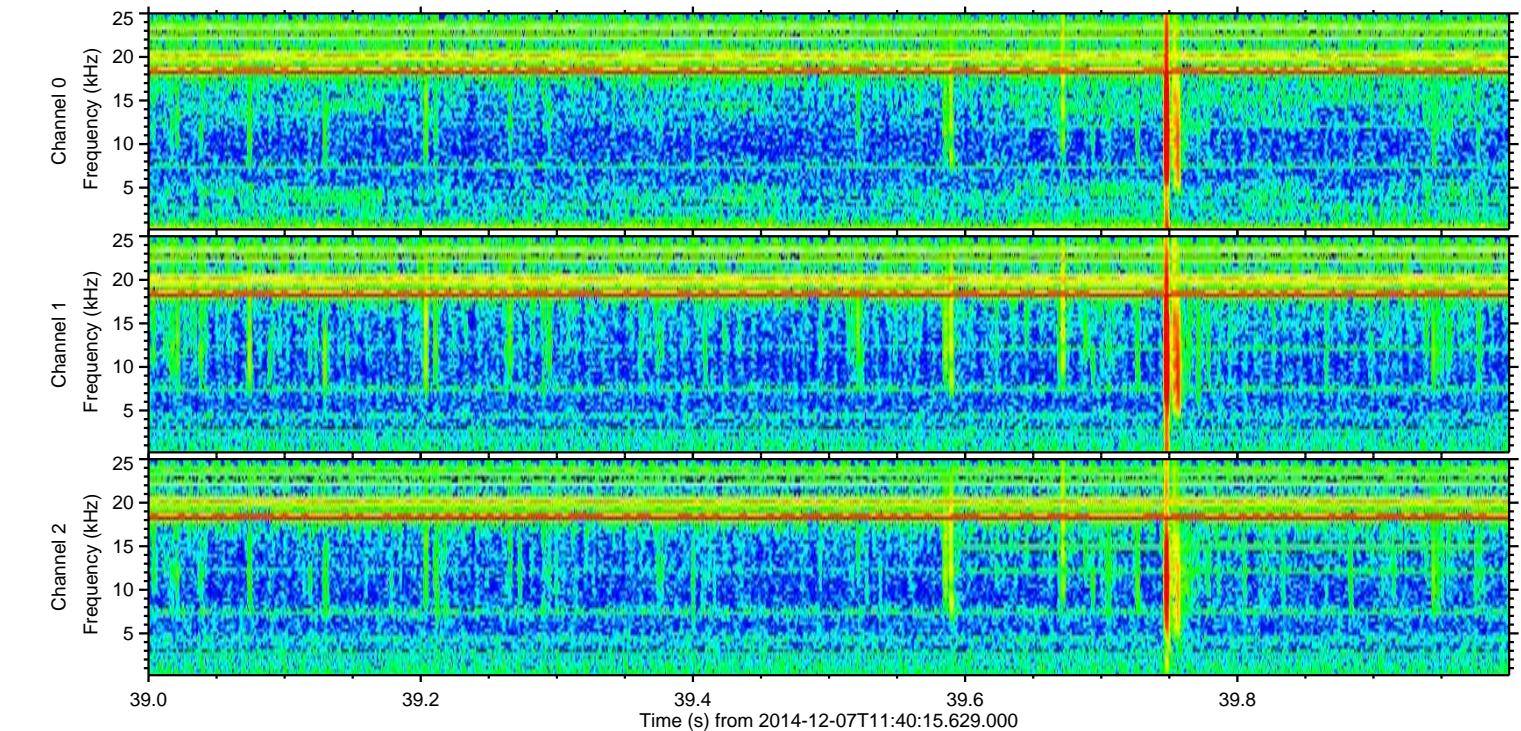
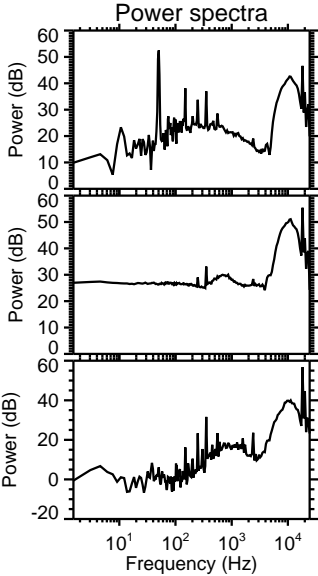
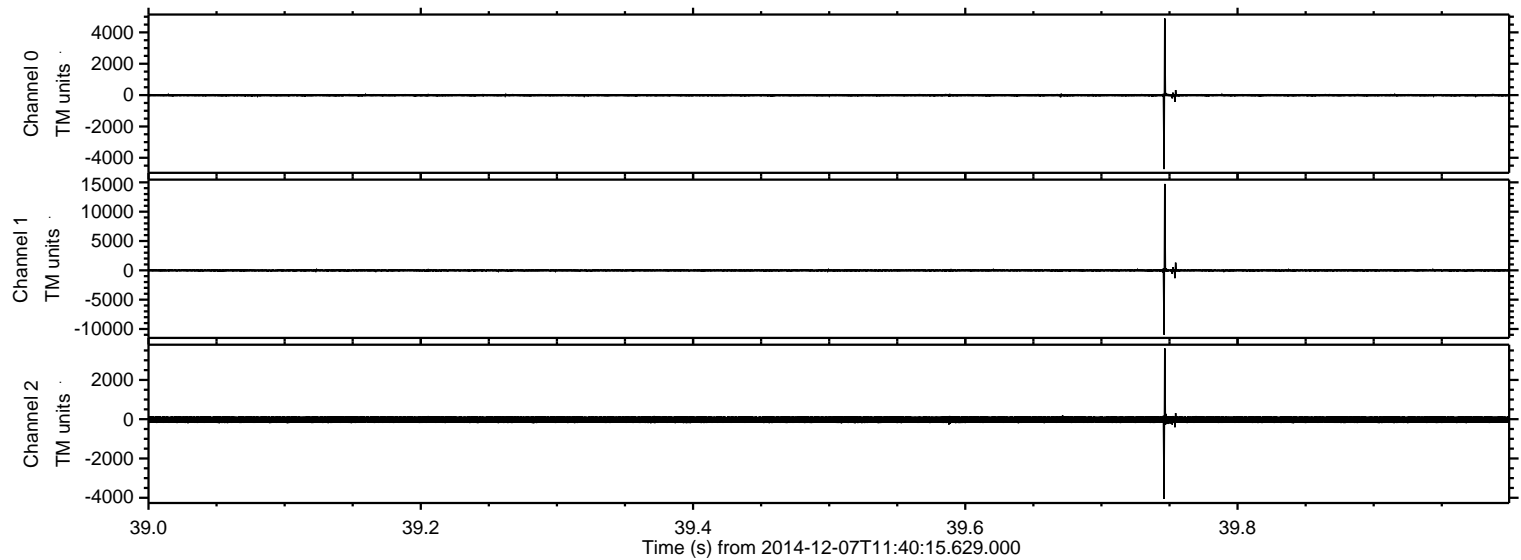
Processed Sun Dec 7 12:48:54 2014 by ELM ver.2012-10-06 from 001__elm20141207_114014__dat00.bin



Processed Sun Dec 7 12:48:55 2014 by ELM ver.2012-10-06 from 001__elm20141207_114014__dat00.bin

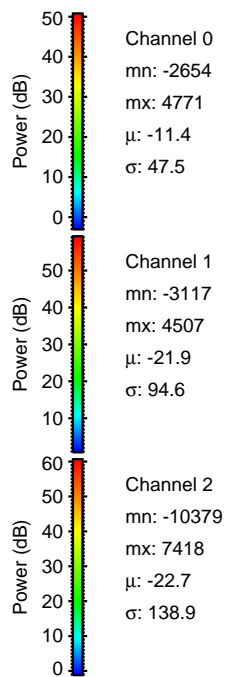
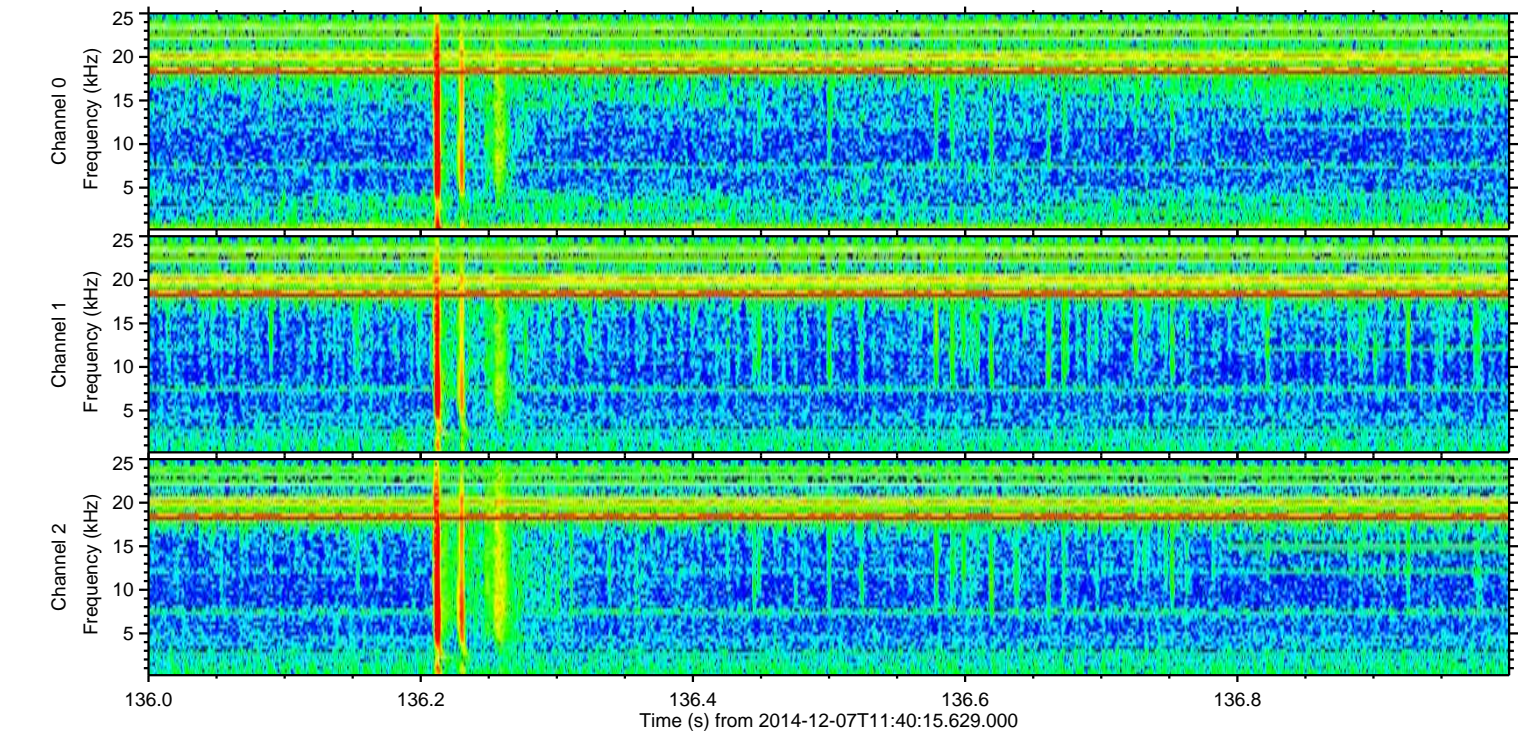
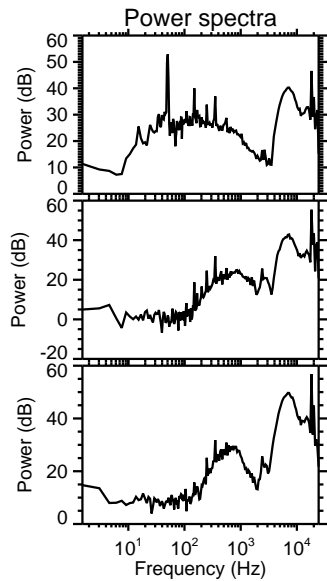
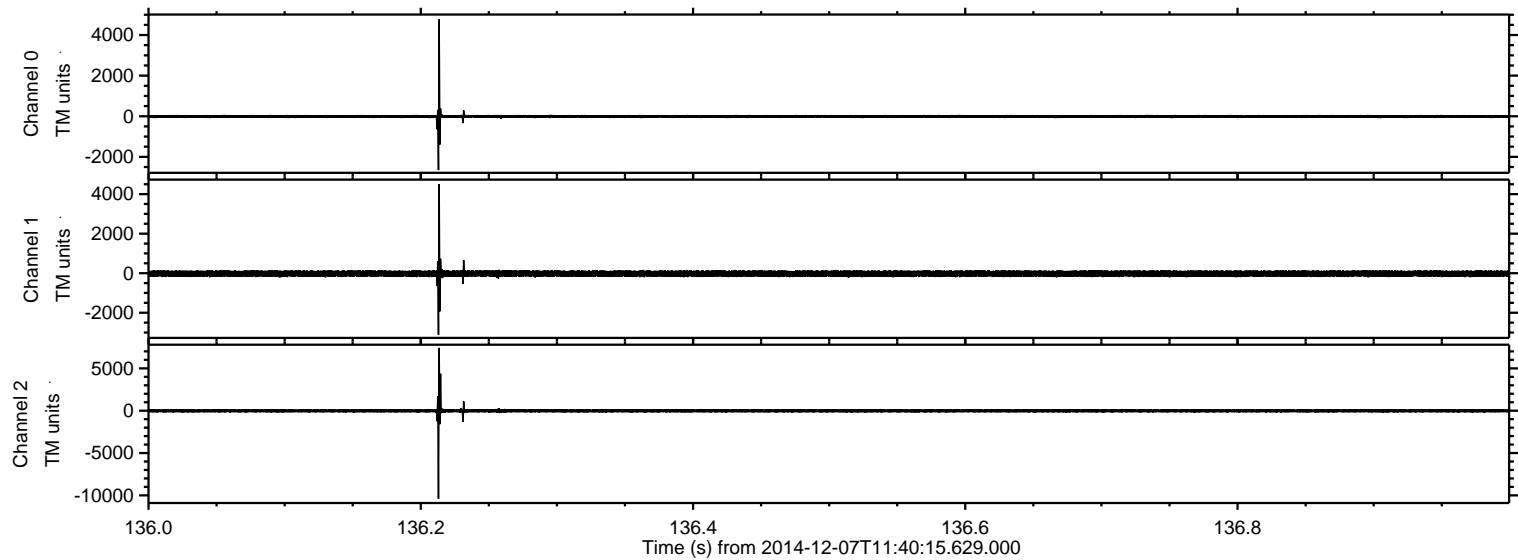


Processed Sun Dec 7 12:48:56 2014 by ELM ver.2012-10-06 from 001__elm20141207_114014__dat00.bin

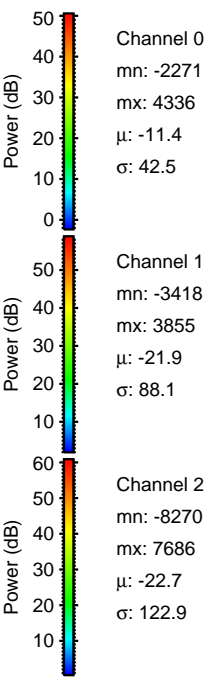
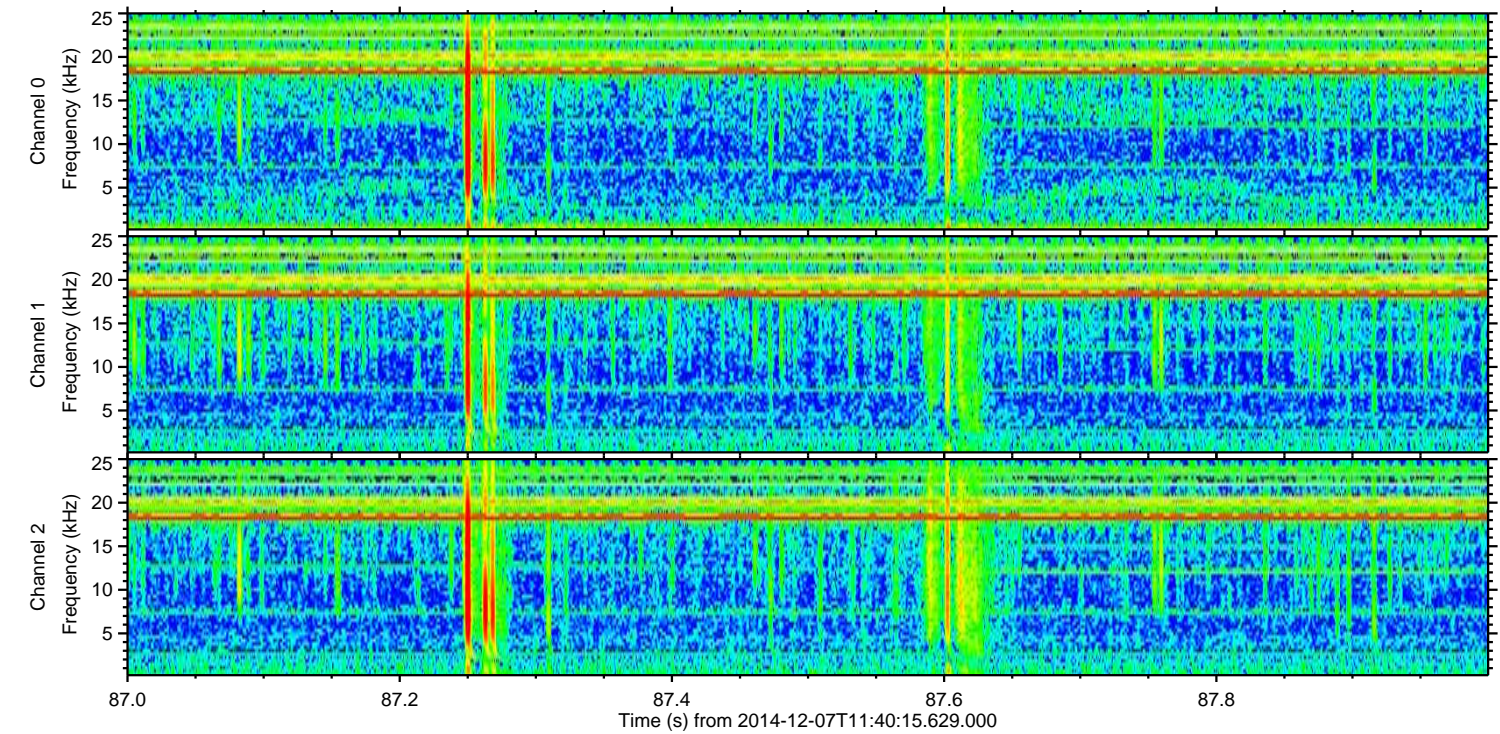
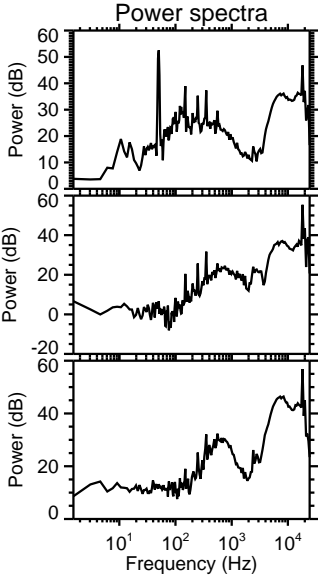
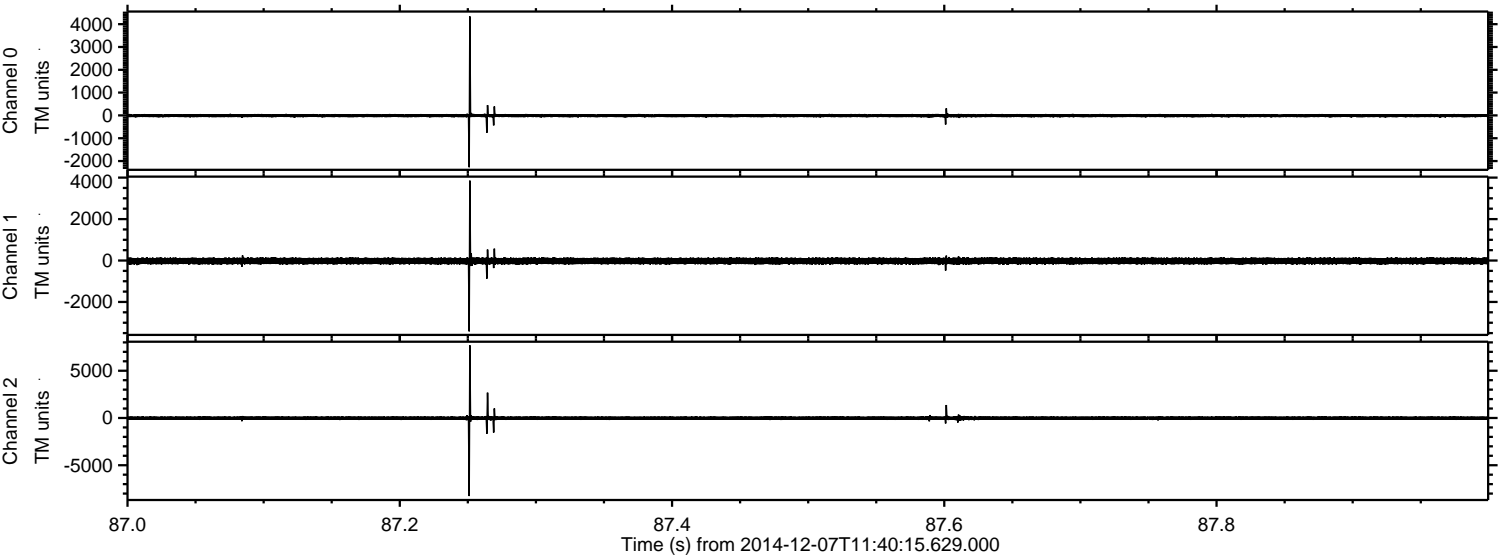


ELMAVAN 3D WAVEFORMS (Measured data sampled at 50 kHz) 49785 packets of 144 samples from 2014-12-07T11:40:15.629.000. Part 137/144

Processed Sun Dec 7 12:48:57 2014 by ELM ver.2012-10-06 from 001__elm20141207_114014__dat00.bin

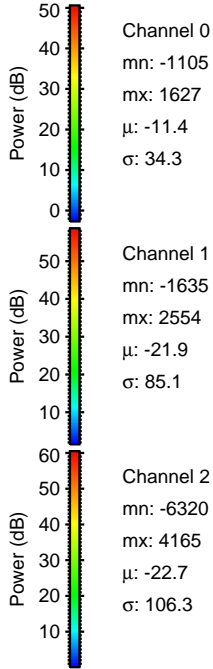
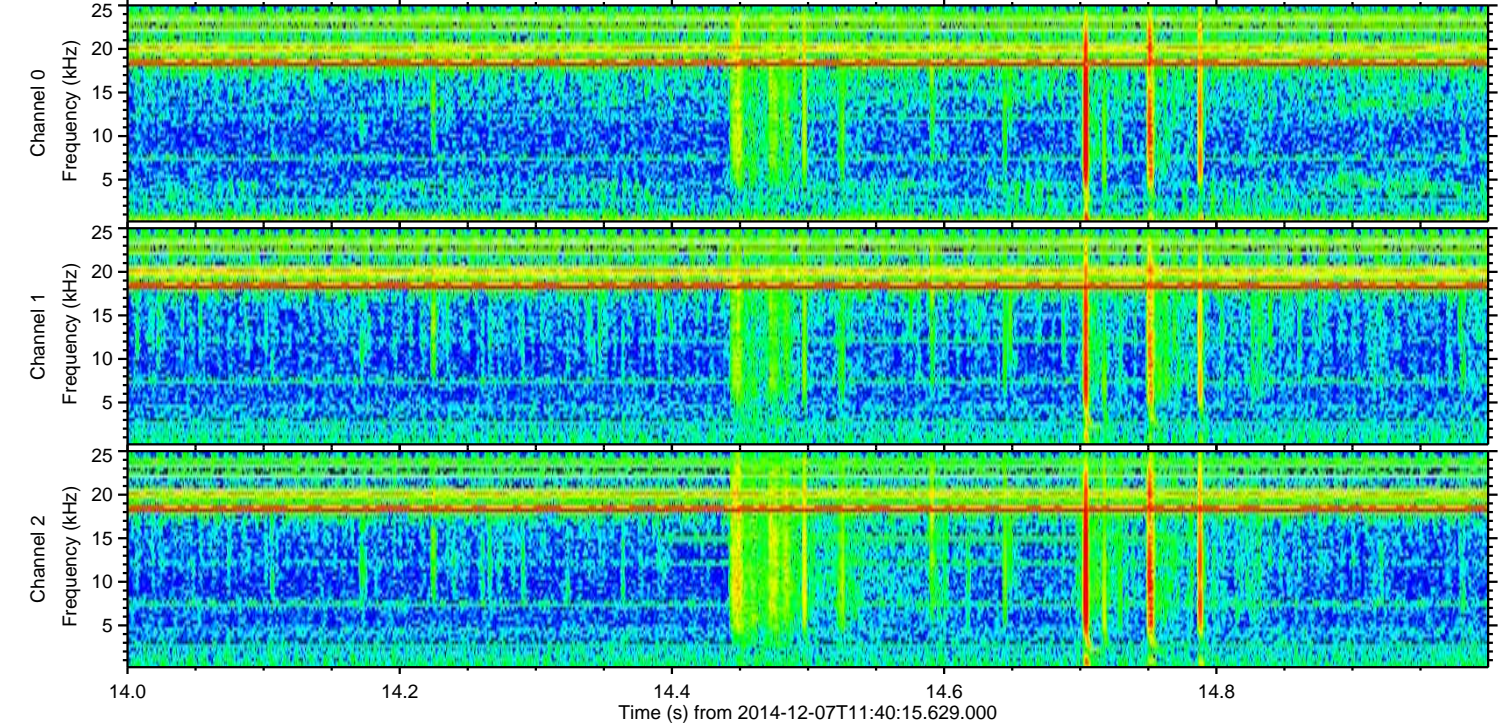
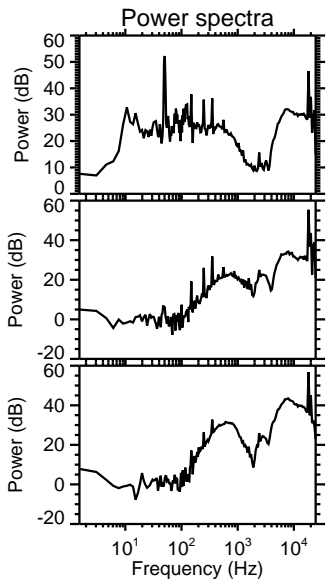
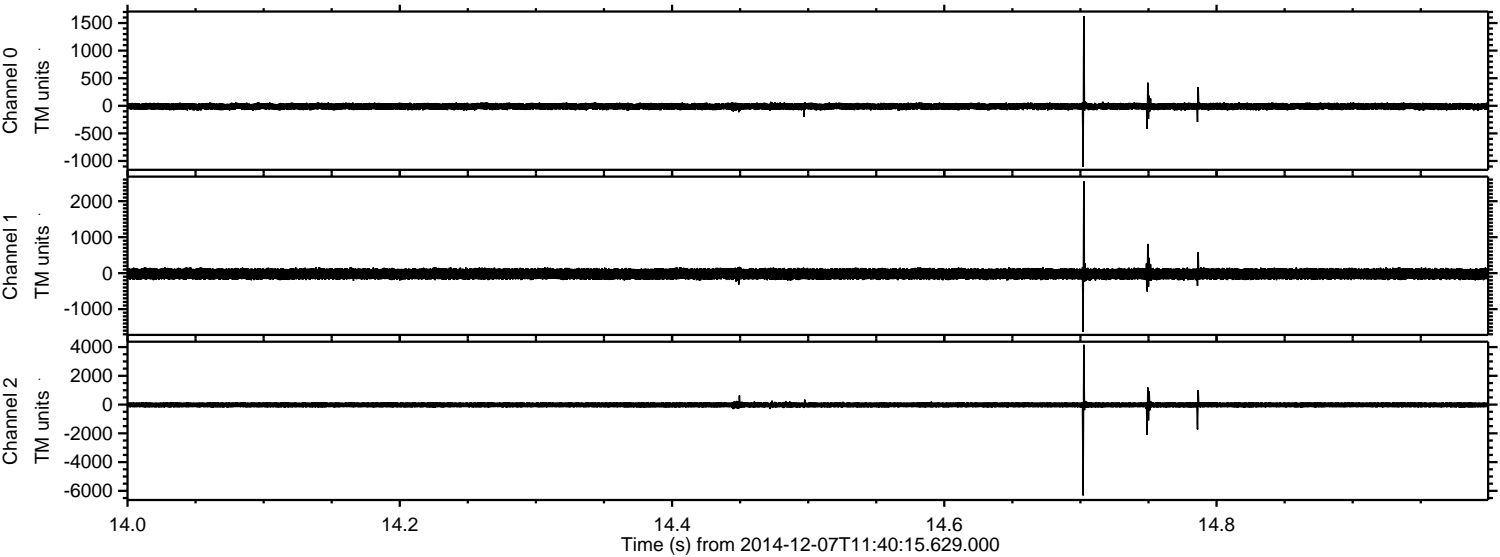


Processed Sun Dec 7 12:48:58 2014 by ELM ver.2012-10-06 from 001__elm20141207_114014__dat00.bin

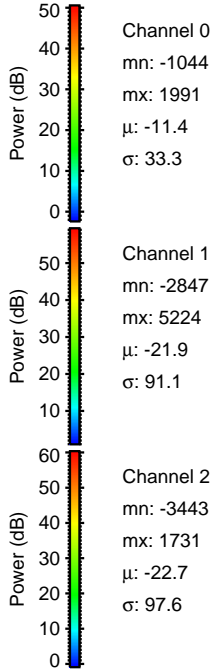
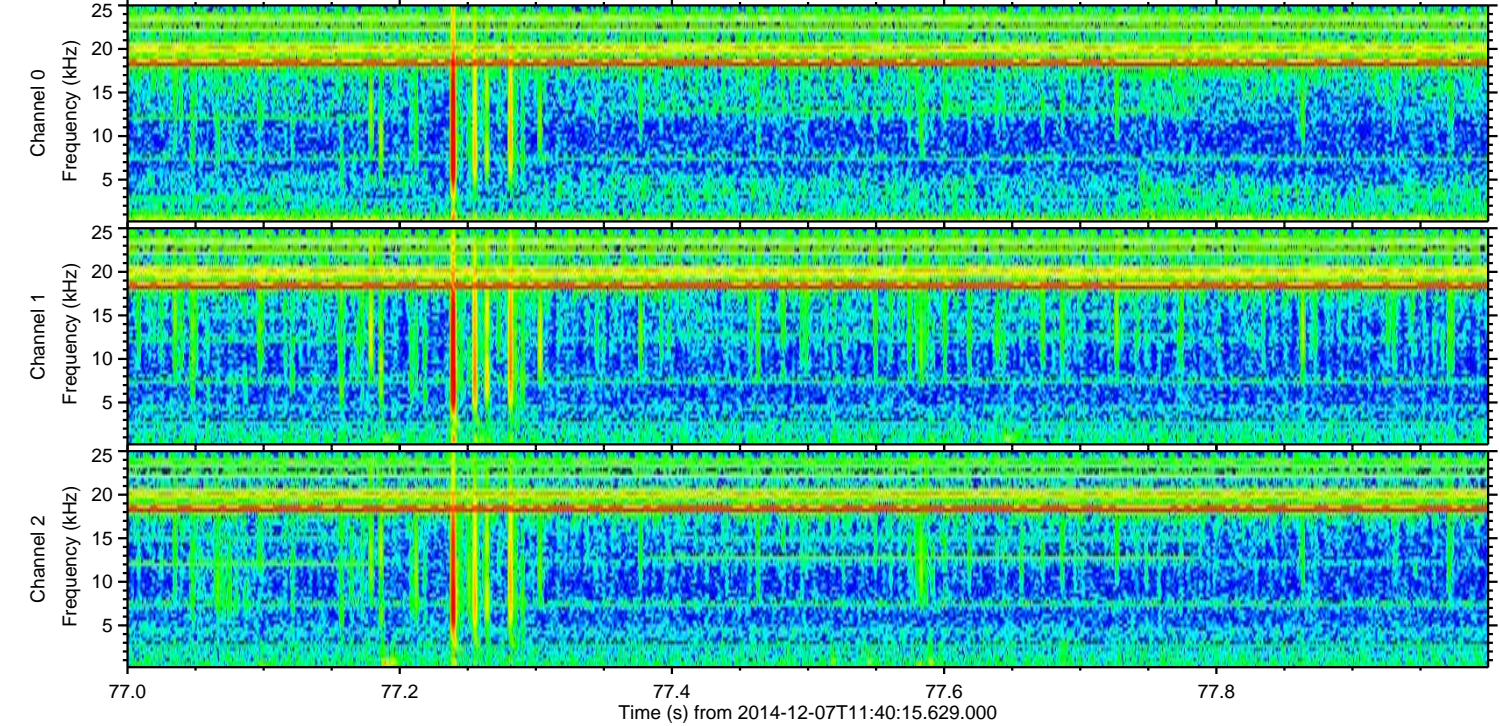
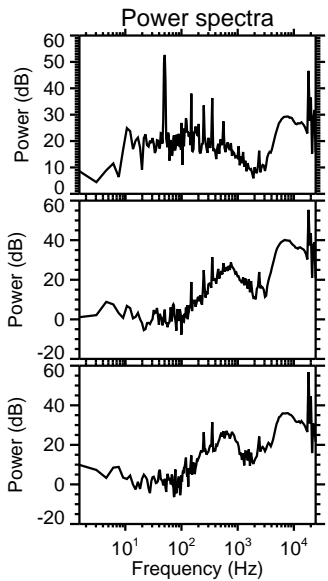
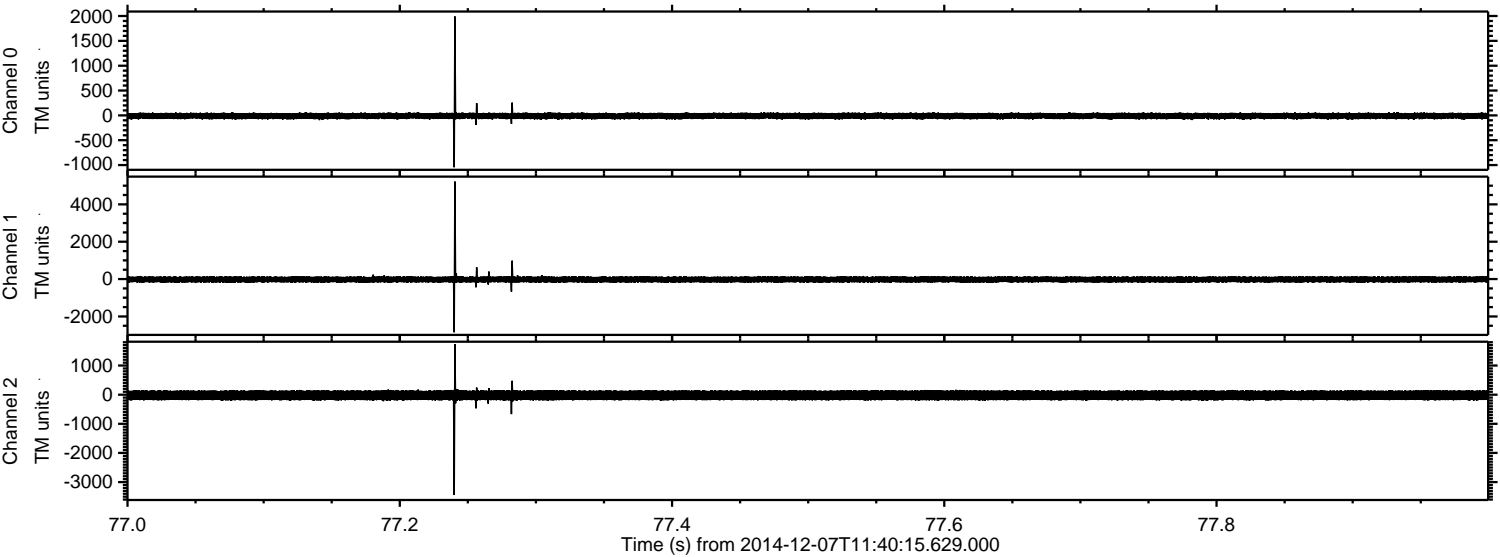


ELMAVAN 3D WAVEFORMS (Measured data sampled at 50 kHz) 49785 packets of 144 samples from 2014-12-07T11:40:15.629.000. Part 15/144

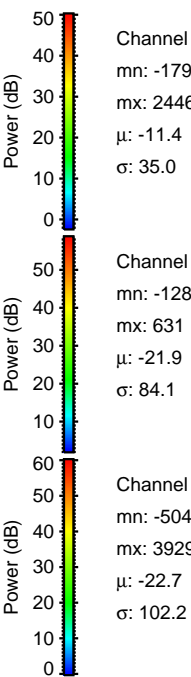
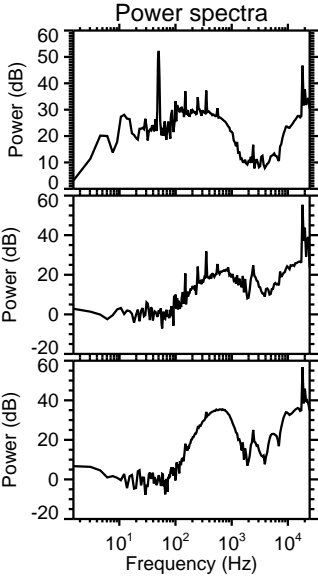
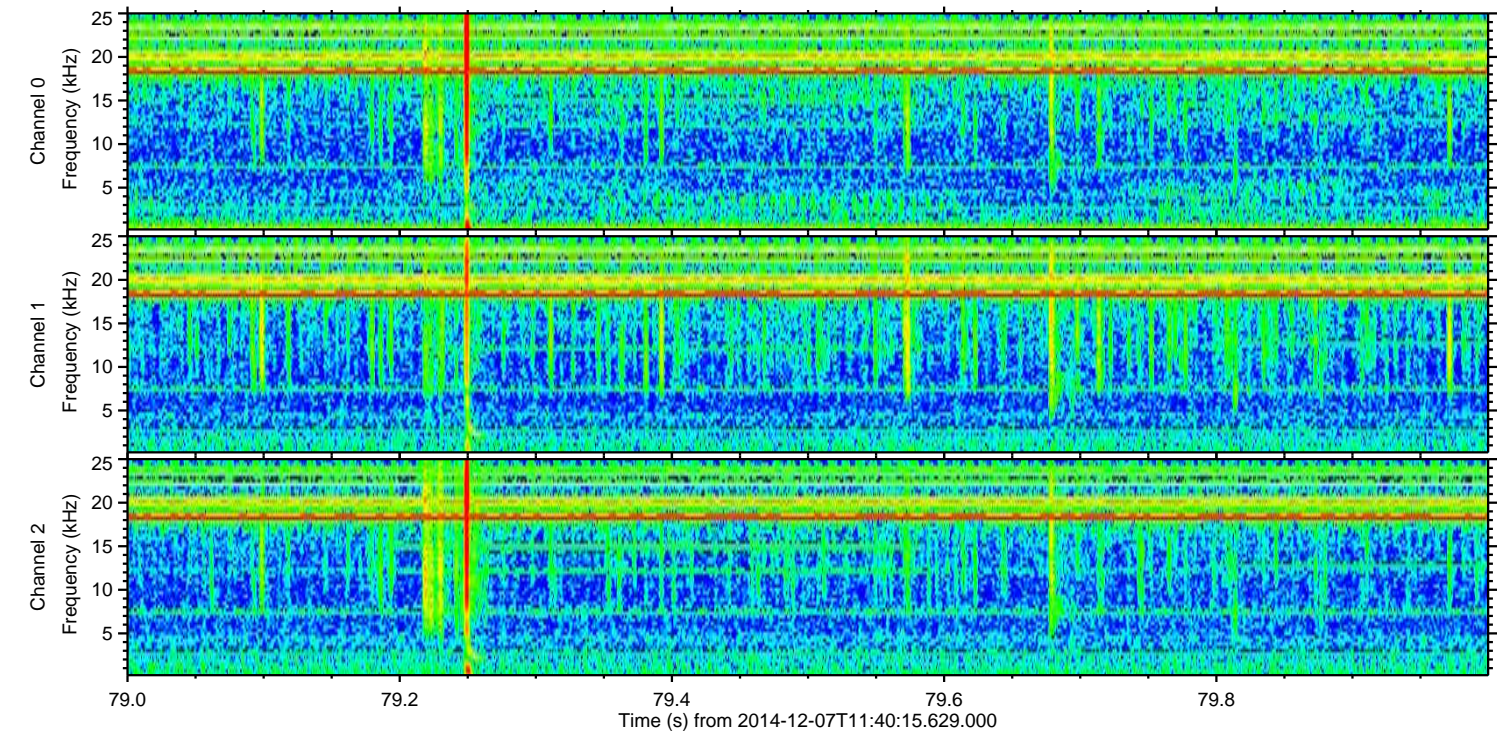
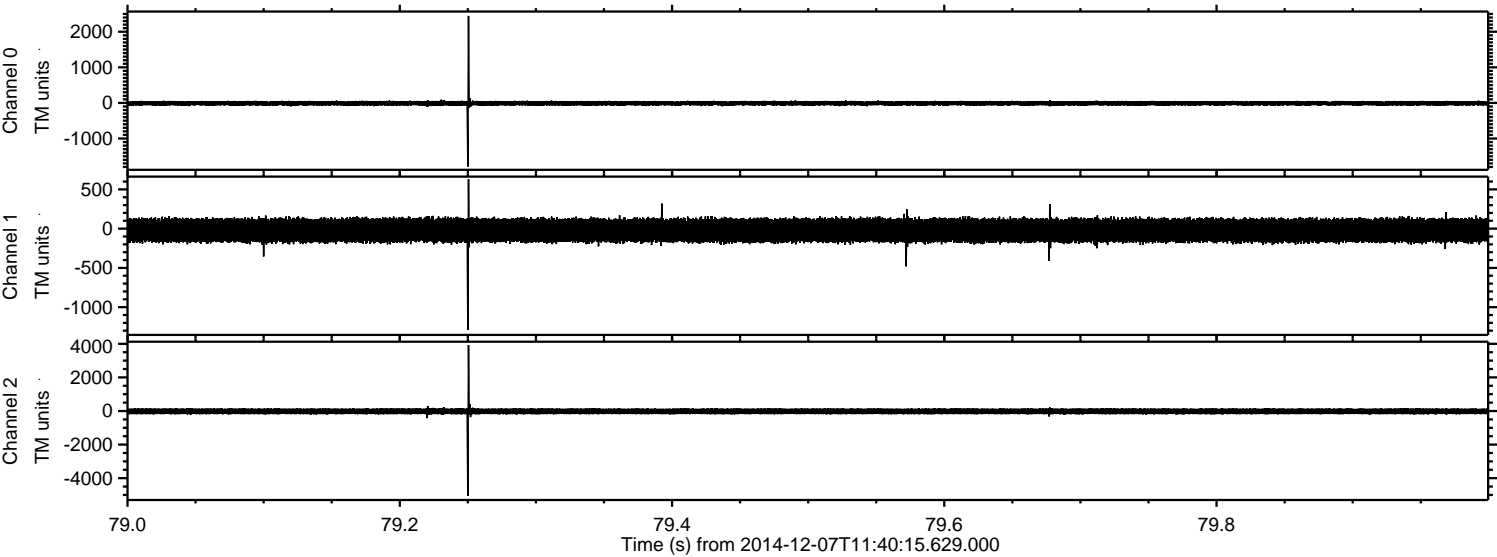
Processed Sun Dec 7 12:48:59 2014 by ELM ver.2012-10-06 from 001__elm20141207_114014__dat00.bin



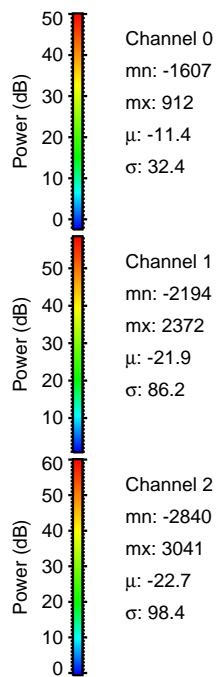
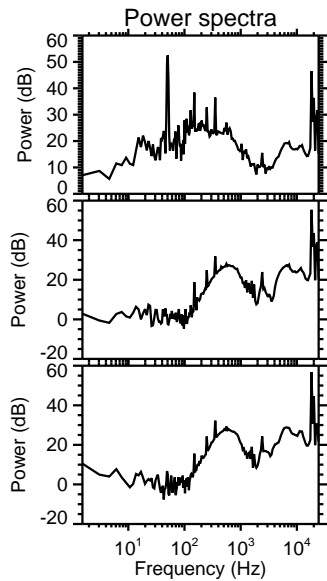
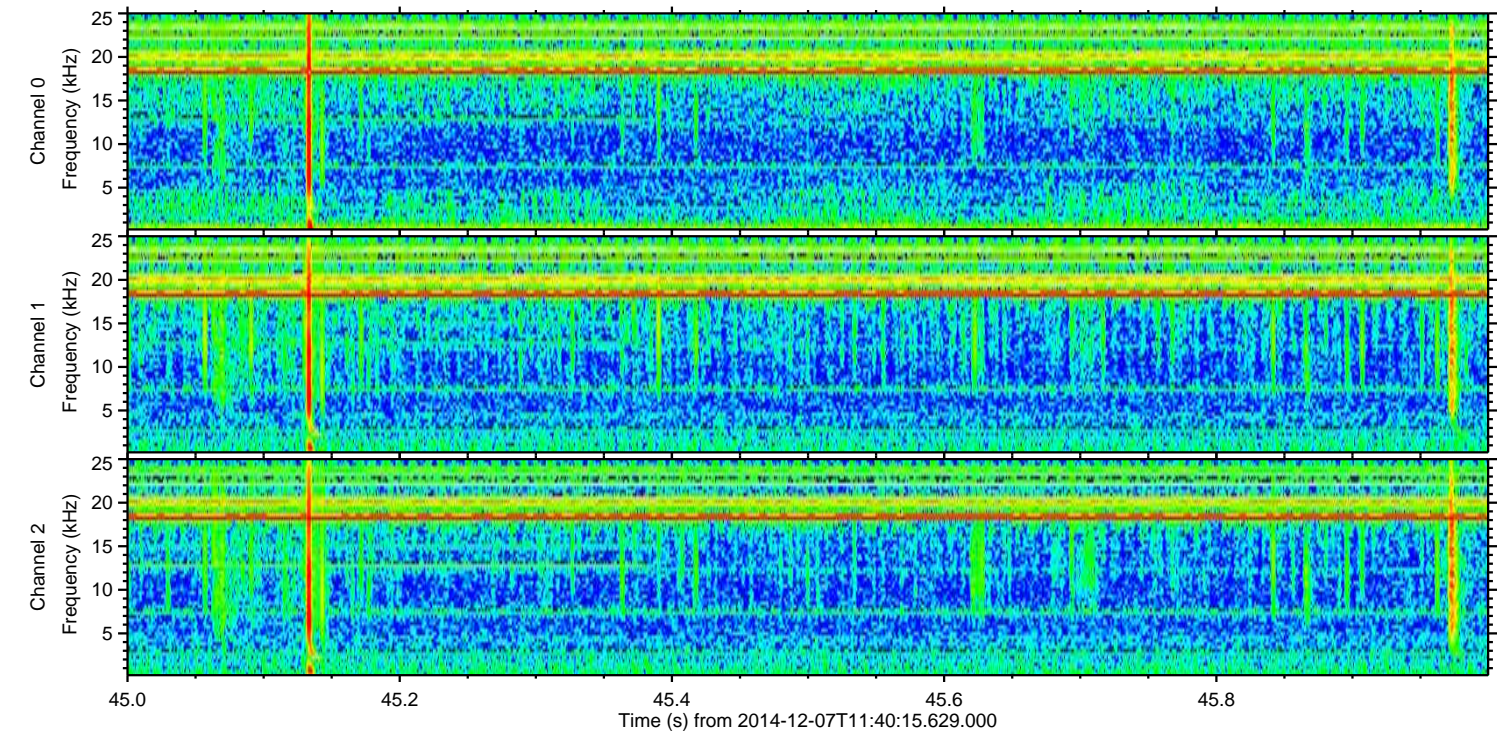
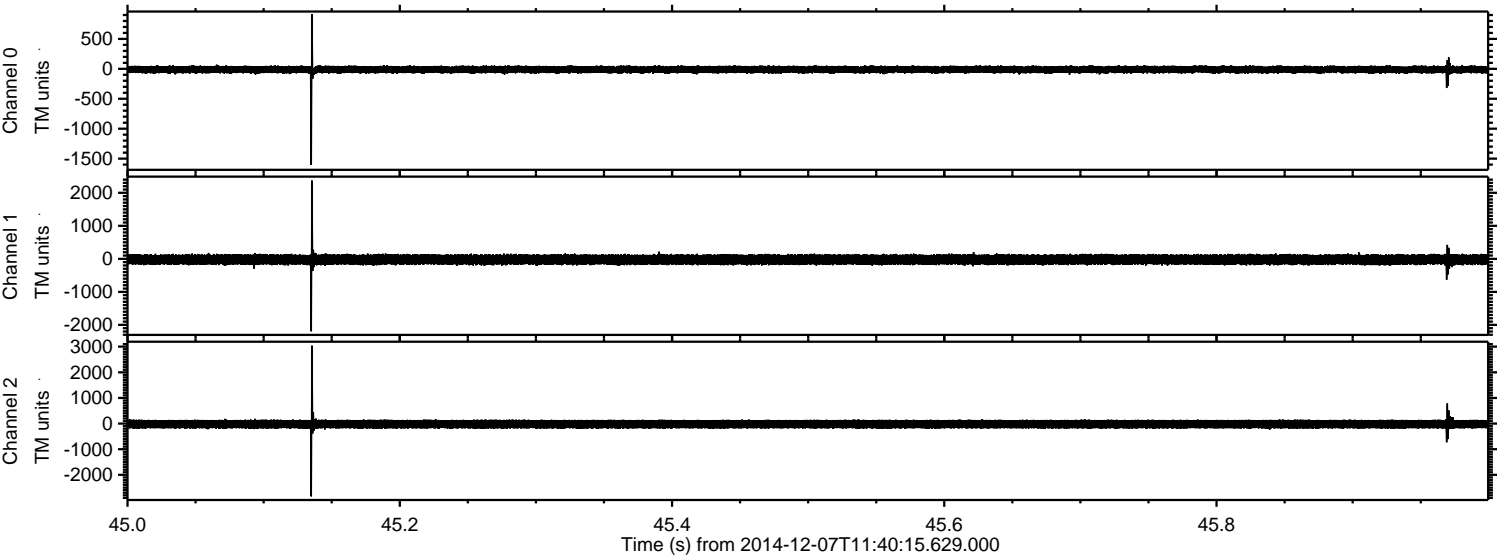
Processed Sun Dec 7 12:49:00 2014 by ELM ver.2012-10-06 from 001__elm20141207_114014__dat00.bin



Processed Sun Dec 7 12:49:01 2014 by ELM ver.2012-10-06 from 001__elm20141207_114014__dat00.bin



Processed Sun Dec 7 12:49:02 2014 by ELM ver.2012-10-06 from 001__elm20141207_114014__dat00.bin



Channel 0
mn: -1607
mx: 912
 μ : -11.4
 σ : 32.4

Channel 1
mn: -2194
mx: 2372
 μ : -21.9
 σ : 86.2

Channel 2
mn: -2840
mx: 3041
 μ : -22.7
 σ : 98.4

Processed Sun Dec 7 12:49:03 2014 by ELM ver.2012-10-06 from 001__elm20141207_114014__dat00.bin

