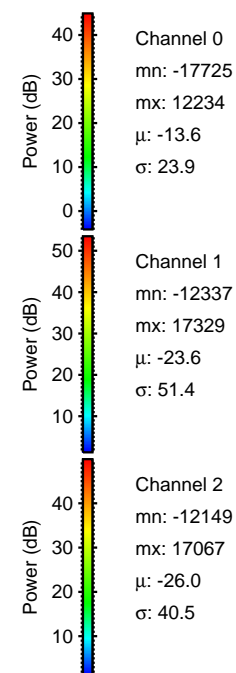
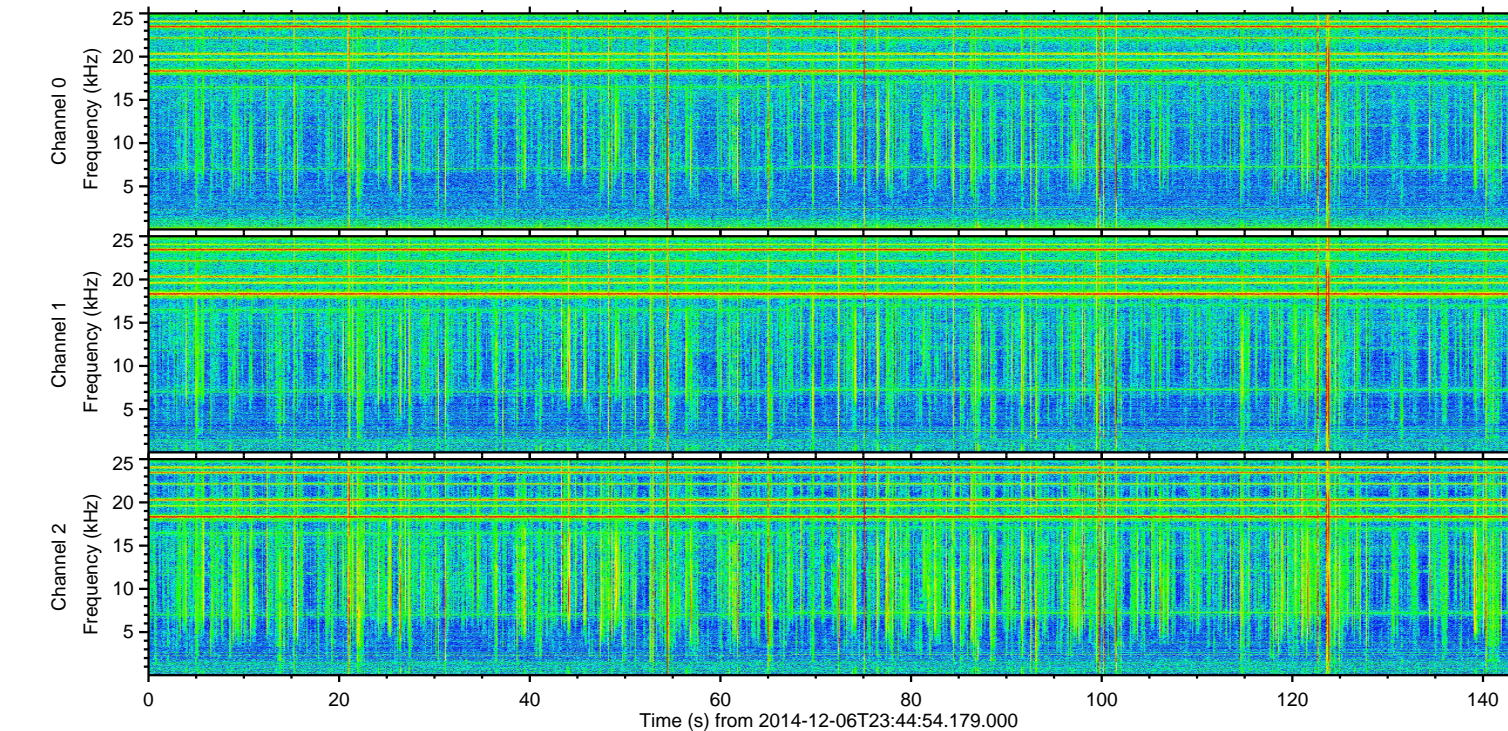
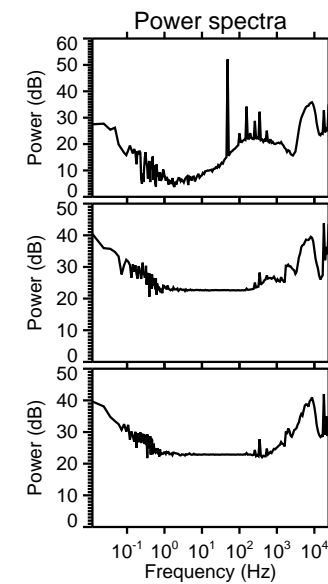
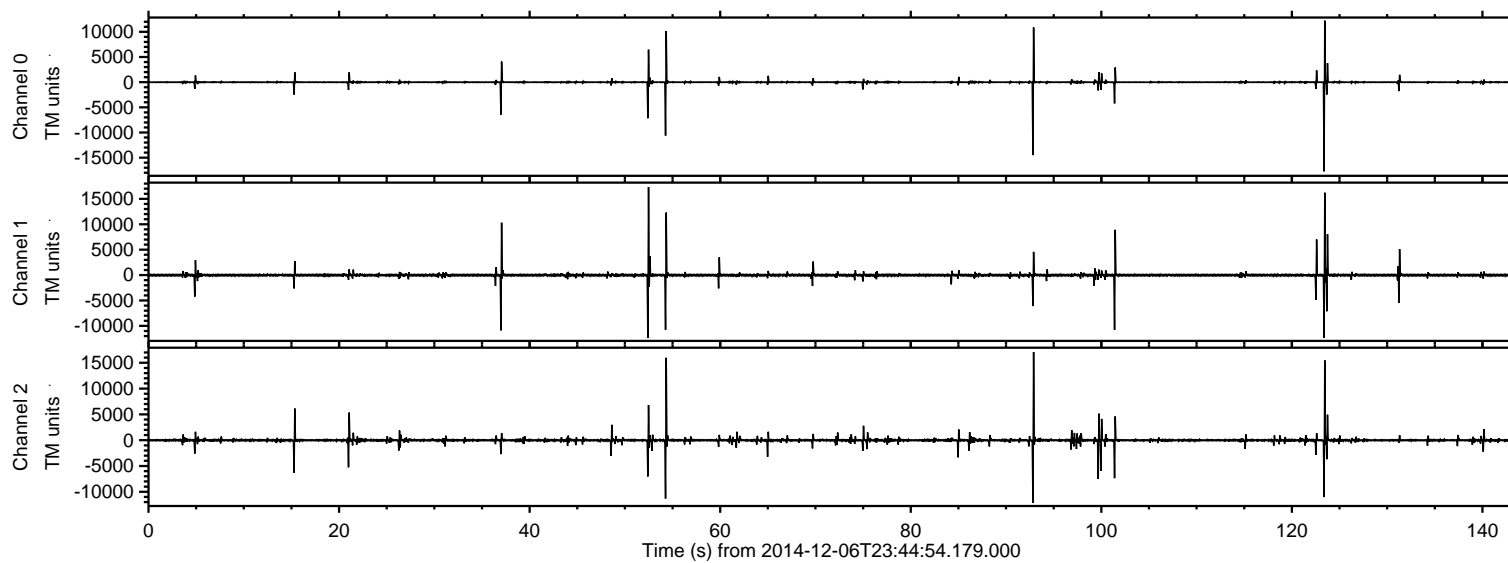


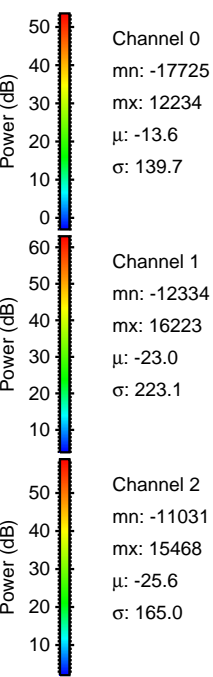
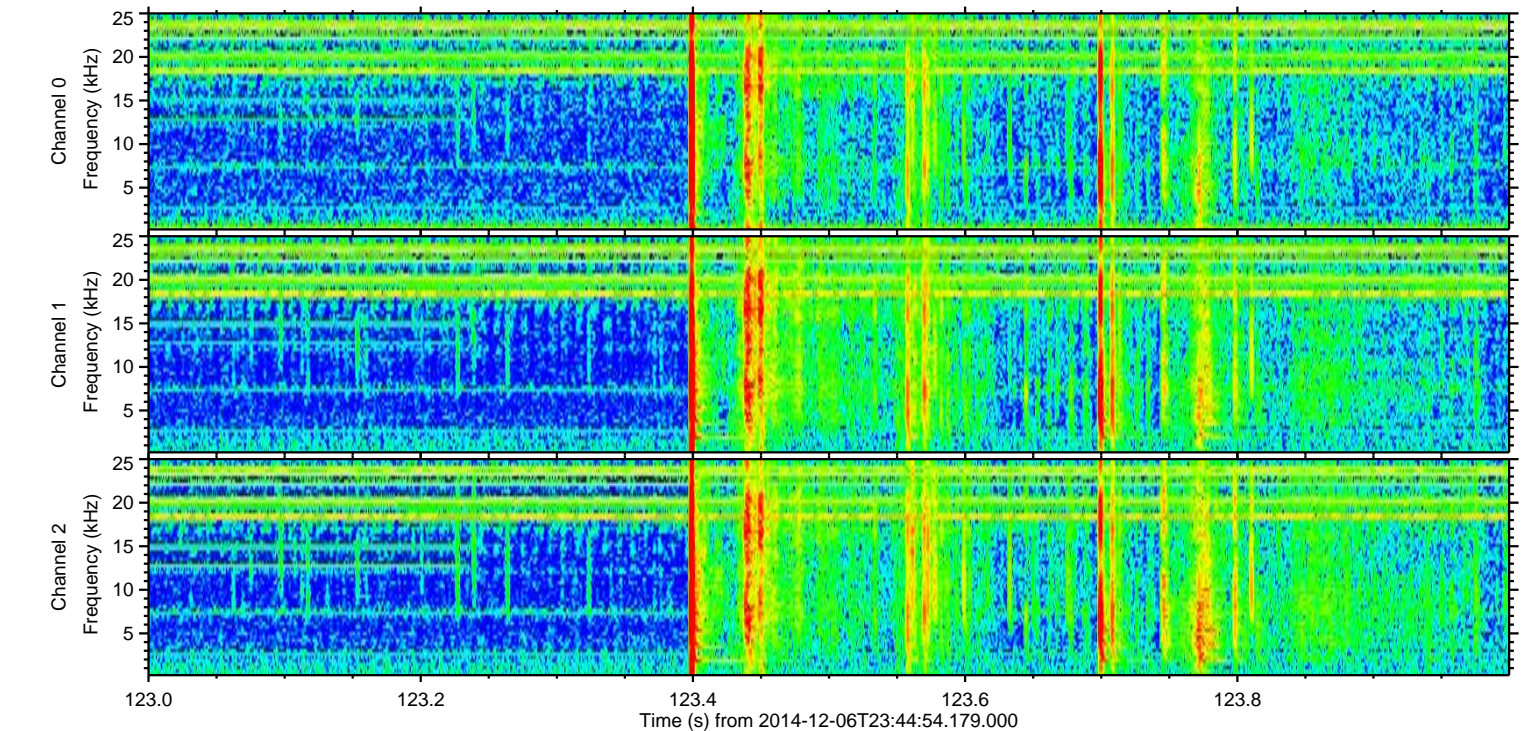
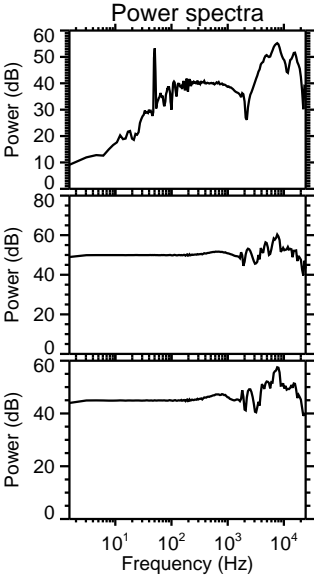
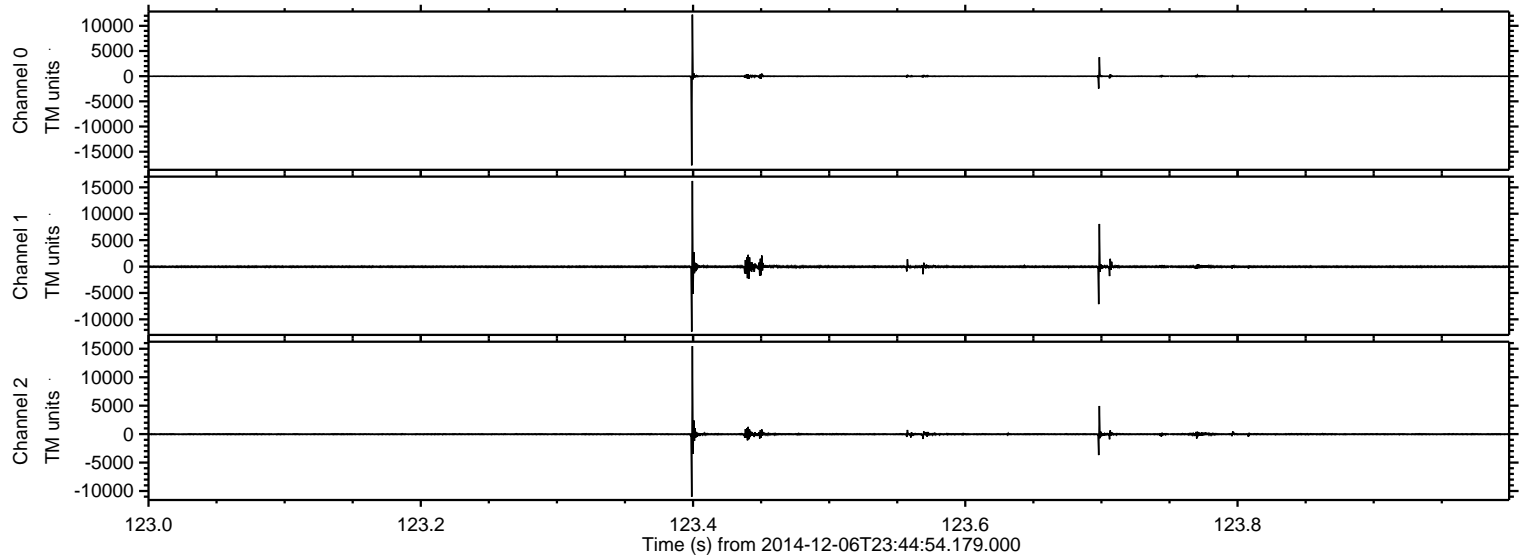
ELMAVAN 3D WAVEFORMS (Measured data sampled at 50 kHz) 49584 packets of 144 samples from 2014-12-06T23:44:54.179.000.

Processed Sun Dec 7 01:03:18 2014 by ELM ver.2012-10-06 from 001__elm20141206_234453__dat00.bin

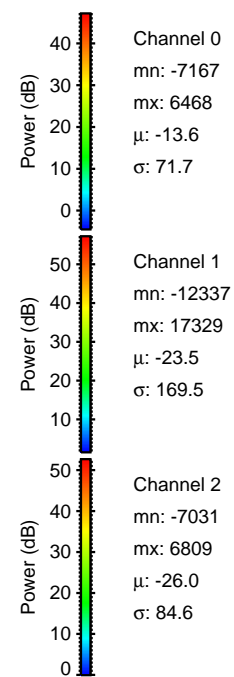
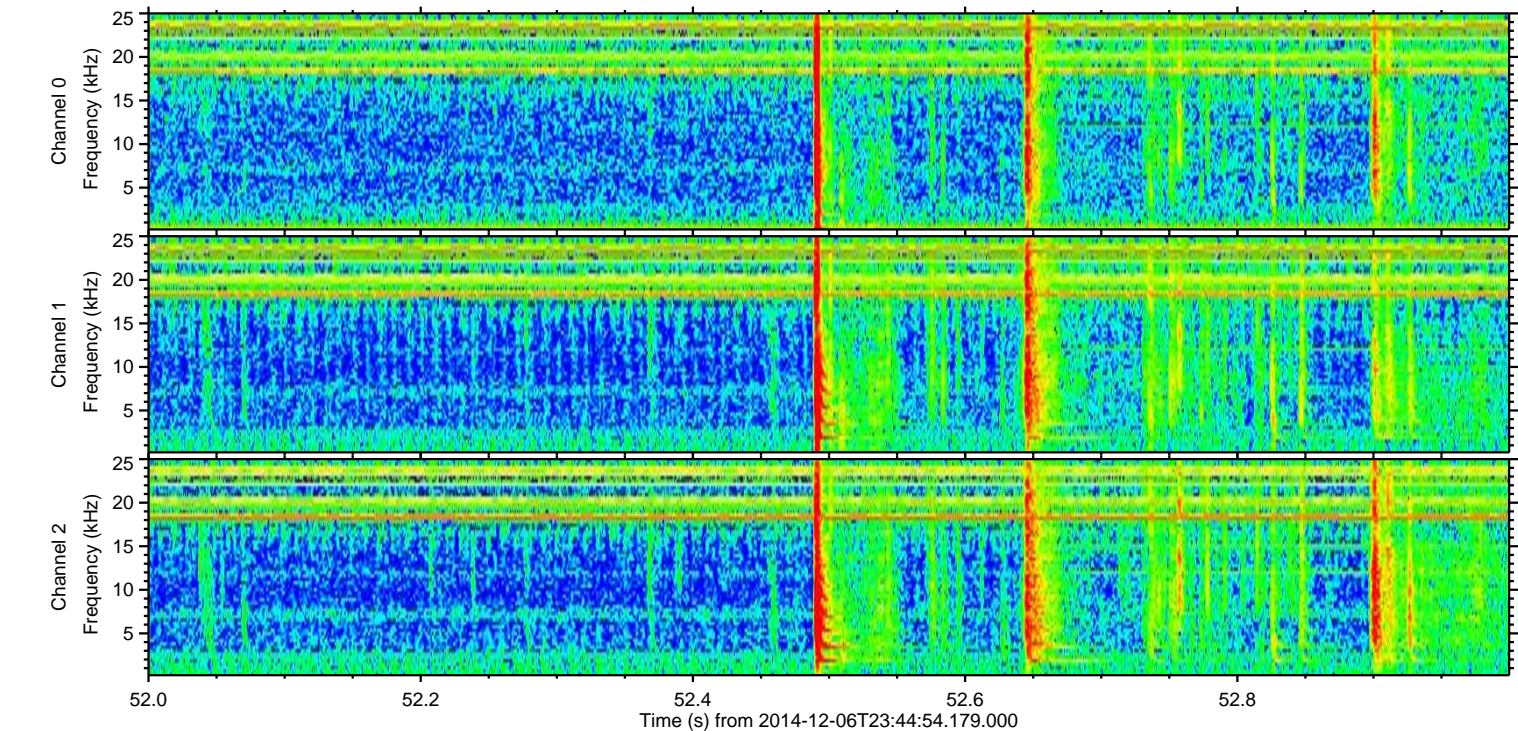
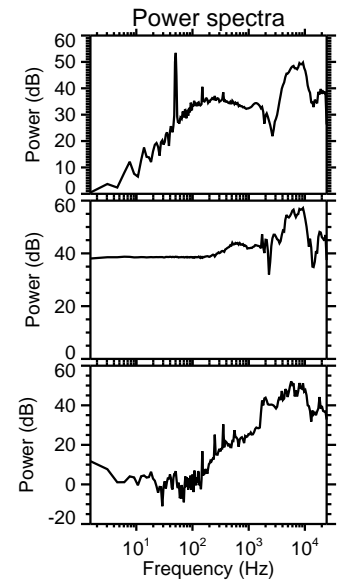
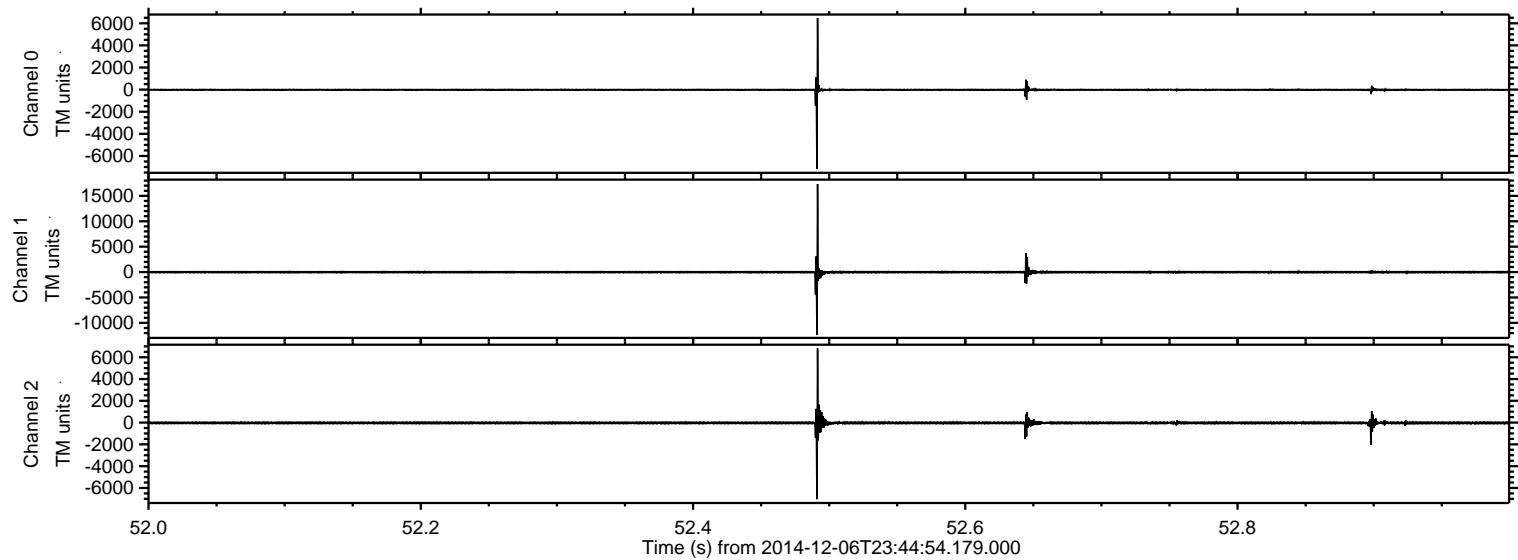


ELMAVAN 3D WAVEFORMS (Measured data sampled at 50 kHz) 49584 packets of 144 samples from 2014-12-06T23:44:54.179.000. Part 124/143

Processed Sun Dec 7 01:03:29 2014 by ELM ver.2012-10-06 from 001__elm20141206_234453__dat00.bin

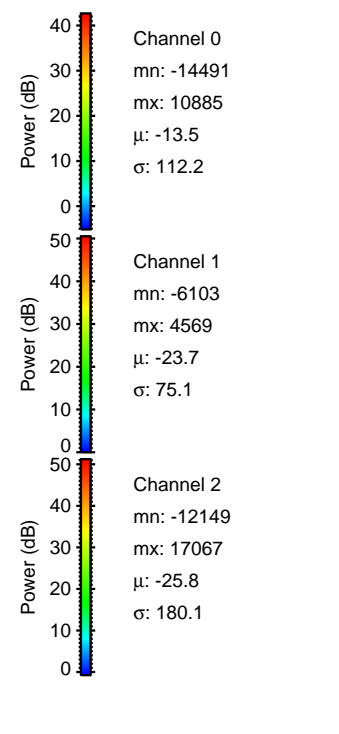
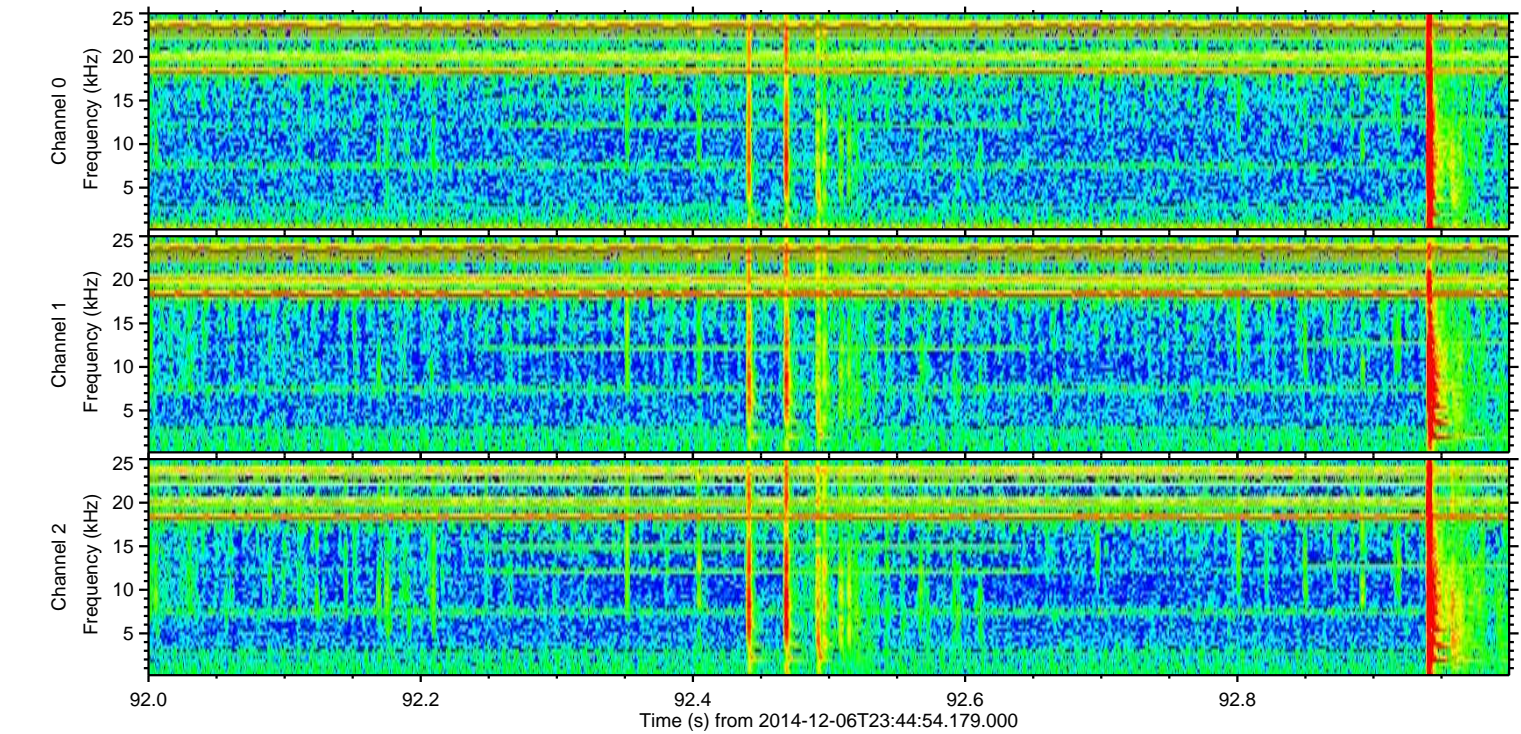
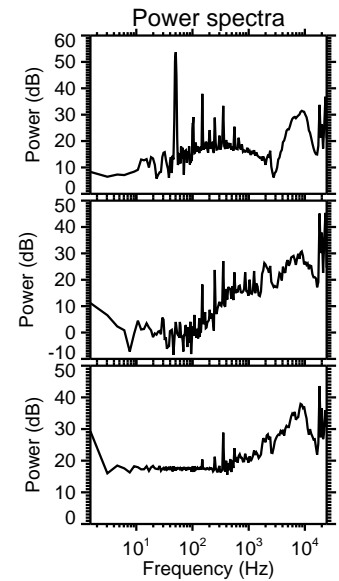
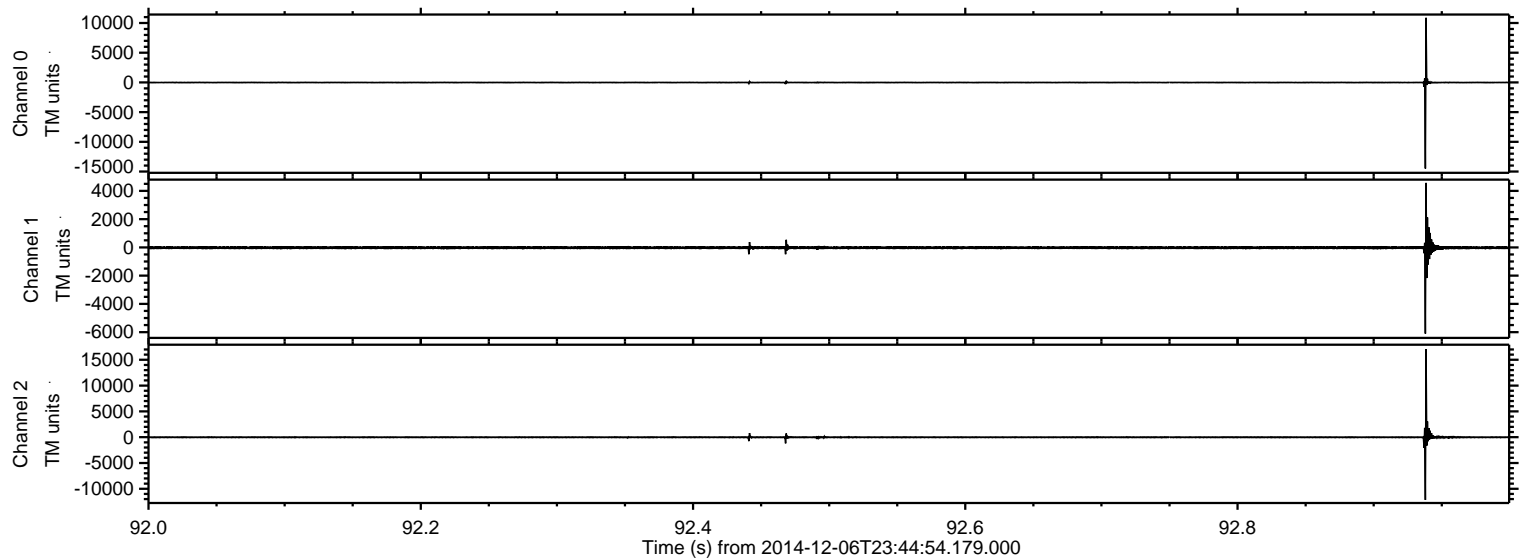


Processed Sun Dec 7 01:03:30 2014 by ELM ver.2012-10-06 from 001__elm20141206_234453__dat00.bin



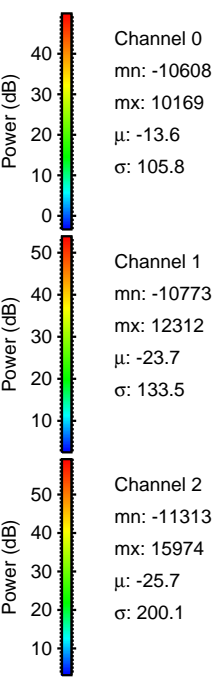
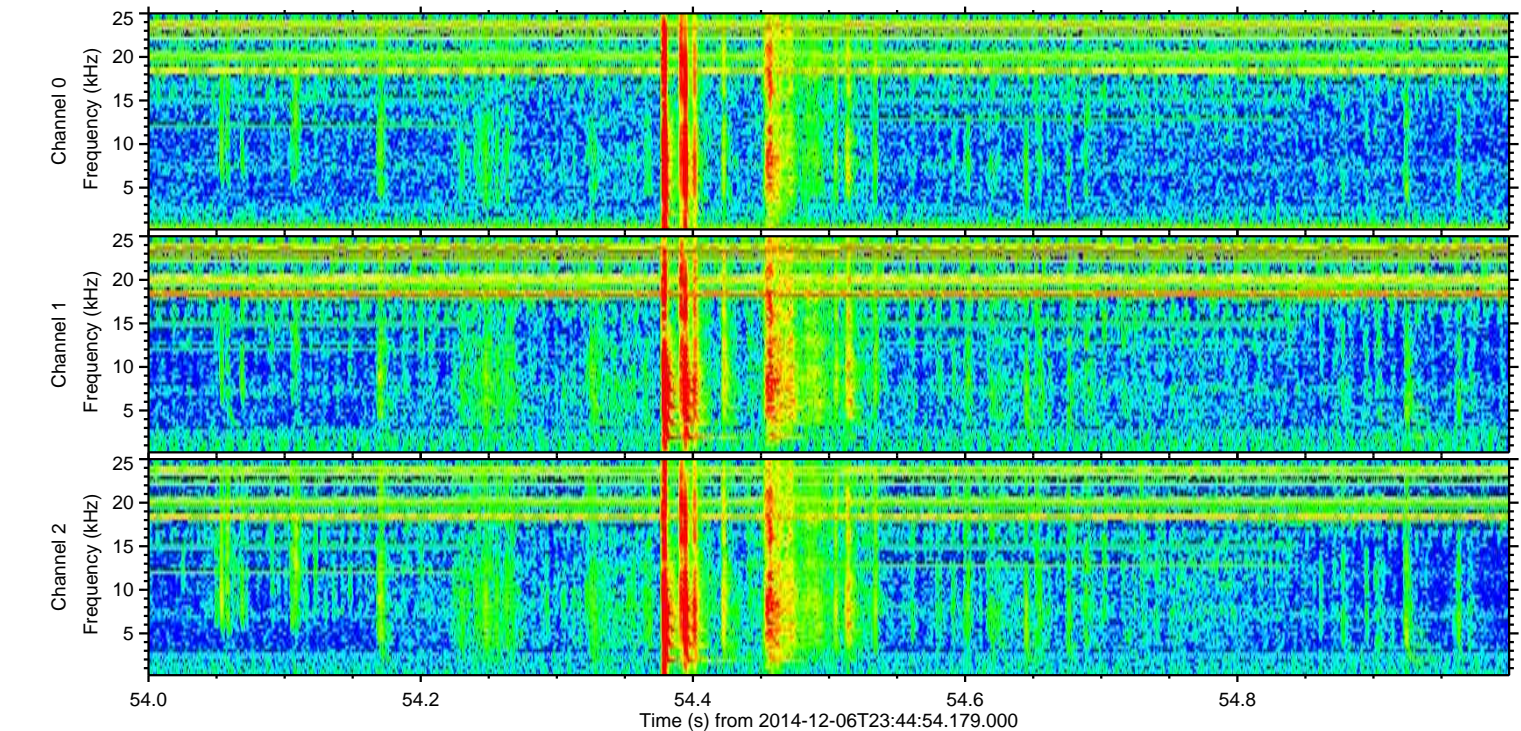
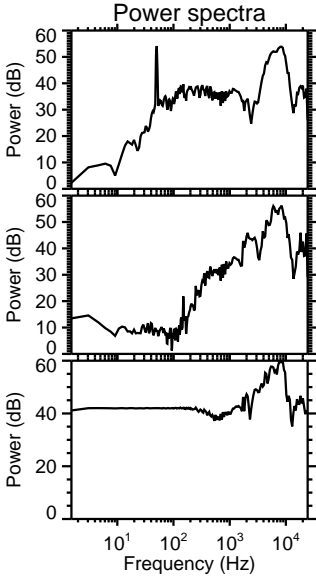
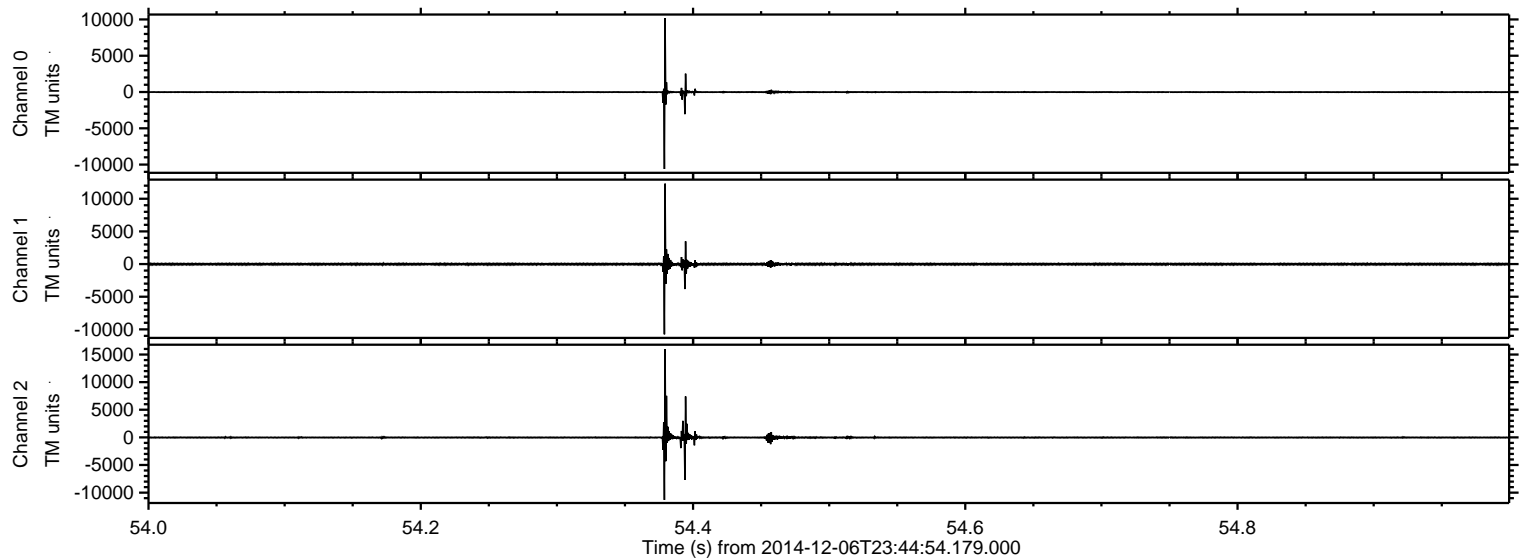
ELMAVAN 3D WAVEFORMS (Measured data sampled at 50 kHz) 49584 packets of 144 samples from 2014-12-06T23:44:54.179.000. Part 93/143

Processed Sun Dec 7 01:03:31 2014 by ELM ver.2012-10-06 from 001__elm20141206_234453__dat00.bin



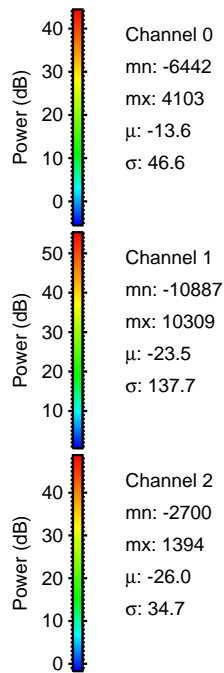
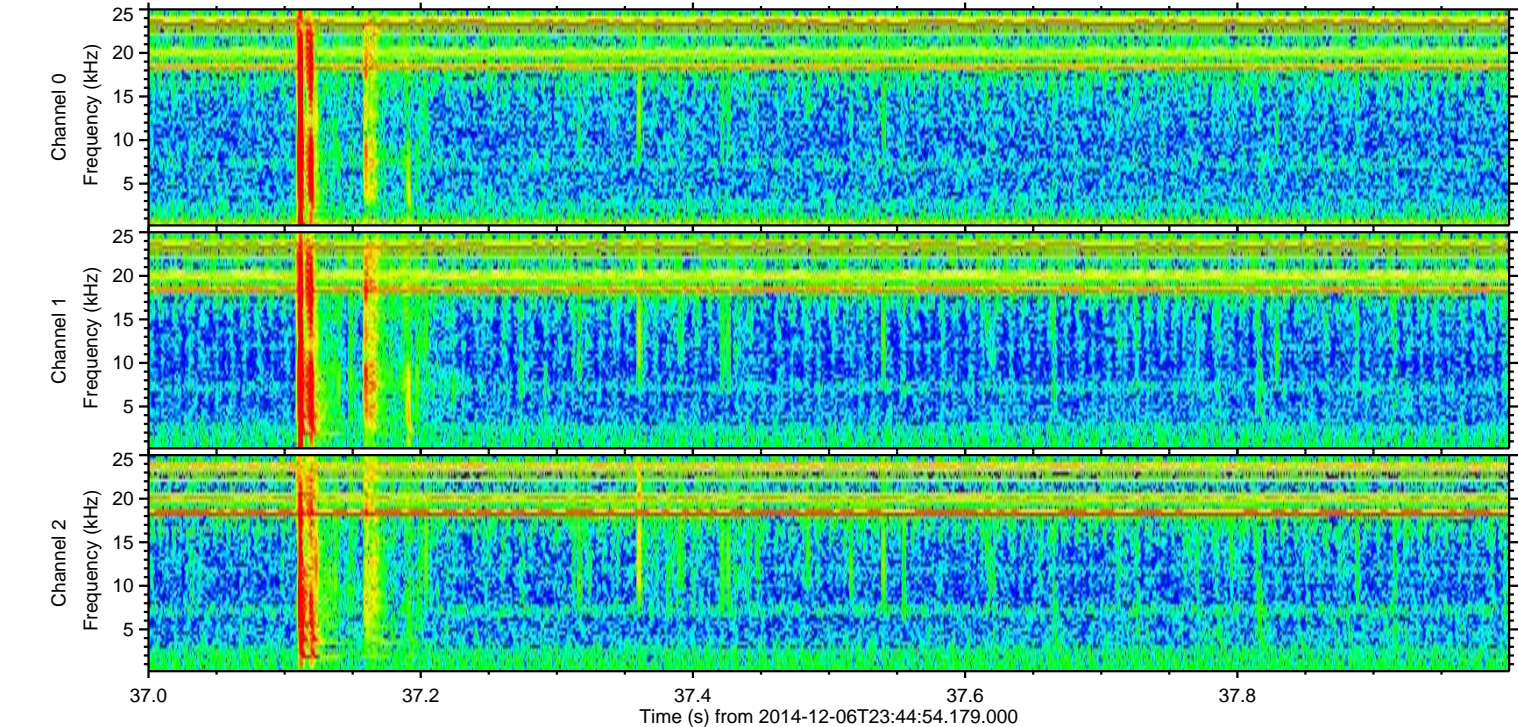
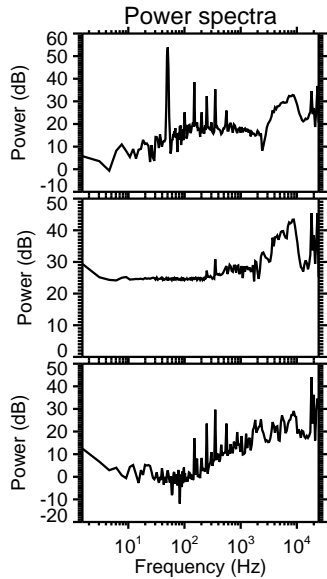
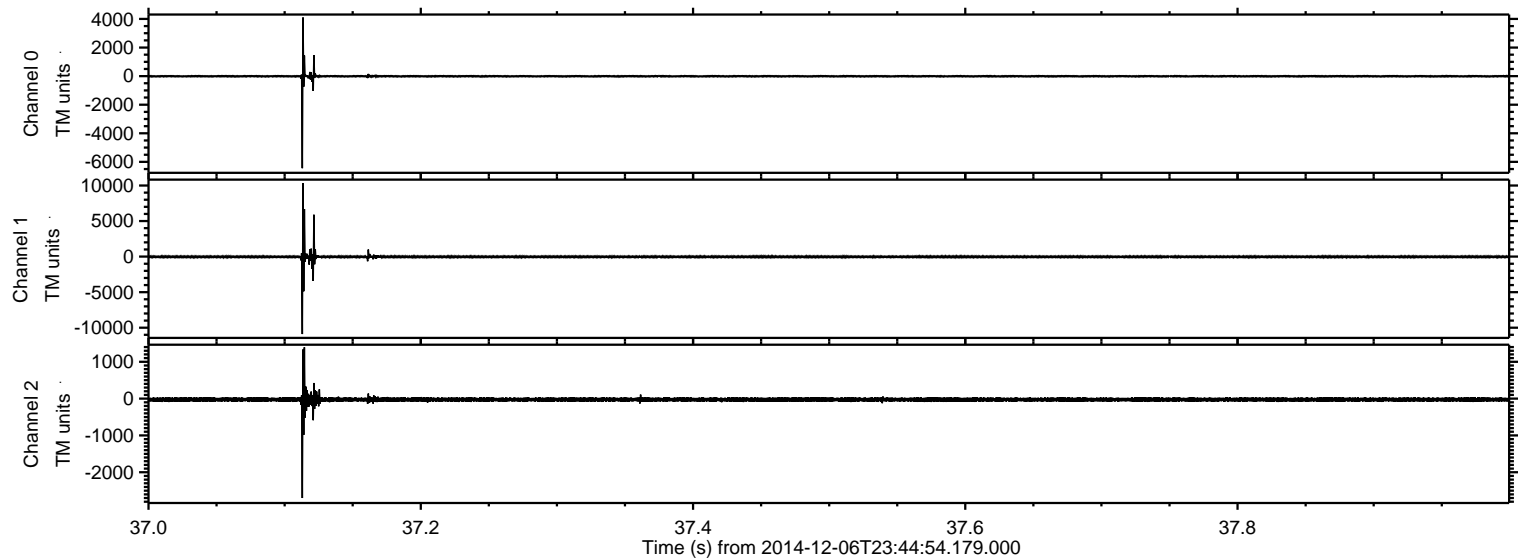
ELMAVAN 3D WAVEFORMS (Measured data sampled at 50 kHz) 49584 packets of 144 samples from 2014-12-06T23:44:54.179.000. Part 55/143

Processed Sun Dec 7 01:03:32 2014 by ELM ver.2012-10-06 from 001__elm20141206_234453__dat00.bin



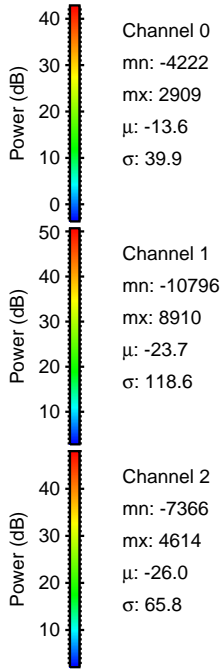
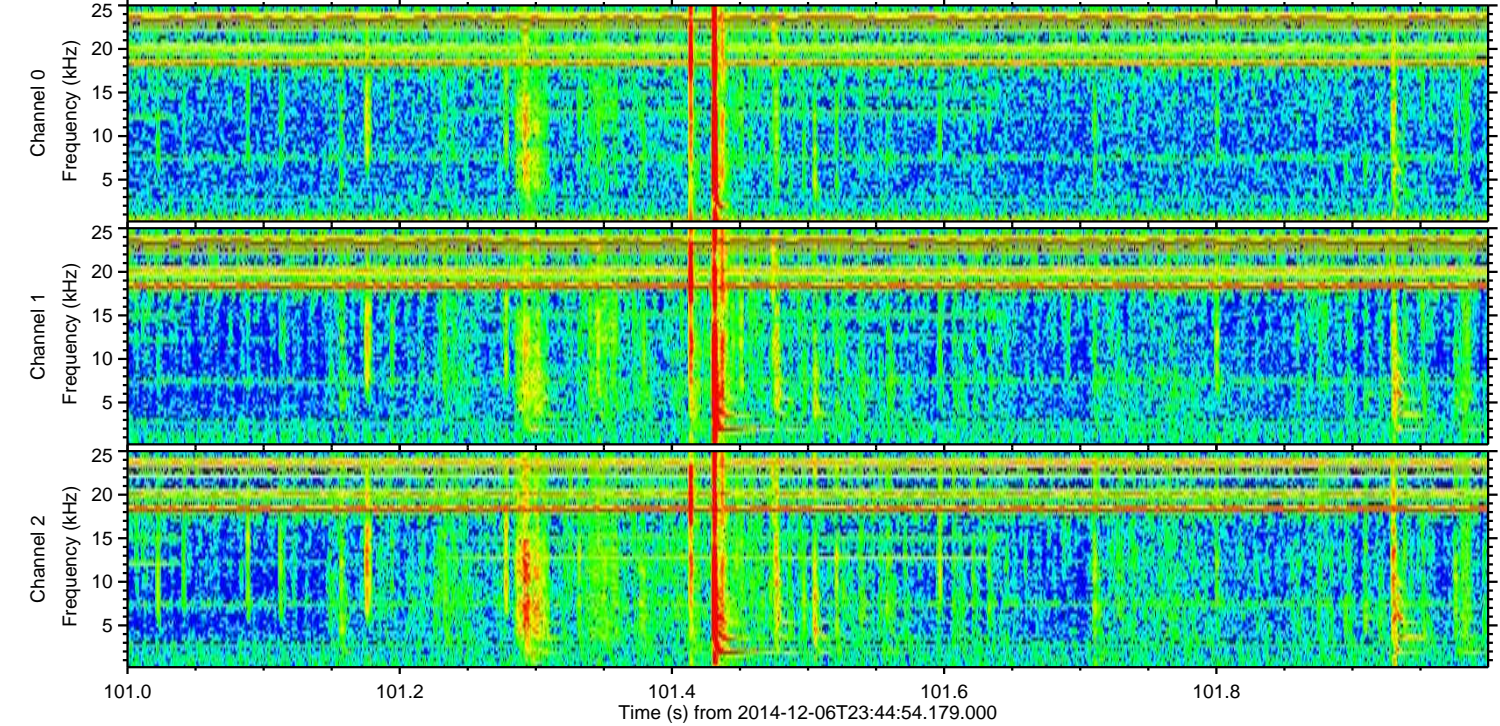
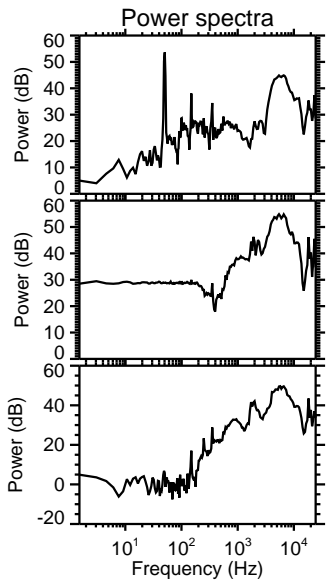
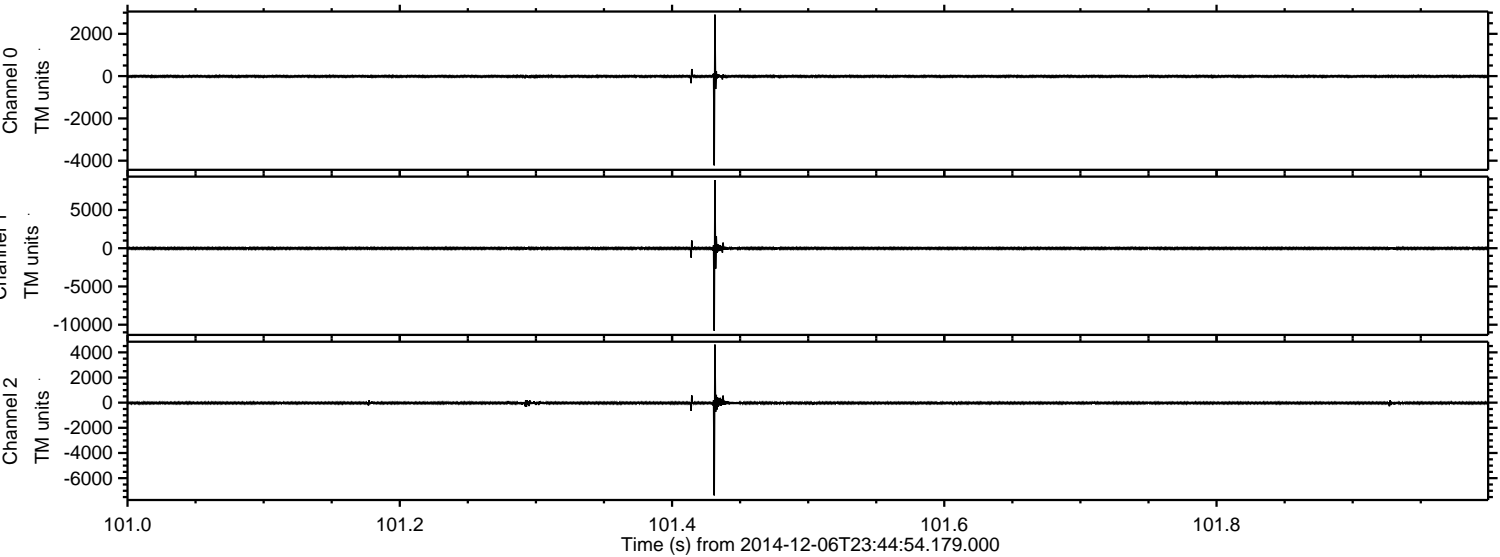
ELMAVAN 3D WAVEFORMS (Measured data sampled at 50 kHz) 49584 packets of 144 samples from 2014-12-06T23:44:54.179.000. Part 38/143

Processed Sun Dec 7 01:03:33 2014 by ELM ver.2012-10-06 from 001__elm20141206_234453__dat00.bin



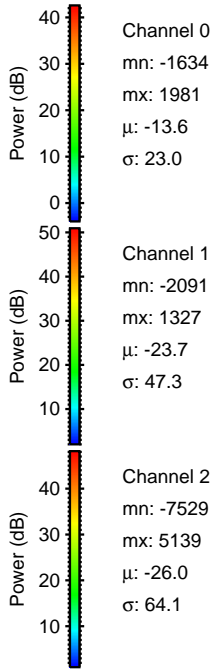
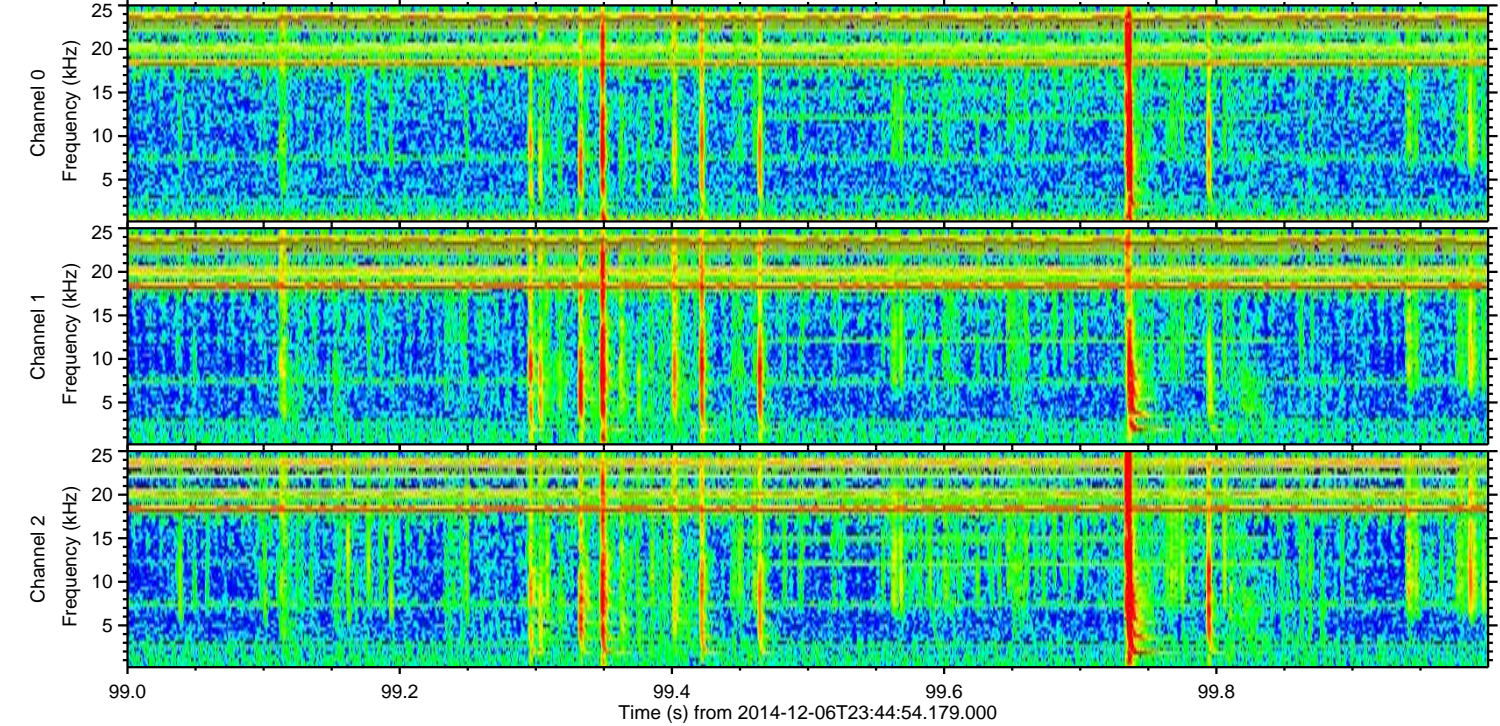
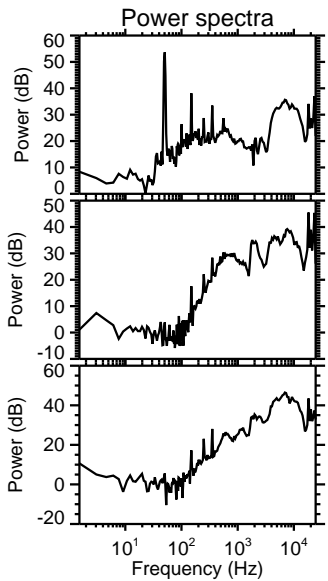
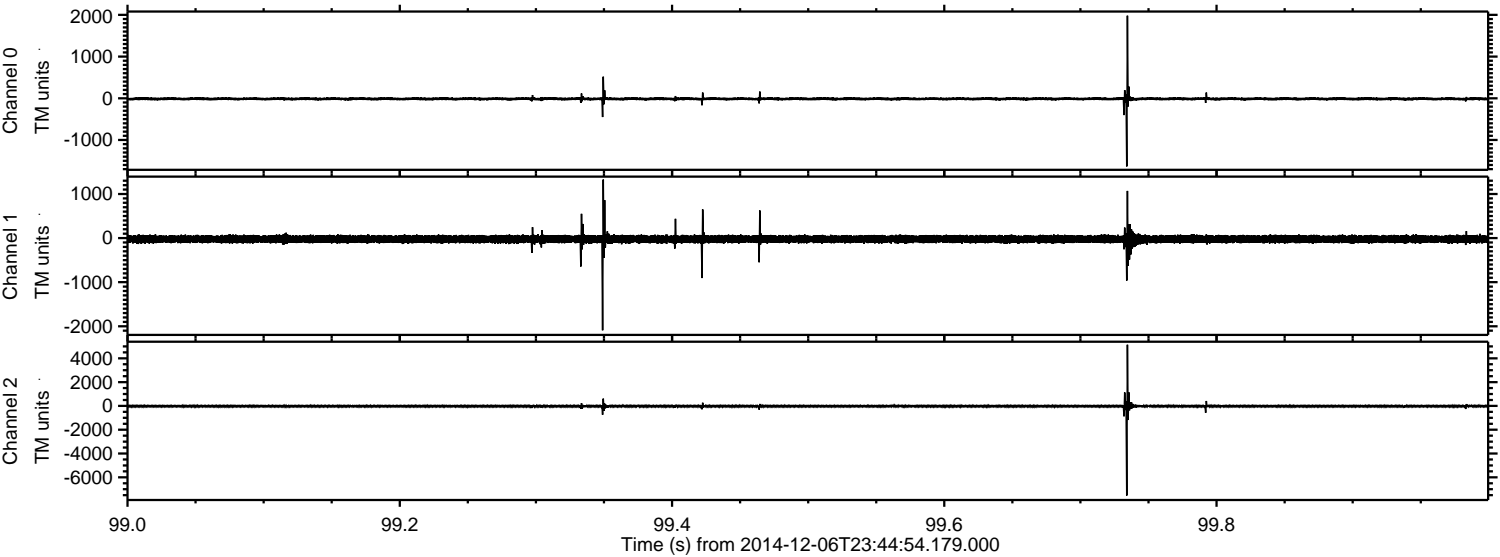
ELMAVAN 3D WAVEFORMS (Measured data sampled at 50 kHz) 49584 packets of 144 samples from 2014-12-06T23:44:54.179.000. Part 102/143

Processed Sun Dec 7 01:03:34 2014 by ELM ver.2012-10-06 from 001__elm20141206_234453__dat00.bin



ELMAVAN 3D WAVEFORMS (Measured data sampled at 50 kHz) 49584 packets of 144 samples from 2014-12-06T23:44:54.179.000. Part 100/143

Processed Sun Dec 7 01:03:35 2014 by ELM ver.2012-10-06 from 001__elm20141206_234453__dat00.bin



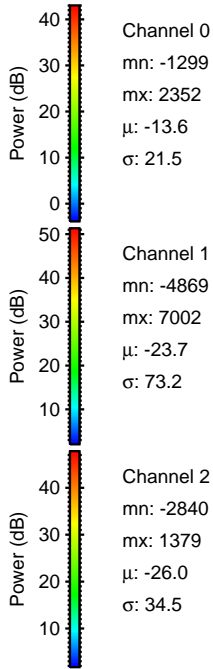
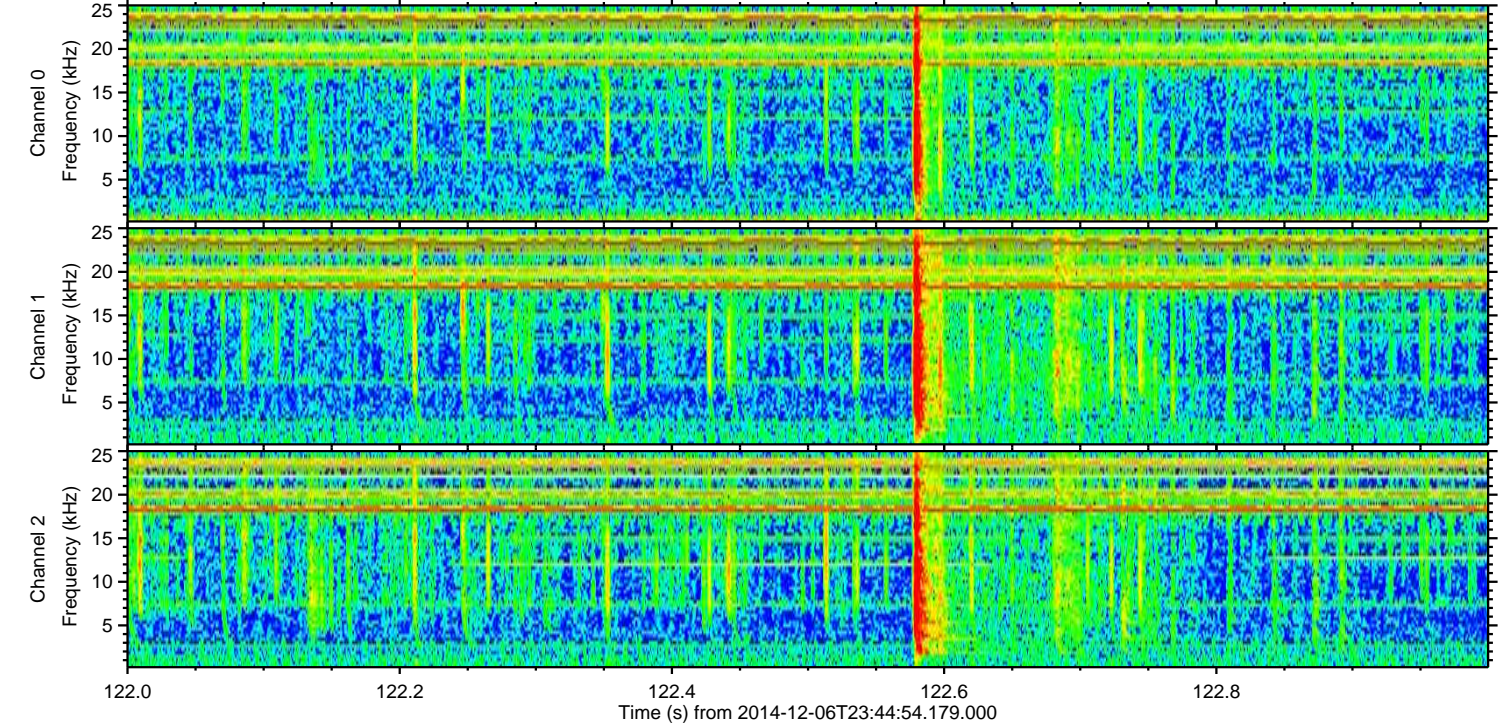
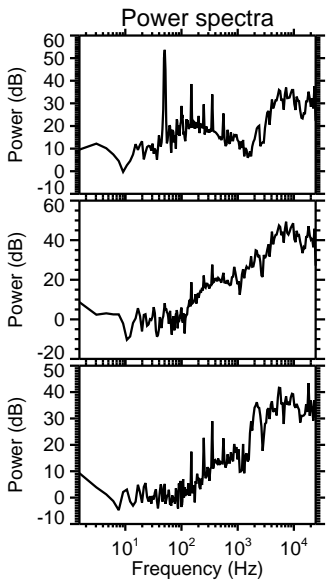
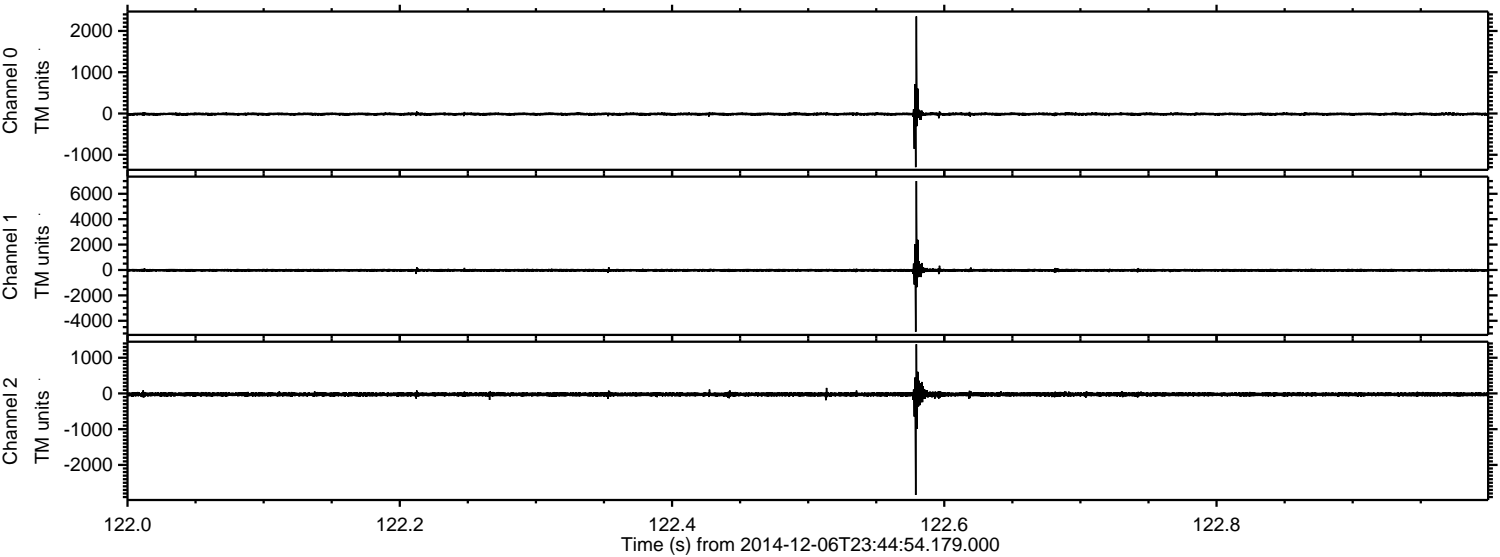
Channel 0
mn: -1634
mx: 1981
 μ : -13.6
 σ : 23.0

Channel 1
mn: -2091
mx: 1327
 μ : -23.7
 σ : 47.3

Channel 2
mn: -7529
mx: 5139
 μ : -26.0
 σ : 64.1

ELMAVAN 3D WAVEFORMS (Measured data sampled at 50 kHz) 49584 packets of 144 samples from 2014-12-06T23:44:54.179.000. Part 123/143

Processed Sun Dec 7 01:03:36 2014 by ELM ver.2012-10-06 from 001__elm20141206_234453__dat00.bin



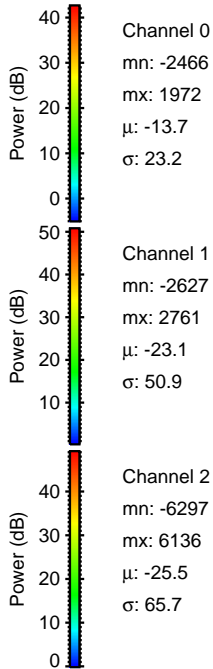
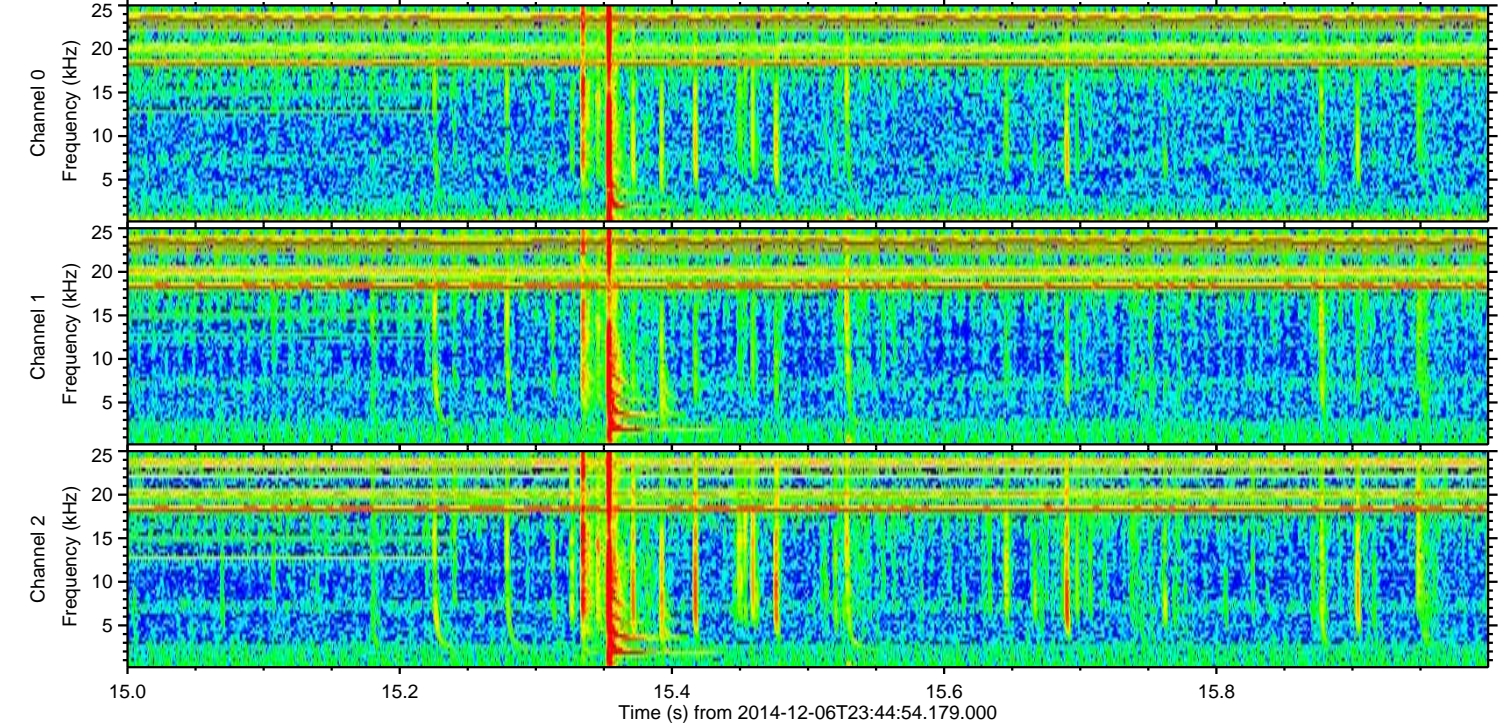
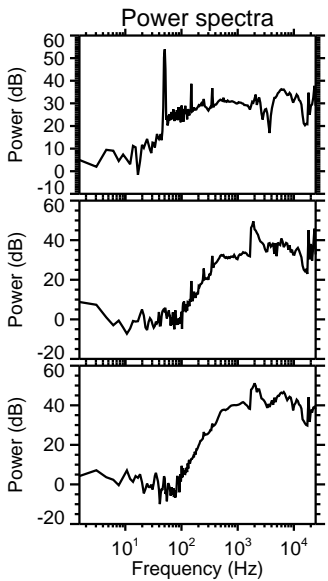
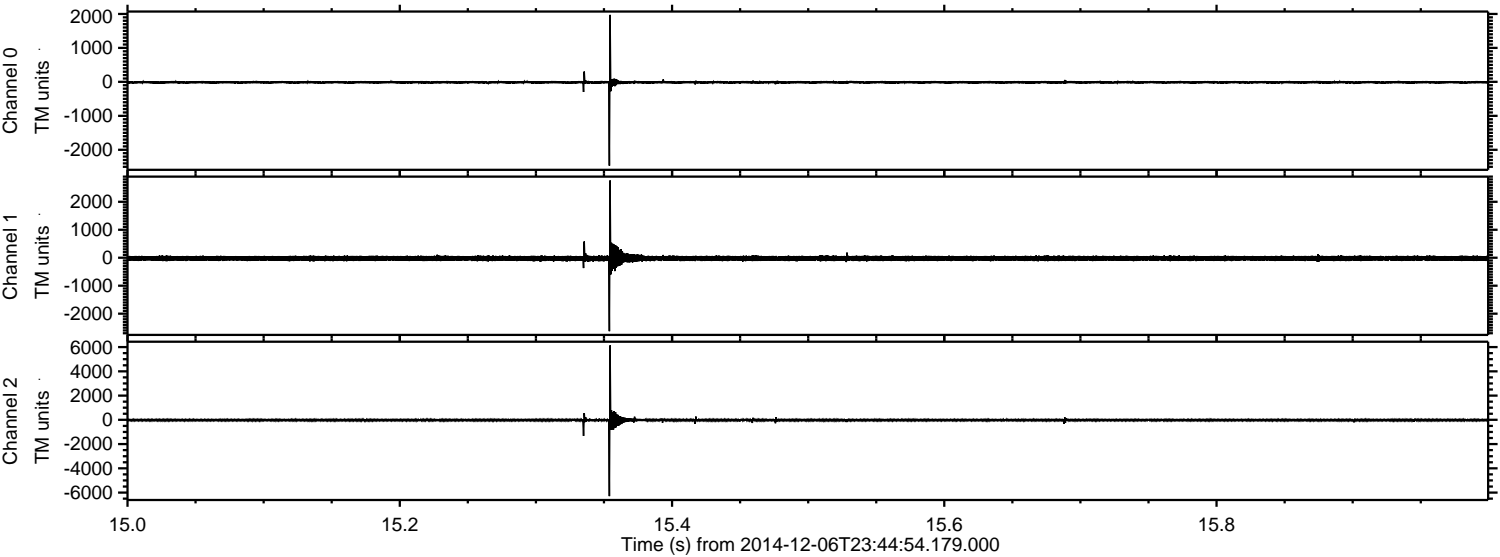
Channel 0
mn: -1299
mx: 2352
 μ : -13.6
 σ : 21.5

Channel 1
mn: -4869
mx: 7002
 μ : -23.7
 σ : 73.2

Channel 2
mn: -2840
mx: 1379
 μ : -26.0
 σ : 34.5

ELMAVAN 3D WAVEFORMS (Measured data sampled at 50 kHz) 49584 packets of 144 samples from 2014-12-06T23:44:54.179.000. Part 16/143

Processed Sun Dec 7 01:03:37 2014 by ELM ver.2012-10-06 from 001__elm20141206_234453__dat00.bin



ELMAVAN 3D WAVEFORMS (Measured data sampled at 50 kHz) 49584 packets of 144 samples from 2014-12-06T23:44:54.179.000. Part 134/143

