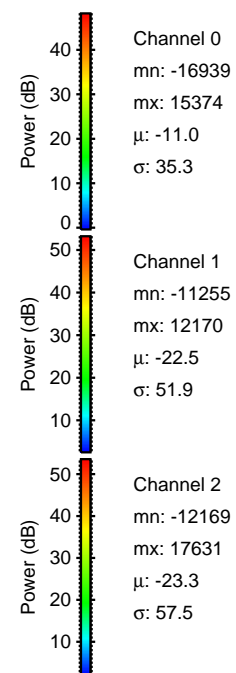
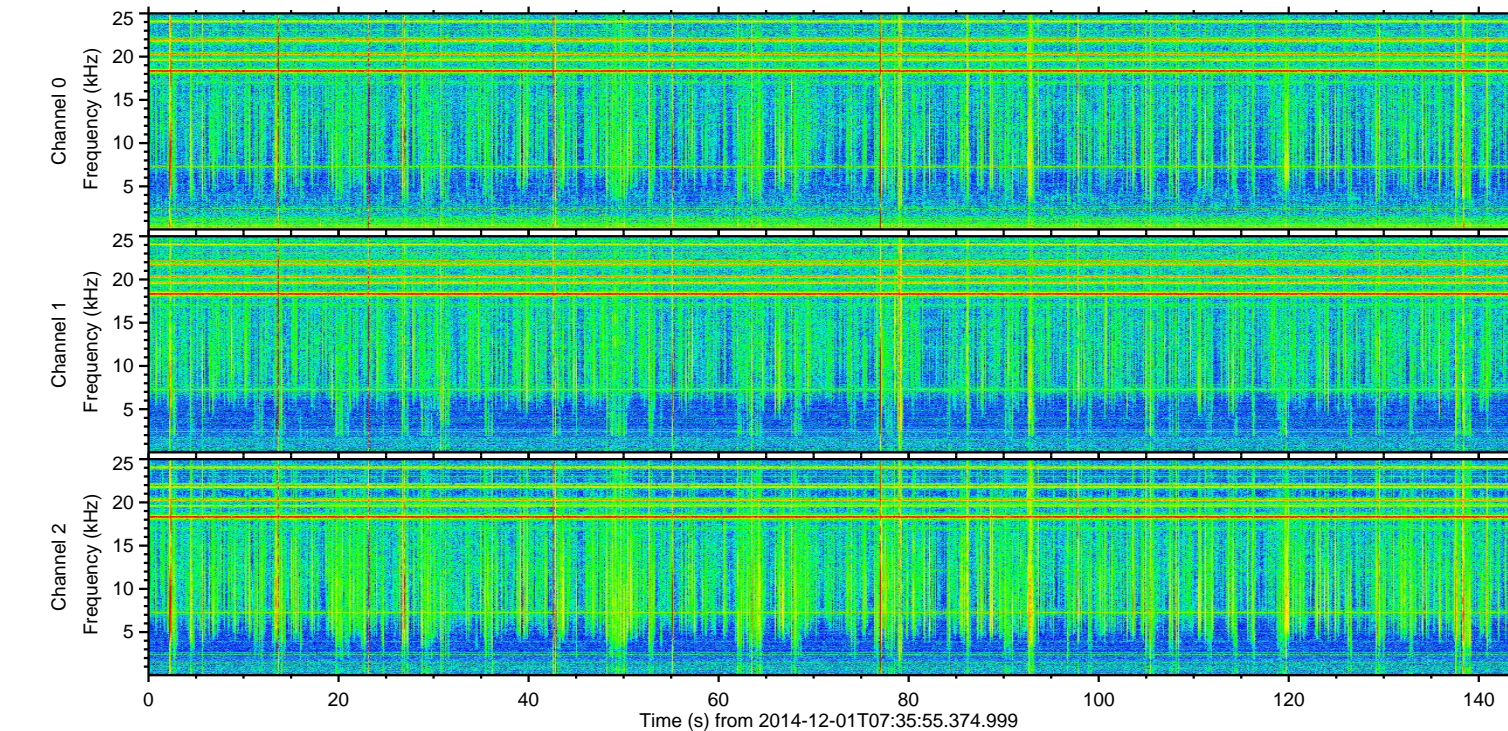
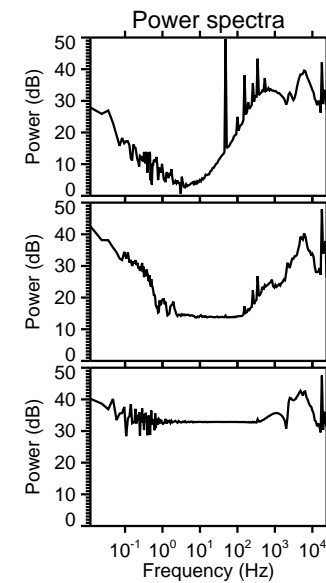
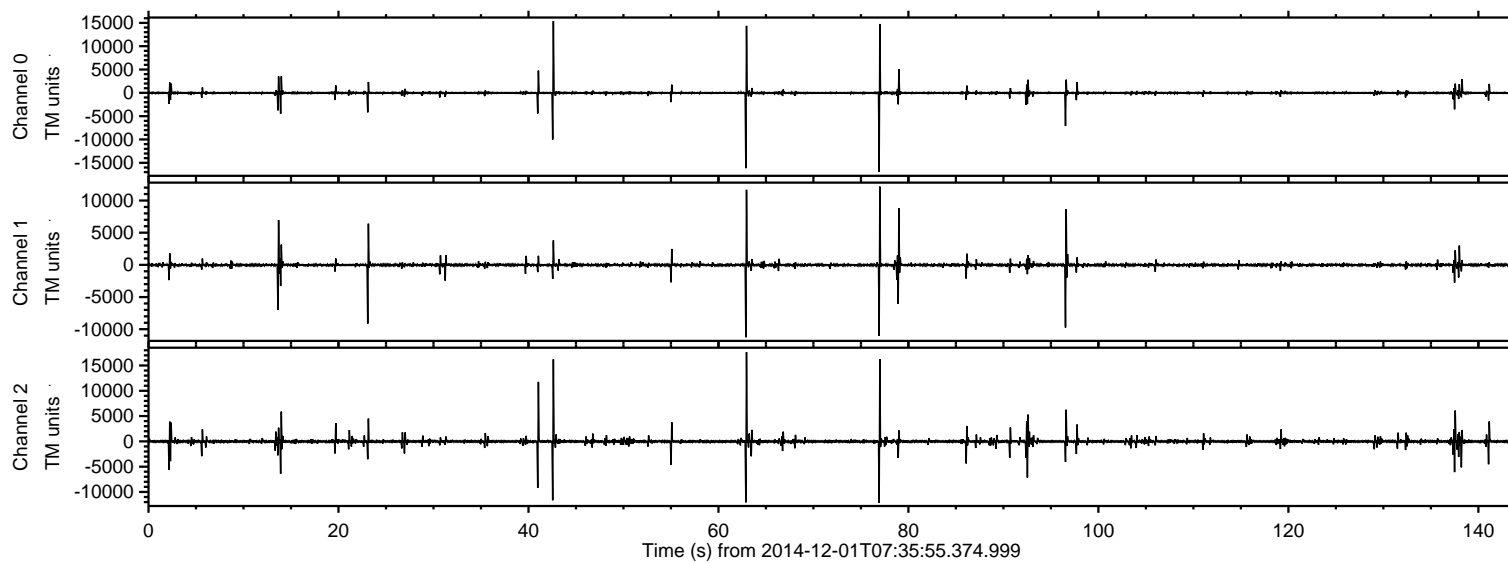


# ELMAVAN 3D WAVEFORMS (Measured data sampled at 50 kHz) 49736 packets of 144 samples from 2014-12-01T07:35:55.374.999.

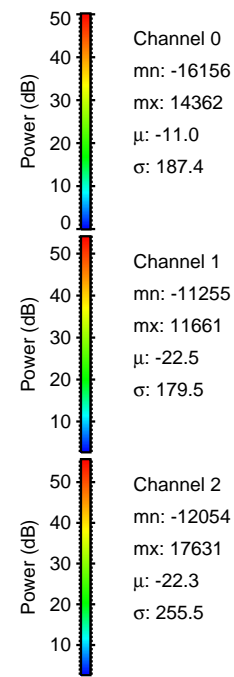
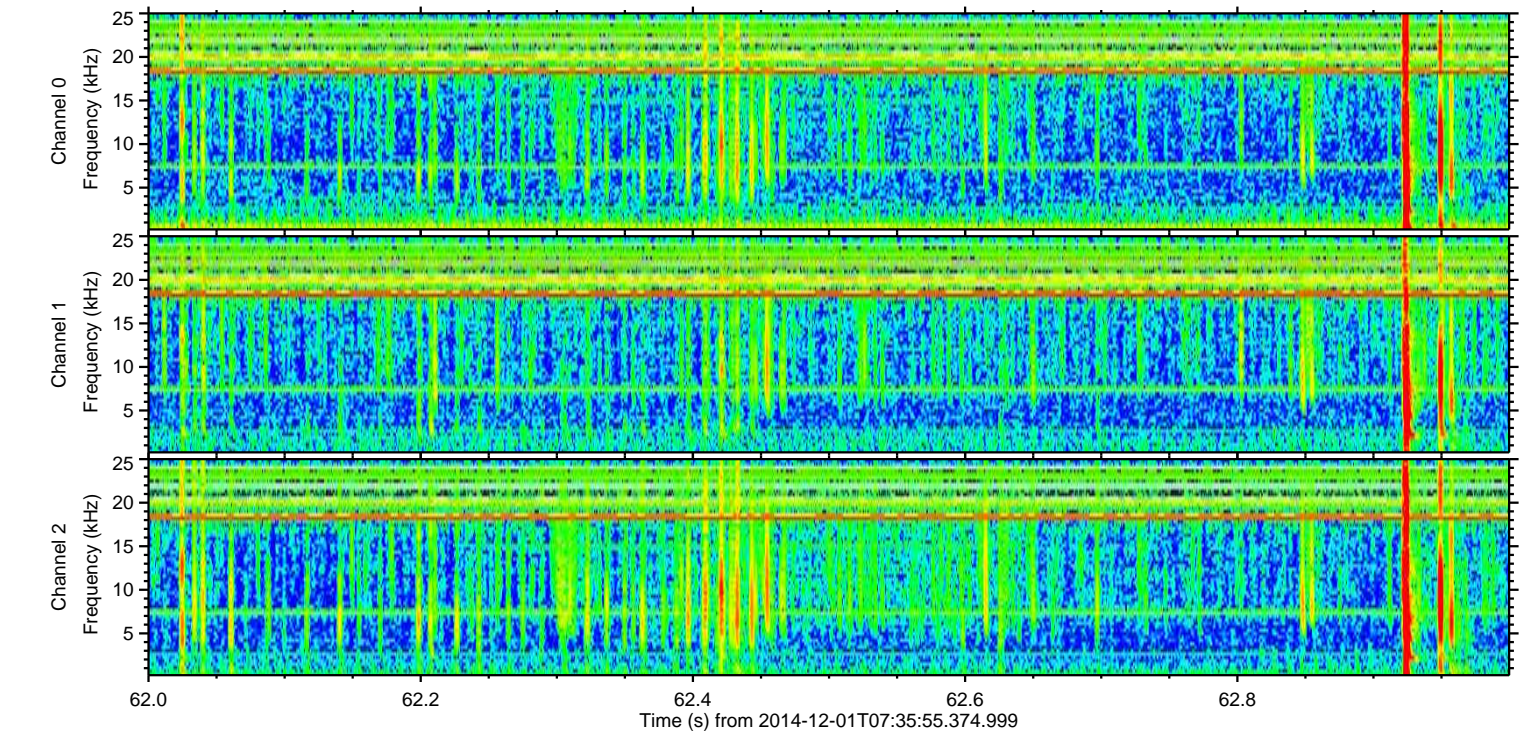
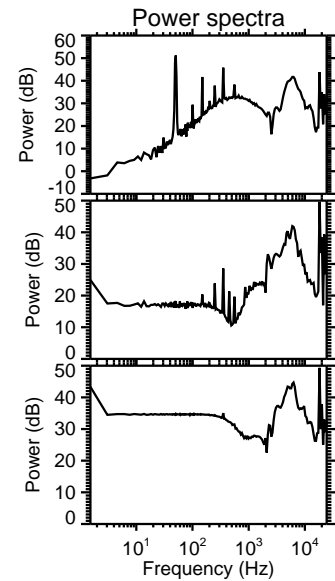
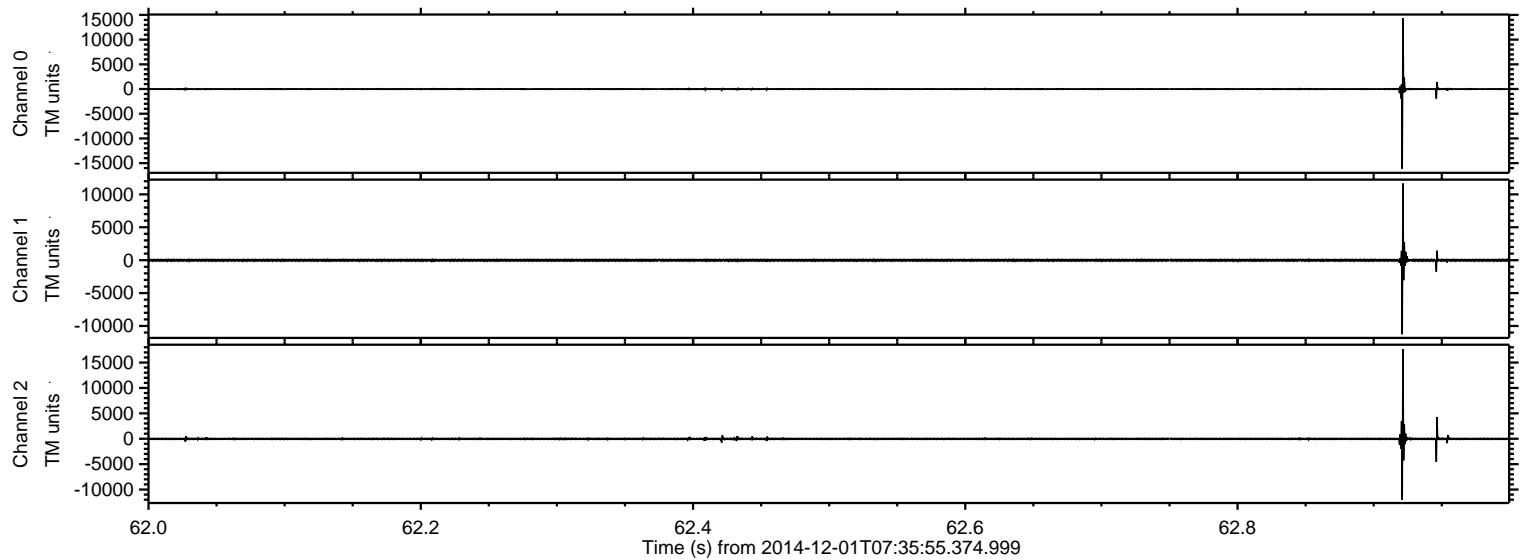
Processed Mon Dec 1 08:43:19 2014 by ELM ver.2012-10-06 from 001\_\_elm20141201\_073554\_\_dat00.bin





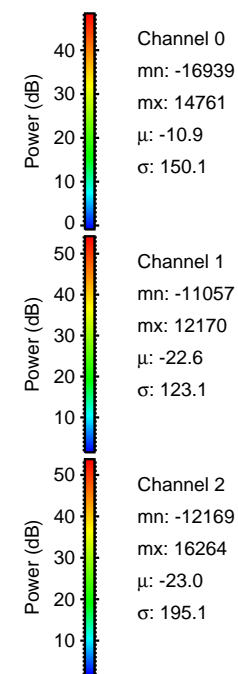
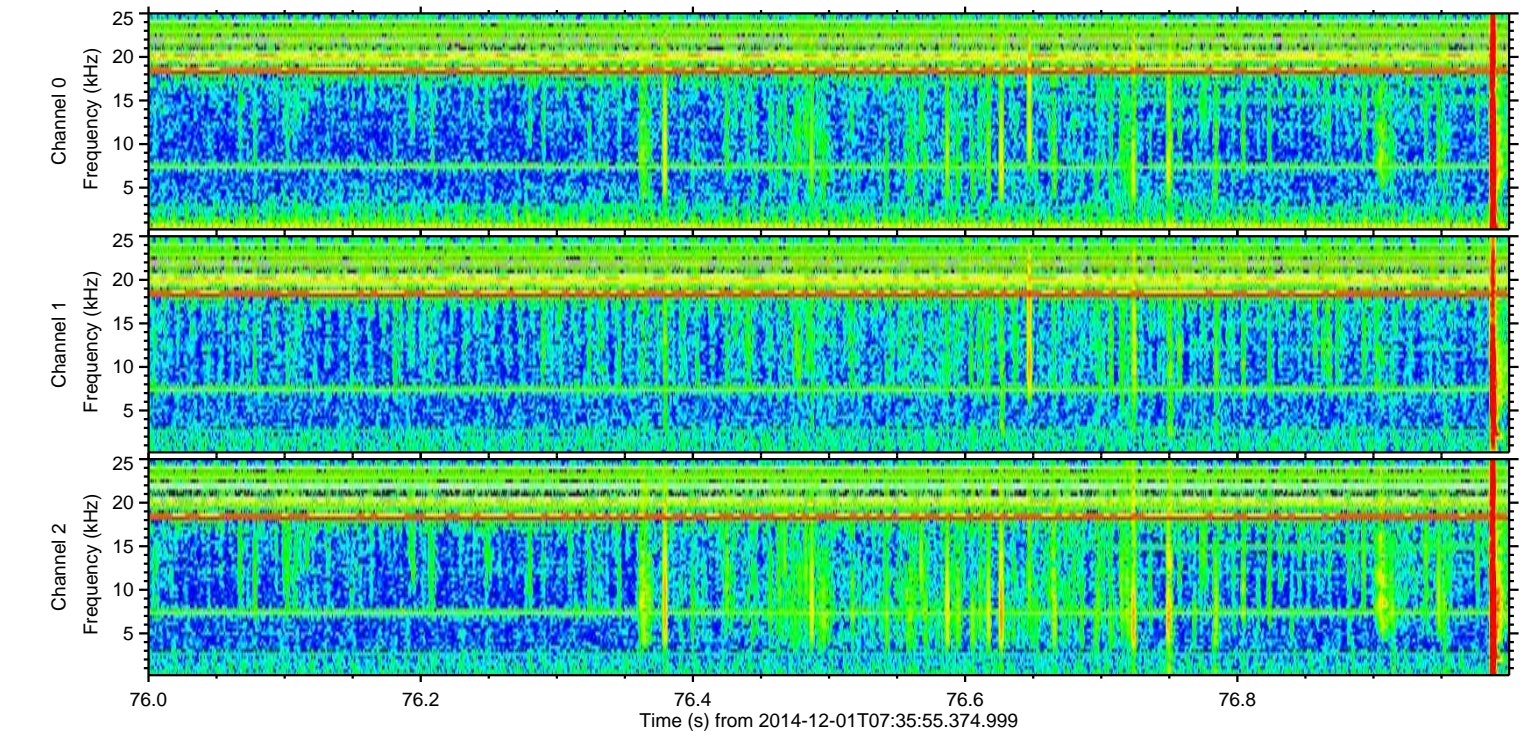
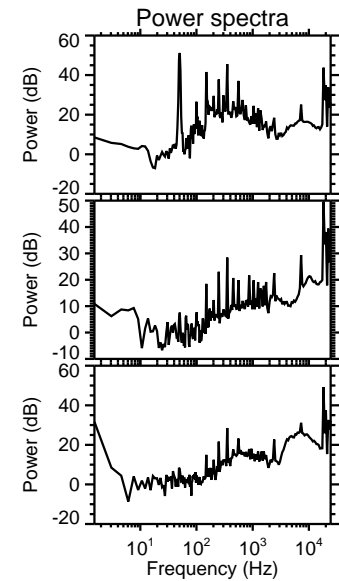
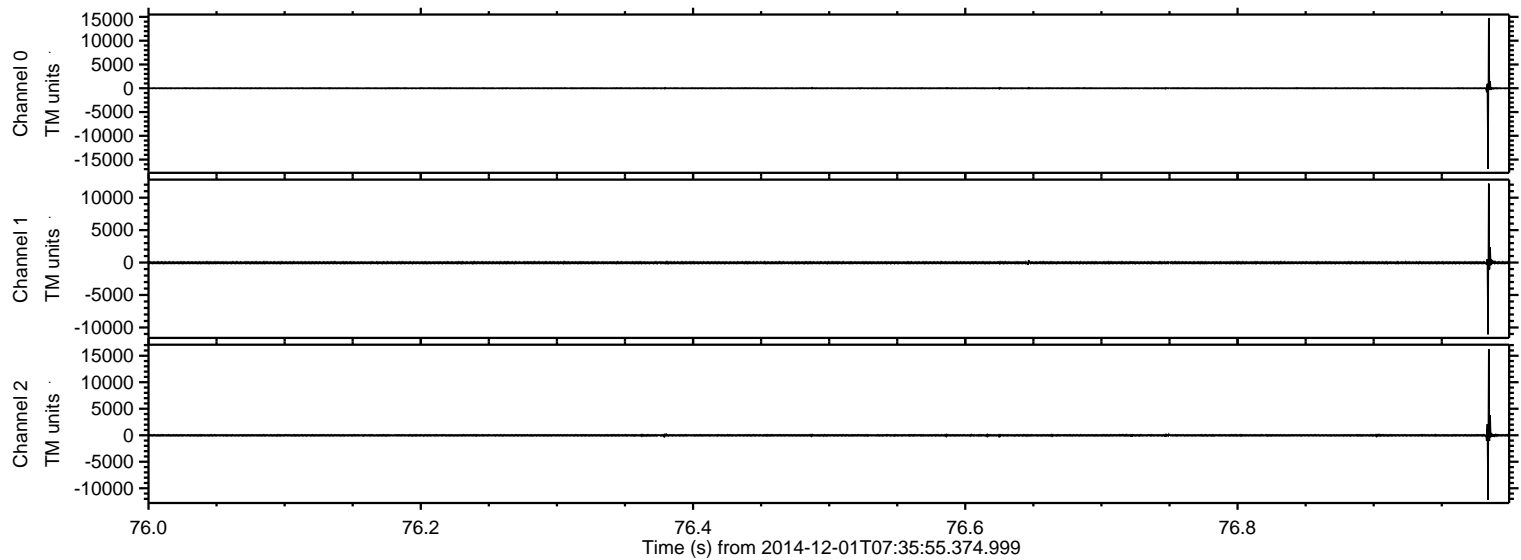
ELMAVAN 3D WAVEFORMS (Measured data sampled at 50 kHz) 49736 packets of 144 samples from 2014-12-01T07:35:55.374.999. Part 63/144

Processed Mon Dec 1 08:43:35 2014 by ELM ver.2012-10-06 from 001\_\_elm20141201\_073554\_\_dat00.bin





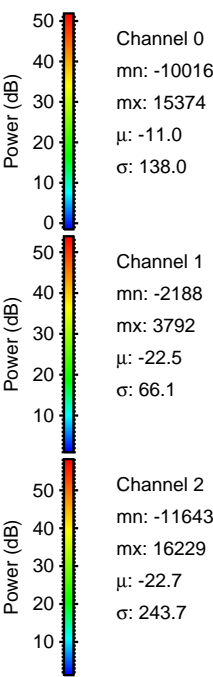
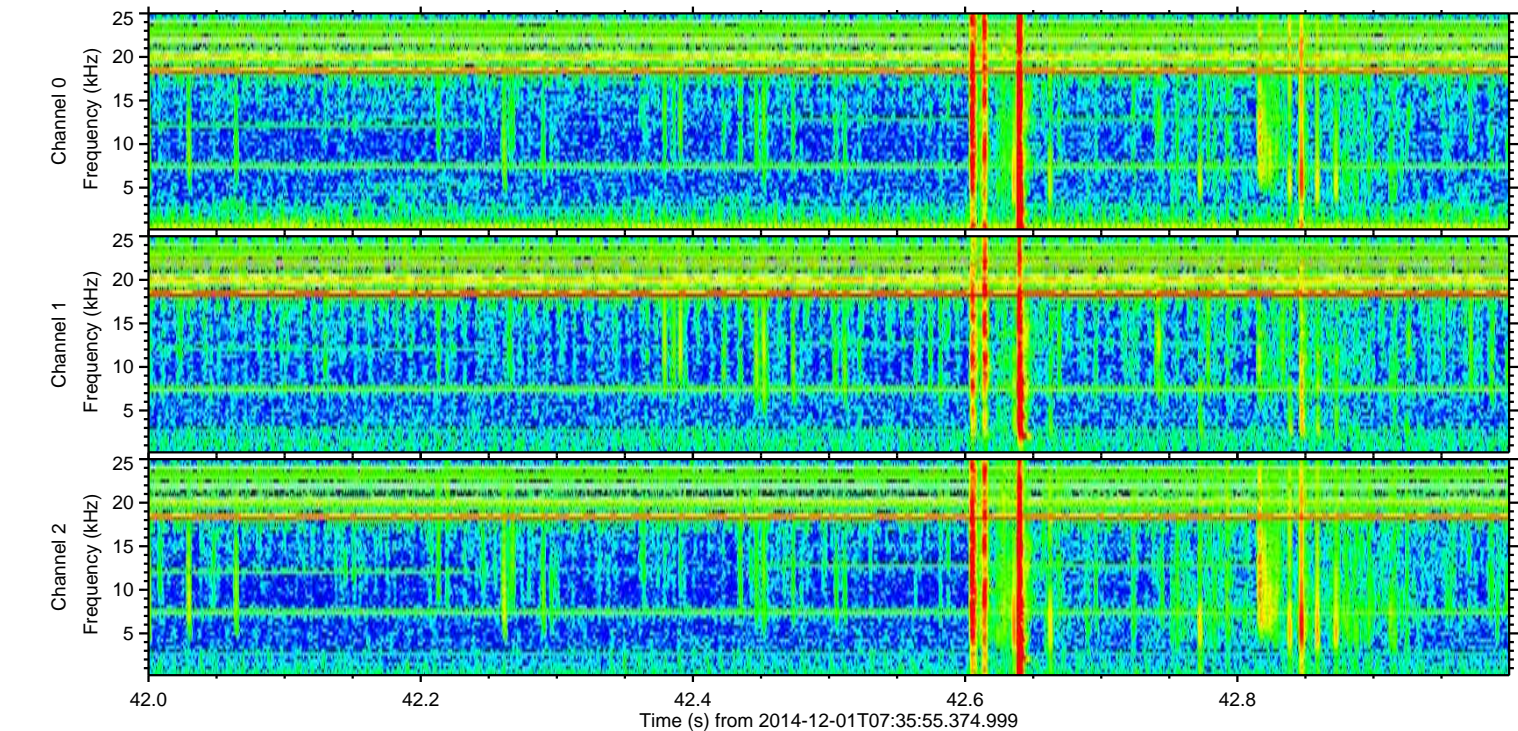
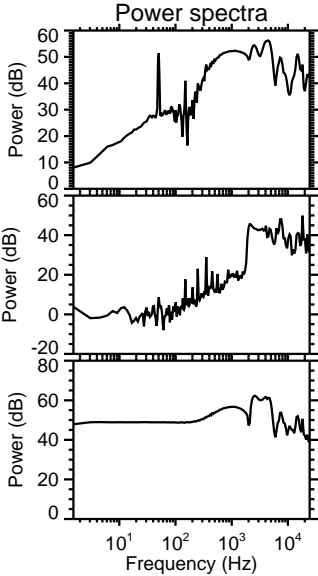
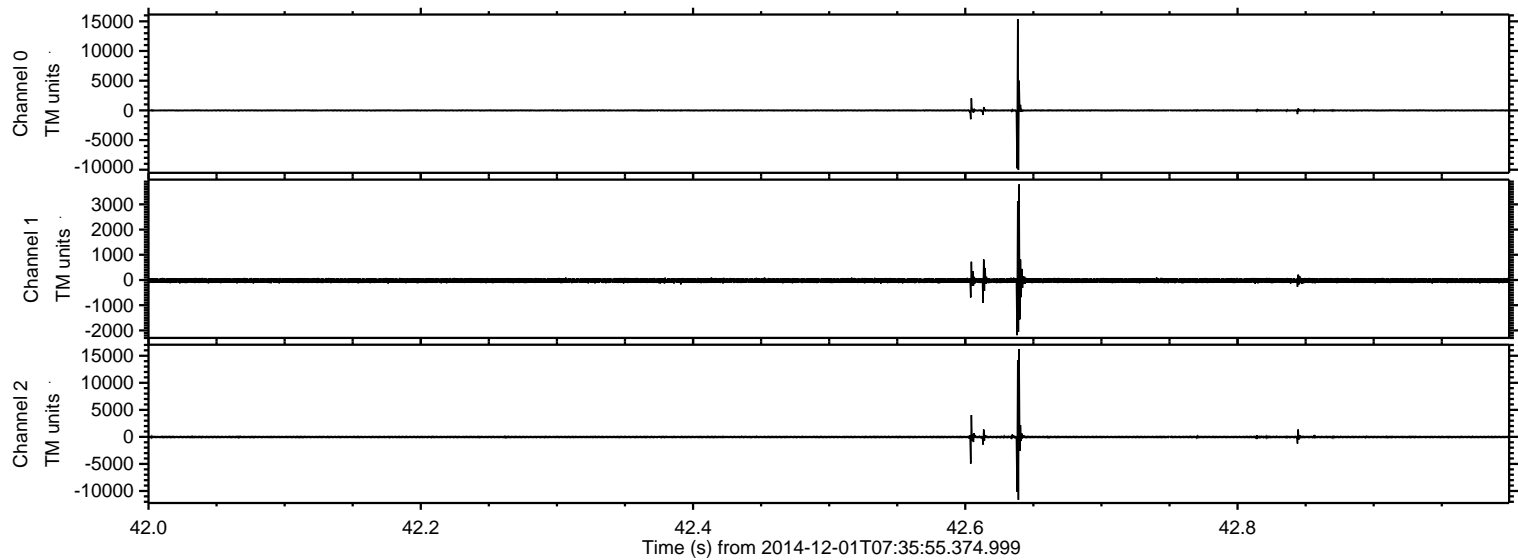
Processed Mon Dec 1 08:43:36 2014 by ELM ver.2012-10-06 from 001\_\_elm20141201\_073554\_\_dat00.bin





ELMAVAN 3D WAVEFORMS (Measured data sampled at 50 kHz) 49736 packets of 144 samples from 2014-12-01T07:35:55.374.999. Part 43/144

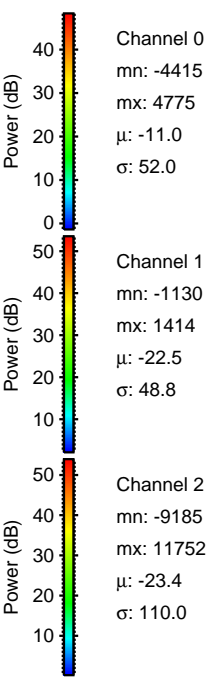
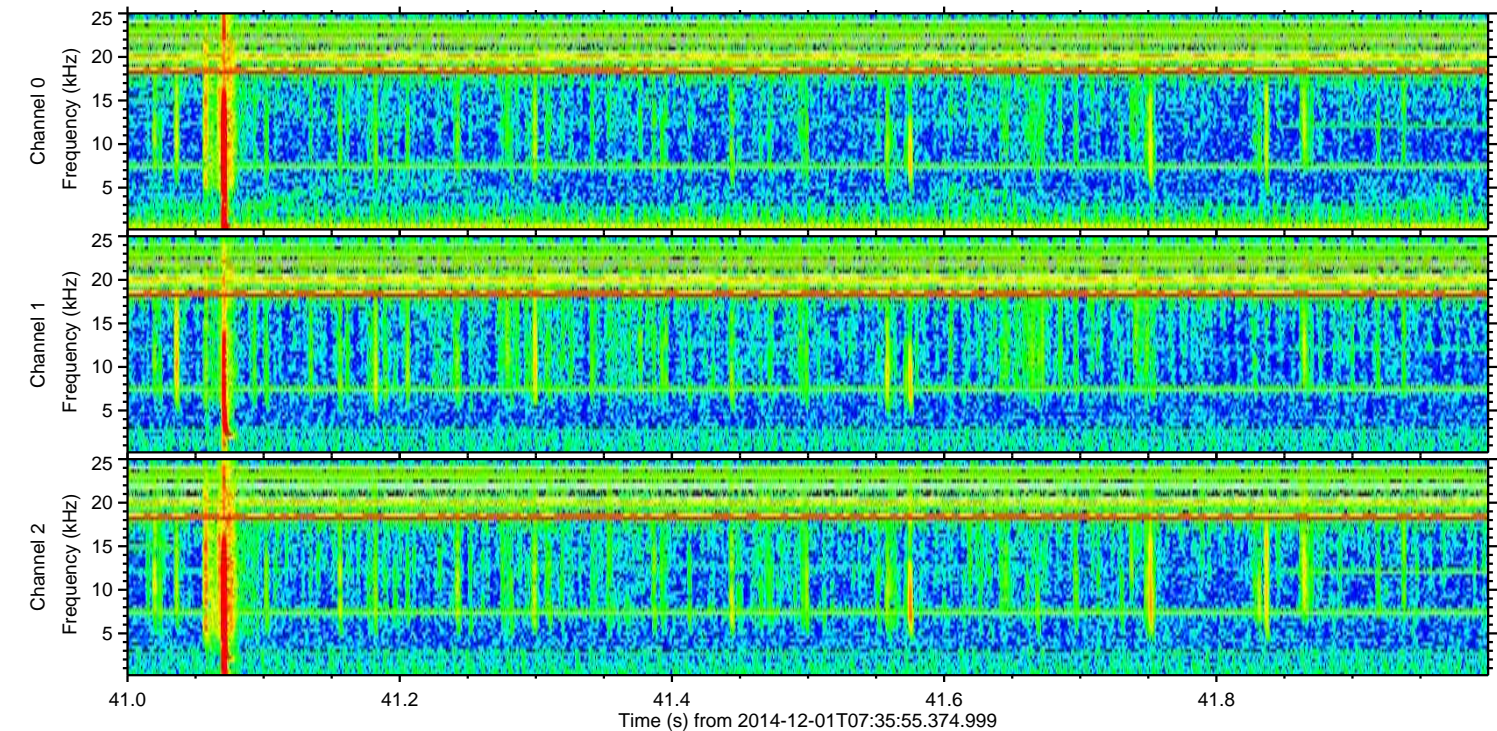
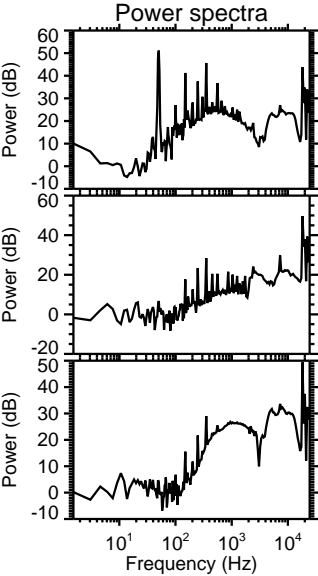
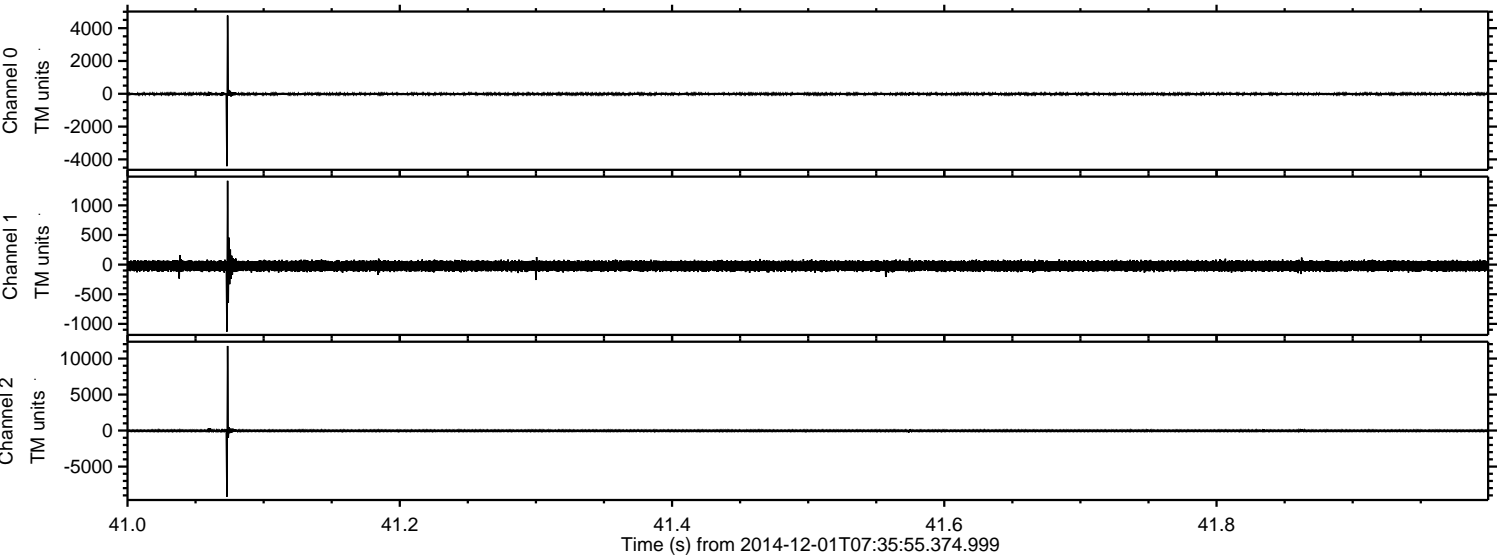
Processed Mon Dec 1 08:43:37 2014 by ELM ver.2012-10-06 from 001\_\_elm20141201\_073554\_\_dat00.bin





ELMAVAN 3D WAVEFORMS (Measured data sampled at 50 kHz) 49736 packets of 144 samples from 2014-12-01T07:35:55.374.999. Part 42/144

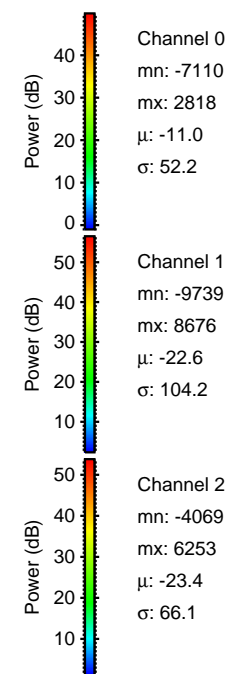
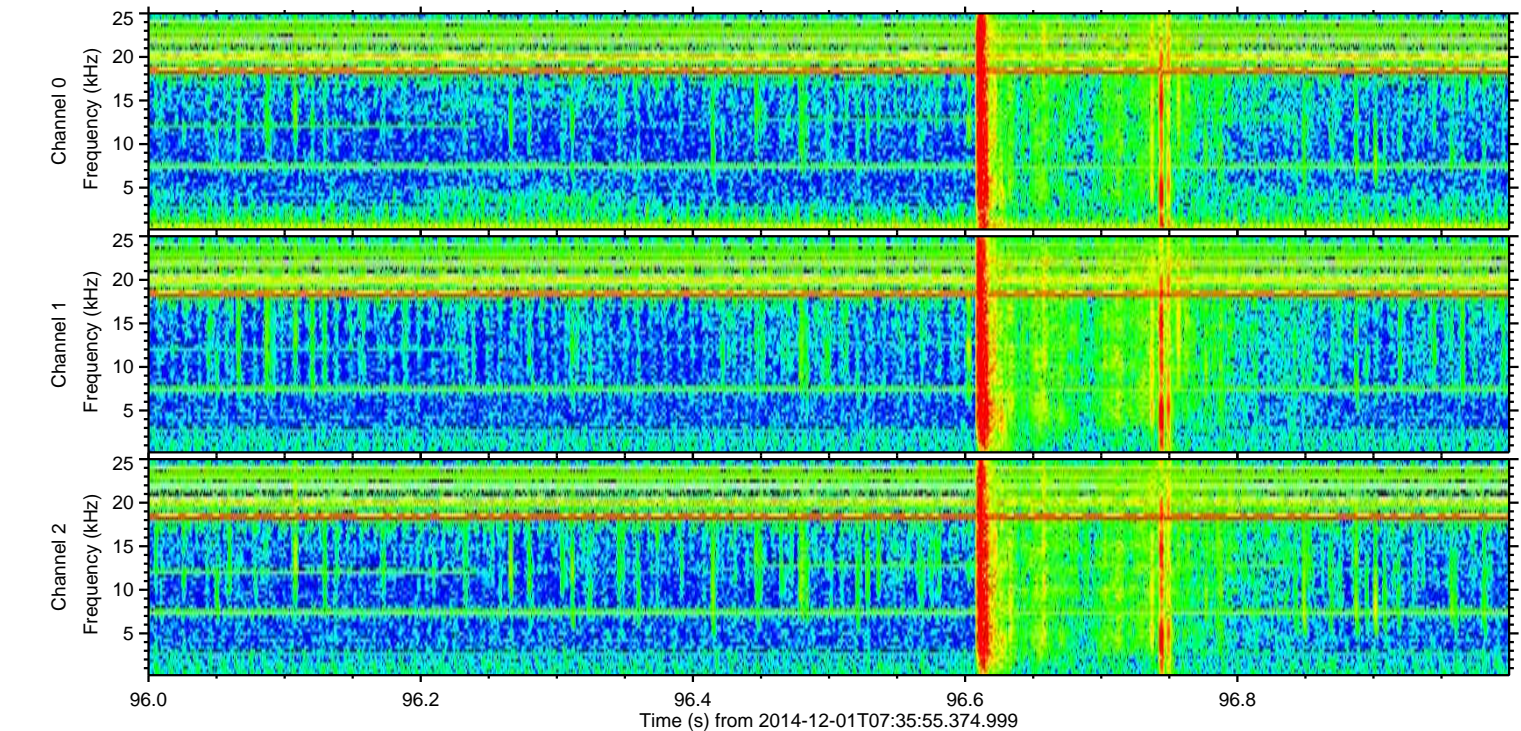
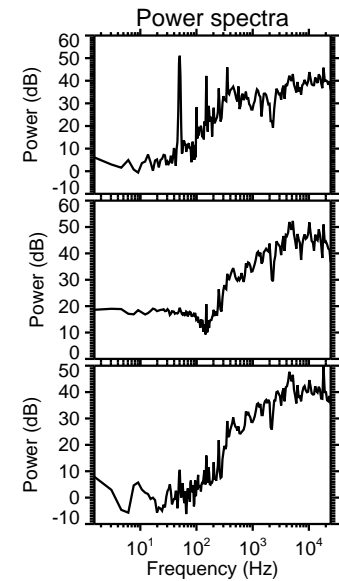
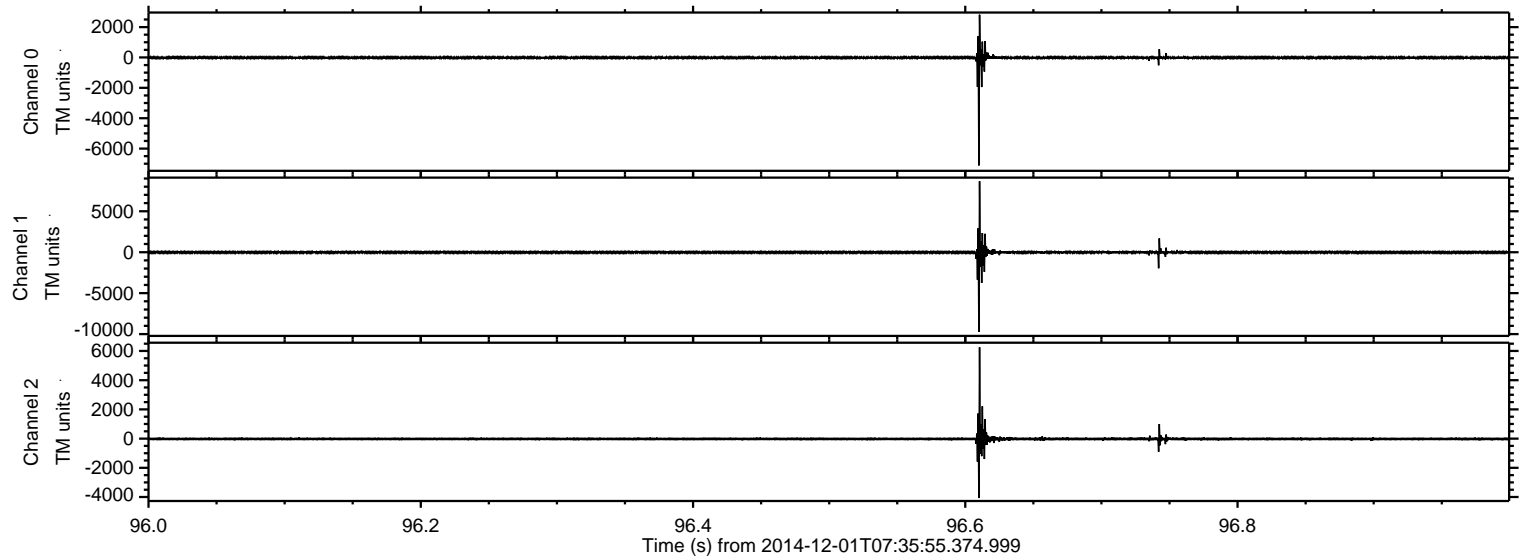
Processed Mon Dec 1 08:43:38 2014 by ELM ver.2012-10-06 from 001\_\_elm20141201\_073554\_\_dat00.bin





ELMAVAN 3D WAVEFORMS (Measured data sampled at 50 kHz) 49736 packets of 144 samples from 2014-12-01T07:35:55.374.999. Part 97/144

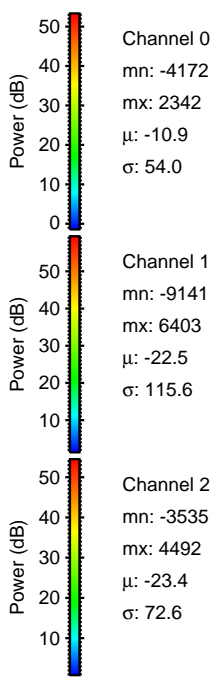
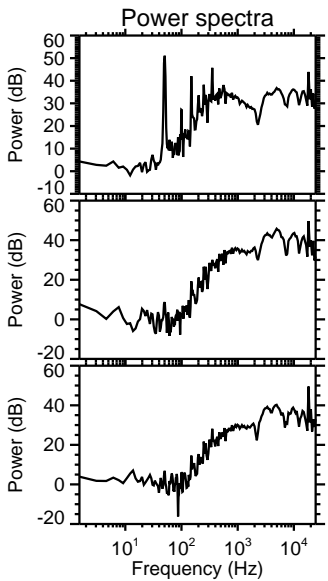
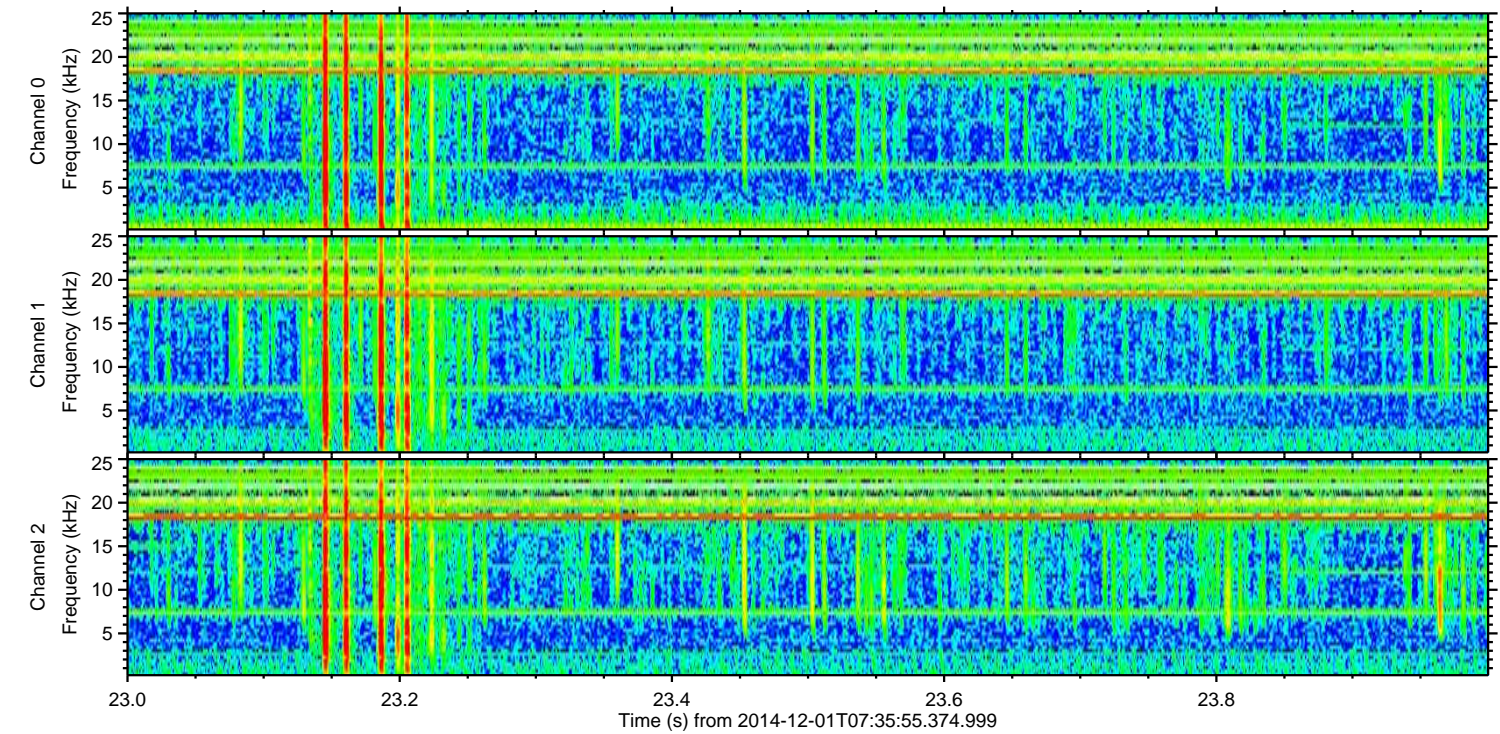
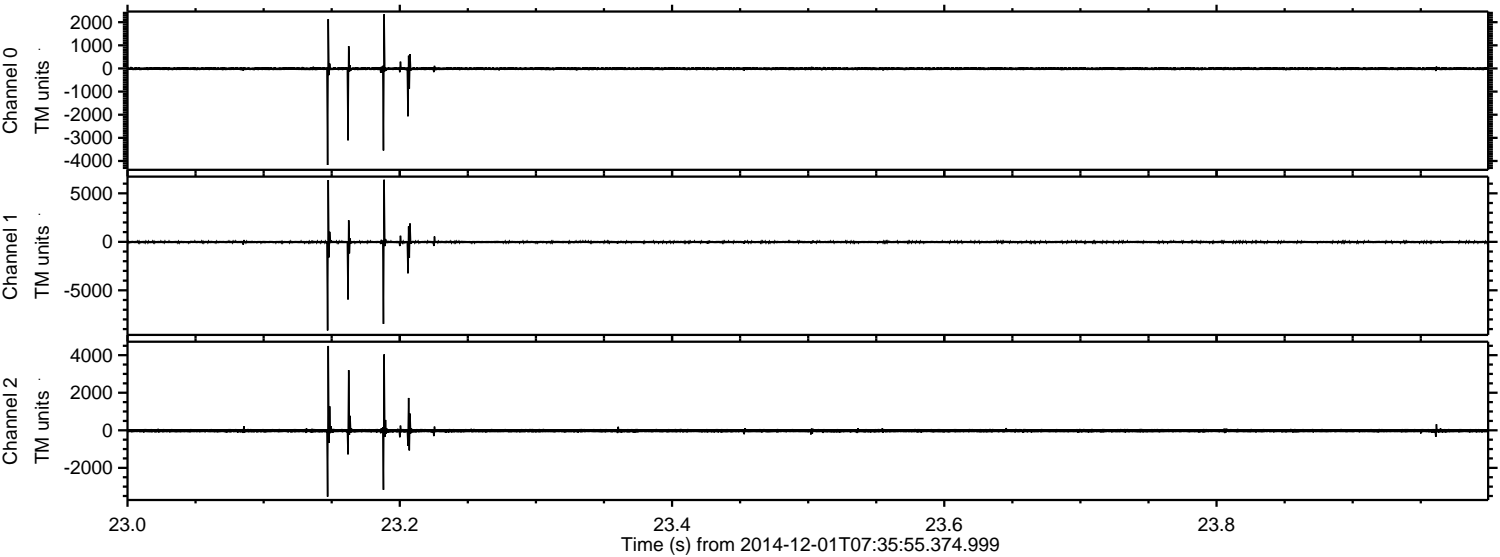
Processed Mon Dec 1 08:43:39 2014 by ELM ver.2012-10-06 from 001\_\_elm20141201\_073554\_\_dat00.bin





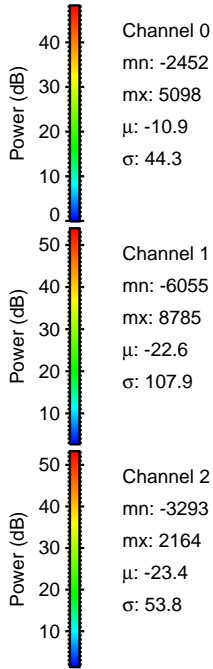
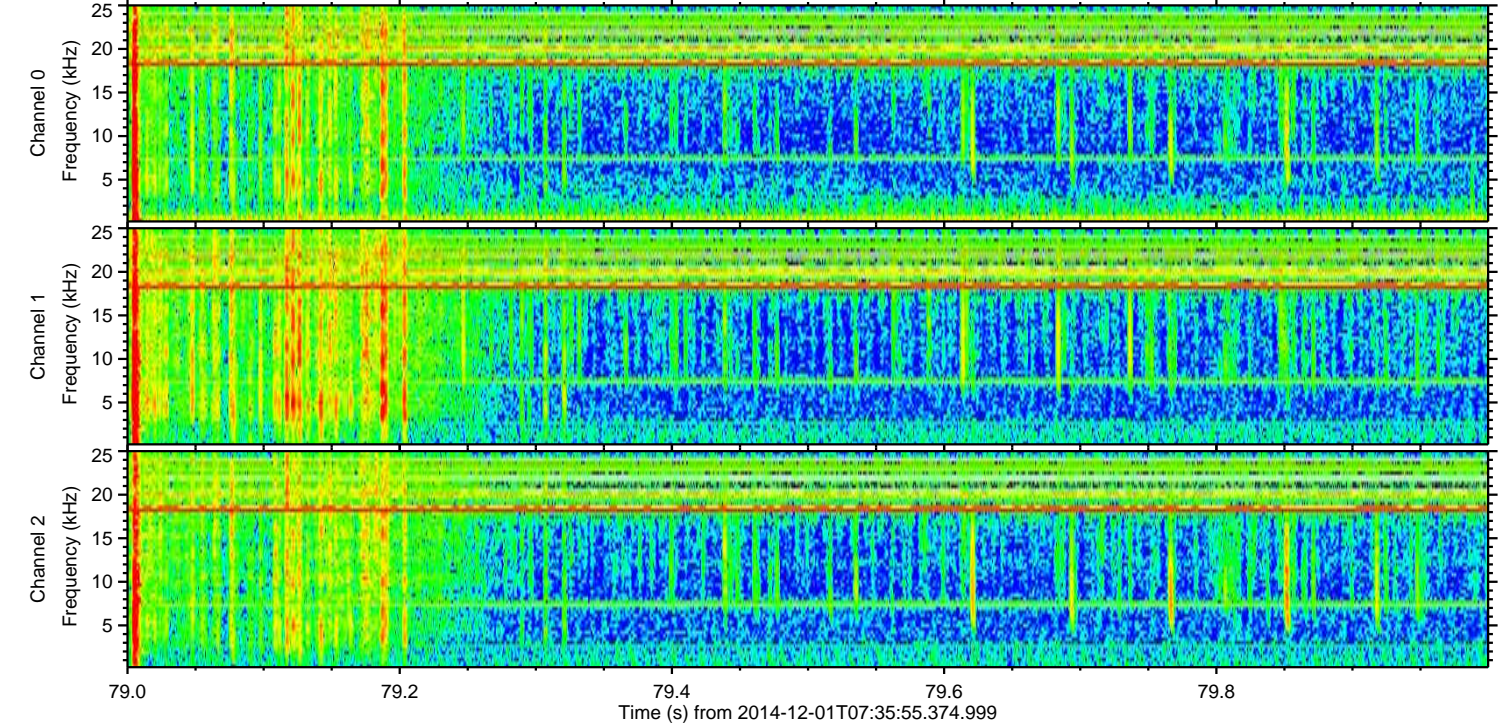
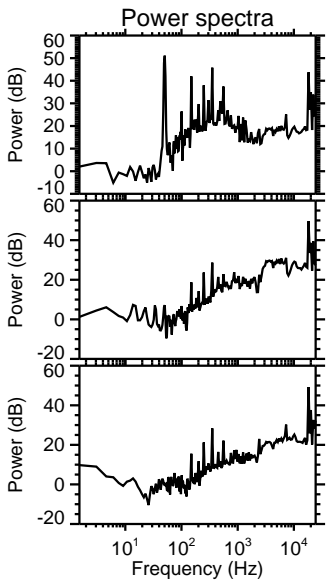
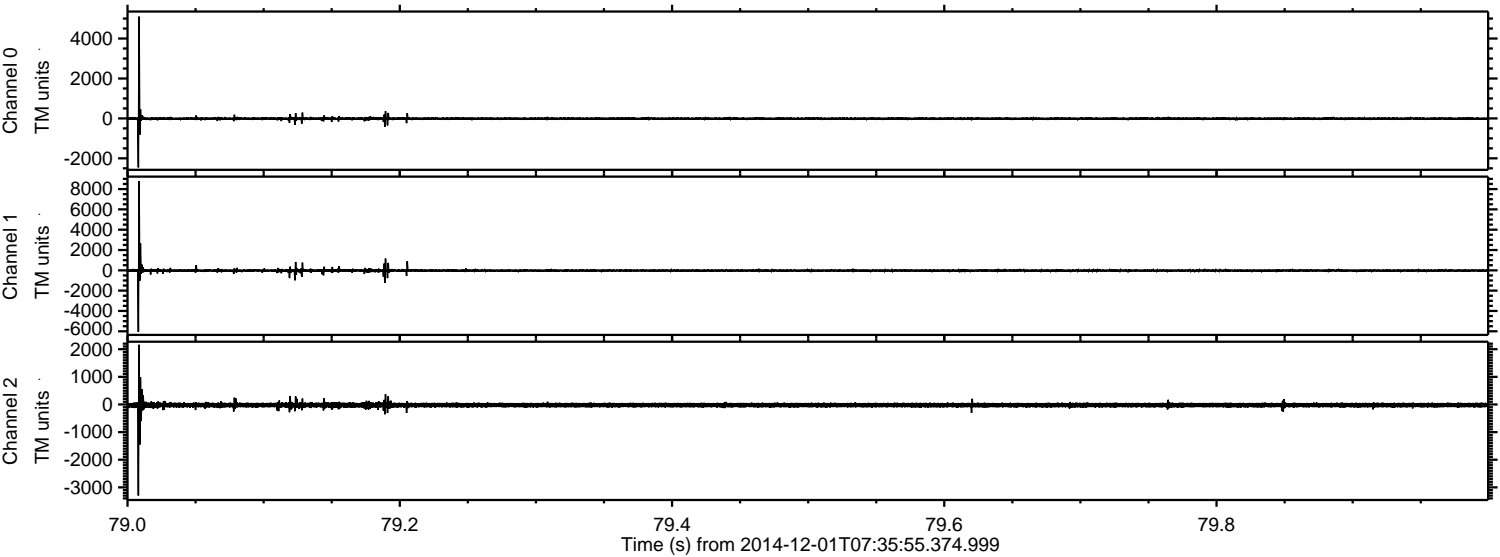
ELMAVAN 3D WAVEFORMS (Measured data sampled at 50 kHz) 49736 packets of 144 samples from 2014-12-01T07:35:55.374.999. Part 24/144

Processed Mon Dec 1 08:43:40 2014 by ELM ver.2012-10-06 from 001\_\_elm20141201\_073554\_\_dat00.bin



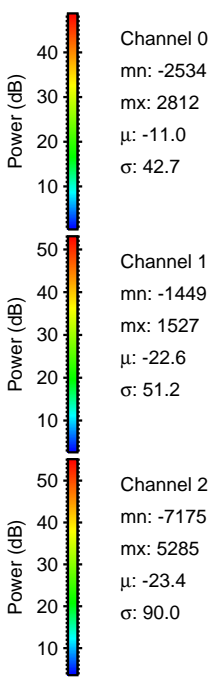
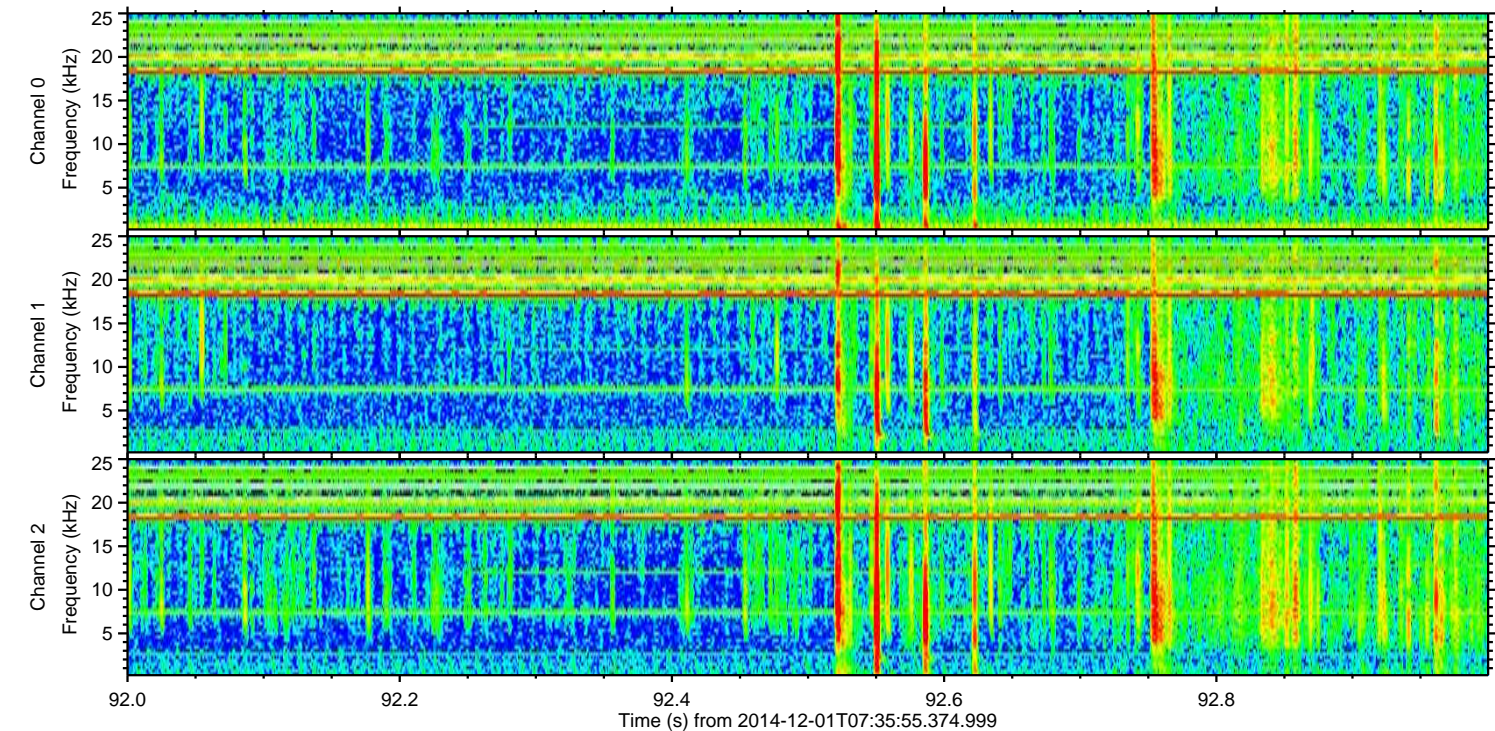
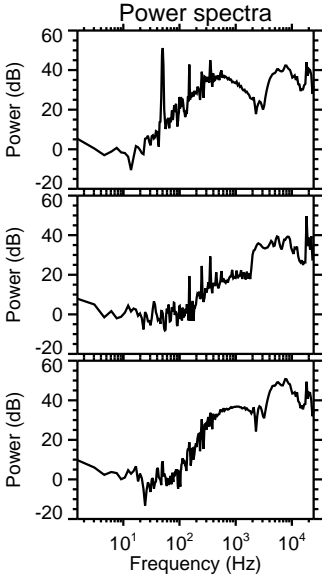
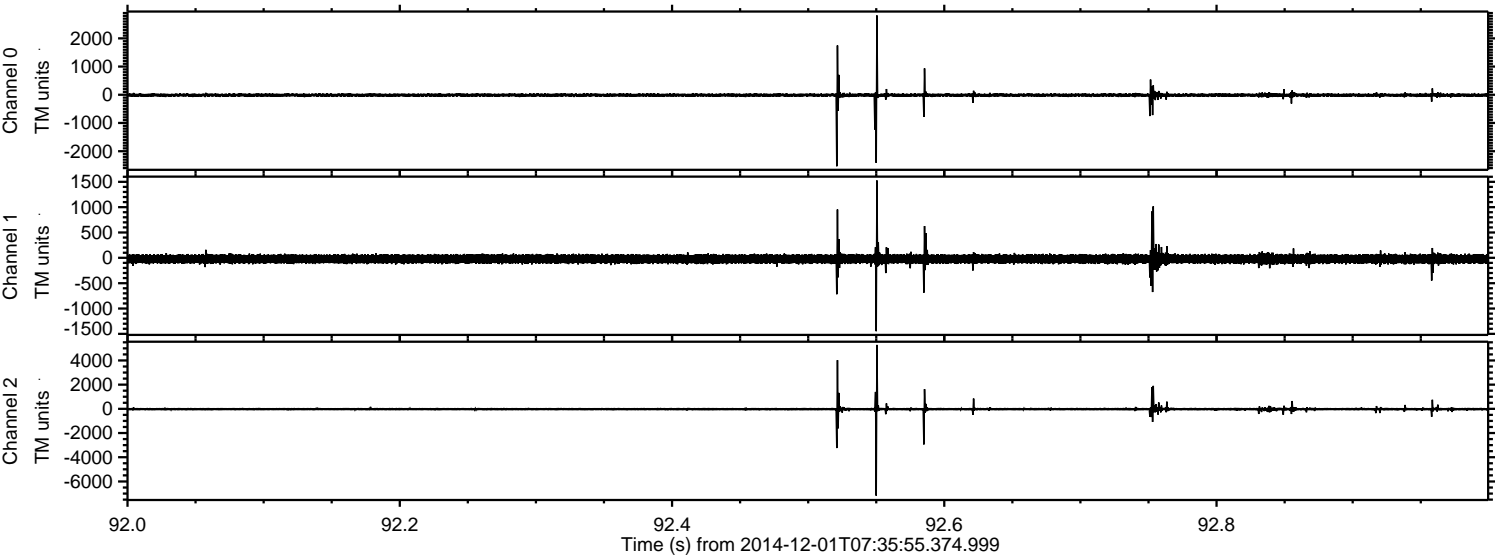


Processed Mon Dec 1 08:43:41 2014 by ELM ver.2012-10-06 from 001\_\_elm20141201\_073554\_\_dat00.bin





Processed Mon Dec 1 08:43:42 2014 by ELM ver.2012-10-06 from 001\_\_elm20141201\_073554\_\_dat00.bin



Channel 0  
mn: -2534  
mx: 2812  
 $\mu$ : -11.0  
 $\sigma$ : 42.7

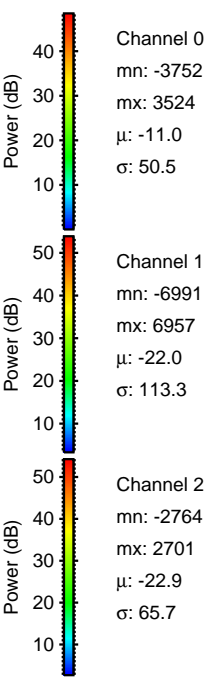
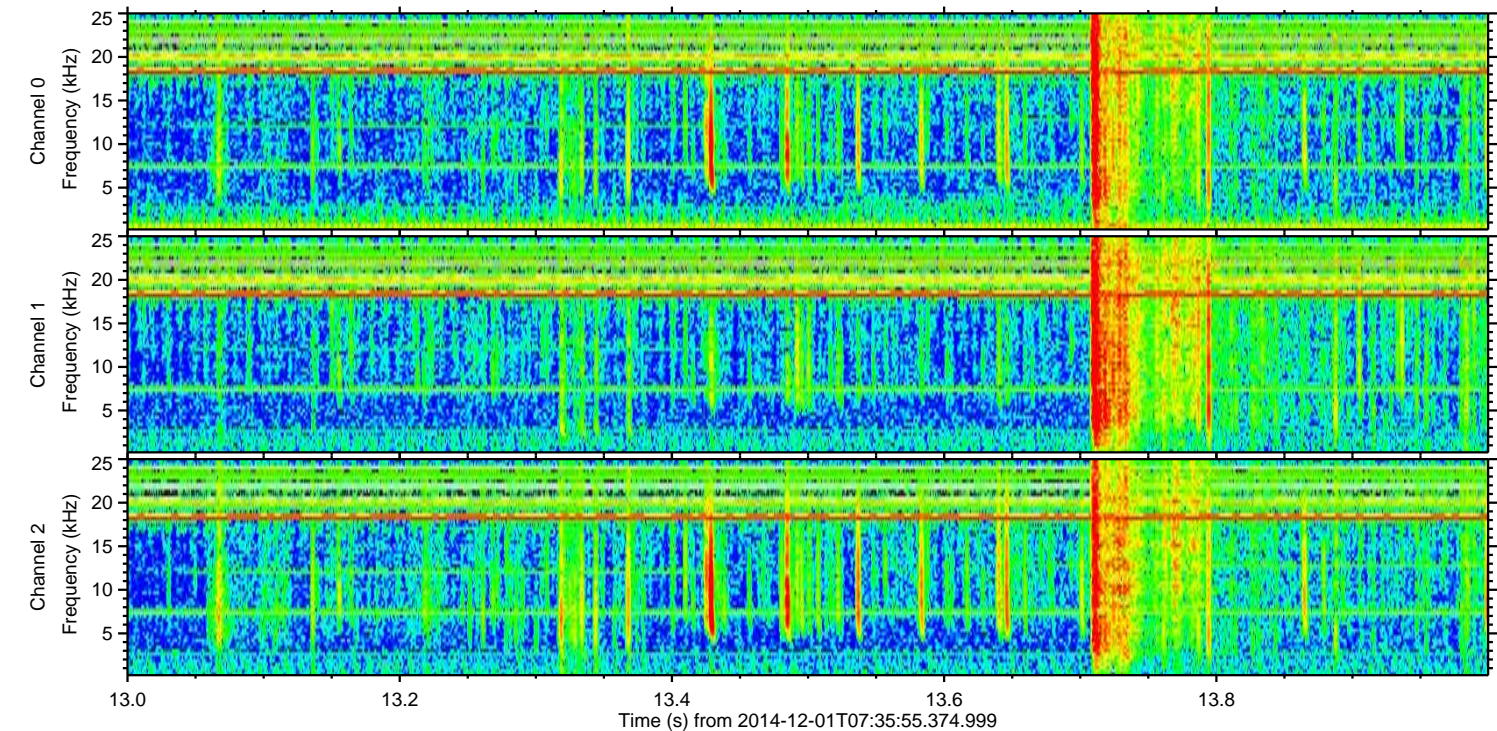
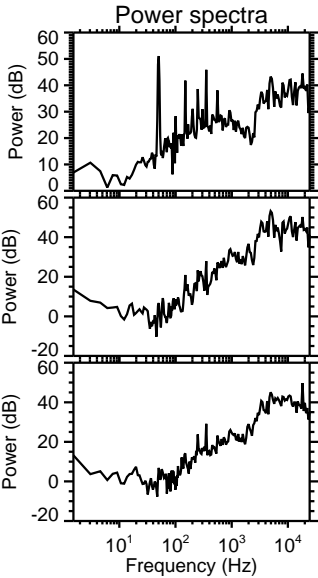
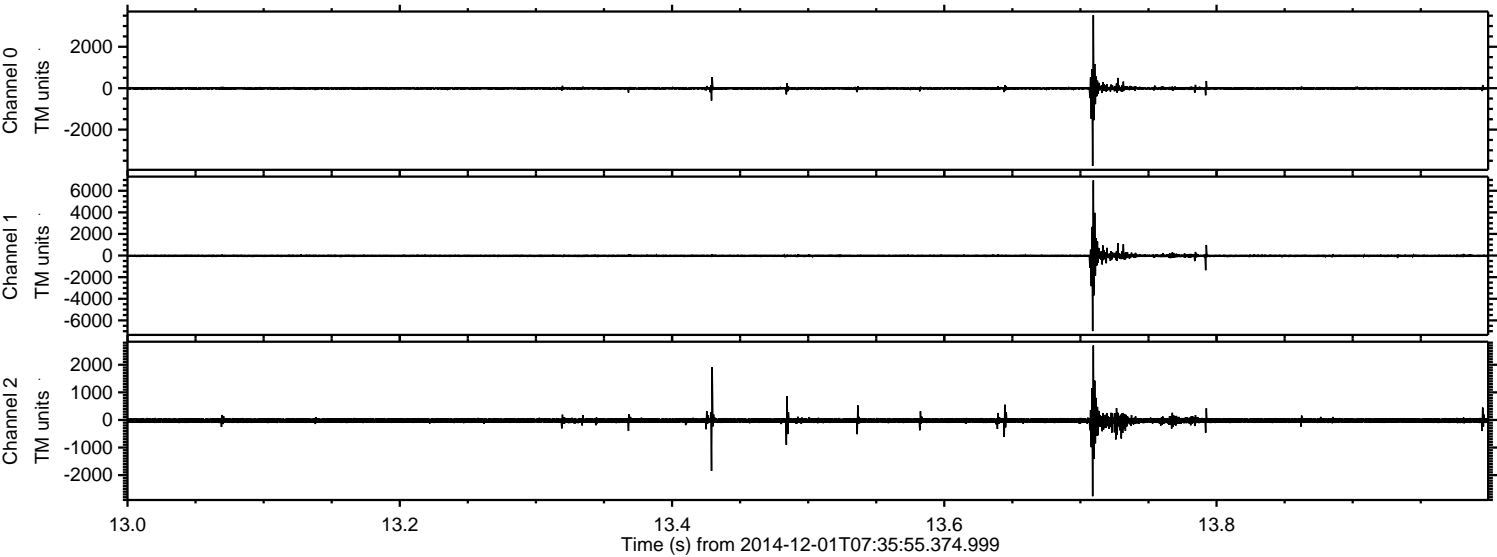
Channel 1  
mn: -1449  
mx: 1527  
 $\mu$ : -22.6  
 $\sigma$ : 51.2

Channel 2  
mn: -7175  
mx: 5285  
 $\mu$ : -23.4  
 $\sigma$ : 90.0



ELMAVAN 3D WAVEFORMS (Measured data sampled at 50 kHz) 49736 packets of 144 samples from 2014-12-01T07:35:55.374.999. Part 14/144

Processed Mon Dec 1 08:43:43 2014 by ELM ver.2012-10-06 from 001\_\_elm20141201\_073554\_\_dat00.bin





ELMAVAN 3D WAVEFORMS (Measured data sampled at 50 kHz) 49736 packets of 144 samples from 2014-12-01T07:35:55.374.999. Part 118/144

Processed Mon Dec 1 08:43:44 2014 by ELM ver.2012-10-06 from 001\_\_elm20141201\_073554\_\_dat00.bin

